

Illinois Chess Bulletin

December 2009

Felecan and Amanov are 2009 Illinois Co-Champions

Grandmaster Mesgen Amanov and International Master Florin Felecan tied for first in the 2009 Illinois Open, held September 5-7 at the Doubletree Oak Brook. The co-titlests scored 5-1, drew with each other and with Grandmaster Dmitry Gurevich, who tied for third with Gopal Menon with 4½. Former champions competing in this event included Gurevich, IM Angelo Young, FM Albert Chow, FM Aleksandar Stannov, and FM Andrew Karklins.

Matthew Castillon won the Reserve section with a 5½-½ score. Thanks to Tim Just, Wayne Clark, and Gary Janssen.

Selected games follow:

GM Dmitry Gurevich – Michael Auger [D90]

2009 Illinois Open

Notes by GM Dmitry Gurevich

1.d4 Nf6 2.c4 g6 3.Nc3 d5 4.Nf3

Or 4.cxd5 Nxd5 5.Bd2!?

4...Bg7 5.cxd5 Nxd5 6.Bd2

This variation was used by Smyslov many years ago. White doesn't get much.

6...0-0 7.Rc1 c6

7...Nb6!? 8.e3 Nc6 9.Bb5 e5! **8.e3**

8.e4 Nb6 9.Be3 Bg4 10.Be2 Bxf3 11.Bxf3 Nc4 12.e5

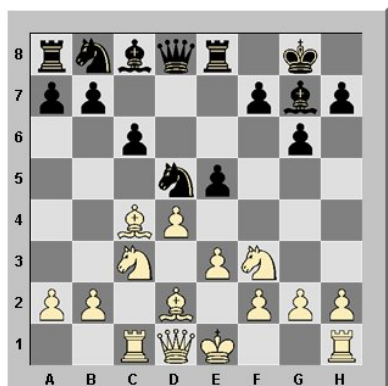
8...Re8

8...Nb6 9.Be2; 8...Nxc3 9.Bxc3 Nd7 10.Be2 Nf6 (10...Qc7 11.0-0 e5 12.d5) 11.0-0 Ne4

9.Bc4

9.Be2 Nxc3 10.Bxc3 Qd5 11.b3 Be6 12.0-0 Nd7

9...e5?!



10.dxe5?!

10.Nxe5! is much stronger than taking with the pawn: for example, 10...Bxe5 11.dxe5 Rxe5 12.Nxd5 cxd5 13.Bc3 Bg4 14.Qd2 (14.Qxg4 Re4 15.Qf3 Rxc4 16.0-0 is pleasant, but not as convincing) 14...d4 15.Qxd4 leads to an enormous endgame advantage.

10...Bg4

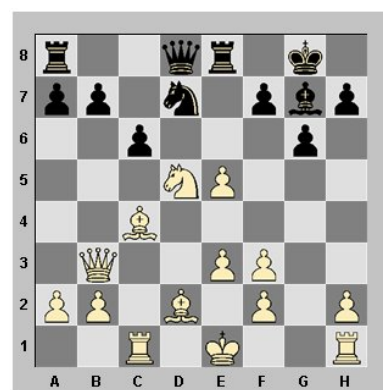
10...Nb6! 11.Bb3 (11.Ne4 Nxc4 12.Rxc4 Nd7 13.Nd6 Nxe5) 11...N8d7 12.e6 fxe6 13.0-0 Nc5

11.Qb3 Bxf3 12.gxf3 Nd7

An interesting psychological moment. Michael wasn't making good choices in the opening, so I was expecting another gift soon. However, my next move is a big blunder.

13.Nxd5?

13.f4! Nc5 14.Qa3 Nxc3 15.Qxc3 (15.Bxc3 Nd3+ 16.Bxd3 Qxd3 17.Bd4 Qf5) 15...Ne4 16.Qc2 Nxd2 17.Qxd2 Qh4 18.Qd3 Rad8 19.Qb3 Re7 20.Rd1 Rxd1+ 21.Qxd1 Qh3 22.Rg1 Qxh2 23.Qg4; 13.Bxd5 cxd5 14.f4 Nc5 15.Qb5 Rc8 16.0-0 a6



13...Nxe5!!

A fantastic shot, totally unexpected by White.

14.Be2 cxd5

14...Qxd5 15.Qxd5 cxd5 16.Rc7 Nc4 17.Rxb7 Nxb2 18.0-0

15.f4

I have enough experience to realize that my advantage is gone. My next moves are on the safe side. However, Michael maintained the pressure and continued to improve his position.

15...Nc4! 16.Bxc4 dxc4 17.Qxc4

17.Rxc4 Qd5

(Continued on page 4)



March 19 – 25, 2010
Holiday Inn - Skokie, IL

\$20,000 Prize Fund Unconditionally Guaranteed!

(Overall): \$3000 - 2000 - 1600 - 1400

(Women): \$1000 - 600 - 400 - 200

(1799 - 1600): \$1000 - 600 - 400 - 200

(1599 - 1400): \$1000 - 600 - 400 - 200

(Under 1400): \$1000 - 600 - 400 - 200

(Unrated): \$1000 - 600 - 400 - 200

1st Place Winner – FIDE Master Title

Top Female Player – Woman's FIDE Master Title

Hotel: Holiday Inn - \$99/night, 2 person occupancy, hot breakfast included.
Mention North American Chess.

Entry Fee: \$120 until February 15; \$150 until March 15; \$200 thereafter and at door

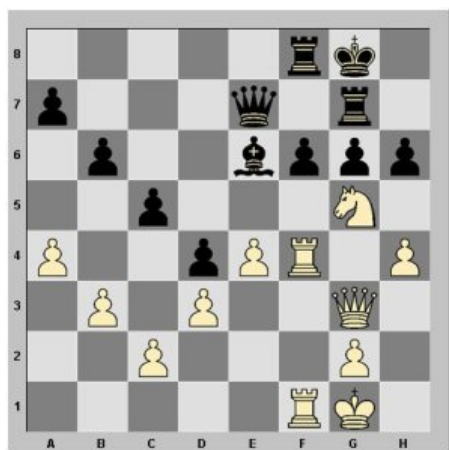
Round Times: 3/19 – 6:30pm; 3/20 -3/21– 12pm and 6:30pm; 3/22-25 – 6:30pm

**Visit the tournament website for more information
on this event including:**

- ▶ Scholarships to Texas Tech University
- ▶ How to get free entry to this event
- ▶ Additional prizes and potential prize fund upgrades
- ▶ Travel and lodging information

**Don't miss out on your chance to become
a World Chess Champion!**

Register Today at <http://www.worldchesschamps.com>



White to play and win
(answer below)

Copyright © 2009 Illinois Chess Association

Editor: Bill Brock icbeditor@il-chess.org

Please submit games in cbv or pgn format.

Membership Information

The *Illinois Chess Bulletin (ICB)* is published (Web and print) by the [Illinois Chess Association](http://il-chess.org) (ICA). ICA membership includes a subscription to the *ICB*

Corporate	\$120
Century Club	\$100
Patron	\$50
Affiliate	\$25
Regular	\$15
Scholastic (under 19)	\$10

ICA SUPPORTERS

Life Patron Members:

Barre, Todd J	Elmhurst
Fineberg, Thomas A	Chicago
Smythe, Bill	Chicago
Warren, Helen E	Western Springs
Warren, James E	Western Springs

Century Club Members:

Benedek, Roy	Western Springs
Brock, Bill	Chicago
Dolson, Carl	Peoria
Harvey, Frank	Plainfield
Krasnopolsky, George	Buffalo Grove
Parker, Robert	Normal
Pradt, Daniel J	Glen Ellyn
Sprandel, Tom	Evanston
Turgut, Tansel	Decatur
Zabell, Sandy	Evanston
Zacate, Mike	Mokena

Patron Members:

Aaron, Michael E	Chicago
Bogan, Tim	Chicago
Brotsos, Jim	Chicago
Delay, Joseph D	Schaumburg
Dixon, Jeff	Oak Park
Henderson, S.E., Jr.	Bolingbrook
Just, Tim	Gurnee
Lewis, Richard	Harvey
Lobrac, Michael	Itasca
McConaghie, Pete	Peoria
Nibbelin, Mark	Normal
Panner, Glenn	Frankfort
Rosen, Andrea	Skokie
Rosen, Brad	Skokie
Scott, Garrett	Normal
Sweig, Mitchel	Evanston
Wong, Philip	Wilmette

Please renew at
[il-chess.org!](http://il-chess.org)

Elected Officers

President, Tom Sprandel
president@il-chess.org
2304 Park Place #1,
Evanston, IL 60201

Metro VP vacant

Downstate VP, David Long
downstatevp@il-chess.org

Treasurer, Carl Dolson
treasurer@il-chess.org
6021 N Wickwood Rd,
Peoria, IL 61614

Secretary, Maret Thorpe
secretary@il-chess.org

Appointed Officers and Committee Chairs

Director, Warren Junior Program
Andi Rosen
warrenprogram@il-chess.org

Membership Secretary
Tom Sprandel
membership@il-chess.org,
2304 Park Place #1
Evanston, IL 60201

Events Editor
Maret Thorpe
events@il-chess.org

Webmaster, Tom Sprandel
webmaster@il-chess.org

Past President, Chris Merli,
pastpres@il-chess.org

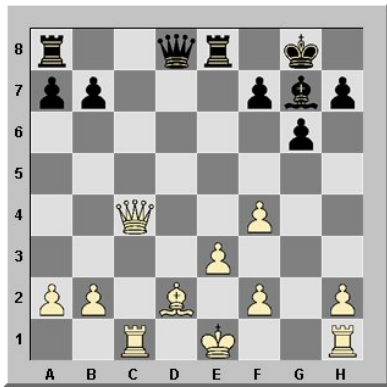
Puzzle answer:

IM Florin Felecan of the **Chicago Blaze** beat Slava Mikhailuk of the Seattle Sluggers in their U.S. Chess League match last month with the following tactic:
28.Rxf6! and **Black resigned** because of the following forced variation
28...Rxf6 (or 28... hxf5 29. Rxf8+ Qxf8 30. Rxf8+ Kxf8 31. Qb8) **29.Qb8+ Rf8** (29...Bc8 transposes after 30. Qxc8+ Rf8 31. Qxf8+ Qxf8 32. Rxf8+ Kxf8 33. Ne6+) **30.Qxf8+ Qxf8 31.Rxf8+ Kxf8 32.Nxe6+ Kf7 33.Nxg7 Kxg7 34.Kf2** etc.

February 6, 2010
Blitz & Benefit
at Northeastern
Illinois University!
See events calendar
for details!

Games from the 2009 Illinois Open

(continued from Page 1)



17...Qd7

Michael has learned how to sacrifice, now it would help him to learn how to collect! 17...Bxb2!± 18.Rc2 (18.Rb1 Rc8 19.Qb3 Bf6 20.Qxb7 Rc2) 18...Bf6 19.0-0 Qd7 20.Rfc1 Qg4+ 21.Kf1 Qf3 22.Kg1 Rad8 23.Qf1 Re7 ±

18.Qe2 Qh3! 19.Rg1 Qxh2 20.Qg4

20.Qf1 Qxf4

20...f5

Black only thought about a draw.. mistake! 20...Bxb2! 21.Rb1 Bf6 22.Rxb7 Bh4 (22...Rac8) 23.Rg2 Qh1+ 24.Ke2 Rad8 +-

21.Qg2

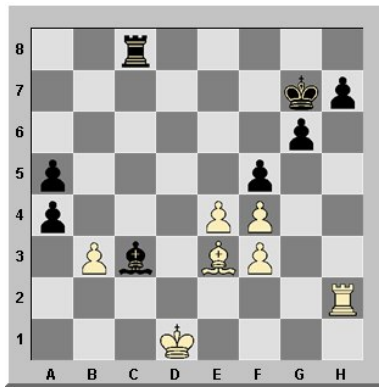
21.Qg3 Qxg3 22.fxg3 Bxb2 23.Rc7 (23.Rb1 Bd4) 23...b6 24.Ke2 Rec8 25.Rd7 Rd8 26.Rb7 Rac8 retains the initiative.

21...Qxg2 22.Rxg2 Rac8 23.b3 Rxc1+ 24.Bxc1 Rc8 25.Kd1 Bc3

Black would still be slightly better after 25...Rd8+!? 26.Kc2 Rc8+ 27.Kb1 Kf7.

26.f3 b5 27.e4 Kf7 28.Be3 a5 29.Rh2 Kg7 30.a4=

White has finally equalized after his horrendous 13th move!



31.bxa4

31.Rc2!? axb3 32.Rxc3 Rxc3 33.Bd4+ Kf7 34.Bxc3 a4 35.Bb4 h6 36.Bd2 g5 37.fxg5 fxe4 38.fxe4 hxg5 39.Bxg5 a3 40.Kc1 Ke6 41.Bf4 Kf6 42.Bb8 Ke6 43.Kb1 Kf6 44.Bd6 Kg5 45.Bh2 Kf6 46.Bb8 Kg5=

31...Rd8+ 32.Ke2 Bb4 33.Rh1 Rd7 34.Rc1 Re7

Black can play more actively with 34...h5 35.e5 Ba3 36.Rc6 h4.

35.Bd4+ Kf7 36.Kd3!

Better than 36.Be5 g5!? In the endgame, Michael's relative inexperience prevented him from scoring a well-deserved half point. Well, there's always next time!

36...Rd7 37.Rc6 Bd2?

A time-pressure mistake. 37...Be7 38.Kc4 h5

38.exf5 gxf5 39.Rf6+ Ke7 40.Rxf5±

In the last few moves, the position has changed drastically.

40...Ke6 41.Re5+ Kf7 42.Rh5 Kg6

42...Kg8 43.Ke4 Re7+ 44.Be5

43.Rg5+- Kh6 44.Rg4 Bc1

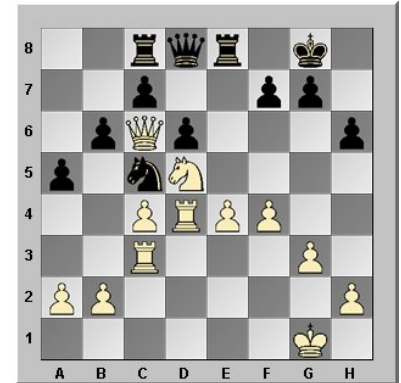
44...Kh5 45.Ke4 Re7+ 46.Kf5

45.Ke4 Re7+ 46.Kf5 1-0

**GM Mesgen Amanov –
FM Albert Chow [E16]**
2009 Illinois Open

1.d4 Nf6 2.c4 e6 3.Nf3 b6 4.g3 Bb7 5.Bg2 Bb4+ 6.Bd2 a5 7.0-0 8.Nc3 Ne4 9.Nxe4 Bxe4 10.Bf4 Be7 11.Rc1 d6 12.Qb3 Nd7 13.Rfd1 h6 14.Ne1 Bxg2 15.Nxg2 Bg5 16.e4 Bxf4 17.Nxf4

Qe7 18.Rc3 Rfe8 19.Qb5 Rac8 20.Qc6 e5 21.Nd5 Qd8 22.f4 exd4 23.Rxd4 Nc5



Black has a cramped but solid position.

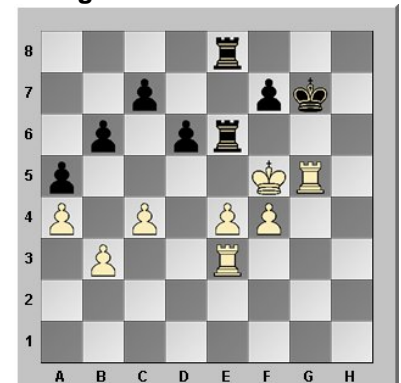
24.Re3 Qd7 25.Qxd7 Nxd7 26.Kf2 Nf6!?

Relieves Black's cramp, and the broken kingside pawns are often good defensively in pure rook endings.

27.Nxf6+ gxf6 28.Kf3 Re7 29.Kg4 Kg7 30.Kf5 Rce8 31.Rd5 Re6 32.b3 Rc8 33.Rd2 Rce8 34.h4 Rb8 35.a4 Rbe8 36.g4 R8e7 37.Rg2 Re8 38.g5

White voluntarily undoubles.

38...fxg5 39.hxg5 hxg5 40.Rxg5+



40...Kf8

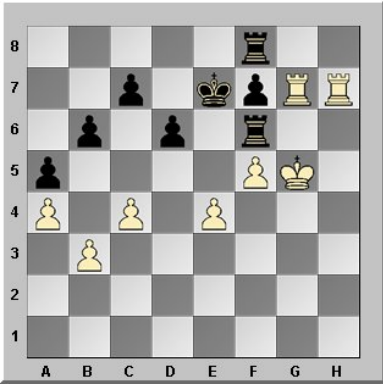
Maybe 40...Rg6 is better: 41.Reg3 Rxg5+ 42.Rxg5+ Kf8 43.e5 dxe5 44.fxe5 Rd8 gives enough counterplay: e.g., 45.Kf6 Rd3.

41.Rh3 Ke7 42.Rh7 Rf6+ 43.Kg4 Rf8 44.f5 Re8 45.Kf4 Rf8 46.Rgg7 Re8 47.Kg5 Rf8

(see diagram, top of next page)

February 6, 2010
Blitz & Benefit
at Northeastern!

See events calendar or
www.il-chess.org

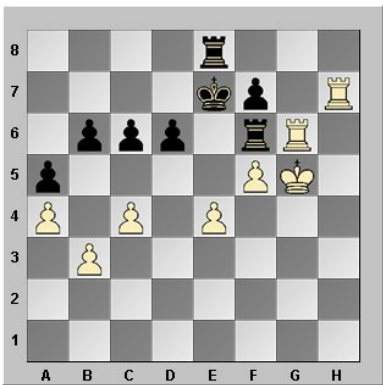


Tactics are in the air, but White needs to lure Black's Rf8 to a less favorable square.

48.Rh3 Re8 49.Rh4 Rd8 50.Rh3 c6

Maybe 50...Re8!?

51.Rh2 Rf8 52.Rhh7! Re8

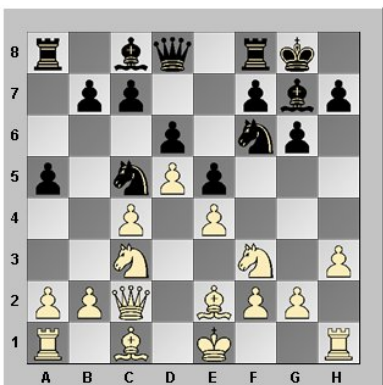


53.Rg6! Rxc6+ 54.fxc6 Rf8 55.Kf5 c5 56.e5 dxe5 57.Kxe5 Ke8 58.g7 Rg8 59.Kf6 1-0

Bill Brock – IM Florin Felecan [E93]

2009 Illinois Open
Notes by editor

1.Nf3 Nf6 2.c4 g6 3.Nc3 Bg7 4.e4 d6 5.d4 0-0 6.Be2 Nbd7 7.h3 e5 8.d5 Nc5 9.Qc2 a5



10.Be3

In the post-mortem, Felecan suggested 10.g4 as critical. I feared 10...h5, but missed 11.Nh2, a common idea in weird h3 lines.

10...Ne8

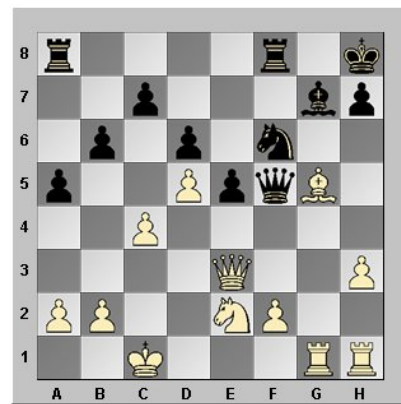
Florin objectively preferred 10...Nh5t, but didn't want to allow the position to become clogged after 11.Nd2 Nf4 12.Bf1: the knight will get evicted with 13.g3.

11.g4 f5 12.gxf5 gxf5 13.0-0-0 b6 14.Rdg1 Kh8 15.Nd2

Headed in the wrong direction? 15.Ng5 or 15.h4 might be more to the point.

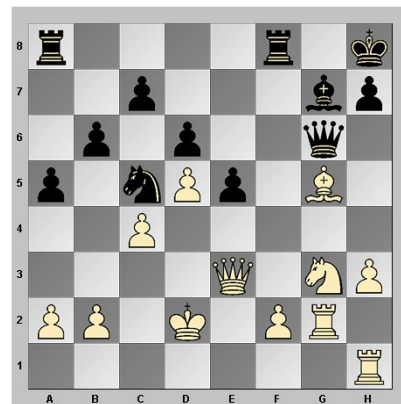
15...fxe4 16.Ndxe4 Bf5 17.Bd3 Nxd3+ 18.Qxd3 Qh4 19.Bg5 Qh5 20.Qe3 Nf6 21.Ng3 Qg6 22.Nxf5 Qxf5 23.Ne2?

Watch Felecan shift gears!



23...Nd7! 24.Rg2 Nc5 25.Ng3 Qg6 26.Kd2

Find the fastest kill!



26...Rf4! 27.Bxf4 exf4 28.Qf3 fxc3 29.fxc3 Rf8 0-1

2009 Illinois All Grade champions!

Thanks to the good folks at Bloomington Normal Area Scholastic Chess for another wonderful event this past November 7th. There were 330 players in 10 sections: by grade from K through 8, and one combined high school section. Chris Merli and Jeff Smith directed. Here are the 2009-2010 champions:

- *high school*: **Frankie Swindle**, with a perfect 4-0.
- *8th grade*: **Shawn Xun Lu**, with a perfect 4-0.
- *7th grade*: **Nathaniel Kranjc** and **Chase Walbert**, each with a perfect 4-0.
- *6th grade*: **Phillip Parker-Turner**, with a perfect 5-0.
- *5th grade*: **Sritej Vontikomu**, with 4½-½.
- *4th grade*: **Alex Bian**, **Anshal Adve**, and **Rachel Ulrich**, each with 4½-½.
- *3rd grade*: **William Radak**, with a perfect 5.0, and a post-tournament rating of 1618!
- *2nd grade*: **Vincent Do**, **Henry Curcio**, and **Ranadheer Tripurameni**, each with 4½-½.
- *1st grade*: **Jason Daniels**, with a perfect 5-0.
- *kindergarten*: **Ivan Mitkov** (GM Mitkov's son; we may all soon be in trouble...) with a perfect 5-0.

Events Calendar

Following are brief listings for upcoming tournaments in Illinois. For complete information on these events, including how to register, visit our web site at www.il-chess.org and click on "Events" in the top menu. All events are non-smoking. W = wheelchair-accessible.

Jan. 9, 2010. Tim Just's Winter Open/Reserve XXIV.

5SS, 40/90, SD/30. **New Site:** Double-Tree Hotel: 1909 Spring Road, Oakbrook, Illinois 60523 EF: \$64 (add \$10 if playing up from Reserve into Open section); \$80 at site 8-8:30 AM; \$85 at site 8:30-8:45 AM; \$10 to play up from Reserve to Open section. <http://chessforlife.com>.

Jan. 9, 2010. Normal January Open.

Northbridge Baptist Church, 2413 Ziebarth Road, Normal, IL 61761. **Reg:** 9:00-9:45 **EF:** \$18, \$20 at site.

Jan. 16, 2010. 3rd Highland Park Scholastic.

4SS G/30. USCF Dual Rated. K-12 Bethany United Methodist Church. 1696 McGovern St Highland Park, IL 60035. **Reg.** 9-9:30am, 1st round approx. 10:00am. **Entry fee:** \$10 cash.

Jan. 16, 2010. McHenry Swiss.

4SS,G/60. Holiday Inn Hotel, 495 Airport Road, Elgin, IL 60123. EF \$20 **Reg:** 8:30 A.M. www.mchenryareachess.org,

Jan. 16, 2010. Burbank School Scholastic Tournament.

Jan. 16, 2010. Gerald Anderson Memorial.

Scovill Banquet Facility, 3909 W. Main Street, Decatur, IL 62522. **ENTRY FEE:** \$18 at site, free to masters. www.decaturchessclub.com

Jan. 23, 2010. 30th Kumbaya Scholastic Chess Tournament.

Jan. 23, 2010. Evanston Chess Club Rapid.

Levy Activity Center, 300 Dodge Avenue, Evanston, IL. 5 round SS, G/29. USCF Quick-rated. Registration 9:00 to 9:30 am, EF \$5 cash at door **Please reserve your spot** www.evanstonchess.org

Jan. 23, 2010. Northwest Scholastic Open.

Jan. 23, 2010. Village of Park Forest Chess Challenge.

4/SS G/45. **Location:** Dining on the Green, 349 Main Street, Park Forest IL 60466. **Reg.** 9:00-9:30 AM; players must check in by 9:45 am. **EF** \$5 cash; preregister www.herbertferguson.com. W.

Jan. 30, 2010. Knights of the Forest Scholastic Open.

Algonquin Middle School, 767 E. Algonquin Road, Des Plaines, IL 60016. Round 1 at 9:00 AM, **7 Rated Sections.** **Entry Fee:** \$25.00 by Monday, Jan 25, 2009, \$30.00 afterwards. None on-site. <http://home.comcast.net/~forestchess>

Jan. 30, 2010. Peoria Winter Tornado.

Lakeview Museum, 1125 W. Lake Ave., Peoria IL 61614. **2 sections: OPEN SECTION:** 4 Rds., Swiss, G/80 with 5 second delay. **Entry fee:** \$17 if received by 1-28-10, \$20 at site, \$2 discount to ICA members, \$2 discount to GPCF members, free to Masters. **Prize fund:** 80% of EF's, 1st: 25%, 2nd: 15%, A, B, C, D & below: 10% each. Registration, 8-8:45 AM, Rds. 9, 12, 2:45, 5:30. **Novice Section** (1399 & below): 4 Rds., Swiss, G/45 with 5 second delay. **Entry fee:** \$12 (includes USCF Tournament Membership if needed). **Prizes:** 1st: trophy (includes free entry to next 1 day Peoria tournament. Top Unrated: trophy (includes free entry to next 1 day Peoria tournament). Registration, 9-10 AM, Rds. 10:15, 12, 1:45, 3:30. **Other information:** half-point bye in any 1 round, but a bye in Rd. 4 must be elected before the start of Rd. 3. www.gpcf.net. **Advance entries:** Fred Malcome, 1000 Lilac Lane, Metamora, IL 61548, 309-367-4833, malcomef@mtco.com.

Jan. 30, 2010. Midway Scholastic Chess Tournament.

TD's: GM Nikola Mitkov, Mikhail Koronman, Zack Fishman. **Registration:** Online at www.chessteachers.org, or on-site until 9:45 a.m.

Jan. 30, 2010. Phi-Kappa-Blanca I.

GM Amanov has confirmed his participation! University of Chicago, Ida Noyes Hall, 1212 East 59th St, Chicago, **EF:** \$25, \$35 at-site, \$10 off to U of C students, OR \$10 special entry — play only. Registration: 9:00am-9:45am. www.mcafidetournaments.blogspot.com

February 6, 2010. Barbara Rose School Scholastic Chess Tournament.

61 W. Penny Road, South Barrington, IL 60010, sponsored by Yury Shulman's Chess Without Borders. **For more information contact** GM Yury Shulman at

312-375-7475, Kiran Frey at 847-382-5410, email chesswob@gmail.com or visit www.shulmanchess.com

February 6, 2010. Illinois State Blitz Championship.

Sponsored by the Illinois Chess Association, Northeastern Illinois University, 5500 N. St. Louis Avenue; Chicago, IL, Student Union, Alumni Hall. USCF membership required. **Format:** 6SS, G/5 (double rounds--12 games) USCF rated. One section unless there are more than 100 players. If more than 100, sections will be U1600 and Open. **Schedule:** Registration and Check-In: 5:30 p.m. to 6:15 p.m. Anyone not registered by 6 p.m. will receive first-round bye. First round will begin promptly at 6:30 p.m. **Entry Fee:** \$20 if received by Feb. 2; \$25 later or on-site. (For players entering the both the daytime and blitz tournaments, combined entry fee is \$35 in advance; \$40 on site). Includes 90-day free ICA membership. **Prizes:** Fifty percent of entry fees collected will be returned as prizes. **Send entries to:** Glenn Panner, 21694 Doud Ct. Frankfort IL 60423. Include player's name, USCF membership number, phone and email. Make checks payable to Chicago Blaze Chess. **Other information:** Andi Rosen at warrenprogram@ilchess.org. All proceeds benefit the ICA General and Warren Scholar Funds and Chicago Blaze Chess. Special thanks to the Northeastern Illinois University Chess Club for hosting this event. Free on-campus parking on 3rd and 4th floors of indoor campus parking garage only. All other campus parking is \$5.

February 6, 2010. ICA Warren Junior Scholars/Chicago Blaze Benefit Tournament.

Northeastern Illinois University, 5500 N. St. Louis Avenue; Chicago, IL, Student Union, Alumni Hall USCF membership required. **Scholastic K8 Division Sections:** K3, K5, K8, 4 Round SS G/40 USCF-Rated. **Open Division Sections:** 8-player octagons, 3-Round SS G/60 USCF-Rated. **Schedule:** Registration and Check-In: 8:30 a.m. to 9 a.m. Anyone not registered by 9 a.m. will receive first-round bye. Round 1 for both divisions: 9:30 a.m. All other rounds ASAP. **Entry Fee:** \$20 if received by Feb. 2; \$25 later or on-site. (For players entering the both the daytime and blitz tournaments (see other listing), combined entry fee is \$35 in advance; \$40 on site). Blitz entry Includes free 90-day ICA membership. **Prizes:** No performance prizes, but all participants receive a Chicago Blaze t-

shirt or cap. All players will also be entered for a chance to win a 1-hour lesson with a player from the Chicago Blaze, Chicago's U.S. Chess League internet chess team. **Send entries to:** Glenn Paner, 21694 Doud Ct., Frankfort IL 60423. Include player's name, USCF membership number, phone and email. Make checks payable to Chicago Blaze Chess. Do not send cash. **Other information:** For more information, contact Andi Rosen at warrenprogram@il-chess.org

February 7, 2010. Knights Quest #50.

4SS, Game/30. Renaissance Chicago North Shore Hotel, 933 Skokie Blvd., Northbrook, IL. **EF:** \$25 by 12/28, \$30 after. www.renaissanceknights.org.

February 12, 2010. 2010 U.S. Amateur Team Championship - North.

Two sections: Open and Scholastic (Saturday only) Open: 5SS, G/90+30/move/increment (G/120 if digital clocks not available; 2-day: rd.1-2 G/60). Crowne Plaza Hotel Milwaukee Airport, 6401 South 13th Street, Milwaukee, WI 53221. 1-414- 764-5300. \$79.99 chess rate, please reserve early. Open to 4 player teams with one optional alternate. Team average (4 highest ratings--2009 Annual Rating List) must be under 2200. **EF:** 3-day \$140, 2-day \$141 per team if received by February 9th, \$180 thereafter. Individuals wishing to play, send \$35 and request to be put on a team. Team changes on site \$20. Check out official website www.wichessacademy.com **Prizes:** see website. **Rounds:** 3-day: on-site registration/check-in 5:30-6:30pm, rds.: 7pm, 11:00am & 5:00pm, 10:00am & 3:30pm. 2-day: on-site registration/check-in 9:00-10:30am, rds. 11:00am & 2:00pm then merge with 3-day. ****Saturday Only**** Scholastic section. 4SS, G/60. Open to 4 player teams with one optional alternate. Team average (4 highest--2009 Annual Rating List) must be under 1600. **EF:** \$120 per team if received by February 9th, \$150 thereafter. Individuals wishing to play, send \$30 and request to be put on a team. Team changes on site \$20. All advance entries will be posted on www.wichessacademy.com 2/10/10.

Rounds: on-site registration/check-in: 9:00am-10:30am; rds.: 11:00am, 1:30pm, 3:45pm, 6:00pm. Checks to: VICA, 6822 North Crestwood Dr., Glendale WI 53209. Please include Team's name and roster, captain's email and phone number,

and desired schedule. **Info:** abetaneli@hotmail.com, 608-334-2574 ashish@vajachess.com, 414-234-1005.

February 13, 2010. Midwest Scholastic Class Championship.

Hadley Junior High. Glen Ellyn.

February 13, 2010. Evanston Swiss Groups.

Levy Senior Center, 300 Dodge Ave. Evanston, IL 60201. 3SS, Game/70. Tom Sprandel, enter@EvanstonChess.org. www.evanstonchess.org

February 20, 2010. 31st Kumbaya Scholastic Chess Tournament.

February 20, 2010. McHenry Quad Tournament. 3 rounds, G/80. Holiday Inn Hotel, 495 Airport Road, Elgin, IL 60123. Entry fee \$20 Registration begins 8:30 A.M.: www.mchenryareachess.org.

February 27, 2010. Northwest Illinois \$5 Open. (unrated)

February 27, 2010. Greater Chicago Scholastic Championships.

Presented by Kasparov Chess Foundation & Renaissance Knights. Crowne Plaza Hotel Northbrook, 2875 Milwaukee Ave, Northbrook, IL 60062. **Online entries:** at www.rknights.org **Info:**

renknights@aol.com (773) 844-0701

March 6, 2010. 32nd Kumbaya Scholastic Chess Tournament.

March 13, 2010. Evanston Tri-Level.

March 13, 2010. 2010 Whitney Young K-8 Scholastic Team Chess Championship.

Whitney Young Magnet High School, 211 S. Laflin, Chicago, Illinois. **Registration:** email names of players you anticipate playing in the team and open sections to Paul Kash at pjkash@cps.edu by 4:00 pm Friday, March 12th. Contact Paul Kash. pjkash@cps.edu or (773) 512-2811

March 14, 2010. Knights Quest #51.

March 19, 2010. FIDE World Amateur Chess Championship.

FIDE World Amateur Chess Championship – an Official FIDE World Chess Championship! 9R-SS G/90 + 30/sec

increment. Holiday Inn Hotel: 5300 W Touhy Ave Skokie, IL 60077. 847.679.8900. \$20,000 Guaranteed. Open to players with no FIDE title and rated under 2000 FIDE. All players compete in a single section. Please see tournament website for more detailed rating regulations. **Prizes:** Overall: \$3000-2000-1600-1400; Top Women: \$1000-600-400-200; (1799-1600): \$1000-600-400-200; (1599-1400): \$1000-600-400-200; (U1400): \$1000-600-400-200; (Unrated): \$1000-600-400-200; **EF:** \$120 by 6pm 02/15, \$150 by 6pm 03/15; \$200 thereafter and onsite. No re-entries allowed. No half-point byes allowed (zero point byes only). Onsite registration from 3-5pm 03/19. **Rds:** 3/19 – 6:30pm; 3/20-21 – 12pm and 6:30pm per day; 3/22-25 – 6:30pm per night. Mail entries with registration information to: North American Chess Association (make checks payable to) 4957 Oakton Street, Suite 113, Skokie, IL 60077. More information and online registration available at: <http://www.worldchesschamps.com>. Questions via email only: sevan@worldchesschamps.com. No smoking. For more information on additional prizes such as FIDE titles, Scholarships to Texas Tech University, a progressive prize fund, entry fee specials, and more, please visit the tournament website. Boards, sets, clocks provided. Tournament provided equipment must be used.

March 20, 2010. CoChess K-8 Championships. .

March 20, 2010. McHenry Swiss Tournament.

March 26, 2010. FIDE Intercontinental School Team Chess Championship.

FIDE Intercontinental School Team Chess Championship – an Official FIDE Intercontinental Chess Championship! 7R-SS G/90. Holiday Inn Hotel: 5300 W Touhy Ave Skokie, IL 60077. 847.679.8900. Open to players in 5 age categories in teams of 4: U10, U12, U14, U16, U18. Please see tournament website for more detailed age and team regulations & prizes. **EF:** \$150 by 6pm 02/01, \$175 by 6pm 03/01; \$200 thereafter. No onsite registrations allowed. <http://www.worldchesschamps.com>. Questions via email only: mikhail@worldchesschamps.com.

Please renew your ICA membership online at www.il-chess.org. Thanks for your support!

NATIONAL CHAMPIONSHIP

U.S. AMATEUR TEAM CHAMPIONSHIP - NORTH

February 12-14 or February 13-14

Crowne Plaza Hotel: 6401 South 13th Street, Milwaukee, WI 53221. 1-414-764-5300.

O P E N

5SS, G/90+30/move/increment (G/120 if digital clocks not available; 2-day: rd.1-2 G/60). \$79.99 chess rate, please reserve early. Open to 4 player teams with one optional alternate. Team average (4 highest ratings--2009 Annual Rating List/December Supplement) must be under 2200.

EF: 3-day \$140, 2-day \$141 per team if received by February 9th, \$180 thereafter. Individuals wishing to play, send \$35 and request to be put on a team. Team changes on site \$20.

ROUNDS: 3-day: on-site registration/check-in 5:30-6:30pm, rds.: 7pm, 11:00am & 5:00pm, 10:00am & 3:30pm. 2-day: on-site registration/check-in 9:00-10:30am, rds. 11:00am & 2:00pm then merge with 3-day.

More Information:

Alex Betaneli, 608-334-2574
abetaneli@hotmail.com
Ashish Vaja, 414-234-1005
ashish@vajachess.com

Please make checks payable
to and send entries to:
VICA
6822 North Crestwood Dr.
Glendale WI 53209

SCHOLASTIC

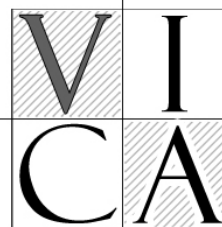
Saturday, February 13th, Only

4SS, G/60. Open to 4 player teams with one optional alternate. Team average (4 highest--2009 Annual Rating List) must be under 1600.

EF: \$120 per team if received by February 9th, \$150 thereafter. Individuals wishing to play, send \$30 and request to be put on a team. Team changes on site \$20.

ROUNDS: on-site registration and check-in: 9:00am-10:30am; rds.: 11:00am, 1:30pm, 3:45pm, 6:00pm.

All advance entries
will be posted on
wichessacademy.com
on February 10th.



P R I Z E S

OPEN: Awards to top two teams, top teams with average rating u1900, u1600, and u1300. Prizes to best team composed of juniors (high school and younger). Prizes to top score on each board.

SCHOLASTIC: awards to top team overall, top three High School Teams, top three Middle School Teams, top three Elementary School Teams, top two club teams. Prizes to top score on each board.



Benefit tournament for Chicago Blaze & Warren Program: February 6th!
Illinois Blitz Championship: February 6th! See events calendar for these two great events!

ADDRESS CORRECTION REQUESTED

Membership Secretary
Illinois Chess Association
2304 Park Place, Unit 1
Evanston, IL 60201