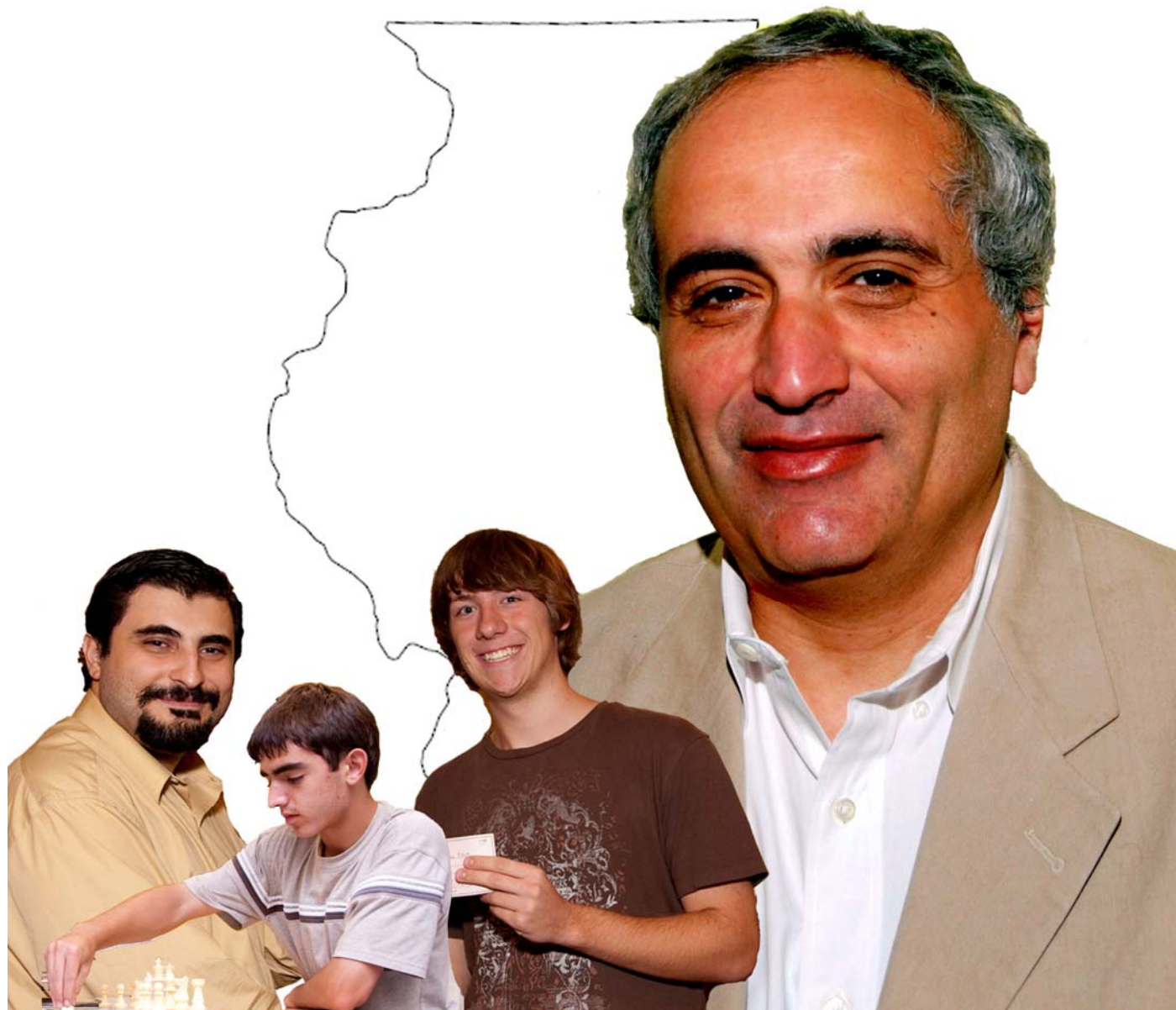


# Illinois Chess Bulletin

September 2009



*We know who you beat this summer...*

## Table of Contents

Cover photos & montage *Betsy Dynako*

Sevan Muradian organizes the [23<sup>rd</sup> North American FIDE Invitational](#); NM Eric Rosen [scores against GMs](#) to become Illinois's newest master, Michael Auger [wins the US Game/30 title](#), and GM Dmitry Gurevich [wins his third U.S. Open title](#) (Blame editor for allusion to cheesy horror flick.)

Gurevich-Amanov *GM Dmitry Gurevich* 3

Yue Xu sweeps Mote Memorial *David Long* 4

Amanov's Brilliant TN 5

Events Calendar *Maret Thorpe* 7

## Interim Editor

Bill Brock [membership@il-chess.org](mailto:membership@il-chess.org)

Please submit games in cbv or pgn format.

## Membership Information

The *Illinois Chess Bulletin (ICB)* is published (Web and print) by the [Illinois Chess Association](#) (ICA). ICA membership includes a subscription to the *ICB*

Corporate	\$120
Century Club	\$100
Patron	\$50
Affiliate	\$25
Regular	\$15
Scholastic (under 19)	\$10

## Copyright © 2009 Illinois Chess Association

## ICA SUPPORTERS

## Life Patron Members:

Barre, Todd J	Elmhurst
Fineberg, Thomas A	Chicago
Warren, Helen E	Western Springs
Warren, James E	Western Springs

## Century Club Members:

Benedek, Roy	Western Springs
Brock, Bill	Chicago
Dolson, Carl	Peoria
Harvey, Frank	Plainfield
Krasnopolsky, George	Buffalo Grove
Parker, Robert	Normal
Pradt, Daniel J	Glen Ellyn
Sprandel, Tom	Evanston
Turgut, Tansel	Decatur
Zabell, Sandy	Evanston

## Patron Members:

Aaron, Michael E	Chicago
Bogan, Tim	Chicago
Brotsos, Jim	Chicago
Delay, Joseph D	Schaumburg
Dixon, Jeff	Oak Park
Henderson, S.E., Jr.	Bolingbrook
Just, Tim	Gurnee
Lewis, Richard	Harvey
Lobraco, Michael	Itasca
McConaghie, Pete	Peoria
Nibbelin, Mark	Normal
Panner, Glenn	Frankfort
Pehas, Alex	Darien
Rosen, Andrea	Skokie
Rosen, Brad	Skokie
Scott, Garrett	Normal
Sweig, Mitchel	Evanston
Wong, Philip	Wilmette

## Illinois Chess Association

## Elected Officers

President, Tom Sprandel

[president@il-chess.org](mailto:president@il-chess.org)

2304 Park Place #1,  
Evanston, IL 60201

Metro VP, Mikhail Korenman

[metrovp@il-chess.org](mailto:metrovp@il-chess.org)

63 W 75th St,  
Willowbrook, IL 60523

Downstate VP, David Long

[downstatevp@il-chess.org](mailto:downstatevp@il-chess.org)

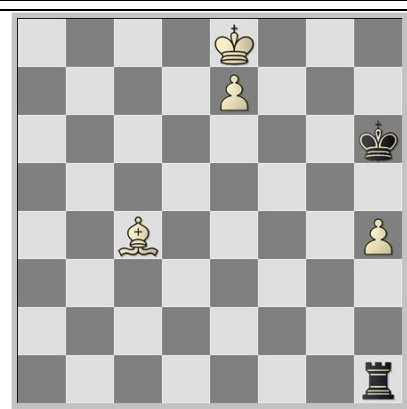
Treasurer, Carl Dolson

[treasurer@il-chess.org](mailto:treasurer@il-chess.org)

6021 N Wickwood Rd,  
Peoria, IL 61614

Secretary, Maret Thorpe

[secretary@il-chess.org](mailto:secretary@il-chess.org)



## Appointed Officers and Committee Chairs

Director, Warren Junior Program

Andi Rosen

[warrenprogram@il-chess.org](mailto:warrenprogram@il-chess.org)

Membership Secretary

Bill Brock,

[membership@il-chess.org](mailto:membership@il-chess.org),

Illinois Chess Association

230 W Monroe, Ste 330

Chicago, IL 60606

Events Editor

Maret Thorpe

[events@il-chess.org](mailto:events@il-chess.org)

Webmaster, Tom Sprandel,

[webmaster@il-chess.org](mailto:webmaster@il-chess.org)

Past President, Chris Merli,

[pastpres@il-chess.org](mailto:pastpres@il-chess.org)

**White to play and win  
Pal Benko  
1st Prize, Magyar Sakkelet  
1981**

Not easy! Please note that the Bc4 does not control the queening square of the h-pawn, so Black cannot be allowed to sacrifice the rook for the e7 pawn. Have fun!

**GM Dmitry Gurevich - GM Mesgen Amanov [D45]**

Chicago Class (3), 18.07.2009  
[Gurevich,Dmitry]

**1.d4 d5 2.c4 c6 3.Nc3 Nf6 4.Nf3 e6 5.e3 Nbd7 6.Qc2 Bd6 7.Be2 0-0 8.b3 dxc4 9.bxc4 e5 10.0-0 Re8 11.Rd1 Qc7?!**

Perhaps Black should prefer 11...exd4 12.exd4 b6 or 11...Qe7 12.Rb1.

**12.c5 Bf8**

After 12...Be7 13.Bc4 h6 (13...exd4 14.exd4 [14.Bxf7! Rybka—ed.] Nf8 15.Bxf7+ Kxf7 16.Ng5+ Kg8 17.Qb3+ Ne6 18.Nxe6) 14.Qg6 Rf8 15.Nh4 Nd5 16.Bxd5 Bxh4 17.Bb3 Be7 18.Qg3

**13.Bc4 h6**

13...exd4 14.exd4 [again 14.Bxf7!—ed.] 14...h6 15.Bxh6 gxh6 16.Qg6+ Kh8 17.Bxf7 Re7 18.Re1; 13...Re7 14.Ba3 exd4 15.exd4 Nb8

**14.Qb3 Re7 15.Ba3!**

15.Nh4 exd4 16.exd4 b5 17.cxb6 Nxb6 18.Ng6 Re8 19.Bf4 Qb7 20.Nxf8 Nxc4 21.Qxc4 Rxf8 22.Rab1 (22.Be5 Be6) 22...Qa6

**15...exd4**

15...g6; 15...g5!? M.Amanov; 15...Rb8 16.Rac1

**16.exd4 Nb8 17.Re1 Rxe1+ 18.Rxe1 b5 19.cxb6 axb6**

Or 18...Bg4 19.Ne5 Bh5 20.h3 b5 21.Bd3.



**20.Ne5!+-**

20.Bxf8 Kxf8 (20...b5 21.Re7) 21.Ne5 Ng4!? M. Amanov, but 22.Nb5! cxb5 23.Ng6+ Kg8 (23...fxg6 24.Qb4+) 24.Re8+ Kh7 25.Nf8+ Kh8 26.Nd7+ Kh7 27.Bd3+ f5 28.Bxf5+ g6 29.Qf7#

**21...Bxa3 21.Bxf7 Kh8**



**22.Qc2!**

22.Ng6+ Kh7 23.Qc2? (23.Qxa3! Rxa3 24.Nf8+ Kh8 25.Ng6+) 23...Qxf7 24.Ne5+ Bf5 M. Amanov 25.Qxf5+ g6 26.Qb1 Qg7]

**22...g5**

Other defenses also lose: 22...Qd6 23.Ng6+ Kh7 24.Re8! M.Amanov (24.Nh4+ Kh8 25.Nb5) 24...Nxe8 25.Nf8+ Kh8 26.Qh7#; 22...Bd6 23.Ng6+ Kh7 24.Nf8+ Kh8



25.Qh7+!! Nxh7 26.Ng6# (Beautiful!—Ed.)

**23.Qg6 Bf8 24.Qxf6+ Bg7 25.Ng6+ Kh7 26.Nf8+ Kh8 27.Qg6 Bf5 28.Qxf5 Bxf8 29.Qf6+ 1-0**

## Yue Xu Sweeps David Mote Memorial

On June 27, the Springfield Chess Club drew 30 chess players to the carpenters' union meeting hall to play in the [Sixth Annual David Mote Memorial](#) tournament, the second-highest turnout at any SCC-organized tournament since the Illinois Class Championships in 2003. For the second time in a row, there were enough players in some rating classes to add extra prizes for those sections.

Yue Xu, of Champaign, won the tournament with a perfect score of 4-0. (*Andi Rosen reminds me that Yue (Penny) Xu is one of only five female Warren Junior Scholars in the state—Ed.*) James Healy, of Springfield, and Tobias Simpson, of Champaign, tied for second place overall and first in class A-B, each with a score of 3½ out of 4. Second place in class A-B went to Jeffrey Davis, of Mahomet, and Justin Stafford; each scored 3 points.

Thomas Knoedler and David Bononi, both of Springfield, scored 2½ points, and shared first and second in class C-D. Levi Gent, of Jacksonville, also scored 2½ points, and won the Class E-under prize. Finally, Nicholas Yamamoto won the un-rated prize with 1 point.

Thanks to everyone who participated, and special thanks to the sizeable Champaign-area contingent.

## Wednesday Meetings Are Back!

After a lapse of over a year, the Springfield Chess Club is able to restart its Wednesday night meetings. Our new meeting location is the White Oaks Mall food court. Besides the obvious benefit of more activity and chess play, the location may get us some exposure and help us grow the club. Please help the club show its appreciation to White Oaks Mall!

---

HYPERLINKS TO CROSSTABLES OF MAJOR SUMMER EVENTS:

[2009 Chicago Open](#), Wheeling

[2009 Chicago Class Championships](#), Oak Brook

[2009 US Open](#), Indianapolis, IN

[US Game/60](#) and [US Game/30](#), Skokie

**GM John Fedorowicz - Eric Rosen [D35]**

US Open (9), 2009 [ICB]

**1.d4 d5 2.c4 e6 3.Nc3 Nf6 4.cxd5 exd5 5.Bg5 c6 6.e3 Bf5**



Many years ago, Dr. Martinovsky told me to study this position carefully, especially the ending after 7.Qf3 Bg6 8.Bxf6 Qxf6 9.Qxf6 gxf6

**7.g4!? Be6 8.h3 Nbd7 9.f4 Nb6**

Very logical play from both sides, and new theoretical ground.

**10.Bd3 Be7 11.Nf3 Qd6 12.f5!?**

The move in the game seems perfectly sound, but 12.Ne5! may give more practical winning changes; 12.Qc2 h6 13.Bxf6 is also logical

**12...Qg3+**

One has to be brave to allow such moves! Kudos to the loser.

**13.Kd2 Ne4+ 14.Nxe4 dxe4 15.Bxe4**

The last few moves seem forced for both sides.

**15...Qf2+ 16.Kc3??**

Fed almost certainly saw 16.Kc1 Bxg5 17.Nxg5 (17.Kb1 Bd5+) 17...Nc4 18.Qb3 Bd5 19.Bxd5 cxd5 20.Qb5+ Kf8 21.Qxb7 Qd2+ 22.Kb1 Qd3+ 23.Kc1 Qxe3+ 24.Kb1 Qd3+ and neither side can avoid the draw. Were it not for a memorable shot, White would be perfectly OK!



**16...Bb4+! 0-1**

**IM David Vigorito - GM Mesgen Amanov**  
**[D44 ]** 23rd North American FIDE Invitational  
 (5) [ICB]

Teenage prodigy IM Ray Robson won the 23rd North American FIDE Invitational in Skokie, but GM Mesgen Amanov detonated the theoretical bombshell of the year. There are only four original moves in this game, but it's hard to overstate the beauty of Amanov's idea or its practical significance.

**1.d4 d5 2.c4 c6 3.Nf3 Nf6 4.Nc3 e6 5.Bg5**

IM Ben Finegold, who did not have access to the scoresheets, gave a slightly different move order in his annotations for Chess Life Online.

**5...dxc4 6.e4 b5**



So begins the Botvinnik Variation, arguably the wildest variation in all of opening theory. Black accepts the disruption of his position in return for the c4 pawn (short term), and amazing dynamic counterplay (long term).

**7.e5 h6 8.Bh4 g5 9.Nxg5 hxg5 10.Bxg5 Nbd7 11.g3 Bb7 12.Bg2 Qb6 13.exf6 c5 14.d5 0-0-0 15.0-0 b4**

Books have been written about the first fifteen moves. To know more, please read them 😊



**16.Rb1!?**

The main line is 16.Na4 but Vigorito's move has also attracted followers at the highest levels.

**16...Qa6 17.dxe6 Bxg2 18.e7 Bxf1 19.Qd5**



What now? The following state of the theory (pre-bombshell) has been cribbled from various games in the ChessBase MegaBase.

**A. 19...Bd3** moves a hanging piece and hits the b1 rook with tempo, but it seems to be outright refuted after 20.Bf4!! Qb6 21.Na4 Qb5 22.exd8Q+ Kxd8 23.Re1 (uh-oh).

**B. Kramnik** has played **19...Bxe7** on more than one occasion: 20.fxe7 Bd3 (20...Rdg8 does not appear to equalize: 21.Ne4 Bd3 (21...Rg6 22.Qa8+! (22.Rxf1? Qc6 23.Qxc6+ Rxc6 24.Bf4! (24.Rd1? Re8 25.Nd6+ Rxd6 26.Rxd6 f6 Kasparov-Kramnik, New York 1994 and now 27.Bf4! Rxe7 28.Kf1± Kasparov) 24...Re8 25.Nd6+ Rxd6 26.Bxd6 Kb7 27.Re1 Kc6 28.Bf4 Nf6 29.h4 Nd5 30.Bc1 Kd7!) 22...Nb8 23.Rxf1 Qc6 24.Rd1!!



24...Qxa8 25.Rd8+ Kc7 (25...Kb7 26.Rxh8 Re6 27.Nxc5+-- ) 26.Bf4+ Kb6 27.Rxh8 Re6 28.e8Q Rxe8 29.Rxe8 Qd5 30.Rxb8+ Ka6

31.Nd2! c3 32.bxc3 bxc3 33.Nb3 c4 34.Nc1 c2 35.h4+-) 22.Nd6+ Kc7 23.Bf4 Kb6 24.Re1 Nf6 25.Qxf7 Ne4 26.Nxe4 Bxe4 27.Rxe4 Qc8 28.Qxc4 Rg6 29.Be3 a5 30.Qxc5+ Qxc5 31.e8Q 1-0 Inarkiev-Shomoev, Dagomys 2008)

After 19...Bxe7 20.fxe7 Bd3:



21.Ne4 Bxb1 22.Nd6+ Kc7 23.Bf4 (23.exd8Q+ Rxd8 24.Nxf7 Re8 25.Bf4+ Kb6 26.Qd6+ Ka5 27.Qxd7 Re1+ 28.Kg2 Be4+ 29.f3 Bc6 30.Qd8+ Ka4 31.Qd2 Ra1) 23...Kb6 24.exd8Q+ Ftacnik (24.Nxc4+ Kb5 25.Nd6+ Kb6 26.exd8B+ Rxd8 27.Nc4+ (27.Nxf7!? Re8 28.Qd6+ Ka5 29.Qc7+ Qb6 30.Qxd7 Re1+ 31.Kg2 Ka6±) 27...Kb5 28.Nd6+ Kb6 29.Nc4+ Kb5 1/2-1/2 Topalov-Kramnik, Dortmund 1996) 24...Rxd8 25.Nxf7∞ (25.Nxc4+ leads to perpetual as in the Topalov-Kramnik game).

C. The other move with a strong "pedigree" is Ftacnik's idea **19...Bh6** 20.Bxh6 (20.exd8Q+ Kxd8 21.Ne4 Bh3 22.Nxc5 Be6 23.Nxe6+ fxe6 24.Qa8+ Qc8 25.Qxa7 Bxg5 26.Qa5+ Qc7 27.Qxg5 Qe5!= Yermolinsky, A-Ivanchuk, V/Pinsk/ 1986/0,5/40/) 20...Bd3 21.Qa8+ (21.Ne4!? Bxe4 22.Qxe4 Rde8 23.Bg7! Rh5 24.Rd1 Qb5! Beliavsky-Shirov, EUCup f Ljubljana 1995) 21...Nb8 22.exd8Q+ Rxd8 23.Re1 bxc3 24.Bf4 Qb6 (24...Qb7 25.Re7!+-) 25.bxc3 Bf5 26.f3! Van Wely's idea: White's kingside pawns more than compensate for the missing piece in the resultant endgame. (26.h4 Qb7! (26...Be6 27.Kh2 Yermolinsky-D. Gurevich, US ch 1994) 27.Qxb7+ Kxb7 28.Re7+ Rd7 29.Bxb8 Kxb8 30.Rxd7 Bxd7 31.Kg2 Kc7= Azmaiparashvili-Shirov, Madrid 1996) 26...Be6 (26...Qb7 27.Qxb7+ Kxb7 28.g4 (28.Re7+) 28...Bg6

(28...Be6 29.Rb1+ Ka8 30.Bxb8 Rxb8 31.Rxb8+ Kxb8 32.h4+-) 29.Re7+ Ka6 30.h4 Nc6 31.Rc7 Rd1+ 32.Kf2 Nd8 33.h5+-) 27.g4 Bd5 28.Qxb8+ Qxb8 29.Bxb8 Kxb8 30.Kf2 The White pawns are ready to roll! 30...Kc7 31.h4 Rd6 32.Re7+ Rd7 33.h5 1-0 Van Wely-Smeets, Leeuwarden 2005;

Whew! Thus ends ICB's very brief and incomplete summary of opening theory.

**19...Re8!!N**



Now there is a fourth move to reckon with!

**20.Ne4 Bh6 21.Nd6+ Kc7 22.Nxe8+ Rxe8**



**23.Qxf7??**

On the Chess Life Online website, Finegold suggested that 23.Bxh6!? might be White's best, but that White would be "fighting for equality" after 23...Bh3! 24.Bf4+ Kb6!

**23...Bh3!!**

Black has two pieces hanging and White has two pawns ready to promote, but mate ends the game: for example, 24.Qxe8 Qc6! If 24.Qd5, simply 24...Bxg5 25.f7 Rxe7.

**24.f4 Qc6 25. Kf2 Qg2+ 26. Ke3 Ne5! 27. Qxe8 Ng4#**

**0-1**

*Following are brief listings for upcoming tournaments in Illinois. For complete information on these events, including how to register, visit our web site at [www.il-chess.org](http://www.il-chess.org) and click on "Events" in the top menu.*

September 12, 2009. Highland Park Chess Scholastic Tournament #2. 4SS G/30. USCF Dual Rated. K-12. Bethany United Methodist Church. 1696 McGovern St Highland Park, IL 60035.

September 12-13, 2009. Downers Grove Chess Club Tournament. 4SS G/115 Fairview Village, 200 Village Drive, Downers Grove, IL 60516.

September 12, 2009. Chess at the Ballpark K-12 Scholastic Chess Tournament at US Cellular Field. 35th & Shields, Chicago, IL. Enter at Gate 3, Free parking in Sox lot D.

September 19, 2009. Evanston Chess Club Rapid. Levy Activity Center, 300 Dodge Avenue, Evanston, IL. 5-SS, G/29. USCF Quick-rated.

September 26, 2009. 26th Kumbaya Scholastic Chess Tournament. National-Louis Univ., 5202 Old Orchard Road, Skokie, IL. 60077. Presented by Chess-Ed. 4R-SS G/30.

September 26, 2009. St. Matthew Scholastic Chess Tournament, 24500 Old McHenry Rd. Hawthorn Woods, IL 60047, sponsored by Yury Shulman International Chess School. 5/SS. G/30

September 26, 2009. Midway Chess Club Tournament. 4/SS G/45. One section. A Place For Us Cafe. 5627 W 63rd St, Chicago, IL 60638.

October 3, 2009. Evanston Swiss Groups. Levy Senior Center, 300

Dodge Ave. Evanston, IL 60201. 3SS, G/70. USCF Regular Rated.

October 9-11 or 10-11, 2009. 18th annual Midwest Class Championships. 5SS, 40/2, SD/1 (2-day option, rds 1-2 G/75). Under 1000 & Under 700 Sections: 6SS, G/75, 10/10-11 only. Westin Chicago North Shore Hotel, 601 North Milwaukee Avenue, Wheeling IL 60090.

October 17, 2009. McHenry Swiss Tournament. 4SS,G/80. Holiday Inn Hotel, 495 Airport Road, Elgin, IL 60123. (Intersection of I-90 & Rt. 31.)

October 24, 2009. 27th Kumbaya Scholastic Chess Tournament. National-Louis University, 5202 Old Orchard Road, Skokie, IL. 60077. Presented by Chess-Ed. 4-SS G/30.

October 24, 2009. University of Chicago Chess Tournament. The Reynolds Club, University of Chicago, 5706 S. University Ave, Chicago, IL, USCF rated only (not FIDE rated). 4-SS G/60+10 Sec increment.

October 31, 2009. Monster Blitz. 7 double rounds. 4SS G/5. USCF Rated. Bethany United Methodist Church. 1696 McGovern St, Highland Park, IL 60035. 1 section.

November 7, 2009. Illinois All Grade Scholastic Championships. Bloomington Junior High School, Bloomington. Hosted by BNASC.

November 7, 2009. Evanston Tri-Level. 4SS G/45. USCF Dual Rated. Levy Senior Center, 300 Dodge Ave., Evanston, IL 60201.

November 14, 2009. 28th Kumbaya Scholastic Chess Tournament. National-Louis Univ., 5202 Old Orchard Road, Skokie, IL. 60077. Presented by Chess-Ed. 4R-SS G/30.

November 14, 2009. Springfield November Open. 3SS, G/80. Anchor Boat Club, 407 East Lake Shore Drive, Springfield 62707.

November 20-22, 2009. 2009 National Youth Action. 9SS, G/30, DoubleTree Hotel, 1909 Spring Road, Oak Brook, Illinois, 60523.

November 27-29, 2009. Midwestern Chess Adventures Presents 1st Annual Martinovsky Memorial. Holiday Inn, 495 Airport Rd, Elgin, IL 60123 847-488-9000 (Interstate 90 & Hwy 31), 6-SS in 3-Sections: Open G/120+30sec (USCF+FIDE rated), 1500-1799 35/90 SD/60 (USCF rated), U1500+Unrateds 35/90 SD/60 (USCF rated).

November 28, 2009. Martinovsky Memorial Scholastic Event. (Also see above event) 4-SS G/45

December 5, 2009. Benjamin Scholastic. West Chicago, IL

December 5-6, 2009. MCA FIDE Futurity IX. Touch Move Chess Club, 5639 N. Ashland, Chicago, 60660. 5-SS G/90+30Sec.

December 19, Mc Henry Quad Tournament. 3 rounds, G/80. Holiday Inn Hotel, 495 Airport Road, Elgin, IL 60123.

December 19, 2009. 29th Kumbaya Scholastic Chess Tournament. National-Louis University, 5202 Old Orchard Road, Skokie, IL. 60077-4409. Presented by Chess-Ed. 4R-SS G/30.

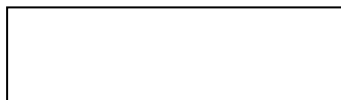
December 20, 2009. Academy of Intellectual Games/Kings & Queens Chess Tournament. Unrated. Temple Judea Mizpah, 8610 Niles Center Road, Skokie, IL 60077. 5 Rounds SS, G25 (or g/22 +3 sec).

**ILLINOIS CHESS ASSOCIATION  
MEMBERSHIP APPLICATION**

Name \_\_\_\_\_  
USCF ID \_\_\_\_\_  
Street Address \_\_\_\_\_  
City, State, Zip \_\_\_\_\_  
Phone # \_\_\_\_\_  
E-mail address \_\_\_\_\_

Membership Type		
Century Club	\$100.00	_____
Patron	\$ 50.00	_____
Regular	\$ 15.00	_____
Scholastic	\$ 10.00	_____
Corporate	\$120.00	_____

Please return to:  
Bill Brock, Membership Secretary [membership@il-chess.org](mailto:membership@il-chess.org)  
230 W. Monroe, Suite 330  
Chicago, IL 60606



ADDRESS CORRECTION REQUESTED

Bill Brock  
Membership Secretary  
Illinois Chess Association  
230 W. Monroe, Suite 330  
Chicago, IL 60606

