

The Illinois Chess Bulletin

Volume 26 Issue 6

November/December 2003



INSIDE THIS ISSUE

- 23** Early Returns from Midwest Class
- 25** Illinois Open Crosstables
- 30** Normal October Open

Dear ICA Members, October 9, 2003

I hope you had a good summer vacation, but it is now fall and all the kids are back in school. The scholastic events will start this month, and many schools will be offering chess classes for their students if the proper funds and teachers are available. Thus we need your help.

No program shows the face of Illinois chess to its members more graphically than our scholastic initiative, the ICA Warren Junior Program. The program has brought chess to hundreds of kids in Chicago and the suburbs, adding to the ICA membership rolls, and enhancing the success of our tournaments. Wide coverage has been given to the program in the pages of the Illinois Chess Bulletin & Chess Life magazines

The ICA Warren Junior Program was first started by Helen Warren. Recently Helen has devoted her time in the program to finding tutors for our most promising young players. James Fagan currently administers the school programs. Teachers have included GM Alex Goldin, GM Dmitri Gurevich, FM Al Chow, IM Angelo Young, and several other titled players and chess experts. Many others also provide help by volunteering their services.

Each year we ask our membership to support this endeavor with their contributions. Because we operate on a matching funds basis, 50% of our annual budget must come from outside sources. These sources are mostly our ICA membership and our state association. The ICA enjoys a 501 (c)(3) status, so your contribution may be tax deductible, an incentive to give generously. The more you give, the more kids will benefit from learning to play better chess.

The ICA Warren Junior Chess Program's promotional article in the ICB won the Best Promotion award from the Chess Journalists of America. USCF delegates were especially impressed with our program, a tribute to your continued support. Help was given several promising youngsters who are among the best in their age groups nationwide! Last year the program provided tutorials to 10 child prodigies. We also sent teachers to a dozen schools, supported our Denker representative (winner of the Natl. Tourney of H.S. Champions!), and contributed book prizes to national scholastic events. Yet several school programs were cut back or not held due to lack of funds. We could easily have sent teachers and tutors to more schools and more children if we only had more money.

As you can see your chess dollar goes a long way to helping develop chess talent! Several students funded by your donations go on to play in major adult tourneys as well as scholastic events. You have the chance to help develop our future chess talent (maybe even find the next Bobby Fisher!). Also think of the challenge & joy you will experience when playing against a rising young star in a major chess tourney! Enclosed you will find a contribution blank and envelope for your use. Donations of \$500 or more will get you a certificate and special mention in the Illinois Chess Bulletin magazine. We hope you will invest in the future of chess in our state and support this vital program!

Checks should be made payable to the ICA. Payments should be mailed to Howard Cohen at 10482 Anne Ct. #2E in Rosemont, IL 60018. Thank you in advance for your loyal support and generous contribution!

Cordially yours,

Larry S. Cohen
ICA President

Table of Contents



On The Cover

Dennis Bourgerie and John Bonwell playing chess at the Clinton, IL Apple and Pork Festival more photos on page 46.

Letters

President's Podium5

Features

Early Returns from the Mid West Class23

October Normal Open30

ICB Games

Games by Albert Chow FIDE Master6

Games By Angelo Young IM20

Articles

Chess From The Middle24

Chess Clubs

Illinois Open Crosstables25

October Normal Open Crosstables32

St. Charles Chess Club33

ICA Support

Supporting Members and Businesses43

Where to Play

Affiliate Listing34

Tournament Calendar36

ICA Tour

ICA Tour38

Notice to library Members:
if you wish to continue to receive the Illinois Chess Bulletin, you must notify the ICA Membership Secretary,

Chris Baumgartner
107 S. Maple Lane
Prospect Points Hts, IL
60070
treegrower4@aol.com
846-749-2573

Illinois Chess Bulletin

Published six times per year

Copyright © 2003 Illinois Chess Association

Next Deadline: December 15th.

Submissions

Send contributions to:

Colley Kitson
428 N Grant Street
Clinton, IL
61727

icb@mchsi.com

Home Phone: 217-935-1265

Cell Phone: 309-824-5701

Electronic submissions are preferred. Preferred formats for articles, stories or advertisements are Microsoft Word or RTF (rich text format). An MS-Word template is available at www.illinoischess.org/icb.htm.

Game submissions must be in electronic format. Games must be submitted in ChessBase archive format (.cbv) or in pgn. ChessBase 8 will automatically send archive format if you e-mail from ChessBase 8. In earlier versions of ChessBase you may archive a database to create a single file to e-mail. See your help materials.

Most chess databases will also produce text files in pgn format, as will many chess playing programs. If you need a simple program to create pgn files, we recommend the freeware **PGN Viewer** by KenChess, available at www.illinoischess.org/icb.htm. The main font for the ICB is Arial, and also using the Figurine Aries font and the US Diagram font from ChessBase.

Editorial Staff

Managing Editor: Colley Kitson
Games Editor: Albert Chow
Assistant Games Editor: Angelo Young
Tour and Crosstables Editor:

Contributors

Bill Smythe
Albert Chow
Angelo Young
Dennis Bourgerie
Larry Cohen
Dan Pradt
Howard Cohen
Dr. Ron Saurez

Advertising Rates

Back Cover: \$125
Inside Front: \$115
Full Page: \$100
1/2 Page: \$65
1/3 Page: \$50
1/4 Page: \$40
1/8 Page: \$25

There is a \$20 design charge for ads that are not camera-ready. Allow 7 days for design. Allow additional time if ad proofing is required. ICA affiliates receive a 1/2 discount and ads that appear in consecutive issues receive a 10% discount. Payment must accompany the ad. The ICA and the ICB reserve the right to refuse any specific advertisement.

Membership Information

The Illinois Chess Bulletin (ICB) is published by the Illinois Chess Association (ICA). ICA membership includes a subscription to the ICB. Memberships marked 1st receive their magazine first class. Memberships marked P also receive a plaque. Affiliates also receive discounted advertising rates, event advertising on Chess Phone and the ICA website, and the right to run Tour events.

Corporate	\$500	1 st Class & Plaque
Organization	\$200	1 st Class & Plaque
Business	\$200	1 st Class & Plaque
Century Club	\$100	1 st Class
Gold Card	\$50	1 st Class
Patron	\$35	1 st Class
Affiliate	\$25	Affiliate benefits
Regular	\$18	
Junior	\$10	
Family	\$6	No magazine
ICCA Coach	\$19	Also a member of ICCA
Cochess	\$19	Also a member of Cochess

President's Podium**PRESIDENT'S PODIUM**

By Larry S. Cohen

To begin with I want to apologize for the lateness of the last issue of the ICB, We (the ICA) are going through a bit of a transition problem. For quite a number of years Bill Smythe has performed exemplarily service to the ICA as our Tour Statistician. He has also been doing service as the tournament clearing house for the entire state of Illinois, as well as the ICA calendar. On top of all that he has been the ICA membership secretary as well. After all these years the inevitable has happened, and he reached his 'burn-out' point. We are truly sorry to see him go and as you can already see we will greatly miss him. The next time you see him at a tournament or a club don't hesitate to go up and thank him for all the hard and thankless work he has put in over the many many years. I do hope to see Bill at the occasional tournament, and hope he will still drop in on our ICA meetings. I know that his input in the past has generated many thoughtful moments for a number of individuals.

Having said this I will let you know that we have replaced Bill with 3 other people. The new membership secretary is Chris Baumgartner [treegrower4@aol.com]. Once we resupply the ICA with membership cards he will see to it that they get mailed out. For now send your membership renewals and information the ICA treasurer Howard Cohen. The tournament clearing house and the ICA calendar will now be handled by Metro VP Howard Fried. The new tour statistician will be Mrs. Sheila Heiser. I want to thank all of these people for agreeing to step in and help out. I ask that you do give them a little leeway until they have gotten up to speed with their various tasks.

Finally I want to remind everyone that Illinois is host to 2 National events before the end of the year. For the final time the National Youth Action will be held in Rockford, and this year the National K-12 Championships will be held in Rosemont. Hopefully quite a number of those trophies will remain in the state. We need to encourage the young in Illinois to play chess. This means we need to support the youth chess movement in Illinois. The giving season is once again among us, so please consider making a donation to the Illinois Warren Junior Chess Fund.

Best "Chess" Regards
& a joyous season

Larry S. Cohen

President:

Cohen, Lawrence S
231 S Villa Ave #3-B
Villa Park IL 60181-2941
630-834-2477
LSCohen60@yahoo.com

Metro VP:

Fried, Howard
2635 N New England Av
Chicago IL 60707
773-889-8553
hfried1@sbcglobal.net

Downstate VP:

Bourgerie, Dennis
PO Box 157
Normal IL 61761-0157
309-454-3842
Schoolstreeter@msn.com

Secretary:

Hart, Vincent J
1204 W Green Acres Ln
Mount Prospect IL 60056-4017
vinnyjh@hotmail.com

Treasurer:

Cohen, Howard
10482 Anne Ct #2-E
Rosemont IL 60018-3520
847-803-0941
ChessNehoc@aol.com

ICA Tour Statistician

Sheila Heiser.
847-526-9025.
skeystone@aol.com.

ICA Membership Secretary

Chris Baumgartner
107 S. Maple Lane
Prospect Points Hts, IL 60070
treegrower4@aol.com
846-749-2573

Helen Warren**Junior Chess Program**

PO Box 305
Western Springs, IL 60558-0305
apct@aol.com

CHESS PHONE

Chess results & announcements
(630) 832-5222

WORLD WIDE WEB

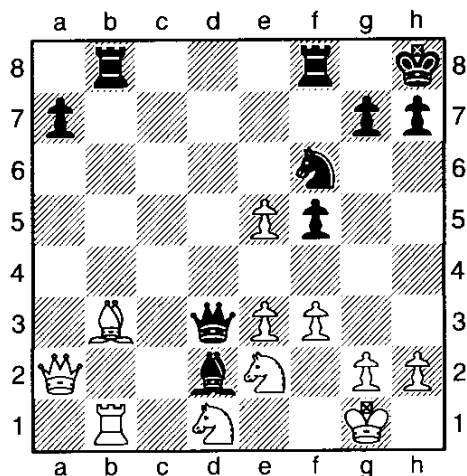
<http://www.illinoischess.org>

(1) Ibragimov,I – Firman,N [D31]

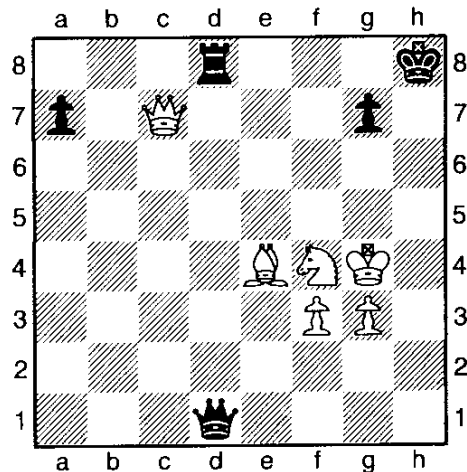
Chicago open (3), 30.05.2003

[A.C.]

1.c4 e6 2.Nc3 d5 3.d4 c6 4.e3 f5 5.Bd3 Nf6 6.Nge2
Bd6 7.f3 0-0 8.Qc2 Na6 9.a3 dxc4 10.Bxc4 b5
11.Bb3 Kh8 12.0-0 Rb8 13.Bd2 c5 14.Be1 c4 15.Ba2
b4 16.axb4 Nxb4 17.Qd2 Nd3 18.Rb1 Ba6 19.b3
Nxe1 20.Rfxe1 cxb3 21.Bxb3 Bb4 22.Rec1 e5
23.Qa2 Bd3 24.dxe5 Bxb1 25.Rxb1 Qd3 26.Nd1 Bd2
Diagram



27.exf6 Rxf6 28.Bc2 Rxb1 29.Qxb1 Qd6 30.Bxf5
Qc5 31.Qd3 Rd6 32.Qe4 Rd8 33.Kf2 Qa5 34.Nd4
Bc1 35.Qc2 Bxe3+ 36.Kxe3 Qe1+ 37.Ne2 Qxd1
38.Bxh7 Qd6 39.Be4 Qb6+ 40.Kf4 Qf2 41.g3 Qxh2
42.Kg4 Qf2 43.Qc4 Qf1 44.Qc7 Qd1 45.Nf4 Diagram

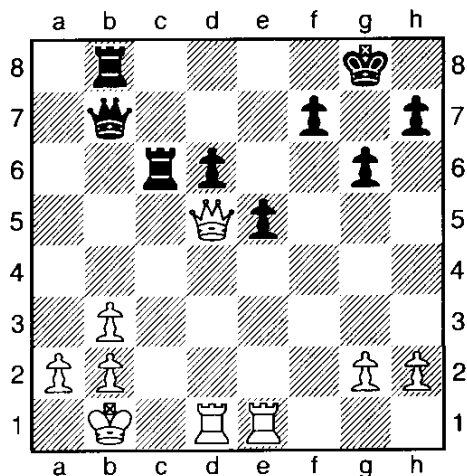


(2) Kaidanov,G – Kudrin,S [B79]

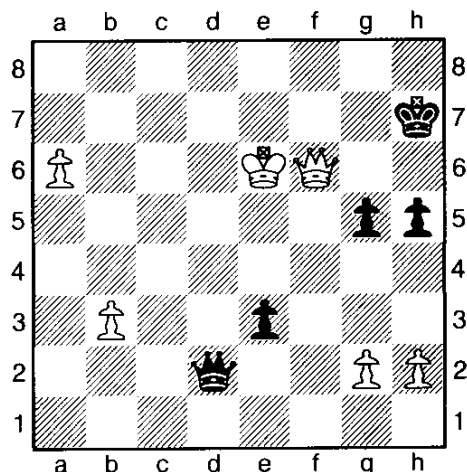
Chicago open, 31.05.2003

[A.C.]

1.e4 c5 2.Nf3 d6 3.d4 cxd4 4.Nxd4 Nf6 5.Nc3 g6
6.Be3 Bg7 7.f3 Nc6 8.Qd2 0-0 9.Bc4 Bd7 10.0-0-0
Qa5 11.Kb1 Rfc8 12.Bb3 Ne5 13.Rhe1!? b5
14.Ncxb5! Qa6 15.Nc3 Rab8 16.Nd5 Nxd5 17.exd5
Qb7 18.Bh6 Bf6 19.Bg5 a5 20.Bxf6 exf6 21.f4 a4
22.fxe5 fxe5 23.Nc6 axb3 24.cxb3! Bxc6 25.dxc6
Rxc6 26.Qd5 Diagram

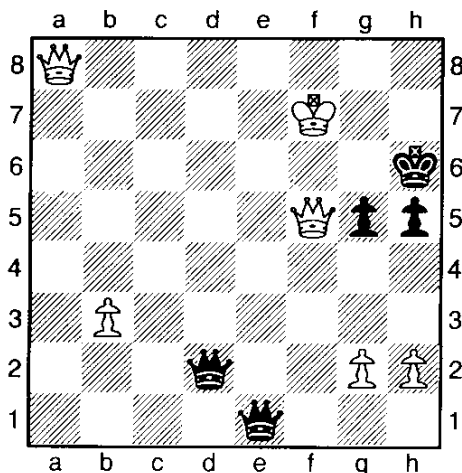


26...Rbc8 27.Rd2 Qc7 28.a3 h5 29.b4 Kg7 30.b5 Rc5
31.Qxd6 Rc1+ 32.Rxc1 Qxc1+ 33.Ka2 Qc4+ 34.b3
Qxb5 35.a4 Qe8 36.Rd5 Rc2+ 37.Ka3 Re2 38.a5 Qc8
39.Qc5 Qf5 40.Qc3 Kh7 41.Qf3 Qe6 42.Rc5 Rd2
43.Qe4 f6 44.Rc7+ Rd7 45.Rxd7+ Qxd7 46.Qb4 Qc6
47.Qb6 Qc1+ 48.Ka4 Qa1+ 49.Kb5 Qf1+ 50.Kc5
Qf2+ 51.Kd6 Qd2+ 52.Ke6 e4 53.a6 e3 54.Qc7+! Kh6
55.Qf4+ g5 56.Qxf6+ Kh7 Diagram

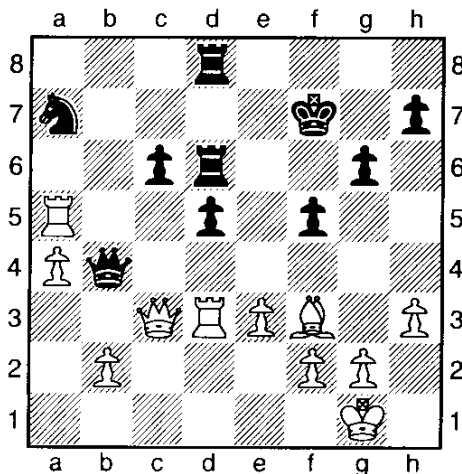


black resigned. 1-0

57.Qf5+ Kh6 58.a7 e2 59.a8Q e1Q+ 60.Kf7 Diagram



Kf7 29.Rc5 a5? 30.a4 Na7 31.Qc3 Qb4 32.Rxa5 Diagram



black resigned. 1-0

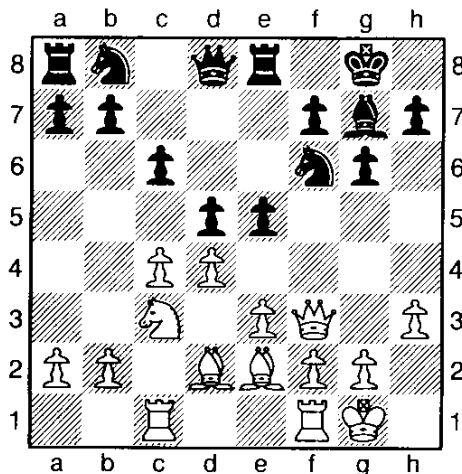
32...Qxc3?? 33.Rxa7+ Kg8 34.Rxc3 black resigned. 1-0

(3) Szpisjak,S – Levine,G [D94]

Caveman Octagon (1), 15.06.2003

[Al Chow]

1.d4 d5 2.c4 c6 3.Nf3 Nf6 4.e3 g6 5.Nc3 Bg7 6.Bd2 0-0 7.Rc1 Bg4 8.h3 Bxf3 9.Qxf3 e6 10.Be2 Re8 11.0-0 e5?! Diagram

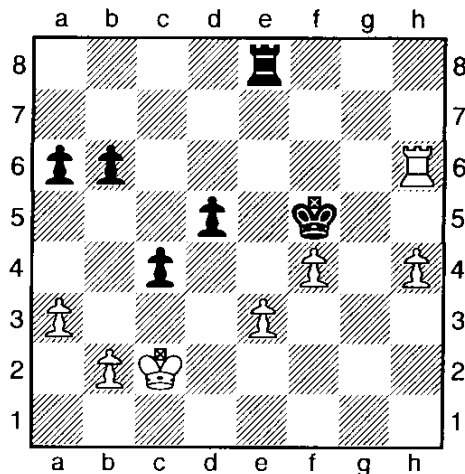


(4) Szpisjak,S – Leng [D61]

Caveman Octagon (3), 15.09.2003

[A.C.]

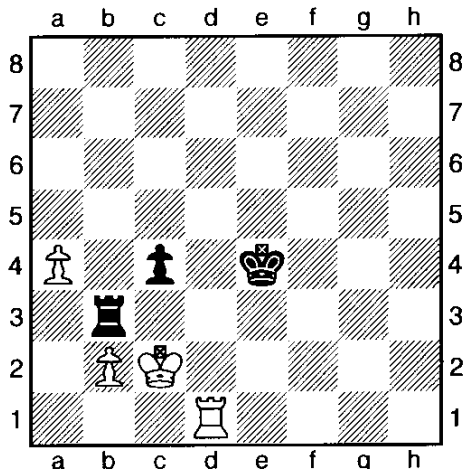
1.d4 Nf6 2.Nf3 d5 3.c4 e6 4.Nc3 Nbd7 5.Bg5 Be7 6.e3 h6 7.Bh4 0-0 8.Qc2 b6 9.cxd5 exd5 10.Bd3 Re8 11.0-0-0 c5 12.Kb1 c4 13.Bf5 Bb7 14.Ne5 Nxe5 15.dxe5 Nd7 16.e6 Bxh4 17.exd7 Re5 18.Rhe1 Qf6 19.Bh7+ Kh8 20.g3 g6 21.f4 Re7 22.gxh4 Rxd7 23.Bxg6 fxg6 24.Rg1 Rg8 25.Nb5 a6 26.Nd4 Re7 27.Rg3 Bc8 28.Rdg1 Reg7 29.a3 Bf5 30.Nxf5 Qxf5 31.Qxf5 gxf5 32.Kc2 Rxg3 33.hxg3 Kg7 34.g4 Re8 35.gxf5+ Kf6 36.Rg6+ Kxf5 37.Rxh6 Diagram



[11...Nbd7 completing development before opening the center is better in the solid Slav.] 12.dxe5 Rxe5 13.cxd5 cxd5 14.Qf4 Re6 15.Rfd1 a6 16.Bf3 Nc6 17.Be1 Rd6 18.Ne2 Qd7 19.Bc3 Ne8 20.Nd4 f5 21.Nxc6 bxc6 22.Qa4 Nc7 23.Rd2 Bxc3 24.Rxc3 Nb5 25.Rcd3 Qb7 26.Qd1 Rad8 27.Rc2 Qb6 28.Qc1

Submissions from Games Editor FM Albert Chow

37...Rxe3 38.Rxb6 Rh3 39.Rxa6 Rxh4 40.Rd6 Kxf4
41.Rxd5 Ke4 42.Rd8 Rh3 43.a4 Rb3 44.Rd1 Diagram



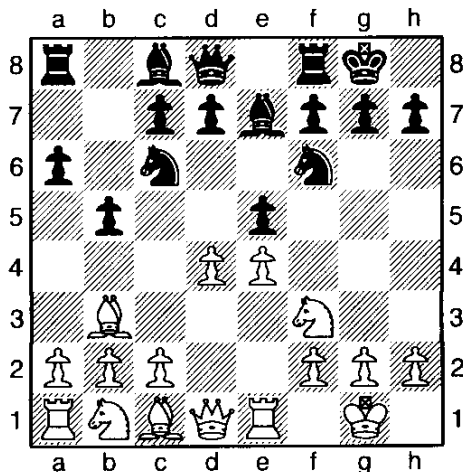
black resigned. 1-0

(5) Bachler, K – Silverman, S [C91]

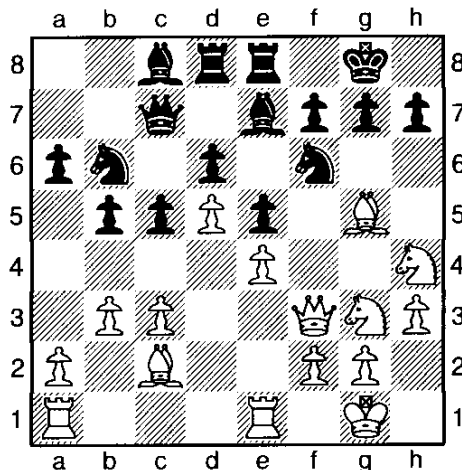
Caveman Octagon (3), 15.06.2003

[Albert chow]

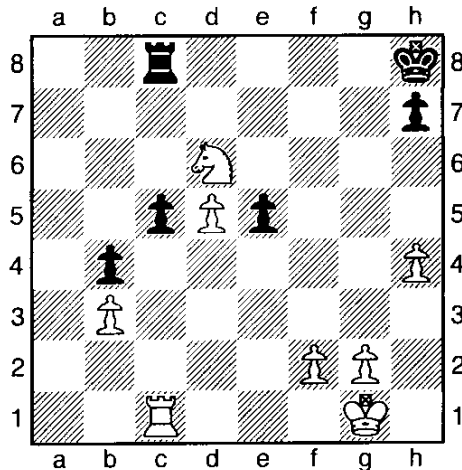
1.e4 e5 2.Nf3 Nc6 3.Bb5 a6 4.Ba4 Nf6 5.0-0 Be7
6.Re1 b5 7.Bb3 0-0 8.d4!? Diagram



An anti Marshall variante. 8...d6 9.c3 Bb7 [9...Bg4! is better.] 10.Nbd2 Re8 11.Nf1 Bf8 12.Ng3 Na5 13.Bc2 c5 14.d5 Nc4 15.b3 Nb6 16.Qe2 Bc8 17.h3 Qc7 18.Be3 Bd7 19.Nh4 Rad8 20.Qf3 Bc8 21.Bg5 Be7 After building up behind a closed position, it is time to trigger the tactical crisis.



22.Nhf5!? Nfxd5! 23.exd5 Bxg5 24.Qg4! f6! 25.h4 Bd2 26.Nh5 Bxf5 [26...Bxe1!? would need courage to play in time pressure.] 27.Qxf5 g6 28.Nxf6+ Kh8 [28...Kg7! 29.Nxe8+ Rxe8 30.Qd3 Bxe1 31.Rxe1 c4! with good counterplay and equal material.] 29.Nxe8 gxf5?? [29...Rxe8! 30.Qf6+ Kg8 and black retains counterplay by threatening e1, c3, and d5.] 30.Nxc7 Bxc3 31.Bxf5 Bxa1 32.Rxa1 b4 33.Be6 a5 34.Nb5 a4 35.Rc1 axb3 36.axb3 Nc8 37.Bxc8 Rxc8 38.Nxd6 Diagram



black resigned. 1-0

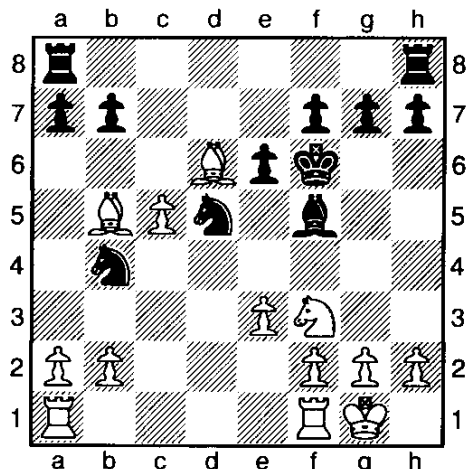
(6) Gurevich, D – Wijetunge, I [A40]

Master Challenge (1), 12.07.2003

[A.C.]

1.d4 c6 2.Bf4 d5 3.e3 Qb6 4.Qc1 Nf6 5.Nf3 Bf5 6.Be2 e6 7.0-0 Be7 8.c4 c5 9.Nc3 Nc6 10.Na4 Qa5

11.Nxc5 Bxc5 12.cxd5 Nb4 13.Qxc5 Qxc5 14.dxc5 Nfxd5 15.Bb5+ Ke7 16.Bd6+ Kf6 Diagram



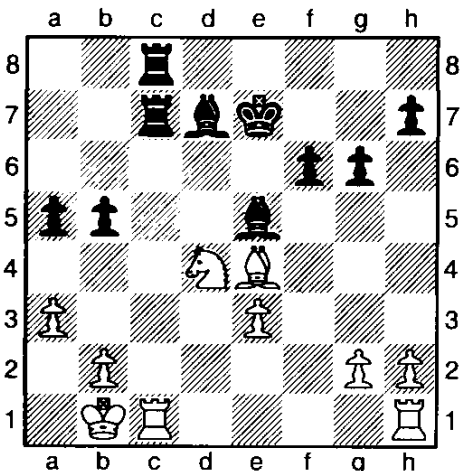
17.Be5+ Ke7 18.Nd4 Rac8 19.Nxf5+ exf5 20.Bxg7 Rhg8 21.Bd4 Rg6 22.g3 h5 23.a3 Nc6 24.Bd3 black resigned, 1-0

(7) Young, I – Gurevich, D [A46]

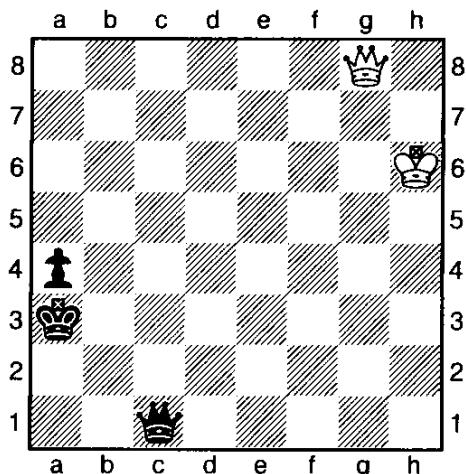
Master Challenge (4), 13.07.2003

[FM Albert Chow]

1.d4 Nf6 2.Nf3 e6 3.a3?! c5! 4.c4 cxd4 5.Nxd4 a6 6.Nc3 d5! 7.cxd5 Nxd5 8.Bd2 e5! Black takes the initiative. 9.Nc2 Be6 10.Nxd5 Qxd5 11.Nb4 Qd7 12.Bc3 f6 13.e3 a5 14.Qxd7+ Nxd7 15.Nc2 A bad knight. 15...Bc5 16.Bb5 Ke7! 17.0-0 Rhc8 18.f4?! [18.Kb1 was more solid.] 18...Bd6! 19.fxe5 Nxe5 20.Bxe5 Bxe5 21.Bd3 b5!? An offer to eat a gambit pawn with 22.Bxb5 or 22.Bxh7, then black will gain some tempo for an attack. 22.Be4 Ra7 23.Kb1 g6 24.Nd4 Bd7 25.Rc1 Rac7



26.Rxc7 Rxc7 27.h3 f5 GM D.Gurevich enjoys transposing to a better ending. 28.Bd3 Bxd4! 29.exd4 Bc6 30.Re1+ Kd6 31.g3 Be4! 32.Bxe4 Re7! 33.Kc2 Rxe4 34.Rd1 [34.Rxe4 fxe4 followed by Kd5 is good for black.] 34...Kd5 35.Kc3 Re3+ 36.Rd3 Rxd3+ 37.Kxd3 g5 Centralized king and outside passed pawn, a classic king endgame win. 38.h4 f4 39.hxg5 fxg3 40.Ke3 a4 41.Kf3 Kxd4 42.Kxg3 Kc4 43.Kg4 Kb3 44.Kh5 Kxb2 45.Kh6 Kxa3 46.Kxh7 b4 47.g6 b3 48.g7 b2 49.g8Q b1Q+ 50.Kh6 Qc1+ Diagram



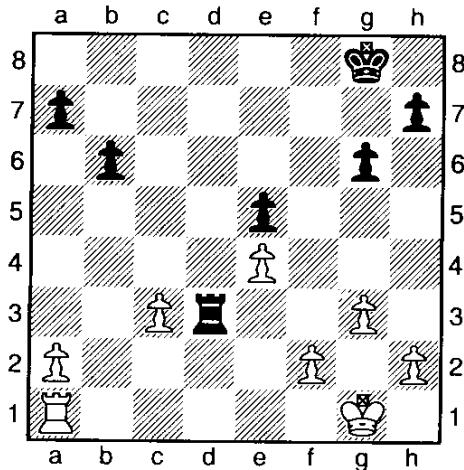
black can force the trade of queens, so white resigned. 0-1

(8) Szpisjak, S – Easter, J [A52]

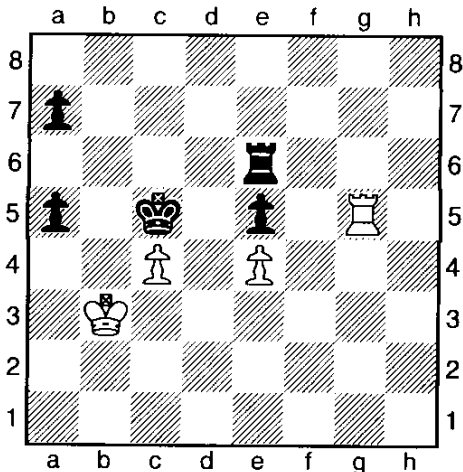
Master Challenge (2), 12.07.2003

[F.M. Al Chow]

1.d4 Nf6 2.c4 e5 3.dxe5 Ng4 4.Bf4 Nc6 5.Nf3 Bb4+ 6.Nc3 Bxc3+ 7.bxc3 Qe7 8.Qd5 f6 9.e6!? [9.exf6 Nxf6 10.Qd3 is the main line in this Budapest gambit accepted.] 9...dxe6! 10.Qh5+ g6 11.Qxg4 e5! 12.Qg3 exf4 13.Qxf4 0-0 In exchange for white's extra e pawn, black has a lead in development to work on white's queenside weaknesses. 14.e4 Ne5 15.Be2 b6! 16.0-0 Ba6! 17.Nxe5 fxe5 18.Qe3 Rad8 19.Rfd1 Rd6! 20.Rxd6 cxd6 21.c5! Bxe2 22.cxd6 Qxd6 23.Qxe2 Rd8! 24.g3 Qd3! 25.Qxd3 Rxd3 Black's compensating activity lasts deep into the endgame.



26.Rc1 Rd2 27.c4 Rd7 [27...Rxa2! 28.c5! Rd2! 29.c6 (29.cxb6!? axb6 30.Rc8+ is also good.) 29...Rd8 30.f4 Kf7! seems to equalize material and draw as well.] 28.Kf1 Kf7 29.Ke2 g5 30.f3 Rc7 31.a4 Ke6 32.Ke3 Rc8 Despite his extra backward f pawn, it is not easy for white to gain any big advantage in this rook ending, due to the weakness of the isolated a and c pawns. 33.g4 Rc7 34.Rc3 Ke7 35.a5 bxa5 36.Ra3 Rc5 37.Kd3 Kd6 38.Kc3 Kc7 39.Ra2 h6 40.h4 gxh4 41.Rh2 Rc6 42.Kd3 Rf6 43.Rxh4 Rxf3+ 44.Kc2 Rf6 45.Rh5 Kd6 46.Kb3 Re6 47.g5 hxg5 48.Rxg5 Kc5 Diagram



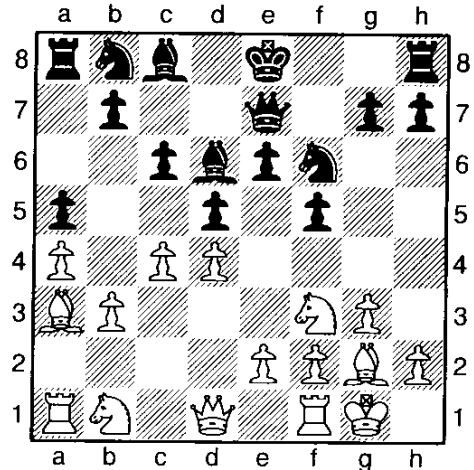
at this point if anyone has advantage it is black, but perhaps tired of defending most of the game, a draw was agreed. 1/2-1/2

(9) Gurevich, D - Firman, N [A90]

Master Challenge, 13.07.2003

[Al Chow]

1.d4 e6 2.c4 f5 3.g3 Nf6 4.Bg2 d5 5.Nf3 c6 6.0-0 Bd6 7.b3 Qe7 8.a4 a5 9.Ba3 Diagram

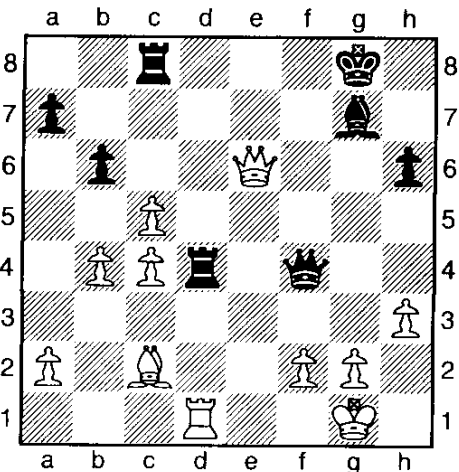


The exchange of dark squared bishops seems favorable to white in the Stonewall Dutch, however an early draw was agreed. 1/2-1/2

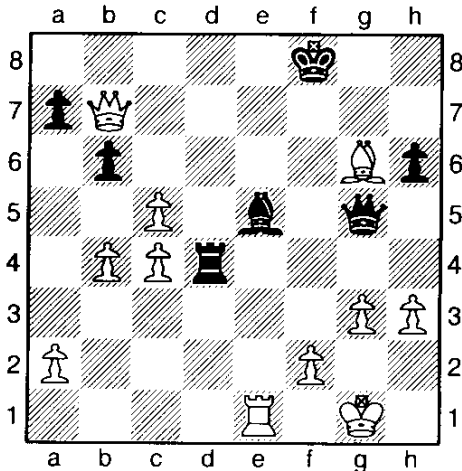
(10) Gurevich, D - Karaganis, P [D30]

Master Challenge (3), 12.07.2003 [Albert Chow]

1.d4 d5 2.c4 c6 3.Nf3 Nf6 4.e3 e6 5.Bd3 Nbd7 6.0-0 Be7 7.Nc3 0-0 8.e4 dxe4 9.Nxe4 Nxe4 10.Bxe4 Nf6 11.Bc2 c5 12.Qd3 h6 13.Be3 Qc7 14.dxc5 e5 15.Nxe5!! Rd8 [if 15...Qxe5 16.Bd4 regains the piece due to the threat of Bxf6 and Qh7.] 16.Qc3 Ng4 17.Nxg4 Bxg4 18.Bd4 Bf8 19.h3 Be6 20.b4 Qf4 21.Rad1 Rac8 22.Rfe1 b6 23.Qd3 g6 24.Rxe6! Rxd4 25.Rxg6+ fxg6 26.Qxg6+ Bg7 27.Qe6+ Diagram



27...Kf8 28.Qxc8+ Kf7 29.Re1 Be5 30.g3 Qg5
31.Qb7+ Kf8 32.Bg6! Diagram



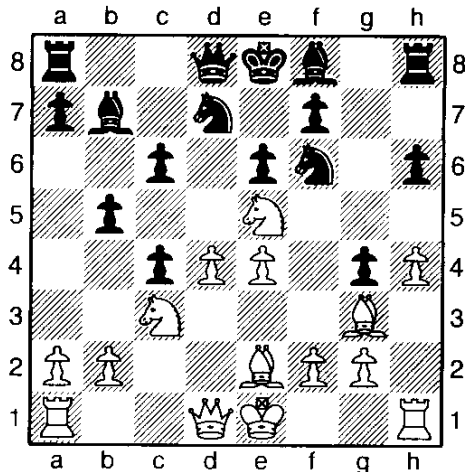
black resigned. 1-0

(11) Brock,B – Firman,N [D43]

Master Challenge (3), 12.07.2003

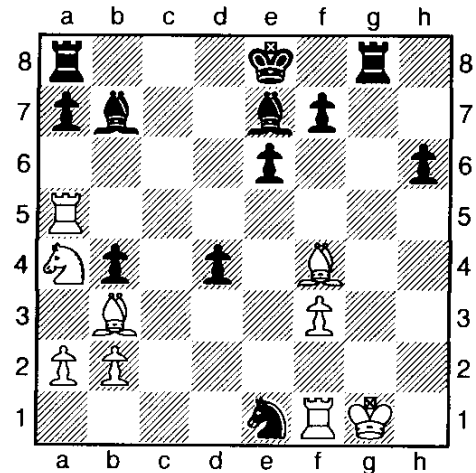
[AI Chow]

1.Nf3 Nf6 2.c4 e6 3.Nc3 d5 4.d4 c6 5.Bg5 h6 6.Bh4
[6.Bxf6 Qxf6 7.e3 is more solid.] 6...dxc4 7.e4 g5
8.Bg3 b5 Accepting the Botvinnik variation in the Semi
Slav Queen's gambit! 9.Be2 Nbd7 10.h4 [10.d5!? is
another sharp attacking try.] 10...g4 11.Ne5 Bb7



12.Nxg4 [12.Nxd7 Qxd7 13.Be5! Bg7 14.Bxg4 also
regains the pawn with a solid enough game.] 12...Rg8
13.0-0 b4! 14.Na4 Nxe4 15.Bxc4 Qa5 16.Ne5 Nxe5
17.Bxe5 c5! 18.f3 cxd4! 19.Bf4? [19.Bxd4! the

recapture is better.] 19...Nd6 20.Bb3 Nf5! 21.Qe1 Be7
22.Rc1 Nxh4 23.Rc5 Nxg2! 24.Rxa5 Nxe1+ Diagram



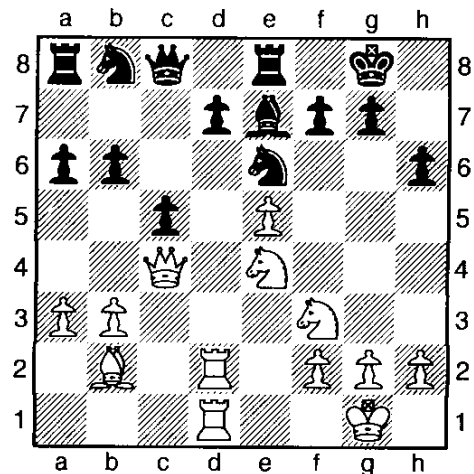
Behind many pawns and under heavy attack, white
resigned. 0-1

(12) Szpisjak,S – Tsyganov,I [E12]

Master Challenge (5), 13.07.2003

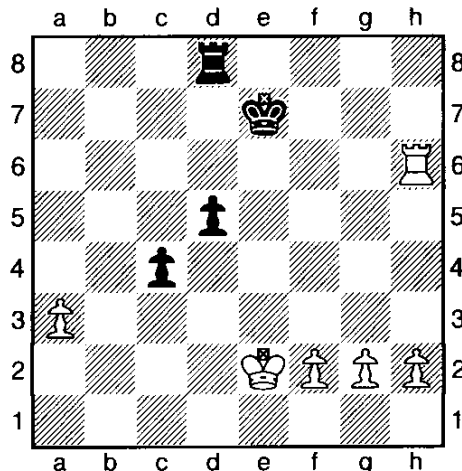
[F.M. Albert Chow]

1.d4 Nf6 2.c4 e6 3.Nf3 b6 4.a3 Ba6 5.Qc2 c5 6.d5!
exd5 7.cxd5 Bb7?! [7...g6 8.Nc3 Bg7 9.g3 0-0 10.Bg2
d6 11.0-0 Nbd7 transposing to a Benoni is also double
edged.] 8.e4 Qe7 9.Bd3! Nxd5 10.0-0 Nc7 11.Nc3
Qd8 White's development advantage returns attacking
chances in exchange for the lost gambit pawn. 12.b3!
Be7 13.Bb2 0-0 14.Rad1 Re8 15.e5! h6 16.Ne4! Ne6
17.Bc4 Qc8 18.Rd2 Ba6 19.Rfd1 Bxc4 20.Qxc4 a6
Steve now earns the brilliancy prize for best sacrificial
combination, as he attacks in the style of Kasparov or
Tal.



Submissions from Games Editor FM Albert Chow

21.Nf6+!! gxf6 22.exf6 Bf8 23.Qg4+ Kh8 [23...Kh7!! was the best defence, setting a trick or treat trap; 24.Qe4+ Kg8 25.Qxa8?? Nc7! 26.Qa7 Nc6! 27.Qxb6 Na8! A knight retreat to the corner trapping white's queen! This was not easy to see without help from a computer, and I imagine both players may have rejected Kh7 during the game without too much calculation, stopping after the rook capture. So instead white should go 25.Qg4+ repeating moves with a possible draw!] 24.Ne5! Nd8? [24...Ng5! was the best defence, branching out into a swamp of unclear tactical complications for example; 25.f4 (25.h4 d6 (25...Rxe5; 25...Nc6)) 25...d6 a)25...Rxe5 26.Bxe5 Nc6= (a)26...Ne6) ; b)25...Nc6 26.Nxc6 dxc6 27.Qxc8 Raxc8 28.fxg5 hxg5=; 26.Qxc8 (26.Ng6+? Kg8 27.Qxc8 Rxc8 28.Nxf8 Ne4+) 26...Rxc8 27.Nc4 Ne4 28.Re2 Re8 29.Nxb6 (29.Rde1 d5 30.Nxb6 Nc6 31.Nxa8 Rxa8) 29...Ra7 30.Nd5 (30.Rde1 Rb7)] 25.Ng6+! fxg6 [25...Kh7? 26.Nxf8+ Rxf8 27.Qg7#] 26.f7+ Re5 27.Qxg6! [27.Bxe5+ Kh7 28.Bxb8 Rxb8 29.Rxd7±] 27...Nxf7! 28.Qxf7 Bg7 29.Bxe5 Bxe5 30.Re1! Nc6 31.Rxe5! Nxe5 32.Qf6+ Kg8 33.Qxe5 Qe8! 34.Qxe8+ Rxe8 35.Kf1! Rd8 The smoke has cleared, the dust has settled. Steve enjoys a winning rook ending, and his technique is up to the task. 36.Rd6! b5 37.Rxa6 c4 38.bxc4 bxc4 39.Rd6 Kf7 40.Ke2 Ke7 41.Rxh6 d5 Diagram



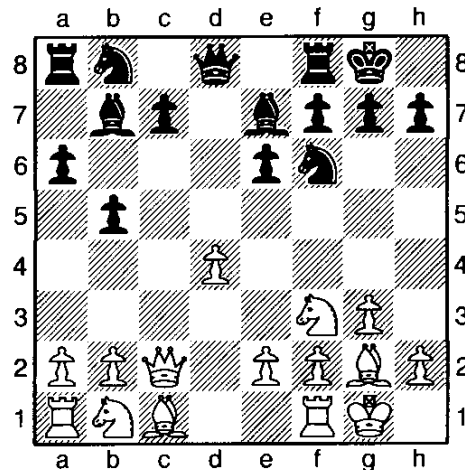
Remaining moves not recorded due to time pressure. White eventually won. 1-0

(13) Allison,R – Firman,N [E05]

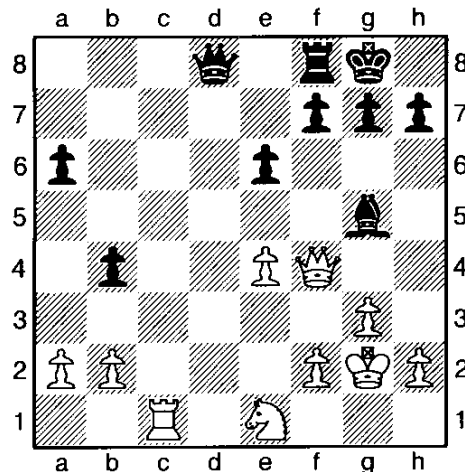
Master Challenge, 12.07.2003

[Albert Chow]

1.c4 Nf6 2.d4 e6 3.Nf3 d5 4.g3 dxc4 5.Bg2 Be7 6.0-0 0-0 7.Qc2 a6 8.Qxc4 b5 9.Qc2 Bb7 Diagram



The classical main line of the Catalan Queen's gambit accepted. 10.Rd1 Nbd7 11.Nc3 Rc8 12.Bf4 b4 13.Na4 Be4 14.Qd2 Nd5 15.Rac1 c5 16.Nxc5 Nxc5 17.dxc5 Bxc5 18.Ne1 Bxg2 19.Kxg2 Be7 20.e4 Rxc1 21.Rxc1?? [21.Qxc1 Nxf4+ 22.gxf4 had to be played.] 21...Nxf4+ 22.Qxf4 Bg5! Diagram



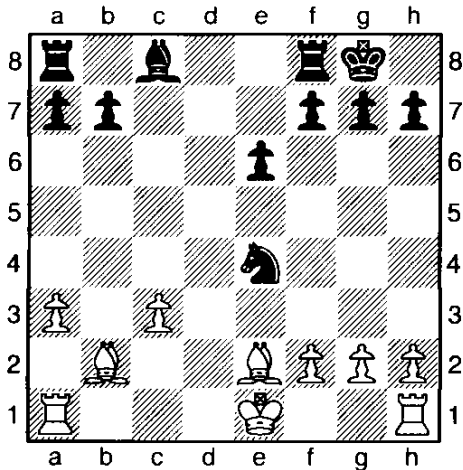
white resigned rather than play the exchange down with 23. Qc7 Bxc1 24.Qxc1 Qd4 etc. 0-1

(14) Hubbard,A (1935) – Gurevich,D (2552) [E38]

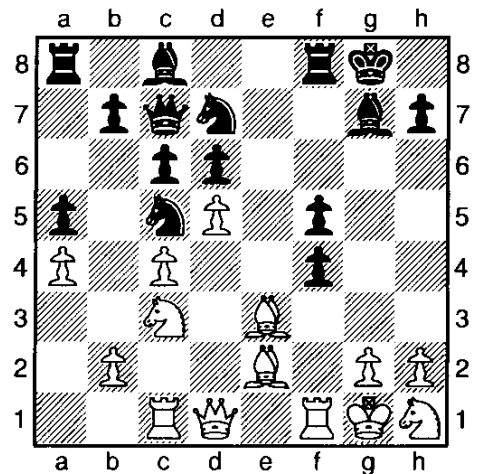
Master Challenge (2), 12.07.2003

[A.Chow]

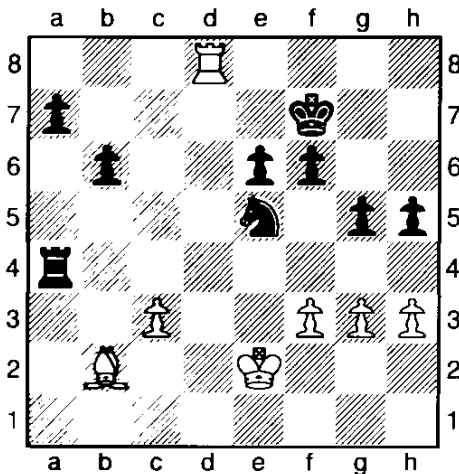
1.d4 Nf6 2.c4 e6 3.Nc3 Bb4 4.Qc2 0-0 5.e3 c5 6.Bd3 Nc6 7.Nf3 d5 8.a3 cxd4! 9.exd4 dxc4 10.Bxc4 Nxd4! 11.Qd3 Nxf3+ 12.Qxf3 Qd4! 13.Be2 Bxc3+ 14.bxc3 Qe4 15.Qxe4 Nxe4 16.Bb2 Diagram



16...b6 17.f3 Nc5 18.Kf2 Ba6 19.Rac1 Bxe2 20.Kxe2 Rac8 21.Rhd1 Rc7 22.Rc2 f6 23.Ke3 Rfc8 24.Rd4 Nb3 25.Rd1 Na5 26.Ba1 Nc4+ 27.Ke2 Nxa3 28.Rcd2 Nc4 29.Rd8+ Rxd8 30.Rxd8+ Kf7 31.Kd3 g5 32.g3 Ne5+ 33.Ke2 h5 34.h3 Rc4 35.Bb2 Ra4 Diagram



17.Bd4?? Falling for a fork when the simple 17.Bxf4 was best. 17...Bxd4+ 18.Qxd4 Nb3 19.Qxf4 Diagram



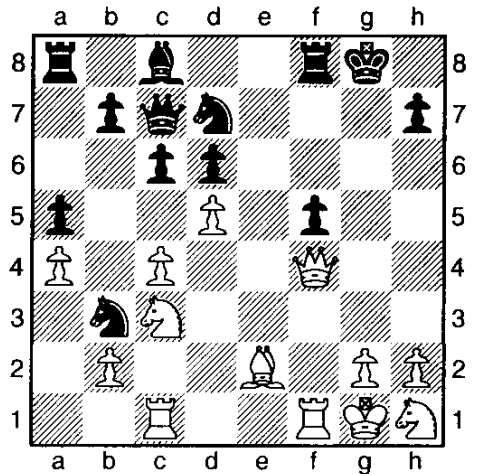
white resigns. 0-1

(15) Cavitt,D - Young,A [A53]

Master Challenge (5), 13.07.2003

[F.M. Albert Chow]

1.d4 Nf6 2.c4 d6 3.Nc3 c6 4.e4 Nbd7 5.Nge2 g6 6.Ng3 Bg7 7.Be2 0-0 8.0-0 a6 9.a4 e5 10.d5 Qc7 After transposing his moves, I.M. Angelo Young displays the dynamic King's Indian defence. 11.Be3 a5 12.Rc1 Nc5 13.f3 Nfd7 14.Nh1? [14.Qc2 Aiming at the key f5 square is better.] 14...f5 15.exf5 gxf5 16.f4 exf4



19...Nxc1 20.Qxc1 Ne5 21.Ng3 Qe7 22.Nh5 Bd7 23.Qh6 Kh8 24.Rd1 c5 25.Rf1 Rf7 26.Nf4 Rg8 27.Nb5 Rf6 28.Qh3 Ng6 29.Nh5 Rf7 30.Qc3+ Ne5 31.Qxa5 f4! 32.Qc3 [32.Nxf4 Qg5! is black's winning tactic.] 32...Qg5 33.Rf2 Bxb5 34.axb5 f3! 35.Ng3 fxe2 36.Rxf7 e1Q+! 37.Qxe1 Nxf7 down a rook, white resigns. 0-1

(16) Chodak,D (1457) - Stannov,A (2295) [C89]

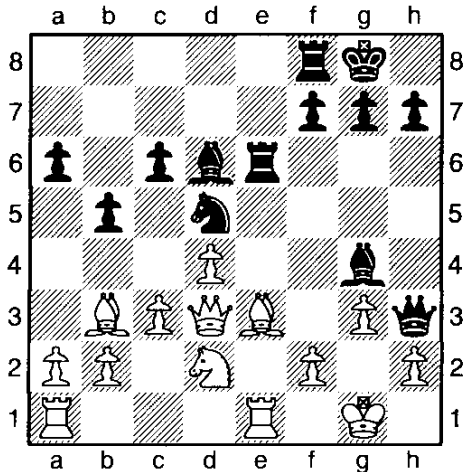
Master Challenge (3), 12.07.2003

[A.C.]

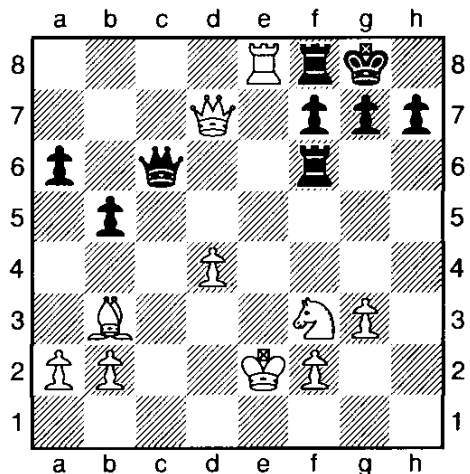
1.e4 e5 2.Nf3 Nc6 3.Bb5 a6 4.Ba4 Nf6 5.0-0 b5 6.Bb3 Be7 7.Re1 0-0 8.c3 d5 9.exd5 Nxd5 10.Nxe5 Nxe5

Submissions from Games Editor FM Albert Chow

11.Rxe5 c6 12.d4 Bd6 13.Re1 Qh4 14.g3 Qh3
15.Be3 Bg4 16.Qd3 Rae8 17.Nd2 Re6 Young
Mr.Chodak shows he is not afraid to accept the
Marshall gambit in the Ruy Lopez!



18.c4 [18.a4 is another critical variation.] 18...Bf4!
19.cxd5 Rh6 20.Qe4 Qxh2+ 21.Kf1 Bf5?? A blunder.
Black has two alternative moves that are better:
[21...Bxe3 22.Rxe3 Rf6 (22...Qh1+ 23.Qxh1 Rxh1+
24.Kg2 Rxa1 25.dxc6 a5 unclear.) 23.f3 Bf5! 24.Qe5
Qxd2 25.Kg1 Qxb2 26.Rae1; 21...f5 22.dxc6+ Kh8
23.Qd5 Bxe3 24.Rxe3 f4 25.gxf4 Qxf4 26.Nf3 Rh1+
27.Ke2 Rxa1] 22.Qxf5 Bxe3 23.Rxe3 Qh1+ [23...Rf6
24.Qxf6! gxf6 25.Rae1 looks good for white!] 24.Ke2
Qxa1 25.dxc6 Rf6 26.Qd7 Qg1 27.Nf3 Qc1 28.Re8!
Qxc6?? Diagram



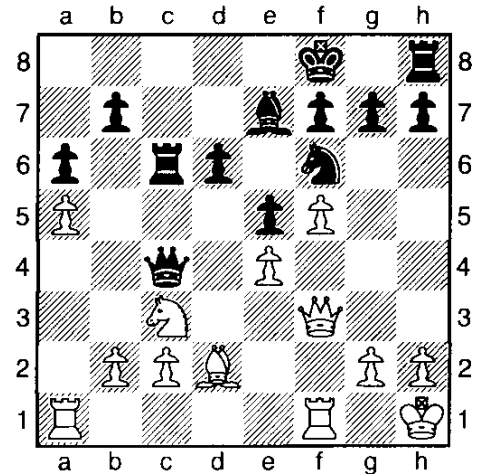
29.Bxf7+! R6xf7 30.Rxf8+ Rxf8 31.Qxc6 Rf6
32.Qe8+ Rf8 33.Qe6+ Kh8 34.Ne5 black resigned. 1-0

(17) Chow,A (2217) – Vasto,D (2092) [B92]

Master Challenge (5), 13.07.2003

[AI Chow]

1.e4 c5 2.Nf3 d6 3.d4 cxd4 4.Nxd4 Nf6 5.Nc3 a6
6.Be2 e5 7.Nb3 Be7 8.0-0 Be6 9.f4 Qc7 10.Kh1 Nbd7
11.a4 Nb6 12.a5 Nc4 13.f5 Bd7 14.Qd3 Bb5 15.Qg3
Kf8 16.Qf3 Rc8 17.Nd2 Nxd2 18.Bxd2 Bxe2 19.Qxe2
Qc4 20.Qf3 Rc6?? Diagram

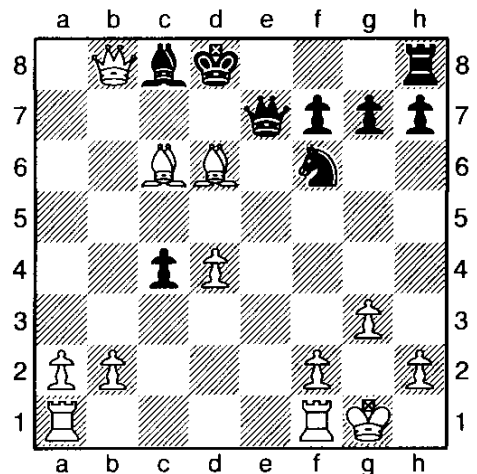


[20...h6 was better.] 21.Ra4! Nxe4 22.Rxc4! and black
resigned. 1-0

(18) Firman,N – Monatelli,D [C00]

Master Challenge (2), 12.07.2003 [A.C.]

1.e4 e6 2.d3 d5 3.Nd2 c5 4.Ngf3 Nc6 5.g3 Bd7 6.Bg2
Bd6 7.0-0 Qc7 8.exd5 exd5 9.c4 dxc4 10.Nxc4 0-0-0
11.Nxd6+ Qxd6 12.Bf4 Qf8 13.d4 Bg4 14.Qb3 Be6
15.Qa4 c4 16.Ne5 Nxe5 17.Qxa7 Qe7 18.Bxe5 Nf6
19.Bc6 Rd6 20.Qa8+ Kc7 21.Qxb7+ Kd8 22.Qb8+
Bc8 23.Bxd6 Diagram



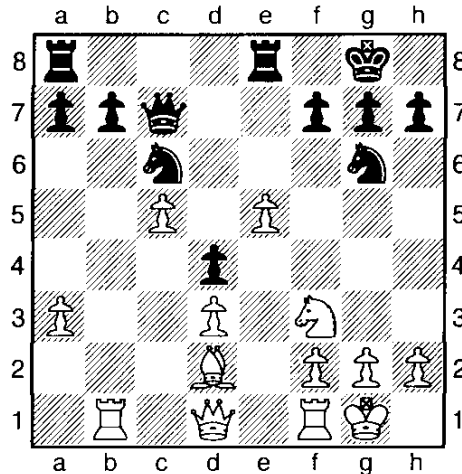
black resigns. 1-0

(19) Firman,N – Palos,O [C19]

Master Challenge (4), 13.07.2003

[Albert Chow]

1.e4 e6 2.d4 d5 3.Nc3 Bb4 4.e5 c5 5.a3 Bxc3+
6.bxc3 Ne7 7.Nf3 Qa5 8.Bd2 Nbc6 9.c4!? Qc7
10.dxc5!? 0-0 [10...Nxe5 11.Bc3] 11.cxd5 exd5
12.Be2 Ng6 [12...Nxe5 13.Nxe5 Qxe5 14.0-0] 13.0-0
Bf5 [13...Ngxe5] 14.Rb1 d4 15.Bd3 Bxd3 16.cxd3
Rfe8



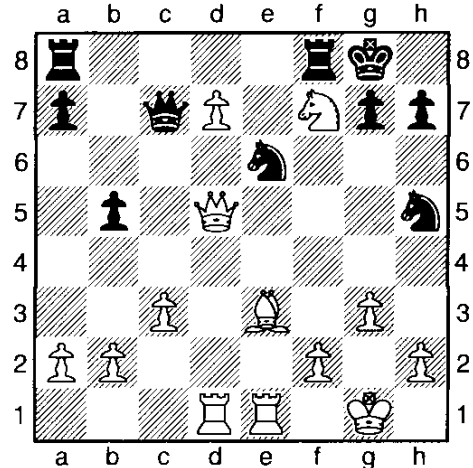
17.Re1 Nf8? [17...Nxc5] 18.Qb3 Rab8 19.Ng5 Ne6?
[19...Rxe5!]= 20.Nxe6 fxe6 21.f4 Qf7± 22.Qc4 Rbd8
23.Re4 Rd5 24.Qb5 Re7 25.Rf1 Rc7 26.f5 exf5 27.e6
Qe7 28.Qb3 fxe4 29.Qxd5 e3 30.Be1 Rc8 31.Bh4 e2
32.Bxe7 exf1Q+ 33.Kxf1 Nxe7 34.Qxb7 Kf8 35.Qf3+
black resigned. 1-0

(20) Bachler,K – Elezaj,E [A07]

Forest City Championship (4), 28.09.2003

[A.C.]

1.Nf3 d5 2.g3 Nf6 3.Bg2 e6 4.0-0 Be7 5.d3 0-0
6.Nbd2 c5 7.e4 dxe4 8.dxe4 Nc6 9.Re1 Qc7 10.c3 b6
11.Qc2 Bb7 12.Nc4 b5 13.Bf4 e5 14.Nxc5 Bd6
15.Nd3 c4 16.e5 cxd3 17.exd6 Qd7 18.Qxd3 Nh5
19.Be3 Nd8 20.Rad1 Ne6 21.Ne5 Qc8 22.d7 Qc7
23.Bxb7 Qxb7 24.Qd5 Qc7 25.Nxf7! Diagram



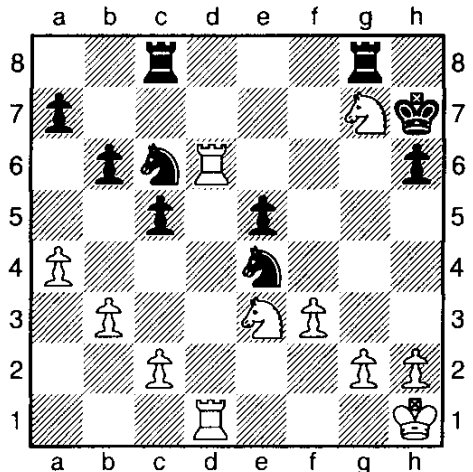
black resigned. 1-0

(21) Firman,N – Hernandez,H [B12]

Forest City Championship, 27.09.2003

[A.C.]

1.e4 c6 2.d4 d6 3.Nc3 Qc7 4.Nge2 e5 5.Ng3 Nf6
6.Bc4 Be7 7.0-0 0-0 8.a4 Bg4 9.f3 Be6 10.Bxe6 fxe6
11.dxe5 dxe5 12.Be3 Na6 13.Qe2 Bc5 14.Bxc5 Nxc5
15.Qc4 Qe7 16.Nf5! Qc7 17.Rad1 Kh8 18.Nd6 Ncd7
19.Qxe6 h6 20.Kh1 Kh7 21.Ne2 b6 22.b3 Nh5
23.Qe7 Nhf6 24.Nf5 Rg8 25.Neg3 Rae8 26.Qd6 Qxd6
27.Rxd6 c5 28.Rfd1 Nb8 29.Ne3 Rc8 30.Ngf5 Nc6
31.Nxg7! Nxe4? Diagram



[The sacrifice should have been accepted with
31...Kxg7! 32.Nf5+ Kf7 (32...Kg6 33.Rxc6! Rxc6
34.Ne7+) 33.Nxh6+ Kg7 34.Nxg8 Nxg8 35.Rd7+--
when white has material advantage in the endgame,

Submissions from Games Editor FM Albert Chow

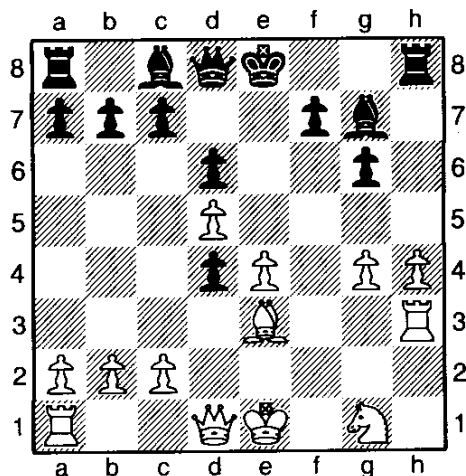
but black's pair of knights might hope for a future fork.]
 32.fxe4 Rxc7 33.Nf5 Rg6 34.Rxc6 Kxc6 35.Rd6+ Kg5 36.g3 Nd4 37.h4+ Kg4 38.Kg2 Nxf5 39.Rg6+ Kh5 40.exf5 1-0

(22) Lung,R – Firman,N [B07]

Forest City Championship, 27.09.2003

[Albert chow]

1.e4 d6 2.d4 Nf6 3.Nc3 g6 The Pirc defence. 4.Be2 Bg7 5.h4 [Against a strong high rated I.M. a more solid development such as 5.Nf3 is better.] 5...Nc6 6.Be3 e5 7.d5 Nd4!? 8.f3? [Instead of conceding the strategic initiative, the gambit must be accepted with 8.Bxd4! exd4 9.Qxd4 0-0 with chances for counterplay.] 8...Nh5! 9.g4 Ng3 10.Rh3 Ngxe2 11.Ncxe2 h5! 12.Nxd4 hxg4 13.fxg4 exd4



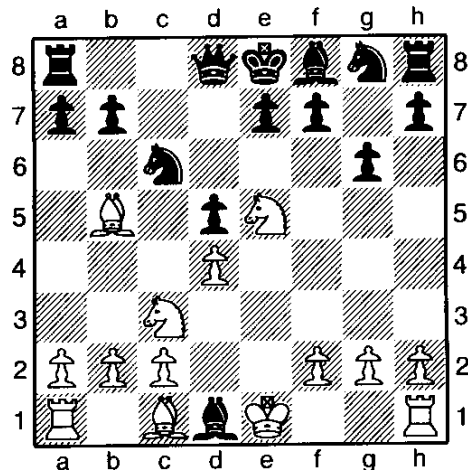
14.Bg5? [The last chance to fight was 14.Bxd4! Bxg4 15.Qxg4 Bxd4 16.0-0-0 with a playable game.] 14...Qd7 15.Rg3 Be5 16.Rg2 f6 17.Bd2 Rxh4 18.Qf3 Rxc4 19.0-0-0 Rxc2 20.Qxc2 Qg4 21.Qh1 Qh5 22.Qg2 Bg4 23.Re1 0-0-0 24.Ne2 Bf3 25.Qf2 Bxe4 26.Nf4 Qf5 white resigned. 0-1

(23) Firman,N – Bachler,K [B15]

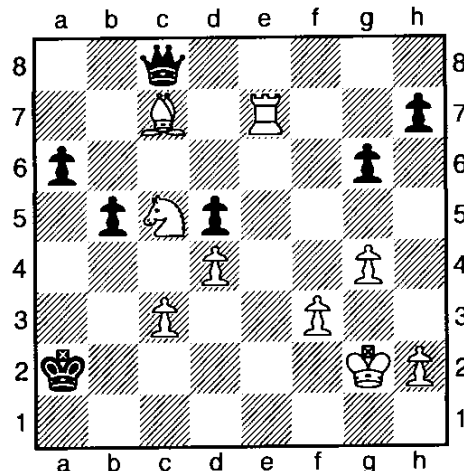
Forest City Championship (5), 28.09.2003

[Albert Chow]

1.e4 g6 2.d4 c6 3.Nc3 d5 4.Nf3 Bg4 5.exd5 cxd5 6.Bb5+ Nc6 7.Ne5!? Bxd1 Diagram



8.Nxc6 Qb6 9.Ne5+ Kd8 10.Nxf7+ Kc8 11.Nxh8 Bxc2 12.Be3 e5 13.Rc1 Bb4 14.Rxc2 Qxb5 15.Nf7 Qd3 16.Rd2 Qa6 17.Nxe5 Nf6 18.f3 Bxc3 19.bxc3 Kc7 20.Re2 Rf8 21.Bh6 Re8 22.Kf2 Qe6 23.Rhe1 Qa6 24.g4 Nd7 25.Nf7 Rxe2+ 26.Rxe2 Qf6 27.Ng5 b5 28.Kg2 Qc6 29.Nf7 Qc4 30.Bf4+ Kb6 31.Re6+ Ka5 32.Re7 Qc6 33.Nd8 Qc8 34.Ne6 a6 35.Bc7+ Ka4 36.Rxd7! Ka3 [If 36...Qxd7 37.Nc5+ Ka3 38.Nxd7] 37.Nc5 Kxa2 38.Re7 Diagram

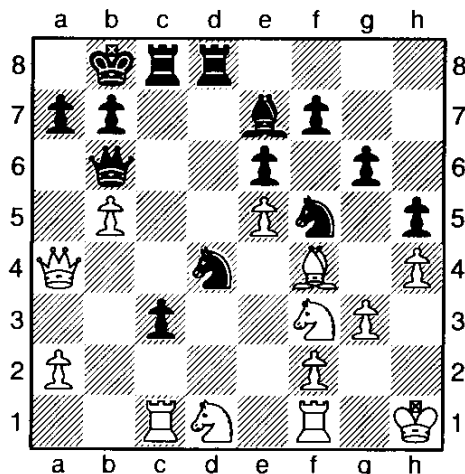


and white went on to win the blitz finish. 1-0

(24) Lung,J – Bachler,K [B15]

Forest City Championship (5), 27.09.2003[A.Chow]

1.e4 g6 2.d4 c6 3.Nc3 d5 4.e5 h5 5.h4 Bg4 6.Be2
Bxe2 7.Qxe2 e6 8.Nf3 Qb6 9.Nd1 c5 10.c3 Nc6
11.Be3 Nh6 12.dxc5 Bxc5 13.Bg5 Be7 14.Be3 Qc7
15.0-0 Nf5 16.g3 0-0-0 17.Bf4 d4 18.Rc1 Kb8 19.Qc4
Qb6 20.Kh1 Rc8 21.Qa4 Rhd8 22.b4 dxc3 23.b5
Ncd4 Diagram

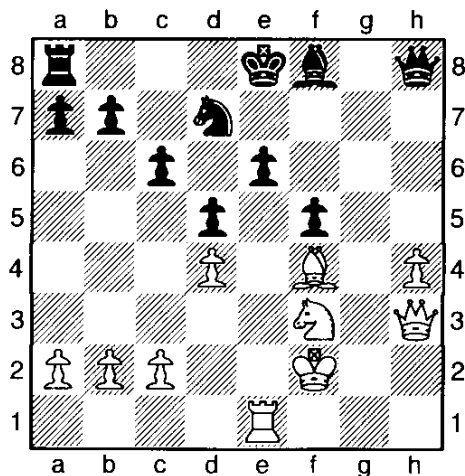


24.Nxd4 Rxd4 25.Qb3 Rb4 26.Qc2 Qxb5 27.Ne3
Qc6+ 28.Kg1 Nd4 29.Qd1 Nf3+ 30.Kg2 Nxe4+
31.Kh3 g5 32.Bxg5 Bxg5 33.a3 Bxe3 34.fxe3 Qg2#
0-1

(25) Gratz,G (2200) – Barbin,J (1651) [B12]

Forest City Championship (2), 27.09.2003 [A.C.]

1.e4 c6 2.d4 d5 3.e5 Bf5 4.g4 Bg6 5.h4 h5 6.e6 Nf6
7.Bd3 Bxd3 8.Qxd3 hxg4 9.Ne2 Ne4 10.Nd2 f5 11.f3
gxf3 12.Qxf3 g6 13.Nf4 Qd6 14.Nxg6 Qxe6 15.Nxh8
Ng3+ 16.Kf2 Nxh1+ 17.Qxh1 Qf6 18.Nf3 Qxh8
19.Bf4 Nd7 20.Qh3 e6 21.Re1 Diagram

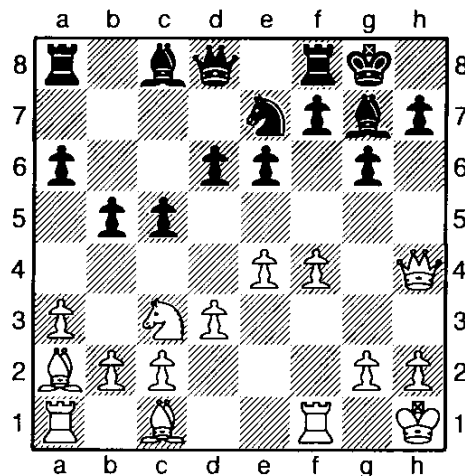


21...Kf7 22.Ng5+ Kg8 23.Nxe6 Be7 24.Rg1+ Kf7
25.Qxf5+ Ke8 26.Qg6# 1-0

(26) Chen,B – Riddle,R [B23]

Forest City Championship (2), 27.09.2003 [Al Chow]

1.e4 c5 2.Nc3 e6 3.f4 g6 4.Nf3 Bg7 5.Bc4 Ne7 6.d3
Nbc6 7.0-0 0-0 8.Qe1 a6 [8...d5] 9.a3 b5 10.Ba2 d6
11.Qh4 Nd4 12.Nxd4 Bxd4+ 13.Kh1 Bg7? Diagram



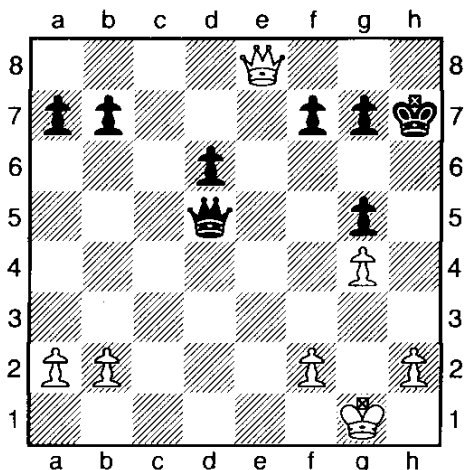
[13...f5] 14.f5! exf5 15.Bg5! Ra7 16.Nd5! Re8
17.Nf6+! Bxf6 18.Bxf6 h5 19.Qg5! Kh7 20.Bxf7 Rg8
21.Bxg8+ Kxg8 22.Bxe7 Qxe7 23.Qxg6+ Qg7
24.Qe8+ Qf8 25.Qxf8+ Kxf8 26.exf5 Rf7 27.f6 Rc7
28.Rae1 Bb7 29.Re7 Rxe7 30.fxe7+ Kxe7 31.Rf5
Bc8 32.Rxh5 Bg4 33.Rg5 Bd1 34.c3 Bc2 35.d4 c4
36.h4 Kf6 37.g4 Bd1 38.Kg2 Bc2 39.Kf3 Bd1+
40.Kf4 Bc2 41.Rg8 d5 42.Re8 Bg6 43.Re5 Bf7
44.Rf5+ Kg6 45.Rxf7 Kxf7 46.Kf5 Kg7 47.g5 a5
48.h5 a4 49.h6+ Kh7 50.g6+ Kg8 51.Kf6 Kf8 52.h7
black resigned. 1-0

(27) Chen,B (1640) – Betaneli,A (2265) [C54]

Forest City Championship (3), 27.09.2003

[Albert Chow]

1.e4 e5 2.Nf3 Nc6 3.Bc4 Bc5 4.c3 Nf6 5.d4 exd4
6.cxd4 Bb4+ 7.Nc3!? [7.Bd2 Bxd2+ 8.Nbxd2 d5!
9.exd5 Nxd5 is the other equal alternative.] 7...Nxe4
8.0-0 Bxc3! 9.d5 Bf6 10.Re1 Ne7 11.Rxe4 d6 12.Bg5
Bxg5 13.Nxg5 h6 14.Bb5+ Bd7 15.Qe2 Bxb5
16.Qxb5+ Qd7 17.Qe2 hxg5 18.Re1 0-0 19.Rxe7 Qf5
20.Qc4 Rac8 21.g4 Qf6 22.Rxc7 Rxc7 23.Qxc7 Qf4!
24.Qd7 Qd2! 25.Re8 Qd1+ 26.Kg2 Qxd5+ 27.Kg1
Rxe8 28.Qxe8+ Kh7? Diagram



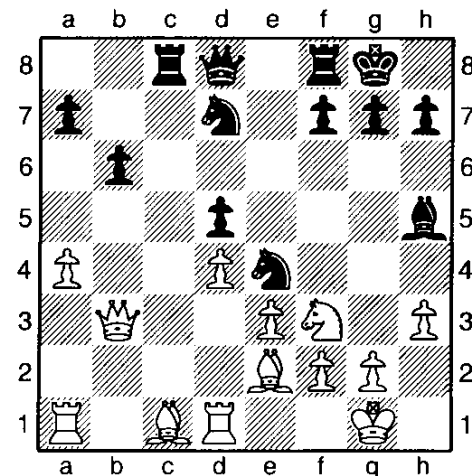
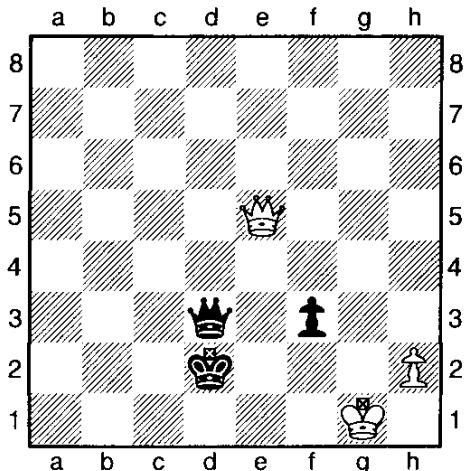
(28) Leng, Y – Firman, N [E40]

Forest City Championship, 27.09.2003

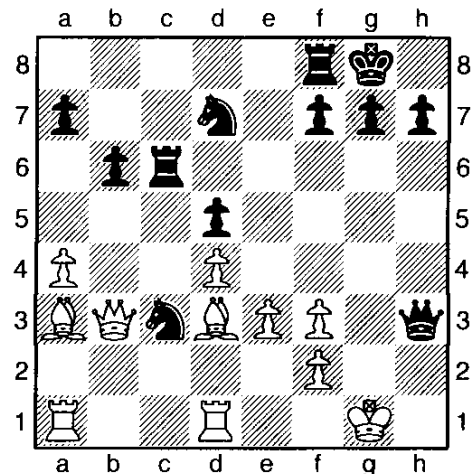
[A.C.]

1.d4 Nf6 2.c4 e6 3.Nc3 Bb4 4.e3 d5 5.a3 Bxc3+
6.bxc3 0-0 7.Nf3 b6 8.cxd5 exd5 9.Bd3 Bg4 10.h3
Bh5 11.0-0 Nbd7 12.a4 c5 13.Be2 Ne4 14.Qb3 Rc8
15.Rd1 cxd4 16.cxd4 Diagram

Black's extra passed d pawn gives a clear advantage in the queen endgame. 29.Qd7 a5 30.a3 b6 31.a4 Qe6 32.Qb5 Qxg4+ 33.Kf1 Qh3+ 34.Kg1 f5 35.Qxb6 Qg4+ 36.Kf1 Qd1+ 37.Kg2 Qg4+ 38.Kf1 Qxa4 39.Qxd6 Qa1+ 40.Kg2 Qb1 [40...Qxb2 41.Qd5] 41.Qg3 Qxb2 42.Qxg5 Qe5 43.Qh4+ Kg6 44.Qd8 Qe4+ 45.Kg1 a4 46.Qd6+ Kh5 47.Qa3 g5 48.Qa2 Kg4 49.Qa3 Qb1+ 50.Kg2 Qb3 51.Qa1 Qf3+ 52.Kg1 a3 53.Qd4+ Kh3 54.Qh8+ Kg4 55.Qd4+ Qe4 56.f3+! Kxf3 57.Qf2+ Kg4 58.Qg3+ Kh5 59.Qxa3 f4 60.Qh3+ Kg6 61.Qh8 Qe1+ 62.Kg2 Qe2+ 63.Kg1 Qe3+ 64.Kf1 Kf5 65.Qh7+ Kg4 66.Qd7+ Kf3 67.Qh3+ Ke4 68.Qe6+ Kd4 69.Qd6+ Kc4 70.Qc6+ Kb4 71.Qb7+ Ka3 72.Qa6+ Kb3 73.Qb5+ Kc2 74.Qxg5 Qc1+ 75.Kf2 Qd2+ 76.Kg1 Qc1+ 77.Kf2 Qe3+ 78.Kf1 Qc1+ 79.Kf2 Qd2+ 80.Kg1 Qe1+ 81.Kg2 Qe2+ 82.Kg1 f3 83.Qc5+ Kb3 84.Qb6+ Kc2 85.Qc5+ Kd2 86.Qd4+ Qd3 87.Qb2+ Ke3 88.Qe5+ Kd2 Diagram



16...Nc3 17.Ba6 Bxf3 18.gxf3 Rc6 19.Ba3 Qh4 20.Bd3 Qxh3 Diagram



and white resigned 0-1

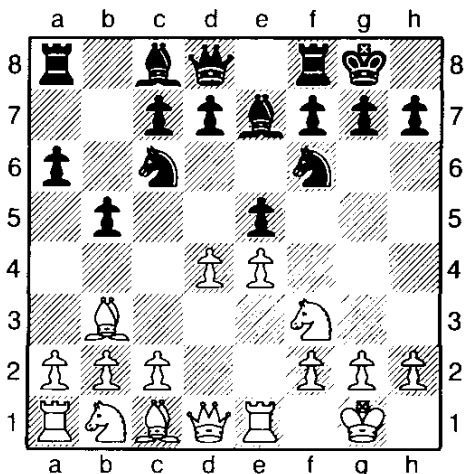
draw agreed. 1/2-1/2

(29) Bachler, K – Silverman, S [C91]

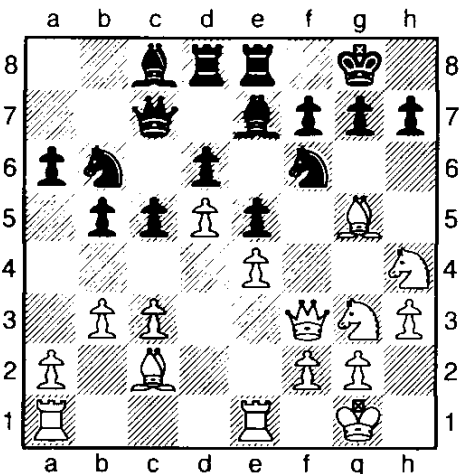
Caveman Octagon (3), 15.06.2003

[Albert chow]

1.e4 e5 2.Nf3 Nc6 3.Bb5 a6 4.Ba4 Nf6 5.0-0 Be7
6.Re1 b5 7.Bb3 0-0 8.d4!? Diagram

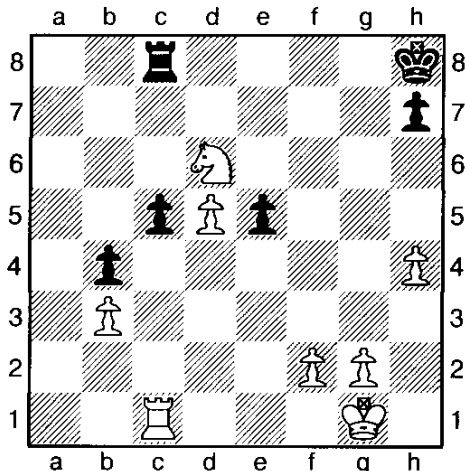


An anti Marshall variante. 8...d6 9.c3 Bb7 [9...Bg4! is better.] 10.Nbd2 Re8 11.Nf1 Bf8 12.Ng3 Na5 13.Bc2 c5 14.d5 Nc4 15.b3 Nb6 16.Qe2 Bc8 17.h3 Qc7 18.Be3 Bd7 19.Nh4 Rad8 20.Qf3 Bc8 21.Bg5 Be7 After building up behind a closed position, it is time to trigger the tactical crisis.



22.Nhf5!? Nfxd5! 23.exd5 Bxg5 24.Qg4! f6! 25.h4 Bd2 26.Nh5 Bxf5 [26...Bxe1!? would need courage to play in time pressure.] 27.Qxf5 g6 28.Nxf6+ Kh8 [28...Kg7! 29.Nxe8+ Rxe8 30.Qd3 Bxe1 31.Rxe1 c4! with good counterplay and equal material.] 29.Nxe8 gxf5?? [29...Rxe8! 30.Qf6+ Kg8 and black retains counterplay by threatening e1, c3, and d5.] 30.Nxc7 Bxc3 31.Bxf5 Bxa1 32.Rxa1 b4 33.Be6 a5 34.Nb5 a4

35.Rc1 axb3 36.axb3 Nc8 37.Bxc8 Rxc8 38.Nxd6 Diagram



black resigned. 1-0

Jan. 3-4. Tim Just's Winter Open/Reserve XVIII.

5SS, 40/90, SD/30. College of Lake County, Rt. 45 & Washington, Main Building, Grayslake, IL 60030.
 \$\$ (2,000 b/70). 2 Sections: Open, open to all. \$\$ 250-175-150; X, A & Below \$125-100; Unr. can win top three only. Reserve, open to U1800. \$\$ 250-175-150; C = \$125-100, D/E = \$100, Unr = \$75 max. Both, EF: \$35 early, to current/renewing ICA and USCF members if rec'd by 12/29, \$5 more later. ICA memb. Req'd. \$18, \$10 Jr., OSA. Reg. 8-8:40 am. Rds. 9-1:30-6; 10-2:30. An Illinois Maxi Tour event. Ent: Wayne Clark, PO Box 789, Lake Villa, IL 60046 (847) 546-8511. e-mail: wclark@lnd.com, Checks payable to Chess Central, NS,NC,W.

Thought of the Month:



“ Be ready when opportunity comes...luck is the time when preparation and opportunity meet” – Roy D. Chapin Jr.

IM Angelo Young - a well known Chess Instructor and one of few International Master in Illinois is offering you or your child:

A chance to improve your game drastically
Beginning to understand all the Basic Chess Principles
Learn the 5 Elements in Chess

Evaluating and Assessing Chess Positions

Tournament Preparation

Opening Repertoire

Endgame Study

Angelo_young@hotmail.com to set up a time. (Available for group & individual Chess lesson, Chess Simuls, Chess Clinic or School Chess Adviser.

Note: Send your games for Free analysis or for a Full detailed analysis (\$10/game & return address) games are to be submitted to Illinois Chess Bulletin at (games only or games & check) to 5920 N. Clark, apt. 305, Chicago, Illinois 60660 - c/o. (773) 627-2759

IM Angelo Young

Mark,E - Mike,D [D35]

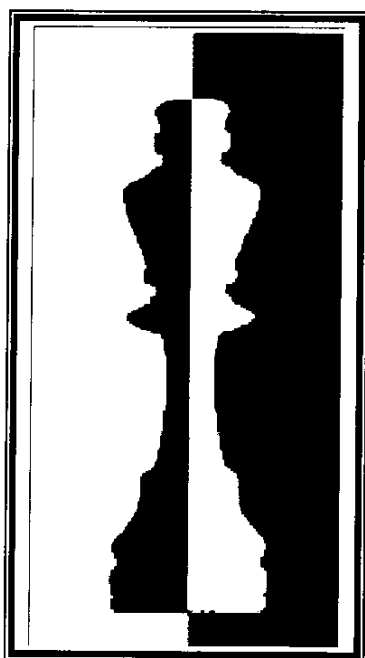
IL Open 2003, 2003

1.d4 d5 2.c4 e6 3.Nc3 Nf6 4.cxd5 exd5 5.Bg5 Be7
6.Qc2 Nbd7 7.e3 h6 8.Bh4 0-0 9.Bd3 Re8 10.Nge2 b6
11.0-0 Bb7 12.Rad1 a6 13.f3 c5 14.Qd2 Rc8 15.Rfe1
Nh5 16.Bf2 Bd6 17.Bb1 c4 18.e4 dxe4 19.fxe4 Bb8
20.e5 Qg5 21.Qxg5 hxg5 22.Be3 g4 23.Bf5 Rc7
24.Bxg4 Nhf6 25.Bf3 Bxf3 26.gxf3 Kh7 27.Ng3 Ng8
28.Nge4 Rc6 29.Ng5+ Kg6 30.d5 Rcc8 31.f4 Nh6
32.Nge4 Rh8 33.Re2 Ng4 34.Rg2 Kf5 35.Ng3+ Kg6
36.Bd4 Bc7 37.Nce4 Rb8 38.d6 Bd8 39.f5+ Kh7 40.e6
fxe6 41.fxe6 Bf6 42.exd7 1-0

Jonathan ,B - Andreas,K

Bradley Summer 2003, 2003

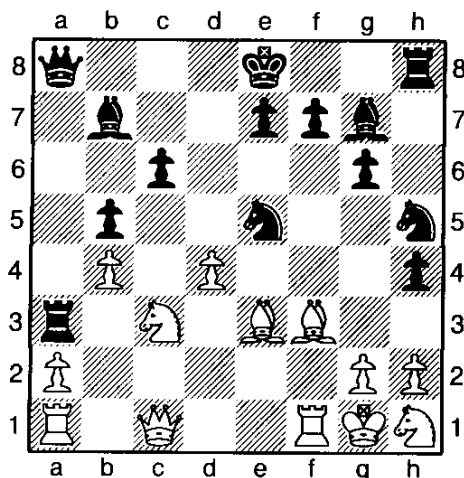
1.e4 c5 2.Nc3 Nc6 3.f4 Closed Sicilian 3...d6 4.Bc4
Nf6 5.d3 [5.h3 e6 6.Nf3 Nxe4 7.Nxe4 d5 8.Qe2 dxe4
9.Qxe4 Bd6 10.d3 0-0 11.0-0 Na5 12.Ng5 g6 13.Qe1
Be7 14.Be3 h5 15.Ne4 b6 16.f5 exf5 17.Bh6 fxe4
18.Qxe4 Nxc4 19.Qxa8 Qd4+ 20.Kh1 Rd8 21.dxc4
Qh4 22.Qf3 Qxc4 Wasem R.- Wickli (Liecht Open)]
5...Bg4 6.Qd2 [6.Nf3 Nd4 7.0-0 g6 8.Qe1 Bxf3 9.gxf3
Bg7 10.Be3=] 6...Bd7 7.h3 This prevents Ng4 7...e6
8.Nf3 Na5 9.0-0 Bc6 10.Qe2 a6 11.a4 g6 12.f5!
12 Open the position while the Black king is still in the
center.12...Nxc4 13.dxc4 Bg7 14.fxe6 fxe6 15.e5 Nh5
16.Bg5 Bxf3 17.Qxf3 Qxg5 18.Qf7+ Kd8 19.Qxb7
Rc8? [19...Qe3+ 20.Kh1 Ng3+ 21.Kh2 Nxf1+ 22.Rxf1
Bxe5+ 23.Kh1 Qg3 24.Qxa8+ Ke7 25.Qb7+ Kd8=]
20.Rf7 (Qd7 + mate) 20...Qe3+ 21.Kh1
Ng3+ 22.Kh2 1-0



(1) Alexander ,B - Eli,S [E70]

IL Open, 2003

1.c4 English Opening 1...Nf6 2.Nc3 d6 3.d4 g6 4.e4
Bg7 5.Nge2 A favorite of GM Serper 5...c6 6.Ng3
Nbd7 7.Be2 a6 8.Be3 b5N [8...h5 9.f3 b5 10.c5 dxc5
11.dxc5 Qc7 12.0-0 h4 13.Nh1 Nh5 14.Qd2 e5 15.Nf2
Nf8 16.a4 b4 17.Nd5! cxd5 18.exd5 f5 19.d6 Qc6
20.Bb5!! GM G. Serper - GM I. Nikolaidis 1-0 48
moves] 9.cxb5 axb5 10.b4 Bb7 11.0-0 h5 12.f4 h4
13.Nh1 Ra3 14.Qc1 Qa8 15.e5 Other tries Nf2, Bf3
15...Nh5 16.Bf3 dxe5 17.fxe5 Nxe5!? Diagram

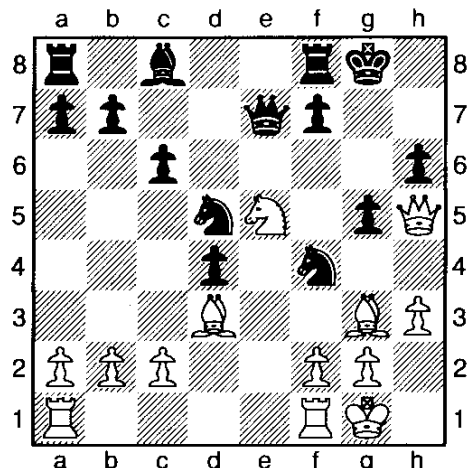


18.dxe5 Bxe5 19.Nxb5 [19.Bd2 Bd4+ 20.Nf2 Ng3
21.Re1 Qa7-+] 19...Rd3 20.Qc4?! [20.Nf2!] 20...Rxe3
21.Bxh5 cxb5 22.Qxf7+ Kd8 23.Rfd1+ Kc8 24.Rac1+
Kb8 25.Qf2 Qa3 26.Bg4 Rd3 27.Rxd3 Qxc1+ 28.Rd1
Qc7 29.Rd7 Bxh2+ 30.Kf1 Qc1+ 31.Rd1 Qc4+
32.Be2 Qc8 33.Bf3 Rf8 34.Qxh4 Bd6 35.Nf2 Bxf3
36.gxf3 Rxf3 37.Qd4 Qc7 38.Qd5 Rf5 39.Qg8+ Ka7
40.Qxg6 Qc2 41.Qg1 Qxd1+ 0-1

(23) James ,F - Diego ,B [B07]

IL Open (Reserve), 2003

1.e4 d6 2.d4 Nf6 3.Nc3 c6 Popularized by GM Pribyl.
GM Adams & GM Hogson likes to use this system GM
Kasparov once lost to this system. 4.Nf3 [4.f4 Qa5
5.Bd3 e5 6.Nf3 Bg4 7.dxe5 dxe5 8.0-0 exf4 9.Bxf4
Nbd7 10.h3 Bxf3 11.Qxf3 Ne5 GM A. Suetin - GM J.
Pribyl Debrecen 1987] 4...Qa5!? [4...Bg4 5.Be2 Nbd7
6.0-0 e5 7.Be3 Be7 8.a4 a5=] 5.Bd3 e5 6.h3 Be7 7.0-
0 8.Bd2 Qc7 9.Ne2 Nbd7 10.Ng3 exd4 11.Nf5
Nc5 12.Nxe7+ Qxe7 13.Bg5 Ne6 14.Bh4 h6 15.e5
dxe5 16.Nxe5 g5 17.Bg3 Nd5 18.Qh5 Nef4□
Diagram



Only move 19.Qxh6 Nxd3 20.Nxd3 f6 21.Rfe1 Qh7 22.Qxh7+ Kxh7 23.Bd6 Rd8 24.Bc5 Kg6 25.Bxd4 b6 26.b3? Ba6 27.Be3 Bxd3 28.cxd3 Nb4 29.Rec1 0-1

(24) Paul ,F – Peter ,L [A48]

IL Open

1.d4 Nf6 2.Nf3 g6 3.Bf4 Bg7 4.e3 d6 5.Be2 Nh5 6.Bg5 h6 7.Bh4 g5 8.Bg3 Nxc3 9.hxc3 c5 10.c3 Qb6 11.Qd2 Nd7 12.Na3 Nf6 13.Bd3 Bd7 14.0-0 Bc6 15.Nc4 Qc7 16.Qe2 b5 17.Ncd2 c4 18.Bc2 0-0 19.e4 e5 20.d5 Bd7 21.a4 a6 22.Rfc1 Rfb8 23.b3 cxb3 24.Bxb3 bxa4 25.Bxa4 Bxa4 26.Rxa4 a5 27.Qd3 Nd7 28.Ra3 Nc5 29.Qc4 a4 30.Ne1 Rb2 31.Ra2 a3 32.Rc2 Ra4 33.Qe2 Rb8 34.Nd3 Nb3 35.Nxb3 Rxb3 36.Nb4 Rb1+ 37.Kh2 Qc5 38.g4 h5 39.gxh5 f5 40.h6 Bxh6 41.exf5 Ra7 42.Qe4 Rh7 43.Kg3 g4 44.Nd3 Bf4+ 45.Nxf4 exf4+ 46.Qxf4 Qxd5 47.Rd2 Qf7 48.Rxa3 Rb8 49.Qxd6 Qe8 1-0

(25) Wayne ,C – Carter ,B [B15]

IL Open Reserve, 2003

1.e4 c6 2.d4 d5 3.Nc3 dxe4 4.Nxe4 Nf6 5.Nxf6+ exf6 6.Bc4 Be6 7.Be2 Bb4+ 8.c3 Ba5 9.Nf3 0-0 10.0-0 Re8 11.Be3 Bc7 12.Re1 Nd7 13.Qc2 f5 14.Ng5 Nf6 15.Nxe6 fxe6 16.Bc4 Qd6 17.g3 Nd5 18.Bd2 Qf8 19.f4 Rad8 20.Re2 b5 21.Bd3 Nb6 22.Rae1 Qf6 23.Bxf5 Kf7 24.Bxe6+ Kf8 25.Qxh7 Rxe6 26.Rxe6 Qf7 27.Qh8+ Qg8 28.Re8+ Rxe8 29.Rxe8+ Kf7 30.Qxg8+ Kf6 31.Re6+ Kf5 32.Qf7+ Kg4 33.Qg6+ Kh3 34.Qf5# 1-0

(26) Dominic ,A – Michael ,B [C55]

IL Open Reserve, 2003

1.Nf3 Nf6 2.Nc3 Nc6 3.e4 e5 4.Bc4 Nxe4 5.Bx7+ Kxf7 6.Nxe4 Be7 7.0-0 Rf8 8.d4 exd4 9.Nxd4 Nxc6 10.Qxd4 d5 11.Nc5 b6 12.Nd3 Bf6 13.Qf4 Kg8 14.Qg3 Bh4 15.Qe5 Bf6 16.Qg3 c5 17.Bf4 Bh4 18.Bc7 Bxg3 19.Bxd8 Bxh2+ 20.Kxh2 Rxd8 21.Rfe1 Bb7 22.Re7 Ba6 23.Rae1 Bxd3 24.cxd3 Rf8 25.f3 Rf7 26.Re8 Rxe8 27.Rxe8+ Rf8 28.Re7 a6 29.Rb7 Rf6 30.a4 Re6 31.Kg3 g5 32.f4 Re3+ 33.Kg4 Rxd3 34.Kxg5 1-0

(28) Jonathan,B – Kanniah,S [B23]

Bradley Summer 2003, 2003

1.e4 c5 2.Nc3 d6 3.f4 Nc6 4.Bc4 a6 5.a4 Nf6 6.d3 g6 7.h3 e6 8.Qe2 Nd4 9.Qf2 Bg7 10.Nf3 Qb6 11.0-0 Nd7 12.Ng5 h6 13.Nf3 Qc7 14.Be3 Nc6 15.f5 exf5 16.exf5 g5 17.Rae1 0-0 18.Kh1 Nf6 19.Nxg5 hxg5 20.Bxg5 Nh7 21.f6 Nxg5 22.fxg7 Kxg7 23.Qf6+ Kh7 24.Qxg5 Ne5 25.Nd5 1-0

Jan. 3-4. Tim Just's Winter Open/Reserve XVIII.

5SS, 40/90, SD/30. College of Lake County, Rt. 45 & Washington, Main Building, Grayslake, IL 60030.

\$\$ (2,000 b/70). 2 Sections: Open, open to all. \$\$ 250-175-150; X, A & Below \$125-100; Unr. can win top three only. Reserve, open to U1800. \$\$ 250-175-150; C = \$125-100, D/E = \$100, Unr = \$75 max. Both, EF: \$35 early, to current/renewing ICA and USCF members if rec'd by 12/29, \$5 more later. ICA memb. Req'd. \$18, \$10 Jr., OSA. Reg. 8-8:40 am. Rds. 9-1:30-6; 10-2:30. An Illinois Maxi Tour event. Ent: Wayne Clark, PO Box 789, Lake Villa, IL 60046 (847) 546-8511. e-mail: wclark@lnd.com, Checks payable to Chess Central, NS,NC,W.

Early Returns From The Midwest Class Tourney

Howard Cohen

Once again 100s of players showed up at the Chicago Midwest Class chess tourney hoping to win big prizes. Of course, only a few were successful. Below is a short list of the various winners in each class from Master to Class E. (see Goichberg's web site chesstour.com for complete list). I am proud to say our state was well represented among the winners. The winner of the Master class was GM Wojtkiewicz. (4 ½). Our very own resident GM, Dmitry Gurevich tied with Nazar Firman (from Ukraine) for 2nd with 4 points. Tied for 1st in the Expert section were Kurt Stein and Geoffrey Caveney (4). In class A, Kevin Fyr and Paul Raso (both 4 ½) tied for 1st. In class B there was a surprise. David Kassin rated only 1525 tied for 1st place with Tony West & A. Diallo. David how about sending in that last round win to Al Chow? In class C, Carlos Gimeno won 1st place with a perfect 5.0! Yuequin Cen also had perfect 5.0 in class D. In class E, Sam Schmakel won (4 ½). Congratulations to all the above listed winners!

Unfortunately, I was unable to play in this event, and was able to get copies of only a few games. Although Al Chow and Angelo Young did not play in this event, hopefully they can get some of the more important games from the organizers to analyze in the next ICB. Here are 3 last round games that helped decide who won prize money in their sections:

D. Gurevich vs. S. Smetankin (final round Master section) 1 d4, Nf6 2. c4, c5 3 d5, e6 4 Nc3, ed5 move 5 ed5, d6 6 Nf3, g6 7 g3, Bg7 8 Bg2, O-O 9 O-O, Re8 10 Bf4, Ne4 11 Ne4, Re4 12 Nd2, R:f4 (surprise-GM sac!) 13 gf4, Bb2 14 Rb1, Bg7 15 Qc2, Na6 16 Rfd1, Qf6 17 Qa4, Nc7 18 Ne4, Qf4 19Nc5, Qa4 20 Na4, b6 21 Rec1, Na6 22 e3, Bd7 23 Bf1, Nc5 24 Nc5, dc5 25 Bb5, Bg4 26 Rb3, Bf8 27 Bc6, Rd8 28 a4, Bf3 29 a5, ba5 30 Ra3, Bd5 31 Rd3, Bc6 32 Rd8, Kg7 33 Rf8, Kf8 34Rc5, Bb7 35 Rc7, Bf3 36 Ra7, Kg7 37 Ra5, Kf6 38h4, Be2 39 Kh2, Bc4 40 Kg3, Bd3 41 Kf4, Bc4 Rc5, Be6 42 Rc6, Kg7 43Rc6, Kg7 44 Ke5, Bb3 45 Rb6, Bc2 46 Rb7, Bd3 47 e4, Bc4 48 f4, Ba2 49 h5, gh5 (GM Wojo claims 49 f5 was the better move; not being able to speak Russian or Polish, I was unable to followed the details they discussed) 50Rb2, Bc4 51f5, Kh6 52Rb4, Ba7 53Kf6, h4 54 e5, Kh5 55Ra5, Bb3 56Ra3, Bc4 57 e6, fe6 58 fe6, Be6 59Ke6, Kg4 60

Ra4, Kg3 61Kf5, h3 62Ra3, Kg2 63Ra2, Kg3 64 Ra3, Kg2 65 Kg4, a5+! 1/2-1/2 Draw

Meanwhile in the Expert section our elder statesman, Erik Karklins also had a shorter, but no less interesting draw: Erik Karklins vs. Will Rhee (final round) 1 e4, c5 2 Nf3, Nc6 3 d4, cd4 4 Nd4, Nf6 5Nc3, e5 6 Ndb5, d6 7 Bg5, a6 8 Na3, b5 9 Nab1, Be7 10 Bf6, Bf6 11 Nd5, Bg5 12Bd3, Be6 13Nbc3, b4 14Ne2, Bd5 15 ed5, Ne7 16 c4, bc3 (e.p.) 17 Qa4, Qd7 18 Nc3, Ra7 19 Qa5, f5 20 O-O, O-O 21 Rfe1, Qb7 22Na4, e4 23Bf1, Ng6 24 Rad1, Rb8 25 Rd4, Ne5 26 Red1, Qc8 27 Rb4, Rb4 28 Qb4, Qc7 29 Nc3, Rb7 30Qa3, a5 31Qa4, Nd7 32Qc6, Qb8 33Nb5, Ne5 34Qd6, Qd6 35Nd6, Rb2 36Nf5, Ra2 37 d6, Rd2 38Rd2, Bd2 39Bb5, Kf7 40 Ng3, e3 41 f4!, Ng6 42 d7, e2! 43Ne2, Ke7 44Ng3, Nf8 45Nf5, Kd8 46Ng7, Bf4 Draw

Another ICA member, Carlos Gimeno, won class C with a perfect score. Now all those class B players will have to deal with this rising star! He was kind enough to share his last round victory:

Carlos Gimeno vs. Jim Fredriksen (final round) 1 e4, e5 2Nf3, Nc6 3 Nc3, Nf6 4 d4, ed4 5Nd4, Bb4 6 Nc6, Bc3 7 bc3, dc6 8 Qd8, Kd8 9 Bg5, h6 10Bf6, gf6 11 O-O-O, Ke7 12 Bc4, Be6 13 Bb3, Rad8 14 Rd8, Rd8 15 Rd1, Rd6 16 Rd3, Kf8 17 f4, a6 (=per Carlos) 18 e5, fe5 19 fe5, Rd3 20 cd3, Bd5 21 Bd5, cd5 22 Kd2, Kg7 23 Ke3, c5 24 a4, b5 25 ab5, ab5 26 d4, c4 27 g4!, Kg6 28 h4, f5? (h5 best per H. Cohen) 29 ef6 (e.p.), Kf6 30 Kd2, Kg6 31 Kc2, h5 32 g5, Kf5 33 Kb2, Kg4 34 g6, Kh4 35 g7, Kh3 35 g8 (Q) 1-0

For those among us hoping to see some tactical gems, I apologize for not providing any. I am sure they occurred. When you arrive late evening at a chess tourney (like I did) interesting endgames like these three are what you get. Also please note that all "!" & "?" marks are my own and not hubris on the part of the players themselves. Once again, congratulations to all the class winners.

Chess From the Middle

I'm Back...

Hi there. Well, one year ago, I decided to stop spending my "chess" time not playing or studying chess. I quit as an officer of the club here in Peoria, I stopped running a chess club I had started in Pekin, I stopped directing tournaments and I stopped writing this column. I decided to spend my time playing and studying. Interestingly enough, my professional work schedule filled in the time gap before I could play more chess. I finally started playing more in tournaments this past July. I also decided to start another chess club here in Peoria for homeschoolers as well start writing this column again. My chess has improved a bit since last year, but more on that some other time.

I played in the Illinois Open this past September as the first full weekend tournament that I have ever played. It was fun and nice. I will definitely do this type of thing again. I must say that I met the nicest people at the tournament. My opponents and fellow players were great to talk with, both over the board as well as away from it. Of course anyone that was there and/or stayed at the hotel can never forget... the soccer players. If you don't know what I am talking about, then you need to ask someone that was there. While you're talking with them ask them how they liked the tournament and have them tell you what it was like for them. You'll also need to ask them to show you a game or so of theirs from the tournament. The stories that we take home with us after such an event are always interesting and amusing, to say the least.

Quite a bit has happened, here in the Middle, this past year, chesswise. I want to take a bit of print space up by giving you my viewpoint if these things. To begin we shall start at the top with the USCF and its present condition. As you all probably know, the USCF is presently in a condition of danger. There is a serious problem with money and the lack of it at our national organization. The executive board and officers of the USCF are presently taking actions to fix the problem as well as change the way the group is operated so that such problems like this don't arise again. We as members need to support our national group in any way that we can. For now, any transaction that we can do with the USCF that involves us sending them money would be a good thing for us to do. Renew your membership early. Buy something from the book and equipment section of the USCF. Play in rated USCF events. Send donations to the USCF. All of these things will help improve the situation for our national group.

The ICA has also seen quite a bit of activity, both for the good and the not-so-good. I will not go into any sordid details. Those details will do no good for us to dwell on. I think the best thing to do is to support your state organization as directly as you can. Renew your membership early. Play in ICA affiliated tournaments as much as possible. Contact an ICA officer and ask what you can do to help. We need volunteers, as most everyone that does things for the ICA is a volunteer. There have been various attitudes in this state regarding the ICA that are wrong and actually silly and foolish. This is OUR group and it is what we make of it, no more and no less. I must say that for any individual to actively compete with our state group's activities is self-defeating in the long run and these "competitors" need to figure out just who and what they really are.

There have been a lot of great things that our officers have been doing to get our group going in this state. We need to help them as much as we can. If you see something that you can do to help then contact your closest ICA official and offer. If you don't know what you can do, then talk to this closest ICA official and ask what you can do to help.

Let us take a moment to talk of better things. We all do this with the initial idea of playing chess. This is a really neat game and it is interesting, fun and good to play. Whether we are playing a casual game with a friend or a serious tournament game, we are in fact playing the game for all the right reasons. I know that my chess has gotten better lately. I have been studying and playing and have gained some success. I have decided to take lessons from a master. There are some very talented masters here in Illinois. I looked at the candidates for my teacher and decided on Al Chow. Al is a very talented chess player that has a lot of knowledge about chess. He also is very good at teaching the concepts of the game to students. Al also does quite a bit for Chess here in Illinois. He is the games editor for the ICB. I do believe in supporting those that support my group and me.

So, play chess my friends. Also, take some time to support your chess groups, both the national and state association. We'll see you later and remember that chess is far better than bowling.

Illinois Open Crosstables

No.	Name	Rate	Pts	Rnd1	Rnd2	Rnd3	Rnd4	Rnd5	Rnd6
1	Firman, Nazar	2540	5.5	W39	W6	W28	W3	D2	W5
2	Smetankin, Stanislav	2529	5.0	W40	W38	W10	D16	D1	W8
3	Karklins, Andrew	2322	5.0	W15	W23	W18	L1	W30	W11
4	Stevanovic, Miomir	2017	5.0	W61	L26	W49	W50	W31	W16
5	Tsyganov, Igor M	2261	4.5	W49	W7	W19	D11	W16	L1
6	Rasmussen, Robert	2023	4.5	W25	L1	W46	W41	-H-	W24
7	Karklins, Erik	2000	4.5	W68	L5	W61	D24	W43	W20
8	Moreno, Jacobo	1948	4.5	D46	W27	W41	W37	W28	L2
9	Betaneli, Alexander	2265	4.0	-H-	D36	D33	D34	W25	W30
10	Chow, Albert C	2239	4.0	W57	W24	L2	W21	D20	-H-
11	Stamnov, Aleksandar	2238	4.0	D56	W34	W26	D5	W23	L3
12	Allsbrook, Fred S	2161	4.0	-H-	D53	W54	-H-	D22	W31
13	Bondar, Leonid A	2010	4.0	D53	-H-	L50	W44	W41	W32
14	Marovitch, Mark	2000	4.0	L26	W42	L51	-X-	W52	-X-
15	Schneeberger, Jose	1947	4.0	L3	L61	W42	W55	W36	W29
16	Young, Angelo	2406	3.5	W32	W21	W29	D2	L5	L4
17	Gorlin, Andrey	2120	3.5	L41	D35	D52	W57	D39	W33
18	Grinberg, Matthew	2050	3.5	W51	W45	L3	L31	W34	D23
19	Duncan, Jason T	2030	3.5	W42	W31	L5	L23	W51	D21
20	Inskeep, Ben	1998	3.5	L62	W44	W36	W26	D10	L7
21	Smith, Garrett L	1969	3.5	W63	L16	W62	L10	W45	D19
22	Riddle, Robert W	1966	3.5	W55	L28	-H-	W54	D12	-H-
23	Nienart, Christoph	1961	3.5	-X-	L3	W53	W19	L11	D18
24	Fricano, Paul R	1832	3.5	W59	L10	W38	D7	W37	L6
25	Mc Elwee, Patrick	1805	3.5	L6	W32	W60	D29	L9	W38
26	Potts, Kevin J	1727	3.5	W14	W4	L11	L20	D38	W39
27	Kane, Jeremy M	1697	3.5	-H-	L8	L32	W64	W56	W43
28	Palos, Osmand	2395	3.0	W33	W22	L1	W39	L8	-F-
29	Loncarevic, Robert	2051	3.0	W52	W62	L16	D25	D33	L15
30	Cohen, Lawrence S	2000	3.0	D54	W64	D47	W51	L3	L9
31	Hubbard, Andrew D	1939	3.0	W66	L19	W45	W18	L4	L12
32	Ford, Samuel M	1919	3.0	L16	L25	W27	W46	W48	L13
33	Lung, Richard E	1912	3.0	L28	W55	D9	W35	D29	L17
34	Thompson, Walt H	1900	3.0	D37	L11	W64	D9	L18	W54
35	Rodriguez, Jose A	1835	3.0	L48	D17	W40	L33	D54	W49
36	Ohlhausen, David B	1618	3.0	D60	D9	L20	W49	L15	W52
37	Brock, William	2074	2.5	D34	W58	W43	L8	L24	-N-
38	Markovic, Arandel	2000	2.5	W44	L2	L24	W53	D26	L25
39	Vaja, Ashish	1942	2.5	L1	W63	W48	L28	D17	L26
40	Leung, Daniel Y	1934	2.5	L2	D52	L35	-H-	W62	D44
41	Freidel, Paul	1842	2.5	W17	W48	L8	L6	L13	D45
42	Thomas, Rodney	1839	2.5	L19	L14	L15	W63	-H-	-X-
43	Cohn-Geier, Matt M	1833	2.5	W67	D47	L37	W56	L7	L27
44	Lacey, Patrick M	1832	2.5	L38	L20	W63	L13	W55	D40
45	Heiser, Eric A	1597	2.5	-B-	L18	L31	W58	L21	D41
46	Bulington, Jeffrey	1525	2.5	D8	D60	L6	L32	-X-	-H-

Illinois Open Crosstables

47	Mc Entee, Tim R	2168	2.0	W50	D43	D30	-U-	-U-	-U-
48	Linn, Peter	2077	2.0	W35	L41	L39	W62	L32	-U-
49	Sollano, Ely O	1931	2.0	L5	W66	L4	L36	W53	L35
50	Gatica, Jose M	1902	2.0	L47	W67	W13	L4	-U-	-U-
51	Aron, Dean	1861	2.0	L18	-B-	W14	L30	L19	-N-
52	Cox, William G	1808	2.0	L29	D40	D17	W59	L14	L36
53	Richards, Joseph P	1808	2.0	D13	D12	L23	L38	L49	W58
54	Abrams, Scott	1787	2.0	D30	W56	L12	L22	D35	L34
55	Kasiurak, Zach	1672	2.0	L22	L33	-B-	L15	L44	W62
56	Maloney, Michael A	1911	1.5	D11	L54	W58	L43	L27	-F-
57	Lazebnik, Yakov	1868	1.5	L10	D59	-H-	L17	-H-	-N-
58	McDonald, Jordan	1834	1.5	-H-	L37	L56	L45	W63	L53
59	Gast, Bryan D	2097	1.0	L24	D57	-H-	L52	-U-	-U-
60	Cavitt, Dexter	1959	1.0	D36	D46	L25	-U-	-U-	-U-
61	Smith, Harry A	1810	1.0	L4	W15	L7	-F-	-U-	-U-
62	Okunevich, Matthew	1734	1.0	W20	L29	L21	L48	L40	L55
63	Schmidt, Scott	1678	1.0	L21	L39	L44	L42	L58	-B-
64	Covic, Mehmed-RE	1800	0.5	-H-	L30	L34	L27	-F-	-U-
65	Firman, Nazar	2540	0.0	-F-	-U-	-U-	-U-	-U-	-U-
66	Betaneli, Alexander	2265	0.0	L31	L49	-U-	-U-	-U-	-U-
67	Karagianis, Pete D	2022	0.0	L43	L50	-U-	-U-	-U-	-U-
68	Covic, Mehmed	1800	0.0	L7	-U-	-U-	-U-	-U-	-U-

Jan. 3-4. Tim Just's Winter Open/Reserve XVIII.

5SS, 40/90, SD/30. College of Lake County, Rt. 45 & Washington, Main Building, Grayslake, IL 60030.

\$\$ (2,000 b/70). 2 Sections: Open, open to all. \$\$ 250-175-150; X, A & Below \$125-100; Unr. can win top three only. Reserve, open to U1800. \$\$ 250-175-150; C = \$125-100, D/E = \$100, Unr = \$75 max. Both, EF: \$35 early, to current/renewing ICA and USCF members if rec'd by 12/29, \$5 more later. ICA memb. Req'd. \$18, \$10 Jr., OSA. Reg. 8-8:40 am. Rds. 9-1:30-6; 10-2:30. An Illinois Maxi Tour event. Ent: Wayne Clark, PO Box 789, Lake Villa, IL 60046 (847) 546-8511. e-mail: wclark@lnd.com, Checks payable to Chess Central, NS,NC,W.

Illinois Open Crosstables

Reserved Section

No.	Name	Rate	Pts	Rnd1	Rnd2	Rnd3	Rnd4	Rnd5	Rnd6
1	Biareishyk, Siarhe	1663	6.0	W88	W123	W99	W36	W10	W7
2	Santarius, Erik F	1770	5.5	W135	W81	D3	W27	W14	W9
3	Barbin, Joseph	1651	5.0	W91	W113	D2	W83	D21	W11
4	Kassin, David	1610	5.0	-X-	W102	W6	L10	W49	W21
5	Winick, Jon-RE	1604	5.0	-X-	W126	L10	W33	W53	W27
6	Diallo, Abdovlaye	1753	4.5	W84	W20	L4	W64	W60	-H-
7	Engelen, Mark S	1711	4.5	W68	W31	W77	W15	D11	L1
8	Sethi, Rishi	1704	4.5	W70	L33	W71	W65	D18	W42
9	Luther, John Richa	1689	4.5	W34	W46	W61	D14	W42	L2
10	Velazquez, Kevin J	1689	4.5	W54	W44	W5	W4	L1	D15
11	Flores, Joshua	1677	4.5	W103	W47	W51	W22	D7	L3
12	Easton, Richard Dw	1675	4.5	W86	D32	W58	D28	D19	W45
13	Chang, Alex	1674	4.5	D87	D57	W76	W101	W31	-H-
14	Betita, Diego	1630	4.5	W89	W65	W60	D9	L2	W52
15	Edelstein, Sam	1628	4.5	W104	W50	W49	L7	W47	D10
16	Moran, Philip D	1569	4.5	W94	D21	-H-	W85	W22	-H-
17	Freidel, Jeremiah	1549	4.5	L107	W75	W54	W34	D36	W56
18	Berry, Nicholas	1516	4.5	W108	D110	D25	W72	D8	W37
19	Labin, Eddie D	1487	4.5	L110	W109	W126	W77	D12	W38
20	Zheng, Xida	1469	4.5	W112	L6	D86	W91	W57	W36
21	Kuhn, Peter B	1786	4.0	W48	D16	W55	W79	D3	L4
22	Zhang, Junyu	1746	4.0	W66	W45	W33	L11	L16	W67
23	Stoltzfus, Jeffrey	1703	4.0	-F-	L122	W119	W114	W68	W58
24	Chen, Byron H	1681	4.0	L126	W106	-X-	W46	D45	D30
25	Kane, Jonathan M	1661	4.0	-H-	W87	D18	L49	W102	W66
26	Freidel, Jesse D	1653	4.0	W35	L51	W84	L67	W85	W65
27	Leng, Yize (See TD)	1622	4.0	W90	W101	W85	L2	W51	L5
28	Bronner, Benjamin	1598	4.0	-H-	W114	W96	D12	D58	D35
29	Kolesnikov, Yurii	1578	4.0	W56	L99	W73	L53	W70	W69
30	Lindner, Eric J	1540	4.0	W75	W107	L36	D55	W93	D24
31	Delgado, Mike	1427	4.0	W119	L7	W115	W99	L13	W77
32	Silesky, Seth B	1415	4.0	W116	D12	L79	W122	W80	-H-
33	Yalavarthi, Ramaki	1390	4.0	W117	W8	L22	L5	W97	W59
34	Izak-Damiecki, Art	1325	4.0	L9	W129	W78	L17	W62	W63
35	Haughton, Jonathan	1278	4.0	L26	W137	W62	D61	W81	D28
36	Lang, Tristan J	1735	3.5	W69	W82	W30	L1	D17	L20
37	Schuschel, Hans	1702	3.5	W71	-Z-	D66	-H-	W67	L18
38	Krepich, Daniel S	1661	3.5	D73	W105	W122	L42	W50	L19
39	Pekovic, Jusuf	1611	3.5	W92	L77	W70	L51	D54	W73
40	Anne, Abou	1573	3.5	D57	W93	L83	W89	D55	-H-
41	Goral, Bradley D	1552	3.5	L123	D91	L59	W132	W118	W89
42	Mc Coy, Nathan	1543	3.5	W74	D96	-X-	W38	L9	L8
43	Dubin, Joshua	1496	3.5	L113	-H-	W94	L56	W91	W93
44	Stapleton, Joshua (See TD)	1460	3.5	W127	L10	L72	W121	D87	W88
45	Hovsepiian, David G	1439	3.5	W115	L22	W123	W110	D24	L12
46	Chien, Jason W	1422	3.5	W97	L9	W107	L24	W71	-H-

Illinois Open Crosstables

47	Mc Daniel, Anthony (See TD)	1418	3.5	W128	L11	W104	W100	L15	D55
48	Lewis, Otis	1408	3.5	L21	D56	L91	W124	W123	W86
49	Barton, Aaron	1403	3.5	W129	W78	L15	W25	L4	-H-
50	Rosen, Eric S	1393	3.5	W131	L15	-H-	W96	L38	W90
51	Townsend, Latreze	1369	3.5	W137	W26	L11	W39	L27	-H-
52	Bilow, Michael A	1363	3.5	L58	W111	W130	D59	W79	L14
53	Keita, Falilou	1361	3.5	L118	W76	W127	W29	L5	-H-
54	Feng, Justin L	1330	3.5	L10	W128	L17	W74	D39	-X-
55	Cen, Kent Y	1308	3.5	-X-	-X-	L21	D30	D40	D47
56	Clipson, Steven M	1211	3.5	L29	D48	W135	W43	W61	L17
57	Wishner, Michael	1135	3.5	D40	D13	-Z-	W86	L20	W84
58	Amodei, Dominic		3.5	W52	W62	L12	W63	D28	L23
59	Clark, Wayne D	1600	3.0	W95	L85	W41	D52	-H-	L33
60	Lung, Jonathan	1572	3.0	W106	W72	L14	W102	L6	-N-
61	Padilla, Rudy R	1507	3.0	W109	W118	L9	D35	L56	-H-
62	Paul, Gabriel S	1486	3.0	W111	L58	L35	W92	L34	W105
63	Levine, Gary T	1434	3.0	L77	W92	W113	L58	W72	L34
64	Lobraco, Michael J	1422	3.0	D114	W124	-H-	L6	L73	W107
65	Ferguson, James R	1393	3.0	W130	L14	W121	L8	W113	L26
66	Hass, Matthew Y (See TD)	1391	3.0	L22	-H-	D37	W107	W110	L25
67	Magness, Trevor S	1369	3.0	W98	D79	-Z-	W26	L37	L22
68	Heller, Michael	1348	3.0	L7	L115	W142	W95	L23	W106
69	Flax, Robert L	1336	3.0	L36	W97	L100	W75	W78	L29
70	Yang, Michael	1311	3.0	L8	W119	L39	W128	L29	W110
71	Matusiewicz, Rick	1302	3.0	L37	W142	L8	W130	L46	W112
72	Freidel, Dennis H	1301	3.0	W100	L60	W44	L18	L63	W118
73	Paniagua, Eric	1271	3.0	D38	D80	L29	W116	W64	L39
74	Song, Charles	1113	3.0	L42	L100	W129	L54	W116	W103
75	Meerovich, Ilan	1112	3.0	L30	L17	W112	L69	W132	W102
76	Yen, Diana	1063	3.0	L82	L53	L13	W142	W121	W104
77	Madirajo, Venkata		3.0	W63	W39	L7	L19	W101	L31
78	Harbert, Carlos	1653	2.5	W120	L49	L34	W105	L69	-H-
79	Dzananovic, Muhamed	1613	2.5	W121	D67	W32	L21	L52	-F-
80	Sullivan, Gerard	1576	2.5	D122	D73	D88	W90	L32	-N-
81	Suarez, Ronald J	1515	2.5	W142	L2	-H-	W88	L35	-N-
82	Prier, Kevin	1463	2.5	W76	L36	D89	L93	W122	-F-
83	Muradian, Sevan A-RE	1412	2.5	D124	W125	W40	L3	-U-	-U-
84	Eaton, Thomas T	1347	2.5	L6	W112	L26	D123	W96	L57
85	Harbert, Christopher	1335	2.5	W138	W59	L27	L16	L26	-H-
86	Gorodetsky, Alex	1321	2.5	L12	W116	D20	L57	W94	L48
87	Gilruth, Bruce H	1304	2.5	D13	L25	-H-	W115	D44	-F-
88	Harvey, Frank	1275	2.5	L1	W117	D80	L81	W111	L44
89	Summers, Todd M	1265	2.5	L14	W132	D82	L40	W108	L41
90	Gordon, Ross S	1249	2.5	L27	-H-	W131	L80	W114	L50
91	Kolesnikov, Vasili	1247	2.5	L3	D41	W48	L20	L43	W113
92	Lewis, Richard	1238	2.5	L39	L63	W117	L62	-H-	W124
93	Krause, Robert A	1225	2.5	-H-	L40	W124	W82	L30	L43
94	Gasunas, Anthony C	1201	2.5	L16	D135	L43	W137	L86	W125

Illinois Open Crosstables

95	Burlington, Carter	1170	2.5	L59	-X-	L101	L68	W127	-H-
96	Schmakel, Sam A	1148	2.5	-X-	D42	L28	L50	L84	W122
97	Wolanyk, Nathaniel	967	2.5	L46	L69	W106	W126	L33	-H-
98	Quinlan, Terence		2.5	L67	L121	D111	W120	L104	W123
99	Baumgartner, Chris	1797	2.0	W140	W29	L1	L31	-U-	-U-
100	Witek, Gregory A	1666	2.0	L72	W74	W69	L47	-N-	-N-
101	Widing, Daniel R	1371	2.0	W132	L27	W95	L13	L77	-N-
102	Girardo, Christopher	1349	2.0	W133	L4	W118	L60	L25	L75
103	Kaczynski, Thomas	1322	2.0	L11	L130	W125	L113	W133	L74
104	Lambert, Gwayne	1262	2.0	L15	W133	L47	L118	W98	L76
105	Broderick, John M	1229	2.0	D134	L38	-H-	L78	W128	L62
106	Barbian, Matthew R	1131	2.0	L60	L24	L97	W129	W115	L68
107	Vaughan, Benjamin	1116	2.0	W17	L30	L46	L66	W130	L64
108	Cordell, Alexander	1109	2.0	L18	L132	-H-	W131	L89	-H-
109	Paul, Barry S	1108	2.0	L61	L19	L116	L117	W131	W130
110	Auger, Michael W	1105	2.0	W19	D18	-H-	L45	L66	L70
111	Placek, Arthur	1091	2.0	L62	L52	D98	W125	L88	-H-
112	Glispie, Vincent	1084	2.0	L20	L84	L75	W119	W117	L71
113	Taylor, Kevin	1076	2.0	W43	L3	L63	W103	L65	L91
114	Placek, Philip	942	2.0	D64	L28	W120	L23	L90	-H-
115	Donna, Daniel A	927	2.0	L45	W68	L31	L87	L106	W133
116	Minjares, Francisco	757	2.0	L32	L86	W109	L73	L74	W127
117	Kusher, Andrew		2.0	L33	L88	L92	W109	L112	W137
118	Chan, Willie		2.0	W53	L61	L102	W104	L41	L72
119	Vucenovic, Zoran		2.0	L31	L70	L23	L112	-B-	W129
120	Schmidt, Eric	1292	1.5	L78	D131	L114	L98	L125	W132
121	Meduri, Aakaash	1224	1.5	L79	W98	L65	L44	L76	-H-
122	Lee, Pamela R	1207	1.5	D80	W23	L38	L32	L82	L96
123	Skachkov, Artur	1153	1.5	W41	L1	L45	D84	L48	L98
124	Kille, Steven L	913	1.5	D83	L64	L93	L48	W137	L92
125	Flooding, Charles		1.5	-H-	L83	L103	L111	W120	L94
126	Delamora, Salvador	1324	1.0	W24	L5	L19	L97	-U-	-U-
127	Kasiurak, Zoe E	1014	1.0	L44	-H-	L53	D133	L95	L116
128	Kille, Bryce L	933	1.0	L47	L54	-B-	L70	L105	-U-
129	Datla, Sameer	840	1.0	L49	L34	L74	L106	W142	L119
130	Datla, Siddarth	782	1.0	L65	W103	L52	L71	L107	L109
131	Wolanyk, Joshua Pe	719	1.0	L50	D120	L90	L108	L109	-H-
132	McClanahan, Gavin		1.0	L101	L89	W108	L41	L75	L120
133	Richter, Wyatt		1.0	L102	L104	-H-	D127	L103	L115
134	Winick, Jon	1604	0.5	D105	-U-	-U-	-U-	-U-	-U-
135	Wilhelm, John H	1400	0.5	L2	D94	L56	-U-	-U-	-U-
136	Senno, Aref	1216	0.5	-F-	-U-	-H-	-U-	-U-	-U-
137	Richter, Evan		0.5	L51	L35	-H-	L94	L124	L117
138	Leong, Gee Y	1700	0.0	L85	-F-	-U-	-U-	-U-	-U-
139	Applebaum, Andy F	1591	0.0	-F-	-U-	-U-	-U-	-U-	-U-
140	Muradian, Sevan A	1412	0.0	L99	-U-	-U-	-U-	-U-	-U-
141	Danalewich, Matt	1213	0.0	-F-	-U-	-U-	-U-	-U-	-U-
142	Sawisch, William		0.0	L81	L71	L68	L76	L129	-U-

Normal October Open

IM Angelo Young wins 2003 Normal October Open; Phil Jarrette, Martin Wilbur and David Long tie for 2nd

by Dennis Bourgerie

Chicago resident and International Master Angelo Young (2408) went 4-0 defeating Wayne Zimmerle (1566), Jon Bonwell (1687), Surya Kopula (1771) and Phil Jarrette (1800).

Tied for 2nd place with 3 points were Phil Jarrette of Elgin, IL, Martin Wilbur (1687) of Arlington Heights, IL and David Long (1953) of Springfield, IL.

The top players rated Under 1600 were Ron Suarez (1505) of Peoria, IL and Matthew Wilbur (1335) of Arlington Heights, IL with 2.5 points.

Alexander Su (954) from Bloomington-Normal took the Under 1200 prize with 1.5 points.

22 players participated in the mini-tour tournament, which was held at the Fairfield Inn in Normal, IL. I directed, with assistance from Colley Kitson and Garrett Scott.

Here are some of the games from the tournament:

Drew, Daryl (1575) – Jarrette, Phil (1800) [A48]

2003 Normal, IL October Open, (2), 04.10.2003

Phil Jarrette had 3 wins in the tournament and lost only to IM Angelo Young in round 4. **1.Ng1-f3 Ng8-f6 2.d2-d4 g7-g6 3.Bc1-g5 Bf8-g7 4.Nb1-c3**

[4.Nb1-d2 d7-d5 5.e2-e3 0-0 6.c2-c3 Nb8-d7 is a more usual opening line.] **4...d7-d5 5.h2-h3 0-0**

White can only break in the center by advancing his e-pawn and to do that successfully he has to make the hard bargain of giving up his queen bishop. **6.Bg5xf6 Bg7xf6 7.e2-e4 d5xe4 8.Nc3xe4 Bf6-g7**

The computer chess program Shredder says the position is equal, but I would rather have the Black long term asset of the 2 B's.

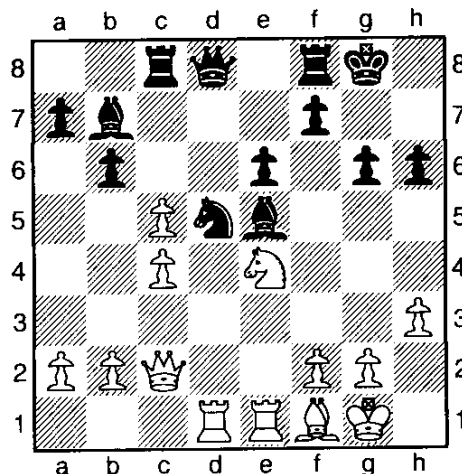
9.c2-c3 b7-b6 10.Bf1-c4 h7-h6 11.0-0 Bc8-b7 12.Rf1-e1

[12.Qd1-e2 Nb8-c6 13.Bc4-a6 White could try to eliminate the Black advantage of the 2 bishops. 13...Bb7xa6 14.Qe2xa6]

12...e7-e6 13.Qd1-b3 Nb8-c6 14.Qb3-c2 Ra8-c8 15.Ra1-d1 Nc6-e7 16.Nf3-e5 Ne7-d5 17.Bc4-f1 c7-c5!

The perfect move, forming a pawn lever with the black rook opposed to the white queen.

18.d4xc5 Bg7xe5 19.c3-c4 Now White aims to get the piece back.



19...b6xc5

[19...Nd5-b4 does not save Black's extra piece. 20.Qc2-b3]

20.c4xd5 Bb7xd5 21.Bf1-a6 Rc8-b8 22.Qc2xc5

White has restored material equality, but not for long. The 2 bishops are strong on an open board.

22...Qd8-b6 23.Qc5xb6 Rb8xb6

Black attacks both the bishop and the b2 pawn.

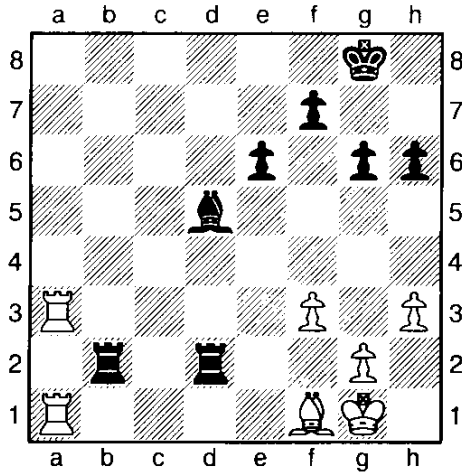
24.Ne4-c5 Be5xb2 25.Ba6-f1 Rb6-c6 26.Nc5-d7 Rf8-c8 27.Nd7-e5 Bb2xe5 28.Re1xe5 Bd5xa2 29.Rd1-a1 Rc6-c2

[29...Ba2-d5 30.Ra1xa7 Rc6-c1 31.Ra7-a4 Bd5-c4 32.Ra4xc4 Rc8xc4 and Black has an exchange and an extra pawn.]

30.Re5-a5 Ba2-d5 31.Ra5xa7 Rc2-b2 32.Bf1-d3 Rb2-d2 33.Ra7-a3 Rc8-b8

Now Black will manage to double rooks on the 2nd rank.

34.f2-f3 Rb8-b2 35.Bd3-f1 The White position seems stable, but Black can increase his advantage by advancing his kingside pawns.



35...g6-g5 36.Ra3-c3 Kg8-g7 37.Kg1-h1 h6-h5 38.Kh1-h2 h5-h4 39.Rc3-d3

loses the pawn on f3.

39...Rd2xd3 40.Bf1xd3 Bd5xf3 41.Bd3-f1 Bf3-d5

Black has an easy plan of advancing his e and f pawns and winning. 42.Ra1-a7 Kg7-g6 43.Ra7-c7 f7-f5 44.Bf1-c4 Rb2xg2+ 45.Kh2-h1 Rg2-c2+

and White resigns because the bishop is pinned and White will lose more material. 46.Bc4xd5 Rc2xc7 47.Bd5xe6 and Black has a winning endgame. 0-1

Voss, Andy (1601) – Naff, Bill (2005) [B30]

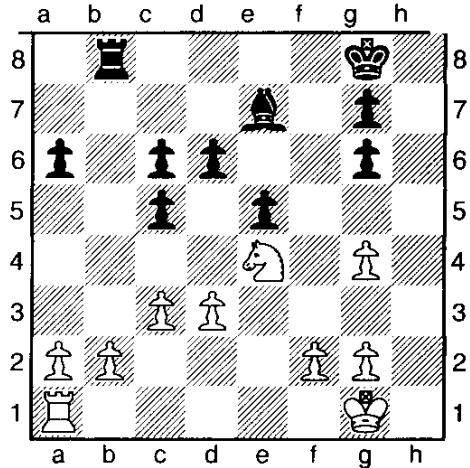
2003 Normal, IL October Open, (2), 04.10.2003

1.e2-e4 c7-c5 2.Ng1-f3 Nb8-c6 3.Bf1-b5 e7-e5 4.0-0 d7-d6

End of opening book.

5.d2-d3 Bf8-e7 6.Nb1-c3 a7-a6 7.Bb5xc6+ b7xc6 8.Nc3-e2 f7-f5 9.e4xf5 Bc8xf5 10.Ne2-g3 Bf5-g6 11.c2-c3 Ng8-f6 12.Rf1-e1 Qd8-d7 13.Nf3-h4 0-0 14.Nh4xg6 h7xg6 15.h2-h3 Nf6-d5 16.Qd1-g4 Qd7xg4 17.h3xg4 Nd5-f4 18.Bc1xf4 Rf8xf4 19.Re1-e4 Rf4xe4 20.Ng3xe4 Ra8-b8

It's hard for Black's bishop to be effective because his pawns on c5, d6 and e5 block the action of the bishop.



21.Ra1-b1 a6-a5 22.Ne4-d2 d6-d5 23.c3-c4 a5-a4 24.b2-b3 a4-a3 25.Rb1-e1 Be7-d6 26.g2-g3 Kg8-f7 27.Nd2-b1 Bd6-c7 28.Re1-e2

[28.Nb1xa3 Rb8-a8 29.Na3-b1 Ra8xa2]

28...Rb8-a8 29.c4xd5 c6xd5 30.Nb1-c3 Ra8-d8 31.Nc3-b5 Bc7-d6 32.Nb5xd6+ Rd8xd6 33.Re2xe5 Rd6-b6 34.Re5xd5 Rb6xb3 35.a2xb3 a3-a2 36.Rd5-d7+

and Black resigns because of 36...Kf7-e6 37.Rd7-a7 catching the pawn on a2. 1-0

Jan. 3-4

Tim Just's Winter Open/Reserve XVIII.
 5SS, 40/90, SD/30. College of Lake County, Rt. 45 & Washington, Main Building, Grayslake, IL 60030. \$\$ (2,000 b/70). 2 Sections: Open, open to all. \$\$ 250-175-150; X, A & Below \$125-100; Unr. can win top three only. Reserve, open to U1800. \$\$ 250-175-150; C = \$125-100, D/E = \$100, Unr = \$75 max. Both, EF: \$35 early, to current/renewing ICA and USCF members if rec'd by 12/29, \$5 more later. ICA memb. Req'd. \$18, \$10 Jr., OSA. Reg. 8-8:40 am. Rds. 9-1:30-6; 10-2:30. An Illinois Maxi Tour event. Ent: Wayne Clark, PO Box 789, Lake Villa, IL 60046 (847) 546-8511. e-mail: wclark@lnd.com, Checks payable to Chess Central, NS,NC,W.

Normal Open Crosstable

2003 Normal, IL October Open

No.	Name	Pts	Rate	Rnd1	Rnd2	Rnd3	Rnd4	Rnd5
1	YOUNG, Angelo	4.0	2408	W18	W5	W10	W2	-U-
2	JARRETTE, Phil	3.0	1800	W16	W12	W6	L1	-U-
3	WILBER, MARTIN	3.0	1674	L11	W22	W18	W10	-U-
4	LONG, DAVID	3.0	1953	D15	W11	W19	-H-	-U-
5	BONWELL, Jonathan	2.5	1687	W14	L1	D7	W16	-U-
6	VOSS, ANDY S.	2.5	1601	W20	W8	L2	D13	-U-
7	SUAREZ, RON	2.5	1505	L8	W20	D5	W15	-U-
8	NAFF, WILLIAM A.	2.5	2005	W7	L6	W15	-H-	-U-
9	WILBER, MATTHEW	2.5	1335	L10	W17	D12	W18	-U-
10	KOPULA, SURYA	2.0	1771	W9	W19	L1	L3	-U-
11	BAUER, Lucas M	2.0	1212	W3	L4	L13	W21	-U-
12	DREW, DARYL	2.0	1575	W21	L2	D9	-H-	-U-
13	WATTS, Bradley S	2.0	1845	-H-	L15	W11	D6	-U-
14	CHIEN, Jason W	2.0	1333	L5	L18	W22	W19	-U-
15	PHALKE, Harshal S	1.5	1454	D4	W13	L8	L7	-U-
16	KITSON, Colley Eri	1.5	1402	L2	W21	-H-	L5	-U-
17	SU, ALEXANDER	1.5	954	L19	L9	-H-	W22	L20
18	ZIMMERLE, WAYNE	1.0	1566	L1	W14	L3	L9	-U-
19	RYNER, Randy L	1.0	1569	W17	L10	L4	L14	-U-
20	NIBBELIN, Mark L	1.0	1010	L6	L7	L21	W17	-U-
21	SUMNER, SPENCER	1.0	974	L12	L16	W20	L11	-U-
22	CHILES, SETH D.	0.5	1270	-H-	L3	L14	L17	-U-

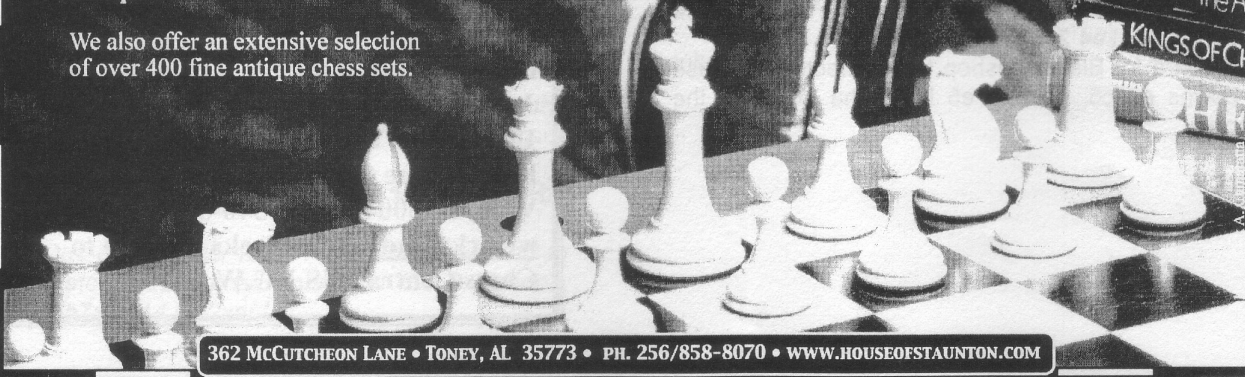
Own A Legend

FINE CHESS SETS FROM
THE HOUSE OF STAUNTON, INC.

Sole U.S. Distributor for Jaques of London

"Acclaimed World-Wide as the
 Finest Staunton Pattern Chess Sets
 ever produced!"

We also offer an extensive selection
 of over 400 fine antique chess sets.



362 McCUTCHEON LANE • TONEY, AL 35773 • PH. 256/858-8070 • WWW.HOUSEOFSTAUNTON.COM

St. Charles Chess Club

ST. CHARLES CHESS CLUB

by Dan Pradt

Aug. 7 Theme Night III was the Fromm Gambit: 1.f4, e5, which led to interesting games on most boards. Final result was White 6, Black 6, drawn 3.

Sept 11 Twins Jesse (QR1631) and Jeremiah (1628) again demonstrated their skill at speed, finishing equal first at 8-2, in our 5 minute championship. J&J, posted 6 and 8 on the wall chart, hung two losses on 4 out of the 5 rated above them-both lost to older brother Paul (1617), who, while having no problem with his younger siblings, dropped points to Jeff Wiewel (1949), Ralph McGraw (1582), and Clive Hutchby (1354), to finish 7-3.

Jeremiah beat Jesse in the 7th round to take the lead, but Jesse returned the favor in the 10th and final round to gain the tie. Jesse was awarded the trophy on tie-break. Jeff Wiewel and Paul Freidel were third with 7-3. Bo Meissen (1605) and Ralph McGraw followed with 6-4, and Clive Hutchby, Kazi Kaqbirul (1266) and unrated Greg Kelly had 5.5.

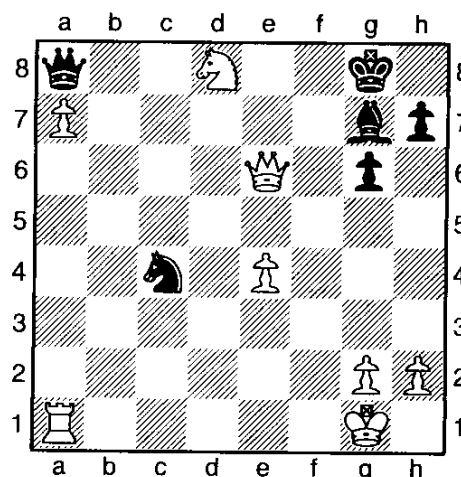
Sept 4 Our ladder tournament for the year 2003 finished. First was Jeff Wiewel 23-9, followed by Jesse Freidel 21-12, Paul Freidel 19.5-11.5, Jeremiah Freidel 17.5-13.5, kRalph McGraw 17-15, Marcus Stinson 17-7, Wally Alberts 16-10, Dan Pradt 15-12, Nathan McCoy 14.5-16.5, Aivras Stoskus 14.5-10.5, Rudy Padilla 14-16, Eric Lindner 13.5-10.5, Frank Kargol 13-9, Bo Meissen 13-1, Dennis Freidel 12-21, Lloyd Lauger 11.5-19.5, Matt Pivovitz 11.5-9.5, Alan Jurgensen 11-15, Carl Staples 11-11, and Greg Kelly 8.5-14.5. For the year, over 50 people played at least two games in the ladder.

Oct 16 Clive Hutchby cruised through the fall Swiss, 5-0 safely ahead of runner-up Kaburil Kazi, 3-2. The Knights' and Squires' Cups are in progress.

(1) Paul, F (1851) - Marcus, S (1841) [E94]

St. Charles Knight's cup (7), 21.11.2002

1.d4 Nf6 2.Nf3 g6 3.c4 Bg7 4.Nc3 0-0 5.e4 d6 6.Be2 e5 7.0-0 Nbd7 8.Bg5 c6 9.Qd2 Re8 10.d5 Nc5 11.Bd3 Bg4 12.Ne1 Qc7 13.f3 Bd7 14.b4 Nxd3 15.Nxd3 Rac8 16.Rfc1 Rf8 [16...Qb6+ 17.c5] 17.a4 Nh5 18.Be3 f5 19.a5 a6 20.dxc6 20...Bxc6 was necessary 20...bxc6 21.b5 axb5 22.cxb5 cxb5 23.Nxb5 Qb8 24.Nc3 fxe4 25.Nxe4 d5 26.Qa2 Be6 27.Ng5 Bf7+- [27...Rxc1+ 28.Rxc1 Bh6! 29.Re1 Bxg5 30.Bxg5 with drawing chances] 28.Nxf7 Rxf7 29.Rxc8+ Qxc8 30.Qxd5 Nf6 31.Qb3 Qe8 32.a6 e4 33.a7 Qa8 34.Ne5 Nd5 35.fxe4 Nxe3 36.Qxf7+ Kh8 37.Qe6 Nc4 [37...h6 38.Ra6 etc] 38.Nf7+ Kg8 39.Nd8+ Diagram



1-0

(2) Freidel, P (1782) - Wiewel, J (2034)

St. Charles Themelll

An example of the complications that can arise when accepting the Fromm Gambit 1.f4 e5 2.fxe5 d6 3.exd6 Bxd6 4.Nf3 g5 5.g3 g4 6.Nh4 Ne7 7.d4 Ng6 8.Nxg6 hxg6 9.Qd3 Bf5 10.e4 Qe7? 11.Bg2 Nc6 12.0-0 Nb4 13.Qd2 Be6 14.e5 Bxe5 15.dxe5 Qc5+ 16.Qf2 Qxc2 17.a3 Qxf2+ 18.Rxf2 Nd3 19.Rc2 0-0-0 protecting both pawns 20.Bg5 Rd7 21.Nc3 Nxe5 22.Ne4 intending Nc5, Bxb7 22...Bf5 23.Re1 [23.Nc5 Bxc2 24.Bxb7+ Kb8 25.Bf6 Rh5 26.Bxe5 Rd2 (26...Re7 27.Bd4 Re2 28.Bg2) 27.Re1! f6 28.Bd4 Rxc5 29.Ba6 Re5 30.Bxe5 fxe5 31.Rxe5 c6 32.b4± (Fritz, Wiewel)] 23...Nf3+ 24.Bxf3 gxf3 25.Rc3 [25.Rcc1 Bxe4 26.Rxe4 White stays on top(Fritz)] 25...Bxe4 26.Rxe4 Rd1+ 27.Kf2 Rxh2+ 28.Kxf3 Rf1+ 29.Ke3 Rxb2 30.Re8+ Kd7 31.Re7+ Kd6 32.Rexc7 [32.Rcxc7 Re1+ 33.Kd4 Rxe7 34.Rxe7 Rb5 35.Bf6 Rf5 36.Rxf7 Ke6 37.Rxb7 Kxf6 38.Rxa7±; 32.Rd3+ Kc6 33.Kd4 Rb5±] 32...Re1+ 33.Kf3 drawn-for if 33...Rf1+ 34.Ke4 [34.Kg4 f5+ 35.Kh3 Rh1#] 34...f5+ 35.Kd3 Rd1+ 36.Ke3 [36.Kc4 b5#] 36...Re1+ etc ½-½

ICA Club Affiliates

Organizations wishing to be listed here should mail an affiliation fee of \$25.00 for one year (check payable to Illinois Chess Association) to the ICA membership secretary, Chris Baumgartner 107 S. Maple Lane, Prospect Points Hts, IL 60070. Include a short paragraph, similar to those below, listing your club's activities.

Alternativa Group, Peter Pelts, 7135 Greenleaf Av, Niles 60714. 847-965-6469.

American Postal Chess Tournaments sponsors postal events and sells chess books and equipment. Jim or Helen Warren, PO Box 305, Western Springs 60558. 630-663-0688, apct@aol.com. Organizers of the U.S. Masters.

The **Center Chess Club** meets 3rd Saturday of each month, 7-10 pm, Crystal Lake Park District, One East Crystal Lake Av (intersection of Walkup), Crystal Lake 60014. Also rated tournaments on most of these same dates, 4 rounds, game/60, register by 8:45 am, round 1 at 9 am. Jeff Buchman, 815-455-5288, buchadolph@aol.com.

Chess Central sponsors rated tournaments in the Grayslake / Zion area. Tim Just, 37165 Willow, Gurnee 60031. 847-244-7954, timjust@Lnd.com.

Chess in Chicago is dedicated to developing and promoting chess in Chicago, and scholastic players are the priority. Lamarr Wilson, email@chessinchiago.org, www.chessinchiago.org.

Chess Utopia sponsors rated tournaments in the Lake County area, Fridays 6 pm. Frank Swindell, 847-816-0869, Swinchess@aol.com, www.ChessUtopia.org.

Chessterton Chess Club meets at Westchester Public Library, 200 W Indiana, Chesterton IN. Joe Alford, Joe.Alford@Kemper.com.

Chicago Industrial Chess League organizes frequent competition among commercial or government teams with awards, ratings, and special events. Pat Sajbel, 847-391-2134.

Chicagoland Community Chess Club (formerly Concordia) meets Tuesdays 6-11 pm, Border's (Cafe Espresso), 7100 Forest Preserve Dr, Norridge. Howard Fried, 773-889-8553, hfried1@sbcglobal.net, or Robert Loncarevic, 773-282-5148, TLSchgo@speedsite.com.

FIDE Master **Albert Chow** gives private lessons by appointment. 3513 N Seminary, Chicago 60657. 773-248-4846, ChowMasterAl@yahoo.com.

Continental Chess Association runs major tournaments nationwide, including the annual World Open in Philadelphia and the Chicago Open in late May each year. PO Box 249, Salisbury Mills NY 12577. Bill Goichberg, www.chesstour.com.

Crossroads Chess Club meets Tuesdays 6 pm, K Square Mall Food court, I-57 / I-70 exit 160, Effingham. Cameron Feltner, 217-844-2645.

Elmhurst Chess Club meets, and holds frequent USCF events, Sundays 6:30 to 11 pm, Room 18, Hammerschmidt Chapel, Elmhurst College, 190 Prospect, Elmhurst. Roger Birkeland, 630-832-1754, rogerdb9@earthlink.net, ElmhurstChess@aol.com.

Evanston Township High School Chess Club, 1600 Dodge Av, Evanston 60204. Ken Lewandowski, 847-492-7932.

Greater Peoria Chess Federation meets Mondays 7 pm, Lakeview Museum, 1125 W Lake Av, Peoria 61614. Wayne Zimmerle, 514 W Loucks Av #2, Peoria 61604. 309-692-4480 (day), 309-686-0192 (evenings), wzim@bwsys.net.

ICA Club Affiliates

Hammond Chess Club, Charles Higgins, 116 Crestview St, Crown Point IN 46307. 219-663-8938.

Happy Squares offers group and private lessons, sets/books/clocks, as well as rated and unrated tournaments. Open to all ages Tuesdays 6-11 pm. Kids only Fridays 6-11 pm, Saturday afternoons 1-6 pm, and Saturday evenings 6-11 pm. 66 Gordon, Elk Grove Village 60007 (3 blocks east of Arlington Heights Rd off of Higgins). 866-KING-680 (866-546-4680). Les Bale, owner.

Highland Park High School Chess Team, 433 Vine Av, Highland Park 60035. Tesc Schultz, tschultz@d113.lake.k12.il.us.

House of Chess meets Saturdays 4:30 pm, 1st Baptist Church, 146 S Main St, Glen Carbon 62034. Paul Holland, 618-288-4117, <http://members.aol.com/houseofchess>.

Illini Chess Club meets Thursdays 7-10 pm, College of Education Building, Room 37, 6th & Pennsylvania), Urbana. www.uiuc.edu/ro/uichess. Jeff Davis.

Illinois Chess Coaches Association is open to scholastic chess coaches in Illinois. Mike Zacate, 708-479-9380, mezacate@aol.com.

Illinois Valley Chess Association meets Thursdays 7-10 pm. Illinois Valley YMCA, Adult Lounge, 300 Walnut St, Peru 61354. Bill Schulte, 520 First St, LaSalle 61301. 815-223-1505, bschulte@rivalins.com.

Illowa Chess Club meets Tuesdays 6:30-10 pm, St Ambrose University, Davenport IA. Matt Nemmers, qcchess@mchsi.com, www.quadcitychess.com.

Joliet Junior College Chess Club meets Thursdays 6:30 pm, Joliet Junior College, Building J, cafeteria, 1215 Houbolt Rd (I-80 exit 127), Joliet. Maps www.jjc.edu/maps/maincampus.html. Tim Owens, c/o JJC-IET, 214 N Ottawa St, Joliet

60432. 815-280-1513, towens@jjc.edu. Or Steve Decman, 1418 Devonshire Dr, Joliet 60435. 815-744-5272, www.jjc.edu/clubs/chess.

Lakeview Cuyler Chess Club meets Wednesdays 7-10 pm, Cuyler Covenant Church, Fellowship Hall, 3901 N Marshfield Av (corner of Byron St), Chicago 60613. Drew Morissee, 1614 W Byron St, Chicago 60613. 312-494-1300 x12, WindyCityKnight@yahoo.com, <http://LakeviewCuylerChess.tripod.com>.

Mahomet-Seymour High School Chess Club, Dan Pirtle, 302 W State, Mahomet 61853. 217-586-4962, dpirt@ms.k12.il.us.

Mid-America Chess Association sponsors the popular website at www.64.com, and brings national tournaments to the Chicago area. midam@64.com.

Midway Chess Enterprises, PO Box 388765, Chicago 60638, whizline@home.com.

Murphysboro Chess Club, Murphysboro 62966. <http://mysite.verizon.net/res0bz47/>.

New Lenox Chess Club, c/o Vince Berry & Cindy Misiak, 815-463-9975, leave message. VWBerry@aol.com.

Park Forest Chess Club meets Thursdays 7-10 pm, Freedom Hall (next to the library), Lakewood Blvd just west of Orchard, Park Forest. Larry Cohen, 630-834-2477. www.tuxdomain.com/pfcc_club.html.

Rudy Lozano Library Chess Club, 1805 S Loomis, Chicago 60608. Hector Hernandez, 312-746-4329, hernande@chipublib.org.

Smythe Dakota Competitions encourages and offers financial support for Plus-Score Mini-Tours at sites in Chicago and adjoining suburbs. Bill Smythe, chichess@rcn.com.

St Charles Chess Club meets Thursdays 7-11 pm, Baker Community House, 101 S 2nd (Rt 31),

St Charles. Jeff Wiewel, 1931 Dunhill Ct, Arlington Heights 60004. 847-818-8913, jwiewel@ntnusa.com.

The South Suburban Chess Club of Greater Chicago meets Fridays 7-11 pm, Oak View Recreation Center, 110th & Kilpatrick, Oak Lawn. Joe Bannon, 773-445-0631.

Springfield Chess Club meets Wednesdays 6-10 pm, American Legion Post 32, 5th & Capitol, Springfield. Thomas Knoedler, 2104 S Fourth St, Springfield 62703. 217-523-7265.

SquareHopper, Joshua Flores, Chess Professional. Available for any chess-related activity at reasonable rates. Specialties are tournament directing/organizing, coaching and teaching. Willing to travel. 630-430-CHES(s) anytime.

State Farm Employee Activities Chess Club 1 State Farm Plaza Corp. HQ C-4 Bloomington, IL, 60701 Colley Kitson 309-766-9493.

Tuley Park Chess Club holds frequent Saturday tournaments at Tuley Park Field House, 501 E 90th Pl, Chicago. Tom Fineberg, 7321 S South Shore Dr, Chicago 60649. 773-721-3979, www.home.earthlink.net/~maxine57.

Twin City Chess Club meets Tuesdays 7-10 pm, Lincoln Leisure Center, 1206 S Lee St, Bloomington 61701. Dennis Bourgerie, PO Box 157, Normal 61761. 309-454-3842, schoolstreeter@msn.com.

West Middle School Chess Club, 1900 N Rocktoon Av, Rockford 61103. Ralph Sullons, 815-966-3220.

Wicker Park Chess Club meets Wednesdays 7 pm to 1 am, Myopic Books, 1468 N Milwaukee Av, Chicago. Pat Jones, 773-772-1369, pjones@artic.edu.

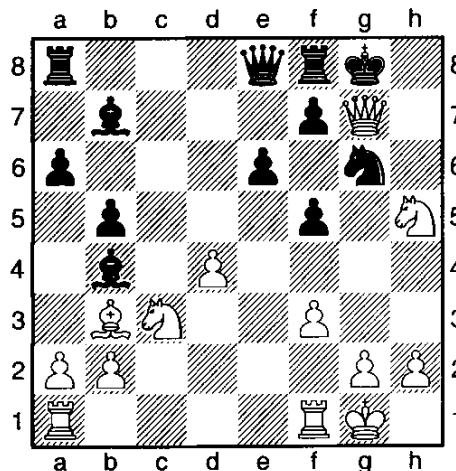
Woodfield Country Chess Club, Carl Troyer, 723 N Main, Eureka 62530. 309-467-6055.

ICB Editor Game Chess Live Rated 3 min game

ColleyChess (1552) – Kingsson (2003)

GCS GCS, 28.02.2003

1.d4 c5 2.e3 cxd4 3.exd4 e6 4.f3 a6 5.Bd3 Nf6 6.c4 d5 7.Nc3 dxc4 8.Bxc4 b5 9.Bb3 Bb7 10.Be3 Bb4 11.Qd2 Nc6 12.Nge2 0-0 13.0-0 Ne7 14.Bg5 14...h6 15.Bxf6 gxf6 16.Qxh6 f5 17.Ng3 Ng6 18.Nh5 Qe8 19.Qg7# Diagram



1-0

2003-4 ICA Tour Leaders

2003-2004 Central Illinois Scholastic Chess Tournament Schedule

These schools are planning to have a scholastic chess tournament during the 2003-04 school year

Date	School Sponsor	Contact Information
Nov 1, 2003	Midwest All Grade Championship	chessteachers@aol.com 312-927-4290
Nov. 7, 2003	Friday 4-rounds: Bent Invitational Area Junior High Tournament	Bent: Fred Schmidt schmidt.four@gte.net Jr. High: Mark Nibbelin mnibb@yahoo.com
Nov. 14, 2003	Rockford National Youth Action Tournament	Twin City Chess Club- Garrett Scott, coach
Nov. 22. 2003	Montessori at East Peoria C.H.S.	Fred Malcome flmalcome@bwsys.net
Dec. 12-14	Rosemont, IL	More Info: http://www.uschess.org/tournaments/K12/index.html
Jan. 10. 2004	Tri-Valley	Robin Shaffer binammm@hotmail.com
Jan. 19. 2004	MLK Tournament, Cultural Center. AKA Scottish Rite Temple (Oakland School)	Garrett Scott scottg@district87.org
Jan. 24. 2004	Colene Hoose	Charlie Bates cmbates50@yahoo.com
Jan. 31. 2004	Parkside Jr. High (& Prairieland?)	Contact: Sherrie Meier meier@ilstu.edu
Jan 31, 2004	East Peoria CHS	Fred Malcome flmalcome@bwsys.net
Feb. 21. 2004	Metcalf	Mark Nibbelin mnibb@yahoo.com
Feb. 28. 2004	Glenn Tournament @ Chiddix	Jan Meadows meadowjv@unit5.org
Mar 20-21, 2004	Ill. State Scholastic Chess Tournament	Jack Shepard, shepherdh@d62.org (This tournament is tentatively scheduled)

2003-4 ICA TOUR LEADERS

by Bill Smythe

NOTE: The 2003-4 ICA Tour began April 1, 2003 and will run through March 31, 2004.

These standings reflect the following 2003-4 Tour events:

April 26, 2003	mini	Peoria Spring Tornado (XU)
Apr 26-27, 2003	MAXI	Ranko Loncarevic Memorial, Niles
May 3, 2003	mini	Rockford Spring Open (XU)
June 28, 2003	mini	Peoria Summer Tornado (XU)
July 11-13, 2003	MAXI	Master Challenge, Elmhurst
August 16, 2003	mini	Bradley Summer Open, Peoria (XU)
August 23, 2003	mini	Springfield Championship (XU)

Not included (crosstable not yet received from organizer):

May 23-26, 2003	MAXI	12th Annual Chicago Open, Oakbrook
June 21, 2003	mini	Illini Summer Open, Urbana (XU)
July 26, 2003	mini	Officers' Appreciation #1
August 10, 2003	mini	Chicagoland Summer Open, Niles

Not included (tournament held after press deadline):

Aug 29 - Sep 1, 2003	MAXI	Illinois Open, Arlington Heights
September 6, 2003	mini	Illini Fall Sections (XU)

Scheduled or probable future 2003-4 Tour events:

December 6-7, 2003	MAXI	Chicagoland Maxi-Tour, Niles (tentative)
--------------------	------	--

Other Tour events will be added as the year progresses. Check Chess Life, the Illinois Chess Bulletin, ChessPhone (630-832-5222) or the web (www.illinoischess.org) for details.

For players with fewer than three 2003-4 Tour events, the number of events (1 or 2) is shown in parentheses. A player must have played in at least three Tour events during the Tour year (4-1-03 thru 3-31-04) to be eligible for year-end Tour prizes.

NOTE: ICA membership is required for all Illinois residents playing in ICA Tour events. Residents of other states are not required to join ICA if they are members of their home state chess associations. However, Tour points earned by out-of-staters do not count unless they are ICA members.

2003-4 ICA Tour Leaders

Master Tour Points:

STAMNOV Aleksandar	48
CHOW Albert C	32.5
SZPISJAK Steven J	27.5
PALOS Osmand (2)	24
YOUNG Angelo (2)	24
KARAGIANIS Pete D	22
FIRMAN Nazar (1)	19
GUREVICH Dmitry (1)	19
LONG David	15
STEVANOVIC Miomir	14
TSYGANOV Igor M (2)	14
VAN BUSKIRK Doug (2)	14

Expert Tour Points:

VAN BUSKIRK Doug (2)	28
KARAGIANIS Pete D	22
LONG David	19
STEVANOVIC Miomir	14
VOSS Andy S	14
NAFF William A	13

Class A Tour Points:

LONG David	19
VOSS Andy S	14
BAUMGARTNER Chris	12
CHODAK David N (1)	12
COVIC Mehmed	12
JOSEPH Bennett (1)	12
VELAZQUEZ Kevin (1)	12
GORAL Bradley D	11
HERNANDEZ Hector	11
ENGELEN Mark S	10
NIENART Christop (2)	10

Class B Tour Points:

BAUMGARTNER Chris	18
ENGELEN Mark S	17
KREPICH Daniel S (2)	16
LAGUMBAY Charles (2)	16
OHLHAUSEN David (2)	14
VOSS Andy S	14
CHODAK David N (1)	12
NAPOLI Steven (1)	12
VELAZQUEZ Kevin (1)	12
DUBIN Joshua (2)	11
GORAL Bradley D	11
HEISER Eric A (2)	10
PADILLA Rudy R	9
DZANANOVIC Muham (2)	8
GRIFFIN Danny L	8

Class C Tour Points:

KREPICH Daniel S (2)	16
LAGUMBAY Charles (2)	16
OHLHAUSEN David (2)	14
VOSS Andy S	14
CHODAK David N (1)	12
VELAZQUEZ Kevin (1)	12
DUBIN Joshua (2)	11
GORAL Bradley D	11

HEISER Eric A (2)	10
PADILLA Rudy R	9
GRIFFIN Danny L	8
CHIEN Jason W	7
DJORDJEVIC Vladi (2)	7
LOBRACO Mike (1)	7

Class D Tour Points:

DE LA MORA Salva (1)	19
LAMBERT Gwayne (1)	19
GRIFFIN Danny L	14
GRIFFIN Lawrence	7
AUGER Mike (1)	6
CHIEN Jason W	6
CUNNINGHAM Rober (2)	6
FENG Justin L (2)	6
GANNON Dan I (1)	6
GORODETSKY Alex (1)	6
HAMILTON Mark P (1)	6
YALAVARTHI Ramak (1)	6

Class E Tour Points:

GRIFFIN Lawrence	7
AUGER Mike (1)	6
YALAVARTHI Ramak (1)	6
LOPEZ Eugene (1)	5
PAUL Barry (1)	5
BARBIAN Matthew (1)	4
BOHAN Phillip Ke (1)	4
LAUGER Lloyd (1)	4
O'BRIEN Brian R (1)	4
SONG Charles (1)	4

Class F Tour Points:

O'BRIEN Brian R (1)	4
TRYKALL David Z (1)	3
WILBER Karen M (2)	3

Class G Tour Points:

HERRERA Juan M (2)	1.5
--------------------	-----

Master Ex-Urban Points:

STAMNOV Aleksandar	29
LONG David	15
VAN BUSKIRK Doug (2)	14
BAUMGARTNER Chris	12
KARAGIANIS Pete (2)	10
CHOW Albert C (1)	7.5
PARKER Robert W (1)	7.5
VOSS Andy S	6
NAFF William A	5
WILBER Martin W	4.5

Expert Ex-Urban Points:

VAN BUSKIRK Doug (2)	28
LONG David	19
NAFF William A	13
BAUMGARTNER Chris	12
KARAGIANIS Pete (2)	10
VOSS Andy S	8

PARKER Robert W (1)	7.5
BOURGERIE Dennis	6.5
KANNIAH Suresh (2)	6.5
HERNANDEZ Hector (2)	5

Class A Ex-Urban Points:

LONG David	19
BAUMGARTNER Chris	12
VOSS Andy S	8
PARKER Robert W (1)	7.5
BOURGERIE Dennis	6.5
KANNIAH Suresh (2)	6.5
HERNANDEZ Hector (2)	5
WILBER Martin W	4.5
WILBER Matthew K	4.5

Class B Ex-Urban Points:

BAUMGARTNER Chris	12
VOSS Andy S	8
PARKER Robert W (1)	7.5
BOURGERIE Dennis	6.5
KANNIAH Suresh (2)	6.5
WILBER Martin W	4.5
WILBER Matthew K	4.5

Class C Ex-Urban Points:

VOSS Andy S	8
WILBER Matthew K	4.5
CREASEY Brian (1)	4
GORAL Bradley D (2)	4
GUO Kevin (1)	4
LAGUMBAY Charles (1)	4
NUNEZ Cesar R (1)	4
TSE Boris (2)	4
BURKETT Bruce (2)	3.5
DRESSEN Robert (2)	3.5
WILDMAN Eric F (2)	3.5

Class D Ex-Urban Points:

WILBER Matthew K	4.5
TSE Boris (2)	4
BURKETT Bruce (2)	3.5
KELLY James R	3
WILBER Karen M (2)	3
BONZON Roman (1)	2.5

Class E Ex-Urban Points:

WILBER Karen M (2)	3
LEVEQUE Christop (1)	2
MORGAN Les (1)	2
CHERTOK Elina (1)	1.5

Class F Ex-Urban Points:

WILBER Karen M (2)	3
BARNES Toby (1)	1

Class G Ex-Urban Points:

HERRERA Juan M (1)	0.5
--------------------	-----

Tournament Calendar

All tournaments are USCF-rated, unless otherwise noted (Quick-rated if game/29 or faster) and require USCF membership. ICA Tour events also require ICA membership. Memberships may be purchased at most tournaments. Most tournaments prohibit smoking in the playing rooms.

ICA Tour events are generally listed as such in Chess Life and in the Calendar below. Players are responsible for checking both Chess Life and the Illinois Chess Bulletin to determine which events are Tour events. Call ChessPhone (630-832-5222) a few days before any tournament to verify its Tour status, or check the web at www.illinoischess.org.

Organizers: Please clear your events through the ICA Tournament Calendar. Calendar coordinator is Howard Fried, 2635 N New England Ave., Chicago 60607, 773-889-8553, hfried1@spcglobal.net. Do not send calendar entries to the ICB editor. If you are running a Tour event, make sure it is listed as such in both Chess Life and the ICB. Deadlines for ICB calendar submissions are as follows:

Event starting date: Deadline: To appear in:

Jan 15 - Mar 14	Nov 5	Jan-Feb issue
Mar 15 - May 14	Jan 5	Mar-Apr issue
May 15 - Jul 14	Mar 5	May-Jun issue
Jul 15 - Sep 14	May 5	Jul-Aug issue
Sep 15 - Nov 14	Jul 5	Sep-Oct issue
Nov 15 - Jan 14	Sep 5	Nov-Dec issue

November 14-16, 2003, National Youth Action Championship. 9-SS, game/30. Best Western Clock Tower, 7801 E State St, Rockford 61108. Four sections: HIGH SCHOOL (K-12), JUNIOR HIGH (K-9), ELEMENTARY (K-6), PRIMARY (K-3). CRBeach@aol.com.

November 15, 2003, Collinsville November Swiss. 3-SS, game/90. First Baptist Church, 723 St Louis Rd, Collinsville 62234. EF \$20. Two sections: OPEN: \$\$280 b/20: \$100, MX \$60, A \$60, B \$60. RESERVE (u1600): \$\$205 b/24: C \$60, D \$60, E/below \$60, unr \$25. Reg 8-8:45 am, rds 9-12:30-3:30. Paul Holland, 204 Sierra Point, Glen Carbon 62034. 618-288-4117. Paul@paulholland.us.

November 22, 2003 Northbridge Baptist Church Open 4-SS, G/70 Northbridge Baptist Church, 2413 Ziebarth Road, Normal, IL 61761. Located at the intersection of E 1900 North Road (Ziebarth Road) and N 1700 East Road (McLean County 31 or Pipeline Road). Entry Fee \$17; free to players 2020+. \$\$400 b/30: \$145, u 2000 \$85, u1600 \$85, u1200 \$85. Bye 1-4. Registration 8:45 a.m.-9:45 a.m., rounds 10-12:30-3-5:30. Send entries to Dennis Bourgerie, Box 157, Normal, IL 61761. 309-454-3842, cellphone for the day of the tournament: 309-531-1723, Schoolstreeter@msn.com

November 22, 2003, Tuley Park Quick #14 (Tiny). 6-SS, rds 1-2 game/8, d/3 (game/10 if d/0), rds 3-6 game/20, d/3 (game/22 if d/0). 501 E 90th Pl, Chicago 60619. EF \$10, u19 \$5, \$1 off before 11:30. \$\$G 210: \$40-30-25, u1800 \$25, u1550 \$25, u1300 \$20, u1050 \$15, u800 \$15, unr \$15. Reg 11-11:50, rd 1 at 12. Tom Fineberg, 7321 S South Shore Dr #6-D, Chicago 60649. 773-721-3979, www.home.earthlink.net/~maxine57.

Calendar

November 28 - November 30 Illinois Class Championships 5SS, G/2. Signature Inn. 3090 Stevenson Drive (immed. West of I-55, exit 94), Springfield. 217-529-6611. HR: \$62+tax, must mention tournament, must reserve by 11/22. An ICA Maxi-Tour and Ex-Urban event. ICA membership required, \$18, OSA. \$\$4,000 b/100. 6 sections: Master/Expert 500-300-200; Class A, B, C, D, and E & under each 300-200-100. Unrateds may play in any section but may not win more than \$50 except in master/expert section. Sched. Reg: Fri: 1-4pm. Rds: Fri. 5pm, Sat. 8:30-1:15-6:00, Sun. 10am. Awards at 2:30pm. One half-point bye available any round except 5th. EF: \$49 if received by 11/22, \$69 thereafter. Play up one section for \$5 extra. Ent/Info: Thomas Knoedler, 2104 S. 4th St., Springfield 62703. 217-206-6056 days, 217-523-7265 evenings, except Wednesday. Info only: David Long, 217-522-0489. Bring boards, sets, and clocks-none provided. NS/NC/W.

GET MAXI-TOUR & EX-URBAN TOUR POINTS !!!

November 28 - 30 or November 29 - 30. Thanksgiving Semi-Class Chess Festival and Buffet. A Wayne Clark, Tim Just, Kevin Bachler event. Schedule 1: 11/28-11/30, 5SS, 40/2, SD/30, Rnds 8, 12-6:30, 10-3:30. Schedule 2: 11/29-11/30, 5SS, Rnds 1,2 G/90, Rnds 3-5, 40/2, SD/30, 10-1:30-6:30, 10-3:30. Schedules merge Rnd 3 on 11/29. Adam's Mark Northbrook, 2875 N Milwaukee Av (1/2 mile south of Willow/Palatine Rd), Northbrook 60062-6103. Hotel rates \$69-69-69-69, ask for chess rate, reserve by 11/14, 847-298-2525 or 800-444-ADAM. PARK FREE. \$7500 b/60 per section. EF \$79 to current/renew/new USCF and ICA members with schedule selected and postmarked by 11/23-\$11 more later, OPEN \$\$ \$750-450-225-125-100, U2200: 400-225-125-100. RESERVE, open to under 2000 \$\$ \$750-450-225-125-100, U1800: 400-225-125-100. BOOSTER, open to under 1600 \$\$ \$750-450-225-125, U1400: 400-225-125, U1200: \$100, UN: \$100. Single bye any rd, \$1 fee (adv requests-pay with EF), rd 5 bye only if requested before rd 1, unretractable after rd 3 start. Re-entry, with single 1/2 pt bye available, \$40, (max single 1/2 pt bye including re-entry byes). ICA member req'd, other states OK. UNR. may only win Booster unr.Prize or Open place prizes. Reg. 11/28, 6:00PM-7:45, 11/29, 8AM-9:30. Late registrants may be assigned bye rd 1. BRING SETS, BOARD, AND CLOCKS. Books/equipment seller on site. \$5 buffet lunch (\$15 value) available to all entrants on Saturday and Sunday.

Side Events: **Friday Daytime: Illinois Scholastic Bughouse & Scholastic Blitz Championship and buffet** (info and entry address: www.ilchess.org/bug.htm), **Friday Evening: Heartland Thanksgiving Quick Chess G/20 Open** (see Chess Life Ad for info or the ICA web site www.ilchess.org/calendar.html), Info: Wayne Clark 847-546-8511 or heartlandchessfestival03@yahoo.com. Cks. Payable CHESS FOR LIFE LLC. Mail to: Chess For Life LLC, PO Box 789, Lake Villa, IL 60046. NS, NC, W

Side Events November 28 THANKSGIVING QUICK CHESS G/20 OPEN A Wayne Clark, Tim Just, Kevin Bachler event 5SS, SD/20, Rnds 7:30-8:30-9:30-10:30-11:30. Adam's Mark Northbrook, 2875 N Milwaukee Av (1/2 mile south of Willow/Palatine Rd), Northbrook 60062-6103. Hotel rates \$69-69-69-69, ask for chess rate, reserve by 11/14, 47-298-2525 or 800-444-ADAM. PARK FREE. \$1500 b/70. EF \$30 to current/renew/new USCF members postmarked by 11/23-\$10 more later. \$\$ \$250-150-100, X, A, B, C, \$125-100, D/under, \$100, UN may win max \$100. Single bye any rd, \$1 fee (adv requests-pay with EF), rd 5 bye only if requested before rd 1, unretractable after rd 3 start. Re-entry, single 1/2 pt bye available, \$20, (max single 1/2 pt bye including re-entry byes). Reg. 11/28, 5:00-7:00. Late registrants may be assigned bye rd 1. BRING SETS, BOARD, AND CLOCKS. Books/equipment seller on site Info: www.ilchess.org/calendar.html or Wayne Clark 847-546-8411 or heartlandchessfestival03@yahoo.com. Cks. Payable CHESS FOR LIFE LLC. Mail to: Chess For Life LLC, PO Box 789, Lake Villa, IL 60046. NS, NC, W

November 28 Illinois Scholastic Blitz and Bughouse Championships For details, click here Bug - 11/28 morning 6 Double SS (may be adjusted based on entries), Teams from the same school may play each other. Bughouse rules here SD/5, Rnds 9:00-9:30-10:00-10:30-11:00-11:30. Adam's Mark Northbrook, 2875 N Milwaukee Av (1/2 mile south of Willow/Palatine Rd), Northbrook 60062-6103. Hotel rates \$69-69-69-69, ask for chess rate, reserve by 11/14, 847-298-2525 or 800-444-ADAM. PARK FREE.

Trophies to top 10 teams in each section (HS 9-12, MS 6-8, Elementary 4-5, Primary K-3) EF \$20 received by 10/26-\$25 received by 11/15, \$30 later and at site. Limited to 300 entries. Reg. 11/28, 7:30-8:15. Late registrants may be assigned bye rd 1. BRING SETS, BOARD, AND CLOCKS. Buffet \$5 all you can eat for lunch. Books/equipment seller on site Info: www.ilchess.org/calendar.html or Wayne Clark 847-546-8411 or heartlandchessfestival03@yahoo.com. Cks. Payable CHESS FOR LIFE LLC. Use bug entry form, Mail to: Chess For Life LLC, PO Box 789, Lake Villa, IL 60046. NS, NC, W

Blitz 11-28 afternoon 6 Double SS (may be adjusted based on entries), Blitz Rules Here SD/5, Rnds 1:00-1:30-2:00-2:30-3:00-3:30. Adam's Mark Northbrook, 2875 N Milwaukee Av (1/2 mile south of Willow/Palatine Rd), Northbrook 60062-6103. Hotel rates \$69-69-69-69, ask for chess rate, reserve by 11/14, 847-298-2525 or 800-444-ADAM. PARK FREE. Trophies to top 10 teams in each section (top 4 scores = team score) and top 10 individuals in each section. (HS 9-12, MS 6-8, Elementary 4-5, Primary K-3) Medals to individual ties, no trophy. EF \$20 received by 10/26-\$25 received by 11/15, \$30 later and at site. Limited to 300 entries. Reg. 11/28, 11:30-12:15. Late registrants may be assigned bye rd 1. BRING SETS, BOARD, AND CLOCKS. Buffet \$5 all you can eat for lunch. Books/equipment seller on site Info: www.ilchess.org/calendar.html or Wayne Clark 847-546-8411 or heartlandchessfestival03@yahoo.com. Cks. Payable CHESS FOR LIFE LLC. Use entry form, Mail to: Chess For Life LLC, PO Box 789, Lake Villa, IL 60046. NS, NC, W

December 6-7, 2003, Chicagoland Maxi-Tour. Niles. Robert Loncarevic, 773-282-5148. An ICA Tour MAXI-event. ICA membership required.

December 12-14, 2003, National K-12 Scholastic. Rosemont. See details at: <http://www.uschess.org/tournaments/K12/index.html>

December 13, 2003, Springfield Holiday Open. 4-SS, game/80. Signature Inn, Dirksen Pkwy & Stevenson Dr (just west of I-55 Stevenson exit), Springfield. EF \$17 by 12/05, \$20 at site. \$\$ 300 b/40: \$100-55, 1600-1999 \$50, 1200-1599 \$40, u1200 \$30, unr \$25. Reg 7:30-8:30 am, rds 9-12-3-6. Thomas Knoedler, 2104 S Fourth St, Springfield 62703. 217-206-6056 day, 217-523-7265 nite, knoedler.thomas@uis.edu.

December 20, 2003, Tuley Park Quick #15 (Bigger). 6-SS, rds 1-2 game/8, d/3 (game/10 if d/0), rds 3-6 game/20, d/3 (game/22 if d/0). 501 E 90th Pl, Chicago 60619. EF \$18, u19 \$9, \$1 off before 11:30. \$\$G 435: \$125-80-40, u1900 \$40, u1700 \$35, u1500 \$30, u1300 \$25, u1100 \$25, u900 \$20, unr \$15. Reg 11-11:50, rd 1 at 12. Tom Fineberg, 7321 S South Shore Dr #6-D, Chicago 60649. 773-721-3979, www.home.earthlink.net/~maxine57.

December 27, 2003, Northern Illinois K-8 Open. Christian Life Center School, 5950 Spring Creek Rd, Rockford 61114. For scholastic players K-8. EF \$20 by 12/21, \$35 at site. Three sections: CHAMPIONSHIP (K-8): 5-SS, game/45. Trophies to top 4, top 2 grades 6,7,8, top 3 teams. ELEMENTARY (K-5): 6-SS, game/30. Trophies to top 4, top 2 grades 4,5, top 3 teams. PRIMARY (K-3): 6-SS, game/30. Trophies to top 3, top 2 grades K,1,2,3, top 3 teams. ALL: Reg 7-8:30 am, rd 1 at 9. Arrivals after 8:30 must take round 1 half-point bye. Section changes not allowed after 8:30. Checks payable Rockford Chess Assn, mail to Gary Noel Sargent, 2764 Panorama Dr, Rockford 61109. Info Joe Guth, 815-399-4303, ChessXPert_2000@yahoo.com, www.rockfordchess.org.

January 3, 2004, Normal January Open. 4-SS, game/80. Fairfield Inn, 202 Landmark Dr, Normal 61761, phone at site 309-454-6600. EF \$17, free to players rated 2020+. \$\$380 b/30: \$140, u2000 \$80, u1600 \$80, u1200 \$80. Reg 8-8:45, rds 9-12-3-6. Dennis Bourgerie, Box 157, Normal 61761. 309-454-3842, Schoolstreeter@msn.com.

January 10, 2004, Tuley Park Quick #1 (Medium). 6-SS, rds 1-2 game/8, d/3 (game/10 if d/0), rds 3-6 game/20, d/3 (game/22 if d/0). 501 E 90th Pl, Chicago 60619. EF \$14, u19 \$7, \$1 off before 11:30.

Calendar

\$\$\$ 300 \$70-45-30, u1900 \$35, u1700 \$30, u1500 \$25, u1300 \$20, u1100 \$15, u900 \$15, unr \$15. Reg 11-11:50 rd 1 at 12. Tom Fineberg, 7321 S South Shore Dr #6-D, Chicago 60649. 773-721-3979, www.home.earthlink.net/~maxine57.

January 31, 2004, Tuley Park Quick #2 (Bigger). 6-SS, rds 1-2 game/8, d/3 (game/10 if d/0), rds 3-6 game/20, d/3 (game/22 if d/0). 501 E 90th Pl, Chicago 60619. EF \$18, u19 \$9, \$1 off before 11:30. \$\$\$ 435: \$125-80-40, u1900 \$40, u1700 \$35, u1500 \$30, u1300 \$25, u1100 \$25, u900 \$20, unr \$15. Reg 11-11:50, rd 1 at 12. Tom Fineberg, 7321 S South Shore Dr #6-D, Chicago 60649. 773-721-3979, www.home.earthlink.net/~maxine57.

February 21, 2004, Collinsville February Swiss. 3-SS, game/90. First Baptist Church, 723 St Louis Rd, Collinsville 62234. EF \$20. Two sections: OPEN: \$\$280 b/20: \$100, MX \$60, A \$60, B \$60. RESERVE (u1600): \$\$205 b/24: C \$60, D \$60, E/below \$60, unr \$25. BOTH: Reg 8-8:45 am, rds 9-12:30-3:30. Paul Holland, 204 Sierra Point, Glen Carbon 62034. 618-288-4117. Paul@paulholland.us.

February 21, 2004, Tuley Park Quick #3 (Medium). 6-SS, rds 1-2 game/8, d/3 (game/10 if d/0), rds 3-6 game/20, d/3 (game/22 if d/0). 501 E 90th Pl, Chicago 60619. EF \$14, u19 \$7, \$1 off before 11:30. \$\$\$ 300: \$70-45-30, u1900 \$35, u1700 \$30, u1500 \$25, u1300 \$20, u1100 \$15, u900 \$15, unr \$15. Reg 11-11:50, rd 1 at 12. Tom Fineberg, 7321 S South Shore Dr #6-D, Chicago 60649. 773-721-3979.

March 20, 2004, Tuley Park Quick #4 (Tiny). 6-SS, rds 1-2 game/8, d/3 (game/10 if d/0), rds 3-6 game/20, d/3 (game/22 if d/0). 501 E 90th Pl, Chicago 60619. EF \$10, u19 \$5, \$1 off before 11:30. \$\$\$ 210: \$40-30-25, u1800 \$25, u1550 \$25, u1300 \$20, u1050 \$15, u800 \$15, unr \$15. Reg 11-11:50, rd 1 at 12. Tom Fineberg, 7321 S South Shore Dr #6-D, Chicago 60649. 773-721-3979.

September 4-6, 2004, Illinois Open. An ICA Tour MAXI-event. ICA membership required.

ICA Supporters

Life Patron Members:

Warren, Helen E Western Springs
Warren, James E Western Springs

Century Club Patron

Members:

Bachler, Kevin L Park Ridge
Brock, Bill Chicago
Cohen, Lawrence S Villa Park
Dwyer, William T Worth
Fineberg, Thomas A Chicago
Friske, Thomas G Des Plaines
Naylor, Samuel, VI Carthage
Novotny, James J Schaumburg
Panner, Glenn E Frankfort
Pradt, Daniel J Glen Ellyn
Ryder, Randall L Springfield
Schmidt, Frederick W, Jr Bloomington
Seth, Pradip Barrington Hills
Smythe, Bill Chicago
Stein, Kurt W Clarendon Hills
Wong, Philip Wilmette

Gold Card Patron Members:

Barre, Todd J Elmhurst
Blanke, Clyde H Matteson
Bossars, Phil J Champaign

Chen, Aaron Oak Brook
Cook, David A Burr Ridge
Delay, Joseph D Schaumburg
Dueker, John T Lockport
Gruenberg, Fred Palos Heights
Hart, Vincent J Mount Prospect
Klink, Steven L, Jr Glen Ellyn
Lang, Richard S Evanston
Marovitch, Mark Cicero
Pehas, Alex Darien
Splinter, Joseph C Hanover Park
Sweig, Mitchel J Evanston
Tanaka, James G Chicago
Widing, Robert W Park Ridge

Patron Members:

Aaron, Michael E St Charles
Adwar, Bacil Alexy Skokie
Amodei, Dominic M Chicago
Benedek, Roy Western Springs
Birkeland, Roger Addison
Bishop, Jack Chicago
Boone, Foster L, Jr Lynwood
Carlton, Robert J Naperville
Cronin, Mike A Alsip
Duncan, Tom Naperville
Dupuis, Brian M Lake Bluff
Fenner, Charles E Chicago
Fischer, Gregory A Elk Grove Village
Fulk, Shizuko Fukuhara Skokie

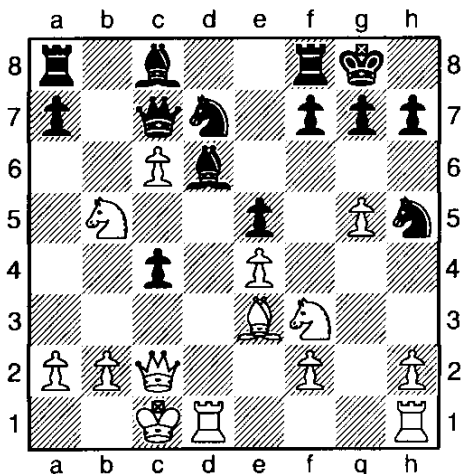
Gasiecki, Alan F Vernon Hills
Gerber, David F Mundelein
Griesmeyer, Walter J Momence
Hansen, Steven E LaGrange
Harvey, Frank Wheeling
Henderson, S E, Jr Bolingbrook
Hernandez, Hector Glen Ellyn
Iovin, Daniel G Elmwood Park
Just, Timothy W Gurnee
Karpes, Richard A Des Plaines
Klink, Steven, Sr Glen Ellyn
Kniedler, Thomas B Springfield
Lewis, Richard Harvey
Lobrac, Michael J Itasca
Marshall, Kenneth N Lombard
Martin, Gary J Park Ridge
Modes, Daniel R Bensenville
Moore, Clarence J Villa Park
Mote, David B Springfield
Rhymmer, Cecil Summit
Rose, Eric J Antioch
Rose, Keith C Woodridge
Satterlee, Ray Doyle Wheaton
Scott, Garrett H Normal
Sollano, Ely O Chicago
Sowa, Walter B Harwood Heights
Suarez, Ronald J Peoria
Tums, John M Oak Park
Zacate, Michael E Mokena

(1) Garry Kasparov – Deep Junior [D45]

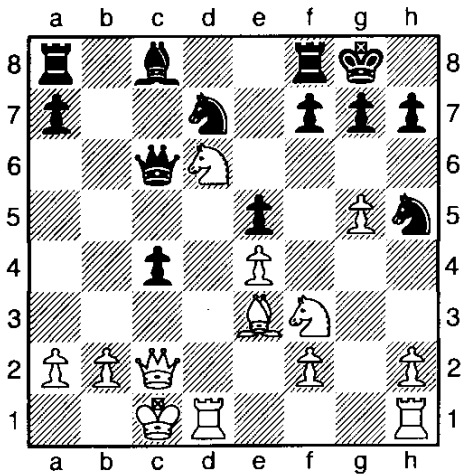
Man vs Machine New York, 26.01.2003

[Knaak/Schön/Greengard/Schulz]

1.d4 d5 2.c4 c6 3.Nc3 Nf6 4.e3 e6 5.Nf3 Nbd7 6.Qc2 Bd6 7.g4 dxc4 8.Bxc4 b6 9.e4 e5 Surprisingly Junior was out of book here and needed a long time for this move. 10.g5 Nh5 11.Be3 0-0 12.0-0 Qc7 13.d5N [RR 13.Be2 exd4 14.Nxd4 Nf4 15.Kb1 Be5 16.h4 Nc5 17.h5 Nce6 18.g6 Nxd4 19.Bxd4 Be6 20.gxh7+ Kxh7 21.Bf3 Rad8 22.Be3 Rxd1+ 23.Rxd1 Rd8 24.Ne2 Rxd1+ 25.Qxd1 c5 26.Qd2 Nxe2 27.Bxe2 Qd6 Ward,C-Gausel,E/Copenhagen 2002/CBM 88/[Wells]/1/2-1/2 (58); RR 13.Kb1 g6 14.Be2 exd4 15.Nxd4 Nf4 16.h4 b5 17.Bxb5 Bb7 18.h5 Be5 19.Bc4 Nb6 20.Be2 Rae8 21.hxg6 fxg6 22.a4 Nxe2 23.Qxe2 Qf7 24.f4 Bh8 25.e5 c5 26.Ndb5 Qb3 27.Nd6 Bxh1 Hillarp Persson,T-Borgo,G/Batumi 1999/CBM 74/1-0 (37)] 13...b5?! 14.dxc6 bxc4 15.Nb5! Diagram



Kasparov remains true to kind and goes for the maximum result. [15.cxd7 Bxd7 16.Qd2 Bg4 17.Qxd6 Qxd6 18.Rxd6 Bxf3 19.Rg1±] 15...Qxc6 16.Nxd6 Diagram

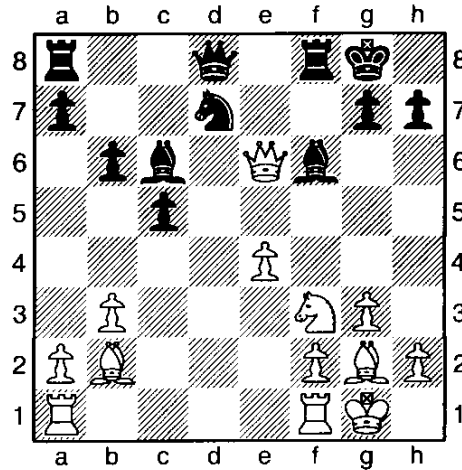


Kasparov would win this position easily against any human being. But against a computer?! 16...Bb7 Black is hoping for counterplay against the pawn on e4. 17.Qc3! [17.Nf5 achieves nothing 17...Qxe4 18.Ne7+ Kh8 19.Qxe4 Bxe4 20.Rxd7 Bxf3=] 17...Rae8?! Gives a rook for a knight in order to save the pawn on e5. [17...Rab8 18.Nxe5 Nxe5 19.Qxe5 Qa4 looks better.] 18.Nxe8 Rxe8 19.Rhe1 Qb5 20.Nd2 Rc8 21.Kb1 Nf8 22.Ka1 Ng6 23.Rc1 Ba6 24.b3! cxb3 25.Qxb3 Ra8 26.Qxb5 Bxb5 27.Rc7 White is completely dominating. At this point the Junior team resigned. 1-0

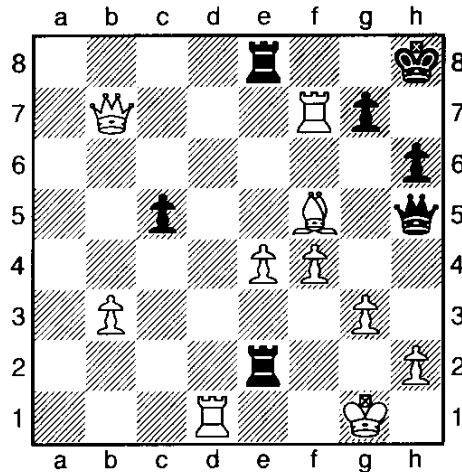
(1) Chris Merli (2068) - ColleyChess (1661) US Chess Live rated game 3

GCS GCS 11.08.2003

1.c4 f5 2.Nf3 Nf6 3.Nc3 e6 4.g3 c6 5.Bg2 d5 6.b3 Be7 7.0-0 0-0 8.e3 Nbd7 9.Bb2 b6 10.d3 Bb7 11.Qc2 c5 12.cxd5 Nxd5 13.Nxd5 Bxd5 14.e4 fxe4 15.dxe4 Bc6 16.Qc4 Bf6 17.Qxe6+ Diagram



17...Kh8 18.Qxc6 Bxb2 19.Rad1 Bd4 20.Nxd4 Rc8 21.Qd6 Rf6 22.Ne6 Qg8 23.Qxd7 Rxe6 24.Bh3 Ree8 25.Qxa7 Ra8 26.Qxb6 Rxa2 27.Rd7 Qf8 28.Qb7 Re2 29.Bf5 h6 30.Rfd1 Qf6 31.Rf7 Qg5 32.f4 Qh5 Diagram



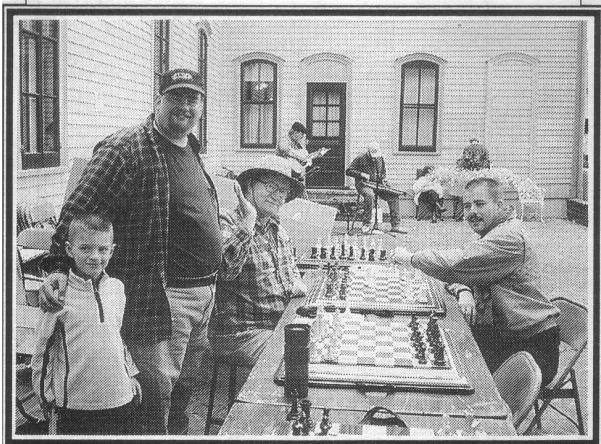
33.h3 Qf3 34.e5 Qxg3+ 35.Kf1 Qf2# 0-1

Clinton IL Apple & Pork Festival was held in September. ICB editor Colley Kitson, Down state Vice President Dennis Bourgerie and Chess Mad Man John Bonwell took on all chess players Saturday & Sunday. Our record was 73-3 with the losses going to the Editor.

While we played chess, several folk bands played some terrific bluegrass and historic music and everybody had a great time.



Jason Kitson playing Chess Public



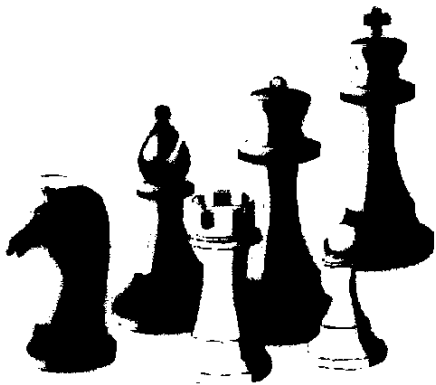
Jason & Colley Kitson
Dennis Bourgerie & John Bonwell



Honest Abe never played but he watched a few.



The Springfield Chess Club
is pleased to present to you



Illinois Class Championship

November 28, 29, and 30, 2003
An ICA Maxi-Tour and Ex-Urban Tour event.

5-SS, G/2, \$4000 b/100. 6 sections: Master/Expert 500-300-200; Class A, B, C, D, and E & under each 300-200-100. Unrateds may play in any section but may not win more than \$50 except in master/expert section. EF: \$49 if received by 11/22, \$69 thereafter. Play up one section for \$5 extra. ICA membership required, \$18, OSA.

Signature Inn, 3090 Stevenson Drive (immed. West of I-55, exit 94), Springfield. Reservations, (217) 529-6611. . HR: \$62 + tax, must mention chess tournament, must reserve by 11/22.

Schedule: Registration Friday 1-4 p.m. Rounds Friday 5 p.m., Saturday 8:30- 1:15- 6:00, Sunday 10 a.m. Awards at 2:30 p.m. One half-point bye available any round except 5th.

Ent/Info. Thomas Knoedler, 2104 S. 4th St., Springfield 62703. (217) 206-6056 days. (217) 523-7265 evenings, except Wednesday. Info only: David Long, (217) 522-0489. Bring Boards, sets, and clocks—none provided. NS/NC/W

Notice to library Members:
If you wish to continue to receive the Illinois
Chess Bulletin, you must notify the ICA
Membership Secretary,

Chris Baumgartner
107 S. Maple Lane
Prospect Points Hts, IL
60070
reegrower4@aol.com
346-749-2573

The Springfield Chess Club
is pleased to present to you



Illinois Class Championship

November 28, 29, and 30, 2003
An ICA Maxi-Tour and Ex-Urban Tour event.

More Information Inside back cover

Time Value Material



ILLINOIS
CHESS ASSOCIATION

C/O Bill Smythe
7042 North Greenview Avenue #1-S
Chicago, IL 60626-2833

ADDRESS SERVICE REQUESTED

PRESORTED
STANDARD
U.S. POSTAGE PAID
Astoria, IL
Permit No. 9