

ILLINOIS CHESS BULLETIN

JULY - AUGUST 1995 VOL. XVIII NO. 4

AN ICA BI-MONTHLY PUBLICATION - \$2.95

NATIONAL HIGH SCHOOL CHAMPIONSHIP DRAWS OVER 1250 PLAYERS

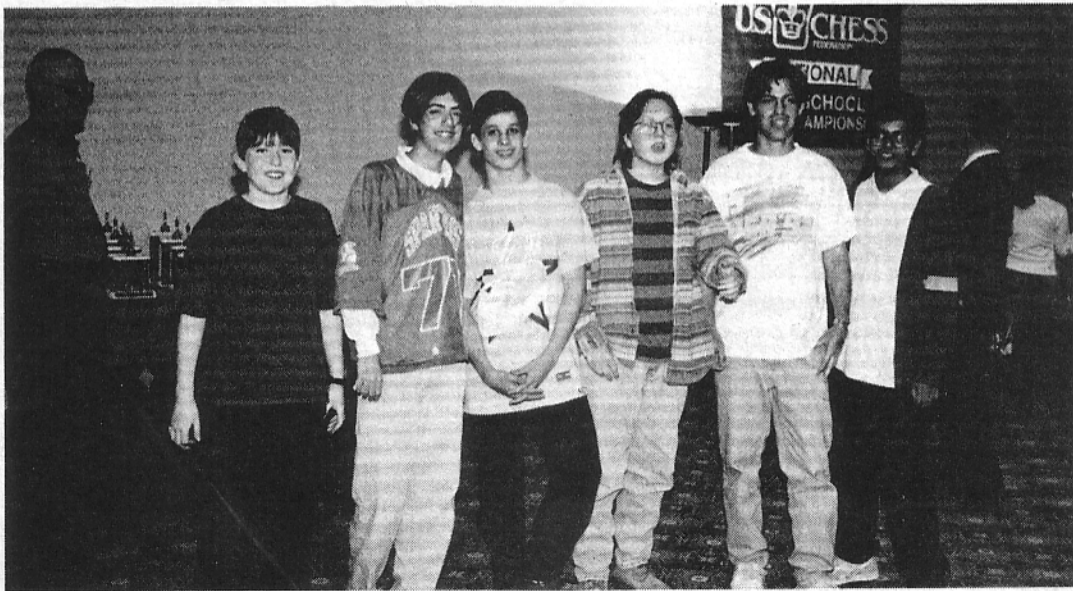


PHOTO COURTESY OF MARVIN ROGAN

**OPEN DIVISION - FIRST PLACE TEAM
DALTON SCHOOL - NEW YORK, NY**



Editor
1255 Oakton Lane, Naperville, IL, 60540,
Games Archivist
161 Oakwood Drive, Bolingbrook, IL, 60440,
Games Editor
161 Oakwood Drive, Bolingbrook, IL, 60440,
Scholastic Editor
654 Hillside, Glen Ellyn, IL, 60137,
Calendar Editor
1255 Oakton Lane, Naperville, IL, 60540,
Tour Statistician
7445 N. Greenview, Chicago, IL, 60626,

Bob Renaut
708-983-0934
Alan Watson
708-759-7757
Alan Watson
708-759-7757
Daniel Pradt
708-858-7511
Bob Renaut
708-983-0934
Bill Smythe
312-761-2455

MEMBERSHIP AND SUBSCRIPTIONS

The Illinois Chess Bulletin (ICB) is published bimonthly by the Illinois Chess Association. ICA membership includes a subscription to ICB. Century Club, Gold Card, and Patron members receive their ICB by first-class mail.

ANNUAL MEMBERSHIP RATES

Century Club.....	\$100.00
Gold Card.....	\$50.00
Patron.....	\$35.00
Regular.....	\$14.00
Junior (under 18).....	\$8.00

Send your subscriptions and address corrections to:
Alan Losoff (ICA Membership Secretary)
9402 N Octavia, Morton Grove, IL 60053

SUBMISSION DEADLINE

The deadline for submissions to the September - October 1995 issue is July 30, 1995.

ICA AFFILIATION

Chess clubs and other organizations which promote chess activity may affiliate with the ICA. Benefits include a copy of the ICB by first class mail, a listing under "Where to Play Chess," discounted advertising rates, free event advertising on Chess Phone and the right to run ICA Tour Events. ICA Affiliation costs \$25; please remit to the Membership Secretary.

ADVERTISING RATES

Full page.....	\$90
Half page.....	\$54
Quarter page.....	\$36
Eighth page.....	\$24

10% discount for the same ad in consecutive issues. 1/3 discount for ICA affiliates. All ads must be camera-ready to qualify for above rates; minimum \$20 charge for layout. Payment must accompany ad. The ICA & ICB reserve the right to reject advertising.

Copyright© 1995 Illinois Chess Association

TABLE OF CONTENTS

Editor's Corner	3
President's Podium.....	3
ICA Tour Standings	4
My European Chess Vacation.....	6
Hodgson Wins 1995 National Open.....	10
2nd Hawaii International	10
Reader's Retort	11
The Black Knights Tangled	12
Spring Tornado Captured By Mel Aisberry	13
The Greater Peoria Open	14
Reader's Showcase.....	16
Fox Valley Low Cost Open #9.....	17
National High School Championship.....	18
St Charles Chess Club News	22
Scholastic Update.....	23
Rule Book Tactics.....	23
Chess Scenes - pictures from recent Illinois events.....	25
Tactics in the endgame	29
Mid America Class Championship annotated games.....	30
Family, Religion, and the Royal Game.....	38
Games, Games, and more Games	39
Shabalov wins Chicago Open	40
Illinois Tour Cross Tables	41
Tournament Calendar.....	44
Illinois Chess Association Patrons	46
Where to Play Chess.....	47

**Need the latest chess tournament info?
Call Chess Phone 708-832-5222**

PRESIDENT'S PODIUM



The 1995 Illinois Tour is off to a great start. Central Illinois hosted three of the seven tour events held so far this year. The tour started off with the Tim Just Winter Open, followed by the Peoria Tornado (benefiting the Helen Warren Junior Chess Program), the Greater Peoria Open, the Fox Valley Low Cost Open, the Mid-America Class Championship, and the blockbuster Chicago Open. I can comment on the Chicago Open because I was lucky enough to get to play in the event. While the entry fee was somewhat steep, it was a terrific tournament. Held Memorial Day weekend at the Oak Brook Hyatt Regency, the tournament drew 417 entries (counting 28 re-entries). The 48 player Open Section was one of the strongest ever in the Chicago area. Alex Shabalov, 1994 U.S. Co-champion, took first place (worth \$3720), in a field that included 11 Grandmasters and 2 International Masters. Congratulations to all, but that was NOT what I was talking about in last month's column when I explained why chess players should eventually all become rich. The prize fund totaled \$37,200. Organizer Bill Goichberg promises that next year's Chicago Open will be even bigger and better.

Coming soon on the tour will be the Midway Amateur Class tournament July 22nd & 23rd (open only to under 2200 players), the August 6th Plus Score Mini Tour at Al Chow's club, and the Labor Day weekend Illinois Open Larry Stillwell Memorial Tournament, held this year at Aurora West High School. The location seems appropriate to remember one of Illinois' leading scholastic chess organizers, a friend and teacher of students for decades. We will all miss Larry. The impact of his character and faith will long be remembered by all who came into contact with him.

Speaking of Illinois organizers, on a more pleasant note, I understand that our own Al Losoff was named organizer of the year by the U.S.C.F. Congratulations, Al. Chicago and Key West were named Chess Cities of the year. Congratulations to us! Keep up the good work!

— Jim Oberweis

EDITOR'S CORNER



This is my twelfth issue of the Illinois Chess Bulletin, boy does time fly when you are having fun! If you are a long time subscriber grab my first or second issue and compare. I think you will see the quality of our state magazine continues to improve. I would like to hear from all of you. What do you like, what do you want to see changed or improved? More games, less diagrams, more articles, book reviews, what are your preferences? Drop me a note, e-mail or fax me with your suggestions.

This month's photograph credits are split between Al Losoff and Marvin Rogan. The Mid America Class Championships photos were taken by Al, while the National High School Championships were snapped by Marvin. Thanks to both these individuals for helping to capture Illinois chess for all to see.

—Bob Renaut

The following is a letter to the editor.

Dear Mr. Renaut,

I enjoyed your FVCC Low Cost Open #9. After a 17 year vacation from chess tournaments it was great to come back to chess with such a well organized tournament. I was glad and nervous to see such a strong turnout. I was impressed with the speed in which pairings and results were posted. I enjoyed the atmosphere of the tournament and hope future tournaments will be the same. Some of the members of your chess club were friendly, Jim Oberweis comes to mind first. Of course the exclamation point comes from my 4th round victory over an expert. The tournament would have been viewed the same no matter what my results though. I am looking forward to more tournaments in the future. No more 17 year vacations for this kid.

—Joseph R. Guth Jr

Mid-America Chess Associates Presents:
US Amateur Team Championship - Feb 1996
Mid-America Class Championships - March 1996
National Open - April 1996

ILLINOIS TOUR STATUS

By Bill Symthe Tour Statistician

This list reflects the following 1995 Tour events:

Tim Just Winter Open MAXI Jan 7-8
 Peoria Tornado mini Jan 15
 Greater Peoria Open MAXI Mar 4-5
 Fox Valley Low Cost Open #9, Aurora mini Apr 15
 Peoria Tornado mini Apr 22

UPCOMING 1995 TOUR EVENTS:

Midway Amateur Class, MAXI
 Jul 22-23
 Plus Score Mini Tour, mini, Aug 6
 Illinois Open MAXI Sep 2-4
 Midwest Class Championship, MAXI
 Oct 27-29
 Illinois Class MAXI Nov 18-19

Other Tour tournaments will be added to the schedule as the year progresses. Check the Illinois Chess Bulletin, Chess Life, and Tour listings posted at tournaments.

For players with fewer than three 1995 Tour events, the number of events (1 or 2) is shown in parentheses. A player must have played in at least three Tour events during 1995 to be eligible for year-end Tour prizes.

NOTE: ICA membership is required for all Illinois residents playing in ICA Tour events. Residents of other states are not required to join ICA if they are members of their home state chess associations. However, Tour points earned by out-of-staters do not count unless they are ICA members.

We have attempted to remove the names of out-of-state non-members from the following list.

Because the membership records are separate from the Tour records, the names of some non-members may remain. Membership checks will be performed at year-end to determine prize eligibility.

Master Tour Points

VAN BUSKIRK Doug	(2)	20
COHEN Lawrence S		19
KINNAIRD Rodney	(2)	19
SHABALOV Alexand	(1)	19
YOUNG Angelo	(1)	19
STEIN Peter	(2)	17
PANGAN Camilo C	(2)	15
CHOW Albert C	(2)	14
SHERNOFF Leon	(2)	14
BROOKS Michael A	(1)	12
FEDOROWICZ John	(1)	12
HART Dan G	(1)	12
MOTE David B	(1)	12
YERMOLINSKY Alex	(1)	12
ANDERSON Phil		11.5
CERMINARO J P		11

Expert Tour Points

KINNAIRD Rodney	(2)	20
SHERNOFF Leon	(2)	20
COHEN Lawrence S		19
NAFF William A		16
ALSBERRY Melvin	(1)	14
ANDERSON Phil		14
FAGAN James B		13
BOLITHO Thomas G		12
COX Richard N	(1)	12
HART Dan G	(1)	12

Class A Tour Points

COHEN Lawrence S		26
GIPSON John H	(1)	19
SCHMITZ Brian	(1)	19
SUKCHAROENPHON K	(1)	19
ZAREMBA Andrie	(1)	19
BOLITHO Thomas G		18

CERMINARO J P		18
ANDERSON Phil		14
HART Dan G	(1)	12
MC ELRATH Flaman	(1)	12
ROWE Robert A	(1)	12
SIWEK Mark S	(1)	12

Class B Tour Points:

TOWNSEND Chester		27.5
WILLARD Gary D	(2)	24
ENGELN Mark	(2)	23
ZIMMERLE R Wayne		23
JASAREVIC Ersah	(1)	19
LENCHO Mark W	(1)	19
ZAREMBA Andrie	(1)	19
ZELINSKI Daryl R	(1)	19
DELAY Joe		18
MITCHELL Gary		16.5
GETZ Barney		16

Class C Tour Points:

MIRANDA Edgardo	(1)	19
WORLEY James	(1)	19
GETZ Barney		16
STEVENS Joseph M		14
WALKER Barry Woo	(2)	14

Class D Tour Points:

MOORE Joseph K	(1)	32
HERTER Rudolph W	(1)	19
ROBLEDO Mark Jr	(2)	14
GIAMPA Michael A	(1)	12
HARRIS Terry T	(1)	12
REINKE Robert T	(1)	12
GASUNAS Anthony	(2)	9
MC CULLEY Matthe	(2)	9
MONTOYA Fernando	(2)	8
WISHNER Michael	(2)	8

Class E Tour Points:

MC CULLEY Matthe	(2)	9
CYGAN Joseph	(1)	7
KHORSHID Ibrahee	(1)	7
TUNNELL Donald	(1)	7
KUIPER Dane M	(1)	6
SETACCIOLI Rober	(1)	6

ILLINOIS OPEN STATE CHAMPIONSHIP

The Larry Stillwell Memorial Tournament

**SEPTEMBER 2 - 4
ICA MAXI TOUR EVENT**

\$5000 Guaranteed Prize Fund

**CHAMPIONSHIP
SECTION**

\$1200-600-300-200

TOP U2300 - \$200

Top Expert - \$300-150

Top U2000 - \$300-150

RESERVE

SECTION (u1800)

\$400-200-125-75

Top C-\$200-100

TOP D-\$150-\$75

E-\$100

Unr/Junior - chess clock

**Entry Fee: \$40 if by 8/27, \$20 to juniors (under 18)
\$10 more at site**

Registration: 7:45 - 8:45 am Saturday

Rounds: 9:30 am - 3:30 pm each day

Entries & info: Helen Warren at (708) 663-0688

P.O. Box 305, Western Springs, IL 60558

**Aurora West High School
1201 West New York Street
Aurora, Illinois**

**6 - SS
40/100, SD/1
USCF & ICA Required**

MY EUROPEAN CHESS VACATION

By Senior Master Dr. Eugene Martinovsky

This past winter I played in three wonderful European chess tournaments; Groningen, Holland December 19-30, 1994, Linares, Spain January 7-15, 1995 and Geneva, Switzerland January 21-29, 1995.

Groningen, Holland

I enjoyed both the European chess as well as the sightseeing too. Chess in Europe enjoys more prestige than back home in America. European papers do print chess news, games, and problems every day and there is a large section of the public that reads these materials. You play only one game per day and know your opponent's name several hours ahead of each game's starting time (sometimes even the night before!) The sets and clocks are all provided and laid out before each round, and there are plenty of tournament directors to observe the games in Zeitnot (time trouble.) And of course you have enough time to rest and sleep, to eat, prepare for your opponent, and to analyze the games in postmortem. You also have time for daily sightseeing!

The tournament in Groningen takes place every year during Christmas time. This past year the Open Grandmasters tournament ran from December 19th thru December 30th and contained 11 rounds; one every day except for Christmas, December 25th which was free for the participants to do as they wished. There were many other tournaments in Groningen taking place at about the same time, but the special Invitational featured our champion

Boris Gulko along with such other Grandmasters as Beliavsky, Yusupov, Miles, Almazi, Sokolov, Georgiev, Hodgson, Van Werly, etc. The young Hungarian Almazi won it with 8 points out of 11 while Yusupov finished clear second with 7 points. The American champion Gulko could only achieve an even score and ended up with 5.5 points.

Every morning at breakfast you could see and talk with these luminaries. The hotel was quite comfortable, and for your \$35.00 per night you also received a very hefty breakfast of all you could eat. The roundtrip airfare from Chicago to Amsterdam was only \$550.00! When you got to the Schiphol Airport in Amsterdam, you were also at the railroad station where you would immediately jump on the train and head to Groningen. The ride was very comfortable and also reasonably priced at \$30.00, and about 2.5-3.5 hours later I arrived in the pleasant surroundings of Groningen. You really don't see the sun too much, but there is also no snow. Sometimes it rains, but the temperatures are always somewhere between 33-45 degrees Fahrenheit. You could take a walk every day and see the surroundings; not only the city itself, but also the many parks and lakes. There are no slums in Groningen. The spacious and comfortable playing site was named "Martinihal" and is located just next to the Hotel Mercure.

This year the tournaments were well attended, especially the Grandmaster Open. Many players came straight to Groningen from Moscow where they had just finished competing in the

Olympiad. There were also many women chessplayers of all ages, particularly young girls. This city seems to have always had a lot of female players. The organizers give ladies special concessions to attract them and they are successful. Many titled female players also compete every year in Groningen, and out of my 11 opponents 3 were women!

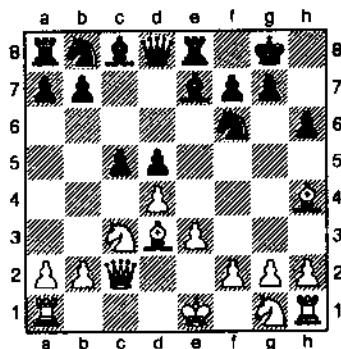
The winners of the 1994 Grandmasters Open with 8 points were GM Schneider, GM Sermek, GM Ibragimov, IM Sorin, IM Notkin, IM Tseitlin, IM Shipor, IM Brenninkmeijer, and GM Dvoiry. My result was a somewhat disappointing +4 -5 =2. I felt quite good, eager to play, enthusiastic and optimistic, but still nothing! My opponents seemed to play particularly well against me. I tried and tried but frequently got into Zeitnot, and we know this is not a good sign. Perhaps these are the roots of my failures in Groningen: being too aggressive, trying too hard early in the game, and of course Zeitnot. Indeed, I had much better results in Linares +5 -3 =1, and Geneva +3 -2 =4 where I played stronger players, but at these subsequent tournaments I didn't get into Zeitnot too often. Still, I did win 4 games here and the tournament was not a complete disaster, just a little bit under par perhaps.

Here are four of my games from Groningen:

Van der Wal, J (NED) (2275)
Martinovsky, E (USA) (2340) [D35]
Groningen (09), 1994
[Martinovsky]

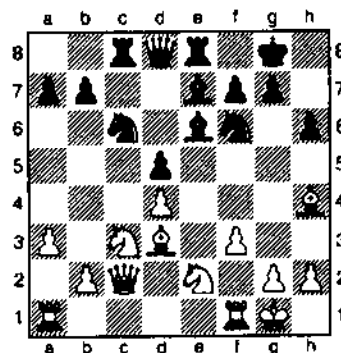
1.d4 ♘f6 2.c4 e6 3.♘c3 d5 4.cxd5

exd5 5. ♖g5 ♗e7 6.e3 0-0 7. ♗d3 ♜e8 8. ♞c2 h6 9. ♗h4 c5!



This is not the first time I am playing this sort of move. A while back I became tired of defending against the minority attack in passive positions where c6 had been played and now prefer an isolani on d5.

10. ♗ge2 ♗c6 11.a3 cxd4 12.exd4 ♗g4 13.f3 ♗e6 14.0-0 ♜c8

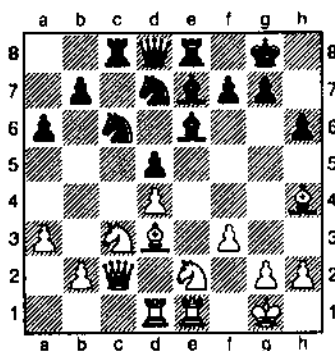


Black has at least equalized although D. Gurevich says there is no more. I personally like the harmony of my piece development which is picture perfect: ♗f6, ♗f6, ♗e6, ♗e7, ♜e8, ♜c6, ♞d8, ♗g8 but Dmitry believes that I'm exaggerating the value of optical perfections and that what really counts is functional perfection. Regardless, he feels that I've done well as Black in the QGE.

15. ♜fe1

Two weeks later at a tournament in Linares, Spain, GM Petursson played 15. ♜ad1 in this same position!

15...a6 16. ♜ad1 ♗d7

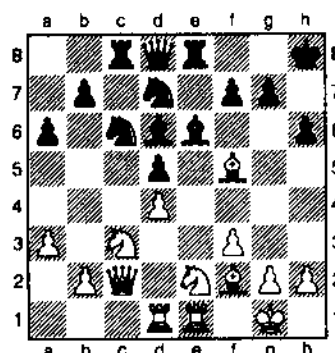


Dmitry claims this is an incorrect plan because Black should not try to exchange the dark-squared bishops. Upon reflection I agree and will not repeat the idea again. Queenside activity by 16...b5 is better.

17. ♗f2

This is possibly the wrong response also, but White was concerned about the weakness of ♗d4.

17...♗d6 18. ♗h7+ ♗h8 19. ♗f5



I didn't expect White to try to exchange my "bad" bishop, but closer scrutiny reveals that it is not so simple for Black to find the proper antidote to this plan.

19...♞f6 20. ♗xe6 fxe6 21. ♗g3 ♗xg3 22.hxg3 b5 23. ♞d3 ♞g5 24. ♗f2 ♗e7

Black is trying to put pressure on ♗g3 but also has his own weaknesses on e6 and g6 which a White knight on f4 would be perfectly positioned to exploit. It is

difficult to say whose position is preferable, but I did have a significant advantage on the clock!

25. ♗f4 ♗f5 26. ♗ce2 ♗f8

26...♜c6

27. ♜c1 ♗g8

27...♗xg3? does not work because of 28. ♗h3! +

28.a4 ♗d6

I realized here that I have nothing on the Kingside and better start preparing to defend my weaknesses on the Queenside.

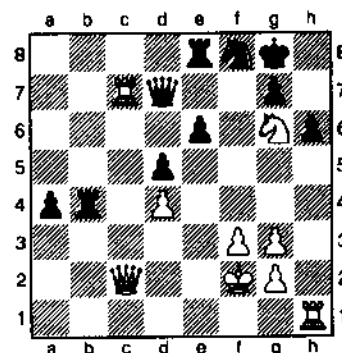
29.axb5 axb5 30. ♜c5 ♞e7 31. ♜ec1 ♞d7 32.b4!? ♗c4 33. ♗c3 ♜b8 34. ♜h1

34. ♜a1 was in retrospect better but my opponent only had 2 minutes left for his next 6 moves while I had 15 minutes.

34...♗b2!

This is an excellent move, especially against against an opponent in time trouble!

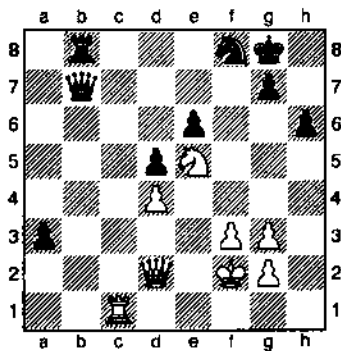
35. ♞c2 ♗a4 36. ♗xa4 bxa4 37. ♗g6 ♜xb4! 38. ♜c7



38...♜b2!! 39. ♞xb2 ♞xc7 40. ♗e5 ♜b8

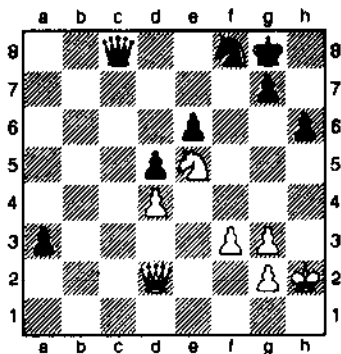
The time trouble is over and I am ahead a passed pawn, but the White ♗e5 will not be easy to neutralize.

41. ♖d2 a3 42. ♞c1 ♜b7!



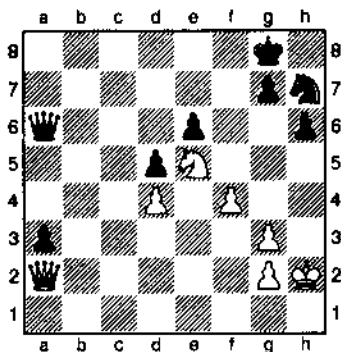
42... ♞b2 would have probably won but I didn't like the passivity of my position after 43. ♞xc7 ♞xd2+ 44. ♜e3 ♞xg2 45. ♞a7 a2 46. g4.

43. ♜g1 ♞c8 44. ♞xc8 ♜xc8 45. ♜h2



45. ♜a5 ♜c1+ 46. ♜h2 ♜b2 47. ♜a7 a2 48. ♜f7+ ♜h7 49. ♜xf8 ♜xd4+

45... ♜a8 46. ♜a2 ♜a6 47. f4 ♞h7



The White Queen is temporarily subdued, but Black must always be alert to the possibility that she may abandon her blockade under the proper circumstances to coordinate

with the ♞e5 in an attack on the Black King. I had to find a way to mobilize my passive ♞f8 without compromising my King's position. My choice may not have been the best, but the clock was ticking and I had to do something.

48. g4 ♜a4 49. ♞g6

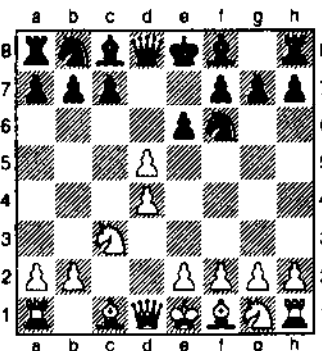
49. ♞f3!

49... ♞f6 50. g5 hxg5 51. fxg5 ♞e4 52. ♞e7+ ♜f7! 53. ♞xd5 ♜xd4! 54. ♞c7 ♜d6+ 55. ♜g1 ♜xc7 56. g6+ ♜f6 57. ♜xa3 ♜c5+ 0-1

Here is another QGE from Gromingen:

Ionescu, V (WIM, Romania) (2170)
Martynovskiy, E (USA) (2340) [D35]
 Groningen, 1994
 [Martynovskiy]

1. d4 ♞f6 2. c4 e6 3. ♞c3 d5 4. cxd5

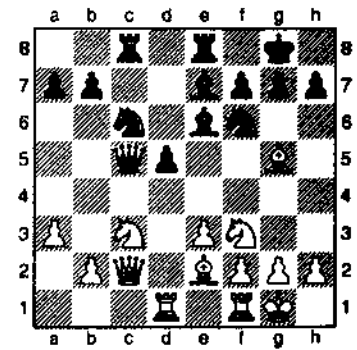


I no longer dread this move ... I welcome it!

4... exd5 5. ♞f3 ♞e7 6. ♞g5 0-0 7. ♜c2 ♞e8 8. e3 c5!? 9. dxc5 ♞c6 10. ♞d1 ♞e6 11. ♞e2 ♜a5 12. 0-0 ♜xc5 13. a3 ♞ac8

You can contact the editor at:

Fax: (708) 305-2942
 Phone: (708) 983-0934
 Internet: brenaut@mcs.net
 Compuserve: 76356,3003

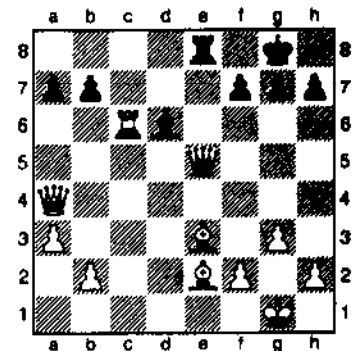


Black has again equalized the chances as all his pieces are harmoniously placed (picture perfect!) and there is no minority attack in sight.

14. ♞c1 d4! 15. cxd4 ♞xd4 16. ♞xd4 ♜xd4 17. ♞e3 ♜e5 18. ♜a4 ♞d6 19. g3

19. ♜h4!?

19... ♞d5 20. ♞xd5 ♞xd5 21. ♞fd1? ♞xc1! 22. ♞xc1 ♞c6! 23. ♞xc6



Dmitry Gurevich claims this is best for White under the present circumstances and with careful play should yield compensation with little chance of losing.

23... bxc6 24. ♜xc6 ♞f8

While I had 32 minutes on my clock to reach move 40, my opponent only had 8 minutes.

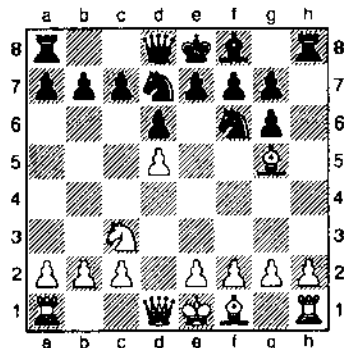
25. ♞f3

25. ♞c4!?

25...a5 26.♖a4? ♜c8 27.♗g4 ♜d8
 28.b4 axb4 29.axb4 ♜b8 30.♙f4
 ♚e1+ 31.♙g2 ♜xb4 32.♗c8 ♜b2!
 33.♙d6 ♜xf2+ 34.♙h3 ♗e6+ 0-1

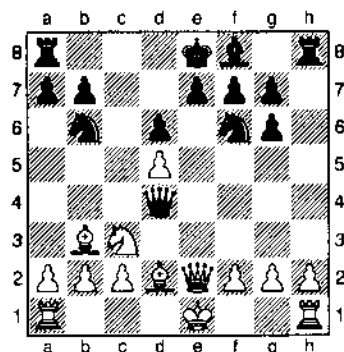
Martinovsky, E (USA) (2340)
Van Esch, N (NED) (2205) [A46]
Groningen, 1994
[Martinovsky]

1.d4 ♘f6 2.♘f3 d6 3.♘c3 ♙f5
 4.♙g5 ♘bd7 5.♘h4 ♙g6 6.♘xg6
 hxg6 7.d5!



We are already out of the books. I usually don't enjoy crossing the 4th rank with my d-pawn because of my dislike for Benoni-like positions, but here the move is good because it restricts the development of Black's ♙f8.

7...c6 8.e4 ♗a5 9.♙d2! ♗b6
 10.♙c4! ♗d4 11.♗e2 ♘b6
 12.♙b3 cxd5 13.cxd5



I give credit to myself for having seen earlier that Black cannot take my ♘d5 because of 13...♘anyxd5 14.♙xd5 ♘xd5 15.♗b5+! ♘d8 16.♗xd5. My opponent noticed it only now.

13...♘fd7?

Also no good.

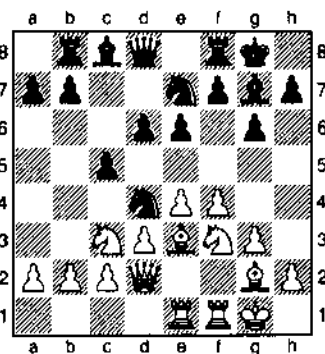
14.♘b5! ♗f6 15.♙c3 ♘e5
 16.♘c7+ ♘d8 17.♘xa8 ♘xa8
 18.0-0-0 ♗g5+ 19.♙b1 ♗xg2
 20.♙xe5 1-0

Martinovsky, E (USA) (2340)
Gazimov (IM, AZE) (2420) [B26]
Groningen, 1994
[Martinovsky]

1.e4

After winning three games in a row my confidence swelled. Who is this Gazimov anyway? I've studied Closed Sicilians for some time, read books, and played it with reasonable success in 15 minute games, so why not test both our knowledge right here. Gazimov was to win his IM title three rounds before the end of this tournament and I just didn't think he would try too hard to beat me. You'll see what happened!

1...c5 2.♘c3 ♘c6 3.g3 g6 4.♙g2
 ♙g7 5.d3 d6 6.♙c3 e6 7.♗d2 ♜b8
 8.f4 ♘ge7 9.♘f3 ♘d4 10.0-0 0-0
 11.♜ae1



Again my position is optically perfect as all pieces are developed on their best squares. I am quite content with this.

11...b6

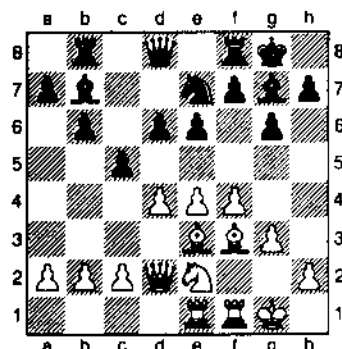
This is a good move despite the fact that it looks strange because

Black first placed his rook on b8 and then not to play b5. The reason is Black must defend his ♘c5 in anticipation of White's intended advance e4-e5 which would undermine its defense. Gazimov knows what he is doing!

12.♘e2!

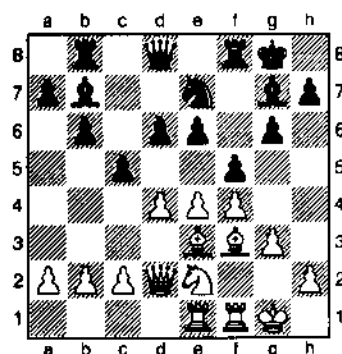
A correct move since after 12...♘xf3+ 13.♙xf3 ♙xb3? there follows 14.c3 with a strong advantage.

12...♘xf3+ 13.♙xf3 ♙b7 14.d4



Although perhaps not a mistake, White should have preferred 14.c3 or 14.g4 with an equal game.

14...f5!



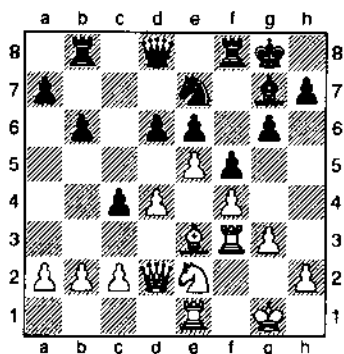
Excellent move. Gazimov played it without too much thought but I was a little surprised.

15.e5?

I wanted to seize space with this move, but the idea was wrong. White should have played 14.dxc4

and been content with equality ... that was all I really had here.

15...♙xf3 16.♞xf3 c4!



After this further surprise I started getting real concerned.

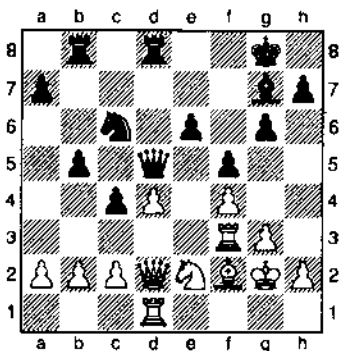
17.exd6 ♖xd6 18.♘c3

If I play instead 17.c3 then all my pieces stand poorly; neither my ♙e3 or ♘c2 having any place to go. At least now the ♘c3 contests the d5 square where Black's ♘e7 seems to be heading and I have the opportunity of pressuring ♙e6 by doubling rooks on the e-file.

18...b5 19.♙f2 ♘c6!!

Now my ♙d4 is in trouble and despite spending a lot of time I was unable to find an adequate defense.

20.♞d1 ♞fd8 21.♘e2 ♗d5 22.♙g2



Things are terrible if I have to play this sort of move, but there is nothing better under the circumstances since 21.♞e3 would lose at least an exchange. I have a terrible traffic jam in my position.

What happened to my picture perfect piece placement?

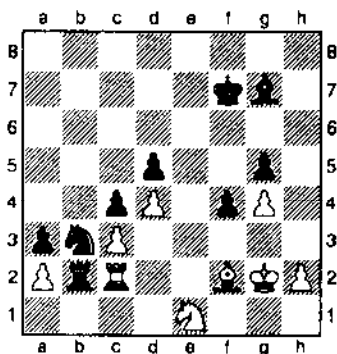
22...b4 23.♙e3 ♞b7 24.c3 a5
25.♘g1 bxc3 26.bxc3 ♞db8
27.♗e2 ♞b2 28.♞d2 ♞b1 29.♙f2
a4 30.♙h3

I stand terribly, but at least I am still alive and to my surprise have not lost anything.

30...h6 31.♞e3 g5 32.fxg5 hxg5
33.g4! ♙f7 34.♗f3! f4 35.♗xd5
exd5 36.♞cc2 ♞c1 37.♞c2 ♞xc2
38.♞xc2 a3 39.♘f3 ♞b2 40.♘e1
♘a5

I've played well in Zeitnot and found the only moves to hold my position, but the game is still lost.

41.♙g2 ♘b3!



42.h4 ♘a1 43.♞c1 ♞xa2 44.♘f3
gxh4 45.♘g5+ ♙f6 46.♘h3 ♘b3
47.♞e1 ♙h6 48.♞e5 ♞xf2+! 0-1

Editor's note: This is the first of a three part article done by Senior Master Martinovsky covering his chess adventures overseas. Check out the September-October issue for parts II & III for the exciting conclusion.

HODGSON WINS 1995 NATIONAL OPEN

The 1995 National Open was jointly sponsored by the USCF and Illinois' Fred Gruenberg and Al Losoff. NM Alan Watson provided his journalistic talents by producing the daily bulletin.

GM Hodgson, GM Walter Browne, and IM Tal Shaked all tied for first place with 5.5 points and all earned \$3,000. GM Hodgson won the distinguished Edmondson Cup on tiebreaks. Meanwhile, GM Benjamin, GM Kaidanov, IM Frias, FM Bradford, IM Mariano, IM I. Ivanov, IM Remlinger, IM Danner, FM Kelleher and GM de Firmian were all tied with 5 points and won \$210 each.

In the Reserve section with 297 players, C. D'Avial and Mike Bruns tied for first and won \$1750 a piece.

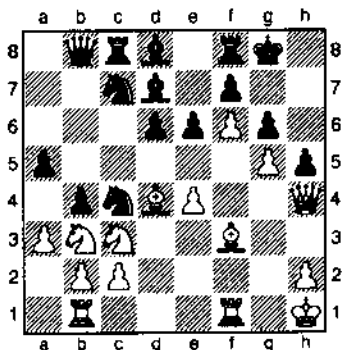
2nd HAWAII INTERNATIONAL

GM S. Djuric suffered only one defeat by Illinois' Eugene Martinovsky on his way to claiming first place with a 9-1 score at the 2nd Hawaii International tournament. Dr Martinovsky's 8.5-1.5 score was good enough to earn him a clear second place. SM Martinovsky drew with Eric Schiller and lost to GM John Donaldson on his way to second place. GM Donaldson took third place.

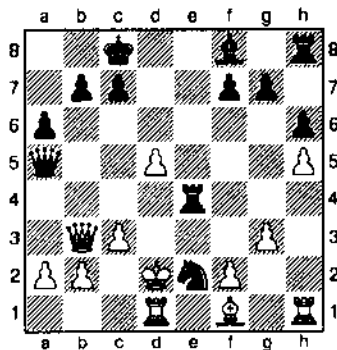
Check out Dr. Martinovsky's victory over GM Stefan Djuric on page XX.

READER'S RETORTS

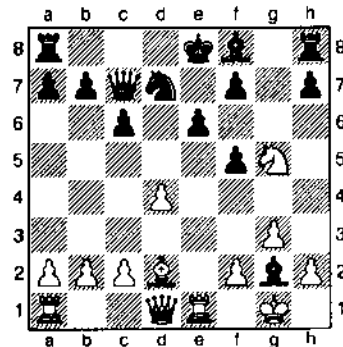
(1) Pedersen, NE - Wallach, K
Mid America Class (3), 1995
White to move



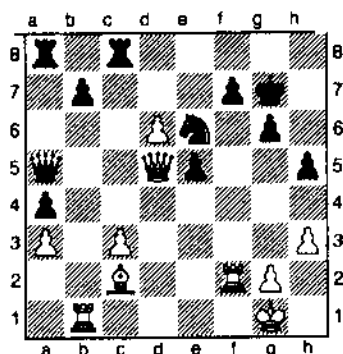
(3) Pangan, C - Formanek, E
Mid America Class (3), 1995
Black to move



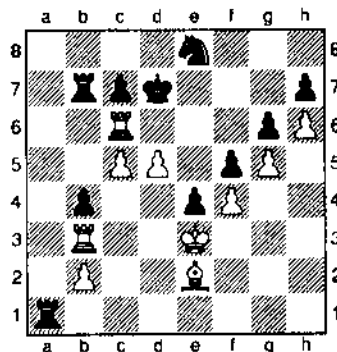
(5) DeFirmian, N. - Owen, S
National Open, 1995
White to move



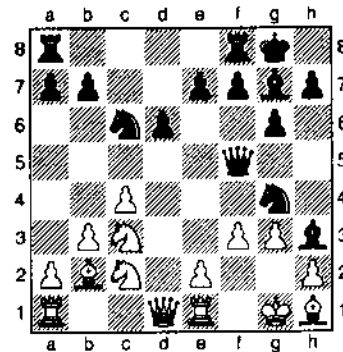
(2) Yermollinsky, A - Manion, J
Mid America Class (1), 1995
White to move



(4) Karklins, E - Rogan, M
Mid America Class (5), 1995
White to move



(6) Heaton, W - Belakovskaya, A
National Open, 1995
Black to move



Retorts Revealed

- (1) 24. ♖xh5 ♜e5 25. ♙xe5 dxe5 26. ♙xg6 fxg6 27. f7+ ♜xf7 28. ♜xf7 ♜xf7 29. ♜h7+ ♜e8 30. ♜f1 ♙f6 31. gxf6 1-0
- (2) 30. ♜xf7+ ♜xf7 31. ♜f1+ ♜g7 32. ♜xe6 e4 33. ♙xe4 ♜g5 34. h4 ♜g3 35. ♜f7+ ♜h6 36. ♙xg6 ♜xg6 37. ♜e3+ 1-0
- (3) 23... ♜d4! 0-1
- (4) 41. ♜xg6 hxg6 42. c6+ ♜c8 43. cxb7+ ♜xb7 44. ♜xb4+ ♜c8 45. ♙a6+ ♜d8 46. ♜b8+ ♜e7 47. ♙b5 1-0
- (5) 14. ♜xc6+ ♙e7 15. ♜h5 ♜f8 16. ♜xg2 ♜f6 17. ♜xf6 ♙xf6 18. ♜xh7 0-0-0 19. ♜xf8 1-0
- (6) 14... ♜xc2 15. ♜xc2 ♙d4+ 16. e3 ♜xe3 17. ♜f2 ♜c2 18. ♜xd4 ♜6xd4 19. ♜xe7 ♜xa1 20. ♜d5 ♜ac2 21. g4 ♜fe8 0-1

The Black Knights Tangled

By National Master Alan Watson

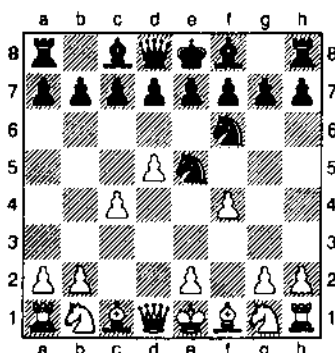
A short while back, Georgi Orlov wrote a manuscript for Inside Chess Enterprises entitled the "Black Knights Tango" in which he expounded the opening 1.d4 ♘f6 2.c4 ♘c6. In such an unusual opening one must always be wary of surprises, and such was the case here as his opponent essayed a sacrifice which was not even considered by Georgi and for which I have been unable to locate any references. Confused and unfamiliar with the resulting sharp position, Georgi rapidly landed in deep trouble after only a couple weak moves and became a victim to his opponent's truly inspired play. The Black knights in this game never do seem to work together and get comfortable; and it is for this reason that I parody the book and title this game "Black Knights Tangled!"

Interestingly, after the game Senior Master and feared tactician Emory Tate was heard to quip that he had been toying with this gambit for more than 10 years, and that if it's good enough for blitz it's good enough to play against Orlov!



Tate, E (2464)
Orlov, G (2600) [A45]
Mid America Class (5), 1995
[Watson]

1.d4 ♘f6 2.c4 ♘c6 3.d5 ♘e5
 4.f4!?



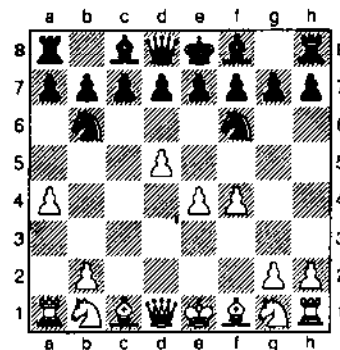
In his book, Orlov considers four alternatives A) 4.e4 e6! (Velasco) 5.f4 ♘g6 6.♗d3 exd5 7.exd5 ♗b4+ 8.♗d2 ♖e7+ 9.♕f1 ♗xd2 10.♖xd2 ♘e4=; B) 4.♘c3 (The most solid approach in this position.) 4...e6 (4...♘xc4 5.e4 ♘b6 6.e5 ♘g8 7.♘f3 d6 8.♗b5+ ♗d7 9.e6!) 5.e4 exd5 6.cxd5 ♗c5 7.♗e2 d6 8.♘f3 0-0 9.♘xe5 dxe5 10.0-0 h6! =; C) 4.♖c2?! (Prematurely developing the Queen.) 4...e6 5.e4 b5!? 6.dxe6 fxe6 7.cxb5 ♗b7 8.♘c3 ♗b4 9.f3 d5 10.exd5 exd5 11.♗d2 d4= Orlov; and finally D) 4.b3?! (This is described by Georgi as the weakest of the 4th move alternatives because of White's vulnerability along the a1-h diagonal Witness the following failure of a former US Champion played onboard a ship crossing the Atlantic!) 4...e6 5.♗b2 ♗b4+ 6.♘d2 ♘e4 7.♗c1 ♖f6 0-1 Marshall, F-Torre, C 1925 I'm sure

Tate's move will be included as an additional chapter in the book's next edition!

4...♘xc4 5.e4!

This move represents White's most consistent follow up to the gambit play initiated with the previous move. In compensation for the proffered pawn, White strives to build a powerful center and accelerate his development through repeated attacks on the awkward Black knights

5...♘b6 6.a4!?



6...a5!?

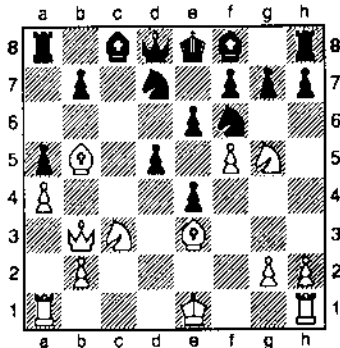
Black reluctantly considers it best to put a brake on White further expansionist aims but in doing so also sows the seeds of his future difficulties as the Queenside is slightly weakened. It should be noted that the ♘b6 is still lacking a safe square 6...♘xe4 7.a5 ♘xd5!?

(7...e6?! 8.axb6 ♖h4+ 9.g3 ♘xg3 10.♘f3 ♖h5 11.♖xa7 ♖b8 12.bxc7+-) 8.♖xd5 ♘f6 9.♖b3=

7.♘c3 c6?!

It is this careless nudge of his c-pawn that is going to land Orlov in a world of trouble. When looking at the position only briefly after the game Seymon Palatnik suggested 6...d6 as better but felt that White had some compensation for his sacrificed material.

8. ♖e3 d6 9. ♖b3 ♘bd7 10. ♘f3 cxd5 11. ♖b5 dxe4 12. ♘g5 d5 13. f5 e6!?



Unable to find anything more promising, and agitated and confused by the swirling White pieces dancing about his position like hornets preparing to retaliate against an unwelcome intruder disturbing their hive, Orlov offers his own sacrifice in the hope that he can rapidly usher his Monarch to safety on the Kingside. One of Tate's numerous threats in this position which he delighted in exhibiting to anyone who would watch was 13...h6 14. ♘e6! fxe6 15. fxe6 g6 16. ♖b6! ♖xb6 17. ♖xd7+ picking off the Black Queen!

14. fxe6 ♖b4 15. ♘xf7 ♖e7 16. ♘g5!

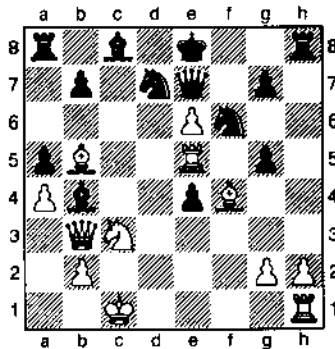
White is not to be bought off by the mere offer of Black's ♖h8. The ♘e6 literally represents the heart of Tate's position and as such pumps life into the assortment of pieces supporting and coordinating with it.

16... ♘g4

That castling still holds a plentitude of dangers is shown by the

variation 16...0-0 17. exd7 ♖xd7 18. 0-0 ♖c6 19. ♖xf6! ♖xf6 20. ♘xd5! with a winning position .

17. ♖f4 h6 18. 0-0-0! hxg5 19. ♖xd5! ♘gf6 20. ♖e5!!



An unusual yet incredibly beautiful move which forces the win of material due to the multitude of pins besieging the Black position.

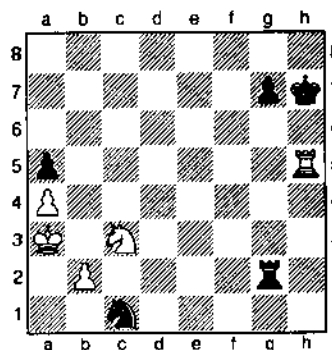
20... gxf4 21. exd7+ ♖xd7 22. ♖xd7+ ♘xd7 23. ♖xe7+ ♖xe7 24. ♖xb7 ♖b8 25. ♖xe4 ♘c5 26. ♖g6+ ♖f8 27. ♖f1 ♖h6 28. ♖xf4+ ♖g8 29. ♖f7+ ♖h8 30. ♖f5

30. ♖xe7? ♘d3+ 31. ♖c2 ♘xf4 32. ♖e5 ♖xb2+!

30... ♖f8 31. ♖xf8+

Tate follows the clearest course and exchanges the majority of remaining pieces to transpose into an easily won ending.

31... ♖xf8 32. ♖xf8+ ♖h7 33. ♖f5 ♘b3+ 34. ♖b1 ♖xh2 35. ♖a2 ♘c1+ 36. ♖a3 ♖xg2 37. ♖h5+



Prudently forcing the Black King into either blocking his own passed pawn or retreating away from the battle where he won't easily be able to assist its advance. At this level of Chess it's the little details which make a world of difference between a win and a draw!

37... ♖g6 38. ♖xa5 ♘d3 39. ♖b5 ♖c2 40. ♘d5 [40. a5?? ♘xb2! =] 40... ♖c1 41. a5 ♖a1+ 42. ♖b3 ♖f7 43. ♘b4 ♘xb4 44. ♖xb4 ♖f6 45. ♖b6+ ♖f5 46. a6 ♖f4 47. ♖g6 ♖f5 48. ♖xg7 ♖xa6 49. ♖b5 ♖a2 50. b4 ♖e6 51. ♖b6 ♖d6 52. b5 ♖b2 53. ♖g5 ♖d7 54. ♖b7 ♖a2 55. b6 ♖d6 56. ♖g1

This scintillating game played against one of the United State's most solid players presents Emory Tate at his most impressive, with a style television buffs might describe as a cross between the shows "Outer Limits" and "Twilight Zone!" 1-0

PEORIA SPRING TORNADO CAPTURED BY MEL ALSBERRY

By Bill Naff

There were 28 entrants in the Peoria Spring Tornado. The tournament was directed by Bill Wilkinson. Mel Alsberry of Bloomington-Normal won the \$75 First Place prize. Bill Naff of Peoria won the \$50 Second Place prize. Class prizes of chess books went to Dennis Bourgerie (A), Chet Townsend (B), Jim Bartel (C), and Greg Weber (D).

SUPPORT THE ICA

Tell our advertisers you
saw their ad in the ICB -
Thanks

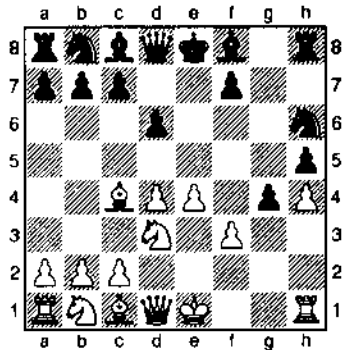
THE GREATER PEORIA OPEN WON BY SM ANGELO YOUNG

SM Angelo Young took a clear first place in the Greater Peoria Open held on March 4-5, 1995. His quick draw in the last round with David Mote insured his undefeated score of 4 1/2 - 1/2 would give him first place. NM David Mote and NM Pagan tied for second place with 4-1 scores.

Here are several games annotated by David Mote.

Mote,D (2268)
Rogan,M (2000) [C39]
Greater Peoria Open (1), 1995
[David Mote]

1.e4 e5 2.f4 exf4 3.d3 g5 4.h4 g4
 5.dxe5 h5 6.dxc4 d6 7.d4 d6
 8.d3 f3 9.gxf3

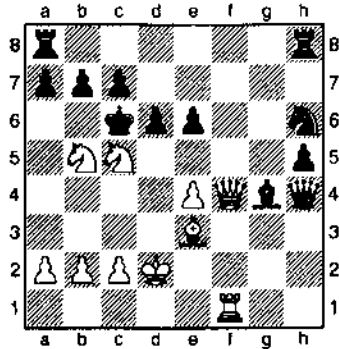


I also considered the safer but less enterprising 9.g3.

9...dxe7 10.dxe3 dxc4+ 11.d2
 dxc6 12.dxc3 gxf3 13.fxf3 d6
 14.f4 dxd4 15.faf1

15.dxd4? d6

15...dxc6 16.dxe6 fxe6 17.d6
 d7 18.fxc4!! dxc4 19.dxc5+
 dxc6



19...dxe7? 20.dg5+ dxc7#;
 21.dxc5? 20.dxc7+ dxe8
 21.d6#; 19...dxc8 20.dxe6]

20.d4+ dxc5

This loses instantly, but the alternatives also lacked promise, e.g. 20...dxb6 21.dxc6 c5 22.dxd6+ dxa5 23.dxc5+ dxa6 (23...dxa4 4.b3 Mate!) 24.dxc7 Mate!

21.d3+ 1-0

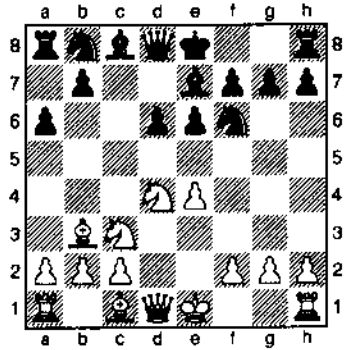
Sax,R
Young,A [B65]
Greater Peoria Open (1), 1995

1.e4 c5 2.d3 dxc6 3.d4 cxd4
 4.dxd4 d6 5.dxc3 d6 6.dg5 e6
 7.f2 d7 8.0-0-0 0-0 9.f4
 dxd4 10.fxd4 fa5 11.dxc4 d7
 12.e5 dxe5 13.fxe5 d6 14.dxf6
 gxf6 15.fg4+ dh8 16.exf6 dxf6
 17.f3 g8 18.f1 ac8 19.d3
 g7 20.f1 cg8 21.f1 fg5
 22.a4 a6 23.f1 c8 24.f2 fg6
 25.f1

The remainder of the game is indecipherable. Black won on move 35. 0-1

Ash,B (2035)
Mote,D (2268) [B88]
Greater Peoria Open (2), 1995
[David Mote]

1.e4 c5 2.d3 d6 3.d4 cxd4
 4.dxd4 d6 5.dxc3 a6 6.dxc4 e6
 7.d3 d7



7...b5 0-0 d7 9.f4 0-0 (9...d7
 10.e5 dxe5 11.fxe5 d5 12.d3
 dxc6 13.exf6 dxd4 14.f1 dxe3+
 15.fxc3 d4 16.fae1 d8=)
 10.e5 dxe5 11.fxe5 d7 12.d3
 dxe5 13.fh5 d4 14.dxc4 bxc4
 15.fad1 fc7 16.f3 g6 17.fh6
 f6=; 7...d6 (transposing to the
 Sozin) 8.d3 d7 9.f4 0-0 10.f3
 dxd4 11.dxd4 b5 12.dxf6 dxf6
 13.e5 d4+ 14.g3 db8 15.gxh4
 d7 16.f1 fh4+

8.0-0 d6 9.d3 da5 10.f4
 dxb3?

10...fc7; 10...b5!?

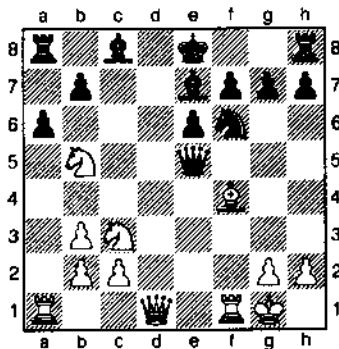
11.axb3 fc7?

11...0-0 12.e5 dxe5 13.fxe5 d5

12.d5 fb8?

12...fc6

13.e5 dxe5 14.fxe5 fe5 15.d4

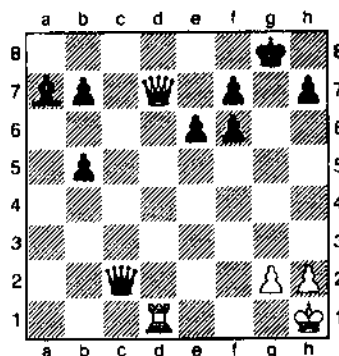


15. ♖d4! ♜xd4 16. ♔xd4-+

15... ♜c5+ 16. ♔h1 0-0 17. ♖c7 ♜a7 18. ♜e2 ♜d8

18... b5 19. ♖7xb5 axb5 20. ♔e3 ♜xa1 21. ♔xc5 ♜xf1+ 22. ♜xf1 ♔xc5 23. ♖xb5

19. b4! ♜xb4 20. ♖3b5 ♔c5 21. ♖xa7 ♔xa7 22. ♜ad1 ♜xd1 23. ♜xd1 ♔d7! 24. ♔e5 ♜c5 25. b4 ♜c6 26. b5 axb5 27. ♔xf6 gxf6 28. ♜d2 ♜xc7 29. ♜xd7 ♜xc2



29... ♜xd7 30. ♜xd7 b4 31. ♜xb7 ♔c5

30. ♜f1 ♜b2

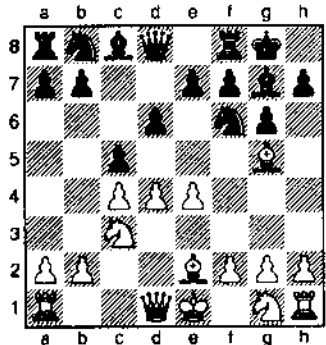
30... b4?? 31. ♜d8+ ♔g7 32. ♜xf6+ ♔g8 33. ♜xf7+ ♔h8 34. ♜f8#

**DON'T FORGET TO
RENEW YOUR
SUBSCRIPTION**

31. ♜xb7 ♔d4 32. ♜b8+ ♔g7
33. ♜g3+ ♔f8 34. ♜b8+ ♔e7
35. ♜c7+ ♔e8 36. ♜c8+ ♔e7
37. ♜c7+ ♔f8 38. ♜b8+ ½-½

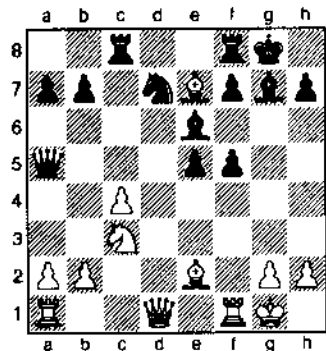
**Kulbacki, J (1927)
Mote, D (2268) [E74]
Greater Peoria Open (3), 1995
[David Mote]**

1. d4 ♖f6 2. c4 g6 3. ♖c3 ♔g7 4. e4 d6 5. ♔e2 0-0 6. ♔g5 c5



6... h6 7. ♔h4 c5 8. d5 (8. ♖f3 g5 9. ♔g3) 8... ♜a5 9. ♔d3 g5 10. ♔g3 ♖xe4 11. ♔xe4 ♔xc3+ 12. bxc3 ♜xc3+ 13. ♔f1 f5

7. ♖f3 cxd4 8. ♖xd4 ♖c6 9. ♖b3 ♔c6 10. 0-0 ♜c8 11. f4 ♖a5? 12. c5 ♖d7 13. ♖xa5 ♜xa5 14. ♔xc7 dxe5! 15. f5! gxf5



15... ♔xf5? 16. ♜xf5 gxf5 17. ♜xd7 ♜b6+ 18. ♔h1 ♜xb2 19. ♜d1 ♜xc3 20. ♔xf8 ♜xf8

16. b4?! ♜b6+ 17. c5 ♜xb4

17... ♖xc5? 18. bxc5 ♜xc5 19. ♖a4

18. ♖d5 ♜a5 19. ♔xf8 [Finally!] 19... ♔xf8! 20. ♔h1 ♜xc5

Trapping the knight in the middle of the board.

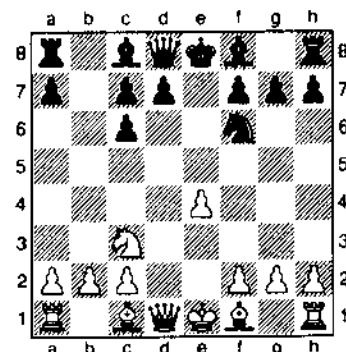
21. ♔f3 e4 22. ♖f4 exf3 23. ♜xf3

23. ♖xe6 fxg2+ 24. ♔xg2 ♜c6+

23... ♖f6 24. ♖xe6 fxc6 25. ♜b3 ♜d5 26. ♜g3+ ♔g7 27. ♜c3 ♜xc3 28. ♜xc3 ♖g4 29. ♜c8+ ♔f7 30. ♜b1 ♜e5 31. ♜xb7+ ♔g6 32. g3 ♜e2 33. ♜g2 ♖f2+ 34. ♔g1 ♖h3+ 35. ♔h1 [35. ♜xh3 ♔d4+ 36. ♔h1 ♜c4+ 37. ♜g2 ♜xb1+ 38. ♜g1 ♜xg1#] 35... ♖f2+ 36. ♔g1 ♔d4 37. h3 ♜xa2 38. ♜b8 ♖g4+ 39. ♔f1 ♖c3+ 0-1

**Mote, D (2268)
VanBuskirk, D (2208) [C45]
Greater Peoria Open (4), 1995
[David Mote]**

1. e4 c5 2. ♖f3 ♖c6 3. d4 exd4 4. ♖xd4 ♖f6 5. ♖xc6 bxc6 6. ♖c3

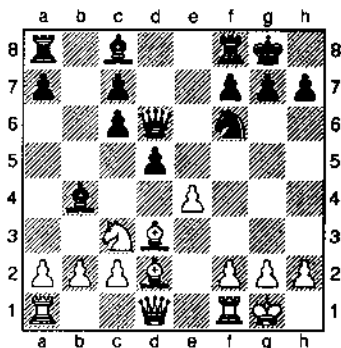


6. e5 ♜e2 7. ♜e2 ♖d5 8. c4 ♔a6 9. ♖d2 0-0-0 10. b3 ♜c8 11. ♔b2 f6 12. ♜e4 ♖b6 13. f4 fxe5 14. fxe5 ♔b7

6... ♔b4 7. ♔d3 d5 8. ♔d2 0-0

8... ♔xc3 9. ♔xc3 dxe4 10. ♔xf6 ♜xf6 11. ♔xe4

9. 0-0 ♜d6



9...♙xc3 10.♙xc3 ♘xe4 (10...dxe4
11.♙xf6) 11.♙xe4 dxe4 12.♖h5

10.cxd5 cxd5 11.♘b5 ♖e7
12.♙c1 ♙e6 13.♙xb4 ♖xb4
14.♘xc7 ♗ad8 15.h3

15.♗xc6?! fxe6 16.♘xe6 ♘g4
17.♘xf8 ♗xf8 with the threat of
♖f4.

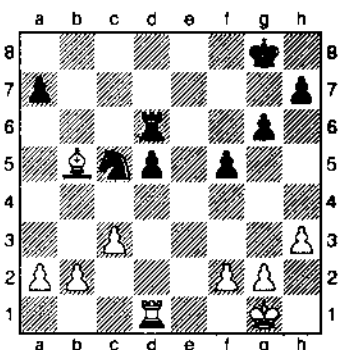
15...♙c8 16.♘b5 ♘e4 17.c3 ♖c5

17...♖xb2? 18.♗e2 ♘xc3 19.♗xb2
♘xd1 20.♗xd1+-

18.♖c2 f5 19.♖e3 ♙a6 20.♖xc5
♘xc5 21.♙f1 ♗f6

21...♗b8 22.a4 ♘xa4 23.♗xa4
♙xb5 24.♙xb5 ♗xb5 25.♗xa7
♗xb2 26.♗ee7+-

22.♗e7 ♙xb5 23.♙xb5 ♗b8
24.♗e8+ ♗xe8 25.♙xe8 g6 26.♗d1
♗d6 27.♙b5



Threatening 28.♗xd5 ♗xd5
29.♙c4.

27...♙f7 28.♗d4

Preparing 29.c4

28...♗b6 29.♗xd5! ♗xb5 30.b4
♙e6 31.♗xc5 ♗xc5 32.bxc5 ♙d5
33.♙f1 ♙xc5 34.♙e2 ♙c4 35.♙d2
f4 36.h4 h6 37.g4 fxg3 38.fxg3 a5
39.♙c2 a4 40.g4 h5 41.g5 ♙d5
42.♙d3 ♙c5 43.a3 ♙d5 44.c4+
♙e5 45.♙e3 ♙f5 46.♙d4 ♙g4
47.♙e4

47...♙xh4 48.♙f4 is hopeless. 1-0

VanBuskirk, D
Gazmen, B [B06]
Greater Peoria Open (5), 1995

1.e4 g6 2.d4 ♙g7 3.♘f3 d6 4.♙c4
c6 5.♘c3 ♖c7 6.0-0 b6 7.♘g5
♘h6 8.f4 ♙a6 9.♙xa6 ♘xa6
10.♖f3 ♘b4 11.♖e2 ♙xd4+
12.♙e3 ♙xe3+ 13.♖xe3 ♘xc2
14.♖h3 ♘g8 15.f5 ♘f6 16.fxg6
fxg6 17.♘e6 ♖c8 18.♗a1 ♘e3
19.♗xf6 exf6 20.♘b5 ♙e7
21.♘bc7 ♖d7 22.♖h6 ♗ag8
23.♖xe3 h5 24.♗d1 ♗c8 25.e5
♗xc7 26.exd6+ ♖xd6 27.♗xd6
♙xd6 28.♘xc7 ♙xc7 29.♖e7+
♙b8 30.♖xf6 ♗c8 31.♖xg6 c5
32.♖xh5 c4 33.h4 a6 34.♖g6 ♙b7
35.h5 b5 36.h6 b4 37.h7 c3
38.bxc3 bxc3 39.♖e4+ ♗c6
40.h8 ♖c2 41.♖b2+ 1-0

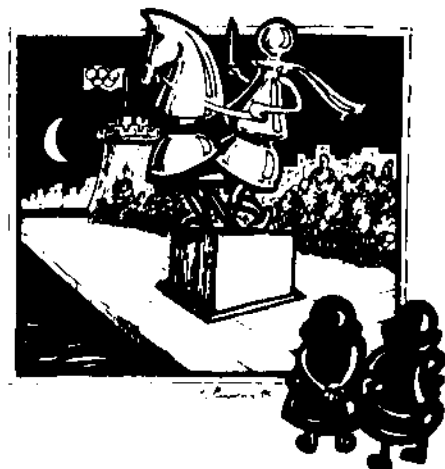
Pangan, C
Szplisjak, S [C85]
Greater Peoria Open (5), 1995

1.e4 e5 2.♘f3 ♘c6 3.♙b5 a6
4.♙a4 ♘f6 5.0-0 ♙e7 6.♙xc6
dxc6 7.d3 ♘d7 8.♘bd2 0-0 9.♘c4
f6 10.♘e3 ♗f7 11.♘f5 ♙f8 12.h3
♘c5 13.♘g3 g6 14.♙e3 b5 15.d4
exd4 16.♘xd4 ♖e8 17.♖f3 ♘e6
18.♘xc6 ♙xc6 19.b3 c5 20.♖e2
♗d7 21.f4 ♙f7 22.c3 c4 23.b4 ♗d3
24.♗a1 c5 25.a3 a5 26.bxa5 ♗xa5
27.♗a1 ♖d8 28.♖f2 ♖a8 29.f5 g5
30.♙xg5 fxg5 31.e5 ♗xa3 32.♗xa3
♖xa3 33.♘c4 ♖a8 34.♘xg5 h6

35.♘xf7 ♙xf7 36.e6+ ♙e8 37.f6
♖d5 38.f7+ ♙d8 39.♖f6+ ♙c7
40.e7 ♗d2 41.♖f4+ ♙b7 42.♖xd2
1-0

VanBuskirk, D
Young, A [B57]
Greater Peoria Open (3), 1995

1.e4 c5 2.♘f3 ♘c6 3.d4 cxd4
4.♘xd4 ♘f6 5.♘c3 d6 6.♙c4 ♖b6
7.♘f5 ♘xe4 8.♖f3 ♖xf2+ 9.♖xf2
♘xf2 10.♘xd6+ exd6 11.0-0 ♙e6
12.♙xc6 fxc6 13.♗xf2 d5 14.♗e2
♙c5+ 15.♙e3 ♙xe3+ 16.♗xe3 d4
17.♗xe6+ ♙d7 18.♗xc6 bxc6
19.♗d1 c5 0-1



READER'S SHOWCASE

This month we feature an Illinois player, John Cerminaro, traveling to New York and winning his first round game at the New York Open. Sit back and enjoy the fireworks.

Cerminaro, John (1865)
Fors, Manuel (1970)
New York Open (1), 1995
[Cerminaro]

1.c4 e5 2.♘c3 ♘f6 3.♘f3 ♘c6
4.g3 d5 5.cxd5 ♘xd5 6.♙g2 ♙e6
7.0-0 ♙e7

FOX VALLEY LOW COST OPEN #9

A record 53 players attended the April 15 tournament held at Aurora's Church of God by the Fox Valley Chess Club. Bob Renaut directed the event with the assistance of Jim Oberweis. Due to the record tournament turnout the announced prize fund of \$120 was more than doubled to \$245!

Low Cost Open tournaments have a history of upsets and this event was no different. In the first round, Mark Robledo Jr. (1316) defeated Jim Condron (2058), in round 3 Jim Oberweis Sr (1920) lost to Eric Ortega (1727), and in round four Joseph Guth (1550) defeated Marvin Rogan (2000) while Mark Robledo Sr. defeated Guy Kittilsen (1811).

Peter Stein (2224), Larry Cohen (1917) and Leon Shernoff (2087) all tied for first place with perfect 4-0 scores. The Top Class B was split between Eric Ortega, Seth Kushinsky, Rudy Padilla and Thomas Brinkmann with 3-1 scores. Joseph Guth, Mark Robledo Sr., and Phillip Ploquin shared the Top Class C prize. Fernando Montoya took sole possession of the Top Class D prize. William Park and Jose Rodriguez scored 2-2 to earn the Top Classe E prize. Kevin Reeves playing in his first tournament also went 2-2 to claim the Top Unrated prize of \$25.

Here are a few games provided from this event.

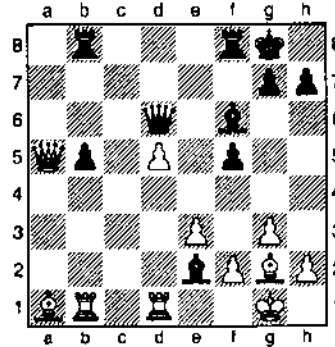
Brinkmann, T
Robledo, M Sr [B96]
Fox Valley Low Cost Open #9,
1995

1.e4 c5 2.d4 f3 d6 3.d4 cxd4
4.dxd4 d6 5.d3 c6 6.d4 e7
7.d3 0-0 8.0-0 d6 9.d3 d5
10.d2 d7 11.f4 d6 12.d3 a5

14...a5 15.d1 a1 b5 16.c2 c4
17.a4 ab8 18.f1 f5 19.e3 e6
20.axb5 cxb5 21.d5

Black's ♖ had to go to h6. (RRR – ♖d7 and ♖f7 are also attempts to try and hold the position.)

21...♖d6 22.♖c3 d6 23.♖xa5
e2

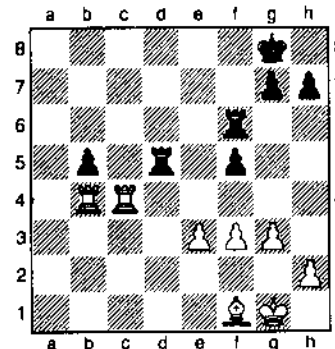


Tactical hopes spring eternal! If
24.d2? a8!

24.d2? a8! 25.c3 b4 ♖xb4
26.b4 a1 27.a1 c4
28.d1 f6

This ♖ doesn't belong here. Better
was 28...f6. (RRR)

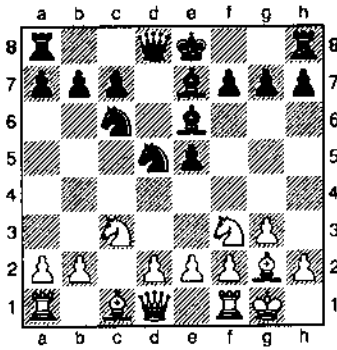
29.f1 c8 30.c1 c5 31.f3
xd5 32.cxc4!!



Bang! And this shot is fatal!

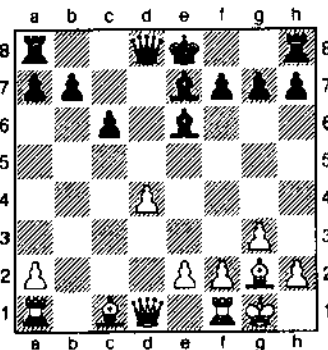
32...bxc4 33.dxc4 f6 34.b5
Resigns

After the game, my opponent blamed
his incomprehensible loss on 1st round
jitters at the New York Open!



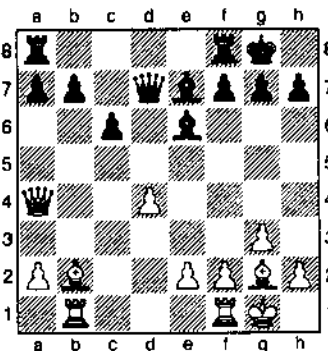
White's extra tempo makes itself
felt.

8.d4 c3 9.bxc3 exd4 10.dxd4
xd4 11.cxd4 c6



I was waiting for 11...d5 when it
didn't come, it felt like the enemy's
gun misfired. So I jumped on...

12.b1 ♖d7 13.♖a4 0-0 14.d2?



Despite my nerves, I was playing
well until this moment. 14.d5!
might have been decisive. Instead,
I could see in my opponent's eyes
that he'd just seen his enemy's gun
misfire and now was smelling
counterplay.

13.a4 e5 14.f5 ♖b4 15.g4 ♙c6
 16.g5 ♗e8 17.♞d2 ♗c7 18.♗d5
 ♙xd5 19.exd5 ♞d7 20.♙e4 ♜fc8
 21.c3 ♗ba6 22.f6 ♙f8 23.♞g2
 ♞c8 24.g6 hxg6 25.♙xg6 gxf6
 26.♙h5+ ♗h8 27.♜xf6 ♞e7
 28.♜xf7 ♞h4 29.♞g6 1-0

Montoya,F
Shernoff,L [C41]
Fox Valley Low Cost Open #9,
1995

1.e4 e5 2.♗f3 d6 3.♙c4 f5 4.d3
 ♙e7 5.♗c3 c6 6.0-0 ♗f6 7.♜e1
 ♗bd7 8.exf5 d5 9.♙b3 0-0
 10.♗xe5 ♗xc5 11.♜xe5 ♙d6
 12.♜e1 ♙xf5 13.♞f3 ♙g4 14.♞e3
 ♞c7 15.g3 ♜ae8 16.♞d2 ♙f3
 17.♜c3 ♗g4 18.♜xe8 ♜xe8
 19.♗c4 ♗h8 20.♗g5 ♙f4 21.gxf4
 ♞xf4 22.♗xf3 ♞xf3 23.♞f4 ♜c1#
 0-1

McKearney,J
Daly,P [B02]
Fox Valley Low Cost Open #9,
1995

1.e4 ♗f6 2.e5 ♗e4 3.d3 ♗c5 4.d4
 ♗e4 5.♙e3 f6 6.♙d3 f5 7.♗d2 d5
 8.f3 ♗xd2 9.♞xd2 h6 10.♗e2 g5
 11.g3 c6 12.f4 ♞b6 13.0-0-0 gxf4
 14.♗xf4 h5 15.e6 h4 16.♗g6 ♜g8
 17.♙xf5 ♙g7 18.♗xh4 ♞a6
 19.♗b1 c5 20.dxc5 ♗c6 21.♞xd5
 ♞e2 22.♙g6+ ♗f8 23.♞d8+ ♗xd8
 24.♜xd8# 1-0

**National High
 School Tournament
 Held In Chicago**

The 1995 National High School Tournament drew over 1000 players! A tremendous organizing success for Alan Losoff and Ken Lewandowski. Tim Just, the Chief Tournament Director had his talented staff well organized and ready to tackle this

huge tournament. The event was held in three sections, Open, Under 1600 and under 1300.

The Open Section Team award went to Dalton School from New York, NY with 22 points. Another NY school, Styvyesant H.S. claimed 2nd place with 20.5 points and Masterman H.S. took a clear 3rd with 19.5 points. The top Illinois team was University of Chicago Lab H.S. with 16 points which earned them 9th place.

Individual honors in the Open Section went to David Arnett and Nawrose Nur both from the Dalton School of New York with David taking first on tie breaks. The top Illinois player was Anna Zemlinsky of Chicago with 5.5 points and a share of 9th place.

The Under 1600 Team title went to the Illinois Math & Science Academy with 20 points beating out George Washington H.S. of Philadelphia and Albuquerque Academy, Albuquerque NM, on tie breaks! Evanston H.S. took 12th place, Auburn H.S. 15th place, Waukegan H.S. 17th, Orr H.S. 18th, Aurora West H.S. 22nd and Naperville North H.S. 25th place.

The individual honors in the under 1600 section went to Pierre Rouston with a perfect 7.0 score! Brian Peterson took a clear second with 6.5 points and Gennady Ioffe of the Illinois Math & Science Academy claimed 3rd place! Allen Lee also from IM&S finished 7th, while Terrence Pullum from Waukegan H.S. took 12th place.

Finney H.S. from Detroit barely outpaced the field with 23 points to claim 1st place in the under 1300 section. Finishing a close 2nd was Shawnee Mission East H.S., Shawnee Mission, KS with 22.5 points. Auburn H.S. took 3rd with 21.5 points, St. Rita H.S., Chicago had 21

points to earn 8th place. MacArthur School from Hoffman Estates took 14th with 20.5 points.

Bronson Gentry from Finney H.S., Detroit, MI and Aaron Laatsch tied for 1st with perfect 7-0 scores. Bronson claimed first on tie breaks. Top Illinois finishers were Mahammad Gigani - St Rita's, Johnny Weier - Benjamin District 25, Luke Matuszczyk - Foreman H.S., Raj Chetty - University H.S. Normal, Jeffrey Busca - MacArthur School and Ryan Ignacio - Auburn H.S.

The ICA would like to thanks all the volunteers that helped to make this tournament a great success.

Here are a few games from this event. The annotations have been provided by NM Alan Watson.

Arnett,D
Chan [D35]
NHS Championship (1), 1995

1.d4 d5 2.c4 e6 3.♗c3 ♗f6 4.cxd5
 cxd5 5.♙g5 ♙c7 6.♞c2 ♙c6 7.c3
 ♗bd7 8.♙d3 h6 9.♙h4 ♗h5
 10.♙xe7 ♞xe7 11.♗ge2 c6 12.♜b1
 ♞g5 13.♗g3 ♗xg3 14.hxg3 ♙g4
 15.b4 ♜c8 16.♞b3 ♗b6 17.♞a3 a6
 18.♞a5 ♞d8 19.0-0 ♗d7
 20.♞xd8+ ♗xd8 21.a4 ♗c7 22.b5
 axb5 23.axb5 ♜a8 24.♜fe1 ♜hb8
 25.♗xd5+ ♗d8 26.♗c3 ♗f8
 27.♗e4 ♗c7 28.d5 1-0

Shahade,G
Isaacson, [C43]
NHS Championship (2), 1995

1.e4 e5 2.♗f3 ♗f6 3.d4 ♗xe4
 4.♙d3 d5 5.♗xe5 ♗d7 6.♞e2
 ♗xe5 7.♙xe4 dxe4 8.♞xe4 ♙d6
 9.dxe5 0-0 10.0-0 ♜e8 11.♜d1
 ♞e7 12.f4 f6 13.♞d5+ ♙e6
 14.cxd6 cxd6 15.♞f3 ♜ac8 16.♗c3
 d5 17.f5 d4 18.fxe6 dxc3 19.b3
 ♞xe6 20.♙f4 ♞e2 21.♞xe2 ♜xe2
 22.♜ac1 a5 23.♙d6 ♜d8 24.♙f4

♖xd1+ 25.♗xd1 ♜xc2 26.♗d3
 ♜xa2 27.♗xc3 ♜a3 28.♜c8+ ♔f7
 29.♜c7+ ♔g6 30.♗xb7

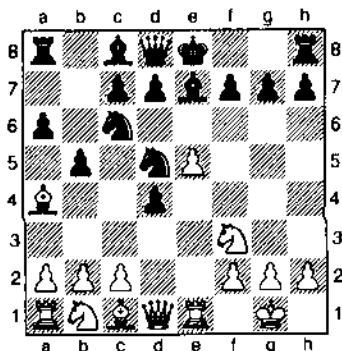
The remainder of the game is indecipherable. White forced resignation on move 52. 1-0

Sharma,A
Kasper,D [E81]
 NHS Championship (2), 1995

1.d4 ♘f6 2.c4 g6 3.♘c3 ♖g7 4.e4
 d6 5.f3 0-0 6.♗e3 ♘bd7 7.♗d3 e5
 8.d5 ♘b6 9.♘ge2 ♘e8 10.0-0 f5
 11.b4 f4 12.♗f2 ♗g5 13.♔h1 ♗c7
 14.c5 ♘d7 15.c6 ♘b6 16.a4 bxc6
 17.dxc6 ♗e6 18.♗a6 ♗c8 19.♗b7
 ♗xb7 20.cxb7 ♜b8 21.a5 ♗xb7
 22.axb6 axb6 23.♗d5+ ♗f7
 24.♗xb7 1-0

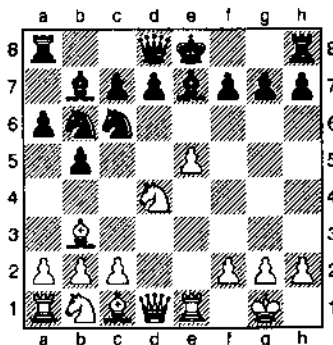
Johnson,B
Kelleher,J [C84]
 NHS Championship (4), 1995
 [Alan Watson]

1.e4 e5 2.♘f3 ♘c6 3.♗b5 a6
 4.♗a4 ♘f6 5.d4 cxd4 6.0-0 ♗c7
 7.♗e1 b5 8.e5 ♘d5?!



Best at this point is the surprising
 [8...♘xe5! 9.♗xe5 d6 10.♗e1 bxa4
 11.♘xd4 ♗d7 12.♗f3 0-0 13.♘c6
 ♗xc6 14.♗xc6 ♗e8 15.♘c3 a3
 16.b3 d5 17.♗g5 h6 18.♗h4 d4
 19.♗xf6 ♗xf6 20.♘d5 ♗e5
 21.♗ad1 ♗e6 22.♗c4 ♗d6 23.g3
 ♗ae8 24.f4 ♗f6 25.♘xf6+ gxf6=
 Gipslis-Hermlin, Parnu 1977.

9.♗b3 ♘b6 10.♘xd4! ♗b7?

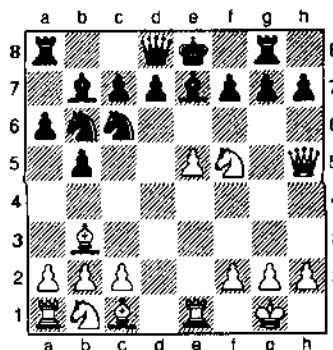


It is here that we leave book; and for good reason since this move loses! Byrne and Mednis concede no more than a slight advantage to White after the correct 10...♘xd4 11.♗xd4 0-0! but note also how easy it is to go astray in citing the continuation 11...c5?! 12.♗g4 e4 13.♗xg7 ♗f8 14.♗h6 with a large advantage as in Timman-Balshan, Lone Pine 1978.

11.♘f5 ♗g8

11...0-0 12.♗h6! gxf6 13.♗g4+
 ♗g5 14.♘xh6+ ♔h8 15.♘xf7+
 ♗xf7 16.♗xf7+

12.♗h5



Black unexpectedly finds himself completely embarrassed and incapable of defending against White's numerous threats! Resignation is in order. 1-0

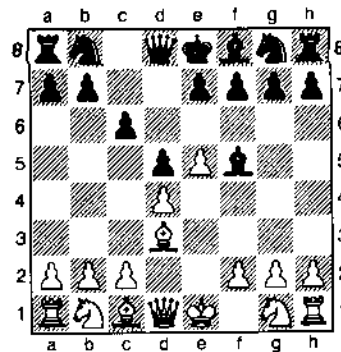
Be a Winner
Support Your
Local Chess Club

Ariel,D
Klein [B09]
 NHS Championship (4), 1995

1.e4 g6 2.d4 ♖g7 3.♘c3 d6 4.f4
 ♘f6 5.♘f3 c5 6.♗b5+ ♗d7 7.e5
 ♘h5 8.g4 ♗xb5 9.♘xb5 ♗a5+
 10.♘c3 cxd4 11.♗xd4 dxe5
 12.fxc5 ♘c6 13.♗a4 ♗xa4
 14.♘xa4 ♘xe5 15.♘xe5 ♗xe5
 16.gxh5 ♗c8 17.♘c3 ♗xc3 18.bxc3
 ♗xc3+ 19.♔e2 ♗xa1 20.♗e3 ♗e5
 21.♗xa7 ♘d7 22.♗b1 ♘c6 23.♗f1
 ♗a8 24.♗e3 ♗f6 25.hxg6 hxg6
 26.♗f4 b5 27.♗b4 ♗xa2 28.♘d3
 ♗a3+ 29.♔e2 ♗a4 30.♗b1 ♗h4
 31.♗h1 ♗h3 32.♗f4 ♗c3 33.♘d2
 ♗f3 34.♗g3 ♗g5+ 35.♔e2 ♗c3+
 36.♘d1 b4 37.♗e1 b3 38.cxb3
 ♗xb3 39.h4 ♗f6 40.h5 gxh5
 41.♗xh5 ♘d7 42.♗d2 e5 43.♔e2
 ♔e6 44.♗h1 ♗e7 45.♗c3 f5
 46.♗f1 e4 47.♗a1 ♗a3 48.♗b1 ♗a6
 49.♗d2 ♗d6 50.♗g1 f4 51.♗xf4
 ♗a2+ 52.♗d2 ♗f4 53.♗g4 ♗xd2+
 54.♔e1 ♘f5 55.♗g8 e3 56.♘f1
 ♔e4 57.♗a8 ♘f3 58.♗a1 ♗f2+
 59.♘g1 e2 60.♗b1 ♗c3 0-1

Sellivanov,J
Conley,V [B12]
 NHS Championship (4), 1995
 [Alan Watson]

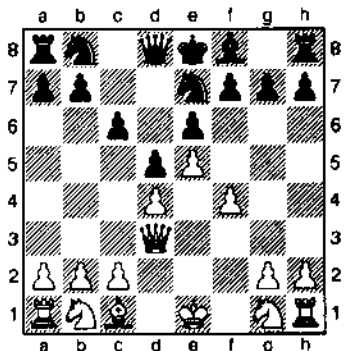
1.e4 c6 2.d4 d5 3.e5 ♗f5 4.♗d3



This move is regarded by modern opening theory as very weak, but the game continuation shows that it's one thing to know the assessment of a position yet something completely different to understand the reasoning behind it and come up with a plan capitalizing on its

essential elements. My own philosophy has always been that theoretical judgements should not be regarded as photographs taken at a moment in time, but rather as roadmaps used to pinpoint our momentary location and guide us to our ultimate destination.

4...♙xd3 5.♚xd3 e6 6.f4 ♘e7?!

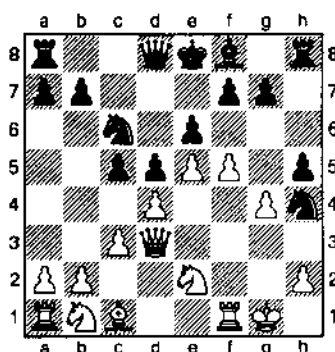


The disadvantage of White's 4th move is that he is left with a bishop the same color on which his central pawns stand. The term applied to such a situation is "bad bishop," and the negative effect is to reduce White's prospects for active play and in many cases relegate this piece to a defensive role behind the chain. Based on this, Black should do his utmost to restrain White's pawns on their present squares and weaken White further on the light squares through an exchange of Queens. Meeting these criteria was the idea 6...♚a5! 7.c3 ♚a6!! first suggested by Nimzovitch. Play may then continue 8.♚d1 (8.♚xa6 ♘xa6 9.♘f3 c5 10.♙e3 ♘h6 =+ Boleslavsky) ...c5 9.♘e2 ♘c6 10.♘d2 cxd4 11.cxd4 ♚d3 which can easily be seen as better for Black.

7.♘c2 ♘f5 8.0-0 c5 9.c3 ♘c6?

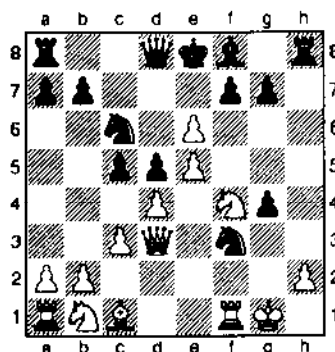
This was Black's final opportunity to restrain White's ambitions on the Kingside with 5...h5! He never gets another chance; and the White pawns thunder forward with the force of a tidal wave sweeping away everything in their path.

10.g4 ♘h4 11.f5! h5??



Black vastly underestimates the significance of a weakness on g6 and allows White to induce cardiac arrest. Whereas we had earlier discussed White's weakness on the light squares, he now wins the game on those very same squares!

12.♘f4 hxg4 13.fxex6 ♘f3+



14.♙xf3! gxf3 15.exf7+ ♙d7 16.♚f5+ 1-0

**Oberwels, J
Bruns, C [C02]
NHS Championship (6), 1995**

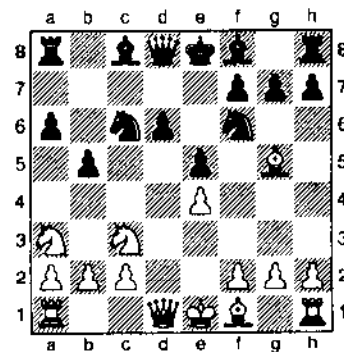
1.e4 e6 2.d4 d5 3.e5 c5 4.c3 ♘c6 5.♘f3 ♚b6 6.♙d3 cxd4 7.cxd4 ♙d7 8.♙c2 ♘b4 9.0-0 ♘xc2 10.♚xc2 ♚c8 11.♘c3 ♙b5 12.♚e1 ♚a6 13.♚d1 ♙d3 14.a3 ♘e7 15.♚e3 ♙g6 16.♚a4+ ♚xa4 17.♘xa4 ♘f5 18.♚c3 ♙xc3 19.♘xc3 ♙h5 20.♙e3 ♙xf3 21.gxf3 ♙d7 22.♚c1 ♘e7 23.b4 ♘c6 24.f4 ♙e7 25.f5 ♚c8 26.♙g2 ♘d8 27.♙g3 ♚c4 28.fxe6+ fxe6 29.♘e2

White offered a draw which was declined.

29...♙xc1 30.♙xc1 ♙c6 31.♘c3 b5 32.f4 g6 33.♘a2 ♘f7 34.♙b2 ♘h6 35.♘c1 ♘f5+ 36.♙f3 ♙d8 37.♙c3 ♙b6 38.♘e2 h5 39.h3 ♙d7 40.♙f2 ♙e7 41.♙f3 ♙f7 42.♙f2 ♙g7 43.♙f3 ♙h6 44.♙f2 g5 45.♙f3 ♘h4+ 46.♙g3 ♘g6 47.♙f3 gxf4 48.♘xf4 ♘f8 0-1

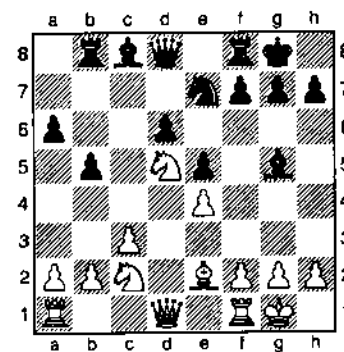
**Ariel, D
Jessar, J [B33]
NHS Championship (6), 1995
[Alan Watson]**

1.e4 c5 2.♘f3 ♘c6 3.d4 cxd4 4.♘xd4 ♘f6 5.♘c3 e5 6.♘db5 d6 7.♙g5 a6 8.♘a3 b5



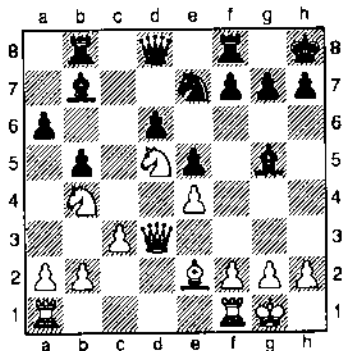
The Chelyabinsk Variation of the Sveshnikov Sicilian initiates an uncompromising struggle where the only goal is victory and the advantage will go to the combatant better prepared.

9.♘d5 ♙e7 10.♙xf6 ♙xf6 11.c3 0-0 12.♘c2 ♚b8! 13.♙e2 ♙g5 14.0-0 ♘e7?!



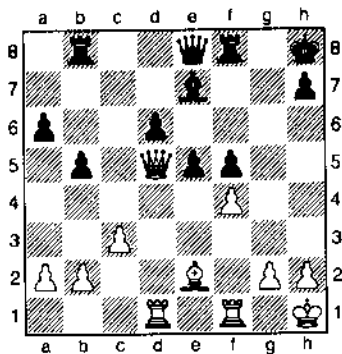
Modern theory deems it necessary for Black to continue 14...a5! so as prevent Qc2b4 and thus make it difficult for White to coordinate his knights on the key d5 square. Play might then continue 15. Wd3! Qe6 16. Rfd1 Wd7 17. Wg3 h6 18.h4 Qd8 19. Qce3 Qh8 20. Rd2 with an interesting struggle ahead.

15. Qcb4 Qb7 16. Wd3 $\text{Qh8!?$



16...a5 17. Qxc7+ Qxc7 18. Qd5 Qxd5 19. Wxd5 b4 20. Qb5! Wb6 21.c4 with a position favoring White although Black is for the moment quite solid. Short-Horvath, Lvov 1984

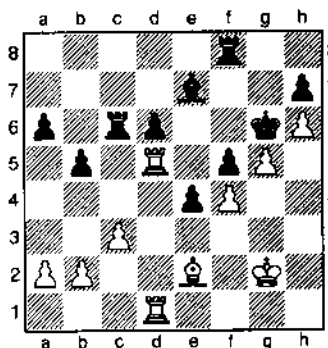
17. Qxc7 Qxc7 18. Qd5 g6 19. Rad1 Qxd5 20. Wxd5 f5 21.cxf5 gxf5 22. Qh1 Wc8 23.f4!



Ariel shows a solid understanding of strategy with this sophisticated thrust. His aim is to gain Kingside space while reducing the flexibility of Black's pawn duo and inducing a weakness on f5.

23...e4 24.g4! Wg6 25.g5 Wf7 26. Wxf7 Rxf7 27. Rd5 Qg7

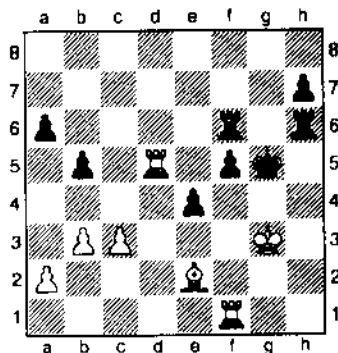
28. Rfd1 Rb6 29.h4 Rf8 30.h5 Rc6 31.h6+ Qg6 32. Qg2



32... $\text{Qxg5!?$

Black senses that the positional battle has been lost and tries to confuse the struggle by revitalizing his central duo.

33.fxg5 Qxg5 34. Rxd6 Rf6 35. R6d5 Rhx6 36. Rf1 Rcf6 37. Qg3 Qg6 38.b3 Qg5



39. Qg4!

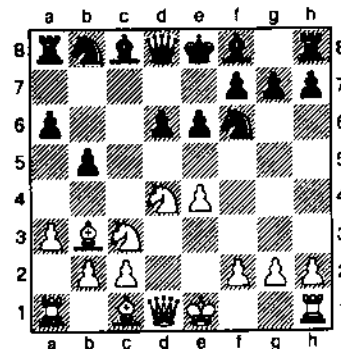
This loss of Black's f-pawn smashes any hopes he may have had to salvage the game. The remainder needs no comment.

39... Qg6 40. Rxf5 Qg7 41. Rd7+ Qf8 42. Rxf6+ Rxf6 43. Rhx7 e3 44. Qe2 Rf2 45. Rh2 Rf6 46. Rh4 Qg7 47. Rc4 Qg6 48. Rxe3 Qg7 49.c4 bxc4 50. Qxc4 1-0

**DON'T MISS AN ISSUE
RENEW NOW AND AVOID
THE DISAPPOINTMENT**

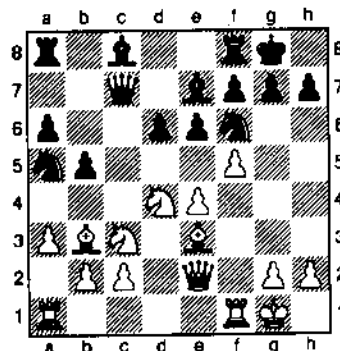
Zemlinsky,A
Sharma,A [B87]
NHS Championship (5), 1995
[Alan Watson]

1.e4 c5 2. Qf3 e6 3.d4 cxd4 4. Qxd4 Qf6 5. Qc3 d6 6. Qc4 a6 7. Qb3 b5 8.a3?!



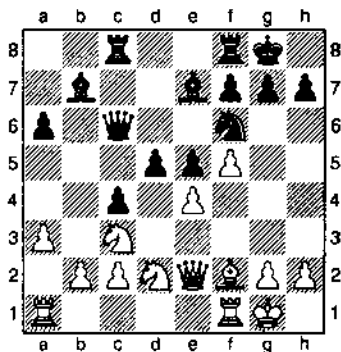
This passive move fails to cause Black any inconvenience. More forcing are 8.f4 and 8.0-0 which both lead to exciting and double-edged play.

8... Qe7 9.0-0 Wc7 10. Wc2 Qc6 11. Qe3 0-0 12.f4 Qa5 13.f5



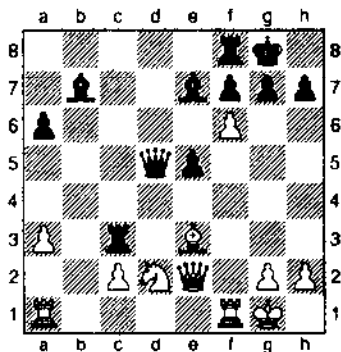
While positionally desirable in this opening, f5 here lacks punch because White's development has not corresponded with his strategical needs; specifically a) the Qe3 is poorly placed and should instead be on g5 threatening to remove the Qf6 b) the Qb3 cannot maintain control over d5 and will either be exchanged or allow a powerful Black knight to settle on c4.

13...e5 14.♘f3 ♘c4 15.♙xc4 bxc4
16.♘d2 ♙b7 17.♙f2 ♖ac8 18.♘a4
♚c6 19.♘c3 d5!

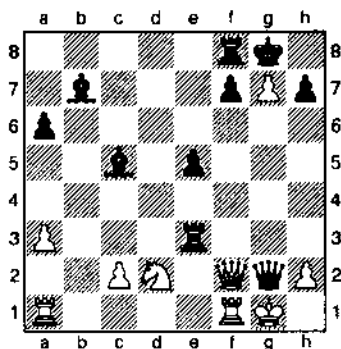


A dynamically important important lever intended to enhance Black's piece activity and expose weakness in White's structure. Black has won the strategical battle at this point and need only control the tactics to bring home a victory.

20.cxd5 ♘xd5 21.♘xd5 ♚xd5
22.♙e3 c3! 23.bxc3 ♖xc3 24.f6



24...♖xe3 25.♚f2 ♙c5 26.fxg7
♚xg2+!



A unique move of rare beauty, and a fitting way for Sharma to end a well-played game!

27.♚xg2 ♖g3+ 0-1

Gulbis, A
Zemlinsky, A [B21]
NHS Championship (6), 1995

1.e4 c5 2.d4 cxd4 3.c3 dxc3
4.♘xc3 d6 5.♘f3 ♘f6 6.♙c4 e6
7.0-0 ♙e7 8.♚e2 ♘bd7 9.♖d1 a6
10.a4 ♚c7 11.♙f4 ♘h5 12.♙e3
♘hf6 13.♖ac1 ♘e5 14.♙a2 ♚b8
15.♙f4 ♙d7 16.b4 b5 17.axb5
axb5 18.♘d4 0-0 19.♘dxb5 ♙xb5
20.♘b5 ♖xa2 21.♖xa2 ♚xb5
22.♚a7 ♖e8 23.♖c7 ♘f8 24.♚d4
♚e2 25.f3 ♚b5 26.♙g3 ♘h5
27.♙xe5 dxe5 28.♚d7 ♚xd7
29.♖dxd7 ♘f6 30.♖d3 ♙xb4
31.♖b3 ♙d6 32.♖c6 ♖d8 33.♖b5
♖d7 34.f4 ♘xe4 35.fxg5 ♙xe5
36.♖c1 ♙d4+ 37.♘f1 ♘e7 0-1

Wheat, J
Longo, D [B12]
NHS Championship (6), 1995

1.e4 c6 2.d4 d5 3.e5 ♙f5 4.♘c3 c6
5.g4 ♙g6 6.♘ge2 c5 7.♙c3 cxd4
8.♘xd4 ♘c6 9.♙b5 ♖c8 10.♚d2
h5 11.g5 ♘ge7 12.f4 ♘f5 13.♘xf5
♙xf5 14.♙xa7 ♚a5 15.♙d4 ♚b4
16.0-0-0 ♙e7 17.♘b1 0-0
18.♙xc6 bxc6 19.a3 ♚b7 20.♘a2
c5 21.♙f2 ♖b8 22.♘a4 ♚a6
23.♙xc5 ♙xc5 24.♘xc5 ♚c4+
25.♘b3 ♙xc2 26.♖c1 ♚xb3+ 0-1

Koenig, D
Sullivan, J [(C29)]
NHS Championship (7), 1995

1.e4 e5 2.♘c3 ♘f6 3.f4 d5 4.fxg5
♘xe4 5.d3 ♚h4+ 6.g3 ♘xg3 7.♘f3
♚h5 8.♘xd5 ♘xh1 9.♘xc7+ ♘d8
10.♘xa8 ♙e7 11.♙g2 ♙h4+
12.♘f1 ♙h3 13.♚d2 ♚xf3+
14.♘g1 ♙f2+ 0-1

Have an idea to make this magazine better? Drop the editor a note and let him know how!

Bhat, H
Ariel, D [B31]
NHS Championship (7), 1995

1.e4 c5 2.♘f3 ♘c6 3.♙b5 g6 4.0-0
♙g7 5.c3 ♘f6 6.♖c1 0-0 7.d4
cxd4 8.cxd4 d6 9.h3 a6 10.♙a4 b5
11.♙b3 ♘d7 12.♘c3 ♘a5 13.♙e3
♘xb3 14.♚xb3 ♖b8 15.♖ac1 ♙b7
16.♙f4 ♘f6 17.a3 ♘h5 18.♙g5 h6
19.♙e3 ♘h7 20.g4 ♘f6 21.♙f4
♚d7 22.g5 ♘h5 23.gxh6 ♘xf4
24.hxg7 ♘xg7 25.♙e3 ♚xh3
26.♘e1 ♚h6 27.♘f3 ♖h8 28.♘f1
♚h1+ 29.♘g1 ♚g2+ 0-1

Wolff, J
Peterson, D [B06]
NHS Championship (7), 1995

1.e4 g6 2.♘c3 ♙g7 3.g3 d6 4.♙g2
♘f6 5.d3 0-0 6.f4 c5 7.♘f3 ♘c6
8.0-0 ♖b8 9.h3 b5 10.g4 ♘d7
11.♚e1 ♘d4 12.♘xd4 cxd4
13.♘d1 ♚c7 14.♖f2 ♙b7 15.f5
♙e5 16.♙h6 ♙g3 17.♙xf8 ♖xf8
18.♚d2 ♙xf2+ 19.♘xf2 ♖c8
20.♖c1 ♘b6 21.b3 ♚c5 22.♚h6
♘d7 23.h4 ♚e5 24.♘h3 ♚g3
25.fxg6 fxg6 26.♘g5 ♚e3+
27.♘h2 ♘f6 28.♙f3 ♚xc1 29.h5
♖xc2+ 30.♘g3 ♚g1+ 0-1

St. Charles Chess Club News

by Dan Pradt

October- Scoring a relatively rare speed chess win over Jeff Weiwei, Ray Satterlee won the club five minute championship, 7-0. Mickey Jacobsen came in second 6-1, with Wiewel and Jim Oberweis tied for third at 5-2.

January - Attendance at the Knight's cup allowed us to hold 4 round robin sections. The first round of the Knight's cup indicated a rough tournament as Jeff Wiewel (2088) and Erv Sedlock (1932) struggled to hold

RULE BOOK TACTICS

By WTD Tim Just

PLAYERS, START YOUR CLOCKS

I. YOUR OPPONENT ARRIVES LATE

Gaining an advantage over your opponent before even one of your chess soldiers attempts to execute a maneuver is a valuable tool to have in your offensive arsenal.

Rule 16, USE OF THE CHESS CLOCK, on page 45 in the 4th edition of the OFFICIAL RULES OF CHESS provides you with the weapons needed to gain an advantage of time over your opponent.

If your opponent is not at your board when the TD instructs the players to start their clocks, do not delay. Start your opponent's time. The longer it takes your opponent to get to your game, the greater your time advantage will be. You will have more time to consider your tactics and strategy than your opponent. You have the advantage before the game begins.

As a player of the black pieces, you can watch your adversary's clock tick away until they arrive to make a move and start your clock.

When you are the general of the white forces, *you do not have to make a move before starting your opponent's clock.* Simply sit back and observe your foe's minute hand awarding you your time advantage. You will not have to engage your troops in battle until your adversary

draws with Bill Buttny (1900) and Dan Pradt (1706), Joe Splinter (2136) lost to Jim Oberweis (1938) and Ray Satterlee (2140) adjourned a level endgame with Justin Sadauskas (1764). The wall charts held to form, however, as Satterlee came in a comfortable first at 6-1, his only loss the white side of a wild Dutch, to Joe Splinter. Len Spiegel won the Squires cup, winning the decisive game with Don Winsauer to finish at 6-1 to Winsauer's 5-2. Steve Fulton took section I 5.5-1.5, and Eddie Patel section II with a perfect 7-0.

Knight's

Ray Satterlee	2140	6
Joe Splinter	2136	4.5
Jim Oberweis	1938	4
Erv Sedlock	1932	4
Jeff Wiewel	2088	3.5
Dan Pradt	1706	3
Justin Sadauskas	1764	1.5
Bill Buttny	1900	1.5

Squire's

Len Spiegel	1942	6
Don Winsauer	1717	5
Phil Ploquin	1301	4
Mickey Jacobsen	1533	3.5
Jim Little	1735	2.5
Rudy Padilla	1600	2.5
Brent Lashinsky	1420	2.5
Kevin Brewer	1492	2

Section I

Steve Fulton	1858	5.5
Carl Priesendorf	1753	4
Mike Flynn	1606	4
Walter Alberts	1800	4
Blair Machaj	1613	3.5
T.V. Weber	1606	2.5
Mark Robledo Sr.	1462	2
Lee Forde	1361	0.5

Section II

Eddie Patel	1314	7
Mark Robledo Jr.	1157	5.5
Mike Giampa	1251	4
Tom Segreto	1205	3
Jim Allterio	997	3
Carl Staples	1318	2.5
Amit Shetty	1147	2

February-March- Ray Satterlee continued his mastery of Club events

by winning the Club Championship, 5.5-0.5. Giving up one draw in the third round to Erv Sedlock, Ray was a half point ahead of the pack at the end of round five and defeated Blair Machaj in round six to finish a full point up. Trailing at 4.5 were experts Joe Splinter and Jeff Wiewel and Junior Justin Sadauskas. Sedlock and a group of Juniors came in at 4.0: Machaj, Mickey Jacobsen, Kevin Brewer, and Eddie Patel.

Saudaskas, Brewer, Machaj, and Patel are all freshman at West Chicago High School. Watch out for this team in the Future. Of particular note are the scores of Saudaskas and Machaj. Justin defeated Wiewel (2088) and Bill Buttny (1900) to earn a performance rating of 2065, while Machaj drew Wiewel and Splinter (2136) and defeated Buttny for a performance rating of 2030.

Mickey Jacobsen (1533,4-2) was top C player, and Phil Ploquin (1370, 3.5-2.5) was top D. 35 players competed. Blair Machaj directed.

May- Ray Satterlee won the Club 15 Minute championship (Ho-Hum) 5-0, pushing his quick rating to over 2100, Ray defeated Erv Sedlock (1863) in the third round, Steve Fulton (1868) in the Fourth, and Jeff Wiewel(2051) in the last. Sedlock, Jim Oberweis (1759), and Roger Allison(1730) finished with 4 points, and Kevin Brewer(1319), Wiewel and T. V. Weber(1561) with 3.5.

SCHOLASTIC NOTES

Moline won the Senior High Team Championship, 6-0, edging out a group of contenders that finished at 5-1: Carver, Evanston, Illinois Math and Science Academy, Orr, New Trier, Rockford Auburn, and West Chicago.

arrives at the board and starts your clock.

Before you can benefit from your opponent's tardy behavior, the chess set, board, and clock must be in place.

The clock of both players must be set so that the end of the first time control will be displayed as six o'clock (a

CHess LESSONS by SM RICHARD VERBER

*1995 Winner of "The Billy Colias
Excellence in Teaching Award."*



I will analyze your games, find your strength and weaknesses and suggest ways to improve.



My students excel at chess! Check out these successful students; Steve Arlinsky (Highest rated Junior in Illinois), Julie Oberweis (Junior High School Champion), Bob Renaut (Master) and Jim Oberweis (1994 ICA Class A tour winner!)



My proven training method works with young and old. Give me a call and you too can be on your way to playing better chess.



Lesson — \$70 (\$10 discount if held at my location), 1970 Tall Oaks Drive Apt 3A, Aurora, IL . Call me at (708) 978-1380.

40/90 time control would have both clocks set at 4:30 at the start of the game). Without the chess equipment being in place, neither player may start their opponent's clock.

With no chess equipment in place to make move one, both players must lose equal amounts of time on their clocks starting from the beginning of the round to the time the equipment is properly in place. After the round starts, it may take five minutes to set up all of the equipment. Both players should then lose 2.5 minutes each on their chess clocks. This insures that all of the players in the tournament, not just you and your opponent, are playing and will continue to play the same round schedule.

II. YOU ARRIVE LATE

You may arrive late for your game and still obtain a time advantage! All that is required is that you appear at your board before your opponent does. Both you and your opponent must lose equally the amount of time between the start of the round and your arrival, i.e., if you arrive 12 minutes late for the start of the game, you and your even tardier opponent both lose 6 minutes off of your respective clocks. After you set up and start your adversary's clock, their time deficit will continue to grow.

Even if your opponent arrives before you, it is possible to negate some of their time advantage. If you appear tardy for your contest and discover no opponent yet find your chess clock running, you are the player with the time disadvantage. Your opponent has arrived before you and started your clock. They are not required to wait for you at your board; however, you are not required to wait for their return before starting the game.

As the tardy player of the white pieces, make your move and start your adversary's clock.

As the not-to-punctual leader of the black forces, start your foe's clock if they have not yet made their first move. If they have shown their hand with move number one, initiate both your response and your opponent's clock.

Until your fellow wood pusher arrives at the game from another area of the tournament hall to respond to your late presence, their clock is eating away at their time advantage.

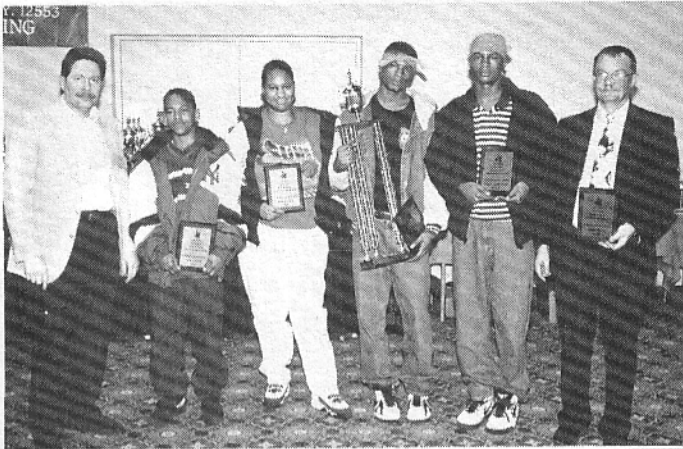
III. ONE HOUR TARDY

When you are on time and your opponent is one hour late, as measured by the chess clock, you can claim a forfeit win. Of course if you are playing in a Game/30 event you can claim that win in only a half-hour.

Be sure to make your claim to the TD. Place that game winning "1" next to your name on the pairing sheet. Do not forget to indicate that the game was a forfeit win by placing an "F" next to the game result notation by both you and your opponent's names.

Even though you will receive a game point for that round on the wall chart, no rating points will be calculated for the forfeit win; however, your opponent, unless they plead with the TD, will be removed from the tournament. They should not get a second chance to inconvenience another player with an unplayed game.

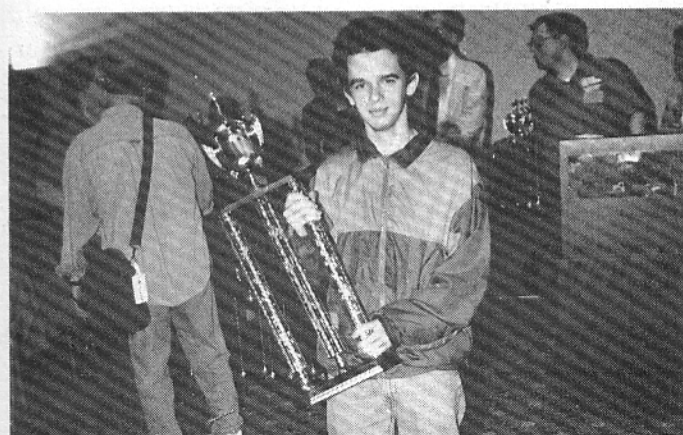
CHESS SCENES



Finnley High School receives their trophies for 1st place in the Under 1300 section - National H.S. Championships from Al Losoff



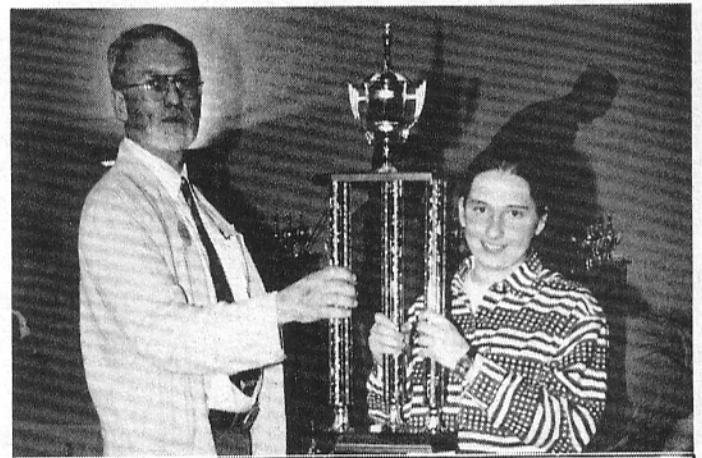
The TD staff guards the trophies at the National High School Championship.



David Arnett hold his 1st place trophy.



Brian Wong 3 1/2 - 3 1/2 in the Open Section of the National High School Championships



Anna Zemlinski, 5 1/2- 1 1/2, receives her trophy for 9th place in the Open Section of the National High School Championships.



Orr High School admires their trophies from the under 1600 section while their coach looks on.

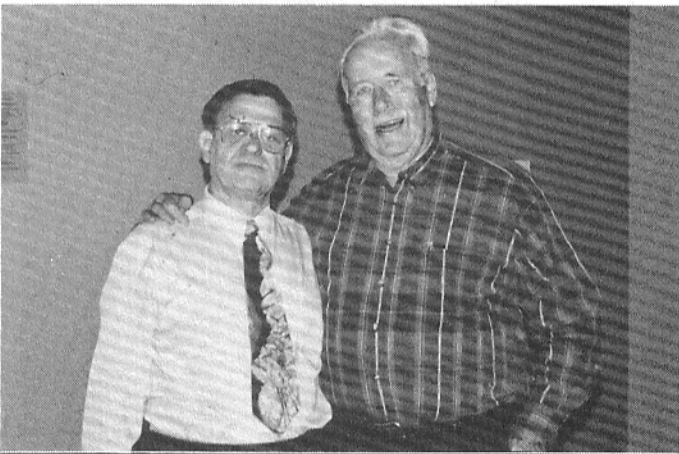
CHESS SCENES



Fred Gruenberg gives Alexander Shabalov his \$2000 check at the Mid America Class .



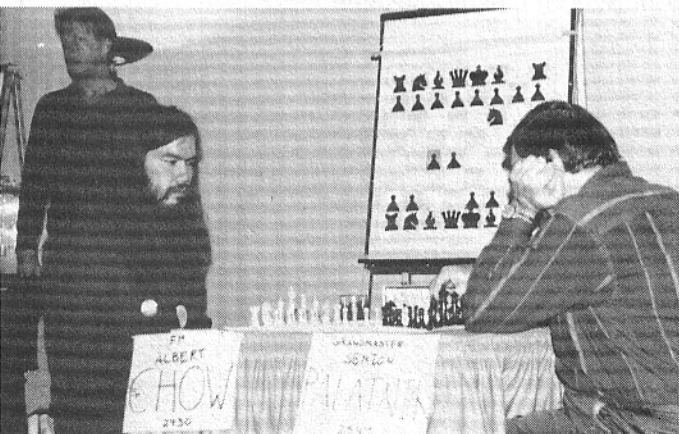
Glenn Panner makes his move against Anna Zemlinsky at the Mid America Class Championship.



Howard Cook, 75 years young, with Fred Gruenberg at the Mid America Class Championship.



GM Alexander Shabalov studies his position against GM Nick DeFirmian at the Mid America Class.



FM Albert Chow awaits GM S. Palatnik response to c4 at the Mid America Class Championships.



GM Alex Yermolinsky looks over his position against GM John Fedorowicz.

1995 MIDWAY AMATEUR CLASS CHAMPIONSHIPS

July 22-23, 1995

4 Round Swiss in 5 Sections

An Illinois Maxi-Tour Event

\$3,000 Guaranteed Prize Fund

<u>Expert</u>	<u>Class A</u>	<u>Class B</u>	<u>Class C</u>	<u>Class D/E</u>
\$300	\$300	\$300	\$300	\$200
200	200	200	200	100
100	100	100	100	50
50	50	50	50	50

An unrated prize will be added if there are 5 or more unrated entries.

Entry Fee \$45, Jr. \$25 if by 7-17, all \$10 more at site.

Registration - 9-9:45 **Rounds** - 10, 5; 10, 5

Oak Lawn Hilton - 9333 S. Cicero Ave. - Oak Lawn, IL

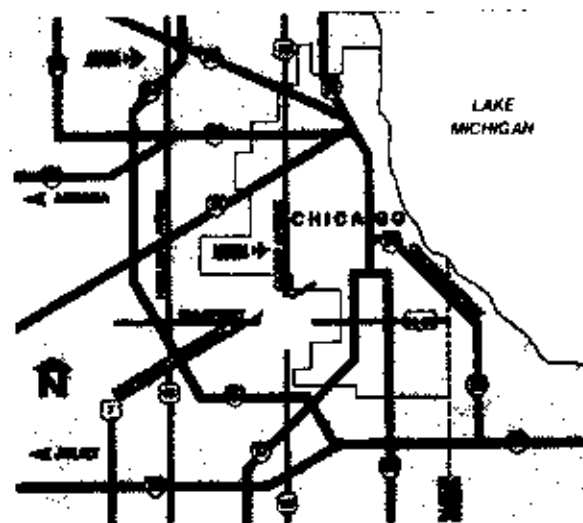
Cicero Avenue is Route 50, or 4800 West.
The Hilton is: A) just 3 miles East of I-294,
95th St. exit; B) 5 miles West of I-57, 95th St.
exit and C) 6 miles South of I-55 Cicero Ave.
exit. Parking is free.

The site is just as easily accessible by public
transportation: Dan Ryan L to 95th St.,
and 95th St. bus West to Cicero Ave.; or Midway L
to Cicero Ave. and Cicero Ave. bus South to 94th St.

Entries:

Midway Chess Enterprises
P.O. Box 388765
Chicago, IL 60638-8765

Info: Hector R. Hernández, (312) 586-3950

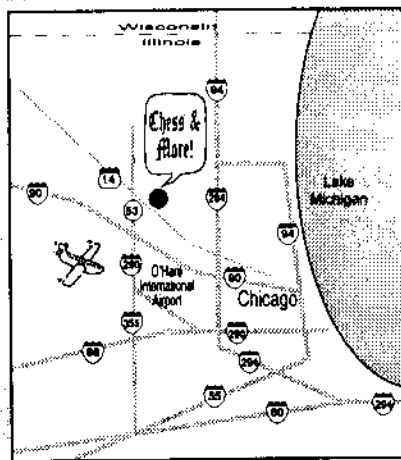


YOU ARE INVITED TO



**A STORE DEDICATED TO CHESS
AND ITS ENTHUSIASTS!**

- The Latest Books
- Instruction Video Rentals
- Chess Computers & Software
- Boards, Sets & Clocks
- Gift Items
- Master Instruction



**JOIN US IN OUR
CELEBRATION
OF THE
GRAND OLD GAME
IN A BRAND NEW STORE!**

Easily found one quarter mile east of
Arlington International Race Course
on Northwest Highway.

Chess & More!

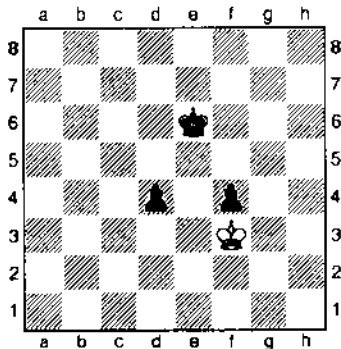
1312 West Northwest Highway, Arlington Heights, IL 60004 • 708/342-9487
Store Hours: Wednesday thru Sunday 12:00 noon to 8:00 pm

TACTICS IN THE ENDGAME

By Grand Master Dimtry Gurevich

We usually associate tactical opportunities with openings and middlegames, with mating attacks and Queen sacrifices. However, there are a lot of tactical solutions at the very end of the game when an extra pawn might be worth as much as an extra Queen.

White to move 1. ?

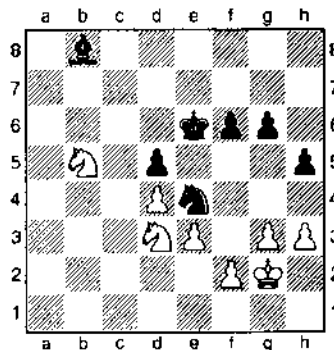


The first impression: White has only one ♔, Black has a ♔ and two ♖'s. Take a pawn and then think how to catch the other one. But, 1. ♕xf4? loses to 1... ♔d5. Instead the beautiful....

1. ♕c4!

The waiting move draws! All the endings analyzed in this article were played during the last few months. The following example is from the game Gurevich–Chudnovsky, Chicago, 1995.

White to move 1. ?

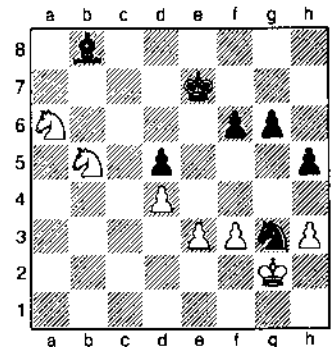


White has a technically won position and the simple 1. ♕c5 would eventually succeed, but there is a much better opportunity for winning material with the tactical shot. 1.f3!

If 1... ♕d2 2. ♕c5+ ♔e7 3. ♕c3 ♔d6 4. ♕a6! ♔a7 5. ♕b5+ ♔c6 6. ♕xa7+ ♔b6 7. ♕b4+-; or 1... ♕d6 2. ♕f4+-; or 1... ♕g5 2. ♕c5+ ♔e7 3. ♕c3 ♔d6 4. ♕a6! ♔a7 5. ♕b5+ ♔c6 6. ♕xa7+ ♔b6 7. ♕b4+-

So Black has to take the pawn.

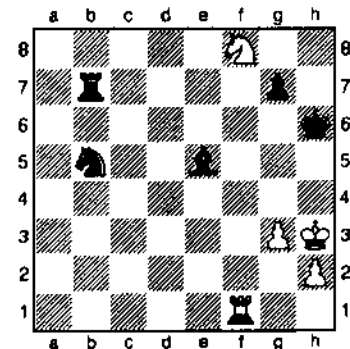
1... ♕xg3 2. ♕c5+ ♔e7 3. ♕a6!



Black loses a piece. If 3... ♕d6 then 4. ♕xd6 ♔xd6 5. ♕xg3 +- or If 3... ♕f5 then 4. ♕xb8 ♕xc3

5. ♕f2 +- Black Resigned [1-0]

White to move 1. ?



The position occurred in the game Gurevich–A. Sokolov, Capelle la Grande, 1995. Andrei Sokolov is a very strong player (he was once ranked third in the world) and he brilliantly outplayed me in this game. The diagramed position is winning for Black but White still has one last resource.

1. ♖f5! ♔e7?

Falling into a trap! After 1... ♕d6! 2. ♕g4 ♕xf8 3. ♖xf8 ♕d6 4. ♕f4 ♕g6 Black's win is only a matter of time.

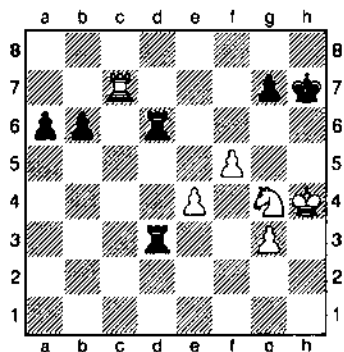
2. ♕g4!

Threatening 3. ♖h5 mate! Black saw this, of course, but only now Solokov understood that he cannot play 2...g6? because of 3. ♖g5!! (beautiful and unusual setup) and Black is in serious

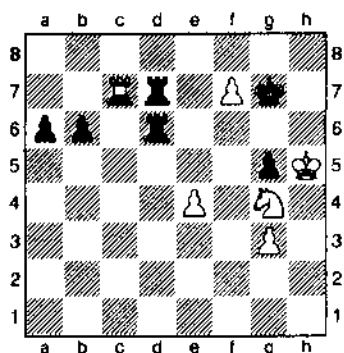
danger, for example: 3...♔g7
4.♕xg6 +- or 3...♖g7 4.♗xe5

Fortunately for Black, he still can hold a draw with 3...g5! 4.♗xg5
♖g7 1/2-1/2 1/2-1/2

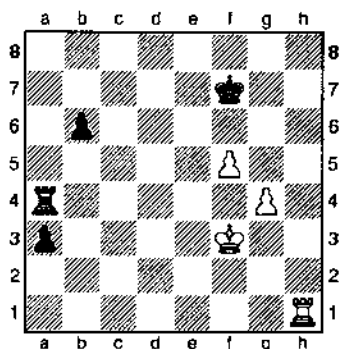
White to move



My endgame against Joel Benjamin (White) in the 1994 U.S. Championship had two interesting tactical movements. The position above happened after Black's 53rd move, and I was expecting 54. f6 and I prepared 54... ♖d7 55. f7 g5+! 56. ♔h5 ♔g7 57. ♗c8 ♖d8 58. ♗c7 ♗d7 59. ♗c6 ♗d6! 60. ♗c7 ♗8d7

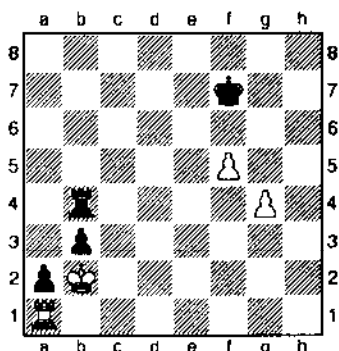


With a winning position for Black. But Joel unriddled my plan and played. 54. ♕e5! The fight went on and a few moves later the following position occurred.



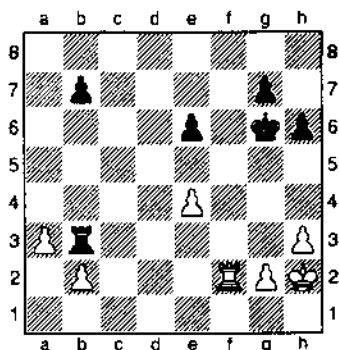
72...a2? and after 73. ♗a1 the position became a draw. For example.

73...b5 [73...♗a3+ 74. ♔e4=] 74. ♔e3 b4 75. ♔d3 b3 76. ♔c3 ♗b4 77. ♔b2



Just in time. Rook and pawn endings often seem so clear cut and simple but sometimes this simplicity is deceptive.

Black to move 1. ...?



Black is down a pawn but the active position of his Rook give him excellent drawing chances.

6...♗e3??

Looks natural but in reality is the decisive mistake.

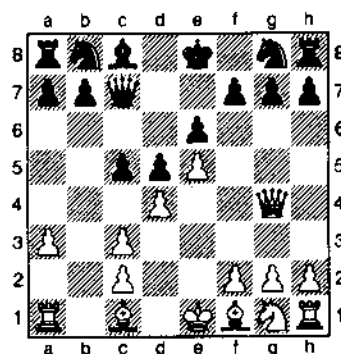
7. ♗f3! ♗xe4 8. ♗b3

and now White is winning. If instead Black would wait for one move and had played. 1...b5! then after 2. ♔g1 Black's 2...Re3! would have been very strong. 3. ♗f3 ♗xe4 4. ♗b3 ♗e5! and Black is equal. 1-0

MID AMERICA CLASS CHAMPIONSHIP ANNOTATED GAMES

Kinnaird, R
Smythe, B [C18]
Mid America Class (1), 1995
[Alan Watson]

1. e4 e6 2. d4 d5 3. ♕c3 ♖b4 4. e5 c5 5. a3 ♖xc3+ 6. bxc3 ♗c7 7. ♗g4!?



This aggressive move reached the zenith of its popularity in 1960 and 1961 when Tal essayed it successfully in his World Championship matches with

Botvinnik, the world's most knowledgeable Winawer expert.

7...f5!?

Zeuthen and Jarlnaes name this the blockade variation because of the immobile central pawn formation and suggest that 7...f6! is actually more precise because of its flexibility.

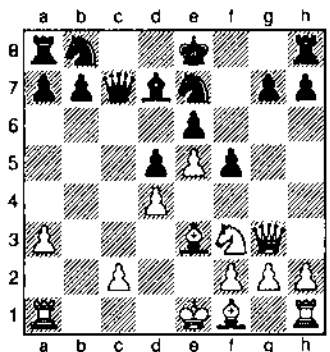
8. ♖g3 ♘e7 9. ♘f3??

A natural looking development which destroys the fragile coordination of White's forces. While both 9. ♘d2 and 9. ♘b5+ have been seen and are regarded as ineffective, 9. ♖xg7! initiating complicated play is best.

9... ♘d7?

9...cxd4 10. ♘xd4 a6 could immediately have been played.

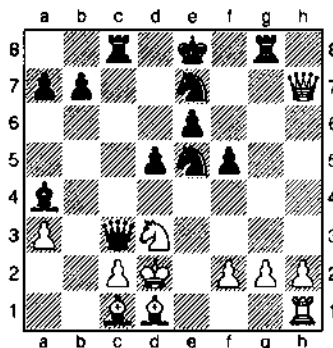
10. ♘c3 cxd4! 11. cxd4??



This further lackadaisical move by Kinnaird completely ignores Black's threats and renders White's game beyond salvation. Necessary was 11. ♘xd4 with a position that isn't pretty but at least holds some opportunities.

11... ♖c3+ 12. ♚d1 ♖xa1+
13. ♘c1 ♘a4 14. ♖xg7 ♖g8
15. ♖xh7 ♖c3 16. ♘e1 ♖xd4+

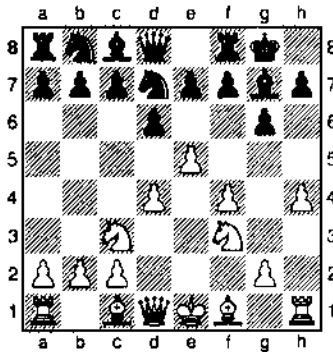
17. ♘d3 ♘bc6 18. ♚d2 ♘xe5
19. ♘e2 ♖c8 20. ♘d1 ♖c3+



A thoroughly unimpressive performance by White, who once having chosen a very sharp line in this opening, appeared to have no idea how to continue. 0-1

Sax, R
Szplisjak, S [B09]
Mid America Class (1), 1995
[Alan Watson]

1. e4 g6 2. d4 ♘g7 3. ♘c3 d6 4. f4
♘f6 5. ♘f3 0-0 6. c5 ♘fd7
7. h4!?



Sax has set his mind upon an unequivocal attack upon his opponent's castled King and begins to pry open the h-file. The variations which may now ensue are both complicated and fascinating ... don't blink!

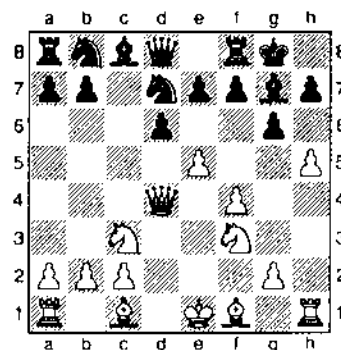
7...c5!

Black realizes the double-edged nature of this position and attempts to distract White from his Kingside ambitions by following the classic philosophy of meeting a wing attack with a reaction in the center. Play is balanced.

8.h5!?

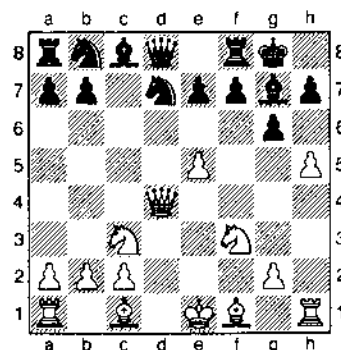
An interesting alternative is 8.e6!? attempting to shatter the cohesiveness of pawns sheltering the Black King.

8...cxd4 9. ♖xd4



Even sharper for White is the sacrifice 9.hxg6!?! dxc3 10.gxf7+ ♖xf7 11. ♘c4 when Black must know the antidote 11...c6! 12. ♘xc6 ♘xe5!! or be quickly run over by an attack barreling forward with the power of a loaded cement truck.

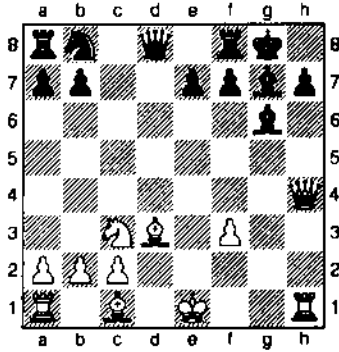
9...dxc5 10.fxc5?



This horrendous move brings White's dreams to an abrupt end.

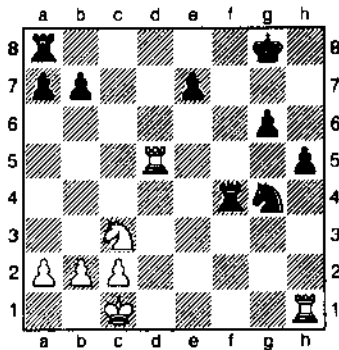
Theory regards 10. ♖f2 or 10. ♖g1 as necessary in order to maneuver the Queen to the h-file. It is at this point through inadequate preparation that the game was lost.

10... ♖xe5! 11. ♖h4 ♖xf3+
12. gxf3 ♖f5 13. hxg6 ♖xg6
14. ♖d3



Shiposh-Liberzon, 1962 continued instead 14. ♖d2 e6 15. ♖h2 ♖c6 16. 0-0-0 ♖b4 when Black had again provided for the safety of his King and held on to his material advantage. If one is to play sharp lines, he must know them well!

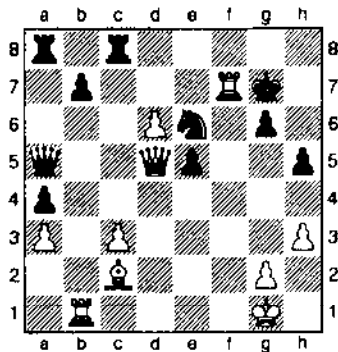
14... h5 15. ♖c3 ♖c6 16. 0-0-0 ♖a5 17. ♖xg6 fxc6 18. ♖d5 ♖a6 19. ♖e4 ♖e5 20. f4 ♖g4 21. ♖d4 ♖xd4 22. ♖xd4 ♖f6 23. ♖b4 ♖xf4+ 24. ♖xf4 ♖xf4



25. ♖d7 ♖af8 26. ♖xb7 ♖f1+
27. ♖xf1 ♖xf1+ 28. ♖d2 h4
29. ♖e4 h3 30. ♖e2 h2 31. ♖g3 ♖g1 0-1

Yermolinsky, A
Manion, J [E71]
Mid America Class (1), 1995

1. d4 ♖f6 2. c4 g6 3. ♖c3 ♖g7
4. e4 d6 5. h3 0-0 6. ♖g5 ♖a6
7. ♖d3 e5 8. d5 c6 9. ♖ge2 ♖c5
10. ♖c2 a5 11. 0-0 cxd5 12. cxd5
♖d7 13. a3 a4 14. ♖c1 h6
15. ♖e3 ♖a5 16. ♖b1 ♖fc8
17. ♖d2 h5 18. ♖1a2 ♖e8
19. ♖b4 ♖c7 20. f4 exf4
21. ♖xf4 ♖b5 22. ♖f2 ♖xc3
23. bxc3 ♖c7 24. e5 dxe5 25. d6
♖a5 26. ♖h6 ♖c6 27. ♖d5
♖xd5 28. ♖xg7 ♖xg7 29. ♖xd5
♖e6 30. ♖xf7+



30... ♖xf7 31. ♖f1+ ♖g7
32. ♖xc6 e4 33. ♖xe4 ♖g5
34. h4 ♖g3 35. ♖f7+ ♖h6
36. ♖xg6 ♖xg6 37. ♖e3+ 1-0

Cohen, H
Mengelis, A [B22]
Mid America Class (2), 1995

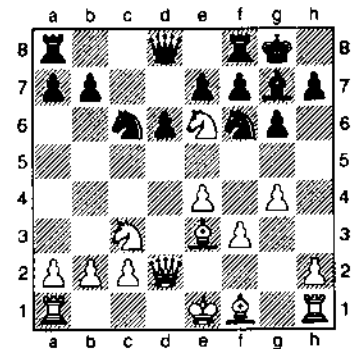
1. e4 c5 2. c3 d5 3. exd5 ♖xd5
4. ♖f3 ♖f6 5. ♖a3 a6 6. ♖c4
♖g4 7. ♖e3 ♖xf3? 8. ♖xd5
♖xd1 9. ♖c7+ ♖d7 10. ♖xa8
♖c6 11. ♖xd1 e5 12. g3 ♖bd7
13. ♖g2+ e4 14. d3 ♖e5 15. dxe4
♖e7 16. f4 ♖xa8 17. fxe5 ♖g4
18. ♖c2 ♖xe5 19. ♖f4 1-0

Helman, J
Fedorowicz, J [B22]
Mid America Class (2), 1995

1. e4 c5 2. d4 cxd4 3. c3 ♖f6 4. e5
♖d5 5. ♖c4 ♖b6 6. ♖b3 d5
7. cxd4 ♖f5 8. ♖f3 e6 9. 0-0
♖e7 10. ♖c3 0-0 11. ♖e3 ♖c6
12. a3 ♖c8 13. ♖c2 ♖g6
14. ♖xg6 fxc6 15. ♖d3 ♖c4
16. ♖c1 ♖f7 17. ♖d2 ♖g5 18. b3
♖xd2 19. ♖xd2 ♖xd2 20. ♖xd2
♖b6 21. ♖fd1 ♖xd4 22. ♖b5
♖xd2 23. ♖xd2 ♖cf8 24. ♖d6
♖d7 25. ♖b5 a6 26. ♖d4 ♖xd4
27. ♖xd4 ♖c7 28. ♖b4 ♖f5
29. ♖e1 ♖xe5 30. ♖f1 ♖xe1+
31. ♖xc1 b5 32. ♖d2 ♖f7
33. ♖f4+ ♖e7 34. ♖h4 h5 35. g4
♖f6 36. gxf5 ♖g5 37. ♖h3 gxf5
38. ♖c3 ♖f6 39. f4 g6 40. ♖e5 a5
41. ♖e3 a4 42. bxa4 bxa4 43. ♖d3
♖c4 44. ♖e3 ♖f5 0-1

Kaldanov, G
Chow, A [B76]
Mid America Class (2), 1995
[Alan Watson]

1. e4 c5 2. ♖f3 d6 3. d4 ♖f6
4. ♖c3 cxd4 5. ♖xd4 g6 6. ♖c3
♖g7 7. f3 ♖c6 8. ♖d2 0-0 9. g4
♖e6 10. ♖xc6



Schiller awards this move a ?! in his 1989 book and suggests that White should return to normal lines with 10. 0-0-0.

10... fxe6 11. 0-0-0

11. ♖c4!?

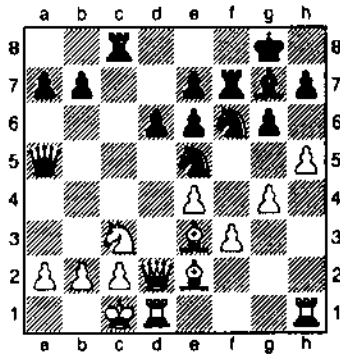
11... ♖e5 12. ♖e2 ♖c8

Interesting is [12... ♖c8!? 13. ♖h6 ♖xh6 14. ♖xh6 ♖c5 15. h4 ♖h8 16. ♖d2 ♖ac8 17. ♖b1 b5 18. ♖xb5 ♖xf3! 19. ♖xf3 ♖xb5 20. g5 ♖d7∞ Campora, D-Kudrin, S, Bern 1988]

13. h4!?

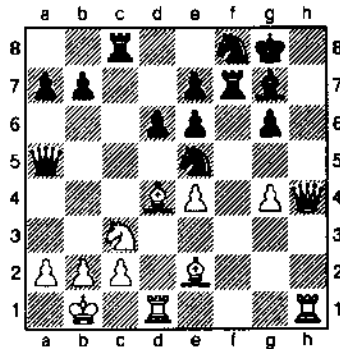
13. ♖b5 ♖d7 14. ♖a3 b5 15. ♖hf1 ♖c4 16. ♖xc4 bxc4 17. c3 ♖a4 18. ♖b1 ♖c6↑ Sveshnikov-van der Wiel, Sochi 1980

13... ♖a5 14. h5 ♖f7!?



It is this move destroying the coordination of Black's rooks which makes me suspicious. Best is the unexpected 14... ♖fxg4! 15. fxg4 ♖f3! 16. ♖xf3 ♖xc3! 17. ♖d2 ♖xa2 as in Kheir, A-Garcia, J, Dubai Olm (10) 1986

15. hxg6 hxg6 16. ♖b1 ♖fd7 17. ♖d4 ♖xf3 18. ♖g5 ♖f7 19. ♖h4 ♖f8



As evidenced by the fact that Black's pieces are in retreat, White is in full control of the initiative and possesses an undisputable advantage. The open "f" and "h" files beckon White's pieces forward while Black has yet to even make a dent in White's defenses.

20. g5 b5 21. ♖xb5 ♖b8 22. c4 a6 23. ♖c3 ♖b4 24. b3 a5 25. ♖a1 ♖f3??

Most likely in serious time pressure, Albert misses a basic tactic allowing the following checkmate.

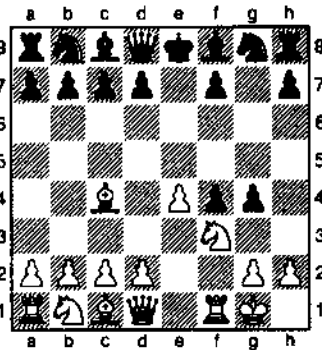
26. ♖h8+ ♖xh8 27. ♖xh8# 1-0

Harris, L
Pinduk, K [C37]
Mid America Class (3), 1995
[Alan Watson]

1. f4 e5 2. c4!

This is an excellent way for a well-prepared White to sidestep the dangerous From's attack against the Bird's Opening and place his opponent in an opening which may not be familiar. Another equally clever response that I have often used is 2. fxe5 d6 3. ♖f3 dxe5 4. e4!?

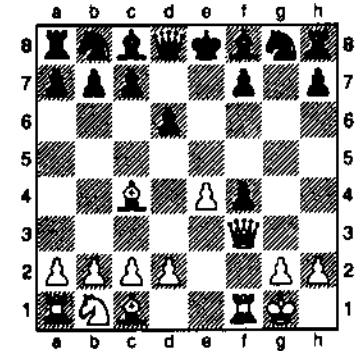
2... exf4 3. ♖f3 g5 4. ♖c4 g4 5. 0-0!



There is an ongoing dispute regarding the proper naming of this opening. Whereas the Oxford

Companion to Chess and most other manuals carry forward the name Muzio Gambit (After Muzio d'Alessandro of Naples who told Salvio in the early 17th century that he had seen it played!), Estrin and Glaskov note that the correct term should be Polerio Gambit in honor of the leading 16th century Italian player who studied and analyzed it. Ah, the vagaries of proper nomenclature!

5... gxf3 6. ♖xf3 d6?



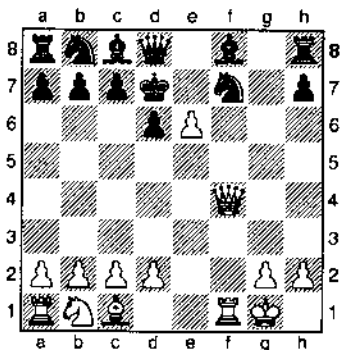
Black fail to appreciate the extreme need for decisive action and instead lowers his head unto the guillotine for the executioner. As noted above, this variation has an extensive history and was at one until the mid 1800's considered winning for White. Modern alternatives are as follows:

[6... d5! 7. exd5 ♖d6 8. d3∞; 6... ♖e7! 7. d4 ♖c6 8. ♖c3! ♖xd4 9. ♖d3 ♖e6 10. ♖d5 ♖c5+ 11. ♖h1 ♖h6 12. ♖d2 ♖f8 13. ♖ad1! d6 14. ♖c3 f6 15. e5!±; 6... ♖f6! (Presently regarded as best.) 7. e5! ♖xe5 8. d3 (8. ♖xf7+!?) 8... ♖h6 9. ♖c3 ♖e7 10. ♖d2 ♖bc6 11. ♖ae1 ♖f5!∞]

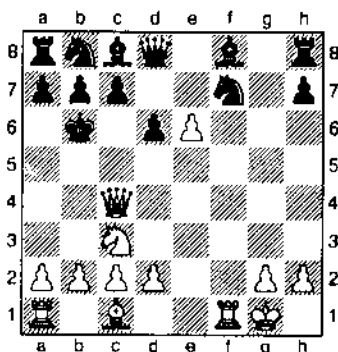
7. ♖xf4 ♖h6 8. ♖xf7+ ♖d7 9. e5!

Ostensibly seeking to open addition lines, but the true tactic isn't clear until the next move!

9... ♖xf7 10. e6+!



10...♔c6 11.♖c4+ ♔b6
12.♗c3!



Golly gee-whiz, it's an old-fashioned King hunt!

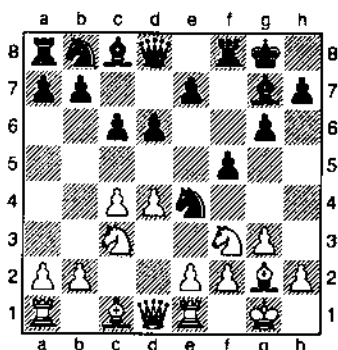
12...c6 13.♞xf7 a6 14.♖d4+ c5
15.♖xh8

A cute game characteristic of the Romantic era in Chess long ago past. 1-0

Shabalov, A
Palatnik, S [A88]
Mid America Class (3), 1995
[Alan Watson]

1.d4 f5 2.g3 ♗f6 3.♔g2 g6
4.♗f3 ♔g7 5.c4 0-0 6.♗c3 d6
7.0-0 c6 8.♞e1 ♗e4

Wanted
*Articles, games, cartoons,
and regular columns for
the next issue. Get
published. Send it to us!*

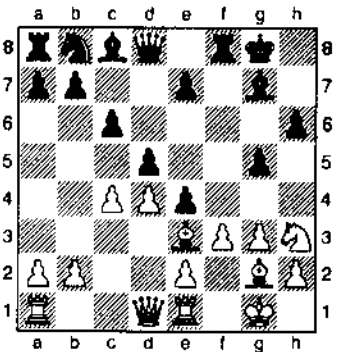


Black's attempt to blockade the e4 square and smother White's ambitions for the freeing e2-e4 ultimately lose time in view of the numerous moves by this knight and the insecurity of the resulting pawn structure. Alternatives are ...♖c7, 8...♗a6, and ...♗h5.

9.♗xc4

Apparently a novelty. [9.♖d3
♗xc3 10.bxc3 c5 11.e4 fxe4
12.♖xe4 ♔f5 13.♖e2 ♗d7=]

9...fxe4 10.♗g5 d5 11.♔e3 h6
12.♗h3 g5 13.f3!



Striking at the immobile Black center and providing a haven for the ♗h3 from where it can observe key central light squares.

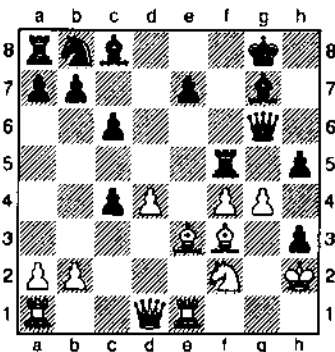
13...exf3 14.exf3 dxc4 15.f4 g4
16.♗f2 h5 17.h3!

Consistently battering Black's defensive shield of pawns which are drawn further forward into less tenable positions.

17...gxh3 18.♔e4

A clever move further highlighting Black's pronounced weakness on the Kingside light squares. White's real target is the ♔h5 which restraining his pieces and not the puny ♔h3.

18...♖e8 19.♔f3 ♖g6 20.♔h2
♞f5 21.g4!



Finally ripping away the last vestiges of security for the Black monarch and opening footpaths for the conquerers to march into Rome.

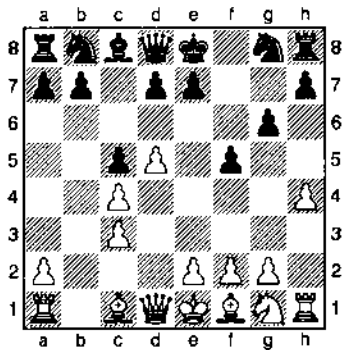
21...hxg4 22.♞g1! ♞h5
23.♔xg4 ♔xg4 24.♞xg4 ♖h7
25.♖e2 ♗d7 26.♞ag1 ♗f6
27.♖xc4+!

White's attack continues to develop with the precision of a finely coached basketball team; every player having a specifically defined function necessary to complement the activities of the team as a whole. Bobby Knight would be proud!

27...♗d5 28.♔c1 ♞f8 29.♖e2
♞f6 30.♗e4 ♞e6 31.f5 1-0

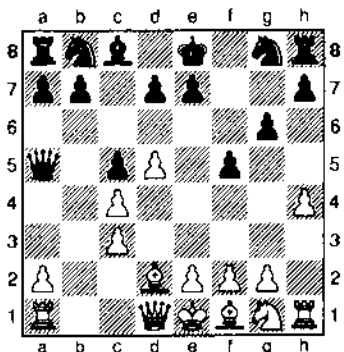
Adams, N
Ivanov, I [A40]
Mid America Class (4), 1995
[Alan Watson]

1.d4 g6 2.c4 ♔g7 3.♗c3 c5 4.d5
♔xc3+ 5.bxc3 f5 6.h4!?



For a brief while, the refutation of Black's enterprising play seemed to lie in the variation 6.c4!? fxe4 7.h4! ♖f6 8.h5! when both 8...♗xh5 9.♙xh5! and 8...gxh5 9.♙xh5! were shown to be very dangerous to the second player. Recently, though, 8...♙g8! has begun to draw attention as a means of maintaining balanced play.

6...♙a5 7.♔d2?



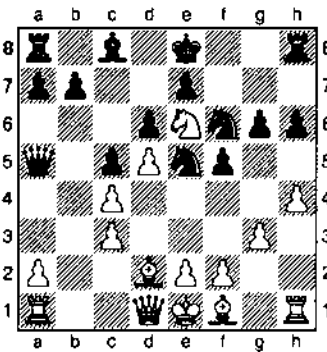
A passive move which doesn't meet the dynamic needs of the position. It was necessary for White to grit his teeth and then plow right on ahead with 7.h5!? ♙xc3+ 8.♔d2 ♙g7 9.h6 (9.♗f3 is noted by Norwood as interesting.) ♙b2 10.♙h3 ♗f6 11.♙b1 ♙d4 12.e3 ♙e5 13.♗f3 ♙c7 14.♔c3 d6 15.♗g5 with good compensation in the game Douven-Befeki, Budapest 1989.

7...♗f6 8.♗f3 d6 9.g3

This is questionable because White's light-squared bishop is tied to the a6-f1 diagonal protecting the weak c-pawn

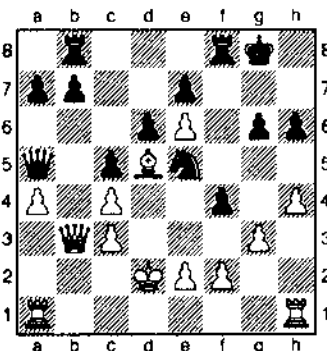
Despite all its early promise, Adams' indecisive continuation has caused 6.h4 to appear as nothing more than a waste of time.

9...♗bd7 10.♗g5 h6 11.♗e6 ♗e5!



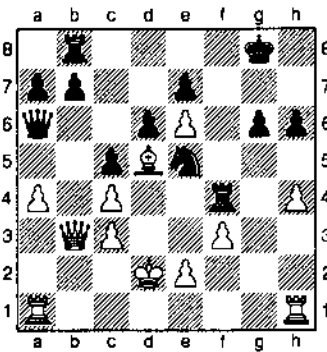
Excellent judgement! White's ♗e6 actually achieves very little despite its impressive appearance deep in the heart of Black's camp.

12.♙b3 ♗c4 13.♔g2 ♗xd2 14.♔xd2 ♔xe6 15.dxc6 0-0 16.♔d5 ♙ab8 17.a4 f4!



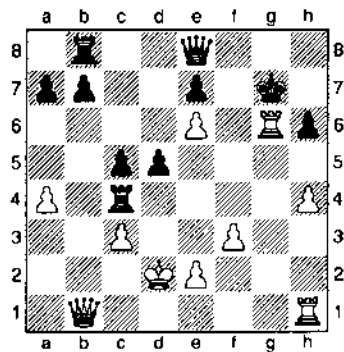
Black opens lines on the Kingside.

18.gxf4 ♙xf4 19.f3 ♙a6!



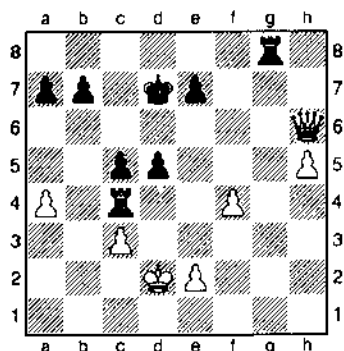
All the precautions have been made and White's c-pawn cannot stand up to the overwhelming force projected against itself.

20.♙b5 ♗xc4+ 21.♔xc4 ♙xc4 22.♙d7 ♙a5 23.♙ac1 ♙d8 24.♙b5 d5 25.♙b1 ♔g7 26.♙cg1 ♙e8 27.♙xg6+!?



I'm not sure whether Ivanov anticipated this or not, but White's best chance lies in upsetting the equilibrium like this in an effort to obscure the game and introduce unclear play.

27...♙xg6 28.♙g1 ♙xg1 29.♙xg1+ ♔f6 30.h5 ♔xc6 31.♙g6+ ♔d7 32.♙xh6 ♙g8 33.f4?



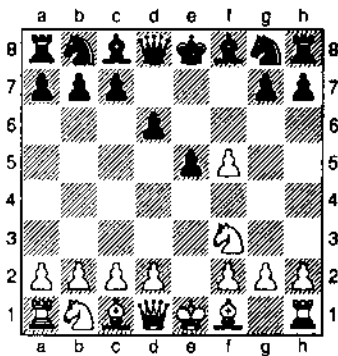
This unnecessary weakening of e4 will come back to haunt White.

33...♙g2 34.♔d3 ♙e4 35.c4 ♙gxc2 36.cxd5 ♙4e3+ 37.♔c4 ♙c2+ 38.♔b5 ♙b3+ 39.♔a5 ♙b6 40.♙g7 ♙cb2 41.♙g4+ ♔c7

And White, unable to prevent the threatened 42...♖a6 Mate! resigned. 0-1

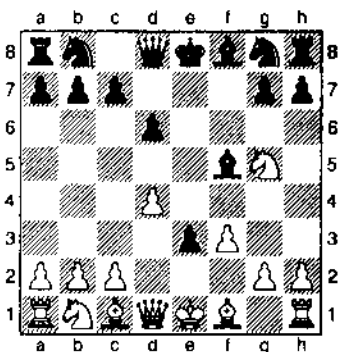
Bisguler,A
Karklins,A [C40]
Mid America Class (4), 1995
[Alan Watson]

1.e4 e5 2.♘f3 f5 3.exf5 d6



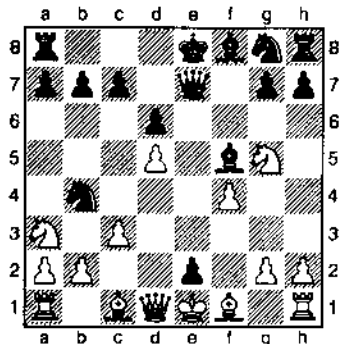
Whereas 3...e4 would maintain the position within the bounds of the Latvian Gambit, this move introduces a subtle transposition to the Philidor Defense. Ever inventive, Andrew has an additional surprise up his sleeve.

4.d4 e4 5.♘g5 ♖xf5 6.f3 e3!?



This clever move has as its point 7.♖xe3 h6! 8.♘e4 (8.♘h3 ♖xh3 9.gxh3 is unclear) ♖xe4 9.fxe4 ♗h4+ when Black regains his pawn. Theory has seen 6...♗f6 7.♗c3 d5 8.fxe4 when both 8...♗xc4 and ...dxe4 were believed to give White the better game.

7.f4 ♗c6 8.d5 ♗b4 9.♗a3 ♗e7 10.c3 e2!



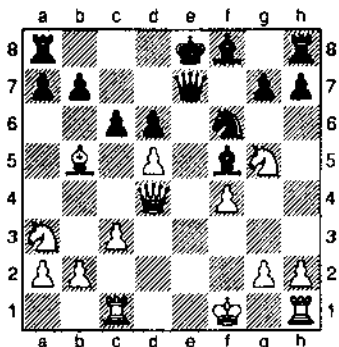
Karklins is unsatisfied with the continuation 10...♗a6 11.♖xa6 bxa6 12.♗a4+ and sacrifices the spearhead on e3 to keep White from castling and secure the dark-squared bishop. When has one seen a pawn so insistently offering itself?

11.♖xe2

11.♗xe2? ♗d3+ 12.♖d1 ♖g4!
 13.♗f3

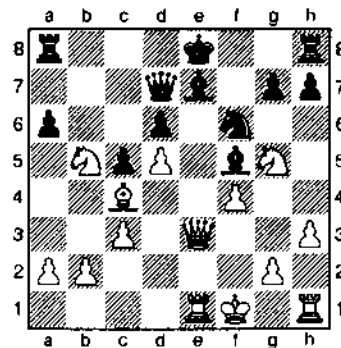
13.♗xg4 ♗f2+--

13...♖xf3 14.gxf3 ♗xe2+
 15.♖xe2 ♗xc1+ 16.♞xc1 0-0-0
 0-0] 11...♗d3+ 12.♖f1 ♗xc1
 13.♞xc1 ♗f6 14.♖b5+ c6!?
 15.♗d4!?



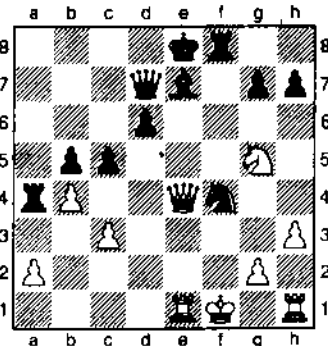
I'm not exactly sure why this was played here, but my belief is that both players felt the following line offered good chances for Black based on his superior development and the insecure position of White's King: 15.dxc6!? 0-0-0 16.cxb7+ ♗xb7 [15.dxc6 0-0-0 16.cxb7+ ♗xb7=]

15...♗d7 16.♞e1+ ♖e7 17.♖c4 c5 18.♗e3 a6 19.h3 b5 20.♗xb5?



Was this an oversight in time pressure? White may have thought that 19...axb5 20.♖xb5! ♗xb5 is impossible because of the mate threat on e7 but forgot that it comes with check! Black now takes control for the remainder of the game.

20...axb5 21.♖d3 ♗xd5 22.♗f3 ♖xd3+ 23.♗xd3 ♗xf4 24.♗c4 ♞a4 25.b4 ♞f8!



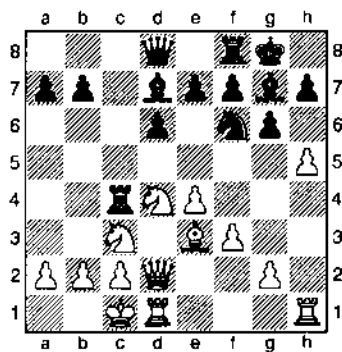
Watch what damage a pair of rambunctious rooks can do!

26.♗xh7 ♞f7 27.♖g1 ♞xa2 28.♞h2 ♖d8 29.g3 ♗xh3+ 0-1

Zinyten,M
Ziane,N [B78]
Mid America Class (5), 1995
[Alan Watson]

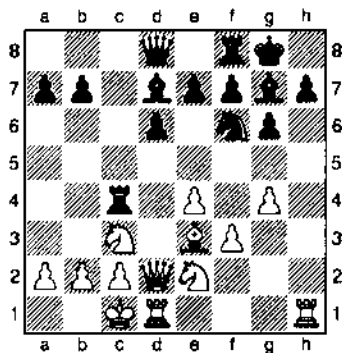
1.e4 c5 2.♘f3 d6 3.d4 cxd4 4.♗xd4 ♗f6 5.♗c3 g6 6.♖e3 ♖g7 7.f3 ♗c6 8.♗d2 0-0

9. ♖c4 ♗d7 10. 0-0-0 ♜c8
 11. ♖b3 ♘e5 12. h4 ♘c4
 13. ♖xc4 ♜xc4 14. h5!?



White optimistically sacrifices his h-pawn in the hope that the resulting open file will prove a gateway into the Black position. As it must be accepted, the result is a very dynamic position full of sharp tactics and exciting play; both players are put on notice that the slightest of wounds may prove fatal and each is eager to land the first solid punch.

14... ♘xh5 15. g4 ♘f6
 16. ♘dc2?!



First made popular by Karpov's dramatic victory over Korchnoi in their 1974 World Championship Candidates' Final match, this move is now regarded as somewhat lame now that the proper means to combat it have been found. To further confuse the issue, it should be remarked that players of the White pieces have experimented with no less than ten choices in this position; namely 16. ♗f5?!, 16. ♞dg1?!, 16. ♞h2?!, 16. ♚b1,

16. e5!, 16. b3, 16. ♖b3. 16. ♘d5?!, 16. ♘dc2?!, 16. ♖h6!?

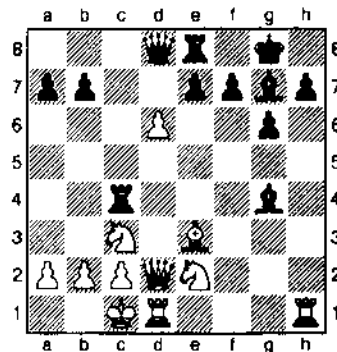
16... ♞e8!

This correct move has made a world of difference; whereas Korchnoi's 16... ♞a5?! went quickly down in flames after 17. ♖h6 ♖xh6 18. ♞xh6 ♜fc8 19. ♞d3! ♞4c5 20. g5! ♞xg5 21. ♞d5!! ♞xd5 22. ♘xd5 ♞e8 23. ♘ef4 ♖c6 24. e5! ♖xd5 25. exf6 exf6 26. ♞xh7+ ♚f8 27. ♞h8+ 1-0.

17. e5 ♘g4!

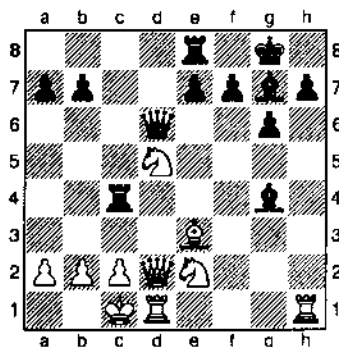
A necessary sacrifice to maintain the activity of the Black forces.

18. fxe4 ♖xg4 19. exd6?



This position well-known to theory, White is placed under tremendous pressure and any sidestep from the best moves will allow Black to quickly decide the game. Best play continues 19. e6! ♖xe6 20. ♖d4 ♖f6 1. ♘f4 ♖f7 22. ♞h2 h5 3. ♚b1 ♞a5 24. ♘fe2 e5 25. ♖e3 d5 =+ as in Edcos-Pirisi, Tapolca 1980. Sapi and Schneider in their book correctly describe the weakness of 19. exd6? as follows: "since exchanging Queens is forbidden because of the loss of a piece on the e-file, this move only serves to activate the Black queen." Carefully examining the remainder of this game will prove just how right they are!

19... ♞xd6 20. ♘d5?

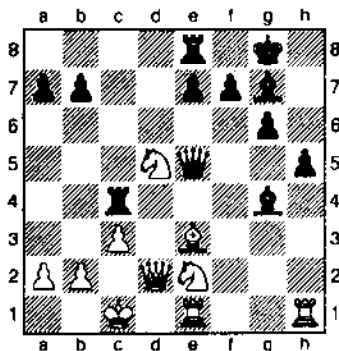


20. ♞xd6? exd6 21. ♞d3 ♖f5-+;
 20. ♞e1 ♖xc3! 21. ♘xc3 ♖xd1
 22. ♘xd1 ♞ec8 23. c3 b5 ♣ Perenyi

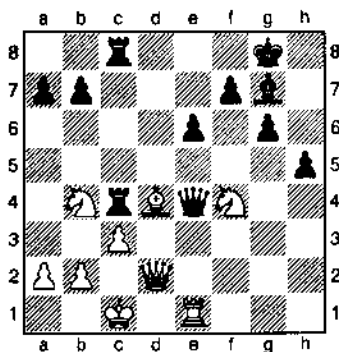
20... ♞e5 21. c3

21. ♘dc3 ♞a5 22. ♖h6 ♖f6
 23. ♞e3 ♞ec8 24. ♞d5 b5 25. ♞xb5
 ♞xb5! 26. ♘xb5 ♞xc2+ 27. ♘d1
 ♞xe2 28. ♞xe2 ♖xe2+ 29. ♚xe2 a6
 30. ♘c3 ♖g7 31. ♖xg7 ♚xg7 ♣

21... ♖f3 22. ♞h3 ♖g4 23. ♞hh1
 h5 24. ♞de1?



24... ♖f3 25. ♘ef4 ♖xh1
 26. ♞xh1 e6 27. ♘b4 ♞e4
 28. ♞e1 ♞ec8 29. ♖d4



29... ♜xd4 0-1

Family, Religion, and the Royal Game

By Alan Watson

Lawrence G. Stillwell, simply Larry to all those who knew him, was born April 23, 1930 and tragically passed away, April 20, 1995. In all of my time and that of many of my acquaintances there has never been another individual who as succinctly epitomized the concept of "club-player and organizer" and who gave so unselfishly of his time and energy.

Some of his achievements in life, above and beyond having a wonderful family and maintaining a position of influence and respect in the church were the following:

Professor at Judson College in Elgin
History teacher at Proviso East & West High Schools
Many-time USCF voting member
Hillside Chess Club founder
Director of the Illinois Chess League
Top Illinois Scholastic Chess Organizer
Hillside Chess Club Champion - 1974 & 1990

Paul Ilosvay perhaps best summed up everyone's sentiments in a recent letter to me when he wrote "I know Larry for 25 years since our first meeting at the Romcoville Chess Club. He was nicest and most giving person I have ever met. Very religious, he demonstrated his faith through example rather than coercion and was friendly to everyone. We played many games together and never once did he show any feeling of remorse after a loss; he'd simply compliment me and set up the pieces for another contest. If he had a fault, it lay in trying to satisfy everyone. He was my friend and I will miss him very much."

The accompanying photograph and score are of a game he and I played in the 1981 Illinois Chess League. Though not completely sound, my sacrifice was warmly applauded by Larry, and I can yet see the sparkle in his eyes as he congratulated me on a "brilliant" victory. He had a marvelous way of making all those about him feel comfortable and relaxed. I wish I had spent more time with him.



Stillwell, Larry – Watson, Alan
Illinois Chess League, 1981

1.d4 f5 2.c4 ♘f6 3.g3 g6 4.♗g2 ♗g7 5.♘f3 0-0 6.0-0 d6 7.♘c3 c6 8.♘d2?! e5 9.d5 c5 10.f3 ♘a6 11.e4 ♘c7 12.f4 exf4! 13.♞xf4 ♘g4 14.♞c2 g5 15.♞f3 f4 16.gxf4 gxf4 17.♘d1 ♗d4+ 18.♖h1 ♗d7 19.♞b3 ♘xh2 20.♖xh2 ♞h4+ 21.♗h3 f3!? 22.♞f1? ♗c5+ 23.♖g1 ♗xh3 24.♞f2 ♞g4+ 25.♖h1 ♗g2+ 26.♖g1 ♗h2+ 27.♖xh2 ♞h3+ 28.♖g1 ♞h1# 0-1

GAMES, GAMES AND MORE GAMES

Ziane,N - Loring,S [B12]
Mid America Class (4), 1995

1.e4 c6 2.d4 d5 3.e5 ♟f5 4.♘c3
c6 5.g4 ♟g6 6.♘ge2 c5 7.h4 h5
8.♘f4 ♟h7 9.♘xh5 cxd4
10.♞xd4 ♟xc2 11.♟g5 ♞b6
12.♟b5+ ♘c6 13.♞xb6 axb6
14.♞c1 d4 15.♞xc2 dxc3 16.0-0
♞xa2 17.♞xc3 ♟e7 18.♟xc6+
bxc6 19.♞xc6 ♟xg5 20.hxg5
♞xb2 21.♞c8+ ♘d7 22.♞fc1
♞b1 23.♞8c7+ ♘d8 24.♞c8+
♘d7 25.♞xb1 ♘xc8 26.♞xb6 g6
27.♘g3 ♘e7 28.♘c4 ♘c7
29.♞b3 ♘c6 30.f4 ♞a8 31.♘d6
♘d8 32.♘f2 ♘d7 33.♘e3 ♞a4
34.♘e4 ♞a7 35.♞d3+ ♘e7
36.♘d6 ♞c7 37.♘c4 ♘b7
38.♞d4 ♘c5+ 39.♘c3 ♘b7
40.f5 ♞c3+ 41.♘d2 1-0

Zlatdinov,R - Levitt,R [C76]
Mid America Class (4), 1995

1.e4 c5 2.♘f3 ♘c6 3.♟b5 a6
4.♟a4 g6 5.0-0 ♟g7 6.c3 d6
7.d4 ♟d7 8.♞c1 ♞e7 9.♟g5 f6
10.♟h4 ♘h6 11.♞d2 b5
12.♟b3 g5 13.♟g3 g4 14.♘h4
exd4 15.cxd4 ♞f8 16.♞f1 ♘a5
17.♞c1 ♘xb3 18.axb3 ♞a7
19.e5 dxe5 20.dxe5 f5 1-0

Adnan,M - Chudnovsky,J [C54]
Mid America Class (5), 1995

1.e4 e5 2.♘f3 ♘c6 3.♟c4 ♟c5
4.c3 ♘f6 5.d3 d6 6.0-0 0-0
7.b4 ♟b6 8.a4 a5 9.b5 ♘e7
10.♞e1 ♘g6 11.♘bd2 ♞e7
12.♘f1 ♟e6 13.♘g3 ♘f4
14.♞b3 ♘xd3 15.♟xc6 ♟xf2+
16.♘f1 ♞xe6 17.♞xe6 fxe6
18.♞d1 ♘xc1 0-1

Satterlee,R - Zemlinsky,A [B86]
Mid America Class (4), 1995

1.e4 c5 2.♘f3 d6 3.d4 cxd4
4.♘xd4 ♘f6 5.♘c3 a6 6.♟c4
e6 7.♟b3 ♟e7 8.0-0 0-0 9.f4
♞c7 10.f5 e5 11.♘f3 b5
12.♟g5 ♟b7 13.♟xf6 ♟xf6
14.g4 ♘d7 15.g5 ♟e7 16.g6
♘f6 17.♘g5 b4 18.♘a4 ♘xe4
19.gxf7+ ♘h8 20.♘xh7 ♟c6
21.♞f3 ♞a7+ 22.♘f1 ♟b5+
23.♘g2 ♟c6 24.♘xf8 ♘f6
25.♘g6+ ♘h7 26.♟d5 ♟xd5
27.♞xd5 ♘g4 28.♞h3+ ♘h6
29.♘xe7 ♞xe7 30.♞xa8 ♞xf7
31.♞e4 ♞f6 32.♞d1 a5 33.♘b6
♘g8 34.♘d5 ♞f7 35.♞f1 ♞a7
36.f6 ♞f7 37.fxg7 ♞e6 38.♞f6
♞g4+ 39.♞xg4 ♘xg4 40.♞g6
1-0

Karklins,E - Condrin,J [B37]
Mid America Class (4), 1995

1.e4 c5 2.♘f3 ♘c6 3.d4 cxd4
4.♘xd4 g6 5.c4 ♟g7 6.♘c2
♘f6 7.♘c3 0-0 8.♟e2 b6 9.0-0
♟b7 10.♞e1 ♞b8 11.f4 e5
12.g3 ♞e8 13.♟f3 exf4 14.gxf4
♘a5 15.♘a3 a6 16.♟d2 ♞c7
17.e5 ♟xf3 18.♞xf3 ♘h5
19.♘d5 ♞c6 20.♞f2 ♞ab8
21.♘b4 ♞c8 22.♞a1 ♟f8
23.♘d5 ♟c5 24.♟e3 d6 25.b4
♟xe3 26.♞xe3 ♘c6 27.b5 axb5
28.cxb5 ♞g4+ 29.♘h1 ♘xe5
30.fxe5 ♞xe5 31.♞d3 ♞bc8
32.♞g1 ♞e6 33.♘c7 ♞c3
34.♘xe6 ♞xd3 35.♘c7 ♞e2
36.♘c4 d5 37.♘xb6 ♞dd2
38.♞gd1 ♞xh2+ 39.♘g1 ♞dg2+
0-1

Helman,T - Computer,BP [C21]
Mid America Class (4), 1995

1.e4 e5 2.d4 exd4 3.c3 dxc3
4.♟c4 cxb2 5.♟xb2 d5 6.♟xd5
♘f6 7.♟xf7+ ♘xf7 8.♞xd8
♟b4+ 9.♞d2 ♟xd2+ 10.♘xd2
♞e8 11.♘g3 ♘c6 12.e5 ♘d5
13.0-0 ♘f4 14.♘c4 ♟g4
15.♘g5+ ♘g6 16.f3 ♟f5
17.♘e4 ♞ad8 18.♘f2 ♟e6
19.♘c3 ♞d2 20.♟c1 ♞xa2
21.♞xa2 ♟xa2 22.♘eg4 ♘e2+
23.♘h1 h5 24.♘c3 ♘xc1
25.♞xc1 ♞xe5 26.♘e4 a5 27.g4
hxg4 28.♘xg4 ♞b5 29.♘g2
♟c6 30.♘g2 ♟c8 31.♘g3 a4
32.♘f4 a3 33.♞a1 ♞a5 34.♘c3
♟c6 35.♘d3 ♟c4 36.♘c1 b5
37.♘b1 a2 38.♘c3 ♘b4 39.♘c5
♘f7 40.h4 ♞a3 0-1

Porter,R - Shernoff,L [C47]
Mid America Class (3), 1995

1.e4 c5 2.♘f3 ♘c6 3.♘c3 ♘f6
4.d4 cxd4 5.♘xd4 ♟b4 6.♘xc6
bxc6 7.♟d3 ♟xc3+ 8.bxc3 ♞e7
9.0-0 d6 10.♟g5 ♞c5 11.♞d2
♟e6 12.f4 ♞c5+ 13.♘h1 ♘g4
14.f5 ♟c4 15.♞f4 h5 16.♟xc4
♞xc4 17.e5 ♞c5 18.exd6 cxd6
19.♞e1+ ♘c5 20.f6 g6 21.♞d4
0-0-0 22.♞b4 ♘c7 23.♟c3 ♞a5
24.♞eb1 ♞a6 25.h3 ♞hc8
26.♟f4 ♞c6 27.c4 ♘d7
28.♞b7+ ♘e8 29.♟xe5 ♞xc5
30.♞h6 1-0



SHABALOV WINS CHICAGO OPEN

The 4th annual Chicago Open, played May 26-29 at the Hyatt Regency Oak Brook, drew a new high of 417 entries (389 players and 28 re-entries). After adjustments for half entry fee players (juniors under 1600, unrateds, re-entries), the paid entry total was 372, so 93% of the \$40,000 projected prize fund was paid, a total of \$37,200.

The 48-player Open Section was probably the strongest tournament ever held in the Chicago area, with eleven Grandmasters and two International Masters. The event was so powerful that 1994 U.S. Co-champion Alex Yermolinsky scored just 4-3, and Novag Grand Champion Alex Ivanov withdrew after six rounds with a 3 1/2 - 2 1/2 score.

Alex Shabalov, the other 1994 U.S. Co-champion, turned in an incredible result to take clear first place and win \$3720. After defeating Eugene Martinovsky (2360) in the first round, Shabalov faced only GM's the rest of the way, finishing with a 6-1 score and a performance rating of 2900! He beat Gabriel Schwartzman and Alex Goldin, drew with Dmitry Gurevich, beat top-rated Lembit Oll (2733) and Joel Benjamin, and clinched first place with a quick last round draw versus Gregory

Oll, Goldin, Kaidanov, and IM Michael Brooks tied for 2nd though 5th with 5 1/2, each winning \$930. Scoring 5 were GM's Benjamin, Nick DeFirmian, Gurevich, and Pavel Blatny (winner of the 1995 New York Open). Under 2400 prizes were shared by Orest Popovych and Ilan Kreitner each scoring 4 1/2 to win \$1395.

The under 2200 section was won by Nathaniel Jackson (6, \$2970) with Kazimieras Jakstas and Gennady Krips tied for second with 5 1/2 points and they won \$1023 each. Aaron Dean took a clear first place in the under 2000 section with 6 points and earned \$2970. Jim Oberweis, Kelvin McAlister, Ellis Blair, Charles Jennings and Arandel Markovic tied for second with 5 1/2 points and they won \$539.40. The under 1800 section was won by Gregory White with a perfect 7-0 score. He won \$2970 for his outstanding performance. Roman Filler and Boris Scheider split the second place prize money are won \$1023 for their 6-1 scores. A three way tie for first saw Richard Larson, Gennady Ioffe, and Edgardo Miranda win \$1612 for 6-1 scores in the under 1600 section. Five players split the first place prize in the under 1400 section. Bill Zebrowski, Mike LeGrand, Michael Giampa Kalmadi Rao, Miguel Camargo all won \$800 for their fine performance. Ralph Wakerly scored 6-1 in the unrated section to take first place and win \$465. Michael Lukasik took the second place prize money of \$232.50

with his 5 1/2- 1 1/2 performance.

The tournament was directed by Bill and Brenda Goichberg, Walter Brown, and Steve Immitt. Next year's Chicago Open is scheduled for the same site on Memorial Day weekend 1996. The Hyatt's beautiful main floor ballrooms will be added to the lower level space used this year, and prizes will be substantially higher in the hope of drawing over 700 players!

Check out the September - October issue of the ICB for NW Alan Watson's annotated games from this event.

Here is Dr Martinovsky's exciting victory over GM Stefan Djuric.

Martinovsky, Eugene
Djuric, Stefan
Hawaii International, 1995

1.d4 e6 2.c4 ♘f6 3.g3 c5 4.♘f3 cxd4 5.♘xd4 d5 6.♙g2 e5 7.♘f3 d4 8.0-0 ♘c6 9.e3 ♙c5 10.exd4 ♙xd4 11.♘c3 0-0 12.♘xd4 ♘xd4 13.♙g5 h6 14.♙xf6 ♗xf6 15.♘d5 ♗d6 16.f4 ♗c5 17.♖h1 ♗xc4 18.fxe5 ♘e6 19.♞c1 ♗xa2 20.♗c2 ♗a5 21.♘e7+ ♖h8 22.♘xc8 ♞axc8 23.♗xc8 ♞xc8 24.♞xc8+ ♖h7 25.♙e4+ g6 26.♞xf7+ ♘g7 27.♙f3 ♗a1+ 28.♖g2 ♗xb2+ 29.♖h3 ♗xc5 30.♞cc7 h5 31.♞xg7+ ♗xg7 32.♞xg7+ ♖xg7 33.♙xb7 a5 34.♙c6 ♖f6 35.♖h4 ♖f5 36.♙a4 ♖f6 37.♙c2 1-0

DMITRY GUREVICH
INTERNATIONAL GRANDMASTER
Professional Chess Instructor



•lectures •seminars •lessons

(312) 241-0752 • 818 S. LaSalle • Chicago, IL 60607

TOURNAMENT CALENDAR

Call Chess Phone, (708) 832-5222, for up-to-date tournament results, and announcements of tournaments that may not be listed in Chess Life or the ICB. The ICA Chess Phone voice is Todd Barre. Unless otherwise noted, all tournaments require USCF membership. Illinois Tour events also require ICA membership.

Organizers - remember it is ICA policy that an event must be published in the ICA bulletin and Chess Life marked as a tour event in order to be a tour event. Please send your tournament notices to: Bob Renaut, 1255 Oakton Lane, Naperville, IL 60540-0310 or call 708-983-0934.

Jul 8, Tuley Park, Chicago, IL

501 E, 90th Place, EF: \$12, under 19 \$6. Reg. 11:00-11:45, 1st Rd at 12. If 16 or less Rds 1&2, G/15, rds 3-5 G/25, Prizes 1st 35%, 2nd 25% best from lower half 20%. If 18 players or more, Rds 1-3, G/15, rds 4-6: G/20, Prizes 1st 28%, 2nd 22%, middle 3rd 19%, lowest 3rd 16% Info: Tom Fineberg 721-3979.

Jul 15 & 16, Fish Fry by the Lake, Chicago, IL., Chicago Chess Club, 1149 W Lunt, Chicago, IL, 60626, 4-SS, 30/60, SD/30, EF: \$20, \$15 Jrs & CCC members, (70% of EF's): 18%-16%-14%-12%-10%, Reg: 12-12:45 pm, Rds: 1-5:30 pm each day. For info: (312) 761-5050.

Jul 22-23, Midway Amateur Class Championships, Oaklawn Hilton Inn, 9333 South Cicero Ave. Oaklawn. 4-SS, 40/120, 20/30, SD/30. EF\$ \$45,\$25 for juniors if by 7-17; all \$10 more at site. ICA membership required. Reg: 9-9:45, Rds: 10, 5 & 10, 5.\$3000G, Expert: 300,

200, 100, 50; Class A 300, 200, 100, 50, Class B 300, 200, 100, 50, Class D/E 200, 100, 50, 50. Entries: Midway Chess Enterprises, PO Box 388765, Chicago, IL 60638-8765. Info: Hector Hernandez (312) 586-3950. **MAXI**

Jul 29, Chessterton Chess

4-SS, G/90, Westchester Public Library, 200 W. Indiana, Chesterton, Indiana 46304. EF\$: \$15, \$10 for High School or below Reg: 8:30 - 9:15 a.m. (all time is Chicago time!), Rds: 9:30, 12:00, 3:00, 6:00, Prizes (b30): 1st \$100, A \$45, B \$40, C \$35, D \$25, E/U \$15, NS,NC Advance entry, information: Randy Pals, 1233 Morningside Dr., Chesterton, IN 46304. 219-926-2266.

Jul 29, Tuley Park, Chicago, IL

501 E, 90th Place, EF: \$12, under 19 \$6. Reg. 11:00-11:45, 1st Rd at 12. If 16, Prizes 1st 35%, 2nd 25% best from lower half 20%. If 18 players or more, Prizes 1st 28%, 2nd 22%, middle 3rd 19%, lowest 3rd 16%. Time controls: If 14 or less; 4SS, G/25, if 14 to 20: 5SS Rds 1&2 G/15, rds 3,4,5 G/25. If 22 players or more: 6SS, rds 1-3: G/15, rds 4-6: G20, Info: Tom Fineberg 721-3979

Aug 3, Bargin Basement Book Battles, Chicago, IL., Chicago Chess Club, 1149 W Lunt, Chicago, IL, 60626, 3-RR, G/29, EF: \$7, \$5 Jrs & CCC members. Book prize to winner of each quad. Reg: 6-7 pm, Rds: 7:15-8:30-9:45, For info: call (312) 761-5050.

Aug 6, PLUS SCORE MINI TOUR 1/2 K, Chicago, IL, Chicago Chess Club, 1149 W Lunt, Chicago, IL, 60626, 4-SS, G/45, EF: \$15, 4.0=\$100, 3.5=\$50, 3.0=\$25, 2.5=\$12, Reg: 12-12:45 pm, Rds: 1-2:45-4:30,6:15 pm, ICA membership required. For info call (312) 761-5050. mini

Aug 6-18, U.S. Open,

Aug 19, 1995 Bradley Summer Open, Peoria, IL, 4-SS, G/80, Garrett Center,

824 N. Duryea Place, Peoria 61625, EF: \$11 if by 8/17 or \$15 at site, PF\$: \$75-50, (b6) A,B,C/under \$25. Reg: 8-8:45, Rds: 9-12-2:45-5:30. Entries: Bill Wilkinson, 905 N. Rebecca Place, Peoria, IL 61606, (309) 673-9455, mini.

Aug 26, Springfield Chess Club, see the back page ad!

Aug 26, Chessterton Chess

4-SS, G/90, Westchester Public Library, 200 W. Indiana, Chesterton, Indiana 46304. EF\$: \$15, \$10 for High School or below Reg: 8:30 - 9:15 a.m. (all time is Chicago time!), Rds: 9:30, 12:00, 3:00, 6:00, Prizes (b30): 1st \$100, A \$45, B \$40, C \$35, D \$25, E/U \$15, NS,NC Advance entry, information: Randy Pals, 1233 Morningside Dr., Chesterton, IN 46304. 219-926-2266.

Aug 26, '95 Tuley Park Quck Chess, Chicago, IL., 501 E, 90th Place, EF: \$12, under 19 \$6. Reg. 11:00-11:45, 1st Rd at 12. If 16, Prizes 1st 35%, 2nd 25% best from lower half 20%. If 18 players or more, Prizes 1st 28%, 2nd 22%, middle 3rd 19%, lowest 3rd 16%. Time controls: If 14 or less; 4SS, G/25, if 14 to 20: 5SS Rds 1&2 G/15, rds 3,4,5 G/25. If 22 players or more: 6SS, rds 1-3: G/15, rds 4-6: G20, Info: Tom Fineberg 721-3979

Sep 2-4, Illinois Open, Aurora, 6-SS Aurora West H.S., MAXI

Sep 2, Chessterton Chess 5-SS, G/60, Westchester Public Library, 200 W. Indiana, Chesterton, Indiana 46304. EF\$: \$15, \$10 for High School or below Reg: 8:30 - 9:15 a.m. (all time is Chicago time!), Rds: 9:30, 11:30, 2:00, 4:00, 6:30, Prizes (b30): 1st \$100, A \$45, B \$40, C \$35, D \$25. E/U \$15, NS,NC Advance entry, information: Randy Pals, 1233 Morningside Dr., Chesterton, IN 46304. 219-926-2266.

Sep 11, '95 Tuley Park Quick Chess, Chicago, IL., 501 E, 90th Place, EF: \$12, under 19 \$6. Reg. 11:00-11:45, 1st Rd at 12, . If 16 , Prizes 1st 35%, 2nd 25% best from lower half 20%. If 18 players or more, Prizes 1st 28%, 2nd 22%, middle 3rd 19%, lowest 3rd 16% . Time controls: If 14 of less; 4SS, G/25, if 14 to 20: 5SS Rds 1&2 G/15, rds 3,4,5 G/25. If 22 players or more: 6SS, rds 1-3: G/15, rds 4-6: G20, Info: Tom Fineberg 721-3979

Oct 14, Tuley Park, Chicago, IL 501 E, 90th Place, EF: \$12, under 19 \$6. Reg. 11:00-11:45, 1st Rd at 12, . If 16 , Prizes 1st 35%, 2nd 25% best from lower half 20%. If 18 players or more, Prizes 1st 28%, 2nd 22%, middle 3rd 19%, lowest 3rd 16% . Time controls: If 14 of less; 4SS, G/25, if 14 to 20: 5SS Rds 1&2 G/15, rds 3,4,5 G/25. If 22 players or more: 6SS, rds 1-3: G/15, rds 4-6: G20, Info: Tom Fineberg 721-3979

Oct 21, Springfield Chess Club

Oct 28, Chessterton Chess

4-SS, G/90, Westchester Public Library, 200 W. Indiana, Chesterton, Indiana 46304. EF\$: \$15, \$10 for High School or below Reg: 8:30 - 9:15 a.m. (all time is Chicago time!), Rds: 9:30, 12:00, 3:00, 6:00, Prizes (b30): 1st \$100, A \$45, B \$40, C \$35, D \$25, E/U \$15, NS,NC Advance entry, information: Randy Pals, 1233 Morningside Dr., Chesterton, IN 46304. 219-926-2266.

Oct 27-29, Midwest Class Championship, Oakbrook, IL. MAXI

Nov 4, '95 Tuley Park Quick Chess, Chicago, IL., 501 E, 90th Place, EF: \$12, under 19 \$6. Reg. 11:00-11:45, 1st Rd at 12, . If 16 , Prizes 1st 35%, 2nd 25% best from lower half 20%. If 18 players or more, Prizes 1st 28%, 2nd 22%, middle 3rd 19%, lowest 3rd 16% . Time controls: If 14 of less; 4SS, G/25, if 14 to 20: 5SS Rds 1&2 G/15, rds 3,4,5 G/25. If 22 players or more: 6SS, rds 1-3: G/15, rds 4-6: G20, Info: Tom Fineberg 721-3979

Nov 18-19, Illinois Class Championship, MAXI

Nov 25, Chessterton Chess

4-SS, G/90, Westchester Public Library, 200 W. Indiana, Chesterton, Indiana 46304. EF\$: \$15, \$10 for High School or below Reg: 8:30 - 9:15 a.m. (all time is Chicago time!), Rds: 9:30, 12:00, 3:00, 6:00, Prizes (b30): 1st \$100, A \$45, B \$40, C \$35, D \$25, E/U \$15, NS,NC Advance entry, information: Randy Pals, 1233 Morningside Dr., Chesterton, IN 46304. 219-926-2266.

Dec 2, '95 Tuley Park Quick Chess, Chicago, IL., 501 E, 90th Place, EF: \$12, under 19 \$6. Reg. 11:00-11:45, 1st Rd at 12, . If 16 , Prizes 1st 35%, 2nd 25% best from lower half 20%. If 18 players or more, Prizes 1st 28%, 2nd 22%, middle 3rd 19%, lowest 3rd 16% . Time controls: If 14 of less; 4SS, G/25, if 14 to 20: 5SS Rds 1&2 G/15, rds 3,4,5 G/25. If 22 players or more: 6SS, rds 1-3: G/15, rds 4-6: G20, Info: Tom Fineberg 721-3979

Dec 9, Springfield Chess Club

Dec 16, '95 Tuley Park Quick Chess, Chicago, IL., 501 E, 90th Place, EF: \$12, under 19 \$6. Reg. 11:00-11:45, 1st Rd at 12, . If 16 , Prizes 1st 35%, 2nd 25% best from lower half 20%. If 18 players or more, Prizes 1st 28%, 2nd 22%, middle 3rd 19%, lowest 3rd 16% . Time controls: If 14 of less; 4SS, G/25, if 14 to 20: 5SS Rds 1&2 G/15, rds 3,4,5 G/25. If 22 players or more: 6SS, rds 1-3: G/15, rds 4-6: G20, Info: Tom Fineberg 721-3979

Dec 23, Chessterton Chess

4-SS, G/90, Westchester Public Library, 200 W. Indiana, Chesterton, Indiana 46304. EF\$: \$15, \$10 for High School or below Reg: 8:30 - 9:15 a.m. (all time is Chicago time!), Rds: 9:30, 12:00, 3:00, 6:00, Prizes (b30): 1st \$100, A \$45, B \$40, C \$35, D \$25, E/U \$15, NS,NC Advance entry, information: Randy Pals, 1233 Morningside Dr., Chesterton, IN 46304. 219-926-2266.

Feb 17-18, US Amateur Team Championship, Rosemont, IL

Mar 15-17, 96 Mid-American Class Championships, Rosemont, IL

Apr 26-28, 96 National Open, Las Vegas, NV.

Rudy Lozano Branch Library Chess Club News

Hector R. Hernandez has captured the Correspondence Chess League of America's 1991 (93rd) North American Class A Championship with a 4-0 score in the Finals match against Canadian Michael Eldridge. Eldridge, a player with a like for off-beat openings, had always proven to be a difficult opponent; but Hector managed to come out on top this time.

Fernando Montoya is the 1995 Illinois State undisputed champion for 9th grade. He scored 5-0 in the Illinois State Scholastic-Freshman Section- held in Aurora in February. There were 40 players from various parts of the state in this section.

1993 U.S. Amateur Team Championship Midwest. This February event saw the "library" team, captained by McKinley Park Branch C.C. coach Josh Flores, take first place in the under 2000 division. Expert Keith Holzmuller, Hector Hernandez and I. C.A. president Jim Oberweis played boards 1, 2 and 3 respectively. Keith, Jim and Josh scored 3.5 of 5 points, and Hector 4 of 5-his only loss being to Expert Glen Gratz, formerly of Champaign.

King's Gambit Accepted Thematic. This Wednesday night, double round robin tourney was patterned after the Buenos Aires Sicilian Defense thematic held last year in honor of Lev Polugayevsky 's birthday. Five high school and five elementary school children participated in our tournament.

ILLINOIS PATRONS

Century Club Members

Michael Belovesick Sr.	Addison
Larry W. Blum	Rockford
Thomas Fineberg	Chicago
Thomas Friske	Des Plaines
Fred Gruenberg	Palos Heights
Bill Smythe	Chicago
Burton Vincent	Chicago
Helen Warren	Western Springs
Jim Warren	Western Springs

Gold Card Members

Todd Barre	Elmhurst
Kurt P. Bridgham	Crawfordsville, IN
Tyrone Brooks	Chicago
Paul H Cox	Chicago
Hector Hernandez	Chicago
H. Steven Hoisington	Ogden, UT
Toshio Imai	East Lansing, MI
Mike Jenkins	Cary
Alan Losoff	Morton Grove
Kenneth Marshall	Lombard
Fred Meyers	Sterling
William Naff	Peoria
Samuel Naylor VI	Carthage
Jim D. Oberweis	Aurora
Peter Pelts	Niles
Daniel Pradt	Glen Ellyn
Michael Pratts	Chicago
Irwin Rothschild	Park Forest
Arthur Sinclair	Evanston
Mitchel Sweig	Evanston
James Tanaka	Chicago
Richard Verber	Aurora
Louis Werner	Evanston
Sandy Zabell	Evanston

Patron Members

Bob Ash	Urbana
Edward J. Blanco Jr.	Chicago
Timothy Bogan	Chicago
Dennis Bourgerie	Normal
Bill Brock	Chicago
Jim Brotsos	Chicago
Walter Brown Jr.	Crest Hill
Gregory Bungo	Elmhurst
Anthony Caliendo	Aurora
James Clark	Streator
Lawrence Cohen	Villa Park
Audrey Lynn Colletti	Phoenix, AZ
Greg DeFotis	Lincolnwood
Joe Delay	Schaumburg
Leroy Dubeck	Cherry Hill, NJ
William Dwyer	Chicago Ridge
Joshua Flores	Chicago
Nik Goncaharoff	Hoffman Estates

William Graves
 Steven Hansen
 Charles Hicks
 Dean Hightower
 Thomas Howell
 Jeffery Hyland
 Kazys Jankauskas
 Steven Josephs
 Tim Just
 Dan Kamen
 Leo Kaushansky
 Scott Kittsley
 Thomas Knoedler
 Walter Kocjan
 Peter Kuhn
 Kevin L. Kukla
 Stephen C. Lauger
 Marc Lonoff
 Eugene Martinovsky
 Patrick Maurer
 Thomas Mayka
 Sergio Moreno
 John Ormins
 Alex Pehas
 Marvin Rogan
 Steve Rydberg Jr.
 Ray Satterlee
 Andrew Schultz
 Mark Sefcheck
 Anthony Sillars
 Scott Silverman
 Anthony Sodaro
 Leonard Spiegel
 Joe Splinter
 Robert Stoltz
 Sonia Taki
 Mike Varady
 James Welton
 Douglas White
 Don Winsauer
 Harold Winston
 Philip Wong
 Philip Woodruff
 Jim Zimmerman

Chicago
 Chicago
 Naperville
 DeKalb
 Evanston
 Mount Prospect
 Darien
 Hinsdale
 Gurnee
 Buffalo Grove
 Wheeling
 Shorewood, WI
 Springfield
 Northlake
 Des Plaines
 Hanover Park
 DeKalb
 Northbrook
 Naperville
 Glen Ellyn
 Wheeling
 Cicero
 Joliet
 Darien
 Chicago
 Mokena
 Wheaton
 Evanston
 Naperville
 Northampton, MA
 Elk Grove Village
 Lyons
 St Charles
 Hanover Park
 River Forest
 Chicago
 Effingham
 Wheeling
 Schamuburg
 West Dundee
 Naperville
 Wilmette
 Grayslake
 Libertyville

Dennis Bourgerie, Downstate Vice-President
 1621 N. School St., Normal, IL 61761
 (309) 454-3842

Alan R. Losoff, Secretary
 9402 N. Octavia, Morton Grove, IL 60053
 (708) 966-5559 or Internet alanl@mcs.net

Todd Barre, Treasurer
 418 Poplar Ave. Elmhurst, IL 60126
 (708) 834-0862

USCF Delegates

by virtue of their USCF position

Fred Gruenberg	Vice-President
Tim Just	Regional Vice-President
Garrett Scott	Regional Vice-President
Frank Skoff	Life Voting Member
Helen Warren	Life Voting Member
Harold Winston	Life Voting Member

by ICA-appointment

James D. Oberweis
 Alan R. Losoff
 Todd J. Barre
 Dennis Bourgerie
 Richard Verber

USCF Voting Members

ICA appointed

Erv Sedlock	Ken Marshall
Jim Warren	Bill Naff
Bob Renaut	Bill Symthe
Walter Brown	Dennis Grant
Thomas Fineberg	Albert Chow
Hector Hernandez	Larry Cohen.

ICA appointed alternates

Joshua Flores	Ken Lewandowski
Les Baie	Keith Martin
Chris Baumgartner	Paul Mills
Ed Blanco	Glenn Panner
Jim Brotsos	Michael Pratts
Tom Copper	Bill Reed
Bill Cox	Howard Wachtel
Bill Wilkinson	Marvin Dandridge
Tom Knoedler	Michael Zacate

ICA ELECTED OFFICERS

James D. Oberweis, President
 3 Buckingham Dr, Aurora, IL 60506
 (708) 466-4886

Helen E. Warren, Metro Vice-President
 Box 147, Western Springs, IL 60558
 (708) 663-0688

Where to Play Chess

ICA Club Affiliates

American Postal Chess Tournaments sponsors postal events and sells chess books & equipment. Jim or Helen Warren, PO Box 305, Western Springs 60558. (708) 663-0688.

Avery Coonley School Chess Club 1400 W Maple Avenue, Downers Grove 60515.

Chess & More! sells books, chess sets and clocks, Wednesday through Sunday 12 to 8 p.m. 1312 W Northwest Highway, Arlington Heights 60004. (708) 342-9487.

Central Lake County Chess Club meets Fridays 7:15 p.m. to midnight at College of Lake County, Bldg. 1, Washington at Rt. 45, Grayslake. Dennis Grant, 1657 McKay, Waukegan 60087. (708) 336-5188.

Chesterton Chess Club meets at Westchester Public Library, 200 W. Indiana, Chesterton, IN. Randy Pals, (219) 926-2266.

The Chicago Chess Club is located at 1149 W. Lunt, Chicago, 60626 and is open from 3 to 11 p.m. Wednesday through Sunday. Albert Chow (312) 761-5050.

The Chess Board BBS is a computer chess club. Use your computer, modem and phone to play electronic postal chess, exchange international messages, download chess related files. James Reames, Chicago. *Modem* (312) 784-3019, 1200-14400 bps.

Chicago Industrial Chess League organizes frequent competition among commercial or government teams with awards, ratings, and special events. Tony Jasaitis (708) 406-6420.

Continental Chess Association PO Box 249, Salisbury Mills, NY 12577. Bill Goichberg.

Downers Grove Park District Chess Club meets Thursdays 6:30-10 p.m., Lincoln Center, 935 Maple Av., Downers Grove. George Uffner, (708) 960-9382.

Dubois Elementary School Chess Club c/o Andrew Skaar, 308 S Douglas, Springfield, 62704.

Evanston Township High School Chess Club 1600 Dodge, Evanston, 60204. Ken Lewandowski, (708) 492-7932.

Fox Valley Chess Club meets Mondays 6:30 to 10:30 p.m., Church of God, corner of Galena Blvd. and Lancaster, Aurora. Bob Renaut, (708) 983-0934 or Dick Verber (708) 978-1380.

Greater Peoria Chess Federation meets Mondays 7 to 11 p.m., Garrett Center, 824 N. University, Peoria. Bill Wilkinson, 901 N. Rebecca Place, Peoria 61606. (309) 673-9455.

Hillside Chess Club meets Fridays 7-11:30 p.m. at Hillside Baptist Church, 5152 Butterfield Rd, Hillside.

Lake County Chess Association sponsors rated tournaments in the Grayslake-Zion area. Tim Just, 37165 Willow, Gurnee 60031. (708) 244-7954.

Midway Chess Enterprises PO Box 388765, Chicago, IL 60638.

Mid-America Chess Association sponsors the Mid-America Class Championships and brings national tournaments to the Chicago area. PO Box 157, Morton Grove, IL 60053.

Oak Park/River Forest Chess Club meets Tuesdays 7 p.m. to midnight, Dominican Conference Center, 7200 W. Division, River Forest. Ken Marshall, 357 W Grove, Lombard 60148. (708) 932-1455.

Park Forest Chess Club meets Thursdays 7 to 10 p.m., Freedom Hall, Orchard & Lakewood, Park Forest. Lawrence Cohen, 135 Westwood, Park Forest 60466. (708) 748-5911 or 834-2477.

Rudy Lozano Library Chess Club 1805 S. Loomis, Chicago, 60608. Hector Hernandez (312) 746-4329.

Smythe Dakota Competitions encourages and offers financial support for Plus-Score Mini-Tours at sites in Chicago and suburbs. Bill Smythe, 7445 N. Greenview #311, Chicago 60626, (312) 761-2455.

St. Charles Chess Club meets Thursdays 7 p.m. at Baker Community House, 101 S. 2nd (Rt. 31), St. Charles. Erv Sedlock, 6 N. 307 Old Homestead Rd., St. Charles 60174. (708) 377-7995.

The South Suburban Chess Club Of Greater Chicago meets Fridays 7 p.m. to midnight at Lutheran Church, 5100 W 115th Street, Alsip. Joe Bannon, 312-445-0631.

Troy Chess Club PO Box 99432, Troy MI 48099. Salah Chehayeb.

Tuley Park Chess Club holds frequent Saturday tournaments at Tuley Park Field House, 501 E. 90th Pl., Chicago. Tom Fineberg, 7321 S South Shore Dr., Chicago 60649, (312) 721-3979.

Villa Park Junior Chess Club (for players aged 8-17) meets Saturdays 10:00 a.m. to noon. Iowa Community Center, 338 N. Iowa Av, Villa Park, IL. Richard Horner (708) 832-7427.

Join the Illinois Chess Association

and receive six issues of the award winning Illinois Chess Bulletin. In addition, you'll qualify to enter dozens of tournaments on the *Illinois Chess Tour*. Every game you win or draw in a tour event earns you tour points that can add up to cash prizes at year-end.

Each year the ICA organizes major tournaments like the Illinois Open and the Illinois Class Championships and helps bring tournaments like the National High School Championships to Illinois. The ICA also sponsors a scholastic clinic, maintains the *tournament clearing house* and promotes and publicizes chess activity statewide.

Membership is only \$14 per year (\$8 juniors under 19) but you can *show increased support for Illinois Chess* by joining as a Patron (\$35), Gold Card (\$50), or Century Club (\$100) member. These members are acknowledged in each issue of the ICB and receive their magazines by first class mail.

Join now. Alan Losoff, ICA Membership Secretary, PO Box 157, Morton Grove, IL 60053.

Springfield Summer Sauna

August 26, 1995

Hampton Inn

Corner of Stevenson Drive and Dirksen Parkway
just off the Stevenson exit from I-55
(make a right turn at the first traffic signal)
Adjacent to the Capital City Shopping Center

4 Round Swiss

Time Control: G/80

\$150 Guaranteed Prize Fund

First: \$75

Second: \$50

Third: \$25

Trophies to:

B, C, D, E/unrated

Entry Fee \$ 12 if by 8/18/95, \$15 at site.
Youth/Scholastic \$10
Registration - 7:30 - 8:30

Entries: Thomas B. Knoedler
2104 South Fourth Street
Springfield, Illinois 62703-3450

 **ILLINOIS**
CHESS ASSOCIATION
c/o Alan R. Losoff
P.O. Box 157
Morton Grove, IL 60053

Address correction
requested

FIRST-CLASS MAIL
U.S. POSTAGE
PAID
ASTORIA IL
PERMIT NO 9

Time Value Material