

ILLINOIS CHESS BULLETIN

MARCH - APRIL 1995 VOL. XVIII NO. 2

AN ICA BI-MONTHLY PUBLICATION - \$2.95

MASTERS MELT DOWN

**AT TIM JUST'S
WINTER OPEN/RESERVE**

**RODNEY KINNAIRD
WINS OPEN SECTION**

**DARYL ZELINSKI WINS
RESERVE SECTION**





TABLE OF CONTENTS

Editor
1255 Oakton Lane, Naperville, IL, 60540, 708-983-0934
Games Archivist
161 Oakwood Drive, Bolingbrook, IL, 60440, 708-759-7757
Games Editor
161 Oakwood Drive, Bolingbrook, IL, 60440, 708-759-7757
Scholastic Editor
654 Hillside, Glen Ellyn, IL 60137, 708-858-7511
Calendar Editor
1255 Oakton Lane, Naperville, IL, 60540, 708-983-0934
Tour Statistician
7445 N. Greenview, Chicago, IL, 60626, 312-761-2455

Bob Renaut

Alan Watson

Alan Watson

Daniel Pradt

Bob Renaut

Bill Smythe

President's Podium.....	3
ICA Tour Standings	4
Reader's Retort.....	5
Upsets Dominate Tim Just's Winter Open.....	6
Annotated Games from Tim Just's Winter Open	6
Rule Book Tactics.....	12
Annotated Games from the Illinois Class	13
The Anti Dutch Spike.....	19
Reader's Showcase.....	22
Personal Observations on Postal Play	25
Oak Park River Forest Chess Club News.....	28
Chow Wins OPRF Winter Open	28
GM Gurevich's Corner.....	30
Scholastic Chess	33
Illinois Tour Crosstables	34
Tournament Calendar.....	36
Illinois Chess Association Patrons.....	38
Where to Play Chess.....	39

MEMBERSHIP AND SUBSCRIPTIONS

The Illinois Chess Bulletin (ICB) is published bimonthly by the Illinois Chess Association. ICA membership includes a subscription to ICB. Century Club, Gold Card, and Patron members receive their ICB by first-class mail.

ANNUAL MEMBERSHIP RATES

Century Club	\$100.00
Gold Card	\$50.00
Patron	\$35.00
Regular	\$14.00
Junior (under 18)	\$8.00

Send your subscriptions and address corrections to:
Alan Losoff (ICA Membership Secretary)
9402 N Octavia, Morton Grove, IL 60053

SUBMISSION DEADLINE

The deadline for submissions to the May - Jun 1995 issue is March 30, 1995.

ICA AFFILIATION

Chess clubs and other organizations which promote chess activity may affiliate with the ICA. Benefits include a copy of the ICB by first class mail, a listing under "Where to Play Chess," discounted advertising rates, free event advertising on Chess Phone and the right to run ICA Tour Events. ICA Affiliation costs \$25; please remit to the Membership Secretary.

ADVERTISING RATES

Full page	\$90
Half page	\$54
Quarter page	\$36
Eighth page	\$24

10% discount for the same ad in consecutive issues. 1/3 discount for ICA affiliates. All ads must be camera-ready to qualify for above rates; minimum \$20 charge for layout. Payment must accompany ad. The ICA & ICB reserve the right to reject advertising.

Copyright© 1995 Illinois Chess Association

DON'T MISS THE ICA BANQUET

MARCH 12 - NOON TILL??

Donation for Dinner \$16 in advance, \$20 at door
Held at Harvey's, 331 East Odgen, Westmont
Make checks payable to Illinois Chess Association
mail by March 5 to ICA Awards Banquet
418 Poplar Avenue, Elmhurst, IL 60126

Need the latest chess tournament info?
Call Chess Phone 708-832-5222

PRESIDENT'S PODIUM

By Jim Oberweis

WoW! Illinois Chess is hot! I.C.A. membership is at or near record levels. The number of local, state, regional and national tournaments in Illinois is at or near record levels. The number of young chess players in Illinois must be a record. The competition level in Illinois events must also be at record levels with such exciting, dynamic players as Dmitry Gurevich, Al Chow, Dr. Martinovsky, Anna Zemlinsky, senior champion Ray Satterlee, James Fagan, Tommy Craggs, Justin Sadauskus, and so many others. Helen Warren's program, matching masters with talented young players, is really starting to pay big dividends! The American Chess Foundation, with partial funding from Intel, is bringing its Chess in the Schools program to Chicago. All we need now is for Bobby Fisher to come out of retirement and move to Chicago.

We recently tried a series of Quick Chess tournaments in our ice cream stores in Aurora, Glen Ellyn, and Rolling Meadows. Upsets rolled out faster than the ice cream. A previously unrated Naperville North High School student named Jeff Lindeen upset a "B" player in the first round, an "A" player in the second round, and an Expert in the third round before finally succumbing to Mark Sefcheck in the final round. With a master and two experts in this Game-15 event, who would ever have expected the only two perfect scores after three rounds to belong to an "A" player and an unrated high school player? Who would have predicted that young Mike Giampa, one of Satterlee's seven slayers, rated 1152, would knock off not one, but two, "A" players enroute to a 3 and 1 score. No "A" player scored more than 2 points except for Mark Sefcheck, who won first place, and Mark Stamatakos, who tied with Pete Stein for second with 3.5 points. Thank God there was no room for me to play! Directing was exciting enough. But the most fun part of the evening was watching the looks on the faces of the non-chess players who came in to get some milk or ice cream only to find every table in the place occupied by focused players feverishly moving their chess pieces, trying to beat the 15 minute time limit.

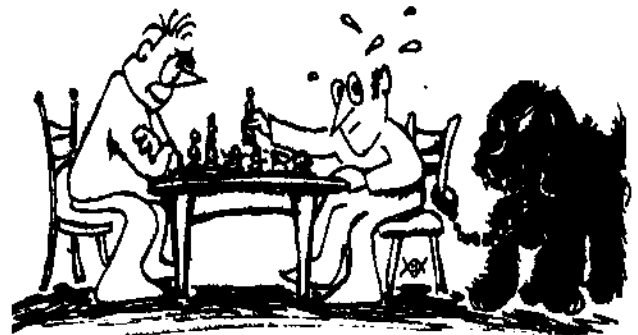
Tim Just will be directing the National High School Chess Tournament at the Ramada O'Hare April 7th - 9th. The event, organized by Ken

Lewendowski and Al Losoff, is likely to draw well over 1000 young players from all over the country. The tournament is divided into three sections, an Open section, a section open to players rated below 1600, and a reserve section open only to players rated below 1300. If you've never seen a national scholastic event, come on out. It's unbelievable Better yet, give Tim Just a call and volunteer your time to help out.



The annual Illinois Chess Association Banquet will be held March 12th at Harvey's restaurant in Westmont on Ogden Ave. between Cass and 83. Come on out to support our winners Al Chow, Gene Scott, Kirk Israelsen, Mike Sims, Joseph Stevens, and William Hendrickson. Helen Warren promises some other fun and surprises.

With all the fun and excitement going on in Illinois Chess, I'd like to know what's next. I'll bet some of you have some great ideas that we haven't heard. I'd like to invite all of you to call me with your ideas of how to make Illinois chess more fun. My office number is 708-801-4766 (after 3:00 PM. is best because that's when the stock market closes). I'm usually there until at least 6:00 PM. My home number is 708-466-4886 but I'm seldom there. Better still, come to the banquet, or to the St. Charles Chess Club on Thursdays or the Fox Valley Club on Mondays, and share your ideas personally!



ILLINOIS TOUR STATUS

By Bill Smythe Tour Statistician

The top two classes in the 1994 Illinois Chess Association Tour were won by a pair of familiar faces. Albert Chow made it look easy by outdistancing his nearest rivals by dozens of Tour points to win it all in the Master class. Gene Scott, by contrast, did it the hard way, leapfrogging over half a dozen competitors in the final Tour event of 1994 to take clear first in the Expert class.

It is nice to have active tournament players among our ICA officers. Newly elected ICA president Jim Oberweis took the class A honors, in the process possibly pushing his rating into the 2000 range for next year's Tour. Cash prize winners in all classes are shown below.

Tour prizes will be awarded at the annual ICA Banquet, March 12 in Westmont.

Master Tour Winners:

1st: Albert Chow 350.00
2nd: Dmitry Gurevich 250.00
3rd: Eugene Martinovsky 150.00

Expert Tour Winners:

1st: Gene Scott 160.00
2nd: Robert Sax 40.00
Steve Szpisjak 40.00

Class A Tour Winners:

1st: James D Oberweis 130.00
2nd: Guy Kittilsen 65.00

Class B Tour Winners:

1st: Kirk Israelsen 100.00
2nd: Rudy Padilla 50.00

Class C Tour Winners:

1st: Mike Sims 70.00
2nd: Joe Delay 35.00

Class D Tour Winners:

1st: Joseph Stevens 40.00
2nd: Pierre Roustan 20.00

Class E Tour Winner:

1st: William Hendrickson 25.00

Here is a final list of the top finishers:

Master Tour Points:

CHOW Albert C 149.5
GUREVICH Dmitry 97
MARTINOVSKY Eugene 59
PANGAN Camilo 55.5
MANION Josh 51
KITILSEN Guy O 43
MOTE David 39
ZIANE Nouredine 39
FAGAN James B 38.5
ZINYTCH Miron 38.5

Expert Tour Points:

SCOTT Gene G 54
SAX Robert D 48
SZPISJAK Steve 48
FAGAN James B 44.5
SMYTHE Bill 43.5
KITILSEN Guy O 43
HERNANDEZ Hector 38
OBERWEIS James D Sr 34.5

Class A Tour Points:

OBERWEIS James D. 62.5
KITILSEN Guy O 58
SMYTHE Bill 43.5
SUKCHAROENPHON T 40.5
FAGAN James B 36.5
LORING Steve 33
PADILLA Rudy R 31
SUKCHAROENPHON Kenga 30

Class B Tour Points:

ISRAELSEN Kirk 77.5
PADILLA Rudy R 71
CLAY Harry 66
MIEL James 61.5
RATNER Jacob 49
HENDERSON S E 42
ENGELEN Mark 39
COVIC Mehmed 37

Class C Tour Points:

SIMS Mike 89
DELAY Joe 47.5
JASAREVIC Ersan 46
RIESER William 44.5
BOORSTEIN Josh L (2) 40
MC COY Damon 39.5

Class D Tour Points:

STEVENS Joseph M 53.5
ROUSTAN Pierre 48.5
GETZ Barney 44
HENDERSON Dale 40
HORNOR Richard 38
MURADIAN Sevan 37
HAMILTON Lloyd 35

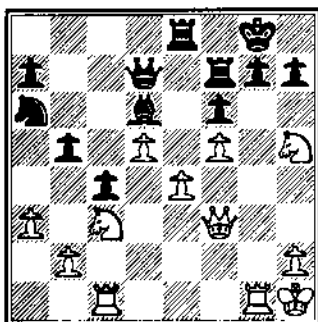
Class E Tour Points:

MARTIN William H (2) 32
HENDRICKSON William 27
ROBLEDO Mark Jr 24.5
SHOUSE Robert (1) 19
JOHNSON Nancy 17

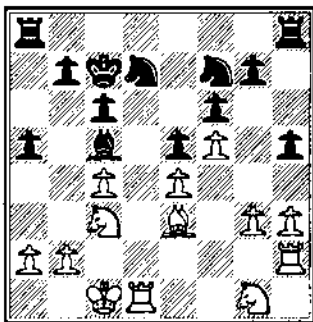
READERS' RETORT

Here is your chance to experience the heat of competition, the thrill of victory or the agony of defeat! These positions have been selected from recent games contributed by you, the reader. Send your "RETORTS" to Alan Watson or Bob Renaut for inclusion in the next issue. Can you find the "RETORT?"

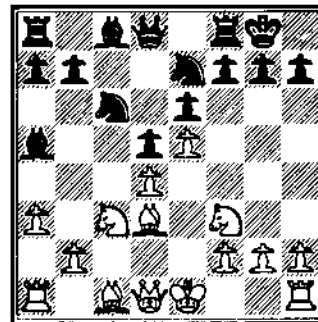
Cohen,L - Ziane,N
Tim Just Winter Open (1), 1995
(1) White to Move



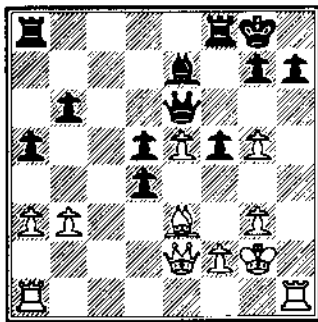
Wong,B - Cerminaro,J
Tim Just Winter Open (4), 1995
(3) White to Move



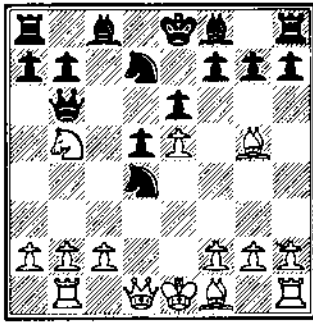
Holzmueller,K - Hernandez,H
Tim Just Winter Open (3), 1995
(5) White to Move



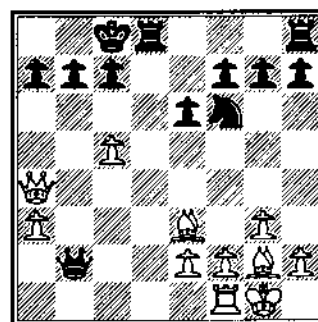
Fagan,J - Chow,A
Tim Just Winter Open (2), 1995
(2) White to Move



Zelinski,D - Flores,J
Tim Just Winter Open, Reserve
(4) White to Move



Torres,J - Sales,J
American Open, 1995
(6) White to Move



Retorts Revealed
 1) 27. Hxg7+ Qh8 28. Qxf6 Hxg7 29. Qxd7 Hxd7 30. Wh5 Hg8 31. f6 Qc5 32. e5 Qe3 33. Hf1 Qc5 34. f7 1-0
 2) 22. Hxh7!! Wg6?? 23. Hah1 dxe3 24. e6!! 24. Wxc6 25. Wh5! g6 26. Hg7+!! 26. Qxg7 27. Wh7#
 3) 20. Hxd7+! Qxd7 21. Qxc5 +-
 4) 10. Wxd4 Qxd4?? 11. Qc7#
 5) 10. Qxh7+! Qxh7 11. Qg5+ Qg8 12. Wh5 He8 13. Wh7+ Qf8 14. Wh8+ Qg8 15. Qh7+ Qe7 16. Qg5+ Qf6
 17. Qxg7 Qc7 18. Qf6 Qxc3+ 19. bxc3 Qa5 20. Qxe8+ 1-0
 6) 16. Qxb7+!! If 16... Qxb7 or 16... Qxb7, then 17. c6!! 1-0

UPSETS DOMINATE TIM JUST'S WINTER OPEN/RESERVE

By Tim Just

Upset number one: Of the four Masters entered in the 24 player Open section, only three of them tied for third place and earned \$33.33 each. Al Chow, Tom Cooper, and Ken Wallach's 3.5-1.5 score was not enough to top Caveman Rodney Kinnaird's \$225 first place 4.5-.5 scoring effort. Nouredine Ziane (2277) found little comfort and no prize money in his 3-2 effort.

Upset number two: At 1607, Dan Hart's no loss 4-1 record was enough to give him sole possession of the \$150 second place prize. Dan scored draws against Master Ken Wallach and Winter Open Champion Rodney Kinnaird (2153). Along with his "odd man bye" from round one, Hart defeated Master Nouredinne Ziane on time and Badger State Expert Guy Hoffman to score his three victories.

Upset number three: James Fagan's two victories and a draw against Masters Chow, Cooper, and Wallach. In round two Fagan (2013) cleanly picked up a victory from his game with Al Chow. Tom Cooper's flag managed to score a point for Fagan in round three. James attempted to claim a threepete position repetition against Master Ken Wallach. His claim was denied; however, the game still ended in a draw a few moves later.

Upset number four: Kansas City's Expert Ryan Porter handed half-points in rounds three and four to Masters Chow and Cooper. The Chow contest generated excitement when Porter claimed Al's flag had taken a nose dive south for the loss. Ryan's inadequate score sheet denied him a victory. The two wood pushers split the point after another hour of play.

For their 3.5-1.5 effort, James Fagan and Ryan Porter split the Expert prizes to the tune of \$112.50 each. Pocket change of \$56.25 each went to the top four 2.5-2.5 scoring A Class players Lawrence Cohen, J.P. Cerminaro, Leonard Sistik, and Robert Hughes.

Upset number five: Unrated Jason Smith won the \$100 D/E/UN Class prize and a tie for second place in the Reserve section by earning 4 out of 5 points. His only loss came at the hands of first place finisher Caveman Daryl Zelinski.

Caveman Daryl Zelinski saw no goose eggs behind his name on the wall chart that gave him a total of 4.5 victories and the \$225 first place Reserve Championship.

The Reserve section was the site of a traffic jam. Gary Willard, Mike Henroid, and Caveman Mike Dennis each earned \$83.33 by scoring 4 points apiece to tie with Unrated Jason Smith at the sign post marked Second Place. A total of \$225 in C Class prizes was divided equally by Stephen Lauger, Chris Clawe, and chess tournament veteran Ed Marshall

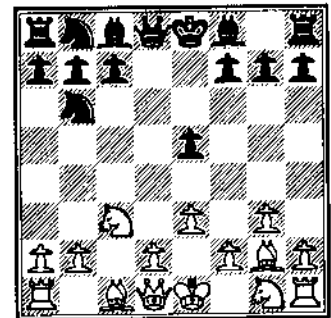
when they collected scores of 3-2 each in the Reserve section. The tournament was organized by the College of Lake County Caveman Chess Club and Tim Just. Wayne Clark was the chief TD. Tim Just was the technical TD. The extra efforts of Orn Backstrom and Dennis Grant contributed to an enjoyable sporting event experienced by one and all.

ANNOTATED GAMES FROM THE TIM JUST WINTER OPEN and RESERVE

By TM Alan L. Watson

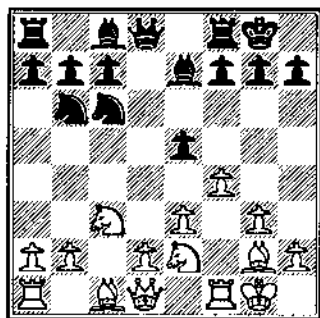
Cohen.L - Ziane.N
Tim Just Winter Open (1), 1995

1.c4 e5 2.g3 d6 3.Bg2 d5
4.cxd5 dxd5 5.dxc3 db6
6.e3?



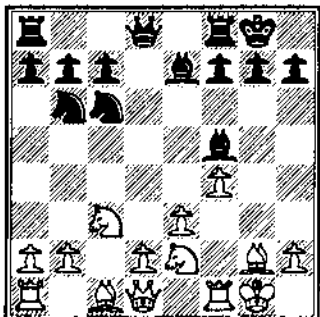
This ugly move which weakens an entire complex of central light squares appears quite dubious. Clear play follows 6.dxf3 dxc6 7.O-O de7 transposing into ECO A29.

6...dxc6 7.dge2 de7 8.O-O
O-O 9.f4



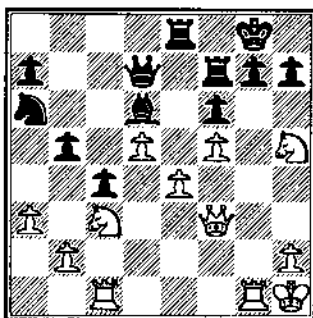
White's central inferiority virtually necessitates this flanking blow since any move of the d-pawn would cause a serious weakening.

9...exf4 10.gxf4 ♖f5?



Better was 10...f5, ♖e6 in order to control e4 while restraining f4/f5. Although e5 would then represent a slight weakness on Black's part, White's pieces are not positioned to profit from it.

11.d4 ♜d7 12.d5 ♖b4 13.e4 ♜c5+ 14.♞h1 ♜h3 15.f5 ♜xg2+ 16.♞xg2 c6 17.a3 ♖a6 18.♞f4 ♜d6 19.♞h5 f6 20.♜e3 ♖c4 21.♞c2 ♖xe3+ 22.♞xe3 ♞ae8 23.♞f3 c5 24.♞ac1 b5 25.♞h1 c4? 26.♞g1 ♞f7??



A careless move.

27.♞xg7+!

Of course! Important for the learning player in improving his tactical play is understanding the term "Overloaded Piece." The ♞f7 in this classic example has been asked to guard both g7 and f6 but finds that request impossible.

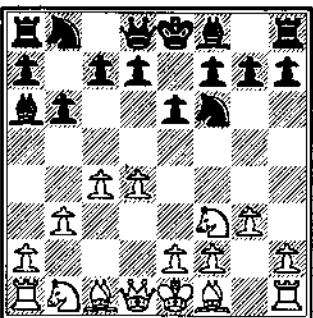
27...♞h8 28.♞xf6!!

This final insult to Black's oversight on move 26 wins additional material and effectively cements the game for White.

28...♞xg7 29.♞xd7 ♞xd7 30.♞h5 ♞g8 31.f6 ♜c5 32.e5 ♜e3 33.♞f1 ♖c5 34.f7 1-0

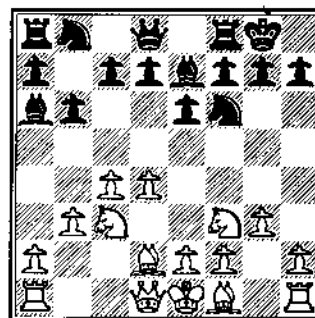
Fagan, J - Chow, A
Tim Just Winter Open (2), 1995

1.d4 ♞f6 2.c4 e6 3.♞f3 b6 4.g3 ♜a6 5.b3



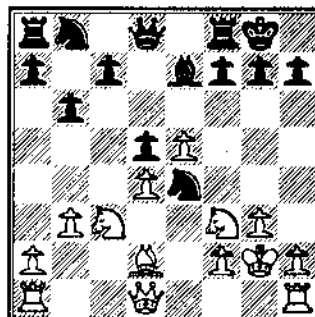
A quiet continuation which avoids Black's speculative but dangerous 5...♞a4 c6 6.♞c3 b5!?

5...♜b4+ 6.♜d2 ♜e7 7.♞c3 0-0?



Slightly better play is offered by 7...c6! intending to recapture with the c-pawn after d5.

8.e4 d5 9.cxd5 ♜xf1 10.♞xf1 exd5 11.e5 ♖e4 12.♞g2

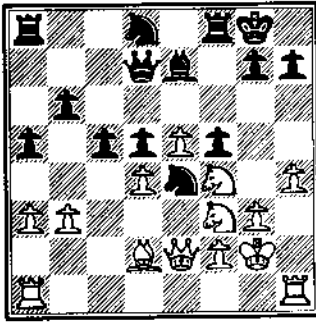


Kuligowski-Keene, Olympiad 1978 continued instead with 12.♞e2 ♖xc3 3.♜xc3 ♞d7 14.♞g2 c5 15.e6! ♞xe6 16.♞xe6 fxe6 17.♞he1 ♜f6 18.♞xe6 with an interesting game.

12..f5 13.h4 ♖c6 14.♖e2 ♞d7 15.♞f4 a5 16.a3 ♖d8 17.♞e2 c5!

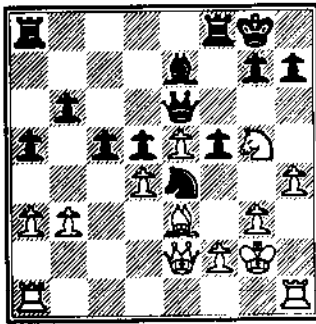
SEND YOUR ARTICLES TO:
BOB RENAULT
1255 OAKTON LANE
NAPERVILLE, IL 60540-0310

SUPPORT
THE ICA
PLAY IN TOUR
EVENT AND WIN
PRIZES!



Black rips away the base of White's central pawn chain in the hope of weakening then ultimately eliminating e5.

18. dxc3 dxe6 19. dxe6 Wxe6 20. d5?

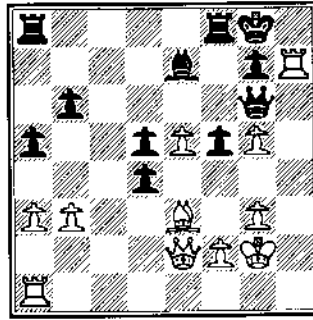


Fagan instinctively senses the approaching central crisis and precipitates a brief tactical melee akin to the last-minute football strategy of flooding an area in the End Zone with receivers then putting the ball up-for-grabs.

20... dxc3 21. hxc3 cxd4?

Oddly enough, this innocent but natural-looking move appears to virtually decide the game after White's surprising Blitzkrieg which follows. Retrospect grants me the wisdom to suggest 21...g6! as being superior.

22. Axh7!! Wg6??



Although Albert believes this to be the losing move I can't find anything substantially better since after 22...dxc3 23. Wh5 Black must again rapidly throw in the towel.

23. Ah1 dxe3 24. e6!!

This move in combination with the next is what Albert must have missed in his analysis. Black is doomed.

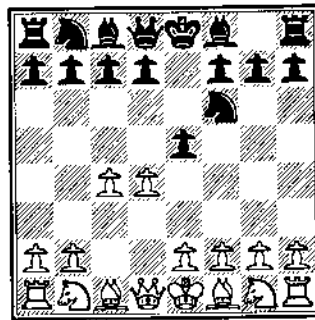
24... Wxe6 25. Wh5! g6 26. Ag7+!!

An amusing finish to a very interesting game that I'm sure James will cherish for a long time to come.

26... Wxg7 27. Wh7# 1-0

Wallach, K - Gazmen, E
Tim Just Winter Open (2), 1995

1. d4 d6 2. c4 e5



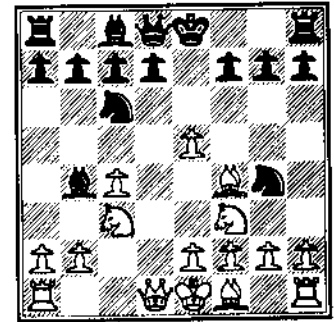
Those who have lived in the Chicagoland area for a while will recall that former resident Sheldon Gelbart had a fondness

for the Budapest Defense and greatly contributed to its study. It is not to be underestimated!

3. dxc5 d4 4. d3

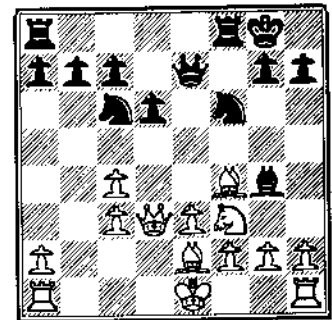
This is a critical point for White, as practice has seen 4.e4 and 4.f4 as well as the text continuation. Tastes differ, and none is regarded as greatly superior.

4... dxc6 5. f4 b4+ 6. d3??



There is some suspicion about this continuation which tries to hold material at the expense of a pawn weakness. More frequently seen is 6. bd2 We7 7. c3 dxc5 8. dxe5 dxe5 9. de2 with level play.

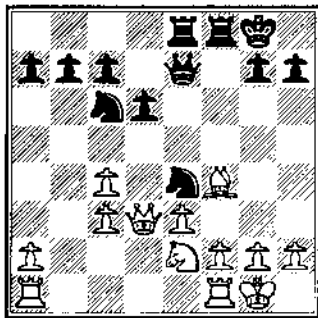
6... dxc3+ 7. bxc3 We7 8. d5 f6 9. exf6 dxf6 10. d3 d6 11. e3 O-O 12. de2 Ag4?



An imperceptible error which commits this bishop prematurely. After the superior 12... de4! 13. O-O Black could continue with the untried 13... dxc5 or plow boldly ahead by

13...♗f5!? 14.♖d5+ ♕h8 15.♞ac1 g5 16.♗g3 h5 with chances.

13.O-O ♖e4 14.♗d4 ♗xe2
15.♗xc2 ♞ac8?

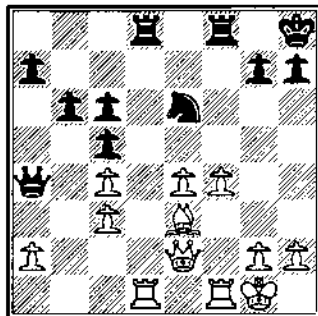


Having made the decision to trade light-squared bishops, Black must now continue with the prophylactic 15...♕h8! so as to increase his freedom of movement and avoid White's annoying ♖d5.

16.♞ab1 ♕h8 17.♖d5 ♗d8
18.f3 ♗c5 19.e4 ♗de6
20.♗e3 c6?

This tempting but incorrect move is the reason for Black's future problems. The resulting weakness along the d-file will forever hamper Black in trying to carry out his strategic goals and he now finds himself bending to White's will.

21.♖d2 b6 22.♞bd1 ♞d8
23.♗d4 ♖b7 24.♗b3 ♖a6
25.♗xc5 dxc5 26.♖e2 ♖a4
27.f4



White has stabilized the center and now turns his attention to Black's awkward ♗e6 and insecurely defended King. With the Black Queen greatly removed from the looming Kingside battle, White has excellent chances of a kill.

27...♖a3 28.f5 ♗c7 29.♗f4
♞xd1 30.♞xd1 ♗e8 31.♞d3
b5 32.g4 bxc4 33.♞h3 ♗f6
34.g5 ♗xe4 35.♖xe4 ♖xa2
36.f6 ♖a1+ 37.♕f2 ♖b2+
38.♕f1 ♖a1+ 39.♕e2 g6
40.♞xh7+! 1-0

Chow.A - Porter.R
Tim Just Winter Open (3), 1995

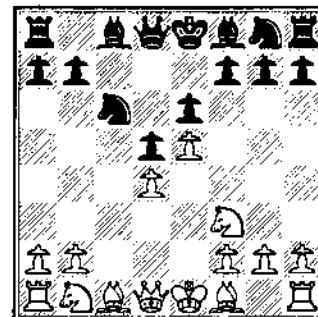
1.e4 c5 2.♗f3 ♗c6 3.d4 cxd4
4.♗xd4 g6 5.c4 ♗g7 6.♗c2
♗f6 7.♗c3 O-O 8.♗e2 d6
9.O-O ♗d7 10.♞e1 ♗c5
11.♗f1 ♗e6 12.♗d5 ♞xd5
13.exd5 ♗e5 14.♞b1 a5
15.b3 ♞e8 16.♗b2 ♖b6
17.♗d4 ♗ed7 18.♗e3 ♖c7
19.♗d4 ♗e4 20.♗b5 ♖b8
21.♖c2 ♗dc5 22.♗f4 ♗f6
23.♞xe7 ♞xe7 24.♗xd6 ♖d8
25.♗xc5 ♞d7 26.d6 ♗e8
27.♗a3 ♗xd6 28.♗xd6 ♞xd6
29.♗xd6 ♖xd6 30.♞d1 ♖a3
31.♖e4 ♞b8 32.♞d7 ♖xa2
33.♖d5 ♞f8 34.♞xb7 ♖b2
35.c5? ♗d4 36.♖f3 ♗xc5
37.g3 ♖c1 38.♕g2 ♖b2
39.♗c4 ♖g7 40.♖d5 ♗b4
41.♖f3 ♗c5 42.h4 h5 43.♖f4
♗b4 44.♞c7 ♗c3 45.♖f3 ♗b4
46.♞d7 ♗c5 47.♕h3 ♗b4
48.♖f4 ♗c3 49.f3 ♖f6
50.♖xf6 ♗xf6 51.g4 hxg4+
52.fxg4 ♕g7 53.g5 ♗c3
54.♕g4 ♗e1 55.♞a7 ♗c3
56.♗d5 ♗b4 57.h5 gxh5+
58.♕xh5 ♗c3 59.♕g4 ♕g6
60.♗e4+ f5+ 61.gxf6+ ♕xf6
1/2

Cooper,T - Fagan,J
Tim Just Winter Open (3), 1995

1.e4 c5 2.♗f3 d6 3.c3 ♗f6
4.♗e2 e6 5.O-O ♗e7 6.♞e1
O-O 7.♗f1 ♗c6 8.d4 d5 9.e5
♗d7 10.a3 c4 11.g3 ♗a5
12.♗bd2 ♗b6 13.h4 ♗d7
14.♗h3 ♗a4 15.♖e2 ♗c2
16.♗xc4 ♗b3 17.♗xb6 ♖xb6
18.♖xc2 ♗xa1 19.♖b1 ♗b3
20.♗g5 ♖c7 21.c4 ♞ad8
22.cxd5 ♞xd5 23.♖d3 ♗xd4
24.♗xd4 ♗xg5 25.♖e4 ♗d2
26.♞e2 ♖c4 27.♗xe6 ♖xe4
28.♞xe4 ♞e8 29.♗c7? ♞exe5
30.♞c4 ♞d8 31.♗g2 b6
32.♗d5 ♕f8 33.♞c7 ♞exd5
34.♗xd5 ♞xd5 35.♞xa7 ♗c1
36.♞a6 ♗xb2 37.♞xb6 ♗xa3
38.♞b3 ♗c5 (Black went on to
win in a time scramble.) 0-1

Holzmueller,K - Hernandez,H
Tim Just Winter Open (3), 1995

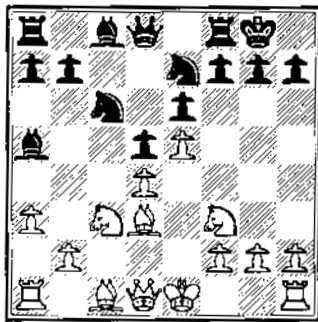
1.e4 c5 2.♗f3 e6 3.c3 ♗c6
4.d4 cxd4 5.cxd4 d5 6.e5



The opening of this game has now transposed into the Advance Variation of the French Defense.

6...♗b4+ 7.♗c3 ♗ge7 8.a3
♗a5? 9.♗d3 O-O

SEND YOUR GAMES TO:
ALAN WATSON
161 OAKWOOD DRIVE
BOLINGBROOK, IL 60440



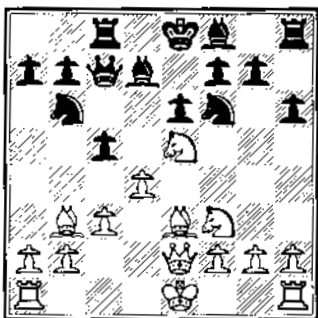
10. Qxh7+!

It seems that Hector didn't read his September-October issue of the "Illinois Chess Bulletin" or he would have known about the classic bishop sacrifice. He now must put on the dunce cap while Keith moves to the head of the class.

10... Qxh7 11. Qg5+ Qg8
 12. Wh5 Re8 13. Wh7+ Qf8
 14. Wh8+ Qg8 15. Qh7+ Qe7
 16. Qg5+ Qf6 17. Qxg7 Qc7
 18. Qxf6 Qxc3+ 19. bxc3 Qa5
 20. Qxe8+ 1-0

Kinnaird, R - Fagan, J
 Tim Just Winter Open (4), 1995

1. e4 c6 2. d4 d5 3. Qc3 dxe4
 4. Qxe4 Qd7 5. Qc4 Qgf6
 6. Qg5 e6 7. Qe2 Qb6 8. Qb3
 h6 9. Q5f3 c5 10. Qe3 Qc7
 11. Qe5 Qd7 12. Qgf3 Qc8
 13. c3



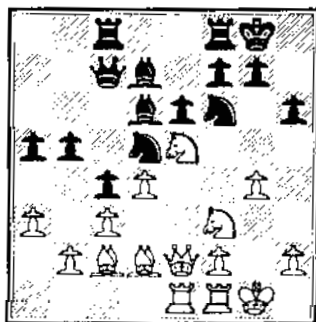
Kupreichik-Petrosian, USSR
 Championship 1969 continued
 13.c4 cxd4 14. Qxd4 Qb4+

15. Qf1 Qc5 16. Qe3 Qc6 17. Qxc6
 Qxc6 18. Qe5 when 18... Qc7!
 would have given Black an even
 game.

13...c4?

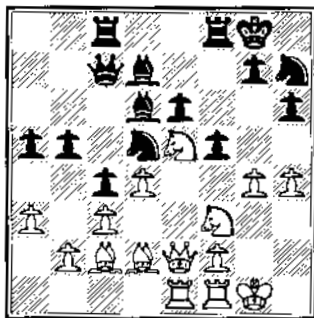
It is always dangerous for
 Black to remove the central
 tension in this fashion since
 play will inevitably shift to the
 Kingside where White has more
 active pieces and greater space.

14. Qc2 Qd6 15. O-O Qbd5
 16. Qd2 O-O 17. Qae1 b5 18. a3
 a5 19. g4!



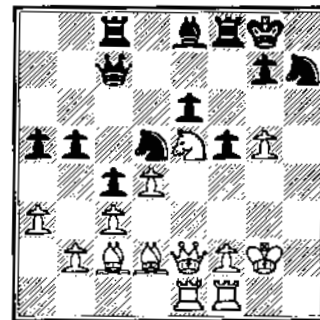
I believe that it was either
 Lasker or Steinitz who once said
 that in certain games we were
 required to follow the dictates of
 the position or lose all our
 advantage. Rodney recognizes
 this and lunges at the opposing
 monarch.

19... Qh7 20. h4 f5?



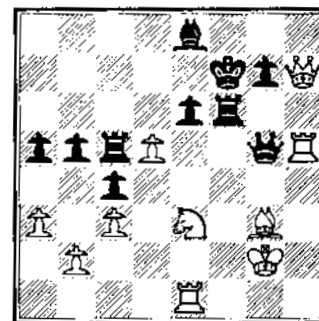
This creates severe weaknesses,
 but what else is Black to do and
 where can he get play?

21. g5 hxg5 22. hxg5 Qxe5
 23. Qxe5 Qe8 24. Qg2!



As a stethoscope relays the
 sound of a beating heart to a
 Doctor's patient ear, so does
 the h-file call White's major
 pieces to the very lair of the
 prey they seek. There is no
 escape and Black must await
 his ultimate fate.

24... Qe7 25. f4 Qxf4+
 26. Qxf4 Qxg5 27. Qh1 Qe4
 28. Qxe4 fxe4 29. Qxe4 Qf5
 30. d5 Qf6 31. Qg3 Qc5
 32. Qg4 Qg5 33. Qe3 Qf6
 34. Qh7+ Qf7 35. Qh5

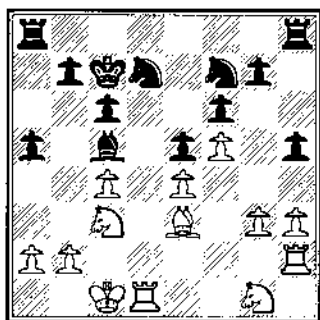


Black resigns rather than
 suffer the loss of his Qc5 after
 35... Qg6 36. dxe6+ 1-0

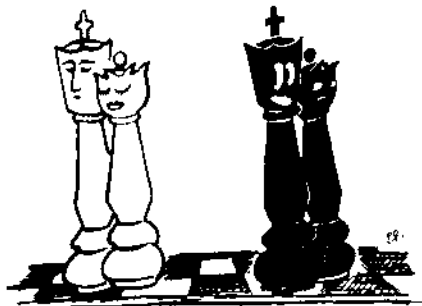
Wong, B - Cerminaro, J
 Tim Just Winter Open (4), 1995

1. d4 Qf6 2. c4 d6 3. Qc3 Qf5
 4. f3 e5 5. dxe5 dxe5 6. Qxd8+
 Qxd8 7. e4 Qe6 8. Qe3 c6
 9. O-O-O+ Qc7 10. f4 Qg4
 11. Qe2 Qbd7 12. g3 Qxe2
 13. Qgxe2 Qg4 14. Qg1 f6

15. h3 ♖h6 16. ♖h2 ♗f7
 17. ♗e3 h5 18. f5 a5 19. ♗g1
 ♗c5

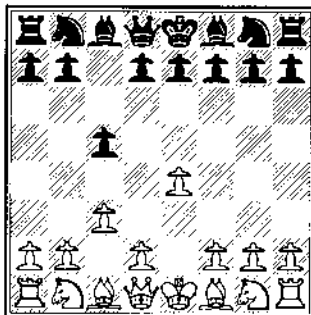


20. ♖xd7+! ♗xd7 21. ♗xc5
 ♗c7 22. ♗a4 ♖a6 23. ♗e3 ♗d6
 24. ♗c5 ♖aa8 25. b3 b6
 26. ♗a4 ♗xe4 27. ♗xb6+ ♗b7
 28. ♗g2 ♗d6 29. g4 hxg4
 30. hxg4 ♖h1 31. ♗b2 ♗a6
 32. ♗f3 ♖h3 33. ♗e1 ♖ah8
 34. ♗d2 ♖h2 35. ♖xh2 ♖xh2+
 36. ♗c1 ♖xa2 37. ♗d3 ♗e4
 38. ♗db2 ♖a1+ 39. ♗c2 ♖h1
 40. ♗d3 ♗g5 41. ♗c3 ♖h4
 42. ♗d3 ♗e4+ 43. ♗b2 ♖xg4
 44. ♗a3 ♗g5 45. b4 ♗g3
 46. bxa5 ♖xd3+ 47. ♗b4 ♖f3
 48. ♗c5+ ♗xc5 49. ♗xc5 ♖xf5
 50. ♗xc6 e4 51. ♗d6 ♖e5
 52. ♗d4 ♖xa5 53. c5 ♗b7
 54. ♗d7 ♖a6 55. ♗e7 ♗c8
 56. ♗f7 g5 57. ♗g6 ♖e6
 58. ♗f5 ♖e5+ 59. ♗xf6 ♖e8
 60. ♗e3 g4 61. ♗g5 g3 62. ♗f4
 g2 63. ♗g3 ♖g8+ 64. ♗h2
 ♗d7 65. ♗g1 ♗c6 66. ♗h2
 ♗d5 67. ♗g1 ♖g6 68. ♗h2
 ♗c4 69. c6 ♖xc6 70. ♗xg2
 ♗d3 71. ♗f2 ♖c2 72. ♗f1
 ♖xf2+ 0-1



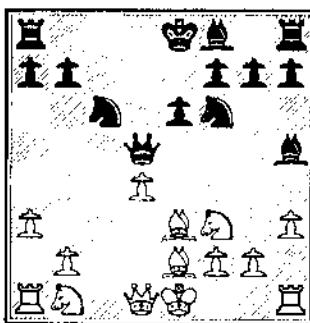
Gazmen, E - Chow, A
 Tim Just Winter Open (5), 1995

1. e4 c5 2. c3!



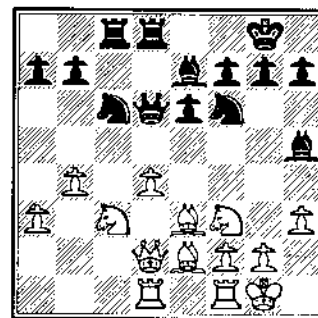
The Alapin variation has become fashionable at all levels of play and cannot be ignored by someone seriously studying the Sicilian Defense. It is sometimes seen more often than 2.d4!

2...d5 3. exd5 ♗xd5 4. d4 ♗f6
 5. ♗f3 ♗g4 6. ♗e2 e6 7. h3
 ♗h5 8. ♗e3 cxd4 9. cxd4 ♗c6
 10. a3



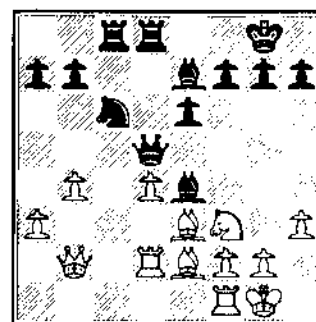
The purpose for this move is not clear and the loss of such a valuable tempo grants Black easy equality. Advisable was 10. O-O ♗e7 11. ♗c3 ♗d6 12. O-O O-O 13. ♗d2 ♖fd8 14. ♖ad1 ♖ac8 15. b4?

10... ♗e7 11. ♗c3 ♗d6 12. O-O
 O-O 13. ♗d2 ♖fd8 14. ♖ad1
 ♖ac8 15. b4?



Having focused pieces towards the center and Kingside why does White now fling this distant pawn forward? I would suggest 15. ♖fel as more consistent.

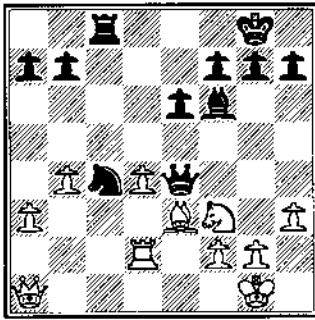
15... ♗g6 16. ♗b2 ♗d5
 17. ♗xd5 ♗xd5 18. ♗d2 ♗e4



Albert is at his best in positions requiring the patient exploitation of minute advantages and this game will prove no exception. Watch how he conquers the light squares and then uses those to increase his advantage.

19. ♖fd1 ♗b8 20. ♗e1 ♗f6
 21. ♗f3 ♗d7 22. ♖c1 ♖xc1
 23. ♗xc1 ♗b6 24. ♗xe4 ♗xe4
 25. ♗f3 ♖c8 26. ♗a1 ♗c4

**DON'T MISS THE ICA
 ANNUAL BANQUET! SEE
 PAGE 38 FOR DETAILS**



The effects of White's loosening 15.b4 are now clearly visible and typical of many cancers which if not diagnosed early enough will prove fatal to the patient. Students should consider all pawn advances very carefully.

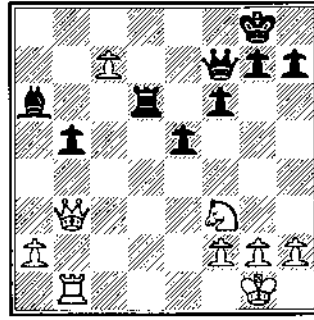
27.♖c2 ♜d3 28.♞e1 ♜xa3
 29.♜b1 ♞xe3 30.♜xe3 ♞c3
 31.♜e4 ♞c1 32.♜xb7 ♞xe1+
 33.♞xe1 ♜xe3+ 34.♞f1 g6
 35.♞f3 ♜d3+ 36.♞e1 ♞xd4
 37.b5 ♞g7 38.♜c6 ♜e3+
 39.♞d1 ♜d3+ 40.♞e1 ♞c3+
 41.♞f2 ♞d4+ 42.♞e1 e5
 43.♜e8 ♞c3+ 44.♞f2 e4
 45.♞g5 ♜d2+ 0-1

Zelinski,D - Flores,J
 Tim Just Winter Open, Reserve

1.e4 e6 2.d4 d5 3.♞c3 ♞f6
 4.e5 ♞fd7 5.♞f3 c5 6.♞g5
 ♜b6 7.♞b1 cxd4 8.♞b5 ♞c6
 9.♞fxd4 ♞xd4?? 10.♜xd4
 ♜xd4 11.♞c7# 1-0

Lauger,S - Delay,J
 Tim Just Winter Open, Reserve

1.e4 c5 2.b4 b6 3.♞a3 d6
 4.♞b5+ ♞d7 5.♞f3 ♞b7 6.e5
 e6 7.O-O a6 8.♞xd7+ ♜xd7
 9.exd6 ♞xd6 10.♞b2 f6
 11.bxc5 ♞xc5 12.d4 ♞d6
 13.c4 ♞e7 14.d5 e5 15.♞c3
 ♞c8 16.♜b3 O-O 17.♞e4 ♞f5
 18.♞ab1 b5 19.cxb5 axb5
 20.♞xd6 ♞xd6 21.♞a3 ♞a6
 22.♞fc1 ♞fd8 23.♞c6 ♞xc6
 24.dxc6+ ♜f7 25.c7 ♞d7
 26.♞xd6 ♞xd6



27.♜xb5! ♜xc7?? 28.♜e8#
 1-0

RULE BOOK TACTICS

By TD Tim Just

OVERLOOKED RULES

The OFFICIAL RULES OF CHESS (4th edition) contains some interesting and obscure rules of the royal game in the section titled "20. CONDUCT OF THE PLAYERS AND SPECTATORS" starting on page 58; i.e.:

Rule 20H: Long absence during play.

This rule prevents players from leaving the playing room for more than 15 minutes without permission from the TD.

This edict was designed to prevent players from abandoning their lost games. This policy also acts as a method to deter those players that may be inclined to discuss or analyze their games in progress with fellow wood pushers.

The dictates of 20H provide a wide latitude in the penalties a TD

may or may not prescribe to its violators.

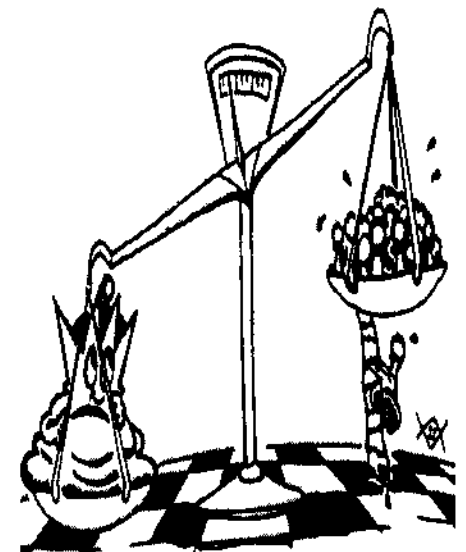
Rule 20M: Behavior of spectators.

You can use this directive to remove a spectator that you find annoying near your board. This rule addresses your rights as a player holding more importance than the rights of either a playing or non-playing spectator.

Once again the TD has a lot of discretion in enforcing this rule.

Rule 20G: Annoying behavior prohibited.

Unintentional and inadvertent annoying behavior were not meant as targets of this rule; however, while your game is in progress, it is in your best interest to allow the TD to determine if the behavior that is annoying you is inadvertent or intentional.

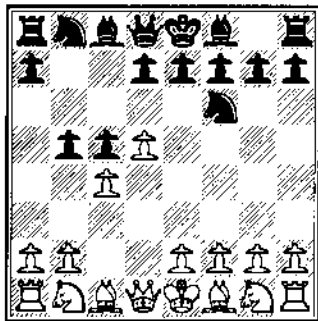


ANNOTATED GAMES FROM THE ILLINOIS CLASS

By *TM Alan Watson*

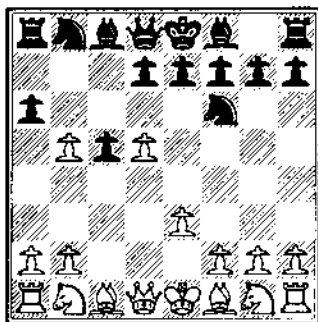
Innumerable.F - Chow,A
Illinois Class (2), 1994

1.d4 ♖f6 2.c4 c5 3.d5 b5



The Benko Gambit has a prominent role in Chicago chess history, having early on been adopted by such strong players as Craig Chellstorp and Greg DeFotis and molded by them into a feared weapon.

4.cxb5 a6 5.e3

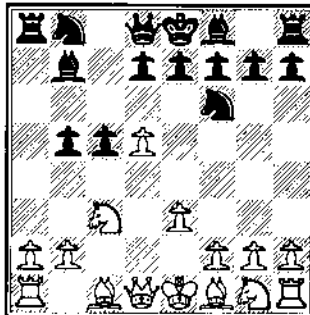


Pal Benko initially dubbed this the "Quiet Variation" and felt that White's loss of a tempo in playing e4 was significant. He could never have imagined that this would become so thoroughly examined and popular a main line!

5...♗b7

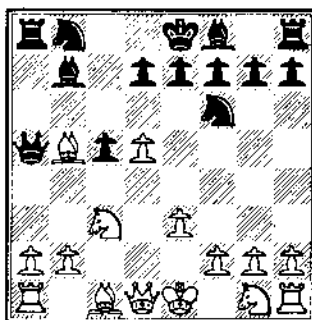
Black plays a slightly unusual line in place of the more common 5...g6, 5...e6, and 5...axb5. It's aim is to steer towards certain variations while restricting White's options.

6.♗c3 axb5?



Black takes his opportunity to directly transpose into lines stemming from 5...axb5 6.♗xb5 ♗b7 7.♗c3 ♖a5 and avoids the dangers of 6...♖a5 7.bxa6!, 6...♗b6? 7.a4, or 6...axb5 7.d6!?

7.♗xb5 ♖a5

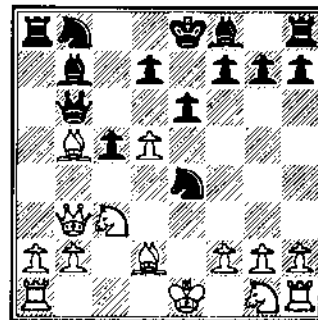


This unusual sequence of moves has allowed Black the startling possibility 7...♗xd5! 8.♗xd5 e6 9.♗c4! ♗xd5 10.♗xd5 exd5 11.♗xd5 ♗c6 12.♗d2 ♖f6 13.♗c3 ♖e6 14.♖xe6+ fxe6 15.♗f3 ♗b4 which I'm now facing in correspondence play.

8.♗d2?

While sharp, the variations stemming from this move have been shown to greatly favor the Black pieces. Safer and very much in vogue at the moment is the idea of returning the pawn with 8.♗ge2 to accelerate Whites development

8...♖b6 9.♖b3 e6 10.e4
♗xe4!

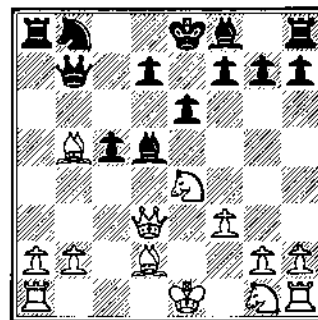


This move destroying the White center and taking advantage of his poorly coordinated pieces is the foundation of Black's play.

11.♗xe4 ♗xd5 12.♖d3 ♖b7!

This improvement was first suggested by Patrick Wolff and requires exact play from White just to hold equality!

13.f3



Unacceptable is 13.♗g3 ♗xg2 14.f3 ♗xh1 15.♗xh1 ♗e7 16.a4

O-O 17.O-O-O $\text{d}c6$ 18. $\text{d}c3$ $\text{d}5$
when Black holds an
advantage.

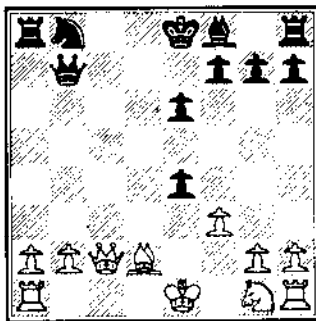
**13...c4! 14. $\text{d}xc4$ $\text{d}xc4$
15. $\text{c}xc4$**

Nickoloff considers that
15. $\text{d}d6+!$? $\text{d}xd6$ 16. $\text{c}xd6$ $\text{c}d5$
17. $\text{c}d5$ $\text{d}xd5$ 18.a4 $\text{d}c6$
19. $\text{d}e2$ $\text{c}e7$ is not much of an
improvement for White.

15...d5 16. $\text{c}c2$

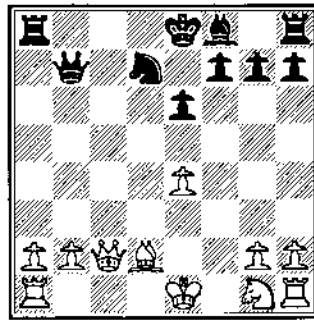
This and 16. $\text{c}d4$ are White's
most serious choices.

16...dxe4



17.fxe4 $\text{d}d7$

If 17. $\text{c}xc4$ $\text{c}xb2$ 18. $\text{d}d1$ $\text{d}a2$
19. $\text{d}e2$ $\text{d}c5!$ and now both
20. $\text{d}c3$ $\text{d}a1$ 21. $\text{c}e2$ $\text{d}d1$
22. $\text{d}d1$ O-O 23. $\text{d}b1$ $\text{c}a3$ and
20. $\text{c}c4$ $\text{d}d7$ 21. $\text{d}c3$ $\text{c}c2$
22. $\text{c}b5$ $\text{c}a4$ 23. $\text{c}b7$ $\text{c}c7$
24. $\text{d}d4$ $\text{d}d8$ 25. $\text{c}c7$ $\text{c}e8$
26. $\text{d}e2$ $\text{c}c4$ Colias-Gurevich,
Illinois Class 1988, favors
Black. However, little tested is
17. $\text{d}c1!$ $\text{d}d7$ 18. $\text{c}xe4$ $\text{c}xe4+$
19.fxe4 $\text{d}c5$ 20. $\text{c}e2$ $\text{d}a2!$?
21. $\text{d}f3$ $\text{d}xb2$ 22. $\text{d}c4!$ $\text{d}e7$
23. $\text{d}a1$ O-O 24. $\text{d}a7$ $\text{d}d6$ 25.e5
 $\text{d}b8$ 26. $\text{d}e7$ $\text{d}b3$ 27. $\text{d}b4$ $\text{d}d2$
28. $\text{d}b2$ $\text{d}xf3$ 29. $\text{c}xf3$ $\text{d}e5$
30. $\text{d}b1!$ =

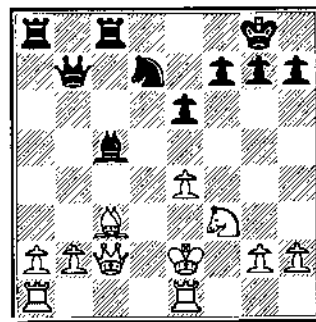


17... $\text{d}c6?$? 18. $\text{d}f3$ $\text{d}b4$
19. $\text{d}xb4$ $\text{d}xb4+$ 20. $\text{c}k2$ O-O
21. $\text{d}hd1$ $\text{d}fc8$ resulted in an
unclear position in the game
Dlugy-Gurevich, USA 1985.
Chow's idea is to secure c5 for
the $\text{d}f8$ while reserving $\text{d}f6$
and $\text{d}c5$ which attack $\text{d}e4$.

18. $\text{d}f3$ $\text{d}c5!$

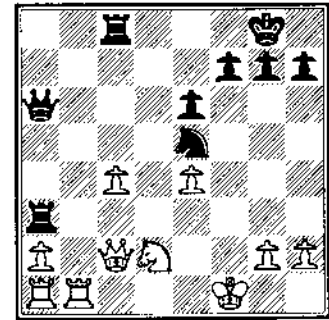
White's lag in development
and inability to castle leave
him with an extremely
difficult and unpleasant
position. Chow is superb at
exploiting such advantages
and it is both pleasing and
informative to watch the
ensuing play.

**19. $\text{d}c3$ O-O 20. $\text{c}e2$ $\text{d}fc8$
21. $\text{d}he1?$**



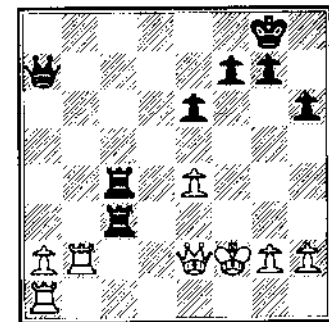
A subtle error reducing
White's prospects of an active
defense. Better seems 21. $\text{d}hd1!$
 $\text{d}b4$ 22. $\text{d}d4!$ when the Rook's
activity offers more opportu-
nities.

**21... $\text{d}b4$ 22. $\text{c}f1$ $\text{d}xc3$
23.bxc3 $\text{d}a3$ 24.c4 $\text{c}a6$
25. $\text{d}d2$ $\text{d}e5$ 26. $\text{d}eb1$**



White's prospects at this point
are dismal, for even after the
fall of his extra pawn there
will still be numerous weak-
nesses he is unable to hold.

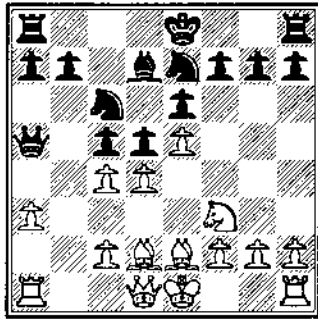
**26... $\text{d}xc4$ 27. $\text{d}xc4$ $\text{d}xc4$
28. $\text{c}c2$ h6 29. $\text{c}f2$ $\text{d}ac3$
30. $\text{d}b2$ $\text{c}a7+$**



An exemplary performance by
Albert illustrating the many
factors which make him one of
the most dangerous players in
Chicago; theoretical prepared-
ness combined with smooth
and tenacious technique. 0-1

Marovitch, M - Wulatin, D
Illinois Class (I), 1994

**1.e4 e6 2.d4 d5 3. $\text{d}c3$ $\text{d}b4$
4.e5 c5 5.a3 $\text{d}xc3+$ 6.bxc3
 $\text{d}e7$ 7. $\text{d}f3$ $\text{d}bc6$ 8. $\text{d}e2$ $\text{c}a5$
9. $\text{d}d2$ $\text{d}d7$ 10.c4?!**



While this move looks natural it tends to weaken White on the light squares and is thus inferior to 10.O-O f6 11.♖e1! +=

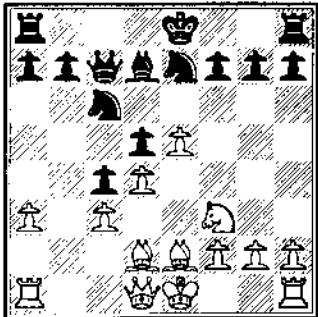
10...♙c7

Another possibility is 10...♙a4!?

11.cxd5 exd5?

Black's intention of keeping a White knight out of e4,d6 is not balanced by his loss of central control. Better seems 11...♗xd5 when 12.c4 ♖e7 only results in a further weakening of the White position.

12.c3 c4?

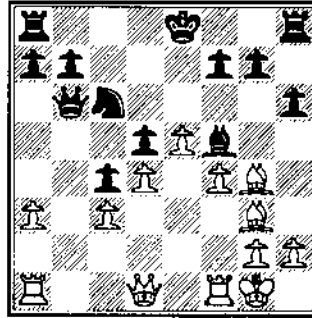


This premature clarification of the center frees White from worry about the integrity of his pawn-chain and allows him to concentrate on the business of King-side expansion.

13.O-O h6 14.♗f4 ♗f5?

A better manner of coordinating the Black pieces was 14...♗e6 followed by 15...♙d7 over-protecting f5 and waiting for White to commit himself before deciding where to castle.

15.♗g3 ♙b6? 16.♖h4 ♗h7
17.f4 ♖f5 18.♗xf5 ♗xf5
19.♗g4!



The White pawns are barreling forward like logs upon a mountain river and little can be done to stop them.

19...♗d3 20.♖e1 O-O 21.f5
♗e4 22.f6 ♙b2 23.♗f3 ♙xc3
24.♗xe4 dxe4 25.♖xe4 g6
26.♖c1 ♙xa3 27.♖xc4

Unnecessary as an immediate 27.♙d2 ♗h7 28.♖h4 was both more efficient and equally lethal.

27...a5 28.♙d2 ♗h7 29.♖h4
g5 30.♙xg5 ♖h8 31.♖xh6#
1-0

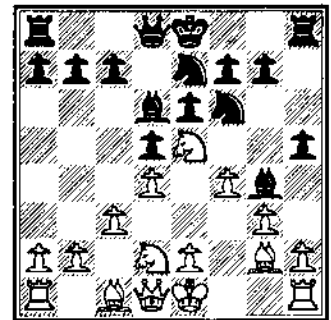
Martinovsky,E - Kleban,Y
Illinois Class (1), 1994

1.d4 ♖f6 2.♖f3 d5 3.c4 c6
4.cxd5 cxd5 5.♗c3 ♗c6
6.♗f4 ♗f5 7.e3 e6 8.♗b5
♗d7 9.O-O ♗e7 10.♖c1 ♖c8
11.♙e2 O-O 12.e4? dxe4
13.♗xe4 ♗xe4 14.♙xe4 ♖f6
15.♙d3 ♗b4 16.♙b3 ♙b6

17.♗e2 ♗bd5 18.♙xb6
♗xb6 19.♗e5 ♖fd5 20.♗e3
♗d6 21.♗c4 ♖f4 22.♗xf4
♗xf4 23.♖c3 ♗xc4 24.♗xc4
♖fd8 25.♖d1 ♗e5 26.♗b3
♗f6 27.♙f1 ♖c6 28.♖cd3
♖cd6 29.d5 ♙f8 30.♙e2
exd5 31.♗xd5 ♗xb2
32.♗xb7 ♖e8+ 33.♙f1 ♖xd3
34.♖xd3 g6 35.g3 ♖e7
36.♗a6 ♙g7 37.h4 h5 38.f4
♙f6 39.♗c4 ♗c1 40.♙f2
♙g7 41.♙f3 ♗b2 42.f5 ♗f6
43.fxg6 fxg6 44.a4 ♖c7
45.♗b5 ♖c3 46.♙e4 ♖xd3
47.♗xd3 ♗c3 48.♙f4 1/2

Kleban,Y - Brooks,M
Illinois Class (2), 1994

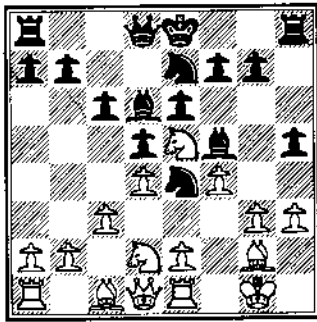
1.♖f3 ♖f6 2.g3 ♗c6 3.d4 d5
4.♗g2 ♗f5 5.c3 e6 6.♗bd2
♗d6 7.♖h4 ♗g4 8.f4! h6
9.♖hf3 ♗e7 10.♗e5 h5?



A risky move renouncing any idea of castling Kingside. Adopting a wait- and-see policy via 10...c6 which also shuts down the ♗g2 was a much more sensible approach, but much too mundane for the inventive Brooks.

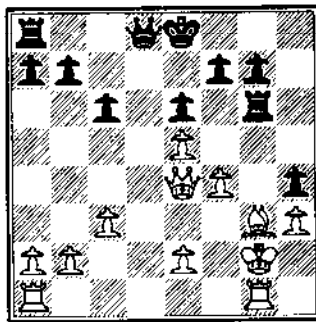
11.h3 ♗f5 12.O-O c6
13.♖e1 ♗e4?

Some knights don't leap the limp
- Tartakover



Brooks continues his double-edged play and accepts an inferior structure and the likely loss of a pawn in exchange for play against the White position. Hindsight, however, would deem 13...♖c7 followed by O-O-O as superior.

14.♗xe4 ♗xe4 15.♗xe4 dx4 16.♖c2 ♗f5 17.♗g2 e3 18.♖e4 ♗h6 19.♗xe3 ♗xe5 20.dxe5 ♗g6 21.♗f2 ♗xg3 22.♗xg3 h4 23.♗g1!

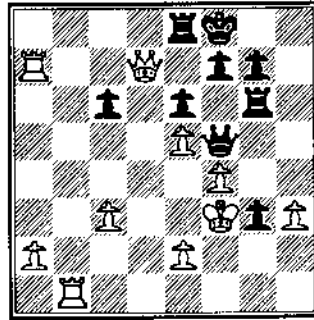


White continues to defend well by gaining in development and tempting Black to exchange off his few developed pieces.

23...♖b6 24.♗f3 hxg3 25.♖d4!

Kleban correctly avoids the passive play which would result after 25.b3?! O-O-O and instead strives to take the initiative over the like-minded Brooks, who must acquiesce to the following complications or accept a worse ending.

25...♖xb2 26.♗gb1! ♖c2 27.♗xb7 ♗f8 28.♗xa7 ♗e8 29.♖d7 ♖f5 30.♗b1!!



An outstanding follow-up! White's threat of 30.♖xe8+! ♗xe8 31.♗b8 ++ cannot be ignored since 30...♖xb1 31.♖xf7 ++ is equally unappealing. Brooks' king must immediately seek shelter and abandon the ♗e8 to its fate.

30...♗g8 31.♖xe8+ ♗h7

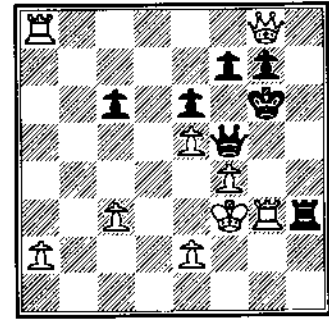
A full rook ahead of such a strong player as Michael Brooks is still no easy matter when your King is staring face-to-face at his major pieces. What would you do now?

32.♗a8??

As I'm fond of saying, right idea but wrong execution. The proper method for White to capitalize on his material and positional advantages was 32.♗b8! ♗h6 33.♖xf7! when mate at g7 is threatened.

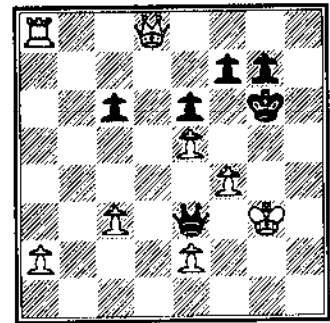
32...♗h6 33.♖g8+ ♗g6 34.♗g1 ♗xh3 35.♗xg3+??

When you see a good move - wait - don't play it - you might find a better one - E. Lasker



One doesn't often get many opportunities to defeat a strong player, and this was the last of the game. 35.♖d8! threatening both 35.♖g5+ as well as 35.♖d3 should do the trick since 35...g2+ 36.♗xg2! ♖g4+ 37.♗f2 rebounds on Black.

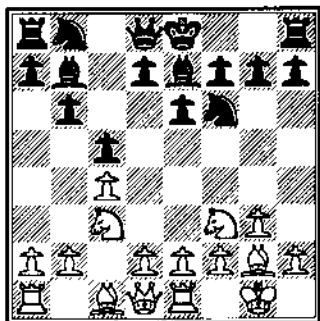
35...♗xg3+ 36.♗xg3 ♖e4! 37.♖d8 ♖e3+!



An extremely disheartening moment for White as he probably just now realized that the win had been thrown away; both major pieces are too far away to prevent a perpetual check. Brooks must have been grinning from ear to ear!

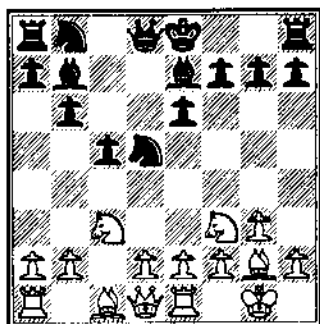
38.♗g4 ♖xe2+ 39.♗h3 ♖f3+ 40.♗h2 ♖f2+ 41.♗h3 ♖f3+ 42.♗h2 ♖f2+ 43.♗h3 ♖f3+ 44.♗h2 ♖f2+ 45.♗h3 ♖f3+ 46.♗h2 1/2

1. d3 c5 2. c4 d6 3. dxc3 e6
4. g3 b6 5. g2 b7 6. O-O
g7 7. Be1?



This move is a fairly modern development in this line of the Symmetrical English and attempts to enforce e2-e4 before breaking in the center with d4.

7...d5 8. cxd5 dxd5?



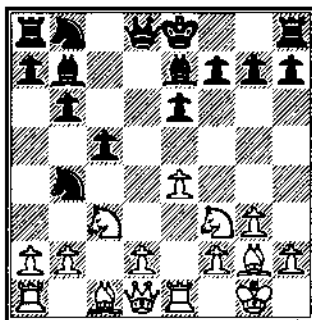
Superior is 8...exd5! 9. d4 O-O 10. g5 d6 11. Bc1 h6 [11...Be8 is also good] 12. dxf6 dxf6 13. Wa4 a6 14. dxc6 bxc6 15. d2 Bb8 16. e4 dxe4 which led to a balanced game in Quinteros-Polugaevsky, 1982.

9. e4!

White realizes that d4 is not a real weakness as he can enforce d2-d4 anytime he wishes and so uses his advantage in development to capture greater central space. Less

effective is 9. dxd5 exd5 10. d4 O-O with only equality.

9...d4



To be considered was 9...dxc3 10. bxc3 O-O 11. d4 cxd4 12. cxd4 dxc6 13. b2 d6 14. Bb1 Be8 15. h4 [Seirawan-Timman, Las Palmas 1981] and now Bc8! with mutual chances.

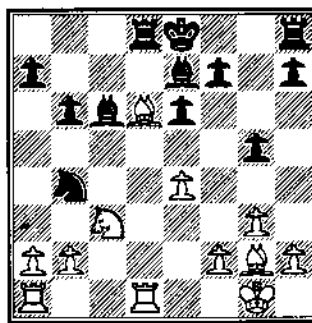
10. d4 cxd4 11. dxd4 d8c6

Ftacnik-Meduna, CSSR 1978 continued here 11...O-O 12. a3 d4c6 13. e5! a6 14. de3 Ba7 15. dxc6 dxc6 16. dxd8 dxd8 17. Bxd1 with a large advantage

12. dxc6 dxd1

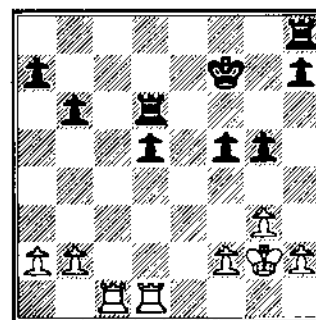
After the careless 12...dxc6, 13. e5! follows with an advantage to White in the game Larsen-Gligoric, Portoroz 1979. Al precludes this possibility.

13. Bxd1 dxc6! 14. d4 g5? 15. d6 Bd8!



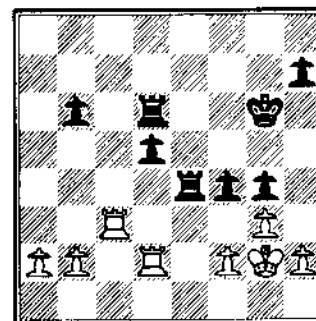
Albert avoids the immediate 15...dxd6?! 16. Bxd6 Be7 17. Bxd1 Bxd8 18. e5 d6 19. d6xg2 dxc6 which is better for White and strives to catch up in development.

16. e5 d6 17. d6xg2 dxd6 18. exd6 f5 19. d5 d5 20. Bxc1 d7 21. d7 Bxd6 22. dxd5 exd5!



Albert continues to defend well and refuses to exchange this rook which is already well-placed to support the rapid advance of his unopposed d-pawn.

23. Bc7+ d6 24. Bxa7 Be8 25. d2 g4 26. Bc7 Be4 27. Bc3 f4!



Another good idea which forces White to split his remaining Kingside pawns since 28...f3+ cannot be allowed. The reduction in material will also make it harder for Dmitry to win.

28.gxf4 ♖xf4 29.♖cd3 d4
 30.♗b3 h5 31.♙g3 ♖e4
 32.a4 ♖e5 33.♗bd3 ♖e4
 34.♗b3 ♖e5 35.♗dd3 ♙g5
 36.h4+ ♙f5 37.♗b4 ♙e4
 38.♗db3 ♖a5 39.♙g2 ♖e6
 40.♙f1 ♖f6 1-0

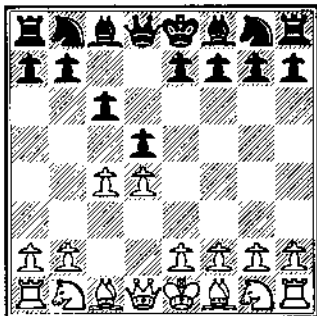
Although Albert appears to have emerged with a very good position, the stress of his earlier calculations finally took its toll and Black lost.

Kleban, Y - Young, A
 Illinois Class (3), 1994

1.♖f3 ♖f6 2.g3 b6 3.♗g2
 ♗b7 4.O-O c5 5.c4 e6 6.b3
 ♖e7 7.♖c3 O-O 8.♗b2 d6
 9.d3 a6 10.e3 ♖a7 11.d4
 cxd4 12.exd4 d5 13.♖e5
 ♖c6 14.♖e1 ♗a8 15.cxd5
 ♖b4 16.♖c4 b5 17.♖e3
 ♖bxd5 18.♖cxd5 ♖xd5
 19.♖xd5 ♗xd5 20.♗xd5
 ♗xd5 21.♖c1 ♖d8 22.♗c2
 ♖f6 23.♖ed1 h5 24.♗c6
 ♗xc6 25.♖xc6 ♖d5 26.f4 a5
 27.♙f2 ♖ad7 28.♙e3 g5
 29.♖d2 ♙g7 30.♖c5 ♙g6
 31.♖xd5 exd5 32.♙f3 ♖c7
 33.♖e2 g4+ 34.♙f2 0-1

Martinovsky, E - Marovitch, M
 Illinois Class (4), 1994

1.d4 d5 2.c4 c6



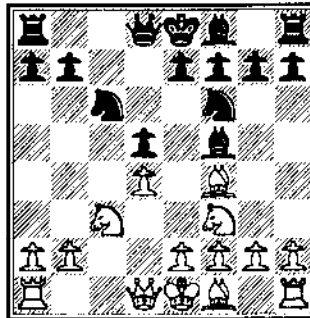
The Slav is rapidly growing in popularity as a safe means of negating White's opening

advantage while taking minimal risks. Even Dmitry Gurevich, following in the footsteps of Shabalov has recently adopted it.

3.cxd5

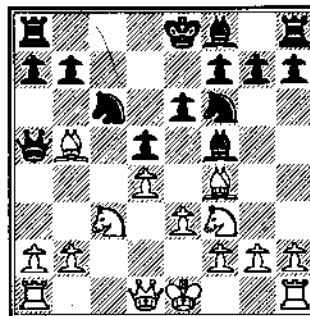
There is one major rule for Black to keep in mind regarding the Exchange Variation; symmetrical positions don't always result in a draw. The main reason many prefer to play this is to reduce Black's active possibilities.

3...cxd5 4.♖f3 ♖f6 5.♖c3
 ♖c6 6.♖f4 ♖f5



Black's first dilemma is whether to develop the ♖c8 outside the light-squared pawn chain like this or inside the chain by 6...e6. Both are fine if you understand the proper ideas, but this is more active.

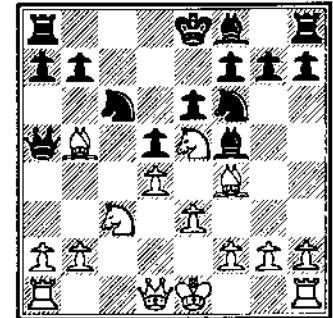
7.e3 e6 8.♗b5 ♗a5?



Such a poor move played this early in a theoretical position

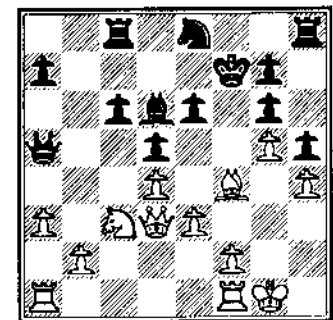
demonstrates a clear lack of preparation and is frequently fatal against Master-level opposition. Necessary was 8...♖d7 9.♗a4 ♖c8 10.O-O a6 11.♗xc6 ♖xc6 +=

9.♖e5!



By this attack on c6 White gains the time necessary to rush his Kingside pawns forward and embarrass the helpless ♖f5. It is also important to note that 9...♗b4 10.♗xc6+ bxc6 11.g4! ♗xc3+ 12.bxc3 ♗xc3+ 13.♙f1! is not much better.

9...♖c8 10.g4 ♗g6 11.h4!
 ♗b4 12.O-O h5 13.♗xc6+
 bxc6 14.♖xg6 fxg6 15.♗d3
 ♙f7 16.g5 ♖e8 17.a3 ♖d6?



It was perhaps slightly better to capture the White knight but would not matter much as Black would remain in an inescapable bind.

18.b4 ♗c7 19.♖e2 ♗xf4
 20.♖xf4 e5 21.♗xg6+ 1-0

An old gambit rejuvenated!

The Anti-Dutch Spike

By N.M. Alan L. Watson

The never-ending search for fresh opening ideas is often best begun by surveying the thoughts of those who came before us. One need look no further than the modern resurgence of such antiquated openings as the Italian Game, Four Knight's Opening, and King's Gambit to understand the practical advantages of reintroducing these forgotten ideas to a new series of unwary opponents.

A less notable example is the unusual gambit *1.d4 f5 2.h3 Nf6 3.g4!?* which appeared in Staunton's 1847 "Chess-Player's Handbook." Despite Dr. Josef Krejci's refinement of *2.g4!?* from a 1923 German chess periodical and Paul Schmidt's additional analysis in 1934, the chess world was to remain unimpressed for 47 more years until Victor Korchnoi's "rediscovery" of this long-forgotten gambit during a critical 1979 game.

This sensational victory gained immediate popularity for the opening a wealth of new ideas which continue to be investigated to this day. Illinois Senior Master Dr. Eugene Martinovsky is one of the intrepid explorer who continues to reap the benefits of this little-seen gambit as evidenced by his incredible record of eight wins and no losses! The following game was played at the 1994 US Open and features a devastating knight sacrifice

against his Master-level opponent.

**Dr. Eugene Martinovsky (2428)
Jeff Gelman (2219)
1994 US Open (9), Chicago
Dutch Defense, Krejci Gambit**

1.d4 f5 2.g4!? ...

Although the text has its share of devotees, modern fashion has come to regard 2.h3 as some-what better ever since Korchnoi's victory over Kacnel. That exciting game continued 2...*Qf6* 3.*g4 fxc4* 4.*hxc4 Qxc4* 5.*e4 d6* 6.*Qg5 g6* 7.*f3 Qf6* 8.*Qc3 c6* 9.*Qd2 Qe6* 10.0-0-0 *Qbd7* 11.*Qb1 Qg7* 12.*Qh3 Qh5* 13.*Qf4 Qxf4* 14.*Qxf4 Qb6* 15.*Qd2 Qc7* 16.*Qe3 Qb6* 17.*d5 Qf7* 18.*a4 a6* 19.*e5 Qxe5* 20.*f4 Qg7* 21.*dx6 bxc6* 22.*Qg2 Qc8* 23.*Qe4 Qf8* 24.*Qh6 Qb8* 25.*Qc3 Qg8* 26.*Qg5 Qxh6* 27.*Qxh6 Qg7* 28.*Qxh7+ Qg8* 29.*Qh3 Qb7* 30.*Qf6+ Qf8* 31.*Qh8+ Qg8* 32.*Qd7+ Qf7* 33.*Qxb8 Qxb8* 34.*Qxc6 Qb6* 35.*Qc1 Qf6* 36.*Qh4+ g5* 37.*fxg5+ 1-0*

2...fxg4 3.Qf4!

This form of the gambit has become a Martinovsky specialty and is superior to the alternatives *3.h3?! or 3.e4!?*

3...Qf6 4.Qc3 d5 5.h3 Qf5?!

A slight error since White's next move forces Black to lose a valuable tempo. *5...c6* is preferable when the game may continue *6.Qd2 g6 7.0-0-0 Qg7 8.hxc4 Qxc4 9.f3 Qf5 10.Qh3 b5 11.Qb1 b4!?* 12.*Qa4*

Qbd7 13.Qxb4 Qh5 14.Qh2 0-0 15.e4!? *dx4 16.Qg5 e5 17.Qc4+ Qh8 18.Qf7+ Qxf7 19.Qxf7 exd4 20.fxe4 Qxe4 21.Qh1* with an overwhelming game as in Martinovsky-Weinberger, Long Beach, 1988.

6.hxc4 Qxc4

No improvement is *6...Qxc4 7.Qh3!* (Insuring the exchange of light-squared bishops.) *Qd7 8.Qf3 Qf6 9.Qxf5 Qxf5 10.Qxc7 Qc6 11.Qd2 Qg4 12.Qg3 0-0-0 13.0-0-0* when White had the better game. Leisebein-Wolf, Corr, DDR thema, 1989.

7.Qd3 Qd7 8.f3 Qf5 9.e4 Qg6 10.0-0-0 e6 11.Qh3 Qb4 12.Qge2 0-0?!

Black's decision to castle is very risky given White's active pieces on the half-open g/h files.

13.Qe3 Qc6 14.Qg5 Qxc3 15.Qxc3 Qbd7 16.e5

Destroying the coordination of Black's pieces and preparing the final Kingside assault when Black's inability to transfer additional defenders will prove a fatal malady.

16...Qe8 17.Qdh2 Qb6 18.b3 a5 19.a4 Qc8 20.Qbd2 Qf7 21.Qf1 Qe7 22.Qb5 Qb6 23.Qxe7 ...

Black's grip on g6 and f5 is the glue that binds his defense together; both this knight and the *Qg6* must be eliminated.



Mid-America Class Championships

- Chicagoland's PREMIER Class Chess Tournament -

MARCH 24-25-26 IN CHICAGO

FIDE-RATED • 5 ROUND SWISS • 6 SEPARATE CLASS SECTIONS

\$15,000 Guaranteed Cash Prizes!

★ ★ ★ ★ ★ Prize Fund Will Not Be Reduced ★ ★ ★ ★ ★

MASTER SECTION

\$\$2000-1500-500-400-300-200

Under 2400: \$\$500-200

CLASS A

\$\$1000-500-300-200-100

CLASS C

\$\$1000-500-300-200-100



EXPERT SECTION

\$\$1000-500-300-200-100

CLASS B

\$\$1000-500-300-200-100

CLASS D/E

\$\$500-300-200

★ ★ ★ ★ ★ Plus 120 Grand Prix Points ★ ★ ★ ★ ★

DON'T MISS THIS EXCITING TOURNAMENT!



VISA & MASTERCARD ACCEPTED

by phone (708-396-1985) daytime until Thursday, March 23rd.

MAKE HOTEL RESERVATIONS EARLY

before March 10th to assure discount rate.
Phone Ramada O'Hare Hotel: 708-827-5131

ENTRY FEE: \$70 if received by 3/17

Send your entry to:

Mid-America Class Championships
Box 100, Palos Heights, IL 60463

Info: Fred Gruenberg 708-489-5800
(evenings only)

SEE CHESS LIFE GRAND PRIX SECTION FOR DETAILS

★ ★ ★ ★ ★

A FUN CHESS WEEKEND AT THE SITE OF THE U.S. OPEN

MARCH 24-25-26 IN CHICAGO

TOURNAMENT INFORMATION

5 Round Swiss in 6 Class Sections: Master (over 2200), Expert (2000-2199), Class A (1800-1999), Class B (1600-1799), Class C (1400-1599), Class D/E (1399 & under). Unrated may play in any section.

GUARANTEED PRIZE FUND plus MANY BONUSSES and EXTRAS, INCLUDING FREE raffle prizes.

PRIZE FUND IS GUARANTEED AND WILL NOT BE REDUCED!!

REGISTRATION

By mail (see form below) or phone: (708) 396-1985 (have VISA or MASTER CARD ready). At tournament: Friday, March 24, 4:00 to 7:00 p.m.

ROUNDS

Friday, March 24th: 8:00 p.m., Saturday, March 25th: 10:30 a.m. & 5:30 p.m., Sunday March 26th: 9:00 a.m. & 4:30 p.m., 1/2 point bye allowed for any round. 5th round bye **MUST** be announced before the tournament.

ENTRY FEE

\$70 if received by March 17 (\$10 more at the site). Grandmasters **FREE**. Special Discounts: **ALL** Juniors and unrated \$30. Fourth members of **ANY** school or chess club play **FREE**. **ALL SPECIAL ENTRY FEES ARE ADVANCE BY MAIL ONLY!** Add \$1 for 1/2 point first round bye. VISA and MASTERCARD to Thursday, March 23, **NOT AT DOOR!** Call 708-396-1985 DAYTIME ONLY. Mail entries to Mid-America Class Championships, Box 100, Palos Heights, IL 60463. You can play in one section above your rating for \$5 additional. Illinois Chess Association MAXI-TOUR event.

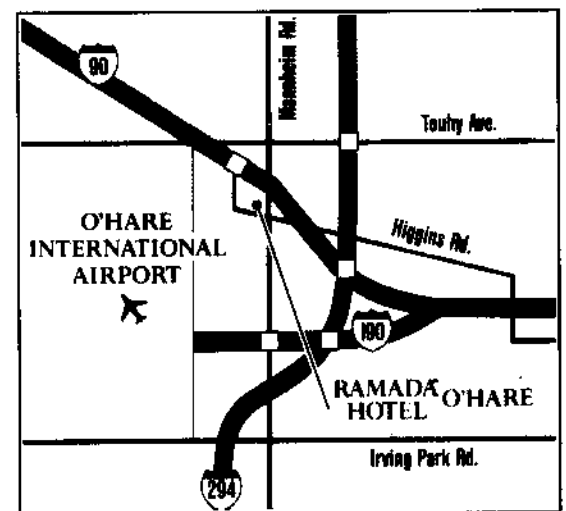
SPECIAL HOTEL RATES

\$59 single (add \$4) for double. (Regular rate is \$96) Ramada O'Hare Hotel, 708-827-5131. Mention "chess tournament." The Ramada O'Hare is located at 6600 N. Mannheim Road, less than 1 mile north of O'Hare airport with **FREE** pick up service from O'Hare every 15 minutes.

MANY EXTRAS

FREE parking. **FREE** raffle prizes before 5th round. **FREE BONUS** for perfect scores. Golf course, swimming pool on premises, weather permitting. **STOCK UP!** - **MID-WEST LARGEST** book concession by Jim/Helen Warren of American Postal Chess. Chess sets & boards provided. Please bring chess clocks!

★ *Special chess set sale after tournament.* ★



6600 N. Mannheim at Higgins Road, Rosemont, Illinois.

★ PREVIOUS MID AMERICA CHAMPIONS ★



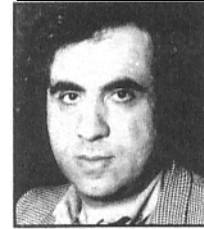
GM Dmitry Gurevich



GM Alex Yermolinsky



GM Alexander Ivanov



GM Roman Dzindzichashvili



GM Shabolov - GM Miles



Please enter me in the Mid-America Class Championships, March 24-26 in Chicago.

NAME _____ U.S.C.F. I.D. # _____ U.S.C.F. RATING _____

ADDRESS, CITY, STATE, ZIP _____

AMOUNT ENCLOSED \$ _____

SPECIAL INSTRUCTIONS _____

*Please include self-addressed postcard
if you want return confirmation*

MAY CHECK PAYABLE TO:
MID-AMERICA CLASS CHAMPIONSHIPS

MAIL ENTRY TO:
Mid-America Class Championships
P.O. Box 100 - Palos Heights, IL 60463

★ ★ ★ ★ ★ **Don't Miss the Fun!** ★ ★ ★ ★ ★

23...♞xe7 24.♛e2 ♘f5 25.♙d3 g6

Black valiantly tries to erect a solid barricade of pawns, but the White pieces are not to be denied in their lust for open lines to ravage the Black monarch

26.♙xf5 exf5 27.♙f4 ♞d8
28.♙xg6! ..

The decisive moment of the game!

28...hxg6 29.♙g5! ...

1-0 Black now resigned since checkmate is unavoidable after the further 29...♞ed7 30.♞h8+ ♜f7 31.♞h7+ ♙g7 32.♞xg7+! ♜xg7 33.♙h6+ ♜f7 34.♙h7+ ♜e6 35.♙xg6+ ♜e7 36.♙g7+ ♜e6 37.♞h6++

Note: The author has recently completed the most thorough book on this gambit ever published. "The Anti-Dutch Spike" (Algebraic notation, 110 pages, 64 diagrams) is available postpaid in the US for \$14.95 from Blackmar Press, 303 Cleveland St. Box 66, Headland, Alabama, 36345. For foreign orders, please add \$5.00 for air postage & handling. Payment by check from US bank or international money order.

READER'S SHOWCASE

This month's first game was submitted by Class-A player John Cerminaro and is very special for the determination he shows in trying to improve his play. While it's easy for any of us

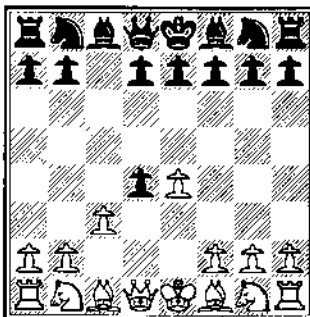
to take our wins and gloat our "brilliant" moves while depreciating those "blunders" of our opponent, John has taken the very different tact of conducting an extremely honest appraisal of one of his losses.

I deeply believe that each of us could learn much more about our failings by carefully examining a single one of our heartfelt losses that we ever could by scanning a dozen or so exhilarating wins. Although emotionally difficult to do, this is also the best way of understanding what we need to learn in order to move ahead.

Therefore, the next time you have an opportunity to study, resist the urge to pull out one of those dusty tomes on opening theory or that game in which you defeated a player rated 300 points above you; instead take out the game or two you lost and jot down notes as you go. It may not be as fun, but I guarantee that you'll learn more about the game and yourself!

Satterlee, R - Cerminaro, J
Chicago, 1994

1.e4 c5 2.d4 cxd4 3.c3!?



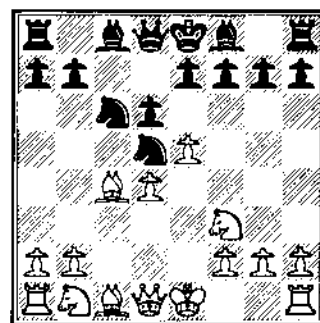
This introduces the Morra Gambit in which White sacrifices a pawn in order to accelerate his development

and acquire a long-term initiative. Little-seen among Grand-masters, it is both quite popular and dangerous at club level. (ALW)

3...♙f6!?

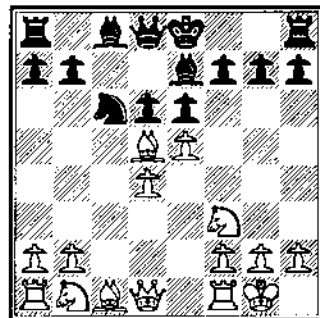
Black disdains the pawn in the hope of fighting for the initiative and staying out of Satterlee's prepared analysis. ALW

4.e5 ♙d5 5.cxd4 ♙c6 6.♙f3 d6 7.♙c4



The first real moment of decision for me. I lost a game to Howard Cohen playing 7...♙b6, plus I was just reading about 7...e6 a couple of days ago, therefore:

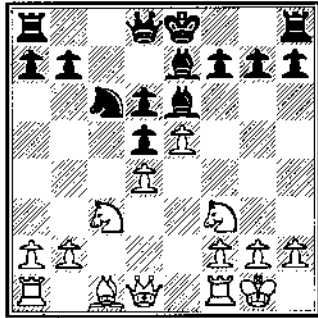
7...e6 8.O-O ♙e7 9.♙xd5



So much for Ken Smith's analysis of this variation. He never covered 9.♙xd5 here, but I don't see how giving up the bishop pair on move nine can be so terrific for White.

[Normal are 9.a3 and 9.♖e2 with interesting play. ALW]

9...exd5 10.♖c3 ♗e6



Here, and for several more moves I could have captured at e5 but thought the issue would then become my isolated pawn at d5. So I decided to argue the point.

11.♗f4 a6

This choice was based on two ideas 1. preparing to advance b5 and ♖c6-a5; 2. keeping White's knight out of b5. However, 11...O-O is probably better.

12.♞c1 O-O

I do not castle lightly. Upon 13.♖b3 I intended dxe5 when neither 14.♗xe5 nor 14.dxe5 are good, and 14.♖xe5 allows ♖xd4 15.♖xb7 ♗c5 16.♖c6 ♖c8 7.♗e7+ ♗xe7 18.♖xe7 and Black does not stand badly as far as I can see.

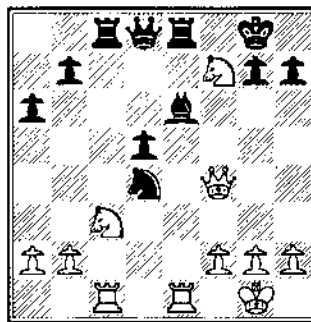
13.♖d2 ♞e8 14.♞fe1 ♞c8
15.exd6 ♗xd6 16.♗g5

A tremendous moment! I spent nearly 40 minutes analyzing this position. I can't recall being more excited by a position. If I play 16... ♗xf4 and white plays 17.♖xf4 I can either play a reasonable move

like ♖d7 or take his d pawn with 17. ♖d4 now (if I take on

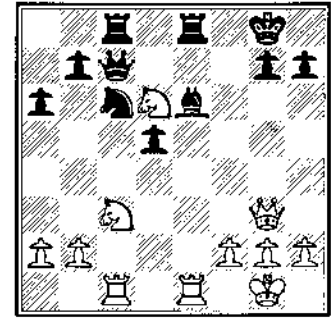
d4) White can play 18. ♖xh7 or 18.♖xf7. On ♖xh7, after I recapture with my ♗, I think I stand okay, but perhaps I do not need to recapture immediately. on the other hand, if he plays ♖xf7 after ♖xf7 there might follow 18.♞xc8 ♖xe8 19.♖d4 ♞c4 and perhaps White plays his ♖ to b6 (?) I cannot assess this very well. Suppose on either ♖xh7 or ♖xf7 I play ♖b6 instead of recapturing! My threat is winning a piece (♖ on f7) and possibly at some point capturing on b2. If White attacks my ♖ with his ♖a4. I can play ♞xc1 and if he recaptures with his ♞ I can play ♖e2+ winning his ♖. This is one of those great moments-one of those artistic moments-where I will win elegantly! I go over everything again, look at my clock which is looking bad now and decide I must play this beautiful combination. So here goes!

16...♗xf4 17.♖xf4 ♖xd4??
18.♖xf7??



Both John and Ray miss the following tactical point first spotted by Tom Cooper: 18.♞xe6! [removing the defense of f7] fxe6 19.♖f7+ ♗h8 20.♖h5 winning for White. ALW

18...♖b6?? 19.♖d6 ♖c7
20.♖e5 ♖c6 21.♖g3!



Oh no, I just didn't see this in-between move. What a shame, suddenly I'm gonna lose the exchange. Afterwards, Satterlee seemed not to see all the stuff I looked at. [Less / accurate analysis is often better than more/bad ALW]

21...d4 22.♖ce4 ♞f8

Now I'm scrambling around in time pressure, its all so pitiful.

23.♖xc8 ♖xg3 24.♖e7+

Another good in-between move that kills me.

24...♖f7 25.hxg3 ♖xe7
26.♖c5

Moral of the story: **DON'T TRUST LONG VARIATIONS AND PLAY SIMPLE MOVES.**

Why didn't I spend half an hour looking at 18...♗xf7? 1-0

The second game was submitted by Paul Ilosvay and enabled him to reach his longstanding personal goal of getting a Master's rating. While he'll be the first to admit just how much time it took and difficult the struggle was, I'm also sure that Paul's feels all his efforts have now been vindicated. Three

cheers for one of Illinois' newest masters!

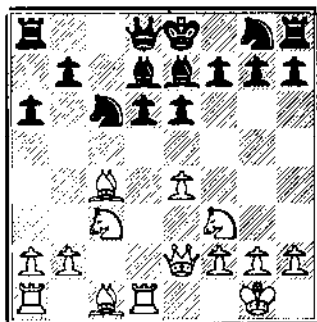
Cohen, Norman - Ilosvay, Paul
Cr USCF Class Tournament

All notes are by Paul Ilosvay unless marked ALW.

1.e4 c5

I title this submission "Over The Hill," and no, I'm not talking about my age (52)! This victory raised my USCF correspondence rating over 2200 for the very first time. My opponent is an expert-rated gambit-player from New Jersey.

2.d4 cxd4 3.c3 dxc3 4.♖xc3 ♗c6 5.♗f3 d6 6.♗c4 e6 7.O-O ♗e7 8.♞e2 a6 9.♞d1 ♗d7



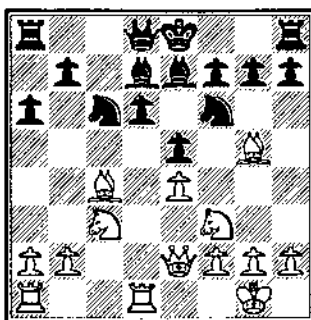
Black is adopting a popular defensive scheme which strives to force White's ♗c1 to be developed on a less active square than g5. ALW

10.♗f4

More common is 10.a4

10...e5 11.♗e3 ♗f6 12.♗g5

If you would play chess, the first rule is, think before you move! Think of whatever you like but let it be evident that you are thinking.
- Emanuel Lasker

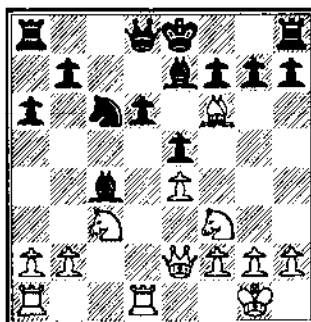


Also possible were 12.h3 O-O 13.♞a1 ♞c8 14.♗d5 b5 15.a3 ♗a5 =+ and 12.♞a1 O-O 13.♗d5 ♗xd5 14.♗xd5 ♞ac8 15.♗d2 b5 =+

12...♗e6

Other moves are 12...O-O, 12...b5 and 12...♗g4!

13.♗xf6 ♗xc4?



While Paul thinks this a slight error, I deem it a major strategical mistake ceding near-total control of d5 to White. More robust was 13...♗xf6 when Black should have no fear of doubled e-pawns which control both d5 and f5. ALW

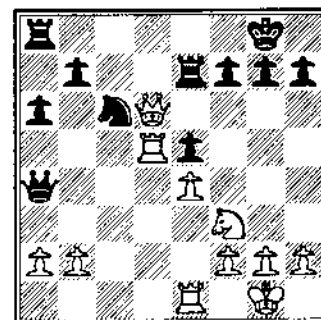
14.♞xc4 ♗xf6 15.♗d5 O-O 16.♞d3 ♗g5?

Hoping for 17.♗xg5 eliminating Black's bad bishop. The correct move is an immediate 16...♞e8.

17.♗c3 ♗e7 18.♗d5 ♗g5?
19.♗c3 ♗e7 20.♗d5 ♞e8
21.♗xe7+ ♞xe7 22.♞xd6 ♞a5 23.♞d5?

Better is 23.♞a1.

23...♞a4 24.♞e1

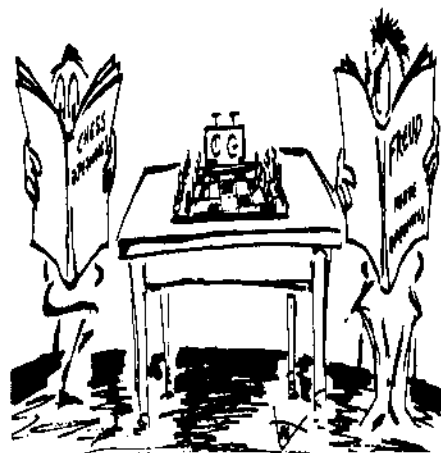


Perhaps White just now noticed that capturing on e5 doesn't work: 24.♗xe5 ♞xe4 5.♗xc6?? ♞e1+! results in a big headache. ALW

24...♞xa2 25.♗xe5 ♞e6 26.♞c7 ♞f8 27.♞ed1?

Best is 27.♗xc6.

27...♗xe5! 28.♞xe5 ♞b3! 29.♞ed5 ♞xc4 0-1



*Bill, bill, bill, junk mail,
bishop check!*

Personal Observations on Postal Play.

By NM Alan L. Watson

The game of Chess is a wonderfully rich and rewarding pastime that can be enjoyed by nearly everyone regardless of age, income, or ethnicity. All it takes is a set & board, creative imagination, and an opponent... and you don't even have to leave your house!

Alternately called either postal or correspondence chess, playing the game by mail is a fulfilling variant which continues to draw new supporters among a wide range of people with differing interests. As familial and employment related demands took a greater toll upon my personal time, I was forced to forgo weekend tournaments and seek other avenues for remaining active. However, what once began as a necessity is now a labor of love!

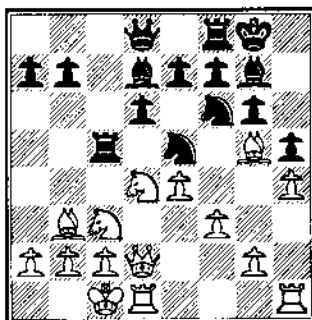
Just imagine.... being able to learn new openings by consulting books, taking three days per move instead of a mere three minutes, being able to move pieces around when trying to understand tactics or strategies, being able to play near-perfect endings with the help of Fine or Troitsky, not having to wait hours between rounds, not feeling fatigued or nervous during your game, never having to leave your house to compete with players from around the world!

I am presently an active Master-level member of four separate correspondence organizations (ICCF, APCT, CCLA, NOST) and have even been appointed US Team Captain for an eight-team international round-robin tournament featuring such countries as Argentina, Australia, Algeria, South Africa, Brazil, and Portugal.

With the following two games which are among my very best efforts and future articles on this topic I hope to impart to the readers some of the drama and excitement offered by postal play so they, too, may decide to participate and share in the many rewards of this enjoyable activity.

Schnaubelt, Gunther -
Watson, Alan
Cr. Austria Vs. USA, 1991

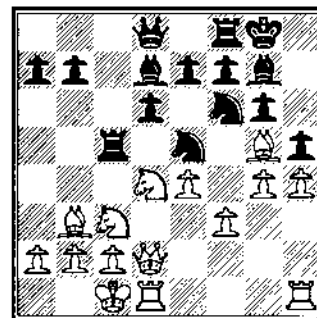
1.e4 c5 2.♘f3 d6 3.d4 cxd4
4.♗xd4 ♘f6 5.♖c3 g6 6.♘e3
♘g7 7.f3 ♗c6 8.♗d2 O-O
9.♘c4 ♘d7 10.h4 ♖e5
11.♗b3 ♗c8 12.O-O-O h5
13.♘g5 ♗c5!?



The Soltis Variation of the Yugoslav Attack of the Dragon Variation of the Sicilian defense sure is a mouthful and could tend to lead one into

believing that these lines are over analyzed!

14.g4!?

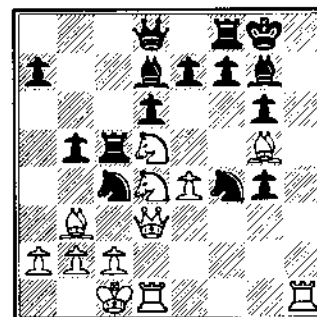


White chooses a variation evoking the same feelings a calvary troupe may have had when travelling to confront a band of Indians in the Old West. However, those savages did have bows + arrows and you never know what's over the next hill!

14...hxg4 15.f4!?

Sapi and Schneider consider this extremely risky and insist that White must continue with the daring 15.h5!! ♗xh5 16.♗d5 ♗e8 17.f4 ♗c4 18.♗d3 offering mutual chances in a highly unclear position.

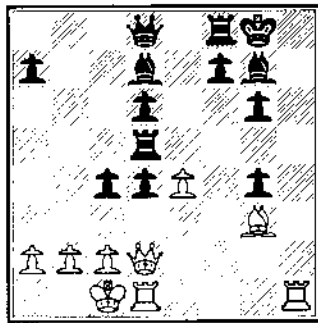
15...♗c4 16.♗d3 b5 17.h5
♗xh5 18.♗d5 ♗xf4!!



This amazing move has revolutionized the variation for Black. With a single stroke Black breaks up the avalanche

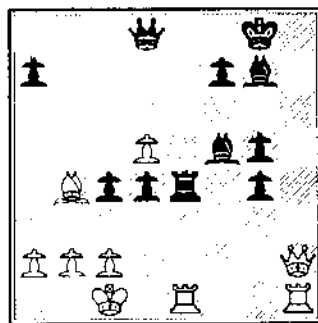
of pawns advancing on his King and initiates selected exchanges which reduce White's attacking potential.

19. ♖xf4 e5! 20. ♗g3 exd4
21. ♖xc4 bxc4 22. ♜d2 ♖xd5!



A necessary complement to the previous play, White's knight is simply too powerful to be left alive.

23. exd5 ♗f5 24. ♜h2 g5!
25. ♖xd6 ♖e8 26. ♖de1 ♖e4
27. ♖b4



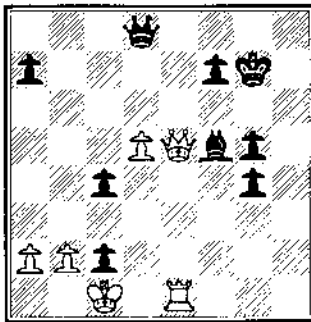
After two years of postcards and twenty-seven moves of chess and we finally leave the books! Patience is certainly an admirable quality in OTB play, but absolutely essential in international play where a single move may take more than a month.

27...d3!

Black seeks to gain the maximum activity from his pieces while fracturing the

solid barrier of pawns sheltering the White King. In positions with mutual attacks, material is often irrelevant while activity means everything.

28. ♖c3 ♖xe1+ 29. ♖xe1 dxc2
30. ♖xg7 ♜xg7 31. ♜e5+

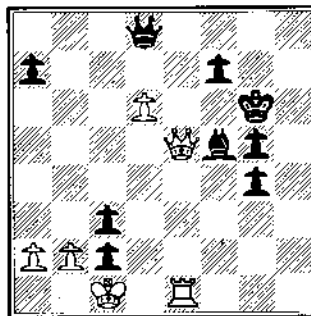


Black has gained another pawn and laid bare the White King, but doesn't that passed d-pawn look like a winner? ... Nope! Keep playing on for the juicy details.

31...♜g6!

The exclamation point is not strictly for this move, but rather the fact that it had to be forseen much earlier. Without the ability of extensive analysis that postal play offers, who would believe Black's King the safer here!

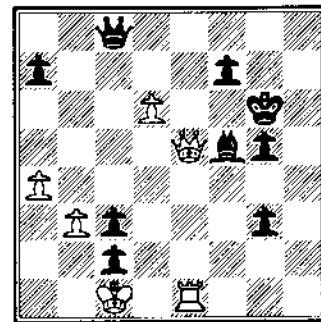
32.d6 c3!!



Another hammer blow which finally makes clear the

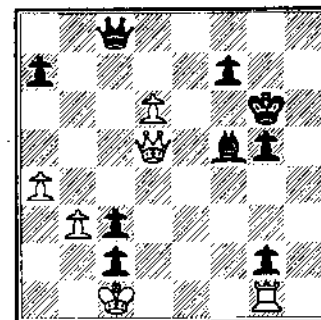
unfortunate plight of White's King. Should this be exchanged at any time for ♖d6 Black's pawns would win the game. 33.bxc3 ♜b8! is also good.

33.b3 ♜c8 34.a4 g3!



One after another Black's pawns dash out to taunt the overworked White pieces into unguarding key squares. Here 35. ♜xg3? ♜c5! is lights out.

35. ♖g1 g2 36. ♜d5?!



It's even too late to return material with 36. ♖xg2? ♜b7! 37. ♖xc2 ♜h1++. White's heavy pieces and passed d-pawn are but silent whispers against the roar of Black's active pieces and marauding pawns!

36...♜e8!

This game in particular remains one of my most cherished creations for the manner in which Black's

Queen, while remaining on the last rank for the first 38 moves, none-the-less created a range of threats over the entire board!

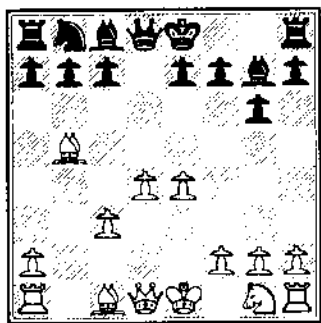
37. ♖f3 ♜e5 38. d7

It's too late even for desperation.

38... ♗xd7 39. ♜xc2 ♕f5+
40. ♜c1 c2 41. ♜xg2 ♜a1+
42. ♜d2 c1♜+! 43. ♜xc1
♜a2+ 44. ♜d1 ♜xg2 0-1

Watson, Alan - Fister, Bernard
Cr. USA Vs. France, 1993

1. d4 ♖f6 2. c4 g6 3. ♖c3 d5
4. cxd5 ♗xd5 5. e4 ♗xc3
6. bxc3 ♗g7 7. ♗b5+!

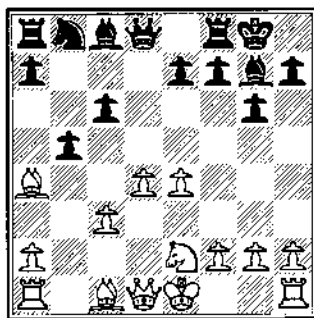


Having recently completed a deep theoretical analysis of this line which was published in the March/April 1993 ICB, I was very confident of my preparations and thrilled to be able to test my opinions over the board.

7... c6

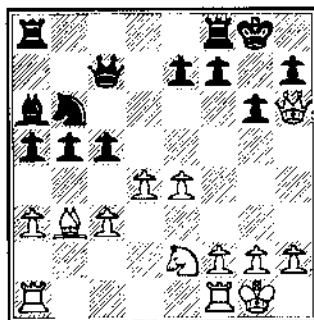
This is still regarded as the critical continuation although the sidelines 7... ♗d7 and 7... ♗d7 are still occasionally seen.

8. ♗a4 O-O 9. ♗e2 b5!?



9... e5 has since crystalized as the main line, but how could a Frenchman fail to follow in the footsteps of Garry Kasparov, who as Black had just utilized this strategy at a Rapid-play tournament in Paris of all places!

10. ♗b3 a5 11. O-O ♗d7
12. ♗g5 ♗b6 13. a3 ♜c7
14. ♜d2 c5 15. ♗h6 ♗xh6
16. ♜xh6 ♗a6?!



This has since come to be regarded as an error, but back then when this line was young who knew!? Kramnik-Kasparov, Paris 1992 now continued 17. ♗f4 c4 18. ♗c2 e5 19. ♗e2 b4 20. axb4 axb4 21. f4 exd5 22. f5 unc, but I wondered...

17. f4!

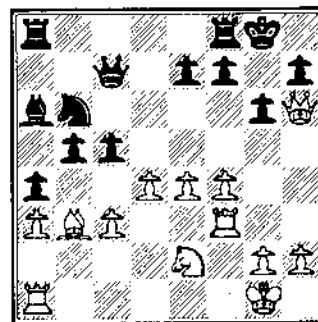
After two weeks of deliberation I improve on Kramnik! With the ♗b3 pinning down Black's Kingside like a sniper in a belltower, I plan a rapid

deployment of my ♖f1 to the 3rd rank with unstoppable threats along the h-file.

17... a4?

No doubt surprised by my response, Black commits a fatal error after which a successful defense of his Kingside is impossible. Interesting variations ensue after both 17...c4! and 17...b4?! and I challenge readers to discover them.

18. ♖f3!



Utterly disregarding the threat to ♗b3, White's formerly inactive rook hears its name bellowed at roll call leaps up to attention, preparing to support Her Majesty already deeply ensconced in enemy territory.

18... ♗c8

The sound of Taps can already be heard, but Black anyway decides upon one last ploy; after all, perhaps that American chap will lose interest or maybe even die, he never did list his age or health status on the postcards!

19. f5! ♗xf5 20. exf5 1-0.

OAK PARK - RIVER FOREST CHESS CLUB NEWS

By Ken Marshall

"Lightning" Tournament - This 10 second per move round robin drew eight players on November 29 and was won by Tony Schroeder, Catalino Reyes, and Mark Gravante, each finishing 5-2. Don Winsauer (3-4) led the 1999-1700 group. First among the 1699-Below entrants was Wlad Boguslawicz (3.5-3.5).

1/2 "K" Action Tournament: Catalino Reyes, Jim McNamara, Paul Prause, and Don Winsauer each scored 3-1 to tie for top honors in the eight player field in this December 6 and 13 event. Winsauer took home the 1999-1700 money, while Joe Cygan (2-2) showed the best 1699-Below result.

World Blitz Chess Association Tournament: Jim McNamara won this Game/5 double round robin six player tourney on December 27 with an 8-2 result. Chris Baugh (6.5-3.5) was second, and Marty Ptacek (5.5-4.5) third. Dave Wulatin and Paul Prause (each 4.5-5.5) split the 1999-1700 prize. 1699Below honors went to Richard Hornor.

"Lightning" Tournament - Showing that his skill at speed chess extends beyond the Game/5 format, Jim McNamara topped this 10 second per move round robin, scoring 5.5-1.5 to outdistance the remainder of the eight player field on January 17. Tony Schroeder and Chuck Collins (at 1650, the lowest rated player) tied for second and third at 4-3 apiece. Robert Stoltz and Charles Jennings each ended up

3.5-3.5 to share the 1999-1700 money, while Bill Barker (3-4) was best among the 1699-Below entrants (other than Collins, who won a place prize).

Albert Chow Group Chess Lesson: This January 24 event attracted 14 people; each got more than his \$5 worth as Senior Master Chow spent more than three hours analyzing several of his games from the 1994 U.S. Open (in which he tied for first through sixth places), asking and answering questions as he went along.

CHOW WINS 1994 OP - RF CC WINTER OPEN

By Ken Marshall

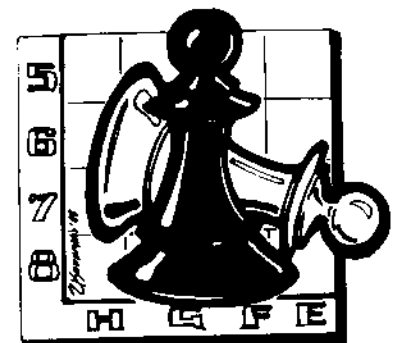
Forty two players took part in the Oak Park-River Forest Chess Club Winter Open, held on December 10 and 11, 1994, at the Club's Tuesday night meeting site at the Dominican Conference Center, 7200 W. Division (Harlem and Division) in River Forest. The large turnout made it possible to increase the \$300 prize fund (which was based on 30 players) by 20% to \$360. Top rated Albert Chow (2420) pocketed the \$120 first prize with a 5-0 result. His perfect score included wins over Experts Ray Satterlee and James Fagan. Satterlee, Expert Robert Sax, and Class A player William Dwyer tied for second and third places at 4-1. Dwyer took home the Class A money. Blair Machaj (1613), ranked seventh of the nine Class B entrants, ended up 3-2 to top Class B, and Chris Baumgartner's 2.5-2.5 score was good

for Class C honors. Mike Giampa celebrated his twelfth birthday 10 days early by finishing 3-2 and winning the Class D/E/ Unrated prize. Giampa (1251) also won the Upset Prize on December 11 with a Round 4 victory over John Wilhelm (1524). The December 10 Upset prize went to young Matthew McCulley (974), who upended Richard Anderson (1429) in Round 2. Oak Park - River Forest Chess Club President Ken Marshall and the Club Vice President directed.

Here are McCulley's upset and one of Chow's wins.

Matthew McCulley (974)
Richard Anderson (1424)

1.e4 c5 2.♘f3 d6 3.d4 cxd4
4.♗xd4 ♘c6 5.♗f3 ♗g4 6.♗c4
e6 7.♗f4 ♗f6 8.♗c3 ♗e7 9.h3
♗xf3 10.♗xf3 0-0 11.♗g3 ♗h5
12.♗g4 ♗xf4 13.♗xf4 ♗e5
14.♗d3 ♗xd3+ 15.cxd3 a6
16.h4 ♗c8 17.h5 ♗g5 18.♗g4
h6 19.f4 ♗f6 20.♗h3 ♗xc3
21.bxc3 ♗f6 22.d4 ♗h7 23.♗g3
♗g8 24.e5 ♗f5 25.♗f3 d5
26.♗c1 ♗e4+ 27.♗xe4+ dxe4
28.♗c3 ♗c4 29.♗xe4 ♗gc8
30.♗e3 ♗xd4 31.cxd4 ♗xc1+
32.♗f2 ♗c2+ 33.♗e2 ♗xe2+
34.♗xe2 g5 35.hxg6e.p. ♗xg6
36.g4 h5 37.gxh5 ♗xh5 38.f5
exf5 39.d5 f6 40.e6 ♗g6 41.d6
♗g7 42.d7 ♗f8 43.d8=♗+ 1-0



Albert Chow (2420)
James Fagan (2013)

1.e4 c6 2.d4 d5 3.exd5 cxd5
4.c4 d6 5.dxc3 g6 6.♖b3 dxc6
7.cxd5 dxa5 8.♗a4 d7 9.♗b5
b6 10.d6 11.a6 12.dxd7 ♗xd7
13.0-0 dxc4
14.b3 d6 15.d6 16.d6
17.g7 18.dxc4 19.d6
20.a4 dxa3
21.dxc6 b5 22.dxa1 b4 3.dxc4
4.g7 24.d6 a5 25.d7 dxc8
26.dxc7 e6 27.d6 dxc8 28.g3
h6 29.dxe5 dxe5 30.dxe5 1-0

Springfield April Showers Open

April 22, 1995

Hampton Inn

Corner of Stevenson Drive and Dirksen Parkway,
just off the Steveson exit from I-55

Four (4) round Swiss

\$150 Prize Fund

First: \$75 Trophies to B,C,D/E/Unr
Second: \$50
Third: \$25

Entry Fee: \$15, \$12 if by 4/17/95 Juniors \$10

Registration: 7:30 - 8:30 Rounds: 9 - 12 - 3 - 6

Time Control: G/80

Entries: Thomas B. Knoedler
2104 South Fourth Street
Springfield, Illinois 62703

1995 PEORIA TORNADO

APRIL 22
4 Round Swiss

An Illinois Mini-Tour Event!
BENEFITING THE HELEN WARREN JUNIOR CHESS PROGRAM

\$125 Prize Fund

1st - \$75
2nd - \$50

Chess Books
to A, B, C, D

GARRETT CENTER
824 N Duryea Pl, Peoria, Illinois
Entries: Bill Naff, 212 Vail Ct, Peoria, IL 61614 309 691-4624

Entry Fee \$ 11 if by 4/13, \$15 at site.
Registration - 8:00 - 8:45
Rounds - 9 - 12 - 2:45 - 5:30

GM GUREVICH'S CORNER

By GM Dmitry Gurevich

American Open Tournament in Long Beach

For some reason this traditional tournament was always difficult for me to play. I kept coming almost every year, but never managed to win a big prize.

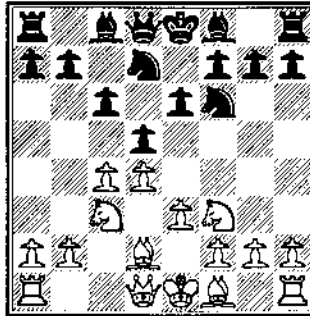
So this year's success, despite losing to Walter Browne, I took a clear first place! This year's tournament was especially pleasant for me.

But I cannot say it came easy. For example, in the round three game against senior master Mark Duckworth with sudden death time control my opponent got mated when I had only seven seconds left on my clock. A very similar situation happened in the preliminary round against Jerry Sales, but here I had thirty seconds left.

I have already submitted my games against IM's John Watson and Jack Peters to Chess Life so here I would like to present my game against a master from California, Javier Torres.

Gurevich, D. - Torres, Javier
American Open, 1995

1.d4 d5 2.c4 c6 3.e3 ♘f6
4.♗c3 e6 5.♘f3 ♗bd7 6.♗d2



I have tried this modest move a few times last year. I don't think it will threaten the popularity of 6.♗b3 or ♗c2.

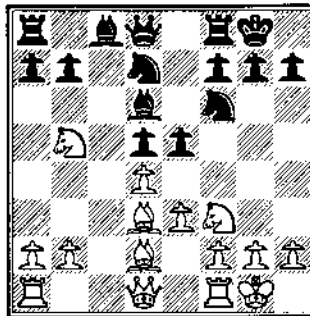
6...♗d6

Aleksander Shabalov found a better solution against the 6.♗b2 plan during our encounter in the U.S. Championship. 6...a6! After 7.a4?! (7.♗c2!?) ♗d6 8.♗d3 (c5!?) e5! Black got the initiative.

7.♗d3 O-O 8.O-O e5

8...a6!?

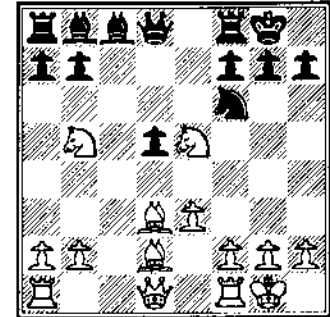
9.cxd5 cxd5 10.♗b5



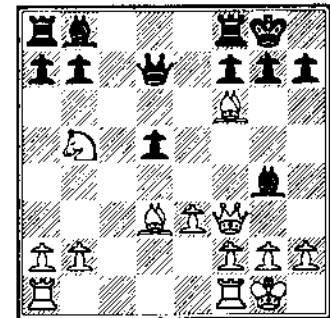
Now we can see the difference between the two games. In

Gurevich-Shabalov ♗b5 was not available.

10...♗b8 11.dxe5 ♗xe5
12.♗xe5!



It would be a mistake to play 12.♗c3?! [12.♗c3 ♗xf3+! 13.♗xf3? 13.gxf3 is the only move. Black has a very interesting tactical opportunity. 13...♗g4! 14.♗xf6 ♗d7!!

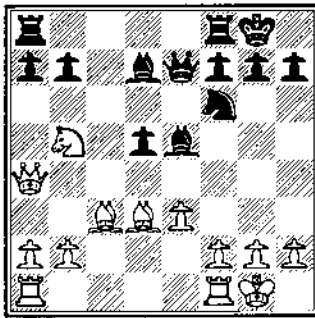


and Black wins!. We can find the same idea in the French defense. 1.e4 e6 2.d4 d5 3.Nc3 dxe4 4.Nxe4 b6 5.Nf3 Bb7 .Bd3 Nf6 7.Nxf6 ♗xf6? 8.Bg5 Bxf6 9.♗d2 (9...♗xd4 10.Bb5)]. Let's return to the game....

12...♗xe5 13.♗c3 ♗e7

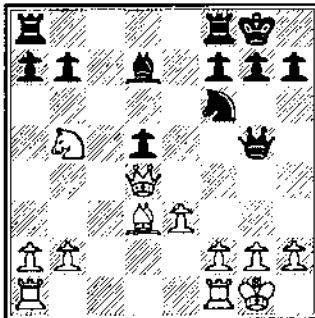
The combination 13...♗xh2? is not available since 14.♗xh2 ♗g4 15.♗g3! ♗g5 16.f4.

14. ♖a4! ♗d7



In case of 14...a6 White's response would have been the same as in the game 15. ♗xe5 ♖xe5 16. ♗d4.

15. ♗xe5 ♖xe5 16. ♗d4 ♖g5

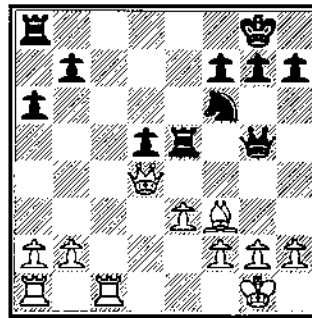


This is a mistake. Black's King side attack is doomed due to the powerful position of White's Queen. Instead Black should have played 16. ♖xd4 17. ♗xd4 ♖fc8. That's why I called the move 6. ♗d2 modest. Even if things go his way White's initiate is very small.

17. ♖fc1! ♗xb5?

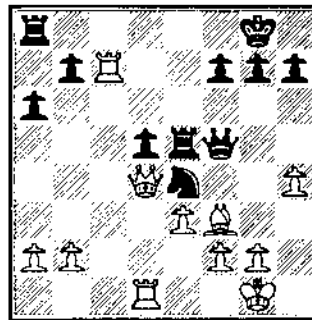
White's bishop will be very strong in the endgame. 17...a6 was better.

18. ♗xb5 a6 19. ♗e2 ♖fe8
20. ♗f3 ♖e5



Black is hoping for 21. ♖c7 ♖f8 22. ♖h1 ♗e4 with some counter chances.

21. h4! ♖f5 22. ♖c7 ♗e4
23. ♖d1



White's King position is now very secure. White's bishop's position is both offensive and defensive (covering f2 square and will take on e4 or d5 at the right moment). It was also possible to take on b7 immediately, but I felt that Black's pawns are not going to go far.

23... ♖ae8

If 23...b5 then 24. ♖a7!

24. ♖xb7 g5 25. ♗xe4 dxe4
26. hxg5 ♖xg5 27. ♗d7

White has won a pawn and his pieces are still dominating the board.

27... ♖f8 28. b4 ♖e6 29. ♖d5
♗g4

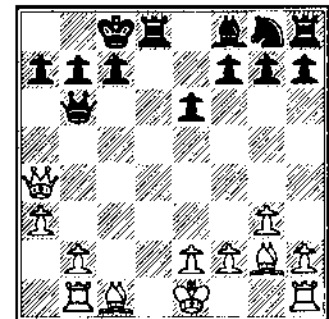
If 29. ♖h4 then 30. g3 ♖g6 (30... ♖h3 or 30... ♖g4 both will be answered with 31. ♖d6!) 31. ♖g2!

30. ♖d6! ♖g6 31. ♖xe6 fxe6
32. ♖b6 Black resigns. 1-0

During the third round I witnessed an elegant miniature at the next table.

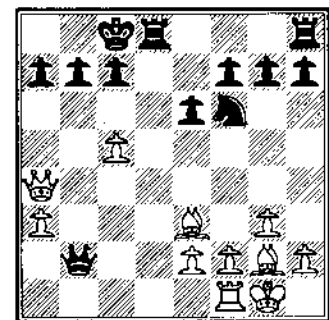
Torres, J - Sales, J.
American Open, 1995

1. d4 d5 2. c4 ♗f5 3. cxd5
♗xb1 4. ♖xb1 ♖xd5 5. a3
♗c6 6. ♗f3 O-O-O 7. ♖c2
♗xd4 8. ♗xd4 ♖xd4 9. g3 e6
10. ♗g2 ♖c5 11. ♖a4 ♖b6



According to Torres, this is an innovation, 11...a6 was played before.

12. b4? ♗c5? 13. bxc5! ♖xb1
14. O-O ♗f6 15. ♗e3 ♖b2



16. ♗xb7+!!

If 16...♟xb7 or 16...♞xb7, then 17.c6!! Black resigns 1-0

The final results of the American Open were: 1st place D. Gurevich 7, 2nd-3rd place Walter Browne and T. Shaked 6.5. A very strong performance by 17 year old Tal Shakad!

North American Open in Las Vegas

Four people tied for the 1st place prize in the tournament: GM's Nick de Firmian, Walter Browne, IM's Igor Ivanov and Michael Brooks. I am especially glad for Michael because for a few years his performance was very unstable. In Las Vegas Brooks beat super strong GM's Alex Yermolinsky and Surbat Yutian! Our encounter in round 5 also made a good impression on me. Playing the Black pieces, Michael sacrificed two pawns for pure positional reasons and made a draw very confidently.

Gurevich, D. - Brooks, M.
North American Open, 1995

1.d4 ♟f6 2.c4 g6 3.♟c3 ♟g7
4.e4 d6 5.♟f3 O-O 6.♟e2 e5
7.O-O exd4 8.♟xd4 ♞e8 9.f3
♟bd7 10.♟g5 c6 11.♞h1 a5
12.♟d2 ♟b6 13.♟c2 ♟c5
14.♟e3 ♟fd7 15.♞ab1 a4!
16.♟xd6 a3 17.bxa3 ♟a5
18.♟d1 ♟e5 19.♟d2 ♟c7
20.g3 20...♟a4 21.♟f2 ♟dc5
22.♞fd1 ♟e7 23.♟d4 ♟xd4
24.♟xd4 ♟e6 25.♟xe6
♟xe6 26.♞g2 ♟c5 27.♟c3
♟c8 28.♞d2 f5!? 29.exf5
♟xf5 30.♞bd1 ♟e3 31.♟f6
♞f8 32.♞d8 ♟e6 33.♞xa8
♞xa8 34.♟b2 ♟c5!? 35.g4
♟e6 36.♟b6 ♟xc2 37.♟xc5

♞f8 38.♞d3 ♟xg4 39.fxg4
♞xf2+ 40.♟xf2 ♟xd3 and a
draw was agreed on shortly.
1/2

Well, if Brooks makes a draw two pawns down easily, it makes me wonder...I hope that Las Vegas tournament will be a turning point of Michael's career.

Tournament in Linares

I am sending this report from Europe where I participated in a few competitions. In the next issue I am going to write about tournaments in Linares, Geneva and Bern. Today, I would like to mention the excellent play of Dr. Eugene Martinovsky of Naperville at the Linares tournament in January. Eugene beat a young GM from Argentinian Pablo Zarnicki and made a draw against the famous Henrique Mecking of Brazil. Here is that game.

Mecking, H. - Martinovsky, E.
Anibal (8), 1995

1.d4 ♟f6 2.♟f3 g6 3.g3 ♟g7
4.♟g2 O-O 5.O-O d6 6.♟c3
♟bd7 7.e4 e5 8.♞e1 c6 9.a4
♟c7 10.h3 ♞e8 11.♟e3 b6
12.♟d2 ♟b7 13.♞h2 a6
14.♟h6 b5 15.♟xg7 ♞xg7
16.axb5 axb5 17.♞xa8 ♟xa8
18.dxe5 dxe5 19.b4 ♟b7
20.♟h4 ♟f8 21.♟f1 ♟e6
22.♟a2 ♞d8 23.♟e3 c5
24.bxc5 ♟xe4 25.♟xb5
♟6xc5 26.f3 ♟f6 27.♟xe5
♞d2+ 28.♞h1 ♟xe5 29.♞xe5
♞xc2 30.♞e2 ♞xe2 31.♟xe2
♟d5 32.♞g2 ♟f6 33.♟f2
♟c8 34.♟c4 ♟b6 35.♟e2 g5
6.♟g2 ♟xh3 37.♟e3 ♟e6
38.♟c3 ♟e5 39.♟b5 f5

40.♟e2 ♟d5 41.♟c4+ ♟f6
42.♟d4 ♟d3+ 43.♞g2 ♟e5
44.♟d6 ♟c7 45.♟a4 ♟f7
46.♟xf7 ♟xf7 47.♟c2 ♟g6
48.f4 h6 49.♞f3 g4+ 50.♞f2
♟e8 51.♟b3 ♟d6 52.♟d5
♟e8 53.♟b5 ♞e7 54.♟d4
♞d6 55.♟e6 ♟g7 drawn in
26 more moves. 1/2

Introducing Boris Zlotnik's *Correspondence Chess School*. During the tournament in Linares I met IM Boris Zlotnik - famous chess teacher from Moscow. Now Boris is a head coach of the Spanish Youth team. He also runs a very successful correspondence chess school in Spain. I suggested he include American players in this school. If you are interested to get the highest quality instructions by mail--send your inquires (in English or Spanish) to:

Boris Zlotnik
C/ Pintor Perez Villamil, 47 - 4D
15403 Ferrol, Spain

There are three levels for beginners, advanced and expert /masters.

**GRAND MASTER
DMITRY GUREVICH**

**IS AVAILABLE FOR CHESS
LESSONS AND
CONSULTATIONS.**

**CALL
(312) 486-8051
LEARN WITH THE BEST!**

SCHOLASTIC NEWS

By Dan Pradt

The 1994-95 season got off to a fast start as Dick Verber's new All Grade Scholastic Tournament attracted 554 players in 13 grades, Kindergarten through 12th. The tournament was held Oct. 29 at Waubonsie Valley High School. 65 individual and 39 team trophies were handed out. Team Scores in each section were based on the scores of the top three players on each team. In the 5th grade section MacArthur posted a perfect score, 12-0.

New Trier dominated the high school section, with a first, second and third place in 4 sections of the high school grades. Glenside of Glendale Heights took first in two out of three Jr. High sections. Oakton of Evanston was a formidable presence in the lower grades-three firsts, two seconds, and a third in six sections.

Individual winners were as follows. All sections played four rounds.

Grade 12 1-2 Yaniv Inbar, New Trier, Julie Oberweis, Aurora West 4; 3rd Gennaddy Ioffe, Illinois Math & Science, 3. Grade 11 1-2 Sean Luster SFRWH, Paul Raso, RASBM, 4; 3rd Pierre Roustan, Maine South, 3. Grade 10 1-2 Micheal Levin, U of C Lab School, Mike Garcia, St Rita, 4; 3rd James Jones U of C Lab, 3.5. Grade 9 1st Kimberly Goodwin, 4; 2-4 Akash Shah, Moline, Michael Youngberg, Rockford Lutheran, Hudson Hollister, GCHJO, 3.5. Grade 8 1st Bryan Gast, Hadley, 4; 2-5 Peter Stroyan, Metcalfe, Ben Wimmer, ONMDG, Forrest Cox, Monticello, Adam Stevens, Wilson Middle, 3.5.

In many of the Junior High and elementary sections the large number of participants resulted in multiple perfect scores. Grade 7 1st Barney Getz FSWPE, 4; 2-5 Mike Mar and Dennis Timpanaro, Glenside, Stephanie Downen, Glenn, Larry Cooper, GFACH, 3.5. Grade 6 1-5 all with 4: Mike Giampa GFACH, Chris Hayes, Glenside, Chad Sprock, INPLH, Emily Ziessler, Glenside, and Amy Bauer, RAVHP. kGrade 5 1-4 all with 4: Matthew McDonald, Holy Angles, Jeffry Busca, Alan Rose, and Glenn Moore of MacArthur. Grade 4 1-3 with 4 points Johnny Weier, Benjamin, Brian Edgerton Parkview, and Jesse Wolfson, Oakton. Grade 3 1-3 Christopher Holmes, Oakton, Matthew Leali STMPE, Jonathan Klent, Oakton, 4. Grade 2 1st Daniel Adelman, Glencrest, 4, seven others with 3. Grade 1 1-2 David Holmes, Justin Sandler, Oakton 4; 3rd Emmet Adler, Oakton. K 1st Joshua Bauer, RAVHP, 4; 2nd Peter Klimkow, Oakton, 3; 3rd Billy Shaw, Holy Angles, 2.

Team Results were as follows (12 points maximum) Grade 12 1-2 New Trier and Orr, 3rd Clemente, 8. Grade 11 1st Moline, 8, 2nd New Trier 6, 3-4 Jefferson, Maine South 5. Grade 10 1st, U of C Lab 10.5 2-3 Aurora East, Roanoke-Benson, 6. Grade 9 1st Moline, 8.5, 2nd Evanston 8. 3rd New Trier 7. Grade 8 1st Hadley 9, 2nd Monticello 8.5, 3rd Moline, 7. Grade 7 1st Glenside 10, 2nd Rockford West 7.5, 3-4 Avery Coonley and Glenn, 6.5. Grade 6 1st Glenside 11, 2nd Avery Coonley 9, 3rd Deerpath 8.5. Grade 5 1st MacArthur 12, 2-3 Holy Angels and Oakton 9. Grade 4 1st Oakton 10.5, 2nd Glenn 9, 3rd Oakland 8.5. Grade 3 1st Oakton 10, 2-3 Avoca West and Franklin Park 8. Grade 2 Avoca 1st West 8.5, 2nd Oakton 7.5, 3rd Rockford Washington 5. Grade 1 1st Oakton 11, 2-3 MacArthur and Oakland 6. Kindergarten 1st RAVHP 4, 2nd Oakton 3, 3rd Holy Angles 2.

Jeff Wiewel directed and made pairings. Floor directors were Joe Decort, Alan Losoff, Joe Oberweis, John Schussler, Garrett Scott, and Mike Zacate.

The Hadley Tournament in Glen Ellyn Attracted 384 Players in three sections. Lincoln Cultural Center, Kankakee, a relative newcomer on the tournament scene, took first in the Jr. High section, beating out Glenside of Glendale Heights on tiebreak. Both schools had 16 out of 20 points. They were followed by Hadley, 15.5, Washington Dist. 52, 14, and Rockford Washington, 13. Oakton of Evanston took elementary honors with 20.5 out of 25, followed by MacArthur 18, Ben Franklin 17.5, Lincoln Cultural Center, 16.5, and Lincoln of Glen Ellyn 16.5.

Oakton also ran off with Primary honors: Oakton 20.5, Lincoln 18, Ben Franklin 17.5, Avoca West (Wilmette) 17, and Franklin of Park Ridge, 17. Individual honors were won in the Jr. High Section by Michael Mar of Glenside, Daniel Stien, Chute Middle School (Evanston), and Ron Jones, Lincoln Cultural Center, with 4 points each. Mar took the first place trophy on tie break. In Elementary, Jeff Busca of MacArthur edged Brian Edgerton of Parkview on tiebreak, both had 5-0 scores. John Weier of Benjamin and Jack Williams Oakton took third and fourth with 4.5. Chris Holmes of Oakton and Patrick Frank of Ben Franklin were first and second in primary, with 5, followed by Dan Howell of Lincoln (Washington) and Johnathon Klemt of Oakton.

Mike Meihle organized the tournament, assisted by an army of volunteers from Hadley, Ben Franklin, Churchill, Forest Glen, and Lincoln. Erv Sedlock directed, assisted by Jeff Wiewel, Dan Pradt, Blair Machaj, and John Schussler.

ILLINOIS TOUR CROSSTABLES

Chicago CC October Plus-Score #1

		October 16, 1994		score		tour			
1	ZIANE Nouredine	2253	W20	W 6	W 7	W 8	4	14	M
2	CHOW Albert	2419	W29	W 5	W 4	D 3	3.5	7.5M	
3	KRECKLER Warren	2271	W17	W10	W13	D 2	3.5	7.5M	
4	LEE Tyrone	2124	W22	W14	L 2	W16	3	4	MX
5	RUGGIERO Brian	1970	W18	L 2	W17	W14	3	4	MXA
6	STEWART Allen	1917	W23	L 1	W27	W18	3	4	MXA
7	COVIC Mehmed	1668	W32	W 9	L 1	W13	3	4	MXAB
8	WALKER Charles	1533	W25	W29	W12	L 1	3	4	MXABC
9	JORDAN Roland	2028	W26	L 7	W20	D11	2.5	2.5MX	
10	WILLIAMS Kent	1993	W31	L 3	D21	W25	2.5	2.5MXA	
11	SMYTHE Bill	1915	W28	H	H	D 9	2.5		
12	CRAWFORD Brad	2198	W21	W15	L 8	-	2	2	MX
13	COHEN Larry	2006	W27	W16	L 3	L 7	2	2	MX
14	GATES Sophia Elise	1894	W19	L 4	W26	L 5	2	2	MXA
15	KITTILSEN Guy	1877	W30	L12	L18	W21	2	2	MXA
16	AROND Dean	1824	W24	L13	W19	L 4	2	2	MXA
17	JASAREVIC Ersan	1557	L 3	W23	L 5	W25	2	2	MXABC
18	BLANDER Benjamin	1386	L 5	W25	W15	L 6	2	2	MXABCD
19	LEVIN Michael A	1247	L14	W22	L16	W27	2	2	MXABCD
20	BACKSTROM Orn	1534	L 1	W28	L 9	D23	1.5	1.5MXABC	
21	MC COY Damon	1484	L12	W30	D10	L15	1.5	1.5MXABC	
22	COBIA Paul	1478	L 4	L19	D24	W29	1.5	1.5MXABC	
23	SHROTH Kevin	1377	L 6	L17	W32	D20	1.5	1.5MXABCD	
24	KUTIN Brian	1083	L16	L27	D22	W30	1.5	1.5MXABCDE	
25	ZINYTCH Miron		L 8	L18	W28	L10	1	1	M
26	BAUMGARTNER Chris	1466	L 9	W32	L14	L17	1	1	MXABC
27	BALES Robert Jr	1426	L13	W24	L 6	L19	1	1	MXABC
28	HRON Ben	1349	L11	L20	L25	W12	1	1	MXABCD
29	MILLER David A	1560	L 2	L 8	D10	L22	0.5	0.5MXABC	
30	JONES James C	1156	L15	L21	D29	L24	0.5	0.5MXABCDE	
31	HOBERMAN Steve		L10	-	-	-	0	0	
32	YE Sign	816	L 7	L26	L23	L28	0	0	

Chicago CC October Plus Score #2

		October 22, 1994		score		tour				
1	CHOW Albert	2419	W12	W 4	W 5	W 2	W 8	4	16	M
2	SCOTT Gene	2178	W14	W 7	W 3	L 1	W 6	4	6	MX
3	ZINYTCH Miron		W11	W 6	L 2	W10	D 4	3.5	3.5M	
4	MARKOVIC Arandel	1902	W15	L 1	W16	W12	D 3	3.5	3.5MXA	
5	PANGAN Camilo	2183	W17	W10	L 1	L 6	W13	3	3	MX
6	FALLS Dwayne	1899	W18	L 1	W 7	W 5	L 2	3	3	MXA
7	WEBER T V	1606	W 9	L 2	L 6	W17	W12	3	3	MXAB
8	DANDRIDGE Marvin	2292	H	H	W 9	W16	L 1	3	3	M
9	SMYTHE Bill	1915	L 7	H	L 8	W19	W14	2.5	2.5MXA	
10	MADEY Paul	1882	W19	L 5	W11	D 4	H	2.5	2.5MXA	
11	SWANSON Randall	1643	L 3	W20	L10	D11	W17	2.5	2.5MXAB	
12	KITTILSEN Guy	1877	L 1	W15	W14	L 4	L 7	2	2	MXA
13	HAYES Will	1651	H	L16	W17	D11	L 4	2	2	MXAB
14	PADILLA Rudy	1600	L 2	W18	L12	W15	L 9	2	2	MXAB
15	BALES Robert Jr	1426	L 4	L12	W18	L14	W20	2	2	MXABC
16	KLOG Steffen	2211	H	W13	L 4	L 8	-	1.5	1.5M	
17	MC COY Damon	1484	L 5	W19	L13	L 7	L11	1	1	MXABC
18	AGRAWAL Alan	1271	L 6	L14	L15	W20	-	1	1	MXABCD
19	SHAPRO Helen	1023	L10	L17	W10	L 9	-	1	1	MXABCDE
20	WEBER Zena	631	H	L11	L19	L18	L15	0.5	0.5MXABCDE	

Chicago CC December Plus-Score #1

		December 4, 1994		score		tour					
1	YOUNG Angelo	2444	W14	W 8	W 2	W 3	W 5	5	16	M	
2	SCOTT Gene	2172	W18	W13	L 1	W 9	W 8	4	6	MX	
3	CHOW Albert	2420	W15	W 9	D 4	L 1	W13	3.5	3.5M		
4	ZIANE Nouredine	2277	W17	W12	D 3	L 5	W14	3.5	3.5M		
5	LEE Tyrone	2128	W22	W10	D 7	W 4	L 1	3.5	3.5MX		
6	KITTILSEN Guy	1790	H	H	H	W23	W13	3.5	3.5MXAB		
7	ZINYTCH Miron	2266	H	W16	D 5	L 8	W14	3	3	M	
8	FAGAN James	2013	W23	L 1	W16	W 7	L 2	3	3	MX	
9	SAX Robert	2007	W26	L 3	W17	L 2	W16	3	3	MX	
10	FISCHER Gregory	1822	W20	L 5	W23	L11	W17	3	3	MXA	
11	JORDAN Roland	2015	H	D15	D14	W10	L 6	2.5	2.5MX		
12	SUKCHAROENPHON Thavorn	1919	W19	L 4	D18	L15	W22	2.5	2.5MXA		
13	FALLS Dwayne	1899	W24	L 2	D22	W18	L 3	2.5	2.5MXA		
14	COVIC Mehmed	1732	L 1	W19	D11	W21	L 4	2.5	2.5MXAB		
15	JASAREVIC Ersan	1713	L 3	D11	W19	W12	L 7	2.5	2.5MXAB		
16	PADILLA Rudy	1600	W25	L 7	L 8	W24	L 9	2	2	MXAB	
17	GROEGER Andrew	1580	L 4	W20	L 9	W23	L10	2	2	MXABC	
18	BACKSTROM Orn	1534	L 2	W26	D12	L13	D23	2	2	MXABC	
19	STEVENS Joe	1359	L12	L14	L15	W20	W25	2	2	MXABCD	
20	BALES Robert Jr	1332	L12	L19	L17	W26	L19	W24	2	2	MXABCD
21	SMYTHE Bill	1951	H	H	H	L14	-	1.5			
22	MC COY Damon	1533	L 5	W25	D13	L 6	L12	1.5	1.5MXABC		
23	BAUMGARTNER Chris	1532	L 8	W24	L10	L17	D18	1.5	1.5MXABC		
24	WISNER Mike	1341	L13	L23	W25	L16	L20	1	1	MXABCD	
25	WEBB James	1192	L16	L22	L24	W26	L19	1	1	MXABCDE	
26	CAFIGATTI Andrew		L 9	L18	L20	L25	H	0.5	0.5M		

Chicago CC December Plus-Score #2

		December 18, 1994		score		tour			
1	SCOTT Gene	2172	W24	W29	W 5	W 4	4	14	MX
2	CHOW Albert	2421	H	W22	W14	W 7	3.5	7.5M	
3	LEE Tyrone	2128	W17	W30	L 7	W12	3	4	MX
4	ZINYTCH Miron	2085	W25	W32	W 9	L 1	3	4	MX
5	YAVARI Paul	2039	W18	W15	L 1	W17	3	4	MX
6	DUDKOWSKI Peter	2021	W19	W16	D12	H	3	4	MX
7	FAGAN James	2013	W36	W11	W 3	L 2	3	4	MX
8	MARKOVIC Arandel	1902	L21	W27	W26	W16	3	4	MXA
9	FALLS Dwayne	1899	W27	W21	L 4	W18	3	4	MXA
10	MADEY Paul	1882	W37	L12	W25	W19	3	4	MXA
11	FRIDMAN Victor	1600	W20	L 7	W32	W15	3	4	MXAB
12	ZIANE Nouredine	2277	W23	W10	D 6	L 3	2.5	2.5M	
13	DUBNOFF Mark	1939	D26	L14	W24	W31	2.5	2.5MXA	
14	SUKCHAROENPHON Thavorn	1919	H	W13	L 2	W26	2.5	2.5MXA	
15	PINDAK Kim	1700	W34	L 5	W20	L11	2	2	MXAB
16	HAYES Will	1644	W35	L 6	W21	L 8	2	2	MXAB
17	BACKSTROM Orn	1529	L 3	W37	W22	L 5	2	2	MXABC
18	JANUS Chris	1465	L 5	W34	W29	L 9	2	2	MXABC
19	GLAWE Chris	1440	L 6	W35	W30	L10	2	2	MXABC
20	POLEY Wilbert		L11	W23	L15	W35	2	2	M
21	HRON Ben	1364	W 8	L 9	L16	W32	2	2	MXABCD
22	GIAMPA Mike	1251	W31	L 2	L17	W30	2	2	MXABCD
23	KEMNER Robert	1579	L12	L20	W37	H	1.5	1.5MXABC	
24	BAUMGARTNER Chris	1532	L 1	D28	L13	W34	1.5	1.5MXABC	
25	COBIA Paul	1476	L 4	W33	L10	D27	1.5	1.5MXABC	
26	LEVIN Michael A	1361	D13	W31	L 8	L14	1.5	1.5MXABCD	
27	STEVENS Joe	1359	L 9	L 8	W33	D25	1.5	1.5MXABCD	
28	TANG Michael	1312	L29	D24	L31	W37	1.5	1.5MXABCD	
29	ROCKWELL David	1844	W20	L 1	L18	-	1	1	MXA
30	YAHYA Raji		W36	L 3	L19	L22	1	1	M
31	COVIC Mehmed	1732	L22	L26	W28	L13	1	1	MXAB
32	CLAY Harry	1700	W33	L 4	L11	L21	1	1	MXAB
33	GASUNAS Anthony	1220	L32	L25	L27	B	1	1	MXABCD
34	COBIA Jeffrey	950	L15	L18	W36	L24	1	1	MXABCDE
35	BAKER Scott	870	L16	L19	W36	L20	1	1	MXABCDE
36	ALLEN Neville		L 7	L30	L35	L34	0	0	
37	BALES Robert Jr	1332	L10	L17	L23	L28	0	0	

Fox Valley Low Cost #6

		October 15, 1994		score		tour			
1	STEIN Peter	2197	W17	W 8	D 6	W 3	3.5	7.5X	
2	CONDON James	2033	W18	W11	D 4	W 6	3.5	7.5X	
3	PETROFF Larry	1952	W12	W16	W 5	L 1	3	4	XA
4	OBBERWEIS Jim D Sr	1938	W21	W20	D 2	D 8	3	4	XA
5	HERNANDEZ Hector	2069	W23	D 7	L 3	W11	2.5	2.5X	
6	COHEN Larry	2006	W10	W15	D 1	L 2	2.5	2.5X	
7	FRIEDMAN Jeffrey	1780	W13	D 5	L 8	W17	2.5	2.5XAB	
8	FLORES Joshua	1778	W24	L 1	W 7	D 4	2.5	2.5XAB	
9	ANDERSON Richard	1400	H	L17	W23	W16	2.5	2.5XABC	
10	PLOQUIN Philip	1301	L 6	W22	D16	W15	2.5	2.5XABCD	
11	WEBER T V	1606	W19	L 2	W18	L 5	2	2	XAB
12	WRZOSEK Bob	1276	L 3	W19	W20	-	2	2	XABCD
13	HARRER William	1048	L 7	D23	D24	W20	2	2	XABCD
14	WEBER Zena	631	L20	L21	B	W24	2	2	XABCD
15	ISRAELSEN Kirk	1665	W22	L 6	D17	L10	1.5	1.5XAB	
16	PADILLA Rudy	1600	B	L 3	D10	L 9	1.5	1.5XAB	
17	RIBSER William	1482	L 1	W 9	D15	L 7	1.5	1.5XABC	
18	PAVONE Frank	1337	L 2	W24	L11	D19	1.5	1.5XABCD	
19	WIMMER Jeremy	743	L11	L12	W22	D18	1.5	1.5XABCDE	
20	MC COY Damon	1484	W14	L 4	L12	L13	1	1	XABC
21	MORENO Ricky	1214	L 4	W14	-	-	1	1	XABCD
22	MC CULLEY Matthew	980	L15	L10	L19	B	1	1	XABCD
23	BUCKLEY Jon	1394	L 5	D13	L 9	-	0.5	0.5XABCD	
24	WIMMER John	980	L 8	L18	D13	L14	0.5	0.5XABCD	

Fox Valley Low Cost #7

		November 12, 1994		score		tour			
1	STOLTZ Robert	1886	W10	W12	W 4	D 2	3.5	7.5XA	
2	FRIEDMAN Jeffrey	1780	W18	W 3	W 6	D 1	3.5	7.5XAB	
3									

Tim Just Lake County Open		October 22, 1994									
OPEN		score					tour				
1	KRETSMAN Bruce 2025	L3	W6	W2	W5	W4	4	6	X		
2	BACHLER Kevin 2187	W4	D3	L1	W6	W5	3.5	3.5X			
3	LEONG Gee 1800	W1	D2	W5	D4	L6	3	3	XA		
4	FANNER Glen 2069	L2	W5	W6	D3	L1	2.5	2.5X			
5	RUGGIERO Brian 1970	W6	L4	L3	L1	L2	1	1	XA		
6	RIDDELL Joshua 1878	L5	L1	L4	L2	W3	1	1	XA		

Tim Just Lake County Open		October 22, 1994									
RESERVE		score					tour				
1	RIESER William 1482	W 4	W 2	W 7	W 3	W 8	5	16	BC		
2	ENGLEN Mark 1694	W12	L 1	W10	W 8	W 4	4	6	B		
3	GRANT Dennis S 1613	W 9	W 6	W 8	L 1	D 7	3.5	3.5B			
4	CLAY Harry 1700	L 1	W12	W 5	W 6	L 2	3	3	B		
5	ZELINSKI Daryl R 1559	W11	L 8	L 4	W 9	W10	3	3	BC		
6	MC CULLEY Matthew 974	W 7	L 3	W12	L 4	W11	3	3	BCDE		
7	BACKSTROM Orr U 1534	L 6	W 9	L 1	W10	D 3	2.5	2.5BC			
8	DENNIS Michael T 1700	W10	W 5	L 3	L 2	L 1	2	2	B		
9	HARTSHORN Kevin 1193	L 3	L 7	W11	L 5	B	2	2	BCDE		
10	NAPOLI Mike 1510	L 8	W11	L 2	L 7	L 5	1	1	BC		
11	DENNIS Jason M 1121	L 5	L10	L 9	B	L 6	1	1	BCDE		
12	JENKINS Mike 1328	L 2	L 4	L 6	-	-	0	0			

Midwest Class		October 28-30, 1994									
MASTER-EXPERT		score					tour				
1	GUREVICH Dmitry GM 2651	W23	W52	W 5	W 4	W 8	5	32	M		
2	BROOKS Michael A IM 2558	X	W15	D 6	W17	W12	4.5	19	M		
3	MARTINOVSKY Eugene 2378	D37	W54	W36	W27	W10	4.5	19	M		
4	YOUNG Angelo 2494	W53	W20	W14	L 1	W17	4	12	M		
5	KAUSHANSKY Leo 2427	W39	W21	L 1	W32	W38	4	12	M		
6	HERNDL Harald 2369	W55	W50	D 2	W11	D13	4	12	M		
7	CHUDNOVSKY Jacob 2196	W46	L13	W44	W19	W31	4	12	MX		
8	FINEGOLD Benjamin IM 2623	W61	W19	W13	D10	L 1	3.5	7	M		
9	TATE Emory A 2483	W35	W32	L17	D21	W20	3.5	7	M		
10	VUCIC Mladen IM 2461	W25	W33	W18	D 8	L 3	3.5	7	M		
11	VUKADINOV Milan 2438	D54	W37	W16	L 6	W29	3.5	7	M		
12	CHOW Albert 2419	D36	W41	W28	W31	L 2	3.5	7	M		
13	MANION Josh 2418	W62	W 7	L 8	W22	D 6	3.5	7	M		
14	VAN METER Lester 2332	W30	W49	L 4	W23	D15	3.5	7	M		
15	ZIANE Noureddine 2253	W58	L 2	W35	W39	D14	3.5	7	M		
16	LEVIT Roman 2365	D60	W40	L11	W50	D21	3	6	M		
17	KARKLINS Andrew 2323	W26	W24	W 9	L 2	L 4	3	6	M		
18	ECKERT Doug D 2298	W44	W48	L10	W24	L 5	3	6	M		
19	STAUFFER Craig A 2269	W57	L 8	W25	L 7	W44	3	6	M		
20	MOTE David B 2244	W42	L 4	W38	W47	L 9	3	6	M		
21	KLUG Steffen 2211	W63	L 5	W56	D 9	D16	3	6	M		
22	WARD Tom 2203	W51	L27	W58	L13	W47	3	6	M		
23	MAZUCHOWSKI Thomas 2199	L 1	W62	W51	L14	W37	3	6	MX		
24	FLAGA Krzysztof 2186	W64	L17	W46	L18	W39	3	6	MX		
25	MANTHE Barry P 2148	L10	W30	L19	W58	W41	3	6	MX		
26	JANKAUSKAS Kazys 2048	L17	L44	W63	W46	W34	3	6	MX		
27	PELTS Peter 2450	W38	W22	H	L 3		2.5	5	M		
28	GOGEL Dennis V 2345	D40	W60	L12	W49	-	2.5	5	M		
29	ROMNEBERG Erik P 2226	D31	L36	W40	W48	L11	2.5	5	M		
30	JORDAN Roland V 2028	L14	L25	H	W60	W50	2.5	5	MX		
31	SMYTHE Bill 1915	D29	W34	X52	L12	L 7	2.5	5	BC		
32	FINEGOLD Mark Jack 2235	W65	L 9	W42	L 5	-	2	4	M		
33	GAFFNEY Matthew 2221	W43	L10	L39	-	W58	2	4	M		
34	JAKSTAS Kazimieras 2197	H	L31	D41	W56	L26	2	4	MX		
35	SHARP Dale Eugene 2134	L 9	W63	L15	D36	D42	2	4	MX		
36	KOWALSKIE Kyle 2124	D12	W29	L 3	D35	-	2	4	MX		
37	PARGES Yves 2121	D 3	L11	H	W51	L23	2	4	MX		
38	LA BUDE Michael 2119	L27	W43	L20	D42	D45	2	4	MX		
39	GAZMEN Ethelbert 2100	L 5	W45	W33	L15	L24	2	4	MX		
40	ASH Robert B 2075	D28	L16	L29	W57	D48	2	4	MX		
41	CONDON James K 2035	H	L12	D34	W53	L25	2	4	MX		
42	MAYKA Tom R 2033	L20	W61	L32	D38	D35	2	4	MX		
43	ZELINSKI Paul B 2016	L33	L38	L55	B	W54	2	4	MX		
44	GORE Ian 2016	L18	W26	L 7	W55	L19	2	4	M		
45	COX William G 1996	L49	L39	W62	D54	D38	2	4	MX		
46	BOGAN Timothy J 1937	L 7	W57	L24	L26	B	2	4	MXA		
47	HANSEN Steven E 1884	L50	B	W54	L20	L22	2	4	XA		
48	HOSCH William 1815	W66	L18	D50	L29	D40	2	4	MXA		
49	CRAWFORD Brad 2198	W45	L14	H	L28	-	1.5	3	MX		
50	SCOTT Gene C 2178	W47	L 6	D48	L16	L30	1.5	3	MX		
51	COHEN Lawrence S 2006	L22	W55	L23	L37	D57	1.5	3	MX		
52	ZINGHEIM F Scott 2290	W56	L 1	F31	-	-	1	2	M		
53	KINNAIRD Rodney M 2153	L 4	L58	W60	L41	-	1	2	MX		
54	KARKLINS Erik 2135	D11	L 3	L47	D45	L43	1	2	MX		
55	INUMERABLE Florentino Jr 2100	L 6	L51	W43	L44	-	1	2	MX		
56	MIDDLETON Douglas 2047	L52	W65	L21	L34	-	1	2	MX		
57	FAGAN James B 2044	L19	L46	H	L40	D51	1	2	MX		
58	NIX Ernest E 2036	L15	W53	L22	L25	L33	1	2	MX		
59	STEIGMAN A J 1713	-	-	W65	-	-	1	1			
60	HODINA James D 2030	D16	L28	L53	L30	-	0.5	1	MX		
61	PANGAN Camilo C 2183	L 8	L42	-	-	-	0	0			
62	BOLTON Richard 2038	L13	L23	L45	-	-	0	0			
63	CREWSE Lynn 2010	L21	L35	L26	-	-	0	0			
64	RICHMOND M Barrie 1927	L24	-	-	-	-	0	0			
65	RICHMOND M Barrie 1927	L32	L56	L59	-	-	0	0			
66	LULVES Joseph 1825	L48	-	-	-	-	0	0			

Midwest Class		October 28-30, 1994									
CLASS A		score					tour				
1	GARRISON R Raymon 1917	W34	W27	W32	W16	D 5	4.5	19	A		
2	REYES Catalino B 1955	W46	L23	W19	W20	W13	4	12	A		
3	MORRIS Jon W 1900	L 7	W47	W28	W36	W12	4	12	A		
4	MOHAPATRA Taranikanta 1886	D 8	W29	W38	W25	D 6	4	12	A		
5	ROSHAL Michael 1823	W42	W28	H	W 9	D 1	4	12	A		
6	ROCKWELL David 1814	D19	W36	W18	W23	D 4	4	12	A		
7	YAVARI Paul 1989	W 3	D33	L10	W37	W17	3.5	7	A		
8	MC ALISTER Kelvin 1941	D 4	D22	W41	W31	D10	3.5	7	A		
9	NETTEROWICZ Stefan 1940	D37	W43	W33	L 5	W23	3.5	7	A		
10	LULVES Joseph F 1825	B	H	W 7	D13	D 8	3.5	7	A		
11	LORING Steven W 1981	H	D19	L20	W38	W25	3	6	A		
12	COHEN Howard 1954	L23	W37	W39	W32	L 3	3	6	A		
13	YARMULNIK Alex 1903	W47	W35	D25	D10	L 2	3	6	A		
14	ANDERSON Phil 1900	L25	W24	H	D27	W31	3	6	A		
15	ALLEN Hence 1861	L16	L20	W43	W35	W28	3	6	A		
16	FRANKLIN David 1987	W15	W39	D23	L 1	-	2.5	5	A		
17	PETKOVIC Zarko M 1928	L33	D40	W29	W22	L 2	2.5	5	A		
18	SHAPIRO Samuel 1917	W41	D38	L 6	D26	D24	2.5	5	A		
19	BUTLER Lawrence D 1913	D 6	D11	L 2	W40	D27	2.5	5	A		
20	DOTSON John B 1904	L27	W15	W11	L 2	D26	2.5	5	A		
21	BUTTNY William P 1900	L38	L41	H	W42	W37	2.5	5	A		
22	SUKCHARONPHON Thavorn 1900	D29	D 8	D30	L17	W36	2.5	5	A		
23	GRUMMAN Feb 1888	W12	W 2	D16	L 6	L 9	2.5	5	A		
24	SHERIDAN Joseph T 1816	L30	L14	W47	W39	D18	2.5	5	A		
25	MANION Tom A 1804	W14	W31	D13	L 4	L11	2.5	5	A		
26	DECMAN Stephen J 1800	L32	B	H	D18	D20	2.5	5	A		
27	STEIGMAN A J 1713	W20	L 1	H	D14	D19	2.5	5	AB		
28	FORD Samuel M 1962	W40	L 5	L 3	W41	L15	2	4	A		
29	MECHEM Paul 1955	D22	L 4	D17	D34	W41	2	4	A		
30	SINGH Aman D 1948	W24	L32	D22	D33	-	2	4	A		
31	OBERSWIS James D 1938	W45	L25	W35	L 8	L14	2	4	A		
32	CERMINARO J P 1875	W26	W30	L 1	L12	-	2	4	A		
33	SEFCHICK Mark M 1873	W17	D 7	L 9	D30	-	2	4	A		
34	MARSHALL Larry G 1862	L 1	D42	L36	D29	W38	2	4	A		
35	WONG Brian 1609	B	L13	L71	L15	W48	2	4	AB		
36	DESHPANDE Anirudd 1939	D43	L 6	W34	L 3	D22	1.5	3	A		
37	RIDDELL Joshua S 1878	D 9	L12	W42	L 7	L21	1.5	3	A		
38	HUGHES Robert 1811	W21	D18	L 4	L11	L34	1	2	A		
39	KLOT										

TOURNAMENT CALENDAR

Call Chess Phone, (708) 832-5222, for up-to-date tournament results, and announcements of tournaments that may not be listed in Chess Life or the ICB. The ICA Chess Phone voice is Todd Barre. Unless otherwise noted, all tournaments require USCF membership. Illinois Tour events also require ICA membership.

Organizers - remember it is ICA policy that an event must be published in the ICA bulletin and Chess Life marked as a tour event in order to be a tour event. Please send your tournament notices to: Bob Renaut, 1255 Oakton Lane, Naperville, IL 60540-0310 or call 708-983-0934.

Mar 4, Chessterton Chess

4-SS, G/90, Westchester Public Library, 200 W. Indiana, Chesterton, Indiana 46304. EF\$: \$15, \$10 for High School or below Reg: 8:30 - 9:15 a.m. (all time is Chicago time!). Rds: 9:30, 12:00, 3:00, 6:00, Prizes (b30): 1st \$100, 2nd \$60, A \$45, B \$40, C \$35, DEU \$30, NS,NC Advance entry, information: Randy Pals, 1233 Morningside Dr., Chesterton, IN 46304. 219-926-2266.

Mar 4-5, Greater Peoria Open

5/SS, G/125, Signature Inn, 4112 N. Brandywine Dr, Peoria, IL, EF\$ 40 at site, \$30 if by 2/22, \$25 if by 2/28. Two sections, OPEN and Reserve (u1800). See Ad on page 27 for prizes and entry info., MAXI

Mar 11 Tuley Park Quick Chess #3, Chicago, IL 5-SS, Rds 1&2 G/15, Rds 3,4, &5 G/25, 501 E, 90th Place, EF: \$12, under 19 \$6. Reg. 11:00-11:45, 1st Rd at 12, . Prizes if 16 or less 1st 35%, 2nd 25% best from lower half 20% Info: Tom Fineberg 721-3979.

Mar 12

ICA Awards Banquet, Harvey's Prime Rib ,Westmont, see ad on page 38.

Mar 24-26, Mid-America Class Championship, Chicago, IL. See Chess Life for details.

Apr 1 Tuley Park QUICK CHESS #4, Chicago, IL 5-SS, Rds 1&2 G/15, Rds 3,4, &5 G/25, 501 E, 90th Place, EF: \$12, under 19 \$6. Reg. 11:00-11:45, 1st Rd at 12, . Prizes if 16 or less 1st 35%, 2nd 25% best from lower half 20% Info: Tom Fineberg 721-3979.

Apr 1, Chessterton Chess

5-SS, G/60, Westchester Public Library, 200 W. Indiana, Chesterton, Indiana 46304. EF\$: \$15, \$10 for High School or below Reg: 8:30 - 9:15 a.m. (all time is Chicago time!), Rds: 9:30, 11:30, 2:00, 4:00, 6:30, Prizes (b30): 1st \$100, 2nd \$60, A \$45, B \$40, C \$35, DEU \$30, NS,NC Advance entry, information: Randy Pals, 1233 Morningside Dr., Chesterton, IN 46304. 219-926-2266.

Apr 7-9, National H.S. Championship, Chicago, IL.

Apr 7-9, National Elementary Championship, Little Rock, AR.

Apr 15, Fox Valley Low Cost Open, Aurora - 4-SS, G/60, mini tour - SEE AD on back page!

Apr 22, Springfield Chess Club
See ad on page 29 .

Apr 22, Peoria Tornado, see ad 29.

Apr 29 95 Tuley Park G/? #3, Chicago 501 E, 90th Place, EF: \$12, under 19 \$6. Reg. 11:00-11:45, 1st Rd at 12, . If 16 or less Rds 1&2, G/15, rds 3-5 G/25, Prizes 1st 35%, 2nd 25% best from lower half 20%. If 18 players or more, Rds 1-3, G/15, rds 4-6: G/20, Prizes 1st 28%, 2nd 22%, middle 3rd 19%, lowest 3rd 16% Info: Tom Fineberg 721-3979.

Apr 29, Chessterton Chess

4-SS, G/90, Westchester Public Library, 200 W. Indiana, Chesterton, Indiana 46304. EF\$: \$15, \$10 for High School or below Reg: 8:30 - 9:15 a.m. (all time is Chicago time!), Rds: 9:30, 12:00, 3:00, 6:00, Prizes (b30): 1st \$100, A \$45, B \$40, C \$35, D \$25, E/U \$15, NS,NC Advance entry, information: Randy Pals, 1233 Morningside Dr., Chesterton, IN 46304. 219-926-2266.

May 5-7, National Open, Las Vegas.

May 12-14, National Junior High, Dearborn, MI.

May 20 95 Tuley Park, Chicago, IL

501 E, 90th Place, EF: \$12, under 19 \$6. Reg. 11:00-11:45, 1st Rd at 12, . If 16 or less Rds 1&2, G/15, rds 3-5 G/25, Prizes 1st 35%, 2nd 25% best from lower half 20%. If 18 players or more, Rds 1-3, G/15, rds 4-6: G/20, Prizes 1st 28%, 2nd 22%, middle 3rd 19%, lowest 3rd 16% Info: Tom Fineberg 721-3979.

May 27, Chessterton Chess

4-SS, G/90, Westchester Public Library, 200 W. Indiana, Chesterton, Indiana 46304. EF\$: \$15, \$10 for High School or below Reg: 8:30 - 9:15 a.m. (all time is Chicago time!). Rds: 9:30, 12:00, 3:00, 6:00, Prizes (b30): 1st \$100, A \$45, B \$40, C \$35, D \$25, E/U \$15, NS,NC Advance entry, information: Randy Pals, 1233 Morningside Dr., Chesterton, IN 46304. 219-926-2266.

May 28-30, Chicago Open, Oakbrook,

Jun 10, Tuley Park, Chicago, IL

501 E, 90th Place, EF: \$12, under 19 \$6. Reg. 11:00-11:45, 1st Rd at 12, . If 16 or less Rds 1&2, G/15, rds 3-5 G/25, Prizes 1st 35%, 2nd 25% best from lower half 20%. If 18 players or more, Rds 1-3, G/15, rds 4-6: G/20, Prizes 1st 28%, 2nd 22%, middle 3rd 19%, lowest 3rd 16% Info: Tom Fineberg 721-3979.

Jun 14-16, U.S. Junior Chess Congress - Midwest, Chicago, IL.

Jun 17, Springfield Chess Club

Jun 24, Chessterton Chess

5-SS, G/60, Westchester Public Library, 200 W. Indiana, Chesterton, Indiana 46304. EF\$: \$15, \$10 for High School or below Reg: 8:30 - 9:15 a.m. (all time is Chicago time!), Rds: 9:30, 11:30, 2:00, 4:00, 6:30, Prizes (b30): 1st \$100, A \$45, B \$40, C \$35, D \$25, E/U \$15, NS,NC Advance entry, information: Randy Pals, 1233 Morningside Dr., Chesterton, IN 46304. 219-926-2266.

Jul 8, Tuley Park, Chicago, IL
501 E, 90th Place, EF: \$12, under 19 \$6.
Reg. 11:00-11:45, 1st Rd at 12, . If 16 or
less Rds 1&2, G/15, rds 3-5 G/25, Prizes
1st 35%, 2nd 25% best from lower half
20%. If 18 players or more, Rds 1-3,
G/15, rds 4-6: G/20, Prizes 1st 28%, 2nd
22%, middle 3rd 19%, lowest 3rd 16%
Info: Tom Fineberg 721-3979.

Jul 22-23, Midway Amateur Class Championships, Oaklawn Hilton Inn, 9333 South Cicero Ave. Oaklawn. 4-SS, 40/120, 20/30. SD/30. EF\$ \$45,\$25 for juniors if by 7-17; all \$10 more at site. ICA membership required. Reg: 9-9:45, Rds: 10, 5 & 10, 5 \$3000G, Expert: 300, 200, 100, 50; Class A 300, 200, 100, 50, Class B 300, 200, 100, 50, Class D/E 200, 100, 50, 50. Entries: Midway Chess Enterprises, PO Box 388765, Chicago, IL 60638-8765. Info: Hector Hernandez (312) 586-3950. **MAXI**

Jul 29, Chessterton Chess
4-SS, G/90, Westchester Public Library, 200 W. Indiana, Chesterton, Indiana 46304. EF\$: \$15, \$10 for High School or below Reg: 8:30 - 9:15 a.m. (all time is Chicago time!), Rds: 9:30, 12:00, 3:00, 6:00, Prizes (b30): 1st \$100, A \$45, B \$40, C \$35, D \$25, E/U \$15, NS,NC Advance entry, information: Randy Pals, 1233 Morningside Dr., Chesterton, IN 46304. 219-926-2266.

Jul 29, Tuley Park, Chicago, IL
501 E, 90th Place, EF: \$12, under 19 \$6.
Reg. 11:00-11:45, 1st Rd at 12, . If 16 or
less Rds 1&2, G/15, rds 3-5 G/25, Prizes
1st 35%, 2nd 25% best from lower half
20%. If 18 players or more, Rds 1-3,
G/15, rds 4-6: G/20, Prizes 1st 28%, 2nd
22%, middle 3rd 19%, lowest 3rd 16%
Info: Tom Fineberg 721-3979

Aug 6-18, U.S. Open,

Aug 22, Springfield Chess Club

Aug 26, Chessterton Chess
4-SS, G/90, Westchester Public Library, 200 W. Indiana, Chesterton, Indiana 46304. EF\$: \$15, \$10 for High School or below Reg: 8:30 - 9:15 a.m. (all time is Chicago time!), Rds: 9:30, 12:00, 3:00, 6:00, Prizes (b30): 1st \$100, A \$45, B \$40, C \$35, D \$25, E/U \$15, NS,NC

Advance entry, information: Randy Pals,
1233 Morningside Dr., Chesterton, IN
46304. 219-926-2266.

Sep 1-3, Illinois Open, Chicago,

Sep 2, Chessterton Chess 5-SS, G/60,
Westchester Public Library, 200 W.
Indiana, Chesterton, Indiana 46304.
EF\$: \$15, \$10 for High School or below
Reg: 8:30 - 9:15 a.m. (all time is
Chicago time!), Rds: 9:30, 11:30, 2:00,
4:00, 6:30, Prizes (b30): 1st \$100, A \$45,
B \$40, C \$35, D \$25, E/U \$15, NS,NC
Advance entry, information: Randy Pals,
1233 Morningside Dr., Chesterton, IN
46304. 219-926-2266.

Sep 29, Tuley Park, Chicago, IL
501 E, 90th Place, EF: \$12, under 19 \$6.
Reg. 11:00-11:45, 1st Rd at 12, . If 16 or
less Rds 1&2, G/15, rds 3-5 G/25, Prizes
1st 35%, 2nd 25% best from lower half
20%. If 18 players or more, Rds 1-3,
G/15, rds 4-6: G/20, Prizes 1st 28%, 2nd
22%, middle 3rd 19%, lowest 3rd 16%
Info: Tom Fineberg 721-3979.

Oct 14, Tuley Park, Chicago, IL
501 E, 90th Place, EF: \$12, under 19 \$6.
Reg. 11:00-11:45, 1st Rd at 12, . If 16 or
less Rds 1&2, G/15, rds 3-5 G/25, Prizes
1st 35%, 2nd 25% best from lower half
20%. If 18 players or more, Rds 1-3,
G/15, rds 4-6: G/20, Prizes 1st 28%, 2nd
22%, middle 3rd 19%, lowest 3rd 16%
Info: Tom Fineberg 721-3979

Oct 21, Springfield Chess Club

Oct 28, Chessterton Chess
4-SS, G/90, Westchester Public Library,
200 W. Indiana, Chesterton, Indiana
46304. EF\$: \$15, \$10 for High School or
below Reg: 8:30 - 9:15 a.m. (all time is
Chicago time!), Rds: 9:30, 12:00, 3:00,
6:00, Prizes (b30): 1st \$100, A \$45, B
\$40, C \$35, D \$25, E/U \$15, NS,NC
Advance entry, information: Randy Pals,
1233 Morningside Dr., Chesterton, IN
46304. 219-926-2266.

**Oct 29-31, Midwest Class
Championship, Oakbrook, IL.**

Nov 4, Tuley Park, Chicago, IL
501 E, 90th Place, EF: \$12, under 19 \$6.
Reg. 11:00-11:45, 1st Rd at 12, . If 16 or
less Rds 1&2, G/15, rds 3-5 G/25, Prizes
1st 35%, 2nd 25% best from lower half
20%. If 18 players or more, Rds 1-3,
G/15, rds 4-6: G/20, Prizes 1st 28%, 2nd

22%, middle 3rd 19%, lowest 3rd 16%
Info: Tom Fineberg 721-3979

**Nov 18-19, Illinois Class
Championship,**

Nov 25, Chessterton Chess
4-SS, G/90, Westchester Public Library,
200 W. Indiana, Chesterton, Indiana
46304. EF\$: \$15, \$10 for High School or
below Reg: 8:30 - 9:15 a.m. (all time is
Chicago time!), Rds: 9:30, 12:00, 3:00,
6:00, Prizes (b30): 1st \$100, A \$45, B
\$40, C \$35, D \$25, E/U \$15, NS,NC
Advance entry, information: Randy Pals,
1233 Morningside Dr., Chesterton, IN
46304. 219-926-2266.

Dec 2, Tuley Park, Chicago, IL
501 E, 90th Place, EF: \$12, under 19 \$6.
Reg. 11:00-11:45, 1st Rd at 12, . If 16 or
less Rds 1&2, G/15, rds 3-5 G/25, Prizes
1st 35%, 2nd 25% best from lower half
20%. If 18 players or more, Rds 1-3,
G/15, rds 4-6: G/20, Prizes 1st 28%, 2nd
22%, middle 3rd 19%, lowest 3rd 16%
Info: Tom Fineberg 721-3979

Dec 9, Springfield Chess Club

Dec 16, Tuley Park, Chicago, IL
501 E, 90th Place, EF: \$12, under 19 \$6.
Reg. 11:00-11:45, 1st Rd at 12, . If 16 or
less Rds 1&2, G/15, rds 3-5 G/25, Prizes
1st 35%, 2nd 25% best from lower half
20%. If 18 players or more, Rds 1-3,
G/15, rds 4-6: G/20, Prizes 1st 28%, 2nd
22%, middle 3rd 19%, lowest 3rd 16%
Info: Tom Fineberg 721-3979

Dec 23, Chessterton Chess
4-SS, G/90, Westchester Public Library,
200 W. Indiana, Chesterton, Indiana
46304. EF\$: \$15, \$10 for High School or
below Reg: 8:30 - 9:15 a.m. (all time is
Chicago time!), Rds: 9:30, 12:00, 3:00,
6:00, Prizes (b30): 1st \$100, A \$45, B
\$40, C \$35, D \$25, E/U \$15, NS,NC
Advance entry, information: Randy Pals,
1233 Morningside Dr., Chesterton, IN
46304. 219-926-2266.

**DEADLINE FOR SUBMISSIONS
FOR THE NEXT ICB IS:**

March 30, 1995

**SORRY
NO EXCEPTIONS**

ILLINOIS CHESS ASSOCIATION PATRONS

Century Club Members

Michael Belovesick Sr Addison
 Larry W. Blum Rockford
 Thomas Fineberg Chicago
 Thomas Friske Des Plaines
 Fred Gruenberg Palos Heights
 Bill Smythe Chicago
 Helen Warren Western Springs
 Jim Warren Western Springs

Gold Card Members

Todd Barre Elmhurst
 Kurt Bridgham Crawfordsville, IN
 Tyrone Brooks Chicago
 Paul Cox Chicago
 Hector Hernandez Chicago
 Steven Holsington Ogden, UT
 Alan Losoff Morton Grove
 Kenneth Marshall Lombard
 Fred Meyers Sterling
 William Naff Peoria
 Samuel Naylor VI Carthage
 Jim Oberweis Aurora
 Peter Pelts Niles
 Daniel Pradt Glen Ellyn
 Michael Pratts Chicago
 Irwin Rothschild Park Forest
 Arthur Sinclair Evanston
 Mitchell Sweig Evanston
 Richard Verber Aurora
 Louis Werner Evanston
 Sandy Zabell Evanston

Patron Members

Bob Ash Urbana
 Edward J. Blanco Chicago
 Timothy Bogan Chicago
 Dennis Bourgerie Normal
 Bill Brock Chicago
 Jim Brotsos Chicago
 Walter Brown, Jr. Crest Hill
 Gregory Bungo Elmhurst
 Anthony Caliendo Aurora
 James Clark Streator
 Lawrence Cohen Villa Park
 Audry Lynn Colletti Phoenix, AZ
 Greg De Fotis Lincolnwood
 Joe Delay Schamburg
 Leroy Dubeck Cherry Hill NJ
 William Dwyer Chicago Ridge
 William Graves Chicago
 Steve Hansen Chicago
 Charles Hicks Naperville
 Dean Hightower DeKalb
 Jeffery Hyland Mount Prospect
 Toshio Imai East Lansing, MI
 Kazys Jankauskas Darien
 Mike Jenkins Cary
 Gersham Johnson Hinsdale
 Stephen Josephs Hinsdale

Tim Just Gurnee
 Dan Kamen Buffalo Grove
 Leo Kaushansky Wilmette
 Scott Kittsley Shorewood WI
 Thomas Knoedler Springfield
 Walter Kocjan Northlake
 Peter Kuhn Des Plaines
 Dr. Kevin Kukla Hanover Park
 Stephen Lauger DeKalb
 Michael Lester Chicago
 Marc Lonoff Northbrook
 Ed Marschall So. Barrington
 Eugene Martinovsky Naperville
 Patrick Maurer Glen Ellyn
 Thomas Mayka Wheeling
 Steve Monti Chicago
 Sergio Moreno Cicero
 John Omins Joliet
 Alex Pehas Darien
 Marvin Rogan Chicago
 Steve Rydberg, Jr. Mokena
 Ray Satterlee Wheaton
 Andrew Schultz Evanston
 Mark Sefcheck Naperville
 Anthony Sillars Northampton MA
 Scott Silverman Elk Grove Village
 Anthony Sodaro Lyons
 Leonard Spiegel St. Charles
 Joe Splinter Hanover Park
 Robert Stoltz River Forest
 Sonia Taki Chicago
 James Tanaka Chicago
 Mike Varady Effingham
 James Welton Wildwood
 Douglas White Schaumburg
 Don Winsauer West Dundee
 Harold Winston Naperville
 Philip Wong Wilmette
 Philip Woodruff Graylake
 John Zimmerman Libertyville

ICA ELECTED OFFICERS

James D. Oberweis, President
 3 Buckingham Dr, Aurora, IL 60506
 (708) 466-4886

Helen E. Warren, Metro Vice-President
 Box 147, Western Springs, IL 60558
 (708) 663-0688

Dennis Bourgerie, Downstate Vice-President
 1621 N. School St., Normal, IL 61761
 (309) 454-3842

Alan R. Losoff, Secretary
 9402 N. Octavia, Morton Grove, IL 60053
 (708) 966-5559 or Internet alani@mcs.net

Todd Barre, Treasurer
 418 Poplar Ave. Elmhurst, IL 60126-4012
 (708) 834-0862

USCF Delegates

by virtue of their USCF position

Fred Gruenberg	Vice-President
Tim Just	Regional Vice-President
Garrett Scott	Regional Vice-President
Frank Skoff	Life Voting Member
Helen Warren	Life Voting Member
Harold Winston	Life Voting Member

by ICA-appointment

James D. Oberweis
 Alan R. Losoff
 Todd J. Barre
 Dennis Bourgerie
 Richard Verber

USCF Voting Members

ICA appointed

Erv Sedlock	Ken Marshall
Jim Warren	Bill Naff
Bob Renaut	Bill Symthe
Walter Brown	Dennis Grant
Thomas Fineberg	Albert Chow
Hector Hernandez	Larry Cohen.

ICA appointed alternates

Joshua Flores	Ken Lewandowski
Les Bale	Keith Martin
Chris Baumgartner	Paul Mills
Ed Blanco	Glenn Panner
Jim Brotsos	Michael Pratts
Tom Copper	Bill Reed
Bill Cox	Howard Wachtel
Bill Wilkinson	Marvin Dandridge
Tom Knoedler	Michael Zacate

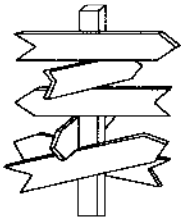
ICA AWARDS BANQUET

MARCH 12 - NOON till ???

HARVEY, 331 EAST OGDEN
 WESTMONT, IL

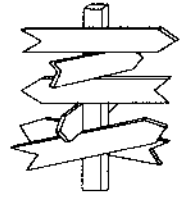
Dinner \$16 if rec'd by 4/5 \$20 at door.
 Checks to Illinois Chess Association
 418 Poplar Ave, Elmhurst, IL 60126

Honor the winners of the 1994 Illinois Chess
 Tour and other achievements and service awards.
 This year marks the first Billy Colias for
 Excellence in Teaching as well as the first
 Broughton Award for Lifetime Achievement!



Where to Play Chess

ICA Club Affiliates



AMERICAN POSTAL CHESS TOURNAMENTS sponsors postal events & sells chess books & equipment. Jim or Helen Warren, P.O. Box 305, Western Springs 60558. (708) 663-0688.

"THE BASEMENT", Daniel Kamcn, 1121 Highland Grove Drive, Buffalo Grove, IL 60089, (708) 537-4956.

CENTRAL LAKE COUNTY CHESS CLUB meets Fridays, 7:15 to 12:00AM College of Lake County, Bldg. 1, Washington at Rte 45, Grayslake. Dennis Grant, 1657 McKay, Waukegan 60087. (708) 336-5188.

CHESTERTON CHESS CLUB is located Westchester Public Library, 200 W. Indiana, Chesterton, IN. For info call Randy Pals (219) 926-2266.

CHICAGO CHESS CLUB is located at 1149 W. Lunt, Chicago, IL. 60626 and is open from 5-11 pm Wednesday - Sunday. For info call Albert Chow (312) 761-5050.

THE CHESS BOARD BBS is a computer chess club. Use your computer, modem and phone to play electronic postal chess, exchange international messages, download chess related files. SysOp: James Reames, Chicago, IL. MODEM (312) 784-3019 (1200-14400 bps)

CHICAGO INDUSTRIAL CHESS LEAGUE organizes frequent competition among commercial/government teams with awards, ratings, & special events. Tony Jasaitis (708) 406-6420.

CONTINENTAL CHESS ASSOCIATION, P.O. Box 249, Salisbury Mills, NY 12577. Bill Goichberg.

DOWNERS GROVE PARK DISTRICT CHESS CLUB meets Thurs., 6:30-10 p.m., Lincoln Center, 935 Maple Ave., Downers Grove. Affiliated with USCF & ICA. George Uffner, (708) 960-9382.

DUBOIS ELEMENTARY SCHOOL CHESS CLUB, c/o Andrew Skaar, 308 So. Douglas, Springfield, IL. 62704.

FOX VALLEY CHESS CLUB meets Monday evenings, 6:30 p.m. to 10:30, Church of God, corner of Galena Blvd and Lancaster, Aurora, IL, Bob Renaut, (708) 983-0934 or Dick Verber (708) 978-1380.

GREATER PEORIA CHESS FEDERATION meets Mon., 7-11 p.m., Garrett Center, 824 N. University, Peoria. Bill Wilkinson, 901 N. Rebecca Pl., Peoria 61606. (309) 673-9455.

HILLSIDE CHESS CLUB meets Fridays 7-11:30 at Hillside Baptist Church, 5152 Butterfield Rd, Hillside. Larry Stilwell (708) 963-6799.

HOLY TRINITY NORTHSORE CHESS CLUB meets Tuesday 7-10 pm at Holy Trinity Church, 2328 Central (at Shermer), Glenview, IL. Dale Hurst, P.O. Box 284, Glenview, IL. 60025. (708) 729-9000.

LAKE COUNTY CHESS ASSOCIATION sponsors rated tournaments in the Grayslake-Zion area. Tim Just, 37165 Willow, Gurnee 60031. (708) 244-7954.

MIDWESTERN CHESS ADVENTURES (MCAC) 3924 N. Hermitage, 2nd floor, Chicago, IL. 60613. (312) 871-2148. Attn: Christopher Baumgartner.

OAK PARK/RIVER FOREST CHESS CLUB meets Tues., 7 midnight, Dominican Conference Center, 7200 W. Division, River Forest. Ken Marshall, 357 W. Grove, Lombard 60148. (708) 932-1455.

PARK FOREST CHESS CLUB meets Thursdays, 7-10:00 p.m., Freedom Hall, Orchard & Lakewood, Park Forest. Lawrence Cohen, 135 Westwood, Park Forest, 60466 (708) 748-5911 or 834-2477.

PAUL RODGERS' CHESS TOURNAMENTS 810 Peach Tree, Urbana, IL. 61801.

RUDY LOZANO LIBRARY CHESS CLUB, 1805 So. Loomis. St., Chicago, 60608. Hector Hernandez. (312) 746-4329.

SMYTHE DAKOTA COMPETITIONS encourages and offers financial support for Plus-Score Mini-Tours at sites in Chicago and suburbs. Bill Smythe, 7445 N. Greenview #311, Chicago, IL. 60626, (312) 761-2455.

ST. CHARLES CHESS CLUB meets Thursday at 7 p.m., Baker Community House, 101 S. 2nd (Rte. 31), St. Charles. Erv Sedlock, 6 N. 307 Old Homestead Rd., St. Charles, IL. 60174. (708) 377-7995

TROY CHESS CLUB, c/o Salah Chehayeb, P.O. Box 99432, Troy, MI.

TULEY PARK CHESS CLUB hold frequent Saturday tournaments, Tuley Park Field House, 501 E. 90th Pl., Chicago. Thomas Fineberg, 7321 S. South Shore Dr., Chicago 60649. (312) 721-3979.

VILLA PARK JUNIOR CHESS CLUB (for players ages 7-18) meets on Saturday from 10:00 am to noon, Iowa Community Center, 338 N. Iowa Ave., Villa Park, IL.; Richard Horner (708) 832-7427.

Join the Illinois Chess Association and receive six issues of the Illinois Chess Bulletin. In addition you'll qualify to enter over two dozen tournaments on the Illinois Chess Tour. Every game you win or draw in a tour event earns you "tour points" that can add up to cash prizes at year-end. Finally, you'll be supporting the activities of the Illinois Chess Association. Every year, the ICA organizes major tournaments like the Illinois Open and Illinois Class Championships; the ICA has bid for the National Open, the US Open and the US Class Championships to be held in Illinois. In addition, the ICA sponsors scholastic clinics, runs a tournament clearinghouse, and promotes and publicizes chess activity statewide. If you would like to show increased support for Illinois chess, please consider renewing as a Century Club, Gold Club, or Patron member. Patrons are acknowledged in each issue of the ICB and receive their magazines by first-class mail.

Mail To:	Alan Losoff, ICA Membership Secretary PO BOX 157 Morton Grove, IL 60053	ICA MEMBERSHIP RENEWAL		
NAME _____	CENTURY	\$100	Circle Membership Type	
ADDRESS _____	PATRON	\$35	GOLD	\$50
CITY _____ STATE _____ ZIP _____	JUNIOR	\$8	REGULAR	\$14
			AFFILIATE	\$25

FOX VALLEY CHESS CLUB'S LOW COST OPEN #9

April 15, 1995

4 - SS G/60 format

1st - \$50

2nd - \$25

Class A: \$15

Class B: \$15

Class C: \$15

Class D/E/unr: \$15

Entry Fee \$ 13 Adults - \$7 Juniors

Registration - 8:00 - 8:30

Rounds - 8:45 - 11:00 - 1:30 - 3:45

Prizes based on 20 entries

**ICA
MINI
TOUR**

Church of God
Galena Blvd at Lancaster
Aurora, Illinois



c/o Alan R. Losoff
9402 N. Octava
Morton Grove, IL 60053

Address correction
requested

FIRST-CLASS MAIL
U. S. POSTAGE
PAID
ASTORIA IL
PERMIT NO. 9

Time Value Material