

ILLINOIS CHESS BULLETIN

JULY - AUGUST 1994 VOL. XVII NO. 4

AN ICA BI-MONTHLY PUBLICATION - \$2.95

BILLY COLIAS MEMORIAL CHAMPION



Dmitry Gurevich



TABLE OF CONTENTS

Editor Bob Renaut
 1255 Oakton Lane, Naperville, IL, 60540, 708-983-0934
 Games Archivist Alan Watson
 161 Oakwood Drive, Bolingbrook, IL, 60440, 708-759-7757
 Games Editor Alan Watson
 161 Oakwood Drive, Bolingbrook, IL, 60440, 708-759-7757
 Calendar Editor Bob Renaut
 1255 Oakton Lane, Naperville, IL, 60540, 708-983-0934
 Tour Statistician Bill Smythe
 7445 N. Greenview, Chicago, IL, 60626, 312-761-2455

MEMBERSHIP AND SUBSCRIPTIONS

The Illinois Chess Bulletin (ICB) is published bimonthly by the Illinois Chess Association. ICA membership includes a subscription to ICB. Century Club, Gold Card, and Patron members receive their ICB by first-class mail.

ANNUAL MEMBERSHIP RATES

Century Club	\$100.00
Gold Card	\$50.00
Patron	\$35.00
Regular	\$14.00
Junior (under 18)	\$8.00

Subscriptions and address corrections should be sent to:

Ken Marshall (ICA Membership Secretary)
 357 W. Grove, Lombard, IL 60148

SUBMISSION DEADLINE

The deadline for submissions to the September - October 1994 issue is July 31.

ICA AFFILIATION

Chess clubs and other organizations which promote chess activity may affiliate with the ICA. Benefits include a copy of the ICB by first class mail, a listing under "Where to Play Chess," discounted advertising rates, free event advertising on Chess Phone and the right to run ICA Tour Events. ICA Affiliation costs \$25; please remit to the Membership Secretary.

ADVERTISING RATES

Full page	\$90
Half page	\$54
Quarter page	\$36
Eighth page	\$24

10% discount for the same ad in consecutive issues. 1/3 discount for ICA affiliates. All ads must be camera-ready to qualify for above rates; minimum \$20 charge for layout. Payment must accompany ad. The ICA & ICB reserve the right to reject advertising.

Copyright© 1994 Illinois Chess Association

President's Podium	3
by Alan Losoff	
Editor's Corner	3
by Bob Renaut	
ICA Tour Standings	4
by Bill Smythe	
Tony Miles Wins the 3rd Annual Chicago International	5
by Bob Renaut	
Oakpark - River Forrest CC vs CICL Match	6
by Ken Marshall	
Annotated Games from the Chicago International	7
by National Master Alan Watson	
98 Players honor Billy Colias	21
by Bob Renaut	
Oakpark River Forrest Chess Club News	23
by Ken Marshall	
Chess on the Fox	24
by Bob Renaut	
An American's View on Chess in Spain	25
Dr. Eugene Martynovsky	
Reader's Showcase	28
by you the reader!	
Steve Arlinksy is heading for Denker Tournament of Champions	31
by Tim Just	
Reader's Retort	32
by you the player!	
Illinois Tour Crosstables	33
Tournament Calendar	36
Illinois Chess Association Patrons	38
Where to Play Chess	39



EDITOR'S CORNER

By
Bob Renaut



Another two months have past and it is time once again for me to climb up on the soap box and beg, plead and conjole people for help. Why is it the truly great players in most sports see fit to give back something to their community or help the next generation learn about their spor?. Are you overlooking your chance to give back something to your sport. Volunteer! Write an article, help direct a tournament, or teach chess to new players young and old. If you have children in school, do they have a chess program? If not, help get it started. Chess develops logical thinking, planning and creativity. You can make a difference, but you must make the first step.

The officers of the ICA are working hard to improve chess in the State. Just check out the number of national events held in Illinois during the past twelve months and compare it to five years ago. The events are not just held in the Chicago area, they are down state too. Support the ICA, renew your membership, upgrade your membership and become a patron, get a friend to join, sponsor an ICA tour event, or run for office. That's right the next ICA election is just around the corner. If you don't like what is happening in Illinois chess, now's your chance to change it. Just don't sit there and complain - get involved.

August will be a very busy month for chess in Illinois. The U.S. OPEN is coming to town. Don't miss it. It is a chance of a lifetime to play in an event this big, this close to town and for so little money (you don't have to fly to get here!). If you can't play in the main event, check out the side events. There is likely one to catch your eye!

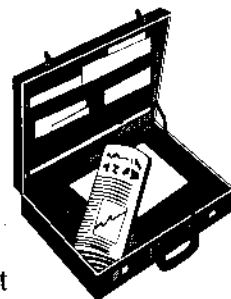
Thanks to Marvin Rogan and Alan Losoff for their photographic contributions used in this issue.

SEND YOUR COMMENTS TO:

Bob Renaut
1255 Oakton Lane
Naperville, IL 60540-0310

PRESIDENT'S PODIUM

By
Al Losoff



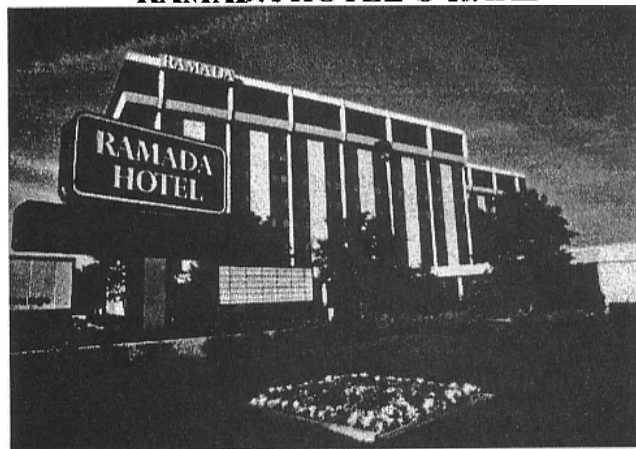
Al's column should return next month. Due to a strict deadline, which he missed the following ads appear in his space.

The 95th Annual
U.S. OPEN
August 7-19, 1994

**A GREAT TOURNAMENT
IN A GREAT CITY**

 **CHICAGO** 

**The 95th Annual U.S. OPEN will be held at:
RAMADA HOTEL O'HARE**



65 Room Rates Resort-Style Facilities
9-Hole Golf Course Newly Remodeled
35 Minutes from Downtown
Over a dozen restaurants within a short walk

Need the latest chess tournament info?
Call Chess Phone 708-832-5222

ILLINOIS TOUR STATUS

By Bill Symthe

This list reflects the following 1994 Tour events:

Tim Just Winter Open/Reserve X,
Grayslake MAXI Jan 8-9
Peoria Winter Tornado, Peoria
mini Jan 15
2nd Annual MCAC Plus-Score,
Evanston, mini Jan 15
Greater Peoria Open, Peoria
MAXI Mar 5-6
Fox Valley Low Cost Open #1,
Aurora, mini Mar 12
Mid-America Class Championship,
O'Hare, MAXI Mar 25-27
Peoria Spring Tornado (OPEN
section only), mini Apr 16
Fox Valley Low Cost Open #2,
Aurora, mini Apr 16
Chicago International/Amateur, Oak
Brook, MAXI Apr 20-24

For players with fewer than three 1994 Tour events, the number of events (1 or 2) is shown in parentheses. A player must have played in at least three Tour events during 1994 to be eligible for year-end Tour prizes.

UPCOMING 1994 TOUR EVENTS SCHEDULED SO FAR:

FOX VALLEY LOW COST OPEN
#4, Aurora, mini Jul 16
ILLINOIS OPEN, Chicago,
MAXI Sep 2-4
MIDWEST CLASS CHAMPIONSHIP,
Oak Brook, MAXI Oct 28-30
ILLINOIS CLASS, Chicago,
MAXI Nov 19-20
OAK PARK / RIVER FOREST
WINTER OPEN, MAXI Dec 10-11

Other events will be added as the

year progresses. Watch for announcements in the Illinois Chess Bulletin and Chess Life.

Master Tour Points:

MILES Anthony	(2)	44
SHABALOV Alexand	(2)	39
CHOW Albert		28
ZINGHEIM F Scott		27
PANGAN Camilo		23
KITTILSEN Guy		21.5
FINEGOLD Benjami	(1)	20
VON KROGH Chris	(2)	19.5
DE FIRMIAN Nick	(2)	19
MOTE David	(1)	19
RASTENIS Gedimin	(1)	19

Expert Tour Points:

BAILEY Gregory	(2)	36
SZPISJAK Steve		32
KARKLINS Erik	(2)	27
SAX Robert		26
HURCHALLA David		24
KITTILSEN Guy		21.5
VON KROGH Chris	(2)	19.5
MC CARTHY Mike		19
FLAGA Krzysztof	(2)	18
FAGAN James		17.5
NAFF William		17.5

Class A Tour Points:

FAGAN James		31.5
KITTILSEN Guy		31.5
LORING Steve		23
ANDERSON Phil		21
LANDRUM Stephen		21
KOH Jason	(1)	19
SUKCHAROENPHON K	(2)	18
SMYTHE Bill	(2)	16
WILLIAMS Kent M	(2)	15
CIMA Joe		14

Class B Tour Points:

MIEL James		49.5
CLAY Harry		46
HENDERSON S E		42
ISRAELSEN Kirk		41.5
PADILLA Rudy		20.5
BELLE John	(1)	19
STOUEMIRE James	(1)	19

VENSKE Dan	(2)	19
HENROID Mike		18
RATNER Jacob	(2)	17

Class C Tour Points:

SIMS Mike		57
GORDIN Vladimir		31
ISRAELSEN Kirk		25.5
PEDERSEN Ken		25.5
DELAY Joe		22
BACKSTROM Orn		20.5
MONTEBON Anthony	(1)	19
MITCHELL Gary		18
GROEGER Andrew		15
BONWELL Jonathan	(1)	14

Class D Tour Points:

GETZ Barney	(2)	34
MARTIN William H	(1)	32
HAMILTON Lloyd	(2)	26
STAPLES Carl	(2)	24
HORNOR Richard	(2)	23
STEVENS Joseph		21
HENDRICKSON William		16
BALES Robert		15
BONWELL Jonathan	(1)	14
ROUSTAN Pierre	(2)	12.5
CHRISTNER Jerry	(1)	12
GORDIN Vladimir		12
MACIASZEK Brian	(1)	12
MARSHALL Kraig		12
WOOLLEY Scott	(1)	12

Class E Tour Points:

MARTIN William H	(1)	32
HENDRICKSON William		16
BASSETT Daniel S	(1)	6
BATH Cheney	(2)	6
HARRIS Donald	(1)	6
LYNCH Brandon	(1)	6
FISHER Timothy M	(1)	5
HAYES Mike	(1)	5
SELLMYER Mark	(1)	5
TUURI Adam M	(1)	5
ABRAM Lawrence	(1)	4
DONNA Dan	(1)	4
FABRIKANT Benjam	(1)	4
GIAMPA Michael A	(1)	4
GRINDINGER Shawn	(1)	4
HORNOR Richard	(2)	4

TONY MILES WINS the 3rd (and final) CHICAGO INTERNATIONAL

By Bob Renaut

The sun has set on the last Chicago International and in its glow stands England's Grandmaster Tony Miles (2643), the winner having scored 7.5 points, just 1/2 point ahead of the 39 player field. He lost one game during this event to second player finisher Grandmaster Alexander Shabalov (2699) and was held to a draw by Grandmaster Alexander Yermolinsky (2570). Tony's visit to the Chicago area this spring has been rewarding. He won both major events he participated in; this one and the Mid-American Class Championship (see the last ICB for coverage). For this outstanding performance Tony takes home the first place prize money of \$2000. Not bad money for four days work!

Grandmaster Alexander Shabalov and Michigan's Ben Finegold (2570) split the second and third place money, \$850 each, by scoring 7 points. GM Shabalov lead the tournament after beating Tony Miles in their head to head match in round four, but faltered in the next two rounds drawing with Ben Finegold in round 5 and then losing to Nick DeFirmian (2660). Grandmaster Shabalov missed his chance to catch Tony in the last round when he was held to a draw by Pennsylvanna's Ed Formanek (2320). Ben Finegold had a good outing defeating Nick DeFirmian, Al Chow (2310), Ed Formanek and Camilo Pangan (2310). Ben's only loss was to GM Tony Miles and he drew with GM Shabalov and GM Yermolinsky.

Nick DeFirmian and Ed Formanek tied for fourth place. They scored 6 points and earned \$450 for their efforts. Nick's only losses were

to GM Miles and Ben Finegold, but he could only draw against Dr. Eugene Martinvosky (2401) and George Alexopoulos (2264). Ed Formanek suffered a second round defeat at the hands of Nick Adams (2264) and this Swiss Gambit paid off. He went on to defeat Josh Manion (2388), Nasser Abbasi (2324) and Al Chow.

Chicago's top player, GM Dmitry Gurevich (2657), took three 1/2 points for the first three rounds. In his first game he defeated Tom Cooper (2242), but then was held to a draw by George Umezina (2355). GM Gurevich's 5.5 points left him in a four way tie for 6th place with the other local players, Josh Manion, Al Chow, and Camilo Pangan. They earned \$250 each for their performance.

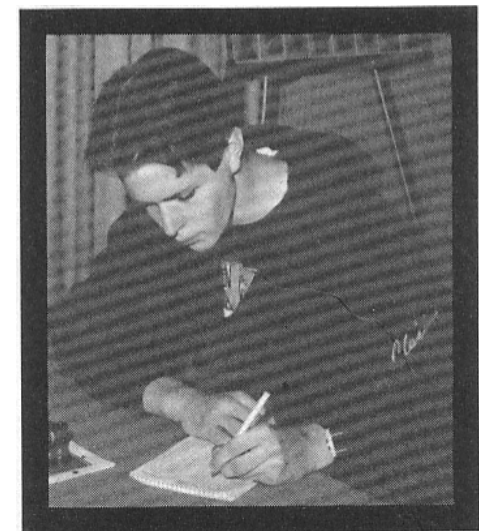
Grandmaster Alexander Yermolinsky's had a slow start in round one by drawing with George Alexopoulos (2264) and never got back on track. He lost to both GM Shabalov and Nick DeFirmian, drew with GM Miles, Ben Finegold and in the final round with Dr. Martinovsky.

The tournament was held at the Oakbrook Hyatt with 37 players participating. The tournament was directed and organized by Bill Goichberg. Unfortunately, this will be the last Chicago International held by the Continental Chess Association. Bill Goichberg lost money again and said in my discussions with him he will not be back to Chicago for this tournament next April.

The Amateur sections drew a combined total of 223 players. The winner of the Under-2200 section was Michigan's Greg Bailey (2068) with the only perfect 5-0 score. Greg took

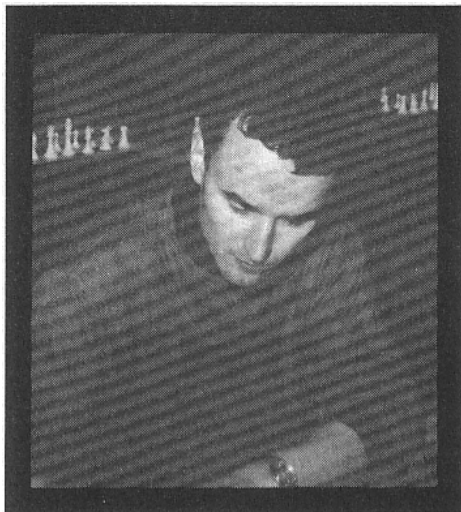


Winner GM Tony Miles (right) and 2nd place (tie) GM Alexander Shabalov.

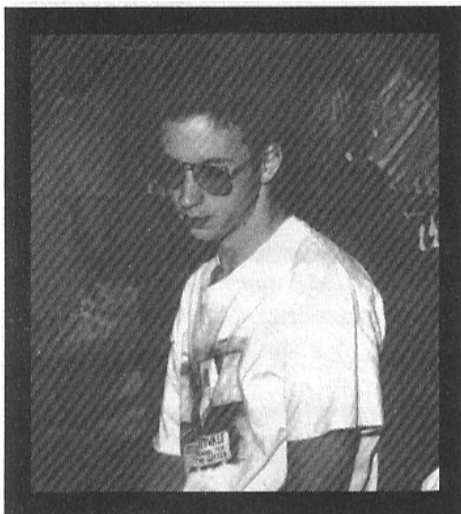


Local player Josh Manion (2388).

home \$700 and the title for his sweep. Krzysztof Flaga (2173), John Tums (2099) and the ICA's tour statistician Bill Smythe (1900) tied for second place with 4-1 scores. This earned them \$233.



**Under 2200 Section - 2nd Place (tie)
Krzysztof Flaga (2173)**



**Under 1600 Section 2nd Place (tie)
Mike Sims (1565)**

The Under-2000 section saw Illinois' Steve Loring (1954) win the first place money of \$700 with a 4 1/2 - 1/2 result. His draw in the final round against Charles Wyche (1920) ensured his victory. Tied for second was Ohio's Greg Doughty (1943), Kent Williams (1920) and Charles Wyche with 4-1 scores.

S.E. Henderson Jr. (1699) swept the field by scoring a perfect 5-0 score to take first place in the Under-1800 section and win \$700. Kirk Israelsen (1662) had another great tournament by finishing with 4 1/2 - 1/2 to claim sole possession of second place and \$400. Michigan's Michael McGrath (1735), Feb Grumman (1685)

and Nebraska's Iouri Plotnikov (1637) tied for third place, earned \$100 for their 4-1 scores.

First place finisher in the Under-1600 section Gordin Vladimir (1410) defeated second place finisher Mike Sims (1565) in the fourth round and then went on to draw with Lawrence Yakowenko (1594) in the final round to earn his \$700. Mike Sims and John Martin tied for second place to earn \$300 for their 4-1 scores. Three players tied for fourth place; Lawrence Yakowenko, Michael Martin (1555) and Jeffrey Somerville (1460). They split the \$100 4th place money.

The only section in the entire Chicago International & Amateur not to have a sole winner was the Under-1400 section. Two players, Richard Hornor (1300) and Lloyd Hamilton (1289) tied for first place with 4 1/2 - 1/2 scores. Richard was held to a draw in the final round by Jerry Christner (1332) while Lloyd beat Dannie Kennedy to earn his share of first place. They earned \$450 each for their tournament performance. Four players tied for third place. They were Brian Maciaszek (1347), Jerry Christner, Carl Staples (1326) and William Hendrickson (1073).

The Unrated section drew nineteen players. Alan Hirsh won the \$100 first place prize money with his perfect 5-0 score. The second place \$60 prize money went to Phil Kilian who earned it with a 4-1 score. Asher Martin and Orson Montgomery tied for 3rd place and they earned \$20 each for their 3 1/2 - 1 1/2 score...□

OAK PARK - RIVER FOREST CHESS CLUB, CHICAGO INDUSTRIAL CHESS LEAGUE DRAW 15 BOARD MATCH

By Ken Marshall

Upset victories on four of the top eight boards helped the Oak Park

- River Forest Chess Club draw its first ever match with the Chicago Industrial Chess League on March 22, 1994.

The hotly contested 15 board match, played at the OP-RF CC with a time control of 40 moves/90 minutes followed by "sudden death"/30 minutes, featured fighting chess: 14 of the 15 games were decisive. The outcome was in doubt until the last game finished at close to midnight. Needing a win to even the score, OP-RF CC Vice President Don Winsauer, his flag hanging, took the full point in an ending with a rook and four pawns against Tom Fiske's rook, bishop, and pawn.

CICL President Jim Hodina, who had suggested the contest, and OP-RF CC President Ken Marshall served as co-directors. Play proceeded smoothly, with no disputes. A second confrontation was planned at the OP-RF CC on June 21, 1994.

White : Tom Fiske (1855 CICL)

Black : D. Winsauer (1714 USCF)

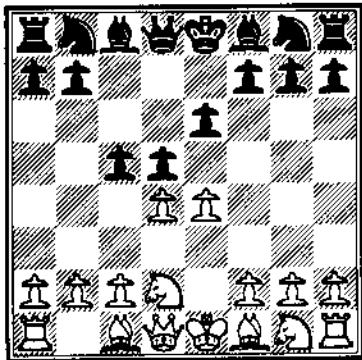
1.e4 e5 2.Nf3 Nc6 3.Bb5 a6 4.Ba4 Bc5
5.0-0 d6 6.c3 b5 7.Bb3 Nf6 8. d4 exd4
9.cxd4 Ba7 10.Nc3 Bg4 11.Be3 Bxf3
12.gxf3 0-0 13.Kh1 Qd7 14.Rg1 Ne7
15.a4 c6 16.Bg5 Kh8 17.Qd2 Qb3
18.Rg3 Qh5 19.Ne2 Ng6 20.Ng1 Nh4
21.Bxh4 Qxh4 22.Rh3 Nxe4 23.fxe4
Qxe4+ 24.Nf3 h6 25.Bc2 Qe6 26.Ng5
Qd5+ 27.Be4 Qxd4 28.Qxd4 Bxd4
29.axb5 d5 30.Bg2 axb5 31.Rb1 Kg8
32.Nf3 Bxf2 33.Ne5 Ra6 34.Rc3 d4
35.Rf3 Be3 36.Nxc6 Rxc6 37.Rxe3
dxe3 38.Bxc6 f5 39.Kg2 b4 40.Kf3 f4
41.Rd1 g5 42.h3 Rf6 43.Be4 Kf8
44.Rd4 Rb6 45.Bd3 Ke7 46.h4 Rd6
47.Re4+ Kf6 48.hxg5+ hxg5 49.Bc4
Rd2 50.b3 Rf2+ 51.Kg4 Rg2+ 52.Kf3
Rg3+ 53.Ke2 Kf5 54.Re8 g4 55.Bd5
Rh3 56.Re7 Rh2+ 57.Kf1 Rf2+
58.Kg1 Rd2 59.Bc4 Kg5 60.Kf1 Rd1+
61.Kg2 f3+ 62.Kg3 Rg1+ 63.Kh2
Rg2+ 64.Kh1 e2 65.Bd5 f2 0-1 ...□

ANNOTATED GAMES from the CHICAGO INTERNATIONAL

National Master Alan Watson

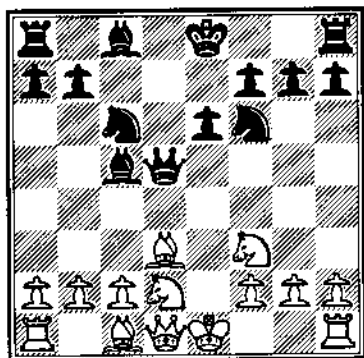
White: Chow, A (2373)
 Black: Landrum, S (1982)
 Chicago International (01), 1994

1.e4 e6 2.d4 d5 3.♘d2 c5



The Tarrasch variation of the French Defense is consistently seen at the highest levels of Chess competition. White's goal is to minimize active play by his opponent while maintaining the a small but quite persistent advantage.

4.exd5 ♖xd5 5.dxc5 ♘xc5
 6.♗g3 ♖f6 7.♘d3 ♘c6



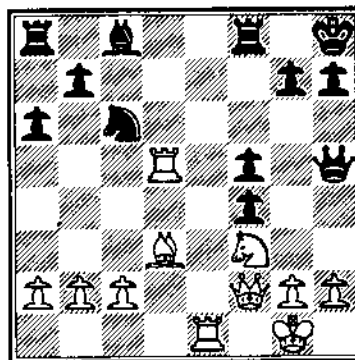
It is more accurate to develop this knight to d7 as in

the game Martinovic-Marjanovic, Yugoslavia Ch 1986 which continued 7...b6 8♖e2 ♘b7 9.♗b3 ♘bd7 10.♖f4 a6 11.O-O-O ♖h5 with a good game for Black.

8.O-O O-O 9.♖c2 a6

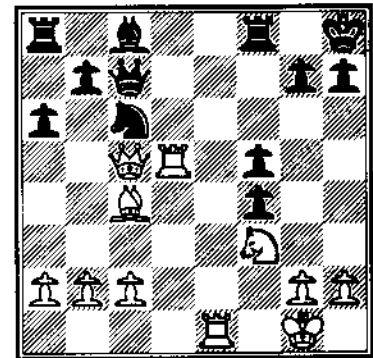
This needless move puts Black further behind in development.

10.♗e4 ♘xc4 11.♘xc4 ♖h5
 12.♗d1 ♖h8 13.♗f4 e5
 14.♗d5? f5! 15.♘d3 ♗xf2+
 16.♖xf2 exf4 17.♗e1



White's last undeveloped piece rushes to enjoin the battle while Black's forces lie unconscious on the Queenside. This game provides an excellent example of how to utilize superior development as the basis for an attack.

17...♖f7? 18.♘c4 ♖c7
 19.♖c5!



Like pac-man eating those energy pills in the video game, the White forces continue to gain activity and strength. If now 19...Bd7? 20.♗e7 ♗ad8 21.♗exd7! winning for White.

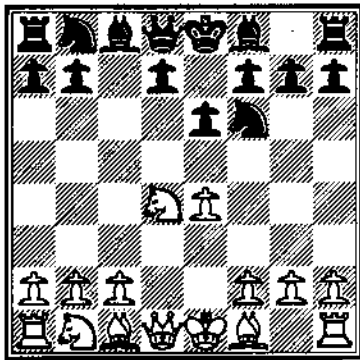
19...♗d8 20.♗xd8+ ♖xd8
 21.♗g5 1-0

Black is unable to avoid either checkmate or the loss of his Queen. It is especially interesting to note that while White's pieces have rampaged over the entire board, None of Black's Queenside pieces have moved since move six!

White: Abbasi, N (2324)
 Black: Tate, E (2463)
 Chicago International (02), 1994

All annotations are by N. Abbasi on the Internet except when denoted by ALW.

1.e4 c5 2.♖f3 e6 3.d4 cxd4
 4.♗xd4 ♖f6

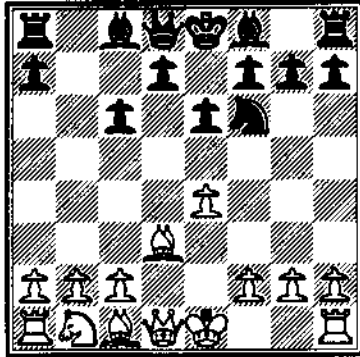


Black indicates his unwillingness to transpose into the Paulsen variation [4...a6] and instead reserves options for the Sheveningen or Four Knights systems. ALW

5.♘d3

5.♘c3 ♘b4 6.e5 ♘d5 7.♗g4

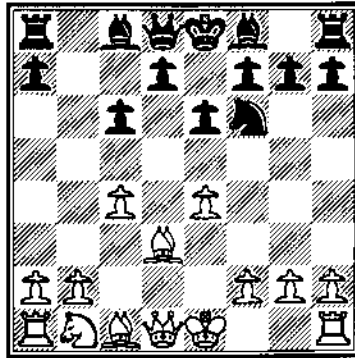
5...♘c6 6.♘xc6 bxc6



Unsuitable for Tate's dynamic style is the equalizing recapture 6...dxc6 7.♗f4 ♘d7

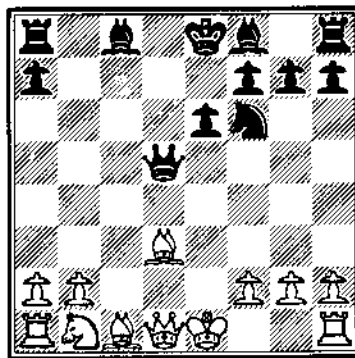
8.♘d2 e5 9.♗g3 ♘d6 10.♘c4 ♘c7 11.♗f3 O-O 12.O-O ♗e7 13.c3 ♘c5 14.♘c2 a5 played in Smyslov-Spassky, USSR 1973.

7.c4



A dangerous move which lands White in an inferior position. White should continue development by 7.O-O d5 8.exd5 cxd5 9.c4 ♘b7 10.♘c3 dxc4 11.♗xc4 ♗xd1 12.♘xd1 += as in Zidkov-Shamkovitch, USSR 1972. ALW

7...d5 8.cxd5 cxd5? 9.exd5 ♗xd5

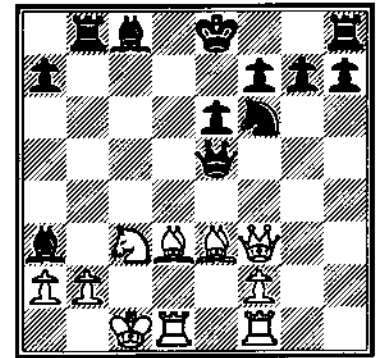


Now Black has a great game. If White castles then Black plays ♘b7, ♗c5, and ♘d8 and must be almost winning, so White decided to sac some pawns.

10.♘c3 ♗xg2 11.♗f1 ♗xh2 12.♗f3 ♗c5+

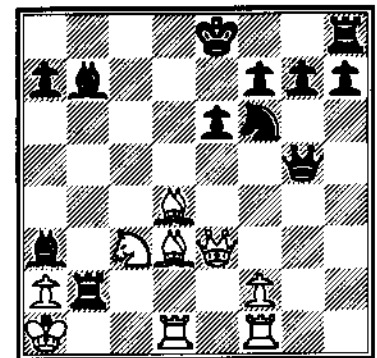
12...♗b8? 13.♗f4.

13.♗c3 ♗b8 14.O-O-O ♗a3!



Black's appears to have such a deadly attack that it not clear how White can last more than a few more moves. However, the burden of accuracy applies to both palyers in complicated positions, and any mistake can prove fatal. ALW

15.♗d4 ♗g5+ 16.♗b1 ♗xb2+ 17.♗a1 ♗b7 18.♗c3



White seeks to exchange Queens despite being three pawns down, but it is Black who declines because of the awkward placement of White's pieces on the Queenside. Besides, surely there must be a win here ALW

18...♗a5 19.♗b1 ♘d5!

A further intensification

Send your articles, comments or games to:

Bob Renaut
1255 Oakton Lane
Naperville, IL 60540

of the struggle surrounding White's King. By threatening to remove White's knight there now appear shadows of a Checkmate on a2 in many variations. ALW

20. ♖e5

20. ♖xd5 ♖xa2 mates.

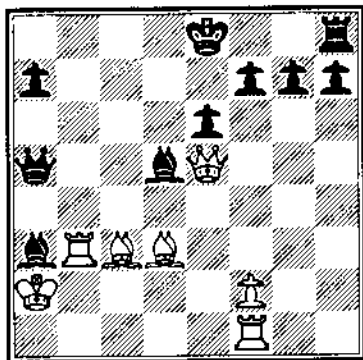
20... ♖xc3 21. ♖xc3

21. ♖xa5 ♖a2 mate.

21... ♖xa2+

Played quickly. 21... ♖xe5 22. ♖xe5 ♖xb1+ 23. ♖xb1 ♖c8 24. ♖xg7 ♖g8 should win for Black.

22. ♖xa2 ♖d5+ 23. ♖b3!



The only defense, but a satisfactory one since the attack on Black's Queen compels additional exchanges. If 23... ♖a4 24. ♖xd5! exd5 25. ♖b5+ wins easily. ALW

23... ♖d6+ 24. ♖xa5 ♖xe5 25. ♖b4! f6 26. f4 ♖b8 27. ♖a3 ♖xb3 28. ♖xb3

After all the smoke has settled, Black still emerges with four pawns for the piece and should not lose. Unfortunately, errors generally come in groups,

and it is difficult for Tate to psychologically readjust. ALW

28... f5 29. ♖c4 ♖f7 30. ♖e1 ♖e8 31. ♖b5 ♖d8 32. ♖c4 ♖xf4

I was ready for a draw if Black repeats moves by 32... ♖e8

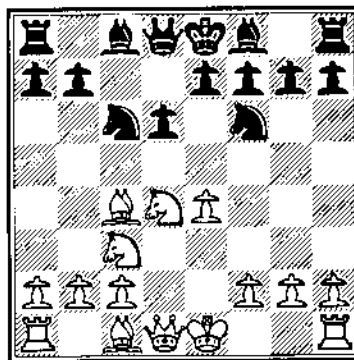
33. ♖xe6 ♖b8 34. ♖a4 g6

If 34... g5 35. ♖a6+ ♖g7 36. ♖c3+ ♖f8 37. ♖xa7.

35. ♖e4+ ♖f6 36. ♖e7+ ♖g7 37. ♖xf4 ♖e8 38. ♖c5 ♖f6 39. ♖d4 ♖g5 40. ♖xa7 h5 41. ♖d6 ♖a8 42. ♖a6 f4 43. ♖f7 ♖xa7 44. ♖xa7 ♖f6 45. ♖e8 h4 46. ♖a6+ ♖f5 47. ♖xg6+ ♖g4 48. ♖c4 ♖g3 49. ♖g6+ ♖h2 50. ♖g4

White: Ash, B (2125)
Black: O'Donnell, R (2348)
Chicago International (03), 1994

1. e4 c5 2. ♖f3 d6 3. d4 cxd4 4. ♖xd4 ♖f6 5. ♖c3 ♖6 6. ♖c4



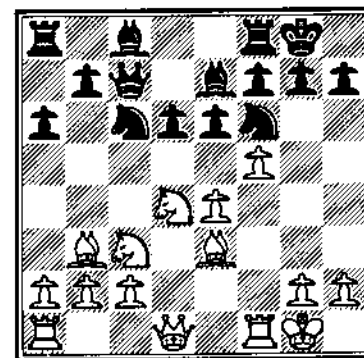
This bishop's development on c4 and its complement the f4-f5 advance are key elements in the Sozin Attack's strategy of weakening d5. Developed over fifty years ago, it is still today regarded as

a good method of dealing with the Sheveningen

6... e6 7. ♖e3 ♖e7 8. ♖b3

Eschewing Velimirovic's even more double-edged 8. Qe2 followed by Queenside castling.

8... a6 9. O-O O-O 10. f4 ♖c7 11. f5



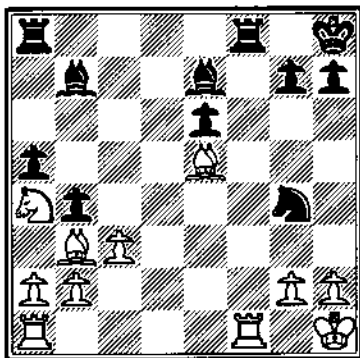
Normal is 11. ♖f3 ♖d7! 12. f5! ♖xd4 13. ♖xd4 b5 14. a3 a5 15. g4 when Alekhine gives the additional moves 15... b4 16. axb4 axb4 17. ♖xa8 ♖xa8 18. g5 bxc3 19. gxf6 ♖xf6 20. ♖xf6 gxf6 21. fxe6 ♖xe6 22. bxc3 and prefers White's position.

11... ♖xd4 12. ♖xd4 b5 13. fxe6 fxe6 14. ♖e2 ♖h8 15. e5 dxe5 16. ♖xe5 ♖c5+ 17. ♖h1 b4!

Excellent timing, shunting White's knight to the edge of the board.

18. ♖a4 ♖c6 19. c3 a5 20. ♖f3 ♖xf3 21. ♖xf3 ♖b7 22. ♖ff1 ♖g4

**PLAY IN TOUR EVENTS
SUPPORT THE ICA**



The failure of White's strategy is readily apparent. He has two pieces cut off from play on the Queenside while Black's continue to acquire greater strength with every move.

23. Qd4 e5! 24. Qc5 Qxc5
25. Qxc5 Qc6

After 25... Qxg2+ 26. Qxg2 Qe3+ 27. Qg1 Qxf1 28. Rxf1 Rxf1+ 29. Qxf1 White's minor pieces would prove at least equal to the Black rook.

26. Qe6 Rxf1+ 27. Rxf1 a4!
28. Qd1 Qe3 29. Qg1 bxc3

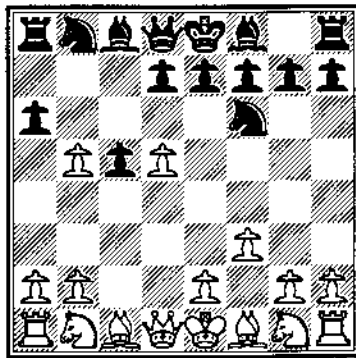
More accurate was 29. a3! which would have forced the immediate creation of a passed pawn

30. bxc3 Qxg2 31. Rxg2 Rb8
32. Qg1 Qxg2 33. Qxg2 Rb2+
34. Qg3 Rxa2 35. Qc5 a3 0-1

White's poorly coordinated minor pieces are unable to stem the further advance of Black's passed pawn.

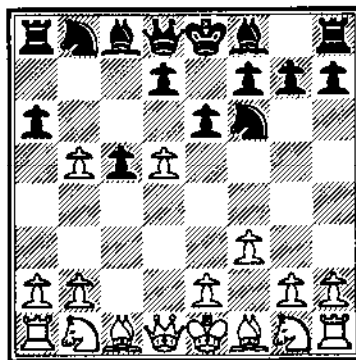
White: Manion, J (2388)
Black: Zingheim, S (2302)
Chicago International (04), 1994

1. d4 Qf6 2. c4 c5 3. d5 b5
4. cxb5 a6 5. f3!



This variation has acquired a great deal of currency in recent times. Michael Adams, the British GM has said "The thing I find most surprising about it is that such a stupid-looking move can be so strong!"

5... e6



Black strikes at the center quickly and challenges White to an immediate tactical melee. Alternatives include 5... Qa5+ [Albur], 5... axb5, and the normal Benko plan of 5... g6. Qg7. (recommended by Odink).

6. e4 axb5 7. Qxb5 Qa6
8. Qxa6 Qxa6 9. Qe2

Manion follows an unorthodox course. Main-line book continues 9. Qc3 c4 10. b3 exd5 11. e5 Qh5 12. Qxd5 Qb4 13. Qe2 Rc8 14. O-O Qb6+ 15. Qh1 cxb3 16. Qxb3 Qc5

17. Qd5 Qe6 unclear.

9... Qb4

Cherniak-Edwards, New England Open 1989 continued here 9... c4 10. O-O Qb4 [10... Qb6+ 11. Qh1 Qb4 12. Qbc3 Qc5 unclear] 11. Qe3 exd5 12. e5 d4 13. Qxd4 Qfd5 14. Qd2 Qc7 15. Qc1 Rc8 16. Qe4 Qd3 17. Qg5 h6 18. Qg3 with an unclear position.

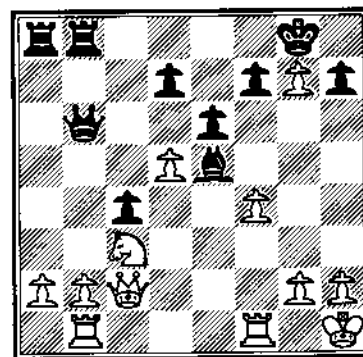
10. Qbc3 c4 11. O-O Qc5+
12. Qh1 Qd3 13. Qf4

White takes immediate measures to expel the intruder at d3. After 13... Qf2+ 14. Rxf2 Qxf2 15. Qe2 followed by 16. Qxc4, White would have two pawns for the exchange and a dynamically balanced game.

13... Qxc1 14. Qxc1 Qb6
15. Qc2 Qe3 16. e5 Qxf4
17. exf6 O-O

Unsatisfactory would be 17... gxf6 18. Qe4 Qh6 19. dxe6 with a discovered attack upon the undefended rook at a8. The disadvantage of the text, however, is that the Black King's position is now compromised.

18. fxg7 Rfb8 19. Rab1 Qe5
20. f4!



This move establishes an important link in the implementation of White's strategy ... the third rank is now open for the transference of a major piece to the Black Kingside.

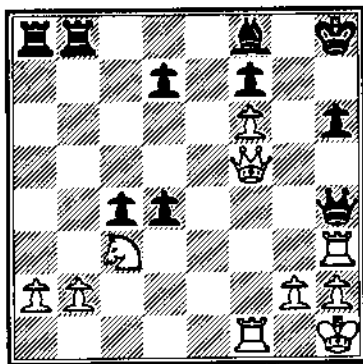
20... ♖xg7 21. f5! ♔d4

With noblest of intentions, the Black Queen rushes to the Kingside in order to assist in the defense only to discover her mere presence allows White to accelerate the attack even further.

22. ♖bd1 ♗h4 23. ♖f3 h6

White threatened 24. ♖h3 ♗f6 25. fxe6 with an attack upon h7.

24. ♖df1 exd5 25. f6 ♖f8
26. ♖g3+ ♗h8 27. ♗f5 d4
28. ♖h3!

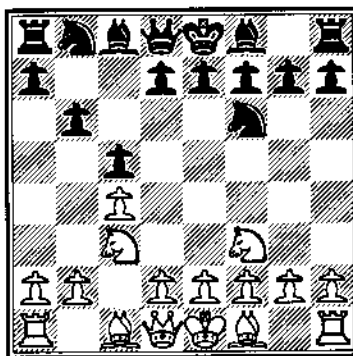


The Black Queen is now trapped.

28... ♗xh3 29. ♗xh3 dxc3
30. bxc3 ♖b7 31. ♗h5 ♗g8
32. ♗g4+ ♗h8 33. ♗xc4 1-0

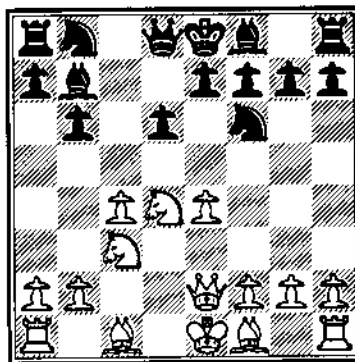
White: Yermolinsky, A (2740)
Black: Olesen, M (2417)
Chicago International (05), 1994

1. ♖f3 ♖f6 2. c4 c5 3. ♖c3 b6



This is a risky move whose consequences have not been fully analyzed. An alternative is 3...d5 4.cxd5 ♗xd5 5. ♖g2 ♖c6 when Andersson's 6.d4 leads to interesting positions offering chances.

4. e4 d6 5. d4 cxd4 6. ♖xd4
♖b7 7. ♗e2



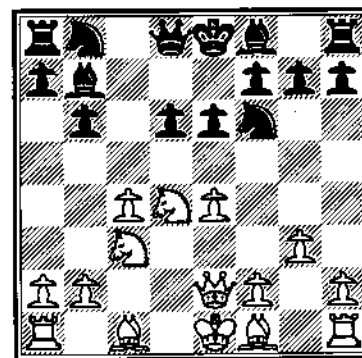
Only this move is known to seriously challenge the specific move order that Black has adopted! White's plan involving Queenside castling followed by a rapid central advance proves very difficult to meet.

7...e6

Unsatisfactory are 7... ♖c6 8. ♖xc6 bxc6 9. ♖g5 ♖d7 10. O-O-O ♗c8 11. ♗b1 ♖c5 12. f3 a5 13. h4 ♗b7 14. h5! when White had a clear plus in Korchnoi-Gheorghiu, London 1980, or 7...g6 8. ♖g5 ♖g7 9. O-O-O ♖bd7 10. f4 as

suggested by Lebrede.

8.g3



Even more challenging is 8. g4e ♖e7 9. g5 ♖fd7 10. h4 ♖c6 11. ♖xc6 [11. ♖e3] ♖xc6 12. ♖f4 a6 13. O-O-O ♗c7 14. ♗b1 ♖b7 15. h5 ♖e5 16. ♖h3 threatening 17. g6! as played in Vera-Lebrede, Managua 1982.

8... ♖e7

Black's attempt to restrain White's center by rapidly mobilizing his Queenside is also insufficient, as shown by Korchnoi-Makropoulos, Rome 1981 which continued 8... ♖bd7 9. ♖g2 a6 10. O-O ♖c8 11. ♖d2 ♗c7 12. b3 +=

9. ♖g2 a6 10. O-O ♗c7 11. ♖e3 ♖bd7 12. ♖ac1 O-O 13. f4 ♖ac8 14. b3 ♖c5 15. ♖f2 ♖fe8 16. ♖fe1 g6 17. ♖c2

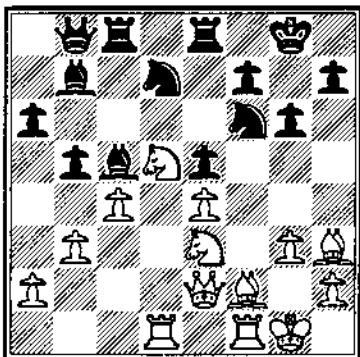
An immediate 17. e5 fails to yield White anything, so he proceeds to utilize his greater space for maneuvering so as to enhance its effectiveness.

17... ♗b8 18. ♖cd1 ♗a8
19. ♖d4 e5

Anticipating the strenght of White's looming e5, Black strikes first in the center but finds this "cure" worse than the

disease! Though stabilizing the pawn structure, Black's weaknesses on the d and f files will prove fatal.

20.fxe5 dxe5 21.♔f2 ♖cd7
22.♗d5 b5 23.♗ce3 ♗c5
24.♞f1 ♜b8 25.♗h3



An excellent move that Black probably missed in his earlier calculations. The half-open f-file in conjunction with the instability of Black's knights and his dark-square weakness guarantee a rapid denouement.

25...♞cd8 26.♗xd7 ♗xd7
27.♗g4 ♗xf2+ 28.♜xf2 ♞f8
29.♗e7+

As the continuation 29.♜g7 ♞xd7 followed by checkmate on f6 illustrates the severity of Black's miscalculations, so he resigns. 1-0

**Chess Phone it's
your connection to all
the Illinois Chess Events**

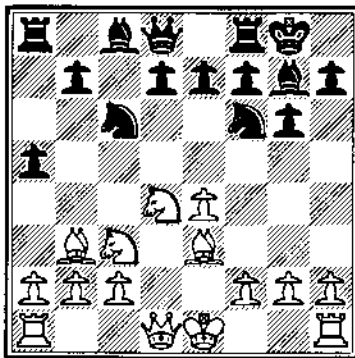
White: DeFirmian, N (2660)

Black: Shabalov, A (2699)

Chicago International (06), 1994

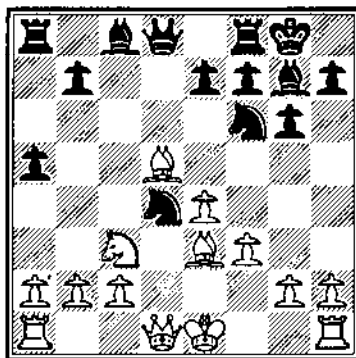
1.e4 c5 2.♗f3 ♗c6 3.♗c3 g6

4.d4 cxd4 5.♗xd4 ♗g7 6.♗e3
♗f6 7.♗c4 O-O 8.♗b3 a5



This move represents Black's sharpest response to the method of development chosen by White. Developed by Lithuanian correspondence player Uogele, its aim is to first loosen White's Queenside and then break in the center.

9.f3 d5 10.♗xd5 ♗xd4



I have not seen this move before; was it planned or merely a fingerfehler by Shabalov? Standard theory continues 10...♗xd5! 11.exd5 [11.♗xd5 f5] ♗b4 12.♗de2 ♗f5 13.♞c1 b5 14.O-O ♞c8 15.♗d4 ♞xc3 16.bxc3 ♗xa2 unclear.

11.♗xd4 a4 12.a3!

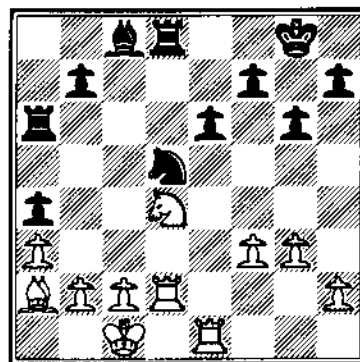
DeFirmian secures the position of his stalwart knight on c3 by preventing 12...a3 which would undermine the

supporting pawn on b2 while weakening other dark squares.

12...♗a5 13.♜d2

Awkward for White would be 13.O-O ♞d8 when Black's pressure on the d-file would give him good play.

13...e6 14.♗a2 ♞d8 15.e5
♗g4 16.O-O-O ♗xe5 17.♗e2
♗xd4 18.♗xd4 ♜xd2+
19.♞xd2 ♗e3 20.g3 ♞a6
21.♞e1 ♗d5



Black avoids the alternate retreat 21...♗f5 as after 22.♗xf5! ♞xd2 23.♜xd2 gxf5 24.♗xf5! Black would still lose a pawn, but his structure would be even more compromised due to the greater number of pawn-islands.

22.♗b5 ♜g7 23.♗c7!

DeFirmian demonstrates excellent technique for the remainder of the game. 23.c4 ♗d7! 24.cxd5 ♗xb5 24.dxe6 ♞c6+ 25.♞c2 ♞xc2+ 26.♜xc2 fxe6 is not as good.

23...♞a5 24.♞ed1 h5 25.♗xd5
exd5 26.♞xd5 ♞axd5 27.♗xd5

Also playable is 27.♞xd5 ♞xd5 28.♗xd5, but White wishes to restrict the activity of the ♗c8 by attacking the b7 pawn.

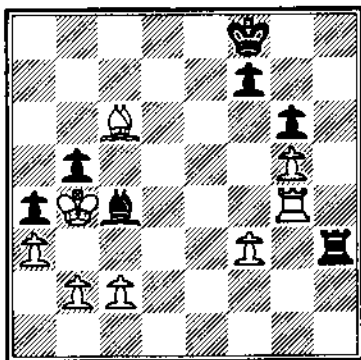
27...h4

Black pries open the h-file so as to allow his rook some measure of activity.

28.♗e4 ♖h8 29.♞d4 hxg3
30.hxg3 b5 31.g4 ♗e6

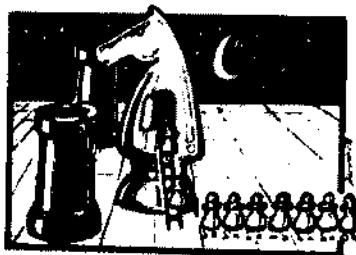
Black rushes to protect his Queenside pawns from c4 before White snares them both with 32.♗c6. However, all is ultimately futile as the dark-squares offer a gateway for the White King into their very bosom.

32.♗d2 ♖h3 33.♗c6 ♗c4
34.g5 ♖f8 35.♗c3 ♖g3
36.♖g4 ♖h3 37.♗b4!



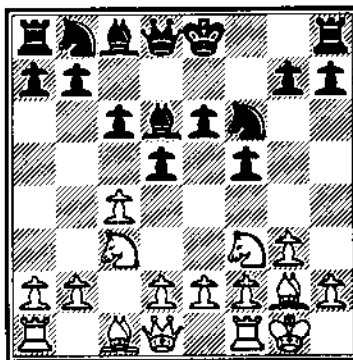
A decisive penetration after which Black cannot avoid the further loss of substantial amounts of material. The game continues longer than necessary only because of the second allegro time control.

37...♞h2 38.♗xb5 ♗e6
39.♗e4 ♖xc2 40.♗e2 ♖c1
41.♗xa4 ♗e7 42.♞d2 ♗f5
43.♗b4 ♗e6 44.f4 ♗e4
45.♗d7+ ♗e7 46.♞d4 ♗c2
47.♗a4 ♗f5 48.♗b5 ♗c2
49.♞c4 1-0



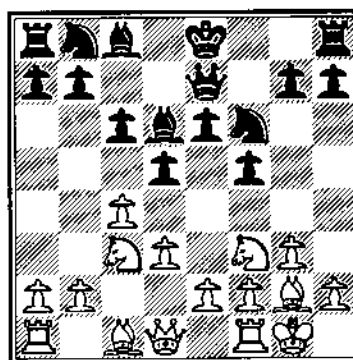
White: Dandridge, M (2330)
Black: Friedman, E (2242)
Chicago International (07), 1994

1.c4 f5 2.♗f3 ♗f6 3.♗c3 e6
4.g3 c6 5.♗g2 d5 6.O-O ♗d6



As White has not yet ruled out preparations for the central advance e4/ e5, this bishop is more satisfactorily placed on e7 where it will not allow a pawn-fork.

7.d3 ♗e7



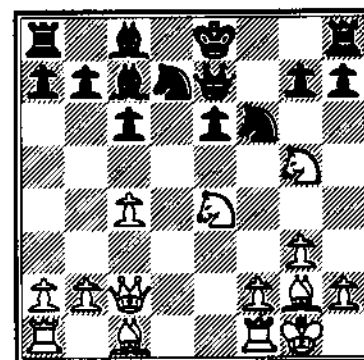
Black follows a predetermined method of

development without taking into account his opponents strategy. Instead of prematurely committing the Queen to a square where she serves no purpose, more flexible was 7...O-O.

8.e4!

This powerful move challenging control of e4 comes when Black is ill-prepared to meet it. White now has a strong advantage

8...dxe4 9.dxe4 ♖xe4 10.♗g5
♗bd7 11.♗cxe4 ♗c7 12.♗c2



Imprecise. More direct seems 12.♗e2 which institutes immediate pressure down the e-file while maintaining better cohesion among the White forces. White fails to appreciate Black's play down the f-file in the coming moves.

12...♗c5 13.♗xc5 ♗xc5
14.♞e1 O-O 15.♞xe6

After 15.♗xe6 ♗xe6 16.♞xe6 ♗g4! Black gets good play against the square f2. The game continuation appears attractive at first sight, but would never have been played had White calculated deeply enough. Watch what happens now ...

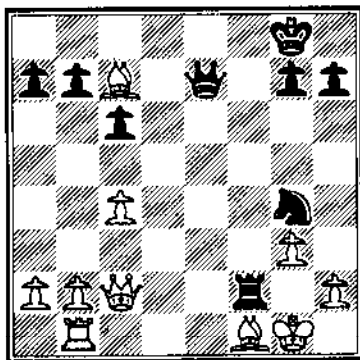
15... ♖xe6 16. ♗xe6 ♕e5
17. ♗xf8 ♖e1+

An excellent zwischenzug which ties up White's entire Queenside while accentuating pressure against f2.

18. ♗f1 ♖xf8 19. ♖b1 ♗g4
20. ♗f4

White now appears to have gotten over the worst of his troubles, but Black has planned a nasty surprise.

20... ♖e7 21. ♗xc7 ♖xf2!



White is lost after this surprising resource and its necessary complement on the next move. I am constantly amazed by the large number of hidden resources available in seemingly bad positions. We need only look deeply enough.

22. ♖d3 ♖c5 23. b4 ♖xf1+

This double-check is the final point to Black's combination begun on move 21, as 24. ♖xf1 is met by 24... ♖f2 checkmate! The remainder of the game is merely an exercise in good technique.

24. ♖g2 ♗e3+ 25. ♖xc3 ♖xc3
26. ♖xf1 ♖e4+ 27. ♖f3 ♗g5
28. h3 h5 29. g4 hxg4 30. hxg4
♖xc4 31. a3 ♖xg4+ 32. ♖g3
♖e4+ 33. ♖f2 g4 34. ♖b8 a5!

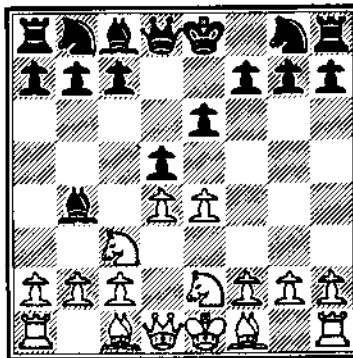
35. bxa5 c5 36. ♖e3 ♗d4
37. ♗e5 ♖d2+ 38. ♖e2 ♖xa5
39. ♖e3 ♖d2+ 40. ♖e2 ♖d1
41. ♖e3 ♖f7 42. ♖g3 ♖g1+
43. ♖f4 ♖f2+ 44. ♖e4 ♖e6!

Black further highlights the unfortunate placement of White's pieces by threatening a checkmate on f5.

45. ♗f4 ♖c2+ 0-1

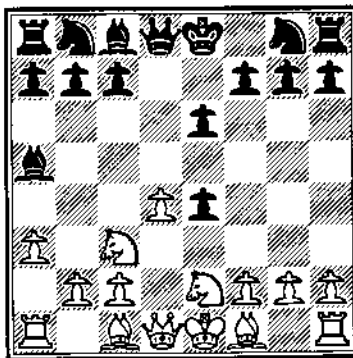
White: Karklins, A (2432)
Black: Alexopoulos, G (2264)
Chicago International (08), 1994

1. e4 e6 2. d4 d5 3. ♗c3 ♖b4
4. ♗ge2



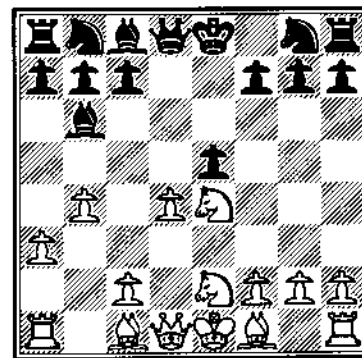
Andrew's pet system.

4... ♗xe4 5. a3 ♖a5



A novelty suggested by Andrew Martin in the obscure TUI pamphlet "A line for Black." Normal play continues 5... ♗xc3+ 6. ♗xc3 or 5... ♗e7.

6. b4 ♖b6 7. ♗xe4 e5



The point to Black's unusual play. By sacrificing a pawn in this fashion, Black hopes to catch the White King in the center of the board and then have reasonable chances of regaining his material by ♗g8-e7-g6.

8. ♗xe5

Alternatives offer little, as 8. ♗e3? f5 is better for Black and 8. ♖b2 exd4 9. ♗xd4 ♗e7! is equal.

8... ♖xd1+ 9. ♖xd1 ♗c6
10. ♖b2

10. ♗f4 is incorrect due to 10... ♗ge7 11. ♗g3 ♗g6 12. f4 ♗f5 planning O-O-O and f6, but the unexplored 10. f4 merits consideration.

10... ♗ge7

White is at a loss for a good plan. Martin considers 11. e6 f6, 11. f4? ♗f5, 11. ♗2g3 ♗g6! 12. e6 ♗xe6 13. ♗xg7 O-O-O+ 14. ♖c1 ♖g8 15. ♖6 ♖d4 unc, and 11. c4 ♗f5! 12. ♗2g3 O-O-O+ 13. ♖c1 ♖d4 as all satisfactory for Black

11. b5 ♗a5 12. ♗f4

A new move. 12. ♗2g3 ♗e6 13. ♖d3 O-O-O 14. ♖e2 ♗g6! is regarded as good for Black.

12...♗f5 13.♘d3 O-O-O
 14.♞e1 ♜b8! 15.♝c1 ♖g6
 16.♜d2 ♗xf2 17.♜xg6 hxg6
 18.♞e2 ♘d4 19.♙xd4 ♞xd4
 20.♜f3

Andrew misses the following tactic which wins a pawn, but his position becoming increasingly difficult anyway.

20...♞xd3! 21.cxd3 ♜b3+
 22.♝b2 ♜xa1 23.♞d2 ♞d8
 24.♝xa1 ♞xd3 25.♞xd3 ♙xd3

More significant in the present position than Black's extra but doubled pawn is the looseness of White's overextended structure which will prove vulnerable to Black's King and fast-stepping bishop. Black has a strong advantage.

26.♜d4 ♝c8 27.♝b2 ♝d7
 28.♝c3 ♗f1 29.g3 a5 30.h4
 ♝e7 31.g4 f6!

Removing White's control of d6 and f6 in order to further approach the center

32.exf6+ ♝xf6!

The normal 32...gxf6 would be incorrect here because 33.h5! would allow White unnecessary counterplay based on his own passed pawn.

33.b6

Faced with a decisive Black penetration by 33...♝e5, ♝f4, White pitches his b-pawn in a last-ditch effort to activate King and knight.

33...♝xb6 34.♜f3 ♘h3!

The White pawns must be coaxed to advance even

further and open up additional avenues for penetration by the Black monarch.

35.g5+ ♝f5 36.♝d4 ♝g4
 37.♝e3 ♘g2 38.♜e5+ ♝xh4
 39.♝f4 ♘d5 40.♜xg6+ ♝h3
 41.♝f5 ♘b3 42.♜f4+ ♝h4
 43.♜g6+ ♝g3 44.♜f4 b5
 45.♜e2+ ♝h4 46.♜d4 ♘c4
 47.♝f4 b4 48.axb4 axb4
 49.♜f5+ ♝h5 50.♝e3 g6
 51.♜d6 b5 52.♜e4 ♝g4 0-1

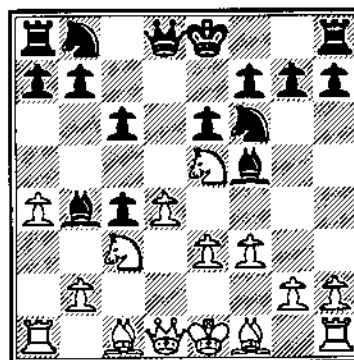
White is unable to avoid further loss of material after 53.♝d4 ♝f4! and so resigns.

White: Miles, A (2643)
 Black: Finegold, B (2570)
 Chicago International (08), 1994

1.d4 d5 2.♜f3 ♜f6 3.c4 c6

The Slav Defense to the Queen's Gambit is becoming more and more popular in today's tournaments for its sturdiness and reliability. The only negatives are having to face the exchange variation and the somewhat symmetrical structure.

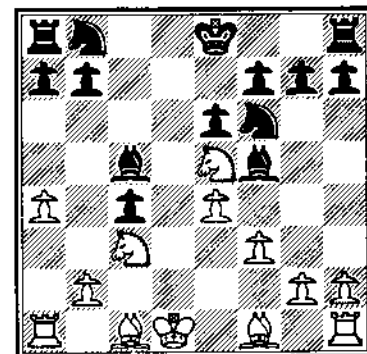
4.♜c3 dxc4 5.a4 ♗f5 6.♜e5
 c6 7.f3 ♘b4 8.e3



Tony cautiously sidesteps the unclear positions which arise after 8.e4 ♘xe4! 9.fxe4 ♜xe4 10.♘d2 [10.♝f3 is equal] ♝xd4 11.♜xe4 ♝xe4+ 12.♝e2

♘xd2+ 13.♝xd2 ♜a6 15.♜xc4 when theory has yet to reach a definite verdict.

8...c5 9.dxc5 ♝xd1+ 10.♝xd1
 ♙xc5 11.e4

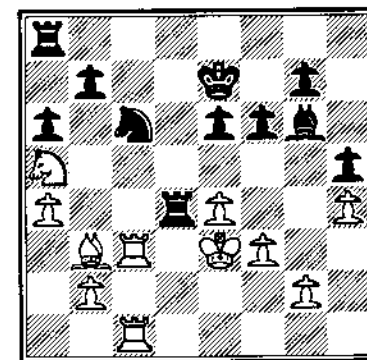


The strength of this pawn formation and indeed the primary foundation of White's strategy lie in keeping Black's light-squared bishop out of play while White slowly regains his pawn and monopolizes the Queenside.

11...♗g6 12.♜b5 ♜a6
 13.♙xc4 ♜d7 14.♜xd7 ♝xd7
 15.♝e2 ♝e7 16.h4

Eliciting a new weakness by Black on the Kingside.

16...h5 17.♘e3 ♞hc8
 18.♞hc1 ♙xe3 19.♝xe3 ♜b4
 20.♞c3 ♜c6 21.♞ac1 a6
 22.♜a3 f6 23.♘b3 ♞d8
 24.♜c4 ♞d4 25.♜a5!



Introducing a clever tactic on the theme of "removing the

guard" which surely must have been considered by the normally attentive Finegold, but Miles has noticed something else.

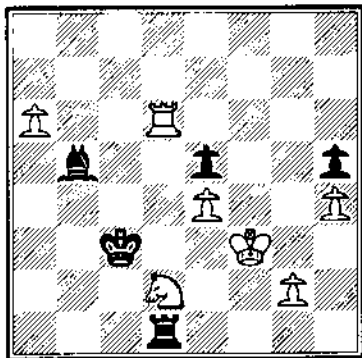
25...Bb4 26.Bxc6

The point which Finegold must have overlooked, as 26...bxc6 27.Qxc6+ forks both King and rook. White now wins an important pawn.

26...Bxb3+ 27.Qxb3 bxc6
28.Bxc6 Qe8 29.Bb6 e5
30.a5 Bc8 31.Bxa6 Bc2
32.Qa7+ Qd6 33.Qd2 Qb5
34.Bb7 Qc6 35.Bxg7

This White rook again demonstrate the strength of controlling one's opponents seventh rank, and proceeds with the harvest of Black's crop of pawns.

35...Bc1 36.f4 Bc1+ 37.Qf3
Bd1 38.fxe5 fxe5 39.Bg6+
Qc5 40.b4+ Qxb4 41.Bd6
Qc3 42.a6!



Indirectly defending White's knight due to the tactics of an advanced pawn. If now 42...Bxd2 43.a7 Bxd6 44.a8=Q White's powerful Queen should easily overcome the disjointed Black pieces and pawns.

42...Ba1 43.Qe3 Qxa6
44.Qf3 Qf1 45.Bd2 Ba5 46.g3
Qc4 47.Bd7 Qb4 48.Bb7+

Qc5 49.Qxe5 Ba3+ 50.Qf4
Qe6 51.Bc7+ Qd6 52.Qc4+!

Being comfortably ahead in pawns, White finally seeks the exchange of pieces in order to reduce Black's counterplay thereby easing his task. Excellent technique on his part makes the remainder of the game look easy.

52...Qxc4 53.Bxc4 Ba8
54.Bd4+ Qe6 55.Bd5 Bh8
56.Qe5+ Qd6 57.Qa5 Bf8+
58.Bf5 Bh8 59.Bf6+ Qe7
60.Qa6 Bf8+ 61.Qe5 Bf3
62.Bg6 Qf7 63.Bg5 Qe7
64.Bxh5 Bxg3 65.Bh7+ Qf8
66.Qf6 Qg8 67.Bh5 Bf3+
68.Bf5 Ba3 69.e5 Qf8
70.Bh5 Bf3+ 71.Qe6 Ba3
72.Bh8+ Qg7 73.Bd8 Ba4
74.Qe7!

White is unable to make progress by trying to hold on to both pawns, and in a manner similar to earlier part of the game trades one advantage for another.

74...Bxh4 75.Bd1

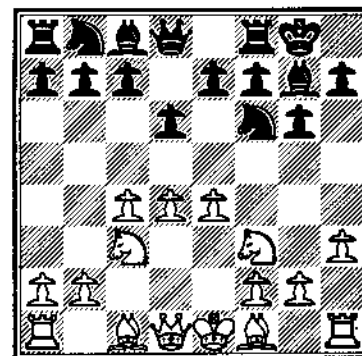
Through extremely judicious exchanges, Miles has finally arrived at a "book" position which is considered a clear win for White. As an exercise, cover up the remaining moves to see if you can determine the winning process.

75...Qg6 76.e6 Bh7+ 77.Qd6
Ba7 78.e7 Ba6+ 79.Qd7
Ba7+ 80.Qe6 Ba6+ 81.Bd6
Ba8 82.Bd8 1-0

White: Gurevich, D (2657)
Black: Olesen, M (2417)
Chicago International (09), 1994

1.Qf3 g6 2.d4 Qf6 3.c4 Qg7

4.Qc3 O-O 5.e4 d6 6.h3

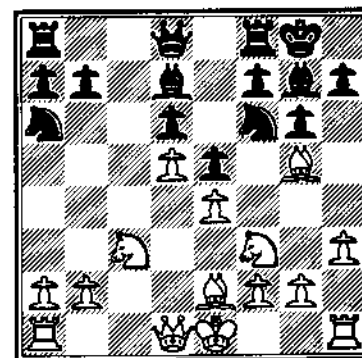


This interesting little move initiates a modernization of the variation with 5.h3 introduced by Reti and Soviet International Master and mathematician Makogorov. It's aim is to play 7.Qe3 unmolested and prepare c5 or e5.

6...Qa6

An unusual response. Practice has normally seen Black continue with 6...c6 7.Qe3 a6 8.Qd3 b5, 6.c5 7.d5 e6 8.Qd3 exd5 9.exd5, or 6...e5 7.d5 Qh5 8.Qh2! Qe8 9.Qe2 Qf4 10.Qf3 f5 11.g3 with interesting games in each case.

7.Qg5 c6 8.Qe2 e5 9.d5 cxd5
10.cxd5 Qd7



Black's play hereabouts seems very awkward, and it appears that the Qa6 may have been developed prematurely;

preferring instead to go to d7 so that a6 and b5 were possible. Perhaps 10...h6 11. ♖e3 ♘c5 was preferable.

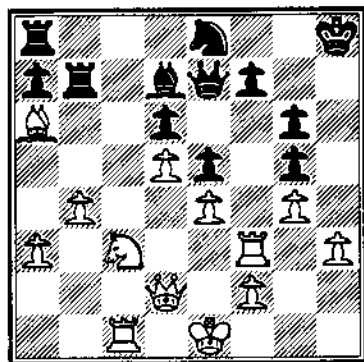
11. ♘d2 ♖e7 12.g4 ♖fc8
13. ♖c1 ♖f8 14. ♖g1 ♘e8
15. ♘c3 ♘f6 16.a3 ♘d8 17.b4
♗h8 18. ♖g3e ♘h4 19. ♖f3 h6
20. ♘c4 ♘g5 21. ♖xg5 hxg5
22. ♘a5!

Black is badly cramped for space and each of his pieces seems to step on the toes of others. After this powerful move, Black is unable to avoid the loss of an important pawn.

22... ♖c7 23. ♖d2

An immediate 23. ♘xb7 gives the initiative to Black after 23... ♘xb4! 24. axb4 ♘xb4.

23... ♖e7 24. ♘xb7 ♖xb7
25. ♖xa6



It is amazing to watch the remainder of this game for the effortless with which White capitalizes on his material advantage without allowing Black a single shred of counterplay. If only I could play like this!

25... ♖b6 26. ♘e2 ♗g7 27.b5
a6 28. ♖e3 ♖d8 29. bxa6 ♖b3
30.a4 ♘c8 31.a7 ♖b7 32. ♘b5
♘d7 33. ♘xd7 ♖xd7 34. ♘b5
♖a5+ 35. ♖c3 ♖xa4 36. ♖c6

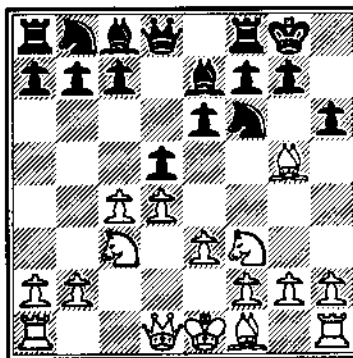
♖xe4+ 37. ♖e3 ♖b4+ 38. ♗f1
♖dd8 39. ♖c4 ♖b2 40. ♗g2
♘f6 41. ♖f3 e4 42. ♖a3 ♖h8
43. ♖c2 ♖b1 44. ♘c7 ♖xa7
45. ♘e6+ 1-0

White: Yermolinsky, A (2740)

Black: Martinovsky, E (2401)

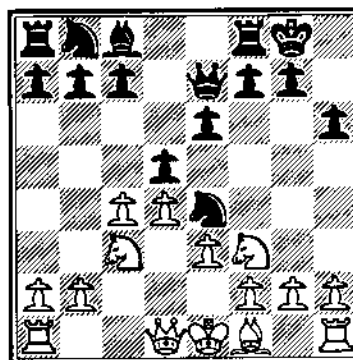
Chicago International (09), 1994

1.d4 ♘f6 2.c4 e6 3. ♘f3 d5
4. ♘c3 ♖e7 5. ♘g5 O-O 6.e3
h6



6... ♘e4 came to be known as Lasker's Defense after being played by him three times during his 1907 match against the American champion Frank Marshall. Modern theory has come to regard a preparatory 6...h6 as more precise.

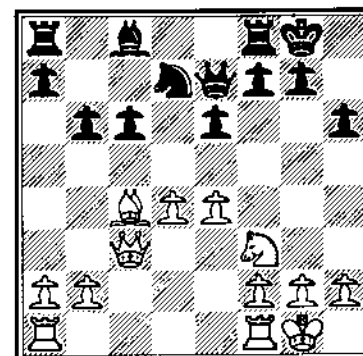
7. ♘h4 ♘e4 8. ♖xe7 ♖xe7



Compared to the normal Lasker Defense, the move h6 can be seen to have gained a tempo as the Black King has gained a luft square and

attacks against h7 are now rendered ineffective.

9. ♖c2 ♘xc3 10. ♖xc3 c6
11. ♘d3 ♘d7 12.O-O dxc4
13. ♖xc4 b6 14.e4

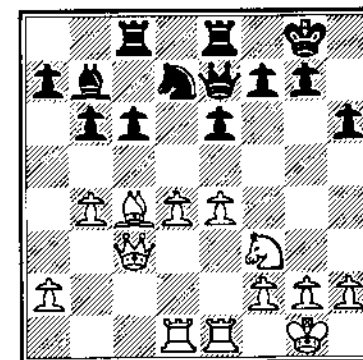


White grabs the center in anticipation of Black's freeing levers c5 and e5, but he might also consider 13. ♘e2 ♘b7 14. ♖f1 ♖fc8 15.b4 a5 16.a3 ♘f6 17. ♖b2 axb4 18.axb4 ♘d5 with a slight edge in Tekavcic-Markovic, Yugoslavia 1945.

14... ♘b7 15. ♖ad1

This development attempts to discourage Polugaevsky's 14. ♖fd1 c5 15.d5 exd5 16.exd5 ♖f6 because the White king's rook will now be able to come to e1.

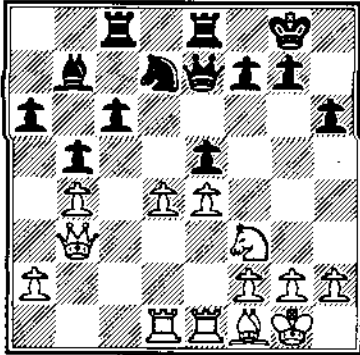
15... ♖ac8 16. ♖fe1 ♖fe8
17.b4



Although preventing Black's c5 lever, this actually serves to make e6e5 more appealing since the looseness in

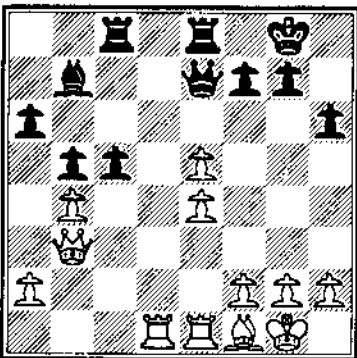
White's Queenside will now offer new targets.

17...a6 18.♖b3 b5 19.♗f1 e5!



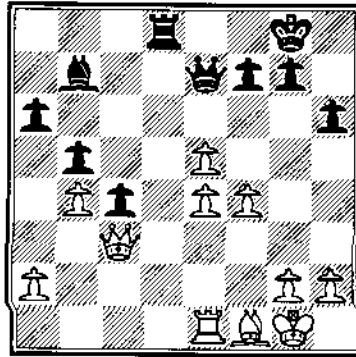
If White were allowed to continue 20.e5, Black's pieces would suffer from asphyxiation. This timely counter frees the advance of Black's c-pawn which will in turn breathe fresh life into his position.

20.♗xe5 ♖xe5 21.dxe5 c5



A forced move which avoids the fatal consequences of the careless 21...♗xe5 22.♗d7 attacking both the ♖b7 and f7. Black's activity and Queenside majority will provide more than sufficient compensation for his sacrifice.

22.f4 c4 23.♗c3 ♗cd8 24.♗xd8 ♗xd8



The true effect of Black's sacrifice can be readily understood when it is observed that White feels compelled to relinquish the d-file to Black's control.

25.a3 ♗d7 26.♗f2 ♗d2+ 27.♗xd2 ♗xd2+

This insolent rook proves impossible to expel, and as long as it is free to discommode the White position, Yermolinsky will be unable to make progress.

28.♗f3 ♗f8 29.h4 ♗e7 30.♗e3 h5 31.♗e2 g6 32.♗f2 ♗c8 33.♗e1 ♗b2 34.♗f3 ♗e6 35.♗d1 ♗b1+ 36.♗c2 ♗h1 37.g3 ♗g1 38.♗d1 ♗g2+ 39.♗c1 ♗g1 40.♗d2 ♗g2+ 41.♗c1 ♗g1

For their second consecutive encounter, Illinois' own Dr. Martinovsky has been able to hold the powerful Yermolinsky to a draw; and with the Black pieces no less. Congratulations

White: Scott, Gene (2194)
Black: Smythe, Bill (1900)
Chicago Amateur Under2200

1.d4 c5 2.d5 b5 3.a4 ♗a5+ 4.♗d2 b4 5.e4 ♗f6 6.f3 g6 7.♗a3 ♗a6 8.♗c4 ♗xc4 9.♗xc4 d6 10.♗e2 ♗g7 11.f4 O-O 12.e5 ♗e8 13.♗f3 a6

14.O-O ♗d7 15.b3 ♗b6 16.♗ae1 ♗c7 17.♗d3 ♗fd8 18.♗g5 h6 19.exd6? ♗xd6 20.♗e4? ♗d7 21.f5 ♗cxd5 22.fxc6 ♗e3? 23.♗xf7+ ♗h8 24.♗e2? ♗xf1 25.♗xf1 c4 26.bxc4 ♗xa4 27.g4 ♗c3 28.♗xc3 bxc3 29.♗e3 ♗e5 30.♗f3 ♗xe3+! 31.♗xe3 ♗d4 32.♗xd4+ ♗xd4 33.♗d5? ♗xg4+ 34.♗h1 ♗b8 35.♗f7 ♗b2 36.h3 ♗g3 37.c5 ♗xh3+ 38.♗g2 ♗d3 39.♗b3 ♗xb3 40.cxd3 c2 41.♗c1 ♗c3 42.d4 ♗g7 43.♗f2 ♗xg6 44.♗e2 e5 45.♗d2 exd4 46.♗xc2 ♗xc2+ 47.♗xc2 ♗f5 48.♗d3 ♗e5 49.♗c4 h5 50.c6 ♗d6 0-1

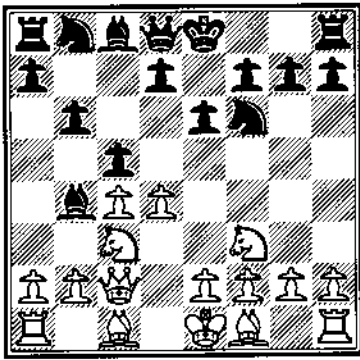
White: Collins, D (1510)
Black: Baumgartner (1545)
Chicago Amateur Under1600

1.♗f3 c5 2.g3 ♗c6 3.♗g2 d5 4.O-O e5 5.d3 ♗e7 6.♗bd2 ♗f6 7.e4 d4 8.♗c4 ♗d7 9.♗e1 b5 10.♗d2 O-O 11.♗df3 ♗e8 12.♗d2 ♗f8 13.♗c1 ♗g4 14.h3 ♗d7 15.♗g5 ♗xg5 16.♗xg5 f6 17.♗gf3 ♗e6 18.♗h4 ♗d7 19.♗h2 ♗ac8 20.♗d1 ♗e7 21.♗d2 c4 22.a3 c3 23.bxc3 ♗xc3 24.f4 exf4 25.gxf4 f5 26.e5 ♗d5 27.♗xd5 ♗xd5 28.♗ef3 ♗b7 29.♗g1 ♗ec8 30.♗ac1 ♗e6 31.♗xf5 ♗xf3 32.♗f2 ♗a8 33.♗h4 ♗xc2+ 34.♗xc2 ♗xc2+ 35.♗g3 ♗b7 0-1

White: Israelsen, Kirk (1662)
Black: Josephs, Steven (1717)
Chicago Amateur Under1800

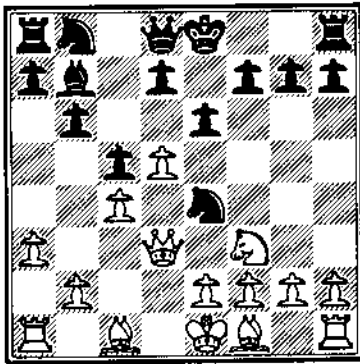
1.d4 ♗f6 2.c4 e6 3.♗c3 ♗b4 4.♗c2 c5 5.♗f3?

More challenging is 5.dxc5! when Black will have to lose time with his pieces recapturing the pawn. 5...b6



Theory has seen both 5...O-O 6.e3 cxd4 7.exd4 d5 = Alatorcev-Kan, USSR 1945 and 5...cxd4 6.Qxd4 Qc6 7.e3 d5 8.Qxc6 bxc6 9.Qd2 O-O 10.Qe2 e5=+ Pavey-Keres, Argentina-USSR 1954.

6.a3 Qxc3+ 7.Qxc3 Qe4 8.Qd3 Qb7 9.d5?



Superior was 9.b3, Qb2 followed by castling Kingside with e3, Qe2, O-O. White makes the mistake of playing too aggressively and being insufficiently concerned about development and the general cohesiveness of his pieces.

9...exd5 10.cxd5 Qe7 11.Qf4 d6 12.Qd2 Qxd2 13.Qxd2 O-O 14.e4?

Though strategically a poor move, this sets various traps which Black fails to fully appreciate in his eagerness to devour material. This avarice ultimately lands him into

intensive care with a severe case of indigestion.

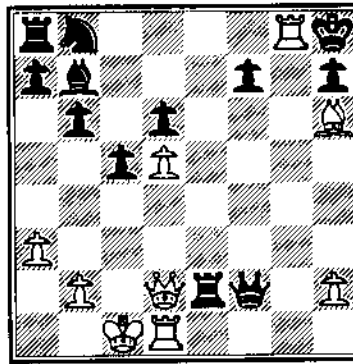
14...Qxe4+ 15.Qe2 Qxg2??

One of the traps Black missed here was 15...Re8 Attempting to prevent White from castling 16.O-O! Qxe2 17.Rae1! +- Perhaps better was 15...Qxd5! when Black will still remain a pawn ahead but without any danger to his King.

16.O-O-O Qxf2 17.Qhg1 Re8 18.Qh6 Qxe2??

Black's greed finally takes its toll as he fails to notice White's two-move combination. However, even after the proper 18...g6 19.Qc3 f6 20.Bb5 the defense would be hard pressed to hold the position.

19.Qxg7+ Qh8 20.Qg8+!



The move overlooked by Black.

20...Qxg8 21.Qg5+ 1-0+

White: Smythe, Bill (1900)
Black: Bailey, Greg (2068)
Chicago Amateur Under 2200

1.d4 Qf6 2.c4 g6 3.Qc3 Qg7 4.e4 d6 5.f3 O-O 6.Qe3 e5 7.d5 Qe8 8.g4 f5 9.gxf5 gxf5 10.exf5 Qxf5 11.Qd3 Qxd3 12.Qxd3 Qh4+ 13.Qe2 Qh6

14.Qf1 Qd7 15.Qf2 Qxe3 16.Qxe3 Qxc4+ 17.Qd2 Qf4 18.Qge2 Qxe3+ 19.Qxe3 Qef6 20.Qg3 Qb6 21.Qd1 Qf7 22.Qge4 Qxe4 23.Qxe4 h6 24.b3 Qaf8 25.Qg2+ Qg7 26.Qxg7+ Qxg7 27.a4 a5 28.Qc3 Qf4 29.Qb5 Qf7 30.Qe4 Qd7 31.Qg1+ Qh7 32.Qd1 Qc5+ 33.Qe3 Qxb3 34.Qb1 Qc5 35.Qc3 b6 36.Qc1 Qb3 37.Qf1 Qd4 38.Qf2 Qf5+ 39.Qe4 Qh4 40.Qe3 Qf4 41.Qe4 Qf5+ 42.Qd3 Qd4 43.Qe3 Qg6 44.Qc3 Qf5+ 45.Qd3 Qd4+ 46.Qc2 Qe3+ 47.Qb3 Qf5 48.Qe2 Qxd5 49.Qxd5 Qxd5 50.Qc2 c5 51.Qc4 Qd4+ 52.Qb5 Qf4 53.Qxb6 Qxa4 54.Qb5 Qa3 55.Qd2 Qxf3 56.Qxd6 h5 57.Qh6 Qg4 58.Qxc5 e4 59.Qg6+ Qh3 60.Qb5 h4 61.Qg1 Qxh2 62.Qg4 e3 63.Qxh4+ Qg3 64.Qe4 Qf2 65.Qe8 e2 66.Qf8+ Qf3 0-1

White: James Miel (1641)
Black: Henderson (1699)
Chicago Amateur Under 1800

1.g4 e5 2.d3 c6 3.Qf3 Qf6 4.g5 Qh5 5.Qxe5 Qa5+ 6.Qd2 Qxc5 7.Qc4 Qc7 8.e4 g6 9.Qd2 d5 10.exd5 cxd5 11.Qe2+ Qe6 12.Qc3 Qg7 13.Qe5 Qxe5 14.Qxe5 O-O 15.O-O-O Qc6 16.d4 a5 17.a4 Qfc8 18.Qxc6 bxc6 19.h4 Qcb8 20.Qe3 Qb7 21.Qh3 Qxh3 22.Qxh3 Qab8 23.b3 Qd6 24.Qb2 Qe7 25.Qd2 Qb4 26.Qxb4 axb4 27.Qd2 Qe4 28.c3 Qf4 29.Qf3 Qe2 30.cxb4 Qxd4 31.Qh3 0-1. □

CALL CHESS PHONE
FOR THE LATEST ON
ILLINOIS CHESS
EVENTS: (708) 832-5222

ILLINOIS OPEN STATE CHAMPIONSHIP

**SEPTEMBER 2 - 4
ICA MAXI TOUR EVENT**

\$4000 Guaranteed Prize Fund

OPEN SECTION

\$900-500-300-200-100

Top Expert \$250-150

Top U2000 - \$250-150

RESERVE SECTION (U1800)

\$350-200-125-75

Top C-\$125-75 D/E

\$100-50 Unr \$75-25

OPEN Section Entry Fee \$38 Adults - \$19 Juniors by 8/25, \$49 at site .

RESERVE Section Entry Fee \$36 Adults - \$18 Juniors by 8/25, \$45 at site.

Registration - 9:00 - 10 A.M.

Rounds - 11:00 - 6:00, 10:00 - 5:00, 10:00

1/2 bye available in rounds 1-4 if requested in advance.

Entries: Alan Losoff, P.O. Box 157, Morton Grove, IL. 60053

(708) 966-5559

**Ramada O'Hare
6600 N. Mannheim
Rosemont, Illinois
(708) 827-5131
Room Rates - \$51, \$61**

**5 - \$\$
40/2, 25/1, SD/1
USCF & ICA Required**

PLAYERS HONOR BILLY COLIAS

By Bob Renaut

The Billy Colias Memorial Tournament drew 98 friends of Billy. Chicago's only Grandmaster Dmitry Gurevich sailed into first place in the Open Section with his perfect 5-0 score. The Under-1800 Section was won by Jeff Jackson from Indiana with 4 1/2 - 1/2 points. The tournament was organized by Fred Gruenberg and Dick Verber, while directed by Walter Browne.

Billy's fighting spirit was the order of the day in both sections. Second ranked Ronald Burnett (2497) was held to a draw by Steven Wagner (2041), fifth ranked Josh Manion (2388) drew with Jim Condron (2019), while Steve Tennant (2315) and Camilo Pangan (2233) were defeated by Larry Cohen (1972) and Robby Singer (1935) respectively. The Manion - Condron game was most interesting, with the final position was two knights verses a pawn. Other minor upsets included Tom Cooper (2222) drawing with T.

Sukcharoenphon (1900) and Mark Brodie (2198) drawing with Jim Oberweis (1878).

There were no upsets in the second round and no real surprises in the third round except for the game between Greg DeFotis (2470) and Alan Watson (2260). Alan fought bravely and held Greg to a well earned draw. The fourth round saw Peter Pelts (2378) against Dmitry Gurevich. In fact, Dmitry was overheard saying his position was inferior, but he overcame this and went on to win.

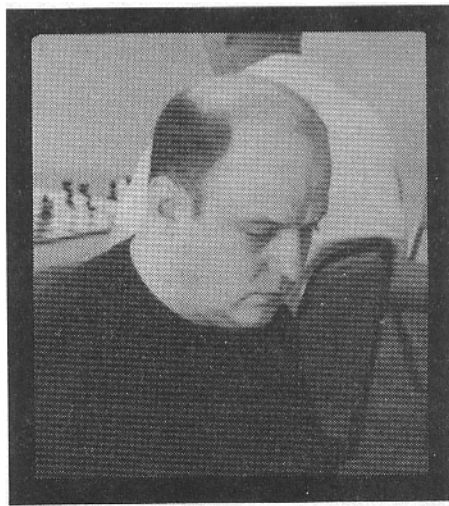
The only two players with perfect scores entering the final round saw Al Chow (2373) playing the Black pieces against Grandmaster Gurevich. Gurevich defeated Al and Fred Gruenberg reported that Dmitry said "he was proud to win it for Billy and that Billy was smiling during his final combination verses Chow!" Dmitry earned \$500 for his top finish. Four players tied for second place. Second place finishers included Josh Manion,

Al Chow, Steve "Swiss Gambit" Tennant and Peter Bereolos. The top Expert prize was won by Henry Yu (2072) with a 3 1/2 - 1 1/2 score, and the 2nd Expert prize went to David Hurchalla (2151) and Mike McCarthy (2020). The top A prize was split three ways with William Cox (1977), Robby Singer (1935) and Kent Williams (1920) all scoring 3 - 2.

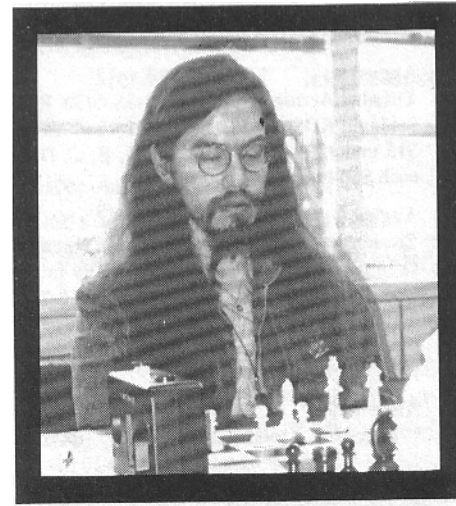
The Under-1800 section exhibited an even greater fighting spirit. Top ranked William Douglas (1767) fell to Peter Mueller (1390). Other big upsets in round one included Kenneth Kogut (1665) losing to Chris Glawe (1352), Wendell Edgington (1638) losing to Darrick Green (1505) and Chris Baumgartner (1545) losing to Asher Martin (1252). When the dust settled Jeff Jackson took top honor. The 4-1 scores of Kurt Bridgham (1631), Julie Oberweis (1594), Darrick Green (1505) and Chris Glawe (1352) was just enough to tie for the second place prize...□



Jim Oberweis contemplates his move while Helen Warren and Richard Verber look on.



Greg DeFotis donated \$1000 for this tournament in memory of Billy.



Al Chow visualizes his position or is he trying to catch a nap?

1994 U.S. OPEN August 7-19 Chicago

All US Open Events are at the Ramada O'Hare Hotel, 6600 N Mannheim, Rosemont, IL 60018. Except as otherwise noted, enter on site only. All prizes are guaranteed.

August 7-19 GPP: 200 IL
95th Annual U.S. Open. 12-SS, 50/2½, 20/1. **\$30,000 Guaranteed Prize Fund:** 5000-3000-2500-2000-1500-1400-1200-1000, 2200-2399 1000-800-600-400-200, Expert 900-700-500-300-100, A 800-600-400-200-100, B 700-500-300-100, C 600-400-200-100, D 500-300-100-50, E 300-200-100, Unrated 200-100-50. **Three convenient playing schedules** - Traditional: rounds at 7 pm each evening 8/7-12 and 8/14-19, Split: rounds 1-6 at 1 pm (8/7-12), rounds 7-12 at 7 pm (8/14-19) and Busy Player Special: start with appropriate score for rating (over 2399 4, M 3½, X 3, A 2½, B 2, C 1½, D 1, E ½ unrated ½) and play only rounds 7-12 (8/14-19) at 7 pm each evening. Note that all 3 schedules are merged by round 7. ½ point byes available in any round if requested by the day before the round, except that the total number of ½ point byes may not exceed your busy player percentage and byes for rounds 8-12 must be requested before the start of round 7 and may not be revoked. EF \$77 traditional, \$78 split, \$79 busy player by 7/29, ALL \$95 on site. Advance entry \$25 less for juniors under 19. REG: 6-8 pm 8/6, 9-11 am 8/7, 2-5 pm 8/7, 2-5 pm 8/14. You must register 2 hours before the first round you play. Sets and boards provided, bring a clock if possible. ENT: US Chess: Attention U.S. Open Entries, 186 Rt 9W, New Windsor, NY 12553. (800) 388-KING [5464] or (914) 562-8350. **NS W FIDE**

August 8 IL
Monday Cash Quad. 3-RR G/60. REG 9-9:45am. RDS 10-12-2. EF \$20, \$15 under 18. **\$5** 50 1st in each section.

August 8 IL
Monday Morning Rated Beginners Open 5-SS G/30. Open to unrated or provisionally rated below 1400. REG 9-9:45am. RDS 10-11-12:30-1:30-2:30. EF \$25, \$15 under 18, free to players joining USCF for first time. Chess books and membership prizes for all plus scores.

August 9 GPP: 10 IL
Tuesday Action Grand Prix 5-SS G/30. REG 9-9:45am. RDS 10-11:15-12:30-1:45-3. EF \$25, \$15 under 18. **\$5** 200-100, X, A, B, C, D, E, U each \$50 (must be 4 in class).

August 9 IL
Tuesday evening Rated Beginners Open. 4-SS G/30. Open to unrated or provisionally rated below 1400. REG 5:30-5:45pm. RDS 6-7-8:30-9:30. EF \$25, \$15 under 18, free to players joining USCF for first time. Book and membership prizes for all plus scores.

August 10 GPP: 6 IL
Wednesday Quick Grand Prix (QC) 7-SS G/15. REG 9-9:45am. RDS 10-10:45-11:30-12:15-1-1:45-2:30. EF \$25, \$15 under 18. **\$5** 200-100, 50 X, A, B, C, D, E, U (must be 4 in class).

August 10-11 GPP: 10 IL

Two Knights Grand Prix Tornado 4-SS G/60, REG 6-6:45pm. RDS 7-9, 7-9. EF \$25. under 18 **\$20.** **\$5** 200-100, X, A, B, C, D, E, U each \$50 (must be 4 in class).

August 11 IL
Thursday Cheap Quad 3-RR G/60. REG 9-9:45am. RDS 10-12-2. EF \$5. **\$5** Book prize to 1st in each section.

August 11-12 GPP: 10 IL
Two Day Grand Prix 4-SS 40/90, SD/30. REG 9-9:45am RDS 10-2, 10-2. EF \$25, under 18 **\$20.** **\$5** 200-100, X, A, B, C, D, E, U each \$50 (must be 4 in class).

August 15 IL
Friday Cash Octo 3-SS in 8-10 player sections. G/45. REG 9-9:45am. RDS 10-12-2. EF \$20, \$15 under 18. **\$5** 80-40 in each section.

August 12 IL
Friday Morning Rated Beginners Open 5-SS G/30. Open to unrated or provisionally rated below 1400. REG 9-9:45am. RDS 10-11-12:30-1:30-2:30. EF \$25, \$15 under 18, free to players joining USCF for first time. Chess books and membership prizes for all plus scores.

August 13 IL
USCF Awards Luncheon Noon.

August 13 IL
U.S. Open WBCA Blitz Championship RR in 12-16 player sections by rating. Qualifiers from each section move up to finals. EF \$25, \$20 under 18. **\$5** less to WBCA members. **\$5** 75% of EF returned as section and finals prizes, so everyone has a chance to win. REG 6-7 pm, start at 7:30. WBCA rated.

August 14 GPP: 10 IL
U. S. Open Sunday Mini-Tour 4-SS G/60. **\$5** G 200-100, X, A, B, C, D, E, U each \$50 (must be 4 in class). REG 9-9:45am. RDS 10-12:30-2:45-5:00. EF \$30, \$15 under 18. ICA membership \$14, under 19 \$8, (other states OK). An ICA Mini-Tour Event. Enter on site only. **NS W**

August 15-19 IL
Arnold Denker Tournament of State High School Champions Invitational.

August 15 IL
Monday Cash Quad 3-RR G/60. REG 9-9:45am. RDS 10-12-2. EF \$20, \$15 under 18. **\$5** 50 1st in each section.

August 15 IL
Monday Morning Rated Beginners Open 5-SS G/30. Open to unrated or provisionally rated below 1400. REG 9-9:45am. RDS 10-11-12:30-1:30-2:30. EF \$25, \$15 under 18, free to players joining USCF for first time. Chess books and membership prizes for all plus scores.

August 16 GPP: 10 IL
Tuesday Action Grand Prix 5-SS G/30. REG 9-9:45am. RDS 10-11:15-12:30-1:45-3. EF \$25, \$15 under 18. **\$5** 200-100, X, A, B, C, D, E, U each \$50 (must be 4 in class).

August 16 IL
Tuesday evening Rated Beginners Open. 4-SS G/30. Open to unrated or provisionally rated below 1400. REG 5:30-5:45pm. RDS 6-7-8:30-

9:30. EF \$25, \$15 under 18, free to players joining USCF for first time. Book and membership prizes for all plus scores.

August 17 IL
Wednesday Quick Cheapie (QC) 7-SS G/10. REG 9-9:45am. RDS 10-10:30-11-11:30-12-1-1:30. EF \$10, under 18 \$5. Book Prizes.

August 18 IL
Thursday Cheap Quad 3-RR G/60. REG 9-9:45am. RDS 10-12-2. EF \$5. **\$5** Book prize to 1st in each section.

August 18-19 GPP: 10 IL
Two Day Grand Prix 4-SS 40/90, SD/30. REG 9-9:45am RDS 10-2, 10-2. EF \$25, under 18 **\$20.** **\$5** 200-100, X, A, B, C, D, E, U each \$50 (must be 4 in class).

August 19 IL
Friday Cash Octo 3-SS in 8-10 player sections. G/45. REG 9-9:45am. RDS 10-12-2. EF \$20, \$15 under 18. **\$5** 80-40 in each section.

August 19 IL
Friday Morning Rated Beginners Open 5-SS G/30. Open to unrated or provisionally rated below 1400. REG 9-9:45am. RDS 10-11-12:30-1:30-2:30. EF \$25, \$15 under 18, free to players joining USCF for first time. Chess books and membership prizes for all plus scores.

August 20 GPP: 15 IL
U.S. Game/15 Championship (QC). 7-SS, Game/15. **\$2,050 Guaranteed Prize Fund.** **\$5** G 500(+trophy)-300-200, M, X, A, B, C, D, E each 150, trophy to top unrated. EF \$30, under 18, \$20, each \$10 more after 8/15. **\$5** discount to ICA members. REG 9-10am. RDS 10:30-11:15-12:30-1:15-2-2:45-3:30. ENT U.S. Game/15 Championship, PO BOX 157, Morton Grove, IL 60053. **NS W**

A GREAT PLAYING SITE

The Ramada O'Hare Hotel is the most popular chess tournament site in the Chicago area. This is *not "just another airport hotel!"* Yes, it's close to the airport, and yes, it has "O'Hare" in it's name, but it's not the typical airport hotel of recent U.S. Opens. How many hotels boast 2 tennis courts and a *9-hole golf course?*

Over a dozen eateries are within a ½ mile walk, including a McDonald's, a gourmet French restaurant, one of the top-rated seafood restaurants in Chicago and a couple of "family" restaurants. *Several are open late* for that *after-the-round* snack. *Downtown Chicago is only a ½ hour ride* by el' train, and if you have a car you'll find countless opportunities for shopping and other fun even closer. If not, we've even arranged discount auto rentals and group tours to help you make your Chicago vacation the best ever.

The playing rooms are spacious and well-lit. Even if you've played here before you'll be surprised to see the beautifully remodeled (right after the *Mid-America Class* in March) playing rooms. The guest rooms are comfortable with **special room rates** of \$65 single or double occupancy. Call 708-827-5131 for reservations.

For *discounts on airfare*, call *Accent on Travel* at-800-875-3223.

OAK PARK RIVER FOREST CHESS CLUB NEWS

by Ken Marshall

Match versus Chicago Industrial Commission Chess League: See the separate story in this ICB concerning this 15 board confrontation.

World Blitz Chess Association Tournament: Twelve players competed in this April 19 "Game/5", single round robin, WBCA-rated event. James Fagan, Ray Satterlee, and Robert Hansen shared first, second, and third places with 9-2 scores, while Art Zacher (6-5) was best 1999-1700 and Sam Henderson (6.5-4.5) was top 1699/below. Ken Marshall directed.

Grandmaster Tony Miles Simultaneous Exhibition: A 29 player field faced GM Miles at the April 26 "simul", which started at 8:15 p.m. The GM played rapidly, and in two and a half hours scored 27 wins, 2 losses, and 0 draws. OP-RF CC member Mark Engelen and non-member Florentino Inumerable each won in 32 moves.

Seventeen Club members participated in this event and helped make it a success. As to organizational support, John Nielsen, a veteran assistant to OP-RF CC President Ken Marshall at "simuls", once again was there when needed, while Club Vice President Don Winsauer, Mark Stamatakos, and others also helped out.

Here are the games of Inumerable (at 2170, GM Miles' highest rated opponent) and of Engelen (1620):

Simultaneous Exhibition -

White: GM Tony Miles (2643)

Black: Florentino Inumerable (2170)

1.c4 g6 2.Nf3 Bg7 3.d4 c5 4.Nc3 cxd4

5.Nxd4 Nf6 6.e4 O-O 7.Be2 Nc6 8.Be3 b6 9.O-O Bb7 10.f3 d6 11.Qd2 Re8 12.Rfd1 Rc8 13.Rac1 Qc7 14.Nd5 Qd8 15.Nxc6 Bxc6 16.Bd4 e6 17.Nxf6+ Bxf6 18.b3 Be7 19.Bb2 e5 20.Ba3 Bg5 21.Qc3 Bxc1 22.Qxc1 Re6 23.f4 Bxe4 24.fxe5 Rxe5 25.Bxd6 Qg5 26.Qxg5 Rxg5 27.g4 Rd8 28.h4 Ra5 29.a4 Bc2 30.Rd2 Bxb3 31.c5 bxc5 32. Rb2 Rxd6 0-1

Simultaneous Exhibition -

White: GM Tony Miles (2643)

Black: Mark Engelen (1620)

1.e4 g6 2.d4 Bg7 3.Nf3 d6 4.Be2 Nf6 5.Nc3 O-O 6.O-O Nbd7 7.Be3 e5 8.h3 Kh8 9.Qd2 Ng8 10.Rad1 f5 11.Bg5 Qe8 12.exf5 gxf5 13.Nd5 Qg6 14.Nxc7 Rb8 15.dxe5 Nxe5 16.Nxe5 dxe5 17.Be3 f4 18.Bxa7 Bxh3 19.Qd5 e4 20.g3 fxg3 21.f4 Bxf1 22.Rxf1 Rbd8 23.Qh5 Qc6 24.Nb5 Qxc2 25.Na3 Qxb2 26.Nc4 Qxa2 27.Bc5 Nf6 28.Qh3 Qxe2 29.Ne5 Nh5 30.Bxf8 Rxf8 31.Rc1 Bxe5 32.Rc8 Qh2+ 0-1

USCF "Game/15" Tournament:

Art Zacher won this 10 player, five round tourney on May 3 with a 4-1 score. Bob Stoltz and Bill Cox (each 3.5-1.5) tied for second and third. Jim Kelly, Bill Barker, and Richard Hornor (all 3-2) split the Under 1800 prize.

ZINGHEIM WINS 1994 OP - RF CC SPRING OPEN

A record 56 players (twice as many as in 1993) took part in the Oak Park - River Forest Chess Club Spring Open, held on April 9 and 10, 1994, at the Dominican Conference Center, 7200 W. Division (Harlem and Division) in River Forest. The large turnout made it possible to increase the \$265 prize fund (which was based on 30 players) by 50%. Top rated Scott Zingheim (2302) pocketed the \$150 first prize with a 5-0 result. His

perfect score included a final game victory over OP-RF CC member Ray Satterlee, the only other player with four points after four rounds. Zingheim caused a minor sensation the morning of April 10 by bringing in more than 125 chess books and selling them for up to 95% off the cover prices. He said he had just acquired a computer data base containing 335,000 games, and so no longer needed his chess library.

Satterlee and OP-RF CC member James Fagan tied with Jamie Gregory for second and third places at 4-1. Also scoring 4-1 to share second and third as well as Class A money were Club member Bob Stoltz, Thavron Sukcharoenphon, and Jim D. Oberweis. Five players ended up 3-2 to split Class B honors: Malcolm Knox, Kirk Israelsen, Randall Swanson, James Miel, and Justin Sadauskas. Scott Silverman and Gary Mitchell each had a 3-2 results to top Class C. Aubrey Tucker, whose 1189 rating ranked him 46th on the wall chart (eighth among the Class D/E/Unrated players) took home the D/E/Unrated prize with a 3-2 score. Tucker was the tournament "giant killer", beating Oberweis (1878), OP-RF CC Vice President Don Winsauer (1714), and Wilfredo Gapuz (1700). Club President Ken Marshall directed (with help from Winsauer and Stoltz at registration).

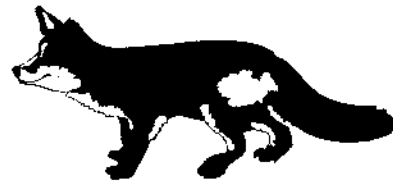
Here is one of Tucker's upset wins.

White: Aubrey Tucker (1189)

Black: Wilfredo Gapuz (1700)

1.e4 d6 2.b3 g6 3.Bb2 Nf6 4.Nf3 Bg7 5.Be2 Nc6 6.O-O O-O 7.d3 b6 8.Nc3 Bb7 9.Rb1 a5 10.Re1 e5 11.Qd2 Nd7 12.Bf1 f5 13.exf5 Rxf5 14.Ne4 Ne7 15.Nfg5 Bh6 16.h4 Nf8 17.Bc1 Bxe4 18.dxe4 Rf6 19.Bc4+ Kg7 20.Qe2 Qd7 21.Rf1 c6 22.f4 b5 23.fxe5 Rxf1+ 24.Qxf1 bxc4 25. Qf7+ Kh8 26.Bb2 Qa7+ 27.Kh2 Bg7 28.exd6 Bxb2 29.dxe7 Be5+ 30. Kh1 Bg7 31.e8=Q Qxf7 32.Nxf7+ 1-0...□

CHES ON THE



ZINGHEIM & STEIN TIE IN LOW COST OPEN #2

The Fox Valley Chess Club hosted the second in a new series of monthly chess tournaments. These tournaments feature low entry fees, a one day 4-SS G/60 format, ICA tour points and a good playing location. This event was held on April 16, and drew 39 players including one master, five experts and four class A players. The question on everyone's mind was "Could last month's winner Guy Kittilsen pull a two peat?"

The first round was uneventful as all the seeded favorites won as expected and Guy Kittilsen was tied for first after one round. Scott Zingheim and Peter Stein won their matches easily.

Two underdogs drew blood in the second round. Expert Peter Conner (2003) was held to a draw by Ken Pedersen (1533). The second upset occurred when Fox Valley Club member Rudy Padilla (1600) tripped up Joe Cima (1954). Scott, Peter and Guy were all still tied for first.

More blood for the underdogs in round three! Guy Kittilsen (1833) beat Expert David Hurchalla (2151), while Steve Decman (1800) lost to Joe Stevens (1285).

Guess what? The final round pairings saw Peter Stein playing last

months winner Guy Kittilsen while Scott Zingheim was paired against Hector Hernandez. These four players had the only perfect 3-0 scores. Could Guy beat the odds again?

In an up and down battle Scott Zingheim (2302) defeated Hector Hernandez (2088) and Peter Stein (2188) easily handled Guy Kittilsen. Peter and Scott ended the tournament with the only 4-0 scores.

A nine way tie for 3rd place resulted when Hector Hernandez, James Condron, Guy Kittilsen, David Hurchalla, Joe Cima, Malcom Knox, Terry Schofield, Kirk Israelsen and Gordon Dobos all finished with 3-1 scores. Guy and Joe split the Top A prize, while Malcom, Terry and Kirk split the Top B prize. Dobos Gordon earned the Top C prize. The Top Unrated prize was shared by repeat winner Mody Devagna and Charles Jones, who finished with 2-2 scores.

The event was directed by Senior Master Richard Verber and he was assisted by Joe DeCort...□

ERIC THE ERRIBLE REINS TERROR ON FIELD

Eric "Shirts" Ortega reigned supreme when the dust settled at the Fox Valley Chess Club's April Quick Chess Tournament. Eric scored a perfect 3-0 on his way to victory defeating Kirk Israelsen, Ted Craig, and the recent winner of the Mid-

America Class Championship - Class B section James Miel.

There was a log jam at second place with Jim Oberweis, James Miel, Mike Flynn, Kirk Israelsen, Scott Bradley and Ted Craig finishing with 2-1 scores. The April G/15 Monday Night Rated Chess tournament drew sixteen players and was directed by Jim Oberweis...□

DICK VERBER KING OF MONDAY NIGHT RATED CHES

The Fox Valley Chess Club holds each month on the third Monday night a rated Quick Chess Event. Everyone is welcome to play. The May event drew sixteen players and was directed by Joe Oberweis.

The first round was uneventful with all the ranked favorites winning. The second round, however, was another matter when Kirk Israelsen (1545) upset current club champion Jim Oberweis (1814) in a convincing victory, while Steve Decman (1811) was also defeated by Dave Carson (1500). T.V. Weber (1610) fell victim to Bob Renaut's (2006) Queen sacrifice and Kingside assault. In the final round, Dick Verber playing the Black side of the Modern Defense weathered the over aggressive piece sacrifice by Bob Renaut to claim a clear first place. Bob Renaut, Jim Oberweis, Steve Decman and T.V. Weber tied for 2nd...□

An American's View of Chess in Spain

by Dr. Eugene Martinovsky

Spain is a very good country full of art, friendly people, pleasing scenery, and also chess. I was in Spain between January 4th and 31st this year with my 24 year old son Charles and played at tournaments in Sevilla and Linares.

In between tournaments I did sightseeing while my son did some bicycling. Spain is very good for bicycling as there are many enthusiasts and the weather is good for it.

Linares is a small town but has the richest chess history. The weather in Linares was half rainy and half the time sunny, but there was no snow! Senor Luis Rentero Suarez made it so by organizing a top-level tournament which takes place every year towards the end of February and beginning of March. This tournament usually has the presence of World Champions Kasparov and Karpov in addition to such aspiring players as Ivanchuk, Anand, and Gelfand. They call Linares the Wimbledon of Chess and everybody in Spain knows it! I played in a different tournament held January 7-15 called the Anibal Open. There were 11 Grandmasters including Ehlvest, Suba, Olafsson, Damljanovic, Ubilava, Petursson, A. Rodriguez along with 13 International Masters. The tournament was playing in the same hotel where the most famous tournament is held in February and March. The hotel is actually owned by Mr. Luis Rentero Suarez himself, who also owns, people say, half the town of Linares. He is a busy impeccably dressed gentleman who is very helpful to the chessplayers. The results were as follows: Svidler (Russia) 7.6 points (15 year old kid who played the White side of the open Sicilian like a genius

and beat all experienced players with it.) Rodriguez, Ragozin, Levin, and Korneev 7 points, Gonzalez and Sorin 6.5 points, Foisor, Petursson, Dimitrov, Pogorelov, Komljenovic, Spangenberg, Henandez, and Todorevic 6 points, Ibragimov, Nedobora, Suba, Damljanovic, Olafsson, Galego, Frois, Ubilava, Atalik, Frez. Aguado, and myself with 5.5 points.

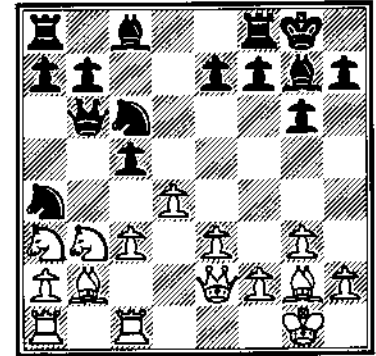
My score of 5.5 out of 9.0 points was not too bad. However, the problem with my score is that I beat all Spanish players +4 -0 =0 (5-0 counting a forfeit). but with Grandmasters my score was a terrible +0 -3 =0. I lost to Ehlvest, Suba, and Amador Rodriguez while drawing with H. Olafsson. It is not easy to play against Grandmasters, but I still very much enjoy playing with them. Ljubojevich saw games I played and told me later that I am building good positions but appear to be rusty - not practicing enough. Ljubojevich makes his home in Linares with a Spanish wife and was very friendly and hospitable to everyone, especially his compatriots from Yugoslavia. He is very much liked in Spain by everyone and is quite enthusiastic about chess.

White: Martinovsky, E (2325)

Black: Olafsson, H (2535)

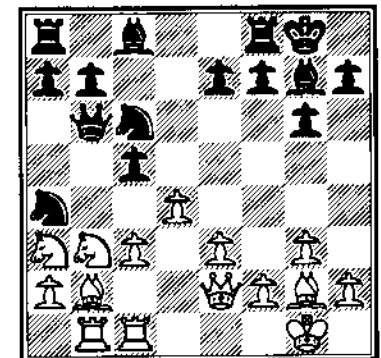
Linares Open "Anibal" (9)

1. d4 e6 2. e3 g6 3. g3 ag7
4. ag2 O-O 5. O-O d5 6. c4 dxc4
7. Ba3 c3 8. bxc3 c5 9. e3 dc6
10. We2 dd5 11. ab2 Wa5
12. Efc1 db6 13. dd2 da4
14. db3 Wb6

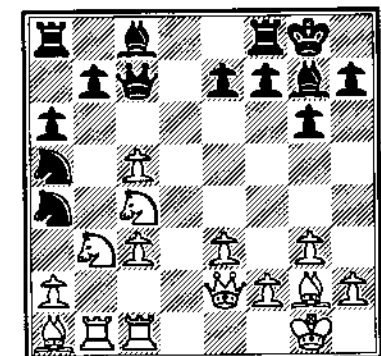


This is all the latest theory, but I didn't know it. My next move is apparently not in theory.

15. Hab1 TN



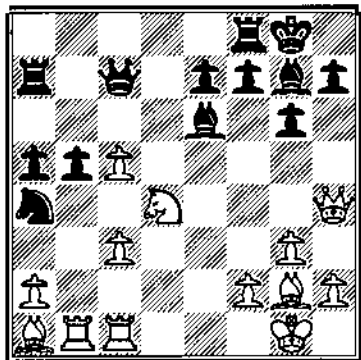
15...a6 16. Qa1 Wc7 17. dxc5
da5 18. dc4



Here I offered a draw but

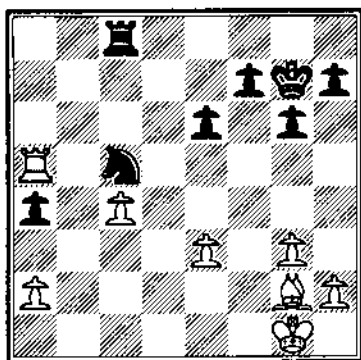
Olafsson flatly refused it.

18...g4 19.f1 f5 20.e4
 xc4 21.xc4 b5 22.b4
 d7 23.e5 a5 24.h4 a7
 24...Re8? 25.e6 xe6 26.d4



Here I thought my position was overwhelming but this turned out not to be so.

26...c4 27.xb5 xb5
 28.xb5 xc5 29.c4 xa1
 30.xa1 d8 31.d5 e5
 32.ab1 c8 33.h6 e6
 34.g2 d8 35.e3 xe3
 36.fx3 c8 37.b8 ac7
 38.xc8+ xc8 39.b5 a4
 40.a5 g7

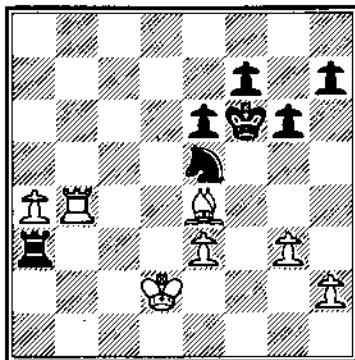


The time trouble was over and again I thought I should be winning but again this turned out not to be so. Actually, I think I started making some wrong moves here. 41.Kf1 was better but I thought I'd attack a4 with Bg2.

41.f3? f6 42.f1 c7
 43.e2?

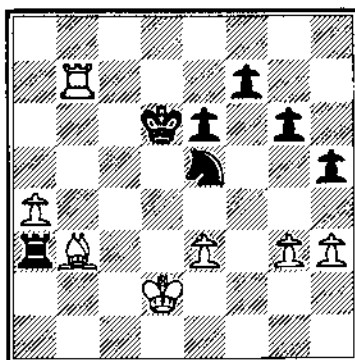
43.Kel! was better.

43...d7! 44.xa4 b6
 45.b4 xc4 46.a4 e5
 47.e4 c3 48.d2 a3



Black managed to activate his pieces quite well and I didn't like it at all!

49.h3 h5 50.c2 e7
 51.b7+ d6 52.b3



How can I make use of my outside pawn?

52...d7 53.c3? c5
 54.b2 xa4! 55.xa4
 xb7 56.c3

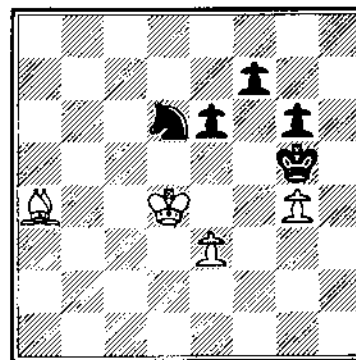
56.Kc1 is better.

56...e5 57.g4! hxg4 58.hxg4
 f6 59.d4 g5 60.d1 d6

Again time trouble is over but I seem to be lost now

because Black threatens continuing Ne8/Nf6/Nxg4 +. However, I found the only move and the only plan!

61.a4!



Here Olafsson sealed his move 61...Kxg4 and I had to analyze the position. Atalik and Russian Ibraginov helped me some and I found a draw if he takes the pawn as he did. He has better chances by playing 61...f6!

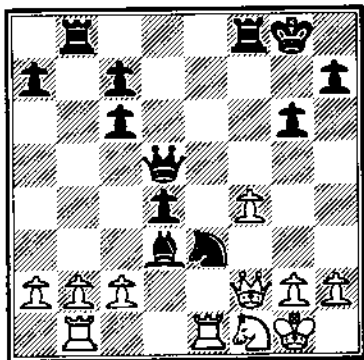
61...xg4 62.e5 f5 63.f6
 h6 64.d1+! h3 65.g7!
 g5 66.xh6 g4 67.g7 g3
 68.f3 g2 69.xg2+ xg2
 70.xf7 e5 71.e6! f3
 72.xe5 xc3

Olafsson was really trying to revenge himself for the defeat in Philadelphia and he was quite angry that he couldn't beat me. I was very happy to save the game but earlier in the game I thought I was winning easily. 1/2-1/2

White: Llanes, M (2115)
 Black: Martinovsky, E (2325)
 Linares Open "Anibal" (3), 1994

1.e4 e5 2.f3 c6 3.b5 g6
 4.d4 exd4 5.g5 e7 6.xe7
 gxe7 7.dxd4 O-O 8.c3 d5
 9.xc6 bxc6 10.d3 f5

11.exf5 ♖xf5 12.O-O ♜b8
 13.♜b1 ♗h4 14.f4 ♜d6
 15.♞e1 ♗f5 16.♞f2 d4
 17.♗e4 ♜d5 18.♗d2 ♗e3
 19.♞fe1 ♗f5 20.♗f1 ♗xd3



21.cxd3 ♞xa2 22.♗xc3 dxc3
 23.♞xc3 ♜xb2 24.♜xb2 ♞xb2
 25.d4 ♞b5 26.♞e6+ ♞f7
 27.♞e8+ ♞f8 28.♞e6+ ♞f7
 29.♞e8+ ♞g7 30.g3 ♜d5
 31.♞e5+ ♞g8 32.♞e8+ ♞f8
 33.♞e6+ ♞g7 34.♞xd5 cxd5
 35.♞a1 ♞a8 36.♞a5 ♞f6
 37.♞f2 ♞e6 38.g4 c6 39.♞g3
 a6 40.♞h4 h6 41.♞c5 ♜d6
 42.♞a5 ♞f8 43.♞g3 ♞a8 44.h4
 ♞c7 45.f5 g5 46.hxg5 hxg5
 47.♞f3 ♞b6 48.♞a2 a5
 49.♞e3 ♞h8 50.♞f2 ♞c7
 51.♜d3 ♜d7 52.f6 ♞e6
 53.♞f5 ♞f8 54.♞xg5 ♞xf6
 55.♞e5+ ♜d6 56.♞e3 ♞f2
 57.♞g3 ♞a2 58.♞g1 ♞a3+
 59.♞c2 ♞a4 60.g5 ♞c7 61.g6
 ♞c4+ 62.♜d3 ♞f8 63.♞e1 a4
 64.♞e6 ♞g7 65.♞d6 ♞c1!
 66.♜d2 ♞g1 67.♞xc6 a3!
 68.♞c1 ♞xc1 69.♞xc1 ♞xg6
 70.♞c2 ♞f5 71.♞b3 ♞e4
 72.♞xa3 ♞xd4 73.♞b2 ♜d3
 0-1

The tournament in Sevilla took place between January 20-29 at the more luxurious and expensive Hotel Melia Sevilla. The weather in Sevilla was perfect; sunny every day without a single cloud ant between 60-70 degrees. Sevilla has fantastic monuments, cathedrals, plazas, parks,

and remnants of Arabic rule. The tournament was larger than in Linares but my score was the same 5.5 out of 9.0. The winners were Spraggett, Suba and Miles with 7.5 points, Azaiparashvilli, Cramling, Ehlvest, Campora, Mageur, Riva, Vasquez, Ubilava, and Franco with 7 points and numerous others at 6.5 points.

What is nice in Spanish and European tournaments is that the pieces, boards, and clocks are set and waiting for you in the hall. The tournament directors press the clock to start the games and are watching the Zeitnot play. You know the pairings some eight hours ahead of time and sometimes even the night before. There is only one game per day which gives you plenty of time to rest, sleep, eat leisurely, prepare for the game, and sightsee.

In Sevilla, the sightseeing is a delight. Also Oranges grow on trees in parks or on the streets. Our hotel owner gave oranges free to all comers. Food is otherwise expensive but also good. Spaniards are well dressed, friendly, and helpful, but very few speak English! Crime is very low, with the street cafe's, and other eating places full of people. I would say that in Madrid at night you see more people on the street than in New York, and it safer to mingle with the crowds. Overall I enjoyed playing chess and sightseeing in Spain and may go back there again next year!

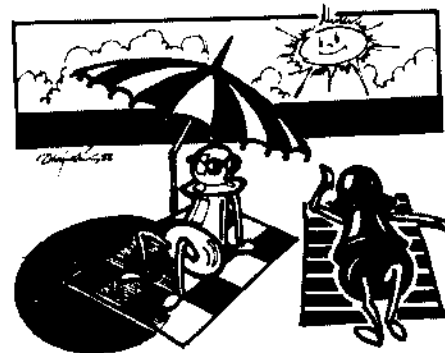
White: Fuhrer,J (2275)
 Black: Martinovsky,E (2325)
 Sevilla Open (02), 1994

1.e4 e5 2.♗f3 ♗c6 3.♞b5 g6
 4.O-O ♞g7 5.c3 a6 6.♞a4 d6
 7.d4 ♞d7 8.♞e1 ♗ge7 9.d5
 ♗b8 10.♞xd7+ ♗xd7 11.a4
 O-O 12.♞c2 h6 13.♗bd2 f5
 14.c4 a5 15.♞b1 ♗c5 16.b3 f4
 17.♞a3 b6 18.♞bd1 g5 19.h3
 ♞h8 20.♗b1 ♜d7 21.♗h2
 ♗g8 22.♞xc5 bxc5 23.♞d3
 ♞f6 24.♞h1 h5 25.♞e2 ♞h6

26.♞g1 ♗f6 27.f3 ♞g8 28.♜d2
 g4 29.fxg4 hxg4 30.♗xg4
 ♗xg4 31.hxg4 ♞xg4 32.♞f3
 ♗f6 33.♞ef1 ♞h4 34.♗c3
 ♞h2+ 35.♞f2 ♗h4+ 0-1

White: Martinovsky,E (2325)
 Black: Dominguez,A (2090)
 Sevilla Open (09), 1994

1.d4 ♗f6 2.♗f3 c5 3.e3 g6
 4.b3 ♞g7 5.♞b2 O-O 6.♗bd2
 b6 7.♞e2 ♗b7 8.O-O cxd4
 9.♗xd4 d6 10.c4 ♗c6
 11.♗xc6 ♗xc6 12.♗f3 ♜d7
 13.♗d4 ♗b7 14.♞c2 ♞ac8
 15.♞ac1 h5? 16.♞fd1 a6
 17.♜d2 ♗e4 18.♞b4 ♞c7
 19.f3 ♗c5 20.♞e1 ♞b8 21.e4
 ♞fd8 22.♞c3 e6 23.♗c2 ♗xc3
 24.♞xc3 e5 25.♞e3 ♞c7
 26.g3 ♞g7 27.♗f1 ♞h8 28.h4
 ♞he8 29.♞d2 ♞cd8 30.♞cd1
 ♗c8 31.♞h2 ♞b8 32.♗b4 ♗b7
 33.♗h3 ♞c7 34.♞g1 ♞e7
 35.♗c2 ♞c7 36.♞gd1 ♞a8
 37.♞e1 ♞h8 38.♗e3 ♗e6
 39.♗c2 ♗c5 40.♗b4 ♗b7
 41.♞e3 ♞he8 42.♗d5 ♗xd5
 43.♞xd5 ♗e6 44.♗xe6 fxe6
 45.♞5d3 ♞d7 46.♞g5 ♞c5
 47.♞g2 ♞c6 48.♞xd6 ♞xd6
 49.♞xe5+ ♞f7 50.♞xd6 ♞c7
 51.♜d4 ♞c5 52.♞d7+ 1-0



READER'S SHOWCASE

BEACONS OF LIGHT IN THE DUNGEON

By Ike Evans III

I am confined at the U.S. prison in Marion, Illinois and have the privilege of playing my first postal game with a USCF rated Expert. The game is a correspondence game which I asked Bob Renaut to play. I have had no instruction in chess, except for reading a few magazines and books. Yet even as I learn a few moves from the magazines and books, chess remains a mystery to me. The underlying strategy of an offensive move or defensive move is still unclear. Nevertheless, good innovative play could very well result in strong positional play. With that in mind I submit my first postal game to the ICB, a source of enlightenment to chess play. I would like to give something back to chess which I am helped by.

Editor's note: Ike contacted me in early 1993 looking for an opponent to play postal chess and for some help in learning more about chess. I agreed to both! Since that time I have been corresponding with Ike and I have learned a lot about him and life in prison.

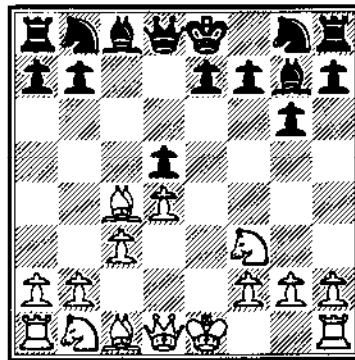
White: Isiah Evans, III (unrated)
Black: Renaut, R. (2191)
Postal Match, 1993-1994
Notes by Ike Evans unless noted

1.e4 g6 2.d4 ♗g7 3.♖c4 c6
4.♟f3 d6

At this state of the game, I had

no knowledge of the type of game black is playing. I only thought it somewhat unusual Black was not trying to control the center, which to my knowledge is basic chess. Development by 4.Nf3 gives added protection to the d4 pawn, while controlling dark squares, i.e. h4, g5, e5. Additionally, development of the knight to f3 leave the c pawn unencumbered, in the case of a challenge to the e4 pawn.

5.c3



It should be observed how the movement of the c pawn to c3 opens lines for the queen to attack on the queen side.

5. ... d5 ?!

Not knowing Ike's chess ability, I gambled on moving this pawn twice, since 5. c3 takes away the best square for White's knight at b1 and I attack the bishop forcing it to move again. RRR

6.exd5 cxd5
7.♗b5+ ♗d7 8.♗b3

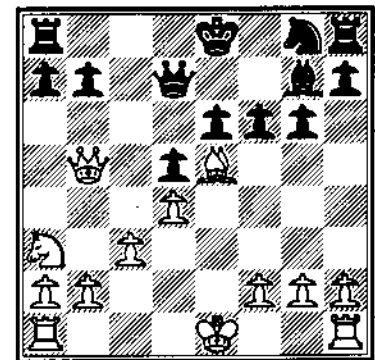
Note Black's c file is opened and instead of exchanging bishops.

White chooses to support it with the queen to b3 which brings pressure on Black's d pawn.

8... ♗xb5 9.♗xb5+ ♗d7
10.♗a3!?

Generally speaking the knight is not well placed on the "rim". It limits the potential squares it can cover and Black has no intention of exchanging queens and furthering white's development (RRR) [10.Qxd7+ Nxd7 11.O-O Ngf6= This line would be considered equal for both players]

10... ♗c6 11.♗f4 e6 12.♗e5
♗xe5 13.♗xe5 f6



Black avoids the trade of White's bad bishop at the cost of leaving the e pawn backwards on an open file (RRR)

14.♗xd7+ ♗xd7 15.♗g3 h5
16.c4 ♗e7

On 16...h4 17.cxd5 hxg3 18.dxe6+ Kxe6 19.d5+ Kxd5 20.O-O-O+ I thought this position would be very dangerous for the Black monarch and worth the sacrifice of the bishop. [That might be true in an over

the board game, but this was postal chess and White's attack is illusionary. RRR]

17.cxd5 dxd5 18.dxb5 a6

I considered this position to be favorable for Black. I have a strong knight post and a White pawn at d4 as a target RRR

19.d6

White heads into the following thinking a bishop and knight are worth the Black rook. This is a mistake and clearly costs him the endgame. RRR

19...h4 20.f7 hxg3 21.dhx8 gxf2+ 22.fxf2 Hxh8 23.g3 g5 24.Had1 f5 25.h3

Note at this juncture in the game, White has given up the two pieces for the rook. I believed that the Bishop could be rendered useless if I could get my pawns all on White squares. [Ike misses the point that Black's 2 pieces for the rook gives Black more mobility and flexibility, plus I have an extra pawn to boot, RRR]

25...Rh4 26.b4 ?

White overlooks the fact that the d pawn is hanging. RRR

26. . . . dxd4 27.Rxd4 Rxd4

White resigns. I apparently made the costly mistake of misplacing Black's rook after his 25th move Rh4 (I placed it on h5) and it was not until four moves later that it dawned on me. I trust this game should be of interest to someone. Chess for Ike Evans and reading the Illinois Chess Bulletin are beacons of light in this dungeon of darkness. If you are interested in contacting Ike Evan III, you can write him at:

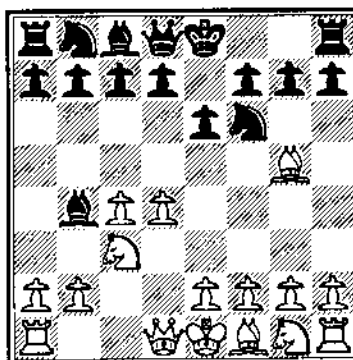
Mr. Ike Evans III
Reg No. 80146-020
U.S. Penitentiary
P.O. Box 1000
Marion, IL 62959

Editor's Note: White is really busted after the pawn at d4 falls even if White doesn't drop his rook. The Black e pawn and the superior mobility of Black's two piece vs the White rook will make it impossible for White to stop the e pawn without greater loses.

One more point, if you do write Ike, don't forget it is expensive to play postal chess for inmates and your financial assistance is greatly appreciated.

**White: Marema, David -1990
Black: Suckcharoenthon-1900
Mid America Class, Chicago
Notes by A. Watson unless noted.**

**1.d4 f6 2.c4 e6 3.dxc3 b4
4.g5**

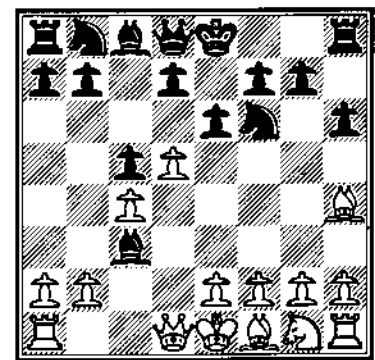


This interesting variation of the Nimzo-Indian derives its name from Vladimir Zak, the Leningrad master and trainer of former World Champion Boris Spassky. It leads to interesting play and has in recent history been favored by Timman.

4...h6 5.dh4 c5!

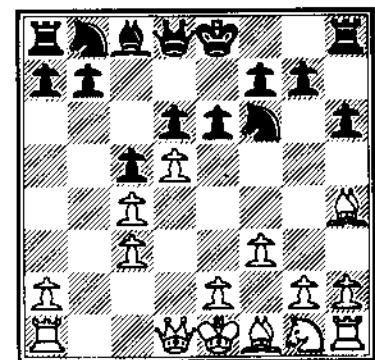
Black strikes at the central dark squares in order to take advantage of the absence of White's bishop from the Queenside.

6.d5 dxc3+?



Though frequently seen, it is advisable to delay this move by first playing the more flexible 6...d6.

7.bxc3 d6 8.f3 ?



A possible defect to Black's last move is the continuation 8.dxe6! when Black may continue 8...fxe6 9.e3 O-O 10.Nf3 d5 11.Be2 Nc6 +=, or 8...Bxe6 9.e3 Nbd7! 10.Bd3 Qa5 11.Ne2 d5 12.cxd5 Nxd5 13.O-O O-O += as in Cherepkov- Nikitin, 1958

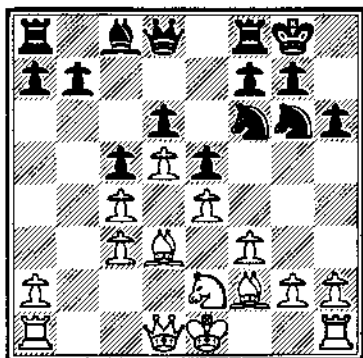
**8...e5 9.e4 dxd7 10.d3 f8
11.d2**

Lukin-Kasimovas, Spartakiade 1967 continued with the less good 11.Bc2 Ng6 12.Ba4+ Kf8! 13.Bg3 Nf4 14.Bxf4 exf4 15.Ne2 Nh5 16.g4 Qh4+ 17.Kd2 Nf6 18.Qg1 Qh3 19.Rf1 g5 20.Qf2 Bxg4 when Black held a clear advantage.

11...d6?

Theory also considers 11...g5.

12. ♖f2 O-O?



This move finally leaves book but initiates an incorrect strategy. In this closed position, castling is less important than first containing White's mobile pawns. Best was 12...h5 13.Ng3 Nf4 14.Bf1 h4 13.Ne2 g5 =.

13. ♖d2 ♖e8 14.g4!

This clarion call has announced that the assault against Black's castled position is now beginning in earnest.

14... ♗d7 15.h4 b6?

A waste of time. From here on in the game is played on the "e" thru "h" files. Marema

16.g5 h5!?

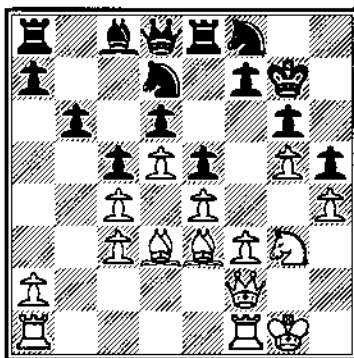
Black makes a good effort to keep the Kingside closed. If 17.Ng3 Nf4 18.Ne3 g6!? 19.Bxf6 exf4 20.Qxf4 Ne5 21.Be2 Ba6 and Black has good play.

17. ♗e3! ♗g8?

Black adopts the ill-advised strategy of passive defense and justifiably gets crushed in a mere 13 additional moves. As discussed earlier, better chances were offered by continuing to restrain f4 with the Ng6. 17...Qe7 was to be preferred.

18. ♗g3 g6 19.O-O ♖g7

20. ♖f2 ?



Dave feels that this is a good move but I'm not so sure. More accurate to me seems 20.Rg2! restraining f6, when White can play both rooks to the f-file and quickly create serious threats to the pawn of f7.

20... ♖e7 21.f4 exf4 22. ♗xf4 f6 ?

White has such an overwhelming superiority of force on the kingside that Black should never consider opening additional lines here. After the correct 22...Ne6 23.Bxe5! dxe5 he has chances to defend.

23. ♖ae1 ♗h7 24.gxf6+ ♗hxf6 25.e5!

Dave notes that this "is the only logical continuation, but still a difficult move to make." He is correct, but it is also an excellent move which unleashes his King's bishop and frees the square e4 for White's knight.

25...dxe5?

Dave correctly sees that this is a critical position. He gives the continuation 25...Nxe5 26.Bxg6! Kxg6 27.Qc2+ Kf7 [27..Kg7 28.Bxe5 dxe5 29.Rxf6 +-] 28.Bxe5 dxe5 [not 28.Bg5 for Nf3+!] 29.Qh7 Kf8 30.Qg8 +-

26. ♖g2!

This is the most fun I've had

in a long time! The text threatens

27.Nf5+ and I knew my opponent would plant his knight in my camp [covering f5 with the Bc8] Marema.

26... ♗g4? 27. ♗xg6!!

This move totally destroys the Black monarch's cover, after which there is no salvation from the onslaught of all White's active pieces.

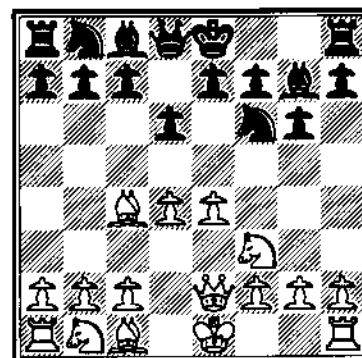
27... ♖xg6 28. ♖e4+ ♖f7

28...Kg67 is followed by 29.Nh5+.

29. ♖h7+ ♖f8 30. ♗h6# 1-0

White: Johnson, Eric(1794)
Black: Ramarez, R.(1741)
Chicago Amateur Under 1800
Notes by A. Watson unless noted.

1.e4 g6 2.d4 ♗g7 3. ♗f3 d6
4. ♗c4 ♗f6 5. ♖e2

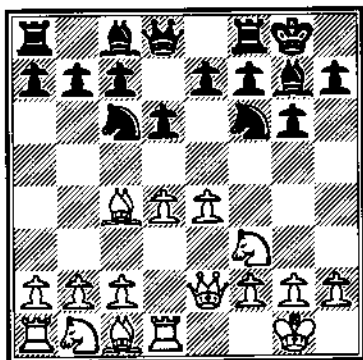


The seemingly aggressive 5.e5 is premature given White's lack of development and turned out badly in Ornstein- Sigurjonsson, Graz 1972 after 5...dxe5 6.Nxe5 O-O 7.O-O Nbd7 8.Bf4 Nb6 9.Bb3 a5 10.c3 Bf5 11.Nbd2 Nfd5 12.Bg3 a4 13.Bc2 a3!

5...O-O 6.O-O ♗c6 ?

The alternatives 6...c6 and 6...Bg4 are regarded as better.

7.♖d1?

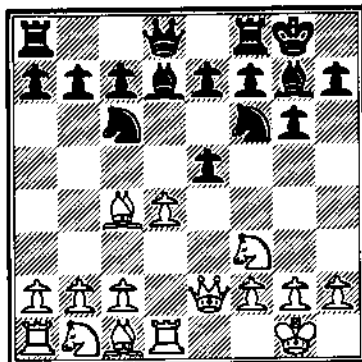


This rook is developed prematurely. necessary to maintain White's advantage was the simple 7.h3 which would have restricted Black's development of the Bc8 while safeguarding d4.

7...♗d7?

Necessary was the aggressive 8...Bg4! 9.e5 Nd7 10.e6 Nb6 11.exf7+ Kh8 12.Bb3 Nxd4 when Black's powerful pressure would have forced the collapse of White's once proud center.

8.e5 dxe5?



This thoughtless capture fully justifies the development of White's rook on move seven. However, even after the superior 8...Ng4 9.e6! White's advantage would be substantial.

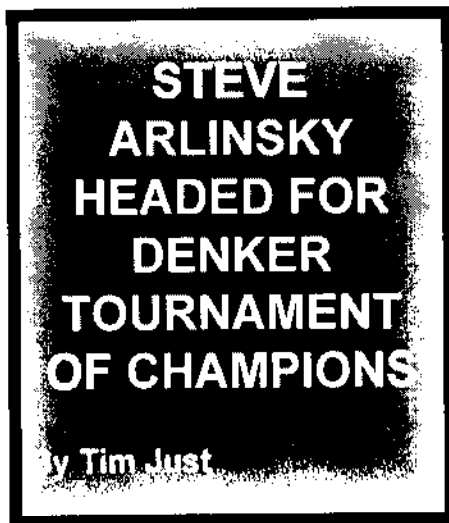
9.dxe5 ♖c8

As on the last move, any knight retreat would allow the

devastating 10.e6! winning a piece due to the pin on the d-file.

10.exf6 ♗xf6 11.♗c3 e6
12.♗e4 ♗g7 13.♗c5 ♗e8
14.♗xe6!

This deadly coup winning an exchange on f8 forces an early resignation. A sharp and crisp ending to relatively well-played game by Eric. 1-0 ...□



Steve Arlinsky's score of 4.5 at the ICA Junior Invitational held on May 21-22, 1994 at the Clarion hotel in Rosemont, Illinois earned him the right to represent Illinois at the Denker Tournament of High School Champions. The Denker tournament is run as a two day event at the U.S. Open each year. One high school student from each state is allow to participate for top prizes of college scholarships. This year's U.S. Open and the Denker tournament will be held at the Ramada O'Hare in August.

On the way to claim first place Arlinsky (2131) beat Alex Burda (1493), Allen Lee (1521) Julie Oberweis (1594), and Damon McCoy (1406). Steve drew with second ranked Gennady Gertsman (1744) in round 3.

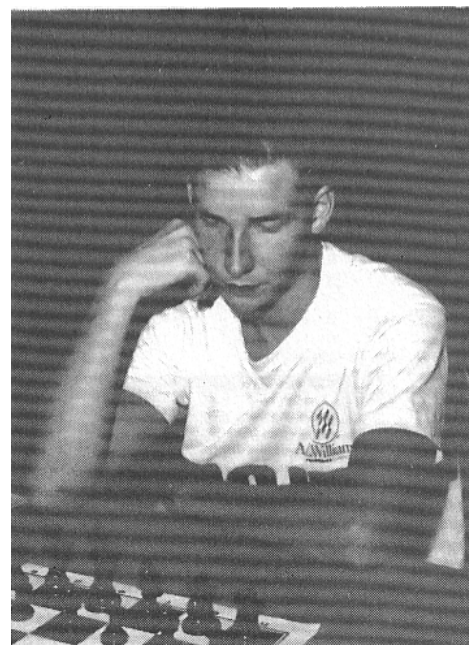
Arlinsky's romp to the top spot in the tournament had a little help from Julie Oberweis the last round. Both

Arlinsky and Gertsman sported a 3.5-.5 score going into round five. If both players won their contests, they would tie for first. Only one of them could claim the first place prize of representing Illinois at the Denker event. The tie breaker would be an Action Chess playoff game between the two young men. Steve finished his round 5 game early on with a victory. Gennady, playing the Black pieces, now had to beat Julie Oberweis in order to grab a piece of first place. Julie's attack took home the point for her and denied Gennady a share of top honors.

All of the thirteen players who accepted one of the many ICA invitations to participate in this tournament received a one year Junior ICA Membership. Those players completing the event were awarded a chess book donated by the Warren Junior Chess Program.

The ICA would also like to thank Juan Torená Crawford, Martin Wauck, Andrew Whittaker, Joseph DeVore, Jonathan Bonnell, Paul Iutzi, and Ben Lucas for accepting their invitations to the tournament.

Al Losoff organized the event for the ICA. Tim Just directed...□



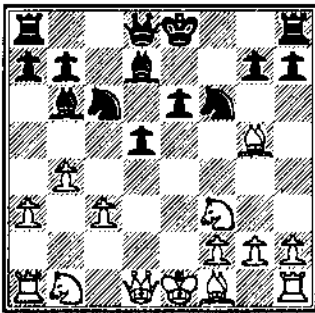
Steve Arlinsky winner of the Illinois Invitational Chess Tournament.

READERS RETORTS.

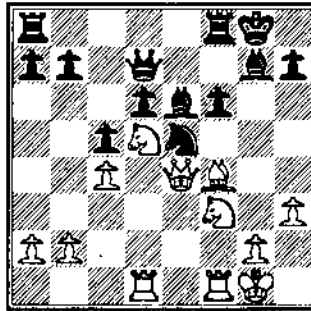
Here is your chance to experience the heat of competition, the thrill of victory or the agony of defeat! These positions have been selected from recent games contributed by you, the reader. Send your "RETORTS" to Alan Watson or Bob Renaut for inclusion in the next issue. There was a correction to last months column. Mark Brodie was White in the game not black. I apologize for any confusion caused by this error.

Can you find the "RETORT?"

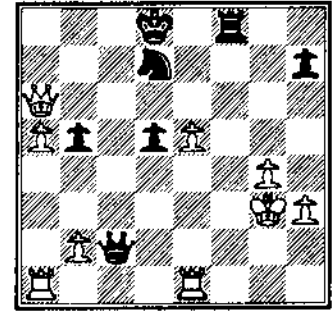
(1) Black to move.
Condrin,J - Wallach



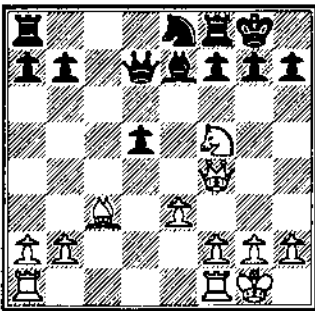
(3) White to move.
Adams, - Formanek,E



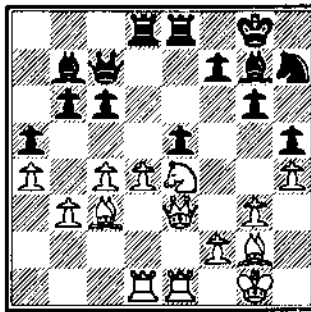
(5) White to move
Martinovsky,E- Wallach,



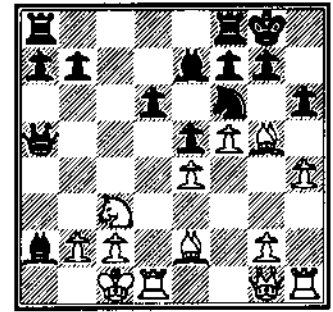
(2) White to move.
Finegold,B - Chow,A



(4) White to move.
Watson,A - Jordan



(6) White to move.
Shabalov,A - O'Donnell,



RETORTS REVEALED

(1) 10... ♖xf2+ 11. ♜x12 ♗e4+ 12. ♜g1 ♗g5+
 (2) 19. ♖g4 ♖e6 20. ♗xg7 1. h5 21. ♗xe7+ ♖xf8+!
 (3) 20. ♗xe5 fxe5 21. ♗g5 ♗h6 22. ♗xe6 ♖xe6 23. ♗c7+
 (4) 25. dxe5 ♗xd1 26. ♗xd1 ♗xe5 27. ♗d6 ♖+
 (5) 30. ♖a8+ ♜e7 31. ♖a7 1-0
 (6) 15. ♗xf6 gxf6 16. ♗h3 ♗ac8 17. ♗xa2! +

ILLINOIS TOUR CROSSTABLES

Chicago International

April 20-24, 1994

													score	tour		
1	MILES Anthony	2590	ENG	2643	W24	W12	W17	L 2	W11	D10	W18	W 3	W 4	7.5	25	M
2	SHABALOV Alexander	2590	PA	2699	W20	W 7	W16	W 1	D 3	L 4	W10	W 6	D 5	7	20	M
3	FINEGOLD Benjamin	2475	MI	2570	W34	W 8	W28	D10	D 2	W 5	W 4	L 1	W 9	7	20	M
4	DE FIRMIAN Nick	2580	CA	2660	W23	D11	D14	W28	W 7	W 2	L 3	W10	L 1	6	13	M
5	FORMANEK Edward	2320	PA	2417	W21	L13	W15	D12	W 8	L 3	W17	W 7	D 2	6	13	M
6	GUREVICH Dmitry	2545	IL	2657	H	H	H	W24	D12	D11	W14	L 2	W16	5.5	11	M
7	MANION Josh	2280	WI	2388	W31	L 2	W34	W29	L 4	W19	W16	L 5	D 8	5.5	11	M
8	CHOW Albert	2310	IL	2373	W32	L 3	W21	D13	L 5	D14	W20	W15	D 7	5.5	11	M
9	PANGAN Camilo		NC	2233	H	H	H	H	H	W28	W11	W18	L 3	5.5	11	M
10	YERMOLINSKY Alex	2620	NJ	2740	D14	W23	W13	D 3	W16	D 1	L 2	L 4	D11	5	10	M
11	MARTINOVSKY Eugene	2325	IL	2401	W25	D 4	D19	W17	L 1	D 6	L 9	W23	D10	5	10	M
12	UMEZINWA George	2300	IL	2355	W36	L 1	W22	D 5	D 6	L18	W13	D16	D14	5	10	M
13	ADAMS Nick		IN	2276	W37	W 5	L10	D 8	D19	L16	L12	W20	X18	5	10	M
14	ALEXOPOULOS George	2260	GRE	2264	D10	W20	D 4	L16	W32	D 8	L 6	W19	D12	5	10	M
15	SHARMA Arun		IN	2174	L18	W36	L 5	W35	D17	W23	D19	L 8	W22	5	10	MX
16	OLESEN Martin	2340	DEN	2417	W22	W29	L 2	W14	L10	W13	L 7	D12	L 6	4.5	9	M
17	ABBASI Nasser	2275	NH	2324	W27	W18	L 1	L11	D15	W24	L 5	D22	D19	4.5	9	M
18	TATE Emory	2350	IN	2463	W15	L17	L24	W21	W20	W12	L 1	L 9	F13	4	8	M
19	KARKLINS Andrew	2385	IL	2432	W35	L28	D11	W30	D13	L 7	D15	L14	D17	4	8	M
20	O'DONNELL Robert		MI	2248	L 2	L14	W35	W22	L18	W21	L 8	L13	W26	4	8	M
21	KARKLINS Erik		IL	2126	L 5	W27	L 8	L18	W33	L20	D26	W24	D25	4	8	MX
22	BROWNE Paul		IA	2069	L16	W33	L12	L20	W25	D26	W24	D17	L15	4	8	MX
23	FRIEDMAN Edward	2290	IL	2242	L 4	L10	W26	W25	D29	L15	W28	L11	-	3.5	7	M
24	COOPER Thomas		IL	2222	L 1	W31	W18	L 6	D28	L17	L22	L21	W27	3.5	7	M
25	CHONG David		IA	1986	L11	W37	L29	L23	L22	L27	W33	D26	D21	3	6	MXA
26	BRADY Lindell		MI	1926	L28	D35	L23	W27	L30	D22	D21	D25	L20	3	6	MXA
27	BELL Adam		OH	1613	L17	L21	L32	L26	B	W25	L31	W33	L24	3	6	MXAB
28	DANDRIDGE Marvin		IL	2330	W26	W19	L 3	L 4	D24	L 9	L23	-	-	2.5	5	M
29	ZINGHEIM Scott		IL	2302	W33	L16	W25	L 7	D23	-	-	-	-	2.5	5	M
30	FISCHER Robert	2155	VA	2145	H	H	H	L19	W26	-	-	-	-	2.5	5	MX
31	RUST Lary		OH	1984	L 7	L24	-	-	-	W33	W27	-	-	2	4	MXA
32	LANDRUM Stephen		MO	1982	L 8	L34	W27	W33	L14	-	-	-	-	2	4	MXA
33	MC DERMOTT Edward		OH	1589	L29	L22	W36	L32	L21	L31	L25	L27	B	2	4	4MXABC
34	SALOMON Eugene		FL	2207	L 3	W32	L 7	-	-	-	-	-	-	1	2	M
35	ASH Robert	2170	IL	2125	L19	D26	L20	L15	-	-	-	-	-	0.5	1	MX
36	LORING Steve		IL	1954	L12	L15	L33	-	-	-	-	-	-	0		

FOX VALLEY CC LOW COST OPEN #4

JULY 16, 1994
ICA MINI TOUR EVENT

CHURCH OF GOD, CORNER OF GALENA BLVD
AND LANCASTER, AURORA, IL.

4-SS G/60 FORMAT EF\$ - Adults \$12 - Juniors \$7
Registration: 8:00 - 8:30 Rounds: 8:45, 11:00, 1:30, 3:45
1st - \$50, 2nd - \$25, CLASS A,B,C, D/E/unr \$15 each (b20)
Call Bob Renaut for info at (708) 983-0934

TOURNAMENT CALENDAR

Call Chess Phone, (708) 832-5222, for up-to-date tournament results, and announcements of tournaments that may not be listed in Chess Life or the ICB. The ICA Chess Phone voice is Todd Barre. Unless otherwise noted, all tournaments require USCF membership. Illinois Tour events also require ICA membership.

Organizers - remember it is ICA policy that an event must be published in the ICA bulletin and marked as a tour event in order to be a tour event. Please send your tournament notices to: Bob Renaut, 1255 Oakton Lane, Naperville, IL 60540-0310 or call 708-983-0934.

July 16,
Fox Valley Low Cost Open #4, Aurora
4-SS, G/60, Church of God, Corner of Galena and Lancaster, Aurora, IL, EF: \$13, \$7 juniors. Reg: 8:00-8:30. Rnds 8:45, 11:00, 1:30, 3:45. Prizes (b20) \$50-\$25, Top A,B,C, D/E/unr \$15 each. For info call: Bob Renaut, (708) 983-0934. mini

July 16,
94 Tuley Park G/22 #1, Chicago, IL
5-SS, 501 E, 90th Place, EF: \$12, under 19 \$8. Reg. 11:00-11:45, Rds: 12, 12:55, 1:50, 2:45 and 3:40. Prizes if 16 or less 1st 35%, 2nd 25% best from lower half 20%, if 18 or more 1st 30%, 2nd 21%, middle 3rd 18% lowest 3rd 15%. Info: Tom Fineberg 721-3979.

July 16,
US OPEN WARMUP #1, Chicago, IL
5-SS, G/60, Chicago Chess Club, EF\$15, \$13 jrs, \$2 more at site, \$\$ (70% of EF b/4 per class), Reg 9:45-10:15 am, Rd 1 at 10:30, Entry: Chicago Chess Club, 1149 W Lunt, Chicago, IL 60626 (312) 761-5050.

July 17,
CCC, PCA Wannabes, Chicago, IL
4-SS, G/25, Chicago Chess Club, EF\$12, \$10 jrs, \$2 more at site, \$\$ (66% of EF b/4 per class), Reg 11:15-11:45 am, Rd 1 at 12, Entry: Chicago Chess Club, 1149 W Lunt, Chicago, IL 60626 (312) 761-5050.

July 21,28

Thursday Knight Thematic, Chicago
Two separate events, 3-SS, G/25, Chicago Chess Club, EF\$10, \$8 jrs, \$\$ (70% of EF b/4 per class), Reg 6:15-6:45 am, Rd 1 at 7,7/21.e4, 7/28 1.d4 Entry: Chicago Chess Club, 1149 W Lunt, Chicago, IL 60626 (312) 761-5050.

July 23-24,
US OPEN Warmup #2, Chicago
5-SS, G/90, Chicago Chess Club, EF\$20, if by 7/21, \$2 more at site, \$\$ (70% of EF b/4 per class), Reg 10-10:30 am, at 10:30, Entry: Chicago Chess Club, 1149 W Lunt, Chicago, IL 60626 (312) 761-5050.

July 26-August 5, Bloomington
U. S Junior Championship,
U. S. Women's Chamionship,
U.S. Action Championship,
U. S. Game 10 Championship,

July 30
US OPEN Warmup #3, Chicago
5-SS, G/60, Chicago Chess Club, EF\$15, \$13 jrs, \$2 more at site, \$\$ (70% of EF b/4 per class), Reg 9:45-10:15 am, Rd 1 at 10:30, Entry: Chicago Chess Club, 1149 W Lunt, Chicago, IL 60626 (312) 761-5050.

July 30,
Chesterton Chess, Chesterton, IN
4-SS, G/90, Westchester Public Library, 200 W. Indiana, Chesterton, IN. Reg: 8:30-9:15 am. EFS - \$15 and \$10 for H.S. and below. Rds 9:30, 12, 3 and 6. \$\$ \$100-\$60-, A \$45, B \$40, C \$35, and DEU \$30. Info / Entries : Randy Pals, 1233 Morningside Dr. Chesterton, IN, 46304, (219) 926-2266.

July 31
CCC: Quick Kill, Chicago, IL
6-SS G/15 Chicago Chess Club, EF\$12, \$10 jrs, \$2 more at site, \$\$ (70% of EF b/4 per class), Reg 12:15-12:45 am, Rd 1 at 1, Entry: Chicago Chess Club, 1149 W Lunt, Chicago, IL 60626 (312) 761-5050.

Aug 4
CCC: Quick Kill II, Chicago, IL
5-SS G/15 Chicago Chess Club, EF\$10, \$6 jrs., \$\$ (66% of EF b/4 per class), Reg

6:16-6:45 pm, Rd 1 at 7, Entry: Chicago Chess Club, 1149 W Lunt, Chicago, IL 60626 (312) 761-5050.

August 7-19,
U. S. Open, Chicago. IL,
95th Annual U.S. Open. 12-SS, 50/2-1/2, 20/1. Ramada O'Hare Hotel, 6600 North Mannheim Road, Rosemont, IL 60018. \$30,000 Guaranteed Prize Fund: 5000 - 3000 - 2500 - 2000 - 1500 - 1400 - 1200 - 1000, 2200 - 2399 1000 - 800- 600 - 400 - 200, Expert 900 - 700 - 500 - 300 - 100, A 800 - 600 - 400 - 200 - 100, B 700 - 500 - 300 - 100, C 600 - 400 - 200 - 100, D 500 - 300 - 100 - 50, E 300 - 200 - 100, Unrated 200 - 100 - 50. Three convenient playing schedules - Traditional: rounds at 7 pm each evening 8/7-12 and 8/14-19, Split: rounds 1-6 at 1 pm (8/7-12), rounds 7-12 at 7 pm (8/14-19) and Busy Player Special: start with appropriate score for rating (over 2399 4, M 3-1/2, X 3, A 2-1/2, B 2, C 1-1/2, D 1, E 1/2 unrated 1/2) and play only rounds 7-12 (8/14-19) at 7 pm each evening. 1/2 point byes available in any round if requested by the day before the round, except that the total number of 1/2 point byes may not exceed your busy player percentage and byes for rounds 8-12 must be requested before the start of round 7 and may not be revoked. EF \$77 traditional, \$78 split, \$79 busy player by 7/29, ALL \$95 on site. Advance entry \$25 less for juniors under 19. REG: 6-8 pm 8/6, 9-11 am 8/7, 2-5 pm 8/7, 2-5 pm 8/14. You must register 2 hours before the first round you play. Sets and boards provided, bring a clock if possible. HR 65-65-75-75. (708) 827-5131. Reserve by 7/29. Free Parking, free shuttle from airport and public transportation. INFO: Alan Losoff, PO Box 157, Morton Grove, IL 60053, (708) 966-5559 (evenings), internet: alanl@mcs.net. ENT: U.S. Chess: Attention U.S. Open Entries, 186 Rt 9W, New Windsor, NY 12553. (800) 388-KING [5464] or (914) 562-8350. NS

August 14
US Open Sunday Mini-Tour
4-SS G/60. Ramada O'Hare Hotel, 6600 N. Mannheim Rd, Rosemont, IL 60018.

TOURNAMENT CALENDAR

\$\$G 200-100, X,A,B,C,D,E,U each \$50 (must be 4 in class). REG 9-9:45am. RDS 10-12:30-2:45-5:00. EF \$30, \$15 under 18. MEMB ICA \$14, under 19 \$8, OSA. An ICA Mini-Tour Event. HR 65-65-75-75, (708) 827-5131. Enter on site only. NSW, mini

August 20.

U.S. G/15 Championship. Rosemont. 7-SS, Game/15. Ramada O'Hare Hotel, 6600 N. Mannheim Rd, Rosemont, IL 60018. **\$2,050 Guaranteed Prize Fund.** \$\$G 500(+ trophy)-300-200, M, X, A, B, C, D, E each 150, trophy to top unrated. EF \$30, under 18, \$20, each \$10 more after 8/15. \$5 discount to ICA members. REG 9-10am. RDS 10:30-11:15-12:30-1:15-2-2:45-3:30. HR 65-65-75-75, (708) 827-5131. ENT: U.S. Game/15 Championship, PO BOX 157, Morton Grove, IL 60053. NS W

August 27,

94 Tuley Park G/22 #2, Chicago, IL 5-SS, 501 E, 90th Place, EF: \$12, under 19 \$8. Reg. 11:00-11:45, Rds: 12, 12:55, 1:50, 2:45 and 3:40. Prizes if 16 or less 1st 35%, 2nd 25% best from lower half 20%, if 18 or more 1st 30%, 2nd 21%, middle 3rd 18% lowest 3rd 15%. Info: Tom Fineberg 721-3979.

August 27,

Chesterton Chess, Chesterton, IN 4-SS, G/90, Westchester Public Library, 200 W. Indiana, Chesterton, IN. Reg; 8:30-9:15 am. EF\$ - \$15 and \$10 for H.S. and below. Rds 9:30, 12, 3 and 6. \$\$ \$100-\$60-,A \$45, B \$40, C \$35, and DEU \$30. Info / Entries : Randy Pals, 1233 Morningside Dr. Chesterton, IN, 46304, (219) 926-2266.

August 27,

Bradley Summer Open, Peoria, IL 4-SS, SD/80, Garrett Center, 824 N. Duryea Pl., Peoria, EF\$ - \$11 in advance, \$13 at site. Reg: 8-8:45 am, Rds: 9, 12, 2:45, 5:30. \$\$G: \$75-50, \$\$ (b 6/class), A/B/C \$25 each. Entries / Info: Bill Wilkinson, 905 N. Rebecca, Peoria, IL

61606, (309) 673-9455, mini.

Sept 1 & 8,

Thursday Night Quick Chess, Chicago 4-SS, G/25, Chicago Chess Club, EF\$10, \$\$ (66% of EF b/4 per class), Reg 6:15-6:45 pm, Rd 1 at 7, Entry: Chicago Chess Club, 1149 W Lunt, Chicago, IL 60626 (312) 761-5050.

Sept 2-4 (see add on page 20)

Illinois Open, Chicago, IL, MAXI

Sept 10,

94 Tuley Park 6SS #1, Chicago, IL 5-SS, G/15 501 E, 90th Place, EF: \$12, under 19 \$8. Reg. 11:00-11:45, Rds: 12, 12:40, 1:20, 2:00, 2:40 and 3:20. Prizes if 16 or less 1st 35%, 2nd 25% best from lower half 20%, if 18 or more 1st 30%, 2nd 21%, middle 3rd 15% lowest 3rd 14%. Info: Tom Fineberg 721-3979.

Sept 10

Double Trouble, Chicago, IL 4-SS (double round format - white and black with each player), G/25, Chicago Chess Club, EF \$15, \$13 jrs, \$2 more at site \$\$ (66% of EF b/4 per class), Reg 10:15-10:45 am, Rd 1 at 11, Entry: Chicago Chess Club, 1149 W Lunt, Chicago, IL 60626 (312) 761-5050.

Sept 24,

Chesterton Chess, Chesterton, IN 5-SS, G/60, Westchester Public Library, 200 W. Indiana, Chesterton, IN. Reg; 8:30-9:15 am. EF\$ - \$15 and \$10 for H.S. and below. Rds 9:30, 11:30, 2, 4, and 6:30. \$\$ \$100-\$60-,A \$45, B \$40, C \$35, and DEU \$30. Info / Entries : Randy Pals, 1233 Morningside Dr. Chesterton, IN, 46304, (219) 926-2266.

Oct 1,

94 Tuley Park G/var #1, Chicago, IL 5-SS, G/15 501 E, 90th Place, EF: \$12, under 19 \$8. Reg. 11:00-11:45, Rds: 12, 12:40, 1:25, 2:15, ad 3:15. Prizes if 16 or less 1st 35%, 2nd 25% best from lower half 20%, if 18 or more 1st 30%, 2nd 21%, middle 3rd 15% lowest 3rd 14%. Info: Tom Fineberg 721-3979.

Oct 28-30, Midwest Class Championship, Oakbrook, IL, MAXI.

October 29,

Chesterton Chess, Chesterton, IN 4-SS, G/90, Westchester Public Library, 200 W. Indiana, Chesterton, IN. Reg; 8:30-9:15 am. EF\$ - \$15 and \$10 for H.S. and below. Rds 9:30, 12, 3 and 6. \$\$ \$100-\$60-,A \$45, B \$40, C \$35, and DEU \$30. Info / Entries : Randy Pals, 1233 Morningside Dr. Chesterton, IN, 46304, (219) 926-2266.

Nov 19-20,

Illinois Class Championship, Chicago, IL MAXI

Nov 26,

Chesterton Chess, Chesterton, IN 4-SS, G/90, Westchester Public Library, 200 W. Indiana, Chesterton, IN. Reg; 8:30-9:15 am. EF\$ - \$15 and \$10 for H.S. and below. Rds 9:30, 12, 3 and 6. \$\$ \$100-\$60-,A \$45, B \$40, C \$35, and DEU \$30. Info / Entries : Randy Pals, 1233 Morningside Dr. Chesterton, IN, 46304, (219) 926-2266.

Dec 10-11, Oak Park River Forest Winter Open, Oak Park River Forest, IL MAXI

1995

Feb 11-13, US Amateur Team Championships Midwest, Oakbrook,

March 24-26, Mid-America Class Championship, Chicago, IL.

April 7-9, National H.S. Championship, Chicago, IL.

April 7-9, National Elementary Championship, Little Rock, AR.

May 12-14, National Junior High, Dearborn, MI.

May 19-21, Natonal Open, Las Vegas,

May 28-30, Chicago Open, Oakbrook,

June 14-16, U.S. Junior Chess Congress

- Midwest, Chicago, IL.

August 6-18, U.S. Open,

September 1-3, Illinois Open, Chicago,

October 29-31, Midwest Class Championship, Oakbrook, IL.

November 18-19, Illinois Class Championship, Chicago,

ILLINOIS CHESS ASSOCIATION PATRONS

Century Club Members

Michael Belovesick Sr Addison
 Larry W. Blum Rockford
 Thomas Fineberg Chicago
 Fred Gruenberg Palos Heights
 Michael McIlhany Springfield
 Bill Smythe Chicago
 Burton Vincent Chicago
 Helen Warren Western Springs
 Jim Warren Western Springs
 William Wentz Milwaukee

Gold Card Members

Todd Barre Elmhurst
 Tyrone Brooks Chicago
 Paul Cox Chicago
 Hartland S. Hoisington Ogden UT
 Alan Losoff Morton Grove
 Kenneth Marshall Lombard
 Fred Meyers Sterling
 William Naff Peoria
 Jim Oberweis Aurora
 Peter Pelts Niles
 Daniel Pradt Glen Ellyn
 Michael Pratts Chicago
 Bob Renaut Naperville
 Irwin Rothschild Park Forest
 Arthur Sinclair Evanston
 Mitchel Sw eig Evanston
 Richard Verber Aurora
 Louis Werner Evanston
 Sandy Zabell Evanston

Patron Members

Bob Ash Urbana
 Roy Benedek Western Springs
 Edward J. Blanco Chicago
 Dennis Bourgerie Normal
 Bill Brock Chicago
 Jim Brotsos Chicago
 Walter Brown, Jr. Crest Hill
 Gregory Bungo Elmhurst
 Anthony Caliendo Aurora
 James Clark Streator
 Lawrence Cohen Villa Park
 Tom Cooper Wheaton
 Greg De Fotis Lincolnwood
 Joe Delay Schamburg
 Leroy Dubeck Cherry Hill NJ
 William Graves Chicago
 Steve Hansen Chicago
 Steven Herr Chicago
 Charles Hicks Naperville
 Dean Hightower DeKalb
 Thomas Howell Evanston
 Jeffery Hyland Mount Prospect
 Toshio Imai East Lansing, MI
 Kazys Jankauskas Darien
 Mike Jenkins Cary
 Gersham Johnson Hinsdale
 Stephen Josephs Hinsdale
 Tim Just Gurnee
 Dan Kamen Buffalo Grove
 Leo Kaushansky Wilmette
 Scott Kittsley Shorewood WI
 Thomas Knoedler Springfield
 Walter Kocjan Northlake
 Peter Kuhn Des Plaines

Dr. Kevin Kukla Hanover Park
 Stephen Lauger DeKalb
 Michael Lester Chicago
 Marc Lonoff Northbrook
 Ed Marschall So. Barrington
 Eugene Martinovsky Naperville
 Patrick Maurer Glen Ellyn
 Thomas Mayka Wheeling
 Patrick McMillen Aurora
 Steve Monti Chicago
 William Naviamos Chicago
 Alex Pehas Darien
 Marvin Rogan Chicago
 Steve Rydberg, Jr. Mokena
 Ray Satterlee Wheaton
 Andrew Schultz Evanston
 Mark Sefcheck Naperville
 Anthony Sillars Northampton MA
 Richard Simonetti Elmwood Park
 Leonard Spiegel St. Charles
 Joe Splinter Hanover Park
 Robert Stoltz River Forest
 Sonia Taki Chicago
 James Tanaka Chicago
 Mike Varady Effingham
 James Welton Wildwood
 Douglas White Schaumburg
 Don Winsauer West Dundee
 Harold Winston Naperville
 Philip Wong Wilmette
 David Wulatin River Forest

ICA ELECTED OFFICERS

Alan Losoff, President
 9402 N. Octavia, Morton Grove, IL 60053
 (708) 966-5559 or Internet alan@mcs.net

Bob Renaut, Metro Vice-President
 1255 Oakton Lane, Naperville, IL 60540
 (708) 983-0934 or Internet brenaut@mcs.net

Dennis Bourgerie, Downstate Vice-President
 1621 N. School St., Normal, IL 61761
 (309) 454-3842

Ken Marshall, Secretary
 357 W. Grove, Lombard, IL 60148
 (708) 932-1455

Todd Barre, Treasurer
 136 Evergreen Elmhurst, IL 60126
 (708) 834-0862

USCF Delegates

by virtue of their USCF position

Fred Gruenberg	Vice-President
Tim Just	Regional Vice-President
Garrett Scott	Regional Vice-President
Frank Skoff	Life Voting Member
Helen Warren	Life Voting Member
Harold Winston	Life Voting Member

by ICA-appointment

Alan Losoff
 Todd Barre
 Kenneth Marshall
 Bob Renaut
 Richard Verber

USCF Voting Members

ICA appointed

Bill Naff	Jim D. Oberweis
Erv Sedlock	Jim Warren
Dennis Bourgerie	Larry Cohen
Bill Symthe	Ken Lewandowski
Dennis Grant	Walter Brown Jr.

ICA appointed alternates

Bill Wilkinson	Hector Hernandez
Tom Cooper	George Marino
Chris Baumgartner	Keith Martin
Ed Blanco	Glenn Panner
Jim Brotsos	Bill Reed
Glen Gratz	Angelo Sandrin
Albert Chow	Howard Wachtel

Where to Play Chess

ICA Club Affiliates



AMERICAN POSTAL CHESS TOURNAMENTS sponsors postal events & sells chess books & equipment. Jim or Helen Warren, P.O. Box 305, Western Springs 60558. (708) 246-6665.

"THE BASEMENT", Daniel Kamen, 1121 Highland Grove Drive, Buffalo Grove, IL 60089, (708) 537-4956.

CENTRAL LAKE COUNTY CHESS CLUB meets Fridays, 7:15 to 12:00AM College of Lake County, Bldg. 1, Washington at Rte 45, Grayslake. Dennis Grant, 1657 McKay, Waukegan 60087. (708) 336-5188.

CHESTERTON CHESS CLUB is located Westchester Public Library, 200 W. Indiana. Chesterton, IN. For info call Randy Pals (219) 926-2266.

CHICAGO CHESS CLUB is located at 1149 W. Lunt, Chicago, IL. 60626 and is open from 3-11 pm Wednesday - Sunday. For info call Albert Chow (312) 761-5050.

THE CHESS BOARD BBS is a computer chess club. Use your computer, modem and phone to play electronic postal chess, exchange international messages, download chess related files. SysOp: James Reames, Chicago, IL. MODEM (312) 784-3019 (1200-14400 bps)

CHICAGO INDUSTRIAL CHESS LEAGUE organizes frequent competition among commercial/government teams with awards, ratings, & special events. Tony Jasaitis (312) 406-6420.

CONTINENTAL CHESS ASSOCIATION, P.O. Box 249, Salisbury Mills, NY 12577. Bill Goichberg.

DOWNERS GROVE PARK DISTRICT CHESS CLUB meets Thurs., 6:30-10 p.m., Lincoln Center, 935 Maple Ave., Downers Grove. Affiliated with USCF & ICA. George Uffner, (708) 960-9382.

DUBOIS ELEMENTARY SCHOOL CHESS CLUB, c/o Andrew Skaar, 308 So. Douglas, Springfield, IL. 62704.

EWALT CHESS ENTERPRISE, P.O. BOX 672, St. Ann, MO 63074

FOX VALLEY CHESS CLUB meets Monday evenings, 6:30 p.m. to 11:30, Church of God, corner of Galena Blvd and Lancaster, Aurora, IL, Bob Renaut, (708) 983-0934 or Dick Verber (708) 978-1380.

GREATER PEORIA CHESS FEDERATION meets Mon., 7-11 p.m., Garrett Center, 824 N. University, Peoria. Bill Wilkinson, 901 N. Rebecca Pl., Peoria 61606. (309) 673-9455.

HOLY TRINITY NORTHSORE CHESS CLUB meets Tuesday 7-10 pm at Holy Trinity Church, 2328 Central (at Shermer), Glenview, IL. Dale Hurst, P.O. Box 248, Glenview, IL. 60025. (708) 729-9000.

LAKE COUNTY CHESS ASSOCIATION sponsors rated tournaments in the Grayslake-Zion area. Tim Just, 37165 Willow, Gurnee 60031. (708) 244-7954.

MIDWESTERN CHESS ADVENTURES (MCAC) 3924 N. Hermitage, 2nd floor, Chicago, IL 60613, (312) 871-2148. Attn: Christopher Baumgartner.

OAK PARK/RIVER FOREST CHESS CLUB meets Tues., 7 midnight, Dominican Conference Center, 7200 W. Division, River Forest. Ken Marshall, 357 W. Grove, Lombard 60148. (708) 932-1455.

PARK FOREST CHESS CLUB meets Thursdays, 7-10:00 p.m., Freedom Hall, Orchard & Lakewood, Park Forest. Lawrence Cohen, 135 Westwood, Park Forest, 60466. (708) 748-5911.

PAUL RODGERS' CHESS TOURNAMENTS 810 Peach Tree, Urbana, IL 61801.

RUDY LOZANO LIBRARY CHESS CLUB, 1805 So. Loomis, St., Chicago. 60608. Hector Hernandez (312) 746-4329.

SMYTHE DAKOTA COMPETITIONS encourages and offers financial support for Plus-Score Mini-Tours at sites in Chicago and suburbs. Bill Smythe, 7445 N. Greenview #311, Chicago, IL 60626, (312) 761-2455.

ST. CHARLES CHESS CLUB meets Thursday at 7 p.m., Baker Community House, 101 S. 2nd (Rte. 31), St. Charles. Erv Sedlock, 6 N. 307 Old Homestead Rd., St. Charles, IL 60174. (708) 377-7995.

THE SOUTH SUBURBAN CHESS CLUB OF GREATER CHICAGO meets Friday from 7p.m. to 12a.m. at Palos Heights Recreational Center, 6601 W. 127th St., Palos Heights, IL.: Fred Gruenberg, (708) 489-5800.

TULEY PARK CHESS CLUB hold frequent Saturday tournaments, Tuley Park Field House, 501 E. 90th Pl., Chicago. Thomas Fineberg, 7321 S. South Shore Dr., Chicago 60649, (312) 721-3979.

Join the Illinois Chess Association and receive six issues of the Illinois Chess Bulletin. In addition you'll qualify to enter over two dozen tournaments on the Illinois Chess Tour. Every game you win or draw in a tour event earns you "tour points" that can add up to cash prizes at year-end. Finally, you'll be supporting the activities of the Illinois Chess Association. Every year, the ICA organizes major tournaments like the Illinois Open and Illinois Class Championships; the ICA has bid for the National Open, the US Open and the US Class Championships to be held in Illinois. In addition, the ICA sponsors scholastic clinics, runs a tournament clearinghouse, and promotes and publicizes chess activity statewide. If you would like to show increased support for Illinois chess, please consider renewing as a Century Club, Gold Club, or Patron member. Patrons are acknowledged in each issue of the ICB and receive their magazines by first-class mail.

Mail To: Ken Marshall, ICA Membership Secretary
357 W. Grove
Lombard, IL 60148

NAME _____
ADDRESS _____
CITY _____ STATE _____ ZIP _____

ICA MEMBERSHIP RENEWAL

Circle Membership Type

CENTURY	\$100	GOLD	\$50
PATRON	\$35	REGULAR	\$14
JUNIOR	\$8	AFFILIATE	\$25

The 95th Annual
U.S. OPEN
August 7-19, 1994

\$30,000 GUARANTEED PRIZE FUND

1st place \$5,000
2nd \$3,000 *3rd* \$2,500 *4th* \$2,000
5th \$1,500 *6th* \$1,400 *7th* \$1,200 *8th* \$1,000

MASTER	EXPERT	CLASS A	CLASS B	CLASS C	CLASS D	CLASS E	UNRATED
\$1,000	\$900	\$800	\$700	\$600	\$500	\$300	\$200
\$800	\$700	\$600	\$500	\$400	\$300	\$200	\$100
\$600	\$500	\$400	\$300	\$200	\$100	\$100	\$50
\$400	\$300	\$200	\$100	\$100	\$50		
\$200	\$100	\$100					

CHICAGO



Address correction
 requested

BULK RATE
 U.S. Postage Paid
 Astoria IL, 61501
 Permit No. 9

Time Value Material