

# ILLINOIS CHESS BULLETIN

MARCH - APRIL 1994 VOL. XXIX NO. 2

AN ICA BI-MONTHLY PUBLICATION - \$2.95

**PEORIA WINTER  
TORNADO  
GUSTS INTO  
A FOUR WAY  
TIE**



**GEDIMINA  
RASTENIS  
WINS  
TIM JUST'S  
WINTER OPEN**



## TABLE OF CONTENTS

Editor **Bob Renaut**  
 1255 Oakton Lane, Naperville, IL, 60540, 708-983-0934  
 Games Archivist **Alan Watson**  
 161 Oakwood Drive, Bolingbrook, IL, 60550, 708-759-7757  
 Games Editor **Tom Cooper**  
 401 Pershing, Wheaton, IL, 60187, 708-690-9503  
 Calendar Editor **Bob Renaut**  
 1255 Oakton Lane, Naperville, IL, 60540, 708-983-0934  
 Tour Statistician **Bill Smythe**  
 7445 N. Greenview, Chicago, IL, 60626, 312-761-2455

### MEMBERSHIP AND SUBSCRIPTIONS

The Illinois Chess Bulletin (ICB) is published bimonthly by the Illinois Chess Association, ICA membership includes a subscription to ICB. Century Club, Gold Card, and Patron members receive their ICB by first-class mail.

### ANNUAL MEMBERSHIP RATES

Century Club .....	\$100.00
Gold Card .....	\$50.00
Patron .....	\$35.00
Regular .....	\$14.00
Junior (under 18) .....	\$8.00

Subscriptions and address corrections should be sent to:

**Ken Marshall (ICA Membership Secretary)**  
 357 W. Grove, Lombard, IL 60148

### SUBMISSION DEADLINE

The deadline for submissions to the May-June 1994 issue is March 30.

### ICA AFFILIATION

Chess clubs and other organizations which promote chess activity may affiliate with the ICA. Benefits include a copy of the ICB by first class mail, a listing under "Where to Play Chess," discounted advertising rates, free event advertising on Chess Phone and the right to run ICA Tour Events. ICA Affiliation costs \$25; please remit to the Membership Secretary.

### ADVERTISING RATES

Full page .....	\$90
Half page .....	\$54
Quarter page .....	\$36
Eighth page .....	\$24

10% discount for the same ad in consecutive issues. 1/3 discount for ICA affiliates. All ads must be camera-ready to qualify for above rates; minimum \$20 charge for layout. Payment must accompany ad. The ICA & ICB reserve the right to reject advertising.

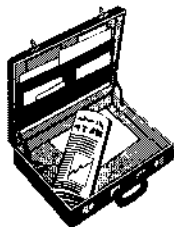
*Copyright © 1994 Illinois Chess Association*

President's Report .....	3
by Alan Losoff	
Editor's Corner .....	3
by Bob Renaut	
ICA Tour Standings .....	4
by Bill Smythe	
Waukeganites Conquer Winter Open/Reserve .....	6
by Tim Just	
Play it Again Sam (Andrew!) .....	7
by National Master Alan L. Watson	
Peoria Winter Tornado Ends in Four Way Tie .....	14
by Bill Naff	
Chicago Industrial Chess League .....	16
by Tony Jasaitis	
Chess on the Fox .....	17
by Local Expert Bob Renaut	
St. Charles Chess Club News .....	17
by Dan Pracht	
Dream Chess Vacation .....	21
by Bob Renaut and Marvin Rogan	
Basics for the Learning Player .....	25
by National Master Tom Cooper	
Annotated Games .....	26
by National Master Tom Cooper	
ICA Tour Cross Tables .....	27
by Bill Smythe	
Tournament Calendar .....	28
by Bob Renaut	
Illinois Chess Association Patrons .....	30
Where to Play Chess .....	31

**Need the latest chess tournament info?  
 Call Chess Phone 708-832-5222**

## PRESIDENT'S REPORT

By Alan Losoff



Bring your husband (or wife) to the ICA Awards Banquet on March 13 at the Ramada O'Hare Hotel. This is the one ICA event of the year that's purely social. We will be honoring outstanding players and organizers including the 1993 ICA Tour winners. There will also be a brief video presentation.

The Helen Warren Junior Chess Program is off to a great start in its second year. This program supports one-on-one master instruction to promising Illinois Juniors. Illinois is well represented in the top-50 lists in the February rating supplement, so we need your support more than ever. Thanks to everyone who contributes, the masters and most of all to Helen for administering this fine program.

The third annual Mid-America Class Championships will be once again at the Ramada O'Hare Hotel, March 25-27. This promises to be a great event in the Gruenberg tradition. Todd Barre will be the Chief TD.

For those who can't make the Mid-America Class, there are plenty of ICA tour events listed in the calendar. Join the tour. Win points. Win cash prizes and acclaim at the end of the year.

1994 is the year of the Nationals in Illinois. There will be no fewer than eight National tournaments in Illinois this year, and negotiations are still in progress for more. This is a trend we hope to see continue.

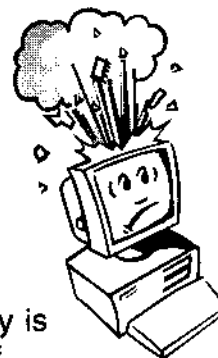
Plan now for the U.S. Open, August 6-19. Details will appear soon in Chess Life and the ICB. The 7PM round times for players who work during the day and the "Busy Player Special" for players who can only play for one week make this a very popular event. If you wish to help out, let me know - we can always use more volunteers.

## EDITOR'S CORNER

By

Bob

Renaut



Apathy. According to Webster, apathy is the total lack of caring. Apathy in Illinois chess is the total lack of involvement in your state organization and its official publication, the Illinois Chess Bulletin. This is your magazine and it is your state chess organization.

After six months of publishing this magazine and requesting for each issue your thoughts, games and criticisms, I have received exactly zero input. Is anyone out there? Do you care? Are you reading this column? Are you reading the magazine? What kind of articles do you want?

I can count on one hand the number of dedicated individuals that want to see chess thrive in Illinois. Just check the "Table of Contents" for the past three issues and you'll find them; Tom Cooper, Alan Watson and Ken Marshall. These are the regulars. There are a few others like; Tim Just, Bill Naff, Marvin Rogan and Helen Warren that also contribute. We need more! We go begging for game scores. Don't see many games by lower rated players? It is because we don't get them.

Don't be apathetic. Get involved. Send your articles, pictures, games, comments or criticisms to:

**Bob Renaut**  
**1255 Oakton Lane**  
**Naperville, IL 60540-0310**

# ICA TOUR STANDINGS

This list reflects the following 1994  
Tour events:

Jan 9-10 MAXI  
Tim Just Winter Open, Grayslake

Jan 16 mini  
Northwestern Plus-Score, Evanston

Upcoming 1994 Tour events:

Greater Peoria Open - Maxi - March  
6-7

Fox Valley Chess Club's Low Cost  
Open - Mini - March 12

Mid-America Class Championship,  
O'Hare - MAXI March 25-27

Fox Valley Chess Club's Low Cost  
Open - Mini - April 16

Chicago Open, Oak Brook  
MAXI - May 28-30

The list of future events is subject to  
change. Check Chess Life and the  
Illinois Chess Bulletin.

Master Tour Points:

RASTENIS Gedimin	(1)	19
VON KROGH Christ	(1)	12
CHOW Albert	(1)	7
KAMEN Dan	(1)	7
MC CARTHY Mike	(1)	7
SAX Robert	(1)	7
KREISMAN Bruce	(1)	6
PANGAN Camilo	(1)	6
SZPISJAK Steve	(1)	6
FAGAN James	(1)	5
GRAVES William	(1)	5
LA BUDDE Michael	(1)	5
MAYKA Tom	(1)	5
RUGGIERO Brian	(1)	5
SCHULTZ Andrew	(1)	5
HERNANDEZ Hector	(1)	4
KITTILSEN Guy	(1)	4
ROCKWELL David	(1)	4
SERRANO Fidel	(1)	4

Expert Tour Points:

VON KROGH Christ	(1)	12
KAMEN Dan	(1)	7
MC CARTHY Mike	(1)	7
SAX Robert	(1)	7
KREISMAN Bruce	(1)	6
SZPISJAK Steve	(1)	6
FAGAN James	(1)	5
GRAVES William	(1)	5
LA BUDDE Michael	(1)	5
MAYKA Tom	(1)	5
RUGGIERO Brian	(1)	5
SCHULTZ Andrew	(1)	5
DELPHIN Fred	(1)	4
HERNANDEZ Hector	(1)	4
KITTILSEN Guy	(1)	4
LIMBERG Reynaldo	(1)	4
NAFF William	(1)	4
ROCKWELL David	(1)	4
SERRANO Fidel	(1)	4
VAN BUSKIRK Doug	(1)	4
BUTTNY William	(1)	3
SPHAR Robert	(1)	2.5
BOURGERIE Dennis	(1)	2
GOODWIN Kim	(1)	2
MOORE Rod	(1)	2
PUKEL Bernard	(1)	2

Class A Tour Points:

FAGAN James	(1)	5
GRAVES William	(1)	5
MAYKA Tom	(1)	5
RUGGIERO Brian	(1)	5
SCHULTZ Andrew	(1)	5
DELPHIN Fred	(1)	4
KITTILSEN Guy	(1)	4
LIMBERG Reynaldo	(1)	4
ROCKWELL David	(1)	4
SERRANO Fidel	(1)	4

Class B Tour Points:

CLAY Harry	(1)	32
BACKSTROM Orn	(1)	12
GASIECKI Alan	(1)	7
HENROID Mike	(1)	7
ISRAELSEN Kirk	(1)	7
LESTER Mike	(1)	7
MITCHELL Gary	(1)	7
RIDDELL Josh	(1)	7
DELAY Joe	(1)	6
JOINTER William	(1)	6
MIEL James	(1)	6
PEDERSEN Ken	(1)	6
SADAUSKAS Justin	(1)	6
FRANK Randy	(1)	5
KITTSLEY Scott	(1)	5

BIEZYNSKI Stan	(1)	4
DELPHIN Fred	(1)	4
DENNIS Mike	(1)	4
DONNA Dan	(1)	4
PADILLA Rudy	(1)	4
BALES Robert	(1)	3
WELTON James	(1)	3
SPHAR Robert	(1)	2.5
DENNIS Jason	(1)	2
GOODWIN Kim	(1)	2
GROEGER Andrew	(1)	2
MOORE Rod	(1)	2
SMITH Orlan	(1)	2
WISHNER Michael	(1)	2
ZELINSKI Daryl	(1)	2

Class C Tour Points:

BONWELL Jonathan	(1)	14
BACKSTROM Orn	(1)	12
GASIECKI Alan	(1)	7
ISRAELSEN Kirk	(1)	7
LESTER Mike	(1)	7
MITCHELL Gary	(1)	7
DELAY Joe	(1)	6
PEDERSEN Ken	(1)	6
FRANK Randy	(1)	5
BIEZYNSKI Stan	(1)	4
DELPHIN Fred	(1)	4
DONNA Dan	(1)	4
TOMANEK Ray	(1)	4
BALES Robert	(1)	3
WELTON James	(1)	3
DENNIS Jason	(1)	2
DOWNEN Stephanie	(1)	2
GOODWIN Kim	(1)	2
GROEGER Andrew	(1)	2
KELLY James	(1)	2
MOORE Rod	(1)	2
SMITH Orlan	(1)	2
WISHNER Michael	(1)	2
ZELINSKI Daryl	(1)	2

Class D Tour Points:

BONWELL Jonathan	(1)	14
FRANK Randy	(1)	5
DONNA Dan	(1)	4
TOMANEK Ray	(1)	4
BALES Robert	(1)	3
WELTON James	(1)	3

Class E Tour Points:

DONNA Dan	(1)	4
DENNIS Jason	(1)	2
DOWNEN Stephanie	(1)	2
BREINER Ryan	(1)	1
HARDY Anne	(1)	1

# INTRODUCING

RATED CHESS YOU CAN AFFORD!

## FOX VALLEY CHESS CLUB'S LOW COST OPEN #1 & #2

4 rd - Game in 60 Swiss

MARCH 12 and APRIL 16  
ICA *mini* TOUR EVENTS

Church of God, corner of Galena Blvd and Lancaster,  
Aurora, IL

Entry Fee: \$12 adults/\$7 juniors  
(\$2 off for FVCC members)

Registration: 8:00-8:30 Rounds: 8:45, 11, 1:30, 3:45

**PRIZES \* \$50 - \$25**

Top A,B,C \$15 each

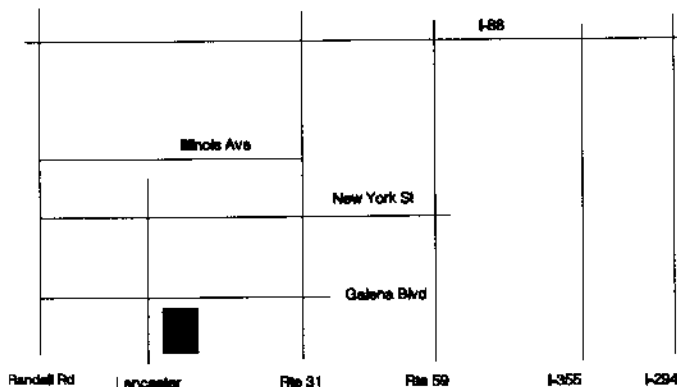
Top D/E/unr \$15

Need more info?

Call Bob Renaut at  
(708) 983-0934

*No Smoking or Computers*

*\*Prizes based on 20 entries*





By Tim Just

# WAUKEGANITES CONQUER WINTER OPEN/RESERVE

Waukegan resident and College of Lake County Caveman Chess Club member Gedimina Rastenis (2452) scored 4.5-.5 to top the 23 player open section of the 1994 Winter Open/Reserve. To collect his \$200 prize, Gedimina had to defeat Tom Mayka (1975), Mike LaBudde (2129), Camilo Pangan (2255), and Robert Sax (2134) before drawing with Al Chow (2441).

Al Chow and Steve Szpisjak fell victim to 4-1 scoring Expert and second place open finisher Chris Von Krogh.

Scoring 3.5-1.5 each was enough for Robert Sax, Dan Kamen, and Mike McCarthy to claim first-second place honors in the Expert class as well as gaining a tie for third place overall with Al Chow.

The first and second place glory in class A was shared by Caveman Tom Mayka, Caveman Brian Ruggiero, James Fagan, Bill Graves, and Andrew Schultz scoring 2.5-2.5 each.

The 29 player reserve section was topped by long time Waukegan resident and College of Lake County Caveman Chess Club member Harry Clay (1765) with a perfect score of 5-0. Harry collected \$200 for defeating Orlan Smith (1512), Alan Gasiiecki (1576), Rudy Padilla (1600), Caveman Josh Riddell (1619), and Mike Lester (1563).

Caveman Orn Backstrom took entries at registration time before he took clear second place in the reserve section with a score of 4-1.

Besides scoring 3.5-1.5 to tie for third place overall in the reserve section with Mike Henroid and Josh Riddell, woodpushers Alan Gasiiecki, Mike Lester, Gary Mitchell, and Kirk Israelsen further shared the first and second place honors in class C.

Randy Frank stood alone at the top of the D/E/UNR section with a score of 2.5-2.5.

Tim Just organized the annual event that was directed by Wayne Clark and Dennis Grant.

### Mayka - Rastenis Tim Just Winter Open, 1994

Annotated by National Master Tom Cooper

1.e4 c5 2.d4 cxd4 3.c3 dxc3 4.Nxc3 Nc6 5.Nf3 e6 6.Bc4 Qc7 7.0-0 Nf6

[This a very sharp system against the Smith-Morra Gambit.]

8.Qe2

[This already steps into trouble. Correct is 8.Bg5 Ng4 9.Bh4 Bc5 (9...Nge5 10.Ne5 Ne5 11.Bb3 unclear) 10.Bg3 d6 11.00 Nge5 (11...00 12.Na4 Qe7 13.Rfd1 Rd8 14.h3 Nf6 15.e5) 12.Rfd1 Nf3 13.Qf3 a6 unclear. Russian Chess Review #1.]

8...Ng4

[ Planning the devastating ....Nd4!]

9.Nb5

[ 9.Nd5 Qb8! 10.g3 d6 11.h3 Nge5 12.Bb5 Bd7 13.Bc6 Nf3 14.Qf3 bc 15.Nf4? ( a better try is 15.Nc3 Be7 though Black is better here) e5 16.Nh5 Rh3 17.Rd1 Qc8 18.Bg5 Bg4 19.Qh1 Bd1 20.Rd1 Qg4 0-1 in I.Horvath-Schipkov 1989.]

9...Qb8 10.h3 h5 11.g3 a6 12.Nc3 Nge5 13.Nxe5 Nxe5 14.Bf4 h4 15.Rfd1 hxg3 16.Bxg3 Rxh3 17.Kg2 Rh6 18.Rac1 Bd6 19.Bb3 b5 20.Qd2 Nc4 21.Bxc4 Bxg3 22.fxg3 bxc4 23.Qd4 Rg6 24.e5 0-1



By National Master Alan L. Watson

# PLAY IT AGAIN, SAM (ANDREW!)

This month, we conduct a modern examination of the Alekhine Variation of the French Defense; so named for that champion's aggressive use of it in the 1930's. In these parts, however, it could almost be called the Chicago Variation for the frequency with which it's played, and the strength of its supporters, including Andrew Karklins.

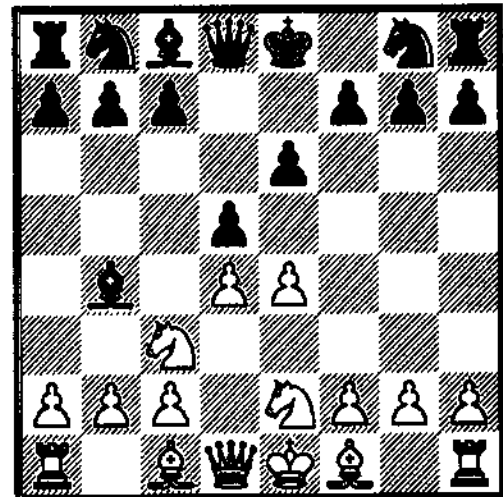
The game itself does not feature a spectacular combination. It does not feature a brilliant attack. It does not feature a deep strategical plan or beautiful ending. What you will discover, is the value of repetition in learning an opening extremely well, and the benefit of doing this. Though regarded by nearly all opening manuals as somewhat harmless, Andrew's thorough study and practice of this variation allows him to introduce new ideas, maneuver intelligently, and continue placing obstacles in opponents paths until they crack. Just look at the number of times the name "Karklins" appears in this article, and you will understand how deeply he "knows" this line!

Those searching for more profound meaning will gain insight into just what separates us from a 2400+ player such as Mr. Karklins. It's this: while each and every chessplayer on a given day is capable of playing 3 or 4 brilliant moves of grandmaster quality, the majority of games we play will be won by 30 or 40 moves of consistent and error-free chess.

In a way, Andrew Karklins' personality typifies his style of chess; persistency combined with consistency; and I greatly admire him for this.

**Karklins, Andrew (2429)-Say, Frank (2308)  
North American Open, Las Vegas 1993**

**1.e4 e6 2.d4 d5 3.Nc3 Bb4 4.Nge2**



White avoids doubled pawns while offering to gambit the e4 pawn. If Black does seriously try to win it, however, his position becomes very passive and difficult.

It is at this point that the player of the Black pieces must make a major decision regarding how to proceed. Whereas 4...Nf6 tempts White to close the game when the knight on e2 may well be misplaced, 4...dxe forces White to lose time regaining his material and

will be considered in illustrative games 1 & 2.  
Here are a few minor alternatives:

#### 4...Nf6

a) 4...c5?! 5.exd5 Qxd5 6.Bd2 (6.a3!?) Bxc3 7.Bxc3 c4 8.Qd2 Nf6 9.f3 0-0 10.Nf4 Qc6 11.0-0-0 Rd8 12.d5 Nxd5 13.Qd4 f6 14.Bxc4 +- Penoyer,Flynn-Nikolic,Ivan Memorial Day Cl, 1992.

b) 4...Nc6 5.a3 Ba5 (5...Bxc3+?! 6.Nxc3 dxe4 7.Bf4!) 6.Be3 Nge7 7.Ng3 e5 8.b4 Bb6 9.Nxd5 Bxd4 10.Bxd4 Nxd4 11.c3 Ndc6 12.Bc4 0-0 13.Qh5 Be6 14.Rd1 With an active game. Beckemeyer,W-Gebhardt,U Dortmund 1992.

c) 4...Ne7 5.a3 Ba5 (5...Bxc3+ 6.Nxc3 0-0 7.Bg5 dxe4 8.Bc4 Nbc6 9.d5 Ne5 10.Bb3 h6 11.Bxe7 Qxe7 12.Qd4 Qg5 13.Qxe4 exd5 14.Nxd5 Bf5 15.Qxf5 1-0 Van Mil,J-Nijboer,F Wijk Sonnevand (02), 1992) 6.b4 (6.Qd3!? Nbc6 7.Be3 dxe4 8.Qxe4 Nd5 9.0-0-0 0-0 10.Nxd5 Qxd5 11.Qxd5 exd5 12.Nf4 Rd8 13.Be2 Ne7 14.g4 c6 15.h4 += Shirazi, K-Benjamin,J National Open, Las Vegas, 1986) Bb6 7.e5 a5 8.b5! (8.Rb1 axb4 9.axb4 0-0 10.Ng3 Nbc6 11.Nce2 Ng6 12.b5?! Na5 13.Nf4 c5 14.c3 cxd4 15.cxd4 Nc4 16.Be2 Ba5+ 17.Kf1 =+) c5 9.Na4 Nd7 10.c3 0-0 11.g3 cxd4 12.cxd4 f6 13.Nf4 Nxe5?! 14.dxe5 fxe5 15.Nh3 Bd4 16.Rb1 Nf5 17.Bg2 Qd6 18.0-0 Black shortly lost due to his incorrect sacrifice. Formanek,E-Tomas,J Midwest Masters, 1987.

#### 5.a3

White forces Black to break the pin to clarify the game and complete his development. The text, while regarded suspiciously, is more energetic than the alternatives.

a) 5.e5 Ne4 (5...Nfd7!?) 6.a3 (6.f3 Nxc3 7.bxc3 Be7 8.Nf4 c5 9.Bd3 Nc6 10.Be3 Qa5 11.Bd2 c4 12.Be2 g6 13.Nh3 Bd7 14.0-0 0-0 15.Qe1 Rfc8 16.f4 = Ernst,E-Wright,W Chicago Open (5), 1993) Nxc3 7.Nxc3 Bxc3+ 8.bxc3 0-0 9.Bd3 f5 10.g4! c5 11.gxf5 exf5

12.Qh5 Be6 13.Rg1 Rf7 14.Qh6 Qd7 15.dxc5 1/2 Dzindzichashvili,R-Lein,A 1982.

b) 5.Bg5 (transposing to a weak line of the McCutcheon) dxe4 6.Qd2 (6.a3 Be7 7.Bxf6 [7.Qd2 Nbd7 8.Ng3 h6 9.Bxf6 Nxf6 10.Ngxe4 = Gipslis,Aivars-Matlak,Marek Ostrava (06), 1992] gxf6 8.Nxe4 f5 9.N4c3 Nd7 10.Qd3 c6 11.h3 h5 12.0-0-0 b5 13.g4! hxg4 14.Bg2 Qb6 15.hxg4 Rg8 16.gxf5 Rvg2 17.fxe6 fxe6 18.Nf4 with a strong attack. Papatheodorou,T-Nikolaidis,I Athens open (02), 1993) 0-0 7.0-0-0 Nbd7 8.Qe3 b6 9.Nxe4 Bb7 10.N2g3 h6 11.h4?! hxg5 12.hxg5 Nxe4 13.Nxe4 Bxe4 14.Qxe4 Qxg5+ 15.f4 Nf6 16.Qf3 Qg4 and White had inadequate compensation for his sacrificed piece. Karklins,A-Chow,A Prairie State M/X Invitational (4), 1989.

#### 5...Be7

Whenever Black gives up the dark-squared bishop he risks weakening those squares in his camp. 5...Bxc3+ 6.Nxc3 dxe4 (6...Nxe4?! 7.Nxe4 dxe4 8.Qg4!) 7.Bg5 h6 8.Bxf6 gxf6 9.Nxe4 f5 10.Ng3 Nd7 11.Be2 Nf6 12.Bf3 a5 13.Qd2 Qd6 14.0-0-0 c6 15.Rhe1 +=

#### 6.Qd3

Closing the center is shown to again be disadvantageous by the following games:

6.e5 Nfd7 with the following continuations:

a) 7.Ng3?! c5 8.Nh5 Rg8 9.Be3 cxd4 10.Bxd4 g6 11.Nf4 Nc6 12.Bb5 a6 13.Ba4 =+ though White eventually won, his center is under tremendous pressure. Mills,J-Weiss,M Midwest Masters Inv. (3), 1985 .

b) 7.Nf4 c5 8.Qg4 g6 9.Nd3 Nc6 10.dxc5 Ndx5 11.Nxe5 Nxe5 12.Qd4 Bf6 =+ White's center has again collapsed. Frank,A-Renet,Olivier Saint Martin op (02), 1993 .

c) 7.b4!? a5 8.b5 a4 9.Nf4 c5 10.bxc6 bxc6 11.Bd3 Ba6 12.Qh5 Nf8 13.0-0 Bxd3 14.Nxd3 Nbd7 15.Be3 Ng6 16.f4 Nh4 17.Kh1 Nf5



18.Bg1 g6 19.Qd1 h5 =+ Karklins,A-  
Wallach,K Chicago Mid-America Class, 1992.

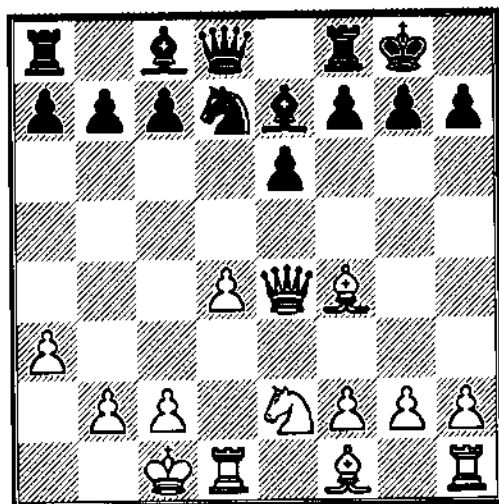
### 6...dxe4 7.Nxe4 Nxe4

Instead of luring the White queen into the center before the other knight can reinforce control of e4, interesting is 7...Nbd7 8.N2c3 0-0 9.Bf4 Nd5 10.Nxd5 exd5 11.Nc3 c6 12.Be2 Nf6 13.0-0 Ne8 14.Qf3 Nd6 15.Bd3 Nf5 16.Ne2 Nh4 17.Qg3 Bf5 18.Rfe1 Bxd3 19.Qxd3 Ng6 20.Bg3 Re8 = Motylev,A-Karpe-shov,O RUS-sf Perm, 1993.

### 8.Qxe4 Nd7

8..Nc6!? 9.Bf4 f5 10.Qd3 Bf6 11.0-0-0 0-0 12.Qg3 Rf7 13.Be5 b5 14.Qc3 Bb7 15.f4 b4 16.Qb3 Be7 17.axb4 Nxb4 18.Nc3 Bd5 19.Nxd5 Nxd5 20.Bc4 c6 unclear Styblo,Michal-Vacek,M Czech tt (03), 1992.

### 9.Bf4 0-0 10.0-0-0

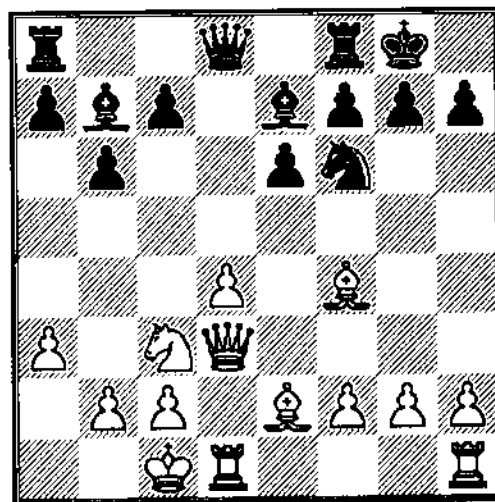


An integral part of White's plan in this variation. In typical positions featuring the central formation pawn on 4th vs. pawn on 3rd as we have here, the defender is advised to play for the c5 or e5 levers. However, the position of White's rook on d1 and its veiled threats against Qd8 make that difficult to accomplish.

### 10...Nf6 11.Qd3 b6?!

There is only one other way to develop this bishop: 11...Bd7 12.Nc3 Bc6 13.Qh3 Qd7 14.Bd3 b5 15.d5 exd5 16.Qxd7 Bxd7 17.Bxc7 a6 18.Be5 Be6 19.Be2 Rad8 20.Bf3 Rd7 21.Bxf6 Bxf6 22.Nxd5 Bxd5 23.Rxd5 Rxd5 24.Bxd5 Rd8 and Black held a draw due to opposite-colored bishops. Perez,Ro-Moran,A Capablanca mem-C (02), 1992.

### 12.Nc3 Bb7 13.Be2!?



Is White bluffing? No, for if the pawn is captured, he gets excellent play. For example, 13...Bxg2!? 14.Rhg1 Bb7 and now:

a) 15.Bh6 Ne8 16.Qg3 Bf6 17.Bb5 c6.

b) 15.d5!? Nxd5 (If instead 15...g6?! 16.dxe6 fxe6 17.Qg3, or 15...exd5 16.Bh6 Ne8 17.Qg3 Bf6 [17...Qd6] 18.Bb5! c6 19.Rde1,Re8,Bg7) 16.Bh6 (16.Qg3 g6 17.Nxd5 exd5 18.Bxc7 Qd7 =+, or 16.Nxd5!? exd5 17.Bh6 Bf6 18.Rxg7+ Bxg7 19.Rg1 Qf6 20.Rxg7+ Qxg7 21.Bxg7 Kxg7 22.Qg3+ Kh8 23.Qxc7 =) Bf6 17.Qg3 +- .

### 13...c5!? 14.Bf3!

This exchange is intended to weaken the squares d5,c6,b6 inside Black's camp and remove White's queen from the d file so the rook's power is enhanced.

14...Bxf3 15.Qxf3 cxd4 16.Be5 Bc5

Black's main problem is the lack of a comfortable square for his queen so that he can unite rooks and oppose the d file.

17.Nb5 Nd5

17...Qd5 18.Qxd5 Nfxd5 18.Rd3 a6 19.Nxd4 Rfd8 20.Rhd1 +=.

18.Qg3 f6 19.Bxd4 Qc8 20.Rhe1 e5??

Black finally cracks under the strain of White's unrelenting pressure. Best seems: 20...Rd8 21.Kb1 Kh8 22.f4 a6 23.Bxc5 Qxc5 24.Nd4 Nxf4 25.Qxf4!? e5 26.Ne6 exf4 27.Nxc5 bxc5.

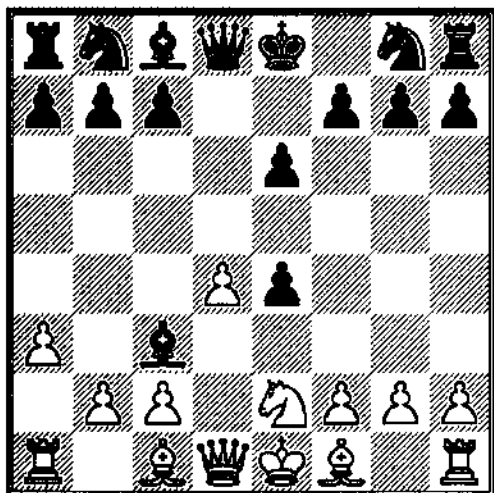
21.Bxc5

and Black resigns as he is unable to prevent loss of a piece after 21...Qxc5 22.Qb3 Rad8 23.Nc3,Nxd5.

### Illustrative Game #1

Ochoa De Echaguen,F- Santos,AP  
Lisboa zt (08), 1993

1.e4 e6 2.d4 d5 3.Nc3 Bb4 4.Nge2 dxe4  
5.a3 Bxc3+



Theory has not yet given a definite indication whether it is better to exchange this bishop or

retain it. Whereas the exchange of this bishop allows Black to develop quickly and attack d4 with gain of tempo, its preservation by 5...Be7 retains better control of the dark squares, and is considered in Illustrative Game 2.

6.Nxc3 Nc6

Alternatives at this stage are not promising:

a)6...c5 7.dxc5 Qxd1+ 8.Kxd1 Bd7 9.Nxe4 Bc6 10.Nd6+ Ke7 11.b4 b6 12.Be3 Nf6 13.Nb5 Bxb5 14.Bxb5 Rd8+ 15.Kc1 a6 16.Be2 b5 17.Bg5 Ra7 18.Kb2 +- . Span,Paul-Michalczyk,Marek Hengelo C (06), 1992.

b)6...f5 (The resulting weaknesses prove difficult to defend.) 7.Bf4 (A disappointingly abrupt end followed 7.f3 exf3 8.Qxf3 Nf6 9.Bf4 Draw Ochoa De Echaguen,F- Moran,A Capablanca mem-C (11), 1992) Nf6 8.Qd2 h6 9.h4 Nc6 10.0-0-0 Nd5 11.f3 exf3 12.gxf3 Kf7 13.Bc4 Nxf4 14.Qxf4 Qd6 15.Qxf5+ Ke7 16.Qg4 +- 1-0 Karklins,E-Smythe,B Midwest Class M/X (4), 1993.

7.Bf4!

7.Bf4 is a trappy move which remains Andrew's consistent choice. Other moves that have been experimented with are:

a)7.Be3 (Campora's favorite, though seemingly passive!)Nf6 (7...Nge7 8.Qd2 0-0 9.0-0-0 f5 10.f3 Nd5 11.fxe4 Nxc3 12.Qxc3 fxe4 13.Bc4 Ne7 14.Bg5 Nd5! 15.Qd2 Qd6 = Campora,D-Lalic,B Sevilla op, 1992) 8.Bb5 h6 9.0-0 0-0 10.Bxc6 bxc6 11.Qd2 Re8 12.f3 Ba6 13.Rf2 e5 14.dxe5 Qxd2 15.Rxd2 exf3 16.exf6 Rxe3 17.Kf2 Re6 18.gxf3 Rxf6 19.Rad1 Re8 20.Rd8 Kf8 21.Ne4 Rfe6 22.R1d2 Bc8 23.Nc5 Rg6 24.Rd4 with the superior ending. Campora,D-Soffer,R Biel op, 1992.

b)7.d5 exd5 8.Qxd5 Be6 9.Qxd8+ Rxd8 10.Bf4 Nf6 (10...f5 11.Nb5 Nf6 12.Nxc7+ Kf7 13.Nxe6 Kxe6 14.Bc4+ Ke7 15.Rd1 h6 16.0-0 g5 17.Be3 With an unclear middlegame pitting two bishops vs. two knights. Tu,Hoang

Thong-Johansen, Darryl Jakarta zt (10), 1993)  
11.Bxc7 Rd7 12.Bf4 0-0 13.Bp5 Rc8 14.Bg5  
Ne8 15.Rd1 Rxd1+ 16.Kxd1 Nd6 17.Bxc6  
Rxc6 18.Kc1 f5 19.Rd1 = Bronstein,  
David-Vaganian, Rafael Tilburg (01), 1993.

c) 7.Bb5 (popular because it allows rapid development.) Nge7 8.Bg5! (8.Be3 0-0 9.Qd2 e5! 10.dxe5 Qxd2+ 11.Bxd2 Nxe5 12.Nxe4 Bf5 13.f3 Bxe4 Draw Polasek, J - Jurek, Josef Czech tt (07), 1993) f6 (Interesting is 8...Bd7 9.Nxe4 h6 10.Bh4 0-0 11.Nf6+ Kh8 12.Nxd7 Qxd7 13.Bxe7 Qxe7 14.0-0 Qd6 =+ Sinz, B-Panzalovic, S Altensteig-B (05), 1993) 9.Be3 0-0 10.Qd2 f5 (avoiding this double-edged weakening of the pawn structure is 10...b6 11.Nxe4 Bb7 12.Nc3 Nf5 13.0-0-0 e5 14.Bxc6 Bxc6 15.d5 Bb7 16.f4 Nxe3 17.Qxe3 exf4 18.Qxf4 Qd7 = Kreiman, B-Formanek, E New York op (3), 1992) 11.0-0-0 (11.f3 Nd5 [Powerful seems 11...f4 12.Bxf4 Qxd4 13.fxe4 e5 14.Be3 Qxd2+ 15.Kxd2 Be6 16.Raf1 Nd4 17.Rxf8+ Rxf8 18.Rf1 Rd8 19.Kc1 Nxb5 0-1 Weteschnik, M- Blauert, J Bern op, 1992] 12.Bxc6 bxc6 13.fxe4 Nxc3 14.Qxc3 Qh4+ 15.g3 Qxe4 16.0-0-0 Qd5 17.Kb1 Rb8 18.Bf4 Rb7 19.Rhe1 +- Weill, R-Prie, E Cannes op, 1992) a6 12.Bxc6 Nxc6 13.f3 exf3 14.gxf3 e5 15.d5 Ne7 16.Bg5 Qd6 17.Rhg1 Rf7 18.h4 Bd7 19.h5 c6 20.Bxe7 Rxe7 21.Qg5 c5 22.h6 g6 +- with a solid advantage, Bauer, W- Formanek, E Cattolica (09), 1992.

### 7...Nge7!

Munching on the tasty d4 morsel will only give Black a bad case of indigestion. For example:

a) 7...Qxd4? 8.Nb5! +-.

b) 7...Nxd4? 8.Be5 Nf5 9.Nb5.

c) 7...Nf6!? 8.Bb5! Bd7 (8...0-0? [offering no compensation for the wrecked pawn structure.] 9.Bxc6 bxc6 10.Bg5 Ba6 11.Qd2 Rb8 12.0-0-0 Kh8 13.Bxf6 gxf6 14.Nxe4 Rg8 15.Nc5 Bc8 16.g3 Qe7 17.f4 +- Ochoa De Echaguen, F- Contin, D Lisboa zt (04) 1993)

9.Bg5 a6 10.Bc4 h6 11.Bh4 Qe7 12.Nxe4 g5 13.Nxf6+ Qxf6 14.Bg3 0-0-0 15.c3 h5 16.h4 g4 17.Qe2 Rhe8 18.0-0 += Ochoa De Echaguen, F- Markzon, G New York, 1992.

### 8.Qd2!?

Less forceful than the text is immediate restoration of material equality by:

8.Nxe4 Ng6 9.Be3 f5 (9...0-0 10.Bc4 b6 11.h4 Nge7 12.Qh5 Nd5 13.0-0-0 Na5 14.Ba2 Ba6 15.Rh3 Nf6 16.Qe5 Nxe4 17.Qxe4 Bc4 = Jones, K-Kreckler, W Midwest Masters Inv. (2), 1985) f5 10.Nc3 f4 11.Bd2 Nxd4 12.Bd3 f3 13.g3 0-0 14.Be3 e5 15.Qd2 c5? 16.Ne4! Qc7 17.c3 c4! 18.Bf1! Nb3?! 19.Qd5+ Kh8 20.Rd1 Bf5 21.Qxc4 Qxc4 22.Bxc4 Na5 23.Bd3 Rfd8 24.Bc2 with a dynamically equal game. Karklins, A-Chow, A Chicago Chess Center Grand Prix, 1986.

### 8...e5!?

a) 8...0-0 (insufficiently challenging.) 9.0-0-0 Ng6 10.Nxe4 Nxd4 11.Bg5 f6 12.Qxd4 Qxd4 13.Rxd4 fxe5 14.Nxg5 h6 (14...Rxf2? 15.Bd3! +=) 15.Ne4 e5 16.Bc4+ Kh8 17.Rd2 Nf4 18.f3 += Ochoa De Echaguen, F -Morris, W New York op (7), 1992.

b) 8...Qxd4!? 9.Qxd4 Nxd4 10.0-0-0 Nec6 11.Nxe4 e5 12.Bxe5! Nxe5 13.Rxd4 0-0 14.Bb5 a6 15.Be2 Re8 16.Rhd1 Nc6 17.R4d2 Kf8 18.Nc3 Be6 19.Bf3 Na5 20.Rd4 Rab8 21.Nd5 with a slight but nagging advantage that was ultimately converted into a win. Karklins, A- Lindsay, F Illinois Tournament Of Champions, IL, 1988.

### 9.dxe5

Slightly greater chances of gaining an advantage seem to be preserved by maintaining the 2 bishops. 9.Bxe5 Nxe5 10.dxe5 Qxd2+ 11.Kxd2 Bf5 12.Re1 0-0-0+ 13.Kc1 Rd4 (13...Ng6 14.Nxe4 Rhe8 15.Ng3 Bd7 16.Bc4 Nxe5 17.Bb3 Bc6 18.f3 f6 = Karklins, A-Chow, A Illinois Tournament Of

Champions, IL, 1988) 14.e6 Bxe6 15.Nxe4 Ng6 16.h4 Bd5 17.Nc3 Bc6 18.h5 Nf4 19.Rh2 a6 20.g3 Ne6 21.Bh3 Bd7 22.f4 Rd8 23.h6 g6 24.Ne4 Nf8 25.Bxd7+ R4xd7 26.Rhe2 b6 = Karklins,A-Remlinger,L Chicago International (8), 1992.

9...Qxd2+ 10.Kxd2 Bf5 11.Re1 0-0-0 12.Kc1 Ng6 13.Bg3 Rhe8 14.Bb5 Ngxe5 15.Nxe4 Re7 16.Nc3 a6 17.Ba4 f6 18.f4 Nc4 19.Bxc6 Rxe1+ 20.Rxe1 bxc6 21.Bf2 Rd2 22.Re2 Rxe2 23.Nxe2 Be4 24.g3 Kd7 25.Nc3 Nd6 26.Na4 Nb7 27.b4 Ke6 28.Kd2 Kf5 29.Nc5 1/2-1/2.

### Illustrative Game #2

**Campora,D - Zlotnik,B**  
**Oviedo op, 1992**

**1.e4 e6 2.d4 d5 3.Nc3 Bb4 4.Nge2 dxe4 5.a3 Be7**

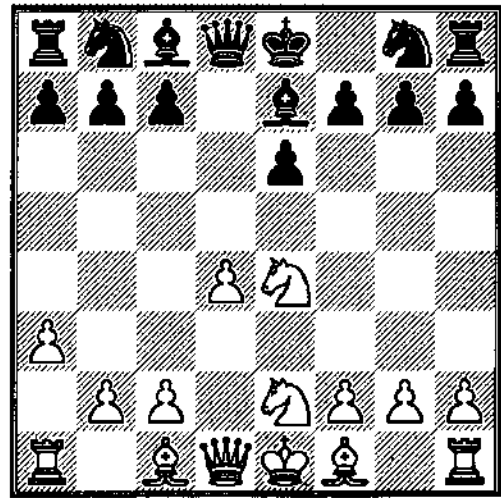
Black refuses to exchange this bishop out of concern for the dark-square weaknesses that resulted in some lines of the previous analysis.

### 6.Nxe4

If White cares to accept greater risk, he may consider: 6.Ng3 Nf6 7.Bb5+ Bd7 8.Bc4 Bc6 9.0-0 Bd5 10.Bxd5 exd5 11.Nf5 0-0 12.Bg5 c6 13.f3 e3! 14.Re1 Nbd7 15.Rxe3 Re8 16.Qd2 Bf8 17.Rxe8 Qxe8 18.Re1 Qd8 and White's slight advantage proved insufficient to win, Karklins,A-Andrews,R Mid-America Class (3),



Chicago, 1993.



### 6...Nc6

There is no clear consensus that c6 is the best square for this knight; and quite often it is developed to d7 as in the following subvariations.

a) 6...Nd7 (reinforcing f6 in anticipation of exchanges.)

7.N2c3 Ngf6 8.Be2!? Nxe4 9.Nxe4 Nf6 10.Bf3 Nxe4 11.Bxe4 c5 12.Be3 Qb6?! 13.0-0 0-0?! 14.dxc5! Qxb2 15.Bxh7+!! Kxh7 16.Qd3+ Kg8 17.Bd4 Qxd4 18.Qxd4 Bf6 19.Qe4 Bxa1 20.Rxa1 Rd8 21.h4 Rb8 22.Rb1 Rd5 23.c4 Rxc5 24.Rd1 f5 25.Rd8+ Kf7 26.Qd4 b6 27.Qd6 Ra8 28.Qf8+ Kg6 29.h5+ Kxh5 30.Qxg7 Bb7 31.Rd3 1-0 a delightful well-calculated game! Karklins,A-Small,G Midwest Masters Inv. (2), 1986.

b) 6...Nf6 (this move is extremely popular; and quite similar to the stem game with the exception that Black frequently delays Nxe4 until White can recapture with his other knight. White may now respond in several different ways:

b1) 7.Qd3 (preparing 0-0-0 at the earliest opportunity.) Nbd7 (a reasonable alternative is 7...b6 8.N2g3 Bb7 9.Be3 0-0 10.Nxf6+ Bxf6 11.0-0-0 Nd7 12.f3 c5 13.Nh5 Bxd4 14.Bxd4 cxd4 15.Qxd4 Qg5+ 16.Qf4 Qxf4+ 17.Nxf4 Nf6 = Ochoa De Echaguen,F-Carlin,A New York op

(5), 1992) 8.Nxf6+ (8.N2c3 Nxe4 9.Nxe4 Nf6 trades too many pieces.) Nxf6 9.Bf4 0-0 10.0-0-0 Bd7 11.Nc3 Rc8 12.Be2 Bc6 13.Bf3 Bxf3 14.Qxf3 c6 15.Rd3 Qb6 16.Bg5 Rfd8 17.Rhd1 Qc7 and White could demonstrate no advantage against the solid Black position. Marfia,J- Wallach,K Midwest Masters Inv. (2), 1988.

b2) 7.N2c3 Nbd7 (7...0-0 8.Ng3 Nc6 9.Be3 Nd5 10.Qf3 f5 11.Nxd5 Qxd5 12.Ne2 Qxf3 13.gxf3 e5 and Black managed to shortly lose despite having equalized rather easily. Walek,Milan-Kacirek,Petr Luhacovice ch-CZ (08), 1993) 8.Bd3 b6 9.Qf3 Rb8 10.Bf4 a6 11.0-0 Bb7 12.Qh3 Nxe4 13.Nxe4 Nf6 14.Nxf6+ Bxf6 15.Rad1 Qe7 16.c3 Rd8 17.Rfe1 c5 18.Bc4 Bd5 19.Bxa6 cxd4 20.Bb5+ Kf8 21.cxd4 +- Jones,K-Wallach,K Midwest Masters Inv. (1), 1982 .

b3) 7.N2g3 played by Andrew quite regularly, and much stronger than N2c3! Tournament experience has seen Black continue with:

b31) 7...0-0 8.b4!? (an unusual strategy!) Nc6 9.Bb2 Nxe4 10.Nxe4 Bf6 11.Rb1 Bxd4? 12.b5 Bxb2 13.bxc6 Qxd1+ 14.Kxd1 Bd4 15.cxb7 Rb8 16.Rb4 Bxb7 17.Rxd4 e5 18.Rc4 Bd5 19.Kc1 Bxc4 20.Bxc4 +- Karklins,A-Haimes,D National Open, Chicago 1991.

b32) 7...Nc6 8.Bb5 (as in the 5...Bxc3+ lines, Campora prefers here the development 8.Be3 0-0 9.Nc3 Nd5 10.Nxd5 exd5 11.Be2 f5 12.Qd2 h6 13.0-0 Be6 14.Rfe1 Bd6 15.Bf4 g5 16.Bxd6 Qxd6 17.Nf1 f4 18.h3 Bf5 19.Nh2 Qg6 20.c4! with a dynamic position in which White masterfully exploited the looseness in Black's Kingside. Campora,D-Zlotnik,B Sevilla (04), 1992) Nxe4 9.Nxe4 Qd5 10.Qd3 Bd7 11.Bf4 a6 12.Bc4 Qxd4 13.Qxd4 Nxd4 14.0-0-0 Nf5 15.Rhe1 0-0-0 16.g4 Nh4 17.Bg3 Bc6 18.Rxd8+ Rxd8 19.f4 Nf3 20.Re3 Bxe4 21.Rxe4 Nd2 22.Bxe6+ fxe6 23.Rxe6 +- Karklins,A-Lonoff,M Lincolnwood TOC (7), 1990.

b33) 7...Nbd7 8.Be2 (8.Bd3 b6 9.Qf3 Rb8 10.0-0 Bb7 11.Nxf6+ Bxf6 12.Be4 Bxe4 13.Nxe4 Be7

14.Bf4 Nf6 15.Rad1 0-0 16.Rfe1 Qd7 17.Be5 Nxe4 18.Qxe4 Rfe8 = Karklins,A-Bachler,K Midwest Masters Inv. (1), 1987) 0-0 9.0-0 b6 10.b3 Bb7 11.Bf3 Qc8 12.Bb2 Nxe4 13.Nxe4 Nf6 14.Nd2 Rd8 15.Qe2 Bxf3 16.Nxf3 Qb7 17.c4 c6 18.Rad1 b5 19.c5 Qd7 20.Rfe1 Qd5 21.Qc2 with a slight advantage in space, piece activity, and that old bugaboo "nagging initiative," which is so dangerous in Andrew's hands. Karklins,A-Lonoff,M Midwest Masters Inv. (4), 1986.

## 7.Bf4!

Alternatives are interesting, but don't promise a great deal.

a) 7.c3 e5.

b) 7.g3 e5 8.d5 Nd4 9.Bg2 Bg4 10.N4c3 Nf3+ 11.Kf1 Nd4 12.h3 Nxe2 13.hxg4 Nxc3 14.bxc3 Nf6 15.Rb1 Rb8 16.c4 Bc5 17.g5 Nd7 18.Rb3 += with an active game and 2 bishops. Formanek,E-Weiss,M Midwest Masters Inv. (5), 1987.

c) 7.c3 (protecting d4 so as to move Ne2 and complete development.) Nf6 8.N2g3 e5 (a standard central lever in this opening which takes advantage of White's insufficient control over e5.) 9.Nxf6+ Bxf6 10.d5 Ne7 11.c4 Ng6 12.Qc2 0-0 13.Bd3 Kh8 14.0-0 Bh4 15.Bd2 b5 16.b3 bxc4 17.bxc4 c6 18.Bb4 Be7 19.Be4 a5 20.Bxe7 Nxe7 21.Rfd1 cxd5 22.Bxd5 Nxd5 23.cxd5 f5 24.d6 += White's passed pawn proved impossible to contain. Span,P-Ernst,S Nijmegen NL-J14, 1993.

## 7...Nf6 8.Qd3 0-0

Black may prefer to reserve castling by developing Bc8 first, i.e.

8...b6 9.0-0-0 (speculative is the curious pawn grab 9.Nxf6+ Bxf6 10.Qg3 Bb7 11.Bxc7 Qd5 12.Nc3 Qxd4 13.Rd1 Bh4! 14.Qf3 Qf6 15.Qxf6 Bxf6 16.Ne4 Bxb2 17.Nd6+ Kd7 18.Nb5+ Ke7 19.f4 Rac8 With an unclear game which was ultimately drawn. Shirazi,K-Weiss,M Midwest Masters Inv. (5), 1988) Bb7 10.N2c3 Nxe4

11.Qxe4 0-0 12.d5 (opening the center before Black consolidates.) exd5 13.Nxd5 Bd6 14.Bd3 f5 15.Qe6+ Kh8 16.Bxd6 cxd6 17.Qe3 Ne5 18.Nf4 Qf6 19.h4 Rac8 20.f3 Rc5 21.Kb1 Rfc8 22.h5 b5 23.Rd2 a5 24.Rhd1 b4 25.Bf1 White had a nagging initiative due to Black's isolated d pawn on the open file, and won a protracted maneuvering game on move 65. Karklins,A-Lonoff,M Chicago Mid-America Class, 1992.

### 9.0-0-0 Nd5

a)9...e5!? (an interesting counter sacrifice.) 10.dxe5 Qxd3 11.cxd3 Nd5 12.Bg3 Rd8 13.N2c3 Bf5 14.Be2 Nd4 15.Rhe1 Nxc3 16.Nxc3 Nxe2+ 17.Rxe2 Rxd3 18.Nd5 Bg5+ 19.Bf4 Rxd5 20.Bxg5 Rc5+ 21.Kd2 Re8 += Adamski,A-Kislov,M Warsaw op, 1992.

b)9...b6 (the logical developement for this bishop.) 10.h4 Bb7 11.N2g3 (beginning an unmistakable shifting of pieces towards the Black King!) Qd7 12.Ng5 h6?! 13.Nh5! g6 14.Nxf6+ Bxf6 15.Nf3 Kg7 16.Qe3 Rh8 17.Ne5?! (unnecessarily trading a valuable attacker.) Bxe5 18.dxe5 Qe7 19.Bd3 with an equal game requiring patient defence for Black. Fischvogt,E-Ronnenberg,E Midwest Masters.

### 10.Bg3

10.h4 (securing g5 for an outpost, and not caring if Black captures Bf4) f5 11.Ng5 Rb8 12.Bd2 b5 13.Nf4 Nxf4 14.Bxf4 b4 15.Qc4 Qd5 16.Qxd5 exd5 17.axb4 Rxb4 18.c3 Rb7 19.Ba6 Rb6 20.Be2 h6 21.Nf3 Bd6 22.Bxd6 cxd6 +- Black's reckless positional play has left numerous weaknesses which White patiently exploited.Westerinen, H-Casadei, M Cattolica (09), 1993.

10...b6 11.c4 Nf6 12.f3 Bb7 13.Kb1 Qd7 14.Bf2 Rfd8 15.N2c3 Qe8 16.Qc2 a6 17.Be2 Na7 18.Rhe1 Nxe4 19.fxe4 b5 20.d5 b4 21.axb4 Bxb4 22.Bd3 e5 23.Rf1 Qe7 24.Na4 Bc8 25.Be3 Bd7 26.Rf2 Bxa4 27.Qxa4 Rab8 28.Rdf1 f6 29.g4 Bc5 30.Bxc5 Qxc5 31.g5 Qd6 0-1....□

## PEORIA WINTER TORNADO ENDS IN FOUR WAY TIE

By Bill Naff

Despite the sub-zero temperatures the Peoria Winter Tornado held on January 15, 1994 attracted 20 entries. The event was organized by Bill Naff and Bill Wilkinson directed.

The Open Section had a four way tie for first place between Doug VanBuskirk, Bill Naff, Reynaldo Limberg, and suprisingly, Class C player, Fred Delphin. Fred deserves special attention for his two draws against Class A Reynaldo Limberg, and former Master Doug VanBuskirk.

The seven player reserve section was won by Jonathan Bonwell and second place by Ray Tomanek..□

U.S. CHESSILLINOIS

Make your plans now for the  
**95th Annual**  
**U.S. OPEN**

August 7-19  
**1994 IN CHICAGO**

Send a large self-addressed stamped (52 cents) envelope to U.S. Open INFO, P.O. Box 157, Morton Grove, IL 60053 for more information on Chicago or the host hotel. You will also receive an early copy of the tournament announcement in spring.

**ILLINOIS CHESS ASSOCIATION  
AWARDS BANQUET**

**RAMADA, O'HARE  
6600 N. MANNHEIM ROAD  
ROSEMONT, IL**

**SOCIAL HOUR  
AT NOON  
DINNER AND  
PROGRAM**

**MARCH  
13**

**DONATION  
\$15 IN ADVANCE  
\$20 AT THE DOOR**

**3RD ANNUAL CHICAGO  
INTERNATIONAL & AMATEUR**

**INTERNATIONAL - APRIL 20-24  
AMATEUR - APRIL 22-24 or APRIL 23-24  
ICA MAXI TOUR EVENT**

**HYATT REGENCY OAK BROOK  
1909 SPRING ROAD, OAKBROOK, IL**

**SEE DETAILS IN CHESS LIFE**

# CHICAGO INDUSTRIAL CHESS LEAGUE

by Tony Jasaitis

The Chicago Industrial Chess League (CICL) finished its 1992-93 season, with the Motorola team sweeping the playoff swiss 3-0. The playoffs are comprised of the top two teams from each of the four geographical divisions.

Motorola, captained by the always enthusiastic Nik Goncharoff, won the championship for only the first time in the league's 35-year history, despite often being a strong contender. The winning team was comprised of I. Melnikov, Y. Hasan, C. Wallach, D. Cieslek, C. Samelson, L. Augsburg, and S. Farenholtz.

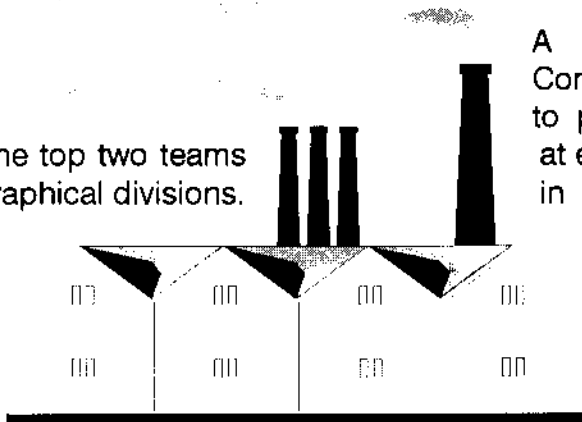
The finishing order in the playoffs was:

Place	Team (division)	Points
1	Motorola (North)	3
2	Argonne Knights (West)	2
3	Bell Labs Dragons	2
4	Chicago Research & Trading	1.5
5	Exemplars (North)	1.5
6	Chicago Post Office	1
7	Bell Labs Royals	1
8	Rockwell International	0

Last year's champion, UOP, just missed qualifying for the playoffs, residing in the exceptionally strong North Division. UOP did sweep the newly created "Second Tier" playoffs, followed by Sears, Columbia College, Alumni Central, Kemper Insurance, J. I. Case, Fermilab, and AT&T Chargers.

On the individual scale, Satish Kale of J. I. Case walked away with five awards, including Most

Improved Player, gaining an astounding 191 rating points in 13 games.



A brief summary of the CICL: Companies submit six-player teams to play matches in a relaxed setting at each other's home sites (usually in a cafeteria or meeting room) once every two to three weeks after working hours. Travel is kept light as the league is divided into four geographical divisions. Team and individual prizes are awarded at a banquet at

the end of the season in June. The league maintains a rating system similar to the USCF.

If you don't think you know enough chess players at work, put a notice in the company newsletter. You may be surprised how many chess players are lurking out there, even ones that have not played in tournaments. Although the matches are played with clocks, USCF experience is not required. Are you good enough for the league? Absolutely! Ratings in the league range from class E to Senior Master. Several teams have a class B player for board 1, yet masters and experts will have plenty of their own kind. Many teams' board 6 is rated 1200 or less.

A new season will begin in September. If you think that you can submit a team, or for further information, call Publicity Director Tony Jasaitis (708-406-6420), or President Jim Hodina (312-856-2762) no later than the middle of August...□





By Bob Renaut

## CLUB LADDER STARTED JANUARY

The first round for the year long club ladder tournament started January 3rd by drawing 28 players. The ladder started with a bang when Mark McGee scored a huge upset over a player rated 400 points above him Fidel Serrano. Here is that game.

**McGee,M (1450) - Serrano,F (1900)**  
**FVCC Ladder (1), 1994**

1.d4 d5 2.c4 dxc4 3.e3 b5? 4.a4! c6? 5.axb5  
cxb5 6.Qf3! Nc6 7.Qxc6+ Bd7 8.Qb7 Nf6  
9.Rxa7 Rxa7 10.Qxa7 e6 11.Nf3 Bd6 12.Be2  
0-0 13.0-0 Bc6 14.Bd2 Ng4 15.h3 f5 16.Ba5  
Qe8 17.Nbd2 Rf7 18.Qa6 Nf6 19.b3 c3  
20.Bxc3 b4 21.Bb2 Nd5 22.Rc1 Rc7 23.Nc4  
Bf8 24.Nce5 Bb7 25.Qa1 Qb8 26.Bb5 Bd6  
27.Nd7 Qd8 28.Nfe5 Qg5 29.Bc6 Rxc6  
30.Rxc6 Bxc6 31.Nxc6 Nxe3 32.Qa8+ Kf7  
33.Nce5+ Bxe5 34.Nxe5+ Ke7 35.Bc1 f4  
36.Bd2 Nd5 37.Qb7+ 1-0

## SM DICK VERBER FREEZES OUT THE FIELD IN FRIGID FOLLIES

Dick Verber iced the competition and swept the January G/10 unrated tournament with a 4-0 score. The event drew 11 hardy souls that braved the 20 degree below zero weather.

Dick was never in any danger as he crushed 2nd place finisher Bob Renaut in their head to head match and made short order of Chuck Hicks, Eric "Oberweis Crusher" Ortega and Joe Moore.

Bob Renaut earned 2nd place by defeating Jim Oberweis, Cliff Anderson and Ted Craig before a thrashing from SM Dick Verber. Julie Oberweis claimed 3rd place on tie breaks with 3-1 score by defeating Dean Fenton, Ted Craig and Joe Oberweis.

## BOB RENAUT SWEEPS SIMUL

The Christmas Game/60 simul drew twelve players. Bob Renaut (2175) engaged these twelve intrepid souls and emerged victorious scoring 12 - 0. This raises his G/60 simul record to 26 - 2 in these two club events... □

## St. Charles Chess Club News

By Dan Pradt

November saw the completion of the Knight's Cup and Squire's cup tournaments. Jeff Wiewel won the Knight's cup on tie break over Jim Marshall, both scoring 6-1. Marshall, who was 6-0 against the rest of the field, lost the Black side of a Saemisch King' Indian. Provoked by Jeff's unorthodox handling of the opening, Jim sacrificed "everything" to get at the White King, but came up a bit short. Wiewel gave up two draws to the rest of the field. Other scores were Erv Sedlock 4.5, Ray Satterlee 3.5, Greg Cisco and Joe Splinter 3.0, Steve Fulton 1.5, and Rudy Padilla 0.5. The level of play was a bit tougher than that, as strong experts Satterlee (2161) and Splinter (2130) could not achieve plus scores. .

The Squire's cup was won by Bill Buttney on tie break over Mike Plett, both 4-1. Mike breezed through the first 4 rounds with 4 wins, including a win over last year's champion Jim Oberweis, before falling to Bill in the final round. Oberweiss, Jim Little, and Kevin Schmuenger followed with 3.5. Upset of the tournament was Schmuenger (2164) losing to junior Blair Majah (1420)...□



# Mid-America Class Championships

- Chicagoland's PREMIER Class Chess Tournament -

## MARCH 25-26-27 IN CHICAGO

FIDE-RATED • 5 ROUND SWISS • 6 SEPARATE CLASS SECTIONS

# \$15,000 Guaranteed Cash Prizes!

★ ★ ★ ★ ★ Prize Fund Will Not Be Reduced ★ ★ ★ ★ ★

### MASTER SECTION

\$\$2000-1250-500-400-300-200  
Under 2400: \$\$500-200

### CLASS A

\$\$1000-500-300-200-100

### CLASS C

\$\$1000-500-300-200-100

### EXPERT SECTION

\$\$1000-500-300-200-100

### CLASS B

\$\$1000-500-300-200-100

### CLASS D/E

\$\$500-300-200

UNR. \$150-100



★ ★ ★ ★ ★ Plus 100 Grand Prix Points ★ ★ ★ ★ ★

## FREE RAFFLE and NATIONAL OPEN BONUSES!



### VISA & MASTERCARD ACCEPTED

by phone (708-396-1984) daytime until Monday, March 21st.  
Mention "Chess Tournament."

**ENTRY FEE: \$70** if received by 3/21

#### Send your entry to:

Mid-America Class Championships  
Box 100, Palos Heights, IL 60463

Info: Fred Gruenberg 708-489-5800  
(evenings only)

### MAKE HOTEL RESERVATIONS EARLY

before March 10th to assure discount rate.  
Phone Ramada O'Hare Hotel: 708-827-5131

### SEE CHESS LIFE GRAND PRIX SECTION FOR DETAILS

★ ★ ★ ★ ★

# A FUN CHESS WEEKEND AT THE SITE OF THE 1994 U.S. OPEN

## MARCH 25-26-27 IN CHICAGO

### TOURNAMENT INFORMATION

5 Round Swiss in 6 Class Sections: Master (over 2200), Expert (2000-2199), Class A (1800-1999), Class B (1600-1799), Class C (1400-1599), Class D/E/Unr (1399 & under).

**GUARANTEED PRIZE FUND** plus **MANY BONUSES** and **EXTRAS**, INCLUDING A **FREE** raffle with a **FREE** air fare to the 1994 National Open in Las Vegas, April 29-30-May 1st. **PRIZE FUND IS GUARANTEED AND WILL NOT BE REDUCED!!**

### REGISTRATION

By mail (see form below) or phone: (708) 396-1984 (have VISA or MASTER CARD ready). At tournament: Friday, March 12, 4:00 to 7:00 p.m., or Saturday, March 26, 8:30-9:30 a.m. with 1/2 point bye.

### ROUNDS

Friday, March 25th: 8:00 p.m., Saturday, March 26th: 10:30 a.m. & 5:30 p.m., Sunday March 27th: 9:30 a.m. & 5:00 p.m., 1/2 point bye allowed for any round. 5th & 6th round byes **MUST** be announced before the tournament.

### ENTRY FEE

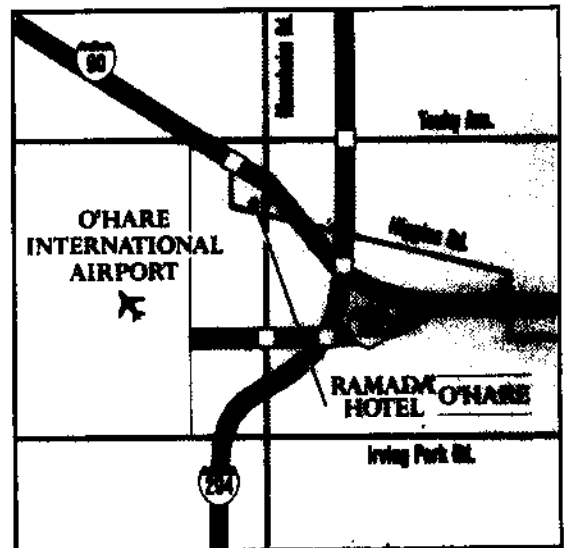
\$70 if received by March 21 (\$10 more at the site). Grandmasters **FREE**. Special Discounts: **ALL** Juniors and unrated \$35. Fourth members of **ANY** school or chess club play **FREE**. **ALL SPECIAL ENTRY FEES ARE ADVANCE BY MAIL ONLY!** Add \$1 for 1/2 point first round bye. VISA and MASTERCARD to Thursday, March 21, **NOT AT DOOR!** Call 708-396-1984 **DAYTIME ONLY**. Mail entries to Mid-America Class Championships, Box 100, Palos Heights, IL 60463. You can play in one section above your rating for \$5 additional. Illinois Chess Association **MAXI-TOUR** event.

### SPECIAL HOTEL RATES

\$59 single (add \$4) for double, (Regular rate is \$96) Ramada O'Hare Hotel, 708-827-5131. Mention "chess tournament." The Ramada O'Hare is located at 6600 N. Mannheim Road, less than 1 mile north of O'Hare airport with **FREE** pick-up service from O'Hare every 15 minutes.

### MANY EXTRAS

**FREE** parking. **FREE** raffle with **FREE** air fare to 1994 National Open in Las Vegas. **FREE BONUS** for perfect scores. Golf course, swimming pool on premises, weather permitting. **STOCK UP! -MID-WEST LARGEST** book concession by Jim/Helen Warren of American Postal Chess. Chess sets & boards provided. Please bring chess clocks!



6600 N. Mannheim at Higgins Road, Rosemont, Illinois



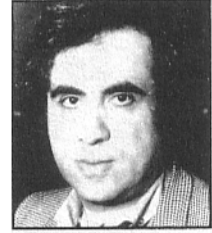
1993 Co-Champion  
GM Dmitry Gurevich



1993 Co-Champion  
GM Alex Yermolinsky



1992 Co-Champion  
GM Alexander Ivanov



1992 Co-Champion  
GM Roman Dzindzichashvili

**Please enter me in the Mid-America Class Championships, March 25-27 in Chicago.**

NAME \_\_\_\_\_ U.S.C.F. ID. # \_\_\_\_\_ U.S.C.F. RATING \_\_\_\_\_

ADDRESS, CITY, STATE, ZIP \_\_\_\_\_

AMOUNT ENCLOSED \$ \_\_\_\_\_

SPECIAL INSTRUCTIONS \_\_\_\_\_

*Please include self-addressed postcard  
if you want return confirmation*

MAY CHECK PAYABLE TO:  
MID-AMERICA CLASS CHAMPIONSHIPS

MAIL ENTRY TO:  
Mid-America Class Championships  
P.O. Box 100 - Palos Heights, IL 60463

★ ★ ★ ★ ★ **Don't Miss the Fun!** ★ ★ ★ ★ ★

# GREATER PEORIA OPEN

## March 5-6, 1994 GRAND PRIX & MAXI-TOUR EVENT TWO SECTIONS

OPEN		RESERVE - UNDER 1800	
First Prize	\$250	First Prize	\$150
Second Prize	\$150	Second Prize	\$75
Third Prize	\$100	Class C	\$70, \$45
Top Under 2000	\$100, \$50	Class D/Under	\$70, \$40

Optional 1/2 point bye available in any one of the first 3 rounds.  
All Class prizes are based on 6 per class.

5 Round Swiss

Time Control: 40/100, 15/30, SD/30

Signature Inn  
4112 N. Brandywine Dr.  
Peoria, IL 61614

Take I-74 to War Memorial Drive (East) exit.

Registration Saturday: 8:30-9:30  
Rounds: (Sat) 10:00, 2:30, 7:00 (Sun) 9:30, 2:30

Entry Fee: \$35.00 at the site \$5.00 Junior Discount  
ICA Membership required  
ENTRIES TO: Bill Wilkinson  
905 N. Rebecca Place  
Peoria, IL 61606  
(309) 673-9455

PLUS: Complimentary coffee, soft drinks, and other treats. A complimentary U.S.C.F. crosstable will be mailed to you at your request.

# DREAM CHESS VACATION

By Bob Renaut and photography by Marvin Rogan

Close your eyes and imagine your dream chess vacation. Where would you want to play? Who would you like to compete against? What would it cost to enter? Try this dream on for size.

The event is called the "III International Open" and was held on December 4-8 in the city of Oviedo in Asturias, Spain. More on where this is later. The event was a 13 round swiss game in 45 minute tournament held in the Sports Palace (the equivalent of Chicago's Rosemont Horizon). The event drew 597 players from over 38 nations, including over 75 Grandmasters! There were 12 players rated over 2600 and 55 rated above 2500! Here are just a few of the players attending; David Bronstein, Lajos Portisch, Viswanath Anand, Valery Salov, the Polgar sisters, Arthur Yusupov, Jan Timman, Tony Miles, Peter Leko (14 year old wonder), Nick DeFirmian and Marvin Rogan. Yes, this was his dream chess vacation.

The dream started by noticing an ad in The British Chess Magazine advertising for the



City of Oviedo Sports Palace playing site for the III International Open December 4 - 8, 1993.



Marvin Rogan playing a school aged opponent, Adolfo Santos Folck (1700) as GM David Bronstein looks on.

tournament sporting a 5,000,000 Ptas prize fund (\$38,000) and an entry fee of 5,000 Ptas (\$38) and a past field flooded with Grandmasters. Marvin boarded a Continental jet in Chicago and finally landed in Madrid, Spain ten hours later. It was a short scenic six hour train ride from Madrid to Oviedo, Spain on the North coast of Spain. The tournament organizers arranged the hotel bookings at a reduced rate of \$65/night. A real bargain. The tournament perks included a daily shuttle from the hotel to the Sports Palace.

The III International Open was a hotly contested event. The eventual winner was 18th ranked on the wall chart Anatoli Vaisser, 2580, with a score of 11 - 2. Anatoli lost only to Sofia Polgar, 2430, in the third round. Anatoli was 1-2 against the Polgar sisters during his visit to Oviedo. His head-to-head match against two of the Polgar sisters follows:

**Vaisser, A. 2580 - Polgar, S. 2430, III International Open, 1993 (3)**

1.d4 Nf6 2.c4 c5 3.d5 b5 4.cb5 a6 5.f3 g6 6.e4 d6 7.a4 Bg7 8.Na3 0-0 9.Ne2 e6 10.Nc3 ed5 11.Nd5 Ne4



**GM Miguel Najdorf, guest of honor, analyzing 4th round game with GM Cifuentes, 2495 vs. Gm Yudasin, 2605, (Yudasin in skull cap).**



**Critical 10th round game between GM Judit Polgar (2630) and IM Tomasz Markowsky (2465) of Poland. Markowsky won this game.**

12.fe4 Qh4+ 13.Kd2 Qe4 14.Qf3 Bh6+ 15.Kc3 Qe1+ 16.Kb3 Bc1 17.Bc4 Qh1 18.Ne7+ Kg7 19.Qc3+ f6 20.Rc1 Qh2 21.Re1 ab5 22.ab5 Bb7 23.Nf5+ gf5 24.Re7+ Kg6 25.Rb7 Qg2 26.Re7 d5 27.Bf1 Qg4 28.Qc5 Qd1+ 29.Nc2 Qf1 30.Qd5 Ra5 31.Kb4 Nc6+ 32.Qc6 Rfa8 33.Qd5 Qf4+ 34.Kc3 Rc8+ 35.Kd3 Qf1+ 36.Ke3 f4+ 37.Kd2 Qf2+ 38.Re2 Rc2+ 0-1



**Vaisser,A. - Polgar,Z.**  
**III International Open (9),**

1.d4 d5 2.c4 dc4 3.e3 e5  
 4.Bc4 ed4 5.ed4 Nf6 6.Nf3  
 Be7 7.Nc3 0-0 8.h3 Nc6  
 9.0-0 Bf5 10.Re1 a6 11.a3  
 b5 12.Bb3 b4 13.ab4 Nb4  
 14.Ne5 c5 15.d5 Bd6  
 16.Nc6 Qc7 17.Bg5 Nd3  
 18.Qf3 Bg6 19.Re2 Ne5  
 20.Ne5 Be5 21.Rae1 Bd4  
 22.Ba4 Qa5 23.Bc6 Rab8  
 24.d6 Rb2 25.Rb2 Bc3  
 26.Ra2 Qa2 27.Qc3 1-0

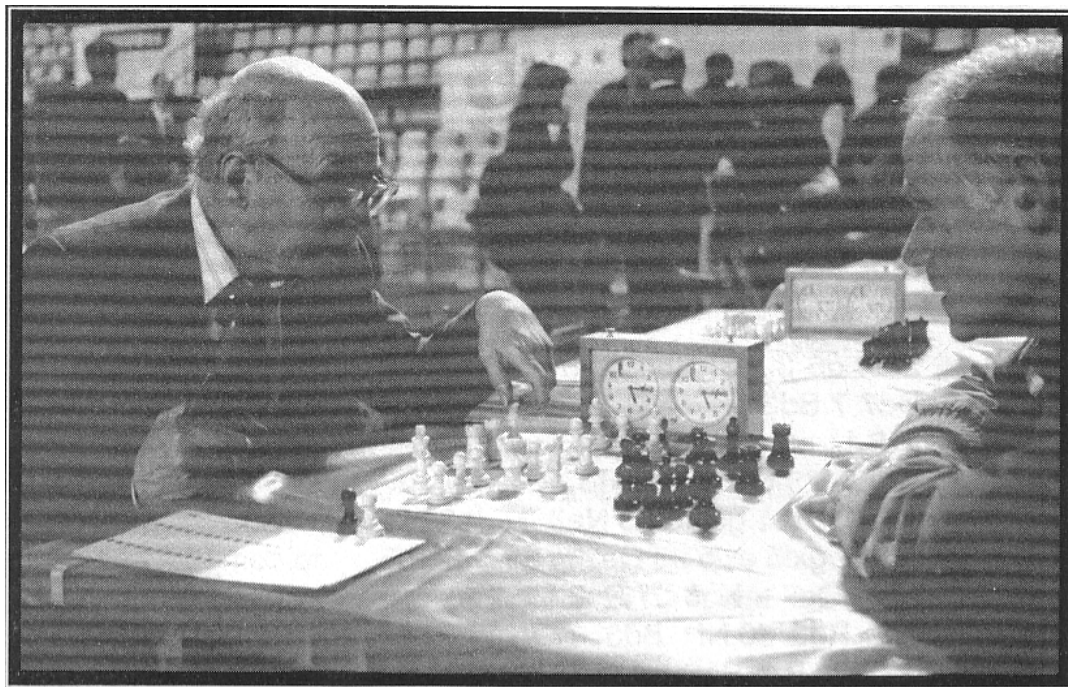
The top ten finishers and  
 the number of points they  
 scored were:

1st	Anatoli Vaisser	11.0
2nd	Leonid Yudasin	10.5
3rd	Sergey Smagin	10.5
4th	Judit Polgar	10.5
5th	Andrei Kharlov	10.5
6th	Illia Smirin	10.0
7th	Jan Timman	10.0
8th	Ivan Sokolov	10.0
9th	Valery Salov	10.0
10th	S. Zagrebelny	10.0

The top finishing computer  
 program was called "The  
 King" which scored 9.5  
 points and finished 15th.  
 The King defeated Valery  
 Salov (2685) who finished  
 9th.

**The King - Salov,V.**  
**III International Open (2)**

1.c4 Nf6 2.d4 e6 3.Nf3  
 Bb4+ 4.Bd2 Qe7 5.g3 Nc6  
 6.Bg2 Bd2+ 7.Nbd2 d6 8.0-0 e5 9.d5 Nb8 10.Qa4+ Nbd7 11.Qc2 a5 12.Ng5 Nc5 13.Nde4 Nfe4  
 14.Ne4 b6 15.Nc5 bc5 16.Be4 g6 17.Bg2 0-0 18.e4 Rb8 19.b3 Bd7 20.Qc3 a4 21.ba4 Rb4 22.a5 Ra8  
 23.f4 Ra5 24.a3 Rba4 25.Ra2 Ra8 26.Qd3 f6 27.Qe3 R4a6 28.f5 g5 29.Rc1 Rb6 30.Qd3 Qd8 31.Rb1  
 Qb8 32.Rb6 Qb6 33.h4 gh4 34.g4 Kh8 35.Rf2 Rg8 36.Kh2 Ba4 37.Qd2 Qb8 38.Qh6 Qd8 39.Rb2 Rg7  
 40.Qe3 Rg4 41.Kh3 Rf4 42.Bf3 Qa8 43.Qd3 Kg7 44.Rg2+ Kh8 45.Rg3 Qb8 46.Qd2 Qf8 47.h5 c6  
 48.Qd3 cd5 49.Qd5 Bc2 50.Kg2 Rh4 51.Kg1 Qb8 52.Qf7 1-0.



**GM David Bronstein, 2395, (7 1/2- 5 1/2) analyzes with Expert Tom Furstenbera from Belaium. (7-6).**



**GM Viswanath Anand, 2725, (9-4) with IM Peter Leko, 2555, (8 1/2- 3 1/2) from Hungary age 14 standing directly behind him. Peter became the youngest GM in history a few weeks later!**

The top rated American player, Nick DeFirmian, 2545, finished with a score of 8.0 and in 106th place. Nick stumbled in the third round losing the following game to the veteran GM David Bronstein.

**DeFirmian,N. (2545) - Bronstein,D. (2395)**  
**III International Open (3), 1993**

1.e4 e6 2.d4 d5 3.Nc3 Bb4 4.e5 b6 5.a3 Bf8  
 6.Bb5+ Bd7 7.Bd3 c5 8.Nf3 Nc6 9.O-O Nge7  
 10.Nb5 Ng6 11.c3 c4 12.Bxg6 hxg6 13.Bg5 f6  
 14.exf6 gxf6 15.Bf4 Rc8 16.Nd6+ Bxd6  
 17.Bxd6 Kf7 18.Re1 g5 19.h3 Ne7 20.Bh2 Nf5  
 21.g4 Rxh3 22.gxf5 exf5 23.Qe2 f4 24.Nd2 Bf5  
 25.f3 Qh8 26.Qe7+ Kg6 27.Re2 Qh4 28.Rg2  
 Rh8 29.Qe2 Rg3 30.Nf1 Bd3 31.Nxg3 Bxe2  
 32.Nxe2 Kf7 33.Rf1 Re8 34.Kh1 Re3 35.Ng1  
 Qh7 36.Rd2 Ke6 37.Kg2 Kd7 38.Rff2 f5  
 39.Rde2 Qh4 40.Kf1 Qh5 41.Ke1 b5 42.Kd2  
 Rd3+ 43.Kc2 Qh4 44.Rg2 Re3 45.Kd2 Rxe2+  
 46.Nxe2 Qh3 47.Rf2 a5 48.Bg1 Qh1 49.Kc2 g4  
 50.fxg4 Qe4+ 51.Kc1 f3 52.Rf1 fxe2 53.Re1 f4  
 54.Bf2 f3 55.Rg1 Qf4+ 56.Kc2 Qh2 0-1

**Bass,L. (2500) - Salov,V. (2685)**  
**III International Open, 1993**

1.d4 Nf6 2.c4 e6 3.Nf3 Bb4+ 4.Bd2 Qe7 5.g3  
 Nc6 6.Bg2 Bd2+ 7.Nbd2 d6 8.O-O e5 9.d5  
 Nb8 10.e4 a5 11.Ne1 O-O 12.Nd3 Na6 13.b3  
 Nb4 14.Nb2 Bg4 15.f3 Bd7 16.a3 Na6 17.Nd3  
 c6 18.dc6 bc6 19.f4 Bg4 20.Qe1 Qa7+ 21.Rf2  
 Qd4 22.Bf1 ef4 23.gf4 Rae8 24.c5 0-1

Hoang Trang, the 13 year old girl from Vietnam scored 7 points on the way to finishing 199th. She is a fast rising star with exceptional tactical talents. Here is game from the 1992 Oviedo event where she defeats the English GM John Nunn.

**Nunn,J (2550) - Trang,Hoang (2300)**  
**II International Open, 1992**

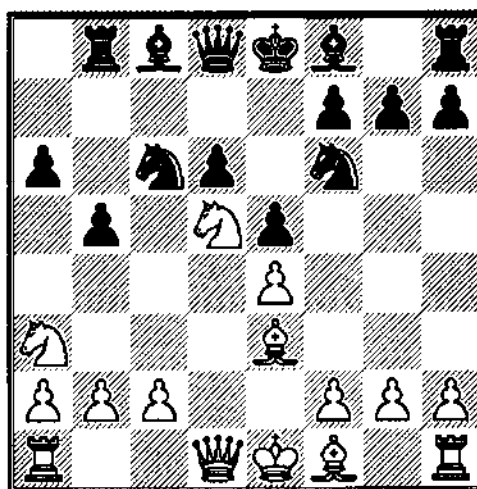
1.e4 e6 2.d4 d5 3.Nc3 Nf6 4.e5 Nfd7 5.f4 c5  
 6.Nf3 Nc6 7.Be3 Qb6 8.Na4 Qa5+ 9.c3 cd4  
 10.b4 Nb4 11.cb4 Bb4+ 12.Bd2 Bd2+ 13.Nd2

g5!? 14.Nb2 b6 15.Kf2 gf4 16.Nd3 Ba6 17.Nb3  
 Qa4 18.Nb2 Qa3 19.Qd4 Rc8 20.Bd3?? Bd3  
 21.Nd3 Rc4! 0-1

What happened to our very own Marvin Rogan? He finished the event with 6 points.

Finally, the organizer planned a G/25 match pairing the 1992 Champion, Gavrikov, against the 1993 Champion, Anatoli Vaisser. The prize was a brand new 1993 Opel sedan. When Gavrikov was unable to play, the organizer selected Judit Polgar to compete against Vaisser for the prize. So Anatoli got his chance to compete against the final Polgar sister. Here is the score from that game.

**Polgar,J.(2630) - Vaisser,A (2580)**  
**Oviedo, Spain G/25 playoff for Opel sedan,**



White to move

10.c4 b4 11.Nc2 Ne4 12.Qf3 f5 13.Bd3 Ng5  
 14.Qh5+ Nf7 15.f4 g6 16.Qe2 Bg7 17.Qd2 a5  
 18.O-O O-O 19.Rad1 Ne7 20.fe5 Nd5 21.cd5 de5  
 22.Bc5 Nd6 23.Ne3 Re8 24.Qe2 e4 25.Ba6 Be5  
 26.Rc1 Ra8 27.Bc8 Rc8 28.Rfd1 f4 29.Ng4 Bg7  
 30.Qa6 Nf5 31.d6 Qd7 32.Nf2 e3 33.Nd3 e2  
 34.Re1 f3 35.gf3 Rc5 36.Nc5 Bd4+ 37.Kh1 Qd6  
 38.Re2 Re2 39.Qe2 Bc5 40.Qc4+ Kg7 41.Qc5  
 Qd2 42.Rg1 Qf4 43.Qd5 Nd4 44.Qe4 Qd2 45.f4  
 Kh6 46.b3 Ne2 47.Rf1 Nc3 48.Qg2 Qd3 49.f5  
 Nd5 50.f6 Ne3 51.f7 1-0 and the car was  
 Judit's. The dream chess vacation came to an  
 end...□



# BASICS for the LEARNING PLAYER

By National Master Tom Cooper

Game Two: Kuerschner's "improvement" against the same opponent.

**Kuerschner-Tarrasch, Nuremberg, 1890.**

**1.e4 e5 2.Bc4 Nf6 3.Nc3 Ne4 4.Bf7+? Kf7  
5.Ne4 d5 6.Qh5+ Kg8 7.Qe2**

White tries to improve on his 6.Qf3+ of their previous game. He sets the same trap as before, hoping for 7...de?? 8.Qc4+.

**7...h6** Now the Knight must move.

**8.Ng3 Nc6**

This position is similar to their previous encounter. White is a little better off with the Q on e2 rather than on f3, but he still violated the same opening principles of exchanging off development for a temporary initiative. Once again, Black controls more of the center and leads in development.

**9.d3 Nd4**

This is premature as it drives the White Queen to a safer square. Simply 9...Bc5 keeping the threat in reserve is better.

**10.Qd1 Bc5 11.Be3**

White should chase the Knight away with 11.c3 before Black can increase his development. With 11.Be3 he counts on trading pieces after c3.

**11...Kh7 12.c3 Re8!**

More development and more pressure as 13.cd ed is too dangerous.

**13.h3** White wants to play 14.Nge2 without allowing any ...Bg4 by Black.

**13...Qh4 14.Nge2 Ne2 15.Qe2 d4**

This gives the e4 square to the White Knight but allows

Black to restrict White's position. Many times in a game of chess to get something you must give something.

**16.Bd2 Bd7 17.Ne4 Bf8!**

Much better than 17...Bb6 when the Bishop would have no attacking power if White castles Q-side.

**18.000**

18.00 is dangerous after 18...Re6 19.Qg4 Qe7 with ...Rg6 and a strong attack.

**18...Re6** heading for the Q-side.

**19.Kb1 Ra6 20.Bc1 Be6**

Both bishops are pointed at White's King. Black is ready to answer 21.c4 with 21...b5!.

**21.a3 b5 22.f3 Rb8 23.g4 Qd8!**

White was threatening 24.g5 to cut off the Black Queen's chance to retreat and help in the attack.

**24.g5 Qd5 25.Kc2**

Trying to flee the attack but it is too late.

**25...dc 26.Nc3 Qb3+ 27.Kd2 b4 28.ab Bb4  
29.Qe5 Ra2 30.gh**

Threatens mate but Tarrasch has a pretty forced win.

**30...Rb2+! 31.Bb2 Qb2+ 32.Ke3 Bc3  
33.Qe4+**

If 33.Qe6 Bd4+ 34.Kf4 Rf8+ 35.Kg5 Qg2+ 36.Qg4 Be3+ 37.Kh5 g3+

**33...g6 34.Qe6 Bd4+ 35.Kf4**

On 35.Ke4 Qe2+ and a Rook check wins the Queen.

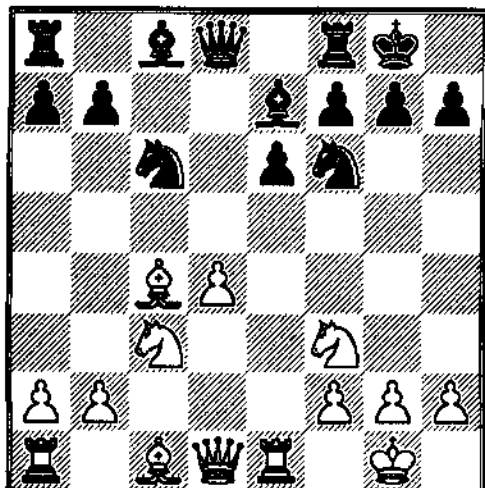
**35...Rf8+ 36.Kg5 Qg2+ 37.Qg4 Rf5+ 0-1...□**

# ANNOTATED GAMES

By National Master Tom Cooper

J.Jones - J.Warren  
Illinois Class, 1993

1.e4 c6 2.d4 d5 3.exd5 cxd5 4.c4 Nf6 5.Nc3 e6 6.Nf3  
Be7 7.Bd3 0-0 8.0-0 dxc4 9.Bxc4 Nc6 10.Re1 b6



After White's 10 the move

[Sharper is 10...a6 11.a3 b5 12.Ba2 Bb7 13.Bg5 Nd5  
14.Ne4 Bg5 15.Nfg5 Ra7 16.Rc1 h6 17.Nf3 a5 18.Rc5  
b4 as in Bischoff-Nauman, Berlin Open 1988.]

11.Bf4 Bd6 12.Ne5 Bxe5 13.dxe5 Qxd1 14.Raxd1 Nh5  
15.Bc1 g6 16.Bh6 Rd8?!

[Black gets tangled up after this. 17...Ng7 looks better.]

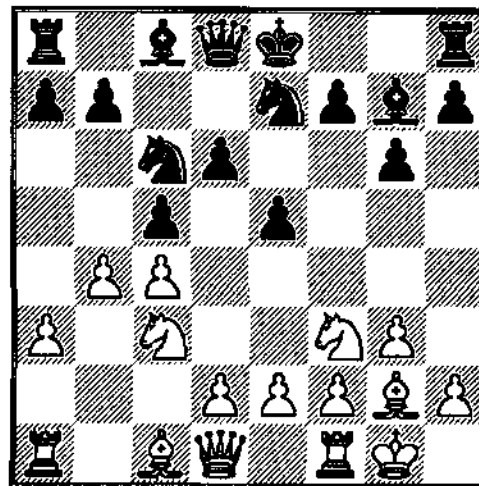
17.Rxd8+ Nxd8 18.Rd1 Bb7 19.Rd7 Bc6 20.Rc7 Ng7  
21.Nb5 Bxb5 22.Bxb5 a6

[22...Nf5 23.Bg5 threatening 24.Rd7.]

23.Bxa6 Nf5 24.Bg5 Rxa6 25.Rc8 Rxa2 26.Rxd8+  
Kg7 27.g4 Rxb2 28.gxf5 gxf5 29.Bf6+ Kh6 30.Rf8 b5  
31.Rxf7 b4 32.Re7 b3 33.Rxe6 Rb1+ 34.Kg2 b2  
35.Rb6 f4 36.e6 f3+ 37.Kxf3 Re1 38.Bxb2 1-0

D.Gurevich - G.Scott  
Illinois Class, 1993

1.c4 c5 2.Nc3 g6 3.Nf3 Bg7 4.g3 Nc6 5.Bg2 d6 6.0-0  
e5 7.a3 Nge7 8.b4 e4



After Black's 8th move

[8...cb 9.ab Nb4 10.Ba3: a) 10...Nec6 11.Qa4 Na6 12.Ne4  
Bf8 13.d4; b) 10...Na6 11.Ne4 Nc5 12.Nfg5 Qc7  
13.Nd6+! Qd6 14.Ne4 Ne4 15.Bd6 Nd6 16.Qa4+ Kf8  
17.Qb4 Ne8 18.Bb7 a5 19.Bc8! Martinovic-DeFirmian, Bor  
1984.]

9.Ne1 d5?!

[ Risky. Known is 9...f5 10.Bb2 with: a) 10...00  
11.d3 (11.Rb1) Be6 12.de fe 13.Be4 Bc4 unclear; or b)  
10...Be6 11.d3 ed 12.Nd3 Bc4 13.Na4 00 (Romanischin-  
Short, Lvov 1984); now Bagirov gives 14.Bg7 Kg7 15.bc  
d5 16.Nf4!]

10.Rb1 cxb4 11.Nxd5 Nxd5 12.cxd5 Qxd5 13.axb4 0-0  
14.d3 Qa2 15.Be3 exd3 16.Nxd3 Bf5 17.b5 Ne5 18.Ra1  
Qc4 19.Nxe5 Bxe5 20.Bxb7! Qxb5 21.Bxa8 Rxa8  
22.Rxa7 Rxa7 23.Bxa7 Bh3 24.Qd8+ Kg7 25.Rd1 Qxe2  
26.Bc5 h5 27.Qf8+ Kh7 28.Qxf7+ Bg7 29.Qd5 Bf5  
30.Rc1 Bd3 31.Bd4 Qd2 32.Be3 Qe2 33.h4 Bf5 34.Qd1  
Qb5 35.Rc7 Qe5 36.Bf4 Qb2 37.Qc1 Qd4 38.Bh6 Bd7  
39.Bxg7 Kxg7 40.Qc6 1-0

Martinovsky - Jordan  
Illinois Class, 1993

1.g3 Nf6 2.Bg2 g6 3.d4 d5 4.Nf3 Bg7 5.0-0 0-0 6.c4 c6  
7.cxd5 cxd5 8.Ne5 Nbd7 9.Nc3 Nb6?! 10.a4 e6 11.a5  
Nbd7 12.f4 a6 13.b3 Qc7 14.Qd3 b6 15.Ba3 Re8  
16.Rfc1 Qb7 17.axb6 Nxb6 18.Na4 Nbd7 19.Rc2 Bf8  
20.Bxf8 Rxf8 21.e3 Qb4 22.Qc3 Qd6 23.Qc7 Qb4  
24.Rc3 Nxe5 25.fxe5 Ne4 26.Bxe4 dxe4 27.Rac1 Bb7  
28.Nb6 Rab8 29.Qd6 Qb5 30.Qc5 Bc6 31.Qxc6 Rxb6  
32.Qxe4 Qb4 33.Qf3 Rbb8 34.h4 Qa3 35.e4? Qb4?

[ 35...Rb3! 36.Rb3 Qc1+ ]

36.Qe3 Rfd8 37.Rd3 Rb5 38.h5 Qf8 39.Rc7 h6 40.Qf2  
Re8 41.Qf6 Qg7 42.hxg6 Qxg6 43.Qxg6+ fxg6 44.Rf3  
Rf8 45.Rf6 Rxf6 46.exf6 Rxb3 47.Rg7+ Kf8 48.Rxg6  
Rb4 49.Rxh6 Rxd4 50.e5 Rg4 51.Rh8+ Kf7 52.Rh7+  
Kf8 53.Re7 Rxg3+ 54.Kf2 Rg5 55.Rxe6 a5 56.Kf3  
Rg1 57.Ra6 Kf7 58.Rxa5 Rf1+ 59.Ke4 Rd1 60.Ra7+  
Kf8 61.Kf5 Rb1 62.Ra8+ 1-0

**Tate - Martynovsky  
Illinois Class, 1993**

1.c4 e5 2.g3 Nc6 3.Bg2 d6 4.Nc3 Be6 5.d3

[ 5.Qa4 Qd7 6.e3 Nge7 (6...000? 7.Nb5 Kb8 8.Bc6 or  
7...a6 8.Bc6) 7.Nd5 Bd5 8.cd Nd8 9.Qd7+ Kd7 10.Ne2  
is better for White according to J.Watson.]

5...Qd7 6.Rb1 g6 7.b4 Bg7 8.b5 Nd8 9.Nf3 Bh3  
10.Bxh3

[ 10.00 Bg2 11.Kg2 Ne7 ]

10...Qxh3 11.Qa4 Qd7 12.0-0 Ne7 13.Ba3 Ne6 14.c5  
0-0 15.Rfc1 dxc5 16.Qe4 b6 17.Nxe5 Qd4 18.Nc6  
Nxc6 19.Qxc6 Qg4 20.e3 Rfd8 21.Nd5 Qe2 22.d4  
cxd4 23.Rb2 Qh5 24.Ne7+ Kh8 25.exd4 Nxd4 26.Qc4  
Nf3+ 27.Kg2 Ne5 28.Qe2 Nd3 29.Rxc7 Nxb2 30.Qxb2  
Rd3 31.Qc2 Qf3+ 32.Kh3

[ Black has a winning material advantage and should  
just trade off pieces with 32...Rc3.]

32...g5? 33.Bb2 g4+ 34.Kh4 Bf6+ 35.Kh5 Rad8?  
36.Qxd3! Bxb2 37.Qxd8+ Kg7 38.Qg8+ Kf6 39.Qg5+  
Ke6 40.Qxg4+ Qxg4+ 41.Kxg4 Be5 42.Rxa7 1-0

**News Flash**

Peter Leko, at 14 becomes the youngest  
Grandmaster ever! Peter earned his final  
grandmaster norm by finishing 3rd at the  
Wijk Ann Zee tournament held in the same  
town..

Peter shatters the record set by Judit Polgar  
set in 1991 by more than a year! Judit and  
Bobby Fischer have become grandmasters at  
the age of 15. Peter lives in the town of  
Szeged on the Hungarian-Yugoslav border.

**ICA TOUR CROSSTABLES**

Peoria Tornado  
OPEN January 15, 1994  
score tour

1	VAN BUSKIRK Doug	2178	W11	W10	D 2	D 4	3	4	X
2	NAFF William	2108	W12	W 6	D 1	H	3	4	X
3	LIMBERG Reynaldo	1921	W13	D 4	D 9	W 6	3	4	XA
4	DELPHIN Fred	1571	W 9	D 3	W 5	D 1	3	4	XABC
5	SPHAR Robert	1757	H	W12	L 4	W 8	2.5	2	5XAB
6	BOURGERIE Dennis	1869	W 7	L 2	W10	L 3	2	2	XA
7	MOORE Rod	1500	L 6	L 9	B	W12	2	2	XABC
8	GOODWIN Kim	1402	L10	B	W11	L 5	2	2	XABC
9	ANDERSON Phil	1949	L 4	W 7	D 3	-	1.5	1	5XA
10	VERO Carl	1857	W 8	L 1	L 6	H	1	1	5XA
11	STAFFORD Jerry	1646	L 5	W13	L 8	-	1	1	XAB
12	STOTLER Richard	1628	L 2	L 5	W13	L 7	1	1	XAB
13	BARTHEL Jim	1552	L 3	L11	L12	-	0		

Peoria Tornado  
RESERVE January 15, 1994  
score tour

1	BONWELL Jonathan	1318	W7	W2	W3	W6	4	14	CD
2	TOMANEK Ray	1342	W5	L1	W6	W3	1	4	CD
3	KELLY James	1432	W4	W7	L1	L2	2	2	C
4	SAX Robert	1175	L3	W6	D5	H	2	2	CDE
5	HARDY Anne	1104	L2	L6	D4	H	1	1	CDE
6	BREINER Ryan	460	L4	W5	L2	L1	1	1	CDE
7	WILDMAN Eric	1452	L1	L3	-	-	0		

Tim Just Winter Open  
OPEN January 8-9, 1994  
score tour

1	BASTENIS Godimina	2452	W11	W10	W 7	W 4	D 3	4.5	19	M
2	VON KROGH Christopher	2032	W19	W 3	D16	D 5	W 8	4	12	MX
3	CHOW Albert	2441	W17	L 2	W22	W16	D 1	3.5	7	M
4	SAX Robert	2134	D14	X	W 6	L 1	W14	1.5	7	MX
5	KAREN Dan	2118	D22	W13	W15	D 2	D 7	3.5	7	MX
6	MC CARTHY Mike	2024	H	W18	L 4	W20	W13	1.5	7	MX
7	PANGAN Danilo	2255	W12	W 9	L 1	D14	D 5	1	6	M
8	SZPILGAK Steve	2132	W14	D15	H	W 9	L 2	1	6	MX
9	KREISMAN Bruce	2029	W23	L 7	W19	L 8	W16	1	6	MX
10	LA BUONDE Michael	2129	W20	L 1	L14	W18	D12	2.5	5	MX
11	MAYKA Tom	1975	L 1	L20	W17	H	W19	2.5	5	MXA
12	FAGAN Janeu	1966	L 7	W23	L 3	W21	D10	2.5	5	MXA
13	BOCKIERO Brian	1955	D 4	L 5	W22	W15	L 6	2.5	5	MXA
14	SCHULTZ Andrew	1929	L 8	W17	W10	D 7	L 4	2.5	5	MXA
15	GRAVES William	1806	H	D 8	L 5	L13	W20	2.5	5	MXA
16	BERNANDEZ Hector	2104	D18	W22	D 2	L 3	L 9	2	4	MX
17	SERRANO Fidel	1967	L 1	L14	L11	W21	W21	2	4	MXA
18	ROCKWELL David	1834	D16	L 6	D21	L10	W23	2	4	MXA
19	KITTISEN Guy	1828	L 2	B	L 9	W22	L11	2	4	MXA
20	BUTNY William	1908	L10	W11	H	L 6	L15	1.5	3	MXA
21	BUKEL Bernard	1908	H	F	D18	L12	L17	1	2	MXA
22	CHINA Joe	1847	D 5	L16	L11	L19	-	0.5	1	MXA
23	WONG Brian	1718	L 9	L12	H	L17	L18	0.5	1	MXAB

Tim Just Winter Open  
RESERVE January 8-9, 1994  
score tour

1	CLAY Harry	1765	W24	W 5	W17	W 4	W 6	5	12	B
2	HACKSTROM Orr	1562	W29	W 9	H	D 3	W11	4	12	BC
3	HENROID Mike	1715	W13	D 6	W 7	D 2	D 5	3.5	7	B
4	RISDELL Josh	1619	D26	W15	W12	L 1	W14	4.5	7	B
5	GASIECKI Alan	1576	W28	L 1	W20	W 9	D 3	3.5	7	BC
6	LESTER Mike	1563	W21	D 3	W14	W16	L 1	3.5	7	BC
7	MITCHELL Gary	1534	H	W26	L 2	W22	W12	3.5	7	BC
8	ISRAELSEN Kirk	1491	W10	D11	L16	W15	W17	3.5	7	BC
9	MIEL James	1700	W18	L 2	W24	L 5	W19	3	6	B
10	JOINTER William	1700	L 8	W23	L19	W26	W21	3	6	B
11	SACAUSKAS Justin	1609	W23	D 8	H	W19	L 2	3	6	B
12	DELAY Joe	1575	W20	W16	L 4	W17	L 7	3	6	BC
13	PEJERSEN Ken	1496	L 3	L21	W29	W28	W20	3	6	BC
14	KITTSLEY Scott	1610	W22	H	L 6	W21	L 4	2.5	5	B
15	FRANK Randy	1266	H	L 4	W27	L 8	W22	2.5	5	BCD
16	DENNIS Mike	1719	W25	L12	W 8	L 6	-	2	4	B
17	PAJILLA Rudy	1600	W27	W19	L 1	L12	L 8	2	4	B
18	BIEZYNSKI Stan	1422	L 9	L20	-	W23	W26	2	4	BC
19	DONNA Dan	1092	B	L17	W10	L11	L 9	2	4	BCDE
20	MARSHALL Craig	-	L12	W18	L 5	W25	L13	2		
21	HAYES William	-	L 6	W13	W25	L14	L10	2		
22	WELTON James	1313	L14	W29	H	L 7	L15	1.5	3	BCD
23	BALES Robert	1306	L11	L10	H	L18	W27	1.5	3	BCD
24	SMITH Chris	1512	L 1	W27	L 9	-	1	1	2	BC
25	ZELINSKI Daryl	1500	L16	W28	L21	L20	-	1	2	BC
26	GROGGER Andrew	1416	D 4	L 7	H	L10	L18	1	2	BC
27	WISNER Michael	1272	L17	L24	L15	W29	L23	1	2	BCD
28	DENNIS Jason	1158	L 5	L25	B	L13	-	1	2	BCDE
29	MENDOZA Noe	-	L 2	L22	L13	L27	B	1		

# TOURNAMENT CALENDAR

Call Chess Phone, (708) 832-5222, for up-to-date tournament results, and announcements of tournaments that may not be listed in Chess Life or the ICB. The ICA Chess Phone voice is Todd Barre. Unless otherwise noted, all tournaments require USCF membership. Illinois Tour events also require ICA membership.

Organizers - remember it is ICA policy that an event must be published in the ICA bulletin and marked as a tour event in order to be a tour event. Please send your tournament notices to: Bob Renaut, 1255 Oakton Lane, Naperville, IL 60540-0310 or call 708-983-0934.

1994

**March 5-6, State Scholastic, Rockford, IL**

**March 5, West Suburban Conf Meet, Downers Grove, IL, Mike Mayfield, 708-852-0600**

**March 5-6, Greater Peoria Open, Peoria, IL**  
Maxi Tour - See ad on page 18,

**March 12, North Boone Individual, Rated, Poplar Grove, IL, Gunther Wohlfarth, 815-765-3311**

**March 12, Fox Valley Low Cost Open #1, Aurora, IL**  
4-SS, G/60, Church of God at the corner of Galena Blvd and Lancaster, Aurora, IL, 60505. EF: \$12, \$7 juniors, (\$2.00 off to FVCC members), Reg: 8:00-8:30 am, Rounds 8:45, 11, 1:30, 3:45, Prizes (b20) 1st-\$50, 2nd-\$25, Top A,B,C \$15 each, Top D/E/unr \$15. For info call: Bob Renaut, 708-983-0934, 1255 Oakton Lane, Naperville, IL. 60540., mini

**March 13, Illinois Chess Association Awards Banquet, Chicago, IL, Ramada O'Hare, 6600 N Mannheim Road, Rosemont, IL. Social hour at noon, dinner and program at 1pm. Donation: \$15 in advance, \$20 at the door.**

**March 19, 94 Tuley Park G/20 #2, Chicago, IL**

5-SS, 501 E, 90th Place, EF: \$12, under 19 \$8. Reg. 11:00-11:45, Rds: 12, 12:50, 1:40, 2:30 and 3:20. Prizes if 16 or less 1st 35%, 2nd 25% best from lower half 20%, if 18 or more 1st 30%, 2nd 20%, middle 3rd 16% lowest 3rd 14%. Info: Tom Fineberg 721-3979.

**March 25-27, Mid-America Class Championship, Chicago, IL, see ad on page 19.**

**March 25-26, IHSA State Team, Normal IL, M. Knight, 309-438-8346**

**April 2, April Fools Tornado, DeKalb, IL**  
See Chess Life for details.

**April 9-10, Oak Park River Forest Spring Open, River Forest, IL**  
5-SS, 40/90, 15/30, Dominican Conf Center, 7200 W. Divison, EF: \$15 if by 4/6, \$20 at site, \$265 (b30), \$100-50-25, ABC \$25, DE/UNR \$15, Reg 8:15-9, Rds 9:30 - 2-6:30, 10 - 2:30, Enty K. Marshall, 357 W. Grove, Lombard. IL, 708 932-1455, NC, NS.

**April 8-10, Arpad Elo Open, Stevens Point, WI**

**April 15-17, National Jr. High Championship, Rye, NY**

**April 16, Fox Valley Low Cost Open #2, Aurora, IL**  
4-SS, G/60, Church of God at the corner of Galena Blvd and Lancaster, Aurora, IL, 60505. EF: \$12, \$7 juniors, (\$2.00 off to FVCC members), Reg: 8:00-8:30 am, Rounds 8:45, 11, 1:30, 3:45, Prizes (b20) 1st-\$50, 2nd-\$25, Top A,B,C \$15 each, Top D/E/unr \$15. For info call: Bob Renaut, 708-983-0934, 1255 Oakton Lane, Naperville, IL. 60540., mini.

**April 16, Peoria Spring Tornado, Peoria, IL.**  
4-SS, 30/60, SD/30, Garrett Center, 824 N. University, Peoria, IL. EF \$11 if by 4/14, \$13 at site. Open Section - Open to all, Reserve section - open to under 1600. ICA membership req'd for Open section only. Reg 8-8:45. Rds: 9,11:30,2:15,5. Guaranteed Cash Prize: \$75 - \$50. Top A & B \$25 each (based on 6 per class). 1/2 bye in any round. Entries: Bill Naff, 212 Vail Ct., Peoria, IL 61614, (309) 691-4624, mini.

**April 16, 94 Tuley Park G/30 #1, Chicago, IL**  
4-SS, 501 E, 90th Place, EF: \$12, under 19 \$8. Reg. 11:00-11:45, Rds: 12, 1:10, 2:20 and 3:30. Prizes if 16 or

# TOURNAMENT CALENDAR

less 1st 35%, 2nd 25% best from lower half 20%, if 18 or more 1st 30%, 2nd 20%, middle 3rd 16% lowest 3rd 14%. Info: Tom Fineberg 721-3979.

**April 20-24,**  
**Chicago International, Oakbrook, IL,**  
**Maxi - See Chess Life for details.**

**April 29-May 1,**  
**National H. S. Championship, Dearborn, MI**

**April 29-May 1, National Open, Las Vegas, NV**

**May 6-8,**  
**National Elementary Championship, San Jose, CA**

**May 14,**  
**Fox Valley Low Cost Open #3, Aurora, IL**  
4-SS, G/60, Church of God at the corner of Galena Blvd and Lancaster, Aurora, IL, 60505. EF: \$12, \$7 juniors, (\$2.00 off to FVCC members), Reg: 8:00-8:30 am, Rounds 8:45, 11, 1:30, 3:45, Prizes (b20) 1st-\$50, 2nd-\$25, Top A,B,C \$15 each, Top D/E/unr \$15. For info call: Bob Renaut, 708-983-0934, 1255 Oakton Lane, Naperville, IL. 60540. mini

**May 14,**  
**94 Tuley Park G/20 #3, Chicago, IL**  
5-SS, 501 E, 90th Place, EF: \$12, under 19 \$8. Reg. 11:00-11:45, Rds: 12, 12:50, 1:40, 2:30 and 3:20. Prizes if 16 or less 1st 35%, 2nd 25% best from lower half 20%, if 18 or more 1st 30%, 2nd 20%, middle 3rd 16% lowest 3rd 14%. Info: Tom Fineberg 721-3979.

**May 21-22, Illinois Junior Invitational (tentative)**

**May 28-30, Chicago Open, Oakbrook, IL**

**June 4,**  
**94 Tuley Park G/20 #4, Chicago, IL**  
5-SS, 501 E, 90th Place, EF: \$12, under 19 \$8. Reg. 11:00-11:45, Rds: 12, 12:50, 1:40, 2:30 and 3:20. Prizes if 16 or less 1st 35%, 2nd 25% best from lower half 20%, if 18 or more 1st 30%, 2nd 20%, middle 3rd 16% lowest 3rd 14%. Info: Tom Fineberg 721-3979.

**June 18, DeKalb, Bill Reed**

**June 25,**  
**94 Tuley Park G/20 #5, Chicago, IL**

5-SS, 501 E, 90th Place, EF: \$12, under 19 \$8. Reg. 11:00-11:45, Rds: 12, 12:50, 1:40, 2:30 and 3:20. Prizes if 16 or less 1st 35%, 2nd 25% best from lower half 20%, if 18 or more 1st 30%, 2nd 20%, middle 3rd 16% lowest 3rd 14%. Info: Tom Fineberg 721-3979.

**June 25,**  
**94 Tuley Park G/20 #6, Chicago, IL**  
5-SS, 501 E, 90th Place, EF: \$12, under 19 \$8. Reg. 11:00-11:45, Rds: 12, 12:50, 1:40, 2:30 and 3:20. Prizes if 16 or less 1st 35%, 2nd 25% best from lower half 20%, if 18 or more 1st 30%, 2nd 20%, middle 3rd 16% lowest 3rd 14%. Info: Tom Fineberg 721-3979.

**July 26-August 5,**  
**U. S. Junlor Championship, Bloomington, IL**  
**U. S. Women's Chamlonship, Bloomington, IL**

**July 30-31,**  
**U.S. Action Championship, Bloomington, IL**

**August 6,**  
**U. S. Game 10 Championship, Bloomington, IL**

**August 7-19, U. S. Open, Chicago, IL,**

**Oct 28-30 Midwest Class Champlonship, Oakbrook, IL**

1995

**Feb 11-13, US Amateur Team Championships Midwest, Oakbrook, IL**

**March 24-26,**  
**Mid-America Class Championship, Chicago, IL.**

**April 7-9,**  
**National H.S. Championship, Chicago, IL.**  
**National Elementary Championship, Little Rock, AR.**

**April 21-24,**  
**Chicago International, Oakbrook, IL.**

**May 12-14,**  
**National Junior High, Dearborn, MI.**

**May 28-30,**  
**Chicago Open, Oakbrook, IL.**  
**August 6-18, U.S. Open, Concord, CA.**

**September 2-4,**  
**Illinois Open, Chicago, IL.**

**October 29-31,**  
**Midwest Class Championship, Oakbrook, IL.**

**November 18-19,**  
**Illinois Class Championship, Chicago, IL**

# ILLINOIS CHESS ASSOCIATION

## Century Club Members

Michael Belovesick Sr ..... Addison  
 Larry W. Blum ..... Rockford  
 Thomas Fineberg ..... Chicago  
 Fred Gruenberg ..... Palos Heights  
 Michael McIlhany ..... Springfield  
 Albert Sandrin ..... Chicago  
 Angelo Sandrin ..... Chicago  
 Bill Smythe ..... Chicago  
 Burton Vincent ..... Chicago  
 Helen Warren ..... Western Springs  
 Jim Warren ..... Western Springs  
 William Wentz ..... Milwaukee

## Gold Card Members

Todd Barre ..... Elmhurst  
 Tyrone Brooks ..... Chicago  
 Harland S. Hoisington ..... Ogden UT  
 Alan Losoff ..... Morton Grove  
 Kenneth Marshall ..... Lombard  
 Fred Meyers ..... Sterling  
 William Neff ..... Peoria  
 Peter Pelts ..... Niles  
 Daniel Pradt ..... Glen Ellyn  
 Michael Pratts ..... Chicago  
 Jim D. Oberweis ..... Aurora  
 Bob Renaut ..... Naperville  
 Irwin Rothschild ..... Park Forest  
 Arthur Sinclair ..... Evanston  
 Marcus Stinson ..... Singapore  
 Mitchell Sweig ..... Evanston  
 Louis Werner ..... Evanston

## ICA ELECTED OFFICERS

Alan Losoff, President  
 9402 N. Octavia, Morton Grove, IL 60053  
 (708) 966-5559 or Internet alan@mcs.net

Bob Renaut, Metro Vice-President  
 1255 Oakton Lane, Naperville, IL 60540  
 (708) 983-0934 or Compuserve 76356,3003

Dennis Bourgerie, Downstate Vice-President  
 1621 N. School St., Normal, IL 61761  
 (309) 454-3842

Ken Marshall, Secretary  
 357 W. Grove, Lombard, IL 60148  
 (708) 932-1455

Todd Barre, Treasurer  
 136 Evergreen Elmhurst, IL 60126  
 (708) 834-0862

## Patron Members

Bob Ash ..... Urbana  
 Roy Benedek ..... Western Springs  
 Edward J. Blanco ..... Chicago  
 Dennis Bourgerie ..... Normal  
 Bill Brock ..... Chicago  
 Jim Brotsos ..... Chicago  
 Walter Brown, Jr. ..... Crest Hill  
 Gregory Bungo ..... Elmhurst  
 Fred Burgess ..... Oak Forest  
 Anthony Caliendo ..... Aurora  
 James Clark ..... Streator  
 Lawrence Cohen ..... Villa Park  
 Tom Cooper ..... Wheaton  
 Paul Cox ..... Chicago  
 Greg De Fotis ..... Lincolnwood  
 Leroy Dubeck ..... Cherry Hill NJ  
 Kalman Farkas ..... Milwaukee WI  
 Jon Gotz ..... West Chicago  
 William Graves ..... Chicago  
 Steve Hansen ..... Chicago  
 Steven Herr ..... Chicago  
 Charles Hicks ..... Naperville  
 Dean Hightower ..... DeKalb  
 Thomas Howell ..... Evanston  
 Jeffery Hyland ..... Mount Prospect  
 Toshio Imai ..... East Lansing, MI  
 Kazys Jankauskas ..... Darien  
 Mike Jenkins ..... Cary  
 Gary Jochim ..... Chicago  
 Gersham Johnson ..... Chicago  
 Stephen Josephs ..... Hinsdale  
 Tim Just ..... Gurnee  
 Dan Kamen ..... Buffalo Grove

## USCF Delegates

by virtue of their USCF

Fred Gruenberg ..... Vice-President  
 Tim Just ..... Regional Vice-President  
 Garrett Scott ..... Regional Vice-President  
 Frank Skoff ..... Life Voting Member  
 Helen Warren ..... Life Voting Member  
 Harold Winston ..... Life Voting Member

by ICA-appointment

Alan Losoff

Todd Barre

Kenneth Marshall

Bob Renaut

Richard Verber

Scott Kittsley ..... Shorewood WI  
 Thomas Knoedler ..... Springfield  
 Walter Kocjan ..... Northlake  
 Warren Kreckler ..... Chicago  
 Peter Kuhn ..... Des Plaines  
 Dr. Kevin Kukla ..... Hanover Park  
 Stephen Lauger ..... DeKalb  
 Michael Lester ..... Chicago  
 Ed Marschall ..... So. Barrington  
 Eugene Martinovsky ..... Naperville  
 Patrick Maurer ..... Glen Ellyn  
 Thomas Mayka ..... Wheeling  
 Patrick McMillen ..... Aurora  
 Steve Monti ..... Chicago  
 William Naviamos ..... Chicago  
 Ken Palmer ..... Bolingbrook  
 Marvin Rogan ..... Chicago  
 Ray Satterlee ..... Wheaton  
 Andrew Schultz ..... Evanston  
 Mark Seftcheck ..... Naperville  
 Anthony Sillers ..... Northampton MA  
 Richard Simonetti ..... Elmwood Park  
 Leonard Spiegel ..... St. Charles  
 Joe Splinter ..... Hanover Park  
 Robert Stoltz ..... River Forest  
 Sonia Taki ..... Chicago  
 James Tanaka ..... Chicago  
 George Urmezina ..... Chicago  
 Mike Varady ..... Effingham  
 Richard Verber ..... Aurora  
 James Walton ..... Wildwood  
 Don Winsauer ..... West Dundee  
 Harold Winston ..... Naperville  
 Philip Wong ..... Wilmette  
 David Wulatin ..... River Forest

## USCF Voting Members

ICA appointed

Bill Neff	Jim D. Oberweis
Erv Sedlock	Jim Warren
Dennis Bourgerie	Larry Cohen
Bill Symthe	Ken Lewandowski
Dennis Grant	Walter Brown Jr.

ICA appointed alternates

Bill Wilkinson	Hector Hernandez
Tom Cooper	George Marino
Chris Baumgartner	Keith Martin
Ed Blanco	Glenn Panner
Jim Brotsos	Bill Reed
Glen Gratz	Angelo Sandrin
Aibert Chow	Howard Wachtel

# Where Play to Play Chess ICA Club Affiliates

**AMERICAN POSTAL CHESS TOURNAMENTS** sponsors postal events & sells chess books & equipment. Jim or Helen Warren, P.O. Box 305, Western Springs 60558. (708) 246-6665.

**"THE BASEMENT"**, Daniel Kamen, 1121 Highland Grove Drive, Buffalo Grove, IL 60089, (708) 394-3530.

**CENTRAL LAKE COUNTY CHESS CLUB** meets Fridays, 7:15 to 12:00AM College of Lake County, Bldg. 1, Washington at Rte 45, Grayslake. Dennis Grant, (708) 336-5188.

**CHAMPAIGN CHESS CLUB** meets Tuesdays at 7 p.m. at the Springer Recreation Center, 301 N. Randolph, Champaign, IL 61820. c/o Duane Kimme, 401 N. Prairie Rd., Champaign, IL 61820. (217) 359-0421.

**THE CHESS BOARD BBS** is a computer chess club. Play electronic postal chess, exchange international messages, download chess related files. James Reames, Chicago, IL. MODEM (312) 784-3019 (1200-14400)

**CHICAGO INDUSTRIAL CHESS LEAGUE** organizes frequent competition among commercial/government teams with awards, ratings, & special events. Tony Jasaitis (312) 406-6420.

**CONTINENTAL CHESS ASSOCIATION**, P.O. Box 249, Salisbury Mills, NY 12577. Bill Goichberg.

**DOWNERS GROVE PARK DISTRICT CHESS CLUB** meets Thurs., 6:30-10 p.m., Lincoln Center, 935 Maple Ave., Downers Grove. Affiliated with USCF & ICA. George Uffner, (708) 960-9382.

**DUBOIS ELEMENTARY SCHOOL CHESS CLUB**, c/o Andrew Skaar, 308 S. Douglas, Springfield, IL 62704.

**EVANSTON TOWNSHIP HIGH SCHOOL CHESS CLUB** Ken Lewandowski 1600 Dodge Avenue, Evanston IL 60204.

**EWALT CHESS ENTERPRISE**, P.O. BOX 672, St. Ann, MO 63074

**FOX VALLEY CHESS CLUB** meets Monday evenings, 6:30 p.m. to 11:30, Church of God, corner of Galena Blvd and Lancaster, Aurora, IL, Bob Renaut, (708) 983-0934 or Dick Verber (708) 978-1380.

**GREATER PEORIA CHESS FEDERATION** meets Mon., 7-11 p.m., Garrett Center, 824 N. University, Peoria. Bill Wilkinson, 901 N. Rebecca Pl., Peoria 61606. (309) 673-9455.

**HILLSIDE CHESS CLUB** meets Fridays 7-11:30 p.m. at Hillside Baptist Church, 5152 Butterfield Road, Hillside. Larry Stilwell (708) 963-6799.

**HOLY TRINITY NORTHSORE CHESS CLUB** meets Tuesday 7-10 pm at Holy Trinity Church, 2328 Central (at Shermer), Glenview, IL. Dale Hurst, P.O. Box 248, Glenview, IL. 60025. (708) 729-9000.

**LAKE COUNTY CHESS ASSOCIATION** sponsors rated tournaments in the Grayslake-Zion area. Tim Just, 37165 Willow, Gurnee 60031. (708) 244-7954.

**MIDWESTERN CHESS ADVENTURES (MCAC)** 3924 N. Hermitage, 2nd floor, Chicago, IL 60613. (312) 871-2148. Attn: Christopher Baumgartner.

**MIDWEST CHESS ASSOCIATION** organizes major tournaments for masters & experts. Helen Warren, P.O. Box 305, Western Springs, 60558. (708) 246-6665.

**OAK PARK/RIVER FOREST CHESS CLUB** meets Tues., 7 midnight, Dominican Conference Center, 7200 W. Division, River Forest. Ken Marshall, 357 W. Grove, Lombard 60148. (708) 932-1455.

**PARK FOREST CHESS CLUB** meets Thursdays, 7-10:00 p.m., Freedom Hall, Orchard & Lakewood, Park Forest. Lawrence Cohen, 135 Westwood, Park Forest, 60466. (708) 748-5911.

**PAUL RODGERS' CHESS TOURNAMENTS** 810 Peach Tree, Urbana, IL 61801.

**RUDY LOZANO LIBRARY CHESS CLUB**, 1805 So. Loomis, St., Chicago, 60608. Hector Hernandez (312) 733-4329.

**SMYTHE DAKOTA COMPETITIONS** encourages and offers financial support for Plus-Score Mini-Tours at sites in Chicago and suburbs. Bill Smythe, 7445 N. Greenview #311, Chicago, IL 60626, (312) 761-2455.

**ST. CHARLES CHESS CLUB** meets Thursday at 7 p.m., Baker Community House, 101 S. 2nd (Rte. 31), St. Charles. Erv Sedlock, 6 N. 307 Old Homestead Rd., St. Charles, IL 60174. (708) 377-7995.

**THE SOUTH SUBURBAN CHESS CLUB OF GREATER CHICAGO** meets Friday from 7p.m. to 12a.m. at Palos Heights Recreational Center, 6601 W. 127th St., Palos Heights, IL.: Fred Gruenberg, (708) 489-5800.

**TULEY PARK CHESS CLUB** hold frequent Saturday tournaments, Tuley Park Field House, 501 E. 90th Pl., Chicago. Thomas Fineberg, 7321 S. South Shore Dr., Chicago 60649, (312) 721-3979.

**TWIN CITIES CHESS CLUB** meets Tuesdays at 7 p.m. Lincoln Leisure Center, Bloomington. Dennis Bourgerie, 1621 N. School St., Normal, IL 61761. (309) 454-3842.

Join the Illinois Chess Association and receive six issues of the Illinois Chess Bulletin. In addition you'll qualify to enter over two dozen tournaments on the Illinois Chess Tour. Every game you win or draw in a tour event earns you "four points" that can add up to cash prizes at year-end. Finally, you'll be supporting the activities of the Illinois Chess Association. Every year, the ICA organizes major tournaments like the Illinois Open and Illinois Class Championships; the ICA has bid for the National Open, the US Open and the US Class Championships to be held in Illinois. In addition, the ICA sponsors scholastic clinics, runs a tournament clearinghouse, and promotes and publicizes chess activity statewide. If you would like to show increased support for Illinois chess, please consider renewing as a Century Club, Gold Club, or Patron member. Patrons are acknowledged in each issue of the ICB and receive their magazines by first-class mail.

Mail To: Ken Marshall, ICA Membership Secretary  
357 W. Grove  
Lombard, IL 60148

## ICA MEMBERSHIP RENEWAL

Circle membership type

CENTURY	\$100	GOLD	\$50
PATRON	\$35	REGULAR	\$14
JUNIOR	\$8	AFFILIATE	\$25

NAME \_\_\_\_\_  
ADDRESS \_\_\_\_\_  
CITY \_\_\_\_\_ STATE \_\_\_\_\_ ZIP \_\_\_\_\_

# PEORIA SPRING TORNAO

APRIL 16

ICA MINI TOUR (OPEN SECTION ONLY)

## \$125 Prize Fund

5 Round Swiss in 2 Sections

1st - \$75

2nd - \$50

Class A: \$25

Class B: \$25

Open Section - EF \$ 11 If by 4/14 \$13 at site.

Reserve Section (under 1600) - EF\$ 5 If by 4/14, \$7 at site

Registration - 8:00 - 8:45

Rounds - 9 - 11:30 - 2:15 - 5

GARRETT CENTER  
824 N. University, Peoria, Illinois

Address correction  
requested

BULK RATE  
U.S. Postage Paid  
Astoria IL, 61501  
Permit No. 9

 **LLINOIS**  
CHESS ASSOCIATION  
c/o Ken Marshall  
357 W. Grove  
Lombard, IL 60148

Time Value Material