

ILLINOIS CHESS BULLETIN

SEPTEMBER-OCTOBER 1993
VOL. XVII NO. 5

AN ICA BI-MONTHLY PUBLICATION - \$2.95

CHICAGO MIDWEST \$10,000 CLASS CHAMPIONSHIP DRAWS 243

SECTION WINNERS

MASTER
AL CHOW & ANDREW KARKLINS
EXPERT
JOEL WEISELAT & RAY SATTERLEE
CLASS A
REGINALD PERRY
CLASS B
ERIC JOHNSON & ANNA ZEMLINSKY
CLASS C
KURT BRIDGHAM & TOM CURRAN
CLASS D/E
GENE COLEMAN & COVIC MEHMED



Al Chow



Andrew Karklins

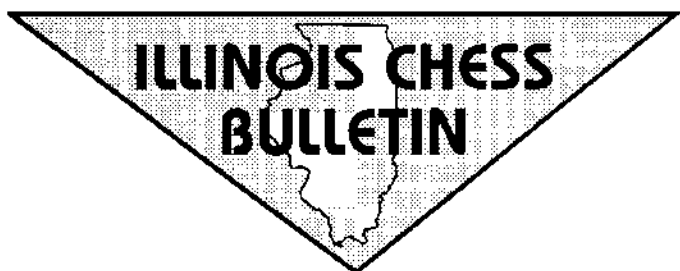


TABLE OF CONTENTS

Editor **Bob Renaut**
 1255 Oakton Lane, Naperville, IL., 60540 708-983-0934
Junior Chess Editor **Richard Verber**
 1790 Tall Oaks Drive #3A, Aurora, IL., 60505 , 708-978-1380
Games Editor **Tom Cooper**
 401 Pershing, Wheaton, IL., 60187, 708-690-9503
Calendar Editor **Bob Renaut**
 1255 Oakton Lane, Naperville, IL., 60540 708-983-0934
Tour Statistician **Bill Smythe**
 7445 N. Greenview, Chicago, IL., 60626, 312-761-2455

MEMBERSHIP AND SUBSCRIPTIONS

The Illinois Chess Bulletin (ICB) is published bimonthly by the Illinois Chess Association, ICA membership includes a subscription to ICB. Century Club, Gold Card, and Patron members receive their ICB by first class mail.

ANNUAL MEMBERSHIP RATES

Century Club	\$100.00
Gold Card	\$50.00
Patron	\$35.00
Regular	\$14.00
Junior (under 18)	\$8.00

Subscriptions and address correction should be sent to:

Ken Marshall (ICA Membership Secretary)
 357 W. Grove
 Lombard, IL 60148

SUBMISSION DEADLINE

The deadline for submissions in the November-December 1993 issue October 2, 1993.

ICA AFFILIATION

Chess clubs and other organizations which promote chess activity may affiliate with the ICA. Benefits include a copy of the ICB by first class mail, a listing under "Where to Play Chess," discounted advertising rates, free event advertising on Chess Phone and the right to run ICA Tour Events. ICA Affiliation costs \$25; please remit to the Membership Secretary.

ADVERTISING RATES

Full page	\$90
Half page	\$54
Quarter page	\$36
Eighth page	\$24

10% discount for the same ad in consecutive issues. 1/3 discount for ICA affiliates. All ads must be camera-ready to qualify for above rates; minimum \$25 charge for layout. Payment must accompany ad. The ICA & ICB reserve the right to reject advertising.

President's Report	3
<i>by Alan Losoff</i>	
Editor's Corner	3
<i>by Bob Renaut</i>	
ICA Tour Standings	4
<i>by Bill Smythe</i>	
Chicago Open	6
<i>by Ken Marshall</i>	
Master Challenge XIV	6
<i>by Ken Marshall</i>	
Games from the Master Challenge	7
<i>by Tom Cooper</i>	
At Last, A Good Chess Movie	8
<i>by Frank Brady</i>	
Correction	10
<i>by Bill Smythe</i>	
Chess on the Fox	12
<i>by Bob Renaut</i>	
Oak Park-River Forest Chess Club News	12
<i>by Ken Marshall</i>	
Chicago Midwest \$10,000 Class Championship	13
<i>by Bob Renaut</i>	
Games from Midwest Championship	14
<i>by Tom Cooper</i>	
Upsets of the Issue	18
<i>by Tom Cooper</i>	
Illinois Tournament of Champions Games	20
<i>by Tom Cooper</i>	
Opening Corner	23
<i>by Bill Brock</i>	
ICA Tour Cross Tables	26
<i>by Bill Smythe</i>	
Tournament Calendar	28
<i>by Bob Renaut</i>	
Illinois Chess Association Patrons	30
Where to Play Chess	31

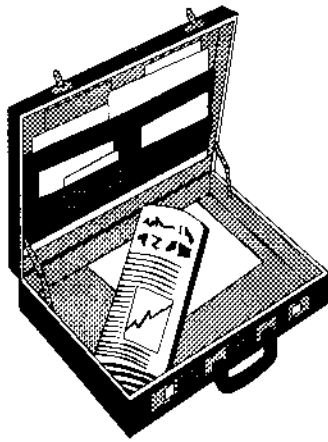
PRESIDENT'S

REPORT

By

Alan

Losoff



USCF ELECTION RESULTS

Congratulations to Fred Gruenberg on his election to the office of USCF vice-president. Fred received nearly as many votes as Bill Snead who ran unopposed for member-at-large. Other winners were Denis Barry (president), Frank Cameratta (treasurer) and Rachel Lieberman (secretary). Congratulations to all.

SEARCHING FOR A GOOD MOVIE

"Searching for Bobby Fischer" is the best chess movie ever. It is also one of the best movies about raising a gifted child. The acting is great and the chess scenes are authentic, but the story is about the people - not the game. I give it 4 pawns.

KEEP THOSE GENEROUS DONATIONS FLOWING

The second year of the ICA/WARREN Junior Chess Program is off to a good start, but we need your help. If we're to search for the next Bobby Fischer (or better still, the next Josh Waitzkin) here in Illinois, this program of master instruction for promising Juniors is a must.

Contact Helen Warren, PO Box 305, Western Springs, IL 60558. 708/246-6665. Thank you.

GET THOSE TOUR POINTS

There's still time to rack up those tour points. Several tour events are listed in this month's ICB. Be there!

ICB WINS AGAIN

Congratulations to outgoing editor Warren Kreckler as once again ICB won 2nd place for the Best State Magazine under 750 circulation. Previous editor Bill Brock also won this award.

EDITOR'S CORNER

By Bob Renaut

This is my first issue and probably my last issue as the editor of the ICB. Let me briefly introduce myself. I am Illinois' weakest USCF Expert, in spite of U.S.C.F. rating of 2174. I have spent the last 20 years organizing tournaments in Ohio and most recently in Illinois. This is my second attempt at editing a newsletter. The members of the Fox Valley Chess Club receive my monthly issue of "Chess on the Fox" and I can tell you this is a much tougher job.

I would like to thank several people who made this issue possible. First, to Tom Cooper, without whose dedication to annotating games from the various Illinois Tour events there would be no game coverage. Secondly, to Ken Marshall who also dedicates many hours to Illinois chess for the love of chess. Finally, to my wife Nancy, for tolerating the time I devote to chess organization and postal chess. Thanks to all of you for your time and efforts.

I would also like to thank all of the individuals that volunteered to take over the editor's job. I can assure you we will be contacting you in the very near future to select a new editor.

To those of you who enjoy reading the ICB bulletin and wonder how to get your games published, it's easy. Just send your game scores to the Games Editor. Make sure you check the score. Most of the lower rated games we receive cannot be published because the game score is incorrect or illegible.

Want to see your chess club highlights or an article you wrote in the ICB? Send your contributions for the next issue to:

Bob Renaut
1255 Oakton Lane
Naperville, IL 60540-0310

1993 ICA TOUR STANDINGS

This list reflects the following 1993

Tour events:

Jan 9-10 MAXI
Tim Just Winter Open, Grayslake

Jan 16 mini
Northwestern Plus-Score, Evanston

Jan 23-24 MAXI
Fox Valley Championship, Aurora

Feb 27-28 MAXI
Paul Rodgers Winter Winds,
Champaign

Mar 12-14 MAXI
Mid-America Class, O'Hare

Mar 27-28 MAXI
Greater Peoria Open, Peoria

Apr 16-18 MAXI
Chicago Amateur, O'Hare

Apr 24-25 mini
C/U Duo-Class P. Cooker, Urbana

May 8 mini
MCAC at UIC, Chicago

May 22 mini
Sword of Damocles 1/2 K, Chicago

May 28-31 MAXI
Chicago Open, Oak Brook

Jun 12-13 MAXI
Paul Rodgers Mid-Year Open, Urbana

Jun 25-27 MAXI
Master Challenge, Oak Park

Jul 23-25 MAXI
Chicago Midwest Class, O'Hare

Upcoming 1993 Tour events:

St Charles Open, St Charles
MAXI Oct 2-3
Tim Just Lake County Open
mini Oct 17

Oak Park / River Forest Action
mini Oct 23
Micro Resales Open, Champaign
MAXI Oct 23-24
Midwest Class, Oak Brook
MAXI Oct 29-31
Illinois Class
MAXI Nov 20-21

The list of future events is subject to change. Check Chess Life and the Illinois Chess Bulletin.

For players with fewer than three 1993 Tour events, the number of events (1 or 2) is shown in parentheses. A player must play in at least three Tour events during 1993 to be eligible for year-end Tour prizes.

Master Tour Points:

CHOW Albert 134.5
MARTINOVSKY Eugene 52
LEVIT Roman 50
UMEZINWA George 49
RAO Vivek 40.5
BURNETT Ron(2) 31
COOPER Tom 28
KARKLINS Andrew 27
DUDKOWSKI Peter 26.5
GUREVICH Dmitry(2) 26
MANION Josh 25
LAHVIC Jim 24
MARSHALL James 22
DANDRIDGE Marvin 20
FAGAN James 20
IVANOV Alexander (1) 20

Expert Tour Points:

SCOTT Gene 39
MARSHALL James 30
SAX Rob 28
GORDON Wallace 27
HERNANDEZ Hector 27
LAHVIC Jim 27
DUDKOWSKI Peter 26.5
SATTERLEE Ray D (2) 26
BENESA Arnulfo 24
FAGAN James 23

Class A Tour Points:

MAREMA David 68
FAGAN James 52
RYDBERG Steve(2) 38
SCHULTZ Andrew 36
MARSHALL Larry 33
PERRY Reginald (1) 32
PUKEL Bernard 32
WULATIN David 32
WILLIAMS Kent 29.5
COHEN Larry 28.5

Class B Tour Points:

CIMA Joe 58
KITILSEN Guy 55
PADILLA Rudy 39.5
WILLIAMS Douglas 39
CERMINARO J P 37
HENROID Mike 31
KNOX Malcolm 31
ZEMPLINSKY Anna 28
AHMER Craig 26
LYONS Mack III 26

Class C Tour Points:

CHEN Xi Ming 57
CURRAN Tom(2) 39
GASIECKI Alan 34
MONTEBON Anthony ... 33
MEYERS Joe 32
SILVERMAN Scott 30
ZYLUK Dan (1) 28
MITCHELL Gary 26
PEDERSEN Ken 26
RODGERS Paul 24

Class D Tour Points:

MEYERS Joe 39
AROND Dean 28
NAVIAMOS William 27
BAUMGARTNER Chris .. 26
MILLER Donald 24
DIXON Brian 22
KYAWWINN Winmor (1) 19
RIDDELL Josh 19
MC COY Damon 18.5

Class E Tour Points:

MILLER Donald 24
MC COY Damon 18.5
DIXON Brian 16
ELLINGSON Eric 14.5
BALTAZAR Mark 14

ST. CHARLES OPEN

Sponsored by the St. Charles Chess Club

OCTOBER 2-3, 1993

BAKER COMMUNITY CENTER

101 S. Second (Rt. 31)

St. Charles, IL

Five Round Swiss Time Control: 40/100, 25/60

Two Sections: Open (Open to All)

Reserve: Under 1800

PRIZE FUND: \$1,260 (based on 60 entries)

Open: 1st-\$300; 2nd-\$200; Expert-\$100, \$80; Class A-\$100, \$80

Reserve: 1st-\$100; 2nd-\$80; Class C-\$70, \$50; Class D/Under, \$60, \$40

Entry Fee: \$30 if received by 9/25, \$35 at site (Half off for Juniors)

Registration: 8:00-8:30 a.m.

Rounds: Saturday, 9-2-7; Sunday, 9-2

No smoking

No computers

ILLINOIS MANI-TOUR EVENT

ICA MEMBERSHIP REQUIRED

Entries and information: Erv Sedlock, 6N307 Old Homestead Rd., St. Charles, IL 60175
(708) 377-7995

A. IVANOV WINS CHICAGO OPEN

by Ken Marshall

Grandmaster Alexander Ivanov defeated International Master Roman Finegold in the last round to finish 6-1 and win the \$10,000.00 first prize at the second annual Chicago Open, held May 28-31, 1993 at the Hyatt Regency Hotel in Oak Brook. Chicago GM Dmitry Gurevich (who drew with Ivanov in Round 5) and IM Bryon Nickoloff each scored 5-1.5 to tie for second and third in the 227 player Continental Chess Association event, which had a guaranteed prize fund of \$20,000.00. Among a large group of players sharing fourth through sixth in the 92 player Open section were Illinois Masters Andrew Karklins, Albert How, Eugene Martinovsky, and Gediminas Rastenis, all with 5-2 results. These four split the 2200- 2399 money with Imundo Legaspi of Pennsylvania.

The tournament also featured prizes for Experts and class players. Illinois winners included Bryan Lilly and Kazimieras Jakstas, tied for Expert third place; Jonathan Eaton and Tommy Craggs, tied for third through seventh in Class A, which had 46 players; J. P. Cerminaro, first in Class B (32 players); and Thomas Curran (second) and Dean Arond and William Naviamos (tied for third through fifth) in Class C (61 players).

Walter Brown and Josh Flores directed, along with organizer Bill Goichberg. The cross tables from the Chicago Open were published in the July-August ILLINOIS CHESS BULLETIN.

BURNETT, CHOW, LEVIT WIN MASTER CHALLENGE XIV

by Ken Marshall

Senior Master Ron Burnett (2463) and Masters Albert Chow (351) and Roman Levit (2333) each scored 4.5-5 to share the top three places at Master Challenge XIV, held June 1-27, 1993 at the Dominican Conference Center in River Forest. One Senior Master, six Masters, and 18 Experts were among the 75 player field in this Illinois Maxi-Tour tournament, the fourteenth edition of the Oak Park-River Forest Chess Club sponsored event. The winners, ranked first, third, and fifth respectively on the wall chart, earned \$103.33 apiece. Burnett (who drew with Chow in the last round) defeated three Experts and Master Camilo Pangan, how upended three Experts and Master Marvin Dandridge, and Levit beat a Class A player, two Experts, and Master George Umezina, drawing only with Expert Jim Marshall.

Marshall and James Lahvic tied for the top two Expert prizes with 4-1 records, while Philip Michalik also ended up 1 to tie for first place in Class A. Dandridge, Umezina, Lorentino Inumerable, Ray Satterlee, and Howard Stern shared fourth place and third Expert money for their 3.5-1.5 marks. The same 3.5-1.5 scores gained Peter Walhout and Andrew Schultz a split of the second and third Class A prizes and garnered first place for Don Martin in Class B and for Joe Meyers in Class C/Below. Five players finished 2 to tie for second and third in Class B: Eric Johnson, hence "Butch" Allen, Mark Stamatakos, Craig Ahmer, and Engis Sukcharoenphon. Andrew Schiller, Orn Backstrom, and Donald Miller each went 2-3 to share the Class C/Below second and third place money. Robert Jenkins and Gabriel

Sabastian were the top Unrated players at 2-3.

Erv Sedlock and Jeff Wiewel directed, assisted by OP-RF CC President Ken Marshall and Vice President Don Winsauer, the organizers of the event. Playing conditions were good, with ample room for skittles and analysis.

Perhaps due to the proliferation of "big money" chess tournaments in the Chicago area, the turnout for Master Challenge XIV was disappointing. Many past Master Challenge "regulars" did not play, and the event, which featured a guaranteed prize fund of \$2,500.00, lost nearly \$500.00. All prizes were timely paid, but the OP-RF CC cannot continue to absorb such losses. After 1991's MCXIII finished \$500.00 in the red, the tournament was put on hiatus in 1992. The OP-RF CC brought the event back in 1993, only to meet with another financial setback. Clearly many Illinois players are no longer interested in the Master Challenge format. If the tournament is held in 1994 (an unlikely prospect at present), it will be on a scaled back, "based on" basis. The era of the club-sponsored guaranteed prize fund tournament appears to be over in Illinois.

Wanted! Your chess articles and games.
Send your submissions to:
Bob Renaut
1255 Oakton Lane
Naperville, IL. 60540-0310

Games from the Master Challenge XIV

Annotated by National Master Tom Cooper

M. Rogan (2019) - M. Acosta (2250)

1.e4 e5 2.Nc3 Nc6 3.f4 exf4 4.Nf3 Nf6 5.Bc4 g6 6.d4 Bb4
7.Bxf4 Nxe4 8.0-0 Bxc3 9.bxc3 d5 10.Bb5 Nxc3 11.Qe1+
Ne4 12.Ne5 Bd7 13.Nxf7 Qf6 14.Be5 Qxf1+ 15.Qxf1 Rf8
16.Bxc7 Rxf7 17.Qd3 Nb4 18.Bxd7+ Rxd7 19.Qb5 Nxc2
20.Qxb7 Rad8 21.Rc1 Nxd4 22.Qb2 Rc8 23.Qxd4 Rdx4
24.Qe5+ Kd7 25.Qxd5+ Nd6 26.Rd1 Rc6 27.Qf7+ Kd8
28.Qe6 Kc7 29.Qe7+ Kb8 30.Rxd6 [and 1-0 in 38] 1-0

J. Fagan (1988) - A. Chow (2351)

1.d4 Nf6 2.c4 e6 3.Nf3 a6 4.e3 c5 5.Be2 d5 6.cxd5 exd5 7.0-0
Nc6 8.b3 Bd6 9.Bb2 0-0 10.Nbd2 cxd4 11.Nxd4 Bc7
12.N2f3 Re8 13.Rc1 Qd6 14.Qc2 Bd7 15.Qc5 Qxc5 16.Rxc5
Bd6 17.Rcc1 Ne4 18.Rfd1 Nb4 19.Nc2? Nxa2 20.Ra1 Nac3
21.Re1 Nxe2+ 22.Rxe2 Rac8 23.Rd1? Bb5 0-1

D. Marema (1922) - J. Marshall (2047)

1.d4 Nf6 2.c4 e6 3.Nc3 Bb4 4.Bg5 h6 5.Bh4 c5 6.d5 Bxc3+
7.bxc3 d6 8.Nf3 e5 9.Nd2 g5 10.Bg3 Nh5 11.e4 Nf4 12.Rb1
Qf6 13.f3 h5 14.Bf2 h4 15.Rg1 Nd7 16.Qa4 Qd8 17.Be3 Kf8
18.g3 hxg3 19.hxg3 Ng6 20.Bd3 Nb6 21.Qa5 Bd7 22.Kd1
Bg7 23.Kc2? Nxd5 24.Qxd8 Nxe3+ 25.Kc1 Raxd8 26.Rxb7
Rh2 27.Rxa7 Kh6 28.a4 Ne7 29.Rb7 f5 30.a5 Nc6 31.a6 Na5
32.Rb5 Bxb5 33.cxb5 c4 34.Bb1 d5 35.exf5 d4 36.Be4 dxc3
0-1

G. Umezina (2349) - D. Wulatin (1959)

1.d4 Nf6 2.c4 g6 3.Nc3 Bg7 4.e4 d6 5.f3 0-0 6.Be3 e5 7.d5
Nh5 8.Bd3 c6 9.Nge2 f5 10.exf5 gxf5 11.Qd2 Nf6 12.0-0
Na6 13.Kh1 Qa5 14.Bh6 Bxh6 15.Qxh6 cxd5 16.cxd5 Nxd5
17.Bc4 Nac7 18.Nxd5 Nxd5 19.Rad1 Qd8 20.Rxd5 Kh8
21.Rxd6 Qe7 22.Rfd1 a6 23.Qxf8+ Qxf8 24.Rd8 1-0

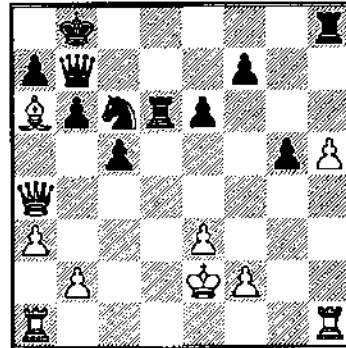
A. Chow (2351) - R. Burnett (2463)

1.d4 Nf6 2.c4 e6 3.Nc3 d5 4.cxd5 exd5 5.Bg5 c6 6.Qc2 Be7
7.e3 0-0 8.Bd3 Nbd7 9.Nf3 Re8 10.0-0 Nf8 11.Rab1 a5 12.a3
Bd6 13.b4 axb4 14.axb4 Bg4 15.Nd2 Bh5 16.Kh1 Bg6 17.b5
Re6 18.bxc6 bxc6 19.Ne2 Qc7 20.Nf4 Bxf4 21.Bxf4 Qe7
22.Rfe1 Bxd3 23.Qxd3 Ng6 24.Bg3 h5 25.h3 h4 26.Bh2 Ne4
27.Nxe4 dxe4 28.Qc4 ½-½

G. Scott (2180) - R. Burnett (2463)

1.d4 Nf6 2.Nf3 e6 3.Bg5 Be7 4.Nbd2 d5 5.e3 c5 6.c3 b6
7.Bd3 Bb7 8.Ne5 Nfd7 9.Bf4 Nc6 10.Qh5 Nxe5 11.dxe5 g6
12.Qe2 Qc7 13.Nf3 Bf8 14.h4 h6 15.Qc2 0-0-0 16.c4 dxc4
17.Bxc4 Bg7 18.Qa4 Bxf3 19.gxf3 Bxe5 20.Bxe5 Nxe5

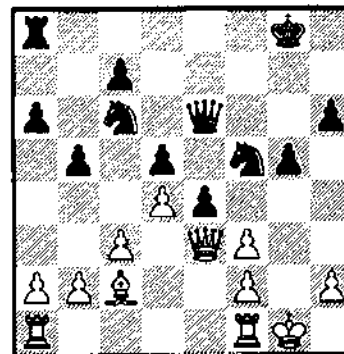
21.Ba6+ Kb8 22.Ke2 Rd5 23.f4 Nc6 24.Bc4 Rd6 25.h5 g5
26.fxg5 hxg5 27.a3 Qb7 28.Ba6



28. ... Nd4+ 29.Kd3 Qf3 30.Kc4 b5+ 31.Bxb5 Qe2+
32.Kxc5 Rd5+ 33.Kb4 Qxb2+ 0-1

J. Marshall (2047) - R. Levit (2333)

1.e4 e5 2.Nf3 Nc6 3.Bb5 a6 4.Ba4 d6 5.c3 f5 6.exf5 Bxf5 7.d4
e4 8.Bg5 Be7 9.Nh4 Be6 10.Bxe7 Ngxe7 11.Nd2 b5 12.Bc2
d5 13.Qe2 0-0 14.0-0 Qd7 15.Qe3 h6 16.Nb3 g5 17.Nc5
Qd6 18.Nxe6 Qxe6 19.Nf3 Rxf3 20.gxf3 Nf5



21.Qxe4! dxe4 22.Bb3 Qxb3 23.axb3 exf3 24.Rfe1 Kf7 25.d5
Nce7 26.c4 bxc4 27.bxc4 Rb8 28.Rxa6 Rxb2 29.Ra7 Re2
30.Kf1 Rd2 31.Rxc7 Kf8 32.Ra7 Ng6 33.Rb1 Nfe7 34.Ke1
Rd4 35.Rd1 Rxc4 36.d6 Nc6 37.Ra8+ Kf7 38.d7 Ke7
39.Re8+ Kf7 40.Rc8 Re4+ 41.Kf1 Nge5 42.Re8 Re2 43.d8Q
Nxd8 44.Rdx8 g4 45.h3 ½-½

**DEADLINE FOR SUBMISSIONS TO
THE NEXT ICB ISSUE:
OCTOBER 2, 1993.**

**Articles received after that date
will be used in future issues.**

At Last, a Good Movie About Chess

By Frank Brady

A review of *SEARCHING FOR BOBBY FISCHER*. Directed by Steven Zaillian; written by Steven Zaillian based on the book by Fred Waitzkin; starring Joe Mantegna, Laurence Fishburne, Joan Allen, Max Pomeranc, and Ben Kingsley. Paramount Pictures, 1993, 110 minutes, rated PG. Opening 11 August 1993. Copyright (c) 1993 American Chess Journal, Inc. All rights reserved.

Viewing a film is like having a dream. We're in the dark, passively reclining. The roles and situations of the characters, exhibited to us in full panorama, are virtually limitless in number and type: abstract and real, joyous and horrific, existential and delusory. Dreams and films can both produce deep emotional reactions, and sometimes we assume the personalities of their leading characters.

SEARCHING FOR BOBBY FISCHER, a film based on the book of the same name by Fred Waitzkin, is the true story of his son Josh's initiation into the ancient cabals of chessplayers. This epic ramble through the world of chess shows realistically how the game can elicit our fascination and love, and sometimes our bitterness and frustration. It is a pleasant but intense dream, much more than a treatise on the game's immense appeal: the film examines the anxiousness and desperation lurking in the labyrinthine path to excellence, and probes the sacred relationships of father to son, student to teacher, and prodigy to himself.

Josh Waitzkin, a New York chess wunderkind who is now 16 years old and has recently completed the requirements for the International Master title, started playing the game when he was six, after learning the moves--like Capablanca--simply by watching others play. Genius, or the gift of prodigy, sometimes comes from God, or the head of Zeus, the film seems to say. But the second necessity for the development of a great chessplayer is a lifelong study of the game. We watch Josh as he confronts this daunting regimen. The movie follows the basic plot of the book, which describes Josh's rise from chess beginner to challenger for the national primary school championship, while omitting chapters concerning trips to Moscow, Bimini, and Pasadena, and other side issues that would have impeded the film's narrative flow.

The eight-year-old who portrays Josh in the film (Max Pomeranc, also a New Yorker) is perfectly typecast. He not only looks remarkably like Josh, but is currently among the top 100 chessplayers of his own age group in the country. His manner of handling the chess pieces and clock is completely authentic, right down to the way he uses a captured piece to hit the button. Best of all, his performance

is more than an impersonation. He becomes Josh Waitzkin, and gets inside him as only a precocious chessplayer who has shared similar formative experiences could. His body language illustrates some of the angst and range of feelings that chess creates in its devotees: he bites his lips when he is tense, stares off into space when bored, and looks proud, almost defiant--but not arrogant--after making a strong move.

He wears dirty sneakers, reminiscent of the once sartorially slipshod Bobby Fischer, whom the young Josh takes as his idol. Sporadically, we actually see and hear the real Bobby in this film--in footage taken for the most part from old television news and talk shows. Since Fischer has appeared before the world press much more recently, this glimpse of the "old" Bobby just before and after Reykjavik has a ghostly feel to it.

One of the most piquant aspects of *SEARCHING FOR BOBBY FISCHER* is the way it elevates the game. It is a homage to difficulty mastered, perseverance rewarded. Other films about chess, such as the Swiss-made *DANGEROUS MOVES* and the recent thriller *KNIGHT MOVES*, tend to banalize the game and turn chess into nothing more than a backdrop for a psychological drama or torrid romance. In *SEARCHING FOR BOBBY FISCHER*, though, we actually see the Latvian Gambit being played and a Rubinstein ending being studied. All the moves are real, not screen concoctions. Look fast and hard and you'll notice the famous Reti-Tartakower 11-move grandmaster checkmate. When Josh is playing in the national championship against the character Jonathan Poe (based on the odd Canadian prodigy Jeff Sarwer from the book), he is a tempo behind in a pawn race; although his opponent queens first, Josh is able to check, forcing his opponent to move his king, which lets Josh pick up the queen. The chess in this film is not only real but plausible.

Similarly, there are also discussions of chess theory, almost unheard of in other films that touch upon chess. Like many young players, Josh enjoys bringing his queen out early in the game. His chess coach Bruce Pandolfini, brilliantly played almost like a Zen master by Ben Kingsley (Oscar winner for *GANDHI*), tries to teach Josh the reasons why such maneuvers are unsound. As he and legions of others have written, Pandolfini explains to Josh that early queen moves can waste time and hand the initiative to the opponent, who can develop new pieces while attacking the queen at the same time. Elementary, of course, but probably enlightening to most of the film's audience. Probing more complex chess issues, during one meditative lesson Pandolfini asks Josh to explain why Black stands better in a position

they are examining. Josh responds categorically, "Black has the advantage because White has more islands. If you have more pawn islands, you have weaknesses."

The relationship between Josh and his teacher is explored deeply in the film, with the result that neither character is a one-dimensional caricature; they are both revealed to have strengths and weaknesses, on and off the board. The coach agrees to accept Josh as a student primarily because he, Pandolfini, is searching for another Bobby Fischer in his own life. "Your son creates like Fischer," Pandolfini tells Josh's father during an intimate moment. "He sees like him. I want back what Bobby Fischer took with him when he disappeared." Josh wishes to excel but also intermittently feels trapped and bullied into study and memorization. Pandolfini wants Josh to take the game more seriously, to concentrate, to visualize. In one dramatic moment, he sweeps the pieces to the floor and demands that Josh solve the problem at hand by staring at the empty board. At times, Josh wants nothing more than a quick vacation to play with his adult friends, the chess hustlers in Washington Square Park (one of whom, Vinnie, is played by Laurence Fishburne).

In a particularly brutal scene, Pandolfini attempts to instill in Josh the awareness that it is an error to judge a move on the basis of how it affects us emotionally. He makes light of the "Master Chess Certificate" he has devised for excellent students, so coveted by Josh. He wants the boy to play the next move, rather than waste time talking of future rewards. He tells the boy that the certificate is worthless. On the verge of tears, and without empty bravura, Josh demands his accolade. Josh and his teacher are hardly stick figures. They are flesh and blood characters, true to themselves and to the dialectic of their relationship.

Josh's father Fred, played by Joe Mantegna in a less world-weary interpretation than most of his previous acting performances, is a man at odds with himself. He is proud of his son, hoping that the boy will someday become world champion. But he is torn because he wants Josh to lead a happy life, and he is unsure of himself as a guide and mentor. In this sense, the film departs from the book, in which Fred's mix of emotions runs to greater extremes: love and pride alternate with rage and near-hatred as the father struggles to accept his son's superiority.

The look, or mise-en-scene, of *SEARCHING FOR BOBBY FISCHER* is one of verisimilitude. The chess clubs and tournaments, the players themselves (one can spot such stars as Joel Benjamin and Roman Dzindzichashvili), and the smoke and din of the chess world are so accurately created that one can almost smell and taste the hallowed and combative places where serious chess is played. The ambient sound is enhanced and echoed as the chess clock is hammered and the pieces banged onto the board, louder and louder, like so many gunshots: the result is striking and unforgettable. Extreme closeups of Josh in concentration, filmed in shadowy lighting, lend an expressionistic feeling to the film. At one point, Pandolfini's voice is heard over

closeups of the pieces, suggesting that each pawn and knight and rook is charged with a life of its own in a world in miniature.

SEARCHING FOR BOBBY FISCHER cleanly captures the essence of a little boy's struggle to become a champion. The episodic narrative of his life and times has a faster pace than in the book, giving the story more impact and believability. And even though the film relied on a few fictive additions to achieve points of drama, it should be commended for its heroic sentiments and for so handsomely apprehending the reality and persona of Josh Waitzkin.

Indeed, the film is most powerful when depicting the expressive sparks in Josh as he engages in combat on and off the board with his father, his teacher, and his opponents. But the boy is a decent and loving child, disturbed by Pandolfini's edict that in order to succeed, he must have contempt for his opponent. "Bobby Fischer shows contempt," the teacher intones. "I'm not him," Josh retorts bravely. Through Josh's life, *SEARCHING FOR BOBBY FISCHER* for the first time brings the true world of the chess struggle triumphantly to the screen.

[Frank Brady founded *Chessworld* magazine, edited *Chess Life*, and wrote the bestselling *PROFILE OF A PRODIGY: THE LIFE AND GAMES OF BOBBY FISCHER*, as well as a biography of Orson Welles and several other books. He holds FIDE's International Arbiter title and is currently Professor of Communications and Director of Journalism at St. John's University in New York.]

This article is reprinted by permission from Issue 2 of *AMERICAN CHESS JOURNAL*, August 1993. Single copy price \$12 postpaid (\$14 Canada/Mexico, \$16 elsewhere) Three-issue subscription \$30 postpaid (\$36 Canada/Mexico, \$42 elsewhere) Six-issue subscription \$54 postpaid (\$66 Canada/Mexico, \$78 elsewhere)

Published three times per year, 128 pages per issue, book format, glossy color cover. Editor in Chief: Christopher Chabris. Managing Editor: Timothy Hanke. Technical Editor: Patrick Wolff (GM and U.S. Champion). *American Chess Journal*, P.O. Box 2967, Harvard Square Station, Cambridge, MA 02238 USA. Telephone 617-876-5759, fax 617-491-9570.

Please note that all orders must be prepaid in U.S. funds, and all checks must be drawn on a U.S. bank.



THE OAK PARK - RIVER FOREST CHESS CLUB PRESENTS AUTUMN ACTION '93 OCTOBER 23, 1993

DOMINICAN CONFERENCE CENTER

7200 W. DIVISION (HARLEM AND DIVISION), RIVER FOREST, IL

5 ROUND SWISS GAME /30

REG: 8:15-8:45 A.M. ROUNDS: 9, 10:15, 11:30, 1:15, 2:30

ENTRY FEE: \$17 If received by 10/20, \$22 at site

PRIZE FUND: \$265 (based on 30 entries) 1st, \$100, 2nd \$50, 3rd \$25;
A,B,C, each \$25; D/E/UNR \$15

ILLINOIS MINI-TOUR EVENT ICA MEMBERSHIP REQUIRED



Entries and Information: Ken Marahall, 357 W. Grove, Lombard, IL 60148 (708) 932-1455

CORRECTION

by Bill Smythe

Due to a bug in the Swis-Sys pairing program, errors appeared in the las issue's crosstable for the Chicago Amateur, April 17-18, under 1800 section. Corrected information is given below. For convenience, we have numbered the players 1-4 rather than using the original wall chart numbers.

	Rating	Rd5	Score	Tour
1 WIRTH Michael	1483	W3	3	6
2 MONTEBON A.	1400	L4	0	
3 MC COY Damon	996	L1	2.5	5
4 ELLINGSON Eric	942	W2	1	

Make your plans now for the
95th Annual
U.S. OPEN

August 7-19
1994 IN CHICAGO

Send a large self-addressed stamped (52 cents) envelope to U.S. Open INFO, P.O. Box 157, Morton Grove, IL 60053 for more information on Chicago or the host hotel. You will also receive an early copy of the tournament announcement in spring.

MICRO-RESALES OPEN

OCTOBER 23 - 24, 1993

URBANA, ILLINOIS

ILLINOIS MAXI-TOUR EVENT

ICA MEMBERSHIP REQUIRED

See *CHES LIFE* for details

CHESS ON THE FOX

By Bob Renaut

MARTINOVSKY AND STEIN TIE FOR 1ST

Peter Stein and Dr. Eugene Martinovsky tied for 1st in the June Quick Chess tournament earning \$10.50 each for their efforts. The \$21.00 first place prize was donated by Bob Renaut. The tournament was directed by Joe DeCort. The final standings from this event are:

Name	rtng	rd 1	rd 2	rd 3	rd 4	TOT
1 Martinovsky, E....	2351	+ 4	+ 5	= 2	+ 3	3.5
2 Stein, Peter.....	2191	+ 8	+ 9	= 1	+ 5	3.5
3 Flynn, M.....	1540	+ 11	+ 6	+ 9	- 1	3.0
4 Anderson, Cliff...	1500	- 1	+ 12	+ 6	+ 7	3.0
5 Padilla, R.....	1600	+ 12	- 1	+ 8	- 2	2.0
6 Ortega, E.....	2000	+ 7	- 3	- 4	+ 11	2.0
7 Roth, P.....	1400	- 6	+ 11	+ 12	- 4	2.0
8 McMillan, Pat.....	1450	- 2	+ 10	- 5	+ 9	2.0
9 DeCort, J.....	1555	+ 10	- 2	- 3	- 8	1.0
10 Hensley, S.....	1325	- 9	- 8	+ 11	U---	1.0
11 Krohn, F.....	1300	- 3	- 7	- 10	- 6	0.0
12 Loza, R.....	1390	- 5	- 4	- 7	U---	0.0

RENAUT SWEEPS JULY BLITZ

Bob Renaut compiled a perfect 10-0 score in the July G/5 double blitz tournament, but not without incident. In the first round John Jelen was mated just as time expired, one more move and John wins on time! Jim Oberweis earned a clear second place and John Jelen third. Bob Renaut directed the event. The final results were:

Name	rtng	rd 1	rd 2	rd 3	rd 4	rd 5	TOT
1 Renaut, Bob..	2150	\$ 9	\$ 4	\$ 2	\$ 8	\$ 3	10.0
2 Oberweis, J..	1900	\$ 10	\$ 7	L 1	\$ 5	\$ 8	8.0
4 Jelen, John..	1600	\$ 12	L 1	W 8	& 7	\$ 6	6.5
5 Flynn, Mike..	1600	H---	W 6	\$ 11	L 2	\$ 14	5.5
8 DeCort, Joe..	1500	\$ 15	\$ 3	W 4	L 1	L 2	5.0
12 Krohn, Frank.	1300	L 4	W 9	W 10	W 14	\$ 7	5.0
6 Cisko, Greg..	1550	W 13	W 5	& 7	W 3	L 4	4.5
3 Oberweis, Jul.	1650	& 11	L 8	\$ 13	W 6	L 1	4.5
13 Hensley, S...	1100	W 6	W 11	L 3	\$ 10	U---	4.0
11 Alt, Andrew..	1400	D 3	W 13	L 5	W 15	W 10	3.5
7 Craig, Ted...	1500	\$ 14	L 2	D 6	D 4	L 12	3.0
10 Roth, Paul...	1400	L 2	W 14	W 12	L 13	W 11	3.0
14 Scott, Aaron.	1100	L 7	W 10	B---	W 12	L 5	3.0
9 McMillan, P.	1450	L 1	W 12	\$ 15	U---	U---	3.0
15 Hensley, Dan.	1100	L 8	B---	L 9	W 11	U---	2.0

Key \$=2.0 &=1.5 W=1.0 D=0.5 L=0

FVCC HOSTS CHICAGO MIDWEST QUICK

The Fox Valley Chess Club hosted the G/15 Championship at the Ramada Inn on July 23, 1993. Josh Manion, Al Chow and James Fagan tied for first with 6.0 scores. The top FVCC player was Peter Stein with 5.5 tied for 4th. The event drew 60 players and was directed by Bill Smythe. The cross table is shown below:

Name	rtng	rd 1	rd 2	rd 3	rd 4	rd 5	rd 6	rd 7	TOT
1 MANION, JOSH...	2359	W 31	W 13	+ 3	+ 25	- 2	+ 9	+ 7	6.0
2 CHOW, ALBERT...	2341	W 33	W 21	+ 7	+ 9	+ 1	+ 5	- 3	6.0
3 FAGAN, JAMES...	2068	W 49	W 24	- 1	+ 10	+ 16	+ 18	- 2	6.0
4 LILLY, BRIAN...	2190	W 35	D 14	+ 54	+ 16	- 5	+ 26	+ 15	5.5
5 STEIN, PETER...	2163	W 37	W 26	= 15	+ 14	+ 4	- 2	+ 18	5.5
6 SCOTT, GENE...	2091	W 43	W 28	- 16	+ 22	- 20	+ 23	+ 21	5.0
7 FORD, SAM...	2073	W 38	W 27	- 2	+ 48	+ 21	+ 20	- 1	5.0
8 HERNANDEZ, HEC.	2036	W 44	L 30	- 48	+ 37	+ 24	+ 22	+ 20	5.0
9 MARSHALL, J.A.	1982	W 55	W 42	+ 18	- 2	+ 25	- 1	+ 14	5.0
10 RAMAS, CASIMIR.	1900	W 47	L 18	+ 38	- 3	+ 33	+ 36	+ 25	5.0
11 BOSSAERS, PHIL.	2056	H---	W 57	- 14	+ 45	- 26	+ 31	+ 28	4.5

12 MIDDLETON, DOUG.	2002	W 58	D 54	+ 46	- 15	+ 27	- 14	+ 30	4.5
13 SINGER, ROB...	1952	W 45	L 1	+ 34	= 30	+ 42	- 15	+ 27	4.5
14 KALAI, ADAM...	1911	W 56	D 4	+ 11	= 5	+ 17	+ 13	- 9	4.5
15 LEVIN, SEMYON.	unr.	W 29	W 19	= 5	+ 12	- 18	+ 12	- 4	4.5
16 STRELCHIN, LEV.	unr.	W 23	W 20	= 6	- 4	- 3	= 17	+ 26	4.5
17 COOPER, THOMAS.	2262	L 54	W 51	+ 23	= 27	- 14	= 16	+ 36	4.0
18 ANDREWS, RANDAL.	2234	W 34	W 10	- 9	+ 28	+ 15	- 3	- 5	4.0
19 COHEN, LARRY...	1982	W 51	L 15	- 24	- 38	+ 46	+ 42	+ 39	4.0
20 PERRY, REGINALD.	1972	W 52	L 16	+ 35	+ 24	+ 6	- 7	- 8	4.0
21 BALE, LESLIE...	1951	W 53	L 2	+ 37	+ 32	- 7	+ 38	- 6	4.0
22 MAREMA, DAVID.	1834	L 42	W 58	+ 40	- 6	+ 30	- 8	+ 40	4.0
23 MAMMEN, WILLIAM.	1803	L 16	W 55	- 17	+ 49	+ 53	- 6	+ 38	4.0
24 CIMA, JOSEPH...	1793	W 32	L 3	+ 19	- 20	- 8	+ 53	+ 41	4.0
25 ROWLAND, TODD.	2169	W 36	W 48	+ 30	- 1	- 9	= 28	- 10	3.5
26 MICHALIK, PHIL.	1896	W 39	L 5	= 43	+ 46	+ 11	- 4	- 16	3.5
27 MAYKA, TOM...	1860	W 41	L 7	+ 44	= 17	- 12	+ 43	- 13	3.5
28 FIGUEROA, IVAN.	1847	W 59	L 6	+ 53	- 18	+ 35	= 25	- 11	3.5
29 SCHULTZ, ANDREW.	1816	L 15	W 52	- 32	+ 50	- 36	= 37	+ 45	3.5
30 HUGHES, ROBERT.	1788	W 50	W 8	- 25	= 13	- 22	+ 45	- 12	3.5
31 STORMS, DANIEL.	1737	L 1	D 45	= 42	= 44	+ 32	- 11	+ 46	3.5
32 POLITIS, ANAST.	unr.	L 24	W 49	+ 29	- 21	- 31	= 44	+ 43	3.5
33 LEIBOWITZ, ROB.	1732	L 2	L 53	+ 60	+ 40	- 10	- 41	+ 52	3.0
34 BARKER, WILLIAM.	1711	L 18	W 56	- 13	- 53	+ 51	- 39	+ 50	3.0
35 JORDAN, WILLIE.	1700	L 4	W 47	- 20	+ 41	- 28	+ 40	+ 53	3.0
36 DAYTON, SOREN.	1651	L 25	L 40	+ 52	+ 39	+ 29	- 10	- 17	3.0
37 SUKCHAROENPHON.	1626	L 5	W 39	- 21	- 8	+ 47	= 29	= 42	3.0
38 WOODRUFF, PHIL.	1534	L 7	W 59	- 10	+ 19	+ 48	- 21	- 12	3.0
39 FAUST, JERRY...	1158	L 26	L 37	+ 58	- 36	+ 49	+ 34	- 19	3.0
40 FAUST, CARNELL.	1144	L 48	W 36	- 22	- 33	+ 50	+ 35	- 23	3.0
41 FAUST, DARNELL.	1122	L 27	L 43	+ 51	- 35	+ 58	+ 33	- 24	3.0
42 GUREVICH, ALEX.	unr.	W 22	L 9	= 31	+ 43	- 13	- 19	= 37	3.0
43 CHEB, XI MING.	1559	L 6	W 41	= 26	- 42	+ 55	- 27	- 32	2.5
44 PEDERSEN, KEN.	1479	L 8	W 50	- 27	= 31	- 45	= 32	= 47	2.5
45 VAKIL, STEPHEN.	1422	L 13	D 31	W 57	- 11	+ 44	- 30	- 29	2.5
46 BRADLEY, SCOTT.	1356	H---	W 60	- 12	- 26	- 19	+ 55	= 31	2.5
47 MURADIAN, SEVAN.	1244	L 10	L 35	- 50	+ 52	- 37	+ 51	= 44	2.5
48 BEARD, GLENN.	1812	W 40	L 25	+ 8	- 7	- 38	U---	U---	2.0
49 MITCHELL, GARY.	1504	L 3	L 32	+ 56	- 23	- 39	- 52	+ 55	2.0
50 GROEGER, ANDREW.	1469	L 30	L 44	+ 47	- 29	- 40	+ 57	+ 34	2.0
51 PATTON, GERMOND.	1464	L 19	L 17	- 41	+ 56	- 34	+ 47	+ 59	2.0
52 MEYERS, JOE...	1458	L 20	L 29	- 36	- 47	+ 56	+ 49	- 33	2.0
53 MANSOUR, KHALED.	1392	L 21	W 33	- 28	+ 34	- 23	- 24	= 35	2.0
54 STILLING, M...	1728	W 17	D 12	- 4	U---	U---	U---	U---	1.5
55 RODGERS, PAUL.	1459	L 9	L 23	= 59	+ 57	- 43	- 46	- 49	1.5
56 DESAI, MICHAEL.	1375	L 14	L 34	- 49	- 51	- 52	+ 59	+ 57	1.5
57 APEL, GEOF...	1118	H---	L 11	- 45	- 55	+ 59	- 50	- 56	1.5
58 MAURER, PAT...	1466	L 12	L 22	- 39	+ 59	- 41	U---	U---	1.0
59 WHITTEN, D...	986	L 28	L 38	= 55	- 58	- 57	= 56	- 51	1.0
60 LARSON, THOMAS.	unr.	H---	L 46	- 33	U---	U---	U---	U---	0.5

OAK PARK - RIVER FOREST CHESS CLUB NEWS

By Ken Marshall

June 22: Hillside CC - OP-RF CC Match. Hillside won this sixth annual match for the first time since 1988, finishing the 13 board confrontation with a convincing 10.5-2.5 victory. Outrated on 10 boards, the OP-RF CC was never really in the fight. Catalino Reyes (Board 4) and Witold Dobzynski (10) were the only Club winners, while Greg Minnis (9) drew. The OP-RF CC was embarrassed both on and off the chess board: Hillside showed up with 18 players, while the Club could only muster 13 members to defend its home turf.

July 6: Speed Tournament. Peter Reyes scored 8.5-2.5 to win this 12 player round robin tourney ahead of Peter Dudkowski (8-3), Richard Matuszczyk (7-4), and Mark Jutovsky (6.5-4.5).

July 27: WBCA Tournament. Losing only two of 14 games, Raul Mancillas finished 10-4 to lead the eight man field in this double round robin, game/five minutes event, which was sanctioned and rated by Grandmaster Walter Browne's World Blitz Chess Association. Tom Fineberg (9-5), who went 1.5-5 against Mancillas, was second, followed by Catalino Reyes and Rob Singer (each 8.5-5.5). Singer won the 1999-1700 prize.

CHOW & KARKLINS SHARE TOP PRIZE IN CHICAGO MIDWEST \$10,000 CLASS CHAMPIONSHIP

By Bob Renaut

Former Illinois State Champions Andrew Karklins (2404) and Albert Chow (2351) tied for first and second place at the Chicago Midwest \$10,000 Class Championship, held July 23-25, 1993 at the Ramada Inn by O'Hare airport. Long among the top players in the Midwest, Karklins and Chow each finished 4.0 - 1.0 to lead a 243 player field which included three Senior Masters and fifteen Masters. The winners earned \$ 750.00 each for their efforts. Al Chow lost the individual contest with Andrew Karklins (see Tom Cooper's annotations below), while Andrew drew with Master Leonid Basin and Master Randal Andrews. Third through fifth place was a three way tie between Leonid Basin, Josh Manion and Lawrence Chachere with 3.5 - 1.5 scores. They each earned \$300.00 for their efforts.

The Expert section first place prize was split between Joel Wesblat (2169) and Ray Satterlee (2127). Joel and Ray drew their individual match while running up 4.5 - 0.5 scores. They took home \$600.00 each for their undefeated efforts. James Wheat (2052), Krzysztof Flaga (2137) and Arnulfo Benesa (2100) tied for 3rd - 5th place to earn \$166.66 each for their 4.0 - 1.0 scores.

The Class A section was won by Reginald Perry (1972) with a perfect 5.0 score! Reginald swept the field to earn \$800.00. Five players tied for second place; Michael McCarthy (1935), Aaron Dean (1932), David Marema (1922), Andrew Schultz (1909) and Michael Plett (1808) each scored 4.0 - 1.0 to earn \$180.00 for their efforts.

Two players Eric Johnson (1779) and Anna Zemlinsky (1662) tied for first place in the Class B section. They didn't have the honor of playing one another but they earned \$600.00 for their 4.5 - 0.5 scores. Guy Kittilsen (1753) took third place and won \$200.00 for his 4.0 - 1.0 score.

Kurt Bridgham (1577) and Tom Curran (1570) scored 4.5 - 0.5 in the Class C section to split first place! They earned \$600.00 for this effort. Four players; Antonio Velasquez (1572), Ming Chen Xi (1559), Alex Gurevich and Willem Wennekestied for third place (1400). They earned \$75.00 each.

Gene Coleman and Covic Mehmed, both unrated, shared first place in the D/E section with perfect 5.0 - 0.0 scores! They each earned \$400.00 for the perfect score.

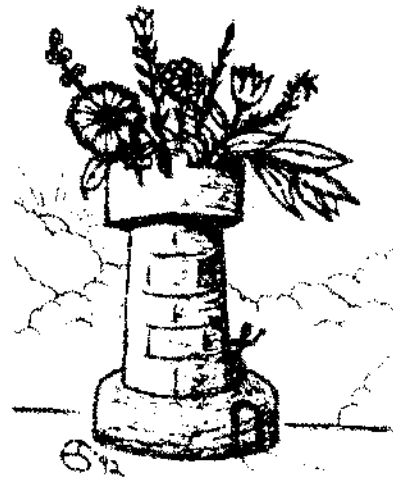
The Chicago Midwest \$10,000 Class Championship was sponsored by the Fox Valley Chess Club, which guaranteed the \$10,000 prize fund. The tournament was organized by Senior Master Dick Verber and directed by Bill Symthe and

Walter Brown. Playing conditions were reasonable, but parking was a definite problem. The hotel had also scheduled a Star Trek convention on the same weekend. The turnout for this tournament was a disappointment for the Fox Valley Chess Club, which lost over \$1000.00 on the event. Like the OP-RF CC the Fox Valley Chess Club cannot continue to absorb such losses and this will likely be our last guaranteed prize fund. We would like to thank all the players that did play and we hope to see you at the 4th Annual Fox Valley Championship held next January and also at next years' Midwest Team Championship in February.

U.S. CHESS  **ILLINOIS**
STATE CHESS FEDERATION

Make your plans now for the
95th Annual
U.S. OPEN

August 7-19
1994 IN CHICAGO

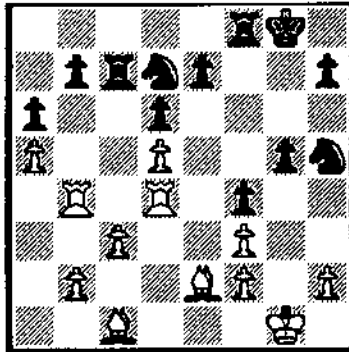


GAMES FROM THE CHICAGO MIDWEST \$10,000 CLASS CHAMPIONSHIP

Annotated by National Master Tom Cooper

A.Karklins (2404) - A.Chow (2351)

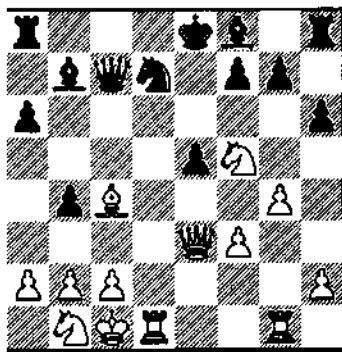
1.e4 c5 2.Nf3 g6 3.d4 Bg7 4.dxc5 Qa5+ 5.c3 Qxc5 6.Qd5
Qxd5 7.exd5 d6 8.Bc4 Nf6 9.O-O Bg4 10.a4 Bxf3 11.gxf3
Nbd7 12.Rd1 Nh5 13.a5 a6 14.Ra4 Rc8 15.Be2 O-O 16.Rb4
Rc7 17.Na3 f5 18.Nc2 f4 19.Nd4 Bxd4 20.Rdxd4 g5



21.Rdc4 Rfc8 22.Rxb7 Rxc4 23.Bxc4 Rxc4 24.Rxd7 Ra4
25.Rxe7 Nf6 26.Re6 Kf7 27.Bd2 Nxd5 28.Rxd6 Rxa5 29.c4
Ra1+ 30.Kg2 Ne7 31.Bc3 Ng6 32.c5 Nh4+ 33.Kh3 Nxf3
34.Kg4 Nxf2+ 35.Kxg5 Rf1 36.Kxf4 Rxf2+ 37.Kg3 Re2
38.Rf6+ Ke7 39.c6 Nf1+ 40.Rxf1 Kd6 41.Rf6+ 1-0

M. White (2054) - I. Chacher (2359)

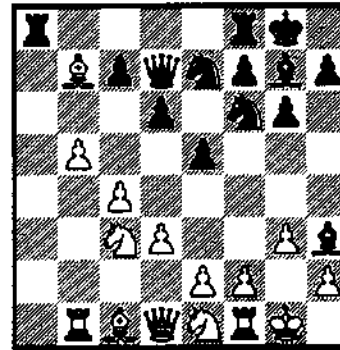
1.e4 c5 2.Nf3 d6 3.d4 cxd4 4.Nxd4 Nf6 5.Nc3 a6 6.Be3 e6
7.f3 b5 8.Qd2 Nbd7 9.O-O Bb7 10.g4 h6 11.Rg1 b4 12.Nb1
e5 13.Nf5 d5 14.exd5 Nxd5 15.Bc4 Nxe3 16.Qxe3 Qc7



17.Rxd7 Kxd7 18.Bxf7 Rd8 19.Rd1+ Kc8 20.Be6+ Kb8
21.Rxd8+ Qxd8 22.Qxe5+ Qc7 23.f4 Qxe5 24.fxe5 g6
25.Nh4 Bc5 26.Nxg6 Be3+ 27.Kd1 Bf3+ 0-1

B. Schuman (2340) - J. Manion (2359)

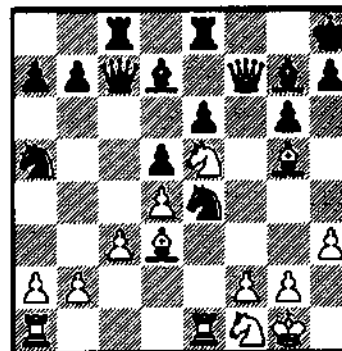
1.Nf3 g6 2.c4 Bg7 3.Nc3 d6 4.g3 Nf6 5.Bg2 O-O 6.O-O e5 7.d3
Nc6 8.Rb1 a5 9.a3 Bg4 10.b4 axb4 11.axb4 Qd7 12.b5 Ne7
13.Ne1 Bh3 14.Bxb7



14. ...Bxf1 15.Kxf1 Qh3+ 16.Kg1 Ng4 17.Nf3 Ra7 18.Bd5
Nxd5 19.Nxd5 f5 20.Qf1 Qxf1+ 21.Kxf1 e4 22.Ne1 Nxf2
23.Kg2 Ng4 24.f3 exf3+ 25.Nxf3 Re8 26.Kf1 h6 27.Ke1 Kf7
28.Kd1 g5 29.e3 Nf6 30.Nb4 Nh5 31.Nd4 Bxd4 32.exd4
Nxf3 33.c5 [score illegible, 0-1 in 42.] 33...Ra3 34.Rb2 f4
35.Nc6 0-1

M. Dandridge (2351) - S. Minin (2077)

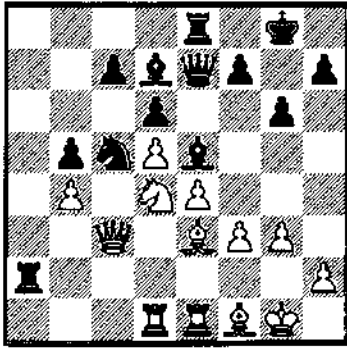
1.Nf3 g6 2.e4 Bg7 3.d4 c6 4.Bd3 d5 5.exd5 cxd5 6.h3 Nc6
7.c3 Bd7 8.O-O Nf6 9.Re1 O-O 10.Nbd2 Rc8 11.Nf1 Na5
12.Qe2 Re8 13.Ne5 e6 14.Bg5 Qc7 15.Qf3 Ne4 16.Qxf7+
Kh8



17.Rxe4 dxe4 18.Bf6 Rg8 19.Nxg6+ hxg6 20.Qxg6 Be8
21.Qh6+ 1-0

M.Aaron (2049) - B. Lilly (2190)

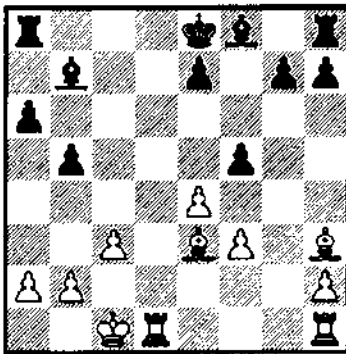
1.c4 Nf6 2.Nc3 g6 3.d4 Bg7 4.e4 O-O 5.Nf3 d6 6.Be2 Nbd7
7.O-O e5 8.Re1 exd4 9.Nxd4 Nc5 10.Bf1 Re8 11.f3 Qe7
12.Be3 a6 13.Nd5 Nxd5 14.cxd5 a5 15.Qc2 Bd7 16.Rad1 Be5
17.g3 Rab8 18.Qd2 b5 19.Qxa5 Ra8 20.Qc3 Rxa2 21.b4?



21. ... Rxh2! 22.Kxh2 Qh4+ 23.Kg1 Qxg3+ 24.Bg2 Bh3
25.Qc2 Qh2+? [25...Nd3!] 26.Kf1 Nxe4 27.fxe4 Bxd4
28.Rxd4 Re5 29.Bg1 1-0

S. Bradley (1305) - D. McCoy (1082)

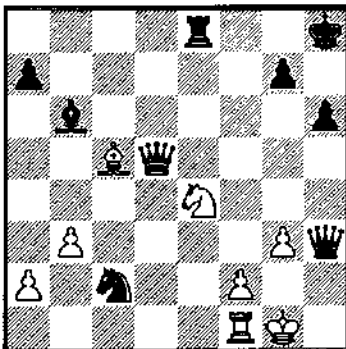
1.e4 c5 2.c3 d5 3.exd5 Qxd5 4.Nf3 Nc6 5.d4 cxd4 6.Nxd4
Nxd4 7.Be3 Nf3+ 8.Qxf3 Qxf3 9.gxf3 a6 10.Nd2 Nf6
11.0-0-0 b5 12.Ne4 Nxe4 13.fxe4 Bb7 14.f3 f5 15.Bh3



15. ...fxe4 16.fxe4 Bxe4 17.Bd7+ Kf7 18.Rdf1+ Kg6
19.Rhg1+ Kh5 20.Bg4+ 1-0

A. Chow (2351) - M. Dandridge (2351)

1.d4 d5 2.c4 e6 3.Nc3 c5 4.cxd5 exd5 5.Nf3 Nc6 6.g3 Nf6
7.Bg2 Be7 8.0-0 0-0 9.Bg5 cxd4 10.Nxd4 h6 11.Be3 Re8
12.Qb3 Na5 13.Qc2 Bf8 14.Rad1 Bg4 15.h3 Be6 16.Bf4 Rc8
17.e4 Qb6 18.Nxe6 fxe6 19.exd5 exd5 20.Bxd5+ Nxd5
21.Rxd5 Nc4 22.b3 Na3 23.Qd3 Qe6 24.Re5 Qxh3 25.Qd5+
Kh8 26.Qxb7 Bc5 27.Ne4 Bd4 28.Rxe8+ Rxe8 29.Qd5 Bb6
30.Bd6 Nc2 31.Bc5



31. ...Rd8?? [31...Bc5 32.Nc5 Ne3! draws or 32.Qc5 Re4
33.Qc2 Rh4! drawing.] 32.Nd6 Ne3 33.Bxe3 Bxe3 34.Nf7+
Kh7 35.Qe4+ Kg8 36.Nxd8 1-0

R. Andrews (2234) - J. Manion (2359)

1.d4 Nf6 2.c4 g6 3.Nc3 Bg7 4.e4 d6 5.Be2 0-0 6.Bg5 Na6
7.Qd2 e5 8.d5 c6 9.0-0-0 Nc5 10.f3 Qb6 11.h4 cxd5 12.Bxf6
Bxf6 13.Nxd5 Qd8 14.Nxf6+ Qxf6 15.Qxd6 Ne6 16.Rd5
Qf4+ 17.Kb1 Qg3 18.Qxe5 Qxg2 19.Qh2 Qxh2 20.Rxh2
Nf4 21.Rd1 Be6 22.Bf1 Rac8 23.b3 f5 24.e5 Rc5 25.Ne2
Nxe2 26.Rxe2 f4 27.Ree1 Re8 28.Kb2 Bf7 29.Re4 Rxe5
30.Rxf4 R8e7 31.Rfd4 a5 32.Bd3 Kg7 33.Be4 b6 34.a4 h6
35.Rd7 g5 36.hxg5 hxg5 37.Rxe7 Rxe7 38.Kc3 Kf6 39.Rd6+
Re6 40.Rxe6+ Bxe6 41.Kd4 g4 42.fxg4 Bxg4 43.c5 bxc5+
44.Kxc5 Ke5 45.Bd5 Bd7 46.Bf7 Kf6 47.Bc4 Ke5 48.Kb6 Kd6
49.Kxa5 Kc7 50.Bb5 Be6 51.Kb4 Kb6 52.a5+ Kb7 53.Bc4
Bd7 54.Kc5 1-0

M. Acosta (2250) - G. Umezina (2349)

1.d4 Nf6 2.Nf3 e6 3.Bg5 c5 4.e4 Qb6?! 5.Nbd2 cxd4
[5...Qb2? 6.Nc4 Qb4+ 7.c3 Qc3+ 8.Bd2 wins] 6.Nc4?!
[6.e5! Nd5 7.Bd3 h6 (7...Nc6 8.00 Qc7 9.Re1 d6 10.Nc4 de
11.N3e5 b5 12.Be4!) 8.Bh4 Nf4 9.00 Nd3 10.cd d5 is
unclear.] 6...Qb4+ 7.c3 dxc3 8.bxc3 Qc5 9.e5 Nd5 10.Nd4
Nb6 11.Nb3 Qc7 12.Nxb6 Qxe5+ 13.Be2 axb6 14.f4
Qxc3+ 15.Kf1 Nc6 16.Rc1 Qe3 17.h4 Rxa2 18.Rh3 Qxe2+
19.Qxe2 Rxe2 20.Kxe2 f6 21.Ra1 Be7 22.Ra8 0-0 23.Rf3 Re8
24.Rc3 fxe5 25.hxe5 d5 26.Kd3 e5 [illegible, 0-1 in 40.] 0-1

A. Chow (2351) - V. Berry (2207)

1.e4 e5 2.f4 d5 3.exd5 exf4 4.Nf3 Nf6 5.Bb5+ c6 6.dxc6
Nxc6 7.d4 Qa5+?! [7...Bd6 is normal.] 8.Nc3 Nd5 9.Qe2+
Be6 10.0-0 0-0-0 11.Nxd5 Bxd5 12.Bxf4 Bxf3 13.Rxf3 1-0

A. Karklins (2404) - I. Basin (2488)

1.e4 c5 2.Nf3 d6 3.Bb5+ Bd7 4.Bc4 Nc6 5.Qe2 Nf6 6.h3 e6
7.c3 Qb6 8.Bb3 a5 9.Ba4 Be7 10.0-0 0-0 11.b3 Qd8 12.Re1
d5 13.d3 h6 14.exd5 Nxd5 15.c4 Nb6 16.Bxc6 Bxc6 17.Bb2
Bf6 18.Ne5 a4 19.Nd2 Nd7 20.Ndf3 Bxf3 21.Nxf3 Ra6
22.Red1 Qb6 23.Bxf6 Nxf6 24.Rab1 Rfa8 ½-½

S. Minin (2077) - B. Schuman (2340)

1.e4 e6 2.d3 c5 3.g3 Nc6 4.Bg2 g6 5.Nf3 Bg7 6.0-0 Nge7 7.a4
0-0 8.Re1 d6 9.Nbd2 a6 10.Nc4 b6 11.Bf4 e5 12.Bd2 Rb8
13.Qc1 b5 14.axb5 axb5 15.Na5 Bg4 16.Nh4 Nxa5 17.Rxa5
Nc6 18.Ra6 Qc8 19.Rxc6 Qxc6 20.h3 Bc8 21.Bh6 Qc7
22.Nf5 Bxh6 23.Qxh6 f6 24.Ne3 Be6 25.f4 Qg7 26.Qh4 g5
27.Qh5 gxf4 28.gxf4 Kh8 29.f5 Bf7 30.Qh4 Qg5 31.Qxg5
fxg5 32.Ra1 Ra8 33.Rxa8 Rxa8 34.Kh2 Kg7 35.Kg3 h5
36.Bf3 Ra2 37.b3 Kf6 38.Bd1 c4 39.dxc4 bxc4 40.bxc4 Ra1
41.Be2 Rc1 42.Kf2 Ke7 43.Bd3 Kd7 44.Nf1 Ra1 45.Nd2 Ke7
46.Kg3 h4+ 47.Kf2 Bh5 48.Nf3 Bxf3 49.Kxf3 Rg1 50.Kf2
Rg3 51.Bf1 Kf6 52.Ke2 g4 0-1

B. Schuman (2340) - J. Manion (2359)

1.Nf3 g6 2.c4 Bg7 3.Nc3 d6 4.g3 Nf6 5.Bg2 0-0 6.0-0 e5 7.d3
Nc6 8.Rb1 a5 9.a3 Bg4 10.b4 axb4 11.axb4 Qd7 12.b5 Ne7
13.Ne1 Bh3 14.Bxb7 Bxf1 15.Kxf1 Qh3+ 16.Kg1 Ng4
17.Nf3 Ra7 18.Bd5 Nxd5 19.Nxd5 f5 20.Qf1 Qxf1+ 21.Kxf1
e4 22.Ne1 Nxb2+ 23.Kg2 Ng4 24.f3 exf3+ 25.Nxf3 Re8
26.Kf1 h6 27.Ke1 Kf7 28.Kd1 g5 29.e3 Nf6 30.Nb4 Nh5
31.Nd4 Bxd4 32.exd4 Nxb3 33.c5 [score illegible, 0-1 in 42.]
33...Ra3 34.Rb2 f4 35.Nc6 0-1

P.Stein (2191) - D.Smith (2126)

1.d4 Nf6 2.Nc3 c5 3.Bg5 cxd4 4.Qxd4 Nc6 5.Qh4 e6 6.0-0-0
Be7 7.e3 d6 8.Nf3 Bd7 9.Nb5 d5 10.c3 a6 11.Nbd4 0-0
12.Bd3 b5? 13.Bxf6?!

[13.Nc6! first wins more material.]

13...g6 14.Bxe7 Nxe7 15.Ng5 h5 16.g4 f6 17.Ngxe6 Bxe6
18.Nxe6 Qa5 19.Nxf8 [And 1-0 in 25.] 1-0

J. Ellis (2153) - H. Hernandez (2036)

1.e4 c5 2.Nf3 e6 3.d4 cxd4 4.Nxd4 a6 5.Bd3 Nf6 6.0-0 d5?
7.exd5?!

[Correct is 7.e5! as 7...Nfd7 runs into 8.Ne6! winning.]

7...Nxd5 8.Qe2 Be7 9.Rd1 Qc7 10.c4 Nf4 11.Bxf4 Qxf4
12.Be4 0-0 13.Nc3 Nd7 14.g3 Qf6 15.Rab1 Bc5 16.Nc2 Rb8
17.Ne3 Qe7 18.b4 Bxe3 19.Qxe3 Nf6 20.Nd5 Nxd5 21.cxd5
Qf6 22.d6 b6 23.Qd3 Rd8 24.Bxb7+ Kf8 25.Be4 b5 26.Bc6
e5 27.Qh7 g6 28.d7 Bb7 29.Bxb7 Rxb7 30.Rbc1 Ke7 31.Qh6
Rbxd7 32.Rxd7+ Rxd7 33.Qe3 Qd6 34.Rc5 f6 35.Qh6 g5
36.Qh7+ Ke6 37.Qh3+ Kf7 38.Qh7+ ½-½

J. Wheat (2052) - K. Flaga (2137)

1.e4 e6 2.d4 d5 3.Nc3 Bb4 4.e5 Ne7 5.a3 Bxc3+ 6.bxc3 b6
7.Nf3 Ba6 8.Bxa6 Nxa6 9.Qd3 Qc8 10.0-0 c6 11.Bg5 Nc7
12.Bxe7 Kxe7 13.Nd2 Qa6 14.Qg3 Rag8 15.f4 Qe2 16.Rf2
Qh5 17.a4 f5 18.exf6+ gxf6 19.Qe3 Qf5 20.a5 Kd7 21.Nf1
Qg6 22.Ng3 f5 23.Nf1 b5 24.Nd2 Qf6 25.Nf3 Ne8 26.Ne5+
Kc7 27.c4! bxc4 28.Qa3 Qf8 29.Qa4 Qd6 30.a6 Rg7 31.Rb1
Rhg8 32.c3 Kd8 33.Nxc6+ Kd7 34.Nxa7+ Kd8 35.Rb8+
Qxb8 36.Nc6+ Kc7 37.Nxb8 Kxb8 38.Rb2+ Ka7 39.Qc6
Rc7 40.Qb6+ Ka8 41.Qb8+ 1-0

P.Clare (1583) - D. Iovin (1517)

1.e4 c5 2.Nf3 d6 3.d4 cxd4 4.Nxd4 Nf6 5.Nc3 Bd7 6.Bc4 Bc6
7.Bb3 g6 8.Qf3 Nbd7 9.h3 a6 10.Bf4 Bg7 11.Qe3 Qc7
12.Bh6 0-0 13.Bxg7 Kxg7 14.f3 Rfe8 15.a4 e6 16.0-0-0 Rad8
17.Nde2 Nb6 18.g4 h6 19.Rdg1 Nh7 20.Nf4 Nd7 21.Nh5+?
gxh5 22.gxh5+ Kh8 23.Qxh6 Rg8 24.Rg4 d5 25.Ne2 dxe4
26.Rhg1 exf3 27.Bxe6 fxe2 28.Rg7 Ndf6
[28...e1=Q+;29...Rd1+] 29.Rxh7+ Nxb7 0-1

J. Lahvic (2095) - P.Stein (2191)

1.d4 Nf6 2.Nf3 g6 3.c4 Bg7 4.Nc3 0-0 5.e4 d6 6.Be2 e5 7.0-0
Nc6 8.d5 Ne7 9.Ne1 Nd7 10.Nd3 f5 11.Bd2 Nf6 12.f3 f4
13.Be1 g5 14.c5 Ng6 15.Bf2 Rf7 16.cxd6 cxd6 17.Rc1 h5
18.Qb3 g4 19.Nb5 g3 20.hxg3 fxg3 21.Bxg3 Bh6 22.Bf2 Bxc1
23.Rxc1 a6 24.Na7 Bd7 25.Qb6 Qxb6 26.Bxb6 h4 27.Rc7
Rb8 28.Rc2 Rg7 29.Bc7 Ra8 30.Bxd6 Rxa7 31.Nxe5 Nf4
32.Bf1 Bb5 33.Rc8+ Kh7 34.Ng4 Nxb4 35.Bxf4 Bxf1
36.Kxf1 b5 37.Bd6 Raf7 38.Ke1 Ne3 39.Ke2 Nc4 0-1

C. Brasket (2312) - A.Karklins (2404)

1.d4 Nf6 2.c4 g6 3.Nc3 Bg7 4.e4 d6 5.f3 Nfd7 6.Bg5 a6
7.Qd2 c5 8.d5 h6 9.Be3 b5 10.cxb5 Nb6 11.Rc1 Bd7 12.a4
axb5 13.axb5 h5 14.b3 Nc8 15.Bd3 Ra3 16.Qc2 0-0 17.Nge2
Nb6 18.0-0 e6 19.dxe6 Bxe6 20.Nf4 c4 21.Nxe6 fxe6 22.Qf2
N8d7 23.Nb1 Rxb3 24.Bxc4 Nxc4 25.Rxc4 Ne5 26.Nd2 Ra3
27.Bb6 Qb8 28.Bc7 Qxb5 29.Rb1 Qd7 30.Rc2 Rc8 31.Qb6
Rd3 32.Rbc1 Bh6 33.Qa5 Bxd2 34.Rxd2 Rxd2 35.Qxd2
Rxc7 36.Rd1 Nf7 37.f4 Qc6 38.Qd3 Qc5+ 39.Kh1 Qc2
40.Qf3 Rc3 41.Qf1 Qxe4 42.Rb1 Rc4 43.Re1 Qxf4 44.Qd3
Kg7 45.g3 Qd4 0-1

C.Brasket (2312) - A. Chow (2351)

1.d4 Nf6 2.c4 e6 3.Nf3 Bb4+ 4.Nbd2 b6 5.a3 Bxd2+ 6.Bxd2
Bb7 7.e3 0-0 8.Bd3 Ne4 9.Bc1 Ng5 10.Nd2 f5 11.f3 d6
12.Qc2 Nd7 13.b3 Qf6 14.Bb2 Qh6 15.0-0-0 c5 16.f4 Nf7
17.d5 exd5 18.Bxf5 Rad8 19.cxd5 Bxd5 20.Nc4 Bc6 21.Rhe1
d5 22.Nd2 Nd6 23.Bd3 Nf6 24.g3 Bb5 25.Bxb5 Nxb5 26.Nf3
Ne4 27.Ne5 Nc7 28.Kb1 b5 29.Re2 a5 30.Rxd5 Rxd5
31.Qxe4 Rd1+ 32.Kc2 Qd6 33.Nd3 Rg1 34.Be5 Qb6
35.Bxc7 Qxc7 36.Qd5+ Kh8 37.Qxc5 Qb8 38.Kb2 Rc8
39.Qe5 Qb7 40.Nc5 Qf3 41.Rc2 Qd1 42.Kc3 b4+ 0-1



OAK PARK-RIVER FOREST CHESS CLUB

MEETS

TUESDAY NIGHTS - 7:00 P.M. TO MIDNIGHT

AT THE

DOMINICAN CONFERENCE CENTER

7200 W. Division

River Forest, IL

(Corner of Harlem and Division – just 1 mile north of the
Lake street Harlem "EL" stop and 2 miles north of the Eisenhower Expressway)

ALL CHESS PLAYERS - NOVICES TO MASTERS - ARE WELCOME

(Chess lessons for beginners and
intermediate players can be arranged)

TUESDAY NIGHT CLUB ACTIVITIES INCLUDE:

- Friendly "skittles" games
- Five and ten minute "speed" chess
- USCF and WBCA rated games and tournaments
- Annual tournaments
 - Club Open Championship
 - Club Closed Championship
 - Club Blitz (five minute) Championship

THE OAK PARK-RIVER FOREST CHESS CLUB ALSO SPONSORS:

- Several weekend tournaments every year
- Matches with other Chicago area chess clubs
- Lectures and simultaneous exhibitions by International Grandmasters and other leading players

(Club members often receive entry
fee discounts for these events)

ANNUAL CLUB DUES: \$24 (Less than 50¢ a week)

(All members receive the monthly club bulletin)

FOR MORE INFORMATION:

Drop in any Tuesday night (Two FREE visits)

or

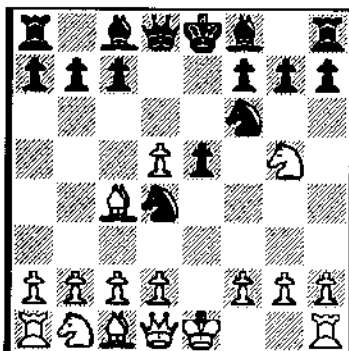
Call Ken Marshall: (708)932-1455

UPSETS OF THE ISSUE

Annotated by National Master Tom Cooper

Julie Oberweis (Class B) vs. Jim Marshall (Expert)
Fox Valley Chess Club's Player Appreciation Tournament.

1.e4 e5 2.Nf3 Nc6 3.Bc4 Nf6 4.Ng5 d5 5.ed Nd4

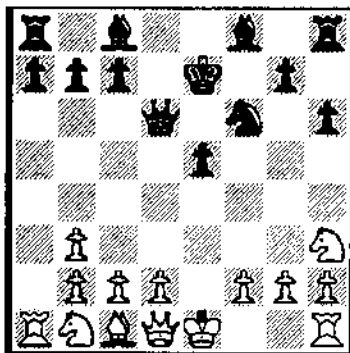


The Fritz variation. Black avoids the more popular 5...Na5 and lures White into a variation where obvious moves can easily backfire.

6.d6?

Case in point-obvious, logical, and bad. If 6...00 b5! 7.Bb3 h6 8.Nf3 Bg4 and Black is better; or 6.Nc3? h6 7.Nge4 Ne4 8.Ne4 Qh4! 9.d3 Bg4 10.Qd2 and Black has a strong attack. Correct is 6.c3 b5 7.Bf1 Nd5 (7...h6 8.ed hg 9.de Nd5 10.Bb5+ Bd7 11.Bd7+ Qd7 12.Nc3 with a clear advantage for White) 8.Ne4 Ne6 9.Bb5 Bd7 10.Bd7 Qd7 11.00 Be7 12.d4 ed 13.cd 00 14.Nbc3 Rad8 allowing White to keep the better game.

6...Qd6 7.Bf7+ Ke7 8.Bb3 Nb3 9.ab h6 10.Nh3?



This can only work if White still has her white-squared bishop, preferably on e2, to cover the weakened white squares. Known theory is 10.Nf3 e4 11.Ng1 Bf5 12.Nc3 (12.Qe2 Kf7) a6 13.Qe2 Kd7 14.Qe3 Ng4! 15.Qe2 Re8 and Black was winning in Jovic-Mesing, Yugoslavia 1973.

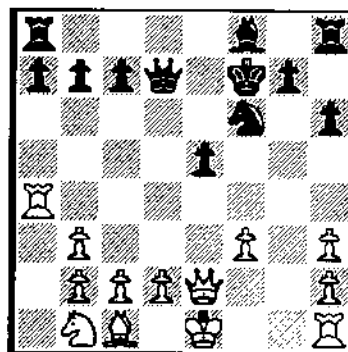
10...Bg4?!

What's the rush? The White Knight can only retreat. 10...e4 looks much stronger when the threat is 11...Bg4. White will find it difficult to achieve complete development as the move d3 will leave weak pawns scattered all over the board.

11.f3 Bh3 12.gh Qd4

13...Qd7-h3 is better. I suspect Black overlooked White's next move.

13.Ra4 Qd7 14.Qe2 Kf7



Not 14...Qh3

15.Qe5+ Kf7 16.Qg3 and Black's shrinking lead in development no longer compensates for the missing pawn.

15.Qg2 b5 16.Ra6

Making the most of a difficult situation by keeping the Rook active is White's best try. If she can safely complete development she will have counterchances.

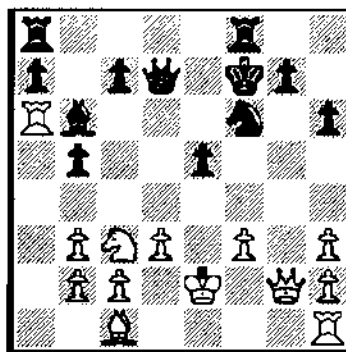
16...Bc5

Stopping 17.Rg1

17.Nc3 Bb6

Takes the sting out of any Ne4 by White by cutting off the Rook's indirect pressure on the g6 square.

18.d3 Rhf8 19.Ke2



Striving to exchange that annoying Black bishop by 20.Be3. This move order shouldn't work. A safer way would be 19.Kd1 with the idea of 20.Re1 and 21.Be3.

19...Rae8?!

Drifting and letting White off the hook. 19...b4! 20.Ne4 (20.Na4 Qb5) Ne4 21.fe (21.de Qb5+) Kg8 looks critical for White as 22.Be3 Qb5 23.Rha1 Be3 24.Ke3 Qe5+ wins.

20.Be3 Be3 21.Ke3 Kg8

If 21...b4 22.Ne4 Nd5 + 23.Kd2 Nf4 24.Qg4! White has counterplay.

22.Rg1 Qd4 + 23.Kc2 Nh5

Not 23...Rf7? 24.Rf6! In fairness, I must mention that Black was in time trouble here.

24.Kd1 Rf3?

Missing 24...Qf4!

25.Rh6

Oops!

25...Rcf8

25...Rg3! saves the piece.

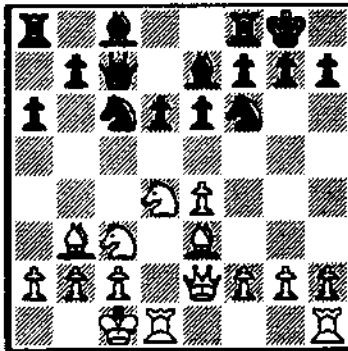
26.Rh5 e5

.... and here Christmas came early for Jim as Julie offered a draw.

This was a well-played game by Julie. She hung tough under pressure and took every chance that was offered. This type of game is usually a confidence builder for junior players. They realize that even bad positions have opportunities for counterplay, and that one of the hardest tasks in chess is to win a winning position. I suspect that Julie's future opponents shouldn't expect any draw offers in similar situations.

Mid-America Class Championships
Mitchell White (Expert) vs. George Umezina (Master)

1.e4 c5 2.Nf3 d6 3.d4 cd 4.Nd4 Nf6 5.Nc3 Nc6 6.Bc4 e6 7.Be3 Be7 8.Qe2
9.000 Qc7 10.Bb3 00

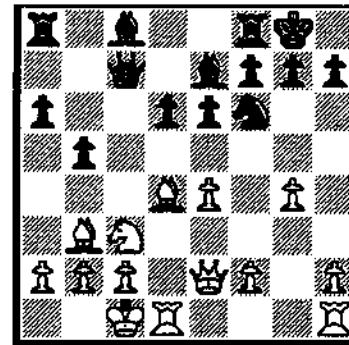


This is an extremely sharp position in the Sozin\Velimirovic Attack variation. One misstep or transpositional oversight can have fatal consequences.

11.g4 Nd4 12.Bd4?

Necessary is 12.Rd4 Nfd7 (12...e5 13.Rc4 and 14.g5) 13.g5 b5 and the race is on. The best advice for both sides in this type of mutual attacking position is don't blink.

12...b5?



Missing 12...e5 13.Be3 Bg4 winning a clear pawn. The text is a well-known theoretical error that is very easy to make. You know that you must get your counterattack underway quickly in this type of "who gets there first with the most" headhunt, and you forget the subtle differences in move-order.

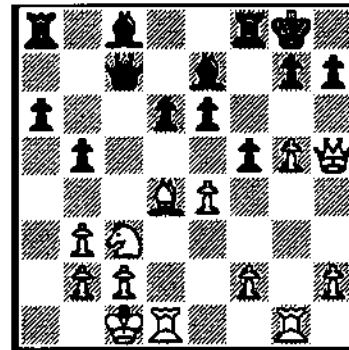
13.g5 Nd7 14.Qh5 Nc5 15.Rhg1

and Black is in big trouble. The White bishop on d4 threatens to invade on f6, and threats of Rg4-h4 aren't far behind.

15...Nb3 +

If 15...Bb7 16.Bf6 Rfc8 17.Rg4 b4 18.Rh4 Be4 19.Re4 bc 20.Rh4 Nb3 + 21.Kb1 wins (Bardonada-Pavlov, 1974.)

16.ab f5



If 16...b4 17.Bf6 bc 18.Qh6!; or, 16...f6 17.gf Bf6 18.Bf6 Rf6 19.Nd5!; or, finally, 16...Qd8 17.Rd3 e5 18.Be5 b4 19.Bf6 (threat-Qh6) Bf6 20.gf Qf6 21.Nd5 wins.

17.Bg7

Simply 17.gf as in the previous note to 16...f6 is good.

17...Kg7 18.Qh6 + Kf7

The only alternative is 18...Kh8 19.g6 Bg5 + 20.Rg5 Qg7 with a thankless defensive task.

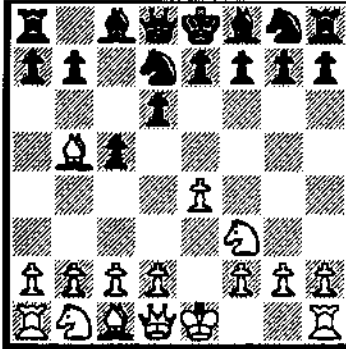
19.g6 + Ke8 20.g7 Rg8 21.Qh7 Bg5 + 22.Rg5 Qf7 23.ef ef 24.Nd5 Be6 25.Qg8 Qg8 26.Nf6 Ke7 27.Ng8 Rg8 28.h4 Rc8 29.Re1 1-0.

GAMES FROM THE ILLINOIS TOURNAMENT OF CHAMPIONS

Annotated by National Master Tom Cooper

Andrew Karklins (2390) vs. Greg DeFotis (2436)
Annotations by DeFotis.

1.e4 c5 2.Nf3 d6 3.Bb5+ Nd7



Favored by Kasparov. 3...Nc6 is playable and 3...Bd7 is currently thought to be Black's most reliable route to equality, but the resulting positions are somewhat dry, certainly not the reason Black essays a Sicilian.

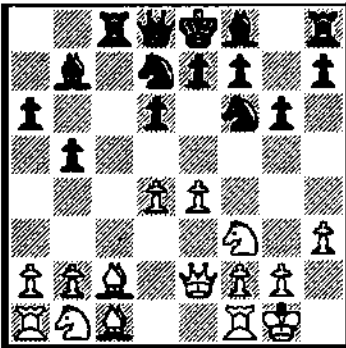
4.c3

Most popular here is 4.d4 which will lead back into positions resembling standard open Sicilians. Lately Black has preferred 4...Nf6 to 4...cd, and after 5.Nc3 or 5.00 Black has been using 5...a6! with mixed results. Ivancuk-Kasparov and Ljubojevic-Kasparov, both from 1991, are high level examples. With his 4th Andrew tries to steer the game into positions resembling the Ruy Lopez.

4...Nf6 5.Qe2 a6 6.Ba4 b5 7.Bc2 Bb7

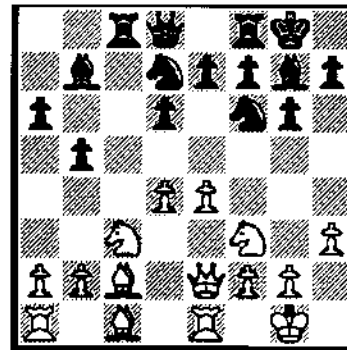
Leaving "theory". ECO quotes only 7...e5 giving final evaluations of = or unclear. Why must Black play e5 immediately? As occurred in this game, for tactical reasons, White cannot enforce e5, so there seems little reason for Black to develop his KB passively at e7.

8.d4 cd 9.cd Rc8 10.00 g6 11.a3



Here 11.Nc3 is answered with 11...b4 and 11.e5 fails after 11...Bf3 12.gf de 13.de Ne5. However, to have to play a move like 11.a3 simply to be able to develop the QN optimally suggests something is less than optimal with the opening. Improvements should be sought around here.

11...Bg7 12.Nc3 00 13.Rc1?



White finally threatens e5. Actually, I'm not sure it's much of a threat. Giving White the move 14.e5 de 15.de (15.Ne5 Nb6) Ng4 16.e6 (16.Bf4 Bf3) Nc5 17.ef+ Rf7 seems ok for Black whose active pieces compensate for the weak e-pawn. Even so, Black will have to play ...e5 at some point, as to try to probe on the Q-side, where lies his space advantage. He can not leave the center completely to White. However, the White KR should have more of a function than overprotecting e4.

13...e5 14.d5?

I think after this Black already has a slight edge. Both sides' bishops have been deadened; White's Qe2 and Re1 are totally wasted moves, and Black's Knights are more flexibly deployed to try to make use of the extra Q-side space. Simply 14.de is equal.

14...Nb6 15.a4?

I suspect White was becoming dissatisfied with the apparent lifelessness of his position, but this only compounds the problem on the q-side. After the game, Andrew said he realized he was giving away the c5 square, but thought he could get c4 in return. A costly misjudgment, particularly as the Black QB also becomes active.

15...b4 16.Nd1 a5 17.Ne3 Nfd7 18.Qd1

An admission that matters are not proceeding as planned. 18.Nd2 Ba6 is even worse, and 18.Qb5 only gets the Q in trouble. It's real hard to suggest ideas for White, so perhaps batten down the hatches and attempting to hold on is best.

18...Ne5 19.b3 Rc7 20.Ra2 Qe8?

Silly. d7 was a better square, and e7 best of all, freeing d7 for the Knights if needed and with an eye toward a possible ...Qf8 and Bh6 after ...Rfc8.

21.h4

This seems born of frustration, and though it's certainly difficult to visualize now, Black's final infiltration will occur along the h-file where White is creating weaknesses.

21...Ba6 22.h5 Qd7 23.Nh2 Rfc8 24.Ra1 Qe7 25.Nhf1 Ncd7 26.Ng3 Qf8

Finally to the right square! Now that Black has negated all the possible sacrificial ideas by White on the K-side, and has White trussed hand and foot on the Q-side, he can get to work K-side.

27.Bd2 Nf6 28.Rc1 Bh6 29.Qf3 Nbd7 30.Bb1 Rc1

This and the following Rook exchange may not be accurate, but time pressure was looming, and I had already worked out a plan for penetrating K-side.

31.Rc1 Rc1 32.Bc1 Bf4!

Putting the question to the h-pawn. Move it or lose it.

33.hg hg 34.Ne2 Bh6

It's obvious here, but from now on, unless material gain is involved, White's pieces are so futile, there is no minor piece trade Black desires.

35.Ng3 Kh7 36.Qd1 Ne5 37.Bc2 Bf4 38.Qf3 Qh6 39.Bb2 Qh4 40.Nef1 Kg8

Some of Black's last may not have been the most accurate or forceful. But I simply wanted to make time control without spoiling anything.

41.Ne2 Bg5 42.Nh2 Qh5!

Not 42...Nce4? 43.g3 Qh5 44.g4!+. Black can win a pawn with 42...Be2 43.Qe2 Nce4 as 44.g3 is crushed after 44...Ng3 45.fg Qg3+ 46.Kh1 Nd5, but White does better with 44.Nf3 Qg4 45.Qb5 when he has some counterplay - his position deserves none. If White trades Queens, Black has a choice of easily winning endings 43...gh 44.Ng3 and now 44...Bd3 45.Bd3 Nd3 46.Ba1 Nc1 etc.; or 44...h4 45.Nf5 Nfe4 46.f3 Ng3! etc.

43.g4 Qh6 44.Ng3 Kg7 45.Qd1 Bf4 46.Kg2 Qh4 47.Bb1 Bc8 48.Qf3 Kg8 49.Bc2 Ng4 50.Nhf1 Nf6 51.Qe2 Qh3+ 52.Kg1 Ba6 53.Qf3 Bf1 0-1.

M. Lonoff (2328) - W. Maddex (2205)

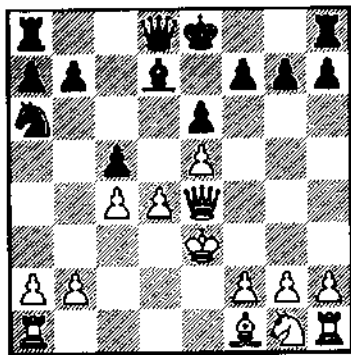
1.c4 Nf6 2.Nc3 e6 3.e4 d5 4.e5 Nc4 5.Nxe4

[Interesting is 5.Nf3 c5 6.Qc2 Nc3 7.bc Nc6 8.Rb1 Qc7 9.d4 with an edge for White. By accepting the pawn sac White falls dangerously behind in development as he has problems mobilizing the K-side.]

5...dxe4 6.Qg4 Bd7 7.Qxc4 Na6

[Very sharp. Also known is 7...Bc6 to hinder K-side development.]

8.d4 Bb4+ 9.Bd2 Bxd2+ 10.Kxd2 c5 11.Ke3



[The advantage of delaying ...Bc6 is seen in the variation 11.d5 Bc6!]

11... Bc6 12.d5 exd5 13.cxd5 Bxd5 14.Bb5+ Kf8 15.Qf4 Bxg2 16.Nf3 Bxh1 17.Bc4 f6 18.Rxh1 Nb4 19.Ke2 Qe7 20.Rd1 Nc6 21.Kf1 Rd8 22.Rd6 Rxd6 23.exd6 Qd7 24.Ng5 Ne5 25.Ne6+ Kf7? 26.Nxc5+ 1-0

G. Gratz (2230) - E. Martinovsky (2377)

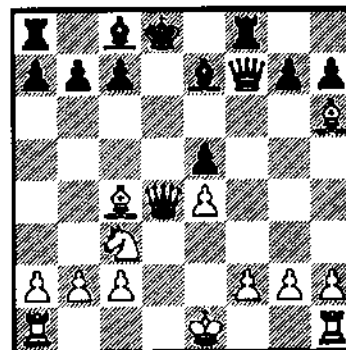
1.e4 e5 2.Nf3 d6 3.Bc4 Be7 4.d4 Nd7?

[Loses. Correct is 4...ed 5.Nd4 Nf6 6.Nc3 00 7.00 a6! and the White bishop is a target for Black's Q-side expansion.]

5.dxe5! Nxe5

[Necessary as 5...de 6.Qd5 is too strong.]

6.Nxe5 dxe5 7.Qh5 Qd4 8.Qxf7+ Kd8 9.Nc3 Nh6 10.Bxh6 Rf8



11.Be3! Rxf7 12.Bxd4 exd4 13.Bxf7 dxc3 14.0-0-0+ Bd6 15.e5 Ke7 16.exd6+ Kxf7 17.d7 1-0

A. Chow (2351) - E. Martinovsky (2377)

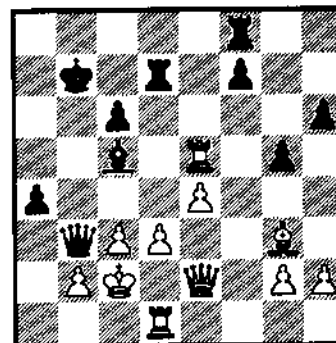
1.e4 e5 2.f4 Be5 3.Nf3 d6 4.Nc3 Nf6 5.Bc4 Nc6 6.d3 a6 7.fxe5 dxe5 8.Bg5 h6 9.Bh4

[9.Bf6 Qf6 10.Nd5 Qd6 11.Qd2 Be6=]

9... g5

[9...Be6 10.Nd5 g5! is given by Glaskov in the Russian edition of his King's Gambit book.]

10.Bg3 Qe7 11.Qd2 Bg4 12.Rf1 Bxf3 13.Rxf3 Nd4 14.Rf1 Rf8 15.0-0-0 16.Kb1 b5 17.Nd5 Nxd5 18.Bxd5 c6 19.Bb3 Kb7 20.c3 Nxb3 21.axb3 a5 22.Kc2 Rd7 23.Qe2 Qe6 24.Rf5 a4 25.bxa4 bxa4 26.Rxe5 Qb3+



27.Kc1?

[28.Kb1]

27...a3 28.Qc2 Be3+ 29.Rd2 Qxc2+ 30.Kxc2 Bxd2 31.bxa3 Bf4 0-1

2nd annual Midwest Class Championships

October 29-31 or 30-31, 1993

\$10,000 PRIZE FUND UNCONDITIONALLY GUARANTEED!
REASONABLE ENTRY FEES!

At the luxurious Hyatt Regency Oak Brook

5-SS, 40/2, SD/1 (2-day option, rd 1 G/70),
Hyatt Regency Oak Brook, 1909 Spring Road (near
I-88 Cermak Road exit), Oak Brook 60521.
Luxurious hotel with indoor pool, whirlpool, sundeck
and weight room; Oak Brook Shopping Center
directly across street with over 100 stores.

**\$10,000 prize fund unconditionally
guaranteed!** In 6 sections.

Top 4 sections: 40/2, SD/1 (2-day option, 1st
rd G/70).

Under 1400 section and unrated section:
Oct 30-31 only, G/90.

Master-Expert: Prizes \$1200-600-300-200,
2200-2399/Unr 700-400, U2200 700-400. FIDE
rated, 80 GPP.

Class A: Prizes \$700-400-200-100.

Class B: Prizes \$700-400-200-100.

Class C: Prizes \$700-400-200-100.

Class D/E: Prizes \$600-300-200-100.

Unrated: \$50-30-20.

Entry fee: 3-day \$58, 2-day \$57 mailed by
10/23, all \$70 at tmt. Juniors under 20: 3-day \$28,
2-day \$27 mailed by 10/23, all \$40 at tmt. All entry
fees \$10 more if playing up.

Entry fee discount: Deduct \$10 per player
if two or more entries sent in same envelope or paid
with one credit card & call. **Free entry to
unrateds!** Must play in unrated section.

Visa/Mastercard entries accepted by mail,
at site, or by phone (call 914-496-9658 8/31-9/28,
10/5-12, or 10/20-26). Advance EF applies to
Visa/Mastercard phone entries through 10/26 &
entries sent Priority Mail through 10/24.

3-day schedule: Reg. ends Fri 7:15 pm, rds.
Fri 8, Sat 1-7:15, Sun 10-4:15.

2-day top 4 sections schedule: Reg. ends
Sat 9:15 am, 1st rd 10 am, then merges with 3-day.

U1400 & unr schedules: Reg. ends Sat
10:30 am, rds. Sat 11-2:30-6, Sun 9-12:30.

All: ICA membership (\$14, under 19 \$8)
required, other states OK. USCF membership
required. Half point byes: OK all rounds (rds 4-5
must commit before tmt). Re-entry \$40. No
smoking. Bring clocks, sets, boards if possible.

Hotel rates: \$63-63-63-63, 708-573-1234,
reserve by 10/7. Free parking.

Entries: Continental Chess, PO Box 249,
Salisbury Mills, NY 12577.

Continental Chess Association entry form- use for any CCA tournament

Name _____ Tournament _____ Section _____

Number of days _____ USCF ID _____ Rating _____ Entry fee _____ Memb. dues _____

Address _____

For Visa/Mastercard entries: Credit card number _____

Credit card expiration date _____ Signature _____ Phone number _____

Send to Continental Chess Association, PO Box 249, Salisbury Mills, NY 12577. Checks payable to same.
Use of entry form is optional- you can enter any Continental Chess event by sending name, tournament, section,
number of days, USCF ID, rating, & fee. If you wish to keep this magazine intact, we suggest a photocopy.

OPENING CORNER: A Bust to Philidor's Counterattack?

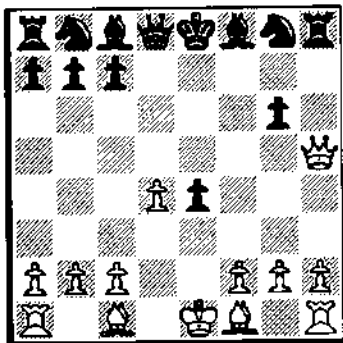
By Bill Brock

Back in the eighteenth century, Philidor's Defense wasn't very defensive. The most popular line was the wild counterattack 1.e4 e5 2.Nf3 d6 3.d4 f5!? Even in the mid-nineteenth century, strong masters such as von der Lasa and Paulsen were still experimenting with this line. And in 1858, Paul Morphy played 3...f5 at least five times. According to modern theory, however, Philidor's Counterattack stinks. ECO says that White can get a sizable advantage by playing any one of four moves: 4.Bc4, 4.dxe5, 4.exf5, or 4.Nc3.

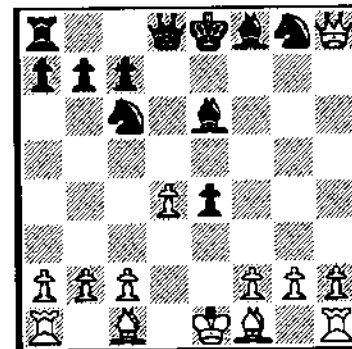
A couple of years ago, NM James R. West challenged this verdict in a series of articles for the **Atlantic Chess News**. West argued that 3...f5 was better than its reputation (if Morphy played it, it couldn't be completely wretched), and he suggested several improvements on book. I read the articles and decided that 3...f5 would be a fun line to play, even if it wasn't objectively good. I first tried it against a B-player in a skittles game at the No Exit Cafe, and he beat me so badly that he didn't believe I was really an Expert. Later, however, I won a few blitz games against Masters, and I began to think that 3...f5 might be a good surprise weapon. I finally sat down to study one of West's articles, which led to a nasty discovery. ECO cites Larsen's recommendation of the 4.Nc3 line as leading to a comfortable edge for White:

1.e4 e5 2.Nf3 d6 3.d4 f5 4.Nc3 fxe4 5.Nxe4 d5
6.Nxe5 dxe4 7.Qh5+ g6 8.Nxg6 hxg6 9.Qxh8 Be6
10.Qe5 (ECO C41/4, note 23).

West suggested that 9...Qd5!? made more sense than 9...Be6. I decided to test this idea by playing a few practice games against my computer. We soon reached the following position:



After 8...hxg6



After 12... Nc6

Since White has already sacked two pieces, it seems natural to eat the hanging Rook. But Sargon III (!) running on an XT clone (!!) found a TN:

9.Qxg6+!

9...Ke7 loses to 10.Bg5+, so

9...Kd7 is forced:

10.Qf5+! Ke8

(10...Kc6 11.Qb5+ is hardly an improvement)

11.Qe5+ Be6 12.Qxh8

and White gets the Rook after all, with a free g-pawn to boot. True, White has lost a tempo (Black's Bishop is already on e6), but Black's loss of castling privileges might cost several tempi later in the game. Black must be busted, I figured. I suspected that Sargon III wasn't the first to make this discovery (I was later told that there's a very similar line in the Latvian Defense; anyone who was familiar with it would be likely to find 9.Qxg6+.) Furthermore, since no one played the darn line, "my" TN had zero practical significance.

That's what I thought in 1991. Later, however, I came across GM Tony Kosten's **Winning With the Philidor** (1992), which includes a chapter recommending the 3...f5 line! At first, I assumed that Kosten must have missed 9.Qxg6+, but I was wrong. Instead, he evaluated the position after 12.Qxh8 and now

12...Nc6 as perfectly fine for Black.

This evaluation seems way too optimistic to me: it's true that Black's slight lead in development and four minor pieces create opportunities for counterplay, but White has no structural weaknesses. Furthermore, White's three extra pawns include the pregnant h-pawn: most endgames look very favorable for White. It seems to me that White should castle Queenside and push Kingside pawns. The move Kosten suggests for White, 13.Bb5, doesn't fit in with this plan; instead,

13.Be3 seems more logical.

Now if Black tries to get some material back with 13...Nb4, simply returning a pawn with 14.O-O-O looks good: 14...Nxa2+ 15.Kb1 Qd5 16.c4.

Alternatively, 13...Qd5 14.Be2 threatens to exchange Queens; if Black attempts a slow buildup with something like 13...Qe7, White might even be able to take the time to play 14.a3. The position after 12...Nc6 was discussed on Prodigy's Chess BB earlier this year. The consensus was that Black is in serious trouble. I wouldn't mind getting credit for 9.Qxg6+! in the next edition of ECO. Too bad it wasn't my idea...

If you have access to a strong chessplaying program, you might find computer-assisted research an interesting way to study openings. Obscure double King Pawn openings might

not be a bad place to begin. For example, a Latvian fanatic named Mark Williams and I spent some time discussing a variation played in the consultation game:

Owen & Staunton vs. Morphy & Barnes, London 1858:

1.e4 e5 2.Nf3 d6 3.d4 f5 4.dxe5 fxe4 5.Ng5 d5 6.e6 Nh6 7.Nc3 c6 8.Ngxe4 dxe4 9.Qh5+ g6 10.Qe5 Rg8.

The Staunton team now played 11.Bxh6?! and got rolled in 34 moves; Löwenthal pointed out that 11.Bg5 would have been stronger. Kosten suggests that Black may still be OK after 11...Bg7 12.e7 Qb6 13 O-O-O, but admits that he'd like to borrow Deep Thought to find out for sure. Mark's analysis (with a little help from M-Chess Pro) didn't answer every question, but it convincingly refuted Kosten's 13...Nd7. We suspected that 13...Bd7 was forced. If some enterprising ICB reader can find a win for White in this line, Staunton's ghost might yet agree to a match with Morphy's ghost.

SSCC GET ACQUAINTED OPEN

SEPTEMBER 18, 1993

4-SS Time Control : 30/60 SD/30

**SOUTH SUBURBAN CHESS CLUB
PALOS HEIGHTS RECREATIONAL
CENTER**

6601 WEST 127th ST., PALOS HEIGHTS

Entry Fee: \$20 if received by 9/10 \$25 at site

Free Lunch to Players

**MINI TOUR EVENT - ICA
MEMBERSHIP REQUIRED!**

PRIZE FUND: \$150 - \$75 - \$50

TOP A & B: \$100 - \$50

TOP C: \$ 75 - \$25 & D/E/UNR \$50-\$25

REG: 8:00-8:30 a.m. Rounds: 9-12-3-6

Entries: SSCC, Box 100, Palos Heights, IL. 60463

U.S ACTION CHAMPIONSHIP

**ILLINOIS WESLEYAN UNIVERSITY
MEMORIAL STUDENT CENTER
104 E. University , Bloomington IL**

SEPTEMBER 18-19, 1993

10-SS Time Control G/30

Entry Fee: \$20, \$15 for juniors

**Prize Fund G\$\$: \$250-\$150-\$100
PLUS LOTS of trophies**

Reg: 9-10 a.m.

**For information call
Garrett Scott 309 452-8116**

4th Annual St. Ann Open Chess Tournament

A United States Chess Federation Rated Event
and Novag Grand Prix - 10 points available
and Show-Me Tour Points - 14 for a perfect score!

OCTOBER 23 & 24, 1993

\$\\$1700.00 PRIZE FUNDS 100% GUARANTEED NOT TO BE REDUCED

1st Overall - \$300

2nd Overall - \$200

Experts: 1st - \$180, 2nd - \$80

Class A: 1st - \$180, 2nd - \$80

Class B: 1st - \$180, 2nd - \$80

Class C: 1st - \$180, 2nd - \$80

Class D/E/Unr: 1st - \$120, 2nd - \$40

FORMAT: One Section, Play all Five Rounds, Swiss Pairing system.

TIME CONTROL: 30 Moves in 70 Minutes, then 30 Moves in 60 Minutes.
1/2 Pt Bys Available in any round if requested
before Round 1 is paired.

SCHEDULE: Registration: Sat. 9-9:45
Round Times: Sat. 10:15 - 1:30 - 6, Sun. 8:30 - 12:45.

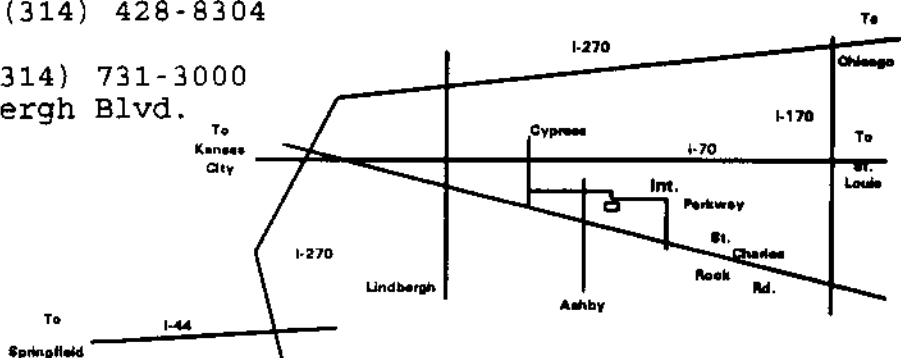
ENTRY FEES: \$32 by 10/20/93
\$35 at site.

USCF Membership Required (may be purchased at the site). Rates:
Adults \$30/year, K-12 \$15/year. Additional family members of the
household may join for \$7 per year (but no magazine).

Advance Entries and Inquiries to: Eric Ewalt
P.O. Box 672
St. Ann, MO 63074
Phone: (314) 428-8304

Playing Site: St. Ann Community Center
#1 Community Center Dr.
St. Ann Mo. 63074
Site Phone: (314) 429-4545

Lodging: Econo Lodge (314) 731-3000
4575 N. Lindbergh Blvd.



ILLINOIS CHESS ASSOCIATION TOUR CROSS TABLES

Master Challenge XIV

June 25-27, 1993

	chart											score	tour
1	BURNETT Ron	2463	W63	W18	W17	W16	D 2	4.5	19				
2	CHOW Albert	2351	W22	W35	W 9	W 7	D 1	4.5	19				
3	LEVIT Roman	2333	W21	D 5	W40	W27	W 8	4.5	19				
4	LAHVIC James	2095	L25	W60	W28	W44	W29	4	12				
5	MARSHALL James	2047	W26	D 3	W47	D15	W31	4	12				
6	MICHALIK Philip	1907	L11	W68	W70	W18	W17	4	12				
7	DANDRIDGE Marvin	2351	W20	D11	W57	L 2	W35	3.5	7				
8	UMEZINWA George	2349	W19	W23	D27	W11	L 3	3.5	7				
9	INUMERABLE Florentino	2175	W36	W37	L 2	W42	D14	3.5	7				
10	SATTERLEE Ray Doyle	2127	L23	W46	W64	D37	W36	3.5	7				
11	STERN Howard	2096	W 6	D 7	W43	L 8	W37	3.5	7				
12	WALHOUT Peter	1985	L16	W30	W48	W45	D15	3.5	7				
13	SCHULTZ Andrew	1909	W72	L57	W67	D19	W34	3.5	7				
14	MARTIN Don	1767	W56	L34	W63	W23	D 9	3.5	7				
15	MEYERS Joe	1443	W28	D22	W62	D 5	D12	3.5	7				
16	PANGAN Camilo	2258	W12	W24	W29	L 1	-	3	6				
17	SCOTT Gene	2180	W74	W25	L 1	W41	L 6	3	6				
18	JORDAN Roland	2127	W41	L 1	W46	L 6	W38	3	6				
19	SAX Robert	2039	L 8	W75	W50	D13	D27	3	6				
20	PEDERSEN Roger	2025	L 7	D38	W39	D22	W44	3	6				
21	SHIKHMAN David	2024	L 3	W48	D49	D43	W47	3	6				
22	FAGAN James	1988	L 2	D15	W55	D20	W46	3	6				
23	WULATIN David	1959	W10	L 8	W51	L14	W48	3	6				
24	HAMMOND Allen	1954	W33	L16	W32	L29	W49	3	6				
25	COHEN Lawrence	1952	W 4	L17	W53	L31	W51	3	6				
26	MAREMA David	1922	L 5	H	D33	W52	W56	3	6				
27	PORTER John	1864	W53	W72	D 8	L 3	D19	3	6				
28	JOHNSON Eric	1779	L15	W54	L 4	W66	W40	3	6				
29	ALLEN Hence	1696	W69	W74	L16	W24	L 4	3	6				
30	STAMATAKOS Mark	1639	W71	L12	L36	W69	W41	3	6				
31	AHMER Craig	1629	H	W39	D42	W25	L 5	3	6				
32	SUKCHAROENPHON Kengkai	1626	W59	L41	L24	W70	W43	3	6				
33	SHIKHMAN Max	2114	L24	D47	D26	D49	W57	2.5	5				
34	LEONE Philip	2081	L42	W14	D60	W57	L13	2.5	5				
35	ROGAN Marvin	2019	W62	L 2	H	W59	L 7	2.5	5				
36	REYES Catalino	1981	L 9	W58	W30	D38	L10	2.5	5				
37	SMYTHE Bill	1921	W64	L 9	W75	D10	L11	2.5	5				
38	MC ALISTER Kelvin	1802	W75	D20	H	D36	L18	2.5	5				
39	SANCHEZ Ignacio	1777	D67	L31	L20	W58	W59	2.5	5				
40	SOLLANO Ely o	2000	H	W44	L 3	D47	L28	2	4				
41	SINGER Robby	1939	L18	W32	W52	L17	L30	2	4				
42	STOLTZ Robert	1930	W34	H	D31	L 9	-	2	4				
43	WILLIAMS Kent	1923	H	W73	L11	D21	L32	2	4				
44	MENGELIS Ainis	1909	W73	L40	W56	L 4	L20	2	4				
45	PUKEL Bernard	1900	W65	L62	W58	L12	-	2	4				
46	SUKCHAROENPHON Thavorn	1900	W55	L10	L18	W53	L22	2	4				
47	PLETT Michael	1804	W66	D33	L 5	D40	L21	2	4				
48	COLEMAN George	1732	W50	L21	L12	W68	L23	2	4				
49	WINTER Victor	1714	D68	D67	D21	D33	L24	2	4				
50	AMIRANTE Ron	1693	L48	W66	L19	L56	W61	2	4				
51	WALHOUT Donald	1685	W70	L63	L23	W67	L25	2	4				
52	SWANSON Victor	1623	L58	W69	L41	L26	W68	2	4				
53	PADILLA Rudy	1600	L27	W71	L25	L46	W67	2	4				
54	SCHILLER Andrew	1583	L60	L28	L69	B	W70	2	4				
55	BACKSTROM Orn	1581	L46	L64	L22	W75	W69	2	4				
56	MILLER Donald	1425	L14	W61	L44	W50	L26	2	4				
57	JENKINS Robert		W61	W13	L 7	L34	L33	2	4				
58	SEBASTIAN Gabriel		W52	L36	L45	L39	W66	2	4				
59	BUTINY William	1900	L32	W65	H	L35	L39	1.5	3				
60	ILOSVAY Paul	1839	W54	L 4	D34	-	-	1.5	3				
61	ENGELN Mark	1655	L57	L56	D68	W65	L50	1.5	3				
62	ACOSTA Mariano	2250	L35	W45	L15	-	-	1	2				
63	DUDKOWSKI Peter	2057	L 1	W51	L14	-	-	1	2				
64	SEFCHECK Mark	1890	L37	W55	L10	-	-	1	2				
65	JOHNSON Henderson	1594	L45	L59	L66	L61	B	1	2				
66	SCOTT George	1460	L47	L50	W65	L28	L58	1	2				
67	BAUMGARTNER Chris	1404	D39	D49	L13	L51	L53	1	2				
68	AROND Dean	1379	D49	L 6	D61	L48	L52	1	2				
69	CRAWFORD Juantorena	1180	L29	L52	W54	L30	L55	1	2				
70	TANABE John	926	L51	B	L 6	L32	L54	1	2				
71	SUNDSTROM Matt		L30	L53	H	-	-	0.5	1				
72	SMITH Dan B	2126	L13	L27	-	-	-	0					
73	TUTUSH Dusan	2107	L44	L43	-	-	-	0					
74	MOHAPATRA Taranikant	2006	L17	L29	-	-	-	0					
75	SAMSON Max	1559	L38	L19	L37	L55	-	0					

5	CHACHERE Lawrence	2359	D11	W13	W 9	D 3	D 4	3.5	7	M
6	LEVIT Roman	2333	D 3	L11	D16	W13	W14	3	6	M
7	KRECKLER Warren	2323	L 1	D17	W18	D14	W12	3	6	M
8	ANDREWS Randal	2234	W12	W 4	D 1	L 2	D 9	3	6	M
9	WHITE Mitchell R	2054	B	D15	L 5	W10	D 8	3	6	MX
10	UMEZINWA George	2349	D17	W14	L11	L 9	B	2.5	5	M
11	BRASKET Curt	2312	D 5	W 6	W10	L 1	L 2	2.5	5	M
12	DANDRIDGE Marvin	2351	L 8	D16	D13	W18	L 7	2	4	M
13	COOPER Thomas	2257	H	L 5	D12	L 6	W18	2	4	M
14	ACOSTA Mariano	2250	H	L10	B	D 7	L 6	2	4	M
15	SCHUMAN Brian	2340	W18	D 9	L 3	L 4	-	1.5	3	M
16	MORRIS Matthew	2313	L 4	D12	D 6	-	-	1	2	M
17	BERRY Vince	2207	D10	D 7	L 2	-	-	1	2	M
18	MININ Serge	2077	L15	B	L 7	L12	L13	1	2	MX
19	PANGAN Camilo	2258	H	L 3	L 4	-	-	0.5	1	M

EXPERT

	chart											score	tour
1	WEISBLAT Joel	2169	W15	W29	D 2	W18	W 5	4.5	19	X			
2	SATTERLEE Ray Doyle	2127	W31	W10	D 1	W23	W 6	4.5	19	X			
3	FLAGA Krzysztof	2137	W43	W40	W 4	L 5	W15	4	12	X			
4	BENESA Arnulfo	2100	W44	W24	L 3	W 9	W10	4	12	X			
5	WHEAT James	2052	W 9	W26	W34	W 3	L 1	4	12	X			
6	STEAT Peter	2191	W36	W41	H	W 7	L 2	3.5	7	X			
7	SMITH Daniel	2126	D38	W39	W32	L 6	W22	3.5	7	X			
8	SCOTT Gene	2180	L29	L15	W39	W40	W23	3	6	X			
9	INUMERABLE Florentino	2175	L 5	W37	W42	L 4	W30	3	6	X			
10	SZPISJAK Steve	2174	W14	L 2	W29	W30	L 4	3	6	X			
11	KARKLINS Erik	2151	D17	W16	L18	W20	D14	3	6	X			
12	SHIKHMAN Max	2114	D21	D33	D20	D32	W31	3	6	X			
13	YANEZ Jorge	2092	H	D21	D24	W19	D18	3	6	X			
14	AARON Michael	2049	L10	W31	D19	W24	D11	3	6	X			
15	SAX Rob	2039	L 1	W 8	W26	W27	L 3	3	6	X			
16	HERNANDEZ Hector	2036	D34	L11	W38	D25	W27	3	6	X			
17	SHIKHMAN David	2024	D11	L34	X45	D28	W25	3	6	X			
18	HAYES Raymond	2009	H	W25	W11	L 1	D13	3	6	X			
19	ROWLAND Todd	2169	D30	D23	D14	L13	W38	2.5	5	X			
20	COSS Jason	2035	D25	D27	D12	L11	W40	2.5	5	X			
21	EATON Jonathan	2000	D12	D13	L27	W42	D24	2.5	5	X			
22	ZERM Alfred	1945	D35	D30	D28	W36	L 7	2.5	5	XA			
23	RICHMOND M Barrie	1917	B	D19	W35	L 2	L 8	2.5	5	X			
24	LILLY Bryan	2190	W42	L 4	D13	L14	D21	2	4	X			
25	ELLIS James	2153	D20	L18	W33	D16	L17	2	4	X			
26	MURPHY Noble	2140	W37	L 5	L15	L31	W39	2	4	X			
27	JORDAN Roland	2127	D32	D20	W21	L15	L16	2	4	X			
28	GORDON Wallace	2101	L40	W43	D22	D17	-	2	4	X			
29	BOSSAERS Phil	2056	W 8	L 1	L10	L33	X42	2	4	X			
30	MARSHALL James	2047	D19	D22	W41	L10	L 9	2	4	X			
31	MOHAPATRA Taranikant	2006	L 2	L14	W43	W26	L12	2	4	X			
32	BAUGH Christopher	2000	D27	W45	L 7	D12	-	2	4	X			
33	HANSEN Steven	1917	H	D12	L25	W29	-	2	4	XA			
34	GAZMEN Ethelbert	2159	D16	W17	L 5	-	-	1.5	3	X			
35	READ Rhys	2095	D22	W38	L23	-	-	1.5	3	X			
36	LAHVIC Jim	2095	L 6	W46	D40	L22	-	1.5	3	X			
37	SOCHE Raymond	2015	L26	L 9	-	W43	D44	1.5	3	X			
38	MIDDLETON Douglas	2000	D 7	L35	L16	W44	L19	1.5	3	X			
39	SOLLANO Ely o	2000	H	L 7	L 8	X46	L26	1.5	3	X			
40	KUHN Peter	1955	W28	L 3	D36	L 8	L20	1.5	3	XA			
41	SHEAF Mike	2137	W46	L 6	L30	-	-	1	2	X			
42	FORD Sam	2073	L24	W44	L 9	L21	F29	1	2	X			
43	THOMPSON Cedric	2015	L 3	L28	L31	L37	B	1	2	X			
44	BOGAN Tim	1946	L 4	L42	D46	L38	D37</						

ILLINOIS CHESS ASSOCIATION TOUR CROSS TABLES

21	BROWNE Paul	1995	D 8	D39	W15	D13	-	2.5	5	A	11	JOHNSON Henderson	1594	L21	W41	L14	W31	W29	3	6	C	
22	MODES Daniel	1975	W46	L14	D27	D39	H	2.5	5	A	12	DELAY Joe	1545	W43	W 6	L 1	W15	L 5	3	6	CC	
23	MC NAMARA Jim	1967	L18	D47	W46	W37	-	2.5	5	A	13	KNIGHT Jerry	1532	L10	W31	W16	W29	L 6	3	6	CC	
24	PUKEL Bernard	1900	H	L 9	H	D41	W42	2.5	5	A	14	MITCHELL Gary	1504	L 6	W32	W11	W26	L 3	3	6	CC	
25	DEAN Jim	1864	L 1	L37	W49	D28	X40	2.5	5	A	15	RIDDELL Joshua	1478	W18	L 4	W25	L12	W26	3	6	CC	
26	SCHUSCHEL Hans	1809	W48	H	L10	W42	L 6	2.5	5	A	16	MARSCHALL Ed	1438	L26	W33	L13	W39	W28	3	6	CC	
27	ALLISON Roger	1800	W30	L 4	D22	D16	D13	2.5	5	A	17	BAUMGARTNER Christop	1404	L 9	B	L28	X37	W27	3	6	CC	
28	FAGAN James	1988	L14	D42	D45	D25	D36	2	4	A	18	CLARE Patrick	1583	L15	W34	D21	W23	L 9	2.5	5	CC	
29	KALAI Adam	1983	L15	W19	W20	L 8	-	2	4	A	19	MC KEOWN John	1565	W34	W24	L 5	D 9	L 7	2.5	5	CC	
30	PEEL Arthur	1921	L27	L36	L19	W47	W43	2	4	A	20	WHEAT Erin	1523	D35	W21	W 7	L 3	-	2.5	5	CC	
31	MENGELIS Ainis	1909	H	D33	L37	L35	W44	2	4	A	21	BROWN Welch	1493	W11	L19	D18	L24	W32	2.5	5	CC	
32	RIUS Richard	1894	D11	W45	D12	F 7	-	2	4	A	22	PEDERSEN Ken	1479	D 7	L35	L 6	W43	W34	2.5	5	CC	
33	OSANYINJOBI Funsho Toks	1823	H	D31	W44	L 3	F14	2	4	A	23	HICKS Charles	1472	H	L 7	W42	L18	W35	2.5	5	CC	
34	FRISKE Tom	1816	D45	D 8	L 3	W44	L15	2	4	A	24	COCHRAN Craig	1421	H	L20	W33	W21	L 8	2.5	5	CC	
35	LULVES Joseph	1809	L 3	L13	B	W31	L17	2	4	A	25	CRANE John R	1575	W41	L 5	L15	L32	W38	2	4	CC	
36	MAMMEN William	1803	L 4	W30	L13	D40	D28	2	4	A	26	SIRPUT Jack	1550	W16	W29	L10	L14	L15	2	4	CC	
37	LEVIN Semyon	1800	L39	W25	W31	L23	L19	2	4	A	27	SILVERMAN Scott	1546	W31	L10	L29	W38	L17	2	4	CC	
38	GIERTZ Charles	1727	B	L 5	L 7	L15	W49	2	4	AB	28	ABRAHAM Thomas	1519	L38	W43	W17	L 6	L16	2	4	CC	
39	TRBOJEVIC George	1725	W37	D21	L11	D22	L20	2	4	AB	29	WATKINS Reginald	1469	W 3	L26	W27	L13	L11	2	4	CC	
40	EVANS Larry	1907	D 9	L11	D42	D36	F25	1.5	3	A	30	MEYERS Joe	1443	W33	X36	L 4	-	-	2	4	CC	
41	THURMAN John B	1746	L 5	B	L 8	D24	L16	1.5	3	AB	31	WILLIAMS JR Claude	1427	L27	L13	W41	L11	W39	2	4	CC	
42	WONG Brian	1636	H	D28	D40	L26	L24	1.5	3	AB	32	SOLANO Mario	1410	L 8	L14	W46	W25	L21	2	4	CC	
43	DOTSON John B	1975	L17	L20	W47	L19	L30	1	2	A	33	WILLIAMS Khalil	1558	L30	L16	L24	D41	W43	1.5	3	CC	
44	NARKOVIC Arandel	1962	W20	L17	L33	L34	L31	1	2	A	34	SCOTT George	1460	L19	L18	H	W42	L22	1.5	3	CC	
45	YOUNG Steven	1948	D34	L32	D28	L20	-	1	2	A	35	VAKIL Stephen	1422	D20	W22	L 2	L 7	L23	1.5	3	CC	
46	SEFCHECK Mark	1890	L22	H	L23	-	-	0.5	1	A	36	MILLIGAN Lando	1550	W39	F20	-	-	-	1	2	CC	
47	WILLIAMS Douglas	1812	L 2	D23	L43	L30	-	0.5	1	A	37	STUBBLEFIELD Bill	1472	L 1	W39	L 3	F17	-	1	2	CC	
48	STOLTZ Robert	1930	L26	-	-	-	-	0	-	-	38	HARTMAN Errol	1414	W28	L 8	L 9	L27	L25	1	2	CC	
49	LEONG Gee	1837	L 7	L10	L25	-	L38	0	0	-	39	DESAI Michael	1375	L36	L37	W44	L16	L31	1	2	CC	
											40	HUGHES Robert		-	-	-	-	W41	1			
											41	GROEGER Andrew	1469	L25	L11	L31	D33	L40	0.5	1	C	
											42	COLLINS Dennis	1448	H	L 2	L23	L34	-	0.5	1	C	
											43	MILLER Donald	1425	L12	L28	H	L22	L33	0.5	1	C	
											44	RODGERS Paul	1459	L 4	L 3	L39	-	-	0			
											45	JOHNSON Gersham	1333	F 5	-	-	-	-	0			
											46	DEMERS Joseph	1151	-	-	L32	-	-	0			

CLASS B

	chart	score	tour
1	JOHNSON Eric	1779	W17 W22 D 7 W19 W 9 4.5 19 B
2	ZEMLINSKY Anna	1662	D18 W36 W29 W14 W 4 4.5 19 B
3	KITTELSEN Guy	1753	D 8 D33 X35 W25 W10 4 12 B
4	MURPHY Robert	1792	D23 W18 W25 W 7 L 2 3.5 7 B
5	RATNER Jacob	1763	W26 L 7 H W17 W15 3.5 7 B
6	LEAFFER Marshall	1758	W31 L25 W30 W24 D 8 3.5 7 B
7	ALLEN Hence	1696	W12 W 5 D 1 L 4 W20 3.5 7 B
8	SUKCHAROENPHON Kengkai	1626	D 3 W37 D24 W29 D 6 3.5 7 B
9	ROSTROM C Richard	1612	D37 W23 W20 W16 L 1 3.5 7 B
10	BUTT Eric	1785	L25 W31 W22 W21 L 3 3 6 B
11	DAYTON Soren	1613	D36 L29 D34 W30 W22 3 6 B
12	VAKIL David	1604	L 7 D38 W18 D23 W25 3 6 B
13	PADILLA Rudy	1600	D29 H L21 X34 W23 3 6 B
14	DOBROVOLNY Charles	1784	W38 W21 D16 L 2 - 2.5 5 B
15	PETERS Ed	1763	W30 D24 L19 W27 L 5 2.5 5 B
16	VAKIL Behrooz	1755	W32 W35 D14 L 9 - 2.5 5 B
17	GORAL Brad	1657	L 1 D27 W33 L 5 W31 2.5 5 B
18	SINGH Aman	1648	D 2 L 4 L12 W28 W29 2.5 5 B
19	AHMER Craig	1629	H X39 W15 L 1 - 2.5 5 B
20	CIMA Joe	1793	L22 W26 L 9 W33 L 7 2 4 B
21	JORDAN Willie	1700	W27 L14 W13 L10 - 2 4 B
22	MILES Daniel	1690	W20 L 1 L10 W36 L11 2 4 B
23	WILLIAMS Sean	1682	D 4 L 9 W32 D12 L13 2 4 B
24	BOLLITT James	1668	W28 D15 D 8 L 6 - 2 4 B
25	SORIANO Leo	1662	W10 W 6 L 4 L 3 L12 2 4 B
26	OBERSWEIS Julie	1656	L 5 L20 D36 W32 D27 2 4 B
27	WOODRUFF Phil	1610	L21 D17 W38 L15 D26 2 4 B
28	HUGHES Robert	1788	L24 L30 D31 L18 W36 1.5 3 B
29	AMIRANTE Ronald	1693	D13 W11 L 2 L 8 L18 1.5 3 B
30	HALE Bob	1646	L15 W28 L 6 L11 D33 1.5 3 B
31	STAMATAKOS Mark	1639	L 6 L10 D28 W38 L17 1.5 3 B
32	HOBSON Nathaniel	1639	L16 D34 L23 L26 B 1.5 3 B
33	PRATTIS Michael	1625	H D 3 L17 L20 D30 1.5 3 B
34	STORMS Daniel	1737	L35 D32 D11 F13 - 1 2 B
35	SWANSON Vic	1623	W34 L16 F 3 - - 1 2 B
36	PATTON Germond	1421	D11 L 2 D26 L22 L28 1 2 BC
37	KNOX Malcolm	1722	D 9 L 8 - - 0.5 1 B
38	BARTOCCI Mario	1658	L14 D12 L27 L31 - 0.5 1 B
39	PARSONS Bob	1786	- - F19 - - - 0

CLASS C

	chart	score	tour
1	BRIDGHAM Kurt	1577	W37 W 9 W12 W 5 D 4 4.5 19 C
2	CURRAN Tom	1570	H W42 W35 W 8 W10 4.5 19 C
3	VELASQUEZ Antonio	1572	L29 W44 W37 W20 W14 4 12 C
4	CHEN Xi Ming	1559	W44 W15 W30 D10 D 1 4 12 C
5	GUREVICH Alex		X45 W25 W19 L 1 W12 4
6	WENNEKES Willem	1400	W14 L12 W22 W28 W13 4 12 C
7	GASIECKI Alan	1589	D22 W23 L20 W35 W19 3.5 7 C
8	LUCKE Matt	1518	W32 W38 H L 2 W24 3.5 7 C
9	IOVIN Daniel	1517	W17 L 1 W38 D19 W18 3.5 7 C
10	CERVERA Edmundo	1423	W13 W27 W26 D 4 L 2 3.5 7 C

CLASSES DE

	chart	score	tour
1	COLEMAN Gene	W48 W31 W12 W 6 W 3 5	
2	MEHMED Covic	W38 W15 W 4 W20 W12 5	
3	BURDA Alex	1390 W14 W34 W 7 W16 L 1 4 12 D	
4	ARON Dean	1379 W40 W43 L 2 W25 W13 4 12 D	
5	HUSTON Shawn	1375 L10 W24 W15 W17 W16 4 12 D	
6	NAVARRO Modesto	W22 W21 W18 L 1 W11 4	
7	SEBASTIAN Gabriel	W24 W25 L 3 W30 W19 4	
8	FAUST Jerry	1234 D17 W49 L30 W27 W26 3.5 7 D	
9	BONNETT Fareyd	1144 L12 X50 D27 W28 W20 3.5 7 DE	
10	ELLINGSON Eric	1015 W 5 L11 D21 W36 W23 3.5 7 DE	
11	WIRTH Mike	1397 W39 W10 L16 W32 L 6 3 6 D	
12	MANSOUR Khaled	1392 W 9 W40 L 1 W23 L 2 3 6 D	
13	HUDETZ John	1257 W28 L16 W43 W29 L 4 3 6 D	
14	NG Chi	1132 L 3 W22 L17 W34 W33 3 6 DE	
15	FAUST Darnell	1109 W19 L 2 L 5 X45 W30 3 6 DE	
16	POLITIS Anastasios	W37 W13 W11 L 3 L 5 3	
17	BISER Haasan	D 8 D45 W14 L 5 W36 3	
18	EDGINGTON Wendell	W32 W46 L 6 W31 - 3	
19	PAVONE Frank	1381 L15 D38 W42 W41 L 7 2.5 5 D	
20	KUNHART Jeffery	1358 D26 W41 W29 L 2 L 9 2.5 5 D	
21	MAR Michael	1309 W44 L 6 D10 L26 W41 2.5 5 D	
22	BRADLEY Scott	1305 L 6 L14 D24 W44 W42 2.5 5 D	
23	BALES Robert Jr	1296 D49 W26 W36 L12 L10 2.5 5 D	
24	MURADIAN Sevan	1279 L 7 L 5 D22 W49 W43 2.5 5 D	
25	APEL Geoffrey Michae	1118 W45 L 7 W44 L 4 D29 2.5 5 DE	
26	CYGAN Joseph	930 D20 L23 X38 W21 L 8 2.5 5 DE	
27	MORENO Sergio	L31 W48 D 9 L 8 W39 2.5	
28	STEVENS Joe	L13 H W48 L 9 W46 2.5	
29	LOTHO Stephen G	X W33 L20 L13 D25 2.5	
30	MOORE Joseph	1316 L34 W39 W 8 L 7 L15 2 4 D	
31	CLARK Robert C	1306 W27 L 1 W33 L18 - 2 4 D	
32	JANKOVSKY Jeff	1205 L18 W47 W34 L11 - 2 4 D	
33	FAUST Carnell	1087 W50 L29 L31 W46 L14 2 4 DE	
34	WHITTEN Derrhum	818 W30 L 3 L32 L14 W47 2 4 DE	
35	HART Natarius	611 B X - - 2 4 DE	
36	HANNEMAN Cary	1341 H W42 L23 L10 L17 1.5 3 D	
37	FERRONI George	1294 L16 L44 D40 L42 W49 1.5 3 D	
38	MADAMALA Kishan	1265 L 2 D19 F26 D48 D44 1.5 3 D	
39	DEMERS Joseph	1151 L11 L30 B D43 L27 1.5 3 DE	
40	OWENS Jimmy	1099 L 4 L12 D37 L47 W48 1.5 3 DE	
41	WONG Kevin	1090 H L20 W49 L19 L21 1.5 3 DE	
42	MC COY Damon	1082 H L36 L19 W37 L22 1.5 3 DE	
43	FRISCH Lora	918 W47 L 4 L13 D39 L24 1.5 3 DE	
44	JOHNSON Nancy	L21 W37 L25 L22 D38 1.5	
45	JERKOVICH Anton	1382 L25 D17 H F15 - 1 2 D	
46	NAVIAMOS William	1377 H L18 H L33 L28 1 2 D	
47	HAYES Sharron	1348 L43 L32 - W40 L34 1 2 D	
48	JACOBSON Ted	1294 L 1 L27 L28 D38 L40 0.5 1 D	
49	ABRAM Lawrence	D23 L 8 L41 L24 L37 0.5	
50	WILLIAMS Alfred	1309 L33 F 9 - - 0	

TOURNAMENT CALENDAR

Call Chess Phone, (708) 832-5222, for up-to-date tournament results, as well as announcements of tournaments that may not be listed in Chess Life or the ICB. The ICA Chess Phone voice is Todd Barre. Unless otherwise noted, all tournaments require USCF membership. Illinois Tour events also require ICA membership.

Organizers - remember it is ICA policy that an event must be published in the ICA bulletin in order to be a tour event. Please send your tournament notices to: Bob Renaut, 1255 Oakton Lane, Naperville, IL 60540-0310 or call at 708-983-0934.

1993

September 4-6:

Illinois Open (State Championship), Chicago, IL
5-SS, 40/2, 25/1, SD/1. Ramada O'Hare Hotel, 6600 N. Mannheim, Rosemont, IL 60018. \$\$G 4,000. In 2 sections: Open \$\$ 900 + 500 + 300 + 200 + 100 X 250-150, U2000 250-150. EF: adults \$38, juniors \$19 by 8/27, all \$49 at site. Reserve open to U1800 and Unrated, \$\$ 350-200-125-75, C 125-75, D/E 100-50, Unr 75-25. EF: adults \$36, juniors \$18 by 8/27, all \$45 at site. Both ICA membership required \$14 (\$8 under 19), OSA. Reg 9-10 AM. Rds 11-6, 10-5, 10.. 1/2 point bye available in one of the first 4 rounds if requested in advance. IIR: 49-49-59-59 (708) 827-5131. Ent: Alan Losoff, PO Box 157, Morton Grove, IL 60053. (708) 966-5559. NS. W. Maxi.

September 11: Cancelled

Fox Valley Chess Club For the Love of Chess #1, Aurora, IL

September 11:

93 Tuley Park G/15 #4, Tuley Park, IL
G/15, 5-SS, 501 E. 90th Pl, Tuley Park, EF\$ 12, Rds 12:30, 1:10, 1:50, 2:30 and 3:10, PF: if 16 or less, 35%-25% best from lower half 20%, if > 18 30% -20% middle 3rd 16% and lowest 3rd 14%, Info: Tom Fineberg, 312-721-3979.

September 12:

Shimer Chess Club Re-Open, Waukegan, IL
4-SS, 30/60, SD/30, Shimer College, Sheridan Rd and Cory Street, EF: \$10, \$\$ based on entries with 90% on EF returned. Free snacks. Reg: 8-8:45, 1st rd 9 AM. Ent: David Shiner, P.O. Box A500, Waukegan, IL 60079.

September 18-19:

US Action Championship, Bloomington, IL
10-SS, G/30, Illinois Wesleyan University, Memorial Student Center, 104 E. University, Bloomington, IL. EF: \$20, \$15 juniors, Reg: 9-10 a.m., Prize Fund \$\$\$ \$250-\$150-\$100. For info call Garret Scott 309-452-8116

September 18:

Blowing Leaf Tornado, DeKalb, IL
4-SS, 30/60, SD/30, Diversions at the Holmes Student Center, N.I.U., EF: \$10, \$\$ (based on 20) 50-30, B \$20, C \$20, D/E \$20, Unr \$20, Reg: 8:00-8:30, 1st Rd at 9:00. For info: Bill Reed, 815-758-1027. Entries to: 1460 North 14th, DeKalb IL, 60115.

September 18:

SSCC Get Acquainted Open, Palos Heights, IL
4-SS, 30/60 SD/30, South Suburban Chess Club, Palos Heights Recreational Center, 6601 West 127th St., Palos Heights EF: \$20 if rec'd by 9/10, \$5 more at site. Mini Tour Event, ICA membership req'd. OSA \$\$G - \$150-\$75-\$50, A-\$100-\$50, B-\$100-\$50, C-\$75-\$25, D/E/unr \$50-\$25. Reg: 8-8:30, Rds: 9-12-3-6. Entries: South Suburban Chess Club, Box 100, Palos Heights, IL 60463. Info after 6pm Fred Gruenberg (708) 489-5800, NS, NC, W. Mini

September 25: CANCELLED

Harvest Time Open, Springfield IL.
4-SS, Washington Park Pavilion, North of intersection of Park Ave. and South Grand Ave., West; Springfield, IL. Info: (217)-523-7265 after 6 PM.

October 1-3:

US Class Championship, Winston Salem, NC

October 2:

Illinois Chess Coach Assn. Clinic, Downers Grove, IL
Mike Mayfield 708 - 852-0600

October 2-3:

St Charles Open, St. Charles, IL,
5-SS, 40/100, 25/60, \$1260 (b60), Baker Community House, 101 S. 2nd (Rte 31), St. Charles, IL, EF: \$30 if rec'd by 9/25, \$35 at site, 1/2 off for juniors, ICA membership req'd, Reg 8-8:30, Rds 9-2-7, 9-2, Prize Fund (Open) - \$300-200, Top X - \$100-80, A-\$100-80, (Reserve - U1800) - \$100-80, C-\$70-50, D&under \$60-40. Entries & Info: Ervin Sedlock, 6N307 Old Homestead Road, St. Charles, IL, 60175, 708-377-7995, NS, NC, Maxi.

October 16:

8th Barb City Tornado, DeKalb, IL.
4-SS, 30/60, SD/30, EF: \$17 if received before 10/15, site \$22, Barb City Manor, 680 Haish Blvd, DeKalb, IL (down First St.), Food provided. For info: Bill Reed, 815-758-1027. Entries to: 1460 North 14th, DeKalb IL, 60115.

October 16,

Normal Maple Leaf Open, Bloomington, IL.
4-SS, 30/60, SD30, Ash Park Recreation Center, Ash Park, Normal, IL., Call D - Bourgerie at 309 - 454 - 3842. Entries to 1621 N. School St., Normal, IL 61766

October 16:

Proviso West H.S. Rated, Hillside, IL.
Workshops, simul by master, 3 G/30 tourneys, EF: clinic \$5, G/30 \$5 or \$8 both, trophies to 1-5 place, clinic begins at 9 AM, action events at 1:00 pm, Reg" G. Marino, Proviso West H.S., Wolf and Harrison, Hillside, IL, 708-449-6400

October 17:

Tim Just's Lake County Open/Reserve XVI, Grayslake, IL
5-SS, G/30, \$1000 (b50), College of Lake County, Rt 45 & Washington, Grayslake. EF\$: \$27 at site or \$22 if rec'd by 10/13, juniors \$5 discount, ICA membership req'd. OPEN PF\$ \$150-100-50, X \$60-40, A & below \$60-40, RESERVE (open to 1799 and below) PF\$ \$150-100-50, C \$60-40, D/E \$60-40, Unr \$40. Reg: 8:20-9:00 AM, Rds 9:30, 11:00, 1:00, 2:30, 4:00 For info Call Jim Just 708-244-7954, 37165 Willow, Gurnee, IL. 60031. Mini

October 23:

OPRF CC Autumn Action 93, Oak Park-River Forest, IL.
5-SS, G/30, \$265 PF (b30), Dominican Conference Center, 7200 W. Division, River Forest, IL. EF\$ \$17 if rec'd by 10/20 or \$22 at site. Reg 8:15-8:45 am. Rds: 9,10,15,11:30, 1:15, and 2:30. ICA membership req'd. PF \$\$ \$100-50-25, Top ABC \$25 each and D/E/unr \$15. Info and entries: Ken Marshall, 357 W. Grove, Lombard, IL 60148, 708-932-1455, NS, NC. Mini

October 24,

Illinois Chess Association Board Meeting, Rosemont, IL.
Illinois Chess Association Membership Meeting, 1 pm, Ramada Inn, O'Hare

October 23-24,

Micro Resale Open, Urbana, IL

TOURNAMENT CALENDAR

October 29-31:

Midwest Class Championship, Chicago, IL
See ad in this issue.

October 30:

Illinois All-Grade Championship, Bloomington, IL
Garrett Scott, 309-452-8116

November 6:

Fox Valley Chess Club 4th Annual Scholastic Championship, Aurora IL
4/5 SS - 6-8 G/45, K-5 G/30, Prisco Community Center, Lake St. and Illinois Ave, Aurora, IL. 6-8 Grade: 4 Rd Swiss - Open to all in Grades 6-8. 4 board team event. Each team must have 4 players. Round 1 at 9:00 A.M. no advance check in required, other rounds as posted. Prizes 1st Trophy plus free entry into 1994 Midwest Team Championship, 2nd & 3rd place Trophy. Board prizes for TOP at each board. K-5 Grade: 5 Rd Swiss - Open to all in Grades K-5. Round 1 at 9:00 A.M., no advance each grade. Entry Fees of All - \$6 per person must be received by 11/3/93. No at site entries taken. Scholastic tournament membership required. Make checks payable to the Fox Valley Chess Club. For info: Call Jim Oberweis, 3 Buckingham Drive, Aurora, IL 60505, 708-466-4886.

November 6:

93 Tuley Park G/30 #4, Tuley Park, IL.
G/30, 4-SS, 501 E. 90th Pl, Tuley Park, EF: \$12 under 19 \$8 1/2K, Reg: 11:00-11:45, Rds 12:00, 1:10, 1:50, 2:20 and 3:10, PF: if 16 or less, 35%-25% best from lower half 20%, if > 18 30% -20% middle 3rd 16% and lowest 3rd 14%, Info: Tom Fineberg, 312-721-3979.

November 6:

Ottawa H.S. Team Tournament, Ottawa, IL.
Pe Doyle, 815-433-1323

November 12-14:

National School Grade Championships,

November 13:

2nd Barb City Open, DeKalb, IL.
4-SS, 30/60, SD/30, EF: \$17 if received before 11/13, site \$22, Barb City Manor, 680 Haish Blvd, DeKalb, IL (down First St.), Food provided. For info: Bill Reed, 815-758-1027. Entries to: 1460 North 14th, DeKalb IL, 60115.

November 13:

North Boone Team Invitational, Poplar Grove, IL
Gunther Wohlfarth, 815-765-3311

November 13:

Bloom Trail Action Tourney, Chicago Heights, IL.
G/30, Don Deakin, 708-758-7000 ext 164

November 13:

Holiday Prelude Open, Springfield, IL.
4-SS, Washington Park Pavilion, North of intersection of Park Ave. and South Grand Ave., West, Springfield, IL. Info: (217)-523-7265 after 6 PM. Ent: Thomas A. Barnard, 403 E. Jefferson, Auburn, IL., 217 - 438-6271, NS. NC.

November 20:

Hadley Junior High Scholastic, Glen Ellyn
9:30 AM

November 20-21

Illinois Class Championships, Chicago, IL
Taxi

November 20:

North Boone Individual, Rated, Poplar Grove, IL
Gunther Wohlfarth, 815-765-3311

December 4:

FVCC 4th Annual High School Team Championship, Aurora, IL
4-SS, G/45, 4 Board Team Format. Prisco Community Center, Lake St. and Illinois Ave., Aurora, IL. Registration: 8:15 - 8:45 A.M., EF: \$25 if received by 12/1/93, \$30 at the site. Round 1 at 9:15 A.M., other rounds as posted. Scholastic tournament USCF membership required. Trophies to top 3 teams, 1st Place team receives free entry into 1994 Midwest Team Championship, top individual on each board. Make checks payable to the Fox Valley Chess Club. Info: Mr. Dick Verber, Aurora, IL. 60505 708-978-1380

December 4,

2nd Barb City Holiday Tornado, DeKalb, IL
4-SS, 30/60, SD/30, Diversions at the Holmes Student Center, N.I.U., EF: \$10, \$\$ (b 20) 50-30, B \$20, C \$20, D/E \$20, Unr \$20, Reg: 8:00-8:30, 1st Rd at 9:00. For info: B. Reed, 815-758-1027. Entries to: 1460 North 14th, DeKalb IL, 60115.

December 11,

U-Chicago-Lab School Team Invitational, Chicago, IL
Chris Janus, 312-702-0588

December 27-30:

Pan American Intercollegiate Championship, Deland, FL

1994

January 8, MacArthur Scholastic, Elgin, IL,

January 8, Evanston H.S. Team Rated Tournament, Evanston, IL, Ken Lewandowski, 708-492-7943

January 22, Albright Middle School Scholastic, Villa Park, IL.

January 22, Illini Union Classic (H.S. Team), Urbana, IL, Chris Butler, 217-333-2870

February 5, Lincoln Cultural Center, Kankakee, IL.

February 5, Auburn Rated Tournament (8 bd H.S. teams), Rockford, IL,
Jim Boyer, 815-966-3300

February 12, Moline Team Rated Tourney, Moline, IL, Paul Mills, 309-762-0326

February 13-15, Midwest Team Championship, Oakbrook, IL

February 19, Hadley Junior High, Glen Ellyn, IL

February 19, Frosh-Soph "State", Oak Lawn, IL, Ed Olson, 708-424-5200 ext 237

February 26, Boulder Dash H.S. Team, Rock Island, IL, Art Milton, 309-793-5950 ext 127

March 5-6, State Scholastic, Rockford, IL

March 5, West Suburban Conf Meet, Downers Grove, IL, Mike Mayfield, 708-852-0600

March 12, North Boone Individual, Rated, Poplar Grove, IL, Gunther Wohlfarth, 815-765-3311

March 25-27, Mid-America Class Championship, Chicago, IL.

March 25-26, IHSA State Chess Team, Normal IL, Mike Knight, 309-438-8346

April 8-10, Arpad Elo Open, Stevens Point, WI

April 15-17, National Jr. High Championship, Rye, NY

April 22-23, IHSA State Individual, TBA

April 29-May 1, National High School Championship, Dearborn, MI

April 29-May 1, National Open, Los Vega, NV

May 6-8, National Elementary Championship, San Jose, CA

August 7-19, U. S. Open, Chicago, IL

1995

March 24-26: Mid-America Class Championship, Chicago, IL

ILLINOIS CHESS ASSOCIATION PATRONS

Century Club Members

Michael Belovesick Sr Addison
 Thomas Fineberg Chicago
 Fred Gruenberg Palos Height
 Steve Hansen Chicago
 Marc Lonoff Northbrook
 Michael McIlhany Springfield
 Albert Sandrin Chicago
 Angelo Sandrin Chicago
 Bill Smythe Chicago
 Burton Vincent Chicago
 Helen Warren Western Springs
 Jim Warren Western Springs

Gold Card Members

Tyrone Brooks Chicago
 Harland S. Hoisington Ogden UT
 Alan Losoff Morton Grove
 Kenneth Marshall Lombard
 Fred Meyers Sterling
 William Naff Peoria
 Peter Pelts Niles
 Daniel Pradt Glen Ellyn
 Michael Pratts Chicago
 Irwin Rothschild Park Forest
 Arthur Sinclair Evanston
 Marcus Stinson Singapore
 Mitchel Sweig Evanston
 Louis Werner Evanston

ICA ELECTED OFFICER

Alan Losoff, President
 9402 N. Octavia, Morton Grove, IL 60053
 (708) 966-5559

Bob Renaut, Metro Vice-President
 1255 Oakton Lane, Naperville, IL 60540
 (708) 983-0934

Dennis Bourgerie, Downstate Vice-President
 1621 N. School St., Normal, IL 61761
 (309) 454-3842

Ken Marshall, Secretary
 357 W. Grove, Lombard, IL 60148
 (708) 932-1455

Todd Barre, Treasurer
 136 Evergreen Elmhurst, IL 60126
 (708) 834-0862

Patron Members

Jack Armstrong Rockford
 Bob Ash Urbana
 Todd Barre Elmhurst
 Roy Benedek Western Springs
 Edward J. Blanco Chicago
 Dennis Bourgerie Normal
 Bill Brock Chicago
 Jim Brotsos Chicago
 Gregory Bungo Elmhurst
 Fred Burgess Oak Forest
 Anthony Caliendo Aurora
 Tom Cooper Wheaton
 Paul Cox Chicago
 Greg De Fotis Lincolnwood
 Leroy Dubeck Cherry Hill NJ
 William Dwyer Worth
 Kalman Farkas Milwaukee WI
 Charles Fenner Chicago
 Jon Gotz West Chicago
 William Graves Chicago
 Steven Herr Chicago
 Charles Hicks Naperville
 Dean Hightower DeKalb
 Thomas Howell Evanston
 Jeffery Hyland Mount Prospect
 Toshio Imai East Lansing, MI
 Kazy Jankauskas Darien
 Gary Jochim Chicago
 Stephen Josephs Hinsdale
 Tim Just Gurnee
 Dan Kamen Buffalo Grove
 Scott Kirtsley Shorewood WI
 Thomas Knoedler Springfield

USCF Delegates

by virtue of their USCF

Fred Gruenberg Regional Vice-President
 Alan Losoff Regional Vice-President
 Frank Skoff Life Voting Member
 Helen Warren Life Voting Member
 Harold Winston Life Voting Member

by ICA-appointment

Ken Marshall

Todd Barre

Tim Just

Tom Fineberg

Bob Renaut

Walter Kocjan Northlake
 Warren Kreckler Chicago
 Peter Kuhn Des Plaines
 Dr. Kevin Kukla Hanover Park
 Harry Lyman Boston MA
 John Marconnet Clarendon Hills
 Ed Marshall So. Barrington
 Eugene Martinovsky Naperville
 Patrick Maurer Glen Ellyn
 Thomas Mayka Wheeling
 Patrick McMillen Aurora
 William Naviamos Chicago
 Jim D. Oberweis Aurora
 Ken Palmer Bolingbrook
 Alex Pehas Downers Grove
 Frederick S. Rhine Chicago
 Marvin Rogan Chicago
 Ray Satterlee Wheaton
 Garrett Scott Normal
 Mark Sefcheck Naperville
 Anthony Sillars Northampton MA
 Scott Silverman Elk Grove Village
 Richard Simonetti Elmwood Park
 Leonard Spiegel St. Charles
 Joe Splinter Hanover Park
 Robert Stoltz River Forest
 Sonia Taki Chicago
 James Tanaka Chicago
 George Umezima Chicago
 Mike Varady Effingham
 Richard Verber Aurora
 James Welton Wildwood
 Don Winsauer West Dundee
 Harold Winston Naperville
 Philip Wong Wilmette
 David Wulatin River Forest

USCF Voting Members

ICA appointed

Marc Lonoff	Richard Verber
Bill Smythe	Jim Oberweis
Dennis Grant	Garrett Scott
Dennis Bourgerie	Bill Naff
Erv Sedlock	Larry Cohen

ICA appointed alternates

Jim Warren	Warren Kreckler
Thomas Knoedler	Howard Wachtel
Bill Wilkinson	Michael Henroid
Angelo Sandrin	Les Bale
Joshua Flores	Hector Hernandez
Ed Blanco	Tony Jasaitis
Jim Brotsos	Tom Cooper
Bill Brock	Bill Reed
Glen Gratz	Keith Martin
George Marino	Albert Chow
Glenn Panner	Ken Lewandowski
Larry Stilwell	



Where to Play Chess

ICA Club Affiliates



AMERICAN POSTAL CHESS TOURNAMENTS sponsors postal events & sells chess books & equipment. Jim or Helen Warren, P.O. Box 305, Western Springs 60558. 708/246-6665.

"THE BASEMENT", Daniel Kamen, 1121 Highland Grove Drive, Buffalo Grove, IL 60089

CENTRAL LAKE COUNTY CHESS CLUB meets Fridays, 7:15 to 12:00AM College of Lake County, Bldg. 1, Washington at Route 45, Grayslake. Dennis Grant, 1657 McKay, Waukegan 60087. 708/336-5188.

CHAMPAIGN CHESS CLUB meets Tuesdays at 7 p.m. at the Springer Recreation Center, 301 N. Randolph, Champaign, IL 61820. c/o Duane Kimme, 401 N. Prairie Rd., Champaign, IL 61820. 217-359-0421.

THE CHESS BOARD BBS is a computer chess club. Use your computer, modem and phone to play electronic postal chess, exchange international messages, download chess related files. SysOp: James Reames, Chicago, IL. MODEM 312-784-1019 (1200-14400 bps)

CHICAGO INDUSTRIAL CHESS LEAGUE organizes frequent competition among commercial/government teams with awards, ratings, & special events. Tony Jasaitas 312/431-2966.

CONTINENTAL CHESS ASSOCIATION, P.O. Box 249, Salisbury Mills, NY 12577. Bill Goichberg.

DOWNERS GROVE PARK DISTRICT CHESS CLUB meets Thurs., 6:30-10 p.m., Lincoln Center, 935 Maple Ave., Downers Grove. Affiliated with USCF & ICA. George Uffner, 708/960-9382.

EVANSTON TOWNSHIP HIGH SCHOOL CHESS CLUB Ken Lewandowski 1600 Dodge Avenue, Evanston IL 60204.

EWALT CHESS ENTERPRISE, P.O. BOX 672, St. Ann, MO 63074

FOX VALLEY CHESS CLUB meets Monday evenings, 6:30 p.m. to 10:15, Prisco Community Center, Lake St. & Illinois Ave., Aurora, IL., Bob Renaut, 708-983-2934.

GREATER PEORIA CHESS FEDERATION meets Mon., 7-11 p.m., Garrett Center, 824 N. University, Peoria. Bill Wilkinson, 901 N. Rebecca Pl., Peoria 61626. 309/673-9455.

HILLSIDE CHESS CLUB meets Fridays 7-11:30 p.m. at Hillside Baptist Church, 5152 Butterfield Road, Hillside, (708) 449-8717, Larry Stilwell (708) 963-6799.

LAKE COUNTY CHESS ASSOCIATION sponsors rated tournaments in the Grayslake-Zion area. Tim Just, 37165 Willow, Gurnee 60031. 708/244-7954.

HOLY TRINITY NORTHSORE CHESS CLUB meets Tuesday 7-10 pm at Holy Trinity Church, 2328 Central (at Shermer), Glenview, IL. Dale Hurst, P.O. Box 248, Glenview, IL. 60025. 708-729-9000.

MIDWESTERN CHESS ADVENTURES (MCAC) 3924 N. Hermitage, 2nd floor, Chicago, IL 60613, 312-871-2148. Attn: Christopher Baumgartner.

MIDWEST CHESS ASSOCIATION organizes major tournaments for masters & experts. Helen Warren, P.O. Box 305, Western Springs, 60558. 708/246-6665.

OAK PARK/RIVER FOREST CHESS CLUB meets Tues., 7 midnight, Dominican Conference Center, 7200 W. Division, River Forest. Ken Marshall, 357 W. Grove, Lombard 60148. 708/932-1455.

PARK FOREST CHESS CLUB meets Thursdays, 7-10:00 p.m., Freedom Hall, Orchard & Lakewood, Park Forest. Lawrence Cohen, 135 Westwood, Park Forest, 60466. 708/748-5911.

PAUL RODGERS' CHESS TOURNAMENTS 810 Peach Tree, Urbana, IL 61801

SMYTHE DAKOTA COMPETITIONS encourages, nurtures, and offers financial support for Plus-Score Mini-Tours at suitable sites in Chicago and adjoining suburbs. Bill Smythe, 7445 N. Greenview #311, Chicago, IL 60626, 312-761-2455.

ST. CHARLES CHESS CLUB meets Thursday at 7 p.m., Baker Community House, 101 S. 2nd (Rte. 31), St. Charles. Erv Sedlock, 6 N. 307 Old Homestead Rd., St. Charles, IL 60174. 708-372-2995.

THE SOUTH SUBURBAN CHESS CLUB OF GREATER CHICAGO meets every Friday from 7:00 p.m. to midnight at the Palos Heights Recreational Center, 6601 West 127th St., Palos Heights, IL. Info: Fred Gruenberg, 708-489-5800.

TULEY PARK CHESS CLUB meets Saturdays, 1-5 p.m., Tuley Park Field House, 501 E. 90th Pl., Chicago. Thomas Fineberg, 7321 S. South Shore Dr., Chicago 60649, 312/721-3979.

TWIN CITIES CHESS CLUB c/o Andy McGowen, 410 E. Walnut St., Bloomington, IL 61701-3146.

Join the Illinois Chess Association and receive six issues of the Illinois Chess Bulletin. In addition you'll qualify to enter over two dozen tournaments on the Illinois Chess Tour. Every game you win or draw in a tournament earns you "tour points" that can add up to cash prizes at year-end. Finally, you'll be supporting the activities of the Illinois Chess Association. Every year, the ICA organizes major tournaments like the Illinois and Illinois Class Championships; the ICA has bid for the National Open, the US Open and the US Class Championships to be held in Illinois. In addition, the ICA sponsors scholastic clinics, runs a tournament clearinghouse, and promotes and publicizes chess activity statewide. If you would like to show increased support for Illinois chess, please consider renewing as a Century Club, Gold Club, or Patron member. Patron acknowledged in each issue of the ICB and receive their magazines by first-class mail.

Mail To: Ken Marshall, ICA Membership Secretary
357 W. Grove
Lombard, IL 60148

(Your mailing label is on the other side; note corrections below)

Name _____
Address _____
City _____ State _____ ZIP _____

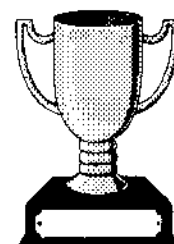
ICA MEMBERSHIP RENEWAL

Circle membership type:

Century	\$100.00	Gold Card	\$50
Patron	\$35.00	Regular	\$14
Junior	\$8.00	Affiliate	\$25



OCTOBER 17, 1993



TIM JUST
LAKE COUNTY OPEN/RESERVE
XVI

A COLLEGE OF LAKE COUNTY ACTION EVENT

\$1000 IN PRIZES

OPEN: \$150-\$100-\$50; EX: \$60-\$40; A & Below: \$60-\$40
RESERVE (below 1800): \$150-\$100-\$50; C: \$60-\$40; D/E \$60; UNRATED: \$40
prizes based on 50 entries;

ICA MINI TOUR EVENT

ROUNDS: 9:30 - 11 - 1 - 2:30 - 4; REG: 8:20 - 9:00; TIME: GAME/30

COLLEGE OF LAKE COUNTY, WASHINGTON & RT. 45, GRAYSLAKE, IL., MAIN BLDG.

EARLY EF: \$22 TO: TIM JUST, 37165 WILLOW, GURNEE, IL. 60031, 708-244-7954
LATE FEE (received after 10/13 or by phone) = \$27
JUNIORS RECEIVE \$5 DISCOUNT ON ALL ENTRIES

YOUR NOVEMBER CHESS LIFE & LABEL = \$2 DISCOUNT ON AT SITE REGISTRATION

ILLINOIS CHESS ASSOCIATION
c/o Ken Marshall
357 W. Grove
Lombard, IL 60148

Time Value Material

BULK RATE
U.S. Postage
PAID
Astoria IL, 61501
Permit No. 9

Address Correction Requested