

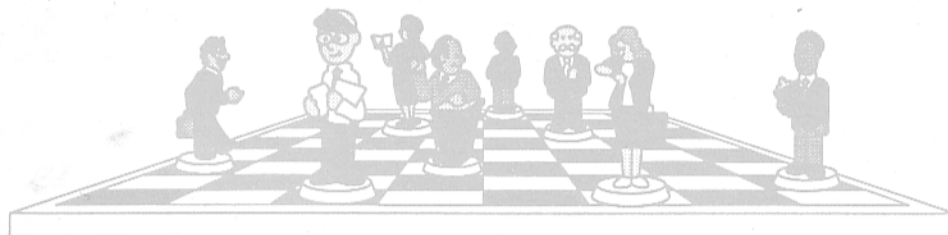
ILLINOIS CHESS BULLETIN

MARCH-APRIL 1993 VOL. XVI NO. 2

AN ICA BI-MONTHLY PUBLICATION - \$2.95

CHOW SCORES 5-0

TO WIN
TIM JUST'S 1993 WINTER OPEN



UMEZINWA - CHOW - MARTINOVSKY
tie for 1st in

3rd Annual
Fox Valley Championship

PLAN NOW TO PLAY IN THE MID-AMERICA CLASS
CHAMPIONSHIPS - MARCH 12-13-14 IN CHICAGO

ILLINOIS CHESS BULLETIN

Editor.....**Warren Kreckler**
6146 N. Oakley • Chicago, IL 60659 • 312-764-2807
Junior Chess Editor.....**Richard Verber**
1970 Tall Oaks Drive #3A • Aurora, IL 60505 • 708-978-1380
Calendar Editor.....**Bob Renaut**
1255 Oakton Lane • Naperville, IL 60540 • 708-983-0934
Tour Statistician.....**Bill Smythe**
7445 N. Greenview • Chicago, IL 60626 • 312-761-2455

MEMBERSHIP AND SUBSCRIPTIONS

The Illinois Chess Bulletin (ICB) is published bimonthly by the Illinois Chess Association. ICA membership includes a subscription to the ICB. Century Club, Gold Card, and Patron members receive their ICB by first-class mail.

ANNUAL MEMBERSHIP RATES

Century Club\$100.00
Gold Card\$50.00
Patron\$35.00
Regular\$14.00
Junior (under 18)\$8.00

Subscriptions and address corrections should be sent to:

Ken Marshall (ICA Membership Secretary)
357 W. Grove
Lombard, IL 60148

SUBMISSION DEADLINE

The deadline for submissions in the MAY-JUNE 1993 issue is APRIL 1, 1993.

ICA AFFILIATION

Chess clubs and other organizations which promote chess activity may affiliate with the ICA. Benefits include a copy of the ICB by first class mail, a listing under "Where to Play Chess," discounted advertising rates, three-line tournament announcements in the "Tournament Calendar," and the right to run ICA Tour Events. ICA Affiliation costs \$25; please remit to Membership Secretary.

ADVERTISING RATES

Full page\$90
Half page\$54
Quarter page\$36
Eighth page\$24

10% discount for the same ad in consecutive issues. 1/3 discount for ICA affiliates. All ads must be camera-ready to qualify for above rates; minimum \$20 charge for layout. Payment must accompany ad. The ICA & the ICB reserve the right to reject advertising.

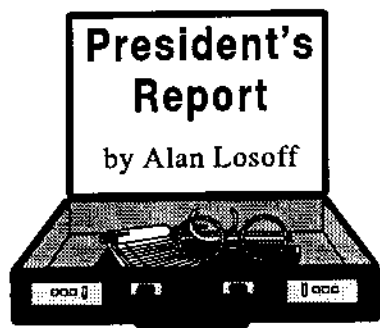
Copyright © 1993 Illinois Chess Association

TABLE OF CONTENTS

President's Report	3
<i>by Alan Losoff</i>	
Editor's Comments	3
<i>by Warren Kreckler</i>	
The 1993 Winter Open	4
<i>by Tim Just</i>	
Chess on the Fox	5
<i>by Bob Renaut</i>	
Chow Vanquishes Local Masters	7
From Russia with Love	8
<i>by Marc Lonoff</i>	
ICA/Warren Junior Chess Program Progress Report	10
<i>by Helen Warren</i>	
Correspondence Chess	12
<i>by Eugene Martinovsky</i>	
Gurevich Annotates	13
<i>by Dmitry Gurevich</i>	
Gurevich Qualifies for Interzonals	15
<i>by Alan Watson</i>	
Abridged Minutes of October 18 ICA Meeting	20
<i>by Ken Marshall</i>	
Midwestern Chess Adventures	20
<i>by Christopher Baumgartner</i>	
1993 Illinois Tour Rules	22
<i>by Bill Smythe</i>	
1992 Final Tour Standings	24
<i>by Bill Smythe</i>	
Tournament Calendar	27
<i>by Bob Renaut</i>	
ICA Patrons	30
Where to Play Chess / ICA Club Affiliates	31



Need the latest chess tournament info?
Call Chess Phone 708-832-5222



by Warren Kreckler

TWO GREAT EVENTS RETURN

I'm pleased to announce the return of two important Illinois tournaments after a brief hiatus. It's like seeing a couple of old friends come back to town. The **Illinois Tournament of Champions** will be held at the Ramada O'Hare Hotel on May 7-9 and May 15-16. This is a two 10-player section round-robin invitational tournament for the top Illinois Masters. Spectators are welcome. Helen Warren's Midwest Chess Association is sponsoring this event with assistance from the ICA.

The Oak Park/River Forest Chess Club is bringing back the **Master Challenge**. A \$2,500 plus prize fund highlights the return of this traditional event. Watch for details of this classic June Maxi-Tour event in next month's Illinois Chess Bulletin.

NEW MEMBERSHIP CARDS

You should have received your new membership card last month. New cards were issued to all players as part of a membership address audit. A surprising number of cards came back undeliverable or were forwarded to new addresses. It is important that you notify the ICA when your address changes because the post office does not forward bulk mail! Bring your card with you to tour events.

MID-AMERICA CLASS CHAMPIONSHIPS

Freddy Gruenberg has put together another great tournament. March 13-15 at the Ramada O'Hare. The tournament has been expanded to 6 sections. Special discounts for juniors and families apply for advance entries only, so get those entries in **NOW!**

WARREN/ICA JUNIOR CHESS PROGRAM

This success of this program is astounding. I know of no comparable program in any other state. But we need your help! This must be an ongoing program in order to succeed in the long run, so keep those generous contributions coming. See Helen's column in this issue for a complete report. Thank you.

NATIONAL JUNIOR HIGH SCHOOL CHAMPIONSHIP

The National Junior High School Championship will be at the Ramada O'Hare on April 16-18. This team/individual tournament is open to 9th graders and below. It is sponsored by the U.S. Chess Federation and the Continental Chess Association. For further information contact the CCA at 914-496-9658.

CHICAGO INTERNATIONAL

The CCA is also bringing back the Chicago International on April 14-18. Although scaled back from last year, FM and IM norms are still possible and it will be held concurrent with the National Junior High School Championship.

The deadline for submissions in the MAY-JUNE ICB will be April 1, 1993. Mail your contributions to ICB editor: Warren Kreckler, 6146 N. Oakley, #2F, Chicago, IL 60659, 312-764-2807. Please call to arrange for modem or fax transmissions.

A RECORD ATTENDANCE FOR U.S. AMATEUR TEAM CHAMPIONSHIP MIDWEST!

There were a total of 46 teams (25 teams last year) in the U.S. Amateur Team Championship Midwest held February 13-15 at the Hyatt Regency Oakbrook. The Wisconsin team "Among the lowest Dogs" placed first on tie-break over the Iowa team "Fear Itself". There was also a 15 minute Quick Chess Tournament on the morning of February 13th in which 90 players participated which resulted in a 4-way tie for 1st between Dmitry Gurevich, Eric Schiller, Eugene Martinovsky, and Albert Chow. We will have a detailed report & annotated games from these events in the next issue. Congratulations to TD's Alan Losoff and Bill Smythe for their expertise in making this a first-class event and to organizers Richard Verber and Jim Oberweis who have just announced their intention to place a bid with the U.S.C.F. to hold the tournament here again next year!

CHICAGOLAND'S PREMIER CLASS CHESS TOURNAMENT!

Join me March 12-13-14 at the Mid-America Class Championships at the Ramada O'Hare. I played in this event last year and drew GM Dmitry Gurevich in the first round! The prizes have been increased this year totaling \$12,500 **GUARANTEED!**

REGINE LEOPOLDI DONATES \$3,000 TO PROMOTE JUNIOR CHESS!

Mrs. Regine Leopoldi made a donation of \$3,000 to the City of Chicago's Department of Human Services to promote chess among inner city youths (see page 26) in honor of her late husband, Norbert Leopoldi.

At press time, we were not finished compiling our promised tribute/article in honor of Norbert Leopoldi. However, the article will appear in the May-June issue.

WEEKLY BLITZ CHESS AT THE EQUINOX CAFE!

Midwestern Chess Adventures of Chicago, a chess promotion enterprise founded by Christopher Baumgartner and Albert Chow, is featuring Blitz Chess every Wednesday night at the Equinox Cafe. (See ad on page 21).

ANNOTATED GAMES!

This issue features annotations by Masters Eugene Martinovsky and Alan Watson, with an unexpected bonus from GM Dmitry Gurevich who annotates two of his games from the U.S. Championship where he qualified for the Interzonal. Thank you gentlemen.

Another Perfect Performance for Albert Chow!

THE 1993 WINTER OPEN

by Tim Just

Extreme time pressure and strong opposition failed to stop Al Chow from continuing his perfect performance play in Lake County, Illinois. Back in October of 1992 Al scored 4-0 to claim king of the mountain honors at Lake County Open XV. In January 1993, only three months later, he continued his winning ways by scoring an additional 5-0 at Tim Just's Winter Open X.

Despite the efforts of Greg Cottle (1941), Robert Sax (2031), Steven Szpisjak (2230), Dr. Eugene Martinovsky (2350), and George Umezina (2352) Al managed to pick up the \$225 first place prize by vanquishing them all.

Dr. Martinovsky and 2355-rated Milwaukee resident Roman Levitt each netted \$125 by scoring 4-1 to tie for the second and third place prize.

Caveman club member Rodney Kinnaird also scored 4-1 to pick up \$125 as the top Expert player. Caveman Gordon Wallace, Dan Kamen, Robert Sax, and Wisconsinite John Becker took home \$25 and second place expert honors each with a score of 3-2.

Hector Hernandez scored 3.5-1.5 to be honored as the top "A" player with a prize of \$125. The second place "A" prize of \$100 was shared three ways by 3-2 scoring Rhys Read, James Fagan, and Kent Williams.

The Reserve section winner, Joe Cima (1761), had to only score 4.5-0.5 to take home a paycheck of \$225. He was followed by 4-1 scoring second place \$150 winner Alan Gasiacky (1540). Two Cavemen, Mike Dennis (1707) and Abraham Untermyer (1703) shared the third place prize of \$100 with scores of 3.5-1.5 each.

The first and second place "C" prizes were divided by 3.5-1.5 scoring Henderson Johnson and Craig Ahmer to take home \$112.50 apiece.

Greg Hicks stood alone to pick up the \$100 D/E/UN prize by scoring 3-2.

Tim Just, Dennis Grant, Don Martin, and Wayne Clark all helped with the organizing and directing of this annual College of Lake County event.

Tim Just Winter Open • January 9-10 • OPEN

	rng.	rd-1	rd-2	rd-3	rd-4	rd-5	score	tour
01 CHOW Albert	2357	W23	W11	W7	W3	W5	5	32
02 LEVIT Roman	2355	L14	W32	W12	W11	W6	4	12
03 MARTINOVSKY Eugene	2350	W24	W8	W16	L1	W9	4	12
04 KINNAIRD Rodney	2188	W33	L19	W23	W16	W15	4	12
05 UMEZINWA George	2352	W31	D13	W22	W14	L1	3.5	7
06 WILLIAMS Bill	2255	W29	D14	W19	W13	L2	3.5	7
07 SZPISJAK Steve	2230	W32	W30	L1	W10	D8	3.5	7
08 HERNANDEZ Hector	1996	W26	L3	W37	W21	D7	3.5	7

09 KAMEN Dan	2117	H	W37	D15	W19	L3	3	6
10 GORDON Wallace	2082	L30	W24	W34	L7	W18	3	6
11 SAX Robert	2031	W25	L1	W27	L2	W23	3	6
12 BECKER John	2013	L19	W39	L2	W34	W24	3	6
13 READ Rhys	1991	W35	D5	W20	L6	D14	3	6
14 FAGAN James	1934	W2	D6	W28	L5	D13	3	6
15 WILLIAMS Kent	1885	W21	D26	D9	W20	L4	3	6
16 MARSHALL James	2044	W34	W27	L3	L4	D17	2.5	5
17 WOLF William	1956	L27	W26	L21	W32	D16	2.5	5
18 SEFCHECK Mark	1300	H	L20	W36	W22	L10	2.5	5
19 CRAGGS Tommy	1752	W12	W4	L8	L9	D22	2.5	5
20 TUMS V M		D22	W18	L13	L15	W29	2.5	5
21 MANION Josh	2343	L15	W25	W17	L8	-	2	4
22 LUBKA Ruben	1951	D20	W36	L5	L18	D19	2	4
23 COTTLE Greg	1941	L1	W33	L4	W27	L11	2	4
24 PUKEL Bernard	1899	L3	L10	W25	W37	L12	2	4
25 ROCKWELL David	1835	L11	L21	L24	W33	W35	2	4
26 BURIAN David	1742	L8	L17	D39	H	W37	2	4
27 VIGANTS Alberts	1507	W17	L16	L11	L23	W32	2	4
28 BACHLER Kevin	2255	W39	D15	L14	-	-	1.5	3
29 GRAVES William	1923	L6	L34	D33	W36	L20	1.5	3
30 DWYER Bill	1839	W10	L7	H	-	-	1.5	3
31 BUTTNY Bill	1900	L5	W35	-	-	-	1	2
32 PORTER John	1855	L7	L2	W35	L17	L27	1	2
33 JOHNSON Eric	1842	L4	L23	D29	L25	D36	1	2
34 KITTILSEN Guy	1837	L16	W29	L10	L12	-	1	2
35 SILVERMAN Scott	1571	L13	L31	L32	W41	L25	1	2
36 WONG Brian	1474	H	L22	L18	L29	D33	1	2
37 GRIESMEYER Walter	1352	B	L9	L8	L24	L26	1	2
38 JUST Tim	1725	W40	-	-	-	-	1	
39 PLETT Michael	1875	L28	L12	D26	-	-	0.5	1
40 ROSE Eric		L38	-	-	-	-	0	
41 MARSCHALL Ed	1493	-	-	-	L35	-	0	

Tim Just Winter Open • January 9-10 • RESERVE

01 CIMA Joe	1761	W25	W26	W5	D3	W6	4.5	19
02 GASIECKI Alan	1540	W27	W22	D6	W16	D3	4	12
03 DENNIS Mike	1707	W17	W9	H	D1	D2	3.5	7
04 UNTERMEYER Abraham	1703	H	W13	W23	L6	W10	3.5	7
05 JOHNSON Henderson	1559	W19	W18	L1	D8	W15	3.5	7
06 AHMER Craig	1499	W7	W20	D2	W4	L1	3.5	7
07 BARR James	1761	L6	W30	D10	W22	D8	3	6
08 KITTSLY Scott	1640	L26	W25	W11	D5	D7	3	6
09 HICKS Greg		W10	L3	D15	D13	W16	3	
10 PARNABY Mark	1563	L9	W17	D7	W23	L4	2.5	5
11 ZELINSKY Daryl	1539	L23	W27	L8	W18	D13	2.5	5
12 GROEGER Andrew	1504	L14	D15	L13	W20	W22	2.5	5
13 MAURER Patrick	1428	H	L4	W12	D9	D11	2.5	5
14 RIDDELL Josh	1288	W12	H	W21	-	-	2.5	5
15 BRODDE Jeff	1669	L18	D12	D9	W19	L5	2	4
16 PADILLA Rudy	1600	L22	W19	W26	L2	L9	2	4
17 MARSCHALL Ed	1493	L3	L10	L19	B	W23	2	4
18 BIEZYNSKI Stan	1447	W15	L5	-	L11	W28	2	4
19 ROSE Eric		L5	L16	W17	L15	B	2	
20 WELTON Jim	1238	B	L6	-	L12	W27	2	4
21 SCHIEFFER Robert	1510	W28	D23	L14	-	-	1.5	3
22 MARTHAKIS Ted	1397	W16	L2	H	L7	L12	1.5	3
23 REINTHALER William	1339	W11	D21	L4	L10	L17	1.5	3
24 SANCHEZ Ignacio	1766	-	W28	-	-	-	1	
25 SMITH Orlan	1503	L1	L8	W30	-	-	1	2
26 MEYERS Joe		W8	L1	L16	-	-	1	
27 DERR Gerald	1374	L2	L11	H	D28	L20	1	2
28 WILLIAMS Robert	1336	L21	L24	H	D27	L18	1	2
29 MARTIN Don	1795	W32	-	-	-	-	1	
30 BALES Robert	1376	H	L7	L25	-	-	0.5	1
31 ENGELEN Mark	1665	-	-	-	-	-	0	
32 GRIESMEYER Walter	1352	L29	-	-	-	-	0	

CHESS

on the



by Bob Renaut

Club Ladder Champion Crowned

The 1992 Club Ladder Champion is Jim Oberweis. Jim went undefeated scoring 6.5 in the Championship section. In fierce competition Paul Turcany took 2nd place, losing only to the eventual champion, Jim in the first round. Third place was captured by Greg Cisko with 4 points. Congratulations to all the players being selected to play in the Championship section. The cross table is shown below:

Name	Rating	Rd1	Rd2	Rd3	Rd4	Rd5	Rd6	Rd7	Total
1 Obwerweis, James D.	1829	W7	W6	W5	W4	W3	D2	W8	6.5
2 Harris, Robert M.	1720	L6	W5	W4	W3	D8	D1	L7	3.0
3 Cisko, Gregory G.	1476	B5	L4	W8	W2	W1	L7	L6	4.0
4 McGee, Mark	1384	W8	L3	L2	L1	L7	L6	L5	1.0
5 Padilla, Rudy	1600	W3	L2	L1	L7	L6	W8	W4	3.0
6 DeCort, Joe	UNR	W2	L1	L7	D8	W5	W4	L3	3.5
7 Turcany, Paul	1580	L1	W8	W6	W5	W4	W3	W2	6.0
8 Carson, David L	1500	L4	L7	L3	D6	D2	L5	L1	1.0

The Reserve section was won by John Jelen with a score of 5.0. John lost only to new club member Roy Frye. Cliff Anderson secured the 2nd position with a 4.5 score. Mike Flynn earned the #3 position with a 4.0 score. The cross table is shown below:

Name	Rating	Rd1	Rd2	Rd3	Rd4	Rd5	Rd6	Rd7	Total
1 Jelen, John L.	1585	L4	W7	W6	W2	B---	W3	W5	5.0
2 Anderson, Cliff J.	1502	7D	6	B---	L1	W3	W5	W4	4.5
3 Flynn, Micheal W.	1635	W5	W4	W7	W6	L2	L1	B---	4.0
4 Frye, Roy	UNR	W1	L3	L5	B---	W7	W6	L2	3.0
5 Sheridan, Tom	UNR	L3	B---	W4	W7	W6	L2	L1	3.0
6 McMillen, Patrick	1339	B---	D2	L1	L3	L5	L4	D7	1.0
7 Moore, Joseph K.	1376	L2	L1	L3	L5	L4	B---	D6	0.5

3rd Annual Fox Valley Championship draws 67



The tournament held January 23-24 continues to grow in size, drawing a record 67 players including five masters and five experts. The players competed for a \$1500 guaranteed prize fund. The tournament was directed by Bob Renaut with assistance from Jim Oberweis and Bill Reed.

The Open Section ended in a three way tie for first between George Umezina, Al Chow and Eugene Martinovsky earning \$172 each for their efforts. Fox Valley Chess Club member, Dr Martinovsky has tied for first in the event each year! This year he had to overcome a 4 pawn deficit in the 3rd round against Robert Sax to get a chance to earn the tie in the fourth round. Peter Stein and Zibby Dudkowski tied for top Expert earning \$112.5 each. James Fagan took top A honors and \$150 home and Andrew Schultz earned \$75 for 2nd A. Craig Ahmer (1478) scored the biggest upset defeating Kelvin McAlister (1918) and Bernard Pukel (1900) and drawing Sam Lafata (2007)!

The Reserve Section was won outright by Joe Cima (1761) with a perfect 5-0 score! Joe won \$200 for his perfect score. Four players tied for second, Malcom Knox, Bill Reed, Mack Lyons and Dan Venske and won \$25 each. TOP C honors and \$100 went to Mike Worth for his 3.5-1.5 score. Dennis Halley earned \$50 for 2nd C. The TOP D/E/UNR prize of \$75 was won by Alfred Williams with a 3-2 score.

Thank you to all the participants for coming out and making this event the best ever. We hope to see you next year and we hope to break this years attendance record!

The cross table is included below:

1993 Fox Valley Championship - Open

Name	Rating	Rd1	Rd2	Rd3	Rd4	Total	Tour
01 Umezina, George	2352	W24	W6	W14	D2	3.5	15
02 Chow, Al	2354	W26	W16	W4	D1	3.5	15
03 Martinovsky, Eugene	2350	W31	D7	W12	W8	3.5	15
04 Stein, Peter	2147	W19	W13	L2	W7	3.0	8
05 Dudkowski, Zibby	2021	W29	L14	W18	W13	3.0	8
06 Fagan, James	1934	W30	L1	W23	W12	3.0	8
07 Schultz, Andrew	1910	W28	D3	W10	L4	2.5	5
08 Marshall, James A	2044	D32	W17	W15	L3	2.5	5
09 Lafata, Samuel	2007	L13	W19	W16	D11	2.5	5
10 Rogan, Marvin	2021	D17	W32	L7	W20	2.5	5
11 Ahmer, Craig	1498	W27	L12	W26	D9	2.5	5
12 Sax, Robert D.	2031	W23	W11	L3	L6	2.0	4
13 Arellano, Al	1728	W9	L4	W2	L5	2.0	4
14 Verber, Richard	2421	W22	W5	L1	U--	2.0	4
15 Stinson, Marcus E.	1984	D2	W25	L8	D18	2.0	4
16 Zazove, David	1897	W21	L2	L9	W27	2.0	4
17 Ellice, H. Wayne	1790	D10	L8	D21	W26	2.0	4
18 Porter, John T.	1855	H--	W20	L5	D15	2.0	4
19 Oberweis, James D.	1865	L4	L9	W28	D22	1.5	3
20 Josephs, Steven	1687	D15	L18	W24	L10	1.5	3
21 Szpisjak, Steven J.	2230	L16	D24	D17	D23	1.5	3
22 Buttny, William P.	1900	L14	W29	L13	D19	1.5	3
23 Allison, Roger	1812	L12	W27	L6	D21	1.5	3
24 Williams, Kent M.	1885	L1	D21	L20	W30	1.5	3
25 Wong, Brian	1474	H--	L15	W32	U--	1.5	3
26 Pukel, Bernard	1900	L2	W30	L11	L17	1.0	2
27 McAlister, Kelvin	1918	L11	L23	W29	L16	1.0	2
28 Tums, Valdis M.	UNR	L7	L31	L19	W32	1.0	2
29 Craddock, Joe	1731	L5	L22	L27	B---	1.0	2
30 Silverman, Scott	1571	L6	L26	B---	L24	1.0	2
31 Sukchdroenphon, T.	1900	L3	W28	U--	U--	1.0	2
32 Kittilsen, Guy	1837	D8	L10	L25	L28	0.5	1

1993 Fox Valley Championship - Reserve

Name	Rating	Rd1	Rd2	Rd3	Rd4	Rd5	Total	Tour
01 Cima, Joseph E.	1761	W31	W25	W20	W4	W2	5.0	32
02 Knox, Malcolm S.	1624	W6	W21	W3	W17	L1	4.0	12
03 Reed, Bill	1792	W26	W23	L2	W14	W7	4.0	12
04 Lyons, Mack	1694	W30	W9	W22	L1	W12	4.0	12
05 Venske, Dan	1691	L22	W29	W21	W20	W15	4.0	12
06 Wirth, Mike	1408	L2	W26	W9	D8	W17	3.5	7
07 Halley, Dennis	1593	D33	W27	W10	W11	L3	3.5	7
08 Engelen, Mark	1665	W32	L20	W30	D6	W18	3.5	7
09 Winter, Victor	1577	W16	L4	L6	W30	W22	3.0	6
10 Raimo, Robert	1691	W13	D18	L7	D23	W21	3.0	6
11 Goral, Brad	1695	L21	W34	W18	L7	W20	3.0	6
12 Flynn, Michael W.	1618	D27	D33	W13	W24	L4	3.0	6
13 Hicks, Charles A.	1444	L10	W35	L12	W26	W23	3.0	6
14 Smith, Orlan B.	1504	W35	L17	W33	L3	W24	3.0	6
15 Ortega, Eric	1703	L20	W32	W31	W22	L5	3.0	6
16 Williams, Alfred	UNR	L9	L30	W32	W31	W28	3.0	6
17 Morton, Bruce	1690	W34	W14	H---	L2	L6	2.5	5
18 Oberweis, Julie	1588	W19	D10	L11	W28	L8	2.5	5
19 Delay, Joseph D.	UNR	L18	L31	D26	W35	W27	2.5	5
20 Anderson, Clifford	1485	W15	W8	L1	L5	L11	2.0	4
21 Pedersen, Kenneth	1471	W11	L2	L5	W25	L10	2.0	4
22 Stesel, Max	1441	W5	W28	L4	L15	L9	2.0	4
23 Padilla, Rudy R.	1600	W24	L3	H---	D10	L13	2.0	4
24 Hightower, Dean	1339	L23	B---	W25	L12	L14	2.0	4
25 Traina, Joseph	1596	W29	L1	L24	L21	W31	2.0	4
26 Scantlen, Anthony	1500	L3	L6	D19	L13	W32	1.5	3
27 Anderson, Richard E.	1405	D12	L7	L28	W29	L19	1.5	3
28 Johnson, Frank	1692	H---	L22	W27	L18	L16	1.5	3
29 Jenkins, Mike	1336	L25	L5	H---	L27	W35	1.5	3
30 Palmer, Ken	1469	L4	W16	L8	L9	U---	1.0	2
31 Mitchell, Gary	1498	L1	W19	L15	L16	L25	1.0	2
32 Dudnick, Steve	1418	L8	L15	L16	B---	L26	1.0	2
33 Baltazar, Mark A.	1114	D7	D12	L14	U---	U---	1.0	2
34 Sukcharoenphon, K.	1421	L17	L11	W35	U---	U---	1.0	2
35 Westergaard, Jay	UNR	L14	L13	L34	L19	L29	0.0	0

Here are a few games from the event:

Buttny, W. - Verber, R.

1993 Fox Valley Championship (1) Open

1.e4 g6 2.d4 Bg7 3.Nc3 c6 4.f4 d5 5.e5 Nh6 6.Nf3 Bg4 7.h3 Bxf3 8.Qxf3 Nf5 9.Qf2 h5 10.Ne2 e6 11.Bd2 Bf8 12.g3 Qb6 13.0-0 c5 14.Bc3 Nc6 15.Bg2 cxd4 16.Bxd4 Ncxd4 17.Nxd4 Bc5 18.c3 Rc8 19.Kb1 Bxd4 20.cxd4 Rc4 21.Rc1 Ke7 22.Rxc4 dxc4 23.Rd1 Rd8 24.g4 Rxd4 25.Rxd4 Qxd4 26.Qxd4 Nxd4 27.Bxb7 h4 28.Ba6 Ne2 29.Bxc4 Nxf4 30.Bf1 g5 31.Kc2 Ng6 32.Kd3 Nxe5+ 33.Ke4 Kd6 34.b4 Nd7 35.Bb5 Nf6+ 36.Kd4 Nd5 37.a3 e5+ 38.Kc4 Nf4 39.Be8 Nxb3 40.b5 Nf2 0-1

Sukchdroenphon, T. - Martynovsky, E.

1993 Fox Valley Championship (1) Open

1.e4 e5 2.Nf3 Nc6 3.Bb5 a6 4.Ba4 Nf6 5.0-0 Be7 6.Re1 b5 7.Bb3 0-0 8.c3 d5 9.d3 dxe4 10.dxe4 Qxd1 11.Bxd1 Bb7 12.Nbd2 Rfd8 13.Bc2 Nd7 14.Nb3 a5 15.Be3 a4 16.Nbd2 Nc5 17.Bxc5 Bxc5 18.a3 f6 19.Rad1 Na5 20.g3 Rd6 21.g4 Rad8 22.Kg2 Bc8 23.h3 Be6 24.Kg3 g5 25.Kg2 Bb3 26.Nxb3 axb3 27.Rxd6 Rxd6 28.Bd1 Kg7 29.Be2 c6 30.Rb1 Kf7 31.h4 h6 32.hxg5 hxg5 33.Rh1 Kg7 34.Rc1 Rd8 35.Kg3 Be7 36.Kg2 Kf7 37.Rh1 Ke6 38.Rf1 Nb7 39.Rc1 Nc5 40.Nd2 Na4 41.Nxb3 Nxb2 42.Na5 Rc8 43.Rc2 Bxa3 44.Rd2 Na4 45.Kf3 Be7 0-1

Chow, A. - Pukel, B.

1993 Fox Valley Championship (1) Open

1.e4 c5 2.Nf3 d6 3.d4 cxd4 4.Nxd4 Nf6 5.Nc3 a6 6.Be3 e6 7.Qd2 Be7 8.f3 0-0 9.0-0 Nc6 10.g4 Nxd4 11.Bxd4 e5 12.Be3 Be6 13.g5 Nh5 14.Rg1 g6 15.Nd5 Bxd5 16.Qxd5 Qc7 17.Bh3 Nf4 18.Bxf4 exf4 19.Qd2 Qc4 20.b3 Qc5 21.Qxf4 Qa3+ 22.Kb1 a5 23.Qd2 a4 24.f4 axb3 25.cxb3 Ra5 26.Rc1 Rfa8 27.Rc2 d5 28.e5 Bb4 29.Qd3 d4 30.e6 Bc3 31.exf7+ Kf8 32.Qc4 Rc5 33.Qe6 Rc6 34.Qd5 Rb6 35.Be6 Qe7 36.f5 gxf5 37.Bxf5 Rd8 38.Qf3 Qa3 Both players had less than 1 minute on their clocks for the past 4 moves! 39.Rxc3 Black's flag fell! 39...dxc3 40.Qxc3 Time forfeit. 1-0

Oberweis, J.-Stein, P.

1993 Fox Valley Championship (1) Open

1.e4 c5 2.Nc3 Nc6 3.f4 a6 4.Nf3 e6 5.d4 cxd4 6.Nxd4 Bb4 7.Qd3 d5 8.Bd2 Qb6 9.Nxc6 bxc6 10.Na4 Qa5 11.b3 Nf6 12.c3 Be7 13.c4 Bb4 14.exd5 exd5 15.Bxb4 Qxb4+ 16.Qc3 Qe7+ 17.Qe5 Be6 18.Bd3 dxc4 19.Bxc4 Ng4 20.Qe2 Bxc4 21.Qxe7+ Kxe7 22.Nb6 Bd3 23.Nxa8 Rxa8 24.h3 Nf6 25.Kf2 Nd5 26.Rhe1+ Kd6 27.Rad1 Bg6 28.Kf3 Rb8 29.Rd4 c5 30.Rd2 Rb4 31.g3 Rd4 32.Rxd4 cxd4 33.g4 f5 34.Re5 d3 35.Re1 Kc5 36.Rc1+ Kb4 37.Rc4+ Ka3 38.Ra4+ Kb2 39.Rd4 Nc3 40.g5 Bh5+ 41.Ke3 Be2 42.Kd2 Ne4+ 43.Ke1 Kc2 44.Rd7 Bf3 45.Rf7+ Kb2 46.Rd7 d2+ 47.Rxd2+ Nxd2 48.Kxd2 Kxa2 49.Kc3 Ka3 50.Kc4 a5 51.Kc3 Bd5 0-1

Verber, R. - Dudkowski

1993 Fox Valley Championship (2) Open

1.e4 c5 2.Nf3 d6 3.Nc3 Nf6 4.g3 g6 5.Bg2 Bg7 6.0-0 0-0 7.d4 cxd4 8.Nxd4 Nc6 9.Nde2 Be6 10.Nd5 Ne5 11.h3 Nc4 12.c3 Rc8 13.b3 Nb6 14.Be3 Nbd7 15.Ndf4 Nc5 16.Nxe6 Nxe6 17.e5 Ne8 18.Bxb7 Rc7 19.Bg2 Bxe5 20.Qd2 Qc8 21.Rac1 N8g7 22.f4 Bf6 23.g4 Bh4 24.c4 Nc5 25.Nd4 e6 26.Nb5 Rd7 27.b4 Na4 28.Nxa7 Qb8 29.Nc6 Qc7 30.Rfd1 f5 31.c5 d5 32.Ne5 Rdd8 33.b5 fxg4 34.hxg4 h5 35.b6 1-0

Zazove, D. - Chow, A.

1993 Fox Valley Championship (2) Open

1.e4 c5 2.Nf3 g6 3.g3 Bg7 4.Bg2 Nc6 5.Nc3 e6 6.d3 Nge7 7.0-0 0-0 8.Be3 Nd4 9.Bxd4 cxd4 10.Ne2 e5 11.c4 dxc3 12.Nxc3 d5 13.Rc1 d4 14.Nb5 Nc6 15.Na3 Be6 16.Nc4 b5 17.Na3 Qb6 18.b3 Bh6 19.Ra1 a5 20.Nc2 Qc5 21.Nfe1 a4 22.bxa4 Rxa4 23.a3 Bb3 24.Qe2 Qc3 25.f4 b4 26.Rc1 bxa3 27.Nf3 Qb2 28.Rfe1 exf4 29.Na1 Na5 30.Rb1 Qxe2 31.Rxe2 Be6 32.gxf4 Bxf4 33.Rc2 a2 34.Rf1 Rb8 35.Nd2 Be3+ 36.Kh1 Bxd2 37.Rxd2 Rb1 38.Rdd1 Rab4 39.Nc2 Rxd1 40.Rxd1 Rb1 0-1

Marshall, J.-Stinson, M.

1993 Fox Valley Championship (3) Open

1.d4 Nf6 2.c4 e6 3.Nc3 Bb4 4.e3 c5 5.Nf3 0-0 6.Bd3 Bxc3+ 7.bxc3 d6 8.0-0 Nbd7 9.Nd2 e5 10.f4 exf4 11.Rxf4 Re8 12.Qc2 Nf8 13.Ne4 Nxe4 14.Bxe4 g6? This weakens black on the dark squares 15.Bd2 Ne6 16.Rff1 Ng7 17.Bd5 Ne6 18.Be1 Rb8 19.dxc5 dxc5 20.Bg3 Ra8 21.Qf2 Rf8 22.Bh4 Qc7 23.Rab1 Ng7 24.e4 a6 25.Qf6 Ra7 26.Qe7 b5 27.Rxf7 Qxe7 28.Rxe7+ 1-0

Umezina, G.-Verber, G.

1993 Fox Valley Championship (3) Open

1.d4 g6 2.Nf3 Bg7 3.e4 c6 4.Be2 d5 5.exd5 cxd5 6.0-0 Nc6 7.c3 Bg4 8.Nbd2 e6 9.Nb3 Nge7 10.Bf4 Bxf3 11.Bxf3 0-0 12.Re1 Nf5 13.Nc5 b6 14.Nd3 Bh6 15.Qd2 Bxf4 16.Qxf4 Rc8 17.Rad1 Kg7 18.g3 Qc7 19.Qd2 Na5 20.Bg2 Nc4 21.Qe2 Rfe8 22.h4 Qd6 23.Qf3 a5 24.Re2 Qd8 25.Rde1 Nfd6 26.Qf4 Qf6 27.Qc1 h6?? 28.b3 Nf5 29.bxc4 Rxc4 30.Ne5 Nxd4 31.Rb2 Re7 32.Ng4 Nf3+ 33.Bxf3 Qxf3 34.Qxh6+ Kg8 35.Qg5 Re8 36.h5 Qxc3 37.Rbe2 Rf8 38.hxg6 f6 39.Nh6+ Kg7 40.Nf5+ exf5 41.Re7+ Rf7 42.Qh5 1-0

Chow, A.-Stein, P.

1993 Fox Valley Championship (3) Open

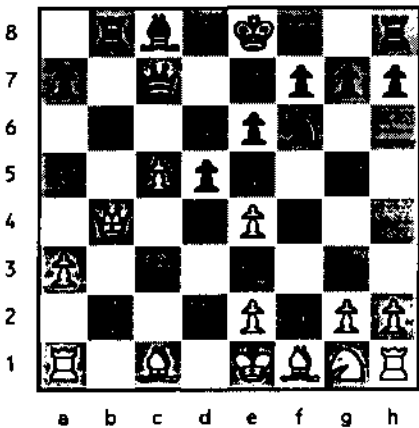
1.e4 c5 2.Nf3 Nc6 3.d4 cxd4 4.Nxd4 Nf6 5.Nc3 e5 6.Ndb5 d6 7.Bg5 a6 8.Na3 b5 9.Bxf6 gxf6 10.Nd5 f5 11.Bd3 Be6 12.0-0 Bxd5 13.exd5 Ne7 14.c3 Bg7 15.Nc2 e4 16.Be2 0-0 17.a4 Qb6 18.axb5 axb5 19.Qd2 Rac8 20.Nb4 Rc5 21.Ra6 Qd8 22.f4 Ng6 23.Nc2 Qd7 24.g3 Rfc8 25.Ne3 Ne7 26.Rfa1 h6 27.Kh1 R8c7 28.Qd1 Ng6 29.Bf1 Rb7 30.Ra8+ Rc8 31.Bh3 Ne7 32.Qh5 Rbb8 33.R1a7 Qd8 34.Rxb8 Rxb8 35.Nxf5 Nxf5 36.Qxf7+ Kh8 37.Bxf5 Qf6 38.Qh5 b4 39.Rf7 Qd8 40.Qg6 Qg8 41.Bxe4 bxc3 42.bxc3 1-0

CHOW VANQUISHES LOCAL MASTERS

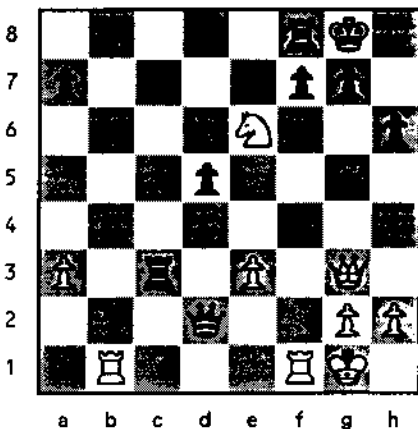
Tim Just 1993 Winter Open

Al Chow (2357) vs.
George Umezina (2352)

1.d4 Nf6 2.c4 e6 3.Nc3 Bb4 4.Qc2 c5
5.dc Na8 6.a3 Bc3 7.Qc3 Nc5 8.b4
Nce4 9.Qd4 d5 10.c5 b6 11.f3 bc
12.bc Qa5 13.Qb4 Qc7 14.fe Rb8



15.Qa4 Bd7 16.Qc2 Ne4 17.Nf3 O-O
18.e3 Nc5 19.Be2 Ba4 20.Qc3 Qb6
21.O-O Nb3 22.Rb1 Rbc8 23.Qd3 Nc1
24.Rbc1 Bb5 25.Qd2 Be2 26.Qe2
Qb3 27.Ra1 Rc2 28.Qe1 Qb2 29.Qg3
h6 30.Nd4 Rc3 31.Rab1 Qd2 32.Ne6!

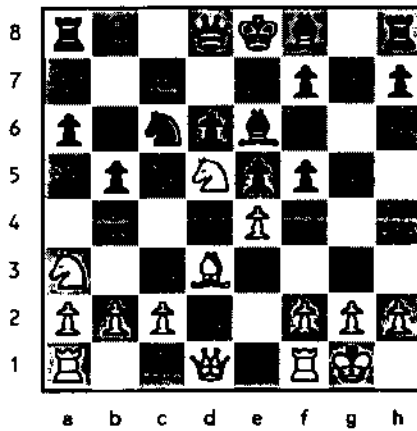


33.R18 K18 34.Rb8 K17 35.Rb7 K16
36.Q14 Kg6 37.Qg4 Kf6 38.Qf4 Kg6
39.Qf7 Kg5 40.Qf4 Kg6 41.Qg4 K16
42.Qg7 Kf5 43.R17 Ke4 44.Rf4 Kd3
45.Qd4 Kc2 46.Rf2 Rd3 47.Qa7 Kd1
48.Rd2 Kd2 49.Kf2 e5 50.Qa5 Kd1
51.a4 e4 52.Qb6 d4 53.Qb1 Kd2
54.Qe1 Kc2 55.ed Rd2 56.Kg3 Kd3
57.d5 e3 58.Kf3 1-O

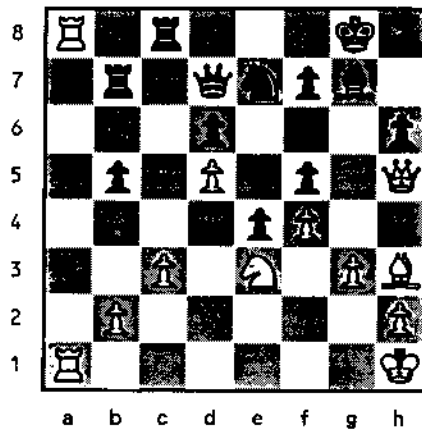
1993 Fox Valley Championship

Al Chow (2354) vs.
Pete Stein (2147)

1.e4 c5 2.Nf3 Nc6 3.d4 cd 4.Nd4 Nf6
5.Nc3 e5 6.Ndb5 d6 7.Bg5 a6 8.Na3
b5 9.Bf6 gf 10.Nd5 f5 11.Bd3 Be6
12.O-O



Bd5 13.ed Ne7 14.c3 Bg7 15.Nc2 e4
16.Be2 O-O 17.a4 Qb6 18.ab ab
19.Qd2 Rac8? 20.Nb4 Rc5 21.Ra6
Qd8 22.f4 Ng6 23.Nc2 Qd7 24.g3
Rfc8 25.Ne3 Ne7 26.Rfa1 h6 27.Kh1
R8c7 28.Qd1 Ng6 29.Bf1 Rb7 30.Ra8
Rc8 31.Bh3 Ne7 32.Qh5

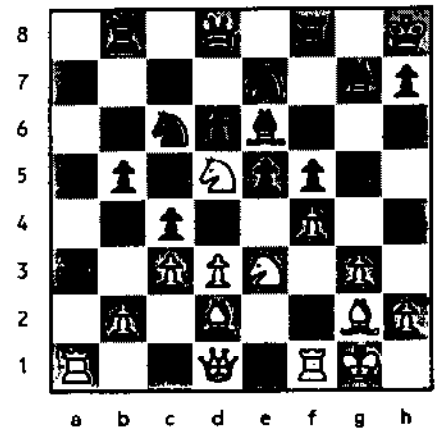


Rbb8 33.R1a7 Qd8 34.Rb8 Rb8
35.Nf5 Nf5 36.Qf7 Kh8 37.Bf5 Of6
38.Qh5 b4 39.Rf7 Qd8 40.Qg6 Qg8
41.Be4 bc 42.bc 1-O

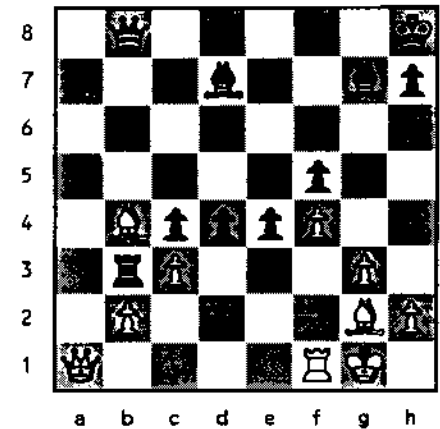
Tim Just 1993 Winter Open

Eugene Martinovsky (2350) vs.
Al Chow (2357)

1.g3 g6 2.Bg2 Bg7 3.Nf3 e5 4.e4 c5
5.O-O Nc6 6.Nc3 d6 7.Nd5 Nge7 8.d3
O-O 9.Nd2 Be6 10.Nc4 b5 11.Nce3
Rb8 12.a4 a6 13.ab ab 14.c3 f5 15.ef
gf 16.f4 Kh8 17.Bd2 c4



18.dc bc 19.Bc1 e4 20.Ne7 Ne7
21.Ra6 Rb6 22.Qa4 d5 23.Nc2 Bd7
24.Qa3 Ra6 25.Qa6 Rf6 26.Qa3 Rb6
27.Be3 Rb3 28.Qa1 Qb8 29.Bc5 Nc6
30.Nb4 Nb4 31.Bb4 d4



32.Rd1 d3 33.Qa6 Bb5 34.Qa1? e3
35.Rb1 e2 36.Bc5? d2 37.Kf2 Qe8
38.Be3 e1=Q 39.Re1 de=Q 40.Qe1
Rb2 41.Kg1 Rc2 42.O-1

From RUSSIA with LOVE



Chess Assistant 1.2

by NM Marc Lonoff

We have seen the German ChessBase, the Dutch New-In-Chess Base, and the American Bookup. Now welcome the Russian Chess Assistant! Where does another database program fit into the marketplace? Chess Assistant offers a combination of many features in one low cost program. The base program for \$195 includes: 1) an excellent 6000 game database, 2) full search and sort capabilities, 3) ability to enter your own games with variations and commentary, 4) ability to search for middlegame theme and pawn structure positions, 5) a full database tree search capability. 6) utilities for converting NIC and CB data into CA format. 7) a utility for finding duplicate games.

Beyond the base program CA is offering data galore with quantity discounts. For a \$10 flat fee plus \$.01 per game you can get a custom order such as all "CK and NI games since 1985" pulled from ICE's 325,000 game database. Or, you can buy 200,000 games

for \$800. If this seems stiff, keep in mind you are getting all the informant games as a 60,000 game subset of this massive database. The Informants alone currently cost more than \$1000 from ChessBase. For \$150 for 1993, CA will offer 15,000 new games from recent events. CB offers 12,000 for \$225 and so on. This comparison is a little misleading: CA data comes without annotations, while CB Magazine and the Informants on disc starting with INF43 offer annotated games.

ICE might offer the whole 325,000 game database for \$1,000. As an aside, it is hard to conceive of how big 325,000 games is. First, it takes up about 32MB of hard disk space. Second, if you played through games at a rate of six minutes each for three hours each day you would barely get through 10,000 games per year or more than thirty years for the lot. Needless to say, some of these games may be worthy of more than six minutes scrutiny, and some less.

Why would anyone want so many games? Good question. A large sample would provide more examples and allow a better selection of illustrative examples for researchers and teachers. For a postal player, more examples would mean more depth and detail for openings. ICE offers 100,000 games and 50,000 games in bargain lots as well.

Reasons not to buy CA. No product is perfect. Although I expect major improvements will come with versions 1.3 and soon 2.0, the current CA has a number of things to improve: 1) The board can only be seen from

white's viewpoint. A flip option should be added. 2) Mouse use is limited. You cannot scroll through a game or add variations with the mouse. CB is much better on this. 3) While you can input game moves with a mouse, addition of variations can only be done by typing in moves in algebraic notation. This limits usefulness for postal analysis. 4) The import utility does not bring in notations and variations from CB or NICB format. 5) There is currently no direct export utility from CA to CB or NICB which would make the CA data attractive for purchase by current CB/NICB users. 6) CA does not have other instructional materials in the pipeline. If you want to learn a particular opening you will still have to buy CB Access, CB author disks, and learn to use CB.

On the choice between NIC/CB/CA I will offer three observations. CB offers a more useful mouse interface (for the moment) and a number of value-added materials such as author disks, annotated Informants, and CB University courses. CA offers a refined program with high speed searches, a built-in tree and built-in position search along with data at a super-bargain price. NIC neither offers the best quality nor the best price for the database, but their Propackage subscription to the NIC-yearbooks, yearbooks on disk, and current tournaments is a good buy.

ChessBase: FRITZ 2.0 ChessBase marches on. Their improved version of Knightstalker (originally Fritz in Europe) has been released as Fritz2 in the United States. This program, running on a 486/33, reportedly scored nine wins and four draws in thirty-seven games against Kasparov in 5-minute chess, and four out of eight against Nunn. Considering that a 486/33 with monitor can be had for \$1500, you have yet another argument for taking the plunge into chess computing. I have not done a scientific study, but this program seems to find better moves than MChessPro. Fritz2 is far more user friendly, installs easily without copy protection, and can be used to read ChessBaseUniversity and other materials.

Looking at new features of Fritz2 vs. Knightstalker. First, it is possible to

handicap the program to make it play badly so you can beat it! Second, you can let the program color the attacked pieces (green if over defended, yellow if just defended, red if under defended or if a higher valued piece is being attacked by a lower valued piece). In this mode when you select a piece to move you also see which squares it can move to color-coded the same way. Third, the opening book seems more flexible and powerful. Fourth, the program uses expanded memory to create hash tables to speed up examination of transpositional lines and deepen endgame play. Fifth, an "analyze game" option automatically plays through the game and provides a suggested best line of play for each line.

RECOMMENDATIONS: My role as a reviewer of materials has obscured the main reason people buy chess materials: to improve at chess. While new wrinkles and products flow into the market most people would be best served by picking a single system, learning it well and using it. In the chess universe, ChessBase has the broadest offering of tools and utilities. A number of special features make it the top quality program. Even though CB may cost more initially, learning CB and sticking with it will be the best course for most players. Competitive sources of data, such as NIC or CA should be considered so long as the data can be unified into CB format.

In contrast to database products, chess playing software requires deliberate seeking of diversity. Becoming too familiar with a software opponent is not productive. Most programs, running on a fast machine, will give you a good speed chess game. I do not have the patience to play a computer at slower than game/30. Of programs on the market, the following are certainly worth buying: Fritz2, Zarkov, MChessPro, Knightstalker (a less expensive earlier version of Fritz), RexChess 2.3 and chess master 3000. I have not played the ChessMachine or other chess hardware. They may be strong, but their extra strength does not justify their extra expense.

Marc Lonoff, 2/1/93.

OAK PARK - RIVER FOREST CHESS CLUB NEWS

By Ken Marshall

Speed (Blitz) Championship

New OP-RF CC member Bob Hansen is the 1992 Club Speed Champion. Hansen, an Expert (2011) who joined the Club on November 24 (the night of the speed tournament), scored 10.5-.5 to win the 12 player round robin "game/5" event. Jim Lahvic finished second with an 8-3 result, followed by Peter Dudkowski at 7.5-3.5 and Gary Jochim at 7-4. Turnout was lower than in the past, perhaps because the tournament took place during Thanksgiving week. The event will be a week later in 1993.

USCF Action Tournament

Peter Dudkowski and Art Zacher each finished 3.5-0.5 to tie for first and

second in this four round Swiss, a 17 player "game/30" event held on December 8 and December 15. Robert Stoltz, Bill Buttny, and Guy Kittilsen (all 3-1) shared third, and also split the 1999-1700 prize. Below 1700 honors went to Mario Solano (2-2).

WBCA Tournament

Drawing only with each other, Al Chow and Jacek Grabiec both scored 7.5-.5 to top a nine man field in this January 19 single round robin tournament, which was sanctioned and rated by Grandmaster Walter Browne's World Blitz Chess Association. Jim McNamara (6-2) finished third. The 1999-1700 prize was shared by Peter Dudkowski and Wladyslaw Boguslowicz (each 4-4).



FREE T-SHIRT

PLAY IN THE
1993 MID-AMERICA CLASS
CHAMPIONSHIPS
MARCH 12-13-14 IN CHICAGO
AND
PLAY IN THE 1993 NATIONAL OPEN
JUNE 11-12-13 IN LAS VEGAS
AND RECEIVE A
MID-AMERICA OR NATIONAL OPEN T-SHIRT



FREE



ICA/WARREN JUNIOR CHESS PROGRAM PROGRESS REPORT

by Helen Warren

MAKING THE NEWS...

Two new schools are scheduled to begin participation within the next several weeks: Ben Franklin Elementary School (Carol Stream) and Visitation Grammar School (Chicago).

The next USCF Rating Supplement will again list the Top Fifty Juniors in specific age groups. We will scan this revised list for Illinois juniors new to the list to determine eligibility for master tutoring.

We estimate that the annual budget required for the maintenance of this program on its present level, i.e., without expansion of number of schools or individuals eligible for tutoring will be \$10,000. This program began in July 1992; present funds will guarantee its continuation until July 1993.

BENEFACTORS:

\$500 or more

ICA
Jim & Helen Warren
Fred Gruenberg
ACF-Fan Adams
anonymous
Bill Smythe

CONTRIBUTORS:

\$100-\$499

George Leighton	Fox Valley Chess Club
Irwin Rothschild	The Craggs Family*
NM Tom Cooper*	SM Richard Verber*
SM Peter Pelts	SM Eugene Martinovsky
James Tanaka	Steve Hansen
Al Losoff	Lou Werner
Crawford Labs	St. Charles Chess Club
Dan Pradt	Twp HS #214*
Mitch Sweig	American Chemco Ind.
Tom Knoedler	IL Math & Science Academy
APCT/Jim Warren (Book Donation)	Tim Bogan (Book Donation)

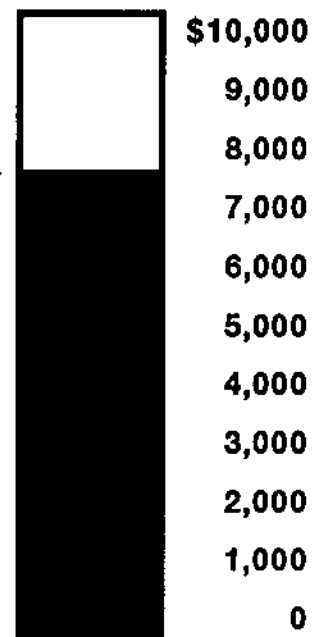
BOOSTERS:

\$1-\$99

Paul Cox	Jim McNamara
Todd Barre	NM Marc Lonoff
Tim Just	Scott Silverman
Tim Bogan	Harold Winston
Jack Wong*	Tony Sillars
Boris Minin*	Valery Gertsman*
Leonid Burda*	David Watson*
Marc Thomas*	Steve Arlinsky*
Salzmann Family*	Karen Cochran*
Marvin Rogan	Tony Jasaitis
John Marconnet	David Rockwell
William Dwyer	Pat Maurer
Steven Josephs	David Watson*
Fred Allsbrook	Roy Benedek
Anonymous	Glenbard H.S. West*
Evanston H.S.*	Len Spiegel
Chester Tom*	Ron Barber
Ken Palmer	Winton Fulk
John Cerminaro	

*Indicates student (or family) or teacher in the program.

TOTAL: \$7,815.89
as of 02/01/93





NICTM BASE

with
**ASCII IMPORT
and THEME
SELECTION**

Designed by
H. & N. Kuijf

NICBASE is the database system preferred by many masters and grandmasters, such as GM Jan Timman.

**MS-DOS
ATARI**

The Database from NEW in CHESS **NICBASE 3.0**

"this is one great product. Whether you are on the cutting edge of opening theory, enjoy playing through the games of the modern giants or the legends of chess history, NICBASE 3.0 is easy to use and a pleasure to experience." — **HANON W. RUSSELL** in USAT Chess Perspectives.

12 EXCITING NEW FEATURES

NICBASE 3.0 (with 2,000 games)
SUPPLEMENT (all games from YB 1-18)
33,400 TOURNAMENT GAMES 1988-1990
SPECIAL OFFER - shipping included for a limited time only.

5 POWERFUL NEW UTILITIES

\$175.00
\$130.00
\$410.00

**BUY ALL 3 NOW
& SAVE 20%
\$595.00**

Including Full NIC KEY 3.0
classifying over 14,600 positions
and 50,000 unduplicated games.

NICTOOLS (10 utilities) **\$125.00**

Specify MS-DOS 3.5" 5.25" ATARI

NEW: ANNOTATED DATA for NICBASE 3.0 from NEW IN CHESS

Special limited introductory offer: six 1991 tournaments **\$40.00**
Covering: Wijk aan Zee, Linares, Amsterdam, Candidates Matches, Reykjavic, Munich.

NEW: CONVERT CHESSBASETM DATA TO NICBASE 3.0-utility \$24.00

Orders and inquiries to:

CHESS COMBINATION INC. 2423 Noble Station, Bridgeport CT 06608-0423

CORRESPONDENCE CHESS

by Senior Master
Dr. Eugene Martynovsky

Boyd vs. Martynovsky

3rd North Atlantic
Team Tournament
9 Aug '90 - 30 Nov '92

1. g3 e5 2. Bg2 d5

The system I played against 1. g3 seems to be one of the best. First I play e5 then immediately d5, creating a powerful central duo. The game reminds one of a Pirc reversed with a minua tempo for Black; but Black aims only to equalize.

3. d3 g6 4. Nf3 Bg7

I played g6 and Bg7 to defend my vulnerable e5 pawn with the fianchettoed bishop. I think Black should have no problem equalizing.

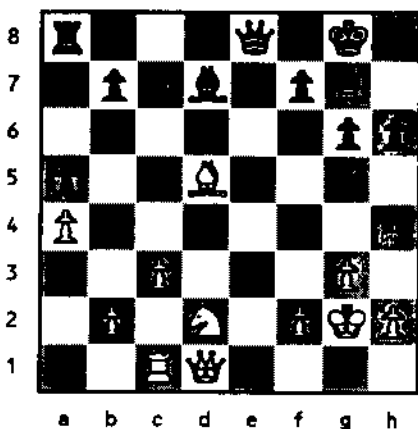
5. O-O Nc6 6. Nbd2 Nf6 7. e4 O-O
8. c3 a5 9. a4 Re8 10. Re1 h6
11. ed...

Instead, White should have played 11. b3, 11. Qb3 or, perhaps the best, 11. Qc2, with an equal game.

11...Nxd5 12. d4...

Better was 12. Qc2 or 12. Nc4

12...ed 13. Rxe8+ Qxe8 14. Nxd4
Nxd4 15. Bxd5 Ne2+ 16. Kg2 Nxc1
17. Rxc1 Bd7

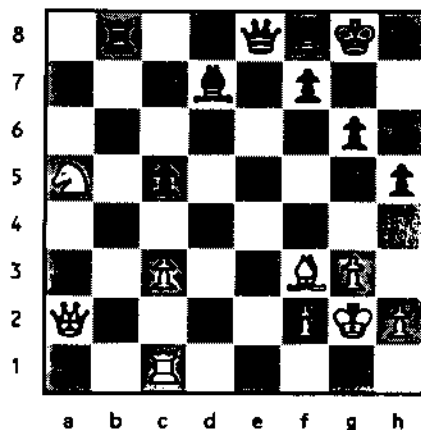


My opponent's 11. ed and 12. d4 resolved the central tension and the resulting position at move 17 is not in White's favor. It was close to equal but Black had a small advantage. If nothing else, he had 2 bishops!

18. Qb3! Rb8 19. Nf1 b5 20. Ne3 c6
21. Bf3 ba 22. Qxa4 Rxb2 23. Nc4!
Rb8 24. Nxa5 c5 25. Qa3 Bf8
26. Qa2 h5

The advantage I had after move 17 was not so great as I thought: My opponent played well, parrying all my plays on the queenside and utilizing the diagonal b3-f7 quite well for countershots. He managed to ac-

tivate his pieces, too, especially his knight. Still Black maintained his minimal advantage.



27. h4 Be6 28. c4! Rb6! 29. Rd1 Ra6
30. Qd2 Qa4

Between moves 17 and 30 White did something wrong. He misplaced his knight on a5 and did not solve the problem of re-deploying it. Perhaps 28. c4 was not good because after that move he started experiencing significant problems with his knight on a5 and his pawn on c4 (which he eventually lost). I played some good difficult-to-find moves to exploit White's weaknesses: 28... Rb6, 29... Ra6, and 30... Qa4. The last move needed lots of calculation and study to make sure the Queen had not gone too far to the right.

31. Nb7 Qxc4 32. Qe3 Bg4 33. Bd5
Qb5! 34. Rc1 c4!

The game was still far from over in spite of my winning a pawn. White had threats on my kingside and also threats to win my c pawn. He almost succeeded in doing the latter. It took some serious calculations and taking some risks on my part to hold onto the pawn, exploit the awkward position of White's knight on b7, not to allow the knight's activation, and to defend my kingside. When I played 34... c4! I had to make sure White did not win that pawn. I prepared, for example, 35. Qe4 Be6! 36. Bxc4 Bxc4 37. Rxc4 Re6!! and White must lose a piece!

35. Qg5...

Threatening Bxf7+, winning the queen.

35...Bf5

The perfect defence - also an attack on the bishop on d5.

36. Qd8 Ra7!

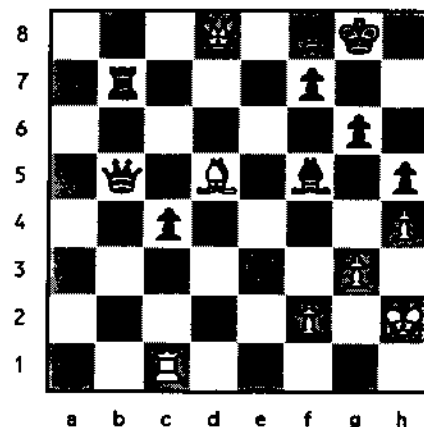
The winning move. White's knight on b7 is fatally clumsy.

37. Kh2...

Hoping for 37... Rxb7 38. Bxb7 Qxb7 39. Rxc4 and perhaps defending this posi-

tion with a rook vs. two bishops. But the pawns are all on the kingside.

37...Rxb7

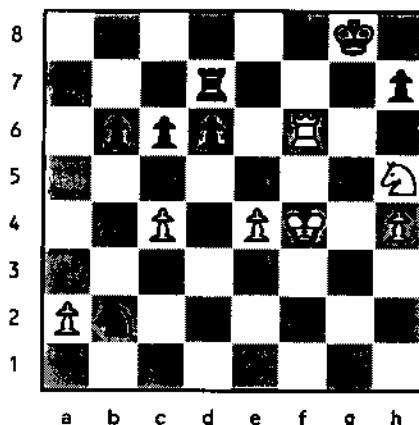


White resigned. He hadn't seen the continuation 38. Bxb7 Qxb7 39. Rxc4 Bh3!!

Martynovsky vs. Curt Carlson

8th MSCCC Finals
16 April '90 - 6 Nov '92

1. d4 Nf6 2. c4 e6 3. Nf3 b6 4. g3
Bb7 5. Bg2 Be7 6. Nc3 O-O 7. O-O
Ne4 8. Qc2 Nxc3 9. Qxc3 f5 10. b3
Bf6 11. Bb2 d6 12. Rad1 Qe7
13. Ne1 Bxg2 14. Nxc2 Nc6 15. Qf3
Qd7 16. Nf4 Rae8 17. d5 Nd8
18. Bxf6 Rxf6 19. de Nxe6 20. Nd5
Rf7 21. e3 g5 22. Qh5 Qd8 23. h4
gh 24. gh f4 25. Kh1 fe 26. fe Ref8
27. Rxf7 Rxf7 28. Rg1+ Ng7
29. Qg4 Kh8 30. Rg3 Qd7 31. Qxd7
Rxd7 32. Rf3 Ne6 33. Rf6 Nc5
34. Kg2 c6 35. Nf4 Kg7 36. Nh5+
Kg8 37. Kf3 a5 38. e4 a4 39. ba
Nxa4 40. Kf4! Nb2

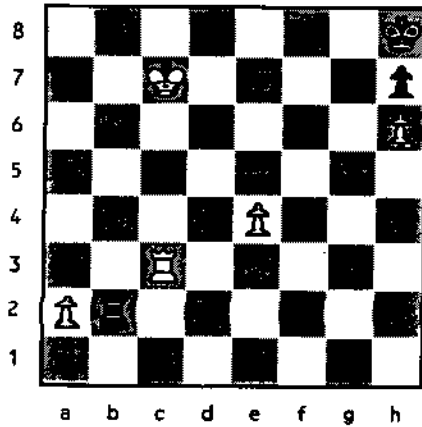


41. Kf5! Nxc4 42. Ke6 Ra7

With 40, 41 and 42 I boldly penetrated with my king into Black's territory and sac'ed a pawn for it.

43. Rf5 Ra8 44. Nf6+ Kh8 45. Rg5
c5 46. h5 Ne5 47. Rg2 c4 48. h6
Ng6 49. Kxd6 Rd8+ 50. Kc6 Rf8!
51. Nd5 Re8 52. Re2! Ne5+ 53. Kb5

Nd7 54. Nxb6! Rb8 55. Kc6 Nxb6
56. Kc7 Rc8+ 57. Kxb6 c3 58. Rc2
Rb8+ 59. Kc7 Rb2! 60. Rxc3...



My intuition and calculation seemed to have been correct and I was elated to be playing like Petrosian. Curt defended well, using his passed c-pawn. Some of his moves were unexpected and, I thought, not the best. When we reached this position I didn't think Curt (or, for that matter, Fischer in his younger days) could save the game.

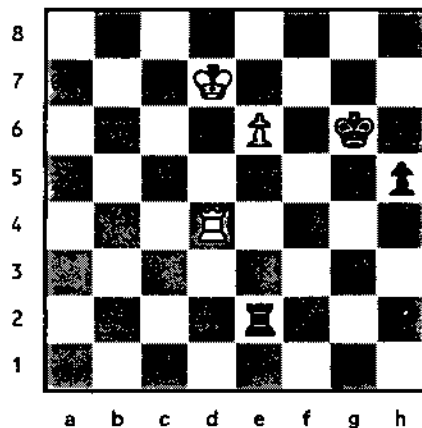
60...Rxa2 61. Kd7 Kg8 62. e5 Kf7!

But Curt performs a miracle! After his 62nd move, I wanted to play 36. e6+: His king is cut off and my pawn marches to e8 escorted by my king. But then I saw the defence 63...Kf6 64. Rf3+ Kg6 65. e7 Ra7+! 66. Kd6 Ra6+ 67. Kd5 Ra5+ 68. Kd4 Ra4+ 69. Ke3 Ra3+ 70. Ke2 (70. Kd4 Ra4+ 71. Kd3 Ra3+ 72. Kc4 Ra4+ 73. Rb5 Re4!)= Ra2 74. Kf1 Ra1+ 75. Kf2 Ra2+ 76. Kg3 Re2! =. Son of a gun!

63. Rf3+...

I attempted a different plan.

63...Kg6 64. Rf6+ Kg5 65. Rc6 Re2! 66. Ke6 Kxh6 67. Kf5+ Kg7 68. Rc7+ Kg8 69. Rd7 Rf2+ 70. Ke6 h5 71. Rd4 Kg7 72. Ke7 Re2 73. e6 Kg6 74. Kd7



Curt hangs on the brink of disaster and puts up a successful goal line defence - no touchdown! Here I offered a draw and my opponent accepted.

GUREVICH ANNOTATES

Two of his games from the U.S. Championship

Round 1

Dzindzichashvili-Gurevich

1. d4 Nf6 2. c4 c5 3. e3

At first Roman wanted to play "normal" 3 d5 but then opted for the system which doesn't promise White any opening advantage. It was going to be a long tournament and he probably decided to take it easy in the beginning.

3...g6 4. Nc3 Bg7 5. Nf3 O-O
6. Be2 cxd4 7. exd4 d5 8. O-O
Nc6

A well known theoretical position from the Tarrasch Defense with colors reversed. If it were Black to move his choices would be 9...Bg4, 9...Bf5, 9...Be6, 9...dxc4, and 9...b6. But White in this position naturally has an extra tempo. The usual move here is 9 h3 preparing g4, in case the Black bishop comes to f5.

9. Re1

It looks like a good move but I haven't seen it before. Surprisingly enough I couldn't find it in ECO either (D94/17).

9...b6?

Obviously the White rook stands better on e1 than on f1 and Black had to find a reply which would make White's Kings Rook position less relevant. 9...Be6 or 9...Bf5 would have equalized comfortably. But instead he chooses a move which makes White's Rook the most visual. What was I thinking? Basically nothing except that I am not playing for advantage so it's good enough. I attribute this unintelligent decision to my usual first round nervousness.

10. Ne5! Bb7 11. Bf3 Na5

With the idea 12. b4 Nxc4 13. Nxc4 Rc8, but White's response is much stronger.

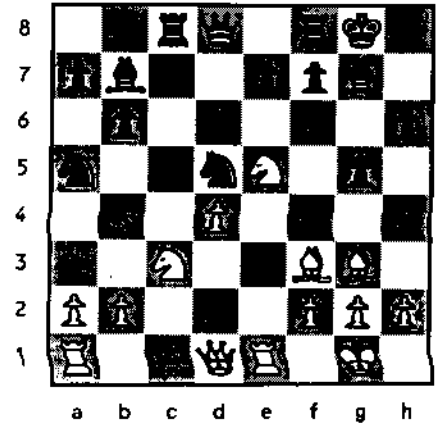
12. Bg5! h6 13. Bh4 Rc8

If the White rook were still on f1 Black would obtain a very good position just by playing 13...dxc4 14 Bxb7 Nxb7 but now it wouldn't be such a good option because of 15. Nc6 Qd7 16. Nxe7 Kh7 17. Qf3!

14. cxd5 g5

A necessary concession. If 14...Nxd5? then 15. Bxd5! Bxd5 16. Bxe7! Qxe7 17. Nxc6. But now Black's King side weakness is obvious.

15. Bg3 Nxd5



A very interesting position. I would also call it a very instructional one. At first glance Black is OK. He wants to play e6 and Nc4. If a few pieces will be exchanged (for example on the c4 and d5 squares) then the isolated d4-pawn becomes weak. The only problem - weak King's side, but how can White exploit it?

16. Bxd5!

It's very unusual to exchange bishop for knight

16...Bxd5

Now the bishop on d5 is "hanging" just for a moment. But it's all what White need to play

17. h4!

We can see another idea of Bxd5. The White queen is ready to jump on h5.

17...Nc4 18. hxg5 hxg5 19. Qe2!

Now what to do? Black certainly doesn't want to take on e5!

19... e6 20. Rad1

Just a few moves after the first diagram position and we can see that Black certainly does have a problem. For example 20...f6 21. Ng6 Re8 22. b3! Nd6 (22...Na3 23. Qb2!, or 22...Na5 23. Nb5!) 23. Nxd5 exd5 24. Ne7 and White is winning.

20...Nd6?

Dzindzi proves it to be a bad manoeuver but White was already better.

21. Nxd5 exd5 22. Qh5! Ne4 23. Bh2 Rc2

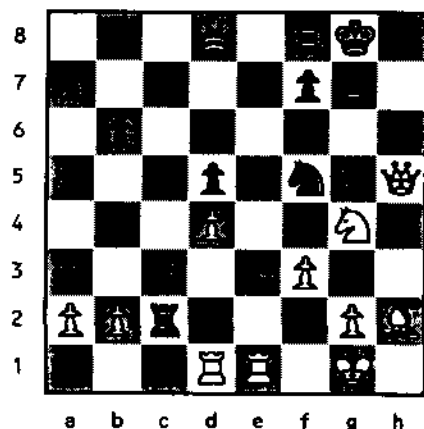
I had a bad feeling after this move and started calculating: 24. Rd3! Nxf2 (24...f6!?) 25. Rf3 Ne4? (25...f6!) 26Rh3! +- but Roman simply played:

24. f3! Nd6 25. Ng4!

I quickly responded with...

25...Nf5

and only then noticed my opponent's next move, which Dzindzi delivered right away:



26. Re5!!

And Black is lost. If 26. Bxe5? then 27. Bxe5 f6 28. Qg6 and 29. Nxf6. My little mistakes were exploited by Dzindzi's creative play. What a disappointment in the first round!

But having a bad position doesn't mean that you have to give up. Being caught off guard I had an intention to put up a good fight.

26...Qc8!

The only move. Not 26... Qd7? 27. Qxg5 f6 28. Qxf5

27. Qxg5 f6 28. Qxf5 fxe5 29. Qg5!

White an exchange down but it's Black who is on the ropes.

29...Qe6 30. Bxe5 Rf7

Here I had some hope. It looks like White wins easily with 31. Bxg7 Rxg7 32. Qd8+ Kh7 33. Qh4+ Kg8 34. Nh6+ Kf8 35. Qd8+ Qe8 36. Qf6 but I had prepared 32...Kf7! (instead of 32...Kh7?) 33. Ne5 Qxe5! 34. dxe5 Rgxf2 with perpetual check. However Dzindzhashvili dismissed my attempts with the not very obvious

31. Rc1!!

exchanging my only active piece. Now, they say, "The rest is a matter of technique". Let's see what it means!

31...Rxc1+ 32. Qxc1 Bxe5

It doesn't look right but Black can't tolerate the bishop on e5 either.

33. dxe5 Kg7 34. Qe3 Kf8

Black doesn't have an active plan.

35. Qg5 Rg7 36. Qf4+ Ke8

Not 36...Ke7 37. Qf6! but now

37. Nf6+ Kd8 38. Nxd5! Rf7

39. Qe4 Rd7 40. Nf6 Rc7

Black barely makes his time control move, but now he is totally lost.

41. b3 a5 42. f4 Qc6!

Black's only chance is to exchange queens

43. Qd4+!

But White isn't going to give it to him.

43...Kc8 44. Kh2!

Black has nothing against this plan.

44... b5 45. Ne4 Qh6+ 46. Kg3

Qg6+ 47. Ng5 b4 48. e6 Qf5

49. Kh4! a4! 50. bxa4 Qc5!?

I am sure White is winning after 51 Qxc5 but Dzindzi doesn't want to give me the slightest chance!

51. Qe4 Kd8 52. Qd3+ Kc8

53. Kh5! Qc6 54. Qf5 Re7

55. Qf8+ Re8 56. Qxb4

Black loses his last pawn but ironically that gives him his last opportunity.

56...Rh8+ 57. Kg6 Rg8+ 58. Kh7

Re8 59. Qb5?!

Black's only success in this game. I've gotten Dzindzi into a little trap.

Diagram 3

59...Rxe6!

Surprisingly enough 60 Nxe6? leads to a draw after 60...Qe4! 61. f5 Qh5+ 62. Kg7 Qh7+! with the eventual stalemate. I have to note that Black couldn't improve his plan with 59... Re7+ 60. Kg6 Rxe6+ because after 61. Nxe6 Qe4+ 62. f5, stalemate was no longer available for Black: 62...Qxf5+ 63. Qxf5 and 62...Qg4+ 63. Ng5

60. Qxc6+!

It was also possible to play 50. Qf5 Qd7+ 61. Nf7 and if 61...Rh6+? 62. Kxh6! +-

60...Rxc6 61. f5 Kd7!

I started getting some hopes here.

62. g4! Rc4 63. Nf7! Ke7

Now if 64. Nh6? then Kf6!

64. Ne5!

The game was about to be adjourned and Black had to seal his move. Just then I realized that the move I intended to make, 64... Re4, loses to 65. Kg7!! Rxe5 66. f6 Ke6 67. f7 Rg5 68. Kh6!. So I sealed

64...Rxa4

but lost anyway after

65. Kg7 Kd6 66. Nf7+ Kd5

67. Nh6 Ra7+ 68. Kg6 Ra6+

69. f6 Ke5 70. g5 Kf4 71. Kh5

Ke5 72. f7 Ra8 73. Kg6 1-0

This game was a good illustration of Roman Dzindzichashvili's creative style. We could only guess what would have happened if he went on playing full strength. But Roman didn't feel well in the Colorado mountains so he settled for many short draws, winning only one more game.

Round 4

D. Gurevich - I Gurevich

1. Nf3 Nf6 2. c4 g6 3. Nc3 d5

4. cxd5 Nxd5 5. Qa4+

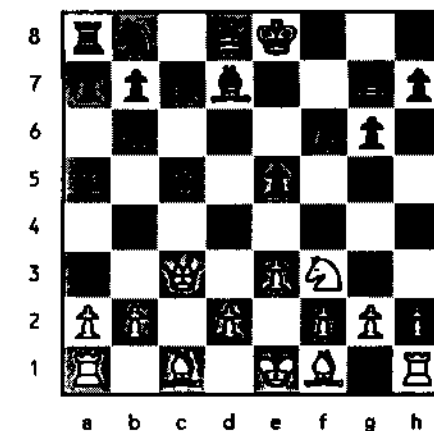
I played 5. e4 against Ilya in April in the Chicago International. After 5...Nxc3 6. dxc3 (6. bxc3!?) Qxd1+ 7. Kxd1, the position is about equal.

5...Bd7 6. Qh4 Nxc3 7. Qd4! f6

8. Qxc3 Bg7

Of course not 8...e5? 9. Nxe5!

9. e3 e5



This position already occurred once in the game of Zuzca Polgar. She played 10. d4 and after 10...e4 11. Nd2 f5 the game soon ended in a draw.

10. b4!

I think this is an improvement. The Position reminds one of the Sicilian with colors reversed.

10...e4?!

A very dubious reply. The normal move was of course 10...O-O +-

11. Nd4 f5 12. Rb1!

I think Ilya didn't see this when he made his 10th move, hoping for 11. Bb2 Nc6! 12. Qc4 Ne5! Now the immediate 12...Nc6? loses a piece so Black makes further concessions

12...Qc8?! 13. Qb3!

After this move Roman Dzindzichashvili (who already finished his game) made a comment to one of the spectators: "I wonder where he learned to play chess. Probably in forest! To make the fifth move with the Queen"! The only person it might work against is a guy with this kind of last name!"

13...e5

If 13...Nc6 then 14. Nxc6 Bxc6 15. b5 Bd7 16. Bc4 Also it's bad to give up the black-squared bishop with 13...Bxd4?

14. bxa5 Nc6 15. Nxc6 Bxc6

*I learned about this variation from GM Bagizov's book where he writes, "The Queen maneuver makes a strange impression." Both he and Dzindzi were joking, of course!

16. a6?

I think white could have won right here with the simple 16. Bb2! After 16... Qd7 17. Bxg7 Qxg7 18. a6 (now it works!) there is no good move for Black. If 18... bxa6? 19. Qe6+; 18...Rb8 19. Bb5!

16...bxa6 17. Bc4

(17. Bb2? Rb8)

17...Qd7 18. O-O Ba4! 19. Qb4 Bc2?

Black could almost get out of trouble with 19...a5! 20. Qc5 Qc6 but instead he once again gives White a winning advantage.

20. Qb7! Rd8 21. Qxa6

Threatening 22. Bb5

21...Bd3

Here I started playing badly. I kept thinking and losing time on the clock but at the same time making second-rate moves.

22. Ba3

(22. Bxd3!? exd3 23. Ba3)

22...Bxc4 23. Qxc4 Qf7 24. Qc2

(24. Rfc1!)

24...Be5 25. Rfc1 Qe6 26. Rb5

(with the idea 21 Rxe5)

26...Bd6 27. Qc6 Kf7 28. Bxd6

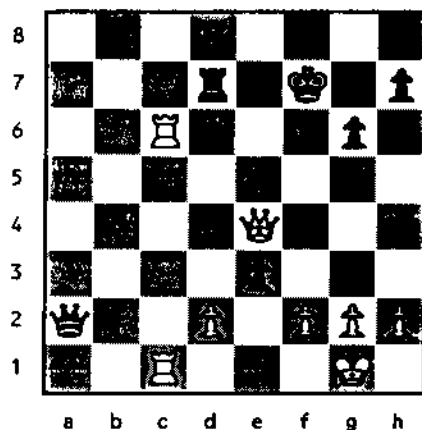
Rxd6 29. Qxc7+ Rd7 30. Qa5?

After 30. Re5! the game would be over.

30...Rhd8 31. Rb2 Qf8! 32. Rbc2

f4! 33. Qb4 Qe5 34. Rc5 Qe6

35. Rc6 Qxa2 36. Qxe4 fxe3



37. fxe3?...

A serious mistake in time pressure. I saw the correct move, 37. Qf3+! Kg7 38. dxe3, but couldn't count the consequences of 38...Rf8 39. Qg3 (not 39. Rf6?? Qb2! -+) Rd2. All I had to see was 39. Rbc2! Anyway I got scared and decided to make a "positional" move.

37...Rxd2 38. Rf1+ Kg8 39. h3?

39. Rc7! was the only try (39. Rc4? Rxc2+! =) and White is still much better.

39...Qd5! 40. Qxd5+ R8xd5

Passing the time control, but the position is already drawn. I wasn't too happy at that moment.

41. Rc7 Rd7 42. Rxd7 Rxd7

43. Rf3

White is still a pawn up and Black has to play accurately to achieve a draw.

43...Rd2 44. Kf1 Kg7 45. Rf2 Rd3

46. Ke2 Ra3 47. Rf4 h5 48. Kf3

Ra2 49. Rb4 Kf6 50. h4 Ke6

51. Rb6 Kf7 52. e4 Ra3 54. Kf4

Ra5 54. g3 Kg7 55. Rd6 Kf7

56. Rd5 Ra3 57. Rd4 Kf6 58. Rd1

Ke6 59. Rf1 Kf6 60. Rf3 Ra4

61. Rc3 Ra5 62. Rc6+

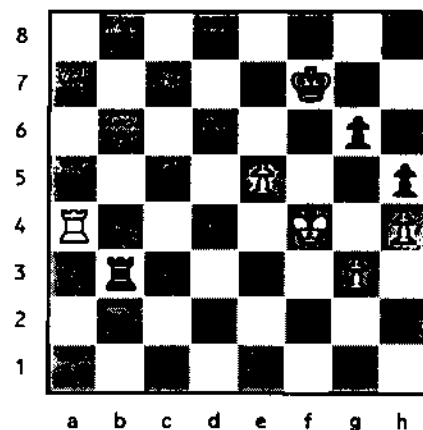
The game was adjourned at this move. Although White improved his position slightly, it's still a draw. That evening I thought I was not going to win a single game in the US Championship!

62...Kf7 63. Rd6 Rb5 64. Ra8 Rc5

65. e5 Rc3!

That's the trick. If now White plays 66. Kg5 Black responds with 66... Rxc3+ 67. Kh6 Rg4. And if 68. Ra7+ Ke6 67. Rg7, Black holds a draw with 67...Rc4 68. Kf3 Rg4. Note that if White pawns were standing on g4 and h5 and Black pawns on h6 and g7 it would have been a win for White, based on the game Botvinnik-Najdorf. But White has in his possession one more trap. Luckily Ilya allowed me to set it up.

66. Ra4 Rb3



In order to set a trap I had to play 67. Re4 Ke6 68. g4 hxg4 69. Kxg4 (it's still a draw!) Unfortunately on 68. g4 Black would have played 68... Rh3! 69. Kg5 Rg3! 70. Ra4 Kxe5 71. Ra5+ Ke6! 72. Kxg6 Rxc4+ 73. Kxh5 and Black draws easily. Instead I took a wild chance and unexpectedly was rewarded!

67. g4 hxg4 68. Kxg4 Re3 69. Kf4 Re1 70. Re4 Rf1+ 71. Kg4

Not 71. Kg5 Rf5+ 72. Kg4 (72. Kh8?? Rh5 mate) Ke6=. Now 71... Rf5?? loses to 72. Rf4 but 71... Rg1 draws immediately.

71...Ke6?

I couldn't believe my eyes. Now I was able to set a trap which I found in the

Averbach endgame book. Actually this position had already occurred a few times, the most famous case being in the game Bronstein-Zinn (colors reversed).

72. Kg5 Rg1+ 73. Rg4 Ra1

Not 73...Rxc4?? 74. Kxg4 Kxe5

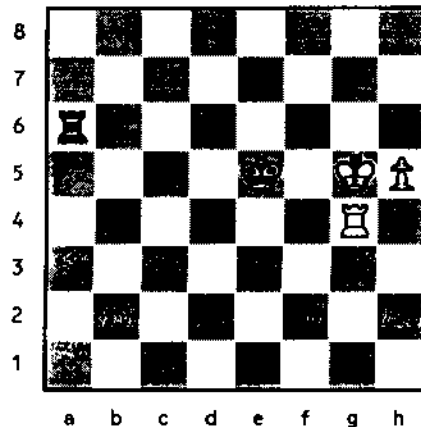
75. Kg5 +-

74. Kxg6 Kxe5 75. h5 Ra6+!

The only move. The trick is that after 75...Ra8? Black loses because of the bad location of his King: 76. h6 Rg8+ 77. Kh5 Rxc4 78. h7! +-

76. Kg5

I made this move and went for a walk.



What would you do if you were Black?

76...Ra8??

The losing move. The only drawing move is hard to find: 76... Ke6! 77. Kg6 Ke5+! Many players fall into this (including Zinn). So 76...Ra8?? didn't surprise me as much as 71...Ke6

77. h6 Ke6

Ilya saw that 77...Rg8 was bad but he thought that nothing was wrong with his move. However...

78. h7 Kf7

Ilya is a very emotional guy and you had to see him discovering the awful truth.

79. Ra4!...

Now if 79...Rb8 then 80. Ra7+ +- So Ilya decided to play for a while with the Rook against a Queen. But I was exercising after the adjournment... just in case!

79...Rxa4 80. h8/Q Ra5+ 81. Kf4 Rd5 82. Ke4 Rg5 83. Qh7+ Kf6 84. Qh6+ Rg6 85. Qf8+ Kg5 86. Qf4+ Kh5 87. Qh2+ Kg4 88. Qg2+ Kh5 89. Qh3+ Kg5 90. Ke5 Ra6 91. Qe3+ Kh4 92. Qe1+ Kg5 93. Qd2+ Kh4 94. Kf5 1-0

Chessplayers often think that Ilya is my relative because the name Gurevich is rare in America. But it's the Russian version of Horowitz and not so rare in the former USSR. For example, MIG stands for Mikoian and Gurevich (no kidding).

Gurevich Qualifies for Interzonals!

By National Master Alan Watson

The 1992 US Championship held December 2-19 at Durango, Colorado is over, and although Alex Sherzer held the lead all the way until round 14, it is Patrick Wolf we now crown as our new champion. Not to be forgotten, however, is the fine performance turned in by Illinois' own Dmitry Gurevich, whose nine points (7 wins, 4 losses, and 4 draws) earned him a tie for 4/5th place with Yasser Seirawan AND a berth in the next interzonal cycle. Congratulations Dmitry!

This month I would like to examine the opening he used to defeat Joel Benjamin's Grunfeld Defence in round 8. Those astute readers carefully reviewing this information will also note that he has used this same system in local tournaments, so beware!

First played by the East German Grandmaster Rainer Knaak in the 1970's, the variation occurring after the moves 1.d4 Nf6 2.c4 g6 3.Nc3 d5 4.cxd5 Nxd5 5.e4 Nxc3 6.bxc3 Bg7 7.Bb5+!? was always regarded as not promising, and did not begin to gain respectability until Dautov and Kramnik's numerous successes with it in the last several years.

So new and misunderstood that there is yet no firm consensus as to Black's best method of meeting this line, its largely unexplored nature quickly takes the game "out-of-the-books," and forces each player upon their own resources. Players considering adopting this variation are encouraged to study all theory carefully, as there are many unusual strategies and piece placements.

Dmitry Gurevich vs. Joel Benjamin

US Championship,
Durango (08), 1992
Opening: D85, Grunfeld Defence,
Dautov-Knaak Variation

1.d4 Nf6 2.c4 g6 3.Nc3 d5 4.cxd5
Nxd5 5.e4 Nxc3 6.bxc3 Bg7

(The main alternative to this move is the immediate thrust 6...c5, introducing a sharp theoretical game.)

7.Bb5+!? ...

(The Dautov-Knaak variation!)

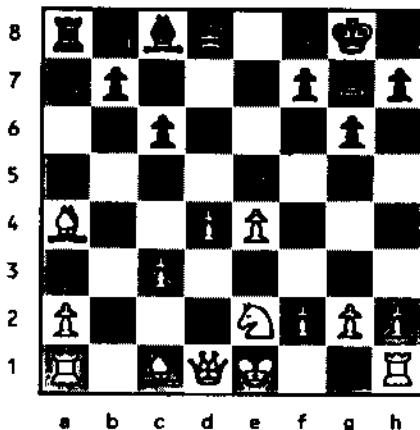
7...c6!

(Current theory regards this as critical, but 7...Nd7 and 7...Bd7 are also frequently played, and will be examined in illustrative games #1 and #2)

8.Ba4! 0-0

(White has scored well against the hyper-aggressive 8...b5, as shown by illustrative Game #3)

9.Ne2 e5!



(This manner of striking at the White center is much in favor, and gives this line a unique twist. Black's 9th move alternatives will be examined in illustrative Game #4)

10.0-0 Nd7

(Though 10...Nd7 is the most natural, Black has also experimented with other systems of development, i.e. a) 10...exd4 11.cxd4 Qe7 12.Qc2 a5 13.Bb3 Re8 14.f3 b5 15.a4 Be6 16.Bd2 Bxb3 17.Qxb3 b4 18.Rac1 Qe6 19.Rc4 Nd7 20.Rfc1 c5 += Kiselev-Karasev, Moscow ZSKS, 1992, b)10...Re8 11.Qc2 [11.f3 transposes to the main line.] Nd7 12.Be3 Qe7 13.Ng3 h5 14.f3 Nb6 15.Bb3 Be6 16.Rad1 Nc4 17.Bc1 Rad8 = Schlosser-Moh, Budapest Cansys, 1991 c)10...Qe7 11.Bc2 Rd8 12.a4 Be6 13.Ba3 Qe8! 14.Bd3 [14.Rb1 b6 15.h3 Nd7 16.h3 +=] Nd7 15.a5 Rac8 16.Rb1 b5 17.axb6 axb6 [Kramnik-Stohl, Chalkidiki 1992] 18.f4! exd4 19.Nxd4 += Kramnik, or lastly d)10...Qh4?! 11.f3! [The most accurate. Worse are 11.f4 <Too loosening!> exd4 12.cxd4 Bg4 13.Be3 Qh5 14.Rf2 c5 unc Savchenko-Odeev, USSR, 1991, or 11.Ng3 <Decentralizing!> exd4 12.cxd4 c5 13.e5 Rd8 14.f4 Rxd4 15.Qc2 Be6 16.Be3 Rc4 17.Qd1 Bxe5 18.fxe5 Rxa4 += Glek-Isoev, URS-chT Azov, 1991] Rd8 12.Be3 h6?! [12...Be6 13.Bb3, or 12...exd4 13.cxd4 c5 14.Qc1! Qe7 15.Qa3] 13.Qc1 Kh7 14.Bb3 exd4 [14...Qe7 15.dxe5 Bxe5 16.Bxh6 Bxh2+ <16...Qh4 17.Bf4> 17.Kxh2 Qh4+

18.Kg1 Qxh6 19.Qxh6+ Kxh6 20.Bxf7] 15.cxd4 Qe7 16.Rb1 b6 17.Rd1 Bb7 18.e5 Na6 19.f4 += Rajsikij-Odeev, Romania, 1991)

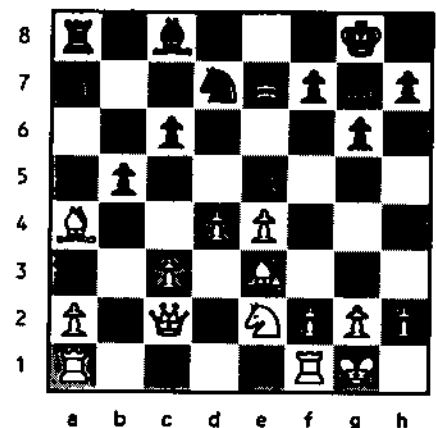
11.Be3

(White may attempt to deploy this bishop with the hope of deploying it on the a3-f8 diagonal by a)11.Bb3 Qe7 12.Qc2 exd4 13.cxd4 Re8 14.f3 b6 15.Rd1 Bb7 16.Bb2 Rac8 17.Qd2 += Mohr-Spiriev, Budapest Cansys, 1991, b)11.Ba3 Re8 12.Bb3 Nb6 13.f4 exd4 14.f5 gxf5 15.Ng3 Qh4 [15...dxc3?! 16.Qh5 Nc4 17.Rad1 Qb6+ 18.Kh1 Qb5 19.Nxf5 Bxf5 20.Rxf5 Ne5 21.Bxf7+ Nxf7 22.Qxf7+ 1-0 Shirov-Smejkal, BL1991-92] 16.cxd4 [16.Nf5!? Bxf5 17.Nxf5 Re4 18.Rxf7 Kh8 unc Ftacnik] f4 17.Nh5 Bg4 18.Bxf7+ Kh8 19.Nxg7 Bxd1 20.Nxe8 Bh5 21.Nd6 Bxf7 22.Nxf7+ Kg8 23.Nd6 Qf6 24.Rad1? 0-1 Pribyl-Smejkal, Pardubice 1992, or c)11.Rb1 Nb6 12.Ba3 Re8 13.Bb3 Be6 14.Bxe6 Rxe6 15.Qd3 Qe8 16.f3 Rd8 17.Rfd1 Kh8 += Ostojic-Orlov, Leningrad URS-JUG, 1991)

11...Qe7

(11...Re8 12.f3 Nb6 [12...Qa5 13.Bb3 Nb6 14.Qd3 Be6 15.f4 exd4 16.cxd4 Qb5 17.Qxb5 cxb5 18.e5 Rec8 19.Rfc1 Bf8 20.Ng3 Nc4 += Mohr-Lutz, Bundesliga 90/91] 13.Bb3 Be6 14.Bxe6 Rxe6 15.Qb3 Qc7 16.Rab1 Rb8 17.Rfd1 Nc8 18.Rd2 b6 19.Rbd1 Rd6 20.dxe5 Bxe5 21.f4 Bg7 22.Ng3 Rxd2 23.Rxd2 Nd6 24.e5 Nb7 25.Qa7 Draw! Soppe-Schmidt, Novi Sad, 1990)

12.Qc2 b5!?



(Perhaps a bit too loosening. Superior seems to be either a)12...Nb6 13.Bb3 Be6 14.Rad1 Nc4? [14...Kh8 15.f4 exd4 16.cxd4 Bb3 17.axb3 f5 Dautov] 15.Bc1 b5 16.f4 f6 17.dxe5 fxe5 18.f5 gxf5 19.exf5 Bd5 20.Ng3 Qh4 21.Rde1 with a sharp game Dautov-Beshukov, Bled, 1990, or b)12...Re8 13.Ng3 h5 14.f3 Nb6 15.Bb3 Be6 16.Rad1 Nc4 17.Bc1 Rad8 18.f4 exf4 19.Bxf4 h4 20.Nh1 Nd6 21.e5 = Schlosser-Mohr, Budapest Cansys 1991)

13.Bb3 Bb7 14.a4 a6 15.Rab1 Rac8 16.f3 Ba8 17.Qa2 exd4!? 18.cxd4 c5 19.axb5 axb5 20.dxc5

Nxc5 21.Qa3! Qe5 22.Ba2 Na4 23.Rfc1 Rxc1+ 24.Rxc1 Qb8 25.Qb3 Kh8 26.Qb4 Be5 27.g3 Bd6 28.Bd4+ Kg8 29.Qb3 Qb7 30.Qe3 Rd8 31.Qg5 Qe7 32.Bf6 Qa7+ 33.Kg2 Re8 34.Qxb5 Rb8 35.Qd3 Bf8 36.Be5 Re8 37.Rc7 1-0

White's delicate piece maneuvers are highly notable, and should be studied carefully!

Illustrative Game #1

Hoffmann-Fette, Groningen, 1991

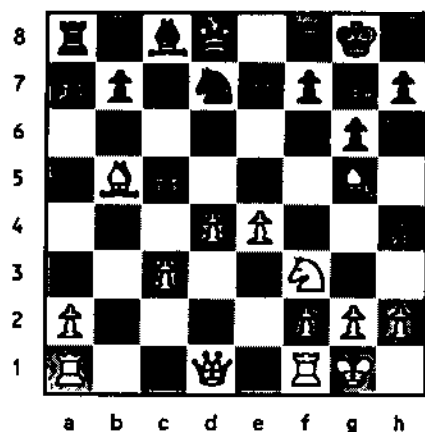
7...Nd7

(Voluntarily renouncing a potential Nc6 this early is regarded as somewhat passive.)

8.Nf3!

(More forceful than 8.Ne2 0-0 9.0-0 [9.h4 Uhlmann] a6 10.Bd3 c5 11.Bg5 b5 12.Rb1 [Too time consuming is the maneuver 12.Qd2 Bb7 13.Bh6 e5! 14.Bxg7 Kxg7 15.f4 f6 16.dxe5 fxe5 17.Rad1 Bc6 18.f5 Qe7 19.Qe3 Rad8 += Hegeler-Michaelsen, Hamburg, 1991] h6 13.Bh4 g5?! 14.Bg3 e5 15.a4 c4 16.Bc2 Qb6 17.dxe5 Nxe5 18.axb5 Bg4!? [18...axb5 19.Bxe5 Bxe5 20.Qd5 +-] 19.bxa6 Qa7 20.Rb5 Rad8 21.Rd5 +- Holm-Liebert, Aarhus, 1971)

8...0-0 9.0-0 c5 10.Bg5



(Dmitry's choice when confronted with this position at the 1990 US Open was a) 10.h3 cxd4 [10...Qa5 11.a4 Qxc3 12.Bd2 Qb2 13.Rb1 Qa2 14.d5 unc] 11.cxd4 Nc5 12.e5 a6 13.Be2 Ne4 14.Bd3 Nc3 15.Qb3 Nd5 16.Bd2 b6 17.Rab1 h6 18.Be4 Be6 19.Qd3 Qd7 20.Nh2 Bf5 21.f3 b5 22.Ng4 Kh7 23.a4 Rab8 24.Nf2 Rfd8 25.axb5 Rxb5 26.Rxb5 axb5 += Gurevich-Baquero, US Open, 1990, however there are other alternatives such as b) 10.Rb1 a6 11.Bd3 b5 12.Be3 Qa5 13.Qd2 cxd4 14.cxd4 Qxd2 15.Nxd2 Rd8 16.d5 += Dautov-Groszpeter, Lippstadter, 1991, c) 10.a4 (restraining the Black queen-side) Qc7 11.Re1 Rd8 12.Qb3 cxd4 13.cxd4 Nc5 14.Qa3 a6 15.Bc4 Bxd4 16.Nxd4 Rxd4 17.Ba2 Rd3 18.Qb4 a5 19.Qb1 b6 20.Be3 Ba6, with an apparent

Black advantage Sokolsky-Kamsky, Swift (Quick Play) 1992, or d) 10.Bd3 cxd4 11.cxd4 Nc5 12.Bc2 Bg4 13.Be3 Ne6 [A truly unusual maneuver!] 14.e5 Qa5 15.h3 Bxf3 16.Qxf3 Qc3 17.Qe4 Rfd8 18.Rfd1 Rac8 19.Bb3 Qb4 [Even such can no longer restrain White's activity.] 20.Bxe6! fxe6 21.Rab1 += Mohr-Van Mil, Budapest Cansys, 1991)

10...a6

(10...h6 11.Bf4 Nf6 12.Bd3 cxd4 13.cxd4 Bg4 14.Be5 Qa5 15.h3 Bd7 16.Qb3 b5 17.Rac1 Rac8 18.d5 += Lazarev-Fogarasi, HUN-chop Gyor, 1990)

11.Bd3 b6 12.Qd2 Bb7 13.Rab1 Rc8 14.Rfe1 Re8 15.h4 cxd4 16.cxd4 Nf8 17.Bh6 Bxh6 18.Qxh6 e5 Draw!

Illustrative Game #2

Dautov-Lucke, Garmisch Open 1991

7...Bd7

(Positionally well-motivated as the White KB is frequently very powerful in Grunfeld lines)

8.Be2

(White is advised against swapping B's unless he receives positional compensation from Black. Instead of the text, though, he has also tried many other ideas such as a) 8.a4 c5 9.Ne2 cxd4 10.cxd4 Nc6 11.Rb1 0-0 12.0-0 e6 13.Be3 Na5 14.Bd2 Bxb5 15.axb5 a6 16.Bc3 Nc4 17.bxa6 bxa6 18.Qd3 Na3 19.Ra1 Nb5 20.Bb4 Re8 21.Rfd1 += Arbakov-Kozlov, Moscow, 1989, b) 8.Rb1 0-0 [8...c5!? 9.Nf3 cxd4 10.cxd4 Bxb5 11.Rxb5 Qd7 12.Qe2 0-0 13.0-0 e6 14.Ba3 Re8 += Giuliani-Kilgour, Corr. 1990/91] 9.Ne2 a6 10.Bd3 [10.Bxd7+ Nxd7 11.Rxb7? fails to Nb6 trapping the rook!] c5 11.d5 b5 12.0-0 f5!? 13.c4 fxe4 14.Bxe4 Bf5 15.Bxf5 Rxf5 16.Nf4 bxc4 17.Qe2 Qd6 18.Qxc4 Nd7 19.Rd1 Bd4 20.g3 Nf6 21.Be3 += Silman-Paglietti, Philadelphia, 1990, c) 8.Bc4?! [Wasting a tempo, having drawn the Black QB to d7] c5 9.Ne2 Nc6 10.0-0 0-0 11.Be3 Rc8 12.Rc1 [12.dxc5 Ne5! 13.Bd5 Ng4! 14.Bf4 Rxc5 15.Bxb7 Bb5 += Uhlmann] e6 13.Qd2 [Knaak-Uhlmann, Leipzig, 1973] a6! 14.Bh6 Bxh6 15.Qxh6 b5 16.Bd3 cxd4 17.cxd4 Qb6 18.Qe3 e5! +=, or d) 8.Bxd7+?! Qxd7 9.Nf3! c5 [Wild is 9...Qg4 10.Qe2!? <surely 10.0-0 Qxe4 11.Re1 also retains compensation!> Qxg2 11.Rg1 Qh3 12.Qb5+ Nd7 13.Rg3 Qe6 14.Qxb7 Rb8 15.Qxc7 Qxe4+ 16.Kf1 Qa8 17.Ba3 Rc8 18.Qa5 Bf6 19.Re1 Nb6 20.Bc5 0-0 21.Bxe7 Bxe7 = Hauchard-Kouatly, France, 1991] 10.0-0 cxd4 11.cxd4 Nc6 12.Be3 0-0 13.d5 [13.Rc1 Rfc8 14.Qd2 b6 15.Rc2 e6 16.Rfc1 Ne7 = Kashdan-Alekhine, London 1932] Na5 [13...Nb4 14.Bd4 Bxd4 15.Nxd4 Rfc8 16.Qb3 Na6 17.Rab1 Nc5 18.Qe3 Na4 19.Rb3 Rc4 20.Qh6 Nc3 21.Re1 Rac8 0-1 Hegeler-

Dvoiry, Gausdal, 1991] 14.Bd4 Rfc8 15.Bxg7 Kxg7 16.Qd4+ Kg8 17.Rad1 Rc4 18.Qe3 Qa4 19.Rfe1 Rac8 20.e5 b6 21.e6 f6 22.d6! exd6 23.e7 Re8 24.Rxd6 Kg7 25.Nd4 Qb4 26.Rd8 Rc3 27.Ne6+ Kf7 28.Qh6 1-0 Gligoric-Zakic, JUG-tch, 1991)

8... c5 9.Nf3 cxd4

(Failing to exchange c-pawns does not help Black. 9...0-0 10.0-0 Nc6 11.h3 Qc7 12.Bg5 Rfd8 13.Rc1 Be8 14.Qd2 Na5 15.Qe3 b5 16.Rfd1 cxd4 17.cxd4 Nc4 18.Bxc4 bxc4 19.Qa3 += Khenkin-Neveerov, Voskresensk, 1990)

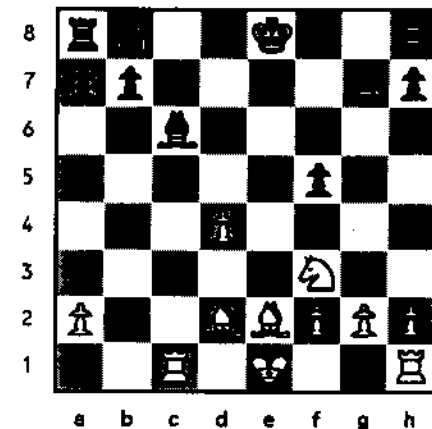
10.cxd4 Bc6!?

(If Black desires to treat the position more normally than the "inspired" text, he may instead choose a) 10...Qa5+ 11.Bd2 Qa4 12.0-0 0-0 13.Qxa4 Bxa4 14.Rab1! [14.Rfc1 e6 15.Rab1 Draw! Kramnik-Groszpeter, Dortmund, 1992] e6? [14...b6 15.Rfc1 +=] 15.Rxb7! Bc6 16.Rc7 Bxe4 17.Ng5 Bd5 18.Bb4 Rd8 19.Bb5! [19.Nxf7 Rd7 20.Rxd7 Nxd7 21.Ne5 Nxe5 22.dxe5 Bxa2] a6 20.Ba4 a5 21.Be7 Na6 22.Bxd8 Rxd8 23.Ra7 += Kramnik-Lputian, Dortmund, 1992, or b) 10...0-0 11.0-0 Bg4 12.Rb1 Bxf3 13.Bxf3 Bxd4 14.Rxb7 Na6 [14...Nc6 15.Qa4 Qd6 16.Rb5 Giuliani-Kristinson, Corr. 1990/91 Be5 17.Rd5 Qf6 18.Be3 Rab8 += Giuliani] 15.Bg5 Nc5 16.Bxe7 Bxf2+ 17.Kxf2 Qxd1 18.Rxd1 Nxb7 19.e5! += Dautov-Korsunsky, Leningrad, 1989)

11.Qd3 f5!?

(Chopping again at the White center. Delaying adds nothing, i.e., a) 11...Na6 12.Rb1 f5 13.exf5 Qa5+ 14.Bd2 Qxf5 15.Qxf5 gxf5 = Dokhoian-Mikhailchisin, Klaipera 1988, or b) 11...Nd7 12.Rb1 f5 13.Qb3! [Threat 14.Ng5] Qb6 14.exf5 Qxb3 15.Rxb3 gxf5 16.Ng5 Nf6 17.Bb5 Nd5 18.Bxc6+ bxc6 19.Rf3 Bxd4 20.Rxf5 Bc3+ 21.Bd2 Bxd2+ 22.Kxd2 Rb8 23.Rc1 Rb2+ 24.Rc2 Rxc2+ 25.Kxc2 Kd7 26.a3 += Levin-Ernst, Groningen, 1991)

12.exf5 Qa5+ 13.Bd2 Qxf5 14.Qxf5 gxf5 15.Rc1! ...



(Playable is also 15.0-0 Bd5 16.Ne5 0-0 17.Rfd1 Nc6 18.Nxc6 bxc6 19.Bf4 c5 20.Be5 cxd4 21.Bxg7 Kxg7 22.Rxd4 e6 = Nikolaev-Berebora, HUN-chop Gyor, 1990)

15...Bd5

(15...Nd7 16.Bc4)

16.Rc5 ...

(16.Bc4 Bxf3 17.gxf3 Nc6 18.d5 Nd4 19.Be3 Rc8 20.0-0 Kd7 21.f4 b5 22.Bd3 Kd6 23.Rfd1 a6 24.Rb1 Rc3 25.a4 Rb8 26.axb5 axb5 27.Rb4 Nc2 28.Bxc2 Rxc2 29.Rdb1 Kxd5 30.Rxb5+ Rxb5 31.Rxb5+ Ke6 32.Kg2 Rc4 33.Kf3 Draw! Aseev- Mikhalchishin, Brno-B, 1991)

16...e6 17.Bc4...

(17.Rc7 0-0 18.0-0 Nc6 19.Rxb7 Rab8 20.Rxb8 Rxb8 21.Bc3 Bxa2 22.Ne5 Rc8 23.Ra1 Bd5 24.Ba6 Rc7 25.Bb2 Nb4 =+ Yakovich-Wegner, Belgrade, 1991)

17...Bxc4 18.Rxc4 Nc6 19.0-0 0-0

20.Rb1 Rf7 21.Re1 Rd7 22.Rxe6 Nxd4 23.Nxd4 Bxd4 24.Bf4 Kf7 25.Re1 Re8?!

(25...Rg8! 26.g3 Rg6 27.Kg2 Rc6 =)

26.Rxe8 Kxe8 27.g3 Bb6 28.Kg2

Kf7 29.Rc3 Bd4 30.Rd3 Ke6 31.Kf3 b5? 32.Be3 Ke5 33.Ke2 a6 34.h4 Rd5 35.Bf4+ Ke6 36.Ra3 Rc5 37.Rxa6+ Kf7 38.Be3 Rc2+ 39.Kd3 Bxe3 40.Kxc2 Bxf2 41.Ra3 Kg6 42.Kd2 b4 43.Rf3 1-0

Illustrative Game # 3

Gleizerov-Jasnikowski,
Pardubice op, 1992

7...c6 8.Ba4 b5!?

(This line strikes immediately at the heart of White's center, by undermining the c3 pawn.)

9.Bb3 ...

(Insufficiently active is 9.Bc2? b4 10.Bb2 bxc3 11.Bxc3 c5! [11...0-0 12.Ne2 Ba6 13.Bd3 Bxd3 14.Qxd3 e5 <14...c5 15.d5; Bukhman> 15.Rd1 exd4 16.Bxd4 Qa5+ 17.Qc3 Qxc3+ 18.Nxc3 =+ Bukhman-Luecke, Budapest, 1989] 12.Ne2 cxd4 13.Ba4+ Bd7 14.Bxd7+ Nxd7 15.Bxd4 Qa5+ 16.Qd2 Qxd2+ 17.Kxd2 0-0 = Flacnik-Krasenkov, Vienna, 1990)

9...b4

(Consistent with 8...b5, but Black may also consider a)9...Bb7 10.Nf3 e6 11.0-0 0-0 12.Ba3 Re8 13.Qe2 Nd7 14.Rad1 Qa5 15.Bb4 Qc7 16.Rfe1 Rad8 17.Ba3 Qa5 18.Bb4 Qc7 19.Ba3 a5 20.Bc1 h6 =+ Holm-Hort, Gloggnitz 1971, or b)9...a5 10.Qf3!? [10.Nf3!?, or 10.Ne2 a4 11.Bc2 0-0 12.0-0 e5 13.Ba3 Re8 14.Qd2 Be6 = Knaak-Pribyl, GDR-Czechoslovakia, 1972] 0-0 11.Ne2 a4 12.Bc2 e5 13.Ba3 Re8 14.0-0 Nd7 15.Rfd1 Nb6 16.Bd3 exd4 17.cxd4 Qh4 18.Rac1 =+ Robatsch-Banas, Trnava, 1987)

10.Ne2 ...

(More dynamic than either a)10.Bb2 bxc3 [10...Na6 11.Ne2 0-0 12.0-0 c5 13.Rc1 Bb7 14.d5 Rc8 15.Bc4 Qb6 16.Nf4 Nb8 17.Qe2 Ba6! =+ Knaak-Gheorghiu, Bucharest 1973] 11.Bxc3 c5 12.Ne2 cxd4 13.Ba4+ Bd7 14.Bxd7+

Nxd7 15.Bxd4 Qa5+ 16.Qd2 Qxd2+ 17.Kxd2 0-0 18.Rhd1 Ne5 19.Rab1 Rab8 20.Rxb8 Rxb8 21.Bxa7 Ra8 22.Bd4 Draw! Ftacnik-Krasenkov, Vienna, 1990, or b)10.Be3 bxc3 11.Rc1 Ba6 [11...Qa5] 12.h4?! [Simply too speculative!] Nd7 13.h5 c5 14.hxg6 hxg6 15.Rxh8+ Bxh8 16.Qf3 e6 17.0-0-0 =+ Soppe-Nevevov, Capablanca mem, 1991)

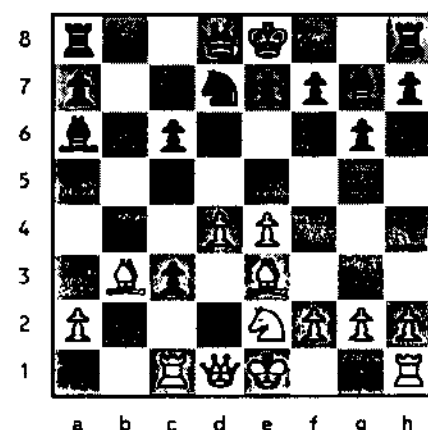
10... bxc3 11.Be3 ...

(11.0-0 Ba6 12.Be3 e5! unc)

11.Ba6 ...

(As every tempo counts here, less accurate is 11...0-0 12.Rc1 Nd7 13.e5 c5 14.e6! fxe6 15.0-0 Ba6 16.Bxe6+ Kh8 17.d5 Ne5 18.Rxc3 Bxe2 19.Qxe2 Nf3+ 20.gxf3 Bxc3 21.Bxc5 Qc7 22.Qe3 =+ Kiselev-Krasenkov, Moscow, 1992)

12.Rc1 Nd7!



(Delaying this knight's development is shown by a)12...0-0?! 13.Rxc3 Qa5 14.Qd2 Rd8 15.Rc2 Qxd2+ 16.Kxd2! Nd7 17.Rxc6 Bb7 18.Rc7 Bxe4 19.f3 Bf5 =+ Dautov-Ftacnik, Muenchen op, 1990, or b)12...Qa5 13.Nxc3 [13qc2! Ftacnik] Nd7 14.Qd2 0-0 15.Ne2 Qxd2+ 16.Kxd2 c5 [16...Rfd8!?] 17.dxc5 Ne5 18.Nc3 Rfd8+ with an attack for the sacrificed material Schlosser-Zakic, Budapest Cansys, 1991)

13.e5! Nb6

(Worth consideration is 13...e6! 14.Nxc3 c5! 15.f4 cxd4 16.Qxd4 Bb7 17.Kf2 0-0 [Kiselev-Krasenkov, Katowice 1992] 18.Rhe1! =)

14.Nxc3 0-0 15.Ne4 Nd5 16.Nc5 Nxe3 17.fxe3 =+

Illustrative Game #4

Gurevich-Collas,
Illinois Open, 1990

7...c6 8.Ba4 0-0

(Continuing development in this fashion prepares a more standard assault against the White center)

9.Ne2 c5!?

(Intending 10...Nc6. Also seen have been a)9...b5 10.Bb3 Bb7 11.0-0 c5 12.d5 [12.f3 b4!?] Nd7 13.Bg5 h6 14.Be3 Qc7 15.Qd2 Kh7 16.Rac1 Nf6

17.f3 Rfd8 18.c4 e6 19.Rfd1 += with a powerful center Hjartarson-Popovic, Manila izt, 1990, and b)9...Be6 10.Bb3 Bxb3 11.axb3 c5?! [Not Quite correct!] 12.dxc5 Qd1+ 13.Kxd1 Na6 14.Be3 Rfc8 15.Ra5 Nb8 16.Kc2 Nc6 17.Ra4 + Sakaev-Sobolewski, Leningrad, 1990)

10.0-0 Nc6

(10...cxd4 11.cxd4 Bg4 12.f3 Be6 13.Be3 Bc4 = Peev-Steane, Lublin 1975, or 10...Bd7 11.Rb1 cxd4 12.cxd4 b6 13.Be3 Nc6 14.Bb5 Na5 15.Ba6 Bc8 16.Bd3 Bb7 17.d5 Rc8 18.Qa4 e6 19.Rfd1 exd5 20.Bb5 Bc6 21.Bxc6 Rxc6 22.exd5 =+ Boissonet-Amura, Buenos Aires, 1991)

11.Be3 cxd4

(To be considered are a)11...Na5 12.Rb1 cxd4 [More appropriate now that the White QR is committed to b1] 13.cxd4 b6 14.d5 e6 15.Bd2! Ba6 [15...exd5?] 16.Bxa5 bxa5 17.Bc6 Ba6 18.Bxa8 Qxa8 19.exd5 Rd8 20.Re1 Rxd5 21.Qb3 +=] 16.Bb4 exd5 17.exd5 Bc4 18.Bxf8 Bxf8 19.Rb2 Qxd5 20.Qxd5 Bxd5 21.Rd1 Bc4 22.Nc1 b5 23.Bc2 a6 24.Nb3 Nc6 25.Be4 =+ Dautov- Labunsky, Leningrad, 1989, or b)11...Qc7 12.Rc1 e6 [12...Rd8?! 13.Qc2 a6 14.Bxc6 bxc6 15.dxc5 Be6 16.Qa4 Rdb8 17.Rb1 Rb5 18.Nd4 Bxd4 19.cxd4 Rab8 =+ Bern-Swidler, Gausdal Arnold Cup, 1991] 13.Bf4 Qe7 14.Qd2 Bd7 15.dxc5! e5 16.Bg5 f6 17.Be3 Be6 18.Bb3 Rad8 19.Bd5! Kh8 20.c4 + Kramnik-Moutousis, Oakham, 1992)

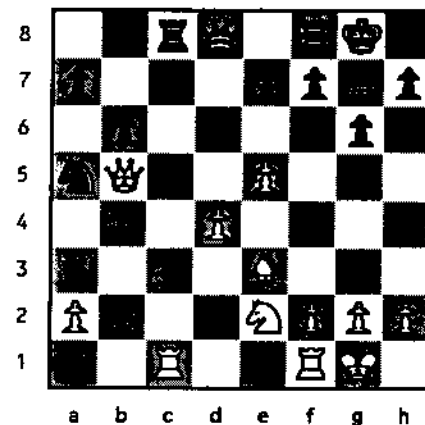
12.cxd4 Na5

(12...Bg4 13.f3 Bd7 14.Rc1 Rc8 15.d5 Ne5 16.Qb3 Bxa4 17.Qxa4 Qd7 18.Qxd7 Nxd7 19.Bxa7 Ra8 20.Bd4 Rxa2 21.Bxg7 Kxg7 22.Nf4 =+ Dragomarezkij-Rudolf, Warsaw, 1992)

13.Rc1 b6 14.Qd3 Bd7 15.Bb5!

Bxb5 16.Qxb5 Rc8 17.e5 ...

(Shutting out the Bg7. With both his minor pieces out of play and White in control of the c-file, Black's game is already difficult.)



17...e6 18.h3 Qe8 19.Qa6 Qd7 20.Ng3 Qb7? 21.Qxb7 Nxb7 22.Ne4 Rfd8 23.Bg5 Rxc1? 24.Rxc1 Rb8 25.Rc7 Bf8 26.Nf6+ 1-0



GREATER PEORIA OPEN

March 27-28
1993

**Grand Prix & Maxi Tour Event
Two Sections
All Prizes Guaranteed**

**OPEN: 1st \$300 & 10 G.P. points, 2nd \$200, 3rd \$100, U/2000 \$150, \$50
RESERVE (Under 1800) 1st \$150, 2nd \$75, C: \$75 \$50, D/below \$75 \$50**

5 Round Swiss, 40/100, 15/30, SD/30

SITE: Signature Inn, 4112 N. Brandywine Drive, Peoria, IL 61614, (309) 685-2556 (Take I-94 to War Memorial Drive, east exit). Rooms \$48 Single, Double or Triple.

REGISTRATION: Saturday, March 27 from 8:30-9:30 a.m.

ROUNDS: March 27 - 10, 2:30, 7, March 28 - 9:30, 2:30.

ENTRY FEE: \$27.50 if postmarked by March 16, \$30 if postmarked by March 22, \$35 at the site.

ENTRIES TO: Bill Wilkinson, 905 N. Rebecca Place, Peoria, IL 61606, (309) 676-9455.

MEMBERSHIP: ICA membership required (Regular \$14, Junior \$8).

PLUS: Complimentary coffee, soft drinks and other treats. A complimentary official U.S.C.F. crosstable will be mailed to you at your request.

1. Minutes of June 14, 1992 Board meeting approved.
2. Officers' Reports: a. President Losoff: ICA in good shape; membership up; 151 players, \$700-\$800 profit on IL Open; Proposed list of USCF delegates and voting members discussed; b. Renaut for Metro VP Fineberg: Calendar report and discussion (including problems with conflicting tournaments); c. Treasurer Lonoff: Anticipate having \$11,500 in ICA treasury at end of 1992, \$1,000 more than at end of 1991; d. Membership Secretary Lonoff: Membership has increased to about 650; e. Secretary Marshall: Valid nominating petitions received from 5 candidates (one for each ICA office); ballots will be mailed in ICB
3. ILLINOIS CHESS BULLETIN: Editor Kreckler: 32 pages maximum from now on; Verber new junior

chess editor; looking for new games editor; discussion re last and upcoming issues; Editor's salary increased from \$300 to \$400 per issue, expense account increased from \$150 to \$200 per issue

4. ICA Illinois Tour: Tour Statistician Smythe: Tour changes discussed and approved; prize fund increased from \$1300 to \$1500; maxi-tour event must be at least a two-day event of at least four rounds AND must offer minimum cash prizes as follows: a) if prizes are awarded by place, \$500 minimum total guaranteed; b) if prizes are awarded by score, the sum of the prizes for each score must be at least \$500 in at least one section of the tournament (Effective 5/1/93)
5. Top 50/ICA/Warren Tutorial Program reviewed and discussed
6. Other Junior Chess Items Discussed:

10/24/92 Scholastic Clinic; ICA working with Illinois Chess Coaches Association

7. 1994 U. S. Open discussed
8. New Business: review of ICA election procedures; Bylaw Amendments passed re junior ICA memberships, Patron dues, notice re nominations and elections, and election procedures; Half Price Entry Fee for ICA Junior Members at ICA Sponsored Tournaments [NOT ALL TOUR EVENTS] approved; ICA to offer \$500 to encourage organizer to run IL Tournament of Champions; ICA Banquet to be in 2/93 or 3/93 Respectfully submitted,

Ken Marshall
ICA Secretary

[Complete minutes (eight typed pages) available from ICA secretary by request]

Midwestern Chess Adventures

of Chicago (MCAC) by Christopher Baumgartner

January 15th, Friday

The "ELBO ROOM", located at 2871 N. Lincoln Ave. in Chicago, was the site of the first of many Friday night BLITZ tournaments and COFFEE HOUSE type chess events. This is a beautiful site and we strongly encourage all chess enthusiasts to attend the next event. And now the tournament...There were 20 players ranging in strength from near 2400 to unrated. Masters Albert Chow (2381), George Umezina (2351), and Rhine (2212), as well as, Dudkowski (2012), Steve Tennant (2351), and Fagan (2320), won their sections and went on to play a winner takes all six man quad. Chow won clear first, while Umezina, Tennant, and Fagan tied for second place. Dwayne Falls (1787) took top U/1800 and Edward Alfonso (Unr) took top U/1600. This was a G/5 event with Christopher Baumgartner directing.

January 16th, Saturday

This 40/60, SD/30, 4SS Mini Tour was held at Northwestern University in Evanston. The tournament attracted 51 players - A RECORD!! Senior Master Peter Pelts (2424) took home \$100, Chow (2357) \$50, Dudkowski (2021) \$50, Cohen (1908) \$50, Hurchalla (2045) \$25, Lahvic (2008) \$25, Mayka (2003) \$25, Shernoff (2002) \$25, Schultz (1909) \$25, Rowland (2134) \$12, Pederson (2000) \$12, Johnson (1692) \$12, Venske (1691) \$12, Raczkiwycz (1268) \$12. 10 Players attended the G/10 tournament after the main event. Chow won first, while Hurchalla, Cohen, Chan, Venske and Backstrom tied for second. Mark Raczkiwycz was the lucky winner of Informant #55! Special thanks go out to Mike Henroid, President of the N.U. chess club, for procuring the site and Bill Smythe for directing. Christopher Baumgartner organized and assisted

in directing.

Last but not least, I want to introduce you to some of the members of MCAC: Albert Chow, Might Know, Gregory Hicks and Dean Arnold. These gentleman have been instrumental in a lot of the work MCAC is doing, THANKS GUYS!

FIDE MASTER
ALBERT CHOW
is available for
LESSONS
LECTURES
SIMULS
312-248-8976



Chicago Public Library's Rudy Lozano Branch Chess Club Members. (From left to right): Miguel Camargo (with gray sweatshirt), Fernando Montoya, chess coach Hector R. Hernandez, Jose Montoya and Isidro Simental (with long sleeved white shirt); display trophies earned in recent events.



**Midwestern
Chess Adventures
of Chicago**

presents

Blitz/Fast Chess at the

EQUINOX CAFE

every Wednesday

2300 N. Lincoln Ave, Chicago

See Chess Life or the ICB for details on our upcoming events, April 24, 25, May 8.

We are now an official distributor of Inside Chess!

BOOKS FOR SALE

For Information call: Christopher L. Baumgartner at (312) 871-2148 or Albert Chow at (312) 248-8976.

**GRANDMASTER
Dmitry Gurevich**

is available for:

**LESSONS
LECTURES
SIMULS**

Call

312-486-8051

1993 ILLINOIS TOUR RULES

by Bill Smythe ICA Tour statistician

The Illinois Chess Association Tour is an annual, year-long series of USCF-rated tournaments offering Tour points to participants and year-end cash prizes to the top performers in each of several rating classes. This year, some changes have been made in the way Tour points will be calculated.

There are two types of Tour events, maxi- and mini-. Major tournaments such as the Tim Just Winter Open, Greater Peoria Open, Mid-America Class, Chicago Open, and Illinois Open are likely to be maxi-events, while others (often one-day tournaments) will be mini-events.

Tour points are awarded in seven rating classes: Master (2200 and up), Expert (2000-2199), Class A (1800-1999), Class B (1600-1799), Class C (1400-1599), Class D (1200-1399) and Class E (below 1200).

Players earn Tour points according to score. Maxi-events award twice as many points as mini-events. For a perfect score in a maxi, the award varies from 28 in a four-round tournament to 40 in a seven-rounder. For each half-point below a perfect score, the award is cut by a factor which varies from .50 to .70 depending on the number of rounds. When this cutting would result in the Tour award being too low, points are awarded in direct proportion to the score. No Tour points are awarded for a score of zero.

Following are the tables for awarding Tour points in maxi- and mini-events of three, four, five, six, and seven rounds.

SEVEN ROUNDS			SIX ROUNDS			FIVE ROUNDS		
score	MAXI	mini	score	MAXI	mini	score	MAXI	mini
7	40	20	6	36	18	5	32	16
6.5	28	14	5.5	23	11.5	4.5	19	9.5
6	20	10	5	15	7.5	4	12	6
5.5	14	7	4.5	10	5	3.5	7	3.5
5	10	5	4	8	4	3	6	3
4.5	9	4.5	3.5	7	3.5	2.5	5	2.5
4	8	4	3	6	3	2	4	2
3.5	7	3.5	2.5	5	2.5	1.5	3	1.5
3	6	3	2	4	2	1	2	1
2.5	5	2.5	1.5	3	1.5	0.5	1	0.5
2	4	2	1	2	1	0	0	0
1.5	3	1.5	0.5	1	0.5			
1	2	1	0	0	0			
0.5	1	0.5						
0	0	0						

FOUR ROUNDS			THREE ROUNDS		
score	MAXI	mini	score	MAXI	mini
4	28	14	3	-	12
3.5	15	7.5	2.5	-	6
3	8	4	2	-	3
2.5	5	2.5	1.5	-	1.5

2	4	2	1	-	1
1.5	3	1.5	0.5	-	0.5
1	2	1	0	-	0
0.5	1	0.5			
0	0	0			

Each Tour tournament, or section thereof, awards Tour points in any given rating class ONLY if: (1) the tournament or section is open to ALL players in that class, and (2) at least one player in that class, or in a higher class, actually plays in the tournament or section. Each player in a Tour event can earn points only in his own rating class and those above.

EXAMPLES:

(1.) Kathy Knight, an A player, scores 4-1 in a five-round maxi-event. According to the chart, she has earned twelve Tour points. The tournament is a single-section event, open to all, and at least one Master actually participates. Kathy's twelve Tour points are awarded in all classes A through Master. She earns twelve A points, twelve Expert points, and twelve Master points.

(2.) Benjamin Bishop, a B player, scores 4.5-0.5 in a five-round maxi-event. The chart shows that he has earned 19 Tour points. But he has chosen to play in the under-2000 section, so his Tour points are awarded only in classes A and B. He receives 19 A points and 19 B points.

All Illinois residents playing in Illinois Tour events must be Illinois Chess Association members. Out-of-staters who are members of their home state chess associations need not join ICA, but their Tour points will not count at year-end unless they were ICA members when they played in each of their Tour events.

At the end of the year, cash prizes are awarded to those ICA members who have accumulated the greatest Tour point totals in each class. The 1993 Illinois Tour prizes are as follows:

Master:	1st:	\$350	2nd:	\$250	3rd:	\$150
Expert:		\$160		\$80		
Class A:		\$130		\$65		
Class B:		\$100		\$50		
Class C:		\$70		\$35		
Class D:		\$40		\$20		
Class E:		\$25				

The \$25 class E prize is the result of an anonymous donation.

Cash prizes will be awarded only to those players who play in at least three Tour events during 1993. Prizes which would have been won by players with only one or

1993 ILLINOIS TOUR RULES

two events will be distributed to those next in line.

Unrated players can accumulate Tour points only in the Master class, and then only if they play in a tournament or section open to all Masters and in which at least one Master actually participates. Unrateds in all Tour events, however, will have their events counted towards the three-event minimum; this will help them later in the year when they become rated.

ORGANIZERS: It is easy to sponsor a Tour mini-event. A Tour event must be a weekend Swiss of at least three rounds, and it must be listed in the Tournament Life section of Chess Life. The Chess Life announcement must include the phrase "ICA membership required" along with the dollar amount of ICA dues. The statement "an ICA Tour mini-event" should also be included. Making "Mini-Tour" part of the name of the tournament is a good idea also.

A Tour event should be set up in such a way that Tour points can be awarded fairly. Section cut-offs, if any, should be at 2200, 2000, 1800, 1600, 1400, and/or 1200. The following are examples of recommended Tour formats:

- (1) 1 section, open to all.
- (2) 2 sections, open and under-1800.
- (3) 3 sections, 1600-&-over, under-2000, and under-1400.

An example of an inadvisable tour format would be an under-1900 section. Such a section could not award Tour points to A players because it would not be open to ALL class A players.

Another inadvisable format would be the quad or the octagon -- four- or eight-player sections grouped by rating. Such an event almost certainly would, for example, split the B players across two sections, neither of which could award B points because neither would be open to ALL players in class B.

The fee for running a Tour mini-event is \$1.00 per player, with a \$50.00 maximum. In addition, your organization must affiliate with ICA at \$25.00 per year. Past experience suggests that these fees repay the organizer many times over in added entry fees, as having an event on the Tour increases its appeal to most players.

The ICA officers reserve the right to reject the Tour status of any tournament. To avoid conflicts, the officers will be scrutinizing the schedule carefully. Be sure to clear your event through the state chess calendar before submitting the tournament announcement to Chess Life. The calendar coordinator is Bob Renaut (address elsewhere in this issue).

This list reflects all 1992 Tour events:

Tim Just Winter Open, Grayslake	MAXI	Jan 11-12
Fox Valley Championship, Aurora	MAXI	Jan 25-26
Mid-America Class, O'Hare	MAXI	Mar 13-15
Normal Redbird Open, Normal	mini	Mar 21
Chicago Amateur, O'Hare	MAXI	Apr 3-5
Midwest Amateur, O'Hare	MAXI	Apr 10-12
Greater Peoria Open	MAXI	May 2-3
Chess Center Bonanza Plus-Score Chicago	mini	May 9
Chicago Open, O'Hare	MAXI	May 22-25
Summer Knights Action Springfield	mini	Jun 13
Maurice Irvin Open, Bloomington	MAXI	Jun 27-28
Oberweis Dalry Class, Aurora	MAXI	Jul 11-12
Midwest Class, O'Hare	MAXI	Jul 17-19
Chess Center Plus-Score, Chicago	mini	Aug 8-9
Bradley Summer Open, Peoria	mini	Aug 15
Oberweis Dalry Open, St Charles	MAXI	Aug 22-23
Illinois Open, O'Hare	MAXI	Sep 5-7
Normal Mapleleaf Open, Normal	mini	Sep 19
Northwestern Plus-Score Evanston	mini	Sep 26
Lake County Action, Grayslake	mini	Oct 10
Harvest Times Action, Springfield	mini	Oct 10
Micro Resales Open, Urbana	MAXI	Oct 10-11
Oak Park / River Forest Autumn Action	mini	Oct 17
Northwestern Plus-Score Evanston	mini	Oct 24
Happy Birthday NEHOC Homewood	mini	Oct 25
Illinois Class, Chicago	MAXI	Nov 21-22

For players with fewer than three 1992 Tour events, the number of events (1 or 2) is shown in parentheses. A player must have played in at least three Tour events during 1992 to be eligible for year-end Tour prizes.

1992 ICA TOUR

FINAL STANDINGS

MASTER TOUR POINTS:

COLIAS Bill	112.5
CHOW Albert	101
YOUNG Angelo	78.5
MARTINOVSKY Eugene	57
GUREVICH Dmitry	51
KARKLINS Andrew	33
COOPER Tom	32.5
PELTS Peter	23.5
NAFF Bill	21
SAX Rob	21
TATE Emory	20.5
VAN BUSKIRK Doug	(2) 20
LEVIT Roman	19.5
BOCK Dale	18
MARSHALL Jim	17.5
ROGAN Marvin	17
COOKE Paul	(1) 16
DLUGY Maxim	(1) 16
DZINDZICHASHVILI	(1) 16
KAIDANOV Gregory	(2) 16
MC CARTHY Mike	16

EXPERT TOUR POINTS:

SCOTT Gene	47.5
ERNST Edward	(2) 36
ZELENSKY Eugene	(2) 36
MARSHALL Jim	29
SAX Rob	25.5
KARKLINS Erik	24
ROGAN Marvin	22.5
READ Rhys	22
COHEN Howard	21.5
WARD Tom	(2) 21.5
NAFF Bill	21
SMYTHE Bill	19
BENESA Arnulfo	18
BOCK Dale	18
WACHTEL Howard	17.5
COHEN Larry	17
PUKEL Bernard	16.5
FULLER William	(1) 16
MC CARTHY Mike	16

CLASS A TOUR POINTS:

JASAITIS Anthony	51.5
WARFIELD Tom	44.5

COHEN Howard	44
PUKEL Bernard	31.5
PRADZINSKI Tim	27.5
MC CARTHY Mike	26.5
COHEN Larry	23
LULVES Joseph	22.5
STOLTZ Bob	21.5
BOCK Dale	21
SMYTHE Bill	19
CRAGGS Tom	18.5
HANSEN Steven	18.5
OBERWEIS James D Sr	17.5
SPHAR Robert	17.5
DECMAN Steve	16
RYDBERG Steeve	16
CHONG David	15.5
SCHULTZ Andrew	15.5
BOLITHO Tom	14.5
WILLIAMS Kent	14.5

CLASS B TOUR POINTS:

PAPHITIS Alexander	71.5
KITTILSEN Guy	51.5
GRAY James Jr	41.5
SANCHEZ Ignacio	37.5
CRAGGS Tom	34
WILLIAMS Kent	32.5
FALLS Dwayne	(1) 32
PADILLA Rudy	29
KIMME Duane	24.5
RAIMO Robert	24.5
RATNER Jacob	23.5
HENROID Mike	22.5
CIMA Joe	22
MORTON Bruce	22
SPHAR Robert	20.5
BRODDE Jeff	20
CREEMENS Matt	(2) 20
ENGELEN Mark	20

CLASS C TOUR POINTS:

OBERWEIS Julie	48.5
VON KROGH Chris	44
VAKIL David	(2) 35
CRAGGS Tom	28.5
JOHNSON Frank	23.5
CISKO Greg	22.5
JOHNSON Henderson	22.5
SILVERMAN Scott	22.5

AMIRANTE Ron	22
JOSEPHS Steve	21.5
IOVIN Daniel	21
WINTER Victor	20.5
CREEMENS Matt	(2) 20
PATTERSON Dan	19
HILLMAN Bruce	17.5
WONG Brian	17.5
BARBER Ronald	(1) 16
JOHNSON Arlando	(1) 16
SCHULTZ Dan	(1) 16

CLASS D TOUR POINTS:

NAVIAMOS William	36
BALES Robert	32.5
RODGERS Paul	18
JENKINS Mike	17
MANZELLO Sam	16.5
AHMER Craig	(2) 16
WIRTH Mike	15
CRAGGS Tom	13.5
MARTIN Brian	(2) 10.5
JOHNSON M David	10
HIGHTOWER Dean	9
MARTIN John	(2) 8
REDDICK Harold Sr	8
WONG Brian	8
BAUMGARTNER Chris	7.5
BALTAZAR Mark	7
HEILSKOV Jens	6.5

CLASS E TOUR POINTS:

BALTAZAR Mark	15
BAUMGARTNER Chris	13.5
HART Dan	12.5
DAVENPORT Felix	(2) 7.5
ELLINGSON Eric	5
GYORI Victoria	(1) 5
LEALI Matt	5
MAAS Stephen	(1) 5
DUPEE Arthur	4
HAUGER Christoph	(1) 4
MARTIN Steve	4
VAN DER WYST Ton	(1) 4
MC COY Damon	3.5
WEINGEIST Rob	(1) 3.5
YEATES Nick	(1) 3
FIORONI Stanley	(1) 2.5
RASTOGI Aditya	(2) 2.5

CONGRATULATIONS!

Northwestern Plus-Score January 16, 1993

Player	Rtng.	Rd-1	Rd-2	Rd-3	Rd-4	Score	Tour
01 PELTS Peter	2424	W40	W21	W20	W 7	4	14
02 CHOW Albert	2357	W41	W13	D 3	W 6	3.5	7.5
03 DUDKOWSKI Peter	2021	W28	W11	D 2	W14	3.5	7.5
04 COHEN Larry	1908	H	W18	W16	W12	3.5	7.5
05 HURCHALLA David	2045	W42	W24	L 6	W23	3	4
06 LAHVIC Jim	2008	W34	W15	W 5	L 2	3	4
07 MAYKA Tom	2003	W43	W26	W19	L 1	3	4
08 SHERNOFF Leon	2002	L23	W35	W32	W24	3	4
09 SCHULTZ Andrew	1909	W29	L12	W27	W28	3	4
10 KITTILSEN Guy	1837	W46	L19	W42	W25	3	4
11 HONG Ernest	1761	W37	L 3	W33	W19	3	4
12 ROWLAND Todd	2134	D14	W 9	W23	L 4	2.5	2.5
13 PEDERSEN Roger	2000	W44	L 2	W40	D15	2.5	2.5
14 WILLIAMS Kent	1885	W30	D12	W17	L 3	2.5	2.5
15 JOHNSON Frank	1692	W50	L 6	W43	D13	2.5	2.5
16 VENSKE Dan	1691	H	W49	L 4	W35	2.5	2.5
17 PADILLA Rudy	1600	H	W38	L14	W37	2.5	2.5
18 RACZKIEWYCZ Mark	1268	H	L 4	W49	W34	2.5	2.5
19 STERN Howard	2135	W27	W10	L 7	L11	2	2
20 ROGAN Marvin	2021	W33	W25	L 1	-	2	2
21 STOLTZ Bob	1923	W45	L 1	W26	-	2	2
22 MC ALISTER Kelvin	1918	H	L32	D35	W43	2	2
23 BERLAND Paul	1822	W36	W 8	L12	L 5	2	2
24 GORAL Brad	1695	W31	L 5	W44	L 8	2	2
25 HENROID Mike	1679	W51	L20	W29	L10	2	2
26 ENGELEN Mark	1665	W52	L 7	L21	W45	2	2
27 KLANN James	1564	L19	W30	L 9	W46	2	2
28 MOY Barratt	1542	L 3	W46	W39	L 9	2	2
29 BAUMGARTNER Chris	1227	L 9	W41	L25	X39	2	2
30 CONAWAY Antwoine	1194	L14	L27	W51	W40	2	2
31 MEYERS Joe		L24	L33	W41	W48	2	2
32 SMITH Orlan	1504	H	W22	L 8	-	1.5	1.5
33 DAYTON Soren	1500	L20	W31	L11	D36	1.5	1.5
34 BACKSTROM Orn	1467	L 6	D37	W48	L18	1.5	1.5
35 HART Dan	1144	W39	L 8	D22	L16	1.5	1.5
36 FAUST Jerry	1091	L23	L42	W52	D33	1.5	1.5
37 MC COY Damon	1024	L11	D34	W38	L17	1.5	1.5
38 TURNER Ruby		H	L17	L37	W50	1.5	1.5
39 STEWART Allen	1847	L35	W48	L28	F29	1	1
40 DOLLISON Leon	1636	L 1	W45	L13	L30	1	1
41 SCHUBERT James	1568	L 2	L29	L31	W49	1	1
42 POPE Raymond	1545	L 5	W36	L10	-	1	1
43 REINTHALER William	1339	L 7	W50	L15	L22	1	1
44 BURDA Alex	1288	L13	W52	L24	L47	1	1
45 NAVIAMOS William	1276	L21	L40	W50	L26	1	1
46 WILLIAMS Michael	1133	L10	L28	W52	L27	1	1
47 SMYTHE Bill	1900	-	-	-	W44	1	1
48 ELLINGSON Eric	822	H	L39	L34	L31	0.5	0.5
49 BRANCH Yvonne		H	L16	L18	L41	0.5	0.5
50 PARK William		L15	L43	L45	L38	0	0
51 SHEA Mike		L25	-	L30	-	0	0
52 WILLIAMS Alfred		L26	L44	L46	L36	0	0

Micro Resales Champaign-Urbana Open October 10-11, 1992 - Open Section

Player	Rtng.	Rd-1	Rd-2	Rd-3	Rd-4	Rd-5	Score	Tour
01 YOUNG Angelo	2446	W25	W 9	W 2	W 3	D 4	4.5	16
02 GRATZ Glen	2187	B	W14	L 1	W 8	W 7	4	8
03 RAO Vivek	2566	D 5	W 6	W11	L 1	W16	3.5	4
04 BRODIE Mark	2214	W23	D10	W22	D 7	D 1	3.5	4
05 WAGNER Steven	1881	D 3	D12	W19	W17	D 8	3.5	4
06 OBERWEIS James Sr.	1827	D 8	L 3	B	W11	W13	3.5	4
07 NAFF Bill	2141	W24	W17	H	D 4	L 2	3	3
08 STEVENSON Wilford	2076	D 6	W20	W10	L 2	D 5	3	3
09 HURCHALLA David	2027	W16	L 1	L17	W22	W15	3	3
10 CAMARDA Kyle	1900	W21	D 4	L 8	D18	W20	3	3
11 SAX Rob	2040	W15	D21	L 3	L 6	W18	2.5	2.5
12 TALBOT Marc	1905	D18	D 5	L16	W19	D17	2.5	2.5
13 COTTLE Greg	1887	D22	D18	W21	D16	L 6	2.5	2.5
14 BOURGERIE Dennis	1885	W19	L 2	H	L15	W21	2.5	2.5

15 LEALI Mike	1819	L11	D23	W20	W14	L 9	2.5	2.5
16 FELTNER Cameron	1800	L 9	W24	W12	D13	L 3	2.5	2.5
17 BLAIR Charles	1771	B	L 7	W 9	L 5	D12	2.5	2.5
18 WARFIELD Tom	1771	D12	D13	H	D10	L11	2	2
19 CRAGGS Tom	1576	L14	B	L 5	L12	W22	2	2
20 SCOTT Jay	1408	B	L 8	L15	W23	L10	2	2
21 DEAN James H	1747	L10	D11	L13	B	L14	1.5	1.5
22 ZORZOPULOS Santi	1723	D13	W25	L 4	L 9	L19	1.5	1.5
23 CALDWELL Scott	1843	L 4	D15	H	L20	-	1	1
24 MC CARTHY Mike	1843	L 7	L16	H	-	-	0.5	0.5
25 JESSEPH Steve	1858	L 1	L22	-	-	-	0	0

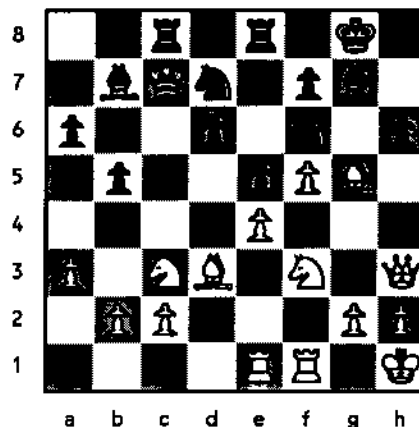
Micro Resales Champaign-Urbana Open October 10-11, 1992 - Under 1800

Player	Rtng.	Rd-1	Rd-2	Rd-3	Rd-4	Rd-5	Score	Tour
01 KIMME Duane	1759	W14	W 2	W13	W 6	D 3	4.5	16
02 ZIMMERMANN Scott	1686	W12	L 1	W15	W17	W 8	4	8
03 FARLEY Curtis	1631	W22	W 5	D 4	W16	D 1	4	8
04 CHEN Eric	1635	W23	W16	D 3	D 8	W 5	4	8
05 KITTILSEN Guy	1755	W10	L 3	W14	W13	L 4	3	3
06 FULLER Bret	1733	W15	D 8	W 7	L 1	D 9	3	3
07 COLEMAN George Jr	1673	W25	D11	L 6	D 9	W14	3	3
08 JOHNSON Frank	1671	W21	D 6	W11	D 4	L 2	3	3
09 FREEMAN Ed	1601	L11	W24	W23	D 7	D 6	3	3
10 WONG Brian	1405	L 5	W22	H	W11	D13	3	3
11 WILLIAMS Kent	1781	W 9	D 7	L 8	L10	W15	2.5	2.5
12 MUNOZ Alberto	1352	L 2	L14	H	W22	W23	2.5	2.5
13 OBERWEIS James Jr.	1680	W18	W19	L 1	L 5	D10	2.5	2.5
14 AMIRANTE Ron	1518	L 1	W12	L 5	W20	L 7	2	2
15 RODGERS Paul	1373	L 6	W21	L 2	W19	L11	2	2
16 LOVEN Dallas	1735	W17	L 4	W20	L 3	-	2	2
17 STAFFORD Jerry	1628	L16	W18	W19	L 2	-	2	2
18 WHITE Michael J	1339	L13	L17	W24	D23	D20	2	2
19 HELLER Jack	1323	W26	L13	L17	L15	W21	2	2
20 LANSING John	1160	H	W26	L16	L14	D18	2	2
21 BOTT Donald	1170	L 8	L15	D22	W24	L19	1.5	1.5
22 RASTOGI Aditya	969	L 3	L10	D21	L12	W24	1.5	1.5
23 OBERWEIS Joe	1311	L 4	B	L 9	D18	L12	1.5	1.5
24 LEALI Matthew	953	B	L 9	L18	L21	L22	1	1
25 BAER Michael	1250	L 7	-	-	-	-	0	0
26 JENKINS Thomas	1647	L19	L20	-	-	-	0	0

Tim Just 1993 Winter Open

Josh Manlon (2343) vs. Hector Hernandez (1996)

1.e4 c5 2.Nf3 e6 3.d4 cd4 4.Nd4 a6 5.Bd3 Qc7 6.O-O Nf6 7.Nc3 Be7
8.Be3 O-O 9.Kh1 b5 10.f4 d6 11.Qf3 Bb7 12.Rae1 Nbd7 13.a3 Rac8
14.Qg3 Rfe8 15.Nf3 Bf8 16.Bd2 g6 17.Ng5 Bg7 18.Qh3 e5 19.f5 h6
20.Nf3 g5 21.Bg5



hg5 22.Ng5 Nc5 23.Re2 Kf8 24.g4 Ke7 25.Nf3 Rh8 26.Qg2 Kd7
27.Rd1 Rcg8 28.Bb5+ Kc8 29.Bd3 Bh6 30.g5 Nh5 31.Qg4 Nf4 32.f6+
Kb8 33.R2e1 Bc8 34.Qg3 Nce6 35.Nd5 Nd5 36.ed5 Ng5 37.Ng5 Bg5
38.Qf2 Bf4 39.h4 Rg4 40.Rg1 0-1

'92 Tuley Park G/30 #3 - Open Section

01	Colias, Bill H.	2401	W13	W7	W4	W2	4.0
02	Rubin, David E.	2272	W12	W6	W9	L1	3.0
03	Kamen, Dan	2128	W8	L9	W13	W7	3.0
04	Hurchalla, David	2059	W10	W5	L1	W9	3.0
05	McNamara, James	1950	W15	L4	W11	W6	3.0
06	Pedersen, Roger E.	2000	W14	L2	W12	L5	2.0
07	Baugh, Christopher	1937	W16	L1	W10	L3	2.0
08	Cima, Joe	1785	L3	L11	W16	W14	2.0
09	Kittilsen, Guy O.	1719	W11	W3	L2	L4	2.0
10	Padilla, Rudy R.	1600	L4	W15	L7	W12	2.0
11	Hicks, Gregory	1437	L9	W8	L5	W16	2.0
12	Falls, Wayne	1841	L2	W14	L6	L10	1.0
13	Neal, Patrick	1788	L1	W16	L3	U	1.0
14	Smith, Orlan B.	1574	L6	L12	W15	L8	1.0
15	Reinthal, Willi	1343	L5	L10	L14	W17	1.0
16	Beaman, Lumumba	1494	L7	L13	L8	L11	0.0
17	Collins, Roger A.		U	U	U	L15	0.0

'92 Tuley Park G/30 #3 - Novice Section

01	Callaway, Gregory	1549	W8	W6	W3	W4	4.0
02	Kennedy, Dannie R.	1404	W14	W12	L10	W11	3.0
03	Cummins, Edwin T.	1273	W13	W5	L1	W10	3.0
04	Davenport, Felix	1223	W21	W7	W16	L1	3.0
05	Moll, Rob	950	W18	L3	W13	W7	3.0
06	Glover, Robert	0	W20	L1	W15	W12	3.0
07	Williams, Alfred	1361	W15	L4	W14	L5	2.0
08	Meyers, Joe	1348	L1	W11	L12	W18	2.0
09	Marshall, Mattie	825	L11	L17	W19	W20	2.0
10	Sweeten, Terry	0	W19	W16	W2	L3	3.0
11	McNeely, Paul B.	0	W9	L8	W17	L2	2.0
12	Moore, Kevin	0	W19	L2	W8	L6	2.0
13	Steele, Waleed	0	L3	W18	L5	D14	1.5
14	Giasson, Douglas	0	L2	W20	L7	D13	1.5
15	Bond, Illya	1290	L7	W21	L6	U	1.0
16	Tuck, Sammie	1160	W17	L10	L4	U	1.0
17	Collins, Roger A.	943	L16	W9	L11	U	1.0
18	Muhammad, Naheem	0	L5	L13	W21	L	1.0
19	Hoskins, Arnold	0	L12	L10	L9	U	0.0
20	Jones, Dan W.	0	L6	L14	U	L	0.0
21	Pickett, Phillip	0	L4	L15	L20	L	0.0

'92 Fall Orr High School G/10- 5th Per

01	Faust, Carnell	1063	W8	W5	W2	W7	4.0
02	Faust, Darnell	1116	W15	W4	L1	W5	3.0
03	Copeland, Deandre	1209	W11	U	D10	W8	2.5

04	Flax, Steve C.	961	W13	L2	W12	U	2.0
05	Cunningham, Tracy	887	W7	L1	W13	L2	2.0
06	Ford, Marquiz	844	L10	W14	L8	W12	2.0
07	Kizer, Alex T.	0	L5	W14	W14	L1	2.0
08	Holloway, Larry	0	L1	W9	W6	L3	2.0
09	Jones, Derrick C.	923	L12	L8	D11	W14	1.5
10	Morris, Marc	0	W6	L13	D3	U	1.5
11	Belk, William	0	L3	L7	D9	W13	1.5
12	Gray, Lamark	804	W9	U	L4	L6	1.0
13	Funches, Willie	0	L4	W10	L5	L11	1.0
14	McCray, Tyrese	0	U	L8	L7	L9	0.0
15	Foster, Lawyer	0	L2	U	U	U	0.0

'92 Fall Orr High School G/10 - 6th Per

01	Conaway, Antwoine	1232	W16	W10	D3	W5	3.5
02	Faust, Jerry	1078	W7	U	W8	W3	3.0
03	Williams, Michael	1183	W12	W5	D1	L2	2.5
04	Piggee, Terrance	0	W14	W13	L5	D7	2.5
05	Garcia, Moises	1271	W17	L3	W4	L1	2.0
06	Smith, John	0	U	W15	U	W9	2.0
07	Jackson, Eugene	0	L2	U	W11	D4	1.5
08	Wilson, Lorenzo A.	1215	W11	U	L2	U	1.0
09	Tate, Everette	0	L10	W11	U	L6	1.0
10	Henderson, Jerry	0	W9	L1	U	U	1.0
11	Jackson, Perry	0	L8	L9	L7	W16	1.0
12	Head, Willie L.	1021	L3	U	U	U	0.0
13	Wright, Jerome	0	U	L4	U	U	0.0
14	Jones, Ronald	0	L4	U	U	U	0.0
15	Boykin, Curtis	0	U	L6	U	U	0.0
16	Jackson, Jermaine	0	L1	U	U	L11	0.0
17	Gordon, Timothy	0	L5	U	U	U	0.0

'92 Fall Orr High School G/10 - 7th Per

01	Gibbs, Chris	1079	W12	U	W4	W3	U	3.0
02	Whitten, Derrhun	925	W8	W5	L3	W10	U	3.0
03	Johnson, CConnie	776	W4	W12	W2	L1	U	3.0
04	Johson, Antoino	0	L3	W11	L1	W7	W12	3.0
05	Jones, Otis	1077	W10	L2	L6	W8	U	2.0
06	Gray, Lamark	798	U	W13	W5	U	U	2.0
07	Johson, Clifford	0	U	D8	L4	W11	U	1.5
08	Frierson, Julius	0	L2	D7	W12	L5	U	1.5
09	Gordon, Anthony O.	902	W13	U	U	U	U	1.0
10	Thomas, Marco	0	L5	U	W11	L2	U	1.0
11	Hunt, Michael	0	U	L4	L10	L7	U	0.0
12	Griffeth, Terry	0	L1	L3	L8	L4	U	0.0
13	Goodlow, Javon	0	L9	L6	U	U	U	0



The City of Chicago's Department of Human Services Commissioner Daniel Alvarez Sr., extreme right is all smiles after accepting a \$3,000 private grant to promote chess playing, especially among inner city youths. Mrs. Regine Leopoldi (2nd from left) made the donation in honor of her late husband, Norbert Leopoldi, an avid chess player and founder of Cloverline, Inc., an advertising firm. Others shown are (left) Ald. Eugene C. Shulter (47), who sponsored a City Council resolution honoring her spouse, and Mrs. Suzanne Leopoldi-Galluzzi, one of the donor's three daughters. Theodore O'Keefe, director of DHS' Youth Delinquency Program, and Tim Mitchell, chief of staff, also participated in recent ceremonies.

(Henry Locke)

Tournament Calendar

Call **CHESS PHONE**, (708) 832-5222, for up-to-date tournament results, as well as announcements of tournaments that may not be listed in **CHESS LIFE** or the **ICB**. The ICA Chess Phone voice is Todd Barre. Unless otherwise noted, all tournaments require USCF membership. Illinois Tour events also require ICA membership.

Organizers - remember it is ICA policy that an event must be published in the ICA bulletin in order to be a tour event. Please send your tournament notices to: Bob Renaut, 1255 Oakton Lane, Naperville, IL 60540-0310 or call at 708-983-0934.

1993

February 21
Illinois Blitz Championship & ICA Banquet
Westmont, IL

February 27
4th Barb City Tornado, DeKalb, IL
4-SS, 30/60, SD/30, EF: \$17 if received before 2/26, site \$22, Barb City Manor, 680 Haish Blvd, DeKalb, IL (down First St.), Food provided. For info: Bill Reed, 815-758-1027. Entries to: 1460 North 14th, DeKalb IL, 60115.

February 27
Peoria Scholastic Grade School
West Suburban Conference Meet
High School

BoulderDash Team Invitational
High School
Hadley Junior High, Glenelg, IL

February 27
Chessterton February Open, Chessterton, IN
4-SS, 30/60, SD/30, Westchester Public Library, 210 W. Indiana, Chessterton, IN 46304. EF: \$15, \$10 junior, Reg: 8:30-9:15 am, Rds: 9:30, 12:00, 3:00, 6:00, Prizes b(20): \$75, \$40, A \$30, B \$25, C \$20, DEU \$15. NS, NC. Info/entries: Randy Pals, 16526 Ellis Ave., South Holland, IN 60473-2425, 708-339-4247.

February 27-28
Paul Rodgers 1993 Winter Winds Open, Urbana, IL

5-SS, 30/90, SD/30, \$\$\$3000/b100 (1500G), Reg: 8-9 am, Rnds: 9/2:30/7 and 9/1:30. EF: \$50 by 1/25, \$60 by 2/15, \$75 at site, Howard Johnson Motor Lodge, 1909 N. Cunningham, Urbana, IL 61801. OPEN (open to all): \$750/300/150. Reserve (u1800): b:175/100 c: 150/75, D/E: 100/50, unr: \$50. Trophy to 1st place in each class. All

early entries eligible for \$50 drawing. Entries/info: Paul Rodgers, 810 Peach Tree, Urbana, IL 61801, (217) 367-6649. Special room rates available for reservations by 2/1/93. ICA mem req'd, NS, NC, WC. **Maxi**

March 6
Illinois Chess League Championship Tournament, Hillside IL

Hillside Baptist Church, 5152 Butterfield Road, Hillside, INFO: Larry Stillwell 708-963-6799

March 12-14
Mid America Class Championship, Rosemont, IL

5-SS, 40/2, 20/1. The Ramada O'Hare Hotel, 6600 N. Mannheim Road, Rosemont, IL. \$\$G 12,500. EF: \$65 by 3/5, \$75 at site, Juniors and second family members play for \$30 (advance only), free EF to Grandmasters, fourth member of schools or chess clubs play free (advance only). Add 50 cents for 1/2 point bye in first round. MASTER -\$\$G 2,000 - 1,000 - 500 - 400 - 200, free entry and room to 1993 National Open for all perfect scores. EXPERT - \$\$G 1,000 - 500 - 300 - 200 - 100, free entry and room to 1993 National Open for all perfect scores. CLASS A - \$\$G 1000 - 500 - 300 - 200 - 100, free entry to 1993 National Open for all perfect scores. CLASS B - \$\$G 800 - 400 - 250 - 200 - 100, free entry to 1993 National Open to all perfect scores, CLASS C - \$\$G 800 - 400 - 250 - 200 - 100, free entry to 1993 National Open for all perfect scores, CLASS D/E/UNR - \$\$G 400 - 250 - 150. ICA Membership req'd, you can play one section higher for \$5 additional. Unrated can win no more than \$200 in any section except MASTER or Unrated. Reg: 4-7 pm Friday, 8-10 am Saturday, Rds: Friday 8 pm, Sat-Sun 10:30 & 5:30. Chess set provided for tournament play only. Bring chess clocks. HR: \$\$59 single, add \$ 4 for Dble. Hotel reservations call 708-827-5131, and mention chess tournament. Ent: Mid America Class Championship, Box 100, Palos Heights, IL 60463. Info: Fred Gruenberg 708-489-5800 evenings only., **MAXI**

March 13
North Boone Individual - High School
Bloom Trail Team "Tourney of Champions" - High School, Call Carl Simonson, 708-304-1466 for details

March 13-14
State - Grade School, Springfield, IL
7-SS, Lincoln Land Community College, 3 divisions K-3, 4&5 adn 6-8. EF: \$12 by

3/1/93 or \$15 by 3/10. Info: Judy Kjellander 217-793-0670 or Bob Ladendorf (217) 546-3475.

March 20
Springfield Spring Thaw Open, Springfield, IL

Octagonal Swiss Format, Washington Park Pavilion, North of intersection of Park Ave. and South Grand Ave., West; Springfield, IL. Info: (217)-523-7265 after 6 PM. Ent: Thomas B. Knoedler, 2104 South Fourth St., Springfield, IL., 62703, NS, NC.

March 20
2nd Annual UIC Open, Chicago, IL
4-SS, 45/120, 25/60. Chicago Circle Center, Room 713, 750 S. Halsted St. Chicago, IL EF: \$10 if by 3/17 or \$13 at site, \$1 off to UIC club members, Prizes: 1st 35%, 2nd 20%, 20% to top u1800, 10% to top u1600 (based on 4 entries per class). Reg: 8:30-9:30, Rds: 10-3:30. Info/Entries: Howard Wachtel, 445 W. Barry Ave. #217, Chicago, IL 60657-5511, (312)-975-7970.

March 20
Idea of March Tornado, DeKalb, IL
4-SS, 30/60, SD/30, Diversions at the Home Student Center, N.I.U., EF: \$10, \$\$ (based on 20) 50-30, B \$20, C \$20, D/E \$20, Unr \$20, Reg: 8:00-8:30, 1st Rd at 9:00. For info: Bill Reed, 815-758-1027. Entries to: 1460 North 14th, DeKalb IL, 60115.

March 20
93 Tuley Park G/30 #2, Tuley Park
4-SS, G/30, 501 E 90th Pl., Tuley Park. Open Section EF: \$12, 1st 35%, 2nd 25%, best from bottom half 20%. Reg: 11:00-11:45, Rds: 12:00, 1:12, 2:24, and 3:36. For info call Tom Fineberg 312-721-3979.

March 26-27
IHSA STATE CHESS TEAM TOURNEY

March 27-28
Greater Peoria Open, Peoria, IL

March 27
Chessterton March Open, Chessterton, IN
5-SS, G/60, Westchester Public Library, 210 W. Indiana, Chessterton, IN 46304. EF: \$15, \$10 junior, Reg: 8:30-9:15 am, Rds: 9:30, 12:00, 3:00, 6:00, Prizes b(20): \$75, \$40, A \$30, B \$25, C \$20, DEU \$15. NS, NC. Info/entries: Randy Pals, 16526 Ellis Ave., South Holland, IN 60473-2425, 708-339-4247.

April 2-4
National High School Championship, Dallas, TX

Tournament Calendar

April 3

93 Tuley Park G/15 Novice #1

5-SS, G/15, 501 E 90th Pl., Tuley Park. Open to und 1400 and unrated EF:\$3, . Reg: 12:00-12:30, Rds: 12:40, 1:20, 2:00, 2:40 and 3:20. Trophies to 1st, 2nd and 3rd. For info call Tom Fineberg 312-721-3979.

April 16-18

National Junior High School Championship. Chicago, IL

7-SS, 25/1, SD/1 Ramada Hotel O'Hare, 6600 N. Mannheim Road, Rosemont 60018. Free Parking, free airport shuttle. 3 sections: JHS Championship, open to all grades K-9. Trophies to top30 players, top 25 teams of 4, top 5 each 1400-1499, 1300-1399, 1200-1299, 1100-1199, 1000-1099, Under 1000, Unrated. Middle School Championship: Open to all in grades K-8. Trophies to top30 players, top 25 teams of 4, top 5 each 1400-1499, 1300-1399, 1200-1299, 1100-1199, 1000-1099, Under 1000, Unrated. Under 1300 Junior Varsity, open to grades K-8 under 1300 or unrated. Trophies to top30 players, top 25 teams of 4, top 5 each 1000-1099, 900-999, 800-899, Under 800, Unrated. Plaques to top 3 in each grad 6, 5, 4, 3, 2, 1, K (a player may receive both a grade plaque and a place or grade trophy). Entry Fee: \$20 per player, or \$40 if later or at site from 3 pm - 8 pm 4/15. No entries or refunds, section changes or bye changes after 8 pm 4/15. Schedule: Fri. 1 pm & 6 pm, Sat 9 am, 2pm & 7 pm, Sun 9 am & 2 pm. Award ceremony 7 pm 4/18. Questions 914-496-9658. Entries & Checks: Continental Chess, P.O. Box 249, Salisbury Mills, NY 12577. Coaches meetings: 11 am 4/16, 2:30 pm 4/17, USCF Coaches Workshop 4/18.

April 14-18

Chicago International, Chicago, IL

April 24

C/U DUO-CLASS "Pressure Cooker 5-SS", Urbana, IL

5-SS, 20/30, SD/30, Howard Johnsons' Motor Lodge, 1907 N. Cunningham, Urbana, IL, EF: \$50 if by 3/31, \$65 at site. Reg: 8-9 am, Rds: 9:30, 12, 2:30, 5, 7:30, Prizes \$2450 (b/80 - \$\$G 1225) - Play only those in your section: Section 1 (2000 & above) \$500 + trophy, \$250, \$50, Section 2 (1600-1999) \$400 + trophy, \$200, \$50, Section 3 (1200-1599) \$350 + trophy, \$150, \$50, Section 4 (under 1200 + unr) \$300 + trophy, \$100, \$50. 1/2 pt bye Rnds (1-4) if requested at

registration. ICA membership req'd, NC, NS, WC. Entries / Info: Paul Rodgers, 810 Peach Tree, Urbana, IL, 61801, (217)-367-6649

April 23-25

National Elementary Championship. Charlotte, NC

April 23-24

IHSA STATE INDIVIDUAL

April 24

Jules Stejn Memorial, Chicago, IL

G/15, 7-SS, U.I.C. Chicago Circle Center, 750 S. Halsted, Rooms 509 & 510. \$250 b/30. 2 Sections: OPEN \$60-50, U2000 \$20, class, U1700 \$50-30, U1300 \$20, class. EF: \$12 if rec'd by 4/22, \$15 at the site. \$2.00 discount to MCAC members (\$10/yr). Reg. 10-10:45am, Round #1 at 11am. NS NC Entries: C. Baumgartner, 3924 N. Hermitage, 2nd floor, Chicago, IL 60613, 312-871-2148.

April 24

Barb City Tornado #5, DeKalb

4-SS, 30/60, SD/30, EF: \$17 if received before , site \$22, Barb City Manor, 680 Haish Blvd, DeKalb, IL (down First St.), Food provided. For info: Bill Reed, 815-758-1027. Entries to: 1460 North 14th, DeKalb IL, 60115.

April 24

Chesterton April Open, Chesterton, IN

4-SS, 30/60, SD/30, Westchester Public Library, 210 W. Indiana, Chesterton, IN 46304. EF: \$15, \$10 junior, Reg: 8:30-9:15 am, Rds: 9:30, 12:00, 3:00, 6:00, Prizes b(20): \$75, \$40, A \$30, B \$25, C \$20, DEU \$15. NS, NC. Info/entries: Randy Pals, 16526 Ellis Ave., South Holland, IN 60473-2425, 708-339-4247.

April 25

MCAC at UIC for an Hour (or Two?), Chicago, IL

1/2k 4-SS G/60 4-SS, U.I.C. Chicago Circle Center, 70% returned as prizes. 2 Sections - OPEN: 30%-20%, U1700 25%-15%-10% EF: \$12 if rec'd by 4/22, \$15 at the site. \$2.00 discount to MCAC members (\$10/yr). Reg: 9-9:45am. Round#1 at 10am NS NC Entries: C. Baumgartner, 3924 N. Hermitage, 2nd floor, Chicago, IL 60613, 312-871-2148.

May 1

93 Tuley Park G/15 #3, Tuley Park

5-SS, G/15, 501 E 90th Pl., Tuley Park. Open Section EF:\$12, 1st 35%, 2nd 25%, best from bottom half 20%. Reg: 12:00-12:30, Rds: 12:40, 1:20, 2:00, 2:40 and 3:20. For info call Tom Fineberg 312-721-3979.

May 1

Champaign May Day Challenge, Champaign, IL

3-SS, 30/60, SD/60, \$\$\$300 b/25, Springer Building, N.W. Corner of Church and Randolph. 2 sections: Open, open to all. Reserve, open to u1600. Both: EF:\$14 or \$12 to CCC members. \$\$\$150; 80-45-25. Reg: 9-9:45 am. Rds, 10-2-6. Ent: Duane Kimme, 401 N. Prairie -2D, Champaign, IL 61820, (217) 359-0421, NS, NC, W.

May 7-8-9, 15-16

Tournament of Champions Ramada O'Hare - Rosemont, IL

May 8

MCAC at U.I.C., Chicago, IL

3-SS 40/90 SD/30, U.I.C. Chicago Circle Center, \$250G, 3 Sections: OPEN, 1400-1799, U1400. All EF: \$15 if rec'd by 5/1, \$17 at site. \$2.00 off to MCAC members (\$10/yr.) Entries: C. Baumgartner, 3924 N. Hermitage, 2nd floor, Chicago, IL 60613, 312-871-2148. NS NC at tournament. Mini Tour

May 15

Barb City Late Spring Tornado, DeKalb, IL

4-SS, 30/60, SD/30, Diversions at the Homles Student Center, N.I.U., EF: \$10, \$\$ (based on 20) 50-30, B \$20, C \$20, D/E \$20, Unr \$20, Reg: 8:00-8:30, 1st Rd at 9:00. For info: Bill Reed, 815-758-1027. Entries to: 1460 North 14th, DeKalb IL, 60115.

May 15-16

Oak Park-River Forest Spring Open, Oak Park-River Forest, IL

Dominican Conference Center, 7200 W. Division (Division & Harlem), River Forest, IL. Players do not need parking permits during tournament. 5-rd swiss, 40/90, 15/30, EF: \$15 by 5/12, \$20 at site. \$\$265 based on 30. 1st \$100, 2nd \$50, 3rd \$25, A-B-C each \$25, D-E-Unr \$15. Reg: 8:15-9:00 a.m. Rounds: 5/15 9:30, 2, 6:30, 15/16, 5/16 10, 2:30. One 1/2 pt. bye available in rds. 1-2-3 if requested before rd. 1. \$2 off entry for OP-RF members. Entries: Ken Marshall, 357 W. Grove, Lombard, IL 60148, (708) 932-1455. NS, NC.

May 22

Springtime in the Park Open, Springfield, IL

Octagonal Swiss Format, Washington Park Pavilion, North of intersection of Park Ave. and South Grand Ave., West; Springfield, IL. Info: (217)-523-7265 after 6 PM. Ent: Thomas B. Knoedler, 2104 South Fourth St., Springfield, IL., 62703, NS, NC.

Tournament Calendar

May 22

Chessterton May Open, Chesterton, IN
4-SS, 30/60, SD/30, Westchester Public Library, 210 W. Indiana, Chesterton, IN 46304. EF: \$15, \$10 junior, Reg: 8:30-9:15 am, Rds: 9:30, 12:00, 3:00, 6:00, Prizes b(20): \$75, \$40, A \$30, B \$25, C \$20, DEU \$15. NS, NC. Info/entries: Randy Pals, 16526 Ellis Ave., South Holland, IN 60473-2425, 708-339-4247.

May 28-30

Chicago Open, Chicago, IL
Continental Chess Association

June 11-13

National Open. Las Vegas, NV

6-SS, 45/2, 25/1, 15/30. The Riviera Hotel and Casino, 2901 Las Vegas Blvd, South, Las Vegas, NV 89109. \$\$G 30,000. Championship Section EF \$75 if by 5/28, or \$85 at the door, \$\$G 4000-3000-2000-1000-500-400-200. 2200-2399 \$\$G 1000-500-300-200. 2000-2199 \$\$G 1000-500-300-200. Under 2000: \$\$G 300. Reserve Section 1600-1999 EF \$70 if by 5/28 or \$80 at door. All juniors and second family members play for \$45 (advance only), \$\$G 2000-1500-1000-500-300-200. Class B 1600-1799 \$\$G 1000-500-300-200. UNR \$\$G 400-200. Booster Section under 1600 EF \$65 if by 5/28 or \$75 at door, all juniors and second family members \$40 (advance only). \$\$G 1000-700-500-200-100, Class D 1200-1399 \$\$G 700-500-200-100, Class E 1000-1199 \$\$G 600-400-200-100, unr \$\$G 100. Ent: US Chess Federation, 186 Route 9W, New Windsor, NY 12553, Info: Fred Gruenberg (708) 489-5800 or Alan Losoff (708) 966-5559 evenings only.

June 12-13

Paul Rodgers 1993 Mid-Year Open, Urbana, IL

5-SS, 30/90, SD/30, Howard Johnson Motor Lodge, 1909 N. Cunningham, Urbana, IL. Reg: 8-9 am, Rds 10 am, 2:30, 7 pm, 9 am, 1:30 pm. 1/2 bye available at time of registration. EF: \$50 by 6/1, \$60 by 6/10 and \$75 at site. All advance entries eligible for \$50 drawing. ICA / USCF membership required. \$\$3300 (b/100 - \$1650 G). Open Section - open to all, \$\$: \$750-300-150, Under 2200 \$350-150-75, Under 2000 \$300-\$125-\$75. Reserve Section - open to under 1800. \$\$ \$225-100, under 1600 \$200-\$75, under 1400 \$150-50, unr \$100. Entries/info: Paul Rodgers, 810 Peach Tree, Urbana, IL 61801,

(217)-367-6649.

June 19

6th Barb City Tornado, DeKalb, IL

4-SS, 30/60, SD/30, EF: \$17 if received before 6/18, site \$22, Barb City Manor, 680 Haish Blvd, DeKalb, IL (down First St.), Food provided. For info: Bill Reed, 815-758-1027. Entries to: 1460 North 14th, DeKalb IL, 60115.

June 25-27

Master Challenge,
Oak Park-River Forest, IL

June 26

Chessterton June Open,
Chesterton, IN

4-SS, 30/60, SD/30, Westchester Public Library, 210 W. Indiana, Chesterton, IN 46304. EF: \$15, \$10 junior, Reg: 8:30-9:15 am, Rds: 9:30, 12:00, 3:00, 6:00, Prizes b(20): \$75, \$40, A \$30, B \$25, C \$20, DEU \$15. NS, NC. Info/entries: Randy Pals, 16526 Ellis Ave., South Holland, IN 60473-2425, 708-339-4247.

July 10-11

Oberwels Class Championship,
Aurora, IL

July 24

Springfield Sauna Open,
Springfield, IL

Octagonal Swiss Format, Washington Park Pavilion, North of intersection of Park Ave. and South Grand Ave., West; Springfield, IL. Info: (217)-523-7265 after 6 PM. Ent: Thomas B. Knoedler, 2104 South Fourth St., Springfield, IL., 62703, NS, NC.

July 24

Mid-Summer Tornado, DeKalb, IL

4-SS, 30/60, SD/30, Diversions at the Home Student Center, N.I.U., EF: \$10, \$\$ (based on 20) 50-30, B \$20, C \$20, D/E \$20, Unr \$20, Reg: 8:00-8:30, 1st Rd at 9:00. For info: Bill Reed, 815-758-1027. Entries to: 1460 North 14th, DeKalb IL, 60115.

July 24

U. S. Open. Philadelphia, PA

Aug 14

C/U DUO-CLASS "Pressure Cooker 5-SS", Urbana, IL

5-SS, 20/30, SD/30, Howard Johnsons' Motor Lodge, 1907 N. Cunningham, Urbana, IL, EF: \$50 if by 7/31, \$65 at site. Reg: 8-9 am, Rds: 9:30, 12, 2:30, 5, 7:30, Prizes \$2450 (b/80 - \$\$G 1225) - Play only those in your section: Section 1 (2000 & above) \$550 + trophy, \$250, \$50, Section 2 (1600-1999) \$425 + trophy,

\$200, \$50, Section 3 (1200-1599) \$375 + trophy, \$150, \$50, Section 4 (under 1200 + unr) \$200 + trophy, \$100, \$50. 1/2 pt bye Rnds (1-4) if requested at registration. ICA membership req'd, NC, NS, WC. Entries / Info: Paul Rodgers, 810 Peach Tree, Urbana, IL, 61801, (217)-367-6649

August 21

7th Barb City Tornado, DeKalb, IL

4-SS, 30/60, SD/30, EF: \$17 if received before 8/20, site \$22, Barb City Manor, 680 Haish Blvd, DeKalb, IL (down First St.), Food provided. For info: Bill Reed, 815-758-1027. Entries to: 1460 North 14th, DeKalb IL, 60115.

September 4-6 - Illinois Open

September 19

Blowing Leaf Tornado, DeKalb, IL

4-SS, 30/60, SD/30, Diversions at the Homles Student Center, N.I.U., EF: \$10, \$\$ (based on 20) 50-30, B \$20, C \$20, D/E \$20, Unr \$20, Reg: 8:00-8:30, 1st Rd at 9:00. For info: Bill Reed, 815-758-1027. Entries to: 1460 North 14th, DeKalb IL, 60115.

September 25

Harvest Time Open, Springfield IL

Octagonal Swiss Format, Washington Park Pavilion, North of intersection of Park Ave. and South Grand Ave., West; Springfield, IL. Info: (217)-523-7265 after 6 PM. Ent: Thomas B. Knoedler, 2104 South Fourth St., Springfield, IL., 62703, NS, NC.

Oct 2-3

St Charles Open, St. Charles, IL
Maxi

Oct 16

8th Barb City Tornado, DeKalb, IL

Oct 23

Oak Park-River Forest Chess Club
Autumn Action, Oak Park-River
Forest, IL

Oct 29-31

Midwest Class Championship
Continental Chess Association
Chicago, IL

Nov 13

2nd Barb City Open, DeKalb, IL

Nov 13

Holiday Prelude Open, Springfield, IL

November 20-21 - Illinois Class

December 4

2nd Barb City Holiday Tornado,
DeKalb, IL

1994

August 7-19: U. S. Open - Chicago

ILLINOIS CHESS ASSOCIATION PATRONS

Century Club Members

Michael Belovesick Sr. Addison
 Thomas Fineberg Chicago
 Fred Gruenberg Palos Heights
 Steve Hansen Chicago
 Marc Lonoff Northbrook
 Michael McIlhany Springfield
 Albert Sandrin Chicago
 Angelo Sandrin Chicago
 Bill Smythe Chicago
 Burton Vincent Chicago
 Helen Warren Western Springs
 Jim Warren Western Springs
 Philip Wong Wilmette

Gold Card Members

Tyrone Brooks Chicago
 Harland S. Hoisington Ogden UT
 Alan Losoff Morton Grove
 Kenneth Marshall Lombard
 Fred Meyers Sterling
 William Naff Peoria
 Peter Pelts Niles
 Daniel Pradt Glen Ellyn
 Michael Pratts Chicago
 Irwin Rothschild Park Forest
 Arthur Sinclair Evanston
 Marcus Stinson Singapore
 Mitchel Sweig Evanston
 Louis Werner Evanston

Patron Members

Jack Armstrong Rockford
 Bob Ash Urbana
 Ken Bankhead Country Club Hills
 Todd Barre Elmhurst
 Roy Benedek Western Springs
 Edward J. Blanco Chicago
 Dennis Bourgerie Normal
 Bill Brock Chicago
 Jim Brotsos Chicago
 Gregory Bungo Elmhurst
 Fred Burgess Oak Forest
 Anthony Caliendo Aurora
 Kevin Connelly Villa Park
 Tom Cooper Wheaton
 Paul Cox Chicago
 Mike Cronin Evergreen Park
 Greg De Fotis Lincolnwood
 Leroy Dubeck Cherry Hill NJ
 William Dwyer Worth
 Kalman Farkas Milwaukee WI
 Charles Fenner Chicago
 Jon Gotz West Chicago
 William Graves Chicago
 Steven Herr Chicago
 Charles Hicks Naperville
 Dean Hightower DeKalb
 Thomas Howell Evanston
 Jeffery Hyland Mount Prospect
 Toshio Imai East Lansing MI
 Randy Ingram Bloomington
 Robert Irons Chicago
 Gersham Johnson Chicago
 Stephen Josephs Hinsdale
 Tim Just Gurnee
 Dan Kamen Buffalo Grove
 Scott Kittsley Shorewood WI

Robert Kjellander Springfield
 Thomas Knoedler Springfield
 Walter Kocjan Northlake
 Warren Kreckler Chicago
 Peter Kuhn Des Plaines
 Dr. Kevin Kukla Tinley Park
 Harry Lyman Boston MA
 John Marconnet Clarendon Hills
 Mark Marovitch Cicero
 Anthony Marquez Chicago
 Ed Marshall So. Barrington
 Eugene Martinovsky Naperville
 Patrick Maurer Glen Ellyn
 Thomas Mayka Wheeling
 James McNamara Hinsdale
 William Naviamos Chicago
 Jim D. Oberweiss Aurora
 Ken Palmer Bolingbrook
 Alex Pehas Downers Grove
 Frederick S. Rhine Chicago
 Marvin Rogan Chicago
 Ray Satterlee Wheaton
 Garrett Scott Normal
 Mark Sefcheck Naperville
 David Shane Macomb
 Anthony Sillars Northampton MA
 Scott Silverman Elk Grove Village
 Richard Simonetti Elmwood Park
 Leonard Spiegel St. Charles
 Joe Splinter Hanover Park
 Peter Stein Naperville
 Robert Stoltz River Forest
 Sonia Takl Chicago
 James Tanaka Chicago
 George Umezlnwa Chicago
 Mike Varady Effingham
 Richard Verber Aurora
 Jeff Weimar Moline
 Don Winsauer West Dundee
 Harold Winston Naperville

ICA Elected Officers

Alan Losoff, President
 9402 N. Octavia, Morton Grove, IL 60053
 (708) 966-5559
 Bob Renaut, Metro Vice-President
 1255 Oakton Lane, Naperville, IL 60540
 (708) 983-0934
 Dennis Bourgerie, Downstate Vice-President
 1621 N. School St., Normal, IL 61761
 (309) 454-3842
 Ken Marshall, Secretary
 357 W. Grove, Lombard IL 60148
 (708) 932-1455
 Todd Barre, Treasurer
 136 Evergreen, Elmhurst, IL 60126
 (708) 834-0862

USCF Delegates

by virtue of their USCF

Fred Gruenberg . . . Regional Vice-President
 Alan Losoff Regional Vice-President
 Frank Skoff Life Voting Member
 Helen Warren Life Voting Member
 Harold Winston Life Voting Member

by ICA-appointment

Ken Marshall
 Todd Barre
 Tim Just
 Tom Fineburg
 Bob Renaut

USCF Voting Members

ICA appointed

Marc Lonoff	Richard Verber
Bill Smythe	Jim Oberweis
Dennis Grant	Garrett Scott
Dennis Bourgerie	Bill Naff
Erv Sedlock	Larry Cohen

ICA Appointed Alternates

Jim Warren	Warren Kreckler
Thomas Knoedler	Howard Wachtel
Bill Wilkinson	Michael Henroid
Angelo Sandrin	Hector Hernandez
Joshua Flores	Les Bale
Ed Bianco	Tony Jasaitis
Jim Brotsos	Tom Cooper
Larry Stilwell	Bill Reed
Bill Brock	Keith Martin
Glen Gratz	Albert Chow
George Marino	Ken Lewandowski
Glenn Panner	



Where to Play Chess ICA Club Affiliates



ABCDEU sponsors tournaments and other chess events. Ed Blanco, Box 579181, Chicago IL 60657-9181.

AMERICAN POSTAL CHESS TOURNAMENTS sponsors postal events & sells chess books & equipment. Jim or Helen Warren, P.O. Box 305, Western Springs 60558. 708/246-6665.

"THE BASEMENT", Daniel Kamen, 1121 Highland Grove Drive, Buffalo Grove, IL 60089

CENTRAL LAKE COUNTY CHESS CLUB meets Fridays, 7:15 to 12:00AM College of Lake County, Bldg. 1, Washington at Route 45, Grayslake. Dennis Grant, 1657 McKay, Waukegan 60087. 708/336-5188.

CHAMPAIGN CHESS CLUB meets Tuesdays at 7 p.m. at the Springer Recreation Center, 301 N. Randolph, Champaign, IL 61820. c/o Dwayne Kimme, 401 N. Prairie Rd., Champaign, IL 61820. 217-359-3421.

CHESSTERTON CHESS CENTER c/o Randy Pals, 16526 Ellis Ave., South Holland, IL 60473-2425, Info: Randy Pals 708-339-4247, Harold Henderson 219-324-2620.

CHICAGO INDUSTRIAL CHESS LEAGUE organizes frequent competition among commercial/government teams with awards, ratings, & special events. Tony Jasaitas 312/431-2966.

CONTINENTAL CHESS ASSOCIATION, P.O. Box 249, Salisbury Mills, NY 12577. Bill Goichberg.

DOWNERS GROVE PARK DISTRICT CHESS CLUB meets Thurs., 6:30-10 p.m., Lincoln Center, 935 Maple Ave., Downers Grove. Affiliated with USCF & ICA. George Uffner, 708/960-9382.

EVANSTON TOWNSHIP HIGH SCHOOL CHESS CLUB Ken Lewancowski 1600 Dodge Avenue, Evanston IL 60204.

GREATER PEORIA CHESS FEDERATION meets Mon., 7-11 p.m., Garrett Center, 824 N. University, Peoria. Bill Wilkinson, 901 N. Rebecca Pl., Peoria 61606. 309/673-9455.

HILLSIDE CHESS CLUB c/o Larry Stilwell, 4705 Elm, Lisle, IL 60532

LAKE COUNTY CHESS ASSOCIATION sponsors rated tournaments in the Grayslake-Zion area. Tim Just, 37165 Willow, Gurnee 60031. 708/244-7954.

MIDWESTERN CHESS ADVENTURES (MCAC) 3924 N. Hermitage, 2nd floor, Chicago, IL 60613, 312-871-2148. Attn: Christopher Baumgartner. We are dedicated to chess promotion within the city of Chicago and eventually we hope to expand our activities to include the entire midwest region. If you are interested in helping us raise chess awareness and its benefits, PLEASE CONTACT US!

MIDWEST CHESS ASSOCIATION organizes major tournaments for masters & experts. Helen Warren, P.O. Box 305, Western Springs, 60558. 708/246-6665.

NORTHWESTERN UNIVERSITY c/o M.B. Henrold, 2245 Sheridan Rd., Room 222, Evanston, IL 60201.

OAK PARK/RIVER FOREST CHESS CLUB meets Tues., 7 midnight, Dominican Conference Center, 7200 W. Division, River Forest. Ken Marshall, 357 W. Grove, Lombard 60148. 708/932-1455.

PARK FOREST CHESS CLUB meets Thursdays, 7-10:00 p.m., Freedom Hall, Orchard & Lakewood, Park Forest. Lawrence Cohen, 135 Westwood, Park Forest, 60466. 708/748-5911.

PAUL RODGERS' CHESS TOURNAMENTS 810 Peach Tree, Urbana, IL 61801

SMYTHE DAKOTA COMPETITIONS encourages, nurtures, and offers financial support for Plus-Score Mini-Tours at suitable sites in Chicago and adjoining suburbs. Bill Smythe, 7445 N. Greenview #311, Chicago, IL 60626, 312-761-2455.

ST. CHARLES CHESS CLUB meets Thursday at 7 p.m., Baker Community House, 101 S. 2nd (Rte. 31), St. Charles. Erv Sedlock, 6 N. 307 Old Homestead Rd., St. Charles, IL 60174. 708-377-7995.

TULEY PARK CHESS CLUB meets Saturdays, 1-5 p.m., Tuley Park Field House, 501 E. 90th Pl., Chicago. Thomas Fineberg, 7321 S. South Shore Dr., Chicago 60649, 312/721-3979.

TWIN CITIES CHESS CLUB c/o Andy McGowen, 410 E. Walnut St., Bloomington, IL 61701-3146.

Join the Illinois Chess Association and receive six issues of the Illinois Chess Bulletin. In addition, you'll qualify to enter over two dozen tournaments on the Illinois Chess Tour. Every game you win or draw in a tour event earns you "tour points" that can add up to cash prizes at year-end. Finally, you'll be supporting the activities of the Illinois Chess Association. Every year, the ICA organizes major tournaments like the Illinois Open and the Illinois Class Championships; the ICA has bid for the National Open, the US Open and the US Class Cham-

pionships to be held in Illinois. In addition, the ICA sponsors scholastic clinics, runs a tournament clearinghouse, and promotes and publicizes chess activity statewide. If you would like to show increased support for Illinois chess, please consider renewing as a Century Club, Gold Card, or Patron member. Patrons are acknowledged in each issue of the ICB and receive their magazines by first-class mail.

Mail To: Ken Marshall, ICA Membership Secretary
357 W. Grove
Lombard, IL 60148

(Your mailing label is on the other side; note corrections below)

Name _____

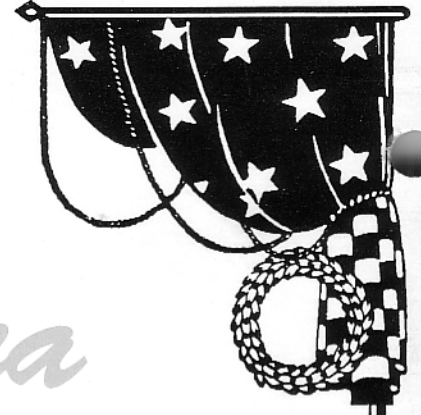
Address _____

City _____ State _____ Zip _____

ICA Membership Renewal

Check membership type:

___Century	\$100.00	___Gold Card	\$50.00
___Patron	\$35.00	___Regular	\$14.00
___Junior	\$8.00	___Affiliate	\$25.00



Mid-America Class Championships

Join your friends at the luxurious Ramada O'Hare Hotel

MARCH 12-13-14 IN CHICAGO

FIDE-RATED • 5 ROUND SWISS • 6 SEPARATE CLASS SECTIONS

\$12,500 in Guaranteed Cash Prizes!

★ ★ ★ ★ ★ Prize Fund Will Not Be Reduced ★ ★ ★ ★ ★

MASTER SECTION

\$\$2000-1000-500-300-200

Under 2400: \$500-200

CLASS A

\$\$1000-500-300-200

CLASS C

\$\$800-400-200-100

EXPERT SECTION

\$\$1000-500-300-200

CLASS B

\$\$800-400-200-100

CLASS D/E/Unr

\$\$400-250-150



★ ★ ★ ★ ★ Plus 100 Grand Prix Points ★ ★ ★ ★ ★

Chicagoland's Premier Class Chess Tournament!

Illinois Chess Association
P.O. Box 2534
Northbrook, IL 60065-2534

Time Value Material

BULK RATE
U.S. POSTAGE PAID
FOX LAKE,
ILLINOIS
PERMIT 49

Address Correction Requested