



ILLINOIS CHESS BULLETIN

JANUARY-FEBRUARY 1993 VOL. XVI, NO. 1

AN ICA BI-MONTHLY PUBLICATION - \$2.95

ILLINOIS CLASS CHAMPIONS

Master/Expert

Dmitry Gurevich

Class A

Anthony Jasaitis & Howard Cohen

Class B

Dwayne Falls

Class C

Julie Oberweis

Class D/E

William Naviamos & Charles Fiterman



NOVEMBER 21-22, 1992



**ILLINOIS CHESS
BULLETIN**

Editor **Warren Kreckler**
6146 N. Oakley • Chicago, IL 60659 • 312-764-2807
Junior Chess Editor **Richard Verber**
1970 Tall Oaks Drive #3A • Aurora, IL 60505 • 708-978-1380
Calendar Editor **Bob Renaut**
1255 Oakton Lane • Naperville, IL 60540 • 708-983-0934
Tour Statistician **Bill Smythe**
7445 N. Greenview • Chicago, IL 60626 • 312-761-2455

MEMBERSHIP AND SUBSCRIPTIONS

The Illinois Chess Bulletin (ICB) is published bimonthly by the Illinois Chess Association. ICA membership includes a subscription to the ICB. Century Club, Gold Card, and Patron members receive their ICB by first-class mail.

ANNUAL MEMBERSHIP RATES

Century Club \$100.00
Gold Card \$50.00
Patron \$35.00
Regular \$14.00
Junior (under 18) \$8.00

Subscriptions and address corrections should be sent to:

Ken Marshall (ICA Membership Secretary)
357 W. Grove
Lombard, IL 60148

SUBMISSION DEADLINE

The deadline for submissions in the March-April 1993 issue is FEBRUARY 1, 1993.

ICA AFFILIATION

Chess clubs and other organizations which promote chess activity may affiliate with the ICA. Benefits include a copy of the ICB by first class mail, a listing under "Where to Play Chess," discounted advertising rates, three-line tournament announcements in the "Tournament Calendar," and the right to run ICA Tour Events. ICA Affiliation costs \$25; please remit to Membership Secretary.

ADVERTISING RATES

Full page \$90
Half page \$54
Quarter page \$36
Eighth page \$24

10% discount for the same ad in consecutive issues. 1/3 discount for ICA affiliates. All ads must be camera-ready to qualify for above rates; minimum \$20 charge for layout. Payment must accompany ad. The ICA & the ICB reserve the right to reject advertising.

TABLE OF CONTENTS

President's Report 3
by Alan Losoff

Editor's Comments 3
by Warren Kreckler

GM Gurevich sweeps Master/Expert section
154-player Illinois Class Championship 4
by Senior Master Dick Verber

FIDE Master Albert Chow Annotates Games
from the Illinois Class Championships 6
by FIDE Master Albert Chow

The Power of a Trappy Opening 8
by National Master Alan Watson

Dr. Martinovsky Annotates 10
by National Master Eugene Martinovsky

Al Chow Tops Lake County Open XV 11
by Tim Just

Chow, Young Triumph at N.U. Plus-Score 11
by Michael Henroid

Chess on the Fox 12
by Bob Renaut

Oak Park-River Forest Chess Club News 13
by Ken Marshall

Founders and Friends
A Tribute to Arpad Elo (1903-1992) 14
by Helen Warren

1992 High School Chess Clinic 16
by Senior Master Dick Verber

1992 ICA Tour Standings 17
by Bill Smythe

The Life of a High School Chess Coach 18
by Ken Lewandowski

Chess Tech-Talk 20
by National Master Marc Lonoff

Twin City Chess Club 22
by Garrett Scott

Midwestern Chess Adventures Fills a Void 24
by Fred Gruenberg

Cohen Partied Heartily at Happy Birthday Nehoc. . . 24
by Lawrence Cohen

Illinois Tournament Crosstables 26
by Bill Smythe

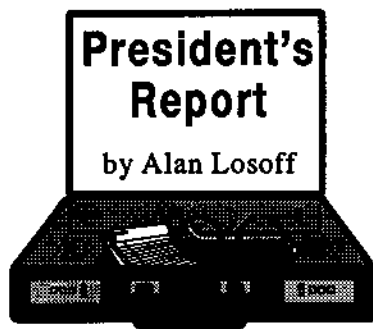
Tournament Calendar 28
by Bob Renaut

ICA Patrons 30

Where to Play Chess 31
ICA Club Affiliates

Need the latest chess tournament info?

Call Chess Phone 708-832-5222



President's Report

by Alan Losoff

U.S. Amateur Team Championships - Midwest

The midwest edition of the U.S. Amateur team championships will be held in Oakbrook over Presidents' Day weekend, February 13-15. The winning team will meet the U.S. Amateur Team East, West and South champions in an expense-paid playoff a few weeks later!

This national tournament is co-sponsored by the USCF and the Fox Valley Chess Club. Details abound elsewhere in this issue. Get your team together and play! If you can't get a team together in advance, come anyway, and you can join one.

There will also be an exciting Quick-Chess event on Saturday morning, February 13th which will offer the largest prize fund ever offered in Chicago (\$1200 guaranteed) for a 15-minute tournament.

Illinois Class Championships

Congratulations to all the winners of the Illinois Class Championships. Everyone who played deserves congratulations for making this one of the most successful ICA tournaments ever. A special thanks to Helen Warren, who provided snacks for the players and acted as ICA hostess in my absence.

ICA Awards Banquet

I'd also like to congratulate the winners of the 1992 Illinois Chess Tour. These players and other outstanding players and promoters will be honored at the ICA Awards Banquet on February 21. Watch for details. If you wish to suggest someone to be recognized at this event, contact awards chairman Ed Blanco at Box 579181, Chicago IL 60657

New ICA Board of Directors

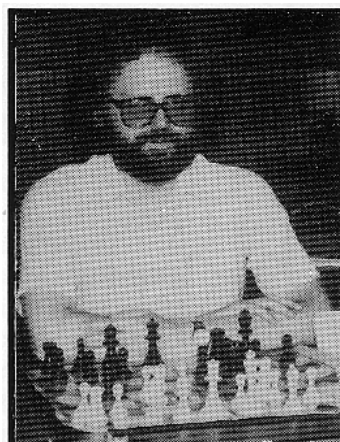
The Illinois Chess Association Board of Directors consists of the elected officers and all elected or appointed USCF delegates and voting members from Illinois. See page 30 for a complete list.

The next meeting of the ICA will be on February 7th. All ICA members are welcome to observe. See the tournament calendar for details.

Patronize Your Membership

The ICA could not exist without the generous support of the Patrons, Gold Card and Century members listed in this and every issue of the ICB. If you are not already a patron member, consider the benefits of upgrading the next time you renew.

Renew early to become a patron at the old rate. As of January 1st, patron membership will jump a bit to keep up with postage. All other membership fees remain the same.



Editor's Comments

by Warren Kreckler

The deadline for submissions in the March-April ICB will be February 1, 1993. Mail your contributions to ICB editor: Warren Kreckler, 6146 N. Oakley, #2F, Chicago, IL 60659, 312-764-

2807. Please call to arrange for modem or fax transmissions.

Norbert Leopoldi (1912-1992)

Norbert Leopoldi passed away in November of '92. Norbert was an avid chess player and a generous chess patron for many years. He will be sorely missed. A tribute to Norbert will be published in the March-April issue. Please send in any interesting games, anecdotes, photos, etc. Thanks!

The election results are in!

ICA officers elected for the period 1/1/93 thru 12/30/93 will be Alan Losoff (President), Bob Renaut (Metro Vice-President), Dennis Bourgerie (Downstate Vice-President), Ken Marshall (Secretary), and Todd Barre (Treasurer). Congratulations gentlemen!

Half priced entry fees for juniors!

At the October 18th ICA membership meeting it was unanimously voted that junior chess players shall receive half priced entry fees in all ICA sponsored tournaments. This is an important step towards developing junior chess talent in Illinois. It is hoped that all Illinois tournament organizers will follow suit.

1993 Illinois Tournament of Champions!

Helen Warren, Richard Verber & Michael Henroid are working to bring this tournament back to us possibly in late June of '93. In the past this tournament was a 10-player (top ten masters) round-robin. A second 10-player section will be added to give the lower rated masters (2250-2350) an opportunity to play. For a progress update call: Helen Warren (708) 246-6665 or Richard Verber (708) 978-1380.

Patrick Wolff Wins U.S. Championship!

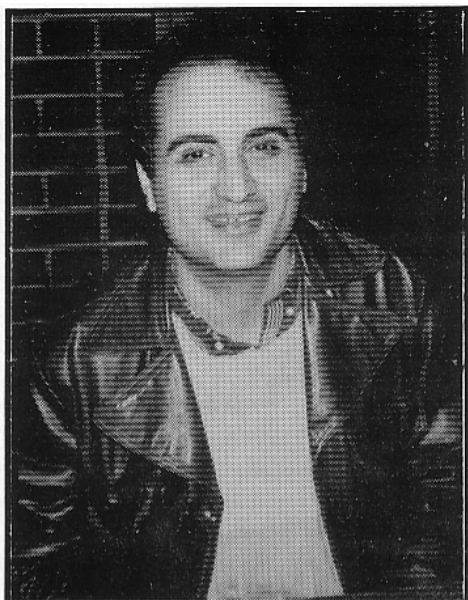
As we go to press, I am pleased to report the results from the U.S. Championship. Patrick Wolff (2655) won the U.S. Championship with a score of 10½. Alex Sherzer (2517) had the best tournament of his life and achieved a GM norm coming in second with 10 points along with Boris Gulko (2684). Yasser Seirawan (2651) and our own Dmitry Gurevich (2610) qualified for the Interzonal in Switzerland with their results. Congratulations to Dmitry! Thanks to Fred Gruenberg, Dick Verber, and Al Losoff for providing us with the latest info!

Martinovsky, Chow, and Watson annotate!

My thanks to these 3 Illinois masters for their excellent annotations in this issue. Albert Chow & Alan Watson have consented to write for future issues.

GM Gurevich Sweeps Master/Expert Section of Record Breaking 154 Player Illinois Class Championships

By
Senior
Master
Dick
Verber



GM Dmitry Gurevich

1992 has been a banner year for our one and only Illinois Grandmaster, Dmitry Gurevich. Last February he started the year off on the right foot by winning a \$5000 1st prize in Europe and in May there was a \$3000 1st place tie at a major American tournament. Throughout the year there have been a succession of 1st and 2nd place prizes at major tournaments at home and abroad. Unfortunately for Dmitry's many fans in Illinois, his successful travels have prevented him from playing as much as usual here in Illinois. So, it was good news to hear that Gurevich would be able to defend his 1991 Illinois Class title the weekend before Thanksgiving. Dmitry's victory this year featured wins against two of the midwest's strongest, Senior Masters Bill Colias (2422) and Emory Tate (2421). Look at Al Chow's notes on the Colias-Gurevich game (page 6) and you will see that the Gurevich victory was no cakewalk. Colias has had a very successful year himself, but he suffered a lapse against Dmitry after achieving a very good game.

Dr. Eugene Martinovsky and Andrew Karklins each gave up only a draw to tie for 2nd & 3rd. Martinovsky played very precisely, winning a beautiful game against Dr. Steve Tenant which he annotates for us on page 10. Andrew Karklins pulled one out of the fire in an

uphill battle against Al Chow as once again time pressure cost Chow the point. Chow knows as much as anyone in Illinois about opening theory, but his rating has plummeted by almost 100 points during 1992 thanks to these time pressure situations. See Albert's notes on his game with Andrew Karklins for the current heart-breaker (page 6).

Rhys Read turned in an outstanding performance to take top Expert honors with wins versus 3 higher rated opponents: Roman Levitt (2349), Gene Scott (2181), and Arnulfo Benesa (2100). Rhys Read's tie for 4th-6th place in this usually master-dominated



Dr. Eugene Martinovsky

section should provide encouragement to experts that they need not "go gently into that good night" versus the masters. Another expert who held his own with the masters, Roland Jordan looked very strong in defeating master Tom Cooper, drawing Martinovsky, and losing only to Andrew Karklins. If Roland Jordan continues his current form, he may become our next Illinois master. Good luck, Roland!

One additional expert whose play deserves special mention is 17-year-old Serge Minin, who gave Senior Master Emory Tate a good scare in the 1st round and drew Senior Master Angelo Young (2451) in the final round.

Serge is one of the most talented young chess players I know as well as an exceptional student. His performance rating for this event was 2300-plus. His attacking style and flair for combinations reminds me much of a younger Billy Colias--but without Billy's rather considerable knowledge of the openings. As a result of his fine play at the Illinois Class, Serge is now the highest rated Illinois Junior--about 10 points higher rated than his friend Steve Arlinsky who had a bummer of a tournament. Their friendly rivalry may well prod both Serge and Steve to become masters during the coming year.

CLASS A SECTION: IS HE AN EXPERT OR AN A-PLAYER?

Twenty years ago the strongest Illinois A-Player-Expert was Walter Grombacher. For a few months he was an expert, for a few months an A-player. Then back and forth again. There was no chicanery involved. Walter's real strength was just about on the fence at 2000. In 1992 we have a similar situation, but with a potentially humorous twist. We now have two or three of these genuine 1999-2000-2001 players: Tony Jasaitis, Jim McNamara, and Howard Cohen. Howard's brother Larry is also stuck near 2000, but recently Larry has courageously opted for the Master-Expert section.



Albert Chow

The 1992 Class A Championship turned into a real battle between these schizophrenic A-Player-Titans, as last year's A-Champion Jim McNamara



Andrew Karklins

fell to Tony Jasaitis in the finale. As a result of their 3rd round draw, Tony Jasaitis and Howard Cohen shared 1st. No doubt Jim McNamara is already plotting his revenge for next year.

CLASS B SECTION

Dwayne Falls (1787) scored the only perfect 4-0 to take the Class B Championship. Ronald Barber, a (1557) C player on his way up, braved the hazards of the B-section and was rewarded with clear 2nd place and a bundle of rating points.

CLASS C SECTION

My favorite young chess student, Julie Oberweis, is certainly one of Illinois' strongest 15-year-olds, but lately Julie has been devoting more attention to horse riding than to chess. Thus, it was a real pleasure to see Julie sweep the C-Section with a perfect 4-0. Julie's play featured sharp attacks and some inspired piece sacrifices. Bravo, Julie! Julie has also been playing Board 1 for the Aurora West High School Chess Team which I coach. Julie does her best to help end male chauvinism by beating most of the boys she plays. The smart boys seem to like her a lot anyway. Victor Winter took clear 2nd in the C Section, giving up only 1 draw.

CLASS D/E SECTION

The Class D/E Section featured the tournament's only 2-way tie with perfect scores between William Naviamos (1219) and Charles Fiterman (Unr).

This year's 1992 Illinois Class Championships were capably directed by Jeff Wiewel and Glenn Panner, with occasional help from expert T.D. Bill Smythe—one of the most competent of Illinois T.D.s. So, the tournament ran smoothly from beginning to end. Our state's best director, Todd Barre, decided to take a well deserved vacation from directing this year and what the players probably missed most was Todd's beautiful multi-colored wall charts—the signature of a Todd Barre tournament. Sorry, Todd, but tournament directing is a thankless task!



Julie Oberweis

In my opinion, the person who deserves a lot of credit for this year's Illinois Class is Helen Warren who provided the players with home baked fruit/nut breads, sandwiches, and pop all at her own expense. On Saturday especially, Helen aided by Fred Gruenberg did a lot of behind the scenes work in the absence of the ICA officers. If you enjoyed the '92 Illinois Class, be sure to thank Helen Warren the next time you see her! In my capacity as ICB Junior Chess Editor, I want to point out that it was gratifying to see so many high school and grammar school kids competing this year. In addition to Serge Minin, Steve Arlinsky, and Julie Oberweis who have been mentioned earlier,

mentioned earlier, there were also contingents from Orr High School, Evanston High School, U of C High School, and many others. Helen Warren's ICA Junior Program made possible for some of these kids to play and Fred Gruenberg generously donated expense money to house and feed the Soviet-American kids. The Illinois Chess Association is doing a good job of nurturing junior chess in Illinois, and to that end ICA has recently adopted a new policy of offering juniors bargain half-price entry for all ICA adult tournaments. Likewise, ICA is encouraging all organizers throughout Illinois to follow its example in lowering entry fees for juniors to encourage their participation in adult events. ICA President Losoff deserves much of the credit for helping to implement this new policy.

LET'S MOVE TO A HOTEL IN 1993!

I am not sure how other people feel about the Morgan Park Academy as an annual site for the Illinois Class, but I think it is the worst site of any major Illinois tournament. Lighting is terrible, quarters are becoming cramped, there is no skittles room, rest rooms are atrocious, and ventilation is poor. Since this tournament made a healthy profit this year, I think we should give the place a break and move to a nice and comfortable south side hotel in Oak Lawn or Alsip. I hope the ICA officers will accept my offer to do the leg-work of finding a hotel site for 1993.



Serge Minin

FIDE Master

ALBERT CHOW

Annotates Games from the Illinois Class

Once again Grandmaster Dmitry Gurevich has won clear first in the master section of the Illinois Class Championships. While most of us struggled for each extra half point, Dmitry rolled to a perfect 4-0 score, defeating both of Indiana's best, Bill Colias and Emory Tate. Not surprising coming from a 2600+ rated contestant for the U.S. Championship. How did he do it? Let us see the games!

Illinois Class Championship Round 3

White: FM Bill Colias

Black: GM Dmitry Gurevich

1.e4 c5 2.Nf3 d6 3.d4 cd 4.Nd4 Nf6 5.Nc3 Nc6

(Gurevich has great experience in this variation.)

6.Bc4 e6 7.Be3 Be7 8.Qe2 O-O 9.O-O-O

(Bill tests the sharp Velimirovic attack, usually featuring an opposite wing race to mate the enemy king where white's lead in development counts. But now the GM shows us something special. Avoiding normal lines probably familiar to white, he lashes out with the risky looking...)

9...d5! 10.Nb3

(Is this a novelty? It's not listed in the book Sicilian:...e6 and d6 systems by Kasparov + Nikitin. The idea is logical; the d5 pawn is pinned and attacked 4 times but only guarded thrice. Other tries at refutation are 10.Ne6 fe 11.ed Na5 12.de with three pawns for the piece, or 10.Nb5!?)

10...Ne4! 11.Ne4 Qc7

(The fork trick! Now 12.Bd3 de 13.Be4 is safe but instead Colias imbalances the forces still further.)

12.Bd5 ed 13.Nc3

(Black's d5 pawn seems to be hanging but it's defended by tactics after 13.Rd5 Nb4!)

13...Be6 14.Kb1

(If 14.Nd5 Bd5 16.Rd5 Nb4 forks d5 + a2 and both could not be held by 17.Ra5 b6 18.Ra4 Qc6)

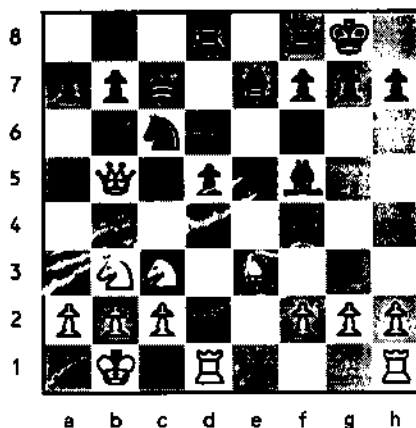
14...Rad8

(Does it matter which rook? It's difficult to argue with success but I prefer 14...Rfd8 using Ra8 to support the advance...a5...a4 or go Rac8)

15.Qb5

(This might have been the type of position Colias imagined when making his 12th move. Black's d5 pawn is under heavy pressure and there is no obvious way out. If 15...a6 white makes use of the weakened b6, c5, d4 squares with 16.Qb6 or 16.Bb6. And if 15...Qd7 white can choose to double rooks with 16.Rd3 or 16.Rd2 intending 17.Rhd1, or the annoying moves 16.Nc5 or 16.Bc5. Faced with this routine torture, the GM makes a surprising practical decision; he abandons his defence of d5!)

15...Bf5!?



16.Rd2

(Yes, white could eat the d pawn, but it leads only to simplification. 16.Nd5 Bc2! 17.Kc2?? Nd4! wins queen after 18.Kb1 Qc2 19.Kal Nb5 or king if 18.Kd3 Qc2 19.Kd4 Bf6 mate. But 17.Kal! is correct with even chances. Also 16.Rd5 Bc2 17.Kc2 Rd5 18.Nd5 Nd4 19.Kd3 Nb5 20.Nc7 Nc7 should be drawn. Instead white strengthens his position, intending to stop counterplay and then press against the weak d5. Another try with similar aims was 16.a3!?, preventing...Nb4.)

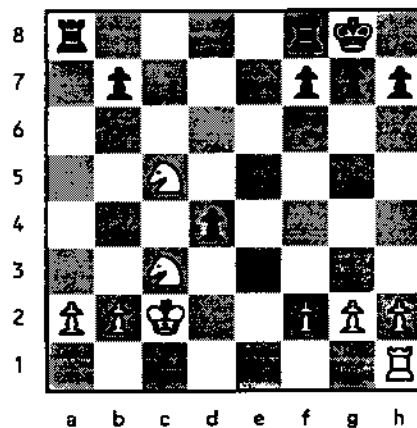
16...Nb4! 17.Ba7!

(This is much more aggressive than 17.Nd4 a6 etc. White eats a juicy gambit pawn plus control over the b6 square adding up to a winning strategic initiative. Next on the menu is d5.)

17...Ra8 18.Bc5

(More forcing was 18.Bb6! when black still has alot to prove.)

18...Nc2 19.Rc2 Bc5 20.Qc5 Qc5 21.Nc5 Bc2 22.Kc2 d4



23.N3e4?

(23.Nd5 stops the pinning 23...Rfc8 since 24.Ne7 Kf8 25.Nc8 Rc8 26.b4 b6 27.Kd3 bc 28.bc Rc5 29.Ra1 is good for white. But there are alternatives; 23...Ra2, 23...Rfd8, or 23...Ra5! enter unclear endgames with two knights vs. rook and pawn. With limited time on the clock it's difficult for a human to calculate all variations. Yet somehow my feeling is that it should be good for twin horsepower.)

23...Rfc8

(Winning material since both knights are frozen waiting for ...b6 or ...f5.)

24.Kb1 15 25.Nd7 fe 26.Nb6 d3 27.Na8 Ra8

(The advanced central pawns inhibit white so he can not activate his major pieces. 27.Rd1 hoping for 27...Rab8 28.Nc8 Rc8 29.f3! could be met instead with 27...Kf7! when 28.Na8 Ra8 29.f3! e3! 30.Rd3 e2 31.Re3 Re8 loses for white.)

28.Re1 Rf8 29.Re4 Rf2

(Gurevich leaves no doubt about the remaining winning technique.)

30.Kc1 Rc2 31.Kd1 Rb2 32.a4 Rg2 33.h4 h5 34.Rb4 Rg4 35.Rb7 Ra4 0-1

In order to win as black, Gurevich had to risk giving Colias chances. We expected the final battle might be a slugfest, vs. Emory Tate on board one. But the result was anticlimatic, as Dmitry won a pawn in the opening and the rest was a matter of technique.

Illinois Class Championship Round 4

White: GM Dmitry Gurevich

Black: Emory Tate (2421)

1.d4 d5 2.c4 c6

(In round 3 Emory won in his best style, using the sharp King's Indian to mate senior master Angelo Young on board two. Maybe this effort affected his nerves, because now he turns to the "solid" Slav.)

3.e3 Nf6 4.Nc3 g6

(Declining to use the more active 4...e6 5.Nf3 Nbd7 which sometimes leads to the controversial Meran variation.)

5.Nf3 Bg7 6.Be2 O-O 7.O-O Bg4

(What to do with the Slav problem bishop? It really has no good squares, and often ends up getting exchanged off. But even then black can not be happy facing white's two bishops. For example 7...dc 8.Bc4 Bg4 9.h3 Bf3 10.Qf3 or 7...Be6 8.b3 c5 9.Ba3 cd 10.Nd4)

8.cd Nd5

(8...cd is also met by the strong 9.Qb3)

9.h3 Bf5 10.Qb3 Qb6?

(It was not necessary to give away material when facing a GM for first prize money. Better was 10...Nc3 11.bc Qb6 or 10...Nb6)

11.Nd5 cd 12.Qd5 Nc6 13.Qb5! e5 14.de Qb5 15.Bb5 Ne5 16.Nd4! a6 17.Be2

(White is a clear pawn up and he isn't giving black any counterplay. I bet Dmitry was glad to be in a no risk situation where he could show off his endgame powers.)

17...Bd3 18.Bd3 Nd3 19.Rd1 Nc5 20.b3 Bd4 21.Rd4 Ne6 22.Rd2 Rfd8 23.Kf1 Rd2 24.Bd2 Rc8 25.Ke2 Kg7 26.e4 f5 27.ef Nd4

(27...gf might have blocked white's majority better on the light squares.)

28.Kd3 Nf5 29.Bc3 Kf7 30.g4 Rd8

31.Ke2 Nd6 32.Rd1 Re8 33.Kf3 Ne4

34.Bb4 b6 35.Rd7 Kf6 36.Rb7

(Not 36.Rh7?? Ng5)

36...Re6 37.h4! h5 38.Kf4!

(Building the mating net, threatening 39.g5)

38...hg 39.Ba3!

(Idea 40.Bb2)

39...g5 40.hg Kg6 41.Bb2

(Threatening 42.Rg7 Kh5 43.Kf5! against which there is no good defence.)

41...Nd6 42.Rb6 Kh5 43.Be5 1-0

My most interesting game was also unfortunately my only defeat.

Illinois Class Championship Round 3

White: Al Chow (2327)

Black: Andrew Karklins (2373)

1.e4 c5 2.Nf3 Nc6 3.d4 cd 4.Nd4 Nf6

5.Nc3 d6 6.Bg5 h6

(Instead of the usual 6...e6 which avoids doubled pawns, Karklins loses a tempo to force me to carry out this threat! Black's kingside is ruptured, making it risky to castle there. Karklin's idea is for his king to hide in the center, behind his important central pawns.)

7.Bf6 gf 8.Qd2 h5 9.f4

(Not 9.O-O-O ?? Bh6 10.f4 Nd4 11.Qd4 Bf4)

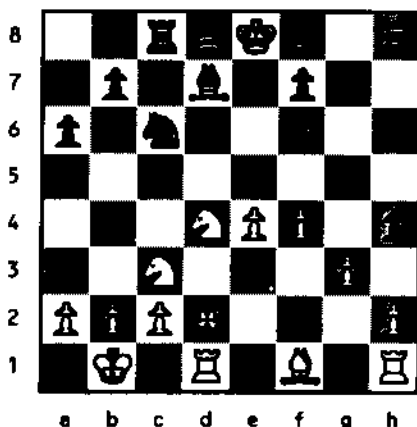
9...Bd7 10.O-O-O Rc8 11.Kbl a6

(Karklins delays...e6, perhaps not wanting to weaken d6 or tempt the line opening break f5. This leaves his dark squared bishop somewhat bad, although it has potential if it gains open lines. Since he neglects the f5 square. I might have occupied it with 12.Nf5! Qa5 13.Bd3. I thought he could kick me back with 13...e6? overlooking 14.Nd6! Bd6 15.Be2. Better is 13...Nb4 14.a3 Nd3 15.Qd3 when if he wants to play ...e6 then something like 15...Rc6 16.Nd5 Rg8 17.g3 Rg6 could happen with an unclear game where I favor twin horsepower.)

12 g3

(A flexible move increasing the possibilities for white's bishop.)

12...h4



(That seems like enough moves with your rook pawn, Andy! Instead of the normal 12...e6 or 12...b5 he attacks in the style of Larsen. Although his isolated h pawn will be exchanged, new lines open on the kingside, aiding white's attack.)

13.Nc6 bc!?

(No matter how he recaptures there is a concession. Neither 13...Rc6 14.Bg2 or 13...Bc6 14.Bh3! e6? 15.f5 were attractive to Karklins; he would like to disturb the opponent's, psychological equilibrium.)

14.Ba6 Ra8

(Afterwards Karklins insisted that 14...Rb8 would have been most accurate.)

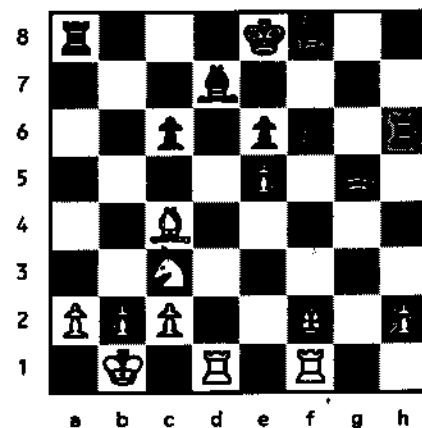
15.Bc4 e6

(Black has some compensation in the spirit of Benko's gambit. It will be a long time till white can even advance the a pawn to a5. Meanwhile black has strengthened his central pawn phalanx. But white leads in development and with energetic moves is able to expose the weakness of the black king.)

16.f5 Qa5 17.fe fe 18.gh

(Other moves were 18.Rhf1, 18.Qf4, or 18.e5! fe 19.Qg5 but 18.e5! Qe5 19.Rhe1 Qf5 20.Be6 Be6 21.Re6 Qe6 22.Re1 Qe5 23.Re5 fe is unclear.)

18...Rh4 19.Qf2 Qg5 20.Rhf1 Rh6 21.e5!



21...Qh4!

(He declines my gift! Acceptance would be fatal. 21...de 23.Ne4 Qf4 24.Qe1 Qh4 25.Nf6, 21...Qe5 22.Be6! Be6 23.Rde1 Qh2 24.Re6, 21...d5 22.e1 dc 23.f7 Kd8 (or 23...Ke7 24.Qd4) 24.Qb6 Kc8 25.Rd7, all give white a decisive attack.)

22.Qh4 Rh4 23.Bd3 d5!

(Not 23...fe?? 24.Bg6 winning a piece. And black would have no practical changes with 23...de 24.Rf6, nor 23...f5 24.ed Bd6 25.Bf5)

24.Rf6

(24.ef e5 may be good too, but the passed e pawn gives black counterplay. Somehow the strange complications had fascinated me. Figuring out the best ways to win had put me in serious time pressure considering that the time control was on move 45 instead of the usual move 40.)

24...Be7 25.Rf2

(Karklins pointed out 25.Rg6 was strong, threatening 26.Rg8.)

25...Kd8 26.Rg1 Kc7 27.Rf7 Bc5 28.Rgg7 Rd8 29.Rh7

(After the game we found I missed the logical 29.Nd5! with a win of more material after 29...Kc8 30.Nf6, 29...ed 30.e6, or 29...cd 30.Bb5 Rh2 31.a4.)

29...Rh7 30.Rh7 Rg8 31.Ne2?

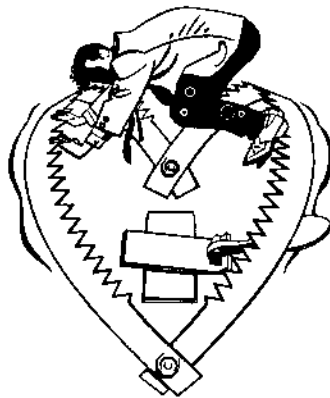
(It was better to push a passer and get a flight square with 31.a4! threatening 32.Nd5!)

31...Rg5 32.c3?

(The wrong way to make luft since ...Re3 will gain an important tempo. Now was the time for me to have fun marching all rook pawns with 32.h4 Re5 33.h5 Re3 34.a4 Rh3 35.a5!)

32...Re5 33.h4 Re3 34.Kc2 Rf3 35.b4 Be3 36.Nd4? Rf2 37.Kb3 Kd6 38.h5 e5 39.Nc2 Bc1 40.Ba6? Bf5 0-1

The POWER of a Trappy Opening



by National Master Alan Watson

Alternately called the La Bourdonnais, Lowenthal, or "Hunt" variation of the Sicilian Defence, the line following 1.e4 c5 2.Nf3 Nc6 3.d4 cd 4.Nd4 e5!? 5.Nb5 a6!? appears to challenge sound opening principles by creating a hole at d5, ceding Bishop for Knight, and weakening the dark squares around the Black king. Black's compensation however, is the possession of a slight lead in development in a sharp position not often seen in tournament practice and where the theoretically best moves are not easy to find over the board. Ideally suited for a tactician, Black's goal in this interesting variation is to stir up trouble in the middlegame before White can consolidate his control of d5 and gain the more comfortable ending.

An example of the deadly power this unusual opening wields against an unprepared and unsuspecting opponent was demonstrated in the last round of the 1992 Illinois Class. In accepting the calculated risk that his opponent was not "booked up" on this line, Albert Chow had only to find two of his own moves (All the rest were known theory!) to put his personal touch on the following short and pretty game and secure the full point. Four additional games with notes are added to give the reader full background on current theory.

Rob Sax (2040) vs. Albert Chow (2327)
1992 Illinois Class, Round 4

Sicilian Defence, LaBourdonnais Variation
1.e4 c5 2.Nf3 Nc6 3.d4 cd 4.Nd4 e5 5.Nb5

(6.Nf5!? d5! 6.Qd5 Qd5 7.ed Bf5 yields Black the more comfortable ending)

5...a6!?

(While 5...d6 transposes to the popular Sveshnikov lines, the rarely played 5...Bc5 is insufficient, as is demonstrated by the continuation 6.Nd6+ Ke7 7.Nf5+ Kf8 8.Be3

d6 9.Bc5 dc 10.Qd8+ Nd8 11.Ne3 Nf6 12.Nc3 g6 13.O-O-O Kg7 +=)

6.Nd6+ Bd6 7.Qd6 Qf6

(Both 7...Qe7 and 7...f5!? have recently been explored)

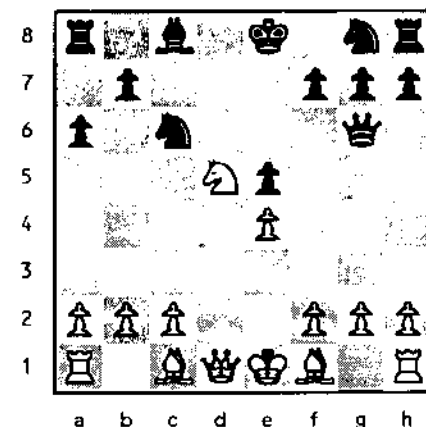
8.Qd1

(Known retreats are 8.Qa3, 8.Qd3, 8.Qd2, and 8.Qc7; however the move 8.Qf6! will be examined in Illustrative Game #1 because of the frequency with which it appears.)

8...Qg6 9.Nc3 d5!?!

(An interesting and rarely played sacrifice first suggested by Gipslis. Normal [and safer!] is 9...Nge7 with a complicated struggle)

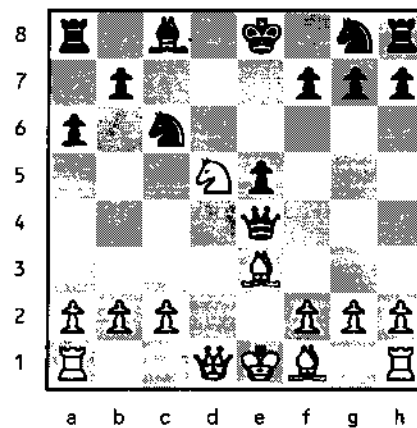
10.Nd5



(Among White's many responses to this unexpected advance of Black's "d" pawn are a) Draw! as in Servat-Cristobal, Mar Del Plata 1990, b) 10.f3 Nge7 11.ed Nd4 12.Bd3 Bf5 13.Be4 Rd8 14.O-O O-O 15.Qd3 Nd5 16.Nd5 Rd5 17.Bf5 Qf5 Draw! Klován-Kapengut, USSR 1963, c) 10.ed Nb4 [10...Nd4!?] 11.Bd3 Nd3+ 12.Qd3

Qg2 13.Qe4 += Vogt, and d) 10.Qd5 Be6 [10...Nf6! 11.Qd6 Be6 12.f3 Nd4 unc Gipslis] 11.Qc5 [11.Qd1 Rd8 12.Bd2 Nf6 13.f3 unc Liberzon] Nf6 12.Qb6 Nd4 13.Bd3 Qg2 14.Rf1 Nf3+ 15.Ke2 Nh2 16.Re1 Bg4+ 17.Ke3 Nd7 18.Qb4 Qf3+ 19.Kd2 a5 20.Qb7 Qf2+ 0-1 Kremen-Ropar, Corr 1988.)

10...Qe4+ 11.Be3



(Once thought to be the refutation of this sacrifice, 11.Be2 is now known to give White nothing as Black may now continue 11...Nd4 [11...Bh3!?, 11...Nf6, 11...Qg2? is just too greedy! 12.Rf1 Rb8 13.Nc7+ Ke7 14.b3! +- Harding/Markland] 12.Nc7+ Ke7 13.Na8 Qg2 14.Rf1 Bf5 unc, or 11.Ne3 Nf6! 12.Bd3 Qb4+ 13.c3 Qe7 14.O-O O-O 15.Nf5 Bf5 16.Bf5 e4 17.Bg5 Qe5 18.Bf6 Qf5 19.Bh4 Ne5 += Damljanovic-Wittmann, Graz 1979)

11...Nd4 12.Nc7+

(12.c4!? Nf6 13.Qd3 Nc2+ 14.Kd2 Qd3+ 15.Bd3 Nd5 16.Bc2 Ne3 17.Ke3 Be6 18.c5 Ke7 19.b4 = Chiburdanidze-Gipslis, USSR 1980)

12...Ke7!

(12...Kd8? 13.Na8 +-, or 12...Kf8? 13.Qd3 Nc2+ 14.Kd2 Qd3+ 15.Bd3 Ne3 16.Na8 Nd5 17.Rac1 +-)

13.Na8?!

(For the superior alternatives 13.Qd3 and 13.Rc1, see illustrative games #2-4)

13...Nc2+ 14.Kd2

(14.Ke2?? Bg4+ 15.f3 Qe3++)

14...Ne3!

(14...Na1? 15.Qc1! +-)

15.fe Nf6!

(Preparing to bring the King's rook into play)

16.Qf3?

(The first new move of the game, and a bad one! Necessary was the protection of b2 and e3 by 16.Qc1 Qb4+ 17.Ke2 Bg4+ 18.Kf2 Ra8 with continued pressure as in Zaitsev-Watzka, Graz 1979.)

16...Qb4+ 17.Kc2 Bg4 0-1

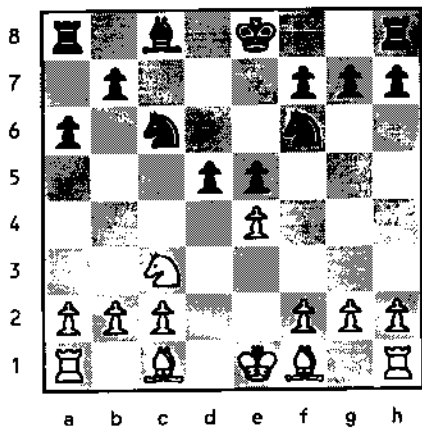
Illustrative Game #1

Short-Tomczak, Bundesliga (Tegel - Solingen) 1990

8.Qf6!?

(Once considered as incorrect because it assisted Black's development, this line is much better than its reputation.)

8...Nf6 9.Nc3 d5?!



(This move, which immediately attempts to free Black's game may be too dangerous. Regarded as superior, but still yielding White an advantage is 9...Nb4!? 10.Bd3 [ECO gives 10.Kd1 Ng4 11.Be3 Ne3 12.fe d6 13.a3 Nc6 14.Nd5 Rb8 = Gligoric, and 10.Kd2! d5 11.a3 d4 12.ab dc+ 13.Ke3 Ng4+ 14.Ke2 f5 15.bc Nf6 16.Ra5 Ne4 17.f3!

Nd6 18.Re5+ +- Velimirovic-Ristic, Yugoslavia 1979] Nd3+! [10...h6?! 11.b3 d6 12.Ba3 Nd3+ 13.cd Ke7 14.f4 Ke6 15.f5+ Ke7 16.Rd1! Rd8 17.d4 ed 18.Rd4 +- Byrne-Evans, USA Ch 1981] 11.cd h6! 12.Be3 d6 13.d4 Be6 14.O-O-O Rc8 15.Kb1 O-O 16.f3 Rc7 = ECO)

10.ed

(White has also tried a)10.Nd5?! Nd5 11.ed Nb4 12.Bd3 Nd3+ 13.cd Bf5 14.Ke2 Rd8 15.Be3 Rd5 = Ziska-Mok, Novi Sad 1990, and b)10.Bg5!? Ne4 11.Nd5 Ng5 12.Nc7+ Ke7 13.Na8 Nb4 14.Bd3 e4 15.a3 Nd5 16.Bc4 Nf4 17.h4 Ng2+ 18.Kf1 Nh4!? 19.Rh4 Bh3+ 20.Rh3 Nh3+- Kosten-Cavendish, Britain 1989)

10...Nb4 11.Bd3 Nfd5

(11...Nd3+ 12.cd Bf5 13.O-O O-O-O 14.Bg5 Bd3 15.Rfe1 Rhe8+= Brinck Claussen-Hansen, Tastrup 1992)

12.Nd5 Nd5 13.Bd2

(Ineffective is 13.O-O O-O 14.Re1 f6 = as in Momeni-Feller, Novi Sad 1990)

13...Be6 14.O-O-O f6!?

(14...O-O!? 15.Rhe1 f6 16.c4 Rfc8 17.Kb1 Nb6 18.b3 +=, and 14...O-O-O 15.Ba5 Rd7 16.Rhe1 f6 17.Be4 b5 are Black's best defenses)

15.Ba5 Rb8?

(A major tactical oversight, although 15...Ne7 16.Be4 Nc6 17.Bc6+ bc 18.Rd6 Bd5 19.Rhd1 Kf7 would be difficult.)

16.Be4 Ne7 17.Bb7!

(Black is surely lost here; the continuation is an exercise in futility.)

17...Kf7 18.Ba6 Ra8 19.Rd6 Ra7 20.b4 Ba2 21.Rhd1 Kg6 22.Kb2 Bf7 23.b5 Bc4 24.Bb6 Raa8 25.Bc7 Nf5 26.Rc6 Be2

27.Rd2 Nd4 28.Rb6 Bc4 29.Be5 Nb5 30.Bb5 Bb5 31.Rb5 fe 32.Re2 Ra4 33.Ree5 Rd8 34.Red5 Rc8 35.Rdc5 Rd8 36.Rc6+ Kf7 37.Rb7+ Kg8 38.f3 1-0

Illustrative Game #2

Kengis-Azmaiparashvili, USSR 1981

13.Qd3 Nc2+ 14.Kd2 Qd3+!

(14...Bf5? 15.Bc5+ Kf6 16.Qd6+ Be6 17.Bd3 Qg2 18.Na8 e4 19.Be2 1-0 Speelman-Bielczyk, Malta 1980)

15.Bd3 Ne3 16.Na8 Nd5

(Borkowski-Wittmann, Hradec Kralove, 1979/80)

17.Rhc1

(17.f4 e4! 18.Be4 Ngf6 19.Rhe1 Kd6 20.Bd5 Nd5 21.Re5 Be6+= Borkowski-Bielczyk, Hradec Kralove 1979/80, or 17.Rac1 Ngf6 18.Nc7 nb4 [18...Nf4 unc Pytel] 19.g3 Nc6 20.Rhd1 Bd7 21.f3 Kd6 22.Na6 ba 22.Ba6 Nd4 += Sersnov-Grave, SSSR 1981)

17...Ngf6 18.Nc7 Nb4!?

(18...Nf4 19.Bf1 Rd8+ 20.Ke1 Ng4 21.g3 Ng6 22.Nd5+ Kf8 += Renet-Cavendish, London Open 1988)

19.a3 Nc6

(19...Nd3 20.Kd3 Bd7 21.Rc5 Kd6 22.Rac1 Bc6 23.Rc6 bc 24.Na6 = Azmaiparashvili / Georgadze)

20.Na6 Rd8 21.f3 Bf5 22.Nc5 Bd3 23.Nd3 e4 24.fe Ne5 25.Rc3 Ne4+ 26.Kc2 Nc3 27.Ne5 Draw!

Illustrative Game #3

Aalbrecht-De Rooi, Netherlands 1982

13 Rc1 Bg4

(13...Rb8?! 14.c31)

14.Qd3

(14.Nd5+ Qd5 15.Qg4 Nf6 unc)

14...Qd3 15.Bd3 Rd8 16.h3

(16.f3? Bh5 17.Be4 Nf6 [17...f5? 18.Bb7 Rd7 19.Bd4! += Vogt-Przewoznik, DDR-Polska 1980] 18.c3 Ne4 19.cd ed 20.Bf4 g5 [20...Nf6 21.Kd2 with the idea 22.Rhe1+ Kd7 23.Na6] 21.fe gf = Vogt)

16...Bc8?!

(For the superior 16...Bh5!, see Illustrative game #3)

17.f4 Kd6

(Superficially attractive, however there are alternatives such as 17...f6 18.c4!? Nf3+ 19.Ke2 Nd4+ 20.Kf2 Kf7 21.c5 Ne7 22.Bc4+ Kg6 23.g4 h6 24.Rhd1 Nec6 += Morosov-Nun, Corr 1988, or 17...ef 18.Bf4 Ne6 19.Ne6 Be6 20.O-O += Liberzon-Franzoni, Biel 1980.)

18.Na8 Nf6

(18...Bh3 19.Rh3 Ra8 20.fe Ke5 21.Rh5+ f5 22.Bd4+ Kd4 23.Rf5 += Aalbrecht, or 18...b5 19.fe+ Ke5 20.O-O f5 21.Nb6 Be6 [Vepkhvisvili- Savgulidze, USSR 1983] 22.Bg5! Re8 23.c3 Nc6 24.Rce1+ +- Vepkhvisvili)

19.fe+ Ke5 20.Nb6 Nf5

(20...Nd5? 21.Nc4+)

21.Bf2 Ne4 22.Be4 Ke4 23.O-O Ke5 24.g4 Nh6 25.Bc5 f5 26.Rce1+ Kf6 27.Be7+ Kg6 28.Bd8 Rd8 29.Nc8 Rc8 30.gf+ Nf5 31.Rf2 h5 32.Re5! Nd4 33.c3 Nc6 34.Rg2+ Kh6 35.Re6+ Kh7 36.Rg5 1-0

Illustrative Game #4

Marjanovic-Simic, Yugoslavia 1983

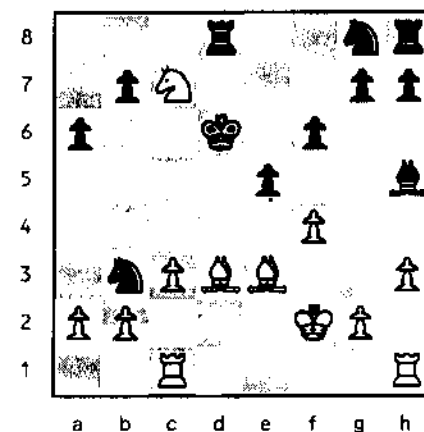
13.Rc1 Bg4 14.Qd3 Qd3 15.Bd3 Rd8 16.h3 Bh5! 17.f4 f6 18.Kf2

(18.c3? Nf3+)

18...Kd6

(18...Rd7 19.Rhe1)

19.c3 Nb3



(19...Kc7?! 20.cd+ Kb8 21.fe fe 22.Rc5, or 19...Nc6 20.Bb6 ef21.c4 Nge7 22.Be4 Nc8 23.c5+ Kd7 24.Nd5 Nb6 25.cb Kd6 26.Nf4 Bf7 27.Rhd1+ Ke5 28.Ke3 +- Winsnes-Hillarp, Rilton Cup 1988)

20.ab Kc7 21.Be4 Ne7 22.Rhe1 Nd5

(22...Bg6!?, or 22...f5? 23.Bf3 Bf3 24.gf! +=)

23.fe Ne3?

(23...fe 24.Bg5 yields only a slight advantage to White.)

24.Ke3 fe 25.Rf1

(Black's numerous weaknesses are indefensible!)

25...Rde8 26.Rf5 Bg6 27.Rg5 Be4 28.Rg7+ Kc6 29.Ke4 Rhg8 30.Rg8 Rg8 31.g4 h5 32.Kf5! hg 33.hg Rf8+ 34.Ke5 Rf2 35.Rg1 Kd7 36.g5 Ke8 37.Rh1 Re2+ 38.Kd6 Rd2+ 39.Kc5 Kf8 40.Rh7 b5 41.Ra7 Rb2 42.b4 1-0

Dr. Martinovsky Annotates!

Martinovsky (2347) - Tennant (2312)
Illinois Class Championship
Round 4 - 11/22/92

1.g3

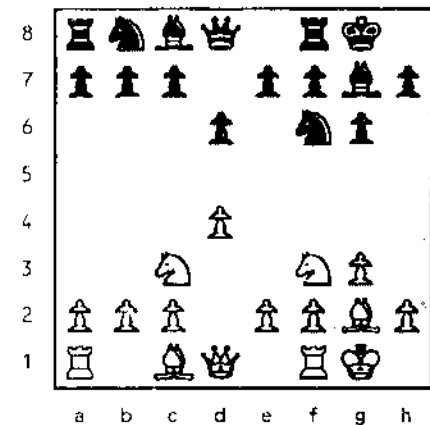
I have lately been playing this move often. I became sick and tired of getting inferior G/5 games against R. Verber and A. Watson by playing anything else. This way I am usually getting at least equal games, many times more against the two most serious opponents mentioned above. Years ago when I was preparing my defences against this move, I had difficulty equalizing against Greg DeFotis. I have concluded there is no easy equality, Black has to struggle. One characteristic of this move is that both White and Black have many transpositional opportunities; that means one has to be a good transpositional artist! Don't laugh—there is an art to transpositional chess!

1...g6 2.Bg2 Bg7 3.Nf3 Nf6 4. O-O O-O
 So far copy-cat transpositional chess!

5.d4 d6

And now a King's Indian Defence.

6.Nc3



I played this move many times and with good success. It is an offbeat King's Indian line and most players know something about it, but not as much as the regular lines. Here I saw 6...Nbd7 7.e4 e5 8.Re1 Re8 9.a4 a5 10.h3 c6 11.Be3 or 6...Nc6 or 6...c5 or 6...Na6 - Shamkovich. Dr. Tennant uses Fischer's move 6...d5, which should equalize. Dzindzihashvili used it against me twice with 2 draws and Ricardo Smetan used it once and equalized also. All the above mentioned moves are good and should equalize, but Tennant's move is probably the best.

6...d5

Black wastes a tempo, moving twice with his d-pawn, but this move underscores the awkward position of White's knight on c3, which does not quite belong there.

7.Bg5

Martinovsky-Dzindzihashvili, Las Vegas 1992 went 7.Ne5 Bf5 8.Nd5 Nd5 9.e4 Be6 10.ed Bd5 11.Be3 Bg2 12.Kg2 Nd7 13.Nd7 Qd7 with equality; Ivkov-Fischer, Santa Monica 1966 went 7.Ne5 c6 8.e4 Be6 (Better was de 9.Ne4 Ne4 10.Be4 Bh3=) 9.ed cd 10.Ne2 Nc6 11.Nf4 Bf5 12.c3 and White had some advantage, but Fischer won in the end. Spassky - Bronstein, Moscow 1961 went 7.Bg5 c6 8.Re1 Ne4 9.Ne4 de 10.Nd2! e3 11.Be3 Bd4 12.Bd4 Qd4 13.c3 Qc5 14.Ne4 Qb6 15.Qd2 Bf5 16.Ng5 with advantage.

7...Ne4

Dr. Tennant decided to play this move right away and I don't blame him. It is a radical way to exploit Bg5. This is very much unexplored territory and I have not seen details anywhere.

8.Ne4 de 9.Nd2 f5

The alternatives are 9...Bd4 or 9...h6. I think Tennant's move is stronger.

10.c3 h6 11.Be3 Nc6

Be6 is an alternative.

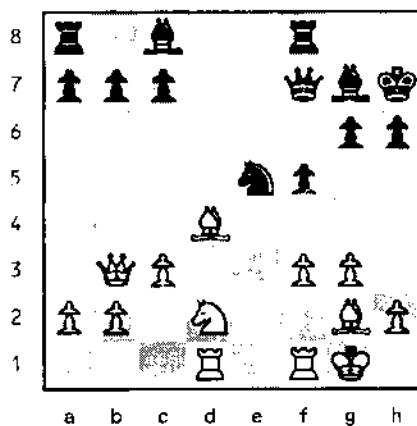
12.Qb3+ Kh7 13.Rad1

Trying to prevent or make e5 difficult, but Dr. Tennant still plays it, calculating recapture on e5 2 moves later.

13...e5 14.de Qe7 15.f4 ef 16.ef Ne5

After all these strikes and counter strikes in the center it's not clear who has the upper hand. Now for example it is not good for White to play 17.Rfe1 because of Nd3 18.Re2 f4! with advantage.

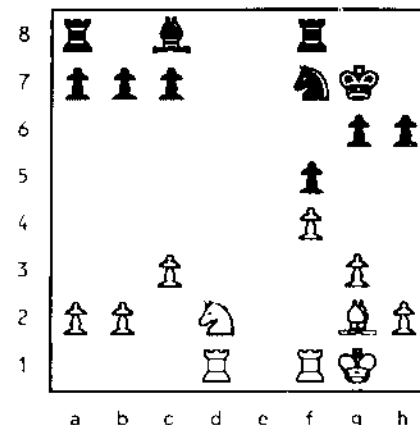
17.Bd4 Qf7?



This turned out to be a mistake. Not good also was 17...c5 18.Qa3! with advantage. 17...c6 is more solid but White's advantage is doubtless. 17...Be6 is a risky try, but it is more promising than the move played. For example 18.Qb7 Rab8 19.Qa7 Nc6 20.Bc5 and White is better or so it seems. But

18.Qb7 Rab8 19.Qa7 Rb2 is not clear, if now 20.Bc5? Ra8! 21.Qa8 Qc5+ 22.Kh1 Nd3! and White may be in trouble. White has other moves than 20.Bc5? and Black then may or may not have compensation for the pawn.

18.Qf7! Nf7 19.Bg7 Kg7 20.f4!



With the last three simple moves White obtained a serious advantage and maybe even a won game. Black will have great difficulties developing his Bc8 and defending important squares c5, e6, d7, e7.

20...Re8 21.Rfe1 Bd7

Good tactical try to free his game, but it does not quite work.

22.Nb3!

The threat Nc5 is difficult to defend.

22...Rab8 23.Nc5 Bc6 24.Ne6+ Kf6 25.Nc7 Re1+ 26.Re1 Bg2 27.Kg2 Kg7 28.Re7

Black managed to exchange his bad bishop, but at a heavy cost. He is a pawn down and his position is passive as well.

28...Kf6 29.Nd5+ Kg7 30.a4 Kf8 31.c4 Re8

Steve gives up some more material in order to activate his pieces and I don't blame him, I would have done the same.

32.Rb7 Nd6 33.Ra7 Re2+ 34.Kf3 Rb2 35.c5!

Good move, but I had to calculate to make sure Black's active pieces do not mate my king.

35...Ne4 36.c6 Rb3+ 37.Ke2 Rb2+ 38.Ke3

Better than 38.Kd3 Rd2+ 39.Kc4 Nd6+ 40.Kc5 Ne4+ making the win extremely complicated and in serious doubt. Some precise King footwork is necessary.

38...Rc2 39.c7 Nd6 40.Ra6! Ne8 41.Ra8 1-0

Al Chow Tops Lake County Open XV

By Tim Just

On October 10, 1992, Al Chow went 4-0 to top the twelve player Open section of the "Tim Just Presents Lake County Open/Reserve XV" on the College of Lake County campus. The action event saw Chow best Chris Baugh (1930), Howard Stern (2137), Kevin Bachler (2242), and Wallace Gordon (2075) to win sixteen Illinois Tour points and \$100 cash. A draw in his last round game with Wallace Gordon would have assured Al Chow of the first place prize money; however, a victory assured him of sixteen tour points. Al's 4-0 score indicates what he thought was worth fighting for.

Kevin "Caveman" Bachler scored 3-1, with a victory over 2347 rated Dr. Martinovsky, to take the \$50 second place prize. It was good to see the inspiration for "Caveman Chess", plus the organizer and tournament director of Lake County Open I, finish near the top on his home turf.

The top Expert accolades and \$50 went to 2.5-1.5 scoring Howard Stern. Andrew Schultz also came up with 2.5-1.5 to win \$50 and the top "A" honors.

The Reserve section of the event also saw a perfect 4-0 score take home the \$100 first place prize. Jeff Brodde's last round contest with Ignacio Sanchez provided the spectators with the kind of thrills, spills, and excitement that action chess has come to represent. Brodde's position was deteriorating fast. Sanchez's game was gaining momentum; however, Sanchez's flag collapsed and died. The match, game point, Illinois Tour points, and first place money belonged to 4-0 scoring Jeff Brodde. The spectators urged Jeff to share his winnings with his good friend Mr. Clock.

A massive tie, with scores of 3-1 each, for Reserve second place and first "C" gave money and glory to Ignacio Sanchez (1766), Kheong Chan (1743), Glenn Rosing (1551), and Darly Zelinski (1506).

Illinois Tour veteran Robert Bales Jr. gained \$50 and the first place D/E/Unrated prize with his effort of 1.5-2.5. His one point upset victory came at the expense of 1735 rated Mike Henroid.

The event was organized and directed by Tim Just and Dennis Grant. The College of Lake County and Caveman Chess look forward to seeing all of their good chess friends on January 9-10, 1993 at the Illinois Maxi-Tour season kickoff event, the \$1725 Tim Just's Winter Open X.

Martinovsky (2347) vs. Bachler (2242)

1.g3 g6 2.Bg2 Bg7 3.d4 c5 4.e3 d6 5.Nf3 Bg4 6.dxc5 Qa5+ 7.Nbd2 Qxc5 8.h3 Bd7 9.O-O Nf6 10.b4 Qc8 11.Bb2 Bxh3 12.Ne4 Bxg2 13.Kxg2 Nbd7 14.Qd3 Qc6 15.Nxf6+ Nxf6 16.c4 Rc8 17.Rac1 O-O 18.Rfe1 Rfd8 19.e4 Qb6 20.a3 Ng4 21.Bxg7 Qxf2+ 22.Kh3 Qxe1 23.Kxg4 Qxc1 24.Bc3 b5 25.Ng5 h5+ 26.Kh4 Qh1+ 27.Nh3 Rxc4 28.Kg5 Qxh3 29.Kh6 Qg4 30.e5 h4 0-1

Chow, Young Triumph at N.U. Plus-Score

by Michael Henroid

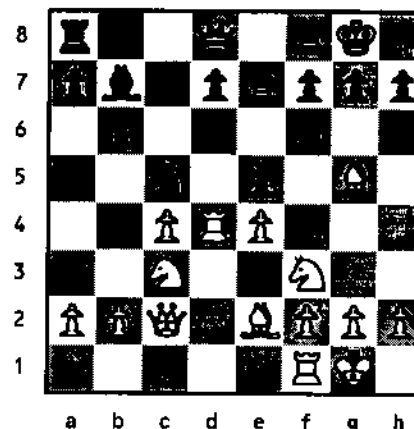
The Northwestern University Chess Club again hosted an ICA Mini-Tour event in Evanston on October 24, 1992. Masters Albert Chow (2379) and Angelo Young each scored perfect 5-0 scores to top the field of forty one players. Each earned \$100 and 16 tour points. Chow's 1992 record in Northwestern tournaments is 16-0. Young's four victories pushed his post-tournament rating to 2500. The winners were able to avoid an over the board encounter because there were only four rounds.

The rest of the prize winners include: Bert Gazmen (2198), Gene Scott (2179), Marvin Rogan (2003), Rhys Read (1985), Andrew Schultz (1907), Bernard Pukel (1908), New Trier High School's Chris Von Krogh (1875), and Jeff Friedman (1847) all with three points. Robert Sax (2040), Roger Pedersen (2007), and Kent Williams (1829) rounded out the plus-scorers with 2.5 points. All ratings are post-tournament.

Club President Michael Henroid organized and directed. The next event at N.U. will be held after New Year's Day. A win in the following game would have given Gene Scott a Master's rating.

Albert Chow vs. Gene Scott

1.d4 Nf6 2.c4 e6 3.Nc3 Bb4 4.Qc2 c5 5.dxc5 Bxc5 6.Nf3 O-O 7.Bg5 b6 8.e4 Be7 9.Rd1 Na6 10.Be2 Bb7 11.O-O Nc5 12.Rd4? e5!



13.Nxe5 Ne6 14.Be3 Nxd4 15.Bxd4 d6? 16.Nf3 Nd7 17.Rd1 Rc8 18.Be3 Qc7 19.Nd4 Rfe8 20.Ndb5 Qb8 21.Qd2 Nc5 22.Bg4 Rcd8 23.f3 a6 24.Nd4 g6 25.Nd5 Bxd5 26.cxd5 Qb7 27.Nc6 Ra8 28.b4 Na4 29.Bd4 Bf8 30.Qf4 Bg7 31.Qd6 Nc3 32.Bxg7 Nxd1 33.Bd4 f5 34.Qf6 1-0

FIDE Master ALBERT CHOW

is available for

Lesson ■ Lectures ■ Simuls

312-248-8976

Chess

on
the

Fox

by Bob Renaut

Fox Valley Defeats Joliet Correctional Center

The Joliet Correctional Center hosted an eight board team match on November 4 with game/60 time controls. Eight club members traveled to Joliet to take up the challenge including, Bob Renaut (Bd 1's & 2), Jim Oberweis (Bd 3), Mike Flynn (Bd 4), John Jelen (Board 5), Joe DeCort (Bd 6), Mark McGee (Bd 7) and Arthur Kitch (Bd 8). The members of the Joliet team playing strengths were not known as few are rated USCF players, but fighting chess was the story of the night. Joliet eventually went down to defeat but without drawing blood first, at the chess board. The final team score was 5 1/2 - 2 1/2. Winning games were Bob Renaut, Jim Oberweis, Mike Flynn and John Jelen. Joe DeCort drew his game in a see-saw battle. Mark McGee lost his game on time and Arthur Kitch also lost. Thanks to Dennis Jenson, Joliet Correctional Center, for organizing the event and providing refreshments during the match. A word of caution to other clubs....watch out for these guys they play to win. The following are a few games from the match with my brief comments.

Phil - Flynn, Mike Joliet Correctional Center Match Bd. 3 - 1992

1.e4 c5 2.Qf3 Nc6 3.Bc4 Ne5 4.Qc3 d6 5.Nf3 Nxc4 6.Qxc4 a6 7.e5 Be6 8.Qf4 dxe5 9.Qxe5 Rc8 10.Ng5 Rc6 11.0-0 Nf6 12.Nxe6 Rxe6 13.Qxc5 Rc6 14.Qf5 e6 15.Qf3 Black can't take the c2 pawn or the rook is trapped after Nc3. 15...Be7 16.c3 e5 17.d3 0-0 18.Bg5 Qd7 19.Bxf6 Rxf6 20.Qe4 Qc7 21.g3 Rh6 22.d4 exd4 23.cxd4 15 24.Qd5+ Kh8 25.Nc3 Rd6 26.Qe5 Qd7 27.Rad1 Bf6 28.Qc5 Rc8 29.Qb4

Bxd4 30.Ne2? Bxf2+ 31.Kxf2 Rxd1 32.Rxd1 Qxd1 33.Qe7 h6 34.Qxb7 Qc2 35.Qxa6 Rc6 36.Qb5 Rc5 37.Qe8+ Kh7 38.Qe3 Rb5 39.b3 Qxa2 40.Qd3 Qxb3 41.Qxb3 Rxb3 42.Nd4 Rb2+ 43.Kf3 g6 44.h4 Kg7 45.Ne6+ Kf6 46.Nf4 g5 47.hxg5+ hxg5 48.Nd5+ Ke5 49.Ne3 Rb3 50.Kf2 Ke4 51.Nc4 Rd3 52.Ke2 Rfg3 53.Nd2+ Kd4 54.Nf3+ Ke4 55.Nd2+ Kf4 56.Kf2 g4 57.Nf1 Ra3 58.Nd2 Ra2 59.Ke1 Rxd2 60.Kxd2 Kf3 61.Ke1 Kg2 62.Ke2 f4 63.Kd3 f3 64.Ke3 f2 65.Kf4 f1Q+ 66.Kxg4 Qf3+ 67.Kg5 Kg3 68.Kg6 Kg4 69.Kh6 Qf6+ 70.Kh7 Kg5 71.Kg8 Qe6+ 72.Kg7 Qe7+ 73.Kg8 Kg6 74.Kh8 Qh7+ 0-1

Oberweis, J. (1850) - Summers, S. Joliet Correction Center Match Bd. 2 - 1992

1.e4 e5 2.Nf3 d6 3.Bc4 Nf6 4.Ng5 Be6 5.Nxe6 fxe6 6.Bxe6 Qe7 7.Bd5? [White should maintain this Bishop to take advantage of Black's white square weakness.] 7...Nxd5 8.exd5 Nd7 9.0-0 g6 10.Nc3 Bg7 11.Re1 0-0 12.d4 Qh4 13.g3? [Forcing Black to capture the d pawn and weakening White's Kingside.] 13...Qxd4 14.Qxd4 exd4 15.Nb5 Rfc8 16.Bg5 a6 17.Re7 Ne5 18.Nxc7 Rab8! Black works on trapping whites' rook [18...Nf3+ This move is not as good as it first appears. 19.Kg2 Nxg5 20.Nxa8 Rxa8 21.Rxb7+] 19.Kg2 Bf8 20.Ne6 Bxe7 21.Bxe7 Nf7 22.Nxd4 Re8 23.Bf6 Ne5 24.Ne6 Rbc8 25.Rc1 Kf7 26.Bxe5 dxe5 27.c4 Ke7 28.c5 Kf6 29.b4 e4 30.Re1 Ke5 31.Rd1 Re7 32.Nf4 g5 33.d6 Rd7 34.Nd5 Rf8 35.Rd2 g4 36.a4 Rf3 37.Ne3 h5 38.Rd5+ Kf6 39.Rxh5 Ke6 40.Nxg4 Rf5 41.Rh6+ Kd5 42.Ne3+ Ke5 43.Nxf5 Kxf5 44.b5 axb5 45.axb5 Ke5 46.c6 bxc6 47.bxc6 Rxd6 48.c7 Rxh6 49.c8Q Rd6 50.h4 Kd4 51.h5 Kd3 52.Qc1 Ke2 53.h6 Rf6 54.Qe3+ Kd1 55.h7 Rf3 56.Qxe4 Rf8 57.h8Q Rxh8 58.Qd4+ Kc2 59.Qxh8 Kb3 60.f4 Kc2 61.Qd4 Kb3 62.f5 Kc2 63.f6 Kb3 64.f7 Kc2 65.f8Q Kb3 66.Qfb4+ Kc2 67.Qdd2+ 1-0

Israel - Renaut, R. (2160) Joliet Correctional Match Bd. 1 - 1992

1.e4 g6 2.d4 Bg7 3.Nf3 c6 4.c3 d5 5.e5 Bg4 6.h3 [White forces black to trade off his bad bishop.] 6...Bxf3 7.Qxf3 e6 8.b3 Nd7 9.Nd2 h5 10.Bd3 c5 11.Qg3 [White is adding pressure to the g6 square and getting ready to attempt a sac of his bishop to open up the kingside.] 11...Ne7 12.Nf3 Qb6 13.Be3 Rc8 14.0-0 cxd4

15.cxd4 0-0 16.Rfc1 [Contesting the open file is a good idea.] 16...Nf5 [Relieving pressure on g6 and tempting white to trade off his good white square bishop.] 17.Bxf5 exf5 18.Bf4 Rfe8 19.Rd1 [White seems to have lost his plan...tying his rook down to the defense of the queen pawn can't be good...plus he lost control of the "C" file.] 19...Rc3 [My plan has been to attack the "d" pawn, trying to wreck white's center. The knight is going to e6 to add further pressure. I didn't want his knight at g5.] 20.Bd2 Rd3 [Risky...I spent alot of time trying to figure out if this rook could get trapped. I also didn't like giving up control of the "C" file.] 21.Rac1 Nf8 22.Qf4 [This move gains nothing as I get my knight to e6 with a tempo...22 Rc3 forcing the trade of rooks looks better.] 22...Ne6 23.Qh4 Bf8 24.Kh2?? [White is trying to win the exchange with 25.Ba5 ? when 25...Rxd1 is now without check so black must capture the bishop 25...Qxa5 26.Rxd4. However, this move also cuts off a key retreat square for the white queen.] 24...Be7! [The white queen is lacking a good square.] 25.Qg3 h4! [Death to the lady!] 26.Nxh4 Rfg3 27.Kxg3 Bxh4+ 28.Kxh4 Qxd4+ 29.Kg3 Qxe5+ [The rest is just mop up.] 30.f4 Qe2 31.Bc3 d4 32.Bxd4 Nxd4 0-1

"O" - Renaut, R. (2160) Joliet Correctional Center Match Bd. 2 - 1992

1.d4 g6 2.c4 Bg7 3.e4 c5 4.d5 b5 5.Qc2 [White declines black's gift of a pawn.] 5...d6 6.Bd2 Nd7 7.f4 Nf6 8.Bc3 b4 9.Bxf6 [Trading this bishop off give Black control of the a1h8 diagonal and makes white weak on the black squares. Watch how Black eventually penetrates white's position.] 9...Nxf6 10.Nd2 a5 11.Be2 Qb6 12.Rb1 a4 13.Qd1 0-0 14.Ng3 Ng4 15.Nf1 f5 [Trying to force open the "F" file at the expense of leaving a weakness at e6.] 16.Ng5 [White moves to quickly occupy the weak square.] 16...Nh6 17.g3 Bd4 18.Nd2 Qa5 19.Kf1 fxe4 20.Ngxe4 Nf5 21.Qc1 Be3 22.a3?? Nd4 23.axb4 Bh3+ 24.Ke1 Qxb4 25.Bf1 Bg4 26.Qc3 Bxd2+ [Black is going for a won endgame now...the "B" pawn is weak and will fall.] 27.Nxd2 Rf8 28.Qxb4 Rxb4 29.Kf2? [29.Bd3 is better, but White is still lost after 29...a3!] 29...Bf5 30.Rc1 Rxb2 31.Ke3 a3 32.Bd3 a2 33.Bxf5 gxf5 34.Kd3 Ra3+ 35.Rc3 a1Q 0-1

3rd Fox Valley Scholastic Championship draws 177!

The third Fox Valley Scholastic Championship was a tremendous success, drawing sixty more students this year. The students consumed the 180 free donuts in a record five minutes. The tournament was directed by Bob Renaut with assistance from Jim Oberweis and Erv Sedlock. NM Tom Cooper provided post game analysis for the interested

students. The team winners in each section were:

Primary

1st	18.0 Ben Franklin
2nd	17.5 LCC- Kankakee
3rd	15.5 MacArthur
4th	14.5 Holy Angels
5th	12.5 Churchhill

Elementary

1st	19.0 LCC-Kankakee
2nd	17.0 Oakland-Bloomington
3rd	17.0 Forest Glen
4th	15.5 Ben Franklin
5th	12.5 Churchhill

Junior

1st	14.0 Hadley
2nd	12.5 Albright
3rd	12.5 Benjamin
4th	11.5 Holy Angels
5th	10.0 MacArthur

Individual section winners were:

Primary

1st	Bucsa, Jeff	5.0
2nd	Wong, Kevin D.	4.5
3rd	Muniz, Sarah	4.5
4th	Sapthavee, M.	4.0
5th	O'Gorman, Chris	4.0

Elementary

1st	Chambers, Chris	5.0
2nd	Allers, Neal	5.0
3rd	Chambers, Andrew	4.0
4th	Salzmann, Steven	4.0
5th	Hayes, Chris	4.0

Junior

1st	Wong, Brian	4.0
2nd	Jacobsen, Anna Liss	4.0
3rd	Dougherty, Andy	3.5
4th	Brewer, Kevin	3.5
5th	Dudic, Filip	3.0

Jim and Helen Warren continued to aid junior chess by donating chess books for the top 24 students in the Junior section. Our thanks to Jim and Helen for taking the time to stop by and explain the junior program to the students and adults. Jim Oberweis, President of FVCC, presented Helen with a \$150 donation, from the Fox Valley Chess Club for the junior program. Our USCF membership drive was also a great success with seventeen youth memberships sold, adding to the the growing number of Illinois chess players. A special thanks for the Oberweis Dairy for providing ice cream treats to all the participants.

OAK PARK - RIVER FOREST

CHESS CLUB NEWS

by Ken Marshall

October 6: Team Speed Tournament. Four three-man teams competed in this double round robin "game/5" tournament. Peter Dudkowski, Jim Lahvic, and Gary Janssen won the event with a score of 4.5-1.5. Mark Marovich, Bill Barker, and Chris Baumgartner followed at 3-3.

October 20: USCF "Game/10" Tournament. This OP-RF CC "members only" event, a five round Swiss System tourney contested under the "Quick Play" rating system, attracted 20 players. Jim Lahvic, Mark Kende, Jim McNamara, and Craig Borri shared first through fourth with scores of 4-1. (Lahvic took home the only prize, a cassette player with earphones donated by Marty Ptacek, by winning a round robin playoff among the top finishers.) Ely Sollano, Art Zacher, Jeff Holmes, and Butch Allen all followed at 3-2, while Robert Stoltz and Mark Sefcheck each ended up 2.5-2.5.

October 23: OP-RF CC - Hillside CC Return Match. Only eight players showed up at the Hillside CC to represent the OP-RF CC in this event (a disappointing turnout, given the Club's 86 person membership). Hillside had nearly 20 members ready to play, and fielded a team which outrated the OP-RF CC contingent on almost every board (including a nearly 400 point advantage on each of the top two boards). The match consisted of two "game/30" games (with Hillside substituting a different player for the second game on four of the boards). Hillside registered a convincing 11.5-4.5 victory. The OP-RF CC's points were provided by Ron Amirante, who overcame a 251 point rating deficit to score 1.5 out of 2; Howard Winchell, who had a win against an opponent rated 266 points higher; Don Winsauer, who won one game; and Ken Marshall, who drew twice.

November 10 and 17: WRC Tournament. This four round, "game/30" event, sanctioned and rated by the Grandmaster Yasser Seirawan's International Chess Federation (FIDE)- affiliated World Rapid [Action] Chess organization, attracted 10 players. Ely Sollano and Jim Lahvic (who drew their Round 3 game) each scored 3.5-5 to finish tied for first and second. Art Zacher, Robert Stoltz, and Chris Baugh (all 2-2) shared third place. Bill Buttny (3-1) took home the 1999- 1700 money. (Buttny's prize in this category was larger than the third place prize he would otherwise have won.) Topping the 1699-Below entrants was Chris Baumgartner (1.5-2.5).

YOUNG, CHOW TOP MINI-TOUR OP-RF CC AUTUMN ACTION '92

Two masters and three experts were among the 20 players competing for \$212 in prizes and for Illinois Tour points at the Oak Park-River Forest Chess Club Autumn Action '92, a five round "game/30" Illinois Chess Association Mini-Tour event held October 17, 1992 at the Dominican Conference Center in River Forest. Angelo Young and Al Chow, ranked first and second on the wall chart, drew with each other in Round 3 on their way to tying for first and second with 4.5- .5 results. Bert Gazmen and Robert Stoltz (one of 10 entrants from the OP-RF CC) both finished 3.5-1.5 to share third place.

Class A honors went to Stoltz, while Michael Henroid and OP-RF CC members Tom Fineberg and Butch Allen all ended up 2.5-2.5 and split the Class B prize. Orn Backstrom topped Class C with a 1.5-3.5 score. Robert Bales and Dan Hart lead Class C/D/Unrated players with 2-3 results. Ken Marshall and Don Winsauer directed.

FOUNDERS AND FRIENDS by Helen Warren

A Tribute to Arpad Elo (1903-1992)

The chess world mourns the death of Arpad Elo in Milwaukee at age eighty-nine. Arpad, creator of the FIDE Rating System which bears his name, died on Nov. 5 of a heart attack. His contribution to chess was monumental and permanent. He was one of the founders of the United States Chess Federation, many-time Wisconsin Champion and officer of its state association, and above all, the creator of the rating system which measures the strength and performance of tournament chess players the world over.

Arpad Elo's connection with Chicago dates back decades. He was part of the Milwaukee group of chess organizers from the fifties who introduced their technical expertise to Chicago area directors. Along with Ernie Olfe, Pearl Mann, and Fred Cramer, all Wisconsin chess promoters, Arpad Elo was a pioneer in the early days of large open tournaments in the midwest. The tutelage of the Milwaukee school produced a core of Illinois directors and organizers who exercised tremendous influence in chess: Frank Skoff, Peter Wolf, Tim Redman, Richard Verber, and others.

In 1979 on the occasion of the USCF's 40th Anniversary, I was asked to write a tribute to George Koltanowski and Arpad Elo, two men who contributed immensely to the development of chess in general and the USCF in particular. The following tribute, edited here, was published in the September, 1979 issue of

Chess Life and Review and republished ten years later in the player's program for the 1989 U.S. Open.



ARPAD ELO

University professor of physics, astronomer, administrator of the American Chess Federation and its President from 1935-1937, creator of the Milwaukee playground chess program, charter director-founder of our USCF: Arpad Elo. He is a complicated, multifaceted scientist with opinions as sturdy as his peasant stock.

His name is synonymous with the rating system used to measure the chess performances and relative strengths of USCF's tournament players. "What's your rating?" It is the recurrent, insistent, ultimate measure of rank and station in a sport/hobby that disdains caste of any other ilk. How good you are is spelled in Elo numbers. That's all most of us know of the man. But that is a layer neat; Arp is a veritable torte.

Arpad Elo brought chess to the children of Milwaukee—and to the young of dozens of cities across the land which emulated the

model. This program of the American Chess Federation was instituted in 1934; a year later Arp became President of the ACF, and it became their project as well. In 1939 the American Chess Federation and the National Chess Federation merged to become the United States of American Chess Federation.

Early in the 1950's Arpad established one of the first tax-exempt foundations for the financial support of chess. He directed and organized the 1953 U.S. Open in Milwaukee, which attracted 181 entrants with a \$5,000 prize fund—great numbers in those days. That was the first Open to contribute to the USCF in dollars. Can you imagine one in this decade without such a financial arrangement?

By 1959 the rating system needed revision; the steady increase in the class-playing population fostered by the increasingly popular weekend swisses and the evident limitations of the existing Harkness rating system suggested the need for a more accurate and more stable measurement. In addition, at about this time FIDE's interest in ratings was growing. Thus the Elo Rating System was born of necessity. In 1960 the Elo Rating System was adopted by the USCF, and ten years later FIDE accepted it as its official measuring tool.

Indeed, it is impossible to overestimate the complexity of the research and the huge investment of time and energy

FOUNDERS AND FRIENDS

A Tribute to Arpad Elo (1903-1992)

that went into the development of the Elo System. Always the matter of the integrity of the system emerges: it must be above political manipulation if it is to do its job. "It is a measuring tool, not a device of reward or punishment; it is a means to compare performances, assess relative strength, not a carrot waved before a rabbit or a piece of candy given to a child for good behavior..."

The respect with which Professor Elo is regarded abroad is best exemplified by the fact that he has served as Secretary of the FIDE Qualifications Committee continuously since 1966 and was reelected again this past spring. In this capacity it is his responsibility, and that of the others on the committee, to establish the criteria by which international titles may be earned.

Ultimately, the Elo System, incorporating the concept of "category tournaments", is the sturdies: mechanism yet devised to rank chess players internationally. Vitiating of its standards, to ease the attainment of titles for any individual or national group, erodes the worth of the title. When we last spoke with Arpad at length, in Milwaukee last November, he said, "The United States will have more titled players when it has more players. For this to happen there must be shifting cultural values—and, of course, promotion of the game by a vigorous national federation. Do not ask title criteria to manufacture international masters or grandmasters by cheap dilution."

For thirty-three years the Elo Rating system has been the instrument which measures the relative strength of chess players. For almost



Helen Warren

a quarter of a century it has served FIDE as the yardstick for the international ranking of chess players. The work of Illinois Expert Jim Warren, acknowledged in the credits in Arpad Elo's book, The Rating of Chess Players Past and Present, may not be generally known. Jim devised the computer program which implemented the Elo formula and made the rating of games in quantity possible. Earlier Jim and I scoured through hundreds of tournament crosstables and raw results lists for results which would eventually lead to the first Elo Rating List. ICA President Al Losoff proofed the manuscript of the original text.

Less known is the fact that Fred Cramer of Milwaukee, one-time USCF president and our representative to FIDE, led a decade battle with FIDE urging the adoption of the ELO System by that body, often meeting with stiff resistance, but never flagging in his zeal and conviction.

The Elo Rating System is the tremendous legacy of Arpad Elo. In spite of all the petty and ruinous tinkering over the years, in spite of the fiddle-points, the feedback, the rating

floors, the bonus points, and the bending and abuse of the system by smaller men, it remains a scientific tool that has drawn and kept players, piqued their interest, spurred their ambition to improve, gave them stars to shoot for, and mirrored their chess ability. "What's your Elo rating?" is asked the world around. His name is synonymous with his creation.

Almost every USCF master can tell you when he achieved the coveted 2200 Elo rating; every FIDE rated player eagerly searches the informant listing to find his name and rating each time it is published. Youngsters begin their chess career with their very first published Elo rating; they travel through their teens and into adulthood marking their hard-fought climb up the Elo ladder. The system has served USCF as a recruitment tool more than any single promotion.

I am reminded now of the great chess personalities I've been privileged to know over the past thirty-five years: Grandmasters, international masters, USCF presidents, editors, top drawer organizers and directors, and players-players, players, and players. If given the task of picking an All Star Team of those who left an indelible mark on the game, Arpad Elo would be on my starting nine.

Rest in peace.

1992 HIGH SCHOOL CHESS CLINIC

by Ken Lewandowski, Chess Coach of Evanston High School

A BIG THANK YOU TO THE ICA!

During last October, the ICA co-sponsored a teaching clinic with the Illinois Chess Coaches Association, Proviso West and Evanston Township High Schools. Over 80 scholastic players from 12 schools participated in this event. During the 3 morning sessions, players learned from one of 3 masters or took part in a simul match against Scott Zingheim. The sessions covered openings, middle game strategy and end games. Allan Watson presented the Center Counter Defence at length as an aggressive response by Black. Richard Verber & Bill Colias discussed the strategic ideas underlying the Najdorf & O'Kelly variations of the Sicilian Defence.

After a quick lunch, the schools formed 5 man teams and played a 4 round G/30 tournament to demonstrate their skills. There was also a rated octagon for the adult players. Winning teams at the end of the day were:

1st Moline High School 2nd Bloom Trail High School
3rd Jefferson (Rockford) H.S.



Tournament Champions: The 1st place Moline High School Team - Coach Paul Mills holds the 1st place trophy. (L-R) Board 1 - Eric Timior (1559), Board 2 - Jim Elliff (1506), Board 3 - Jason Elliff (1582), Board 4 - Tyler Morton (1523). Board 5 - Jason Cochuyt (1439). Congratulations to Moline High School! Note: that the Quad Cities deserve much credit for their excellent scholastic chess program. In Illinois, DuPage County (the western suburbs) and Moline-Rock Island each have many outstanding grammar school students on the USCF top-50 age categories lists. It looks like their grammar school program is starting to translate into success at the high school level as well!

Dick Verber ICB Junior Chess Editor

Awards were also given to winners on each board:

Board 1

1st	Bryce Folsom	Jefferson H.S.
2nd	Dan Hart	Evanston A.H.S.
3rd	Shaanan Fink	Evanston B.H.S.

Board 2

1st	Jim Elliff	Moline H.S.
2nd	Andy Dougherty	W. Aurora H.S.
3rd	Mike Scheib	Proviso West H.S.

Board 3

1st	Kevin Gough	Bloom Trail H.S.
2nd	Jason Elloff	Moline H.S.
3rd	Mark Raczkiewicz	Lane H.S.

Board 4

1st	Brad Watton	Jefferson H.S.
2nd	Andrew Martin	Bradley/Bourbonais H.S.
3rd	Tomas Palaez	Bloom Trail H.S.

Board 5

1st	Jason Cochuyt	Moline H.S.
2nd	Narayan Desai	Proviso West H.S.
3rd	Fred Strickler	Bradley/Bourbonais H.S.

Adult Octagon

Paul Mills Moline

Student Octagon

Tommy Craggs Urbana

During the morning, 20 of the participants took part in a speed tournament during one session of the lectures. Scholastic players do not get many chances at this speed. Several adults tried their games with them. Winners were:

Speed Tourney

1st	Barratt Moy	Northwestern University (Evanston asst.)
2nd	Tom Fineburg	Organizer
3rd	Bryce Folsom	Jefferson

This is a second year for this co-sponsored event. Despite restricting the participation to high school and older this year, more players took part. The coaches who attended were enthusiastic about the mix of lessons, blitz, action and team competition and will recommend the clinic to other schools. We hope to continue this clinic next October with the support of the ICA and encourage all of the adult members to come and learn/play chess with the players of tomorrow.

Added note: by Dick Verber, ICB Junior Chess Editor

A special guest visitor at this year's High School Chess Clinic was Helen Warren, coordinator of the ICA-Warren Junior Chess Program. Thanks to Helen & ICA for spending thousands of dollars to teach chess. Thanks also to George Marino of Proviso West High School who did the lion's share of the work in organizing this very successful 1992 High School Chess Clinic. Keep up the good work, George!



From left to right: Ken Lewandowski - Tournament Director and Coach of Evanston High School, National Master Scott Zingheim, George Marino - Chess Clinic Organizer & Coach of the Proviso West (Hillside) High School, Senior Master Dick Verber - Chess Coach of Aurora West High School, and Senior Master Bill Colias.

GM DMITRY GUREVICH

is available for:

Lessons ■ Simuls ■ Lectures

312-486-8051

Midwestern Chess Adventures of Chicago (MCAC)

CHESS AT THE ELBO ROOM!!

Friday night, Jan. 15th G/5 Blitz Round Robin Tournament
(alternate date Jan. 22nd) EF: \$5.00 70% returned in prizes

Call before Jan. 14th to confirm the tournament date!

Phone: 312-871-2148 (MCAC)
or 312-248-8976 (Albert Chow)

Pre-entries: Midwestern Chess Adventures of Chicago
3924 N. Hermitage St., 2nd floor, Chicago, IL 60613
Make checks payable to: Christopher L. Baumgartner

FOOD & DRINK AVAILABLE AT SITE

1992 ICA TOUR STANDINGS

MASTER TOUR POINTS:

COLIAS Bill	112.5
CHOW Albert	101
YOUNG Angelo	62.5
MARTINOVSKY Eugene	57
GUREVICH Dmitry	51
KARKLINS Andrew	33
COOPER Tom	32.5
IVANOV Alexander	25
PELTS Peter	23.5
TATE Emory	20.5

EXPERT TOUR POINTS:

SCOTT Gene	47.5
ERNST Edward	36
ZELENSKY Eugene	36
MARSHALL Jim	29
KARKLINS Erik	24
SAX Rob	23
ROGAN Marvin	22.5
READ Rhys	22
COHEN Howard	21.5
WARD Tom	21.5

CLASS A TOUR POINTS:

JASAITIS Anthony	51.5
COHEN Howard	44
WARFIELD Tom	42.5
PUKEL Bernard	31.5
PRADZINSKI Tim	27.5
MC CARTHY Mike	26
COHEN Larry	23
LULVES Joseph	22.5
DIAZ Pablo	21.5
STOLTZ Bob	21.5
BOCK Dale	21

CLASS B TOUR POINTS:

PAPHITIS Alexander	71.5
KITTILSEN Guy	48.5
GRAY James Jr	41.5
SANCHEZ Ignacio	37.5
CRAGGS Tom	32
FALLS Dwayne	32
WILLIAMS Kent	30
PADILLA Rudy	29
RAIMO Robert	24.5
RATNER Jacob	23.5
HENROID Mike	22.5

CLASS C TOUR POINTS:

OBERWEIS Julle	48.5
VON KROGH Chris	44
VAKIL David	35
VENSKE Danny	28
CRAGGS Tom	26.5
JOHNSON Frank	23.5
CISKO Greg	22.5
JOHNSON Henderson	22.5
SILVERMAN Scott	22.5
JOSEPHS Steve	21.5

CLASS D TOUR POINTS:

NAVIAMOS William	36
BALES Robert	32.5
JENKINS Mike	17
MANZELLO Sam	16.5
AHMER Craig	16
RODGERS Paul	16
WIRTH Mike	15
CRAGGS Tom	13.5
MARTIN Brian	10.5
JOHNSON M David	10

CLASS E TOUR POINTS:

BALTAZAR Mark	15
BAUMGARTNER Chris	13.5
HART Dan	12.5
RACZKIEWYCZ Mark	8.5
DAVENPORT Felix	7.5
ELLINGSON Eric	5
GYORI Victoria	5
MAAS Stephen	5
DUPEE Arthur	4
HAUGER Christoph	4
LEALI Matt	4
MARTIN Steve	4
VAN DER WYST Ton	4

THE LIFE OF A HIGH SCHOOL CHESS COACH

by Ken Lewandowski

It all starts in September when you place the announcement in the school bulletin: *Students interested in playing chess should attend a meeting after school and wait.* How many seniors did I lose? You try to remember. How many incoming freshman will be more than wood-pushers? Will everyone else return to the team? You hope? You look over the tournament schedule and the league matches and discuss fees and transportation with the appropriate administrator and then...

In most league play and several tournaments (including the state tournament recently described by Dick Verber) a team is composed of 8 players playing 8 players from another school. Each board has a point value, 12 for board 1, 11 for 2 and so on to 5 for board 8. Quick mathematics shows this to give a 68 point match. More math shows that 35 points are needed for a win. Draws earn 1/2 point for each team. The idea behind the weighting system is to encourage teams to play the best players on board 1 etc. In practice little is gained by "sacking" the top boards as your opponent almost automatically gets 1/3 the points needed for the win. It is in determining the "board order" that the coach sometimes has the most effect on the team's outcome. It is generally accepted that a team needs at least 6 players to compete.

Most schools play in a league that parallels the other scholastic sports, although with less hoopla. These matches take place after school from October through March. With the state individual tournament coming in April, the chess season is much longer than most. There are a number of schools that do not have a regular set of opponents. These schools (and many of the league schools) meet at several all day Saturday tournaments throughout the year. (See the list at the end of the article.) Most scholastic tournaments run 4 rounds, usually with a G/60 time control and last from 8 AM to 6 PM. With the demise of the free scholastic membership, only a few of these currently are rated by USCF. Besides playing 8-10 leagues matches each year, I try to take my team to 1 tournament each month.

As you can see from the above paragraphs, there is more to high school chess than just being able to play the game and promote interest. Richard Verber asked me to write something about high school chess for the ICA and after seeing my phone number in print, I realized he meant it. My intention in this article has been to give a brief overview of high school chess. It is also a plea for all ICA members to become active locally and work to increase the overall participation in chess in Illinois. My team always listens more to outsiders than to me. The Evanston team has had Dick Verber, Les Bale and Al Chow as guest lecturers and I saw results quickly. During the summer, I take some players to local clubs to keep them in shape and I am amazed how much better they play against "unknowns" than they do against each other.

I attribute much of my club's success to the amount of chess they play and the variety of opponents. Call your local school to see if they have a club and when it meets. Volunteer to come and play, if it is just informally. If you feel qualified, volunteer to describe some of your games or your favorite opening. There will be a teaching clinic in October for all players. Go over your bookshelves and get rid of those books you haven't referred to in years. Most clubs have players at all levels and coaches would be thankful to have another "teacher" come in to help divide the club into "ability groups" for appropriate instruction and level of play. If there is a tournament in your area, call and see if you can help. Several of them have open sections where you could even play.

Why get involved? Several of the Evanston players continue playing after graduation and one has become a TD at Northwestern University and is helping run some mini tour events for ICA. Currently, several of my teams have been working with elementary school players at Oakton School. When they teach they also learn. I have not played serious chess since I was in high school when I took over the Evanston team 6 years ago. I now have a regular place to find opponents and a reason to keep trying to improve. Some of my favorite memories are of players springing traps in tournament play that I helped them learn and seeing their excitement.

If you are unsure about your local school, call me. There is an association of chess coaches in Illinois and I should be able to find out who the coach is for you. In future articles, the North Shore Chess League will be featured with results and games (this includes Steve Arlinsky of Niles North to drop a name.)

Ken Lewandowski - (708) 869-8246 evenings



MAXI TOUR EVENT

Paul Rodgers

1993

Winter Winds

Open



February 27 & 28, 1993

LOCATION:

HOWARD JOHNSON
MOTOR LODGE
1909 N. Cunningham
(Just south of I-74)
Urbana, Illinois 61801
(217) 367-8331

REGISTRATION:

2/27 - 8 am - 9 am

ROUNDS:

2/27 - 10:00 am
2:30 pm
7:00 pm
2/28 - 9:00 am
1:30 pm

PRIZE AWARDS:

2/28 - 6:00 pm

TIME CONTROL:

30/90 SD/30

NOTE: Special room rates for players making reservations before 2/1/93. Ask for the Special Chess Rate.

1/2 point byes (one bye per player) available for rounds 1-4. Must commit to bye at time of registration.

ALL ADVANCE ENTRIES ELIGIBLE FOR \$50 PRIZE DRAWING.

USCF and ICA Membership required. Other States honored. First time players can join both USCF and ICA at registration.

\$3000 PRIZE FUND

based on 100 entries (\$1500 guaranteed)

OPEN SECTION: (open to all)

1st - \$750 + Trophy
2nd - \$300
3rd - \$150

Under 2200: 1st - \$300 + Trophy
(EXPERT) 2nd - \$150
3rd - \$ 75

Under 2000: 1st - \$250 + Trophy
(A Class) 2nd - \$125
3rd - \$ 75

RESERVE SECTION: (open to under 1800)

Under 1800: 1st - \$175 + Trophy
(B Class) 2nd - \$100

Under 1600: 1st - \$150 + Trophy
(C Class) 2nd - \$ 75

Under 1400: 1st - \$100 + Trophy
(D/E Class) 2nd - \$ 50

Unrated: 1st - \$ 50 + Trophy

\$25 PRIZE to best score by registered room guest

\$50 PRIZE for biggest UPSET by any Rated Player

UNRATED ELIGIBLE FOR UNRATED OR TOP OPEN PRIZES ONLY

ENTRY FEE: BY 1/25/93 - \$50; BY 2/15/93 - \$60; AT SITE - \$75

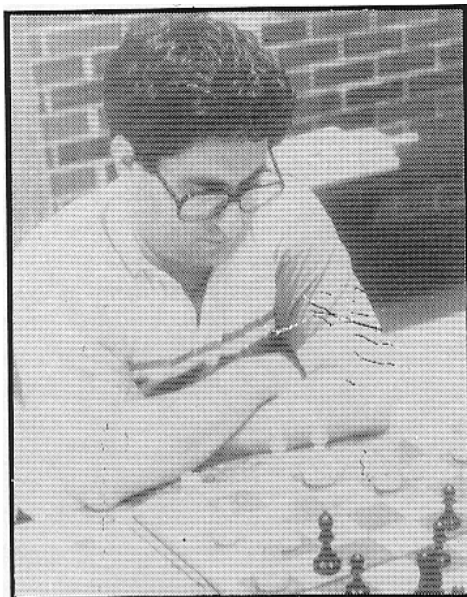
Entries/Questions: Paul Rodgers

810 Peach Tree

Urbana, IL 61801

(217) 367-6649 (after 6pm)

CHESS TECH-TALK



by NM Marc Lonoff,
with help from Julia Lonoff

Chess Base University

Study Materials for ChessBase

A new line of products from Chess Base USA marks the beginning of the end of chess books as we know them. Chess Base University (CBU) describes a series of interactive chess instruction materials that range from beginners manuals to middlegame, endgame and opening works for advanced players. Once we get used to these materials we will find it hard to return to books of the old style.

How does CBU work? In their current form each "course" is purchased separately. A course might be "French Winawer", "Nimzovich's: My System and Praxis", "King's Indian Attack", and so on. Each course comprises a ChessBase (CB) datafile and an associated text file. The opening courses include special opening, middle and endgame keys geared to the structures of that opening. CB has also worked out agreements with publishers to create game files that complement texts. Unfortunately, you still need the physical

hardcopy of the book since the publishers have yet to allow a complete copy of the book text into the CB text file.

Once you buy a course you need a ChessBase product, either Knightstalker (KS) or Access or ChessBase (CB), to read the CBU course material. Note: you can simply buy the package of KS and Access, called "ChessBase University" and you do not need to purchase the full CB program to use the new materials.

After starting KS you then select the database, say CBU100, and the program places you at the top of the text file for that CBU course. You can read the text on the screen like a book and scroll down line by line. When you reach an exercise or game you can click on the text screen and the game position appears on the screen in KS. You can then follow the lines forward or backward in the game using the KS program. You can also play against KS from any position. Hitting the HOME key takes you back to the text page.

You might recall that KS only allows examination of lines one layer deep. If you are examining an opening manual with complex nested lines you must use Access or ChessBase to see all the variations. This adds a step for practice since you must switch to KS to practice playing from key positions and there is no guarantee you can reach the position in KS since it might be in a deeply nested line. CB should consider deepening KS so CBU users can do all their work in KS. KS also has a 2500 game limitation per datafile which is binding on some of the larger CBU disks.

The main consideration in CBU is the interface between text and games. The program must make it

easy to go from the text to illustrative game examples. As you explore a CBU course you get used to its back and forth rhythm. The program design allows you to work from the text files to the game file. When you go from text to a game file your text location is saved and that is where you return when you click HOME at the end of the example(s). If you wander among the game files and click HOME you will go to the text you originally left, not to the text matching the game you were exploring.

One final caveat: Before using CBU course materials make sure you have the most recent version of KS. In the latest version you see CBU in color and can use the F10 key to advance to the next problem or game. The old KS leaves blanks in the text where the color should go and has no easy way of loading the next game.

CBU-100 and CBU-101

The Introductory Course

If you purchase the CBU package, an introductory course is included for free. The Introductory course in CBU comprises three parts: CBU-100 Chess for Kids and Other Beginners; CBU-101 Basic Chess: A Lightning Survey; and The ChessBase University Gymnasium.

CBU 100 and 101 are based on a game file containing a total of roughly 300 positions, problems, and games. They are referenced from a thin to sketchy text. The examples are supposed to do the teaching.

The topics covered look like the standard introductory chess course: how the pieces move and capture, check, checkmate, castling, basic mates, tactical elements: forks, pins, skewers, mates; and sketches of opening systems. Several annotated

CHESS TECH-TALK

games are included, and a simple opening repertoire is suggested and sketched. The Gymnasium includes starting positions with different material imbalances and pieces. For example K+8P vs. K+4P or K+5P or ... K+8P; K+8P+2N vs. K+8P and so on. KS dutifully takes the short end of these odds while the beginner learns how to handle the pieces and win with different levels of material imbalance.

Where does CBU100/101 fit into a program of chess instruction? I do not think it would work as a stand alone system for a number of reasons. One problem comes from using chess base files: the program does not monitor your progress. If you make the same error over and over the program does not notice. If you succeed smartly the program does not say "good" or "excellent". The program does not give you a way of grading or timing a quiz. The program lacks a marker that resumes where you previously left off. The program uses the CB framework for organizing, presenting and relating complex material that is scattered across games and examples. It is not a teaching system or a drilling system (like Mavis Bacon Teaches Typing, MathBlasterPlus or several speed-reading or quiz and drill programs.)

I asked my nine year old daughter to examine the beginners course in CBU. Julia reads well, is comfortable with computers and is a beginner in chess. After looking at text a little she jumped to the gymnasium. She comments:

"I think the program is good. I like doing the problems it gives me, and when I choose different setups and work on them I improve my chess ability. I think beginners could learn a lot, just like I have. I am having

fun exploring it and learning at the same time. It's like a game; the more you play the better it gets, but unlike a game you are learning and you are always the winner.

"I find it a little boring reading screen after screen. I find it hard to get to different setups and screens.

CBU-202e King and Pawn Endings

by Alexander Fishbein

This disk leads the user from basic concepts of king and pawn endings example by example to quite complex endings. The datafile includes some 300 examples ranging from theoretical positions to actual game positions. The use of CB allows the reader to quickly view and review examples and subvariations without the tedium of setting and resetting positions. Fishbein has organized and ordered the examples to illustrate themes: 2 vs 1, 3 vs 2, passed pawns, protected passed pawns, gaining tempi, key squares and so on. The only suggestion I have to improve this disk is to beef up the text a little bit and use some special diagrams in the text to illustrate concepts like the triangle, opposition and corresponding squares. Obviously, any concept that can be illustrated in a textbook can be included in the text portion of the CBU files.

One advantage of Fishbein's work is its linear nature. You can progress through the database one example at a time and mark your progress steadily. I would love to see more of these endgame disks, but I understand how much work it takes to put them together. Perhaps using Motiv (another CB product used to find themes and structures) would facilitate the collection of examples

from practical play. Organizing and making sense of these examples (plus theoretical positions and positions from the CB endgame study collection) would be the value added to CBU.

Summary

ChessBase USA has begun to make materials that truly add value and take advantage of the CB programs power for mastering chess material. The advanced courses (previously called "author's disks") with openings and keys are spectacular. While CB/KS/Access are cumbersome for introductory instruction, the inclusion of CBU100/101 gives you a lot for your money. The use of the Gymnasium with its myriad of exercises (playing against KS) is a wonderful idea.

Of course, the selection of examples depends on the quality of each CBU course and the care taken by the author. I will try to review these courses in future ICB's, like book reviews.

ChessBase University includes Knightstalker (a 2300 level chess opponent), Access (a database reading utility), and CBU100/101 all for \$99.95. If you already own CB you only need to buy the instructional or author disks. These are typically \$29. The Fishbein disk is only \$15. You can enjoy the full benefits of CBU without buying the full CB database program.

**THE DEADLINE FOR
SUBMISSIONS IN THE
MARCH-APRIL ICB
WILL BE FEB. 1, 1993**

Twin City Chess Club

by Garrett Scott, ICA VP

The Twin City Chess Club is an active club based in Normal. Bloomington and Normal are small twin cities about equidistant from Chicago and St. Louis. The community of approximately 90,000 supports a chess club that draws between ten or a dozen on slow summer evenings to two dozen to thirty in the winter. Meetings are held in the meeting room at the Normal Parks and Recreation Department on Tuesday evenings at 7 p.m.

TCCC itself is run rather informally with three people doing the biggest share of the club work. Dale Elder is the kind of treasurer with which every club should be blessed. Players pay dues and game fees quickly and willingly. The abuse heaped upon deadbeats is merciless. He is kind and courteous to youngsters and newcomers, but veterans know it is wisest to pay up quickly. Dennis Bourgerie shares club tournament directing duties with Garrett Scott. Dennis also directs several weekend (one day) tournaments each year. The last two have been rather successful, attracting more than 50 each time. Fifty is an above average draw for downstate, one day tournaments.

Club activities are a mix of speed tournaments, rated quick tournaments, rated ladders and an annual championship. Members who attend regularly have had the opportunity to play about 60 rated games (both systems) and 50 speed chess games over the past year. There are of course, the constant offhand games as at any club.

TCCC is also instrumental in bringing national tournaments to the prairie. Because of an unsuccessful bid for the US Junior Open in 1990, USCF became aware of the attractive setting of the Illinois Wesleyan University campus. The US Junior Championship that year went without a bid and the USCF staff recommended IWU to

the Board. In a roundabout the CF contacted Garrett Scott to be the local coordinator. A local chess enthusiast, Dan Irvin, enjoyed the tournament's presence. It was his idea to try to attract the US Junior Championship to Bloomington or Normal for several years in a row. He has provided financial support for a festival in honor of his father.

He and Garrett Scott have since put together two "Maurice Irvin Chess Festivals". The festivals have been held each of the past two summers with the US Junior Championship as the centerpiece. The 1991 MI Festival included a camp, the US Junior Championship, the US Junior Open and the Maurice Irvin Open. The MI Open is a Grand Prix event that attracted two grandmasters in 1991 and 1992. The '92 MI Festival was the same except that the US Junior Open was replaced by the Midwest Cadet Action. As in '91, GMs Max Dlugy and Dmitry Gurevich graciously accepted invitations to participate in the '92 Maurice Irvin Open. In '92 two of the US Junior championship participants stayed on for the Maurice Irvin Open.

In '93, preliminary planning would indicate that the festival will include a camp, the US Junior Championship, and the US Action Championship. The planning now is that the 1993 Maurice Irvin Chess Festival will be held in late July, perhaps into early August.

We feel that the Twin City Chess Club and the chess community of Bloomington and Normal can take pride in the prospect of six national championship chess events in four years being held in the community. Dan Irvin deserves credit for the support he has provided.

TCCC is responsible for a rather energetic outreach program to the youth

of the Twin Cities as well as other parts of Central Illinois. In each of the last several years there has been an increasing number of opportunities for young players to play rated scholastic chess in central Illinois.

In 1987, there was one club formed in Bloomington to play scholastic chess. At that time there was activity in East Peoria, Peoria and Washington where scholastic chess was being played below the high school level. Activity in Peoria and Washington died for two years and a year respectively, but have come back. East Peoria's program has gone inactive. The combined Junior High & High School program at Olympia Schools (Stanford) have been going on some years under the direction of Ken Hieronymus.

Since then a number of clubs have been formed: In Bloomington; Bent school with Mike Wallace, Irving school with Tim Sexton, Stevenson school with Sue Adam and Sandy Lewis, and Washington school with Peter Dederich. In Normal, one club has been active several years: The Glen School club headed up by Peggy Hardy.

Two active out-of-town clubs have formed from "missionary" work by TCCC members: The DuBois school club in Springfield lead by Judy Kjellander and the Monticello school clubs headed up by Jim Cox. The DuBois School club will be hosting this year's Illinois Chess Association event. The liaison to the ICA from grade school chess has been Erv Sedlock.

The restoration of activity to Peoria parochial school chess has been under the leadership of Mrs. Lamb and Barthel with assistance from Garrett Scott.

On the horizon it looks as good as ever. There is a prospect of five addi-

Twin City Chess Club

tional grade school clubs being added in Bloomington and Normal this year. The prospects at Holy Trinity/St. Clare in Bloomington, Metcalf (the Illinois State University lab school), and Brigham (a Normal-Unit 5 school in rural south Bloomington) are bright. Possibilities are also glimmering at Sheridan and Lincoln schools in Bloomington (District 87).

Judy Kjellander of Springfield is coordinating a chess coach training/player introduction/club formation forum in Springfield this fall to help lay a firmer foundation for club chess in the state capitol to help support the state championship.

Mike Leali has talked of building a scholastic chess league in Peoria. He coordinated Sunday evening youth chess lessons this past summer. The "professor" was chess author and expert John Lutes.

Additional activity occurs in making an attempt at the High School level. Certain rules, practices and events, not well perceived by non-school people, make Illinois high school chess and USCF chess a difficult mix. In spite of this, two USCF players, Kent Hieronymus and Garrett Scott are trying to put together a high school chess league in the Bloomington-Normal area.

CISCO (Central Illinois Scholastic Chess Organization) presently sponsors activity in Olympia and Roanoke-Benson. Its well-established programs serve as the backbone joining sporadic programs such as University High of Normal, long chessically dormant Bloomington High and newly established Central Catholic of Bloomington, making five active schools. We are presently striving to find a sixth program to even out the league.

(Some of us are hoping for a Peoria Area New Chess Organization to spring up so a PANCHO/CISCO

rivalry might spring up. The significance of this is probably lost on anyone under 40.)

Julian Morrison's five lustrum of work with the Roanoke-Benson HS club and Kent Hieronymus two lustrum will support the effort. Bloomington HS, with the proud chess history of two masters and an expert, but dormant since the mid-seventies has the fruits of two successive state Junior High Champion teams coming up. University High consistently turns out some talented chess players, but has suffered under uneven tutelage. Mark Feister has recently taken the reins there. Central Catholic, a small school has an enthusiastic new advisor, Jim Taber, and an enthusiastic young player.

This report of downstate activity with the Twin City Chess Club as the nurturing adult organization is to let the rest of the state know what is going on in the central part of the state. We feel that our USCF membership per capita of more than 1 per 1000 (imagine metropolitan Chicago with 6000 active players or the US with 300,000) is an achievement for which we can take pride.

Normal Mapleleaf Open - Sept. 19

Annotations by Dennis Bourgerie

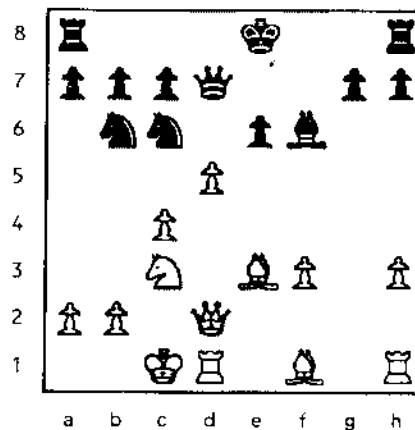
Bill Naff (2155) - Paul Mecham (1743) Sicilian Dragon - Round 2

1.e4 c5 2.Nf3 d6 3.d4 cxd4 4.Nxd4 Nf6 5.Nc3 g6 6.Be2 Nc6 7.Be3 Bg7 8.h4 h5 9.f3 Ne5 10.Qd2 Qa5 11.Ncb5 Qxd2+ 12.Kxd2 (A double-edged capture as white's king is well-positioned for the endgame, but still could be unsafe in the middle of the board) 12...0-0 13.Nb3 b6 14.Nc7 Rb8 15.c4 Bb7 16.Nd5 e6 17.Nxf6+ Bxf6 18.Bg5 Bg7 19.Ke3 [19.Be7 Rfe8 20.Bxd6 Red8] 19...d5 20.cxd5 exd5 21.Rac1 dxe4 22.fxe4 Rbc8?! (Trading off rooks makes white's king more secure and powerful for the coming endgame)

[22...Rfe8 23.Rc7 Ba8 24.Rxa7 Ng4+ 25.Bxg4 Rxe4+ 26.Kf2 Rxc4] 23.Rxc8 Rxc8 24.Rc1 Ng4+ 25.Bxg4 Rxc1 26.Nxc1 Bxb2? (Now white wins a piece) 27.Nd3 hxg4 28.Nxb2 Bc8 29.Bf6 Be6 30.a3 b5 31.Kd4 a5 32.Kc5 b4 33.axb4 axb4 34.Kxb4 Bc8 35.g3 Bb7 36.e5 Bd5 37.Kc5 Be6 38.Nd3 Kf8 39.Kd6 Bf5 40.Nf4 Be4 41.Nd5 Bd3 42.Kd7 Bb5+ 43.Kd8 Bc4 44.Nb6 Be6 45.Nd7+ Kg8 46.Ke7 Bd5 47.Bg5 Kg7 48.Nf6 Be6 49.Ne8+ Kg8 50.Kf6 Kh8 1-0

Guy Kittelsen(1755) - Phil Anderson (1910) Alekhine Defence - Round 2

1.e4 Nf6 2.e5 Nd5 3.c4 Nb6 4.d4 d6 5.f4 dxe5 6.fxe5 Bf5 7.Nc3 e6 8.Be3 Nc6 9.Nf3 Bg4 10.Qd2 Be7 11.0-0-0 f6 12.exf6 Bxf6 13.h3 Bxf3 14.gxf3 Qd7 15.d5!



(Very thematic and white's game is very good after this move) 15...exd5 16.Nxd5 Nxd5 17.cxd5 Ne7 18.h4 Rd8 19.Bc4 b5 20.Bb3 c6 21.dxc6 Qxc6+ 22.Qc2 Rxd1+ 23.Rxd1 Qxc2+ 24.Kxc2 Nc6 25.Rd6 Nb4+ 26.Kc1 Be7 [26...Ke7 27.Bc5 Rc8 28.Rc6+ Kd7 29.Rxc8 Kxc8 30.Bxb4] 27.Re6 Kd7 (Now white can win two pieces for a rook) 28.Rxe7+ Kxe7 29.Bc5+ Kf6 30.Bxb4 Rd8 31.Bc3+ Kg6 32.Bc2+ Kh6 33.Be4 a6 34.Kc2 Rd7 35.Kb3 Kh5 36.Bxh7 Kxh4 37.Be4 Kg3 38.Kb4 Kf4 39.Kc5 g5 40.Kc6 Rd1 41.Bd5 g4 42.fxg4 Kxg4 43.Kc5 Kf5 44.Bb7 Ra1 45.a3 1-0

N.U. PLUS SCORE mini-TOUR

Jan 16th, Saturday, 4-SS,
40/60 SD/30, Norris Center,
Northwestern University, 1999
N. Sheridan Rd., Evanston, IL

4 pts. = \$100 3.5 pts. = \$50
3 pts. = \$25 2.5 pts. = \$12

I.C.A. Membership required:
\$14, \$8 Jrs. per year

Registration: 8:30-9:30 am

Entry Fee: \$12 if received by
1/15, \$16 at the site



Send entries to:

Christopher L. Baumgartner
3924 N. Hermitage St., 2nd fl.
Chicago, IL 60613
Phone: 312-871-2148

As soon as the regular tourna-
ment ends, there will be a 3-SS
G/10. Reg: 8:15-8:45 pm;
Rounds: 8:50-9:15-9:40

Ent: \$5, free to 3.5 and 4.0
scorers!

All participants of both tourna-
ments will be put in for a drawing
for a free Informant #54!

Midwestern Chess Adventures Fills A Void!

by Fred Gruenberg, USCF Regional VP

There is a new chess club on the North side of Chicago...and it fills a void left by three chess clubs that have vacated this teeming area.

The Midwestern Chess Adventures of Chicago with Christopher Baumgartner as its Director and FIDE Master Albert Chow as his advisor have a roaring agenda. They plan on holding many tournaments with lots of prizes and a few new wrinkles. I had the pleasure of playing in their November 28th tournament at the Edgewater library and, with over 30 players, I found it to be well run and very friendly. If you're anywhere in the North Chicago area (even if your not) why not give Chris a call and get on his mailing list! His number is 312-871-2148. You'll be favorably impressed.

Cohen Partied Heartily at Happy Birthday Nehoc

by Lawrence Cohen

On Sunday October 25th at the Happy Birthday Nehoc, Game/60 Mini-Tour event 13 opponents tested their skill and quickness. Howard Cohen (the non-birthday Nehoc) emerged victorious with a perfect 4-0 score. Second place, the "A" class, and the "B" class prizes were shared by Bob Yakich, Stephen Decman, and Mack Lyons. The "C" class prize was split by Kevin Kukla and Orlan Smith. Kevin won the \$10 upset prize for his first round draw against the top rated player in the tournament. In "D/E" class Jens Heilskov and Mark Baltazar tied; each with 1.5 points, with the 1/2 point resulting from their game against each other. The only unrated to show up was Charles Shinnick, naturally he won the unrated prize. More tournaments are in the works to be played at the Homewood Ramada Inn.

Normal Mapleleaf Open - Sept. 19

Michael McCarthy(1843) - David Chong (2056)

Reti-King's Indian Attack- Round 4, 1992 (Notes D. Bourgerie)

1.Nf3 Nf6 2.g3 g6 3.Bg2 Bg7 4.0-0 0-0 5.d3 d6 6.c4 Nbd7 (This game starts out quietly but turns into a real slugfest!) 7.Nc3 c6 8.Bg5 h6 9.Bd2 e5 10.Qc1 Kh7 11.b4 Qc7 12.Rb1 Nh5 13.b5 Nc5 14.bxc6 bxc6 15.Nh4 Bb7 16.Qc2 Ne6 17.Qb2 Rab8 18.Qa3 Ba8 19.Be3 Nd4 20.Bxd4 exd4 21.Ne4 Rbd8 22.Rb3 f5 23.Nd2 Qe7 24.Re1 Nf4 25.e4 Nxc2 26.Nxc2 Qg5 27.f4 Qf6 28.Qxa7 c5

29.Reb1 Bc6 30.Qa6 Ba8 31.Qa7 Rf7 32.Qa6 fxe4 33.Nxe4 Bxe4 34.dxe4 Qe6 35.e5 Rdd7 36.Rb6 Ra7 37.Qb5 Qf5 38.Rxd6 Bxe5 39.Rd5 {39.fxe5 Qf2+ 40.Kh1 Qf1+ 41.Rxf1 Rxf1+} 39...Qc2 40.Rxe5 Rxa2 (Now it looks like white can just pick up his pieces and go on home!) 41.Qb7!! Kg7 {41...Rxb7 42.Rxb7+ Kg8 43.Re8+} 42.Qe4 d3 43.Rf1 Ra6 44.Re7 Raf6 45.Rxf7+ Rxf7 46.Nh4 Rf6 47.Qe7+ Rf7 48.Qe5+ Kh7 49.Qe6 Rg7 50.Qe4 Qc3 51.f5 d2 52.fxc6+ Kh8 53.Rf8+ Rg8 54.Rxc8+ (Black resigns. The finish would be ...Kxc8 55. Qe8+ Kg7 56.Qf7+ Kh8 Qh7 mate). 1-0

29 REASONS TO BUY NICBASE 3

(not counting the thousands of games available in NICBASE 3 format!)

Both NICBase 3.0 (NIC3) and Chessmaster 3000 (CM3) are in their third versions and both represent a significant increase in features over earlier versions. NIC3 is now #1 in databases for ease of use/features while CM3 is #1 for the same reasons for playing programs. Database users may prefer NIC3 over its major competitor ChessBase 3 (CB3) for the following reasons:

- 1) A very extensive on line help feature.
- 2) A NIC Convert utility that can import CB3 games. \$24.00 extra.
- 3) Automatic key reorganization.
- 4) Find games in a key range.
- 5) Store and view background info in a memo field . . .
- 6) Sort games within a key.
- 7) The list and review games selector is much improved with ability to sort the gamefile and load games in a gamefile up to a maximum of 750. NIC3's pattern recognition has 5 major improvements:
 - 8) It is now possible to search for games in which a specific difference in material between both sides occurs; irrespective of the further (equal) material on the board, e.g. R vs B+P in a middle game setup.
 - 9) Also, this pattern can be combined with further restrictions concerning the location of the pieces on the board, whether they are floating, stationary, or forbidden squares.
- 10) It is also possible to search for specific moves from one square to another square.
- 11) NIC3 also lets you specify patterns after, or before, or = to a certain move number, checkmates, stalemates, or wild card pieces or coordinates; and for a specific colour.

12) You can also save a pattern to disk. Once you get the idea of working with the pattern recognition board and screen it is a completely menu driven process. CB3's motif is more sophisticated in that the dynamic patterns are unlimited, but since it is a programmable language and not menu driven, it is more difficult to master than NIC3's pattern recognition.

Other new NIC3 features are:

- 13) Additional game information such as ELO rating and title, with the ability to search by these fields.
- 14) The annotation window memo field has been enlarged to 12,000 characters.
- 15) The max. number of keys/positions is now 65,535.
- 16) The max. number of moves per game including annotated moves has been lowered to 600. (Conceivably so that games take up less space on your hard disk).

17) The max. number of games allowed in 1 database is now 2,147,483,647!

NIC3 has new utilities and enhanced features in the new versions of their old utilities, but the old utilities will not work with the new program and you must buy the NIC3 utilities separately . . . new tools as follows:

18) NICSort lets you temporarily sort the games within the games selector (found games and selected games) or permanently sort the games in the gamefile on any one of 13 different fields. Caveat: most non chess databases let you sort more than one field and also let you create your own fields. Let's hope that chess databases do this in the future.

19) NICAppend lets you append 2 or more gamefiles together and then port once into a database. In NIC2 you had to port each gamefile to a database, which was a tedious process.

20) NICForce allows you to edit all game info fields in one pass so that you can correct name changes for players, sources, or tournaments . . .

21) NICTable lets you generate a crosstable from a round robin tournament.

22) In the enhanced tools package: NICKeylist lets you print a complete or partial list of your key without having to select every single key or subkey. CB3 cannot do this. The NICTwice, . . . NICRecover and NICClean tools are part of the enhanced tools package.

23) NICTwice has two new features: You can edit game info of the duplicates and save changes back to the disk. You can also limit your search to one or more keys.

Other new features of NIC3 are:

24) Select all the found games in the selector in one pass by clicking on the visual button.

25) The select environment has 2 pointer sliders which work the same as the ones found in CB3. The left slider represents the whole database (db) or gamefile (gf) while the right one represents the list of found games.

26) You can now change the settings environment layout with the line def button and either alter the amount of space for each field or specify the order of attributes.

27) You can also change the scrolling speed.

28) For laptops, the LCD displays in reverse video for better viewing.

29) We have tested the different versions of NICBase and believe that NIC3 is about 20% faster than NIC2 in most operations.

With all these improvements NIC3 now has more features than CB3.

(From a review of NICBASE 3 and Chessmaster 3000 in "Komputer Korner" by Al Tomalty in *En Passant* no. 113, April, 1992 — excerpted by permission of the publishers.)

NICBASE 3 with 2000 world champion games incl. Pattern Recognition and ASCII reader	\$175.00	NICTOOLS enhanced utilities package	125.00
DATA SUPPLEMENT NIC YB 1-18 + NIC KEY	130.00	GAMECONV converts CB to NB3 data includes illegal move checker	24.00
TOURNAMENT DATA 1988-90 33,400 games	410.00	NIC KEY 3 classifies over 14,600 positions	24.00
All three above items incl. 50,000 unduplicated games at a savings of 20%, free shipping	\$595.00	Over 100 opening / player / yearbook NICBASE DATA collections available. Ask about NICBASE DATA services available on subscription exclusively from the publishers of NEW IN CHESS YEARBOOK and MAGAZINE. Ask about NICPUBLISH .	

System Requirements:
MS-DOS ver. 2.0 or higher; 512 RAM, mouse, graphics
ATARI ST 520, monochrome monitor, DS-DD drive
Hard disk needed for KEY, large databases.

CHESS COMBINATION INC. 2423 NOBLE STATION, BRIDGEPORT CT 06608
messages: 800-354-4083 fax: 203-380-1703 Internet: 70244.1532@compuserve.com USATLINC: CHESSCOM

ILLINOIS TOURNAMENT CROSSTABLES

by Bill Smythe

Harvest Times Action - October 10, 1992

PLAYER	Rtng.	rd-1	rd-2	rd-3	rd-4	Score	Tour
01 VAN BUSKIRK Doug	2228	W2	W5	L3	W4	3	4
02 MOTE David	2217	L1	W5	W3	W4	3	4
03 KNOEDLER Thomas	1724	W4	W1	L2	W5	3	4
04 CLARK Wes		W5	L3	L1	L2	1	1
05 CLARK James	1349	L4	L1	L2	L3	0	

Tim Just Lake County Open - October 10, 1992

PLAYER	Rtng.	rd-1	rd-2	rd-3	rd-4	Score	Tour
01 CHOW Ai	2327	W 8	W 4	W 2	W 6	4	16
02 BACHLER Kevin	2242	W12	W 3	L 1	W 8	3	4
03 MARTINOVSKY Eugene	2347	W 5	L 2	D 6	W11	2.5	2.5
04 STERN Howard	2137	W10	L 1	W 7	D 5	2.5	2.5
05 SCHULTZ Andrew	1825	L 3	W12	W 9	D 4	2.5	2.5
06 GORDON Wallace	2021	D 9	W 7	D 3	L 1	2	2
07 MARSHALL James	2000	W11	L 6	L 4	W10	2	2
08 BAUGH Christopher	1919	L 1	W 9	W10	L 2	2	2
09 ALLISON Roger	1845	D 6	L 8	L 5	W12	1.5	1.5
10 BALE Les	1830	L 4	W11	L 8	L 7	1	1
11 GIERTZ Charles	1865	L 7	L10	W12	L 3	1	1
12 FRISKE Tom	1903	L 2	L 5	L11	L 9	0	

Tim Just Lake County Open - October 10, 1992

RESERVE	Rtng.	rd-1	rd-2	rd-3	rd-4	Score	Tour
01 BRODDE Jeff	1605	W17	W 7	W 5	W 2	4	16
02 SANCHEZ Ignacio	1779	W 6	W10	W 4	L 1	3	4
03 CHAN Kheong Sann	1743	H	W12	W14	D 7	3	4
04 ZAFAR Saeed	1615	W16	W15	L 2	W10	3	4
05 ROSING Glenn	1551	W11	W 9	L 1	W14	3	4
06 ZELINSKY Daryl	1508	L 2	W16	W18	W 9	3	4
07 UNTERMEYER Abraham	1701	W13	L 1	W11	D 3	2.5	2.5
08 HENROID Mike	1672	L15	L14	W12	W17	2	2
09 PADILLA Rudy	1861	W19	L 5	W15	L 6	2	2
10 SILVERMAN Scott	1588	W18	L 2	W17	L 4	2	2
11 KLANN Jim	1577	L 5	W19	L 7	W15	2	2
12 HAYES Michael	1649	D14	L 3	L 8	W19	1.5	1.5
13 BACKSTROM Orn	1450	L 7	L17	D18	W18	1.5	1.5
14 BALES Robert	1358	D12	W 8	L 3	L 5	1.5	1.5
15 HAMER Phil		W 6	L 4	L 9	L11	1	1
16 JENKINS Mike	1288	L 4	L 8	B	-	1	1
17 HIGHTOWER Dean	1266	L 1	W13	L10	L 8	1	1
18 RIDDELL Joshua	1254	L10	B	L 6	L13	1	1
19 HENDERSON Dale	1366	L 9	L11	D13	L12	0.5	0.5

OPRF Autumn Action - October 17, 1992

PLAYER	Rtng.	rd-1	rd-2	rd-3	rd-4	rd-5	Score	Tour
01 YOUNG Angelo	2451	W 6	W 4	D 2	W 3	W 5	4.5	8
02 CHOW Albert	2327	W11	W 8	D 1	W10	W 6	4.5	8
03 GAZMEN Bert	2197	W12	D10	W 7	L 1	W 9	3.5	3.5
04 STOLTZ Bob	1943	W20	L 1	W11	D 9	W10	3.5	3.5
05 SEFCHECK Mark	1851	W16	L 6	W13	W 7	L 1	3	3
06 PRAUSE Paul	1829	L 1	W 5	W 8	W17	L 2	3	3
07 DUDKOWSKI Peter	2012	W13	W 8	L 3	L 5	D12	2.5	2.5
08 SOLLANO Ely	2000	W14	L 2	L 6	W18	D13	2.5	2.5
09 SMYTHE Bill	1942	W15	L 7	W12	D 4	L 3	2.5	2.5
10 BAUGH Chris	1930	W19	D 3	W18	L 2	L 4	2.5	2.5
11 SCHULTZ Andrew	1825	L 2	W15	L 4	D14	W17	2.5	2.5
12 FINEBERG Tom	1738	L 3	W20	L 9	W19	D 7	2.5	2.5
13 ALLEN Hence	1712	L 7	W19	L 5	W18	D 6	2.5	2.5
14 HENROID Mike	1672	L 8	W16	L17	D11	W18	2.5	2.5
15 BALES Robert	1358	L 9	L11	L18	W20	W19	2	2
16 HART Dan	1121	L 5	L14	W15	L13	B	2	2
17 MC NAMARA Jim	1985	H	L18	W14	L 6	L11	1.5	1.5
18 BACKSTROM Orn	1450	H	W17	L10	L 8	L14	1.5	1.5
19 JOHNSON M David	1268	L10	L13	W20	L12	L15	1	1
20 SOLANO Marlo	1428	L 4	L12	L19	L15	-	0	

Northwestern Plus-Score - October 24, 1992

PLAYER	Rtng.	rd-1	rd-2	rd-3	rd-4	Score	Tour
01 YOUNG Angelo	2451	W22	W 8	W 7	W 3	4	16
02 CHOW Albert	2327	W23	W16	W13	W 4	4	16
03 GAZMEN Ethelbert	2197	W31	W14	W18	L 1	3	4
04 SCOTT Gene	2181	W15	W 9	W12	L 2	3	4
05 READ Rhys	2022	W19	D20	W28	D13	3	4
06 ROGAN Marvin	2000	W29	L18	W23	W17	3	4
07 PUKEL Bernard	1900	W34	W26	L 1	W18	3	4
08 SCHULTZ Andrew	1825	W35	L 1	W32	W20	3	4
09 FRIEDMAN Jeff	1804	W37	L 4	W33	W21	3	4
10 KITTILSEN Guy	1746	L26	W34	W25	W15	3	4
11 VON KROGH Chris	1699	W40	L13	W38	W16	3	4

12 SAX Robert	2040	W24	D17	L 4	W29	2.5	2.5
13 PEDERSEN Roger	2000	W32	W11	L 2	D 5	2.5	2.5
14 WILLIAMS Kent	1800	W36	L 3	D29	W27	2.5	2.5
15 SMYTHE Bill	1942	W33	L 4	W21	L10	2	2
16 HALL Jeffrey	1862	W25	L 2	W31	L11	2	2
17 CIMA Joe	1759	W38	D12	D20	L 6	2	2
18 JOHNSON Frank	1729	W39	W 6	L 3	L 7	2	2
19 HENROID Michael	1672	L 5	H	W30	H	2	2
20 PADILLA Rudy	1861	W30	D 5	D17	L 8	2	2
21 LOMONT Chris	1557	W41	L15	W26	L 9	2	2
22 JOHNSON Henderson	1500	L 1	W35	L27	W34	2	2
23 HUANG John	1498	L 2	W36	L 6	W35	2	2
24 CHEN Xi Ming	1441	L12	L38	W37	W36	2	2
25 BAUMGARTNER Chris	1239	L16	W30	L10	W31	2	2
26 FAUST Jerry		W10	L 7	L21	W33	2	2
27 CHAN Kheong Sann	1743	H	L28	W22	L14	1.5	1.5
28 WONG Brian	1476	H	W27	L 5	-	1.5	1.5
29 MARTIN Keith	1347	L 6	W39	D14	L12	1.5	1.5
30 DOLLISON Leon	1674	L20	L25	L19	W36	1	1
31 BACKSTROM Orn	1462	L 3	W37	L16	L25	1	1
32 SOLANO Marlo	1438	L13	W41	L 8	-	1	1
33 JOHNSON David	1268	L15	W40	L 9	L26	1	1
34 NAVIAMOS William	1219	L 7	L10	W39	L22	1	1
35 ONTIVEROS Fernando		L 8	L22	W40	L23	1	1
36 MONTANEZ Steve		L14	L23	W41	L24	1	1
37 MC COY Damon	996	L 9	L31	L24	W41	1	1
38 BURDA Alex		L17	W24	L11	L30	1	1
39 GARCIA Moses		L18	L29	L34	W40	1	1
40 HAMER Phil		L11	L33	L35	L39	0	
41 WHITTEN Derrhun		L21	L32	L36	L37	0	

Happy Birthday Nehoc - October 25, 1992

PLAYER	Rtng.	rd-1	rd-2	rd-3	rd-4	Score	Tour
01 COHEN Howard	1900	W10	W 4	W 2	W 5	4	16
02 YAKICH Bob	2014	D 8	W 7	L 1	W 8	2.5	2.5
03 DECMAN Stephen	1800	H	W 8	L 5	X 9	2.5	2.5
04 LYONS Mack	1672	W11	L 1	D 9	W10	2.5	2.5
05 MC ALISTER Kelvin	1918	H	D 6	W 3	L 1	2	2
06 SIERRA Kevin	1751	H	D 5	W 7	L 2	2	2
07 PADILLA Rudy	1861	W13	L 2	L 6	W11	2	2
08 KUKLA Kevin	1543	D 2	L 3	L10	W13	1.5	1.5
09 SMITH Orlan	1500	L12	W13	D 4	F 3	1.5	1.5
10 HEILSKOV Jens	1393	L 1	D11	W 8	L 4	1.5	1.5
11 BALTAZAR Mark	1114	L 4	D10	W13	L 7	1.5	1.5
12 COHEN Lawrence	1989	W 9	-	-	-	1	1
13 SHINNICK Charles		L 7	L 9	L11	L 8	0	

Tuley Park G/15 - November 7, 1992

PLAYER	Rtng.	rd-1	rd-2	rd-3	rd-4	rd-5	Score
01 COLIAS Bill	2348	W 2	W 7	W 3	W 4	W 6	5.0
02 KITTILSEN Guy	1768	L 1	W 4	W 6	W 5	W 3	4.0
03 FAGAN James B.	2059	W10	W 6	L 1	W 7	L 2	3.0
04 BAUGH Christopher	1983	D 5	L 2	W 9	L 1	W10	2.5
05 CUMMINS Edwin T.	1273	D 4	L 8	W10	L 2	W 7	2.5
06 HOLZMUELLER Keith	2158	W 8	L 3	L 2	W 9	L 1	2.0
07 PEDERSEN Roger E.	2015	W 9	L 1	W 8	L 3	L 5	2.0
08 KNOX Malcolm	1685	L 6	W 5	L 7	W10	L 9	2.0
09 BEAMON Lumumba	1494	L 7	W10	L 4	L 6	W 8	2.0
10 CLARK Lawrence	1634	L 3	L 9	L 5	L 8	L 4	0.0

Normal Mapleleaf Open - September 19, 1992

Bill Naff (2155) - Paul Mecham (1743)

Sicilian Dragon - Round 2 (Notes by D. Bourgerie)

1.e4 c5 2.Nf3 d6 3.d4 cxd4 4.Nxd4 Nf6 5.Nc3 g6 6.Be2 Nc6 7.Be3 Bg7 8.h4 h5 9.f3 Ne5 10.Qd2 Qa5 11.Ncb5 Qxd2+ 12.Kxd2 (A double-edged capture as white's king is well-positioned for the endgame, but still could be unsafe in the middle of the board) 12...0-0 13.Nb3 b6 14.Nc7 Rb8 15.c4 Bb7 16.Nd5 e6 17.Nxf6+ Bxf6 18.Bg5 Bg7 19.Ke3 [19.Be7 Rfe8 20.Bxd6 Red8] 19...d5 20.cxd5 exd5 21.Rac1 dxe4 22.fxe4 Rbc8? (Trading off rooks makes white's king more secure and powerful for the coming endgame) [22...Rfe8 23.Rc7 Ba8 24.Rxa7 Ng4+ 25.Bxg4 Rxe4+ 26.Kf2 Rxg4] 23.Rxc8 Rxc8 24.Rc1 Ng4+ 25.Bxg4 Rxc1 26.Nxc1 Bxb2? (Now white wins a piece) 27.Nd3 hxg4 28.Nxb2 Bc8 29.Bf6 Be6 30.a3 b5 31.Kd4 a5 32.Kc5 b4 33.axb4 axb4 34.Kxb4 Bc8 35.g3 Bb7 36.e5 Bd5 37.Kc5 Be6 38.Nd3 Kf8 39.Kd6 Bf5 40.Nf4 Be4 41.Nd5 Bd3 42.Kd7 Bb5+ 43.Kd8 Bc4 44.Nb6 Be6 45.Nd7+ Kg8 46.Ke7 Bd5 47.Bg5 Kg7 48.Nf6 Be6 49.Ne8+ Kg8 50.Kf6 Kh8 1-0

ILLINOIS TOURNAMENT CROSSTABLES

Illinois Class - November 21-22, 1992

MASTER-EXPERT	Rtng.	rd-1	rd-2	rd-3	rd-4	Score	Tour
01 GUREVICH Dmitry	2613	W35	W16	W15	W 4	4	32
02 KARKLINS Andrew	2373	W18	D12	W 5	W13	3.5	16
03 MARTINOVSKY E.	2347	W28	D13	W11	W 8	3.5	16
04 TATE Emory	2421	W14	W17	W 7	L 1	3	8
05 CHOW Albert	2327	W25	W 6	L 2	W18	3	8
06 READ Rhys	2022	W22	L 5	W16	W17	3	8
07 YOUNG Angelo	2451	W24	W10	L 4	D14	2.5	4
08 TENNANT Steven	2312	H	W21	W12	L 3	2.5	4
09 COOPER Thomas	2248	D19	W27	L13	W25	2.5	4
10 WACHTEL Howard	2143	W26	L 7	D25	W24	2.5	4
11 KINNAIRD Rodney	2130	D27	W19	L 3	W28	2.5	4
12 LEONE Philip	2084	W31	D 2	L 8	W27	2.5	4
13 JORDAN Roland	2071	W32	D 3	W 9	L 2	2.5	4
14 MININ Serge	2048	L 4	W36	W32	D 7	2.5	4
15 COLIAS Bill	2422	W34	W28	L 1	-	2	2
16 SCOTT Gene	2181	W20	L 1	L 6	W30	2	2
17 BENESA Arnulfo	2100	W36	L 4	W20	L 6	2	2
18 SAX Robert	2040	L 2	W31	W33	L 5	2	2
19 MARSHALL Jim	2000	D 9	L11	D29	W32	2	2
20 HERNANDEZ Hector	2000	L16	W35	L17	W29	2	2
21 BOGAN Timothy	1909	W23	L 8	D24	D22	2	2
22 LEVIT Roman	2349	L 6	L25	W36	D21	1.5	1.5
23 ARLINSKY Steve	2099	L21	D29	L26	W33	1.5	1.5
24 JANKAUSKAS Kazys	2046	L 7	W30	D21	L10	1.5	1.5
25 MADERA Bill	2000	L 5	W22	D10	L 9	1.5	1.5
26 COHEN Larry	1989	L10	D34	W23	L11	1.5	1.5
27 BECKER John	1962	D11	L 9	W34	L12	1.5	1.5
28 KROM John	2124	W30	L15	-	-	1	1
29 FIGUEREDO Ivan	2000	L 3	D23	D19	L20	1	1
30 LORING Steve	1946	L28	L24	W31	L16	1	1
31 RIUS Richard	1899	L12	L18	L30	W36	1	1
32 OBERWEIS Jim	1829	L13	B	L14	L19	1	1
33 GOMEZ Antonio		H	H	L18	L23	1	1
34 WARREN James	2054	L15	D26	L27	-	0.5	0.5
35 DZURNY Anthony	2067	L 1	L20	-	-	0	
36 SMYTHE Bill	1942	L17	L14	L22	L31	0	

10 HENROID Michael	1672	L16	W25	D 9	W17	2.5	4
11 VIGANTS Albert	1500	L 2	W28	D19	W25	2.5	4
12 KITTILSEN Guy	1746	H	L 7	W26	D15	2	2
13 CHAN Kheong Sann	1743	W30	W15	L 2	L 5	2	2
14 JOHNSON Frank	1721	W27	W16	L 1	L 4	2	2
15 JOSEPHS Steven	1666	W22	L13	D17	D12	2	2
16 JOCHIM Gary	1779	W10	L14	D18	L 6	1.5	1.5
17 TRBOJEVIC George	1731	W25	L 1	D15	L10	1.5	1.5
18 ALLEN Hence	1712	W28	L 3	D16	L 8	1.5	1.5
19 COOPER William	1692	L 1	W30	D11	L 9	1.5	1.5
20 GRAY Bennett	1650	D 4	L 6	L 8	W24	1.5	1.5
21 WONG Brian	1476	H	L22	L24	W28	1.5	1.5
22 WILLIAMS Doug	1760	L15	W21	L 7	-	1	1
23 WILSON Steve	1661	W 9	L 5	-	-	1	1
24 PADILLA Rudy	1661	L 3	L27	W21	L20	1	1
25 SPERTUS Michael	1617	L17	L10	W30	L11	1	1
26 GRANT Dennis	1602	D 6	L 4	L12	D28	1	1
27 GRUENBERG Fred	1600	L14	W24	-	-	1	1
28 SILVERMAN Scott	1588	L18	L11	D29	D28	1	1
29 GERTSMAN Gennady	1629	L 5	L 9	D28	L21	0.5	0.5
30 BANNON Joe	1648	L13	L19	L25	-	0	

Illinois Class - November 21-22, 1992

CLASS C	Rtng.	rd-1	rd-2	rd-3	rd-4	Score	Tour
01 OBERWEIS Julie	1562	W17	W18	W 7	W 5	4	32
02 WINTER Victor	1542	D 9	W11	W 8	W10	3.5	16
03 IOVIN Daniel	1568	L16	W29	W23	W19	3	8
04 POPE Raymond	1545	L19	W24	W25	W18	3	8
05 POON Chung-Hay	1532	W24	W23	W19	L 1	3	8
06 AHMER Craig	1498	W27	L19	W22	W12	3	8
07 HERNANDEZ Daniel	1417	W29	W16	L 1	W14	3	8
08 JOHNSON Henderson	1500	D28	W20	L 2	W22	2.5	4
09 BERKHEIMER Ed	1456	D 2	W28	D14	D13	2.5	4
10 CHEN Xi	1441	W12	D14	W13	L 2	2.5	4
11 WHITE David	1500	H	L 2	W28	W20	2.5	4
12 NOVY Gerard	1527	L10	W30	W18	L 6	2	2
13 GROEGER Andrew	1522	D20	W25	L10	D 9	2	2
14 SMITH Orlan	1500	W30	D10	D 9	L 7	2	2
15 MITCHELL Gary	1498	L25	L21	X20	W28	2	2
16 HUANG John	1498	W 3	L 7	W21	L 4	2	2
17 MARSCHALL Ed	1493	L 1	L22	W29	W23	2	2
18 PALMER Ken	1469	W22	L 1	L12	X21	2	2
19 GOLDMAN Richard	1465	W 4	W 6	L 5	L 3	2	2
20 SANCHEZ Isaac	1431	D13	L 8	X27	L11	1.5	1.5
21 KNIGHT Jerry	1557	L23	W15	L18	F18	1	1
22 GORAJ Maciej	1553	L18	W17	L 8	L 8	1	1
23 MAURER Pat	1469	W21	L 5	L 3	L17	1	1
24 KIZLAITIS Victor	1441	L 5	L 4	L28	W29	1	1
25 HIGHTOWER Dean	1266	W15	L13	L 4	-	1	1
26 WARREN Helen	1567	-	-	W24	-	1	1
27 DAVIS Jeff	1592	L 6	H	F20	-	0.5	0.5
28 HAYES Sharron	1401	D 8	L 9	L11	L15	0.5	0.5
29 MEADOWS David	1501	L 7	L 3	L17	L24	0	
30 FENNER Charles	1400	L14	L12	F15	-	0	

Illinois Class - November 21-22, 1992

CLASS D/E	Rtng.	rd-1	rd-2	rd-3	rd-4	Score	Tour
01 NAVIAMOS William	1219	W21	W13	W 4	W 9	4	32
02 FITERMAN Charles		W 3	W 5	W 8	W 7	4	
03 MARTIN John	1362	L 2	W27	W19	W14	3	8
04 REDDICK Harold Sr	1343	W23	W18	L 1	W11	3	8
05 MANZELLO Sam	1319	W24	L 2	W16	W12	3	8
06 JOHNSON David	1268	W16	W17	L 2	W13	3	8
07 MARTIN Brian	1247	W28	W15	W12	L 2	3	8
08 RODGERS Paul	1392	L19	W20	D18	W21	2.5	4
09 CALLAWAY Greg		W11	H	W10	L 1	2.5	
10 WILLIAMS Alfrad		W22	H	L 9	W18	2.5	
11 HEILSKOV Jens	1393	L 9	W24	W22	L 4	2	2
12 JOHNSON Tarrell	1359	W20	W18	L 7	L 5	2	2
13 BALES Robert Jr	1358	W27	L 1	W15	L 6	2	2
14 FERRONI George	1313	L15	W23	W17	L 3	2	2
15 LUSTER Sean		W14	L 7	L13	W28	2	
16 MILLER Don		L 6	W28	L 5	W23	2	
17 NOTTERMANN Thomas		W26	L 8	L14	W22	2	
18 BALTAZAR Mark	1114	W25	L12	D 8	L10	1.5	1.5
19 FAUST Jerry	1091	W 8	L 4	L 3	D20	1.5	1.5
20 GARCIA Moises		L12	L 8	W24	D19	1.5	
21 SIMENTAL Isidro		L 1	D25	W28	L 8	1.5	
22 DUPEE Arthur	1119	L10	W28	L11	L17	1	1
23 KEILER Louis		L 4	L14	X26	L16	1	
24 CAMARGO Miguel		L 5	L11	L20	W25	1	
25 OBIAL Joan	1042	L18	D21	-	L24	0.5	0.5
26 CHEN Andrew	1219	L17	L16	F27	-	0	
27 SCHREINER John		L13	L 3	-	-	0	
28 MONTOYA Fernando		L 7	L22	L21	L15	0	

Illinois Class - November 21-22, 1992

CLASS B	Rtng.	rd-1	rd-2	rd-3	rd-4	Score	Tour
01 FALLS Dwayne	1787	W19	W17	W14	W 3	4	32
02 BARBER Ronald	1557	W11	W 8	W13	D 7	3.5	16
03 CIMA Joseph	1759	W24	W18	W 5	L 1	3	8
04 BURIAN David	1759	D20	W26	D 6	W14	3	8
05 CERMINARO John	1740	W29	W23	L 3	W13	3	8
06 CLEMENS Gregory	1721	D26	W20	D 4	W16	3	8
07 MORTON Bruce	1690	D 8	W12	W22	D 2	3	8
08 SANCHEZ Ignacio	1779	D 7	L 2	W20	W18	2.5	4
09 KIMME Duane	1759	L23	W29	D10	W19	2.5	4

Tournament Calendar

Call Chess Phone, (708) 832-5222, for up-to-date tournament results, as well as announcements of tournaments that may not be listed in **Chess Life** or the **ICB**. The ICA Chess Phone voice is Todd Barre. Unless otherwise noted, all tournaments require USCF membership. Illinois Tour events also require ICA membership.

Organizers - remember it is ICA policy that an event must be published in the ICA bulletin in order to be a tour event. Please send your tournament notices to: Bob Renaut, 1255 Oakton Lane, Naperville, IL 60540-0310 or call at 708-983-0934.

1993

"The Basement" 1800+ Weekly quads, Buffalo Grove, IL

Advance registration (1 week) only. Limited to 2 quads per week. Fully rated, G-30. Inquiries: 1121 Highland, Buffalo Grove, IL 60089. Dan Kamen (708) 394-3530

January 9-10:

Tim Just Winter Open/Reserve X, Grayslake
5-SS, 40/90 then SD/80. College of Lake County (main building), 19351 W. Washington (at Rt. 45), Grayslake, IL 60030. EF: \$32 if rec'd by 1/6/93, \$40 at site. Reg: 8-8:45, Rds 9 - 2 - 7, 1/10 10 - 3. Prizes (b60) Open \$225-\$150-\$100; EX: \$125-\$100; A&Below: \$125 - \$100. Reserve: \$225-\$150-\$100; C:\$125-\$100; D/E/Unr \$100. Entries: Tim Just 37165 Willow Lane, Gurnee, IL 60031, 708-244-7954. **MAXI**

January 9:

Monticello CC Team Tourney - Grade School

January 9:

Evanston Team Invitational - High School

January 16:

January NU Plus Score Mini Tour, Evanston
4-SS, 40/80, SD/30, Norris Center, Northwestern University, 1999 Sheridan Road, Room 2-G, Evanston, IL, Entry Fee: \$12 if rec'd by 1/17, \$16 at site. Prize Fund Guaranteed - 4pts = \$100, 3.5 = \$50, 3.0 = \$25, 2.5 = \$12. Reg: 8:30-9:30, Rds= 10:00, 12:30, 3:00, 5:30. 1/2 bye available for first three rounds if requested in advance, cafeteria on site, free close parking, ICA membership req'd. Entries: C. Baumgartner, 3924 N. Hermitage St. 2nd floor, Chicago, IL 60613, 312-871-2148. **Mini**

January 16:

93 Tuley Park G/15 #1, Tuley Park
5-SS, 501 E 90th Pl., Tuley Park. Open Section EF: \$12, 1st 40%, 2nd 20%, best from bottom half 20%. Reg: 11:15-12:00, Rds: 12:15, 1:00, 1:45, 2:30 and 3:15. For info call Tom Fineberg 312-721-3979.

January 18:

ML King Tourney - Grade School

January 23-24:

3rd Annual Fox Valley Championship-G\$1500, Aurora

4/5-SS, Site-Prisco Community Center, Lake St. and Illinois Ave., Aurora. Open Section - 4-SS 40/100, 15/30, SD/30. Open to all. EF: \$32 if rec'd by 1/17, \$40 at site. Reg: 8:00-8:45. Rds 9:15,

3:00 both days, Prizes (Guaranteed) Open \$300, \$150, \$75, EX: \$150-\$75, A&Below \$150-\$75. Reserve: Open to all u1800, 5-SS, 45/90, SD/30. EF: \$28 if rec'd by 1/17, \$35 at site. Reg: 8:00-8:45. Rds 9:00, 1:30, 5:45, Sun 9:15, 1:00. Prizes (Guaranteed): \$200-\$100; C:\$100,\$50, D/E/Unr \$75. ICA membership req'd. Entries: R. Renaut, 1255 Oakton Lane, Naperville, IL 60540, (708) 983-0934, NS, NC, W. **MAXI**

January 23:

Springfield Winter Open, Springfield

Octagonal Swiss Format, Washington Park Pavilion, North of intersection of Park Ave. and South Grand Ave., West Springfield, IL. Info: (217)-523-7265 after 6 PM. Ent: Thomas B. Knuedler, 2104 South Fourth St., Springfield, IL 62703, NS, NC.

January 23:

Illini Union Classic (Team) - High School

January 23:

Chessterton January Open, Chesterton, IN

4-SS, 30/60, SD/30, Westchester Public Library, 210 W. Indiana, Chesterton, IN 46304. EF: \$15, \$10 junior. Reg: 8:30-9:15 am, Rds: 9:30, 12:00, 3:00, 6:00, Prizes b(30): \$100, \$60, \$45, A \$35, B \$30, C \$20, DEU \$15, top Junior \$10, Upset \$10. NS, NC. Info/entries: Randy Pals, 18528 Ellis Ave., South Holland, IN 60473-2425, 708-339-4247.

January 30:

Superbowl Tornado, DeKalb

4-SS, 30/60, SD/30, Home Student Center, N.I.U., EF: \$10, \$\$ (based on 20) 50-30, B \$20, C \$20, D/E \$20, Unr \$20, Reg: 8:00-8:30, 1st Rd at 9:00. For info: Bill Reed, 815-758-1027. Entries to: 1460 North 14th, DeKalb IL, 60115.

January 30:

Lincoln Land Tourney Grade School

February 6:

Auburn Invitational - High School

February 6:

93 Tuley Park Action Chess, Tuley Park
G/30 4SS open

February 7:

ICA Board Meeting, Hyatt Regency Oakbrook

1909 Spring Rd. (3 blocks north of Spring Rd. exit on I-88), in the Kent Room, Officers 12-1 p.m., Directors 1-4 p.m.

February 12:

Lincoln Day Tourney Grade School

February 13-15:

U.S. Amateur Team Championship Midwest, Oakbrook

6-SS, 50/2, 15/30, Hyatt Regency Oakbrook Hotel, 1909 Spring Rd., Oakbrook, IL 60521. Open to 4-player teams with average rating under 2200. Each team allowed one alternate player. EF: \$80/team if rec'd by 2/5/93, \$90 at site. Special half price entry to high school and grammar school teams (\$40/\$45). EF for individuals who wish to be assigned to city or state teams by TD, \$20 if rec'd by 2/5/93, \$25 at site. \$\$ Plaque plus 4 Master Quartz clocks to top team; plaque plus 4 BHB clocks to 2nd and 3rd place teams. Master Quartz clock awarded to top player each board. Trophies

to top teams with average rating below 2000, 1800 and 1600, top company team, top college team, top 3 high school teams, top H.S. Frosh-Soph team, top elementary school team, best team name, team travelling greatest distance, and top teams from the following states; MI, OH, IN, IL, MN, WI, IA, MO, NE, KS, KY, TN. REG: 9 A.M. - 12 noon Saturday. Rds: 2-7, 10-5, 9-3. Up to two half-point BYES allowed. Can't play Monday take two byes (must request byes before start of tournament). HR: \$60 single, \$70 double or twin. Phone Hyatt Hotel 708-573-1234 before 2/5/93 to make room reservations, mention "CHESS TOURNAMENT" to receive special discount room rates. For help in forming teams contact Chief Organizer Senior Master Richard Verber, 1970 Tall Oaks Drive, Apt 3-A, Aurora, IL, 60505, or 708-978-1380. ENTRIES: U.S. Chess Federation, 188 Route 9-W, New Windsor, NY 12553, ATTN: U.S. Amateur Team Midwest. (914-562-8350), NS, NC.

February 13:

Chicago Midwest Amateur

15-Minute Championship, Oakbrook

7-SS, USCF Rated G/15 Chess, Hyatt Regency Oakbrook Hotel, 1909 Spring Rd., Oakbrook, IL 60521. EF: \$16 if rec'd by 2/8/92 or \$20 at site. REG: 8:30-9:15. First round 9:30 A.M. sharp. \$\$ 1200 Guaranteed: \$125, 75, 60, 50, 40, EX: 90-80-40, A: 90-80-40, B: 80-50-30, C& below: 80-50-30. Trophy and \$50 to top unrated. Make check payable to Fox Valley Chess Club. ENT and INFO: Mr. Richard Verber, 1970 Tall Oaks Drive, Apt 3-A, Aurora, IL 60505, or call 708-978-1380. Chess sets are provided - bring chess clocks.

Feb 13-14:

cheap \$hot Open, Homewood

5-SS, 40/90, 30/30, SD/30, Ramada Inn, 17900 S. Halsted, Homewood, IL. EFS: \$30 if rec'd by 2/8 or \$35 at site, \$5 off to ICA membs. \$\$ 800 (b/50, 10/class), OPEN (open to 1750+) 140-75, X 70-40, A 65. RESERVE (below 1800) 125-85, C 60-30, D/E 50, unr 40. Both: Best Swindle 20. Reg: 8:30-9:15, Rds 9:30-2-6:30, 10:30, 3:30. 1/2 pt bye for any Sat rd. INFO/ENT: L. Cohen, 135 Westwood Dr., Park Forest, IL 60466, 708-834-CHSS till 2/10.

February 20:

A (Phi Kappa Bianca) In Chicago, Evanston

3-SS, 35/90, SD/30, Norris Center, Northwestern University, 1999 Sheridan Road, Room 2-G, Evanston, IL, Entry Fee: \$13 if rec'd by 2/19, \$16 at site, \$3 off if member of MCAC. Prize Fund - \$3300 (b/40). Reg: 8:30-9:30, Rds= 10:00, 2:00, 6:00. 1/2 bye available for first round if requested in advance, cafeteria on site, free close parking. Entries: C. Baumgartner, 3924 N. Hermitage, 2nd floor, Chicago, IL 60613, 312-871-2148.

February 20:

Frosh-Soph "State" Tourney - High School

February 20:

Oak Lawn Open Chess Tournament, Oak Lawn

4-SS, SD/60, Oak Lawn Community High School, 94th and Southwest Hwy., Oak Lawn, IL. EF: \$5.00, Reg 8-8:30 am, Rd 1 at 9 am, other rounds as posted. Trophies to top 3 finishers, Top C, Top D, best unr. Entries/info: Ed Olson, Oak Lawn Community High School, 94th and Southwest Hwy, Oak Lawn, IL 60453, 708 424-5000 ext 237.

February 20:
93 Tuley Park Quick Chess, Tuley Park
5SS, tentative.

February 21:
ICA Banquet, Westmont

February 21:
Illinois Blitz Championship, Westmont

February 27:
4th Barb City Tornado, DeKalb
4-SS, 30/60, SD/30, EF: \$17 if received before
2/26, site \$22, Barb City Manor, 680 Haish Blvd,
DeKalb, IL (down First St.), Food provided. For
Info: Bill Reed, 815-758-1027. Entries to: 1460
North 14th, DeKalb, IL 60115.

February 27:
Peoria Scholastic Grade School
West Suburban Conference Meet
High School

BoulderDash Team Invitational
High School

February 27:
Chessterton February Open, Chesterton, IN
4-SS, 30/60, SD/30, Westchester Public Library,
210 W. Indiana, Chesterton, IN 46304. EF: \$15,
\$10 junior, Reg: 8:30-9:15 am, Rds: 9:30, 12:00,
3:00, 6:00, Prizes b(30): \$100, \$60, \$45, A \$35,
B \$30, C \$20, DEU \$15, top Junior \$10, Upset \$10.
NS, NC. Info/entries: Randy Pals, 16526 Ellis
Ave., South Holland, IN 60473-2425, 708-339-
4247.

February 27-28:
Paul Rodgers 1993 Winter Winds Open,
Urbana

5-SS, 30/90, SD/30, \$\$3000/b100 (1500G), Reg:
8-9 am, Rnds: 10/2:30/7 and 9/1:30. EF: \$50 by
1/25, \$60 by 2/15, \$75 at site, Howard Johnson
Motor Lodge, 1909 N. Cunningham, Urbana, IL
61801. OPEN (open to all): \$750/300/150; Under
2200: 300/150/75; Under 2000: 250/125/75.
Reserve (u1800): b:175/100 c: 150/75, D/E:
100/50, unr: \$50. Trophy to 1st place in each
class. All early entries eligible for \$50 drawing.
Entries/Info: Paul Rodgers, 810 Peach Tree, Ur-
bana, IL 61801, (217) 367-6649. Special room
rates available for reservations by 2/1/93. ICA
mem req'd, NS, NC, WC. **MAXI**

March 6:
Illinois Chess League Championship Tourna-
ment, Hillside
Hillside Baptist Church, 5152 Butterfield Road,
Hillside, INFO: Larry Stillwell 708-963-6799

March 12-14:
Mid America Class Championships in Chicago,
Rosemont

5-SS, 40/2, 20/1. The Ramada O'Hare Hotel, 6600
N. Mannheim Road, Rosemont, IL 60018 (less
than 1 mile from O'Hare Airport with Free Ramada
pickup service). \$\$ 12,500 Guaranteed Prize
Fund Will Not Be Reduced! In six sections - EF
\$65 by 3/5, \$10 more at site. Juniors and second
family members play for \$30 (entry must be sent
in advance). Fourth member of schools or chess
clubs play Free (must send entry together in ad-
vance) Add 50 cents for 1/2 point first round bye.
MASTER - \$\$G: 2,000 - 1,000 - 500 - 300 -
200, Under 2400 \$500-200. Free entry and room
at 1993 National Open in Las Vegas for ALL per-
fect scores. **EXPERT** - \$\$G: 1,000 - 500 - 300 -
200, Free entry and room at 1993 National Open
in Las Vegas for ALL perfect scores. **CLASS A** -
\$\$G: 1,000 - 500 - 300 - 200, Free entry to 1993
National Open in Las Vegas for ALL perfect
scores. **CLASS B** - \$\$G: 800 - 400 - 200 - 100,
Free entry to 1993 National Open for ALL perfect
scores. **CLASS C** - \$\$G: 800 - 400 - 200 - 100,

Free entry to 1993 National Open in Las Vegas for
ALL perfect scores. **CLASS D/E** \$\$G 400 - 250 -
150. Free entry to 1993 National Open in Las
Vegas for ALL perfect scores. **Free Raffle** after 4th
round: Free round trip air from any USA city to
1993 National Open in Las Vegas. You can play
one section higher than your rating for \$5 addition-
al. Unrateds can win no more than \$200 in any
section EXCEPT Master. **Registration:** 4:00 -
7:00 p.m., Friday 3/12. Players may register
Saturday morning by 10 a.m. with a 1/2 point bye
for Friday's round. Rds. Friday 8 p.m., Sat-Sun
10:30, 5:30. Chess sets provided for tournament
play only - NOT for skittles - please bring chess
clocks! Midwest's largest chess book concession
by Jim/Helen Warren of APCT. Entry by Visa and
MasterCard accepted by phone only - NOT AT
DOOR! Call: RAE Products and Chemicals, 708-
398-1984 between 9:00 A.M. and 4:00 P.M. Mon-
day thru Fridays - Central Standard Time. Mention
Chess Tournament. **HR:** \$50 Single, add \$4 for
Dble. For Hotel reservations call 708-827-5131.
Mention chess tournament. **NOTE:** Discounted
room rates to 2/24 - only on availability thereafter.
ENT: Mid-America class Championships: P.O. Box
100, Palos Heights, Illinois 60463. FREE Hotel
brochure and tournament flyer: send self ad-
dressed stamped envelope to above address.
Info: Fred Gruenberg 708-489-5800 evenings
only. NS, W. 100 Grand Prix points available. FIDE
rated.

March 13:
North Boone Individual - High School

Bloom Trail Team "Tourney of Champlons" -
High School

March 13-14
State - Grade School

March 20:
93 Tuley Park Action Chess, Tuley Park
G/30 4SS open

March 20:
Springfield Spring Thaw Open, Springfield
Octagonal Swiss Format, Washington Park
Pavilion, North of intersection of Park Ave. and
South Grand Ave., West Springfield, IL. Info:
(217)-523-7265 after 6 PM. Ent: Thomas B.
Knoedler, 2104 South Fourth St., Springfield, IL,
62703, NS, NC.

March 20-21:
2nd Annual UIC Open, Chicago
4-SS, 45/120, 25/60. Chicago Circle Center, Room
713, 750 S. Halsted St. Chicago, IL EF: \$10 if by
3/17 or \$13 at site, \$1 off to UIC club members,
Prizes: 1st 35%, 2nd 20%, 20% to top u1800, 10%
to top u1600 (based on 4 entries per class). Reg:
8:30-9:30, Rds: 10-3:30. Info/Entries: Howard
Wachtel, 445 W. Barry Ave. #217, Chicago, IL
60657-5511, (312)-975-7970.

March 20:
Ides of March Tornado, DeKalb
4-SS, 30/60, SD/30, Diversions at the Home Stu-
dent Center, N.I.U., EF: \$10, \$\$ (based on 20)
50-30, B \$20, C \$20, D/E \$20, Unr \$20, Reg:
8:00-8:30, 1st Rd at 9:00. For info: Bill Reed,
815-758-1027. Entries to: 1460 North 14th, De-
Kalb, IL 60115.

March 26-27:
IHSA STATE CHESS TEAM TOURNEY

March 27-28
Greater Peoria Open, Peoria

March 27:
Chessterton March Open, Chesterton, IN
4-SS, 30/60, SD/30, Westchester Public Library,
210 W. Indiana, Chesterton, IN 46304. EF: \$15,
\$10 junior, Reg: 8:30-9:15 am, Rds: 9:30, 12:00,

3:00, 6:00, Prizes b(30): \$100, \$60, \$45, A \$35,
B \$30, C \$20, DEU \$15, top Junior \$10, Upset \$10.
NS, NC. Info/entries: Randy Pais, 16526 Ellis
Ave., South Holland, IN 60473-2425, 708-339-
4247.

April 9-11:
National High School Championship
Dallas, TX

April 16-18:
National Junior High School Championship,
Chicago

April 17
C/U DUO-CLASS "Pressure Cooker 5-SS", Ur-
bana

April 23-25:
National Elementary Championship
Charlotte, NC

April 23-24
IHSA STATE INDIVIDUAL

April 24:
Barb City Tornado #5, DeKalb

April 24:
Chessterton April Open, Chesterton, IN

May 15:
Barb City Late Spring Tornado, DeKalb

May 22:
Springtime in the Park Open, Springfield

May 22-23:
Evanston

May 22:
Chessterton May Open, Chesterton, IN

May 28-30: Chicago Open, Chicago

June 11-13:
National Open, Las Vegas, NV

June 19:
6th Barb City Tornado, DeKalb

June 26:
Chessterton June Open, Chesterton, IN

July 10-11
Oberwels Class Championship, Aurora

July 18-18:
Midwest Class Championship, Chicago

July 24:
Springfield Sauna Open, Springfield

July 24:
Mid-Summer Tornado, DeKalb

August 7-15:
U. S. Open, Philadelphia, PA

August 21:
7th Barb City Tornado, DeKalb

September 19,
Blowing Leaf Tornado, DeKalb

September 25:
Harvest Time Open, Springfield

October 16:
8th Barb City Tornado, DeKalb

Nov 13-14
2nd Barb City Open, DeKalb

November 13:
Holiday Prelude Open, Springfield

December 4:
2nd Barb City Holiday Tornado, DeKalb

1994

August 7-19: U. S. Open - Chicago

ILLINOIS CHESS ASSOCIATION PATRONS

Century Club Members

Michael Belovesick Sr. Addison
 Thomas Fineberg Chicago
 Fred Gruenberg Palos Heights
 Marc Lonoff Northbrook
 Michael McIlhany Springfield
 Robert Raimo Blue Island
 Albert Sandrin Chicago
 Angelo Sandrin Chicago
 Bill Smythe Chicago
 Burton Vincent Chicago
 Helen Warren Western Springs
 Jim Warren Western Springs
 Bill Wenz Milwaukee WI
 Phillip Wong Willmette

Gold Card Members

Erone Brooks Chicago
 William Dwyer Worth
 Ianland S. Holsington Ogden UT
 Ian Losoff Morton Grove
 Kenneth Marshall Lombard
 William Naff Peoria
 Peter Pelts Niles
 Daniel Pradt Glen Ellyn
 Michael Pratts Chicago
 Win Rothschild Park Forest
 Mark Stinson Singapore
 Mitchell Sweig Evanston
 George Umezlnwa Chicago
 Louis Werner Evanston
 Andy Zabell Chicago

CA Elected Officers

Ian Losoff, President
 402 N. Octavia, Morton Grove, IL 60053
 (708) 966-5559
 Bob Renaut, Metro Vice-President
 255 Oakton Lane, Naperville, IL 60540
 (708) 983-0934
 Dennis Bourgerle, Downstate Vice-President
 621 N. School St., Normal, IL 61761
 (309) 454-3842
 Ken Marshall, Secretary
 57 W. Grove, Lombard IL 60148
 (708) 932-1455
 Todd Barre, Treasurer
 36 Evergreen, Elmhurst, IL 60126
 (708) 834-0862

Patron Members

Fred Allsbrook Downers Grove
 Jack Armstrong Rockford
 Bob Ash Urbana
 Ken Bankhead Country Club Hills
 Todd Barre Elmhurst
 Dennis Bourgerle Normal
 Bill Brock Chicago
 Jim Brotsos Chicago
 Gregory Bungo Elmhurst
 Fred Burgess Oak Forest
 Bill Buttny Darien
 Anthony Caliendo Aurora
 Lawrence Cohen Villa Park
 Kevin Connelly Villa Park
 Tom Cooper Wheaton
 Paul Cox Chicago
 Mike Cronin Evergreen Park
 Greg De Fotis Lincolnwood
 John Deutsch Chicago
 Leroy Dubeck Cherry Hill NJ
 Kalman Farkas Milwaukee WI
 Charles Fenner Chicago
 Michael Flynn Aurora
 Jon Gotz West Chicago
 William Graves Chicago
 Steve Hansen Chicago
 Steven Herr Chicago
 Charles Hicks Naperville
 Dean Hightower DeKalb
 Keith Holzmueller Evanston
 Jeffery Hyland Mount Prospect
 Toshio Imai East Lansing
 Randy Ingram Bloomington
 Robert Irons Chicago
 Gary Jochim Chicago
 Gersham Johnson Chicago
 Stephen Josephs Hinsdale
 Tim Just Gurnee
 Dan Kamen Buffalo Grove
 Scott Kittleley Shorewood WI
 Thomas Knoedler Springfield
 Walter Kocjan Northlake

USCF Delegates

by virtue of their USCF posts
 Fred Gruenberg Regional Vice-President
 Alan Losoff Regional Vice-President
 Frank Skoff Life Voting Member
 Helen Warren Life Voting Member
 Harold Winston Life Voting Member

by ICA-appointment

Ken Marshall
 Todd Barre
 Tim Just
 Tom Fineburg
 Bob Renaut

Warren Kreckler Chicago
 Peter Kuhn Des Plaines
 Dr. Kevin Kukla Tinley Park
 Richard Lang Evanston
 Harry Lyman Boston MA
 John Marconnet Clarendon Hills
 Mark Marovitch Cicero
 Anthony Marquez Chicago
 Ed Marschall So. Barrington
 Eugene Martinovsky Naperville
 Patrick Maurer Glen Ellyn
 Thomas Mayka Wheeling
 James McNamara Hinsdale
 Fred Meyers Sterling
 Earl Miller Anna
 Jim Oberweis Aurora
 Ken Palmer Bolingbrook
 Randall Pals South Holland
 Alex Pahas Downers Grove
 Mieczyslaw Platek Skokie
 Frederick S. Rhine Chicago
 Marvin Rogan Chicago
 Ray Satterlee Wheaton
 Garrett Scott Normal
 Mark Sefcheck Naperville
 David Shane Macomb
 Anthony Sillars Northampton MA
 Scott Silverman Elk Grove Village
 Richard Simonetti Elmwood Park
 Arthur Sinclair Evanston
 Leonard Spiegel St. Charles
 Peter Stein Naperville
 Robert Stoltz River Forest
 Sonia Taki Chicago
 James Tanaka Chicago
 Mike Varady Effingham
 Richard Verber Aurora
 Jeff Weimar Moline
 Don Winsauer West Dundee
 Harold Winston Naperville

Effective January 1st, 1993
 Patron dues will increase
 from \$25 to \$35.

RENEW NOW!
 at the old rate for 1 year.

USCF Voting Members

ICA appointed

Marc Lonoff	Richard Verber
Bill Smythe	Jim Oberweis
Dennis Grant	Garrett Scott
Dennis Bourgerle	Bill Naff
Erv Sedlock	Larry Cohen

ICA appointed alternates

Thomas Knoedler	Warren Kreckler
Bill Wilkinson	Howard Wachtel
Angelo Sandrin	Michael Henroid
Joshua Flores	Hector Hernandez
Ed Blanco	Les Bale
Jim Brotsos	Tony Jasaltis
Larry Stilwell	Tom Cooper
Bill Brock	Bill Reed
Glen Gratz	Keith Martin
George Marino	Albert Chow
Glenn Panner	Ken Lewandowski



Where to Play Chess ICA Club Affiliates



ABCDEFU sponsors tournaments and other chess events. Ed Blanco, Box 579181, Chicago IL 60657-9181.

AMERICAN POSTAL CHESS TOURNAMENTS sponsors postal events & sells chess books & equipment. Jim or Helen Warren, P.O. Box 305, Western Springs 60558. 708/246-8665.

"THE BASEMENT", Daniel Kamen, 1121 Highland Grove Drive, Buffalo Grove, IL 60089

CENTRAL LAKE COUNTY CHESS CLUB meets Fridays, 7:15 to 12:00AM College of Lake County, Bldg. 1, Washington at Route 45, Grayslake. Dennis Grant, 1657 McKay, Waukegan 60087. 708/336-5188.

CHAMPAIGN CHESS CLUB 706 Kenwood Road, Champaign IL 61821.

CHESSTERTON CHESS CENTER c/o Randy Pals, 16526 Ellis Ave., South Holland, IL 80473-2425, Info: Randy Pals 708-339-4247, Harold Henderson 219-324-2620.

CHICAGO CHESS CENTER meets for casual chess 7 days a week 6:00 p.m. 1:00 a.m. \$2 charge. 1921 W. 47th St., Chicago 60609. Also sponsors rated tournaments Thurs.-Sun. Ray Socha, 312/376-5678.

CHICAGO INDUSTRIAL CHESS LEAGUE organizes frequent competition among commercial/government teams with awards, ratings, & special events. Tony Jasaitas 312/431-2966.

CONTINENTAL CHESS ASSOCIATION, 450 Prospect Ave. Mt Vernon NY 10553. Bill Golchberg.

DOWNERS GROVE PARK DISTRICT CHESS CLUB meets Thurs., 6:30-10 p.m., Lincoln Center, 935 Maple Ave., Downers Grove. Affiliated with USCF & ICA. George Uffner, 708/960-9382.

EVANSTON TOWNSHIP HIGH SCHOOL CHESS CLUB Ken Lewandowski 1800 Dodge Avenue, Evanston IL 60204.

FOX VALLEY CHESS CLUB meets Monday evenings, 7 p.m.-?, Prisco Community Center, Lake St. & Illinois Ave., Aurora IL. Bob Renaut, 708/983-0934.

GREATER PEORIA CHESS FEDERATION meets Mon., 7-11 p.m., Garrett Center, 824 N. University, Peoria. Bill Wilkinson, 901 N. Rebecca Pl., Peoria 61606. 309/673-9455.

HAMMOND CHESS CLUB c/o Jim Enochs, 6438 Jefferson Avenue, Hammond, IN, 46324

ILLOWA CHESS CLUB meets Tues., 6:30-10 p.m., Hauberg Civic Center, 1300 24th St., Rock Island. Bob Ratcliff, 2336 25th St., Rock Island IL 61202; 309/786-8104.

ROBERT KJELLANDER 405 Clipper Boulevard, Springfield, IL 62707

LAKE COUNTY CHESS ASSOCIATION sponsors rated tournaments in the Grayslake-Zion area. Tim Just, 37165 Willow, Gurnee 60031. 708/244-7954.

MATTOON ARLA CHESS CLUB meets Monday, 7-9 p.m., 2608 Richmond Ave., Mattoon IL 61938. Bret R. Fuller.

MIDWESTERN CHESS ADVENTURES (MCAC) 3924 N. Hermitage, 2nd floor, Chicago, IL 60613, 312-871-2148. Attn: Christopher Baumgartner. We are dedicated to chess promotion within the city of Chicago and eventually we hope to expand our activities to include the entire midwest region. If you are interested in helping us raise chess awareness and its benefits, PLEASE CONTACT US!

MIDWEST CHESS ASSOCIATION organizes major tournaments for masters & experts. Helen Warren, P.O. Box 305, Western Springs, 60558. 708/246-8665.

NORTHWESTERN UNIVERSITY c/o M.B. Henroid, 2245 Sheridan Rd., Room 222, Evanston, IL 60201.

OAK PARK/RIVER FOREST CHESS CLUB meets Tues., 7 midnight, Dominican Conference Center, 7200 W. Division, River Forest. Ken Marshall, 357 W. Grove, Lombard 60148. 708/932-1455.

ORLAND PARK CHESS CLUB meets every Friday night, 7:30-11, at the George Brown Commons, 15045 West Ave. (1 block w. of Lagrange Rt. 45 96th Ave.), Orland Park. No membership fee is required. Glenn Panner, 708/460-3111.

PARK FOREST CHESS CLUB meets Thursdays, 7-10:00 p.m., Freedom Hall, Orchard & Lakewood, Park Forest. Lawrence Cohen, 135 Westwood, Park Forest, 60466. 708/748-5911.

QUAD CITIES CHESS CLUB, Steven J. Foust, 9500 14th St. W., Apt. C2-B, Rock Island, 61202. 309/787-5198.

PAUL RODGERS' CHESS TOURNAMENTS 810 Peach Tree, Urbana, IL 61801

RUDY LOZANO LIBRARY CHESS CLUB, 1805 S. Loomis, Chicago, 60608. Hector Hernandez, Head Librarian. 312/733 4329.

SHIMER COLLEGE CHESS CLUB meets Mondays, 7 p.m. to ?, Koko House, Shimer College, corner of Genessee and Cory in Waukegan. David Shiner, P.O. Box A500, Waukegan 60079. 708/623-8400.

SMYTHE DAKOTA COMPETITIONS is the sponsor of the monthly Plus-Score Mini-Tours in the Chicago area. Bill Smythe, 6945 N. Ashland #F-3, Chicago 60626. 312/761-2455.

SPRINGFIELD CHESS CLUB meets Wed., 6-10 p.m., Washington Park Pavillion, Park Ave. & South Grand Ave. West, Springfield. Tom Knoedler, 217/523-7265; or James Larson, 217/529 0781. ST.

ST. CHARLES CHESS CLUB meets Thursdays at 7 p.m., Baker Community House, 101 S. 2nd (Rte. 31), St. Charles. Erv Sedlock, 6 N. 307 Old Homestead Rd., St. Charles 60174, 708/377-7995.

TULEY PARK CHESS CLUB meets Saturdays, 1-5 p.m., Tuley Park Field House, 501 E. 90th Pl., Chicago. Thomas Fineberg, 7321 S. South Shore Dr., Chicago 60649, 312/721-3979.

Join the Illinois Chess Association and receive six issues of the Illinois Chess Bulletin. In addition, you'll qualify to enter over two dozen tournaments on the Illinois Chess Tour. Every game you win or draw in a tour event earns you "tour points" that can add up to cash prizes at year-end. Finally, you'll be supporting the activities of the Illinois Chess Association. Every year, the ICA organizes major tournaments like the Illinois Open and the Illinois Class Championships; the ICA has bid for the National Open, the US Open and the

US Class Championships to be held in Illinois. In addition, the ICA sponsors scholastic clinics, runs a tournament clearinghouse, and promotes and publicizes chess activity statewide. If you would like to show increased support for Illinois chess, please consider renewing as a Century Club, Gok Card, or Patron member. Patrons are acknowledged in each issue of the ICE and receive their magazines by first-class mail.

Mail To: Ken Marshall, ICA Membership Secretary
357 W. Grove
Lombard, IL 60148

(Your mailing label is on the other side; note corrections below)

Name _____
Address _____
City _____ State _____ Zip _____

ICA Membership Renewal

Check membership type:

___Century	\$100.00	___Gold Card	\$50.00
___Patron	\$35.00	___Regular	\$14.00
___Junior	\$8.00	___Affiliate	\$25.00

J.S. Amateur Team Championship Midwest

**-Round Swiss, February 13-15 at the
Hyatt Regency Oakbrook Hotel,
Oakbrook, Illinois**

SS, 50/2, 15/30, Hyatt Regency Oakbrook Hotel, 1909 Spring Rd.,
Oakbrook, IL. Open to 4-player teams with average rating under 2200.
Each team allowed one alternate player.

ENTRY FEE: \$80/team if received by 2/5/93, otherwise \$90 at the site.
Special half price entry to high school and grammar school teams. Entry
fee for individuals who wish to be assigned to city or state teams by TD,
\$10 if received by 2/5/93, \$25 at site.

PRIZES: Plaque plus 4 Master Quartz clocks to top team; plaque plus 4
MB clocks to 2nd and 3rd place teams. Master Quartz clock awarded to
top player each board. Trophies to top teams with average rating below
1800, 1800 and 1600, top company team, top college team, top 3 high
school teams, top high school Fresh-Soph team, top elementary school
team, best team name, team travelling greatest distance, and top teams
from the following states; MI, OH, IN, IL, MN, WI, IA, MO, NE, KS, KY, TN.

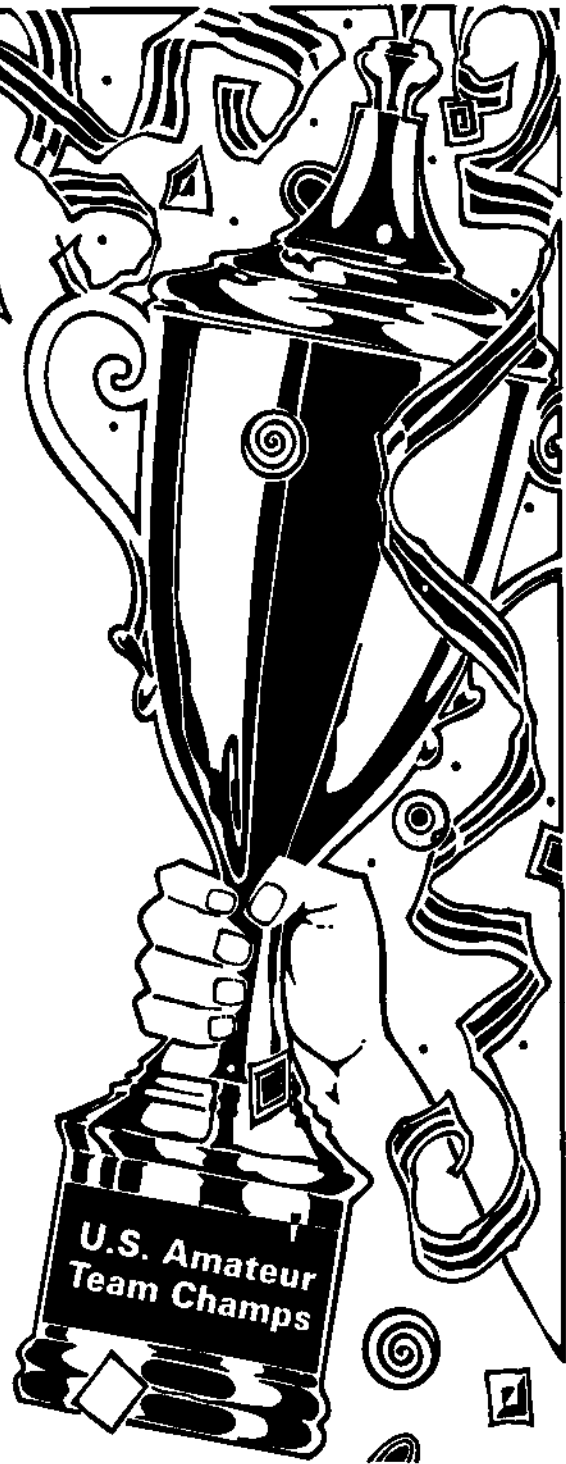
REGISTRATION: 8 a.m. - 12 Noon Saturday. Rounds: 2-7, 10-5, 9-3. Up
to two half-point BYES allowed. Can't play Monday? Take two byes (must
quest byes before start of tournament).

HOTEL RATES: \$60 single, \$70 double or twin. Phone Hyatt Hotel
18-573-1234 before 2/5/93 to make room reservations. Mention "chess
tournament" to receive special discount room rates. Hotel is close to major
shopping malls, theaters and numerous restaurants.

FORMATION: For help in forming teams contact Chief Organizer Senior
Master Richard Verber, 1970 Tall Oaks Drive, Apt 3-A, Aurora, IL, 60505,
708-978-1380.

ENTRIES: U.S. Chess Federation, 186 Route 9-W, New Windsor, NY
12553, Attention: U.S. Amateur Team Midwest. (914-562-8350), No
smoking. No computers.

SPONSORED BY: The Oberweis Dairy and the Fox Valley Chess Club,
Aurora, Illinois.



TALK TO YOUR CHESS FRIENDS TODAY TO PLAN YOUR 4 MAN TEAM!

Illinois Chess Association
P.O. Box 2534
Northbrook, IL 60065-2534

Time Value Material

Address Correction Requested