



ILLINOIS CHESS BULLETIN

Official Publication of the Illinois Chess Association, a U.S.C.F. Affiliate
A Not For Profit Organization

May-June 1992 Volume XV, No. 3 Bi-monthly \$2.95

MID-AMERICA CLASS



GM ALEXANDER IVANOV
MASTER SECTION CO-CHAMPION



GM ROMAN DZINDZICHASHVILI
MASTER SECTION CO-CHAMPION



ERNST EDWARD
EXPERT SECTION CHAMPION



ANTHONY JASAITIS
CLASS A SECTION CHAMPION

C H A M P I O N S

CLASS B SECTION CHAMPION: JAMES GREY

CLASS C & BELOW CHAMPIONS:

STEVEN JOSEPHS - DAN SCHULTZ - FRANK JOHNSON



TABLE OF CONTENTS

Editor **Warren Kreckler**
Calendar Editor **Bob Renaut**
Tour Statistician **Bill Smythe**
Games Editor **Tom Cooper**

MEMBERSHIP AND SUBSCRIPTIONS

The Illinois Chess Bulletin (ICB) is published bimonthly by the Illinois Chess Association. ICA membership includes a subscription to the ICB. Century Club, Gold Card, and Patron members receive their ICB by first-class mail.

ANNUAL MEMBERSHIP RATES

Century Club \$100.00
 Gold Card \$50.00
 Patron \$25.00
 Regular \$14.00
 Junior (under 18) \$8.00

Subscriptions and address corrections should be sent to:

ICA Membership Secretary
 P. O. Box 2534
 Northbrook, IL 60065-2534

SUBMISSIONS

Please notify the editor in advance at 312-764-2807 regarding plans to submit articles, photographs, crosstables, games, advertising, and other publishable materials. The deadline for submission in the July-August 1992 issue is June 1, 1992.

ICA AFFILIATION

Chess clubs and other organizations which promote chess activity may affiliate with the ICA. Benefits include a copy of the ICB by first class mail, a listing under "Where to Play Chess," discounted advertising rates, three-line tournament announcements in the "Tournament Calendar," and the right to run ICA Tour Events. ICA Affiliation costs \$25; please remit to Membership Secretary.

ADVERTISING RATES

Full page \$90
 Half page \$54
 Quarter page \$36
 Eighth page \$24

10% discount for the same ad in consecutive issues. 1/3 discount for ICA affiliates. All ads must be camera-ready to qualify for above rates; minimum \$20 charge for layout. Payment must accompany ad. The ICA & the ICB reserve the right to reject advertising.

Copyright © 1992 Illinois Chess Association

Presidents Report	3
<i>by Alan Losoff</i>	
Editors Column	3
<i>by NM Warren Kreckler</i>	
Mid-America Class Championships	4
<i>by NM Warren Kreckler</i>	
Fox Valley Championship	12
<i>by Bob Renaut</i>	
War of the Roses Chess Challenge	15
<i>by Howard Wachtel</i>	
Dempsey Leads Shimer to Upset	15
<i>by David Shiner</i>	
Normal Redbird Open	16
<i>by Dennis Bourgerie</i>	
Aah! Spring	18
<i>by E. Stuparitz</i>	
St. Charles Club News	19
<i>by Dan Pradt</i>	
Junior Chess in Illinois	20
<i>by I. Leslie Bale</i>	
Chess Tech-Talk	22
<i>by NM Marc Lonoff</i>	
In the begining there was the endgame	24
<i>by NM Brian Schuman</i>	
ICA Tour Standings	27
<i>by Bill Smythe</i>	
Tournament Calendar	32
<i>by Bob Renaut</i>	
ICA Patrons	34
Where to Play Chess	35
ICA Club Affiliates	

Mid-America & North Avenue Beach Photos: Marvin Rogan
 Original Artwork: E. Stuparitz

Requiem by Kevin L. Bachler

NM Kevin Gensler of Woodstock, Illinois passed away on Wednesday morning, March 4, 1992, when the auto he was driving in Crystal Lake struck a tree and burst into flames. His funeral was held at St. Patrick's in Rochelle, IL. Interment was at Chapel Hills Memorial Park in Freeport, IL.

Kevin was known as a very sharp attacking player. Fellow cavemen NM Ken Wallach and NM Kevin Bachler will have an article on some of Kevin's best games in an upcoming ICB.

President's Report

by Alan Losoff

Volunteers are the lifeblood of any chess organization. The ICA is no exception. I'm especially proud of the people who donate their talents to Illinois Chess.

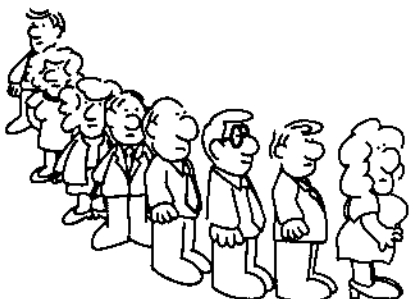
These are the people who bring you great tournaments like the Mid-America Class Championships. These are the people who bring you a great magazine 6 times a year. These are the people who stay 'til the last blitz game is over to lock up the Chess Club. These are the people who run scholastic programs for our young chess players.

These are the people who give up evenings, weekends and family time so you have a place to play chess. I know of one organizer who runs a major tournament every year on his daughter's birthday.

And why do they do it? They do it for love of the game which they no longer have time to play. They do it for the thrill of hearing a player say "I had a great time." They do it because someone has to.

Look at the last pages of this magazine. The volunteers and patrons listed there are only a few of the many dedicated to bringing the best chess to Illinois. Not every chess event in the state is part of ICA, but they all help to make Illinois a great chess state. The ICA wouldn't be the same without them.

So take the opportunity to say "thank you" the next time you attend a tournament or chess club. And don't be afraid to offer your help. We can always use fresh blood.



Editor's Column

by Warren Kreckler

Dear chess friends,

Let me take this opportunity to introduce myself to those of you who are not familiar with yours truly. I have participated in USCF tournaments (on and off) since 1967 and currently hold the title of National Master with a rating of (2300+). I have had several years experience in the computer field and for the past few years have been involved in electronic publishing.

I intend to give the ICB a more professional appearance and to introduce a broader spectrum of articles. It is important to portray chess in an attractive manner if we are to recruit more participants and members. In future issues you will see many new names as well as old familiar ones.

The first issue is always the most difficult. If I have made any errors or omissions, I humbly ask for your indulgence. Please feel free to call me with comments, suggestions, criticisms at 312-764-2807.

My thanks to: Marc Lonoff (former ICB editor) for showing me the ropes and for his introduction to ChessBase, to Richard Verber for providing me with names and phone numbers of ICA organizers and for his ICA political commentary, to Bill Smythe (ICA Tour Statistician) for his punctual submission of the tournament crosstables and ICA Tour standings, to Tom Cooper (Games Editor), to Bob Renaut (Calendar Editor), to NM Brian Schuman for the first in series of articles on the endgame, to E. Stuparitz for artwork and artistic consultation, to Marvin Rogan for the photos of the Mid-America tournament and the North Avenue Beach Pavilion, and to contributors Howard Wachtel, Dennis Bourgerie, Dan Pradt, and Les Bale.

IMPORTANT: Only computer printed or typed material will be considered for future issues. Submissions may also be sent by modem or fax. Please comply and help streamline the process of compiling this publication. Thanks!

Mid-America Class Championships

by Warren Kreckler

The Mid-America Class Championships were held on March 13-14-15 at the luxurious Ramada Inn O'Hare. There were 316 total entrants, 54 in the Master Section, 57 in the Expert Section, 66 in the Class A Section, 55 in the Class B Section, and 84 in the Class C & Below Section.

The tournament attracted such notables as GM Alexander Ivanov (2656), GM Roman Dzindzichashvili (2639), IM Igor Ivanov (2610), IM Kamran Shirazi (2606), GM Dimitri Gurevich (2601), and GM Arthur Bisguier (2467).

The Master Section winners were GM Alexander Ivanov (2656) and GM Roman Dzindzichashvili (2639) with 4.5 points each. These two giants drew in the fourth round. In the fifth round GM Alexander Ivanov (2656) triumphed against super IM Igor Ivanov (2610), while GM Roman Dzindzichashvili (2639) had the easier pairing, beating SM Peter Pelts (2407). In second place at four points each were, IM Kamran Shirazi (2606), IM Alex Fishbein (2567), GM Arthur Bisguier (2467), and NM Roman Levitt (2313). Third place finishers at 3.5 points each were, IM Igor Ivanov (2610) and SM Peter Pelts (2407).

In the Expert Section, Ernst Edward (2100) won first place with a perfect 5.0 score, beating former NM Erik Karklins (2182) in the last round. Tom Ward (2103) followed with 4.5 to take second. In third place at 4

points each followed, Mark Brodie (2175), Leonard Johnson (2114), and Tyrone Lee (2078).

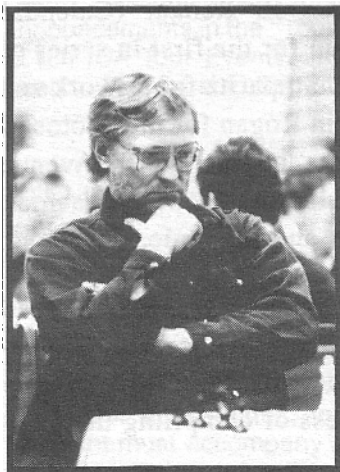
In the Class A Section, Anthony Jasaitis (1938) took first place with a perfect 5.0 score. In second place at 4.5 points each followed, Tim Pradzinski (1933) and Robert Stoltz (1893). Tied for third place at 4 points each were Slavko Milovanovic (1957) and David Freeman (1949).

In the Class B Section, James Gray (1725) took first place with an undefeated performance of 5.0. In second place at 4.5 points, followed Alexander Paphitis (1601). Tied for third at 4 points each were, Howard Weiner (1753), Ed Peters (1723), and George Coleman (1744).

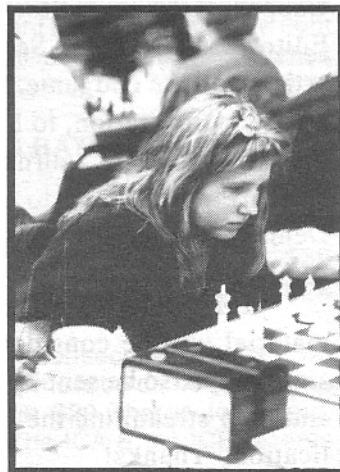
In the Class C & Below Section, three players tied for first at 4.5 points each: Steven Josephs (1599), Dan Schultz (1554), and Frank Johnson (1526). In second place at 4 points each followed, Lance Purkey ((1586), Steve Slagle (1576), Ruben Ybarra (1557), Gerald Knutson (1487), and Nick Hantzeas.

The Ramada Inn O'Hare tournament site and playing conditions were first class and most of the rounds started on time. Congratulations are in order for organizers Fred Gruenberg, Helen Warren, and Richard Verber for adding another major tournament to the Illinois tournament schedule.

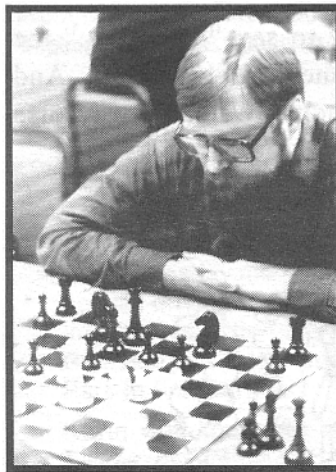
We will have more coverage on the Mid-America Class Championships in the July-August issue. ■



IM Igor Ivanov



Julie Oberweis



NM Tom Cooper



SM Peter Pelts

Mid-America Class – Master Section

Name		rtng	rd1	rd2	rd3	rd4	rd5	score	tour
01. Ivanov Alexander	GM MA	2656	W6	W39	W5	D2	W7	4.5	16
02. Dzindzichashvili R.	GM NU	2639	W20	W16	W15	D1	W8	4.5	16
03. Shirazi Kamran	IM NY	2606	W28	L17	W30	W28	W10	4	8
04. Fishbein Alex	IM WY	2567	W22	W18	D23	D8	W15	4	8
05. Bisquier Arthur	GM NU	2467	W49	W27	L1	W17	W9	4	8
06. Levit Roman	WI	2313	L1	W34	W47	W13	W23	4	8
07. Ivanov Igor	IM CA	2610	D45	W44	W17	W23	L1	3.5	4
08. Pelts Peter	IL	2407	W34	W31	W10	D4	L2	3.5	4
09. Gurevich Dmitry	GM IL	2601	D21	W41	D19	W16	L5	3	3
10. Bavin Leonid	IM MI	2472	W29	W24	L8	W27	L3	3	3
11. Remlinger Larry	IM CA	2472	L30	D32	W43	D35	W33	3	3
12. DeFotis Greg	FM IL	2447	D41	D45	W28	D18	D19	3	3
13. Valvo Michael	IM MN	2442	W51	D19	D26	L6	W31	3	3
14. Karklins Andrew	FM IL	2435	L31	W42	W45	D19	D18	3	3
15. Burnett Kevin	IA	2422	W32	W40	L2	W31	L4	3	3
16. Colias Bill	IN	2405	W43	L2	W21	L9	W30	3	3
17. Olesen Martin	IA		W52	W3	L7	L5	W34	3	3
18. Umezina George	IL	2328	W37	L4	W36	D12	D14	3	3
19. Yoos John	MN	2324	W38	D13	D9	D14	D12	3	3
20. Ginsburg Jeffrey	OH	2308	L2	W43	D44	D32	W36	3	3
21. Kreckler Warren	IL	2282	D9	H	L16	W46	W35	3	3
22. O'donnell Robert	MI	2266	L4	W52	D39	D25	W37	3	3
23. Marlinovsky E.	FM IL	2414	W33	W36	D4	L7	L6	2.5	2.5
24. Chow Albert	FM IL	2361	W35	L10	L31	W44	D25	2.5	2.5
25. Arlinsky Steve	IL	2100	L27	D49	W41	D22	D24	2.5	2.5
26. Tsemekhman Vadim	MI	2422	W42	D30	D13	L3	-	2	2
27. Weiss Mitch	IA	2347	W25	L5	W33	L10	-	2	2
28. Torregrossa Ron	IL	2291	L3	W46	L12	L34	W44	2	2
29. Manion Josh	WI	2261	L10	D35	L32	W41	D38	2	2
30. Martin Roger	IL	2256	W11	D26	L3	D37	L16	2	2
31. Wallach Ken	IL	2230	W14	L8	W24	L15	L13	2	2
32. Levine David	IL	2226	L15	D11	W29	D20	-	2	2
33. Innumerable F.	IL	2219	L23	X50	L27	W47	L11	2	2
34. Laren Philip	MI	2213	L8	L6	W51	W28	L17	2	2
35. Naff William	IL	2161	L24	D29	W49	D11	L21	2	2
36. Reynolds Robert	IA	2120	W50	L23	L18	W42	L20	2	2
37. Ash Robert	IL	2089	L18	W51	D40	D30	L22	2	2
38. Brock William	IL	2077	L19	H	-	W52	D29	2	2
39. Kaushansky Leo	FM IL	2395	W46	L1	D22	-	-	1.5	1.5
40. Graenias Steven	VA	2319	W47	L15	D37	-	-	1.5	1.5
41. Gratz Glen	IL	2238	D12	L9	L25	L29	W52	1.5	1.5
42. Schiller Eric	IL	2224	L26	L14	W52	L36	D43	1.5	1.5
43. Maddex William	IL	2203	L16	L20	L11	W54	D42	1.5	1.5
44. Minin Serge	IL	2057	W53	L7	D20	L24	L28	1.5	1.5
45. Lonoff Marc	IL	2294	D7	D12	L14	-	-	1	1
46. Napoli Carl	IL		L39	L28	B	L21	-	1	1
47. Warren James	IL	2077	L40	B	L6	L33	-	1	1
48. Kudrin Sergey	GM CT	2661	H	-	-	-	-	0.5	
49. Cooper Thomas	IL	2255	L5	D25	L35	-	-	0.5	0.5
50. Kornfeld Allen	IL	2358	L36	F33	-	-	-	0	
51. Avery Robert	MI	2230	L13	L37	L34	-	-	0	
52. Napoli Carmelo	IL		L17	L22	L42	L38	L41	0	
53. Rogan Marvin	IL	2054	L44	-	-	-	-	0	
54. Ward Tom	MI	2103	-	-	-	L43	-	0	

Mid-America Class – Expert Section

Name		rtng	rd1	rd2	rd3	rd4	rd5	score	tour
01. Ernst Edward	KY	2100	W48	W32	W9	W17	W7	5	32
02. Ward Tom	MI	2103	W57	W13	D3	X	W11	4.5	16
03. Brodie Mark	IL	2175	W53	W22	D2	W21	D4	4	8
04. Johnson Leonard	MN	2114	W38	W41	D18	W16	D3	4	8
05. Lee Tyrone	CA	2078	W6	L9	W32	W34	W17	4	8
06. Schmidt Ulrich	IL	2198	L5	W54	D15	W43	W22	3.5	4
07. Karklins Erik	IL	2182	D16	W39	W29	W8	L1	3.5	4
08. Heyer Jon Paul	MN	2149	W37	W24	D21	L7	W26	3.5	4
09. Marconnet John	IL	2142	W54	W5	L1	W23	D10	3.5	4
10. Zelensky Eugene	IN	2116	W27	W44	L17	W36	D9	3.5	4
11. Jakstas Kazimieras	IL	2058	H	W40	W26	W31	L2	3.5	4
12. Fuernkranz Johannes	IL	2036	D19	W51	L16	W33	W21	3.5	4
13. Reeves Thomas	OH	2000	W23	L2	W30	D22	W34	3.5	4
14. Wachtel Howard	IL	2154	L41	W38	D25	W44	D16	3	3
15. Wong Philip	IL	2087	L50	W57	D6	D27	W36	3	3
16. Sheaf Michael	OH	2061	D7	W47	W12	L4	D14	3	3
17. Ikeuchi Curtis	IL	2053	W46	W33	W10	L1	L5	3	3
18. Knutson Greg	WI	2198	W52	W34	D4	-	-	2.5	2.5
19. Mazuchowski Thomas	MI	2118	D12	L29	L43	W47	W45	2.5	2.5
20. Murray William	MN	2102	L44	D27	W47	W42	-	2.5	2.5
21. Chehayeb Salah	MI	2101	W28	W31	D8	L3	L12	2.5	2.5
22. Kinnaird Rodney	IL	2100	W49	L3	W41	D13	L6	2.5	2.5
23. Marshall James	IL	2099	L13	W56	W39	L9	D27	2.5	2.5

24. Bolton Richard	OK	2087	W45	L8	L31	W49	D25	2.5	2.5
25. Wallach Cliff	IL	2055	L32	W48	D14	D28	D24	2.5	2.5
26. Splinter Joseph	IL	2040	H	-	W55	L11	W29	L8	2.5
27. Cohen Lawrence	IL	2030	L10	D20	W55	D15	D23	2.5	2.5
28. Gustafson Dale	MN	2016	L21	D52	W35	D25	D33	2.5	2.5
29. Berry Gregory	IL	2010	D40	W19	L7	L26	W41	2.5	2.5
30. Kamen Dan	IL	2130	H	D42	L13	D38	W44	2.5	2.5
31. Bohannon Mark	IL	2183	W36	L21	W24	L11	-	2	2
32. Flaga Krzysztof	IL	2170	W25	L1	L5	W40	-	2	2
33. Benesa Arnulfo	IL	2133	W56	L17	D42	L12	D28	2	2
34. Jungman Gerard	IL	2102	W43	L18	W49	L5	L13	2	2
35. Scott Gene	IL	2083	L39	D43	L28	D48	W49	2	2
36. Holyfield Robert	AR	2064	L31	W45	W46	L10	L15	2	2
37. Siwek Mark	IL	2049	L8	L46	D45	W55	D40	2	2
38. Becker Sidney	IL	2025	L4	L14	W53	D30	D39	2	2
39. Porter John	IL	1901	W35	L7	L23	D41	D38	2	2
40. Chong David	IA	1877	D29	L11	W52	L32	D37	2	2
41. Jordan Roland	IL	2053	W24	L4	L22	D39	L29	1.5	1.5
42. Hayes Raymond	WI	2029	H	D30	D33	L20	-	1.5	1.5
43. McNamara James	IL	2019	L34	D35	W19	L6	-	1.5	1.5
44. Sax Robert	IL	2019	W20	L10	H	L14	L30	1.5	1.5
45. Brady Undell	MI	1924	L14	L36	D37	W53	L19	1.5	1.5
46. Stern Howard	IL	2167	L17	W37	L36	-	-	1	1
47. Jankauskas Kazys	IL	2026	H	L16	L20	L19	D53	1	1
48. Lubka Reuben	ND	2015	L1	L25	D	D35	-	1	1
49. Fages James	IL	2007	L22	W53	L34	L24	L35	1	1
50. Richmond M. Barrie	IL	1916	W15	-	-	-	-	1	1
51. Kujoth Richard	IL	2170	H	L12	-	-	-	0.5	0.5
52. Zafrin Vladimir	MO	2079	L18	D28	L40	-	-	0.5	0.5
53. Ziemacki Rafal	IL	2059	L3	L49	L38	L45	D47	0.5	0.5
54. Madera William	IL	2047	L9	L6	D48	-	-	0.5	0.5
55. Dodd Jason	IL	1865	H	L26	L27	L37	-	0.5	0.5
56. Dzurmy Anthony	IL	2042	L33	L23	-	-	-	0	
57. Stevenson Wilford	IL	2020	L2	L15	-	-	-	0	

Mid-America Class – Class A Section

Name		rtng	rd1	rd2	rd3	rd4	rd5	score	tour
01. Jasaitis Anthony	IL	1936	W59	W48	W15	W18	W8	5	32
02. Pradzinski Tim	IL	1933	W60	W51	W4	D8	W11	4.5	16
03. Stoltz Robert	IL	1893	W62	D6	W13	W32	W14	4.5	16
04. Milovanovic Slavko	IL	1957	W30	W44	L2	W50	W25	4	8
05. Freeman David	IL	1949	W23	W43	L18	W51	W27	4	8
06. Hernandez Hector	IL	1978	W58	D3	H	W22	D10	3.5	4
07. Kovalic Jeffrey	TN	1863	L43	W23	W24	W46	D9	3.5	4
08. Cohen Howard	IL	1944	W46	W22	W38	D2	L1	3.5	4
09. Dudkowski Zibby	IL	1906	W50	W33	W17	L14	D7	3.5	4
10. Rydberg Steeve	IL	1858	L28	W62	W52	W15	D6	3.5	4
11. Mc Alister Kelvin	IL	1826	H	W34	W54	W33	L2	3.5	4
12. Cerninard John	IL		D55	W65	D19	W38	D17	3.5	
13. Siegh Clifford	IL	1853	H	W16	L3	W54	W29	3.5	4
14. Wulatin David	IL	1878	H	W31	W28	W9	L3	3.5	4
15. Eaton Jonathan	IL	1978	W63	W40	L1	L10	W32	3	3
16. Yarmulnik Alex	WI	1977	D20	L13	W60	W40	D26	3	3
17. Smith Michael	MI	1954	W21	D29	L9	W55	D12	3	3
18. Wydryck Robert	MI	1920	W61	W25	W5	L1	-	3	3
19. Carroll William	VA	1891	W66	D28	D12	L27	W47	3	3
20. Marshall Larry	MI	1865	D16	L35	W45	D28	W50	3	3
21. Coraretti Ron	OH	1836	L17	W64	L33	W34	W35	3	3
22. Leighton George	IL	1832	W65	L8	W36	L6	W39	3	3
23. Bale Leslie	IL	1830	L5	L7	W64	W56	W36	3	3
24. Hansen Steven	IL	1805	D54	D37	L7	W57	W38	3	3
25. Johnson Eric	IL	1775	W39	L18	W43	W35	L4	3	3
26. Goncharoff N.	IL	1736	H	D36	W30	D29	D16	3	3
27. Liebowitz Robert	IL	1709	X	L38	W44	W19	L5	3	3
28. Diaz Pablo	IL	1963	W10	D19	L14	D20	D30	2.5	2.5
29. Lahr H. Fred	MI	1858	W64	D17	D35	D26	L13	2.5	2.5
30. Fraats Daniel	IL	1854	L4	W66	L26	W62	D28	2.5	2.5
31. Mc Carthy Michael	IL	1801	D37	L14	D34	W58	H	2.5	2.5
32. Dwyer William	IL	1800	H	W42	W55	L3	L15	2.5	2.5
33. Leopoldi Norbert	IL	1994	W41	L9	W21	L11	-	2	2
34. Marcowka Robert	IL	1943	D45	L11	D31	L21	W58	2	2
35. Pukel Bernard	IL	1919	H	W20	D29	L25	L21	2	2
36. Reber Paul	PA	1915	D47	D26	L22	W48	L23	2	2
37. Fulton Steven	IL	1910	D31	D24	L51	D44	D48	2	2
38. Lyon Mark	IL	1906	W49	W27</					

47. Schmucker Vivian	IN	1803	D36	L55	W42	D39	L19	2	2	03. Johnson Frank	IL	1526	W60	W42	W27	D15	W17	4.5	1.6
48. Tanaka James	IL	1801	W56	L1	D39	L36	D37	2	2	04. Purkey Lance	MI	1586	W39	W11	L19	W26	W23	4	8
49. Berry Thomas	WI	1800	L38	L57	D63	W64	D42	2	2	05. Slagle Steve	IL	1576	W65	L26	W37	W53	W27	4	8
50. Gabriel Robert	OH	1800	L9	W58	W41	L4	L20	2	2	06. Ybarra Ruben	IL	1557	W76	W53	W26	W19	L1	4	8
51. Mihajlov Alexander	IL	1781	W57	L2	W37	L5	-	2	2	07. Knutson Gerald	WI	1487	W79	L22	W69	W31	W21	4	8
52. Drebenstedt James	IA	1726	L40	W63	L10	D43	D60	2	2	08. Hantzeas Nick	IA	-	W34	F24	W25	W51	W22	4	
53. Kalai Adam	IL	1890	-	-	-	W61	W63	2		09. Raimo Robert	IL	1596	D54	W71	D38	W52	D19	3.5	4
54. Davolt Doug	IA	1915	D24	W45	L11	L13	-	1.5	1.5	10. Silverman Scott	IL	1539	W68	L28	W40	W58	D18	3.5	4
55. Beasley L.	IL	1883	D12	W47	L32	L17	-	1.5	1.5	11. Gasiecki Alan	IL	1510	W78	L4	D70	W71	W36	3.5	4
56. Sjerven D.	MN	1909	L48	L46	W61	L23	-	1	1	12. Collins Darrell	IL	1505	L43	W78	D42	W70	W47	3.5	4
57. Bohannon T.	IA	1905	L51	W49	L46	L24	-	1	1	13. Dudnick Steve	IL	1503	W44	D31	W66	L17	W41	3.5	4
58. Osterlund R.	IL	1866	L6	L50	W66	L31	L34	1	1	14. White David	IL	1500	H	W41	W47	L2	W33	3.5	4
59. Brown Tony	IL	1819	L1	L39	W65	L41	-	1	1	15. Kale Satuh	IL	1496	W73	W21	W22	D3	L2	3.5	4
60. Decman Stephen	IL	1815	L2	H	L16	L42	D52	1	1	16. Wong Felix	IL	1490	D45	W74	L1	W42	W35	3.5	4
61. Bryant Daniel	IN	1814	L18	L41	L56	L53	W62	1	1	17. Poon Chung-Hay	IL	1465	W29	W23	D2	W13	L3	3.5	4
62. Kerr H. L.	IL	1811	L3	L10	B	L30	L61	1	1	18. Vernon Ken	IL	1398	W25	W33	W51	L1	D10	3.5	4
63. Race Thomas	IL	1872	L15	L52	D49	L45	L53	0.5		19. Horskins Fred	IL	1525	W46	W43	W4	L6	D9	3.5	4
64. Glick Robert	IL	1971	L29	L21	L23	L49	-	0		20. Iovin Daniel	IL	1590	L64	L47	W77	W43	W45	3	3
65. Buttny William	IL	1951	L22	L12	L59	-	-	0		21. SHANE David	IL	1585	W56	L15	W64	W38	L7	3	3
66. Boskey Craig	IL	-	L19	L30	L58	-	-	0		22. Kiineletter Howard	IL	1568	W80	W7	L15	W54	L8	3	3

Mid-America Class - Class B Section

Name	rating	rd1	rd2	rd3	rd4	rd5	score	tour	Name	rating	rd1	rd2	rd3	rd4	rd5	score	tour		
01. Gray James	IL	1725	W55	W38	W12	W7	W6	5	32	25. Halley Dennis	IL	1514	L18	W77	L8	W57	W56	3	3
02. Paphitis Alexander	IL	1601	W17	W32	D13	W11	W8	4.5	16	26. Vakil David	IL	1498	W72	W5	L6	L4	W58	3	3
03. Weiner Howard	IL	1753	W30	W34	L6	W19	W18	4	8	27. Berg Robert	IL	-	W50	W32	L3	W49	L5	3	
04. Peters Ed	IL	1723	W51	L6	W34	W38	W12	4	8	28. Groeger Andrew	IL	-	W52	W10	L24	L23	W51	3	
05. Coleman George	IL	1744	L44	W54	W17	W27	W20	4	8	29. Wirth Mike	IL	1258	L17	W80	L41	W76	W53	3	3
06. Hauptfeld Sven	IL	1796	W28	W4	W3	D8	L1	3.5	4	30. Webb John	IL	-	-	-	W59	W55	W49	3	
07. Vakil Behrouz	MO	1789	H	W44	W29	L1	W25	3.5	4	31. Waller Ron	WI	1589	W55	D13	D54	L7	D38	2.5	2.5
08. Clark Todd	IL	1782	W53	W16	W27	D6	L2	3.5	4	32. Schwartz Len	TN	1539	W67	L27	W65	D45	-	2.5	2.5
09. Williams Kent	IL	1656	D25	W41	W10	D13	D15	3.5	4	33. Winter Victor	NM	1531	W69	L18	D43	W39	L14	2.5	2.5
10. Engelen Mark	IL	1689	H	W43	L9	W44	W24	3.5	4	34. Dunlap Tony	IL	1525	L8	W68	L78	D40	W67	2.5	2.5
11. Ramirez Rafael	IL	1785	L18	W47	W40	L2	W29	3	3	35. Maurer Pat	IL	1513	W70	H	L71	W68	L16	2.5	2.5
12. Parsons Bob	IL	1776	W33	W26	L1	W16	L4	3	3	36. Uram Max	IL	1466	W59	L2	D45	W50	L11	2.5	2.5
13. Montgomery Harold	MO	1758	W54	W46	D2	D9	-	3	3	37. Fenner Charles	IL	1453	W84	L50	L5	D67	W71	2.5	2.5
14. Mc Guinness John	IL	1727	L20	W35	L38	W49	W33	3	3	38. Durrant Larry	IL	1451	D1	W75	D9	L21	D31	2.5	2.5
15. Burke J. Marcellus	IL	1725	W48	D20	L18	W30	D9	3	3	39. Mc Crimon Carlos	IL	1437	L4	W72	D50	L33	W75	2.5	2.5
16. Jordan Willie	MI	1711	W21	L8	W50	L12	W34	3	3	40. Cisko Greg	IL	1400	L2	W84	L10	D34	W61	2.5	2.5
17. Ditsworth Todd	IL	1685	L2	W48	L5	W36	W37	3	3	41. Toribio Alexander	IL	-	D61	L14	W29	W46	L13	2.5	
18. Lutzke Rick	IL	1678	W11	D31	W15	D20	L3	3	3	42. Craggs Tommy	IL	1384	W62	L3	D12	L16	W63	2.5	2.5
19. Alton Matthew	IL	1658	D22	W39	D31	L3	W32	3	3	43. Hillman Bruce	IL	1343	W12	L19	D33	L20	W64	2.5	2.5
20. Morton Bruce	IL	1642	W14	D15	W25	D18	L5	3	3	44. Jenkins Mike	IL	1343	L13	W63	L53	X81	H	2.5	2.5
21. Zint Michael	OH	1629	L16	W53	W46	W31	-	3	3	45. Manzella Jam	IL	1319	D16	W48	D36	D32	L20	2.5	2.5
22. Howell Thomas	IL	1750	D19	L28	D49	W47	D27	2.5	2.5	46. Reddick Harold	IL	1466	L19	D60	W75	L41	W68	2.5	2.5
23. Gapuz Wilfredo	IL	1742	L34	L30	H	W42	W38	2.5	2.5	47. Goddard John	IL	1449	H	W20	L14	W61	L12	2.5	2.5
24. Gierz Charles	IL	1734	W35	L27	W36	H	L10	2.5	2.5	48. Peterson Anthony	IL	1577	H	L45	L58	W79	W65	2.5	2.5
25. Ratner Jacob	IL	1731	D9	W37	L20	W41	L7	2.5	2.5	49. Amirante Ron	IL	1551	L66	W57	W55	L27	L30	2	2
26. Sanchez Ignacio	IL	1694	W42	L12	D44	L29	W43	2.5	2.5	50. Mitchell Gary	NE	1545	L27	W37	D39	L36	H	2	2
27. Helt David	CO	1682	W50	W24	L8	L5	D22	2.5	2.5	51. Marschall Ed	IL	1541	W81	W64	L18	L8	L28	2	2
28. Burlan David	IL	1678	L8	D49	L37	W51	W44	2.5	2.5	52. Young Phillip	IN	1539	L28	W67	W76	L9	-	2	2
29. Kittilsen Guy	IL	1674	D39	W22	L7	W26	L11	2.5	2.5	53. Deng Jian	IL	1477	W82	L6	W44	L5	L29	2	2
30. House Steve	IA	1662	L3	W23	D32	L15	W40	2.5	2.5	54. Solano Mario	IL	1447	D9	W83	D31	L22	-	2	2
31. Pindak Kim	IL	1759	W47	D18	D19	L21	-	2	2	55. Meador John	IL	1440	L31	W73	L49	L30	W79	2	2
32. Cooper William	IL	1724	W49	L2	D30	D37	L19	2	2	56. Hernandez Dan	IL	1429	L21	W79	L23	W78	L25	2	2
33. Cathcart Eugene	IL	1675	L12	L36	X54	W50	L14	2	2	57. Johnson Tarrell	IL	-	L23	L49	W82	L25	W76	2	
34. Goral Brad	IL	1657	W23	L3	L4	W50	L16	2	2	58. Cathcart Daniel	IL	1268	W63	L1	W48	L10	L26	2	2
35. Fuller Bret	IL	1656	L24	L14	L47	W53	W49	2	2	59. Heller Jack	IL	1261	L36	L76	L30	W77	W80	2	2
36. Knox Malcolm	IL	1624	L46	W33	L24	L17	W47	2	2	60. Woolley Scott	IL	1354	L3	D46	L61	H	B	2	2
37. Kittsley Scott	WI	1616	H	L25	W28	D32	L17	2	2	61. Vignats Albert	IL	1532	D41	L70	W60	L47	L40	1.5	1.5
38. Swanson Victor	IL	1610	W40	L1	W14	L4	L23	2	2	62. Wirtala Mark	PA	1508	L42	L69	L72	W74	D73	1.5	1.5
39. Jackson Donald	IL	1770	D29	L19	W52	-	-	1.5	1.5	63. Milovanovic Mirko	IL	1471	L58	L44	W73	D68	L42	1.5	1.5
40. Matthews Gregory	IL	1689	L38	W55	L11	D43	L30	1.5	1.5	64. Wynkoop Walker	IL	1443	W20	L51	L21	D69	L43	1.5	1.5
41. Williams Douglas	IL	1683	D43	L9	W42	L25	-	1.5	1.5	65. Munoz Alberto	IL	1426	L5	W82	L32	D72	L48	1.5	1.5
42. Woodruff Philip	IL	1627	L26	H	L41	L23	W51	1.5	1.5	66. Pena Waldo	IL	1400	W49	H	L13	L35	-	1.5	1.5
43. Johnson Henderson	IL	1581	D41	L10	H	D40	L26	1.5	1.5	67. Ginzburg Roman	IL	-	L32	L52	W84	D37	L34	1.5	
44. Wallace Mark	IL	1464	W5	L7	D26	L10	L28	1.5	1.5	68. Rieser William	IL	-	L10	L34	W83	D63	L46	1.5	
45. Fineberg Tom	IL	1799	H	W52	-	-	-	1.5		69. Hunt Roger	IN	-	L33	W62	L7	D64	-	1.5	
46. Clark Lawrence	IL	1691	W36	L13	L21	-	-	1	1	70. Butler Craig	MO	1397	L35	W61	D11	L12	-	1.5	1.5
47. Rostrom C. Richard	MI	1666	L31	L11	W35	L22	L36	1	1	71. Hanneman Gary	IL	1348	H	L9	W35	L11	L37	1.5	1.5
48. Engles Roy	WI	1640	L15	L17	W53	-	-	1	1	72. Wisowaty John	IL	1327	L26	L39	W62	D65	-	1.5	1.5
49. Brodde Jeff	IL	1636	L32	D28	D22	L14	L35	1	1	73. Ferroni George	IL	1325	L15	L55	L63	W84	D62	1.5	1.5
50. Turner Keith	IL	1578	L27	W51	L16	L33	L34	1	1	74. Zoellner John	IL	1322	H	L16	-	L62	W82	1.5	1.5
51. Padilla Rudy	IL	1632	L4	L50	H	L28	L42	0.5	0.5	75. Lands Jerry	IL	1321	H	L38	L48	W83	L391	1.5	1.5
52. Eichbaum Edgar	MI	1675	H	L45	L39	-	-	0.5	0.5	76. Shull David	IL	1403	L6	W59	L52	L29	L57	1	1
53. Kuhr Olaf	IN	1677	L8	L21	L48	L35	-	0		77. Lazar Willard	IL	-	L24	L25	L20	L59	W84	1	
54. Banzhaf Scott	WA	1664	L13	L5	F33	-	-	0		78. Bales Robert	IL	1394	L11	L12	W34	L56	-	1	1
55. Webb John	IN	1639	L1	L40	-	-	-	0		79. Dumas Steve	MI	1282	L7	L56	W80	L48	L55	1	1

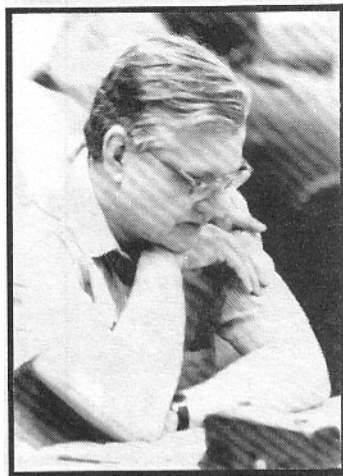
Mid-America Class - Class C & Below Section

Name	rating	rd1	rd2	rd3	rd4	rd5	score	tour	Name	rating	rd1	rd2	rd3	rd4	rd5	score	tour		
01. Josephs Steven	IL	1599	D38	W58	W16	W18	W6	4.5	16	81. Kaden Ted	IL	-	L51	H	-	F44	-	0.5	
02. Schultz Dan	MI	1554	W40	W36	D17	W14	W15	4.5	16	82. Whitman Rich	IL	1279	L53	L65	L57	D80	L74	0.5	0.5
										83. Oberweis Joseph	IL	1272	H	L5					

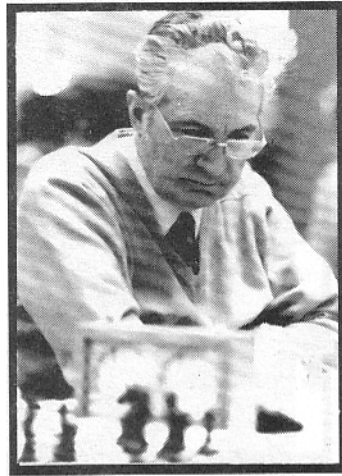
Scenes/Games

from the

Mid-America Class Championships



SM Andrew Karklins



SM Eugene Martinovsky



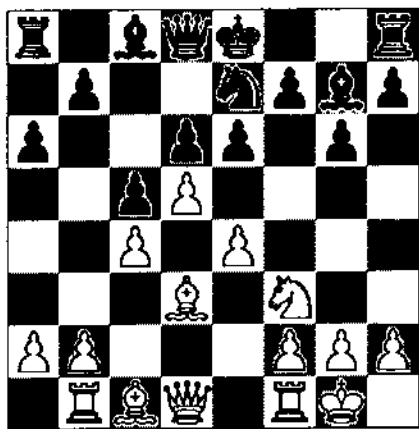
SM Greg DeFotis



Norbert Leopoldi

Dzindzichashvili-Burnett Mid-America, 1992

1.c4 g6 2.d4 ♗g7 3.♖f3 c5 4.e4 ♘c6 5.d5 ♘d4 6.♘xd4
♗xd4 7.♗d3 a6 8.0-0 e6 9.♘d2 d6 10.♞b1 ♘e7 11.♖f3
♗g7

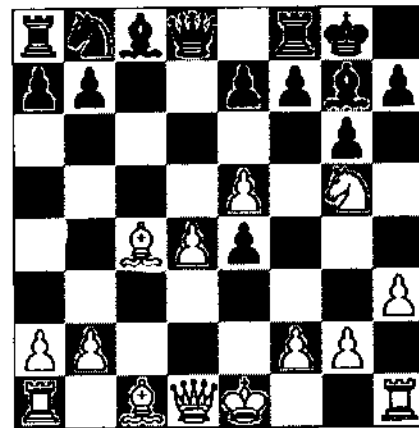


12.b4 cxb4 13.♞xb4 exd5 14.cxd5 b5 15.a4 bxa4
16.♞xa4+ ♗d7 17.♞a3 0-0 18.♗f4 ♗b5 19.♗xb5 axb5
20.♞b3 h6 21.♘d4 ♗xd4 22.♞xd4 g5 23.♗g3 ♞b6
24.♞b4 ♞a5 25.h4 ♞fa8 26.hxg5 hxg5 27.♞b1 ♘g6
28.♞xb5 ♞xb5 29.♞xb5 ♞xb5 30.♞xb5 ♞d8 31.♞b6 ♘f4
32.♗xf4 gx4 33.♗f1 ♞e8 34.f3 ♞d8 35.♗f2 ♗g7 36.g3
fxg3+ 37.♗xg3 f6 38.♗f4 ♗g6 39.♞a6 ♞d7 40.♞a8
♞b7 41.♞g8+ ♗f7 42.♞d8 ♗e7 43.♞a8 ♞b3 44.♞a7+
♗e8 45.♗g4 ♞e3 46.♞b7 ♞a3 47.f4 ♞e3 48.♗f5 ♞e1
49.♞h7 ♞e2 50.♞h6 ♗e7 51.♞xf6 ♞xe4 52.♗xe4 ♗xf6
53.♗e3 ♗g6 54.♗f2 ♗h6 55.♗g3 ♗h5 56.♗h3 ♗g6
57.♗g4 ♗f6 58.f5 1-0

Weiss-Arlinsky Mid-America, 1992

1.e4 g6 2.d4 ♗g7 3.♘c3 c6 4.♘f3 d5 5.h3 ♘f6 6.e5 ♘e4
7.♘xe4 dxe4 8.♘g5 c5 9.♗c4 0-0 10.c3 cxd4

11.cxd4



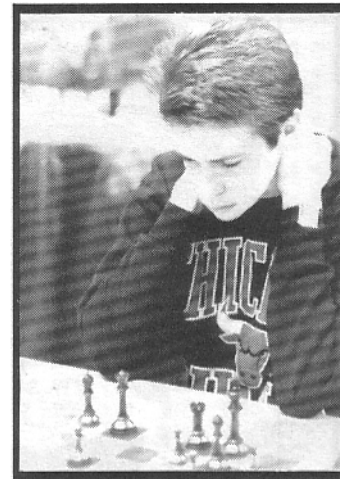
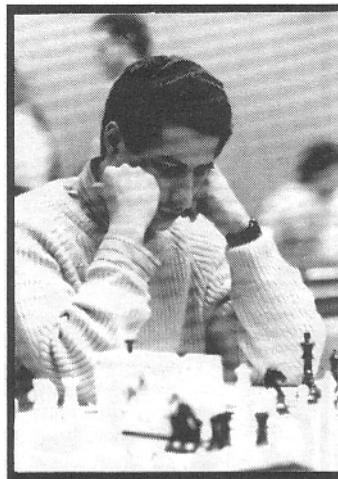
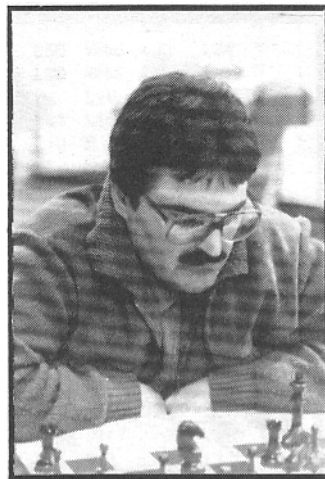
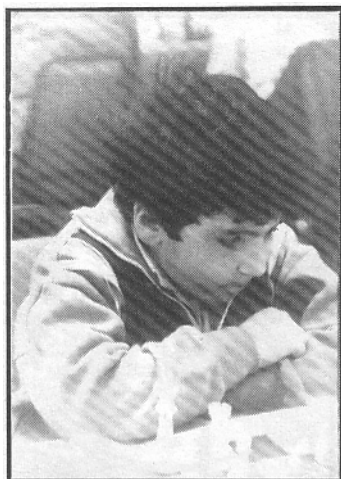
b5 12.♗b3 ♗b7 13.♗c2 ♘a6 14.0-0 ♞c8 15.♗xe4 ♗xe4
16.♘xe4 ♞d5 17.♘c3 ♞c4 18.♗e3 b4 19.♘a4 ♞fd8
20.♞g4 ♞d5 21.b3 e6 22.♞ac1 ♗f8 23.♞e2 ♞b7 24.♘b2
♘c7 25.♘a4 ♘b5 26.♞xc8 ♞xc8 27.♞d2 ♞d5 28.♞d1
♞c6 29.♞a1 ♞c8 30.♘b2 ♞d8 31.♞d1 ♘c3 32.♞c1 ♘xa2
33.♞a1 ♞xb3 34.♘d3 ♘c3 35.♞xa7 ♘d5 36.♞b7 ♞a8
37.♘c5 ♞c3 38.♘e4 ♞a1+ 39.♗h2 ♞c6 40.♞b8 ♞a3
41.♗h6 ♞a8 42.♗xf8 f5 43.♞h6 1-0

Chow-Naff Mid-America, 1992

1.e4 c5 2.♘f3 ♘c6 3.d4 cxd4 4.♘xd4 g6 5.c4 ♗g7 6.♘c2
d6 7.♗e2 ♘f6 8.♘c3 ♗e6 9.0-0 ♞d7 10.f3 0-0 11.♗d2 ♘e8
12.♞c1 f5 13.exf5 ♗xf5 14.♘e3 ♘c7 15.♘xf5 ♞xf5 16.♗e3
♞fd8 17.f4 e6 18.♗g4 ♞f7 19.♘b5 ♘e8 20.♞e2 ♘f6
21.♗h3 ♗h8 22.♗f2 e5 23.c5 dxc5 24.fxg5 ♘xe5
25.♞xe5 b6 26.♗h4 ♞f8 27.♘d6 1-0

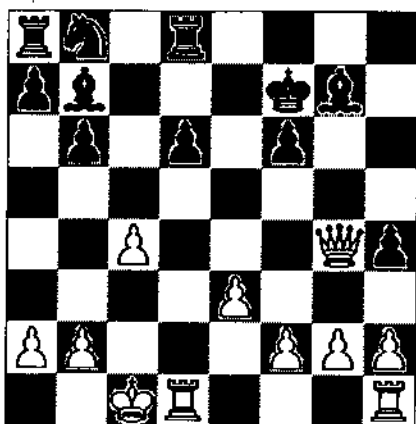
Scenes/Games

from the Mid-America Class Championships

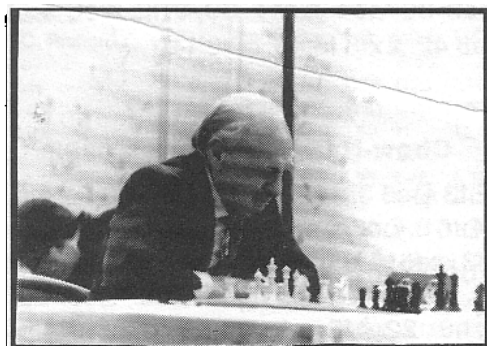


Dzindzichashvili-Pelts Mid-America Class, 1992

1.c4 c5 2.♘f3 ♘f6 3.♙c3 b6 4.d4 cxd4 5.♙xd4 ♖b7
6.♙g5 d6 7.♙xf6 gxf6 8.e3 h5 9.♙e2 h4 10.♙f3 ♖d7
11.♙d5 ♙g7 12.♙g4 e6 13.♙xe6 fxe6 14.♙xe6 ♖xe6
15.♙c7+ ♗e7 16.♙xe6 ♗xe6 17.♖g4+ ♗f7 18.0-0-0 ♜d8

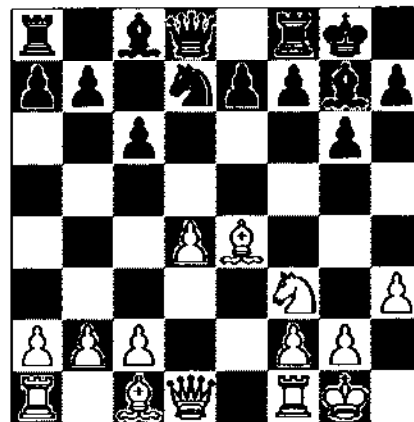


19.♜d5 ♙xd5 20.cxd5 ♘a6 21.♗b1 ♙c5 22.b4 ♙d3
23.♖e6+ ♗f8 24.♜d1 ♙xb4 25.♜c1 ♘a6 26.♜c6 ♙c5
27.♖g4 ♜ab8 28.♜c7 ♙h8 29.♖h5 1-0



Levine-Burnett Mid-America Class, 1992

1.d4 g6 2.e4 ♙g7 3.♙c3 c6 4.♙f3 d5 5.h3 ♙f6 6.♙d3
dxe4 7.♙xe4 ♙xe4 8.♙xe4 ♙d7 9.0-0 0-0



10.♜e1 c5 11.♙g5 cxd4 12.♙xe7 ♖xe7 13.♙xb7 ♖xe1+
14.♖xe1 ♙xb7 15.♖e7 ♙xf3 16.gxf3 ♙e5 17.♗g2 ♜fe8
18.♖c5 ♜ac8 19.♖xd4 ♙xf3 20.♖xa7 ♙xb2 21.♜d1 ♙e5
22.♖a4 g5 23.♜d5 ♙c1 24.♜c5 ♙g6 25.♜xc8 ♜xc8
26.c4 ♙f4 27.♖a6 ♜b8 28.c5 ♜b1 29.♗f3 ♜e1 30.♗g4
♗g7 31.a4 h5+ 32.♗xh5 ♜e6 33.♖b6 ♙e5 34.a5 ♙d7
35.♗g4 ♙xb6 36.cxb6 ♗g6 37.h4 f5+ 38.♗f3 ♙c1 0-1

Maddex-Collas Mid-America Class, 1992

1.e4 c5 2.♙c3 ♙c6 3.g3 g6 4.♙g2 ♙g7 5.d3 d6 6.♙e3 e5
7.♖d2 ♙ge7 8.♙h6 ♙xh6 9.♖xh6 ♙e6 10.f4 ♙d4 11.♜c1
♖b6 12.♙d1 ♙xa2 13.♙h3 0-0-0 14.fxe5 dxe5 15.♖e3 c4
16.♙hf2 cxd3 17.cxd3+ ♗b8 18.0-0 h5 19.♙c3 ♙b3
20.♗h1 a6 21.♙fd1 f6 22.♖f2 ♙xd1 23.♜fxd1 ♜d6 24.♙a4
♖b5 25.♜c4 ♜c8 26.♜dc1 ♙xc4 27.♜xc4 ♙c6 28.♙c3
♖b3 29.h3 ♜d6 30.♖e3 b5 31.♖h6 bxc4 0-1

Scenes/Games

from the Mid-America Class Championships



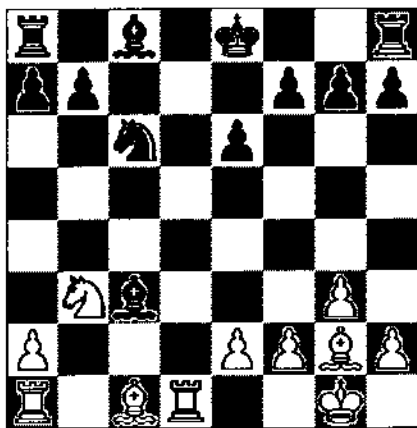
GM Arthur Bisguler



IM Alex Fishbein

DeFotls-Gratz Mid-America, 1992

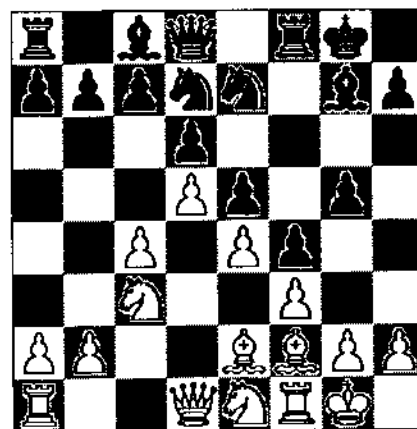
1.d4 d5 2.♘f3 c5 3.g3 ♘c6 4.♙g2 cxd4 5.♗xd4 ♘f6 6.c4 e6 7.♗c3 ♙c5 8.♗b3 ♙b4 9.cxd5 ♗xd5 10.0-0 ♗xc3 11.bxc3 ♖xd1 12.♞xd1 ♙xc3



13.♙g5 f6 14.♞ac1 ♙b2 15.♞xc6 fxg5 16.♞c2 ♙f6 17.♗c5 0-0 18.♗xb7 ♙xb7 19.♙xb7 ♞ad8 20.♞dc1 ♙d4 21.e3 ♙b6 22.♙g2 ♞d6 23.♞b1 ♞fd8 24.♞bb2 g4 25.♙e4 g6 26.a4 ♞d1 27.♞b5 ♞a1 28.♞e5 ♞dd1 29.h3 gxh3+ 30.♙xh3 ♞xa4 31.♞xe6 ♙f7 32.♞cc6 ♞d2 33.♞f6+ ♙g7 34.♞f4 g5 35.♞g4 ♞a5 36.f4 ♙xe3 37.♞xg5+ ♞xg5 38.fxg5 ♞d7 39.♙g4 a5 40.♞a6 ½-½

Gurevich-Colias Mid-America, 1992

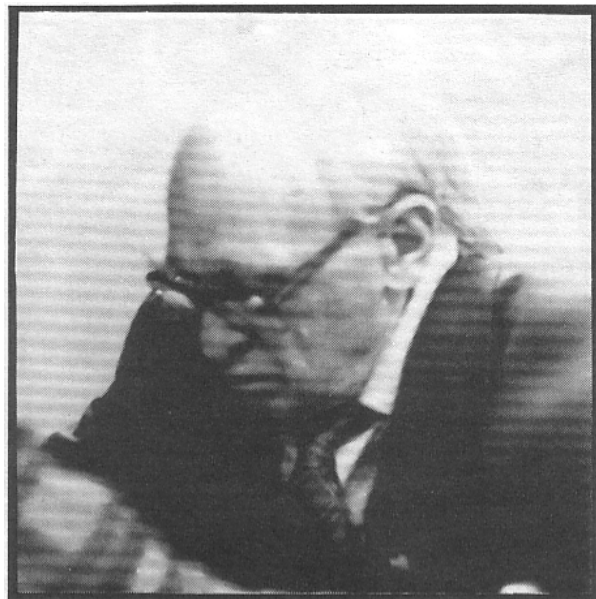
1.d4 ♘f6 2.c4 g6 3.♗c3 ♙g7 4.e4 d6 5.♗f3 0-0 6.♙e2 e5 7.0-0 ♗c6 8.d5 ♗e7 9.♗e1 ♗d7 10.♙e3 f5 11.f3 f4 12.♙f2 g5



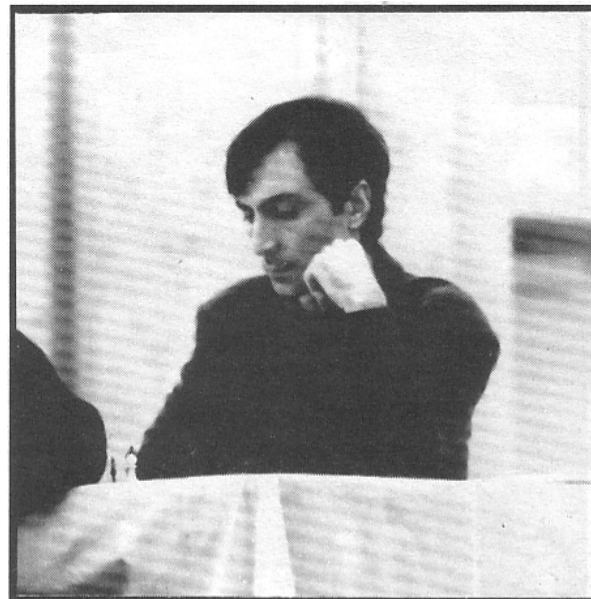
13.♗b5 b6 14.b4 a6 15.♗c3 ♗f6 (15...Rf6, 15...Ng6) 16.c5 ♗e8 17.cxb6 cxb6 18.♗a4 ♞b8 19.b5 a5 20.♖d2 ♙d7 21.♗xb6 ♞xb6 22.♖xa5 ♞b8 23.♖xd8 ♞xd8 24.♗c2 ♗c7 25.a4 g4 26.fxg4 ♗cxd5 27.exd5 ♗xd5 28.♙c4 ♙e6 29.♗b4 ♗xb4 30.♙xe6+ ♙h8 31.a5 e4 32.♞a4 e3 33.♞xb4 d5 34.♙f5 d4 35.♙d3 ♞de8 36.♙e1 1-0

Scenes/Games

from the Mid-America Class Championships



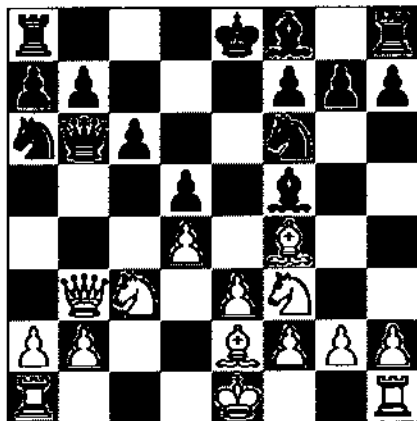
NM Roman Levit



IM Kamran Shirazi

Reynolds-Ginsburg Mid-America, 1992

1.d4 d5 2.c4 e6 3.cxd5 exd5 4.♖c3 c6 5.♗f3 ♕f5 6.♕f4 ♗f6
7.e3 ♖b6 8.♖b3 ♖a6 9.♕e2



10.♖xb3 11.♖xb3 ♗b4 12.♗e5 ♕e7 13.♖a4 0-0
14.♗c5 ♕xc5 15.dxc5 ♗e4 16.♗d3 ♖a6 17.♗fc1 ♗fe8
18.b4 g5 19.b5 ♗axc5 20.♗xc5 ♗xc5 21.♗xc5 gxf4
22.bxc6 bxc6 23.♕a6 fxe3 24.fxe3 ♗ab8 25.♗xc6 ♗xb2
26.♗d6 ♕e4 27.♕f1 ♗c8 28.♗xa7 ♗c1 29.♗f6 ♗xg2+ 0-1

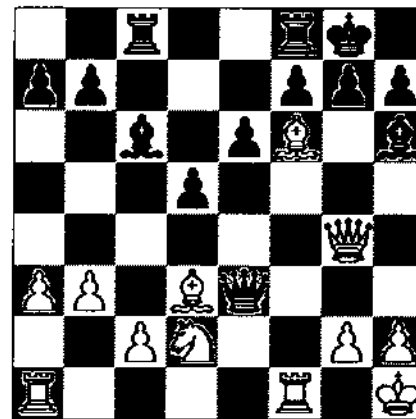
A. Ivanov-Kaushansky Mid-America, 1992

1.e4 c5 2.♗f3 ♗c6 3.d4 cxd4 4.♗xd4 ♗f6 5.♗c3 e5
6.♗db5 d6 7.a4 a6 8.♗a3 ♕e6 9.♕g5 ♕e7 10.♕xf6 ♕xf6

11.♕c4 ♗c8 12.♗d5 ♕g5 13.0-0 0-0 14.c3 ♖h8 15.♖e2 f5?
16.♗b6 ♕xc4 17.♗axc4 ♗c7 18.♗ad1 ♗cf7 19.♗xd6 ♖c7
20.♗fd1 ♕e7 21.♗d7 ♖b8 22.♗7d5 fxe4 23.♗d7 ♖e8
24.♗xf8 ♖xf8 25.♗xe5 ♗xe5 26.♗xe5 ♕c5 27.♗xc5
♖xc5 28.♗d8+ ♗f8 29.♗xf8+ ♖xf8 30.♖xe4 1-0

Olesen-Shirazi Mid-America, 1992

1.d4 e6 2.♗f3 c5 3.e3 ♗f6 4.♕d3 d5 5.b3 ♗c6 6.0-0 ♕d6
7.♕b2 0-0 8.♗bd2 ♕d7 9.a3 ♗c8 10.♗e5 ♕e8 11.f4 ♖b6
12.dxc5 ♖xc5 13.♗xc6 ♖xe3+ 14.♖h1 ♕xc6 15.♕xf6 ♕xf6
16.♖g4 ♕h6



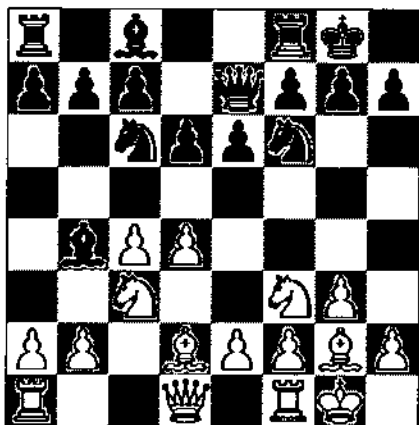
17.♗ae1 ♖xd2 18.♗e2 ♖a5 19.♗e3 ♖h8 20.♖h5 1-0

Scenes/Games

from the Mid-America Class Championships

Collas-Dzindzihashvili Mid-America, 1992

1.d4 ♘f6 2.c4 e6 3.♗f3 ♖b4+ 4.♙d2 ♜e7 5.g3 ♘c6 6.♘c3 0-0 7.♙g2 d6 8.0-0

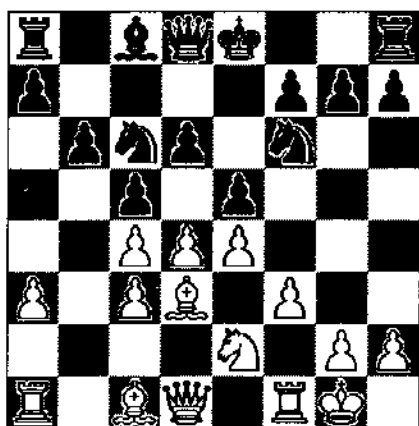


♙xc3 9.♙xc3 ♘e4 10.♜c2 ♘xc3 11.♜xc3 e5 12.d5 ♘b8 13.b4 ♙g4 14.♞ac1 a5 15.a3 ♘d7 16.c5 axb4 17.axb4 ♘f6 18.♜c4 ♙xf3 19.exf3 ♜d7 20.f4 exf4 21.♜xf4 ♞a4 22.c6 bxc6 23.♞xc6 ♞b8 24.♞b1 h6 25.♜c1 ♞axb4 26.♞xb4 ♞xb4 27.♞xc7 ♜f5 28.♞c8+ ♜h7 29.♜c2 ♜xc2 30.♞xc2 ♞b1+ 31.♙f1 ♞d1 32.♞c7 ♜g6 33.♜g2 ♘xd5 34.♞a7 ♜f6 35.h4 g5 36.hxg5+ hxg5 37.♙c4 ♘e7 38.♞a6 ♘g6 39.♞a5 ♘e5 40.♙b3 ♞d3 41.♙d5 ♞d2 42.♙e4 ♞d4 43.♙d5 g4 44.♙b7 ♞b4 45.♙d5 ♞b1 46.♙e4 ♞e1 47.♙d5 ♞d1 48.♙e4 ♜e6 49.♙b7 d5 50.♙c8+ ♜f6 51.♞a4 d4 52.♞a6+ ♜g5 53.♞d6 d3 54.♙b7 f6 55.♙e4 ♞e1 56.f4+ gxf3+ 57.♙xf3 ♞a1 58.♙d5 d2 59.♙b3 ♞a3 60.♙d1 ♞d3 61.♞a6 ♘g4 62.♞a1 ♘e3+ 63.♜f2 ♘xd1+ 64.♞xd1 ♜g4 65.♜e2 ♞d8 0-1

♙xc3 9.♙xc3 ♘e4 10.♜c2 ♘xc3 11.♜xc3 e5 12.d5 ♘b8 13.b4 ♙g4 14.♞ac1 a5 15.a3 ♘d7 16.c5 axb4 17.axb4 ♘f6 18.♜c4 ♙xf3 19.exf3 ♜d7 20.f4 exf4 21.♜xf4 ♞a4 22.c6 bxc6 23.♞xc6 ♞b8 24.♞b1 h6 25.♜c1 ♞axb4 26.♞xb4 ♞xb4 27.♞xc7 ♜f5 28.♞c8+ ♜h7 29.♜c2 ♜xc2 30.♞xc2 ♞b1+ 31.♙f1 ♞d1 32.♞c7 ♜g6 33.♜g2 ♘xd5 34.♞a7 ♜f6 35.h4 g5 36.hxg5+ hxg5 37.♙c4 ♘e7 38.♞a6 ♘g6 39.♞a5 ♘e5 40.♙b3 ♞d3 41.♙d5 ♞d2 42.♙e4 ♞d4 43.♙d5 g4 44.♙b7 ♞b4 45.♙d5 ♞b1 46.♙e4 ♞e1 47.♙d5 ♞d1 48.♙e4 ♜e6 49.♙b7 d5 50.♙c8+ ♜f6 51.♞a4 d4 52.♞a6+ ♜g5 53.♞d6 d3 54.♙b7 f6 55.♙e4 ♞e1 56.f4+ gxf3+ 57.♙xf3 ♞a1 58.♙d5 d2 59.♙b3 ♞a3 60.♙d1 ♞d3 61.♞a6 ♘g4 62.♞a1 ♘e3+ 63.♜f2 ♘xd1+ 64.♞xd1 ♜g4 65.♜e2 ♞d8 0-1

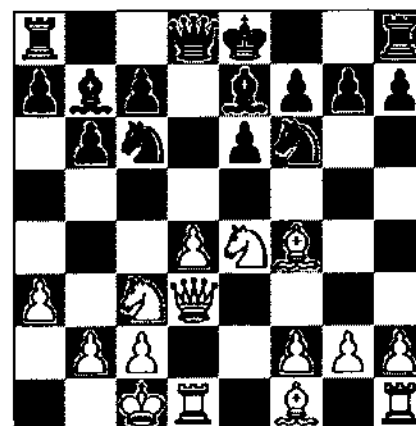
Reynolds-Umezina Mid-America, 1992

1.d4 ♘f6 2.c4 e6 3.♗c3 ♖b4 4.a3 ♙xc3+ 5.bxc3 c5 6.f3 b6 7.e4 d6 8.♙d3 e5 9.♘e2 ♘c6 10.0-0

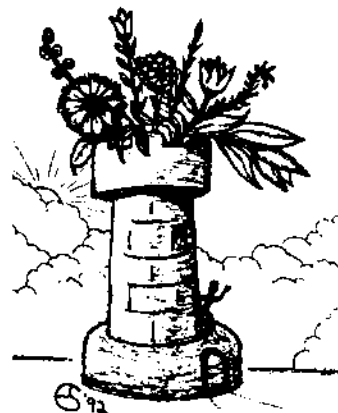


A. Karklins-Lonoff Mid-America, 1992

1.e4 e6 2.d4 d5 3.♘c3 ♖b4 4.♘ge2 dxe4 5.a3 ♙e7 6.♘xe4 ♘c6 7.♙f4 ♘f6 8.♜d3 b6 9.0-0-0 ♙b7 10.♘c2c3



♘xe4 (10...Nd5 11Nd5 ed 12 Ng3 Be6 13 Qc3 Bd6 14 Nh5 Ne7 15 Bd6 Qd6 16 Qg3 Nf5= Mokry-Short 1984) 11.♜xe4 0-0 12.d5 exd5 13.♘xd5 ♙d6 14.♙d3 f5 15.♜e6+ ♜h8 16.♙xd6 cxd6 17.♜e3 ♘e5 18.♘f4 ♜f6 19.h4 ♞ac8 20.f3 ♞c5 21.♜b1 ♞fc8 22.h5 b5 23.♞d2 a5 24.♞hd1 b4 25.♙f1 ♘f7 26.♜e6 ♜xe6 27.♘xe6 ♞e5 28.♘d4 bxa3 29.bxa3 g6 30.hxg6 hxg6 31.♜c1 ♞e3 32.♞d3 ♞xd3 33.♙xd3 ♜g7 34.♜d2 ♙d5 35.♞b1 ♜f6 36.♞b6 ♜e5 37.♘e2 g5 38.♞a6 ♞c5 39.♘c3 ♙c6 40.♞a7 ♜f6 41.♘e2 f4 42.♘d4 ♙a4 43.♞a6 ♜e5 44.♘e2 ♜e6 45.♘d4+ ♜e5 46.♘b3 ♙xb3 47.cxb3 ♘d8 48.b4 axb4 49.axb4 ♞c6 50.♞a7 ♞b6 51.b5 ♜d5 52.♜c3 ♞b8 53.♙c4+ ♜e5 54.♞e7+ ♜f6 55.♞e8 ♞c8 56.♜b3 ♞b8 57.♜c3 ♞c8 58.♜d3 ♞a8 59.♙d5 ♞b8 60.b6 ♞xb6 61.♞xd8 ♞b2 62.♙c6 ♞xg2 63.♞xd6+ ♜f7 64.♙d7 ♞g1 65.♜e4 1-0



FOX VALLEY CHAMPIONSHIP - SNOWBOWL 1992

BY BOB RENAUT

Neither four inches of snow or Super Bowl weekend could keep 57 aggressive chess players from participating in the Fox Valley Championship on January 25-26. The dedication of these players was clearly demonstrated by Richard Anderson who unfortunately had a car accident (he was not hurt) on the way to the tournament. Richard arrived forty minutes late for round one and the game went on! The tournament was held at the Prisco Community Center in Aurora and drew four Masters and nine Experts.

Unlike the superbowl where there was a clear winner, the OPEN SECTION had three Masters and three Experts tie for first in the second annual Fox Valley Championship. Bill Colias (2426), Dr. Martinovsky (2389), Tom Cooper (2234), Peter Stein (2164), Anthony Marquez (2082) and James Marshall (2055) all finished the tournament with three points and took home \$116.66 each. Peter Stein and Dr. Martinovsky are repeat winners, having won the tournament last year as well! Lawrence Cohen and Wayne Ellice shared 3rd place U2100 prize of \$50.

The OPEN SECTION began with one upset as Alexander Paphitis (1638) defeated Expert Rajashree Basararaj (2030). Colias, Chow and Stein were tied for the lead with 2 points through the second round. Round three saw Pete Stein lose to Tom Cooper, Al Chow drew with Bill Colias and Dr. Martinovsky beat Lawrence Cohen setting the stage for the final round match-ups. Bill Colias drew with Tom Cooper, Peter Stein defeated Marvin Rogan, Anthony Marquez defeated Tony Dzurny. Al Chow missed a chance to take sole possession of first place when he lost to Dr. Martinovsky in the final round.

The RESERVE SECTION was won by Brian Smith (1693) with 4.5 points. Brian took home the 1st place prize of \$100 with a quick draw against Dennis Grant (1702) in the final round. Dennis Grant, Boyd Reed (1703), Lawrence Clark (1691), Ignacio Sanchez (1658) and Tommy Craggs (1333) tied for 2nd with 4 points. Ron Amirante (1551) took the home 2nd under 1600 prize of \$25 with a score of 3.5 points.

The RESERVE SECTION started with several key upsets as top seeded Alexander Mihajlov (1770) was defeated by Steven Joesphs, Carl Solonka (1698) upset by Ken Palmer (1529) and Byron Lee (1595) lost to Tommy Craggs (1333). Boyd Reed lead the tournament for the first three rounds and then lost in the fourth to Brian Smith. Junior player, Tommy Craggs, had an impressive tournament only losing to Brad Goral and eventually tying for 2nd place overall and top U1600! Look for Tommy's rating to climb over 1500 soon.

The Fox Valley Chess Club sponsored the tournament which featured a well light, large playing hall and free coffee and donuts each day. The tournament was directed by Bob Renaut with assistance by Jim Oberweis. The Fox Valley Chess Club plans on making this an annual event and would like to thank all of the participants of the 1992 Fox Valley Championship. We will see you next year! ■



Fox Valley Championship - Open Section

Name	rtng	rd1	rd2	rd3	rd4	score	tour	Name	rtng	rd1	rd2	rd3	rd4	score	tour
01. Cooper, Thomas L.	2234	W13	D5	W3	D4	3.0	8	12. Oberweis, James D.	1831	L15	W14	L10	W19	2.0	2
02. Martinovsky, Eugene.	2389	W10	L3	W9	W7	3.0	8	13. Kalai, Adam	1881	L1	W20	L11	W18	2.0	2
03. Stein, Peter	2162	W16	W2	L1	W11	3.0	8	14. Plett, Michael I.	1943	L7	L12	W20	W22	2.0	2
04. Colias, Bill	2426	W19	W11	D7	D1	3.0	8	15. Sax, Robert	2037	W12	L7	D16	L5	1.5	1.5
05. Marshall, James A	2055	W20	D1	D6	W15	3.0	8	16. Allison, Roger D.	1876	L3	W19	D15	L8	1.5	1.5
06. Marquez, Anthony	2082	H---	W18	D5	W10	3.0	8	17. Lulves, Joseph	1860	L11	W22	H---	L9	1.5	1.5
07. Chow, Albert C.	2354	W14	W15	D4	L2	2.5	4	18. Paphitis, Alexander	1638	W22	L6	L8	L13	1.0	1
08. Ellice, H. Wayne	1731	D21	L10	W18	W16	2.5	4	19. Cohen, Howard	1941	L4	L16	W22	L12	1.0	1
09. Cohen, Lawrence S.	2012	H---	W21	L2	W17	2.5	4	20. Decman, Steve	1849	L5	L13	L14	B---	1.0	1
10. Dzurny, Anthony A.	2000	L2	W8	W12	L6	2.0	2	21. Condran, James	2032	D8	L9	U---	U---	0.5	0.5
11. Rogan, Marvin	2071	W17	L4	W13	L3	2.0	2	22. Basararaj, Rajashree	2030	L18	L17	L19	L14	0.0	0

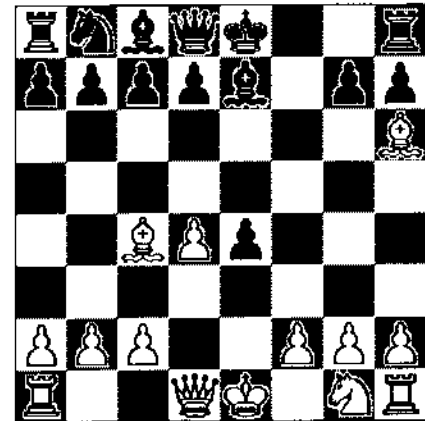
Fox Valley Championship – Reserve

Name	rtng	rd1	rd2	rd3	rd4	rd5	score	tour
01. Smith Brian	1693	W30	W11	W12	W4	D2	4.5	16
02. Grant Dennis	1702	W34	W20	D3	W5	D1	4	8
03. Sanchez Ignacio	1658	W27	W19	D2	D13	W12	4	8
04. Reed Boyd	1703	W28	W21	W9	L1	W13	4	8
05. Clark Lawrence	1691	W15	W32	W25	L2	W9	4	8
06. Craggs Tommy	1333	W23	L9	W11	W20	W10	4	8
07. Mihajlov Alexander	1770	L19	W8	W30	D18	W24	3.5	4
08. Amirante Ron	1551	H	L7	W34	W21	W19	3.5	4
09. Goral Bradley	1657	W22	W6	L4	W17	L5	3	3
10. Kittilsen Guy	1672	W18	L12	W32	W15	L6	3	3
11. Iovin Daniel	1590	W17	L1	L6	W22	W25	3	3
12. Zafar Saeed	1564	W35	W10	L1	W25	L3	3	3
13. Padilla Rudy	1640	H	W16	W33	D3	L4	3	3
14. Oberweis Julie	1571	L16	W22	L17	W31	W18	3	3
15. Carson David	1500	L5	W35	W24	L10	W20	3	3
16. Lazar Willard		W14	L13	L19	W30	W29	3	
17. Wirth Mike	1258	L11	B	W14	L9	W23	3	3
18. Durrant Larry	1436	L10	W23	W21	D7	L14	2.5	2.5
19. Josephs Steven	1550	W7	L3	W16	H	L8	2.5	2.5
20. Hicks Charles	1596	W31	L2	W26	L6	L15	2	2
21. Pope Raymond	1623	W26	L4	L18	L8	W31	2	2
22. Cisko Greg	1400	L9	L14	W28	L11	W30	2	2
23. Lee Byron	1595	L6	L18	W29	W26	L17	2	2
24. Woodruff Philip	1627	W29	L25	L15	W27	L7	2	2
25. Hightower Dean	1017	B	W24	L5	L12	L11	2	2
26. Mc Millen Patrick	1365	L21	W28	L20	L23	B	2	2
27. Anderson Richard	1420	L3	L33	W35	L24	D28	1.5	1.5
28. Silverman Scott	1539	L4	L26	L22	W34	D27	1.5	1.5
29. Bales Robert	1398	L24	D34	L23	X	L16	1.5	1.5
30. Thomas Kyle	1551	L1	W31	L7	L16	L22	1	1
31. Sanchez Isaac	1350	L20	L30	B	L14	L21	1	1
32. Palmer Kenneth	1529	W33	L5	L10	-	-	1	1
33. Solonka Carl	1698	L32	W27	L13	-	-	1	1
34. Koski John	1530	L2	D29	L8	L28	-	0.5	0.5
35. Evans Paul		L12	L15	L27	F	-	0	

16. ♖xc8 ♗xc8 17. exd3 ♖b7 18. dxe4 ♖a8 19. ♜c7 ♜d8
20. ♜xd8+ ♗xd8 21. ♜xf7 ♗f6 22. ♜d7 ♖c8 (22...g5)
23. ♗h3 ♗xe5 24. ♗e6+ ♗h8 25. ♗xe5 ♖c1+ 26. ♗g2
♗xe4+ 27. f3 ♖c2+ 28. ♗h3 ♗f5+ 29. g4 ♗xe6 30. ♜xg7
♖c5 31. ♜g5+ ♖xe5 32. ♜xe5 ♗xa2 33. ♜e8+ ♗g7
34. ♜e7+ ♗g6 35. ♜xa7 ♗d5 36. ♗g3 1-0

Collas-Rogan Fox Valley Ch., 1992

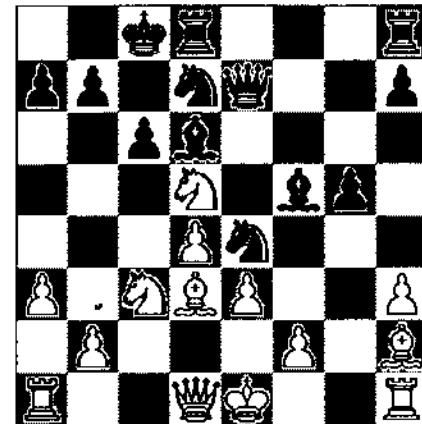
1. d4 f5 2. ♖c3 ♖f6 3. ♗g5 e6 4. e4 ♗e7 5. exf5 exf5 6. ♖c4
♖e4 7. ♖xe4 fxe4 (7...Bg5 8 Ng5 Qg5 10 Nf3) 8. ♗h6



♗f8 (8...d5 9 Bg7) 9. ♖h5 ♗b4+ (9...Qe8 10 Qf5 Bf6 11
Qf6) 10. c3 d5 11. ♗xd5 ♖f6 12. ♗g5 1-0

Allison-Stein Fox Valley Ch., 1992

1. d4 f5 2. g4 fxg4 3. ♗f4 d5 4. h3 g3 5. ♗xg3 ♖f6 6. e3 ♗f5
7. ♗b5+ c6 8. ♗d3 e6 9. ♖e2 ♗d6 10. ♖f4 ♖e7 11. a3
♖bd7 12. c4 ♖e4 13. ♗h2 0-0-0 14. cxd5 exd5 15. ♖c3 g5
16. ♖fxd5



cxd5 17. ♖xd5 ♖e6 18. ♜c1+ ♗b8 19. ♗xd6+ ♖xd6
20. ♖c3 ♖xc3 21. ♜xc3 ♜hf8 22. ♗xf5 ♜xf5 23. 0-0 ♖e5
24. ♖c2 ♖f3+ 0-1

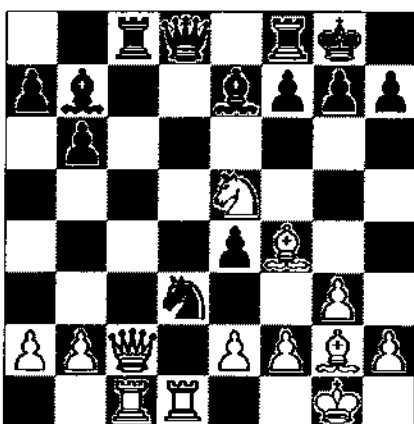
Rogan-Kalai Fox Valley Ch., 1992

1. e4 e5 2. f4 exf4 3. ♗c4 d6 4. ♖f3 g5? (4...g5 is much
safer) 5. h4 g4 6. ♖g5 ♖h6 7. ♖c3 (7 d4! :a) 7...Bg7 8 Bf4
Nc6 9 Be3 Qe7 10 Nc3 Be6 11 d5 Ne5 12 de Nc4 13 Bd4
Nb2 14 Bg7 Nd1 15 Nd5 Bucker-Hess 1984; or b) 7...f6 8
Bf4 fg 9 Bg5 Morphy- Tilghman, 1859!) 7...c6 8. d4 ♖e7
9. ♗xf4 d5 10. ♗xd5 f6 11. 0-0 ♖a6 12. ♗b3 ♗d7 13. e5 fxg5
14. ♗xg5 ♖g7 15. ♗f6 ♖g6 16. ♗xh8 0-0-0 17. e6 ♖h5

Here are a few games from the tournament annotated by Tom Cooper:

Martinovsky-Dzurny Fox Valley Ch., 1992

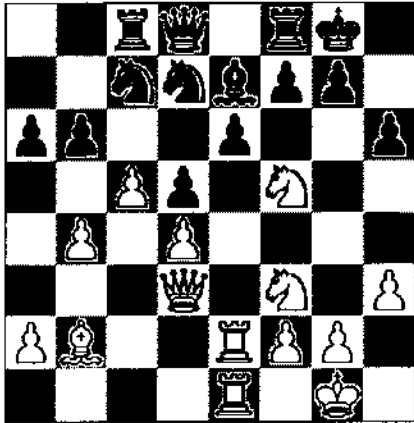
1. d4 ♖f6 2. ♖f3 e6 3. c4 b6 4. g3 ♗b7 5. ♗g2 ♗e7 6. ♖c3
d5 7. cxd5 exd5 8. 0-0 0-0 9. ♗f4 ♖e4 10. ♜c1 ♖a6 11. ♖e5
c5 12. ♖xe4 dxe4 13. dxc5 ♖xc5 14. ♖c2 ♜c8 15. ♜f1? (15
Rcd1 Qe8 16 Bh3 f5 17 b4 Na6 18 Qb3 Kh8 19 Nd7 Rf7 20
a3 Nc7 was unclear in Anikaev-Szekely, Moscow 1982)
15... ♖d3



18.exd7+ ♖b8 19.♗e5+ ♜a8 20.♗e6 ♗e7 21.g3 ♘c5
22.dxc5 ♜xe5 23.♞e1 ♗xc5+ 24.♜g2 ♗e3 25.♗b3
♞c5 26.♞d1 ♘f5 27.♞xf5 ♞xf5 28.♞xe3 h5 29.♞f4 ♞c5
30.♞c7 ♞f8 31.♞f1 ♞e7 32.♞f7 ♞xd7 33.♞xd7 ♞b8
34.♞d8 1-0

Josephs-Mihajlov Fox Valley Ch., 1992

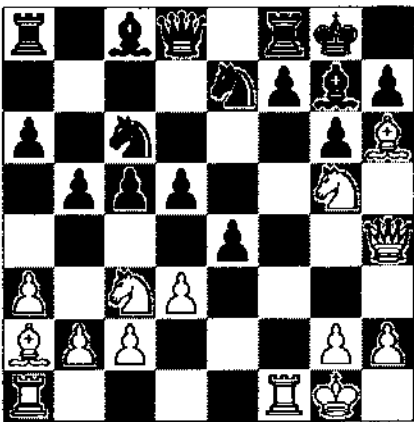
1.e4 ♘f6 2.e5 ♘d5 3.c4 ♘b6 4.d4 d6 5.exd6 cxd6 6.♘f3
♗g4 7.h3 ♗h5 8.♘c3 e6 9.♗e2 ♗e7 10.0-0 0-0 11.b3
♘d7 (11...d5 12.c5 Bf3 13.Bf3 N6d7 is standard procedure
in this variation of the Alekhine) 12.♗b2 a6 13.♞e1
♗g6 14.♗d3 ♗xd3 15.♞xd3 ♞c7 16.♘e4 h6 17.♞ac1
♞d8 18.♘g3 ♞c8 19.♞c2 d5 20.c5 ♘a8 21.♞ce2 b6
22.b4 ♘c7 23.♘f5



b5 24.♗c1 ♗g5 25.♗xg5 hxg5 26.♘d6 ♞b8 27.♞d2
♘e8 28.♘xe8 ♞xe8 29.♘g5 ♘f6 30.♞f4 ♞c8 31.♞h4
g6 32.♞h6 ♞e7 33.♞e3 ♞f8 34.♞xf8+ ♜xf8 35.♘f3
♘d7 36.♘e5 ♘xe5 37.♞xe5 ♞c6 38.g4 ♜e7 39.♞xd5
♜f6 40.♞d7 1-0

J. Oberwels-Plett Fox Valley Ch., 1992

1.e4 c5 2.♘c3 ♘c6 3.f4 g6 4.♘f3 ♗g7 5.a3 d6 6.♗c4 e6
7.d3 ♘ge7 8.0-0 0-0 9.♞e1 a6 10.f5 b5 11.♗a2 exf5
12.♞h4 d5 13.♗h6 fxe4 14.♘g5

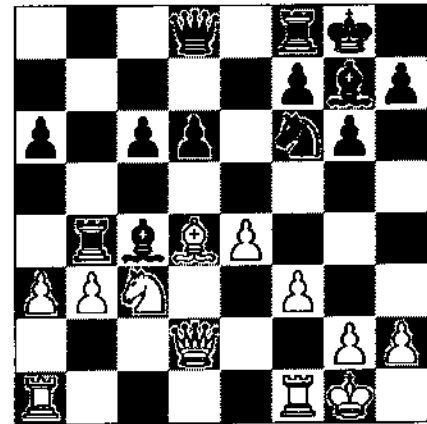


f6 15.♗xg7 fxg5 16.♞xf8+ ♞xf8 17.♗xf8 gxh4 18.♗xe7
♘xe7 19.♘xd5 ♜f8 20.♞f1+ ♘f5 21.dxe4 c4 22.♘b6 1-0

Chow-Colias Fox Valley Ch., 1992

1.d4 ♘f6 2.c4 g6 3.♘c3 ♗g7 4.e4 d6 5.f3 0-0 6.♗e3 ♘c6
7.♘ge2 a6 8.♞d2 ♞b8 9.♘c1 e5 10.♘b3 exd4 11.♘xd4

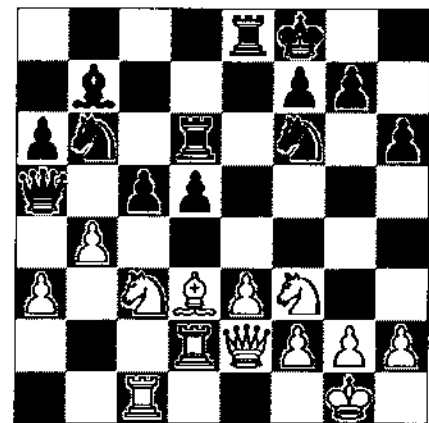
♘xd4 12.♗xd4 c6 13.♗e2 b5 14.0-0 bxc4 15.♗xc4 ♞b4
16.b3 ♗e6 17.a3 ♗xc4



18.axb4 ♗xf1 19.♜xf1 c5 20.bxc5 dxc5 21.♗e3 ♞b8
22.♞c2 ♞xh2 23.♞xa6 ♘h5 24.♘e2 ♞d8 25.♞c6 ♞h1+
26.♜f2 ♞h4+ 27.♜f1 ♗d4 28.♗xd4 cxd4 29.♞d3 ♞a8
30.♞xd4 ♘f4 31.♘xf4 ♞a1+ 32.♞xa1 ♞h1+ 33.♜f2
♞xa1 34.♘e2 ♞a7+ 35.♜f1 ♞a3 36.♞c3 h5 37.f4 ♞a5
38.♞e3 ♜g7 39.e5 ♞b6 40.♞c3 ♞b4 41.♞e3 ♞b6
42.♜f2 ♜f8 43.♘g3 h4 ½-½

Craggs-Kittilsen Fox Valley Ch., 1992

1.d4 d5 2.c4 e6 3.♘c3 ♘f6 4.♗g5 ♗e7 5.e3 0-0 6.♘f3
b6 7.cxd5 exd5 8.♗d3 h6 9.♗h4 ♗b7 10.♞c1 ♘bd7
11.0-0 c5 12.♞c2 (12 Qe2: a) 12...Re8 13 b3 Rc8 14 Ba6
Ba6 15 Qa6 cd 16 ed Nb8 17 Qa7 Ne4 18 Be7 Re7 19 Qe7
Qe7 20 Nd5+ - Loginov-Fedoruk 1979 or b) 12...a6 13 b3
Re8 14 Rfd1 Ne4 15 Be7 Qe7 is better for White.) 12...♞c8
13.♞fd1 a6 14.dxc5 bxc5 15.♞e2 ♞a5 16.a3 (16 Bb1)
16...♞fe8 17.♗f5 ♞cd8 18.♞d2 (18 Qd2-idea-Nd5)
18...♘b6 19.♗d3 ♜f8 20.♗g3 ♗d6 21.♗xd6+ ♞xd6
22.b4



♞xa3 23.♞b1 cxb4 24.♞a2 ♞xc3 25.♞c2 ♞xc2
(25...Qa3) 26.♞xc2 ♞c8 27.♞a2 ♞dc6 28.♞xb4 ♞c1+
29.♗f1 ♞8c6 30.♘d4 ♞d6 31.♞a3 ♞xf1+ 32.♜xf1 ♜g8
33.♞b3 ♘fd7 34.♞c3 ♞f6 35.♞c7 ♗c8 36.♘c6 ♞e6
37.♞xb6 ♘xb6 38.♞xb6 ♜h7 39.♞c7 ♞e8 40.♞xf7
♞e4 41.♘e7 ♗e6 42.♞g6+ ♜h8 43.♞e8+ ♜h7 44.f4
d4 45.f5 ♗c4+ 46.♜g1 dxe3 47.♞g6+ ♜h8 48.f6 ♞f4
49.♞xg7+ 1-0

WAR OF THE ROSES CHESS CHALLENGE

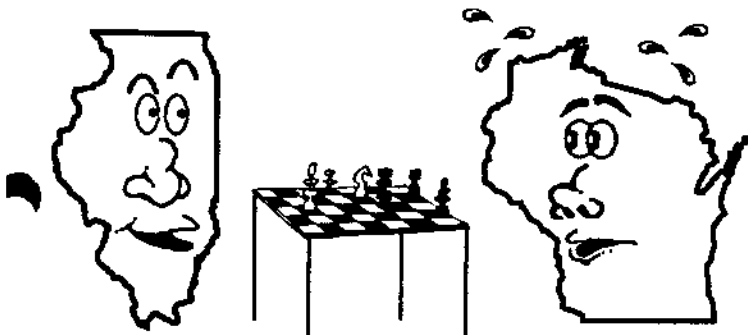
by Howard Wachtel

The 1992 edition of the Illinois-Wisconsin chess match will take place on Sunday, July 26, 1992 at the gymnasium of Shimer College, 438 N. Sheridan Road, Waukegan. It will be a two round, 25 board USCF rated match between Illinois and Wisconsin.

Details on the match: Registration time is 9:00-9:45 a.m., rounds are scheduled to begin at 10 a.m. and 3 p.m. **If you have not pre-registered, you must arrive not later than 9:30 a.m.** Each player will play two games, one with each color. Time control is 50/2, secondary 25/1, (no sudden death). Players of all rating levels are encouraged to participate. (The Wisconsinites have plenty of masters!) A modest entry fee of \$1 will be charged to cover rating costs. A traveling trophy, engraved with the winning states's match name and match score, will be awarded to the winning team. A small side tournament will be held if necessary to accommodate any extra players from either state. The format of the side event will be decided by the participants.

We encourage players to register in advance if at all possible. To do so, contact Howard Wachtel, 445 W. Barry #217, Chicago 60657, phone (312) 975-7970. I will try to arrange for car-pooling, so let me know if you need a ride or can offer a ride to others. For directions to Shimer College, please contact Dave Shiner (address and phone to be found in list of ICA club affiliates, elsewhere in this magazine).

In the 1991 match, Illinois squeezed by the higher rated Wisconsin team 15-13, as reported in the September-October 1991 ICB. The Wisconsin players will be hungry to win their trophy back this year! **Come out and support the Illinois team!** The match will continue to be an annual event, alternating sites between Wisconsin and Illinois. ■



DEMPSEY LEADS SHIMER TO UPSET IN PAN-AM GAMES

by David Shiner

In the recent Pan-American Collegiate Chess Tournament, tiny Shimer College of Waukegan scored a major upset by winning the Class "A" Prize. Shimer, with fewer than 100 total students, scored four points to triumph over such major universities as the University of Michigan and SUNY-Buffalo.

A major factor in Shiner's strong result was the play of its second board, the British visiting student Tony Dempsey. Playing second board behind Senior Master Jesse Kraai, Dempsey went undefeated at 5-1, narrowly losing the gold medal on tiebreaks to Brooklyn College's Mark Kurtzman.

Here are two of Tony's best efforts in the Games. In the first, he scores a big win against a stalwart of the top-rated team in the entire tournament to propel Shimer to a drawn match. In the second, he scores the penultimate round victory that puts Shimer in position to win the gold for Class A. Notes are by Dempsey.

James Lewis (University of the Dominican Republic)
vs. Tony Dempsey (Shimer College)

Sicilian Scheveningen

1. e4 c5 2. Nf3 d6 3. d4 cd 4. Nd4 Nf6 5. Nc3 e6 6. Be2 a6 7. 0-0 Be7 8. f4 Qc7 9. Be3 0-0 10. Qe1 Nc6 11. Qg3 Nd4 12. Bd4 b5 13. Kh1 !? (13. a3) Bb7 14. Bd3 g6! ? 15. Qh3? (f5!? - Lewis) e5 16. Be3 b4 17. Ne2 Ne4 18. fe de 19. Bh6 f5! (Black has a winning advantage) 20. Bf8 Rf8 21. c3?! Ng5 22. Qh4? (22. Qg3 f4 etc. 22. Qh6 Qc6 etc.) Bg2+! 23. Kg2 Qb7+ 24. Kg3 f4+? (24. . Ne4+) 25. Nf4 Ne4+ and Black won.

Tony Dempsey (Shimer College)
vs. Jon Voelker (University of Akron)

English

1. c4 e5 2. g3 Nf6 3. Bg2 Be5!? 4. Nc3 0-0 5. d3 c6?! (5. . .Nc6) 6. Nf3 Re8 7. 0-0 d5? (after the correct 7. . .d6, White's advantage is slight) 8. cd cd 9. Bg5 (White has a great advantage) d4 10. Bf6 Qf6 11. Ne4 Qb6 12. Nc5 Qc5 13. Qb3 Nc6 14. Rac1 Qd6 15. Ng5 Re7 16. Ne4 Qe6 17. Qa4 Rc7 18. b4 b5 19. Qb5 Rb8 20. Qb8+ Nb8 21. Rc7 Bd7 22. Rfc1 g6 23. Rb7 Nc6 24. Rd7 f5 25. Rd6 1-0 ■



Dale Bock, Paul Cooke Go 4-zip to win Normal Redbird Open

Event Attracts 50 Players From 3 States

by Dennis Bourgerie



Fifty players from three different states, Missouri, Iowa and Illinois) showed up Saturday March 21st at Normal, IL. The organizers were a bit surprised since they only expected 30 players from the local area. The field was headed by Master Paul Cooke, Experts Steve Lynn and Chris Merli and 8 Class A players. Paul Cooke played his usual solid chess for a perfect score and Dale Bock (heretofore an unheralded A player) used Bird's Opening to join Paul at the top.

Tom Barnard and Paul Chong tied for the A prize at 3.5 - 0.5. Their last round game was marked by time-pressure as Barnard held the draw despite being a pawn down. Randy Ingram, Tom Warfield and Robert Sphar tied for the B prize at 3-1 by winning their last round games.

The C prize was a four-way tie at 2-2 between Robert Earley, Paul Mechem, Kevin Kukla and Matt George. Santi Zarzopulos won the unrated prize in December at Normal - this time he upgraded to the D prize at 2.5 - 1.5. John Groves and David Wetzel tied for the unrated prize at 2-2.

The tournament was directed by Dennis Bourgerie with assistance from Tom Warfield at registration, Garrett Scott in organizing the physical layout and Eddie Ebeling who brought his computer system and expertise to help pair the rounds.

Here's a potpourri of the games:

Tom Bolitho (1869) - Paul Cooke (2229) Sicilian Defense (round 4)

1. e4 c5 2. Nf3 Nc6 3. d4 cxd4 4. Nxd4 Nf6 5. Nc3 e5 6. Ndb5 d6 7. Nd5 Nxd5 8. exd5 Nb8 9. c4 Be7 10. Bd3 0-0 11. 0-0 f5 12. Bd2 a6 13. Nc3 Nd7 14. Bc2 Nf6 15. a4 Bd7 16. b3 Rc8 17. a5 f4 18. Na4 Bg4 19. f3 Bh5 20. Nb6 Rc7 21. Qb1 g5 22. h3 Rf7 23. Ra2 Rg7 24. Bf5 Be8 25. Bc3 Nh5 26. Re1 Ng3 27. Rd2 Nxf5 28. Qxf5 Bg6 29. Qe6+ Rf7 30. Bxe5 Bf5 31. Qh6 Bf8 32. Qh5 Bg6 33. Qg4 h5 34. Qe6 Bf5 (the white queen just can't escape being harassed) 35. Bf6 Qxf6 36. Qxf6 Rxf6 37. Rde2 Rf7 38. Re8 Rfe7 39. R8xe7 Rxe7 40. Rxe7 Bxe7 41. Kf2 Bd8 42. Ke2 Bxb6 (the simplest course) 43. axb6 a5 44. Kd2 Kf7 45. Kc3 0-1.

Dale Bock (1804) - Bill Moushey (1569) Bird's Opening (Round 2)

1. f4 Nc6 2. Nf3 d5 3. e3 Bg4 4. Bb5 Qd7 5. h3 Bxf3 6. Qxf3 Nf6 7. b3 a6 8. Bxc6 Qxc6 9. c3 e6 10. Bb2 Be7 11. 0-0 0-0-0 12. d4 Ne4 13. Qd1 f5 14. Nd2 Nxc3 15. Bxc3 Qxc3 16. Nf3 Qxe3 (Black is winning at this point) 17. Kh1 Qxf4 18. Ne5 Qg3 19. Rf3 Qh4 20. Nf7 Bf6 21. Nxf8 Rxf8 22. Qe2 Kd7 23. Re1 Qe4? (23...Re8 24. Rxf5 Qxd4 keeps the e-file closed for the time being) 24. Re3 Qxd4 25. Rxe6 Bh4 26. Re8 Rxe8 27. Qxe8 Kd6 28. Qe6+ Kc5 29. Rc1+ Kb4 30. Qd7 Bg3 31. Qa4 mate 1-0.

Randy Ingram (1777) - Matt George (1551) Ruy Lopez - Bird's Defense (Round 4)

1. e4 e5 2. Nf3 Nc6 3. Bb5 Nd4 4. Nxd4 exd4 (The displacement of the black e-pawn sometimes means that the white e and f pawns become very mobile and the white king is protected from checks on the g1-a7 diagonal) 5. 0-0 c6 6. Be2 Bd6 7. d3 h6 8. f4 Ne7 9. Nd2 Ng6 10. Nc4 Bc7 11. e5 d6 12. Nxd6 Bxd6 13. exd6 Qxd6 14. Bh5 0-0 15. f5 Ne7 16. f6 Nf5 17. fxf7 Nxf7 18. Bf4 Qd5 19. Bf3 Qe6 20. Qd2 (White has developed a comfortable positional and developmental plus) Nf5 21. Bg4 (this pin puts black in hot water) Kh7 (after this move black is lost - ...Qd5 was necessary) 22. Bxf5 Qxf5 23. Bd6 Qg6 24. Bxf8 Bh3 25. Qxh6 Qxh6 26. Bxh6 Rg8 27. Rxf7+ Kxh6 28. Rf2 c5 29. Re1 b6 30. Re4 a5? 31. Rh4+ resigns 1-0.

SUBMISSION DEADLINE FOR
JULY-AUGUST ISSUE

JUNE 1, 1992

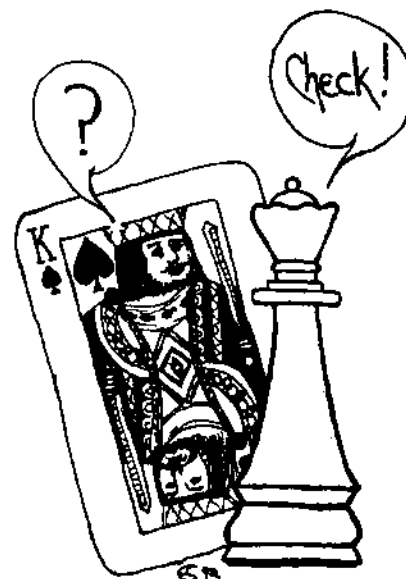
Only computer printed or
typed copy will be accepted.



Sulay Jhaveri (1282) - Larry Zevnick (1633)

Caro-Kann (round 3)

1. e4 c6 2. Nc3 d5 3. g3 dxe4 4. Nxe4 Nf6 5. Nxf6 exf6 6. Qe2+ Be7 7. d3 0-0 8. Bh3 Re8 9. Be3 Bc5 10. 0-0-0 Bxe3+ 11. fxe3 Bxh3 12. Nhx3 Na6 13. a3 Qd5 14. c4 (this loosens up the castled position unnecessarily) Qa5 15. Qd2 Qc5 16. Rhe1 b5 17. b4 Qe5 18. d4 Qf5 19. Nf4 bxc4 20. Qc3 Nc7 21. Qxc4 Nd5 22. Qd3 Qc8 23. Rd2 Nb6 24. Rc2 Na4 25. Røe2 a5 26. Qd2 axb4 27. Qxb4 Qa6 28. Qc4 Qa7 (Black naturally wants to avoid the trade of Queen's while the white king position is so unsafe) 29. Qxc6 Nb6 30. Rc3? (something like 30. Kd1 Rab8 31. Qd6 is called for) Rac8! 31. Qxc8 Nxc8 32. Rec2 Nd6 33. Nd5 h5 34. Nc7 Rd8 35. Nd5 Ne4 36. Rc7 Qxa3+ 37. Kd1 Rxd5 38. resigns 0-1.



David Wetzel (unrated) - Robert Sphar (1764)

Bird's Opening - (round 4)

1. f4 Nf6 2. e3 d5 3. b3 e6 4. Bb2 Be7 5. Nf3 0-0 6. Bd3 h6 7. 0-0 Nbd7 8. h3 Nc5 9. Qe2 Nce4 10. Bxe4 Nxe4 11. d3? (Kh2) Ng3 12. Qf2 Nxf1 13. Kxf1 Bf6 14. Ne5 Bxe5 15. Bxe5 f6 16. Bb2 e5 17. Nd2 b6 18. d4 exf4 19. Qxf4 Qd7 20. g4 h5 21. Ba3 Rf7 22. Ke2 hxg4 23. hxg4 Qxg4+ 24. Qxg4 Bxg4+ 25. Kd3 Bf5+ 26. Kc3 Rc8 27. b4 Re8 28. Nf1 Bh3 29. Kd3 Rfe7 30. Re1 Bxf1 31. Kd2 Bc4 32. b5 Re4 33. Bc1 Rg4 34. Kc3 Bxb5 35. Kb4 a6 36. a4 c5 37. Kc3 Bxa4 38. Kb2 cxd4 39. Resigns 0-1.

John Groves (unrated) - Don Johnson (1400)

King's Indian Defense (round 4)

1. d4 Nf6 2. c4 g6 3. Nc3 Bg7 4. e4 d6 5. Nf3 0-0 6. Bd3 Re8 7. 0-0 Bg4 8. h3 Bh5? (a mistake? or a provocation? 8...Bxf3 9. Qxf3 Nc6 is preferable) 9. g4 Nfg4 10. hxg4 Bxg4 11. Be2 e5 12. d5 f5 13. Nh2 (The knight is well-placed here, shielding the king from the unwelcome attentions of the black queen) Bh3 14. Re1 f4 15. Kh1 Qh4 16. f3 h5 17. Rg1 Kf7 18. Bd2 Rh8 19. Be1 Qe7 (So far black has not demonstrated he has compensation for the piece) 20. Bf2 Nd7 21. Bf1 Bxf1 22. Qxf1 g5 23. Qh3 Rag8 24. Qf5+ Bf6 25. Rg2 Nc5 26. Bxc5 dxc5 27. Rag1 c6 28. Rxc5 Rxc5 29. Rxc5 Ke8 30. Rxc5 Rxc5 31. Qxc5+ Kd8 32. Ng4 Bg7 33. Ne2 cxd5 34. cxd5 c4 35. Qh7 b5 36. Qg8+ Bf8 37. Nxe5 Qxe5 38. Qxf8 Kc7 39. Qxf4 (trade queens and avoid any chance of black getting a perpetual check) Qxf4 40. Nxf4 a5 41. Ne2 a4 42. a3 Kd6 43. Nc3 Kc5 44. e5 b4 45. d6 resigns 1-0.

Winfield Scott (1823) - Dan Patterson (1610)

Modern Defence (round 4)

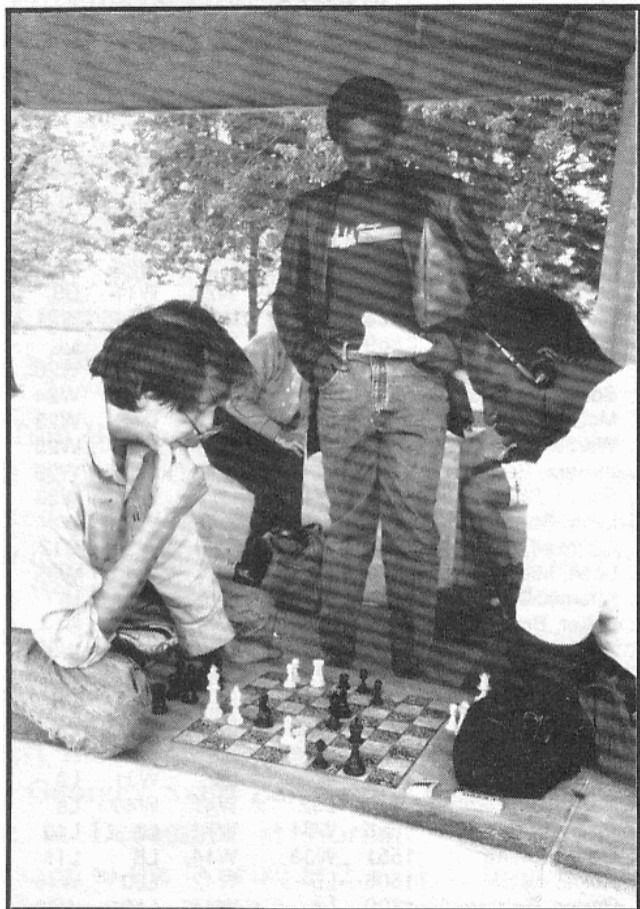
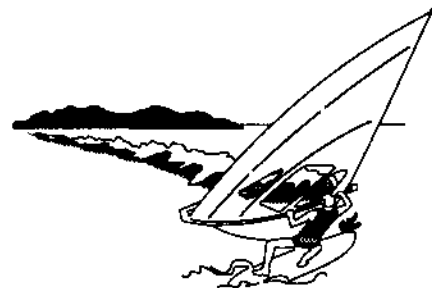
1. e4 d6 2. f4 g6 3. d4 Bg7 4. Nf3 Bg4 5. Be2 Nf6 6. Nbd2 0-0 7. 0-0 Nbd7 8. c4 c5 9. e5 Ne8 10. exd6 exd6 11. d5 Ndf6 12. Qb3 Rb8 13. Bd3 Nc7 14. h3 Bd7 15. Ng5 b5 16. Nde4 bxc4 17. Nxf6+ Bxf6 18. Qc4 Bb5 19. Qc2 Bxd3 20. Qxd3 Bxb2 21. Bxb2 Rxb2 22. Qc3 Qb8 23. Qd3 Qb4 24. Ne4 Rd8 25. Kh1 f5 26. Ng5 Qd2 27. Qg3 Nd5 28. Rad1 Qe3 29. Qh4 Nf6 (Rd7) 30. Nhx7 Nhx7 31. Qxd8 Kg7 32. Rde1 Qg3 33. Re7+ Kh6 34. Rg1 Qf4 35. Qh8 Rxa2 36. Rxh7+ Kg5 37. Qd8 mate 1-0. ■

Normal Redbird Open Crosstable

01. Cooke, Paul	2229	W49	W20	W8	W6	4
02. Bock, Dale	1804	W30	W36	W5	W19	4
03. Barnard, Tom	1962	W37	W17	W25	D4	3.5
04. Chong, David	1877	W28	W23	W11	D3	3.5
05. Merli, Chris	2016	W27	W12	L2	W21	3
06. Bolitho, Tom	1869	W39	W22	W26	L1	3
07. Vero, Carl	1847	W29	L25	W18	W20	3
08. Scott, Winfield	1823	W40	W21	L1	W24	3
09. McCarthy, Mike	1801	H	W13	D16	W23	3
10. Warfield, Tom	1792	W41	D18	D19	W25	3
11. Ingram, Randy	1777	W31	W45	L4	W26	3
12. Sphar, Robert	1764	W42	L5	W28	W33	3
13. Lynn, Steve	2042	H	L9	W32	W34	2.5
14. Caldwell, Scott	1820	W47	L26	W37	D17	2.5
15. Leali, Michael	1763	-	H	W40	W35	2.5
16. Kimme, Duane	1761	W43	D19	D9	H	2.5
17. Fuller, Bret	1656	W44	L3	W38	D14	2.5
18. Zarzopulos, Santi	1269	WF	D10	L7	W39	2.5
19. Anderson, Phil	1941	W38	D16	D10	L2	2
20. Ewalt, Eric	1702	W48	L1	W27	L7	2
21. Kittilsen, Guy	1674	W50	L8	W29	L5	2
22. Scott, Garrett	1636	W45	L6	W39	--	2
23. Zevnik, Lawrence	1633	W46	L4	W31	L9	2
24. Patterson, Dan	1610	L32	W41	W46	L8	2
25. Mechem Paul	1585	W34	W7	L3	L10	2
26. George, Matt	1551	W33	W14	L6	L11	2
27. Kukla, Kevin	1505	L5	W42	L20	W46	2
28. Earley, Robert	1400	L4	W44	L12	W36	2
29. Belle, John	1373	L7	W45	L21	W42	2
30. Hillman, Bruce	1343	L2	L33	W50	W43	2
31. Jhaveri, Sulay	1282	L11	W49	L23	W41	2
32. Groves, John	UNR	W24	L11	L13	W38	2
33. Wetzel, David	UNR	L26	W30	W36	L12	2
34. Schnitichen, Julius	UNR	L25	D47	W49	L13	1.5
35. Mills, Chris	UNR	L36	O40	W47	L15	1.5
36. Moushey, Bill	1569	W35	L2	L33	L28	1
37. Sronce, Gavin	1444	L3	W48	L14	--	1
38. Johnson, Don	1400	L19	W43	L17	L32	1
39. Cruise, Donald	1386	L6	W50	L22	L18	1
40. Davis, John	1362	L8	D35	L15	H	1
41. Fradkin, Andres	1319	L10	L24	W48	L31	1
42. Frost, Carl	1281	L12	L27	W44	L29	1
43. Heller, Jack	1261	L16	L38	W45	L30	1
44. Willitz, Caleb	1205	L17	L28	L42	W47	1
45. Martin, Steve	1118	L22	L29	L43	W50	1
46. Leali, Matthew	658	L23	B	L24	L27	1
47. Knisley, Kevin	1348	L14	D34	L35	L44	0.5
48. Hardy, Chris	1248	L20	L37	L41	H	0.5
49. Bitner, Jason	1512	L1	L31	L34	--	0
50. Remus, Ginger	1240	L21	L39	L30	L45	0

Aah!

Spring



The new season takes note of how out-of-shape we've become during winter's cold hibernation. A restlessness strikes us with a vengeance.

What to do, what to do...hunched over chess books, diagrams, staring bleary-eyed at computer screens, we find ourselves distracted by the sounds of birds chirping raucously at an open window, or captured by an erratic ray of sunlight sneaking in at a new angle. So why not simply give in to it, hmm?

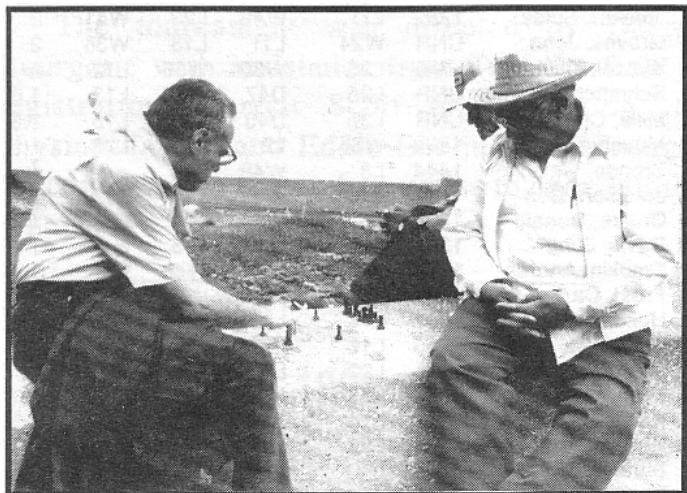
Yes indeed! It's never too late! Even chess players can become outdoor athletes when spring rolls around!

Breathe! Smell the budding greenness, the returning life! Experience the sun's heat & fresh breezes off the lake.

Exercise! Stretch mental muscles dulled by winter's greys.

Brush the winter cobwebs from your mind and pack up your games & take them off to the North Avenue Beach Chess Pavilion!

♠



ST. CHARLES CHESS CLUB NEWS

by Dan Pradt

October 1991 - Jeff Wiewel finished on top of the ladder tournament with 18 points, followed by Jim Marshall with 14.5, Erv Sedlock - 13.5, Roger Allison and Jim Little - 12, Joe Splinter and Brian Morrison - 11.5, Steve Fulton - 11, and Chuck Giertz and Larry Durrant - 10.5. Giertz had the best tournament attendance, showing up 30 times. Lee Forde and Kevin Gensler followed with 28. The top eight qualifiers will play in the Knight's Cup.

The new format of the ladder has been quite popular, with 16-20 members showing up each Thursday to play unrated but serious games, with players ranging in skill from Expert to class C & D.

October 1991 - Kevin Gensler won the five minute tournament, 7-0. Jeff Wiewel was second at 6-1.

January 1992 - Joe Splinter won the Knight's cup round robin with a score of 6-1, edging out Erv Sedlock with 5.5. Splinter and Sedlock met in the final round, with Erv leading by a half-point. Joe won a long endgame playing the black side of a Center-Counter Game. Mike Plett won the newly created Squire's Tournament, cruising to a 9-0 score. Mike received a traveling trophy donated by Pat Maurer.

March 1991 - The Club Championship, a five round swiss, drew 26 entrants. Upsets were the normal routine in the early rounds. Roger Harris (1677) and Steve Fulton (1937) both beat Jim Marshall (2099). Larry Durant (1451) and Rudy Padilla (1627) beat Erv Sedlock (1901). Greg Cisco (1400) beat Dan Sajkowski (1890). Draws included Les Bale (1830) and Jeff Wiewel (2126), and Brian Morrison (1602) and Bill Buttney (1951). The wall chart eventually held to form, as Joe Splinter beat Wiewel and Fulton in the last two rounds to win the tournament with 4.5. Mike Plett finished with 4, and Wiewel, Buttney, Sajkowski, and Fulton with 3.5.

We announce with deep regret the passing of Kevin Gensler, victim of a traffic auto accident this March. Kevin was an enthusiastic supporter of the St. Charles Club, as well as one of its strongest players. He was always ready to analyze and give advice to the other members. He will be missed by all of us. ■

TULEY PARK CHESS CLUB

'91 TULEY PARK ACTION MINITURE

01. COLIAS, BILL	IN 2402/2405	W14	W4	W10	W5	4.0
02. UMEZINWA, GEORGE	IL 2330/2328	W25	D9	W17	W8	3.5
03. SMYTHE, BILL	IL 2063/2058	W19	W18	L5	W13	3.0
04. FAGAN, JAMES B	IL 1994/2007	W15	L1	W19	W11	3.0
05. BAUGH, CHRIS	IL 1977/2005	W20	W13	W3	L1	3.0
06. ANDRIC, DRAGOSLAV	IL 1899/1913	D24	D7	W14	W10	3.0
07. FINEBERG, THOMAS	IL 1776/1799	H	D6	W16	W17	3.0
08. KAMEN, DAN	IL 2148/2130	W11	L10	W9	L2	2.0
09. DUDKOWSKI, ZIBBY	IL 1900/1906	W16	D2	L8	D12	2.0
10. KALAI, ADAM	IL 1878/1890	W21	W8	L1	L6	2.0
11. FALLS, DWAYNE	IL 1778/1787	L8	W21	W18	L4	2.0
12. STEWART, ALLEN	IL 1776/1775	H	L17	W25	D9	2.0
13. JOHNSON, ERIC L	IL 1775/1775	W23	L5	W20	L3	2.0
14. JACKSON, DONALD E	IL 1751/1770	L1	W15	L6	W18	2.0
15. WILLIAMS, KENT M	IL 1643/1656	L4	L14	W22	W20	2.0
16. KNOX, MALCOLM	IL 1594/1624	L9	W25	L7	W19	2.0
17. PADILLA, RUDY R	IL 1620/1632	H	W12	L2	L7	1.5
18. ALLISON, ROGER D	IL 1800/1800	W22	L3	L11	L14	1.0
19. CIMA, JOE	IL 1698/1675	L3	W22	L4	L16	1.0
20. PAPHITIS, ALEXANDER	IL 1638/1601	L5	W23	L13	L15	1.0
21. MURPHY, WILLIAM J	IL 1497/1483	L10	L11	W23	L22	1.0
22. REDDICK, HAROLD B	IL 1466/1464	L18	L19	L15	W21	1.0
23. HEILSKOV, JENS A	IL 1405/1417	L13	L20	L21	W25	1.0
24. NEAL, PATRICK	IL 1784/1788	D6	U	U	U	0.5
25. MORRISON, MICHAEL	IL 1768/1699	L2	L16	L12	L23	0.0

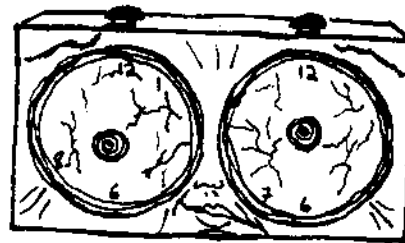
QUICK CHESS '92 TULEY PARK G/15 SWISS #1

01. COLIAS, BILL	2405	L5	W7	W4	W2	W3	4.0
02. McNAMARA, JAMES	2019	W6	W4	L3	L1	W8	3.0
03. FAGAN, JAMES B.	2007	W7	D5	W2	W10	L1	3.5
04. BEARD, GLENN	1886	W8	L2	L1	L9	L6	1.0
05. CLARK, TODD	1782	W1	D3	L10	W8	L9	2.5
06. CLARK, LAWRENCE	1691	L2	W8	L9	L7	W4	2.0
07. KNOX, MALCOLM	1624	L3	L1	W8	W6	L10	2.0
08. JOHNSON, TARRELL	UNR	L4	L6	L7	L5	L2	0.0
09. KENDE, MARK	1998	BYE	L10	W6	W4	W5	3.5
10. EVANS, LARRY	1866	BYE	W9	W5	L3	W7	3.5

'92 TULEY PARK ACTION SWISS NO. 1

01. COLIAS, BILL	2407/2409	W11	W3	W2	W4	4.0
02. FAGAN, JAMES B	2007/2014	W12	W6	L1	W7	3.0
03. JACKSON, DONALD E	1770/1791	W10	L1	W12	W6	3.0
04. FLORES, JOSHUA	1770/1786	W14	W7	W5	L1	3.0
05. JOHNSON, ROBERT C	UNR/1310	H	W15	L4	W9	2.5
06. CLARK, LAWRENCE	1683/1673	W16	L2	W13	L3	2.0
07. HAYES, MICHAEL L	1672/1666	W9	L4	W10	L2	2.0
08. REDDICK, HAROLD B	1464/1449	H	D13	L9	W14	2.0
09. TUCK, SAMMIE	586/1160	L7	W14	W8	L5	2.0
10. JOHNSON, TARRELL	UNR/1473	L3	W11	L7	W16	2.0
11. URAM, MAX	1466/1449	L1	L10	X	D12	1.5
12. FENNER, CHARLES E	1455/1453	L2	W16	L3	D11	1.5
13. BRATTON, JULIAN	1451/1437	H	D8	L6	U	1.0
14. SARGENT, GARY NOE	1395/1358	L4	L9	W16	L8	1.0
15. FINCH, NATHANIEL	UNR/857	H	L5	F	U	0.5
16. BUFFORD, JOHN H	UNR/1103	L6	L12	L14	L10	0.0

"Tic-ping! hic, Ring-
a-ding... uh, Tock,
buzzzz... ooh..."



hic! I dunno, Doc,
I think it's a concussion.

Junior Chess in Illinois

by I. Leslie Bale

This is the first article of what is to be a monthly feature in your Illinois Chess Bulletin. This coverage is a direct result of a request made by Helen Warren for the ICB to cover junior chess in Illinois. Helen suggested that there should be coverage of this type and that someone write an article for each issue of the ICB. So, here goes.

1992 ILLINOIS GRADE SCHOOL STATE CHAMPIONSHIP CHESS TOURNAMENT

The tournament was held on Saturday, Feb. 29, and Sunday, March 1, 1992 at the Haldey Junior High School, Glen Ellyn, Illinois. There were 539 boys and girls competing for over 145 trophies and 32 medals.

There were 3 separate divisions within the tournament; Junior High (6th through 8th grades), Elementary (4th through 5th grades) and Primary (3rd grade and younger). Time control in the Junior High division was 40/60 then 15 min. sudden death. Time control in the other two divisions was 60 min. sudden death.

The tournament directors, Irv Sedlock and Jeff Wiewel were assisted by an "army" of volunteers that consisted of coaches, parents, and teachers. Irv and Jeff have directed this tournament every year since 1985.

When the last pawn had been pushed:

JUNIOR HIGH DIVISION

- | | |
|-----------------|------------------|
| 01. Bloomington | 06. Holy Angels |
| 02. West Middle | 07. Albright |
| 03. Benjamin | 08. Washington |
| 04. Glenside | 09. Flinn Middle |
| 05. Hadley | 10. Moline |

ELEMENTARY SCHOOL DIVISION

- | | |
|-------------------------|-----------------------|
| 01. Oakland | 06. Benjamin Dist. 25 |
| 02. Ben Franklin | 07. Monticello |
| 03. Glen Hill | 08. Churchill |
| 04. Forest Glen | 09. Alice Gustaffson |
| 05. Lincoln Cult. Cntr. | 10. Washington |

PRIMARY SCHOOL DIVISION

- | | |
|---------------------|------------------------|
| 01. Ben Franklin | 06. Bent |
| 02. Oakland | 07. Swartz |
| 03. Glen Hill | 08. Oakton |
| 04. Evergreen | 09. Washington (Blmtg) |
| 05. Glen Elementary | 10. Washington Grade |

1992 ILLINOIS STATE CHAMPIONS

- | | |
|------------------------|-------------------------|
| Kindergarten | Christopher Holmes |
| 1st Grade | Johnny Weier |
| 2nd Grade | Adam Cook |
| 3rd Grade | Brian Wong |
| 4th Grade | Craig Cochran 1st Grade |
| 5th Grade | Kyle Thomas |
| 6th Grade | Jeremy Koch |
| 7th Grade | Adam Lewensky |
| 8th Grade | Gennady Gerstman |

The tournament was one of the best run chess events that I have ever seen. It was very obvious from the time that you first entered the school that this was a well planned out event. A tournament with over 500 players is no easy task. But when you add to it that the players are children that brings with it a few additional surprises. There were visits from the Fire Dept. for alarms being pulled, and from paramedics for electronic toys blowing up.

Each team that paid a small additional fee was given a separate class room to use as theirs. This alone reduced the confusion between rounds as the players all had "their own" room to report to. Chess Master John Burke played a continuous simul against all players during both days. There were about 10 boards going all the time!

There were T-shirts and sweatshirts with a terrific logo that could be purchased. Of course there were food concessions for both days. The list goes on and on of all the things that were going on at the same time.

So, who is responsible for such a tournament? Do you start with Larry Stillwell formerly of Proviso High, or Ruth Jacobsen who started the chess club at Ben Franklin School. That club was the beginning club and model for most of the schools that took part. How about the coaches and parents of: Forest Glen School, Mary Lou Lowry and Georgia Koch, or Linda Hess and Carol Salzmann of Ben Franklin School, or the host school Hadley who has Sue Kruscak and Mike Miele as their leaders. Of course there is Garrett Scott of the Bloomington/Normal area who has run countless tournaments and brought almost 100 students from that area to this tournament.

I am sure that there are dozens of people that should be thanked for such a fine tournament. THANK-YOU. Please keep it up. ■

◆◆◆◆◆ A SENSATIONAL NEW TOURNAMENT! ◆◆◆◆◆

CHICAGO OPEN

MAY 22-25 or 23-25- Memorial Day weekend

**\$40,000 CASH PRIZES UNCONDITIONALLY GUARANTEED!
LARGEST PRIZE FUND EVER OFFERED IN THE MIDWEST!**

FREE LECTURES EACH ROUND BY GRANDMASTER ARTHUR BISGUIER! Players in all sections are invited to ask questions, or submit games for analysis by the former US Champion!

7-SS, 40/2, SD/1 (3-day option, rds 1-2 G/90), Ramada Hotel O'Hare, 6600 N Mannheim Rd, Rosemont, IL 60018. **\$40,000 GUARANTEED PRIZES- LARGEST EVER IN MIDWEST!** Now in 6 sections (note changes- **unrateds must play in new Under 1200/Unr Section, G/1, May 23-24 only, or in Open Section.**)

Open: \$\$G 4000-2000-1000-800-600-600-500-500, 2300-2449 \$\$G 1000-500-300, Under 2300/Unr \$\$G 1000-500-300. FIDE rated, 200 Novag Grand Prix Points, ChessBase-CCA Grand Prix Points available.

Under 2200: \$\$G 3000-1500-700-400-300-200-200-200.

Under 2000: \$\$G 3000-1500-700-400-300-200-200-200.

Under 1800: \$\$G 3000-1500-700-400-300-200-200-200.

Under 1600: \$\$G 2000-1200-600-400-300-200-200-200, U1400 class prizes \$\$G 1000-500-300.

Under 1200/Unr: Trophies to 1st 6, top 2 JHS students, top 2 Elementary students.

Provisional players (ratings based on 4-19 games): US citizen provisionals are eligible for full prizes. For non-US citizen provisionals, maximum prizes \$1500 in U2200, \$1000 U2000, \$700 U1800, \$400 U1600.

Entry fee, postmarked by 4/10: 4-day \$99, 3-day \$98. Postmarked 4/11-5/15: 4-day \$109, 3-day \$108. All \$130 at site (\$120 paid by money order). GMs \$60. **U1200/Unr entry fee:** \$14, under 18 \$9 postmarked by 5/15, both \$6 more at tmt. **All:** ICA memb. req. (\$14, under 18 \$8), other states OK. An Illinois Maxi-Tour event. Re-entry \$70- same or other schedule, with or without byes. U1200/Unr Section, no re-entry.

Choice of schedules: 4-day & 3-day merge rd 3, all compete for same prizes. **4-day schedule:** Fri 7; Sat 11 & 6; Sun 11 & 6; Mon 9 & 3:30. **3-day schedule:** Sat 10, 2, 6; then same as 4-day. **U1200/Unr schedule:** Sat 11, 2, 5, 8; Sun 11, 2, 5. **All:** ½-pt byes OK any; rds 4-7 must commit before tmt. Reg. ends hour before rd 1.

All: Hotel rates: \$59-59-69-69, 708-827-5131, reserve by 5/1. Free parking, free airport shuttle. Resort hotel with tennis, golf, pool, health club. **Ratings:** April USCF list used (same as May CHESS LIFE label). For foreigners, World Open rating rules used. Questions: 914-496-9658. No credit card or phone entries, no smoking, no computers. Open prizes paid 5/25, others mailed by 6/1. **Quick Quads each day (6 events):** See G/10-G/15 section of CHESS LIFE.

CONTINENTAL CHESS ASSOCIATION ENTRY FORM- use for any CCA tournament

Name _____ Tournament _____ Section _____

Number of days _____ USCF ID _____ Rating _____ Entry fee _____ Memb. dues _____

Address, if dues enclosed _____

Send to Continental Chess Association, PO Box 249, Salisbury Mills, NY 12577. Checks payable to same.

Use of entry form is optional- you can enter any Continental Chess event by sending name, tournament, section, number of days, USCF ID, rating, and fee. If you wish to keep this magazine intact, we suggest a photocopy.

CHESS TECH-TALK



by Marc Lonoff

CBTree

CBTree is a utility developed by ChessBase to turn CB game files into "position" databases. The utility should appeal to users of both CB and NICBase (the latter taking the intermediate step of using CBWorld to convert NICBase files to CB files). CBTree provides a way to study openings in large volumes of game data.

Begin with a special opening collection, say 3000 games in the Benko Gambit. First convert it to CB format, then run it through CBTreeMake. In barely minutes you have a functional tree with which you use CBTreeView to examine. You can then progress move-by-move through the tree of Benko Gambit variations and transpositions. At each position, the last move made, the average playing strength of the player (ELO rating), the frequency of the position in the database, and the average result achieved by white appears at the top.

More importantly, you see all the moves made from that position. For each move you see the number of games in which each move was made, the strength of the players making the move, and the result of the move. Now, if you click on a move and then on "games" in the menu you can see a list of games using the move and you may then follow any one of the listed games to its conclusion.

COMPARISON TO BOOKUP

Bookup7 by Chess Laboratories is the main alternative "position" database currently available. Compared to Bookup7, CBTree has strengths and weaknesses.

The strengths are obvious. CBTree processes up to 4096 games very quickly. Since it uses the game file for reference, it takes up far less disk space and enables you to examine complete games. The statistical information and ability to see the frequency of each move played and the strength of the players

making the moves is a important feature. CBTree makes using a database to analyze un-annotated games far easier.

CBTree lacks several features that are prominent in Bookup. First, in CBTree you cannot flip the board around to analyze from the black side. This makes it hard to work on your black opening repertoire. Secondly, you cannot enter moves or notes into CBTree, you can only view games already in your game file. Thirdly, you cannot see notes or annotations from your game file.

CBTree is a speedy utility for collating games from the white side. Other strengths of CBTree might be undermined by lack of data quality. Much of the data has no ELO ratings, so a default value of 2200 is used. Duplicate games appear in many guises and are hard to eradicate, so you may get funny numbers for frequency of moves played and the results may be skewed. A single win by black might appear five times on your database (from various sources) and make you think black does well in the line. You cannot kill duplicates directly in CBTree. You must go back to reform your game file

That being said, CBTree does allow you to quickly compile a survey of openings played by Botvinnik during his life, or in a tournament like New York 1924 or the New York Open of 1991.

CBTree is an excellent utility and makes CB more useful. It is not comparable to Bookup for study of openings. You can use Bookup to play through a repertoire book to put notes and lines into a data file. You can only do this in CB by adding lines in CB and then going to CBTree to compile them into a tree. On the other hand, if CBTree could show notes and nested lines (and flip from white to black) it would put Bookup out of business. As yet, CBTree does not try to do what Bookup7 does. Each program has its niche.

CBTree \$95 from ChessBase USA
1-800-524-3527

WORLD'S BIGGEST CHESS TOURNAMENT!

20th Annual

WORLD OPEN



ADAM'S MARK HOTEL, PHILADELPHIA

OPEN SECTION: 9-SS, July 1-5, 2-5, or June 29-July 5

OTHER SECTIONS: 8-SS, July 2-5 or 3-5

\$150,000 IN PRIZES- all unconditionally guaranteed!

In all 7 years at the luxurious Adam's Mark, the World Open has drawn more players than any other tournament. If you haven't played yet, make this the year you discover why so many keep coming back!

The hotel offers great playing conditions, low room rates, free parking for all. Reasonable food prices for a hotel; easy walk to good, inexpensive restaurants.

Located in the "Golden Mile," Philadelphia's finest area, Adam's Mark has indoor/outdoor pools, racquetball, saunas, whirlpool; golf & tennis nearby.

SPECIAL FEATURES:

1) **ALTERNATE SCHEDULE:** Fast schedule option, all sections, plays rds. 1-4 at G/45, then merges, saves time & hotel cost. 7-day Open Section schedule if you like one game a day; merges after rd 3.

2) **FRESH START:** Top 5 section players may re-enter any section or schedule, with byes if needed, for \$100. If you switch to a quicker schedule, you can start fresh without byes! Under 1200 section players may re-enter U1200 section for \$30, any other section for \$200.

3) **SPECIAL AIRFARES** on American, Delta, or US Air! Check on all three with one free call to Gramercy Travel, Desk #5, 800-537-3881. (In NY, 914-967-5505.)

4) **IM NORMS** possible. We expect to again have over 20 FIDE rated foreigners, including 10 GMs/IMs. All can then earn norms, even if playing no foreigners.

5) **ANALYSIS BY GM PAL BENKO**, former World Championship candidate, each round July 2-5. Players in all sections may submit games for consideration or ask questions. Free admission to everyone!

GUARANTEED PRIZES:

OPEN SECTION: \$12000, 6000, 3000, 1500, 1000, 800, 700, 600, 500, 500, 400, 400, 400, 400, 300, 300, 300, 300, 300. 2300-2449/unr: \$3000, 1500, 1000. UNDER 2300 (no unr): \$3000, 1500, 1000.

UNDER 2200 SECTION: \$10000, 5000, 2500, 1200, 1000, 800, 600, 500, 500, 500, 400, 400, 400, 400, 300, 300, 300, 300, 300. No non-US citizen unrateds allowed in section.

UNDER 2000 SECTION (no unrateds): \$10000, 5000, 2500, 1200, 1000, 800, 600, 500, 500, 500, 400, 400, 400, 400, 300, 300, 300, 300, 300, 300.

UNDER 1800 SECTION (no unrateds): \$10000, 5000, 2500, 1200, 1000, 800, 600, 500, 500, 500, 400, 400, 400, 400, 300, 300, 300, 300, 300, 300.

UNDER 1600 SECTION (no unrateds): \$10000, 5000, 2500, 1200, 1000, 800, 600, 500, 500, 500, 400, 400, 400, 400, 300, 300, 300, 300, 300, 300. **UNDER 1400 CLASS PRIZES (not a section):** \$2000, 1200, 800. U1400s play for both U1600 place prizes and U1400 class prizes, & receive larger if winning both.

UNDER 1200/UNR SECTION: \$200, 160, 130, 110, 100, 90, 80, 70, 60.

NON-US CITIZENS need 20+ games on 2/92 or prior list or acceptable foreign rating to win over \$2000 in U22, \$1500 U20, \$1000 U18, \$500 U16.

OPEN SECTION SCHEDULES: 7-day: Mon-Thu 7 pm, Fri-Sat 11 am & 7 pm, Sun 11 am. 5-day: Wed-Sat 11 am & 7 pm, Sun 11 am. 4-day: Thu 4, 6, 8, 10 pm; then same as 7-day & 5-day.

OTHER SECTION SCHEDULES: 4-day: Thu 1 & 8 pm, Fri-Sat 10 am & 5 pm, Sun 9 am & 4 pm. 3-day: Fri 4, 6, 8, 10; then same as 4-day.

JUNE USCF RATING SUPPLEMENT (same as July CHESS LIFE label) and CCA ratings used. See CCA list in 4/92 CHESS LIFE, to be updated 7/92.

RESERVE ROOM early. Adam's Mark (215-581-5000) & Holiday Inn next door (215-477-0200) chess rates, \$66 for 1-4/room. Adam's Mark requires 1 night deposit, usually fills up in May.

North American Motor Inn (215-878-3100) is 6 blocks from tmt. McIntosh Inn (215-768-9100) & Budget Lodge (215-265-7200), 15 min. away (I-76 exit 24), have no chess rate but are under \$50.

TOP 5 SECTIONS ENTRY FEE: Postmarked by 4/15: 5-day \$205, 4-day \$204, 3 or 7-day \$203. 4/16-5/15: 5-day \$215, 4-day \$214, 3 or 7-day \$213. 5/16-6/17: 5-day \$225, 4-day \$224, 3 or 7-day \$223. At site: all \$250 (\$240 by money order). GMs, foreign IMs: \$100. Foreign FIDE 2205/over: \$150. **UNDER 1200 ENTRY FEE:** 4-day \$39, 3-day \$38 postmarked by 6/17, both \$50 at site.

ALL: Do not mail entry after June 17. USCF membership required; entry fee \$2.50 less if mailed with \$30 adult or \$15 junior USCF dues.

No smoking, no computers, no equipment supplied. Open prizes paid 7/5, others mailed (by 7/13).

OTHER EVENTS: International 6/25-29, Warmup 6/27-28, Amateur 6/29-7/1, 15-minute Championship 7/5, Blitz Championship 7/6, Quads each day.

SEE CHESS LIFE for bye & rating info, other events, etc.

ROOM SHARING: call 914-496-9658.

ENTRIES, checks payable: Continental Chess Assn. PO Box 249, Salisbury Mills, NY 12577. Include name, tournament, section, number of days, ID, rating, fee. No phone or credit card entries. no checks over \$100 at site. Unless you ask to play up, you'll be entered in lowest possible section.

ENTRY FORM: Use of entry form is optional. See Chicago Open ad, this issue, for entry form, which may be used for World Open or any other CCA event.

MAILED ENTRIES do not "register" or "check in" at site; just find round 1 pairing and begin play.

In the beginning there was the endgame

by Brian Schuman

Welcome to endgames. I would like to identify myself and inform you about my intentions in these articles. My name is Brian Schuman, I'm in my forties, have been in programming since 1969 and enjoy mathematics, nature, chess, and music. I learned chess in high school, won the Lake County Championship my senior year, joined the USCF a year later, and playing off and on, finally achieved my National Master Title in 1986. My goal in these articles will be to provide different perspectives, stimulate interest, and provide current updates in the subject of endgames (my favorite aspect of chess). Different perspectives will come from a variety of texts and my own analysis. I will present informative examples and aesthetically pleasing problems to stimulate interest. And will present and possibly analyze endgames sent to me from readers or extracted from USCF games. I hope their will be something of interest for all categories of players. Thanks!

There is not always a clear demarcation where the opening, middlegame, and endgame begin or end. I will consider a position an endgame when the King becomes a fighting piece. Pawn promotion generally becomes possible and even thematic during the endgame. Endgames, more than openings and middle games, are studied backwards, ie. positions which can be transposed to are studied before positions that can be transposed from. One has to know whether the simpler position resulting from an exchange of pieces is advantageous or winning, and also how to proceed to win or increase ones advantage. Let us begin with the chess board. Why two colors? It makes identification of diagonal destinations easier for bishops and queens (perhaps something the game of GO could use for schicho's). Without pieces the board has only ten different categories of squares (defined by neighbor squares) as the diagram shows. As pieces are placed on the board the symmetry breaks up and each square becomes unique unto itself (just as when the Universe cooled it broke up into its four separate forces). Aah the pieces.

I. Uniqueness among the pieces.

- A. The king is the only piece which cannot be captured or whose value is infinite.
- B. The queen combines the moves of two pieces at once (both the Bishop and the Rook) It is also the most powerful piece.

- C. The rook is the only piece that does not increase in power as it approaches the center.
- D. The bishop may visit only half the squares on the board.
- E. The knight is not impeded by friend or foe and alternates the color of its square on every move.
- F. The pawn is the only piece that can never move to from whence it came, that can metamorphose into another piece, and captures differently than it moves.

G. Miscellaneous

1. Castling is the only move that allows two pieces to move simultaneously.
2. En passant is the only move in which the capturing piece is moved to a square other than where the captured piece stood. This allows force lines to be cleared thru 2 squares instead of 1 (in discovered attack themes). Originally the pawns could only move one square forward at a time, but since contact with opposing troops usually required at least two moves, someone decided to speed up the game and allow a pawn's first move to be 2 squares forward. People who went to the trouble getting their pawns all the way to the fifth rank did not enjoy seeing these optimistic chameleons whizz by, hence en passant. Accuracy and details of this history may be suspect.

II. The Center - (the four squares d4,d5,e4,e5) Its importance is created by two facts.

- A. The number of squares controlled by pieces occupying the center is usually greater than the same piece on the edge or corner of the board.
- B. Short range pieces like the king and knight are able to reach more areas of the board in less moves.
- C. The assumption is that, given no other information, the more options or possibilities the better.

III. The King and the Board

- A. The king and a square- The relationship is simple, the king may occupy a square, guard or control a square, or move toward a square.
- B. The centralized king-
 1. From the center the king can reach any square on the board in a maximum of 4 moves (few enemy pawns could outrun such a monarch)
 2. Serious consideration must be given to centralizing the king as the endgame approaches. A powerfully centralized king is often enough advantage to win an ending.
- C. The distance and paths covered by the king-

1. The squares a king can reach in x moves is represented by concentric squares surrounding the king.
 - a. In 1 move it can reach 8 new squares
 - b. In 2 moves it can reach 16 new squares
 - c. In 3 moves it can reach 24 new squares.
2. Once the king has committed itself to a direction toward one of these concentric squares he can no longer get to all of the same 8, 16, or 24 squares originally possible. A diagonal move allows the king to get to more of the original squares than a vertical or horizontal move.
 - a. A diagonal move loses the possibility of reaching all but 9 of the original 24 squares (15 lost).
 - b. A horizontal or vertical move loses all but 5 (19 lost).
 - c. This means that generally the diagonal move allows one to move in two directions at once and hence generally can perform two functions.
3. Back to the concentric squares.
 - a. There is only 1 path to reach a corner of this square in a requisite number of moves.
 - b. The squares directly forward, backwards or sideways from the original king position have the most paths.
 - c. The numbers of paths increase from the corner to the central square.
 - d. This means it is easier to prevent or block a king from getting to a diagonal square than a horizontal square the same distance away.

IV. King vs. King

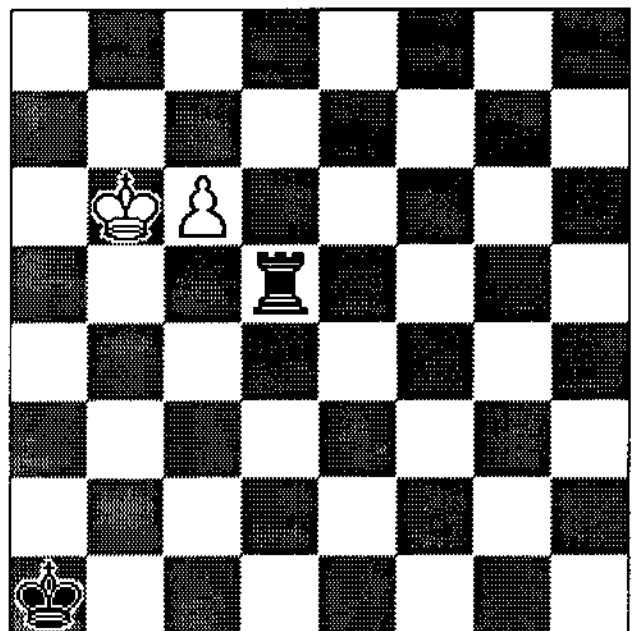
- A. Let there be no mistake, this is a definitive draw. Why then are we looking at this, why why why?!. We are trying to separate a complex subject into its elements for simpler analysis leaving the re-integration to the reader.
- B. The aggressive king will try to occupy or control a square while the defensive king will try to prevent this by occupying a square himself or blocking the opponent's king's path to the square.
- C. The Opposition- We shall discuss the direct opposition, the diagonal opposition, the distant opposition, and the rectilinear opposition.
 1. The direct opposition (kings on d4, d6)- The kings face each other (as close as is possible even in this day and age) horizontally (preferable) or vertically, separated by exactly 1 square (which they will smoke afterwards). Whichever king does not have the

move is said to have the opposition. What can the king do with the opposition? What can the king do without the opposition?

- a. The king with the opposition (hereafter known as superking) can
 - (1) occupy any square behind or to the left or right of himself. He can prevent the opposing king from even attacking any of these squares.
 - (2) attack any square on the board
 - (3) occupy one of any two non-contiguous squares (examples and procedures will follow).
- b. The king without the opposition is not without resource, he can
 - (1) occupy any square behind or to his left or right. He cannot prevent the opposing king from attacking any of these squares.
 - (2) He can prevent the opposing king from occupying any one particular square or two contiguous squares other than those stated in a. (1) above.

The deadline to publication is approaching, so I will end the article after presenting a favorite problem. I find the problems apparent simplicity, the solutions methodical procedure and final surprises, a fine example of the inherent beauty in chess. In the next article, I will discuss diagonal, and distant opposition. I will also give practical examples for all discussions.

**Problem 1: White (Kc6, c6) Black (Ka1, Rd5)
White to move and win (Solution next issue)**



ChessBase USA Announces the Release of CBTree

"The world's most powerful positional database"

ChessBase 3.0 has always been the world's most powerful *games* database; now CBTree uses existing ChessBase files to create the world's most powerful *positional* database, adding a new weapon to ChessBase USA's remarkable arsenal of chess study tools - for only \$55!

CBTree takes any ChessBase file of up to 4096 games and - in a matter of minutes - converts them to a single ECO-style openings tree, a lightning fast positional database that puts its slower, clumsier competitors to shame. At each branch, CBTree gives you an instant move-by-move statistical breakdown, sorting variations by frequency, won-lost percentage, and average ELO performance.

"My God!" exclaimed one seasoned international master after reviewing a grandmaster's games with black using CBTree. "It's like an X-ray - I can literally *see* what my opponent is thinking move by move!"

Even in isolation from ChessBase's other computer tools, CBTree combines with existing ChessBase data to create a new generation of positional chess study tools. With CBTree, move-by-move opening preparation, study for a specific opponent, or statistical research on your favorite player's opening repertoire becomes a trivial matter - a few clicks of a mouse or taps of a key.

If you already own ChessBase 3.0, Access or KnightStalker, then CBTree adds an entirely new dimension to an already outstanding training environment. If you are new to the ChessBase family of professional training tools, CBTree offers a new way in.

Flash!!!

CBWorld (\$49) now converts Bookup 7 and NICBase 3.0 data!

Move existing Bookup 7 and NICBase files to ChessBase format
for use with ChessBase 3.0, Access, KnightStalker and CBTree.
(Previous owners - \$10 upgrade)

And don't forget ChessBase USA's original family of fine computer tools for chessplayers:

ChessBase 3.0 Deluxe (11,000 games - \$395) and ChessBase Basic (1100 games - \$295)
KnightStalker Deluxe (3500 games - \$95) and KnightStalker Basic (570 games - \$49.95)
Access (500 games - \$39.95) and ChessBase University (Access + KnightStalker - \$75)
(MS-DOS only - specify disk size when ordering)



Free ChessBase 3.0 Demo!!!

Send \$3 postage and handling for a free hands-on demonstration
with a 159-game database.

Specify disk size (3.5" or 5.25") when ordering:
ChessBase USA - 75 Main Street #16 - Manasquan, NJ 08736

To order, call:

1-800-524-3527

ICA TOUR STANDINGS

1992 ILLINOIS CHESS ASSOCIATION TOUR STANDINGS

by Bill Smythe (Tour Statistician)

This list reflects the following events:

**Tim Just Winter Open, Grayslake
MAXI – Jan. 11-12**

**Fox Valley Championship, Aurora
MAXI – Jan. 25-26**

**Mid-America Class, O'Hare
MAXI – March 13-15**

**Normal Redbird Open, Normal
Mini – March 21**

Upcoming 1992 Tour events:

**Chicago Amateur, O'Hare
MAXI – April 3-5**

**Midwest Amateur, O'Hare
MAXI – April 10-12**

**Greater Peoria Open
MAXI – May 2-3**

**Chicago Open, O'Hare
MAXI – May 22-25**

**Springfield Summer Action
Mini – June 13**

**Midwest Class, Chicago
MAXI – July 17-19**

**Illinois Open
MAXI – Sept. 5-7**

**Springfield Action
Mini – Oct. 10**

**Illinois Class
MAXI – Nov. 22-23**

Many more events will be added as the year progresses.
A player must compete in at least three Tour events
during 1992 to be eligible for year-end Tour prizes.

MASTER TOUR POINTS

COLIAS Bill	19
COOPER Thomas	16.5
BOCK Dale	(1) 16
COOKE Paul	(1) 16
DZINDZICHASHVILI	(1) 16
IVANOV Alexander	(1) 16
CHOW Albert	14.5
MARQUEZ Tony	(2) 11
MARSHALL James	11
MARTINOVSKY Euge	(2) 10.5
MANION Josh	(2) 10
LONOFF Marc	(2) 9
BERNARD Thomas	(1) 8
BISGUIER Arthur	(1) 8
CHONG David	(2) 8
FISHBEIN Alex	(1) 8
KRAAI Jesse	(1) 8
LEVIT Roman	(1) 8
SHIRAZI Kamran	(1) 8
STEIN Peter	(1) 8
COHEN Larry	6
DZURNY Anthony	6
MC CARTHY Mike	6
COHEN Howard	5
SAX Robert	4.5
BOLITHO Tom	(1) 4
ELLICE Wayne	(1) 4
INGRAM Randy	(1) 4
IVANOV Igor	(1) 4
LULVES Joseph	4
MERLI Chris	(1) 4
PELTS Peter	(1) 4
SCOTT Winfield	(1) 4
SPHAR Robert	(1) 4
VERO Carl	(1) 4
WARFIELD Tom	(1) 4
WARREN James	(2) 4
BACHLER Kevin	(1) 3
BASIN Leonid	(1) 3
BURNETT Kevin	(1) 3
DE FOTIS Greg	(1) 3
GINSBURG Jeffrey	(1) 3
GRAVES William	(1) 3
GUREVICH Dmitry	(1) 3
JUNGMAN Gerard	(2) 3
KARKLINS Andrew	(1) 3
KRECKLER Warren	(1) 3
O'DONNELL Robert	(1) 3
OLESEN Martin	(1) 3
REMLINGER Larry	(1) 3
SZPISJAK Steve	(1) 3
UMEZINWA George	(1) 3
VALVO Michael	(1) 3
YOOS John	(1) 3
ALLISON Roger	(2) 2.5
ARLINSKY Steve	(1) 2.5
CALDWELL Scott	(1) 2.5
DECMAN Steve	2.5
FULLER Bret	(2) 2.5
KIMME Duane	(1) 2.5
KINNAIRD Rodney	(2) 2.5
LEALI Michael	(1) 2.5
LYNN Steve	(1) 2.5
PORTER John	(2) 2.5
ZERZOPULOS Santi	(1) 2.5

ANDERSON Phil	(1) 2
ASH Robert	(1) 2
BELLE John	(1) 2
BROCK William	(1) 2
BURIAN David	(2) 2
CAMARDA Kyle	(1) 2
CLARK Wayne	(1) 2
EARLEY Robert	(1) 2
EWALT Eric	(1) 2
FRAATS Dan	(2) 2
GEORGE Matt	(1) 2
GROVES John	(1) 2
HAUPTFELD Sven	(2) 2
HILLMAN Bruce	(2) 2
INUMERABLE Flore	(1) 2
JHAVERI Sulay	(1) 2
KALAI Adam	(1) 2
KAMEN Dan	(2) 2
KITTILSEN Guy	2
KUKLA Kevin	(1) 2
LAREN Philip	(1) 2
LEVINE David	(1) 2
MARTIN Roger	(1) 2
MECHEM Paul	(1) 2
NAFF William	(1) 2
OBERWEIS James D	(2) 2
PATTERSON Dan	(1) 2
PLETT Michael	(1) 2
REYNOLDS Robert	(1) 2
ROGAN Marvin	(1) 2
SCOTT Garrett	(1) 2
SEFCHECK Mark	(2) 2
TORREGROSSA Ron	(1) 2
TSEMEKHMEN Vadim	(1) 2
WALLACH Ken	(1) 2
WEISS Mitch	(1) 2
WETZEL David	(1) 2
ZEVNIK Lawrence	(1) 2
BALE Les	(2) 1.5
FULTON Steve	(2) 1.5
GRATZ Glen	(1) 1.5
GREANIAS Steven	(1) 1.5
HURCHALLA David	(1) 1.5
KAUSHANSKY Leo	(1) 1.5
MADDEX William	(1) 1.5
MILLS Chris	(1) 1.5
MININ Serge	(1) 1.5
SCHILLER Eric	(1) 1.5
SCHNITTCHEN Juli	(1) 1.5
CRUISE Donald	(1) 1
DAVIS John	(1) 1
FREDKIN Andres	(1) 1
FROST Carl	(1) 1
HELLER Jack	(2) 1
JOHNSON Don	(1) 1
LEALI Mathew	(1) 1
MARTIN Steven	(1) 1
MOUSHEY Bill	(1) 1
NAPOLI Carl	(1) 1
PAPHITIS Alexander	1
PUKEL Bernard	(2) 1
RYDBERG Steeve	(2) 1
SRONCE Gavin	(1) 1
WILLITZ Calet	(1) 1
BUTTNY Bill	(2) 0.5
CONDON James	(1) 0.5
HARDY Chris	(1) 0.5

SUBMISSION DEADLINE FOR
JULY-AUGUST ISSUE

JUNE 1, 1992

Only computer printed or
typed copy will be accepted.



ICA TOUR STANDINGS

KNISLEY Kevin (1) 0.5
RACE Thomas (2) 0.5

EXPERT TOUR POINTS

ERNST Edward (1) 32
BOCK Dale (1) 16
WARD Tom (1) 16
MARSHALL James 13.5
MARQUEZ Tony (2) 11
CHONG David (2) 10
COHEN Larry 8.5
BERNARD Thomas (1) 8
BRODIE Mark (1) 8
JOHNSON Leonard (1) 8
LEE Tyrone (1) 8
STEIN Peter (1) 8
DZURNY Anthony 6
MC CARTHY Mike 6
SAX Robert 6
COHEN Howard 5
JUNGMAN Gerard (2) 5
KINNAIRD Rodney (2) 5
KAMEN Dan (2) 4.5
PORTER John (2) 4.5
BOLITHO Tom (1) 4
ELLICE Wayne (1) 4
FUERNKRANZ Johan (1) 4
HEYER Jon Paul (1) 4
INGRAM Randy (1) 4
JAKSTAS Kazimier (1) 4
KARKLINS Erik (1) 4
LULVES Joseph 4
MARCONNET John (1) 4
MERLI Chris (1) 4
REEVES Thomas (1) 4
SCHMIDT Ulrich (1) 4
SCOTT Winfield (1) 4
SPHAR Robert (1) 4
VERO Carl (1) 4
WARFIELD Tom (1) 4
WARREN James (2) 4
ZELENSKY Eugene (1) 4
GRAVES William (1) 3
IKEUCHI Curtis (1) 3
SHEAF Michael (1) 3
SZPISJAK Steve (1) 3
WACHTEL Howard (1) 3
WONG Philip (1) 3
ALLISON Roger (2) 2.5
ARLINSKY Steve (1) 2.5
BERRY Gregory (1) 2.5
BOLTON Richard (1) 2.5
CALDWELL Scott (1) 2.5
CHEHAYEB Salah (1) 2.5
DECMAN Steve 2.5
FULLER Bret (2) 2.5
GUSTAFSON Dale (1) 2.5
KIMME Duane (1) 2.5
KNUTSON Greg (1) 2.5
LEALI Michael (1) 2.5
LYNN Steve (1) 2.5
MAZUCHOWSKI Thom (1) 2.5
MURRAY William (1) 2.5
SPLINTER Joseph (1) 2.5
WALLACH Cliff (1) 2.5
ZERZOPULOS Santi (1) 2.5
ANDERSON Phil (1) 2

ASH Robert (1) 2
BECKER Sidney (1) 2
BELLE John (1) 2
BENESA Amulfo (1) 2
BOHANNON Mark (1) 2
BROCK William (1) 2
BURIAN David (2) 2
CAMARDA Kyle (1) 2
CLARK Wayne (1) 2
EARLEY Robert (1) 2
EWALT Eric (1) 2
FLAGA Krzysztof (1) 2
FRAATS Dan (2) 2
GEORGE Matt (1) 2
HAUPTFELD Sven (2) 2
HILLMAN Bruce (2) 2
HOLYFIELD Robert (1) 2
JHAVERI Sulay (1) 2
KALAI Adam (1) 2
KITILSEN Guy 2
KUKLA Kevin (1) 2
MECHEM Paul (1) 2
NAFF William (1) 2
OBERWEIS James D (2) 2
PATTERSON Dan (1) 2
PLETT Michael (1) 2
REYNOLDS Robert (1) 2
ROGAN Marvin (1) 2
SCOTT Garrett (1) 2
SCOTT Gene (1) 2
SEFCHECK Mark (2) 2
SIWEK Mark (1) 2
ZEVNIK Lawrence (1) 2
BALE Les (2) 1.5
BRADY Undell (1) 1.5
FULTON Steve (2) 1.5
HAYES Raymond (1) 1.5
HURCHALLA David (1) 1.5
JORDAN Roland (1) 1.5
MC NAMARA James (1) 1.5
MININ Serge (1) 1.5
CRUISE Donald (1) 1
DAVIS John (1) 1
FAGAN James (1) 1
FREDKIN Andres (1) 1
FROST Carl (1) 1
HELLER Jack (2) 1
JANKAUSKAS Kazya (1) 1
JOHNSON Don (1) 1
LEALI Mathew (1) 1
LUBKA Reuben (1) 1
MARTIN Steven (1) 1
MOUSHEY Bill (1) 1
PAPHITIS Alexander 1
PUKEL Bernard (2) 1
RICHMOND M Barri (1) 1
RYDBERG Steeve (2) 1
SRONCE Gavin (1) 1
STERN Howard (1) 1
WILLITZ Calet (1) 1
BUTTNY Bill (2) 0.5
CONDON James (1) 0.5
DODD Jason (1) 0.5
HARDY Chris (1) 0.5
KNISLEY Kevin (1) 0.5
KUJOTH Richard (1) 0.5
MADERA William (1) 0.5
RACE Thomas (2) 0.5

ZAFRIN Vladimr (1) 0.5
ZIEMACKI Rafal (1) 0.5

Class A Tour Points:

JASAITIS Anthony (1) 32
BOCK Dale (1) 16
PRADZINSKI Tim (1) 16
STOLTZ Robert (1) 16
CHONG David (2) 10
COHEN Howard 9
MC CARTHY Mike 8.5
BERNARD Thomas (1) 8
FREEMAN David (1) 8
MILOVANOVIC Slav (1) 8
LULVES Joseph 6
RYDBERG Steeve (2) 5
BALE Les (2) 4.5
FRAATS Dan (2) 4.5
PORTER John (2) 4.5
BOLITHO Tom (1) 4
DUDKOWSKI Zibby (1) 4
ELLICE Wayne (1) 4
HERNANDEZ Hector (1) 4
INGRAM Randy (1) 4
KOVALIC Jeffrey (1) 4
MC ALISTER Kelvi (1) 4
OBERWEIS James D (2) 4
SCOTT Winfield (1) 4
SEFCHECK Mark (2) 4
SIEGH Clifford (1) 4
SPHAR Robert (1) 4
VERO Carl (1) 4
WARFIELD Tom (1) 4
WULATIN David (1) 4
DECMAN Steve 3.5
FULTON Steve (2) 3.5
CARROLL William (1) 3
CORARETTI Ron (1) 3
EATON Jonathan (1) 3
GONCHAROFF Nicko (1) 3
GRAVES William (1) 3
HANSEN Steven (1) 3
JOHNSON Eric (2) 3
LEIGHTON George (1) 3
LIEBOWITZ Robert (1) 3
MARSHALL Larry (1) 3
PUKEL Bernard (2) 3
SMITH Michael (1) 3
WYDRYCK Robert (1) 3
YARMULNIK Alex (1) 3
ALLISON Roger (2) 2.5
CALDWELL Scott (1) 2.5
DIAZ Pablo (1) 2.5
DWYER William (1) 2.5
FULLER Bret (2) 2.5
KIMME Duane (1) 2.5
LAHR H Fred (1) 2.5
LEALI Michael (1) 2.5
ZERZOPULOS Santi (1) 2.5
ANDERSON Phil (1) 2
BELLE John (1) 2
BERRY Thomas (1) 2
BURIAN David (2) 2
CAMARDA Kyle (1) 2
CLARK Wayne (1) 2
DREBENSTEDT Jame (1) 2
EARLEY Robert (1) 2

EGERTON James (1) 2
EWALT Eric (1) 2
GABRIEL Robert (1) 2
GARDNER Charles (1) 2
GEORGE Matt (1) 2
HAUPTFELD Sven (2) 2
HILLMAN Bruce (2) 2
JHAVERI Sulay (1) 2
KALAI Adam (1) 2
KITILSEN Guy 2
KUKLA Kevin (1) 2
LEOPOLDI Norbert (1) 2
LYON Mark (1) 2
MARCOWKA Robert (1) 2
MECHEM Paul (1) 2
MIHAJLOV Alexand (2) 2
PATTERSON Dan (1) 2
PLETT Michael (1) 2
REBER Paul (1) 2
SCHMUCKER Vivian (1) 2
SCHUSCHEL Hans (1) 2
SCOTT Garrett (1) 2
STEWART Allen (2) 2
TANAKA James (1) 2
WHITACRE Fredric (1) 2
ZEVNIK Lawrence (1) 2
BEASLEY LEONARD (1) 1.5
BRADY Undell (1) 1.5
DAVOLT Doug (1) 1.5
BOHANNON Ted (1) 1
BROWN Tony (1) 1
BRYANT Daniel (1) 1
CRUISE Donald (1) 1
DAVIS John (1) 1
FREDKIN Andres (1) 1
FROST Carl (1) 1
HELLER Jack (2) 1
JOHNSON Don (1) 1
KERR H L (1) 1
LEALI Mathew (1) 1
MARTIN Steven (1) 1
MOUSHEY Bill (1) 1
OSTERLUND Russel (1) 1
PAPHITIS Alexander 1
RACE Thomas (2) 1
RICHMOND M Barri (1) 1
SJERVEN Donald (1) 1
SRONCE Gavin (1) 1
WILLITZ Calet (1) 1
BUTTNY Bill (2) 0.5
DODD Jason (1) 0.5
HARDY Chris (1) 0.5
KNISLEY Kevin (1) 0.5

CLASS B TOUR POINTS

PAPHITIS Alexander 49
GRAY James (2) 33
SANCHEZ Ignacio 18.5
REED Boyd (2) 16
SMITH Brian (1) 16
WILLIAMS Kent (2) 12
KITILSEN Guy 11.5
CRAGGS Tommy 11
PARSONS Bob (2) 11
GRANT Dennis (2) 9.5
CLARK Lawrence (2) 9
CLARK Todd (2) 8

ICA TOUR STANDINGS

COLEMAN George	(1)	8	EARLEY Robert	(1)	2	IOVIN Daniel	(2)	6	LANDS Jerry	(1)	1.5
PETERS Ed	(1)	8	EWALT Eric	(1)	2	OBERWEIS Julie	(2)	6	MILOVANOVIC Mirk	(1)	1.5
WEINER Howard	(1)	8	GEORGE Matt	(1)	2	WIRTH Mike	(2)	6	MUNOZ Alberto	(1)	1.5
DITSWORTH Todd	(2)	7	HICKS Charles	(1)	2	WALLER Ron	(2)	5	PENA Wakdo	(1)	1.5
ENGELN Mark	(2)	7	HIGHTOWER Dean	(1)	2	CISKO Greg	(2)	4.5	VIGANTS Albert	(1)	1.5
AMIRANTE Ron		6.5	HILLMAN Bruce	(2)	2	HILLMAN Bruce	(2)	4.5	WALLACE Mark	(1)	1.5
HAUPTFELD Sven	(2)	6	JHAVERI Sulay	(1)	2	COLLINS Darrell	(1)	4	WIRTALA Mark	(1)	1.5
JOHNSON Eric	(2)	6	KITTSLEY Scott	(1)	2	GASIECKI Alan	(1)	4	WISOWATY John	(1)	1.5
MIHAJLOV Alexand	(2)	6	KNOX Malcolm	(1)	2	HORSKOP Fred	(1)	4	WYNKOOP Walker	(1)	1.5
MORTON Bruce	(2)	6	KUKLA Kevin	(1)	2	KALE Satuh	(1)	4	ZOELLNER John	(1)	1.5
JOSEPHS Steve		5.5	LEE Byron	(1)	2	MAURER Pat	(2)	4	CRUISE Donald	(1)	1
LUTZKE Rick	(2)	5.5	MC MILLEN Patric	(1)	2	POON Chung-Hay	(1)	4	DAVIS John	(1)	1
GORAL Brad	(2)	5	MECHEM Paul	(1)	2	VERNON Ken	(1)	4	DUMAS Steve	(1)	1
PADILLA Rudy		5	PATTERSON Dan	(1)	2	WHITE David	(1)	4	FREDKIN Andres	(1)	1
SWANSON Victor	(2)	5	PINDAK Kim	(1)	2	WONG Felix	(1)	4	FROST Carl	(1)	1
BURIAN David	(2)	4.5	POPE Raymond	(1)	2	JOHNSON Henderso	(2)	3.5	JOHNSON Don	(1)	1
DURRANT Larry		4.5	SANCHEZ Isaac	(2)	2	MARSCHALL Ed	(2)	3.5	LEALI Mathew	(1)	1
FULLER Bret	(2)	4.5	SCOTT Garrett	(1)	2	BALES Robert		3	MARTIN Steven	(1)	1
BRODDE Jeff	(2)	4	WARREN Helen	(1)	2	CARSON David	(1)	3	MOUSHEY Bill	(1)	1
DRAVES Rodney	(1)	4	ZELINSKI Daryl	(1)	2	DUDIC Filip	(1)	3	SHULL David	(1)	1
ELLICE Wayne	(1)	4	ZEVNIK Lawrence	(1)	2	HALLEY Dennis	(1)	3	SRONCE Gavin	(1)	1
INGRAM Randy	(1)	4	ANDERSON Richard	(1)	1.5	HELLER Jack	(2)	3	THOMAS Kyle	(1)	1
SPHAR Robert	(1)	4	BROOKS Amy	(1)	1.5	KLINELETTER Howa	(1)	3	TURNER Keith	(1)	1
STEWART Allen	(2)	4	CALLAHAN Jerry	(1)	1.5	PALMER Ken	(2)	3	WILLITZ Calet	(1)	1
VAKIL Behrouz	(1)	4	CIMA Joe	(1)	1.5	SHANE David	(1)	3	HARDY Chris	(1)	0.5
WARFIELD Tom	(1)	4	HENDERSON Dale	(1)	1.5	VAKIL David	(1)	3	HEILSKOV Jens	(1)	0.5
JOHNSON Henderso	(2)	3.5	JACKSON Donald	(1)	1.5	ZAFAR Saeed	(1)	3	KNISLEY Kevin	(1)	0.5
SILVERMAN Scott		3.5	MARSCHALL Ed	(2)	1.5	DUNLAP Tony	(1)	2.5	KOSKI John	(1)	0.5
SOLOMKA Carl	(2)	3.5	MATTHEWS Gregory	(1)	1.5	FENNER Charles	(1)	2.5	OBERWEIS Joseph	(1)	0.5
WOODRUFF Philip	(2)	3.5	MAURER Pat	(2)	1.5	GODDARD John	(1)	2.5	WHITMAN Rich	(1)	0.5
ALTON Matthew	(1)	3	WALLACE Mark	(1)	1.5	JENKINS Mike	(1)	2.5			
BARTOCCI Mario	(1)	3	WILLIAMS Douglas	(1)	1.5	MANZELLA Jam	(1)	2.5			
BURKE J Marcellu	(1)	3	CRUISE Donald	(1)	1	MC CRIMON Carlos	(1)	2.5			
CARSON David	(1)	3	DAVIS John	(1)	1	PETERSON Anthony	(1)	2.5			
GONCHAROFF Nicko	(1)	3	ENGLES Roy	(1)	1	REDDICK Harold	(1)	2.5			
IOVIN Daniel	(2)	3	FREDKIN Andres	(1)	1	SCHWARTZ Len	(1)	2.5			
JORDAN Willie	(1)	3	FROST Carl	(1)	1	URAM Max	(1)	2.5			
LIEBOWITZ Robert	(1)	3	HELLER Jack	(2)	1	WINTER Victor	(1)	2.5			
MC GINNESS John	(1)	3	JOHNSON Don	(1)	1	ZERZOPULOS Santi	(1)	2.5			
MONTGOMERY Harol	(1)	3	KERR H L	(1)	1	BELLE John	(1)	2			
OBERWEIS Julie	(2)	3	LEALI Mathew	(1)	1	BIEZYNSKI Stan	(1)	2			
PALMER Ken	(2)	3	MARTIN Steven	(1)	1	CATHCART Daniel	(1)	2			
RAIMO Robert	(2)	3	MOUSHEY Bill	(1)	1	DENG Jian	(1)	2			
RAMIREZ Rafael	(1)	3	ROSTROM C Richar	(1)	1	EARLEY Robert	(1)	2			
WIRTH Mike	(2)	3	SRONCE Gavin	(1)	1	GEORGE Matt	(1)	2			
ZAFAR Saeed	(1)	3	THOMAS Kyle	(1)	1	HERNANDEZ Dan	(1)	2			
ZINT Michael	(1)	3	TURNER Keith	(1)	1	HICKS Charles	(1)	2			
GAPUZ Wilfredo	(1)	2.5	WILLITZ Calet	(1)	1	HIGHTOWER Dean	(1)	2			
GIERTZ Charles	(1)	2.5	EICHBAUM Edgar	(1)	0.5	JHAVERI Sulay	(1)	2			
HELT David	(1)	2.5	HARDY Chris	(1)	0.5	KUKLA Kevin	(1)	2			
HOUSE Steve	(1)	2.5	KNISLEY Kevin	(1)	0.5	LEE Byron	(1)	2			
HOWELL Thomas	(1)	2.5	KOSKI John	(1)	0.5	MC MILLEN Patric	(1)	2			
KIMME Duane	(1)	2.5				MEADOR John	(1)	2			
LEALI Michael	(1)	2.5				MECHEM Paul	(1)	2			
LEVINE Neil	(1)	2.5				MITCHELL Gary	(1)	2			
NELSON Patrick	(1)	2.5				SANCHEZ Isaac	(2)	2			
RATNER Jacob	(1)	2.5				SOLANO Mario	(1)	2			
WALLER Ron	(2)	2.5				WARREN Helen	(1)	2			
ZERZOPULOS Santi	(1)	2.5				WOOLLEY Scott	(1)	2			
BALES Robert		2				YOUNG Phillip	(1)	2			
BELLE John	(1)	2				ZELINSKI Daryl	(1)	2			
BIEZYNSKI Stan	(1)	2				ANDERSON Richard	(1)	1.5			
CATHCART Eugene	(1)	2				BROOKS Amy	(1)	1.5			
CISKO Greg	(2)	2				BUTLER Craig	(1)	1.5			
CLARK Wayne	(1)	2				CALLAHAN Jerry	(1)	1.5			
COOPER William	(1)	2				FERRONI George	(1)	1.5			
DREBENSTEDT Jame	(1)	2				HANNEMAN Gary	(1)	1.5			
DUDNICK Steve	(2)	2				HENDERSON Dale	(1)	1.5			

CLASS C TOUR POINTS

JOSEPHS Steve	21.5
JOHNSON Frank	(1) 16
SCHULTZ Dan	(1) 16
CRAGGS Tommy	13.5
AMIRANTE Ron	8.5
KNUTSON Gerald	(1) 8
PURKEY Lance	(1) 8
SLAGLE Steve	(1) 8
YBARRA Ruben	(1) 8
SILVERMAN Scott	7.5
DURRANT Larry	7
RAIMO Robert	(2) 7
DUDNICK Steve	(2) 6

CLASS D TOUR POINTS

CRAGGS Tommy	13.5
WIRTH Mike	(2) 6
HILLMAN Bruce	(2) 4.5
VERNON Ken	(1) 4
BALES Robert	3
HELLER Jack	(2) 3
JENKINS Mike	(1) 2.5
MANZELLA Jam	(1) 2.5
ZERZOPULOS Santi	(1) 2.5
BELLE John	(1) 2
CATHCART Daniel	(1) 2
HIGHTOWER Dean	(1) 2
JHAVERI Sulay	(1) 2
MC MILLEN Patric	(1) 2
SANCHEZ Isaac	(2) 2
WOOLLEY Scott	(1) 2
BUTLER Craig	(1) 1.5
FERRONI George	(1) 1.5
HANNEMAN Gary	(1) 1.5
LANDS Jerry	(1) 1.5
WISOWATY John	(1) 1.5
ZOELLNER John	(1) 1.5
CRUISE Donald	(1) 1
DAVIS John	(1) 1
DUMAS Steve	(1) 1
FREDKIN Andres	(1) 1
FROST Carl	(1) 1
LEALI Mathew	(1) 1
MARTIN Steven	(1) 1
WILLITZ Calet	(1) 1
HARDY Chris	(1) 0.5
KNISLEY Kevin	(1) 0.5
OBERWEIS Joseph	(1) 0.5
WHITMAN Rich	(1) 0.5

APCT CHESS BOOK & SUPPLY SALE

BY APPOINTMENT ONLY — APR. 20 THRU MAY 25

**ALL CHESS BOOKS & SUPPLIES 25% OFF
SOME BOOKS 30%, 40%, 50%, EVEN 60% OFF**

Free book to everyone who
brings this brochure

FOR APPOINTMENT CALL JIM WARREN (708) 246-6665

No mail orders — you must come in person — no credit cards
accepted — checks accepted with identification

**At: 5333 Woodland Ave.
Western Springs, IL 60558**

Our reputation and record of service is our best advertisement.

Directions to get here:

Woodland Ave. is three short blocks west of Wolf Rd. The nearest large intersection is Wolf Rd. and 55th St.

Western Springs is accessible from the tollways and expressways that reach the near western suburbs.

From the east: Exit Eisenhower Expy at Wolf Rd. and take south to 54th St., right to Woodland.

From the west: East-West Tollway to Tri-State South, exit at Ogden Ave. East, go to Wolf Rd., then south to 54th St., right to Woodland.

From the South: Exit Tri-State Tollway to Stevenson Expy taking "South--St. Louis Wolf Rd." exit and take Wolf Rd. north to 54th St., left to Woodland.

From the Southwest: Exit Stevenson Expy at Joliet Rd. ramp to Wolf Rd., north to 54th St., left to Woodland.

CHESS INFORMANT #53

Games from Sept-Dec 1991-- openings indexed by variation--games have short coded annotations. Fig. alg. notation. The most popular chess series in history!

Only \$20.21 after 25% off!

All earlier Informants also available.



See next page for examples of titles

APCT CHESS BOOK & SUPPLY SALE

APCT Stocks over 1000 chess titles!

WINNING WITH THE SICILIAN DEFENSE, IM Jeremy Silman, A complete system against 1 e4 in one book! Clearly explains a counter-punching defense - the Accelerated Dragon. If White tries to play the popular Yugoslav, he's in for a nasty surprise. Also covers other White tries. List price is \$16.50, APCT price is \$15.50 and with the 25% discount you pay only.....\$11.62



Secrets of Chess Training

SECRETS OF CHESS TRAINING, Mark Dvoretsky. Train with the best! GM Dvoretsky show you how he used secret Soviet methods to develop players like GM Yusupov and GM Dollmatov into World Championship candidates! A must for masters and master wannabes! List price is \$15.95, APCT price is \$14.95 and with the 25% discount you pay only.....\$11.21



EXAMPLES OF SOME RECENT TITLES

PART OF OUR STOCK OF OVER 1000 DIFFERENT CHESS TITLES

Classical French, Tim Harding\$11.96
 Sicilian Scheveningen (New Edition), Kasparov.....11.96
 Petrosian, The Games of, Shekhtman, Vol 1 or 2 (HB).35.21
 Petroff Defense, Forintos & Haag.....11.96
 Latvian Gambit Made Easy, Kon Grivainis & Elburg..... 4.27
 Positional Chess Handbook, Gelfer.....11.96
 Play The Caro-Kann (2nd Ed.) Varnusz.....16.46

Above prices reflect 25% off APCT price. Many titles are 30%, 40%, 50% or more off! All chess equipment, sets, boards, clocks, etc. are 25% off.

See previous page for details of sale

The Database from NEW in CHESS **NICBASE 3.0**

"this is one great product. Whether you are on the cutting edge of opening theory, enjoy playing through the games of the modern giants or the legends of chess history, NICBASE 3.0 is easy to use and a pleasure to experience." — HANON W. RUSSELL in USAT Chess Perspectives.

12 EXCITING NEW FEATURES

NICBASE 3.0 (with 2,000 games) \$175.00
SUPPLEMENT (all games from YB 1-18) \$130.00
33,400 TOURNAMENT GAMES 1988-1990 \$410.00
 SPECIAL OFFER - shipping included for a limited time only.

5 POWERFUL NEW UTILITIES

**BUY ALL 3 NOW & SAVE 20%
 \$595.00**

Including Full NIC KEY 3.0 classifying over 14,600 positions and 50,000 unduplicated games.

NICTOOLS (10 utilities) \$125.00

Specify MS DOS 3.5" 5.25" ATARI

NEW: ANNOTATED DATA for NICBASE 3.0 from NEW IN CHESS

Special limited introductory offer: six 1991 tournaments \$40.00

Covering: Wijk aan Zee, Linares, Amsterdam, Candidates Matches, Reykjavic, Munich.

NEW: CONVERT CHESSBASE™ DATA TO NICBASE 3.0-utility \$24.00

Orders and inquiries to:

CHESS COMBINATION INC. 2423 Noble Station, Bridgeport CT 06608-0423

Tournament Calendar

Call Chess Phone, (708) 832-5222, for up-to-date tournament results, as well as announcements of tournaments that may not be listed in Chess Life or the ICB. The ICA Chess Phone voice is Todd Barre. Unless otherwise noted, all tournaments require USCF membership. Illinois Tour events also require ICA membership.

April 20-May 25 APCT Annual Chess Book & Supply Sale

25% to 60% off on all chess books & equipment (sets, boards, clocks, score books & bags) - by appointment only, call Jim Warren (708) 246-6665.

April 24-25 (tentative) IHSA State Individual Tourneys

Michael Zacate, (708)479-9380

April 24-26 National Elementary Championships, Knoxville, TN

April 25-26 UIC Premier Open

4-SS, 45/2, 25/1. Chicago Circle Center, room 713, 750 S. Halsted, Chicago. 35% of EFs to 1st, 20% 2nd, 20% under 1800, 10% under 1600. EF: \$10 by 4/21, \$13 later. \$1 less for UIC CC members, off for masters. No equipment supplied. ENT: Howard Wachtel, 445 W. Barry Av, #217, Chicago, IL 60657. (312) 975-7970.

April 25 Let's Try a Quad #1

3-RR, 30/60, SD/60. Hammond Public Library, James A. Howard Branch, 171st & Grand Ave., Hammond, IN 46323. \$30 to winner of each section. EF \$12, \$10 to HCC members, more 8:45. \$\$\$(300/b30). REG 8-8:45 am. RDS 9-1-5. ENT: J. Enochs, 6436 Jefferson Ave., Hammond IN 46324. (219) 932-1437. NS, NC, W.

May 1-3 National Jr. High Championships Tallahassee, FL

May 1-3 Greater Peoria Open - Peoria, IL

5-SS, 40/100, 15/30, SD/30, Signature Inn, 4112 N. Brandywine Drive, Peoria, IL 61614, (309) 685-2556. \$\$G \$1,275. 2 Sections: Open - open to all. \$\$ 800: 300, 200, 100, U2000 150-50. Reserve - open to U1800, \$\$ 475: \$150,-\$75 C/D/Under each 75-50. Both EF: \$27.50 if postmarked by 4/2, \$30 if postmarked by 4/27, \$35 at site. ICA membership req'd, \$14 OSA. Reg. 8:30-9:30 am. Rds 10-2:30, 7, 9:30-2:30. Optional 1/2 pt. bye available in any one of the first three rounds. Ent: Bill Wilkinson, 905 N. Rebecca, Peoria, IL (309) 673-9455, NS, NC, W. **MAXI**

May 8-10 National High School Championships, Lexington KY.

May 9-10 CCC Plus Score Bonanza Mini Tour - Chicago, IL

Two separate events. 4-SS 40/60, SD/30, Chicago Chess Center, 1921 West 46th St, Chicago, IL, 60669. EF \$\$15, first 5 entries receive \$5 rebate, remaining entries receive \$1 credit to 4 CCC events, ICA membership req'd. \$\$ 4 pts=\$90, 3 1/2 pts=\$45, 3 pts=\$22, 2 1/2 pts=\$11, Reg 9-10 am daily. Rds 10-1-4-7 each day. Info (312) 376-5678, NS. **MINI**

May 16-17 Oak Park / River Forest Chess Club Spring Open River Forrest, IL

5-SS, 40/90, 15/30, New Site: Dominican Conference Center, 7200 W. Division, River Forrest, IL, (players do not need parking permits during tournament). EF \$15 if rec'd by 5/13, \$20 at site, \$2 off entry fee for OP-RF CC members. \$\$\$(265 b/30): 100-50-25, A, B, C, each \$25 D/E, Unr. \$15. Reg: 8:15-9 A.M. Rds: 9:30, 2, 6:30 &

10, 2:30. One 1/2 point bye available in rounds 1, 2 or 3 if requested before round 1. Ent: Ken Marshall, 357 W. Grove, Lombard, IL 60148, (708) 932-1455, NS, NC.

May 16-17 Grand Hammond Open

5SS, 40/90, SD/60, Hammond Public Library, James A. Howard Branch, 171st & Grand Ave., Hammond, IN 46323. EF \$20, \$15 to HCC members, \$5 more 8:45. \$\$\$(500/b30). REG 8-8:45 am. RDS 9-1-3-6:30, 10-3. ENT: J. Enochs, 6436 Jefferson Ave., Hammond IN 46324. (219)932-1437. NS NC W

May 22-25 Chicago Open

Continental Chess Association. \$40,000 prize fund. See full advertisement in this issue. **MAXI**

June 5-7 National Open.Las Vegas NV

June 13 Summer Knights Action Chess & ICA Mini Tour Open 1/4k Springfield, IL

4-SS,G/30, Washington Park Pavilion, North of intersection of Park Ave. and south Grand Ave. West Springfield, IL. EF \$\$16, \$14 Springfield CC members. ICA membership req'd. OSA, \$\$G 100, other prizes based on entries. Reg: 8:15-9:15, Rds 9:40-11-1-2:20. Chks payable to Springfield Chess Club, Info: (217) 523-7265 after 6 pm. Ent. T. B. Knoedler, 2104 South Fourth St. Springfield, IL. 62703. NS, NC. **MINI**

June 13 Hammond Summer Open

4-SS, 30/60, SD/30, Hammond Public Library, James A. Howard Branch, 171st & Grand Ave., Hammond, IN 46323. EF \$12, \$10 to HCC members, \$5 more 8:45. \$\$\$(350/b30). REG 8-8:45 am. RDS 9-12-3-6. ENT: J. Enochs, 6436 Jefferson Ave., Hammond IN 46324; (219)932-1437. NS NC W **MINI**

Tournament Calendar

June 20 First Barb City Tornado Decalb, IL

4-SS, 30/60, SD/30, EF: \$15 if received before 6/19, site \$20, Barb City Manor, 680 Hais Blvd, Decalb, IL (down First st.), For info: Bill Reed, 815-758-1027. Entries to: 1460 North 14th, Decalb IL 60115.

June 20, 27, July 11 Chicago Chess Center Summer Opens 1-2-3

Three 1-day events, 3-SS, 40/60, 30/G, LS, EF: \$12 one day in advance, \$14 at site. Registration: 9:00-10:00 a.m. Rounds: 10, 1, 4. Prize Fund (\$\$180, b/20): \$80, A/B \$50, C+ below \$50. Chicago Chess Center, 1921 W. 47th St., Chicago, IL 60601. Joshua Flores (312) 376-5678.

June 21, 28, July 12 Chicago Chess Center Summer Swiftees 1-2-3

Three 1-day events, 4-SS, 40/60, 30/G, LS, EF: \$12 one day in advance, \$14 at site. Registration: 10:00-11:00 a.m. Rounds: 11, 1, 3, 5. Prize Fund (\$\$180, b/20): \$86, A/B \$50, C+ below \$50. Chicago Chess Center, 1921 W. 47th St., Chicago, IL 60601. Joshua Flores (312) 376-5678.

June 22 Fox Valley Chess Club Speedy Four, Aurora, IL

4-SS, G/15 (Quick Chess). Site-Prisco Community Center, Lake St. and Illinois Ave, Aurora. EF: \$2, \$\$ 5 to 1st. Reg. 6:30-7:05. Rds 7:15, 7:50, 8:25, 9:00 pm. Cks. payable to Fox Valley Chess Club. Ent: R. Renaut, 1255 Oakton Ln., Naperville, IL 60540, (708) 983-0934, NS, NC, W.

July 11-12 Berweis Dairy Class Championship, Aurora, IL

3 Sections: Open 40/100 20/40 SD/15 - 4-SS, Class A/B 45/90 SD/30 - 5-SS,

Class C/D/E 45/90 SD/15 - 5-SS, Site-Prisco Community Center, Lake St. and Illinois Ave, Aurora, Open: Open to all over 2000. , Rds - Sat. 9:30, 2:30 Sun. 9:30, 2:30 - Prize Fund (b10), \$100,\$50, Top U2200 \$60,\$30, Class A/B - Open to A/B., Rds - Sat 9:00, 1:00, 5:00, Sun 9:30, 1:30 - Prize Fund (b/20), Top A \$80, \$40, Top B \$80, \$40, Class C/D/E/unr. - Open to C/D/E/unr. Rds: Sat 9:00, 1:00, 5:00 Sun 9:30, 1:30. Prize Fund (b/20), Top C \$60,\$30, Top D \$60,30, Top E \$60,30, Top Unr - Trophy. Reg: Saturday 8:00 - 8:30 A.M. Entry Fee: \$20 if rec'd by 7/7/92, \$30.00 at site, unrated free (not eligible for cash prize), \$3 off to FVCC members. ICA membership req'd. Make checks payable to the Fox Valley Chess Club. For info: Bob Renaut at 708-983-0934, Entries to: R. Renaut, 1255 Oakton Lane, Naperville, IL 60540. **MAXI**

July 17-19 Continental Chess Association Chicago

\$5,000 prize Fund. **MAXI**

August 2-14 US Open - Dearborn, MI

August 8 Springfield Sauna Open

August 15 Second Barb City Tornado Decalb, IL

4-SS, 30/60, SD/30, EF: \$15 if received before 8/14, site \$20, Barb City Manor, 680 Hais Blvd, Decalb, IL (down First st.), For info: Bill Reed, 815-758-1027. Entries to: 1460 North 14th, Decalb IL, 60115.

September 5-7 Illinois Open - MAXI

October 10 Springfield Action - MINI

November 22-23 Illinois Class Championships MAXI

1993

April 9-11 National High School Championship - Dallas, TX

April 16-18 National Junior High School Championship - Chicago

April 23-25 National Elementary Championship - Charlotte, NC

June 6-8 National Open. Las Vegas, NV

August 7-15 U. S. Open - Philadelphia, PA

1994

August 7-19 U. S. Open - Chicago

IMPORTANT NOTICE

The Hammond Chess Club has lost their playing site at the Hammond Public Library due to a change in Hammond Library policy. All events are cancelled until further notice.

SUBMISSION DEADLINE FOR
JULY-AUGUST ISSUE

JUNE 1, 1992

Only computer printed or
typed copy will be accepted.



ILLINOIS CHESS ASSOCIATION PATRONS

Century Club Members

Michael Belovesick Sr. Elmhurst
Roy Berg Madison WI
Thomas Fineberg Chicago
Fred Gruenberg Chicago
Marc Lonoff Northbrook
Michael McIlhany Springfield
Robert Raimo Blue Island
Albert Sandrin Chicago
Angelo Sandrin Chicago
Bill Smythe Chicago
Burton Vincent Chicago
Helen Warren Western Springs
Jim Warren Western Springs
Bill Wenz Milwaukee WI
Philip Wong Wilmette

Gold Card Members

Tyrone Brooks Chicago
William Dwyer Worth
Donald Graft Wheaton
Harland S. Hoisington Ogden UT
Alan Losoff Morton Grove
Kenneth Marshall Lombard
William Naff Peoria
Peter Pelts Niles
Daniel Pradt Glen Ellyn
Michael Pratts Chicago
Irwin Rothschild Park Forest
Markus Stinson Singapore
Mitchel Sweig Evanston
Louis Werner Evanston
Sandy Zabel Chicago

Patron Members

Faneuil Adams New York NY
Fred Allsbrook Downers Grove
Bob Ash Urbana
Kevin Bachler Waukegan
Ken Bankhead Country Club Hills
Todd Barre Elmhurst
Roy Benedek Western Springs
Edward J. Blanco Chicago
Timothy Bogan Chicago
Dennis Bourgerie Normal
Barry Bouton Newark
Bill Brock Chicago
Jim Brotsos Chicago
Gregory Bungo Elmhurst
Fred Burgess Oak Forest
Bill Buttny Downers Grove
Anthony Caliendo Aurora
Lawrence Cohen Villa Park
Jim Condon Westmont
Paul Cox Hazel Crest
Mike Cronin Evergreen Park
Greg De Fotis Chicago
John Deutsch Chicago
Leroy Dubeck Cherry Hill NJ
Kalman Farkas Milwaukee WI
Charles Fenner Chicago
Michael Flynn Aurora
Jon Gotz West Chicago
William Graves Chicago
Steve Hansen Indian Head Park
Walter Henry Naperville
Steven Herr Chicago
Charles Hicks Naperville
Keith Holzmueller Evanston
Jeffery Hyland Mount Prospect
Toshio Imai East Lansing
Randy Ingram Bloomington
Robert Irons Chicago
Gary Jochim Chicago
Gersham Johnson Chicago
Stephen Josephs Hinsdale
Tim Just Gurnee
Dan Kamen Buffalo Grove

Scott Kittsley Shorewood WI
Thomas Knoedler Springfield
Walter Kocjan Northlake
Warren Kreckler Chicago
Peter Kuhn Des Plaines
Richard Lang Evanston
Michael Lester Chicago
Harry Lyman Boston MA
John Marconnet Clarendon Hills
Mark Marovitch Cicero
Anthony Marquez Chicago
Ed Marschall Barrington
Eugene Martinovsky Naperville
Patrick Maurer Glen Ellyn
Thomas Mayka Wheeling
James McNamara Hinsdale
Fred Meyers Morrison
Earl Miller El Paso
Ken Palmer Bolingbrook
Alex Pehas Downers Grove
Waldo Pena Chicago
Mieczyslaw Piatek Skokie
Michael Plett Wheaton
Rhys Read Evanston
Frederick S. Rhine Chicago
Murrell Rhodes Peoria
Marvin Rogan Chicago
Ray Satterlee Wheaton
Mark Seifcheck Naperville
David Shane Illinois
Anthony Sillars Huntington MA
Richard Simonetti Elmwood Park
Arthur Sinclair Evanston
Leonard Spiegel St. Charles
Joe Splinter Glen Ellyn
Peter Stein Wheaton
Robert Stoltz River Forest
Eric Stover Chicago
James Tanaka Chicago
Marc E. Thomas Normal
George Umezawa Chicago
Richard Verber Chicago
Jeff Weimar Moline
Douglas White Schaumburg
Don Winsauer Forest Park
Harold Winston Naperville
David Wulatin River Forest
Max Zavanelli Park Ridge

ICA Elected Officers

Alan Losoff, President
P.O. Box 157, Morton Grove, IL 60053
(708) 966-5559

Garrett Scott, First Vice-President
202 Foster Drive, Normal, IL 61761
(309) 452-8116

Tom Fineberg, Metro Vice-President
7321 S. South Shore Dr. Chicago, IL
60649-3597 (312) 721-3979

Ken Marshall, Secretary
357 W. Grove, Lombard IL 60148
(708) 932-1455

Marc Lonoff, Treasurer
900 Appletree Court, Northbrook IL 60062
(708) 564-2346

USCF Delegates

by virtue of their USCF posts

Alan Losoff Regional Vice-President
Fred Gruenberg Regional Vice-President
Frank Skoff Life Voting Member
Helen Warren Life Voting Member
Harold Winston Life Voting Member

by ICA-appointment

Tom Fineberg
Tim Just
Ken Marshall
Todd Barre

USCF Voting Members

ICA appointed

Marc Lonoff
Garrett Scott
Jim Warren
Bill Naff
Larry Cohen
Jim Condon

Bill Smythe
Erv Sedlock
Dennis Grant
Tom Knoedler
Les Bale
Bill Wilkinson

ICA appointed alternates

Jim W Oberweis
Howard Wachtel
Angelo Sandrin
Ray Socha
Jim Brotsos
James Enochs

Murrell Rhodes
John Barstad
William Brock
Glen Panner
Steve Foust
Dave Shiner



Where to Play Chess

ICA Club Affiliates



ABCDEU sponsors tournaments and other chess events. Ed Blanco, Box 579181, Chicago IL 60657-9181.

AMERICAN POSTAL CHESS TOURNAMENTS sponsors postal events & sells chess books & equipment. Jim or Helen Warren, P.O. Box 305, Western Springs 60558. 708/246-6665.

CENTRAL LAKE COUNTY CHESS CLUB meets Fridays, 7:15 to 12:00AM College of Lake County, Bldg. 1, Washington at Route 45, Grayslake. Dennis Grant, 1657 McKay, Waukegan 60087. 708/336-5188.

CHAMPAIGN CHESS CLUB 706 Kenwood Road, Champaign IL 61821.

CHICAGO CHESS CENTER meets for casual chess 7 days a week 6:00 p.m. 1:00 a.m. \$2 charge. 1921 W. 47th St., Chicago 60609. Also sponsors rated tournaments Thurs.-Sun. Ray Socha, 312/376-5678.

CHICAGO INDUSTRIAL CHESS LEAGUE organizes frequent competition among commercial/government teams with awards, ratings, & special events. Tony Jasaitas 312/431-2966.

CONTINENTAL CHESS ASSOCIATION, 450 Prospect Ave. Mt Vernon NY 10553. Bill Goichberg.

DOWNERS GROVE PARK DISTRICT CHESS CLUB meets Thurs., 6:30-10 p.m., Lincoln Center, 935 Maple Ave., Downers Grove. Affiliated with USCF & ICA. George Uffner, 708/960-9382.

EVANSTON TOWNSHIP HIGH SCHOOL CHESS CLUB Ken Lewandowski 1600 Dodge Avenue, Evanston IL 60204.

FOX VALLEY CHESS CLUB meets Monday evenings, 7 p.m.-?, Prisco Community Center, Lake St. & Illinois Ave., Aurora IL. Bob Renaut, 708/983-0934.

GREATER PEORIA CHESS FEDERATION meets Mon., 7-11 p.m., Garrett Center, 824 N. University, Peoria. Bill Wilkinson, 901 N. Rebecca Pl., Peoria 61606. 309/673-9455.

HAMMOND (INDIANA) CHESS CLUB meets Thursdays, 7:00 p.m. to ?, at Hammond Public Library, Howard Branch, 171st and Grand. Jim Enochs, 6346 Jefferson Ave., Hammond, IN 46324. 219/932-1437.

ILLOWA CHESS CLUB meets Tues., 6:30-10 p.m., Hauberg Civic Center, 1300 24th St., Rock Island. Bob Ratcliff, 2336 25th St., Rock Island IL 61202; 309/786-8104.

LAKE COUNTY CHESS ASSOCIATION sponsors rated tournaments in the Grayslake-Zion area. Tim Just, 37165 Willow, Gurnee 60031. 708/244-7954.

MATTOON AREA CHESS CLUB meets Monday, 7-9 p.m., 2608 Richmond Ave., Mattoon IL 61938. Bret R. Fuller.

MIDWEST CHESS ASSOCIATION organizes major tournaments for masters & experts. Helen Warren, P.O. Box 305, Western Springs. 60558. 708/246-6665.

MISSOURI CHESS ASSOCIATION PO Box 410826, Kansas City Missouri 64141-0826.

OAK PARK/RIVER FOREST CHESS CLUB meets Tues., 7 midnight, Dominican Conference Center, 7200 W. Division, River Forest. Ken Marshall, 357 W. Grove, Lombard 60148. 708/932-1455.

ORLAND PARK CHESS CLUB meets every Friday night, 7:30-11, at the George Brown Commons, 15045 West Ave. (1 block w. of Lagrange Rt. 45 96th Ave.), Orland Park. No membership fee is required. Glenn Panner, 708/460-3111.

PARK FOREST CHESS CLUB meets Thursdays, 7-10:00 p.m., Freedom Hall, Orchard & Lakewood, Park Forest. Lawrence Cohen, 135 Westwood, Park Forest, 60466. 708/748-5911.

QUAD CITIES CHESS CLUB, Steven J. Foust, 9500 14th St. W., Apt. C2-B, Rock Island, 61202. 309/787-5198.

RUDY LOZANO LIBRARY CHESS CLUB, 1805 S. Loomis, Chicago, 60608. Hector Hernandez, Head Librarian. 312/733 4329.

SHIMER COLLEGE CHESS CLUB meets Mondays, 7 p.m. to ?, Koko House, Shimer College, corner of Genessee and Cory in Waukegan. David Shiner, P.O. Box A500, Waukegan 60079. 708/623-8400.

SMYTHE DAKOTA COMPETITIONS is the sponsor of the monthly Plus-Score Mini-Tours in the Chicago area. Bill Smythe, 6945 N. Ashland #F-3, Chicago 60626. 312/761-2455.

SPRINGFIELD CHESS CLUB meets Wed., 6-10 p.m., Washington Park Pavilion, Park Ave. & South Grand Ave. West, Springfield. Tom Knoedler, 217/523-7265; or James Larson, 217/529 0781. ST.

CHARLES CHESS CLUB meets Thursdays at 7 p.m., Baker Community House, 101 S. 2nd (Rte. 31), St. Charles. Erv Sedlock, 6 N. 307 Old Homestead Rd., St. Charles 60174, 708/377-7995.

TULEY PARK CHESS CLUB meets Saturdays, 1-5 p.m., Tuley Park Field House, 501 E. 90th Pl., Chicago. Thomas Fineberg, 7321 S. South Shore Dr., Chicago 60649, 312/721-3979.

Join the Illinois Chess Association and receive six issues of the Illinois Chess Bulletin. In addition, you'll qualify to enter over two dozen tournaments on the Illinois Chess Tour. Every game you win or draw in a tour event earns you "tour points" that can add up to cash prizes at year-end. Finally, you'll be supporting the activities of the Illinois Chess Association. Every year, the ICA organizes major tournaments like the Illinois Open and the Illinois Class Championships; the ICA has

bid for the National Open, the US Open and the US Class Championships to be held in Illinois. In addition, the ICA sponsors scholastic clinics, runs a tournament clearinghouse, and promotes and publicizes chess activity statewide. If you would like to show increased support for Illinois chess, please consider renewing as a Century Club, Gold Card, or Patron member. Patrons are acknowledged in each issue of the ICB and receive their magazines by first-class mail.

Mail To: ICA MEMBERSHIP SECRETARY
PO BOX 2534
NORTHBROOK IL 60065-2534

(Your mailing label is on the other side; note corrections below)

Name _____
Address _____
City _____ State _____ Zip _____

ICA Membership Renewal

Check membership type:

___Century	\$100.00	___Gold Card	\$50.00
___Patron	\$25.00	___Regular	\$14.00
___Junior	\$8.00	___Affiliate	\$25.00

Greater Peoria Open

MAY 2-3, 1992

GRAND PRIX & IL MAXI-TOUR EVENT

Two Sections • 5 Round Swiss • Time Control 40/100, 15/30, SD/30

ALL PRIZES GUARANTEED

★ OPEN SECTION (Open to all) ★

**1st \$300 (10 Grand Prix Points) – 2nd \$200 – 3rd \$100
Under 2000 \$150, \$50**

★ RESERVE SECTION (Under 1800) ★

**1st \$150 – 2nd \$75
Class C \$75, \$50 – Class D/Under \$75, \$50**

Entry Fee: \$27.50 if postmarked by April 21, \$30 if postmarked by April 27, \$35 at the site.

Memberships: ICA Membership Required - Regular \$14.00, Junior \$8.00

Registration: Saturday, May 2nd: 8:30-9:30 a.m.

Rounds: Saturday, May 2nd: 10:00, 2:30, 7:00, Sunday May 3rd: 9:30, 2:30, Optional 1/2 point bye available in any one of the first 3 rounds.

Entries To: Bill Wilkinson, 905 N. Rebecca Place, Peoria, IL 61606, (309) 673-9455

Tournament Site: Signature Inn, 4112 N. Brandywine Drive, Peoria, IL 61614, (309) 685-2556, Take I-74 to War Memorial Drive (East) exit, Rooms: \$49 Single, Double or Triple.

Extras: Complimentary coffee, soft drinks, and other treats. A complimentary official U.S.C.F. crosstable will be mailed to you at your request.

Illinois Chess Association
P.O. Box 2534
Northbrook, IL 60065-2534

Time Value Material

Address Correction Requested