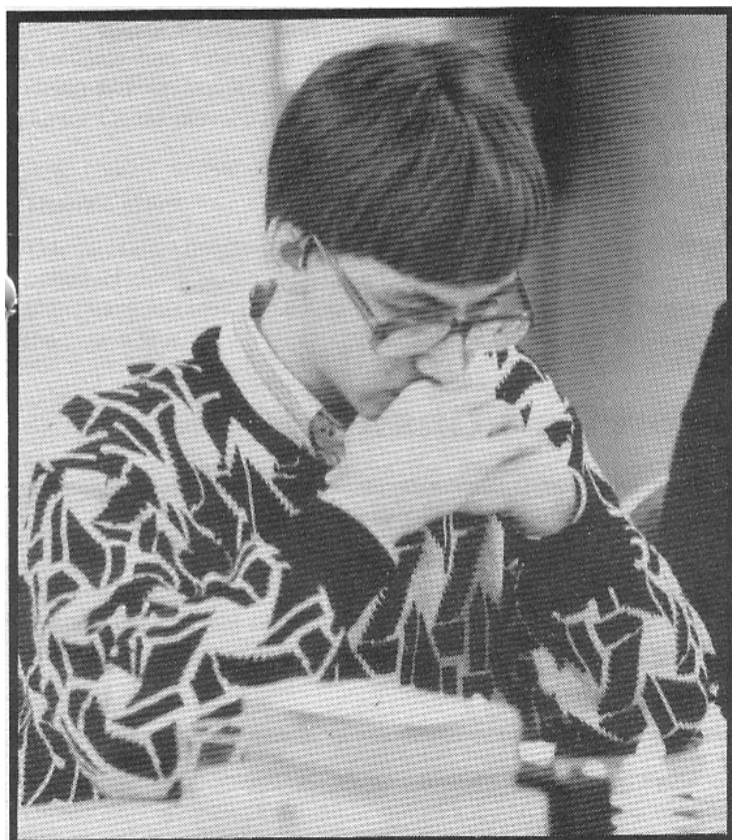


# ILLINOIS CHESS BULLETIN

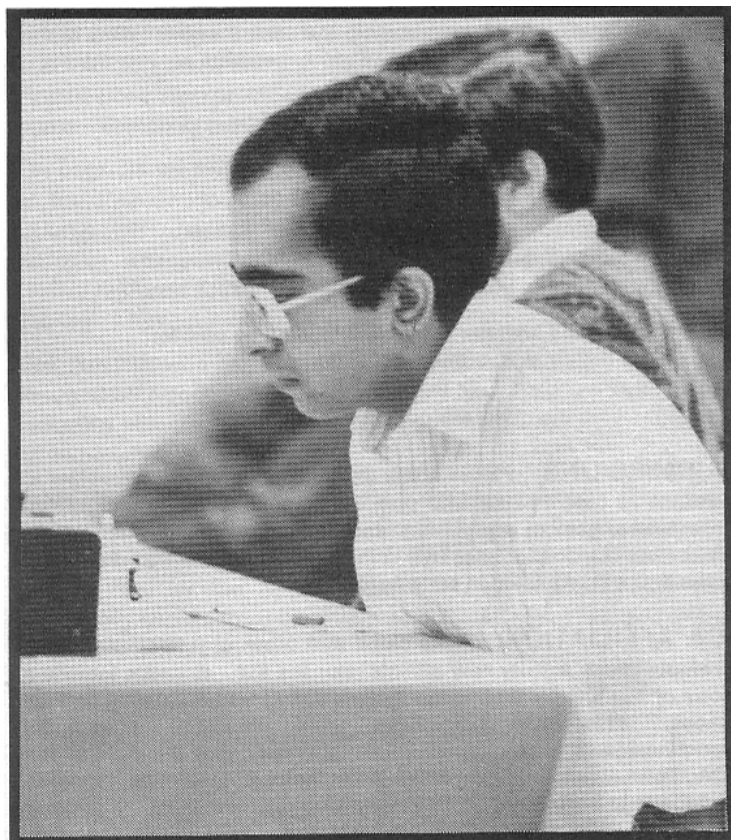
Official Publication of the Illinois Chess Association, a U.S.C.F. Affiliate  
A Not For Profit Organization

March-April 1992    Volume XV, No. 2    Bi-monthly    \$2.95

## U of I URBANA WINS PAN-AM INTERCOLLEGIATE VIVEK RAO BEATS KAMSKY!



GATA KAMSKY



VIVEK RAO

## GUREVICH WINS 1991 ICA TOUR & REPEATS AS IL CLASS CHAMP!

**PLAN NOW TO PLAY IN THE MID-AMERICA CLASS  
CHAMPIONSHIPS – MARCH 13-14-15 IN CHICAGO**



**Editor** Marc Lonoff  
**Calendar Editor** Alan Losoff  
**Tour Statistician** Bill Smythe  
**Games Editor** Tom Cooper

**MEMBERSHIP AND SUBSCRIPTIONS:**

The Illinois Chess Bulletin (ICB) is published bimonthly by the Illinois Chess Association. ICA membership includes a subscription to the ICB. Century Club, Gold Card, and Patron members receive their ICB by first-class mail.

**Annual membership rates:**

Century Club	\$100.00
Gold Card	\$50.00
Patron	\$25.00
Regular	\$14.00
Junior (under 18)	\$8.00

**Subscriptions and address corrections should be sent to:**

ICA Membership Secretary  
P. O. Box 2534  
Northbrook IL 60065-2534

**SUBMISSIONS:** Please notify the new editor, Warren Kreckler in advance at 312-764-2807 and plan to submit articles, photographs, crosstables, games, advertising, and other publishable materials to him before March 12, 1992. This is the deadline for the May-June 1992 issue that will be mailed in early April 1992.

**ICA AFFILIATION:** Chess clubs and other organizations which promote chess activity may affiliate with the ICA. Benefits include a copy of the ICB by first-class mail, a listing under "Where to Play Chess," discounted advertising rates, three-line tournament announcements in the "Tournament Calendar," and the right to run ICA Tour Events. ICA Affiliation costs \$25; please remit to Membership Secretary.

**ADVERTISING RATES:**

Full page	\$90
Half page	\$54
Quarter page	\$36
Eighth page	\$24

10% discount for the same ad in consecutive issues. 1/3 discount for ICA affiliates. All ads must be camera-ready to qualify for above rates; minimum \$20 charge for layout. Payment must accompany ad. The ICA & the ICB reserve the right to reject advertising.

Copyright © 1992 Illinois Chess Association

**TABLE OF CONTENTS**

<b>Presidents Report</b>	<b>Alan Losoff</b>	<b>3</b>
<b>Editors Column</b>	<b>NM Marc Lonoff</b>	<b>3</b>
<b>On the Road</b>	<b>GM Dmitry Gurevich</b>	<b>4</b>
<b>Illinois Class Games</b>	<b>NM Tom Cooper</b>	<b>12</b>
<b>Illinois Tour Prize List</b>	<b>Bill Smythe</b>	<b>20</b>
<b>Taylor's Tactical Teasers</b>	<b>PM David Taylor</b>	<b>22</b>
<b>Readers' Games</b>	<b>PM Robert Irons</b>	<b>23</b>
<b>Rao Beats Kamsky in Pan Am</b>		<b>24</b>
<b>Chess on the Fox</b>	<b>Bob Renaut</b>	<b>26</b>
<b>Normal Pinetree Open</b>	<b>Dennis Bourgerie</b>	<b>28</b>
<b>Tim Just Winter Open</b>	<b>Tim Just</b>	<b>30</b>
<b>Final Tour Points Report 1991</b>	<b>Bill Smythe</b>	<b>33</b>
<b>Chess Tech-Talk</b>	<b>NM Marc Losoff</b>	<b>35</b>
<b>Illinois Tournament Calendar</b>		<b>36</b>
<b>Illinois Chess Association</b>		
<b>Patrons</b>		<b>38</b>
<b>Where To Play Chess:</b>		
<b>ICA Club Affiliates</b>		<b>39</b>

Cover Photos by Marvin Rogan

Back and front cover layout by Warren Kreckler

**Important Change!**

**Illinois Chess Bulletin New Editor:**  
**Warren Kreckler**  
**6146 North Oakley**  
**Chicago, IL 60659**  
**312-764-2807**

# President's Report

by Alan Losoff

## Congratulations

Congratulations to the 1991 Illinois Chess Tour winner, Dmitry Gurevich, and to all the other winners. They will all be honored at the **ICA Awards Banquet** on March 8th.

## Instructional Program Launch Success

It's too soon to see if any new grandmasters will be created, but many of the states most promising juniors are receiving one-on-one instructions from masters. The program is sponsored by Helen Warren and the Midwest Chess Association, with the ICA providing partial funding. About a dozen players who qualified by appearing on a USCF "top 50" list are participating.

## Junior Chess Beat

Les Bale has taken up one part of the challenge offered by Helen Warren last issue. He will be the ICB's reporter on Illinois Junior Chess players and activities. Contact Les with news.

## Thank's Marc

This is Marc Lonoff's last issue as interim editor of the ICB. On behalf of the ICA Board and all ICA members I'd like to thank Marc for a job well done. Warren Kreckler will be taking over as the new editor.

## Show Your Support

The ICA could not exist without the generous support of our patrons, gold card and century members listed in this and every issue of the ICB. If you are not already a patron member, consider the benefits of upgrading the next time you renew. In addition to receiving your magazine first class and recognition in every ICB, you will have the satisfaction of helping the ICA to provide innovative chess programs for our members.

## Support the Tour

Show your support of the ICA and affiliates by playing in Illinois Chess Tour events. Besides showing support, you also win tour points which could add up to prizes at year-end. Tour standings are printed in every issue of ICB.

# Editor's Notepad

by Marc Lonoff

## Highlights of this Issue

This issue is structured around the Illinois Class. Dmitry presents his exploits *On The Road* and annotates his four wins from the Class. His first round game, against Larry Cohen was his hardest! I have added a few supplementary games to Dmitry's annotated games in the Dutch and Catalan lines Dmitry employed.

Games Editor Tom Cooper annotates eleven games from the Class and I used ChessBase to include twenty four more games that Tom selected from the tournament scoresheets. Tom must have played through dozens more to make the selections. I tried to illustrate interesting or critical positions with diagrams and in some cases I could not resist kibitzing.

David Taylor responded to my plea for interesting positions in the last issue with three postal games. I suggest you cover the game continuation below the diagram or set the positions up on a board and close the magazine. They require some thought! Robert Irons also provided two annotated postal games featuring some interesting tactics on g3.

On page 24 we have a highlight from the Pan Am Intercollegiate at the Palmer House. SM Vivek Rao, currently a student at Champaign/Urbana, beat United States Champion Gata Kamsky, representing Brooklyn College. Last issue, of course, Dmitry featured Kamsky's struggles with Karpov and Kasparov at Tilburg. I have annotated the game as best I could.

Bob Renaut, who organized the successful Fox Valley Open late in January, contributes a report on activities in the Valley including some annotated games in *Chess on the Fox*. Now we all know who is "le renard".

From Normal we have the colorful Pinetree Open with comments by director Dennis Bourgerie. From Grays Lake we have the Tim Just Winter Open, the first ICA tour event of 1992 with commentary by the eponymous Tim Just. I annotated two interesting games from the event and Tom Cooper will add some more for the next issue.

## A Cloud of Dust and a Hearty Hi-Ho-Silver

I enjoyed compiling three issues of the ICB and would like to thank the following contributors and assistants: Al Losoff (Calendar), Ken Marshall, Dmitry Gurevich, Tom Cooper, Warren Kreckler (Cover and back of this issue), Bill Smythe (Tour data and crosstables reliable as a clock and in comma delimited format!), Marvin Rogan (for superb photographs of which I used too few) Bob Renaut, Dennis Bourgerie and Bill Brock (immediate past editor and now a father). Thanks also to Don Maddox at ChessBase for helping me get the figurine and diagram font software to work. Greatest thanks to my wife Alice, daughter Julia, and son David for their forbearance during the many hours I spent working my way down the learning curve.

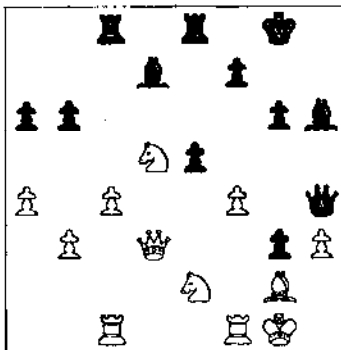
# On the Road

by GM Dmitry Gurevich

After returning from Tilburg, the first tournament I entered was the Middle America Open in St. Louis. Usually after coming from Europe the first week proves difficult to play and unfortunately I have a collection of losses to lower rated players in this situation. (See my loss versus BP Computer in ICB November-December 1991, for one example.) Even though I did not lose I made three draws and I needed some luck in the last round to draw.

## Curt Jones- Dmitry Gurevich Middle America Open, 1991

I am a piece down and if on a previous move the white queen had gone to c3 instead of d3 the game would be over. Now I escape through a miracle.

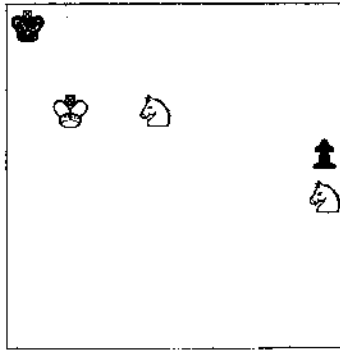


1...exf4 With the ♙ on c3 of course ♖f6+ follows. 2.♗dxf4 ♔c6 Oddly enough black continues the attack by trading pieces! 3.♙xg3 ♙xg3 4.♗xg3 ♔e3 Aiming for the important b3 pawn. 5.♗xc6 ♗xc6 6.♗g2 I was more afraid of: 6.♗d5 ♗xg3+ 7.♗h2 ♔e3 (7...♗xc1 8.♗xc1 ♗xb3 9.♗e7+ ♗f8 10.♗xc6 ♔a3 11.a5 bxa5 12.c5+-). 6...♗xb3 7.♗c2 b5! 8.axb5 axb5 9.c5 ♗f8 10.♗e4 b4 11.♗d5 f5 12.♗d2 ♗d3 13.♗xb4 ♗xc5! 14.♗xd3 ♗xc2 15.♗f2 g5! I made it! White will have to exchange rooks and the h-pawn and with two knights...16.♗f1 ♗xf2+ 17.♗xf2 ♗e7 18.♗g3 ♗d6+ 19.♗g2 ♗e7 20.♗g3 ♗d6+ 21.♗f2 ♗e7 22.♗e3 g4 23.♗xf5 ♗h4+ 24.♗xh4 gxh3 Draw

I want to add some thoughts about the ending ♗ versus a pawn. As you know, ♗+2♗ versus a lone ♗ is a draw, but this is not always the case if we give the weaker side a pawn. To

allow winning chances the pawn should be blockaded three moves away from queening.

## Example 2♗ vs pawn.



1.♗hf5 h4 2.♗e7 h3 3.♗c6 h2 4.♗b5 h1 ♗5.♗x7+ 1-0

This is an extreme example. The question is which pawns when blockaded and on precisely which squares will lead to a loss. A few years ago I heard that someone wanted to publish a book with 50 known examples of the endgame ♗ versus a pawn from tournament games. The ending is extremely complicated [though I think it is available on the ChessBase CD ROM of five piece endings-Editor]. Botvinnik called it "difficult for analysing even for grandmasters" which is quite true. I had one of the easiest versions of the ending, blocking with a white knight a black pawn on d5 against SM Rowley in the NY Open, 1989. Thanks to my student Alex Fishbein, who explained everything to me during the break before the adjourned session, I won.

And last but not least, about a week before my game with Jones I discussed ♗ versus pawn with Karpov and Kasparov in Tilburg where Karpov was trying to win with three pieces against Kasparov's rook. Karpov did not have experience of this kind before but Kasparov knew quite a bit. I had a short argument with him. I represented that a black pawn blockaded on h4 did not lose. I happened to be wrong, but surprisingly a blocked pawn on g5 leads only to a draw!

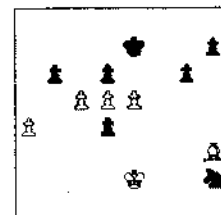
But returning to Missouri, the tournament was won by GM Kudrin with 4.5-5 and SM Burnett got the second place with 4-1. I tied for third with 3.5-1.5.

The next tournament I played in was the Illinois Class Championship in Morgan Park Academy. Usually the higher rated opponents give you the most trouble. In

this tournament everything was turned upside down as my most difficult game came in Round 1:

## Larry Cohen- Dmitry Gurevich Illinois Class M/Ex, 1991

1.c4 ♖f6 2.g3 g6 3.♗g2 ♗g7 4.♗c3 O-O 5.e3 d6 6.♗ge2 e5 7.O-O c6 8.d4 ♗bd7 9.a4! In March 1990 I lost to Larry in Peoria. In this game also he is playing very well in the opening. a5 Otherwise white would play a5 himself. 10.b3 ♔e8 11.♗c2 ♗c7 12.♗a2! ♖f8 13.d5 cxd5 14.cxd5 ♗d7 15.e4 ♔ec8 16.♗d3! ♖e8 17.♗e3 f5 18.f3 Somewhere around this move I found myself thinking that if I was playing a Grandmaster who made all the same moves as white in this game I would find it quite normal.. ♗ut being outplayed by a low expert who already beat me once...What's going on? ♖f6 19.♗c1 ♗d8 20.♗ac2! The exclamation point is for the whole plan. White is much better. 20.h3!? was also possible. 20...fxe4 21.♗xe4 ♗f5 22.♗xc8 I prefer 22.h3 at this point. It not only threatens g4 but also creates some extra safety for the king in case of some shots on the a7-g1 diagonal. 22...♗xc8 23.♗xc8 ♗xc8 24.♗2c3 ♖xe4 25.♗xe4 ♗c7 26.♗b5 Again 26.h3!? 26...♗d7 27.g4? ♗xe4 28.fxe4 ♗c3 29.♗f2 In some sense we have seen more things happening in the last two moves than for the whole game before. With no apparent reason white went down from better to worse. 29...♖f6 Maybe 29...♗c1 was a better choice. 30.♗c4 White wants to try his luck in the endgame. 30.h3 was still possible! I would answer 30...♗h6. 30...♗xc4 31.bxc4 ♖xg4 I wonder if black can win after: 32.♗h3 ♖f2 33.♗f2 with opposite colored bishops. 32.♗b6 ♗h6 33.♗xa5 ♗e3+ 34.♗f1 ♗c5 I saw this position when I played 29...♖f6 and assumed that black has good winning chances. 35.♗d2 Preventing ♗e3+. 35...♖xh2+ 36.♗e2 b6 To stop 37.a5. 37.♗h3! Maybe white has winning chances again. 37...♗f7 38.♗g5 Correct is: 38.♗e3 A) 38...♗d4 39.♗xd4 exd4 40.e5 dxe5 (40...♗e7 41.c5! What a nice surprise. Something to think about.) 41.c5+;



# CHESSE FESTIVAL AT RAMADA O'HARE

17 events April 3-12, including \$10,000 Chicago Swiss International

**April 4-12: CHICAGO INTERNATIONAL.** 9-SS, 30/90, 20/1, SD/1, Ramada Hotel O'Hare, 6600 N. Mannheim Rd, Rosemont 60018 (resort hotel- tennis, golf, pool, health club, etc.) **\$10,000 PRIZE FUND UNCONDITIONALLY GUARANTEED.** Open to all; GM & IM norms expected to be possible.

**GUARANTEED PRIZES:** \$\$ 3000-1500-1000-800-700-600-500-500-400-400-300-300. **Entry fee:** IGMs free, foreign IMs \$50, foreign FIDE-rated \$100. US IMs \$76 postmarked by 2/15, \$86 by 3/28, \$100 at tmt. US FMs \$116 by 2/15, \$126 by 3/28, \$140 at tmt. US FIDE-rated (over 2200) \$156 by 2/15, \$166 by 3/28, \$180 at tmt. Others \$226 by 2/15, \$236 by 3/28, \$250 at tmt.

1/92 FIDE ratings used; "expected" titles or ratings do not count. FIDE rated, 200 Novag Grand Prix Points, ChessBase-CCA Grand Prix Points available.

Late entries end noon April 4; one rd each day at 1 pm. ½-pt byes available all rounds (rds. 5-9 must commit before tmt). You can't make a norm with a bye (9 games are needed), but can have result FIDE rated.

**April 3-5: CHICAGO AMATEUR.** 5-SS, 40/2, SD/1 (optional 2-day schedule, rds. 1-2 G/90). Prizes to all plus scorers based on points- full amount to each player with score listed, not split on ties. In 5 sections:

**Under 2200 & Under 2000:** 5 points wins \$200, 4½ \$100, 4 \$50, 3½ \$30, 3 \$15.

**Under 1800, Under 1600, & Under 1400:** 5 points wins \$150, 4½ \$75, 4 \$45, 3½ \$30, 3 \$15.

**Unrateds:** may enter any section, but must take bye in rd 5 if 4-0.

**Entry fee:** 3-day \$28, 2-day \$27 postmarked by 3/28, both \$40 at tmt. ICA memb. (\$14, jrs \$8) req. OSA. ICA Maxi-Tour Event. Re-entry \$20.

**Choice of schedules.** 3-day: Fri 7, Sat 11 & 6, Sun 9 & 3. 2-day: Sat 10, 2, 6, Sun 9 & 3. ½-pt byes: available all rds. (rounds 4-5 must commit before tmt). Late entries end 45 min. before your 1st game.

**April 10-12: MIDWEST AMATEUR.** 5-SS, 40/2, SD/1 (optional 2-day schedule, rds. 1-2 G/90). Prizes to all plus scorers based on points- full amount to each player with score listed, not split on ties. In 5 sections:

**Under 2200 & Under 2000:** 5 points wins \$250, 4½ \$120, 4 \$60, 3½ \$40, 3 \$20.

**Under 1800, Under 1600, & Under 1400:** 5 points wins \$200, 4½ \$100, 4 \$60, 3½ \$40, 3 \$20.

**Unrateds:** may enter any section, but must take bye in rd 5 if 4-0.

**Entry fee:** 3-day \$38, 2-day \$37 if postmarked by 3/28 or paid at Ramada Hotel chess tournament 4/3-4/9, both \$50 after 4/9. ICA memb. (\$14, jrs \$8) req. OSA. ICA Maxi-Tour Event. Re-entry \$30.

**Choice of schedules:** 3-day: Fri 7, Sat 11 & 6, Sun 9 & 3. 2-day: Sat 10, 2, 6, Sun 9, 3. **Half point byes:** available all rds. (rounds 4-5 must commit before tmt). Late entries end 45 min. before your 1st game. **Do not mail entries after 3/28.**

**April 3, 4, 5, 6, 10, 11: Chicago G/10 Quick Quads.** 6 separate events, rated by new USCF quick rating system. Reg. ends 8:45 pm each day, Rds. 9-9:20-9:40. EF: Master \$30, Expert \$20, others \$10. \$\$ 70% of EFs 1st if top rated in section is Master, 60% if Expert, 50% if lower.

**April 5, 6, 10, 11, 12. Chicago G/15 Quick Quads.** 5 separate events, rated by USCF quick rating system. Reg. ends 6:45 pm each day, Rds. 7-7:30-8. EF: Master \$30, Expert \$20, others \$10. \$\$ 70% of EFs 1st if top rated in section is Master, 60% if Expert, 50% if lower.

**April 7: Chicago G/10 Open.** 6-SS, G/10. EF: \$20. \$\$ 70% of EF returned with 25% 1st, 15% 2nd, 10% 3rd, 10% each to 2200-2399/Unr, Expert, A, B, U1600. Reg. ends 6:30 pm; rds. 7-7:40-8:20-9-9:40-10:20.

**April 8: Chicago Blitz.** G/5, EF \$20, 70% returned, Reg. ends 6:30 pm.

**April 9: Chicago G/15 Open.** 5-SS, G/15. EF: \$20. \$\$ 70% of EF returned with 25% 1st, 15% 2nd, 10% 3rd, 10% each to 2200-2399/Unr, Expert, A, B, U1600. Reg. ends 6:30 pm; rds. 7-7:50-8:40-9:30-10:20.

## ALL TOURNAMENTS:

**Hotel rates:** \$59 single or twin, \$69 of 4 in room. Call 708-827-5131, reserve at least 3 weeks before arrival. Free parking, free airport transportation. Bring clocks, sets, boards- none supplied.

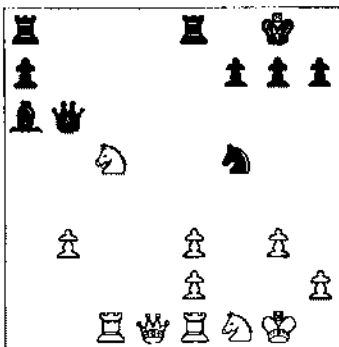
**Send entries to:** Continental Chess, PO Box 249, Salisbury Mills, NY 12577. Include name, name of tournament, section & no. of days (if options offered), USCF ID, rating, and fee. Questions: 914-496-9658, no credit card or phone entries. No smoking, no computers.

B) 38... $\text{e7}$  39. $\text{dxc5}$   $\text{dxc5}$  40. $\text{f2}$   $\text{h5}$   
41. $\text{g3}$   $\text{g4}$  42. $\text{dxc4}$   $\text{hxc4}$  43. $\text{dxc4}$ +

38... $\text{h5}$  39. $\text{dxc6}$ +  $\text{e8}$  40. $\text{d2}$   $\text{g4}$   
41. $\text{f3}$ ?? Simply  $\text{dxc6}$   $\text{g4}$  probably  
draws for white. 41... $\text{f2}$ ! 42. $\text{dxc8}$   $\text{d3}$   
43. $\text{g3}$   $\text{f7}$  44. $\text{h4}$ ?  $\text{f2}$  Larry played  
very well in the opening and  
middlegame but virtually beat himself  
in the very end. 0-1

**Dmitry Gurevich**  
**Tom Cooper**  
Illinois Class M/Ex, 1991

1. $\text{c4}$   $\text{e6}$  2. $\text{d3}$   $\text{d5}$  3. $\text{d4}$   $\text{c5}$  4. $\text{cxd5}$   $\text{exd5}$   
5. $\text{f3}$   $\text{c6}$  6. $\text{g3}$   $\text{f6}$  7. $\text{d2}$   $\text{e7}$  8.O-O  
O-O 9. $\text{b3}$  A modest move. Most  
common are  $\text{d5}$ ,  $\text{d4}$  and  $\text{e3}$ .  
9... $\text{e4}$  10. $\text{d2}$   $\text{d6}$  11. $\text{a4}$   $\text{e8}$ ! If  
black tries to win material with 11... $\text{b5}$   
then 12. $\text{dxc5}$   $\text{c5}$  13. $\text{e1}$ ! 12... $\text{c1}$   $\text{b6}$ !  
13. $\text{dxc5}$   $\text{dxb2}$  14. $\text{dxb2}$   $\text{bxc5}$  15. $\text{a4}$   
 $\text{a6}$  16. $\text{e1}$   $\text{c4}$  17. $\text{d2}$  in Larsen-  
Kasparov, Niksic 1983, white  
continued 17... $\text{h4}$ ?! 17... $\text{cxb3}$ ! N ECO  
recommends both 17... $\text{g5}$  and  
17... $\text{a5}$  but my opponents reply may  
be just as good. 18. $\text{axb3}$   $\text{d4}$ ! 19... $\text{dxe4}$   
[19... $\text{dxe4}$   $\text{dxe4}$  20... $\text{c5}$   $\text{dxe2}$ +!-+]  
19... $\text{dxe4}$  20... $\text{c5}$   $\text{e3}$  A very  
interesting moment. If black wanted a  
draw the easiest way would be  
20... $\text{dxe2}$ ! 21... $\text{dxe2}$   $\text{dxe2}$  22... $\text{dxe2}$   
and now for instance  $\text{d5}$ . I do not  
know very many whites who could  
win this position with 2...s against a  $\text{e}$   
and pawn with the reasonable pawn  
structure. 21... $\text{fxe3}$   $\text{f5}$  22... $\text{f1}$   $\text{wb6}$



Lets look at this position carefully. It  
has a certain philosophical aspect.  
White has an extra pawn but it looks  
pathetic and his advantage seems  
nonexistent. So why did I win?

During my chess career I have met a  
few very strong players on whose scale  
a single pawn would have a value of  
10 as opposed to 1. Two of those  
players are M. Gurevich and A.  
Chernin, both from the Ukraine.

Anatoly Karpov, of course, is a  
General in this category but I am  
talking about my personal experience  
from blitz games, analysis, and  
conversations. Their philosophy was  
well expressed by Boris Fogan, also  
from the Ukraine now living in  
Atlanta: "In my practice there never  
was a single position when an extra  
pawn would not win. Sometimes it  
takes 200 moves, but it always wins!"  
Of course, Boris is joking, but in each  
joke there is a fraction of truth.

23... $\text{d2}$   $\text{d5}$  24... $\text{c3}$   $\text{e5}$  25... $\text{ecl}$   
 $\text{eae8}$  26... $\text{d7}$ ! What else? 26... $\text{dxd7}$   
27... $\text{dxd7}$  Black is not worse here, but  
to make a draw requires a few good  
moves. 27... $\text{g6}$  [ On 27... $\text{dxe3}$   
28... $\text{c6}$   $\text{wb5}$  29... $\text{c7}$   $\text{dxd7}$  30... $\text{dxd7}$ =]  
28... $\text{c8}$   $\text{dxc8}$  29... $\text{dxc8}$ +  $\text{g7}$  30... $\text{dxc7}$   
 $\text{dxc7}$  31... $\text{dxc7}$   $\text{d5}$  32... $\text{c3}$   $\text{d6}$   
33... $\text{d2}$   $\text{f5}$ ? A time pressure error.  
34... $\text{c7}$ +  $\text{d6}$  35... $\text{dxa7}$   $\text{d5}$  36... $\text{a2}$ +  
 $\text{b5}$  37... $\text{a6}$ +  $\text{f7}$  38... $\text{f3}$   $\text{d1}$ +  
39... $\text{f2}$   $\text{c3}$  40... $\text{a7}$ +  $\text{g8}$  41... $\text{c7}$   
 $\text{e4}$ + 42... $\text{g2}$   $\text{b1}$  43... $\text{d4}$   $\text{b2}$   
44... $\text{c1}$   $\text{d2}$  45... $\text{h3}$   $\text{dxb3}$ ? 46... $\text{dxc8}$ +  
Wins the exchange after 46... $\text{dxc7}$   
47... $\text{b8}$ . 1-0

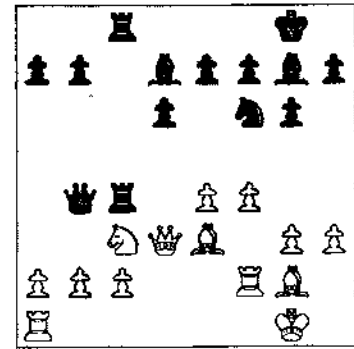
Next morning I played against SM Leonid  
Kaushansky. I think I first met Leonid  
some 15 years ago en route to Riga. In  
the following game I managed to get a  
good game in the opening and even won  
a pawn, but then my opponent made a  
few not so obvious moves...

**Leonid Kaushansky-**  
**Dmitry Gurevich**  
Illinois Class M/Ex, 1991

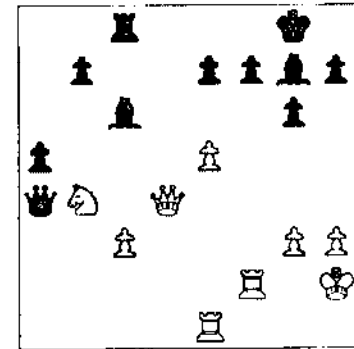
1. $\text{e4}$   $\text{c5}$  2... $\text{f3}$   $\text{d6}$  3. $\text{d4}$   $\text{cxd4}$  4... $\text{dxd4}$   
 $\text{f6}$  5... $\text{c3}$   $\text{c6}$  6. $\text{g3}$  6... $\text{g3}$  is less  
common than 6... $\text{d5}$ , 6... $\text{c4}$ , 6... $\text{e2}$ ,  
and even 6... $\text{e3}$ . 6... $\text{g6}$  Here, 6... $\text{e5}$  is  
possible.

Years ago I analysed 6... $\text{d4}$  7... $\text{f3}$   $\text{dxd4}$   
8... $\text{dxd4}$   $\text{dxf3}$ ! 7... $\text{d2}$   $\text{d7}$  8.O-O  $\text{d7}$   
9... $\text{b3}$  9... $\text{d4}$ -e2 is played. 9...O-O  
10... $\text{h3}$   $\text{c8}$  ECO gives 10... $\text{a5}$  in almost  
the same position (with the bishop on  
 $\text{e8}$  instead of  $\text{d7}$ ). I prefer not to  
weaken some squares, for example  $\text{d5}$   
and in this case  $\text{b5}$ . For this reason I  
did not play  $\text{e5}$  on move 6. Its a  
matter of taste.

11... $\text{e3}$ ! Sometimes its easier to wait  
to develop the bishop with 11... $\text{e1}$ ,  
11... $\text{a4}$ , 11... $\text{d5}$ . 11... $\text{e5}$ ! Heading for  
 $\text{c4}$ - $\text{b2}$ . If  $\text{dxa7}$  then  $\text{b6}$  traps the  
bishop. 12... $\text{d2}$   $\text{a5}$  13... $\text{f4}$   $\text{c4}$   
14... $\text{dxc4}$   $\text{dxc4}$  15... $\text{d3}$   $\text{dxc8}$  16... $\text{f2}$ ?  
 $\text{wb4}$ !



Black is better. Leonid does not want  
to play the passive  $\text{d1}$  and so gives  
up the  $\text{b2}$  pawn. 17... $\text{e1}$ ?  $\text{dxb2}$   
18... $\text{d1}$   $\text{wb4}$  19... $\text{c3}$   $\text{a5}$  20... $\text{e5}$ ?  $\text{d5}$   
21... $\text{d2}$   $\text{e4}$  22... $\text{dxe4}$   $\text{dxe4}$  23... $\text{d4}$   
 $\text{d6}$  White has made a few good  
moves and the game is far from over.  
If I had played 23... $\text{d5}$ ! white could  
develop a strong king-side attack with  
 $\text{e3}$  and  $\text{f5}$ . I decided to sacrifice an  
exchange. 24... $\text{b2}$ ! and white takes  
the offer! 24... $\text{d5}$  25... $\text{h2}$   $\text{dxe5}$   
26... $\text{fxe5}$   $\text{dxd4}$ ? 27... $\text{dxd4}$   $\text{dxa2}$  28... $\text{d3}$   
 $\text{wa4}$  29... $\text{b4}$   $\text{a5}$  Inviting  $\text{d4xc6}$  but  
also setting a trap.



30... $\text{a2}$ ? An interesting optical  
illusion. The second rank looks so  
strong at the moment. 30... $\text{wb3}$ !-+ Of  
course  $\text{dxa5}$  loses to  $\text{wb2}$ + when no  
interposition is possible. 31... $\text{d4}$   $\text{e6}$   
32... $\text{dxa5}$  [32... $\text{dxc6}$   $\text{dxa2}$ + 33... $\text{e2}$   
 $\text{wa3}$  guards  $\text{e7}$ .] 32... $\text{dxc3}$  With the  
dual threats:  $\text{dxe1}$  and also  $\text{d3}$   
followed by a  $\text{d}$  check. 33... $\text{dxc6}$   $\text{dxe1}$   
34... $\text{d7}$ +  $\text{f8}$  35... $\text{dxc8}$   $\text{dxa5}$  36... $\text{d6}$   
 $\text{dxe5}$  37... $\text{d4}$   $\text{a2}$ + 38... $\text{d1}$   $\text{dxc3}$  0-1  
I was lucky with 30... $\text{a2}$ .

During my first encounter with Peter Pelts  
in 1972 (!) in Ukraine I played  $\text{e4}$  and a  
sharp line of the Sicilian, but my style has  
changed.

A SENSATIONAL NEW TOURNAMENT!

# CHICAGO OPEN

**MAY 22-25 or 23-25- Memorial Day weekend**  
**\$40,000 CASH PRIZES UNCONDITIONALLY GUARANTEED!**  
**LARGEST PRIZE FUND EVER OFFERED IN THE MIDWEST!**

7-SS, 40/2, SD/1 (3-day option, rds 1-2 G/90), Ramada Hotel O'Hare, 6600 N Mannheim Rd, Rosemont, IL 60018.  
**\$40,000 GUARANTEED PRIZES- LARGEST EVER IN MIDWEST!** Now in 6 sections (note changes- **unrateds** must play in new **Under 1200/Unr Section, G/1, May 23-24 only**, or in Open Section).

**Open:** \$\$G 4000-2000-1000-800-600-600-500-500, 2300-2449 \$\$G 1000-500-300, Under 2300/Unr \$\$G 1000-500-300. FIDE rated, 200 Novag Grand Prix Points, ChessBase-CCA Grand Prix Points available. **Under 2200:** \$\$G 3000-1500-700-400-300-200-200-200. **Under 2000:** \$\$G 3000-1500-700-400-300-200-200-200. **Under 1800:** \$\$G 3000-1500-700-400-300-200-200-200. **Under 1600:** \$\$G 2000-1200-600-400-300-200-200-200, U1400 class prizes \$\$G 1000-500-300. **Under 1200/Unr:** Trophies to top 6, top 2 JHS students, top 2 Elementary students. **Provisional players (ratings based on 4-19 games):** US citizen provisionals are eligible for full prizes. For non- US citizen provisionals, maximum prizes are \$1500 in U2200, \$1000 U2000, \$700 U1800, \$400 U1600.

**Entry fee,** postmarked by 4/10: 4-day \$99, 3-day \$98. Postmarked 4/11-5/15: 4-day \$109, 3-day \$108. All \$130 at site (\$120 paid by money order). GMs \$60. **U1200/Unr entry fee:** \$14, under 18 \$9 postmarked by 5/15, both \$6 more at tmt. **All:** ICA memb. req. (\$14, under 18 \$8), other states OK. Illinois Maxi-Tour event. Re-entry \$70- same or other schedule, with or without byes. U1200/Unr Section, no re-entry.

**Choice of schedules:** 4-day & 3-day merge rd 3, all compete for same prizes. **4-day schedule:** Fri 7; Sat 11 & 6; Sun 11 & 6; Mon 9 & 3:30. **3-day schedule:** Sat 10, 2, & 6; then same as 4-day. All reg. ends hour before rd 1. ½-pt byes OK all rounds (rds 4-7 must commit before tmt). **U1200/Unr schedule:** Sat 11, 2, 5, 8; Sun 11, 2, 5.

**Hotel rates:** \$59 single or twin, \$69 triple or quad, 708-827-5131, reserve by 5/1. Free parking, free airport transportation. Resort hotel with tennis, golf, pool, health club, etc.

**Ratings:** April USCF list used (same as May CHESS LIFE label). For foreign players, World Open rating rules used. \$1 of each EF goes to Professional Players Health & Benefits Fund. Questions: 914-496-9658. No credit card or phone entries, no smoking, no computers. **Quick Quads (6 separate events):** See April CHESS LIFE.

-----  
**ENTRY FORM- CHICAGO OPEN**

Name \_\_\_\_\_ Section \_\_\_\_\_ Number of days \_\_\_\_\_

USCF ID \_\_\_\_\_ Rating \_\_\_\_\_

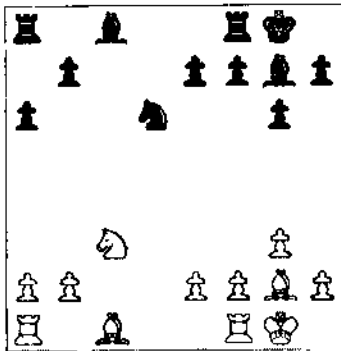
Entry fee \_\_\_\_\_ USCF expiration date, or dues enclosed \_\_\_\_\_

Address, if dues enclosed \_\_\_\_\_

**Send to Continental Chess, PO Box 249, Salisbury Mills, NY 12577.** Checks payable to same. Use of entry form is optional- you can enter any Continental Chess event by sending name, tournament, section, no. days, & fee.

**Dmitry Gurevich-  
Peter Pelts  
Illinois Class M/Ex, 1991**

1.f3 f6 2.c4 c5 3.f3 c6 4.d4  
cxd4 5.fxd4 g6 6.g3 g7 7.g2 O-O  
8.O-O a6! Theory gives the solid  
8...fxd4 9.fxd4 d6. If you like to  
sacrifice pawns, try 8..d6! 9.fxc6  
bxc6 10.fxc6 b8. 9.c5! fxd4  
10.fxd4 d6 11.cxd6 e8 12.fxb4  
fxd6 13.fxd6! fxd6 I think  
somewhere around this point Peter  
realized we had played this game  
before in a blitz game.



14.fxd5! In this nearly symmetrical  
position white is much much better. I  
noticed that in certain bad positions a  
stronger player loses even faster than  
a lower rated one because he does not  
want to settle for a bad endgame.  
14...e5?! Better 14..e6! 15.fxc3 g4  
16.fxc5 ffd8 17.ffd1! fb5  
18.fxe7+- fh8 19.fxb7 fxe2  
20.fel d3 21.fxc6 fxb8 If 21..f45  
then 22.fh4! fxc5 23.fxd3.  
Interesting geometry. 22.fxd8 fxd8  
23.fad1 f6 24.fxa6 fa8 25.fb7  
fb8 26.fxd3 fxb7 27.fb3 1-0

In the clubhouse, so to speak, at 4-0, I  
awaited the result of the game Cusi-  
Martinovsky. An interesting struggle  
ended in a draw. It meant that I took  
clear first at 4-0, Martinovsky 3.5-5,  
Chow/Cusi et. al. 3-1. It is always a  
pleasure to play in the Illinois Class with  
its friendly atmosphere/ May thanks to  
Helen Warren, Al Losoff, Todd Barre and  
all the others involved.

**Los Angeles**

The next morning I flew to LAX for the  
American Open. That tournament was  
always a tough one for me. In four years  
I had yet to score more than 5.5 out of 8.  
And this time it was no exception.

However, I am not entirely disappointed  
because the tournament produced a few  
interesting games.

In Rounds One and Three I played the  
Stonewall Dutch but my opponents tried  
two different plans.

**Meierding-Gurevich  
American Open, 1991**

1.d4 f5 2.g3 f6 3.f2 e6 4.f3 d5  
5.O-O d6 6.c4 c6 7.b3 Theory says  
white must try to trade dark-square  
bishops, but the Stonewall is a  
chameleon opening. Sometimes  
white's dark-bishop is extremely  
strong and also (in good hands!)  
black's modest light-square bishop  
becomes a monster. 7...e7 This move  
is automatic these days. 8.f2 O-O  
8..b6! 9.fxe5 d7 10.f2 e8 11.f2  
fh5 12.fae1 12.f3! 12...fbd7 13.f3?  
It is too late for this move, but black  
has already equalized. 13...fxe5  
14.dxe5 fxc5++ Black has a favorable  
pawn structure. 15.fh1 f7 16.e3 a5  
17.f4 fxd4! 18.fxd4 f4! 19.f2  
fg6 20.f3 h5 21.f1 a4! Black gets  
the a-line under his control. 22.c5  
axb3 23.axb3 fg5 24.fh3 f5  
25.fxf5 fxf5 26.f2 g5 27.h3 fg7  
To meet g4 with hg4/fh7/fh8.  
28.f2 fxc2 29.fxc2 fa3 30.f2  
fxg3 31.fhg3 fh6 Leaving the g6  
square for the knight, in case the  
maneuver f8/g6/f4 comes into play.  
32.fxe2 b6! 33.fxb6 fb8! 34.f4 On  
34.f4 c1 fxb6 35.fbc2 fb8! Winning  
the b-pawn but with an unclear  
position. Maybe the fh6 would be  
better on g6. 34...fxb6 35.f5? My  
opponent was in time trouble. In time  
deficit, players lose objectivity and  
overestimate their own chances or  
underestimate their opponents  
chances. I do both! 35...exf5-+ 36.fg3  
fg6 37.e6 f6 38.e7 fa8 39.fbe2 f4  
40.e8++ and white lost on time, but  
he is two pawns down. 1-0

After this game, I realised the  
similarity of the strategy to a game I  
lost to M. Gurevich in 1989.

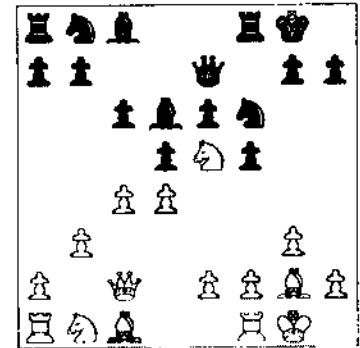
**Gurevich, D-Gurevich, M  
New York [147/12] 1989**

1.f3 f6 2.c4 e6 3.g3 d5 4.b3 a5 5.f2 a4  
6.f3! axb3 7.fxb3 fxa3 8.fxa3 c6 9.O-O O-O  
10.d3 fb6 11.d4! fa5 12.fxe5 fbd7 13.f4!  
fxc5 14.fxe5 fg4 15.f2 d2 fa6 16.f3 d7  
17.c5 fc7 18.e4 fa8 19.f2 d8 20.h3 fh6  
21.h4 fe8 22.fh4 fa3 23.fxa3 fxa3 24.fal  
fa5= 25.fxa3 fxa3 26.fxd5 exd5 27.fh3 fh8!  
f7 28.f2 fe7 29.g4 d7 30.fg3 fd8!  
f7 31.f2 fa2 32.f3 fb1 33.f2 fg1  
34.f2 fc8 35.f4 fb1 36.f3 fg8 37.f1 fe7  
38.f5 g6f 39.f4? fe4+ 40.fg3 gxf5 41.fxf5  
fe6 42.f2 fh1 43.f1 fh3+ 44.f2 fh2+?  
45.f2 fg8! f6 g4! 46.fg1! fxf5 47.f4  
fh4+ 48.fg3 ffg3+ 49.fg3 h6 50.fh5 fe7

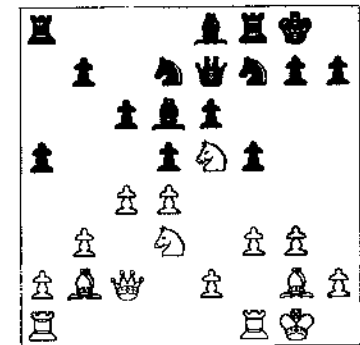
51.f4 fg6+ 52.fg3! = fd8 53.f3 d7! f  
f18-e6 54.f6 f18 55.fg8? .h5! 56.f6 fxc8!  
57.f2 h4+ 58.fhx4 fe6 59.f1 fxd4 60.fg3  
f5 61.f4 fg6 62.f3 fe6 63.f2 d4+  
64.f2 fc7! f7 fe7, fa6 65.f3 fe7 66.fg6  
fxg6 67.f3 fe6! 68.fxd4 fe5+ 69.f1 g5  
70.fhb f14 71.f3 fxe5 72.f4+ f14 73.f2  
g4 74.f2 fd5 75.f5 g3+ 76.fg2 fg4! 77.f4  
f4+ 78.f1 fh3 79.f3 fd3 80.f2 g2  
81.f3 f4 82.f2 fh2 83.fhg2 fhg2 84.f2  
fg3 85.f3 f4+ 0-1

**Larry Remlinger-  
Dmitry Gurevich  
American Open, 1991**

1.d4 f5 2.g3 f6 3.f2 e6 4.f3 d5  
5.O-O d6 6.c4 c6 7.b3 e7 8.f2!  
Stops 8..b6 due to 9.cd5. 8...O-O  
9.f2!



9...d7 Now 9..b6 would be a  
mistake 10.fxd5 cxd5 11.fxc4! fc7  
12.f3!+- 10.f2 fe8 11.fdf3 fe4  
12.fbd7 13.f4! 12.f3 fd7  
13.f2! Something was wrong, but  
I did not want to admit it to myself. I  
played standard Stonewall methods to  
keep out of trouble. 13...a5 14.f3 fg5  
15.f2 f7? Maybe 15.fxe5 and if  
16.fxe5 only then 16.f7.



16.fxd7 fxd7 17.e4 and black is  
strategically lost. White's opening  
play is "classical." 17...dxe4 18.fxe4  
fxe4 19.fxe4 fg5 20.f2 Here I  
remembered the words of Tigran  
Petrosian: "If you think that your



# KINGS ISLAND OPEN

**March 20-22 or 21-22, near Cincinnati**

**\$20,000 PRIZE FUND!**  
**ALL PRIZES UNCONDITIONALLY GUARANTEED!**  
Largest Ohio prize fund ever, and \$49 room rates!

**OPEN SECTION:** Open to all. Prizes \$2000, \$1000, \$500, \$300, \$200. Under 2400/Unr: \$1000, \$500, \$300. FIDE rated, 100 Novag Grand Prix points, ChessBase-CCA Grand Prix points available.

**EXPERTS SECTION:** Open to under 2200. Prizes \$1500, \$700, \$500, \$300, \$200.

**AMATEUR SECTION:** Open to under 2000. Prizes \$1500, \$700, \$500, \$300, \$200.

**BOOSTER SECTION:** Open to under 1800. Prizes \$1500, \$700, \$500, \$300, \$200.

**RESERVE SECTION:** Open to under 1600. Prizes \$1500, \$700, \$500, \$300, \$200.  
Under 1400 (no Unr): \$800, \$400, \$200.

**SCHEDULE:** Choice of 3-day or 2-day. 3-day Open and Amateur play all 40/2, SD/1; 3-day Reserve plays all 40/90, SD/1. 2-day has rounds 1-2 G/90, then merges with 3-day.

**3-day Open & Amateur rounds:** Fri 7, Sat 11 & 6, Sun 9 & 3:30.

**2-day rounds:** Sat 10, 2, 6; Sun 9 & 3:30.

**LATE REGISTRATION** closes 1 hour before your first game. Late entries with round 1 bye also close 1 hour before round 2. If you enter by mail, there is no further registration at the site.

**ENTRY FEE:** Postmarked by 1/15, 3-day \$69, 2-day \$68. Postmarked 1/16-3/13, 3-day \$79, 2-day \$78. All \$90 at site (\$85 paid by money order). Advance entry \$3 less to OCA memb. Re-entry \$50 (same or other schedule, with or without byes).

**HALF POINT BYES:** If playing any round or rounds is inconvenient, you may take a half point bye instead. 1 hour notice is sufficient for half point byes in first 3 rounds. For byes in rounds 4 or 5, irrevocable notice must be given before your first game.

**HOTEL:** Special room rate \$49 single/twin, \$59 3 in room, \$69 4 in room at the beautiful Kings Island Inn, a resort hotel on a 1600 acre wooded setting. Indoor pool, tennis, health club, College Football Hall of Fame adjacent. Reserve by 3/1 (800-727-3050, in OH 800-582-3050), ask for chess rate. Free parking.

**OPEN SECTION PLACE PRIZES** paid March 22. All other prizes mailed no later than March 30; be sure to list name & address on prizewinners sheet if in the running. Winners of over \$600 must show ID with social security number.

**NO SMOKING**, no computers, no credit card or phone entries. Questions: 914-496-9658.

**SEND ENTRIES TO:** Continental Chess Assn, PO Box 249, Salisbury Mills, NY 12577.

**QUICK QUADS:** 4 separate Quads, rated by the new USCF Quick Rating System for G/10 to G/15, these are scheduled for times when many Kings Island Open players will be through with their games. **G/15 Quads** start 10 pm 3/20 & 1 pm 3/22; rounds each half hour. **G/10 Quads** start 4 pm 3/21 & 10 pm 3/21; rounds each 20 minutes.

**QUAD ENTRY FEES:** Master \$30, Expert \$20, others \$10.

**QUAD PRIZES:** 70% of entry fees 1st each section if top rated in section is Master, 60% if Expert, 50% if lower.

**ENTER QUADS** at hotel up to 15 minutes before start. No mailed entries, please.

## ENTRY FORM- KINGS ISLAND OPEN

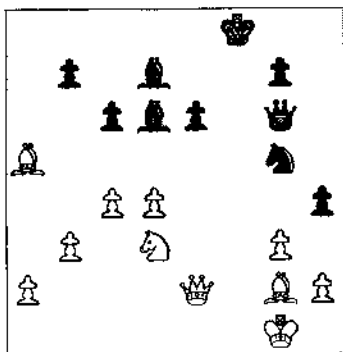
Name \_\_\_\_\_ Section \_\_\_\_\_ Number of days \_\_\_\_\_ USCF ID \_\_\_\_\_ Rating \_\_\_\_\_

Entry fee \_\_\_\_\_ USCF expiration date, or dues enclosed \_\_\_\_\_

Address, if dues enclosed \_\_\_\_\_

Send to Continental Chess, PO Box 249, Salisbury Mills, NY 12577. Checks payable to Continental Chess. Use of entry form is optional- you can enter any Continental Chess tournament by sending name, tournament, section, no. days, & fee.

opponent is going to play Dutch the most important thing is not to try to prevent it." 20...f7 21...xf7 xf7 22...ee2! The killing move. An immediate ef1 can be met by wh5. 22...ef8 23...ef1 wg6 24...xf8+ xf8 25...ac3 h5 26...axa5 h4!



Pure bluff! 27...ee5? It worked. Simply 27.gxh4 fh3+ 28...ff1+ 27...axe5 28...dxe5 h3 29...ff1+ gg8 30...axh3 After thinking for a long time, Larry decided to take the pawn which allows a draw. It would have been too dangerous to let the pawn live. 30...axh3+ 31...wxh3 bb1+ 32...ff1 wxax2 33...wd1 wxax5 34...wd7 we1+ with perpetual check. Draw

Some related Dutch Defenses:

**Brodsky, M - Uilblin, M**  
Yurmala jr (05), 1989

1.d4 e6 2.c4 f5 3.f3 ff6 4.g3 d5 5...gg2 c6 6.O-O dd6 7.b3 we7 8...wc2 O-O 9...af4 axf4 10.gxf4 ad7 11.c3 de8 12...de5 fe4 13...fe3 fd7 14...fe2 gh8 15.f3 fd6 16...wd2 dxc4 17...fxe4 fxe4 18...bxc4 c5 19...ff1 cxd4 20...wxd4 fxe5 21...wd6 wxd6 22...wd6 ff7 23...ad1 fd7 24...wd7 axd7 25...ff2 gg8 26...ff1 ff8 27...fe3 de6 28...fd4 fe7 29...de2 fd8 30...we1 fd6 31...fd2 de8 32...wd6 axd6 33...ad1 de6 34...de2 fd7 35...fb1 h6 36...ec3 g5 37...fxg5 hxg5 38.f4 gxf4 39...exf4 e5 40...fxe5+ fxe5 41...fd2 ff4 42...fd4 fe5 43.h4 gg4 44...ff1 gg2 45.c5 de5 46.h5 fxe6+ 47...fc3 gg5 48...fe3 de4 49...fxe4 f4 50...fd2 gh1 51.a3 fd8 52...de4 de6 53...ff3+ ff6 54...fd2 gg5 55...ad4 fe6+ 56...wc4 gg5 57...ad4 de6 58...gg4 fe6+ 59...axe6 wxex6 60.h6 ff6 61.h7 gg7 62...de5 f3 63...ff4 f2 64...de3 gh7 65...xf2 Draw

**Carrier, Bruno - Lauvsnes, Arild**  
Stavanger (05), 1989

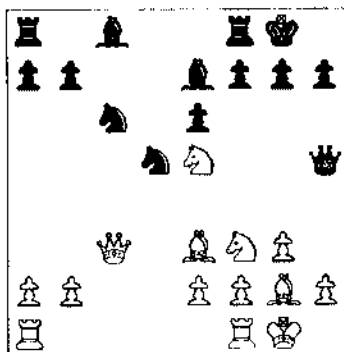
1.f3 d5 2.g3 c6 3...gg2 f5 4.O-O ff6 5.d4 e6 6.c4 dd6 7.b3 we7 8...wc2 O-O 9...de5 ad7 10...fd2 de8 11...fd3 fd7 12...ad3 de4 13...ff4 g5 14...axd6 axd6 15.c5 ff7 16...wc3 g4 17...de5 fxde5 18...dxc5 gg5 19.f4 ff7 20.a4 h5 21.c3 h4 22...ff1 gh7 23.b4 a6 24...de1 fh8 25...fxe2 ad7 26...fd4 ea7 27.b5 axh5 28...axh5 ffax8 29...exa7 fxa7 30...bxc6 bxc6 31...fb6 we8 32...wb2 wa8 33...ff1 ea2 34...fb8 fxb2 35...fxa8 fb7 36...aa6 fc7 37...ff2 h3 38...de2 gg6 39...ad2 gg7 40...fc3 ff7 41...fb4 fe7 42...wa5 fxe8 43...axc8 axc8 44...wb6 fb7+ 45...axc6 fb2 46...axc8 1-0

**Pelts, Roman-Jauregui, C**  
Montreal zt (10), 1981

1.f3 f5 2.d4 ff6 3.g3 c6 4...gg2 d5 5.O-O dd6 6.c4 c6 7.b3 we7 8...wc2 O-O 9...ab2 dbd7 10...dbd2 de4 11.c3 ff6 12...fe1 wh6 13...ad3 fdf6 14...ffe1 ad7 15...ff1 fac8 16.f3 fg5 17...ff2 de8 18...we1 wh5 19...fd2 db8 20...wd1 wh6 21...fd3 ah5 22...ff4 ffe8 23...wc2 dd6 24...fac1 ec7 25...wd3 db4 26...ac3 aa3 27...ec2 dd6 28.c5 ff8 29.b4 a6 30.a4 fd7 31.e4 fxe4 32...fxe4 gg6 33.h4 fxe4 34...fxe4 dxc4 35...axe4 axe4 36...fxe4 ff6 37...fxe6 fxe6 38...axc6 ec7 39...ec2 fd5 40...ad2 wh5 41...de1 wg4 42...fe4 gg6 43...we2 h6 44...fe5 ff7 45.b5 axb5 46...axb5 de7 47...bxc6 bxc6 48...we4 ff6 49...ff4 fc7 50.h5 bb5 51...ff2 fxe7 52...ff3 ff8 53...ec2 de7 54...gg4 ff8 55...gg6 de7 56...ea2 ff8 57...ea7 gg5 58...wxg5 hxg5 59...fg6 1-0

**Dmitry Gurevich - James Maki**  
American Open, 1991

1.f3 d5 2.c4 e6 3.g3 ff6 4...gg2 de7 5.O-O O-O 6.d4 dxc4 In round 2, Orlov played 7.Ne5 and Maki won, but Orlov erred later. 7...wc2 c5 More normal is 7...a6 8.a4 then 8...c5. 8...dxc5 wa5? 9...fa3 c3 10...fc4 wxex5 10...cxh2 11...fxa5 bxa1 12...fb3+ 11...wxex3 fxe6 12...de3 wh5 Now the threat is 13...fd5. White must watch out for fg4/gh4/wh2. 13...fxe5 Fighting for the key squares. If 13...fxe5 14...fxe5 + 13...fd5



14...fxe6? ff6? This reply looks really fancy, but Jim misses my not so obvious answer. Instead of taking the ff6, black attacks it again with another piece! But was the simple capture so bad? Some of the variations are very interesting: 14...fxe3 15...fxe7+ gh8 16...bxc3 ad7 Black must try to trap the de7. 17...ff1 (17...ff4 wc5 18...ff1 wxex7 19...ad6 Winning back a whole rook.) ) ad8 18...fd4:  
A) 18...ff8 19...fh4 wb5 20...wxh7+ wxh7 21...fg5+ gh6 22...fxf7+;  
B) 18...ff1;  
C) 18...ab5? 19...gh4+-

At any rate, I strongly believe in this kind of chess. Even if sacrifices like this are not always correct, I prefer them to any dull position for the excitement of the game and postmortem analysis.

15.g4! I saw this move right away, but spent a few minutes checking wa5 and wc5. 15...wxg4 [15...fxe3 16.gxh5 fxe2+ 17...gh1 bxc6 18...ffe1 aa6 19...ff1 axb2 20...fab1 ac3 21...axe2 axel 22...axa6+-] 16...fxe5 fxe3 17...fxg4 fxe2+ 18...gh1 axb2 19...fab1+- Three pawns in this position are not sufficient compensation for the piece. 19...ac3 20...fxe5 f6 21...fxe4 e5 22...ad6 de6 23...xb7 a5 24...db5 axa2? Falling into another trap. 25...fxg1! ac4 26...fxe3 fxe3 27...fc1 de5 28...fxe3 axb7 29...axb7 and black gave up. Three pieces for a rook is too much. 29...fab8 30...ad5+ gh8 31...ea3 fb5 32...ac4 eb4 33...ac5 1-0

**Korchnoi-Khanov**  
Frunze, 1956

1.c4 e6 2.g3 ff6 3...gg2 de7 4...ff3 O O 5.O-O d5 6.d4 dxc4 7...wc2 c5 8...dxc5 wc7 9...wxex4 wxex5 10...wxex5 axc5 11...fxe5 dbd7 12...fxe4 fxd5 13...fd1 ff16 14...fxe3 h6 15...fxd5 cxd5 16...fxd2 fc8 17.c3 gg4 18...ff1 ff5 19...ff3 fad8 20...fxe5 hxe5 21...h3 d4 22...aa3 fc8 23...fac1 dxc3 24...fxe3 ad3 25...ff1 c4 26...ah3 fc7 27...bxc4 de2 28...fd4 h5 29...ad6 fc6 30.c5 ff3 31...ff1 gg4 32...gg2 fa6 33.c4 fxa2 34.c5 fxg2+ 35...wxg2 fd7 36.c6 fxe5 37...axc5 fxe5 38...fd8+ gh7 39...fc1 fc2+ 40...gg1 1-0

**Hansen, MS - Hyldkrog, L**  
Lyngby open (05), 1990

1.d4 e6 2...ff3 d5 3.c4 ff6 4.g3 dxc4 5...gg2 de7 6.O-O O-O 7...wc2 c5 8...dxc5 axc5 9...wxex4 ab6 10...fxe3 fxe6 11...fd1 we7 12...gg5 h6 13...axf6 wxex6 14...gh4 de7 15.b4 a6 16...fxe5 c5 17.a3 bb6 18...fac1 fb8 19...fxd8+ wxd8 20.c3 we7 21...fd2 fxd8 22...fxd3 ff8 23...wxax7 ed5 24...fd4 ed7 25...ff1 edc7 26...fxe6 bxc6 27...wc5 ff6 28.a4 fd7 29...wd6 db6 30.a5 fd5 31...ff3 wb2 32...fab1 wa2 33...wc5 wa4 34.e4 ff6 35...ea1 wb3 36...wc3 wxex3 37...fxe3 fb8 38...ea4 fd7 39...de2 fb7 40...fxe6 fxb4 41...fxb4 fxb4 42...ec8+ gh7 43...ec7 1-0

**Rajkovic, Dusan-Simic, Milan**  
Vrsac (13), 1981

1.d4 ff6 2.c4 c6 3...ff3 d5 4.g3 de7 5...gg2 O-O 6.O-O dxc4 7...wc2 c5 8...dxc5 axc5 9...wxex4 we7 10...fxe3 dbd7 11...wh4 fd8 12.a3 ff8 13.b4 gg6 14...wc4 ad6 15...gg5 h6 16...axf6 wxex6 17...fc4 we7 18...fxd6 fxd6 19.h4 ad7 20.h5 ec8 21...we4 ac6 22...wc3 ff8 23...wxax7 ed5 24...fd4 ed7 25...ff1 edc7 26...fxe6 bxc6 27...wc5 ff6 28.a4 fd7 29...wd6 db6 30.a5 fd5 31...ff3 wb2 32...fab1 wa2 33...wc5 wa4 34.e4 ff6 35...ea1 wb3 36...wc3 wxex3 37...fxe3 fb8 38...ea4 fd7 39...de2 fb7 40...fxe6 fxb4 41...fxb4 fxb4 42...ec8+ gh7 43...ec7 1-0

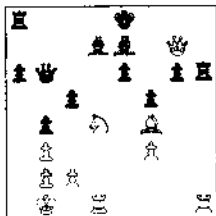
My next opponent could very well be considered to be the most promising in the young generation if...he was not hidden in the shadow of Gata Kamsky.

**Patrick Wolff-Dmitry Gurevich**  
**American Open, 1991**

1.e4 c5 2.f3 d6 3.d4 cxd4 4.fxd4 f6 5.c3 c6 6.c4 Wolff's pet line, though he beat Dlugy nicely with 6.fg5 at the New York Open this year. 6...e6 7.f3 e3 a6 8.f2 e7 9.O-O-O c7 10.f3 a5 11.g4 b5 12.g5 fxb3+ 13.axb3 d7 14.h4 b4 15.f4 In Brooks-Wolff from the last round of this tournament, Brooks played 15.f4, the move recommended by Kasparov and Nikitin in their 1984 book. Brooks lost! 15...c5 16.h5 d7 17.f1 e4? To play a critical line like this one in which your opponent is better prepared is like a high wire act. Better is 17...xa4 18.bxa4 b7! 18.g6 f5 This is "interesting" according to Kasparov and Nikitin. 19.h6 hxg6 20.f3! Yes, it is going to be very interesting, but mostly for white! 20...c5 For example, 20...g3 21.hxg7 g8 22.f8 or 20...f6 21.g2! After the game Patrick told me this is all known analysis. 21.c5 dxc5 22.f4!

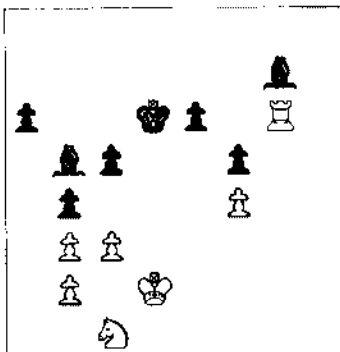
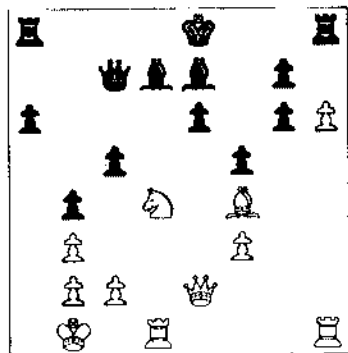
Liquidating the h-pawn. 23...O-O-O 24.f7g7 cxd4 25.f7e7+ 24.f7h6!

I am not sure black can escape after this, but 24.f7g7! also looks like a clear win :



f8 (24...fxh1 25.f7g6+ d8 26.f7h1+- threatening fxf5 and f8.) 25.f7g8 fxh1 26.f7g6+ d8 27.f7h1 cxd4 28.f8 c8 29.f7!+-]

24...gxh6 25.f7h6 I think after this move black can hold the game. I was more afraid of 25.f7h8+ f8 26.f7f6 cxd4 27.f7d4+- 25...O-O-O 26.f7e2 c7 27.f7xc7+ c7 28.f7xg6 e8 29.f7xd8 f7g6+ 30.f7a8 30.f7h8? 30...d6 31.f7h8 If 31.f7xa6 f5! 32.f7g1 e5 with drawing chances. 31...d7 32.f7c1 e8 33.f7d2 e5 34.f7h7+ d6 35.c3 d6? 35...f5! 36.f4 f6 37.f7c1 bxc3+ 38.bxc3 c4! 36.f4 f6 37.f7c1 b5 38.f7h6 g7 39.f7g6



Only now did I realize the consequences of playing my opponents game. I saw this move in advance, but miscalculated it. I thought I would either take a piece and give it back, or play f6 or f8. 22...f6 Avoiding 22...xf4? 23.f7e6 f5 24.f7g2+- and 22...c8? 23.f7e5! cxd4 (23...f6 24.hxg7 f7e5 25.f7h8+ f7 26.f7xc8 f7xc8 27.f7xe5+- cxd4 28.f7xd4) 24.f7g7 f8 25.h7!+- 23.f7e5!

A very nice trap. With two minutes to reach move 45 black errs. 39...f8? This loses. The bishop needs to stay on the long diagonal.

[39...f8 40.f7h6 g7 41.f7h7 f6 42.c4 c6 43.f7d3 e4 44.f7a7 f7xd3 45.f7xa6+ d7 46.f7xd3 f7xb2= The white king cannot penetrate through h4 since the black king stays on f6 or e7.]

40.c4 c6 41.f7d3 a5 42.f7e5 The knight penetrates and black's position falls apart. 42...e4 43.f7f7+ d7 44.f7g5 e5 45.f7xe4 fxe4 46.f5! 1-0

23.f7c7! f7xc7 24.f7xe6 c6 25.hxg7 g8 26.f7f8! d8 27.f7h8 f7 28.f7xg8 f7xg8 29.f7xe7 Wolff saw this line but felt f7e5 was equally strong. An embarrassment of riches. 23...f7h6

Good game by Patrick Wolff. Making a mistake because of time trouble is not a good excuse because your opponent played well enough to put you into time trouble! In modern chess competition position and a clock go together. Once I asked Gary Kasparov about his game with Carpo in Amsterdam 1988. "what if you had played b4 on move \_\_\_?" His instant reply was "then his flag would have fallen down!"

After this game I made two draws and got only a minor prize. The tournament was won by Joel Benjamin with 7-1 (after a 6-0 start). Second and third were shared by Wolff and Doug Root. Root defeated Walter Browne and Alex Fishbein.

**Improve Your Chess**

**International Grandmaster Dmitry Gurevich**

Available for lectures, simultaneous exhibitions, private lessons and consultations.

**312-465-2926**

For the Record:

**Peoria Tornado**

June 8, 1991

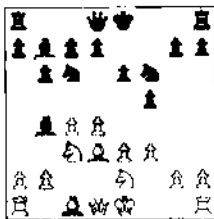
1	STEVENSON Willford	1900	W21	W 5	W 7	D 2	3.5
2	CROUSE Matt	1968	W11	W 9	W 6	D 1	9.5
3	GOTTLE Greg	1796	W15	W14	D 4	D 6	3
4	BOURGERIE Dennis	1918	W12	D10	D3	W11	3
5	DEIKE Ron	2041	W 8	L 1	W10	W 9	3
6	MC GOWAN Andy	2137	W14	W17	L 2	D 3	2.5
7	WILKINSON Bill	2005	W13	D18	L 1	W12	2.5
8	LEALI Mike	1742	L 5	D21	W18	W16	2.5
9	SCOTT Winfield	1821	W22	L 2	W16	L 5	2
10	VERO Carl	1798	W20	D 4	L 5	D17	2
11	CRUM Randy	1858	L 2	W22	W17	L 4	2
12	STAFFORD Jerry	1851	L 4	W20	W13	L 7	2
13	ZIMMERLE Wayne	1725	L 7	W19	L12	W18	2
14	LIMBERG Ray	1748	L 6	L 3	W21	W19	2
15	RODGERS Paul	-	L 3	L18	W22	W21	2
16	WARFIELD Tom	1830	W19	D 7	L 8	L 8	1.5
17	BOLITHO Tom	1901	W18	L 6	L11	D10	1.5
18	KIRKPATRICK Don	1562	L17	W15	L 8	L13	1
19	THOMAS Marc	1454	L16	L13	W20	L14	1
20	VON HEIMBURG Karl	1155	L10	L12	L19	Wbye	1
21	ANDERSON Richard	1478	L 1	D 8	L14	L15	0.5
22	HAIG Ted	1215	L 9	L11	L15	-	0

# Games From the Illinois Class

Selected and Annotated by NM Tom Cooper

## Cusi-Bogan Illinois Class M/Ex, 1991

1.d4 f5 2.c4 ♖f6 3.♗c3 e6 4.e3 b6 5.♗d3 ♗b7 6.f3 ♗c6 White plays an old favorite of Akiba Rubinstein. Modern theory considers the line harmless for black if he fianchettoes the other bishop and plays ..e5. It tests blacks understanding, forcing him to change gears and play Leningrad-like 7.♗ge2 ♗b4?!



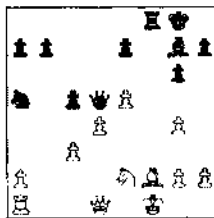
A step in the wrong direction since black will never sink a knight on e4. Correct is: 7...g6 8.♗c2 ♗g7 9.a3 e5 Taimanov-Maric, Vinkovici, 1970 with a good game for black.

8.♗d2 O-O 9.♗c2 ♗e7 10.a3 ♗xc3 11.♗xc3 a5 Black's failure to play ..e5 gives white the advantage. White has two bishops a flexible position, and a mobile pawn center. 12.O-O ♗ae8 White threatens b4 and e4 with rapid expansion. 13.♗ae1 ♗f7 14.♗g3 d6 Black must wait to see where the blow will come: the center or the queenside. 15.b4 axb4 16.axb4 ♗h5 17.e4 Both b4 and e4! 17...f4 18.♗xh5 ♗xh5 19.b5 ♗e7 20.♗a1 ♗f6 21.♗a7 ♗c8 22.e5 ♗h6 23.h3 Black's attack is an ephemera. 23...♗g5 24.♗h1 dxe5 25.dxe5 c5 26.bxc6 ♗xc6 27.♗a4 ♗d8 28.♗xc6 ♗xd3 29.♗e8+ 1-0

## Chow-Marshall Illinois Class M/Ex, 1991

1.d4 ♖f6 2.c4 g6 3.♗c3 d5 4.cxd5 ♗xd5 5.e4 ♗xc3 6.bxc3 ♗g7 7.♗c4 O-

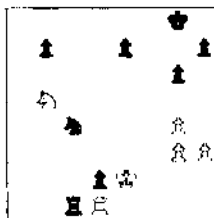
O 8.♗e2 c5 9.O-O ♗c6 10.♗e3 ♗g4 11.f3 ♗a5 12.♗xf7+ ♗xf7 13.fxg4 ♗xf1+ 14.♗xf1 ♗d6 15.e5 ♗d5 16.♗f2 ♗f8



17.♗g1?

Better is 17.g5 ♗f7 18.♗e1 ♗c4 19.♗g3 ♗b2 20.♗e4 ♗d3 21.♗e3 ♗xf2 22.♗xf2 Kuzmin-Malishauskas, USSR 1989. Now Kuzmin gives 22...♗c4+ 23.♗g1 ♗d8+

17...♗c4+ 18.♗e2 ♗f7 19.♗e1 ♗h6 20.♗g1 ♗c4 21.♗g3 ♗d2 22.♗e2 ♗xc3 23.♗c1 cxd4 24.♗e4 ♗xe5 25.♗xc3 ♗xf2+ 26.♗xf2 ♗xf2 27.♗b5 ♗d2 28.♗xa7 ♗xa2 29.♗b5 d3 30.h3 d2 31.♗d1 ♗c4 32.♗f2 ♗c2 33.♗e2 ♗c1 34.g3



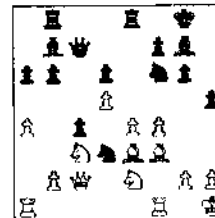
34...♗e3?? 35.♗xd2 ♗c5 36.♗d4 ♗d5 37.♗e6 ♗c6? 38.♗d8 ♗d6 39.♗xb7 ♗c3+ 40.♗e3 ♗xd2 41.♗xd2 ♗e4+ 42.♗e3 ♗xg3 43.♗f3 ♗f1 44.♗e2 ♗g3+ 45.♗f3 ♗f1 Draw

## Jakstas-Schuschel Illinois Class M/Ex, 1991

1.d4 ♖f6 2.c4 g6 3.♗c3 ♗g7 4.e4 d6 5.f3 O-O 6.♗e3 e5 7.d5 ♗h5 8.g4 ♖f4 9.h4 ♗d7 10.♗ge2 ♗c5 11.♗xf4 exf4 12.♗xf4 f5 13.gxf5 gxf5 14.e5 dxe5 15.♗e3 b6 16.♗d2 f4 17.♗xc5 bxc5 18.♗e4 ♗b8 19.O-O-O ♗f5 20.♗d3 ♗e7 21.♗dgl ♗h8 22.♗h2 ♗xe4 23.♗xe4 ♗f6 24.♗g4 ♗g8 25.♗f2 h5 26.♗g1 ♗xg1+ 27.♗xg1 ♗g8 28.♗g2 ♗xg2 29.♗xg2 ♗g7 30.♗h3 ♗g1+ 31.♗c2 ♗f2+ 32.♗b3 ♗xh4 33.♗c8+ ♗d8 34.♗f5 ♗e7 35.♗xh5+ ♗g8 36.♗f5 ♗f6 37.♗g6+ ♗f8 38.♗xf6+ ♗xf6 39.♗a4 ♗e7 40.♗a5 ♗d6 41.♗e4 ♗h4 42.♗a6 ♗e1 43.♗xa7 ♗a5 44.♗a6 ♗b6 45.a4 c6 46.♗xb6 cxd5 47.♗xd5 1-0

## Madera-Zhu Illinois Class M/Ex, 1991

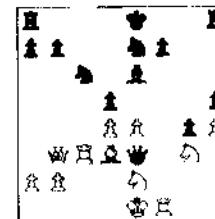
1.d4 ♖f6 2.c4 e5 3.d5 d6 4.♗c3 g6 5.e4 ♗g7 6.♗d3 O-O 7.♗ge2 e6 8.O-O exd5 9.cxd5 ♗e8 10.♗g3 a6 11.a4 ♗bd7 12.f4 ♗c7 13.♗h1 c4 14.♗e2 ♗b8 15.♗e3 b6 16.♗c2 ♗b7 17.♗g1 h5 18.♗f3 ♗c5 19.♗ge2 ♗d3 20.♗e3?=-



20...♗xd5 21.♗xd5 ♗xd5 22.♗c3 ♗c6 23.♗g1 ♗xf4 0-1

## Cohen-Hansen Illinois Class/A, 1991

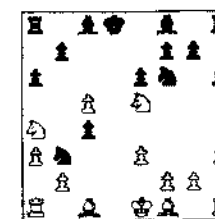
1.e4 e5 2.f4 exf4 3.♗f3 d6 4.d4 g5 5.h4 g4 6.♗g1 ♗f6 7.♗c3 c6 8.♗ge2 ♗h6 9.g3 fxg3 10.♗xg3 ♗xc1 11.♗xc1 ♗e7 12.♗c4 ♗f4 13.♗ce2 ♗e3 14.♗f1 d5 15.♗d3 h5 16.c4 ♗e6 17.cxd5 cxd5 18.♗b3 ♗bc6 19.♗c3!=-



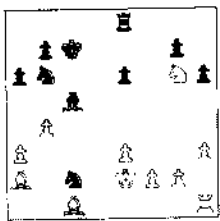
19...O-O 20.exd5 ♗xd5 21.♗c4 ♗xc4 22.♗xc4 ♗h6 23.♗e4 ♗ad8 24.♗f6+ ♗h8 25.d5 ♗e5 26.♗d4 ♗g6 27.♗f5 ♗f3+ 28.♗cxf3 gxf3 29.♗xh5 ♗g7 30.♗e8+ ♗g8 31.♗f6+ ♗g7 32.♗xh6 ♗xh6 33.♗g3 ♗e7 34.♗f4+ ♗g7 35.♗gh5+ ♗g6 36.♗g5+ 1-0

## Martinovsky-Smythe Illinois Class M/Ex, 1991

1.d4 c5 2.e3 d5 3.♗f3 ♗c6 4.c4 ♗f6 5.♗c3 e6 6.a3 a6 7.h3 h6 8.dxc5 dxc4 9.♗xd8+ ♗xd8 10.♗a4 ♗a5 11.♗e5 ♗b3



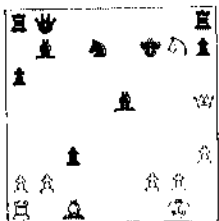
12.xf7+ c7 13.xh8 xal 14.xc4 d7 15.b6 e8 16.xd7 xd7 17.g6 xc5 18.b4 b6 19.a2 xc2+ 20.e2



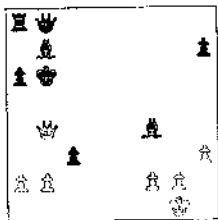
20...xb4 21.axb4 xxb4 22.b2 d6 23.f4 e5 24.e6+ c6 25.xg7 f8 26.c1+ b5 27.d1 a4 28.a1 b4 29.d5+ c6 30.xe5 c3 31.b3 b5 32.e6 f5 33.d6+ b7 34.d5+ a7 35.d7+ b6 36.c7+ a7 37.a5+ b8 38.d8+ a7 39.a8+ 1-0

**Colias-Chow**  
Illinois Class M/Ex, 1991

1.d4 d5 2.c4 dxc4 3.e3 f6 4.xc4 e6 5.f3 c5 6.O-O a6 7.c3 b5 8.b3 b7 9.e2 bbd7 10.d1 d6 11.e4 cxd4 12.xd4 b8 13.h3 b4 14.xe6 fxe6 15.xe6 bxc3 16.e5 xe5 17.xg7+ f7 18.xd7+ xd7 19.h5+



19...xg7 20.h6+ g8 21.g4+ f7 22.xd7+ g6 23.e1 e8 24.f4 xxf4?? 25.e6+ xe6 26.xe6+ g7 27.e7+ g8 28.e6+ f8 29.f6+ e8 30.e6+ d8 31.f6+ d7 32.f7+ d8 33.f6+ d7 34.f7+ c6 35.c4+ b6 36.b4+



36...c6 37.c4+ d6 38.xf4+ c5 39.e3+ b5 40.d3+ b6 41.d4+ c7 42.f4+ d7 43.f7+ d6 44.f6+ d5 45.f3+ e6 46.g4+ d5 47.f3+ e5 48.g3+ f6 49.h4+ g6 50.g4+ f7

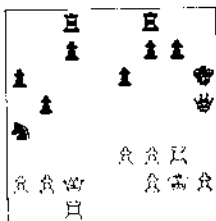
51.f5+ e7 52.g5+ d7 53.f5+ d6 54.f4+ c5 55.e3+ Thirty straight queen moves! Draw

**Inumerable-Chow**  
Illinois Class, M/Ex 1991

1.d4 f6 2.c4 e6 3.f3 a6 4.g5 d5 5.e3 e7 6.c3 O-O 7.d3

7.cxd5 xd5 8.xe7 xe7 9.d3 xc3 10.bxc3 d7 11.c2 h6 12.O-O b6 13.e4 e5 14.d2 f6 15.f4+ Zaitsev-Sahov, USSR 1965.

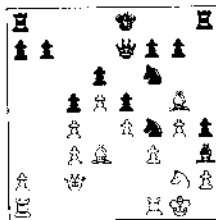
7...dxc4 8.xc4 b5 9.d3 b7 10.xf6 xf6 11.e4 d7 12.c1 e7 13.O-O c8 14.c5?! xf3 15.gxf3 xc5 16.dxc5 g5+ 17.h1 xc5 18.xh7+ xh7 19.c2+ h6 20.g1 h5 21.g3 a4 22.g2



22...f5 23.e4 f4 24.h3+ g6 25.e5+ f5 26.e2 h8 27.g3+ h7 28.g1 g6 29.e3 g7 30.b3 b6 31.a4 d5 32.d2 f4+ O-1

**Warren-Gratz**  
Illinois Class M/Ex, 1991

1.d4 f6 2.c4 e6 3.c3 b4 4.e3 xc3+ 5.bxc3 d6 6.d3 c5 7.f3 [7.f4 d7 8.e4 e5 9.f3 cxd4 10.cxd4 exd4 11.O-O O-O 12.b1 c6 13.c2 h6 14.xd4+ Segal-Kamara, Brazil 1985.] [7.e4 e5 8.e2 c6 9.O-O e7 10.f3 b6 11.e3 a5 12.c1 a6+ ECO.] 7...c6 8.e4 e5 9.d5 e7 10.O-O g6 11.e1 e7 [11...O-O 12.g3 h3 13.g2 e8 14.b1 d7 15.b2 f5 16.exf5 xf5 17.f4= ECO] 12.c2 h5 13.g3 h3 14.g2 f6 15.f3 h5 16.g5 h4 17.g4 f4



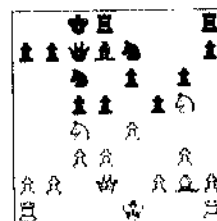
I would be tempted to sacrifice an exchange here by 18.xf4 xf1 19.h5 xd3 20.xd3 f8 21.xh4 When white has shed his bad bishop

and can play f6, h5-g3-f5 with good practical winning chances. Blacks rooks have trouble getting together and have no open files to work on. Editor

18.xf4 exf4 19.f1 xg2 20.xg2 h3 21.d2 g5 22.c2 b6 23.a4 c7 24.f1 d7 25.b2 e7 26.e2 ab8 27.a3 b7 28.b3 bb8 29.b5 hc8 30.b3 d8 31.g1 h8 32.f1 e5 33.f2 d7 34.e1b2 c7 35.d2 h4 36.e2 g6 37.f1 xf2+ 38.xf2 h8 39.d2b2 e5 40.e2 f6 41.b1 f7 42.b3b2 hc8 43.f1 h8 44.e2 e5 45.b3 f7 46.b3b2 1-0

**Marquez-Kaushansky**  
Illinois Class M/Ex, 1991

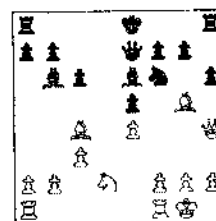
1.e4 c5 2.c3 c6 3.g3 g6 4.g2 g7 5.d3 e6 6.e3 d4 7.d2 d6 8.d1 e7 9.c3 dxc6 10.h6 10.h4 h5 11.d4 b6 12.f3+ 10...xh6 11.xh6 b6 12.f3 d7 13.d2 O-O-O 14.e3 14.d4 14...f5 15.c4 c7 16.g5 d5



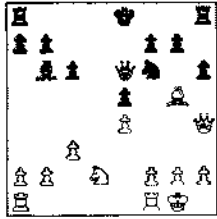
17.exd5 exd5 18.e3 f4 19.gxf4 xf4 20.xd5 e5+ 21.e3 xd5 22.xe5 xe5 23.xd5 xd3+ 24.f1 hf8 25.c4 xf2 26.xh7 xh1+ 27.xf8 xf8+ 28.e2 f2+ 29.e3 xh2 30.d5 g3 31.g1 f5+ 32.d3 xb2 33.xg6 e7 34.g5 xd5 35.xd5 b6 36.h5 xa2 37.e4 c7 0-1

**Zhu-Jankauskas**  
Illinois Class M/Ex, 1991

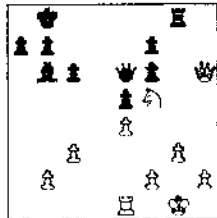
1.e4 e5 2.f3 c6 3.b5 c5 4.O-O d4 5.xd4 xd4 6.c3 b6 7.d4 c6 8.c4 d6 9.dxe5 dxe5 10.h5 10.b3 e7 11.a4 f6 12.a5 c5= Hort-Spassky, Match 1977 or 10...e7 11.g5 f6 12.h4 e6 =Suetin ECO. 13.d2 h6



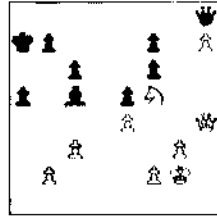
14. ♖xe6 ♗xe6



15. ♖xf6 gxf6 16. ♗h5 O-O-O 17. ♔f3 ♗hg8 18. a4 ♖d3 19. ♖ad1 ♖xd1 20. ♖xd1 ♗b8 21. g3 21. ♗h6? ♗g4+ 21... ♗c4 22. ♖e1 ♗b3 23. a5 ♖xa5 24. ♗xh6 ♗e6 24... ♗xb2 25. ♗xf6 ♖b6 26. ♖xe5+ 25. ♖h4 ♖b6 26. ♖f5



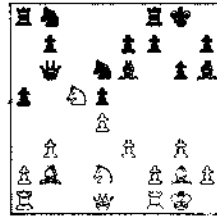
26... a6 27. ♖d1 ♗c4 28. ♖e1 ♗e6 29. ♗h5 ♖d8 30. ♖d1 ♖xd1+ 31. ♗xd1 ♖a7 32. h4 ♖c5 33. h5 ♗c8 34. ♖g2 a5 35. h6 ♗g8 36. ♗h5 ♗h7 37. ♗h4 ♗h8 38. h7



38... ♗d8 39. h8 ♗ ♗d2 40. ♖e3 ♖xe3 41. ♗8xf6 ♖b6 42. ♗xf7 1-0

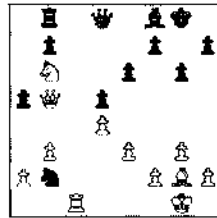
**Cusi-Martinovsky**  
Illinois Class M/Ex, 1991

1. ♖f3 ♖f6 2. d4 g6 3. g3 d5 4. ♖g2 ♖g7 5. O-O O-O 6. c4 c6 7. ♖bd2 a5 8. b3 ♖e4 9. ♖b2 ♖d6 10. ♖e5 ♖e6 11. cxd5 cxd5 12. e3 ♗b6 13. ♖d3 ♖h6 14. ♖c5

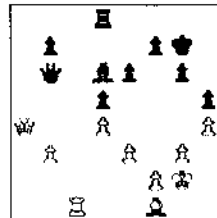


14... ♖f5 15. ♗e2 ♖a6 16. ♖xe6 ♗xe6 17. ♖b1 ♗d7 18. ♖c3 e6 19. ♖a4 ♗d6 20. ♖ac1 ♖fb8 21. ♗b5 ♖f8 22. ♖b6 ♖c7 23. ♖xc7 ♗xc7 24. ♖c1 ♖d8

25. ♗c5 ♗d8 26. ♖xa8 ♖c4 27. ♗b5 ♖xb2 28. ♖b6

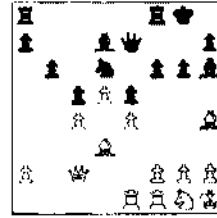


28... ♖d3 29. ♖d1 ♖b4 30. ♗xa5 ♖xa2 31. ♗xa2 ♗xb6 32. ♖c1 ♖d6 33. ♖f1 ♖g7 34. ♗a4 ♖d8 35. ♖g2 h5 36. h4 Draw



**Colias-Martinovsky**  
Illinois Class M/Ex, 1991

1. d4 ♖f6 2. c4 g6 3. ♖c3 d5 4. cxd5 ♖xd5 5. e4 ♖xc3 6. bxc3 ♖g7 7. ♖c4 O-O 8. ♖e2 ♖c6 9. O-O b6 10. ♖g5 ♖a5 11. ♖d3 c5 12. d5 f6 13. ♖h4 e5 14. c4 ♖h6 15. ♗c2 ♗e7 16. ♗h1 ♖d7 17. ♖ae1 ♖b7 18. ♖g1 ♖d6



19. f4 ♖xf4 20. ♖xf4 exf4 21. e5 21... ♖f5 22. exf6 ♗d6 23. ♖xf5 ♖xf5 24. ♗c3 h6 25. ♖e7 ♖f7 26. ♖f3 ♖xe7 27. fxe7 g5 28. ♖xg5 hxg5 29. ♖xg5 ♖f7 30. h4 ♖g8 31. ♗e1 ♖e8 32. ♗e2 ♖xg5 33. hxg5 ♗xe7 34. ♗d1 a5 35. ♗a1 ♖d7 36. ♗b2 ♖c7 37. ♗h2 ♖b7 38. ♗f6 ♗xf6 39. gxf6 ♖g6 40. ♗g1 ♖c7 41. ♖f2 ♖d6 42. ♖f3 ♖h5+ 43. g4 ffg3+ 44. ♖xg3 ...and black won. 0-1

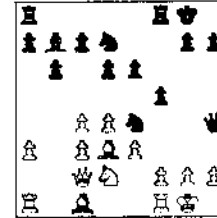
**Inumerable-Cusi**  
Illinois Class M/Ex, 1991

1. d4 d5 2. c4 c6 3. ♖c3 ♖f6 4. cxd5 cxd5 5. ♖g5 ♖c6 6. e3 e6 7. ♖f3 ♖e7 8. ♖c1 O-O 9. ♖d3 ♖d7 10. O-O ♖c8 11. ♖e5 ♖e8 12. ♖xe7 ♗xe7 13. f4 ♖d6 14. ♗h5 f5 15. g4 g6 16. ♗h3 ♖xe5 17. fxe5 ♖e4 18. ♖xe4 fxe4 19. ♖xf8+ ♖xf8 20. ♖f1 ♖xf1+ 21. ♖xf1 ♗h4 22. ♗e2 h6

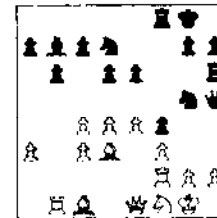
23. ♖g2 ♖e8 24. h3 ♗e7 25. a3 a6 26. ♖g3 g5 27. ♗f2 ♖g7 28. ♖g2 ♖b5 29. ♖xb5 axb5 30. ♗f1 b4 31. axb4 ♗xb4 32. ♗f6+ ♖h7 33. ♗f7+ ♖h8 34. ♗f2 ♖g8 35. ♖g3 b5 36. h4 ♗b3 37. hxg5 hxg5 38. ♖d2 b4 39. ♖f2 ♖g7 40. ♖f1 ♖g6 Draw

**Jakstas-Inumerable**  
Illinois Class M/Ex, 1991

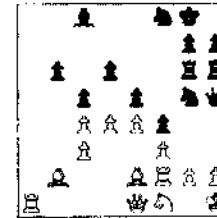
1. d4 ♖f6 2. c4 e6 3. ♖c3 ♖b4 4. e3 b6 5. a3 ♖xc3+ 6. bxc3 ♖b7 7. ♖f3 d6 8. ♖d3 ♖bd7 9. ♗e2 ♖e4 10. ♗c2 f5 11. O-O O-O 12. ♖d2 ♗h4



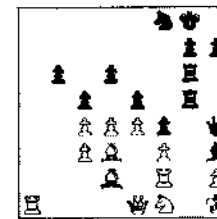
13. f3 ♖g5 14. e4 f4 15. ♗d1 ♖f6 16. ♗e1 ♗h5 17. ♖f2 ♖h6 18. ♖f1 ♖f8 19. ♖b1



19... e5 20. a4 c5 21. a5 ♖ff6 22. axb6 axb6 23. ♖b2 ♖f8 24. ♖a1 ♖c8 25. ♖e2 ♖fg6 26. ♗h1



26... ♖h3! 27. gxxh3 ♖xxh3 28. ♖c1 ♗h4 29. ♖d2 ♖h5 30. ♖d3 ♖hg5

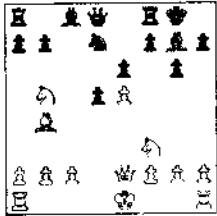


31. ♖e3 fxe3 32. ♖xe3 ♖g2+ 33. ♖xg2 ♗xe1+ 34. ♖xe1 ♖xg2 35. ♖a1 ♖d7 36. ♖a7 ♖f7 37. ♖xd7+ ♖e6 38. ♖b7

2b2 39.h3 3g3 40.f1 fxf3 41.g5  
xf1+ 0-1

**Cooper-Cohen**  
Illinois Class M/Ex, 1991

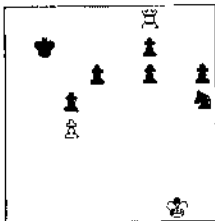
1.e4 g6 2.d4 d6 3.f3 f6 4.c4 c6  
5.e2 g7 6.e5 dxe5 7.dxe5 d5  
8.d2 e6 9.f3 d7 10.xd5 cxd5  
11.b5 0-0 12.b4



12...e8 13.d6 f8 14.f7 dxd6  
15.exd6 b6 16.h4 d6 17.e8  
e7 18.h5 xe8 19.hxg6 hxg6 20.O-  
O 1-0

**Wallach-Smythe**  
Illinois Class M/Ex, 1991

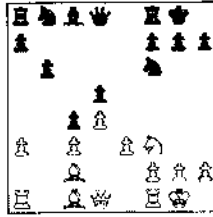
1.d4 c5 2.d5 b5 3.a4 wa5+ 4.c3 d6  
5.a3 wxa4 6.wxa4 bxa4 7.b5 d8  
8.ea4 d7 9.ea7 xa7 10.a7  
c7 11.c4 b6 12.b5 dxb5 13.cxb5  
f6 14.e4 fxe4 15.e2 g6 16.f3 f6  
17.e2 g7 18.g4 b7 19.f4 ea8  
20.f2 e8 21.e3 f7 22.h4 dxc3  
23.bxc3 fxd5 24.d2 a2 25.d1  
f7f6 26.f3 a3 27.c1 e8 28.f5  
gxf5 29.gxf5 a4 30.c4 a3+ 31.f2  
df6 32.f3 g7 33.c3 a2+  
34.g1 fxf5 35.fxf6 exf6 36.d1  
c7 37.h5 h6 38.e1 d4 39.d5  
d7 40.b6 e2+ 41.f1 g3+  
42.g1 b2 43.b7 fxf5 44.a1 c7  
45.a8 fxb7 46.fxb7 f7 47.f8



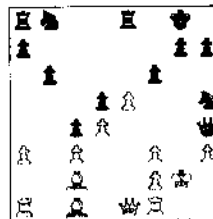
47...c6 48.f2 f4 49.e3 g6  
50.a8 e5 51.a4 h5 52.f4 h4  
53.f5 h3 54.a3 fxc4 55.f3 h5  
56.fxf6 d5 57.e7 f5 58.f6 f4  
59.f4 d2 60.f6 f3 61.f6 d4  
62.e7 b5 63.f5 e4 64.d7 c4  
65.c6 d4+ 66.dxd6 c3 67.f1 e2  
68.e1 e3 69.e5 f4 70.a1 f3 0-1

**Warren-Pelts**  
Illinois Class M/Ex, 1991

1.d4 f6 2.c4 e6 3.f3 b4 4.e3 O-O  
5.d3 d5 6.f3 b6 7.cxd5 exd5 8.O-O  
c5 9.a3 dxc3 10.bxc3 c4 11.c2



11...g4! 12.h3 d5 13.e1 f3  
14.gxf3 h5 15.e4 wh4 16.g2 e8  
17.e5 f6



18.e3 fxe5 19.dxe5 f6 20.f4 f8  
21.f5 e8 22.e6 e7 23.f3 f6  
24.f4 e4 25.g3 g5 26.dxe4  
dxe4 27.fxe4 f5 28.a1 b5  
29.f2 h5 30.f4 f6 31.e5 h4  
32.g3 g6 33.fxf6 fxf6 34.d6  
fexe6 35.fxe6 fxe6 36.f8 a6  
37.b1 fxa3 38.fxb5 fxc3+ 39.g2  
b3 0-1

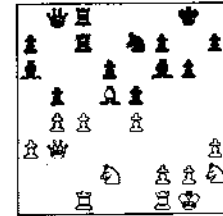
**Brodie-Kraai**  
Illinois Class M/Ex, 1991

1.e4 c5 2.f3 e6 3.d4 cxd4 4.fxd4  
f6 5.f3 d6 6.c4 a6 7.f3 b5 8.O-  
O e7 9.f4 O-O 10.a3 b7 11.f5 e5  
12.fde2 b7 13.g3 f5 14.d5  
dxd5 15.exd5 a5 16.g5 a4 Draw

**Dudnick-Marshall**  
Illinois Class C, 1991

1.e4 c5 2.f3 g6 3.d4 cxd4 4.fxd4  
g7 5.c3 e5 6.f3 d6 7.g5 f6  
8.fxf6 fxf6 9.c4 O-O 10.O-O f6  
11.fbd2 c7 12.f3 b5 13.a3 b7  
14.d5 ead8 15.c1 a6 16.b4 e7  
17.c4 b8 18.f3 c8 19.h3 c7  
20.f2 f6

**CHESSPHONE**  
708-832-5222



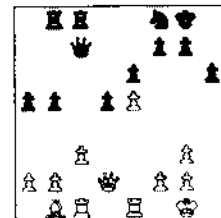
21.fxf7+ f7 22.cxb5+ g7  
23.fxc7 fxc7 24.bxa6 fc8 25.b5 g5  
26.fh3 c3 27.f4 c7 28.fg5  
g8 29.fg3 f8 30.f5 d3  
31.c4+ fxc4 32.fxc4 c3 33.e3  
fxa3 34.c1 b6 35.c7 h6 36.f7  
b3 37.fhx6+ f8 38.fxa7 fxb5  
39.f7 b2 40.a7 a2 41.fxb6 1-0

**Smythe-Marquez**  
Illinois Class M/Ex, 1991

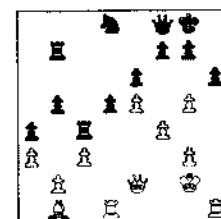
1.d4 f6 2.c4 c5 3.d5 b5 4.cxb5 a6  
5.bxa6 g6 6.f3 dxa6 7.wa4 g7  
8.e4 f1 9.wxa8 d2 10.f3 d1  
11.f2 O-O 12.f2 d6 13.e3 f3  
14.fxf3 d7 15.f4 wh3+ 16.g3  
b7 17.wa4 e5+ 18.f2 fg4+  
19.e1 f3+ 20.d1 e3+ 21.c1  
f1+ 22.d1 fxe2 23.f3 d2+  
24.f1 dxc3 0-1

**Kaushansky-Thompson**  
Illinois Class M/Ex, 1991

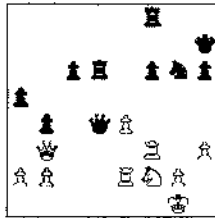
1.e4 c6 2.d4 d5 3.exd5 cxd5 4.d3  
f6 5.c3 g4 6.f3 f7 7.e2 xe2  
8.fxe2 e6 9.f2 e7 10.f3 f6  
11.O-O O-O 12.e1 a6 13.d3 b5  
14.g5 h6 15.f4 f8 16.g3 d6  
17.a1 d2 18.f3 f8 19.f1  
a5 20.e5 fxe5 21.dxe5 d7 22.c2  
f8 23.d2



23...a7 24.g4 e7 25.g3 b7 26.d3  
a4 27.a3 d7 28.e2 c5 29.g2 b8  
30.c1 f6 31.f1 c4 32.f4 d8  
33.f1 f8 34.g5

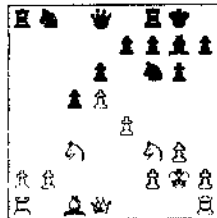


34...b4 35.cxb4 ♖bc7 36.♔d3 ♖4c6  
37.gxh6 g6 38.h7+ ♖h8 39.♖f3 f5  
40.exf6 ♖xf6 41.♖h6 ♖g7 42.b5 ♖cc7  
43.b6 ♖cf7 44.♖g2 e5 45.♖xe5 ♖xe5  
46.fxe5 ♖e7 47.♖c1 ♖xh7 48.♖xg6  
♖hg7 49.♖c8 ♖xg6 50.♔xg6 ♖g7  
51.♖xd8 ♖xg6 52.♖xd5 1-0

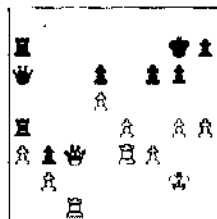


**Kraai-Thompson**  
Illinois Class M/Ex, 1991

1.d4 ♖f6 2.c4 e5 3.d5 b5 4.cxb5 a6  
5.bxa6 ♔xa6 6.♖c3 g6 7.♔f3 ♔g7 8.e4  
♔xf1 9.♖xf1 d6 10.g3 O-O 11.♖g2



11...♔fd7 12.♔f4 ♖a6 13.♖e1 ♖b8  
14.♖e2 c4 15.♖d2 ♖ac5 16.♔d4 ♖e5  
17.♖xe5 ♖xe5 18.♖c6 ♔xc3  
19.♖xe7 ♖g7 20.♖xc3+ f6 21.♖c6  
♖b7 22.♔d4 ♖fe8 23.f3 ♖a4 24.h4  
♖ea8 25.a3 ♖b3 26.♖xb3 cxb3 27.♖c1  
♖a6 28.♖e3 ♖a7 29.g4



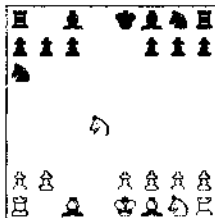
29...♖b7 30.♖c6 ♖a7 31.♖d3 ♖a6  
32.♖c4 ♖c5 33.♖xc5 dxc5 34.♖xc5  
♖xa3 35.bxa3 b2 36.♖d1 b1 ♖ 37.♖xb1  
♖xb1 38.d6 ♖f7 39.♖d5 ♖e8 40.d7+  
♔d8 41.a4 ♖a1 42.a5 ♖a2+ 43.♖g3  
♖a3 44.g5 fxg5 45.hxg5 ♖a1 46.e5  
♖a2 47.e6 ♖e2 48.♖d6 1-0

**Colias-Jakstas**  
Illinois Class M/Ex, 1991

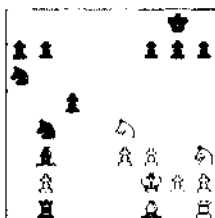
1.d4 d5 2.c4 dxc4 3.e3 ♖f6 4.♔xc4  
♖bd7 5.♖f3 e6 6.O-O ♔d6 7.♖c3 O-O  
8.e4 e5 9.♔g5 c6 10.h3 h6 11.♔h4 g5  
12.♔g3 ♖e7 13.♖e1 b5 14.♔b3 a6  
15.♖c2 ♔b7 16.♖ad1 ♖ac8 17.dxe5  
♔xe5 18.♔xe5 ♔xe5 19.♖e2 ♖cd8  
20.f4 gxf4 21.♔xf4 ♖h7 22.♖f1 b4  
23.♔a4 ♔g6 24.♖de1 ♔c8 25.♖e3 ♔g8  
26.♖c5 a5 27.♖e2 ♔e6 28.♔c2 ♔c4  
29.♔d3 ♔xd3 30.♔xd3 ♖xf4 31.♖xf4  
♖e5 32.♖c1 ♖e7 33.♖f3 ♖d6 34.♔h5  
f6 35.♖f1 ♔g6 36.♖g4+ ♖g5  
37.♖f4+ ♖f7 38.♖f3 ♖e5 39.♖b3+  
♖g7 40.♖f3 ♖h7 41.♔d3 ♖d4+  
42.♖f2 ♔g6 and black lost on time 1-0

**Smythe-Szpisjak**  
Illinois Class M/Ex, 1991

1.d4 d5 2.c4 e5 3.cxd5 ♖xd5 4.♖c3  
♖xd4 5.♖xd4 exd4 6.♖b5 ♖a6 7.♔xd4



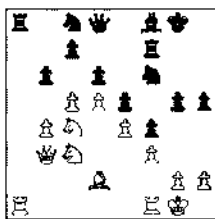
7...♔b4+ 8.♔d2 ♔xd2+ 9.♖xd2 c5+  
10.♖b5 ♔e6 11.e3 ♖d8+ 12.♖c3 ♖f6  
13.f3 ♔d5+ 14.♖d2 ♖db4+ 15.♖e2  
♔xa2 16.♔h3 O-O 17.♖c1 ♖d7 18.♖e1  
♖fd8 19.♖c3 ♔b3 20.♖e4 ♖d1+  
21.♖xd1 ♖xd1+ 22.♖f2 ♖b1



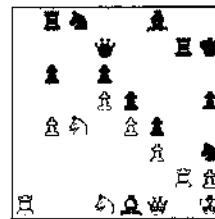
23.♔xa6 ♖xb2+ 24.♔e2 ♔d3+  
25.♖g3 ♖xe2 26.♖a1 a6 27.♖a5 c4  
28.♖d5 h6 29.♖d8+ ♖h7 30.♖d7  
♖xe3 31.♖xb7 a5 32.♖xf7 ♖xe4  
33.fxe4 c3 34.♖f3 c2 35.♖xd3 c1 ♖  
36.♖xb3 a4 37.♖f3 a3 38.♖f2 ♖e3+  
39.♖f3 ♖xf3+ 0-1

**Pelts-Moynihan**  
Illinois Class M/Ex, 1991

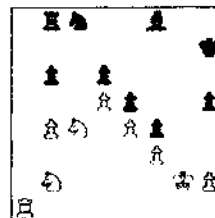
1.d4 ♖f6 2.c4 g6 3.♖c3 ♔g7 4.e4 d6 5.♔c2 O-O  
6.♖f3 e5 7.O-O ♖c6 8.d5 ♖e7 9.♔d2 a5 10.♖b1  
♖e8 11.a3 f5 12.b4 axb4 13.axb4 f4? 14.♔g4! g5  
15.c5 ♖f6 16.♔xc8 ♖xc8 17.f3 h5 18.♖c4 h6  
19.♖b3 ♖f7 20.♔d2 ♖f8 21.♖a1



21...♖b8 22.cxb6 cxb6 23.♖a2 g4  
24.♖fa1 gxf3 25.gxf3 ♖g7+ 26.♖h1  
♔h7 27.♖d1 ♔g5 28.♖f1 ♖d7 29.♔e1  
♔h3 30.♖g2 ♖h7 31.♔d1



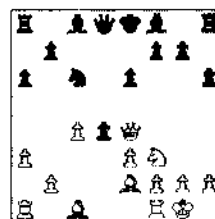
31...♔g5 32.♔h4 ♖h3 33.♔xg5 ♖xg5  
34.♔db2 ♖xg2+ 35.♖xg2 ♖xg2  
36.♖xg2



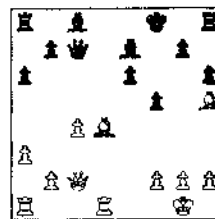
36...♖b7 37.♖f1 ♖c7 38.♖e2 b5  
39.♔d2 ♖c2 40.♔d1 ♖b6 41.♖d3 ♖c7  
42.♖c3 h4 43.♖xb5 ♖b7 44.♖a7 ♖xa7  
45.♖xa7 ♖g7 46.♖c4 ♔d7 47.♖c8 h3  
48.♔4xd6 ♖g6 49.♖c4 ♔h6 50.b5 ♔g5  
51.♖f5 ♔d8 52.d6 ♔a5 53.♖d5 ♖f7  
54.b6 ♔e1 55.♖c6 ♖e8 56.♖c7 ♔g3  
57.♔g7+ 1-0

**Bogan-Kujoth**  
Illinois Class M/Ex, 1991

1.c4 e6 2.♖c3 d5 3.e3 c5 4.d4 ♖f6 5.♖f3 ♖c6  
6.♔c2 h6 7.a3 a6 8.O-O ♖e4 9.♖c2 cxd4 10.♖xe4  
dxe4 11.♖xc4



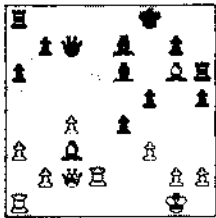
11...dxe3 12.♔xe3 f5 13.♖c2 ♔e7  
14.♖fd1 ♖c7 15.♔d4 ♔xd4 16.♔h5+  
♖f8 17.♔xd4



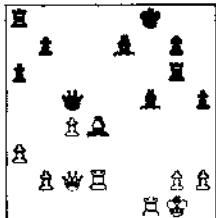




17...e5 18.♖c3 ♗e6 19.♗g6 e4 20.♗d2 h5 21.f3 ♖h6



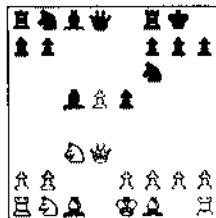
22.fxg4 ♖xg6 23.exf5 ♖c5+ 24.♗d4 ♗xf5 25.♖f1



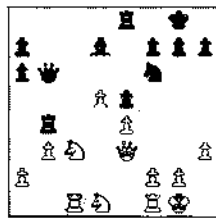
25...♖f6 26.♖c3 ♖c8 27.♗xf6 ♗xf6 28.♖f3 ♗g4 29.♗d5 ♖c6 30.h3 ♖xd5 31.♖xd5 ♗e6 32.♖xh5 ♗xc4 33.♖c1 ♗g8 34.g4 g6 35.♖a5 ♗xb2 36.♖f1+ ♖g7 37.♖a4 ♖d8 38.♖b4 ♗d4+ 39.♖h2 ♗e5+ 40.♖g1 b5 41.a4 ♗c3 42.♖b4 b4 0-1

**Wachtel-Bogan**  
Illinois Class M/Ex, 1991

1.d4 ♗f6 2.c4 c5 3.♗f3 cxd4 4.♗xd4 e5 5.♗b5 d5 6.cxd5 ♗c5 7.♗5c3 O-O 8.♗d3



8...♖e8 9.e4 ♗g4 10.♗d1 ♖b6 11.♖c2 ♗a6 12.♗xa6 bxa6 13.O-O ♗d7 14.h3 ♗f6 15.♗bc3 ♖ac8 16.♗e3 ♗d4 17.♗d2 ♖c4 18.b3 ♖b4 19.♖c1 ♗xe3 20.♖xe3

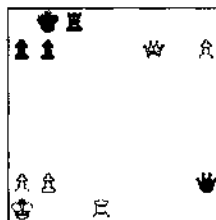


20...♖c8 21.f3 ♗h5 22.♖e1 ♖d4 23.♗f2 ♗f4 24.♖h2 ♖g6 25.♖g1 ♖h5 26.♗e2 ♗xe2 27.♖xc8+ ♗xc8 28.♖xe2

♗g5 29.♖c2 ♗d8 30.♖c1 ♗d7 31.♖c7 ♖e8 32.♗g4 f6 33.♖xa7 ♗b5 34.♖b7 ♗d7 35.♖c7 1-0

**Uhlean-Clemens**  
Illinois Class B, 1991

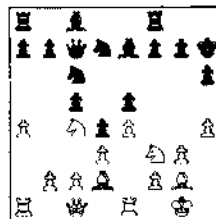
1.e4 c6 2.d4 d5 3.♗c3 dxe4 4.♗xe4 ♗f5 5.♗g3 ♗g6 6.h4 h6 7.♗f3 ♗d7 8.h5 ♗h7 9.♗d3 ♗xd3 10.♖xd3 ♖c7 11.♗d2 e6 12.O-O-O ♗gf6 13.♗e4 ♗xe4 14.♖xe4 ♗d6 15.♖b1 O-O-O 16.c4 ♗f6 17.♖e2 ♗d7 18.♗c3 ♖b8 19.d5 exd5 20.cxd5 ♖he8 21.♖c2 ♗e5 22.dxc6 ♗xf3 23.gxf3 ♖xc6 24.♗xg7 ♖xf3 25.♗xh6 ♖e2 26.♖b3 ♖e4+ 27.♖a1 ♖c8 28.♗g7 ♖xf2 29.h6 ♗e5 30.♗xe5+ ♖xe5 31.h7 ♖h2 32.♖xh2 ♖xh2 33.♖xf7



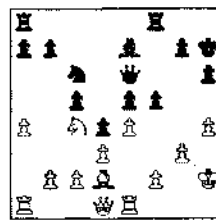
33...♖h8 33...♖c2 34.♖b1 a6 35.♖g8 ♖h2 36.♖c1+- or 33...♗d2 34.♖b1 ♗d4 35.♖g8 ♖h8 36.♖g1+- 34.♖g8+ 1-0

**Breitling-Cieslek**  
Illinois Class j, 1991

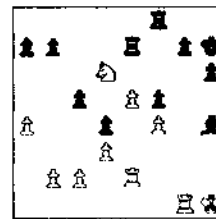
1.♗f3 d5 2.g3 c5 3.♗g2 ♗f6 4.O-O e6 5.d3 ♗c6 6.♗bd2 ♗e7 7.♖e1 e5 8.e4 d4 9.♗c4 ♗d7 10.a4 O-O 11.h4 h6 12.♗d2 ♖c7 13.♖c1 ♖h7



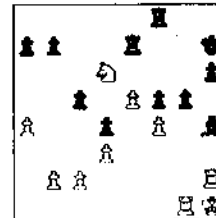
14.♗h3 ♗f6 15.♗xc8 ♖xc8 16.♖g2 ♖e6 17.♗h2 ♗g4 18.♗d1 ♗xh2 19.♖xh2 f5



20.f4 exf4 21.♗xf4 ♖ae8 22.♖h5 ♖g6 23.♖xg6+ ♖xg6 24.e5 ♗b4 25.♖e2 ♗d5 26.♖ae1 ♗xf4 27.gxf4 ♗xh4 28.♖g1+ ♖h7 29.♗d6 ♖e7 30.♖h1



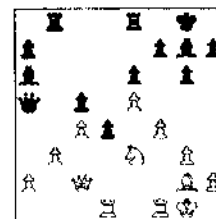
30...g5 31.♖h2



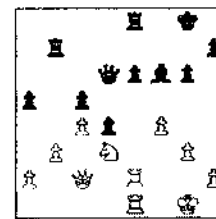
31...a6? 32.fxg5 hxg5 33.♖xg5 ♖h6 34.♖xf5 ♖g7 35.♖xh4 ♖g8 36.♖g5+ ♖f8 37.♖f4+ 1-0

**Rydberg-Stoltz**  
Illinois Class A, 1991

1.e4 c5 2.♗c3 d6 3.g3 g6 4.♗g2 ♗c6 5.♗ge2 ♗g7 6.d3 e6 7.O-O ♗ge7 8.♗e3 O-O 9.♗d2 ♖e8 10.f4 ♗d4 11.♗d1 ♗xe2+ 12.♖xe2 ♖b8 13.e5 b6 14.d4 ♗f5 15.dxc5 ♗xe3 16.♗xe3 bxc5 17.♖ad1 d5 18.b3 ♖a5 19.c4 ♗a6 20.♖c2 d4



21.♗g4 ♗d8 22.♗f2 f5 23.exf6 ♗xf6 24.♗d3 ♗d6 25.♖de1 ♗b7 26.♖f2 ♗xg2 27.♖xg2 a5 28.♖ge2 ♖b7



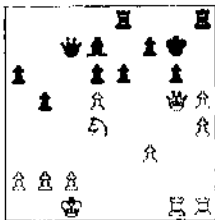
29.♗f2 ♗g7 30.♗e4 ♖c7 31.♗g5 ♗d6 32.♗e4 ♖c7 33.♗g5 ♗d6 34.♗e4 Draw

**Brodie-Bogan**  
**Illinois Class M/Ex, 1991**

1.e4 e5 2.f3 c6 3.b5 a6 4.xc6 dxc6 5.O-O f6 6.d4 exd4 7.exd4 c5 8.b3 wxd1 9.Exd1 g4 10.f3 Ae6 11.Ae3 b6 12.c3 Ad6 12...Ae7 13.f4 c8 14.a4 c6 15.d5 Ae5 16.d2 Ad5 17.exd5 f7 18.a5 b5=13.d5 O-O-O 13...Ad5? 14.exd5 Ae7 15.a4± 14.a4 Ae7 15.c4 a5 16.f2 b7 17.d2 g6 18.g3 c6 19.f4 f7 20.b3 Ae5 21.Eac1 h5 22.hxg6 hxg6 23.f4 b2 24.Eb1 Ac3 25.f5 Af7 26.f3 g5 27.e5 g4 28.e6 Axe6 29.fxe6 gxf3 30.e7 Exd1 31.Exd1 Ee8 32.Ed7+ Ac8 33.Ed6 Exe7 34.Exc6+ Ab7 35.Ed6 Ae5 36.Ed3 h7 37.hxf3 h4 38.f4 Ad4 39.g4 hxg3 40.hxg3 c6 41.Ae3 Ae5 42.Af2 Eg7+ 43.f3 h7 44.Ae4 Eh8 45.g4 Eg8 46.f3 Eh8 47.Ae4 Eg8 Draw

**Josephs-Schaffer**  
**Illinois Class C, 1991**

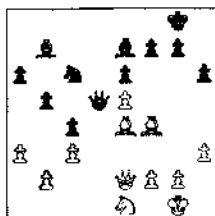
1.e4 c5 2.f3 d6 3.d4 cxd4 4.exd4 f6 5.c3 g6 6.Ae3 Ag7 7.f3 O-O 8.Wd2 c6 9.Ac4 a6 10.O-O-O Wc7 11.Ab3 Aa5 12.Ah6 Axb3+ 13.Axb3 b5 14.Axg7 Wxg7 15.h4 h5 16.d5 exd5 17.exd5 Af5 18.f4 Ad7 19.g4 Eh8 20.Wg5 Aae8 21.Edg1 e6 22.gxh5



22...Wxh5?? 23.Wxh5 1-0

**Kujoth-Cusi**  
**Illinois Class M/X, 1991**

1.d4 Af6 2.f3 e5 3.c3 e6 4.Ad3 h6 5.fbd2 Ab7 6.c3 Ae7 7.O-O d6 8.Ee1 O-O 9.e4 c6 10.a3 a6 11.f1 Wc7 12.g3 Efe8 13.Ad2 Ead8 14.We2 b5 15.dxc5 dxc5 16.e5 Ad7 17.f4 c4 18.Ac2 Ac5 19.Ead1 Exd1 20.Exd1 Ed8 21.c4 Axc4 22.Axe4 Exd1+ 23.Wxd1 Aa5 24.Ac2 Wc6 25.Ac1 Wd5 26.We2 h6 27.h3 c6 28.Ae4

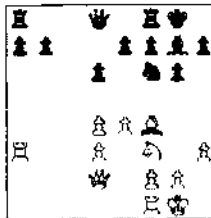


28...Ad4 29.cxd4 Wxe4 30.Wxe4 Axc4 31.Ad2 Af8 32.f3 Ab1 33.f2 Ae8

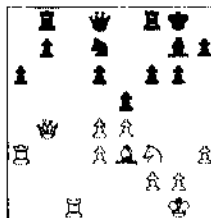
34.g3 Ad7 35.g2 c6 36.Ae3 Ad8 37.Ab4 Ab6 38.Ac3 Ad3 39.Ae1 h5 40.Ad2 Ab1 41.c1 Ah7 42.Ad2 Aa7 43.g2 Af5 44.h4 Ab1 45.f4 g6 46.Ae3 Af5 47.Ae2 Ab6 48.c1 Ad8 49.f4 Ac2 50.Ad2 Aa4 51.Ae2 a5 52.g1 Ab6 53.f3 Ae7 54.Ae3 b4 55.axb4 axb4 56.Ad2 Ae8 57.Ae1 Ab5 58.Ad2 Aa4 59.c2 Ac6 60.d2 b3+ 61.Ad1 Ab4 62.Af2 c3 63.bxc3 Ac3 64.Ab1 Ab4 65.d5 Ad5 66.Ad4 Ab5 67.c1 c4 68.Aa7 Ae4 69.Ab2 Axb1 70.Wxb1 Ae1 0-1

**Szpisjak-Zhu**  
**Illinois Class M/Ex, 1991**

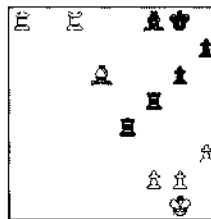
1.e4 c5 2.f3 d6 3.b4 cxb4 4.d4 Af6 5.Ad3 g6 6.a3 bxa3 7.O-O Ag7 8.Exa3 O-O 9.Af4 c6 10.fbd2 Ag4 11.h3 Axf3 12.fxf3 Ab4 13.Wd2 exd3 14.cxd3



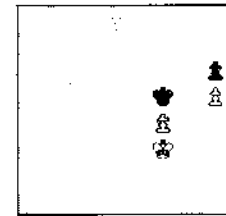
14...Ad7 15.fal a6 16.Ab4 Ab8 17.Ec1 e5 18.Ag5 f6 19.Ae3



19...exd4 20.Ad4 Af7 21.Eac3 Ae5 22.Axe5 fxe5 23.Aa7 Aa8 24.Ab3 d5 25.Ab6 Ad6 26.exd5 Ah6 27.Elc2 Ag7 28.Ac7 Wf6 29.Wxb7 Ae8 30.Wc6 Wxc6 31.Exc6 e4 32.dxe4 Exe4 33.Exa6 Ad7 34.Ag3 Exd5? 35.Ec7+ Wg8 36.Ea8+ Af8 37.Ecc8 Ef5 38.Ad6



38...Eef4 39.Axf4 Exf4 40.g3 Af7 41.g2 Ag7 42.Exf8 Exf8 43.Exf8 Wxf8 44.f3 Af7 45.g4 Af6 46.h4 h6 47.h5 g5 48.f4 gxf4 49.gxf4 Ae6 50.f3 Af5



On 51.Ae3 Ae6 52.Ae4 Af6 53.f5 Ae7 54.Ae5 Af7 55.f6 Af8 56.f5 Af7 Black holds off the direct assault. White must make use of "coordinate squares" to penetrate. This ending is discussed in the introduction to Pawn Endings by Averbach and Maizelis. 57.Ae5 Af8 58.Ae4 Ae8 59.f4 Af8 60.Ae5 And white wins since black is in zugzwang. Af7 is met by Af5. Ae8 is met by Ae6. Ag8 is met by Ae6. An important little ending to know. Editor

51.Ae3 Ag4 Black should make white show his knowledge of the "coordinate squares" maneuver discussed in the previous note. This makes it too easy. 52.Ae4 Wxh5 53.f5 Now if: 53...Ag5 54.Ae5 h5 55.f6 h4 56.f7 h3 57.f8 W h2 58.Wf4+ and black loses the race. Even if black somehow queened, Wg8+ Wh8+ would win the queen on h1. 1-0

**Upcoming**  
**Tour Events**

**March 13-15:**  
**Mid-America Class**

**April 3-5:**  
**CCA Chicago**  
**Amateur**

**April 10-12:**  
**CCA Midwest**  
**Amateur**

**May 1-3:**  
**Greater Peoria**  
**Open**

**May 22-25:**  
**CCA Chicago**  
**\$40,000**

**Plan Now To Play!**

# **Illinois Chess Association 1991 Tour Cash Prizes**

**Master: 1st: Dmitry Gurevich \$300.00**  
**2nd: Albert Chow 200.00**  
**3rd: Steven Szpisjak 140.00**

**Expert: 1st: Wilford Stevenson 150.00**  
**2nd: Larry Cohen 75.00**

**Class A: 1st: Jim McNamara 120.00**  
**2nd: Tom Bolitho 60.00**

**Class B: 1st: Kevin Connelly 90.00**  
**2nd: Rudy Padilla 45.00**

**Class C: 1st: Kheong San Chan 60.00**  
**2nd: Robert Bales 30.00**

**Class D: 1st: Tommy Craggs 30.00**

This list is provisional, pending confirmation of memberships and examination by any interested parties. If you believe there is an error, contact ICA Tour Statistician Bill Smythe, (312) 761-2455, before March 1, 1992. No corrections will be made after that date. Tour prizes will be awarded at the ICA Banquet on March 8, 1992.



# ILLINOIS

## CHESS ASSOCIATION

### AWARDS BANQUET



#### **Blitz Championship**

After the awards banquet, you may wish to stay for the Illinois Blitz Chess Championship. Even if you don't play, blitz is the most exciting form of chess for the spectator.

\$200 minimum prizes guaranteed. Trophy and title to winner. WBCA rated round robin preliminary and final sections, with section size determined by number of entrants. Entry Fee \$15, \$4 discount for banquet participants. ICA membership required. WBCA membership not required, but WBCA members get an additional \$4 discount. Enter at the site only.

Sunday, March 8, 1992

Harvey's Prime Rib  
331 East Ogden  
Westmont, Illinois

#### **Schedule:**

Social Hour	12 noon
Dinner & Program	1:00 pm
Blitz Tournament	3:30 pm

#### **Donation:**

in advance	\$14
at the door	\$18

This is our opportunity to recognize our Illinois Chess Tour winners with a check and a cheer. And let's not forget the many volunteers who make the many chess activities available to all of us. Bring your spouse or a friend and enjoy good food, good friends and fun.

For further information contact Alan Losoff, PO Box 157, Morton Grove, IL 60053. (708) 966-5559.

Make checks payable to Illinois Chess Association and mail to: ICA Awards Banquet, PO Box 157, Morton Grove, IL 60053. Please return before March 2nd.

Name \_\_\_\_\_

Number Attending \_\_\_\_\_

Address \_\_\_\_\_

\_\_\_ Roast Prime Rib

\_\_\_ Chicken Marsala

City \_\_\_\_\_ State \_\_\_\_\_ Zip \_\_\_\_\_

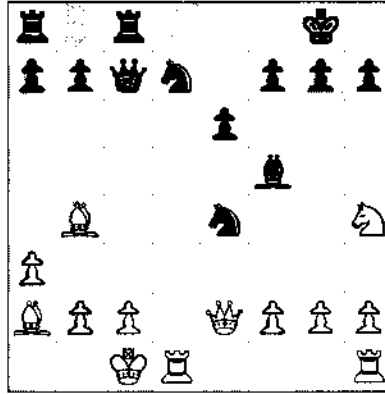
Amount Enclosed \$ \_\_\_\_\_

# Taylor's Tactical Teasers

by David Taylor

[David Taylor, renowned midwestern postalmighty and winner of the 7th ICCF US Championship submitted three tactical problems from his postal games. Since he offered to send more, I have given him title billing for this column.-Editor]

Black to play and win:



16...Wf4+

[16...Wf4+ 17.Bb1 Wxh4 18.Bxd7 Bxc2 19.Wxc2 Bxc3+ (19...Bxf2 20.Wxf5 exf5 21.Bxf7 Wh8 22.Bf8 We4+ 23.Ba1 Wxg2 24.Bxg7+ Wxg7 25.Bxg7 Bxg7 26.Bf1=) 20.bxc3 Bxc2+ 21.Bxc2 a5 22.Bc5 Wa4+]

17.Bb1 Wxh4 0-1

# Readers' Annotated Games

by Robert Irons

[Robert Irons, a strong postal player, contributes two annotated games featuring tactics on g3.-Editor]

## Knud Hansen (Denmark) Robert Irons (USA) Friendly Country Match, 1989

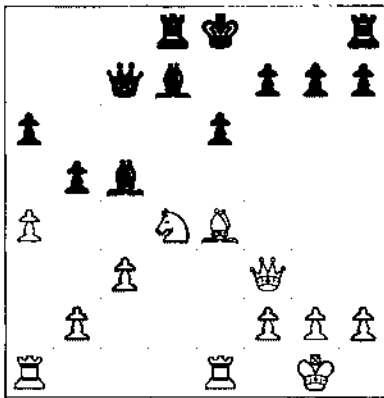
1.e4 c5 2.Bf3 d6 3.d4 cxd4 4.Qxd4 Bf6 5.Bc3 a6 6.Be2 e6 7.O-O Be7 8.Be3 O-O 9.We1? The maneuver We1-g3 is typical in this type of position, but here it is premature. Better first is f4 and Bf3 (with or without a preparatory a4). Black now grabs the initiative. 9...b5 10.a3 Bb7 11.f3 Bbd7 12.Bb3 Bc8 13.Bd3 An indication of whites problems: the strong bishop has no good square or line to occupy. 13...Be5 14.We2 Bc4 15.Bxc4 Bxc4 16.Bd2? White must play Bbd1 to stop d5. 16...Bc8 17.Bf1? d5 18.exd5 Bxd5 19.Bxd5 Wxd5

Black is better. He has two bishops and open lines. White's pieces are not well deployed on the queenside. Black chooses to attack the king, and devises a unique method of operation. 20.c3 Wh5 Pins the f-pawn and prevents Bd2-e4. 21.Bf1 g5? Black plans f7-f5-f4 binding the king-side and taking away the knights best squares. In this plan, the black queen belongs on g6 to guard e6 and support g4. 22.Bd1 Bc6! Keeping the rook out. 23.Bd2 Wg6 24.Bad1 f5 25.Bd4 f4 26.h3 h5 27.Bh2 Bf7 Preparing to double rooks or occupy the g and h files after the pawn break. 28.Be1 Bd5 29.Wd1 g4? A temporary pawn sacrifice to attack the black squares around the king. 30.hxg4 Bh4 31.Bf2? The active 31.Be5 is met by 31...Bh7 preparing to make use of the h-file: 32.Bh5 Bh5 33.gh Wh5 34.Bg4 Bf7 preparing Bh8. 31...Bg3 Bb2 and hg4. 32.Bxg3 fxxg3 33.Bf1 hxg4 34.fxxg4 Bxf1+ 35.Bxf1 Wh6 36.Bf3 Wh2+ 37.Bf1 Bc4+ 38.Bdd3 Bd8 39.Be1 Bxd3 0-1

## Taylor-Dorsch CCLA Regional Match, 1991

1.e4 c5 2.d4 cxd4 3.c3 Bf6 4.e5 Bd5 5.Bc4 Wc7 6.We2 Bb6 7.Bd3 Bc6 8.Bf3 d5 9.exd6 Wxd6 10.Bxd4 Bd7 11.O-O a6 12.Be1 Bd8 13.Bg5 Bd5 14.Bd2 Bf4 15.Bxf4 Wxf4 16.B2f3 e6 17.Be4 Bxd4 18.Bxd4 Wc7 19.Wf3 b5 20.a4 Bc5

White to play and win:



21.axb5 axb5 22.Bc6 Bc8 23.Ba6 Bb6 24.Bxb6 Wxb6 25.Be5 1-0

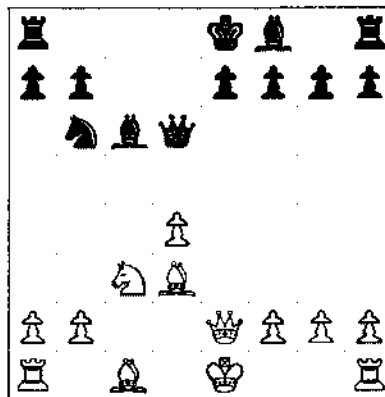
## Conner-Taylor Region VII Postal Final, 1982

1.e4 d5 2.exd5 Wxd5 3.Bc3 Wa5 4.d4 Bf6 5.Bf3 Bf5 6.Bd2 e6 7.Bc4 c6 8.We2 Bb4 9.O-O-O Bbd7 10.a3 Bxc3 11.Bxc3 Wc7 12.d5 cxd5 13.Bxd5 O-O 14.Ba2 Be4 15.Bb4 Bfc8 16.Bh4

## Taylor-Adams 1974 CCLA North American, 1974

1.e4 c5 2.d4 cxd4 3.c3 Bf6 4.e5 Bd5 5.Bc4 Wc7 6.We2 Bb6 7.Bd3 Bc6 8.Bf3 d5 9.exd6 Wxd6 10.Bxd4 Bxd4 11.cxd4 Bd7 12.Bc3 Bc6

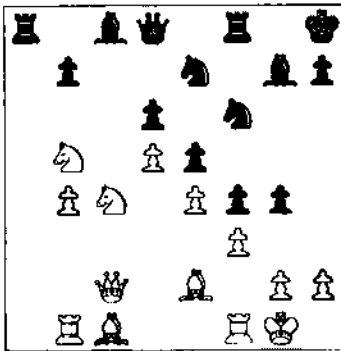
White to play and win:



13.Bb5 Wd7 14.Bf4 Bd5 15.Bd6+ Bd8 16.Bxf7+ Be8 17.Bf5 1-0

**Ernst Melchior  
Robert Irons  
Thematic KI Tournament,  
1991**

1.d4 ♠f6 2.c4 g6 3.♠c3 ♠g7 4.e4 d6  
5.♠f3 O-O 6.♠e2 e5 7.O-O ♠c6 8.d5  
9.e7 9.♠d2 a5 10.a3 ♠d7 11.♠b1 f5  
12.b4 ♠h8 To allow ♠g8 and ♠h6.  
13.♠c2 ♠f6 14.f3 axb4 Clarifying the  
queenside before f4 and g5-g4.  
15.axb4 f4 16.c5 g5 17.cxd6? 17.♠b5  
maintains the tension. 17...cxd6  
18.♠c4 g4 White dare not capture on  
g4. Black would then pile up on the  
g-file. 19.♠b5



19...g3! 20.hxg3 fxg3 21.♠bxd6 ♠e8!  
Clearing the d8-h4 diagonal. 22.♠xb7  
On 22.♠xe8 ♠xe8 (22...♠f5! 23.♠d1  
♠h4 24.♠d3 ♠h2+ 25.♠f1 ♠h1+  
26.♠e2 ♠d4+-) 23.f4 22...♠xb7  
23.♠g5 ♠f6 24.♠h4 ♠g6 25.♠xg3  
♠h5 26.♠f2 ♠g5 27.♠e3 ♠gf4  
28.♠xf4? White must swap the heavy  
pieces to reach a minor piece ending  
with drawing chances. 28...exf4  
29.♠f1 ♠g8 30.♠f1 ♠h4 31.♠d6  
♠af8 32.♠xb7 ♠g3 33.♠c4 ♠d4+  
34.♠xd4 ♠h1+ 35.♠f2 ♠xe4+ 36.♠e2  
♠xg2+ 0-1

**Support Illinois  
Chess  
Become a Patron  
Member of the  
ICA  
Call Chessphone:  
708-832-5222  
Play In ICA Tour  
Events**

**OAK PARK -  
RIVER  
FOREST  
CHESS  
CLUB NEWS**

*By Ken Marshall*

The Oak Park - Forest Park Chess Club has a new name and a new site. The Club, now known as the **Oak Park - River Forest Chess Club**, continues to meet on Tuesday nights from 7 p.m. to midnight at its new home, the Dominican Conference Center, 7200 W. Division (at the northwest corner of Harlem and Division) in River Forest. Motor vehicles must come on to the Center grounds from Division Street. Club members and guests should then enter the Center complex through the doors facing Harlem Avenue.

**November 19, 1991: OP-FP CC Speed (Blitz) Championship** Fred Allsbrook scored 4.5-5 to top a round robin six player final and become the 1991 Club Speed (game/five minutes) Champion. Ray Satterlee finished second with a 2.5- 2.5 result, followed by Lafayette Garth, Rich Rius, Steve Hansen, and Kevin Connelly, all at 2-3.

**December 3 and 10, 1991: USCF Action Tournament** Greg Bungo defeated Zibby Dudkowski in the final round to end up 4-0 and finish clear first in this 12 player, game/30 minutes event. Bill Buttny (3-1) and Don WinsauerDudkowski (2.5-1.5) and Art Zacher (2.5-1.5) split the 1999-1700 prize. Below 1700 honors went to Jack Simunic (1.5-2.5).

**December 17, 1991 WBCA Tournament** Dropping only one game, Albert Chow scored 12-1 to lead the 14 man field in this single round robin, game/five minutes event, which was sanctioned and rated by Grandmaster Walter Browne's World Blitz Chess Association. Fred Allsbrook (11-2) finished second and Jim McNamara (10.5-2.5, and the only player to beat Chow) third. The 1999-1700 prize William Terbell (4-9) garnered the Below 1700 money.

**Colias Aces  
Tuley Park  
Action**

**December 21, 1991**

1	COLIAS Bill	2428	W13	W5	W8	W3
2	UMEZINWA George	2333	W25	D10	W17	W9
3	BAUGH Christopher	1980	W20	W11	W4	L1
4	SMYTHE Bill	2040	W19	W18	L3	W11
5	FAGAH James	1940	W15	L1	W19	W12
6	ANDRIC Dragoslav	1192	D24	D7	W13	W8
7	FINEBERG Thomas	1776	Dbye	D6	W14	W17
8	KALAI Adam	1881	W21	W9	L1	L6
9	KAMEN Dan	2124	W12	L8	W10	L2
10	DUDKOWSKI Peter Z	1908	W14	D2	L9	D16
11	JOHNSON Eric	1806	W23	L3	W20	L4
12	FALLS Dwayne	1722	L9	W21	W18	L5
13	JACKSON Donald	1770	L1	W15	L6	W18
14	KNOX Malcolm	1594	L10	W25	L7	W19
15	WILLIAMS Kent	1634	L5	L13	W22	W10
16	STEWART Allen	1776	Dbye	L17	W25	D10
17	PADILLA Rudy	1640	Dbye	W18	L2	L7
18	ALLISON Roger	1876	W22	L4	L12	L13
19	CIMA Joe	1698	L4	W22	L5	L14
20	PAPHITIS Alexander	1838	L3	W23	L11	L15
21	MURPHY William	1493	L8	L12	W23	L22
22	REDDICK Harold Sr	1432	L18	L19	L15	W21
23	HEILSKOV Jens	1351	L11	L20	L21	W25
24	NEAL Patrick	1784	D6	-	-	-
25	MORRISON Michael	1751	L2	L14	L18	L23

**Colias Ices  
Hammond  
Winter Swiss**

**December 14, 1991**

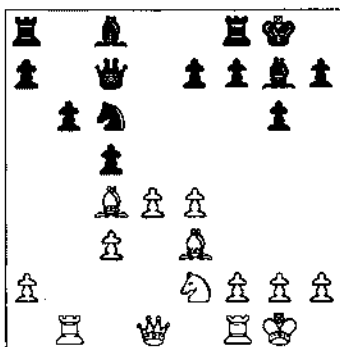
1	COLIAS Bill	2428	W17	W6	W5	W3	4
2	ALFORD Joseph	2065	W16	D8	W13	W19	3.5
3	DUDKOWSKI Zibby	1923	W25	W22	W4	L1	3
4	YAKICH Bob	2018	W20	W9	L3	W8	3
5	MIKUTA Joseph	1954	W28	W26	L1	W13	3
6	KALAI Adam	1881	W32	L1	W28	W14	3
7	COHEN Lawrence	2012	W30	L13	W16	W18	3
8	PALS Randal	1897	W21	D2	W10	L4	2.5
9	RYDBERG Steve	1813	W35	L4	W26	D11	2.5
10	DILLON Benjamin	1769	D34	W25	L8	W15	2.5
11	COHEN Howard	1941	L14	W34	W17	D9	2.5
12	EMERY Steve	1457	L13	W30	D22	W24	2.5
13	HENDERSON H	1835	W12	W7	L2	L5	2
14	RAIMO Robert	1592	W11	D19	D18	L6	2
15	HOOVER Jim	1589	L27	W20	W26	L10	2
16	CORBIN William	1683	L2	W21	L7	W23	2
17	SCHULTZ Andrew	1692	L1	W32	L11	W28	2
18	MC ALISTER Kelvin	1868	Dbye	W31	D14	L7	2
19	MARSHALL James	2055	Dbye	D14	W23	L2	2
20	KUHR Otel	1648	L4	L15	W35	W29	2
21	BULGER Brock	1567	L8	L16	W36	W30	2
22	MATHIUS Harry	1703	W31	L3	D12	-	1.5
23	BALES Robert	1394	Dbye	W24	L19	L16	1.5
24	PADILLA Rudy	1640	Dbye	L23	W25	L12	1.5
25	ALLISON Roger	1876	Dbye	L10	L24	W31	1.5
26	BURGESS Fred	1764	W36	L5	L15	-	1
27	ENOCHS James (house)	1899	W15	-	-	-	1
28	JENKINS Thomas	1594	L5	W35	L6	L17	1
29	SMELTZER Phil	1590	L3	W36	L9	L20	1
30	RISTOW William	1631	L7	L12	W34	L21	1
31	HOCK Alexander	1176	L22	L18	W32	L25	1
32	DUDNICK Steven	1469	L6	L17	L31	W35	1
33	SMITH Floyd (extra)	1392	-	-	-	W36	1
34	WISOWATY John	1263	D10	L11	L30	-	0.5
35	SMITH Floyd	1392	L9	L28	L20	L32	0
36	SCHINDLER Mark	1233	L26	L29	L21	L33	0

# Vivek Rao Leads U of I Champaign- Urbana To Pan Am Intercollegiate Title

The sixth ranked team from University of Illinois at Champaign Urbana, comprising Vivek Rao, Mark Brodie, Willie Stevenson, and Chris Merli scored 5.5 match points in six rounds to top a 33 team field in the 1992 Pan American Intercollegiate Team Championship held December 27-30 at Chicago's Palmer House. Brooklyn College, headed by US Champion GM Gata Kamsky, came in second at 5-1. The eighteen team Pan Am High School championship held concurrently was won by the University of Chicago Lab School. The event was organized by Jerry Seidler and directed by Walter Brown assisted by Irv Sedlock.

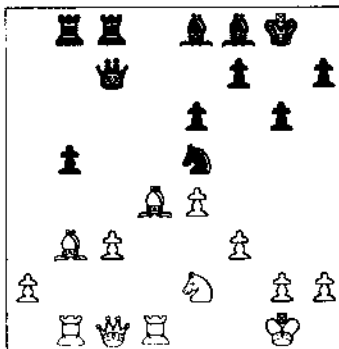
## Rao-Kamsky Pan Am Intercollegiate, 1991

1.d4 ♖f6 2.c4 g6 3.♗c3 d5 4.cxd5 ♗xd5 5.e4 ♗xc3 6.bxc3 ♗g7 7.♗c4 c5 8.♗e2 ♗c6 9.♗e3 O-O 10.O-O ♖c7 11.♖b1 b6?



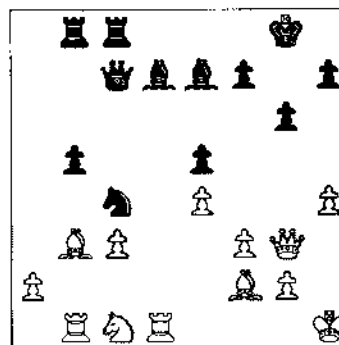
Ordinarily black can afford to sacrifice the c-pawn in exchange for play on the c-file and control of c4 and d3. I could not find reference to b6 in this position. I think ♖a5, ♗d7 or ♗d8 all

make sense first. 12.dxc5 ♗e5 13.♗d5 ♖b8 14.cxb6 axb6 15.♖a4 Black usually gets counterplay in the pawn sac lines by ♗a6/♗d8/♗d3 and ♗c4. With the weak pawn on b6 and white's control of a6 black will be hard pressed to make progress. 15...e6 16.♗b3 ♗b7 17.f3 ♖fc8 Vacating f8 for the bishop and applying pressure to c3. 18.♗fd1 ♗c6 19.♖a6 ♗e8 20.♗d4 b5 21.♖a3 ♗f8 22.♖c1



22...♗c6 Black has driven the ♖ away and posted his heavy pieces actively. Can black make any further progress? Richard Verber suggests an immediate Nc4. I think he is right as black seems to get good play: 22...♗c4 23.♗xc4 (23.♖g5 ♗e7 24.♖h6 f6 When black can play e5, ♗f7, ♗f8-g7 to secure his kingside.) bxc4 24.♖xb8 ♖xb8 25.♖g5 ♗e7 26.♖h6 f6 27.♗f4 ♗f7.

23.♖g5 e5 24.♗e3 ♖a5 25.♗d5 While e5 limited the ♗e3, it expanded the scope of the ♗b3. White wants to avoid trading this ♗ for the ♗. 25...♗c4 26.♗f2 ♗e7 27.♖h6 ♖b6 28.♗b3 ♗c4 29.♖h1 ♗d7 Now white finds an excellent maneuver to reposition the ♗ from e2 to d5. 30.♗c1 ♗d8 ♗g5. 31.h4 ♗f8 32.♖g5 ♗e7 33.♖h6 ♗f8 34.♖g5 ♗e7 35.♖g3 White avoids the draw. He could have claimed the draw by noting that ♖h6 would have been the third appearance of the position with black to play. 35...♖c7



White must reorganize his pieces and activate the ♗c1. 36.♗d3 ♗e6 37.♖b4 By threatening to go to d5 and a6 the ♗ fulfills his destiny. 37...♗xb4 38.cxb4 Now white has the ♗a6 and the weak c3 pawn is on b4. White must now repair the backward a-pawn by a2-a4xb5 so the extra pawn will be a free-standing passed pawn. 38...f6 39.♗c5 White improves the position of his queen and bishop before attempting a2-a4. The immediate push does not work: 39.a4 bxa4 40.♗xa4 ♖a3 41.♖b2 ♖c3 and the b-pawn falls.

39...♗d8 40.♖f2 ♖g7 41.♖e2 White has an extra pawn and is willing to trade all the major pieces on the d-file. 41...♖f7 42.♗xd8 ♗xd8 43.♗d1 ♖a8 Black cedes the d-file but guards d8/d7/d6/d5 and d4. The ♖a8 hinders a2-a4 which will cure white's backward a-pawn. 44.♖c1 Renews the threat of a4 by attacking c4 three times. 44...♖a3 45.♖b2 Defends b3 and posts the queen on the active diagonal a1-h8 looking at the black king. 45...♗c4 On 45...♗xb3 46.a2xb3 cuts off the ♖a3. 46.♖c3 ♖a3 47.♗d1 Threatening to invade on d8. 47...♖a8 48.♖f1 h6 Threatening to play g6-g5 stopping whites kingside play. 49.f4 ♗d8 On 49...♖a3 50.fxe5 ♗xe5 51.♗d4 ♗xb3 52.♗xe5+- 50.a4 Also 50.fxe5 ♗xe5 51.♗d4 ♖g4 52.♗xf6+ ♗xf6 53.e5+-

50...bxa4 51.♗xa4 ♖a8 52.♗b3 exf4 53.♗xc4 ♗xc4 54.♖xf4 ♖a6 55.e5 ♗d5 56.♖xf6 ♖xf6 57.exf6+ ♖g8 Of course, 57...♖xf6 58.♗d4+- 58.♖e5 ♗d7 ♖Oh3. 59.♖g1 ♗c6 60.♖e7 ♖xe7 61.♗xe7 Keeping the pawns as far apart as possible. 61...♖f7 62.♖f2 ♖e6 63.g3 g5 64.hxg5 hxg5 65.♗e3 ♗b5 66.♗d4 ♗e2 67.♖c5 g4 68.b5 ♗d7 69.b6 ♗f3 70.♗d6 ♖e6 71.♗f4 ♗e4 72.f7 ♖xf7 73.♗d6 1-0

## Rao-Yoos Pan-Am Intercollegiate, 1991

1.d4 ♖f6 2.c4 e6 3.♗f3 a6 4.♗g5 c5 5.d5 b5 6.e4 h6 7.♗xf6 ♖xf6 8.♗c3 bxc4 9.♗xc4

White has better development and a better pawn structure.

9...d6 10.♖a4+ ♗d7 11.e5 dxe5 12.dxe6 fxe6 13.♖c6 ♖b8 14.♗xe6 ♗d8 15.♗xe5 ♗e7 16.♗xd7+ A blowout. 1-0



# ENJOY A WEEKEND CHESS VACATION AT OUR ELEGANT COMFORTABLE PLAYING SITE

## MARCH 13-14-15 IN CHICAGO

*At the Luxurlous Ramada Inn O'Hare, Site of the 634-player National Open in Chicago*

### TOURNAMENT INFORMATION

5 Round Swiss in 5 Class Sections: Master, Expert, A, B, C-below. Time Limit: 40/2, then 20/1. Generous Class Prizes totaling \$12,000 **GUARANTEED!** Prizes will be raised if there are 400-plus entrants.

### REGISTRATION

By mail or phone (708) 396-1984. Late Registration at the Ramada Inn O'Hare Friday, March 13 from 4:00 to 7:00 p.m. If you are taking a 1st round 1/2 point BYE, registration is also available Saturday morning 8:00 to 10:00 a.m.

### ROUNDS

Friday: 8:00 p.m., Saturday: 10:30 a.m. and 5:30 p.m., Sunday: 10:30 a.m. and 5:30 p.m. 1/2 point BYE also available for 5th round. **MUST BE ANNOUNCED BEFORE START OF TOURNAMENT!**

**HUGE SELECTION OF CHESS BOOKS!**

### ENTRY FEE

\$62 if mailed by February 12, \$65 if mailed by March 7. \$5 more at the tournament site Friday, March 13th. VISA and MASTERCARD are accepted by phone weekdays 9 a.m. to 4 p.m., call (708) 396-1984 until Thursday, March 12. Mail entries to: Mid-America Class Championships, c/o Rae Products - Fred Gruenberg, 11630 S. Cicero Ave., Alsip, IL 60658. Players wishing to play one section above their rating, add \$6 to EF. All Illinois entrants must be Illinois Chess Association members: Discount Rate \$9.

### SPECIAL HOTEL RATES

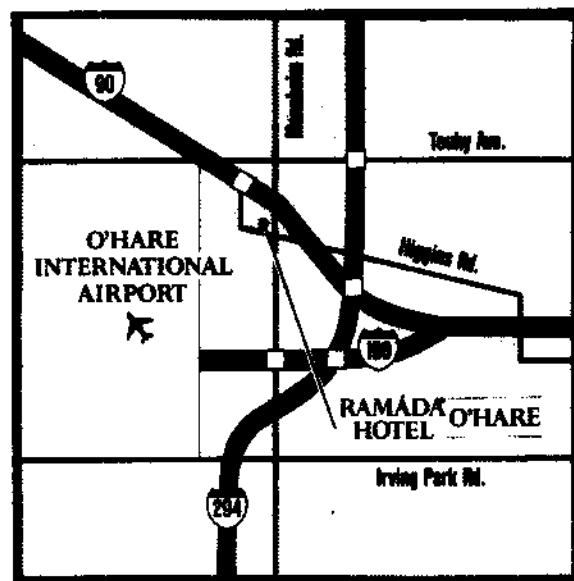
\$59 single, \$65 double **INCLUDES FREE BREAKFAST.** For room reservations phone the Ramada Hotel O'Hare at (708) 827-5131. Mention Chess Tournament. The Ramada Hotel is located at 6600 N. Mannheim Road, less than 1 mile from O'Hare Airport with **FREE RAMADA** pick-up service from the airport.

### DISCOUNT AIR FARES

Phone American Airlines at 1-800-433-1790 and ask for STAR file S0132BZ.

**FREE RAFFLE FOR ROUND-TRIP AIR FARE TO 1992 NATIONAL OPEN IN LAS VEGAS**

### FREE PARKING



6600 N. Mannheim at Higgins Road, Rosemont, Illinois

## **MAIL YOUR TOURNAMENT ENTRY BY FEBRUARY 12th & SAVE \$\$ MONEY!**

**ENTRY FEE IS \$62 IF MAILED BY FEBRUARY 12TH, \$65 IF MAILED BY MARCH 7TH.**

**PLEASE ENTER ME IN THE MID-AMERICA CLASS CHAMPIONSHIPS, MARCH 13-15 IN CHICAGO**

NAME \_\_\_\_\_ U.S.C.F. I.D. # \_\_\_\_\_ U.S.C.F. RATING \_\_\_\_\_

ADDRESS, CITY, STATE, ZIP \_\_\_\_\_

DO YOU WANT TO PLAY IN YOUR OWN SECTION? \_\_\_\_\_ (There is an additional \$6 charge to play in the next higher section).

DO YOU WANT A 1/2 POINT BYE IN THE 1ST ROUND? \_\_\_\_\_ (There is an additional 50¢ charge for 1st round BYE)

**ALL ILLINOIS PLAYERS MUST BE MEMBERS OF THE ILLINOIS CHESS ASSOCIATION: (Special Discount Dues of \$9).**

**Make your check payable to: Mid-America Class Championships**

**Mail your entry to:**

Mid-America Class Championships  
c/o Rae Products - Fred Gruenberg  
11630 S. Cicero Ave., Alsip, IL 60658



**If you miss this tournament ★ ★ ★ ★ ★ ★ ★ ★ ★ ★**

**★ ★ ★ ★ ★ ★ ★ ★ ★ ★ YOU'VE MISSED THE BEST!!!**

# Chess on the Fox

by Bob Renaut

The Fox Valley Chess Club (FVCC) meets from 6:45 - 10:00 pm on Monday evenings in the Prisco Community Center (corner of Rte 31 and Illinois avenue in Aurora) with easy access off the I-88 expressway. The Club was formed in November 1989 to meet the chess needs of the Naperville, Aurora, Batavia, Wheaton, Lisle, Oswego, Sugar Grove and Bolingbrook areas. The Club has grown from the its initial 11 members to 51 chess enthusiasts. Annual club membership costs \$12.00 and members receive discounts to FVCC sponsored USCF/ICA tournaments, a monthly newsletter and free entry into selected Club rated events.

## Club Objectives

The FVCC objectives are to expand the base of local chess players and increase the playing strength of club members. To accomplish these objectives the FVCC sponsors (1) scholastic chess tournaments, (2) USCF rated weekend events, (3) USCF rated action chess tournaments, (4) chess lessons, (5) speed chess tournaments, (6) Club Ladder tournament and (7) simultaneous exhibitions.

## FVCC Early 1992 Events

- Feb 01 Scholastic Team Championship
- Feb 03 Game in 20 minutes Tournament
- Feb 24 Swiss Tournament 3 rd 40/60 SD15 -two sections rated/unrated
- Mar 02 2nd Rd of Swiss Tournament
- Mar 09 3rd Rd of Swiss Tournament
- Mar 30 Speed Tournament
- Apr 06 Game in 20 minutes - Quad
- Apr 20 Speed Tournament
- May 18 Game in 20 minutes - Quad
- Jun 01 Speed Tournament
- Jun 08 1st Rd of Swiss Tournament 40/60 SD/15 - 2 sections rated/unrated
- Jun 15 2nd Rd of Swiss Tournament
- Jun 22 3rd Rd of Swiss Tournament

The FVCC has tried to offer a variety of chess activities for its members. In the first year, 1990, GM Roman Dzindzishvili visited the club and put on a simultaneous exhibition and a question and answer session. The club members were no match for Roman as he won every game, but his visit was a success as six new chessplayers joined our club.

Failing to draw blood from Roman, the Club looked north and challenged the St. Charles Chess Club to a match. The St. Charles Chess club sent twenty members to visit the Fox Valley Chess Club in the fall of 1990. St. Charles won the match 13-7 by cleaning up on the lower boards. Here is a game from the third board of this match.

## Alberts,W.(1912) Renaut,R. (2012) St. Charles vs Fox Valley 1990

1.e4 g6 2.d4 ♖g7 3.♗c3 c6 4.f4 d5 5.♗f3 ♗g4 6.e5 ♗d7? 6...e6 is better. 7.h3 ♗xf3 8.gxf3 e6 9.h4 ♗e7 10.♗e3 ♗f5 11.♗f2 ♗h6 12.♗d2 ♗a5 13.♗d3 0-0-0 14.♗xf5 gxf5 15.0-0-0 ♗dg8 16.♗dg1 c5 17.dxc5 ♗xe5! 18.♗c3 ♗c6 19.♗xg8+ ♗xg8 20.♗d2 ♗g2 21.♗g1 ♗xg1+ 22.♗xg1 ♗g7 23.♗e3?? White offered a draw with this move...but he is already losing the endgame and this move costs him a piece 23...d4 24.♗e4 fxe4 25.♗xa5 ♗xa5 26.♗d2 exf3 27.♗e1 ♗c4 28.b3 ♗e3 29.♗d2 ♗d7 30.c3 ♗g4 0-1

## Fox Valley Championship

The first USCF rated tournament sponsored by the Fox Valley Chess Club was the Fox Valley Championship held on Jan 12/13 1991. The tournament drew 24 players. The field included Al Chow (2406) and Dr. Martinovsky (2379). The tournament ended in a three way tie with Chow, Martinovsky, and club member Peter Stein (2168) all at 4-1 sharing first place and \$500. Al Chow missed a chance for taking a clear first place by forfeiting his game against Peter Stein when he showed up for his fourth round game 70 minutes late! Jim Oberweis, Jim Marshall and Michael Plett scored 3-2 to split the Top A prize.

## Oberweis,J. (1825) Condron,J.(2028) Fox Valley Championship, 1991

1.e4 c5 2.♗c3 ♗c6 3.f4 e6 4.♗f3 g6 5.♗c4 ♗g7 6.0-0 ♗ge7 7.d3 0-0 8.♗e1 a6 9.f5 b5 10.♗b3 exf5 11.♗h4 b4 12.♗e2 d5 13.♗h6 fxe4 14.♗g5 ♗f5 15.♗xf5 ♗xf5 16.dxe4 dxe4 17.♗xg7 ♗xg7 18.♗xh7+ ♗f6 19.♗h4 ♗h8 20.♗f4 ♗e7 21.♗xf7 ♗h5? 22.g4 ♗h4 23.g5+ ♗g7 24.♗xh4 ♗xf7 25.♗xf7 ♗xf7 26.♗h7+ ♗e6 27.♗g7 ♗c8 28.♗d1 ♗d4 29.♗xd4+ cxd4 30.♗xd4 1-0

## Oberweis,J.(1825) Chow,A.(2404) Fox Valley Championship, 1991

1.e4 c5 2.♗c3 e6 3.f4 d5 4.e5 ♗c6 5.♗f3 ♗h6 6.♗b5 ♗e7 7.0-0 ♗d7 8.d4 ♗f5 9.♗e2 ♗xe5 10.fxe5 ♗xb5 11.c3 ♗b6 12.♗f2 0-0 13.g4 ♗h4 14.♗e3 ♗xf3+ 15.♗xf3 ♗xe2 16.♗xe2 cxd4 17.cxd4 ♗ac8 18.♗af1 f6 19.exf6 ♗xf6 20.g5 ♗xf3 21.♗xf3 ♗d8 22.h4 ♗e8 23.h5 ♗a4 24.g6 ♗f8 25.gxh7+ ♗xh7 26.♗d3+ ♗h8 27.♗h3 ♗f5 28.h6 g6 29.a3 ♗h7 30.♗e2 ♗c4 31.♗g2 ♗f6 32.♗g3 ♗xd4 33.♗xd4 ♗xd4+ 34.♗h1 ♗f2 0-1

## Oberweis Class Championship

The Oberweis Dairy Class Championship held in May 1991, drew 31 players. The Expert/A/B section was won by Randy Fronek (1905) with a score of 4.0, Joe Splinter (2094) and Daniel Pradt (1773) tied for 2/3 with 3.5 points. The C/D/E/UNR section was won by club members Robert Harris and Paul Turcany with 4 points each. Julie Oberweis, Greg Cisko and Patrick Maurer tied for 3/4/5 with scores of 3.5 points.

## Renaut,R.(2019) Giertz,C.(1683) Oberweis Class Championship, 1991

1.e4 e5 2.f4 exf4 3.♗f3 d5 4.exd5 ♗f6 5.c4? c6 6.dxc6 ♗xc6 7.d4 ♗b4+ 8.♗c3 0-0 9.♗d3 ♗e8+ 10.♗f1 ♗g4 11.♗e2 ♗xf3 12.gxf3 ♗xd4 13.♗xh7+ ♗xh7 14.♗xd4 ♗xd4 15.♗xd4 ♗ad8 16.♗c2 ♗d1+ 17.♗g2 ♗e2+ 18.♗h3 ♗g5+ 19.♗g4 ♗g2+ 20.♗f5 g6+ 21.♗f6 ♗h7+ 22.♗e5 ♗d6+ 23.♗e4 ♗g5+ 0-1

**Padilla,R.(1693)  
Renaut,R.(2019)  
Oberweis Class Tournament,  
1991**

1.e4 g6 2.d4 ♖g7 3.e5 d5 4.♗g5 c5 5.c3 ♖b6 6.♗d2 ♗c6 7.♗f3 ♗g4 8.♗e2 e6 9.0-0 ♗xf3 10.♗xf3 cxd4 11.cxd4 ♗xd4 12.♗c3 ♗xd2 13.♗xd2 ♗xe5 14.♗ae1 0-0-0 15.♗c1 ♖b8 16.b3 ♗ge7 17.♗g5 f6 18.♗d2 ♗d4 19.♗g4 h5 20.♗e2 ♗c8 21.♗fe1 ♗xe2+ 22.♗xe2 ♗xc3 23.♗xc3 ♗xc3 24.♗xc3 e5 25.f4 ♗c6 26.g3 ♗e8 27.♗f2 ♗c7 28.a4 d4 29.♗b2 e4 30.♗c1 f5 31.h3 ♗b4 32.♗a3 ♗d3+ 33.♗f1 ♗d7 34.♗c2 ♗c8 35.♗c4 ♗xc4 36.bxc4 ♗c6 37.♗e2 h4 38.g4 ♗xf4+ 39.♗f1 ♗xh3 40.gxf5 gxf5 41.♗e7 ♗f4 42.♗xh4 ♗d3 43.♗e7 ♗b2 44.♗f6 ♗c5 0-1

**Fox Valley Open**

The Fox Valley Open held in August 1991 was a scheduling mistake. The Club was not a member of the ICA at the time and we accidentally scheduled this tournament one week before the St. Charles Open. Now we are members and we won't let that happen again. Despite the scheduling conflict, we still drew 51 players; including two masters and six experts! The tournament ended in a four way tie! Mariano Acosta (2240), Peter Stein (2147), Kevin Schmuiggerow (2145) and Douglas Middleton (2065) all scored four points. The Reserve section was won by Robert Harris (1591) with a perfect 5.0 score.

**Ladder Championship**

In 1991, the Club crowned its first ladder champion, Bob Renaut. The Club ladder tournament was run throughout the year and 48 players participated in the event. The championship was determined by a round robin tournament that included the four members that accumulated the most points during the year, Bob Renaut (28),

Mike Helgeson (24), Jim Oberweis (19) and Mark McGee (19). The crosstable for the round robin is below:

	1	2	3	4	Total
<b>Renaut</b>	x	1	1	1	3.0
<b>Helgeson</b>	0	x	=	1	1.5
<b>Oberweis</b>	0	=	x	1	1.5
<b>McGee</b>	0	0	0	x	0.0

**Helgeson,M.-Renaut,R.  
FVCC Ladder Championship,  
1991**

1.d4 ♗f6 2.c4 g6 3.♗c3 d5 4.♗f3 ♗g7 5.e3 0-0 6.♗b3?! ♗d3, ♗e2, b4 or cd are other choices for White. For example: 6.♗d3 c6 7.0-0 ♗g4 8.h3 ♗xf3 9.♗xf3 e6 10.♗d1 ♗bd7 11.b3 ♗e8 12.♗f1 e5 13.cxd5 e4 = 6...e6 7.♗d3 c6 8.0-0 ♗bd7 9.♗d2 ♗e8

[9...c5 10.♗fe1 cd4 11.ed4 dc4 12.♗c4 ♗b6 13.♗f1 = Lalic,B. - Ninov, ♗. 1988 1/2]

[9...a5 10.♗fe1 ♗e8 11.e4 a4 12.♗c2 de4 13.♗e4 ♗e4 14.♗e4 c5 15.d5 ♗f6 Kasparov,G - Ijubojevic,L. 1987, 1/2]

10.♗ad1?! The wrong rook! MCO 11 gives ♗ac1 and white's other rook on d1 with equality. I thought that the other rook belonged on e1. This move is too passive. 10.e4! as in Kasparov above is best. 10...b6 11.cxd5?

Releasing the pressure, but opens the ♗a-file, which would have been fine if white had played the ♗c3 to c1 as mentioned earlier. This move opens the e-file for black's use. One alternative might be: 11.e4! ♗a6 12.ed5 ed5 13.♗g5 ♗c7 = 11...exd5 12.♗c1 ♗b7 13.♗d1 ♗e4 14.♗e2 f5

15.♗c3 ♗df6 with a strong outpost at e4. White's position is solid, but passive. 16.♗e5 ♗g4 17.♗xg4 fxe4 18.♗f4 ♗c8 19.♗e2 ♗h4 20.♗e1 g5! 21.f3 g3 22.hxe3 ♗xe3 23.♗xxg3 ♗xxg3 24.♗h5 ♗h4 25.♗xg7 ♗xxg7 26.♗d3 ♗e6 27.e4 ♗h6 28.♗e3 ♗e6? 28...♗h2 continuing the attack is stronger: 28...♗h2+ 29.♗f2 ♗h3 30.♗g1 dxe4 31.fxe4 ♗f8+ 32.♗e1 ♗xg2 33.♗xg5+ ♗g6 34.♗xg2 ♗h1+ 35.♗d2 ♗xg5 36.♗xg5+ ♗f6 37.♗f5+ ♗e7 38.♗xh1 or 28...♗h2+ 29.♗f2 ♗h3 30.♗g1 ♗e8 31.♗f1 ♗d7 32.e5 += 29.♗xc6 ♗f7 30.exd5 ♗xd5 31.♗xh6 ♗xh6 32.♗e5 ♗c6 33.d5 ♗d7 34.d6 ♗e8 35.♗c4+ ♗f8?? 36.♗h8+ 1-0

**Junior Program**

The officers of the FVCC believe in the importance of bringing in new blood to the ICA/USCF to this end we have sponsored four scholastic tournaments. We signed up 38 new USCF members and drew over 350 young chess players at these events.

We have an active chess lesson program for all our players. Our Young Knights program was started by Steve Meyers (1941) in 1990 and continued in 1991 with Bob Renaut taking over the training duties. This program included weekly one hour chess lessons followed by USCF rated games for the juniors. Three of our junior members excelled at the Illinois elementary and grade school championships in 1991. Julie Oberweis an 8th grader at Holy Angels school became the first female grade school champion in Illinois history! Craig Cochran took the top honors in the 4-5 grade elementary section and Kyle Thomas another club member, took fourth. We have sponsored chess lessons for the general membership with Alan Watson (2247), Joe Splinter (2094) and Bob Renaut (2091) all contributing their time.

**PLAN NOW TO PLAY IN THE MID-AMERICA CLASS CHAMPIONSHIPS – MARCH 13-14-15 IN CHICAGO**

# Bolitho, Cottle and Lynn Win Normal Pinetree Open

by Dennis Bourgerie

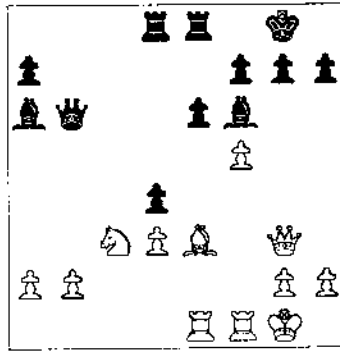
Tom Bolitho, Greg Cottle and Steve Lynn posted 3.5-.5 scores to share first prize in a field of twenty-four players at the Normal Pinetree Open, December 7, 1991. Trailing slightly at 3-1 were Phil Anderson, Tom Warfield and Duane Kimme, the latter two tying for the B prize. Shawn Halsey and Gavin Sronce tied for the C prize at 2-2, while Andres Fratkin won the D prize with 2.5-1.5.

Dennis Bourgerie directed the tournament. The next scheduled tournament for Normal is the Normal Redbird Open, March 21st, a four round ICA Mini-tour event. Call 309-454-3842 to enter.

## Sronce-French

### Normal Pinetree Open, 1991

1.e4 c5 2.b3 ♟c6 3.♟f3 e5 4.♟b2 d6 5.♟b5 ♟d7 6.♟xc6 ♟xc6 7.d3 ♟e7 8.c4 ♟g6 9.g3 ♟f6 10.♟c3 ♟e7 11.♟e2 h5 12.h4 ♟e6 13.O-O-O a6 14.♟d5 ♟xd5 15.exd5 ♟g4 16.♟e3 b5 17.♟e4 ♟d7 18.♟d2 f5 19.♟e3 f4 20.gxf4 ♟xf4 21.♟f3 O-O-O 22.♟hg1 ♟f6 23.♟g5 ♟f5 24.♟e4 ♟hg8 25.♟d2 ♟e7

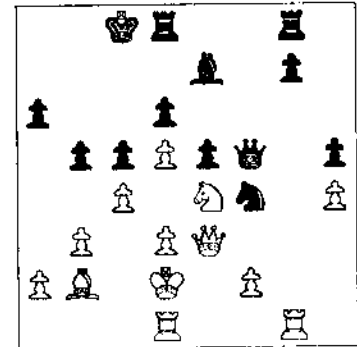


21.♟f2 ♟xb2 22.♟e4 ♟e7 23.f6 g6 24.fxe7 ♟xe7 25.♟g5 ♟b4 26.♟h4 ♟xd3 27.♟f6 ♟g7 28.♟h5+ ♟g8 29.♟xe7 ♟xe7 30.♟xe7 1-0

## Stevenson-Kimme

### Normal Pinetree Open, 1991

1.e4 c5 2.♟f3 d6 3.d4 cxd4 4.♟xd4 ♟f6 5.♟c3 a6 6.♟g5 e6 7.f4 ♟e7 8.♟f3 ♟c6 9.♟b3 ♟c7 10.O-O-O O-O 11.g4 b5 12.♟g1 ♟b7 13.♟xf6 ♟xf6 14.g5 ♟e7 15.♟d3 ♟b4 16.♟h5 ♟xd3+ 17.♟xd3 g6 18.♟h6 f6! 19.♟h3 ♟f7 20.f5



26.♟g5 ♟f8 27.cxb5 axb5 28.♟e4 ♟xg5 29.♟xg5 ♟xe4 30.dxe4 ♟f7 31.♟g3 ♟a7 32.♟a1 ♟d8 33.a4 b4 34.♟c2 ♟f8 35.♟e1 ♟e2 36.♟g6 ♟d7 37.♟e3 ♟f4 38.♟g5 ♟d7 39.♟g3 ♟g8 40.♟d2 ♟e7 41.♟f1 ♟f6 42.♟xf4 exf4 43.♟g5 g6 44.f3 ♟e7 45.♟f1 ♟a7 46.♟xh5 gxf5 47.♟xg8 c4 48.♟c2 cxb3+ 49.♟xb3 ♟b7 50.♟f8+ ♟e5 51.♟f5+ ♟d4 52.♟xf4 ♟e3 53.♟f5 ♟b6 54.a5 ♟b5 55.a6 ♟a5 56.♟xb4 ♟xa6 57.♟b5 ♟a8 58.♟c6 ♟a6+ 59.♟b7 ♟a2 60.♟xh5 ♟xf3 1-0

## Normal Pinetree Open December 7, 1991

1	COTTLE Greg	1874	W15	W14	W4	D2	3.5
2	LYNN Steve	2027	W20	W13	W5	D1	3.5
3	BOLITHO Tom	1850	W21	W10	W9	D7	3.5
4	KIMME Duane	1724	W16	W7	L1	W11	3
5	WARFIELD Tom	1759	W18	W11	L2	W12	3
6	ANDERSON Phil	1966	L10	W21	W15	W9	3
7	STEVENSON W	2077	W22	L4	W20	D3	2.5
8	FRAKIN Andres	1245	L9	W17	D14	W10	2.5
9	ZEVNIK Lawrence	1871	W8	W19	L3	L6	2
10	SRONCE Gavin	1407	W6	L3	W19	L8	2
11	ZARZOPULOS Sam	-	W12	L5	W13	L4	2
12	HALOPY Shawn	1599	L11	W18	W16	L5	2
13	GARDNER Keith	1712	W23	L2	L11	W21	2
14	STAFFORD Jerry	1605	W24	L1	D8	Dbye	2
15	THOMAS Marc	1999	L1	W24	L6	W20	2
16	CRAGGS Tommy	1333	L4	W22	L12	D17	1.5
17	EARLEY Bob	1412	L19	L8	W23	D16	1.5
18	CRUISE Donald	1365	L5	L12	W22	Dbye	1.5
19	FRENCH Kevin	2020	W17	L9	L10	-	1
20	GRIFFITH Jeremy	1427	L2	W23	L7	L15	1
21	RODGERS Paul	1375	L3	L8	W24	L13	1
22	COX Randolph	1492	L7	L16	L18	W24	1
23	GOODWIN Kim	1282	L13	L20	L17	Wbye	1
24	BRUMLEYE Danny	-	L14	L15	L21	L22	0

## Lynn-Warfield

### Normal Pinetree Open, 1991

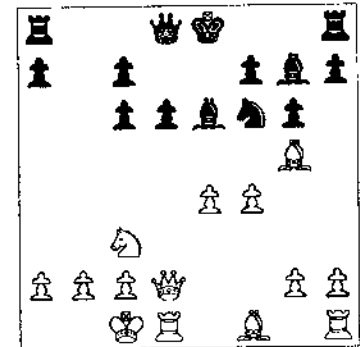
1.e4 c5 2.♟c3 e6 3.f4 d5 4.♟f3 ♟c6 5.♟b5 ♟e7 6.O-O ♟f6 7.d3 O-O 8.♟xc6 bxc6 9.♟e5 ♟c7 10.♟e1 ♟a6 11.♟d2 ♟ad8 12.♟d1 ♟d6 13.♟xc6 ♟xc6 14.e5 ♟e7 15.exf6 ♟xf6 16.♟g3 16...♟fe8 17.♟del c4 18.f5 cxd3 19.cxd3 ♟b6+ 20.♟e3 d4

## Play in the Mid-America Class Ramada O'Hare March 13-14-15

## Fradkin-Earley

### Normal Pinetree Open, 1991

1.e4 e5 2.♟f3 ♟c6 3.d4 exd4 4.♟xd4 ♟f6 5.♟g5 d6 6.♟c3 g6 7.♟d2 ♟g7 8.♟xc6 bxc6 9.O-O-O ♟e6 10.f4



10...d5? 11.e5 d4 12.exf6 dxc3 13.♟xd8+ ♟xd8 14.♟xd8+ ♟xd8 15.fxg7+ 1-0



# OAK PARK-RIVER FOREST CHESS CLUB



**MEETS**

**TUESDAY NIGHTS - 7:00 P.M. TO MIDNIGHT**

**AT THE**

**DOMINICAN CONFERENCE CENTER**

7200 W. Division  
River Forest, IL

**NEW  
SITE**

**NEW  
SITE**

(Corner of Harlem and Division -- just 1 mile north of the  
Lake street Harlem "EL" stop and 2 miles north of the Eisenhower Expressway)

**ALL CHESS PLAYERS - NOVICES TO MASTERS - ARE WELCOME**

(Chess lessons for beginners and  
intermediate players can be arranged)

## **TUESDAY NIGHT CLUB ACTIVITIES INCLUDE:**

- Friendly "skittles" games
- Five or ten minute "speed" chess
- USCF, WRC, and WBCA rated games and tournaments
- Annual tournaments:
  - Club Open Championship
  - Club Closed Championship
  - Club Speed (five minute) Championship

## **THE OAK PARK-RIVER FOREST CHESS CLUB ALSO SPONSORS:**

- Several weekend tournaments every year
- Teams in Illinois Chess League play
- Lectures and simultaneous exhibitions by International Grandmasters and other leading players

(Club members often receive entry  
fee discounts for these events)

**ANNUAL CLUB DUES:** \$24 (Less than 50¢ a week)

(All members receive the monthly club bulletin)

## **FOR MORE INFORMATION:**

Drop in any Tuesday night (Two FREE visits)

or

Call Ken Marshall: (708)932-1455

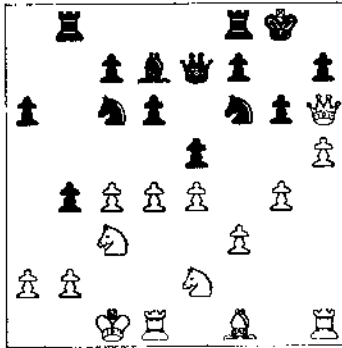




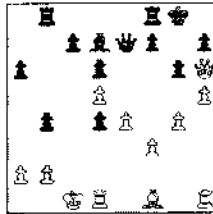
37...c4 37...xf2+ 38.fxf2 c4+  
 39.g2 g1+ 40.fh3 Ac7 41.Axg6  
 wxh2+ 42.g4 g2+ 43.f5 wxc2+  
 44.e6 wxg6+ 45.wg6 hxg6 46.f7  
 and white wins! 38.Axg6 Cxf2+  
 39.Cxf2 wxh5 40.f8+ 1-0

**Chow-Manion  
 Winter Open, 1992**

1.d4 f6 2.c4 g6 3.fxc3 Ag7 4.e4 d6 5.f3 O-O  
 6.e3 fc6 7.d2 a6 8.fge2 Bb8 9.O-O-O b5  
 10.Qb6 2xh6 11.Wxh6 e5 12.h4 we7 13.h5 Ad7  
 14.g4 b4



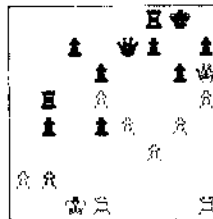
15.f5 15.g5 bxc3 16.fxc3 leaves black with  
 adequate defensive resources. 15...fxd5  
 16.cxd5 fxd4 17.fxd4 exd4



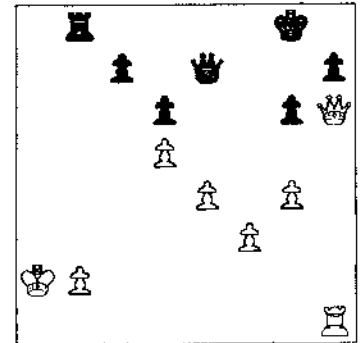
18.Axa6 This gives black play on the a and b  
 lines. Perhaps the attack could have been  
 continued some other way?

[18.fxc4 Ab5 19.Ab3 a5 20.e5 a4 21.c2 dxe5  
 22.hxg6 fxg6 23.fxg6 hxg6 24.wh8+ Af7  
 25.fh7+ Ac8 26.fxe7+ fxc7 27.wxc5+-]

[18.Ed2 This line plans Edh2 and h5xg6. Can  
 black defend? wf6 19.Edh2 wg7 20.hxg6  
 (20.wg7+ fxg7 21.hxg6 hxg6 22.fh7+ Af6  
 23.f4 fxg4 24.Axa6 Af3 25.e) Bb8 26.f4d3 in  
 this illustrative line black winds up too passive.)  
 wxh6+ (20..hxg6 21.g5+-) 21.fhx6 hxg6  
 22.g5+-] 18...Ab5 19.fhx5 =xb5



20.fxd4 I think the white queen belongs on this  
 diagonal. For example: 20.wd2 we5 21.wxd4  
 wf4+ 22.f6b1 wf3 23.Ed1 wxg4 24.f6 (24.h6  
 f6 25.fxf6 fxf6 26.wxf6 wxc4+ 27.fxc1 wxh1+  
 28.fxc2 fc5+-) fc8 Otherwise black is hard  
 pressed to meet h5-h6 with a subsequent rook  
 discovery. 25.hxg6 [xg6 26.fhx7 wxe4+  
 27.wxe4 fxe4 28.fxc7 fxd5 29.fxg6++  
 20...fa8 21.hxg6 fxg6 22.f6b1 fba5 23.fxb4  
 fxa2 24.f8+ fxb8 25.fxa2



Black is behind a pawn and has a weakness on  
 c7. On the other hand, white must watch out for  
 c5 and other lines that allow black to get his  
 queen and rook active. 25...fb6 26.f6b1 fb3  
 27.wf4 wg7 28.fh2 fd3 29.fc2 fd1+ 30.fc1  
 wd4 31.fxd1 wxd1+ and white lost on time.  
 Black's stubborn defense runs white out of time.  
 In the final position black has a draw by  
 perpetual check, but no more. This was Chow's  
 only loss in the event. 0-1

# The Database from NEW in CHESS NICBASE 3.0

"this is one great product. Whether you are on the cutting edge of opening theory, enjoy playing through the games of the modern giants or the legends of chess history, NICBASE 3.0 is easy to use and a pleasure to experience." — HANON W. RUSSELL in USAT Chess Perspectives.

**12 EXCITING NEW FEATURES**

- NICBASE 3.0** (with 2,000 games) **\$175.00**
  - SUPPLEMENT** (all games from YB 1-18) **\$130.00**
  - 33,400 TOURNAMENT GAMES** 1988-1990 **\$410.00**
- SPECIAL OFFER** - shipping included for a limited time only.

**5 POWERFUL NEW UTILITIES**

**BUY ALL 3 NOW  
 & SAVE 20%  
 \$595.00**

Including Full NIC KEY 3.0  
 classifying over 14,600 positions  
 and 50,000 unduplicated games.

**NICTOOLS** (10 utilities) **\$125.00**

Specify  MS DOS  3.5"  5.25"  ATARI

**NEW: ANNOTATED DATA for NICBASE 3.0 from NEW IN CHESS**

Special limited introductory offer: six 1991 tournaments **\$40.00**

Covering: Wijk aan Zee, Linares, Amsterdam, Candidates Matches, Reykjavic, Munich.

**NEW: CONVERT CHESSBASE™ DATA TO NICBASE 3.0-utility \$24.00**

Orders and inquiries to:

**CHESS COMBINATION INC. 2423 Noble Station, Bridgeport CT 06608-0423**



# ILLINOIS

## CHESS ASSOCIATION

### AWARDS BANQUET



#### **Blitz Championship**

After the awards banquet, you may wish to stay for the Illinois Blitz Chess Championship. Even if you don't play, blitz is the most exciting form of chess for the spectator.

\$200 minimum prizes guaranteed. Trophy and title to winner. WBCA rated round robin preliminary and final sections, with section size determined by number of entrants. Entry Fee \$15, \$4 discount for banquet participants. ICA membership required. WBCA membership not required, but WBCA members get an additional \$4 discount. Enter at the site only.

Sunday, March 8, 1992

Harvey's Prime Rib  
331 East Ogden  
Westmont, Illinois

#### **Schedule:**

Social Hour	12 noon
Dinner & Program	1:00 pm
Blitz Tournament	3:30 pm

#### **Donation:**

in advance	\$14
at the door	\$18

This is our opportunity to recognize our Illinois Chess Tour winners with a check and a cheer. And let's not forget the many volunteers who make the many chess activities available to all of us. Bring your spouse or a friend and enjoy good food, good friends and fun.

For further information contact Alan Losoff, PO Box 157, Morton Grove, IL 60053. (708) 966-5559.

Make checks payable to Illinois Chess Association and mail to: ICA Awards Banquet, PO Box 157, Morton Grove, IL 60053. Please return before March 2nd.

Name \_\_\_\_\_

Number Attending \_\_\_\_\_

Address \_\_\_\_\_

\_\_\_ Roast Prime Rib

\_\_\_ Chicken Marsala

City \_\_\_\_\_ State \_\_\_\_\_ Zip \_\_\_\_\_

Amount Enclosed \$ \_\_\_\_\_



# FINAL 1991 ILLINOIS CHESS ASSOCIATION TOUR STANDINGS.

by Tour Statistician Bill Smythe

## Master Tour

1	QUREVICH Dmitry	108.0
2	CHOW Albert	93.8
3	SZPISJAK Steven	80.0
4	PANGAN Camilo	77.5
5	COOPER Tom	66.5
6	COLIAS Bill	51.0
7	MARTINOVSKY E.	48.0
8	KRAAI Jesse	47.0

## Expert Tour

1	SMYTHE Bill	56.5
2	STEVENSON Wilford	45.5
3	COHEN Larry	44.5
4	SZPISJAK Steven	35.0
5	COMPX BP	33.0
6	MARSHALL James	31.5
7	FAQAN James	29.0
8	JORDAN Roland	29.0
9	SAX Robert	29.0

## Class A Tour

1	MC NAMARA Jim	40.0
2	STEVENSON Wilford	38.5
3	BOLITHO, Tom	32.0
4	DUDKOWSKI P. Z.	29.0
5	BOURGIERIE Dennis	28.0
6	ALLISON Roger	27.5
7	MC ALISTER Kelvin	27.0
8	SINGER Rob	22.5

## Class B Tour

1	CONNELLY Kevin	49.5
2	ARNOLD Charles	(1) 32.0
3	PADILLA Rudy	31.0
4	MC ALISTER Kelvin	30.0
5	GIERTZ Charles	28.0
6	CLARK Wayne	24.5
7	REED Boyd	24.5
8	BALES Robert	23.0

## Class C Tour

1	CHAN Kheong Sann	34.0
2	BALES Robert	27.0
3	JOSEPHS Steven	23.0
4	PALMER Kenneth	17.5
5	FENNER Charles	14.0
6	MAURER Patrick	13.5
7	KEMPNER Robert	12.0
8	ZEVNIK Lawrence	12.0

## Class D Tour

1	MARTIN John	(1) 32
2	CRAGGS Tommy	20.5
3	BALES Robert	11.5
4	MARTIN Brian	(1) 8.0
5	SANCHEZ Isaac	8.0
6	RODGERS Paul	7.5
7	JENKINS Mike	5.0
8	MAURER Patrick	5.0

## 1991 ICA Tour events:

Tim Just Winter Open    Maxi event    Grayslake, January  
Bradley Action    Mini event    Peoria, January  
Lincolnwood Plus-Score    Mini events    Lincolnwood, January  
Lincolnwood Min-Tours    Mini events    Lincolnwood, February  
Chess Center Plus-Score    Mini events    Chicago, February  
Greater Peoria Open    Maxi event    Peoria, March  
Chicagoland Plus-Score    Mini event    Chicago, March  
Pawn Showers Action    Mini event    Springfield, April  
Hammond Spring Open    Mini event    Hammond, April  
Chicagoland Plus-Score    Mini events    Chicago, April  
Chess Center Plus-Score    Mini events    Chicago, May  
Master Challenge    Maxi event    Forest Park, June  
Maunce Irvin Open    Maxi event    Bloomington, June  
Peoria Tomado    Mini event    Peoria, Jun 8  
Chess Center Plus-Score    Mini events    Chicago, July  
Fireworks Under-2000    Mini event    Chicago, July  
Chicagoland Master-Exp    Mini event    Chicago, July  
Chicagoland Under-2000    Mini event    Chicago, August  
St Charles Open    Maxi event    St Charles, August  
Bradley Summer Open    Mini event    Peoria, August  
Illinois Open    Maxi event    O'Hare, Aug-Sep  
Chicagoland Fall Fest    Maxi event    Chicago, September  
Chicagoland Plus-Score    Mini event    Chicago, October  
Pawn Harvest Action    Mini event    Springfield, October  
Forest Park Action    Mini event    Forest Park, October  
Metro Resales Open    Maxi event    Champaign, October  
Chicagoland Plus-Score    Mini event    Chicago, November  
Lake County Open    Maxi event    Waukegan, November  
Illinois Class    Maxi event    Chicago, November  
Normal Pinetree Open    Mini event    Normal, December  
Hammond Winter Swiss    Mini event    Hammond, December  
Tuley Park Action    Mini event    Chicago, December

## How to Add Points to Your Rating and Years to Your Chess Life.

For years I've had only two or three hours a week to devote to chess. For years I've dreamed about having thirty. Now in two or three hours I accomplish more than I used to in thirty hours spread over three months. It may be hard to believe, but most of our chess study time is wasted searching for and organizing chess information and in setting up pieces on a chessboard for replay. Wasted months, wasted years.

ChessBase products are designed to make sure that you spend your precious time *studying* chess, not flipping pages or trying to remember the last main line position on the board. The bottom line is literally *years* added to your chess life!

How? By harnessing the power of the computer to meet the unique demands of the chessplayer. Now in a matter of seconds, you can search through literally thousands of games for the precise position you want to study, then bring it to the screen and play through the deepest, most complicated analysis without ever setting up a board or misplacing a piece, learning from the world's strongest players in the privacy of your own home. ChessBase's unique "Notation" screen allows you to preview every move, every note, every position in a game with a simple touch of a key or click of a mouse.

Time is important to the professional chessplayer - his living depends on it. That's why 85 of the top 100 players in the world use ChessBase. But in a way time is even more important to the average player - we have so little of it to give to chess.

And now ChessBase USA is developing a set of instructional materials designed for players of all levels, from beginner to master, to take the mystery out of learning chess. Combining a revolutionary new text delivery system with ChessBase's game management facilities, we provide players with the best of both worlds - the power and flexibility of the personal computer with the range and depth of a book.

Better yet, ChessBase KnightStalker (Basic \$49.95, Deluxe \$95) turns the world's finest training platform into a fully interactive study environment. With a world-class electronic playing partner at your side, you never again have to take an author's word for an evaluation - just tap a key and give the position an immediate live test!

Now for the best news of all. Even if ChessBase 3.0 (Basic \$295, Deluxe \$395) is too expensive for you right now, ChessBase Access (\$39.95) unlocks the magic of ChessBase to anyone who owns an MS-DOS computer. Even players who spend as little as an hour a month studying chess will be amazed at how much more they accomplish - and at how much stronger they become. If you play chess and you own a personal computer, you can't afford to be without Access.

And for a limited time only, ChessBase USA is offering a special introductory package to first-time users - ChessBase Access and KnightStalker together, an \$89.90 value, for just \$75!

**Call or write:**

**ChessBase USA**

**Co-Sponsors of the ChessBase USA/CCA Grand Prix**

75 Main Street, Suite 16 - Manasquan, NJ 08736

(Specify disk size with order, 3.5" or 5.25")

**1-800-524-3527**

(Ask about our special book catalog and hardware options)



**Free Demo!**

159-game data base for hands-on test

Send \$3 postage and handling (Specify disk size, 3.5" or 5.25")

# Chess Tech-Talk Software Review: Chessmaster 3000 by Marc Lonoff

Software Toolworks latest entry in the chess playing program derby, Chessmaster 3000 (CM3000), polishes their earlier bestsellers Chessmaster 2000 and 2100 into a real gem for beginners and tournament players up to Class B. CM3000 comes in both DOS versions for old PC/AT machines and in a Windows version for more advanced PC's. Versions for other platforms such as Apple/Macintosh and Nintendo should also become available.

## Features

Chessplaying programs draw on the full processing power of whatever computer they inhabit. Program developers face a trade-off: adding fancy graphics, clocks and mouse interrupts take processor time away from evaluating chess positions. As processor power increases these time outs cost less in chess strength. Comparing CM3000 with MChess or RexChess on a "features" basis unfairly penalizes the latter two programs, which noticeably outrate CM3000. The target market for CM3000 is looking for ease of use and lots of frills. CM3000 delivers:

- 1) Choice of mouse or keyboard control;
- 2) Two or three dimensional board display;
- 3) Flexible time controls, including seconds per move, minutes per game and conventional tournament controls but missing a countdown clock;
- 4) Choice of analog or digital clock;
- 5) Choice of 3D or 2D rotated boards;
- 6) Choice of "modern", "fantasy", and Staunton pieces;
- 7) Choice of custom board colors, degree of tilt, and depth of view into 3D board;

8) Striking graphic quality in 256 color VGA;

9) Easy save and load of games;

10) The program offers the flexibility of choosing to display eight windows around the chessboard:

a) game status (shows player name and digital clock);

b) analog clock;

c) move list (includes a scroll bar for reviewing stored and historic games and allows quick takeback of moves during games);

d) annotation window (for entry and display of text notes);

e) captured piece display;

f) best line;

g) legal moves list;

h) "thinking" (number of positions evaluated by computer, score of best line for computer, best line so far, current line being analysed).

11) For beginners a "mentor" will suggest a move or give detailed advice in a "natural language" that resembles english.

12) The mentor includes several other features under teaching:

a) A display of legal moves possible by a selected piece;

b) Pieces under attack by the player on move;

c) Squares attacked by white or black.

13) Beginners can work through an interactive tutorial that starts "chess is played on an 8x8 board" and proceeds through the rules of the game in a spritely way.

14) A second tutorial covers king and pawn endings, basic mating patterns, basic combinations, the "origins of combinations", double attacks, sacrifices, and simple strategic concepts with a built in set of quiz positions.

15) Three sets of ten problems enable you to estimate your rating (though no time limit is suggested).

16) Opening practice covers numerous opening variations with a single line each to serve as an introduction to lines. A limited option but possibly misleading for beginners.

17) You can experiment by creating and playing against a stable of "chess personalities" by modifying the balance of attack and defense and the value given to an extra pawn or a deficit pawn.

18) You can play blindfold with one or both sides obscured.

19) The program sets itself up in Windows 3.0 and has excellent help screens.

## Playing Strength

The bottom line for all these programs is playing strength. I have experimented playing five minute chess with the program on a 486/25 computer and estimate it plays about 2100-2200. Perhaps calling the program CM2200 would have been more accurate!

## Recommendation

I recommend this program for players under 2000. The further you are below 2000, the more valuable this program will be for you. As you approach Class A you will probably want to switch to KnightStalker and begin buying opening disks. If you have worked with Zarkov/Bookup the CM3000 will give you another sparring partner.

## Buying A Computer System

In the two months since I assessed the PC market prices have tumbled further. You can now purchase a 486/33, the fastest PC currently available, with 4MB of RAM and a 124MB hard drive with DOS 5, Windows 3.0, a Microsoft Mouse, and a very nice super VGA monitor and graphics board for under \$2500. The slowest computers still offered are 286 systems with VGA card and monitor for about \$800. These are hardly worth mentioning since 386 systems with monitors and hard-drives are now plentiful for under \$1000. Since prices are falling so fast, you might buy the 386 system now(!) and plan to buy a 486/33 next year for \$2000!

Based on my reading of *Computer Shopper* and conversations with other buyers of computers, I now recommend Gateway (1-800-523-2000), a South Dakota based mail order firm. They offer excellent price, quality, and service.

Again, the minimum system to run Windows 3.0, (hence ChessNet and CM3000) and to get reasonable playing strength from Knightstalker is a 386 SX16 with 2MB memory, a 40MB hard drive, two floppies, a 2400 baud modem, and a mouse

# Tournament Calendar

Call **Chess Phone, (708) 832-5222**, for up-to-date tournament results, as well as announcements of tournaments that may not be listed in **Chess Life** or the **ICB**. The ICA Chess Phone voice is **Todd Barre**. Unless otherwise noted, all tournaments require **USCF** membership. **Illinois** Tour events also require **ICA** membership.

**February 15, 16, 22, 23, 29** . Chess Center Opens #1 to #5. Five separate events. 3-SS, 40/1, SD/30 Chicago Chess Center. SSG(180/b20) 1st 80, AB 55, CDE 45. EF \$12 advance, \$14 at site. REG 9-10. RDS 10-1:30-5. ENT Chicago Chess Center, 1921 W 47th St, Chicago, IL 60609. (312) 346 5678. NS

**February 15: President's Open.** 4-SS, 30/60, SD/30, Hammond Public Library, James A. Howard Branch, 171st & Grand Ave., Hammond, IN 46323. EF \$12, \$10 to HCC members, \$5 more 8:45. \$(300/b30). REG 8-8:45 am. RDS 9-12-3-6. ENT: J. Enochs, 6436 Jefferson Ave., Hammond IN 46324; (219)932-1437. NS NC W

**February 15: Frosh-Soph State Tourney (IHSA).** Oak Lawn Community HS. Ed Olson. (708)257-5537.

**February 15: Springfield Frozen Pawns Octagonal.** 3-SS, 30/1, SD/30, Washington Park Pavilion, North of intersection of Park Ave. and South Grand Ave., West; Springfield IL. Eight(8) man sections based on rating. EF:\$18, \$16 if member of SCC. \$(135 b/8):70-40-25. Reg:8:15-9:10 am. Rds. 9:25-1:10-4:25. Cks. payable to Springfield Chess Club. Info 217-523-7265, after 6 pm. Ent: Thomas B. Knoedler, 2104 S. Fourth St., Springfield, IL 62703. NS NC W.

**February 15: Scholastic event.** Holy Angels HS, Aurora.

**February 29-March 1, 1992: Illinois Grade School State Championship.** 7 SS, 40/60, SD/15, Hadley Junior High School, Glen Ellyn, IL Three Sections: Junior High, open to 8th grade and under. Elementary, open to 5th grade and under. Primary, open to 3rd grade and under. All, EF \$10 by 2/10, \$15 by 2/24, (advance entries only). USCF membership not required. Trophies. HR: write or call for special hotel rates, more details. Ent: Mike Miele, 861 Valley Ave., Glen Ellyn, IL 60137. 708-469-3630.

**March 8: Illinois Chess Association Awards Banquet.** Harvey's Prime Rib, 321 East Ogden (3 miles west of I-294), Westmont. Social hour at noon, dinner at 1PM. Donation: \$14 in advance, \$18 at the door. Send to Alan Losoff, PO Box 157, Morton Grove, IL 60053. (708) 966-5559. Specify Prime Rib or Chicken Marsala.

**March 8: Illinois Blitz Championship.** Harvey's Prime Rib, 321 East Ogden (3 miles west of I-294), Westmont. \$200 minimum prizes guaranteed. Trophy and title to winner. WBCA rated round robin preliminary and final sections, with section size determined by number of entrants. Entry Fee \$15, \$4 discount for banquet participants. ICA membership required. WBCA membership not required, but WBCA members get an additional \$4 discount. Enter at the site only.

**March 13-15: Mid-America Class Championships in Chicago.** 5-SS, 40/2, 20/1. The New Ramada O'Hare Hotel, 6600 N. Mannheim Road, Rosemont, IL 60018. \$12,000 Guaranteed in Prizes. 5 Sections: **Master**, \$\$ 2000-1000-500-400-200. **Expert**, \$\$ 1000-500-300-200-100. **Class A**, \$\$ 1000-500-300-100. **Class B**, \$\$ 800-400-250-150-100. **Class C/D/E**, \$\$ 800-400-250-150-100, Under 1400 200-100. Perfect score in any section wins free EF at 1992 National Open. Perfect score in Master or Expert section also wins free room. EF: \$62 if mailed by 2/12, \$65 by 3/7, \$70 later. GM's Free. Add \$6 to play one section above your rating. Add 50 cents for 1/2 point bye in round 1. Unrateds may win no more than \$200 in any section except Master. CCA ratings may be used if higher than Feb supplement. REG: Friday 4-7PM, Saturday (with 1/2 point bye) 8-10AM. RDS: 8, 10:30-5:30, 10:30-5:30. ENT: Mid-America Class Championships, c/o RAE Products and Chemicals, 11630 S. Cicero, Alsip, IL 60658. *Visa & Mastercard accepted for phone reservations only* (708)396-1984. 9-4 CST. HR: \$59 sgl, \$65 dbl including FREE breakfast! **MAXI**

**March 14: Seventh North Boone Spring Tournament,** 4SS, SD/30, North Boone High School, 17641 Poplar Grove Road, Poplar Grove, IL 61065. \$\$G 300. 2 Sections: **Open**, EF:\$12 by 3/7, \$15 at site. \$100-50-25, B,C,D,E,Unr each 25. **Scholastic**, open to jrs. EF \$6 by 3/7, \$8 at site. EF + USCF Sch memb. \$11 or EF + USCF youth \$17 by 3/7. Trophies. **Both**, Reg 7:30-8:30 am Rds 9-12-3-6. Ent: Carl Simonson, 216 Washington Street, Barrington IL 60010. 708-304-1466. NS. W.

**March 21: Normal Redbird Open.** 4SS,30/60,SD/30, Ash Park Recreation Center, Normal IL (Intersection East College Ave and Maple St., located approximately at the 500 block of East College Ave.). EF: \$13 by 3/18, \$16 at site. \$8 students by 3/18, \$10 at site. \$\$G 320: 100-50, A 50, B 45, C 40, D 35, plus trophies. Reg 8-8:45am. Rds: 9,12,3,6. Ent: Dennis Bourgerie, 1621 N School St, Normal IL 61761. 309-454-3842. NS NC W. **MINI**.

**March 21: March to Mate.** 4-SS, 30/60, SD/30, Hammond Public Library, James A. Howard Branch, 171st & Grand Ave., Hammond, IN 46323. EF \$12, \$10 to HCC members, \$5 more 8:45. \$(300/b30). REG 8-8:45 am. RDS 9-12-3-6. ENT: J. Enochs, 6436 Jefferson Ave., Hammond IN 46324; (219)932-1437. NS NC W

**March 21: Chess Center Open #6.** 3 SS, 40/1, SD/30, Chicago Chess Center. SSG(180/b20) 1st 80, AB 55, CDE 45. EF \$12 advance, \$14 at site. REG 9-10. RDS 10-1:30-5. ENT: Chicago Chess Center, 1921 W 47th St, Chicago, IL 60609. (312) 346-5678 NS

**March 22: Chess Center Open #7.** 3 SS 40/1, SD/30 Chicago Chess Center. SSG(180/b20) 1st 80 AB 55 CDE 45 EF \$12 advance, \$14 at site. REG 9-10 RDS 10-1:30-5 ENT Chicago Chess Center 1921 W 47th St Chicago IL 60609 (312) 346-5678 NS

**March 27-28: IHSA State Team Tourneys.** Michael Zacate, (708)479-9380.

**March 28: Chess Center Open #8.** 3-SS 40/1 SD/30 Chicago Chess Center SSG(180/b20) 1st 80 AB 55 CDE 45 EF \$12 advance, \$14 at site. REG 9-10 RDS 10-1:30-5 ENT Chicago Chess Center, 1921 W 47th St, Chicago IL 60609 (312) 346-5678 NS

**March 29: Chess Center Open #9.** 3-SS, 40/1 SD/30, Chicago Chess Center. SSG(180/b20) 1st 80, AB 55 CDE 45 EF \$12 advance, \$14 at site. REG 9-10 RDS 10-1:30-5 ENT, Chicago Chess Center 1921 W 47th St Chicago IL 60609. (312) 346-5678. NS

# Tournament Calendar

**April 3-5: CCA Chicago Amateur.** 5-SS, 40/2, SD/1 (2-day format rds 1-2 G/90). Ramada Hotel O'Hare, 6600 N. Mannheim Rd, Rosemont, 60018. 5 Sections, *Plus-score* format. **Under 2200 & Under 2000:** 5 points wins \$200, 4½ \$100, 4 \$50, 3½ \$25, 3 \$15. **Under 1800, under 1600, under 1400:** 5 points wins \$150, 4½ \$75, 4 \$45, 3½ \$30, 3 \$15. Unr in any section must take bye in rd 5 if 4-0. EF: 3-day \$28, 2-day \$27 by 3/28, both \$40 at site. Re-entry \$20. Rds: (3-day) 7, 11-7, 9-3. (2-day) 10-2-6, 9-3. ½ bye available in any round but rounds 4-5 must commit before tmt. No equipment supplied. ENT: Continental Chess, PO Box 249, Salisbury Mills, NY 12557. (914) 496-9658. NS NC W **MAXI**

**April 4: Chess Center Action #5.** 4-SS, G/30. Chicago Chess Center. \$\$G(180/b20) 1st 80, AB 55, CDE 45. EF \$12 advance, \$14 at site. REG 9-10. RDS 10-11:15-1-2:15. ENT: Chicago Chess Center, 1921 W 47th St, Chicago, IL 60609. (312) 346-5678. NS

**April 5: Chess Center Action #6.** See Chess Center Action #5.

**April 4-12: Chicago International.** 9-SS, 30/90, 20/1, SD/1. Ramada Hotel O'Hare. **\$10,000 guaranteed in prizes.** Open to all; GM and IM norms expected to be possible. See full page ad for details.

**April 10-12: CCA Midwest Amateur.** 5-SS, 40/2, SD/1 (2-day format rds 1-2 G/90). Ramada Hotel O'Hare, 6600 N. Mannheim Rd, Rosemont, 60018. 5 Sections, *Plus-score* format. **Under 2200 & Under 2000:** 5 points wins \$250, 4½ \$120, 4 \$60, 3½ \$40, 3 \$20. **Under 1800, under 1600, under 1400:** 5 points wins \$200, 4½ \$100, 4 \$60, 3½ \$40, 3 \$20. Unr in any section must take bye in rd 5 if 4-0. EF: 3-day \$38, 2-day \$37 by 3/28, both \$50 at site. Re-entry \$30. Rds: (3-day) 7, 11-7, 9-3. (2-day) 10-2-6, 9-3. ½ bye available in any round but rounds 4-5 must commit before tmt). No equipment supplied. ENT: Continental Chess, PO Box 249, Salisbury Mills, NY 12557. (914) 496-9658. NS NC W **MAXI**

**April 11: April Showers Open.** Springfield.

**April 11: Chess Center Action #7.** See Chess Center Action #5.

**April 12: Chess Center Action #8.** See Chess Center Action #5.

**April 24-25 (tentative): IHSA State Individual Tourneys.** Michael Zacate, (708)479-9380.

**April 24-26: National Elementary Championships.** Knoxville, TN.

**April 25-26: UIC Premier Open.** 4-SS, 45/2, 25/1. Chicago Circle Center, room 713, 750 S. Halsted, Chicago. 35% of EFs to 1st, 20% 2nd, 20% under 1800, 10% under 1600. EF: \$10 by 4/21, \$13 later. \$1 less for UIC CC members, ½ off for masters. No equipment supplied. ENT: Howard Wachtel, 445 W. Barry Av, #217, Chicago, IL 60657. (312) 975-7870.

**April 25: Let's Try a Quad #1.** 3-RR, 30/60, SD/60. Hammond Public Library, James A. Howard Branch, 171st & Grand Ave., Hammond, IN 46323. \$30 to winner of each section. EF \$12, \$10 to HCC members, \$5 more 8:45. \$\$\$(300/ b30). REG 8-8:45 am. RDS 9-1-5. ENT: J. Enochs, 6436 Jefferson Ave., Hammond IN 46324; (219)932-1437. NS NC W

**May 1-3: National Jr High Championships.** Tallahassee, FL.

**May 1-3: Greater Peoria Open MAXI**

**May 8-10: National High School Championship.** Lexington KY.

**May 16-17: Grand Hammond Open.** 5SS, 40/90, SD/60. Hammond Public Library, James A. Howard Branch, 171st & Grand Ave., Hammond, IN 46323. EF \$20, \$15 to HCC members, \$5 more 8:45. \$\$\$(500/ b30). REG 8-8:45 am. RDS 9-1:30-6:30, 10-3. ENT: J. Enochs, 6436 Jefferson Ave., Hammond IN 46324; (219)932-1437. NS NC W

**May 22-25: Continental Chess Association.** Chicago. \$40, 000 prize fund. See full advertisement on page 7 **MAXI**

**June 5-7: National Open.** Las Vegas NV.

**June 13: Summer Action.** Springfield **MINI**

**June 13: Hammond Summer Open.** 4-SS, 30/60, SD/30, Hammond Public Library, James A. Howard Branch, 171st & Grand Ave., Hammond, IN 46323. EF \$12, \$10 to HCC members, \$5 more 8:45. \$\$\$(350/ b30). REG 8-8:45 am. RDS 9-12-3-6. ENT: J. Enochs, 6436 Jefferson Ave., Hammond IN 46324; (219)932-1437. NS NC W **MINI**

**July 17-19: Continental Chess Association.** Chicago. **\$5,000 prize Fund. MAXI**

**August 2-14: US Open.** Dearborn MI.

**August 8: Springfield Sauna Open.**

**September 5-7: Illinois Open. MAXI**

**October 10: Springfield Action. MINI**

**November 22-23: Illinois Class Championships. MAXI.**

## 1993

**April 9-11: National High School Championship.** Dallas, TX.

**April 16-18: National Junior High School Championship.** Chicago.

**April 23-25: National Elementary Championship.** Charlotte, NC.

**June 6-8: National Open.** Las Vegas, NV.

**August 7-15: U. S. Open.** Philadelphia, PA.

## 1994

**August 7-19: U. S. Open.** Chicago.

# Illinois Chess Association Patrons

## Patron Members

### Century Club Members

<b>Michael Bojovesick Sr</b>	<b>Elmhurst</b>
<b>Roy Berg</b>	<b>Madison WI</b>
<b>Bill Brock</b>	<b>Chicago</b>
<b>Thomas Fineberg</b>	<b>Chicago</b>
<b>Fred Gruenberg</b>	<b>Chicago</b>
<b>Marc Lonoff</b>	<b>Northbrook</b>
<b>Michael McIlhany</b>	<b>Springfield</b>
<b>Robert Raimo</b>	<b>Blue Island</b>
<b>Albert Sandrin</b>	<b>Chicago</b>
<b>Angelo Sandrin</b>	<b>Chicago</b>
<b>Bill Smythe</b>	<b>Chicago</b>
<b>Burton Vincent</b>	<b>Chicago</b>
<b>Helen Warren</b>	<b>Western Springs</b>
<b>Jim Warren</b>	<b>Western Springs</b>
<b>Bill Wenz</b>	<b>Milwaukee WI</b>
<b>Phillip Wong</b>	<b>Wilmette</b>

### Gold Card Members

<b>Tyrone Brooks</b>	<b>Chicago</b>
<b>Bill Buttny</b>	<b>Downers Grove</b>
<b>William Dwyer</b>	<b>Worth</b>
<b>Donald Graft</b>	<b>Wheaton</b>
<b>Harland S. Holsington</b>	<b>Ogden UT</b>
<b>Alan Losoff</b>	<b>Morton Grove</b>
<b>Kenneth Marshall</b>	<b>Lombard</b>
<b>William Naff</b>	<b>Peoria</b>
<b>Peter Pelts</b>	<b>Niles</b>
<b>Daniel Pradt</b>	<b>Glen Ellyn</b>
<b>Michael Pratts</b>	<b>Chicago</b>
<b>Irwin Rothschild</b>	<b>Park Forest</b>
<b>Mitchel Sweig</b>	<b>Evanston</b>
<b>Louis Werner</b>	<b>Evanston</b>
<b>Sandy Zabell</b>	<b>Chicago</b>

Faneuil Adams	New York NY
Fred Aillsbrook	Downers Grove
Bob Ash	Urbana
Kevin Bachler	Waukegan
Ken Bankhead	Country Club Hills
Todd Barre	Elmhurst
Roy Benedek	Western Springs
Edward J. Blanco	Chicago
Timothy Bogan	Chicago
Dennis Bourgette	Normal
Barry Bouton	Newark
Jim Brotsos	Chicago
Gregory Bungo	Elmhurst
Fred Burgess	Oak Forest
Anthony Caliendo	Aurora
Lawrence Cohen	Villa Park
Jim Condron	Westmont
Paul Cox	Hazel Crest
Mike Cronin	Evergreen Park
Greg De Fotis	Chicago
John Deutsch	Chicago
Leroy Dubeck	Cherry Hill NJ
Kalman Farkas	Milwaukee WI
Michael Flynn	Aurora
Jon Gotz	West Chicago
William Graves	Chicago
Steve Hansen	Indian Head Park
Walter Henry	Naperville
Charles Hicks	Naperville
Keith Holzmueller	Evanston
Jeffery Hyland	Mount Prospect
Toshio Imai	East Lansing
Randy Ingram	Bloomington
Robert Irons	Chicago
Gary Jochim	Chicago
Gersham Johnson	Chicago
Stephen Josephs	Hinsdale
Tim Just	Gurnee
Dan Kamen	Buffalo Grove
Scott Kittsley	Shorewood WI
Thomas Knoedler	Springfield
Walter Kocjan	Northlake

Peter Kuhn	Des Plaines
Richard Lang	Evanston
Michael Lester	Chicago
Harry Lyman	Boston MA
John Marconnet	Clarendon Hills
Mark Marovitch	Cicero
Anthony Marquez	Chicago
Ed Marschall	Barrington
Eugene Martinovsky	Naperville
Patrick Maurer	Glen Ellyn
Thomas Mayka	Wheeling
James McNamara	Hinsdale
Fred Meyers	Morrison
Earl Miller	El Paso
Ken Palmer	Bolingbrook
Alex Pehas	Downers Grove
Waldo Pena	Chicago
Mieczyslaw Platek	Skokie
Michael Plett	Wheaton
Rhys Read	Evanston
Frederick S. Rhine	Chicago
Murrell Rhodes	Peoria
Marvin Rogan	Chicago
Ray Satterlee	Wheaton
Mark Setcheck	Naperville
David Shane	Macomb
Anthony Sillars	Huntington MA
Richard Simonetti	Elmwood Park
Arthur Sinclair	Evanston
Leonard Spiegel	St Charles
Joe Splinter	Glen Ellyn
Peter Stein	Wheaton
Robert Stoltz	River Forest
Eric Stover	Chicago
James Tanaka	Chicago
Marc E. Thomas	Normal
George Umezirwa	Chicago
Richard Verber	Chicago
Jeff Weimar	Moline
Douglas White	Schaumburg
Don Winsauer	Forest Park
Harold Winston	Naperville
David Wulatin	River Forest
Max Zavanelli	Park Ridge

### ICA ELECTED OFFICERS

Alan Losoff, President  
P.O. Box 157, Morton Grove, IL 60053  
(708) 966-5559

Garrett Scott, First Vice-President  
202 Foster Drive, Normal, IL 61761  
(309) 452-8116

Tom Fineberg, Metro Vice-President  
7321 S. South Shore Dr.  
Chicago, IL 60649-3597  
(312) 721-3979

Ken Marshall, Secretary  
357 W. Grove, Lombard IL 60148  
(708) 932-1455

Marc Lonoff, Treasurer  
900 Appletree Court, Northbrook IL 60062  
(708) 564-2346

### USCF DELEGATES

by virtue of their USCF posts

Alan Losoff, Regional Vice-President  
Fred Gruenberg, Regional Vice-President  
Frank Skoff, Life Voting Member  
Helen Warren, Life Voting Member  
Harold Winston, Life Voting Member

by ICA-appointment

Tom Fineberg  
Tim Just  
Ken Marshall  
Todd Barre

### USCF VOTING MEMBERS

ICA appointed

Marc Lonoff	Bill Smythe
Garrett Scott	Erv Sedlock
Jim Warren	Dennis Grant
Bill Naff	Tom Knoedler
Larry Cohen	Les Bale
Jim Condron	Bill Wilkinson

ICA appointed alternates

Jim W Oberweis	Murrell Rhodes
Howard Wachtel	John Barstad
Angelo Sandrin	William Brock
Ray Socha	Glen Panner
Jim Brotsos	Steve Foust
James Enochs	Dave Shiner
Kevin Bachler	Larry Stilwell

# Where to Play Chess

## ICA Club Affiliates

**ABCDEU** sponsors tournaments and other chess events. Ed Blanco, Box 579181, Chicago IL 60657-9181.

**AMERICAN POSTAL CHESS TOURNAMENTS** sponsors postal events & sells chess books & equipment. Jim or Helen Warren, P.O. Box 305, Western Springs 60558. 708/246-6665.

**CENTRAL LAKE COUNTY CHESS CLUB** meets Fridays, 7:15 to 12:00AM College of Lake County, Bldg. 1, Washington at Route 45, Grayslake. Dennis Grant, 1657 McKay, Waukegan 60087. 708/336-5188.

**CHAMPAIGN CHESS CLUB** 706 Kenwood Road, Champaign IL 61821.

**CHICAGO CHESS CENTER** meets for casual chess 7 days a week 6:00 p.m. 1:00 a.m. \$2 charge. 1921 W. 47th St., Chicago 60609. Also sponsors rated tournaments Thurs.-Sun. Ray Socha, 312/376-5678

**CHICAGO INDUSTRIAL CHESS LEAGUE** organizes frequent competition among commercial/government teams with awards, ratings, & special events. Tony Jasaitas 312/431-2966.

**CONTINENTAL CHESS ASSOCIATION**, 450 Prospect Ave. Mt Vernon NY 10553. Bill Golchberg.

**DOWNERS GROVE PARK DISTRICT CHESS CLUB** meets Thurs., 6:30 10 p.m., Lincoln Center, 935 Maple Ave., Downers Grove. Affiliated with USCF & ICA. George Uffner, 708/960 9382.

**EVANSTON TOWNSHIP HIGH SCHOOL CHESS CLUB** Ken Lewandowski 1600 Dodge Avenue, Evanston IL 60204.

**FOX VALLEY CHESS CLUB** meets Monday evenings, 7 p.m.-?, Prisco Community Center, Lake St. & Illinois Ave., Aurora IL. Bob Renaut, 708/983 0934

**GREATER PEORIA CHESS FEDERATION** meets Mon., 7 11 p.m., Garrett Center, 824 N. University, Peoria Bill Wilkinson, 901 N. Rebecca Pl, Peoria 61606. 309/673 9455.

**HAMMOND (INDIANA) CHESS CLUB** meets Thursdays, 7:00 p.m. to ?, at Hammond Public Library, Howard Branch, 171st and Grand Jim Enochs, 6346 Jefferson Ave., Hammond, IN 46324. 219/932 1437

**ILLOWA CHESS CLUB** meets Tues., 6.30 10 p.m., Hauberg Civic Center, 1300 24th St., Rock Island. Bob Hatcliff, 2336 25th St., Rock Island IL 61202; 309/786 8104.

**LAKE COUNTY CHESS ASSOCIATION** sponsors rated tournaments in the Grayslake-Zion area. Tim Just, 37165 Willow, Gurnee 60031. 708/244 7954.

**MATTOON AREA CHESS CLUB** meets Monday, 7-9 p.m., 2608 Richmond Ave., Mattoon IL 61938. Bret R. Fuller.

**MIDWEST CHESS ASSOCIATION** organizes major tournaments for masters & experts. Helen Warren, P.O. Box 305, Western Springs, 60558. 708/246-6665.

**MISSOURI CHESS ASSOCIATION** PO Box 410826, Kansas City Missouri 64141-0826

**OAK PARK/RIVER FOREST CHESS CLUB** meets Tues., 7- midnight, Dominican Conference Center, 7200 W. Division, River Forest, Ken Marshall, 357 W. Grove, Lombard 60148. 708/932-1455.

**ORLAND PARK CHESS CLUB** meets every Friday night, 7:30-11, at the George Brown Commons, 15045 West Ave. (1 block w. of Lagrange Rt. 45 96th Ave.), Orland Park. No membership fee is required. Glenn Panner, 708/460-3111.

**PARK FOREST CHESS CLUB** meets Thursdays, 7-10:00 p.m., Freedom Hall, Orchard & Lakewood, Park Forest. Lawrence Cohen, 135 Westwood, Park Forest, 60466. 708/748-5911.

**QUAD CITIES CHESS CLUB.** Steven J. Foust, 9500 14th St. W., Apt. C2-B, Rock Island, 61202. 309/787-5198.

**RUDY LOZANO LIBRARY CHESS CLUB.** 1805 S. Loomis, Chicago, 60608 Hector Hernandez, Head Librarian. 312/733- 4329

**SHIMER COLLEGE CHESS CLUB** meets Mondays, 7 p.m. to ?, Koko House, Shimer College, corner of Genessee and Cory in Waukegan. David Shiner, P.O. Box A500, Waukegan 60079. 708/623-8400.

**SMYTHE DAKOTA COMPETITIONS** is the sponsor of the monthly Plus-Score Mini-Tours in the Chicago area. Bill Smythe, 6945 N. Ashland #F-3, Chicago 60626. 312/761-2455.

**SPRINGFIELD CHESS CLUB** meets Wed., 6-10 p.m., Washington Park Pavilion, Park Ave. & South Grand Ave. West, Springfield. Tom Knoedler, 217/523-7265; or James Larson, 217/529- 0781.

**ST. CHARLES CHESS CLUB** meets Thursdays at 7 p.m., Baker Community House, 101 S. 2nd (Rte. 31), St. Charles. Erv Sedlock, 6 N. 307 Old Homestead Rd., St. Charles 60174, 708/377-7995.

**TULEY PARK CHESS CLUB** meets Saturdays, 1-5 p.m., Tuley Park Field House, 501 E. 90th Pl., Chicago Thomas Fineberg, 7321 S. South Shore Dr., Chicago 60649, 312/721-3979.

Join the **Illinois Chess Association** and receive six issues of the Illinois Chess Bulletin. In addition, you'll qualify to enter over two dozen tournaments on the **Illinois Chess Tour**. Every game you win or draw in a tour event earns you "tour points" that can add up to cash prizes at year-end. Finally, you'll be supporting the activities of the Illinois Chess Association.

Every year, the ICA organizes major tournaments like the Illinois Open and the Illinois Class Championships; the ICA has bid for the National Open, the US Open

and the US Class Championships to be held in Illinois. In addition, the ICA sponsors scholastic clinics, runs a tournament clearinghouse, and promotes and publicizes chess activity statewide.

If you would like to show increased support for Illinois chess, *please consider renewing as a Century Club, Gold Card, or Patron member.* Patrons are acknowledged in each issue of the ICB and receive their magazines by first-class mail.

### Mail To:

ICA MEMBERSHIP SECRETARY  
PO BOX 2534  
NORTHBROOK IL 60065-2534

(Your mailing label is on the other side; note corrections below)

NAME: \_\_\_\_\_

ADDRESS: \_\_\_\_\_

CITY: \_\_\_\_\_ STATE: \_\_\_\_\_ ZIP: \_\_\_\_\_

### ICA Membership Renewal

#### Check membership type:

<input type="checkbox"/> Century Club	100.00
<input type="checkbox"/> Gold Card	50.00
<input type="checkbox"/> Patron	25.00
<input type="checkbox"/> Regular	14.00
<input type="checkbox"/> Junior	8.00
<input type="checkbox"/> Affiliate	25.00



1992 National Open Organizer Fred Gruenberg and friends Helen Warren and Richard Verber invite you to join the Grandmasters in Chicago for our great new annual tournament.

# MID-AMERICA CLASS CHAMPIONSHIPS

at the luxurious Ramada Inn O'Hare, site of the 634-player 1991 National Open in Chicago.

## MARCH 13-14-15 IN CHICAGO

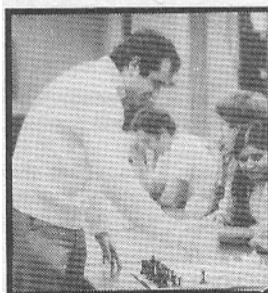
FIDE-RATED • 5 ROUND SWISS • 5 SEPARATE CLASS SECTIONS

### \$12,000 IN GUARANTEED CASH PRIZES!

*(1st Prize in Master Section donated by Helen Warren)*

MASTER SECTION: \$\$2000,1000,500,400,200	CLASS B SECTION: \$\$800,400,250,150,100
EXPERT SECTION: \$\$1000,500,300,200,100	CLASS C & BELOW: \$\$800,400,250,150,100
CLASS A SECTION: \$\$1000,500,300,200,100	BONUS of \$200,100 to TOP 1399 & BELOW

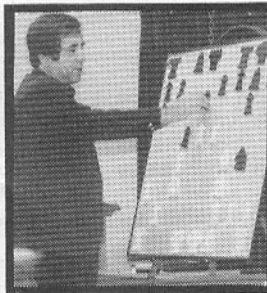
## JOIN THE GRANDMASTERS IN CHICAGO



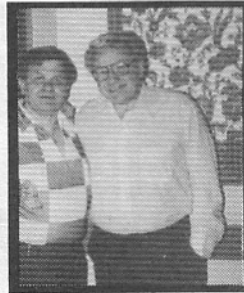
GM DIMITRY GUREVICH  
Chicago resident GM



GM SERGEY KUDRIN



GM ROMAN DZINDZICHASHVILI  
Former U.S. Champion



National Open Organizer  
FRED GRUENBERG  
with GM ARTHUR BISQUIER



GM ALEXANDER IVANOV  
Our newest GM

Illinois Chess Association  
P.O. Box 2534  
Northbrook, IL 60065-2534

**Time Value Material**

Address Correction Requested