



# ILLINOIS CHESS BULLETIN

Official Publication of the Illinois Chess Association, a U.S.C.F. Affiliate  
A Not For Profit Organization



January-February 1992    Volume XV, No. 1    Bi-monthly    \$2.95



**EDITOR:**  
**Marc Lonoff**  
 900 Appletree Court  
 Northbrook, IL 60062  
 (708) 564-2313

**GAMES EDITOR:**  
**Tom Cooper**

**MEMBERSHIP AND SUBSCRIPTIONS:**

The Illinois Chess Bulletin (ICB) is published bimonthly by the Illinois Chess Association. ICA membership includes a subscription to the ICB. Century Club, Gold Card, and Patron members receive their ICB by first-class mail.

**Annual membership rates:**

Century Club	\$100.00
Gold Card	\$50.00
Patron	\$25.00
Regular	\$14.00
Junior (under 18)	\$8.00

Subscriptions and address corrections should be sent to:

ICA Membership Secretary  
 P. O. Box 2534  
 Northbrook IL 60065-2534

**SUBMISSIONS:** Please notify the editor in advance and plan to submit articles, photographs, crosstables, games, advertising, and other publishable materials to him before January 12, 1991. This is the deadline for the March-April 1992 issue that will be mailed in early February 1991.

**ICA AFFILIATION:** Chess clubs and other organizations which promote chess activity may affiliate with the ICA. Benefits include a copy of the ICB by first-class mail, a listing under "Where to Play Chess," discounted advertising rates, three-line tournament announcements in the "Tournament Calendar," and the right to run ICA Tour Events. ICA Affiliation costs \$25; please remit to Membership Secretary.

**ADVERTISING RATES:**

Full page	\$90
Half page	\$54
Quarter page	\$36
Eighth page	\$24

10% discount for the same ad in consecutive issues. 1/3 discount for ICA affiliates. All ads must be camera-ready to qualify for above rates; minimum \$20 charge for layout. Payment must accompany ad. The ICA & the ICB reserve the right to reject advertising.

Copyright © 1991 Illinois Chess Association

# TABLE OF CONTENTS

Presidents Report <i>Alan Losoff</i>	3
Editors Column..	3
Tutorial Program To Benefit Illinois Juniors <i>Helen Warren</i>	4
On the Road <i>GM Dmitry Gurevich</i>	6
ICA/ICCA Scholastic Chess Clinic <i>Ken Lewandowski</i>	14
Games From the Gurevich Birthday Bash	15
Four Masters Tie In Lake County Open <i>David Shiner</i>	16
Bondari and French Win Normal Mapleleaf <i>Dennis Bourgerie</i>	18
Chess Tech-Talk <i>NM Marc Lonoff</i>	19
ICA Tour Crosstables	20
1992 Illinois Tour Rules	22
1991 ICA Tour Standings <i>Bill Smythe</i>	22
Oak Park/Forest Park Reports <i>Ken Marshall</i>	23
Illinois Tournament Calendar	24
Illinois Chess Association Patrons	26
Where To Play Chess: ICA Club Affiliates	27

**Tournament Clearinghouses:**

Metropolitan Chicago (zip codes 600xx-606xx):  
 Tom Fineberg  
 7321 S. Shore Drive  
 Chicago IL 60649-3597  
 (312) 721-3979

Rest of Illinois:  
 Garrett Scott  
 202 Foster Drive  
 Normal IL 60761  
 (309) 452-8116

# President's Report

by Alan Losoff

## CALL FOR BIDS

Any organization wishing to bid for the 1992 Illinois Open or 1992 Illinois Class Championships should write to ICA, Box 157, Morton Grove, IL 60053. The bidding deadline for the Illinois Open is January 15th, and for the Illinois Class March 15th. If no satisfactory bids are received, the ICA will organize these events itself.

## SHOW YOUR SUPPORT

The ICA could not exist without the generous support of our patrons, gold card and century members listed in this and every issue of the ICB. If you are not already a patron member, consider the benefits of upgrading the next time you renew. In addition to receiving your magazine first class and recognition in every ICB, you will have the satisfaction of helping the ICA to provide innovative chess programs for our members.

## FAREWELL

I'm saddened to learn of the demise of the Chicagoland Chess and Games. It's not easy to run a full time chess club, and this one will also be missed.

## CLASSY TOURNAMENT

On the other hand, I'm excited to see three of our states major organizers, in alphabetical order: **Fred Gruenberg, Dick Verber and Helen Warren**, working together to bring us a great new tournament, the Mid-America Class Championships on March 13-15. Plan to play!

## BE A REPORTER TOO

Organizers, send in those tournament reports. Players, send in those games and anecdotes. The ICB doesn't have a staff of reporters to cover the major tournaments of the state, so we depend on you to keep us informed.

## SUPPORT THE TOUR

Show your support of the ICA and affiliates by playing in Illinois Chess Tour events. Besides showing support, you also win tour points which could add up to prizes at year-end. Leaders in the Tour are listed in every issue of ICB.

## Upcoming Tour Events:

12/7	Normal Pinetree Open
12/14	Hammond Winter Swiss
12/21	Tuley Park Action
1/11-12	Tim Just Winter Open
1/25-26	Fox Valley Championship
3/14-15	Mid-America Class

# Editors Column

by Marc Lonoff

This issue features Dmitry Gurevich's observations from Tilburg, truly the chess pinnacle. Illinois activity between the Open and the Class included a number of exciting, strong, but small tournaments. Our next issue will feature the Illinois Class, played too close to the press date to cover in this issue.

I would like to call your attention to Helen Warren's impassioned plea for an organized program to promote junior chess in Illinois on pages 4-5 of this issue. Helen is spearheading a trial program to identify and nurture young chess talent. Her recommendations for action will be heeded!

Helen has also joined forces with Fred Gruenberg and Richard Verber to launch a **major new Chicago tournament called the Mid America Class**. This \$12,000 guaranteed prize fund tournament will be held at the Ramada on March 13-14-15 (the ides of March). Helen has generously offered to donate the \$2000 first prize in the Master Section. This should be a top-flight tournament.

**I note with regret the closing of Les Bale's Chicagoland Chess and Games**. Running a chess club is a contributory activity. Over his clubs year and a half lifetime, Les contributed much time, energy and money. We owe Les and his family a hearty thank-you. A quick glance at the Tournament Calendar and you will notice the absence of Chicagoland's slate of tournaments. I hope Les will share his feelings and experiences with ICB readers in an upcoming issue. Perhaps another brave soul might be inspired to open a chess club.

This is my second ICB issue and I have a few ideas for material for future issues but **I need your help to gather material**. The only reward I can offer is that **you will see your brilliant moves, your games and your name in print**. Your fellow chess players will be entertained and enlightened. At your next tournament maybe a stranger will seek you out to say "I really liked that rook sac you made".

**Have any nice sacrifices or difficult endings?** I would like readers to send in their "best move" positions, the source game, some brief background on the occasion of the move, and some notes on the move. I will use these positions to select a "move of the month" if there are a reasonable number of submissions, and I will include the most interesting positions in a tactical quiz section.

**All tournament organizers should submit a brief report on their tournaments and include some games** that are of interest for their chess content or that were critical to the tournament results.

I also would like to publish upset games. A collection of upsets or the "upset of the month" would certainly interest ICB readers. **Please send your upset wins, especially wins against masters**.

As an immediate implementation of one of Helen's suggestions, I invite anyone who would like to act as an associate editor on junior chess to contact me.

Last but not most important, **have a healthy and hearty new year with lots of ! and !! and !? and hopefully not so much ??**

# Tutorial Program To Benefit Illinois Juniors On USCF Top Fifty Lists

by Helen Warren

The Midwest Chess Association, Helen Warren and Jim Warren, in cooperation with the ICA will begin a program to pay for master level instruction for Illinois juniors who are on USCF's Top Fifty junior lists. This program will identify young talent early, provide promising youngsters with structured chess instruction, and mainstream them into the tournament chess environment.

## Eligibility

The latest USCF rating supplement lists about 300 youngsters, age 6 to 18, on top fifty lists in six age categories. Seventeen of these youngsters live in Illinois. They range in age from seven to eighteen and represent diverse areas of the state. Their presence on the USCF Top Fifty lists shows that they have talent. Talent undeveloped soon vanishes. This tutorial program aims to recognize and nurture their abilities. Additional youngsters may become eligible in the future by attaining a rating that will place them on the Top Fifty list.

## Course of Instruction

Illinois masters and veteran chess teachers will meet with young chess players in weekly lessons starting after January 1, 1992. Our hope is that each youngster will receive a minimum of six hours of concentrated instruction without cost to them. If the youngster improves and shows eagerness to play in non-scholastic tournaments, the lessons may continue beyond the initial six sessions.

Each student who accepts free instruction also will receive a copy of GM Lev Alburt's book, **A**

**Comprehensive Chess Course, Volumes I and II**, for study simultaneously with tutorials or for private use. The Alburt books are a direct donation by Helen Warren and the Midwest Chess Association. Helen Warren will also select teachers and take care of other logistical matters. The Midwest Chess Association has already sent letters of invitation describing this program to the seventeen juniors eligible with a December 1 date for acceptance. The ICA will hopefully continue its support of this program beyond the pilot stage. We hope parental support will supplement additional instruction in the future.

## The Sad State of Illinois Junior Chess

The sad state of junior chess in Illinois can best be seen in looking over the room at a non-scholastic tournament. In the 1950s and 1960s junior chess in Illinois produced some of the strongest players in the nation. These players graduated naturally from the school room to the tournament hall. Not so today. Junior chess has grown to mean scholastic chess. What does this mean? It's simple: kids play within the school or between schools, forever meeting competition that does not challenge. The means for improvement wither. Chess weakness becomes inbred. The "big fish" is big because he swims in a "little pond." Talent generally goes untested and undeveloped.

Consider Table 1, constructed to show the top ten states represented on the USCF Top Fifty Junior lists. [Editors note: These ten states were aggregated to make a "big-state" composite for ease of comparison to Illinois. The average for the "Other" states, covering half of the USCF membership was also presented, as were averages for the entire USCF]. Almost half Indiana's and more than half Kentucky's total USCF membership are juniors! Despite it's junior population of 495, Michigan does not appear in this table since only five made the Top Fifty list. Arizona has less than one-fourth as many juniors as Illinois, yet has almost as many kids on the Top Fifty list. Finally, while Illinois does have a healthy percentage of junior USCF members as a share of total Illinois USCF membership, **if Illinois had the same percentage of top rated juniors as the ten reference states listed in Table 1, we would have twenty-six instead of seventeen listed juniors.** [Editors note: Illinois' share of the top 300 falls almost precisely on the average for the entire USCF, but this is no reason for complacency. Read on.]

Eligible Illinois Juniors	Age	Rating	City
Steve Arlinsky	16	2100	Skokie
Serge Boris Minin	15	2057	Skokie
Anil Gurnaney	18	1947	Bloomington
Zibby Dudkowski	18	1931	Chicago
Adrian Ingram	14	1850	Bloomington
William Cooper	9	1724	Chicago
Filip Dudic	10	1553	Darien
Kyle Thomas	10	1515	Batavia
Craig Cochran	9	1506	Elgin
Andrew Chambers	10	1491	Bloomington
Ryan Carl	9	1461	Hoffman Estates
Phillip Beverage	10	1432	Bloomington
Christopher Chambers	10	1399	Bloomington
Brian Wong	8	1373	Glen Ellyn
Andy Saphavee	7	1313	Moline
Christopher Hardy	8	1269	Normal
Matthew Koch	7	1266	Bloomington

Further analysis might examine states and age clusters on the Top Fifty lists, Illinois' strong showing in the lower age categories (8&U, 9-10) stark weakness in the 17-18, 15-16, 13-14 and 11-12 groups, coupled with comparison and dissection of the junior/scholastic programs within each state.

Illinois may be doing *right* with the very young; but something very wrong is happening as kids approach the junior high school and high school levels. Perhaps its better to say nothing is happening at all! The few top rated Illinois juniors in the older categories are foreign or partly foreign trained kids!

### Future Actions Needed For A Vigorous Junior Program

As organizers and lovers of the game interested in perpetuating a vibrant Illinois chess scene, we should ask "where will our tournament players come from in the future?" These are the players who will make the difference between a 120 player Illinois Open and a 200 player Illinois Open, a 140 player Master Challenge and a ninety-two player event, a 120 player Peoria open and an eighty player tournament. The health of the local chess club, the player base for future national tournaments, and the successors to ourselves as future organizers all depend on our commitment to youth chess today. Whether our motivation is enlightened self-interest or an altruistic love of our game, the challenge remains the same. The ICA must make a commitment to the development of junior chess on an organizational level and to potentially talented players on individual level. We must identify talent and nurture it.

Some practical suggestions for future ICA action:

- Establish individual chess instruction programs like the one described in this article on an ongoing basis, with the ICA budget allocating specific funds for such activity.
- Hold ICA organized and directed junior chess programs, with the formal awarding of ICA titles--high school individual champion, junior high individual champion, and elementary school champion. This means an Illinois Junior Open with appropriate sections by age level with the option of playing in stronger sections.
- Begin holding an Illinois Junior Invitational, a round-robin event with at least eight players.
- Hold a series of ICA supervised chess clinics with master-level construction of curriculum.
- Devote an ICB segment of at least two pages to junior chess with an associate junior editor, responsible for the gathering, composition and editing of news, human interest articles, and games concentrating on juniors.
- Under ICA supervision, *raise money* to establish a junior chess development fund in Illinois.

The next ICA election should include a candidate for president willing to embrace and implement such a platform of action.

<b>Table 1</b>	<b>Top 50's</b>	<b>Juniors<sup>1</sup></b>	<b>USCF<sup>2</sup></b>	<b>Junior/USCF</b>	<b>Top 50/Junior</b>
New York	68	1529	6591	23.2%	4.4%
California <sup>3</sup>	42	857	5323	16.1%	4.9%
Pennsylvania	17	620	2756	22.5%	2.7%
<b>Illinois</b>	<b>17</b>	<b>787</b>	<b>2883</b>	<b>27.3%</b>	<b>2.2%</b>
Indiana	14	597	1388	43.0%	2.3%
Kentucky	13	406	752	54.0%	3.2%
Virginia	13	486	1761	27.6%	2.7%
Massachusetts	12	399	2067	19.3%	3.0%
Minnesota	11	213	938	22.7%	5.2%
Arizona	11	176	819	21.5%	6.3%
Composlte	218	6070	25277	24.0%	3.6%
Other	82	6638	32627 <sup>4</sup>	20.3%	1.2%
<b>Total USCF</b>	<b>300</b>	<b>12708</b>	<b>57904<sup>4</sup></b>	<b>21.9%</b>	<b>2.4%</b>

Sources. Columns 1 and 2 are based on USCF data as of 10/31/91.

Columns 4 and 5 were calculated by Helen Warren based on USCF data

Notes 1) Juniors include youth, participating youth, scholastic and JTP's.

2) Column 3 was calculated from columns 2 and 4 by the editor.

3) California is the aggregate of two USCF reporting areas.

4) Data obtained from the USCF by the editor

# On the Road

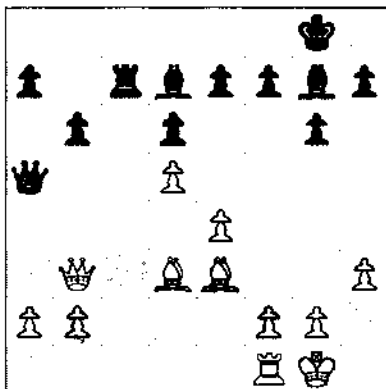
by GM Dmitry Gurevich

We ended up our story last issue with my blitz game against Marvin Dandridge from Chicagoland Chess and Games. The next week I returned with the idea of revenge. Marvin came also, but...decided he would rather be playing scrabble. I had to be satisfied just winning the tournament with one of my very few 100% scores.

The next "serious" tournament I played was also in Chicagoland. The crucial game was played in Round 4 when both players had 3-0.

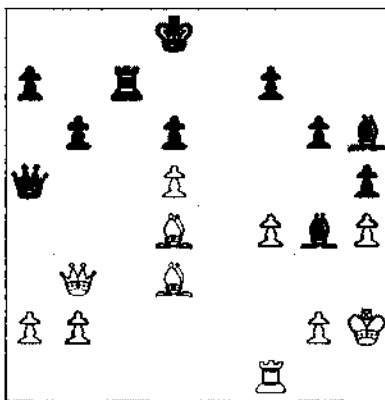
## Dr. Martinovsky-Gurevich Chicagoland Plus Score, 1991

1.d4 ♠f6 2.♠f3 c5 3.e3 Very unpretentious. The strongest move in this position is 3.d5 of course. But in the opening it is better to make not the "strongest" moves but moves which suit your style. 3...g6 4.♠e2 ♠g7 5.O-O 6.c4 cxd4 7.♠xd4 The usual move is e3xd4 with a Tarrasch Reversed. 7...♠c6 8.♠c3 ♠xd4 9.♠xd4 9.exd4 d5 10.c5 ♠e6 Tarasov-Petrosian 1957, which black eventually won. 9...d6 10.e4 ♠e6 11.♠d3 If the white bishop were already on g5 or e3 then white would have a normal Maroczy advantage with ♠e3 or ♠d2. 11...♠c8 12.♠xd5 ♠xd5 13.cxd5 ♠d7 14.♠e3 ♠a5 15.♠b3 ♠c7 16.♠a1 ♠f8 17.♠xc7 ♠xc7 18.♠d3! b6 19.h3



Now what should black do? The only plan I saw was ♠a4 and after ♠a3 ♠c2, and after ♠c1 the black ♠c7 lacks protection. So... 19...♠f8?

20.♠h2 h5? I did not want white to become too comfortable on the kingside. Of course, h5 weakens black's kingside, too. 21.h4 White is not in a hurry. 21...♠e8 22.f4! Well-timed. Black's king is in the middle of the road. 22...♠d8 Black continues his peregrination. It was still possible to head for the ending after ♠a4. 23.e5 ♠g4? I clearly underestimated white's reply. Instead it was much better to play 23...♠a4 24.♠a3 ♠xd5 25.exd6 exd6 26.♠xa4 ♠xd3 Black is okay. And if 26.♠e2 then black is fine after 26...♠c2 even though it may seem dangerous. 24.♠d4! ♠h6?+- 25.exd6 exd6



26.♠c3? The in-between move: 26.♠f6+! ♠c8 27.♠c3 ♠c5 28.♠b4 ♠d4 29.♠xd6 ♠d7 30.♠c2+ ♠d8 31.♠e5 ♠xd5 32.♠f6+- 26...♠c5 27.♠b4 ♠d4 28.♠xd6 ♠c1! With the black king on e8 this move is not possible. 29.♠xc1 ♠xf4+ 30.♠h1 ♠xd6+ 31.♠c3 ♠f2! 32.b4!! Black threatened ♠xh4+ followed by ♠c5+. 32...♠xh4+ 33.♠g1 ♠g3 34.♠h8+ ♠e7 35.♠e1+ ♠xe1 36.♠e5+= and white's flag fell. 0-1 The game might have concluded: 36...♠e6! 37.dxe6 ♠f2+ 38.♠f1 ♠g3 39.♠e3 ♠h1+ 40.♠g1 ♠xg1+ 41.♠xg1 ♠xe6+.

I won the tournament with 5-0 and Dr. Martinovsky came in second with 4-1. Al Chow and Jesse Kraai trailed.

## San Francisco

On the way to my next tournament I stopped in Las Vegas for a simultaneous exhibition. My mediocre result in the simul (losing four games and allowing a few draws in 25 games) could be offered as evidence that good chess goes better with sleeping than with gambling. On the other hand, I did win a few National Opens in Las Vegas and the Western Open in Reno with a bit of gaming on the side. Perhaps I will collect more evidence

with Victor Korchnoi in Las Vegas next spring.

On to San Francisco for the US Class Championship. My losses in the simul alarmed me so much that I played cautiously in my first game in the US Class against former Russian master Levit. For a while it seemed that my experienced opponent was going to hold on:

## Gurevich-Levit US Class, 1991

1.d4 ♠f6 2.c4 e6 3.g3 d5 4.♠g2 ♠e7 5.♠f3 O-O 6.O-O dxc4 7.♠c2 a6 8.a4 ♠d7 9.a5 Perhaps this is a novelty here. It certainly gives white nothing. 9...♠c6 10.♠bd2 ♠bd7 11.♠d1? b5 12.b3? On 12.axb6 cxb6= 12...c3! On 12...♠xf3 13.♠xf3 cxb3 14.♠xb3= 13.♠xc3 ♠b7 14.♠b2 ♠c8 Black's threat of c7-c5 forces white to act in the center. 15.♠e5 ♠xg2 16.♠xg2 c5 17.♠f3 ♠d5 18.♠xd7 ♠xd7 19.dxc5 ♠xc5! 20.♠e4 ♠c2! 21.♠ab1 ♠d8 22.♠c3 ♠c6 23.♠cd1 If I had seen black's reply I would have played ♠bc1. 23...♠d2 24.e4 ♠xc3 25.♠xc3 ♠d3 26.♠e5 ♠xc1 27.♠xc1 ♠xf3 28.♠xf3 f6 29.♠f4 ♠b4 30.♠e2 ♠d4 31.♠c6 e5 32.♠e3 ♠d6 33.♠b6! My opponent is in serious time trouble. 33...♠f7 34.f4 ♠e6 35.♠b8! exf4? On 35...♠xa5 36.♠c5 ♠d2+ 37.♠f3 ♠d3+ 38.♠g4 ♠xb3 39.♠b7 Looks flashy, but black need not go for the b3 pawn. 36.♠xf4 ♠c6 37.♠b6 ♠d7 38.♠b7+ ♠e6 39.♠xg7 h5? This loses. ♠xa5 was still worth a try. 40.♠c7! ♠xc7 41.♠xc7 Black made the time control at the price of a pawn. White has a technical win: 41...f5 42.♠f3 ♠e1 43.exf5+ ♠xf5 44.h3 ♠e6 45.g4 hxg4+ 46.hxg4 ♠d5 47.g5 ♠c3 48.♠d8 ♠d2 49.g6 ♠h6 50.♠f6 ♠c5 51.♠c3 b4 52.♠f6 ♠b5 53.♠d8! ♠g7 54.♠e4 ♠c6 55.♠f5 ♠d5 56.♠e7 ♠h6 57.♠xb4 ♠d4 58.♠e6 ♠d3 59.♠f7 ♠c2 60.♠f8 1-0

**Plan now  
for the next big  
Chicago area bash:  
Mid-America Class  
March 13-14-15.**

This game finished late in the evening and the next morning I had the following encounter with NM Jon Frankle, a long time proponent of the Smith-Morra Gambit.



1992 National Open Organizer Fred Gruenberg and friends Helen Warren and Richard Verber invite you to join the Grandmasters in Chicago for our great new annual tournament.

# MID-AMERICA CLASS CHAMPIONSHIPS

at the luxurious Ramada Inn O'Hare, site of the 634-player 1991 National Open in Chicago.

## MARCH 13-14-15 IN CHICAGO

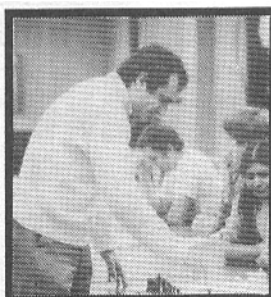
FIDE-RATED • 5 ROUND SWISS • 5 SEPARATE CLASS SECTIONS

### \$12,000 IN GUARANTEED CASH PRIZES!

*(1st Prize in Master Section donated by Helen Warren)*

MASTER SECTION: \$\$2000,1000,500,400,200	CLASS B SECTION: \$\$800,400,250,150,100
EXPERT SECTION: \$\$1000,500,300,200,100	CLASS C & BELOW: \$\$800,400,250,150,100
CLASS A SECTION: \$\$1000,500,300,200,100	BONUS of \$200,100 to TOP 1399 & BELOW

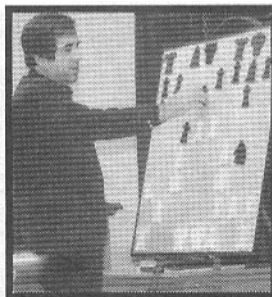
## JOIN THE GRANDMASTERS IN CHICAGO



GM DIMITRY GUREVICH  
Chicago resident GM



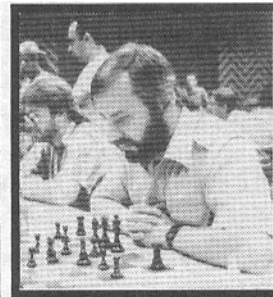
GM SERGEY KUDRIN



GM ROMAN DZINDZICHASHVILI  
Former U.S. Champion



National Open Organizer  
FRED GRUENBERG  
with GM ARTHUR BISGUIER



GM ALEXANDER IVANOV  
Our newest GM

1/2 POINT BYE AVAILABLE FOR FRIDAY EVENING ROUND • CHIEF TD RICHARD VERBER 312-262-8050



### VISA & MASTERCARD ACCEPTED

by phone (708-396-1984) daytime until Thursday, March 12. Mention "Chess Tournament".

**ENTRY FEE: \$62** if mailed by 2/12,  
\$65 if mailed by 3/7, \$70 at the door 3/13 or 3/14.  
Send your entry to: Mid-America Class Cham-  
pionships, c/o Rae Products - Fred Gruenberg,  
11630 So. Cicero Ave., Alsip, Illinois 60658

**MAKE HOTEL RESERVATIONS EARLY**  
before Feb. 25 to assure discount rate with **FREE**  
breakfast. Phone Ramada O'Hare Hotel: 708-  
827-5131

SEE GRAND PRIX SECTION FOR DETAILS



## Frankle-Gurevich US Class, 1991

1.e4 c5 2.d4 cxd4 3.c3 d3?! Of course 3..d3! is a better move and 3..d3 can only be justified by my desire to avoid my opponents long experience with the Smith-Morra gambit. 4.c4 d6 5.♗xd3 ♟f6 6.♟c3 e6 7.♗g5 This move does not appeal to me. Let's say white plays a "normal" move: 7.f4! ♗e7 8.♟f3. This position can be reached by: 1.e4 c5 2.♟f3 d6 3.d4 cd4 4.♟d4 e6?! 5.c4 ♟f6 6.♟c3 ♗e7 and now white gets three moves: f4, ♗d3 and ♟f3. 7...♗e7 Now the bishop on g5 is "hanging" because of the threat 8.♟e4 9.♗e7 ♟c3 or 8.♟f3 h6 9.♗h4 ♟e4. 8.♗d2 h6 9.♗h4 ♟bd7 On 9...♟xe4?? 10.♗xe7 ♟xd2 11.♗xd8+- 10.♗e2?! b6 11.♗g3 ♟c5 12.f3 It looks like that instead of being ahead in development white is going to be behind. 12...♟h5 13.♗f2 a6 Hedgehog! 14.b4 ♟d7 15.a3 ♗b7 16.f4 ♟hf6 17.♗d3 g5! White's opening has failed. If f4xg5 then Ne5 and white is nearly busted. 18.g3! ♟g8 19.♟f3 ♟c8 20.♟d2! ♟c7 21.♗d4! A few good moves and white has managed to consolidate. 21...♟d8 22.♟f1! ♟e5 23.fxe5 23.♟e3?! 23...dxe5 24.♗xb6 ♟xb6 25.♟f3? This messes up all whites hard work. After 25.♟c2 ♗d4 26.c5! white is fine. 25...g4! 26.♟f2 ♗d4! This forces a favorable exchange of queens. 27.♟xd4 exd4 28.♟d5 Now in terrible time trouble, white puts up an heroic defense but does not succeed. 28...exd5 29.exd5 ♟g5 30.♟f4 ♟h5 31.h4 gxh3 32.♗xh5 ♟xh5 33.♟f3 ♗c8 34.♟f2 ♗g5 35.♟b3 ♗e3+ 36.♟xe3+ dxe3+ 37.♟f3 ♟d6 38.♟e1 ♟g6 39.♟xe3+ ♟d8 40.♟f2 White has made the time control with seconds to spare only to see his position ruined. 40...h2 41.♟g2 ♟xg3 This wins a rook. 0-1

Round three was quite unusual for me. When I came in to see the pairings the round had already begun. I found out with surprise that I was paired against Anthony Saidy. I thought Tony was going to take a bye and went to talk to Bill Goichberg. "Oh, no" said Bill. "of course he told me that, but I forgot." Since the round was underway, Bill gave me the choice of taking the point on forfeit or playing the "fill-in".

This presented me with an interesting psychological situation. The fill-in was my nemesis Luis Busquets. He is only 2300, but is an extremely good theoretician. In fact he knows my own openings better than I do. If you remember my exciting game with Busquets from St. Martin. I

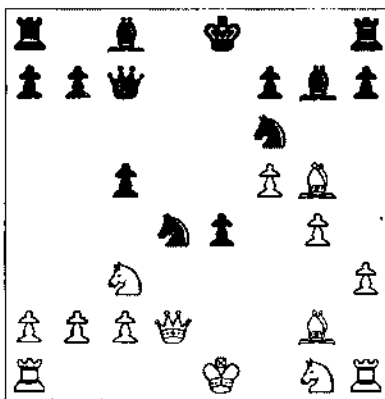
played g2-g3 on the first move out of desperation. The game ended in a draw.

On the other hand, I had the legal right to get a full point bye. But how upset the other leading players would be! Especially Walter Browne! All these thoughts flashed through my mind in the second when I agreed to play. The game by itself was very short. I got a bad opening and offered a draw which was immediately accepted. After all its ridiculous to play a "fill-in" on a leading board. You care and he does not! It could be any result but its always something unnatural. Next time Bill screws up the pairing I am taking the full point! And, by the way, Walter Browne was still upset--that I did not lose!

Back to the tournament. In round 4 I played Russian emigre Philip Frenkel. Ages ago I played with him and his son Oleg in Moscow. The game was annotated by GM Leonid Shamkovich in *Inside Chess* (Seirawan's excellent biweekly magazine). I wanted to highlight two important moments of that game.

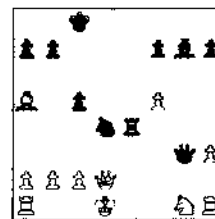
## Frenkel-Gurevich US Class, 1991

1.e4 c5 2.♟c3 ♟c6 3.f4 g6 4.d3 ♗g7 5.♗e3 d6 6.g4? ♟f6 7.h3 d5 8.♗d2 dxe4 9.dxe4 ♟d4 10.♗g2 e5 11.f5 gxf5 12.exf5 e4 13.♗g5 ♟c7 14.♗d2



Here, Shamkovich recommends an immediate 14...♗f5 15.gf5 O-O-O "with a strong initiative for the sacrificed material". I must disagree. 16.♟f2 or even 16.O-O-O ♟b3 (16..♟f3 17.♟f4) 17.ab3 ♟d2 18.♟d2+ 14...♟g3+ 15.♟d1 ♗xf5 16.gxf5? O-O-O 17.♟xe4 ♟xe4 18.♗xe4 ♟he8 Shamkovich suggests the sharp line. 18...♟xc2? 19.♗xd8 ♟xd8 wins the queen. 20.♟xd8+ ♟xd8 21.♟xc2 ♟f2+ and the marauding queen collects a rook

or more. 19.♗d3 [On 19.♗xd8 ♟xe4 Shamkovich offers the improvement: 20.♗a5

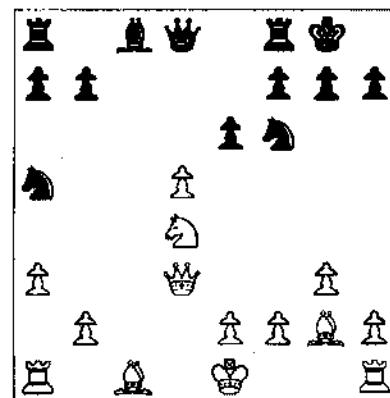


I did not see this move. It protects e1 and stops combinations based on the overworked ♗d2 such as 20...♗h6, and threatens ♟h2! My answer to Shamkovich. 20...b6! 21.♗c3 (21.♟h2 ♟h4! 22.♗d2 ♗h6 23.c3 ♟h5+-) ♟f3 22.♟e2 ♟g2+- 19...♟f3+- 20.♗h4 ♟xh4 21.♟e2 ♟f3 22.♟g1 c4 0-1

Before the last round Walter Browne had 4-0. Georgi Orlov, Igor Ivanov, and I had 3½-½. On Board One Orlov played white against Browne and I got white against Igor after winning a coin-toss.

## Gurevich-Ivanov US Class, 1991

1.d4 ♟f6 2.c4 e6 3.g3 ♗b4+ 4.♟d2 c5 5.a3 More usual are 5.♟f3 and 5.d5. 5...♗xd2+ 6.♟xd2 cxd4 Last year Aleksander Ivanov played 6...♗c6! and got a good game. 7.♟f3 ♟c6 8.♟xd4 O-O If 8...♟e4 then 9.♟c6+, but theory recommends 8.♟a5! 9.♗g2 ♟a5 10.♟d3 d5 11.cxd5



11...e5? Igor likes to make an unexpected positional move, but here its not justified. After 11..ed5 or 11..ed5 the whole game lies ahead. 12.b4! exd4 13.bxa5 ♟xa5+ 14.♗d2 ♟a4 15.♟b1 a5 16.O-O+- ♟d8 17.♗g5 ♟a6 18.♟fc1! h6 19.♗f4 Its easy to make good moves in such positions. Unfortunately, they do not come round so often! Black is helpless



# U.S. AMATEUR TEAM CHAMPIONSHIP

MIDWEST DIVISION - 1ST TIME IN KANSAS CITY, MISSOURI!!  
PRESIDENT'S WEEKEND - **FEBRUARY 15 - 16 - 17, 1992**

Open to teams of four players (plus one optional alternate) with an average rating (of the four highest rated) less than 2200. 1991 Annual Rating used. NATIONAL TITLE: The four division champions will play a teleconference round robin tournament for the title of **1992 U.S. AMATEUR TEAM CHAMPION.**

## TEAM PRIZES

### **1st Place Team wins**

4 engraved USCF Master Quartz Chess Clocks and PLAYOFFS.

**2nd, 3rd Place, Top Under 2000,  
Top Under 1800, Top Under 1600  
Top Under 1400/Unrated,  
Scholastic, Company wins**  
4 engraved BHB Chess Clocks.

**2nd Scholastic, 2nd Company wins**  
roll-up chess boards and sets.

**Biggest Upset wins 4**  
"New In Chess" books.

## INDIVIDUAL PRIZES

**Top score on each board wins**  
an engraved USCF  
Master Quartz Chess Clock.

**Biggest Upset wins**  
"Batsford Chess Openings 2" book.

## SPECIAL PRIZES

**Team travelling furthest wins**  
2 nights free hotel room.

**Best team name wins**  
free entry fee.

**Tournament Held at Midwest's Finest Hotel:**

## WESTIN CROWN CENTER

One Pershing Road, Kansas City, MO 64108

**(816) 474-4400 (800) 228-3000**

HR: \$75 for up to 4 persons.

Six-rounds, Team Swiss-Style paired

Rounds: 11-5, 10-4, 9-3

2 1/2 pt. Byes available (any rds.)

Registration: 8-10 a.m.

Entry Fee: \$80 postmarked by Feb. 8 (Scholastic \$40)  
\$90 at-site (Scholastic \$45)

- 6 movie theaters
- 65 shops and restaurants
- health club (swimming, sauna, steam, whirlpool)
  - ice skating
- spectacular views

Advance Entries:

**U.S. Chess Federation**

Attn.: USATM

186 Route 9W

New Windsor, NY 12550

## Need help forming a team?

More information or questions about tournament:  
Don Oswald - **(913) 299-3976**

against ♖c4 and of course 19..♗d5 20.♗d5 ♗d5 allows 21.♖c8. So, black gave up. 1-0

Unfortunately for me, Orlov lost to Browne with white. Any other result would have increased my prize from \$200 to \$1100. Well, you can only control your own results. The tournament was won by old "six-times" with a clean 5-0.

### Tilburg

After San Francisco my next tournament was..Tilburg. No, of course I did not play over there, but just went to see what might be the strongest tournament of the post-Fischer era thus far.

For the first few days I helped Victor Korchnoi, then left to see my friends and then came back on my own. The cast was 4K's: Kasparov, Karpov, Korchnoi and Kamsky, and four stars: Short, Anand, Timman and Bareev!

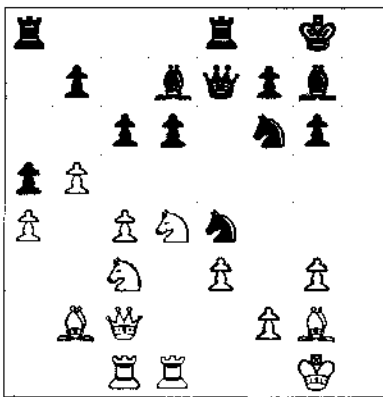
In the first round Kasparov beat Timman with Black. As he put it a few rounds later: "Kings Indian begins and wins."

### Timman-Kasparov Tilburg(1), 1991

1.d4 ♗f6 2.c4 g6 3.♗f3 ♗g7 4.g3 O-O 5.♗g2 d6 6.O-O ♗bd7 7.♗c3 e5 8.♖c2 c6 9.♗d1 ♖e7 10.b3 exd4 10...♗e8 11.♗a3 e4 12.♗g5 e3 13.f4 ♗f8 as in Ivanchuk-Yusupov M(9) 1991 which black won. Perhaps Kasparov thought white's play could be improved (perhaps 13.f3?) so he deviates first. 11.♗xd4 ♗e8 12.♗b2 Another important moment. Timman regretted that he did not play 12.♗f4? ♗e5. (If 12.♗h5? 13.♗xc6). 12...♗c5 13.e3 a5! 14.a3 h5! Black already has a good game. Dutch players (Van der Wiel et. al.) were analysing 15.h3 h4 16.g4 ♗g4?.. Korchnoi has half joked: "I never react on h-pawn movement." 15.b4 ♗ce4 16.b5 ♗d7 17.♗ac1 h4

If you are a high school junior or senior chessplayer with a good academic record you can apply to the USCF for a 1992 Scholar-Chess National Award  
Deadline is 3/15/1992.  
For information call USCF Assistant Director Bob Nasiff  
914-562-8350

18.a4 hxg3 19.hxg3

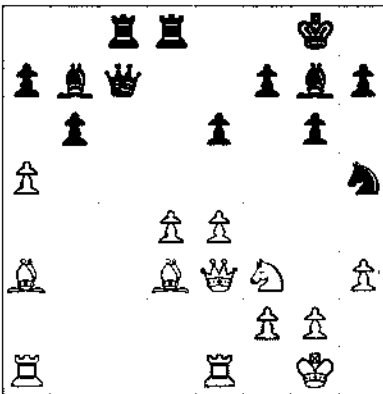


19...♗xf2! A crushing move. Reminds me of Zita-Bronstein. 20.♖xf2 ♗g4 21.♖f3 ♗xe3 White is totally outplayed and his position is lost, but players in Tilburg even lose in a beautiful way. 22.♗e1 ♗xd4 23.♗d5 ♗g4+ 24.♗xd4 ♖xe1+ 25.♗xe1 ♗xe1+ 26.♗f1 cxd5 27.♖xd5 ♗ae8 28.♗f2 ♗e6 29.♖xb7 ♗c1 30.♖c6 ♗c8 31.♖e4 ♗8xc4 32.♖a8+ ♗h7 33.b6 ♗b4 34.♖xa5 ♗bb1 35.♗g2 ♗c2 0-1

In the first round Korchnoi had a serious advantage against Kamsky but failed to score.

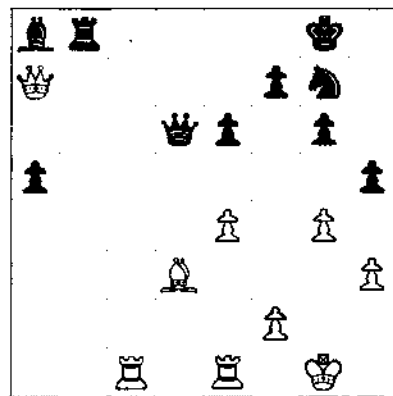
### Korchnoi-Kamsky Tilburg(1), 1991

1.c4 c5 2.♗f3 ♗f6 3.♗c3 d5 4.cxd5 ♗xd5 5.e3 ♗xc3 6.bxc3 g6 7.♗b5+ ♗d7 8.a4 ♗g7 9.d4 O-O 10.O-O ♖c7 11.♗a3 b6 12.e4 ♗f6 13.♗e1 ♗d8 14.♗d3 ♗b7 15.♗d2 e6 16.h3 ♗ac8 17.♖e3 ♗h5 18.a5 cxd4 19.cxd4



19...bxa5?! This looks like a positional error to me. Now white's small advantage increases. 20.♖ab1 ♗a8 21.g4! ♗f6 22.♗e5 ♗b8 23.♗bc1 ♖b6 24.♗c5 ♖c7 25.♖f4! ♗e8 26.♗a3

♗xe5 27.dxe5 ♖b6 28.♖h6 ♗g7 29.♗d6 ♗xd6 30.exd6 ♖xd6 31.♖e3 31.♖e3!+ 31...h5 32.♖xa7?



A time pressure mistake. After 32.g5! white is still better. 32...hxg4 33.hxg4 ♖f4! 34.♖f1 ♗f8 35.♖xa5 ♖xg4 Black is slightly better. The remainder of the game is not too exciting: 36.♖e3 ♗h5 37.♗e2 ♖h4 38.♖e1 ♗f4 39.♗f1 ♗h5 40.♖e5 ♗f6 41.♗h3 ♖xe4+ 42.♖xe4 ♗xe4 43.♗a6 ♗d5 44.♗c8 ♗xc8 45.♗xc8 ♗f4 46.♗a3 g5 47.♗d2 ♗g7 48.♗a7 ♗f6 49.♗b7 ♗g6 50.f3 ♗h5 51.♖e3 ♗g6 52.♗a5 ♗e5 53.♗c5 ♗g6 54.♗e4 ♗xe4 55.♖xe4 1/2-1/2.

After the round I talked to Kasparov's wife Masha. I congratulated her on Gary's win and jokingly said "Tomorrow a draw is fine." The next day Kasparov played white against Korchnoi. To my big surprise the game was an exchange French Defense. Does Kasparov want a draw? No, that's impossible. Of course, Kasparov played for a win, he prepared a line and it happened to be the Exchange French. Later he played it again against Nigel Short and got a big advantage. Korchnoi should not lose the game but committed a help-mate in time pressure.

### Kasparov-Korchnoi Tilburg(2), 1991

1.e4 e6 2.d4 d5 3.exd5 exd5 4.♗f3 ♗f6 5.♗d3 c5 6.O-O c4 7.♗e1+ ♗e7 8.♗f1 O-O 9.♗g5 ♗g4 10.h3 ♗xf3 11.♖xf3 ♗c6 12.c3 ♗d7 13.♗d2 ♗ae8 14.b3 b5 15.bxc4 bxc4 16.♖ab1 ♗d8 17.h4 ♗xe1 18.♗xe1 ♗e8 19.♗b1 h6 20.♗xf6 ♗xf6 21.g3 ♗e7 22.♗d1 g5 23.hxg5 hxg5 24.♗g2 g4 25.♗f1 ♗g5 26.♖b2 ♗g7 27.♖b1 ♗c8 28.♗e2 ♗c6 29.♗e5 f6 30.♗e2 ♖b6 31.♗d1 ♗f5 32.♗e1 ♗h6 33.♖e2 ♗f7 34.f4 gxf3 35.♖xf3 ♗d6

An Illinois Maxi-Tour Event

# **Fox Valley Championship**

**\$1050 Prizes Guaranteed**  
**January 25-26, 1992**

**Open** (open to all)  
4SS, 40/100, 30/60.  
Entry Fee: \$32.50 by  
1/15, \$37.50 after  
**Prizes: \$300, 150, 75**  
**Under-2100**  
**\$100, 75, 50**

**Reserve** (open to under  
1800-- and unrated)  
5SS, 45/90, SD/30.  
Entry Fee: \$20 by 1/15,  
\$25 after  
**Prizes: \$100, 75, 50**  
**\$50, 25**

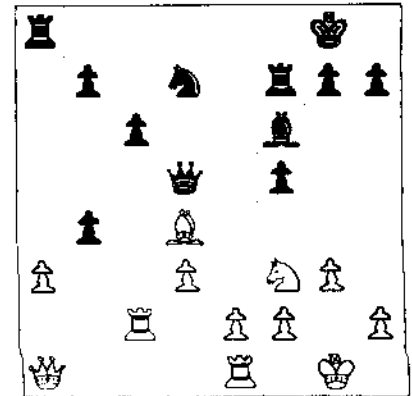
**Site:**  
**Prisco Community Center**  
**Lake Street and Illinois**  
**Avenue**  
**Aurora, Illinois**

**Entries and Inquiries :**

Bob Renaut  
1255 Oakton Lane  
Naperville, IL 60540  
708-983-0934

**Timman-Bareev  
Tilburg(5), 1991**

1.c4 e5 2.♖c3 ♟f6 3.♟f3 ♜c6 4.g3 d5  
5.cxd5 ♟xd5 6.♗g2 ♟b6 7.a3 ♗e7  
8.b4 ♗e6 9.♞b1 f6 10.O-O O-O 11.d3  
♟d4 12.♟xd4 exd4 13.♞e4 ♗d5  
14.♗b2 f5 15.♟d2 ♟f6 16.♗xd5+  
♞xd5 17.♞c1 ♟f7 18.♞c5 ♞e6 19.♞e1  
c6 20.♟f3 ♟d7 21.♞c2 ♗d5 22.♞a1 a5  
23.♗xd4 axb4



24.♗xf6 ♟xf6 25.♞b2 ♞xa3 26.♞xb4  
♞b3 27.♞f4 h6 28.♞a1 ♟h7 29.♞ca2  
♟f8 30.♞a5 c5 31.♞e5 ♞xe5 32.♟xe5  
b6 33.♞a7 ♞e6 34.f4 ♟g6 35.♟d7 ♟d6  
36.♞b7 c4 37.dxc4 ♞e3 38.♟f2 ♞e7  
39.♞a7 1-0

**Kamsky 7-6** Please ignore any interviews with Kamsky you may have read in *New In Chess* or *Inside Chess*. Just look at his chess. Against Karpov and Kasparov young Gata made 2½-1½, but even more important was his strong play in these games even more than the result. Judge for yourself! Kamsky rates to be a world championship contender, soon!

**Kamsky-Karpov  
Tilburg(5), 1991**

1.e4 c6 2.d4 d5 3.♖c3 dxe4 4.♟xe4  
♟d7 5.♟g5 ♟gf6 6.♗d3 e6 7.♟f3  
♗d6 8.c3 h6 9.♞e4 ♟xe4 10.♗xe4 O-O  
11.O-O c5 12.♗c2 ♞c7 13.♞e1 ♟d8  
14.h3 ♟f6 15.♞e2 cxd4 16.♟xd4  
♟h2+ 17.♟h1 ♟f4 18.♞b5 ♞b8 19.a4  
♟d7 20.♗xf4 ♞xf4 21.♟d4 ♗c6  
22.♞ad1 ♗d5 23.♞e3 ♞c7 24.♟g1 a6  
25.f4 b5

went to the game resumption. Imagine: Karpov and Kasparov playing, both of their wives watching and no one else (except the TD's and me!). I wonder if it would ever happen again. The session continued for about 4½ hours. It was a wasy one for Karpov. After all, he could blunder two pieces and still draw. Kasparov had to watch out. Gary later told me: "he simply came to drink my blood."

Later, in the US I contacted Lewis Stiller from Johns Hopkins University who is famous for analysing the endgame ♞+♗ vs 2♟ on a supercomputer. That's basically what you need for 6 piece endgames since the number of possible positions is 7 billion! The ♞+♗ win against the 2♟'s in just 223 moves. Stiller analysed 2♟+♗ versus ♞ and found out that its a draw, indeed. It was even hard to find positions which actually were winning for the three pieces. The defensive king must stay away from the corner of the bishop's color. That's basically what the two K's thought without the supercomputer and Stiller's program.

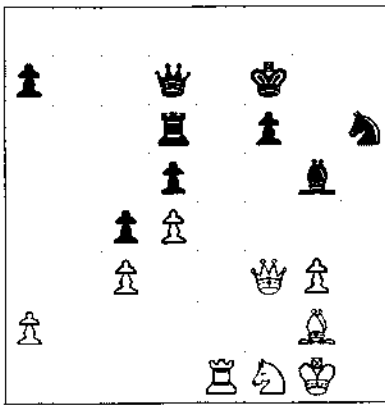
I would like to say a little bit about the Tilburg participants starting from the "bottom."

**Bareev 3-11** The 4th rated player in the world (2680) simply had a bad tournament. I am sure he'll be able to overcome it, but it will be really difficult to start all over again fighting for the championship title. On the other hand, Kamsky had a similar result in Linares and quickly bounced back.

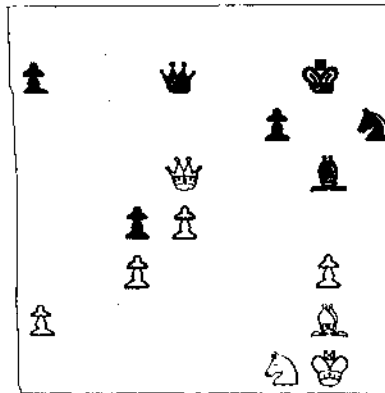
**Korchnoi 5½-8½** Victor once told me that how you play in the last round shows your basic attitude towards life. In this sense, Korchnoi's only win in the tournament (against Timman) in the last round is very encouraging. I hope we will soon see him fighting for the top places in the strongest events. Oddly enough, -3 was about Korchnoi's expected result based on his rating in this superfield!

**Timman 6½-6½** Despite some minor chess defects Timman still has one thing going for him--he is an extremely strong player. You want a proof? After Tilburg he won the Immopar Action Tournament in Paris beating both Karpov (2-0) and Kasparov.

**Congratulations to Winton D Fulk of Skokie, Illinois who has been certified as an Associate National Tournament Director by the USCF. This certification follows a fourteen year effort on Winton's part to achieve certification. He passed the National Tournament Director exam in 1977!**



36.♞e5! White wins a pawn, but not the game. 36...♟g7 37.♞xd5 ♟xd5 38.♞xd5



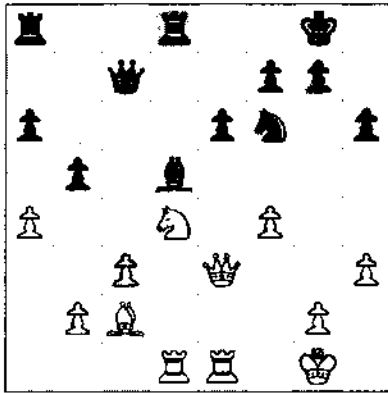
Black can draw 38...♞d5 39.♗d5 ♗c1 40.♗c4 ♗b2 41.d5 ♟f7! In the game Korchnoi got mated after: 38...♞a4?? 39.♞b7+ ♟g6 40.♗c6 ♞a5 41.♗e8+ ♟f5 42.♞h7+ ♟g4 43.♞e4+ ♟h3 44.♗d7+ f5 45.♞g2+ and 45...♟g4 46.♞e2+ ♟h3 47.♞h5++ 1-0

Korchnoi was far from his best in the tournament. Once again I failed to bring luck to him.

Kasparov continued his strong performance and by the end of the first half was leading the tournament but surprisingly only ½ point ahead of Anand.

The 7th round game between Karpov and Kasparov had theoretical interest not only in the opening but also in the endgame. For the first time in Grandmaster tournaments one side had two Knights and a Bishop against a Rook with nothing else! Of course the main drawing plan is to sacrifice the rook for the bishop leaving a theoretically drawn ending with two knights only.

The World Champion himself was not so sure that the game could be drawn. I



26.axb5 axb5 27.f5 exf5 28.fxf5 Ac4  
29.fxd8+ fxd8 30.f2 e8  
31.fxe8+ fxe8 32.f4 Ae6 33.f4  
fc5+ 34.f4 d7 35.f3 f8  
36.f2 f7 37.f7 g6 38.f2 h5  
39.f2 g7 40.f2 h4 41.f4 f5  
42.f4 f4 43.f4 f6 44.f3  
f6 45.f6 f6 46.f4 f6 47.f4  
f4 48.f4 f5 1/2-1/2

**Karpov-Kamsky  
Tilburg(12), 1991**

1.d4 f6 2.c4 g6 3.f3 d5 4.cxd5  
fxd5 5.e4 f3 6.bxc3 g7 7.f3 c5  
8.f2 f5 9.f1 a6 10.f1 cxd4  
11.cxd4 fxd2+ 12.f2 O-O 13.f3  
e6 14.f4 f6 15.fhd1 f7 16.f1  
f5 17.f2 f8 18.f2 f6 19.f3  
f7 20.f2 f5 21.e5 f6 22.f4 f7  
23.f1 f5 24.f1 f6 25.f5 f7  
26.f3 f8 27.f1 f4 28.f1  
f1 29.f1 f4 30.f1 f2  
31.f5 f5 f8 32.f1 f4 33.f7  
f7 34.f1 f2 35.f8 f8 36.f6  
f4 37.f1 f3 38.f5 f7 39.f1  
f3 40.f3 f6 41.f2 f4 42.f2  
f5 43.f4 f6 44.f6 h5 45.f2  
f3 46.f4 f1 47.f3 f1 48.f3 g5  
49.f5 h4+ 50.f2 f1 51.f2 f6  
52.f2 f1 53.f4 f3 54.f2 f3  
55.f5 f7 56.f3 f2+ 57.f1  
f2 58.f2 f4 59.f5 f5 60.f2  
f3 61.f3 d4 62.f2 h3 63.f3  
d3 64.f3 f4+ 65.f3 h2 66.f2  
f3+ 67.f3 d2 68.f2 f2 69.f5  
f4 70.f4 f5 71.f4 f6 72.f5  
a5 0-1

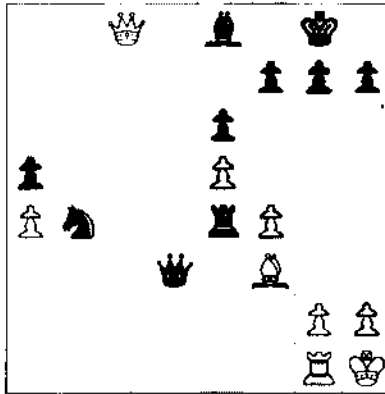
**Kasparov-Kamsky  
Tilburg(10), 1991**

1.e4 e5 2.f3 f6 3.d4 exd4 4.fxd4  
f6 5.f3 f6 6.c3 f7 7.f4 O-O  
8.O-O f6 9.f1 f8 10.f5 h6  
11.f2 d5 12.f5 f4 13.f4 f5  
14.f3 f6 15.f4 f4 16.f4  
f4 17.f3 f5 18.f4 f7 19.f6  
fxd6 20.f1 f8 21.f5 f5 22.f1  
f8 23.f3 a6 24.f4 f4 25.f4  
f4 26.f4 f6 27.f3 f8 28.f2

fcd8 29.f3 f3 30.f2 f5 31.f2  
f4 32.f7 f7 33.f2 f5 34.f2  
f7 35.f3 f6 36.f4 f8 37.f2  
g5 38.f4 f7 39.f4 f6 40.f6  
f6 1/2-1/2

**Kamsky-Kasparov  
Tilburg(3), 1991**

1.e4 c5 2.f3 e6 3.d4 cxd4 4.fxd4  
f6 5.f3 d6 6.f2 a6 7.f4 f6  
8.f3 f7 9.O-O O-O 10.f4 f7  
11.f1 f8 12.f3 f8 13.f2 f7  
14.f1 f5 15.f3 f8 16.f2  
f8 17.f7 f8 18.f4 f6 19.f6  
f6 20.f6 f6 21.e5 f7 22.f2  
f4 23.f3 f8 24.f4 f5 25.f2  
f2 26.f3 a5 27.f1 f1 28.f1  
f8 29.f3 f4 30.f1 f3  
31.f8 f8 32.f7 f3 33.f7  
f4 34.f4 f3 35.f1 f4 36.f8



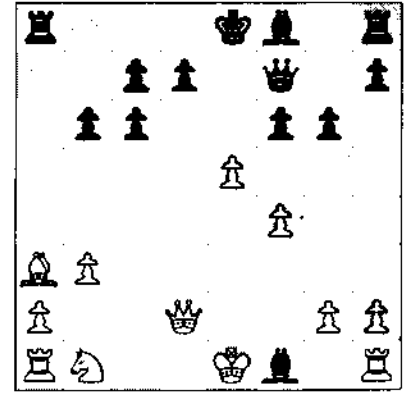
36.f8 37.f5+ f8 38.f7 g6  
39.f8+ f7 40.f4 f4 41.f1  
f3 42.f5 f3 43.f3 f2+ 44.f2  
f4+ 45.f1 f3+ 1/2-1/2

**Kasparov-Karpov  
Tilburg(14), 1991**

1.e4 e5 2.f3 f6 3.d4 exd4 4.fxd4  
f6 5.f6 f6 6.e5 f7 7.f2 f5  
8.f4 f6 9.f3 g6 10.f4 f6 11.f3 f7  
12.f2 f6 13.f5 f1 14.f6 f6

**Upcoming Tour Events:**

12/7	Normal Pinetree Open
12/14	Hammond Winter Swiss
12/21	Tuley Park Action
1/11-12	Tim Just Winter Open
1/25-26	Fox Valley Championship
3/14-15	Mid-America Class



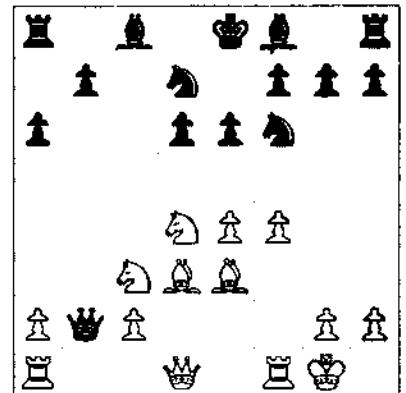
15.e6 f6 16.f8 f8 17.f2 f2  
18.f2 f8 19.f6 f6 20.f3  
f7 21.f2 f8 22.O-O-O f8  
23.f7+ f8 24.f2 f8 25.f4  
f5 26.f2 f7 27.f6 f4+  
28.f3 f4 29.f1 f4 30.f3 e5  
31.f3 f4 32.f1 f1+ 33.f1  
fxd1+ 34.f2 h5 35.f3 f1  
36.f2 h4 37.f2 f2+ 38.f2 g5  
39.f4 f6 40.f5 e4 41.f4 h3 42.f3  
f7 43.f6 f5 44.f3 1-0

**Karpov 7 1/2-5 1/2** Karpov was tired after his spectacular result in Reikjavik. He came back strongly in the second half winning three games until he lost to Kamsky.

**Anand 8-6** Just one round before the end of the tournament Anand had a chance to tie with Kasparov for first place. He was the only one to beat Kasparov.

**Anand-Kasparov  
Tilburg(12), 1991**

1.e4 c5 2.f3 d6 3.d4 cxd4 4.fxd4  
f6 5.f3 a6 6.f4 e6 7.f3 f7 8.O-O  
f6 9.f3 f6



10.f5 f6 11.f5 f5 12.f1  
f5 13.f2 f2 14.f1 f1  
15.f6 f6 16.f3 f7 17.f1  
f7 18.f7 f6 19.f6 f7

20. Qb5 Rg8 21. Bd1 e5 22. f5 Qc5  
 23. Qxd6 Ag5 24. Wxh7 Qxe4 25. Qxb6  
 Qd8 26. Qd3 Qe3+ 27. Qf1 Qxb6  
 28. Qxe4 Qd4 29. c3 1-0

**Short 8½-5½.** His performance in Tilburg reminds me of his recent match against Gelfand. He just handed over his first round game with the white pieces, but then settled down and played strong chess. Some of Short's games were really impressive! I changed my mind about Short. I now think he and not Karpov is the favorite in this candidates cycle.

**Short-Timman  
 Tilburg(4), 1991**

1. e4 Qf6 2. e5 Qd5 3. d4 d6 4. Qf3 g6  
 5. Qc4 Qb6 6. Qb3 Qg7 7. We2 Qc6  
 8. O-O O-O 9. h3 a5 10. a4 dxe5 11. dxe5  
 Qd4 12. Qxd4 Qxd4 13. Qe1 e6 14. Qd2  
 Qd5 15. Qf3 Qc5 16. We4 Qb4 17. Qc4

**ICA/ICCA  
 Scholastic  
 Chess Clinic  
 by Ken Lewandowski**

Much has been said of the supposed declining state of educational commitment in Illinois and America. We, in chess, have experienced a drop in attendance and in the number of high rated junior players over the last few years. What can be said of over 80 students who gave up an entire Saturday, some leaving home before the crack of dawn, and returning much after sunset? What can be said of the adults who brought them to Proviso West High School? What can be said of the four chessmasters who took it upon themselves to try to impart their love of chess and their expertise to these students?

Students from twelve schools from all over Illinois gathered together on Saturday, October 26th to take advantage of the 1992 Scholastic Chess Clinic. During the morning, USCF Masters Al Chow, Tom Cooper, Marc Lonoff and Ken Wallach were available to share their insights and expertise with the high school players. Their presentations covered openings (the Exchange Ruy Lopez), pawn structures, middle game analysis and basic end games. Each student could attend 3 sessions of his or her choice.

Qb6 18. b3 Qxc4 19. bxc4 Qe8 20. Qd1  
 Qc5 21. Qh4 b6 22. Qe3 Qc6 23. Qh6  
 Qh8 24. Qd8 Qb7 25. Qad1 Qg7  
 26. Q8d7 Qf8 27. Qxg7 Qxg7 28. Q1d4  
 Qae8 29. Qf6+ Qg8 30. h4 h5 31. Qh2  
 Qc8 32. Qg3 Qce8 33. Qf4 Qc8 34. Qg5  
 1-0

**Kasparov 10-4** As strong as ever, but the other guys are coming up. After this tournament Kasparov is climbing back to 2800.

The main result of the Tilburg tournament: after ten years the 2K domination is over. Karpov is still very strong and will be near th top for many years but Ivanchuk, Short, and Anand are now his equals.

I also will predict the next three cycles (of course, I might be wrong):

- 1992 Short
- 1995 Ivanchuk

1998

Kamsky.

Of course I expect Kasparov to fend off these challengers. If he loses all bets are off. Kamsky might mature in time for the 1995 cycle. The dark horse Alexei Shirov might give Kamsky a fight in 1998. I am not sure where Anand fits in.

**Errata:** Among many typographical and editorial errors in the November-December issue the following are noteworthy: Norman Rogers is a senior master and not to be confused with GM Ian Rogers from Australia. Milan Vucic is the player, not Vukic, another fellow entirely. In the two diagrams Gurevich-Kuraica the white pawn should be on h3 instead of h2. Finally, in Dandridge-Gurevich, 13.f4? should read 13.f4!



**Master Tom Cooper pauses to reflect during a simul at the clinic**

Afterwards, several adults and middle school players joined the 84 high school players in a Game/30 action tournament. Many of the students were able to put the morning's instruction to good use. Winners of the Scholastic Action Tournament were Matt Cremeens of Olympia HS (1st), Tony DeHoyos, Morton HS (2nd) and Alex Buttermann of Buffalo Grove HS (3rd).

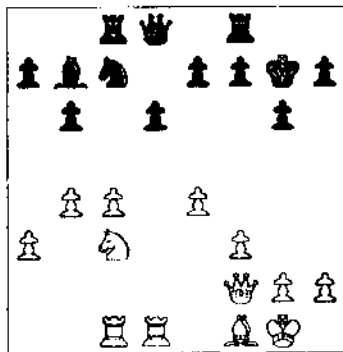
Team awards based on the top 5 scores for each team went to Bloom Trail HS (1st), Morton HS (2nd) and Olympia HS (3rd). The clinic was sponsored by the Illinois Chess Association, the Illinois Chess Coaches Association, Proviso West and Evanston Township High School. Ken Lewandowski and George Marino organized the event.

**Call Chessphone on Tuesday and Saturday  
 for the latest chess news.  
 708 832-5222**

# Games From the Dmitry Gurevich Birthday Bash

## Gurevich-Nalborczyk Birthday Bash, 1991

1.d4 ♖f6 2.c4 d6 3.♗f3 g6 4.♗c3 ♖g7  
5.e4 ♗bd7 6.♖e2 c5 7.O-O cxd4  
8.♗xd4 ♗c5 9.f3 O-O 10.♖e3 ♗e6  
11.♗b3 ♖d7 12.♗d2 b6 13.♗fd1 ♗c5  
14.♗d4 ♗e6 15.♗c2 ♗c8 16.♖f1 ♖c6  
17.♗b4 ♖b7 18.♗ac1 ♗c5 19.♗f2  
♗fd7 20.♗bd5 ♗f6 21.b4 ♗a6 22.a3  
♗c7 23.♗xf6+ ♖xf6 24.♖h6 ♖g7  
25.♖xg7 ♗xg7



26.e5! d5 27.♗c2 e6 28.♗e4 ♗e7  
29.♗d6 ♗b8 30.c5 ♗e8 31.c6 ♖c8  
32.c7 ♗xc7 33.♗dc1 1-0

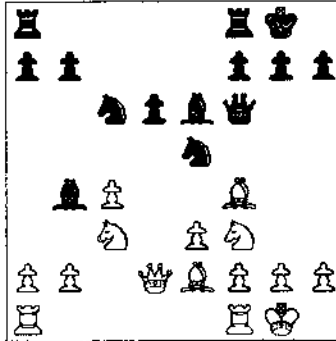
## Allison-Gurevich Birthday Bash, 1991

1.d4 ♗f6 2.c4 e6 3.♗c3 ♖b4 4.a3  
♖xc3+ 5.bxc3 b6 6.e4? ♗xe4 7.♗g4  
♗f6 8.♗xg7 ♗g8 9.♗h6 ♗g6 10.♗h4  
♗g4 11.♗h6 ♖b7 12.f3 ♗g6 13.♗h4  
d6 14.♖a2 ♗bd7 15.♖d3 ♗g8 16.♖g5  
♗e7 17.♖e2 O-O 18.♗h3 h6 19.♖c1  
♗h8 20.♗d1 ♗dg8 21.♗he1 ♗d5  
22.♗xe7 ♗xe7 23.♖f4 ♖a6 24.♗c2  
♗c6 25.♖g3 ♗a5 26.d5 ♗c5 27.dxe6  
♗xd3 28.exf7 ♗xe1+ 29.♗xe1 ♗f8  
30.♗f4 ♗xf7 0-1

**Beware the Ides of  
March  
Play in the Mid-America  
Class**

## Gurevich-Alford Birthday Bash, 1991

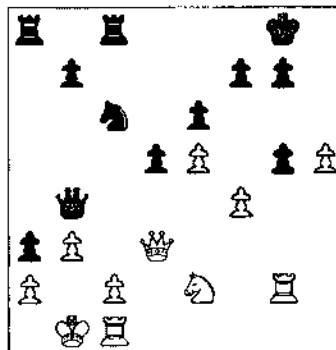
1.d4 ♗f6 2.c4 e5 3.dxe5 ♗g4 4.♖f4  
♖b4+ 5.♗c3 d6 6.♗f3 O-O 7.exd6 ♗f6  
8.♗d2 cxd6 9.e3 ♗c6 10.♖e2 ♗ge5  
11.O-O ♖e6



12.♖xe5 dxe5 13.♗d5 ♖xd5 14.♗xd5  
♖ad8 15.♗e4 ♗e7 16.g4 g6 17.g5 f5  
18.gxf6 ♗xf6 19.a3 ♖d6 20.b4 ♗df8  
21.c5 ♖b8 22.♖ad1 ♗g7 23.h4 h6  
24.♗g2 ♗d8 25.♖c4+ ♗h8 26.♗g5!  
♗e7 27.♗g4 hxg5 28.hxg5 ♗f7  
29.♗h1+ ♖g7 30.♗h4 ♗xf2+ 31.♗g1  
♗f5 32.♗h6+ 1-0

## Colias-Gurevich Birthday Bash, 1991

1.e4 c5 2.♗f3 d6 3.d4 cxd4 4.♗xd4  
♗f6 5.♗c3 ♗c6 6.♖g5 e6 7.♗d2 ♖e7  
8.O-O O-O 9.f4 h6 10.h4 ♗b6  
11.♗b3 a5 12.♗b1 a4 13.♗c1 a3 14.b3  
♗d8 15.♖d3 ♗g4 16.♖xe7 ♗xe7  
17.♗df1 d5 18.e5 ♖d7 19.h5 ♗dc8  
20.♗1e2 ♗f2 21.♗h2 ♗c6 22.g4 ♗xd3  
23.♗xd3 ♗b4 24.♗d2 ♖b5 25.♗xb5  
♗xb5 26.♗c1 ♗c6 27.g5 hxg5 28.♗g2  
♗b4 29.♗d3



29...♗e4 30.♗xe4 dxe4 31.♗xg5 ♗e7  
32.♗g3 e3 33.f5 exf5 34.♗xf5 ♗xf5  
35.♗xf5 ♖a5 36.c4 ♗cc5 37.♗c2 ♗xe5  
38.♗xe5 ♗xe5 39.b4 ♗xh5 40.c5 e2  
41.♗d2 ♗f8 42.♗xe2 ♗h2+ 43.♗d3  
♗xa2 44.b5 ♗e7 45.♗c4 ♗b2 46.♗c3

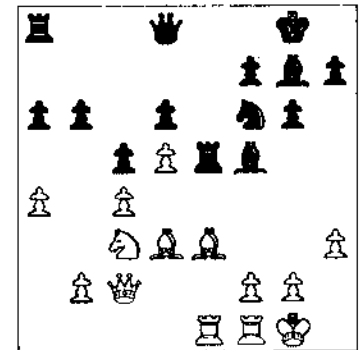
a2 47.♖a3 ♗d7 48.♖a7 ♗c7 49.♖a5  
♗c2+ 50.♗b4 ♗xc5 51.b6+ ♗xb6  
52.♖xa2 ♗f5 0-1

## Dillon-Colias Birthday Bash, 1991

1.e4 c5 2.f4 g6 3.♗f3 ♖g7 4.c3 ♗c6  
5.d4 cxd4 6.cxd4 ♗b6 7.e5 d6 8.♗c3  
♖g4 9.♖b5 e6 10.♖e3 d5 11.O-O  
♗ge7 12.♗c1 ♗c8 13.b3 O-O 14.♖xc6  
♗xc6 15.♗a4 ♗b4 16.♗d2 ♗xd2  
17.♗xd2 ♗fc8 18.♗xc6 ♗xc6 19.♗b1  
♖f8 20.♗c1 ♗xc1+ 21.♖xc1 ♗c6  
22.♖b2 ♗b4 23.♖a3 ♗xa2 24.♖xf8  
♗xf8 25.♗c5 b6 26.♗d7+ ♗e7 27.♗f6  
♖f5 28.♗d2 h5 29.♗f2 ♖c2 30.g4  
hxg4 31.♗xg4 ♗c1 32.♗e3 ♗xb3  
33.♗xc2 ♗xd2 34.♗e2 ♗c4 35.♗b4 a5  
36.♗a2 ♗d7 37.♗d3 b5 38.♗c3 ♗e3  
39.♗c1 ♗g4 40.h3 ♗f2 41.h4 ♗e4+  
42.♗b3 ♗g3 43.♗d3 ♗e2 0-1

## Colias-Henderson Birthday Bash, 1991

1.d4 ♗f6 2.c4 c5 3.d5 d6 4.♗c3 g6  
5.e4 ♖g7 6.♗f3 O-O 7.h3 e6 8.♖d3  
exd5 9.exd5 ♗e8+ 10.♖e3 a6 11.O-O  
♗bd7 12.a4 b6 13.♗c2 ♗e5 14.♗xe5  
♗xe5 15.♖ae1 ♖f5



16.♖xf5 ♗xf5 17.f4 h5 18.g3 ♗d7  
19.♗g2 ♗h7 20.♗e4 g5 21.g4 ♗xf4  
22.♖xf4 gxf4 23.♗xf4 ♖d4+ 24.♗h1  
h4 25.g5 ♗g7 26.♗ef1 ♗f8 27.♗xh4  
♗h8 28.♗hf4 ♗f8 29.♗f6 ♗c7 30.♗xh7  
♗xh7 31.g6+ 1-0

## Panner-Colias Birthday Bash, 1991

1.d4 ♗f6 2.c4 e6 3.♗c3 ♖b4 4.e3 c5  
5.d5 ♗e4 6.♗c2 ♗f6 7.♗xe4 ♖xc3+  
8.♗e2 ♖xb2 9.♗b1 ♖xc1 10.♗xc1 O-O  
11.♗f3 exd5 12.cxd5 d6 13.g4 ♗d7  
14.h4 ♗b2+ 15.♗c2 ♗b5+ 16.♗d1  
♗b1+ 17.♗e2 ♗f6 18.♗d3 ♖xg4  
19.♖g2 ♗b6 20.♗c4 ♖h5 21.♗d2 ♖g6  
22.e4 ♗xe4+ 23.♗xe4 ♗b2+ 24.♗d1  
♖xe4 25.♗xe4 ♗fe8 26.♗d3 c4  
27.♗d2 ♗b1+ 0-1

# Four Masters Tie For Top Honors in Lake County Open

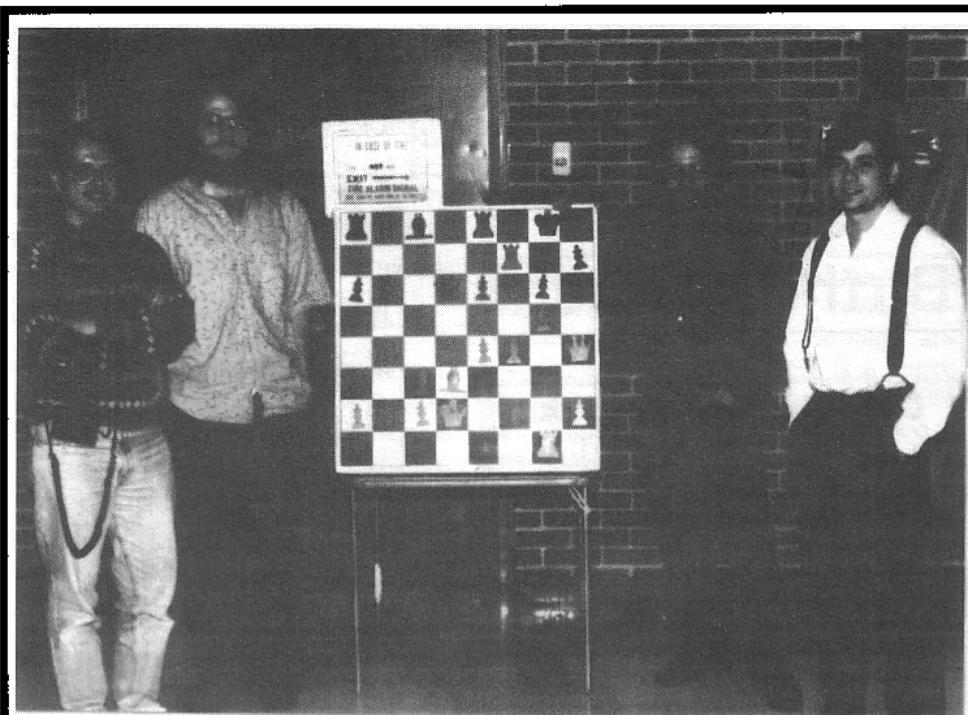
by David Shiner

"A disappointing turnout, but a great tournament" was the theme of the Lake County Open XIV. The tournament, which ran on November 2-3, was held as usual at Shimer College in Waukegan. Twenty five players, including four masters competed for prizes and glory.

The Open Section began as expected. There was only one first-round upset, as expert Robert Sax defeated Master Kevin Bachler--and with the black pieces to boot. Bill Colias and Jesse Kraai met in the second round and drew, while Albert Chow took the lead with a win by defeating Sax. In the third round Colias defeated Chow while Kraai and Bachler drew. Round four featured a quick draw between Chow and Kraai to put them at 2½-1½ while Bachler defeated Colias in a sharp game to also reach 2½-1½.

By round five the masters round-robin was over. All the masters were paired down and won to yield a four way tie for first at 3½-1½ and share \$380. Jim Marshall won the Expert-prize (\$65) a half point ahead of Gerard Jungman (\$50) while Roger Alison won his last two games to take the A-prize.

Kevin Connelly (1658) won the Reserve Section and \$150 with 4½-½. Connelly's low rating is somewhat deceptive. After some recent tournament successes including the expert level performance here, he must be well into Class A. He needed both will power and luck to win the event as he salvaged a draw from a lost position against Boyd Reed and then won from a lost position against Clark in the last round. Kevin is only 18, and with



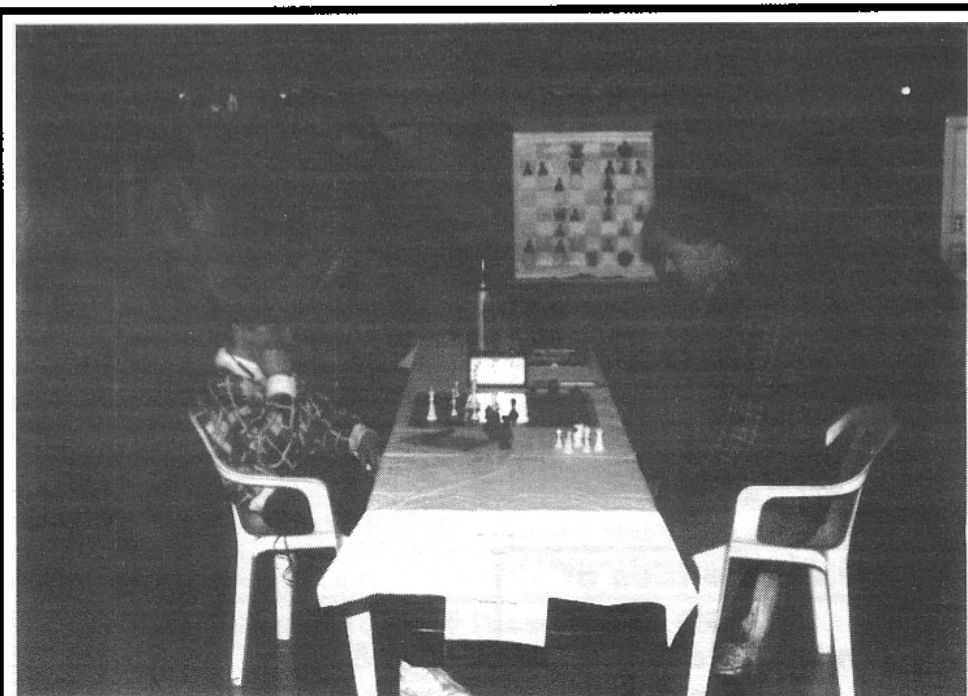
**Triumphant Quartet: From the left Kevin Bachler, Jesse Kraai, Albert Chow and Bill Colias.**

continued study and play he should soon be an expert.

Boyd Reed, who also went through the tournament undefeated, tied for second place with James Gray at 3½-1½. Henderson Johnson scored 3-2 to win the C-prize.

The **Shimer College Chess Club** sponsored the tournament, which featured a spacious playing hall and free

refreshments every round. More than 100% of entry fees were returned as prizes. David Shiner directed with assistance from Bachler and Reed. The tournament also featured visits from local chess personalities with senior TD's Les Bale and Tim Just handling the demonstration boards and Scottish Master Tony Dempsey helping with game analysis.

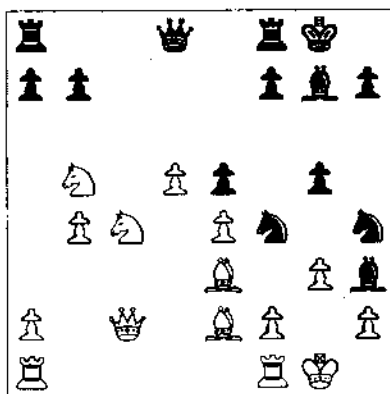


**Kevin Connelly and Wayne Clark in the critical fifth round.**



**Chow-Marquez**  
Lake County Open (1), 1991

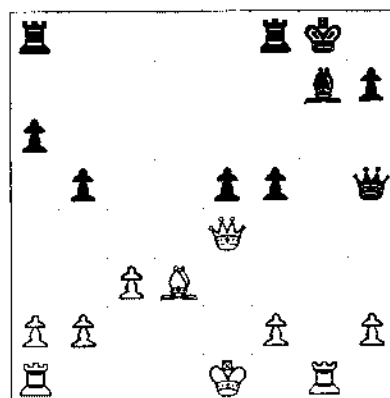
1. d1f3 d1f6 2.c4 g6 3. dxc3 d6 4.d4 d1bd7  
5.e4 e5 6. dxe2 d7 7.O-O O-O 8. dxe3  
e8 9.d5 d1f8 10. d1d2 d1d6 11. dxc2 g5  
12.b4 d1g6 13.c5 d1df8 14.cxd6 cxd6  
15. d1b5 d1f4 16. d1c4 d1g6 17. d1cxd6  
f1f8 18. d1c4 d1h4 19.g3 d1h3



20.gxh4 gxh4 21. d1xf4 exf4 22. d1h1 a6  
23. d1c3 b5 24. d1g1 bxc4 25. d1g4 d1xg4  
26. d1xg4 d1f6 27. d1ag1 d1ae8 28. d1xg7+  
d1h8 29. d1xh7+ d1xh7 30.e5+ d1g6  
31. d1xg6 f1xg6 32.e6 f1f5 33. d1e4 d1g7  
34. d1xc4 g5 35. d1e4 d1f6 36.h3 d1e5  
37. d1h7 d1e1+ 38. d1g2 d1f8 39. d1e4+  
d1e5 40. d1g7+ 1-0

**Sax-Chow**  
Lake County Open (2), 1991

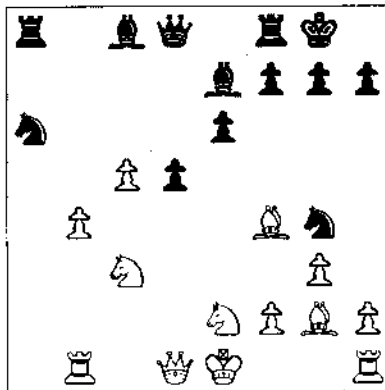
1.e4 c5 2. d1f3 d1c6 3.d4 cxd4 4. d1xd4  
d1f6 5. d1c3 e5 6. d1db5 d6 7. d1g5 a6  
8. d1a3 b5 9. d1xf6 g1xf6 10. d1d5 d1g7  
11.c3 f5 12.exf5 d1xf5 13. d1c2 d1e7  
14. d1xe7 d1xc2 15. d1xc2 d1xe7 16. d1e4  
O-O 17.g4 d1h4 18. d1d3 d5 19. d1xd5  
d1xg4 20. d1e4 d1h5 21. d1g1 f5



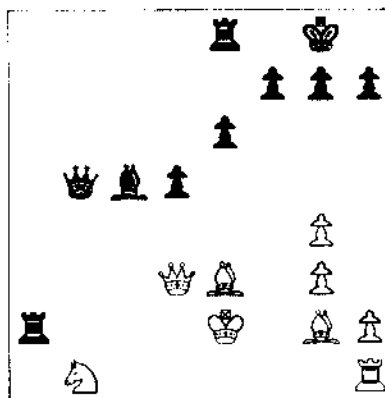
22. d1g2 d1a7 23.a4 b4 24.cxb4 d1h8  
25. d1xa6 d1h4 26.O-O-O d1h6+ 27. d1b1  
d1xa6 28. d1d5 d1g6 0-1

**Chow-Colias**  
Lake County Open (3), 1991

1.d4 d1f6 2.c4 e6 3. d1c3 d1b4 4.e3 c5  
5. d1ge2 cxd4 6.exd4 d5 7.a3 d1e7 8.c5  
b6 9.b4 bxc5 10.dxc5 O-O 11.g3 a5  
12. d1b1 d1a6 13. d1f4 d1g4 14. d1g2 axb4  
15.axb4



15... d1xb4! 16.f3 d1xc5 17.f1xg4 d1a6  
18. d1xb4 d1xb4 19. d1d2 d1a5 20. d1b1  
d1f8 21. d1f2 d1c5+ 22. d1e3 d1xe2  
23. d1xe2 d1b5+ 24. d1d3 d1a2+



25. d1d2?? d1xd3+ 26. d1xd3 d1a3+ 0-1

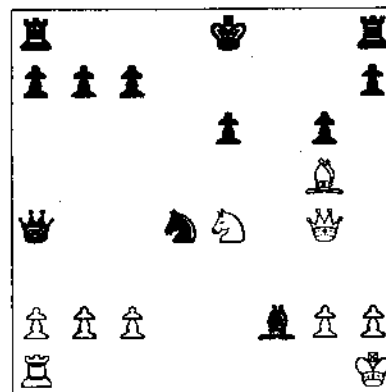
**Sanchez-Connelly**  
Lake County Reserve (2),  
1991

1.d4 d1f6 2.c4 g6 3. d1c3 d1g7 4.e4 d6  
5. d1f3 O-O 6. d1e3 d1g4 7. d1g5 h6 8. d1c1  
d1f6 9.h3 c5 10.d5 a6 11. d1e2 d1d7  
12.a4 a5 13.O-O d1a6 14. d1e3 d1b4  
15. d1c1 g5 16.e5 d1h7 17.h4 g4 18. d1e1  
h5 19. d1d3 d1xd3 20. d1xd3 d1xe5  
21. d1h6 f5 22. d1xf8 d1xf8 23. d1e2 f4  
24.g3 d1f6 25. d1b1 d1f8 26. d1c2 d1g5  
27. h1xg5 d1xg5 28. d1d2 h4 29. d1c3 h1xg3  
30. d1e4 d1h4 31. f1xg3 d1d4+ 32. d1f2  
f1xg3 33. d1g5+ d1xg5 34. d1xg5 d1xf2  
35. d1h7+ d1h8 36.b3 d1f5+ 37. d1g2

d1xg5 38. d1h1 d1g7 39. d1xg3 d1e5+  
40. d1h4 d1f6 41. d1g3 d1e5 42. d1c2  
d1e3+ 43. d1f4 d1f3+ 44. d1e4 d1f5+ 0-1

**Bachler-Colias**  
Lake County Open (4), 1991

1.e4 e5 2. d1f3 d1c6 3. d1c4 d1f6 4.d4  
exd4 5.O-O d1xe4 6. d1e1 d5 7. d1xd5  
d1xd5 8. d1c3 d1a5 9. d1xe4 d1e6 10. d1d2  
d1a4 11. d1g5! d1b4 12. d1xd4 d1xe1  
13. d1xe6 f1xe6 14. d1h5+ g6 15. d1g4  
d1xf2+ 16. d1h1 d1d4



17. d1f4! d1a5 18. d1f6 d1d7 19. d1xf2  
d1f5 20. d1d1+ d1c8 21.g4 d1b6 22. d1d2  
d1d6 23. d1c3 d1d7 24. d1c5+ d1c6  
25. d1a4+ 1-0

**Chow-Marshall**  
Lake County Open (5), 1991

1.e4 c5 2. d1f3 e6 3.d4 cxd4 4. d1xd4  
d1f6 5. d1c3 d6 6.g4 d1e7 7.g5 d1f7  
8. d1g1 d1c6 9. d1e3 O-O 10. d1h5 g6  
11. d1h6 d1e8 12.O-O-O a6 13.f4 d1f8  
14. d1h4 d1g7 15. d1xc6 bxc6 16. d1xd6  
d1xc3 17.bxc3 d1a5 18. d1d2 d1c5  
19. d1d3 d1b7 20. d1xc6 d1d7 21. d1b6  
d1a3 22. d1c7 d1d6 23. d1xb7 d1c8 24.e5  
d1c6 25. d1xf7 d1xf7 26. d1xh7+ d1f8  
27. d1h8+ d1f7 28. d1f6+ d1g8  
29. d1xg6+ d1f8 30. d1h6+ 1-0

**Jungman-Kraai**  
Lake County Open (5), 1991

1.d4 d1f6 2.c4 e6 3. d1f3 c5 4. d1c3 cxd4  
5. d1xd4 d5 6. d1g5 d1e7 7.e3 O-O 8. d1e2  
d1xc4 9. d1a4 a6 10. d1xc4 b5 11. d1d3  
d1b7 12.a3 d1xg2 13. d1g1 d1b7 14. d1h6  
d1e8 15. d1e4 d1d7 16. d1g5 d1xg5  
17. d1xg5 d1df6 18.h4 d1e4 19. d1b3  
d1a5+ 20. d1b4 d1c7 21.f3 d1b7 22.e4  
d1c8 23. d1c1 d1h2 24. d1f1 d1xc1+  
25. d1xc1 d1h3+ 26. d1e1 d1xh4+  
27. d1d1 a5 28. d1e7 d1f2 29. d1xg7+  
d1xg7 30. d1h6+ d1xh6 31. d1xf8+ d1g6  
32. d1c5 d1g1+ 33. d1d2 d1g5+ 0-1

# Bondari and French Win Normal Mapleleaf Open

By Dennis Bourgerie

Cyrus Bondari and Kevin French posted powerful 4-0 scores to share first place in a field of thirty players at the Normal Maple leaf Open September 14, 1991. Bondari won against Bret Fuller, Tom Bolitho, Doug Ulth and Tom Barnard. French survived a first round scare against Matt Cremeens and then defeated Tom Warfield, James Burns and Wilford Stevenson. Last year French also took first place.

One point back were Phil Anderson, Wilford Stevenson, and Tom Barnard who shared the A-prize at 3-1. Keith Gardner also won the B prize for the second year in a row at 3-1. Randy Cox captured the C prize with 2-2. Dan Glass and Paul Rodgers shared the D prize at 2-2.

Paul Rodgers (1212) pulled the upset of the day when he defeated Carl Vero (1798) in the first round.

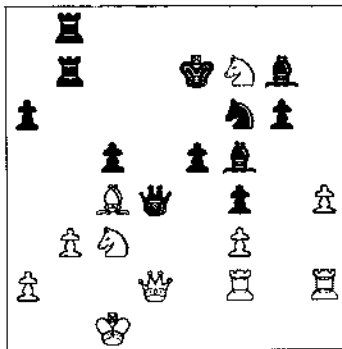
Dennis Bourgerie directed for the Twin City Chess Club. The next tournament in Normal will be December 7th, a four round ICA Tour Event. Call Dennis Bourgerie (309-454-3842) to enter.

## Games from the Mapleleaf Open

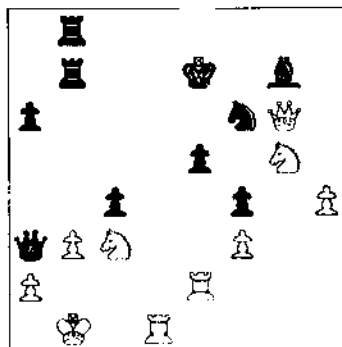
### Bondari-Fuller Normal Mapleleaf Open

1.c4 g6 2.e4 g7 3.d4 d6 4.f3 f6 5.g2 O-O 6.g3 c6 7.e2 e5 8.d5 c7 9.h4 h5 10.g5 b7 11.d2 h7 12.d1 c5 13.f1 h8 14.h2 f8 15.c2 g8 16.d2 h8 17.e3 d7 18.c1 a6 19.f3 b8 20.dg1 b5 21.g4 bxc4 22.gxh5 h5 23.xc4 b7 24.g4 h7 25.f2 f8 26.h3 e7 27.g5 b6 28.h2 b7 29.f1 h8 30.f2 f4 31.xf4 exf4 32.e5 dxe5

33.d6+ xd6 34.f7 d4 35.b3 f5 36.d2



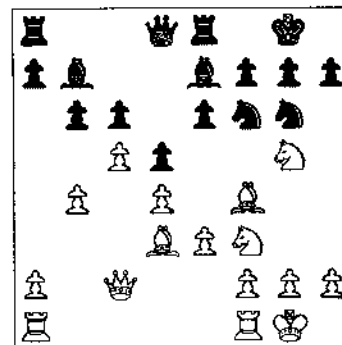
36...e6! 37.xe6 xe6 38.g5+ e7 39.c2 c4 40.d2 e3 41.e2 h1+ 42.d1 c5 43.xg6 a3+ 44.b1



44...f8! 45.e6+ g8 46.xg7 xg7 47.f6 cxb3 48.d8+ xd8 49.xd8+ h7 50.d3+ g6 51.axb3 b3+ 52.b2 a3 53.h5 1-0

### Gardner-Caldwell Normal Mapleleaf Open

1.d4 f6 2.f3 e6 3.g5 d5 4.b2 e7 5.e3 O-O 6.d3 b7 7.c4 c6 8.c5 b6 9.b4 b7 10.O-O c7 11.f4 d8 12.c2 e8 13.g5 f8 14.d3 g6



15.xe6 [15.f7 f7 16.g5+ g8 17.xg6 hxg6 18.xg6 f8 19.e5 e7 20.f6+] 15...fxe6 16.xg6 hxg6 17.xg6 f8 18.g5 d7 19.e5 e7 20.f7+ h8 21.f6 22.xd7 e7 23.d6 xg5 24.f4 f6 25.g4 e8 26.f3 g8 27.g5 1-0

### Vero-Rodgers Normal Mapleleaf Open

1.c4 c5 2.f3 f6 3.g3 c6 4.g2 e5 5.d3 e7 6.f3 O-O 7.O-O h6 8.h4 d6 9.f3 a6 10.d2 e6 11.b3 d7 12.e1 d4 13.d1 d5 14.e3 c6 15.cxd5 exd5 16.c2 f6 17.c4 c7 18.e2 b5 19.d2 b4 20.b1 d8 21.e4 xd3 22.f1 c4 23.d2c3 xe4 24.xe4 f5 25.g2 e4 26.h3 c6 27.a3 f4 28.xe6+ xe6 29.exf4 xc1 30.xc1 f5 31.e3 c5 32.xe4 xe4 33.xe4 d4 34.b1 fe8 35.c3 xc3 36.bxc3 d3 37.b1 d2 38.f1 d8 39.e1 a2 40.a1 d2 41.ea2 ea2 42.g2 xa3 43.e3 b4 44.cxb4 xe3 45.fxe3 c3 46.f3 c2 47.h4 c1 48.h5 c4 49.g4 xb4 0-1

### Martin-Warfield Normal Mapleleaf Open

1.e4 e5 2.c4 f6 3.c3 c5 4.h3 O-O 5.f3 c6 6.e2 d6 7.O-O e6 8.d5 xe4 9.c2 g3 10.d4 xd4 11.d3 dx2+ 12.h2 xf1+ 13.h1 g3+ 14.fxg3 xg3+ 15.h2 e4 16.c2 f1+ 17.h1 exf3 18.g4 h4 19.f4 g3 20.b3 g1+ Mate 0-1

### ICA Mini-Tour Event

# Normal Pinetree Open

# 7

See Tournament  
Calendar  
for more details

# Chess Tech-Talk

by NM Marc Lonoff

## Chess-Net

**Chessnet** is a communications program that enables two players to play chess at a distance: "telechess." You can play against your neighbor, against your nemesis from the club or against an old friend who moved to New Hampshire. The effect is the same. Each player must buy the program, and run it in Windows 3.0 on an IBM compatible machine. Each player must have a modem. One player then calls the other and the computers can be linked directly or after a brief conversation. Both players see the same chessboard and clocks simultaneously. Movement with a mouse is exact and quick. Voila! Telechess!

I tested this program against IM James Rizzitano, a former US Open Speed Champion, who now lives in Sharon, Massachusetts. As a professional computer programmer, Jim is very demanding of both software and chess software in particular. He was delighted with the responsiveness of the mouse and clock combination. He said "It seems instantaneous. Almost faster than using pieces and a clock." We played twenty games in three hours and planned to split the phone bill.

Speed chess offers a useful way to work on openings and reveals your intuitive thought patterns in a way slow chess does not. With ChessNet you can save your games and review them later to diagnose your opening and middlegame weaknesses, a novelty since you rarely get to save your speed chess games.

Is chess by phone expensive? For long distance calls within certain supported phone exchanges it is possible to use a data-only service of Sprint. After a sign up fee of \$30 you can buy 30 or 60 hours of long distance calling for a flat rate of \$30 or \$50 per month. This compares quite favorably to the cost in time and money of driving to a chess club or playing chess on the USAT network. USAT offers 15 minute chess with random opponents, has very slow

network response (about 3-5 seconds per move lost clock time), and charges \$5 per hour per player.

Although it lists for \$49.95, ChessNet can be purchased at CompUSA for under \$30. The program is easy to use. If you have any problems the program is well supported on the telephone by Masque Publishing, a friendly software company that also sells blackjack and video poker programs.

Since ChessNet by itself is so inexpensive once you have made the investment in a computer it is a must buy for chessplayers. Let me turn now to the more critical question: how much does hardware to run all this magnificent chess software cost?

## Buying A Computer System

To the novice computer user the computer market presents a bewildering array of choices. All the following comments apply to IBM/MS DOS compatible machines. Forget about Apples and Mac's.

The current price structure and strength of desktop computers is roughly:

Machine	Price	Strength
286	\$800-1200	2000
386 SX	\$1000-1500	2200
386 DX	\$1500-2000	2300
486 SX	\$2000-2500	2350
486 DX	\$2500-3000	2400

Since ChessNet runs in Windows this raises the minimum requirements for any computer you might buy. You can run most chess software on a 286, but this is quickly becoming an "old" processor and newer software will begin to take advantage of and then require a 386. I suggest the following configuration:

386 level system

2 megabytes(MB) of RAM (preferably 4MB)

MSDOS 5.0 and MSWindows 3.0.

A mouse (preferably Microsoft or Logitech)

A 2400 baud modem.

A 40 MB hard drive (preferably 80 MB)

VGA graphics card and monitor.

Both a 1.2MB 5.25" and a 1.44MB 3.5" floppy drive

The simplest 386SX is sufficient to run databases and ChessNet. On the other hand, the faster the machine the stronger it will be running chess playing software such as MChess, Zarkov, and Knightstalker.

These prices are quoted in magazines such as *PC Magazine* and the phonebook-like *Computer Shopper*. I have dealt with numerous mail order firms that advertise in these magazines and have had no difficulties getting technical support or exchanging defective components. I recommend three vendors for hardware: Dataworld, Treasure Chest, and Gateway based on their excellent system prices and my own personal experience. Usually the prices quoted on the phone are lower than those advertised in the magazine. There are dozens of hardware vendors who are doubtless as good. If you want to buy from an Illinois vendor I have found Computer Discount Warehouse, Elek-Tek, and CompUSA to be competitive.

ChessBase USA has begun to offer hardware packages. They will setup an appropriate system and install DOS, Windows, ChessBase, ChessNet and Knightstalker for you. All you need to do is plug it in and turn it on. For this handholding and setup service you obviously will pay a premium over the mail order prices. On the other hand, if you would rather avoid any computer headaches this may be the way to go.

## Knightstalker Notes

I would like to correct a few errors and misimpressions in my review last issue. First, the game limit in KS databases is not 700 but the much less restrictive 2500. This is sufficient to accomodate most opening, tournament, Informant, and Yearbook data disks currently available.

Second, there is no limitation on "search depth". The user can impose a limit on plies searched if he desires. There is currently a limit on the nesting of lines. Only one subline is currently allowed to split off from each position on the mainline.

Finally, Larry Kaufman has rated KS at 2346 on a 486/33, MChess at 2410, Zarkov 2.5 at 2348, and Rexchess 2.3 at 2338. Running on a 386/33 the strength is probably 60 to 80 points lower.

# ICA Tour Crosstables

## Chicagoland Fall Festival September 21-22, 1991 OPEN SECTION

1	GUREVICH Dmitry	2606	W12	W 4	W 5	W 2	W 3	5
2	MARTINOVSKY Eugene	2373	W 6	W15	W 6	L 1	W 7	4
3	WOODHOUSE Don	1942	W20	W 7	W18	D 5	L 1	3.5
4	KNUTSON Greg	2219	D21	L 1	W 9	W15	W11	3.5
5	COOPER Tom	2242	W14	W21	L 1	D 3	D 6	3
6	SAX Robert	2043	W22	W19	L 2	D 9	D 5	3
7	KRAAI Jesse	2347	W 9	L 3	W21	W13	L 2	3
8	ZABLITSKY Edgardo	1892	L 2	W20	W19	D 6	D13	3
9	ALLISON Roger	1848	L 7	W12	L 4	W17	W18	3
10	KALAI Adam	1854	W16	L18	L13	W20	D12	2.5
11	BUTTNY Bill	1952	L19	W27	Dbye	W18	L 4	2.5
12	FLETT Michael	1953	L 1	L 9	W16	W14	D19	2.5
13	GOHEN Lawrence	1935	Dbye	D16	W10	L 7	D 8	2.5
14	MC ALISTER Kelvin	1831	L 5	W17	Dbye	L12	W21	2.5
15	KENDE Mark	1969	W17	L 2	Dbye	L 4	D16	2
16	SMYTHE Bill	2034	L10	D13	L12	W21	D15	2
17	WINTER Victor	1563	L15	L14	Wbye	L 9	W20	2
18	SOLLANO Ely	2046	Dbye	W10	L 3	L11	L 9	1.5
19	CHOW Albert	2381	W11	L 6	L 8			1
20	JOHNSON Henderson	1558	L 3	L 8	W22	L10	L17	1
21	JOHNSON Enc	1813	D 4	L 5	L 7	L16	L14	0.5
22	KITTS SFN Guy	1703	L 6	L11	L20			0

## Chicagoland Fall Festival September 21-22, 1991 RESERVE SECTION

1	ZAZOVE David	1782	W 7	W 9	D 2	W 3	W 5	4%
2	CONNELLY Kevin	1658	W 3	W 5	D 1	W 6	W 8	4%
3	REAMES James	1745	L 2	W10	W 6	L 1	W 7	3
4	GIERTZ Charles	1714	W 8	L 6	D 9	L 5	W11	2%
5	MC CARTHY Michael	1798	W 9	L 2	Dbye	W 4	L 1	2%
6	CANNONE Charles	1604	W11	W 4	L 3	L 2	L 9	2
7	MORTON Bruce	1661	L 1	W10	L 8	W11	L 3	2
8	SCHULTZ Andrew	1614	L 4	L11	W 7	W10	L 2	2
9	HALE Bob	1662	L 5	L 1	D 4	D10	W 6	2
10	PALMER Kenneth	1567	L 3	L 7	W11	L 6	D 9	1%
11	PADILLA Rudy	1672	L 6	W 8	L10	L 7	L 4	1

## Lake County Open November 2-3, 1991 OPEN SECTION

1	COLIAS Bill	2417	W 5	D 3	W 2	L 4	W 6	3%
2	CHOW Albert	2385	W 8	W 9	L 1	D 3	W 5	3%
3	KRAAI Jesse	2349	W 6	D 1	D 4	D 2	W 8	3%
4	BACHLER Kevin	2227	L 9	W 7	D 3	W 1	W11	3%
5	MARSHALL Jim	2071	L 1	W11	W 9	W 8	L 2	3
6	JUNGMAN Gerard	2077	L 3	D 9	W11	W 9	L 1	2%
7	ALLISON Roger	1825	Dbye	L 4	L 8	W11	W 9	2%
8	MARQUEZ Anthony	2053	L 2	D 6	W 7	L 5	L 3	1%
9	SAX Robert	2012	W 4	L 2	L 5	L 6	L 7	1
10	SHNER David	1716	W11	-	-	-	-	1
11	PUKEL Bernard	1900	L10	L 5	L 6	L 7	L 4	0

## Lake County Open November 2-3, 1991 RESERVE SECTION

1	CONNELLY Kevin	1658	W13	W 6	W 8	D 2	W 4	4%
2	REED Boyd	1705	D10	W 3	D 7	D 1	W 8	3%
3	GRAY James	1702	W11	L 2	W 5	D 7	W 9	3%
4	CLARK Wayne	1689	L 5	W12	W10	W 9	L 1	3
5	JOHNSON Henderson	1558	W 4	L 8	L 3	W10	W12	3
6	SANCHEZ Ignacio	1649	W14	L 1	L 9	W11	W 7	3
7	KITTSLEY Scott	1651	W 9	Dbye	D 2	D 3	L 6	2%
8	GIERTZ Charles	1719	Dbye	W 5	L 1	W12	L 2	2%
9	PADILLA Rudy	1717	L 7	W13	W 6	L 4	L 3	2
10	PAULSEN David	1602	D 2	D11	L 4	L 5	W13	2
11	GRANT Dennis	1600	L 3	D10	Dbye	L 6	W14	2
12	MAURER Pat	1547	Dbye	L 4	W14	L 9	L 5	1%
13	JENKINS Mike	1340	L 1	L 9	Dbye	W14	L10	1%
14	YODER Horley	1521	L 6	Dbye	L12	L13	L11	0%

## Micro Resales Champaign-Urbana Open November 19-20, 1991 OPEN SECTION

1	CHOW Albert	2381	Wbye	W11	D 3	W 7	D 2	4
2	HAO Vivek	2509	Wbye	W21	D 7	W 6	D 1	4
3	GRATZ Glen	2224	Wbye	W12	D 1	D 8	W10	4
4	BRODIE Mark	2160	Wbye	L 5	W16	W12	W 8	4
5	WAGNER Steven	1740	W14	W 4	Dbye	L10	W12	3%
6	TORRELGHOSSA	2292	Wbye	W10	D 8	L 2	W11	3%
7	COOK Paul	2231	W15	W16	D 2	L 1	D 9	3
8	STEVENS W	2051	Wbye	W13	D 6	D 3	L 4	3
9	COTTLE Gregory	1783	Dbye	L18	W20	W14	D 7	3
10	MAHSHALL J	2082	Wbye	L 6	W17	W 5	L 3	3
11	ASH Robert	2086	Wbye	L 1	D14	W18	L 6	2%
12	BARBARO T	1971	W17	L 3	W21	L 4	L 5	2
13	HEINRICH Paul	2288	W20	L 8	W18			2
14	CAMARDA Kyle	1970	L 5	W15	D11	L 9	D16	2
15	BOURSERIE D	1886	L 7	L14	L19	W20	W17	2
16	WOLF William	2002	Wbye	L 7	L 4	D17	D14	2
17	CALDWELL S	1674	L12	W20	L10	D16	L15	1%
18	TALBOT Marc	1923	Dbye	W 9	L13	L11	L20	1%
19	WALSH Bill	1842	-	-	W15	-	-	1
20	JESSEPH Steve	1850	L13	L17	L 9	L15	W18	1
21	REYNOLDS R	2126	Wbye	L 2	L12	-	-	1

# ICA Tour Crosstables

## Micro Resales Champaign-Urbana Open November 19-20, 1991

### RESERVE SECTION

1	ARNOLD Charles	1783	W14	W 3	W13	W 5	W 4	5
2	DOSS Jason	1734	W12	L 4	W 9	W13	W 5	4
3	KIMME Duane	1712	W17	L 1	W21	W14	W10	4
4	WAGNER Dana	1511	W11	W 2	Dbye	W 6	L 1	3½
5	GARDNER Keith	1672	W21	W 7	W10	L 1	L 2	3
6	FATHAUER Terry	1789	W19	L13	W15	L 4	W16	3
7	WARFIELD T	1772	W 9	L 5	D18	D16	W14	3
8	Craggs Tommy	1000	W18	L10	L14	W17	W15	3
9	TANG Tze-John	1453	L 7	W11	L 2	W21	W13	3
10	PADILLA Rudy	1672	Dbye	W 8	L 5	W18	L 3	2½
11	LOVEN Dallas	1792	L 4	L 9	W20	D15	W18	2½
12	MUNOZ Alberto	1408	L 2	L18	Dbye	W19	W20	2½
13	WANG One-Wei	1680	W20	W 6	L 1	L 2	L 9	2
14	YBARRA Ruben	1488	L 1	W17	W 8	L 3	L 7	2
15	WATKINS Brian	1507	Dbye	W18	L 6	D11	L 8	2
16	FENNER Charles	1480	Dbye	L15	W19	D 7	L 6	2
17	FRADKIN Andres	1246	L 3	L14	Wbye	L 8	W21	2
18	WINTER Victor	1563	L 8	W12	D 7	L10	L11	1½
19	ANDERSON R	1435	L 6	D20	L16	L12	Wbye	1½
20	RODGERS Paul	1212	L13	D19	L11	Wbye	L12	1½
21	BOTT Donald	1114	L 5	Wbye	L 3	L 9	L17	1

## Chicagoland Plus-Score October 12, 1991

1	CHOW Albert	2385	W16	W 9	W 7	D 3	3½
2	FAGAN James	1923	W14	W 4	D 3	W 6	3½
3	COOPER Tom	2252	W20	W10	D 2	D 1	3
4	SZPISJAK Steve	2149	W11	L 2	W17	W 9	3
5	WOODHOUSE Don	2039	W22	L 6	W16	W12	3
6	HONG Ernest	1549	W17	W 5	D12	L 2	2½
7	SAX Robert	2012	W13	W15	L 1	D 8	2½
8	STERN Howard	2175	L15	W13	W10	D 7	2½
9	SMYTHE Bill	2002	W18	L 1	W15	L 4	2
10	PEDERSON Roger	2000	W19	L 3	L 8	W11	2
11	KITTILSEN Guy	1739	L 4	W22	W14	L10	2
12	MC ALISTER K	1835	Dbye	W21	D 6	L 5	2
13	HARRIS Robert	1648	L 7	L 8	W21	W22	2
14	FENNER Charles	1480	L 2	D20	L11	W21	1½
15	MORRISON M	1755	W 8	L 7	L 9	-	1
16	BEASLEY Leonard	1880	L 1	W19	L 5	-	1
17	DUDKOWSKI PZ	1953	L 6	W18	L 4	-	1
18	CHAN Khong S	1594	L 9	L17	W19	-	1
19	HENROID Mike	1592	L10	L16	L18	W22	1
20	BALE Leslie	1811	L 3	D14	-	-	½
21	BALES Robert	1419	Dbye	L12	L13	L14	½
22	DISSELHORST J	1184	L 5	L11	L19	L13	0

## Chicagoland Under-2000 August 3, 1991

1	DUDKOWSKI P	1773	W 7	W 5	W 3	W 2	4
2	CAPLAR Dueta	-	W16	W 8	W 4	L 1	3
3	SINGER Robby	1872	W13	W11	L 1	W 6	3
4	SUKCHARDENPH	1901	W10	W 6	L 2	W 9	3
5	KUHN Peter	1924	W12	L 1	D 9	W 7	2½
6	TRBOJEVIC G	1750	W14	L 4	W 8	L 3	2
7	FLORES Edward	1556	L 1	W10	W14	L 5	2
8	MICHALIK Philip	1834	W17	L 2	L 6	W12	2
9	HAUPTFELD Sven	1700	Dbye	W18	D 5	L 4	2
10	MORTON Bruce	1661	L 4	L 7	W17	W14	2
11	ROZMAN Alex	1595	W18	L 3	D12	-	1½
12	GRAY James Jr	1677	L 5	D11	W16	L 8	1½
13	KALAI Adam	1654	L 3	D16	L15	W17	1½
14	WINCHELL H	1923	L 6	W17	L 7	L10	1
15	WOODHOUSE Don	1947	-	-	W13	-	1
16	PESIC Radovan	1716	L 2	D13	L12	-	½
17	GRANT Dennis	1812	L 8	L14	L10	L13	0
18	DWYER William	1831	L11	L 9	-	-	0

## Pawn Harvest Action October 12, 1991

1	VAN BUSKIRK Doug	2177	W3	W4	D2	W6	3½
2	KUJOTH Richard	2170	W5	W6	D1	W4	3½
3	LARSON James	1588	L1	W7	W6	W8	3
4	BOURGIERE Dennis	1886	W7	L1	W5	L2	2
5	LLBO Steven	1554	L2	W8	L4	W7	2
6	KNOEDLER Tom	1739	W8	L2	L3	L1	1
7	HILL Farris	1272	L4	L3	W8	L5	1
8	YARADY Mike	1130	L6	L5	L7	L3	0

## Chicagoland Plus-Score November 2, 1991

1	SMYTHE Bill	2002	W13	W 6	W10	W 2	4
2	WOODHOUSE Don	2039	W 4	W 3	W 5	L 1	3
3	FISCHER Greg	1861	W 9	L 2	W 7	W 5	3
4	KALAI Adam	1711	L 2	W 9	W14	W11	3
5	YAKICH Bob	2018	W16	W 7	L 2	L 3	2
6	SOLANO Mano	1472	W 8	L 1	L11	W15	2
7	SCHULTZ Andrew	1741	W14	L 5	L 3	W12	2
8	BALE Les	1811	L 6	W15	W13	-	2
9	HARRIS Robert	1648	L 3	L 4	W18	W13	2
10	JORDAN Roland	2073	Dbye	W11	L 1	-	1½
11	MC ALISTER Kelvin	1895	Dbye	L10	W 6	L 4	1½
12	RAESE Robert	1400	Dbye	L14	W15	L 7	1½
13	BURIAN David	1685	L 1	W18	L 8	L 9	1
14	COHEN Lawrence	2066	L 7	W12	L 4	-	1
15	BALES Robert	1429	Dbye	L 8	L12	L 6	0½
16	IMAI Toshio	1705	L 5	L13	L 9	-	0

# 1992 ILLINOIS TOUR RULES

by Bill Smythe  
ICA Tour statistician

As the 1991 Illinois Chess Tour winds down with close races in several classes, the contenders and also-rans alike can look forward to a repeat performance in 1992. A year-long series of events, the 1992 Tour features year-end cash prizes to the top performers in six rating classes. The Tour rules and formulas set out below are the same as those used in 1991.

There are two types of Tour events, maxi and mini. Major tournaments such as the Tim Just Winter Open, Greater Peoria Open, Master Challenge, and Illinois Open are likely to be maxi-events, while others (often one-day tournaments) will be mini-events.

Tour points are awarded in six rating classes: Master (2200 and up), Expert (2000-2199), Class A (1800-1999), Class B (1600-1799), Class C (1400-1599), and Class D (below 1400).

## Players

Players earn Tour points according to score. Maxi-events award 32 points for a perfect score, mini-events 16. For each half point below a perfect score, the Tour award is cut in half. When this halving would result in the Tour award being less than the score, the score itself is used instead. No Tour points are awarded for a score of zero.

The above formula works out as follows for three-, four-, five- and six-round Tour tournaments. Maxi-Tour events must be at least four rounds and two days long.

### Three-Round Event

Score	Maxi	Mini
3	32	16
2.5	16	8
2	8	4
1.5	4	2
1	2	1
0.5	1	0.5
0	0	0

### Four-Round Event

Score	Maxi	Mini
4	32	16
3.5	16	8
3	8	4
2.5	4	2.5
2	2	2
1.5	1.5	1.5
1	1	1
0.5	0.5	0.5
0	0	0

### Five-Round Event

Score	Maxi	Mini
5	32	16
4.5	16	8
4	8	4
3.5	4	3.5
3	3	3
2.5	2.5	2.5
2	2	2
1.5	1.5	1.5
1	1	1
0.5	0.5	0.5
0	0	0

### Six-Round Event

Score	Maxi	Mini
6	32	16
5.5	16	8
5	8	5
4.5	4.5	4.5
4	4	4
3.5	3.5	3.5
3	3	3
2.5	2.5	2.5
2	2	2
1.5	1.5	1.5
1	1	1
0.5	0.5	0.5

Each Tour tournament, or section thereof, awards Tour points in any given rating class ONLY if (1) the tournament or section is open to ALL players in that class, and (2) at least one player in that class, or in a higher class, actually plays in the tournament or section. Each player in a Tour event can earn points only in his own rating class and those above.

All Illinois residents playing in Illinois Tour events must be Illinois Chess Association members. Out-of-staters who are members of their home state chess associations need not join ICA, but cannot accumulate Tour points at tournaments in which they are not ICA members.

At the end of the year, cash prizes are awarded to those ICA members who have accumulated the greatest Tour point totals in each class. The 1992 Illinois Tour prizes will be announced in the next ICB. Cash prizes will be awarded only to those players who play in at least three Tour events during 1992. Prizes which would have been won by players with only one or two events will be distributed to those next in line.

Unrated players can accumulate Tour points only in the Master class, and then only if they play in a tournament or section open to all Masters and in which at least one Master actually participates. Unrateds in all Tour events, however, will have their events counted towards the three event minimum; this will help them later in the year when they become rated.

## Organizers

It is easy to sponsor a Tour mini-event. A Tour event must be a weekend Swiss of at least three rounds, and it must be listed in the Tournament Life section of Chess Life. The Chess Life announcement must include the phrase "ICA membership required" along with the dollar amount of ICA dues. The statement "an ICA Tour mini-event" should also be included. Making "Mini Tour" part of the name of the tournament is a good idea also.

A Tour event should be set up in such a way that Tour points can be awarded fairly. Section cut-offs, if any, should be at 2200, 2000, 1800, 1600, and/or 1400. The following are examples of recommended Tour formats:

- (1) 1 section, open to all
- (2) 2 sections: open and under-1800
- (3) 3 sections: 1600-&-over, under-2000, and under-1400

An example of an inadvisable tour format would be an under-1900 section. Such a section could not award Tour points to A players because it would not be open to ALL class A players.

Another inadvisable format would be the quad or the octagon -- four- or eight-player sections grouped by rating. Such an event almost certainly would, for example, split the B players across two sections, neither of which could award B points because neither would be open to ALL players in class B.

The fee for running a Tour mini-event is \$1.00 per player, with a \$50.00 maximum. For 1992, the ICA officers have eliminated the \$25.00 minimum for mini-events, so you risk little if your tournament bombs. In addition to paying the Tour fee, your organization must affiliate with ICA at \$25.00 per year. Past experience suggests that these fees repay the organizer many times over in added entry fees, as having an event on the Tour increases its appeal to most players.

The ICA officers reserve the right to reject the Tour status of any tournament. Due to several instances during the past year when two Tour events were held on the same weekend, the officers will be scrutinizing the schedule carefully. Be sure to clear your events through the state chess calendar -- Tom

Fineberg for Chicago-area events, Garrett Scott for downstate (addresses elsewhere in this issue).

## 1991 Tour Standings Master Tour Points:

CHOW Albert	85.5
PANGAN Carmilo	77.5
GUREVICH Dmtry	76
SZPISJAK Steven	72
COOPER Tom	48.5
KRAAI Jesse	39
COMPX BP	34.5
LAGUA Bende (1)	32
MARTINOVSKY Eugene	32
UMEZINWA George	30.5
COHEN Larry	28
MARSHALL James	27.5
SAX Robert	27.5
SMYTHE Bill	27.5
PELTS Peter	25.5
KARKLINS Andrew	23
MARQUEZ Anthony	22.5
WACHTEL Howard	22.5
ALLISON Roger	21
KNUTSON Greg	20

## Expert Tour Points:

SMYTHE Bill	51.5
COHEN Larry	38.5
STEVENSON Wilford	33.5
COMPX BP	33
JORDAN Holand	29
MARSHALL James	27.5
SAX Robert	27.5
ACOSTA Mariano	27
SZPISJAK Steven	27
ALLISON Roger	25
FAGAN James	25
MC ALISTER Kelvin	25
WOLF William	25
WOODHOUSE Don	23
MARQUEZ Anthony	22.5
WACHTEL Howard	22.5
BOURGERIE Dennis	21
SOCHA Ray	20.5
JUNGMAN Gerard	18
JONES Ellis Eugene	17.5

## Class A Tour Points:

STEVENSON Wilford	30.5
ALLISON Roger	25
MC ALISTER Kelvin	25
BOURGERIE Dennis	24
DUDKOWSKI Peter Z	23
BOLITHO Thomas	22.5
WOODHOUSE Don	21
SINGER Rob	20.5
WOLF William	20.5
JONES Ellis Eugene	17.5
SUKCHAROENPHON Thavo	15
MICHALIK Philip	13.5
SMYTHE Bill	13.5
BALES Robert	13
ANDERSON Phil	12.5
FRENCH Kevin (2)	12
MORRISON Michael	12

### Class C Tour Points:

BALES Robert	21.5
FENNER Charles	12.5
MAURER Patrick	12
ZEVNIK Lawrence (2)	12
PADILLA Rudy	10.5
PALMER Kenneth	9.5
RAIMO Robert	8
JOSEPHS Steven	7
URAM Max	7
DUDNICK Steve	6.5
RODGERS Paul	6.5

### Class D Tour Points:

BALES Robert	10
RODGERS Paul	6.5
JENKINS Mike	5
MAURER Patrick	5
COULTER David	4
SANCHEZ Isaac (2)	4
TIARKS Richard (2)	4

## 1991 Tournaments Posted-to-date

Tim Just Winter Open, Open Section  
 Tim Just Winter Open, Reserve Section  
 Lincolnwood Plus-Score Tornado #1,  
 Lincolnwood Plus-Score Tornado #2,  
 Bradley Winter Action,  
 Plus-Score Tornado #3,  
 Plus-Score Tornado #4,  
 Lincolnwood Mini-Tour, Saturday  
 Lincolnwood Mini-Tour, Sunday  
 Greater Peoria Open, Open Section  
 Greater Peoria Open, Reserve Section  
 Plus-Score Leisure #1,  
 Pawn Showers Action,  
 April Chicagoland Plus-Score Tornado, Saturday  
 April Chicagoland Plus-Score Tornado, Sunday  
 Hammond Spring Open,  
 May Chess Center Plus-Score Tornado, Saturday  
 May Chess Center Plus-Score Tornado, Sunday  
 May Chess Center Plus-Score Tornado, Monday  
 July Chess Center Plus-Score Tornado, Thursday  
 July Chess Center Plus Score Tornado, Saturday

July Chess Center Plus-Score Tornado, Sunday  
 Master Challenge XIII,  
 Chicagoland Master-Expert,  
 Chicagoland Under-2000 Fireworks,  
 Chicagoland Under-2000,  
 St Charles Open, Open  
 St Charles Open, Reserve  
 Bradley Summer Open,  
 Maurice Irvin Open, Open  
 Maurice Irvin Open, Reserve  
 Illinois Open, Open  
 Illinois Open, Reserve  
 Chicagoland Fall Festival, Open  
 Chicagoland Fall Festival, Reserve  
 Pawn Harvest Action,  
 Chicagoland Plus-Score,  
 Micro Resales, Open  
 Micro Resales, Reserve  
 Oak Park / Forest Park Action,  
 Chicagoland Plus-Score,  
 Lake County Open, Open  
 Lake County Open, Reserve  
 Master

## OP-FP CC Autumn Action '91 by Ken Marshall

Twenty four players competed in the "full K" Oak Park Forest Park Chess Club Autumn Action '91 tournament, a five found Illinois Chess Association Mini-Tour event held October 19, 1991 at the Mohr Community Center in Forest Park. Steve Szpisjak (2149), ranked second on the wall chart, posted a perfect 5-0 mark to win the \$100 first prize. Larry Cohen(2086) and Jim McNamara (1973) each scored 4-1 and shared second and third. McNamara's high finish allowed Zibby (Peter) Dudkowski (1923) to take home the Class A prize for his 3-2 result.

Donald Jackson (1770), Carl Solonka, Jr. (1729), and Kevein Connelly (1658) tied for Class B honors at 3-2. Connelly pulled off the upset of the tournament in Round 1, knocking off favorite and top-rated SM Bill Colias (2425). Class C prize money was divided by Robert Raimo, Steve Dudnick and Robert Bales, Jr. Unrated Steve Hwang ended up 2.5-2.5 to top the Class D/E/Unrated category. Ken Marshall directed, assisted by Don

### Oak Park / Forest Park Autumn Action October 19, 1991

1	SZPISJAK Steven	2149	W14	W11	W 5	W 2	W 8	5
2	COHEN Larry	2086	W17	W 7	W 3	L 1	W 6	4
3	MC NAMARA Jim	1973	W18	W15	L 2	W10	W 5	4
4	SMYTHE Bill	2002	D21	W12	W 6	L 8	W 7	3½
5	SAX Robert	2012	W24	W 9	L 1	W11	L 3	3
6	DUDKOWSKI Peter	1953	W22	W18	L 4	W 9	L 2	3
7	CONNELLY Kevin	1658	W 8	L 2	W15	W21	L 4	3
8	COLIAS Bill	2425	L 7	W24	W21	W 4	L 1	3
9	SOLODKA Carl	1729	W19	L 5	W18	L 6	W15	3
10	JACKSON Donald	1770	L15	W23	W18	L 3	W17	3
11	FINEBERG Tom	1819	W23	L 1	W17	L 5	D14	2½
12	MORTON Bruce	1882	D13	L 4	W19	L14	W21	2½
13	HWANG Steve	.	D12	L21	W20	L17	W16	2½
14	STAMATAKOS M	1623	L 1	L19	W23	W12	D11	2½
15	JENKINS Mike	1340	W10	L 3	L 7	W18	L 9	2
16	BALES Robert	1419	W20	L 6	L 9	W19	L13	2
17	RAIMO Robert	1592	L 2	W22	L11	W13	L10	2
18	DUDNICK Steve	1469	L 3	W20	L10	L15	W22	2
19	COULTER Dave	1273	L 9	W14	L12	L16	W24	2
20	ALLISON Roger	1806	L16	L18	L13	W22	W23	2
21	FISCHER Greg	1861	D 4	W13	L 8	L 7	L12	1½
22	HIGHTOWER Dean	1017	L 5	L17	W24	L20	L18	1
23	GRAIS William	1432	L19	L14	W24	L20	1	
24	MIRKPATRICK D	1518	L 5	L 8	L22	L23	L19	0

Winsauer.

## Oak Park-Forest Park Chess Club News by Ken Marshall

**October 1:** Team Speed Tournament Seven three-man teams competed in this single round robin game/5 tournament. Mark Marovitch, Don Winsauer, and Steve Josephs won on tie-break over Mark Sefcheck, Dan enske, and Chuck Collins; both teams finished 5-1.

**October 11:** OP-FP CC-Hillside CC Return Match Only eight players appeared to represent the OP-FP CC at this event is Hillside (a disappointing turnout, given the Club's 84 person membership. The Hillside CC had 15 members ready to play, and fielded a team which outrated OP-FP by anywhere from 42 to 503 points per opponent (with an average rating advantage of 200 points a board). The players each contested two "game/30" games, with Hillside posting a convincing 12-4 victory. [Assuming a 200 point rating advantage per board this is exactly the result the ratings would have predicted!-Editor]. Bill Barker overcame a 133 point rating deficit to provide the OP-FP CC with two of its four points. Art Zacher won one game and Ken Marshall and Steve Josephs each had a draw.

**October 29 and November 5:** World Rapid Chess Tournament This "game/30" event, played at two rounds per night, was sanctioned and rated by GM Seirawan's International Chess Federation (FIDE) affiliated World Rapid Chess organization. Eight players competed. Jim Marshall scored 3-1 to finish clear first. Hence (Butch) Allen, Chuck Cannone, and Mark Stamatakos followed at 2.5-1.5.

**Call Chessphone  
for ICA Tour News  
708 832-5222**

# Tournament Calendar

**Call Chess Phone, (708) 832-5222, for up-to-date tournament results, as well as announcements of tournaments that may not be listed in Chess Life or the ICB. The ICA Chess Phone voice is Todd Barre. Unless otherwise noted, all tournaments require USCF membership. Illinois Tour events also require ICA membership.**

December 7: Normal Pinetree Open. 4-SS, 30/1, SD/30. Ash Park Pool & Recreation Center, Normal (East College Avenue at Maple Street). \$\$ 325 b/25. EF \$11 by 12/4, \$15 later. Students \$10. Free for players rated 2100 and up. REG: 8-8:45am. RDS: 9 12-3-6. ENT: Dennis Bourgeois, 1621 N School Street, Normal, IL 61761. MINI

December 7: 1991 Benjamin Scholastic Chess Tournament. Carol Stream, IL. See Chess Life.

December 14: Hammond Winter Swiss. 4-SS, 30/60. SD/30. Hammond Public Library, James A. Howard Branch, 171st & Grand Ave., Hammond, IN 46323. EF \$15, \$12 to HCC members. \$\$350 b/30. REG 8-8:45 am.; \$5 late fee after 8:45. RDS 9-12-3-6. ENT: J. A. Enochs, 6436 Jefferson Ave., Hammond IN 46324; (219)932-1437 NS NC W MINI

December 14: The Chilly Knight Open. 3-SS, 30/1, SD/30. Washington Park Pavilion, West Springfield 8 player sections by rating. EF: \$18, \$\$ 135 b/8, 70-40-25. REG 8:15-9:10 am. ENT: Thomas B. Knoedler, 2104 S Fourth St, Springfield, IL 62703. (217)523 7265.

December 21: Tuley Park Action Mini-Tour. 4/SS, G/30. 501 E. 90th Pl, Chicago, IL 60619. (312)723-0150. EF \$15. \$\$ (80% of total EF) 30%-18%, best in middle third 17%, lower third 15%. REG 11-11:45 am. RDS 12-1:12-2:24-3:36. ENT: Tom Fineberg, 7321 South Shore Drive, Chicago, IL 60649. (312)721-3979. NS NC W MINI

December 27-28: Pan-Am Alumni Swiss. At site of Pan-Am Team

December 27-30: Pan-Am Intercollegiate Team Championships. & Pan-American High School Team Championships. 6-SS, 50/2, 25/1, Palmer House Hotel, 17 E. Monroe St., Chicago IL 60603. Collegiate division: Open to all teams of four players and up to two optional alternates. Participants must be grad-undergrad-professional students from the same college or university and be currently enrolled in a degree-granting program.

For multi-campus state universities, all members must be from the same campus. All teams must be college affiliates of USCF. Open to all teams in North, Central, South America. \$\$2500 guaranteed: 800-500-200-100-100, 200 each to top class A, B, C, 2-year college. Trophies, plaques, or clocks to places 1-3, top board scores, top under 1700 avg. rating, top under 1500 avg. rating, top team of 4 unrated players. EF: \$90-\$75-\$50 for 1st 3 teams from one school, if postmarked by 11/27 (add'l teams \$30 each). High school division: Open to all teams of four students and up to two optional students from the same public, private, or parochial high school (U.S. grades 9-12, or foreign equivalent). USCF high school affiliation req'd. Trophies, plaques, or clocks to places 1-3, top board scores, top under 1700 avg. rating, top under 1500 avg. rating, top team of 4 unrated players. EF: \$50-40-30 for 1st 3 teams from one school, if postmarked by 11/27 (add'l teams \$30 each). Both: \$10 per team more if not pre-registered. No cks. accepted at site. Hotel: 312/726-7500. ENT: U of Chicago Chess Club, Ida Noyes Hall Box 16, 1212 E. 59th St., Chicago IL 60637.

## 1992

January 11: IHSA Event. Evanston HS. K Lewandowski (708)869-8246.

January 11-12: Tim Just Winter Open. 5-SS, 40/90, G/30, College of Lake County, Main Building, 19351 W Washington at Route 45, Grayslake. See display ad on back of this issue for details. MAXI

January 18 (tentative): Illini Union Classic (IHSA). University HS, Urbana. Chris Butler, (217)998-3574

January 18: Scholastic Event. Villa Park.

January 18: Floyd Bolton Memorial. 4-SS, 30/60, SD/30. Hammond Public Library, James A. Howard Branch, 171st & Grand Ave., Hammond, IN 46323. EF \$12, \$10 to HCC members, \$5 more 8:45. \$\$ (300/ b30). REG 8-8:45 am. RDS 9-12-3-6. ENT: J. Enochs, 6436 Jefferson Ave., Hammond IN 46324; (219)932-1437. NS NC W

January 25-26: Fox Valley Championship. \$1,050 guaranteed in prizes. In 2 sections. Open (open to all): 4-SS, 40/100, 30/60. 300-150-75, under 2100 100-75-50. EF: \$32.50 by 1/15, \$37.50 later. REG: 8:30-9am. RDS: 9:15-2, 8:15-1:15. Reserve (open to under 1800 and unrated): 5-SS, 45/90, SD/30. \$\$ 100-75-50, under 1800 50-25. EF: \$20 by 1/15, \$25 later. REG: 8-8:30. RDS: 9-1-5, 8:15-12:30. ENT: Bob Renaut, 1255 Oakton Lane, Naperville, IL 60540,

(708) 983-0934. MAXI

January 20: Martin Luther King Day Scholastic. Bloomington.

February 1: IHSA Team. Auburn.

February 1: Scholastic event. Fox Valley HS, Aurora.

February 8: Scholastic. Lincoln HS Springfield.

February 15: President's Open. 4-SS, 30/60. SD/30, Hammond Public Library, James A. Howard Branch, 171st & Grand Ave., Hammond, IN 46323. EF \$12, \$10 to HCC members, \$5 more 8:45. \$\$ (300/ b30). REG 8-8:45 am. RDS 9-12-3-6. ENT: J. Enochs, 6436 Jefferson Ave., Hammond IN 46324; (219)932-1437. NS NC W

February 15 (tentative): Frosh-Soph "State" Tourney (IHSA). Oak Lawn Community HS. Ed Olson, (708)257-5537.

February 15: Springfield Frozen Pawns

February 15: Scholastic event. Holy Angels HS, Aurora.

February 29-March 2, 1992: Illinois State Scholastic Championship. Glen Ellyn

March 8: Illinois Chess Association Banquet & Illinois Blitz Championships.

March 14-15: Mid-America Class Championships in Chicago. 5-SS, 40/2, 20/1. The New Ramada O'Hare Hotel, 6600 N. Mannheim Road, Rosemont, IL 60018. \$12,000 Guaranteed in Prizes. 5 Sections: Master, \$2000-1000-500-400-200. Expert, \$1000-500-300-200-100. Class A, \$1000-500-300-100. Class B, \$800-400-250-150-100. Class C/D/E, \$800-400-250-150-100 and Under 1400, \$200-100. Perfect score in any section wins free EF at 1992 National Open. Perfect score in Master or Expert section also wins free room. EF: \$62 if mailed by 2/12, \$65 by 3/7, \$70 later. GM's Free. Add \$6 to play one section above your rating. Add 50 cents for 1/2 point bye in round 1. Unrateds may win no more than \$200 in any section except Master. CCA ratings may be used if higher than Feb supplement. REG: Friday 4-7PM, Saturday (with 1/2 point bye) 8-10AM. RDS: 8, 10:30-5:30, 10:30-5:30. ENT: Mid-America Class Championships,



# Tournament Calendar

c/o RAE Products and Chemicals,  
11630 S. Cicero, Alsip, IL 60658.  
*Visa & Mastercard accepted for  
phone reservations only (708)396-  
1984, 9-4 CST. HR: \$59 sgl, \$65 dbl  
Including FREE breakfast! MAXI*

**March 27-28 (tentative): IHSA State Team  
Tournaments.** Michael Zacate, (708)479-9380.

April 4-5: CCA Event Chicago. MINI

**April 4-12, 1992: Chicago International.** 9-  
SS, 30/90, 20/1, SD/1. Ramada Hotel O'Hare,  
6600 N. Mannheim Rd, Rosemont, 60018.  
**\$10,000 guaranteed in prizes.** Open to all;  
GM and IM norms expected to be possible.  
See *Chess Life* or next ICB for details.

**April 11: April Showers Open.** Springfield.

April 11-12: CCA. Chicago. MINI

**April 24-25 (tentative): IHSA State  
Individual Tournaments.** Michael Zacate,  
(708)479-9380

**April 24-26: National Elementary  
Championships.** Knoxville, TN

**May 1-3: National Jr High Championships.**  
Tallahassee, FL.

**May 2-3: Greater Peoria Open MAXI**

**May 8-10: National High School  
Championship.** Lexington KY.

**May 22-25: Continental Chess As-  
sociation.** Chicago. \$30,000 prize  
fund. MAXI

**June 5-7: National Open.** Las Vegas NV.

June 13: Summer Action. Springfield MINI

**July 17-19: Continental Chess  
Association.** Chicago. \$5,000 prize  
Fund. MAXI

**August 2-14: US Open.** Dearborn MI.

**August 8: Springfield Sauna Open.**

**September 5-7: Illinois Open. MAXI**

October 10: Springfield Action. MINI

**November 22-23: Illinois Class  
Championships. MAXI.**

**1994**

**August 7-19, 1994: U.S. Open.** Chicago.

**Important Notice  
Chicagoland Chess and Games  
has closed.  
All Chicagoland Chess and  
Games Tournaments are  
Cancelled**

# Illinois Chess Association Patrons

## Century Club Members

Michael Belovesick Sr	Elmhurst	Marc Lonoff	Northbrook	Burton Vincent	Chicago
Roy Berg	Madison, WI	Albert Sandrin	Chicago	Helen Warren	Western Springs
Bill Brock	Chicago	Angelo Sandrin	Chicago	Jim Warren	Western Springs
Thomas Fineberg	Chicago	Bill Smythe	Chicago	Bill Wenz	Milwaukee, WI
Fred Gruenberg	Chicago			Philip Wong	Wilmette

## Gold Card Members

Tyrone Brooks	Chicago	Alan Losoff	Morton Grove	Michael Pratts	Chicago
Bill Buttny	Downers Grove	Kenneth Marshall	Lombard	Irwin Rothschild	Park Forest
William Dwyer	Worth	William Naff	Peoria	Mitchel Sweig	Evanston
Donald Graft	Wheaton	Peter Pelts	Niles	Louis Werner	Evanston
Harland S. Hoisington	Ogden, UT	Daniel Pradt	Glen Ellyn	Sandy Zabell	Chicago

## Patron Members

Faneuil Adams	New York, NY	Keith Holzmueller	Evanston	Ken Palmer	Bolingbrook
Bob Ash	Urbana	Jeffery Hyland	Mount Prospect	Alex Pehas	Downers Grove
Kevin Bachler	Waukegan	Toshio Imai	East Lansing, MI	Mieczyslaw Platek	Skokie
Todd Barre	Elmhurst	Randy Ingram	Bloomington	Rhys Read	Evanston
Roy Benedek	Western Springs	Robert Irons	Chicago	Frederick S. Rhine	Chicago
Edward J. Blanco	Chicago	Gary Jochim	Chicago	Murrel Rhodes	Peoria
Timothy Bogan	Chicago	Gersham Johnson	Chicago	Marvin Rogan	Chicago
Barry Bouton	Newark	Stephen Josephs	Hinsdale	Ray Satterlee	Wheaton
Jim Brotsos	Chicago	Tim Just	Gurnee	Mark Sefcheck	Naperville
Gregory Bungo	Elmhurst	Dan Kamen	Buffalo Grove	David Shane	Macomb
Fred Burgess	Oak Forest	Scott Kittsley	Shorewood, WI	Anthony Sillars	Huntington, MA
Anthony Caliendo	Aurora	Thomas Knoedler	Springfield	Richard Simonetti	Elmwood Park
Lawrence Cohen	Villa Park	Walter Kocjan	Northlake	Arthur Sinclair	Evanston
Jim Condron	Westmont	Peter Kuhn	Des Plaines	Leonard Spiegel	St Charles
Paul Cox	Hazel Crest	Richard Lang	Evanston	Joe Splinter	Glen Ellyn
Mike Cronin	Evergreen Park	Michael Lester	Chicago	Peter Stein	Wheaton
Greg De Fotis	Chicago	Harry Lyman	Boston, MA	Robert Stoltz	River Forest
John Deutsch	Chicago	John Marconnet	Clarendon Hills	Eric Stover	Chicago
Leroy Dubeck	Cherry Hill, NJ	Anthony Marquez	Chicago	James Tanaka	Chicago
Kalman Farkas	Milwaukee, WI	Ed Marshall	Barrington	Marc E. Thomas	Normal
Michael Flynn	Aurora	Eugene Martinovsky	Naperville	George Umezina	Chicago
Jon Gotz	West Chicago	Patrick Maurer	Glen Ellyn	Richard Verber	Chicago
William Graves	Chicago	Thomas Mayka	Wheeling	Jeff Weimar	Moline
Steve Hansen	Indian Head Park	Michael McIlhany	Springfield	Don Winsauer	Forest Park
Walter Henry	Naperville	James McNamara	Hinsdale	Harold Winston	Naperville
Charles Hicks	Naperville	Earl Miller	El Paso	David Wulatin	River Forest
				Max Zavanelli	Park Ridge

## ICA ELECTED OFFICERS

Alan Losoff, President  
P.O. Box 157, Morton Grove, IL 60053  
(708) 966-5559

Garrett Scott, First Vice-President  
202 Foster Drive, Normal, IL 61761  
(309) 452-8116

Tom Fineberg, Metro Vice-President  
7321 S. South Shore Dr.  
Chicago, IL 60649-3597  
(312) 721-3979

Ken Marshall, Secretary  
357 W. Grove, Lombard IL 60148  
(708) 932-1455

Marc Lonoff, Treasurer  
900 Appletree Court, Northbrook IL 60062  
(708) 564-2346

## USCF DELEGATES

by virtue of their USCF posts

Alan Losoff, Regional Vice-President  
Fred Gruenberg, Regional Vice-President  
Frank Skoff, Life Voting Member  
Helen Warren, Life Voting Member  
Harold Winston, Life Voting Member

by ICA-appointment

Tom Fineberg  
Tim Just  
Ken Marshall  
Todd Barre

## USCF VOTING MEMBERS

ICA appointed

Marc Lonoff	Bill Smythe
Garrett Scott	Erv Sedlock
Jim Warren	Dennis Grant
Bill Naff	Tom Knoedler
Larry Cohen	Les Bale
Jim Condron	Bill Wilkinson

ICA appointed alternates

Jim W Oberweis	Murrel Rhodes
Howard Wachtel	John Barstad
Angelo Sandrin	William Brock
Ray Socha	Glen Panner
Jim Brotsos	Steve Foust
James Enochs	Dave Shiner
Kevin Bachler	Larry Stilwell

# Where to Play Chess: ICA Club Affiliates

**AMERICAN POSTAL CHESS TOURNAMENTS** sponsors postal events & sells chess books & equipment. Jim or Helen Warren, P.O. Box 305, Western Springs 60558. 708/246-6665.

**AUBURN HIGH SCHOOL CHESS CLUB**, 4273 Straw Lane, Roscoe 61073. James Boyer, 815/623-8148.

**CENTRAL COMETS CHESS CLUB**. Steger Central Junior High School, c/o D. DeVore, 19 W. 33rd St., Steger 60475.

**CENTRAL LAKE COUNTY CHESS CLUB** meets Fridays, 7:15 to 12:00AM College of Lake County, Bldg. 1, Washington at Route 45, Grayslake. Dennis Grant, 1657 McKay, Waukegan 60087. 708/336-5188.

**CHAMPAIGN-URBANA CHESS LEAGUE** sponsors rated tournaments in the Champaign-Urbana area. Tom Worley, 2106 Zuppke, Urbana 61801. 217/367-4744.

**CHESS NORTHWEST** meets the 2nd & 4th Friday eves of each month. Schaumburg Public Library, 32 Library Lane, Schaumburg, Elmer Linden, 1325 Dennison, Hoffman Estates 60195. 708/882-2382.

**CHICAGO CHESS CENTER** meets for casual chess 7 days a week 6:00 p.m. 1:00 a.m. \$2 charge. 1921 W. 47th St., Chicago 60609. Also sponsors rated tournaments Thurs.-Sun. Play Socha, 312/376-5678.

**CHICAGO INDUSTRIAL CHESS LEAGUE** organizes frequent competition among commercial/government teams with awards, ratings, & special events Jim Brotsos, 312/775-5054; or Ross Siegel 312/828-2046.

**CONTINENTAL CHESS ASSOCIATION**, 450 Prospect Ave. Mt Vernon NY 10553 Bill Goichberg.

**DOWNERS GROVE PARK DISTRICT CHESS CLUB** meets Thurs., 6:30 10 p.m., Lincoln Center, 935 Maple Ave., Downers Grove. Affiliated with USCF & ICA. George Uffner, 708/960-9382.

**ELK GROVE VILLAGE CHESS CLUB** meets Fri. 7-10 p.m., at the Al Hattendorf Center, 225 E. Elk Grove Blvd., Elk Grove Village Gary Janssen, 708/894-0996 eves.

**FOX VALLEY CHESS CLUB** meets Monday evenings, 7 p.m.?, Pnsco Community Center, Lake St. & Illinois Ave., Aurora Ill. Gary Kayser, 708/892-5428

**GREATER PEORIA CHESS FEDERATION** meets Mon., 7 11 p.m., Garrett Center, 824 N. University, Peoria Bill Wilkinson, 901 N. Hebecca Pl, Peoria 61606 309/673-9455.

**HAMMOND (INDIANA) CHESS CLUB** meets Thursdays, 7:00 p.m. to ?, at Hammond Public Library, Howard Branch, 171st and Grand. Jim Enochs, 6346 Jefferson Ave., Hammond, IN 46324. 219/932-1437

**HILLSIDE CHESS CLUB** meets Fridays, 7:30-midnight, Hillside Baptist Church, 5152 Butterfield (just east of Taft), Hillside. Larry Stilwell, 4/05 Elm, Lisle 60532. 708/963-6799

**ILLINOIS CHESS CLUB** meets Tues., 6:30-10 p.m., Hauberg Civic Center, 1300 24th St., Rock Island. Bob Ratcliff, 2336 25th St., Rock Island IL 61202; 309/786-8104.

**LAKE COUNTY CHESS ASSOCIATION** sponsors rated tournaments in the Grayslake-Zion area. Tim Just, 37165 Willow, Gurnee 60031. 708/244-7954.

**MATTOON AREA CHESS CLUB** meets Monday, 7-9 p.m., 2608 Richmond Ave., Mattoon IL 61938. Bret R. Fuller.

**MIDWEST CHESS ASSOCIATION** organizes major tournaments for masters & experts. Helen Warren, P.O. Box 305, Western Springs, 60558. 708/246-6665.

**OAK PARK/FOREST PARK CHESS CLUB** meets Tues., 7- midnight, Mohr Community Center, Jackson & DesPlaines, Forest Park, Ken Marshall, 357 W. Grove, Lombard 60148. 708/932-1455.

**ORLAND PARK CHESS CLUB** meets every Friday night, 7:30-11, at the George Brown Commons, 15045 West Ave. (1 block w. of Lagrange Rt. 45 96th Ave.), Orland Park. No membership fee is required. Glenn Panner, 708/460-3111.

**PARK FOREST CHESS CLUB** meets Thursdays, 7-10:00 p.m., Freedom Hall, Orchard & Lakewood, Park Forest. Lawrence Cohen, 135 Westwood, Park Forest, 60466. 708/748-5911.

**QUAD CITIES CHESS CLUB**. Steven J. Foust, 9500 14th St. W., Apt. C2-B, Rock Island, 61202. 309/787-5198.

**RUDY LOZANO LIBRARY CHESS CLUB**, 1805 S Loomis, Chicago, 60608 Hector Hernandez, Head Librarian 312/733-4329.

**SHIMER COLLEGE CHESS CLUB** meets Mondays, 7 p.m. to ?, Koko House, Shimer College, corner of Genessee and Cory in Waukegan. David Shiner, P.O. Box A500, Waukegan 60079 708/623-8400.

**SMYTHE DAKOTA COMPETITIONS** is the sponsor of the monthly Plus Score Mini-Tours in the Chicago area. Bill Smythe, 6945 N. Ashland #F 3, Chicago 60626. 312/761-2455.

**SPRINGFIELD CHESS CLUB** meets Wed., 6-10 p.m., Washington Park Pavilion, Park Ave & South Grand Ave. West, Springfield. Tom Knoedler, 217/523-7265; or James Larson, 217/529-0781.

**ST. CHARLES CHESS CLUB** meets Thursdays at 7 p.m., Baker Community House, 101 S. 2nd (Rte 31), St. Charles. Erv Sedlock, 6 N. 307 Old Homestead Rd., St. Charles 60174, 708/377-7995.

**TULEY PARK CHESS CLUB** meets Saturdays, 1-5 p.m., Tuley Park Field House, 501 E. 90th Pl., Chicago. Thomas Fineberg, 7321 S. South Shore Dr., Chicago 60649, 312/721-3979.

**TWIN CITIES CHESS CLUB** meets Tuesday eves., Parks & Rec. Bldg., 611 S. Linden, Normal. Speed trmtns., \$0.50/game. Dale Elder, 802 S. Mercer, Bloomington 61701

Join the **Illinois Chess Association** and receive six issues of the Illinois Chess Bulletin. In addition, you'll qualify to enter over two dozen tournaments on the **Illinois Chess Tour**. Every game you win or draw in a tour event earns you "tour points" that can add up to cash prizes at year end. Finally, you'll be supporting the activities of the Illinois Chess Association. Every year, the ICA organizes major tournaments like the Illinois Open and the Illinois Class Championships; the ICA has bid for the National Open, the US Open

and the US Class Championships to be held in Illinois. In addition, the ICA sponsors scholastic clinics, runs a tournament clearinghouse, and promotes and publicizes chess activity statewide.

If you would like to show increased support for Illinois chess, *please consider renewing as a Century Club, Gold Card, or Patron member*. Patrons are acknowledged in each issue of the ICB and receive their magazines by first-class mail.

## Mail To:

ICA MEMBERSHIP SECRETARY  
PO BOX 2534  
NORTHBROOK IL 60065-2534

(Your mailing label is on the other side; note corrections below)

NAME: \_\_\_\_\_

ADDRESS: \_\_\_\_\_

CITY: \_\_\_\_\_ STATE: \_\_\_\_\_ ZIP: \_\_\_\_\_

## ICA Membership Renewal

### Check membership type:

<input type="checkbox"/> Century Club\$	100.00
<input type="checkbox"/> Gold Card	50.00
<input type="checkbox"/> Patron	25.00
<input type="checkbox"/> Regular	14.00
<input type="checkbox"/> Junior	8.00
<input type="checkbox"/> Affiliate	25.00

An ICA Maxi-Tour and Caveman Tour Tournament

# Tim Just's Winter Open/Reserve IX

A College of Lake County Event

**\$1725 in Prizes**  
**January 11-12, 1992**

**Place:** College of Lake County,  
Main Building  
19351 W Washington at Route 45  
Grayslake, Illinois 60030

**Rounds:** 5SS: Saturday 9 - 2 - 7;  
Sunday: 10 - 3

**Prizes (based on 60 entries):**

**Sections:**

Open is open to all players  
Reserve is restricted to players below 1800

**Early Registration (before 1/7/92)  
and Information:**

Tim Just  
37165 Willow Lane  
Gurnee, Illinois 60031  
708-244-7954

**Byes:** ½ point available  
in rounds 1, 2, 3, or 4

**Time Controls:** 40/90, G/30.

**Entry Fee:** \$32 Early,  
\$40 Late and Telephone.

**Open:** 225,150,100;  
Expert 125,100;  
A 125,100.

**Reserve:** 225,150,100;  
C 125,100; D/E/Unrated 100.

**Late Registration:** At the site:  
1/11/92; 8:00-8:45 AM

**No Smoking on Campus!**

**ICA Maxi-Tour Event:** ICA  
Membership Required of IL Residents.

Illinois Chess Association  
PO Box 2534  
Northbrook, IL 60065-2534

*Time Value Material*

Address Correction Requested