

# ILLINOIS CHESS BULLETIN

Official Publication of the Illinois Chess Association, a U.S.C.F. Affiliate  
(A Not For Profit Organization)

November-December 1991

Volume XIV, No. 5

Bi-monthly

\$2.95

**KARKLINS  
WINS  
ILLINOIS  
OPEN**





## TABLE OF CONTENTS

**EDITOR:**  
**Marc Lonoff**  
 900 Appletree Court  
 Northbrook, IL 60062  
 (708) 564-2313

**ICA TOUR STATISTICIAN**  
**Bill Smythe**

**CALENDAR EDITOR**  
**Alan Losoff**

**GAMES EDITOR:**  
**Tom Cooper**

### MEMBERSHIP AND SUBSCRIPTIONS:

The Illinois Chess Bulletin (ICB) is published bimonthly by the Illinois Chess Association. ICA membership includes a subscription to the ICB. Century Club, Gold Card, and Patron members receive their ICB by first-class mail.

#### Annual membership rates:

Century Club	\$100.00
Gold Card	\$50.00
Patron	\$25.00
Regular	\$14.00
Junior (under 18)	\$8.00

Subscriptions and address corrections should be sent to:

ICA Membership Secretary  
 P. O. Box 2534  
 Northbrook IL 60065-2534

**SUBMISSIONS:** Please notify the editor in advance and plan to submit articles, photographs, crosstables, games, and other publishable materials to him before November 9, 1991. This is the deadline for the January-February 1992 issue that will be mailed in early December 1991.

**ICA AFFILIATION:** Chess clubs and other organizations which promote chess activity may affiliate with the ICA. Benefits include a copy of the ICB by first-class mail, a listing under "Where to Play Chess," discounted advertising rates, three-line tournament announcements in the "Tournament Calendar," and the right to run ICA Tour Events. ICA Affiliation costs \$25; please remit to Membership Secretary.

### ADVERTISING RATES:

Full page	\$90
Half page	\$54
Quarter page	\$36
Eighth page	\$24

10% discount for the same ad in consecutive issues. 1/3 discount for ICA affiliates. All ads must be camera-ready to qualify for above rates; minimum \$20 charge for layout. Payment must accompany ad. The ICA & the ICB reserve the right to reject advertising.

Copyright © 1991 Illinois Chess Association

<b>President's Report</b> <i>Alan Losoff</i>	3
<b>Editor's Column</b> <i>NM Marc Lonoff</i>	3
<b>Andrew Karklins Wins Illinois Open</b> <i>Ken Marshall</i>	4
<b>Games From the Illinois Open</b> <i>NM Tom Cooper</i>	6
<b>On the Road</b> <b>GM Dmitry Gurevich</b>	16
<b>Postal Scramble</b> <i>SM Eugene Martinovsky</i>	22
<b>Ray Satterlee: First in US Senior Open</b> <i>Ken Marshall</i>	23
<b>Oak Park News</b> <b>Ken Marshall</b>	23
<b>Martinovsky Wins St Charles Open</b> <i>Ken Marshall</i>	24
<b>Software Review: Knightstalker</b> <i>NM Marc Lonoff</i>	26
<b>ICA Tour Standings and Crosstables</b> <i>Bill Smythe</i>	27
<b>Illinois Tournament Calendar</b>	28
<b>Illinois Chess Association Patrons</b>	30
<b>Where To Play Chess: ICA Club Affiliates</b>	31

Cover Drawing: Marlene Goodman, MKG Graphics, 401 E Prospect, Mt Prospect IL 60056. (708) 255-5772.

### Tournament Clearinghouses:

Metropolitan Chicago (zip codes 600xx-606xx):  
 Tom Fineberg  
 7321 S. Shore Drive  
 Chicago IL 60649-3597  
 (312) 721-3979

Rest of Illinois:  
 Garrett Scott  
 202 Foster Drive  
 Normal IL 60761  
 (309) 452-8116

## President's Report

by Alan Losoff

### ICA Membership Meeting

The annual ICA membership meeting will be held at the Ramada Hotel O'Hare Sunday, October 20 at one pm. All ICA members are welcome to attend. A meeting of the ICA Board of Directors will follow.

### Congratulations to Karklins

Andrew Karklins is the new Illinois Champion. The Illinois Open was a joy to direct this year, and the players were terrific. There is plenty of coverage elsewhere in this issue, but I wanted to add my personal congratulations to Andy, to reserve champion Dennis Grant, and all the other winners.

### Support the ICA Tour

Show your support of the ICA and affiliates by playing in Illinois Chess Tour events. Besides showing support, you prizes at year-end. Tour standings are printed in every issue of *ICB*.

### Illinois Class Championships

The Illinois Class Championships is a particularly good event for players chasing tour points. Again this event will be held at Morgan Park Academy the weekend *before* Thanksgiving. Under the expert direction of Todd Barre, this is always an excellent tournament.

### Scholastic Chess Clinic

High School students wishing to improve their chess skills should check out the 1991 Scholastic Chess Clinic at Proviso

West HS on October 26th. Clinic directors George Marino and Ken Lewandowski have arranged an excellent program. The ICA is proud to be a sponsor of this effort.

### 1994 US OPEN

At its August meeting in Los Angeles, the USCF policy board accepted the Illinois Chess Association's bid for the 1994 US Open. A factor that led to this award was the success of the 1989 US Open, due in large part to your support. I hope Illinois players also will support the 1992 US Open in Dearborn Michigan.

### News From Delegates Meetings

Other news from the Los Angeles USCF Delegates' meeting includes the end of the Junior Tournament Player program and the beginning of the Chess Development Fund. The latter is a retirement fund for grandmasters that is to be funded by contributions from high entry-fee tournaments. Fred Gruenberg was named a trustee of the fund. The delegates soundly defeated a twenty-five per cent dues increase proposal.

### Illinois Residents to Chair Committees

Also, Illinois residents were named to the chair of several committees: Todd Barre (Finance), Tim Just (Tournament Director Certification), Eric Schiller (Computer Chess), Harold Winston (Bylaws), and Max Zavenelli (Postal Chess).

## Editor's Column

I am pleased to edit the *ICB* during interesting times. Why are these times suddenly interesting?

### First, chess activity in Chicago will rise sharply in 1992.

Active tournament player should be excited by the prospects of playing in five Continental Chess Association tournaments in Chicago in 1992. The US Open will be in nearby Michigan in 1992 and back in Chicago in 1994. Alan Losoff's aggressive leadership of the ICA, largely as a successful tournament organizer should be given some credit for luring Goichberg to Chicago. We will all benefit from the opportunity to play in more strong events with large prize funds.

**Second, the dissolution of the Soviet empire** has allowed chess talent on a grand scale to emigrate out of the USSR to Europe and the United States. The presence of these players will doubtless make it difficult for chess professionals in the west, not used to such depth of talent and competition to survive. For the average chess-player this flood will provide a pool of talented chess teachers and authors. Translations of less-well-known but brilliant chess books will become available. Opportunities to study chess will be increased.

**Third, the availability of inexpensive playing computers** will transform our idea of the game. Back in 1974, I thought that if I could get a computer that played at master strength I would give up tournament chess. Now, I have many computer programs that drub me at five minute chess, but I still find tournament competition fun. Again, the computer gives all players below senior master strength the opportunity

to play more high quality chess, and a patient opponent to use to practice against and improve.

### Fourth, the development of chess database programs,

also taking advantage of inexpensive computer hardware, gives us access to games **and study tools** we could only dream about a few years ago. These programs also enable timely desk-top publishing of high quality chess magazines such as *New In Chess*, *Inside Chess*, and *Chess Chow*. Exhaustive computer studies of endings such as ♠+♗ versus ♠ are available for purchase!

### Fifth, we face the prospect of computer chess machines playing even-up with Karpov and Kasparov, and winning.

There are lots of new ways of looking at the old game of chess.

### In my view, the purpose of the ICA is to promote chess activity in Illinois and the ICB acts as the record of that activity.

With your suggestions I want to make the chess calendar more useful. By taking advantage of new technology I hope to include more diagrams and games from Illinois events. To this end, I welcome submissions of games and interesting positions by Illinois chess players. Please view the *ICB* as the place to share and preserve the chess achievements of the Illinois chess community.

I would like to thank Bill Brock, Al Losoff, and Ken Marshall for their direct contributions of material and advice. I also would like to thank my wife and children for their patience while I struggled to pull together this issue.

# Andrew Karklins Wins Illinois Open

## GM Gurevich Upset By Computer Program BP

By Ken Marshall

SM Andrew Karklins (2408) defeated SM Peter Pelts (2410) in the final round to avenge his loss last year to Pelts and to win the 1991 Illinois Open and State Championship. The tournament drew 142 entrants to the Ramada O'Hare Hotel in Rosemont on August 31-September 2, 1991. Karklins took home the \$750 first prize by finishing 5.5-5 in the eighty-two player Open Section of the Illinois Maxi-Tour event, sponsored by the Illinois Chess Association.



Pelts and Karklins Duel for the Trophy in Round Six

The major story of the 1991 Open, however, was the performance of 2200 rated computer program BP, the brainchild of Bob Cullum of Prospect Heights. Since strong players frequently take the USCF option of refusing to be paired with a computer Cullum offered \$20 to anyone willing to play BP. BP scored well against tough opposition, going undefeated and numbering among its four victims GM Dmitry Gurevich (2606) and NM Florentino Innumerable (2206). It yielded draws only against NM Edward Zelkind (2380) and eventual tournament winner Karklins on its way to tie for second through fourth places. Gurevich, thwarted in his bid for a third straight Illinois State Championship, and Bill Colias (2425) also ended up 5-1, winning \$325 apiece. (BP was ineligible for prize money.) The BP-Gurevich game appears with annotations in Gurevich's *On The Road* column. Following his loss, the GM challenged BP to a match. Cullum considered the possibility, but declined, at least for the present. "The program still needs some work," said Cullum. "Maybe a match can be arranged after I correct those problems."

Returning to the human side of chess: Mariano Acosta, Albert Chow, Pelts, Mike Zelkind, and Scott Zingheim all went 4.5-1.5, winning \$20 each. Steve Szpisjak, Dan Kamen, Erik Karklins, and Gordon Wallace divided the \$300 Expert money, also with 4.5-1.5 scores. Donald Woodhouse and Gerard Jungman garnered Class A honors and shared \$300 for their 3.5-2.5 efforts.

## 1991 Illinois Open: Open Section

1	KARKLINS Andrew	2408	W30	W36	W22	D 2	W20	W 6	5.5
2	COMPUTER BP	2200	W27	W48	W 4	D 1	D14	W20	5
3	COLIAS Bill	2425	W73	W24	W23	D20	D10	W15	5
4	GUREVICH Dmitry	2606	W38	W31	L 2	W16	W33	W14	5
5	ACOSTA Marino A	2240	W54	W28	D21	W12	L 6	W24	4.5
6	PELTS Peter	2410	D63	W52	W56	W 9	W 5	L 1	4.5
7	CHOW Al	2381	W37	W57	D46	D 8	W22	D10	4.5
8	SZPISJAK Steve	2164	W55	W59	D14	D 7	D13	W27	4.5
9	ZELKIND Mike	2204	W60	D26	W39	L 6	W30	W21	4.5
10	ZINGHEIM Scott	2275	W53	W35	Dbye	W46	D 3	D 7	4.5
11	KARKLINS Erik	2174	W67	L56	D27	W73	W47	W32	4.5
12	GORDON Wallace	2136	W49	Dbye	W70	L 5	W52	W38	4.5
13	KAMEN Dan	2059	Dbye	W78	D15	W36	D 8	W23	4.5
14	ZELKIND Ed	2380	W61	W17	D 8	W21	D 2	L 4	4
15	COOPER Thomas L	2242	W79	D70	D13	W18	W34	L 3	4
16	DAMOCLES Job	2059	W43	L20	W60	L 4	W59	W34	4
17	WITKOWSKI Jim	2079	W42	L14	L34	W45	W56	W37	4
18	MARQUEZ Anthony	2057	L58	W44	W40	L15	W60	W33	4
19	MIDDLETON Douglas	2065	L72	W64	W54	L25	W61	W52	4
20	INNUMERABLE Fl.	2206	W81	W16	W47	D 3	L 1	L 2	3.5
21	STEIN Pete	2147	W68	W40	D 5	L14	W35	L 9	3.5
22	BENESA Arnulfo	2137	W64	W58	L 1	W48	L 7	D20	3.5
23	WACHTEL Howard	2148	W75	W72	L 3	D35	W26	L13	3.5
24	MOYNIHAN Kieran	-	W44	L 3	W28	W56	D25	L 5	3.5
25	POPOVICH Stava	2315	W34	L47	W26	W19	D24	-	3.5
26	SAX Rob	2043	W51	D 9	L25	W72	L23	W49	3.5
27	WOODHOUSE Donald	1942	L 2	W69	D11	W31	W36	L 8	3.5
28	BERRY Greg	2000	W77	L 5	L24	W66	W43	D22	3.5
29	RONNEBERG Erik	2276	L59	W75	W37	D47	L32	W48	3.5
30	JUNGMAN Gerard	1993	L 1	W42	D31	W70	L 9	W47	3.5
31	ASH Robert	2098	W80	L 4	D30	L27	W41	W50	3.5
32	WARREN Jim	2055	L40	D50	WF	W49	W29	L11	3.5
33	JORDAN Roland	2073	D41	D63	W59	W58	L 4	L18	3
34	KENDE Mark	1969	L25	W65	W17	W57	L15	L16	3
35	SMYTHE Bill	2034	W65	L10	W77	D23	L21	D42	3
36	MARSHALL James A	2082	W76	L 1	W63	L13	L27	W88	3
37	GILARDONI Gustavo	1985	L 7	W68	L29	W65	W57	L17	3
38	MADERA Bill	2000	L 4	D55	W76	D62	W58	L12	3
39	STINSON Marcus E	2018	D78	W41	L 9	L52	D68	W64	3
40	PORTER John	1820	W32	L21	L18	L61	W67	W59	3
41	VALLEJERA Sam	1473	D33	L39	D81	W75	L31	W60	3
42	HERNANDEZ Luis	1853	L17	L30	W74	D71	W53	D35	3
43	MC ALISTER Kelvin	1831	L16	Dbye	D50	W63	L28	W61	3
44	JESSEPH Steve	1888	L24	L19	L65	W82	W66	W83	3
45	FOHRO Virgilio	1878	L57	Dbye	W53	L17	D54	W56	3
46	PANGAN Camilo	2190	W50	W71	D 7	L10	-	-	2.5
47	ROGAN Marvin	2043	W66	W25	L20	D29	L11	L30	2.5
48	MILOVANOVIC Slavko	2029	W74	L 2	W51	L22	D50	L20	2.5
49	BRAFALI Rudi	1898	L12	D53	W78	L32	W71	L26	2.5
50	FULTON Stava	1941	L48	D32	D43	W77	D48	L31	2.5
51	LULVES Joseph	1816	L26	W81	L48	L59	W75	D54	2.5
52	FREEMAN David	1941	Dbye	L 6	W78	W39	L12	L19	2.5
53	LAHYIC Jim	1964	L10	D49	L45	W55	L42	W89	2.5
54	HALL Jeffrey	1954	L 5	W82	L19	Dbye	D45	D51	2.5
55	FRONEK Randy	1934	L 8	D39	L62	L53	W77	W74	2.5
56	EATON Jonathan	1976	W62	W11	L 6	L24	L17	L45	2
57	SPLINTER Joseph C	2081	W45	L 7	W61	L34	L37	-	2
58	PRADZINSKI Tim	1823	W18	L22	W71	L33	L38	-	2
59	COHEN Howard	1966	W29	L 8	L33	W51	L16	L40	2
60	HERNANDEZ Hector	1946	L 9	W74	L16	W89	L18	L41	2
61	MC NAMARA James	1878	L14	W66	L57	W40	L10	L43	2
62	YOOS Jack	2359	L56	D67	W55	D38	-	-	2
63	ANDERSON Phil	1898	D 6	D33	L36	L43	W72	L44	2
64	PUKEL Bernard B	1800	L22	L19	L66	W78	W65	L39	2
65	JOHNSON Eric L	1813	L35	L34	W44	L37	L64	W62	2
66	HANSEN Steven	1818	L47	L61	W64	L28	L44	W77	2
67	COHEN Larry	1935	L11	D62	L73	D76	L40	W72	2
68	RACE Tom	1913	L21	L37	Dbye	W79	D39	L36	2
69	MORRISON Michael	1682	L71	L27	Wbye	L60	W76	L53	2
70	JAKSTAS Kazimieras	2074	W82	D15	L12	L30	-	-	1.5
71	LORING Steve	2017	W69	L46	L58	D42	L49	-	1.5
72	FRAATS Daniel	1847	W19	L23	Dbye	L26	L63	L87	1.5
73	BERNAL Luis	2000	L 3	Dbye	W67	L11	-	-	1.5
74	GONCHAROFF Nick	1752	L46	L60	L42	Dbye	W82	L55	1.5
75	BOURGERIE Dennis	1918	L23	L29	W82	L41	L51	-	1
76	SEFCHECK Mark	1878	L36	Dbye	L38	D67	L69	-	1
77	JOHNSON Henderson	1549	L29	Wbye	L35	L50	L55	L68	1
78	BURGESS Fred	1735	D39	L13	L52	L64	-	-	.5
79	RICHMOND M Barrie	1963	L15	D80	L49	L68	-	-	.5
80	WULATIN David	1880	L31	D79	LF	-	-	-	.5
81	BUTTNY William P	1952	L29	L51	D41	-	-	-	.5
82	ALLISON Roger Dale	1949	L70	L54	L75	L44	L74	L65	.5

# Nalborczyk Tops Open Reserve



Grant and Nalborczyk Prepare to Draw

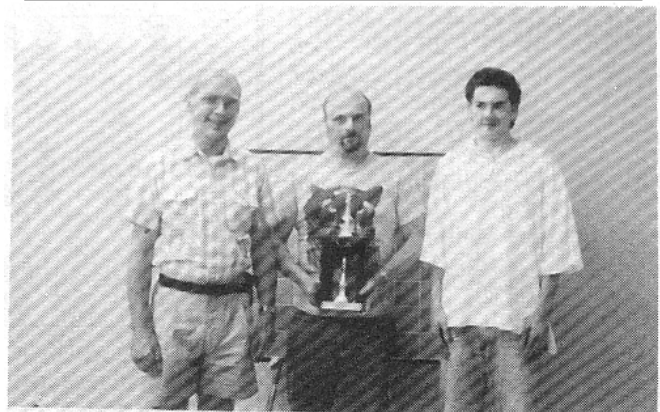
In the Reserve Section, Indiana resident Randall Nalborczyk won five games in a row, then drew with Dennis Grant to finish atop the 61 player field. Nalborczyk had played in only one tournament earlier this year after a six year layoff from chess. Nalborczyk pocketed \$300, but the Reserve Championship trophy, restricted to Illinoisans, went to Grant on tie breaks ahead of Tim Just and Adam Kalai, all of whom posted 5-1 marks and took home \$100 each. A nine way tie for Class C honors saw Keith Farral, Steve Josephs, Felix Wong, Alan Gasiiecki, Patrick Maurer, Max Uram, Saeed Zafar, Chung-Hay Poon, and Greg Cisko score 3-3 to win \$16.67 apiece. Larry Blum drew against two Class C and two Class D players on the way to a 3-3 score sufficient to win the \$100 Class D/E prize. Robert Bales' 2.5-3.5 result was good for \$50, the second place D/E money.

Besides providing a spacious, well lit and quiet site (including skittles rooms), the Ramada O'Hare donated two upset prizes. They presented a free room night to the player registered at the hotel who turned in the biggest upset on August 31 and on September 1. Larry Durrant (1438) [who beat John Pandis (1690)] and Larry Blum (1318) [who drew Kevin Connelly (1658)] earned those awards. ICA President Alan Losoff, who organized the tournament, praised the Ramada facilities and the cooperation of the Ramada staff in helping the event run smoothly. Players also were happy with the site, noting the excellent playing conditions, reasonable room rates, free parking, and proximity to "fast food" restaurants.

Losoff served as Chief Tournament Director, aided by Ed Blanco and Erv Sedlock. Losoff did the pairings using the Swis-Sys Version 6.0 program on a desktop computer. "The program paired quickly and correctly," said Losoff. "The directors checked the top pairings manually before each round, and confirmed that they were right."

## 1991 Illinois Open: Reserve Section

1 NALBORCZYK R	1721	W51	W24	W12	W15	W 5	D 2	5.5
2 GRANT Dennis	1612	D 5	W57	W17	W16	W21	D 1	5
3 KALAI Adam	1654	W49	D10	D 4	W27	W15	W 9	5
4 JUST Tim	1769	W59	Dbye	D 3	W14	L 20	W 8	5
5 MC CARTHY Mike	1798	D 2	W48	W13	W 8	L 1	W18	4.5
6 RYDBERG Steve	1781	W23	D20	L14	W37	W25	W17	4.5
7 CONNELLY Kevin	1658	L55	W30	D26	W39	W16	W21	4.5
8 HIERONYMUS K	1701	W46	W43	W 9	L 5	W11	L 4	4
9 GERTZ Charles E	1714	W26	W33	L 8	W13	W23	L 3	4
10 FLORES Joshua	1773	W38	D 3	W29	D20	D18	D14	4
11 UHLEAN Mike	1641	W26	D16	D21	W22	L 8	W23	4
12 SANCHEZ	1706	W36	W55	L 1	L23	W42	W31	4
13 CIESLEK David	1616	W53	W56	L 5	L 9	W45	W22	4
14 GRAY James Jr	1677	Dbye	W25	W 6	L 4	W29	D10	4
15 CLARK Wayne	1719	W42	W37	W22	L 1	L 3	D19	3.5
16 LIN James	1785	W27	D11	W35	L 2	L 7	W30	3.5
17 ENGELN Mark	1689	D25	W32	L 2	W36	W26	L 6	3.5
18 PANDIS John	1690	L41	W34	W55	W24	D10	L 5	3.5
19 BREITLING R	1619	W45	Dbye	L20	D26	W34	D15	3.5
20 YAKIL Behrooz	1695	W31	D 6	W18	D10	L 4	-	3
21 BARTOCCI Mario	1715	D32	W54	D11	W40	L 2	L 7	3
22 DITSWORTH T	1714	W34	W41	L15	L11	W27	L13	3
23 GORAL Brad	1600	L 6	W47	W43	W12	L 9	L11	3
24 IOVIN Daniel G	1618	W44	L 1	W48	L18	L31	W41	3
25 WONG Felix	1434	D17	L14	W38	W52	L 6	D29	3
26 BLUM Larry	1318	L11	W59	D 7	D19	D37	D32	3
27 CANNONE Chuck	1604	L16	W31	W44	L 3	L22	W46	3
28 GASIECKI Alan F	1517	L 9	D53	W57	W35	L17	D33	3
29 PADILLA Rudy	1872	W30	Dbye	L10	W33	L14	D25	3
30 ZAFAR Saeed	1411	L29	L 7	W46	W44	W40	L16	3
31 URAM Max	1446	L20	L27	W51	W48	W24	L12	3
32 POON Chung-Hay	1528	D21	L17	L45	W53	W38	D26	3
33 JOSEPHS Steven	1471	W60	L 9	Dbye	L29	W38	D28	3
34 CISKO Greg	1507	L22	L18	W53	W55	L19	W45	3
35 HALE Bob	1662	W47	Dbye	L16	L28	D41	W42	3
36 MAURER Patrick	1491	L12	W60	Dbye	L17	W49	D37	3
37 FARRAL Keith	1585	WF	L15	W47	L 6	D26	D36	3
38 SILVERMAN S	1582	L10	D49	L25	W54	L33	W44	2.5
39 BALES Robert	1377	Dbye	L50	WF	L 7	L32	W49	2.5
40 STAFFORD Jerry	1622	L43	W46	W41	L21	L30	-	2
41 DURRANT Larry	1438	W18	L22	L40	D49	D35	L24	2
42 FENNER Charles	1846	L15	D45	D49	W43	L12	L35	2
43 SANCHEZ Isaac	1315	W40	L 8	L23	L42	L46	W55	2
44 WHITMAN Rich	1256	L24	W51	L27	L30	W57	L38	2
45 BURIC Mike	1291	L19	D42	W32	Dbye	L13	L34	2
46 HENDERSON V D	1477	L 6	L40	L30	W47	W43	L27	2
47 WOOLLEY Scott	1343	L35	L23	L37	L46	W55	W48	2
48 JENKINS Mike	1281	W52	L 5	L24	L31	D51	L47	1.5
49 NOVAK James	1323	L 3	D38	D42	D41	L36	L39	1.5
50 WARREN Helen	1624	Dbye	W39	-	-	-	-	1.5
51 PALMER Kenneth	1587	L 1	L44	L31	W57	D48	-	1.5
52 WHITE Harde	1620	L48	Dbye	W54	L25	-	-	1.5
53 GLASS Dan	1184	L13	D28	L34	L32	L54	Wbye	-
54 WALLACE M	1499	Dbye	L21	L52	L38	W53	-	1.5
55 WIRTH M	1323	W 7	L12	L18	L34	L47	L43	1
56 REED B	1762	W58	L13	LF	-	-	-	1
57 STAKAUSKAS R	1157	Dbye	L 2	L28	L51	L44	-	0.5
58 DAVIS Jeff	1568	L56	Dbye	LF	-	-	-	0.5
59 MILOVANOVIC M	1570	L 4	L26	-	-	-	-	0
60 HAUPFELD S	1700	L33	L36	-	-	-	-	0
61 PARSONS Bob	1776	LF	-	-	-	-	-	0



Second through fourth: Grant, Just and Kalai

# Annotated Games From The Illinois Open By NM Tom Cooper

## Chow-Splinter B01 Illinois Open, 1991

1.e4 d5 2.exd5 wxd5 3.c3 wa5  
4.d4 f6 5.f3 g4 6.h3 h5 7.g4  
g6 8.e5

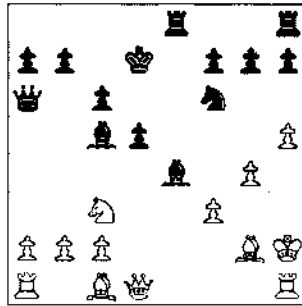
The plan of 8.e5 9.g2 and 10.h4 was introduced in Karpov-Larsen, Mar del Plata 1982. An outright attempt at refutation was seen in Volkov-Nenov, Shumen 1990 where white played : 8.b4 wxb4 9.d2 wd6 10.eb1 b6 11.g2 c6 (11...a6 12.e5 ea7 13.f4 we6 14.O-O wc8 15.h4 h6 16.fxg6 fxg6 17.g5+ Volkov) 12.e5 e4 13.fxe4 dxe4 14.fxe4 1-0 as 14...wxd4 15.wf3 wxe5 16.f4 wa5+ 17.wf1 d7 18.fxc6 e5 19.ed1 ed8 20.fxd7 and white wins. If 8.b4 works then black will have to play 6...xf3. 8...e6 9.g2 c6

Black's main choice and one that requires a piece sacrifice. Earlier games saw: 9...e4 10.fxe4 fxe4 11.wf3 fd6 Now correct is 12.O-O! e7 13.d5 O-O 14.e1 exd5 15.wxd5 wxd5 16.fxd5 d8 17.f4 c6 as in Jansa-Rodgers, Nice 1985, where according to Rodgers, 18.e3 ac7 19.ead1.

On 9...e4 what about that fd6? Can it keep an eye on both f7 and b7? In Swiecik-Wiese Jozwiak, Poland 1989, white's attempt to exploit the overloaded f knight backfired and instructively reveals the tactics behind 9...e4: 10.fxe4 fxe4 11.wf3 fd6 12.fxf7? fxf7 13.wxb7 ab4 14.wxa8 fxc3+ 15.bxc3 wxc3+ 16.e2 wc4+ (16...wxa1? 17.wxb8+ fd8 18.wxd8+ fxd8 19.fg5++) 17.e1 wc3+ 18.e2 O-O 19.f3 wc4+ 20.e1 fc6 21.wb7 eb8 0-1 since 22.wxc7 wc3+ 23.e2 fxd4+ wins the wc7. 10.h4 fbd7 11.fxd7

Also critical are 11.f4 wa6 12.f1 b5 13.h5 as in Karpov-Larsen and 11.w2 h5 12.g5 fd5 as in Chandler-Rodgers, Melbourne 1983. 11...fxd7 12.d5 exd5 13.h5 fe8+ 14.f1 wa6+ 15.fg1

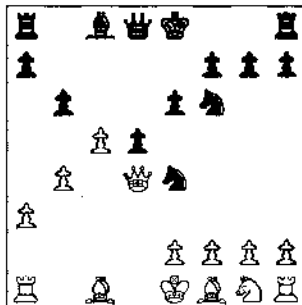
Necessary, as on 15.f2 fe2 16.wxe2 wxe2+ 17.fxe2 fxc2 the bishop escapes. 15...e4 16.f3 ac5 Wrong would be 16...wb6+ 17.f1 wa6+ 18.f2+ 17.fh2



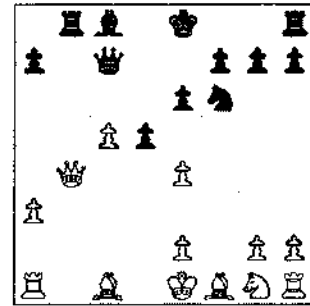
17...fxg4+? Missing his chance. According to Hazai, black can survive with 17...fd6+ 18.fh3 ag6 19.f1 fb6 20.fg2 d4 21.f2 c5 22.fxg6 fxg6 as black threatens to sac on g4 next. 18.fg4 fd6+ 19.fh3 fxg2+ 20.fxg2 fc4 Black threatens both ..d4 and ..fxg4. 21.f1? Better seems 21.fh3 to answer d4 with 22.f3. 21...fe7? Overlooking 21..d4 when the fc4 guards f7. If the knight moves then fe2+ and fxg4+ and white is mated. Missing this shot allows white to regroup and win with the extra piece. 22.fh3 fe8 23.f3 wc5 24.f5+ fd8 25.f4 fx4 26.f4 fe3+ 27.fg2 f6 28.h6 gxh6 29.f8+ fd7 30.fxb7+ fe6 31.fael d4 32.fxe3+ dxe3 33.fhx7 fd8 34.fxf6+ fe5 35.f5+ fd4 36.f4+ 1-0

## Acosta-Pelts E38 Illinois Open, 1991

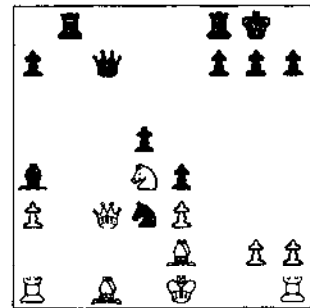
1.d4 f6 2.c4 e6 3.c3 ab4 4.wc2 c5 5.fxc5 a6 6.a3 fxc3+ 7.fxc3 fxc5 8.b4 The line 8.f3 d5 9.cxd5 b6 was a new idea in Miles-DeFirmian, Manila 1990. If 10.fxe6 fxe6 11.fg5 fc8 12.ed1 fe7 black has counterplay. 8...ce4 9.f3 ECO, 2nd edition, gives 9.f2 d5 10.c5 h6 11.f3 fg5 12.f4 fh5 13.f6 f5 14.e3 f7+ 9...d5 10.c5 b6



This involves a piece sacrifice. 10..h6 is the alternative. 11.f3 bxc5 12.bxc5 wa5+ 13.f4 fc7 On 13...fxb4+ 14.fxb4 fc3 15.f2 d4 16.e4+ 14.fxe4 fb8



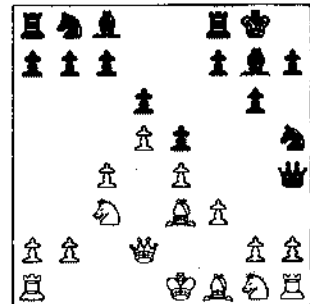
15...e5 Critical is 15.f4+ fd7 16.c6 O-O! as played in Invanchuk-DeFirmian Inf49/671 and Gurevich-Timman Inf51/558. 15...e5 If 16.f4+ (6.f3 fe4 17.fxd5 fb7 18.f3 fd8 19.f5+ fc6 20.f6 fd7 21.f3 wf5 22.f3 fe2+) 16...fd7 17.f2 fe4 18.e3 To be able to meet f5 with fd3. 18...fxc5= 19.f3 O-O 20.f2 fa4 21.f3 e4 22.f4 fd3+



Here white mistakenly gives up his queen. 23.fxd3? On 23.f2, white has some fight left: 23.f2 wxc3+ (23...fc5=) 24.fxc3 fc8+ 25.f2 d2 fxc1 26.fhxcl fb2+ 27.f2 fxc2 28.fxc2+- 23...exd3 24.fxd3 wc3+ 0-1

## Smythe-P.Stein E87 Illinois Open, 1991

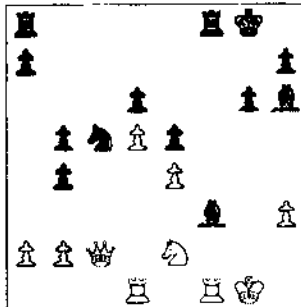
1.d4 f6 2.c4 g6 3.c3 ag7 4.e4 d6 5.f3 O-O 6.f3 e5 7.d5 fh5 8.f2 wh4+



An extremely sharp line and one well suited when a win for black is needed at any cost. 9.g3 On 9.f2 wf4 or fe7 are fine for black, and

9.♔d1 only works if black plays 9.♖g3? 10.Qf2. 9...♗xg3 10.♖f2 ♗xf1 11.♗xh4 ♗xe3 An original idea by Bronstein. For the queen, black has two bishops and two pawns along with the better pawn structure. IM Andrew Martin gives this line in his KI repertoire for black.

Kasparov-Seirawan, Barcelona 1989, was drawn. 12.♖f2 The acid test is 12.♖e2 ♗xc4 13.♖c1 ♗a6 14.♗d1 ♖b6 15.♗e3 ♗d7 16.♗h3 f6 with ♖b6-c8-e7. Kasparov-Seirawan Inf47/719. 12...♗xc4 13.♗b5 Pushing the ♗c4 back to b6 right away is better. 13.♖e2 ♖b6 14.h4 f5 15.h5± ECO. (14.O-O-O c6 15.dxc6 ♗xc6 16.♖xd6 ♗d4 was fine for black in Gligoric-Janosevic, Belgrade 1962.) 13...♗a6 Better ♖e2 14...c6! This move gains strength from the misplaced ♗b5. 15.♖xc4 cxb5 16.♖c3 b4 17.♖d3 ♗c5 18.♖d1 f5 White's loss of time with the ♖ allows black to strike quickly at the center. With no development and no avenues of entry into the black position, white is in trouble. Once the position is opened the ♗'s become "marauding chainsaws." 19.♖c2 fxe4 20.fxe4 ♗g4 21.♗e2 Threatening ♗e3. 22.h3 ♗f3 23.O-O b5-+



White is virtually paralysed. 24.♖b1? ♗xe2 25.♖xf8+ ♖xf8 26.♖e1 ♗e3+ 27.♖g2 ♗f3+ 28.♗h2 ♗xe4 29.♖d1 ♖f2+ 30.♖g3 ♖g2+ 0-1 ♗

**Blum-Connelly**  
Illinois Open Reserve, 1991

1.♗f3 ♗f6 2.b4 g6 3.♗b2 d5 4.c4 ♗g7 5.cxd5 O-O 6.g3 ♗xd5 7.♗xg7 ♖xg7 8.a3 c6 9.♗g2 a5 10.e4 ♗b6 11.♗c3 ♗c4 12.d4 axb4 13.axb4 ♗b2 14.♖b1 ♗d3+ 15.♖e2 ♖xa1 16.♖xa1 ♗xb4 17.♖c1 ♗g4 18.♖e3 ♖g8 19.♗e5 ♗e6 20.f4 f6 21.♗d3 ♗a6 22.♗f1 ♗b3 23.♗xb4 ♗xb4 24.♗d3 ♗xd3 25.♗xd3 b5 26.♖b1 ♗c4+ 27.♖e3 e5 28.♗d2 ♗xd4+ 29.♗xd4 exd4+ 30.♖f3 ♖d8 31.♗xc4 bxc4 32.♖xc4 d3 33.♖c1 d2 34.♖d1 ♖f7 35.♖e3 ♖e6 36.♖xd2 ♖xd2 37.♖xd2 ♖d6 38.h3 g5 39.♖d3 h5 40.h4 gxf4 41.gxf4 ♖c5 42.♖c3 ♖b5 43.♖b3 c5 44.e5 c4+ 45.♖c3 fxe5 46.fxe5 ♖c5 47.e6 ♖d6 48.e7 ♖xe7 49.♖xc4 ♖e6 50.♗d3 ♖f5

51.♖e3 ♖g4 52.♖f2 ♖xh4 53.♖g2 ♖g4 54.♖h2 h4 55.♖g2 h3+ 56.♖h1 ♖g3 57.♖g1 ♖f3 58.♖h1 ♖g3 59.♖g1 h2+ 60.♖h1 1/2-1/2

**Buric-Chung-Hay-Poon**  
Illinois Open Reserve, 1991

1.d4 d5 2.e3 e6 3.c4 ♗f6 4.c5 b6 5.b4 a5 6.b5 bxc5 7.♗a3 c4 8.♗xf8 ♖xf8 9.♗c3 ♗d7 10.a4 c6 11.♖b1 cxb5 12.axb5 ♖c7 13.♗ge2 ♖e7 14.♗a4 ♖c8 15.♗ec3 ♖d8 16.♗e2 ♖a7 17.♗c5 ♖ac7 18.♖a4 ♖e8 19.♖xa5 1-0

**Grant-Lin**  
Illinois Open Reserve, 1991

1.e4 c5 2.♗c4 a6 3.a3 ♗c6 4.♗f3 e6 5.♗c3 ♖c7 6.d4 cxd4 7.♗xd4 b5 8.♗xc6 dxc6 9.♗d3 ♗f6 10.♗g5 ♗e7 11.O-O O-O 12.♖e1 ♖b7 13.e5 ♗d5 14.♗xd5 cxd5 15.♖g4 ♖fe8 16.♗f6 ♗f8 17.♖e3 g6 18.♖h3 ♗g7 19.♗h4 h5 20.♖g5 ♖ec8 21.♗xg7 ♖xg7 22.♖xh5 ♖g8 23.♖h6+ 1-0

**Hieronymous-Uhlean**  
Illinois Open Reserve, 1991

1.d4 e6 2.e3 ♗f6 3.♗d3 d5 4.♗d2 c5 5.c3 ♗c6 6.f4 cxd4 7.exd4 ♖c7 8.♗h3 b6 9.O-O a5 10.♖e2 ♗e7 11.♗f3 ♖b7 12.♗e5 ♗xe5 13.fxe5 ♗e4 14.♗f2 ♗xf2 15.♖xf2 ♗f8 16.♖e2 ♖c8 17.♖d1 ♖d7 18.♖e2 ♖c8 19.♖b5+ ♗c6 20.a4 ♗e7 21.♗d3 f5 22.exf6 ♗xf6 23.♖h5+ ♖e7 24.♗g5 ♖e8 25.♖g4 h6 26.♗xf6+ gxf6 27.♖f4 f5 28.♗xf5 ♖c8 29.♖ae1 ♗d7 30.♗h3 ♖f8 31.♖h4+ ♖d6 32.♖g3+ ♖e7 33.♖g7+ ♖d6 34.♖f7 ♖xf7 35.♖xf7 ♖b8 36.♖f4+ ♖e7 37.♖xh6 ♖b7 38.♖g7+ ♖d6 39.♖e5+ ♖e7 40.♖xd5 ♖c7 41.♖e5 ♖c4 42.d5 ♖c5+ 43.♖h1 ♖xa4 44.♗xe6 ♖d6 45.♖g5+ ♖e8 46.♖g8+ 1-0

**Nalborczyk-McCarthy**  
Illinois Open Reserve, 1991

1.♗f3 ♗f6 2.b3 g6 3.♗b2 ♗g7 4.e3 O-O 5.♗c4 d5 6.♗e2 c5 7.c4 dxc4 8.♗xc4 ♗c6 9.♖c1 ♗a5 10.♗e2 b6 11.d4 cxd4 12.♗xd4 ♖b7 13.O-O ♗c6 14.♗c3 ♖c8 15.♖d1 ♖c7 16.♗bd2 ♗g4 17.♗xg7 ♖xg7 18.♖b2+ f6 19.♖ac1 ♖b8 20.h3 ♗h6 21.♗g5 ♗d8 22.♖xc8 ♖xc8 23.♖c1 ♖f5 24.♗g3 ♗e6 25.♗c4 ♗c5 26.♗d4 ♖d7 27.♖b5 ♗d5 28.♗2f3 e5 29.♖xc5 bxc5 30.♗c4 ♖d6 31.♖e6+ ♖h8 32.♗xf8 ♖xf8 33.♖d2 ♖e7 34.♗d5 ♗c8 35.e4 ♗g8 36.♖a5 h5 37.♖e1 g5 38.♗d3 g4 39.hxg4 ♗xg4 40.♗xc5 ♖g7 41.♖c3 h4 42.♗e6 ♗xe6 43.♗xe6 ♖g444.♗c5 ♖d1+ 45.♖h2 ♗h6 46.♖f3 ♖d6 47.b4 f5 48.♖h5 ♖g7 49.♖xh4 ♗g4+ 50.♖g3 ♖d2 51.♖e7+ ♖h6 52.♖f8+ ♖h7 53.♖xf5+ 1-0

**Just-Hieronimus**  
Illinois Open Reserve, 1991

1.d4 ♗f6 2.♗c3 g6 3.e4 d6 4.♗c4 ♗g7 5.♖e2 e5 6.♗g5 ♗bd7 7.♗f3 O-O 8.O-O-O ♖e8 9.dxe5 ♗xe5 10.♗xf6 ♗xf6 11.♗d5 ♗d8 12.♗xe5 ♖xe5 13.f4 ♖g7 14.g4 ♗e6 15.h4 c6 16.♗e3 ♗f6 17.e5 ♗xc4 18.♗xc4 dxe5 19.fxe5 ♗d8 20.♗d6 ♗c7 21.♖he1 b6 22.g5 h5 23.♖e4 c5 24.♖c6 ♗d8 25.♖b1 ♗e7 26.♖d7 ♗xd6 27.exd6 ♖fd8 28.♖e7 ♖f8 29.♖c1 ♖e8 30.♖f6 ♖a4 31.a3 ♖d7 32.♖e7 ♖ad8 33.♖xf7+ 1-0

**Join the Tour of Champions In November:**  
2 Chicagoland Plus-Score  
2-3 Lake County Open XIV  
23-24 Illinois Class Championships

**FIDE CHESS**  
GM M.Gurevich  
and Iclicki Willy  
125 Avenue Marechal  
Joffre  
1190 Brussels  
Belgium

Twenty air-mail  
shipments per year.  
Minimum of 12000  
games in ChessBase  
format.

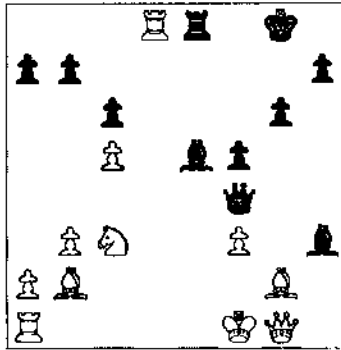
US \$245.

**Chessphone**  
708-832-5222

**Pelts-A.Karklins**

Illinois Open, 1991

1.c4 f6 2.d3 g6 3.g3 g7 4.g2  
 O-O 5.f3 d6 6.O-O e5 7.d4 b7  
 8.b3 e8 9.dxe5 dxe5 10.b2 e4  
 11.e1 g4 12.c1 d6 13.c2 c6  
 14.e3 a5 15.g4 g4 16.h3  
 d7 17.e3 h5 18.g4 g4  
 19.hg4 g4 20.f1 e5 21.f1  
 f5 22.c5 h2 23.f3 exf3 24.exf3  
 h3 25.g1 f4 26.d3 d8  
 27.d8



27...xf3+ 28.f2 g2+ 29.g1  
 h2+ 30.xh2 h3+ 0-1

**Pradzinski-Jordan**

Illinois Open, 1991

1.e4 c5 2.f3 c6 3.d4 cxd4 4.fxd4  
 e5 5.f3 f6 6.d3 c5 7.O-O O-O  
 8.g5 h6 9.h4 g5 10.g3 d6 11.a3  
 a5 12.c3 g4 13.e2 xf3 14.gxf3  
 d7 15.b5 h3 16.xc6 bxc6  
 17.h1 f8 18.c3 a4 19.g1 e6  
 20.h3 d8 21.d2 b3 22.c2  
 ab8 23.ab1 c4 24.g2 b5  
 25.f1 h5 26.c4 b6 27.d2  
 g3 28.g3 xa3 29.d1 c5  
 30.d6 d6 31.d6 b2 32.c5  
 xc2 33.cxb6 a3 0-1

**Benasa-Milovanovic**

Illinois Open, 1991

1.f3 d5 2.g3 c6 3.d4 f6 4.g2  
 e6 5.O-O d6 6.c4 dxc4 7.a4 d7  
 8.xc4 O-O 9.c3 a6 10.e4 b5  
 11.e2 e5 12.dxe5 dxe5 13.c2  
 b8 14.dxe5 dxe5 15.e3 g4  
 16.c5 e8 17.d1 c8 18.d5!  
 h8 19.e7 e7 20.dxe7 e8  
 21.c5 h6 22.h3 f6 23.f4 d6  
 24.f2 b4 25.e5 g8 26.xc7 e6  
 27.b3 f8 28.a7 a5 29.c1 a4  
 30.bxa4 c4 31.f1 e2 32.d7  
 e7 33.c7 c4 34.c5 dxc5+  
 35.xc5 g6 36.xf8+ f8  
 37.d2 e6 38.b7 b7 39.dxb7  
 c5 40.d5 xa4 41.dxc4 bxc4  
 42.d8+ h7 43.c8 b2 44.f5  
 d3 1-0

**Woodhouse-Ash**

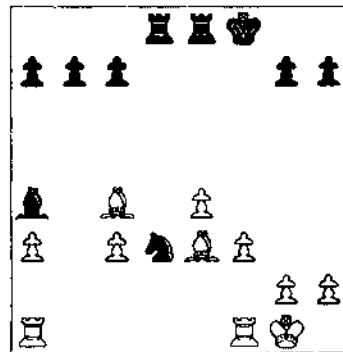
Illinois Open, 1991

1.e4 e5 2.f3 c6 3.b5 a6 4.a4  
 f6 5.O-O dxe4 6.d4 b5 7.b3 d5  
 8.dxe5 e6 9.e2 e7 10.d1 O-O  
 11.c4 bxc4 12.dxc4 d7 13.c3  
 xc3 14.bxc3 f6 15.xa6 dxe5  
 16.d4 f7 17.b5 c6 18.f4 cxb5  
 19.fxe5 fxe5 20.xe5 d6 21.g3  
 h8 22.g5 g6 23.xf6 gxf6?  
 24.f2 e4 25.d2 e6 26.b2  
 d3 27.b3 c6 28.c5 f5  
 29.d4 c4 30.f2 c8 31.b3 e6  
 32.d2 e8 33.xc4 dxc4 34.f1  
 e7 35.f5 e6 36.xb5 xa2  
 37.f5 d8 38.xc4 d2 39.c6  
 e3+ 40.h1 e2 41.xf6+ 1-0

**Moynihan-Eaton**

Illinois Open, 1991

1.d4 d5 2.c4 c6 3.f3 g4 4.cxd5  
 xf3 5.dxc6 dxc6 6.c3 f6 7.f3 e5  
 8.dxe5 xd1+ 9.fxd1 d7 10.e6  
 b4+ 11.c3 c5? 12.exf7+ xf7  
 13.e4 e8 14.c4+ f8 15.O-O  
 d8 16.a3 dxc3 17.bxc3 a4  
 18.e3 d3



19.d1! b5 20.d3 d1 21.d1  
 c6 22.e2 a6 23.d8 d8 24.e5  
 f7 25.f4 e6 26.f2 d5 27.f3+  
 e6 28.d4 a5 29.e3 c8  
 30.g4+ 1-0

**Madera-Gurevich**

Illinois Open, 1991

1.d4 f6 2.c4 c5 3.d5 b5 4.cxb5 a6  
 5.e3 b7 6.c3 a5 7.d2 axb5  
 8.xb5 b6 9.b3 e6 10.e4  
 10...f4 11.f4 d5 12.e3  
 xb5 13.c3 c6 14.f5 d5  
 15.f3 e7 16.O-O xa2 17.xa2  
 xa2 18.e5 O-O 19.c3 f6 20.g3  
 e5 21.h4 e6 22.e1 d5 23.f4 d4  
 24.f5 b3 25.g6 hxg6 26.fxg6 d8  
 27.e4 dxc3 28.h3 f5 29.dxe5  
 d1+ 30.h2 d6 31.xc3 xe5+  
 32.xe5 d6 0-1

**McAlister-Anderson**

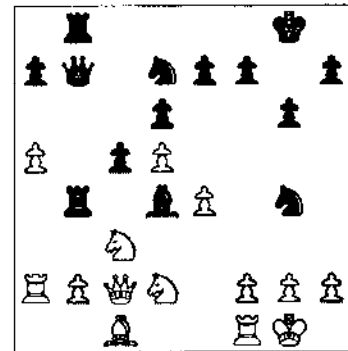
Illinois Open, 1991

1.d4 f5 2.g3 f6 3.g2 g6 4.f3  
 g7 5.b3 O-O 6.b2 d6 7.O-O a6  
 8.c4 c5 9.d5 c7 10.c3 b8 11.d2  
 e5 12.dxe6 dxe6 13.e4 dxe4  
 14.dxe4 fxe4 15.dxe4 d5 16.cxd5  
 fxd5 17.c1 f6 18.g2 g4 19.f3  
 f5 20.e4 dxe4 21.fxe4 xd1  
 22.cxd1 g4 23.xf8+ xf8  
 24.g7 g7 25.h3 e3 26.d3  
 g2 27.g2 f7 28.e5 e7  
 29.d5 b6 30.f3 g5 31.e4 h6  
 32.d6 h5 33.f5 g4 34.hg4 hxg4  
 35.e6 f8 36.f6 h7 37.d8+  
 Mate 1-0

**E. Johnson-Gilardoni**

Illinois Open, 1991

1.d4 f6 2.c4 c5 3.d5 b5 4.c2 g6  
 5.e4 d6 6.f3 g7 7.e2 O-O 8.O-O  
 bxc4 9.dxc4 a6 10.e1 dxc4  
 11.xc4 b7 12.a4 b8 13.c3  
 b4 14.d3 g4 15.c2 b6 16.a5  
 b7 17.d2 d4 18.f1 b8  
 19.a2



19...a6 20.b3 d5 21.f3 d3  
 22.xc3 b3 23.e1 xf3 24.b2  
 fb3 25.d2 d3 26.dxe5 dxe5  
 27.xd3 d3 28.f3 b2 29.a1  
 f4 30.g3 g2+ 31.h1 b2  
 32.f1 xh2+ 33.g1 h3+ 0-1

**Jordan-Gurevich**

Illinois Open, 1991

1.c4 c5 2.c3 b6 3.f3 b7 4.e3  
 f6 5.d4 cxd4 6.exd4 e6 7.g5 e7  
 8.e2 O-O 9.O-O d5 10.b3 c6  
 11.xf6 dxf6 12.cxd5 exd5 13.d2  
 d6 14.ac1 ac8 15.fel g6  
 16.f1 a6 17.g3 b5 18.g2 fe8  
 19.h3 d8 20.e2 e4 21.g2  
 de8 22.d1 e4 23.f1 c8  
 24.h3 f5 25.g1 b4! 26.c1  
 d4 27.fxd4 d1+ 28.d1  
 d4 29.d5 e2 and black won.  
 0-1



# You Asked For It!!

The Publishers of *New In Chess* are Proud to Present

## NICBASE 3.0

The Chess Database for Every Serious Player — novice to GM — teacher, journalist, organizer, or fan. Integrated with the authoritative *New in Chess Yearbooks and Magazine* (edited by Jan Timman), **NICBASE 3.0** offers many new features in addition to the high quality data management and study options that made **NICBASE 2.0** the choice of many critics and players worldwide.

### 12 EXCITING NEW FEATURES YOU WANTED

1. Reads **ASCII** gamescores. 2. Online help. 3. Player Background storage. 4. Wide-range Key search (e.g. K1 33 thru K1 54). 5. **KEY** reorganization. 6. Sort games within **KEY**. 7. List and review games selection. 8. New Select Options. 9. More Game Information fields. 10. Extended Annotations Window. 11. Scroll through games with mouse. 12. LCD Display Reversal for Laptops. In addition to **NICBASE's** popular end- and middle-game **Pattern Search** to select games with specific positions or themes (f.e. "hanging pawns"), many **ASCII** export options, unlimited storage of games in **KEY** or database, densest data format, statistical analysis, annotation options, tutorials, and user-friendly installation.

### 5 POWERFUL UTILITIES YOU REQUESTED

1. **NICSORT** (offers many new ways to sort your gamefiles). 2. **NICAPPEND** (add one gamefile to another without 'porting'). 3. **NICFORCE** (global edit and replace game information items — names, places, etc.). 4. **NICTABLE** (generates a tournament crosstable). 5. **NICKEYLIST** (prints out your key — all or in part). Supplements the popular utilities **NICTWICE** (handles duplicate games, including New edit function), **NICPRINT** (dot-matrix diagrams), **NICRECOV** (recovers deleted games), **NICCLEAN** (copies your **KEY** for new data), **NICBAKUP** (helps insure against loss of data).

**10 HISTORIC TOURNAMENT DISKS 1834-1943 + 25 NEW OPENINGS COLLECTIONS + 4 NEW PLAYERS' COLLECTIONS YOU SUGGESTED** in addition to 4 **Yearbook** and 20 **Tournament** data disks issued each year: **EVERY GAME COMPLETE** — even games briefly cited in **Yearbook** articles are complete on the data disk. **Now over 110 data disks to choose from.** And the **NIC KEY** — devised by the Informant team especially for computer management of chess openings — has been updated by the **NIC Yearbook** staff, indexing 14,600 opening positions!

<b>NICBASE 3.0</b>	<b>\$175.00</b>
<b>SUPPLEMENT</b> (all games from YB 1-18)	<b>\$130.00</b>
<b>33,400 TOURNAMENT GAMES 1988-1990</b>	<b>\$410.00</b>

**Buy All 3 Now & SAVE**  
**\$595.00**

**SPECIAL OFFER** - shipping included for a limited time only! Including Full **NIC KEY 3.0** classifying over 14,600 positions.

**NICTOOLS** (all 10 utilities mentioned above). **\$125.00**

System requirements:

MS-DOS: ver. 2.0, 512k RAM, graphics card, mouse.  
ATARI ST: 520, monochrome monitor, DS-DD drive.  
Hard disk is required for full **KEY** and large database

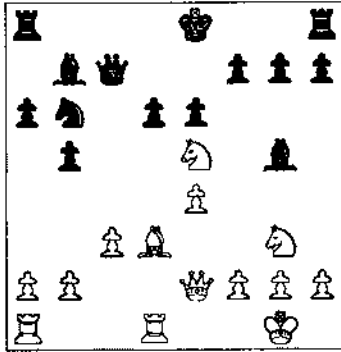
Orders and inquiries to:

**CHESS COMBINATION INC. 2423 Noble Station, Bridgeport CT 06608-0423**

**Satisfaction Guaranteed.** All prices are in U.S. dollars and must be prepaid in US funds drawn on a US bank by check, money order, VISA, MasterCard, or American Express. Connecticut residents must pay sales tax. If your software does not work properly we will cheerfully replace it.

**A.Karklins-Benesa**  
Illinois Open, 1991

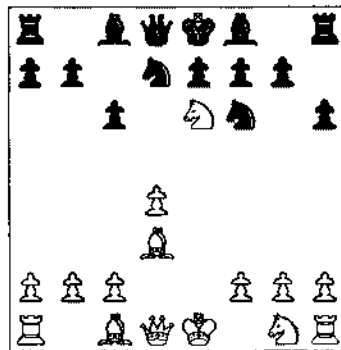
1.e4 c5 2.♖f3 d6 3.♗c4 e6 4.♗e2 a6  
5.c3 b5 6.♗b3 c4 7.♗c2 ♗b7 8.d3  
cxd3 9.♗xd3 ♖f6 10.O-O ♗e7  
11.♖bd2 ♖fd7 12.♗d1 ♗c7 13.♖f1  
♖c6 14.♖g3 ♖b6 15.♗g5 ♖e5  
16.♗xe5 ♗xg5



17.♗xb5+? axb5 18.♗xb5+ ♗e7  
19.♖xf7 ♖xf7 20.♗xg5 ♗hd8 21.♗d4  
♗g8 22.♖h5 h6 23.♗g4 ♗f7 24.♗b4  
♗a6 25.♗d1 ♗h7 26.h3 ♗c8 27.♗h4  
♗d7 28.♗d3 g5 29.♗g4 ♗g6 30.a3  
d5 31.♖f3 ♖f7 32.e5 ♖d7 33.♖xf7+  
♗xf7 34.♗e2 ♗a7 35.f4 ♖c5  
36.♖f6+ ♖h8 37.fxg5 hxg5 38.♗e3  
♖e4 39.♖xe4 dxe4 40.♖xe4 ♗f5  
41.♖c4 ♗a8 42.♖g4 ♗a6 43.♖xg5  
♗b1+ 44.♗h2 ♗d3 45.♗f3 ♗a7  
46.♗f6+ 1-0

**Pangan-Fulton**  
Illinois Open, 1991

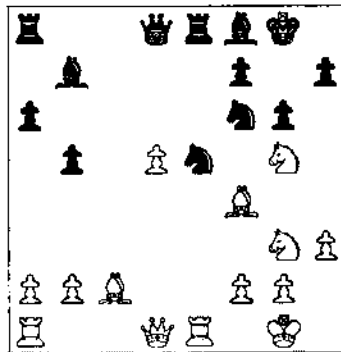
1.e4 c6 2.d4 d5 3.♖c3 dxe4 4.♖xe4  
♖d7 5.♖g5 ♖g6 6.♗d3 h6 7.♖e6



7...♗b6 8.♖f3 fxe6 9.♗g6+ ♖d8  
10.O-O ♖d5 11.c4 ♖b4 12.a3 ♖a6  
13.b4 e5 14.c5 ♗c7 15.♖xe5 ♖xe5  
16.dxe5+ ♗d7 17.e6 ♗c8 18.♗f4  
♗d8 19.♗f5 ♗e8 20.♗c2 ♖c7  
21.♗ad1 ♖d5 22.♗e5 h5 23.♗c4 a6  
24.♗e4 h4 25.♗xd5 ♗h5 26.♗xc6  
♗xd1 27.♗d7+ ♗xd7 28.exd7+  
♗xd7 29.♗xd1+ ♗e8 30.c6 ♖c8  
31.c7 ♗h6 32.♗d5 1-0

**BP-A.Karklins**  
Illinois Open, 1991

1.e4 e5 2.♖f3 ♖c6 3.♗b5 a6 4.♗a4  
♖f6 5.O-O ♗e7 6.♗e1 b5 7.♗b3 d6  
8.c3 O-O 9.h3 ♖a5 10.♗c2 c5 11.d4  
cxd4 12.cxd4 exd4 13.♗xd4 ♗b7  
14.♖f5 ♗e8 15.♗f4 ♖c4 16.♖d2 ♖e5  
17.♖f3 ♗f8 18.♖g5 g6 19.♖g3 d5  
20.exd5



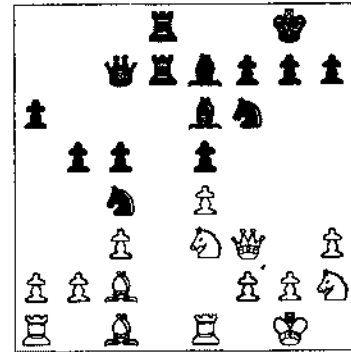
20...Nxd5 21.Rxe5 Nxf4 22.Rxe8  
Qxd1+ 23.Rxd1 Rxe8 24.Bb3 Re7  
25.f3 Bc6 26.Rd4 Ne2+ 27.Nxe2  
Rxe2 28.Nxf7 Kg7 29.Nd8 Bc5  
30.Kf1 Bxd4 31.Kxe2 Bd7 32.Be6  
Be8 33.b3 Bb6 34.Nb7 Kf6 35.Bc8  
Ke5 36.b4 Bf7 37.Na5 Bxa5 38.bxa5  
Bxa2 39.Bxa6 Bc4+ 40.Ke3 Kd5  
41.Bc8 Kc5 42.f4 b4 43.g4 b3  
44.Kd2 Kb4 45.Bb7 Kxa5 46.Kc3  
Bf7 47.Bc6 Kb6 48.Ba4 Kc5 49.h4  
Be6 50.g5 Kd6 51.Bb5 Bd5 52.Be2  
Bf7½-½

**Gurevich-Damocles**  
Illinois Open, 1991

1.d4 ♖f6 2.c4 e6 3.g3 d5 4.♗g2 c5  
5.cxd5 exd5 6.♖f3 ♖c6 7.O-O ♗e6  
8.♖c3 ♖c8 9.♗g5 c4 10.♖e5 ♗b6  
11.♗xc6 bxc6 12.♗xf6 gxf6 13.e4  
dxe4 14.♖xe4 ♗e7 15.♖c5 ♗xc5  
16.dxc5 ♗xc5 17.♗f3 ♗e7 18.♖fe1  
♗b8 19.♗e2 ♗hd8 20.♗ae1 ♗d5  
21.♖f4 ♗e5 22.♖xe5 fxe5 23.♖xe5  
♗d6 24.♗g5+ ♖d7 25.h4 ♖xb2  
26.♗e3 ♖xa2 27.♗e4 ♗a3 28.♗c1  
♗d3 29.♖h2 ♗d1 30.♗e3 c5 31.♗a3  
♗d4 32.♗xa7+ ♗e8 33.♗e1 ♖f8  
34.♗a8+ ♖g7 35.♗a1 f6 36.♗a7+  
♖h6 37.♗e4 f5 38.♗f3 c3 39.♗a3  
♖xh4+ 40.♗g2 ♗e4 41.♗a8 ♗f7  
42.♗h8 c2 43.♗h1+ 1-0

**Woodhouse-BP**  
Illinois Open, 1991

1.e4 e5 2.♖f3 ♖c6 3.♗b5 a6 4.♗a4  
♖f6 5.O-O ♗e7 6.♗e1 b5 7.♗b3 d6  
8.c3 O-O 9.h3 ♖a5 10.♗c2 c5 11.d4  
♗c7 12.dxe5 dxe5 13.♖bd2 ♗d8  
14.♖h2 ♗e6 15.♗f3 ♗d7 16.♖df1  
♗ad8 17.♖e3 ♖c4



18.♖f5 ♖d2 19.♖xe7+ ♖xe7 20.♗e2  
♗ed7 21.b3 ♗a5 22.♖f3 ♗xc3  
23.♗xd2 ♗xc2 24.♗a5 ♗xe2  
25.♖xe2 ♗d1+ 26.♗xd1 ♖xd1+  
27.♖h2 c4 28.♗d2 ♖xd2 29.♖xd2  
♖d7 30.bxc4 bxc4 31.♗g3 ♖c5  
32.♖f3 f6 33.♗e2 ♖f7 34.♗b4 ♖d3  
35.♗a3 ♖f4+ 36.♖f3 c3 37.♖b3 ♖d3  
38.♗e3 ♖e1 39.♗e2 ♖xg2 40.♖f3  
♖f4 41.♖d4 exd4 42.♖xf4 d3 43.♗e3  
d2 44.♗e2 ♗xa2 0-1

**BP-Innumerable**  
Illinois Open, 1991

1.e4 c5 2.♖f3 ♖c6 3.d4 cxd4 4.♖xd4  
♖f6 5.♖c3 d6 6.♗g5 e6 7.♗d2 a6  
8.O-O-O ♗c7 9.♗e2 ♗e7 10.f4 b5?  
11.♖xc6 ♗xc6 12.e5! b4 13.♗f3 d5  
14.♖e2 ♖d7 15.♗xe7 ♖xe7  
16.♗xb4+ ♗e8 17.♗d3 ♖b8 18.♗d4  
♗b6 19.♗hd1 ♗e7 20.♖b3 ♗xd4  
21.♖xd4 ♗b7 22.♗e2 ♖hc8 23.♖xb7  
♖xb7 24.♗xa6 ♖cc7 25.♗xb7 ♖xb7  
26.a4 f6 27.♖c6+ ♗e8 28.exf6 gxf6  
29.f5 e5 30.♗xd5 ♖b6 31.♗d6 ♖c5  
32.a5 ♗a6 33.b4 ♖e4 34.♗d8+ ♖f7  
35.b5 1-0

**Pradzynski-Marquez**  
Illinois Open, 1991

1.e4 e5 2.f4 exf4 3.♖f3 d5 4.exd5  
♗g4 5.♗b5+ ♖d7 6.O-O a6 7.♗e1+  
♗e7 8.♗e2 ♖g6 9.♖c3 ♖b6 10.d4  
♗d6 11.♖e5 ♗xe2 12.♗xe2 ♖fxd5  
13.♖xd5 exd5 14.c4 ♖e3 15.♗xe3  
fxe3 16.♗xe3 ♖f8 17.c5 ♖h6 18.♗d3  
O-O-O 19.c6 ♗c5 20.♗f5+ ♖b8  
21.dxc5 bxc6 22.♖d7+ 1-0

# MIDDLE AMERICA OPEN

NOVEMBER 1-3 or 2-3, 1991  
at Breckenridge Frontenac Hotel (St Louis)  
**\$5,000 GUARANTEED PRIZES!**

5-round Swiss at the elegant Breckenridge Hotel, 1335 S. Lindbergh Blvd. (near Rt 40, 2 miles east of I-270), Frontenac (St. Louis) 63131.  
**\$5,000 PRIZES UNCONDITIONALLY GUARANTEED.**

**In 3 sections:** Open & Amateur 40/2, SD/1; Reserve 40/90, SD/1. All sections have optional 2-day schedule with time limit G/90 rds. 1-2.

**Open**, open to all. Entry fee: 3-day \$49, 2-day \$48 postmarked by 10/26, all \$60 at tmt. \$\$ 1000-500-250-150-100, Under 2200 (no unrated) \$400-200. FIDE rated; 40 Grand Prix Points.

**Amateur**, open to under 2000 or unr. Entry fee: 3-day \$43, 2-day \$42 by 10/26, all \$50 at tmt. \$\$ 500-250-150-100, Under 1800 (no unrated) \$300-150; no unr may win over \$300.

**Reserve**, open to under 1600 or unr. Entry fee: 3-day \$33, 2-day \$32 postmarked by 10/26, all \$40 at tmt. \$\$ 350-150-100-50, Under 1400 (no unrated) \$200-100; no unr may win over \$150.

**Open & Amateur schedules: 3-DAY:** Fri 7, Sat 11 & 6, Sun 9 & 3:30;  
**2-DAY:** Sat 10, 2, & 6, Sun 9 & 3:30.

**Reserve schedules: 3-DAY:** Fri 8, Sat 12 & 6, Sun 9 & 2:30; **2-DAY:** Sat 10, 2, & 6, Sun 9 & 2:30.

**All:** Re-entry \$30. Half point byes available all rounds (rds. 4-5 must commit before tmt); Open Section U2200 limited to 1 bye. Foreign unr. must play in Open section. Late entries end 45 min. before your 1st game.

**Hotel rates:** \$64-64, 314-993-1100, reserve by 10/7, ask for chess rate. Free parking; free transportation from St. Louis airport.

**Special airfares or car rental rates:** Gramercy Travel, Continental Chess desk, 800-537-3881.

**Room sharing, car pool info:** Call 914-668-6025 for phone numbers of players seeking roommates, drivers, or passengers to share expenses.

**Bring sets, boards, clocks** if possible- none supplied.

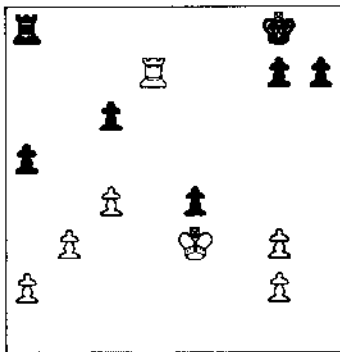
**Rated Beginners Open, Nov. 3:** A separate 1-day, 4-round, G/30 event, open to under 1200 or unrated. Entry fee \$10; free if joining USCF for first time. Plaques to top 4. Enter 12-12:45 pm; rds. 1, 2, 3, 4.

**Mail entries to:** Continental Chess, 450 Prospect Ave, Mt Vernon, NY 10553. No credit cards, no phone entries, no smoking, no computers, 914-668-6025 for questions.

**A.Karklins-Jungman**

Illinois Open, 1991

1.e4 c5 2.♂f3 ♀c6 3.d4 cxd4 4.♁xd4 ♀f6 5.♁c3 e5 6.♂f5 d5 7.exd5 ♁xf5 8.dxc6 bxc6 9.♂f3 ♁d7 10.♂g3 e4 11.♁e2 ♁g6 12.♁f4 ♁e7 13.♁d1 ♂b7 14.♁d6 O-O 15.♁xe7 ♂xe7 16.♁d6 ♂b7 17.b3 ♂b6 18.♁a4 ♂a5+ 19.♁d2 ♂e5 20.♂c3 ♂g5 21.O-O ♁d5 22.♂g3 ♂xg3 23.hxg3 e3 24.c4 exf2+ 25.♂xf2 ♀f6 26.♁f3 ♀e4+ 27.♁xe4 ♁xe4 28.♁c5 f5 29.♁d7 ♁fd8 30.♁fd1 ♁xd7 31.♁xd7 a5 32.♁e7 ♁b1 33.♁e1 ♁c2 34.♁c1 ♁e4 35.♁d1 ♂f7 36.♁d7+ ♂g8 37.♁xe4 fxe4 38.♁e3



38...a4 39.♁xe4 axb3 40.axb3 ♁a2 41.♁d3 ♁a5 42.♁f3 g6 43.♁d4 ♁g5 44.b4 ♁g7 45.♂b3 ♂f6 46.b5 c5+ 47.♁e4 ♁e5+ 48.♂f3 ♁f5+ 49.♁e2 ♁e5+ 50.♁e3 1-0

**A.Karklins-Innumerable**

Illinois Open, 1991

1.e4 c5 2.♂f3 ♀c6 3.d4 cxd4 4.♁xd4 ♀f6 5.♁c3 d6 6.♁b5 ♁d7 7.O-O e6 8.♁e1 ♁e7 9.♁xc6 bxc6 10.e5 dxe5 11.♂f3 O-O 12.♁xe5 ♁e8 13.♂f3 ♁d5 14.b3 f6 15.♁c4 ♁b4 16.♁b2 ♁f7 17.a3 ♁e7 18.♁e4 ♂c7 19.♁cd2 e5 20.♂g3 ♀f4 21.♂f5 ♁d5? 22.♁xe7+ ♂xe7 23.♂xf4 ♂c5 24.♂f5 ♁ad8 25.b4 ♂e7 26.♂f1 ♁e6 27.♂e4 ♁d5 28.♂e2 ♂f7 29.♁e3 ♁e6 30.♁ad1 h5 31.h4 g5 32.hxg5 fxg5 33.♁xe5 h4 34.♁xd8 ♁xd8 35.♁g4 1-0

**M.Zelkind-Jungman**

Illinois Open, 1991

1.e4 c5 2.♁c3 e6 3.g3 b6 4.♁g2 ♁b7 5.♁ge2 ♀f6 6.O-O d6 7.d4 cxd4 8.♁xd4 ♁d7 9.♁g5 ♁e7 10.♁d2 O-O 11.♁ad1 a6 12.f4 ♁d8 13.f5 ♁c6 14.fxe6 fxe6 15.♁h3 ♁xd4 16.♁xd4 b5 17.♂e3 ♂h8 18.♁d5 ♁xd5 19.exd5 ♁xg5 20.♂xg5 ♂c7 21.♁xe6 ♁f8 22.c3 ♁ae8 23.♁xf8+ ♁xf8 24.♁d4 ♁f6 25.♂e3 ♂e7 26.♁e4 ♂f8 27.♁h3 ♁xd5 28.♁e8 1-0

**E. Zelkind-Szpisjak**

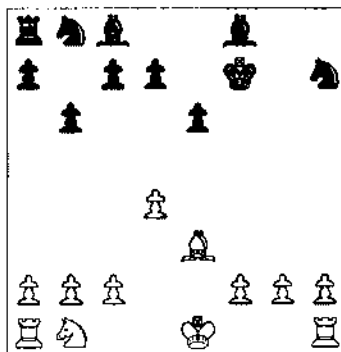
Illinois Open, 1991

1.e4 e5 2.♂f3 ♀f6 3.♁c3 ♁b4 4.♁d5 ♁xd5 5.exd5 e4 6.♁d4 ♂g5 7.♁b5 ♁a6 8.c3 ♁e7 9.d6 cxd6 10.d4 ♂g6 11.♂b3 O-O 12.♁f4 ♁e8 13.♁d5 ♂e6 14.♁c4 ♁f8 15.O-O ♂b8 16.♁xd6 ♁xd6 17.♁xd6 ♂xd5 18.♁xd5 ♀c7 19.♁xe4 b5 20.♁fe1 ♂b6 21.♁xc8 ♁xc8 22.♁f5 ♁d8 23.♁e2 g6 24.♁c2 a5 25.♁ae1 ♂g7 26.g3 ♀e6 27.♁e3 b4 28.♁b3 ♁a8 29.♁a4 ♁a7 30.♁d3 bxc3 31.bxc3 ♂b2 32.a3 ♁a2 33.c4 ♂b7 34.♁b5 d5 35.cxd5 ♁xb5 36.dxe6 fxe6 37.♁xe6 ♁f5 38.♁e7+ ♂f6 39.♁xh7 ♁xfx2 40.♁d1 ♁g2+ 41.♂h1 ♁ge2 42.d5 ♁ed2 43.♁xd2 ♁xd2 44.♁d7 ♁a2 45.d6 ♁xa3 46.♂g2 ♁d3 47.h4 a4 48.♁a7 ♁xd6 49.♁xa4 ♁c6 50.♁f3 ♁c8 51.♁a6+ ♂g7 52.♁a4 ♁b8 53.♂g4 ♁b5 54.♂f4 ♁b1 55.♁a5 ♂f6 56.♁a6+ ♂g7 57.♁d6 ♁f1+ 58.♂g5 ♁f5+ 59.♂g4 ♁a5 60.♁e6 ♁b5 61.♁e4 ♁b1 62.♁f3 ♁f1+ 63.♂g2 ♁a1 64.g4 ♁a3 65.♁e2 ♁a4 66.♂f3 ♂h6 67.♁e4 ♁a1 68.♁e7 ♁a3+ 69.♂f4 ♁a4+ 70.♁e4 ♁a1 71.♂e5 ♂g7 72.♁d4 ♁e1+ 73.♂f4 ♁e7 74.♁d6 ♁b7 75.♂e5 ♁e7+ 76.♁d5 ♁e1 77.g5 ♁d1+8-8

**Cooper-Kende**

Illinois Open, 1991

1.♂f3 f5 2.e4 fxe4 3.♂g5 ♀f6 4.d3 e3 5.♁xe3 e6 6.d4 b6 7.♁d3 ♂e7 8.♁xh7 ♁xh7 9.♁xh7 ♀xh7 10.♂h5+ g6 11.♂xg6+ ♂f7 12.♂xf7+ ♂xf7

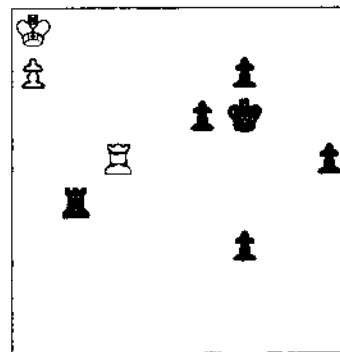


13.♁d2 ♁b7 14.f3 ♁c6 15.c3 ♀e7 16.♁e4 ♂g6 17.O-O-O ♁d5 18.♁d2 ♁h6 19.h4 ♁xd2+ 20.♁xd2 ♀hf6 21.♂xf6 ♂xf6 22.♂h3 ♁h8 23.♁e1 ♀h5 24.g4 ♀f4 25.h5+ ♂f6 26.♁g3 ♂g5 27.♂e3 ♁h6 28.♂h1 b5 29.♁gg1 ♁d5 30.b3 a5 31.♁h2 a4? 32.bxa4 bxa4 33.♁b1 ♁c6 34.c4 e5 35.d5 ♁xd5 36.cxd5 ♁xd5+ 37.♁f2 ♀c3 38.♁b8 ♂f6 39.♂g3 d5 40.♂h4 ♁e7 41.g5 ♁b6 42.♁xb6 cxb6 43.h6 ♂f7 44.h7 ♂g7 45.g6 1-0

**E. Zelkind-BP**

Illinois Open, 1991

1.d4 d5 2.♁c3 ♀f6 3.♁g5 ♁bd7 4.e3 e6 5.♂f3 ♁b4 6.♁d3 ♁xc3+ 7.bxc3 c5 8.c4 dxc4 9.♁xc4 ♂a5+ 10.♁d2 ♂xd2+ 11.♁xd2 cxd4 12.exd4 b6 13.♁b5 ♁b7 14.f3 ♁c8 15.♁c4 ♁e7 16.♁e3 h6 17.♁xd7 ♁xd7 18.♁xf6 gxf6 19.♁d2 ♁hg8 20.a4 ♁g5 21.♁a3 ♁cg8 22.♁b1 ♁c6 23.c4 ♁e7 24.♁e1 ♁h5 25.h3 ♁a5 26.♁c3 ♁gg5 27.♂b4 ♁b7 28.♁e2 h5 29.h4 ♁g8 30.♁c2 ♁d8 31.♁c3 f5 32.f4 ♁g8 33.♂b4 ♁e4 34.♁d2 ♁d8 35.♂f1 ♂f6 36.♁e3 ♁c6 37.c5?! ♁xc5 38.dxc5 ♁xd2 39.g3 ♁d4+ 40.♁c4 ♁d5 41.♁c3 ♁xc4 42.♁xc4 bxc5+ 43.♁xc5 ♁d3 44.♂b5 ♁xg3 45.♂a6 ♁e3 46.a5 ♁e4 47.♁c5 ♁xf4 48.♂xa7 ♁xh4 49.a6 f4 50.♂b7 f3 51.a7 ♁b4+ 52.♂a8



52...♁f4 [52...♁a4 53.♁xh5 e5 54.♂b7 ♁xa7+ 55.♂xa7 e4+ 56.♂b6 f2 57.♂h1 e3 58.♁f1 ♁e5] 53.♂b7 f2 54.a8♂ f1♂ 55.♁d8+ ♂g7 56.♂g5+ ♂h7 57.♁xh5+ ♂g7 1/2-1/2

**Marquez-Cooper**

Illinois Open, 1991

1.e4 c6 2.d3 e5 3.♂f3 ♀f6 4.g3 ♁e7 5.c3 d6 6.h3 O-O 7.♁g2 ♁e8 8.♁e3 ♁f8 9.♂c2 ♂c7 10.♁bd2 a5 11.♁c4 ♁bd7 12.a4 b6 13.O-O ♁a6 14.♁fd2 d5 15.♁a3 ♁ad8 16.exd5 cxd5 17.♁b5 ♁xb5 18.axb5 h6 19.d4 e4 20.♁ac1 ♁c8 21.♂b1 ♂b7 22.b3 ♁d6 23.c4 ♁b4 24.cxd5 ♁xd2 25.♁xd2 ♂xd5 26.♁e3 ♂xb5 27.♁c2 ♁xc2 28.♂xc2 ♀f8 29.♁c1 ♁d7 30.♂c6 ♁d5 31.♂h2 ♁e6 32.♂a4 ♂xa4 33.bxa4 ♁d7 34.♁c8+ ♂h7 35.h4 ♁xe3 36.fxe3 ♀f6 37.♁h3 ♁d6 38.g4 g5 39.♂g3 gxf4+ 40.♂xh4 ♁d5 41.♁g2 ♁e6 42.♁d8 ♁xe3 43.d5 ♁xg2+ 44.♂g3 ♁g6 45.d6 ♁e3 46.d7 ♁d6 47.♂f4 ♁xg4 48.♂xg4 ♂g7 49.♂f5 e3 50.♂e5 ♁xd7 0-1

What do 85 of the top 100 players in the world have  
that you don't have?

## ChessBase 3.0

Train with the Best! Join players like Kasparov, Karpov, Gelfand, Nunn, Anand, Ftacnik, Salov and many more who recognize that ChessBase's speed, power and efficiency can make the difference between a good performance and a *great* performance.

### ChessBase Magazine

*"...the world's single largest source  
of grandmaster-annotated games..."*

6 disks a year, 5,000 games, 300-500 an issue  
annotated by the world's strongest players -  
recent annotators include Grandmasters Mikhail Gurevich,  
Korchnoi, Anand, Gelfand, Salov, Huebner,  
King, Ftacnik, Nunn, Blatny and Sax \$115 a year

### Special *FREE* Offer!!

Send \$3 postage/handling for free ChessBase 3.0 demo  
with 159-game data base for a hands-on test

### Order Now!!

Basic Package including 1000 games - **\$295**  
Deluxe Package including 11,000 games - **\$395**  
ChessBase Access - **\$39.95**

### ChessBase Author Disks

*"...put the world's strongest players  
in your corner..."*

Your favorite openings on disk  
with recommendations and annotations  
by leading grandmasters. Current selections  
include the Ruy Lopez, King's Indian,  
Nimzo-Indian, Catalan, Sicialian, French,  
English, Benoni and the Italian Game. **\$29 ea**

System requirements: MS-DOS, min 512K, DOS 2.0 or higher, graphics card - hard drive and mouse recommended.

**...if you can't afford ChessBase, you can't afford to be without...**

## Access!

**A growing number of players across the country are finding that you don't have to own  
ChessBase 3.0 to stake a claim to a piece of the ChessBase rock.**

ChessBase Access is a remarkable new way to join a select group of users who have direct access to the world's largest, most important bank of grandmaster-annotated games. For only \$39.95, you can put the world's strongest players to work for you, analyzing the latest games and recommending razor-sharp improvements.

ChessBase 3.0 is the most exciting, dynamic way to stay on the cutting edge of chess theory. But if you can't afford ChessBase, there's still no reason to settle for second best. Access is designed to deliver the power and flexibility of ChessBase 3.0 to players with limited budgets or smaller computers at a fraction of the price. Access requires no hard drive and is not copyprotected. A great way to join the ChessBase revolution and learn to use the world's most important chess database while you save up the money to upgrade your machine or to buy the full ChessBase package.

### Special Offer!!!

For a limited time only, purchasers of Access  
will be able to trade in their original Access disk  
and manual for a \$39.95 credit to upgrade to the full  
ChessBase 3.0.



Call or write:

### ChessBase USA

2153 Highway 35  
Sea Girt, NJ 08750  
(908) 974-9085

FAX: (908) 528-5730

(Orders only: 1-800-524-3527)

### Warren-Ronneberg

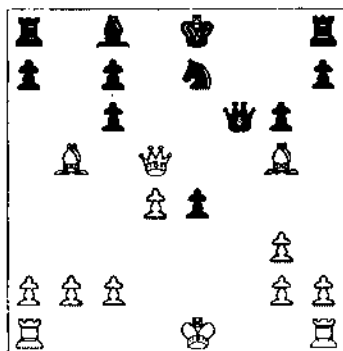
Illinois Open, 1991

1.d4 ♖f6 2.c4 g6 3.♗c3 ♖g7 4.e4 d6  
 5.f3 O-O 6.♙e3 ♗c6 7.♗d2 a6 8.O-O-  
 O e5 9.♗e2 exd4 10.♗xd4 ♗xd4  
 11.♗xd4 ♙e6 12.♗d5 c5 13.♗xf6  
 ♗xf6 14.♗xf6+ ♗xf6 15.♗c3!  
 ♗xc3+ 16.bxc3 ♗fd8 17.♗d2 ♗ab8  
 18.♗b2 ♗d7 19.♗d2 ♗f8 20.♙e2  
 ♗e7 21.♗e3 ♗c6 22.♗d1 ♗f8 23.f4  
 f6 24.g3 ♗fe8 25.♗f3 ♗d7 26.♗bd2  
 ♗e6 27.e5! fxe5 28.♗g4 exf4+  
 29.♗xf4 ♗e7 30.♗xe6 ♗xe6  
 31.♗xd6+ ♗e7 32.♗d2 h6 33.♗e1+  
 ♗f7 34.h4 ♗f8 35.♗g4 ♗g8 36.♗e7  
 ♗f3+ 37.♗h3 h5 38.♗d6 ♗g4+  
 39.♗h2 ♗f5 40.♗xb7 ♗e4 41.♗e7  
 ♗f5 42.♗xa6 ♗d8 43.♗aa7 ♗d2+  
 44.♗g1 1-0

### Ronneberg-Rogan

Illinois Open, 1991

1.e4 e5 2.♗f3 ♗c6 3.♗b5 f5 4.♗c3  
 ♗xe4 5.♗xe4 d5 6.♗g3 e4 7.♗e5 ♗f6  
 8.d4 ♗d6 9.♗xc6 ♗xg3 10.fxg3 bxc6  
 11.♗h5+ g6 12.♗xd5 ♗e7 13.♗g5



13...♗xd5 14.♗xf6 ♗xf6 15.♗xc6+  
 ♗d7 16.♗xa8 ♗e7 17.♗xe4?! ♗xe4  
 18.O-O-O ♗d6 19.♗he1 ♗e8 20.c4  
 h5 21.♗e3 c6 22.♗de1 ♗f6 23.♗xe8  
 ♗xe8 24.b4 ♗f6 25.♗b2 ♗f5 26.♗b3  
 ♗e4 27.♗e2 ♗d3 28.♗d2 ♗e4 29.h3  
 ♗f5 30.♗e2 ♗d3 31.♗e5 ♗e4 32.♗a5  
 ♗xg2 33.h4 ♗e4 34.♗xa7 ♗xg3  
 35.♗g7 ♗e4 36.a4 ♗e2 37.a5 ♗xd4+  
 38.♗c3 ♗e6 39.♗g8 ♗c7 40.♗d4 ♗f5  
 ½-½

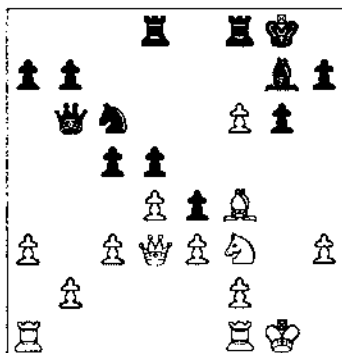
# Chessphone

# 708-832-5222

### Eaton-Pelts

Illinois Open, 1991

1.d4 ♗f6 2.♗f3 g6 3.♗g5 ♗e4 4.♗f4  
 ♗g7 5.♗bd2 d5 6.e3 c5 7.♗d3 ♗f5  
 8.h3 ♗c6 9.g4 ♗xd2 10.♗xd2 ♗xd3  
 11.♗xd3 ♗b6 12.O-O O-O 13.c3  
 ♗ad8 14.a3 f6 15.g5 e5! 16.gxf6 e4!

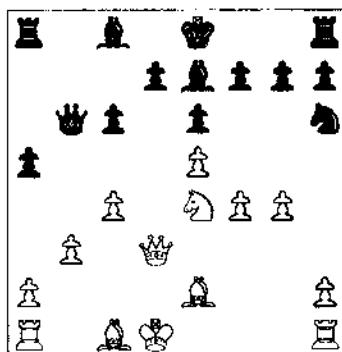


17.♗d1 ♗xf6 18.♗g5 ♗xg5 19.♗xg5  
 ♗f3! 20.b4 cxb4 21.cxb4 ♗df8  
 22.♗b3 ♗f5 23.h4 ♗c7 24.♗g2  
 ♗d7 25.♗h6 ♗g5+ 0-1

### Szpisjak-Chow

Illinois Open, 1991

1.e4 c5 2.♗f3 e6 3.d4 cxd4 4.♗xd4  
 ♗f6 5.♗c3 ♗c6 6.♗xc6 bxc6 7.e5  
 ♗d5 8.♗e4 ♗c7 9.f4 ♗b6 10.c4 ♗e3  
 11.♗d3 ♗f5 12.b3 a5 13.g4 ♗b4+  
 14.♗d1 ♗h6 15.♗e2 ♗e7

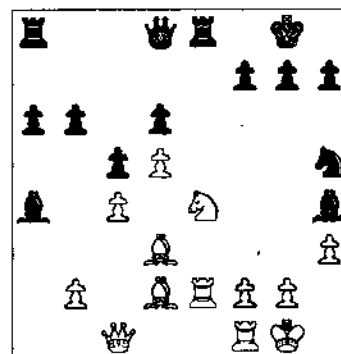


16.♗d6+ ♗xd6 17.♗xd6 ♗b4  
 18.♗a3 ♗xd6+ 19.♗xd6 f6 20.exf6  
 gxf6 21.♗c2 ♗f7 22.♗a3 d5 23.♗b2  
 e5 24.cxd5 cxd5 25.g5 ♗f5+ 26.♗d2  
 fxg5 27.fxe5 O-O 28.♗ac1 ♗fe8  
 29.♗b5 ♗e7 30.♗hg1 h6 31.h4 ♗xe5  
 32.♗xe5 ♗xe5 33.hxg5 hxg5  
 34.♗xg5+ ♗f7 35.♗c7+ ♗f6  
 36.♗gg7 ♗g6 37.♗d3 ♗xd3 38.♗xd3  
 ½-½

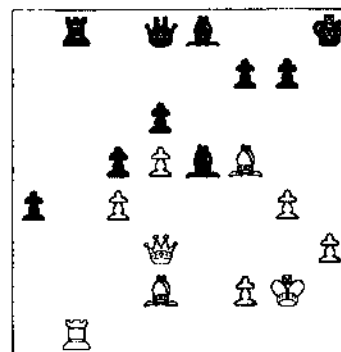
### Jungman-Jakstas

Illinois Open, 1991

1.d4 ♗f6 2.c4 e6 3.♗f3 b6 4.a3 ♗b7  
 5.♗c3 ♗e7 6.d5 O-O 7.e4 exd5  
 8.exd5 ♗e8 9.♗e2 d6 10.O-O c5  
 11.♗c2 ♗bd7 12.h3 a6 13.a4 ♗f8  
 14.♗d2 ♗c8 15.♗d3 ♗g6 16.♗ae1  
 ♗d7 17.♗e2 ♗h5 18.♗c1 ♗h4  
 19.♗xh4 ♗xh4 20.♗e4 ♗xa4



21.♗b1! ♗e7 22.g4 ♗f6 23.♗xf6+  
 ♗xf6 24.♗xh7+ ♗h8 25.♗xe8+  
 ♗xe8 26.♗f5 ♗e5 27.♗g2 b5 28.b3  
 bxc4 29.bxc4 ♗b8 30.♗d3 a5 31.♗b1  
 a4?



32.♗a5! ♗xb1 33.♗xd8 ♗b3 34.♗d1  
 ♗b2 35.♗c2 a3 36.♗d3 g6 37.♗xa3  
 ♗xc2 38.♗a8 ♗g7 39.♗e7 ♗d4  
 40.♗xe8 ♗xf2+ 41.♗g3 1-0

### Bourgerie-Vallejera

Illinois Open, 1991

1.e4 c5 2.♗f3 ♗c6 3.♗c3 a6 4.a4 e6  
 5.d4 cxd4 6.♗xd4 ♗e7 7.♗e2 ♗f6  
 8.♗b3 ♗b4 9.♗d3 ♗xc3+ 10.bxc3  
 h6 11.♗a3 d5 12.exd5 ♗xd5 13.♗g3  
 ♗e5 14.♗d3 ♗d5 15.c4 ♗f4 16.♗f3  
 ♗xe2 17.♗xe2 ♗xe2+ 18.♗xe2 f6  
 19.♗hd1 ♗f7 20.c5? e5 21.♗d6 ♗f5  
 22.♗d2 ♗he8 23.♗e1 ♗e7 24.♗c3  
 ♗c8 25.♗b2 ♗g6 26.c3 ♗g5 27.♗d2  
 ♗e6 28.♗e4+ ♗g6 29.♗dd1 ♗a5  
 30.♗d6 ♗c6 31.♗b4 ♗b3 32.f4 ♗xc5  
 33.f5+ ♗xf5 34.♗e3 ♗e6 35.♗g3+  
 ♗h7 36.♗a3 ♗d7 37.♗xc5 ♗xc5 and  
 black won on time. 0-1

# Tim Just's Winter Open/Reserve IX

A College of Lake County Event

## \$1725 in Prizes

**January 11 - January 12, 1992**

College of Lake County, Main Building  
19351 W Washington at Route 45  
Grayslake, Illinois 60030

**Rounds:** SSS: Saturday 9 - 2 - 7; Sunday: 10 - 3

**Byes:** ½ point available in rounds 1, 2, 3, or 4

**Time Controls:** 40/90, G/30.

**Entry Fee:** \$32 Early, \$40 Late and Telephone.

**Sections:**

Open is open to all players

Reserve is restricted to players below 1800

**Prizes** (based on 60 entries):

**Open:** 225,150,100;Expert 125,100;A 125,100.

**Reserve:** 225,150,100;C 125,100;D/E/Unrated 100.

**Early Registration** (before 1/7/92) and Information:

Tim Just  
37165 Willow Lane  
Gurnee, Illinois 60031  
708-244-7954

**Late Registration:** At the site: 1/11/92; 8:00-8:45 AM

*No Smoking on Campus!*

ICA Maxi-Tour Event: ICA Membership Required of IL Residents.

## HAMMOND WINTER SWISS - An ICA Mini-Tour Event

**WHEN:** Saturday, December 14, 1991      **WHAT:** 4 Round Swiss

**WHERE:** Hammond Chess Club: Hammond Public Library, Howard Branch  
171st and Grand Avenue, Hammond, Indiana (only 10 min from IL-IN border)

**ENTRY:** \$15, \$12 for HCC members      **REG:** 8:00-8:30 a.m.      **ROUNDS:** 9, 12, 3, 6

**TIME CONTROL:** 30/60, SD/30      1/2 pt. bye in 1st round if requested in advance

**PRIZES:** \$350 b/30 - 1st \$85, 2nd \$60, 3rd \$45, Class A \$40, B \$35, C \$25,  
D/E/Unr \$20, Top junior \$20, Biggest upset \$20.

**ADV. ENTRIES:** Jim Enochs, 6436 Jefferson Ave., Hammond, IN 46324 (219) 932-1437

**NO SMOKING    NO COMPUTERS    ICA MEMBERSHIP** required for IL residents

**DIRECTIONS:** I-80/94 to Cline Ave. (4 mi. east of IL-IN border). Cline north 1 mi.  
to 169th. 169th 1/2 mi. west to Grand. Grand south 1/4 mi. to site.  
**From I-90:** Exit at Cline Ave., then 2 mi. south to 169th and as above.

# On The Road

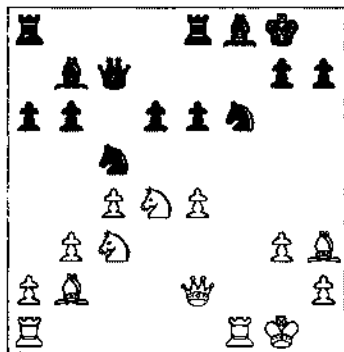
by GM Dmitry Gurevich

## Philadelphia

We begin our story this time at the end of June when my former student Alex Fishbein stopped in Chicago on his way from Kasper, Wyoming to the East Coast. It took us only 14 hours to drive to New Jersey to see Alex's father Gregory. A few days later we were in Philadelphia, attending the World Open. While Alex played only in the main event. He finished with 6½-2½, and made his second GM norm. I played in the competitions with shorter time controls.

### Palatnik-Gurevich Philadelphia, US G/60 Ch 1991

1.c4 c5 2.♠f3 ♠f6 3.♠c3 b6 4.e4 d6 5.d4 cxd4 6.♠xd4 e6 7.g3 ♠b7 8.♠g2 ♠bd7 9.O-O a6 10.b3 ♠c7 11.♠b2 ♠e7 12.♠e2 O-O I have played the opening a little carelessly (6...♠b7 would have been better) yet I feel very comfortable with the Hedgehog regardless of the move order. Oddly, since this game I have heard "hedgehog" used only as a derogation. 13.f4 ♠fe8 14.f5 ♠f8? This mistake has a history. In Beer Sheva (1984) I analysed a similar position with Roumanian GM Suba. I tried to convince him that black is OK. Now, after seven years I admit he was right. Black must break his hedgehog with 14...e5. 15.fxex6 fxe6 16.♠h3 ♠c5

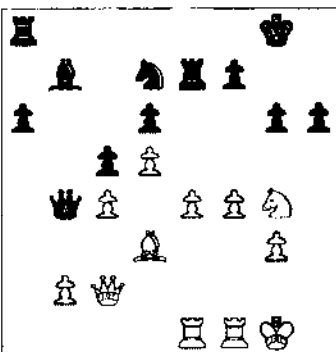


17.♠xf6! A very nice exchange sacrifice. Black's pawns are too weak. 17...gxg6 18.b4 e5?! More stubborn is 18...♠b7-c8 returning the piece without immediately adding to black's weaknesses. I underestimated white's next move. 19.♠c2! I had expected 19 ♠f5 when

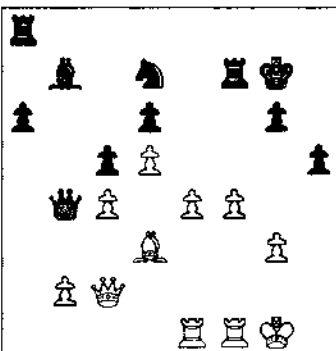
♠e6 holds. 19...♠e6 20.♠xe6+ ♠xe6 21.♠g4+ ♠f7 At this point Palatnik left himself only 10 minutes, letting me hope that he might be content with the draw 22.♠h5 ♠g8 23.♠g4. 22.♠e3! What a disappointment! I am lost now, but I could have put up better resistance. 22...♠g7? 23.♠xd5! ♠c6 24.♠f1 ♠g8 25.♠f5 ♠xc4? 26.♠c1 ♠xd5 27.♠h5+! ♠f8 28.exd5 ♠xc1+ 29.♠xc1 ♠e8 1-0

Despite the short time control, this game reveals the underlying power of Palatnik's play, and the basis for his subsequent success in the world open. Fortunately, this crushing loss did not break my spirit as I made 3½-½ in the next four rounds.

### Gurevich-Rogers Philadelphia, US G/60 Ch, 1991



31...h5?! A provocative and risky move. 32.♠h6+! The only way to get advantage is through this piece sacrifice. 32...♠g7 33.♠xf7! ♠xf7 What does white have for his piece?



34.e5 dxe5 35.♠xg6 ♠f6 36.♠f5! ♠af8 [36...♠c8 37.fxe5+ ] 37.♠xd7 ♠xd5 This counter-sacrifice falls short. 38.cxd5 ♠d4+ 39.♠f2 ♠xd5 40.♠d1 ♠b3 41.f5! ♠b8 42.♠e6 ♠xb2 43.♠xc5 and white won in a few moves. 1-0

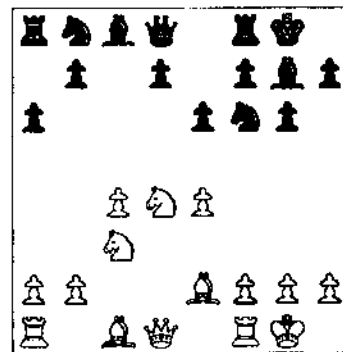
This was not GM Norman Rogers best game! Rogers has beaten a number of strong players in recent years including Fedorowicz and Benjamin.

In the last round I managed to beat the strong Soviet IM Schneider and tied for the second place (5½-1½) with many good players including Dolmatov, Azmaiparashvili, and Fedorowicz. GM Joel Benjamin took clear first with 6-1, a prelude to his strong second place finish in the US Championship.

My next tournament was the "World Open Warmup" with a normal time control. SM Emory Tate has given me trouble in the past, so this next game gave me a measure of revenge.

### Gurevich-Tate Philadelphia, WO Warmup, 1991

1.c4 g6 2.d4 ♠f6 3.♠c3 ♠g7 4.e4 O-O 5.♠f3 c5 6.♠e2 cxd4 7.♠xd4 e6? 8.O-O! a6?!

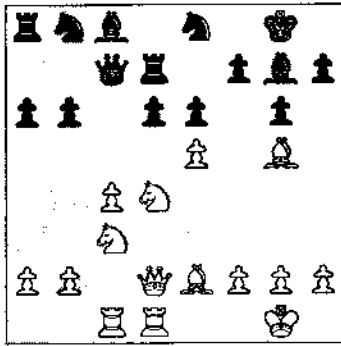


Instead of playing a normal Maroczy position with 7..d6 and 8...♠c6 black sets up a "hedgehog". By the way, GM Stean coined this term in 1978 as Korchnoi's second. He meant it as a derogatory comparison to the "dragon". 9.♠e3 ♠c7 10.♠c1 d6 11.♠d2 ♠d8 12.♠fd1 b6? Some people (myself included a few years ago) believe that they can play the hedgehog against anything. 13.e5 Surprise. If 13...dxe5 14.♠e6 ♠xd2 15.♠xc7+- 13...♠e8 14.♠g5 ♠d7

See you on the tour:  
October

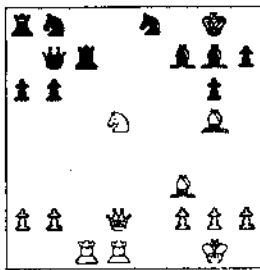
12 Pawn Harvest, Springfield  
12 Chicagoland Plus Score  
19 Oak Park/Forest Park  
Autumn Action  
19-20 MicroResales  
Champaign Open



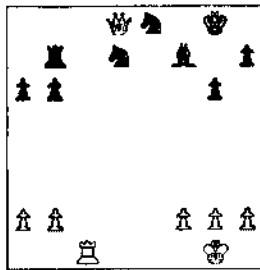


15.  $\Delta d5!$  Now black has a difficult choice. Taking the knight leads to difficult positions. A possible line:

[15...exd5 16.e6 fxe6 17.cxd5  $\mathbb{W}b7$  18.dxe6  $\mathbb{C}c7$  19. $\Delta f3$  d5 20. $\Delta e2$   $\Delta xe6$  21. $\Delta f4$   $\Delta f7$  22. $\Delta xd5$



which I regard as +/-, but 22... $\mathbb{C}xc1$  23. $\mathbb{C}xc1$   $\mathbb{C}a7$  24. $\Delta f6+$   $\Delta xf6$  25. $\Delta xb7$   $\Delta xg5$  26. $\mathbb{W}xg5$   $\mathbb{C}xb7$  27. $\mathbb{W}d8$   $\Delta d7$  with an obscure position still:



So black decides not to take on d5: 15... $\mathbb{W}a7$  16. $\Delta f6+$   $\Delta xf6$  17.exf6  $\Delta h8$  18. $\mathbb{C}c3$   $\mathbb{C}d8$  19. $\Delta f3$  e5 20. $\Delta c2$  The same maneuver as the Palatnik game:  $\Delta d4$ -c2-e3-d5. 20... $\Delta b7$  21. $\Delta b4$  e4 22. $\Delta g4$  Korchnoi now jokingly calls all bad positions "hedgehogs". 22... $\Delta c6$  23. $\Delta d5$   $\Delta e5$  24. $\Delta e7+$   $\mathbb{C}f8$  25. $\Delta h3$  h6 26. $\Delta h4!$  No, no, its the Queen who belongs on h6! 26...g5 27. $\Delta xg5$  hxg5 28. $\mathbb{W}xg5$   $\Delta g6$  29. $\mathbb{W}h6+$   $\mathbb{C}e8$  30. $\Delta xg6$   $\Delta xf6$  31. $\mathbb{W}f8+$  1-0

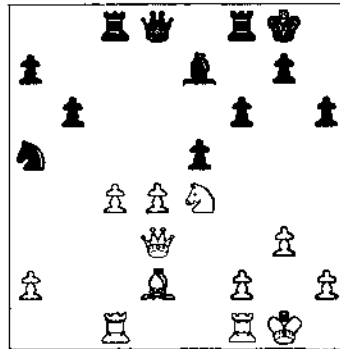
I tied for first in this event (3½-½) with IM Georgi Orlov, SM Miles Ardaman, and SM Ken Potts.

The next game took place during the World Open Action Championship,

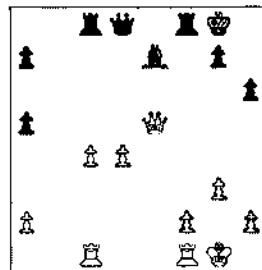
(game in thirty minutes). For some time, I could not figure out why I lost!

**Vukic-Gurevich**  
Philadelphia, WO g/30 Ch  
A46, 1991

1.d4  $\Delta f6$  2. $\Delta f3$  e6 3. $\Delta g5$  c5 4.e3 cxd4 5.exd4 b6 6.g3?  $\Delta b7$  7. $\Delta g2$   $\Delta e7$  The moves  $\Delta g5$  and  $\Delta g2$  do not work well together in this line. White is not ready to give up his dark square bishop. 8.O-O O-O 9.c4 h6 10. $\Delta f4$  d5 11. $\Delta e5$   $\Delta c6$  12. $\Delta c3$   $\Delta a5$  13.b3  $\mathbb{C}c8$  14. $\mathbb{C}c1$  dxc4 15. $\Delta xb7$   $\Delta xb7$  16.bxc4  $\Delta a5!$  Black effortlessly achieves a superior position. White must defend his hanging c and d pawns, a constant headache. 17. $\mathbb{W}d3$   $\Delta d7!$  Simplification will expose the weakness of the pawns. 18. $\Delta e4$   $\Delta xe5$  19. $\Delta xe5$  f6! 20. $\Delta f4$  e5 21. $\Delta d2$



Black has many choices. He can win a pawn, win a piece for two pawns, or simply add to his advantage. For example, 21...f5 22. $\Delta xa5$  fxe4 23. $\mathbb{W}xe4$  bxa5 24. $\mathbb{W}xe5$

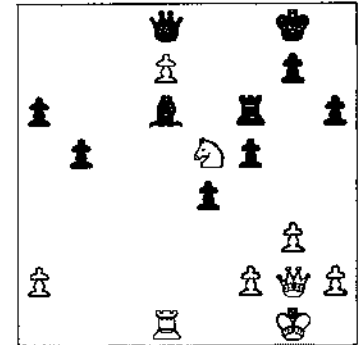


When black might experience practical difficulties winning under the fast time control.

Also possible, 21... $\mathbb{W}xd4$  22. $\mathbb{W}xd4$  exd4 23. $\Delta xa5$  bxa5 and black is better, but I wanted more!

So: 21... $\Delta c6!$  22.d5 f5 23.d6 If 23. $\Delta c3?$  then e5-e4 followed by  $\Delta c6$ -d4/e5-f3 with a decisive advantage. 23... $\mathbb{C}f7$  24. $\mathbb{W}d5$   $\Delta f8$  25. $\Delta c3$  Black can now win the d6 pawn without allowing  $\Delta d2$ x $\Delta a5$ . 25... $\mathbb{W}xd6$  26. $\Delta b5$   $\mathbb{W}b8$  27. $\mathbb{W}e6$  a6 when white has nothing for his lost pawn.

At this point, impressed by my own ingenuity, I began to push my luck. 25... $\Delta d4!$  Black is still winning, but the attitude "I'll take the d-pawn whenever I want" is wrong (in this case!). 26. $\Delta e3$   $\mathbb{C}c5$  27. $\mathbb{W}g2$   $\mathbb{C}xc4$  Very spectacular, but the d6-pawn is still alive! 28. $\Delta xd4$   $\mathbb{C}xd4$  29. $\Delta b5$   $\mathbb{C}d3$  30. $\mathbb{C}fd1$   $\mathbb{C}xd1+$  31. $\mathbb{C}xd1$  a6 32. $\Delta a3$  e4 33. $\Delta c4$  b5? At this point 33... $\mathbb{C}d7$  still wins the d6 pawn. 34. $\Delta e5$   $\Delta f6$  35.d7  $\Delta d6$



It appears black still recovers the d7 pawn. 36.f4! A rude shock. Probably much stronger than 36. $\mathbb{C}c1?$   $\mathbb{C}f8$  37. $\Delta g6$   $\mathbb{W}xd7$ . In disbelief, I wasted almost all my remaining time. 36...exf3 37. $\mathbb{W}xf3$   $\mathbb{C}h7$  38. $\mathbb{W}d5$   $\Delta e7$  39. $\mathbb{W}g2$   $\mathbb{C}d6?$  40. $\mathbb{W}xd6!$   $\Delta xd6$  41. $\mathbb{C}xd6$  and white won in a few moves. The d7 pawn has the last laugh, netting my queen. 1-0

So why did I lose this game? First, although I am a Grandmaster, I have some "blind-spots" in my chess understanding. In this case I fail to appreciate the "energy" of a passed pawn, and the extra initiative it gives to it's owner. Sometimes this wild chance turns the tables upside down.

Second, one must be philosophical about the fortunes of sport. Vasily Smyslov summarized this during a post-mortem to the second game of his 1983 Candidates Match with Zoltan Ribli: "I was much better and I lost, but in the first game I was worse and I won. Well, this is only natural!" All of us have been in such situations way too often, so next time let's remember these words of a true chess and sports genius.

**Hear Todd Barre On Chess Phone**

## Biel

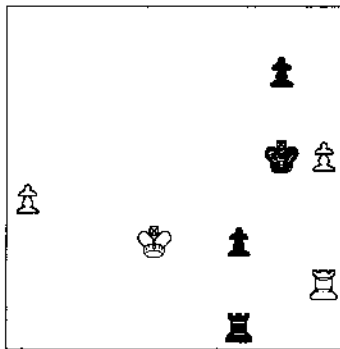
The next day I had to leave Philadelphia, missing the World Open for the first time since 1980 when I came to the United States. But the reason for this was a very pleasant one. Viktor Korchnoi invited me to Switzerland to help him prepare for his Candidates Match against Jan Timman. I was working with Korchnoi on a few occasions since 1987 and it was always a highlight of my chess career. This time Korchnoi's main second was Vladimir Tukmakov, a very strong GM and experienced trainer. For two weeks we analysed various opening positions in Korchnoi's home town of Wohlen. Then, Tukmakov and I went to play in the Annual Chess Festival in Biel.

The Biel festival is a truly exciting chess event. For two weeks, the beautiful Palace of the Congress was the stage for thirteen chess tournaments. I played in three events: the blitz tournament, action chess, and the Masters Tournament.

The blitz tournament had over 200 entrants. Oddly enough, the preliminaries were round-robins and the final was a 70 player swiss. In the first round of the final I lost to an untitled German NM Reshke and it was all over for me. I scrambled to a final score of 5-2 and got the last cash prize (for tenth place). NM Reshke scored 6½-½ for clear first! My second loss was to an untitled Philippino which reminded me that if you compare OTB rating with speed chess strength that the Philippino players are the best blitz players in the world.

The action tournament had 193 participants including 10 GM's. The tournament surprised me with a number of good games. Action chess is taken seriously in Europe. And guess who was leading the field after six rounds with 6-0? Normunds Miezis and Sahbaz Nurkic! Have you ever heard of them? Stefan Djuric won the tournament with 8½-1½. I finished with 7½-2½ for 7th place. I had a very interesting rook and pawn endgame against British GM Gallagher in the important final round.

## Gallagher-Gurevich Biel G/30, 1991

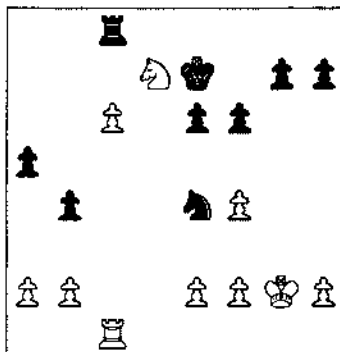


1...♖f4?  
2.h6! gxf6 3.♗xh6 ♔d1+ 4.♔c4 and white made a draw easily despite having only one minute on his clock. I returned to my hotel and spent a few hours trying to find a win for black. At first I thought I had it:

1...♗e1 2.a5 ♗e8 3.a6 ♖g4 4.h6 ♖g3 5.♗h1 g5 6.h7 f2- +  
However, another drawing line appeared:

1...♗e1 2.a5 ♗e8 3.h6! gxf6 4.a6 h5 5.♗a2 h4 6.a7 ♗a8 7.♔d2 ♖f4 8.♗e1 h3 9.♖f1 h2 10.♗xh2 ♗xa7 11.♗h8=  
The day after the action tournament the Masters Swiss Tournament began. This 11 round swiss with GM norms possible attracted 160 players. In Round 3 I faced the strong Soviet Georgian, IM Zurab Sturua. If only I had known how important this game would be! Zurab played very well, but after achieving a won position he slipped and gave me a chance to recover.

## Sturua-Gurevich Biel Masters Swiss, 1991



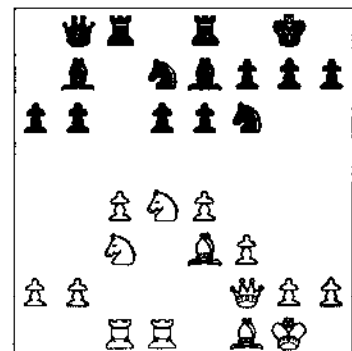
1.♖f3? ♗d6? and white won.  
But instead, 1...♗c3! 2.bxc3 ♗xc6 3.♗b8 ♗c8! 4.♗a6 bxc3! gives a drawn game. Over the board I had only seen 3...♗b6 4.cxb4+-. After the

game Zurab told me that he had seen 1...♗c3 and was planning 2.♗b6 ♗xc6 3.♗a4? He had missed 3...♗xe2. Cold shower. After this game, Sturua continued to play well and clinched clear first with 9-2, an excellent score.

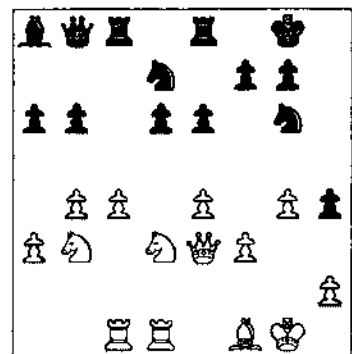
My game from Round 7 was awarded a special *Torero Prize* as the best game of the round (100 SFr plus dinner for the winner and dinner for the loser!)

## Kostic-Gurevich Biel Masters Swiss, 1991

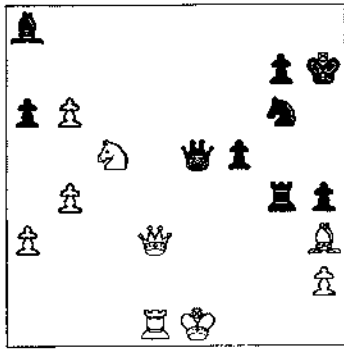
1.c4 c5 2.♗f3 ♗f6 3.d4 cxd4 4.♗xd4 b6 5.♗xc3 ♗b7 6.f3 d6 7.e4 e6 8.♗e2 ♗e7 9.♗e3 O-O 10.O-O ♗bd7 11.♗c1 a6 12.♗d2 ♗e8 13.♗fd1 ♗c7 14.♗f1 ♗ac8 15.♗f2 ♗b8



A well known position! 16.a3 ♗d8 17.b4 ♗c7 18.g3 h6 19.♗b3 ♗e5 20.♗d4 ♗fd7 21.♗e2 ♗d8 22.♗a4 ♗a8 23.♗b2 ♗g6 24.♗d3 h5 25.♗f1 h4 26.g4 ♗g5 27.♗e3 ♗xe3 28.♗xe3



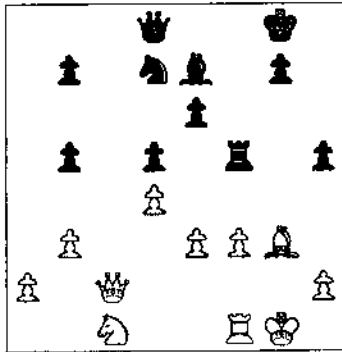
28...d5! 29.♗f2 ♗de5 30.c5 dxe4 31.fxe4 f5! 32.gxf5 exf5 33.cxb6 ♗g4 Black should have traded rooks on c1 before ♗g4 to keep the ♗b8 aimed at h2. 34.♗xg4 ♗xe4 35.♗xc8+ ♗xc8 36.♗d3? Here 36.♗f6+ is possible, giving white a new lease on life. 36...♗xg4+ 37.♗f2 ♗h7! 38.♗c5 ♗c6 39.♗e1 ♗f6 40.♗h3 ♗e5+



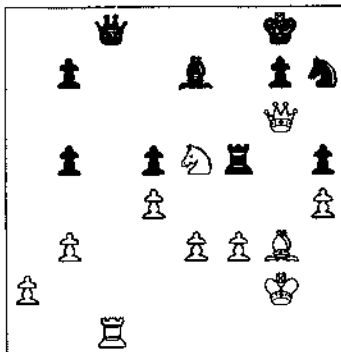
0-1

In the last round, I managed to beat GM Vaiser, a strong Soviet player who now lives in France.

**Gurevich-Vaiser**  
Biel Masters Swiss, 1991



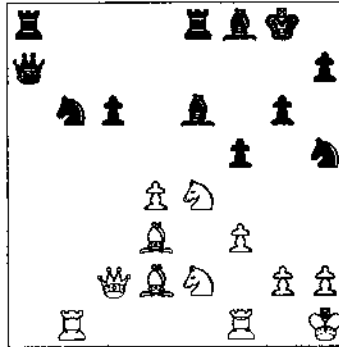
1.  $\Delta d3!$   $\mathbb{W}f8$   
[1...h4? 2.  $\Delta f4$   $\mathbb{W}b6$  (2...hgx3 3.  $\Delta xe6$  gxh2+ 4.  $\mathbb{G}h1$   $\mathbb{W}e8$  5.  $\mathbb{W}xf5$ ) (2... $\Delta f8$  3.  $\Delta xe6$   $\Delta xe6$  4.  $\mathbb{W}xf5$ +) 3.  $\Delta g6$ ]  
2.  $\mathbb{W}c7$   $\Delta f6?$  Black had to try Qe8 with some play in exchange for the b7 pawn. 3.  $\mathbb{W}b6!$ +  $\mathbb{G}h7$  4.  $\mathbb{W}xe6$   $\Delta e4$  5.  $\Delta e5$   $\Delta g5$  6.  $\mathbb{G}g6+$   $\mathbb{G}g8$  7.  $\mathbb{G}g2!$   $\mathbb{W}c8$  8. h4  $\Delta h7$  9.  $\mathbb{E}c1$



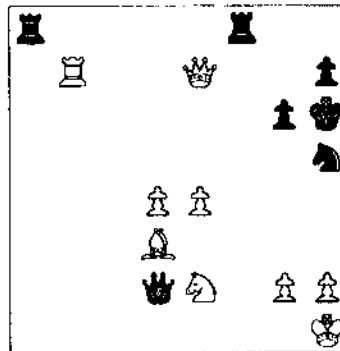
Now on 9.  $\mathbb{W}xc1$  10.  $\mathbb{W}e6$  white has mate in two moves. 1-0

The next round I was able to hold a draw against Tukmakov in a good fighting game, and moved on to Round 10 with a 7-2 score, a four way tie with Vaiser, Kuraica, Tukmakov and me a full point behind Sturua.

**Gurevich-Kuraica**  
Biel Masters Swiss, 1991



22.  $\mathbb{W}xc6!$  An interesting piece sacrifice. Otherwise, black would have played  $\Delta d5$  with a fine position. 22...fxe4 23. fxe4  $\mathbb{W}a2!$ ? Very active. Perhaps the simple  $\mathbb{E}ab8$  was better. 24.  $\mathbb{E}xf8$ +? During the game I was thinking "I am playing beautifully and another Torero brilliancy prize will soon be mine." Much more courageous was 24.  $\Delta c3$  keeping all the threats. 24... $\mathbb{E}xf8$  25.  $\mathbb{E}xb6$   $\mathbb{W}xd2$  26.  $\mathbb{W}xe6+$   $\mathbb{G}g7$  27.  $\mathbb{E}b7+$   $\mathbb{G}h6$  28.  $\mathbb{W}e7$

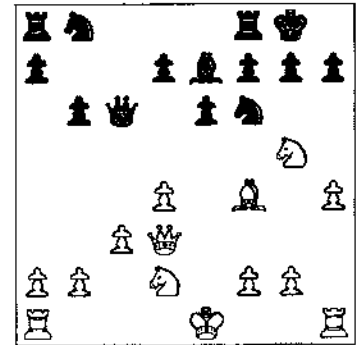


I am hoping for 28... $\mathbb{W}xd3$  29. h4!+- 28... $\mathbb{E}h8$  Bye-bye Torero! Now, even though white has greedily recovered his material, black is better. 29. h4  $\Delta ae8$  30.  $\mathbb{W}c7$   $\mathbb{W}e1+$  If 31.  $\mathbb{O}xd3$  32.  $\mathbb{Q}c1$ . 31.  $\mathbb{G}h2$   $\mathbb{W}xh4+$  32.  $\mathbb{G}g1$   $\mathbb{E}c8$  33.  $\mathbb{W}e7$   $\mathbb{W}e1+$  34.  $\mathbb{G}h2$   $\mathbb{E}ce8$  35.  $\mathbb{W}b4$   $\mathbb{G}h4+$  36.  $\mathbb{G}g1$   $\mathbb{W}g5$  37.  $\mathbb{E}f7?$   $\mathbb{W}e3+$  Now the  $\Delta d3$  can be captured and black soon won. 0-1

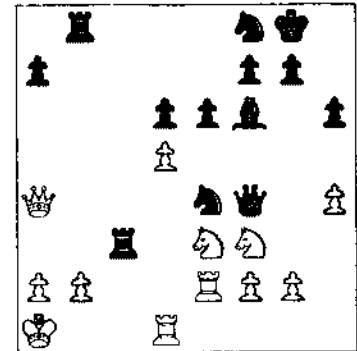
After this disappointment, I faced Czechoslovakian IM Pavel Blatny in the final round.

**Blatny-Gurevich**  
Biel Masters Swiss, 1991

1. d4  $\Delta f6$  2.  $\Delta f3$  e6 3.  $\Delta f4$  b6 4. e3  $\Delta b7$  5.  $\Delta d3$   $\Delta e7$  6.  $\Delta bd2$  c5 7. c3 cxd4 8. exd4 O-O? Maybe a bit too early. 9. h4!  $\Delta a6$  10.  $\mathbb{W}e2$   $\Delta xd3$  11.  $\mathbb{W}xd3$   $\mathbb{W}c8$  12.  $\Delta g5!$   $\mathbb{W}c6?$



As soon as I made my move I realized the danger of my position. To keep calm I wandered off to watch the final moments of the ladies tournament. After 15 minutes of thinking my opponent played: 13. O-O-O? 13.  $\Delta e5$  instead would have been devastating for black. 13...d6! Closing the door on  $\Delta e5$ . 14.  $\Delta de4$   $\Delta bd7$  15.  $\mathbb{E}he1$  h6 16.  $\Delta g3$   $\mathbb{W}d5!$  I did not feel like taking a piece and allowing white to mount a vicious attack. 17.  $\mathbb{G}b1$   $\mathbb{E}fc8$  18.  $\Delta f3$   $\Delta f8$  19.  $\Delta f1$  b5 20.  $\Delta e3$   $\mathbb{W}e4$  21. d5??  $\mathbb{W}xf4$  22.  $\mathbb{W}xb5$  Of course it was better to resign, but Blatny was too upset. 22... $\mathbb{E}ab8$  23.  $\mathbb{W}a5$   $\Delta e4$  24.  $\Delta a1$   $\Delta f6$  25.  $\mathbb{W}a4$   $\mathbb{E}xc3$  26.  $\mathbb{E}e2$



26... $\Delta d2!$  27.  $\mathbb{W}xf4$   $\mathbb{E}c1+$  28.  $\mathbb{E}xc1$   $\Delta xb2+$  0-1

A nice way to finish the tournament, for a final result of 8-3 and a tie for third through ninth places. Prize distribution followed Bucholz, a common practice in France and Switzerland, so instead of receiving SFr4000 for third place I got SFr1500 for seventh. Still, I was happy with my result. I gained about 15 ELO points.

The Round Robin Tournament was won by up and coming star Alexsei Shirov from Latvia. World fourth-ranked Evgeny Bareev was second. The Ladies Tournament featured a number of strong WGM's but was won by WIM Guenara Sakhatova who came to Biel with from Alma-Ata with her sister Elvira.

After Biel, Tukmakov and I went back to study with Korchnoi and a few days later we all arrived in Brussels, the site of the Candidate Quarterfinals.

### Brussels

The size of this article does not permit a serious coverage of the events in Brussels and I refer the reader to Inside Chess for excellent coverage. I have provided a few impressions of the matches:

**Timman 4½-Korchnoi 2½.** Korchnoi was simply out of form. Timman played well enough for a confident victory. Ironically, the day after the match ended, I felt Viktor was beginning to get back in shape.

**Karpov 4½-Anand 3½.** If Anand only could have won his winning positions! However, Karpov deserves some praise. As one strong GM put it: "If I had the positions Karpov got, I would have a heart attack." Despite the loss I consider Anand as one of a very few chess geniuses.

**Short 5-Gelfand 3.** Both are great players and if they had to play again the result might easily be reversed. Gelfand's problems are psychological.

**Yusupov 4-Ivanchuk 4, 1½-½.** It was the best match in which the best candidate out of eight lost. Perhaps the reason is that Yusupov was not so far behind.

In the semifinals I think that Karpov and Yusupov are slight favorites over Short and Timman and have equal chances to face Kasparov in 1993. Karpov is a major benefactor of Ivanchuk's loss. I am more confident that in the World Championship of 1995 or 1996 Kasparov will play Ivanchuk with an unclear result.

The organization of the matches was excellent. Unfortunately, Bessel Kok has announced that he is leaving

professional chess circles. He can never be replaced.

My two month stay in Europe was saddened by Korchnoi's loss, but everything else during my trip was wonderful.

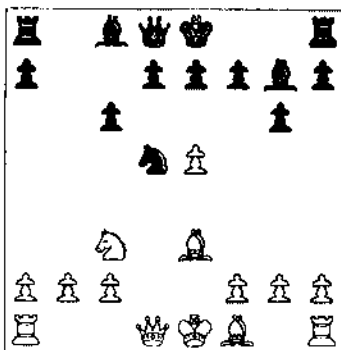
### Back in the USA

The first tournament I played in upon my return to Chicago was the Illinois Open. The tournament was won by Andrew Karklins who played several excellent games. I especially enjoyed his last round win over Peter Pelts. I tied for second through fourth with Billy Colias and the BP computer.

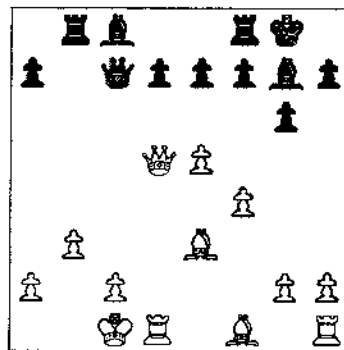
Certainly, my most interesting game was my painful loss against BP.

### BP-Gurevich Illinois Open, 1991

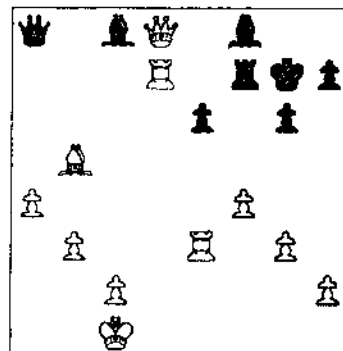
1.e4 c5 2.♘f3 ♘c6 3.d4 cxd4 4.♗xd4 ♗f6 5.♘c3 g6? Trying to get the machine out of the book. 6.♗e3 ♗g7 7.♗xc6 If white planned this capture it was better a move earlier when white does not have to place his bishop on e3. BP's reaction is paradoxically "human"-he plays the position which is better known. 7...bxc6 8.e5 ♗d5



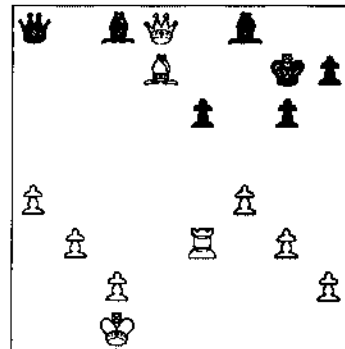
This is as good as Ng8 but I have never played it before. I mistakenly thought this was the best line against the machine. 9.♗xd5 cxd5 10.♗xd5 ♗b8 11.O-O-O ♗c7? Theory gives 11..Bb7 which makes more sense. 12.f4 O-O 13.b3



Excellent! White is much better. 13...♗b6? Trying to fool the machine instead of playing sound chess. 14.♗xb6 axb6 Black has no compensation for the exchange and a pawn. 15.♗c4 ♗a7 16.a4! e6 17.♗d6+ ♗f6 18.exf6 ♗xf6 19.♗he1 ♗a5 20.♗e3 ♗g7 21.♗b5 ♗a8 22.g3 ♗f7 23.♗xb6 ♗f8 24.♗d8 ♗g7 25.♗xd7?



The only bad move which BP made during the entire game. The position after move 24 is easily winning for white. Now black gets a few tactical chances. 25...♗xd7 26.♗xd7



26...♗a3+? After the game we "asked" BP how he would have responded to ♗a7. His answer was 27.♗d3 ♗a3 28.♗d2 (28.♗b1? ♗h1+ 29.♗a2 ♗c1-+) ♗f2 and black can draw. ♗a7 grabs the a7-g1 diagonal and was black's best



Cullum and BP versus Gurevich

chance. 27.♖d2! Avoiding the blunder ♖b1. 27...♗d5+ 28.♗d3 ♗g2+? I think 28...♗b4+ was the last chance. 29.♖c3 ♗e4 30.♗b6! ♗e1+ 31.♗d2 ♗e7

The computer criticized ♗e7 and gave: 31...♗c1 32.♗d4+ e5 33.♗xe5+ ♗xe5+ 34.fxe5 ♗xd2+ 35.♗xd2 ♗xd7 BP gives this position "a small plus for white" although white is winning easily. White places his king on d4 and advances the a/b/c pawns. BP thinks a bishop is worth three pawns! Computers are still weaker in the ending.

32.♗xc8 ♗f6+ 33.♗d3 ♗f1+ 34.♗e3 ♗e1+ 35.♗e2 ♗c3+ 36.♗e4 ♗xc8 37.c4 ♗a8+ 38.♗d3 ♗f3+ 39.♗e3 ♗f1 40.♖c2 ♗a1 41.♗d2 ♗b2+ 42.♗d1 ♗a1+ 43.♗e2 ♗h1 44.♗d7+ ♗h6 45.h4 ♗g2+ 46.♗e1 ♗h1+ 47.♗f2 ♗h2+ 48.♗f3 ♗h1+ 49.♗g4 An impressive win. 1-0

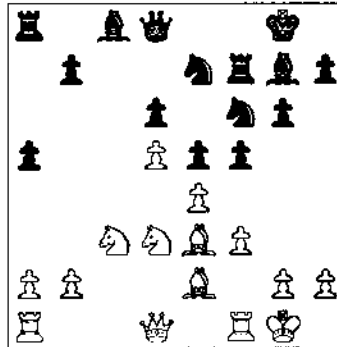
I was hoping to get revenge against BP with a separate competition or match Unfortunately, programmer Bob Colunin said that the BP program would require a few months of improvements! BP did make mistakes against Karklins (almost winning for BP) and Zelkind (when BP missed a win in the ending). Those games ended up as draws, but BP strikes me as a very "smart" program with a lot of potential!

Have you ever heard the expression: "if I win its a sacrifice, if I lose it was a blunder?" Even

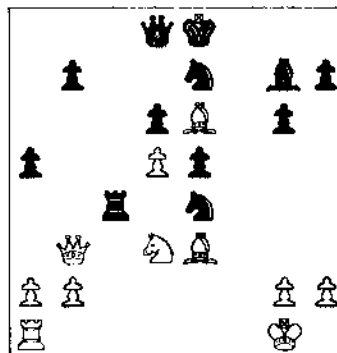
though I won this game, move 15 was still a blunder.

**Gurevich-E.Zelkind**  
Illinois Open, 1991

1.♠f3 ♠f6 2.c4 g6 3.♗c3 ♗g7 4.e4 d6 5.d4 O-O 6.♗e2 e5 7.O-O ♗c6 8.d5 ♗e7 9.♗e1 ♗d7 10.♗e3 f5 11.f3 a5 12.♗d3 ♠f6 13.c5 ♗f7 14.cxd6 cxd6+



15.♗a4? A typical "jet-lag" move. The secret is that in this variation black always plays f5-f4 so that f5xe4 is impossible. 15...fxe4 16.fxe4 ♗xe4 17.♗xf7 ♗xf7 18.♗b6 ♗b8? On 18.Nf5! black is better. Now white quickly whips up a storm. 19.♗xc8 ♗xc8 20.♗g4! ♗c4 Here, if 20...♠f5 21.♗xf5 gxf5 22.♗h5 ++ 21...♗e6+ ♗e8 22.♗b3!+-



If I had not blundered I would not be winning so quickly. 22...♗d4 What else? If 22...♗c8 then 23.♗a4+. If

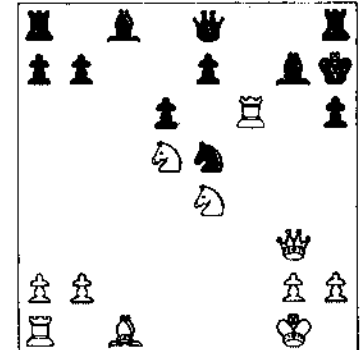
22...♗c7 then 23.♗b5 ♗d8 24.♗b6. 23.♗xd4 exd4 24.♗a4+ ♗f8 25.♗f1+ ♗f5 26.♗d7 1-0

**Blitz in Chicagoland**

Friday night blitz tournaments at Les Bale's Chicagoland Chess and Games Club, usually attract a strong field. I would like to preserve a memorable game from a few weeks ago when the field included Pelts, Kraai, Umezina, Popovich, and other masters. Marvin Dandridge and I tied for first and second with 14-1. Our individual pairing was the highlight of the evening. The spectators were not disappointed.

**Dandridge-Gurevich**  
Chicagoland Blitz, 1991

1.e4 c5 2.d4 cxd4 3.c3 dxc3 4.♗xc3 ♗c6 5.♠f3 g6 6.♗c4 ♗g7 7.O-O ♠f6? 8.e5 ♠g4 9.♗xf7+ ♗xf7 10.♠g5+ ♗g8 11.♗xg4 ♗xe5 I thought black was okay, but Marvin had a better idea! 12.♗g3 h6 13.f4? ♗c6 14.♠ge4 ♗e8 15.f5 gxf5 16.♗xf5 d6 17.♠f6! ♗h7 18.♗d5 ♠e5



19.♗xh6! ♗xh6 20.♗xh6+ ♗xh6 21.♗g5+ ♗h7 22.♠ef6+ 1-0 Another Paul Morphy in Chicago? We will find out next Friday, Marvin!

**\$2250 in Prizes.**

**Plan now. Play in the**

**Illinois Class Championships.**

**November 23-24. Morgan Park Academy.**

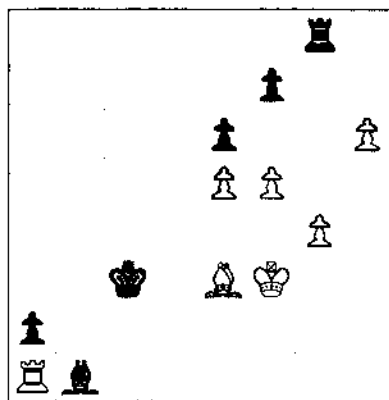
# Postal Scramble

by SM Eugene Martinovsky

The 8th United States Correspondence Chess CHampionship, sponsored by Max Zavenelli's organization, the International Correspondence Chess Federation (ICCF) soon will be concluded. The readership of the ICB might be interested to know that Editor Marc Lonoff is currently leading the field of fourteen players. He is 8½-3½ or +5 with one game remaining. Much like a golfer in the clubhouse with a set score, Lonoff must watch while two other contenders finish their schedules. Dan Fleetwood is 4½-1½ or +3 with seven games remaining, and I am 7½-2½ or +4 with 3 games remaining.

In Lonoff's final game he is a pawn down against Fleetwood but would appear to have serious winning chances due to the inactivity of the white Ra1.

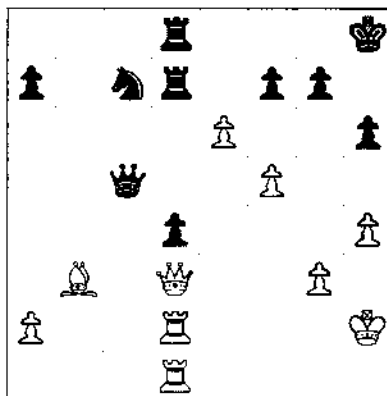
## Fleetwood-Lonoff 8th ICCF US Final, 1991



Black is due to make his 43rd move and must play extremely accurately to win.

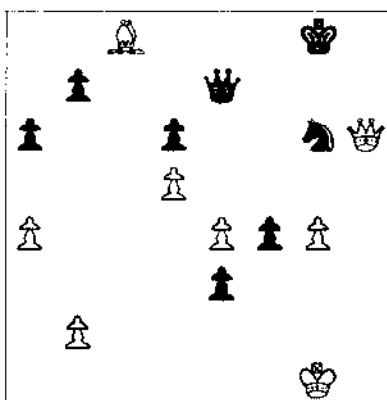
In my three remaining games, all with the white pieces, I think I have good chances to win, but the positions are all complicated. Here they are, with a few comments on what I think might be the course of the games.

## Martinovsky-Elmquist 8th ICCF US Final, 1991



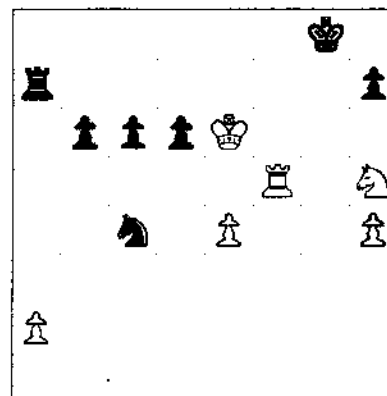
36...fxe6 37.fxe6 ♖e7 38.♗g6 or 38.♕c2 and I feel I have significant winning chances.

## Martinovsky-Fleetwood 8th ICCF US Final, 1991



45...♗g7 46.♗g5 (I can blunder with 46.♗xg7+?! ♗xg7 47.a5 ♔e5 48.♕xb7 ♔d3 49.♗f1 f3 50.♕xa6 e2+ and then black wins!) 46...e2 47.♕e6+ ♗h7 48.♗h5+ ♗h6 49.♗f2 f3 50.♕f5 ♗g7 51.♗xh6+ ♗xh6 52.♕xg6 ♗xg6 53.e5 dxe5 54.d6 and white is winning.

## Martinovsky-Carlson 8th ICCF US Final, 1991



I am down a pawn and Carlson can grab another one by 43...♗xa2 44.♗f6+ ♗h8 45.♗e8 ♗g2 46.h5 h6 47.♗xd6 ♗xd6 48.♗xd6 when the pawn on e4 poses grave problems for black.

My game against Lonoff followed Granda-Zuniga--Miles, Zagreb, 1987, until I varied on move 21.

## Lonoff-Martinovsky 8th ICCF Final, 1991

1.♗f3 c5 2.c4 ♗f6 3.g3 b6 4.♕g2 ♕b7 5.O-O g6 6.b3 ♕g7 7.♕b2 O-O 8.♗c3 ♗a6 9.d4 d5 10.cxd5 ♗xd5 11.♗xd5 ♗xd5 12.e4 ♗d7 13.♗e5 ♕xe5 14.dxe5 ♗xd1 15.♗fxd1 ♗fd8 16.a3 ♗f8 17.f4 ♗e8 18.♗f2 ♗xd1 19.♗xd1 ♗d8 20.♗xd8+ ♗xd8 21.g4 e6 22.h4 ♗c7 23.♗e3 ♗e7 24.♗f3 ♕a6 25.h5 ♕f1 26.f5 a5 27.h6 ♕b5 28.f6+ ♗d7 29.g5 ♗a6 30.♕d1 ♗b8 31.♕c3 ♗c6 32.♕c2 c4 33.b4 axb4 34.axb4 ♕a6 35.♕a4 b5 ½-½

The readers are invited to study these positions, but do not hurry. I will write the finale to this story when the dust settles, perhaps next spring.

# Ray Satterlee Ties For First In US Senior Open

By Ken Marshall

Wheaton resident Ray Satterlee shared first place at the 1991 US Senior Open, held July 14 through 19, 1991 in San Diego, California. A long time chess Expert and a veteran of 17 U.S. Opens, Satterlee, 54, tied for top honors with three Masters (Ronald Gross, Louis Levy, and Carl Wagner) in the seventy-seven player event, a yearly tournament which is open to those 50 years of age and older.

In his only other Senior Open effort, Satterlee was part of a nine man tie for first in 1987. "I decided my fate in the last round in both tournaments," said Satterlee. "I defeated Alexander London, a 2274 player, in Round 6 in 1987, and I beat Jose Mondragon, rated 2295, in the final game this year." His win over Mondragon, coupled with a final round draw between the other two top contenders, gave Satterlee his share of first place and the Expert Champion trophy. He and the other winners were pictured on the cover of the October, 1991 CHESS LIFE.

## Wagner-Satterlee US Senior Open, 1991

1.c4 ♖f6 2.g3 c5 3.♗g2 ♘c6 4.♕f3 e5 5.♘c3 ♗e7 6.0-0 0-0 7.♗e1 d6 8.h3 (White is playing very passively.) 8... ♗e6 9.d3 ♖d7 10.♖h2 d5 11.cxd5 ♘xd5 12.f4 (White undermines black's fine center, but White's position is a bit disorganized and underdeveloped.) c3 14.bxc3 ♗f6 15.♗d2 g6 16.♗f3 ♗fd8 17.♖c2 ♖ab8 18.♖ab1 b5 19.a4 b4 20.♗g5 ♗d5 21.♗e4 (I was expecting 21.e4 with an interesting position.) 21... ♗e7 22.cxb4 cxb4 23.♖b2 ♗xe4 (I wished to avoid ♗f6+.) 24.♗xe4 f5 25.♗g2 ♖e6 26.♗fe1 a5 27.♖bc1 ♗d4 28.e4 ♗h4 29.exf5 ♖xf5 (To blockade the isolated pawns ) 30.♗e4 ♗f6 31.♖b1 ♖d7 32.♖a2+ ♖g7 33.♗e3 ♗f5 34.♗f1 b3 35.♖a3 b2 36.♖b1 ♗dc8 37.♖a2 ♗c2+ 38.♖g1 ♗xe3 39.♗xe3 ♗d4 0-1 [Satterlee]

White's pieces never ventured beyond the fifth rank!



## Satterlee-Mondragon US Senior Open, 1991

My opponent is one of San Diego's best players. I was meeting him in the last round on board two. I knew that if I won, and if Gross and Levy drew their game on board one I would share the Senior Open title. I took a deep breath and hoped for the best. 1.e4 c5 2.♗f3 e6 3.d4 cxd4 4.♗xd4 ♗f6 5.♘c3 ♗b4 The "Pin Variation". Mondragon was hoping I would not be familiar with it. 6.e5 ♗d5 7.♗d2 (7.♖g4 was the old move) 7... ♗xc3 8.bxc3 ♗e7 9.♖g4 0-0 (Allowing White to win the exchange.) 10.♗h6 g6 11.♗xf8 (11.h4.) 11... ♗xf8 12.♗e2 ♖c7 13.♖g3 ♘c6 14.♗xc6 bxc6 15.♗d1 (This prevents the freeing move d5.) 15... ♖a5 16.♗c4 ♗g7 17.f4 d5?! 18.exd5 e.p.! (White keeps his advantage with this capture.) 18... ♗xc3+ 19.♗e2 (The ♖ing is fairly safe here.) 19... ♗d7 20.♖b1 ♗f6 (The bishop guards the queening square.) 21.♖b7 ♗d8 22.♖hb1 e5 (This weakens f7 but gets black some play.) 23.♖b3 exf4 24.♗xf7+ ♖h8 25.♗f1 (Black threatened ♖h5+.) 25... ♖c5 26.♖b8 (The assault begins.) 26... ♗xd6 27.♗xd8+ ♗xd8 28.♖b8 ♗f8 29.♗d1 ♗xf7 30.♗xd8+ ♗e8 31.♗e1 ♖c4+ 32.♖g1 ♖g7 33.♖xe8 ♖xc2 34.♗d7+ 1-0 [Satterlee]

Mondragon took his loss with a great display of sportsmanship. Gross and Levy had drawn, meaning that I had tied for first. This was my second Senior Open San Diego miracle in four years!

## Oak Park - Forest Park Chess Club News

By Ken Marshall

### Tournament Results

**July 23: World Blitz Chess Association Tournament** Albert Chow went 5-0 in the round robin final to take the \$50.75 first prize in this 22 player, WBCA-rated, 5/minutes game event. Mariano Acosta was second, followed by Gerard Jungman and Kevin Connelly, and Jim McNamara and Sven Hauptfeld.

**August 20 - September 17: OP-FP CC Closed and Class Championships** Rich Rius (1690), ranked eighth on the nine man wall hart, upset Master Greg Bungo (2232), an Expert, and two Class A players as he won the **Closed Championship** with a 4-1 score. Bungo took clear second at 3.5-1.5, while Tom Oelrich (1996) and Mark Stamatakos (1593) each ended up 3-2 to tie for third. Stamatakos, the field's lowest rated entrant, was undefeated, scoring four draws and a win although "paired up" by at least 331 points in every game. In the **Expert/Class A/Class B** tournament. Art Zacher (1860) and Gerard Jungman (1992) each finished 4-1 (with Zacher winning their individual game) to share first and second places. The **Class C/Below** four round event was topped by Steve Josephs with a perfect 4-0 result.

### Upcoming Events:

**October 19:** OP-FP CC Autumn Action '91 (See Illinois Tournament Calendar in this ICB for details)

**October 29 - November 5:** World Rapid Chess Tournament (WRC-rated, 30 minutes/game, two rounds a night)

**November 19:** OP-FP CC Speed (game/5 minutes) Championship (open to Club members only).

## Martinovsky Wins St. Charles Open

By Ken Marshall

Eugene Martinovsky scored 4½-½ to take home the \$300 first prize in the 34 player Open Section of the St. Charles Open, an Illinois Chess Association Maxi-Tour event sponsored by the St. Charles Chess Club and held on August 10 and 11, 1991, at the Baker Community House in St. Charles. Ranked second on the wall chart, Martinovsky (2373) beat two Class A players, an Expert, and a Master, and battled long time rival and top rated Albert Chow (2381) to a Round 4 draw. Camilo Pangan defeated Chow in the last round to finish clear second with a 4-1 result. Chow, Mariano Acosta, Wilford Stevenson, Wesley Underwood, James Marshall, John Porter, and Howard Cohen followed at 3½-1½. The Expert prize was shared by Underwood and Marshall, while Stevenson, Porter, and Cohen split the Class A money.

Reserve Section winner David Cieslek (1616) rose from his number 11 wall chart position to score 4.5-5 and outdistance a 27 player field. Cieslek drew with twelfth ranked Brad Goral (1600), who ended up 4-1 and tied for second through fourth with Charles Giertz and Allen Stewart. Top Class C honors went to Kenneth Palmer for his 3.5-1.5 score, with Brian Morrison and Egill Jacobsen each finishing 3-2 and dividing the second Class C prize. At 2-3, Brian Wong and Isaac Sanchez were the best in Class D/Under.

In addition to the place prizes, \$50 U.S. Savings Bonds were awarded for the best played game in each Section, as selected by Master Tom Cooper. Those prizes, donated by the Old Kent Bank, went to Martinovsky and Chow for their draw (Open) and to Robert Bales for his win over Vic Swanson (Reserve).

Jeff Wiewel and Dan Pradt directed for the St. Charles Chess Club. Club President Erv Sedlock said that the Club hopes to make the St. Charles Open, with its \$1,260 guaranteed prize fund, an annual August Illinois Tour event.

### Martinovsky-Chow St. Charles Open, 1991

1.d4 ♠f6 2.c4 g6 3.♠c3 d5 4.cxd5 ♠xd5 5.e4 ♠xc3 6.bxc3 ♠g7 7.♠c4 O-O 8.♠e2 ♠c6 9.O-O b6 10.♠g5 ♠b7 11.♠d2 ♠a5 12.♠d3 c5 13.d5 ♠d7 14.♠ad1 c4 15.♠c2 ♠ae8 16.f4 f6 17.♠h4 e5 18.f5 g5 19.♠f2 ♠c8 20.h4 h6 21.♠g3 ♠b7 22.♠de1 ♠f7 23.♠d1 ♠e7 24.♠h5 ♠d8 25. ♠g6 ♠d6 26.♠b1 ♠c7 27.♠e3 ♠c5 28.♠b4 ♠a6 29.a4 ♠d6 30.a5 ♠b8 31.axb6+ axb6 32.♠a1 ♠a8 33.♠f1 ♠fb8 34.♠d2 ♠f8 35.♠xc4 ♠xc4 36.♠xa8 ♠xa8 37.♠xc4 ♠a1+ 38.♠h2 ♠d7 39.♠b4 ♠a4 40.♠h5 gxf4 41.♠xh4 ♠d6 42.♠xa4 ♠xa4 43.♠e8 ♠c5 44.♠h3 ♠e7 45.♠c6 ♠g7 46.♠e2 ♠d6 47.g4 h5 48.gxf5 ♠g1 49.♠f3 ♠h6 50.♠xf6 ♠f4 51.h6 ♠xe4 52.♠h4 ♠g3 53.♠g4 ♠xh4+ 54.♠xh4 ♠g5+ 55.♠h3 ♠xh6+ 56.♠g2 ♠d2+ 57.♠g1 ♠xc3 58.f6 ♠g5+ 59.♠f1 ♠c1+ 60.♠f2 ♠d2+ 61.♠f1 ♠c1+ 62.♠g2 ♠d2+ 63.♠h3 ♠h6+ 64.♠g3 ♠g5+ 65.♠h2 ♠h6+ 66.♠g2 ♠g6+ 67.♠f1 ♠b1+ 68.♠g2 ♠g6+ 69.♠f1 ½-½

### Bales-Swanson St. Charles Open Reserve, 1991

1.e4 e5 2.♠f3 ♠c6 3.♠c4 ♠c5 4.d3 ♠f6 5.♠c3 O-O 6.h3 d6 7.♠g5 ♠e6 8.♠xe6 fxe6 9.♠c1 ♠d7 10.a3 a6 11.b4 ♠a7 12.♠b1 d5 13.exd5 exd5 14.O-O e4 15.dxe4 dxe4 16.♠d2 ♠f5 17.♠e3 ♠xe3 18.fxe3 ♠e5 19.♠e2 ♠d5 20.♠c4 ♠g5 21.♠f4 ♠c3 22.♠b3 ♠d5 23.♠e6 ♠xf1 ♠e5?? 25.♠xe5 1-0

### Hauptfeld-Pukel St. Charles Open, 1991

1.e4 c6 2.d4 d5 3.e5 ♠f5 4.c3 e6 5.♠e2 c5 6.♠f3 ♠c6 7.O-O ♠b6 8.a3 cxd4 9. cxd4 ♠xb1 10.♠xb1 ♠xa3 11.♠a4 ♠b4 12.♠e3 ♠ge7 13.♠f1 O-O 14.♠c2 ♠fc8? 15.♠g5 ♠f5 16.♠d3 h6 17.g4! hxg5 18.gxf5 ♠e7 19.fxe6 fxe6 20.♠g6 ♠b4 21.♠h5 ♠f8 22.♠g4 ♠f5 23.♠xf5 exf5 24.♠xf5 ♠f8 25.♠d7 ♠c6 26.♠xd5+ ♠h8 27.♠e4 ♠b3 28.d5 ♠d8 29.d6 g4 30.♠d3 ♠c2 31.♠c1 ♠e2 32.♠d2 ♠d4 33.♠xe2 ♠xe2+34.♠g2 ♠xc1 35.♠xc1 ♠f8 36.♠xb7 a5 37.♠g5 ♠e8 38.d7 1-0

### Stevenson-Kabalec St. Charles Open, 1991

1.e4 d6 2.d4 ♠f6 3.♠c3 g6 4.f3 ♠g7 5.♠e3 O-O 6.♠c4 c6 7.♠b3 b5 8.g4 a5 9.a4 b4 10.♠ce2 ♠bd7 11.♠g3 e5 12.g5 ♠e8 13.h4 c5 14.dxc5 ♠b7 15.cxd6 ♠a6 16.h5 ♠xd6 17.♠e2 gxf5 18.♠h2 ♠df6 19.gxf6 ♠xf6 20.♠c5 1-0

### Pangan-Chow St. Charles Open, 1991

1.d4 ♠f6 2.e3 g6 3.♠d3 d5 4.♠d2 ♠g7 5.c3 O-O 6.f4 b6 7.♠e2 a5 8.e4 dxe4 9.♠xe4 ♠a6 10.♠f2 c5 11.dxc5 ♠d5 12.♠f3 ♠xc5 13.♠e3 ♠c7 14.O-O ♠xd3 15.♠xd3 ♠c6 16.♠ad1 ♠d5 17.♠f2 b5 18.a3 e6 19.♠c5 ♠f6 20.♠xb5 ♠g4 21.♠d7 ♠xf2 22.♠xf2 ♠fd8 23.♠fd2 a4 24.♠c5 ♠b7 25.♠fe5 ♠dc8 26.♠b6 ♠a6 27.♠xa6 ♠xa6 28.♠c5 1-0

### Acosta-Szpisjak St. Charles Open, 1991

1. d4 d6 2. c4 ♠f6 3. ♠c3 ♠f5 4. ♠f3 g6 5. ♠g5 ♠g7 6.e4 ♠g4 7.f3 ♠c8 8.f4 O-O 9.♠e2 c5 10.d5 e5 11.fxe5 dxe5 12.♠e3 h6 13.♠f3 ♠bd7 14.♠d2 ♠h7 15.h3 a6 16.g4 ♠g8 17.h4 f6 18.O-O-O ♠b8 19.♠dg1 ♠e7 20.g5 ffg5 21.hxg5 h5 22.♠h4 ♠h8 23.♠xh5 gxf5 24.g6+ ♠g8 25.g7 ♠f7 26.gxf8=♠+ ♠xh8 27.d6 1-0

### Jungman Pangan St. Charles Open, 1991

1.d4 d5 2.c4 e6 3.♠c3 c5 4.cxd5 exd5 5.♠f3 ♠c6 6.g3 ♠f6 7.♠g2 ♠e7 8.O-O O-O 9.♠g5 cxd4 10.♠xd4 h6 11.♠e3 ♠e8 12.♠c1 ♠f8 13.♠xc6 bxc6 14.♠a4 ♠a5 15.♠c5 ♠xc5 16.♠xc5 ♠a6 17.♠e1 ♠d7 18.♠c3 ♠e5 19. e4 dxe4 20.♠xe4 ♠f5 21.♠d4 ♠ac8 22.a3 ♠g4 23.♠d2 ♠a5 24.h3 ♠h5 25.♠c5 ♠cd8 26.b4 ♠c7 27.♠e3 f6 28.f4 ♠xd4 29.♠xd4 ♠d8 30.♠e6 ♠xd4 31.♠xc7 ♠d1+ 32.♠h2 ♠c4 33.♠c3 ♠d2 34.g4 ♠f7 35.♠g3 ♠d6 36.♠a6 ♠f8 37.♠c5 ♠d5 38.h4 g6 39.a4 ♠b6 40.a5 ♠c4 41.♠f2 ♠xg2 42.♠xg2 ♠d2+ 43.♠f3 ♠d6 44.♠d7+ ♠e7 45.♠b8 ♠b5 46.♠xc6+ ♠d6 47.♠c5 ♠d3+ 48.♠e4 ♠c3 49.♠xa7 f5+ 50.gxf5 gxf5+51.♠xf5 ♠d4+ 52.♠g6 ♠g3+ 53.♠xh6 ♠e6 54.♠g5 ♠f5+ 55.♠h7 ♠c3 56.♠b5 ♠c4 57.a6 1-0

### Josephs-Cieslek St. Charles Open Reserve, 1991

1.e4 c5 2.♠f3 ♠c6 3.d4 cxd4 4.♠xd4 d6 5.♠c3 ♠f6 6.♠g5 g6 7.f3 ♠g7 8.♠d2 O-O 9.♠c4 ♠b6 10.♠xc6 bxc6 11.O-O-O ♠b8 12.♠b3 ♠e6 13.♠a4 ♠b7 14.♠xe6 fxe6 15.b3 c5 16.♠h6 ♠bc8 17.♠xg7 ♠xg7 18. g4 c4 19.h4 cxb3 20.c3 ♠b4 21.axb3 ♠xc3+ 22.♠c2 ♠xc2+ 0-1



### St Charles Open: Open Section

1 MARTINOVSKY Eugene	2373	W27	W 6	W10	D 3	W 4	4.5
2 PANGAN Camilo	2190	W22	L10	W 5	W11	W 3	4
3 CHOW Albert	2381	W30	W13	W16	D 1	L 2	3.5
4 ACOSTA Mariano	2240	D 5	W18	W20	W15	L 1	3.5
5 STEVENSON Willford	1951	D 4	W24	L 2	W26	W16	3.5
6 UNDERWOOD Wesley	2019	W23	L 1	D26	W21	W17	3.5
7 MARSHALL James	2082	L26	W32	W22	W18	D12	3.5
8 PORTER John	1820	Dbye	W 9	L12	W27	W19	3.5
9 COHEN Howard	1966	Dbye	L 8	W28	W24	W15	3.5
10 JUNGSMAN Gerard	1992	W29	W 2	L 1	D19	D11	3
11 SURAK Steve	2082	W25	D17	W21	L 2	D10	3
12 MARCONNET John	2174	L17	W31	W 8	D16	D 7	3
13 SAX Robert	2043	W32	L 3	L18	W29	W23	3
14 HAUPTFELD Sven	1700	L20	W33	L19	W25	W27	3
15 SZPISJAK Steven	2164	W33	D20	W17	L 4	L 8	2.5
16 SPLINTER Joseph	2081	W34	W26	L 3	D12	L 5	2.5
17 COHEN Lawrence	1935	W12	D11	L15	W20	L 6	2.5
18 STOKES Geoffrey	1843	W19	L 4	W13	L 7	D22	2.5
19 WOLF William	2002	L18	W25	W14	D10	L 8	2.5
20 WILLIAMS Mike	1990	W14	D15	L 4	L17	W28	2.5
21 SEDLOCK Ervin	1901	D31	W28	L11	L 6	W26	2.5
22 FULTON Steven	1941	L 2	W29	L 7	W32	D18	2.5
23 ALLISON Roger	1848	L 6	L27	W33	W31	L13	2
24 LULVES Joseph	1816	Dbye	L 5	W31	L 9	D29	2
25 PUKEL Bernard	1900	L11	L19	W32	L14	Wbye	2
26 KABALEC Jiri	1885	W 7	L16	D 6	L 5	L21	1.5
27 BUTTNY William	1952	L 1	W23	Dbye	L 8	L14	1.5
28 JOHNSON Eric	1813	Dbye	L21	L 9	W33	L20	1.5
29 ALBERTS Walter	1828	L10	L22	Wbye	L13	D24	1.5
30 KENDE Mark	1999	L 3	WF	-	-	-	1
31 KITTLSEN Guy	1703	D21	L12	L24	L23	-	0.5
32 FORRO Virgilio	1878	L13	L 7	L25	L27	-	0
33 FRONEK Randy	1934	L15	L14	L23	L28	-	0
34 BALE Lee	1881	L16	LF	-	-	-	0

### St Charles Open: Reserve Section

1 CIESLEK David	1616	W22	W16	W17	D 2	W 8	4.5
2 GORAL Brad	1600	W26	W 3	W 5	D 1	D 4	4
3 GIERTZ Charles	1714	W11	L 2	W25	W17	W 8	4
4 STEWART Allen	1794	Dbye	W24	W15	W13	D 2	4
5 LITTLE James	1686	W18	W25	L 2	W15	D10	3.5
6 KUMRO Daniel	1714	L 8	W21	Dbye	W18	W14	3.5
7 PALMER Kenneth	1567	L13	W22	Dbye	W20	W17	3.5
8 MORRISON Brian	1558	W 6	L13	W18	W12	L 3	3
9 REED Boyd	1762	L17	W20	W11	W10	L 1	3
10 PADILLA Rudy	1672	Dbye	W27	W23	L 9	D 5	3
11 JACOBSEN Egil	1560	L 3	W26	L 9	W22	W24	3
12 SANCHEZ Ignacio	1706	W20	L17	WF	L 8	W18	3
13 MARSHALL Ken	1733	W 7	W 8	Dbye	L 4	-	2.5
14 SWANSON Victor	1671	D27	L23	W24	W16	L 6	2.5
15 MAURER Patrick	1491	Dbye	W18	L 4	L 5	W23	2.5
16 JOSEPHS Steven	1471	WF	L 1	Dbye	L14	W25	2.5
17 JACOBSEN Mickey	1567	W 9	W12	L 1	L 3	L 7	2
18 JACOBSEN Ruth	1651	W21	L15	L 8	W23	L12	2
19 CURRANT Larry	1479	L 5	Dbye	W27	L 6	D21	2
20 SADAUSKAS Justin	1520	L12	L 9	W26	L 7	Wbye	-
21 WONG Brian	1354	L18	L 6	Dbye	W27	D18	2
22 SANCHEZ Isaac	1315	L 1	L 7	Wbye	L11	W26	2
23 BALES Robert	1377	Dbye	W14	L10	L18	L15	1.5
24 FORDE Norris	1457	Dbye	L 4	L14	W25	L11	1.5
25 CISKO Gregory	1507	WF	L 5	L 3	L24	L16	1
26 FIORONI Stanley	-	L 2	L11	L20	Wbye	L22	1
27 CAIN Dennis	1380	D14	L10	L19	L21	-	0.5

**Support Illinois Chess.**  
**Become a contributing member of the**  
**ICA**

**"IF YOU ARE NOT GETTING  
NEW IN CHESS  
YOU ARE MISSING SOME OF THE  
BEST CHESS JOURNALISM  
IN THE WORLD  
TODAY."**      — Hannon W. Russell, in  
USAT Chess Perspectives

Edited by **Jan Timman**, published by the producers of **NICBASE**  
Issued 8 times a year, Supplemented by 4 Yearbook issues.

**LIMITED OFFER:** Write for a FREE sample or **SUBSCRIBE NOW!**  
( ) INTRODUCTORY FOR NEW SUBSCRIBERS ONLY - 6 ISSUES - **\$34.00**

**Chess Combination Inc.** 2423 Noble Station, Bridgeport, CT 06608

# Software Review

## ***Knightstalker***

Beginning in the spring of 1991 Chessbase (CB) began a major competitive thrust into the United States' market. Don Maddox, formerly editor of *Chess Life*, and an avid chessplayer, opened up an office in New Jersey dedicated entirely to selling and supporting CB products and data. CB released Chessbase 3.0, a major upgrade to its database product and followed with a host of utilities and special products to make the database more powerful. They also introduced Access an inexpensive gateway to their data, to appeal to a broad market. Finally, CB USA bought full page advertisements in dozens of chess publications to get their message out. I plan to review all these CB products and competitors such as NICBase 3.0 in future issues of the ICB.

In this review I examine Knightstalker, the latest CB product. It is new, exciting, and can work as a stand-alone product.

### **What does it do?**

Knightstalker (KS) is a playing program. Loaded in an IBM AT compatible machine I estimate it would play blitz chess between 2100 and 2500 strength depending on the speed of the computer. As such, it is comparable to M-Chess, ChessMachine, Zarkov, and RexChess, the "strong" software group, and distinctly better than mass-market software such as Sargon and Chessmaster 2100.

The second feature of Knightstalker is that it is itself a CB gateway. If you have CB databases you can select from the first 700 games and replay them directly using pull-down menus in KS. For example, you can use KS to read the Informants on disk. You can do this very easily. First you identify the Informant as your active database, then you scroll through a list of the games in the Informant, and select a game by clicking on it. You then use KS to play

through the game and notes one layer deep. This is a fast way to review *all* the games in the Informant.

Much like the Zarkov-Bookup combination, you can turn on the chessplaying capabilities in any position of a game you are reviewing and play against the KS program. You can store these games, replay them, and annotate them one line deep.

Last, but not least, the CB organization plans to work with GM's to prepare opening books for KS. Eventually, you should be able to buy a utility to develop your own opening books in combination with CB. Using this software, you will be able to define and practice your repertoire. Admittedly, Zarkov-Bookup already does this, but KS allows you to save and retrieve your training games as games, both to and from your CB database without leaving KS.

### **How well does it work?**

The program is extremely user friendly and easy to learn. Most of the commands are clear from the menus. I have not yet received the documentation, but the program is so straightforward you will rarely need to refer to the manual.

The program looks and feels like CB. Many subroutines benefit from years of CB refinement. For example, the position setup utility comes directly from CB, is almost entirely mouse driven, and is the fastest and simplest setup routine of any I know.

The other unique CB feature you get is hypertext. You can click on any move or subline in the annotated text of a game and instantly have the position appear on the board. With KS you can then begin computer analysis or play of the position.

Like CB, KS realizes its true power if you use a mouse. For example, you can hold a chessbook with one hand and do virtually everything else with the mouse in your other hand. The program's pull-down menus allow selection of time controls, selection of opening books, selection of databases,

and loading, saving and printing games, among other features. The mouse is very smooth. In five minute chess using the mouse feels as fast as physically moving the pieces and hitting a clock. You can hover the mouse on the next piece you plan to move to speed up movement.

As for the limitations on numbers of games in databases and on search depth, these are annoying but not too onerous. Most data packages you might use with KS such as a particular opening disk or a player collection will be under the 700 game limit. Don Maddox believes the game and line nesting limits might be removed in future versions of KS.

### **Who should consider buying it and for what purpose?**

I would recommend this program to anyone who owns an IBM/AT computer and mouse and likes to play chess. Based on price, KS competes with mass market software but does much more!

This program makes a useful addition to your stable of strong blitz opponents alongside the other strong chess-playing software you might already own.

If you read the Informants this program will speed up your study and boost your retention.

If you own NICBase, adding KS and the CBworld import utility will let you create and sort CB databases without buying the full CB program. You also get the benefit of the CB hypertext to examine annotated games.

**Marc Lonoff, 9/18/91.**

Knightstalker, retail \$49.95, available from ChessBase USA, 1-800-524-3527 to order, or 1-908-974-9085 for more information.

# Illinois Tour Standings and Crosstables from Tour Events.

These tour standings reflect the cumulative year-to-date results including tour events up to and including the Illinois Open.

Master Tour Points:	
PANGAN Camilo	77.5
CHOW Albert	64.5
SZPISJAK Steven	52
GUREVICH Dmitry	44
COOPER Tom	41.5
COMPX BP	34.5
KRAAI Jesse	32
LAGUA Bende (1)	32
UMEZINWA George	30.5
PELTS Peter	25.5
MARTINOVSKY E	24
KARKLINS Andrew	23
WACHTEL Howard	22.5
COHEN Larry	21.5
MARSHALL James	21.5
MARQUEZ Anthony	21
SMYTHE Bill	20

Expert Tour Points:	
COMPX BP	33
COHEN Larry	31
STEVENSON W	30.5
SMYTHE Bill	28
JORDAN Roland	27.5
ACOSTA Mariano	27
WOLF William	23
WACHTEL Howard	22.5
MARSHALL James	21.5
MARQUEZ Anthony	21
SOCHA Ray	20.5

Class A Tour Points:	
STEVENSON W	30.5
BOLITHO Thomas	22.5
SINGER Rob	20.5
WOLF William	20.5
BOURGERIE Dennis	20
DUDKOWSKI P (2)	19
MC ALISTER Kelvin	19
ALLISON Roger	17.5
JONES Ellis Eugene	17.5
WOODHOUSE Don	17

Class B Tour Points:	
MC ALISTER Kelvin	30
PADILLA Rudy	21.5

CIESLEK David (2)	20
DUDKOWSKI P(2)	19
BALES Robert	18.5
NALBORCZYK R(1)	16
GIERTZ Charles	15
SWANSON Victor	15
GORAL Brad	14.5
SINGER Rob	14

Class C Tour Points:	
BALES Robert	18.5
ZEVNIK L (2)	12
MAURER Patrick	10.5
PADILLA Rudy	10.5
FENNER Charles	9
PALMER Kenneth	8
JOSEPHS Steven	7
URAM Max	7
RAIMO Robert	6
CIBULSKIS Peter	5.5

Class D Tour Points:	
BALES Robert	10
MAURER Patrick	5
RODGERS Paul	5
SANCHEZ I (2)	4
TIARKS Richard (2)	4

## Maurice Irvin Open June 21-23, 1991 Open Section

1 GUREVICH D	2980	W 5	W 4	W 3	D 2	W 8	4.5
2 DLUZKY Maxim	2827	W 6	W 7	W 10	D 1	W 4	4.5
3 MOTE David	2219	W 12	D 10	L 1	W 8	W 7	3.5
4 GRATZ Glen	2180	W 8	L 1	W 11	W 5	L 2	3
5 MC GOWAN Andy	2137	L 1	W 8	W 7	6.4	D 12	2.5
6 NAEF William	2144	L 2	W 9	Obys	W 10	L 12	2.5
7 VAN BUSKIRK D	2207	W 9	L 2	L 5	W 11	L 3	2
8 ZABAWA Michael	1982	L 4	L 5	W 12	L 3	W 10	2
9 WILKINSON W	2005	L 7	L 6	Obys	D 12	W 11	2
10 BONDARI Cyrus	2175	W 11	D 3	L 2	L 6	L 8	1.5
11 RUST Larry	1918	L 10	W 12	L 4	L 7	L 9	1
12 CARIAN George	2012	L 3	L 11	L 8	D 9	D 5	1

## Reserve Section

1 BOLITHO Thomas	1901	W 22	D 5	W 6	W 12	W 4	4.5
2 FRENCH Keon	1878	W 8	D 6	W 10	D 4	W 7	4
3 ANDERSON Phil	1998	W 19	L 4	W 17	W 5	W 8	4
4 WHEELER Stephen	1749	W 21	W 3	W 7	D 2	L 1	3.5
5 LIMBERG Reynaldo	1746	W 11	D 1	W 9	L 3	W 13	3.5
6 OBERWEIS James	1796	W 15	D 2	L 1	W 14	W 12	3.5
7 PATTERSON Dan	1850	W 24	W 16	L 4	W 11	L 2	3
8 ELOER Dale	1844	L 2	W 15	W 10	W 25	L 3	3
9 BOURGERIE D	1919	W 17	D 12	L 5	D 10	W 16	3
10 FULLER Brad	1867	D 20	W 14	L 2	D 9	W 19	3
11 RODGERS Paul	1991	L 5	W 22	W 16	L 7	W 17	3
12 CRUM Randy	1856	W 18	D 8	W 13	L 1	L 8	2.5
13 WARFIELD T	1830	D 14	W 20	L 19	W 19	L 5	2.5
14 KEMPNER Robert	1814	D 13	L 10	W 20	L 6	W 21	2.5
15 THOMAS Mark	1444	L 8	L 8	W 24	Obys	W 23	2.5
16 VERO Carl	1800	W 23	L 7	L 11	W 22	L 9	2
17 WENGER Morton	1957	L 9	W 24	L 3	W 18	L 13	2
18 TIARKS Dick	1955	L 12	W 23	L 8	L 17	W 22	2
19 STAFFORD Jerry	1851	L 9	W 21	Obys	L 13	L 10	1.5
20 MEADOR John	1980	D 10	L 13	L 14	L 23	W 24	1.5
21 DAVIS John	1403	L 4	L 19	Obys	W 24	L 14	1.5
22 COX Randy	1829	L 1	L 11	W 23	L 18	L 18	1
23 EARLEY Bob	1905	L 16	L 16	L 22	W 20	L 15	1
24 PURPUS Chris	-	L 7	L 17	L 15	L 21	L 20	0
25 BOWMAN Ralph	1856	-	-	-	L 8	-	0

## Chicagoland Fireworks Under-2000 July 6, 1991

1 WOODHOUSE Don	1894	W 9	W 5	D 3	2.5
2 KREBS Larry	1828	D 3	W 8	W 5	2.5
3 SUKCHAROENPHON T	1943	D 2	W 7	D 1	2
4 ROZMAN Alex	1830	L 5	W 9	W 7	2
5 FISCHER Gregory	1898	W 4	L 1	L 2	1
6 TANAKA James	1808	-	-	W 9	1
7 CARDONALE Michael	1512	D 6	L 3	L 4	0.5
8 SALE Leslie	1865	D 7	L 2	-	0.5
9 BUZZELL Brandon	1484	L 1	L 4	L 5	0

## Chicagoland Master-Expert July 27, 1991

1 WACHTEL Howard	2173	W 7	W 6	W 4	3
2 COHEN Lawrence	2020	D 8	D 3	W 6	2
3 CHOW Albert	2388	D 4	D 2	W 7	2
4 WOODHOUSE Don	1884	D 3	W 5	L 1	1.5
5 MARQUEZ Anthony	2053	D 2	L 4	W 8	1.5
6 JUNGMAN Gerard	2047	W 9	L 1	L 2	1
7 BMYTHE Bill	2024	L 1	W 8	L 3	1
8 READ Ryan	1980	L 8	L 7	L 6	0

## Bradley Summer Open August 24, 1991

1 BRODE Mark	2160	W 17	W 6	W 9	D 2
2 STEVENSON Willard	1981	W 18	W 1	W 12	D 1
3 REYNOLDS Robert	2128	W 23	W 15	D 4	D 5
4 WARFIELD Thomas	1788	W 19	W 14	D 3	D 10
5 CALDWELL Scott	1942	D 19	W 22	W 14	D 3
6 VERO Carl	1788	W 18	L 1	W 20	W 12
7 JOSEPH Steve	1888	L 20	W 19	W 16	W 13
8 ZEVNIK Lawrence	1976	L 14	W 25	W 15	W 19
9 LIMBERG Reynaldo	1837	W 27	W 20	L 1	D 11
10 WILLIAMS Mike	1990	L 12	W 28	W 21	D 4
11 BOURGERIE Dennis	1919	L 22	W 26	W 23	D 9
12 ELDER Dale	1871	W 10	W 13	L 2	L 5
13 FELTNER Cameron	1860	W 24	L 12	W 22	L 7
14 BOLITHO Thomas	1852	W 9	L 6	L 5	W 23
15 SPHAR Robert	1810	W 28	L 3	L 8	W 29
16 CRUM Randy	1887	L 2	W 18	L 7	W 21
17 MOHR Allan D	1737	L 1	L 34	W 28	W 25
18 RODGERS Paul	1912	L 8	L 18	W 28	W 27
19 BALES Robert	1977	D 5	L 7	W 24	L 8
20 MALCOLM Freddie	1988	W 7	L 9	L 8	-
21 INGRAM Randy	1783	W 28	L 2	L 10	L 18
22 STAFFORD Jerry	1822	W 11	L 5	L 13	-
23 GARDNER Keith C	1872	L 3	W 27	L 11	L 14
24 MOORE Rod	1660	L 13	W 17	L 18	L 15
25 GOODWIN Kimberly	1119	L 4	L 8	W 27	L 17
26 HAIG Theodore	1233	L 16	L 11	L 17	-
27 CATLETT Roger	1261	L 9	L 20	L 25	L 18
28 KIRKPATRICK Donald	121	L 10	L 18	-	0

# Tournament Calendar

Call Chess Phone, (708) 832-5222, for up-to-date tournament results, as well as announcements of tournaments that may not be listed in **Chess Life** or the **ICB**. The ICA Chess Phone voice is Todd Barre. Unless otherwise noted, all tournaments require USCF membership. Illinois Tour events also require ICA membership.

**October 5: Chicagoland Scholastic Open.** 5-SS, G/30, Chicagoland Chess & Games, 3047 N. Lincoln Ave., Chicago IL 60657. (312)47-CHESS. 2 sections: **Grade K-6** EF \$8 by 9/27, \$10 at site. **Grade 7-12** EF \$10 by 9/27, \$12 at site. **Both** Prizes: 3 trophies per grade. REG 8:30-9:30 am. RDS 10-11:30-1:30-3-4:30. LS.

**October 12: Pawn Harvest Action Chess.** 4-SS, G/30, Washington Park Pavilion, N. of intersection of Park Ave. & South Grand Ave. West, Springfield IL. EF \$16. \$\$ 100 1st guaranteed; other prizes b/entries. REG 8:15-9:15 am. RDS 9:40-11-1-2:20. ENT: Thomas B. Knoedler, 2104 S. Fourth St., Springfield IL 62703; 217/523-7265. NS NC W **MINI**

**October 12: Harvest Open.** 4-SS, 30/60, SD/30, Hammond Public Library, James A. Howard Branch, 171st & Grand Ave., Hammond, IN 46323. EF \$12. \$10 to HCC members, \$5 more 8-45. \$\$ (300/b30). REG 8-8:45 am. RDS 9-12-3-6. ENT: J. A. Enochs, 6436 Jefferson Ave., Hammond IN 46324. (219)932-1437. NS NC W

**October 12: Chicagoland Plus-Score Open.** 4-SS, 40/60, G/30, Chicagoland Chess & Games, 3047 N. Lincoln Ave., Chicago IL 60657. (312)47-CHESS. EF \$13 by 10/5, \$15 at site. \$\$ by score. 4=\$100, 3.5=\$50, 3=\$25, 2.5=\$12. REG 9-9:45 am. LS **MINI**

**October 13: N/W Indiana Action Swiss #6.** 4-SS, G/30, Hammond Public Library, James A. Howard Branch, 171st & Grand Ave., Hammond, IN 46323. EF \$10, \$5 more after 12:45. \$\$ (250/b30). REG 12-12:45 pm. RDS 1-2:30-4-5:30. ENT: J. A. Enochs, 6436 Jefferson Ave., Hammond IN 46324; (219)932-1437. NS NC W

**October 18: Illinois Chess Coaches Association Clinic (IHSA).** Downers Grove South HS. Mike Mayfield, (708)852-7223.

**October 19: OP-FP CC Autumn Action '91.** 5-SS, G/30 (full k), Mohr Community Center, 7640 Jackson Blvd., Forest Park IL. \$265 Guaranteed in Prizes. EF \$15 by 10/16, \$20 at site. \$\$ 100-50-25, A, B, C each 25, D/E/Unr 15. REG 8:15-8:45. RDS 9-10:15-11:30-1:15-2:30. ENT: Ken Marshall, 357 W Grove, Lombard IL 60148; (708)932-1455. NS NC W **MINI**

**October 19: Chicagoland Rambling Rook.** 3-SS, 30/60, SD/60, Chicagoland Chess & Games, 3047 N. Lincoln, Chicago, IL 60659. (312)47-CHESS. \$\$ (300/b30). EF \$12 by 10/12, \$15 at site. \$2 less for members or students. REG 9:30-10 am. LS NC

**October 19: Rated Beginners.** 5-SS, G/45, Days Inn, 1701 S Neil St, Champaign, IL. Under 1200 and unrated. EF \$6, free if joining USCF for 1st time. Trophies to top 2. REG 8-9:15 am. RDS 9:30-11-1-2:30-4. ENT: Micro-Resales, 130 W Main, Urbana, IL 61801.

**October 19-20: Micro Resales C-U Open 3.** 5-SS, 40/100, 25/1.SD/1. Days Inn, 1701 S Neil St, Champaign, IL. \$\$ (1050/b60) in 2 sections. **Open**, \$\$300-200, U2000 125. **Reserve** (under 1800), \$\$ 175-100, U1600 75, U1400 75. **Both** EF \$27 by 10/15, \$31 at site. REG 8-9:15 am. RDS 9:30-2:30-7:30, 9:30-2:30. One 1/2 point bye in rds 1-4 if requested before rd 2, 1 point bye in rd 1 for over 2000. Unrateds ineligible for U1400 prize. Free Pizza before rd 3 HR \$30 1-4. (217) 359-8888. ENT: Micro Resales, 130 W Main, Urbana, IL 61801. NS NC W **MAXI**

**October 19-20: Evanston Fall Open:** See *Chess Life* for Details.

**October 20: Illinois Chess Association Annual Membership Meeting.** 1 PM. Ramada O'Hare Hotel, 6600 N. Mannheim, Rosemont. Board of Directors meeting follows.

**October 26: Chicagoland Passed Pawn Action.** 4-SS, G/30, Chicagoland Chess & Games, 3047 N Lincoln, Chicago, IL 60659. (312)47-CHESS. \$\$ (275/b25) 100 60-40, U2000 45, U1800 30. EF \$16 by 10/19, \$18 at site. \$2 less for members or students. REG 10 10:45 am. RDS 11-12:30-2-3:15. LS NC

**October 26: Scholastic Chess Clinic.** Proviso West HS, Wolf Hd, south of Eisenhower Expy, Hillside. Instruction by 4 Chicago Area masters. EF \$5. REG 8:30-9 am. Sessions at 9-10-11-12. INFO: Ken Lewandowski, (708)492-7815.

**October 26: Clinic Action Tournaments.** 3-SS, G/30, in 3 sections: Elementary/Middle, High Scholl, Adult/Open. Only the Open section is USCF rated. Trophies to top 5 individuals and top 3 teams. EF \$5, \$8 including clinic. REG by 1PM. ENT: Mr. George Marino, Proviso West HS, Hillside, IL 60162. (708) 449-6400.

**October 27 Pan-Am Warm-up #1.** 4-SS, 45/1, SD/30, Ida Noyes Hall, University of Chicago. 2 sections: **College** EF \$10 by 10/3, \$15 at site. **High School** \$6 by 10/3, \$11 at site. USCF membership required. Trophies, clocks, boards and sets as prizes. REG 8-8:45 am. No checks at site. RDS 9-12-3:30-6:30. ENT U of C Chess Club, Ida Noyes Hall, Box 16, 1212 E. 59th St., Chicago IL 60637. NS W

**November 1-3 or 2-3 Middle America Open.** 5-SS, Breckenridge Hotel, St.Louis,MO. See display ad in this issue for details.Continental Chess Association.

**November 2 Chicagoland Plus-Score Open.** 4-SS, 30/60, G/30, Chicagoland Chess & Games, 3047 N. Lincoln Ave., Chicago IL 60657. (312)47-CHESS. EF \$14 by 10/26, \$16 at site. \$2 less for members or students. \$\$ by score: 4=\$100, 3.5=\$50, 3=\$25, 2.5=\$12. REG 9-9:45 am. LS NC **MINI**

**November 2: Tuley Park Action Swiss #7.** 4/SS, G/30, 501 E. 90th Pl, Chicago, IL 60619. (312)723-0150. 2 sections: **Open**. EF \$12. \$\$ (80% of total EF) 30%-20%, middle third 15%, lower third 15%. **Novice** (under 1400 and unrated), EF \$2. Trophy to 1st. **Both**, REG 11-11:45 am. RDS 12-1:12-2:24-3:36. ENT: Tom Fineberg, 7321 South Shore Drive, Chicago, IL 60649. (312)721-3979. NS NC W

**November 2: IHSA event.** Roanoke HS. J Morrison, (309) 923-7247.

**November 2-3: Lake County Open XIV.** 5-SS, 40/100, SD/60, Shimer College, Gym & Student Lounge, 445 N. Genesee, Waukegan IL. \$1,725 In guaranteed prizes! 2 sections. **Open:** 225-150-100, X 125-100, A 125-100. **Reserve** (open to under 1800): 225-150-100, C 125-100, D/E/Unr 100. **Both:** EF \$35 by 9/30, \$42 at site. REG 8-8:45. RDS 9-1:30-6, 10-2:30. 1/2-point bye avail. in rds. 1-4 if requested in advance. ENT: David Shiner, Shimer College, Box A500, Waukegan IL 60079. LS,NC **MAXI**

**November 9: Chicagoland Scholastic Open #2.** 4-SS, G/30, Chicagoland Chess & Games, 3047 N. Lincoln Ave., Chicago IL 60657. (312)47-CHESS. 2 sections: **Grade K-8** EF \$8 by 11/2, \$10 at site. **Grade 9-12** EF \$10 by 11/2, \$12 at site. **Both** Prizes: 2 trophies per grade. USCF membership required. REG 8:30-9:30 am. RDS 10-11:30-1:30-3-4:30. LS NC

**November 9: Scholastic event.** Hadley School, Glen Eilyn.

**November 16: Bird Memorial.** 4-SS, 30/60, SD/30, Hammond Public Library, James A. Howard Branch, 171st & Grand Ave., Hammond, IN 46323. EF \$12, \$10 to HCC members., \$5 more after 8:45. \$\$ (350/b30). REG 8-8:45 am. RDS 9-12-3-6. ENT: J. A. Enochs, 6436 Jefferson Ave., Hammond IN 46324; (219)932-1437. NS NC W

**November 16: Chicagoland Battling Bishops.** 3-SS, 30/60, SD/30, Chicagoland Chess & Games, 3047 N Lincoln, Chicago, IL 60659. (312)47-CHESS. \$\$ (300/b30). EF \$13 by 11/9, \$15 at site. \$2 less for members or students. REG 9:30-10 am. LS NC

**November 23-24: 1991 Illinois Class Championships.** 4-SS, 45/2, 25/1, SD/1. Morgan Park Academy - Alumni Hall, 2153 West 111th Street, Chicago, IL 60643. \$2,250 Guaranteed in Prizes. 5 Sections: **M/X**, EF \$35. \$\$ 500-250-100, X 150. **A, B, C**, EF \$30. \$\$ 200- 100-50. **D/E/Unr.**, EF \$25. \$\$ 100-60-40. All: \$6 more after 11/19. Play in your own class or 1 above. Unrated may not win more than \$60. REG 8:30-9:30 AM. RDS 10-4, 10-4. 1/2 point bye available in round 1 or 2 if requested in advance. Free snacks and drinks throughout the tournament. Ent: Todd Barre, 136 Evergreen, Elmhurst, IL 60126. (708) 834-0862. NS NC **MAXI**

# Tournament Calendar

**November 24: King City Swiss.** MI, Vernon IL. Mark Oestreich, 618/532-5733.

**November 30: Chicagoland Under 2000 #6.** 3-SS, G/60. Chicagoland Chess & Games, 3047 N Lincoln, Chicago, IL 60659. (312)47-CHESS. \$\$ (70% of EF). EF \$15 by 11/23. \$17 at site. \$2 less for members or students. REG 9-9:45 am. RDS 10-1-3. LS NC

**November 30: Pan-Am Warm-up #2** 4-SS, 45/1. See Pan-Am Warm-up #1, October 27.

**December 7: Scholastic event.** Benjamin School, Carol Stream.

**December 7-8 Chicagoland Winter Maxi Tour** 4-SS, 40/90, 20/30, SD/30. Chicagoland Chess & Games, 3047 N. Lincoln Ave., Chicago IL 60657. (312)47-CHESS. **\$1,000 in guaranteed prizes!** In 2 sections: **Open** EF \$35 by 12/1, \$40 at site. \$\$ 175-125-90, U2200 50-30, U2000 50-30. **Reserve** EF \$30 by 12/1, \$35 at site. \$\$ 130-90-70, U1700 50-30, U1600 50-30. **Both** \$2 less for members or students. REG 9-9:45 am. RDS 10-2-6, 10-3. LS NC **MAXI**

**December 14: Hammond Winter Swiss.** 4-SS, 30/60, SD/30, Hammond Public Library, James A. Howard Branch, 171st & Grand Ave., Hammond, IN 46323. EF \$15, \$12 to HCC members. \$\$350 b/30. REG 8-8:45 am; \$5 late fee after 8:45 RDS 9-12-3-6. ENT: J. A. Enochs, 6436 Jefferson Ave., Hammond IN 46324; (219)932-1437. NS NC W **MINI**

**December 14: Chicagoland Scholastic Open #3.** 4-SS, G/30, Chicagoland Chess & Games, 3047 N Lincoln Ave., Chicago IL 60657. (312)47-CHESS. 2 sections: Grade K-8, EF \$8 by 12/7, \$10 at site. Grade 9-12, EF \$10 by 12/7, \$12 at site. **Both** Prizes: 2 trophies/grade. USCF membership required. REG 8:30-9:30 am., RDS 10-11:30-1:30-3-4:30. LS NC.

**December 14: The Chilly Knight Open.** Springfield. Thomas B. Knoedler, 217/523 7265.

**December 21: Tuley Park Action Mini-Tour.** 4/SS, G/30, 501 E. 90th Pl, Chicago, IL 60619 (312)723-0150. EF \$15. \$\$ (80% of total EF) 30%-18%, best in middle third 17%, lower third 15%. REG 11-11:45 am. RDS 12-1:12-2:24-3:36. ENT: Tom Fineberg, 7321 South Shore Drive, Chicago, IL 60649. (312)721-3979. NS NC W **MINI**

**December 21 Chicagoland Plus-Score Open.** 4-SS, 30/60, SD/30, Chicagoland Chess & Games, 3047 N. Lincoln, Chicago IL 60657. (312)47-CHESS. EF \$14 by 12/14. \$16 at site. \$2 less for members or students. \$\$ by score: 4=\$100, 3.5=\$50, 3=\$25, 2.5=\$12. REG 9-9:45 am. LS NC

**December 27-28: Pan-Am Alumni Swiss.** At site of Pan-Am Team

**December 27-30: Pan-Am Intercollegiate Team Championships.** & Pan-American High School

**Team Championships.** 6-SS, 50/2, 25/1. Palmer House Hotel, Chicago. See *Chess Life* for details or contact U of Chicago Chess Club, Ida Noyes Hall Box 16, 1212 E. 59th St., Chicago IL 60637.

**December 28 Chicagoland Goodbye '91.** 3-SS, G/60. Chicagoland Chess & Games, 3047 N Lincoln, Chicago, IL 60659. (312)47-CHESS. \$\$ (70% of EF). EF \$20. \$2 less for members or students. REG 9-9:45 am. RDS 10-12:30-2. LS NC

## 1992

**January 4: Chicagoland January Action.** 4-SS, G/30. Chicagoland Chess & Games, 3047 N Lincoln, Chicago, IL 60659. (312)47 CHESS. \$\$ (275/225) 100-60-40, U2000 45, U1800 30 EF \$16 by 12/28. \$18 at site. \$2 less for members or students. REG 10-10:30 am. LS NC

**January 11: Chicagoland Plus-Score Open.** 4-SS, 30/60, G/30, Chicagoland Chess & Games, 3047 N. Lincoln Ave., Chicago IL 60657. (312)47-CHESS. EF \$14 by 1/4, \$16 at site. \$2 less for members or students. \$\$ by score: 4=\$100, 3.5=\$50, 3=\$25, 2.5=\$12. REG 9-9:45 am. LS NC **MINI**

**January 11: IHSA Event.** Evanston HS. K Lewandowski (708)869-8246

**January 11-12: Tim Just Winter Open.** 5-SS, 40/90, G/30, College of Lake County, Main Building, 19351 W Washington at Route 45, Grayslake. See display ad in this issue for details. **MAXI**

**January 18 (tentative): Illini Union Classic (IHSA).** University HS, Urbana. Chris Butler, (217)398-3574.

**January 18: Scholastic Event.** Villa Park.

**January 25-26: Fox Valley Championship.** \$1,050 prize fund. Bob Renaut, (708) 983-0934. **MAXI**

**January 20: Martin Luther King Day Scholastic.** Bloomington.

**February 1: IHSA Team.** Auburn.

**February 1: Scholastic event.** Fox Valley HS, Aurora

**February 8: Scholastic.** Lincoln HS Springfield.

**February 15 (tentative): Frosh-Soph "State" Tourney (IHSA).** Oak Lawn Community HS. Ed Olson, (708)257-5537.

**February 15: Springfield Frozen Pawns**

**February 15: Scholastic event.** Holy Angels HS, Aurora.

**February 29-March 2, 1992: Illinois State Scholastic Championship.** Glen Ellyn.

**March 8: Illinois Chess Association Banquet.**

**March 14-15: Greater Midwest Open.** Chicago. **MAXI**

**March 21-22: Greater Peoria .MAXI**

**March 27-28 (tentative): IHSA State Team Tourneys.** Michael Zacate, (708)479-9380.

**April 4-5: CCA Event.** Chicago. **MINI**

**April 4-12: Chicago International.** Continental Chess Association

**April 11: April Showers Open.** Springfield.

**April 11-12: CCA.** Chicago. **MINI**

**April 24-25 (tentative): IHSA State Individual Tourneys.** Michael Zacate, (708)479-9380.

**April 24-26: National Elementary Championships.** Knoxville, TN.

**May 1-3: National Jr High Championships.** Tallahassee, FL.

**May 8-10: National High School Championship.** Lexington KY.

**May 22-25: Continental Chess Association.** Chicago. \$25, 000 prize fund. **MAXI**

**June 5-7: National Open.** Las Vegas NV.

**June 13: Summer Action.** Springfield **MINI**

**July 17-19: Continental Chess Association.** Chicago. \$5, 000 prize Fund. **MAXI**

**August 2-14: US Open.** Dearborn MI.

**August 8: Springfield Sauna Open.**

**September 5-7: Illinois Open.** **MAXI**

**October 10: Springfield Action.** **MINI**

**November 22-23: Illinois Class Championships.** **MAXI.**

## 1994

**August 7-19, 1994: U.S. Open.** Chicago.

# Illinois Chess Association Patrons

## Century Club Members

Michael Belovesick Sr	Elmhurst	Marc Lonoff	Northbrook	Burton Vincent	Chicago
Roy Berg	Madison, WI	Albert Sandrin	Chicago	Helen Warren	Western Springs
Bill Brock	Chicago	Angelo Sandrin	Chicago	Jim Warren	Western Springs
Thomas Fineberg	Chicago	Bill Smythe	Chicago	Bill Wenz	Milwaukee, WI
Fred Gruenberg	Chicago			Philip Wong	Wilmette

## Gold Card Members

Tyrone Brooks	Chicago	Kenneth Marshall	Lombard	Marvin Rogan	Chicago
Bill Buttny	Downers Grove	William Naff	Peoria	Irwin Rothschild	Park Forest
Donald Graft	Wheaton	Peter Pelts	Niles	Mitchel Sweig	Evanston
Harland S. Hoisington	Ogden, UT	Daniel Pradt	Glen Ellyn	Louis Werner	Evanston
Alan Losoff	Morton Grove	Michael Pratts	Chicago	Sandy Zabell	Chicago

## Patron Members

Faneuil Adams	New York, NY	Walter Henry	Naperville	Ken Palmer	Boilingbrook
Bob Ash	Urbana	Charles Hicks	Naperville	Alex Pehas	Downers Grove
Kevin Bachler	Waukegan	Keith Holzmueller	Evanston	Mieczyslaw Piatek	Skokie
Todd Barre	Elmhurst	Jeffery Hyland	Mount Prospect	Rhys Read	Evanston
Roy Benedek	Western Springs	Toshio Imai	East Lansing, MI	Frederick S. Rhine	Chicago
Edward J. Bianco	Chicago	Randy Ingram	Bloomington	Murrel Rhodes	Peoria
Timothy Bogan	Chicago	Robert Irons	Chicago	Ray Satterlee	Wheaton
Barry Bouton	Newark	Gershon Johnson	Chicago	Mark Sefcheck	Naperville
Jim Brotsos	Chicago	Stephen Josephs	Hinsdale	David Shane	Macomb
Gregory Bungo	Elmhurst	Tim Just	Gurnee	Anthony Sillars	Huntington, MA
Fred Burgess	Oak Forest	Dan Kamen	Buffalo Grove	Richard Simonetti	Elmwood Park
Anthony Caliendo	Aurora	Scott Kittsley	Shorewood, WI	Arthur Sinclair	Evanston
Lawrence Cohen	Villa Park	Thomas Knoedler	Springfield	Leonard Spiegel	St Charles
Jim Condron	Westmont	Walter Kocjan	Northlake	Joe Splinter	Glen Ellyn
Paul Cox	Hazel Crest	Peter Kuhn	Des Plaines	Peter Stein	Wheaton
Mike Cronin	Evergreen Park	Michael Lester	Chicago	Robert Stoltz	River Forest
Greg De Fotis	Chicago	Harry Lyman	Boston, MA	Eric Stover	Chicago
John Deutsch	Chicago	John Marconnet	Clarendon Hills	James Tanaka	Chicago
Leroy Dubeck	Cherry Hill, NJ	Anthony Marquez	Chicago	Marc E. Thomas	Normal
William Dwyer	Worth	Ed Marschall	Barrington	George Umezinwa	Chicago
Kalman Farkas	Milwaukee, WI	Eugene Martinovsky	Naperville	Jeff Weimar	Moline
Michael Flynn	Aurora	Patrick Maurer	Glen Ellyn	Don Winsauer	Forest Park
Jon Gotz	West Chicago	Thomas Mayka	Wheeling	Harold Winston	Naperville
William Graves	Chicago	Michael McIlhany	Springfield	David Wulatin	River Forest
Steve Hansen	Indian Head Park	James McNamara	Hinsdale	Max Zavanelli	Park Ridge
		Earl Miller	El Paso		

## ICA ELECTED OFFICERS

Alan Losoff, President  
P.O. Box 157, Morton Grove, IL 60053  
(708) 966-5559

Garrett Scott, First Vice-President  
202 Foster Drive, Normal, IL 61761  
(309) 452-8116

Tom Fineberg, Metro Vice-President  
7321 S. South Shore Dr., Chicago, IL 60649-3597  
(312) 721-3979

Ken Marshall, Secretary  
357 W. Grove, Lombard IL 60148  
(708) 932-1455

Marc Lonoff, Treasurer  
900 Appletree Court, Northbrook IL 60062  
(708) 564-2346

## USCF DELEGATES

by virtue of their USCF posts

Harold Winston, Immediate Past President  
Al Losoff, Regional Vice-President  
Tim Just, Regional Vice-President  
Frank Skoff, Past President  
Helen Warren, Life Voting Member

by ICA-appointment

Fred Gruenberg  
Tom Fineberg  
Ken Marshall  
Todd Barre

## USCF VOTING MEMBERS

ICA appointed

Jim Warren  
Bill Naff  
Larry Cohen  
Jim Condron  
Bill Smythe  
Erv Sedlock

Dennis Grant  
Tom Knodler  
Garrett Scott  
Marc Lonoff  
William Brock

## ICA appointed alternates

Bill Wilkinson  
Leslie Bale  
Ray Socha  
Jim Brotsos  
Walter Brown  
James Enochs  
Kevin Bachler  
Murrel Rhodes

John Barstad  
Angelo Sandrin  
Glen Panner  
Steve Foust  
Dave Shiner  
Guy Gruenberg  
Larry Stilwell

# Where to Play Chess: ICA Club Affiliates

**A.B.C.D.E.U.**, c/o Chicagoland Chess & Games, 3047 N. Lincoln Ave., Chicago IL 60639; 312/47CHESS. Ed Bianco.

**AMERICAN POSTAL CHESS TOURNAMENTS** sponsors postal events & sells chess books & equipment. Jim or Helen Warren, P.O. Box 305, Western Springs 60558. 708/246-6665.

**AUBURN HIGH SCHOOL CHESS CLUB**, 4273 Straw Lane, Roscoe 61073. James Boyer, 815/823-8148.

**CENTRAL COMETS CHESS CLUB**. Steger Central Junior High School, c/o D. DeVore, 19 W. 33rd St., Steger 60475.

**CENTRAL LAKE COUNTY CHESS CLUB** meets Fridays, 7:15 to 12:00AM College of Lake County, Bldg. 1, Washington at Route 45, Grayslake. Dennis Grant, 1657 McKay, Waukegan 60087. 708/336-5188.

**CHAMPAIGN-URBANA CHESS LEAGUE** sponsors rated tournaments in the Champaign-Urbana area. Tom Worley, 2106 Zuppke, Urbana 61801. 217/367-4744.

**CHESS NORTHWEST** meets the 2nd & 4th Friday eves. of each month. Schaumburg Public Library, 32 Library Lane, Schaumburg. Elmer Linden, 1325 Dennison, Hoffman Estates 60195. 708/862-2382.

**CHICAGO CHESS CENTER** meets for casual chess 7 days a week 6:00 p.m. 1:00 a.m. \$2 charge. 1921 W. 47th St., Chicago 60609. Also sponsors rated tournaments Thurs.-Sun. Ray Socha, 312/376-5678.

**CHICAGO INDUSTRIAL CHESS LEAGUE** organizes frequent competition among commercial/government teams with awards, ratings, & special events. Jim Brotsos, 312/775-5054; or Ross Siegel 312/828-2046.

**CHICAGOLAND CHESS AND GAMES** sponsors tournaments, sells chess books, and is open for casual chess Tues. Fri. 6 p.m.-midnight, Saturdays 9 a.m.-midnight; closed Sundays and Mondays. 3047 N. Lincoln Ave., Chicago IL 60618. Les Bale, 312/472-4377 (47-CHESS).

**CONTINENTAL CHESS ASSOCIATION**, 450 Prospect Ave. Mt Vernon NY 10553. Bill Gochberg.

**DOWNERS GROVE PARK DISTRICT CHESS CLUB** meets Thurs., 6:30-10 p.m., Lincoln Center, 935 Maple Ave., Downers Grove. Affiliated with USCF & ICA. George Uffner, 708/960-9382.

**ELK GROVE VILLAGE CHESS CLUB** meets Fri., 7-10 p.m., at the Al Hattendorf Center, 225 E. Elk Grove Blvd., Elk Grove Village. Gary Janssen, 708/894-0996 eves.

**FOX VALLEY CHESS CLUB** meets Monday evenings, 7 p.m.?, Prisco Community Center, Lake St. & Illinois Ave., Aurora IL. Gary Kayser, 708/892-5428

**GREATER PEORIA CHESS FEDERATION** meets Mon., 7-11 p.m., Garrett Center, 824 N. University, Peoria. Bill Wilkinson, 901 N. Rebecca Pl., Peoria 61606. 309/673-9455.

**HAMMOND (INDIANA) CHESS CLUB** meets Thursdays, 7:00 p.m. to ?, at Hammond Public Library, Howard Branch, 171st and Grand. Jim Enochs, 6346 Jefferson Ave., Hammond, IN 46324. 219/932-1437

**HILLSIDE CHESS CLUB** meets Fridays, 7:30-midnight, Hillside Baptist Church, 5152 Butterfield (just east of Taft), Hillside. Larry Stillwell, 4705 Elm, Lisle 60532. 708/963-6799.

**ILLOWA CHESS CLUB** meets Tues., 6:30-10 p.m., Hauberg Civic Center, 1300 24th St., Rock Island. Bob Ratcliff, 2336 25th St., Rock Island IL 61202; 309/786-8104.

**LAKE COUNTY CHESS ASSOCIATION** sponsors rated tournaments in the Grayslake-Zion area. Tim Just, 37165 Willow, Gurnee 60031. 708/244-7954.

**MATTOON AREA CHESS CLUB** meets Monday, 7-9 p.m., 2608 Richmond Ave., Mattoon IL 61938. Bret R. Fuller.

**MIDWEST CHESS ASSOCIATION** organizes major tournaments for masters & experts. Helen Warren, P.O. Box 305, Western Springs, 60558. 708/246-6665.

**OAK PARK/FOREST PARK CHESS CLUB** meets Tues., 7- midnight, Mohr Community Center, Jackson & DesPlaines, Forest Park. Ken Marshall, 357 W. Grove, Lombard 60148. 708/932-1455.

**ORLAND PARK CHESS CLUB** meets every Friday night, 7:30-11, at the George Brown Commons, 15045 West Ave. (1 block w. of Lagrange Rt. 45 96th Ave.), Orland Park. No membership fee is required. Glenn Panner, 708/460-3111.

**PARK FOREST CHESS CLUB** meets Thursdays, 7-10:00 p.m., Freedom Hall, Orchard & Lakewood, Park Forest. Lawrence Cohen, 135 Westwood, Park Forest, 60466. 708/748-5911.

**QUAD CITIES CHESS CLUB**. Steven J. Foust, 9500 14th St. W., Apt. C2-B, Rock Island, 61202. 309/787-5198.

**RUDY LOZANO LIBRARY CHESS CLUB**, 1805 S. Loomis, Chicago. 60608. Hector Hernandez, Head Librarian. 312/733-4329.

**SHIMER COLLEGE CHESS CLUB** meets Mondays, 7 p.m. to ?, Koko House, Shimer College, corner of Genessee and Cory in Waukegan. David Shiner, P.O. Box A500, Waukegan 60079. 708/623-8400.

**SMYTHE DAKOTA COMPETITIONS** is the sponsor of the monthly Plus-Score Mini-Tours in the Chicago area. Bill Smythe, 6945 N. Ashland #F-3, Chicago 60626. 312/761-2455.

**SPRINGFIELD CHESS CLUB** meets Wed., 6-10 p.m., Washington Park Pavilion, Park Ave. & South Grand Ave West, Springfield. Tom Knoedler, 217/523-7265; or James Larson, 217/529-0781.

**ST. CHARLES CHESS CLUB** meets Thursdays at 7 p.m., Baker Community House, 101 S. 2nd (Rte. 31), St. Charles. Erv Sedlock, 6 N. 307 Old Homestead Rd., St. Charles 60174, 708/377-7995.

**TULEY PARK CHESS CLUB** meets Saturdays, 1-5 p.m., Tuley Park Field House, 501 E. 90th Pl., Chicago. Thomas Fineberg, 7321 S. South Shore Dr., Chicago 60649, 312/721-3979.

**TWIN CITIES CHESS CLUB** meets Tuesday eves., Parks & Rec. Bldg., 611 S. Linden, Normal. Speed trmts., \$0.50/game. Dale Elder, 802 S. Mercer, Bloomington 61701

Join the Illinois Chess Association and receive six issues of the Illinois Chess Bulletin. In addition, you'll qualify to enter over two dozen tournaments on the Illinois Chess Tour. Every game you win or draw in a tour event earns you "tour points" that can add up to cash prizes at year-end. Finally, you'll be supporting the activities of the Illinois Chess Association. Every year, the ICA organizes major tournaments like the Illinois Open and the Illinois Class Championships; the ICA has bid for the National Open, the US Open

and the US Class Championships to be held in Illinois. In addition, the ICA sponsors scholastic clinics, runs a tournament clearinghouse, and promotes and publicizes chess activity statewide.

If you would like to show increased support for Illinois chess, please consider renewing as a Century Club, Gold Card, or Patron member. Patrons are acknowledged in each issue of the ICB and receive their magazines by first-class mail.

## Mail To:

ICA MEMBERSHIP SECRETARY  
PO BOX 2534  
NORTHBROOK IL 60065-2534

(Your mailing label is on the other side; note corrections below)

NAME: \_\_\_\_\_

ADDRESS: \_\_\_\_\_

CITY: \_\_\_\_\_ STATE: \_\_\_\_\_ ZIP: \_\_\_\_\_

## ICA Membership Renewal

### Check membership type:

<input type="checkbox"/> Century Club	\$100.00
<input type="checkbox"/> Gold Card	50.00
<input type="checkbox"/> Patron	25.00
<input type="checkbox"/> Regular	14.00
<input type="checkbox"/> Junior	8.00
<input type="checkbox"/> Affiliate	25.00

# 1991 ILLINOIS CLASS CHAMPIONSHIPS

NOVEMBER 23-24

*THE WEEKEND BEFORE THANKSGIVING*

**MORGAN PARK ACADEMY - ALUMNI HALL**

2153 West 111th Street, Chicago, IL 60643

(Just behind the Beverly Art Center)

**4 Round Swiss in 5 Sections**

**\$2,250 Prize Fund**

**Master/Expert: \$500, \$250, \$100; Top Expert \$150**

**Class A: \$200; \$100; \$50**

**Class C: \$200; \$100; \$50**

**Class B: \$200; \$100; \$50**

**Class D/E/Unr: \$100; \$60; \$40**

**An Illinois Maxi-Tour Event!**

Illinois Chess Association  
PO Box 2534  
Northbrook, IL 60065-2534

*Time Value Material*

Address Correction Requested