

# ILLINOIS CHESS BULLETIN

Official Publication of the Illinois Chess Association a U.S.C.F. Affiliate  
A Not For Profit Organization

JULY-AUGUST 1991 VOLUME XIV, NO. 3 BI-MONTHLY

\$2.95



**ILLINOIS  
JUNIOR  
HIGH  
SCHOOL  
CHAMPION  
JULIE  
OBERWEIS**

## TABLE OF CONTENTS



**EDITOR:**  
 Bill Brock  
 1608 W. Granville Ave., #3  
 Chicago IL 60660  
 312/274-4169

**ASSISTANT EDITOR:**  
 Claire Nicolay  
**ICA TOUR STATISTICIAN:**  
 Bill Smythe  
**TECHNICAL EDITOR:**  
 John Schuchert

### SUBSCRIPTIONS:

The Illinois Chess Bulletin (ICB) is published bimonthly by the Illinois Chess Association. ICA membership includes a subscription to the ICB. Century Club, Gold Card, and Patron members receive their ICB by first-class mail.

### ANNUAL MEMBERSHIP RATES:

Century Club	\$100.00
Gold Card	\$50.00
Patron	\$25.00
Regular	\$14.00
Junior (under 18)	\$8.00

Subscriptions and address changes & corrections should be sent to:

Marc Lonoff, ICA Membership Secretary  
 P. O. Box 2534  
 Northbrook IL 60065-2534

### SUBMISSIONS:

Submit articles, photographs, crosstables, games, and other publishable materials to the Editor. Deadline for the next issue is August 9, 1991.

**ICA AFFILIATION:** Chess clubs and other organizations which promote chess activity may affiliate with the ICA. Benefits include a copy of the ICB by first-class mail, a listing under "Where to Play Chess," discounted advertising rates, three-line tournament announcements in the "Tournament Calendar," and the right to run ICA Tour Events. ICA Affiliation costs \$25; please remit to Membership Secretary.

### ADVERTISING RATES:

Full page	\$90
Half page	\$54
Quarter page	\$36
Eighth page	\$24

10% discount for the same ad in consecutive issues. 1/3 discount for ICA affiliates. All ads must be camera-ready to qualify for above rates; minimum \$20 charge for layout. Payment must accompany ad. The ICA & the ICB reserve the right to reject advertising.

Copyright © 1991 Illinois Chess Association

**CHESS PHONE: 708/832-5222**

ON THE ROAD <i>GM Dmitry Gurevich</i>	3
IHSA INDIVIDUAL CHAMPIONSHIPS	4
1991 GREATER PEORIA OPEN	6
PRESIDENT'S PAGE <i>Alan Losoff</i>	13
ORR TEAM OUT TO CHECKMATE SCHOOL'S IMAGE <i>Karen M. Thomas</i>	14
ILLINOIS TOURNAMENT CALENDAR	16
JULIE OBERWEIS, 1991 ILLINOIS JUNIOR HIGH SCHOOL CHAMPION	18
DOUBLE STARS AT NILES NORTH	20
LIN WINS ILLINOIS HIGH SCHOOL INVITATIONAL	20
1991 ICA TOUR STANDINGS <i>Bill Smythe</i>	21
PLUS-SCORE MINI-TOUR UPDATE <i>Bill Smythe</i>	22
WAR OF THE ROSES CHESS CHALLENGE <i>Howard Wachtel</i>	24
MAURICE IRVIN CHESS FESTIVAL <i>Garrett Scott</i>	24
ICA PATRONS	26
ICA CLUB AFFILIATES	27

Photo Credits: p. 13, Marvin Rogan; p. 20, Frank Cardulla.

## From the Editor's Desk

Once again, we're almost a week behind schedule. The next ICB will be on time, even if it's only four pages long. My apologies to Kevin Bachler and Marc Lonoff, whose articles got bumped to the next issue because of budgetary constraints. Thanks to the reliable contributors who make this job relatively easy (Marc, Ken Marshall, Dmitry Gurevich, and especially Bill Smythe).

Unfortunately, personal and professional commitments are forcing me to ditch this job sooner than I originally expected. The November-December issue (to be mailed October 1) is definitely my last one. So far, no one has responded to our search for a new editor—here's your chance to give something back to the game that has given you so much pleasure.

It's 4 a.m.—ta-tal!

# On the Road

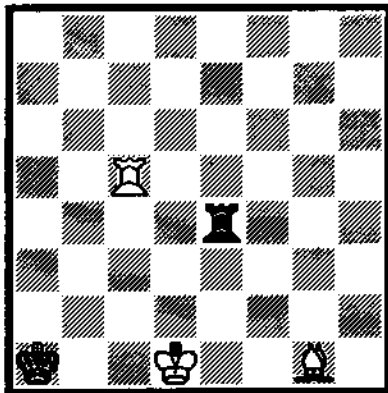
GM Dmitry Gurevich

## THE MIRACLE OF DATABASES

I was giving lessons to Alex Fishbein in New Jersey. Alex's home is conveniently located just an hour's drive from the headquarters of ChessBase USA, a company organized by Don Maddox, former editor of Chess Life. Among the disks that Alex purchased was one named "Rook + Bishop vs. Rook." On the way back, we were discussing how a program written on a small diskette could possibly recognize more than 100,000,000 positions. We thought that something was wrong. But everything was correct: the program recognizes all King, Rook, and Bishop vs. King and Rook positions instantly! It also recognizes all the positions that come out of it. We found some amazing King and Rook vs. King and Bishop positions: imagine White to move winning in *eighteen* moves!

But now comes a real surprise. Imagine a Rook and Bishop vs. Rook position with the caption "White wins in 59 moves." Now try to find a winning move. After each one of your tries, the computer will say "Draw." And only when you get completely discouraged, you'll finally see "White wins in 58 moves."

Anyway, after a few hours of work, Alex and I came up with a composition. My contribution was about 20%, of which I am very proud.



Fishbein, D. Gurevich, and Database, 1991  
White to play and win in 34 moves.

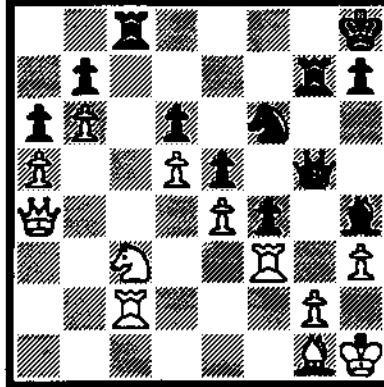
Please find the first move!

Don Maddox told us that in about six months, we will be able to get diskettes of King, Rook, and pawn against King and Rook, as well as King, Queen, and pawn vs. King and Queen, among others. It's time to check endgame books, comrades!

## NEW YORK OPEN

Unfortunately, the best game I played was the one I lost. For a while it looked like the Great Escape:

GM D. Gurevich—IM H.-U. Gruenberg



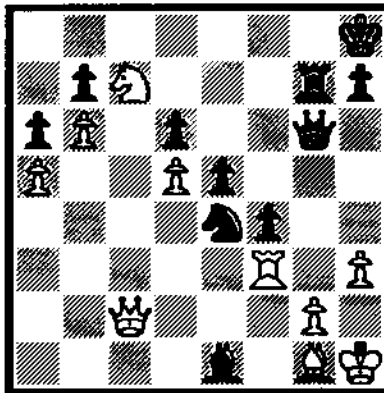
White to move

It looks like Black is completely winning—the threats are ...Qh5 followed by ...Rxf2.

34.Nb5! Rxc2 35.Qxc2 Nxe4

Looks simplest. If 35...axb5 36.a6 bxa6 37.b7 Nd7 38.Ra3 and White is hanging on.

36.Nc7 Qg6! 37.Kh2 Bg3+ 38.Kh1 Be1  
Is it over?



After 38...Be1

39.Ne6! Ng3+ 40.Rxf2 Bxf3

Now what?

41.Qc7!! Rxc7 42.bxc7 Qe8 43.Ng5!  
Be1 44.Nf7+ Qxf7

Now my flag was hanging.

45.c8Q+ Kg7 46.Bb6 Bg3 47.Qg4+  
Qg6 48.Qd7+ Kh6 49.Bg1 e4 50.Qxb7  
f3 51.gxf3??

Could I have drawn after 51.Be3+  
Kh5 52.Qxa6?!

51...Qf5! +- 52.Be3+ Kg6 53.Kg1 exf3  
54.Qb2 f2+ 55.Bxf2 Bxf2+ 56.Qxf2  
Qxf2+ 57.Kxf2 Kf5 58.h4 Kf4 0-1

On the brighter side, at least one Gurevich played really well: Ilya. His games against Kamsky and Benjamin were excellent. Now I really can call him my "little brother."

## NEW HAVEN: U.S. ACTION CHAMPIONSHIP

The following numbers tell the story of my "tragedy":

Round	1	2	3	4	5	6	7	8	9
D. Gurevich	1	2	3	4	5	5	5	5	6

(The last-round victory didn't matter!) The final results were Dlugy (1st on tiebreak), Yermolinsky, Gulko, Shirazi, and Sherzer 7; Benjamin, Wolff, Gurevich 6, and so on....

Here's a game from the more pleasant half of the tournament:

## English Opening

GM Dmitry Gurevich - GM Max Dlugy  
U. S. Action 1991

1.c4 c5 2.Nf3 Nf6 3.Nc3 e6 4.d4 cxd4  
5.Nxd4 d5! 6.cxd5 Nxd5 7.Bd2 Nb6  
8.e3 Be7 9.Be2 0-0 10.O-O e5 11.Nb3  
Nc6 12.Ne4 a5 13.a4 Nb4 14.Nec5  
N6d5 15.Bf3 Qb6 16.Bxb4! Nxb4  
17.Nd7 +/- 17...Bxd7 18.Qxd7 Nc2  
19.Rac1 Qxb3 20.Qxe7 Qxb2 21.Rb1  
Qa3 22.Qxe5 Qxe4 23.Bd1! ±  
23...Rac8 24.Rc1 g6? (24...Rfd8)  
25.Qb2 Qd7 26.Bxc2 b5 27.g3 b4  
28.Be4 Rb8 29.Bc6 (1-0, 35 moves)

After the following blow-out, I lost two more games:

## Sicilian Defense

GM Patrick Wolff - GM Dmitry Gurevich  
US Action 1991

1.e4 c5 2.Nf3 d6 3.d4 cxd4 4.Nxd4 Nf6  
5.Nc3 Nc6 6.Bc4 e6 7.Be3 a6 8.Qe2  
Na5 9.Bd3 Be7? 10.g4 Qc7? 11.O-O-O  
Nd7 12.Kb1 Ne5 13.Nf5! exf5?  
(13...Bf8) 14.Nd5 +- 14...Qc6 15.gxf5  
Nac4 16.Bd4 Bf6 17.f4 Nxd3 18.Qxd3  
Bxd4 19.Qxd4 Kf8 20.Rhg1 Rg8 21.Rg3  
b5 22.Rdg1 g6 23.fxf6 Nd2+ 24.Kc1  
Bf5 25.gxh7 1-0

I hope my next article will end on a lighter note!

Here's the solution to the composition:  
1.Bd4+!!

The only move. Now if 1...Rxd4+, then of course 2.Kc2 Ra4 3.Kb3 +-, so...  
1...Ka2 2.Kc2 and wins—in 32 more moves!

# IHSA Individual Championships

Allen Hammond (2066) of Chicago's St. Ignatius Prep won the 1991 Illinois High School Association Class AA Individual Championship. Seventy-five of the qualifiers for this tournament came to Wheaton on April 19-20 to contend for the top spot, but only Hammond and Serge Minin (1749) of Niles North H.S. chalked up perfect 5-0 scores. Normally, of course, tiebreaks are not used for perfect scores, but a technical error in this year's IHSA rules made no provision for declaring the players co-champions or holding a five-minute playoff, and the officials felt it would have been even more unfair to throw out the rulebook. Nevertheless, Hammond faced much stronger opponents than Minin—he beat the third-, fourth-, and fifth-place finishers in the last three rounds.

Of the thirty-one qualifiers for the Class A Championship, Che Wei Wang (1606) from University H.S. in Urbana recovered from a second-round loss to emerge victorious with a 4-1 score, beating out Dave Vakil (1523) of Illinois Math & Science Academy, Doug Coons (1483) of Georgetown H.S., and University H.S. teammate Corey Hochman (1708).

In the past school year, some 1,023 students from 97 schools throughout Illinois participated in team and individual events under IHSA auspices. The top finishers in team events then qualify for the individual championship. High school coaches who would like to know how to participate in IHSA events may contact Michael Zacate at (708) 479-9380.

## Illinois High School Assn. Individual Class AA Championship

1. Allen Hammond	St. Ignatius	2066	W49	W12	W 4	W 5	W 3	5
2. Serge Minin	Niles North	1749	W58	W13	W36	W10	W 9	5
3. Cory Schanes	Jefferson-Rock	1755	W64	W18	W21	W19	L 1	4
4. James Lin	Niles West	1551	W54	W35	L 1	W25	W21	4
5. Zibby Dudkowski	Foreman	1637	W55	W24	W43	L 1	W15	4
6. Josh Overcast	Bloom Trail	1586	W63	W20	L10	W41	W24	4
7. Dennis Swanson	Edwardsville	1352	W42	W67	W11	L 9	W22	4
8. Chris Dayagdag	Morton	1394	W71	W64	D 9	D14	W19	4
9. Tim Hoffman	Boylan-Rock.	1626	W69	W60	D 8	W 7	L 2	3½
10. Adam Kalai	New Trier	1392	W59	W58	W 6	L 2	D16	3½
11. Tom Brinkmann	Thornton	1616	W17	W28	L 7	D36	W37	3½
12. Alex Buteman	Buffalo Grove	1607	W31	L 1	W29	D38	W35	3½
13. Jim Oberweis	Marmion	1589	W74	L 2	W30	W43	D17	3½
14. Chong Bun Tieng	St. Ignatius	1655	W39	L19	W68	D 8	W26	3½
15. Mark Stamatikos	Fenwick	1440	W51	D22	W46	W20	L 5	3½
16. Mark Jutovsky	Glenbrook N.	1542	L20	W44	W47	W33	D10	3½
17. Andrew Schultz	Evanston Twp.	1502	L11	W56	W52	W44	D13	3½
18. Bret Fuller	Mattoon	1610	W50	L 3	W F	D37	W38	3½
19. Boris Gelfand	Evanston Twp.	1565	W32	W14	W26	L 3	L 8	3
20. Paul Smith	Mattoon	1665	W16	L 6	W28	L15	W43	3
21. William Murphy	Evanston Twp.	1450	W70	W27	L 3	W46	L 4	3
22. Gabe Moy	Evanston Twp.	1534	D27	D15	W70	W45	L 7	3
23. Greg Szweczyk	Niles West	1449	D25	D30	D35	W48	D27	3
24. Soren Dayton	Evanston Twp.	1508	W48	L 5	W51	W57	L 6	3
25. Felix Gutierrez	St. Rita	1393	D23	W40	D37	L 4	W55	3
26. Brandon Buzzell	Auburn-Rock.	1338	W29	W37	L19	W50	L14	3
27. Mark Monroy	Jefferson-Rock.	1659	D22	L21	W59	W53	D23	3
28. Mark Hopkins	Thornwood	1455	W47	L11	L20	W61	W45	3
29. Ian Watson		1431	L26	W65	L12	W49	W46	3
30. Chris Nielson	Bloom Trail	1429	D56	D23	L13	W69	W57	3
31. Cleofas Chaidze	Clemente	1487	L12	L47	W65	W52	W44	3
32. Mauricio Lopez	Eisenhwr.-Blue 1.	1703	L19	L43	W74	W68	W36	3
33. Felix Wong	Elk Grove Vill.	1414	W65	L66	W48	L16	W50	3
34. Robert Parrillo	St. Ignatius	1439	L45	L52	W67	W66	W51	3
35. Larry Strain	Jefferson-Rock.	1650	W67	L04	D23	W40	L12	2½
36. Greg Leuthold	Urbana	1443	W75	W53	L02	D11	L32	2½
37. Chung Hay Poon	Elk Grove Vill.	1427	W62	D54	D25	D18	L11	2½
38. Mike Sims	Wheaton North	1424	L46	W61	W49	D12	L18	2½

## April 19-20, 1991

39. Floren Irizarry	Clemente	1529	L14	W45	L44	W47	D41	2½
40. Andy Lee	Downers Grove N.	1466	D53	L25	W54	L35	W62	2½
41. Chris Mooney	Rock Island	1422	W73	L48	W66	L06	D39	2½
42. John Towey	Maine West	1204	L07	BYE	L50	W71	D53	2½
43. Brian Anderson	Proviso West	1419	W52	W32	L05	L13	L20	2
44. Ken Caton	Downers Grove N.	1379	W68	L16	W39	L17	L31	2
45. Todd Hickman	Edwardsville	1355	W34	L39	W60	L22	L28	2
46. Tomas Haran	St. Rita	1309	W38	W69	L15	L21	L29	2
47. Alex Rozman	Auburn-Rock.	1398	L28	W31	L16	L39	W64	2
48. Danny Venske	Lane Tech	1634	L24	W41	L33	L23	W63	2
49. Rob Goldman	Glenbrook North	1582	L 1	W22	L38	L29	W63	2
50. Edward Gorz	St. Rita	1489	L18	W57	W42	L26	L33	2
51. Sam Manzello	Elk Grove Vill.	1376	L15	W71	L24	W60	L34	2
52. Paul Rodriguez	Lincoln-Way	1267	L43	W34	L17	L31	W69	2
53. Mason Wehrle	Bloom Trail	1597	D40	L36	W56	L27	D42	2
54. Brad Stevens	Auburn-Rock.	1682	L 4	D37	L40	D56	W71	2
55. Bui Doug	Clemente	1520	L 5	L26	W F	W70	L25	2
56. Jeff Yang	Wheaton North	1325	D30	L17	L53	D54	W67	2
57. Timothy Lawler	Lane Tech	1329	BYE	L50	W63	L24	L30	2
58. William Getchius		1577	L 2	L10	L71	W74	W70	2
59. Bryan Swanson	Glenbrook North	1449	L10	D62	L27	D64	W66	2
60. Tom Adams	T. F. North	1503	W66	L 9	L45	L51	W65	2
61. Nick Yeates	Rich South	1217	L72	L38	BYE	L28	W74	2
62. Rob Krause	Stevenson	1316	L37	D59	D64	D63	L40	1½
63. Preshant Bhawe	Auburn-Rock.	1456	L 6	W75	L57	D62	L48	1½
64. Ken Rahr	Wheaton North	1581	L 3	L 8	D62	D59	L47	1
65. Scott McAIM		1243	L23	L29	L31	BYE	L60	1
66. Jef Chang	De Kalb	1620	L60	W33	L41	L34	L59	1
67. Geoff Freemark	Proviso West	1524	L35	L 7	L34	W73	L56	1
68. Danny Rakovic	Niles West	1441	L44	W73	L14	L32	L49	1
69. Joel Attey	Edwardsville	1504	L 9	L46	W73	L30	L52	1
70. Joel Schwab	New Trier	1395	L21	W74	L22	L55	L58	1
71. Tad Eicher		1450	L 8	L51	W58	L42	L54	1
72. Alex Pantelias		----	W61	L49	L F	----	----	1
73. Steve Pacholik	Downers Grove N.	1281	L41	L68	L69	L67	BYE	1
74. Chris Lefever	Quincy	1461	L13	L70	L32	L58	L61	0
75. Rafael Mendez	Morton	1391	L36	L63	L F	----	----	0

## Illinois High School Assn. Individual Class A Championship

1. Che Wei Wang	University-Urbana	1606	W19	L05	W17	W16	W10	4
2. Dave Vakil	Ill. Math & Science	1523	W26	W22	D05	W15	D03	4
3. Doug Coons	Georgetown	1483	W24	W25	D15	W09	D02	4
4. Corey Hochman	University-Urbana	1708	L14	W31	W30	W11	W06	4
5. Sean Phillips	Stillman Valley	1464	W20	W01	D02	L06	W14	3½
6. J. Aeschleman	Roanoke-Benson	1356	D07	W23	W14	W05	L04	3½
7. Matt Creneens	Olympia	1532	D06	D18	W29	D14	W09	3½
8. Chris Morrison	North Boone	1505	W17	L16	D19	W12	W15	3½
9. Peter Chou	University-Urbana	1463	W28	W10	W16	L03	L07	3
10. Taylor Wilhour	Ill. Math & Science	1630	W30	L09	W18	W22	L01	3
11. Ryan Swanson	Stillman Valley	1507	W29	L15	W20	L04	W18	3
12. Robert Boehner	Springfield Luth.	1150	L22	BYE	W21	L08	W23	3
13. Matt Raney		1191	L16	L17	W26	W29	W22	3
14. Andrew Roerkohl	North Boone	1394	W04	W21	L06	D07	L05	2½
15. Dana Wagner	University-Urbana	1418	W27	W11	D03	L02	L08	2½
16. Bryan Biggers	Stillman Valley	1407	W13	W08	L08	L01	D20	2½
17. Tim Sales	Stillman Valley	1325	L08	W13	L01	W27	D21	2½

## April 19-20, 1991

18. Ken Gaspar	Roanoke-Benson	1227	W23	D07	L10	W19	L11	2½
19. Paul Iutzi	Olympia	1364	L01	W24	D08	L18	W29	2½
20. Martin Freeman	Quigley	1307	L05	W26	L11	W30	D16	2½
21. Adrian Skinner	Quigley	1466	W31	L14	L12	W25	D17	2½
22. Brian Winkle	Georgetown	1455	W12	L02	W25	L10	L13	2
23. Paul Stelzer	Quigley	1423	L18	L06	W31	W24	L12	2
24. Ryan Harkey	Sherrard	1319	L03	L19	W28	L23	W30	2
25. David Zwenez	Hampshire	1266	BYE	L03	L22	L21	W31	2
26. Joel Buss	Central Catholic	1333	L02	L20	L13	D31	BYE	1½
27. Kirk Francis	Rockford Luth.	1221	L15	L29	BYE	L17	D28	1½
28. Chris Podgorski	Hampshire	1303	L09	L30	L24	BYE	D27	1½
29. John Muller	Westmont	1329	L11	W27	L07	L13	L19	1
30. Jason Thompson	Georgetown	1606	L10	W28	L04	L20	L24	1
31. Kelly Bloemke	Rockford Luth.	1309	L21	L04	L23	D26	L25	½

# MASTER CHALLENGE XIII

Presented By

**THE OAK PARK-FOREST PARK  
CHESS CLUB**

**JUNE 21, 22, 23, 1991**

MOHR COMMUNITY CENTER  
7650 JACKSON BOULEVARD  
FOREST PARK, ILLINOIS

**\$3,000.00**

**GUARANTEED**

## PRIZE FUND

1st: \$700 • 2nd: \$450 • 3rd: \$230 • 4th: \$120

Expert ..... \$250, \$120, \$65

Class A ..... \$240, \$115, \$55

Class B ..... \$220, \$105, \$50

Class C/below .. \$160, \$70, \$25

Unrated ..... \$25

REGISTRATION: JUNE 21 — 6-7 PM

JUNE 22 — 8-8:45 AM

ROUNDS: JUNE 21 — 7:30 PM

JUNE 22 — 9 - 2:00 - 7

JUNE 23 — 10 - 4

## SPLIT 1ST ROUND

Player chooses either Friday or Saturday morning round.  
Everyone plays last 4 rounds.

**TIME CONTROL: 40/100; 25/60**

**ENTRY FEE: \$36 IN ADVANCE BY 6/18  
\$43 AT SITE**

BY MAIL TO: Ken Marshall  
357 W. Grove  
Lombard, IL 60148  
Information: (708)932-1455

**A GRAND PRIX & ILLINOIS TOUR EVENT**  
ICA MEMBERSHIP REQUIRED FOR ILLINOIS PLAYERS

# 1991 Greater Peoria Open

Camilo Pangan (2207), one of Chicago's newest Masters, swept the field 5-0 at the 1991 Greater Peoria Open. This Grand Prix tournament was held March 23-24 at Peoria's Signature Inn, site of the 1989 Illinois State Championship, and attracted 71 players. Pangan, whose wallchart rating probably understates his true strength (see his win against GM Dmitry Gurevich in the previous issue) played most impressively. While he was definitely busted in his Round 3 game with Al Chow (2397), Pangan nevertheless managed to fashion a mating net in a seemingly sterile endgame. On Sunday, Pangan beat Peter Pelts (2410) and Dr. Eugene Martinovsky (2379).

Shimer College freshman Jesse Kraai (2357) also had an excellent result, beating Masters Acosta and Wallach and drawing Martinovsky. Chow rebounded from his loss to take clear third at 4-1. Marc Talbot (1940) drew Kevin Bachler (2130) and beat three Experts (Robert Ash, Rob Sax, and yours truly) to grab top Class A honors.

Three of the four winners of the Reserve Section scored an undefeated 4-1. Randy Ingram (1613) held two higher-rated players to draws, then beat Steve Jesseph (1775) and David Shiner (1743). Lawrence Zevnik (1551) and Ken Marshall (1693) took half-point byes, then drew each other in the last round. Zevnik knocked off two higher-rated players, Lawrence Yakowenko (1605) and Shiner (1743), while Marshall shot down Mack Lyons and Steve Zubatch (both 1743). It was Zubatch, however, who finished first on tiebreaks, thanks to his last-round victory over top-seeded William Corbin (1785).

Zevnik took top Class C honors, while Robert Bales (1390) score 3-2 to nab the Class D prize.

I had one of the strangest tournaments of my life. Twice my games were adjourned while I was in serious time pressure. In Round 1, I sealed a move that hung a piece. A true sportsman would have resigned, but this slimeball offered his opponent, Tom Bolitho, a draw. Tom declined, but made an offer of his own a couple hours later, which was accepted immediately. My Catholic upbringing compelled me to confess my sealed move, and I was relieved when Tom took the news much more graciously than I would have. The adjournment of my Round 4 game with Phil Anderson (1998) was almost as bizarre. Phil's sealed move was probably not the best, but it sure was a surprise: ...b1=B+!

## OPEN SECTION

### Queen's Pawn Opening

Mariano Acosta (2186) - Steve Szpisjak (2268)

1.d4 Nf6 2.e3 d6 3.Nc3 g6 4.b3 Bg7 5.Bb2 O-O 6.Qd2 Nbd7 7.O-O-O c6 8.f3 b5 9.g4 a5 10.g5 Nh5 11.Nge2 Nb6 12.Ng3 a4 13.Nxh5 gxh5 14.h4 b4 15.Ne2 axb3 16.axb3 Be6 17.Ng3 Ra2 18.Nxh5 Nd5 19.e4 Qa5 20.Qd3 Nc3 21.Bh3 Bxh3 22.Rdg1 Rxb2 23.e5 dxe5 24.Nf6+ exf6 25.gxf6 Rb1+ 26.Kd2 Rxc1 27.Rxc1 e4 28.Qe3 Qh5 29.Rg5 Qxf3 30.Rxc7+ Kh8 31.Qg1 e3+ 0-1

## Greater Peoria Open

March 23-24, 1991

OPEN SECTION	wall chart	score	tour
1 PANGAN Camilo	2250 W21 W28 W 3 W19 W 4	5	32 M
2 KRAAI Jesse	2357 W22 W15 W 9 D 4 W 7	4½	16 M
3 CHOW Albert	2397 W32 W 5 L 1 W11 W10	4	8 M
4 MARTINOVSKY Eugene	2379 W25 W20 W10 D 2 L 1	3½	4 M
5 BACHLER Kevin	2130 W30 L 3 W12 D 8 W15	3½	4 MX
6 SZPISJAK Steven	2268 W 8 Dbye W17 L 7 W 9	3½	4 M
7 WALLACH Kenneth	2261 Dbye W29 W16 W 6 L 2	3½	4 M
8 TALBOT Marc	1940 L 6 W33 W26 D 5 W16	3½	4 MXA
9 ACOSTA Mariano	2186 W33 W13 L 2 W24 L 6	3	3 MX
10 TORREGROSSA Ron	2293 W14 W26 L 4 W25 L 3	3	3 M
11 SATTERLEE Ray Doyle	2117 L13 W14 W32 L 3 W18	3	3 MX
12 SCHMIDT Ulrich	1800 L26 W38 L 5 W32 W25	3	3 MXA
13 LEALI Michael	1658 W11 L 9 L22 Wbye W27	3	3 MXAB
14 MARSHALL James	1942 L10 L11 W38 W26 W24	3	3 MXA
15 HUTSON Terry	2064 W27 L 2 D18 W22 L 5	2½	2½ MX
16 BROCK William	2139 D17 W35 L 7 W23 L 8	2½	2½ MX
17 BOLITHO Thomas	1877 D16 W37 L 6 W33 L23	2½	2½ MXA
18 CALDWELL Scott	1777 L28 W39 D15 W21 L11	2½	2½ MXAB
19 PELTS Peter	2410 Dbye W36 W24 L 1	-	2½ M
20 NAFF William	2137 W38 L 4 Dbye W29	-	2½ MX
21 BOURGERIE Dennis	1876 L 1 D34 W36 L18 W30	2½	2½ MXA
22 REYNOLDS Robert	2079 L 2 Dbye W13 L15 W29	2½	2½ MX
23 ANDERSON Phil	1998 L31 Dbye W37 L16 W17	2½	2½ MXA
24 WARFIELD Thomas	1768 W34 W31 L19 L 9 L14	2	2 MXAB
25 COX William	2008 L 4 W27 W31 L10 L12	2	2 MX
26 SAX Robert	2052 W12 L10 L 8 L14 W32	2	2 MX
27 VERO Carl	1821 L15 L25 Wbye W35 L13	2	2 MXA
28 SLATER Michael	2030 W18 L 1 Dbye	-	1½ MX
29 BUTTNY William	1916 Dbye L 7 W34 L20 L22	1½	1½ MXA
30 ALLISON Roger	1825 L 5 L32 Dbye WF L21	1½	1½ MXA
31 AVERY Robert	2165 W23 L24 L25	-	1 MX
32 SMYTHE Bill	2009 L 3 W30 L11 L12 L26	1	1 MX
33 ASH Robert	2077 L 9 L 8 W35 L17	-	1 MX
34 DZURNY Anthony	2020 L24 D21 L29	-	½ ½ MX
35 LULVES Joseph	1796 Dbye L16 L33 L27	-	½ ½ MXAB
36 PANNER Glenn	2015 Dbye L19 L21	-	½ ½ MX
37 GODFREY Jonathan	2023 Dbye L17 L23 LF	-	½ ½ MX
38 SMIT Tom	1955 L20 L12 L14	-	0
39 MILLER Wayne	- - L18	-	0

RESERVE SECTION	wall chart	score	tour
1 ZUBATCH Steve	1743 W12 W26 W14 L 4 W 9	4	8 B
2 INGRAM Randy	1613 W31 D 7 D16 W10 W15	4	8 B
3 ZEVNIK Lawrence	1551 W10 Dbye W15 W 6 D 4	4	8 BC
4 MARSHALL Ken	1693 Dbye W17 W21 W 1 D 3	4	8 B
5 BURGESS Fred	1717 W23 L14 W11 D 7 W16	3½	4 B
6 YAKOWENKO Lawrence	1605 W32 D15 W 8 L 3 D 7	3	3 B
7 WHEELER Stephan	1783 W19 D 2 D20 D 5 D 6	3	3 B
8 BURDICK Scott	1567 W 9 W25 L 6 L17 W22	3	3 BC
9 CORBIN William	1784 L 8 W23 W25 W20 L 1	3	3 B
10 JESSEPH Steve	1775 L 3 W31 W26 L 2 W14	3	3 B
11 BOLDA Matthew	1767 L14 W32 L 5 W26 W23	3	3 B
12 BALES Robert	1390 L 1 W30 Dbye D18 W21	3	3 BCD
13 KIRKPATRICK Donald	1541 L26 W18 Dbye D22 W20	3	3 BC
14 MOORE Rod	1507 W11 W 5 L 1 D16 L10	2½	2½ BC
15 SHINER David	1743 W22 D 6 L 3 W28 L 2	2½	2½ B
16 DITSWORTH Todd	1753 D27 W29 D 2 D14 L 5	2½	2½ B
17 LYONS Mack III	1743 D24 L 4 W29 W 8	-	2½ B
18 SWANSON Victor	1695 L25 L13 W27 D12 W28	2½	2½ B
19 SHAFFER Thomas	1564 L 7 L22 Dbye W29 W30	2½	2½ BC
20 CRUM Randy	1644 D21 W27 D 7 L 9 L13	2	2 B
21 GRIFFITH Jeremy	- D20 W28 L 4 D25 L12	2	2
22 WARREN Harry	1296 L15 W19 Dbye D13 L 8	2	2 BCD
23 TIARKS Richard	1312 L 5 L 9 W32 W30 L11	2	2 BCD
24 MILLER Wayne	1425 D17 - L28 D27 W29	2	2 BC
25 MOHR Allen Doug	1752 W18 L 8 L 9 D21	-	1½ 1½ B
26 PALMER Kenneth	1538 W13 L 1 L10 L11 D27	1½	1½ BC
27 KEMPNER Robert	1467 D16 L20 L18 D24 D26	1½	1½ BC
28 PADILLA Rudy	1573 Dbye L21 W24 L15 L18	1½	1½ BC
29 RODGERS Paul	- W30 L16 L17 L19 L24	1	1
30 DREESSEN Robert	1608 L29 L12 W31 L23 L19	1	1 B
31 JENKINS Mike	- L 2 L10 L30 Wbye	-	1
32 YOUNGS Joel	- L 6 L11 L23	-	0

### English Opening

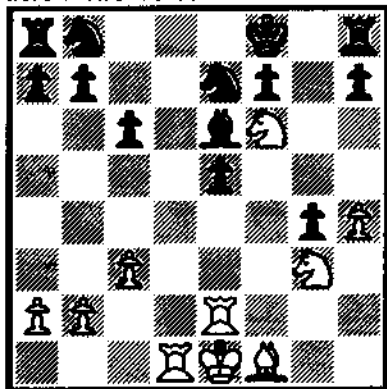
Ron Torregrossa (2293) - Al Chow (2397)

1.c4 Nf6 2.Nc3 c5 3.a3 g6 4.Nf3 Bg7 5.Be2 O-O 6.O-O Nc6 7.d4 cxd4 8.exd4 d5 9.Bg5 Be6 10.c5 Ne4 11.Be3 Nxc5 12.dxc5 d4 13.Nxd4 Nxd4 14.Qc1 Qa5 15.Bxd4 Bxd4 16.Bf3 Qxc5 17.Bxb7 Rab8 18.Bf3 Rfc8 19.a3 Bc4 20.Ne4 Qb6 21.Qh6 Bxf1 22.Rxf1 Qxb2 23.h4 Bg7 24.Qg5 Qxa3 25.h5 h6 26.Qg3 g5 27.Re1 Qa5 28.Rd1 Rd8 29.Rc1 Rbc8 30.Rb1 f5 31.Nxg5 Be5 32.Qh3 hxg5 33.h6 g4 34.Qh5 gxf3 35.gxf3 Kh8 36.Kh1 Qd2 37.Qxf5 Rc1 + 0-1

### King's Gambit Accepted

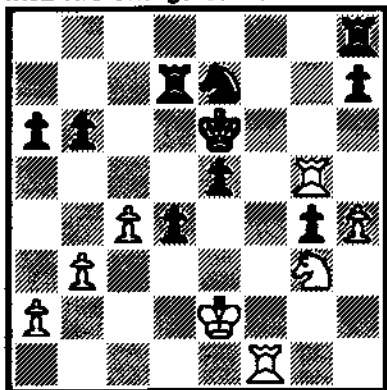
Camilo Pangan (2206) - Al Chow (2397)

1.e4 e5 2.f4 exf4 3.Nf3 d6 4.d4 g5 5.h4 g4 6.Ng1 Bh6 7.Nc3 c6 8.Nge2 Qf6 9.g3 fxg3 10.Nxg3 Bxc1 11.Rxc1 Ne7 12.e5 dxe5 13.Nce4 Qf4 14.Rh2 Be6 15.Rf2 Qe3+ 16.Ra2 Qxd4 17.Nf6+ Kf8 18.c3 Qxd1+ 19.Rxd1



After 19.Rxd1

19...Nd5 20.Nxd5 cxd5 21.c4 d4 22.Rxe5 Nc6 23.Rb5 Re8 24.Kf2 Re7 25.b3 a6 26.Rc5 Rd7 27.Bg2 Ne7 28.Bd5 b6 29.Bxe6 fxe6 30.Re5 Kf7 31.Ke2 Kf6 32.Rg5 e5 33.Rf1 + Ke6



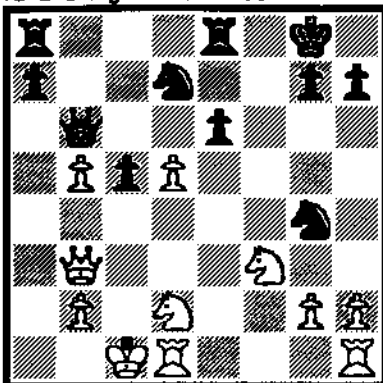
After 33...Ke6

34.Ne4 d3+ 35.Kd2 Rd4 36.Rf6 + Kd7 37.Rxe5 Ng6 38.Rf7 + Kc8 39.Re6 Nxe4 40.Rc6 + Kd8 41.Nd6 Nf3+ 42.Kd1 Rxd6 43.Rxd6 + Ke8 1-0

### King's Gambit Declined

Camilo Pangan - Eugene Martinovsky

1.e4 e5 2.f4 Bc5 3.Nf3 d6 4.c3 Nf6 5.d4 exd4 6.cxd4 Bb4+ 7.Bd2 Bxd2+ 8.Nbxd2 O-O 9.Bd3 c5 10.d5 b5 11.Bxb5 Qb6 12.Qb3 Ba6 13.a4 Nbd7 14.e5 Bxb5 15.axb5 dxe5 16.fxe5 Rfe8 17.O-O-O Ng4 18.e6 fxe6



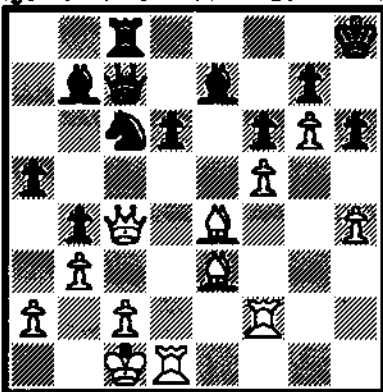
After 18...fxe6

19.Nc4 Qc7 20.dxe6 Qf4+ 21.Kb1 Nb6 22.Rc1 Kh8 23.Rhe1 Rxe6 24.Rxe6 Qf5+ 25.Qc2 Qxe6 26.Qxh7+ Kxh7 27.Ng5+ Kg6 28.Nxe6 Nxe2 29.Nd6 Ng4 30.Rxc5 Ne3 31.Rc7 Nxg2 32.Nxg7 Ne3 33.Nge8 Ned5 34.Rg7+ Kh6 35.Nf5+ Kh5 36.Rg1 Rxe8 37.Ng7+ Kh6 38.Nxe8 Nc4 39.Rg7 Nb4 40.Rxa7 Nd2+ 41.Kc1 Nb3+ 42.Kd1 1-0

### Sicilian Defense

Marc Talbot (1940) - Bill Brock (2139)

1.e4 c5 2.Nf3 d6 3.d4 cxd4 4.Nxd4 Nf6 5.Nc3 a6 6.Be3 e6 7.f3 b5 8.g4 Bb7 9.g5 Nfd7 10.Qd2 Nc6 11.O-O-O Nde5 12.Be2 Be7 13.h4 b4 14.Ne4 Qa5 15.b3 Qc7 16.f4 Nd7 17.f5 Nxd4 18.Qxd4 Rc8 19.Bd3 Ne5 20.Rhf1 exf5 21.exf5 f6 22.Rf2 O-O 23.Nb6 a5 24.Nxc8 Rxc8 25.g6 h6 26.Be4 Nc6 27.Qc4 + Kh8



After 27...Kh8

28.Bxh6 gxh6 29.g7+ Kh7 30.Qf7 1-0

### Queen's Pawn Opening

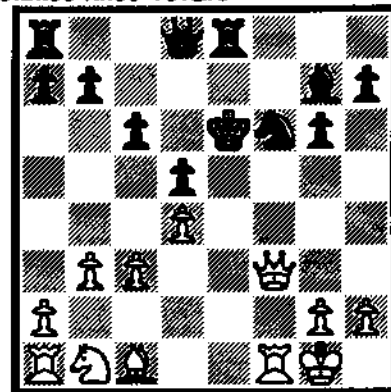
Eugene Martinovsky (2379) - Ron Torregrossa (2293)

1.d4 Nf6 2.Nf3 g6 3.g3 Bg7 4.Bg2 O-O 5.O-O d6 6.Nc3 Nc6 7.d5 Ne5 8.Nd4 e6 9.e4 Rb8 10.b3 c5 11.dxc6ep Nxc6 12.Nce2 Ne8 13.c4 Bd7 14.Be3 Ne5 15.h3 f5 16.exf5 gxf5 17.Nf4 Qe7 18.Ndx6 Rf7 19.Nxg7 Rxg7 20.Bxa7 Ra8 21.Qd5 + Kh8 22.Qxb7 Rc8 23.Bd4 Qg5 24.c5 Rc7 25.Qa6 Bc6 26.Ne6 Qh5 27.Bxe5 Bxg2 28.Bxg7 + Nxg7 29.Kxg2 Nxe6 30.Qxd6 Qf7 31.Rfe1 Re7 32.c6 f4 33.c7 1-0

### Latvian Gambit

Thomas Bolitho (1877) - Steve Szpisiak (2268)

1.e4 e5 2.Nf3 f5 3.exf5 e4 4.Ne5 Nf6 5.Be2 d6 6.Bh5+ Ke7 7.Nc4 Bxf5 8.O-O d5 9.Ne3 Be6 10.d4 c6 11.b3 g6 12.Be2 Bg7 13.f4 exf3ep 14.Bxf3 Re8 15.Ng4 Nbd7 16.c3 Nxg4 17.Bxg4 Nf6 18.Bxe6 Kxe6 19.Qf3



After 19.Qf3

19...Kf7 20.Qh3 Kg8 21.Bg5 Qd6 22.Nd2 Re6 23.Bf4 Qe7 24.Nf3 Ne4 25.Ng5 Nxg5 26.Bxg5 Qe8 27.Qg3 b5 28.b4 a5 29.bxa5 Rxa5 30.Rae1 Re4 31.Rxe4 dxe4 32.Qf2 b4 33.cxb4 Rg5 34.a4 Rd5 35.Qa2 Bxd4+ 36.Kh1 e3 37.b5 e2 38.Re1 Bc3 39.Rxe2 Qf7 40.Qb1 cxb5 41.Rc2 Rf5 42.Rc1 bxa4 43.h3 Qc4 44.Qb8 + Rf8 45.Qb1 a3 0-1

### King's Indian Defense

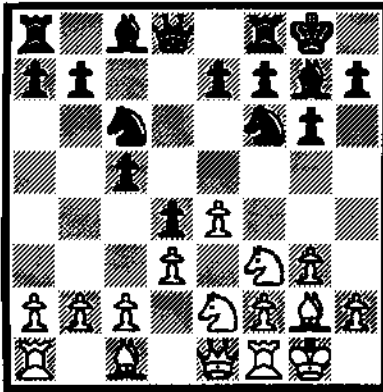
Jesse Kraai (2357) - Robert Reynolds (2079)

1.d4 Nf6 2.c4 g6 3.Nc3 Bg7 4.Nf3 O-O 5.g3 d6 6.Bg2 c6 7.O-O Qa5 8.e4 Bg4 9.h3 Bxf3 10.Qxf3 Nfd7 11.Be3 Qb4 12.Qe2 Nb6 13.c5 dxc5 14.dxc5 Nc4 15.a3 Qb3 16.Rab1 Nxe3 17.Qxe3 Na6 18.Rfc1 Rfd8 19.e5 Qe6 20.f4 Rd7 21.Ne4 Rad8 22.Ng5 Qa2 23.Bf1 e6 24.Bc4 Rd1 + 25.Rxd1 Rxd1 + 26.Rxd1 Qxc4 27.b4 Nc7 28.Qd3 Qxd3 29.Rxd3 Nd5 30.Ne4 Bf8 31.Nc3 h5 32.Nxd5 exd5 33.Kf2 a6 34.Ke3 Bg7 35.a4 Kf8 36.b5 axb5 37.axb5 f6 38.exf6 Bxf6 39.Rb3 Be7 40.Kd4 Bf6 + 41.Kd3 Be7 42.bxc6 bxc6 43.Rb6 Bxc5 44.Rxc6 Bf2

45.Rxg6 Kf7 46.Rg5 d4 47.Rxh5 Bxg3  
48.Kxd4 1-0

**King's Indian Attack**

Ken Wallach (2261) - Jesse Kraai (2357)  
1.Nf3 Nf6 2.g3 d5 3.Bg2 c5 4.O-O Nc6  
5.d3 g6 6.Qe1 Bg7 7.e4 O-O 8.Nc3 d4  
9.Ne2



After 9.Ne2

9...c4 10.Bd2 cxd3 11.cxd3 a5 12.Nf4  
e5 13.Nh3 Nd7 14.Nh4 Nc5 15.Qe2 b6  
16.f3 Nb4 17.Bxb4 axb4 18.Rfd1 Bf6  
19.Qe1 b3 20.a3 h5 21.Kh1 Be6  
22.Ng1 Qd7 23.Bf1 Rac8 24.Ng2 Na4  
25.Rd2 Rc5 26.Be2 Rfc8 27.Bd1 Rc1  
28.Rxc1 Rxc1 29.Qf2 Qc6 30.f4 Nc3  
31.Bf3 Bc8 32.fxe5 Bxe5 33.Nf4 Qb5  
34.Nd5 Be6 35.Nb4 Na2 36.Nd5 Nc3  
37.Nb4 Bg7 38.Kg2 Bh6 39.Rd2 Nxe2  
40.Qxe2 Be3 41.Nh3 Qc5 0-1

**Bankö Gambit**

Michael Leali (1658) - Ray Doyle  
Satterlee (2117)

1.d4 Nf6 2.c4 c5 3.d5 b5 4.cxb5 a6  
5.b6 Qxb6 6.Nc3 g6 7.e4 d6 8.Be2 Bg7  
9.Nf3 Bg4 10.Nd2 Bxe2 11.Qxe2 Nbd7  
12.O-O O-O 13.Nc4 Qc7 14.Rb1 Rfb8  
15.Bg5 Rb4 16.f4 Nb6 17.Nxb6 Rxb6  
18.e5 Ne8 19.exd6 exd6 20.Ne4 Rab8  
21.b3 f6 22.Bh4 Qf7 23.Qd3 Rb4  
24.Rbd1 Rd4 25.Qf3 Qxd5 26.Rxd4  
Qxd4+ 27.Bf2 Qd5 28.Rd1 Qe6 29.g4  
Rb4 30.Ng3 Nc7 31.f5 Qe7 32.h3 d5  
33.Re1 Qd6 34.Rc1 c4 35.bxc4 Rxc4  
36.Rb1 Nb5 37.Qe3 Qd7 38.Qb6 Rc6  
39.Qb8+ Qc8 40.Qf4 Rc4 41.Qe3 Nc3  
42.Rb6 Nd1 43.Qe6+ Qxe6 44.fxe6 Bf8  
45.Rb8 Rc7 46.Bc5 Rxc5 47.e7 1-0

**King's Indian Defense**

James Marshall (1942) - Ron Torregrossa  
(2297)

1.d4 Nf6 2.c4 g6 3.Nc3 Bg7 4.e4 d6  
5.Nf3 O-O 6.Be2 e5 7.O-O Nc6 8.d5  
Ne7 9.Ne1 Nd7 10.Be3 f5 11.f3 f4  
12.Bf2 g5 13.Nb5 Nf6 14.Nxa7 Rxa7  
15.Bxa7 b6

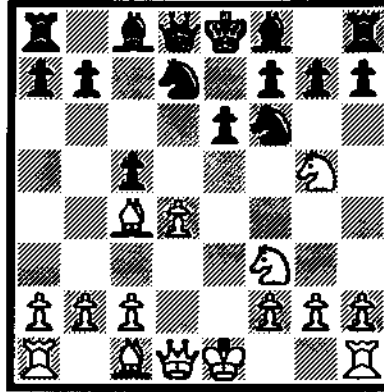
The Exchange sac has been played with the a-pawn still on the board: 13...a6 14.Na7 Rxa7 etc. It may be extravagant for Black to gambit an extra pawn, but it works....

16.e4 g4 17.Nd3 g3 18.hxg3 fxg3  
19.Ra3 Ng6 20.f4 Nxe4 21.fxe5 Qh4  
22.Rxf8+ Bxf8 23.Bf3 Nf2 24.Nxf2  
gxf2+ 25.Kf1 dxe5 26.d6 Bxd6 27.Rd3  
Bc5 28.b4 Qh1+ 29.Ke2 Nf4+ 0-1

**Caro-Kann Defense**

Camilo Pangan (2206) - Dennis Bourgerie  
(1876)

1.e4 c6 2.d4 d5 3.Nc3 dxe4 4.Nxe4  
Nd7 5.Bc4 Ngf6 6.Ng5 e6 7.N1f3 c5



After 7...c5

8.Nxf7 Kxf7 9.Ng5+ Ke8 10.Nxe6 Qb6  
11.Qe2 Be7 12.Nxg7+ Kd8 13.Ne6+  
Ke8 14.Bf4 Nf8 15.Nc7+ Kd8 16.Nxa8  
Qxb2 17.O-O Ng6 18.Bc7+ Ke8 19.Be5  
Kf8 20.Nc7 b6 21.Bxf6 Bxf6 22.Qe8+  
Kg7 23.Qf7+ Kh6 24.Qxf6 Rf8 25.Bf7  
Qxc2 26.Ne6 Bxe6 27.Qxe6 cxd4  
28.Rac1 Qd2 29.Bxg6 hxg6 30.Rc6 Qg5  
31.f4 Qh5 32.g4 1-0

**Sicilian Defense, Najdorf Polugaevsky**

Robert Sax (2050) - Marc Talbot (1940)

1.e4 c5 2.Nf3 d6 3.d4 cxd4 4.Nxd4 Nf6  
5.Nc3 a6 6.Bg5 e6 7.f4 b5 8.e5 dxe5  
9.fxe5 Qc7 10.Qe2 Nfd7 11.O-O O Bb7  
12.Qg4 Qxe5 13.Bxb5 axb5 14.Rhe1 h5  
15.Nxe6 fxe6 16.Rxe5 hxg4 17.Rxe6+  
Kf7 18.Rde1 Bc6 19.R6a2 Rxh2  
20.Rf2+ Kg6 21.Bf4 Rxg2 22.Rff1 Nf6  
23.Nd1 Bc5 24.Re5 Rg1 0-1

**English Opening**

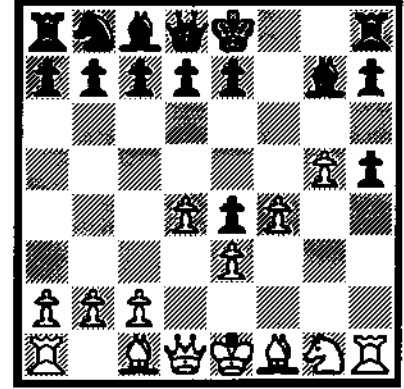
Marc Talbot (1940) - Bob Ash (2077)

1.Nf3 Nf6 2.c4 c5 3.Nc3 Nc6 4.g3 d5  
5.b3 d4 6.Na4 e5 7.Bg2 Bd6 8.O-O e4  
9.Ng5 Bf5 10.f3 exf3 11.Bxf3 Bg6  
12.d3 Qd7 13.e3 h6 14.Ne4 Nxe4  
15.Bxe4 Bxe4 16.dxe4 O-O 17.exd4  
Nxd4 18.Qh5 Qe7 19.Bf4 Bxf4 20.Rxf4  
f5 21.Raf1 fxe4 22.Rxf8+ Rxf8  
23.Rxf8+ Kxf8 24.Qxc5 e3 25.Qxd4 e2  
26.Qf2+ Kg8 27.Qe1 Qe3+ 28.Kg2  
Qd3 29.Kf2 b5 30.cxb5 Qxb5 31.Qxe2  
Qf5+ 32.Kg1 Qb1+ 33.Kg2 Qf5  
34.Nc3 Qd7 35.Qc4+ Kh8 36.Nd5 Qb7  
37.Kf2 a5 38.Ke3 Qa7+ 39.Qd4 Qa6  
40.Nf4 Qb7 41.Ne6 1-0

**Dutch Defense**

Eugene Martinovsky (2379) - William  
Cox (2008)

1.d4 f5 2.g4 Nf6 3.g5 Ne4 4.f3 Nd6  
5.Nc3 g6 6.h4 Bg7 7.h5 gxh5 8.f4 Ne4  
9.Nxe4 fxe4 10.e3



After 10.e3

Those who wandered into the tournament hall a few minutes late had difficulty imagining how this position arose. Although White does not have one piece developed, he has a won game!

10...d5 11.Qxh5+ Kf8 12.Ne2 Nc6  
13.Bd2 e6 14.Ng3 Kg8 15.O-O-O Ne7  
16.Bh3 Nf5 17.Bxf5 exf5 18.g6 hxg6  
19.Qxg6 Qf6 20.Rxh8+ Kxh8 21.Rh1+  
Kg8 22.Qh7+ Kf7 23.Rh5 Be6 24.Nxf5  
Rh8 25.Qxg7+ Qxg7 26.Nxg7 Kxg7  
27.Rg5+ Kf6 28.b3 Rh1+ 29.Kb2 Rf1  
30.a4 Bf7 31.Be5 b6 32.Bb4 Rf3  
33.Bd2 Rf2 34.Kc3 a6 35.Rg1 Rh2  
36.Be1 Rh5 37.Kb4 Be6 38.c4 c6 39.c5  
b5 40.Ka5 bxa4 41.bxa4 Rh8 42.Kb6  
Rb8+ 43.Kxc6 Rb3 44.Bh4+ Kf7  
45.Re1 Ra3 46.Kd6 Rxa4 47.Rf1 Bg4  
48.Kxd5 Be2 49.Rb1 1-0

**Leningrad Dutch**

Ron Torregrossa (2293) - Robert Sax  
(2052)

1.d4 f5 2.g3 Nf6 3.Bg2 g6 4.Nh3 Bg7  
5.O-O O-O 6.f3 d6 7.c3 e5 8.Bg5 h6  
9.Bc1 Nc6 10.Nf2 Be6 11.e4 fxe4  
12.fxe4 Bf7 13.d5 Ne7 14.Nd2 c6  
15.c4 Qb6 16.Kh1 Be8 17.Nb3 cxd5  
18.exd5 Rc8 19.Qd3 Nf5 20.Bh3 Bd7  
21.g4 Ne7 22.Be3 Qa6 23.Rac1 b6  
24.a3 Rc7 25.Rg1 g5 26.Bf1 Rfc8 27.h4  
Ba4 28.Na1 Qb7 29.Bg2 Be8 30.hxg5  
hxg5 31.Bxg5 Bg6 32.Qe2 Kf7 33.Rgf1  
Rh8+ 34.Kg1 Qc8 35.Bxf6 Bxf6 36.g5  
Bxg5 37.Ne4+ 1-0

**"Anti-Max-Lange"**

Thomas Warfield (1768) - Robert Avery  
(2165)

1.e4 e5 2.Nf3 Nc6 3.d4 exd4 4.Bc4 Nf6  
5.O-O Nxe4 6.Re1 d5 7.Bxd5 Qxd5  
8.Nc3

I couldn't find the name of this well-known variation in ECO, BCO, Botterill and Harding, or Keres. Readers?  
8...Qa5 9.Nxe4 Be6 10.Neg5 O-O-O  
11.Nxe6 fxe6 12.Rxe6 Qf5 13.Qe2 Bc5  
14.Bg5 Rdf8



# **Maurice Irvin Open**

**Illinois Wesleyan University**

**Bloomington, Illinois**

**June 22-23, 1991**

**Open Section: \$500, \$250, \$150, \$100, X \$100 U2000/entries**

**Reserve Section: limited to under 2000, \$150 plus trophy**

**B, C, D/E, Unrated, each \$60 plus trophy**

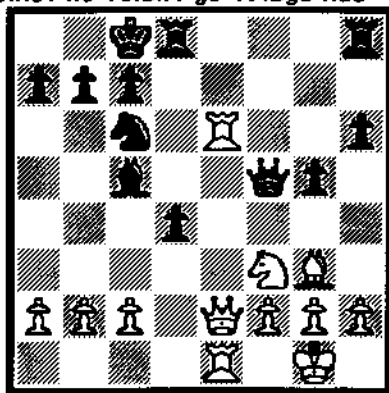
## **Illinois Chess Association Maxi Tour Event**

**Entry fee is \$25 if received postmarked by June 10. \$30 later.  
Illinois Chess Association membership required for Illinois residents.  
Registration from 8 to 8:45 AM. Saturday rounds at 9:30, 2 and  
6:30. Sunday rounds at 9 and 1:30. Time control is 40/100, SD/30.**

**College dorm rooms available, \$25 single and \$35 double. Must  
be reserved by June 18.**

**Entry to Garrett Scott,  
202 Foster Dr.  
Normal, IL 61761**

14...d3 is book.  
15.Re1 h6 16.Bh4 g5 17.Bg3 Rd8



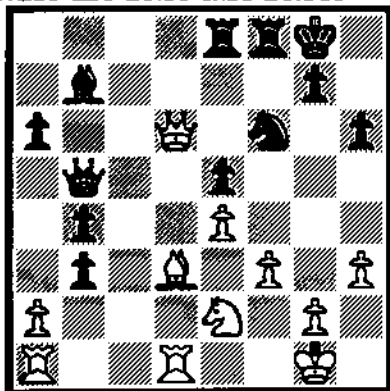
After 17...Rd8

18.Rxc6 bxc6 19.Qa6+ Kb8 20.Ne5 Rd5 21.Nxc6+ Ka8 22.Na5 Qc8 23.Qc6+ Kb8 24.Qxd5 Bb6 25.Nc6+ Kb7 26.Ne7+ c6 27.Qe6 Qxa6 28.Rxe6 Re8 29.Bd6 c5 30.Re5 c4 31.Nf5 Rd8 32.Kf1 Kc6 33.Bb4 d3 34.cxd3 cxd3 35.Ke1 Bxf2+ 36.Kxf2 d2 37.Bxd2 fxd2+ 38.Re2 Rd1 39.Nxb6 a5 40.Ng4 a4 41.b3 axb3 42.axb3 Rb1 43.Re3 Kd5 44.Nf6+ Kd4 45.Ne4 g4 46.Nf6 Rb2+ 47.Re2 g3+ 48.hxg3 Rxb3 49.Re4+ Kc5 50.g4 Rb7 51.Kf3 Kd6 52.g5 Rb3+ 53.Kg4 Rb2 54.g3 Rf2 55.Kh5 Rf3 56.g4 Rh3+ 57.Kg6 Rh8 58.Kf7 Ra8 59.Re6+ 1-0

**Queen's Gambit Accepted**

Jesse Kraai (2357) - Mariano Acosta (2186)

1.d4 d5 2.c4 dxc4 3.Nf3 Nf6 4.e3 e6 5.Bxc4 c5 6.Nc3 a6 7.O-O b5 8.Bb3 Bb7 9.Qe2 Nbd7 10.Rd1 Qc7 11.d5 c4 12.dxe6 fxe6 13.Bc2 Bd6 14.e4 O-O 15.h3 Rae8 16.Bg5 h6 17.Qd2 Bc5 18.Ba3 b4 19.Ne2 Ne5 20.Nxe5 Qxe5 21.Bxc5 Qxc5 22.Qd4 Qc6 23.f3 e5 24.Qd6 Qb5 25.b3 cxb3 26.Bd3



After 26.Bd3

26...Qc6 27.Qxc6 Bxc6 28.Bc4+ Kh7 29.axb3 Bb5 30.Bxb5 axb5 31.Nc1 Rc8 32.Na2 Nh5 33.Nxb4 Nf4 34.Nd5 Ne2+ 35.Kf2 Nd4 36.b4 Rc2+ 37.Kg3 Ne2+ 38.Kh2 Nd4 39.Kh1 Rfc8 40.Ne3 Re2 41.Re1 Rb8 42.Rab1 Ra2 43.Ra1 Rb2

44.Rab1 Ra2 45.Rbc1 Rf8 46.Ng4 Rd8 47.Nxe5 1-0 (time)

**French Defense**

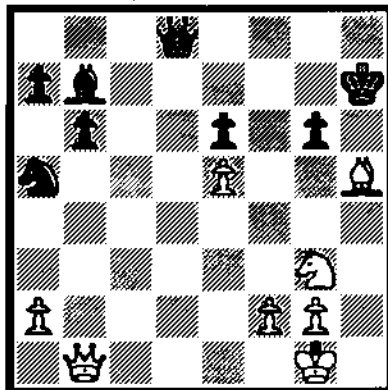
Steve Szpisjak (2268) - Ken Wallach (2256)

1.e4 e6 2.d4 d5 3.Nd2 Nf6 4.e5 Ng8 5.Bd3 c5 6.c3 Nc6 7.Ngf3 Bd7 8.O-O Qc7 9.dxc5 Bxc5 10.Nb3 Bb6 11.Bf4 Nge7 12.Re1 Ng6 13.Bg3 Na5 14.Nxa5 Bxa5 15.b4 Bb6 16.c4 dxc4 17.Rc1 c3 18.Qb3 Rc8 19.Re4 O-O 20.Rc4 Qb8 21.R1xc3 Rxc4 22.Bxc4 Bc7 23.Re3 Bc6 24.Qb2 Rd8 25.Qe2 Bxf3 26.gxf3 Rd4 27.a3 Qd8 28.Rd3 h5 29.Qe3 Bb6 30.h4 Nxh4 31.Rxd4 Qxd4 32.Qxd4 Nxf3+ 33.Kg2 Nxd4 34.Bf4 Bc7 35.Kh3 g6 36.Bd3 b6 37.Be4 f5 38.Bb7 Ne2 39.Bh2 g5 40.Kg2 f4 41.Bf3 Nd4 42.Bxh5 Nc2 43.Kf3 Bxe5 44.Kg4 Bf6 45.Bg6 Nxa3 46.Bd3 b5 47.Bg1 Nc4 48.Kh5 Nd2 49.f3 a6 (0-1, 55 moves)

**Grünfeld Defense**

Jesse Kraai (2357) - Eugene Martinovsky (2379)

1.d4 Nf6 2.c4 g6 3.Nc3 d5 4.cxd5 Nxd5 5.e4 Nxc3 6.bxc3 Bg7 7.Bc4 O-O 8.Ne2 Nc6 9.O-O b6 10.Be3 Bb7 11.Qd2 Qd6 12.Bh6 Na5 13.Bxg7 Kxg7 14.Bd3 c5 15.Rad1 cxd4 16.cxd4 Rad8 17.Qg5 h6 18.Qg4 Bc8 19.Qh4 Qf6 20.Qg3 Qg5 21.Qc7 Rd7 22.Qc3 a6 23.d5+ Kh7 24.dxe6 fxe6 25.e5 Bb7 26.Ng3 Rc8 27.Qb4 Rcd8 28.Qb1 h5 29.h4 Qg4 30.Be2 Rxd1 31.Rxd1 Qxh4 32.Rxd8 Qxd8 33.Bxh5



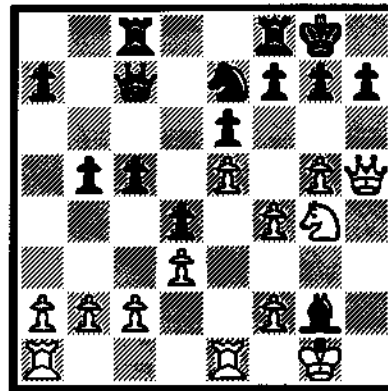
After 33.Bxh5

33...Qg5 34.Qd3 Qc1+ 35.Kh2 Qh6 36.Kg1 Qc1+ 37.Bd1 Kh6 38.Qd8 Bd5 39.Qh8+ Kg5 40.Qf6+ Kh6 41.Qh8+ 1/2-1/2

**King's Indian Attack**

Mariano Acosta (2186) - Thomas Warfield (1768)

1.Nf3 Nf6 2.g3 d5 3.Bg2 c5 4.O-O Nc6 5.d3 e6 6.Nbd2 Be7 7.e4 O-O 8.e5 Nd7 9.Re1 Qc7 10.Qe2 b5 11.Nf1 Bb7 12.h4 Rac8 13.Bf4 Nb6 14.N1h2 d4 15.Ng5 Bxg5 16.hxg5 Ne7 17.Qh5 Nbd5 18.Ng4 Nxf4 19.gxf4 Bxg2



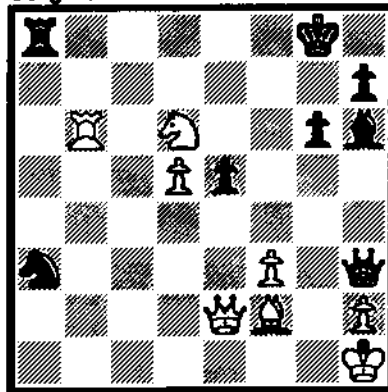
After 19...Bxg2

20.Nf6+ gxf6 21.gxf6 Kh8 22.Kxg2 Rg8+ 23.Kf3 Qb7+ 24.Re4 Rg6 25.Rh1 h6 26.fxe7 Qxe7 27.Ree1 c4 28.Reg1 Rcg8 29.Qxh6+! 1-0

**King's Indian Defense**

Al Chow (2397) - Kevin Bachler (2130)

1.d4 Nf6 2.c4 g6 3.Nc3 Bg7 4.e4 d6 5.Bd3 e5 6.d5 O-O 7.Nge2 a5 8.f3 Na6 9.Bg5 Qe8 10.Qd2 Nd7 11.g4 Nb4 12.Bb1 Nb6 13.b3 f6 14.Be3 Bd7 15.Ng3 Na6 16.O-O Nc5 17.Bc2 Qe7 18.Nb5 Rfc8 19.Rfd1 Qa8 20.Qe2 Qf8 21.a3 Bh6 22.Bf2 Be8 23.Rab1 c6 24.Nc3 cxd5 25.exd5 Ncd7 26.Kh1 a4 27.Nxa4 Nxa4 28.bxa4 Nc5 29.Bd4 Nxa4 30.Qd3 b5 31.cxb5 Nc3 32.Ra1 Nxb5 33.Be4 Rc3 34.Qe2 Rxa3 35.Rxa3 Nxa3 36.Bxe8 Qxe8 37.Ne4 Qf8 38.Rb6 f5 39.gxf5 Qxf5 40.Nxd6 Qh3



After 40...Qh3

41.Rb3 Bf4 42.Bc5 Nc2 43.Qxc2 Ra1+ 44.Bg1 Qf1 45.Qc8+ Kg7 46.Rb7+ Kh6 47.Qf8+ Kg5 48.Ne4+ 1-0

**Bishop's Opening**

Bill Naff (2137) - Eugene Martinovsky (2379)

1.e4 e5 2.Bc4 Nf6 3.d3 Nc6 4.Be3 d5 5.exd5 Nxd5 6.Qf3 Be6 7.Bb5 Be7 8.Nc3 O-O 9.Bxc6 bxc6 10.Nge2 f5 11.O-O Qd7 12.h3 Kh8 13.Na4 Nxe3 14.fxe3 Bd5 15.Qf2 c5 16.b3 Rf6 17.Nec3 Bb7 18.Qe2 Raf8 19.e4 f4 20.Qf3 c6 21.Ne2 Bc8 22.Nb2 g5 23.Nc4 Bd6 24.Kf2 Qg7 25.Ke1 g4 26.hxg4 Bxg4 27.Qf2 f3 28.Ng3 fxg2

—Three ICA Tour Mini-Events—

# July Chess Center Plus-Score Mini-Tour Tornados

Thursday, July 4 & Saturday, July 6  
& Sunday, July 7

Three separate one-day tournaments, each a four round USCF-rated Swiss, awarding cash prizes and ICA Tour Points according to score:



SCORE	TOUR POINTS	PRIZE:
4.0	16	\$100.00
3.5	8	50.00
3.0	4	25.00
2.5	2.5	12.00
2.0	2	
1.5	1.5	
1.0	1	
0.5	0.5	

---

**Organizer and TD: Bill Smythe**

---

**ROUND TIMES:** 10:00, 12:30, 3:00, 5:30 each day. Half-point bye available in round 1 or 2 (but not both) if requested before pairings are made.

**TIME CONTROL:** 40/1, then 20/30

**ENTRY FEE FOR EACH TOURNAMENT:** \$12.00 if postmarked by June 27. \$15.00 at the door by 9:30 a.m. each day.

**MEMBERSHIPS REQUIRED:** USCF (\$30.00 per year) ICA (\$14.00 per year, juniors \$8)

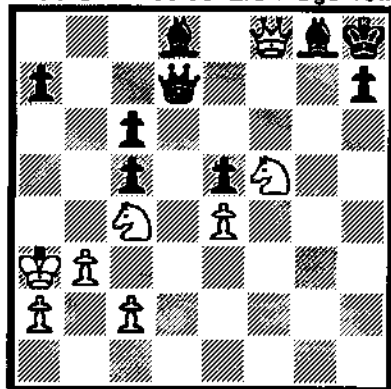
**MAKE CHECK PAYABLE AND MAIL ADVANCE ENTRY TO:** William Smythe, 6945 N. Ashland #F-3, Chicago, IL 60626, (312) 761-2455.

**TOURNAMENT SITE:** Chicago Chess Center, 1921 W. 47th Street, Chicago, IL 60609, (312) 376-5678.

By public transportation, the 47th Street bus operates 24 hours a day from the 47th Street stations on both the Dan Ryan and the Englewood/Jackson Park rapid transit lines.

Please, **NO SMOKING** at the site during the tournament.

29.Qxg2 Rxf1+ 30.Nxf1 Be7 31.Kd2 Bh4 32.Kc3 Rf2 33.Qh1 Bd8 34.Nfe3 Qd7 35.Kb2 Qxd3 36.Ka3 Qd7 37.Rf1 Rxf1 38.Qxf1 Be6 39.Qf8+ Bg8 40.Nf5



After 40.Nf5

40...Bg5 41.Kb2 Qc7 42.Ncd6 c4 43.Ne8 Qf7 44.Qxf7 Bxf7 45.Ned6 Be6 46.Kc3 cxb3 47.axb3 h5 48.Nc4 h4 49.Nce3 0-1

#### French Defense

Jonathan Godfrey (2023) - Thomas Bolitho (1877)

1.e4 e6 2.d4 d5 3.Nd2 Nf6 4.e5 Nfd7 5.Bd3 c5 6.c3 Nc6 7.Ne2 Nb6 8.O-O Bd7 9.Nf3 cxd4 10.cxd4 Nb4 11.Bb1 Bb5 12.Re1 Bxe2 13.Qxe2 Qd7 14.a3 Nc6 15.Bd3 Rc8 16.Be3 Nc4 17.Bxc4 dxc4 18.Rac1 b5 19.Red1 Ne7 20.a4 a6 21.axb5 axb5 22.Ra1 Nd5 23.Ra6 Be7 24.Rda1 O-O 25.Bd2 Nc7 26.Ra7 Ra8 27.Qe4 Rxa7 28.Rxa7 Qd5 29.Qb1 Qc6 30.Qa2 Rc8 31.Qa5 Nd5 32.Ra6 Qe8 33.Ne1 b4 34.Nc2 c3 35.bxc3 bxc3 36.Bc1 Rb8 37.Qa1 Qc8 38.g3 h6 39.Kg2 Qc4 40.Ra8 Rxa8 41.Qxa8+ Kh7 42.Qa1 Qb3 43.Na3 Bxa3 44.Qxa3 Qb1 45.Kf3 Qd3+ 46.Be3 Nxe3 47.fxe3 Qd2 48.Qf8 c2 49.Qxf7 c1Q 50.Qxe6 Qxe3+ 51.Kg2 Qe4+ 0-1

#### King's Indian Defense

Ken Wallach (2261) - Bill Brock (2139)

1.d4 Nf6 2.c4 g6 3.Nc3 Bg7 4.e4 d6 5.Bd3 O-O 6.Nge2 Nc6 7.Bg5 h6 8.Bh4 e5 9.d5 Nd4

Maybe I should've played the less enterprising 9...Ne7—I thought I would get sufficient play for the pawn, but Wallach proves me wrong.

10.Nxd4 exd4 11.Ne2 c5 12.dxc6ep Qa5+ 13.Qd2 Qxd2+ 14.Kxd2 bxc6 15.Nxd4 Bd7 16.Ne2 Rfe8 17.Nc3 Nh5 18.Rhe1 g5 19.Bg3 Nxc3 20.hxc3 Rab8 21.Kc2 Rec8 22.Rad1 Be5 23.Bf1 Be6 24.b3 d5 25.exd5 Bxc3 26.Kxc3 cxd5 27.Rd4 Rb6 28.Rc1 Ra6 29.Kb2 Rac6 30.Bd3 Kf8 31.Rc2 dxc4 32.Bxc4 Bf5 33.Re2 R8c7 34.Rd8+ Kg7 35.Red2 Be6 36.Bd3 h5 37.Be4 Rc5 38.Ra8 h4 39.gxh4 gxh4 40.Rd4 h3 41.gxh3 Bxh3 42.Ra4 Bf5 43.Bxf5 Rxf5 44.f4 Re7 45.R8xa7 Re2+ 1-0 (time, 50 moves)

## RESERVE SECTION

#### King's Indian Defense

William Corbin (1784) - Steve Zubatch (1743)

1.c4 Nf6 2.Nc3 g6 3.g3 Bg7 4.Bg2 O-O 5.Nf3 d6 6.O-O e5 7.d4 Nc6 8.d5 Ne7 9.h3 Nh5 10.Kh2 f5 11.e4 f4 12.g4 Nf6 13.Rh1 h6 14.Qe2 Nh7 15.Bd2 Kh8 16.b4 g5 17.Rag1 Qe8 18.Bf1 h5 19.gxh5 Qxh5 20.Nxg5 f3 21.Qe3 Rf4 22.Nxh7 Kxh7 23.Qd3 Rh4 24.Rg3 Bh6 25.Bxh6 Qxh6 26.Qxf3 Rf4 27.Qe3 Bd7 28.Rhg1 Raf8 29.R1g2 Ng8 30.Ne2 Rxf2 31.Qxh6+ Nxh6 32.Kg1 Rxf1+ 33.Kh2 Rg8 34.Rxg8 Nxg8 35.Ng3 Rf4 36.Nh5 Rf7 37.Kg3 Nf6 38.Kh4 Nxh5 0-1

#### Irregular Opening

Robert Dreesen (1608) - Robert Bales (1390)

1.e4 g6 2.d4 b6 3.Nf3 Bb7 4.Nc3 Bg7 5.Bb5 a6 6.Ba4 b5 7.Bb3 d6 8.Bg5 Nf6 9.a3 h6 10.Bxf6 Bxf6 11.Qd2 Nd7 12.O-O e6 13.Rfe1 c5 14.d5 Ne5 15.dxe6 Nxf3+ 16.gxf3 c4 17.exf7+ Kxf7 18.Ba2 Bxc3 19.Qxc3 Qg5+ 20.Kh1 Qe5 21.Qxe5 dxe5 22.Rad1 Rad8 23.b3 Rxd1 24.Rxd1 Ke7 25.bxc4 Rc8 26.cxb5 Rxc2 27.bxa6 Bxa6 28.Bd5 Rxf2 29.Rg1 g5 30.Rb1 Rxf3 31.Rb6 Rxa3 32.Re6+ Kd7 33.Rxe5 Be2 34.Rf5 g4 35.Rf7+ Kd6 36.Rf6+ Ke5 37.Rxh6 Kd4 38.Kg1 Ke3 39.h4 Bf3 40.Kh2 Ra1 41.Rf6 Rh1+ 42.Kg3 Rh3+ 0-1

White shouldn't have lost this ending; Black played extremely well.

#### Queen's Gambit Declined

Lawrence Zevnik (1551) - Lawrence Yakowanko (1605)

1.c4 Nf6 2.Nc3 d5 3.d4 e6 4.e3 Be7 5.Nf3 Nbd7 6.Bd3 O-O 7.O-O dxc4 8.Bxc4 Nb6 9.Bd3 c5 10.Re1 cxd4 11.exd4 Nbd5 12.Nxd5 Nxd5 13.Ne5 Nf6 14.Be3 a6 15.Qf3 Bd6 16.Rad1 Bd7 17.Qg3 Bxe5 18.dxe5 Nh5 19.Qg4 g6 20.Bh6 f5 21.exf6ep Rxf6 22.Bg5 e5 23.Bf5 gxf5 24.Qc4+ Kg7 25.Bxf6+ Nxf6 26.Rxe5 Rc8 27.Qb4 Kg6 28.Re3 Rc2 29.Rg3+ Kf7 30.Qb3+ Kf8 31.Qxc2 Qb6 32.Rxd7 Nxd7 33.Qc8+ 1-0

#### Dutch Defense

Steve Jesseph (1775) - Lawrence Zevnik (1551)

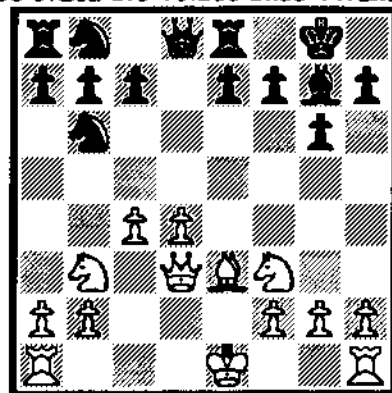
1.d4 f5 2.Nf3 e6 3.d5 Bd6 4.Bg5 Nf6 5.Nc3 O-O 6.e4 fxe4 7.Nxe4 Be7 8.Nxf6+ Bxf6 9.Bxf6 Qxf6 10.c3 d6 11.Be2 e5 12.Qd3 Nd7 13.O-O Nc5 14.Qe3 e4 15.Nd2 Qg6 16.Rad1 Bf5 17.Rfe1 Rae8 18.Bb5 Re7 19.b4 Nd7 20.Nb3 Ne5 21.Kh1 Ref7 22.Nd4 Bg4 23.Rd2 a6 24.Bf1 Bh5 25.Na6 Re8 26.Nf4 Qg5 27.Nxh5 Qxh5 28.Qxe4 Ref8 29.f3 Rf4 30.Qe2 h6 31.Red1 g5 32.Rd4 g4 33.Rxf4 Rxf4 34.fxg4 Nxg4

35.h3 Nf2+ 36.Kh2 Qxe2 37.Bxe2 Nxd1 38.Bxd1 Rf1 39.Bb3 Rc1 40.c4 Rc3 41.Kg1 Kg7 42.Kf2 Kf6 43.g3 Kf5 44.Kg2 Kg5 45.Kh2 h5 46.Kg2 Kf5 47.Kf2 Ke4 48.Kg2 Re3 49.Kf2 Rf3+ 50.Kg2 Ke3 51.g4 h4 52.c5 Rf2+ 53.Kg1 Kf3 54.Bc4 Kg3 55.a4 Rf4 56.cxd6 cxd6 57.Bd3 Rxb4 58.Bc2 Kxh3 59.g5 Rg4+ 60.Kh1 Rxg5 0-1

#### Center-Counter Defense

Steve Zubatch (1743) - Ken Marshall (1693)

1.e4 d5 2.exd5 Nf6 3.d4 Nxd5 4.c4 Nb6 5.Be3 g6 6.Nd2 Bg7 7.Nb3 O-O 8.Nf3 Re8 9.Qc2 Bf5 10.Bd3 Bxd3 11.Qxd3



After 11.Qxd3

11...e5 12.Qe2 exd4 13.Nfxd4 c5 14.Nxc5 Bxd4 15.Rd1 Qc7 16.Rxd4 Qxc5 17.Rd8 Qe7 18.Rxe8+ Qxe8 19.O-O Nc6 20.Qc2 Rd8 21.b3 Nd4 22.Qb2 Qe5 23.Qb1 Qf5 24.Qd1 Ne6 25.Qa1 Qh5 26.Re1 Nc8 27.h3 b6 28.Kh2 Na7 29.Qf6 Nc6 30.g3 Qe5 31.Qf3 Ncd4 32.Qd1 Nf5 33.Bd2 Qd6 34.Re2 Nh4 35.Qh1 Qd3 0-1

## St. Charles Chess Club

Dan Pradt

Jeff Wiewel won the Speed tournament with a score of 6½-½. Jim Marshall took second, 6-1. Wiewel also won the club championship, for the second year in a row, 4½-½. Coming in second were Wes Underwood, Jim Marshall, and Dan Pradt with 4-1.

## MASTER CHALLENGE

JUNE 21-23

## President's Page

Alan Losoff

Last week I received an anonymous postcard from Arizona. The message simply said "400 miles closer!" My guess is that this postcard came from one of the several chessplayers who wrote me from the West Coast indicating an interest in the National Open. Either he forgot to sign it or expects me to recognize him from his original request; or perhaps he just wishes to surprise me.

In any case, things like this make all the effort that goes into promoting a major chess tournament worthwhile. Here's a player so enthusiastic about playing in the National Open that he sends me progress reports as he works his way closer to Chicago.

I'm not eligible to enter Fred's contest, but my guess is that we will break the 697 mark set by Chicago's 1988 National Open by at least 20 players. But no matter how many players play, they are all very welcome and I appreciate them as much as my anonymous friend in Arizona.

Not on the same scale, but one of the premier annual events in Illinois is the Master Challenge XIII on June 21-23. I've played in this event several times, and I can assure you that it's great fun for us non-masters too. Play for four points in this or one of the many other Illinois Chess Tour events this month.

Congratulations to IHSA Class A Champion Che Wei Wang and to Class AA Champ Allen Hammond who beat out Serge Minin on tiebreak.

The 1991 Scholastic Chess Clinic will be held in mid-October. The program is aimed at high school students but talented junior high and grade school students may also benefit. For more information contact Tim Just at (708) 244-7954.

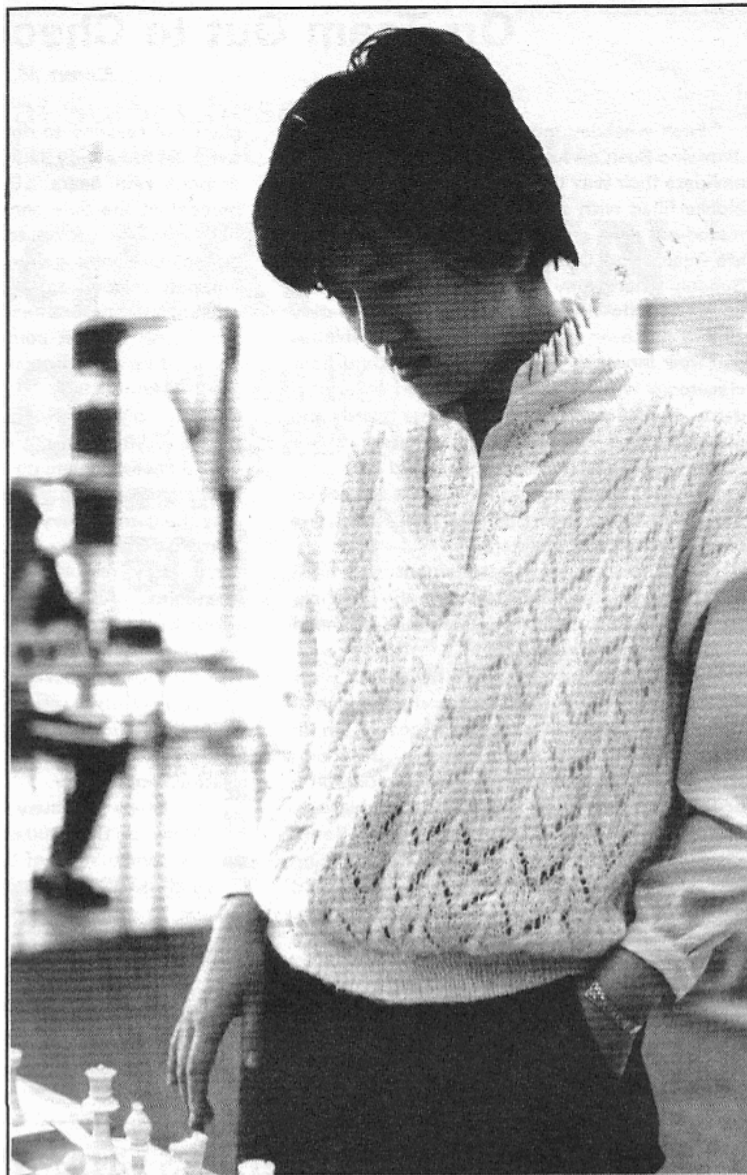
This year's Illinois Open will be held at the Ramada O'Hare, August 31-September 2. Those of you attending the National Open know the Ramada is one of the best sites ever, and the new special room rate is surprisingly low.

---

Benko, Pal, and Burt Hochberg. **Winning with Chess Psychology**. New York: McKay, 1991. 264 pp., algebraic notation, paperback.

Pal Benko is the only American besides Fischer and Reshevsky to have qualified for the Candidates twice. Unfortunately, the as-yet-unwritten **Pal Benko's Best Games** would be a much more interesting book than **Winning with Chess Psychology**. The first five chapters, which take up about 40% of the book, claim to "outline the development of the psychological method as practiced by its leading exponents of the past: Lasker, Alekhine, Botvinnik, and others." In fact, these chapters are little more than a smoothly-written rehash of modern chess history. **Winning with Chess Psychology** becomes much more interesting in the remaining chapters, when the games of Benko and his contemporaries are used to illustrate the "psychological" advice. Even here, however, this advice is not always very illuminating. For example, "You can't win by resigning" and "Arrive for your games on time." On the other hand, several chapters, including ones on the psychology of the draw and on developing a style and offer truly useful advice.

**Winning with Chess Psychology** is a better book than Kroguis's **Psychology in Chess**, but doesn't always live up to its title.



Liping Zhu at Lab School

*Marvin Rogan*

Liping Zhu (FIDE 2040) is a member of the Women's Olympic Team for the Peoples' Republic of China, a team which finished in third place in the 1990 Olympiad in Novi Sad. On April 24, she gave a simultaneous exhibition at the Lab School of the University of Chicago. She quickly dispatched her opponents from the Lab School Chess Team. Liping's husband is working on his Ph.D. at the U. of C., so she will be here for a while.

This event was made possible by the efforts of Chris Janus, a teacher at the Lab School and sponsor of the school team. Michel Lacocque, a counselor at the Lab School, facilitated the event and also assisted as translator.

**ST. CHARLES OPEN**  
**AUGUST 10-11**

# Orr Team Out to Checkmate School's Image

Karen M. Thomas

Each weekday morning, Sedrick Jones and Jermaine Bush awake at the crack of dawn and navigate their way through Chicago's West Side blocks filled with spray-painted gang symbols, rusted-out cars, and abandoned buildings. They are heading to Orr Community Academy High School, where they are students. They show up for a battle of wits, to beat the odds, to defy all that has been said about them, their abilities and their inner-city high school. In a third-floor classroom with at least three dozen other students, they huddle over paper chess boards and plastic chess pieces, honing their chess strategies. Their hard work has paid off.

"This is supposed to be a dumb school on the West Side," said Sedrick, 15. "Well, we proved to be great thinkers."

On Thursday, in a tournament that cost their coach his six-inch beard, Sedrick, Jermaine, and three other classmates trounced one of the system's showcase schools—Whitney Young Magnet High School—and won the city chess championship. On Friday, they placed their coach, math teacher Tom Larson, in the center of the room, tuned in his favorite classical radio station on a boom box, and made him pay up on his bet. Larson, a Paul Bunyan-type fellow with a Santa Claus beard, had placed his whiskers on the line and told his chess players that they could could chop the hair off if they became city champs.

"I tried to think of something to motivate them, to get their minds of the game itself," Larson said.

Larson does more than offer his facial hair to keep their minds off things. And there are

plenty of reasons to do so at Orr. One of the toughest inner-city high schools, the school's dropout rate nears 80 percent; at least 10 percent of the girls enrolled are pregnant; and few students go on to college. In October, during Larson's geometry class, a student dropped a bookbag and his gun discharged, striking the student seated in front of him.

"I can look at some of my students and know they are dropping out," Larson said. "But I know they are as good as at any suburban school. Now we are winners."

In addition to the early-morning sessions, his 80 chess players go to his classroom during study halls, lunch periods and after school to play the game. They take lessons from Richard Verber, a Chicagoan who is a senior chess master. They read chess books to learn new strategies. And they hang out with Larson, going to the movies and out to eat.

They have traveled to Kansas City, Mo., (a trip that for most was their first plane ride) to Peoria and other places to compete in city, state and national competitions. On Friday they will travel to Oak Forest to compete for the state championship.

"It keeps you busy," Jermaine said.

Most of the students' grades have risen from a combination of being tutored by Larson in math and being motivated to keep good grades to stay on the team. But sometimes chess isn't enough to keep the students at bay. While flipping through several photograph albums of the students' successes, Jermaine and Sedrick paused at several snapshots to point out classmates who gave up their chess pieces for drugs and gangs.

"This guy here, he's a gangbanger," Sedrick said, his finger resting on a smiling face seated before a chessboard. "He thought he had something to prove."

The students said that they have something to prove, too.

"We know what people say about us," said Fred Tolliver, 17, one of the five team members. "What other people say don't count. The reason we won was to prove to them that we're somebody."

The students gathered around Larson Friday, placed a torn T-shirt around his neck, and began to hack away at his beard. In the end, Larson's beard was reduced to tufts, samples preserved in plastic bags and other held playfully under team members' chins.

"That will teach you to bet against us. You will learn," Fred told the newly shaven and nicked Larson.

But Larson doesn't learn as quickly as some of his students. He bet his moustache that his team would not win the state tournament.

"My moustache does not believe you will win state," he said. "My beard did not believe that you would win city, and you see where my beard is."

*[This article first appeared in the March 17, 1991, Chicago Tribune; reprinted by permission. While Orr did not win the State Team Championship, they managed to knock off top-seeded Niles North; second board Jermaine Bush held Steve Arlinsky (2141) to a draw in that match—Ed.]*

## 1991 CANADIAN OPEN CHESS CHAMPIONSHIP – July 13 - 21– Windsor, Ontario

Sponsors: Holiday Inn, Chess Federation of Canada, International Freedom Festival, City of Windsor

**Anticipated Prize Distribution (\$12,000 GUARANTEED)**

**Overall: \$2500 \$1500 \$1000 \$800 \$700 \$600 \$500**

2000 - 2199: \$400 \$300 \$200 \$100; 1800 - 1999: \$400 \$300 \$200 \$100; 1600 - 1799: \$350 \$250 \$150 \$50

1400 - 1599: \$300 \$200 \$100 \$50; 1200 - 1399: \$250 \$150 \$75 \$50; below 1199/Unrated: \$200 \$100 \$75 \$50

**Proposed schedule of rounds:** 10 Round Swiss: Saturday, July 13: Rd. 1, a.s.a.p. after Reception; Sunday, July 14: Rd. 2, 10:00 am, Rd. 3, 6:00 pm; Monday, July 15: Rd. 4, 6:00 pm; Tuesday, July 16: Rd. 5, 6:00 pm; Wednesday, July 17: Rd. 6, 6:00pm; Thursday, July 18: Rd. 7, 6:00 pm; Friday, July 19: Rd. 8, 6:00 pm; Saturday, July 20: Rd. 9, 2:00 pm; Sunday, July 21: Rd. 10, 10:00 am.

**Special Events: Registration:** Saturday, July 13 from 9:00 am to 4:00 pm. **Opening Reception:** Saturday, July 13 at 6:00 pm. **CFC Governors' Meeting:** Mon. – Wed. (July 15-17) from 10am to 4pm each day. **Canadian Blitz Championship:** Thursday, July 18, starting at 10:00am. **Simultaneous** by GM Walter Browne: Sunday, July 14, 10am - 2pm (tentative)

**SITE:** Holiday Inn, 480 Riverside Dr. W, Windsor, Ontario, N9A 5K6

**TRAVEL:** Windsor has an international airport, so you can travel by car, bus, train, plane, or any other means your heart desires!

**ACCOMODATIONS:** Rooms will be available at the site at: \$15.50/night quadruple, \$21.00/night triple, \$31.00/night double, \$62.00/night single room occupancy.

**BYES:** 1/2 point byes are available for rounds 1, 2, 3 and 4 if requested in advance with your registration.

**ENTRY FEES: and MEMBERSHIPS:** If received from January 1 - June 30, 1991: \$60 (\$50 for Sr & Jr). If received after June 30, 1991: \$75 (\$60 for Sr & Jr). CFC Membership required for Canadian players. U.S. players may elect to pay a \$10.00 tournament membership rather than join the CFC..

**HOW TO ENTER:** Send a cheque/money order, made payable to Chess Federation of Canada, and mail to: CFC, 2212 Gladwin Crescent, E-1, Ottawa, Ontario K1B 5N1. Please specify what payment is for and provide the following information (print or type): Name, Address, City, Province or State, Postal or Zip Code, Phone Number(s). Please include your CFC number and expiry date. Junior entrants - give date of birth.

**FOR MORE INFORMATION,** write to: CANADIAN OPEN 1991, 147 Janette, #302, Windsor, Ontario N9A 4Y7. Phone: (519) 256-5585

**PLAN NOW TO PLAY IN CANADA'S OLDEST AND BEST ANNUAL EVENT!!**

To Determine the Official State Chess Champion  
The Missouri Chess Association and SJC Invite You to the

# 1991 MISSOURI OPEN

WITH  
A

## \$4,500

PRIZE FUND  
(BASED ON 150)

**\$G 1,000-750-500-250**

EXPERT	250-100-50
A	250-100-50
B	250-100-50
C	250-100-50
D/E/UNRATED	250-100-50



To be held at Kansas City's Premier Hotel

## THE RADISSON SUITE HOTEL

106 West 12th Street  
Kansas City, MO 64105  
(816) 221-7000

- \$59 Flat Rate 1-4
- Free Valet Parking
- Free Breakfast
- Free Coffee and Newspaper

## JULY 20 & 21, 1991

Entry Fee: \$33 before July 14, \$35 after

Registration at Site: 9:00 - 9:30 am

Rounds: 10-2-7, 9-2 (1/2 pt. Bye Any One Round Saturday)

5 Round Swiss-Pairing, Time Control: 40/2, 20/1

USCF Member (\$30.00) Required

MCA Member (\$4.00, other states OK)

**GM SIMUL  
FRIDAY  
JULY 19  
7:00 P.M.**

### INFORMATION:

Don Oswald  
(913) 299-3976

### Advance Entries:

David R. Marshall  
P.O. Box 410826  
Kansas City, MO 64141-0826

# Illinois Tournament Calendar

## NATIONAL EVENTS

**June 18-21, 24-26: 1991 U.S. Junior Closed Championship.** Bloomington IL. By invitation only; spectators welcome. See article in this ICB. Garrett Scott, 309/452-8116.

**June 22-23: 1991 U.S. Junior Open.** 6-SS, 40/100, Illinois Wesleyan University, Memorial Union, Bloomington IL. \$\$500. 3 sections. **Under 21:** open to under age 21. EF: \$20 if rec'd by 6/18, \$25 at site. \$\$300: 200-100, trophies to 1st, 2nd, and to every 100 rating points and by age (13 total). **Under 17:** open to under age 17. EF: \$15 if rec'd by 6/18, \$20 at site. \$100 first, trophies to 1st-3rd, 15 trophies. **Under 13:** open to under age 13. EF: \$15 if rec'd by 6/18, \$20 at site. \$100 first, 15 trophies. INFO: Garrett Scott, 309/452-8116. ENT: USCF, 186 Rte. 9W, New Windsor NY 12553. NS, NC.

**July 28-August 9: 1991 U.S. Open.** Los Angeles CA. See Chess Life for details.

**December 27-30: 1991 Pan-American Intercollegiate Team Championships. 1991 Pan-American High School Team Championships.** Palmer House Hotel, Chicagol. Details in the next ICB.

## ILLINOIS TOUR EVENTS

**June 22-23: Master Challenge XIII (MAXI-TOUR).** 5-SS, 40/100, 25/60, Mohr Community Center, 7640 Jackson Blvd. (Jackson & Desplaines), Forest Park IL. EF: \$36 if rec'd by 6/18, \$7 more at site. **\$\$3,000 in guaranteed prizes!!** 700-450-230-120, X 250-120-85, A 240-115-55, B 220-105-50, C/D/E 180-70-25, Unr 25, 30 Grand Prix points available. REG: 6-7 p.m. 6/21, or 8-8:45 a.m. 6/22. RDS: 7:30, 9-2-7, 10-4. Split 1st round; player chooses to play either Friday night or Saturday morning (specify which round). One 1/2 avail. in any of 1st 3 rds. if requested at time of registration. ENT: Ken Marshall, 357 W. Grove, Lombard IL 60148. 708/932-1455. NS, NC, W.

**June 21-23: Maurice Irvin Open (MAXI-TOUR).** 5-SS, 40/100, SD/30, Illinois Wesleyan University, Bloomington, IL. EF: \$25 if postmarked by 6/10; \$30 later. **\$1,490 in prizes!** Two sections. *Open:* \$500-250-150-100, Expert \$100; U2000 prize b/entries. *Reserve* (under 2000): \$150 plus trophy. Classes B, C, D/E, Unrated each \$60 plus trophy. REG: 8-8:45 a.m. RDS: 9:30-2-6:30, 2-6:30. College dorm rooms available (\$25 single, \$35 double). Must be reserved by 6/18. ENT: Garrett Scott, 202 Foster Dr., Normal IL 61761. 309/452-8116.

Call Chess Phone, (708) 832-5222, for up-to-date tournament results, as well as announcements of tournaments that may not be listed in Chess Life or the ICB. The ICA Chess Phone voice is Todd Barre. Unless otherwise noted, all tournaments require USCF membership. Illinois Tour events also require ICA membership.

**July 4: July Chess Center Plus-Score Mini-Tour Tornado #1.**

**July 6: July Chess Center Plus-Score Mini-Tour Tornado #2.**

**July 7: July Chess Center Plus-Score Mini-Tour Tornado #3.** Three separate one-day events: 4-SS, 40/1, then 20/30. Chicago Chess Center, 1921 W. 47th St., Chicago IL 60609. (312) 376-5678. EF: \$12.00 per tmnt. by June 28, \$15.00 at door. \$\$ according to score: 4-0 wins \$100, 3 1/2-1/2 wins \$50, 3-1 wins \$25.00, 2 1/2-1 1/2 wins \$12.00. REG: closes 9:30 a.m. each day. RDS: 10-12:30-3-5:30 each day. ENT: Bill Smythe, 6945 N Ashland #F-3, Chicago IL 60626. 312/71-2455. NS.

**July 6-7: Fireworks U-2000 No. 4.** 5-SS, 40/75, SD/30, Chicagoland Chess & Games, 3047 N. Lincoln Ave., Chicago IL 60618. Open to U2000. EF: \$22 if rec'd by 7/1, \$25 at site. Merchandise and cash prizes. REG: 9-10 a.m. Rd. 1 at 10 a.m. ENT: Chicagoland Chess & Games, 3047 N. Lincoln Ave., Chicago IL 60618. 312/472-4377. LS, NC.

**August 10-11: St. Charles Open (MAXI-TOUR).** 5-SS, 40/100, 25/1, Baker Community House, 101 S. 2nd (Rta. 31) St. Charles. EF: \$25 if rec'd by 8/4, \$30 at site. **\$1,260 in guaranteed prizes!** Two sections. *Open:* 300-200, X 100-80, A 100-80. *Reserve* (Open to Under 1800): 100-80, C 70-50, D/E/Unr 60-40. REG: 8-8:30. RDS: 9-2-7, 1-6. 10 Grand Prix Points available. Ervin Sedlock, 6N307 Old Homestead Road, St. Charles IL 60175. 708/377-7995.

**August 24: Bradley Summer Open.** 4-SS, 30/60, 10/20, Garrett Center, 824 N. University, Peoria IL 61606. EF: \$11. \$\$ 200: 75-50 (guaranteed); A \$25, B \$25, C/under \$25 (b/6 per class). REG: 8-8:45. RDS: 9-12-3-6. ENT: Bill Wilkinson, 905 N. Rebecca Pl., Peoria IL 61606; 309/673/8455.

**August 31-September 2: 1991 Illinois Open (MAXI-TOUR).** Illinois Chess Association. Ramada O'Hare, Rosemont. See next issue for details.

**September 21-22: Chicagoland Chess & Games (MAXI-TOUR).** TBA.

**November 23-24 (tentative): 1991 Illinois Class Championships (MAXI-TOUR).** Illinois Chess Association. TBA.

**December 14: Hammond Winter Swiss.** 4-SS, 30/60, SD/60, Hammond Public Library, James A. Howard Branch, 171st & Grand Ave., Hammond, IN 46323. EF: \$15, \$12 to HCC members. \$\$350 b/30. REG: 8-8:45 a.m.; \$5 late fee after 8:45. RDS: 9-12-3-6. ENT: J. A. Enochs, 6436 Jefferson Ave., Hammond IN 46324; 219/932-1437. NS, NC, W.

## OTHER EVENTS

**Every Thursday Night (through July 25): Chicago Chess Center WBCA Blitz.** Chicago Chess Center, 1921 W. 47th St., Chicago IL 60609. EF: \$7. REG: 7:00 sharp. Prizes: \$45 b/10. WBCA rated. ENT: address above. 312/376-5678.

**Every Friday Night: Chicagoland Chess & Games WBCA Blitz.** Chicagoland Chess & Games, 3047 N. Lincoln Ave., Chicago IL 60618. EF: \$7. WBCA rated. For info, call 312/472-4377.

**June 16: Hammond Summer Open.** 4-SS, 30/60, SD/60, Hammond Public Library, James A. Howard Branch, 171st & Grand Ave., Hammond, IN 46323. EF: \$15. \$12 to HCC members. An Indiana Tour Event—ISCA membership required for all Indiana residents. \$\$300 b/30. REG: 8-8:30 a.m. RDS: 9-12-3-6. ENT: J. A. Enochs, 6436 Jefferson Ave., Hammond IN 46324; 219/932-1437. NS, NC, W.

**June 16: Tri C Action #3.**

**June 16: Tri C Action #4.** Two one-day events. 4-SS, G/30. Chicago Chess Center, 1921 W. 47th St., Chicago IL 60609. EF: \$12. REG: 9:00. RDS: 10, 11:15, 12:30, 1:45. Prizes: \$80 b/10. ENT: address above. 312/376-5678.

**June 16: "Quad" No. 3.** 3-RR, 30/60, SD/30, Chicagoland Chess & Games, 3047 N. Lincoln Ave., Chicago IL 60618. EF: \$10 if rec'd by 6/8, \$12 at site. \$\$30 1st each quad. ICA membership req'd. REG: 9-10 a.m. Rd. 1 at 10 a.m. ENT: address above, 312/472-4377. LS, NC.

**June 17-23: Maurice Irvin Chess Festival Camp.** Bloomington, IL. See article elsewhere this issue for details. Garrett Scott, 309/452-8116.

**June 16: Illinois-Wisconsin Match.** Milwaukee WI. See article elsewhere this issue for details.

**June 21-23: Master Challenge XIII (MAXI-TOUR).** Forest Park IL. See Illinois Tour listings.

**June 21-23: Maurice Irvin Open (MAXI-TOUR).** Bloomington IL. See Illinois Tour listings.

**June 22-23: U.S. Junior Open.** Bloomington IL. See National Events.

**June 22: Tri C Classic #7.**

**June 23: Tri C Classic #8.** Two one-day events. 3-SS, 40/60, SD/30. Chicago Chess Center, 1921 W. 47th St., Chicago IL 60609. EF: \$12. REG: 9:00 sharp. RDS: 10-12:30-3. Prizes: \$80 b/10. REG: address above. 312/376-5678.



**June 29: Hillside-Tuley Park "Huge" Match.** Tom Fineberg, 312/721-3979.

**June 29: Bale Blizzard.** 5-SS, G/30, Chicagoland Chess & Games, 3047 N. Lincoln Ave., Chicago IL 60618. EF: \$13 if rec'd by 6/22, \$15 at site. \$320 b/30: 100-70, A 60, B 50, C/below 40. REG: 10-11 a.m. Rd. 1 at 11 a.m. ENT: Chicagoland Chess & Games, 3047 N. Lincoln Ave., Chicago IL 60618. 312/472-4377. LS.

**June 29: Tri C Action #5.**

**June 30: Tri C Action #6.** Two one-day events at the Chicago Chess Center; see June 15/16 listing.

**July 5, 12, 19, & 26: Chicago Chess Center "X vs. M".** 4-SS, 40/90, 25/60, Chicago Chess Center, 1921 W. 47th St., Chicago IL 60609. EF: \$30. REG: 6:30-7:00 p.m. on July 5. RDS: 7:00 sharp on each Friday in July. Prizes: \$80 b/10. ENT: address above. 312/376-5678.

**July 6-7: Fireworks U-2000 No. 4.** See Illinois Tour listings.

**July 13: Tri C Action #7.**

**July 14: Tri C Action #8.** Two one-day events at the Chicago Chess Center; same format as June 15/16 tournament.

**July 12, 19, & 26: Jim "Spanky" Burns Action Event.** 6-SS, G/30, Orland Park CC, George Brown Commons, 15045 West Ave., Orland Park IL. Two rounds each night. EF: \$4. REG: 7:30-7 on July 12.

**July 13: July Tornado.** 3-SS, 40/60, SD/30, Chicagoland Chess & Games, 3047 N. Lincoln Ave., Chicago IL 60618. EF: \$13 if rec'd by 7/6, \$15 at site. \$225 b/25: 80-50, A 40, B 30, C/below 25. REG: 9-10 a.m. Rd. 1 at 10 a.m. ENT: Chicagoland Chess & Games, 3047 N. Lincoln Ave., Chicago IL 60618. 312/472-4377. LS, NC.

**July 13-21: 1991 Canadian Open Chess Championship.** Windsor, Ontario. \$12,000 in guaranteed prizes! See ad this issue.

**July 13: Tri C Action #7.**

**June 14: Tri C Action #8.** Two one-day events at the Chicago Chess Center; same format as June 15/16 tournament.

**July 14: Mt. Vernon Open Championship.** Mt. Vernon IL. Mark Oestreich, 618/532-5733.

**July 20-21: 1991 Missouri Open.** 5-SS, 40/2, 20/1, The Radisson Suite Hotel, 106 W. 12th St., Kansas City MO 64105. EF: \$33 by July 14, \$35 later. \$4,500 (b/150): 1,000-750-500-250; Exp., A, B, C, D/E/Unr. each 250-100-50. REG: 9-9:30 a.m. RDS: 10-2-7, 9-2 (one ½-point bye avail. in rds. 1-3). Missouri Chess Assn. membership required (\$4, other states OK). GM simul Friday, July 19, 7:00 p.m. ENT: David R. Marshall, P.O. Box 410826, Kansas City MO 64141-0826. INFO: Don Oswald 913/299-3976.

**July 20: Tri C Classic #9.**

**July 21: Tri C Classic #10.** Two one-day events at the Chicago Chess Center; same format as June 22/23 tournament.

**July 27: Calumet Region Open.** 4-SS, 30/60, SD/60, Hammond Public Library, James A. Howard Branch, 171st & Grand Ave., Hammond,

IN 46323. EF: \$12, \$10 to HCC members. \$300 b/30. REG: 8-8:45 a.m.; \$5 late fee after 8:45. RDS: 9-12-3-6. ENT: J. A. Enochs, 6436 Jefferson Ave., Hammond IN 46324; 219/932-1437. NS, NC, W.

**July 27: Tri C Action #9.**

**July 28: Tri C Action #10.** Two one-day events at the Chicago Chess Center; see June 15/16 listing.

**July 28-August 9: 1991 U.S. Open.** Los Angeles CA.

**August 3-4: Fox Valley Open.** 5-SS, 40/100, 30/60, Prisco Community Center, Corner of Illinois & Lake St. (Rte. 31), Aurora. Two sections. **Open:** EF: \$20 if rec'd by 7/26, \$25 at site. \$ (b/25) 170-120-75, A, B each 50. **Reserve:** Open to U1600/unrated. EF: \$15 if rec'd by 7/26, \$20 at site. Unrated free. \$ (b/25): 100-75-50, C, D/E each 50. Both sections: REG: 8:30-9 a.m. RDS: 9:15-1-4:30, 11-3:30. Cks. payable to Fox Valley Chess Club. ENT: R. Renaut, 1255 Oakton Lane, Naperville IL 60540-0310. 708/983-0934. LS, NC, W.

**August 10-11: St. Charles Open (MAXI-TOUR).** See Illinois Tour listings.

**August 10-11: Grand Hammond Championship.** 5-SS, 40/90, SD/60, Hammond Public Library, James A. Howard Branch, 171st & Grand Ave., Hammond, IN 46323. EF: \$20, \$15 to HCC members. \$500 b/30. REG: 8-8:45 a.m.; \$5 late fee after 8:45. RDS: 9-1:30-7, 1-3. ENT: James A. Enochs, 6436 Jefferson Ave., Hammond IN 46324; 219/932-1437. NS, NC, W.

**August 17: The Springfield Sauna Open.** Springfield. Thomas B. Knoedler, 217/523-7265.

**August 31-September 2: 1991 Illinois Open (MAXI-TOUR).** See Illinois Tour events.

**September 6, 13, 20 & 27: Orland Park 30/1 Championship.** 4-SS, 30/1, Orland Park CC, George Brown Commons, 15045 West Ave., Orland Park IL. One round each night. All but rating fee returned as prizes. EF: \$5. REG: 7:30-7 on September 6.

**September 14: Polgar Sisters Open.** 4-SS, 30/60, SD/60, Hammond Public Library, James A. Howard Branch, 171st & Grand Ave., Hammond, IN 46323. EF: \$12, \$10 to HCC members. \$300 b/30. REG: 8-8:45 a.m.; \$5 late fee after 8:45. RDS: 9-12-3-6. ENT: J. A. Enochs, 6436 Jefferson Ave., Hammond IN 46324; 219/932-1437. NS, NC, W.

**September 15: Open Championship IX.** Mt. Vernon IL. Mark Oestreich, 618/532-5733.

**September 21-22: Chicagoland Chess & Games Maxi-Tour Event.** TBA.

**September 28: '91 Tuley Park Action Swiss #6.** 4-SS, G/30 (full k), 501 E. 90th Place, Chicago. EF: \$12. 80% of EF returned as prizes: 30% first, 20% second, 15% best in middle third by ratings, 15% best in lowest third. REG: 11-11:45 a.m. RDS: 12-1:12-2:24-3:36. Tom Fineberg: 312/721-3979.

**October 4, 11, 18 & 25: Scarry Swis.** 4-SS, 30/1, Orland Park CC, George Brown Commons,

15045 West Ave., Orland Park IL. One round each night. Cash prizes.

**October 12: The Harvest of Pawns Open.** Springfield. Thomas B. Knoedler, 217/523-7265.

**October 12: Harvest Open.** 4-SS, 30/60, SD/60, Hammond Public Library, James A. Howard Branch, 171st & Grand Ave., Hammond, IN 46323. EF: \$12, \$10 to HCC members. \$300 b/30. REG: 8-8:45 a.m.; \$5 late fee after 8:45. RDS: 9-12-3-6. ENT: J. A. Enochs, 6436 Jefferson Ave., Hammond IN 46324; 219/932-1437. NS, NC, W.

**October 13: N/W Indiana Action Swiss #6.** 4-SS, G/30, Hammond Public Library, James A. Howard Branch, 171st & Grand Ave., Hammond, IN 46323. EF: \$10. \$250 b/30. REG: 12:00-12:45 p.m.; \$5 late fee after 12:45. RDS: 1-2:30-4-5:30. ENT: J. A. Enochs, 6436 Jefferson Ave., Hammond IN 46324; 219/932-1437. NS, NC, W.

**October 18 (tentative): Illinois Chess Coaches Association Clinic (IHSA).** Downers Grove South HS. Mike Mayfield, 708/852-7223.

**October 20: Illinois Chess Association board meeting.** TBA.

**October 26 (tentative): High School Team Event (IHSA).** Proviso West HS, Hillside. George Marino, 708/420-8152.

**November 8, 15, 22 & 29: Orland Park Action Championship.** Details TBA.

**November 16: Bird Memorial.** 4-SS, 30/60, SD/60, Hammond Public Library, James A. Howard Branch, 171st & Grand Ave., Hammond, IN 46323. EF: \$12, \$10 to HCC members. \$350 b/30. REG: 8-8:45 a.m.; \$5 late fee after 8:45. RDS: 9-12-3-6. ENT: J. A. Enochs, 6436 Jefferson Ave., Hammond IN 46324; 219/932-1437. NS, NC, W.

**November 23-24: 1991 Illinois Class Championships (MAXI-TOUR).** Location TBA.

**November 24: King City Swiss.** Mt. Vernon IL. Mark Oestreich, 618/532-5733.

**December 14: Hammond Winter Swis.** See Illinois Tour listings.

**December 14: The Chilly Knight Open.** Springfield. Thomas B. Knoedler, 217/523-7265.

**January 18, 1992 (tentative): Illini Union Classic (IHSA).** University HS, Urbana. Chris Butler, 217/398-3574.

**February 15, 1992 (tentative): Frosh-Soph "State" Tourney (IHSA).** Oak Lawn Community HS. Ed Olson, 708/257-5537.

**March 27-28, 1992 (tentative): IHSA State Team Tourneys.** TBA. Michael Zacate, 708/479-9380.

**April 24-25, 1992 (tentative): IHSA State Individual Tourneys.** TBA. Michael Zacate, 708/479-9380.

**May 8-10, 1992: 1992 National High School Championship.** Lexington KY.

**June 5-7, 1992: 1992 National Open.** Las Vegas NV.

**August 2-14, 1992: 1992 U.S. Open.** Dearborn MI.

## Julie Oberweis, 1991 Illinois Junior High School Champion

Julie Oberweis (1601), an eighth-grader at Holy Angels School in Aurora, won the Illinois State Junior High School Championship this March on tiebreaks over Adrian Ingram (1812) of Bloom Junior High School in Bloomington. The championship was held March 2-3 at Stanford and organized by Kent Hieronymus. Julie, ranked 14th on the wallcharts, was paired up in two of the first six rounds, but had little difficulty dispatching opponents Mike Nichols (1651) and Chris Jetton (1576). After the penultimate round, only Julie and Adrian Ingram (18xx) remained undefeated. Before the decisive game, one coach (who shall remain anonymous) said that "for Julie to go 6-1 was quite an accomplishment." The final game itself was anticlimactic—both players deserve a mild scolding for agreeing to a draw in a position with dynamic equality—and Julie won on tiebreaks with a 6½-½ score.

Julie, who just turned fourteen, comes from a woodpushing family. She and her 11-year-old brother Joey play for the Holy Angels team; her older brother Jim is captain of the Marmion High School team; older sister Tricia has just started to play; and her father, Jim, is a well-known tournament player and organizer. Jim's wife, Elaine, and their remaining daughter, Jenny, deserve credit for tolerating so many chessplayers in one home.

Julie doesn't remember when she first learned to play, but guesses she was 7 or 8 years old. When she was in fourth grade, her father coaxed her into playing her first scholastic tournament, one of Larry Stilwell's team events at Proviso, even though she didn't completely understand the concept of checkmate. Julie only scored half a point on the bottom board, but that draw gave her team the third-place trophy. Since then, Julie has won several scholastic awards: an under-1300 prize at the 1989 National Junior High School Championship, third place in the Junior High division of the Glen Ellyn Chess Classic, first place at the 1990 Chicago New Year's Classic.

Nevertheless, she still had a Class D rating as late as last fall, when she won the 2nd Class D prize in the Reserve Section of the Illinois Open. Senior Master Dick Verber, from whom she had taken occasional lessons, said she was ready to blossom as a player. Her improvement was rapid. First, after several consecutive defeats to "archrival" Mickey Jacobson, an eighth-grader and Class B player from Glen Ellyn, she drew him. Then, earlier this year, she finally beat Mickey. In two Junior High events previous to the championship, at

Hadley and Fox Valley, Julie took first place with 4-0 scores.

Julie describes herself as an "A-/B+" student; she is in the honors program at Holy Angels, and her favorite subjects are math and English. Next year, she will attend West Aurora High School. Principals should note that Julie decided to attend West Aurora because the parochial high school had no chess team!

Here are three critical games from the championship:

### Modern Defense

**Adrian Ingram (1812) - Julie Oberweis (1444)**

1.e4 g6 2.d4 Bg7 3.Nf3 c6 4.Nc3 d5

The Gurgendize System is not a bad idea for young players who are tired of 1...e5—it's solid, it's strategically sophisticated, and even strong opponents are unlikely to know book here. One suspects that Dick Verber influenced this choice of opening.

5.exd5 oxd5 6.Bb5+ Nc6 7.h3 Nf6 8.O-O O-O 9.Re1 Bf5 10.Bf4 Ne4 11.Nxe4 Bxe4 12.Bxc6 Bxf3 13.Qxf3 bxc6 14.c3 e6 ½-½

Alan Watson thought Black was better here, while Verber thought that White had a tiny pull.

The following game is so gory that children should not see it unless accompanied by a parent:

### Italian Game

**Julie Oberweis (1444) - Chris Retton (1576)**

1.e4 e5 2.Nf3 Nc6 3.Bc4 Bc5 4.c3 Nf6 5.d4 exd4 6.e5 Ng4?

Falling into White's trap—Black can equalize after the thematic 6...d5!

7.Bxf7+! Kxf7 8.Ng5+ Kg8 9.Qb3+ d5 10.exd6ep+ 1-0

Julie uses smooth technique to roll one of the top seeds off the board:

### Modern Defense

**Mike Nichols (1661) - Julie Oberweis (1444)**

1.e4 g6 2.d4 Bg7 3.Nf3 c6 4.Nc3 d5 5.e5 Bg4 6.h3 Bxf3 7.Qxf3 e6 8.Bd3 Ne7 9.Bg5 Qb6 10.Rb1 Qxd4 11.O-O Nf5 12.Bf8 Bxf8 13.exf6 Qxf6 14.Qf4 Qd8 15.Qe5 O-O 16.Bxf5 exf5 17.Qf4 Nd7 18.Rfe1 Re8 19.Re3 Qf6 20.Rd1 Nc5 21.Ne2 Qxb2 22.Qf3 Rfe8 23.Rd2 Rxe3 24.Qxe3 Ne4 25.Rd3 Qxc2 26.f3 Re8 27.fxe4 Rxe4 28.Qd2 Rxe2 29.Qxc2 Rxc2 30.Ra3 e6 0-1

## Master Challenge:

13 Years and Counting

Ken Marshall

Since 1979, mid-June in Illinois chess has meant Master Challenge, Illinois' oldest and largest club-sponsored annual tournament. This year the event is set for June 21-23 at its usual location at the Mohr Community Center in Forest Park. Again an Illinois "Maxi-Tour" tournament, Master Challenge features its traditional \$3000.00 guaranteed prize fund as the Oak Park - Forest Park Chess Club continues its practice of offering generous open and class prizes. Master Challenge has no "Reserve" section; it is a "true" open tournament in which any entrant may be paired with any other. The event was founded to provide lower-rated players with the opportunity to "challenge" their Master and Expert counterparts, while offering top players the chance to win substantial prize money in return for giving chess lessons (and, often, rating points!) to their challengers. Over the past 13 years Illinois chess players have made Master Challenge a success. With the continued support of the Illinois chess community, the tournament will remain one of the Chicago area's top chess events for years to come. (See the full page ad in this ICB for full details on Master Challenge XIII.)

## Oak Park-Forest Park Chess Club News

Ken Marshall

**March 19 & 26, 1991: USCF "Action Chess" Tournament.** This four-round "game/30" event saw Greg Bungo top a 12-man field with a score of 4-0. Paul Iloavay, who had a Queen for a Rook and a pawn against Bungo in a complex middle game, only to be mated in a mutual time scramble, finished second at 3-1. Bill Buttny and Tim Pradzinaki each ended up 2½-1½, tying for third and also dividing the 1989-1700 prize. Sharing the 1600/below honors with 2-2 results were Mark Stamatakos and Butch Allen.

**April 9: Annual Membership Meeting & Elections.** All incumbent officers were re-elected: Ken Marshall, President; Don Winsauer, Vice President; Greg Minnie, Treasurer; Tom Oelrich, Secretary; Don Haley, Member at Large.

**April 16: WBCA Tournament.** Jim Marshall scored 6-2 to finish clear first in this five-player, "game/5," double-round robin event, sanctioned and rated by Grandmaster Walter Browne's World Blitz Chess Association. Mariano Acosta (5½-2½) was second, followed by Jim McNamara (4½-3½). Richard Rius (4-4) took the 1989-1700 honors.

The St Charles Chess Club Presents  
**The St Charles Open**

Aug 10 & 11, 5 Rd Swiss, TC 40/100

An Illinois Tour Maxi Event

\$1260 Guaranteed in 2 Sections

Open: Open to All

\$860: 300-200, X & A each 100-80

Reserve, open to U1800

\$400: 100-80, C 70-50, D/under 60-40

Entry \$25 by 8/4, \$30 At the Door

Reg 8-8:30, Rds 9-2-7,1-6

Site: Baker Community House

101 S. 2nd (Rte 31), St Charles Ill

Entries to: Erv Sedlock

6N307 Old Homestead Rd

St Charles, Ill, 60175

708-377-7995



## Double Stars at Niles North

Niles North High School coach Frank Cardulla has an enviable job, because two of the most talented young chessplayers in Illinois are on his team. 15-year-old Serge Minin (1949), a sophomore, is first board, while another 15-year-old, freshman Steve Arlinsky (2191!), plays second board. The two young men have much in common. Both are recent émigrés from the Ukraine: Serge's family is from Minsk, while Steve lived in Odessa. While in the Soviet Union, both played for their schools in the "White Castle" competitions, and both were very successful (Serge's school team won the Ukrainian championship four consecutive years). At age 13, Serge was a First Category player (roughly equivalent to USCF 1900) and had one Candidate Master norm. At the same age, Steve was already a Candidate Master (roughly equivalent to USCF 2100), and was ranked first in his age group in the Ukraine!

Serge is an outstanding student; he finished first in Cardulla's Honors Chemistry class. When I visited the school, his honors project on fractals was on display in the hallway. Although his rating is slightly lower than Steve's, his place on first board has been justified by scholastic successes. For two



*Serge and Steve analyzing a position*

consecutive years, he has tied for first in the IHSA Individual AA championship, only to lose on tiebreaks twice. Serge's brother Yuri plays seventh board for the Niles North team.

Steve has recently begun to play in adult tournaments. Last Labor Day weekend, he took second place in the Reserve Section of the Illinois Open; more recently, he held Allen Kornfeld to a draw. With proper training and tournament experience, he could reach

2300 within a year. Serge is equally talented—as he takes his studies very seriously, however, it remains to be seen how large a role chess will play in his life.

Niles North is not necessarily a cinch to win the team championship in 1992 and 1993: this year, they lost to both St. Ignatius and Orr. It's been several years, however, since Illinois chess has had two scholastic players with similar potential.

---

## Lin Wins Illinois High School Invitational

Fourth-rated James Z. Lin of Niles West High School beat the odds when he went undefeated to win the 1991 Illinois High School Invitational Championship, held at Shimer College in Waukegan on May 4-5.

The co-favorites in the ten-person tournament were top-rated Boyd Reed, now a (17-year-old) sophomore at Shimer College, and Allen Hammond of St. Ignatius Preparatory. Also highly regarded was third-rated Sean Phillips of Stillman Valley High School in Rockford. Reed, Hammond, Phillips, and Lin were the only B-and-above players in the tournament (*perhaps because most of the strong players were in Atlanta that weekend, playing for their team at the National High School Championships?* —Ed.) and it was the last chance for each to compete as high school students.

All games went as expected in Round 1. In Round 2, Hammond made a horrendous blunder from a good position and lost to Lin. Reed and Phillips drew, and when junior Kevin Connelly of Willowbrook High School defeated Chris Nielsen of Bloom Trail, he moved up to Board 1 to face Lin in Round 3.

Connelly got an advantage from the opening, but Lin kept fighting back and eventually won. This gave him a perfect three points and a clear one-point lead over Connelly, Hammond, and the surprising Taylor Wilhour of Illinois Math and Science Academy. Reed and Phillips were another half-point back, virtually out of the running for first prize.

In Round 4 Lin defeated Wilhour in a long game. Hammond beat Phillips to move into clear second; Reed defeated Joe Salazar of Bloom Trail to move into clear third. In the last round, Hammond

won a complex game against Nielsen, so that the final prizes would depend on the result of the Reed-Lin game. Reed had a clear endgame advantage but blundered into a draw, giving Lin 4½ points and first prize. Hammond's 4 points were good for second; Reed took third on tiebreaks over Wilhour, each with 3 points.

Local masters Kevin Bachler and Jesse Kraai of Shimer College were on hand to provide analysis for the players. At the end, more than \$500 of prizes donated by a variety of Illinois chess organizers, including Helen Warren and Fred Gruenberg, as well as the Shimer College Chess Club, were given to the top four finishers.

# 1991 Illinois Chess Association Tour Standings

Bill Smythe, Tour Statistician

This list reflects all 1991 ICA Tour events through April, with the exception of the Hammond Spring Open. For players with fewer than three events, the number of events (1 or 2) is given in parentheses. All players must have played in at least three Tour events by year-end in order to be eligible for Tour prizes.

Note to Experts: The Tour statistician intends to declare himself ineligible for year-end Tour prizes. So if you think you're in fourth place, you may really be in third, etc. The BP computer isn't eligible, either.

Master Tour Points	
PANGAN Camilo	56½
SZPISJAK Steven	45
CHOW Albert	36
COOPER Tom	34½
KRAAI Jesse	32
GUREVICH Dmitry (2)	20
HEURUNG David (1)	16
UMEZINWA George	14½
PELTS Peter	13
SMYTHE Bill	13
BACHLER Kevin (2)	12
MARSHALL James	11½
SINGER Rob	11½
ARLINSKY Steve	10½
COMPX BP (2)	10½
GARRETT David	10½
JORDAN Roland	10
KINNAIRD Rodney	10
MARQUEZ Anthony (2)	10
ALLISON Roger	9
WHITE Joe	9
SAX Robert	8½
KNUTSON Greg (1)	8
SZMETAN Ricardo	8
MICHALIK Phil	7½
COHEN Larry	7
PRADZINSKI Tim	7
WALLACH Ken (2)	7
BALES Robert	5½
BEARD Glenn (2)	5½
BOURGERIE Dennis	5½
FENNER Charles	5½
PADILLA Rudy	5½
WOODHOUSE Donald	5½
MADERA Bill (2)	5
MC ALISTER Kelvin	5
REDDICK Harold Sr	5
BOLITHO Thomas (2)	4½
BROCK William (2)	4½
FAGAN James (2)	4½
MILOVANOVIC Slav (2)	4½
BALE Les	4
BAUGH Chris (1)	4
BERRY Greg (1)	4
CIBULSKIS Peter	4
COHEN Howard (2)	4
DAVIS Jeff (1)	4
FRENCH Kevin (1)	4
HANSEN Steve	4
LUTZKE Rick (2)	4
SMIT Tom (2)	4
TALBOT Marc (1)	4
VERO Carl (2)	4
WARFIELD Thomas (2)	4

Class A Tour Points	
BOURGERIE Dennis	13½
SINGER Rob	11½
ALLISON Roger	9
WHITE Joe	9
MARSHALL James	8
MICHALIK Phil	7½
PRADZINSKI Tim	7
BALES Robert	5½
BEARD Glenn (2)	5½
FENNER Charles	5½
PADILLA Rudy	5½
WOODHOUSE Donald	5½
BEELMAN Bob (2)	5

Expert Tour Points	
BOURGERIE Dennis	13½
SMYTHE Bill	13

Make plans to play in these upcoming Tour events:  
 Master Challenge (MAXI), Forest Park, June 21-23  
 Maurice Irvin Open (MAXI), Bloomington, June 21-23  
 Chess Center Plus-Score, Chicago, July 4, 6, 7  
 Fireworks Under-2000, Chicago, July 6-7  
 St. Charles Open (MAXI), St. Charles, Aug. 10-11  
 Illinois State Championship (MAXI), Ramada O'Hare, Aug. 31-Sept. 2  
 Illinois Class (MAXI), Chicago, Nov. 23-24

LEALI Michael (2)	5	CARDINALE Mike (1)	3
MADERA Bill (2)	5	CIMA Joe (1)	3
MC ALISTER Kelvin	5	CORBIN William (1)	3
REDDICK Harold Sr	5	DUDNICK Steve (1)	3
BOLITHO Thomas (2)	4½	FULTON Steve (1)	3
BALE Les	4	GIERTZ Charles (1)	3
BAUGH Chris (1)	4	HENDERSON Dale (1)	3
CIBULSKIS Peter	4	JESSEPH Steve (1)	3
DAVIS Jeff (1)	4	KITTILSEN Guy	3
FRENCH Kevin (1)	4	MAURER Pat (1)	3
HANSEN Steve	4	ROZMAN Alex (1)	3
LUTZKE Rick (2)	4	WHEELER Stephan (1)	3
SMIT Tom (2)	4	YAKOWENKO Lauren (1)	3
TALBOT Marc (1)	4	ZIMMERLE Wayne (1)	3
VERO Carl (2)	4		
WARFIELD Thomas (2)	4		
PORTER Ryan (1)	3½		
SUKCHAROENPHON T (2)	3½		
VIGANTS Alberts	3½		

Class C Tour Points	
BALES Robert	10
PADILLA Rudy	8½
ZEVNIK Lawrence (1)	8
FENNER Charles	5½
REDDICK Harold Sr	5
KIRKPATRICK Dona (2)	4½
CIBULSKIS Peter	4
DAVIS Jeff (1)	4
WIENS Scott (1)	4
BROOKS Amy (1)	3
BURDICK Scott (1)	3
CARDINALE Mike (1)	3
CIMA Joe (1)	3
DUDNICK Steve (1)	3
HENDERSON Dale (1)	3
MAURER Pat (1)	3
ROZMAN Alex (1)	3
KALAI Adam (2)	2½
MOORE Rod (1)	2½
SANCHEZ Ignacio (1)	2½
SHAFFER Thomas (1)	2½
STEWART Dan (2)	2½

Class B Tour Points	
MC ALISTER Kelvin	21
SINGER Rob	11½
INGRAM Randy (2)	11
PADILLA Rudy	11
PRADZINSKI Tim	11
SHINER David (2)	10½
SWANSON Victor (2)	10½
BALES Robert	10
LUKER Greg (1)	8
MARSHALL Ken (1)	8
ZEVNIK Lawrence (1)	8
ZUBATCH Steve (1)	8
MICHALIK Phil	7½
BURGESS Fred	6½
DITSWORTH Todd (2)	6½
FENNER Charles	5½
VIGANTS Alberts	5½
LEALI Michael (2)	5
REDDICK Harold Sr	5
KIRKPATRICK Dona (2)	4½
CIBULSKIS Peter	4
DAVIS Jeff (1)	4
KITTSLEY Scott (1)	4
LUTZKE Rick (2)	4
WARFIELD Thomas (2)	4
WIENS Scott (1)	4
BOLDA Matthew (1)	3
BROOKS Amy (1)	3
BURDICK Scott (1)	3

Class D Tour Points	
BALES Robert	4½
CIMA Joe (1)	3
MAURER Pat (1)	3
KALAI Adam (2)	2½
STEWART Dan (2)	2½
TIARKS Richard (1)	2
WARREN Harry (1)	2
COULTER David (2)	1½
DUPEE Arthur (1)	1½

**MAURICE IRVIN OPEN**  
**JUNE 22-23**

# Plus-Score Mini-Tour Update

Bill Smythe

The Plus-Score Mini-Tour tournaments continue to attract many of the Chicago area's strongest players. Eight masters were among the 27 players at the March Chicagoland Plus-Score Leisure tournament on March 30-31. Nobody scored a perfect 5-0, nor did anybody escape with just a half-point off a perfect score. Tied at 4-1 were Andrew Karklins, Peter Pelts, George Umezina, and David Garrett.

A foreign visitor popped in, 12-year-old Ryan Porter from Kansas. Rated 1881, he began the tournament by defeating a master, Ricardo Szmetan, and drawing another, Steve Szpisjak. Ryan finished with 3½, along with Albert Chow and Roland Jordan.

Five masters and five experts contributed to the total of 24 players at the same location on Saturday, April 27, 1991. Albert Chow and George Umezina duked it out to a draw in round 3, each finishing otherwise unscathed with 3½ out of 4. Camilo Pangan, after giving up two early draws, fell in right behind at 3-1 along with experts Rodney Kinnaird and Steve Arlinsky.

The next day, 25 players returned for the Sunday edition, with an increase in the number of masters to six. The first round saw no upsets, but just barely. Jesse Kraai (2351), in his own words, "was toast" against Illinois Open Reserve champion Kenneth Brian Gurley (1845), until Gurley missed a winning shot in time pressure. The clocks kept ticking away as both players proceeded to blitz out moves, without keeping score, well past move 40. Eventually the players realized they were past the time control and were instructed to complete their scoresheets, using an auxiliary board if necessary. When both stated they would be unable to do so, I asked them to make a diagram of the current position and then proceed as if from move 41. Thinking my job as TD was done, I retired to the skittles room to shuffle pairing cards.

Thirty seconds later, the players emerged from the playing room looking like two children with a confession to make. "We can't figure out whose move it is." Great. Although I had been watching, I wasn't sure either. Gurley thought he remembered stopping his side of the clock after the time scramble, but

Kraai thought he remembered his opponent's last move. By this time Jesse was a piece up, but he had only one Pawn left so his attempt to talk Brian into resigning fell on deaf ears. Before resorting to a coin toss to decide whose move it was, I made a desperate plea in the skittles room for any spectators who might have been watching. Fortunately, Larry Cohen came to the rescue, recalling exactly whose move it was. Whew. The game continued peaceably with Kraai winning several moves later.

In round two, Albert Chow found himself in a busted position against expert Tony Marquez. He could fork Tony's Rook and Queen, but his own Queen was hanging so there could be a tactical refutation. Indeed there was, but Albert evidently decided his only chance was to play the fork and hope Tony would miss the winning shot. That's exactly what happened, and Chow eventually eked out the draw a Pawn down. Marquez, despite conceding this half point, had a terrific tournament with wins over masters Bruce Gardner and Steve Szpisjak. He tied for first with 3½ points along with Chow and Kraai. Following at 3-1 was Rob Sax, whose only loss was to Kraai.

The next Plus-Score Mini-Tour Tornados (other than the May events which will have already been held when you read this) will be at the Chicago Chess Center on 47th Street on July 4, 6, and 7.

\*\*\*\*\*

For those who have wondered how the prizes are calculated in a Plus-Score tournament, the secret is contained in a mathematical array known as Pascal's Triangle:

rounds	players								
0	1								
1	2								
2	4								
3	8								
4	16								
5	32								
6	64								
7	128								

The triangle begins with two strings of 1's down the sides. Each interior entry is the sum of the two numbers immediately above, to the left and right. For example, 21 in row seven is the sum of 6 and 15 in row six. Pascal's Triangle

shows that, in a 4-round tournament with 16 players, there should be a 1-4-6-4-1 distribution of players with scores of 4-0, 3-1, 2-2, 1-3, and 0-4 respectively. This assumes no draws, half-point byes, forfeits, or withdrawals.

The second half of the theory is a prize fund that decreases geometrically as the score drops. If you just arrived from Neptune, prizes in a Plus-Score tournament are awarded by score rather than place. For example:

Score:	4-0	3½-½	3-1	2½-1½
Prize:	\$100.00	\$50.00	\$25.00	\$12.00

Each prize is about half the one above it. The important thing is that each difference is smaller than the previous difference. For example, the difference between \$50.00 and \$25.00 is smaller than the difference between \$100.00 and \$50.00. This makes the no-draws, no-forfeits assumption the worst case for the organizer—in a 16-player tournament, he or she would have to pay out \$200 (\$100 to 1 player with a perfect 4-0 and \$25 each to 4 players with 3-1). Even in this worst case, an entry fee of \$12.50 should cover the prize fund. A slightly higher entry fee, say, \$12 in advance, \$15 at the door, together with the likelihood of some draws and drop-outs, allows some of the other expenses to be covered as well. If the tournament draws better or worse than the theoretical 16 players for a four-round event (or 32 for five rounds, etc), the number of players in each score group should increase or decrease in proportion. Thus, the organizer can guarantee the prizes even though the total prize fund varies with the turnout. No shirts will be lost here.

Maybe a couple of socks, though. If the turnout is extremely low (six players or so) there may still be a \$100 perfect score prize to pay. And don't overlook the other expenses: site rental, pre-tournament mailing, tour fee, rating fee, etc, possibly adding up to \$300 per weekend (\$150 per one-day event). For a prospective organizer trying to make a contribution to chess, who is willing to risk a non-catastrophic loss of \$100 or so on a pair of one-day events, the Plus-Score format has it all over the standard prizes-by-place, non-guaranteed, based-on-xx approach.

Guaranteed prizes attract more players and enhance your reputation as an organizer. A prize winner can be given his prize as soon as he finishes his last game—no waiting around to see if there will be a six- or seven-way tie.

A Plus-Score tournament attracts two kinds of players: strong ones (of course), and those average players who enjoy a challenge, see an opportunity to sharpen their game, and dream of bagging a big one in the early rounds. Fighting chess is encouraged by the geometric prize fund. Two players with 3-0 who are paired in the last round will win a total of \$125 for a decisive result, but only \$100 for a draw.

Be sure your Plus-Score event is on the Illinois Chess Tour. This lends prestige to the tournament and will likely triple your attendance. Side benefits include a free half-page ICB ad (or a full-page for two 1-day events) and publication of your crosstable in the ICB after the event. It's well worth the \$25 or so (per 1-day tournament) ICA Tour fee.

## March Chicagoland Plus-Score Leisure Mini-Tour March 30-31, 1991

	USCF pre/post											score	tour
		W18	W19	W 3	D 5	D 2	4	4	M				
1 PELTS Peter	2393/2408	W18	W19	W 3	D 5	D 2	4	4	M				
2 UMEZINWA George	2319/2327	W24	D 6	W16	W 9	D 1	4	4	M				
3 KARKLINS Andrew	2396/2403	W14	W10	L 1	W13	W 5	4	4	M				
4 GARRETT David	2080/2113	W22	L 5	W15	W14	W 9	4	4	MX				
5 CHOW Albert	2393/2396	W17	W 4	W12	D 1	L 3	3	3	M				
6 JORDAN Roland	2019/2053	W23	D 2	L 9	W11	W10	3	3	MX				
7 PORTER Ryan	1927/1991	W27	D 9	Dbye	D10	W14	3	3	MXA				
8 ROZMAN Alex	1580/1650	L10	L14	W26	W15	W16	3	3	MXABC				
9 SZPISJAK Steven	2250/2220	W21	D 7	W 6	L 2	L 4	2½	2½	M				
10 ARLINSKY Steve	2149/2126	W 8	L 3	W17	D 7	L 6	2½	2½	MX				
11 MC ALISTER Kelvin	1777/1804	L12	W26	Dbye	L 6	W18	2½	2	MXAB				
12 KORNFIELD Allen	2367/2360	W11	W13	L 5	-	-	2	2	M				
13 BECKER Sidney	2029/2029	W26	L12	W21	L 3	-	2	2	MX				
14 BALE Les	1899/1885	L 3	W 8	W20	L 4	L 7	2	2	MXA				
15 WOODHOUSE Don	1914/1884	Dbye	D16	L 4	L 8	W22	2	2	MXA				
16 SMYTHE Bill	1984/1984	W25	D15	L 2	-	L 8	1½	1½	MX				
17 HANSEN Steve	1884/1886	L 5	W22	L10	D18	-	1½	1½	MXA				
18 SUKCHAROENPHON Thavorn	2002/1943	L 1	L20	W22	D17	L11	1½	1½	MXA				
19 PANGAN Camilo	2270/2263	W20	L 1	-	-	-	1	1	M				
20 KITTELSEN Guy	1644/1646	L19	W18	L14	L22	-	1	1	MXAB				
21 BURGESS Fred	1737/1731	L 9	W25	L13	-	-	1	1	MXAB				
22 NELSON Zachary	1568/1575	L 4	L17	L18	W20	L15	1	1	MXABC				
23 FRISCH Andrew	1321/1395	L 6	D24	Dbye	-	-	1	1	MXABCD				
24 JENDO Jebrail	1838/1838	L 2	D23	-	-	-	½	½	MXA				
25 KRAUSE Robert	1148/1147	L16	L21	Dbye	-	-	½	½	MXABCD				
26 KALAI Adam	1637/1605	L13	L11	L 8	-	-	0	0					
27 SZMETAN Ricardo	2354/2346	L 7	-	-	-	-	0	0					

## April Chicagoland Plus-Score Tornado

April 27-28, 1991

SATURDAY	wall chart											score	tour
		W15	W 3	D 2	W 6	3½	8	M					
1 CHOW Albert	2390	W15	W 3	D 2	W 6	3½	8	M					
2 UMEZINWA George	2319	W18	W12	D 1	W 7	3½	8	M					
3 KINMAIRD Rodney	2192	W13	L 1	W20	W 8	3	4	MX					
4 ARLINSKY Steve	2146	W21	L 6	W18	W14	3	4	MX					
5 PANGAN Camilo	2259	D 8	D14	W16	W11	3	4	M					
6 KORNFIELD Allen	2345	W20	W 4	D 7	L 1	2½	2½	M					
7 SZPISJAK Steven	2258	W19	W11	D 6	L 2	2½	2½	M					
8 OSANYINJOBI Funsho Toks	1753	D 5	W10	W 9	L 3	2½	2½	MXAB					
9 WOODHOUSE Don	1932	Dbye	W23	L 8	W19	2½	2½	MXA					
10 COHEN Larry	2037	Dbye	L 8	W13	W16	2½	2½	MX					
11 JORDAN Roland	2019	W24	L 7	W19	L 5	2	2	MX					
12 BROCK William	2139	W22	L 2	L14	W18	2	2	MX					
13 KITTELSEN Guy	1654	L 3	W15	L10	W23	2	2	MXAB					
14 MICHALIK Phil	1760	Dbye	D 5	W12	L 4	2	2	MXAB					
15 SUKCHAROENPHON Thavorn	1992	L 1	L13	W22	W21	2	2	MXA					
16 SINGER Rob	1747	Dbye	W17	L 5	L10	1½	1½	MXAB					
17 SMYTHE Bill	1989	Dbye	L16	W23	-	1½	1½	MXA					
18 HANSEN Steven	1884	L 2	W22	L 4	L12	1	1	MXA					
19 MORTON Bruce	1689	L 7	W24	L11	L 9	1	1	MXAB					
20 BALE Les	1889	L 6	W21	L 3	-	1	1	MXA					
21 LEVINE Neal	-	L 4	L20	W24	L15	1	1						
22 FENNER Charles	1461	L12	L18	L15	W24	1	1	MXABC					
23 BALES Robert	1437	Dbye	L 9	L17	L13	½	½	MXABC					
24 REDDICK Harold Sr	1442	L11	L19	L21	L22	0	0						

SUNDAY	wall chart											score	tour
		W24	W 4	D 5	W 6	3½	8	M					
1 KRAAI Jesse	2351	W24	W 4	D 5	W 6	3½	8	M					
2 CHOW Albert	2390	W15	D 3	W10	W 7	3½	8	M					
3 MARQUEZ Anthony	2053	W19	D 2	W11	W 5	3½	8	MX					
4 SAX Rob	2054	W22	L 1	W18	W12	3	4	MX					
5 SZPISJAK Steve	2258	W14	W18	D 1	L 3	2½	2½	M					
6 MOHR Ken	2224	W20	W 8	D 7	L 1	2½	2½	M					
7 PANGAN Camilo	2259	W16	W13	D 6	L 2	2½	2½	M					
8 JORDAN Roland	2019	W21	L 6	W14	D13	2½	2½	MX					
9 REDDICK Harold Sr	1442	L13	D16	W23	W22	2½	2½	MXABC					
10 PADILLA Rudy	1603	Dbye	W24	L 2	W16	2½	2½	MXAB					
11 GARDNER J Bruce	2314	W25	W12	L 3	-	2	2	M					
12 OOHEN Howard	2031	W23	L11	W20	L 4	2	2	MX					
13 COHEN Larry	2037	W 9	L 7	D15	D 8	2	2	MX					
14 HENROID Michael	1614	L 5	W17	L 8	W21	2	2	MXAB					
15 HANSEN Steve	1884	L 2	W22	D13	-	1½	1½	MXA					
16 BURGESS Fred	1717	L 7	D 9	W19	L10	1½	1½	MXAB					
17 FLORES Edward	-	L18	L14	D22	W19	1½	1½						
18 WHITE Joe	1999	W17	L 5	L 4	-	1	1	MXA					
19 FENNER Charles	1461	L 3	W25	L16	L17	1	1	MXABC					
20 CHAN Kheong Sann	1507	L 6	W21	L12	-	1	1	MXABC					
21 FISHER Dale	1299	L 8	L20	L14	W23	1	1	MXABCD					
22 SOLANO Mario	1472	L 4	L15	D17	L 9	½	½	MXABC					
23 BALES Robert	1437	L12	Dbye	L 9	L21	½	½	MXABC					
24 GURLEY K Brian	1845	L 1	L10	-	-	0	0						
25 HALE Bob	1747	L11	L19	-	-	0	0						

Petrosian, Tigran. *Petrosian's Legacy*. Ed. Edward Shekhtman. Preface by Gary Kasparov. Los Angeles: Editions Erebound, 1990. 123 pp., algebraic notation, paperback. \$11.95.

*Petrosian's Legacy* is a compilation of the late world champion's writings for the Soviet chess press. Readers may already be familiar with some of the material—for example,

several articles in this book have previously appeared in RHM's *How to Open a Chess Game*. In addition, the compiler has added several pages of filler to this slender volume. Even so, the remaining articles—containing strategic advice for every phase of the game—more than justify the purchase price. Parts of the book may be too difficult for players under 1700.

# War of the Roses Chess Challenge

Howard Wachtel

The Illinois-Wisconsin chess match is back! A two-round, 25-board USCF-rated match between Illinois and Wisconsin will take place on Sunday, June 16. The match will be held in conjunction with the Milwaukee Journal Rose Festival at the Boerner Botanical Gardens in Whitnall Park, 5879 S. 92nd Street (phone 414/529-1870) in the Milwaukee suburb of Hales Corners, WI. We will be playing underneath a large outdoor tent. An indoor location is available in the event of rain. Don't miss this opportunity to enjoy a day of top-notch chess combined with the many activities of the Rose Festival, which features craft demonstrations, botanical workshops, outdoor concerts, international dance, and numerous flower displays.

Details on the match itself: Registration time is 8:30-9:30 AM, rounds are scheduled to begin at 10 AM and 3 PM. **If you have not pre-registered, you must arrive not later than 9:30 AM.** Each player will play two games, one with each color. Time control is 50/2, secondary 25/1 (no sudden death). Average rating of entire team cannot exceed 2100, but players of all rating levels are encouraged to participate.

(The Wisconsinites have plenty of masters!) A traveling trophy, engraved with the winning state's name and match score, will be awarded to the winning team. A modest \$1 entry fee will be charged to cover rating costs, but players will receive free admission to the Gardens (parking is \$3). A small side tournament will be held if necessary to accommodate any extra players from either state. The format of the side event will be decided by the participants.

We encourage players to register in advance if at all possible. To do so, contact Howard Wachtel, 445 W. Barry #217, Chicago 60657, phone (312) 975-7970. I will try to arrange for car-pooling, so let me know if you need a ride or can offer a ride to others. All players pre-registering by June 5 will receive a special invitation directly from the Boerner Gardens.

In the last match, Wisconsin crushed Illinois 41-19; let's even the score this time! Come out and support the Illinois team, and enjoy the Festival! We hope to make this match an annual event, alternating sites between Wisconsin and Illinois.

---

## Maurice Irvin Chess Festival

Garrett Scott

Illinois Wesleyan University in Bloomington will be the site of the Maurice Irvin Chess Festival, to be held June 17-June 28. The Festival is named in honor of Maurice Irvin, the father of the event's sponsor, Dan Irvin. Dan Irvin is a Bloomington chess player who began tournament chess as a high school player during the 1970's. He went away to college, worked in the East for a number of years, then came back to Bloomington to work in the family business. He is an active postal player and also plays on one of the computer chess networks. One of his early joys was playing in a tournament in which there were a lot of "name" players participating. The festival has an underlying theme: the opportunity for young players to associate with strong players.

The festival is comprised of four events: the U. S. Junior Championship, the U. S. Junior Open Chess Camp, the U. S. Junior Open, and the Maurice Irvin Open.

### THE U.S. JUNIOR CHAMPIONSHIP

Eight of the strongest junior players in the country will play in the Junior Championship, which begins with the opening ceremony on Monday evening, June 17. Rounds will be on June 18, 19, 20, 21, 24, 25, and 26. The line-up is not yet set, but the invitees are: Ilya Gurevich (2564 and reigning World Junior Champion), Alex Sherzer (2522), Vadim Tsemekhman (2435), Mikhail Braude (2415), Jesse Kraai (2354), James Schulyer (2352), Robert Seltzer (2345), and R. O. Mitchell (2190). The alternate invitees are Stanislaw Garber (2341) and Maxim Berlyant (2320).

Rounds are tentative scheduled for 1:30 each afternoon. Playing sessions will be six hours, with adjournments played the following morning.

### THE U. S. JUNIOR OPEN CAMP

A chess camp for youth will be held June 17-June 23. Participation in the camp includes entry in the U. S. Junior Open.

Participants at the camp will be involved in chess instruction, analysis, and play for the first four days of the camp. The campers will receive instruction appropriate for their strength. They will also have the opportunity to be spectators to the U. S. Junior Championship.

Added to this will be some recreation for a break. On Saturday and Sunday, all the camp participants will play in the U. S. Junior Open.

### MAURICE IRVIN OPEN

This Grand Prix and Illinois Chess Association Maxi-Tour event will be held Saturday and Sunday, June 22-23. The Maurice Irvin Open is an event for players in the Downstate area to have an opportunity to play in a strong tournament within commuting distance. Negotiations are presently underway to attract two Grandmasters to the event. In addition, all the participants in the U. S. Junior Championship are being invited to attend.

The Maurice Irvin Open will be in two sections, the Open, in which all can participate, and the Reserve, limited to those rated below 2000. For more information, see the ad and tournament announcement in this ICB.

### THE U. S. JUNIOR OPEN

A second national championship will be part of the festival. The U. S. Junior Open, June 22-23, will be held concurrently with the Maurice Irvin Open, with an additional Sunday evening round. There will be three sections: Under 21, Under 17, and Under 13—the winners of each section will be a National Champion; the winner of the Under 21 section will qualify for the U. S. Junior Championship if he or she is eligible by age to play.

In 1990, Twin City Chess Club sponsored a summer chess camp and the Midwest Cadet Championship at Illinois Wesleyan University. Many members of the Downstate chess community, including Dan Irvin, enjoyed watching the young warriors go at it at the USJC. It was during this time and immediately following that the idea of the Maurice Irvin Chess Festival was born.

The Twin City Chess Club of Normal and Bloomington are proud to host the Maurice Irvin Chess Festival. The chief festival organizer is Garrett Scott. He is being assisted by Dennis Bourgerie, Dale Elder, Randy Ingram, Michael Brun, and Tom Warfield on the organizing committee, with the assistance of others. Michael Zacate will be directing the national tournaments.



# NICBASE 2.0

## with Theme Selection

### \$145.00

Available now for MS-DOS or Atari - shipping free for a limited time includes games from NIC Yearbook 14 and simple NIC Key.

NICDATA: GAMES from NIC YEARBOOKS 1-13 **\$115.00**  
NIC FULL KEY including over 12,000 positions **\$24.00**

**NICDATA PROFESSIONAL PACKAGE 1991 -**  
4 quarterly shipments include  
1991 QUICK DISK SERVICE + YEARBOOKS 19-22  
with disks

[Saves \$50.00] with hardcover books **US \$288.00**  
specify disk size with softcover books **US \$268.00**

Ask for price list of NICDATA Archive games covering major international tournaments and over 50 openings.

System requirements: **MS-DOS** min. 512K RAM, DOS ver 2.x, graphics card, mouse.  
Please specify disk size when ordering. 20MB hard drive recommended. **ATARI ST** 520  
or 1040, monochrome monitor. 20MB hard drive recommended.

All orders must be prepaid in US funds drawn on a US bank by check, money order,  
MasterCard, VISA or American Express. Prices are subject to change. No COD or tele-  
phone orders please. Residents of Connecticut must pay sales tax.

## Chess Combination, Inc.

2423 Noble Station, Bridgeport CT 06608-0423

**1991 BRADLEY SUMMER OPEN**

**AN ICA MINI-TOUR EVENT**

**WHEN:** Saturday, August 24, 1991.

**WHERE:** Garrett Center, 824 N. University, Peoria, IL 61606

**ENTRY FEE:** \$11 advance, \$13 at the door (checks payable to Bill Wilkinson)

**WHAT:** Four Round Swiss System. **TIME LIMIT:** 30/60; 10/20; 10/20

**MEMBERSHIPS REQUIRED:** USCF & ICA (\$14 Regular. \$8 Junior)

**GUARANTEED CASH PRIZES:** \$75 First, \$50 Second.

**CLASS PRIZES:** Classes A, B, C/under \$25 each (based on 6 entrants per class)

**REGISTRATION:** 8:00-8:45 A.M. **ROUND TIMES:** 9:00, 12:00, 3:00, 6:00.

**NO SMOKING ALLOWED IN THE BUILDING. PLEASE BRING SETS, BOARDS, AND CLOCKS.**

**ADVANCE ENTRIES:** Bill Wilkinson, 905 N. Rebecca Pl.; Peoria, IL 61606.  
Phone: (309) 673-9455

# Illinois Chess Association Patrons

## Century Club Members

Michael Belovesick Sr.	Elmhurst	Marc Lonoff	Northbrook	Burton Vincent	Chicago
Roy Berg	Madison, WI	Albert Sandrin	Chicago	Helen Warren	Western Springs
Bill Brock	Chicago	Angelo Sandrin	Chicago	Jim Warren	Western Springs
Thomas Fineberg	Chicago	Bill Smythe	Chicago	Bill Wenz	Milwaukee, WI
Fred Gruenberg	Chicago			Philip Wong	Wilmette

## Gold Card Members

Tyrone Brooks	Chicago	Ed Marschall	South Barrington	Michael Pratts	Chicago
Bill Buttny	Downers Grove	Kenneth Marshall	Lombard	Marvin Rogan	Chicago
Ruben Chavez	Glendale, AZ	Jova Mihajlovic	Bensenville	Irwin Rothschild	Park Forest
Donald Graft	Wheaton	William Naff	Peoria	Mitchel Sweig	Evanston
Harland S. Hoisington	Ogden, UT	Peter Pelts	Niles	Terry Terrance	Schaumburg
Alan Losoff	Morton Grove	Daniel Pradt	Glen Ellyn	Louis Werner	Evanston

## Patron Members

Faneuil Adams	New York, NY	William Graves	Chicago	Ken Palmer	Boilingbrook
Bob Ash	Urbana	Guy Gruenberg	Matteson	Alex Pehas	Downers Grove
Kevin Bachler	Waukegan	Steve Hansen	Indian Head Park	Mieczyslaw Piatek	Skokie
Todd Barre	Elmhurst	Walter Henry	Naperville	Frederick S. Rhine	Chicago
John Barstad Sr.	Carol Stream	Charles Hicks	Naperville	Murrel Rhodes	Peoria
Roy Benedek	Western Springs	Keith Holzmüller	Evanston	Jacque Sanders	Champaign
Roger Blaine	Elkhart, IN	Richard F. Huttel	Itasca	Ray Satterlee	Wheaton
Edward J. Blanco Jr.	Chicago	Jeffery Hyland	Mount Prospect	Mark Sefcheck	Naperville
Timothy Bogan	Chicago	Randy Ingram	Bloomington	Tom Shaffer	Chicago
Barry Bouton	Newark	Robert Irons	Chicago	David Shane	Macomb
Jim Brotsos	Chicago	Gary Jochim	Chicago	Anthony Sillars	Huntington, MA
Gregory Bungo	Elmhurst	Stephen Josephs	Hinsdale	Arthur Sinclair	Evanston
Fred Burgess	Oak Forest	Tim Just	Gurnee	Leonard Spiegel	St Charles
Anthony Caliendo	Aurora	Dan Kamen	Buffalo Grove	Joe Splinter	Glen Ellyn
Lawrence Cohen	Villa Park	Scott Kittleley	Shorewood, WI	Peter Stein	Wheaton
Jim Condron	Westmont	Thomas Knoedler	Springfield	Robert Stoltz	River Forest
Lynn Crewse	Arlington Heights	Walter Kocjan	Northlake	Eric Stover	Chicago
Mike Cronin	Evergreen Park	Peter Kuhn	Des Plaines	James Tanaka	Chicago
Greg De Fotis	Chicago	Michael Lester	Chicago	John Tums	Oak Park
John Deutsch	Chicago	Harry Lyman	Boston, MA	George Umezina	Chicago
Leroy Dubeck	Cherry Hill, NJ	John Marconnet	Clarendon Hills	John Vrbancic	Evanston
William Dwyer	Worth	Anthony Marquez	Chicago	Jeff Weimar	Moline
Keith Esses	Chicago	Eugens Martinovsky	Naperville	Douglas White	Schaumburg
Kalman Farkas	Milwaukee, WI	Patrick Maurer	Glen Ellyn	Don Winsauer	Forest Park
Michael Flynn	Aurora	Thomas Mayka	Wheeling	Harold Winston	Naperville
Martin Franek	Oak Lawn	Michael McIlhany	Springfield	David Wulatin	River Forest
Gerard Garino	Evanston	James McNamara	Hinsdale	Sandy Zabell	Chicago
Jon Gotz	West Chicago	Earl Miller	El Paso	Max Zavanelli	Park Ridge
		Patrick Moran	Wilmette		

## ICA ELECTED OFFICERS

Alan Losoff, President
P.O. Box 157, Morton Grove, IL 60053
(708) 966-5579
Garrett Scott, First Vice-President
202 Foster Drive, Normal, IL 61761
(309) 452-8118
Tom Fineberg, Metro Vice-President
7321 S. South Shore Dr., Chicago, IL 60649-
3597
(312) 721-3979
Ken Marshall, Secretary
357 W. Grove, Lombard IL 60148
(708) 932-1455
Marc Lonoff, Treasurer
900 Appletree Court, Northbrook IL 60062
(708) 564-2313

## USCF DELEGATES

by virtue of their USCF posts
Harold Winston, Immediate Past President
Al Losoff, Regional Vice-President
Tim Just, Regional Vice-President
Frank Skoff, Past President
Helen Warren, Life Voting Member

## ICA-APPOINTED USCF DELEGATES

Fred Gruenberg	Tom Fineberg
Ken Marshall	Todd Barre

## ICA-APPOINTED USCF VOTING MEMBERS

Jim Warren	Dennis Grant
Bill Naff	Tom Knoedler
Larry Cohen	Garrett Scott
Jim Condron	Marc Lonoff
Bill Smythe	William Brock
Erv Sedlock	

## ICA-APPOINTED USCF

### ALTERNATE VOTING MEMBERS

Bill Wilkinson	John S. Barstad
Leslie Bale	Angelo Sandrin
Ray Socha	Glen Panner
Jim Brotsos	Steve Foust
Walter Brown	Dave Shiner
James Enochs	Guy Gruenberg
Kevin Bachler	Larry Stilwell
Murrel Rhodes	

# Where to Play Chess: ICA Club Affiliates

**AMERICAN POSTAL CHESS TOURNAMENTS** sponsors postal events & sells chess books & equipment. Jim or Helen Warren, P.O. Box 305, Western Springs 60558. 708/246-6665.

**AUBURN HIGH SCHOOL CHESS CLUB**, 4273 Straw Lane, Roscoe 61073. James Boyer, 815/623-8148.

**CENTRAL COMETS CHESS CLUB**. Steger Central Junior High School, c/o D. DeVore, 19 W. 33rd St., Steger 60475.

**CENTRAL LAKE COUNTY CHESS CLUB** meets Fridays, 7:15 to midnight, College of Lake County, Bldg. 1, Washington at Route 45, Grayslake. Dennis Grant, 1657 McKay, Waukegan 60087. 708/336-5188.

**CHAMPAIGN-URBANA CHESS LEAGUE** sponsors rated tournaments in the Champaign-Urbana area. Tom Worley, 2106 Zupke, Urbana 61801. 217/367-4744.

**CHESS NORTHWEST** meets the 2nd & 4th Friday eves. of each month, Schaumburg Public Library, 32 Library Lane, Schaumburg. Elmer Linden, 1325 Dennison, Hoffman Estates 60195. 708/882-2382.

**CHICAGO CHESS CENTER** meets for casual chess 7 days a week 6:00 p.m. - 1:00 a.m. \$2 charge. 1921 W. 47th St., Chicago 60609. Also sponsors rated tournaments Thurs.-Sun. Ray Socha, 312/376-5678.

**CHICAGO INDUSTRIAL CHESS LEAGUE** organizes frequent competition among commercial/government teams with awards, ratings, & special events. Jim Brotsos, 312/775-5054; or Rose Siegel 312/828-2046.

**CHICAGOLAND CHESS AND GAMES** sponsors tournaments, sells chess books, and is open for casual chess Tues.-Fri. 6 p.m.-midnight, Saturdays 9 a.m.-midnight; closed Sundays and Mondays. 3047 N. Lincoln Ave., Chicago IL 60618. Les Bale, 312/472-4377 (47-CHESS).

**DOWNERS GROVE PARK DISTRICT CHESS CLUB** meets Thurs., 6:30-10 p.m., Lincoln Center, 935 Maple Ave., Downers Grove. Affiliated with USCF & ICA. George Uffner, 708/960-9382.

**ELK GROVE VILLAGE CHESS CLUB** meets Fri., 7-10 p.m., at the Al Hattendorf Center, 225 E. Elk Grove Blvd., Elk Grove Village. Gary Janssen, 708/894-0996 eves.

**FOX VALLEY CHESS CLUB** meets Monday evenings, 7 p.m.-?, Prisco Community Center, Lake St. & Illinois Ave., Aurora IL. Gary Kayser, 708/892-5428

**GREATER PEORIA CHESS FEDERATION** meets Mon., 7-11 p.m., Garrett Center, 824 N. University, Peoria. Bill Wilkinson, 901 N. Rebecca Pl., Peoria 61606. 309/673-9455.

**HAMMOND (INDIANA) CHESS CLUB** meets Thursdays, 7:00 p.m. to ?, at Hammond Public Library, Howard Branch, 171st and Grand. Jim Enochs, 6346 Jefferson Ave., Hammond, IN 46324. 219/932-1437.

**HILLSIDE CHESS CLUB** meets Fridays, 7:30-midnight, Hillside Baptist Church, 5152 Butterfield (just east of Taft), Hillside. Larry Stilwell, 4705 Elm, Lisle 60532. 708/963-6799.

**ILLOWA CHESS CLUB** meets Tues., 6:30-10 p.m., Hauberg Civic Center, 1300 24th St., Rock Island. Bob Ratcliff, 2336 25th St., Rock Island IL 61202; 309/788-8104.

**LAKE COUNTY CHESS ASSOCIATION** sponsors rated tournaments in the Grayslake-Zion area. Tim Just, 37165 Willow, Gurnee 60031. 708/244-7954.

**MATTOON AREA CHESS CLUB** meets Monday, 7-9 p.m., 2608 Richmond Ave., Mattoon IL 61938. Bret R. Fuller.

**MIDWEST CHESS ASSOCIATION** organizes major tournaments for masters & experts. Helen Warren, P.O. Box 305, Western Springs, 60558. 708/246-6665.

**OAK PARK/FOREST PARK CHESS CLUB** meets Tues., 7-midnight, Mohr Community Center, Jackson & DesPlaines, Forest Park. Ken Marshall, 357 W. Grove, Lombard 60148. 708/932-1455.

**ORLAND PARK CHESS CLUB** meets every Friday night, 7:30-11, at the George Brown Commons, 15045 West Ave. (1 block w. of Lagrange-Rt. 45-96th Ave.), Orland Park. No membership fee is required. Glenn Panner, 708/460-3111.

**PARK FOREST CHESS CLUB** meets Thursdays, 7-10:00 p.m., Freedom Hall, Orchard & Lakewood, Park Forest. Lawrence Cohen, 135 Westwood, Park Forest, 60466. 708/748-5911.

**QUAD CITIES CHESS CLUB**. Steven J. Foust, 9500 14th St. W., Apt. C2-B, Rock Island, 61202. 309/787-5198.

**RUDY LOZANO LIBRARY CHESS CLUB**, 1805 S. Loomis, Chicago, 60608. Hector Hernandez, Head Librarian. 312/733-4329.

**SHIMER COLLEGE CHESS CLUB** meets Mondays, 7 p.m. to ?, Koko House, Shimer College, corner of Genessee and Cory in Waukegan. David Shiner, P.O. Box A500, Waukegan 60079. 708/623-8400.

**SMYTHE DAKOTA COMPETITIONS** is the sponsor of the monthly Plus-Score Mini-Tours in the Chicago area. Bill Smythe, 6945 N. Ashland #F-3, Chicago 60626. 312/761-2455.

**SPRINGFIELD CHESS CLUB** meets Wed., 6-10 p.m., Washington Park Pavilion, Park Ave. & South Grand Ave. West, Springfield. Tom Knoedler, 217/523-7265; or James Larson, 217/529-0781.

**ST. CHARLES CHESS CLUB** meets Thursdays at 7 p.m., Baker Community House, 101 S. 2nd (Rte. 31), St. Charles. Erv Sedlock, 6 N. 307 Old Homestead Rd., St. Charles 60174, 708/377-7995.

**TULEY PARK CHESS CLUB** meets Saturdays, 1-5 p.m., Tuley Park Field House, 501 E. 90th Pl., Chicago. Thomas Fineberg, 7321 S. South Shore Dr., Chicago 60649, 312/721-3979.

**TWIN CITIES CHESS CLUB** meets Tuesday eves., Parks & Rec. Bldg., 611 S. Linden, Normal. Speed tmnts., \$0.50/game. Dale Elder, 802 S. Mercer, Bloomington 61701.

Join the **Illinois Chess Association** and receive six issues of the Illinois Chess Bulletin. In addition, you'll qualify to enter over two dozen tournaments on the **Illinois Chess Tour**. Every game you win or draw in a tour event earns you "tour points" that can add up to cash prizes at year-end. Finally, you'll be supporting the activities of the Illinois Chess Association.

Every year, the ICA organizes major tournaments like the Illinois Open and the Illinois State Championship; this year, the ICA is also bringing the National Open to Chicago. In addition, the ICA sponsors scholastic clinics, runs a tournament clearinghouse, and publicizes chess activity statewide.

If you would like to show increased support for Illinois chess, *please consider renewing as a Century Club, Gold Card, or Patron member*. Patrons are acknowledged in each issue of the ICB and receive their magazines by first-class mail.

MAIL TO:  
ICA MEMBERSHIP SECRETARY  
PO BOX 2534  
NORTHBROOK IL 60065-2534  
(Your mailing label is on the other side; note corrections below)

**Check membership type:**

— Century Club .....	\$100.00
— Gold Card .....	\$50.00
— Patron .....	\$25.00
— Regular .....	\$14.00
— Junior .....	\$8.00
(under 18; birthdate <u> / / </u> )	
— Affiliate .....	\$25.00

NAME: \_\_\_\_\_

ADDRESS: \_\_\_\_\_

CITY: \_\_\_\_\_ STATE: \_\_\_\_\_ ZIP: \_\_\_\_\_

—Three ICA Tour Mini-Events—

## July Chess Center Plus-Score Mini-Tour Tornados

Thursday - July 4 & Saturday - July 6 & Sunday - July 7

Three separate one-day tournaments,  
each a four round USCF-rated Swiss,  
awarding cash prizes and ICA Tour  
Points according to score:

SCORE	TOUR POINTS	PRIZE:
4.0	16	\$100.00
3.5	8	50.00
3.0	4	25.00
2.5	2.5	12.00
2.0	2	
1.5	1.5	
1.0	1	
0.5	0.5	

Organizer and TD: Bill Smythe

**ROUND TIMES:** 10:00, 12:30, 3:00, 5:30 each day.  
Half-point bye available in round 1 or 2 (but not both)  
if requested before pairings are made.

**TIME CONTROL:** 40/1, then 20/30

**ENTRY FEE FOR EACH TOURNAMENT:** \$12.00 if  
postmarked by June 27. \$15.00 at the door by 9:30  
a.m. each day.

**MEMBERSHIPS REQUIRED:** USCF (\$30.00 per  
year) ICA (\$14.00 per year, juniors \$8)

**MAKE CHECK PAYABLE AND MAIL ADVANCE  
ENTRY TO:** William Smythe, 6945 N. Ashland #F-3,  
Chicago, IL 60626, (312) 761-2455.

**TOURNAMENT SITE:** Chicago Chess Center, 1921  
W. 47th Street, Chicago, IL 60609, (312) 376-5678.

By public transportation, the 47th Street bus oper-  
ates 24 hours a day from the 47th Street stations on  
both the Dan Ryan and the Englewood/Jackson Park  
rapid transit lines.

---

# MASTER CHALLENGE XIII

## JUNE 21-23

### \$3,000 IN GUARANTEED PRIZES!

---

ILLINOIS CHESS BULLETIN  
1608 W. Granville Ave., Apt. 3  
Chicago, IL 60660-1210

SPEEDY DELIVERY APPRECIATED

ADDRESS CORRECTION REQUESTED