

# ILLINOIS CHESS BULLETIN

Official Publication of the Illinois Chess Association a U.S.C.F. Affiliate  
A Not For Profit Organization

JANUARY-FEBRUARY 1990 VOLUME XIII, NO. 1 BI-MONTHLY \$2.00

## MARTINOVSKY WINS ILLINOIS CLASS



## CHOW WINS ILLINOIS TOUR



**EDITOR:**

BILL BROCK  
1608 W. Granville Avenue, Apt. 3  
Chicago IL 60660  
312-274-4169

Dept. of English, Loyola University  
6525 N. Sheridan Road  
Chicago IL 60626

Please send non-bendable items (e.g., photos or diskettes) to my work address.

**GAMES EDITOR:**

Bill Colias

**TECHNICAL EDITORS:**

Claire Nicolay  
John Schuchert

**SUBSCRIPTIONS:**

The *Illinois Chess Bulletin* (ICB) is published bimonthly by the Illinois Chess Association. ICA membership includes a subscription to the ICB. Century Club, Gold Card, and Patron members receive their ICB by first-class mail.

**ANNUAL MEMBERSHIP RATES:**

Century Club	\$100.00
Gold Card	\$50.00
Patron	\$25.00
Regular	\$10.00
Junior (under 18)	\$6.00

Subscriptions and address changes & corrections should be sent to:

Alan Losoff, ICA Membership Secretary  
P. O. Box 157  
Morton Grove IL 60053-0157

**SUBMISSIONS:**

Submit articles, photographs, crosstables, games, and other publishable materials to the Editor. Deadline for the next issue is March 9, 1990.

## TABLE OF CONTENTS

FROM THE EDITOR'S DESK	3
WHERE TO PLAY CHESS: ICA CLUB AFFILIATES	6
FROM THE PRESIDENT <i>Helen Warren</i>	7
ILLINOIS CLASS CHAMPIONSHIPS	8
COLIAS ANNOTATES	16
POSTAL MORTEM <i>David Taylor</i>	20
WEAK SIDE STORY <i>Bill Colias</i>	21
1990 ILLINOIS TOUR RULES <i>Bill Smythe</i>	25
1989 ILLINOIS CHESS TOUR	26
THE BEST IN ILLINOIS	28
ANNOTATORS WANTED <i>David Wulatin</i>	29

Photo Credit: Al Losoff

## CHESS PHONE: 708/832-5222

ICA AFFILIATION: Chess clubs and other organizations which promote chess activity may affiliate with the ICA. Benefits include a copy of the ICB by first-class mail, a listing under "Where to Play Chess," discounted advertising rates, three-line tournament announcements in the "Tournament Calendar," and the right to run ICA Tour Events. ICA Affiliation costs \$15; please remit to Membership Secretary.

**ADVERTISING RATES:**

Full page	\$80
Half page	\$50
Quarter page	\$30
Eighth page	\$20

10% discount for the same ad in consecutive issues. 1/3 discount for ICA affiliates. All ads must be camera-ready to qualify for above rates. The ICA & the ICB reserve the right to reject advertising.

## FROM THE EDITOR'S DESK

Thanks to all of you who gave me feedback on the November-December issue. Everyone offered kind words and constructive criticism. (My biggest mistake was neglecting to credit two major contributions to the issue: ICA Tour Statistician Bill Smythe also provided all the crosstables from tour events, and Peg Waterman was the artist responsible for the festive holiday cover.)

I'd like to get even more feedback, however. Since the ICB is your magazine, I'm eager to run the features that you, the members of the Illinois Chess Association, want to read. But if you don't tell me what you want, I won't know.

\*\*\*\*\*

Rolodex/mailling list update time--please note my new address: Bill Brock, 1608 W. Granville Ave., Apt. 3, Chicago IL 60660.

\*\*\*\*\*

For the convenience of organizers, contributors, ICA officers, and myself, I would like to standardize the following deadlines. All articles should be received by the 9th day of odd-numbered months, except for advertisements, tournament announcements, and articles from ICA officers, which will be accepted until the 15th. Camera-ready copy (including advertisements) is fine if received by the 18th. I will mail the ICB no later than the first business day of every even-numbered month. If you think you may have problems meeting a deadline, please let me know.

Organizers: I want to plug every USCF tournament in Illinois, especially those of ICA affiliates. When you mail a Tournament Life announcement into **Chess Life**, please send me a copy. Doing so will insure that your tournament gets as much publicity as possible.

\*\*\*\*\*

Opaa! I hope to see many of you at the Greek Islands restaurant at 1:30 on Sunday, March 4, for the Illinois Chess Association Awards Banquet. The winners of the 1990 Illinois Chess Tour will be there to pick up their checks and eat some saganaki;

awards will also be given to other Illinois players and organizers. The last time I visited Greek Islands, our party polished off a fair quantity of ouzo. My memory is hazy, but I think we wound up at a nightclub at 3 a.m., where I was attempting to dance with one of the ICB's Technical Editors. Unfortunately, I can't remember which Technical Editor it was. A Sunday afternoon affair will be a bit less raucous, perhaps, but just as much fun--maybe I'll even buy a round.

\*\*\*\*\*

Many ICA members read Larry Evans's syndicated chess column on a regular basis, either in the Sunday **Chicago Tribune** or other Sunday papers. I believe that notwithstanding FIDE statute 2.1, it is impossible to keep politics out of chess--or out of anything. Evans's column, however, focuses upon chess politics to the virtual exclusion of chess itself. In the column published in the January 21, 1990, **Tribune**, for example, he criticizes the editorial policies of **Chess Life**, USCF President Harold Winston, former U.S. FIDE delegate Don Schultz, and Mr. Slime himself, FIDE President Campomanes. There is also a 2-move problem in the column. On those comparatively rare occasions when Evans chooses to discuss a chess game, the editors of the **Tribune** are fond of retaining his commentary without printing the score of the game!

I for one don't want Larry Evans to be muzzled--we all know that USCF, FIDE, and **Chess Life** could use some criticism. At a certain point, however, such criticism becomes counterproductive. Witness the Ricardo Calvo affair, in which Calvo was declared **persona non grata** by FIDE for making tactless yet true observations about the prostitution of young girls in certain Latin American countries. In my opinion, both FIDE and USCF acted reprehensibly in this affair. Yet I also believe that Evans used poor judgment when he signed a letter addressed to FIDE members that said in part,

In response to the truth-telling of Dr. Calvo, a number of Third World countries have attempted to foist aspects of their barbaric social systems on the civilized nations of the West. They must not succeed. . . .

Dictators take heed: The United States of America has spoken!"

Harold Winston has characterized this letter as "racist"; I agree (**Inside Chess**, October 23, 1989, page 23).

I would advise Evans to continue criticizing chess politicians as he sees fit, but would remind him that diplomacy can be an effective weapon. Since his syndicated column has a general audience, and since we all want to increase the popularity of chess in the U.S., it seems appropriate for him to devote more of his columns to chess, and fewer to chess politics. And if Evans does so, the **Tribune's** editors owe their readers the courtesy of printing his entire column.

USCF Past President Frank Skoff sent us the following notice regarding his plans to publish a new journal devoted to chess history:

The intended title of the journal is **CHESS HISTORIAN'S LETTER**.... It will aim to present documented (or witnessed) information on obscure or hitherto unknown aspects of chess history: players, problemists, organizations, events, games, etc. It will be issued at unexpected intervals, that is, whenever enough material is received to make an issue; eventually, I hope, it would attract enough readers to be issued regularly. Researchers will have their inquiries printed, and our readers may be able to provide answers, which would then appear in the **CHL**.... Political arguments or speculation without hard evidence will not be welcome.

.... I hope that someone younger than myself will volunteer to be the Executive Editor for the journal. I will be glad to hear from any applicants who have the skill and the leisure time to handle the editorial duties as well as the files of subscribers; the chances are that any remuneration would be nominal at the start. I would be the publisher, paying for all the usual expenses incurred by the journal. Interested applicants should send me a resumé, as soon as possible, of their skills and background for the position....

A journal of chess history is a worthwhile project that deserves to be supported from the outset. If you're interested, drop Frank a line: Frank Skoff, Box 214, 3952 N. Southport, Chicago IL 60613.

#### CHICAGO CHESS CENTER

Carl Soionka (1706) proved he was no duffer, as he toppled Bert Gazmen (2126) and drew top-ranked Angelo Sandrin (2166) on his way to victory in **Duffer's Delight #1** (Nov. 11). Marvin Dandridge (2345) scored a perfect 3-0 in **Pawn Grabber's Delight #1** (Nov. 25); the next day, David Garrett (2083) beat Sandrin, Gazmen, and CCC proprietor Ray Socha (2115) to win **Pawn Grabber's Delight #2**. Dandridge and Sandrin drew each other to tie for first with Jason Dodd (1850) in **Snowball Bash #1** (Dec. 2), while Jim McNamara (2060) and Bernard Pukel (1953) split the laurels in **Snowball Bash #2**. Marcus Stinson (1951) and Chris Baugh (1940) each had 2 1/2 out of 3 in **Duffer's Delight #2** (Dec. 9); Eric Johnson topped the top two seeds to win **Duffer's Delight #3** (Dec. 10). Sandrin and Ely Sollano (2046) tied for first in **Point Pay-Day #1** (Dec. 16); Angelo also won **Point Pay-Day #2**, along with Bernard Pukel and Jason Dodd. Dusan Tutush (2074) won **Pawns N' Pieces** (Dec. 23) with a 3 1/2-1/2 score. Albert Chow (2399) was nicked for a draw by Ely Sollano, but still beat the field by a full point in **New Year's Nonsense** (Dec. 30). Angelo Sandrin satisfied his **Lust for Sacs** (Jan. 6) with a perfect score, while unrated Mehrdad Pedram took **Lust for Sacs #2** (Jan. 7) with a 2258 performance rating. Sandrin, still undefeated in 1990, won **Checks N' Stuff** (Jan. 13) with a 4-0 score.

#### CAVEMAN CONFIDENTIAL

Wallace Gordon (2032) upset Ken Wallach (2307) and Kevin Bachler (2083) on his way to winning the Central Lake County Chess Club Championship. Gordon tallied a solid 5 1/2-1/2 score. Scott Haubrich (2068) took second place with 4 points. Tim Just (1685) and Kirnes Holland (1686) were Co-Champions in the Reserve Section; each posted a 4 1/2-1 1/2 score.

Gordon continued his winning ways in 1990: he and Todd Albrecht tied for first in the Caveman Speed Championship on January 5. Abraham Untermeyer and Roger Owiecki were equal first in the Reserve Section.

Tim Just was named the Chief Tournament Director for the 1990 U.S. Amateur Team Championship, to be held February 17-18 in St. Louis.

The Caveman Action Chess Championship begins February 23rd. It only costs \$5 to enter, but you must be a Central Lake County Chess Club member (AKA "Cave[wo]man") in order to play. If you'd like to join, call Tim Just, 708/244-7954, for more info.

1990

Greater Peoria Open

1990

March 31, April 1

GRAND PRIX & IL MAXI-TOUR EVENT

TWO SECTIONS

ALL PRIZES GUARANTEED

<u>OPEN</u>		<u>RESERVE - UNDER 1800</u>	
First Prize	\$300	First Prize	\$150
Second Prize	\$150	Second Prize	\$75
Expert	\$150	Class C	\$75, \$
Top Under 2000	\$150, \$50	Class D/Under	\$75, \$

Optional 1/2 point  
bye available in  
any one of the  
first 3 rounds

5 Round Swiss

Signature Inn  
4112 N. Brandywine  
Peoria, IL 61614  
(309) 685-2556

Rooms: \$45 Single, Double,  
or Triple

Take I-74 to War Memorial Drive (East) exit.

Time Control:

Sat. 50/2, 30/1

Sun: 40/2, 25/1

Saturday, March 31

Registration: 8:30 - 9:30

Rounds: 10, 2:30, 7:00

Sunday, April 1:

Rounds: 9:30, 2:30

Entry fee: \$25 if postmarked by March 21  
\$27.50 if postmarked by March 26  
\$30 at site  
\$3 Junior Discount

ENTRIES TO:

ICA Membership Required

Bill Wilkinson  
905 N. Rebecca Place  
Peoria, IL 61606  
(309) 673-9455

Regular \$10.00  
Junior \$ 6.00

PLUS: Complimentary coffee, soft drinks, and other treats.  
A complimentary official U.S.C.F. crosstable will be mailed  
to you at your request.

## Where to Play Chess: ICA Club Affiliates

**AMERICAN POSTAL CHESS TOURNAMENTS** sponsors postal events & sells chess books & equipment. Jim or Helen Warren, P.O. Box 305, Western Springs 60558. 708/246-6665.

**AUBURN HIGH SCHOOL CHESS CLUB**, 4273 Straw Lane, Roscoe 61073. James Boyer, 815/623-8148.

**CENTRAL COMETS CHESS CLUB**. Steger Central Junior High School, c/o D. DeVore, 19 W. 33rd St., Steger 60475.

**CHAMPAIGN-URBANA CHESS LEAGUE** sponsors rated tournaments in the Champaign-Urbana area. Tom Worley, 2106 Zuppke, Urbana 61801. 217/367-4744.

**CENTRAL LAKE COUNTY CHESS CLUB** meets Fridays, 7:15 to midnight, College of Lake County, Bldg. 1, Washington at Route 45, Grayslake. Dennis Grant, 1657 McKay, Waukegan 60087. 708/336-5188.

**CHESS NORTHWEST** meets the 2nd & 4th Friday eves. of each month, Schaumburg Public Library, 32 Library Lane, Schaumburg. Elmer Linden, 1325 Dennison, Hoffman Estates 60195. 708/882-2382.

**CHICAGO CHESS CENTER** meets for casual chess 7 days a week, 6 p.m. to 1 a.m., 2923 N. Southport, Chicago 60657. Also sponsors rated tournaments. Ray Socha, 312/929-7010.

**CHICAGO CHESS MATES CLUB AND BOOKSTORE** sponsors tournaments & group lessons, sells chess books & equipment weekdays 4-11 p.m., weekends 10 a.m.-9 p.m. Closed Mondays. 1261 Loyola, Chicago 60626. Richard Verber 312/262-9100 or 262-8050.

**CHICAGO INDUSTRIAL CHESS LEAGUE** organizes frequent competition among commercial/government teams with awards, ratings, & special events. Jim Brotsos, 312/775-5054; or Bruce McNeil, 312/742-5195.

**CLOVERLINE STUDENT CHESS PROGRAM** offers free chess lessons for high school & grammar school students. Tues., 3 to 6 p.m. at Revere Park Field House, 2509 W. Irving Park, Chicago 60618. Richard Verber, 312/262-8050.

**DOWNERS GROVE PARK DISTRICT CHESS CLUB** meets Thurs., 6:30-10 p.m., Lincoln Center, 935 Maple Ave., Downers Grove. Affiliated with USCF & ICA. George Uffner, 708/960-9382.

**ELK GROVE VILLAGE CHESS CLUB** meets Fri., 7-10 p.m., at the Al Hattendorf Center, 225 E. Elk Grove Blvd., Elk Grove Village. Gary Janssen, 708/894-0996 eves.

**EVANSTON TOWNSHIP HIGH SCHOOL CHESS CLUB** meets Fri., 3:30-6:00 p.m., Beardsley Student Center. Ken Lewandowski, 708/492-7943.

**GREATER PEORIA CHESS FEDERATION** meets Mon., 7-11 p.m., Garrett Center, 824 N. University, Peoria. Bill Wilkinson, 901 N. Rebecca Pl., Peoria 61606. 309/673-9455.

**HAMMOND (INDIANA) CHESS CLUB** meets Thursdays, 7:00 p.m. to ?, at Hammond Public Library, Howard Branch, 171st and Grand. Les Kistler, 719 E. 12th St., Hobart, IN 46342. 219/942-8815.

**HILLSIDE CHESS CLUB** meets Fridays, 7:30-midnight, Hillside Baptist Church, 5152 Butterfield (just east of Taft), Hillside. Larry Stilwell, 4705 Elm, Lisle 60532. 708/963-6799.

**LAKE COUNTY CHESS ASSOCIATION** sponsors rated tournaments in the Grayslake-Zion area. Tim Just, 37165 Willow, Gurnee 60031. 708/244-7954.

**MIDWEST CHESS ASSOCIATION** organizes major tournaments for masters & experts. Helen Warren, P.O. Box 305, Western Springs, 60558. 708/246-4665.

**OAK PARK/FOREST PARK CHESS CLUB** meets Tues., 7-midnight, Mohr Community Center, Jackson & DesPlaines, Forest Park. Ken Marshall, 357 W. Grove, Lombard 60148. 708/932-1455.

**PARK FOREST CHESS CLUB** meets Thursdays, 7-10:30 p.m., Freedom Hall, Orchard & Lakewood, Park Forest. Lawrence Cohen, 135 Westwood, Park Forest, 60466. 708/748-5911.

**SPRINGFIELD CHESS CLUB** meets Wed., 6-10 p.m., Washington Park Pavilion, Park Ave. & South Grand Ave. West, Springfield. Tom Knoedler, 217/523-7265; or James Larson, 217/529-0781.

**ST. CHARLES CHESS CLUB** meets Thursdays at 7 p.m., Baker Community House, 101 S. 2nd (Rte. 31), St. Charles. Erv Sedlock, 6 N. 307 Old Homestead Rd., St. Charles 60174, 708/377-7995.

**TULEY PARK CHESS CLUB** meets Saturdays, 1-5 p.m., Tuley Park Field House, 501 E. 90th Pl., Chicago. Thomas Fineberg, 7321 S. South Shore Dr., Chicago 60649, 312/721-3979.

**TWIN CITIES CHESS CLUB** meets Monday eves., Parks & Rec. Bldg., 611 S. Linden, Normal; except 1st Monday of month, Garcia's, Watterson Place. Speed tmnts., \$0.50/game. Andy McGowan, 520 E. Chestnut, Bloomington 61701, 309/827-7892.

## PRESIDENT'S PAGE

*ICA President Helen Warren*

### SOME THINGS IN THE OFFING...

The eye-catching purple flyer inserted in this issue announces the annual ICA Awards Banquet for Sunday, March 4. Circle the date on your calendar now and meet your fellow ICAers at the Greek Islands Restaurant for an afternoon of good food and chess chatter. This is the time we honor the givers--chess patrons--and players--the winners of the ICA 1989 Tour. The food will be outstanding as always; you can't beat the price! \$12.50 for a complete family style Greek dinner. Bring your wife or friend. Coupon is included on flyer for your convenience. Reservations should be mailed to Helen Warren and checks made payable to ICA.

\*\*\*\*

### ICA CHESS CLINIC SCHEDULED FOR MAY 5...

Elementary, junior high, and high school students are in for a real chess treat when they participate in the ICA SCHOLASTIC CLINIC. Thanks to the efforts of ICA Secretary Tim Just, we have secured the excellent facilities of the College of Lake County in Grayslake for a full day of chess instruction and play on May 5.

The Chicago area's top masters will serve as instructors for a three-hour morning session followed by a three-round Action Chess event in the afternoon. The afternoon tournament will be open to all. Additional details on starting time for classes, description of course material, instructors, cost, etc. will become available soon. Schools with active chess clubs should call Tim Just or Helen Warren to be sure they receive a flyer. Here's an opportunity for beginners to learn, intermediates to improve, and "veterans" to further hone their skills.

\*\*\*\*

### THE ILLINOIS CHESS TOUR IN FULL SWING...

1989 saw the ICA Tour blossom with the largest number of mini and maxi events ever. This year promises to be bigger and better. Thanks

tour statistician Bill Smythe we have a full explanation of the tour rules and prizes in this issue. Funding for the ICA Tour continues at last year's level. Remember--you must play in at least three tour events to be eligible for prizes. Consult the calendar of events for tour events.

Organizers! YOU can run a tour event very easily. Submit your format to any ICA officer, consult with Fred Gruenberg, our clearinghouse, for suitable dates and to avoid conflicts.

++++

### ICA WILL ENTERTAIN BIDS FOR THE IL CLASS..

The deadline for submission of bids for the 1990 Illinois Open has come and gone with no bids received. Thus, the ICA will itself organize the event. MARCH 15 is the deadline for the IL CLASS, traditionally held the week before Thanksgiving. Bids should be sent to Helen Warren.

++++

### TWO NATIONAL EVENTS IN THE MIDWEST IN THE OFFING...

The U.S. Amateur Team Midwest will be held in St. Louis on February 17-18. While the east, west, and south versions of the U.S. Amateur Team are three day events, the St. Louis Midwest event will take only two days--an added reason to organize a team and make the short trip south. See Tournament Life for additional details.

The U.S. Masters invites spectators! The Hyatt Oakbrook welcomes you on March 15-18 for a look-see. No admission, of course. Already confirmed as participants are GM Arthur Bisguier, IM Igor Ivanov, and IM John Donaldson. Come see U.S. chess brightest stars compete for \$15,000 in prizes, including \$5,000 in regional booty

## Illinois Class Championships November 18-19, 1989

145 players journeyed to the Morgan Park Academy last November 18 and 19 to play in the 1989 Illinois Class Championships. The last game to finish was the one that decided first place in the Master/Expert section, as Dr. Eugene Martinovsky won \$400 for his 3 1/-1/2 score. Dr Martinovsky found a way to draw a dead lost Rook ending against Tennesseean and fellow Senior Master Ron Burnett. [See Bill Colias's analysis of the Burnett-Martinovsky endgame for the full story--unfortunately, the score of the entire game was not available at presstime.] On second board, Albert Chow was unable to convert his advantage against another Volunteer invader, Jerry Wheeler. Burnett, Chow, Wheeler, Florentino Innumerable, ICB Games Editor Bill Colias, and Ray Socha all finished in a tie for second place with 3-1.

Sylvester Turner took home the \$150 first prize in Class A with a perfect 4-0 score. Roger Allison and Leonid Sagalovsky were also undefeated: they tied for second with 3 1/2 points.

In the Class B section, Prakash Kamat swept his opponents four straight games for \$150. Robby Singer was second with 3 1/2, and there was a three-way tie for third between Lawrence Kosiba, Randy Fronek, and Harrison Robinson. Two ICA officers, Fred Gruenberg and Tim Just, had a chance to tie for third as well, but they battled each other to a draw after an exceptionally tense struggle.

Class C also had a clear winner, as Sidney Davis powered through the field to win 4 in a row and \$150. Thomas Curran and Sedrick Prude tied for second with 3 1/2 points.

Steven Dudnick copped \$100 for winning all of his games in the Class D/E/Unrated section. There was a three-way tie for second between Robert Raimo, James Peters, and Bruce Chenoweth, all with 3 points.

Todd Barre directed capably, while some ICA gremlins furnished snacks and soda to the participants during every round. Following the crosstables for each section, Games Editor Bill Colias and I annotate several games from the event.

MASTER-EXPERT	rating	w	d	l	score
1 MARTINOVSKY Eugene	2399	W21	W11	W 4 D 2	3.5
2 BURNETT Ronald	2497	W10	W14	D 3 D 1	3
3 WHEELER Jerry	2198	W23	W17	D 2 D 5	3
4 INUMERABLE Florentino	2152	W20	W 6 L 1	W12	3
5 CHOW Albert	2428	D26	W16	W 9 D 3	3
6 COLIAS Bill	2450	W13	L 4	W15 W11	3
7 SOCHA Raymond	2115	D18	W30	D12 W13	3
8 BENESA Arnulfo	2158	L16	W26	D10 W20	2.5
9 GRATZ Glen	2108	Dbye	W27	L 5 W16	2.5
10 SAX Robert	2067	L 2	WF	D 8 W19	2.5
11 NAFF William	2144	W19	L 1	W23 L 6	2
12 JORDAN Roland	2109	D28	W18	D 7 L 4	2
13 MC NAMARA James	2060	L 6	W28	W14 L 7	2
14 SANDRIN Angelo	2166	W24	L 2	L13 W18	2
15 KREISMAN Bruce	2030	D27	Dbye	L 6 W23	2
16 BECKER Sidney	2010	W 8	L 5	D17 L 9	1.5
17 LAWSON Kevin	2070	W25	L 3	D16 -	1.5
18 MULATIN David	1894	D 7	L12	W21 L14	1.5
19 BUTTNY William	1911	L11	W29	D25 L10	1.5
20 BOGAN Timothy	1959	L 4	D21	W30 L 8	1.5
21 HAUBRICH Scott	2033	L 1	D20	L18 W24	1.5
22 SCHMUGGEROW Kevin	2205	W29	-	- -	1
23 BLANK David	2018	L 3	W25	L11 L15	1
24 FORD Sam	2012	L14	LF	W29 L21	1
25 PORTER John	1802	L17	L23	D19 D29	1
26 KAMEN Dan	2053	D 5	L 8	- -	0.5
27 SCHILLER Eric	2305	D15	L 9	- -	0.5
28 MARTIN Don	1806	D12	L13	- -	0.5
29 SMYTHE Bill	2019	L22	L19	L24 D25	0.5
30 SEFCHECK Mark	1922	Dbye	L 7	L20 -	0.5

### CHOW, A. KARKLINS, PENKALSKI EQUAL FIRST AT NORTH CENTRAL OPEN

Congratulations to Illinois' Andrew Karkins and Al Chow, who tied with Wisconsin Senior Master David Penkalski in Milwaukee's prestigious **William Martz Memorial/North Central Open**. Each scored 6-1 in the Thanksgiving weekend tournament. We hope to have some games from this event next issue.

### NEW! FOX VALLEY CHESS CLUB

Yup, there's a new place to play chess in Aurora, the Fox Valley Chess Club. Members meet 7 p.m. every Tuesday in the McCullough Park District Building, at the corner of Illinois Avenue and Lake Street. For more info, call Jim Oberweis at 466-4886 in the evening, or 801-4766 during the day.



CLASS A	wall chart	score
1 TURNER Sylvester	1994 W19 W13 W12 W 4	4
2 ALLISON Roger	1843 W 7 W14 D 3 W 9	3.5
3 SAGALOVSKY Leonid	1964 W31 W24 D 2 W10	3.5
4 BARGERSTOCK Dan	1870 W20 W27 W 6 L 1	3
5 MAKASKAS Tony	1778 W15 W25 L 9 W14	3
6 PUKEL Bernard	1953 W34 W17 L 4 W15	3
7 COHEN Lawrence	1951 L 2 W21 W24 W13	3
8 WHITAKER Jerome	1829 L27 W30 W25 W12	3
9 WITT John	1924 Dbye W16 W 5 L 2	2.5
10 LULVES Joseph	1786 Dbye W18 W26 L 3	2.5
11 PARADAN L D	1862 L26 D32 W31 W18	2.5
12 BOUTON Barry	1910 W29 W26 L 1 L 8	2
13 GRAVES William	1894 W22 L 1 W16 L 7	2
14 OSTERLUND Russell	1936 W33 L 2 W19 L 5	2
15 FISCHER Greg	1879 L 5 W29 W20 L 6	2
16 GIERTZ Charles	1647 W30 L 9 L13 W28	2
17 PANNER Glenn	1873 W32 L 6 LF D21	1.5
18 BEASLEY Leonard	1872 D21 L10 W22 L11	1.5
19 GAUDRY William	1862 L 1 W28 L14 D20	1.5
20 JOHNSON Eric	1711 L 4 W34 L15 D19	1.5
21 BURKE Marcellus	1725 D18 L 7 Dbye D17	1.5
22 DWYER William	1800 L13 D31 L18 W25	1.5
23 BURGESS Fred	1744 L24 D33 L28 W34	1.5
24 COX William	1878 W23 L 3 L 7	1
25 WOLF William	1931 W28 L 5 L 8	L22 1
26 DZURNY Anthony	1984 W11 L12 L10	- 1
27 ROSS Ted	1942 W 8 L 4 LF	- 1
28 SCHMUCKER Vivian	1811 L25 L19 W23 L16	1
29 WHEELER Stephan	1806 L12 L15 W30	- 1
30 ISAAC Theodore	1687 L16 L 8 L29	Wbye 1
31 SOLCICH Kevin	1852 L 3 D22 L11	- 0.5
32 DENNIS Michael	1741 L17 D11	- 0.5
33 RACE Thomas	1827 L14 D23	- 0.5
34 PALS Randall	1851 L 6 L20 Dbye L23	0.5

CLASS B	wall chart	score
1 KAMAT Prakash	1707 W16 W18 W 6 W 3	4
2 SINGER Robby	1690 W 4 W12 W 8 D 6	3.5
3 KOSIBA Lawrence	1791 W24 W20 W11 L 1	3
4 FRONEK Randy	1799 L 2 W14 W24 W15	3
5 ROBINSON Harrison	1630 Dbye D10 WF W12	3
6 FRAATS Daniel	1796 W19 W 9 L 1 D 2	2.5
7 GRUENBERG Fred	1628 D27 W28 D15 D10	2.5
8 COOPER William	1784 D28 W22 L 2 W13	2.5
9 JOCHIM Gary	1699 W13 L 6 D18 W19	2.5
10 JUST Timothy	1707 D14 D 5 WF D 7	2.5
11 SOLODKA Carl	1706 W32 W21 L 3	- 2
12 HENDERSON Harold	1751 W30 L 2 W25 L 5	2
13 FULTON Steven	1568 L 9 W35 W27 L 8	2
14 KUHR Olaf	1619 D10 L 4 D16 W32	2
15 MICHALIK Philip	1651 Dbye W27 D 7 L 4	2
16 FARRAL Keith	1612 L 1 D19 D14 W24	2
17 FLORES Joshua	1767 L20 L24 W30 W18	2
18 GRANT Dennis	1627 W26 L 1 D 9	L17 1.5
19 VIGANTS Albert	1682 L 6 D16 W28 L 9	1.5
20 MADERA Bill	1672 W17 L 3	- 1
21 BAYER Duane	1792 W25 L11	- 1
22 LOBO Edgardo	1446 W36 L 8 LF	- 1
23 PHILLIPS Lord	- W29	- 1
24 HUGHES Nathaniel	1679 L 3 W17 L 4	L16 1
25 CLARK Lawrence	1681 L21 W32 L12	- 1
26 THOMPSON Michael	1721 L18 W30 LF	- 1
27 ELLICE Wayne	1735 D 7 L15 L13 D28	1
28 REAMES James	1678 D 8 L 7 L19 D27	1
29 FINEBERG Tom	1710 L23	- W37 1
30 BANNON Joseph	1635 L12 L26 L17 W38	1
31 STEWART Allen	1693	- - W39 1

32 CARSON David	1606 L11 L25 Wbye L14	1
33 JUST Timothy	1707 - - D34	- 0.5
34 PALMER Kenneth	1492 - - D33	- 0.5
35 SIMS Mike	1410 - L13	- 0
36 ANTELMAN Kristin	1385 L22 - -	- 0
37 CARSON David	1606 - - L29	- 0
38 ISAAC Theodore	1687 - - -	L30 0
39 AMIRANTE Ron	1576 - - -	L31 0

CLASS C	wall chart	score
1 DAVIS Sidney	1568 W17 W20 W 5 W 4	4
2 CURRAN Thomas	1478 W13 D 3 W18 W11	3.5
3 PRUDE Sedrick	1575 W22 D 2 W15 W10	3.5
4 PADILLA Rudy	1536 W12 W18 W10 L 1	3
5 FULLER Bret	1524 W21 W 6 L 1 D 7	2.5
6 PANDIS John	1579 W14 L 5 D16 W15	2.5
7 KEMPNER Robert	1497 D 8 D19 W21 D 5	2.5
8 POPE Raymond	1584 D 7 L15 W20 W12	2.5
9 DAVIS Jeff	1499 L18 Dbye W17 W16	2.5
10 MC ALISTER Kelvin	1597 W23 W11 L 4 L 3	2
11 SMELTZER Phil	1548 W16 L10 W19 L 2	2
12 UHLEAN Michael	1446 L 4 W14 W13 L 8	2
13 AMIRANTE Ron	1576 L 2 W22 L12 Wbye	2
14 PALMER Kenneth	1492 L 6 L12 WF W21	2
15 MARTIN Stephen	1531 D19 W 8 L 3 L 6	1.5
16 ALLEN Keith	1452 L11 W23 D 6 L 9	1.5
17 KUKOWSKI Joseph	1466 L 1 Dbye L 9 W20	1.5
18 SHAFFER Thomas	1595 W 9 L 4 L 2	- 1
19 HIBBS Robert	1435 D15 D 7 L11	- 1
20 ANTELMAN Kristin	1385 Wbye L 1 L 8	L17 1
21 SIMS Mike	1410 L 5 Wbye L 7	L14 1
22 FENNER Charles	1471 L 3 L13 LF	- 0
23 BRINKMANN Thomas	1515 L10 L16	- 0

CLASSES D/E/UNR	wall chart	score
1 DUDNICK Steven	1378 W18 W13 W 2 W 7	4
2 RAIMO Robert	1373 W19 W11 L 1 W 9	3
3 PETERS James	1376 D 5 D14 W18 W 6	3
4 CHENOWETH Bruce	1341 L11 W19 W15 W10	3
5 CRAWFORD William	- D 3 LF W17 W13	2.5
6 LOPEZ Mauricio	1224 D12 WF W 8 L 3	2.5
7 BALES Robert	1324 D14 WF W 9 L 1	2.5
8 PHILLIPS Lord	- Dbye W17 L 6 W16	2.5
9 MEARS Timothy	1158 W16 W10 L 7 L 2	2
10 MOORE Joseph	1363 W15 L 9 W11 L 4	2
11 SUAREZ Edward	- W 4 L 2 L10 W18	2
12 BROOKS Tyrone	1384 D 6 LF D13 W15	2
13 COULTER David	1313 W17 L 1 D12 L 5	1.5
14 POULOS Theo	1398 D 7 D 3	- 1
15 MORGAN Chris	- L10 W16 L 4 L12	1
16 HARMON Percival	1380 L 9 L15 W19 L 8	1
17 CAIN Dennis	1388 L13 L 8 L 5 W19	1
18 DUPEE Arthur	1154 L 1 Wbye L 3	L11 1
19 FLETCHER Charles	- L 2 L 4 L16	L17 0

KICKS ABOVE THE WAISTLINE DEPT.

Tim Rice's musical **Chess** opened last month at Marriott's Lincolnshire Resort and Theatre and will run through April 8th. It's a story of love and intrigue at the World Championships with music by Björn Ulvaeus and Benny Andersson of ABBA fame. Call the Marriott box office, (708) 634-0200.

**MASTER-EXPERT SECTION:**

**Eugene Martinovsky (2423) - Scott Haubrich (2109)**  
**Round 1 [Annotated by Bill Colias]**

1.d4 Nf6 2.c4 c5 3.Nf3 e6 4.g3 d5 5.Bg2 dxc4 6.Qa4+ Bd7 7.Qxc4 Bc6 8.dxc5 Nbd7 9.O-O Bxc5 10.Nc3 Rc8

Threatening to win the White Queen with 11... Bxf3, 12... Bxf2+, and 13... Rxc4.

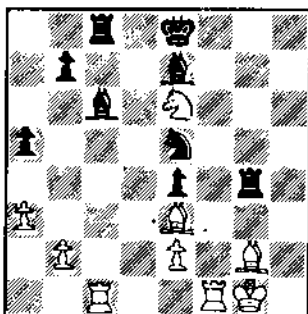
11.Qf4 h6

Another idea here would be to play 11... O-O, which forces White to take measures against 12... e5; Black's idea is 13.Nxe5 Bxg2 14.Kxg2 Bd6, winning a piece; e.g., 15.Rd1 Bxe5 16.Rxd7 Nxd7 is awful for White. 12.a3 a5 13.g4 g5 14.Qg3 Qc7 15.Qxc7 Rxc7 16.h3 Rc8

Black should play more actively with 16... b5 or 16... Ke7. 17.Bd2 h5

This is too slow; there was still time for Black to play 17... Ke7 coordinating the Rooks.

18.Nxg5 hxg4 19.hxg4 Nxg4 20.Nce4 Rg8 21.Rac1 Be7 22.f3 f5 23.fxg4 fxe4 24.Nxe6 Rxg4 25.Be3 Ne5



Threatening 26... Nf3+ 27.Kf2 Bh4 mate. So maybe Black's plan of 16... Rc8 and 17... h5 wasn't too slow after all!

26.Rf5 Ng6

[26... Nf3+! is equal, according to the notes Martinovsky made on his scoresheet.--Ed.]

27.Ng7+ Kd7 28.Rf7 Rg8

28... Nh4 looks strong; 29.Rf2 Nxg2 30.Rxg2 Rxg2 31.Kxg2 Rg8+.

29.Kf1 (!--Martinovsky) Bd5

29... Rg3 fails to 30.Rxe7+ Kxe7 31.Nf5+ and 32.Nxg3; however, 29...Rh8 with the idea of Rh2 is very messy.

30.Bh3 Bxf7 31.Bxg4+ Kd6

32.Nf5+ Ke5 33.Rc7 (!--

Martinovsky) Be6 34.Nxe7 Rf8+

35.Ke1 Nxe7 36.Rxe7 1-0

**Robert Sax (2141) - Ron Burnett (2451)**  
**Round 1**

1.e4 c5 2.Nf3 Nc6 3.d4 cxd4 4.Nxd4 Nf6 5.Nc3 d6 6.Bc4 Bd7 7.Bg5 e6 8.Qd2 a6 9.Bb3 h6 10.Bxf6 Qxf6 11.O-O-O Nxd4 12.Qxd4 Qxd4 13.Rxd4 b5 14.a4 g5 15.Rhd1 Bc6 16.f3 Be7 17.a5 Bb7 18.Na2 Rc8 19.Nb4 O-O 20.g3 Kg7 21.Nd3 Rfd8 22.Ne1 Rd7 23.Ng2 Rcd8 24.Ne3 Bf6 25.R4d3 h5 26.Kb1 g4 27.fxg4 Bxe4 28.gxh5 Bxd3 29.Rxd3 Rh8 30.g4 Bd8 31.c4 Bxa5 32.Bd1 Bd8 33.Ra3 Bg5 34.cxb5 axb5 35.Ng2 Rc8 36.Bf3 d5 37.h4 Rc4 38.Ka2 Be7 39.Rd3 Ra7+ 40.Kb3 Raa4 41.g5 Rab4+ 42.Ka2 Rc2 0-1

**Bill Buttny (1957) - Bill Naff (2143)**

**Round 1 [Annotated by Bill Colias]**

1.e4 c5 2.Nc3 e6 3.Nge2

This particular move order may be played very effectively against Najdorf players, as White retains

the option of playing d4 and transposing into a normal Open Sicilian with ...e6 instead of ...d6. 3...Nc6 4.g3 g6 5.Bg2 Bg7 6.O-O Nge7 7.d3 O-O 8.Be3 Nd4 9.f4 d6 10.a4

I already like Black's position: White's King Knight seems a little misplaced on e2, and Black's play is easier on the Queenside. White is going to have to go beyond the call of duty to break through on the Kingside.

10...a6 11.Qd2 Nec6 12.Kh1 Rb8 13.f5

White is trying to attack, but Black's pieces are well placed defensively.

13...exf5 14.Bh6 Nxe2 15.Bxg7

Gives up another pawn.

15...Nxg3+ 16.hxg3 Kxg7 17.Nd5 Nd4 18.Rf2 Be6 19.Raf1 Bxd5 20.exd5 b5 21.axb5 axb5 22.c3 Nb3 23.Qd1 Na5 24.Rxf5 gxf5 25.Qh5 f6 26.Rxf5 Qe8 27.Qh4 Rb7 28.Be4 Kh8 29.Rh5 Rf7 30.b4 cxb4 31.cxb4 Nb3 32.Kg2 Qe7 33.Kf2 f5 34.Qxe7 Rbx7 0-1

**Bill Colias (2405) - Jim McNamara (2029)**  
**Round 1**

1.d4 Nf6 2.c4 c5 3.d5 b5 4.cxb5 a6 5.e3 g6 6.Nc3 d6 7.a4 Bg7 8.Ra3 O-O 9.Bc4 Nbd7 10.Nge2 Bb7 11.O-O Nb6 12.Ba2 axb5 13.axb5 Qc7 14.e4 Nfd7 15.Qc2 Ne5 16.Nb1 Rfc8 17.Bd2 c4 18.Rxa8 Bxa8 19.Bc3 Qa7 20.Na3 e6 21.dxe6 fxe6 22.Nd4 Qe7 23.Qe2 h6 24.f4 Nd3 25.Nxc4 Nxc4 26.Qxd3 d5 27.e5 Kh7 28.Bb1 Qf7 29.h4 h5 30.Nf3 Bh6 31.Ng5+ Bxg5 32.fxg5 Qg7 33.Rf6 Nxe5 34.Bxe5 Qa7+ 35.Kh2 1-0

Dan Kamen (2046) - Albert Chow (2372)  
Round 1

1.d4 Nf6 2.Nf3 g6 3.e3 Bg7  
4.Bd3 O-O 5.O-O d5 6.Ne5 c5  
7.c3 Nbd7 8.f4 b6 9.Nd2 Bb7  
10.Ndf3 Ne4 11.a4 Ndf6 12.Qe2  
Qc7 13.Bd2 Nxd2 14.Nxd2 e6  
15.g4 Nd7 16.Nxd7 Qxd7 17.Nf3  
Qd6 18.Ra3 Rfc8 19.g5 cxd4  
20.cxd4 Qb4 21.Qd2 Bf8  
22.Qxb4 Bxb4 23.Raa1 Rc7  
24.Rfc1 Rac8 25.Rxc7 Rxc7  
26.Kf2 Bc8 27.Ke2 Bd7 28.Ne5  
Kf8 29.Ng4 Ke7 30.Ne5 Bd6  
31.Nf3 a6 32.Kd2 Bb4+ 1/2-1/2

Bruce Kreisman (2030) - Eric Schiller (2279)  
Round 1

1.Nf3 d6 2.g3 Bg4 3.Bg2 c6  
4.O-O Qd7 5.d3 e5 6.Nbd2 Be7  
7.c4 Na6 8.Rb1 Bh3 9.b4 Bxg2  
10.Kxg2 f5 11.Qb3 Bf6 12.Ba3  
Nc7 13.b5 c5 14.Bb2 b6 15.a4  
Ne7 16.a5 O-O 17.axb6 axb6  
18.Ra1 g5 19.Rxa8 Rxa8 20.Ra1  
h5 21.Rxa8+ Nxa8 22.Qa4 Qb7  
23.Kg1 g4 24.Ne1 Bg5 25.Bc3  
Nc7 26.Qa1 Ng6 27.e3 h4  
28.Ng2 h3 29.Ne1 Kf7 30.Qd1  
Ne6 31.e4 Bxd2 32.Bxd2 fxe4  
33.Qxg4 Nef8 34.Qxe4 Qxe4  
35.dxe4 Ne6 36.Nf3 Kf6 37.Kf1  
Ngf8 38.Ke2 Nd4+ 39.Nxd4  
cxd4 40.Bb4 Ke6 41.f4 Nd7  
42.f5+ Ke7 43.g4 Nc5 44.Bxc5  
dxc5 45.g5 Kf7 46.Kf3 Kg7  
47.Kg3 Kg8 1/2-1/2

Florentino Inumerable (2152) - Tim Bogan (1959)  
Round 1

1.d4 Nf6 2.c4 g6 3.Nc3 d5 4.Nf3  
Bg7 5.g3 O-O 6.Bg2 c6 7.Qb3  
dxc4 8.Qxc4 Na6 9.O-O Be6  
10.Qa4 Qc8 11.Qa3 Nd5 12.Bd2

Re8 13.e4 Ndb4 14.Rac1 Nd3  
15.Rb1 Nab4 16.Na4 Bxa2  
17.Bxb4 Bxb1 18.Rxb1 Nxb4  
19.Qxb4 a5 20.Qc5 Qe6 21.Nb6  
Rad8 22.e5 Qa2 23.Qc2 Bf8  
24.Rc1 e6 25.Bf1 1-0

Ray Socha (2135) - David Wulatin (1901)  
Round 1

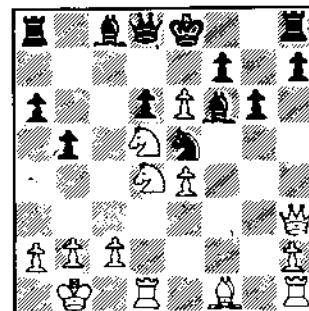
1.e4 e6 2.d4 d5 3.Nd2 Nf6 4.e5  
Nfd7 5.Bd3 c5 6.c3 Nc6 7.Ne2  
Qb6 8.Nf3 cxd4 9.cxd4 f6  
10.exf6 Nxf6 11.O-O Bd6  
12.Nc3 a6 13.a3 O-O 14.Be3  
Qc7 15.h3 Bd7 16.Rc1 Rae8  
17.b4 b5 18.Re1 Qb8 19.Qb3  
Kh8 20.Qb1 e5 21.Nxe5 Nxe5  
22.dxe5 Bxe5 23.Ne2 Ne4  
24.Bxe4 dxe4 25.Nd4 Qd6  
26.Red1 Qg6 27.Kf1 Re7  
28.Qc2 Ref7 29.Rd2 h6 30.Nc6  
Bxc6 31.Qxc6 Qxc6 32.Rxc6  
Rf6 33.Rxf6 Rxf6 34.Ke2 Rc6  
35.Bc5 Bf4 36.Rd8+ Kh7  
37.Kd1 Re6 38.Rd7 e3 39.Bxe3  
Rd6+ 1/2-1/2

Eric Schiller (2279) - Glen Gratz (2141)  
Round 2 [Annotated by Bill Colias]

1.e4 c5 2.Nf3 d6 3.d4 cxd4  
4.Nxd4 Nf6 5.Nc3 a6 6.Bg5 e6  
7.f4 Be7 8.Qf3 Qc7 9.O-O-O  
Nbd7 10.g4 b5 11.Bxf6 Nxf6  
12.g5 Nd7 13.f5 Bxg5+

The older main line for Black, 13...Nc5 14.f6 gxf6 15.gxf6 Bf8, has run into trouble of late because of 16.Rg1. Walter Browne has played 13...Bxg5 in recent games.

14.Kb1 Ne5 15.Qh5 Bf6 16.fxe6  
g6 17.Nd5 Qd8 18.Qh3



18.Qh6 was played in Molasch-Bina, Corres. 1977. I have experimented with an interesting pawn sac, 18.Qe2!?. Colias-L. Kistler continued 18...fxe6 19.Nf4 Nc4 20.e5 Bxe5 21.Bg2 O-O 22.Nxg6 (1-0, 36 moves). 18.Qh3 just seems to give Black the initiative, as White's Queen must soon leave the diagonal.

18...O-O 19.exf7+ Rxf7 20.Qb3 Bg4 21.Bh3 Bxd1 22.Rxd1 Kh8 23.Rf1 Bg7 24.Rxf7 Nxf7 25.Qe3 Qg5 26.Ne6 Qxe3 27.Nxe3 Be5 28.Nd5 Bxh2 29.Nec7 Rf8 30.Ne6 Rb8 31.b4 h5 32.Nec7 Ng5 33.Bd7 Rf8 34.Nxa6 Be5 35.Bxb5 h4 0-1

Scott Haubrich (2109) - Tim Bogan (1959)  
Round 2

1.e4 e5 2.Nf3 Nc6 3.Bb5 a6  
4.Ba4 Nf6 5.O-O Be7 6.Re1 b5  
7.Bb3 d6 8.c3 O-O 9.h3 Bb7  
10.d4 Re8 11.a4 Bf8 12.Nbd2  
h6 13.Qe2 exd4 14.axb5 dxc3  
15.bxc3 axb5 16.Rxa8 Qxa8  
17.Qxb5 Ne5 18.Nxe5 Rxe5  
19.Qc4 Bd5 20.Qxc7 Bxb3  
21.Nxb3 Rxe4 22.Rxe4 Qxe4  
23.Bd2 Qb1+ 24.Nc1 Qc2  
25.Be3 Nd5 26.Qa7 Qxc3  
27.Qd4 Qe1+ 28.Kh2 Nxe3  
29.Qxe3 Qxe3 30.fxe3 f5 31.Kg3  
Kf7 32.Ne2 g5 33.h4 Bg7  
34.hxg5 hxg5 35.Kf3 1/2-1/2

Ron Burnett (2451) - Angelo Sandrin (2206)  
Round 2

1.e4 c5 2.Nf3 Nc6 3.Bb5 g6  
4.O-O Bg7 5.c3 Nf6 6.e5 Nd5  
7.d4 cxd4 8.cxd4 Qb6 9.Bc4  
Nc7 10.Nc3 O-O 11.a3 a5  
12.Be3 d5 13.exd6 exd6 14.Na4  
Qa7 15.d5 Qb8 16.Nb6 Ne5  
17.Nxe5 dxe5 18.d6 1-0

Florentino Innumerable (2152) -  
Bill Colias (2405)  
Round 2

1.d4 Nf6 2.Nf3 g6 3.g3 Bg7  
4.Bg2 c5 5.d5 d6 6.O-O O-O  
7.c4 b5 8.cxb5 a6 9.bxa6 Nbd7  
10.Nc3 Nb6 11.e4 Bxa6 12.Re1  
Ng4 13.Bf4 Nc4 14.Qc2 Qa5  
15.Rac1 Rfb8 16.b3 Na3 17.Qd2  
c4 18.Nd4 Qb6 19.Nc6 cxb3  
20.axb3 Re8 21.h3 Ne5 22.Bxe5  
Bxe5 23.Nxe5 dxe5 24.Na4  
Qxb3 25.Nc5 Qb8 26.Qg5 Bb5  
27.Bf1 Qd6 28.Bxb5 Nxb5  
29.Nd3 Nd4 30.Re3 e6 31.Nxe5  
exd5 32.Ng4 Ra6 33.e5 Qe7  
34.Nf6+ Rxf6 35.exf6 Qxe3  
36.Qxe3 Rxe3 37.Rc8+ 1-0

Bill Naff (2143) - Eugene  
Martinovsky (2423)  
Round 2

1.e4 e5 2.Bc4 Nc6 3.Nf3 Nf6  
4.d3 Be7 5.O-O O-O 6.c3 d6  
7.Re1 Na5 8.Bb5 a6 9.Ba4 b5  
10.Bc2 c5 11.b4 cxb4 12.cxb4  
Nc6 13.a3 Bg4 14.Bb2 Qb6  
15.Nbd2 Rfc8 16.Bb3 a5  
17.bxa5 Nxa5 18.Ba2 Rc7 19.h3  
Bh5 20.Nb3 Nc4 21.dxc4 bxc4  
22.Re3 cxb3 23.Rxb3 Qa7  
24.Qe2 Rac8 25.Bb1 Nd7 26.a4  
Nc5 27.Rb4 Ne6 28.g4 Nf4  
29.Qf1 Bg6 30.a5 d5 31.Rba4 f6  
32.Ne1 Rb8 33.Ba3 Be8  
34.Bxe7 Rxe7 35.R4a3 Bb5  
36.Bd3 Nxd3 37.Rxd3 dxe4  
38.Rd8+ Kf7 0-1

Bill Colias (2405) - Bruce  
Kreisman (2030)  
Round 2

1.d4 d5 2.c4 c6 3.cxd5 cxd5  
4.Nc3 Nc6 5.Bf4 Nf6 6.e3 Bf5  
7.Nf3 e6 8.Bb5 Bb4 9.Qa4 O-O  
10.O-O Qb6 11.Ne5 Nxe5  
12.Bxe5 Be7 13.Qb3 Rac8  
14.Rac1 Rfd8 15.Rfd1 h6  
16.Ba4 Qxb3 17.Bxb3 Ne4  
18.Nxe4 Bxe4 19.Ba4 Rxc1  
20.Rxc1 Bd6 21.Bxd6 Rxd6  
22.Rc8+ Kh7 23.f3 Bb1  
24.Bc2+ Bxc2 25.Rxc2 Rb6  
26.Kf2 Kg6 27.Ke2 Kf6 28.b3  
Kg6 29.Kd3 Kf6 30.Rc5 Rc6  
31.Rxc6 bxc6 32.Kc3 Ke7  
33.Kb4 Kd6 34.a4 g6 35.Ka5  
Kc7 36.Ka6 Kb8 37.b4 f6 38.b5  
cxb5 39.axb5 e5 40.b6 e4  
41.bxa7+ Ka8 42.fx4 dxe4  
43.d5 1-0

Eugene Martinovsky (2423) -  
Florentino Innumerable (2152)  
Round 3 [Annotated by Bill  
Colias]

1.d4 Nf6 2.Nf3 g6 3.g3 Bg7  
4.Bg2 c5 5.O-O cxd4 6.Qxd4  
Nc6 7.Qh4 Qb6

Played to answer 8.Bh6 with  
8...Bxh6 9.Qxh6 Qxb2.  
8.Nbd2 d5 9.c4 Ng4

After this pawn sac, Black  
always seems to be one move  
behind. Black might be able to  
take away some Queenside play  
by playing 9...d4 instead.  
10.cxd5 Bf6 11.Nc4 Qc5 12.Bg5  
Nd4 13.Nxd4 Bxd4 14.e3 Bg7  
15.Rac1 h6

If Black tries to remove his  
Bishop from the c-file with  
15...Bd7 or 15...Bf5, White would  
have a strong double attack on  
the Black Queen and Knight with  
16.Ne4.

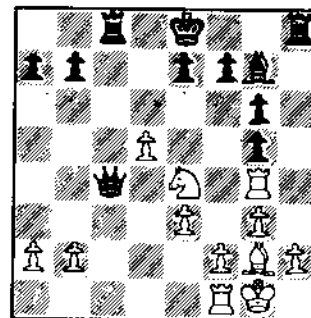
16.Nd2 Qb4 17.Ne4 hxg5

Although Black now wins the

Exchange for a pawn, 17...Bf5 or  
17...Bd7 may be stronger.

18.Rxc8+ Rxc8 19.Qxg4 Qc4

White was threatening to win  
Black's Queen with 20.Nf6; of  
course, the Rook on c8 was also  
hanging.



20.d6!

Unleashes the full potential of  
Black's position. Black is now  
swept away by the initiative.

f5 21.Qxg5 Qe6 22.Rd1 Rd8  
23.d7+ Rxd7 24.Rxd7 Qxd7  
25.Qxg6+ Kf8 26.Nc5 Qd1+  
27.Bf1 Qg4 28.Ne6+ Kg8  
29.Ng5 Qh5 30.Bc4+ e8  
31.Qxe6+ Kf8 32.Qd6+ 1-0

Angelo Sandrin (2206) - Jim  
McNamara (2029)

Round 3 [Annotated by Bill  
Colias]

1.d4 Nf6 2.Nf3 b5

The Polish Defense--a bit  
different, but perfectly playable.  
3.Bg5 e6 4.Nbd2 Bb7 5.e3 a6  
6.Bd3 c5 7.O-O d5

I get slightly nervous whenever  
I have pawns on e6 and d5  
because of the hole on d5.  
Therefore, I usually keep a pawn  
on d6 in positions like these.  
Here, I would suggest 7...Be7,  
and if 8.e4?, then 8...c4 and  
9...Nxe4.

8.c3 Nbd7 9.Ne5 Qb6 10.f4 h5  
11.Nxd7

A dubious move, as it releases some of the tension. Two other moves look more thematic: 11.Ndf3 (with the idea of Bxf6 and Nfg6), or 11.Nef3 followed by f5.

11...Nxd7 12.Nf3 16 13.Bg6+ Kd8 14.Bh4 Kc7 15.Bg3 Bd6 16.Nh4 Rh6 17.Bf7 g5 18.fxg5 fxg5 19.Bxd6+ Qxd6 20.Nf3 Qe7 21.Ne5 Nxe5 22.dxe5 Rf8

White has overreached and Black's temporary pawn sac leads to a winning advantage.

23.Bxh5 Rxf1+ 24.Kxf1 Qh7 25.g4 Qe4 26.Qe1 Qh1+

26...Rh8 is also very strong.  
27.Ke2 Qxh2+ 28.Qf2 Qxe5 29.Qf7+ Kb6 30.Rf1 d4 31.cxd4 cxd4 32.Qf2 Bd5 33.b3 Rh8 34.Kd2 dxe3+ 35.Qxe3+ Qxe3+ 36.Kxe3 Kc5 37.Rf7 Kb4 38.Ra7 a5 39.Kd2 Rf8 40.Bf7 Rc8 41.Ra6 Rd8 42.Kc1 e5 43.Bxd5 Rxd5 44.Rg6 e4 45.Re6 Rd4 46.Kc2

46.Re5 e3 47.Rxg5 (47.Rxe3 Rxg4 -+) e2 48.Re5 Rd1+ and 49...e1=Q wins. After 46.Kc2, however, ...Rd1 is no longer with check.

46...e3 47.Rxe3 Rxg4 48.Re2 Rg1 49.Kb2 g4 50.Re4+ Kc5 51.Re5+ Kc6 52.a4 Rg2+ 53.Kb1

It would've been better to go forward with 53.Kc3.

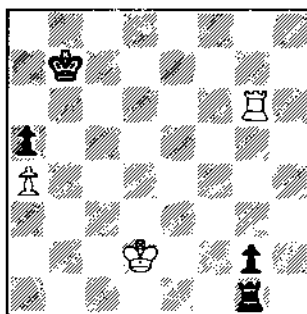
53...bxa4 54.bxa4 Kb6 55.Rb5+ Ka6 56.Rg5 g3 57.Rg6+ Kb7 58.Kc1 Rg1+

Here, 58...Kc7 makes more sense. If the White Rook ever leaves the g-file (e.g. to take the pawn on a5), Black can play ...Rf2 followed by ...g2 and ...Rh1+.

59.Kd2

59.Kb2 is simpler. If Black plays 59...g2, it's a draw, as in

the analogous positions that I analyze in Burnett-Martinovsky. 59...g2



0-1???

Wait a minute! White draws the pawn ending easily after 60.Ke2! Ra1 61.Rxg2 Ra2+ 62.Kf3 Rxg2 (62...Rxa4 63.Rg6 is also a draw) 63.Kxg2 Kc6 64.Kf3. Did Sandrin lose on time, or did he hallucinate?

David Wulatin (1901) - Scott Haubrich (2109)  
Round 3 [Annotated by Bill Colias]

1.e4 c5 2.Nc3 d6 3.f4 Nc6 4.Nf3 Nf6 5.Bc4

This line is known as the Grand Prix Attack, in honor of the English players Hebden and Hodgson, who have used this particular setup to win so many of the British Grand Prix tournaments.

5...e6 6.O-O Be7 7.d3 O-O 8.Qe1 d5

I think that Black should grab the two Bishops with 8...Na5.

9.Bb3 d4 10.Ne2 Na5 11.Ba4 Bd7

I would prefer Black after 11...a6, which prepares 12...b5. [White looks OK to me after 11...a6 12.Bd2!-Ed.] White now works up a Kingside attack.

12.Bxd7 Nxd7 13.Ng3 Nc6 14.a3 Re8 15.f5 Qc7 16.Ng5 Nf8

17.Qf2 Bxg5 18.Bxg5 f6 19.Bf4 e5 20.Bd2 a5 21.Nh5 Qf7 22.Qf3 b5 23.Qg4 Kh8 24.Rf3 c4 25.Raf1 Nd7 26.Qh4 cxd3 27.cxd3 b4 28.Rc1 bxa3 29.bxa3 Ncb8

A fatal choice. Here, 29...Ndb8, with the idea of ...Ra7, needs to be played. White now wins with a nice combination.

30.Rg3 Rg8 31.Nxg7! Rxg7 32.Rxg7 Qxg7 33.Rc8+ Qg8 34.Rxg8+ Kxg8 35.Bh6 Ra6 36.Qh5 Nf8 37.Qg4+ Kf7 38.Qg7+ Ke8 39.Qxf8+ Kd7 40.Qxb8 Rc6 41.Qb5 Kc7 42.Qxa5+ Kc8 43.Qa8+ Kd7 44.Qxc6+ Kxc6 45.Bg7 1-0

Sidney Becker (2010) - Glen Gratz (2141)  
Round 4

1.e4 c5 2.Nf3 d6 3.b3 Nc6 4.Bb2 e5 5.Bb5 Bd7 6.d3 Be7 7.Bxc6 Bxc6 8.Nc3 Nf6 9.O-O Qd7 10.Qd2 Nh5 11.Nd5 Bxd5 12.exd5 Nf4 13.Bxe5 dxe5 14.Nxe5 Qf5 15.Rae1 Qg5 0-1

Jim McNamara (2029) - Ray Socha (2115)  
Round 4 [Annotated by Bill Colias]

1.e4 e6 2.d4 d5 3.Nd2 Nf6 4.e5 Nfd7 5.Bd3 c5 6.c3 Nc6 7.Ne2 Qb6

7...f6 is the other main line. 8.Nf3

I prefer to sac the pawn with 8.O-O cxd4 9.cxd4 Nxd4 10.Nxd4 Qxd4 11.Nf3 Qb6 12.Qc2, after which White has a lasting initiative. For example, 12...h6 13.Rb1 Be7 14.Be3 Bc5 15.Bd2 Bb4 16.Bf4 O-O 17.Rfc1.

8...cxd4 9.cxd4 16 10.exf6 Nxf6 11.O-O Bd6 12.a3 O-O 13.Re1 e5 14.dxe5 Nxe5 15.Nxe5 Bxe5

### 16.h3

*[When I asked Ray what he would have done after 16.Be3, he came up with 16...Bxh2+!? 17.Kxh2 Ng4+; Black's attack is dangerous, but I suspect White can weather the storm. Of course, there are more materialistic continuations...--Ed.]*  
**Ng4! 17.Be3 Nxe3 18.fxe3 Qxe3+ 19.Kh1 Bxh3 20.Rg1 Qh6 21.Qc1 Bxg2+ 0-1**

### CLASS A SECTION:

**Tony Makauskas (1778) - William Wolf (1942)**  
 Round 2

1.d4 Nf6 2.c4 e6 3.Nf3 c5 4.Nc3 cxd4 5.Nxd4 Bb4 6.Qc2 d5 7.e3 O-O 8.a3 Bxc3+ 9.Qxc3 Nc6 10.Nxc6 bxc6 11.Bd3 Qd6 12.c5 Qc7 13.b4 e5 14.Bb2 e4 15.Be2 a5 16.b5 cxb5 17.Bxb5 Ba6 18.a4 Rfb8 19.Bxa6 Rxa6 20.O-O Rc6 21.Qe5 Rxc5 22.Qxc7 Rxc7 23.Be5 Rbc8 24.Bxc7 Rxc7 25.Rab1 Kf8 26.Rb5 1-0

**Leonid Sagalovsky (1964) - Joseph Lulves (1830)**  
 Round 4

1.e4 e5 2.Nf3 Nc6 3.Bb5 Nd4 4.Nxd4 exd4 5.d3 c6 6.Ba4 Qa5+ 7.c3 Nf6 8.O-O dxc3 9.Nxc3 Be7 10.Be3 Qc7 11.f4 b5 12.Bb3 O-O 13.Rc1 Qd8 14.e5 Ne8 15.Qf3 d5 16.Ne2 Bb7 17.d4 a5 18.f5 f6 19.Nf4 Nc7 20.Nh5 a4 21.Qg3 Ne8 22.Bc2 fxe5 23.dxe5 Kh8 24.Qh3 Bg5 25.Bc5 Rg8 26.Rce1 d4 27.f6 Bc8 28.f7 Rf8 29.Qd3 g6 30.fxe8=Q Rxe8 31.Bxd4 Re7 32.e6+ Kg8 33.Nf6+ Bxf6 34.Rxf6 c5 35.Rxg6+ 1-0

**John Witt (1924) - Roger Allison (1843)**  
 Round 4

1.d4 e6 2.e3 Nf6 3.Bd3 b6 4.f4 Bb7 5.Nf3 c5 6.c3 Nc6 7.O-O Qc7 8.Qe2 Be7 9.e4 cxd4 10.Nxd4 Rc8 11.Nd2 Nxd4 12.cxd4 O-O 13.e5 Nd5 14.Nf3 f5 15.exf6 Rxf6 16.Ne5 Rcf8 17.f5 Nb4 18.Bg5 Nxd3 19.Qxd3 Qd8 20.Bxf6 Bxf6 21.fxe6 dxe6 22.Rae1 Qd5 23.Qd2 Rd8 24.Nf3 Ba6 25.Rf2 Qxa2 26.Qf4 Qd5 27.Qe4 Bb7 28.Qxe6+ Qxe6 29.Rxe6 Bxf3 30.Rxf3 Bxd4+ 31.Kf1 Bxb2 32.Re2 Rd1+ 33.Re1 Rxe1+ 34.Kxe1 Bd4 35.Rd3 Bc5 36.Kd1 a5 37.Kc2 Kf7 38.g4 h6 39.Rg3 g5 40.h3 Ke6 41.Rg2 0-1

### CLASS B SECTION:

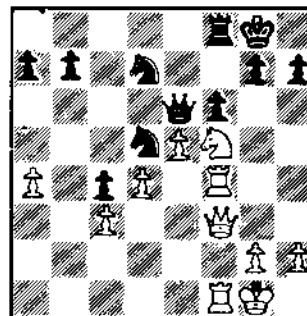
**Harold Henderson (1725) - Lawrence Clark (1691)**  
 Round 3 [Annotated by Bill Colias]

1.d4 Nf6 2.c4 e6 3.Nc3 Bb4 4.a3 Bxc3+ 5.bxc3 d5  
 Black had to give up the two Bishops in order to double White's pawns; therefore, I don't like 5...d5 because it gets rid of White's weakness. Better is 5...b6 followed by the thematic attack on the c4 pawn: Ba6-Nc6-Na6.  
 6.cxd5 exd5 7.e3 Ne4 8.Qc2 Bf5 9.Bd3 O-O 10.Ne2 10.f3? falls to 10...Qh4+ 11.Kf1 Ng3+ 12.hxg3 Bxd3+ 13.Qxd3 Qxh1.  
 10...Bg6 11.O-O Nd7 12.f3 Nd6 13.e4 dxe4 14.fxe4

I like White's play: first he gets the two Bishops, then he grabs the center. Note that without any central pawns to support his

Knights, Black's pieces now begin to get pushed off the board.

14...Qh4 15.Ng3 c5 16.Rf4 Qe7 17.e5 Bxd3 18.Qxd3 c4 19.Qf3 Nb5 20.a4 Nc7 21.Ba3 Qe6 22.Bxf8 Rxf8 23.Nf5 f6 24.Rf1 Nd5



25.Qg4!

Very pretty. Black has to choose between defending his Queen and preventing mate on g7.

Rf7 26.Nh6+ 1-0

**Lawrence Kosiba (1791) - Prakash Kamat (1808)**  
 Round 4

1.e4 e6 2.d4 d5 3.Nd2 g6 4.Ngf3 Nd7 5.Bd3 Bg7 6.O-O Ne7 7.c3 O-O 8.b4 a6 9.a4 b6 10.Re1 Bb7 11.e5 c5 12.bxc5 bxc5 13.Rb1 Qc7 14.Ba3 Rab8 15.Nb3 Rfe8 16.Nxc5 Nxc5 17.Bxc5 Qd7 18.Bd6 Ra8 19.Qb3 Bc6 20.a5 Nc8 21.Bc5 Bf8 22.Bxf8 Rxf8 23.h3 Ne7 24.Qb2 Qc7 25.Qd2 Kg7 26.Rb6 Nc8 27.Rxa6 Rb8 28.Qg5 Bb7 29.Qf6+ Kg8 30.Rxe6 fxe6 31.Qxe6+ Qf7 32.Ng5 Qxe6 33.Nxe6 Rf7 34.Nc5 Bc6 35.c4 Bb2 36.cxd5 Bxd5 37.Be4 Bxe4 38.Nxe4 Ra2 39.d5 Rxa5 40.d6 Rxe5 41.Nf6+ Rxf6 42.Rxe5 Nxd6 43.Re3 Kf7 44.Rf3? Rxf3 45.gxf3 Kf6 46.Kg2 h5 47.Kg3 Kf5 48.Kh4 Nc4 49.Kg3 Ne5

50.h4 Nd3 51.f4 Nxf4 52.Kf3 Nd3 53.Ke3 Nxf2 54.Kxf2 Kg4 0-1

Fred Gruenberg (1628) - Tim Just (1707)  
Round 4  
"When Titans Collide"

1.e4 d5 (1/2-1/2)

**CLASS C SECTION:**

John Pandis (1579) - Keith Allen (1457)

1.e4 c6 2.d4 d5 3.Nd2 dxe4 4.Nxe4 Bf5 5.Ng3 Bg6 6.Nf3 h6 7.Be2 e6 8.O-O c5 9.Bb5+ Nd7 10.dxc5 Bxc5 11.Ne5 Ngf6 12.c4 Bh7 13.Qa4 Bd4 14.Nxd7 Nxd7 15.Rd1 e5 16.Nh5 g6 17.Nf6+ Ke7 18.Nxd7 a6 19.Qb4+ Ke6 20.Nc5+ Bxc5 21.Qe1 Qb6 22.Bd7+ Ke7 23.Be3 Bxe3 24.fxe3 Rhd8 25.Bh3 Rxd1 26.Rxd1 g5 27.Rd7+ Kf8 28.Qf2 Bg6 29.Kh1 Rd8 30.b3 Rxd7 31.Bxd7 Qd8 32.Qd2 Bf5 33.Qd6+ Kg8 34.Qxh6 Qxd7 35.Qxg5+ Bg6 36.h3 Qf5 37.Qd8+ Kg7 38.Qd1 Qb1 39.Qxb1 Bxb1 40.a3 Ba2 41.b4 Bxc4

Black has weathered the storm and should win handily.

42.Kh2 b6 43.Kg3 Kg6 44.Kg4 a5?!

A general rule of thumb in the endgame is that the player with the material advantage wants to avoid exchanging pawns, because every pawn swapped is a potential Queen lost. The maxim is particularly true here: since Black's Bishop does not control the a-pawn's Queening square, he now has to work to promote one of his Kingside pawns.

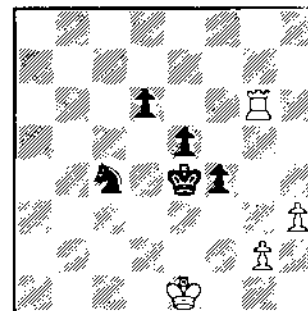
45.bxa5 bxa5 46.Kf3 Bd5+ 47.Kf2 Kg5 48.g3 f5 49.Kf1 f4? 50.gxf4+ exf4 51.exf4+ Kxf4 52.Ke1 Kg3 53.a4 Bb3 54.Kd2 Bxa4 55.Kc3 Bd1 56.Kb2 a4 57.Ka3 Bb3 58.Kb2 Kxh3 59.Ka3 1/2-1/2

Sidney Davis (1595) - Rudy Padilla (1490)  
Round 4

1.d4 e5 2.dxe5 Nc6 3.Nf3 Qe7 4.g3 Nxe5 5.Nxe5 Qxe5 6.Bg2 Bb4+ 7.c3 Bc5 8.O-O Nf6 9.Bf4 Qe7 10.e4 d6 11.e5 Ng4 12.exd6 Bxf2+ 13.Rxf2 Nxf2 14.Kxf2 Qd7 15.Qe2+ Qe6 16.Qxe6+ Bxe6 17.dxc7 O-O 18.Bxb7 Rae8 19.Bd6 Bc8 20.Bxc8 Rxc8 21.Bxf8 Kxf8 22.Nd2 1-0

Kelvin McAlister (1638) - Sedrick Prude (1632)  
Round 4

1.d4 g6 2.c4 Bg7 3.Nc3 c6 4.e4 d6 5.f4 Qb6 6.Nf3 Bg4 7.d5 Nf6 8.Be2 O-O 9.Na4 Qc7 10.h3 Bxf3 11.Bxf3 Nbd7 12.O-O Rac8 13.Be3 cxd5 14.cxd5 Qc4 15.Nc3 Nc5 16.Qd4 Nd3 17.Qxc4 Rxc4 18.Be2 Nxb2 19.Bxc4 Nxc4 20.Bd4 Rc8 21.Rac1 Nd2 22.Rfe1 Nfxe4 23.Bxg7 Kxg7 24.Nxe4 Rxc1 25.Rxc1 Nxe4 26.Rc7 Kf6 27.Rxb7 Nc3 28.Rxa7 Ne2+ 29.Kf2 Nxf4 30.Ra5 Ke5 31.Rb5 Nd3+ 32.Ke3 Nc5 33.Rb4 Kxd5 34.a4 e5 35.a5 f5 36.Rb6 Na4 37.Rb7 f4+ 38.Kd2 Nc5 39.Rxh7 Nb3+ 40.Ke1 Nxa5 41.Rg7 Nc4 42.Rxg6 Ke4



43.Ke2?

After the game, a passel of kibitzers (Chow, Fineberg, Brock et al.) thought that White would be winning after 43.h4 d5 44.h5 d4 46.Rc6!

43... d5 44.h4 d4 45.Ke1 d3 46.Kd1 Ke3 47.Kc1 d2+ 0-1

**CLASS D/E SECTION:**

Steven Dudnick (1378) - Bob Bales (1324)  
Round 4

1.e4 e5 2.Nf3 d6 3.h3 Nf6 4.d3 h6 5.Be3 c5 6.Nc3 Nc6 7.g4 d5 8.exd5 Nxd5 9.Nxd5 Qxd5 10.Bg2 Qd8 11.Qe2 Nd4 12.Bxd4 cxd4 13.Qxe5+ Qe7 14.Qxe7+ Bxe7 15.Nxd4 Bf6 16.c3 Bxd4 17.cxd4 O-O 18.O-O f5 19.gxf5 Rxf5 20.Rfe1 Rf8 21.Re7 Bf5 22.Bxb7 Rad8 23.Be4 Bxh3 24.Rxa7 Rxd4 25.Rc1 Bf5 26.Bxf5 Rxf5 27.Rcc7 Rg5+ 28.Kf1 Rxd3 29.Re7 Rd4 30.a4 h5 31.Re3 h4 32.Rh3 Rd1+ 33.Ke2 Rgd5 34.Ra8+ Kf7 35.Rxh4 R1d2+ 36.Kf1 Rxb2 37.Ra7+ Kf6 38.Rf4+ Ke5 39.Rg4 Rb1+ 40.Kg2 Rdd1 41.Rg7 Rg1+ 42.Kf3 Rb3+ 43.Ke2 Rb2+ 44.Kd3 Rd1+?!

Swapping Rooks draws easily, but Bales, who is half a point behind Dudnick, apparently hopes to swindle his opponent

and win the tournament.

45.Kc3 Rxf2 46.Rge7+ Kd6? 47.Red7+ 1-0

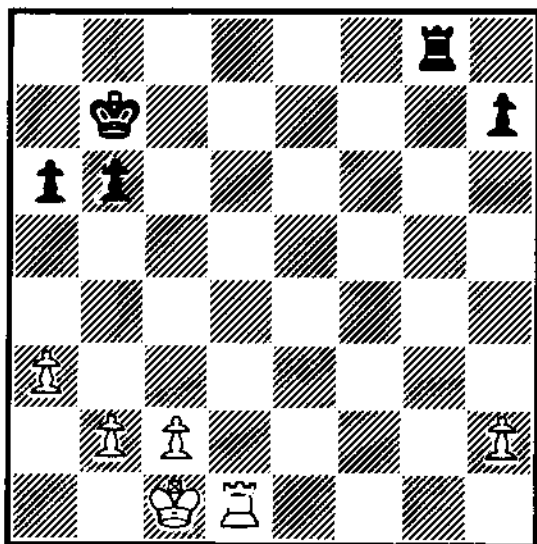
Our final game is a crowd-pleaser:

Timothy Mears (1186) - Robert Raimo (1373)  
Round 4

1.c4 Nf6 2.Nc3 g6 3.d4 Bg7 4.e4 d6 5.Be3 O-O  
6.e5 dxe5 7.dxe5 Qxd1+ 8.Rxd1 Ng4 9.Bg5  
Nxe5 10.Bxe7 Re8 11.Nd5 Na6 12.Bg5  
Nf3 mate! 0-1

### COLIAS ANNOTATES

The following endgame determined first place in the top section of the 1989 Illinois Class Championships. Ron Burnett had 2 1/2 points and the White pieces; Black, Dr. Eugene Martinovsky, was the only player with a perfect 3-0 score. As Albert Chow and Jerry Wheeler had already agreed to a draw on Board 2, a draw would give Martinovsky undisputed first place. To earn that draw, however, seemed almost impossible. Martinovsky barely made it out of the middlegame alive, only to reach the following position:



36. Rd7+ Kc6

37. Rxh7 ...

As he is two pawns up, one would expect White to win easily. However, there are a few

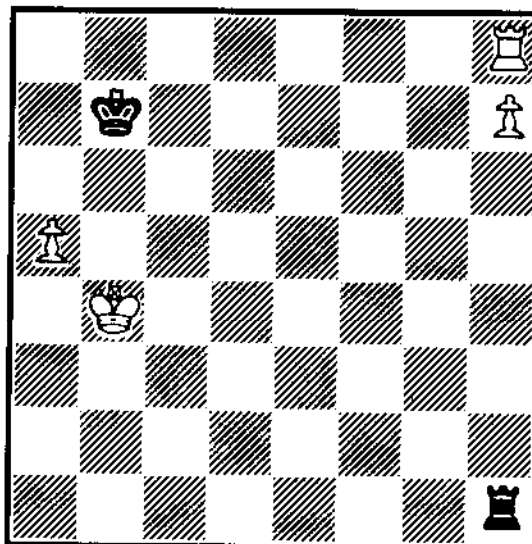
problems because of the h-pawn.

37. ... Rg2

If Black expects to make it to the time control (move 45), he will have to keep White's king out of the game. Both players had less than five minutes left.

38. b3 ...

At this point, it would be a good idea to examine what types of endgames are desirable for White and which ones he wants to avoid. As White's Queenside pawns advance, they may be exchanged off; it is extremely important to know that the c-pawn is the most valuable. Why? Because it's quite possible that one of the following three endings will be reached:

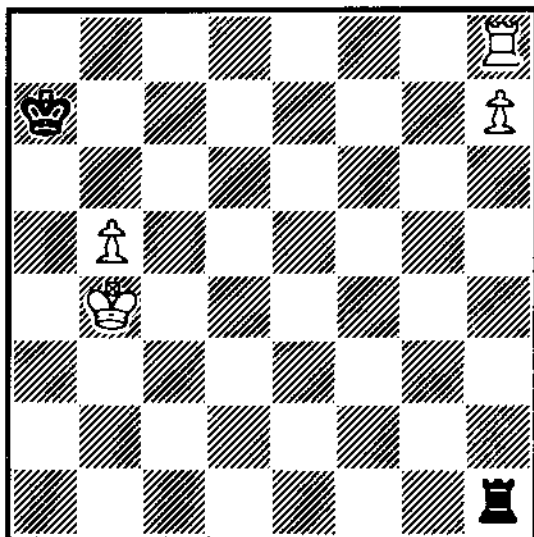


Example 1

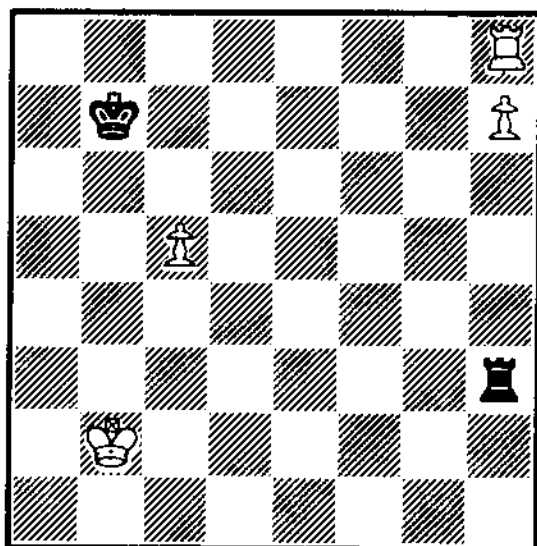
#### NOTED WITH ENVY

Remember Andrew Karklins's tactical demolition of Dana Nance in the May-June 1989 ICB, that Siesta Variation game with the flashy TN 13.Bh6? Well, check out game 412 in **Informant 47**, and remember that you saw it here first. And while you have the **Informant** out, turn to page 405 and take another look at Morris Giles's brilliant combination against Walter Browne from their 1988 U.S. Open game.





Example 2



Example 3

In Example 1, White can try 1.a6+. The reply 1... Kxa6 2.Ra8+ Kb7 3.h8=Q would lose. If Black plays 1... Ka7, however, White has no way to make progress. If White's King goes to g6 to protect the h-pawn, Black should play Rg1+, driving the King away from the h-pawn, then play the Rook back to h1, keeping White's Rook tied down.

White can make no progress in Example 2,

either. After 1.b6+ Kb7, the White Rook cannot move without losing the h-pawn. As in Example 1, if the White King moves towards the h-pawn, Black checks the King away, then plays back to h1.

Example 3, however, is different: after 1.c6+, Black has no good move. 1... Kc7 2.Ra8 Rxh7 3.Rxa7 Kxc6 4.Rxh7 wins, while 1... Ka7 2.c7 and 3.c8=Q is also winning for White.

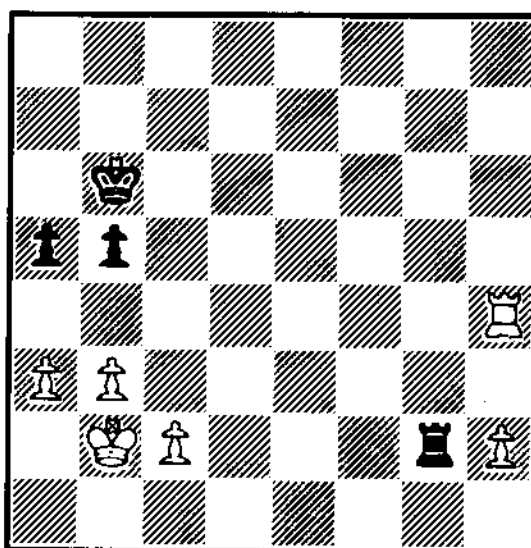
38. ... a5

39. Rh4 ...

Threatening 40.Rc4 and 41.h4.

39. ... b5

40. Kb2 Kb6



41. b4 ...

Although 41.b4 is not bad, I think it was more thematic for White to go for the good c-pawn with 41.a4 bxa4 42.bxa4. White could then put his Rook on h8, the pawn on h7, and run the c-pawn in for the win as shown earlier. Therefore 41.a4 would most likely be answered by 41... b4 when play could go 42.Rh6+ Kb7 43.Rh5 Kb6 44.Rb5+ Ka6 45.h4 Rh2 46.h5 Rh1 47.Rf5 Kb6 48.Rf6+ Kb7 49.h6 Kc7 50.Rf7+ Kb6 51.h7 Kc6 52.c4 and White's King makes for g8 and queens the h-pawn.

41. ... a4

An important decision for Black and, I think, the correct one. 41... axb4 42.axb4 and White will free up his King by placing his Rook on c5 and his pawns on h5 and c3.

42. Rh6+ Kb7

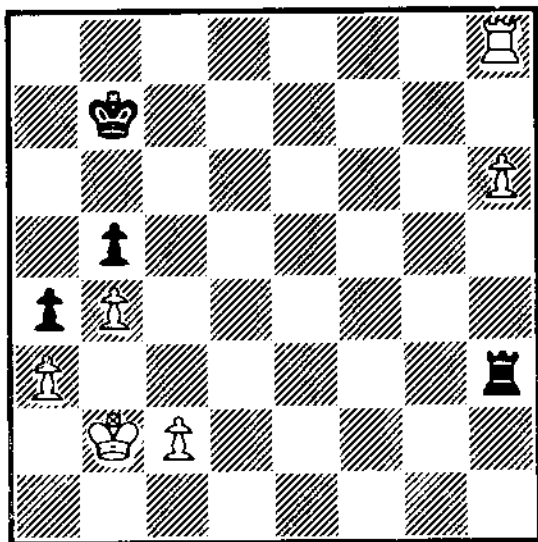
### 43. h4 Rg3

Perhaps 43... Rh2 was a little more accurate. The good point of 43... Rg3 is that it ties down to the defense of the a-pawn, which means that the h-pawn is going to be advanced. However, 43... Rg3 does give White the extra option of playing 44.Rf6 (see the next note). Consideration should also be given to the saying that Rooks belong behind passed pawns, a maxim that holds for both defender and attacker. The Rook is superior behind the pawn because every move the pawn makes will increase its activity, while restricting that of the Rook stationed in front of it. I also like 43... Rh2 because White's King isn't going anywhere: e.g., 43... Rh2 44.Kc3 Rh3+ 45.Kd4 Rxa3 46.Kc5 Rc3+ 47.Kxb5 a3 48.Rb6+ Ka7 (not 48... Kc8 49.Ra6 Rxc2 50.Rxa3 Rh2 protecting the pawn) 49.Ra6+ Kb7 50.h5 Rxc2 51.Rxa3 Rh2 is equal.

44. h5 ...

An interesting way for White to advance the h-pawn is 44.Rf6: the idea is to protect the pawn along the rank instead of in front of it on the file. For example, 44... Rh3 45.Rf5 Kc6 46.h5 Kb6 47.Rf6+ Kb7 48.h6 Kc7 49.Rf7+ Kc6 50.h7 Rh1 51.Kc3 and White wins by playing his King to g8 and queening the pawn.

44. ... Rh3  
45. Rh7+ Kc6  
46. h6 Kb6  
47. Rh8 Kb7



A key position. White can't make progress

without bringing the King into the fight, and the only way to free the King is to shut in the Rook with h7.

48. h7 Ka7

49. Kc1 Rh2

49... Rxa3 loses to 50.Rb8+ and 51.h8=Q.

50. Kd1 ...

White will have to march his King over to g1 to get the Rook off the second rank.

50. ... Kb7

51. Ke1 Ka7

51... Kc7 loses to 52.Ra8 Rxb7 53.Ra7+ Kc6 54.Rxb7. Therefore, Black's King is confined to two squares--b7 and a7.

52. Kf1 Kb7

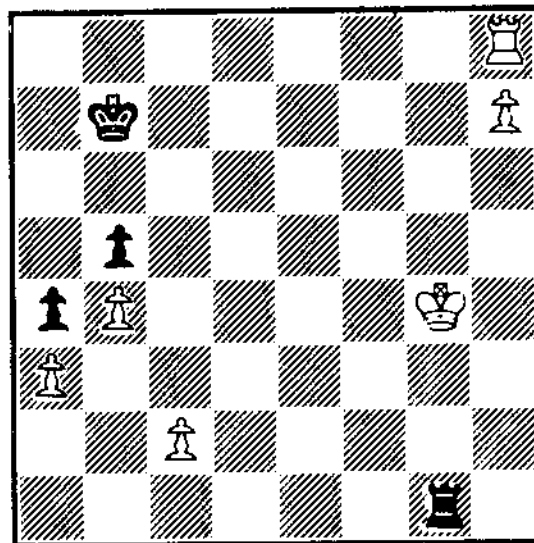
The best square for the Black King is b7, because if White's King were ever to reach c5 with the Black King on a7, Black would be in Zugzwang after 1... Rh5 2.Kc6. If the Black Rook moves, White can either take the b5 pawn or queen his h7 pawn, and if Black plays 2... Ka6, 3.Ra8 is mate.

53. Kg1 Rh6

54. Kg2 Rh5

55. Kg3 Rh1

56. Kg4 Rg1+



57. Kf3 ...

Another winning attempt is to run the White King along the sixth rank with 57.Kf5. After 57... Rh1 (57... Rf1+ 58.Kg6 transposes into the main line) 58.Kg6 (again threatening to move the Rook) 58... Rg1+ 59.Kf6! (As you will see shortly, it's

very important for White to move his King along the sixth rank.) 59... Rf1+ (59... Rh1 60.Re8!, with the idea of answering 60... Rxh7 by 61.Rf7+) 60.Ke6 Re1+ 61.Kd6 (61.Kd5 is met by 61... Rh1 62.Kc5 Rh5+) 61... Rh1 (61... Rd1+ 62.Kc5 and White wins the b-pawn) 62.Re8! Rh6+ (62... Rxh7 leads to a winning King and Pawn ending after 63.Re7+ Rxe7 64.Kxe7 Kc6 65.Ke6 Kb6 66.Kd5 Ka6 67.Kc6) 63.Re6 Rh1 (63... Rh7 64.Re7+ transposes into the last note) 64.Re7+ Kb6 (64... Kb8 65.Re8+ Kb7 66.h8=Q) 65.Kd7 with the idea of playing Ke8-f8-g8--White will then queen the pawn, as the harassing ...Rg2+ can be met with Rg7.

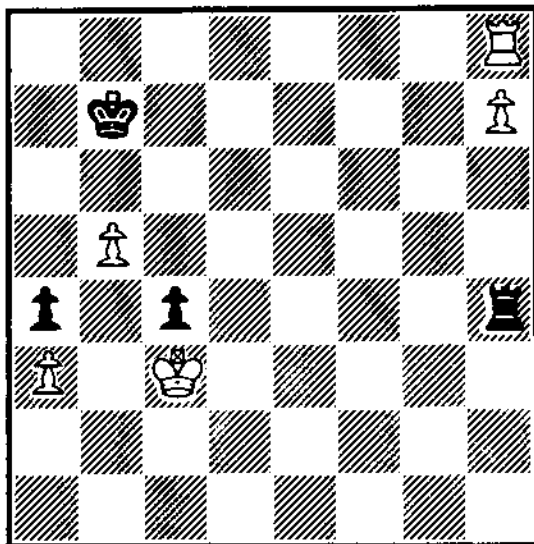
57. ... Rh1  
 58. Ke3 Rh3+  
 59. Kd2 Rh2+  
 60. Kd3 Rh3+  
 61. Kd4 Rh4+  
 62. Ke5 Rh3

So as to answer 63.c4 with ... bxc4 64.Kd4 c3.

63. c3 Rh2

63... Re3+ 64.Kd6 Rh3 65.Re8 is similar to the note after White's 57th.

64. c4 bxc4  
 65. Kd4 Rh4+  
 66. Kc3 Ka7  
 67. b5 Kb7



68. b6? ...

A blunder that throws away the win. White should have continued with 68.Kb4 c3+ (68... Ka7 69.Kxa4 with the idea of Kb4, a4, and a5

winning easily) 69.Kc3 Ka7 (Black can only mark time if he moves his Rook off the fourth rank: 69... Rh1 70.Kb4 Rh4+ 71.Ka5 Kb7 72.Rg8 Rxh7 73.Kxa4 is a theoretical win for White) 70.Kd3 Kb7 71.Ke3 Ka7 72.Kf3 Kb7 73.Kg3 Rh1 74.kf4 Rh4+ 75.Ke5 Rh1 76.Kd5 Rh2 77.Kc5 Rh4 78.Re8 Rxh7 79.Rxe4, with the idea of 80.Kb4 and 81.Kxa4 is winning for White.

68. ... Rh6  
 69. Kc4 Rc6+

This *zwischenzug* is probably what Burnett missed when playing 68.b6. The point is that Black gets the b-pawn with check after 70.Kb5 Rxb6+ 71.Kxa4--as shown in Example 1, this position is a draw.

70. Kd5 Rh6  
 71. Kc5 Rc6+  
 72. Kd4 Rh6  
 73. Re8 ...

Now, playing the King to the sixth would only draw: 73.Ke5 Rh1 74.Kf6 Rh2 75.Re8 Rxh7 76.Re7+ Rxe7 77.Kxe7 Kxb6 78.Kd6 Kb5 79.Kd5 is equal.

73. ... Rxh7  
 74. Re6 Rh5

The game is drawn: if White goes after the a-pawn, he will have to give up his b-pawn.

75. Kc4 Ka6  
 76. Rd6 Rg5  
 77. Rf6 Rh5  
 78. Kb4 Rb5+  
 79. Kxa4 Rxb6  
 80. Rf5 Rh6

Burnett played on until move 142, but the game is completely equal.

## MOVING?

Send address changes and corrections to:

Alan Losoff  
 Membership Secretary  
 P.O. Box 157  
 Morton Grove, IL 60053

## POSTAL MORTEM

We hope to make this column, which will feature annotated correspondence games, a regular one. (Sorry about the title; at least it's no worse than "The Check Is in the Mail.") Postal players: since you put so many hours of analysis into your victories, why not share this analysis with other ICB readers?

Dave Taylor sends us a game from the finals of the 7th U.S. Correspondence Championship, which he won with a smashing score of 13 1/2-1/2. Congratulations! His ICCF rating is now an astronomical 2550, a number normally accompanied by an international title. Watch him roll Marvin Dandridge, one of Chicago's strongest over-the-board masters and a formidable postal opponent.

**W: David Taylor**

**B: Marvin Dandridge**

**Finals, 7th U.S. Correspondence Chess Championship**

- |       |    |
|-------|----|
| 1. e4 | c6 |
| 2. d3 | e5 |
| 3. f4 | d6 |

According to ECO, 3...exf4 4.Bxf4 d5 is supposed to equalize, but I have my doubts. [ECO also suggests the immediate 3...d5; Tal-Bronstein, Moscow 1966, continued 4.Nf3 dxe4 5.Nxe5 Qh4 6.g3 Qe7 7.d4 Nh6 8.Bc4 Be6 9.d5 cxd5 10.Bxd5 f6 11.Nc4 Nc6 12.Ne3 Rd8 13.c4 Qf7 14.Nc3 Bc5 15.Nxe4 Bd4! with compensation for the pawn. As the final position in this line looks OK for Black, Marvin may have suspected an improvement.--Ed.]

- |         |      |
|---------|------|
| 4. Nf3  | Nd7  |
| 5. Be2  | Ngf6 |
| 6. O-O  | Be7  |
| 7. Kh1  | Qc7  |
| 8. Nc3  | b6   |
| 9. a4   | Bb7  |
| 10. Qe1 | O-O  |
| 11. Nh4 | Kh8  |
| 12. Nf5 | Bd8  |
| 13. Qg3 | Ne8  |
| 14. Be3 | ...  |

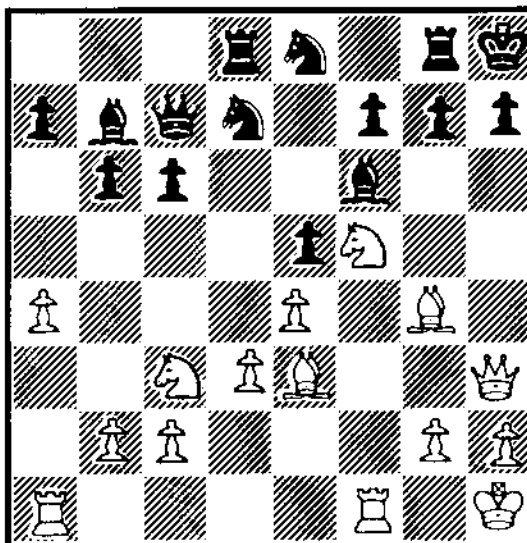
White has the advantage with the makings of a Kingside attack.

- |          |      |
|----------|------|
| 14. ...  | Bf6  |
| 15. fxe5 | dxe5 |

16. Bg4 ...

Probably not the best move. 16.Qh3 may have been better.

- |         |     |
|---------|-----|
| 16. ... | Rd8 |
| 17. Qh3 | Rg8 |



Now if White had an extra move (Rf3), he could win with Qxh7+! The problem with 18.Rf3 is that Black would reply 18...Nf8, which would make further progress difficult. After much thought, I came to the conclusion that the correct way to proceed was a Kingside minority attack, even though I had to waste another move with my King Bishop. White can absorb this loss of tempi because Black has made many defensive moves without starting a Queenside or central counter-offensive of his own.

- |          |      |
|----------|------|
| 18. Be2  | Bc8  |
| 19. g4   | Nf8  |
| 20. Qg3  | Rd7  |
| 21. g5   | Bd8  |
| 22. Bg4  | Bb7  |
| 23. Qh3  | Nd6  |
| 24. Nxd6 | Rxd6 |
| 25. Rf3  | ...  |

White has pressure on both the f-file and the Black King. The combination of threats will soon win at least a pawn.

- |         |     |
|---------|-----|
| 25. ... | Ng6 |
| 26. Qh5 | ... |

With the threat of 27.Rh3.

- |         |     |
|---------|-----|
| 26. ... | Re8 |
|---------|-----|

27. Bf5	Bc8
28. Bxc8	Qxc8
29. Rxf7	Re7
30. Rf3	Kg8
31. Raf1	Qe6
32. b3	Rdd7
33. Qh4	Rf7
34. Qg3	Bc7
35. Ne2	Nf8
36. Qf2	Rde7
37. Rxf7	Rxf7
38. Qxf7+	Qxf7
39. Rxf7	Kxf7
40. Kg2	Ke6
41. h4	Nd7
42. d4	g6
43. c3	Bd6
44. Nc1	c5
45. Nd3	...

Not 45.d5+? Kf7, as Black could later play ...a6 and ...b5; I don't see how White could then break the blockade to win.

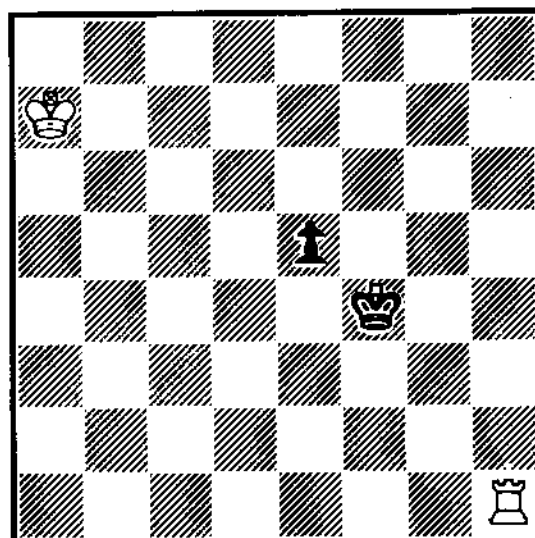
45. ... Resigns

I was surprised that Dandridge resigned here, as White must play carefully to win. I expected 45...cxd4 46.cxd4 exd4 47.Bxd4 with a tough game.

### WEAK SIDE STORY: ROOK VS. PAWN Bill Colias

In Rook vs. pawn endings, the side with the Rook must try to maneuver his King to the pawn's weak side (that is, the side opposite the rival King), while the side with the pawn must try to prevent the enemy King's advance.

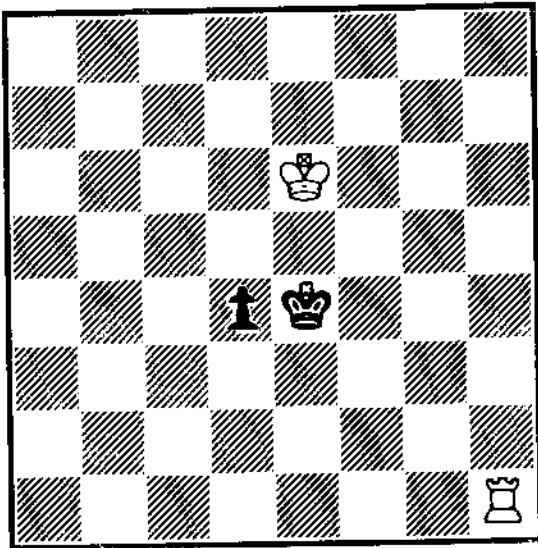
The following diagram is an excellent illustration of the problems we will be dealing with in playing Rook vs. pawn endings. White to play wins, which is not so surprising, since the King is on the correct path of approaching the pawn from the opposite side of the rival King. What is amazing about this position, however, is that Black to play draws!!



The Black King is able to slow the White King's advance: 1... e4 2.Kb6 Ke3!! Why does Black voluntarily block his own pawn's advance? Because Black's King, by playing to the pawn's weak side, makes it the strong side and hinders the further advance of the White King. But doesn't the move 2... Ke3 lose time? No, it actually gains time, as White will only be able to stop the pawn by placing his King on f2; had Black pushed his pawn blindly, the White King could have stopped the pawn at d2. 3.Kc5 Kd3 4.Kd5 After 4.Rh3+ e3 (not 4... Kd2?? 5.Kd4 +-) 5.Kd5 Kd2, White doesn't even reach a Rook vs. Knight ending, which we will look at later. 4... e3 5.Ke5 e2 6.Kf4 Kd2 and draws.

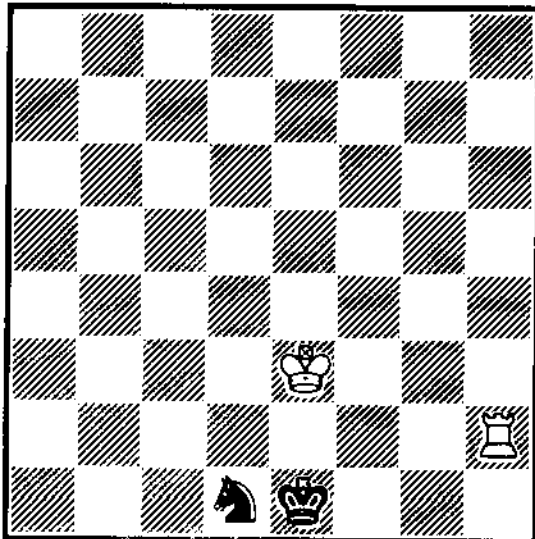
It is now obvious that since Black drew by a single tempo, White to play wins: 1.Kb6 Ke4 Also coming up short is 1... e4 2.Kc5 e3 (2... Ke3 3.Kd5 Kd3 4.Ke5 e3 transposes to the main line) 3.Kd4 Kf3 4.Rh3+ and 5.Rxd3 wins. 2.Kc5 Kd3 3.Kd5 e4 4.Ke5 e3 5.Kf4 e2 6.Kf3 Kd2 7.Kf2, winning the pawn.

A very common mistake in Rook vs. pawn ending is to allow the pawn to underpromote to a Knight and hold a draw, as the following example shows.



*White to play*

**1.Rh4??** As we have shown, the correct way to win is to play the King to the pawn's weak side-- had White observed this Golden Rule, he would have won with **1.Kd6! d3 2.Kc5 Ke3 3.Kc4 d2 4.Kc3 Ke2 5.Kc2. 1... Ke3 2.Ke5** White no longer has time to play his King to the weak side: **2.Kd5 d3 3.Kc4 d2 4.Rh1 Ke2** and draws. **2...d3 3.Rh3+ Ke2 4.Ke4 d2 5.Rh2+ Ke1 6.Ke3 d1=N+.**



White is unable to make further progress:  
**7.Kd3 Nf2+ 8.Ke3 Nd1+ 9.Kf3 Nc3 10.Rc2 Nd1.**

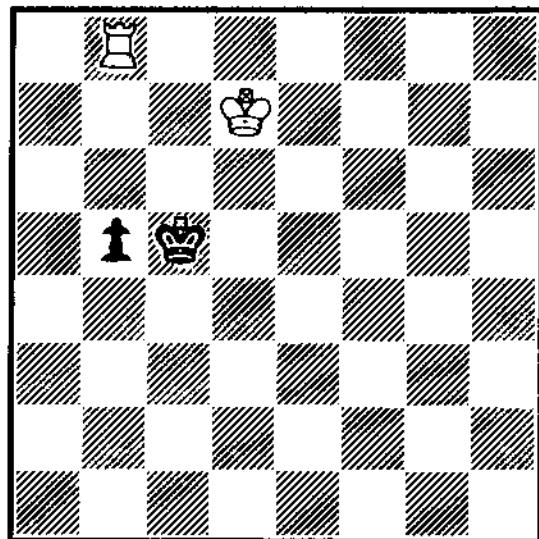
Such endings with King, Queen, or Bishop Pawns are always drawn, although a bit more thought is required when the pawn is on the c- or f-files:

(See diagram, p. 23)

**1.Kc3 Na2+ 2.Kb3 Nc1+ 3.Ka3 Ka1+ 4.Rc2 Kb1 5.Rb2+ Ka1 6.Rb8 Ne2!** Black's only move. E.g., **6... Na2** would lose to **7.Kb3 Kb1 8.Rb7 Nc1+ 9.Kc3 Ka1 10.Kc2**; another loser is **6... Nd3 7.Kb3 Nc1+ 8.Kc2 Na2 9.Rb1** mates. Black loses in these lines because his King and Knight get tied up. Therefore, in this particular instance, it would be a mistake to keep them together. After the text, the Knight will soon return to his King and thus obey the general rule that one shouldn't separate King and Knight, since a Knight that strays too far will be trapped. **7.Kb3 Kb1 8.Re8 Nc1+ 9.Kc3 Na2+ 10.Kb3**, and White is unable to make any progress.

When dealing with Rook Pawns, the Rook will always be able to capture the Knight soon after its promotion. E.g., White: **Kg4, Ra1**; Black: **Kg2, Ph2**; White to play has **1.Ra2+ Kg1 2.Kg3 h1=N+ 3.Kf3** winning the Knight.

Let's look at some more Rook vs. pawn battles:



*White wins*

In the above diagram, no matter who moves first, White's King will be able to play to the pawn's weak side.

If Black to move plays **1... b4**, White replies

**2.Kc7!** Since the Black King is currently stopping the White King's advance, White will only be able to win if he can maneuver his King to the pawn's weak side. **2.Ke6?** would allow Black to draw after **2... Kc4 3.Ke5 b3**--as a general rule, it is usually better to advance the pawn instead of the King, because by advancing the pawn first, the King can delay its counterparts' advance longer--**4.Ke4 Kc3 5.Ke3 b2 6.Rc8+ Kb3** and draws.

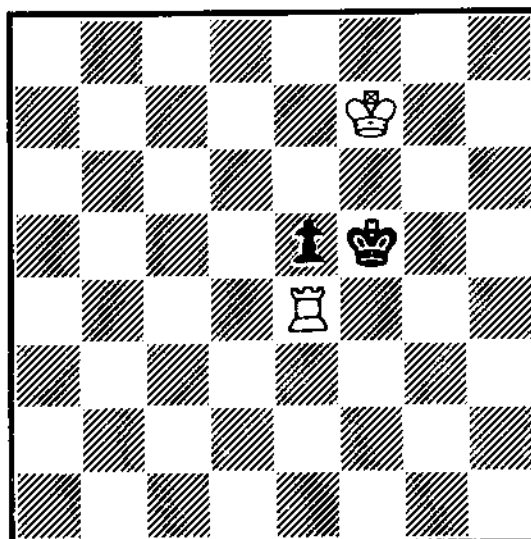
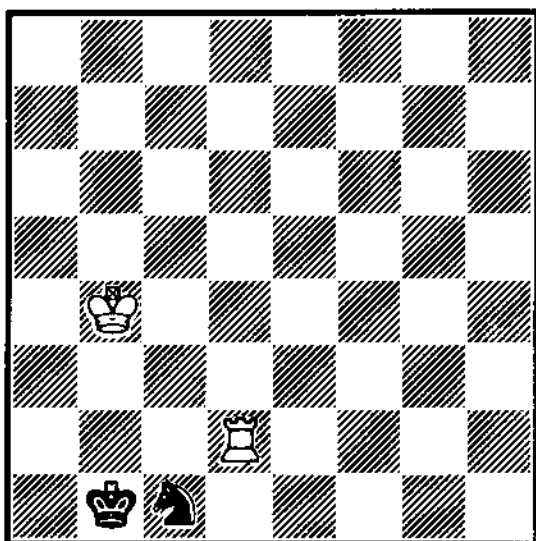
I'd like to further emphasize the importance of the inferior side's King boxing out his rival's advance. White could also have tried **2.Rc8+?**, which would win after **2... Kb6? 3.Kd6**. Black has a much stronger move, however, in **2... Kd5**, which keeps out the White King and secures the draw, as White will eventually have to waste a tempo bringing his Rook back into the fray.

**2... Kc4 3.Kb6** White has successfully played his King to the pawn's weak side, and Black's games is hopeless. **3... b3 4.Ka5 Kc3 5.Ka4 b2 6.Ka3** and wins.

Let's go back and see how White wins if it's his turn to move: **1.Kc7 b4 2.Rb7!** After **2.Kb7 Kb5! 3.Ka7 Ka5**, Black has succeeded in holding off the White King's weak side entry. The text, although it loses the move, is rewarded tenfold because Black must now allow the advance of the White King to the weak side. **2... Kc4 3.Kb6 b3 4.Ka5 Kc3 5.Ka4 b2 6.Ka3** and wins.

In the next example, a 1928 study by Richard Réti, we see the great importance of ensuring the White King's advance to the weak side. This advance is made possible only through the efforts of the White Rook, which marks time until the Black King commits itself. (A similar waiting idea was seen in the last example with **2.Rb7!**)

(See text, p. 22)



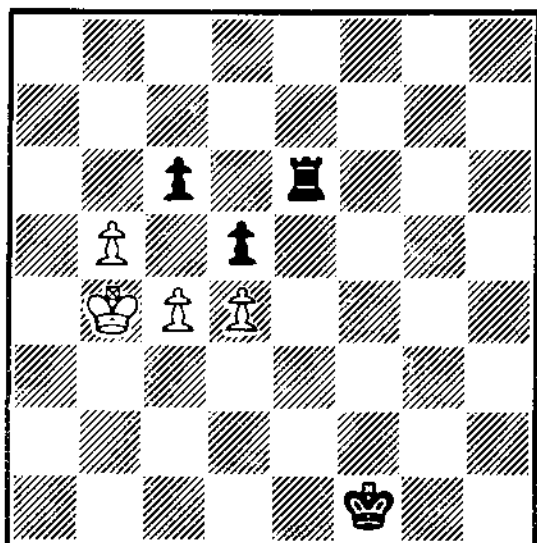
*White to play and win*

**1.Re2!** Although most of us would play **1.Re1?**, Black would then be able to stop the White King's advance with **1... e4 2.Ke7 Ke5!** (not allowing White's King to advance to the weak side) **3.Re2** (if **3.Kd7**, Black halts the White King with **3... Kd5!**; or if **3.Kf7 Kf5!**) **3... Kd4 4.Ke6 e3 5.Kf5 Kd3 6.Re1 Kd2 7.Rh1 e2** draws easily. **1... e4 2.Re1! Ke5** If **2... Kf4**, then **3.Ke6 e3 4.Kd5 Kf3 5.Kd4 e2 6.Kd3** winning the pawn. **3.Ke7** The culmination of White's idea: whichever file Black's King moves to (d or f), White's King will play to the opposite side and win. **3... Kd4 4.Kf6 e3 5.Kf5 Kd3 6.Kf4 e2 7.Kf3** wins the pawn.

The ideas we've talked about so far also hold true for endings with more material on the board. For example, the position below arose in Zelnin-Dmitriev, USSR 1984.

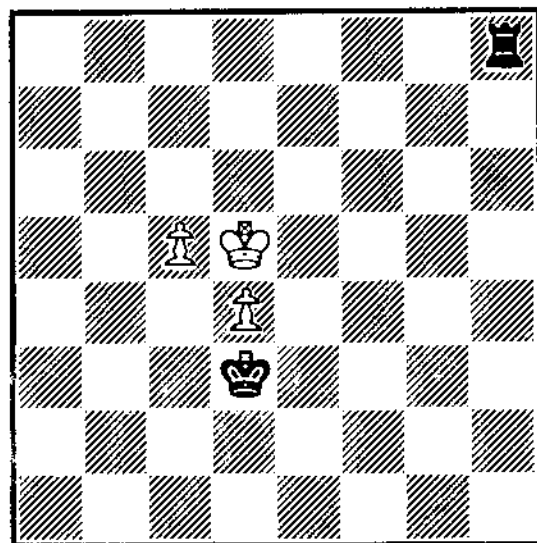
Please send Chicago metropolitan area Tournament Clearinghouse material to:  
 Fred Greenberg  
 Box 4336, Chicago, IL 60643  
 (312) 396-1981 (D) (312) 379-0306 (N)

Please send Downstate Tournament Clearinghouse material to:  
 Garrett Scott  
 202 Foster Dr., Normal, IL 61761  
 (309) 452-8116



*Black to play*

In Informant 37, M. Ceitlin evaluates the position as a win for Black: **1... cxb5 2.Kxb5 Rd6 3.c5** If 3.Kc5, then 3... dxc4 4.Kxc4 Ke2 5.d5 Ke3 6.Kc5 Rd8 7.d6 Ke4, and Black will be able to capture the pawn; the alternative 3.cxd5 fails to an idea we saw in the Réti study: 3... Rxd5+ 4.Kc4 Rd8 5.d5 Ke2 6.Kd4 Kd2! **3... Rd8 4.Kc6 Ke2 5.Kc7 Rh8 6.Kd6 Kd3 7.Kxd5**



**7... Rd8+?** Dmitriev should have played **7... Kc3!**, the point being that White has no way of stopping the weak side advance of Black's King:

**8.Kd6 Kb4 9.c6 Kb5 10.Kc7 Kb6** wins. **8.Ke6 Kxd4 9.c6**. Here the players agreed to a draw, in view of **9... Kc5 10.c7 Rh8 11.Kd7 Rh7+ 12.Kd8 Kd6 13.c8=N+**.

However, Ceitlin's evaluation of the position as lost for White seemed suspicious to me. It would be odd if Black could win the game by bringing his King from f1 to b6 with virtually no problem. Black's successful King entry was caused by White's own pawn keeping its own King off the main battlefield. Let's take a look at what White should have played to secure the draw:

**1... cxb5 2.cxb5!** Now, the White King will not only be able to maneuver, but it can also choose one of two pawns, separated by one file, that it wants to shepherd to the queening square. The side to which the Black King plays will determine the pawn that White advances--thus, Black's King will not be able to reach the weak side in time. **2... Rd6 3.Kc5 Rd8 4.Kc6 Ke2 5.Kc7 Rh8 6.Kc6 Kd3 6... Rh5** fails to win after **7.b6 Rh6+ 8.Kxd5 Rxb6 9.Kc5 Rb8 10.d5 Ke3 11.d6 Ke4 12.Kc6 Ke5 13.Kc7 Rh8 14.d7. 7.Kxd5 Kc3 7... Rxh5** leads again to one of the main drawing ideas for the side with the pawn(s) after **8.Kc6 Kxd4 9.b6 Rh6+ 10.Kc7 Kc5 11.b7 Rh7+ 12.Kc8 Kc6 13.b8=N+**. **8.Kc5** One of the main points of **8.cxb5** is that White's King is better able to stop the enemy King's advance--here, however, **8.Kc6 Kb4 9.d5** also happens to draw. **8... Rc8+ 9.Kd6 Kb4 10.b6** and draws.

#### CHICAGO CHESS MATES UPDATE

More results from Bill Smythe's **Plus-Score Open** tournaments at Chicago Chess Mates: Dick Verber swept the field 4-0 in both **Plus-Score #10** and **#11**, held November 4-5. Al Chow also won a double-header in **Plus-Score #12** and **#13**, held December 9 and 10, albeit with slightly less profitable scores of 3 1/2-1/2. George Umezina shared first place with Chow on December 9. Chow, Umezina, and Roland Jordan were equal first in January 13th's **Plus-Score #14**. The next day, Chow won all four games in **Plus-Score #15**.

In the **Chicago New Year's Weekend Tournament**, Dick Verber (2407) scored a perfect 5-0 to take first place. Bill Wolf (1931) knocked off three Experts on his way to a 4-1 score and second prize. There was a three-way tie for top Expert: Howard Wachtel (2151), Gerry Jungman (2090), and James Marshall (2014) split the dough. The Under-1800 prize went to David Sacks (1652), who upset Marshall in the first round.



## 1990 ILLINOIS TOUR RULES by Bill Smythe, tour technician

The 1990 Illinois Tour, a year-long series of tournaments sponsored by the Illinois Chess Association and its affiliates, is underway, featuring year-end cash prizes to the top performers in six rating classes. The Tour rules and formulas set out below are the same as those used in 1989.

There are two types of Tour events, maxi- and mini-. Major tournaments such as the Tim Just Winter Open, Greater Peoria Open, Prairie State Master-Expert, and Master Challenge are likely to be maxi-events, while others (often one-day tournaments) will be mini-events.

Tour points are awarded in six rating classes: Master (2200 and up), Expert (2000-2199), Class A (1800-1999), Class B (1600-1799), Class C (1400-1599), and Class D (below 1400).

Players earn Tour points according to score. Maxi-events award 32 points for a perfect score, mini-events 16. For each half-point below a perfect score, the Tour award is cut in half. When this halving would result in the Tour award being less than the score, the score itself is used instead. No Tour points are awarded for a score of zero.

The above formula works out as follows for three-, four-, five-, and six-round Tour tournaments.

3-Round Event		
Score	Maxi	Mini
3	32	16
2.5	16	8
2	8	4
1.5	4	2
1	2	1
0.5	1	0.5
0	0	0

4-Round Event		
Score	Maxi	Mini
4	32	16
3.5	16	8
3	8	4
2.5	4	2.5
2	2	2
1.5	1.5	1.5
1	1	1
0.5	0.5	0.5
0	0	0

5-Round Event		
Score	Maxi	Mini
5	32	16
4.5	16	8
4	8	4

3.5	4	3.5
3	3	3
2.5	2.5	2.5
2	2	2
1.5	1.5	1.5
1	1	1
0.5	0.5	0.5
0	0	0

6-Round Event		
Score	Maxi	Mini
6	32	16
5.5	16	8
5	8	5
4.5	4.5	4.5
4	4	4
3.5	3.5	3.5
3	3	3
2.5	2.5	2.5
2	2	2
1.5	1.5	1.5
1	1	1
0.5	0.5	0.5
0	0	0

Each Tour tournament, or section thereof, awards Tour points in any given rating class ONLY if: (1) the tournament or section is open to ALL players in that class, and (2) at least one player in that class, or in a higher class, actually plays in the tournament or section. Each player in a Tour event can earn points only in his own rating class and those above.

### EXAMPLES:

1. Kathy Knight, an A player, scores 4-1 in a five-round maxi-event. According to the chart, she has earned eight Tour points. The tournament is a single-section event, open to all, and at least one Master actually participates. Kathy's eight Tour points are awarded in all classes A through Master. She earns eight A points, eight Expert points, and eight Master points.

2. Benjamin Bishop, a B player, scores 4.5-0.5 in a five-round maxi-event. The chart shows that he has earned 16 Tour points. But he has chosen to play in the under-2000 section, so his Tour points are awarded only in classes A and B. He receives 16 A points and 16 B points.

All Illinois residents playing in Illinois Tour events must be Illinois Chess Association members. Out-of-staters who are members of their home state chess associations need not join ICA, but cannot accumulate Tour

points at tournaments in which they are not ICA members.

At the end of the year, cash prizes are awarded to those ICA members who have accumulated the greatest Tour point totals in each class. The 1990 Illinois Tour prizes are as follows:

Master:	1st: \$300	
	2nd: \$200	
	3rd: \$140	
Expert:	1st: \$150	2nd: \$75
Class A:	1st: \$120	2nd: \$60
Class B:	1st: \$90	2nd: \$45
Class C:	1st: \$60	2nd: \$30
Class D:	1st: \$30	

Cash prizes will be awarded only to those players who play in at least three Tour events during 1990. Prizes which would have been won by players with only one or two events will be distributed to those next in line.

Unrated players cannot accumulate Tour points. Their events, however, count toward the three-event minimum; this may help them cash in on Tour points won later in the year when they become rated.

\*\*\*\*\*

**ORGANIZERS:** Be sure your Tour events are set up in such a way that Tour points can be awarded fairly. Section cut-offs should be at 2200, 2000, 1800, 1600, and/or 1400. The following are examples of recommended Tour formats:

- (1) 1 section, open to all.
- (2) 2 sections, open and under-1800.
- (3) 3 sections, 1600-&-over, under-2000, and under-1400.

An example of an inadvisable tour format would be an under-1900 section. Such a section could not award Tour points to A players because it would not be open to ALL class A players.

Another inadvisable format would be the quad or the octagon -- four- or eight-player sections grouped by rating. Such an event almost certainly would, for example, split the B players across two sections, neither of which could award B points because neither would be open to ALL players in class B.

## 1989 ILLINOIS CHESS TOUR

For the second year in a row, Albert Chow has won the Illinois Chess Association's Illinois tour. This year, however, the result was not decided until the final game of the Illinois Class Championships: had Al lost to Jerry Wheeler of Tennessee, Bill Colias would have won the Tour; if both Chow and Colias had lost their last game, Dr. Eugene Martinovsky could have won the Tour by beating Ron Burnett. (Incidentally, the final results were not known to be "final" until a few days after the Illinois Class. The Park Forest Chess Club's December "Thursday Action" tournament was originally intended to be a Tour tournament. ICA officers ruled, however, that because the tournament had not appeared in **Chess Life** and because most ICA members would not receive their ICB until after the beginning of the tournament, it would not be fair to include the "Thursday Action" on the Tour. We hope Park Forest will organize one or more Tour events this year!)

A list of the prizewinners and their winnings follows:

<b>Master:</b>	1st:	Albert Chow	\$300
	2nd:	Bill Colias	\$200
	3rd:	Dr. Eugene Martinovsky	\$140
<b>Expert:</b>	1st:	Kevin Gensler	\$150
	2nd:	Larry Cohen	\$ 75
<b>Class A:</b>	1st:	Roger Allison	\$120
	2nd:	Barry Bouton	\$ 60

<i>Master Tour Points:</i>		BONDARI Siamack (2)	20
<b>CHOW Albert</b>	<b>78.5</b>	BOUTON Barry	20
<b>COLIAS Bill</b>	<b>77</b>	PELTS Peter	20
GUREVICH Dmitry (2)	64	SAX Robert	19
<b>MARTINOVSKY Eugene</b>	<b>60.5</b>	BROCK Bill	18
BONDARI Cyrus	59.5	CUSI Ronald (1)	16
GENSLER Kevin	46	GARDNER Bruce (2)	16
WALLACH Ken	30.5	GRATZ Glen	16
COHEN Larry	29	SPHAR Robert	16
SZPISJAK Steven	29	GRAVES Bill	15.5
UMEZINWA George	28	BOLITHO Thomas	15
MC GOWAN Andy	27.5	MC NAMARA James	15
TORREGROSSA Ron	27.5	CONDRON Jim	14.5
NAFF Bill	25.5	SATTERLEE Ray Doyle	13.5
CRAWFORD Brad	24.5	ALLISON Roger	13
SURAK Steve	24	SCHILLER Eric	13
VLASTNIK Richard	23.5	ANDERSON Phil	12.5
		KARKLINS Andrew (2)	12.5

<b>Class B:</b>	1st:	Anthony Dzurny	\$ 90
	2nd:	Duane Bayer	\$ 45
<b>Class C:</b>	1st:	Rudy Padilla	\$ 60
	2nd:	Lawrence Zevnik	\$ 30
<b>Class D:</b>	1st:	Robert Bales	\$ 30

Players must play in at least three Tour events to be eligible for prizes--for players with only one or two events, the number is given in parentheses. For example, GM Dmitry Gurevich did not win third place in the Master Section: he was busy representing the U.S. in the World Team Championship, then preparing for the U.S. Championship. We'll forgive you this year, Dmitry, but you'd better have your priorities in order for 1990!

There were twenty tournaments on this year's tour, a new record! Nine were **Maxi-Tour** tournaments: Tim Just's Winter Open/Reserve, 1989 Midwest Action Championship, No Bones Mini-Tour, Greater Peoria Open, 1989 Prairie State Masters and Experts, Master Challenge XI, Illinois Open, Micro Resales Champaign-Urbana Open, and the Illinois Class Championships.

Eleven were **Mini-Tour** tournaments: Bradley Winter Open, First Lincolnland Mini-Tour, 1989 Prairie Action Under 2000, Peoria Spring Tornado, Peoria Action Open, Prelude to an Open, Bradley Summer Open, Lake County Open, St. Charles Open, Peoria Fall Tornado, and the Oak Park/Forest Park Autumn Action.

LONOFF Marc	12.5	SMIT Tom	9
BUNGO Greg (2)	12	ACOSTA Mariano (2)	8.5
REYNOLDS Robert (2)	12	COHEN Howard	8.5
STEIN Peter (2)	12	SPLINTER Joseph	8.5
BARGERSTOCK Dan	11.5	BENESA Arnulfo (2)	8
MOTE David (2)	11.5	BERRY Greg (2)	8
SMYTHE Bill	11.5	BURNETT Ronald (1)	8
REPERT Victor (2)	11	LEVINE David (1)	8
ASH Robert (2)	10.5	SOCHA Raymond (1)	8
LUNDQUIST Doug	10.5	WHEELER Jerry (1)	8
SLATER Michael	10.5	ZELKIND Ed (1)	8
HIERONYMUS Kent	10		
INUMERABLE Florentin (2)	10		
SANDBOTHE William (2)	10		
BUTTNY Bill	9.5		
WULATIN David (2)	9.5		
LA FRANA Arthur	9		
PORTER John (2)	9		

*Expert Tour Points:*

<b>GENSLER Kevin</b>	<b>46</b>
<b>COHEN Larry</b>	<b>29</b>
MC GOWAN Andy	27.5

NAFF Bill	25.5	BARGERSTOCK Dan	19.5	INGRAM Adrian	13	BALES Robert	12.5
CRAWFORD Brad	24.5	SPHAR Robert	18	SPHAR Robert	13	TERRANCE Terry	12
SURAK Steve	24	SAGALOVSKY Leonid (1)	16	ZEVNIK Lawrence	13	SHAFFER Thomas	10.5
VLASTNIK Richard	23.5	BOLITHO Thomas	15	BALES Robert	12.5	INGRAM Randy	10
BOUTON Barry	20	MC NAMARA James	13.5	TERRANCE Terry	12	ANTELMAN Kristin	9
TORREGROSSA Ron	19.5	PUKEL Bernard	12.5	CALDWELL Scott (2)	11.5	FULTON Steve	8
SAX Robert	19	COHEN Howard	11.5	GRUENBERG Fred	11.5	ZELINSKI Daryl (1)	8
BONDARI Cyrus	18.5	CRAWFORD Brad	10.5	FLORES Joshua	11	MC ALISTER Kelvin	7.5
BROCK Bill	18	BALE Leslie	10	JOCHIM Gary	11	KEMPNER Robert (2)	7
GRATZ Glen	16	HIERONYMUS Kent	10	FRONEK Randy (2)	10	FELTNER Cameron	6.5
SPHAR Robert	16	HERNANDEZ Hector	9.5	MARSHALL Ken (2)	10	KIRKPATRICK Donald	6.5
SZPISJAK Steven	16	LULVES Joseph	9.5	MOHR Allen Douglas	10	PALMER Ken	6.5
GRAVES Bill	15.5	WULATIN David (2)	9.5	SHAFFER Thomas	9.5	CALIENDO Anthony	6
BOLITHO Thomas	15	LA FRANA Arthur	9	ROBINSON Harrison (2)	9	FULLER Bret (2)	6
MC NAMARA James	15	LEONG Gee	9	SOLCICH Kevin	9	HIBBS Robert	6
CONDRON Jim	14.5	PORTER John (2)	9	ANTELMAN Kristin	8	MILLER Earl	5.5
SATTERLEE Ray Doyle	13.5	TERRANCE Terry	9	FULTON Steve	8	POPE Raymond (2)	5.5
ALLISON Roger	13	ANDERSON Phil	8.5	HIERONYMUS Kent	8	ENGELLEN Mark (2)	5
ANDERSON Phil	12.5	BUTTNY Bill	8.5	KOSIBA Lawrence (1)	8	FENNER Charles	5
BUNGO Greg (2)	12	FINEBERG Tom	8	MAKAUSKAS Tony (1)	8	WALLACE Michael	5
REYNOLDS Robert (2)	12	FULK Winton (2)	8	PORTER John (2)	8	AMIRANTE Ron	4.5
BARGERSTOCK Dan	11.5	MAKAUSKAS Tony (1)	8	WOLF William	8	ANDERSON William (2)	4.5
SMYTHE Bill	11.5	PANNER Glenn	8	WULATIN David (2)	8	CARSON David	4.5
REPPERT Victor (2)	11	WHITAKER Jerome (1)	8	YAKOWENKO Lawrence (1)	8	CREMEENS Matt	4.5
ASH Robert (2)	10.5	JARRETTE Phil (2)	7.5	ZELINSKI Daryl (1)	8	DITSWORTH Todd (1)	4.5
LUNDQUIST Doug	10.5	RABOVSKY Barry	7.5	JUST Tim	7.5	CAIN Dennis	4
SLATER Michael	10.5	SEFCHECK Mark	7.5	MC ALISTER Kelvin	7.5	DAVIS Jeff (1)	4
HIERONYMUS Kent	10	ZEVNIK Lawrence	7.5	RABOVSKY Barry	7.5	LULVES Joseph	4
INUMERABLE Florentin (2)	10	ZIMMERLE Wayne	7.5	STAFFORD Jerry	7.5	PANDIS John (1)	4
SANDBOTHE William (2)	10	BALES Robert	7	ZIMMERLE Wayne	7.5	SCOTT Garrett (2)	4
BUTTNY Bill	9.5	FISCHER Gregory	7	BURGESS Fred	7	TALBOT Marc (1)	4
WULATIN David (2)	9.5	GARDNER Keith C	7	SWANSON Victor	7	WARREN Harry	4
LA FRANA Arthur	9	JOCHIM Gary	7	FELTNER Cameron	6.5	COULTER Dave	3.5
PORTER John (2)	9	MOHR Allen Douglas	7	FRAATS Daniel	6.5	DAVIS John	3.5
SMIT Tom	9	SMIT Tom	7	KIRKPATRICK Donald	6.5	MOORE Rod (2)	3.5
COHEN Howard	8.5	FLORES Joshua	6.5	SCOTT Winfield (2)	6.5	ASHER David (1)	3
SPLINTER Joseph	8.5	PARAOAN L O (2)	6.5	VERO Carl	6.5	BIEZYNSKI Stan (1)	3
BENESA Arnulfo (2)	8	WOLF William	6.5	WILLIAMS Mike (2)	6.5	JOCHIM Gary	3
BERRY Greg (2)	8	BAYER Duane	6	CALIENDO Anthony	6	MOORE Allen Dean (1)	3
SOCHA Raymond (1)	8	BURGESS Fred	6	STOTLER Richard	6	SANDERS Jacque (2)	3
WHEELER Jerry (1)	8	COX William	6	CARSON David	5.5	SIMS Mike (2)	3
SEFCHECK Mark	7.5	LUNDQUIST Doug	6	FINEBERG Tom	5.5		
ULTCH Doug	7.5	MARTIN Don	6	FRISKE Tom (2)	5.5		
WARREN Jim	7.5	WALHOUT Peter (2)	6	GRAUSTEIN Walter	5.5		
ZEVNIK Lawrence	7.5			JOHNSON Henderson (2)	5.5		
ZIMMERLE Wayne	7.5			MILLER Earl	5.5		
GARDNER Keith C	7	<i>Class B Tour Points:</i>		OWIECKI Roger	5.5	<i>Class D Tour Points:</i>	
GREGORY Jammie (2)	7	<b>DZURNY Anthony</b>	<b>34.5</b>	STOVER Eric	5.5	DUDNICK Steven (2)	33
JOCHIM Gary	7	KAMAT Prakash (2)	32	BUTLER Herb (2)	5	<b>BALES Robert</b>	<b>16.5</b>
KARKLINS Erik (2)	7	<b>BAYER Duane</b>	<b>22.5</b>	ENGELLEN Mark (2)	5	<b>ANTELMAN Kristin</b>	<b>9</b>
MOHR Allen Douglas	7	CRUM Randy	21	FENNER Charles	5	CHENOWETH Bruce (1)	8
PUKEL Bernard	7	WARFIELD Thomas	20	HIBBS Robert	5	PETERS James (1)	8
		WHEELER Stephan	19.5	WALLACE Michael	5	RAIMO Robert (1)	8
		LULVES Joseph	17.5			CALIENDO Anthony	6
<i>Class A Tour Points:</i>		ALLISON Roger	16.5	<i>Class C Tour Points:</i>		CAIN Dennis	5
TURNER Sylvester (1)	32	ROCKWELL David (1)	16	DAVIS Sidney (1)	32	COULTER Dave	5
<b>ALLISON Roger</b>	<b>30.5</b>	SINGER Robby (1)	16	PADILLA Rudy	22	WALLACE Michael	5
COHEN Larry*	28.5	STEVENSON Willie (1)	16	CURRAN Thomas (2)	18	ANDERSON William (2)	4.5
<b>BOUTON Barry</b>	<b>25</b>	GARDNER Keith C	15	PRUDE Sedrick (1)	16	CREMEENS Matt	4.5
DZURNY Anthony	22.5	PADILLA Rudy	14	ZEVNIK Lawrence	13	LOPEZ Mauricio (1)	4
GRAVES Bill	20.5	INGRAM Randy	13.5			WARREN Harry	4
						MILLER Earl	3.5
						DUPEE Arthur	3

## THE BEST IN ILLINOIS

### TOP 100 ILLINOIS PLAYERS

(Collated from USCF's December 1989 Annual Rating List. Includes active players only)

1. GM Dmitry Gurevich	2641	45. Krzysztof Flaga	2193
2. IM Robert Gruchacz	2433	45. Anthony Schroeder	2193
3. FM Morris Giles	2431	47. Boris Mitnik	2191
4. FM Greg DeFotis	2429	48. Robert C. Bain	2187
5. Ronald Cusi	2409	48. Erik Karklins	2187
6. FM Eugene Martinovsky	2406	50. Floyd H. Moose	2186
7. FM Andrew Karklins	2400	51. John A. Marconnet	2182
8. FM Albert Chow	2399	52. Wayne W. Wheeler	2175
9. Richard W. Verber	2384	53. Angelo Sandrin	2174
10. George O. Umezina	2368	54. Douglas Van Buskirk	2172
11. Lawrence Chachere	2364	55. Ruben R. Reyes	2170
12. Alan R. Federl	2352	56. Cliff H. Wallach	2160
13. Peter Pelts	2335	57. William A. Naff	2153
14. Brian Schuman	2333	58. Florentino Inumerable	2152
15. David Parsons	2321	59. Keith Holzmueller	2146
16. Marc J. Lonoff	2313	60. Richard Vlastnik	2145
17. Marvin Dandridge	2307	61. William Brock	2144
17. Steven Tennant	2307	62. Andy J. McGowan	2139
17. Kenneth T. Wallach	2307	63. Sandy L. Zabell	2126
17. Scott Zingheim	2307	64. Ray Socha	2120
21. J. Bruce Gardner	2305	65. Larry R. Mason	2119
22. Roger Martin	2300	66. Mark Zvilius	2115
23. Allen I. Kornfeld	2288	66. Roland V. Jordan	2115
24. Eric Schiller	2279	68. Richard K. Kujoth	2114
25. Charles W. Kramer	2278	69. Philip Wong	2107
26. Mitchell Sweig	2264	70. Douglas Middleton	2092
27. David M. Levine	2263	71. Gerard J. Jungman	2090
27. Kurt W. Stein	2263	72. Albert Sandrin	2084
29. Cyrus Bondari	2248	73. David Garrett	2083
30. Erik Ronneburg	2241	74. James E. Warren	2079
31. John Burke	2234	75. Steve S. Surak	2076
32. Steven Szpisjak	2233	76. W. John Lutes	2073
33. Alan L. Watson	2225	77. Luis Bernal	2072
34. Kevin M. Gensler	2223	78. Howard W. Stern	2071
35. Tony K. Herrstrom	2222	79. Kevin W. Lawson	2070
36. Mark Marovitch	2220	80. Philip R. Shields	2070
37. David Mote	2216	81. Richard S. Lang	2066
38. Peter Stein	2215	82. Terry Vonz Hutson	2064
39. Ron W. Torregrossa	2211	83. Robert Potoker	2063
40. Brent Chromczak	2209	84. Robert D. Sax	2062
41. Kevin Schmuggerow	2205	85. James Davies	2061
42. Paul S. Cooke	2204	86. James McNamara	2060
43. Arnulfo Benesa	2202	87. Brad Crawford	2058
44. K. A. Czerniecki	2198	87. Mitchell R. Walton	2058
		89. Murrel Rhodes	2057
		90. Darren Bolden	2056
		90. Jon Gotz	2056
		90. Robert C. Gerber	2055
		90. Jammie Gregory	2053

94. Peter M. Vesely	2051
95. Ray Satterlee	2049
96. Daniel A. Juengel	2048
97. Edward W. Buerger	2046
97. Matthew Chen	2046
97. Dan Kamen	2046
97. Samuel V. Naylor	2046

### FIDE-RATED ILLINOIS PLAYERS

(Based on July 1989 Rating List)

	<u>FIDE</u>
1. GM Dmitry Gurevich	2480
2. FM Greg DeFotis	2385
3. FM Albert Chow	2355
3. FM Morris Giles	2355
5. FM Eugene Martinovsky	2330
6. IM Robert Gruchacz	2325
7. Ronald Cusi	2320
7. Kurt W. Stein	2320
9. Lawrence Chachere	2315
10. FM Andrew Karklins	2300
10. David Parsons	2300
10. Peter Pelts	2300
13. Eric Schiller	2270
14. Steven Tennant	2240
15. Alan R. Federl	2225
16. Marvin Dandridge	2215
16. Kenneth T. Wallach	2215

#### TULEY PARK ACTION

On December 16, ICB Games Editor Bill Colias (2413) earned \$70 for his 4-0 victory in Tom Fineberg's **Tuley Park Action Swiss #6**. Roland Jordan (2115) and Sam Ford (2012) each took \$25 for their 3-1 score, good for equal second, while Tom Friske (1822) won the \$40 Under-2000 award, also with 3 points. Sidney Davis III (1575) took the Under-1750 prize of \$40 with an even score.

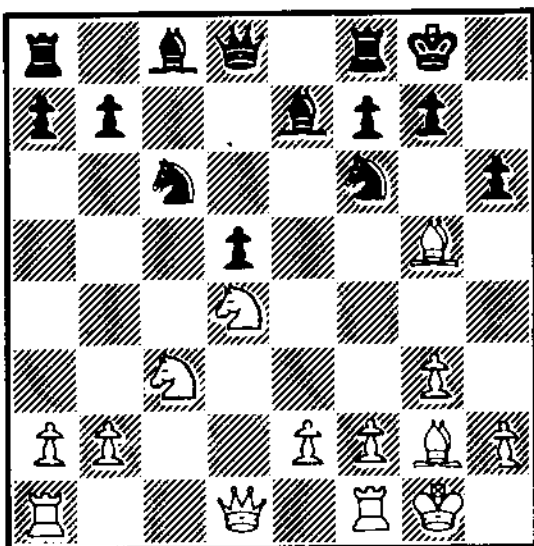
**ANNOTATORS WANTED**  
by David Wulatin

I sympathize with my editor's efforts in finding a games editor. I've noticed that most annotators these days are more interested in evaluating moves or giving alternative lines than entertaining readers. This is quite a change from the last two centuries, when chess theory was still in its infancy. "Analysis" like this was common:

"The exiled King is hunted down by the ebony foot soldiers, despite the valiant defense of his royal steeds."

Not the stuff that the Informant is made of, but an interesting read.

In an attempt to bring this style of annotation back into fashion, I contacted some of the country's greatest writers and thinkers and asked them to evaluate the following position from the Tarrasch Variation of the Queen's Gambit Declined.



As usual, the issue being debated is whether Black's d-pawn is strong or weak. Here's what they had to say:

(Thumbs up) "Dynamic! Black's pieces are active in fine supporting roles"--Gene Siskel, film critic.

(Thumbs down) "I thought that the d-pawn was too weak to play the leading role in Black's game"--Roger Ebert, film critic.

"Was Black's choice right or wrong? Is the d-pawn weak or strong? If you do not like this way, find another way to play, like the Sloggo-Boggo line of the Brickaback Attack!"--Dr. Seuss, author of children's books.

"He saw the d-pawn there (hovering, hovering) reminding him of the camping trips he went on as a

child in Castle Rock, Maine. His older brother would sneak up behind him with the sleeping bag, hesitate for the slightest instant (hovering), then drop down on him ('BOOGEYMAN'S GOTCHA!') and he'd kick and squirm and scream I can't breathe i can't breathe I C A N ' T B R E A T H E H E L P M E MOOOOOMMMMMMMMMMMMMMMMMYYYYYYYYY ..."--Stephen King, horror author.

"Didja ever notice how when you have an isolated pawn, it's always hopelessly blockaded and weak, and when your opponent has one, he's always threatening to push it down your throat?"--Andy Rooney, commentator.

"The isolated pawn was supported by the--Queen?--slut was more like it! The little tramp was so sure of herself and her ability to ensnare any King she wanted. Well, if she tried to mate her King, the bitch would get more than she bargained for!"--Judith Krantz, summer-trash-novel author.

"White should try to maintain the blockade on the d-pawn, but he shouldn't do this in a hateful, spiteful manner. He should gently, lovingly impede its progress, making sure to show it respect and understanding"--Dr. Leo Buscaglia, author/speaker.

"The pawn looked down the board/ And he knew where he should go/ But when he tried to move down that Midwestern file/ Every single square felt like a hundred miles"--Bob Seger, rock singer.

"I'm looking at the board, trying to concentrate, but I'm too busy thinking of ways to separate Raoul from his kidneys. He said that this extract from the pineal glands of an armadillo was the greatest hallucinogen since acid, but it's been over an hour and I haven't felt a damn thing. When I get my hands on him I'll...Omigod! Black has a huge winged lizard with fangs on the third rank! That changes the whole position!"--Hunter S. Thompson, gonzo journalist.

"The Black pieces need liess ISOLATION and more COOPERATION! Fewer POSITIONAL BINDS and more OPEN LINES!"--Rev. Jesse Jackson, presidential candidate.

"Isolation? You wanna talk isolation? I WAS MARRIED FOR TWO YEARS!! I WAS CUT OFF FROM THE REST OF THE WORLD BY THAT SHE-DEMON!! SIAMESE TWINS HAVE MORE FREEDOM!! OH! OH!! AUUUGGHHHHH!!!!!"--Sam Kinison, comedian.

"I understand that the Army has just developed a new way to get rid of isolated pawns. They just send them out on helicopters during maneuvers." (Pause) "You see, a lot of Army helicopters have crashed recently, and..." (Long pause) "Ooooookay"--Johnny Carson, talk-show host.

"That pawn is a PTP, a prime-time player! He's got moMEntum! He's in MOtion for a proMOtion!"--Dick Vitale, college basketball announcer.

## **CENTURY CLUB MEMBERS**

Michael Belovesick	Elmhurst
Tom Fineberg	Chicago
Fred Gruenberg	Chicago
Albert Sandrin	Chicago
Angelo Sandrin	Chicago
Bill Smythe	Chicago
Burton Vincent	Chicago
Helen Warren	Western Springs
Jim Warren	Western Springs
Philip Wong	Wilmette

## **GOLD CARD MEMBERS**

Faneuil Adams	New York, NY
Bill Buttney	Downers Grove
Harland Hoisington	Ogden, UT
Ed Marschall	South Barrington
Earl Miller	El Paso
Daniel Pradt	Glen Ellyn
Michael Pratts	Chicago
Irwin Rothschild	Park Forest
Mitchel Sweig	Evanston
Don Townsend	Chicago
Bill Wenz	Milwaukee, WI
Louis Werner	Evanston

## **PATRON MEMBERS**

Bob Ash	Urbana
Kevin Bachler	Waukegan
Todd Barre	Clarendon Hills
John Barstad, Sr.	Carol Stream
Roy Benedek	Western Springs
Timothy Bogan	Chicago
Barry Bouton	Sandwich
Bill Brock	Chicago
Tyrone Brooks	Chicago
Jim Brotsos	Chicago
Fred Burgess	Oak Forest
Anthony Caliendo	Aurora
Jim Condron	Downers Grove
Lynne Crewse	Arlington Heights
David Cromer	Iowa City, IA
John Deutsch	Chicago
Leroy Dubeck	Cherry Hill, NJ
Gerard Garino	Evanston
Jon Gotz	West Chicago
Donald Graft	Wheaton
William Graves	Chicago
Guy Gruenberg	Matteson
Walter Henry	Naperville
Charles Hicks	Naperville

Keith Holzmueller  
Richard Huttel  
Jeffrey Hyland  
Robert Irons  
Tim Just  
Dan Kamen  
Scott Kittsley  
Thomas Knoedler  
Walter Kocjan  
John Krom  
Peter Kuhn  
Marc Lonoff  
Alan Losoff  
John Marconnet  
Ken Marshall  
Donald Martin  
Eugene Martinovsky  
James McNally  
James McNamara  
Patrick Moran  
Bill Naff  
Kenneth Palmer  
Peter Pelts  
Mieczyslaw Piatek  
John Popovich  
Tim Redman  
Frederick Rhine  
Murrel Rhodes  
Ray Satterlee  
Vivian Schmucker  
Mark Sefcheck  
Tom Shaffer  
Tony Sillars  
Arthur Sinclair  
Leonard Spiegel  
Peter Stein  
Miomir Stevanovic  
David Taylor  
William Terbell  
George Umezina  
John Vrbancic  
Douglas White  
Harold Winston  
David Wulatin  
Sandy Zabell  
Max Zavanelli

Evanston  
Itasca  
Mount Prospect  
Chicago  
Gurnee  
Wheeling  
Shorewood, WI  
Springfield  
Northlake  
Chicago  
Des Plaines  
Northbrook  
Morton Grove  
Chicago  
Lombard  
Round Lake Beach  
Naperville  
Broadview  
Hinsdale  
Wilmette  
Peoria  
Bollingbrook  
Chicago  
Chicago  
Evergreen Park  
Lima, OH  
Chicago  
Peoria  
Wheaton  
Goshen, IN  
Naperville  
Chicago  
Chicago  
Evanston  
Naperville  
Naperville  
Lincolnwood  
Kankakee  
Glen Ellyn  
Chicago  
Evanston  
Schaumburg  
Naperville  
Oak Park  
Chicago  
Park Ridge

## ICA ELECTED OFFICERS

Helen Warren, President  
P.O. Box 305, Western Springs, IL 60558  
(708) 246-6665

Fred Gruenberg, Metro Vice-President  
2035 W. 110th Place, Chicago, IL 60643  
(312) 779-0306

Garrett Scott, Downstate Vice-President  
202 Foster Drive, Normal, IL 61761  
(309) 452-8116

Tim Just, Secretary  
37165 Willow Lane, Gurnee, IL 60031  
(708) 244-7954

Alan Losoff, Treasurer  
P.O. Box 157, Morton Grove, IL 60053  
(312) 966-5579

## USCF DELEGATES

by virtue of their USCF posts

Harold Winston, President  
Todd Barre, Regional Vice-President  
Tim Just, Regional Vice-President  
Frank Skoff, Past President  
Helen Warren, Life Voting Member

## ICA-APPOINTED USCF DELEGATES

Fred Gruenberg      Alan Losoff  
Garrett Scott        Tom Fineberg

## ICA-APPOINTED USCF VOTING MEMBERS

Jim Warren            Ken Marshall  
Bill Naff                Erv Sedlock  
Walter Brown        Dennis Grant  
Larry Cohen           Tom Knoedler  
Jim Condron          Bill Wilkinson  
Bill Smythe            Ray Socha

## ICA-APPOINTED USCF

### ALTERNATE VOTING MEMBERS

William Brock        Bob Bain  
Murrel Rhodes        Byron Pappas  
Wayne Palmquist    Glen Panner  
John Barstad Sr.     Jim Brotsos  
Larry Stilwell        Angelo Sandrin  
Dave Shiner           Mike Zacate  
Eric Schiller          Guy Gruenberg  
Kevin Bachler

## ANSWERS TO LAST ISSUE'S TEASERS:

**Page 17:** (J. Hitselberger-Morris Giles.) Obviously, Black must prevent Qf6+. According to the U.S. Open bulletin, Morris originally wrote down 1...Qe7?, which would have dropped the Queen to 2.Rg8+! Fortunately, he spotted the trap in time and actually played 1...Qd8! White's attack has petered out, and he gave up after 2.Rf6 Rg8 3.Qf4 Rg1+ 4.Kd2 Be4+.

**Page 31:** (Kubbel, 1922) White wins after 1.Nc6! Kxc6 (forced; if 1...Kc5, then 2.Be7+ wins the a-pawn) 2.Bf6 Kd5 3.d3!! a2 4.c4+ Kc5 (Taking **en passant** also loses: after 4...dxc3 5.Bxc3, Black can't promote his pawn, nor can he take White's.) 5.Kb7! a1=Q 6.Be7 mate!

---

## BETTER LATE THAN NEVER . . .

In our frantic attempt to meet the deadline for the November-December issue, we inadvertently omitted the results of the **Springfield Late Summer Lightning**, held September 23rd at the Springfield Chess Club. Douglas Van Buskirk (2172) and Richard Kujoth (2110) drew their last-round game to tie for first with 2 1/2 points each. James Larson directed.

Also, in last issue's report on the First Annual Minnesota Master's Cup Invitational, we simply forgot to mention Andrew Karklins's strong 6-3 score, good for second-place. Our apologies!

## OAK-PARK FOREST PARK CHESS CLUB

New member Marvin Dandridge won the club's speed championship, held last November 14. Fred Allsbrook finished second, and Ray Satterlee was third.

Tony Schroeder aced the December Action Tournament with a perfect 4-0 score; Greg Bungo and Under-2000 winners Roger Allison and Mark Sefcheck tied for second with 3-1. An even score was good enough to earn the Under-1700 prize for Don Winsauer and Salam Aburas.

The omnipresent Albert Chow won a World Blitz Chess Association tournament on December 19 with an impressive 19-1 score, Bungo was second with 17-3, and Allsbrook grabbed third with 15-5. Chow-slayer Jim McNamama and Art LaFrana split Under-2000 honors.

A USCF-rated Action Chess Tournament will be held February 6, 13, and 27. The entry fee is only \$5, but entry is restricted to Oak Park-Forest Park Chess Club members. Call Ken Marshall, 708/932-1455, for membership info.

## ILLINOIS TOURNAMENT CALENDAR

Call Chess Phone, (708) 832-5222, for up-to-date tournament results, as well as announcements of tournaments that may not be listed in **Chess Life** or the ICB. The ICA Chess Phone voice is Todd Barre.

Unless otherwise noted, all tournaments require USCF membership. Illinois Tour events also require ICA membership. Announcements of ICA affiliates' tournaments receive more space in the Calendar than do those of non-affiliates.

### NATIONAL EVENTS

**March 15-18: 1990 U.S. Masters.** Hyatt Regency Oak Brook, 1909 Spring Road, Oak Brook. 7-SS, open to players rated 2200/above or ever so rated. No entries at site. **\$15,750 in guaranteed cash prizes.** Spectators welcome. Helen Warren: 708/246-6665.

**June 8-10: National Open, Las Vegas NV.**

### ILLINOIS TOUR EVENTS

**March 31-April 1: Greater Peoria Open.** SEE FULL-PAGE AD IN THIS ICB. **\$1275 in guaranteed cash prizes.** Bill Wilkinson: 309/685-2256.

### OTHER EVENTS

**February 6, 13, 20, 27, March 6: Chicago Tuesday Evening February Swiss.** 5-SS, 40/90, Chicago Chess Mates, 1261 W. Loyola, Chicago 60626. EF: \$20, \$21 at site. Reg. 6-7 p.m. Richard Verber: 312/262-9100.

**February 8: Chicago Chess Mates Every Thursday Action Open.** 3-SS, G/30. EF: \$10. REG: 6-7 p.m. 312/262-9100.

**February 10-11. Cheap Thrills.** Two one-day events at the Chicago Chess Center, 2923 N. Southport, Chicago. 4-SS, 40/1. EF: \$7. Ray Socha: 312/929-7010.

**February 15: Chicago Chess Mates Every Thursday Action Open.** EF: \$10. REG: 6-7. 312/262-9100.

**February 17: The Cold Winter Knight's Open.** 3-SS octagonal, 30/1, SD/30. Washington Park Pavilion, Park Ave. & South Grand Ave. West, Springfield. EF: \$18. \$\$135 b/8. REG: 8:15-9 a.m. Thomas Knoedler: 217/523-7265.

**February 24: Tuley Park 1/4K 3-SS #1.** G/45. EF: \$15. \$\$350 b/24; \$200 guar. REG: 10:30-11. Tom Fineberg: 312/721-3979.

**February 24: Peoria Novice/Tornado.** Garrett Center, 824 N. University, Peoria. **Novice:** 4-SS. 30/45, open to under 1500. \$\$60 guar. **Tornado:** 3-SS, 30/1. \$\$60 guar. EF: \$5, \$4 jr.; at site, \$7, \$6 jr. Bill Wilkinson, 905 N. Rebecca Pl., Peoria 61606. 309/673-9455.

**February 24-25: Rockford February Swiss.** 5-SS, 30/1, Rockford College, 5050 E. State St., Rockford. REG: 8-9 a.m. EF: \$20 at site.

**March 10: 5th North Boone Membership Tournament.** 4-SS, 40/1, North Boone HS, 17641 Poplar Grove Rd., Poplar Grove. EF at site: \$14, \$8 jr.

**March 13, 20, 27, April 3, 10: Chicago Chess Mates Tuesday Evening Tournament.** 5-SS, 40/90. EF: \$20, \$21 at site. Reg. 6-7 p.m. 312/262-9100.

**April 28-29: Oak Park-Forest Park Chess Club Spring Open.**

<b>U.S. MASTERS, OAK BROOK    MARCH 15-18</b> <b>GREATER PEORIA OPEN    MARCH 31-APRIL 1</b>
---

ILLINOIS CHESS BULLETIN  
1608 W. Granville Avenue, Apartment 3  
Chicago, IL 60660

SPEEDY DELIVERY APPRECIATED