

ILLINOIS CHESS BULLETIN

Official Publication of the Illinois Chess Association a U.S.C.F. Affiliate
A Not For Profit Organization

SEPTEMBER-OCTOBER 1989 VOLUME XII, NO. 5 BI-MONTHLY \$2.00



**DMITRY GUREVICH WINS ILLINOIS OPEN
ALSO SHARES CONTINENTAL ACTION CHESS TITLE**

LEV ALBURT TAKES FIRST IN 630 PLAYER U.S. OPEN



ILLINOIS CHESS BULLETIN

EDITOR:

KEN MARSHALL
357 W. Grove
Lombard, Illinois 60148
(312) 932-1455

TECHNICAL EDITOR:

MARY GAITHER MARSHALL

ASST. TECHNICAL EDITOR:

DON WINSAUER

SUBSCRIPTIONS:

The Illinois Chess Bulletin (ICB) is published bimonthly by the Illinois Chess Association. ICA membership includes a subscription to the ICB. (Century, Gold, and Patron members receive their ICB by first-class mail.

ANNUAL MEMBERSHIP RATES:

| | |
|--------------------|----------|
| Century Club: | \$100.00 |
| Gold Card: | 50.00 |
| Patron: | 25.00 |
| Regular: | 10.00 |
| Junior (under 18): | 6.00 |

Subscriptions, Address Changes, and Corrections should be sent to:

Alan Losoff, ICA Membership Secretary
P.O. Box 157
Morton Grove, IL 60053-0157

SUBMISSIONS:

Submit articles, photographs, crosstables, games, and other publishable materials to the Editor. Publication deadline for the next issue is November 8, 1989.

ADVERTISING RATES:

| | |
|--------------|------|
| Full page | \$80 |
| Half page | \$50 |
| Quarter page | \$30 |
| Eighth page | \$20 |

10% discount for the same ad in consecutive issues. 1/3 discount for ICA affiliates. All advertising must be camera ready to qualify for these rates. The ICA and the ICB reserve the right to reject advertising.

TABLE OF CONTENTS

| | |
|---------------------------------------|----|
| FROM THE EDITOR'S DESK | 1 |
| WHERE TO PLAY CHESS / CLUB AFFILIATES | 2 |
| FROM THE PRESIDENT | 3 |
| WHAT'S NEW | 6 |
| 1989 U.S. OPEN | 7 |
| ILLINOIS TOURNAMENT CROSSTABLES | 22 |
| 1989 ILLINOIS OPEN | 24 |
| 1989 ILLINOIS RESERVE | 29 |
| LAKE COUNTY OPEN | 29 |
| 1989 ILLINOIS TOUR STANDNGS | 30 |
| AN EDITOR'S FAREWELL | 31 |

SUBMIT MATERIAL FOR THE NOVEMBER-DECEMBER ICB TO NEW EDITOR BILL BROCK AT HIS WORK ADDRESS: DEPARTMENT OF ENGLISH, LOYOLA UNIVERSITY, 6525 N. SHERIDAN ROAD, CHICAGO, IL 60626. (Bill is moving soon; his new home address will appear in the November-December issue.)

**CHESS PHONE: (312) 832-5222
(After 11/11/89: (708) 832-5222)**

**DOWNSTATE CHESS PHONE:
(309) 655-0618**

ICA AFFILIATION: Chess clubs and other organizations which promote chess activity may affiliate with ICA. Affiliate benefits include a copy of each ICB by first-class mail, a listing (if desired) under "Where to Play Chess" in each issue, discounted ICB advertising rates, three-line tournament announcements in the "Tournament Calendar", and the right to run ICA Tour events. ICA affiliation costs \$15; please remit to address shown under "Annual Membership Rates". Include your club meeting times, name of contact person, and other useful information in the format shown in "Where to Play Chess" on page 2.

From the Editor's Desk

My two year tenure as ILLINOIS CHESS BULLETIN Editor ends with this issue. (At the risk of appearing self-indulgent, I present a "farewell address" on page 31.) New Editor Bill Brock has set a November 8 deadline for submissions for the November-December ICB. (See the facing page for Bill's address and see Helen Warren's "From the President" column for some information about him.)

The Illinois Chess Association Illinois Tour is heading into its final months with all Tour prizes still there for the taking. October Mini-Tour point opportunities (the Peoria Fall Tornado [October 14] and the Oak Park-Forest Park Chess Club Autumn Action [October 21] are upcoming. Two Maxi-Tour events (the Micro Resales Champaign-Urbana Open [October 21- 22] and the Illinois Class Championships [November 18-19]) also remain; scoring well in either (or both) of these major tournaments could catapult a player into contention from well back in the pack. As the Chicago Cubs proved in the National League and I proved in the Illinois Open Reserve (where I amazed myself [and just about everybody else] by scoring 5-1 and sharing first through fourth places), improbable victories are indeed possible. But the old cliché is true: you can't win if you don't play.

The October 21-22 Micro Resales Champaign-Urbana Open, featuring a \$1,200 guaranteed prize fund, represents a significant milestone for downstate chess activity: a major tournament being held other than in Peoria. I strongly urge not only downstate but also Chicago area players to take part in this event if at all possible. Unfortunately, in my capacity as President of the Oak Park-Forest Park Chess Club, I had scheduled a Mini-Tour tournament in Forest Park on October 21 before the C-U Open was announced. Players who are facing this choice of Tour events: go to Champaign if you can! It is important for the C-U Open to succeed. Light attendance will not be tragic for the OP-FP CC tournament, a a "based on" event; but a poor turnout at the C-U Open could have a strong negative impact on downstate organizing outside of Peoria. Help to promote the resurgence of chess activity in the Champaign-Urbana area: play in the C-U Open. [See the full page ad in this ICB for complete details.]


The 1989 U.S. Open is now history. Of the 630 entrants (the third largest U.S. Open turnout of the 1980s), 276 were from Illinois, proving once again that players in this state can and will support large national chess events. Chief Organizer Helen Warren deserves credit for putting together a tournament

which ran smoothly and efficiently. Although I initially had some concern about the terms of the Illinois Chess Association-Warren contract, which guaranteed her two-thirds and the ICA one-third of any local profit, Helen put in hundreds of hours of work and more than justified that arrangement. The staff she assembled was superb and the scope of the local fund raising she undertook was unprecedented. Through these and other efforts Warren made sure that Illinois' first U.S. Open in ten years was a both a "chessic" and a financial success.

Perhaps the only disappointing aspect of the Open was the almost total lack of coverage by the Chicago area media. The U.S. Open Speed Championship, seemingly a natural for television, attracted neither TV cameras nor print reporters. In the only local story of which I am aware, a writer for the CHICAGO TRIBUNE (who admitted knowing nothing about chess) managed to cut the 630 player field by half, make me editor of CHESS LIFE rather than the ICB, and misquote me terribly. (My letter to the TRIBUNE'S editor correcting these errors went unpublished.)

With regard to the ILLINOIS CHESS BULLETIN'S U.S. Open coverage, I conferred with Bill Brock and decided to defer to CHESS LIFE for in-depth stories on the tournament and its associated events and instead concentrate on cross tables and game scores. The Open's cross table and nearly 100 games (the majority featuring at least one Illinois player) from the first four rounds appear in this issue; Bill will publish the cross tables from the daytime events and dozens of additional games from the last five rounds in the next issue. Spreading the coverage over two ICBs will allow more games to be printed, and will also give Bill the opportunity to add anything further which he believes is needed to complete the ICB's record of the U.S. Open.

MOVING?



Send address changes and corrections to:

Alan Losoff
Membership Secretary
P.O. Box 157
Morton Grove, IL 60053

CHESS PHONE: (312) 832-5222
After November 11, 1989: (708) 832-5222



WHERE TO PLAY CHESS: ICA CLUB AFFILIATES



AMERICAN POSTAL CHESS TOURNAMENTS sponsors postal events and sells chess books and equipment. Contact Jim or Helen Warren, P.O. Box 305, Western Springs 60558. (312) 246-6665.

AUBURN HIGH SCHOOL CHESS CLUB, 4273 Straw Lane, Roscoe 61073. Contact James Boyer, sponsor. (815) 623-8148.

CENTRAL COMETS CHESS CLUB, Steger Central Junior High School, c/o D. DeVore, 19 W. 33rd St., Steger, IL 60475.

CHAMPAIGN-URBANA CHESS LEAGUE sponsors rated tournaments in the Champaign-Urbana area. Contact Tom Worley, 2106 Zuppke, Urbana 61801. (217) 367-4744.

CENTRAL LAKE COUNTY CHESS CLUB meets Fridays, 7:15 p.m. to midnight, College of Lake County, Bldg. 1, Washington at Route 45, Grayslake. Contact Dennis Grant, 1657 McKay, Waukegan 60087. (312) 336-5188.

CHESS NORTHWEST meets the second and fourth Friday evenings of each month, Schaumburg Public Library, 32 Library Lane, Schaumburg. Contact Elmer Linden, 1325 Dennison Rd., Hoffman Estates, IL 60195. (312) 882-2382.

CHICAGO CHESS CENTER meets for casual chess 7 days a week, 6 p.m. to 1 a.m., 2923 N. Southport, Chicago 60657. Also sponsors rated tournaments. Contact Ray Socha, (312) 929-7010.

CHICAGO CHESS MATES CLUB AND BOOKSTORE sponsors tournaments and group lessons, sells chess books and equipment, weekdays 4 p.m.-11 p.m., weekends 10 a.m. - 9 p.m. (closed Mondays), 1261 W. Loyola, Chicago, 60626. Contact Richard Verber (312) 262-9100 or (312) 262-8050.

CHICAGO INDUSTRIAL CHESS LEAGUE organizes frequent competition among commercial/government teams with awards, ratings, and special events. Contact Jim Brosos, (312) 775-5054, or Bruce McNeil, (312) 742-5195.

CLOVERLINE STUDENT CHESS PROGRAM offers free chess lessons for high school and grammar school students, Tuesdays, 3 to 6 p.m. at Revere Park Field House, 2509 W. Irving Park, Chicago 60618. Contact Richard Verber (312) 262-8050.

DOWNERS GROVE PARK DISTRICT CHESS CLUB meets Thursdays, 6:30-10 p.m., Lincoln Center, 935 Maple Ave., Downers Grove. Affiliated with USCF and ICA. Contact George Uffner, (312) 960-9382.

ELK GROVE VILLAGE CHESS CLUB meets Fridays, 7 p.m. to 10 p.m., at the Al Hattendorf Center, 225 East Elk Grove Blvd., Elk Grove Village. Contact Gary Janssen, (312) 894-0996 (evenings).

EVANSTON TOWNSHIP HIGH SCHOOL CHESS CLUB meets Fridays, 3:30-6:00 p.m., Beardsley Student Center. Contact Ken Lewandowski. (312) 492-7943.

GREATER PEORIA CHESS FEDERATION meets Mondays, 7 to 11 p.m., Garrett Center, 824 N. University, Peoria. Contact Bill Wilkinson, 901 N. Rebecca Pl., Peoria 61606. (309) 673-9455.

HAMMOND (IN) CHESS CLUB meets Thursdays, 7:00 p.m. to ?, at Hammond Public Library, Howard Branch, 171st and Grand, Hammond, IN. Contact Les Kistler, 719 E. 12th St., Hobart, IN 46342. (219) 942-8815.

HILLSIDE CHESS CLUB meets Fridays, 7:30 p.m. to midnight, Hillside Baptist Church, 5152 Butterfield (just east of Taft), Hillside. Contact Larry Stilwell, 4705 Elm, Lisle 60532. (312) 963-6799.

LAKE COUNTY CHESS ASSOCIATION sponsors rated tournaments in the Grayslake/Zion area. Contact Tim Just, 37165 Willow Ln., Gurnee 60031. (312) 244-7954.

MIDWEST CHESS ASSOCIATION organizes major tournaments for masters and experts. Contact Helen Warren, P.O. Box 305, Western Springs, 60558. (312) 246-6665.

OAK PARK / FOREST PARK CHESS CLUB meets Tuesdays, 7 p.m. to midnight, Mohr Community Center, Jackson and DesPlaines, Forest Park. Contact Ken Marshall, 357 W. Grove, Lombard 60148. (312) 932-1455.

PARK FOREST CHESS CLUB meets Thursdays, 7 to 10:30 p.m., Freedom Hall, Orchard & Lakewood, Park Forest. Contact Lawrence Cohen, 135 Westwood, Park Forest 60466. (312) 748-5911.

SPRINGFIELD CHESS CLUB meets Wednesdays, 6-10 p.m., Washington Park Pavilion, Park Ave. and South Grand Ave. West, Springfield. Contact Tom Knoedler, (217) 523-7265, or James Larson, (217) 529-0781.

ST. CHARLES CHESS CLUB meets Thursdays at 7 p.m., Baker Community House, 101 S. 2nd (Route 31), St. Charles. Contact Erv Sedlock, 6 N. 307 Old Homestead Rd., St. Charles 60174. (312) 377-7995.

TULEY PARK CHESS CLUB meets Saturdays, 1-5 p.m., Tuley Park Fieldhouse, 501 E. 90th Pl., Chicago. Contact Thomas Fineberg, 7321 S. South Shore Dr., Chicago 60649. (312) 721-3979.

TWIN CITIES CHESS CLUB meets Monday evenings, Parks & Rec. Bldg., 611 S. Linden, Normal, except 1st Monday/month, Garcia's, Watterson Place. Speed tournaments 50 cents/game. Contact Andy McGowan, 520 E. Chestnut, Bloomington 61701. (309) 827-7892.

| |
|---|
| <p>CHESS PHONE: (312) 832-5222</p> <p>DOWNSTATE CHESS PHONE: (309) 655-0618</p> |
|---|

FROM THE PRESIDENT

Helen Warren, ICA President

US OPEN REPORT

Over a year of intensive planning, teamwork, and just plain know-how combined to produce a successful U.S. Open 89. My congratulations to GM Lev Albur! His 8½/9 score was not merely impressive; it was stunning and superb. To the dozens of other winners, many from IL, a hearty "well done"! ICAers will enjoy the spirited games from the Open in these pages as well as in CL. Watch for complete tournament coverage by GM Arthur Bisguier and Don Maddox.

Assessing the success of a U.S. Open is different from measuring any other tournament. The Open is a festival of chess, an annual convention, a vacation for many, and an annual trip for the hard core chess lover who would not pass up the experience if it were held in Nome, Alaska. Allow me to share some thoughts and fill in ICA members on some Open facts.

Attendance (not counting non-paying housemen) was 630, not a bad turn out compared to those of the past decade. Personally, I had hoped for fifty more. Why not 700? That's easy. Chicago has had and will continue to have an uphill battle to restore its chess reputation. We've taken some black eyes in the last year--and it's no secret. The impact of the actions of a single organizer has been serious; players out of state, rightly or otherwise, lump organizers AND ORGANIZATIONS in a single parcel. This U.S. Open did much to enlighten the general chess population in attendance. My efforts as ICA president in the coming year will be aimed at continuing the process.

Financially the tournament was a major success. Careful spending in the preparation stages, coming in under budget in every area, an independent treasurer with both bookkeeping and auditing powers, a healthy at the door entry, and the underwriting of major costs by local fund raising, all contributed to success. Of special interest is the fact that USCF as concessionaire made a deserved profit.

The rounds went without a hitch due to excellent directing by the "Chicago Team"--Brown, Just, and Barre, ably assisted by a thoroughly professional crew: Erv Sedlock, Bill Wilkinson, Tom Fineberg, Dave Shiner, Bill Smythe (all IL), Dennis Wasson (IA), Carol Jerecki (NJ), and Dan Burg (MI). No arguments, no crises, no long-winded sermons at the mike.

For vacationing chess players and their families, this U.S. Open was certainly in a class by itself: two Cubs games, a trip to Arlington Race Track, many escorted trips downtown for shopping, museums, and other sights. A very special thanks to Maxine Fineberg, Sallie Barre, and Fred Gruenberg for their whirlwind energy in extending hospitality to our guests and presenting our city as a great place to be.

My thanks to the many volunteers who made the Open 89 possible and memorable from Steve Monti and Larry Stillwell & Co who assisted with the demo boards, Ken Marshall who helped with the CJA set-up and Blitz event, to the many contributors. Their generosity made it possible to do much more than the ordinary.

I must specifically thank four individuals whose contribution to the U.S. Open was uniquely selfless: first, Fred Gruenberg who handled publicity with energy and

aplomb; Tim Just who did early work on the tournament bid and put in a tremendous number of hours; Todd Barre who eased my mind with his financial expertise and whose encouragement throughout was indispensable; and my husband Jim who ran errands without complaint, refurbished USCF's book inventory daily, handled the finances of daytime events, and otherwise made it possible for me to do my job. This event owes much of its success to these four individuals.

My thanks to the hundreds of players who played, many of whom made it a point to speak with me during the tournament. Dozens of them came out of "retirement" to play! Some "regulars" asked when we would do it again...how about 1995?

My thanks to the ICA for the opportunity to organize a U.S. Open and thereby improve their treasury. And finally, I must thank the USCF for giving me a free organizational hand, cooperating beautifully pre- and post-tournament, and winding up the financials in record time: we closed the books exactly one month after the last result in round nine was posted.

Amen.

US MASTERS IN CHICAGO

And now we turn our attention to the U.S. Masters! Yes, the U.S. MASTERS! Another national tournament comes to the Chicago area in 1990. I'm pleased to report that the Midwest Chess Association will organize this new event in March at the Hyatt Oakbrook. Dates are March 15, 16, 17, and 18. The Midwest Masters will become the U.S. Masters with a \$15,000 prize fund, expansion to seven rounds, and national status.

This FIDE rated event will offer 150 Grand Prix points and introduce a new concept in master chess prize fund structure: 1/3 of the prize fund, \$5,000, will go to regional prizes, distributed geographically so that masters from Maine and Washington as well as Chicago and New York will have an opportunity at prizes. In addition, we will invite six fast-improving juniors rated 2150-2200 to participate--an opportunity for them to experience challenging competition for ALL seven rounds.

I invite ICA members to visit the Oakbrook Hyatt and experience the unique flavor of this event.

CONGRATULATIONS, GM DMITRI GUREVICH!!!

Grandmaster Dmitri Gurevich is our new state champ! (See write-up elsewhere this issue.) Congratulations to Dmitri and to Peoria, Bill Wilkinson and Bill Naff whose work downstate has made their city a proud ICA partner.

BILL BROCK NEW ICB EDITOR

We are pleased to announce the appointment of Bill Brock as the new ICB editor effective October 1. Bill is a familiar face at Chicago area tournaments, a solid expert (2100), and a teacher of English at Loyola University. The next ICB (Nov.-Dec.) will be his first issue.

Let's help Bill off to a good start by sending him game scores from your events. Affiliates should send crosstables from their events, including club events, to Bill at 6830 N Sheridan Rd., #350, Chicago, IL 60626. Bill especially wants annotated games!

Our thanks to Ken Marshall, outgoing editor, for his faithful service to the ICA. Ken had a tough job on his hands when he took over. He succeeded in getting the ICB back on schedule, making up significant lost ground in the process. In recent months the ICB improved markedly, both in content and graphics. We hope Ken will continue as a steady ICB contributor.

ICA MEETING AT MORGAN PARK, OCTOBER 22

The ICA board of directors will meet at 1:30 PM, Oct 22, Morgan Park Methodist Church. (ICA officers will convene at 12:30 PM.) ALL ICA members are invited to attend this annual membership meeting and observe proceedings at the Board of Directors meeting. Some important items of business include a full financial report on the U.S. Open.



ICA WILL ACCEPT BIDS FOR THE 1990 ILLINOIS OPEN AND ILLINOIS CLASS

Organizers who would like to run either the IL Open or IL Class for 1990 are urged to contact the ICA president as early as possible. These traditional tournaments are scheduled over Labor Day (IL Open) and on the week-end before Thanksgiving (IL Class). Organizers should be prepared to provide a formal bid, including site, prize fund, format of the tournament, and other details. The ICA will assist with preparations, publicity, etc. ICA officers would like to nail down these events as early as possible, but certainly no later than Jan. 1.

CHESS CENTER HOSTS ILLINOIS TOURNAMENT OF CHAMPIONS IV

October 27, 28, and 29 and November 4 and 5 are the scheduled dates for the ITC IV, an invitational round robin. We are grateful to Ray Socha and the Chess Center for being the host site for this strong event. Confirmed participants are Greg Defotis (2429), Al Chow (2441), Andrew Karklins (2403), Billy Colias (2445), Eugene Martinovsky (2399), Larry Chachere (2364), Peter Pelts (2364), and Marc Lonoff (2322). We will have three more players added by tournament time. Spectators are invited. The Friday evening first round is at 7 PM with Saturday and Sunday rounds at 10 AM and 5 PM on both week-ends.

1989 ILLINOIS CLASS -- AN ILLINOIS MAXI-TOUR EVENT

MORGAN PARK ACADEMY NOVEMBER 18 -19, 1989

\$2,000 PRIZE FUND

PEORIA FALL TORNADO

AN ICA ILLINOIS MINI-TOUR EVENT

WHEN: October 14, 1989

WHERE: Garrett Center, 824 No. University, Peoria, IL.

WHAT: 4 Round Swiss TIME CONTROL: 30/60, then 10/20

MEMBERSHIPS REQUIRED: USCF & ICA

CASH PRIZES: \$200 (Based on 6 per class; top 2 guaranteed)

1ST: \$75 2ND: \$50 CLASS PRIZES: Class A, B, C/Below: Each \$25

ENTRY FEE: \$11 in advance (by 10/12/89); \$13 at door

REGISTRATION: 8:00-8:45 a.m. ROUND TIMES: 9-12-3-6

ADVANCE ENTRIES: Bill Naff, 212 W. Vail Ct., Peoria, IL 61614

INFORMATION: Bill Naff (309) 691-4624

NO SMOKING -- NO COMPUTERS PLEASE BRING CLOCKS, SETS AND BOARDS



- Prestigious Playing Site
- I.C.A. Maxi-Tour Event
- Free Parking

SUPPORT YOUR CHESS ASSOCIATION!

PLAY IN THE **1989 ILLINOIS
CLASS CHAMPIONSHIPS**

NOVEMBER 18-19

— THE WEEK-END **BEFORE** THANKSGIVING —

\$2,000 GUARANTEED PRIZES

Master/Expert: \$400, \$250, \$100

Top Expert: \$150

Class A: \$150, \$100, \$50 Class C: \$150, \$100, \$50

Class B: \$150, \$100, \$50 D/E/UNR.: \$100, \$60, \$40

— **I.C.A. MAXI TOUR EVENT** —

2 ROUNDS PER DAY at MORGAN PARK ACADEMY

2153 West 111th Street • Chicago, Illinois
(Just Behind the "Beverly Art Center")

Play in your own class — or ONE class above!

MARK YOUR CALENDAR! • WATCH FOR DETAILS!

SUPPORT YOUR I.C.A.!

What's new

CHICAGO AREA CHESS PHONE HAS NEW NUMBER: 832-5222

The new number of the Illinois Chess Association's Chess Phone, now located in Elmhurst, is (312) 832-5222. As of November 11, the area code for Chicago's suburbs will change from 312 to 708. From then until early February of 1990, callers will be able to reach Chess Phone using either of the aforesaid area codes; after that three month period, the number will be accessible only through area code 708. (Chicago residents will be able to dial the 708 number for no extra charge.) The downstate (Peoria area) Chess Phone remains (309) 655-0618.

COLIAS, BONDARI, MCGOWAN WIN BRADLEY SUMMER OPEN

Topping a 28 player field, Senior Master Bill Colias, Master Cyrus Bondari, and Expert Andy McGowan yielded only one draw apiece to finish 3.5-5 and share the first three places at the Illinois Mini-Tour Bradley Summer Open, a four round tournament held in Peoria on August 19. Expert Phil Anderson, Class A players Tom Smit and Bruno Mannerelli, and Class B winner Robert Sphar followed at 3-1. Class C and Under honors went to Bret Fuller (C), Earl Miller (C), William Anderson (D), and Dennis Cain (D), who all ended up 2-2.

FIVE SHARE TOP HONORS AT ST. CHARLES OPEN

Senior Master Bill Colias, Bill Butny, Lawrence Cohen, Robert Sax, and Steve Surak each scored 4-1 to tie for first through fifth at the 1989 St. Charles Open, a 43 player Illinois Mini-Tour event which took place on September 23-24, 1989. For Colias, the victory was his third first place (one clear, two shared) in a Mini-Tour tournament in three months. Cohen, Sax, and Surak were the top Experts, while Butny won the Class A prize. Illinois Open Reserve Co-Champion Duane Bayer (3-2) split the Class B money with Joe Lulves (3-2), who upset Colias in Round 1. Also closing at 3-2 and taking home prizes were Terry Terrance (Class C) and Kristen Antelman (Class D).

GUREVICH TIES FOR FIRST AT FIDE CONTINENTAL ACTION CHESS CHAMPIONSHIP

In one of his best ever results, Chicago Grandmaster Dmitry Gurevich scored 9.5-3.5 to share first through third places with GMs Yasser Seirawan and Joel Benjamin at the 13 round World Chess Association (FIDE) Continental Action Chess Championship, held in San Mateo, California on September 22-24, 1989. After losing to Senior Master Matthew Beclby (a player he had defeated in several previous encounters) in Round 1, Gurevich stormed through the star-studded 300 plus player field, beating GMs Max Dlugy, Larry Christiansen, and Anatoly Lein and drawing GMs Seirawan, Joel Benjamin, John Fedorowicz, and Nick DeFirmian on his way to the top. Gurevich's effort earned him \$4,000.

JANUARY 20-21, 1990

**TIM JUST
WINTER OPEN/RESERVE VII
A COLLEGE OF LAKE COUNTY EVENT
\$1700 IN PRIZES**

ALBURT TAKES CLEAR FIRST AT 1989 U.S. OPEN

GRANDMASTER TOPS 630 PLAYER FIELD, WINS \$5000

By Ken Marshall

[Editor's Note: The November CHESS LIFE provides an extensive report on the U.S. Open. Rather than duplicating that effort, this ICB contains a relatively brief article dealing primarily with the results of Illinois players in the main tournament and associated events. The remainder of this issue's Open coverage consists of some material which appears in CL (the scores of several top games of the first four rounds) and much material which does not (a complete cross table of the Open, and the scores of other top contests and of dozens of games involving Illinois players in rounds one through four.) The November-December ICB will carry the cross tables of the day time tournaments, the top games of rounds five through nine, many Illinois' players' contests from those rounds, and any other information regarding the Open which is deemed of value by incoming ICB Editor Bill Brock. (Some U.S. Open game scores in this issue are from the daily tournament bulletin published by Jim Marfia and David Moody; others are from score sheets supplied by Chief Tournament Director Walter Brown.)]

Closing with wins over three of the strongest players in the United States, Grandmaster Lev Albur scored 8.5-.5 to win the nine round 1989 U.S. Open, held at the Hyatt Regency O'Hare in Rosemont from August 5-13, 1989. Albur, the 1984 and 1985 U.S. Closed and 1987 U.S. Open Champion, assured himself of the \$5,000 first prize by defeating International Master Igor Ivanov, GM Walter Browne, and GM Sergey Kudrin in the final three rounds. He finished half a point ahead of GM Maxim Dlugy, whose 8-1 result was good for clear second and \$3,000. Eight players tied for third through tenth in the 630 player event, which featured a \$33,000 prize fund, the largest in U.S. Open history.

Illinois supplied 276 players, but none of the top prize winners. Chicago resident GM Dmitry Gurevich, the 1988 U.S. Open champion who was seeded number one, suffered an upset by Master Paul Cripe in Round 4 and ended up 6.5-2.5. Playing GM Dlugy on Board 2 in the final round, Senior Master Greg DeFotis could have taken second place with a win. DeFotis lost, but his 7-2 final score tied him with Masters Scott Zingheim, Roger Martin, and David Parsons for the best result by an Illinois entrant. Andrew Karklins' 6.5-2.5 performance pushed his rating over 2400. Lawrence Chachere, Peter Pelts, George Umizinwa, Peter Stein, Erik Ronneberg, and K.A. Czerniecki also finished 6.5-2.5. (Although the cross table lists John Burke at 6.5-2.5, Burke reports that this is incorrect, and that his actual score was 5.5-3.5.) Illinois residents who tallied 6-3 results were Albert Chow, Morris Giles, Bruce Gardner, Marc Lonoff, Alan Watson, Mariano Acosta, Anthony Schroeder, Amulfo Benesa, John Marconnet, Cliff Wallach, Richard Vlastnik, Carroll Schmidt, Glen Gratz, Gregory Berry, and Wallace Gordon.

Prize winners among the Illinois contingent included Zingheim (tie for 2nd-8th Master, \$321.43); Czerniecki (tie for 1st-4th Expert, \$612.50); Glenn Panner, 5.5-3.5 (tie for 1st-8th Class A, \$275); William Gaudry and Thomas McCaughey, 5.5-3.5 (tie for 1st-2nd, Class B, \$600 apiece); Alva Wise, 5-4 (tie for 1st-3rd, Class C, \$433.34); Michael Davidson, 5-4 (1st, Class D, \$500); Philip Woodruff, 4.5-4.5 (2nd, Class D, \$300); Richard Simonetti and Gregory Hager, 4-5 (tie for 3rd-5th, Class D, \$133.34 apiece); Steven Hansen, 4-5 (1st Unrated, \$200); Charles Dobrovolny, 3.5-5.5 (2nd Unrated, \$100); William Dwyer, Mike Mockovak, and Albert Vigants, 3-6 (tie for 3rd-6th Unrated, \$37.50 apiece).

Illinois players also had some success in the daytime events which took place between August 7 and 11. In winning the August 7 Midwest Quad/5, Art LaFrana (3-0) defeated three higher rated entrants. Ken Wallach (4-1) shared second through sixth in the 40 player Hall of Fame Classic on August 8, and tied for fifth through eighth (at 3.5-1.5) in the Windy City Classic, a 36 player event held two days later. August 11's Chicago Premier saw John Cron, Jr. (4-1) come in equal third through sixth in the 46 player field.

No Illinois players made the 12 man round robin finals of the Druce/U.S. Open Speed Chess Championship, won by GM Browne (8-3: \$1,000 prize) ahead of GM Dlugy (7.5-3.5: \$500) and 14 year old Soviet emigre Gata Kamsky (7-4: \$250). Marc Lonoff and Marcus Stinson did qualify for the consolation finals, however, an 11 player event in which Lonoff (7-3) tied for second and third (with Bruce Leverett, behind Robert Rowley (8-2)) to win a Druce chess board and set. (In preliminary section play, Stinson defeated GM Albur, overcoming Alekhine's Defense, a specialty of Albur's which the GM knows as well as anyone in the world.)

36th William Martz Memorial North Central Open

\$3,300 Guaranteed Prize Fund
November 23 - 26, 1989

look for complete details in the November & December
issues of Chess Life

1989 U.S. OPEN CROSSTABLE

Table listing names, initials, and scores for the 1989 U.S. Open Crosstable. Includes names like Bungo, DeMeyer, Sullivan, and many others with their respective scores.

Table listing names, initials, and scores for the 1989 U.S. Open Crosstable. Includes names like Newman, Gratz, Clark, and many others with their respective scores.

Table listing names, initials, and scores for the 1989 U.S. Open Crosstable. Includes names like Newman, Gratz, Clark, and many others with their respective scores.

GAMES FROM THE 1989 U.S. OPEN

Bh5 9.g4 Nxc4 10.hxc4 Bxc4
11.Kg2 O-O 12.Qe1 Qd6 13.Nh2
Qg6 14. Kh1 Qh5 15.f3 Bh3 16.Rg1
Bh4 17.Qe2 f5 18.d3 f4 19.Bd2 Bg3
20.Be1 Bxh2 21.Qxh2 Qxf3+
22.Rg2 Rf6 23.Bh4 Rh6 0-1

W: D. Wheatley (1921) B: G.
Kamsky (2526) 1.e4 e6 2.Nc3 d5
3.d4 c6 4.Nf3 Nf6 5.Bg5 dxc4 6.e4
b5 7.e5 h6 8.Bh4 g5 9.Nxcg5 hxc5
10.Bxc5 Nbd7 11.Qf3 Qb6 12.Bxf6
Nxf6 13.exf6 Bb7 14.Rd1 O-O-O
15.Be2 Rxd4 16.Qe3 Bc5 17.Rxd4
Bxd4 18.Qg3 c5 19.O-O Bxf6
20.Bf3 Rd8 21.Bxb7+ Qxb7 22.Qf4
Bd4 23.Ne4 Qc7 24.Qxc7+ Kxc7
25.Nc3 Kc6 26.g3 b4 27.Nd1 c3
28.bxc3 bxc3 29.Nc3 Bxe3 30.fxc3
c2 0-1

W: W. Raftshol (1913) B: A.
Bisguier (2496) 1.e4 Nc6 2.Nc3 e5
3.f4 Bc5 4.Nf3 d6 5.Bb5 Nge7
6.fxc5 dxc5 7.Na4 Bd6 8.O-O O-O
9.b3 Bg4 10.Be2 f5 11.Ng5 Bxe2
12.Qxe2 Qe8 13.Qc4+ Kh8 14.Rf3
Qh5 15.Nxh7 b5 16.Qf1 Kxh7
17.Rh3 Qxh3 18.gxh3 bxa4 19.Qe1
Nd4 20.Kh1 Nxc2 21.Qh4+ Kg8
22.Rb1 f4 23.Bb2 Rf6 24.d4 exd4
25.Qf2 axb3 26.axb3 Ne3 27.Bxd4
Rf7 28.Rg1 Nc6 29.Bxe3 fxe3
30.Qxe3 Ne5 31.h4 Raf8 32.h5 Nf3
33.Rg2 Nh4 34.Rg1 Rf2 35.e5 Bxe5
36.Qxe5 R8f7 37.Qe8+ Kh7
38.Qe4+ Nf5 39.Qe6 Rf6 40.Qd7 c5
41.Qxa7 Rc2 42.Qd7 Rf2 43.Qd3
Rd6 44.Qe4 Rdd2 45.Re1 Rxb2+
46.Kg1 Rxb5 47.Qg4 Rhd2 48.Re6
Rh1+ 49.Kg2 R5h2+ 50.Kf3 Nd4+
51.Ke4 Rh4 0-1

W: Eugene Martinovsky (IL)
(2429) B: Anil Gumaney (IL)
(1909) 1.d4 Nf6 2.c4 g6 3.Nc3 d5
4.cxd5 Nxd5 5.e4 Nxc3 6.bxc3 Bg7
7.Bc4 c5 8.Ne2 O-O 9.O-O Nc6
10.Be3 Bg4 11.f3 Na5 12.Bd3 cxd4
13.cxd4 Be6 14.Rc1 Bxa2 15.d5
Bb3 16.Qe1 b6 17.Qb4 Qd6
18.Qxd6 exd6 19.Rc7 Rfc8 20.Rfc1
Bc4 21.R7xc4 Nxc4 22.Bxc4 Rc7
23.Ba6 Rxc1+ 24.Nxc1 Re8 25.Kf2
h5 26.Nd3 Bc3 27.Bf4 Rd8 28.Bg5
Rb8 29.e5 dxe5 30.d6 b5 31.d7 Ba5
32.Nxe5 Bc7 33.Nc6 Rb6 34.Ne7+
Kf8 35.Nd5 1-0

W: Albert Sandrin (IL) (2088)
B: J. Reames (1574) 1.e4 e5 2. Nf3
Nc6 3.d4 exd4 4.Bc4 Be7 5.c3 dxc3
6.Qd5 d6 7.Qxf7+ Kd7 8. Be6+ 1-0

W: Mike Cronin (IL) (1910) B:
M. Ashley (2452) 1.d4 Nf6 2. Nf3
g6 3.g3 b5 4.Bg2 Bb7 5.O-O Bg7
6.c4 bxc4 7.Qa4 O-O 8.Qxc4 Ne4
9.Qc2 Qc8 10.Nbd2 Nxd2 11.Bxd2
Na6 12.Rac1 Rb8 13.b4 Bc6 14.a3
Qb7 15.Be3 Rbc8 16.Rfd1 Bd5
17.Ne1 Bxc2 18.Nxc2 c6 19. Nf4
Nc7 20.Qc5 Rfe8 21.d5 cxd5
1/2-1/2

W: Alan Losoff (IL) (1850) B:
Scott Zingheim (IL) (2304) 1.e4
c5 2.d3 Nc6 3.Nf3 g6 4.c3 d5
5.Nbd2 Bg7 6.g3 e6 7.Bg2 Nge7 8.
O-O b6 9.Re1 a5 10.Nh4 Ba6
11.Nf1 O-O 12.f4 f5 13.exd5 exd5
14.Nf3 h6 15.Ne5 Re8 16.h4 Kh7
17.Nh2 b5 18.Nhf3 d4 19.h5 gxh5
20.Nxc6 Nxc6 21.Ng5+ hxc5
22.Qxh5+ Kg8 23.fxc5 Qd7 24.g6
Rf6 25.Qh7+ Kf8 26.Bh6 Bxb6
27.Qxd7 Rd8 28.Qh7 Bg7 29.Bxc6
Rxc6 30.Re5 Be8 31.Rae1 Rc7
32.Re7 Rcd7 33.Qxc7+ 1-0

ROUND 2

W: E. Frumkin (2128) B: Dmitry
Gurevich (IL) (2678) 1.e4 c5 2.c3
d5 3.exd5 Qxd5 4.d4 e6 5.Nf3 Nf6
6.Be2 Be7 7.O-O cxd4 8. cxd4 Nc6
9.Nc3 Qd6 10.Bg5 O-O 11.Qd2 b6
12.Rfd1 Nd5 13.Nxd5 Qxd5
14.Bxe7 Nxe7 15.Ne5 Qd6 16.Bf3
Nd5 17.Ne4 Qd7 18.Ne5 Qd6
19.Ne4 Qd8 20.Bxd5 Qxd5 21.Ne3
Qg5 22.d5 Rd8 23.Qc2 exd5 24.
Rxd5 Rxd5 25.Qe6 Bb7 26.Qxb7
Rdd8 27.Rc1 Qe5 28.Rc2 Rd1+ 0-1

W: W. Browne (2678) B: A.
Spiller (2129) 1.d4 Nf6 2.e4 e6 3.
Nf3 b6 4.a3 Ne4 5.Nfd2 Nxd2
6.Bxd2 Bb7 7.Nc3 f5 8.d5 e5 9.e4
Qf6 10.exf5 Qxf5 11.Be3 Bc5
12.Bd3 Qf7 13.O-O Na6 14.b4 Be7
15.f4 e4 16.Nxe4 O-O 17.Bd4 c5
18.Ng5 Bxc5 19.fxc5 Qe7
20.Bxh7+ Kxh7 21.Qh5+ Kg8
22.g6 1-0

W: B. Inman (2122) W: S.
Kudrin (2670) 1.Nf3 Nf6 2.c4 c5 3.
Nc3 b6 4.g3 Bb7 5.Bg2 g6 6.O-O
Bg7 7.d4 cxd4 8.Qxd4 d6 9.Rd1
Nbd7 10.Be3 Rc8 11.Rac1 O-O
12.Qd3 a5 13.b3 Re8 14.Nd5 Ng4
15.Bd4 e5 16.Qe4 Bxd5 17.cxd5 f5
18.Rxc8 Qxc8 19.Qb1 exd4 20.
Nxd4 Bxd4 21.Rxd4 Rxe2 22.Bf3
Rc2 0-1

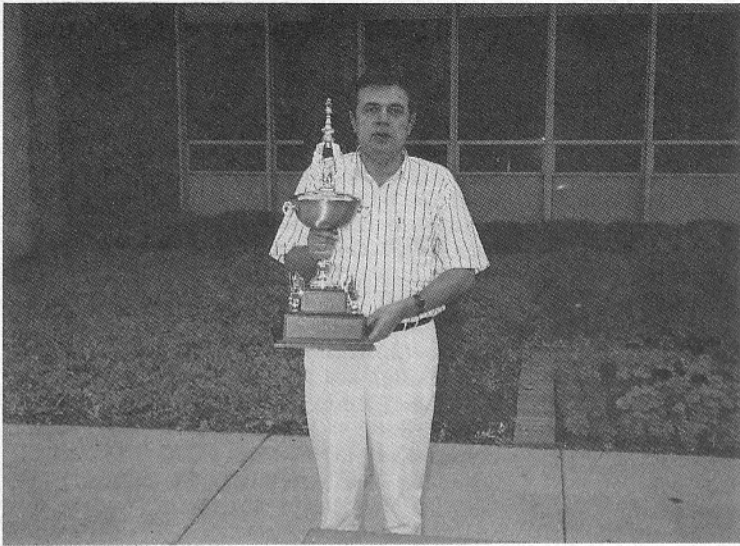
W: S. Norquist (2119) B: L.
Alburt (2658) 1.e4 Nf6 2.Nc3 d5
3.e5 Nfd7 4.Nxd5 Nxe5 5.Ne3
Nbc6 6.c3 Nd3+ 7.Bxd3 Qxd3
8.Qe2 Qxe2+ 9.Nxe2 e5 10.f4 Bc5
11.Nd5 Bd6 12.fxe5 Nxe5 13.d4
Nd3+ 14.Kf1 O-O 15.Nef4 Nxc1
0-1

W: M. Dlugy (2653) B: Carroll
Schmidt (IL) (2128) 1.d4 Nf6 2. c4
g6 3.Nc3 Bg7 4.e4 d6 5.f3 c6 6.Be3
a6 7.c5 dxc5 8.dxc5 e5 9.Qxd8+
Kxd8 10.Bc4 Ke7 11.Nge2 Be6
12.Bxe6 Kxe6 13.Nc1 Nbd7 14.Nb3
Bf8 15.Na4 Rb8 16.Na5 Be7
17.O-O-O Bd8 18.Nc4 Bc7 19.Rd3
Nh5 20.Rhd1 Rhd8 21.Nd6 Bxd6
22.Rxd6+ Ke7 23.Bd2 b5 24.cxb6
Kxd6 25.Bg5+ Ke6 26.Bxd8 Rxd8
27.Nc5+ Ke7 28.Rxd7+ Rxd7
29.b7 Rxb7 30.Nxb7 Nf4 31.g3
Nd3+ 32.Kd2 Nxb2 33.Kc3 Nd1+
34.Ke2 Ne3+ 35.Kd3 Nf1 36.Ke2
Nxb2 37.Kf2 f5 38.exf5 gxf5
39.Kg2 Nxf3 40.Kxf3 Ke6 41.Nc5+
Kd5 42.Nxa6 c5 43.Nc7+ Kc6
44.Ne6 c4 45.Ke3 Kb5 46.Kd2 Kb4
47.Ng7 f4 48.g4 c3+ 49. Kc2 f3
50.Nf5 Ka3 51.Kxc3 Kxa2 52.Kd3
Kb3 53.Ke3 Ke4 54.Kxf3 Kd3
55.g5 1-0

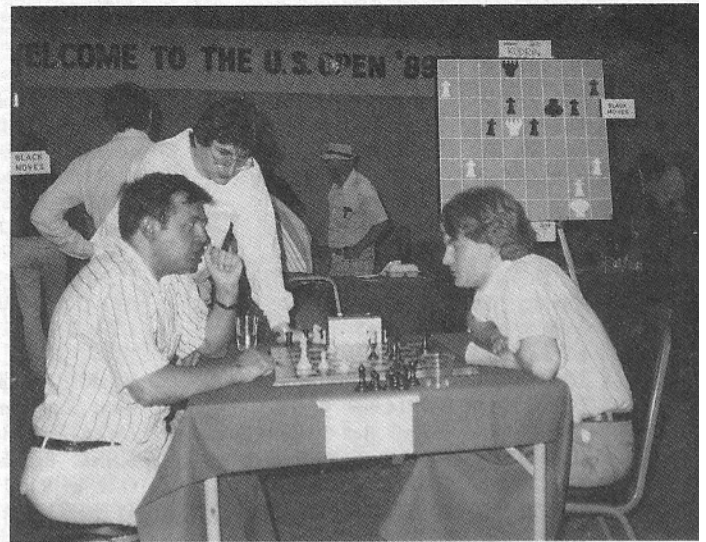
W: T. Harris (2116) B: J.
Fedorowicz (2652) 1.d4 Nf6 2.c4
c5 3.Nf3 cxd4 4.Nxd4 b6 5.Nf3 Bb7
6.e3 e6 7.Be2 Be7 8.O-O O-O 9. b3
d6 10.Bb2 Nbd7 11.Nbd2 Re8
12.Qc2 Rc8 13.Rad1 Qc7 14.Qb1
Qb8 15.Rfe1 a6 16.e4 Ng4 17.h3
Nge5 18.Nxe5 Nxe5 19.Nf3 Nd7
20.Nd2 Bf8 21.Bf3 Ba8 22.Qd3 b5
23.Qe3 bxc4 24.Ba3 cxb3 25.Nxb3
Ne5 26.Be2 Nc4 27.Bxc4 Rxc4
28.Qd3 d5 29.Bxf8 Rxf8 30.exd5
Bxd5 31.Nd2 Ra4 32.a3 Qf4
33.Re3 g6 34.Nf3 Rb8 35.Qc3 h6
36.Ne5 Qg5 37.Rg3 Qf6 38.Re1
Rf4 39.Qc7 Rb7 40.Qc8+ Kh7
41.Ng4 Qb2 42.Rc1 Qg7 43.Rc7
Rb1+ 44.Rc1 Rxc1+ 45.Qxc1 Rc4
46.Qf4?? 0-1

W: I. Ivanov (2619) B: T.
Brookshear (2120) 1.Nf3 d5 2.d4
Nf6 3.c4 e6 4.Bg5 h6 5.Bxf6 Qxf6
6.Nc3 c6 7.Qb3 Nd7 8.e4 dxc4
9.Bxc4 c5 10.e5 Qg6 11.O-O Be7
12.d5 O-O 13.Rad1 Nb6 14.d6 Bd8
15.Bb5 a6 16.Bd3 c4 17.Bxc4 Nxc4
18.Qxc4 Bd7 19.Nd4 b5 20.Qe2
Bb6 21.Rd3 b4 22.Rg3 Bxd4
23.Rxc6 fxc6 24.Qe4 Bc5 25. Nd5
Kh7 26.Ne7 Bb5 27.Nxc6 Rfd8
28.Nf8+ 1-0

1989 U.S. OPEN



Lev Alburk took home the Fidelity Cup and the \$5,000.00 First Prize.



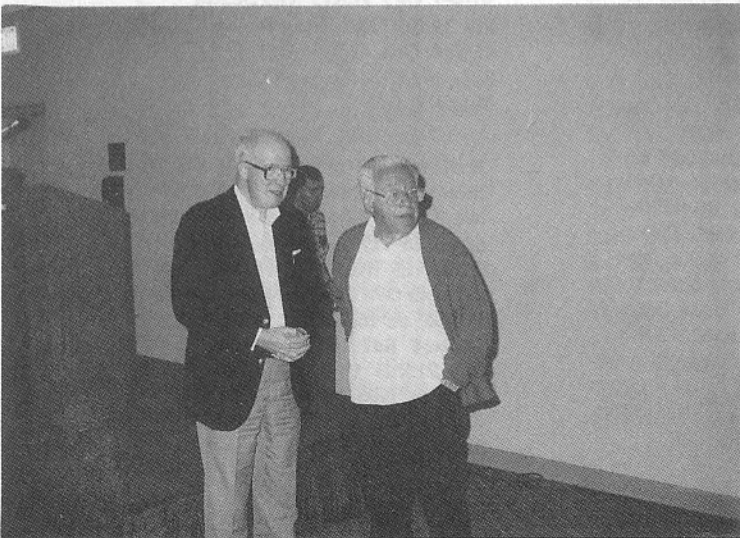
GMs Lev Alburk, Max Dlugy, and Sergey Kudrin (left to right) analyze Alburk's last round victory.



Chicagoan Greg DeFotis (left) lost to GM Max Dlugy in Round 9 to finish 7-2.



GM Dmitry Gurevich (left) was upset by Gata Kamsky in the final round.



Robert Byrne (left) and Arthur Bisguier were among the nine Grandmasters who played.



Organizer Helen Warren presents award to USCf co-founder Arpad Elo.

GAMES FROM THE 1989 U.S. OPEN

W: Robert Ash (IL) (2114) B: M. Brooks (2606) 1.d4 Nf6 2.c4 g6 3.Nc3 Bg7 4.e4 d6 5.Be2 O-O 6.Nf3 Nbd7 7.O-O e5 8.Be3 c6 9.d5 Ng4 10.Bg5 f6 11.Bh4 c5 12.Rb1 Nh6 13.Ne1 g5 14.Bg3 f5 15.f3 f4 16.Bf2 Nf6 17.h3 Qe8 18.Nb5 Qd7 19.b4 b6 20.bxc5 dxc5 21.Nd3 Nf7 22.Be1 h5 23.Bc3 a6 24.Na3 Qc7 25.Ba1 Nd7 26. Kf2 Nd6 27.Kel b5 28.Qc1 b4 29.Nc2 Nxc4 30.Nxf4 gxf4 31.Bxc4 Qd6 32.Rg1 Nb6 33.Be2 h4 34.a3 a5 35.axb4 axb4 36.Bb2 c4 37. Ba1 b3 0-1

W: A. Fishbein (2590) B: J. Felber (2117) 1.e4 c6 2.d4 d5 3. Nc3 dxc4 4.Nxe4 Nf6 5.Ng3 g6 6.Nf3 Bg7 7.Bc4 O-O 8.O-O Bg4 9. c3 Nbd7 10.h3 Bxf3 11.Qxf3 Nb6 12.Bb3 a5 13.a4 Nbd5 14.Re1 Qc7 15.Bg5 Rac8 16.Rad1 h6 17.Bc1 Kh7 18.c4 Nb6 19.d5 cxd5 20.cxd5 Qd7 21.Ne4 Nxa4 22.d6 Nxe4 23.Rxe4 exd6 24.Rxa4 Qb5 25.Rf4 Re7 26.Bxf7 1-0

W: D. Aldrich (2102) B: R. Byrne (2548) 1.e4 c5 2.Nf3 d6 3.d4 cxd4 4.Nxd4 Nf6 5.Nc3 a6 6.Bc4 e6 7.Be3 Be7 8.Qe2 b5 9.Bd3 Bb7 10.f3 Nbd7 11.O-O-O b4 12.Na4 Qa5 13.b3 Nc5 14.Bc4 O-O 15.g4 Nxa4 16.bxa4 d5 17.exd5 Nxd5 18.Nb3 Qxa4 19.Bxd5 Bxd5 20.Kb1 Rac8 21.Bd4 Qc6 22.Na5 Bxa2+ 23.Kxa2 Qa4+ 24.Kb1 Qxa5 25.Qe3 Rfd8 26.Qe5 Qxe5 27.Bxe5 f6 28.Bf4 Kf7 29.Rhe1 e5 30. Bg3 a5 31.f4 exf4 32.Bxf4 Rxd1+ 33.Rxd1 Rc4 0-1

W: J. Rizzitano (2542) B: R. Ducret (2109) 1.Nf3 Nf6 2.c4 g6 3.Nc3 Bg7 4.e4 d6 5.d4 O-O 6.Be2 e5 7.O-O Nc6 8.d5 Ne7 9.Ne1 Nd7 10.f3 f5 11.g4 Nf6 12.Be3 c6 13.Ng2 a6 14.a4 a5 15.Rb1 c5 16.Ra1 Rf7 17.h3 b6 18.Bd3 f4 19.Bf2 g5 20.h4 h6 21.Nb5 Ne8 22.hxg5 hxg5 23.Be1 Ng6 24.Kf2 Nc7 25.Rh1 Nxb5 26.axb5 Bf6 27.Rh5 Raa7 28.Bd2 Rh7 29.Qh1 Qc7 30.Rg1 Qe7 31.Qh2 Nf8 32. Ne1 Ng6 33.Bf1 Nb4 34.Nd3 Ng6 35.b3 Qd8 36.Nb2 Nh4 37.Na4 Rag7 38.Rxh7 Rxh7 39.Rh1 Qc7 40.Be2 Bd8 41.Qg1 Ng6 42.Qa1 Rxh1 43.Qxh1 Qh7 1/2-1/2

W: Keith Holtzmueller (IL) (2095) B: E. Kengis (2501) 1.e4 c5 2.Nf3 d6 3.Bb5+ Nd7 4.d4 Ngf6 5.Nc3 g6 6.Bxd7+ Nxd7 7.O-O e6

8.Bg5 Qc7 9.dxc5 Nxc5 10.Qd2 f6 11.Bf4 b5 12.a3 Bb7 13.Rfel e5 14.Bg3 Rc8 15.Rac1 Be7 16.h3 O-O 17.Nd5 Bxd5 18.Qxd5+ Kh8 19.b3 Qc6 20.Qxc6 Rxc6 21.Nd2 Rfc8 22.Rcd1 Ne6 23.c4 Nd4 24. Re1 Bd8 25.f3 Ba5 26.b4 Bb6 27.Bf2 bxc4 28.Nf1 c3 29.Nc3 Nb3 30.Rc2 Bxc3 31.Bxc3 f5 32.exf5 d5 33.Rb1 Nd4 34.Bxd4 exd4 35. Rd1 Rc4 36.Kf2 Kg8 37.g4 Kf7 38.Rd3 Re8 39.h4 Kf6 40.f4 Re4 41.Rf3 h5 42.gxh5 Kxf5 43.Kg3 Re3 44.Kf2 Ke4 45.Rg3 Rxg3 46. Kxg3 d3 0-1

W: J. Hitselberger (2094) B: Morris Giles (IL) 2475 1.e4 c5 2.Nf3 d6 3.d4 cxd4 4.Qxd4 Nc6 5.Bb5 Bd7 6.Bxc6 Bxc6 7.Nc3 Nf6 8.Bg5 e6 9.O-O-O

Be7 10.Rhe1 O-O 11.e5 dxe5 12.Qh4 Qc7 13.Nxe5 Rfe8 14.Rd3 Nd5 15.Bxe7 Nxe7 16.Rh3 h6 17.g4 Bg2 18. Rg3 Bd5 19.Qh5 Nc6 20.Nb5 Qe7 21.g5 Nxe5 22.Rxc5 Rac8 23.gxh6 g6 24.Nd6 Qxd6 25.Rxg6+ Kh8 26.Qg5 Qd8 27.Rf6 Rg8 28.Qf4 Rg1+ 29.Kd2 Be4+ 0-1

W: D. Cotten (2090) B: Eugene Martinovsky (IL) (2429) 1.e4 c5 2.c3 Nf6 3.e5 Nd5 4.d4 cxd4 5.Qxd4 e6 6.Nf3 Nc6 7.Qe4 d6 8.Bc4 dxe5 9.Nxe5 Nf6 10.Nxc6 Nxe4 11.Nxd8 Kxd8 12.Nd2 Nd6 13.Bb3 Bd7 14.O-O Be6 15.Nc4 Nxc4 16.Bxc4 Bd6 17.Be3 Ke7 18. Rael Rac8 19.Be2 Bd5 20.Ra1 a6 21.Rfel Be5 22.f3 Be4 23.Bxc4 Rxc4 24.Rd1 b5 25.a3 h5 26.Rd3 Rd8 27.Rad1 Rxd3 28.Rxd3 Rc7 29.h3 Rd7 30.Be5+ Ke8 31.Rxd7 Kxd7 32.Kf2 Ke6 33.Bb4 Kd5 34. b3 Bc7 35.Ke3 f5 36.Kd3 g5 37.c4+ bxc4+ 38.bxc4+ Kc6 39.a4 e5 40.Be7 g4 41.fxg4 fxg4 42.hxg4 hxg4 43.Ke4 Kd7 44.Bb4 Ke6 45. c5 Bd8 46.Be1 Be7 47.Bf2 Bd8 48.Bg3 Be7 49.Be1 Bxc5 50.Bc3 Bd6 51.Bb2 Bc7 52.Bc3 Bb8 53.Bb2 Kf6 54.Bc3 Be7 55.Bb2 Ke6 1/2-1/2

W: Albert Chow (IL) (2418) B: R. Hough (2095) 1.c4 c5 2.Nc3 g6 3.g3 Bg7 4.Bg2 Nc6 5.Nf3 e5 6.O-O Nge7 7.Rb1 d6 8.d3 O-O 9.a3 a5 10.Bg5 f6 11.Be3 Rb8 12.Ne1 f5 13.Bg5 Be6 14.Nc2 Qd7 15.b4 axb4 16.axb4 b6 17.Qd2 f4 18.Nd5 Nf5 19.gxf4 h6 20.e4 Bxd5 21.cxd5 Ncd4 22.exf5 Nxc2 23.f6 Nd4 24.fxg7 Kxg7 25.Bxh6+ Kxh6

26.fxe5+ Kg7 27.e6 Qe7 28.f4 Rh8 29.Be4 Rh5 30. bxc5 dxc5 31.Qg2 Qf6 32.Ra1 Nf5 33.Ra7+ Kb6 34.Bxf5 Rxf5 35. Kh1 Rxf4 36.Qh3+ Qh4 37.Qxh4+ Rxh4 38.e7 Kg5 39.d6 Rbh8 40. Ra2 Rd4 41.Rf8 1-0

W: J. Caccamise (2095) B: Greg DeFotis (IL) (2410) 1.e4 f5 2. g3 Nf6 3.Bg2 g6 4.Nc3 Bg7 5.d4 O-O 6.e3 d6 7.Nge2 c6 8.O-O Na6 9.Rb1 e5 10.b4 Nc7 11.b5 e4 12.d5 c5 13.f3 exf3 14.Bxf3 Nd7 15.Qb3 Ne5 16.Bg2 b6 17.a4 a5 18.Bd2 Bh6 19.Rb2 Ra7 20. Nd1 Ne8 21.e4 Bxd2 22.Rxd2 Qg5 23.Rc2 Nf6 24.Nf2 fxe4 25.Nxe4 Nxe4 26.Rxf8+ Kxf8 27.Bxe4 Rf7 28.Bg2 Bf5 29.Ra2 Nd3 30.h4 Qe3+ 31.Kh2 Re7 32.Ng1 Ne5 33.Qxe3 Ng4+ 34.Kh1 Rxe3 35.Bf3 Ne5 36.Kg2 Nxf3 37.Nxf3 Be4 38.Rf2 h5 39.Rf1 Kg7 40.Rf2 Kf6 41.Rf1 Kf5 42.Rf2 Kg4 0-1

W: B. Leverett (2394) B: Albert Sandrin (IL) (2088) 1.d4 Nf6 2.c4 e6 3.g3 c5 4.Nf3 b6 5.Bg2 Bb7 6.d5 exd5 7.Nh4 g6 8.Nc3 d6 9.O-O Bg7 10.cxd5 O-O 11.e4 Na6 12.f4 Nc7 13.a4 a6 14.Rb1 b5 15.axb5 axb5 16.b4 Nd7 17.Ne2 Ra4 18.e5 Qa8 19.bxc5 Nxc5 20.exd6 Nxd5 21.Rxb5 Rc8 22.Rxb7 Qxb7 23.Bxd5 Bd4+ 24.Qxd4 Rxd4 25.Bxb7 Nxb7 26.Nxd4 1-0

ROUND 3

W: Dmitry Gurevich (IL) (2678) B: H. Terrie (2239) 1.Nf3 d5 2.c4 e6 3.d4 Nf6 4.g3 c5 5.cxd5 Nxd5 6.Bg2 Nc6 7.O-O Be7 8. dxc5 Bxc5 9.a3 a5 10.Qc2 Qb6 11.Nbd2 O-O 12.e4 Nde7 13.Nb3 Bd6 14.Be3 Qc7 15.Rac1 e5 16.Nbd2 Be6 17.Nc4 h6 18.Rfd1 Nc8 19.Nxd6 Nxd6 20.Nxe5 1-0

W: M. Morris (2227) B: W. Brown (2678) 1.e4 c5 2.Nf3 d6 3.d4 cxd4 4.Nxd4 Nf6 5.Nc3 a6 6.Be2 e5 7.Nb3 Be7 8.O-O O-O 9.a4 Nc6 10.Be3 Nb4 11.Nd5 Nfxd5 12.exd5 Bf5 13.Rc1 Be4 14.Bf3 Bxf3 15.Qxf3 f5 16.Bd2 a5 17.Nxa5 Qxa5 18.Qb3 Qxa4 19.Qxb4 b5 20.h3 Rfc8 21.Bc3 Rc4 22.Qxa4 bxa4 23.Bd2 Rb8 24.b3 axb3 25.cxb3 Rxc1 26.Rxc1 Rxb3 27.Rc8+ Kf7 28.Rc7 Ke8 29.Rc8+ Kd7 30.Ra8 Rd3 31.Ra7+ Ke8 0-1

GAMES FROM THE 1989 U.S. OPEN

W: S. Kudrin (2670) B: John Burke (IL) (2226) 1.e4 c5 2.Nf3 Nc6 3.d4 cxd4 4.Nxd4 e6 5.Nc3 a6 6.Nxc6 bxc6 7.Bd3 d5 8.O-O Nf6 9.Re1 Be7 10.e5 Nd7 11.Qg4 g6 12.Bh6 Qc7 13.Qh3 Rg8 14.Na4 c5 15.c4 d4 16.b3 Bb7 17.Be4 Bxe4 18.Rxe4 g5 19.Rae1 Rg6 20.f4 g4 21.Qh5 O-O-O 22.Bg5 Bxg5 23.fxg5 h6 24.Rxg4 Nxe5 25.Rg3 d3 26.gxh6 d2 27.Rd1 Rxg3 28.hxg3 f5 29.h7 Nf7 30.Qf3 Kb8 31.Qf4 e5 32.Qxf5 Ka7 33.Qf2 1-0

W: D. Smith (2225) B: M. Wilder (2669) 1.c4 Nf6 2.Nc3 g6 3.g3 Bg7 4.Bg2 O-O 5.e3 e5 6.Nge2 d6 7.O-O Nbd7 8.d4 Re8 9.b3 h5 10.h4 e4 11.a4 Nf8 12.a5 a6 13.Ra2 Bf5 14.d5 Qc7 15.Na4 N8d7 16.Bb2 Ne5 17.Bxe5 Qxe5 18.Nf4 Bg4 19.Qc1 g5 20.hxg5 Qxg5 21.Nc3 Re5 22.Qe1 Rce8 23.Nce2 h4 24.Nd4 Bd7 25.Bh3 Bxh3 26.Nxh3 Qh6 27.Nf4 Ng4 28.Re2 Rg5 29.Nh3 hxg3 30.f3 Nxe3 31.Nxg5 Bxd4 0-1

W: L. Alburt (2658) B: P. Yu (2223) 1.d4 Nf6 2.c4 g6 3.Nc3 Bg7 4.e4 d6 5.Be2 O-O 6.Bg5 c5 7.d5 a6 8.a4 Qa5 9.Bd2 e6 10.Nf3 Re8 11.O-O Qc7 12.h3 exd5 13.exd5

Nbd7 14.Qc2 Nf8 15.Bd3 Bd7 16.b3 Rab8 17.Bf4 Nh5 18.Bd2 Nf6 19.Nh2 h5 20.Nf3 N8h7 21.Bf4 h4 22.Bd2 Qd8 23.Bf4 Qc7 24.Bh2 g5 25.Rae1 Bh6 26.Qd2 Kg7 27.Qb2 Kg8 28.Bxh7+ Nxh7 29.Ne4 Rxe4 30.Rxe4 Bf5 31.Re3 b5 32.axb5 axb5 33.Qa1 bxc4 34.bxc4 Qd7 35.Qa6 Bf8 36.Rfe1 Bg6 37.Ra1 Bh5 38.Qc6 Qd8 39.Rae1 Bxf3 40.Rxf3 Nf6 41.Qa4 Ne4 42.Qc2 Nf6 43.Qf5 Bg7 44.Qxg5 Qa5 45.Rfe3 Rb3 46.Re8+ Nxe8 47.Rxe8+ Kh7 48.Qf5+ 1-0

W: Alan Watson (IL) (2222) B: M. Dlugy (2653) 1.f4 c5 2.Nf3 d5 3.g3 g6 4.Bg2 Bg7 5.O-O Nc6 6.d3 Nf6 7.c3 O-O 8.Qc2 d4 9.Na3 Rb8 10.Nc4 Nd5 11.e4 dxe3 12.Nxe3 Nc7 13.Bd2 b6 14.Rad1 Bb7 15.Bc1 e6 16.Qc2 Nd5 17.Ng4 Qc7 18.Nge5 Nde7 19.Rfe1 Rbd8 20.Be3 Nxe5 21.Nxe5 Bxg2 22.Qxg2 Rd5 23.Ng4 Rfd8 24.Nf2 Nf5 25.Qf3 h5 26.Bc1 Qd7 27.Kf1 Qa4 28.a3 Qb3 29.Rd2 R5d7 30.Kg2 Qa4 31.Qd1 Qc6+ 32.Qf3 Qa4 33.Qd1 Qa6 34.Qf3 Rd5 35.Rdd1 Qa4 36.Re4 Qd7 37.Kg1 b5 38.Bd2 a5 39.Be1 Ne7 40.Re2 Nc6 41.Ne4 e5 42.fxe5 Nxe5 43.Nf6+ Bxf6 44.Qxf6 Rd6

45.Qxe5 Re6 46.Qxe6 fxe6 47.Bf2 Qd5 48.Re4 Qxe4 49.dxe4 Rxd1+ 50.Kg2 c4 51.Bb6 Rd2+ 52.Kf3 a4 53.h4 Rxb2 54.Bc5 Kf7 55.Ke3 Rb3 56.Bb4 Kf6 57.Kd4 Rxb4 0-1

W: J. Fedorowicz (2652) B: D. Southam (2221) 1.d4 Nf6 2.c4 g6 3.Nc3 Bg7 4.e4 d6 5.Be2 O-O 6.Bg5 c5 7.d5 h6 8.Be3 e6 9.Qd2 exd5 10.exd5 Kh7 11.f3 a6 12.a4 Re8 13.g4 Nbd7 14.Nh3 Ne5 15.Nf2 Qa5 16.h4 b5 17.O-O b4 18.Ncd1 Qd8 19.g5 Nh5 20.f4 Ng3 21.fxe5 Nxf1 22.Bxf1 Bxe5 23.Bg2 Ra7 24.Nh1 f5 25.Ndf2 h5 26.Rf1 Rae7 27.Nd3 Bg7 28.Ng3 fxe4 29.Nf4 Bg4 30.Qc2 b3 31.Qxb3 Qb8 32.Qc4 Bf3 33.b3 Qb4 34.Qxb4 cxb4 35.Ne6 Bg4 36.Nxg7 Kxg7 37.Bd4+ Kh7 38.Bf6 Rc7 39.Bxe4 a5 40.Bb2 Rce7 41.Rf4 Bd1 42.Bd3 Re3 43.Ne4 R8xe4 44.Rxe4 Rxd3 45.Re8 Rg3+ 46.Kf2 Rc3 47.Bxc3 bxc3 48.Rc8 Bxb3 49.Rxc3 Bxd5 50.Rc7+ Kg8 51.Ra7 1-0

W: D. Sharp (2214) B: I. Ivanov (2619) 1.e4 c5 2.Nf3 d6 3.d4 cxd4 4.Nxd4 Nf6 5.Nc3 Nc6 6.Bg5 Qb6 7.Nb3 e6 8.Be2 Be7 9.Be3 Qc7 10.f4 a6 11.a4 b6 12.O-O O-O 13.Bf3



MIDWEST CHESS ASSOCIATION

PRESENTS

1990 U.S. MASTERS

INCORPORATING IN 1990 THE MIDWEST MASTERS VIII
"The Annual Homecoming of the American Master."

150 GRAND PRIX POINTS

MARCH 15-18, 1990

at the

Hyatt Regency Oak Brook
1909 Spring Rd.
Oak Brook, IL 60521
15 min. from O'Hare Airport

A 7-RD. SWISS FOR PLAYERS
RATED 2200 or above, or who
have ever been so rated,
AND SIX INVITED JUNIORS
RATED 2150-2200

\$15,000 GUARANTEED

PRIZE FUND

| | |
|-----|--------|
| 1st | \$5000 |
| 2nd | 2500 |
| 3rd | 1200 |
| 4th | 800 |
| 5th | 500 |

**U 2400: \$500 - 250
AND \$5,000 IN
REGIONAL PRIZES
FIDE RATED**

TIME CONTROL 40/2

HOTEL RATES \$59 SINGLE OR DOUBLE
(RESERVE AFTER DEC. 1)

ENTRY: \$60 IF REC'D BY 3/4
\$75 THEREAFTER
NO ENTRIES AT SITE

FREE ENTRY TO GMS & IMs
IF REGISTERED BY 3/4

ROOM SHARING ARRANGED IF
REQUESTED BY 3/1

ENTRIES TO AND INFORMATION CONTACT
HELEN WARREN
MIDWEST CHESS ASSOC.
P.O. BOX 305
WESTERN SPRINGS, IL 60558
(312) 246-6665
AFTER NOV. 11 (708) 246-6665

GAMES FROM THE 1989 U.S. OPEN

Rb8 14.Qe2 Re8 15. Rael Bf8
16.e5 dxe5 17.Bxc6 Qxc6 18.fxe5
Nd5 19.Qf3 Rb7 20.Ne4 Qxc2
21.Bg5 Kh8 22.Rd1 Qc7 23.Qg3 b5
24.a5 Qc4 25.Qf3 b4 26.Rc1 Qb5
27.Qg3 Rd7 28.Qh4 Bb7 29.Rf2
Rc8 30.Rc1 Ne7 31.Qg3 Bxe4
32.Rxf7 Nf5 33.Rxf8+ Rxf8
34.Qg4 Qxf1+ 35.Kxf1 Ng3+
36.Ke1 Rf1+ 0-1

W: M. Brooks (2606) B: J.
Hechtlinger (2215) 1.e4 c5 2.Nf3
e6 3.d4 cxd4 4.Nxd4 Nf6 5.Nc3
Nc6 6.Ndb5 d6 7.Bf4 e5 8.Bg5 a6
9.Na3 b5 10.Bxf6 gxf6 11.Nd5 f5
12.Bd3 Be6 13.Qh5 f4 14.g3 Rg8
15.Qd1 Nd4 16.Rf1 Bg4 17.f3 fxg3
18.hxg3 Bh3 19.Rg1 Bh6 20.c3 Ne6
21.Bf1 Rxc3 22.Rxc3 Qh4 23.Kf2
Bf4 24.Bxb5+ axb5 25.Qg1 Nc5
26.Rd1 Ra4 27.Nb4 Rxa3 28.bxa3
f5 29.Qh2 fxe4 30.Qxh3 Bxc3+
31.Qxc3 e3+ 32.Kg2 e2 33.Re1 1-0

W: J. Hove (2213) B: A. Fishbein
(2590) 1.e4 e5 2.Nf3 Nc6 3.Bb5 a6
4.Ba4 Nf6 5.O-O Nxe4 6.d4 b5
7.Bb3 d5 8.dxe5 Be6 9.Qe2 Be7
10.Rd1 O-O 11.c4 bxc4 12.Bxc4
Qd7 13.Nc3 Nxc3 14.bxc3 f6
15.exf6 Bxf6 16.Bg5 h6 17.Bxf6
Rxf6 18.Bxa6 Re8 19.Bb5 Bf7
20.Qd3 Qd6 21.Re1 Rxe1+
22.Rxe1 Bg6 23.Qd2 Be4 24.Nd4
Nxd4 25.cxd4 Rg6 26.Bf1 c5
27.dxc5 Qxc5 28.Qe3 Qa5 29.Ra1
Rc6 30.Qe1 Qa3 31.f3 Bg6 32.Qd2
Qc5+ 33.Kh1 d4 34.Rd1 Be2
35.Qxd4 Bxd1 36.Qxd1 Rc8 37.h3
Kh8 38.Kh2 Qc5+ 39.Kg1 Qg5
40.Qd7 Rd8 41.Qc7 Rf8 42.Qc6
Qc3+ 43.Kh2 Qf4+ 44.Kg1 Qc3+
45.Kh2 Qc5+ 46.Kg1 Qa1 47.a4
Rd8 48.Qc7 Qd4+ 49.Kh2 Ra8
50.a5 Qa1 51.Ba6 Qe1 52.Qb6
Qe5+ 53.Kg1 h5 54.Bd3 Qxa5
55.Qxa5 Rxa5 56.h4 Kg8 57.Bg6
Kf8 58.f4 Ke7 59.f5 Kf6 60.Kf2 Ra7
61.Kf3 Ra3+ 62.Kf2 Ke5 63.g3 Kf6
64.Kg2 Ra2+ 65.Kf3 Ke5 66.Ke3
1/2- 1/2

W: T. Weideman (2201) B: G.
Kamsky (2526) 1.d4 d5 2.Nf3 Nf6
3.e3 Bf5 4.c4 c6 5.Nc3 e6 6.Qb3
Qb6 7.Be2 Nbd7 8.O-O Be7 9.Bd2
O-O 10.Na4 Qxb3 11.axb3 Be2
12.Bd1 Bd3 13.cxd5 Bxf1 14.dxe6
Bd3 15.exd7 Nxd7 16.b4 b6 17.Ne1
Bg6 18.Bf3 Rac8 19.Nc3 Bxb4
20.Rxa7 Nf6 21.Rb7 b5 22.Rb6
Bxc3 23.Bxc3 Be4 24.Bxe4 Nxe4
25.Nd3 Rfe8 26.Bb4 Nf6 27.Bc5

Nd5 28.Rb7 Rc7 29.Rxc7 Nxc7
30.Kf1 f6 31.Ke2 Nd5 32.Kf3 Kf7
33.e4 Nc7 34.Ke3 Ne6 35.f4 Nxc5
36.dxc5 Ke6 37.h4 Ra8 38.f5+ Ke7
39.e5 fxe5 40.Nxe5 Kf6 41.Nxc6
Rc8 42.Nd4 Rxc5 43.g4 Ke5
44.Nf3+ Kd5 45.g5 Rc4 46.g6 hxg6
47.fxg6 Re4+ 48.Kd3 Rg4 49.h5
Rg3 50.Ke3 Rh3 51.Kf4 Rxb5 0-1

W: Morris Giles (IL) (2475) B:
A. Kobemat (2187) 1.e4 e5 2.f4
exf4 3.Nf3 d5 4.exd5 Nf6 5.d4
Nxd5 6.Bc4 Be6 7.Qe2 c6 8. Bxd5
cxd5 9.Bxf4 Nc6 10.O-O Bd6
11.Bxd6 Qxd6 12.c3 O-O 13.Nbd2
Rae8 14.Rae1 f6 15.Nb3 b6 16.Nc1
Bd7 17.Qf2 1/2-1/2

W: W. Harris (2187) B: B. Colias
(2435) 1.e4 e5 2.Nf3 d6 3.d4 cxd4
4.Nxd4 Nf6 5.Nc3 Nc6 6.Bg5 e6
7.Qd2 a6 8.O-O-O h6 9.Be3 Nxd4
10.Bxd4 Be7 11.f4 Qa5 12.Bxf6
gxf6 13.Kb1 Bd7 14. Bd3 h5 15.f5
Bc6 16.Rhe1 O-O-O 17.fxe6 fxe6
18.Bc4 Kd7 19.Qf2 Rdf8 20.Ne2
Bb5 21.Bxc6+ Kxc6 22.Qf5+ Kf7
23.Nf4 Bd8 24.Qe6+ Kg7 25.Re3
Be8 26.Rd5 Qb6 27.Rg3+ Kh6
28.b3 Qg1+ 29.Kb2 Qxh2 30.Rdg5
Qxc3 31.Rxc3 Bf7 32.Qxd6 Re8
33.Qd7 Rhf8 34.Nxh5 Rxe4
35.Ng7 Bg6 36.Nf5+ Kh5 37.Qd1+
1-0

W: Robert Gruchacz (2434) B: L.
Kaplan (2181) 1.e4 e5 2.Ne2 d6
3.g3 g6 4.Bg2 Bg7 5.c3 Nc6 6.d4
cxd4 7.cxd4 e5 8.d5 Nce7 9.Nbc3
Nf6 10.Qa4+ Bd7 11.Qb4 Qb6
12.Qxb6 axb6 13.f3 O-O 14.Be3 h5
15.b4 Rfc8 16.Kd2 Ra3 17.Rhe1
Rc4 18.Nb1 Rxe3 19.Kxe3 Bh6+
20.f4 exf4+ 21.gxf4 Rxe1 22.Nxc1
Ng4+ 23.Kd3 Nxd5 24.Ne2 Nf2+
25.Kd2 Nxf4 26.Nxf4 Bxf4+
27.Kc2 Ng4 28.Bh1 Bxh2 29.Nc3 f5
30.Kd2 h4 31.Nd5 Kg7 32.Ke2 h3
33.Rc1 g5 34.Rc7 Ne5 35.Ne3 g4
36.Rxb7 g3 37.Kf1 g2+ 38.Bxc2
hxg2+ 39. Kxc2 Bf4 40.Nxf5+
1/2-1/2

W: Kevin Gensler (IL) (2197) -
Albert Chow (IL) (2418) 1.d4 Nf6
2.e4 e6 3.Nf3 Bb4+ 4.Bd2 Be7
5.Nc3 d5 6.Bg5 O-O 7.e3 Nbd7
8.Rc1 a6 9.exd5 exd5 10.Bd3 c6
11.O-O Re8 12.Qc2 Nf8 13.Ne5
Ng4 14.Bxe7 Qxe7 15.Nxc4 Bxc4
16.Rce1 Qd6 17.Ne2 Rad8 18.a3
Be8 19.Ng3 g6 20.b4 Ne6 21.f4 f5
22.Qd2 Nf8 23.Rf3 Be6 24.Nf1 Nd7

25.Qf2 Ra8 26.Qb2 b5 27.Nd2 a5
28.Rf2 axb4 29.axb4 Ra4 30.Rb1
Bf7 31.Re2 Nb6 32.Nf3 Nc4
33.Bxc4 dxc4 34.Ne5 Bd5 35.g4
Be4 36.gxf5 Bxb1 37.Qxb1 Rxb4
38.Qe1 Ra4 39.Qh4 Ra1+ 40.Kf2
Kg7 41.fxg6 hxg6 42.Qg5 Rh8
43.Kg2 Rh5 44.Qg4 Qd5+ 45.e4
Qd6 46.f5 Qf6 47.Nf3 c3 48.Qf4
Ra7 49.Qb8 Re7 50.Qd8 gxf5 51.e5
Qe6 52.Kf1 Rh6 53.Ke1 Rg6
54.Nh4 Rd7 55.Qa5 Rg4 56.Nf3
Qc4 57.e6 c2 58.Rxc2 Qxc2 59.exd7
Re4+ 60.Kf1 Qc2+ 0-1

W: Greg Defotis (IL) (2410) B:
J. Weisblat (2181) 1.g3 d5 2.Bg2
Nf6 3.c4 c6 4.Nf3 Bf5 5.O-O e6
6.d4 Nbd7 7.Nc3 h6 8.Nd2 Be7 9.e4
dxc4 10.Ndxc4 Nxe4 11.Nxe4 Nb6
12.b3 Bxe4 13.Bxe4 Bf6 14.Be3 Nc8
15.Qh5 Bxd4 16.Rad1 e5 17.Bxd4
exd4 18.Qe5+ Kf8 19.Rxd4 Qe7
20.Qf4 g5 21.Qd2 Kg7 22.Rd7
Qxe4 23.Qc3+ Kg6 24.Qxh8 Nb6
25.Rd6+ 1-0

W: E. Formanek (2395) B:
Angelo Sandrin (IL) (2174) 1.d4
Nf6 2.c4 e6 3.Nc3 Bb4 4.Qc2 d6
5.Bg5 Nbd7 6.e3 e5 7.dxc5 Nxc5
8.Nge2 Bd7 9.a3 Ba4 10.Qb1
Bxc3+ 11.Nxc3 Bb3 12.Be2 Qa5
13.Bxf6 gxf6 14.O-O f5 15.Qc1
O-O-O 16.Nb5 Rhg8 17.Nd4 Kb8
18.Rb1 Re8 19.f3 Qb6 20.Rf2 f4
21.Qc3 Ba2 22.Ra1 Na4 23.e5 dxc5
24.Qc2 fxe3 25.Rff1 cxd4 26.Qxa4
Bb3 0-1

W: John Marconnet (IL) (2141)
B: D. Shapiro (2339) 1.d4 Nf6 2.c4
e6 3.Nc3 Bb4 4.e3 O-O 5.Nge2 d5
6.a3 Bd6 7.e5 Be7 8.b4 c6 9.Ng3
Nbd7 10.Be2 b6 11.O-O g6 12.Bd2
Qc7 13.f4 Ne8 14.Nh1 Ng7 15.g4 f6
16.Be1 Rf7 17.Ng3 Nf8 18.Qc2 Bd7
19.Bd3 bxc5 20.bxc5 Qc8 21.h3
Bd8 22.Nce2 Re7 23.Be3 Be7 24.e4
dxe4 25.Nxe4 Rf7 26.g5 Nf5
27.Nxf6+ Rxf6 28.gxf6 Ne3
29.Qd2 Nxf1 30.Rxf1 Qe8 31.Ng3
Qf7 32.Ne4 h6 33.Rf2 Be8 34.Rg2
Qd7 35.f5 exf5 36.Qxh6 Qh7 37.f7+
Qxf7 38.d5 Nh7 39.d6 1-0

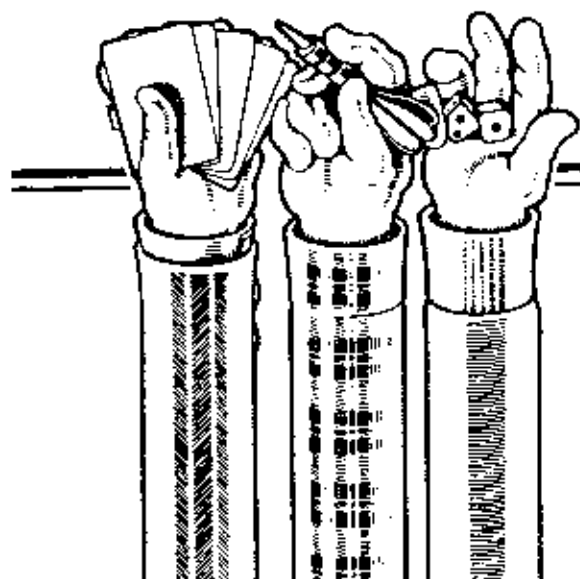
W: Ken Wallach (IL) (2308) B:
Rhys Read (IL) (2031) 1.d4 Nf6
2.e4 e6 3.Nc3 d5 4.Nf3 c6 5.g3 Be7
6.Bg2 O-O 7.O-O b6 8.Qd3 Bb7
9.Rd1 Nbd7 10.e4 dxe4 11.Nxe4 c5
12.Nfg5 Nxe4 13.Nxe4 cxd4
14.Qxd4 Nc5 15.Nd6 Bxc2
16.Kxc2 Qxd6 17.Qxd6 Bxd6
18.Rxd6 Rfd8 19.Rxd8+ Rxd8
20.Be3 Nd3 21.b3 Kf8 22.Kf1 Ke7

WE'RE NOTHING BUT FUN AND GAMES.

- ★ BOARD GAMES
- ★ PUZZLES
- ★ STRATEGY GAMES
- ★ TRAVEL GAMES
- ★ CRIBBAGE
- ★ BACKGAMMON
- ★ PARTY GAMES

- ★ OUTDOOR GAMES
- ★ CHESS
- ★ DARTS
- ★ SPORTS GAMES
- ★ DOMINOES
- ★ EDUCATIONAL GAMES
- ★ GAME ACCESSORIES

AND MORE!



GAMES
by James[®]

WOODFIELD
330-1386

YORKTOWN
495-7977

"WE'RE VERY SERIOUS ABOUT FUN!"

GAMES FROM THE 1989 U.S. OPEN

23.Ke2 e5 24.f3 Nb4 25.Bd2 Nc2
26.Rd1 Nd4+ 27.Kf2 Ke6 28.Bc3
Nc6 29.Rxd8 Nxd8 30.Ke3 g5
31.Kd3 f5 32.h3 h5 33.g4 hxg4
34.hxg4 fxg4 35.fxg4 Nf7 36.Ke4
Nd6+ 37.Kf3 Nf7 38.Bd2 Kf6
39.Be3 Ke6 40.a4 Kd6 41.Ke4 Nh6
42.Bxg5 Nxc4 43.Kf3 Kc5 44.Be7+
Kd4 45.Kxc4 Kc3 46.b4 Kxc4
47.a5 bxa5 48.bxa5 a6 49.Kf5 Kd5
50.Bg5 e4 51.Be3 Ke6 52.Kxe4 Kb7
53.Kd5 Kc7 54.Kc5 Kb7 55.Bf4
Ka7 56.Kc6 Ka8 57.Be3 Kb8
58.Kb6 Ka8 59.Kxa6 Kb8 60.Ba7+
Ka8 1/2-1/2

W: George Umezina (IL) 2287
B: J. Witkowski (2023) 1.d4 g6
2.c4 Bg7 3.Nf3 d6 4.e4 Nf6 5.Nc3
O-O 6.Be2 c5 7.d5 Na6 8.h3 Nc7
9.O-O a6 10.a4 e6 11.Bg5 exd5
12.cxd5 h6 13.Be3 Re8 14.Nd2 Bd7
15.a5 Bb5 16.Re1 Bxe2 17.Qxe2
Nb5 18.Qd3 Qc7 19.Nxb5 axh5
20.Qxb5 Nxe4 21.Bxb6 Nf6
22.Rxe8+ Rxc8 23.Bf4 Qe7 24.Bg5
Qe2 25.Qxb7 Ne4 26.Nxc4 Rxe4
27.a6 Bxb2 28.a7 Bd4 29.a8=Q+
Kg7 30.Be3 Bxc3 31.fxe3 Qxe3+
32.Kh1 Qg3 33.Rf1 Rf4 34.Qa1+
Kh6 35.Qc1 1-0

W: R. Cunningham (2212) B:
Mark Sefcheck (IL) (1964) 1.e4 c5
2.d4 cxd4 3.Nf3 Nc6 4.Nxd4 Nf6
5.Nc3 e5 6.Ndb5 d6 7.Bg5 a6
8.Na3 b5 9.Nd5 Qa5+ 10.Bd2 Qd8
11.Bg5 Qa5+ 12.Bd2 Qd8
13.Nxf6+ Qxf6 14.c4 Be7 15.cxb5
Nd4 16.Nc2 Bg4 17.Qb1 Nf3+
18.gxf3 Bxf3 19.Nc3 Bxh1 20.Nd5
Qh4 21.Nc7+ Kd7 22.Nxa8 Rxa8
23.bxa6 Qxe4+ 24.Qxe4 Bxe4
25.Rc1 Bc6 26.b4 Rb8 27.a7 Ra8
28.b5 Bb7 29.b6 Rc8 30.Rxc8 Kxc8
31.Ba6 1-0

W: Marvin Rogan (IL) 2085 B:
James Rizzitano (2508) 1.e4 c5
2.Nc3 Nc6 3.g3 g6 4.Bg2 Bg7
5.Nge2 d6 6.d3 e6 7.Be3 Nd4
8.Qd2 Ne7 9.O-O-O Qb6 10.Rde1
Nec6 11.Bxd4 cxd4 12.Nd1 Bd7
13.c4 dxc3 14.Nexc3 Nd4 15.f4 Rc8
16.Rhf1 Qa6 17.Kb1 b5 18.Ne3 b4
19.Ne2 b3 20.a3 Nc2 21.Rc1 Qxa3
0-1

W: Eugene Martinovsky (IL)
(2429) B: Glen Gratz (IL) (2056)
1.c4 e5 2.Nc3 c5 3.g3 Nc6 4.Bg2 d6
5.c3 Be7 6.Nge2 Bg4 7.f3 Be6 8.b3
Nf6 9.O-O Qd7 10.e4 Bh3 11.d3
Bxg2 12.Kxcg2 h5 13.h4 O-O-O
14.a3 Nh7 15.Rh1 g5 16.hxg5
Nxc5 17.Nd5 Rdg8 18.Ne3 h4
19.g4 h3+ 20.Kf2 h2 21.Nf5 Rh3
22.Kg2 Rgh8 23.Bxcg5 Bxcg5 24.b4
Nd4 25.Nexc4 cxd4 26.c5 d5
27.Nd6+ Kb8 28.exd5 Bf4 29.Nf5
Qxd5 30.Qe2 f6 31.a4 1/2-1/2

W: Mark Siwek (IL) 2027) B:
Lawrence Chachere (IL) 2375)
1.e4 c5 2.Nf3 d6 3.d4 Nf6 4.Nc3
cxd4 5.Qxd4 Nc6 6.Bb5 Bd7
7.Bxc6 Bxc6 8.Bg5 e6 9.O-O-O
Be7 10.Rhe1 O-O 11.Kb1 Qc7
12.Bxf6 Bxf6 13.Qxd6 Qxd6
14.Rxd6 Bxc3 15.bxc3 Rfd8
16.Rd4 Kf8 17.Ne5 Be8 18.Red1
Rdc8 19.Kb2 f6 20.Nf3 e5 21.Rb4
Rc7 22.Rd3 b6 23.Nd2 Rac8 24.f3
Bf7 25.h4 Ke7 26.g3 Rc5 27.Nb3
R5c6 28.Nd2 Be8 29.Nf1 a5 30.Rb5
Re6 31.Rbd5 Be6 32.Ne3 g6 33.c4
Bxd5 34.cxd5 Rd6 35.Rc3 Rxc3
36.Kxc3 b5 37.Kh3 Rb6 38.a3 h5
39.f4 Kd6 40.e3 Rb8 41.Nc2 Re8
42.f5 gxf5 43.Ne3 fxe4 44.c4 bxc4+
45.Kxc4 Rc8+ 46.Kb3 Kc5 47.g4
hxg4 48.Nxc4 f5 49.Nf6 Kd4 50.d6
a4+ 51.Kb2 f4 52.d7 Rb8+ 53.Kc1
f3 54.Kd1 Kd3 55.Ke1 e3 0-1

W: Jon Gotz (IL) 2025) B: S.
Lower (2229) 1.d4 d5 2.c4 e6 3.Nc3
c5 4.cxd5 exd5 5.Nf3 Nc6 6.g3 Nf6
7.Bg2 Be7 8.O-O O-O 9.b3 Bg4
10.dxc5 Bxc5 11.Bb2 a6 12.Rc1
Qd6 13.Qd2 Rad8 14.Rfd1 Rfe8
15.Qg5 Qe6 16.Bf1 h6 17.Qf4 Ba7
18.Na4 Qe4 19.Qxe4 dxe4 20.Ne1
Nd4 21.Nc3 b5 22.h3 Bh5 23.g4
Bg6 24.e3 Nc6 25.b4 h5 26.Be2
hxg4 27.hxg4 Bb8 28.a4 bxa4
29.Nxa4 Nd5 30.Ba3 Nc7 31.Ne3
Kh7 32.Kg2 Kh6 33.Nc2 Kg5
34.Na1 Rh8 35.Nb3 f6 36.Na5 Nb5
37.Nxb5 axb5 38.Nxc6 Rxd1
39.Rxd1 Be7 40.Rd5+ Kh4 41.Ne7
Rh6 42.Nxcg6+ Rxcg6 43.Rh5+ 1-0

W: Nikolai Goncharoff (IL)
(1830) B: Luis Bernal (IL) (2074)

1.e4 g6 2.d4 Bg7 3.Nf3 d6 4.c3
Nf6 5.Bd3 Nbd7 6.O-O e5 7.d5
Nc5 8.Qe2 Nxd3 9.Qxd3 O-O
10.h3 Nh5 11.Na3 f5 12.Bg5 Qe8
13. Be3 fxe4 14.Qxe4 Bf5 15.Qh4
e4 16.Nd4 Bd7 17.Nac2 h6 18.g4
Bf6 19.g5 hxg5 20.Bxc5 Bxc5
21.Qxc5 Nf4 22.Qg3 Nxb3+
23.Kh2 Kg7 24.Ne6+ Bxc6
25.dxc6 Nf4 26.Nd4 c5 27.Nc2
Rh8+ 28.Kg1 Ne2+ 29.Kg2
Nxc3 30.Kxc3 Qxc6 31.Rh1
Qe5+ 32.Kg4 Raf8 33.Rxb8 Rf3
34.Rh7+ Kxh7 35.Rh1+ Kg7
36.Rh7+ Kxh7 37.Ne3 Qf4+ 0-1

W: Fred Burgess (IL) (1769) B:
Steve Surak (IL) (2100) 1.d4 e6
2.Nf3 f5 3.g3 Nf6 4.Bg2 Be7 5.c4
d6 6.Nc3 O-O 7.O-O Qe8 8.Rc1
d5 9.b3 c6 10.Ne5 Nbd7 11.Nd3
Ne4 12.Bb2 Nd6 13.cxd5 exd5
14.Rc1 Nf7 15.Rc2 Bd6 16.Qc1
Qe7 17.Na4 Ng5 18.Nac5 Ne6
19.Nxc6 Qxc6 20.Ba3 Bxa3
21.Qxa3 Nf6 22.b4 Qd6 23.Qb2
Bd7 24.Nc5Rfb8 25.e3 Qc7
26.Rec1 Be8 27.a4 a6 28.a5 Rd8
29.f3 Qxe3+ 30.Kh1 Rab8
31.Re2 Qh6 32.Rce1 Bd7 33.Re7
Qg6 34.Qe2 Kf8 35.Qe5 Re8
36.Qd6 Kg8 37.Nxd7 Rbd8
38.Qe6+ Kh8 39.Nxf6 0-1

W: R. Mikell (1983) B: Ted
Isaac (IL) (1633) 1.d4 Nf6 2.c4
e6 3. Nc3 Bb4 4.e3 c5 5.Bd3 cxd4
6.exd4 O-O 7.Nf3 d6 8.Qc2 h6
9.O-O Bxc3 10.Qxc3 b6 11.b3
Bb7 12.Bc2 Nbd7 13.Ba3 Qc7
14.Rfe1 Rfd8 15.Qd3 Nf8
16.Rad1 Rac8 17.Nh4 d5 18.c5
bxc5 19.Bxc5 Ne4 20.b4 Qf4
21.Nf3 Nxc5 22.bxc5 Qc7 23.Ne5
Qa5 24.Rb1 Ba6 25.Qf3 Qc7
26.Qa3 Bc4 27.Rb4 Rb8 28.Nxc4
dxc4 29.Rxc4 Rd5 30.Be4 Rh5
31.h3 Rh4 32.Ra4 Rxe4 33.Rd1
Rb7 34.Qd3 Rf4 35.Qc2 Ng6
36.Ra6 Qb8 37.c6 Rc7 38.d5 exd5
39.Rxd5 Rb4 40.Qd3 Rb1+ 0-1

W: Ralph Erickson (IL) (1810)
B: Charles Hicks (IL) (1498)
1.d3 Nf6 2.Nf3 g6 3.Bg5 Bg7
4.Qd2 O-O 5.Nc3 d6 6.Bh6 Nbd7
7.e4 e5 8.h3 a6 9.Be2 Rb8

JANUARY 20-21, 1990

TIM JUST

WINTER OPEN/RESERVE VII

A COLLEGE OF LAKE COUNTY EVENT

\$1700 IN PRIZES

17

GAMES FROM THE 1989 U.S. OPEN

10.Bxg7 Kxg7 11.O-O-O b5
12.Qc3 b4 13.Nb1 c5 14.Nfd2 Nb6
15.h4 h5 16.f3 Be6 17.Nc4 Qc7
18.Nbd2 Nbd7 19.Qg5 a5 20.g4
Nh7 21.Qe3 Ndf6 22.Rhg1 a4
23.Rdf1 d5 24.g5 dxc4 25.gxf6+
Nxf6 26.Nxc4 b3 27.cxb3 axb3
28.a3 Rfc8 29.Rg5 Nd7 30.Rfgl
Kf8 31.Rf1 Ke7 32.f4 exf4 33.Rxf4
Rd8 34.Rg1 Rbc8 35.Qg3 Bxc4
36.dxc4 Ne5 37.Qg5+ Ke6 38.Qf6+
Kd7 39.Rd1+ 1/2-1/2

W: Dave Coulter (IL) (1298) B:
Daniel Kumro, Jr. (IL) (1744)
1.e4 e5 2.d4 exd4 3.c3 dxc3 4.Bc4
cxb2 5.Bxb2 Bb4+ 6.Nc3 d6
7.Nge2 Be6 8.Bb3 Nc6 9.O-O Nf6
10.Nd5 Bxd5 11.exd5 Ne5 12.Ba4+
Kf8 13.Nf4 Bc5 14.Bxe5 dxe5 15.
Nd3 Bd4 16.Rb1 Rb8 17.Qf3 e4
18.Qf4 Bxf2+ 19.Nxf2 Nxd5
1/2-1/2

W: Ron Amirante (IL) (1389) B:
Carl Solonka, Jr. (IL) (1632) 1.e4
c5 2.f4 Nc6 3.Bb5 Nd4 4.Bc4 e6
5.Nf3 Qf6 6.d3 a6 7.a4 d6 8.c3
Nxf3+ 9.Qxf3 Ne7 10.a5 Nc6
11.O-O Be7 12.Be3 O-O 13.Nd2
Bd7 14.Nb3 Rab8 15.d4 cxd4
16.cxd4 Nb4 17.Nc1 Nc2 18.e5
dxe5 19.dxe5 Qh6 20.Rb1 Nxe3
21.Qxe3 Rbc8 22.Qb3 Bc5+
23.Kh1 Bc6 24.Qg3 Rfd8 25.Nd3
Be4 26.b3 Ba7 27.Rbcl Bxd3
28.Bxd3 Rxc1 29.Rxc1 Qh5 30.h3
g6 31.Kh2 Kg7 32.h4 b5 33.Kh3
Rd7 34.Rf1 Bc5 35.Re1 Bb4 36.Rcl
Rd4 37.Qe3 Rd7 38.g4 Qh6 39.g5
Qh5 40.Be2 Bd2 41.Qe4 Qxc2
42.Qxe2 Bxcl 43.Qe4 Rd5 44.Kg4
Bd2 45.h5 Bxa5 46.h6+ Kf8 47.Qc2
Bd8 48.Qc6 a5 49.Qa8 b4 50.Qc8
Rd3 51.Qc5+ Kg8 52.Qb5 Rd5
53.Qe8+ 1-0

W: Novag X (2164) B: William
Wolf (IL) (1870) 1.d4 Nf6 2.Bg5
e6 3.c4 h6 4.Bxf6 Qxf6 5.Nc3 Bb4
6.Nf3 c5 7.e3 Nc6 8.Be2 O-O
9.O-O Bxc3 10.bxc3 d6 11.d5 exd5
12.cxd5 Ne7 13.c4 Ng6 14.a4 a5
15.Nd2 Qe7 16.Rb1 f5 17.Re1 Ne5
18.Qb3 Qf7 19.e4 f4 20.Qc3 Qf6
21.Rb5 Kh7 22.Nb3 f3 23.Bxf3
Nxf3+ 24.Qxf3 Qxf3 25.gxf3 Rxf3
26.Kg2 Rc3 27.f3 Rxc4 28.e5 dxe5
29.Rxe5 Rb4 30.Nxc5 Rxb5
31.axb5 a4 32.d6 a3 33.Re1 Ra5
34.d7 Bxd7 35.Nxd7 Rxb5 36.Ra1
Rb2+ 37.Kg3 a2 38.Nc5 b5 39.Nd3
Rb3 40.Nc5 Rc3 41.Na6 Ra3
42.Nb4 Kg6 43.Rxa2 Rxa2

44.Nxa2 Kf5 45.Nb4 Kg5 1/2-1/2

ROUND 4

W: P. Cripe (2350) B: Dmitry
Gurevich (IL) (2678) 1.e4 c5 2.d4
exd4 3.c3 dxc3 4.Nxc3 d6 5.Bc4 e6
6.Nf3 Nf6 7.O-O a6 8. Qe2 b5
9.Bb3 Ra7 10.e5 dxe5 11.Nxe5 Bc5
12.Bg5 h6 13.Bh4 Be7 14.Rfd1 Qb6
15.a4 b4 16.a5 Qb7 17.Na4 Nd5
18.Bg3 O-O 19.Racl Bg5 20.Rc4
Qb5 21.Qc2 Bb7 22.Re5 Qe8
23.Nb6 Be7 24.Ba4 Qd8 25.Rc4
Bd6 26.Qd3 Qe7 27.Be2 f5 28.Ng6
Qg5 29.Nxf8 Bxf8 30.Qe2 Qg6
31.Re1 Kf7 32.Rg4 Qf6 33.Be5 Qe7
34.Bxb8 fxg4 35.Bxa7 Nf4
36.Qxg4 g5 37.Bb8 h5 38.Qd1 1-0

W: W. Browne (2678) B: J.
Schuyler (2360) 1.d4 g6 2.e4 Bg7
3.Nc3 c5 4.d5 d6 5.Be2 Nf6 6.Nf3
O-O 7.O-O Bg4 8.Bf4 Nbd7 9.Re1
a6 10.a4 Qb6 11.Qcl Qb4 12.a5 b5
13.Bd2 Nxe4 14.Nxe4 Qxe4 15.Ng5
Qxe2 16.Rxe2 Bxe2 17.Qe1 Bg4
18.Qxe7 h6 19.Ne6 fxe6 20.Qxd7
Rfd8 21.Qe7 exd5 22.Bxh6 Bxb2
23.Re1 Bf5 24.h4 Re8 25.Qxe8+
Rxe8 26.Rxe8+ Kf7 27.Ra8 Bxc2
28.Rxa6 Ke6 29.Rb6 b4 30.a6 d4
31.f3 Bb3 32.Bf4 d3 33.Rxd6+ 1-0

W: Roumel Reyes (2348) B: S.
Kudrin (2670) 1.e4 c5 2.Nf3 d6
3.d4 cxd4 4.Nxd4 Nf6 5.Nc3 g6
6.Be3 Bg7 7.f3 Nc6 8.Qd2 O-O
9.Bc4 Bd7 10.O-O-O Ne5 11.Bb3
Rc8 12.h4 h5 13.Bh6 Bxh6 14.Qxh6
Rxc3 15.bxc3 Qc7 16.Kbl Rc8
17.g4 a5 18.gxh5 a4 19.hxg6 axb3
20.cxb3 Qxc3 21.gxf7+ Kxf7
22.Rhg1 Bh3 23.Rg3 Bf1 24.Rg7+
Ke8 25.Qh8+ Kd7 26.Rxe7+ Kxe7
27.Nf5+ Kd7 28.Qg7+ Kc6
29.Rxd6+ Kc5 30.Qgl+ Kb4
31.Qxf1 b5 32.Ne7 Rc7 33.Rxf6
Qc2+ 34.Kal Qcl+ 0-1

W: M. Wilder (2669) B: M. Weiss
(2347) 1.e4 e6 2.d4 d5 3.e5 c5 4.c3
Bd7 5.Nf3 Qb6 6.Be2 cxd4 7.cxd4
Bb5 8.Nc3 Bxc2 9.Nxe2 Bb4+
10.Bd2 Nc6 11.O-O Bxd2 12.Qxd2
Nge7 13.Ng3 O-O 14.Nh5 Kh8
15.Racl Rac8 16.Rc3 Ng6 17.Rfel
Nce7 18.Rb3 Rxc1+ 19.Qxcl Rc8
20.Qxc8+ Nxc8 21.Rxb6 Nxb6
22.b3 Nd7 23.Ng5 Kg8 24.f4 Ne7
25.Nf3 Kf8 26.Kf2 Nc6 27.Ke2 a5
28.a4 b5 29.axb5 Na7 30.Kd3
Nxb5 31.g4 g6 32.Ng3 Nb6 33.f5
exf5 34.gxf5 a4 35.bxa4 Nxa4

36.fxg6 hxg6 37.Ne2 Nc7 38.Nf4
Nb6 39.Kc3 Ne6 40.Nd3 Ke7
41.Kb4 Nd7 42.h4 f6 43.Kc3
1/2-1/2

W: Marc Lonoff (IL) (2328) B:
L. Albur (2658) 1.g3 e5 2.c4 c6
3.d4 exd4 4.Qxd4 d5 5.cxd5 cxd5
6.Nc3 Nf6 7.Bg5 Nc6 8.Qa4 d4
9.Rd1 Bd7 10.Bh3 Bxh3 11.Nxh3
Qc8 12.Bxf6 gxf6 13.Nd5 Qxh3
14.Nxf6+ Kd8 15.Rxd4+ Kc8
16.Rc4 Kb8 17.e4 a6 18.Rxc6 bxc6
19.Qd4 Kb7 20.Nd5 cxd5
21.Qxd5+ Kb6 22.Qb3+ Kc7
23.Qc4+ Kd7 24.Qxf7+ Be7 25.Kc2
Ra7 26.Qd5+ Ke8 27.Qe5 Rf8
28.Qb8+ Bd8 29.Qxa7 Qg4+
30.Kd2 Qf3 31.Qc5 Qxh1 32.Qe5+
Be7 33.Qb8+ Kf7 34.Qf4+ Kg8 0-1

W: M. Dlugy (2653) B: P.
Bertolos (2328) 1.d4 g6 2.c4 Bg7
3.e4 d6 4.Nc3 Nc6 5.Be3 e5 6.d5
Nce7 7.g4 f5 8.f3 Nf6 9.h3 c5 10.a3
O-O 11.b4 b6 12.Bd3 Bd7 13.Rb1
Rb8 14.Rh2 f4 15.Bf2 h6 16.Nge2
Be8 17.Ncl Rf7 18.Bgl Nc8
19.Rhb2 Bf8 20.Bc2 Rc7 21.bxc5
dxc5 22.Nd3 Bd6 23.Ba4 Bxa4
24.Qxa4 Ra8 25.Bf2 Rh7 26.Ke2
Ne8 27.Bh4 g5 28.Bf2 Qd7 29.Qxd7
Rxd7 30.a4 Be7 31. Nb5 Re7 32.a5
Bd8 33.Ra2 Rb8 34.Nc3 Rbb7
35.axb6 axb6 36.Ra8 Ncd6 37.Nb5
Rbd7 38.Nxd6 Nxd6 39.Rxb6 Kg7
40.Rxd6 Rxd6 41.Bxc5 Rdd7
42.Rxd8 1-0

W: D. Eckert (2317) B: J.
Fedorowicz (2652) 1.d4 Nf6 2.Nf3
g6 3.e4 c5 4.d5 Bg7 5.Nc3 O-O 6.e4
d6 7.Be2 c5 8.O-O Na6 9.Nel Nd7
10.a3 f5 11.Nd3 Nf6 12.f3 f4 13.b4
b6 14.bxc5 bxc5 15.Bd2 Nc7
16.Rb1 h5 17.Nf2 g5 18.h3 Rf7
19.Qa4 Bf8 20.Nb5 Nxb5 21.Qxb5
Bd7 22.Qa6 Qe8 23.Rb3 Rg7
24.Rfb1 g4 25.hxg4 hxg4 26.fxg4
Nxg4 27.Bf3 Nxf2 28.Kxf2 Qg6
29.Rb8 Rxb8 30.Rxb8 Bg4
31.Bxg4 Qxg4 32.Rxf8+ Kxf8
33.Qxd6+ Ke8 34.Qe6+ Qxe6
35.dxc6 Re7 36.g3 fxg3+ 37.Kxg3
Rxe6 38.Be3 Kf7 39.Bxc5 Rc6
40.Bxa7 Rxc4 0-1

W: I. Ivanov (2619) B: D. Allan
(2319) 1.e4 Nf6 2.Nf3 e6 3.d4 c5
4.d5 exd5 5.cxd5 Bd6 6.Nc3 Bc7
7.e4 d6 8.Be2 O-O 9.Bg5 Re8
10.O-O Nbd7 11.Nd2 a6 12.a4 Nf8
13.f4 h6 14.Bh4 Ng6 15.Bg3 Ba5
16.Bf3 Rb8 17.Qc2 b5 18.axb5
axb5 19.Kh1 e4 20.Rfel Bg4 21.b3
Bxf3 22.gxf3 Nh5 23.bxc4 Bxc3

MICRO RESALES CHAMPAIGN-URBANA OPEN

CHESS TOURNAMENT

OCTOBER 21-22, 1989

BEST WESTERN PARADISE INN, 1001 N DUNLAP, SAVOY, ILL. 2 1/2 MI. SOUTH OF CHAMPAIGN ON HWY 45

\$1200 IN PRIZES GUARANTEED!!!

THREE SECTIONS:

OPEN SECTION: (OPEN TO 1500 AND ABOVE)

FOUR-ROUND SWISS-SYSTEM TOURNAMENT. TIME CONTROL: TWO AND 1/2 HOURS PER PLAYER PER GAME.
ENTRY FEE: \$34. **\$580 IN PRIZES GUARANTEED BY MICRO RESALES:**

FIRST, \$250 . . . SECOND, \$125 . . . UNDER 2100, \$125 . . . UNDER 1950, \$80.

SCHEDULE OF ROUNDS: SATURDAY, 10 A.M., 4 P.M.; SUNDAY, 9 A.M., 3 P.M..

UNDER 1900 SECTION:

SIX-ROUND SWISS-SYSTEM TOURNAMENT. TIME CONTROL: 100 MINUTES PER PLAYER PER GAME.
ENTRY FEE: \$25. **\$405 IN PRIZES GUARANTEED BY MICRO RESALES:**

FIRST, \$125 . . . SECOND, \$100 . . . UNDER 1750, \$100 . . . UNDER 1600, \$80.

SCHEDULE OF ROUNDS: SATURDAY, 9:40 A.M., 1:40 P.M., 5:40 P.M.; SUNDAY, 9 A.M., 1 P.M., 5 P.M.

OPEN & UNDER 1900 SECTIONS ARE ILLINOIS CHESS ASSOCIATION MAXI-TOUR EVENTS:
ILLINOIS CHESS ASSOCIATION MEMBERSHIP REQUIRED FOR ILLINOIS RESIDENTS: \$10 (\$6 UNDER AGE 18)

UNDER 1500 SECTION:

TWELVE-ROUND, MODIFIED-PAIRING TOURNAMENT. TIME CONTROL: 45 MINUTES PER PLAYER PER GAME.
ENTRY FEE: \$16. **\$215 IN PRIZES GUARANTEED BY MICRO RESALES:**

FIRST, \$100 . . . SECOND, \$65 . . . UNDER 1350, \$50.

SCHEDULE OF ROUNDS: SATURDAY, 10:20 A.M., 12:10 P.M., 2 P.M., 3:50 P.M., 5:40 P.M., 7:30 P.M.

SUNDAY, 9 A.M., 10:50 A.M., 12:40 P.M., 2:30 P.M., 4:20 P.M., 6:10 P.M.

ILLINOIS CHESS ASSOCIATION MEMBERSHIP NOT REQUIRED FOR UNDER 1500 SECTION.

ALL SECTIONS:

ABOVE ENTRY FEES ARE IF RECEIVED IN ADVANCE. ALL ARE \$6 MORE AT THE SITE.

REGISTRATION IS SATURDAY MORNING, 8:30 - 9:20 A.M.

HALF-POINT BYES ARE AVAILABLE ANY AND ALL ROUNDS.

UNRATEDS MAY WIN ANY PRIZE EXCEPT UNDER 1350.

NO SMOKING IN THE PLAYING ROOMS.

LATEST RATINGS USED.

HOTEL RATES AT THE PARADISE INN: \$32; \$34 OR \$44; \$46; \$48 FOR 1; 2; 3; 4 IN A ROOM.

RESERVE ROOMS BY PHONING (800) 528-1234; MENTION CHESS. RESERVE EARLY!

SEND ENTRIES TO: TOM WORLEY, 2106 ZUPPKE, URBANA, IL 61801. INFORMATION: (217) 367-4744.

GAMES FROM THE 1989 U.S. OPEN

24.Qxc3 Nxf4 25.Bxf4 Nxf4
26.Rg1 Re5 27.Rg4 Qf6 28.Rag1
Ne2 29.Rxg7+ Kh8 30.Qb2 Nxf1
31.Rxg1 b4 32.c5 dxc5 33.f4 Rf5
34.e5 Qe7 35.Ne4 Rxf4 36.e6+ f6
37.Qd2 Rh4 38.Qe1 Rxe4 39.Qxe4
Rg8 40.Rxg8+ Kxg8 41.Qg6+ Qg7
42.Qe8+ Qf8 43.Qd7 Qa8 44.Qf7+
Kh8 45.Qxf6+ Kh7 46.Qf7+ 1-0

W: Bill Williams (2316) B: M.
Brooks (2606) 1.c4 Nf6 2.Nc3 g6
3.g3 Bg7 4.Bg2 d6 5.d3 Nbd7 6.f4
O-O 7.Nf3 c5 8.e4 c6 9.O-O Ng4
10.Qe2 f5 11.h3 Ngf6 12.exf5 gxf5
13.fxe5 Nxe5 14.Nh4 Re8 15.Nxf5
Bxf5 16.Rxf5 Neg4 17.Ne4 Nxe4
18.Bxe4 d5 19.cxd5 Nf6 20.Bg5
cxd5 21.Bxf6 Qb6+ 22.Kg2 Bxf6
23.Rxd5 Re7 24.Rc1 Kh8 25.b3
Rg8 26.Qf2 Qa6 27.a4 Bh4
28.Qb2+ Bf6 29.Qd2 Be5 30.g4 Qe6
31.Qf2 Rf7 32.Qh4 Bf6 33.Qg3 Qb6
34.Rb5 Qd4 35.Rf1 Rc8 36.Rf2
Qa1 37.Rbf5 Rc1 38.Qb8+ Kg7
39.Rxf6 Rxf6 40.Qxb7+ Kf8
41.Qb8+ Kc7 42.Qxa7+ Kd8
43.Qa8+ Kc7 44.Qa5+ Kc8
45.Rxf6 Qxf6 46.Qf5+ Qxf5
47.Bxf5+ Kd8 48.Bxh7 Rc3 49.b4
Rb3 50.b5 Ra3 51.b6 Rxa4 52.Be4
Rb4 53.b7 Ke7 54.Kf3 Kf6 55.Kf4
Rb1 56.g5+ Ke6 57.d4 Rb2 58.h4
Rb4 59.h5 Rb2 60.h6 1-0

W: J. Gallagher (2309) B: R.
Byrne (2548) 1.e4 e5 2.Nf3 Nc6
3.Bb5 a6 4.Bxc6 dxc6 5.O-O Qd6
6.d4 exd4 7.Qxd4 Qxd4 8.Nxd4
Bd7 9.Be3 O-O 10.Nc3 g6 11.f4
Bg7 12.Rad1 Nf6 13.Nf3 Bg4
14.Rxd8+ Rxd8 15.Ne5 Be6 16.f5
gxf5 17.exf5 Bd5 18.Bg5 1/2- 1/2

W: G. Kamsky (2526) B: George
Umezina (IL) (2287) 1.e4 e6 2.d4
d5 3.Nc3 Bb4 4.e5 Ne7 5.a3 Bxc3+
6.bxc3 c5 7.Qg4 O-O 8. Bd3 Nbc6
9.Qh5 Ng6 10.Nf3 Ncc7 11.h4 f6
12.exf6 gxf6 13.Qh6 Rf7 14.h5 Nf8
15.O-O c4 16.Be2 Nf5 17.Qf4 Qd6
18.Re1 Bd7 19.a4 Re8 20.Bf1 Rg7
21.g3 a5 22.Bg2 Qxf4 23.Bxf4 Ra8
24.Reb1 Be8 25.h6 Re7 26.Re1 Ng6
27.Be1 Bd7 28.g4 Nd6 29.Nh2 Ne4
30.Bxe4 dxc4 31.Rxe4 Be6 32.Rc3
Nf4 33.Bd2 Nd5 34.Rg3 Nb6 35.g5
f5 36.Nf3 Bxa4 37.g6 hxg6
38.Rxg6+ Kh7 39.Rg3 Bxc2
40.Ng5+ Kh8 41.Bf4 Nd7 42.Bd6
Rac8 43.Bxe7 Rxe7 44.Rxa5 Nf6
45.Re5 f4 1-0

W: Albert Chow (IL) (2418) B:

A. Chiaudano (2266) 1.c4 e6 2.Nf3
d5 3.d4 c6 4.Qc2 Nf6 5.g3 Be7
6.Bg2 O-O 7.O-O b6 8.Nbd2 Bb7
9.e4 dxe4 10.Nxe4 Na6 11.Rd1 Qc8
12.Bg5 Qd8 13.Ne5 Nxe4 14.Bxe7
Qxe7 15.Bxe4 f5 16.Bg2 c5 17.Bxb7
Qxb7 18.dxc5 Nxc5 19.b4 Ne4
20.Rd7 Qc8 21.Rad1 Nf6 22.R7d6
Qe8 23.Qe2 Ne4 24.R6d3 Rc8 25.f3
Nf6 26.Rd6 b5 27.c5 Nd5 28.Rd4
Rc7 29.c6 Qe7 30.Rd7 Qf6
31.R4xd5 exd5 32.Rxc7 Re8 33.f4
Qd6 34.Qh5 Rf8 35.Rf7 1-0

W: R. Cunningham (2251) B:
Greg Defotis (IL) (2410) 1.e4 c5
2.d4 cxd4 3.Nf3 d6 4.Nxd4 Nf6
5.Nc3 a6 6.Be2 e5 7.Nb3 Be7 8. Be3
Be6 9.a4 O-O 10.O-O Nc6 11.f4
exf4 12.Rxf4 Rc8 13.Qe1 Nd7
14.Rf1 Bf6 15.Rd1 Nb4 16.Qd2
Ne5 17.Nd4 Bg4 18.Rxf6 Qxf6
19.Bg5 Qg6 20.Bxg4 Nxg4 21.Nf5
Qh5 22.h3 Ne5 23.Ne7+ Kh8 24.
Qxd6 Qxg5 25.Nxc8 Rxc8
26.Qxb4 Qg3 27.Qd6 h6 28.Kh1
Rc6 29.Qb8+ Kh7 30.Ne2 Qf2
1/2-1/2

W: Angelo Sandrin (IL) (2174)
B: Andrew Karklins (IL) (2382)
1.d4 Nf6 2.Nf3 e6 3.Bg5 c5 4.c3 h6
5.Bh4 b6 6.e3 Bb7 7.Nbd2 Be7
8.Bd3 g5 9.Bg3 g4 10.Ne5 h5 11.e4
d6 12.Qa4+ Kf8 13.Nec4 h4 14.Bf4
cxd4 15.cxd4 d5 16.exd5 Nxd5
17.Bxb8 Qxb8 18.Ne5 Kg7
19.Nxg4 Qf4 20.h3 Bb4 21.Rd1
Qxd4 22.Qd7 Qxd3 23.Qxb7 Nf4
24.Qf3 Qxf3 25.gxf3 Nd3+ 26.Ke2
Nxb2 27.Rb1 Bxd2 28.Kxd2
Rhd8+ 29.Ke2 Na4 30.Rbc1 Rac8
31.a3 Rc3 32.Rxc3 Nxc3+ 33. Ke3
Nd5+ 34.Ke2 Rc8 35.Ne3 Nxe3
36.fxe3 Rc2+ 37.Kd3 Ra2 38.Rg1+
Kf6 39.Rg4 Rxa3+ 40.Kd2 Ra2+
41.Kd3 Ra3+ 42.Kd2 a5 43.Rxh4
b5 44.Rf4+ Ke7 45.h4 b4 46.Rc4
Ra2+ 47.Kd3 b3 48.Rc7+ Kf6
49.Rb7 a4 1-0

W: J. Rizzitano (2542) B: Greg
Bungo (2179) 1.e4 d6 2.d4 Nf6
3.Nc3 g6 4.f4 Bg7 5.Nf3 O-O
6.Bd3 Na6 7.O-O c5 8.d5 Bg4
9.Qe1 Nb4 10.Qh4 c4 11.Bxc4
Nxc2 12.Rb1 Qb6+ 13.Kh1 Rac8
14.Bb3 Nd4 15.Be3 Nxf3 16.Rxf3
Qb4 17.Rff1 Bd7 18.Bg1 a5 19.Be2
Nxe4 20.Bxe4 Bxc3 21.Bxg6 fxe6
22.bxc3 Qxc3 23.Rxb7 Re7 24.Bd4
Qc4 25.Rxc7 Qxf1+ 26.Bg1 Qb5
27.Qxe7 Rf7 28.Qd8+ Be8 29.Rc8
Rf8 30.Qxd6 1-0

W: R. Koepke (2287) Rhys Read
(IL) (2031) 1.d4 Nf6 2.c4 e6 3. Nf3
d5 4.Nc3 c6 5.cxd5 exd5 6.Bg5 Be7
7.Qc2 Nbd7 8.e3 h6 9. Bh4 O-O
10.Bd3 Re8 11.O-O Ne4 12.Bxc4
Bxh4 13.Bh7+ Kh8 14.Bd3 Bf6
15.b4 a6 16.a4 Nf8 17.b5 axb5
18.axb5 Bd7 19.bxc6 bxc6 20.Na4
Ne6 21.Rab1 Qe7 22.Nb6 Rab8
23.Nxd7 Qxd7 24.Rxb8 Rxb8
25.Rc1 Rb6 26.Qa4 Qb7 27.g3 g5
28.Nd2 Kg7 29.Bf5 Nd8 30.Rb1
Rxb1+ 31.Bxb1 Qb2 32.Qc2 Qxc2
33.Bxc2 Be7 34.Bd1 f5 35.Kg2 Kf6
36.h3 Ne6 37.Bf3 f4 38.Nb3 Bb4
39.Bg4 fxe3 40.fxe3 Nd8 41.Kf3
Ke7 42.Bf5 Nb7 43.Kg4 Kf6 44.Bd7
Nd8 45.Kf3 Ke7 46.Be8 Kf7 47.Nc1
Ke7 48.Nd3 Bd6 49.Bg4 Kf6
50.Bh5 Ne6 51.Be8 c5 52. dxc5
Nxc5 53.Nb4 Ke5 54.Nc6+ Kf6
55.Nd4 1/2-1/2

W: Luis Bernal (IL) 2074 B:
Eugene Martinovsky (IL) 2429
1.c 4 Nf6 2.Nc3 g6 3.g3 d5 4.cxd5
Nxd5 5.Bg2 Nxc3 6.bxc3 Bg7 7.
Nf3 c5 8.O-O O-O 9.Qc2 Qc7
10.Rb1 e5 11.e4 c4 12.Rd1 Na6 13.
Ba3 Nc5 14.Rb5 b6 15.Bxc5 bxc5
16.Rdb1 Ba6 17.R5b2 Qe6 18.Ne1
Rad8 19.Bf1 Bh6 20.Nf3 Rfe8
21.Re1 Rd6 22.Bg2 f6 23.h3 Bb5
24.Qb1 Ba6 25.Re2 Red8 26.Rb8
Qc7 27.Rxd8+ Qxd8 28.Qc2 Qd7
29.Kh2 Rb6 30.Re1 Bb5 31.Qd1
Rd6 32.Qb1 Rd3 33.a4 Bxa4
34.Qb8+ Bf8 35.Rb1 Qf7 36.Ra1
Bc6 37.Rxa7 Rd7 38.Ra5 Rb7 39.
Qc8 Qd7 40.Qxd7 Rxd7 41.Bf1
Bxe4 42.Bxc4+ Kg7 43.Bb5 Rd6
44. Ra7+ Kh6 45.Nh4 Rxd2 46.Rf7
Bg7 47.g4 Rxf2+ 48.Kg3 Rc2 49.c4
Rc3+ 50.Kh2 Bh8 51.Rc7 Rc2+
52.Kg3 f5 53.Nf3 f4+ 54.Kh4 g5+
55.Nxg5 Bf6 0-1

W: John Dowse (IL) (1721) B:
Albert Sandrin (IL) (2088) 1.e4
e5 2.Ne2 Nf6 3.Nbc3 Nc6 4.f4 d5
5.fxe5 Nxe4 6.d4 Bb4 7.g3
Bg48.Qd3 f6 9.exf6 Qxf6 10.Be3
O-O 11.O-O-O Bxc3 12.bxc3 Qf3
13. Rg1 Nf2 14.Bxf2 Qxf2 15.Rg2
Qxf1 16.Rxf1 Rxf1+ 17.Kb2 Na5
18. a4 Nc4+ 19.Kb3 Bf5 0-1

W: John Marconnet (IL) (2141)
B: Peter Pelts (IL) (2375) 1.d4
Nf6 2.c4 c5 3.d5 e6 4.Nc3 exd5
5.cxd5 d6 6.e4 g6 7.Nf3 Bg7 8. Be2
O-O 9.O-O Re8 10.Nd2 a6 11.a4
Nbd7 12.f4 Rb8 13.a5 Qc7 14.Qc2
b5 15.axb6 Nxb6 16.h3 Qe7 17.Bf3
Nh5 18.Bxh5 gxf5 19. Qd1 h4
20.Qh5 f5 21.Nf3 fxe4 22.Ng5 Bf5
23.Rxa6 h6 24.Ne6 Bxe6 25.dxe6

GAMES FROM THE 1989 U.S. OPEN

Qxe6 26.f5 Qf7 27.Qxh4 Qf6
28.Qh5 Re5 29.g4 e3 30.Re1 Ne4
31.Ra4 Nxb2 32.Bxb2 Rxb2
33.Ra8+ Bf8 34.Ne2 Qg5 35.Nf4
Qxh5 36.Nxh5 Rb7 37.Nf4 Kf7
38.Rxf8+ Kxf8 39.Ng6+ Kf7
40.Nxe5+ dxe5 41.Rxe3 Kf6
42.Kg2 c4 43. Rc3 Rb2+ 44.Kg1
Rb4 45.Ra3 e4 46.Ra6+ Kg5
47.Re6 c3 48. Rc6 h5 49.Rxc3 hxg4
50. hxg4 Kxg4 51.f6 Rb6 52.f7 Rf6
53.Rc7 1/2-1/2

W: Richard Vlastnik (IL) (2145)
B: Lawrence Chachere (2375) 1.e4
c5 2.f4 g6 3.Nf3 Bg7 4.Nc3 Nc6
5.g3 e6 6.Bg2 Nge7 7.O-O O-O
8.d3 d6 9.Ne2 b6 10.Nh4 f5 11.c3 d5
12.e5 Rb8 13.Nf3 Bd7 14.Be3 Qc7
15.h3 a6 16.Qe1 Nd8 17.Qf2 Bh5
18.Rfd1 c4 19.Ned4 Bd7 20.dxc4
dxc4 21.Rd2 Nd5 22.Rad1 Nxe3
23.Qxc3 Bc8 24.Kh2 Bc8 25.Ne1
Bf8 26.Nec2 Bb7 27.a3 Bxg2
28.Kxg2 Nb7 29.Qf3 Nc5 30.Qc6
Rbc8 31.Qxc7 Rxc7 32.Nf3 h6
33.Ne3 b5 34.Rd8 Kf7 35. Rxe8
Kxe8 36.Nd4 Kf7 37.Nec2 Nd3
38.Rb1 Bc5 39.Kf3 g5 40.Ne2 Rd7
41.Nb4 gxf4 42.gxf4 a5 43.Nc6 Bb6
44.Ncd4 b4 45.axb4 axb4 46.Nc6
b3 47.Ned4 Bxd4 48.Nxd4 Ra7
49.Ke3 Nc5 50.Nb5 Ra4 51. Nd6+
Ke7 52.Rf1 Kf8 53.Rg1 Nd3
54.Rg2 Ra2 55.Nxc4 Nxf4 56.Kxf4
Ra4 57.Rg6 Rxc4+ 58.Kf3 Rh4
59.Kg3 Re4 60.Rxe6 Re2 1/2-1/2

W: E. Epp (2109) B: Ken Wallach
(IL) (2306) 1.Nf3 Nf6 2.d4 g6 3.g3
Bg7 4.Bg2 O-O 5.O-O d6 6.c4 c5
7.e3 Nc6 8.Nc3 Bg4 9.h3 Bd7 10.b3
Qa5 11.Bd2 Qd8 12.Bc1 Rb8
13.Bb2 a6 14.Qd2 b5 15. dxc5 bxc4
16.cxd6 cxb3 17.dxe7 Qxe7 18.Nd5
Nxd5 19.Bxg7 Kxg7 20.Qxd5 Rb5
21.Qc4 b2 22.Rab1 Qb4 23.Qc2
Rfb8 24.Nd2 Rc5 25. Qd3 Bf5 26.e4
Be6 27.Nb3 Bxb3 28.axb3 Qxb3
29.Qxa6 Rb6 30.Qa7 Rc3 31.Qc7
Rb7 0-1

W: B. Colias (2435) B: Brad
Crawford (IL) (2069) 1.d4 f5 2.
Nc3 d5 3.f3 g6 4.e4 dxe4 5.fxe4 Bg7
6.Nf3 Nc6 7.Bb5 a6 8.Bxc6+ bxc6
9.e5 Nh6 10.O-O Nf7 11.Na4 O-O
12.Nc5 e6 13.c3 g5 14.Qa4 g4
15.Ne1 Qe8 16.Ned3 Nd8 17.Rf2
Qe7 18.Be3 Bd7 19. Raf1 h5 20.Qc4
Be8 21.Rxf5 Rxf5 22.Rxf5 Kh8
23.Bg5 Qxc5 24.Qxc5 exf5 25.Qe7
Nf7 26.Bf6 1-0

W: W. Harrison
(2027) B: Eric Rommenberg (IL)
(2225) 1.e4 e6 2.d4 d5 3.Nd2 Nf6
4.e5 Nfd7 5.f4 c5 6.c3 Nc6 7.Ndf3
Qb6 8.Ne2 f6 9.f5 cxd4 10.fxe6
Ndx5 11.Nxe5 fxe5 12.cxd4 Bb4+
13.Bd2 Bxe6 14.dxc5 O-O 15.Bxb4
Nxb4 16.Nd4 Qxd4 0-1

W: D. Huddleston (2026) B: Alan
Watson (IL) (2222) 1.e4 Nf6 2.e5
Nd5 3.c4 Nb6 4.c5 Nd5 5.Bc4 e6
6.Nc3 Nxc3 7.dxc3 Nc6 8. Bf4
Bxc5 9.Qg4 g5 10.Bxg5 Rg8
11.Bxd8 Rxg4 12.Be2 Rxg2
13.Bxc7 b6 14.b4 Bxf2+ 15.Kf1
Rxxg1+ 16.Kxf2 Rg5 17.Rhg1
Rf5+ 18.Bf3 Nxe5 19.Rg8+ Ke7
20.Bd8+ 1-0

W: J. Marfia (2206) B: Joe
Splinter (IL) (2024) 1.e4 e6 2.d4
d5 3.Nc3 Bb4 4.Nge2 dxe4 5.a3
Be7 6.Nxe4 Nf6 7.Qd3 Bd7
8.Nxf6+ Bxf6 9.Bf4 Bc6 10.O-O-O
Nd7 11.Nc3 Nb6 12.Ne4 Bxe4
13.Qxe4 Qd5 14.Qxd5 Nxd5
15.Bg3 O-O-O 16.Be2 Rhe8
17.Rhe1 c6 18.c3 b5 19.Kc2 Kb7
20.Be5 Bxe5 21.dxe5 Kb6 22.g3 a5
23.b3 b4 24.axb4 axb4 25.cxb4
Nxb4+ 26.Kb2 Rxd1 27.Rxd1 Ra8
28.Ra1 Rxa1 29.Kxa1 Kc5 30.Kb2
Kd4 1/2-1/2

W: Matthew Chen (IL) (2005) B:
T. Weideman (2201) 1.d4 d5 2. e4
e6 3.Nc3 Nf6 4.Bg5 Nbd7 5.cxd5
exd5 6.e3 c6 7.Bd3 Be7 8. Qc2 O-O
9.Nf3 Re8 10.O-O Ne4 11.Bf4 Nef6
12.Rab1 Nf8 13.b4 Bg4 14.Nd2
Bh5 15.Na4 Bg6 16.b5 cxb5
17.Rxb5 Qd7 18.Rfb1 b6 19.Bxg6
Nxxg6 20.Bg3 Rac8 21.Nc3 Rc6
22.R5b3 Rec8 23.Rc1 b5 24.Qd1 b4
25.Ne2 Rxc1 26.Nxc1 Qc6 27.Rb1
Qc2 28.Ncb3 Qxd1+ 29.Rxd1 Rc2
30.Rc1 Rxa2 31.Re8+ Nf8 32.Ra8
N6d7 33.h3 Nb6 34. Re8 a5
35.Rxc7 a4 36.Re8 f6 37.Bd6 Kf7
38.Rxf8+ Ke6 39.Bxb4 axb3
40.Nxb3 Rb2 41.Rb8 Nd7 42.Nc5+
Nxc5 43.dxc5 Rb1+ 44.Kh2 Rb2
45.c6 Rc2 46.Rb6 f5 47.c7+ Kd7
48.Bd6 Rxf2 49.Rb8 Rc2 50.
c8=Q+ Rxc8 51.Rxc8 Kxc8
52.Kg3 Kd7 53.Be5 g5 54.Bf6 h6
55.h4 f4+ 56.exf4 gxf4+ 57.Kxf4
1-0

W: Tom Oelnich (IL) (2000) B: R.
Phillips (2191) 1.Nf3 Nf6 2. b4 e6
3.a3 c5 4.bxc5 Bxc5 5.e3 d5 6.d4

Bd6 7.Bd3 b6 8.O-O Ba6 9.Qe2
Bxd3 10.cxd3 Nbd7 11.Bb2 O-O
12.e4 dxe4 13.dxe4 Bf4 14. Nbd2
Rc8 15.Rac1 Rc7 16.g3 Rxc1
17.Rxc1 Bh6 18.Rc2 Qa8 19.e5
Nd5 20.Ne4 Rc8 21.Nd6 Rxc2
22.Qxc2 Nf4 23.Qc8+ Qxc8
24.Nxc8 Nd3 25.Bc3 a6 26.Kf1 Bc1
27.Ke2 Nb2 28.Bxb2 Bxb2 29.a4 f6
30. Ne7+ Kf7 31.Nc6 Ba3 32.Kd3
fxe5 33.Nfx5+ Nxe5+ 34.Nxe5+
Ke7 35.Nc4 Bd6 36.Nxb6 Bc7
37.Nc4 Kf6 38.Ke4 g5 39.h3 h5
40.g4 hxg4 41.hxg4 Ke7 42.f3 Bf4
43.Nb2 Bd2 44.Nd3 Kd6 45.Nc5 a5
46.Nd3 Ke7 47.Ke5 Be3 48.f4 Kf7
49.f5 exf5 50.gxf5 Bd2 51.Nf2 Bf4+
52.Ke4 Bc7 53.Ng4 Ke7 54.Kd5
Bb6 55.f6+ Kf7 56.Ke5 Kg6 57.d5
Bd8 58.Ke6 Bb6 59.d6 Bc5 60.d7
1-0

W: Florencio Inumerable (IL)
(2166) B: James McNamara (IL)
(2043) 1.d4 Nf6 2.c4 c5 3.d5 b5
4.cxb5 a6 5.e3 g6 6.Nc3 Bg7 7.Bc4
d6 8.h3 O-O 9.Nf3 Nbd7 10.bxa6
Bxa6 11.Bxa6 Rxa6 12.O-O Qa8
13.e4 Rb8 14.Qe2 Nb6 15.Bg5 Na4
16.Nd1 Rb4 17.Bxf6 Bxf6 18.Rb1
Rab6 19.b3 c4 20.Nd2 cxb3
21.Rxb3 Nc5 22.Rxb4 Rxb4 23.
Nc4 Qa6 24.Nde3 Nxe4 25.a3 Ra4
26.Qc2 Nc3 27.Qb3 Qb5 28.Rb1
Qc5 29.Qb8+ Kg7 30.Rb4 Qd4
31.Nxd6 Ne2+ 32.Kf1 Qa1+
33.Rb1 Qa2 34.Ne8+ Kh6 35.Nxf6
exf6 36.Rb2 Ng3+ 37.fxg3 Qa1+
38.Kf2 Kg7 39.Qb6 Rxa3 40.Ng4
Ra6 41.Qb3 Qe1 42.Qc2 Qg5
43.Rb5 Ra1 44.Rb1 Ra3 45.Qd1 b5
46.Nh2 Qxxg3+ 47.Kg1 Rd3 48.Qe1
Qd6 49.Rd1 Rxd5 50.Rxd5 Qxd5
51.Nf3 Qe6 52.Qxc6 fxe6 53.Kf2 e5
54.Ke3 g5 55.g4 hxg4 56.hxg4 Kf7
57.Ke4 Ke6 58.Nh2 Kf7 59.Kf5 Ke7
60.Nf1 Kd6 61.Kxf6 Kd5 62.Kxg5
Ke4 63.Kf6 Kf3 64.g5 e4 65.Nd2+
1-0

W: D. Fletcher (2214) B: Leslie
Bale (IL) (1890) 1.f4 g6 2. e4 Bg7
3.Nf3 d5 4.e5 Bg4 5.d4 Nh6 6.Bd3
e6 7.O-O Nf5 8.c3 h5 9.Bxf5 exf5
10.Nbd2 Nd7 11.Re1 Nf8 12.Qb3
Ne6 13.Qxb7 Nxf4 14.Nb3 Bxf3
15.Bxf4 Be4 16.Qc6+ Kf8 17.Nc5
Kg8 18.e6 fxe6 19. Nxe6 Qe8
20.Qxe8+ Rxe8 21.Nxxg7 Kxg7
22.Be5+ Rxe5 23.dxe5 Re8 24.b4
Rxe5 25.c4 Kf6 26.cxd5 Rxd5
27.Re2 Ke5 28.a4 Rd4 29.Rb2 g5
30.Rc1 c6 31.Rc5+ Kf4 32.Kf2 b4
33.Ra5 Rd7 34.b5 Rb7 35.Rd2 c5
36.Ra6 c4 37.Rd4 Ke5 38.Rxc4
Rd7 39.Rc5+ Kf4 40.g3+ hxg3+
41.hxg3+ Kg4 42.Rc3 Rh7 43.a5

OAK PARK - FOREST PARK CHESS CLUB AUTUMN ACTION

AN ICA MINI-TOUR EVENT AN ACTION CHESS EVENT

WHEN: Saturday, October 21, 1989

WHERE: Mohr Community Center, 7640 Jackson Blvd. (Jackson and DesPlaines),
Forest Park, IL

WHAT: 5 Round Swiss TIME CONTROL: G/30

MEMBERSHIPS REQUIRED: USCF & ICA

CASH PRIZES: \$255 (Based on 30) 1ST: \$90 2ND: \$50 3RD: \$25

CLASS PRIZES: A,B,C: Each \$25; D/E/Unrated: \$15

ENTRY FEE: \$15 in advance (by 10/18/89); \$20 at site (\$2 off for OP-FP CC members)

REGISTRATION: 8:15-8:45 a.m. ROUND TIMES: 9:00, 10:15, 11:30, 1:15, 2:30

ADVANCE ENTRIES: Ken Marshall, 357 W. Grove, Lombard, IL 60148

INFORMATION: Ken Marshall: (312) 932-1455

NO SMOKING -- NO COMPUTERS PLEASE BRING CLOCKS and SETS

TOURNAMENT CROSSTABLES

CALUMENT REGION OPEN -- 6/17/89

BRADLEY SUMMER OPEN -- 8/19/89

| CALUMENT REGION OPEN -- 6/17/89 | | | | | | | BRADLEY SUMMER OPEN -- 8/19/89 | | | | | | | | |
|---------------------------------|----------------|--------------|-----|-----|-----|-----|--------------------------------|-----------------------|----------------|--------------|-----|-----|-----|------|-----|
| PLAYER | PRE ST RTNG | POST RTNG | 1 | 2 | 3 | 4 | TOT | PLAYER | PRE ST RTNG | POST RTNG | 1 | 2 | 3 | 4 | TOT |
| 1 COLIAS, BILLY | IN 2431 | 2431 | W-5 | W-4 | W-3 | D-2 | 3.5 | 1 COLIAS, BILLY | IN 2453 | 2450 | W13 | W-5 | D-8 | W10 | 3.5 |
| 2 BOUSUM, JOSHUA D | IN 2173 | 2189 | W18 | W10 | W14 | D-1 | 3.5 | 2 BONDART, CYRUS | IL 2211 | 2219 | W23 | W-6 | W-4 | D-3 | 3.5 |
| 3 MC ENTEE, TIM R | IN 2162 | 2179 | W17 | W-9 | L-1 | W-7 | 3.0 | 3 MC GOWAN, ANDY J | IL 2097 | 2114 | W21 | W20 | W-9 | D-2 | 3.5 |
| 4 TUTUSH, DUSAN | IN 2059 | 2088 | W23 | L-1 | W21 | W-6 | 3.0 | 4 ANDERSON, PHIL | IL 2026 | 2024 | W25 | W12 | L-2 | B--- | 3.0 |
| 5 STEELE, PERRY E | IN 1907 | 1931 | L-1 | W28 | W23 | W12 | 3.0 | 5 SMIT, TOM | IL 1949 | 1958 | W15 | L-1 | W19 | W12 | 3.0 |
| 6 GARDNER, J BRUCE | IL 2353 | 2332 | W15 | W12 | D-7 | L-4 | 2.5 | 6 MANNERELLI, BRUNO | IL 1832/16 | 1854 | X-- | L-2 | W23 | W13 | 3.0 |
| 7 STEIN, PETER | IL 2239 | 2232 | W16 | W13 | D-6 | L-3 | 2.5 | 7 SPHAR, ROBERT L | IL 1817 | 1820 | X-- | L-8 | W20 | W14 | 3.0 |
| 8 TURNER, SYLVESTER | ID 2047 | 2025 | D21 | W11 | L10 | W15 | 2.5 | 8 NAFF, WILLIAM A | IL 2131 | 2144 | W24 | W-7 | D-1 | U-- | 2.5 |
| 9 MEYERS, PHILLIP R | IN 1917 | 1912 | W24 | L-3 | D17 | W21 | 2.5 | 9 SLATER, MICHAEL A | IL 2077 | 2055 | W14 | D11 | L-3 | W18 | 2.5 |
| 10 PALS, RANDALL | IL 1884 | 1902 | W29 | L-2 | W-8 | D11 | 2.5 | 10 ULTCH, DOUGLAS A | IL 2061 | 2053 | D20 | W22 | W11 | L-1 | 2.5 |
| 11 KAMIENIECKI, PETER | IN 1856 | 1860 | W25 | L-8 | W18 | D10 | 2.5 | 11 WHEELER, STEPHAN S | IL 1793 | 1806 | W17 | D-9 | L10 | W19 | 2.5 |
| 12 ROUSH, JOHN D | IN 1941 | 1932 | W27 | L-6 | W16 | L-5 | 2.0 | 12 WARFIELD, THOMAS | IL 1726 | 1721 | W26 | L-4 | W16 | L-5 | 2.0 |
| 13 ENOCHS, JAMES A | IN 1857 | 1847 | W19 | L-7 | L15 | W23 | 2.0 | 13 ZIMMERLE, R WAYNE | IL 1643 | 1649 | L-1 | W15 | W17 | L-6 | 2.0 |
| 14 BARGERSTOCK, DAN | IL 1852 | 1844 | H-- | W26 | L-2 | D17 | 2.0 | 14 FULLER, BRET | IL 1496 | 1524 | L-9 | W28 | W22 | L-7 | 2.0 |
| 15 CHLOUPEK, FRANK R | IL 1803 | 1818 | L-6 | W27 | W13 | L-8 | 2.0 | 15 MILLER, EARL | IL 1394 | 1438 | L-5 | L13 | W24 | W22 | 2.0 |
| 16 BURK, ROBERT E | IL 1761 | 1760 | L-7 | W19 | L12 | W24 | 2.0 | 16 ANDERSON, WILLIAM | IL 1379 | 1422 | W27 | L19 | L12 | W23 | 2.0 |
| 17 SOLCICH, KEVIN G | IL 1753 | 1765 | L-3 | W24 | D-9 | D14 | 2.0 | 17 CAIN, DENNIS R | IL 1351 | 1388 | L11 | W24 | L13 | W25 | 2.0 |
| 18 HENDERSON, ROBIN K | IN 1694 | 1685 | L-2 | W29 | L11 | W26 | 2.0 | 18 SHANE, DAVID W | IL 1635 | 1656 | Z-- | U-- | W27 | L-9 | 1.5 |
| 19 MIKUTA, JOSEPH | IN 1502 | 1525 | L13 | L16 | W20 | W25 | 2.0 | 19 MAYBERRY, JOHN H | IL 1523 | 1525 | H-- | W16 | L-5 | L11 | 1.5 |
| 20 SULLIVAN, JOHN A | IN 1862 | 1798 | D26 | L21 | L19 | W27 | 1.5 | 20 EIHUSEN, LAUREL H | IL 1434 | 1456 | D10 | L-3 | L-7 | W26 | 1.5 |
| 21 HENDERSON, HAROLD | IN 1688 | 1714 | D-8 | W20 | L-4 | L-9 | 1.5 | 21 DAVIS, JOHN R | IL 1396 | 1421 | L-3 | D27 | W26 | U-- | 1.5 |
| 22 KISTLER, LESLIE C | IN 2012 | 2014 | W28 | U-- | U-- | U-- | 1.0 | 22 OLEJNIK, JOSEPH V | IL 1739 | 1683 | W28 | L10 | L14 | L15 | 1.0 |
| 23 SMELTZER, PHIL W | IN 1568 | 1560 | L-4 | W25 | L-5 | L13 | 1.0 | 23 CRUM, RANDY M | IL 1664 | 1638 | L-2 | W25 | L-6 | L16 | 1.0 |
| 24 EMERY, STEVE | IN 1365 | 1363 | L-9 | L17 | W29 | L16 | 1.0 | 24 ZEVNIK, LAWRENCE | IL 1554 | 1512 | L-8 | L17 | L15 | W28 | 1.0 |
| 25 DOBKINS, CHRIS | IN 1178 | 1183 | L11 | L23 | W29 | L19 | 1.0 | 25 HIBBS, ROBERT M | IL 1449/13 | 1435 | L-4 | L23 | W28 | L17 | 1.0 |
| 26 MAREK, MICHAEL | IN 1075 | 1103 | D20 | L14 | D27 | L18 | 1.0 | 26 WALLACE, MICHAEL G | IL 1371/13 | 1324 | L12 | B-- | L21 | L20 | 1.0 |
| 27 CALD, JOHN | IL 1509 | 1485 | L12 | L15 | D26 | L20 | .5 | 27 VERD, CARL M | IL 1798 | 1798 | L16 | D21 | L18 | U-- | .5 |
| 28 GASAWAY, HAROLD | IN 1560 | 1554 | L23 | L-5 | U-- | U-- | .0 | 28 WESTERMAN, DAVID E | IL 1308 | 1281 | L22 | L14 | L25 | L24 | .0 |
| 29 KOHALSKI, JOSEPH T | IN 1105 | 1085 | L10 | L18 | L24 | L25 | .0 | | | | | | | | |

GAMES FROM THE 1989 ILLINOIS OPEN

W: Dmitry Gurevich (2600) B: Arnulfo Benesa (2143) Round 4 English Opening (Annotated by Eric Schiller)

1 Nf3 Nf6 2 c4 g6 3 N c3 d5 4 Qa4+

Having seen Benesa defeat Chow and Schiller consecutively in lines containing a good deal of theory, Gurevich chooses to depart from the common paths.

4...c6 5 cxd5 Nxd5 6 Qd4 Nf6 7 Qxd8+ Kxd8 8 d4

Already White enjoys a clear advantage, as he will control the center and Black has lost the right to castle.

8...Bg7 9 e4 h6 10 Bc4 e6 11 Ne5 Ke8 12 Be3

12 h3 does not lead to much after 12 Kf8 13 Ba3+ Kg8 and the Black king will complete his manual castling with Kg8-h7, while the White bishop would be misplaced on a3.

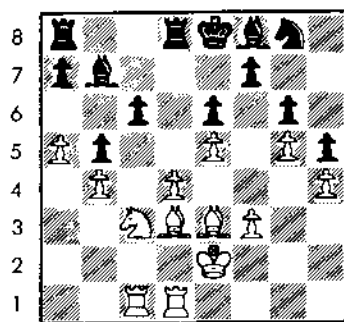
12...Nbd7 13 Nxd7 Bxd7 14 f3 Rc8?!

Black hopes to organize counterplay with 15...c5 but since that isn't going to happen he should have simply brought a Rook to d8.

15 Ke2 Ke7 16 b4 b6 17 Rac1 Ra8 18 a4 Rhd8

Now it is clear just how much time has been wasted shuttling Rooks!

19 g4 Bc8 20 Rhd1 Bb7 21 g5 Ng8 22 h4 h5 23 c5 Bf8 24 a5 b5 25 Bd3?! Ke8



a b c d e f g h

26 Nxb5?

Gurevich overlooked a tactical refutation of this line. 26 Rb1 was called for.

26...cxb5 27 Bxb5+ Rd7 28 Rc7??

Overlooking 28...Ba6! which would have exploited the pin on the Bc4. On 28 a6, 28... Bxa6 would have left Black worse but not hopeless, but 28...Bc8 29 d5 Bxa6 resembles the next note, except that Black has snared the important a-pawn.

28...Bc8? 29 d5 Kd8?

If now 29...Ba6 then 30 Bxa6 Rxc7 31 Bb5+ and here: a) 31...Kd 8!? and a1) 32 d6 Rb7 (32...Rd7 33 Rc1 Rc8 34 Rxc8+ Kxc8 35 Bxd7+ Kxd7 36 Bxa7 Kc6 37 Bc5 and d6-d7 will be a killer) 33 Bc6 Rbb8 34 Bxa8 Rxa8 35 b5 and White has more than enough compensation, because the Black pieces are permanently pinned down and he will have to sacrifice a piece just to get one of them into the game; a2) 32 dxc6 Ke7 33 Bc5+ Rxc5. b) 31...Rd7 32 dxc6

30 Rxd7+ Bxd7 31 dxc6 fxe6 32 Rxd7+ Kc8 33 Bxa7 Bxb4 34 Bb6 Ne7

34...Bxa5 35 Bxa5 Rxa5 36 Rg7 Rxb5 37 Rxb8+ Kd7 38 Rxb6 Rxc5+ 39 Kf2+a and the h-pawn falls.

35 Rc7+ Kb8 36 a6 Nc8 37 Rb7+ 1-0

W: Anthony Dzurny (1984) B: Ken Wallach (2305) Round 1 King's Indian 1 Nf3 Nf6 2 d4 g6 3 g3 Bg7 4 c4 0-0 5 Bg2 d6 6 Nc3 Nbd7 7 Bf4 Re8 8 Qd2 c6 9 h4 Qa5 10 e4 e5 11 dxe5 dxe5 12 Bg5 Nc5 13 0-0-0 Bg4 14 Bxf6 Bxf6 15 h5 Rad8 16 Qh6 Rxd1+ 17 Kxd1 Qd8+ 18 Kc2 Qd3+ 19 Kc1 Bxf3 20 hxg6 hxg6 0-1

W: Rhys Read (2035) B: Glen Gratz (2088) Round 2 St. George 1 d4 b5 2 e4 Bb7 3 Nd2 a6 4 Ngf3 e6 5 Bd3 c5 6 c3 Qb6 7 0-0 Be7 8 Re1 cxd4 9 cxd4 Nc6 10 Nb3 Nf6 11 a3 0-0 12 e5 Nd5 13 Ng5 f5 14 Qh5 h6

15 Nxe6? dxe6 16 Bxb6 Rf7! 17 Qg6 Nxd4 18 Nxd4 Qxd4 19 Bxf5 exf5 20 Rad1 Qg4 0-1

W: Albert Chow (2458) B: Arnulfo Benesa (2143) Round 2 Gruenfeld Defense (Exchange Variation) (Annotated by Eric Schiller) 1 d4 Nf6 2 c4 g6 3 Nc3 d5 4 cxd5 Nxd5 5 e4 Nxc3 6 bxc3 Bg7 7 Bc4 0-0 8 Ne2 c5 9 0-0 Nc6 10 Be3 cxd4 11 cxd4 Bg4 12 f3 Na5 13 Bxf7+

This is now played only with the c pawns still on the board, but the text is the original version, seen in Spassky-Korchnoi, USSR 1953. I researched the line back in 1972 and have never had a chance to play it seriously!

13...Rxf7 14 fxg4 Rxf1+ 15 Kxf1 Qd7 16 g5?

Al and I discussed this after the game. Even though it looks like a logical way of cramping the King side, 16 e5 is better. The problem now is that the light squares are weak, and the Be3 is cramped.

16...Qe6 17 Qd3 Qc4 18 Qd2

Naturally White does not wish to exchange queens as his extra g pawn is worth nothing in the endgame.

18...Qa6

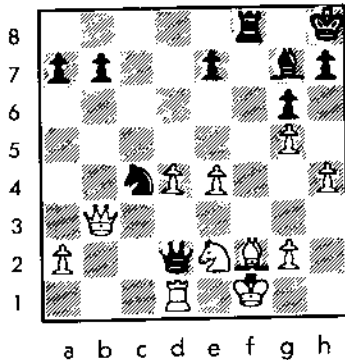
Interestingly, Black decides that the pin is so useful that it is worth preserving with this awkward-looking move. In fact, however, the Queen will soon return to the center.

19 Qc2 Nc4 20 Bf2 Rc8 21 Qd3 Qa5!

A fine finesse which exploits the weakness of the g5 pawn. Benesa displays a mature mix of patience and aggression, combined with a general technical competence which impressed all of the Masters present.

22 h4 Qd2 23 Qb3 Kh8 24 Rd1 Rf8!!

GAMES FROM THE 1989 ILLINOIS OPEN



It is not surprising that White overlooked this in his calculations. The threat of Ne3 is now sufficiently powerful to force Chow into an exchange-down endgame, in which he really doesn't have any chances at all.

25 Rxd2 Nxd2+ 26 Ke1 Nxb3 27 axb3 Kg8 28 Be3 Kf7 29 Kd2 e6 30 Kd3 Rc8 31 Ne3 Ke7 32 e5 a6 33 Ne4 b6 34 Nf6 b5 35 Bd2 Bxf6! 36 gxf6+ Kf7 37 Bc3 Rd8 38 Ba5 h6 39 g4 g5 40 h5 Rc8 41 Kd2 Rc6 42 Bc3 a5!

A superb move which leads to an easily winning position.

43 Bxa5 Ra6 44 Bc3 Ra2+ 45 Ke3 Ra3 46 Ke4 Rxb3 47 Be1 Rb1 48 Bd2 Rd1 49 Bb4 Rg1 50 Kf3 Rh1 51 Bd2 Rh3+ 52 Ke4 Rg3 53 d5 exd5+ 54 Kd4 Ke6 0-1

W: Peter Pelts (2357) B: Bill Naff (2124) Round 2 Catalan Opening (Annotated by Eric Schiller) 1 d4 d5 2 Nf3 Nf6 3 c4 dxc4 4 g3 e5 5 Qa4+ Bd7 6 Qxc4 cxd4 7 Nxd4 e5 8 Nf3 Nc6

White has achieved nothing in the opening and starts to play impatiently.

9 Ng5 Bb4+ 10 Bd2 Qe7 11 Bxb4 Qxb4+ 12 Nd2 0-0

Naff isn't fooled into trying to chop down all the wood when playing against a stronger player. 12...Qxb4 13 Nxb4 would have given White a slight initiative and chances to exploit

the weak d6-square.

13 Bg2 h6 14 Nge4 Nxe4 15 Bxe4 Qe7 16 0-0 Rac8 17 Qd3 Rfd8 18 Qe3 Be6

Black has a much more comfortable game and the d4-square is waiting for an occupant. White prevents this, but cuts off the road home for his Bishop.

19 Nf3 Bd5

Somewhat unambitious.
19...Bh3!?

20 Rfd1 Bxe4 21 Qxe4 Qe6 22 Qa4 a6 23 a3 f6

Rather unnecessary.
23...Rxd1 24 Rxd1 Rd8 25 Rxd8 Nxd8 followed by 26...Nc6 should lead to a sure draw. Of course Pelts doesn't like to agree to draws and might try to win anyway, with great risk. The text has psychological merit.

24 Rxd8+ Rxd8 25 Rd1 Rxd1+ 26 Qxd1 Kf7

Naff has conceded the d file, but it really doesn't matter. His only weakness is at g6, and White cannot do anything with it. But leave it to Pelts to try!

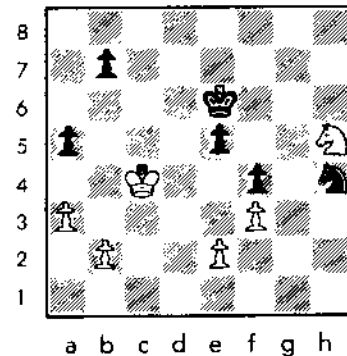
27 Kg2 Ke7 28 h4 h5 29 Qd2 Qc4 30 Ne1 Qd4 31 Qc2 Qd5+ 32 f3 Qb5 33 Nd3 Kd6 34 Qd2 Qd5 35 Qe3 Qd4

Now Pelts has to exchange, or else 36 e4!

36 Qxd4+ Nxd4 37 Kf2 a5 38 g4 g6 39 Ke3 Kd5 40 Nf2 f5 41 gxh5 f4+ 42 Kd3 gxh5

Knight and pawn endgames with lots of pawns are rarely drawn, and require tremendous powers of calculation. This should favor the stronger player, but here it is Pelts who will go astray.

43 Ne4 Nf5 44 Nf6+ Ke6 45 Nxb5 Nxb4 46 Kc4



Pelts is counting on Naff to be tempted by the trapped White Knight, but instead of snaring the wayward steed with Ke6-f7-g6, which would allow the White King to chow down on the Black pawns, Naff unleashes a surprise.

46...Nf5 47 Kc5 Ng3! 48 b4

Obviously not 48 Nxb3 fxg3 and a Queen is but a few steps away.

48...axb4 49 Nxf4+ exf4 50 axb4 Nxe2 51 Kb6 Nd4 52 Kxb7 Nxf3 0-1

W: Dmitry Gurevich (2600) B: Kevin Gensler (2194) Round 3 Queen's Gambit Declined (Tartakower Variation) 1 d4 Nf6 2 c4 e6 3 Nc3 d5 4 Bg5 Be7 5 e3 h6 6 Bh4 0-0 7 Rc1 b6 8 cxd5 exd5 9 Bd3 Bb7 10 Nge2 c5 11 0-0 Nbd7 12 dxc5 bxc5 13 Na4 Qa5 14 Bf5 Rfe8 15 a3 Rad8 16 Bxd7 Nxd7 17 Bxe7 Rxe7 18 b4 cxb4 19 axb4 Qa6 20 Nd4 Qg6 21 Rc7 Ba8 22 Rxa7 Re5 23 Qc2 Qxc2 24 Nxc2 Be6 25 Nd4 Bxa4 26 Rxa4 Rec8 27 g3 Rb8 28 b5 Rec8 29 Nc6 Ra8 30 Rxa8 Rxa8 31 Ne7+ 1-0

W: Steven Szpisjak (2230) B: John Lutes (2072) Round 3 Dutch (Annotated by Eric Schiller) 1 d4 f5 2 Qd3

The Manhattan or Ulvestad Variation.

2...d6

There are two alternatives:
a) 2...e6 3 g4 fxg4 (3...d5 4 g5 c5 5 Nf3 Nc6 6 Bf4? Qb6 =+, Schiller-Pavlovic, New York 1979) 4 h3 gxh3 (4...Qh4!? 5 Bg2 Nc6 6 c3 g3! 7 fxg3 Qe7 8 Nf3 Nf6=, Schiller-Chubinsky, New

GAMES FROM THE 1989 ILLINOIS OPEN

York 1972) 5 Nxb3 with a very powerful attack against Black's undeveloped King side; or b) 2...d5 3 g4 (Better is 3 Bf4, since the gambit line doesn't work well here.) 3...fxg4 4 h3 g3! 5 f4?! (Better 5 fxg3 or 5 Qxg3) 5...Nf6 6 Qxg3 Bf5 7 c3 Ne4 =>, Schiller-Lombardy, U.S. Open 1972.

3 g4 fxg4 4 h3 gxh3

4...Nf6 5 Bg5 g6 6 Bxf6 exf6 7 hxg4 Nc6 8 Bg2 Bg7? 9 Rxb7+., Schiller-Zache, Chicago 1973

5 Nxb3 Nc6 6 Ng5 Nh6 7 Bh3

7 Nxb7 Bf5 8 Rxb6 Bxd3 9 Nf6+ exf6 10 Rxb8 Bxc2+

7...Bxb3 8 Rxb3 Qd7 9 d5 Ne5 10 Qb3 0-0-0 11 Ne6 Re8 12 f4 Nef7 13 Rc3 c5 14 dxc6 bxc6 15 Qa4 Kb7 16 Be3 Rb8 17 Qxa7+ Kc8 18 Qa6+ Rb7 19 Qa8+ 1-0

[E.S.: I include the following game only because readers may want to know how Chow got upset by Brock, not for its intrinsic value!]

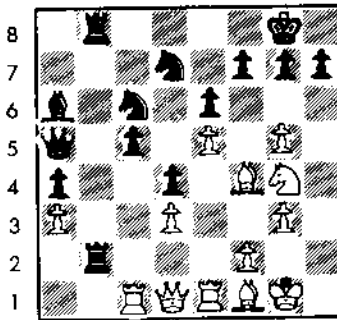
W: Bill Brock (2084) B: Albert Chow (2458) Round 3 French Defense (Winawer Variation) (Annotated by Eric Schiller) 1 e4 e6 2 d4 d5 3 Nc3 Bb4 4 Bd2 dxe4 5 Qg4 Nf6 6 Qxg7 Rg8 7 Qh6 Qxd4 8 0-0-0 Rg6?! (Better 8 Bf8) 9 Qh4 Rg4 10 Qh6?! (10 Qh3!) 10...Bf8?? (But this is much too late!) 11 Qxf8+! Kxf8 12 Bh6+ Ke7 13 Rxd4 Nc6 14 Rd2 Bd7 15 f3 Rg6 16 Be3 exf3 17 Nxf3 Rg8 18 g3 1-0 (There just isn't any compensation for the piece.)

W: Jim Warren (2058) B: Peter Pelts (2357) Round 3 Modern Benoni 1 d4 Nf6 2 c4 c5 3 d5 e6 4 Nc3 exd5 5 cxd5 d6 6 e4 g6 7 Nf3 Bg7 8 Be2 0-0 9 0-0 Bg4 10 Nd2 Bxe2 11 Qxe2 a6 12 a4 Re8 13 Nc4 Qe7 14 f3 Nfd7 15 Qd3 Ne5 16 Nxe5 Bxe5 17 Be3 f5 18 Rael f4 19 Bf2 Nd7 20 a5 g5 21 Na4 Qd8 22 Qd2 b5 23 axb6 Nxb6 24 b3 Nxa4 25 bxa4 Rb8 26 Rb1 Qe7 27 Qc2 Rxb1 28 Rxb1 Rb8 29 Rxb8+ Qxb8 30 Be1 Kf7 31 h3 Bd4+ 32 Kf1 Be5 33 Kg1 h5 34 Be3 Qh8 35 Bxe5 Qxe5 (E.S.: Once again Pelts finds

himself in a drawish position which he must find a way to lose!) 36 Qc4 g4 37 hxg4 hxg4 38 fxg4 a5 39 Kf2 Kf6 40 Kf3 Kg5 41 Qc1 e4 42 g3 Qd4 43 Qxf4+ Kg6 44 Qxd6+ Kg7 45 Qe7+ Kg6 46 Qe6+ Kg7 47 d6 Qd3+ 48 Kf4 c3 49 Kf5 c2 50 Qe7+ Kg8 51 Kg6 1-0

W: Cyrus Bondari (2194) B: Dmitry Gurevich (2600) Round 4 English Opening (Hedgehog) 1 e4 c5 2 Nc3 b6 3 e4 Bb7 4 Nge2 d6 5 d4 cxd4 6 Nxd4 Nf6 7 f3 e6 8 Be3 Be7 9 Be2 0-0 10 0-0 Nbd7 11 Kh1 a6 12 Qd2 Qc7 13 Rac1 Rfe8 14 Rfd1 Rac8 15 b3 Qb8 16 Bf1 Bd8 17 Nde2 Bc7 18 Bf4 Ne5 19 Ng3 h6 20 Bxb6?! gxh6 21 Qxb6 Ng6 22 e5 dxe5 23 Bd3 e4 24 Nxe4 Bxe4 25 Nxe4 Nxe4 26 Bxe4 Bf4 27 Qh5 Rc5 28 Rd5 Rxd5 29 exd5 Kg7 30 Rc6 Rh8 31 Qg4 Rxb2+ 32 Kg1 Rh4 0-1

W: Eugene Martinovsky (2429) B: Ken Wallach (2305) Round 4 French (King's Indian Attack) 1 e4 e6 2 d3 d5 3 Nd2 Nf6 4 Ngf3 c5 5 g3 Nc6 6 Bg2 Be7 7 0-0 0-0 8 Re1 Rb8 9 e5 Nd7 10 Nf1 b5 11 h4 a5 12 Bf4 Ba6 13 Bh3 b4 14 Ng5 Bxg5 15 hxg5 a4 16 a3 Qa5 17 Ne3 d4 18 Ng4 h3 19 Rcl bxc2 20 Qxc2 Rb3 21 Bf1 Rfb8 22 Qd1 Rxb2



a b c d e f g h

23 Nf6+ Nxf6 24 exf6 R8b3 25 Qh5 Bxd3 26 Rxe6 Qa8 27 Bxd3 Rxd3 28 Rocl Rd1 29 Rxd1 fxe6 30 f7+ Kf8 31 g6 h6 32 Qxc5+ Ne7 33 Bd6 Rb7 34 Qxd4 1-0

W: Arnulfo Benesa (2143) B: Cyrus Bondari (2194) Round 6 King's Indian Defense (Fianchetto Variation) 1 Nf3 Nf6 2 g3 g6 3 Bg2 Bg7 4 0-0 0-0 5 c4 d6 6 d4 Nbd7 7 Nc3 c5 8 b3 cxd4 9 Nxd4 Nc5 10 Bb2 Qc7 11 Nd5 Nxd5 12 Nb5 Bxb2 13 Nxc7 Nxc7

14 Rb1 Bf6 15 e4 Rb8 16 b4 N5e6 17 f4 b5 18 f5 Ng7 19 fxg6 hxg6 20 Rxf6 exf6 21 Qxd6 Nge8 22 Qd4 Rb6 23 c5 Ra6 24 Qb2 Bb7 25 Rd1 Re6 26 Rd4 Re5 27 Qa3 a6 28 Qa5 Ne6 29 Rd5 N8c7 30 Rxe5 fxe5 31 Qb6 Bc8 32 Kf2 Kg7 33 Qd6 f6 34 Bh3 Rf7 35 c6 Ng5 36 Bg2 Bh3 37 Bf3 Bg4 38 Bh1 Nge6 39 Bg2 Nd4 40 h3 Be6 41 a3 Nc2 42 Qd3 Nd4 43 Qc3 Be4 44 Bf1 Bxf1 45 Kxf1 Nce6 46 Qb2 Rc7 47 Qa2 Rxc6 48 Qd5 Ng5 49 a4 bxa4 50 h4 Nf7 51 Qa5 Nd6 52 Qxa4 Nxe4 53 b5 axb5 54 Qa7+ Kf8 55 Qh7 Rc2 56 Qxg6 Rf2+ 57 Ke1 Re2+ 58 Kd1 Nc3+ 59 Kc1 Rc2+ 60 Qxc2 Nxc2 61 Kxc2 Nd5 0-1

W: Eric Schiller (2305) B: Arnulfo Benesa (2143) Round 3 Sicilian (King's Indian Attack) (Annotated by Eric Schiller) 1 e4 c5 2 Nf3 d6 3 d3 g6 4 g3 Bg7 5 Bg2 Nf6 6 0-0 0-0 7 Re1 Nc6 8 Nbd2 d5 9 a4 e6 10 Qe2 h6 11 h4 b6 12 Nf1 Bb7 13 e5 Nd7 14 Bf4 d4 15 N1d2 Nb4 16 Nc4

Although Black controls d5, White has a much freer game and can attack the weak King side.

16...Bd5 17 c3! Bxc4 18 cxb4 Bd5 19 Qd2 Kh7 20 Re2

To make room for the Knight in the event that Black transfers his Queen to the long diagonal. Unfortunately, I forgot about that a few moves later!

20...Qe7 21 Rcl Rfe8 22 Qe1 Nb8 23 bxc5??

Assuming that he would recapture, but missing the obvious zwischenzug...

23...Qb7! 24 Nxd4 Bxg2 25 f3 Bxf3 26 Rf2 Bd5 27 Nb5 Qd7 28 Nd6 Rf8 29 b4 bxc5 30 b5

The only hope is to keep the Black pieces pinned down, so bxc5 was not played.

30...a6 31 b6 Nc6 32 Rxc5 a5! 33 Qe3 Ra6 34 Rb5 Nd8 35 Rc2 Be6 36 g4 Nb7!

After 36...Bxb5 37 axb5 Ra8 White plays 38 Rc7!

GAMES FROM THE 1989 ILLINOIS OPEN

37 g5 Nxd6 38 exd6 e5 39 Rxc6
Qxc6 40 gxh6 exf4 41 hxg7 Kxg7
42 Qd4+ Kh7 43 h5 Qc1+ 44 Kg2
Qd2+ 45 Kf1 Rc8 46 hxg6+ fxg6 47
Rh5+ gxh5 48 Qe4+ Kh6 49 Qe6+
Kg5 50 Qxc8 Qxd3+ 51 Kg2 Qg3+
52 Kf1 Qf3+ 53 Ke1 Qe3+ 54 Kf1
Rxb6 55 Qd8+ Kg4 56 Qg8+ Kh3
57 Qc8+ Kh2 58 Qc2+ Kh1 0-1

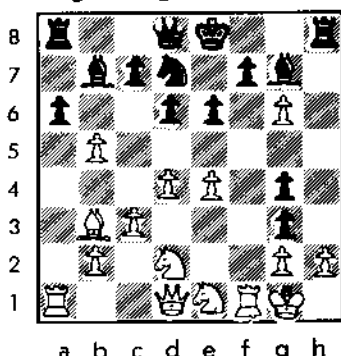
No more checks. Pity about
the d pawn, otherwise 58
Qh2+!!

W: Bill Naff (2124) B: Eric
Schiller (2305) Round 4 Dutch
(Modern Stonewall) Modern
Stonewall 1 d4 d5 2 Nf3 e6 3 e3 c6 4
c4 f5 5 Nbd2 Nf6 6 Ne5 Bd6 7 Ndf3
0-0 8 Bd3 Ne4 9 Qe2 Bd7 10 a3 a5
11 Bd2 Be8 12 Bc3 Bh5 13 Qc2 Nd7
14 Nxd7 Qxd7 15 c5 Bc7 16 Be2
Qe7 17 g3 g5 18 Rf1 Rf7 19 Ng1
Bg6 20 Bd3 e5 21 0-0 0-0 f4 22 gxf4
exf4 23 Bd2 f3 24 h3 Kh8 25 Kb1
Qe6 26 Bc1 Bh2 27 Ka1 a4 28 Rde1
Bxg1 29 Rxg1 Qxh3 30 Rh1 Qe6 31
Rh6 Kg7 32 Reh1 Kf8 33 R1h2 Ke7
34 Qd1 g4 35 Bc2 Rf8 36 R2h4 g3
37 Rxe4 Bxe4 38 fxg3 f2 0-1

W: Ray Satterlee (2126) B: Eric
Schiller (2305) Round 2 Modern
Defense/St. George (Annotated
by Eric Schiller) 1 e4 g6 2 d4 Bg7
3 Nf3 d6 4 Bc4 e6 5 0-0 a6 6 Bg5
Ne7 7 c3 b5 8 Bb3 Bb7 9 Nbd2 Nd7
10 a4 h6 11 Bh4 g5 12 Bg3 Ng6 13
axb5 g4? 14 Ne1 h5 15 f4 h4 16 f5?

16 Bf2! and Black is in a heap
of trouble!

16...hxg3 17 fxg6



a b c d e f g h
17...Qg5! (A real killer!) 18
gxf7+ Ke7 19 hxg3 Qe3+ 20 Rf2
Rh1+! 21 Kxh1 Qxf2 22 Nef3 gxf3
23 Nxf3 Rh8+ 24 Nh2 Qxg3 25 Qg1
Nf6 26 f8=Q+ Bxf8 0-1

W: Eric Schiller (2305) B:
Eugene Martinovsky (2429)
Round 5 Spanish (Closed)
(Annotated by Eric Schiller) 1 e4
c5 2 Nf3 Nc6 3 Bb5 a6 4 Ba4 Nf6 5
0-0 Be7 6 Re1 b5 7 Bb3 0-0 8 c3 d6 9
a4 b4 10 a5 bxc3 11 bxc3?

11 dxc3! is known to be better
for White from an old
Tal-Spassky encounter, and I
had actually looked at the
position the night before. But at
the board this faulty recapture
came almost automatically, as
it just looks more natural to
capture toward the center.
Unfortunately, there is a major
tactical problem.

11...Rb8 12 Bc4 Nxa5 13 Rxa5
Rxb1 14 Bxa6 c5 15 Ra2 Be6 16 c4?

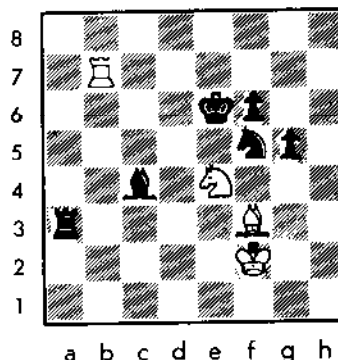
Things were already in a
sorry state for White; now the
damage is permanent.

16...Qb6 17 Ng5 Ra8 18 Nxe6
Rxa6 19 Rxa6 Qxa6 20 Nc7 Qxc4
21 d3 Qc3 22 Qd2 Qxd2 23 Bxd2
Rb3 24 Ra1 Rxd3 25 Bg5 h6 26
Bxf6 Bxf6 27 Kf1 c4 28 Rcl Rd4 29
f3 Bg5 30 Rc2 Rd2 31 Rxc4 Be3 32
Nd5 Bc5 33 Rc3 Rf2+ 34 Kg1 Bd4
0-1

W: Eric Schiller (2305) B: Andy
McGowan (2005) Round 1
Spanish (Berlin) (Notes by Eric
Schiller) 1 e4 e5 2 Nf3 Nc6 3 Bb5
Nf6 4 0-0 Nxe4 5 d4 Be7 6 Re1 Nd 6
7 Bxc6 bxc6? 8 dxe5 Nb7 9 Nd4
0-0 10 Qg4 d5 11 e6 Bf6! 12 Nxc6
Qe8! (I had underestimated this
move.) 13 Nd4 c5 14 Nf3 Bxe6 15
Qg3 Qc6 16 Nc3 Nd6 17 Ne5 Bxe5
18 Rxe5 Rab? 19 Bh6 g6 20 Bxf8
Kxf8 21 Rd1 Rxb2 22 Qf3 Nc4 23
Rexd5 Bxd5 24 Nxd5 Qb7! 25 h4
Rb1 26 Rxb1 Qxb1+ (Ok, I am
down a pawn, but I wasn't
sweating. Queen and Knight
endgames are notoriously
difficult, and I knew that by
carefully repositioning my
pieces and keeping control of the
center I would have very
respectable winning chances. In
fact, the full point would require
a little cooperation on the part
of my opponent, but then most
wins do.) 27 Kh2 Qxc2 28 Qf4!
Qe2 29 Nf6 Ke7 30 Ne4 Qh5 31
Qc7+ Kf8 32 Qd8+ Kg7 33 Qf6+

Kf8? (33...Kg8! was more
resistant.) 34 Ng5! Qxh4+ 35
Kg1 Kg8 36 Qxf7+ 1-0.

W: Eugene Martinovsky (2429)
B: Dmitry Gurevich (2600)
Round 6 Symmetrical English 1
c4 c5 2 Nc3 b6 3 e4 Bb7 4 Nge2 Nf6
5 e5 Ng4 6 f4 d6 7 Ng3 Nh6 8 exd6
e6 9 d4 cxd4 10 Nb5 Bxd6 11 Qxd4
Bb4+ 12 Bd2 Qxd4 13 Nxd4 Bxd2+
14 Kxd2 Ke7 15 h3 Rd8 16 Ke3 Na6
17 Rg1 Rd7 18 Be2 Rad 8 19 Rad1
Nb4 20 a3 Rxd4 21 axb4 Rxd1 22
Bxd1 Bxg2 23 h4 g6 24 Be2 Bb7 25
b5 a6 26 bxa6 Bxa6 27 Ra1 Bb7 28
Ra3 Rd6 29 Rb3 Bc8 30 Bf3 Ba6 31
Rc3 f6 32 b4 c5 33 b5 exf4+ 34 Kxf4
Bc8 35 Ne4 Rd4 36 e5 bxc5 37 Rxc5
Bd7 38 Ke3 Rb4 39 Nc3 Kd6 40
Rd5+ Ke6 41 h5 Nf5+ 42 Kd3 Nd6
43 hxg6 hxg6 44 Rc5 Bxb5+ 45 Ke2
Bc4 46 Rc7 Bb3+ 47 Kd3 Rf4 48
Ke3 g5 49 Ne2 Nf5+ 50 Kf2 Rc4 51
Ra7 Ra4 52 Rb7 Bc4 53 Nc3 Ra3
54 Ne4



54...Rxf3+ 55 Kxf3 Bd5 56 Kg4
Ne3+ 57 Kh5 Bxb7 58 Ne5+ Ke5 59
Nxb7 g4 60 Kh4 Kf5 61 Ne5 Kf4 62
Kh5 g3 63 Nd3+ Ke4 64 Ne1 g2 65
Kg6 f5 0-1

1989 ILLINOIS CLASS

AN ILLINOIS MAXI-TOUR EVENT

NOVEMBER 18-19, 1989

MORGAN PARK ACADEMY

\$2,000 PRIZE FUND

FOUR TIE FOR ILLINOIS OPEN RESERVE CHAMPIONSHIP

By Ken Marshall

Duane Bayer, Ken Marshall, Randy Crum, and Choonmun Lau each scored 5-1 to share top honors in the 52 player Reserve Section of the Illinois Open, which was limited to players rated 1799 and below. Marshall, leading the field by a full point with a perfect score after five games, needed only a draw with Bayer in the last round to finish clear first. An early blunder, however, allowed Bayer to obtain an advantage which he never relinquished on his way to a 40 move victory. In final round pairings of players with 4-1 scores, Crum defeated Jerry Stafford and Lau beat Mike Williams to join Bayer and Marshall as Reserve Co-Champions. Todd Ditsworth (4.5-1.5) and Thomas Shaffer (4-2) took home the Class C prizes, while Class D and Under winners were the unrated Lau and Eric Koester.

Here are some games from the Reserve event taken from score sheets supplied by Tournament Director Bill Wilkinson.

W: Duane Bayer (1711) B: Kenneth Palmer (1457)
Round 1 1.d4 d5 2.Nf3 Nf6 3.e3 Nc6 4.Nbd2 Bf5 5.c4 Nb4
6.Qa4+ c6 7.Qxb4 1-0

W: Mike Williams (1703) B: Stephan Wheeler (1778)
Round 3 1.d4 f5 2.c4 Nf6 3.Nc3 e6 4.g3 Be7 5.Bg2 O-O
6.Nh3 d6 7.O-O e5 8.dxe5 dxe5 9.Qc2 Nc6 10.Rd1 Qe8
11.Nb5 Bd8 12.Be3 a6 13.Nc3 Qh5 14.Bc5 Be7 15.Bxe7
Nxe7 16.f3 f4 17.Nf2 Nf5 18.g4 Nc3 19.Qb3 Qf7 20.g5 Qg6
21.c5+ Kh8 22.Nce4 Nxe4 23.Nxe4 Nxd1 24.Rxd1 b6

25.Qd5 Bf5 26.Qxe5 Bxe4 27.fxe4 Qf7 28.c6 Rad8 29.Rd5
Rfe8 30.Qd4 Rxd5 31.exd5 Rxe2 32.d6 cxd6 33.Qxd6 f3
34.Bxf3 Re7 35.c7 Rxc7 36.Qd8+ Qg8 37.Qxc7 h6
38.Qxb6 hxg5 39.Qxa6 Qc4 1-0

W: Robert Sphar (1787) B: Ken Marshall (1675)
Round 5 1.e4 d5 2.exd5 Nf6 3.d4 Nxd5 4.Nf3 Bg4 5.Be2
e6 6.O-O Be7 7.c4 Nb6 8.Be3 Nc6 9.d5 Bxf3 10.Bxb6
Bxe2 11.Qxe2 cxb6 12.dxc6 bxc6 13.Rd1 Qc7 14.Nc3
O-O 15.Rd3 Rad8 16.Rad1 Rxd3 17.Rxd3 Rd8 18.Rh3
Qf4 19.g3 Qf5 20.Rh5 Qd3 21.Re5 Bf6 22.Re3 Qxe2
23.Rxe2 Bxc3 24.bxc3 Rd3 25.Rc2 Kf8 26.Kf1 Ke7
27.Ke2 Rd7 28.Rd2 Rxd2+ 29.Kxd2 Kd6 30.Kd3 Kc5
31.a4 f6 32.f3 g6 33.h3 h6 34.h4 a6 35.g4 e5 36.h5 gxh5
37.gxh5 f5 0-1

W: Randy Crum (1664) B: Jerry Stafford (1610)
Round 6 1.d4 Nf6 2.c4 e6 3.Nc3 Bb4 4.Bd2 c5 5.e3 cxd4
6.exd4 b6 7.Be2 Bb7 8.Bf3 Nc6 9.Nb5 Be7 10.d5 exd5
11.cxd5 Ne5 12.d6 Nxf3+ 13.Nxf3 Nd5 14.dxe7 Nxe7
15.Nd6+ 0-1

W: Choonmun Lau (UNR) B: Mike Williams (1703)
Round 6 1.e4 c5 2.Nf3 d6 3.d4 cxd4 4.Nxd4 Nf6 5.Nc3 g6
6.f3 Bg7 7.Be3 Nc6 8.Bc4 O-O 9.Bb3 Na5 10.Qd2 Nxb3
11.cxb3 Bd7 12.O-O-O Rc8 13.Kb1 a6 14.g4 b5 15.h4 h5
16.gxh5 Nxh5 17.Bh6 b4 18.Nd5 a5 19.Rhg1 e6 20.Bxg7
Kxg7 21.Ne3 Qxb4 22.Rh1 Qf4 23.Rd1 Qh6 24.Ne2 Rc5
25.Qd4+ Kh7 26.Ng4 e5 27.Qxd6 Bxg4 28.fxg4 Rfc8
29.gxh5 gxh5 30.Qxb6+ Kxh6 31.Ng3 Kg5 32.Nxh5+ 1-0

GENSLER TOPS 1989 LAKE COUNTY OPEN

By Dave Shiner

After eleven years as a "traditional" two day chess event, the Lake County Open switched to an "Action Chess" format in 1989. The result was a set of wild games, most of which saw several sudden changes of fortune. The September 16 tournament, held for the first time at Shimer College in Waukegan, returned almost 75% of the entry fees to the 12 man field.

Following an upset-free opening round, Expert Kevin Bachler defeated Senior Master Billy Colias (who hung a Rook during time pressure) in Round 2 and Expert Jim Condron in Round 3 to take undisputed possession of first place. Senior Master Al Chow and Expert Kevin Gensler drew their third round contest, so both stood half a point behind Bachler. Colias was tied with the surprising Duane Bayer (1711) for third at 2-1.

The penultimate round saw Chow face Bachler on Board 1 and Gensler take on Colias on Board 2. Both senior masters were upset. Bachler blundered from a winning position, only to see Chow walk into a clever mate

during the final blitz. Gensler beat Colias in the best-played game of the tournament:

W: Kevin Gensler (2194) B: Billy Colias (2427) Round 4 1.e4 e5
2.Nf3 Nf6 3.Bb5 a6 4.Ba4 Nf6
5.O-O Be7 6.Re1 b5 7.Bb3 O-O
8.c3 d6 9.h3 Na5 10.Bc2 c5 11.d4
Qc7 12.Nbd2 Bd7 13.dxe dxe
14.Nf1 Rad8 15.Qc2 Be6 16.Nc3
Rfe8 17.Nf5 Bf5 18.exf Nc6 19.Ng5
h6 20.Ne4 Nh7 21.Qg4 Kh8 22.Qh5
f6 23.Be3 Nb8 24.Rad1 Bf8 25.Rd8
Rd8 26.Rd1 Rd1 27.Qd1 Qe6
28.Qd8 Nd7 29.Nd2 Ng5 30.h4 Nf7
31.Qe8 Kg8 32.Qe6 Nb8 33.Be4
Qe6 34.fxe Nd8 35.Bd5 Be7 36.Bc5
Kf8 37.Bb6 Ndc6 38.h5 Bd6 39.Ne4
Ke7 40.Ng3 Kf8 41.Nf5 Be7 42.b4
Nd8 43.Kf1 Nbc6 44.Ke2 Nb8
45.Kf3 Ndc6 46.Ke4 Nd8 47.Nh4
Bd6 48.Kf5 Ndc6 49.Kg6 Ne7
50.Kh7 Nd5 51.Ng6 Ke8 52.Kg7
Nb6 53.Kh6 Nc6 54.Kg7 Nd5 55.h6
Ne7 56.Ne7 Ne7 57.h7Nf558.Kf6
1-0

When Billy resigned his flag was about to fall, while Kevin still had about 15 minutes left.

The expected final round pairing of Chow and Colias did take place - but on the second, not the top, board. The two played to a quiet draw. Meanwhile, the

two Kevins went hell-for-leather for first place. Bachler, a piece up, gave Gensler a few pawns and a strong attack. After surviving the onslaught, Bachler transposed into a lost Rook end game, allowing Gensler to pick up the full point. Gensler, the only player to go undefeated, finished 4.5-5, taking home the \$50 first prize and regaining his Master title. Second place went to Bachler (4-1), while Chow (3-2) and Condron (3-2) shared third and fourth. William Graves (3-2) won the A prize, Bayer (3-2) topped Class B, and Anthony Caliendo (2-3) was the best in Classes C/D. Dave Shiner directed.

Here is another interesting game from the event:

W: Jim Condron (2054) B: Al Chow (2458) Round 2 1.e4 e6 2.d4
d5 3.e5 c5 4.c3 Bd7 5.a3 Qb6 6.Nf3
cxd 7.cxd Bb5 8.Bb5 Qb5 9.Nc3
Qa6 10.Qe2 Qe2 11.Ke2 Nc6
12.Be3 Rc8 13.Rfcl Ne7 14.b4 f6
15.exf gxf 16.Na4 b6 17.Nb2 Kd7
18.Bd2 Nf5 19.Kd3 Bg7 20.g4
Nfd4 21.Nd4 Nd4 22.Rc8 Rc8
23.Kd4 Rc2 24.Ke3 Rb2 25.Bc3
Rb3 26.Kd2 Rc3 27.Kc3 f5 28.Kd2
Ba1 0-1

1989 ILLINOIS TOUR

By Ken Marshall

Although still in first place with 70.5 points, Senior Master Albert Chow has seen his 1989 Illinois Tour lead shrink considerably as the result of Grandmaster Dmitry Gurevich's perfect 6-0 Illinois Open score. Now trailing Chow by only 6.5 points, Gurevich (64 points) still has not played in three Tour events, and will not be eligible for Tour prizes if he fails to do so by year's end. Billy Colias (54.5) has moved into third place on the strength of three first place finishes (one clear and two shared) in Mini-Tour events during the summer, while Cyrus Bondari (51.5) is a close fourth.

Kevin Gensler (30) sets the pace in the Expert section with 30 points. Because he is now a Master, Gensler will not be increasing his Expert point total unless his rating again falls below 2200. The way to the top thus appears open for Andy McGowan (25.5), Brad Crawford (24.5), Richard Vlastnik (23.5), or Larry Cohen (23).

Anthony Dzurny (21.5) maintains his hold on the top spots in both Class A (with 21.5 points, slightly ahead of Barry Bouton [20], Larry Cohen [18.5], and Robert Sphar [17]) and Class B (with 34 points, far more than Randy Crum [21], Stephan Wheeler [16], and David Rockwell [16, but who has played in only one Tour event]). Lawrence Zevnik's 13 points lead Class C, with Rudy Padilla (10.5), Robert Bales (9), Thomas Shaffer (9), and Terry Terrance (9) all within striking distance. Bales is also well ahead of his Class D competition.

Tour participants who have now compiled 7 or more Master, Expert, Class A, or Class B points, 5 or more Class C points, or 3 or more Class D points are set out below. This list is current through September 17 and reflects the following 15 Tour events: Tim Just Winter Open, Midwest Action Chess Championship, No Bones Mini-Tour, Bradley Winter Open, Greater Peoria Open, Lincoln Land Mini-Tour Open, Prairie State Masters/Experts Invitational, Prairie State Action Under 2000, Peoria Spring Tornado, Master Challenge XI, Peoria Action Open, Prelude to an Open, Bradley Summer Open, Illinois Open, and Lake County Open. (Tour points from the St. Charles Open [September 23-24], a Mini-Tour tournament, will be included in the November-December ICB's Tour report.)

The next scheduled Tour events are the Peoria Fall Tornado (Mini-Tour: October 14, Peoria), the Oak-Park Forest Park Chess Club Autumn Action (Mini-Tour: October 21, Forest Park), the Micro Resales Champaign-Urbana Open (MAXI-TOUR: October 21-22, Savoy), and the Illinois Class Championships (MAXI-TOUR: November 18-19, Chicago).

REMEMBER: YOU MUST PLAY IN AT LEAST THREE TOUR TOURNAMENTS IN ORDER TO BE ELIGIBLE FOR TOUR PRIZES. Complete Tour rules, regulations, and prize fund were set out on page 10 of the January-February, 1989 ICB and again on page 14 of the May-June, 1989 ICB.

| | | | | | | | |
|----------------------------|----------|----------------------------|----------|-----------------------------|---------|-----------------------------|---------|
| Master Tour Points: | | LEVIN David | 8 (1) | WARREN Jim | 7.5 | MOHR Allen D | 10 |
| CHOW Albert | 70.5 | PORTER John | 8 (1) | SEVNIK Lawrence | 7.5 | BALIS Robert | 9 |
| GURFVICH Dmitry | 64 (2) | WULATIN David | 8 (1) | GREGORY Jamie | 7 (2) | FLORES Joshua | 9 |
| COLIAS Bill | 54.5 | YERKIND Ed | 8 (1) | KARLINS Erik | 7 (2) | INGRAM Adrian | 9 |
| BONDARI Cyrus | 51.5 | ULICH Doug | 7.5 | LA FRANK Arthur | 7 | SHAFFER Thomas | 9 |
| MARTINOVSKY Eugene | 44.5 | WARREN Jim | 7.5 | MOHR Allen D | 7 | SOLICICH Kevin | 9 (2) |
| GENSLER Kevin | 30 | SEVNIK Lawrence | 7.5 | | | TERBRACE Terry | 9 |
| WALLACE Ken | 28 | CUMMINGHAM Robin | 7 (2) | Class A Tour Points: | | | |
| MC GOWAN Andy | 25.5 | GREGORY Jamie | 7 (2) | DEBURY Anthony | 21.5 | CALDWELL Scott | 8 (1) |
| SEFISZAK Steven | 25.5 | KARLINS Erik | 7 (2) | BOUTON Barry | 20 | GARDNER Keith C | 8 |
| CRAWFORD Brad | 24.5 | LA FRANK Arthur | 7 | COHEN Larry | 18.5 | PORTER John | 8 (1) |
| ORSHINGA George | 24 (2) | MOHR Allen D | 7 | SPHAR Robert | 17 | WOLF William | 8 |
| VLASTNIK Richard | 23.5 | | | GRAVES Bill | 15.5 | WULATIN David | 8 (1) |
| COHEN Larry | 23 | | | BOLITHO Thomas | 15 | YERKIND Ed | 8 (1) |
| BONDARI Siemack | 20 (2) | Expert Tour Points: | | MC NAMARA James | 13.5 | GRUBBS Fred | 7.5 |
| FELTS Peter | 20 | GENSLER Kevin | 30 | COHEN Howard | 11.5 | INGRAM Randy | 7.5 |
| HAFF Bill | 19.5 | MC GOWAN Andy | 25.5 | CRAWFORD Brad | 10.5 | MC ALISTER Kelvin | 7.5 |
| TORREGROSSA Ron | 19.5 (2) | CRAWFORD Brad | 24.5 | ALLISON Roger | 9.5 | BANOVSKY Barry | 7.5 |
| BROCK Bill | 18 | VLASTNIK Richard | 23.5 | BARGERSTOCK Dan | 9.5 | STAFFORD Jerry | 7.5 |
| BOUTON Barry | 17 | COHEN Larry | 23 | HERMANNET Hector | 9.5 | SWANSON Victor | 7 |
| SORAK Steve | 17 | HAFF Bill | 19.5 | LEONG Gee | 9 | | |
| CUBI Ronald | 16 (1) | TORREGROSSA Ron | 19.5 (2) | ANDERSON Phil | 8.5 | Class C Tour Points: | |
| GARDNER Bruce | 16 (2) | BONDARI Cyrus | 18.5 | BALE Leslie | 8.5 | SEVNIK Lawrence | 13 |
| BOLITHO Thomas | 15 | BROCK Bill | 18 | HERKOWYUS Kent | 8.5 | PADILLA Rudy | 10.5 |
| SPHAR Robert | 15 | BOUTON Barry | 17 | FULK Winton | 8 (2) | BALIS Robert | 9 |
| CONDON Jim | 14.5 | SORAK Steve | 17 | PORTER John | 8 (1) | SHAFFER Thomas | 9 |
| SATTERLEE Ray Doyle | 13.5 | SEFISZAK Steven | 16 | WULATIN David | 8 (1) | TERBRACE Terry | 9 |
| ANDERSON Phil | 12.5 | BOLITHO Thomas | 15 | JANETTE Phil | 7.5 (2) | SEKINSKI Daryl | 8 (1) |
| GRAVES Bill | 12.5 | SPHAR Robert | 15 | BANOVSKY Barry | 7.5 | KIRKPATRICK Donald | 6.5 |
| KARLINS Andrew | 12.5 (2) | CONDON Jim | 14.5 | SEVNIK Lawrence | 7.5 | INGRAM Randy | 5.5 |
| LOWERY Marc | 12.5 | SATTERLEE Ray Doyle | 13.5 | LA FRANK Arthur | 7 | MC ALISTER Kelvin | 5.5 |
| SCHILLER Eric | 12.5 | ANDERSON Phil | 12.5 | MOHR Allen D | 7 | MILLER Earl | 5.5 |
| BUNGO Greg | 12 (2) | GRAVES Bill | 12.5 | SMIT Tom | 7 | WHEELER Mark | 5 (2) |
| STEIN Peter | 12 (2) | BUNGO Greg | 12 (2) | | | FEDNER Charles | 5 |
| MOTE David | 11.5 (2) | REPPERCT Victor | 11 (2) | Class B Tour Points: | | | |
| REPPERCT Victor | 11 (2) | SAX Robert | 11 | DEBURY Anthony | 34.5 | Class D Tour Points: | |
| SAX Robert | 11 | SMYTHE Bill | 11 | CRUM Randy | 21 | BALIS Robert | 9 |
| SMYTHE Bill | 11 | ASH Robert | 10.5 (2) | ROCKWELL David | 16 (1) | WALLACE Michael | 5 |
| ASH Robert | 10.5 (2) | LOWDQUIST Doug | 10.5 | NECKLER Stephen | 16 | ANDERSON William | 4.5 (2) |
| LOWDQUIST Doug | 10.5 | MC NAMARA James | 10 | BAUER Duane | 15 | CALDWELL Scott | 4.5 (2) |
| MC NAMARA James | 10 | BARGERSTOCK Dan | 9.5 | WARFIELD Thomas | 15 | WARREN Jim | 4 |
| BARGERSTOCK Dan | 9.5 | SMIT Tom | 9 | SPHAR Robert | 13 | ANTHELMAN Kristin | 3.5 |
| SMIT Tom | 9 | COHEN Howard | 8.5 | SEVNIK Lawrence | 13 | CLIN Dennis | 3.5 (2) |
| ACOSTA Mariano | 8.5 (2) | ALLISON Roger | 8 | ALLISON Roger | 11.5 | CRIBBENS Matthew | 3.5 (2) |
| COHEN Howard | 8.5 | PORTER John | 8 (1) | LOVELS Joseph | 10.5 | MILLER Earl | 3.5 |
| HERKOWYUS Kent | 8.5 | WULATIN David | 8 (1) | PADILLA Rudy | 10.5 | | |
| ALLISON Roger | 8 | ULICH Doug | 7.5 | MARSHALL Ken | 10 (2) | | |

AN EDITOR'S FAREWELL

This is it: my 13th and last issue as ILLINOIS CHESS BULLETIN editor. I had hoped to finish out 1989, but personal considerations and family concerns combined with increased work-related obligations to make that impossible. Fortunately, a capable successor has stepped forward. Bill Brock, a graduate student at Loyola University, will be the new ICB editor, effective with the November-December issue. I have met with Bill on several occasions, and am confident that he will continue to maintain the ICB'S timely publication schedule and will keep up or improve upon the quality of my ICB work.

As I leave I would like to thank those who helped me in what at times was almost an overwhelming task. I could not have published a single ICB without the assistance of my wife, Mary. Her title of "Technical Editor" was not an empty one; she solved the mysteries of our home computer (which I still treat as simply a glorified typewriter) and produced the layout of all 13 issues, often working until 3:00 or 4:00 a.m. after a day of dealing with our six year old son and four year old daughter and preparing lesson plans for her part time teaching position at the College of DuPage. Alan Losoff and then Don Winsauer served as Assistant Technical Editor, providing both additional computer expertise and the access to laser printers which has so improved the appearance of the ICB over the last year and a half. (As ICA Membership Secretary, Alan also supplied the ICB's mailing labels, while Don helped "computerize" some of the dozens of games which appear in this issue.)

Dave Wulatin, in my view the top chess humorist in the country, won a Chess Journalists of America award and two CJA honorable mentions for his ICB work. (Space limitations kept Dave's latest effort - not one of his best - out of this issue; whether or not his column will continue is up to the new editor.) As Al Losoff's predecessor as Membership Secretary, Bill Smythe provided mailing labels; he also kept track of the Illinois Tour standings and supplied them, as well as a good number of tournament cross tables, to me. (Bill, another computer expert, bailed me out this issue by literally dictating a computer program over the phone which enabled my wife to retrieve critical data which my computer decided to try to withhold.) As successive Illinois Chess Association presidents, Tim Just and Helen Warren both met every publication deadline for their respective president's columns, and neither made any attempt to interfere with my editorial discretion, though each may have disagreed with some of my decisions as to what to publish. Al Chow, Eugene Martinovsky, Lawrence Chachere, and several other top Illinois players submitted annotated games. To all of these people, to all others who helped by writing articles, submitting club news, tournament

results, etc., and to all ICA members who bore with me as I learned how to put together and bring out a bimonthly magazine: thank you.

Finally, no farewell would be complete without a listing of perceived accomplishments and disappointments. As ICB editor I put the magazine back on its bimonthly publication schedule, and brought out every issue within its designated two-month cycle. In an effort to broaden chess coverage beyond the Chicago area, I visited or played in tournaments from Waukegan to Peoria and from Rockford to Springfield. In 1989 I paid increased attention to the Illinois Tour and like to think that I contributed to the more than doubling of Tour events this year. I also focused the ICB on Illinois chess, leaving coverage of national events (unless they took place in Illinois) and international events (such as the World Championship) to national and international publications. Finally, I tried to concentrate the ICB on chess play rather than on the interminable infighting of chess politics.

Disappointments included not having enough time to write more human interest and historical articles which I had hoped to run on top Illinois players and on the development of chess in this state. Lack of story contributions (and often lack of any information at all) from ICA affiliates, organizers, clubs, and players was also a problem; although Helen Warren, Tim Just, Bill Naff, Bill Wilkinson, David Shiner, and a few others came through in this regard, such submissions (as well as submissions of games for publication) were all too rare. (I never could figure out why some organizers who may well be too busy to write about their events still could not spare a minute or two to send me a copy of the tournament wall chart or USCF crosstable.) Despite my repeated requests for club information, little of that was submitted either. I published virtually everything I received; if a report or a cross table on a particular tournament did not appear in the ICB, it almost certainly was never sent to me.

All things considered, however, I am satisfied with the overall direction and general content of the magazine under my editorship. It has been an interesting two years. Now the time has come to "pass the baton" and to devote the one hundred odd hours I would spend on each ICB to other things, primarily my family and my law practice.

1989 ILLINOIS CLASS
AN ILLINOIS MAXI-TOUR EVENT
NOVEMBER 18-19, 1989
MORGAN PARK ACADEMY
\$2,000 PRIZE FUND

**ILLINOIS TOURNAMENT CALENDAR
(Continued)**

October 28: Hammond Harvest Open, at the Hammond (IN) Public Library, Howard Branch, in Hammond. Les Kistler: (219) 942- 8815.

October 28: 16th Octagon Plus One, 14th IL Scholastic [Grade School] Team Tournament, and 16th IL High School Chess Events Tournaments, at Proviso West High School in Hillside. Lawrence Stilwell: 963-6799.

October 28, 29: King's Ransom, 1 day events at the Chicago Chess Center. Ray Socha: 929-7010.

November 3, 10, 17, December 1, 8, 15: Caveman CLC CC Championship, at College of Lake County, in Grays Lake. Tim Just: 244-7954.

November 4: CANCELLED: '89 Tuley Park Action Swiss No. 5, at the Tuley Park Fieldhouse in Chicago.

November 4, 5: Pawn Grabbers Delight, 1 day events at the Chicago Chess Center. Ray Socha: 929-7010.

November 11: North Boone Fall Rated [Open and Scholastic] Events, at North Boone High School, in Poplar Grove. Guenter Wohlfarth, c/o N.B.H.S., 17641 Poplar Grove Rd., Poplar Grove, IL 61065.

November 11, 12: Duffer's Delight, 1 day events at the Chicago Chess Center. Ray Socha: 929-7010.

November 18: Springfield Autumn Open, at the Washington Park Pavilion, in Springfield. Thomas Knowdler: (217) 523-7265, after 6 p.m.

November 18: IL Valley Swiss Open No. 3, at the Grace United Methodist Church, in LaSalle. Byron Pappas: (815) 224-2869.

November 18-19: 1989 Illinois Class Championships, at Morgan Park Academy in Chicago. AN ICA ILLINOIS MAXI-TOUR EVENT. Todd Barre: 834-0862. SEE FULL PAGE AD IN THIS ICB.

December 2: Champaign-Urbana Chess League tournament, at the Illini Union, in Champaign. Dan Bargerstock: (217) 355-1660.

December 2: Bird Memorial, at the Hammond (IN) Public Library, Howard Branch, in Hammond. Les Kistler: (219) 942- 8815.

**PATRON MEMBERS
(CONTINUED)**

| | |
|--------------------|----------------------|
| Scott Kittsley | Shortwood, WI |
| Thomas Knoedler | Springfield, IL |
| Walter Kocjan | Northlake, IL |
| John Krom | Chicago, IL |
| Peter Kuhn | Des Plaines, IL |
| Marc Lonoff | Northbrook, IL |
| Alan Losoff | Morton Grove, IL |
| John Marconnet | Chicago, IL |
| Ken Marshall | Lombard, IL |
| Donald Martin | Round Lake Beach, IL |
| Eugene Martinovsky | Naperville, IL |
| James McNally | Broadview, IL |
| James McNamara | Hinsdale, IL |
| Patrick Moran | Wilmette, IL |
| Bill Naff | Peoria, IL |
| Peter Pelts | Chicago, IL |
| Mieczyslaw Piatek | Chicago, IL |
| John Popovich | Evergreen Park, IL |
| Tim Redman | Lima, OH |
| Frederick Rhine | Chicago, IL |
| Ray Satterlee | Wheaton, IL |
| Vivian Schmucker | Goshen, IN |
| Mark Sefcheck | Naperville, IL |
| Tom Shaffer | Chicago, IL |
| Tony Sillars | Chicago, IL |
| Arthur Sinclair | Evanston, IL |
| Leonard Spiegel | Naperville, IL |
| David Sprengle | Knoxville, TN |
| Peter Stein | Naperville, IL |
| Miomir Stevanovic | Lincolnwood, IL |
| David Taylor | Kankakee, IL |
| William Terbell | Glen Ellyn, IL |
| John Vrbancic | Evanston, IL |
| Douglas White | Schaumburg, IL |
| Harold Winston | Naperville, IL |
| David Wulatin | Oak Park, IL |
| Sandy Zabel | Chicago, IL |
| Max Zavanelli | Park Ridge, IL |

Please send Chicago metropolitan area Tournament Clearinghouse material to:

Fred Gruenberg
Box 43336, Chicago, IL 60643
(312) 396-1984 (D) (312) 779-0306 (N)

Please send Downstate Tournament Clearinghouse material to:

Garrett Scott
202 Foster Dr., Normal, IL 61761
(309) 452-8116

CENTURY CLUB MEMBERS

| | |
|--------------------|---------------------|
| Michael Belovesick | Elmhurst, IL |
| Tom Fineberg | Chicago, IL |
| Fred Gruenberg | Chicago, IL |
| Albert Sandrin | Chicago, IL |
| Angelo Sandrin | Chicago, IL |
| Bill Smythe | Chicago, IL |
| Burton Vincent | Chicago, IL |
| Helen Warren | Western Springs, IL |
| Jim Warren | Western Springs, IL |
| Philip Wong | Wilmette, IL |

GOLD CARD MEMBERS

| | |
|--------------------|----------------------|
| Faneuil Adams | New York, NY |
| Bill Buttny | Downers Grove, IL |
| Harland Hoisington | Ogden, UT |
| Ed Marshall | South Barrington, IL |
| Earl Miller | El Paso, IL |
| Daniel Pradt | Glen Ellyn, IL |
| Michael Pratts | Chicago, IL |
| Irwin Rothschild | Park Forest, IL |
| Mitchel Sweig | Evanston, IL |
| Don Townsend | Chicago, IL |
| Bill Wenz | Milwaukee, WI |
| Louis Werner | Evanston, IL |

PATRON MEMBERS

| | |
|-------------------|-----------------------|
| Bob Ash | Urbana, IL |
| Kevin Bachler | Waukegan, IL |
| Todd Barre | Clarendon Hills, IL |
| John Barstad, Sr. | Carol Stream, IL |
| Roy Benedek | Western Springs, IL |
| Timothy Bogan | Chicago, IL |
| Barry Bouton | Sandwich, IL |
| Bill Brock | Chicago, IL |
| Tyrone Brooks | Chicago, IL |
| Jim Brotsos | Chicago, IL |
| Fred Burgess | Oak Forest, IL |
| Anthony Caliendo | Aurora, IL |
| Jim Condron | Downers Grove, IL |
| Lynn Crewse | Arlington Heights, IL |
| David Cromer | Iowa City, IA |
| John Deutsch | Chicago, IL |
| Leroy Dubeck | Cherry Hill, NJ |
| Keith Esses | Chicago, IL |
| Gerard Garino | Evanston, IL |
| Jon Gotz | West Chicago, IL |
| Donald Graft | Wheaton, IL |
| William Graves | Chicago, IL |
| Guy Gruenberg | Matteson, IL |
| Walter Henry | Naperville, IL |
| Charles Hicks | Naperville, IL |
| Keith Holzmueller | Evanston, IL |
| Richard Huttef | Itasca, IL |
| Jeffery Hyland | Mount Prospect, IL |
| Robert Irons | Chicago, IL |
| Tim Just | Gurnee, IL |

ICA ELECTED OFFICERS:

Helen Warren, President
P.O. Box 305 Western Springs, IL 60558
(312) 246-6665

Fred Gruenberg, Metro Vice-President
2035 W. 110th Pl., Chicago, IL 60643
(312) 779-0306

Garrett Scott, Downstate Vice-President
202 Foster Dr. Normal, IL 61761
(309) 452-8116

Tim Just, Secretary
37165 Willow Ln., Gurnee, IL 60031
(312) 244-7954

Alan Losoff, Treasurer
P.O. Box 157, Morton Grove, IL 60053
(312) 966-5579

USCF DELEGATES

by virtue of their USCF posts:

Harold Winston, President
Todd Barre, Regional Vice-President
Tim Just, Regional Vice-President
Frank Skoff, Past President
Helen Warren, Life Voting Member

ICA APPOINTED USCF DELEGATES:

| | |
|----------------|--------------|
| Fred Gruenberg | Alan Losoff |
| Ken Marshall | Tom Fineberg |

ICA APPOINTED USCF VOTING MEMBERS:

| | |
|-----------------|--------------|
| Bill Naff | Dennis Grant |
| Walter Brown | Mike Zacate |
| Guy Gruenberg | Jim Warren |
| Garrett Scott | Bob Bain |
| Erv Sedlock | Tom Knoedler |
| Wayne Palmquist | |

ICA APPOINTED USCF ALTERNATE VOTING MEMBERS:

| | |
|----------------|----------------|
| Larry Stilwell | Al Chow |
| Bill Smythe | John Tonkinson |
| Larry Cohen | Byron Pappas |
| Jim Condron | Chris Musgrave |
| Angelo Sandrin | Jim Brotsos |
| Bill Wilkinson | Eric Schiller |
| Glen Panner | Barry Fisher |
| John Barstad | Kevin Bachler |

ILLINOIS TOURNAMENT CALENDAR

Call Chess Phone, (312) 832-5222 [after November 11, 1989, (708) 832-5222] for recorded tournament announcements and results, often more up-to-date than CHESS LIFE or the ICB. The ICA Chess Phone voice is Todd Barre.

Unless otherwise noted, all tournaments require USCF membership. Illinois Tour events also require ICA membership. Phone numbers are area code 312 unless a different area code is listed. Announcements of ICA affiliates receive more space in the Tournament Calendar than do those of non-affiliates.

October 14: Peoria Fall Tornado, at the Garrett Center in Peoria. AN ICA ILLINOIS MINI-TOUR EVENT. Bill Naff: (309) 691-4624. SEE HALF PAGE AD IN THIS ICB.

October 14: '89 Tuley Park Action Swiss No. 4, at the Tuley Park Field House in Chicago. Tom Fineberg: 721-3979.

October 14, 15: Pawn Pusher Passion, 1 day events at the Chicago Chess Center. Ray Socha: 929-7010.

October 21: Oak Park-Forest Park Chess Club Autumn Action '89, at the Mohr Community Center in Forest Park. AN ICA ILLINOIS MINI-TOUR EVENT. Ken Marshall: 932-1455. SEE HALF PAGE AD IN THIS ICB.

October 21-22: Micro Resales Champaign-Urbana Open, at the Best Western Paradise Inn in Savoy. TOP TWO SECTIONS ARE ICA ILLINOIS

MAXI-TOUR EVENTS. Tom Worley: (217) 367-4744. SEE FULL PAGE AD IN THIS ICB.

October 21, 22: Lucky Eleven Cheapo: 1 day events at the Chicago Chess Center. Ray Socha: 929-7010.

October 22: Illinois Chess Association Annual Membership Meeting, Morgan Park Methodist Church (Chicago), 1:30 p.m. Helen Warren: 246-6665.

October 22: Metro-East Double Class Championships, at the Days Inn in Edwardsville. Darwin Evans: (618) 876-4328.

October 27, 28, 29, November 4, 5: Illinois Tournament of Champions IV Invitational, at the Chicago Chess Center. Spectators invited. [See page 4 of this ICB for details.]

(Continued on page 32)

1989 ILLINOIS CLASS CHAMPIONSHIPS

MORGAN PARK ACADEMY (CHICAGO)

NOVEMBER 10-19, 1989

ILLINOIS CHESS BULLETIN
357 W. GROVE
LOMBARD, ILLINOIS 60148

SPEEDY DELIVERY APPRECIATED