



# ILLINOIS CHESS BULLETIN

Official Publication of the Illinois Chess Association - a U.S.C.F. Affiliate  
A Not For Profit Organization

MAY - JUNE, 1989 VOLUME XII, NO. 3 BI-MONTHLY \$2.00



**THINK ILLINOIS TOUR THIS SUMMER:**

**MASTER CHALLENGE XI: JUNE 23-25**

**PEORIA ACTION OPEN: JULY 8**

**PRELUDE TO AN OPEN: JULY 15**

**BRADLEY SUMMER OPEN: AUGUST 19**

**AND REMEMBER**

**THE U.S. OPEN: AUGUST 5-13**



# ILLINOIS CHESS BULLETIN

**EDITOR:**  
**KEN MARSHALL**  
 357 W. Grove  
 Lombard, Illinois 60148  
 (312) 932-1455

**TECHNICAL EDITOR:**  
**MARY GAITHER MARSHALL**

**ASST. TECHNICAL EDITOR:**  
**DON WINSAUER**

**GAMES EDITOR:**  
**LAWRENCE CHACHERE**

#### SUBSCRIPTIONS:

The Illinois Chess Bulletin (ICB) is published bimonthly by the Illinois Chess Association. ICA membership includes a subscription to the ICB. (Century, Gold, and Patron members receive their ICB by first-class mail.)

#### ANNUAL MEMBERSHIP RATES:

Century Club:	\$100.00
Gold Card:	50.00
Patron:	25.00
Regular:	10.00
Junior (under 18):	6.00

Subscriptions, Address Changes, and Corrections should be sent to:

Alan Losoff, ICA Membership Secretary  
 P.O. Box 157  
 Morton Grove, IL 60053-0157

#### SUBMISSIONS:

Submit articles, photographs, crosstables, games, and other publishable materials to the Editor. Publication deadline for the next issue is July 18, 1989.

#### ADVERTISING RATES:

Full page	\$80
Half page	\$50
Quarter page	\$30
Eighth page	\$20

10% discount for the same ad in consecutive issues. 1/3 discount for ICA affiliates. All advertising must be camera ready to qualify for these rates. The ICA and the ICB reserve the right to reject advertising.

## TABLE OF CONTENTS

FROM THE EDITOR'S DESK	1
WHERE TO PLAY CHESS / CLUB AFFILIATES	2
FROM THE PRESIDENT	3
WHAT'S NEW	4
ANDREW KARKLINS ANNOTATES	6
MIDWEST MASTERS REVISITED	10
DAVID WULATIN'S COLUMN	13
ILLINOIS TOUR RULES	14
1989 ILLINOIS TOUR STANDINGS	15
HIGH SCHOOL INDIVIDUAL CHAMPIONSHIP / ICB CORRECTIONS	16
GRADE SCHOOL CHAMPIONSHIP	18
BRAD CRAWFORD	20
GAMES OF ICA MEMBERS	21
OBSERVATIONS AT NORTH AMERICAN CLASS	22



**CHESS PHONE: (312) 325-3666**  
**DOWNSTATE CHESS PHONE:**  
**(309) 655-0618**

**ICA AFFILIATION:** Chess clubs and other organizations which promote chess activity may affiliate with ICA. Affiliate benefits include a copy of each ICB by first-class mail, a listing (if desired) under "Where to Play Chess" in each issue, discounted ICB advertising rates, three-line tournament announcements in the "Tournament Calendar", and the right to run ICA Tour events. ICA affiliation costs \$15; please remit to address shown under "Annual Membership Rates". Include your club meeting times, name of contact person, and other useful information in the format shown in "Where to Play Chess" on page 2.

# From the Editor's Desk

The Illinois Chess Association's 1989 Illinois Tour is moving along at a record-setting pace. Master Challenge XI (June 23-25, Forest Park) will be the tenth Tour tournament (and fourth Maxi-Tour event) held before the end of June. July provides Mini-Tour point opportunities with the Peoria Action Open (July 8) and the Prelude to an Open (July 15, Park Forest). Peoria will host its fifth 1989 Tour tournament(!), the Mini-Tour Bradley Summer Open, on August 19. With at least three more Tour events to come this fall (the Maxi-Tour Illinois Open (September 2-4) and Illinois Class (November 18-19), and the Mini-Tour Oak Park-Forest Park Chess Club Autumn Action (October 21), the 1989 Illinois Tour will consist of at least 16 tournaments, compared to nine in 1988. A 20 event Tour may yet occur as organizers see how free ads in the ILLINOIS CHESS BULLETIN and the prospect of picking up Tour points combine to draw increasing numbers of players to Tour events. [Organizers can contact either ICA President Helen Warren (312-246-6665) or ICB Editor Ken Marshall (312- 932-1455) for information on how to make a tournament part of the Illinois Tour.] The 1989 Tour rules and Tour standings are on pages 16 and 17 of this ICB, respectively.

Master Challenge XI, Illinois' oldest and largest club-sponsored annual tournament, is set for June 23-25, 1989, at the Mohr Community Center in Forest Park. The Illinois Maxi-Tour event again has a guaranteed prize fund of \$3000 as the Oak Park-Forest Park Chess Club continues its tradition of offering generous open and class prizes. Master Challenge has no "Reserve" section; it is a "true" open tournament in which any entrant may be paired with any other. The event was founded to provide lower rated players with the opportunity to "challenge" their Master and Expert counterparts, while offering top players the chance to win substantial prize money in return for giving chess lessons (and, often, rating points!) to their challengers. (In addition, this year's Master Challenge will provide all participants with a strong event in which to "tune up" for the U.S. Open.)

As an Illinois chess player (and as ICB editor) I want to see all Illinois tournaments - especially all Illinois Tour events - do well. As President of the OP-FP CC I have a special interest in the ongoing success of the Master Challenge series. I therefore hope that the Illinois chess community will continue to support one of the Chicago area's top yearly chess events. [See page five of this ICB for full details.]

Chicago's 1989 U.S. Open is only about six weeks away. The tournament will mark the 50th anniversary of the founding of the United States Chess Federation. Chief Organizer Helen Warren, Publicity Chairman Fred Gruenberg, and others are working hard to make the event memorable, but it is up to the players to make it a success. Although players will be coming in from all over the country, strong attendance by Midwest (and especially

Chicago area) residents is critical to demonstrate that the heartland can and will support major national chess tournaments. The nine round, one game per day format (with weekday games starting at 7 p.m.) is perfect for local players who cannot take time off work, as well as for those who want to devote one (but not two) weeks of vacation to chess. Take advantage of this opportunity to play in America's oldest and most prestigious national chess event. Join Grandmasters Arthur Bisguier, Walter Browne, Maxim Dlugy, Dmitry Gurevich, Sergey Kudrin, and others for a week of chess play and chess-related activity from August 5 through 13. [See pages 8 and 9 of this ICB for details.]

Who's the "hottest" player in Illinois as the summer of 1989 begins? I nominate Anthony Dzurmy, who has bid goodbye to Class B with first place finishes in March's Greater Peoria Open reserve section (4.5-.5) and May's Prairie State Action Under 2000 (5.0). Dzurmy also scored 6.5-1.5 to tie for second through fifth (and win \$1,644) in the under 1800 section of the New York Open in March. The New Lenox resident attributes his recent success to "study, frequent play, and some good luck". Two of his New York Open wins (including a "nine mover" published on page 30 of the July CHESS LIFE) appear in the "Games of ICA Members" section in this issue.

Rated chess tournaments have returned to the Chicago Chess Mates Club. The Tuesday, Thursday, and weekend events are being organized and directed by Bill Smythe and Howard Weiner. Chess Mates owner Richard Verber, whose USCF membership and club affiliation have been suspended because of his failure to pay the prizes won at the July, 1988 North American Class Championships, provides the playing site but is otherwise not involved in running the events. Most of the profit from the tournaments goes into a fund set up to pay the aforesaid prizes. (All North American Class prize winners have now received half of their money as the result of a fund raising effort led by George Leighton and Norbert Leopoldi; that effort continues. Verber has vowed that all prizes will be paid in full.)

I have been asked why the ICB has "ignored" postal chess over the last year and a half. The answer is simple: virtually no correspondence chess news or games have been submitted for publication. This issue features two postal contests, and also some information [see "What's New"] submitted by Max Zavarelli, U.S. Secretary of the International Correspondence Chess Federation. I will try to use any postal news or games I receive involving Illinois players or tournaments; as with other information, however, I cannot publish it if I do not have it.

This issue marks the end of Lawrence Chachere's tenure as ICB Games Editor. (Lawrence's job will soon take him away from the Illinois chess scene to England.) I would like to thank Lawrence for his work. I also would like to invite applications for the Games Editor position; any Master who feels up to annotating two or three games every two months is welcome to contact me to discuss the job.



## WHERE TO PLAY CHESS: ICA CLUB AFFILIATES



AMERICAN POSTAL CHESS TOURNAMENTS sponsors postal events and sells chess books and equipment. Contact Jim or Helen Warren, P.O. Box 305, Western Springs 60558. (312) 246-6665.

CENTRAL COMETS CHESS CLUB, Steger Central Junior High School, c/o D. DeVore, 19 W. 33rd St., Steger, IL 60475.

CENTRAL LAKE COUNTY CHESS CLUB meets Fridays, 7:15 p.m. to midnight, College of Lake County, Bldg. 1, Washington at Route 45, Grayslake. Contact Dennis Grant, 1657 McKay, Waukegan 60087. (312) 336-5188.

CHESS NORTHWEST meets the second and fourth Friday evenings of each month, Schaumburg Public Library, 32 Library Lane, Schaumburg. Contact Elmer Linden, 1325 Dennison Rd., Hoffman Estates, IL 60195. (312) 882-2382.

CHICAGO CHESS CENTER meets for casual chess 7 days a week, 6 p.m. to 1 a.m., 2923 N. Southport, Chicago 60657. Also sponsors rated tournaments. Contact Ray Socha, (312) 929-7010.

CHICAGO CHESS MATES CLUB AND BOOKSTORE sponsors tournaments and group lessons, sells chess books and equipment, weekdays 4 p.m.-11 p.m., weekends 10 a.m. - 9 p.m. (closed Mondays), 1261 W. Loyola, Chicago, 60626. Contact Richard Verber (312) 262-9100 or (312) 262-8050.

CHICAGO INDUSTRIAL CHESS LEAGUE organizes frequent competition among commercial/government teams with awards, ratings, and special events. Contact Jim Brotsos, (312) 775-5054, or Bruce McNeil, (312) 742-5195.

CLOVERLINE STUDENT CHESS PROGRAM offers free chess lessons for high school and grammar school students, Tuesdays, 3 to 6 p.m. at Revere Park Field House, 2509 W. Irving Park, Chicago 60618. Contact Richard Verber (312) 262-8050.

DOWNERS GROVE PARK DISTRICT CHESS CLUB meets Thursdays, 6:30-10 p.m., Lincoln Center, 935 Maple Ave., Downers Grove. Affiliated with USCF and ICA. Contact George Uffner, (312) 960-9382.

ELK GROVE VILLAGE CHESS CLUB meets Fridays, 7 p.m. to 10 p.m., at the Al Hattendorf Center, 225 East Elk Grove Blvd., Elk Grove Village. Contact Gary Janssen, (312) 894-0996 (evenings).

EVANSTON TOWNSHIP HIGH SCHOOL CHESS CLUB meets Fridays, 3:30-6:00 p.m., Beardsley Student Center. Contact Ken Lewandowski. (312) 492-7943.

GREATER PEORIA CHESS FEDERATION meets Mondays, 7 to 11 p.m., Garrett Center, 824 N. University, Peoria. Contact Bill Wilkinson, 901 N. Rebecca Pl., Peoria 61606. (309) 673-9455.

HILLSIDE CHESS CLUB meets Fridays, 7:30 p.m. to midnight, Hillside Baptist Church, 5152 Butterfield (just east of Taft), Hillside. Contact Larry Stilwell, 4705 Elm, Lisle 60532. (312) 963-6799.

LAKE COUNTY CHESS ASSOCIATION sponsors rated tournaments in the Grayslake/ Zion area. Contact Tim Just, 37165 Willow Ln., Gurnee 60031. (312) 244-7954.

MIDWEST CHESS ASSOCIATION organizes major tournaments for masters and experts. Contact Helen Warren, P.O. Box 305, Western Springs, 60558. (312) 246-6665.

OAK PARK / FOREST PARK CHESS CLUB meets Tuesdays, 7 p.m. to midnight, Mohr Community Center, Jackson and DesPlaines, Forest Park. Contact Ken Marshall, 357 W. Grove, Lombard 60148. (312) 932-1455.

PARK FOREST CHESS CLUB meets Thursdays, 7 to 10:30 p.m., Freedom Hall, Orchard & Lakewood, Park Forest. Contact Wayne Palmquist, 9820 S. 51st Ave. Oak Lawn 60453 (312) 857-8150.

SPRINGFIELD CHESS CLUB meets Wednesdays, 6-10 p.m., Washington Park Pavilion, Park Ave. and South Grand Ave. West, Springfield. Contact Tom Knoedler, (217) 523-7265, or James Larson, (217) 529-0781.

ST. CHARLES CHESS CLUB meets Thursdays at 7 p.m., Baker Community House, 101 S. 2nd (Route 31), St. Charles. Contact Erv Sedlock, 6 N. 307 Old Homestead Rd., St. Charles 60174. (312) 377-7995.

TULEY PARK CHESS CLUB meets Saturdays, 1-5 p.m., Tuley Park Fieldhouse, 501 E. 90th Pl., Chicago. Contact Thomas Fineberg, 7321 S. South Shore Dr., Chicago 60649. (312) 721-3979.

TWIN CITIES CHESS CLUB meets Monday evenings, Parks & Rec. Bldg., 611 S. Linden, Normal, except 1st Monday/month, Garcia's, Watterson Place. Speed tournaments 50 cents/game. Contact Andy McGowan, 520 E. Chestnut, Bloomington 61701. (309) 827-7892.

**CHESS PHONE:  
(312) 325-3666**

**DOWNSTATE CHESS PHONE:  
(309) 655-0618**

# FROM THE PRESIDENT

by Helen Warren

## ILLINOIS OPEN WILL BE IN PEORIA

The Peoria Team, fresh from a stunning success in hosting the National Junior High School Scholastic tournament with almost 900 youngsters this past month, will present the ILLINOIS OPEN over Labor Day.

Plan to make the short trip to play in this six round, \$2,000 guaranteed state championship. The Signature Inn will offer attractive \$46 room rates. Of course, players on the Illinois Tour point hunt will welcome this maxi-tour tournament. A modest \$25 entry is another excellent feature.

Support your state association by playing in the ILLINOIS OPEN! See Tournament Life in CL and the ICB calendar for additional details.

SEE YOU IN PEORIA!

## ICB SEEKS NEW EDITOR

We all appreciate the long hours an editor of a state magazine gives to his job; we thank Editor Ken Marshall for his dedication and hard work during his tenure in the post. Now, as Ken has told the ICA officers and the ICA readership, professional and family responsibilities make it necessary for him to step down at the end of this year.

Luckily we have several months notice to find a replacement for Ken. It would, of course, be best if we had a new editor in place so that the last issue (or two) could be a transition-team effort, with Ken showing the new editor the ropes.

If you are interested in the job and can show some appropriate credentials, please contact Ken and the ICA president to discuss duties. You won't be facing the formidable alone!

## FUND RAISING NEARS \$5000 GOAL

It hardly seems possible that the last year and a half have flown by with such speed! About two months remain for preparations for the U.S. OPEN in Chicago, August 5-13th. We're grateful for the assistance from many quarters; volunteers for specific duties for day time hosting of our tournament guests have helped guarantee hospitality.

Still needed are individuals willing to handle the driving chores for the August 8 game at Cubs Park. Our thirty tickets are already half spoken for! But we DO need another several hosts to drive. Call me if you can help out.

Manning the demo boards for the grandmaster games is still an assignment to be filled. School chess clubs may want to take one of the nine evenings exclusively.

We'll have ICA Board meeting probably on July 9 at the Hyatt Regency O'Hare for final organizational planning.

Fund raising efforts have taken us ever closer to the \$5,000 goal. As we prepare this page on June 1 our total is \$4,661 with another two months ahead of us. We would like to list all contributors in the players' program now in preparation--and that means about a July 10 deadline to guarantee inclusion in the Honor Roll of patrons. If you haven't done so already, send U.S. Open Todd Barre a check--even if it's a modest one. Be a part of the total effort!

Our list of contributors continues to grow:

AMERICAN CHESS FOUNDATION  
MIDWEST CHESS ASSOC. (H Warren)  
APCT (Jim Warren)  
ALBERT SANDRIN  
ANGELO SANDRIN  
BILL SMYTHE  
TODD BARRE  
TOM KNOEDLER  
ST. CHARLES CC (E Sedlock)  
CHGO INDUSTRIAL CHESS LEAGUE (J Brotsos)  
TOM FINEBERG  
JULES STEIN  
1989 NATIONAL OPEN (F Gruenberg)  
HAROLD WINSTON  
CLARENCE MOORE

PETER PELTS  
E STEVEN DOYLE  
EPIC METALS CORP.  
ILL. INSULATION SUPPLY CO  
PRO-FASTENING SYSTEMS, INC  
CHARLES HICKS  
RYERSON STEEL CO.  
BILL BUTTNY  
F WOODROW HARRIS  
ARTHUR SINCLAIR  
IRWIN ROTHSCHILD  
CORRUGATED METALS, INC  
GUY GRUENBERG  
R DOYLE SATTERLEE  
JOHN GOTZ  
INSIDE CHESS  
MICHAEL BELOVESICK  
Anonymous  
MARVIN ROGAN  
TIM JUST  
JIM CONDRON  
RICHARD GEARON  
LOU WERNER  
ALEX & CHRISTINE PEHAS  
LAKE CO. CHESS ASSOC.  
CENTRAL LAKE CO CC  
WALTER KOCJAN  
RICHARD ANDERSON  
DAN KUMRO  
NEWMAN GUTTMAN  
FRANK SKOFF  
WINTON FULK  
EDGARS RUDZITIS  
MIKE ZACATE  
KEITH FARRAL  
RICHARD BALES  
JOHN TUMS  
RICHARD BALES  
DAVID COULTER  
WAYNE ELLICE  
ERIK KARKLINS

## CLOSING IN ON THE KING



\$5,000 OUR GOAL  
4,500  
4,000  
3,500  
3,000  
2,500  
2,000  
1,500  
1,000  
500  
0

Fund as of 6/1: \$4,661

Our thanks to all for helping make this 50th Anniversary U.S. OPEN a memorable occasion in the true "I WILL" spirit of Chicago!

# What's new

## **CHOW, MARTINOVSKY, ZELKIND SHARE PRAIRIE STATE TITLE**

Albert Chow, Eugene Martinovsky and Eduard Zelkind each finished 5-1 to tie for first through third places at the Fifth Annual Prairie States Masters/Experts Invitational, an Illinois Maxi-Tour event held in Grayslake on May 27-29, 1989. [A full report on this 42 player tournament, including annotated and unannotated games, a list of prize winners, and a crosstable, will appear in the next ICB.]

## **DZURNY TOPS PRAIRIE STATE ACTION UNDER 2000**

Scoring a perfect 5-0, Anthony Dzurny won the May 27, 1989 Prairie State Action Under 2000 tournament, which took place in conjunction with the annual Prairie State Masters/Experts Invitational. Dzurny defeated James McNamara in a final round battle for first place. [The next ICB will contain Tournament Director David Shiner's story on this event.]

## **NATIONAL JUNIOR HIGH SCHOOL CHAMPIONSHIP SETS ATTENDANCE RECORD**

Nearly 900 players took part in the 1989 National Junior High School Championship in Peoria on May 12-14, 1989. New York City schools Dalton and Horace Mann tied for first in the 170 player 9th Grade/Below section, while Eric Grabowski took individual honors with a 6.5-.5 result. The 300 player 8th Grade/Below section saw Rockford's Woodrow Wilson school win the team title; Bobby Seltzer of Milton Academy in Massachusetts was the top individual at 7-0. The Junior Varsity section (limited to 8th Grade/Below players with USCF ratings under 1300) was won by Armstrong school of Flint, Michigan; Steger Central (Steger, Illinois) and Flinn (Rockford, Illinois) finishing second and third, respectively. Pat Heivilin of Flinn ended up 7-0 to share individual honors in this 420 player section with Jay O'Neill and Jeff Majors, both from Indiana. Illinois players Aaron Angel (Park Forest) and John Delavan (Flinn) were among those who garnered 6.5 points.

## **TAYLOR WINS U.S. CORRESPONDENCE CHESS CHAMPIONSHIP**

Kankakee's David Taylor, long one of America's best postal chess players, has won the Seventh United States Correspondence Chess Championship. Taylor scored 13.5-.5 to take clear first in this event.

## **GREVICH LEADS 1989 NOVAG GRAND PRIX**

Grandmaster Dmitry Gurevich, a Chicago resident since August of 1988, holds a commanding lead in the \$30,000 1989 Novag Grand Prix, the year long competition sponsored by chess computer manufacturer Novag Industries. As of May 1 Gurevich, with 90.5 points, was well ahead of Alexander Ivanov (56.0) and Walter Browne (46.5) in the race for the \$10,000 Grand Prix first prize.

# MASTER CHALLENGE XI

Presented By

**THE OAK PARK-FOREST PARK  
CHESS CLUB**

**JUNE 23, 24, 25, 1989**

**MOHR COMMUNITY CENTER  
7650 JACKSON BOULEVARD  
FOREST PARK, ILLINOIS**

**\$3,000<sup>00</sup>**

**GUARANTEED**

## PRIZE FUND

1st: \$700 • 2nd: \$450 • 3rd: \$225 • 4th: \$110  
Expert . . . . . \$250, \$120, \$65  
Class A . . . . . \$240, \$115, \$60  
Class B . . . . . \$220, \$105, \$55  
Class C/below . . . \$160, \$75  
Unrated . . . . . \$50

**REGISTRATION: JUNE 23—6-7 PM  
JUNE 24—8-8:45 AM**

**ROUNDS: JUNE 23—7:30  
JUNE 24—9 - 1:30 - 6  
JUNE 25—10 - 3**

## SPLIT 1ST ROUND

Player chooses either Friday or Saturday morning round.  
Everyone plays last 4 rounds.

**TIME CONTROL: 40 / 100**

**ENTRY FEE: \$34<sup>00</sup> IN ADVANCE BY 6 / 20  
\$40<sup>00</sup> AT SITE**

**BY MAIL TO: Ken Marshall  
357 W. Grove  
Lombard, IL 60148  
Information: (312) 932-1455**

**A GRAND PRIX & ILLINOIS TOUR EVENT**  
**ICA MEMBERSHIP REQUIRED FOR ILLINOIS PLAYERS**

# ANDREW KARKLINS ANNOTATES

[Editor's Note: Andrew Karklins has been one of Chicago's strongest players for more than 20 years. Consistently rated near or above 2400, Karklins is known as a creative player whose games often feature explorations of seldom used opening variations. He is the author of MODERN GRANDMASTER CHESS, a deeply annotated study of all 42 games of the 1964 USSR Zonal Tournament. Karklins and his father, long time master Erik Karklins, are regular participants in the Chicago area's major tournaments.]

In introducing the following two games I would like to give some information which might add to the human interest of the subsequent annotations. I believe that both contests have considerable theoretical value, in that they feature new, sound, and interesting ideas in fairly major lines of the Ruy Lopez and Two Knights Defense. Yet the particulars of the games were not the product of home analysis. My only preparatory work was the selection of the basic lines, which I chose as interesting or promising on general grounds. Thus in the Steinitz Deferred "Siesta Variation" I decided to try a straightforward continuation which I considered natural. Some years ago I had noticed that Capablanca had also tried "my" idea in a game against H. Steiner (New York 1931). Over the board, however, I realized that I had stepped into a piece sacrifice which is considered unclear (ECO) and which has apparently never been repeated after its 1931 inaugural. After a lot of thought I believe I succeeded in improving on Capablanca's play. The reader may judge for himself after considering my notes.

I write this introduction so that the reader may review these games with the knowledge that they were "over the board" efforts, as opposed to the result of home analysis or analysis from some publication. Of course there is nothing wrong with home study, and to a degree everyone depends on publications for the systemization of ideas. Yet I believe most will agree that it is interesting to know that someone has found something new on his own in lines where theory has for years remained solid and unchanged, especially when the discoveries lead to difficult and exciting games.

Both of these games were played in the Midwest Masters tournaments. The "Capa Siesta" contest is from the 1989 event and has been submitted for consideration for the "Best Game" prize. The other game, which took place in 1988, was submitted as a "Best Game" candidate last year. (I have not seen the game which won the 1988 prize.)

1989 Midwest Masters  
Invitational

March 3-5, 1989

White: Andrew Karklins (2379)

Black: Dana Nance (2166)

Ruy Lopez (Steinitz Deferred  
"Siesta Variation")

Annotated by Andrew Karklins

1.e4 e5 2.Nf3 Nc6 3.Bb5 a6 4.Ba4  
d6 5.c3 f5 6.exf5 Bxf5 7.d4 e4 8.d5

In my opinion Black obtains good chances after 8.Ng5. The text is a natural line of play. As noted above, this is what appealed to me in selecting the line.

8...exf3 9.dxc6 b5 10.Qxf3

This whole variation was played for the first (and maybe the only) time in Capablanca - H. Steiner (New York 1931). White's move involves a piece

sacrifice. The alternative 10.Bb3 f3g does not look promising for White.

10...Bxb1 11.Bb3 Bg6

11...Qc7+ 12.Kd1 appears to leave Black too exposed on the King file, e.g., 12...Be4 13.Qh3 and next 14.Re1.

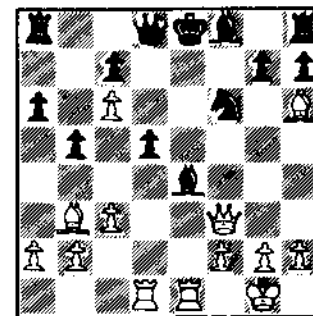
12.0-0 Nf6 13.Bh6!

This appears to be an improvement over Capablanca's 13.Bg5. (His game ended in a draw.) The basic idea behind Bh6 is simple: White retards Black's development while threatening 14.Rfe1+ Be7 15.Bg7. If Black takes the Bishop (13...gxh6, then 14.Rfe1+ Be7 15.Qf6 Rf8 16.Qg7) his position is hopeless. So Black tries...

13...d5 14.Rfe1+ Be4

On 14...Ne4, 15.Rad1 is rapidly decisive.

15.Rad1



15...Be7

If 15...gxh 16.Bd5! Nd5 17.Qh5+ wins. The text clearly (though not obviously) loses. Critical is 15...Qe7. The win for White is not easy to find, but it is definitely there. I.e., 15...Qe7 16.Qh3 gxh 17.f3 and now Black has two basic lines: A) 17...Qc5+ and B) 17...Bg7. A) 17...Qc5+ 18.Kh1 Qc6 [if 18...Bg7, 19.fxe 0-0 20.e5 Ne8 21.Rd5 Qa7 22.d3 and Black must lose to so many threats] 19.fxe dxe leads to the



most crucial position. White wins with 20.Rd4! Bg7 [if 20...Bd8?!, 21.Ree4! Ne4 22.Qh5+ Qg6 23.Qe5+ Be7 24.Qh8+ Bf8 25.Qe5+ Be7 26.Re4 etc.; or if 20...Be7, 21.Qh6 Rf8 22.Rde4! Qe4 23.Re4 Ne4 24.Qc6+! Kd8 25.Qa8+ Kd7 26.Qd5+ etc.] 21.Qf5! and suddenly after these quiet moves Black is lost. White threatens 22.Ree4! and Black has no defense (21...Rf8 22.Qe5+). B) 17...Bg7 18.fxe dxe [18...0-0 19.e5 Ne8 20.Rd5 Kh8 21.Qd3 and Black has no good response to 21.Bc2] 19.Rd4! wins in a manner similar to A) since both 19...Rd8 and 19...Rf8 lose, e.g. 19...Rd8 [19...Rf8 20.Rde4 Ne4 21.Re4 wins] 20.Ree4! Ne4 21.Qh5+ Kf8 Rd8+ etc.

16.Rxe4! dxe4 17.Rxd8+ Bxd8

Black sees that 17...Rd8 18.Qg3 gxf 19.Qc7 leaves him helpless against the imminent advance of White's passed pawn despite the fact that he would have more than enough material compensation for his Queen. The text move does not help in saving Black's c-pawn, however.

18.Qg3 gxf6 19.Qe5+ Be7 20.Qxc7

Black has two Rooks and a Bishop for his Queen, but is

completely at the mercy of White's forces.

20...Rd8 21.Qb7 Nd5 22.c7 Nxc7 23.Qxc7 Rd6 24.Qb8+ Rd8 25.Qc5 Rf8 26.Qh5+ Kd7 27.Qxb6 Rf6 28.Qxb7 Rdf8 29.Qxe4 Rxf2 30.Qb7+ Ke8 31.Qc8+ Bd8 32.Qc6+ 1-0

1988 Midwest Masters  
March 11-13, 1988 - Round 1

White: Kurt Stein (2211)  
Black: Andrew Karklins (2417)

Two Knights Defense (by transposition)

Annotated by Andrew Karklins

1.e4 e5 2.Nf3 Nc6 3.d4 exd4 4.Be4 Nf6 5.e5 d5 6.Bb5 Nc4 7.Nxd4 Bc5 8.Nxc6

Is White playing the latest theoretical recommendation? Later during the tournament Jim Marfia informed me that this move was examined in "Larry Evans on Chess" in the April 1988 CHESS LIFE. I only knew that 7...Bc5 was fairly commonplace. This was the first time I had ever played the Two Knights Defense.

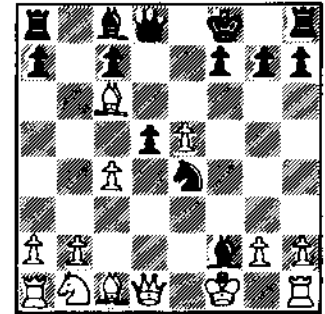
8...Bxf2+ 9.Kf1 bxc6!  
"Book" is 9...Qh4. I had a

vague recollection of this move. Without looking much deeper, however, 10.Nc3 (guarding against 10...Ng3+) appeared to be a reasonable defense. The ideas behind the text seem more natural.

10.Bxc6+ Kf8

The threat is 11...Ba6+. White therefore cannot take Black's Rook, and captures on d5 are also out of the question (11.Bd5? Ba6+ 12.c4 Bc4+ etc., or 11.Qd5? Ba6+ 12.c4 Bc4+! 13.Qc4 Qd1+). To my knowledge, no one has played this; yet the basic ideas of Black's approach are indicated.

11.c4



Now White threatens 12.Ba8 as well as capturing on d5 with the Queen. When playing 9...bxc6 I saw that Black had at least  
(Continued on Page 17)

## PRELUDE TO AN OPEN

### AN ICA ILLINOIS MINI-TOUR EVENT

WHEN: Saturday, July 15, 1989

WHERE: Freedom Hall, Lakewood and Orchard Blvd., Park Forest, IL

WHAT: 4 Round Swiss

TIME CONTROL: 40/90; SD/30

MEMBERSHIPS REQUIRED: USCF & ICA

CASH PRIZES: \$320 (based on 30 entries; 1st prize guaranteed)

1ST: \$100 2ND: \$60 3rd: \$30 Expert: \$30

CLASS PRIZES: Class A: \$30 Class B: \$25 Class C: \$25 Class D/E/Unr: \$20 (Based on 8 players per class)

OTHER PRIZES: Biggest Upset: \$10 Top Junior: \$10

ENTRY FEE: \$13 in advance (by 7/13/89) or for PF CC members; \$15 at site

REGISTRATION: 8:00-8:45 a.m. ROUND TIMES: 9:00, 12:30, 3:30, 7:00

ADVANCE ENTRIES: Lawrence S. Cohen, 135 Westwood, Park Forest, IL 60466

U.S.  CHESS PROUDLY INVITES YOU TO:  
FEDERATION

# 1989 U.S. OPEN *in* CHICAGO

August 5<sup>TH</sup> - 13<sup>TH</sup>  
**\$33,000<sup>00</sup>**  
in prizes.

*50th  
Anniversary  
Celebration*

## CHAMPIONSHIP

\$33,000 in Prizes

1st Place — \$5,000.00 & Fidelity Cup  
2nd through 9th — \$3,000, \$2,500, \$2,000, \$1,500,  
\$1,400, \$1,300, \$1,200, \$1,100  
2200-2399 — \$1,000, \$800, \$600, \$450, \$250, \$150  
Exp. \$900, \$700, \$500, \$350, \$150, \$100

A—\$800, \$600, \$400, \$300, \$100  
B—\$700, \$500, \$400, \$200, \$100  
C—\$600, \$400, \$300, \$200, \$100  
D—\$500, \$300, \$200, \$100, \$100  
E—\$300, \$200, \$100, \$100  
Unr. — \$200, \$100, \$100, \$50



**NEW  
9 ROUND  
FORMAT**

**NEW  
1 WEEK  
FORMAT**

## CELEBRATE IN CHICAGO

# 1989 U.S. Open

## 50th Anniversary Celebration!

9 Round Swiss 50/150

### REGISTRATION

Friday, August 4th, Noon-8:00 p.m.  
Saturday, August 5th, 9:00 a.m.-4:00 p.m.  
1/2 pt. bye available 1st round  
only if requested in advance.

### ROUNDS

Saturday, August 5th-12th 7:00 p.m.  
Last Round:  
Sunday August 13th 1:00 p.m.

### ENTRY FEE

\$80 in advance (\$10 more at site). To pay in advance, send entry fee, postmarked by 7/19 or pay by Visa, MasterCard or American Express until 7/19 - NOT AT DOOR. Call (914) 562-8350. Mail entries to: U.S. CHESS, 186 Route 9W, New Windsor, New York 12550.

### SPECIAL ROOM RATES

\$65 single or double.  
Call (312) 696-1234  
Ask for "Chess Rate"

### TRAVEL DISCOUNTS

AMERICAN AIRLINES 1-800-433-1790  
(ask for Star File: 0289-CW.)  
FREE Mini-bus from O'Hare Airport.  
Free Parking at Hotel  
(One block from train to Downtown Chicago.)

### MANY EXTRAS

#### DAYTIME EVENTS GALORE!

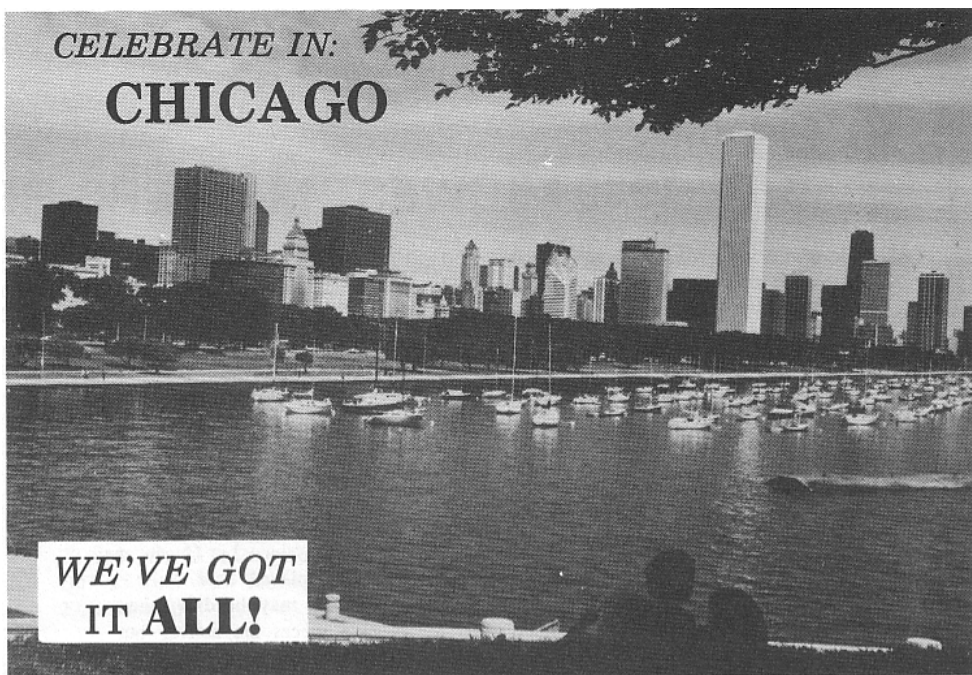
U.S. Speed Championship.  
Action Chess Tournaments  
Grandmaster Lectures & Simuls  
Planned/Escorted Daytime Trips To:  
Cubs Park, Arlington Race Track,  
Shopping Trip, Art Institute, Great  
America Amusement Park and

**MORE...MORE...MORE!**

#### PLUS:

**50th Anniversary Banquet  
and Hall of Fame Induction**

CELEBRATE IN:  
CHICAGO



## 50th Anniversary Celebration

### DAY Tyme Chess Events

August 6/7: U.S. Speed Championship — \$1,000 First Prize  
August 6/10: Denker High School Tournament — 5-SS  
August 7: Midwest 30/30 Quads — 3-SS; four man sections by rating  
August 8: Hall of Fame Classic — 5-SS; Game/30  
August 8: Grand Master Max Dlugy Simul  
August 8: Arthur Bisguier Lecture: A Chess Retrospective  
August 9: 50th Anniversary Commemorative — 4-SS; Game/45  
August 9: Grand Master Dmitry Gurevich Simul  
August 9: Walter Browne Lecture: Games from the Calgary Blitz Tournament  
August 10: Windy City Classic — 5-SS; Game/30  
August 11: The Chicago Premier — 5-SS; Game 30  
Saturday, August 12 - Noon: Annual Awards Banquet  
50th Anniversary Celebration, and Hall of Fame Induction

*Bring your camera and swim suit and join us at our 50th Anniversary Celebration*  
**FOR A FUN der FUL WEEK OF CHESS & EXCITEMENT**

### NON-CHESS SOCIAL EVENTS GALORE!

August 8: Trip to Cubs' Park  
August 9: Shopping Trip and Art Institute Tour  
August 10: Great America Amusement Park

OTHER ATTRACTIONS AVAILABLE: (Brochures available with transportation directions) Sport Fishing on Chicago's Great Lake, Shedd Aquarium, Museum of Science & Industry, Adler Planetarium, Spirit of Chicago Lake Michigan cruise, an afternoon at Arlington Park Race Track, Sears Tower, Field Museum of Natural History, 40 miles of fabulous lakefront and beaches, ethnic restaurants, Brookfield Zoo, etc., etc. Also, bridge and scrabble tournaments during the day, hosted by Maxine Fineberg.

HYATT REGENCY  O'HARE

9300 West Bryn Mawr Avenue • Rosemont, Illinois 60018  
(312) 696-1234

# 1989 MIDWEST MASTERS REVISITED

[Editor's Note: Albert Chow's article on the 1989 Midwest Masters, along with seven annotated and 11 unannotated games, six photos, and the event's crosstable, appeared in the March-April ICB. Another 30 games, including one annotated by outgoing ICB Games Editor Lawrence Chachere and one by long time Illinois Master Andrew Karklins, are presented in this issue. These games were chosen for publication by Albert Chow. Most were taken directly from score sheets; the remainder are courtesy of Eric Schiller (who has lightly annotated some of the games) and U.S. Chess [ChessLine News] via the USA TODAY Network [formerly Leisure LINC].

More Games from the 1989 Midwest Masters March 3-5, 1989  
Lincolnwood Hyatt (Chicago)

W: Andrew Karklins (2379) B: Dean Nance (2166) Round 4  
[Annotated by Andrew Karklins]  
[See page 6 of this ICB.]

W: Kenneth Wallach (2308) B: Lawrence Chachere (2363) Round 6  
[Annotated by Lawrence Chachere] 1.d4 Nf6 2.Nf3 e6 3.c4 b6 4.a3 Bb7 5.Nc3 d5 6.Bg5

Usual is 6.cxd. The text move does not lead to a disadvantage, but the game is heading toward a Queen's Gambit Declined Tartakower where White has played a3.

6...Be7 [White cannot transpose back into the main line, since Black can recapture on d5 with the Knight.] 7.e3 Nbd7 [Black wants to be able to recapture on f6 with a Knight if White decides to give up the Bishop when Black plays h6.] 8.b4!

This move actually turns a3 into a useful tempo. If White moves his King Bishop instead, Black plays dxc and is a move up in a QGD Tartakower.

8...dxc4 [Forced. White threatened c5.] 9.Bxc4 0-0 10.0-0

White now offered a draw. The position is equal; in this whole line it seems difficult for either side to get winning chances.

10...h6 11.Bh4 e5

I thought for a while before playing this break; the pawns are becoming very symmetrical. But the other break, e5, gives White an advantage: e.g., 11...Nc4 12.Bxe7 Qxe7 13.Nxe4 Bxe4 14.Nd2! and if Bb7 15.e4 e5 16.d5!

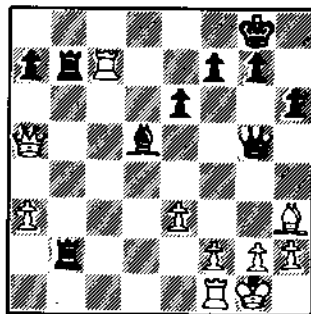
12.bxc5 [12.dxc bxc 13.b5 Qa5! is good for Black.] bxc5 13.Be2?!

I think this may be a mistake for White, since his Queen may be better placed here. Preferable may be dxc, when Black's pieces are active, but the position is still equal.

13...Nd5 14.Bxc7 Qxe7 15.Nxd5 Bxd5 16.dxc5 Nxc5 [Black has a slight advantage due to better piece placement.] 17.Nd2 [Bf3 will equalize for White if allowed. Also, b3 is covered.] Rfd8 [Threats include Bg2 followed by Nc4.] 18.Qc2 Rac8 19.Qb2 [If 19.Rfc1, Qb7 is strong.] R h8 [If Na4, Qb4! equalizes.] 20.Qc3 [This looks provocative, but if Qc2 Black makes progress with Rdc8.] Nb3! [The best way to maintain the initiative. Na4 permits Qa5.] 21.Nxb3 Rxb3 22.Qa5 Rb2 23.Bg4?! [The Bishop goes out of play, but there does not seem to be a better plan.] Rdb8 24.Rac1 Qg5 25.Bh3 R8b7

Black would probably never lose if he gave up the a-pawn, but White's extra a-pawn could be enough of a distraction to eliminate Black's chances.

26 Rc7?



Loses instantly. I expected g3,

playing for Bg2. I would have responded with Ra2, still keeping some pressure. Rfd1 is also plausible, playing for Rd2; White may equalize.

Rxf2! [Mate is now unavoidable unless White gives up his Queen.] 0-1

W: Lawrence Chachere (2363) B: Sandy Zabeil (2181) Round 1 1.f4 d5 2.Nf3 g6 3.g3 Bg7 4.Bg2 Nf6 5.d3 O-O 6.O-O c6 7.Qc1 Nbd7 8.e4 dxe4 9.dxe4 e5 10.Kh1 Qe7 11.Nc3 b6 12.f5 Ba6 13. Rg1 Rad8 14.Nh4 Kh8 15.h3 Nc5 16.g4 Nf7 17.g5 f6 18.fxg6 fxg5 19.Nf5 Qf6 20.gxh7 Nc6 21.Qg3 Nf4 22.h4 gxh4 23.Qxg7+ Qxg7 24.Nxg7 Nxg2 25.Nc6 h3 26.Bh6 Rde8 27.Nxf8 Nxf8 28.Kh2 Kxh7 29.Kxh3 Kxh6 30.Rxg2 Ng6 31.Kg3 Rg8 32.Rh1+ Nh4+ 33.Kxh4 Rxg2 34.Rd1 Bc4 35.Rd6+ Kg7 36.Rxc6 b5 37.b3 Rxc2 38.bxc4 Rxc3 39.cxb5 Re3 40.Kg5 Rxc4 41.Rc7+ Kf8 42.Rxa7 Ke8 43.Kf6 Rb4 44.Kc6 Kf8 45.a4 e4 46.Rf7+ Ke8 47.Rh7 Kd8 48.Kd6 Kc8 49. a5 e3 50.Kc6 Rc4+ 51.Kb6 Re4 52.Rh8+ Kd7 53.Rh1 e2 54.a6 e1=Q 55.Rxe1 Rxe1 56.a7 Ra1 57.Kb7 Kd6 58.b6 Kc5 59.a8=Q Rxa8 60. Kxa8 Kxb6 1/2-1/2

W: David Levine (2307) B: Gene Scott (2150) Round 1 1.e4 c5 2.Nf3 Nc6 3.d4 cxd4 4.Nxd4 g6 5.Be2 Bg7 6.Nb3 Nf6 7.Nc3 O-O 8.O-O d6 9.Bg5 a6 10.f4 b5 11.Bf3 Bb7 12.Kh1 h6 13.Bh4 Nd7 14.Rb1 Nb6 15.Nd5 Nc4 16.c3 a5 17.Nd2 Nxd2 18.Qxd2 Ba6 19. Rfe1 Ra7 20.Rbd1 Qb8 21.Bf2 Ra8 22.Nb6 Ra7 23.e5 Bb7 24.Nd7 Qd8 25.Nxf8 1-0

W: William Harris, Jr. (2153) B: Mitchell Weiss (2357) Round 1 1.e4 e6 2.d4 d5 3.Nc3 Bb4 4.e5 c5 5.a3 Bxc3+ 6.bxc3 Qc7 7. Qg4 f6 8.Nf3 c4 9.a4 Nc6 10.Bf4 Qf7 11.h4 h5 12.Qg3 Nge7 13. Be2 Bd7 14.a5 O-O-O 15.Kd2 Ng6 16.Rhb1 fxe5 17.Bxe5 Nxe5 18. Nxe5 Nxe5 19.Qxe5 Qxf2 20.Rb6 Qf6 21.Qd6

## GAMES FROM THE MIDWEST MASTERS

Qf8 22.Qe5 Qf6 23. Qd6 Rhf8  
24.a6 Qf4+ 25.Qxf4 Rxf4 26.Rxb7  
Rxb4 27.Rxa7 Kb8 28. Rb7+ Ka8  
29.Rc7 Be8 30.Rxg7 Rc8 31.Rf1  
Bc6 32.Rff7 Rh2 33.Rg5 h4 34.Rh7  
Bb5 35.Rgg7 Bc6 36.Ke3 Rh1  
37.Rg4 Ra1 38.Rgxb4 Rxa6  
39.Re7 Ra2 40.Kd2 Rb8 41.g4 Rf8  
42.g5 Rg8 43.g6 Be8 44.g7 Ra7  
45.Rxa7+ Kxa7 46.Rh8 Bf7  
47.Rxg8 Bxg8 48.Ke3 Kb6 49.Kf4  
Ka5 50.Ke5 Ka4 51.Kf6 Ka3  
52.Bh5 Kb2 53.Bf7 Bh7 54.Bg6 Bg8  
55.Ke7 Kxc3 56.Kf8 e5 57.dxe5 d4  
58.Kxg8 1-0

W: Alexander Ivanov (2599) B:  
Andrew Karklins (2379) Round 2  
(Analysis by Eric Schiller) 1 e4  
e5 2 Nf3 Nc6 3 Bb5 a6 4 Ba4 Nf6 5  
0-0 Be7 6 Re1 b5 7 Bh3 d6 8 c3 0-0 9  
h3 Na5 10 Bc2 c5 11 d4 exd4 12  
cxd4 exd4!? (A new twist on  
Borisenko's plan involving the  
fianchetto of the Bc8) 13 Nxd4  
Bb7 14 Nf5 Re8 15 Bg5 Bf8 16 Qf3  
Re6 17 Nc3 h6 18 Bh4 Nc4 19 Nd4  
Ne5 20 Qf5 Re8 21 Nd5 Nxd5 22  
exd5 g6 23 Bxd8 gx15 24 Bf6 f4 25  
Be4 Nd7 26 Bh4 Re5 27 Nc6 Rh5 28  
g3 fxg3 29 Bxg3 Rg5 30 h4 Rg4 31  
Bf3 Rg6 32 Ne7+ Bxe7 33 Rxe7  
Rd8 34 Kf1 Be8 35 Re1 Kf8 36 Re3  
Nb6 37 Rc7 Nc4 38 Rcc7 Rf6 39  
Bh5 Bh3+ 40 Kg1 Ne5 41 Bxe5  
dxe5 42 Rxf7+ Rxf7 43 Rxf7+ Kg8  
44 Ra7 Rd6 45 Be8 e4 46 Bc6 Rg6+  
47 Kh2 Bf1 48 Rxa6 Rg2+ 49 Kh1  
Rxf2 50 Kg1 e3 51 Ra3 Bc4 52  
Rxe3 Rd2 53 Re7 Bxa2 54 Rb7  
Bxd5 55 Bxd5+ Rxd5 1/2-1/2

W: Allen Kornfeld (2238) B:  
Lawrence Chachere (2363) Round  
2 1.e4 c5 2.Nc3 Nc6 3.g3 g6 4.Bg2  
Bg7 5.f4 d6 6.Nf3 Nh6 7.d3 f5  
8.Be3 O-O 9.Qd2 Rb8 10.h3 Kh8  
11.O-O b5 12.a3 a5 13.Rae1 b4  
14.axb4 axb4 15.Nd1 Qa5 16.Bf2  
Bd7 17.exf5 gxf5 18.d4 c4 19.d5 c3  
20.Qc1 Qxd5 21.Ne5 Qd2 22.Qxd2  
cxd2 23.Nxd7 dxc1=Q 24.Rxe1  
Rbc8 25.Nxf8 Bxf8 26.Bd5 Bg7  
27.c3 bxc3 28.Nxc3 Bf6 29.Bxc6  
Rxc6 30.Nd5 Bxb2 31.Re2 Bf6  
32.Nxe7 Rc1+ 33.Kg2 1/2- 1/2

W: Mitchell Weiss (2357) B:  
Angelo Sandrin (2160) Round 2  
1. e4 c5 2.Nf3 Nc6 3.d4 cxd4  
4.Nxd4 e6 5.Nc3 Qc7 6.Be3 a6  
7.Be2 Nf6 8.O-O Ne5 9.f4 Nc4  
10.Bc1 b5 11.e5 b4 12.exf6 bxc3 13.  
fxg7 Bxg7 14.bxc3 Rb8 15.Qd3 d5

16.f5 e5 17.f6 Bf8 18.Nf5 Qc5+  
19.Kh1 Rg8 20.Ng7+ Bxg7  
21.Qxh7 Qf8 22.Bxc4 Bxf6  
23.Bxd5 Rg6 24.Ba3 Rh6 25.Bc6+  
1-0

W: Marvin Rogan (2011) B: Seth  
Goldstein (1982) Round 2 1.e4 c5  
2.Nf3 d6 3.d4 cxd4 4.Nxd4 Nf6  
5.Nc3 a6 6.g3 e6 7.Bg2 Be7 8.O-O  
Qc7 9.Be3 Nbd7 10.Qe2 Nc5  
11.Rad1 O-O 12.f4 Rb8 13.g4 e5  
14.Nf5 Bxf5 15.exf5 cx4 16.Rxf4  
h6 17.h4 Bd8 18.g5 hxg5 19.hxg5  
Nh7 20.Nd5 Qc8 21.g6 fxg6  
22.fxg6 Nf6 23.Rxf6 gxf6 24.Qh5  
Qd7 25.Bxc5 Be7 26.Nxc7 Qxc7  
27.Bd5+ 1-0

W: Mike Zelkind (2309) B:  
Morris Giles (2452) Round 2 1.e4  
c5 2.Nc3 Nc6 3.g3 g6 4.Bg2 Bg7  
5.d3 Rb8 6.f4 h5 7.a3 d6 8.Nf3 Bg4  
9.h3 Bxf3 10.Qxf3 Nd4 11.Qf2 e6  
12.Be3 Ne7 13.O-O a5 14.Nd1  
O-O 15.c3 Nb3 16.Rb1 Qc7 17.g4  
f5 18.Qg3 Kh8 19.Nf2 d5 20.e5 d4  
21.Bc1 Rfd8 22.h4 fxg4 23.Qxg4  
Nf5 24.Be4 Qe7 25.Nh3 Nxb4  
26.Ng5 Nf5 27.Rf2 Bh6 28.Nf3 Rf8  
29.Rh2 Nxc1 30.Rxc1 Ne3 31.Qh4  
Qxb4 32.Rxb4 Bxf4 33.Bxg6 Rb7  
34.cxd4 Rg7 35.Rxh7+ Rxh7  
36.Bxh7 Kxh7 37.Rxc5 Rg8+  
38.Kh1 Nd1 39.Rc2 Rg3 40.Nc1  
Be3 41.Kh2 Rg4 42.Nf3 0-1

W: Gary Simms (2287) B: Igor  
Ivanov (2609) Round 3 1.e4 c5  
2.Nf3 d6 3.d4 cxd4 4.Qxd4 a6 5.c4  
Nc6 6.Qd2 Nf6 7.Nc3 e6 8.Bc2 Be7  
9.O-O O-O 10.Rc1 Bd7 11.b3 Qb8  
12.Bb2 Rd8 13.Bf1 Ng4 14.Qf4  
Ngc5 15.Rad1 Bf6 16.Nxe5 dxe5  
17.Qg4 Nd4 18.Rd3 b5 19.Rh3  
bxc4 20.bxc4 Bb5 21.cxb5 axb5  
22.Qh5 h6 23.Bc1 b4 24.Na4 Qb5  
25.Be3 Nc2 26.Rc1 Nxe3 27.fxc3  
Rac8 28.Nb2 Qxf1+! 29.Kxf1  
Rxc1+ 30.Ke2 Rc2+ 31.Kf3 Rxb2  
32.Rg3 Bg5 33.Rxg5 hxg5  
34.Qxg5 Rdd2 35.Qxe5 Rf2+  
36.Kg3 Rg2+ 37.Kh3 Rxh2+  
38.Kg3 Rbg2+ 39.Kf3 Rf2+  
40.Kg3 Rhg2+ 41.Kh3 Rg1  
42.Qb8+ Kh7 43.Qxb4 Rf6 44.Kh2  
Rg5 0-1

W: Peter Pelts (2390) B: Mike  
Zelkind (2309) Round 3 1.d4 Nf6  
2.Nf3 g6 3.c4 Bg7 4.Nc3 d6 5.c4  
O-O 6.Be2 Bg4 7.O-O Nfd7 8.Be3  
Nc6 9.d5 Bxf3 10.Bxf3 Na5 11.Be2  
c5 12.Qd2 a6 13.f4 Rb8 14.e5! dxc5

15.f5! b6 16.Bh6 Nb7 17.Rf3 f6  
18.fxg6 hxg6 19.Bd3 g5 20.Bxg7  
Kxg7 21.Ne4 e6 22.dxc6 f5  
23.Nxg5 e4 24.Rg3 f4 25.Nf7+ fxg3  
26.Qh6+ 1-0

W: GM Eduard Gufeld (2520) B:  
GM Dmitry Gurevich (2689)  
Round 4 (Analysis by Eric  
Schiller) 1 e4 c5 2 Nf3 d6 3 d4 cxd4  
4 Nxd4 Nf6 5 Nc3 Nc6 6 Bg5 e6 7  
Qd2 a6 8 0-0-0 Bd7 9 f4 Be7 10 Nf3  
b5 11 Bd3 (11 Bxf6 is normal  
here) 11...h6!? (11 Qa5 12 Kb1 b4!  
13 Nce2!? 0-0 14 g4!?) 12 Bh4 g5  
(Notice the complete symmetry  
of Black's position!) 13 fxg5 Nh7  
14 g6 Bxh4 15 Nxb4 Qxb4 16 gxh7  
Qg5 17 Qxg5 hxg5 18 h4! g4 19  
Re2 Kc7 20 Bxg4 Rxh7 21 Rh2 Ne5  
22 Bf3 Rg8 (Dmitry has been  
known to enjoy the Black side of  
the Benko Gambit, where the a-  
and b- files are opened at the  
cost of a pawn. Here he is  
applying the same technique to  
the Kingside.) 23 h5 Bc6 24 a3  
Rg5 25 Rdh1 Rh6 26 Rh4 f5 27 b3  
Nxf3 28 gx3 fxc4 29 fxc4 Be8 30  
Ne2 Rxbh5 31 Rxb5 Bxb5 32 Nf4  
Bf7 33 Kd2 Rg4 34 Kc3 Rg3+ 35  
Kd2 Rf3 36 Nd3 Bg6 37 Re1 Rg3 38  
Re2 a5 39 Nf4 Bh7 40 e5 Bf5 41  
exd6+ Kxd6 42 Nd3 Rg4 43 Ne5  
Rd4+ 44 Kc3 Rd5 45 Nf7+ Kc7 46  
Ne5 Kf6 47 Nd3 e5 48 Nf2 Kg5 49  
b4 axb4+ 50 axb4 Kf4 1/2-1/2

W: Alexander Ivanov (2599) B:  
Eugene Martinovsky (2443)  
Round 4 1 e4 e5 2 Nf3 Nc6 3 Bh5  
a6 4 Ba4 Nf6 5 0-0 6 Rc1 b5 7  
Bh3 0-0 8 c3 d6 9 h3 Bh7 10 d3 Qd7  
11 Nbd2 Nh5 12 Nf1 g6 13 d4 Rad8  
14 Bh6 Rfc8 15 Ng5 Bxg5 16 Bxg5  
Rb8 17 dxe5 Nxe5 18 Nh2 c5  
19 Ng4 Nxg4 20 hxg4 Ng7 21 f3 c4  
22 Be2 Qe6 23 Bf4 Rbd8 24 Qd2 h5  
25 gxh5 Nxb5 26 Be3 f6 27 b3 d5 28  
exd5 Rxd5 29 Bd4 Qf7 30 bxc4 Rg5  
31 Rxe8+ Qxe8 32 Bxf6 Rg3 33  
Bh4 Qb8 34 Rd1 Kh7 35 Qd6 Qa7+  
36 c5 Rxg2+ 37 Kxg2 Bxf3+ 38  
Kxf3 Qf7+ 39 Ke3 Ng7 40 Qxg6+  
1-0

W: GM Maxim Dlugy (2691) B:  
Stephen Wygle (2365) Round 4  
1.d4 Nf6 2.c4 e6 3.Nf3 Bb4+ 4.Bd2  
Qe7 5.g3 Nc6 6.Bg2 Bxd2+  
7.Nbxd2 d6 8.O-O a5 9.e4 e5 10.d5  
Nb8 11.Ne1 O-O 12.Nd3 Na6  
13.Qc2 Nd7 14.a3 Nde5 15.Nxc5  
Nxc5 16.b4 axb4 17.axb4 Rxa1  
18.Rxa1 Na6 19.Qc3 c5 20.dxc6  
bxc6 21.b5 Nc5 22.Nb3 cxb5



## GAMES FROM THE MIDWEST MASTERS

23.cxb5 Bb7 24.b6 Nxb3 25.Qxb3  
Rb8 26.Rc1 Rc8 27.Rxc8+ Bxc8  
28.Bf1 Bb7 29.Bc4 Kf8 30.Bd5 Ke8  
31.Qa4+ Kd8 32.Qa7 Kc8 33.Bc4  
Qg5 34.Ba6 Qcl+ 35.Kg2 Qc6  
36.Qa8+ 1-0

W: GM Sergey Kudrin (2677) B:  
Lawrence Chachere (2363) Round  
4 1.e4 c5 2.Nf3 d6 3.d4 Nf6 4.Nc3  
cxd4 5.Nxd4 a6 6.a4 e6 7.Be2 Be7  
8.O-O O-O 9.f4 Qc7 10.Kh1 Nc6  
11.Be3 Bd7 12.Nb3 b6 13.Bf3 Rab8  
14.Qe2 Be8 15.g4 Rd8 16.g5 Ne8  
17.Bg2 g6 18.Rad1 Bf8 19.Nd4  
Nb4 20.Qf2 Ng7 21.Rd2 d5 22.Nf3  
dxc4 23.Nxe4 Ne8 24.Bd4 Nc6  
25.Nf6+ Nxf6 26.Bxf6 Rxd2  
27.Nxd2 b5 28.Qh4 Qd7 29.Ne4  
Rb7 30.Bc3 Be7 31.Qh6 f6 32.gxf6  
Bf8 33.Qh4 Nd4 34.f7+ 1-0

W: Igor Ivanov (2609) B:  
Mitchell Weiss (2357) Round 4  
1.Nf3 c5 2.e4 Nc6 3.Nc3 g6 4.e3 d6  
5.d4 Bg4 6.d5 Ne5 7.Be2 Nxf3+  
8.Bxf3 Bxf3 9.Qxf3 Bg7 10.e4 Nf6  
11.O-O O-O 12.Bg5 a6 13.a4 Nd7  
14.Qh3 Rb8 15.f4 Bd4+ 16.Kh1 f6  
17.Bh6 Rf7 18.Rab1 Bxc3 19.Qxc3  
Qc7 20.h4 Nf8 21.a5 e5 22.f5 Qd8  
23.Rf3 Kh8 24.Rbf1 Nd7 25.Rg3  
gxf5 26.Rxf5 b5 27.axb6 Qxb6  
28.Qf3 Rg8 29.Rxg8+ Kxg8  
30.Qg4+ Kh8 31.Rf3 Qd8 32.Rg3  
f5 33.exf5 1-0

W: Stephen Ahlstrom (2223) B:  
Peter Peltis (2390) Round 4 1 e4  
e5 2 Nc3 Nf6 3 Nf3 d6 4 d4 Nbd7 5  
e4 g6 6 Be2 exd4 7 Nxd4 Bg7 8 0-0  
0-0 9 Re1 Re8 10 Bf1 Nc5 11 f3 a5  
12 Ndb5 Bd7 13 Be3 Ne6 14 Qd2  
Be6 15 Rad1 Nd7 16 Qf2 Bxb5 17  
Nxb5 f5 18 exf5 gxf5 19 Nd4 Nxd4  
20 Bxd4 Qg5 21 Bxg7 Kxg7 22  
Qd4+ Qf6 23 Qxf6+ Kxf6 24 Kf2  
Nc5 25 Bd3 Re5 26 Be2 Rae8 27  
Rxe5 dxe5 28 g3 b6 29 Rd5 Re7 30  
f4 e4 31 Ke3 Rg7 32 Rd8 Ne6 33  
Rd2 h5 34 Rg2 h4 35 g4 fxg4 36  
Bxe4 g3 37 hxg3 h3 38 Rg1 h2 39  
Rh1 Rxg3+ 40 Kf2 Rh3 41 Bg2  
Rh4 42 Kg3 Rxf4 43 Bd5 Rf5 44  
Rxb2 Nd4 45 Rd2 Ke5 46 Rd3 b5  
47 Re3+ Kd6 48 Rd3 Kc5 49 Be4  
Ne2+ 50 Kh2 Rh5+ 51 Rh3 Rxh3+  
52 Kxh3 bxc4 53 Kg2 Kd4 54 Kf2  
Nc3 55 bxc3+ Kxe4 56 Ke2 a4 57  
Kd2 Kf3 58 Kc2 Ke3 0-1

W: Nick Adams (2211) B: Eric  
Schiller (2322) Round 4  
(Analysis by Eric Schiller) 1 e4

e6 2 Nf3 d5 3 cxd5 exd5 4 d4 c5 5  
Nc3 Nc6 6 g3 Nf6 7 Bg2 Be7 8 0-0  
0-0 9 h3?! e4 10 Nc5 Be6 11 b3?! (A  
dubious novelty) 11...Bb4 12 Bh2  
Qa5 13 Rcl Rac8 14 bxc4 dxc4 15  
Nxc6 bxc6 16 Qc2 Qh5! 17 Kh2  
Rfd8 18 Ne4 Nxe4 19 Qxc4 Bd2! 20  
g4 Qa5 21 Ral c3 22 Bcl Bd5 23  
Qc5 Re8 24 Qf5 Qc7+! 25 Kg1  
Bxg2 26 Kxg2 Rxe2 27 Qd3 Rce8  
28 Qg3 (28 Ref3!! was  
threatened) 28 Qd7 29 Qd3 Qd5+  
30 Qf3 Qxd4 31 Qxc6 h5! 32 gxh5  
R8c5 33 Qa8+ Kh7 34 Qf3 Rg5+ 35  
Kh1 Qd5 36 Qxd5 Rxd5 37 Kg2  
Rxb5 38 Bxd2 Rxd2 39 Ral c2 40  
Kg3 Ra5 41 Ral Rad5 42 Kf3 Rd1  
43 Ke2 R5d2+ 0-1

W: Kevin Bachler (2136) B:  
Angelo Sandrin (2160) Round 4  
1.e4 c5 2.Nf3 Nc6 3.d4 cxd4  
4.Nxd4 e6 5.Nb5 d6 6.Bf4 e5 7.Be3  
Nf6 8.Bg5 Be6 9.Nd2 Qa5 10.a3 a6  
11.b4 Qb6 12.Bxf6 gxf6 13.Nc3  
Rg8 14.Nc4 Bxc4 15.Bxc4 Qd4  
16.Nd5 Qxe4+ 17.Be2 Qxg2 18.Rf1  
O-O-O 19.Nxf6 Rg6 20.Bg4+ Kb8  
21.Nd7+ Rxd7 22.Bxd7 Nd4  
23.Qd3 Bh6 24.h5 axh5 25.a4 Kc7  
26.Bxb5 Rg4 27. Qc3+ Kh8  
28.Bd3 Nf3+ 29.Kc2 Bd2 30.Qa3  
Bb4 31.Qb2 Nd4+ 32.Kd1 Qf3+ 33.  
Kc1 Be3 34.Qb6 Nc6 35.Rb1 Qf4+  
36.Qe3 Qxa4 37.Bxh7 Qa3+  
38.Kd1 Nd4 39. Be4 Qa2  
40.Rxb7+ Kc8 41.Qxc3+ 1-0

W: Albert Chow (2449) B: GM  
Maxim Dlugy (2691) Round 5 1  
d4 d5 2 c4 dxc4 3 e4 e5 4 Nf3 Bb4+  
5 Nc3 exd4 6 Qxd4 Qxd4 7 Nxd4  
Nf6 8 f3 Be5 9 Be3 Nc6 10 Rd1  
Bxd4 11 Bxd4 Nxd4 12 Rxd4 Be6  
13 Nb5 c5 14 Rd2 Ke7 15 Nc7 Rab8  
16 Nxe6 fxe6 17 Bxc4 b5 18 Be2 c4  
19 Kd1 Rbc8 20 Kc2 Rb6 21 Rhd1  
Rc7 22 g3 g5 23 h4 gxh4 24 g4 h4 25  
Rh1 h3+ 26 Kbl c3 27 bxc3 bxa2+  
28 Kxa2 Rc5 29 Rb2 h5 30 gxh5  
Rxb5 31 Rxb6 axb6 32 f4 Rh8 33  
Bf3 h3 34 e5 Nd7 35 Bd1 h2 36 Kb2  
Nf8 37 Be2 Kf7 38 f5 Nd7 39 Bb3  
Nxe5 40 fxe6+ Ke7 41 Ka3 Nd3 42  
Bd5 Kd6 43 e4 b5 44 e7 b4+ 45 Kb3  
Kxe7 46 Bg2 Nf2 47 Rf1 Rf8 48  
Ral Rg8 49 Bd5 Rg1 50 Ra7+ Kd6  
51 Kxb4 Nd3+ 52 Kc3 Nf4 53 Ba8  
Rcl+ 54 Kd4 Ne6+ 55 Kd3 Nc5+  
56 Kd4 h1B1? 57 Bxh1 Rxh1 58  
Ra2 Rh3 59 Rd2 Nb3+ 0-1

W: Eric Schiller (2322) B:  
Stephen Ahlstrom (2223) Round

5 (Analysis by Eric Schiller) 1 e4  
c5 2 Nf3 e6 3 d4 cxd4 4 Nxd4 Nc6 5  
Nb5 d6 6 e4 Nf6 7 N1c3 a6 8 Na3  
Be7 9 Be2 0-0 10 0-0 b6 11 f3 Bb7 12  
Be3 Nc5 13 Qd4 Ned7 14 Rad1?1  
(14 Rac1) 14 Qc7 15 g4 h6 16 h4?  
d5! 17 f4 Bc5 Qd2 Nxe4 19 Nxe4  
dxc4 20 b4 Bxe3+ 21 Qxc3 Rfd8 22  
g5 hxg5 23 hxg5 Nf8 24 e5 Rxd1 25  
Rxd1 bxc5 26 bxc5 Ng6 27 Rf1  
Nh4 28 Nc4 Nf5 29 Qf2 Rd8 30 Rcl  
c3 31 Nxe3 Qc6 32 Ng2 Nh4!!+ 33  
Rb1 Qxg2+ 34 Qxg2 Bxg2 35 Bxa6  
Be4 36 Rb4 Be6 37 Rb6 Nf3+ 38  
Kf2 Nd4 39 Bd3 Kf8 40 Ke3 f6 41  
Rb4 e5 42 gxh6 gxh6 43 fxc5 fxe5 44  
a4 Ra8 45 Bb1 Ke7 46 Bd3 Rxa4 47  
Rxa4 Bxa4 48 Ke4 Kf6 49 Kd5  
Bb3+ 50 Kd6 Be2 51 Bf1 e4?! 52  
Kd5 Ne6 53 c6 Bd3 54 Bg2 e3?  
(54...Nf4 +) 55 Bf3 Kf5 56 Bd1  
Be4+ 57 Kd6 Kf6 58 e7 Nxc7 59  
Kxc7= Ke5 60 Be2 Kd4 61 Kd6 Bd3  
62 Bf3 Bf5 63 Be2 Be2 64 Bg4 Bf5 65  
Be2 Kc3 66 Ke5 Kd2 67 Bh5 Be2 68  
Kd4 1/2-1/2

W: Kevin Gensler (2172) B: John  
Krom, Jr. (2155) Round 5 1 e4 c5  
2 Nf3 d6 3 d4 cxd4 4 Nxd4 Nf6 5  
Nc3 a6 6 Bg5 e6 7 f4 Qb6 8 Qd2  
Qxb2 9 Rb1 Qa3 10 Be2 Be7 11 e5  
dxc5 12 fxe5 Nfd7 13 Nc4 Nxe5 14  
0-0 h6 15 Bf4 Nbc6 16 Nxc6 Nxc6  
17 Nd6+ Bxd6 18 Bxd6 Qa5 19 Qf4  
Qf5 20 Qc3 Qg5 21 Qc3 f5 22 Bh5+  
Kd8 23 Rfd1 Bd7 24 Rxb7 Qxb5 25  
Rxd7+ Kxd7 26 Qxg7+ Ke8 27  
Qxb8+ Kf7 28 Qh7+ Kf6 29 Re1  
Ra7 30 Qh8+ Kg5 31 Qg8+ Qg6 32  
Bf4+ 1-0

W: Angelo Sandrin (2160) B:  
Marvin Rogan (2011) Round 5  
1.d4 Nf6 2.e4 g6 3.Nc3 d5 4.Nf3  
Bg7 5.Bf4 O-O 6.Rc1 c6 7.e3 Nbd7  
8.Bd3 dxc4 9.Bxc4 Nb6 10.Bb3 Bf5  
11.O-O Rc8 12.Qe2 Nfd5 13.Be5  
Nxc3 14.bxc3 Bg4 15.Bxg7 Kxg7  
16.h3 Bxf3 17.Qxf3 Qc7 18.h4 e6  
19.h5 Qe7 20.Qf4 Nd5 21.h6+ Kg8  
22.Qg3 f5 23.e4 Nf6 24.f3 c5!  
25.Rce1 Qc7 26.Qg5 Rcd8 27.d5 e5  
28.Be2 Ne8! 29.Rb1 Nd6 30.Bd3  
Rd7 31.Qh4 Qd8 32.Qh2 Qe7  
33.Rb3 Nf7 34. Kf2 e4 35.Be2 Qg5  
36.Rh1 Qf6 37.f4 Nd6 38.Ra3?  
Qb2 39.Rxa7 Nxc4 40.Rd1 Nd2  
41.Qh4 c4 0-1  
(Continued on Page 19)

# HIGH SCHOOL CHESS STARS: THE PRICE OF FAME

By David Wulatin

Ask veteran high school chess coaches about Greg "Groovy Gruenfeld" Gunderson and their faces will light up. "Oh, yeah, 'Groovy'. Best player in Illinois in the early '70s. Went to some big college on the east coast. Whatever happened to him, anyway? We all thought he'd make it big".

I didn't know what had become of "Groovy" until last weekend, when I saw him in a television commercial. That piercing, analytical stare he was famous for had been replaced by a dull, glazed look. I watched in horror as he droned these words into the camera:

"Hi, I'm Greg. I was a good chess player in high school, but not good enough to make it in the pros. Then I heard about Discoh Tech. They give you hands-on training from real professionals. Thanks, Discoh Tech."

I couldn't believe it. What could possibly have driven one of the state's brightest young chess stars into a school of automotive technology?

My questions led me to Discoh Tech, where I caught up with Greg Gunderson. He had some time before his next class (Advanced Spark Plugs) and agreed to an interview.

"Yeah, I went to college for a while, man", he said. "What a joke! I had spending money comin' outta my ears, my own car, a girl friend for each day of the week, and someone to take my tests for me. But I wasn't satisfied, y'know? So I went hardship and turned pro, thinking the big bucks would really start to roll in. Like most athletes, though, I didn't figure on getting hurt".

In his rookie year on the pro circuit, Greg suffered an itsy-bitsy cerebral hemorrhage. Although a minor injury for most people involved in sports (such as linebackers or first base coaches), it effectively ended Greg's career. With no degree to fall back on, his life came to a standstill.

Greg didn't think things would have turned out better even if he had finished college, however. "Hey, man, even if they had handed me that diploma it wouldn't have made a difference. I never really learned anything. Hell, they never did tell me what my major was". He paused to take a drag on a cigarette. "Thank God I found out about Discoh Tech, where I'm getting hands-on training from real professionals".

Is "Groovy"'s case an isolated one, or has this type of "recruiting" become the norm? I can speak from personal experience on this point, having finished in the top ten at the state high school tournament in 1987. The following conversation took place at a well known university which will remain anonymous pending an investigation:

"So what do you think of the campus, Dave?"

"Golly, it sure is pretty, Mr. ...?"

"Smith. John Smith."

"It looks great, Mr. Smith, but I've heard that your school has a pretty tough Physical Education program. I'm not exactly what you'd call a jock."

"Hell, you don't worry none. We got football players who'll take care of that."

"Gee. Well, what about the students here? Are they friendly?"

"Friendly? Are you kidding? You're gonna be Mr Popularity!"

"Gosh. Really?"

"I guarantee it. Especially with the ladies."

"They like the chess players, eh?"

"That's putting it mildly. Between you and me, Dave, they'll do anything for the guys with the nine-inch cerebrums."

The offer was so tempting that I probably would have accepted it if I hadn't remembered some pearls of wisdom my auto shop teacher once gave me: "Dave, college is nice, but it's only a temporary thing. The knowledge of how to give a car a good tune-up: now that will stay with you forever."

And so I barely avoided what could have been a disastrous error in my life. But what about today's young chess stars? Will they be wise enough to see through the smoke blown by fast-talking recruiters? Or will they, like "Groovy" Gunderson, sink into the quagmire of burned-out wood pushers? Only time will tell.

POSTSCRIPT: There is a bright note Greg Gunderson's story. His coaching has helped the Discoh Tech Chess Team move into first place in the QTSD (Quasi-Trade School Division). Last week Discoh even defeated perennial powerhouse Arca Tech. This just goes to show what hands-on training by real professionals can accomplish.

# 1989 ILLINOIS TOUR RULES

By Bill Smythe

The Illinois Tour, a year long series of tournaments sponsored by the Illinois Chess Association and featuring cash prizes for top performers in six categories from Master to Class D, is underway, and will continue through December. The Tour rules and methods of calculation set out below are the same which were used in 1988.

There are two types of Tour events, maxi- and mini-. Major tournaments such as the Tim Just Winter Open, Greater Peoria Open, Master Challenge, Illinois Open, etc. are likely to be maxi-events, while others (often one-day tournaments) will be mini-events.

Tour points are awarded in six rating classes: Master (2000 and up); Expert (2000-2199); Class A (1800-1999); Class B (1600-1799); Class C (1400-1599); Class D (Below 1400).

Players earn tour points according to score. Maxi-events award 32 points for a perfect score, mini-events 16. For each half-point below a perfect score, the Tour award is cut by half. When this halving would result in the points awarded being less than the score, the score itself is used instead. No Tour points are awarded for a score of zero.

The above formula works out as follows for three, four, and five round Tour tournaments:

3 Round Event		
Score	Maxi	Mini
3	32	16
2.5	16	8
2	8	4
1.5	4	2
1	2	1
0.5	1	0.5
0	0	0

4 Round Event		
Score	Maxi	Mini
4	32	16
3.5	16	8
3	8	4
2.5	4	2.5
2	2	2
1.5	1.5	1.5
1	1	1
0.5	0.5	0.5
0	0	0

5 Round Event		
Score	Maxi	Mini
5	32	16
4.5	16	8
4	8	4
3.5	4	3.5
3	3	3
2.5	2.5	2.5
2	2	2
1.5	1.5	1.5
1	1	1
0.5	0.5	0.5
0	0	0

Each rated player receives Tour points in all rating classes from his own up through the rating class of the highest rated player in the tournament or section.

## EXAMPLES:

1. Kathy Knight, an A player, scores 4-1 in a five round maxi-event. According to the chart, she has earned eight Tour points. The tournament was a single-section event, open to all, and at least one Master participated. Kathy's eight Tour points are awarded in all classes from A through Master: she earns eight A points, eight Expert points, and eight Master points.

2. Benjamin Bishop, a B player, scores 4.5-.5 in a five round maxi-event. The chart shows that he has earned 16 Tour points. He played in the Under 2000 section of the tournament, however. Because no Experts or Masters played in that section, Benjamin's Tour points are awarded only in classes A and B: he receives 16 A points and 16 B points.

All Illinois residents playing in Illinois Tour events must be Illinois Chess Association members. Out-of-staters who are members of their home state chess associations need not join the ICA, but cannot accumulate Tour points at tournaments in which they are not ICA members.

At the end of the year, cash prizes are awarded to those ICA members who have accumulated the greatest Tour point totals in each class. The 1989 Illinois Tour prizes are as follows:

Master:	1st: \$300	2nd: \$200	3rd: \$140
Expert:	\$150	\$75	
Class A:	\$120	\$60	
Class B:	\$90	\$45	
Class C:	\$60	\$30	
Class D:	\$30		

Cash prizes will be awarded only to those players who play in at least three Tour events in 1989. Prizes which would have been won by players who participate in only one or two such events will be distributed to those next in line.

Unrated players cannot accumulate Tour points. Events they play in, however, do count toward the three event minimum: this may help them cash in on Tour points won later in the year when they become rated.



# 1989 ILLINOIS TOUR

By Ken Marshall

Bidding to repeat his 1988 Illinois Tour victory, Senior Master Albert Chow has an 18.5 point lead over Grandmaster Dmitry Gurevich and Senior Master Eugene Martinovsky after the first eight Tour tournaments of 1989. Chow and Martinovsky each picked up eight points by tying for first in the Prairie State Masters/Experts Invitational. Gurevich, who passed up the Prairie State, has so far played in only one Tour tournament, and thus remains two short of the minimum number needed to qualify for Tour prizes.

Ron Torregrossa has moved to the top of the Expert class by garnering 19.5 points in only two Tour events. Steven Szpisjak follows with 16 points. (Having become a Master since earning these points, Szpisjak will not be increasing his Expert total unless he tumbles from the Master ranks.)

Red-hot Anthony Dzurny now leads both Class A (with 16 points, ahead of Bill Graves [12] and Larry Cohen [12]) and Class B (with 32 points, ahead of David Rockwell [16]). Given his recent results, Dzurny's future points will no doubt be chalked up in Class A (or above!). Class C leader Daryl Zelinski (8 points, one event) has left Illinois, so Rudy Padilla (6) and Terry Terrance (6), who have both met the

three tournament requirement, are fighting it out for the top spot. Robert Bales (4.5) sets the pace in Class D.

Tour participants who have now compiled 4 or more Master points, 3.5 or more Expert, Class A, or Class B points, 3 or more Class C points, or 2 or more Class D points are set out below. This list is current through June 1 and reflects the following Tour events: Tim Just Winter Open, Midwest Action Chess Championship, No Bones Mini-Tour, Bradley Winter Open, Greater Peoria Open, Lincoln Land Mini-Tour Open, Prairie State Masters/Experts Invitational, and Prairie State Action Under 2000.

The next scheduled Tour events are Master Challenge XI (Maxi-Tour: June 23-25), Peoria Action Open (Mini-Tour: July 8), Prelude to an Open (Mini-Tour: July 15), and Bradley Summer Open (Mini-Tour: August 19).

REMEMBER: YOU MUST PLAY IN AT LEAST THREE TOUR TOURNAMENTS IN ORDER TO BE ELIGIBLE FOR TOUR PRIZES. Complete Tour rules, regulations, and prize fund are set out on page 14 of this ICB.

## Master Tour Points:

CHOW Albert	50.5
GUREVICH Dmitry	32 (1)
MARTINOVSKY Eugene	32
BONDARI Cyrus	23.5
COLIAS Bill	20
SEPIJSKJ Steven	20 (2)
TORREGROSSA Ron	19.5(2)
WALLACH Ken	16
GENSLER Kevin	14.5
COHEN Larry	14
SURAK Steve	14
CRAMFORD Brad	13.5
VLASTNIK Richard	12 (2)
PELTS Peter	11 (2)
ASH Robert	10.5(2)
GRAVES Bill	9.5
SCHILLER Eric	9.5(2)
CONDON Jim	9 (2)
LONGOFF Marc	8.5(2)
BOLITHO Thomas	8
BOUON Barry	8
GARDNER Bruce	8 (1)
LEVINE David	8 (1)
PORTER John	8 (1)
SATTERLEE Ray Doyle	8 (1)
UMSINGA George	8 (1)
KELKIND Ed	8 (1)
MC NAMARA Jim	7
SMYTHE Bill	7 (2)
FAHRENHOLZ Steve	6.5(2)
SPEAR Robert	6.5
VAN BOSKIRK Doug	6.5(2)
HERNANDEZ Hector	6
NAFF Bill	6 (2)
SAX Robert	6 (2)
BROCK Bill	5.5(2)
REYES Virgilio	5.5
WARREN Jim	5.5(2)
ALLISON Roger	5
FISCHER Gregory	5 (2)
LUNDQUIST Doug	5 (2)
MAYKA Tom	5 (2)
TAMEZ Isidro	5 (2)
KARLINS Andrew	4.5(1)
LA FRAMA Arthur	4.5(2)
MARTIN Don	4.5
PAMPEL William	4.5(2)
BERRY Greg	4 (1)
BONDARI Sinaak	4 (1)
BUNGO Greg	4 (1)
FULK Winton	4 (2)
ROCKWELL David	4 (1)

HARGER Daniel	4 (1)
HIERONYMUS Kent	4 (2)
JARRETTE Phil	4 (2)
KAMEN Dan	4 (1)
REYES Ruben	4 (1)
REYNOLDS Robert	4 (1)
RUDLOFF Michael	4 (1)
SEPCHECK Mark	4 (1)
STEIN Peter	4 (1)
UNDERWOOD Wesley	4 (1)
ZUMERBACH Randy	4 (1)

## Expert Tour Points:

TORREGROSSA Ron	19.5(2)
SEPIJSKJ Steven	16 (2)
GENSLER Kevin	14.5
COHEN Larry	14
SURAK Steve	14
CRAMFORD Brad	13.5
VLASTNIK Richard	12 (2)
ASH Robert	10.5 (2)
GRAVES Bill	9.5
CONDON Jim	9 (2)
BOLITHO Thomas	8
BOUON Barry	8
PORTER John	8 (1)
SATTERLEE Ray Doyle	8 (1)
MC NAMARA Jim	7
SMYTHE Bill	7 (2)
FAHRENHOLZ Steve	6.5(2)
SPEAR Robert	6.5
VAN BOSKIRK Doug	6.5(2)
HERNANDEZ Hector	6
NAFF Bill	6 (2)
SAX Robert	6 (2)
BROCK Bill	5.5(2)
REYES Virgilio	5.5
WARREN Jim	5.5(2)
ALLISON Roger	5
FISCHER Gregory	5 (2)
LUNDQUIST Doug	5 (2)
MAYKA Tom	5 (2)
TAMEZ Isidro	5 (2)
LA FRAMA Arthur	4.5(2)
MARTIN Don	4.5
PAMPEL William	4.5(2)
BERRY Greg	4 (1)
BUNGO Greg	4 (1)
FULK Winton	4 (2)
GREGORY Jamie	4 (1)
HIERONYMUS Kent	4 (2)
JARRETTE Phil	4 (2)
KAMEN Dan	4 (1)

REYNOLDS Robert	4 (1)
RUDLOFF Michael	4 (1)
SEPCHECK Mark	4 (1)
UNDERWOOD Wesley	4 (1)
MILLS Paul	3.5(1)
MOHR Allen D	3.5(2)
SLATER Michael	3.5(1)

## Class A Tour Points:

DZURNY Anthony	16 (2)
GRAVES Bill	12.5
COHEN Larry	12
BOUON Barry	11
CRAMFORD Brad	10.5
MC NAMARA Jim	10.5
HERNANDEZ Hector	9.5
SPEAR Robert	9.5
BOLITHO Thomas	8
FULK Winton	8 (2)
PORTER John	8 (1)
JARRETTE Phil	7.5(2)
ALLISON Roger	6.5
BALZ Leslie	6.5(2)
COHEN Edward	6 (2)
MARTIN Don	5.5
PINEBERG Tom	5 (2)
FISCHER Gregory	5 (2)
TAMEZ Isidro	5 (2)
FLORES Joshua	4.5
LA FRAMA Arthur	4.5(2)
PAMPEL William	4.5(2)
BERRY Greg	4 (1)
GRUENBERG Fred	4
HIERONYMUS Kent	4 (2)
RUDLOFF Michael	4 (1)
SEPCHECK Mark	4 (1)
FRISKE Tom	3.5(1)
MILLS Paul	3.5(1)
MOHR Allen D	3.5(2)

## Class B Tour Points:

DZURNY Anthony	32 (2)
ROCKWELL David	16 (1)
RUDN Randy	10 (2)
ALLISON Roger	8.5
CALDWELL Scott	8 (1)
GARDNER Keith C	8
PORTER John	8 (1)
SOLCICH Kevin	8 (1)
WARFIELD Thomas	8 (1)
WHEELER Stephan	8 (2)
WOLF William	8 (2)
YAKOWENKO Lawrence	8 (1)

ZELINSKI Daryl	8 (1)
FLORES Joshua	7
MOHR Allen D	6.5(2)
PADILLA Rudy	6
TERRANCE Terry	6
SPRAR Robert	5.5
ZEVNIK Lawrence	5.5
GRUENBERG Fred	5
SHAFFER Thomas	5 (2)
STOTLER Richard	5 (2)
BALES Robert	4.5
INGRAM Randy	4.5(2)
OWIECKI Roger	4.5(2)
PAMPEL William	4.5(2)
BAYER Duane	4 (1)
HIERONYMUS Kent	4 (2)
LULVES Joseph	4 (1)
TALBOT Marc	4 (1)
FRISKE Tom	3.5(1)
MILLER Earl	3.5(2)
MILLS Paul	3.5(1)
MOORE Rod	3.5(2)

## Class C Tour Points:

ZELINSKI Daryl	8 (1)
PADILLA Rudy	6
TERRANCE Terry	6
ZEVNIK Lawrence	5.5
SHAFFER Thomas	5 (2)
BALES Robert	4.5
LULVES Joseph	4 (1)
TALBOT Marc	4 (1)
MILLER Earl	3.5(2)
MOORE Rod	3.5(2)
BIEZYNSKI Stan	3 (1)
ENGLEEN Mark	3 (1)
KEMPKER Robert	3 (1)

## Class D Tour Points:

BALES Robert	4.5
MILLER Earl	3.5(2)
CALLENDO Anthony	2.5(1)
KNUTSON Gerald	2.5(1)
COULTER Dave	2 (1)
DUPEE Arthur	2 (2)
WALLACE Michael	2 (1)

# ILLINOIS HIGH SCHOOL ASSOCIATION

## INDIVIDUAL CHESS CHAMPIONSHIP

OTTAWA HIGH SCHOOL      APRIL 21-22, 1989

CLASS AA

CLASS A

Final Place	Sch	PLAYER NAME	RATE	Rd. 1	Rd. 2	Rd. 3	Rd. 4	Rd. 5	pts
1	DS	BRAD CRAWFORD	2018	V-027	V-019	V-014	V-015	V-005	5
2	Ur	MALCOLM CARROLL	1750	V-035	V-034	D-010	V-030	V-003	4.5
3	DS	EVAN RYNES	1741	V-023	V-050	V-004	V-009	L-002	4
4	JR	MARK MONROY	1566	V-040	V-006	L-003	V-020	V-018	4
5	Cn	MATT CROUSE	1996	V-021	V-011	V-018	V-017	L-001	4
6	Nn	WILLIE STEVENSON	1550	V-012	L-004	V-033	V-025	V-015	4
7	AR	JAY RIFKIN	1593	V-031	L-009	V-043	V-036	V-016	4
8	Dv	CHRIS SEYMOUR	1511	L-033	V-045	V-027	V-042	V-014	4
9	LT	WILLIAM NEVEITT	1515	V-050	V-007	V-026	L-003	D-010	3.5
10	Kv	SPENSER FRIEL	1509	V-036	V-044	D-002	D-016	D-009	3.5
11	MS	JOHN HOESLEY	1615	V-007	L-005	V-023	D-026	V-017	3.5
12	Kv	PAUL BERLAND	1874	L-006	V-054	D-029	V-037	V-026	3.5
13	Pv	RYUN LEE	1447	BYE	D-016	L-017	V-046	V-028	3.5
14	MS	ANIL GURNAWEY	1948	V-053	V-021	L-001	V-024	L-008	3
15	LT	FIDEL SERRANO	1931	V-037	V-031	V-024	L-001	L-006	3
16	hm	SEDRICK PRUDE	1564	V-044	D-013	V-022	D-010	L-007	3
17	DS	PETER CHIEN	1649	V-048	V-035	V-013	L-005	L-011	3
18	RJ	DAVID NOLINE	1287	V-045	V-047	L-005	V-019	L-004	3
19	OF	SASCHA RAICICB	1280	V-020	L-001	V-038	L-018	V-036	3
20	SP	JONATHAN EATON	1940	L-019	V-033	V-034	L-004	V-030	3
21	DN	JOHN WHITE	1784	L-005	L-014	V-050	V-032	V-034	3
22	Cv	CHRIS HAYTON	1438	D-041	V-049	L-016	V-029	D-025	3
23	Cv	NATHANIEL HUGHES	1679	L-003	V-053	L-011	V-052	V-040	3
24	GN	MARI JUTOVSKY	1632	V-051	V-052	L-015	L-014	V-035	3
25	Ur	GREG LEUTHOLD	1384	V-043	D-051	V-056	L-006	D-022	3
26	JR	GREG MILLER	1726	V-039	V-040	L-009	D-011	L-012	2.5
27	MC	TONY GLASER	1334	L-001	V-038	L-008	D-033	V-048	2.5
28	MC	FRANK MORAN	1473	D-029	V-041	L-030	V-039	L-013	2.5
29	RI	TANG KANJANAPITAK	1367	D-028	D-046	D-012	L-022	V-047	2.5
30	DS	SAMER TALSANIA	1333	V-055	D-056	V-028	L-002	L-020	2.5
31	MM	JIM OBERWEIS	1446	L-007	L-015	D-045	V-055	V-046	2.5
32	JR	LARRY STRAIN	1544	L-038	D-055	V-041	L-021	V-045	2.5
33	RI	HASSEER NAZEER	1370	V-008	L-020	L-006	D-027	D-039	2
34	Pv	FRED FORTMAN	1489	V-042	L-002	L-020	V-043	L-021	2
35	BB	CORY ALLEN	1579	L-002	L-017	V-052	V-038	L-024	2
36	ET	ERIC MATLIS	1514	L-010	V-048	V-051	L-007	L-019	2
37	NV	JASON BURI	1483	L-015	D-039	V-049	L-012	D-042	2
38	WN	ED FARSIAT	1408	V-032	L-027	L-019	L-035	V-051	2
39	Rn	ADAM DEREMIAE	0000	L-026	D-037	V-055	L-028	D-033	2
40	PV	GREG DAVIS	1626	L-004	L-026	V-057	V-056	L-023	2
41	OL	KEN SWANSON	1303	D-022	L-028	L-032	D-051	V-052	2
42	OF	JAMES PETRIE	1397	L-034	V-057	D-046	L-008	D-037	2
43	JR	MARK WILCOX	1289	L-025	BYE	L-007	L-034	V-056	2
44	SR	HECTOR RODRIGUEZ	1569	L-016	L-010	L-048	V-057	V-050	2
45	LP	BYRON MITCHELL	1269	L-018	L-008	D-031	V-049	L-032	1.5
46	Br	CHRISTOPHER SPAN	1238	D-049	D-029	D-042	L-013	L-031	1.5
47	CL	SCOTT McLAIN	0000	L-011	L-018	V-053	D-048	L-029	1.5
48	LW	JAMES ROBERTSON	1419	L-017	L-036	V-044	D-047	L-027	1.5
49	Sv	ROB EMAR	1005	D-046	L-022	L-037	L-045	V-055	1.5
50	TT	TOM BRINKMAN	0000	L-009	L-003	L-021	V-053	L-044	1
51	MV	TONY SARNO	1308	L-024	D-025	L-036	D-041	L-038	1
52	TT	GEORGE CLAIBORNE	1342	V-056	L-024	L-035	L-023	L-041	1
53	VE	JEFF HARRISON	0000	L-014	L-023	L-047	L-050	V-057	1
54	Sv	SERGE BIEBERMAN	1367	V-057	L-012	W/D	W/D	W/D	1
55	OL	KEN HLEBASKO	1385	L-030	D-032	L-039	L-031	L-049	.5
56	Cb	BRENT HILLMAN	1406	L-052	D-030	L-025	L-040	L-043	.5
57	SI	FRANK DING	1443	L-054	L-042	L-040	L-044	L-053	0

Final Place	Sch	PLAYER NAME	Rd. 1	Rd. 2	Rd. 3	Rd. 4	Rd. 5	pts
1	BF	JAMAL LEWIS	V-017	D-019	V-010	V-015	V-003	4.5
2	SV	BRUCE BIGGERS	V-011	V-006	V-009	L-003	V-005	4
3	OI	SHAWN HALSEY	V-026	V-022	V-018	V-002	L-001	4
4	Wt	SHI GI CHEH	D-028	V-021	V-019	D-005	V-009	4
5	BF	WENDELL TERRY	V-024	V-015	V-007	D-004	L-002	3.5
6	UN	DAVID LORBER	V-008	L-002	V-026	V-020	D-007	3.5
7	EP	BRIAN MARSH	V-020	V-025	L-005	V-016	D-006	3.5
8	GR	DOUG COONS	L-006	V-031	V-025	V-018	D-010	3.5
9	CL	WADE BRANSTITER	V-029	V-014	L-002	V-019	L-004	3
10	RD	NICK WOLFE	D-021	V-012	L-001	V-027	D-008	3
11	GR	JOHN DANIEL	L-002	V-029	L-016	V-024	V-018	3
12	GN	JUANBOSCO AYALA	D-025	L-010	V-021	V-023	D-015	3
13	RL	ERIC WHITE	L-016	D-023	V-028	D-014	V-020	3
14	GR	ANDY HENSEN	V-031	L-009	D-027	D-013	V-022	3
15	GN	THOMAS McCAGHEY	V-030	L-005	V-022	L-001	D-012	2.5
16	RB	PHIL NEUKOMH	V-013	L-018	V-011	L-007	D-017	2.5
17	NB	STEVE McBRIDE	L-001	L-027	V-029	V-026	D-016	2.5
18	SV	NATE PETERSON	V-027	V-016	L-003	L-008	L-011	2
19	Ba	MARC BOUTON	V-032	D-001	L-004	L-009	D-026	2
20	GR	DOUG PEENICIE	L-007	V-028	V-030	L-006	L-013	2
21	OI	MATT CREMERS	D-010	L-004	L-012	V-031	D-023	2
22	RB	DOUG ENCHET	V-023	L-003	L-015	V-030	L-014	2
23	SV	JEFF BASTIAN	L-022	D-013	V-031	L-012	D-021	2
24	NB	CARL MARTIN	L-005	L-030	V-032	L-011	V-028	2
25	Bv	BRUCE CARUTH	D-012	L-007	L-008	L-028	V-027	1.5
26	CL	JERRY SMITE	L-003	V-032	L-006	L-017	D-019	1.5
27	BI	DARRALL SHOOP	L-018	V-017	D-014	L-010	L-025	1.5
28	BI	RUSSELL PAUST	D-004	L-020	L-013	V-025	L-024	1.5
29	RD	KENNY GASPAR	L-009	L-011	L-017	V-032	D-030	1.5
30	CL	SCOTT LUND	L-015	V-024	L-020	L-022	D-029	1.5
31	AC	DON BOEDIGHEIMER	L-014	L-008	L-023	L-021	V-032	1
32	OI	JASON SANDERS	L-019	L-026	L-024	L-029	L-031	0

### MARCH/APRIL ICB CORRECTIONS

Albert Chow has pointed out some errors which crept into his Midwest Masters article during the editing of the March-April ICB: the Black King should be on d4 in the Brooks-Lukowiak diagram (p.7), and in the first Rizzitano-Brooks note, the reference should be to the King's Indian, not Queen's Indian (p.8). Chow also notes that in Rizzitano-Brooks he was working with an incorrect game score; Black's 33rd move is Bf7, not Bc3, which explains the final position (p.8).

Other March-April corrections: In the article on the Albert Chow-Eugene Martinovsky match the colors of the first game were reversed; as is indicated by the story's context, Martinovsky had White and Chow had Black in that game. Roger Blaine of the Ohio Chess Association noted that the 1988 Ohio tournament won by Peter Pelts was the Bellis-Underhill Memorial, not (as stated in the story on Pelts) the Buckeye Open.

# 1989 PEORIA ACTION OPEN

AN ICA ILLINOIS MINI-TOUR EVENT

WHEN: Saturday, July 8, 1989

WHERE: Garrett Center, 824 N. University, Peoria, IL

WHAT: 5 Round Swiss

TIME CONTROL: Game/30

MEMBERSHIPS REQUIRED: USCF & ICA

GUARANTEED CASH PRIZES: 1st: \$75 2nd: \$50

CLASS PRIZES: Class A: \$25 Class B: \$25 Class C/Under: \$25  
(Based on 6 players per class)

ENTRY FEE: \$11 in advance (by 7/6/89); \$13 at site

REGISTRATION: 8:30-9:15 a.m. ROUND TIMES: 9:30, 10:45, 12:30, 1:45, 3:00

ADVANCE ENTRIES: Murrel Rhodes, 1116 N. Parkside Dr., Peoria, IL 61606

NO SMOKING

PLEASE BRING SETS, BOARDS, & CLOCKS

## KARKLINS ANNOTATES

(Continued from Page 7)

11...Ba6 here; then 12.b3 dxc!  
gives Black very good chances  
(13.Qd8 Rd8 14.Bc4 Bd4!). But  
rather than 12.b3 White also has  
both 12.Nd2 and 12.Na3; it may  
be that these moves also favor  
Black, but this is not absolutely  
clear. Black chose to keep his  
light squared Bishop on the  
c8-h3 diagonal, and played...

11...Qh4!!

This move is hard to resist. I  
believe it deserves two  
exclamation points due to the  
brilliant play which arises from  
it. As demonstrated by the  
following variations, the move  
is not merely "spectacular", but  
is also unquestionably sound.  
White has four main lines: I)  
12.Ba8; II) 12.Qd5; III) Bd5; IV)  
12.Nc3. I) 12.Ba8, Ng3+!  
13.Kf2 (forced) 13...Ne4+ 14.Ke3  
[or Ke2] Qf2+ 15.Kd3 Bf5! This  
threatens a forced win (e.g.,  
after 16.Bd5) with 16...Nd2+!  
17.Kc3 Qe3+ 18.Kb4 a5+! etc.  
White has no defense. E.g.:  
A) 16.Re1 dxc+ 17.Kc4 Qc5+

18.Kb3 Ke7 and there is no  
recourse against 19...Rb8+ with  
a mating attack (19.Ka4!  
Rb8!). B) 16.cxd Nd2+  
17.Kc3 Qe3+ 18.Kb4 a5+! 19.Ka5  
(19.Ka4 Qd4+ forces Ka5) Qb6+  
20.Ka4 Bd7 21.Bc6 Bc6+ 22.dxc  
Ke7 with mate in two. C)  
16.g4 dxc+ 17.Kc4 Qc5+ 18.Kb3  
Ke7 winning as in A). D)  
16.Qf3 Nc5+ [16...Nd2+ is an  
error as after 17.Qf5 White gets  
far too much material for the  
Queen] 17.Kc3 Qc2+ 18.Kd4  
(18.Kb4 Qc4+ mates) Nc6+  
19.Kd5 (19.Kc3 d4 mate) Ke7 and  
White's King has no chance to  
survive (e.g. 20.Nc3 c6+ 21.Kc6  
Nd4+ and after capturing  
White's Queen Black will play  
Qf2, decisively pursuing White's  
King. E) 16.b3? or 16.b4?  
lead to rapidly forced losses,  
e.g. 16.b3? bxc+ 17.bxc Nd2+  
18.Kc3 Qe3+ 19.Kb4 a5+! mating  
shortly; or 16.b4? Nd2+ 17.Kc3  
Qe3+ 18.Kb2 Nc4 mate. II)  
12.Qd5 Bb6 13.g3 (forced) Bh3+  
14.Kc1 (Ke2 Qh5+ 15.Kd3 Nf2+  
16.Kc3 Be6 17.Qb5/Qf3/Qe5+  
Rd8 and White loses) Bf2+  
15.Kd1 Qh5+ 16.Kc2 Qe2+ 17.Nd2  
Bf5! 18.Ba8 (what else?) Nf6+  
(simplest) winning White's  
Queen. III) 12.Bd5 again leads  
to an interesting variation:

12...Ng3+! 13.Kf2 Ne4+ 14.Kc3 Qf2+!  
15.Kd3 (15.Kc4, Bf5 mate)Bf5 16.Bc4  
(16.Ba8 leads to the familiar mating  
pattern - 16...Nd2+ 17.Kc3 Qe3+ 18.Kb4  
a5+! etc.) Rd8+ 17.Kc3 Rd1 18.Rd1 Bc4  
19.Rd8+ Ke7 20.Rh8 Qc2+ 21.Kb4 Qe1  
winning. IV) 12.Nc3 Nc3 13.bxc  
(13.Qd3 Ba6 wins) Qc4+ 14.Kf2 Qc6 and  
Black is a pawn up with the better  
position.

12.Nd2 Ng3+ 13.Kxf2

This leads to a forced mate in 11  
moves at most! After 13.hxg, however,  
Qh1+ 14.Ke2 Bg4+ 15.Nf3 Qg2 leaves  
White materially and positionally  
lost.

13...Ne4+ 14.Kc3 Qf2+ 15.Kd3 Nc5+  
16.Kc3

Stalling with 16.Kc2 would have led  
to the forced mate in 11: 16...Bf5+  
17.Kc3 Qe3+ 18.Kb4 a5+ 19.Kb5 Rb8+  
20.Bb7 Rb7+ 21.Kc6 Bd7+ 22.Kd5 c6+  
23.Kd6 Qd4 mate.

16...Qe3+ 17.Kb4 a5+ 18.Kb5 Rb8+  
19.Kxa5 Nb3+! 0-1 (...Qa7 is mate).

Is a forced mate in 11 by Black from  
move 13 a record?

# ILLINOIS GRADE SCHOOL CHAMPIONSHIPS ATTRACTS 322 ENTRIES

By Garrett Scott

A record 322 players competed in the 1989 Illinois Grade School Championships, which took place at Bloomington High School on March 4 and 5, 1989. Bloomington's Oakland School hosted the three section event, which was organized by Garrett Scott and run by veteran scholastic tournament director Erv Sedlock and his St. Charles Chess Club crew (Jeff Wiewel, Mike Krupicka, Jon Gotz, and Dan Pradt) with plenty of local volunteer help.

## Primary Section Results

Matt Schuerman of Bent School (Bloomington) won the 77 player Primary Section (Kindergarten through Third Grade) with a 6.5-.5 score. Oakland (Bloomington) took the team title.

### Individual

Primary State Champion: Matt Schuerman (Bent, Bloomington) 6.5 points 1st Third Grade: Ben Blott (Ben Franklin, Glen Ellyn) 6 2nd Third Grade: Luke Hogan (Oakland) 6 3rd Third Grade: Adam Havens (Oakland) 5.5  
1st Second Grade: Filip Dudic (Swartz) 5 2nd Second Grade: Kevin Cleereman (Ben Franklin) 5 3rd Second Grade: Mark Strayer (Ben Franklin) 5 1st First Grade: Craig Cochran (Chicago Junior) 6 2nd First Grade: Steve Salzman (Ben Franklin) 5.5 3rd First Grade: Andrew Chambers (Oakland) 5 1st Kindergarten: Andy Stibal (St. Vincent, Peoria) 4 2nd Kindergarten: Matt Havens (Oakland) 2.5 3rd Kindergarten: David Lapen (St. Vincent) 2

### Team

1. Oakland (Bloomington) 21.5 2. Ben Franklin (Glen Ellyn) 21 3. Swartz 17 4. Washington (Washington) 15  
5. Evergreen (Carol Stream) 15 6. Centennial (Bloomington) 13 7. Stevenson (Bloomington) 8.5 8. Olympia (Stanford) 7.5

## Elementary Section Results

The 109 player Elementary Section (Grades Four and Five) was won by Michael Nichols (6.5 .5) of Oakland (Bloomington), the school which won the team championship.

### Individual

Elementary State Champion: Mike Nichols (Oakland, Bloomington) 6.5 1st Fifth Grade: Matthew Krusack (Ben Franklin, Glen Ellyn) 6 2nd Fifth Grade: Jeff Havens (Oakland) 6 3rd Fifth Grade: Tim Singer (Glen Hill, Glendale Heights) 6 1st Fourth Grade: David Schoolman (Oakland) 6 2nd Fourth Grade: Annaliss Jacobsen (Ben Franklin) 5.5 3rd Fourth Grade: Anthony Mathile (Oakland) 5.5

### Team

1. Oakland (Bloomington) 24 2. Glen Hill (Glendale Heights) 20.5 3. Ben Franklin (Glen Ellyn) 20.5 4. Albright (Villa Park) 19 5. Centennial (Bloomington) 18 6. Martin Luther King (Rockford) 17 7. Washington (Washington) 17 8. Robein (East Peoria) 17 9. East Park (Danville) 14 10. Stevenson (Bloomington) 13.5 11. Father Sweeney (Peoria) 12 12. Evergreen (Carol Stream) 10.5 13. Washington (Bloomington) 7

## Junior High Section Results

Finishing with a perfect 7-0 score, Jamie Getchius of Haines School (St. Charles) topped 136 players in the Junior High Section (Grades Six through Eight). Rockford's Wilson School won the team title.

### Individual

Junior High State Champion: Jamie Getchius (Haines, St. Charles) 7 1st Eighth Grade: Scott Rifkin (Wilson, Rockford) 6.5 2nd Eighth Grade: Matt Piper (Washington JH, Washington) 5 3rd Eighth Grade: Cory Shanes (Flynn, Rockford) 5 1st Seventh Grade: Phil Drennan (Wilson) 6 2nd Seventh Grade: Jeremy Sevcik (St. Mary, Lake Forest) 6 3rd Seventh Grade: Grant Cain (Minooka) 5.5 1st Sixth Grade: Adrian Ingram (Stevenson, Bloomington) 6 2nd Sixth Grade: Ravi Singh (Hadley, Glen Ellyn) 5.5 3rd Sixth Grade: Mickey Jacobsen (Ben Franklin, Glen Ellyn) 5

Team

- 1. Wilson (Rockford) 23
- 2. Hadley (Glen Ellyn) 18.5
- 3. Albright (Villa Park) 18.5
- 4. Bloomington JH 18
- 5. Benjamin (West Chicago) 18
- 6. Martin Luther King (Rockford) 17.5
- 7. Flynn (Rockford) 17.5
- 8. Beverly Manor (Washington) 17.5
- 9. Immanuel Lutheran (Belvidere) 16
- 10. Steger (Steger) 16
- 11. Olympia (Stanford) 16
- 12. Father Sweeney (East Peoria) 14
- 13. Washington JH (Washington) 13.5
- 14. Chiddix (Normal) 12
- 15. St. Mary (Lake Forest) 11.5
- 16. Centennial (Bloomington) 9

Here are two games from the Junior High Section:

W: Joseph Liu (1489) B: Adrian Ingram (1611) 1.e4 e5 2.Nf3 Nf6 3.Nxe5 d6 4.Nf3 Nxe4 5.d4 d5 6.Bd3 Bd6 7.O-O O-O 8.Re1 Bf5 9.Nbd2 Nxd2 10.Qxd2 Bxd3 11.Qxd3 Nd7 12.Bg5 f6 13.Bd2 Nb6 14.Ba5 Nc4 15.Bc3 Qd7 16.b3 Nb6 17.Bd2 Rfe8 18.c4 dxc4 19. hxc4 c5 20.dxc5 Bxc5 21.Qxd7 Nxd7 22.a3 Nb6 23.Bb4 Rxe1+ 24. Rxe1 Bxb4 25.axb4 Nxc4 26.Nd4 a5 27.Ra1 Rd8 28.Nc2 Rd2 29.Ne3 Nxe3 30.fxe3 axb4 31.Rb1 Rd7 32.Rxb4 Kf7 33.Kf2 Ke6 34.Rb1 Kd5 35.Rd1+ Kc6 36.Rxd7 Kxd7 37.Ke2 Ke6 38.g4 Ke5 39.Kd3 b5 40.h3 b4 41.Kc4 Kc4 42.Kxb4 Kxc3 43.h4 Kf4 44.g5 fxg5 45.hxg5 Kxg5 46.Kc3 Kg4 47.Kd2 Kg3 48.Ke2 Kg2 49.Ke3 g5 50.Ke4 h5 51. Kf5 h4 52.Kxg5 h3 53.Kf5 h2 54.Kc5 h1=Q 55.Kd4 Qe1 56.Kd5 Kf3 57.Kd6 Kf4 58.Kd5 Qe5+ 59.Kc4 Ke3 60.Kb4 Kd3 0-1

W: Josh Friday (1491) B: Jon Young (1298) 1.e4 e5 2.Nf3 Nc6 3.Bc4 Nf6 4.Ng5 Bc5 5.Nxf7 Bxf2+ 6.Kxf2 Nxe4+ 7.Ke1 Qh4+ 8.g3 Nxg3 9.hxg3 Qxh1+ 10.Kc2 Nd4+ 11.Kf2 Qxd1 12.Nxh8 Qf3+ 13.Kg1 Qxg3+ 14.Kf1 Qf3+ 15.Kg1 Qd1+ 16.Kg2 Qxc1 17.c3 Qxb2 18.cxd4 Qxa1 19.Nc3 d5 20.Nxd5 c6 21.Nc7+ Kf8 22.Nxa8 exd4 23.Bd3 Qxa2 24.Bxh7 Qxd2+ 25.Kf1 Bh3+ 26.Kg1 Qg2+ 1-0

## MIDWEST MASTERS REVISITED

(Continued from page 12)

W: GM Eduard Gufeld (2520) B: Peter Pelts (2390) Round 6 1.Nf3 c5 2.e4 d6 3.d4 exd4 4.Nxd4 Nf6 5.Nc3 a6 6.Be3 e6 7.Be2 Be7 8.g4 Nc6 9.g5 Nd7 10.h4 O-O 11.Rg1 Nc5 12.h5 g6 13.Qd2 Nxd4 14.Qxd4 b5 15.O-O-O Qa5 16.h6 e5 17.Qd2 Be6 18.Nd5 Qxd2+ 19.Rxd2 Bxd5 20.exd5 Ne4 21.Rd3 Rfc8 22.f3 Nc5 23.Rdd1 Rab8 24.f4 exf4 25.Bxf4 b4 26.Bg4 Re7 27.Rge1 Bf8 28.Re3 a5 29.Rdc1 b3 30.axb3 Rb4 31.Rf1 Nxb3+ 32.Kd1 Rd4+ 33.Rd3 Rcc4 34.Rxd4 Rxd4+ 35.Ke2 Nc5 36.Ke3 Rxd5 37.Bf3 Rf5 38.Bg4 Rd5 39.Bf3 Rf5 40.Bg4 1/2-1/2

W: Magdy Amin Assem (2406) B: Mark Ginsburg (2563) Round 6 1 d4 Nf6 2 c4 e6 3 Nf3 b6 4 g3 Ba6 5 b3 Bb4+ 6 Bd2 Be7 7 Nc3 c6 8 Bg2 d5 9 exd5 cxd5 10 Ne5 h5 11 h3 h4 12 g4 b5 13 a3 Bb7 14 O-O Qb6 15 Be3 Nfd7 16 Nd3 O-O 17 b4 a5 18 Ne5 Bc6 19 f4 Na6 20 Rb1 Naxc5 21 bxc5 Nxc5 22 dxc5 Bxc5 23 Bf2 b4 24 Na2 d4 25 Bxc6 Qxc6 26 axb4 axb4 27 Nxb4 1-0

W: Randy Zumbrunnen (2192) B: Richard Horvitz (2404) Round 6 1.e4 c5 2.Nc3 Nc6 3.g3 g6 4.Bg2 Bg7 5.d3 d6 6.f4 e6 7.Nf3 Nge7

8.O-O O-O 9.Be3 Nd4 10.e5 Nc5 11.Bf2 Nxf3+ 12.Qxf3 Nd4 13.Qd1 dxe5 14.fxe5 Bxe5 15.Nc4 f5 16.Nxc5 Qc7 17.b4 14 18.gxf4 Rxf4 19.Re1 Nf5 20.c3 Rxf2 21.Rxf2 Bxh2+ 22.Kh1 Bf4 23.Rb1 Be3 24.Qf3 Rb8 25.Re1 Bxf2 26.Qxf2 b6 27.Nxe6 Qxc3 28.Nf4 Bb7 29.Nd5 Bxd5 30.Bxd5+ Kg7 31.Bc4 Rf8 32.b5 h5 33.Re6 h4 34.Kh2 Rf6 35.Re8 Ng3 36.Qg2 Qd4 37.Qb7+ Kh6 38.Rh8+ Kg5 39.Qd5+ Qxd5 40.Bxd5 Kg4 41.Re8 Rf2+ 42.Kg1 Re2 43.Rf8 Re1+ 44.Kh2 Nf5 45.Rf6 Re2+ 46.Kg1 Kg5 47.Rf7 h3 48.Rh7 Kg4 49.Rh8 Kg3 50.Kf1 Rf2+ 51.Kc1 h2 52.Rh7 Rb2 53.Rxa7 Nh4 54.Kf1 Nf3 55.Rh7 Rf2+ 0-1

W: Kevin Gensler (2172) B: Daniel Harger (2227) Round 6 1 e4 e6 2 d4 d5 3 Nc3 Nf6 4 Bg5 Bb4 5 e5 h6 6 Bd2 Bxc3 7 bxc3 Ne4 8 Qg4 g6 9 h4 c5 10 Bd3 Nxd2 11 Kxd2 Nc6 12 Nf3 Qa5 13 Rab1 exd4 14 Nxd4 Nxe5 15 Qf4 Nxd3 16 exd3 a6 17 Nf3 Rh7 18 Ne5 Qc7 19 Nxb6 fxg6 20 Qd4 Re7 21 g3 Bd7 22 Rhe1 O-O-O 23 Re2 e5 24 Qa7 Bg4 0-1

W: Barry Manthe (2123) B: William Naff (2115) Round 6 1.e4 c5 2.Nf3 e6 3.b3 d5 4.exd5 exd5

5.Bb2 Be6 6.Bb5+ Nd7 7.d4 Ngf6 8.O-O a6 9.Bxd7+ Nxd7 10.Rc1 Qf6 11.Nc3 O-O-O 12.dxc5 Nxc5 13.b4 Nd7 14.Rb1 Qf5 15.b5 a5 16.Nd4 Qg6 17.Qc2 Bb4 18. f3 Bc5 19.Nxd5 Bf5 20.Kh1 Kb8 21.Nxf5 Qxf5 22.Qc4 Bd6 23.Ne7 Qh5 24.h3 f6 25.Nc6+ hxc6 26.hxc6 Nb6 27.Qa6 Qf7 28.Qxb6+ Ka8 29.Qxa5+ Qa7 30.Qxa7+ Kxa7 31.Bd4+ Ka6 32.Rb6+ Ka5 33.Reb1 Rb8 34.Bc3+ Ka4 35.Ra6+ 1-0

W: Marvin Rogan (2011) B: Liz Neely (2204) Round 6 1.e4 c5 2.Nf3 d6 3.d4 exd4 4.Nxd4 Nf6 5.Nc3 a6 6.g3 g6 7.Bg2 Bg7 8.O-O O-O 9.a4 Bd7 10.Bg5 Nc6 11.Nxc6 bxc6 12.Qd2 Rb8 13.b3 c5 14.Rad1 Bg4 15.f3 Be6 16.Bb6 c4 17.Bxg7 Kxg7 18.bxc4 Bxc4 19. Rfe1 Qc7 20.Nd5 Bxd5 21.exd5 Rb2 22.Re2 Re8 23.Qe1 Rxc2 24. Rxe7 Qb6+ 25.Kh1 Qb2 26.Qe6 Rf8 27.Rg1 Qb4 28.Ra7 Qc5 29.Rb7 Re1 30.Bf1 Nxd5 31.Qe2 Nc3 32.Qxa6 Qe3 33.Qa7 Qxf3+ 34.Bg2 Rxg1+ 35.Qxg1 Qd3 36.Qa1 Kg8 37.Rb3 Rc8 38.a5 Qc4 39.Rb6 Qc5 40.Rb3 Nb5 41.h3 d5 42.a6 Na7 43.Rb7 1/2-1/2

# BRAD CRAWFORD: ILLINOIS HIGH SCHOOL'S BEST

By Ken Marshall

In leading Downers Grove South High School to first place in the 1989 Class AA [large school] Team Tournament, and then winning the Class AA Individual Championship (with a perfect 5-0 score), Brad Crawford simply confirmed what has been evident for some time: he is, as a freshman, Illinois' best high school chess player. At 2085, Brad is presently the second highest rated 15 year old in the United States. He plans to be a master by September. "I'll have plenty of time to study during the summer", he said. "I also intend to keep playing a lot, and hope to make reach 2200 at the U.S. Open if not before".

Crawford learned to play chess when he was six by "messing around" with his father's chess computer. "My dad didn't know I was using the computer until he heard it say 'I lose'", he stated. Brad played chess with his father (who is "about 1600 strength"), but had no chess books, teacher, or coach, in his early grade school years. "As a fifth grader at Fairmont School in Downers Grove I finished second in the state, and I won the state championship in sixth grade", he said. "I played 'naturally' at that time, and did not look at books or become serious about chess until I was in eighth grade".

Crawford's first chess book, written by Fred Reinfeld, dealt with openings. "I was preparing for the eighth grade state championship, and thought I should start doing some 'book' work", he said. Playing for O'Neill School, Crawford had won the seventh grade title; he went on to finish second in the eighth grade tournament.

Brad first played in an "adult" chess event in January of 1988. "My rating went from 1536 to 1683 after three tournaments that month", he said. "I gained 100 points at the Midwest Action Chess Championship. I also gained confidence, and decided to keep playing in non-scholastic tournaments and see what happened". Since that time Crawford has played in more than 50 "adult" events. He now studies chess about two hours a night during the week, and tries to play in at least one tournament every weekend. "I spend a lot of time with the INFORMANT and with opening books", he said. "I also analyze my own games during the week after I play them, spending at least 30 minutes on each

one". Crawford considers himself a tactical player, and believes he is strongest in the middle game. He has taken only one formal chess lesson, a four hour session with Senior Master Albert Chow last February.

Although heavily involved with chess, Crawford does not devote his life to the game. He also is interested in soccer and other sports. A self-described "average" student, he does not ignore his school work in favor of chess. Brad withdrew from the Oak Park-Forest Park Chess Club Spring Open while tied for first at 3-0; he could not play the second day because he needed time to complete homework assignments. He was unable to compete in the recent OP-FP CC Championship because he had to study for final examinations.

With regard to other young players looking to improve their chess, Crawford recommends playing regularly and getting involved in non-scholastic chess activity. "Juniors should try to get experience in 'adult' tournaments", he said. "Playing tough competition on a regular basis - not just once a week or once a month - is critical. Constant play and serious study are important for grade and high school players who want to make progress". (Crawford notes that he is fortunate to have parents who have been very supportive of his chess efforts. "My father drives me to tournaments all over the Chicago area nearly every weekend, and also takes me to the weekly meetings of the Downers Grove and Oak Park-Forest Park Chess Clubs. This gives me the chance to play strong opposition all the time", he said.)

The following game was for first place in the 1989 Illinois Class AA High School Individual Championship. Both players were 4-0 going into the final round. Crawford's opponent, Matthew Crouse, is the "Under 17" United States Champion.

W: Matthew Crouse (1996) B: Brad Crawford (2018)  
1. e4 e5 2.Nc3 Nc6 3.Nf3 Nf6 4.e3 Bb4 5.Nd5 d6 6.a3 Ba5  
7.b4 Bb6 8.d3 Nxd5 9.cxd5 Ne7 10.e4 O-O 11.Be2 f5  
12.O-O Qe8 13.a4 a6 14.Qc2 a5 15.b5 f4 16.Nd2 Bd7  
17.Nc4 f3 18.Bxf3 Rxf3 19.Nxb6 cxb6 20.gxf3 Bh3 21.Bg5  
Qh5 0-1



## AL HOROWITZ MEMORIAL OPEN — \$8,900 GUARANTEED

in support of

### FIRST UNITED STATES INTERNATIONAL TITLE TOURNAMENT (INVITATIONAL)

ALL PRIZE MONEY HELD IN ESCROW BY USPCF

OPEN ENTRIES: July, 1989 to October 1, 1989

START DATE: November 1, 1989

ENTRY FEE: \$30 for the Open Prize Fund

\$ 5 to support your primary USPCF organizations: USCF, CCLA, APCT, TCC or NOST.

\$ 5 to support the International Prize Fund and our top players going for the Grandmaster and International Master titles.

\$40 (Make checks payable to ICCF-U.S.)

ONLY TWO ROUNDS! Two years per round.

12-15 PLAYERS-PER SECTION: Winner Advances

Premier Prizes (Open to all): \$4,500 Amateur Prizes (Open to under 1900): \$2,600 Reserve Prizes (Open to under 1600): \$1,800

Unrated players (without OTB or postal rating) cannot play in the Reserve Section and win prizes.

MAX ZAVANELLI, ICCF-U.S. SECRETARY  
729 South Prospect, Park Ridge, IL 60068

## GAMES OF ICA MEMBERS

[Editor's Note: Although most Chicago area chess players probably know Jim Warren as the proprietor of the American Postal Chess Tournaments (APCT) book and supply business, many may not realize that he has an expert rating in both postal and "over the board" play. Warren does not participate in many tournaments these days, but the following games (from the 1988 U.S. Open) show that he remains a formidable player.]

White: Woman International Master Liz Neely (2200) Black: Jim Warren (2063) Caro-Kann  
 1.e4 c6 2.Nc3 d5 3.d4 dxe4 4.Nxe4 Bf5 5.Ng3 Bg6 6.h4 h6 7.f4 e6 8.Nf3 Nd7 9.h5 Bh7 10.Bd3 Bxd3 11.Qxd3 Ngf6 12.Bd2 Qc7 13.O-O-O O-O-O 14.Ne5 Nxe5 15.fxe5 Nd7 16.Qf3 c5 17.Qxf7 cxd4 18.Qxe6 Qxe5 19.Qg4 Qd5 20.Bc3 Qxa2 21.Rxd4 Bc5 22.Rd3 Kb8 23.b4 Bb6 24.Rhd1 Rhe8 25.Bd4 Rc8 26.Rc3 Rxc3 27.Bxc3 Bc3+ 28.Rd2 Bxd2+ 29.Kxd2 Qd5+ 30.Kc1 a6 31.Nf5 Ka8 32.Nxg7 Rc8 33.Bb2 Qd3 34.Qd1 Qc3+ 35.Kb1 Nb6 36.Bd4 Qc7 37.c3 Nc4 38.Qg4 Qe1+ 0-1

White: Jim Warren (2063) Black: Mark Shmulevich (2154) Dutch Defense 1.d4 e6 2.c4 f5 3.Nf3 Nf6 4.g3 Be7 5.Bg2 O-O 6.O-O d6 7.Nc3 Qe8 8.Rc1 Qg6 9.e4 fxe4 10.Nxe4 Nxe4 11.Rxe4 Ne6 12.Re1 Bf6 13.Bf4 Kh8 14.Qd2 a6 15.d5 e5 16.Be3 Ne7 17.Rac1 Bg4 18.c5 Nf5 19.cxd6 Nxe3 20.Rxe3 Bxf3 21.Rxf3 Bg5 22.Rxf8+ Rxf8 23.f4 exf4 24.dxc7 Qf5 25.Qc2 Qc8 26.Bh3 1-0

"Here is a contest from the 1988 Golden Knights Postal Championship", writes Paul Ilosvay. "It may be of interest because Black, though outrated by 334 points, apparently has a won game after 20 moves. Although 20...Ne4 allows White to take the Knight four different ways, each potential capture loses."

White: Bob Martinec (2045 Postal) Black: Paul Ilosvay

(1711 Postal) King's Indian [Analysis by Paul Ilosvay] 1.c4 Nf6 2. Nc3 g6 3.Nf3 Bg7 4.e4 d6 5.d4 O-O 6.Be2 c5 7.Be3 c6 8.Qd2 exd4 9.Nxd4 Re8 10.f3 d5 11.cxd5 cxd5 12.O-O-O?! [This move avoids "book" lines but exposes the White King to a Queenside attack. The first 11 moves are well known, but my opponent has played them in an order which could have transposed into many openings. (12.O-O dxc 13.Rad1 b6 14.N4b5 Qd2 15.Bd2 Na6 16.Bc4 Be6=+ per GM Walter Browne; White, with his much higher rating, avoided this because he was playing for a win.)] Nc6 [=+] 13.Nxc6 bxc6 14.Bg5 Ba6 15.Rhe1 Qe8 16.Bf1 Rxe1 17.Rxe1 Bxc4 18.Bxc4 dxc4 19.Qd4 Qf5 20.Re5 Ne4!

[Probably the winning move; the Knight can be taken four ways, each of which leads to a loss for White.] 21.Rxf5 Bxd4 22.Nxe4? [Taking with the pawn might be better, but still loses, e.g., 22.fxc gxf 23.cxf Bxc3 etc.] gxf5 23.Nd6 f6 24.Bf4 c3 25.bxc3 Bxc3 26.Nxf5 Be5 27.Be3 [Not 27.Bxe5 fxe 28.Nc7+ Kf7 29.Nxc6? Rc8!] Bxh2!? [Ties up the Bishop but is probably okay] 28.g3 Re8!? [Gives up a pawn (temporarily) to activate the Rook and also avoid the trapping of Black's Bishop] 29.Bxa7 Ra8 30.Bd4 Rxa2! 31.Bxf6 Kf7 32.Bc3 [32.Bb2 is better] Ke6 33.Nd4+ Kd7!? [33...Kd5 34.Nc2 with complications] 34.g4 [Not best] Be5 35.Kd1 Rf2 0-1

The following game pits Donald Walhout against his son Peter in the 1985 Region VII Postal Finals. "We played by mail in the usual way, since most of the time Peter was away at college", Donald writes. "When he was home, we exchanged move slips by putting them in the mailbox (which did save us some postage!). Peter and I assure the reader that, despite our family relationship, we played hard with no concessions."

White: Peter Walhout Black: Donald Walhout French 1.d4 e6 2.e4 d5 3.Nd2 c5 4.Ng3 Nc6 5.Bb5 Bd7 6.exd5 exd5 7.Qe2+ Qe7 8.dxc5 Qxe2+ 9.Bxe2 Bxc5 10.Nb3

Bb6 11.O-O Nf6 12.Bf4 O-O 13. Rad1 Be6 14.Nfd4 Rac8 15.c3 Rfe8 16.Bf3 Bg4 17.Bxg4 Nxb4 18. h3 Nge5 19.Nf5 Nc4 20.Bcl Re2 21.Ng3 Re5 22.Rd3 Rec8 23.Rfd1 h5 24.h4 Re1+ 25.Rxc1 Rxe1+ 26.Kh2 Bxf2 27.Rxd5 N6e5 28.Kh3 Be3 29.Bxe3 Rxc3 30.Nd4 Nxb2 31.Ndf5 Re1 32.Nxb5 Nd1 33.Nhxg7 Nxc3 34.Rd8+ Kh7 35.Kg3 Nxa2 36.h5 Nc3 37.Nc8 Ne4+ 38.Kf4 a5 39.Rd4 Kh8 40.g4 Ne5 41.Kg3 Rg1+ 42.Kf2 Rxb4 43.Rd8 Rg8 44. Nfd6 a4 45.Ra8 b6 46.Ra7 f5 47.Re7 Rf8 48.Kf1 Ncd3 49.h6 f4 50.Ne4 Ng6 51.Re6 Nc5 52.Nxc5 bxc5 53.Nf6 a3 54.Ra6 a2 55.Ng4 c4 56.Rxa2 c3 57.Rc2 Rc8 58.Ke2 Ne7 59.Kd3 Kh7 60.Rxc3 Rxc3+ 61.Kxc3 Nf5 62.Kd3 Nxb6 63.Ke4 1/2-1/2

Be they short or long, Anthony Dzurny has been winning a lot of games lately. [See "From the Editor's Desk" on page one of this ICB.] Here are two of his efforts from the 1989 New York Open.

Black: Anthony Dzurny (1777) White: Steve Saul (1754) 1.e4 c6 2.d4 d5 3.Nc3 dxe4 4.Nxc4 Nd7 5.Bd3 Ngf6 6.Qe2 g6?? 7.Nd6++ 1-0

White: Kon Kabilafkas (1711) Black: Anthony Dzurny (1777) 1. c4 Nf6 2.Nc3 d5 3.g3 d4 4.Nb5 c6 5.Na3 e5 6.Nc2 c5 7.d3 Nc6 8.Bg2 Bd6 9.Nf3 O-O 10.O-O h6 11.a3 Re8 12.Nd2 Bf5 13.Ne4 Nxe4 14.dxe4 Be6 15.b3 Qh6 16.Ne1 Na5 17.Bd2 Nxb3 18.Rb1 Bxc4 19.Nd3 Be6 20.f4 e4 21.f5 cxd3 22.fxc6 dxe2 23.exf7+ Kh7 24. Qxb3 exf1=Q+ 25.Bxf1 Qxb3 26.Rxb3 Re7 27.Bc4 Rf8 28.Rf3 Kg6 29.h4 h5 30.Rf5 Rxf7 31.Rg5+ Kh7 32.Rxb5+ Kg8 33.Rf5 Bxa3 34.Bxf7+ Rxf7 35.Rxe5 Re7 36.Rxe7 Bxe7 37.Kf2 Kf7 38.Ke2 Ke6 39.Kd3 Bc5 40.Kc4 b6 41.Bf4 a5 42.g4 a4 43.h5 b5+ 44.Kxc5 a3 45.Bc1 a2 46.Bb2 d3 47.Bxg7 d2 48.h6 d1=Q 49.h7 Qd6+ 50.Kxb5 Qd7+ 0-1

1989 U.S. OPEN  
 August 5-13  
 Hyatt Regency O'Hare  
 \$33,000 Prize Fund

# SOME OBSERVATIONS AT THE NORTH AMERICAN CLASS CHAMPIONSHIPS

By David Dathe

[Editor's Note: David Dathe submitted this Class B player's look at a major class tournament months ago. Space limitations kept it out of previous ICBs.]

After several years away from rated tournament play, I had hoped to return to action in the Class B section of the North American Class Championships, held in Chicago on July 28-31, 1988. Unfortunately, lack of time relegated me to the role of spectator for a day. My disappointment at not playing, however, was soon forgotten as I had the chance to watch many interesting games and see some of the big names in American chess. It was fun to sit in a hotel easy chair and have Grandmasters Robert Byrne, Dmitry Gurevich, Nick DeFirmian, and Sergey Kudrin, as well as International Masters Alexander Ivanov and Igor Ivanov and "world class" FIDE Master Michael Brooks, all walk by within a ten minute period. Strange how these fellows can play chess at 2600 strength while I struggle around 1600. What is the explanation for their success?

I thought it might be interesting to observe the playing habits of some of the top competitors and compare them with the habits of lower rated players like myself. Because the various class sections were partitioned off, I was able to see over the course of two rounds (3 and 4) how chess players of various strengths actually play the game. My "random" comparison of playing practices confirmed much of what I already knew.

I found that players of all strengths have certain "quirks." While away from the board, Igor Ivanov almost always walked with his hands clasped on his chest as if praying to Caissa for guidance. Immediately after his opponent moved, Robert Byrne would stretch his arms out to pull up his shirt sleeves and then clasp his hands under his chin to begin a long think. Nick DeFirmian sometimes sat on his feet in a guru-like position as he studied the board. Walter Morris, a senior master, would take off his sweater at the critical juncture of the game. And Alexander Ivanov, while intently studying a position, would frequently curl his lips as if to say "Ugh! How did I get into a position like this?"

Apparently some of these idiosyncrasies are more effective than my own (wearing headphones to keep out noise) because in the third round Byrne crushed his opponent, A. Ivanov beat DeFirmian after appearing to be lost for most of the middlegame, I. Ivanov drew with Michael Brooks, and Walter Morris played what I thought was a wonderful combination:

W: Forbush (2130) B: Morris (2417) 1.d4 Nf6 2.Bg5 e6 3.e4 h6 4.Bxf6 Qxf6 5.Qd2 c5 6.c3 b6 7.g3 Qd8 8.Bg2 Ba8 9.f4 Be7 10. Ne2 0-0 11.0-0 d5 12.e5 Nc6 13.Rd1 b5

14.Na3 b4 15.Nc2 bxc 16.bxc Qa5 17.Bf1 Rab8 18.Nc1 Bxf1 19.Kxf1 Qa4 20.dxc Rb2 21. Nb3 Qe4 22.Rac1 Rxa2 23.Qd3 Qh1+ 24.Kf2 Qxh2+ 25.Kf3 Nxe5+?! 26.fxc5 f6 27.Qg6 fxc+ 28.Kg4 Rf4+ 29.gxf Qg2+ 0-1

After the game I told Mr. Morris that his concluding combination (beginning with 25. ... Nxe5+) was one of the most beautiful I had seen in a long while. His reply was revealing: "His 27.Qg6 was a mistake. He should have played 27.Kf4. I was wrong in my calculations!" (So senior masters make errors while calculating. I was elated -- I can't remember the last game I played in which I didn't make the same kind of mistake.) I'm not sure what the final verdict is on 27.Kf4, but I'll certainly take a look at it during one of my study sessions.

I also noted that similar types of endgames were reached on many of the higher and lower boards. The majority of endings involved Rook + Pawn(s) vs. Rook + Pawn(s). Pal Benko, Andy Soltis, Fred Reinfield, and many others have said it, and we all know it: Rook and Pawn endings are the most common. This appears to be true regardless of the strength of the players.

Differences in playing habits between masters and lower rated players also were evident. The amount of time taken for a game varied significantly among the classes. Round 3 started at 10:00 on Saturday morning. Around 11:00, several games in classes C and D/E were finished (many having been decided in the endgame!) while almost all of the master games were still around moves 8-10. What an impression! With a time limit of 45 moves in two hours, pounding out 40 moves in 30 minutes to reach a hopeless ending, as some lower rated players did, seemed quite irresponsible. I saw one class C player on the Black side of Dragon Sicilian spend only 15 minutes in making five moves in a complex middlegame. During those five moves he won a piece, checked the White King, overlooked a Knight fork on his Queen and Rook, and finally traded down to a dead lost endgame. Had this player taken more time to think, he certainly would have won, particularly since he was up a piece.

Not surprisingly, a second difference between classes was tactical ability. The lower rated players were simply tactically poorer players. Of course, not being involved in the games and under no pressure, I probably saw more. As a class B player myself, I know how hard it can be to find combinations, but the number of missed forks, skewers, and double attacks on the lower boards was astounding. Masters could,



and did, overlook simple tactical moves, but at nowhere near the frequency of their lower rated compatriots.

In conclusion, I offer the following advice to B and C players. (It may not be original, but this time it comes from a fellow woodpusher.) First, use the time allotted. Chess players are always concerned about avoiding time trouble. But some consideration must be given to the opposite problem-failing to use a significant portion of the time available. Making wise use of all allocated time has got to improve one's game. Don't rush. (I'm beginning to believe that Tarrasch's recommendation to "Sit on your hands!" is the soundest piece of chess advice ever given.)

Second, study tactics, study tactics, and study tactics. I was very much impressed by this simple observation -- the stronger players were masters of tactics. If, as someone once said, chess is 90% tactics, then studying tactics should improve 90% of one's game.

Third, even those who hate endings should study Rook + Pawn(s) v. Rook + Pawn(s) endgames. This was, by far, the most common endgame reached. Since most players seem to be able to get to this type of endgame fairly often, how much stronger would their playing strength be if they knew how to handle this ending correctly?

The role of spectator was fun. I saw joy, anguish, smiles, and even tears at the boards. I saw good chess and awful chess. I also resolved to study chess a lot harder, and to find time to play in tournaments again. Maybe one day I'll sit at the high boards, maybe see 10 moves ahead, maybe correctly play a Rook and Pawn ending. Maybe even BE a master. Maybe.

## Haubrich, Holtzmueller Top OP-FP CC Spring Open

By Ken Marshall

Two masters and 10 experts were among the 44 players who competed for \$455 in prizes at the Oak Park-Forest Park Chess Club Spring Open, held April 29-30, 1989 at the Mohr Community Center in Forest Park. (The size of the field resulted in the "based on 30" prize fund of \$255 being increased by \$200.) Experts Keith Holtzmueller and Scott Haubrich drew their hard fought last round game to share first and second places at 4.5-5; each earned \$125. Peter Stein, Joseph Splinter, and Robert Sax all finished 4-1 to tie for third through fifth.

Class A honors went to Leonard Beasley and OP-FP CC members Bill Buttny and Art LaFrana for their 3-2 scores. James Kimura, an OP-FP CC member who topped Class B with a 3.5-1.5 result, raised his rating by 68 points as he drew Master Steve Szpisjak and beat two experts. Four players - OP-FP CC member Gary Jochim, David Carson, Ed Berkheimer, and Rowland Cordero - each ended up 2-3 to split the Class C money. Richard Simonetti's 1.5 points won the Class D/E/Unrated prize. Ken Marshall directed.

1989 U.S. OPEN

AUGUST 5-13

HYATT REGENCY O'HARE

\$33,000 PRIZE FUND

## 1989 BRADLEY SUMMER OPEN

AN ICA ILLINOIS MINI-TOUR EVENT

WHEN: Saturday, August 19, 1989

WHERE: Garrett Center, 824 N. University, Peoria, IL

WHAT: 4 Round Swiss TIME CONTROL: 30/60; 10/20 thereafter

MEMBERSHIPS REQUIRED: USCF & ICA

GUARANTEED CASH PRIZES: 1st: \$75 2nd: \$50

CLASS PRIZES: Class A: \$25 Class B: \$25 Class C/Under: \$25  
(Based on 6 players per class)

ENTRY FEE: \$11 in advance (by 8/17/89); \$13 at site

REGISTRATION: 8:00-8:45 a.m. ROUND TIMES: 9:00, 12:00, 3:00, 6:00

ADVANCE ENTRIES: Bill Wilkinson, 905 N. Rebecca Pl., Peoria, IL 61606

NO SMOKING

PLEASE BRING SETS, BOARDS, & CLOCKS

**ILLINOIS TOURNAMENT CALENDAR**  
(Continued)

July 15: Prelude to an Open, at Freedom Hall in Forest Park. AN ICA ILLINOIS MINI-TOUR EVENT. Lawrence Cohen, 135 Westwood, Park Forest, IL 60466. SEE HALF PAGE AD IN THIS ICB.

July 15, 16: For the Penny-Pinching Pawn Pusher, 1 day events at the Chicago Chess Center. Ray Socha: 929-7010.

July 22: Springfield Sauna Open for 1989, at the Washington Park Pavilion in Springfield. Thomas Knoedler: (217) 523- 7265.

July 22: Illinois Valley Octagonal #2, at the Grace United Methodist Church in LaSalle. Byron Pappas: (815) 224-2869.

July 22: Illinois Valley Swiss Open, at the Grace United Methodist Church in LaSalle. Byron Pappas: (815)224-2869.

July 22, 23: Blunders Count, 1 day events at the Chicago Chess Center. Ray Socha: 929-7010.

July 29, 30: Chess Center Mod Quad, 1 day events at the Chicago Chess Center. Ray Socha: 929-7010.


August 5 - 13: 1989 U.S. OPEN, AT THE HYATT REGENCY O'HARE IN ROSEMONT. Helen Warren: 246-6665. SEE TWO PAGE AD IN THIS ICB.

August 5,6: For the Penny-Pinching Pawn Pusher, 1 day events at the Chicago Chess Center. Ray Socha: 929-7010.

August 12, 13: For the Penny-Pinching Pawn Pusher, 1 day events at the Chicago Chess Center. Ray Socha: 929-7010.

August 19: Bradley Summer Open, at the Garrett Center in Peoria. AN ICA ILLINOIS MINI-TOUR EVENT. Bill Wilkinson: (309) 673-9455. )

**CHESS PHONE: (312) 325-3666**  
**DOWNSTATE CHESS PHONE:**  
**(309) 655-0618**



**PATRON MEMBERS**  
(CONTINUED)

Scott Kittsley	Shorewood, IL
Thomas Knoedler	Springfield, IL
Walter Kocjan	Northlake, IL
John Krom	Chicago, IL
Peter Kuhn	Des Plaines, IL
Marc Lonoff	Northbrook, IL
Eugene Lopez	Elk Grove, IL
Alan Losoff	Morton Grove, IL
Ken Marshall	Lombard, IL
Donald Martin	Round Lake Beach, IL
Eugene Martinovsky	Naperville, IL
James McNally	Broadview, IL
James McNamara	Riverside, IL
Earl Miller	El Paso, IL
Bill Naff	Peoria, IL
Peter Pelts	Chicago, IL
Mieczyslaw Piatek	Chicago, IL
John Popovich	Evergreen Park, IL
Tim Redman	Lima, OH
Frederick Rhine	Chicago, IL
Ray Satterlee	Wheaton, IL
Vivian Schmucker	Goshen, IN
Mark Sefcheck	Naperville, IL
Tom Shaffer	Chicago, IL
Tony Sillars	Chicago, IL
Arthur Sinclair	Evanston, IL
Leonard Spiegel	Naperville, IL
David Sprenkle	Knoxville, TN
Peter Stein	Naperville, IL
Miomir Stevanovic	Lincolnwood, IL
David Taylor	Kankakee, IL
William Terbell	Glen Ellyn, IL
John Vrbancic	Evanston, IL
Douglas White	Schaumburg,, IL
Harold Winston	Naperville, IL
David Wulatin	Oak Park, IL
Sandy Zabell	Chicago, IL
Max Zavanelli	Park Ridge, IL

Please send Chicago metropolitan area Tournament Clearinghouse material to:  
Fred Gruenberg  
Box 43336, Chicago, IL 60643  
(312) 396-1984 (D) (312) 779-0306 (N)  
Please send Downstate Tournament Clearinghouse material to:  
Garrett Scott  
202 Foster Dr., Normal, IL 61761  
(309) 452-8116

### CENTURY CLUB MEMBERS

Michael Belovesick	Elmhurst, IL
Fred Cramer	Mequon, WI
Tom Fineberg	Chicago, IL
Fred Gruenberg	Chicago, IL
Albert Sandrin	Chicago, IL
Angelo Sandrin	Chicago, IL
Bill Smythe	Chicago, IL
Burton Vincent	Chicago, IL
Helen Warren	Western Springs, IL
Jim Warren	Western Springs, IL
Philip Wong	Wilmette, IL

### GOLD CARD MEMBERS

Bill Buttny	Downers Grove, IL
Harland Hoisington	Ogden, UT
Ed Marschall	South Barrington, IL
Daniel Pradt	Glen Ellyn, IL
Michael Pratts	Chicago, IL
Irwin Rothschild	Park Forest, IL
Mitchel Sweig	Evanston, IL
Don Townsend	Chicago, IL
Bill Wenz	Milwaukee, WI
Louis Werner	Evanston, IL

### PATRON MEMBERS

Faneuil Adams	New York, NY
Bob Ash	Urbana, IL
Kevin Bachler	Waukegan, IL
Todd Barre	Clarendon Hills, IL
John Barstad, Sr.	Carol Stream, IL
Roy Benedek	Western Springs, IL
Timothy Bogan	Chicago, IL
Barry Bouton	Sandwich, IL
Bill Brook	Chicago, IL
Tyrone Brooks	Chicago, IL
Jim Brotsos	Chicago, IL
Walter Brown	Crest Hill, IL
Fred Burgess	Oak Forest, IL
Anthony Caliendo	Aurora, IL
Jim Condron	Downers Grove, IL
Lynn Crewse	Arlington Heights, IL
David Cromer	Iowa City, IA
John Deutsch	Chicago, IL
Leroy Dubeck	Cherry Hill, NJ
Keith Esses	Chicago, IL
Gerard Garino	Evanston, IL
Jon Gotz	West Chicago, IL
Donald Graft	Wheaton, IL
William Graves	Chicago, IL
Walter Henry	Naperville, IL
Charles Hicks	Naperville, IL
Keith Holzmüller	Evanston, IL
Jeffery Hyland	Mount Prospect, IL
Robert Irons	Chicago, IL
Tim Just	Gurnee, IL
Dan Kamen	Wheeling, IL

### ICA ELECTED OFFICERS:

Helen Warren, President  
P.O. Box 305 Western Springs, IL 60558  
(312) 246-6665

Fred Gruenberg, Metro Vice-President  
2035 W. 110th Pl., Chicago, IL 60643  
(312) 779-0306

Garrett Scott, Downstate Vice-President  
202 Foster Dr. Normal, IL 61761  
(309) 452-8116

Tim Just, Secretary  
37165 Willow Ln., Gurnee, IL 60031  
(312) 244-7954

Alan Losoff, Treasurer  
P.O. Box 157, Morton Grove, IL 60053  
(312) 966-5579

### USCF DELEGATES

by virtue of their USCF posts:

Harold Winston, President  
Todd Barre, Regional Vice-President  
Tim Just, Regional Vice-President  
Frank Skoff, Past President  
Helen Warren, Life Voting Member

### ICA APPOINTED USCF DELEGATES:

Fred Gruenberg	Alan Losoff
Ken Marshall	Tom Fineberg

### ICA APPOINTED USCF VOTING MEMBERS:

Bill Naff	Dennis Grant
Walter Brown	Mike Zacate
Guy Gruenberg	Jim Warren
Garrett Scott	Bob Bain
Erv Sedlock	Tom Knoedler
Wayne Palmquist	

### ICA APPOINTED USCF ALTERNATE VOTING MEMBERS:

Larry Stilwell	Al Chow
Bill Smythe	John Tonkinson
Larry Cohen	Byron Pappas
Jim Condron	Chris Musgrave
Angelo Sandrin	Jim Brotsos
Bill Wilkinson	Eric Schiller
Glen Panner	Barry Fisher
John Barstad	Kevin Bachler

## ILLINOIS TOURNAMENT CALENDAR

Call Chess Phone, (312) 325-3666, for recorded tournament announcements and results, ~~often~~ more up-to-date than CHESS LIFE or the ICB. The ICA Chess Phone voice is Todd Barre.

Unless otherwise noted, all tournaments require USCF membership. Illinois Tour~~naments~~ events also require ICA membership. Phone numbers are area code 312 unless a different ~~area code~~ is listed. Announcements of ICA affiliates receive more space in the Tournament ~~Calendar~~ than do those of non-affiliates.

June 17: 1989 Springfield June Bug Open, at the Washington Park Pavilion in Springfield. Thomas Knoedler: (217) 523-7265.

June 17, 18: I Had a Won Game, But..., 1 day events, at the Chicago Chess Center. Ray Socha: 929-7010.

June 23-25: Master Challenge XI, at the Mohr Community Center in Forest Park. AN ICA ILLINOIS MAXI-TOUR EVENT. Ken Marshall: 932-1455. SEE FULL PAGE AD IN THIS ICB.

June 24, 25: For the Penny Pinching Pawn Pusher, 1 day events, at the Chicago Chess Center. Ray Socha: 929-7010.

July 1, 2, 3, 4: Big Bang for Six Bucks, 1 day events, at the Chicago Chess Center. Ray Socha: 729-7010.

July 8: Peoria Action ~~Open~~, at the Garrett Center in Peoria. AN ICA ILLINOIS MINI-TOUR EVENT. Murrell Rhodes: (309) 646-0951. SEE HALF ~~PAGE~~ AD IN THIS ICB.

July 8, 9: Who is the Highest Rated Player?, 1 day events, at the Chicago Chess Center. Ray Socha: 929-7010.

July 8, 9: Plus Score Opens 5 and 6, 1 day events, at the Chicago Chess Mates Club. Bill Smythe: 761-2455.

(Continued on Page 4)

# 1989 U.S. OPEN

HYATT REGENCY O'HARE

AUGUST 5-13, 1989

## \$33,000.00 PRIZE FUND

ILLINOIS CHESS BULLETIN  
357 W. GROVE  
LOMBARD, ILLINOIS 60148

SPEEDY DELIVERY APPRECIATED