

# ILLINOIS CHESS BULLETIN

Official Publication of the Illinois Chess Association a U.S.C.F. Affiliate  
A Not For Profit Organization

MARCH - APRIL, 1989    VOLUME XII, NO. 2    BI-MONTHLY    \$2.00



**MICHAEL BROOKS REIGNS AT  
MIDWEST MASTERS**

**DELUGES OPPOSITION TO TAKE CLEAR FIRST**



# ILLINOIS CHESS BULLETIN

**EDITOR:**  
**KEN MARSHALL**  
 357 W. Grove  
 Lombard, Illinois 60148  
 (312) 932-1455

**TECHNICAL EDITOR:**  
**MARY GAITHER MARSHALL**

**ASST. TECHNICAL EDITOR:**  
**DON WINSAUER**

**GAMES EDITOR:**  
**LAWRENCE CHACHERE**

#### SUBSCRIPTIONS:

The Illinois Chess Bulletin (ICB) is published bimonthly by the Illinois Chess Association. ICA membership includes a subscription to the ICB. (Century, Gold, and Patron members receive their ICB by first-class mail.)

#### ANNUAL MEMBERSHIP RATES:

Century Club:	\$100.00
Gold Card	50.00
Patron:	25.00
Regular:	10.00
Junior (under 18):	6.00

Subscriptions, Address Changes, and Corrections should be sent to:

Alan Losoff, ICA Membership Secretary  
 P.O. Box 157  
 Morton Grove, IL 60053-0157

#### SUBMISSIONS:

Submit articles, photographs, crosstables, games, and other publishable materials to the Editor. Publication deadline for the next issue is May 22, 1989.

#### ADVERTISING RATES:

Full page	\$80
Half page	\$50
Quarter page	\$30
Eighth page	\$20

10% discount for the same ad in consecutive issues. 1/3 discount for ICA affiliates. All advertising must be camera ready to qualify for these rates. The ICA and the ICB reserve the right to reject advertising.

## TABLE OF CONTENTS

FROM THE EDITOR'S DESK	1
WHERE TO PLAY CHESS / CLUB AFFILIATES	2
FROM THE PRESIDENT	3
WHAT'S NEW	4
MIDWEST MASTERS	6
DAVID WULATIN'S COLUMN	13
GUREVICH ANNOTATES	14
CHOW MARTINOVSKY MATCH	15
1989 ILLINOIS TOUR STANDINGS	18
PETER PELTS	19
GREATER PEORIA OPEN	21
CROSSTABLES / JULES STEIN	23
HIGH SCHOOL TEAM CHAMPIONSHIP	25
CLUB SCENE / U.S. OPEN	26
GRADE SCHOOL CHESS / ICA MINUTES	27



**CHESS PHONE: (312) 325-3666**  
**DOWNSTATE CHESS PHONE:**  
**(309) 655-0618**

**ICA AFFILIATION:** Chess clubs and other organizations which promote chess activity may affiliate with ICA. Affiliate benefits include a copy of each ICB by first-class mail, a listing (if desired) under "Where to Play Chess" in each issue, discounted ICB advertising rates, three-line tournament announcements in the "Tournament Calendar", and the right to run ICA Tour events. ICA affiliation costs \$15; please remit to address shown under "Annual Membership Rates". Include your club meeting times, name of contact person, and other useful information in the format shown in "Where to Play Chess" on page 2.

# From the Editor's Desk

The 1989 Illinois Chess Association Illinois Tour continues to grow: four more Tour tournaments are scheduled before the end of June. Helen Warren has made her annual Prairie State Masters and Experts Invitational (May 27-29, Grayslake) a Maxi-Tour event, and has created a one day Mini-Tour "Action Chess" tournament (May 28, Grayslake) for players rated under 2000. Peoria will again provide Tour point opportunities in central Illinois with the Mini-Tour Peoria Spring Open (June 10), Master Challenge (June 23-25, Forest Park) maintains its tradition as a Maxi-Tour event. All of 1988 saw only nine Tour tournaments; this year, 10 will have been held by June 30. Prospects for a 20 tournament 1989 Tour appear bright. [Organizers: contact either ICA President Helen Warren (312-246-6665) or ICB Editor Ken Marshall (312-932-1455) to find out how easy it is to make your events part of the Illinois Tour.]

The 1989 U.S. Open will be here soon. The nine round, one game per day format is ideal for Chicago area chess players who cannot take time off work (the weeknight games are at 7 p.m.), as well as for Illinois and midwest residents who cannot afford the two week vacation and travel expenses participating in the Open usually requires but can take a week off to play close to home. Here is an opportunity to play some serious chess for some serious prize money and to enjoy the many other activities planned in connection with America's oldest and most prestigious national chess event. Keep August 5-13, 1989 "open for the Open". (See page five of this ICB for full U.S. Open details.)

Illinois' other 1989 national tournament is only a few weeks away. The National Junior High School Championship will take place May 12-14 at the Peoria Civic Center. This event features three Sections: 9th grade/below (open to 9th grade through kindergarten), 8th grade/below (open to 8th grade through kindergarten), and Junior Varsity (open to 8th grade through kindergarten for those with United States Chess Federation ratings below 1300). Hundreds of trophies will be awarded. See the "Tournament Life" section of the April or May, 1989 CHESS LIFE or contact Murrel Rhodes (work: (309) 674-5290; home: (309) 676-0951) for complete information.

All present and would-be chess journalists take note: the post of ILLINOIS CHESS BULLETIN editor will become vacant no later than December 31, 1989. I would like to continue in the job, but I want to devote more time to my family (I have a six year old son and a three year old daughter) and I need to devote more time to my law practice. For the past year and a half I given both less attention than they deserve as I have served as President of the 60 member Oak Park-Forest Park Chess Club and as ICB editor. I simply need more time, and because I have found that giving up sleeping is impractical, I have to give up

something else—the ICB. I hope to be able to carry on through the summer to help make the U.S. Open a success, and will try to stay until year's end if necessary to allow time for a replacement to be found. Anyone interested in becoming ICB editor can contact me or ICA President Helen Warren to discuss the position. (The final decision as to my successor will be made by the ICA officers.)

Jules Stein, longtime proprietor of the Chicago Chess Center, died on March 16 at age 73. As noted by Illinois Chess Association President Helen Warren and United States Chess Federation President Harold Winston (on pages 5 and 23, respectively, of this ICB), he will be missed. This issue contains all eight games of the Albert Chow-Eugene Martinovsky match which Jules organized at the CCC in January — one of the last of his many contributions to the Chicago chess community.

As this ICB went to press, U.S. Open organizer Helen Warren advised that she has received five more contributions to the Open fund. Guy Gruenberg (Matteson), Corrugated Metals, Inc., (Jersey City, NJ), Walter Kocjan (Northlake), Irwin Rothchild (Park Forest), and Ray Satterlee (Wheaton) have joined the individuals and organizations listed on the "Honor Roll of Contributors to the U.S. Open Fund" on page 5.

ICA Membership Secretary Alan Losoff is planning a membership drive featuring special recognition for ICA members who bring in new people. Details will be announced in the next ICB.

Scheduling problems kept World Champion Garry Kasparov from coming to Chicago in February, so the planned report on his visit is not in this issue. Expanded coverage of the Midwest Masters has pushed a number of submissions back to the May-June ICB. Articles by Cyrus Bondari and David Dache, as well as annotated games from Andrew Karklins, ICB Games Editor Lawrence Chachere, and others will appear next time. (I should note, however, that the long awaited Peter Pelis article is actually in this ICB!)

## MOVING?

Send address changes and corrections to:  
Alan Losoff  
Membership Secretary  
P.O. Box 157  
Morton Grove, IL 60053



## WHERE TO PLAY CHESS: ICA CLUB AFFILIATES



**AMERICAN POSTAL CHESS TOURNAMENTS** sponsors postal events and sells chess books and equipment. Contact Jim or Helen Warren, P.O. Box 305, Western Springs 60558. (312) 246-6665

**AUBURN HIGH SCHOOL CHESS CLUB**, 4273 Straw Lane, Roscoe 61073. Contact James G. Boyer, sponsor. (815) 623-8148.

**CENTRAL COMETS CHESS CLUB**, Steger Central Junior High School, c/o D DeVore, 19 W. 33rd St., Steger, IL 60475.

**CENTRAL LAKE COUNTY CHESS CLUB** meets Fridays, 7:15 p.m. to midnight, College of Lake County, Bldg. 1, Washington at Route 45, Grayslake. Contact Dennis Grant, 1657 McKay, Waukegan 60087. (312) 336-5188.

**CHESS NORTHWEST** meets the second and fourth Friday evenings of each month, Schaumburg Public Library, 32 Library Lane, Schaumburg. Contact Elmer Linden, 1325 Dennison Rd., Hoffman Estates, IL 60195. (312) 882-2382.  
**CHICAGO CHESS CENTER** meets for casual chess 7 days a week, 6 p.m. to 1 a.m., 2923 N. Southport, Chicago 60657. Also sponsors rated tournaments. Contact Ray Socha, (312) 929-7010.

**CHICAGO CHESS MATES CLUB AND BOOKSTORE** sponsors tournaments and group lessons, sells chess books and equipment, weekdays 4 p.m.-11 p.m., weekends 10 a.m. - 9 p.m. (closed Mondays), 1261 W. Loyola, Chicago, 60626. Contact Richard Verber or Al Chow (312) 262-9100 or (312) 262-8050.

**CHICAGO INDUSTRIAL CHESS LEAGUE** organizes frequent competition among commercial/government teams with awards, ratings, and special events. Contact Jim Brosos, (312) 775- 5054, or Bruce McNeil, (312) 742-5195.

**CLOVERLINE STUDENT CHESS PROGRAM** offers free chess lessons for high school and grammar school students, Tuesdays, 3 to 6 p.m. at Revere Park Field House, 2509 W Irving Park, Chicago 60618. Contact Richard Verber (312) 262-8050.

**DECATUR CHESS CLUB** meets Thursdays, 7:00 p.m. to midnight, Sheraton Inn, 450 E. Pershing, Decatur Contact Bill Meyer, 2365 Esther, Decatur 62521 (217) 864-4797.

**DOWNERS GROVE PARK DISTRICT CHESS CLUB** meets Thursdays, 6:30-10 p.m., Lincoln Center, 935 Maple Ave., Downers Grove. Affiliated with LSCF and ICA. Contact George Liffner, (312) 960-9382.

**EVANSTON TOWNSHIP HIGH SCHOOL CHESS CLUB** meets Fridays, 3:30-6:00 p.m., Beardsley Student Center Contact Ken Lewandowski (312) 492-7943.

**FRED REINFELD CHESS CLUB** meets Sunday afternoons from 2-6 p.m. at Coslow's, 200 E. Johns St., Champaign. Speed chess is emphasized. Contact Barry Fisher, 2112 Cyprus, Champaign 61821. (217) 333-9083.

**GREATER PEORIA CHESS FEDERATION** meets Mondays, 7 to 11 p.m., Garrett Center, 824 N. University, Peoria. Contact Bill Wilkinson, 901 N. Rebecca Pl., Peoria 61606. (309) 673-9455.

**HILLSIDE CHESS CLUB** meets Fridays, 7:30 p.m. to midnight, Hillside Baptist Church, 5152 Bunkerfield (just east of Tatt), Hillside. Contact Larry Stilwell, 4705 Elm, Lisle 60532. (312) 963-6799.

**ILLINOIS VALLEY CHESS CLUB** meets Thursdays, 6-10 p.m., Grace United Methodist Church, 1345 Chartres St., LaSalle. Contact Byron Pappas, 432 Creve Coeur, LaSalle 61301. (815) 224-2869.

**LAKE COUNTY CHESS ASSOCIATION** sponsors rated tournaments in the Grayslake/Zion area. Contact Tim Just, 37165 Willow Ln., Gumee 60031. (312) 244 7954.

**MIDWEST CHESS ASSOCIATION** organizes major tournaments for masters and experts. Contact Helen Warren, P.O. Box 305, Western Springs, 60558. (312) 246-6665.

**OAK PARK / FOREST PARK CHESS CLUB** meets Tuesdays, 7 p.m. to midnight, Mohr Community Center, Jackson and DesPlaines, Forest Park. Contact Ken Marshall, 357 W. Grove, Lombard 60148. (312) 932-1455.

**PARK FOREST CHESS CLUB** meets Thursdays, 7 to 10:30 p.m., Freedom Hall, Orchard & Lakewood, Park Forest. Contact Wayne Palmquist, 9820 S. 51st Ave. Oak Lawn 60453 (312) 857-8150.

**SPRINGFIELD CHESS CLUB** meets Wednesdays, 6-10 p.m., Washington Park Pavilion, Park Ave. and South Grand Ave. West, Springfield. Contact Tom Knuedler, (217) 523-7265, or James Larson, (217) 529-0781.

**ST. CHARLES CHESS CLUB** meets Thursdays at 7 p.m., Baker Community House, 101 S. 2nd (Route 31), St. Charles. Contact Erv Sedlock, 6 N. 307 Old Homestead Rd., St. Charles 60174. (312) 377-7995

**TULEY PARK CHESS CLUB** meets Saturdays, 1-5 p.m., Tuley Park Fieldhouse, 501 E. 90th Pl., Chicago. Contact Thomas Fineberg, 7321 S. South Shore Dr., Chicago 60649. (312) 721- 3979.

**CHESS PHONE:  
(312) 325-3666**

**DOWNSTATE CHESS PHONE:  
(309) 655-0618**

# FROM THE PRESIDENT

by Helen Warren

## GOODBYE TO JULES STEIN...

The Chicago Chess Center and all of Illinois chess mourns the passing of Jules Stein. Jules had been a fixture of the local chess scene for more than a decade, first at his emporium on Halstead St., and more recently on north Southport. The CCC was a haven for the avid chess player who sought events on almost every week-end.

The last issue of *Chess Life* listed Jules as the third most active TD in the country, and while he left the actual directing to others, he supervised the activities of the CCC with dedication. Jules was a successful artist whose club was studded with many of his canvases. He had a keen eye for the graphic touch as well as a charm and wit in dubbing his week-end events with wry and humorous titles. His "Penny-Pinching Pawn Pusher" and "The Joy of Sacs" events were TL mainstays.

Unknown to most was Jules' generous support of many local masters--help with a plane ticket to an out of state event or a free site for a match. Yes, he had his faults; shall we count our own? But the contribution he made to Chicago chess with an active, almost-always-open establishment was most significant. We'll miss the "Big Bang For \$6.00 Bucks".

Long-time TD Ray Socha is carrying on at the CCC. We wish him the best of luck in continuing Jules' tradition of week-end tournaments. All in the Chicago chess community have an interest in guaranteeing that the CCC remain a viable place for chess.

## NEW HONORS FOR TIM JUST...

Just as the attainment of the master's title is the long term aim of a serious chessplayer, so the National Tournament Director's card, the NTD, is the goal of every USCF TD, from local or club level through intermediate and senior. This past month one of our own, former ICA President Tim Just, achieved this distinction. Congratulations to you, Tim!




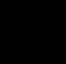
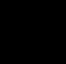
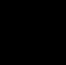
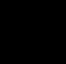
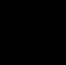


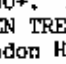
Just how tough it is to earn the NTD may be a secret to many. It entails directing a variety of tournaments--from swisses, large national events, round robins--you name it. The applicant must also show a firm and complete command of tournament rules and technical knowledge.

## BAD CHECKS...

No, not the kind on the chessboard; rather, the kind the bank sends back, the ones made of rubber. We're sorry to say that we've had two since the first of the year. We have waited for three months for Eric Johnson, ID# 13408787, to make good one two such checks for a total of \$108.50. Organizers should be aware of the risk of accepting checks from individuals with a track record of payment delinquency.

## HONOR ROLL OF CONTRIBUTORS TO U.S. OPEN FUND

AMERICAN CHESS FOUNDATION  
MIDWEST CHESS ASSOCIATION (H Warren)  
APCT (J Warren)  
THOMAS KNOEDLER, Springfield  
TODD BARRE, Clarendon Hills  
St. CHARLES CHESS CLUB (E Sedlock)  
CHGO INDUSTRIAL CHESS LEAGUE (J Brotsos)  
TOM FINEBERG, Chicago  
JULES STEIN, Chicago  
1989 NATIONAL OPEN (F Gruenberg)  
HAROLD WINSTON, Naperville  
CLARENCE MOORE, Oak Park  
PETER PELTS, Chicago  
E STEVEN DOYLE, No. Brunswick, NJ  
EPIC METALS CORP., Rankin, PA  
ILLINOIS INSULATION SUPPLY CO., Chicago  
PRO FASTENING SYSTEMS, Inc., Arlington Heights  
RYERSON STEEL CORP., Chicago  
BILL BUTTNY, Downers Grove  
F WOODROW HARRIS, Emporia, VA  
ARTHUR SINCLAIR, Evanston  
CHARLES HICKS, Naperville  
MARVIN ROGAN, Chicago  
TIM JUST, Gurnee  
JIM CONDRON, Downers Grove  
RICHARD GEARON,  
LOU WERNER, Evanston  
ALEX & CHRISTINE PEHAS,  
LAKE CO. CHESS ASSOCIATION  
RICHARD ANDERSON, Elmhurst  
DAN KUMRO, Mt. Prospect  
NEWMAN GUTTMAN, Evanston  
FRANK SKOFF, Chicago  
MICHAEL ZACATE, Mokena  
WINTON FUIK, Skokie  
EDGARS RUDZITIS, Chicago  
JOHN TUMS, Oak Park  
KEITH FARRAL, Lisle  
RICHARD BALES, Aurora  
DAVID COULTER, Villa Park  
WAYNE ELLICE  
ERIK KARKLINS, Chicago

	\$5,000
	4,500
	4,000
	3,500
	3,000
	2,500
	2,000
	1,500
	1,000
	500
	0

Total Donated as of 4/8/89: \$3,700+. HELP US REACH OUR GOAL WITH A CHECK TO U.S. OPEN TREASURER TODD BARRE, 16 W 520 59th St., Clarendon Hills, IL 60514.

AS WE GO TO PRESS...We're delighted to report that we have confirmed the appearance of the Dean of American Chess, George Koltanowski, and Arpad Elo (we ALL know what his great contribution to U.S. Chess is!) at the Awards Banquet on Saturday, Aug. 12, at the Hyatt Regency O'Hare. Be a part of the celebration!

# What's new

## ICA NAMES PELTS, CHOW 1988 PLAYERS OF THE YEAR

Illinois State Champion Peter Pelts and 1988 Illinois Tour winner Albert Chow were honored as Illinois' 1988 Players of the Year at the Illinois Chess Association banquet on March 19, 1989. Other award recipients included Helen Warren (Organizer of the Year), Ken Marshall (for service as ICB editor), and Jules Stein (for service to the Chicago chess community; sadly and unexpectedly, this award had to be made posthumously).

\*\*\*\*\*

## DLUGY, A. IVANOV SHARE MIDWEST BLITZ TITLE

Grandmaster Maxim Dlugy and International Master Alexander Ivanov each scored 17-2 to tie for first and second at the Midwest Blitz Championship, a World Blitz Chess Association event held on March 2, 1989, at the Hyatt Lincolnwood Hotel. Soviet GM Eduard Gufeld (15.5-3.5) finished third, followed by GM Dmitry Gurevich (15.4) and Master Peter Pelts (14.5-4.5).

\*\*\*\*\*

## 1989 ILLINOIS GRADE SCHOOL CHAMPIONSHIP SETS ATTENDANCE MARK

A record-breaking 322 players took part in the 1989 Illinois State Grade School Championship, held March 4-5 at Bloomington High School in Bloomington. Jamie Getchou (of Haines in Naperville) and Wilson Middle School (Rockford) won the individual and team titles in the 8th Grade/Below section, Mike Nichols (Oakland in Bloomington) and Oakland were the top 5th Grade/Below individual and team, and Matt Schuerman (Bent in Bloomington) and Oakland led the individual and team standings in the 3rd Grade/Below category. [A full report on this event should appear in the next ICB.]

\*\*\*\*\*

## CLOVERLINE SPONSORS FREE CHESS INSTRUCTION FOR STUDENTS

Norbert Leopoldi's Cloverline, Inc. is sponsoring free chess lessons for high school and grade school students every Tuesday from 3 to 6 p.m. at the Revere Park Fieldhouse, 2509 W. Irving Park, Chicago. Lessons are given by Master Richard Verber; chess sets and clocks are provided. For more information, contact Mr. Verber at 262-8050, or call the Revere Park Fieldhouse at 539-4694.

1989 U.S. OPEN

AUGUST 5-13

HYATT REGENCY O'HARE

\$33,000 PRIZE FUND

# 1989 U.S. OPEN

August 5th — 13th 1989

HYATT REGENCY  O'HARE

AT O'HARE INT'L AIRPORT

PLAYING SITE: HALL E, Rosemont Expo Center  
(adjacent to Hyatt)

PRIZE FUND...\$33,000!

\$5,000 + Fidelity Cup - 1st  
3,000 - 2nd  
2,500 - 3rd  
2,000 - 4th  
1,500 - 5th  
1,400 - 6th  
1,300 - 7th  
1,200 - 8th  
1,100 - 9th

150 GRAND PRIX  
POINTS!

2399-2200: \$1,000-800-600-450-250-150  
Experts: 900-700-500-350-150-100  
Class A: 800-600-400-300-100  
Class B: 700-500-400-200-100  
Class C: 600-400-300-200-100  
Class D: 500-300-200-100-100  
Class E: 300-200-100-100  
UNR. 200-100-100-50

PLANNED ACTIVITIES: shopping tour/Art Institute, Ballgame at Cubs Park, and Great America Amusement Park. Visit our fabulous museums, restaurants, and sport centers! It's all waiting for you!

9-round Swiss, time limit 50/150.  
Entry: \$80 if postmarked 7/19; \$90 at site. Registration: Fri., Aug. 4: noon-8 PM; Sat., Aug. 5: 9 AM-4 PM. Rds. 7 PM daily, except for Aug. 12: 1 PM. FIDE RATED.

Hotel rates: \$65 single or double.

FREE UNLIMITED PARKING!! FIVE MINUTES FROM O'HARE AIRPORT!! FREE MINI-BUS FROM AIRPORT TO HOTEL!

Hotel Reservations: (312) 696-1234

## DAYTIME CHESS EVENTS GALORE

U.S. Open Speed Championship, Action Chess events, workshops, grandmaster lectures and simulms, USCF's Annual Awards Banquet, Hall of Fame inductions, and 50th Anniversary Celebration!

SEE CHICAGO! THE IDEAL PLACE FOR A VACATION WITH THE ENTIRE FAMILY! Reasonable car rental on site. Public transportation to Chicago Loop 1 block!

For more information, to reserve tickets to the Cubs game (Aug. 8), Great America, or shopping tour/Art Institute tour, write: Helen Warren, U.S. Open Chief Organizer, PO Box 305, Western Springs, IL 60558. Or give me a call! (312) 246-6665.

MAIL YOUR ENTRY TODAY TO: USCF, 186 Rt 9W, New Windsor, NY 12550

Enclosed is \$80. Enroll me in the U.S. Open. I will need a 1/2 bye for rd.1 \_\_\_\_\_

NAME \_\_\_\_\_

ADDRESS \_\_\_\_\_

USCF ID# \_\_\_\_\_ USCF Expiration Date \_\_\_\_\_

*50th Golden Anniversary*  
U.S.C.F.

# MICHAEL BROOKS WINS 1989 MIDWEST MASTERS

## MISSOURIAN FINISHES AHEAD OF FOUR GRANDMASTERS

By Albert Chow

(Editor's Note: The 1989 Midwest Masters Invitational, the seventh annual "Homecoming of the American Master" organized by Helen Warren and her Midwest Chess Association, took place at the Hyatt Lincolnwood in Chicago on March 3-5, 1989. Given the ICB's space limitations and the fact that "the play's the thing", I have decided to publish as many MMI games as possible rather than write a lengthy article about the event. Senior Master Albert Chow, 1988's Illinois Tour winner and Illinois Co-Player of the Year, has provided the following story, and has annotated all six games of first place finisher Michael Brooks. George Umezawa's analysis of his Round 1 win over International Master Igor Ivanov is also presented, along with many games from the first three rounds (some lightly annotated by Eric Schiller). The next ICB will feature Chow's analysis of other important contests from all six rounds, annotations by ICB Games Editor Lawrence Chachere, and many more unannotated games from Rounds 4-6. (Game scores courtesy of Eric Schiller and U.S. Chess [ChessLine News] via USA TODAY Network [formerly Leisure LINC]).

The Midwest Masters is easily the strongest open tournament held in Illinois each year. Top players from all over the United States travel to Chicago to compete for thousands of dollars, as well for FIDE and USCF rating points, Grand Prix points, and the pride and glory that come with winning. This motivation, enhanced by good playing conditions, creates six rounds of interesting, fighting chess. Among the many high quality participants in the 70 player 1989 tournament were American Grandmasters Dlugy, Gurevich, Kudrin and Soviet GM Gufeld, plus International Masters Igor Ivanov, Alexander Ivanov, James Rizzitano, Mark Ginsburg, and Karl Huger. Yet this year clear first was taken by FIDE Master Michael Brooks, a Missouri resident who became the first Midwesterner to win the Midwest Masters outright. (Brooks, whose USCF rating is now approaching 2650, had tied for first twice before, in 1982 and 1984.) The following games provide entertaining examples of how Brooks did it.

PLAYER	POST	ST	RTNB	1	2	3	4	5	6	TOT
1 BROOKS, MICHAEL A	MO	2640	W52	W29	W50	W-3	W10	D-4		5.5
2 IVANOV, ALEXANDER	MA	2617	W38	D21	W55	W26	D-9	W-0		5.0
3 RIZZITANO, JAMES A	MA	2545	W23	W22	W20	L-1	W15	W-9		5.0
4 KUDRIN, SERGEY	CT	2671	D56	W63	D18	W14	W26	D-1		4.5
5 IVANOV, IGOR	CA	2601	L37	W48	W32	W27	D-6	W20		4.5
6 ASSEN, MADDY AMIN	WA	2430	W44	W37	L10	W41	D-5	W17		4.5
7 ROGAN, MARVIN	IL	2085	L63	W70	W71	W68	W60	D50		4.5
8 DLUGY, MAXIM	NJ	2674	W51	L50	W25	W13	D10	L-2		4.0
9 GUREVICH, DMITRY	IL	2679	W32	W15	W11	D10	D-2	L-3		4.0
10 GUFELD, EDUARD		2535	X--	W34	W-6	D-9	L-1	D12		4.0
11 COLIAS, BILLY	IN	2427	W33	W36	L-9	D22	D31	W27		4.0
12 PELTS, PETER	IL	2397	L24	D25	W56	W40	W30	D10		4.0
13 WYGLE, STEPHEN L	OH	2381	D53	D40	W23	L-8	W51	W26		4.0
14 CHACHERE, LAWRENCE	IL	2375	D59	D65	W39	L-4	W41	W31		4.0
15 LEVIT, ROMAN	WI	2356	W58	L-9	W65	W36	L-3	W20		4.0
16 O'DONNELL, ROBERT	WI	2320	W70	L26	D53	W25	W19	D18		4.0
17 GINSBURG, MARK	MO	2543	D65	W64	W21	D24	D20	L-6		3.5
18 CHOW, ALBERT C	IL	2453	W61	D55	D-4	W20	L-8	D16		3.5
19 HORVITZ, RICHARD P	OH	2308	W60	L24	W37	D30	L16	W42		3.5
20 LEVERETT, BRUCE W	PA	2400	W57	W45	L-3	W51	D17	L-5		3.5
21 KARKLINS, ANDREW	IL	2382	W42	D-2	L17	W33	D24	D22		3.5
22 BLANKENAU, MIKE P	NE	2292	W68	L-3	D42	D11	W52	D21		3.5
23 HARGER, DANIEL V	IA	2241	L-3	W47	L13	D48	W46	W45		3.5
24 FLABA, KAZYSZTDF	IL	2253	W12	W19	L26	D17	D21	D29		3.5
25 HARRIS, JR WILLIAM	OH	2187	W27	D12	L-8	L16	X--	W37		3.5
26 MARTINOVSKY, EUGEN	IL	2437	W66	W16	W24	L-2	L-4	L13		3.0
27 WEISS, MITCHELL J	IA	2343	L25	W60	W61	L-5	W32	L11		3.0
28 GARDNER, J BRUCE	IL	2330	L43	W44	W66	L18	X--	L15		3.0
29 LONOFF, MARC J	IL	2328	W47	L-1	D33	D53	D37	D24		3.0
30 JONES, KENNETH E	MO	2319	D48	D53	W59	D19	L12	D33		3.0
31 WALLACH, KENNETH T	IL	2301	H--	D59	D48	W42	D11	L14		3.0
32 SIMMS, GARY	TX	2380	L-9	W43	L-5	W50	L27	W52		3.0
33 NANCE, DANA W	NC	2189	L11	W62	D29	L21	W48	D30		3.0
34 ZELKIND, EDUARD	MN	2340	W46	L10	L40	W45	D36	U--		2.5
35 SCHILLER, ERIC	IL	2305	H--	L41	D48	W66	D40	U--		2.5
36 LEVINE, DAVID M	IL	2303	W71	L11	W46	L15	D34	U--		2.5
37 UMEZAWA, GEORGE O	IL	2287	W-5	L-6	L19	W43	D29	L25		2.5
38 FELDMAN, ALEXANDER	MN	2234	L-2	L42	W68	L46	W58	D47		2.5
39 CARLIN, ROBERT D	MN	2248	H--	D54	L14	W59	U--	D46		2.5
40 AHLSTROM, STEPHEN	MO	2248	D49	D13	W34	L12	D35	U--		2.5
41 BONDARI, CYRUS	IL	2246	D54	W35	W49	L-6	L14	U--		2.5
42 ZUMBRUNNEN, RANDY	WI	2199	L21	W30	D22	L31	W62	L19		2.5
43 KARKLINS, ERIK	IL	2191	L50	L32	W70	L37	D56	W57		2.5
44 SUNNA, HISHAM	AL	2166	L-6	L28	L50	D70	W67	W59		2.5
45 GENSLE, KEVIN M	IL	2184	W20	L20	D31	L34	W61	L23		2.5
46 MATUCHOWSKI, THOMA	MI	2162	L34	W69	L36	W38	L23	D39		2.5
47 TRAMMELL, III GEOR	OK	2137	L29	L23	D69	D57	W66	D38		2.5
48 MANTHE, BARRY P	MO	2139	D30	L-5	D35	D23	L33	W68		2.5
49 GILES, MORRIS C	IL	2435	D40	W56	L41	D52	U--	U--		2.0
50 BURGER, KARL	GA	2407	W43	W-8	L-1	U--	U--	U--		2.0
51 MILLS, JR JAMES A	IN	2243	L-0	W57	W63	L20	L13	U--		2.0
52 LUKOWIAK, WILLIAM	MA	2235	L-1	W50	D54	D49	L22	L32		2.0
53 SCHMUGGEROW, KEVIN	IL	2201	D13	D30	D16	D29	U--	U--		2.0
54 BRASKET, CURT JUST	MN	2374	D41	D39	D52	U--	U--	U--		1.5
55 SMALL, GREGG H	TX	2342	W62	D18	L-2	U--	U--	U--		1.5
56 ZELKIND, MIKE	MN	2294	D-4	L49	L12	D67	D43	U--		1.1
57 WACHTEL, HOWARD K	IL	2171	L20	L51	D62	D47	D59	L43		1.5
58 NEELY, LIZ	CA	2170	L15	L52	W44	L32	L30	D-7		1.5
59 ZABELL, SANDY L	IL	2162	D14	D31	L30	L39	D57	L44		1.5
60 SANDRIN, ANGELO	IL	2135	L19	L27	D67	L62	L-7	W70		1.5
61 KROM, JR JOHN M	IL	2142	L18	W68	L27	D63	L45	U--		1.5
62 BACHLER, KEVIN L	IL	2124	L55	L33	D57	W60	L42	U--		1.5
63 CRAWFORD, BRAD	IL	2062	W-7	L-4	L51	D61	U--	U--		1.5
64 SCHUMAN, BRIAN	IL	2333	W67	L17	U--	U--	U--	U--		1.4
65 KORNFELD, ALLEN I	IL	2242	D17	D14	L15	U--	U--	U--		1.0
66 ADAMS, NICK A	IN	2187	L26	W67	L28	L35	L47	U--		1.0
67 BUKOVAC, ROBERT F	WV	2161	L64	L66	D60	D56	L44	U--		1.0
68 NAFF, WILLIAM A	IL	2112	L22	L61	L38	L-7	W70	L48		1.0
69 BURKE, JOHN F	IL	2226	U--	L46	D47	U--	U--	U--		.5
70 GOLDSTEIN, SETH	MN	1943	L16	L-7	L43	D44	L60	L60		.5
71 SCOTT, GENE	IL	2127	L36	U--	L-7	U--	U--	U--		.0



## GAMES FROM THE MIDWEST MASTERS

### 1989 Midwest Masters Prize Winners

1st: Michael Brooks (5.5-.5)  
(\$2500)

2nd-3rd: Alexander Ivanov,  
James Rizzitano (5-1) (\$900  
each)

4th-6th: Sergey Kudrin, Igor  
Ivanov, Magdy Amin Assen  
(4.5- 1.5) (\$133 each)

Top Under 2400: Peter Pelts,  
Stephen Wygle, Lawrence  
Chachere, Roman Levit, Robert  
O'Donnell (4-2) (\$50 each)

Top Illinois Player: Dmitry  
Gurevich, Peter Pelts, Lawrence  
Chachere (4-2) (\$100 each)

Top Junior: Alexander Foldman  
(2.5-3.5) (\$100)

### GAMES FROM THE 1989 MIDWEST MASTERS

**W: FM Michael Brooks  
(2618) B: William  
Lukowiak (2236)** Round 1  
Ruy Lopez [Annotated by  
Albert Chow] 1.e4 e5 2.Nf3 Nc6  
3.Bb5 Nf6 4.d4 Nxe4 [4...exd4 is  
the alternative.] 5.f3 Be7 [Here  
there are two other decent  
moves, 5...a6 or 5...Nd6.] 6.Qe2  
Nd6 [Another choice is 6...d5  
7.Ne5 Bd7.] 7.Bxc6 bxc6

7...dxc6 could be played, but  
White would still have a lead in  
development and the better  
pawn structure after 8.dxc6.

8.dxc6 Nb7 [8...Nf5 might have  
kept this horse more active.]  
9.Nd4 Nc5 10.Rd1 Bb7 11.Qg4 g6  
12.Bb6 Bf8 13.Be3

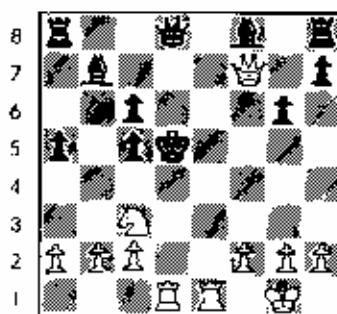
Brooks has gained a clear  
initiative from the opening.  
Lukowiak needs to castle, but  
13...Bg7 fails after 14.Ne6. The  
only chance was 13...Be7!

13...a5? 14.Nc3 d5? 15.exd6 cxd6  
16.Re1

It is too late to shield the

King now that Black has  
exploded open lines. An example  
is 16...Be7 17.Bg5. Brooks  
provides the punishment with an  
old fashioned King hunt.

ff 17.Nxf5 Kf7 18.Bxc5 dxc5  
19.Qe4+ Kf6 20.Nc4+ Kxf5  
21.Qf7+ Ke5 22.Nc3+ Kd4  
23.Rad1+ 1-0



a b c d e f g h

**W: Marc Lonoff (2344) B:  
Michael Brooks (2618)**

Round 2 English [Annotated by  
Albert Chow] 1.e4 Nf6 2.g3 e5  
3.Bg2 Be7 4.d3

A more active plan is 4.Nf3,  
not fearing 4...e4? 5.Ng5 d5 6.exd  
Qd5 7.d3 After either 4...Ne6 or  
4...d6, White continues 5.d4 with  
some advantage.

4...0-0 5.Nc3 e6 6.e4 [6.Nf3 again  
was possibly better.] d6 7.Nge2  
Nbd7 8.0-0 a6 9.h3 h5 [Brooks has  
already equalized.] 10.Be3 Rb8  
11.b3 b4 12.Na4 d5

This aggressive move can be  
made without preparation since  
Black regains the pawn after  
13.exd cxd 14.exd Bb7.

13.Re1 Qa5

It seems Black will be able to  
take the initiative. Perhaps  
sensing this, White decides to  
force complications. But Black  
will have resources due to the  
offside Na4.

14.exd5 cxd5 15.d4 dxc4 16.bxc4  
Bb7

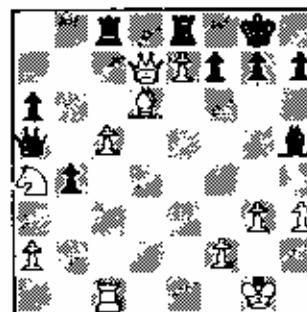
A critical moment. White  
could now play 17.d5 with a  
difficult situation where the c  
and d pawns might become

strong or weak. Instead, things  
get tactical.

17.dxc5 Bxg2 [Not 17...Ne5?  
18.Bb6, nor 17...Qe5 18.Bf4]  
18.exf6 Bxf1 19.fxe7 Bxe2 20.Qxd7

Which piece should be taken?  
20.Qe2 Rfc8 is good for Black.  
Why not 20.exf=Q+ Nxf8 21.Qe2  
Qa4 with decent chances? Maybe  
Lonoff thought he deserved  
more.

20...Rfc8 21.Be5 Rh5 22.Bd6 Rbc6  
23.e5



Suddenly White threatens  
24.Nb6. With two powerful  
passed pawns, White seems to be  
winning. Black now  
demonstrates his great  
resourcefulness in difficult  
situations. He creates a number  
of practical problems for his  
opponent.

23...b3! 24.axh3 [It must have  
been tempting to eliminate every  
pawn. But 24.Nb6 was also  
dangerous.] Qd2 25.Re3

White's pieces are far away  
from their King, giving Black  
counterplay. For example,  
25.Re4 Bf3, or 25.Ra1 Bd1, or  
25.Rf1 Be2.

25...Be2

This threatens 26.Qe1+. It  
is amazing how much energy  
Brooks is able to squeeze out of  
this Bishop over the next few  
moves.

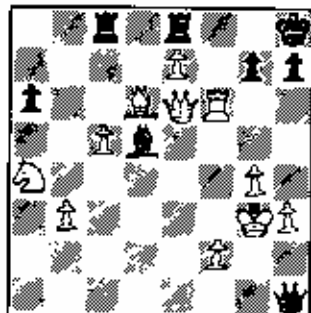
26.Qf5 Bb5 [Threatens 27..Ba4.]  
27.Rf3 f6 28.Qe6+ Kh8

Now if 29.Nb6 Qd1+, so White  
tries something more dangerous

## GAMES FROM THE MIDWEST MASTERS

instead. Lonoff deserves credit for going for the gusto!

29.Rxf6! Bc6! 30.g4 Qd1+ 31.Kh2 Qh1+ 32.Kg3 Bd5!



Both players have played with great energy. Lonoff was probably in time pressure; otherwise why not 33.Qf5 threatening both 34.Rf8+ and 34.Nb6 when Brooks has nothing better than 33...gxf 34.Qf6+ Kg8 35.Qg5+ draw by perpetual check? Maybe Lonoff was still going for the win!

33.Qac8? Qg2+ 34.Kh4 Rxc8 35.Rf8+ Kg8 36.Nb6 [36.Rxc8 Qxf2+] Rc8! 37.Rxc8 Qxf2+ 38.Bg3 Qf6+ 39.g5 Qd4+ 0-1

**W: Michael Brooks (2618) B: IM Karl Burger (2390)** Round 3

[Annotated by Albert Chow]  
1.e4 c6 2.d4 d5 3.Nc3 dxe4 4.Nxe4 Nd7 5.Bc4 Ngf6 6.Nxf6+ Nxf6 7.Qd3

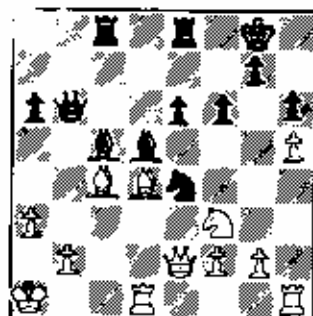
Has Brooks found a new move? The idea is to stop Black's Queen Bishop from developing easily since 7...Hg4 8.Qb3 is dangerous. Something this logical seems like it might be very old, but 7.Qd3 is not listed in either the Encyclopedia of Chess Openings or in Basic Chess Openings.

7...e6 8.Nf3 Bc7 9.Bf4 0-0 10.h4

Brooks continues to make unexpected moves. Pushing up a Rook pawn seems to make a commitment. 10.0-0 was good, but now White would rather castle Queenside. So why not 10.0-0, maintaining a flexible choice of pawns?

10...b5 [10...e5 is good too.] 11.Bb3 a6 12.0-0-0 e5 13.e4 Bb7

[Black should have good play against White's exposed King.] 14.Be5 bxc4 15.Bxc4 Nc4 16.Qe2 Rc8 17.Kb1 Qb6 18.Ka1 f6 19.dxc5 Bxc5 20.Bd4 Rfe8 [Maybe 20...Kh8, unpinning with the idea 21...e5.] 21.h7 h6 [So White's b-pawn has proven useful!] 22.a3 Bd5



23.Ba2 Rcd8

Better was 23...Ba2 because Black's King would feel safer when White exchanges his long range pieces.

24.Bb1 Bxd4 25.Nxd4 Qh7 [25...Nc5 was better, hitting h3.] 26.Rhe1 Nd6 27.f3 Rb8 [What about 27...e5?] 28.Rd2 Nc4 29.Rc2 Na5 30.Rc3 e5 31.b4! exd4?? 32.Qe8+ 1-0

**W: IM James Rizzitano (2525) B: Michael Brooks (2618)** Round 4

King's Indian-Saenuch  
[Annotated by Albert Chow]  
1.d4 Nf6 2.e4 g6 3.Nc3 Bg7 4.e4 d6 5.f3 0-0 6.Be3 Nbd7 7.Qd2 a6

A useful waiting move. Brooks retains the option of either ...c5 or ...e5. He has had great experience with the Queen's Indian, and adds his own ideas to the many complicated variations.

8.Nh3 [Other alternatives include 8.0-0-0, 8.Bd3, or Ngc2] e5 [8...c5 is also playable.] 9.d5 Nb6 10.Nf2 Nh5 11.e5

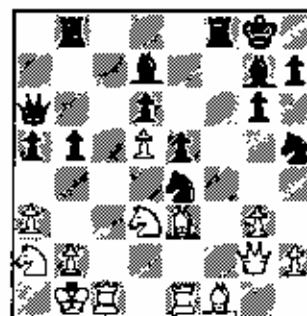
Not 11.g4?! Nf4! 12.Bf4 exf 13.Qf4 (5 when the attack is worth a pawn. A better idea is 11.0-0-0 f5 12.exf gxf 13.g4 undermining the e4 square 11...Nd7 12.Nd3 f5 13.0-0-0 Ndf6 14.Kb1) Bd7

A very difficult and dynamic middle game has appeared. Each move presents many possibilities, and the choice of plan is important. Both players maneuver to improve piece position and probe for weaknesses.

15.Bg5 Qe7 16.cxd6 exd6 17.Bc2 Qe8 18.Rhe1 Rc8 19.Bf1 a5 20.Rc1 b5 21.a3 Rb8 22.Na2 Qd8 23.g3 fxe4 24.fxe4 Qb6 25.Bc3 Nxe4

!? Did Rizzitano hang a pawn? No, of course not. He must have assumed this capture was not possible because Black should lose material.

26.Qg2 Qa6



This is the critical moment. ~~White~~ could now take a piece with 27.Qe4. ~~Brooks~~ play here helps explain how he was able to take clear first in this strong event. Brooks played aggressively to win, and was not afraid to take chances. As a matter of principle, White should accept Black's gamble. Then after 27.Qe4 Bf5 28.Qg2 b4 29.Rod1 bxa 30.Rc2 does Black have enough? White threatens 31.g4 and if he consolidates he may even win.

27.Rc7 Nef6 28.Ra7 Qc8 29.Rxa5 Bf5 30.Nab4 Bc4 31.Qd2 Nxd5 32.Nxd5 Rxd5 33.Nf2 Bf3 34.Qxd6 Rd8 35.Qa6 Qf5- 36.Ka1 Qc2 37.Rxb5 e4 38.Rb1 0-1

Forgive me for sounding stupid, but I don't understand what happened. The game score show 38.Rb1, and Black won. Did White forfeit on time? Resignation before Black shows his move seems premature. 38...Ra8 can be met by 39.Qe6+ Kh8, and now not 40.Ka2? Ra3+! but instead 40.Qb3

## GAMES FROM THE MIDWEST MASTERS

**W: Michael Brooks (2618) B: GM Eduard Gufeld (2520)** Round 5  
Sicilian [Annotated by Albert Chow]

This game is important because it was played in a critical "money round". The grandmaster never equalizes and is outplayed. By winning Brooks assured himself of at least a tie for first. He then needed only a last round draw to be the clear winner.

1.e4 e5 2.Nf3 Nc6 3.d4 exd4  
4.Nxd4 Nf6 5.Nc3 d6 6.Rg5 Qb6  
7.Nb3 e6 8.Be2 Be7 9.0-0 0-0  
10.Be3 Qc7

By an unusual move order, a transposition to a position to a position characteristic of the Scheveningen variation has been reached.

11.f4 a6 12.a4 b6 13.Bf3 Bb7

GM Gufeld has written a book on the Sicilian, so he must know what he is doing. But the Bishop could have stayed home on e8. Instead of 13...Bb7, 13...Rb8 prepares ...b6 ...b5 while protecting b6.

14.Qc2 Nd7

In view of White's intended Qf2, the Knight retreats to defend. Maybe Black should have tried 14...Rb8 15.Qf2 Ba8, only playing ...Nd7 after White commits his Kingside pawns with g4 g5.

15.Rad1 Nc5 16.Qf2 Rad8 17.Kh1 Rfe8 18.Rd2 Bf6 [It may have been better to protect e5 indirectly with 18...Bf8.] 19.e5! dxe5 20.Nxc5 Rxd2 21.Bxd2 bxc5 22.Ne4! Be7 [22...exf? 23.Nf6+ gxf 24.Qh4 is too dangerous.] 23.Nac5 Bxc5 24.Qxc5 exf4 [Black might improve his drawing chances by unpinning with 24...Qe7; this is true next move also.] 25.h4! e5? 26.h5 axb5 27.axb5 e4 28.Rel! f5

Perhaps Black intended 28...Qe5 and then realized that move is refuted by 29.Re4 Qc5

30.Re8 Qf8 31.Rf8 Kf8 31.Be6.  
Now he loses a piece and White's win is only a matter of technique.

29.hxc6 Qxc6 30.Qxc6 Bxc6 31.Re2 g5 32.Kg1 Bd5 33.e4 Be6 34.e5 Re8 35.Rc1 Bd5 36.Bb4 Kf7 37.Bb5 Rb8 38.Be4 Ke6 39.Bxd5+ Kxd5 40.e6 Re8 41.e7 g4 42.Ba5 e3 43.Rd1+ Ke6 44.Rd3 Kb7 45.Kf1 Ra8 46.Rd8 1-0

**W: GM Sergey Kudrin (2677) B: Michael Brooks (2618)** Round 6  
Gioco Piano [Annotated by Albert Chow]

Once again in an important game the grandmaster gets nothing from the opening. Brooks creates a strong attack, and GM Kudrin is happy to concede a draw.

1.e4 e5 2.Nf3 Nc6 3.Bc4 Bc5 4.c3 Nf6 5.d4

Instead of the 5.d4, Kudrin prefers the slower form of Gioco Piano. It's somewhat surprising that he doesn't use the Ruy Lopez.

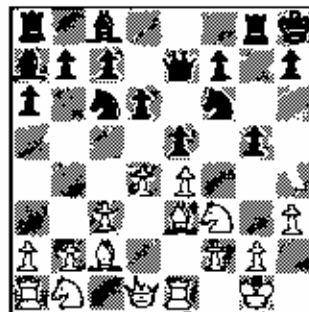
5...a6 6.0-0 Ba7 7.Re1 d6 8.Bb3 [Why not grab space with 8.b4 first?] 0-0 9.h3

A quiet preventive move. Black is under no pressure, and he even finds an original way to show that 9.h3 weakens the Kingside!

9...Kh8! 10.d4 Qc7 11.Be2

White's build up has been rather slow compared with a normal Ruy Lopez. But would you believe that Black could create a mating attack within a half dozen moves?

11...Rg8! 12.Be3 g5!



13.dxe5 [13.Bg5 is met by 13...Bh7 regaining material after 14.gxh h6; 13.Ng5 h6 14.Nf3 Bh3 is similar.] dxe5 14.Bxa7 Nxa7 15.Qd3 Nh5 16.Nh2 Nf4 17.Qc3 Nc6 18.Nd2 g4! 19.hxg4 Bxg4 20.Nag4 Rxc4 21.g3 Qh4 22.Qf3 Ragh

Threatening to sacrifice a Rook on g3 and win! Now if 23.Nf1 then Brooks gets his draw with 23...Nh3 24.Kg2 Nf4 so instead Kudrin guards g3 with a Rook, but...

23.Re3 Nd4!

Every last Black piece joins in the attack! This is the best example of the form Brooks was in at the 1989 Midwest Masters, always finding creative ways to grab the initiative.

24.cxd4 exd4 25.Ra3 d3 [The point of the combination. The Rook's defense of g3 is cut off.] 26.Rxd3 Nxd3 27.Qxd3 Rxc3+ 28.fxc3 Rxc3+ 29.Qxc3 Qxc3+ 30.Kf1 Qf4+ 31.Ke2 Qh2+ 32.Ke3 Qh6+ 33.Kd3 Qd6+ 1/2-1/2

**W: George Umezina (2289) B: IM Igor Ivanov (2609)** Round 1 [Annotated by George Umezina] 1.d4 g6 2.e4

Usually I play 2.c4, but I didn't want to have a discussion with Ivanov on the Dzindzi-Indian which would arise after 2.c4 Bg7 3.Nc3 e5 4.d5 Bc3 5.bxc3 f5 etc.

2...Bg7 3.Nf3 e5 4.d5 d6 5.Be2 Nf6 6.Nc3 0-0 7.0-0

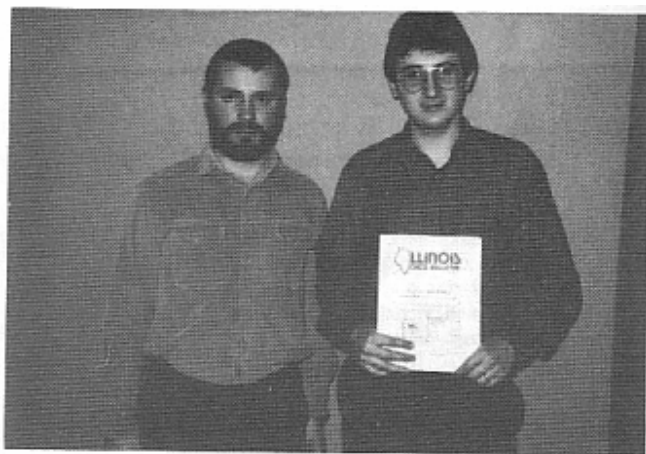
This is a rare form of the Benoni Defense. It definitely is not modern, because White has purposely omitted the move 2.c4.

7...Na6 8.h3 Ne7 9.Rel Re8 10.Bf4 b6 11.a4 Bh7?!

## The 1989 Midwest Masters



Organizer Helen Warren Congratulates Midwest Masters Winner Michael Brooks.



IM Alexander Ivanov (left) and GM Maxim Dlugy [who obviously reads the best chess magazines] tied for first and second at the Midwest Blitz.



GM Dmitry Gurevich (left) and IM Alexander Ivanov conduct a post-mortem.



Father and son Erik and Andrew Karklins analyze a position.



GM Dmitry Gurevich considers his next move.



Soviet GM Eduard Gufeld finished out of the money.

## GAMES FROM THE MIDWEST MASTERS

11...a6 would discourage White's idea of 12.Nd2 because of 12...Bd7 and an eventual b5 with good play on the Queenside for Black.

12.Nd2!

Now Black cannot play 12...c6 because of 13.Nc4 when he is forced to play 13...e5 wasting another tempo.

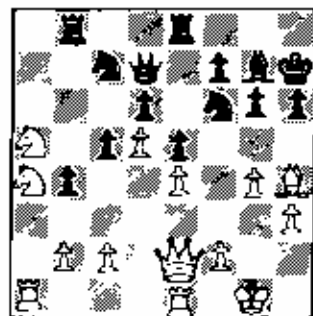
12...e5 13.Bg5 h6 14.Bh4 Qd7 15.Nc4 Ba6 16.Qd2 Kh/ 17.Nc3 Bxc2 18.Qxc2 a6

Black will finally get in b5, but not under favorable circumstances because of the weakness of the c6 square. First he has to guard the pawn on b6 after 19.Nc4, and only then can he play b5.

19.Nc4 Rb8 20.g4! b5 21.axb5 axb5 22.Na5

Yes, a Knight on the rim is grum, but this Knight has some possibilities vis-a-vis the c6 square, where Black can do nothing to dislodge it.

22.b4 [forced.] 23.Na4 [Played with the idea of Nc4-b6.]



23...N(xd5)?

Black tries to activate his central pawns by means of a piece sacrifice. Good or bad, he had to do something, since White was threatening to take over the a-file by the maneuver Nc4-Na4-b6 and Ra7, after which the course of the game would be determined by White.

24.exd5 Nxd5 25.Nc4 Nf4 26.Qf1!

This is the only move, 26.Qe3 g5 27.Bg3 Nh3 gives Black sufficient compensation for the piece because of the weak position of White's King and three pawns to boot.

26...d5 27.Ne3 Qe6 28.Bg3 [The Knight has to go.] e4 29.b3 c3? [29.cxb3] 30.Rad1 Rbd8 31.Bxf4 exf4 32.Ng2 f3 33.Nf4 [33.Nh4? Qf6, and Black is winning] Be5 34.Nd3 Bb8 35.h4! [Active defense] Re4 36.Qh3 Qe6 37.Qxf2 Qxg4+

After 37...Rg4, 38.Kf1 Re4 39.Nac5 Re1 40.Re1 Black is lost because the f7 square is weak

38.Qxg4 Rxg4+ 39.Kf1 Rxb4

Material is about even. Black has three pawns for the piece, but White has control of the e-file and all the play. Once White brings the a4 Knight into action the game will be over.

40.Re7 Kg7 41.Rde1 Bd6 42.R7e3 h5 43.Re8 Rd7? 44.Nb6 Rb7 45. Nxd5 Rd4 46.Ne3 Bf8 47.Nc4 Ra7 48.R8e4 Rd5 49.Re5 Rd4 50.Ra5 Rb7 51.Ra8 h4 52.Kg2 g5 53.Ree8 Re7 54.Ne3 1-0 [Black will lose more material or will get mated.]

**W: Mike Zelkind (2309)**

**B: GM Sergey Kudrin**

(2677) Round 1 1.e4 e6 2.d4 d5 3.f3 e6 4.Be3 dxe4 5.Nd2 exf3 6.Nxf3 Nf6 7.Be4 Qc7 8.0-0 Nnd7 9.Ng5 Nb6 10.Qf3 Bd6 11.h3 c5 12.Rae1 exd4 13. Bxd4 Nxc4 14.Nxc4 Qxc4 15.Bxf6 gxf6 16.Qxf6 Rf8 17.Nxh7 Be7 18.Qg7 Qc5+ 19.Kh1 Qh5 20.Qxf8+ Bxf8 21.Nf6+ Ke7 22.Nxh5 Bd7 23.Nf4 Be6 24.Nd3 Bg7 25.Ne5 Be8 26.c3 Rd8 27.Nf3 a5 28.Rd1 Re8 29.Nd4 b5 30.Rfe1 Kf8 31.a3 b4 32.axb4 axb4 33.cxb4 Re4 34.Re4 Kg8 35.Rg4 Rxb4 36.b3 Rb6 37.Rd3 Kf8 38.Nf3 Bf6 39.Rc4 Ra6 40.Rd1 Be6 41.b4 Bd5 42.Rc8+ Kg7 43.b5 Rh6 44.Rb1 Be4 45. Rb4 Bd9 46.Rc5 Be7 47.Rg4+ Bg6 48.Rc7 Bf6 49.Rc5 Re7 50.Rc7 Bf6 51.Nh4 Bxh4 52.Rxh4 Rxb5 53.Kg1 1/2-1/2

**W: GM Maxim Dlugy (2691) B: James Mills,**

**Jr. (2243) Round 1 1.d4 Nf6 2.e4 e5 3.dxe5 Ng4 4.Bf4 Nc6 5.Nf3 Bb4+ 6.Nc3 Qe7 7. Qd5 Bxc3+ 8.bxc3 Qa3 9.Re1 d6 10.exd6 Be6 11.Qh5 exd6 12.Qxb7 Re8 13.Qb3 Qc5 14.e3 0-0 15.Be2 Rh8 16.Qd1 Nge5 17.0-0 Rb2 18.Rc2 Rfb8 19.Nd4 Bxc4 20.Bxc4 Qxc4 21.Nxc6 Qxc6 22.Rab2 [U 22.Rxb2, then 23.Bxc5 wins a piece (Schiller)] 1-0**

**W: GM Dmitry Gurevich (2689) B: Gary Simms**

(2287) Round 1 1.d4 Nf6 2.c4 g6 3.Nc3 Bg7 4.e4 d6 5.Be2 0-0 6.Nf3 e5 7.0-0 Nc6 8.d5 Ne7 9.Ne1 a5 10.Be3 Nd7 11.Nd3 b6 12.a3 f5 13.f3 14 14.Bf2 g5 15.h4 axb4 16.axb4 Rxa1 17.Qxa1 Nf6 18.c5 bxc5 19. bxc5 h5 20.Qa5 g4 21.Nb5 Ne8 22.exd6 Nxd6 23.Nc5 e6 24.Qxd8 Rxd8 25.Bh4 Kf7 26.Na7 Bf6 27.Bxf6 Kxf6 28.dxc6 Rg8 29.Rd1 Nf7 30.Nd7+ Bxd7 31.Rxd7 gxh3 32.Bxf7 Ng5 33.Kf1 Ne8 34.Nb5 Nxf3 35.gxf3 Ne7 36.e7 Ra8 37.Rxe7 [37.Kxe7 38.Na6 Kd7 39. e8=Q+ Rxc8 40.Nxc8 Kxc8 41.Kg2 +- (Schiller)] 1-0

**W: John Krom, Jr. (2155)**

**B: Albert Chow (2449)**

Round 1 1 d4 Nf6 2 e4 g6 3 Nc3 d5 4 exd5 Nxd5 5 e4 Nxc3 6 bxc3 Bg7 7 Nf3 c5 8 Rb1 0-0 9 Be2 exd4 10 exd4 Qa5+ 11 Bd2 Qxa2 12 Qc1 Qcb 13 e5 Nc6 14 0-0 b6 15 Re1 Bb7 16 Be4 Qf5 17 e6 Nxd4 18 exf7+ Kh6 19 Nxd4 Bxd4 20 Be3 Bg7 21 Rb5 Qe4 22 f3 Qc6 23 Rb2 e6 24 Rc2 Rx7 25 Ba6 Qe8 26 Qa3 Re8 27 Re1 Rxc2 28 Rxc2 Qd8 29 Be2 Bd4 30 Rd2 Bxc3+ 31 Qxc3 Bd5 32 Qc5+ Qf6 33 Qb8+ Kg7 0-1

**W: Dana Nance (2166) B:**

**Billy Colias (2420) Round**

1 [Analysis by Eric Schiller] 1 d4 Nf6 2 e4 e5 3 d5 Ne4 4 Qc2 Qa5+ 5 Nd2 (5 Nc3 Nxc3! 6 Bd2 e5!) 5 Nd6 6 e4 (6 h3! 15 7 Bb2 e6 8 Bc3! Qb6 9 Nh3 Benjamin & Schiller) 6 g6 7 Ng3 Bg7 8 Bd3 (8 Re2 0-0 9 0-0 15 =- Buecker) 8 Na6 9 a3 e5 (9 b5!) 10 0-0 bxd4 11 Nxc4 Nxc4 12 Bxc4 Qb6 13 Rb1! 0-0, Schmidke-Buecker, Germany 1981) 10 0-0 0-0 11 Nh4 Qd8 12 g3 Ne8 13 Ng2 d6 14 f4 exf4 15 Nxf4 Nh8 (An amazing series of redeploying maneuvers! Having

## GAMES FROM THE MIDWEST MASTERS

done their work on the queenside, the Black forces now regroup.) 16 Nf3 Bg4 17 Bd2 Bxf3 18 Rxf3 Nd7 19 Bc3 Ne5 20 Bxc5 Bxc5 21 Rxf1 Nf6 22 Ne2 Qe7 23 Kg2 Rae8 24 h3 Nd7 25 Rb1 Bg7 26 Rff1 Ne5 27 Nc3 b6 28 Rbe1 a6 29 Qe2 Rb8 30 Nd1 Qd7 (White Whic has been shifting his pieces aimlessly, Black has developed a consistent plan. The queenside will soon explode.) 31 Rf2 b5 32 Rff1 Rb7 33 b3 Rfb8 34 cxb5 axb5 35 Ne3 Ra8 36 Ng4 Nxf4 37 hxf4 Qe8 38 a4 bxa4 39 bxa4 Kxa4 40 Re1 Bd4 41 Rf1 Rb2 42 Rc2 Raa2 43 Rb1 c4! 44 Rxb2 cxd3 45 Rxa2 dxe2 46 Rxc2 Qc8 47 g5 Qg4 48 Reel Qxg5 49 Rf1 Qd2+ 50 Kh3 Qd3 51 Rbe1 Re5 52 Rg1 Qc2 53 Rg2 Qd3 54 Rer2 Bxg3 0-1

**W: George Trammell III (2125) B: Marc Lonoff (2344)** Round 1 1 e4 e6 2 d4 d5 3 Nd2 Nf6 4 e5 Nf7 5 Bd3 c5 6 e3 Nc6 7 Ngf3 Qh6 8 0-0 f6 9 exf6 Nxf6 10 Re1 exd4 11 cxd4 Bd6 12 Nb1 0-0 13 Nc3 Bd7 14 h3 Rae8 15 Bg5 Kh8 16 Na4 Qe7 17 Re1 Bf4 18 Rc3 Bxg5 19 Nxf5 Qf4 20 h4 Ng4 21 Rf1 Qh2+ 0-1

**W: Robert O'Donnell (2300) B: Eugene Martinovsky (2443)** Round 2 1 Nf3 Nf6 2 e4 g6 3 Ne3 d5 4 cxd5 Nxd5 5 e4 Nxc3 6 bxc3 Bg7 7 d4 0-0 8 Rb1 b6 9 Be2 Bb7 10 Qc2 Nd7 11 0-0 e5 12 Rd1 exd4 13 cxd4 Qe7 14 d5 Rac8 15 Bd2 Bxd5 16 Bb4 Bxe4 17 Qa4 Ne5 18 Bxc5 bxc5 19 Rbe1 c6 20 Re1 Bb2 21 Re4 Bxf3 22 gxh3 Bd4 23 Qc2 Rfe8 24 Qe4 Qxe4 25 fxe4 Rxe4 26 Kf1 Rce8 27 Rcc1 Rf4 28 f3 Re5 29 Bd1 Rg5 30 Re7 Rg1+ 31 Ke2 Rg2+ 32 Kf1 Kxa2 0-1

**W: Bruce Leverett (2388) B: IM James Rizzitano (2525)** Round 3 1 d4 Nf6 2 e4 e6 3 Nc3 Bb4 4 e3 b6 5 Bd3 Bb7 6 Nf3 Ne4 7 0-0 15 8 Qc2 Bxc3 9 bxc3 0-0 10 d5 Nc5 11 Ba3 Nba6 12 Nd4 Rf6 13 f4 g6 14 e4 fxe4 15 Bxe4 Qf8 16 Rael Re8 17 g3 e5 18 fxe5 Rxe5 19 Bg2 Rxf1+ 20 Rxf1 Qe8 21 Be1 Re1 22 Bh6 Rxf1+ 23 Kxf1 Nh8 24 Nb5 Ba6 25 Qd2 Bxb5 26 exb5 d6 27 Qf4 Qf7 28 Ke2 Nbd7 29 Qh4 Qf6 30 Qxf6 Nxf6 31 Bg5 Kf7 32 e4

Nod7 33 Kd3 Ne5+ 34 Kd4 Kg7 35 h3 Nf7 36 Bd2 Nh5 37 g4 Nf6 38 Bf3 g5 39 Be4 h6 40 Bf3 Ne5 41 Be2 Ng6 42 Bf3 Ne5 43 Be2 Nfd7 44 Ke4 Kg6 45 Kd4 Nf6 46 Be3 h5 47 gxb5+ Nxb5 48 Bf2 Nf4 49 Bg4 Nh5 50 Be2 Nf4 51 Bg4 Kf6 52 Be8 Nf6 53 Be3 Ne7 54 Bg4 Nf5+ 55 Ke4 Nxc3 56 Kxc3 Nxc4+ 57 Kd4 Na3 58 Be2 Nc2+ 59 Ke4 Nb4 60 Be4 Ne2 61 Be2 Ne1 62 Bg4 Ng2 63 Be2 Nf4 64 Bg4 Ng6 65 Be2 Ne5 66 Bg4 Kg6 67 Kd4 Nf7 68 Ke4 Nh6 69 Kd4 Ng8 70 Ke4 Nf6+ 71 Kd4 Nh5 72 Ke4 Ng7 73 Kd4 Kf6 74 Ke4 Kg6 75 Kd4 Nf5+ 76 Ke4 Ne7 77 Kd4 Kf6 78 Ke4 Ng6 79 Kd4 Ne5 80 Ke4 Ne4 81 Kd4 Na3 82 Be2 Kf5 83 Kc3 Ke4 84 Kb2 Ke3 85 Bf1 Kf2 86 Bd3 Kg2 87 Kxa3 Kxh3 0-1

**W: William Harris, Jr. (2153) B: GM Maxim Dlugy (2691)** Round 3 1 e4 e5 2 Nf3 d6 3 d4 cxd4 4 Nxd4 Nf6 5 Ne3 Nc6 6 Bg5 e6 7 Qd2 a6 8 0-0-0 h6 9 Bh4 Nxe4 10 Qd4 Ng5 11 Nxc6 bxc6 12 Ne4 e5 13 Bxg5 hxg5 14 Qd2 d5 15 e4 Bf5 16 Ng5 Be7 17 Nf3 e4 18 Qe2 Bg4 19 exd5 cxd5 20 Qe6+ Kf8 21 Rxd5 Qe8 22 Ne5 Qxe6+ 23 Nxc6 Re8 0-1

**W: Eric Schiller (2322) B: Barry Manthe (2123)** Round 3 [Analysis by Eric Schiller] 1 e4 e5 2 Nf3 Ne6 3 Bb5 f5 4 Qe2 fxe4 5 Bxc6 bxc6 (A move originally suggested by Keene, as reported in Shamkovich & Schiller's book on the Schlemann Defense) 6 Qxe4 Bd6 7 d4 (or 7 Nxe5 Nf6 with unclear complications.) 7 Nf6 8 Qe2 e4 9 Ng5 Qe7 10 0-0 (10 Nd2 0-0 11 Ndx4 Nxe4!?, 10 Ne3 Bb4!?) 10 Bb7! 11 Nc3 e5 12 dxc5! (12 Re1? exd4 13 Ngxe4 Bxc4! 15 Qxe4 Qxe4 16 Rxe4+ Kf7) 12 Bxc5 13 Nb5 Bb6 14 e4 h6 15 Nh3 0-0 16 Nf4 Kh7! 17 Be3 Bxc3 18 fxe3 Qe5 19 Rad1 a6 20 Ne3 e6 21 Na4 d6 22 Rd2? (22 Qd2! Rad8 23 Qd4) 22 Rad8 23 b4 Be8 24 e5 g5 25 Nb6 gxh4 26 exf4 Qh5 27 Qxh5 Nxb5 28 cxd6 e3 29 Re2 Bg4 30 Rxc3 Rxd6 31 Re7+ Kg6? (31 Kg8 32 Ne4 Rd5) 1/2-1/2?! (Black is still winning.)

**W: Gene Scott (2150) B: Marvin Rogan (2011)** Round 3 [Editor's Note: Rogan,

the "house" or "odd-even" man who filled in each round so that no one had to take a bye, raised his rating by 74 points with his 4.5-1.5 result.] [Analysis by Eric Schiller] 1 d4 Nf6 2 Nf3 d5 3 Bf4 g6 4 e4 Bg7 5 Ne3 0-0 6 e3 e5 7 Qh3 cxd4 8 exd4 Nc6 9 cxd5 Na5 10 Qb5 a6 11 Qe5 b6 12 Qc7 Nxd5 13 Qxd8 Rxd8 14 Nxd5 Rxd5 15 b4 Bxd4 16 0-0-0? Nc6 (16 Bb2+ 17 Kxb2 Rxd1 18 haa5 aab5 19 Ke2 Ra1 20 Kb2 =; 19 Rd7!?) 17 Be4 Rd7 18 b5 Na5 19 Bxf7+ Kxf7 20 Rxd4 Rxd4 21 Nxd4 axb5 22 Nxb5 Be6 23 Ne7 Rb8 24 Kb2 Nc4+ 25 Ke3 Nd6 0-1

### VOLUNTEERS FOR U.S. OPEN NEEDED!

By Helen Warren

ICA members with cars available during daytime hours are needed to run errands and to provide transportation for airport pickup, spouse activities, excursions to Great America, Cubs Park, Arlington Race Track, etc.

We also need volunteers to man demo boards during the evening rounds. If you can work only two or three rds. of the tournament, you're still welcome to assist.

USCF would like several trustworthy individuals to help with book sales throughout the tournament. You will be paid for your time. We prefer someone with knowledge of book stock.

If you're able to assist with any of the above assignments, please call Helen Warren at your earliest convenience. (312) 246-6665.

# STARS MUST COME OUT FOR CHESS TO SHINE

By David Wulatin

The debate on the best way to promote chess in the United States continues. Most people seem to think that the answer lies in America's youth. Get the kids interested at an early age, and before you know it this country will be overflowing with chess players. It's a reasonable assumption. Unfortunately, it's wrong.

If you don't believe me, look at soccer, played in the United States by millions of kids at every school level. Every six years, the best of these players are assembled to get destroyed by the European and South American teams at the World Cup qualifying trials. Soccer's track record as a spectator sport speaks for itself. Seen any good North American Soccer League games lately?

No, I'm afraid that the only salvation for chess in America is celebrity participation. Jack Lemmon and Andy Rooney can often be spotted at tennis tournaments. Harry Caray has had everyone from Bill Murray in Emma Samms in the Chicago Cubs broadcasting booth. And Jack Nicholson gets more air time at a typical Los Angeles Lakers game than he did in "Easy Rider". But of all the people in the "Celebrity Section" of that chess tournament at Matizatlan, Mexico last December, the only names I recognized were Erik Estrada and Morgan Fairchild. Chess deserves better than "Hollywood Squares" rejects. We need some real celebrities, like:

**PATRICK SWAYZE:** This Dirty Dancer could singlehandedly end the male-female imbalance in chess. How much do you think the average teenage girl would pay to put the moves (on and off the board) on him for two hours?

**PAULINA PORIZKOVA.** Well, after all, the women shouldn't

have all the fun . . .

**DONALD TRUMP.** Imagine what this man's ego could do for chess. I can just picture this conversation between him and Harold Winston, USCF president:

Trump: "Now Harry, I want this to be a quality event. What's the biggest prize fund ever given at a chess tournament?"

Winston (thinking quickly): "Uh, I think it's five million."

Trump: "Five million? Hal!" [He picks up the phone.] "Ivana, schedule a press conference tomorrow to announce the Trump Tournament, with a ten million dollar prize fund."

Before you know it, chess would find its way into the worlds of "Entertainment Tonight" and trash talk shows ("Next on Geraldo: Pawn Sacrifices - [the Newest Cult!"] Soon the royal game would reach the final plateau in America: the beer commercials.

**SCENE:** A Soviet grandmaster waits at the chessboard. We hear the singing "voice over".

VO: "Talenikov is undefeated; who'll play for the USA?" [Enter three stunning women in sleek black and white outfits, accompanied by an ugly dog.]

Women: "Go, Spuds, go!"

VO: "Yes, it's Spuds Mackenzie, here to save the day!"

Women: "Yeah, Spuds!"

**SCENE:** A man sits alone at the bar with a chessboard. The caption reads: Bobby Fischer, Ex-World Champion.

Fischer: "Even though I don't play much chess anymore, I still

can't afford to get filled up when I'm thwarting mind control attempts by Semitic communists. That's why I drink . . .

Bob Uecker: "Heeeyy, Bobby! Ready for our game? Gotta warn you though, I'm pretty good. Back in school, the other kids always had to king me!"

**SCENE:** A young boy sits in a darkened chess club, studying rook and pawn endgames. The singing "voice over" begins.

VO: "I gotta dream, I gotta dream, right from the heart of the heartland. I can make my dream, gonna take my dream, right from the heart of the heartland. Right from the heart of the heartland."

Flash forward: The boy is playing the world champion in a complicated rook and pawn endgame.

VO: "I won't rest, gonna reach for the best, got it all here in my hand. Wherever I go, I'm gonna let 'em know I come right from the heart of the heartland." [The boy brilliantly sacs his rook for an unstoppable passed pawn. The champion knocks over his king down in disgust.] Right from the heartland of the heartland."

Finally, it's time to get the mudslinging back into the national chess magazines. If the new editor of CHESS LIFE continues to take the high road, I may consider creating my own magazine, CHAIR (CHESS HEARSAY AND INNUEXDOES, RUMORS). After all, a little controversy never hurt anyone - just ask Wade Boggs and Pete Rose.

# GRANDMASTER DMITRY GUREVICH ANNOTATES

Chicago Chess Center Grand Prix

February 18-19, 1989

White: GM Dmitry Gurevich (2542)

Black: Senior Master Albert Chow (2438)

Annotated by Dmitry Gurevich

1.Nf3 Nf6 2.e4 e5 3.d4

My only two previous games with Albert had ended up as draws. More importantly, I never had any advantage in either of them. I therefore was careful in choosing the opening in this context.

3...cxd4 4.Nxd4 e6 5.g3 d5 6.Bg2 e5 7.Nf3 d4 8.O-O Nc6 9.e3 Bc5

The alternative is 9...Be7.

10.cxd4 cxd4

This classical line is supposed to equalize for Black.

11.Nbd2

Or 11.Re1 Be6 12.Ng5 0-0?

11...0-0 12.Nb3 Qb6 13.Bg5!? Ne4 14.Re1?

This relatively new idea of GM Roman Dzindzichashvili is (like most of his ideas) quite brilliant.

14...Nxg5

If 14...Bf5 15.Nh4!; but 14...f5? 15.Nc5 Qe5+=.

15.Nxg5

Now Albert thought for a long time. In fact he does have reason to worry. For example, 15...Bf5 16.Bxc6! and Re5+, or 15...h6? 16.Nxf7! Rxf7 17.Bd5 Bf8? (Dzindzichashvili-Lobron, N.Y. Open 1988), and now White could have won the game after 18.Bxf7+ Kxf7 19.Qf3+! Kg8

20.Re8.

15...Bb4!

Probably best. Now it was my turn to think.

16.e5? Qd8

Not 16...Bxc5? 17.Qc2

17.Qh5 Bf5!

17...h6 would be a mistake because of 18.Nxf7! Rxf7 19.Bd5 Qf8 20.Ba7 Qxf7 21.Re8+.

18.Red1!

During the game I considered a funny variation: 18.Be4 h6 19.Hxf5 Bxe1 20.Bh7+ Kh8 21.Nxf7+ Rxf7 22.Qxf7 Bxf2+ 23.Qxf2 Kxh7 24.Rd1 Qf6 25.Nxd4 Qxf2+ 26.Kxf2 Rd8 27.Ke9 Re8+ 28.Kf2 Rd8! =. But in any event I wanted to keep my g2 Bishop for a while!

18...Bg6?

This allows White to move his Queen to her best location. The immediate pawn sacrifice 18...h6 19.Bxc6 hxc6 20.Rxd4 Qxg5 would have given Black chances to save the game due to his strong white-squared Bishop. But 18...d7 would be even better: 19.a3 Ba5 20.Bxc6 bxc6 21.Nxa5 Qxa5 22.b4 Qa4 23.Qf3 and White has just a slight advantage.

19.Qg4!

Now 19...Be2 loses to 20.Bxc6

19...d3

20.Bxc6!

In making this move, White had to make sure that he is getting rid of Black's white bishop! 20.h4 would have given Black an important tempo to retreat after 20...h5 21.Qf4 Ba5.

20...bxc6 21.h4

Played with the nice idea of 21...h6 22.Ne6! Qd7 23.h5! Qe6 24.Qe6 fxe6 25.hxg6 +.

21...f6

This fails because of White's "pendulum" maneuver.

22.Qc4+ Kh8 23.Ne6 Bf7 24.Qg4!

Forcing Black to give up his Bishop.

24...Bxc6 25.Qxc6

Now White's remaining Bishop is much easier to deal with.

25...Re8

If 25...a5 then 26.a3; if 25...Ba5 then 26.Qc6 or 26.Qc4 d2 27.Qa4!

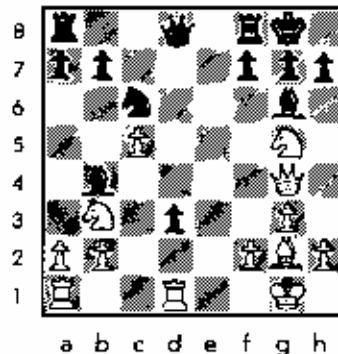
26.Qc4

It is simpler just to get rid of the d-pawn. White is winning.

26...Rb8 27.a1 Ba5 28.Rd3 Qc7 29.Ra1 Re8 30.Rae1 Rxe1 31.Qe6

Domination! If 31...Ba5, 32.Rd7, winning the ill-fated Bishop. Black resigned. 1-0

My play in this game was inspired by the ideas of Roman Dzindzichashvili and the drawings of Jules Stern.



1989 US OPEN

AUGUST 5-13

HYATT REGENCY O'HARE

\$33,000 PRIZE FUND



# CHOW - MARTINOVSKY MATCH FEATURES FIGHTING CHESS

## LONGTIME FOES BATTLE TO 4-4 TIE

By Albert Chow

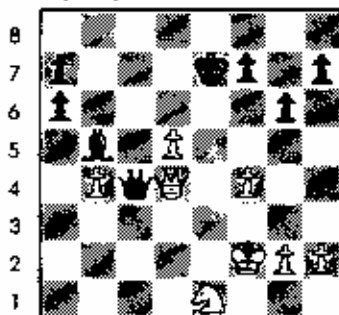
[Editor's Note: Perhaps no recent Illinois chess rivalry has been more intense than that of Albert Chow and Eugene Martinovsky. During the past several years these two Senior Masters have contested many hard fought games, several of which each player has annotated in the ICB. This issue features Martinovsky's analysis of game two and Chow's analysis of game three of their recent match.]

Over the years Jules Stein and his Chicago Chess Center have provided local chess players with a place to meet and compete seven days a week. Jules also organized many types of chess events. The idea of an eight game match between Dr. Eugene Martinovsky and me floated around for a while, but details needed to be worked out. Jules telephoned me one day with the answer. He had arranged the match at the Chess Center from January 15 to January 22, with one game to be played each day. Jules would be the chief arbiter. The first time control was 40 moves in 2 hours, the second 20 moves in 1 hour, and the last 30 minutes/sudden death\* (This would make certain that each game would finish in one day.) The draw for colors gave Martinovsky white the first game.

The final result was a drawn match! We each won two and lost two; the other four were drawn. All of the games were interesting, and featured a somewhat stubborn theoretical discussion. It is no great secret that the doctor and I like to open with the Queen pawn. But it seems that we both also favor the Gruenfeld Defense! As White we used different systems, testing the entire range of possible refutations. Nothing came close. Black won the first three games! I was then leading by one point, but could not finish Martinovsky off. After three draws, I surprised him in game seven by switching to a "solid" opening. Maybe this was a mistake; he ground me down and tied the score. The last game was then drawn.

### Match Game #1

January 15, 1989 W:  
Albert Chow (2338) B:  
Eugene Martinovsky  
(2454) 1.d4 Nf6 2.c4 g6  
3.Nc3 d5 4.Bf4 Bg7 5.e3 O-O  
6.exd5 Nad5 7.Nxd5 Qxd5  
8.Bxc7 Na6 9.Bxa6 bxa6  
10.Nf3 Bf5 11.O-O Rfe8  
12.Rc1 Qb7 13.Ba5 Qxb2  
14.Qd2 Qb7 15. Rxc8+ Rxc8  
16.Rc1 Rxc1+ 17.Qxc1 Be4  
18.Ne1 e6 19.Qc3 Bf8 20. a3  
Qb1 21.f3 Bd5 22.e4 Ba2  
23.Bb4 Bxb4 24.axb4 Be4  
25.Kf2 Bh5 26.Qd2 Qb3 27.d5  
exd5 28.exd5 Kf8 29.f4 Ke7  
30.Qd4 Qc4



a b c d e f g h  
31.Qe5+ Kd7 32.Nf3 Qxb4  
33.Kg3 Qd6 34.Qd4 Ke8  
35.Qh8+ Ke7 36.Qd4 Ke8

37.Ng5 h6 38.Ne4 Qa3+ 39.Nc3  
Qe7 40.d6 Qe1+ 41.Kh3 dd7+  
42.g4 Qf1+ 43.Kg3 Qe1+ 44.Kh3  
Be6 45.Nd5 Qf1+ 46.Kg3 Qe1+  
47.Kh3 h5 48.Nc7+ Kd7 49.Nxe6  
hrg4+ 50.Kxg4 Qxe6+ 51.Kg5  
Qxd6 52.Qxa1+ Ke8 53.Qf2 Qd5+  
54.Kg4 a5 55.Qb2 Kf8 56.Qh8+  
Ke7 57.Kg3 a4 58.Qa1 Qd3+  
59.Kg4 Qe2+ 60.Kg3 Qe3+ 61.Kg4  
a3 62.Kg5 Kd7 63.Kf6 Qe6+  
64.Kg7 a2 65.Qd4+ Ke6 66.Qa4+  
Ke5 67.Qa5+ Kd4 68.Qd2+ Ke4  
69.Qe2+ Kf5 70.Qc2+ Kxf4  
71.Qf2+ Kg4 72.Qg2+ Kh5  
73.Qf3+ Qg4 74.Qd5+ f5 75.Qxa2  
Qd4+ 76.Kf7 Qd7+ 77.Kf6 Qd6+  
78.Kf7 g5 79.Qe2+ g4 80.Qf2 f4  
81.Qc2 Kg5 82.Qb2 Qd7+ 83.Kg8  
Qe8+ 84.Kg7 Qg6+ 85.Kh8 Qf6+  
0-1

With a one point lead, I decided to play solidly. Perhaps my approach was too passive. In any case the doctor got the kind of game he plays so well, transposing into a better Rook ending, which I probably misplayed.

Match Game # 2 January  
16, 1989 W: Albert Chow  
(2438) B: Eugene Martinovsky  
(2454) [Analysis by Eugene

Martinovsky] 1.d4 Nf6 2.e4 g6  
3.g3 c6 (Kasparov) 4.Bg2 d5  
5.exd5 exd5 6. Ne3 Bg7 7.Nf3  
O-O 8.O-O Ne6 (8...Ne4) 9.Ne5  
e6 10.Nxe6 hxc6 11.Na4 Nd7  
12.b3 (12.Bf4; 12.Be3) c5! 13.Bh2  
(13.Ba3=) Ba6 14.Re1 Re8 15.e3  
Qa5! (g) 16.Be3 Qb5 17.dxc5  
Bxc3 18.Nxc3 Qxc5 19.Na4 Qb4!  
20.a3 Qd6 21.Qd4 Ne5 22.Qb4  
Re6! 23.Nxe5 Qxc5 24.Qxc5 Rxc5  
25.Ree1 Rfe8 26.Rxc5 Rxc5  
27.Bf1 Bxf1 28.Kxf1 Re2 (g)  
29.b4 Rb2 30.g4 g5 31.Kg2  
(31.Re1!) Kg7 32.Kg9 Rb3 33.h4  
h6 34.h5 Kf6 35.Kf3 Ke5 36.Re1  
Rxa3 37.Re8 (Re7!) d4! 38.Rh8  
d3! 39.Rd8 (39.Rxb6 Ra1 →) f6  
40.Rd4 Rb3 41.b5 Rxb5! (-+)  
42.Rxd3 a5 43.Rd8 a4! 44.Ra8  
Rb4 45.Ra5+ Kd6 46.e4 Rb3+  
47.Ke2 a3 48.Ra6+ Ke5 49.f3  
Kd4! 0-1 (If 50.Rxe6 a2 51.Ra6  
Rb2+ 52.Kd1 Rb1+ 53.Kc1  
a1=Q)

### Match Game # 3

January 17, 1989 W:  
Eugene Martinovsky  
(2454) B: Albert Chow  
(2438) [Annotated by Albert  
Chow] 1.d4 Nf6 2.e4 g6 3.Nc3 d5  
4.Nf3 Bg7 5.Bg5 Ne4 6.cxd5  
Nxc5 7.Nxc5 c6!? 8.e3

Instead of the more often played 7...c6, my 7th move seems to have been a surprise for which Martinovsky was not prepared. If White wants to gain any advantage then he must challenge the soundness of Black's gambit by accepting it: 8.dxc6.

8...e6

By hitting the Knight on g5 Black gains the option of recapturing on d5 with the e-pawn. This is better than 8...cxd4 9.Qf3.

9.Nge4 exd5

Recapturing with a gain of time by attacking the e4 Knight. Why did White avoid the correct 9.Nf3 with equality? Now he wants more, a Knight outpost on e5.

10.Nc5 O-O 11.Be2 Nd7

Striking at the target c5 Knight. If White recaptures on c5 with his d pawn the long a1-h8 diagonal opens up for Black's unopposed Grünfeld dark-squared Bishop. Maybe 12.Nd3 was better, although then Black could even try 12...e5!?: for example, 13.dxc4.

12.b4 Nxc5 13.bxc5 f5

Black threatens to attack the base of White's dark-squared pawn chain with ...f4. It is becoming clear that Black has the initiative.

14.g3

Other moves could have been played, but it seems White's pawns are already fixed on dark squares where they will be hit. If 14.Qd2, then Black can play f4 without any preparation since the pawn is regained after 15.exf4 Qf6. Castling instead might be correct, but after 14.O-O f4 there are threats such as ...Qg5.

14...g5 15.f4

An idea was 15.h4 hoping for 15...g4? or 15...gxh? 16.Rh4, or

15...h6? hxg hxg 17.Qc2, but Black plays 15...f4 anyway. Then after 15.h4!?! f4! 16.hxg fag 17.f4! White suddenly has strange counterplay. Black would improve with 16.hxg fxc? 17.f4 since now that the pawns on e3 and g3 have traded places d4 is weak: 17...Qa5!?! 18.Qd3 Bf5 19.Qc3 Qb4 20.Rd1 Bc2 21.Rd2 Rae8 22.Qf3 Be4!?! 23.Ne4 Re4 24.Qh5 Rfe8 25.Qh7 Kf8 26.Qf5 Ke7! 27.Rh7 Kd8 and do you believe Black wins? What, you're not convinced that this is best play and that it's all forced? Instead on move 17 Black could try 17...Bf5 or 17...b6. Maybe 15.h4 wasn't so great for White and maybe I should try to forget this fantasy variation since it never happened.

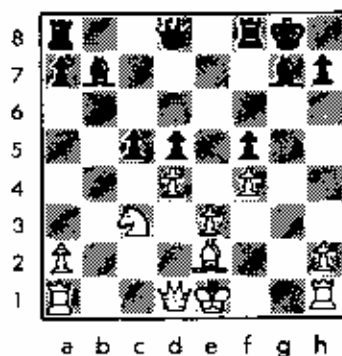
15...b6 16.cxb6

It would probably have been better to play 16.Na4! gxf 17.gxf! Qh4 18.Kd2 and by covering c5 White's King might even survive in the center!?

16...gxf4 17.b7

I was expecting 17.gxf Qh4+ with attacking chances after 18.Kd2 e5!?! 19.dxc4 d4 or 18.Kf1 axb; but not 17.gxf? Qb6 winning material.

17...Bxb7 18.gxf4 e5



The continued theme of hitting White pawns with breaks is strong. But most accurate was 18...Qh4+ and after White's King moves 19...c5. The difference is that with the game continuation White had a last

chance for relative King safety after 18.O-O! exd 19.exd Qf6 and Black will win White's d- pawn. But better to lose a pawn than the game.

19.Bf3 exd4 20.exd4 Qh4+ 21.Kf1 Qxh4 22.Rb1 Ba6+ 23.Kg2 Qg5+ 24.Kf2 Qh4+ 25.Kg2 Bxd4 26.Bxd5+ Kh8 27.Ne4 Be5

Threatening ...Rg8+ White uses his last resources, but his Kingside is too empty

28.Ng3 f4 29.Qh5

There is no real answer to the attack. 29.Ra8 fag threatens 30...Rf2 and 30...gxh.

29...Qxh5 30.Nxh5 Rad8 31.Bh7 Bxb7+ 32.Rxb7 Rf5 33.Rh5 f3+ 34.Kh3 Rxb7+ 35.Kg4 Rxb2 36.Rf1 Rg8+ 37.Kf5 Rf8+ 38.Ke4 Re2+ 39.Kd3 Rd8+ 40.Kc4 Rc2+ 41.Kb3 Rb2+ 0-1

A strange jinx seemed to hang over the White pieces. Again leading, my goal was not to lose with White! But what I really needed was another win so the match result would be clear.

#### Match Game # 4 January 18, 1989 W: Albert Chow (2438) R: Eugene

Martinovsky (2454) 1.Nf3 Nf6 2.c4 g6 3.Nc3 d5 4.cxd5 Nxd5 5.e4 Nxc3 6.dxc3 Qxd1+ 7.Kxd1 f6 8.Be3 e5 9.Nd2 Be6 10. Be4 Kf7 11.Kc2 Nd7 12.b4 Be7 13.Bxc6+ Kxe6 14.Ne4 b6 15.a4 Rhd8 16.f3 Rg8 17.Rhd1 b5 18.Rd5 Rgd8 19.Rad1 c6 20.R5d2 Nf8 21.a5 b5 22.Nb2 Rxd2+ 23.Rxd2 a6 24.Be5 Nd7 25.Nd3 Rd8 26.Bb6 Rcb 27.Nc5+ Nxc5 28.Bxc5 Rd8 29.Bxc7 Rxd2+ 30.Kxd2 Kxe7 1/2 1/2

#### Match Game # 5 January 19, 1989 W: Eugene Martinovsky (2454) R: Albert Chow (2438)

1.d4 Nf6 2.c4 g6 3.Nc3 d5 4.cxd5 Nxd5 5.e4 Nxc3 6.bxc3 Bg7 7.Be4 O-O 8.Ne2 e5 9.Be3 Nc6 10.O-O Qe7 11.Rc1 Rd8 12.Qd2 a6 13.Rfd1 b5 14.Bb3 Na5 15.Rf1 Qd7 16.dxc5 Qxd2 17.Rxd2 Rxd2 18.Bad2 Bb7 19.f3 Kc8 20.Be3 e6 21.c4 b4 22.Nf4

22..Rd8 23.Kf2 Be6 24.Nd5 exd5  
 25.exd5 Be8 26.c6 Nxc6 27.dxc6  
 Bxc6 28.Rd1 Rxd1 29.Rxd1 Re3  
 30.Bb6 Kf8 31.Ke3 Ke7 32.Kd3  
 Bd7 33.g4 h5 34.a3 hxg4 35.fxg4  
 Be5 36.axb4 Bxh2 37.Rf3 Be8  
 38.Bd4 Bf4 39.Ke4 g5 40.Kd3 f5  
 41.gxf5 1/2- 1/2

Now I decided to roll out the heavy artillery in an effort to increase my lead to two points. I won a pawn plus the Bishop pair, but the active Black pieces created enough resources to hold.

**Match Game #6 January 20, 1989 W: Albert Chow (2438) B: Eugene**

**Martinovsky (2454) 1.d4**  
 Nf6 2.Nf3 g6 3.c4 Bg7 4.Nc3 d5  
 5.Qb3 dxc4 6.Qxc4 O-O 7.e4 Ne6  
 8.Be2 Bg4 9.d5 Bxf3 10.gxf3 Ne5  
 11.Qb3 c6 12.f4 Ned7 13.dxc6 bxc6  
 14.e5 Nd5 15.Nxd5 cxd5 16.Qxd5  
 e6 17.Qd6 Rb8 18.O-O Nb6  
 19.Qxd8 Rfxd8 20.Rd1 Nd5 21.  
 Be4 f6 22.Re1 Kf7 23.Bb3 Rb4

24.Bd2 Rd4 25.Rad1 Bh6  
 26.Ba5 Rxd1 27.Rxd1 Rd7 28.exf6  
 Bxf4 29.Be3 Bg5 30.Kg2 Bxf6  
 31.Bxf6 Kxf6 32.Kf3 Ka5 33.Re1+  
 Kd6 34.Rd1 Rf7+ 35.Kg3 Rf5  
 36.Rd4 Rf7 37.h4 Ke5 38.Ra4 Rb7  
 39.f3 Rf7 40.Ra6 Rd7 41.Ra4 Rb7  
 42.Ra6 Rd7 43.Ra4 Rb7 44.Ra6  
 1/2-1/2

**Match Game #7 January 21, 1989 W: Eugene Martinovsky (2454) B: Albert Chow (2438) 1.d4**

Nf6 2.c4 e6 3.Nf3 b6 4.g3 Ba6 5.b3  
 Bb4+ 6.Ba2 Be7 7.Bg2 c6 8.Bf4 d5  
 9.Nbd2 Nbd7 10.O-O O-O 11. Re1  
 Re8 12.Re1 c5 13.e4 dxe4 14.Nxe4  
 Nxe4 15.Rxe4 Bb7 16.Re2 Nf6  
 17.Rd2 cxd4 18.Rxd4 Qe8 19.Ne5  
 Bxg2 20.Kxg2 Be5 21.Rd3 Rd8  
 22.Rxd8 Qxd8 23.Nc6 Qa8 24.Qf3  
 Re8 25.Ne5 Qxf3+ 26.Kxf3 Ne8  
 27.a3 a5? 28.Nd7 f6 29.Nxc5 Rxc5  
 30.b4 axb4 31.axb4 Re6 32.b5 Re8  
 33.Ke4 Kf7 34.Be3 Nf6+ 35.Kd3 e5  
 36.Re3 e4+ 37.Kd4 Rd8 38.Rb3  
 Ke6? 39.Ke3 Ne8 40.Kb4 Rd1 41.e5  
 bxc5+ 42.Kxc5 Nd6 43.Rb4 f5

44.b6 Nb7+ 45.Kc6 Rd7 46.Bf4  
 Nd8+ 47.Kb5 Rd1 48.Rh2 Kd7  
 49.Ra2 Ne6 50.b7 Rb1+ 51.Ke5  
 Rxb7 52.Rd7+ 1-0

Both players were satisfied with the creative effort of the previous games. Not wanting to spoil a week's work, we agreed to a draw in an unclear position. After the game Jules said that he thought White had had a strong attack, but he could not prove a win against the doctor in post mortem analysis.

**Match Game #8 January 22, 1989 W: Albert Chow (2438) B: Eugene**

**Martinovsky (2454) 1.d4**  
 Nf6 2.c4 g6 3.Nc3 d5 4.cxd5 Nxd5  
 5.e4 Nxc3 6.bxc3 Hg7 7.Be4 Ne6  
 8.Nc2 O-O 9.O-O h6 10.Be3 Bb7  
 11.Qd2 Na5 12.Bd3 c5 13.Ra1  
 cxd4 14.cxd4 Qd7 15.Bh6 e6  
 16.Bxg7 Kxg7 17.h4 Qe7 18.h5  
 Qh4 19.Nf4 Rac8 20.g3 Qf6 1/2  
 1/2

## MASTER CHALLENGE XI

AN ICA ILLINOIS MAXI-TOUR EVENT

WHEN: JUNE 23-25, 1989

WHERE: Mohr Community Center, 7640 Jackson Blvd. (Jackson and DesPlaines), Forest Park, IL

WHAT: 5 Round Swiss (split 1st rd., player chooses to play either Friday night or Saturday morning)

TIME CONTROL: 40/100

MEMBERSHIPS REQUIRED: USCF & ICA

GUARANTEED CASH PRIZES: \$3000

1ST: \$700 2ND: \$450 3RD: \$225 4TH: \$110

EXPERT: \$250, \$120, \$65 CLASS A: \$240, \$115, \$60

CLASS B: \$220, \$105, \$55 CLASS C/BELOW: \$160, \$75 UNRATED: \$50

ENTRY FEE: \$34 in advance (by 6/20/89); \$40 at site

REGISTRATION: 6-7 p.m on 6/24, or 8-8:45 on 6/25

ROUND TIMES: 7:30 p.m (6/24), 9-1:30-6, 10-3

ADVANCE ENTRIES: Ken Marshall, 357 W. Grove, Lombard, IL 60148 (Specify Friday night or Saturday morning round)

NO SMOKING - NO COMPUTERS PLEASE BRING SETS AND CLOCKS

# 1989 ILLINOIS TOUR

By Ken Marshall

Senior Master Albert Chow has increased his 1989 Illinois Tour lead to 10.5 points after the first five Tour tournaments of the year. Unlike his closest pursuers, the 1988 Tour winner has already played in three Tour events, and so has assured his eligibility for 1989 Tour prizes. With at least 10 more Tour tournaments scheduled for later this year, however, Chow's hold on first place is certainly open to challenge.

Steven Szpisjak continues to top the Expert class, with Steve Surak (who has met the three tournament minimum for prize money eligibility) right behind him. Brad Crawford is ahead in Class A, while Anthony Dzarmy and David Rockwell share the Class B lead (though both have played in only one 1989 Tour event so far). Daryl Zelinski sets the pace in Class C, but reportedly has moved to the East Coast, thus making the super active Rudy Padilla once again the man to beat in his class. Class D leaders are Robert Bales and Earl Miller.

Tour participants who have now compiled 4 or more

Master points, 3.5 or more Expert, Class A, or Class B points, 3 or more Class C points, or 2 or more Class D points are set out below. This list is current through April 15, and reflects the following Tour events: Tim Just Winter Open, Midwest Action Chess Championship, No Bones Mini-Tour, Bradley Winter Open, and Greater Peoria Open.

The next scheduled Tour tournaments are the Prairie State Master/Experts (Maxi-Tour: May 27-29), Prairie State Action Under 2000 (Mini-Tour: May 27), Peoria Spring Open (Mini-Tour: June 10), and Master Challenge XI (Maxi-Tour: June 23-25).

REMEMBER: YOU MUST PLAY IN AT LEAST THREE TOUR TOURNAMENTS IN ORDER TO BE ELIGIBLE FOR TOUR PRIZES. Complete Tour rules, regulations, and prize fund information are set out on page 10 of the January-February 1989 ICB (and will again appear in the next issue, along with a list of all players who have earned more than 1 Tour point).

## Master Tour Points:

CHOW Albert	42.5
ORSEVICH Dmitry	32 (1)
MARTYUSHEV Eugene	24 (2)
BOGDARI Cyrus	18.5(2)
CILIAS Bill	16 (2)
SZPISJAK Steven	16 (1)
SURAK Steve	14
VLASTNIK Richard	12 (2)
BALLACK Ken	12 (2)
COHEN Larry	10.5
CRANFORD Brad	10.5
GENGLER Kevin	10.5(2)
GRAVES Bill	9.5
SCHILLER Eric	9.5(2)
ASN Robert	8 (1)
BOULTON Barry	8
COMBON James	8 (1)
GARDNER Bruce	8 (1)
LEVINE David	8 (1)
PELTS Peter	8 (1)
PORTER John	8 (1)
SATTERLEE Ray Boyle	8 (1)
UNEZINBA George	8 (1)
MC NAMARA Jia	7 (2)
SHYNE Bill	7 (2)
FAHRENHOLT Steve	6.5(2)
BOLITHO Thomas	6 (2)
HERNANDEZ Hector	6 (2)
HAFF Bill	6 (2)
BAI Robert	6 (2)
BROCK Bill	5.5(2)
SPINAR Robert	5.5(2)
WARDEN Jia	5.5(2)
ALLISON Roger	5
FISCHER Gregory	5 (2)
MATKA Tom	5 (2)
TANEZ Isidro	5 (2)
LA FRAMA Arthur	4.5(2)
MARTIN Ben	4.5
PANPEL William	4.5(2)
BERRY Greg	4 (1)
FULK Winston	4 (1)
WARDEN Daniel	4 (1)

NIERONYIUS Kent	4 (2)
JARRETTE Phil	4 (1)
KAPEN Ben	4 (1)
LOHMEYER Marc	4 (1)
REYES Ruben	4 (1)
REYES Virgilio	4 (2)
REYNOLDS Robert	4 (1)
BUNLOFF Michael	4 (1)
SEFCHECK Mark	4 (1)
STEIN Peter	4 (1)
UNDERWOOD Wesley	4 (1)
TURBROCKEN Sandy	4 (1)

## Expert Tour Points:

SZPISJAK Steven	16 (1)
SURAK Steve	14
VLASTNIK Richard	12 (2)
COHEN Larry	10.5
CRANFORD Brad	10.5
GENGLER Kevin	10.5(2)
GRAVES Bill	9.5
ASN Robert	8 (1)
BOULTON Barry	8
COMBON James	8 (1)
PORTER John	8 (1)
SATTERLEE Ray Boyle	8 (1)
MC NAMARA Jia	7 (2)
SHYNE Bill	7 (2)
FAHRENHOLT Steve	6.5(2)
BOLITHO Thomas	6 (2)
HERNANDEZ Hector	6 (2)
HAFF Bill	6 (2)
BAI Robert	6 (2)
BROCK Bill	5.5(2)
SPINAR Robert	5.5(2)
WARDEN Jia	5.5(2)
ALLISON Roger	5
FISCHER Gregory	5 (2)
MATKA Tom	5 (2)
TANEZ Isidro	5 (2)
LA FRAMA Arthur	4.5(2)
MARTIN Ben	4.5
PANPEL William	4.5(2)
BERRY Greg	4 (1)

FULK Winston	4 (1)
NIERONYIUS Kent	4 (2)
JARRETTE Phil	4 (1)
KAPEN Ben	4 (1)
REYES Ruben	4 (1)
REYES Virgilio	4 (2)
REYNOLDS Robert	4 (1)
BUNLOFF Michael	4 (1)
SEFCHECK Mark	4 (1)
UNDERWOOD Wesley	4 (1)
HILLS Paul	3.5(1)
MOORE Allan B	3.5(1)
SLATER Michael	3.5(1)

## Class A Tour Points:

CRANFORD Brad	10.5
GRAVES Bill	9.5
BOULTON Barry	8
COHEN Larry	8
PORTER John	8 (1)
MC NAMARA Jia	7 (2)
BOLITHO Thomas	6 (2)
HERNANDEZ Hector	6 (2)
SPINAR Robert	5.5(2)
ALLISON Roger	5
FISCHER Gregory	5 (2)
TANEZ Isidro	5 (2)
LA FRAMA Arthur	4.5(2)
MARTIN Ben	4.5
PANPEL William	4.5(2)
BERRY Greg	4 (1)
FULK Winston	4 (1)
NIERONYIUS Kent	4 (2)
JARRETTE Phil	4 (1)
BUNLOFF Michael	4 (1)
SEFCHECK Mark	4 (1)
HILLS Paul	3.5(1)
MOORE Allan B	3.5(1)

## Class B Tour Points:

DZARMY Anthony	16 (1)
ROCKWELL David	16 (1)
CHOW Randy	10 (2)

PORTER John	8 (1)
SOLICICH Kevin	8 (1)
MARTIELL Thomas	8 (1)
WOLF William	8 (1)
YAKOVENKO Lawrence	8 (1)
ZELINSKI Daryl	8 (1)
PADILLA Rudy	5.5
SPINAR Robert	5.5(2)
SHAFFER Thomas	5 (2)
STOTLER Richard	5 (2)
FLORES Joshua	4.5(2)
INGRAM Randy	4.5(2)
PANPEL William	4.5(2)
ZEVNIK Lawrence	4.5(2)
WAYER Duane	4 (1)
GARDNER Keith C	4 (2)
NIERONYIUS Kent	4 (1)
LULVES Joseph	4 (1)
WHEELER Stephan	4 (1)
BALES Robert	3.5(2)
MILLER Earl	3.5(2)
HILLS Paul	3.5(1)
MOORE Allan B	3.5(1)
MOORE Rod	3.5(2)

## Class C Tour Points:

ZELINSKI Daryl	8 (1)
PADILLA Rudy	5.5
SHAFFER Thomas	5 (2)
ZEVNIK Lawrence	4.5(2)
LULVES Joseph	4 (1)
BALES Robert	3.5(2)
MILLER Earl	3.5(2)
MOORE Rod	3.5(2)
DZETSKSI Stan	3 (1)
KEMPNER Robert	3 (1)
TERRANCE Terry	3 (2)

## Class D Tour Points:

BALES Robert	3.5(2)
MILLER Earl	3.5(2)
CALIBANO Anthony	2.5(1)
KRUTSON Gerald	2.5(1)
COULTER Dave	2 (1)
IMPICE Arthur	2 (2)
MALLACE Michael	2 (1)

## PHYSICAL FITNESS, FREQUENT PLAY HELP PELTS REACH THE TOP IN ILLINOIS CHESS

By Ken Marshall

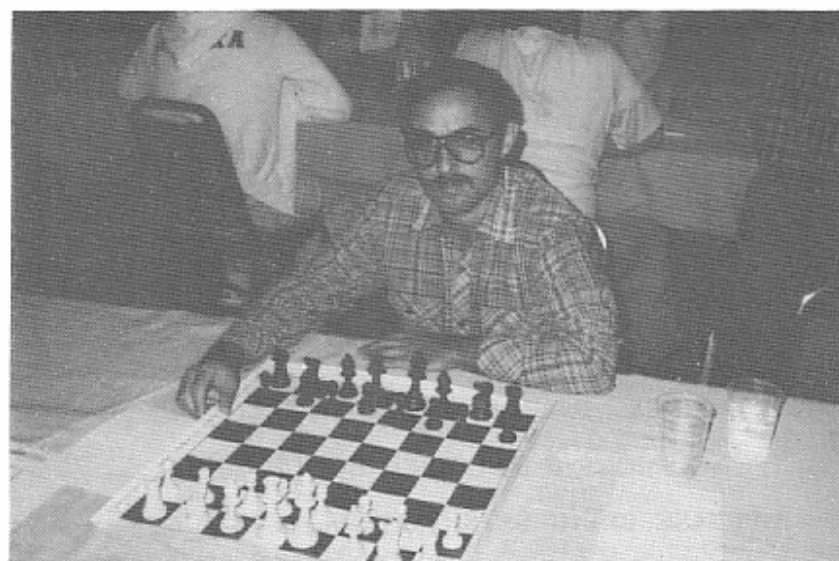
When 1988 began, Peter Pelts, now 31, had little inkling that he would emerge as one of the dominant figures in Illinois chess, finishing the year as Illinois State Champion and being named Co-Player of the Year (along with Albert Chew) by the Illinois Chess Association. "I didn't study chess any more than usual in 1988", said Pelts. "I did play a lot more, however, and I also kept myself in good physical shape". Pelts' regimen of increased competition and physical exercise paid off with clear first place finishes in five major 1988 tournaments: the Buckeye Open (Ohio), the Western Open (Wisconsin), and three top Illinois events -Master Challenge X, the Illinois Open (and State Championship), and the Illinois/Midwest Tournament of Champions III. He won undisputed top honors at Master Challenge X and the Western Open, both 100 plus player events, on consecutive weekends in late June and early July. "I was working out at a health club three days a week", Pelts stated, "and found that I had much more energy when I had to play two games a day in weekend events. I credit good physical conditioning as the major factor in my 1988 success".

Born in the Ukraine in the Soviet Union, Pelts learned to play chess from school mates when he was eight or nine years old. "I tried other club activities like swimming and table tennis, but I found chess the most interesting", he said. "I became a promising young player, but never really had good instruction. The coach at my club was not very strong. I played chess as well as he did, and there was little interaction between us." Pelts nevertheless continued to improve, and represented the Ukraine in a number of

national competitions in the early 1970s. "I lost to Dmitry Gurevich, then representing Moscow, in the Spartacus All-Union Junior competition 17 or 18 years ago. I played many of today's top Soviet grandmasters when we were all juniors. Present world championship candidate Arur Yusupov defeated me, but I beat S. Lputian and I have an even score (2-2) against Michael Gurevich, now one of the best players in the world. But I discovered then that I was not as driven, not as deeply immersed in chess, as most of the top players I faced".

In 1976 Pelts entered college and stopped playing serious chess in order to concentrate on his engineering studies. Three years later he and his parents emigrated and came to Chicago. Pelts returned to chess, and found a number of other subjects competing with chess for his time. "I became interested in literature and poetry, so much so that I began writing poetry", he said. "I also enjoy sports, especially soccer and tennis. Although I played chess on occasion in the early 1980s, I was not very deeply involved in the game after coming to the United States".

Pelts decided to return to more frequent chess competition in 1988. Rather than study intensely, he opted to play as often as he could. "The more I play, the better my results", Pelts stated. "Once I began playing regularly again, and had gotten myself into good physical condition, I could see my game improve". Going into last year, Pelts' United States Chess Federation rating was about 2300. By the end of November's Illinois/Midwest Tournament of



Peter Pelts became one of Illinois' top players in 1988.

Champions, his rating had risen to 2430. "After I won the Tournament of Champions I seriously considered quitting my job to devote full time to chess", said Pelts. "I would like to see how good I can become if I really study the game more seriously. But then I received a job offer that I could not refuse, and so I'm still working full time as a computer programmer". When he does find time to study, Pelts analyzes his own and grandmaster games.

Pelts placed advertisements in consecutive issues of the ILLINOIS CHESS BULLETIN in mid-1988 seeking contract work

which would give him free time between projects so that he would be able to study chess. "I received some response to those ads, but nothing substantial", he said.

According to Pelts, his chess activity in 1989 will depend upon his job situation. "The less I have to work, the more I will play", he said. He hopes to again participate in many of the events he won last year. "The Chicago area is becoming a major chess center, thanks to organizers like Helen Warren, Fred Gruenberg, and others", Pelts stated. "I want to thank all those involved in increasing

the number and quality of Illinois tournaments".

Peter Pelts (2430) - Dov Gorman (2465) [1988] 1.Nf3 c5 2.c4 Nc6 3.g3 g6 4.Bg2 Bg7 5.O-O e5 6.Nc3 Nge7 7.Rb1 O-O 8.a3 a5 9.d3 d6 10.Nd5 h6 11.Ne1 Be6 12. Nc2 Rh8 13.b4 b6 14.Bd2 axb4 15.axb4 f5 16.e3 Qd7 17.Bc3 h5 18.f4 Rfc8 19.bxc5 dxc5 20.Nae7+ Nxe7 21.Rxb5 Rxb5 22.cxb5 exf4 23.Bxg7 Kxg7 24.b6 fxb6 25.b7 gxb2+ 26.Kh1 Rb8 27.Qa1+ Kh7 28.Qe5 Rxb7 29.Bxb7 Qxb7+ 30. Kxb2 Qb3 31.Qxc5 Qb8+ 32.Kg2 Qd8 33. Ral Bd5+ 34.Kf1 Bb7 35.Nd4 Nc8 36. Ke2 h5 37.Nxf5 gxf5 38.Qxf5+ Kh6 39. Rgl Bf3+ 40.Kxf3 1-0

### 1989 PEORIA SPRING TORNADO

#### AN ICA ILLINOIS MINI-TOUR EVENT

WHEN: Saturday, June 10, 1989

WHERE: Garrett Center, 824 N. University, Peoria, Ill.

WHAT: 4 Round Swiss

TIME CONTROL: 30/60; 10/20 thereafter

MEMBERSHIPS REQUIRED: USCF & ICA

GUARANTEED CASH PRIZES: 1ST: \$75 2ND: \$50

CLASS PRIZES: Class A: \$25 Class B: \$25 Class C/Below: \$25;  
(Based on 6 players per class)

ENTRY FEE: \$11 in advance (by 6/8/89); \$18 at site

REGISTRATION: 8:00-8:45 a.m.

ROUND TIMES: 9:00, 12:00, 3:00, 6:00

ADVANCE ENTRIES: Bill Naff, 212 W. Vail Ct., Peoria, IL 61614

NO SMOKING ALLOWED IN BUILDING

PLEASE BRING SETS, BOARDS, & CLOCKS

# CHOW, COLIAS, GARDNER, ASH WIN GREATER PEORIA OPEN

## DZURNY TAKES FIRST IN RESERVE SECTION

By Bill Wilkinson

Sixty seven players - ten more than last year - turned out for the 1989 Greater Peoria Open, an Illinois Maxi-Tour event held March 11-12, 1989, at the Signature Inn in Peoria. Senior Masters Albert Chow (the 1988 GPO champion) and Billy Colias, Master J. Bruce Gardner, and Expert Robert Ash each scored 4-1 to share top honors in the 38 player Open section. Typical of the fierce Open competition was the third round battle between Colias and Master Daniel Harger, ending in a spectacular time scramble during which both flags fell. (The players then agreed to a draw.) In round five, Chow and Gardner blitzed off their final moves to reach the first time control. Gardner then studied the board for 15 minutes before claiming, and demonstrating, a draw by three fold repetition of position. Ash beat Harger in a final round contest featuring a "good" Knight versus "bad" Bishop ending.

A piece down to Expert Steve Surak in the last round, Class A player Mike Rudloff found a mating end game combination. The win gave Rudloff a 3.5-1.5 result and earned him the top prize in the Under 2000 category. Hector Hernandez, Doug Lundquist, Thomas Bobtho, and Walter Graustein (one of five Class B players who opted for the Open rather than the Reserve competition) all finished 3-2 to tie for second among the Under 2000 entrants.

In the Reserve (Under 1800) section, top rated Tony Dzurny beat Randy Crum in the final round to take undisputed first place with a 4.5-5 score. Crum, Tom Warfield, and Larry Yakowenko each garnered 3 points to share second prize. Joe Lulves (3.5-1.5) and Terry Terrance (3-2) won Class C honors, while Earl Miller, Harry Warren, Jon Young, and Kristin Antelman tied for Class D money at 1.5-3.5.

Bill Wilkinson directed the event, which ran smoothly, with all rounds starting on time. The tournament hall, although a bit crowded, was pleasant and very quiet, and proved superior to the GPO's previous site. (In addition to excellent playing conditions, players enjoyed complimentary coffee, soft drinks, and cookies.)

OPEN SECTION		score	tour			score	tour		
1 GARDNER Bruce	2350	W2	W 8	W 6	D 2	D 3	4	0	N
2 COLIAS Bill	2416	W11	W17	D 5	D 1	W15	4	0	M
3 CHOW Albert	2444	D23	W22	W21	W15	D 1	4	0	N
4 ASH Robert	2036	D37	D30	W33	W12	W 5	4	0	N1
5 HARGER Daniel	2236	W 9	W 7	D 2	W10	L 4	3.5	4	M
6 REYNOLDS Robert	2137	W13	W36	L 1	D11	W19	3.5	4	N1
7 UNDERWOOD Wesley	2013	W14	L 5	W26	D16	W20	3.5	4	N2
8 FARMERHOEJ Steve	2021	W32	L 1	W30	D 9	W27	3.5	4	N1
9 RUDLOFF Michael	1937	L 5	W14	W17	D 8	W16	3.5	4	N1A
10 RAFF Bill	2149	W18	W25	Dbye	L 5	D11	3	3	N1
11 HERNANDEZ Hector	1965	L 2	W28	W35	D 6	D10	3	3	N1A
12 LUNDQUIST Doug	1941	D24	W20	Dbye	L 4	W28	3	3	N1A
13 BOLITHO Thomas	1854	L 6	W28	L24	W35	W23	3	3	N1A
14 GRAUSTEIN Walter	1754	L 7	L 9	Wbye	W30	W25	3	3	N1A
15 BOMBARI Cyrus	2190	W31	W25	Dbye	L 3	L 2	2.5	2.5	N1
16 SURAK Steve	2058	W28	L21	W23	D 7	L 9	2.5	2.5	N1
17 CONYER Lawrence	2025	W26	L 2	L 9	D32	W34	2.5	2.5	N1
18 KAPTONAK Robert	1886	L16	D29	W34	D25	D21	2.5	2.5	N1A
19 MC BOWAN Andy	2017	L25	W34	Dbye	W22	L 6	2.5	2.5	N1
20 VAN BUSKIRK Doug	2160	Dbye	L12	W36	W21	L 7	2.5	2.5	N1
21 WALTON Clarence	1725	W15B	W16	L 3	L20	W18	2.5	2.5	N1A
22 CROUSE Matthew	1966	Dbye	L 3	W37	L19	W33	2.5	2.5	N1A
23 TAMEZ Isidro	1990	D 3	W37	L16	D27	L13	2	2	N1A
24 VAN PETER Lester	2201	D12	D33	W13	-	-	2	2	N
25 SMIT Tom	2012	W29	L15	Dbye	D18	L14	2	2	N2
26 SMITH Brad	1814	L17	W31	L 7	D33	D29	2	2	N1A
27 CRAWFORD Brad	1951	L 1	W32	Dbye	D23	L 8	2	2	N1A
28 BOUTON Barry	1854	L16	L11	W29	W36	L12	2	2	N1A
29 SPHAR Robert	1747	L25	D18	L28	W37	D26	2	2	N1A
30 PAMNER Glenn	1842	Dbye	D 4	L 8	L14	W35	2	2	N1A
31 COE William	1909	L15	L26	L32	Wbye	W36	2	2	N1A
32 LA FRAGA Arthur	1804	L 8	L27	W31	D17	-	1.5	1.5	N1A
33 GODFREY Joaquin	1866	Dbye	D24	L 4	D26	L22	1.5	1.5	N1A
34 GADOURY Donald	1809	Dbye	L19	L18	W38	L17	1.5	1.5	N1A
35 ALLISON Roger	1766	W19	L10	L11	L13	L30	1	1	N1A
36 HIERONYMUS Kent	1733	W38	L 6	L20	L28	L31	1	1	N1A
37 GRAVES Bill	1848	D 4	L23	L22	L29	D38	1	1	N1A
38 ANDERSON Phil	1998	L36	L13	Dbye	L34	D37	1	1	N1A
RESERVE SECTION		score	tour			score	tour		
1 DZURNY Anthony	1777	W14	W22	W13	W11	W 2	4.5	16	B
2 CRUM Randy	1626	W25	W 8	W 4	W 3	L 1	4	0	B
3 WARFIELD Thomas	1603	W23	W27	W 7	L 2	W 9	4	0	B
4 YAKOWENKO Lawrence	1602	W29	W26	L 2	W18	W 7	4	0	B
5 WHEELER Stephen	1763	Dbye	W 6	L11	W14	W13	3.5	4	B
6 LULVES Joseph	1552	Dbye	L 5	W17	W20	W11	3.5	4	BC
7 BOMB Douglas	1735	W 9	W10	L 3	W12	L 4	3	3	B
8 STOTLER Richard	1664	W18	L 2	W15	L 9	W12	3	3	B
9 TERRANCE Terry	1541	L 7	W28	W23	W 8	L 3	3	3	BC
10 INGRAM Adrian	1611	W28	L 7	L18	W22	W19	3	3	B
11 FLORES Joshua	1702	D16	W17	W 5	L 1	L 6	2.5	2.5	B
12 PALMER Kenneth	1429	D13	W14	W26	L 7	L 8	2.5	2.5	BC
13 OPPER Steve	1664	D12	W16	L 1	W21	L 5	2.5	2.5	B
14 INGRAM Randy	1578	D 1	L12	W16	L 5	W18	2.5	2.5	BC
15 MOORE Rod	1524	L21A	W19	L 8	D23	W22	2.5	2.5	BC
16 RYLANDER Lyle	1466	D11	L13	L14	W24	W23	2.5	2.5	BC
17 PADILLA Rudy	1544	Dbye	L11	L 6	W25	W20	2.5	2.5	BC
18 ZEVNIK Lawrence	1426	L 8	W25	W10	L 4	L14	2	2	BC
19 RASMUSSEN Kirk	1404	L26	L15	W24	W28	L19	2	2	BC
20 BERKMEIER Ed	1481	L27	W29	D21	L 6	L17	1.5	1.5	BC
21 STAFFORD Jerry	1627	L22	W24	D20	L13	-	1.5	1.5	B
22 MILLER Earl	1377	W21	L 1	Dbye	L10	L15	1.5	1.5	BC
23 YOUNG Jon	1342	L 3	Wbye	L 9	D15	L16	1.5	1.5	BC
24 ANTELMAN Kristin	-	Dbye	L21	L19	L16	W28	1.5	1.5	BC
25 WARREN Harry	1356	L 2	L18	Dbye	L17	Wbye	1.5	1.5	BC
26 GARDNER Keith	1656	W19	L 4	L12	-	-	1	1	B
27 RULLIC Neil	1729	W20	L 3	-	-	-	1	1	B
28 RAMLHNSON David	1345	L10	L 9	Wbye	L19	L24	1	1	BC
29 KALLISTER David	-	L 4	L20	-	-	-	0	0	B

**GAMES FROM THE 1989  
GREATER PEORIA OPEN**

**W: Billy Colias (2416) B:  
Hector Hernandez (1965)**  
Round 1 1.d4 d5 2. e4 e6 3.cxd5 cxd5  
4.Nc3 Nc6 5.Bf4 e6 6.e3 Nf6 7.Bd3  
Bd6 8.Bg3 O-O 9.Nf3 b6 10.Re1 Nb4  
11.Bb1 Ba6 12.a3 Bxg3 13.hxg3 Nc6  
14.Ne5 Ne7 15.Bxh7+ Kh8 16.Bg6+  
Kg8 17.Bd7+ Rxf7 18.Rh8+ 1-0

**W: Albert Chow (2444) B:  
Cyrus Bondari (2198)** Round  
4 1.d4 Nf6 2.e4 c5 3.Nf3 cxd4 4.Nxd4  
e5 5.Nb5 d5 6.cxd5 Be5 7.N5c3 O-O  
8.e3 e4 9.Nd2 Qe7 10.a3 Bf5 11.b4 Bb6  
12.Nc4 Rd8 13.Nxb6 axb6 14.Bb2 Nc6  
15.Qb3 Ne5 16.Be2 Nfg4 17.h3 Qh4  
18.Hxg4 Nd3+ 19.Kd2 Bxg4 20.g3 Qf6  
21.Nxe4 Qxb2+ 22.Qxb2 Nxb2  
23.hxg4 Rxd5+ 24.Ke2 Ne4 25.Rhd1  
Rxd1 26.Rxd1 Nxa3 27.Rd7 Ne2  
28.b5 Na3 29.Nd6 b6 30.Rxh7 1-0

**W: Robert Ash (2036) B:  
Daniel Harger (2226)** Round  
5 1.d4 Nf6 2.e4 d6 3.Nc3 e5 4.Nf3  
Nbd7 5.e4 e6 6.Be2 a6 7.a4 a5 8.O-O  
Be7 9.h3 O-O 10.Be3 Re8 11.d5 Hf8  
12.Qc2 h6 13.Nh2 Nh7 14.Bg4 Ndf6

15.Bac8 Rxc8 16.Qe2 Kh8 17.Nf3 Ng8  
18.Rab1 e5 19.Qd2 g6 20.Qe2 Re7  
21.Ne2 f6 22.g4 Rg7 23.Kh2 Qd7  
24.Ng3 Ng5 25.Nxg5 hxg5 26.Kg2  
Rh7 27.Rh1 Be7 28.Rh2 Bd8 29.Rbh1  
Rh4 30.B Re7 31.Bf2 Reh7 32.Ne2  
R4h6 33.Nc3 Ne7 34.h4 f5 35.gxf5  
gxf5 36.hxg5 Rxb2+ 37.Rxb2 Ng6  
38.Be3 Nh4+ 39.Kf2 f4 40.Be1 Qg7 41.  
Qd1 Qxg5 42.Qh1 Qg3+ 43.Ke2 Kg8  
44.Rh3 Qg7 45.Bd2 Qh8 46.Nb5 h6  
47.Be1 Be7 48.Bah4 Rxb4 49.Rxb4  
Qxb4 50.Qxb4 Bxb4 51.Nxd6 Kh7  
52.Kf1 Kg6 53.Kg2 1-0

**W: Steve Surak (2058) B:  
Michael Rudloff (1937)**  
Round 5 1.e4 e5 2.Nf3 d6 3.d4 cxd4  
4.Nxd4 Nf6 5.Nc3 g6 6.Be3 Bg7 7.Be2  
O-O 8.O-O Ne6 9.Nb3 Be6 10.f4 Na5  
11.f5 Be4 12.Bd3 Nxb3 13.axb3 Bxd3  
14.Qxd3 a6 15.b4 Ng4 16.Bd4 Ne5  
17.Qd1 Re8 18.Nd5 Re4 19.c3 Nd7  
20.Qd3 Bxd4+ 21.cxd4 Re6 22.b5  
axb5 23.Qxb5 Nb6 24. Ne3 e6 25.f6  
Nd7 26.Qg5 Nxf6 27.Qxf6 Qxf6  
28.Rxf6 Kg7 29.Raf1 Rb6 30.R6f2  
Rb4 31.Rd2 f5 32.exf5 gxf5 33.Re1  
Rf7 34.Re4 Rb3 35.Re3 Rb4 36.Nc4  
Rd7 37.Kf2 Kf6 38.Kf3 Rb5 39.Ne3  
Rb4 40.b3 Rb5 41.Rdd3 Rg7 42.Nc2  
f4 43.Re4 e5 44.b4 e4+ 45.Kxe4 d5+

46. Kxf4 dxc4 47.Rd2 Rf5+ 48.Ke3  
Re7+ 0-1  
**W: Walter Graustein (1754)  
B: Tom Smit (2012)** Round 5  
1.Nf3 c5 2.e4 g6 3.d4 cxd4 4.Qxd4 Nf6  
5.Nc3 Nc6 6.Qd1 Bg7 7.e3 d6 8.h3  
O-O 9.Be2 Be6 10.O-O Re8 11.Rh1  
h6 12.h3 g5 13.Nd4 Nxd4 14.exd4 Nd7  
15.Bg4 f5 16.Bf3 b6 17.Qe2 Bf7 18.Nb5  
a6 19.Na7 Re7 20.Nc6 Rxc6 21.Bxc6  
Bxd4 22.Bxd7 Qxd7 23.Bb2 Be5  
24.Rbd1 e5 25.Qxe5 1-0

**W: Randy Crum (1626) B:  
Anthony Dzuryn (1777)**  
Round 5 (Reserve) 1.d4 Nf6 2.e4 g6  
3.Nc3 d5 4.e3 Bg7 5.Nf3 O-O 6.Qc2  
Na6 7.cxd5 Nb4 8.Qb3 Nbd5 9.Bd2  
c6 10.Bd3 Rb8 11.e4 Nxc3 12 Bxc3  
Beb 13.Qc2 Qb6 14.O-O Rhd8  
15.Rad1 Bxa2 16.Qd2 Qb3 17.Ra1 e5  
18.Be2 Qb5 19.Bd3 Qa4 20.Be2 Qa6  
21.Bb1 cxd4 22.Bxd4 e5 23.Rxa2  
Nxc4 24.Qd3 Qxd3 25.Bxd3 Nd2  
26.Nxd2 Rxd4 27.Bxg6 Rxd2 28.Be4  
b5 29.Rxa2 Rxb2 30.Rh7 Rd8 31.g3  
Rdd2 32. Rb8+ Bf8 33.Bxb7+ Kg7  
34.Re8 b4 35.Be4 b3 36.Re3 Bb4  
37.Rd3 Be5 38.Rxd2 Rxd2 39.h4 h2  
40.g4 Rd4 41.Bf5 Kf4 42.Kg2 e4 43.f3  
Be3 44.Rb1 exf3+ 45.Kf1 Re4 46.Rd1  
Re1 47.Kc1 f2+ 0-1

Your rating must be **UNDER 2000** (May supplement) to be eligible for this event  
**PRAIRIE STATE ACTION UNDER 2000**  
**May 27, 1989 a One Day Event!**

**A Five Round Swiss at the College of Lake  
County, 19351 W. Washington St., Grayslake,  
IL 60030, Bldg. 1**

**REGISTRATION: 8:30 - 9:30 a.m. Saturday,  
May 27**

**ROUND TIMES: 10:00 AM, 11:30 AM, 1:30  
PM, 3:00 PM, and 4:30 PM**

**No Smoking**

**No Computers**

**PRIZE FUND**

**1st: \$150 2nd: \$100 3rd: \$75  
(prizes guaranteed)**

**Top B: \$100-\$50**

**Top C: \$100-\$50**

**Top D/E/Unr.: \$75-\$40  
(based on 8 per class)**

**This is an ICA Mini-Tour event. ICA membership is required for Illinois Residents.  
Other state memberships accepted.**

**ENTRY FEE: \$22 if received by 5/21 \$27 after 5/21 and at the site**

**Presented by the Midwest Chess Association and  
the Lake County Chess Association**

**ADVANCE ENTRIES TO: HELEN WARREN, P.O. Box 305, Western Springs, IL 60558**

**PLEASE BRING SETS, BOARDS, AND CLOCKS. FURTHER INFORMATION: HELEN WARREN (312) 246-6665**



# TOURNAMENT CROSSTABLES

## OP-FP CC ACTION CHESS II

February 14-28, 1989

PLAYER	ST	PRE		POST		1	2	3	4	5	6	TOT
		RTNG	RTNG	RTNG	RTNG							
1 SEFCHECK, MARK M	IL	1918	1958	W13	W-5	L-3	W-9	W-7	W-6			5.0
2 CRAWFORD, BRAD	IL	2018	2052	W11	W-6	W-9	H--	W-3	U--			4.5
3 MC NAMARA, JAMES	IL	1935	1942	W12	D-4	W-1	D-8	L-2	W-7			4.0
4 KELLY, JAMES P	IL	1771	1794	W15	D-3	L-8	L-5	W12	W-9			3.5
5 SURAK, STEVE S	IL	2091	2062	B--	L-1	H--	W-4	D-9	U--			3.0
6 RADZILOWSKY, GEORG	IL	1803/13	1769	W10	L-2	X--	L-7	W11	L-1			3.0
7 ITZEN, RICHARD J	IL	1667	1716	W-8	L-9	W11	W-6	L-1	L-3			3.0
8 STINSON, MARCUS E	IL	1974	1955	L-7	W12	W-4	D-3	U--	U--			2.5
9 HERMANN, CASEY S	WI	1847	1834	W14	W-7	L-2	L-1	D-5	L-4			2.5
10 MOORE, A D	IL	1404	1437	L-6	H--	U--	U--	W15	W11			2.5
11 ALLISON, ROGER D	IL	1792	1734	L-2	W13	L-7	W15	L-6	L10			2.0
12 JOCHIM, GARY	IL	1573	1557	L-3	L-8	X--	L13	L-4	W15			2.0
13 MC LAREN, JOHN	IL	1540	1552	L-1	L11	W15	W12	U--	U--			2.0
14 WULATIN, DAVID	IL	1714	1705	L-9	W15	U--	U--	U--	U--			1.0
15 LONG, JEFFREY J	IL	1147/5	1194	L-4	L14	L13	L11	L10	L12			.0

### 1989 Tulay Park Action Swiss #1 March 25, 1989

1 COLIAS Bill	2416	W 3	W 7	W 2	W 5	4
2 GARDNER Bruce	2350	W16	W11	L 1	W 6	3
3 LEWIS Jamal	1681	L 1	W18	W10	W11	3
4 FAGAN James	1946	W19	W12	L 5	D 7	2.5
5 JORDAN Roland	2018	D 8	W15	W 4	L 1	2.5
6 BOLDEN Darren	2096	D14	W 9	W 8	L 2	2.5
7 HICKMAN Roger	1916	W17	L 1	W16	D 4	2.5
8 ISAAC Theodore	1575	D 5	W14	L 6	W13	2.5
9 SANDERS Robert	1766	D13	L 6	W14	W12	2.5
10 GRAVES Bill	1893	L12	W17	L 3	W16	2
11 SMITH Wayne	1796	W18	L 2	D12	L 3	1.5
12 HOPPER Kenneth	1290	W10	L 4	D11	L 9	1.5
13 HOUSTON Errick	-	D 9	L16	W15	L 8	1.5
14 STOVER Eric	1596	D 6	L 8	L 9	W18	1.5
15 STOWART Alan	1695	Dbye	L 5	L13	W17	1.5
16 NEAVER Ron Lee	1618	L 2	W13	L 7	L10	1
17 GARCIA Raul	1515	L 7	L10	W18	L15	1
18 HARRIS Keith	-	L11	L 3	L17	L14	0
19 PRUDE Sedrick	1550	L 4	-	-	-	0

## R.I.P. - JULES STEIN

By Harold Winston

The death of Jules Stein is a heavy blow to chess in Illinois. Jules combined a rare sense of humor with a great enthusiasm for chess promotion and an outspoken willingness to express his opinions. He was fiercely independent. His Chicago Chess Center provided a home for the metropolitan chess community for a decade, a rare place where chess players could learn to appreciate art as well as winning moves.

Jules will be remembered for his creative tournament names as well as his award-winning art. I will miss a friend who was always both a pleasure and a challenge to talk with.



# Announcing!

A SPECIAL EVENT FOR MASTERS AND EXPERTS!

## THE FIFTH PRAIRIE STATE INVITATIONAL

May 27-29, 1989

MEMORIAL DAY WEEK-END

A six round Swiss at the College of Lake County  
19351 W. Washington St., Grayslake, IL 60030  
Conference Room, Bldg. 1

UNCONDITIONALLY GUARANTEED PRIZE FUND \$1850

1st: \$700 2nd: \$400 3rd: \$250 4th: \$150 1st 2100-2199: \$200

30 GRAND PRIX PTS. 1st 2000-2099: \$150

ADVANCE ENTRY: \$42 if received by 5/21 \$50 after 5/21 and at the site

TD: ANTD Tim Just

Registration: 9:30 - 10:30 AM Half point bye  
available for rounds one or two, but must be  
requested by end of registration period

40/2 20/1

### AN ICA MAXI-TOUR EVENT!

Round times: Saturday: 11 AM and 6 PM Sunday: 10 AM and 4:30 PM  
and Monday: 9:30 AM and 4:00 PM

Limited Smoking. No computers. See enclosed for motel, train, and  
restaurant information. See map for easy driving instructions.

Presented by the Midwest Chess Association and  
the Lake County Chess Association

ADVANCE ENTRIES TO: HELEN WARREN, P.O. Box 305, Western Springs, IL 60558

PLEASE BRING SETS, BOARDS, AND CLOCKS. FURTHER INFORMATION: HELEN WARREN (312) 248-6665

### ENTRY FOR PRAIRIE STATE

Name \_\_\_\_\_ Address \_\_\_\_\_

City \_\_\_\_\_ State \_\_\_\_\_ Zip \_\_\_\_\_ USCF ID# \_\_\_\_\_ Exp. \_\_\_\_\_

Rating \_\_\_\_\_

Checks and money orders should be made payable to the Midwest Chess Association.

# ILLINOIS HIGH SCHOOL ASSOCIATION

## 1989 CHESS TEAM CHAMPIONSHIPS MARCH 17-18, 1989 at ROCK ISLAND HIGH SCHOOL

		CLASS AA		TEAM RESULTS											
Place	File	Score	Break	SCHOOL	ROUND 1	ROUND 2	ROUND 3	ROUND 4	ROUND 5	ROUND 6	Individual				
					pts	tm	pts	tm	pts	tm	pts	tm	pts	tm	points
1.	6.0	3408.0		DS Downers Grove (South)	42.5 x 05	54.0 x 15	52.0 x 46	35.5 x 02	59.0 x 13	37.0 x 06					290.0
2.	5.0	3340.0		AR Rockford (Auburn)	54.5 x 24	57.0 x 04	35.0 x 03	32.5 x 03	45.5 x 07	45.0 x 08					269.5
3.	5.0	3152.0		Ur Urbana (H.S.)	57.5 x 40	58.0 x 16	33.0 x 02	47.0 x 21	43.5 x 12	46.0 x 10					285.0
4.	5.0	3124.0		LF Chicago (Lane Tech)	68.0 x 35	11.0 x 02	56.0 x 11	68.0 x 46	49.0 x 09	43.0 x 07					275.0
5.	5.0	2815.3		JR Rockford (Jefferson)	25.5 x 01	55.0 x 50	57.5 x 37	41.0 x 33	56.5 x 27	41.5 x 13					277.0
6.	4.0	3506.0		MS Aurora (Illinois Math & Sci)	51.5 x 28	55.0 x 12	51.5 x 09	29.5 x 07	68.0 x 15	31.0 x 01					286.5
7.	4.0	3004.0		Kw Chicago (Kenwood)	68.0 x 14	43.5 x 39	51.0 x 25	38.5 x 06	22.5 x 02	25.0 x 04					268.5
8.	4.0	2959.0		ES East St. Louis (Senior)	41.0 x 17	26.5 x 25	59.0 x 23	68.0 x 26	56.5 x 24	23.0 x 02					294.0
9.	4.0	2797.0		ET Evanston (Township)	39.0 x 10	35.0 x 17	16.5 x 06	46.0 x 14	19.0 x 04	53.0 x 21					255.5
10.	4.0	2764.0		RI Rock Island (H.S.)	29.0 x 09	68.0 x 29	41.5 x 22	15.5 x 15	49.0 x 19	59.0 x 33					262.0
11.	4.0	2663.0		Mn Mattoon	33.0 x 13	58.0 x 18	12.0 x 04	53.5 x 50	45.0 x 34	46.5 x 36					250.0
12.	4.0	2599.0		NW Grove (Wales West)	58.5 x 31	15.0 x 06	50.5 x 40	53.5 x 25	24.5 x 03	57.0 x 22					257.0
13.	4.0	2568.0		Wa Chicago (Washington)	35.0 x 11	45.5 x 21	57.0 x 20	40.0 x 19	09.0 x 01	26.5 x 05					211.0
14.	4.0	2404.0		BN Northbrook (Glenbrook North)	00.0 x 07	68.0 x 30	36.0 x 16	22.0 x 09	41.0 x 23	51.5 x 25					218.5
15.	4.0	2361.5		SC Chicago (St. Ignace)	53.0 x 32	14.0 x 01	48.0 x 31	52.5 x 10	00.0 x 06	37.5 x 26					205.0
16.	4.0	2274.0		NW Wheaton (North)	35.0 x 27	10.0 x 03	52.0 x 14	53.0 x 43	68.0 x 50	41.0 x 24					259.0
17.	4.0	2165.0		OP Oak Park (O.P.-River Forest)	07.0 x 08	15.0 x 09	46.0 x 19	64.5 x 29	53.5 x 46	51.0 x 23					237.0
18.	4.0	1787.5		Cv Chicago (Carver)	48.0 x 34	10.0 x 11	42.5 x 53	35.0 x 40	42.0 x 39	22.0 x 03					199.5
19.	3.5	2133.0		Mo Morton	34.0 x 38	49.0 x 34	36.0 x 28	28.0 x 13	19.0 x 10	35.0 x 37					201.0
20.	3.5	2058.0		Sv Prairie View (Stevenson)	40.0 x 56	54.0 x 32	11.0 x 13	27.0 x 39	34.0 x 37	48.0 x 38					214.0
21.	3.0	2236.0		BE Belleville (East)	43.0 x 22	24.5 x 13	48.5 x 39	26.0 x 03	33.5 x 36	46.0 x 50					221.5
22.	3.0	2195.0		PM Hillside (Proviso West)	25.0 x 21	49.0 x 56	26.5 x 10	17.5 x 23	68.0 x 45	68.0 x 46					254.0
23.	3.0	2146.0		Dr Chicago (Dorr)	58.0 x 55	50.0 x 28	29.0 x 08	60.5 x 22	27.0 x 14	17.0 x 17					221.5
24.	3.0	2101.0		NW Skokie (Wales North)	13.5 x 02	53.5 x 47	53.5 x 35	47.5 x 41	11.5 x 08	27.0 x 16					206.5
25.	3.0	2077.5		DW Downers Grove (North)	62.5 x 49	41.5 x 08	17.0 x 07	14.5 x 12	60.0 x 51	16.5 x 14					212.0
26.	3.0	2043.0		MC Cicero (Morton)	40.0 x 58	33.0 x 31	53.0 x 42	00.0 x 38	45.0 x 29	30.5 x 15					198.5
27.	3.0	2006.0		SP Chicago (St. Patrick)	33.0 x 16	50.5 x 46	40.0 x 38	36.0 x 30	11.5 x 05	49.5 x 41					200.5
28.	3.0	1953.0		An Tinley Park (Andrew)	16.5 x 06	18.0 x 23	33.0 x 19	62.0 x 52	38.0 x 42	51.0 x 43					217.5
29.	3.0	1828.0		Dv Danville (H.S.)	51.0 x 32	00.0 x 10	58.0 x 36	03.5 x 17	23.0 x 26	45.0 x 40					180.5
30.	3.0	1799.0		Br Madisonian (Bremen)	64.0 x 51	00.0 x 14	44.0 x 43	32.0 x 27	51.0 x 32	34.5 x 39					205.5
31.	3.0	1717.0		Ld New Lenox (Lincoln-Way)	09.5 x 12	28.0 x 26	20.0 x 15	47.0 x 51	39.0 x 41	15.0 x 09					168.5
32.	3.0	1700.0		TS Lansing (Thorn. Frac. South)	15.0 x 15	14.0 x 20	54.0 x 52	36.0 x 42	35.0 x 30	11.0 x 12					167.0
33.	3.0	1693.0		AE Aurora (East)	17.0 x 29	50.0 x 45	54.0 x 35	27.0 x 35	36.0 x 35	09.0 x 10					193.0
34.	3.0	1681.0		TT Harvey (Thornton Township)	20.0 x 18	19.0 x 17	42.0 x 54	48.0 x 44	25.0 x 11	57.0 x 51					209.0
35.	3.0	1672.0		Fw Oak Park (Fenwick)	30.0 x 34	55.0 x 48	14.5 x 24	49.0 x 45	22.0 x 33	57.0 x 49					207.5
36.	3.0	1515.0		Fr Mount Prospect (Prospect)	43.0 x 45	19.0 x 22	13.0 x 29	59.0 x 53	34.5 x 21	19.5 x 11					185.0
37.	2.5	1799.0		SR Chicago (St. Rita)	50.0 x 39	59.0 x 44	16.5 x 05	64.5 x 55	34.0 x 20	23.0 x 19					231.0
38.	2.0	1803.0		BR Rockford (Bayland)	38.0 x 37	04.5 x 07	19.5 x 21	41.0 x 20	26.0 x 18	33.5 x 30					162.5
39.	2.0	1797.0		SB Bradley (Bourbonnais)	19.5 x 03	35.0 x 43	17.5 x 12	32.0 x 18	66.0 x 55	23.0 x 29					187.0
40.	2.0	1690.0		MJ Des Plaines (Maine West)	32.0 x 43	39.0 x 52	50.0 x 48	20.5 x 24	29.0 x 31	18.5 x 27					189.0
41.	2.0	1652.0		MM Aurora (Marion Military)	21.0 x 46	35.0 x 38	15.0 x 26	30.0 x 32	30.0 x 28	56.0 x 48					177.0
42.	2.0	1642.0		Ba Chicago (Bowen)	25.0 x 41	33.0 x 40	24.0 x 30	15.0 x 16	50.0 x 47	19.0 x 28					176.0
43.	2.0	1524.0		WE Waukegan (East)	40.0 x 57	09.0 x 07	21.5 x 50	20.0 x 34	17.0 x 52	40.0 x bye					147.5
44.	2.0	1379.5		Ta South Holland (Thornwood)	25.0 x 36	18.0 x 35	40.0 x bye	19.0 x 35	00.0 x 22	44.5 x 53					146.5
45.	2.0	1331.0		MF Flossmoor (Haweswood-F.)	37.0 x 42	37.5 x 27	06.0 x 01	00.0 x 04	14.5 x 17	00.0 x 22					095.0
46.	2.0	1322.0		RM Rolling Meadows (R.S.)	53.0 x 52	14.5 x 24	32.0 x 51	12.0 x 48	18.0 x 43	39.0 x 55					263.5
47.	2.0	1313.5		TN Calumet City (T. Frac North)	49.5 x 34	13.0 x 35	18.0 x 43	47.0 x 47	17.0 x 38	32.0 x 42					176.5
48.	2.0	1281.0		DF Oak Forest	05.5 x 25	23.0 x 51	12.0 x 17	40.0 x bye	47.0 x 53	11.0 x 35					128.5
49.	2.0	1274.0		RS Richton Park (Rich South)	47.0 x 53	13.0 x 05	46.5 x 44	14.5 x 11	00.0 x 16	22.0 x 21					143.0
50.	2.0	1191.0		ES Elk Grove Village (E. G.)	04.0 x 30	45.0 x 49	36.0 x 47	21.0 x 31	08.0 x 25	06.0 x 34					120.0
51.	2.0	1062.0		CL Crystal Lake (South)	15.0 x 47	24.0 x 41	14.0 x 32	06.0 x 28	51.0 x 44	38.0 x 54					148.0
52.	1.0	1511.0		Rt Rantoul	21.0 x 50	40.0 x bye	25.5 x 18	09.0 x 36	21.0 x 49	23.5 x 45					140.0
53.	1.0	1327.0		It Ottawa (Township)	18.5 x 48	21.5 x 55	21.0 x 34	16.0 x 38	40.0 x bye	25.0 x 52					142.0
54.	1.0	0903.0		Sh Palos Heights (Shepard)	10.0 x 23	46.5 x 54	14.0 x 33	02.5 x 37	30.0 x 40	29.0 x 47					102.0
55.	0.0	0480.0		Lb Chicago (Lindblom)	00.0 x 20	withdrawn									000.0
56.	0.0	0440.0		El Blue Island (Eisenhower)	00.0 x 44	withdrawn									000.0
57.	0.0	0420.0		Bf Chicago Mts (Bloom Trail)	00.0 x 26	withdrawn									000.0

# ILLINOIS HIGH SCHOOL ASSOCIATION

## 1989 CHESS TEAM CHAMPIONSHIPS MARCH 17-18, 1989 at ROCK ISLAND HIGH SCHOOL

### CLASS A TEAM RESULTS

Place	Tie		SCHOOL	ROUND 1		ROUND 2		ROUND 3		ROUND 4		ROUND 5		ROUND 6		Individual points
	Score	Break		pts	to	pts	to	pts	to	pts	to	pts	to	pts	to	
1.	5.0	950.0	GR Georgetown (G.-Ridge Farm)	08.0	w 15	10.0	w 07	04.5	x 09	10.0	w 17	07.0	w 06	06.5	w 02	48.0
2.	5.0	856.0	UU Urbana (University)	06.0	w 17	06.0	w 11	05.5	w 04	04.0	w 10	05.5	w 05	03.5	x 01	32.5
3.	5.0	712.0	SV Stillman Valley	10.0	w 22	02.5	x 05	09.0	w 19	06.0	w 04	06.0	w 09	06.0	w 08	39.5
4.	4.0	962.0	RD Roanoke (R.-Benson)	10.0	w 06	08.0	w 16	04.5	x 02	04.0	x 03	05.5	w 11	07.0	w 05	39.0
5.	4.0	902.0	HF Chicago (Hales Franciscan)	07.0	w 12	07.5	w 03	06.0	w 10	05.5	w 09	04.5	x 02	03.0	x 04	33.5
6.	4.0	789.0	DM Chicago (Douglas North)	00.0	x 04	10.0	w 20	07.0	w 07	08.0	w 12	03.0	x 01	07.0	w 10	35.0
7.	3.5	736.0	Bi Bismarck (B.-Hennings)	10.0	w 18	00.0	x 01	03.0	x 06	05.0	d 16	09.0	w 15	06.0	w 09	33.0
8.	3.5	724.5	OI Stanford (Olympia)	10.0	w 20	03.0	x 09	05.0	d 15	09.0	w 13	06.5	w 14	04.0	x 03	37.5
9.	3.0	910.0	Na Hampshire	06.5	w 11	07.0	w 08	05.5	w 01	04.5	x 05	04.0	x 03	04.0	x 07	31.5
10.	3.0	803.5	CL Rockford (Christian Life)	08.5	w 19	09.0	w 14	04.0	x 05	04.0	x 02	10.0	w 16	03.0	x 06	30.5
11.	3.0	748.0	NB Podlar Grove (North Boone)	03.5	x 09	04.0	x 02	10.0	w 21	08.0	w 18	04.5	x 04	07.0	w 14	37.0
12.	3.0	645.0	EP Evergreen Park	03.0	x 05	07.0	w 21	05.0	d 14	02.0	x 06	07.0	w 19	05.0	d 13	29.0
13.	3.0	543.5	By Byron	02.5	x 14	05.0	d 19	10.0	w 22	01.0	x 08	07.0	w 18	05.0	d 12	30.5
14.	2.5	706.5	RL Rockford (Lutheran)	07.5	w 13	01.0	x 10	05.0	d 12	09.0	w 15	03.5	x 08	03.0	x 11	29.0
15.	2.5	631.0	SD Sherrard	02.0	x 01	06.0	w 18	03.0	d 08	01.0	x 14	01.0	x 07	06.0	w 21	21.0
16.	2.5	619.5	WT Westmont	08.0	w 21	02.0	x 04	04.0	x 17	05.0	d 11	00.0	x 10	06.5	w 19	25.5
17.	2.0	620.0	CI Clinton	04.0	x 02	10.0	w 22	06.0	w 16	00.0	x 01	withdrew				20.0
18.	2.0	520.0	AC Aurora (Central Catholic)	00.0	x 07	04.0	x 15	08.0	w 20	02.0	x 07	03.0	x 13	10.0	w 22	27.0
19.	1.5	616.5	NC Sterling (Newman Cen. Catholic)	01.5	x 10	05.0	d 13	01.0	x 03	08.0	w 20	03.0	x 12	03.5	x 16	22.0
20.	1.5	525.0	OH Ohio	00.0	x 08	00.0	x 06	02.0	x 18	02.0	x 19	05.0	d 21	06.0	w bye	15.0
21.	1.5	475.5	WV Waverly	02.0	x 16	03.0	x 12	00.0	x 11	06.5	w 22	05.0	d 20	04.0	x 15	20.5
22.	1.0	535.5	SF Kincaid (South Fork)	00.0	x 03	00.0	x 17	00.0	x 13	03.5	x 21	06.0	w bye	00.0	x 18	09.5

## THE CLUB SCENE

### Club Bits and Pieces ...

Grandmaster Maxim Dlugy, 1988 World Open Champion, won 18 of 19 games in a March 7, 1989 simultaneous exhibition at the Oak Park-Forest Park Chess Club (Tony Schroeder got the only draw) ... Mark Seftcheck finished first and Brad Crawford second in the six round OP-FP CC February "Action Chess" tournament ... Tony Schroeder (9-2) won a March 21, 1989 World Blitz Chess Association event, followed by Jim Warren (8.5-2.5) ... Newly elected OP-FP CC officers are Ken Marshall (President), Don Winsauer (Vice President), Tom Oelrich (Secretary), Greg Minnis (Treasurer), and Don Haley (Member at Large) [Information supplied by Ken Marshall]

Jeff Wiewel scored 4.5-5 to take the 1989 St. Charles Chess Club Championship; Joe Splinter, Les Bale, and Dan Pradt tied for second through fourth at 4-1 ... 1989 St.C CC officers are Erv Sedlock (President), Dan Pradt (Vice President), Jon Gotz (Treasurer), Jeff Wiewel (Secretary), and Barry Bouton (Member at Large) ... Club members will man a booth at the Taste of St. Charles on June 4 ... [The St.C CC Speed Chess Championship is set for on June 15] [Information supplied by Erv Sedlock and Jeff Wiewel]

The Central Lake County Chess Club will meet on Thursday nights starting June 8; meetings will return to Friday nights in early August ... CLC CC defeated Shimer College 7-2 in a late February match [Information supplied by CLC CC President Tim Just]

## SUPPORT OUR 1989 US OPEN!

### By USCF President Harold Winston

The US Open is the major chess event of the year in which amateurs and grand masters alike can compete. This is also your federation's annual convention, with a festival of events including daytime tournaments, a Speed Championship, workshops on all topics of chess, and the annual display of the Chess Journalists of America. This year is special as it is the 50th Anniversary of the United States Chess Federation, which was created by the merger of two federations in 1939.

Helen Warren, chief organizer of the US Open for the Illinois Chess Association, is working tirelessly to make sure the tournament will be one to long remember. Let's all do our part to help! Make sure the dates August 5-13 are marked on your calendar ... this is a one week Open, so you save vacation time. Make sure all your friends know about the event. Join the Honor Roll of Contributors to the US Open Fund by sending a donation to Todd Barre, 16 W 520 59th St., #10C, Clarendon Hills, IL 60514.

It's been a full 10 years since the US Open was last held in Chicago. Don't miss it this year!



CHESS PHONE: 325-3666

# 170 PLAY IN GLEN ELLYN SCHOLASTIC TOURNAMENT

By Ruth Jacobsen

The first Glen Ellyn Classic took place on February 18, 1989, at Hadley Junior High School. Sponsored by chess coaches Martin Walters and Mike Miele (Hadley), Georgia Koch (Forest Glen Elementary), and Ruth Jacobsen (Ben Franklin Elementary), the event drew 170 junior high and grammar school chess players, although it was organized on less than one month's notice. The top players included the following, all of whom are among the 50 highest rated in the United States in their respective age groups: Craig Cochran (7 years old), Ben Blou (8), AnnaLiss Jacobsen (8), Matt Krosack (10), Mike Nichols (11), Adrian Ingram (12), Jeremy Sevick (12), and Mickey Jacobsen (12).

Individual honors in the Primary Division (3rd grade and below) went to Craig and Ben, each winning all four of his games. Mike, AnnaLiss, and newcomer Carolyn Lowry were co-champions of the Elementary Division (4th and 5th grades). Adrian and Mickey, both 6th graders with 1600 ratings, tied for first and second in the Junior High Division (6th through 8th grades).

Oakland Elementary of Bloomington, coached by Garrett Scott, won the Primary Division team title, followed by Ben Franklin (Glen Ellyn, Ruth Jacobsen) and Swartz Elementary (Villa Park, Jerry Esposito). Oakland also took first place in the Elementary Division. Second was Glen Hill Elementary (Glendale Heights, Ray Satterlee coaching a group of fourth graders he taught how to play chess this year!); third, Albngh Middle (Villa Park, Jerry Esposito); fourth, Ben Franklin; fifth, Forest Glen Elementary (Glen Ellyn, Georgia Koch). The Junior High Division was led by Hadley (Glen Ellyn, Martin Walters and Mike Miele), second, Albngh Middle; third, Benjamin Middle (Carol Stream and West Chicago, Donna Barstad), fourth, Glen Crest (Glen Ellyn).

Erv Sedlock directed, assisted by his St. Charles Chess Club crew (Jeff Wiewel, Jon Goetz, Dan Pradt, and Mike Flynn). Chess teachers Joe Splinter and Wes Underwood attended. (Although not present physically, John Burke was there in spirit, as his three students [Cochran and the Jacobsons] won all of their games.

---

ICA BOARD MEETING MINUTES (abridged)  
HYATT O'HARE; 2/26/89; SAS ROOM  
Call to order 1 P.M.

Present: T. Barre, T. Just, H. Warren, F. Gruenberg, K. Marshall, A. Losoff, T. Fineberg, B. Naff, G. Scott, E. Sedlock, D. Grant, M. Zacate, J. Warren, B. Smythe, I. Cohen, J. Condron, J. Brutsos.  
Observers: D. Middleton, M. Rhodes, D. Verber

The minutes of the October ICA Board meeting were read and unanimously approved.

Reports were submitted by the officers, ICA chess phone, membership secretary, and ICB editor. All reports were unanimously approved.

## REPORT HIGHLIGHTS

The Clearinghouses outlined the procedures for getting on the tournament calendar.

Momel Rhodes of Peoria, Organizer of the 1989 National Junior High, needs floor managers for the event. Contact Mr. Rhodes if you can help.

Due to the resignation of Guy Gruenberg as Treasurer, a full Treasurer's Report and a budget cannot be presented by new Treasurer Al Losoff until the next meeting.

Membership in the ICA is at 511. Various methods for signing up more adult and junior ICA members was discussed.

Ken Marshall will retire as ICB editor at the end of 1989.

The organizing of the 1989 U.S. Open is right on schedule.

The ICA is accepting bids for the 1989 Illinois Class

and Illinois Open in writing to the officers. The ICA will organize and sponsor a scholastic tournament in December. Zacate and Sedlock will report to the officers on the details of this event.

## NEW BUSINESS

Mike Zacate indicated the IHSA coaches' organization needs funds to continue to rate IHSA chess events.

MOTION: MOVED THAT THE ICA WILL CONTRIBUTE THE \$200 NEEDED TO HELP RATE THE IHSA TEAM TOURNAMENT; BY MIKE ZACATE - MOTION DIED FOR A LACK OF A 2ND. MOTION: MOVED THAT THE ICA WILL PURCHASE \$200 WORTH OF ICA AND USCF MEMBERSHIPS FOR THE WINNERS OF THE MARCH 17 IHSA TEAM TOURNAMENT; FURTHER, FRED GRUENBERG WILL MATCH THE ICA'S MEMBERSHIP PURCHASES DOLLAR FOR DOLLAR, UP TO \$200, WITH MEMBERSHIPS TO ICA AND USCF FOR THE TOP FINISHERS OF THIS SAME EVENT. MIKE ZACATE WILL DETERMINE THE RECIPIENTS AND NOTIFY THE ICA OFFICERS AND FRED GRUENBERG; BY LOSOFF, 2ND BY GRANT; PASSES 9-6-2. MOTION: MOVE TO RECONSIDER THE PREVIOUS MOTION; BY LOSOFF, 2ND BY GRANT; FAILED 9-6-2 (2/3 NEEDED TO RECONSIDER).

A discussion of the current USCF Policy Board race between Bill Lickorjak and Bill Grichberg followed. Meeting adjourned at 4:51 p.m.

Respectively submitted by ICA Secretary Tim Just [Unabridged minutes available from Tim Just]

**ILLINOIS TOURNAMENT CALENDAR**  
(Continued)

May 20,21: Pawndemonium. 1 day events, at the Chicago Chess Center. Ray Socha: 929 7010.

May 27: Illinois Valley Octagonal #1, at the Grace United Methodist Church in LaSalle. Byron Pappas: (815) 224-2869.

May 27: Prairie Action Under 2000, at the College of Lake County in Grayslake. AN ICA ILLINOIS MINI-TOUR EVENT. Helen Warren: 246-6665. SEE HALF PAGE AD IN THIS ICB.

May 27-29: 5th Annual Prairie State Master/Experts Invitational, at the College of Lake County in Grayslake. AN ICA ILLINOIS MAXI-TOUR EVENT. Helen Warren: 246-6665. SEE FULL PAGE AD IN THIS ICB.

May 27, 28: Big Bang for Six Bucks, 1 day events, at the Chicago Chess Center. Ray Socha: 729-7010.

May 28: Southern Illinois Trophy Spectacular, at the Holiday Inn in Mt. Vernon. Mark Oestrich: (618) 532-5733.

June 3, 4: Doffer's Delight, 1 day events, at the Chicago Chess Center. Ray Socha: 729-7010.

June 9-11: National Open, at the Riviera Hotel & Casino in Las Vegas, Nev. Fred Gruenberg. 779-0306.

June 10: Peoria Spring Tomado, at the Garrett Center in Peoria. AN ICA ILLINOIS MINI-TOUR EVENT. Bill Naff: (309) 691-4624. SEE HALF PAGE AD IN THIS ICB.

June 10, 11: Big Bang for Five Bucks, 1 day events, at the Chicago Chess Center. Ray Socha. 929-7010.

June 11: Southern Illinois Chess Tournament, at the Holiday Inn in Mt. Vernon. Mark Oestrich: (618) 532 5733

June 23-25: Master Challenge XI, at the Mohr Community Center in Forest Park. AN ICA ILLINOIS MAXI-TOUR EVENT. Ken Marshall: 932-1455. SEE HALF PAGE AD IN THIS ICB.



**CHESS PHONE: (312) 325-3666**

**PATRON MEMBERS**  
(CONTINUED)

Scott Kittsley	Shorewood, IL
Thomas Knoedler	Springfield, IL
Walter Kucjan	Northlake, IL
John Krom	Chicago, IL
Peter Kuhn	Des Plaines, IL
Marc Lunoff	Northbrook, IL
Eugene Lopez	Elk Grove, IL
Alan Losoff	Morton Grove, IL
Ken Marshall	Lombard, IL
Donald Martin	Round Lake Beach, IL
Eugene Martinovsky	Naperville, IL
James McNally	Roadview, IL
James McNamara	Riverside, IL
Earl Miller	El Paso, IL
Patrick Moran	Wilmette, IL
Bill Naff	Peoria, IL
Wayne Palmquist	Oak Forest, IL
Peter Peltz	Chicago, IL
Mieczyslaw Piatek	Chicago, IL
John Popovich	Evergreen Park, IL
Tim Redman	Lima, OH
Frederick Rhine	Chicago, IL
Ray Sauerlee	Wheaton, IL
Vivian Schmucker	Goshen, IN
Mark Sefcheck	Naperville, IL
Tom Shaffer	Chicago, IL
Tony Sillars	Chicago, IL
Arthur Sinclair	Evanston, IL
Leonard Spiegel	Naperville, IL
David Sprengle	Knoxville, TN
Perer Stein	Naperville, IL
Miomir Stevanovic	Lincolnwood, IL
David Taylor	Kankakee, IL
William Terbell	Glen Ellyn, IL
John Vrbancic	Evanston, IL
Douglas White	Schaumburg, IL
Harold Winston	Naperville, IL
Marvin Winston	Old Bridge, NJ
David Wolatin	Oak Park, IL
Sandy Zabel	Chicago, IL
Max Zavanelli	Park Ridge, IL

Please send Chicago metropolitan area Tournament Clearinghouse material to:

Fred Gruenberg  
Box 43336, Chicago, IL 60643  
(312) 396-1984 (D) (312) 779-0306 (N)

Please send Downstate Tournament Clearinghouse material to:

Garrett Scott  
202 Foster Dr., Normal, IL 61761  
(309) 452-8116

### CENTURY CLUB MEMBERS

Michael Belovesick	Elmhurst, IL
Fred Cramer	Mequon, WI
Tom Fineberg	Chicago, IL
Fred Gruenberg	Chicago, IL
Albert Sandrin	Chicago, IL
Angelo Sandrin	Chicago, IL
Bill Smythe	Chicago, IL
Burton Vincent	Chicago, IL
Helen Warren	Western Springs, IL
Jim Warren	Western Springs, IL
Philip Wong	Wilmette, IL

### GOLD CARD MEMBERS

Bill Buttny	Downers Grove, IL
Harland Hoisington	Ogden, UT
Ed Marschall	South Barrington, IL
Daniel Pradt	Glen Ellyn, IL
Michael Pratts	Chicago, IL
Irwin Rothschild	Park Forest, IL
Mitchel Sweig	Evanston, IL
Don Townsend	Chicago, IL
Bill Wenz	Milwaukee, WI
Louis Werner	Evanston, IL

### PATRON MEMBERS

Faneuil Adams	New York, NY
Bob Ash	Urbana, IL
Kevin Bachler	Waukegan, IL
Todd Barre	Clarendon Hills, IL
John Barstad, Sr.	Carol Stream, IL
Roy Benedek	Western Springs, IL
Timothy Bogan	Chicago, IL
Barry Bouton	Sandwich, IL
Bill Brock	Chicago, IL
Tyrone Brooks	Chicago, IL
Jim Brotsos	Chicago, IL
Walter Brown	Crest Hill, IL
Fred Burgess	Oak Forest, IL
Anthony Caliendo	Aurora, IL
Jim Condron	Downers Grove, IL
Lynn Crewse	Arlington Heights, IL
David Cromer	Iowa City, IA
John Deutsch	Chicago, IL
Leroy Dubeck	Cherry Hill, NJ
Keith Esses	Chicago, IL
Gerard Garino	Evanston, IL
Jon Gotz	West Chicago, IL
Donald Graft	Wheaton, IL
William Graves	Chicago, IL
Walter Henry	Naperville, IL
Charles Hicks	Naperville, IL
Keith Holzmueller	Evanston, IL
Jeffery Hyland	Mount Prospect, IL
Robert Irons	Chicago, IL
Tim Just	Gurnee, IL
Dan Kamen	Wheeling, IL
Leo Kaushansky	Chicago, IL

### ICA ELECTED OFFICERS :

Helen Warren, President  
P.O. Box 305 Western Springs, IL 60558  
(312) 246-6665

Fred Gruenberg, Metro Vice-President  
2035 W. 110th Pl., Chicago, IL 60643  
(312) 779-0306

Garrett Scott, Downstate Vice-President  
202 Foster Dr. Normal, IL 61761  
(309) 452-8116

Tim Just, Secretary  
37165 Willow Ln., Gurnee, IL 60031  
(312) 244-7954

Alan Losoff, Treasurer  
P.O. Box 157, Morton Grove, IL 60053  
(312) 966-5579

### USCF DELEGATES

by virtue of their USCF posts :

Harold Winston, President  
Todd Barre, Regional Vice-President  
Tim Just, Regional Vice-President  
Frank Skoff, Past President  
Helen Warren, Life Voting Member

### ICA APPOINTED USCF DELEGATES :

Fred Gruenberg	Alan Losoff
Ken Marshall	Tom Fineberg

### ICA APPOINTED USCF VOTING MEMBERS :

Bill Naff	Dennis Grant
Walter Brown	Mike Zacate
Guy Gruenberg	Jim Warren
Garrett Scott	Bob Bain
Erv Sedlock	Tom Knoedler
Wayne Palmquist	

### ICA APPOINTED USCF ALTERNATE VOTING MEMBERS :

Larry Stilwell	Al Chow
Bill Smythe	John Tonkinson
Larry Cohen	Byron Pappas
Jim Condron	Chris Musgrave
Angelo Sandrin	Jim Brotsos
Bill Wilkinson	Eric Schiller
Glen Panner	Barry Fisher
John Barstad	Kevin Bachler

## ILLINOIS TOURNAMENT CALENDAR

Call Chess Phone, (312) 325-3666, for recorded tournament announcements and results, often more up-to-date than CHESS LIFE or the ICB. The ICA Chess Phone voice is Todd Barre.

Unless otherwise noted, all tournaments require USCF membership. Illinois Tour events also require ICA membership. Phone numbers are area code 312 unless a different area code is listed. Announcements of ICA affiliates receive more space in the Tournament Calendar than do those of non-affiliates.

April 29: Larry Thompson Memorial Open, Rockford. Gary Sargent, 2764 Panorama, Rockford, IL 61109.

April 29: Peoria Novice/Tornado, at the Garrett Center in Peoria. Bill Wilkinson: (309) 673-9455.

April 29-30: OP-FP CC Spring Open, at the Mohr Community Center in Forest Park. Ken Marshall: 932-1455.

April 29, 30: For the Penny Pinching Pawn Pusher, 1 day events, at the Chicago Chess Center. Ray Socha: 929-7010.

May 6-7: CCC \$400 Guaranteed 1999/Below, at the Chicago Chess Center. Ray Socha: 929-7010.

May 12-14: 1989 National Junior High School Championship, at the Peoria Civic Center in Peoria. Murrel Rhodes: (309) 674-5290; Home (309) 676-0951.

May 13: '89 Tuley Park Action Swiss #2, at 501 E. 90th Pl. in Chicago. Tom Fineberg: 721-3979.

May 13: Spring Knight Sectional, in Urbana. Daniel Bargerstock: (217) 355-1660.

May 13, 14: For the Penny Pinching Pawn Pusher, 1 day events, at the Chicago Chess Center. Ray Socha: 929-7010.

(Continued on Page 28)

# 1989 U.S. OPEN

HYATT REGENCY O'HARE

AUGUST 5-13, 1989

## \$33,000.00 PRIZE FUND

ILLINOIS CHESS BULLETIN  
357 W. GROVE  
LOMBARD, ILLINOIS 60148

SPEDY DELIVERY APPRECIATED

Bulk Rate  
U.S. Postage Paid  
Lombard, IL 60148  
Permit No. 248