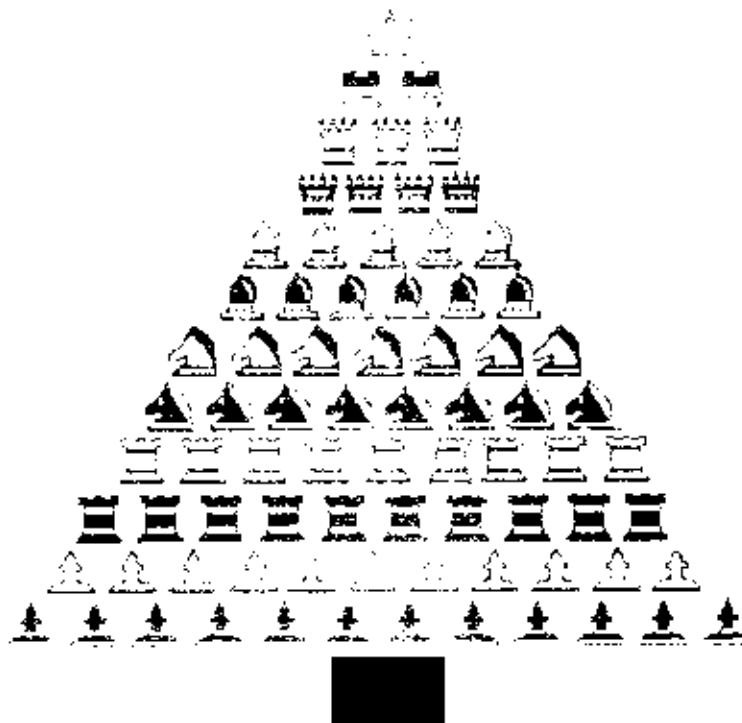


# ILLINOIS CHESS BULLETIN

Official Publication of the Illinois Chess Association a U.S.C.F. Affiliate  
A Not For Profit Organization

NOVEMBER - DECEMBER, 1988    VOLUME XI, NO. 6    BI-MONTHLY    \$2.00



HAPPY HOLIDAYS



# ILLINOIS CHESS BULLETIN

## EDITOR:

KEN MARSHALL  
357 W. Grove  
Lombard, Illinois 60148  
(312) 932-1455

## TECHNICAL EDITOR:

MARY GAITHER MARSHALL

## ASST. TECHNICAL EDITOR:

ALAN LOSOFF

## GAMES EDITOR:

LAWRENCE CHACHERE

## SUBSCRIPTIONS:

The Illinois Chess Bulletin (ICB) is published bimonthly by the Illinois Chess Association. ICA membership includes a subscription to the ICB. (Century, Gold, and Patron members receive their ICB by first-class mail.

### ANNUAL MEMBERSHIP RATES:

Century Club:	\$100.00
Gold Card:	50.00
Patron:	25.00
Regular:	10.00
Junior (under 18):	6.00

Subscriptions, Address Changes, and Corrections should be sent to:

Alan Losoff, ICA Membership Secretary  
P.O. Box 157  
Morton Grove, IL 60053-0157

## SUBMISSIONS:

Submit articles, photographs, crosstables, games, and other publishable materials to the Editor.

Publication deadline for the next issue is January 22, 1989.

## ADVERTISING RATES:

Full page	\$80
Half page	\$50
Quarter page	\$30
Eighth page	\$20

10% discount for the same ad in consecutive issues. 1/3 discount for ICA affiliates. All advertising must be camera ready to qualify for these rates. The ICA and the ICB reserve the right to reject advertising.

## TABLE OF CONTENTS

FROM THE EDITOR'S DESK	1
WHERE TO PLAY CHESS / CLUB AFFILIATES	2
PRESIDENTIAL PONDERINGS	3
WHAT'S NEW	4
ILLINOIS CLASS	6
DAVID WULATIN, FOUNTAIN OF CHESS WISDOM	11
ILLINOIS/MIDWEST TOURNAMENT OF CHAMPIONS III	12
FROM THE PRESIDENT-ELECT	15
ILLINOIS TOUR	16
CHICAGO CHESS MATES	19
OLYMPIA MIDDLE SCHOOL CHESS	20
GAMES FROM RECENT EVENTS	21
KREISMAN ANNOTATES	22
TOURNAMENT CROSSTABLES	23
R.I.P. - CHARLES "CHUCK" LANDRY	26
THE CLUB SCENE	26
ILLINOIS CHESS LEAGUE	27

**ICA AFFILIATION:** Chess clubs and other organizations which promote chess activity may affiliate with ICA. Affiliate benefits include a copy of each ICB by first-class mail, a listing (if desired) under "Where to Play Chess" in each issue, discounted ICB advertising rates, three-line tournament announcements in the "Tournament Calendar", and the right to run ICA Tour events. ICA affiliation costs \$15; please remit to address shown under "Annual Membership Rates". Include your club meeting times, name of contact person, and other useful information in the format shown in "Where to Play Chess" on page 2.

# From the Editor's Desk

Organizer Helen Warren has said that she will donate any profit from the Midwest Action Chess Championship tournament to the 1989 U.S. Open Fund. Due to her generosity, the prospect of an exciting day of chess now includes the opportunity to help make Chicago's U.S. Open the best ever. I hope that chess players in Illinois and all over the Midwest respond to Warren's gesture by turning out in record numbers for five rounds of "action chess" on January 14, 1989. (Details are set out in the full page ad for the 1989 Midwest Action Chess Championship on page nine of this ICB.)

\*\*\*\*\*

The 1989 Illinois Chess Association Illinois Tour arrives with a rush: January features two Maxi and two Mini events. When compared with 1988, when only nine Tour tournaments were held during the entire year, prospects for the 1989 Tour look bright. While the final prize fund is not yet set, incoming ICA President Helen Warren has indicated that prizes will amount to at least the \$1400 offered in 1988. Full Tour details and rules will appear in the next ICB. In the meantime, ICA members can start accumulating 1989 Tour points at Tim Just's Winter Open on January 7-8, and continue at the Midwest Action Chess Championship on January 14 and at either the No Bones Mini-Tour or the Bradley Open Mini-Tour events on January 28. (These tournaments all have either full or half page ads in this magazine.)

\*\*\*\*\*

Speaking of the Illinois Tour: The organizer of every Tour event is sent an updated list of ICA members at least a week before the date of his or her tournament. An ICA member on that list can play in that Tour tournament whether or not he has a current ICA membership card. New Membership Secretary Alan Losoff is working hard to straighten out the somewhat chaotic membership records situation which he inherited. Both first time and renewing members should now be receiving their cards relatively quickly. But with or without a card, any ICA member is welcome to - and encouraged to - participate in Illinois Tour events.

\*\*\*\*\*

Five more chess organizations have affiliated with the ICA. An old friend - the Midwest Chess Association - has returned, and the Chicago Chess Mates Club and Book Store and the Evanston High School, Hillside, and Springfield Chess Clubs have joined for the first time. "Where to Play Chess" on page three of this issue sets out the location and activities of these and 17 other ICA affiliates.

\*\*\*\*\*

The promised article on Senior Master Peter Pelts - surely the 1988 "Illinois Chess Player of the Year" - should appear in the next ICB. Pelts is now involved in a four game match with 1988 U.S. Open winner Dmitry Gurevich. The match has been suspended while the GM plays in Europe, but will resume in early January. (Pelts is down 1-0, but arguably had the better of the opening and the early middle game in the first contest.) I hope to prevail upon both players to annotate their games for publication in this magazine.

\*\*\*\*\*

Please remember: if you are moving, send ICA Membership Secretary Alan Losoff (P.O. Box 157, Morton Grove, IL 60053- 0157) your new address!! I recently received letters from two ICA members complaining that they have not been receiving their ICBs - one raged that he "hasn't seen an ICB in six months!". Of course both men had moved (one of them twice!), but had not informed the ICA of this fact. I therefore had been sending the ICB to their respective old addresses. Because neither was a Century Club, Gold Card, or Patron member, the magazines were mailed third rather than first class, and were not forwarded by the U.S. Postal Service. Now the men want me to supply them with duplicates of the issues they missed. Folks, ICA membership entitles you to one copy of each ICB. If that copy is sent to the wrong address because of your failure to advise of your new location, please do not expect me to spend more of the ICA's limited funds to send you back issues (which are in limited supply in any event). I have done this in the past, but do not intend to do it any more.



## WHERE TO PLAY CHESS: ICA CLUB AFFILIATES



AMERICAN POSTAL CHESS TOURNAMENTS sponsors postal events and sells chess books and equipment. Contact Jim or Helen Warren, P.O. Box 305, Western Springs 60558. (312) 246-6665.

AUBURN HIGH SCHOOL CHESS CLUB, 4273 Straw Lane, Roscoe 61073. Contact James G. Boyer, sponsor. (815) 623-8148.

CENTRAL LAKE COUNTY CHESS CLUB meets Fridays, 7:15 p.m. to midnight, College of Lake County, Bldg. 1, Washington at Route 45, Grayslake. Contact Dennis Grant, 1657 McKay, Waukegan 60087. (312) 336-5188.

CHICAGO CHESS ASSOCIATION organizes major tournaments. Also master chess lessons, \$40/3hr. Contact Dick Verber, 1261 W. Loyola, Chicago 60626. (312) 262-9100 after 3 p.m.

CHICAGO CHESS CENTER meets for casual chess 7 days a week, 6 p.m. to 1 a.m., 2923 N. Southport, Chicago 60657. Also sponsors rated tournaments. Contact Jules Stein (312) 929-7010.

CHICAGO CHESS MATES CLUB AND BOOKSTORE sponsors tournaments and group lessons, sells chess books and equipment, weekdays 4 p.m.-11 p.m., weekends 10 a.m.-9 p.m. (closed Mondays), 1261 W. Loyola, Chicago, 60626. Contact Richard Verber or Al Chow (312) 262-9100 or (312) 262-8050.

CHICAGO INDUSTRIAL CHESS LEAGUE organizes frequent competition among commercial/government teams with awards, ratings, and special events. Contact Jim Brotsos, (312) 775-5054, or Bruce McNeil, (312) 742-5195.

DECATUR CHESS CLUB meets Thursdays, 7:00 p.m. to midnight, Sheraton Inn, 450 E. Pershing, Decatur. Contact Bill Meyer, 2365 Esther, Decatur 62521 (217) 864-4797.

DOWNERS GROVE PARK DISTRICT CHESS CLUB meets Thursdays, 6:30-10 p.m., Lincoln Center, 935 Maple Ave., Downers Grove. Affiliated with USCF and ICA. Contact George Uffner, (312) 910-0421.

EVANSTON TOWNSHIP HIGH SCHOOL CHESS CLUB meets Fridays, 3:30-6:00 p.m., Beardsley Student Center. Contact Ken Lewandowski. (312) 492-7943.

FRED REINFELD CHESS CLUB meets Sunday afternoons from 2-6 p.m. at Coslow's, 200 E. Johns St., Champaign. Speed chess is emphasized. Contact Barry Fisher, 2112 Cyprus, Champaign 61821. (217) 333-9083.

GREATER PEORIA CHESS FEDERATION meets Mondays, 7 to 11 p.m., Garrett Center, 824 N. University, Peoria. Contact Bill Wilkinson, 901 N. Rebecca Pl., Peoria 61606. (309) 673-9455.

HILLSIDE CHESS CLUB meets Fridays, 7:30 p.m. to midnight, Hillside Baptist Church, 5152 Butterfield (just east of Taft), Hillside. Contact Larry Stilwell, 4705 Elm, Lisle 60532. (312) 963-6799.

ILLINOIS VALLEY CHESS CLUB meets Thursdays, 6-10 p.m., Grace United Methodist Church, 1345 Chartres St., LaSalle. Contact Byron Pappas, 432 Creve Coeur, LaSalle 61301. (815) 224-2869.

LAKE COUNTY CHESS ASSOCIATION sponsors rated tournaments in the Grayslake/Zion area. Contact Tim Just, 37165 Willow Ln., Gurnee 60031. (312) 244-7954.

MIDWEST CHESS ASSOCIATION organizes major tournaments for masters and experts. Contact Helen Warren, P.O. Box 305, Western Springs, 60558. (312) 246-6665.

OAK PARK / FOREST PARK CHESS CLUB meets Tuesdays, 7 p.m. to midnight, Mohr Community Center, Jackson and DesPlaines, Forest Park. Contact Ken Marshall, 357 W. Grove, Lombard 60148. (312) 932-1455.

PARK FOREST CHESS CLUB meets Thursdays, 7 to 10:30 p.m., Freedom Hall, Orchard & Lakewood, Park Forest. Contact Wayne Palmquist, 9820 S. 51st Ave. Oak Lawn 60453 (312) 857-8150.

SOUTHERN ILLINOIS CHESS LEAGUE sponsors rated tournaments throughout southern Illinois. Contact John Tonkinson, 105A Manor Court, Alton 62002. (618) 462-5732.

SPRINGFIELD CHESS CLUB meets Wednesdays, 6-10 p.m., Washington Park Pavilion, Park Ave. and South Grand Ave. West, Springfield. Contact Tom Knoedler, (217) 523-7265, or James Larson, (217) 529-0781.

ST. CHARLES CHESS CLUB meets Thursdays at 7 p.m., Baker Community House, 101 S. 2nd (Route 31), St. Charles. Contact Erv Sedlock, 6 W. 307 Old Homestead Rd., St. Charles 60174. (312) 377-7995.

TULEY PARK CHESS CLUB meets Saturdays, 1-5 p.m., Tuley Park Fieldhouse, 501 E. 90th Pl., Chicago. Contact Thomas Fineberg, 7321 S. South Shore Dr., Chicago 60649. (312) 721-3979.

TWIN CITY CHESS CLUB meets Monday evenings, Parks & Rec. Bldg., 611 S. Linden, Normal, except 1st Monday/month, Garcia's, Watterson Place. Speed tournaments 50 cents/game. Contact Andy McGowan, 520 E. Chestnut, Bloomington 61701. (309) 827-7892.

# PRESIDENTIAL PONDERINGS

By ICA President Tim Just

Thank you for allowing me to serve you.

[Editor's Note: Rather than prepare a column touting his achievements, Tim Just chose to close out his Illinois Chess Association presidency with a simple "thank you" to ICA members. In fact, it is the ICA which should thank Tim, as noted by Harold Winston in the following article. (Winston, outgoing ICA Metro Vice President, is currently president of the United States Chess Federation and served as ICA president from 1976 to 1978.)]

## BEING JUST TO TIM

By Harold Winston ICA Metro Vice President

Tim Just is completing two tough, challenging years as president of the Illinois Chess Association. Name a problem and Tim has had to

deal with it. Both he and the ICA have been strengthened by his response to those problems. The time, energy, and plain hard work Tim has put in on behalf of Illinois chess have been immense.

In addition to doing his own job, Tim made sure that the other ICA officers did theirs. If an officer lacked the time for ICA work, Tim helped find someone else to fill that person's position. Dedicated workers who became ICA officers during Tim's administration include Secretary Ken Marshall, Treasurer Guy Gruenberg, and Membership Secretary Alan Losoff. When the ILLINOIS CHESS BULLETIN began appearing irregularly, Tim was instrumental in bringing in a new and vigorous editor, Ken Marshall.

During his term of office Tim promoted the Illinois

Open and Illinois Class state tournaments, served as an Illinois delegate at the United States Chess Federation annual meetings, kept up his own tournament organizing and directing and club activities, and held down a full time teaching job. Tim also led the effort to secure the 1989 U.S. Open for Chicago; he chaired the original exploratory committee, initiated contact with the Hyatt Regency O'Hare, and represented the ICA in negotiations. Tim then took the lead in the movement to name Helen Warren as chief organizer of the '89 Open.

Tim cares deeply about chess, holds strong opinions, and does not hide his feelings. He has handled a rough job well. Chess players owe him thanks for his commitment to and work for Illinois chess.

## BRADLEY WINTER OPEN -- AN ICA MINI-TOUR EVENT

AN "ACTION CHESS" TOURNAMENT WHEN: Saturday, January 28, 1989

WHERE: Garrett Center, 824 N. University, Peoria, IL

WHAT: 5 Round Swiss

TIME LIMIT: Sudden Death/30

MEMBERSHIPS REQUIRED: USCF & ICA

GUARANTEED CASH PRIZES: \$225 1st: \$75 2nd: \$50 A, B, C, D/E/UNR: Each \$25

ENTRY FEE: \$11 if received by 1/26/89, \$13 at site

REGISTRATION: 8:30-9:15

ROUND TIMES: 9:30, 11:00, 1:00, 2:30, 4:00

ENTRIES AND INFORMATION: Bill Wilkinson, 905 N. Rebecca Pl., Peoria, IL 61606 (309) 673-9455

NO SMOKING OR COMPUTERS ALLOWED -- PLEASE BRING SETS, BOARDS, & CLOCKS

# What's new

## **WORLD CHAMPION GARRY KASPAROV TO VISIT CHICAGO IN FEBRUARY**

Eric Schiller has advised that World Chess Champion Garry Kasparov will be in Chicago from February 19 to February 21, 1989. According to Schiller, a chess author and international arbiter who is a friend of Kasparov, the visit is planned as part of a national tour which includes stops in New York and Washington. Although details remain unresolved, the world champion apparently will be available for simultaneous exhibitions (\$10,000 for thirty boards) or lectures (fee not yet set). Schiller indicated that he will keep Chess Phone [(312)-325-3666] informed of developments. Anyone interested in arranging a simul or lecture can call Schiller directly (after January 1) at (312) 684-0662.

## **NEW ICA OFFICIALS ELECTED FOR TWO YEAR TERMS**

Longtime chess activists Helen Warren and Fred Gruenberg were among the five Illinois Chess Association officers elected in recent ICA balloting. Warren, the new ICA president who is perhaps best known for organizing the annual Midwest Masters, Prairie State, and Midwest Action Chess Championship tournaments, completed a three year term on the United States Chess Federation Policy Board in August of 1988. Gruenberg, the force behind the legendary "Put the Fun Back into Chess" tournaments in years past and, more recently, the giant National Opens in Las Vegas, takes over as Metro Vice President. Outgoing ICA President Tim Just assumes the duties of Secretary, incumbent Treasurer Guy Gruenberg retains his office, and Garrett Scott, a major downstate organizer in the 1970s who has been heavily involved in scholastic chess in recent years, becomes Downstate Vice President. The new officers will serve from January 1, 1989 through December 31, 1990.

## **CUSI FIRST, PELTS SECOND IN WBCA U.S. CHAMPIONSHIP QUALIFIER**

Ronald Cusi scored a perfect 13-0 to top a 14 player field at the World Blitz Chess Association's Midwest Qualifying Tournament for the 1988 U.S. (Closed) Blitz Championship, held at the Oak Park-Forest Park Chess Club on October 18. Peter Pelts (11-2) and Lawrence Chachere (10.5-2.5) followed. Because Cusi is not a United States citizen and has not yet resided in the U.S. for one year, he is not eligible for the WBCA (Closed) title. Pelts therefore will participate in the WBCA championship tournament as the qualifying event's representative.

## **JANUARY 1989 TO FEATURE FOUR ILLINOIS TOUR EVENTS**

The 1989 ICA Illinois Tour gets off to a fast start with two Maxi and two Mini events in January. (See the ads for these tournaments in this issue.) Full details about the 1989 Tour, with its prize fund of at least \$1400, will appear in the next ICB.



**TIM JUST**  
**WINTER OPEN/RESERVE VI**  
**JANUARY 7-8, 1989**  
**\$1700 GUARANTEED!**

OPEN-Open to all players

RESERVE-Below 1800

1st-2nd           \$225-\$150  
 Expert: 1-2     \$125-\$100  
 A: 1-2           \$125-\$100

1st-2nd     \$225-\$150  
 C: 1-2     \$125-\$100  
 D/E: 1-2   \$125-\$100  
 UNR. 1st   \$50

ICA MAXI-TOUR EVENT \*\*\*\*\* GRAND PRIX POINTS = 5

5 ROUND SWISS: Saturday 9:30-2:30-7; Sunday 10-4

TIME CONTROL: 40/100, 25/1

1/2 point bye rounds 1, 2, 3, or 4 if requested in advance

EARLY ENTRY FEE = \$32

LATE & PHONE ENTRY FEE = \$40

EARLY FEES & INFO:

by 1/3/89

TIM JUST  
 37165 WILLOW LN.  
 GURNEE, IL. 60031  
 312-244-7954

LATE REGISTRATION AT SITE:

8-9 AM on 1/7/88

ILLINOIS BEACH RESORT  
 SHERIDAN RD & WADSWORTH to the Lake  
 Zion, Illinois 60099  
 Hotel Rates: 312-249-2100

ICA Membership required--other states OK \*\*\* NS; NC; Wheelchair

# GUREVICH, SCHILLER TOP ILLINOIS CLASS

## 108 PLAYERS COMPETE IN FINAL 1988 ILLINOIS TOUR EVENT

By Tim Just

Grandmaster Dmitry Gurevich and Master Eric Schiller scored 3.5-.5 to tie for first and second places in the Master/Expert section of the 1988 Illinois Class Championships, held November 19-20 at the Morgan Park Academy in Chicago. The winners led a 34 man field made up of one GM, nine Masters, 19 Experts, and five members of Class A who decided to "play up".

Gurevich, the 1988 U.S. Open winner who presently resides in Illinois, and Schiller, a world famous chess author and international arbiter, each won \$300. The Grandmaster defeated Expert Darren Bolden and Masters Tony Schroeder and Bill Colias before drawing with Senior Master Albert Chow in the last round. (Colias gave Gurevich a tough fight from the the White side of a Benko Gambit before losing on time.) Schiller beat Expert Robert Sax, took a second round .5 point bye, and defeated Leslie Bale, who was "playing up". He then found himself paired against Master Andy Karklins, an opponent he had a history of being unable to beat. Eric, rising to the challenge, saddled Andy with tripled isolated e-pawns and came through with a jinx-busting victory.

Sharing third through seventh places in the Master/Expert Class with 3-1 results were Chow, Masters Peter Pelts, Lawrence Chachere, and Ken Wallach, and Expert Steven Szpisjak (who won the \$100 Expert prize).

Isidro Tamez, tenth on the 24 player Class A wallchart, scored a perfect 4-0 to take clear first in his class. Roland Jordan, Anil Gurnaney, Hector Hernandez, and Dan Bargerstock all followed at 3-1.

Class B honors went to Lawrence Kosiba, Fred Gruenberg, Joshua Flores, Duane Bayer, and Byron Jones, each of whom garnered 3 points. (Every player in this 15 man section finished the event, making it the only class without any withdrawals.)

Bill Madera led 18 Class C competitors with an unblemished 4-0 mark. Tied for second through fifth with scores of 3-1 were Tom Shaffer, Ted Isaac, Joe Bannon, and Kelvin McAlister.

Seven of the 15 players in the Class

D/E/Unrated section won prizes. Steve Dudnick's 3.5-.5 result was good for first place, while Nick Haan took second at 3-1. Third through seventh places were shared by Robert Raimo, Bruce Chenoweth, Robert Bales, Mike Sims, and Monica Plisch, each of whom finished with 2.5 points.

Illinois Chess Association President Tim Just organized the 1988 Illinois Class Championships on behalf of the ICA. Just and Todd Barre directed the event, which was hosted by the Morgan Park Academy and Fred Holtzrichter for the third year in a row.

### ILLINOIS CLASS PRIZE WINNERS

MASTER/EXPERT 1st: Dmitry Gurevich, Eric Schiller, 3.5-.5; 3rd-7th: Albert Chow, Peter Pelts, Lawrence Chachere, Ken Wallach, Steven Szpisjak, 3-1; Top Expert: Szpisjak

CLASS A 1st: Isidro Tamez, 4-0; 2nd-5th: Roland Jordan, Anil Gurnaney, Hector Hernandez, Dan Bargerstock, 3-1

CLASS B 1st-5th: Lawrence Kosiba, Fred Gruenberg, Joshua Flores, Duane Bayer, Byron Jones, 3-1

CLASS C 1st: Bill Madera, 4-0; 2nd-5th: Tom Shaffer, Ted Isaac, Joe Bannon, Kelvin McAlister, 3-1

CLASS D/E/UNRATED 1st: Steve Dudnick, 3.5-.5; 2nd: Nick Haan, 3-1; 3rd-7th: Robert Raimo, Bruce Chenoweth, Robert Bales, Mike Sims, Monica Plisch, 2.5-1.5

### GAMES FROM THE 1988 ILLINOIS CLASS CHAMPIONSHIPS

(Editor's Note: The following games are from Illinois Class score sheets provided by Tournament Director Tim Just.)

**W: Darren Bolden (2102) B: GM Dmitry Gurevich (2628)** Master/Expert, Round 1  
 1.e4 c5 2.Nf3 d6 3.d4 cxd4 4.Qxd4 Nc6 5.Bb5 Nf6 6.Nc3 Bd7 7.Bxc6 Bxc6 8.Bg5 e6 9.0-0-0 Be7 10.Rhe1 h6 11.Be3 Qc7 12.Nd2 b5 13.f3 0-0 14.g4 Rfc8 15.Kb1 Nd7 16.Nb3 Ne5 17.Rf1

(Continued on page 8)



# ILLINOIS CLASS CHAMPIONSHIPS -- NOVEMBER 19-20, 1988

MASTER-EXPERT		Score	Tour	CLASS B		Score	Tour
1 GUREVICH Dmitry	2628	W29	W14	W 9	D 5	3.5	16 M
2 SCHILLER Eric	2260	W23	Dbye	W14	M 8	3.5	16 M
3 WALLACH Ken	2256	W19	W13	D 8	D 4	3	8 M
4 PELTS Peter	2396	W25	D10	W20	D 3	3	8 M
5 CHOW Albert	2444	D 7	W28	W10	D 1	3	8 M
6 CHACHERE Lawrence	2368	W27	D20	D12	W15	3	8 M
7 SIPSJAK Steven	2093	D 5	D11	W17	W14	3	8 M,X
8 KARKLINS Andrew	2384	W31	W15	D 3	L 2	2.5	4 M
9 COLIAS Bill	2336	W32	W21	L 1	D12	2.5	4 M
10 KROM John	2207	W33	D 4	L 5	W21	2.5	4 M
11 KRAS Timothy	2157	D17	D 7	W24	D13	2.5	4 M,X
12 MAZUCHOWSKI Thomas	2153	Dbye	W18	D 6	D 9	2.5	4 M,X
13 CRAWFORD Brad	1866	Mbye	L 3	W28	D11	2.5	4 M,X,A
14 SCHROEDER Anthony	2230	W26	L 1	W27	L 7	2	2 M
15 GENSLER Kevin	2191	W24	L 8	W23	L 6	2	2 M,X
16 DALE Leslie	1884	D22	W29	L 2	D18	2	2 M,X,A
17 DELRICH Tom	2000	D11	D22	L 7	W27	2	2 M,X
18 HAAM David	1986	D28	L12	W31	D16	2	2 M,X,A
19 BOSSAERS Phil	2042	L 3	L27	Mbye	W29	2	2 M,X
20 SOCHA Ray	2121	W30	D 6	L 4	-	1.5	1.5M,X
21 SNYTNE Bill	1984	W34	L 9	D22	L10	1.5	1.5M,X,A
22 KREISMAN Bruce	2108	D16	D17	D21	-	1.5	1.5M,X
23 SAY Robert	2044	L 2	W33	L15	D24	1.5	1.5M,X
24 COHEN Lawrence	2006	L15	W32	L11	D23	1.5	1.5M,X
25 ROGAN Marvin	2082	L 4	Dbye	W26	-	1.5	1.5M,X
26 READ Rhys	2040	L14	D31	L25	Mbye	1.5	1.5M,X
27 WITKOWSKI Jim	2056	L 6	W19	L14	L17	1	1 M,X
28 KAMEN Dan	2126	D18	L 5	L13	D30	1	1 M,X
29 BOLDEN Darren	2102	L 1	L16	W30	L19	1	1 M,X
30 FRANEK Martin	1905	L20	Dbye	L29	D28	1	1 M,X,A
31 BERNAL Luis	2073	L 8	D26	L18	-	0.5	0.5M,X
32 CONDRON James	2051	L 9	L24	-	-	0	-
33 BUTTNY William	2010	L10	L23	-	-	0	-
34 BAIN Robert	2124	L21	-	-	-	0	-
CLASS A		Score	Tour	CLASS C		Score	Tour
1 TAMEZ Isidro	1935	W19	W 2	W 9	W 6	4	32 A
2 BARGERSTOCK Dan	1834	W25	L 1	W12	W10	3	8 A
3 JORDAN Roland	1987	D23	W18	D10	W 7	3	8 A
4 GURANEY Anil	1961	D21	W23	D 5	W11	3	8 A
5 HERNANDEZ Hector	1922	Dbye	W13	D 4	W 9	3	8 A
6 MARQUEZ Anthony	1942	W20	W15	D 7	L 1	2.5	4 A
7 BOGAN Timothy	1930	W24	W12	D 6	L 3	2.5	4 A
8 COHEN Howard	1953	L12	W19	D14	W18	2.5	4 A
9 MC NAMARA James	1970	W14	W11	L 1	L 5	2	2 A
10 PUKEL Bernard	1953	D17	W21	D 3	L 2	2	2 A
11 BOUTON Barry	1913	W22	L 9	W17	L 4	2	2 A
12 BURKE Marcellus	1772	W 8	L 7	L 2	W17	2	2 A,B
13 WHITE Joe	1999	D18	L 5	W21	D15	2	2 A
14 PANNER Glenn	1834	L 9	W22	D 8	D16	2	2 A
15 PALS Randall	1868	W16	L 6	Dbye	D13	2	2 A
16 STINSON Marcus	1980	L15	D20	W24	D14	2	2 A
17 EATON John	1758	D10	W25	L11	L12	1.5	1.5A,B
18 BEASLEY Leonard	1907	D13	L 3	W20	L 8	1.5	1.5A
19 MAKASKAS Tony	1720	L 1	L 8	W22	D21	1.5	1.5A,B
20 BURGESS Fred	1726	L 6	D16	L18	W24	1.5	1.5A,B
21 MONTI Steven	1785	D 4	L10	L13	D19	1	1 A,B
22 HOESLEY John	1609	L11	L14	L19	W26	1	1 A,B
23 COX William	1913	D 3	L 4	-	-	0.5	0.5A
24 ROBINSON Harrison	1716	L 7	Dbye	L16	L20	0.5	0.5A,B
25 BERRY Gregory	1976	L 2	L17	-	-	0	-
26 SWANSON Victor	1685	-	-	-	L22	0	-
1 MADERA Bill	1575	W19	W12	W 6	W 2	4	32 C
2 ISAAC Theodore	1545	W18	W15	W 3	L 1	3	8 C
3 SHAFFER Thomas	1592	W17	W 4	L 2	W10	3	8 C
4 BANNON Joseph	1529	W10	L 3	W17	W 7	3	8 C
5 MC ALISTER Kelvin	-	L15	W11	W13	W12	3	-
6 SINOMETTI Richard	1350	W22	W16	L 1	D 8	2.5	4 C,D
7 FARRAL Keith	1545	D 8	W13	W16	L 4	2.5	4 C
8 OTTO Michael	1445	D 7	W14	D12	D 6	2.5	4 C
9 KUKOWSKI Joseph	1424	L12	D19	W14	W15	2.5	4 C
10 PALMER Kenneth	1380	L 4	W23	W15	L 3	2	2 C,D
11 PADILLA Rudy	1482	L16	L 5	W19	W18	2	2 C
12 KHALIL Edward	1534	W 9	L 1	D 8	L 5	1.5	1.5C
13 BRUNELLE Jon	1564	D14	L 7	L 5	W19	1.5	1.5C
14 FENNER Charles	1468	D13	L 8	L 9	W24	1.5	1.5C
15 MARTIN Stephen	1523	W 5	L 2	L10	L 9	1	1 C
16 SMITH Orlan	1567	W11	L 6	L 7	-	1	1 C
17 NOVY Gerard	1513	L 3	W18	L 4	-	1	1 C
18 PETERS James	1430	L 2	L17	Mbye	L11	1	1 C
19 BERKHEIMER Ed	1492	L 1	D 9	L11	L13	0.5	0.5C
20 CHENOWETH Bruce	1354	-	-	D21	-	0.5	-
21 SINS Mike	1260	-	-	D20	-	0.5	-
22 HAAN Nicholas	1245	L 6	-	-	-	0	-
23 PANDIS John	1571	-	L10	-	-	0	-
24 GRAVES Andrew	-	-	-	-	L14	0	-
CLASS D		Score	Tour	CLASS E		Score	Tour
1 DUDNICK Steven	1259	W13	W 7	Dbye	W 2	3.5	16 D
2 HAAN Nicholas	1245	Mbye	W 4	W 3	L 1	3	8 D
3 BALES Robert	1315	W10	D 9	L 2	W11	2.5	4 D
4 SINS Mike	1260	W12	L 2	D10	W 9	2.5	4 D
5 PLISCH Monica	1258	D11	L12	W 8	W10	2.5	4 D
6 CHENOWETH Bruce	1354	L 9	W 8	WF	D 7	2.5	4 D
7 RAIMO Robert	1368	WF	L 1	W 9	D 6	2.5	4 D
8 GRAVES Andrew	-	W14	L 6	L 5	Mbye	2	-
9 DUPEE Arthur	1254	W 6	D 3	L 7	L 4	1.5	1.5D
10 FARRELL Marty	-	L 3	W11	D 4	L 5	1.5	-
11 ROSSOW Mara	-	D 5	L10	WF	L 3	1.5	-
12 JURYNEC Jurij	-	L 4	W 5	LF	-	1	-
13 WILSON Troy	-	L 1	W14	LF	-	1	-
14 OLSON Joel	1291	L 8	L13	-	-	0	-
15 HELLER Michael	1256	LF	-	-	-	0	-

**CHESS PHONE:**  
**(312) 325-3666**



**DOWNSTATE**  
**CHESS PHONE:**  
**(309) 655-0618**

## GAMES FROM THE 1988 ILLINOIS CLASS CHAMPIONSHIPS

a5 18.Qb6 Qxb6 19.Bxb6 b4  
20.Ne2 Bb5 21.Nbd4 Ba6  
22.b3 0-1

**V: GM Dmitry Gurevich (2628) B: Anthony Schroeder (2230)**

Master/Expert, Round 2  
1.d4 Nf6 2.c4 e6 3.Nc3 d5  
4.Bg5 Be7 5.e3 Nbd7 6.Nf3  
h6 7.Bh4 0-0 8.Qc2 c6  
9.Rd1 Qa5 10.Nd2 Re8  
11.Be2 dxc4 12.Nxc4 Qd8  
13.Bg3 Nf8 14.Bf3 Ng6  
15.h4 Nd5 16.h5 Nh4 17.Rf1  
Nf5 18.Bh2 b5 19.Ne5 Bb7  
20.Be4 Nd6 21.Bh7+ Kh8  
22.Ne4 Rf8 23.Nc5 Qa5+  
24.Ke2 Nb4 25.Qb1 Bc8  
26.a3 Nd5 27. Nxc6 Qb6  
28.Nxe7 Nxe7 29.Bd3 Nb7  
30.Be4 Nd5 31.Rc1 Nxc5 32.  
Rxc5 Bb7 33.Rfc1 Qd8  
34.Bf3 a6 35.Kf1 Qf6  
36.Kg1 Rad8 37.e4 Nf4  
38.e5 Nh3+ 39.Kf1 Flag 1-0

**V: Dan Kamen (2126) B: Al Chow (2444)**

Master/Expert, Round 2  
1.d4 Nf6 2.c4 g6 3.Nc3 d5  
4.e3 Bg7 5.Nf3 0-0 6.Bd3  
c5 7. cxd5 Nxd5 8.0-0 cxd4  
9.exd4 Nc6 10.Be4 Be6  
11.Re1 Rc8 12.Bg5 Re8  
13.Rc1 Nxc3 14.bxc3 Bxa2  
15.d5 Ne5 16.Qa4 Bc4 17.d6  
Qxd6 18.Bxb7 Nxf3+ 19.gxf3  
Rb8 20.Qxc4 Rxb7 21.Rcd1  
Qb8 22.Bf4 Qc8 23.Qd5 e6  
24.Qe4 Bxc3 25.Rc1 Rb4  
26.Qe3 Bxe1 27.Rxc8 Rxc8  
28. Be5 Bc3 29.Bxc3 Rb3  
30.Qxa7 Rbxc3 31.Kg2 h6  
32.Qd7 R8c4 33. Kg3 Kg7  
34.h4 Rc1 35.Qd3 h5 36.Qb3  
R1c3 37.Qb2 e5 38.Kg2 Rc5  
39.Qd2 Rc6 40.Qb2 Kh7  
41.Qd2 R3c5 42.Qb2 Rf6  
43.Qd2 Rc4 44. Qe3 Rf5  
Flag 0-1

**V: Robert Raimo (1368) B: Steven Dudnick (1259)**

Class  
D/E/Unrated, Round 2  
1.Nf3 Nc6 2.e3 d5 3.Bb5  
Bd7 4.b3 a6 5. Bxc6 Bxc6  
6.Bb2 f6 7.d4 e6 8.Nbd2  
Bd6 9.c4 Bb4 10.0-0 Ne7  
11. a3 Bxd2 12.Qxd2 dxc4  
13.bxc4 Bxf3 14.gxf3 Qd7  
15.Rfd1 0-0-0 16.Rab1 Ng6

17.Qb4 Qc6 18.e4 b6 19.d5  
a5 20.dxc6 Rxd1+ 21. Rxd1  
axb4 22.axb4 Rd8 23.Rxd8+  
Kxd8 24.Bd4 e5 25.Be3 Nh4  
26. c5 b5 27.f4 exf4  
28.Bxf4 Nf3+ 29.Kf1 Nd4  
30.e5 fxe5 31.Bxe5 Nxc6  
32.Bc3 g6 33.Ke2 Ke7  
34.Kf3 Ke6 35.Ke4 Ne7  
36.Be5 c6 37. Bf4 Nd5  
38.Bd2 Nf6+ 39.Kf3 Kf5  
40.Bc3 Nd5 41.Bd2 h5 42.h4  
Nf6 43.Bg5 Ne4 44.Bd2 Nf6  
45.Bg5 Nd5 46.Bd2 Nc7  
47.Bg5 Ne6 48. Be3 Ke5  
49.Ke2 Ke4 50.f3+ Kd5  
51.Kd3 Ng7 52.Bg5 Nf5  
53.Bf6 Ke6 54.Bg5 Ke5  
55.f4+ Kd5 56.Bf6 Ng3  
57.Bg5 Nh1 58.Bf6 Nf2+  
59.Kc3 Ke4 60.Bg5 Nd3  
61.Bh6 Nxf4 62.Bxf4 Kxf4  
63.Kd4 g5 64. hxg5 Kxg5  
65.Ke5 h4 66.Kd6 h3  
67.Kxc6 h2 68.Kxb5 h1=q  
69.c6 Qd5+ 70.Kb6 Qd4+  
71.Kb5 Qa7 72.Kc4 Kf5  
73.Kd5 Qa4 74.c7 Qd7+  
75.Kc5 Qxc7+ 76.Kb5 Ke5  
77.Ka6 Kd5 78.b5 Qb8 79.b6  
Kc6 0-1

**V: Bill Colias (2336) B: GM Dmitry Gurevich (2628)**

Master/Expert,  
Round 3 1.d4 Nf6 2.c4 c5  
3.d5 b5 4.cxb5 a6 5. e3  
axb5 6.Bxb5 Qa5+ 7.Nc3 Bb7  
8.Bd2 Qb6 9.Qb3 e6 10.e4  
Nxe4 11.Nxe4 Bxd5 12.Qd3  
Qb7 13.f3 c4 14.Bxc4 Bxc4  
15.Qxc4 d5 16. Qc2 dxe4  
17.Qxe4 Qxb2 18.Rd1 Rxa2  
19.Ne2 Bc5 20.Qc4 Nd7 21.  
Bc3 Qc2 22.Qb5 Qa4 23.Qb7  
Ke7 24.Nd4 Rd8 25.Qc7 Ke8  
26.Ne2 Qc4 Flag 0-1

**V: Robert Sax (2044) B: Kevin Gensler (2191)**

Master/Expert,  
Round 3 1.e4 c5 2.Nf3 d6  
3.d4 cxd4 4.Nxd4 Nf6 5.Nc3  
a6 6.Bg5 e6 7.f4 Qb6 8.Nb3  
Nbd7 9.Qd2 Be7 10.0-0-0 h6  
11.Bh4 g5 12. fxc5 Ng4  
13.Be2 hxg5 14.Bxg4 Rxh4  
15.Be2 Ne5 16.Rdf1 Bd7 17.  
Nd4 0-0-0 18.Nf3 Nxf3  
19.Rxf3 Be8 20.h3 g4  
21.Rg3 gxh3 22. gxh3 Bf6  
23.Rf1 Be5 24.Rgf3 Rh7

25.Bc4 Kb8 26.Bb3 Qa5  
27.Qf2 Rc8 28.Nd1 Qb4  
29.c3 Rg7 30.Bc2 Qa5  
31.Kb1 Qc7 32.Bd3 Ba4 33.  
Ne3 f6 34.Ng4 Qa5 35.Nxf6  
Rgc7 36.Rc1 Bxc3 37.Rxc3  
Rxc3 38. bxc3 Qxc3 39.Qf1  
Qb4+ 40.Ka1 Qd2 41.Kb1 Rc2  
42.Bc4 Rb2+ 43. Ka1 Bd1  
44.Bd3 Qc1+ 0-1

**V: Kenneth Palmer (1380) B: Steve Martin (1523)**

Class C,  
Round 3 1.e4 e5 2.Nf3 Nc6  
3.Bc4 Bc5 4.d3 Nf6 5.Ng5  
d5 6.exd5 Nxd5 7.Qf3 Be6  
8.Nc3 Nd4 9.Qe4 Qf6  
10.Nxd5 Nxc2+ 11.Kd1 Bxd5  
12.Qxd5 Qxf2 13.Qxf7+ Qxf7  
14.Bxf7+ Ke7 15.Kxc2 h6  
16.Ne4 Bd4 17.Bd5 c6  
18.Bb3 Rhf8 19.Bd2 b5  
20.Bb4+ c5 21.Nxc5 Rfc8  
22. Rhe1 Kd6 23.Kd2 Bxc5  
24.Bxc5+ Rxc5 25.Rac1 Rcc8  
26.Rxc8 Rxc8 27.Rf1 a5  
28.a4 bxa4 29.Bxa4 Rb8  
30.b3 Ke6 31.Ra1 Rd8  
32.Bb5 Rf8 33.Ke2 Kd5  
34.Rxa5 Kd4 35.Bc4 Re8  
36.Kd2 Rd8 37.b4 e4 38.  
Ra7 e3+ 39.Ke2 Rf8 40.Rxg7  
Rf2+ 41.Ke1 Rb2 42.Rd7+  
Kc3 43.Rg7 Rd2 44.b5 Kc2  
45.b6 Rd1+ 46.Ke2 Rb1  
47.b7 Kc3 48.Kxe3 Re1+  
49.Kf3 Rf1+ 50.Kg3 Rb1  
51.Ba6 1-0

**V: GM Dmitry Gurevich (2628) B: Al Chow (2444)**

Master/Expert,  
Round 4 1.Nf3 Nf6 2.c4 c5  
3.Nc3 d5 4.cxd5 Nxd5 5.e4  
Nb4 6.Bb5+ N8c6 7.d4 cxd4  
8.a3 dxc3 9.Qxd8+ Kxd8  
10.axb4 cxb2 11.Bxb2 e6  
12.Ke2 f6 13.e5 f5 14.Bxc6  
bxc6 15. Nd4 Bd7 16.Rhc1  
Bxb4 17.Nxc6+ Bxc6 18.Rxc6  
Kd7 19.Rca6 Rhc8 20.Ba3  
Rc2+ 21.Kf1 Bxa3 22.R1xa3  
Rb8 23.Rxa7+ Kc6 24.R7a6+  
Kc5 25.R6a5+ Kc6 26.Ra6+  
Kc5 27.R6a5+ Kc6 28.Ra6+  
.5-.5

(Illinois Class Games  
continued on page 10)

**CHESS PHONE  
(312) 325-3666**

---

# 1989 MIDWEST ACTION CHESS CHAMPIONSHIP!

---

---

## PRIZE FUND

**1st:       \$300**  
**2nd:       \$150**  
**3rd:       \$100**

**Top Expert ..... \$125-75**  
**Top Class A ..... \$100-50**  
**Top Class B ..... \$100-50**  
**Top Class C & Below .. \$100-50**

---

### ROUND TIMES

10 AM, 11:30 AM, 1:30 PM, 3 PM and 4:30 PM  
1/2 pt. bye available for first round if requested with  
entry; **NONE** at site.

At site registration: 8:30 AM — 9:30 AM

Pre-tournament announcements on special rules:  
9:30 AM.

ANY PROFIT WILL BE DONATED TO THE 1989 U.S. OPEN FUND
--

---

### SITE

HOLIDAY INN O'HARE, 5440 N. River Rd.  
Rosemont, IL 60018  
Lower Level, Love A & B

---

**JANUARY 14, 1989**

**TIME CONTROL: GAME/ 30 minutes**

Each player must make ALL moves within 30 minutes;  
no game can last longer than one hour!

A few special rules apply which will be explained by  
the TDs BEFORE the start of play! All players will  
receive a rules sheet before game time and a copy will  
be posted.

Players are required to keep a score sheet until the last  
5 minutes of play.

---

### ENTRY FEES

**ADVANCE ENTRY: \$20** if received by 12/28  
AFTER 12/28 or at site: \$27

**ADVANCE ENTRY FOR JUNIORS: \$15; \$20** at  
site.

5 junior entries from the same school entering in  
**one** envelope BEFORE 12/28: \$60. IDs and expira-  
tions MUST be provided.

---

**SPECIAL HOTEL RATES FOR OUT OF TOWNERS COMING ON FRIDAY NIGHT OR STAYING OVER SATURDAY  
NIGHT: \$54 for single or Double! A great mini-vacation!**

---

### FREE UNLIMITED PARKING

**PLEASE BRING SET, BOARD, AND CLOCK!!! NONE WILL BE PROVIDED!**

Further information from: Helen Warren, Midwest Chess Association, P.O. Box 305,  
Western Springs, IL 60558 (312) 246-6665.

**SEE TOURNAMENT LIFE ANNOUNCEMENT IN JANUARY CHESS LIFE!**

**GET A GREAT START ON YOUR CHESS NEW YEAR BY PLAYING IN  
THE MIDWEST ACTION CHESS CHAMPIONSHIP!!**

**GAMES FROM THE 1988 ILLINOIS CLASS CHAMPIONSHIPS**



Isidro Tamaz scored a perfect 4-0 to win the Class A title

**V: Eric Schiller (2260)**

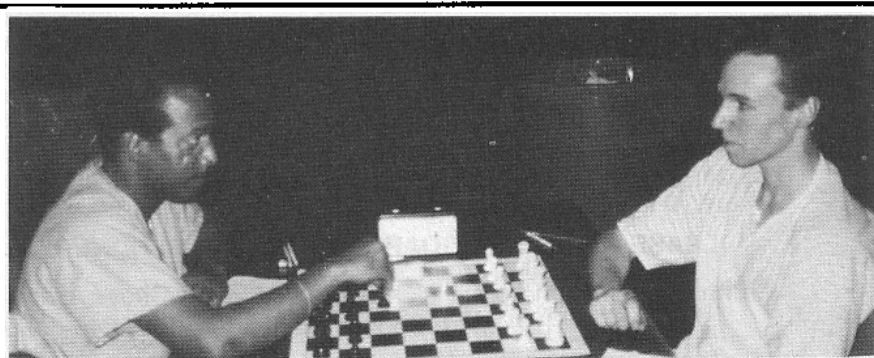
**B: Andrew Karklins (2384)** Master/Expert, Round 4 1.d4 Nf6 2.Nf3 e6 3.e3 b6 4.Bd3 Bb7 5.0-0 d5 6.b3 Bd6 7.Bb2 Ne4 8.Nbd2 Nd7 9.Qe2 Qf6 10.a4 Qh6 11.g3 Qh3 12.We5 Bxe5 13.Bxe4 dxe4 14.dxe5 0-0 15.Rfd1 f6 16. Nc4 Nxe5 17.Nxe5 fxe5 18.Rd7 Rf5 19.Qf1 Qh6 20.Rad1 Raf8 21. R1d2 Qf6 22.Ba3 Rc8 23.Qc4 Bd5 24.Qa6 Re8 25.Rxc7 Rh5 26.Rc8 Qf7 27.Rxe8+ Qxe8 28.Qxa7 Qc8 29.c4 h6 30.Qxb6 Kh7 [Editor's Note: Karklins now had two minutes left to make 15 moves] 31.Qc5 Bc6 32.Rd6 Qf8 33.Rd2 Qe8 34.a5 Ba8 35.Qe7 Qg6 36.Rd6 Qg4 37.Qxe6 Qf3 38.Qg6+ 1-0

**V: Anthony Schroeder (2230) B: Steven Szpisjak (2093)**

Master/Expert, Round 4 1.Nc3 d5 2.d4 Nf6 3.Bg5 Bf5 4.f3 c6 5.e3 Qb6 6.Na4 Qa5+ 7.c3 Nbd7 8.b4 Qc7 9.Ne2 a5 10.a3 h6 11. Bh4 e6 12.Bg3 Bd6 13.Bxd6 Qxd6 14.Ng3 Bh7 15.Kf2 0-0 16.Bd3 Bxd3 17.Qxd3 axb4 18.axb4 Ra7 19.Nc5 Qb8 20.Qc2 b6 21.Nxd7 Nxd7 22.Qb2 c5 23.h3 Rc8 24.bxc5 Rxa1 25.Rxa1 bxc5 26.Qxb8 Rxb8 27.Ra7 Nf6

28.dxc5 Rc8 29.Ra5 Nd7 30.e4 dxe4 31.Nxe4 f5 32.Nd6 Rxc5 33.Rxc5 Nxc5 34.Ke3 Kf8 35.Kd4 Nb3+ 36.Kc4 Nc1 37.Nb5 Ke7 38.Nd4 g6 39.Kb5 Nd3 40.c4 Nf4 41.c5 Nxc2 42.c6 Nf4 43.Kb6 Nd5+ 44.Kb7 e5 45.Nb5 e4 46.fxe4 fxe4 47.Nd4 Kd6 48.Ne2 e3 49.Nf4 Nxf4 50.c7 e2 51.c8=Q e1=Q 52.Qd8+ Ke5 53. Qe8+ Ne6 54.Qh8+ Kf5 55.Qxh6 Qb4+ 56.Ka7 Qd4+ 57.Ka6 Qf4 58. Qh8 Qa4+ 59.Kb7 Qb5+ 60.Ka7 Nc5 61.Qf8+ Ke4 62.Qe7+ Kd4 63. Qf6+ Kc4 64.Qf1+ Kb4 65.Qb1+ Ka5 66.Qe1+ Qb4 67.Qe7 Ka4 68. Qg7 Qa5+ 69.Kb8 Qd8+ 70.Ka7 Qa5+ 71.Kb8 Qb6+ 72.Kc8 Qc6+ 73. Kb8 Nd7+ 0-1

**V: Anthony Marquez (1942) B: Isidro Tamez**



William Madera (right) won this battle with Ted Isaac to take first place in Class C with a 4-0 result.

**(1935) Class A, Round 4**

1.e4 e6 2.d3 c5 3.g3 Nc6 4.Bg2 Nf6 5.Nd2 d5 6.Ngf3 Be7 7.0-0 0-0 8.Re1 b5 9.h3 Rb8 10.e5 Nd7 11.c3 b4 12.d4 bxc3 13.bxc3 Qa5 14.Re3 Ba6 15.Nb3 Qa4 16.Qe1 Rxb3 17.Nd2 Rbb8 18. Nf3 cxd4 19.cxd4 Nxd4 20.Nxd4 Qxd4 21.Bd2 Bb4 22.Rd1 Rfc8 23. f4 Rc2 24.Bxb4 Qxb4 25.Qxb4 Rxb4 26.Ra3 Nc5 27.f5 Rbb2 28.Bh1 Rxa2 29.Re3 h6 30.Rb1 Rab2 31.Ra1 Nb3 32.Rae1 d4 33.Rf3 Bb7 34.fxe6 fxe6 0-1

**V: Bill Madera (1575)**

**B: Ted Isaac (1545)**

Class C, Round 4 1.e4 e6 2.d4 d5 3.Nc3 Nf6 4.Bg5 Be7 5.e5 Nfd7 6.Bxe7 Qxe7 7. Nf3 a6 8.Bd3 c5 9.dxc5 Nxc5 10.0-0 Nxd3 11.cxd3 Bd7 12.Rc1 0-0 13.d4 Rc8 14.Ne2 Nc6 15.a3 Na7 16.Nd2 Bb5 17.Re1 Bxe2 18. Qxe2 Nc6 19.Nb3 b6 20.Rc2 Qb7 21.Rec1 Na7 22.Rc3 Rxc3 23.Rxc3 Rc8 24.Qc2 Rxc3 25.bxc3 Qc6 26.Nd2 g6 27.Nb1 b5 28.h3 Nc8 29. Qb3 Nb6 30.Nd2 a5 31.g3 Na4 32.Nb1 Qc4 33.Qxc4 bxc4 34.Kf1 f5 35.Ke2 Nb2 36.Nd2 a4 37.Nf3 h6 38.Ne1 Kf7 39.Kd2 Ke7 40.Kc2 Nd3 41.Nxd3 cxd3+ 42.Kxd3 Kd7 43.c4 dxc4+ 44.Kxc4 Kc6 45.Kb4 Kd5 46.Kxa4 Kxd4 47.Kb5 Kxe5 48.a4 Kd6 49.Kb6 Kd7 50.Kb7 g5 51.a5 e5 52.a6 f4 53.gxf4 gxf4 54.a7 Ke6 55.a8=Q Kf5 56.Qf8+ Kg5 57.h4+ 1-0

# DAVID WULATIN, FOUNTAIN OF CHESS WISDOM

By David Wulatin

"No way, Dave. I won't use that title."

"Why not, Ken? I think it's perfect."

"Look, we're all very happy that you won those CJA awards, but you shouldn't let them go to your head."

"Go to my head? Are you implying that I, DAVID WULATIN, WINNER OF TWO CHESS JOURNALISTS OF AMERICA AWARDS, am becoming arrogant? I just think that someone who wins TWO CHESS JOURNALISTS OF AMERICA AWARDS is qualified to write a chess advice column."

"With a 1707 rating?"

"Ken, I'm not going to argue about this all day. Either give me the column or I, DAVID WULATIN, will see if CHESS LIFE is interested in getting some real talent to replace that '65th Square' bozo."

"All right, Dave, but this better be good."

## BACK TO SCHOOL, SCHOLAR

Dear Dave:

I have just begun to play chess and am always getting burned by the "Scholar's Mate". What's the best way to get out of this cunning trap? (My last loss went 1.e4 e5 2.Bc4 c6 3.Qh5 Nf6 4.Qxf7+..)

Pat Zerr

Dear Pat: Current theory favors 3...g6, but I think that this weakens the Kingside prematurely. I prefer 3...Ke7! If then 4.Qxf7+, 4...Kd6 5.Qd5+ Kc7 Qxe5+ Bd6! At the cost of only two insignificant pawns, Black has developed his Bishop and King with a tempo to boot! White, on the other hand, has violated opening principles by moving his Queen in the opening (and not just once, either!) and grabbing pawns before his pieces are developed. Black's win now is simply a matter of technique.

## VIVA NATIONAL OPEN?

Dear Dave:

I heard that Bobby Fischer and Elvis Presley have been spotted playing speed chess at the Graceland Chess Club. Any truth to these rumors?

Hoping in Hicksville

Dear Hoping: Rumors? This sighting has been confirmed by at least seven sources, including the prestigious WEEKLY WORLD TATTLER. Word has

it that Bobby and the King will play a 12 game exhibition match at the 1989 National Open in Las Vegas, and will also team up on the stage for some red hot duets. Anyone who's seen Elvis's King's Gambit or heard Bobby croon "Suspicious Hearts" knows that this is one "can't miss" tournament. (P.S. to Fred Gruenberg: You owe me for this free promo.)

## CHESS WITH A TWIST

Dear Dave:

Recently I've become interested in chess games with wild variants. I've played "Bughouse", "Take Me", and the new three and four player games you can buy. Now I've heard about something called "South African Chess". How do you play?

Curious

Dear Curious: I'm afraid the game is not that interesting. It's always White's move.

## UPSETTING A MASTER

Dear Dave:

The top player in my chess club is a master, and he's always giving me a hard time. It seems like the harder I try to win, the easier he beats me. Can you tell me how to beat him so that I can finally get revenge?

Stuck in Class D

Dear Stuck: You are confusing victory with vengeance. As every smart player knows, what counts is not whether you win or lose, but how badly you can embarrass your opponent. Challenge the master to a match, but insist on giving him Queen odds. "But I'll lose for sure", you say. Exactly. Now the master is in real trouble. If he accepts, the club newsletter headline will probably read "MASTER NEEDS QUEEN ODDS TO BEAT LOWLY D PLAYER". If he refuses, even better: "MASTER DUCKS CLASS D PLAYER'S CHALLENGE". In either case, he'll probably be too humiliated to show his face at the club again.

Well, that's all the letters for today. If you'd like to read a letter that wasn't made up, send your questions, comments, and suggestions to DAVE WULATIN, WINNER OF TWO CHESS JOURNALISTS OF AMERICA AWARDS, C/O ILLINOIS CHESS BULLETIN. Letters will be chosen for publication based on how easy it is to make fun of them - the standard used by most newspaper columnists. See you next issue! [Editor's Note: Don't bet on it, Dave.]

# PELTS WINS ILLINOIS/MIDWEST TOURNAMENT OF CHAMPIONS III

By Helen Warren

A happy combination of talent, luck, and endurance paid off for Illinois state champion Peter Pelts in the grueling nine round Illinois/Midwest Tournament of Champions III, held October 28-30 and November 5-6, 1988, at the Hyatt Lincolnwood Hotel. By a scant half point the Chicago master bested a field comprised of Illinois' strongest players and two guests from out of state, Fred Lindsay of Michigan and Eduard Zelkind of Minnesota.

This has been a banner year for Pelts: also notched on his belt are first place honors in the Western Open (Milwaukee), the Buckeye Open (Ohio), Master Challenge X (Forest Park), and the Illinois Open and State Championship (LaSalle-Peru). With its 2404 average rating, the I/M T of C may have been Peter's toughest challenge, as he found himself rated fifth (at 2396) on the ten man wall chart, behind leader Morris Giles (2475), Eugene Martinovsky (2463), Albert Chow (2444), and Greg Defotis (2399). Pelts scored 2.5-1.5 against these players, beating Giles and Martinovsky, drawing with Chow, and losing to Defotis.

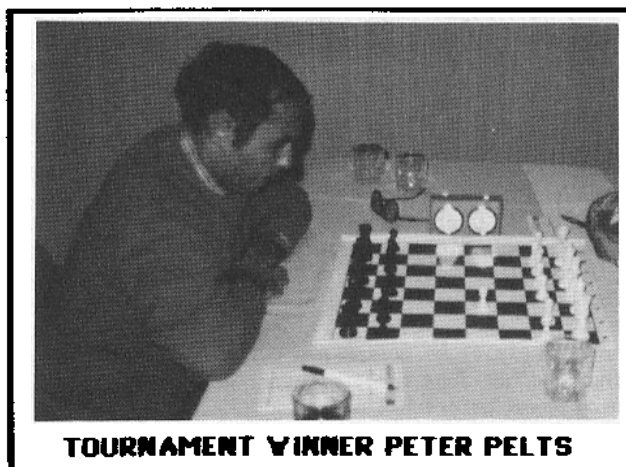
As in the first two T of Cs, six points were sufficient to take first place. Just behind Pelts was steady Fred Lindsay, who made the long drive from Ann Arbor on consecutive weekends. Greg Defotis proved once again that prolonged inactivity takes its toll, yet his 5.5-3.5 result tied him with Lindsay. Al Chow was alone in fourth with five points. After his brilliant 9-3 performance at the 1988 U.S. Open in August, Morris Giles scored only 4-5. He said that he had not looked at a chess board since the Open, and it showed. But Morris will no doubt be back.

The \$1,100 prize fund was guaranteed by the Midwest Chess Association. Our hope is to continue the T of C series, including the feature of bringing in two or three players from outside

of Illinois while still assuring the strength of the events. Costs exceed income by about \$800, however, so if anyone is interested in sponsoring future such tournaments I would be most interested in hearing from him or her. I am available to organize the events if the support is forthcoming.

My special thanks go to volunteer tournament directors Tim Just, Todd Barre, and Alan Losoff. Congratulations to Senior Master Peter Pelts, and thanks to the ten players who created exciting and beautiful games.

[Editor's Note: The first of the games on page 12 was annotated by ICB Games Editor Lawrence Chachere (who played in the T of C). I hope to include more games analyzed by him, as well as additional ones annotated by other tournament participants, in the next ICB. In the meantime, some of the victories (unannotated) of the top four finishers are presented now. (More unannotated games will also appear in the next issue.) Game scores were supplied by Helen Warren.]



**TOURNAMENT WINNER PETER PELTS**

## ILLINOIS/MIDWEST TOURNAMENT OF CHAMPIONS III

	PLAYER	ST	PRE		POST										TOT
			RTNG	RTNG	1	2	3	4	5	6	7	8	9	10	
1	PELTS, PETER	IL	2412	2435	*	L	W	D	W	W	L	W	D	W	6.0
2	DE FOTIS, GREG S	IL	2399	2417	W	*	W	D	D	D	D	L	W	D	5.5
3	LINDSAY, FRED	MI	2394	2415	L	L	*	W	W	D	L	W	W	W	5.5
4	CHOW, ALBERT C	IL	2449	2447	D	D	L	*	W	D	D	W	D	D	5.0
5	MARTINOVSKY, EUGEN	IL	2457	2445	L	D	L	L	*	W	D	W	W	D	4.5
6	GILES, MORRIS C	IL	2475	2452	L	D	D	D	L	*	D	L	W	W	4.0
7	KARKLINS, ANDREW	IL	2407	2399	W	D	W	D	D	D	*	L	L	L	4.0
8	CHACHERE, LAWRENCE	IL	2363	2366	L	W	L	L	L	W	W	*	L	W	4.0
9	FEDERL, ALAN R	IL	2360	2352	D	L	L	D	L	L	W	W	*	D	3.5
10	ZELKIND, EDUARD	MN	2350	2333	L	D	L	D	D	L	W	L	D	*	3.0

GAMES FROM THE  
ILLINOIS/MIDWEST  
TOURNAMENT OF  
CHAMPIONS III

**W: Peter Pelts (2396) B:  
Eduard Zelkind (2373)**

Annotated by Lawrence Chachere

Round 1 1.d4 Nf6 2.c4 g6  
3.Nc3 Bg7 4.e4 d6 5.Be2 0-0  
6.Nf3 Bg4 7.0-0

The major alternative is  
7.Be3 Nfd7 8.Ng1 Be2 9.Bxe2,  
exchanging the light squared  
Bishop which often becomes bad  
after White's pawns are locked  
on c4, d5, and e4.

7...Nfd7 8.Be3 e5 9.d5 Bxf3  
10.Bxf3 a5

Chachere-Mazuchowski  
(1988 Illinois Class) continued  
9...f5 10.b4 a5 11.a3 Kh8  
12.Rc1?!. Black got the  
advantage, though the game was  
later drawn. The Rook belonged  
on b1.

11.Rb1! Na6 12.a3 f5 13.b4 axb  
14.axb Nf6?

Black should consider  
Bf6, with the idea of Bg5,  
exchanging his bad Bishop.  
Furthermore, moving the Knight  
lessens Black's control over  
c5, making it easier for White  
to achieve his thematic Pawn  
break. After Nf6, the game is  
clearly in White's favor.

15.Be2 f4 16.Bd2 h5 17.Be1 Qe8  
18.f3 g5 19.c5 Nb8?!

This move seems un-  
necessary; Black should not be  
spending his time on the  
Queenside. He might consider  
either Rf7 followed by Bf8,  
Rg7, and g4, or Qg6 threatening  
g4.

20.Nb5 Qe7 21.Qc2 Ne8 22.c6!

This is much stronger  
than exchanging on d6.

22...bxc 23.dxc Kh7 24.Bc4 Bf6

If 24...Nxc6??, 25.Bd5

25.Bd5 Ng7 26.Qc4 g4 27.Bf2 g3

This pawn sacrifice does  
not work; Black's Kingside  
attack is too far behind  
White's Queenside onslaught.

28.hxg fxg 29.Bxg3 h4 30.Bf2  
Nh5 31.Ra1 Rxa1

31...Na6 may give White  
more problems.

32.Rxa1 Qg7 33.Ra7 Nf4 34.Rc7  
Be7 35.Qf1 Na6 36.Rd7 Nxb4  
37.Bxh4 Nbxh4 38.exd5 Rf7  
39.Rxe7 Rxe7 40.Bxe7 Qxe7 41.c7  
Qd7 42.Qc4 1-0

**W: Alan Federl (2360) B:  
Greg DeFotis (2399) Round 2**

1.c4 f5 2.Nc3 Nf6 3.g3 g6  
4.Bg2 Bg7 5.d4 d6 6.Nh3 c6  
7.Bg5 Qb6 8.0-0 Qxb2 9.Qd3 Ne4  
10.Nxe4 fxe4 11.Qxe4 e5 12.dxe  
Qxe5 13.Qxe5+ dxe5 14.Rad1 0-0  
15.f4 Bg4 16.fxe Re8 17.Rd4 Bf5  
18.Bf6 Na6 19.g4 Be6 20.Ng5 Nc5  
21.Bxg7 Kxg7 22.Rb1 Re7 23.h3  
Rae8 24.Be4 Bc8 25.Nf3 Nd7  
26.Bd3 Nxe5 27.Nxe5 Rxe5 28.Rd6  
Ra5 29.Rb2 Kh6 30.Kg2 Rae5  
31.Rf6 Kg5 32.Rf7 R5e7 33.Rf3  
Kh4 34.Kf2 c5 35.Rb5 b6 36.Rb1  
Bb7 37.Rf6 Kg5 38.Rd6 Kf4  
39.Rf6+ Kg5 40.Rd6 Rf8+ 41.Ke1  
Kf4 42.Kd2 Ke5 43.Rd5+ Bxd5  
44.cxd5 Kxd5 45.h4 Rf4 46.Rg1  
c4 0-1

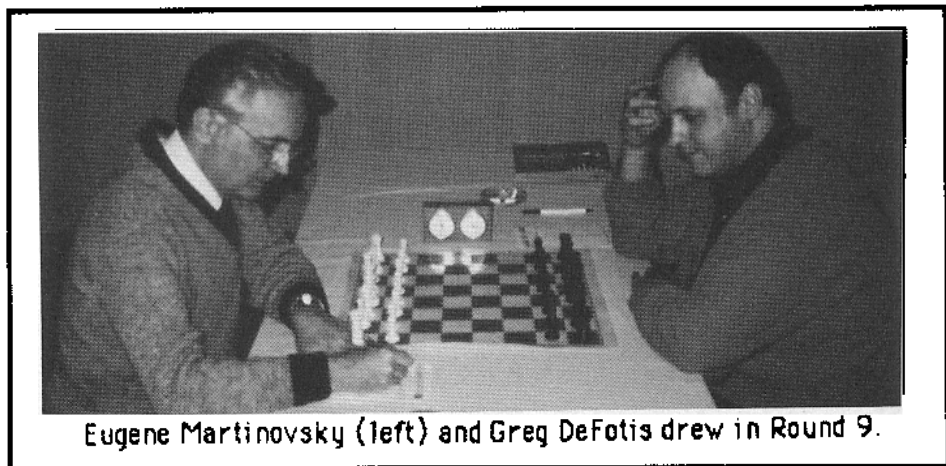
**W: Fred Lindsay (2373) B:**

**Peter Pelts (2396) Round 2**

1.c4 g6 2.e4 c5 3.Nf3 Nc6 4.d4  
Bg7 5.dxc Qa5+ 6.Nfd2 Nf6 7.Nc3  
Qxc5 8.Nb3 Qe5 9.f4 Qb8 10.Be2  
0-0 11.0-0 a6 12.Be3 d6 13.Qe1  
Bg4 14.Bd3 Nb4 15.Bb1 Be6  
16.Na4 Ng4 17.Bb6 Nc6 18.Qe2  
Nf6 19.Bd3 Nb4 20.f5 Bd7 21.Nc3  
a5 22.Rae1 a4 23.Nd4 Ra6 24.c5  
Nxd3 25.Qxd3 dxc 26.Bxc5 Qe5  
27.Ba3 Re8 28.Nf3 Qc7 29.fxg  
hxg 30.e5 Bf5 31.Qb5 Bd7 32.Qb4  
Ng4 33.Nd5 Qc2 34.Nxe7+ Kh8  
35.h3 Nxe5 36.Nxe5 Bxe5 37.Qh4+  
Kg7 38.Rxe5 Qd2 39.Qf6+ Rxf6  
40.Rxf6 Kxf6 0-1

**W: Albert Chow (2444) B:  
Fred Lindsay (2373) Round 3**

1.d4 e6 2.e4 d5 3.Nd2 Nf6 4.e5  
Nfd7 5.f4 c5 6.c3 Nc6 7.Ndf3  
Qb6 8. g3 cxd 9.cxd Bb4+ 10.Kf2  
f6 11.Kg2 g5 12.exf g4 13.f7+  
Kf8 14.Ne5 Qxd4 15.Qxd4 Nxd4  
16.Nxg4 b6 17.b3 Nc2 18.Bb2 d4  
19.Rc1 Bb7+ 20.Kf2 Bxh1 21.Rxc2  
h5 22.Bxd4 hxg4 23.Bxh8 Bc5+  
24.Rxc5 Nxc5 25.Bd4 Kxf7 26.Be2  
Rg8 27.Bxc5 bxc5 28.h3 gxh  
29.Nxh3 Bd5 30.g4 Rh8 31.Ng5+  
Kf6 32.Nf3 Rh1 33.Ne5 Ra1  
34.Nd7+ Ke7 35.Nxc5 Rxa2 36.Ke3  
Rc2 37.b4 a5 38.Bd3 Rc3 39.Kd4  
axb 40.Na6 Bb3 41.Nc5 Ra3 42.f5  
b3 43.Kc3 Kd6 44.Ne4+ Bxe4  
45.Bxe4 Ra4 46.Bf3 e5 47.Kxb3  
Rf4 48.Bd1 Rd4 49.Kc2 e4 50.Be2  
Ke5 51.Kc3 Rd6 52.Bc4 Kf4  
53.Be2 Ke5 54.Kc2 e3 55.Kc3 Kf4  
56.Kc4 Rd2 57.f6 Rxe2 58.f7  
Rc2+ 0-1



Eugene Martinovsky (left) and Greg DeFotis drew in Round 9.

## GAMES FROM THE ILLINOIS/MIDWEST TOURNAMENT OF CHAMPIONS III



**Eduard Zelkind (left) beat Andrew Karklins in the final round.**

**W: Fred Lindsay (2373) B: Greg DeFotis (2399)** Round 4  
 1.Nc3 d5 2.e4 d4 3.Nce2 c5 4.f4 Nc6 5.Nf3 Nf6 6.Ng3 Qc7 7.d3 e5 8.fxg Ng4 9.Be2 g6 10.c3 Bg7 11.Nxd4 cxd4 12.Bxg4 Bxg4 13.Qxg4 Nxe5 14.Qe2 dxc 15.0-0 Rd8 16.bxc Rxd3 17.Bf4 Rd7 18.Qb5 0-0 19.Rab1 a6 20.Qb3 Qc6 21.Rbd1 Nd3 22.Be3 Qxc3 23.Qb1 Rfd8 24.Ne2 Qc4 25.Bb6 Re8 26.Rf3 Ne5 27.Rxd7 Nxd7 28.Qb3 Rxe4 29.Qxc4 Rxc4 30.Rb3 Rc2 31.Kf1 Rxa2 32.Bf2 Ra1+ 33.Be1 Nc5 34.Re3 Bh6 35.Re8+ Kg7 36.Rd8 Ne4 37.Ng3 and Flag 0-1

**W: Eugene Martinovsky (2463) B: Fred Lindsay (2373)** Round 5 1.e4 e6 2.d3 d5 3.Nd2 c5 4.Ngf3 Nc6 5.g3 Bd6 6.Bg2 Nge7 7.0-0 0-0 8.Re1 Qc7 9.c3 Bd7 10.Qe2 f6 11.b3 d4 12.cxd cxd 13.Bh3 b5 14.a4 a6 15.e5 Bxe5 16.Ba3 b4 17.Bb2 Nf5 18.Rac1 Qa7 19.Nxe5 Nxe5 20.f4 Nf7 21.Bxf5 exf5 22.Qf2 Rfe8 23.Bxd4 Qb7 24.Nc4 Be6 25.Re2 Qc6 26.Bb2 Rad8 27.Nb6 Qd6 28.Rce1 Kf8 29.Qe3 Nh6 30.Nc4 Qc6 31.h3 Bf7 32.Qd2 a5 33.Rxe8+ Rxe8 34.Rxe8+ Bxe8 35.Qe3 Qd5 36.Qd4 Qf3 37.Qd6+ Kf7 38.Nxa5 Qd1+ 39.Kf2 Qd2+ 40.Kf3 Qxb2 41.Qxb4 Qh2 42.Qe1 Qxh3 43.d4 g5 44.fxg fxg 45.d5 Bd7 46.Nc4 Ng4 47.a5 Qh2 48.Ne5+ Nxe5 49.Qxe5 Qd2 50.Qd6 g4+ 0-1

**W: Peter Pelts (2396) B: Greg DeFotis (2399)** Round 6  
 1.d4 f5 2.Bg5 d5 3.c4 Nf6

4.Bxf6 exf6 5.cxd Qxd5 6.Nc3 Qa5 7.e3 Be6 8.Nh3 Nd7 9.Bd3 g6 10.a3 c6 11.Nf4 Bf7 12.b4 Qd8 13.0-0 Nb6 14.b5 c5 15.Qf3 c4 16.Bc2 Bd6 17.a4 Bxf4 18.Qxf4 0-0 19.Rfc1 Rc8 20.Bd1 a5 21.bxa (e.p.) bxa 22.h4 Nd5 23.Qh2 Nb4 24.a5 Nd3 25.Rab1 f4 26.Bf3 Re8 27.Rb7 fxe 28.fxe Rxe3 29.d5 Ne5 30.d6 Qxd6 31.Ne4 Nxf3+ 32.gxf Qd4 33.Qd6 Rxe4+ 34.Qxd4 Rxd4 35.Rb6 c3 0-1

**W: Lawrence Chachere (2368) B: Albert Chow (2444)** Round 6 1.d4 Nf6 2.c4 g6 3.Nc3 d5 4.cxd Nxd5 5.e4 Nxc3 6.bxc3 Bg7 7.Nf3 c5 8.Be3 Qa5 9.Qd2 Nc6 10.Rc1 cxd 11.cxd Qxd2+ 12.Kxd2 0-0 13.d5 Rd8 14.Ke1 Na5 15.Nd2 Bd7 16.Bd3 e6 17.Ke2 exd 18.exd Ba4 19.Nc3 Rxd5 20.Be4 Rb5 21.Nxa5 Rxa5 22.Bxb7 Rb8 23.Be4 Bb5 24.Kf3 Rxa2 25.Bd5 Be2+ 26.Kg3 Ra5 27.Be4 Ra4 28.f3 Be5+ 29.Kh3 Rxe4 30.Bxa7 Rb3 31.Rc8+ Kg7 32.Rhc1 Ra4 33.Bc5 g5 34.Bf8+ Kg6 35.R8c6+ f6 36.g3 Bxf3 37.Re6 Rh4+ 38.gxh g4+ 0-1

**W: Eugene Martinovsky (2463) B: Peter Pelts (2396)** Round 7 1.d4 Nf6 2.Nf3 c5 3.e3 d5 4.c4 cxd 5.exd g6 6.Nc3 Bg7 7.cxd Nxd5 8.Bb5+ Bd7 9.Qb3 Nxc3 10.bxc Bxb5 11.Qxb5+ Qd7 12.a4 0-0 13.0-0 Rc8 14.Bd2 Nc6 15.Rab1 b6 16.Rfe1 Qd6 17.Qg5 Bf6 18.Qh6 e5 19.Ng5 Bxg5 20.Bxg5 exd 21.Rbd1 Re8 22.Qh3 Re5 23.Re5 Qe5 24.f4 Qc5 25.cxd Nxd4

26.Kh1 Qc2 27.Rg1 Qxa4 28.Bf6 Nf5 29.Qf3 Re8 30.Be5 Qd7 31.h3 Qe6 32.Re1 Qd7 33.Rd1 Qe7 34.g4 Nh4 35.Qc6 Rd8 36.Rc1 Rf8 37.Bf6 Qe3 38.Rc3 Qe1+ 39.Kh2 Qf2+ 40.Kh1 Qf1+ 41.Kh2 Qxf4+ 42.Kg1 g5 43.Be7 Rb8 44.Qd5 h6 45.Bd6 Rd8 46.Be5 Qg3+ 47.Bxg3 Rxd5 48.Rc7 a5 49.Rb7 b5 50.Bc7 a4 51.Ba5 Ng6 52.Kf2 Nf4 53.Bc3 Nxb3+ 54.Ke3 f5 55.gxf Rxf5 56.Ke4 Rc5 57.Bd4 Rc4 58.Rxb5 Nf4 59.Ke5 Kf7 60.Rb6 h5 61.Rb7+ Kg6 62.Rb6+ Kh7 63.Be3 Rc7 64.Ra6 Be7+ 65.Kd4 Rf7 66.Rxa4 Kg6 67.Ke4 h4 68.Ba7 Ng2 69.Bb8 Kh5 70.Ke5 Nf4 71.Ra1 h3 72.Rg1 Ng2 73.Ke4 Kg4 74.Be5 Kh4 75.Ra1 Nf4 76.Ra6 h2 77.Rh6+ Kg3 78.Rh5 g4 79.Rh8 Re7 80.Rh6 Rxe5 81.Kxe5 Nh3 0-1

**W: Fred Lindsay (2373) B: Eduard Zelkind (2373)** Round 8  
 1.Nf3 Nf6 2.d4 d6 3.c4 Nbd7 4.Nc3 c6 5.e4 e5 6.Be2 Be7 7.0-0 0-0 8.Rb1 Re8 9.Re1 Bf8 10.Bf1 exd 11.Nxd4 Nc5 12.f3 a5 13.Be3 Qc7 14.b3 Bd7 15.Qd2 Rad8 16.a3 Bc8 17.Qf2 Nd7 18.b4 axb 19.axb Ne6 20.Nf5 Kh8 21.Red1 g6 22.Nh6 Bxh6 23.Bxh6 Ne5 24.Be3 Qe7 25.Bb6 Rd7 26.Qg3 g5 27.Rb2 f6 28.Be3 Rg8 29.Kh1 Rg6 30.R2d2 Rg8 31.Na4 R7d8 32.Be2 Nf7 33.Nb6 Ng7 34.Bd4 Nh5 35.Qe1 Be6 36.g3 Ng7 37.Qf2 Ne8 38.Bc3 Ne5 39.Qd4 Flag 1-0

**W: Fred Lindsay (2373) B: Lawrence Chachere (2368)** Round 9  
 1.c4 e5 2.Nf3 d6 3.d4 Nd7 4.e4 Ngf6 5.Nc3 Be7 6.Be2 0-0 7.0-0 c6 8.Rb1 Re8 9.Re1 Qc7 10.Bf1 Bf8 11.d5 a6 12.Bd2 g6 13.b4 cxd 14.cxd b5 15.a4 bxa 16.Qxa4 Nb6 17.Qc6 Qb8 18.Be3 Nbd7 19.Qa4 Ng4 20.Bd2 Qa7 21.h3 Qxf2+ 22.Kh1 Qg3 23.hxg Qxg4 24.Qc6 Rb8 25.Be3 Bb7 26.Nh2 Bxc6 27.Nxg4 Bb7 28.Bd3 Be7 29.Rf1 f6 30.b5 a5 31.b6 Rec8 32.Na4 h5 33.Nf2 Bd8 34.Bb5 Nf8 35.Rfc1 Kf7 36.Bc6 Ke7 37.Rb5 Nd7 38.Rxa5 Bxc6 39.Rxc6 Nxb6 40.Nxb6 Rxc6 41.dxc Bxb6 42.Rb5 Bc7 43.Bxb8 Bxb8 44.Bb6 Ke6 45.c7 Bxc7 46.Bxc7 d5 47.exd+ Kxd5 48.Bd8 f5 49.Kg1 Ke6 50.Nd3 f4 51.Kf2 Kf5 52.Bc7 g5 53.Nxe5 Ke4 54.Ng6 h4 55.Nxh4 1-0



# FROM THE PRESIDENT-ELECT

by Helen Warren, ICA President-Elect

"As I was saying..." might be an appropriate title for this column. It's been four years since we last talked together in the pages of the ICB. During that time I had the privilege of three years of service on the USCF Policy Board, a genuine education, indeed. Thomas Wolf's edict "You Can't Go Home Again" might be right after all; I don't really consider that I left...

Much has happened in the USCF and in the ICA in the past several years, some of it worrisome. Both organizations find themselves in financial trouble with declining memberships. So, if imitation is the sincerest form of flattery, ICA pays homage to our parent federation. At the end of my term as ICA president membership stood at 876; its present paid membership is about 500, representing a loss of 43%. Our financial status has deteriorated markedly, not only in the startling fund balance figures, but in our outstanding obligation to our members. We have committed the fundamental error of living on SASP funds from the USCF, the State Association Support Program, intended for programs over and above the essentials. Instead, we are paying for printing and editorial costs and underwriting tournament losses. Our once-proud program of scholastic chess clinics, an awards banquet and picnic, are gone.

The chess politicians among us experienced the full impact of declining USCF membership in Illinois when we were informed that Illinois had lost a delegate in the USCF schema of governance! Horrors!

The ICA will now begin a turn-around. It starts on January 1, 1989 and will continue to the last day of this administration on December 31, 1990. That's a pledge I make to every ICA member. Our program is simple and direct: the restoration of financial stability, a return to membership viability, the re-establishment of association sponsored tournaments and activities, including an awards banquet and one scholastic clinic in the fall of 1989 and two in 1990, an ICA picnic with a state speed championship, and hopefully, the beginning of an ICA program for scholastic chess. We will aim to expand our Patron-Gold Card-Century Club classifications. If there is a general malaise in chess in our state (and country), then this is a state of mind that needs changing.

My thanks to the outgoing officers for their service. I'm gratified that we retain considerable experience among the "new" officers: Tim Just will serve as secretary and Guy Gruenberg continues as treasurer. My right-hand man will be Fred Gruenberg, metro-VP; he will handle the Chicago-area tournament calendar and implement specific projects. Special thanks to Bill Naff of Peoria, outgoing downstate VP; Bill served with energy and distinction. We welcome Garrett Scott of Normal as his successor. Garrett is an experienced organizer especially interested in scholastic chess.

With your help this team will make chess come alive in Illinois.

## CHICAGO U.S. OPEN 1989

The coming of the U.S. Open to Chicago in August 1989 is a singular opportunity for the ICA to implement its program of renewal outlined above. It could be the source of an awakening of chess interest for our local clubs as well, an opportunity to introduce chess to hundreds of newcomers. The extent of this success is dependent on two interacting factors: the quality of the organization and the degree of involvement of the Illinois chess community. Let me give you an updated report.

In the last two months we have totally revamped and reorganized our agreement with the Hyatt Regency O'Hare, our host hotel, quadrupling our original function room space for the book concession, workshops, meetings, and 50th Anniversary banquet. We've inspected HALL E of the Expo Center and will soon begin working on tournament set-up. The Tournament Direction Staff is totally in place. NTD Walter Brown, Chicago's finest!, will be the chief TD. His support team include familiar names: Tim Just and Todd Barre (co-assistant chief TDs), Erv Sedlock, Dennis Grant, Al Losoff, Bill Wilkinson--all of Illinois, Dan Burg (MI), and Dennis Wasson IA). We have several others "in reserve".

I have inaugurated a major fund raising effort with letters to ICA officers and the board of directors. The month of January will see a continuation of these contacts with letters to our Patron-Gold Card-Century members, USCF Life Members, our local chess clubs, and individuals. Beginning in our next issue, we will highlight the names of contributors in a special boxed section of the ICB. In addition to mail appeals, Guy Gruenberg has agreed to serve as telephone appeals coordinator. As we mentioned in our last issue, contributions to the U.S. Open Fund are to be used ONLY for specific items: the 50th Anniversary Celebration/Awards Banquet, upping of the prize fund from \$30,000 to \$32,000+, and importing chess dignitaries like George Koltanowki and Arpad Elo. Send your contribution to Todd at 16W520 59th St #16C, Clarendon Hills, IL 60514.

The month of December will see the finalization of the tournament budget and the contacting of GMs to assure their participation. In January we will begin planning the players' program. By year's end the USCF may even let us in on their plans for celebrating its own 50th Anniversary celebration! Our publicity plans need to be in place by December 31. By the new year we will have a schedule of our day-time activities, tournaments and workshops, and an attractive entertainment calendar for our out-of-town players and their families.

BE A PART OF THE TEAM--WITH YOUR FINANCIAL CONTRIBUTION, YOUR TIME, AS A PLAYER!

# 1988 ILLINOIS TOUR

by Bill Smythe

The clear winner in the 1988 ICA Tour is Albert Chow with 56 tour points. His final-round draw with Dmitry Gurevich in the Illinois Class garnered him his last 8 points, keeping him ahead of Peter Pelts who also added 8 to his total to finish with 40. Third in the Tour is last year's winner, Cyrus Bondari, who by missing this event passed up a chance to overtake one or both of the leaders.

In the Expert class and below, it seems some players are not reading each issue of the ICB where it loudly proclaims, "a player must play in at least three Tour events by year's end in order to win Tour prizes." As a result, several would-be prize winners have graciously donated their winnings to those next in line. Final Tour winners are as follows:

**Master:** 1st: Albert Chow  
2nd: Peter Pelts  
3rd: Cyrus Bondari

**Expert:** 1st: Lawrence Cohen  
2nd: Thomas Bolitho

**class A:** 1st: Dan Bargerstock  
2nd: Bernard Pukel

**class B:** 1st: Barry Bouton  
2nd: Robert Sphar

**class C:** 1st: Rudy Padilla  
2nd: Steven Lebo

**NOTE:** Although Thomas Bolitho appears to have finished second in class A, that prize goes to Bernard Pukel since Bolitho is also the second-place finisher in the Expert class. Similarly, Rudy Padilla's first-place finish in class C supersedes his D win. Except for Padilla, no D player has satisfied the three-event minimum this year, so the D players have made an unintentional contribution to the ICA treasury. Thanks, guys!

The 1988 Tour consisted of the following events:

Tim Just Winter Open/Reserve  
Peoria Winter Tornado  
Greater Peoria Open/Reserve  
Peoria Spring Tornado  
Tuley Park Action Mini-Tour  
Master Challenge X  
Soy City Tornado  
Illinois State Championship  
Illinois Class

The complete list follows. For players with fewer than three events, the number of events is given in parentheses.

Master Tour Points:		SEBLOCK Ervin	3 (1)
CHOW Albert	56	STERN Howard	3 (1)
PELTS Peter	40	TONEY Michael	3 (1)
BONDARI Cyrus	29.5	VAN BUSKIRK Douglas	3 (2)
CHACHERE Lawrence	24	WALLACH Cliff	3 (1)
WALLACH Ken	23	WHEELER Stephan	3
SCHILLER Eric	20 (2)	WINSAUER Don	3 (1)
COOKE Paul	16 (1)	WULATIN David	3 (2)
GUREVICH Dmitry	16 (1)	AUGSBURGER Leonard	2.5(1)
PUKEL Bernard	12	BAIN Robert	2.5(2)
GENSLER Kevin	11.5	BRAILS福德 James	2.5(1)
BOLITHO Thomas	11	BUMGARDNER Gerald	2.5(2)
COHEN Lawrence	11	CALOPEK Frank	2.5
SZPISJAK Steven	10.5(2)	ENOCHS James	2.5(1)
MAZUCHOWSKI Tom	10	FAHRENHOLZ Steven	2.5(1)
SCHROEDER Tony	10 (2)	FRAATS Daniel	2.5(2)
SATTERLEE Ray Doyle	9.5	FRENCH J Kevin	2.5(1)
CRAWFORD Brad	8.5	GROELLER William	2.5(1)
TORREGROSSA Ron	8.5(2)	HARRISON William	2.5(1)
CUSI Ronald	8 (1)	HERNANDEZ Hector	2.5(2)
ECKERT Doug	8 (1)	HOLZMUELLER Keith	2.5(1)
GAGNON Mark	8 (1)	JOHNSON Paul	2.5(1)
HALL John	8 (2)	JORDAN Roland	2.5(2)
HEURUNG David	8 (1)	KAMEN Dan	2.5(2)
KARKLINS Andrew	8 (2)	PARADAN Liderman	2.5(1)
KARKLINS Erik	8 (1)	REYES Virgilio	2.5(1)
MOULIN Pierre	8 (1)	RIZZITANO James	2.5(1)
SCHOLL Paul	8 (2)	ROBINSON Harrison	2.5
SURAK Steve	8 (1)	RYNES Evan	2.5(2)
UMEZINWA George	8 (1)	SANDRIN Angelo	2.5(1)
WATSON Alan	8 (1)	STAFFORD Jerry	2.5
ZINGHEIM Scott	8 (1)	SZUSTOWSKI Paul	2.5(1)
BERNAL Luis	7.5	TUTUSH Dusan	2.5(1)
BUTKO Nathaniel	7 (2)	WALHOUT Peter	2.5(1)
VLASTNIK Richard	7	WHALEN Sean	2.5(1)
WOLF William	7 (2)	ACOSTA Mariano	2 (2)
BUTTNY William	6.5	ANDERSON Phil	2
ZABELL Sandy	6.5(2)	BALE Leslie	2 (1)
BEASLEY Leonard	6	BASENSPIELER Larry	2 (1)
MARSHALL James	6 (2)	BLACKMON Eric	2 (1)
BARGERSTOCK Daniel	5.5	BLAIR Charles	2 (1)
GRAVES William	5.5	BOSSAERS Phil	2 (2)
KREISMAN Bruce	5.5(2)	BRUENNER Don	2 (1)
MARQUEZ Anthony	5.5	COX William	2 (2)
NAFF William	5.5(2)	DAMOCLES Job	2 (1)
FRANEK Martin	5 (2)	DOND Gail	2 (2)
GOLLA Roman	5 (2)	EATON Jonathan	2 (2)
BURGESS Fred	4.5	ENGELEN Mark	2 (1)
SAX Robert	4.5(2)	FATHAUER Terry	2
SMYTHE Bill	4.5	GADOURY Donald	2 (1)
STINSON Marcus	4.5	GILES Morris	2 (1)
BOLDEN Darren	4	GODFREY Joaquin	2 (1)
BOURGERIE Dennis	4 (1)	GUERRERO Ernesto	2 (1)
BOUTON Barry	4	HAAN David	2 (1)
COLIAS Bill	4 (1)	HART Roderick	2 (1)
COMPX B P	4 (1)	HIERONYMUS Kent	2 (1)
CREWSE Lynn	4 (1)	JONAITIS Algis	2 (1)
CROUSE Matthew	4 (1)	KAPTONAK Robert	2 (2)
DEJNEK Mark	4 (1)	KHALIL Edward	2
ELLIS Jim	4 (1)	KING Robert	2 (2)
ESSES Keith	4 (1)	KOSUT Kenneth	2 (1)
FISHER Barry	4 (1)	MC GOWAN Andy	2 (1)
KNUTSON Greg	4 (1)	MOOSE Floyd	2 (1)
KRAS Timothy	4 (1)	OELRICH Tom	2 (1)
KROM John	4 (1)	RHODES Murrel	2 (1)
MARTINOVSKY Eugene	4 (1)	STEELE Robert	2 (1)
RONNEBERG Erik	4 (1)	SWANSON Victor	2
SCHNUCKER Vivian	4 (2)	ULTCH Douglas	2 (1)
UNDERWOOD Wesley	4 (1)	WALHOUT Donald	2 (1)
ALLISON Roger	3.5	WARFIELD Thomas	2 (2)
ILDSVAY Paul	3.5(2)	WHEELER Jerry	2 (1)
LUNDQUIST Douglas	3.5(2)	ZEYNIK Larry	2 (2)
PANNER Glenn	3.5	BORRI Chris	1.5(1)
SPHAR Robert	3.5	BROWN Tony	1.5(2)
BRDCK Bill	3 (1)	JOCHIN Gary	1.5(1)
DZURNY Anthony	3	MC ENTEE Tim	1.5(1)
FREENAN David	3 (1)	MC NAMARA James	1.5(2)
GARDNER Keith	3	OWIECKI Roger	1.5(2)
HADDAD-MASHALI Ali	3 (1)	PADILLA Rudy	1.5
HAMEDANI Bakhshali	3 (1)	POWELL Frank	1.5(1)
LANE Kevin	3 (1)	READ Rhys	1.5(1)
LEBO Steven	3	ROGAN Marvin	1.5(1)
MANCILLAS Raul	3 (1)	SIMONETTI Richard	1.5(2)



KHALIL Edward	2
KING Robert	2 (2)
KOGUT Kenneth	2 (1)
MAC PHERSON James	2 (1)
MARSHALL James	2 (2)
MC NAMARA James	2 (2)
NICHALIK Philip	2 (1)
MOORE Rod	2 (2)
MURPHY Greg	2 (1)
PALS Randall	2 (1)
RHODES Murrel	2 (1)
STEELE Robert	2 (1)
STINSON Marcus	2
STOTLER Richard	2 (2)
SWANSON Victor	2
ULTCH Douglas	2 (1)
WALHOUT Donald	2 (1)
WARFIELD Thomas	2 (2)
WHITE Joe	2 (1)
ZEVNIK Larry	2 (2)
BORRI Chris	1.5(1)
BROWN Tony	1.5(2)
CHRISTIANSEN William	1.5(1)
JOCHIM Gary	1.5(1)
MAKAUSKAS Tony	1.5(1)
OWIECKI Roger	1.5(2)
PADILLA Rudy	1.5
POWELL Frank	1.5(1)
SCOTT Winfield	1.5(1)
SIMONETTI Richard	1.5(2)
SOLCICH Kevin	1.5(2)
SUAREZ Ronald	1.5(1)
ZIEGLER Kevin	1.5(1)
ANDERSON Darrin	1 (1)
BARTOCCI Mario	1 (1)
BUTLER Herbert	1 (2)
CARSON David	1
DIAZ Manuel	1 (1)
DODD Randy	1 (1)
EIHUSEN Laurel	1 (2)
FENNER Charles	1
HOESLEY John	1 (1)
JOHNSON Henderson	1 (1)
JOHNSON Marvin	1 (1)
JULIUS Larry	1 (1)
MADSEN Dave	1 (2)
MC ILHANY	1 (1)
MEYER William	1 (2)
MILLER Earl	1 (2)
MONTI Steven	1 (1)
MOODAY Cleo	1 (1)
REIDELBACH John	1 (1)
SCOTT George	1 (1)
SEFCHECK Mark	1 (1)
SONG Patrick	1 (1)
TIARKS Richard	1 (1)
WALLACE Mark	1 (1)
WEAVER Ron	1 (1)
ZACATE Michael	1 (1)
BERKHEIMER Ed	0.5
EWALT Eric	0.5(1)
FRANKLIN Charles	0.5(1)
RACE Thomas	0.5(1)

Class B Tour Points:

BOUTON Barry	43
SMITH Colin	16 (1)
SPHAR Robert	14.5
BAYER Duane	13.5
CHLOUPEK Frank	13.5
GARDNER Keith	13
GRUENBERG Fred	12
STOTLER Richard	10 (2)
PADILLA Rudy	9.5
BURGESS Fred	9
INGRAM Randy	8.5
STAFFORD Jerry	8.5
BURSE Rodney	8 (1)
CRUM Randy	8 (1)
DENNIS Mike	8 (1)
FLORES Joshua	8 (1)
JONES Byron	8 (1)
KOSIBA Lawrence	8 (1)

SCHLENKER Charles	8 (1)
FATHAUER Terry	7.5
LEBO Steven	7
WOLF William	7 (2)
ROBINSON Harrison	6
SWANSON Victor	6
BROWN Tony	5.5(2)
RYNES Evan	5.5(2)
FLYNN Michael	5 (2)
KAPTONAK Robert	5 (2)
MARSHALL Ken	5 (2)
MEYER William	5 (2)
MOORE Rod	5 (2)
BERKHEIMER Ed	4.5
CRAWFORD Brad	4.5
KHALIL Edward	4.5
SOLCICH Kevin	4.5(2)
WHEELER Stephan	4.5
MULATIN David	4.5(2)
ZEVNIK Larry	4.5(2)
BARGERSTOCK Daniel	4
FENNER Charles	4
GRANT Dennis	4 (2)
LYONS Mack III	4 (1)
MADSEN Dave	4 (2)
ROCKWELL David	4 (1)
SCHMUCKER Vivian	4 (2)
CARSON David	3.5
EATON Jonathan	3.5(2)
FRAATS Daniel	3.5(2)
OWIECKI Roger	3.5(2)
BENNETT Bradley	3 (1)
DZURNY Anthony	3
HAMEDANI Bakhshali	3 (1)
RIFFLE James	3 (1)
SHANE David	3 (1)
TUDOR Judd	3 (1)
WASHINGTON Kenneth	3 (1)
WINSAUER Don	3 (1)
AUGSBURGER Leonard	2.5(1)
CALIENDO Anthony	2.5(1)
CLARK Lawrence	2.5(1)
JOHNSON Lee	2.5(1)
JOHNSON Paul	2.5(1)
KLEIN Robert	2.5(1)
LESTER Michael	2.5(2)
MILLER Earl	2.5(2)
PALMER Kenneth	2.5(2)
PANPEL William	2.5(1)
PARADAN Liderman	2.5(1)
PEACOCK John	2.5(1)
PESTIC Radovan	2.5(1)
WELLS J Edward	2.5(1)
ALLISON Roger	2
ANDERSON William	2 (1)
BLACKMON Eric	2 (1)
BURIAN David	2 (1)
BURKE Marcellus	2 (1)
CAIN Dennis	2 (1)
DIXON Raymond	2 (1)
DOWD Gail	2 (2)
ENGELEN Mark	2 (1)
GADOURY Donald	2 (1)
GRUENBERG Guy	2 (1)
HENDERSON Dale	2 (1)
HIERONYMUS Kent	2 (1)
KALEEL David	2 (1)
KEMPNER Robert	2 (1)
KING Robert	2 (2)
KNUTSON Gerald	2 (1)
KOGUT Kenneth	2 (1)
KURFMAN David	2 (1)
LOPEZ Eugene	2 (1)
MAC PHERSON James	2 (1)
NICHALIK Philip	2 (1)
MOORE Allen D	2 (1)
MUNOZ Alberto	2 (1)
OPPER Stan	2 (1)
OPPER Steve	2 (1)
PANDIS John	2 (1)
RYLANDER Lyle	2 (1)
WALHOUT Donald	2 (1)
WARFIELD Thomas	2 (2)

WARREN Helen	2 (1)
ZELINSKY Daryl	2 (1)
CHRISTIANSEN William	1.5(1)
DONLEY Ryan	1.5(1)
FERRONI George	1.5(1)
GOENEGER Louis	1.5(1)
JOCHIM Gary	1.5(1)
KIRKPATRICK Donald	1.5(1)
KITTSLEY Scott	1.5(1)
MAKAUSKAS Tony	1.5(1)
MUNOZ Chris	1.5(2)
POWELL Frank	1.5(1)
RASMUSSEN Mark	1.5(1)
SCOTT Winfield	1.5(1)
SIMONETTI Richard	1.5(2)
SUAREZ Ronald	1.5(1)
WILLIAMS Robert	1.5(1)
ANDERSON Darrin	1 (1)
BARTOCCI Mario	1 (1)
BRODDE Jeff	1 (1)
BUTLER Herbert	1 (2)
DIAZ Manuel	1 (1)
DODD Randy	1 (1)
EIHUSEN Laurel	1 (2)
HAGER Greg	1 (1)
HOESLEY John	1 (1)
JOHNSON Eric	1 (1)
JOHNSON Henderson	1 (1)
JULIUS Larry	1 (1)
LULVES Joseph	1 (1)
MC ILHANY	1 (1)
MONTI Steven	1 (1)
MOODAY Cleo	1 (1)
REIDELBACH John	1 (1)
SCOTT George	1 (1)
SONG Patrick	1 (1)
TIARKS Richard	1 (1)
WALLACE Mark	1 (1)
WEAVER Ron	1 (1)
ZACATE Michael	1 (1)
EWALT Eric	0.5(1)
FRANKLIN Charles	0.5(1)
RACE Thomas	0.5(1)

Class C Tour Points:

MADERA Bill	32 (1)
SMITH Colin	16 (1)
PADILLA Rudy	11.5
BANNON Joseph	8 (1)
ISAAC Theodore	8 (2)
SHAFFER Thomas	8 (1)
LEBO Steven	7
KHALIL Edward	6
BAYER Duane	5.5
FENNER Charles	5.5
SIMONETTI Richard	5.5(2)
BERKHEIMER Ed	5
MOORE Rod	5 (2)
INGRAM Randy	4.5
PALMER Kenneth	4.5(2)
ZEVNIK Larry	4.5(2)
FARRAL Keith	4 (1)
KUKOWSKI Joseph	4 (1)
MADSEN Dave	4 (2)
OTTO Michael	4 (1)
CARSON David	3.5
OWIECKI Roger	3.5(2)
BENNETT Bradley	3 (1)
BURGESS Fred	3
CHLOUPEK Frank	3
GRUENBERG Fred	3
RIFFLE James	3 (1)
SHANE David	3 (1)
TUDOR Judd	3 (1)
WINSAUER Don	3 (1)
CALIENDO Anthony	2.5(1)
JOHNSON Lee	2.5(1)
KLEIN Robert	2.5(1)
LESTER Michael	2.5(2)
MILLER Earl	2.5(2)
ANDERSON William	2 (1)
BLACKMON Eric	2 (1)
CAIN Dennis	2 (1)

DOWD Gail	2 (2)
ENGELEN Mark	2 (1)
GRUENBERG Guy	2 (1)
HENDERSON Dale	2 (1)
KEMPNER Robert	2 (1)
KNUTSON Gerald	2 (1)
LOPEZ Eugene	2 (1)
MAC PHERSON James	2 (1)
NICHALIK Philip	2 (1)
MUNOZ Alberto	2 (1)
OPPER Stan	2 (1)
PANDIS John	2 (1)
RYLANDER Lyle	2 (1)
WARFIELD Thomas	2 (2)
BRUNELLE Jon	1.5(1)
DONLEY Ryan	1.5(1)
FERRONI George	1.5(1)
GOENEGER Louis	1.5(1)
JOCHIM Gary	1.5(1)
KIRKPATRICK Donald	1.5(1)
MUNOZ Chris	1.5(2)
POWELL Frank	1.5(1)
RASMUSSEN Mark	1.5(1)
SUAREZ Ronald	1.5(1)
WILLIAMS Robert	1.5(1)
ANDERSON Darrin	1 (1)
BRODDE Jeff	1 (1)
DIAZ Manuel	1 (1)
DODD Randy	1 (1)
EIHUSEN Laurel	1 (2)
HAGER Greg	1 (1)
JULIUS Larry	1 (1)
LULVES Joseph	1 (1)
MARTIN Stephen	1 (1)
MC ILHANY	1 (1)
NOVY Gerard	1 (1)
PETERS James	1 (1)
REIDELBACH John	1 (1)
SCOTT George	1 (1)
SMITH Brian	1 (1)
SONG Patrick	1 (1)
TIARKS Richard	1 (1)
WALLACE Mark	1 (1)
WEAVER Ron	1 (1)
ZACATE Michael	1 (1)
EWALT Eric	0.5(1)
FRANKLIN Charles	0.5(1)

Class D Tour Points:

BUDNICK Steven	16 (1)
HAAM Nicholas	8 (1)
SIMONETTI Richard	5.5(2)
PALMER Kenneth	4.5(2)
BALES Robert	4 (1)
CHENOWETH Bruce	4 (1)
PADILLA Rudy	4
PLISCH Monica	4 (1)
RAIND Robert	4 (1)
SIMS Mike	4 (1)
BENNETT Bradley	3 (1)
MADSEN Dave	3 (2)
CALIENDO Anthony	2.5(1)
MILLER Earl	2.5(2)
ANDERSON William	2 (1)
BLACKMON Eric	2 (1)
CAIN Dennis	2 (1)
DOWD Gail	2 (2)
ENGELEN Mark	2 (1)
GRUENBERG Guy	2 (1)
KNUTSON Gerald	2 (1)
MAC PHERSON James	2 (1)
ZEVNIK Larry	2 (2)
DUPEE Arthur	1.5(2)
FERRONI George	1.5(1)
MUNOZ Chris	1.5(2)
WILLIAMS Robert	1.5(1)
HAGER Greg	1 (1)
SCOTT George	1 (1)
SONG Patrick	1 (1)
TIARKS Richard	1 (1)
FRANKLIN Charles	0.5(1)

## CHICAGO CHESS MATES CLUB AND BOOK STORE OFFERS VARIETY OF CHESS ACTIVITIES

By Alan Losoff

Chicago has another full time chess club - and a chess book store. Chicago Chess Mates Club and Book Store, 1261 W. Loyola (one half block west of the Loyola "El" station), is Master Richard Verber's newest chess enterprise. Hours are 4 p.m. to 11 p.m. Tuesday through Friday, 9 a.m. to 9 p.m. on Saturday, and noon to 9 p.m. on Sundays (sometimes a little later). The single room storefront location, pleasant and well lit, can comfortably accommodate 60 or more players. Smoking is permitted, but the high ceiling and good ventilation should satisfy any but the most militant non-smoker.

A selection of chess books (advertised as "the best in Chicago") lines one wall. Verber indicated that he and his assistant, Senior Master Albert Chow, have tried to choose only the best books for their initial inventory. (Some chess equipment is also available for purchase.)

Chicago Chess Mates offers an ambitious program of evening and weekend activities. Friday night "blitz" tournaments draw some of the top players in Chicago. Swiss system events, held on Tuesdays, run for five consecutive weeks (one round per

night). Thursday nights (and most Sundays) feature three rounds of "action chess" at a time control of 30 minutes/game. One or two day events are scheduled for almost every weekend. (At present, Chess Mates tournaments are not USCF rated.) Verber or Chow offers group chess lessons on Wednesday evenings.

Regular Club membership is \$40 per quarter or \$100 for a full year. Patron members, who join for annual dues of \$200, are entitled to two free chess lessons from Verber and also to a 20% discount on all books and equipment. (Verber indicated that within the next several months he hopes to begin publishing a bimonthly 12 to 16 page magazine, the CHICAGO CHESS BULLETIN. The planned annual subscription price is \$10 for Club members and \$12 for nonmembers; patrons will receive the periodical free.) Membership is not required to participate in Chess Mates activities, but members receive a discount on tournament entry fees. Nonmembers who are not playing in a tournament pay a daily fee of \$3. For more information or a detailed schedule of club events, call 262- 9100 (after 4 p.m.), or 262-8050.



Chicago Chessmates Club and Book Store is open every day except Monday. Hours are 4 p.m. to 11 p.m. weekdays, 9 a.m. to 9 p.m. Saturday, and noon to 9 p.m. Sunday.

# OLYMPIA MIDDLE SCHOOL HOSTS FIRST SCHOLASTIC EVENT

## ALSO DOES WELL AT NATIONAL JUNIOR HIGH SCHOOL CHAMPIONSHIP

By Kent P. Hieronymus

[Editor's Note: Although Olympia chess coach and tournament organizer Kent Hieronymus submitted the following article several months ago, space limitations kept it out of previous ICBS. I will try to publish any scholastic chess information which I receive.]

On April 16, 1988, Olympia Middle School sponsored its first scholastic chess tournament. (Olympia, located about 12 miles west of Bloomington near Stanford, Illinois, is the largest geographical school district in the state.) Although the event took place relatively late in the school year, it drew 100 players from all over central and northern Illinois. The tournament, for grades Kindergarten through Nine, featured Junior High, Elementary, and Primary sections. Four team trophies and three individual trophies were awarded in the former sections, and a K-3 trophy in the latter one. The top five finishers at each grade level won ribbons.

Tournament directors Lewis Betts and Andy McGowan ran the event smoothly and efficiently. The first round started by 9:15 a.m., and the last was over by 4:45 p.m. The sudden death time control allowed all of the participants to return home at a reasonable hour. Olympia plans to host another scholastic event in 1989.

The following won trophies:

**JUNIOR HIGH SECTION:** Team trophies: 1st, Wilson Middle School (Rockford); 2nd, Olympia Middle School (Stanford); 3rd, Morton Junior High (Morton); 4th, Immanuel Lutheran (Belvidere). Individual trophies: 1st, Shawn Halsey (Olympia); 2nd, Brad Stevens (Wilson); 3rd, Paul Vernon (Morton).

**ELEMENTARY SECTION:** Team trophies: 1st, Oakland (Bloomington); 2nd, District 58 (Washington); 3rd, Americana (Wheaton), 4th, Immanuel Lutheran (Belvidere). Individual trophies: 1st, Mike Nichols (Oakland); 2nd, Jeffrey Havens (Oakland); 3rd, Adrian Ingram (Stevenson-Bloomington).

**PRIMARY SECTION:** Individual Champion: Sara Hasty (Morton Jefferson).

The next players won ribbons:

**Ninth Grade:** 1st, Brian Bolton (Olympia); 2nd, Jim Wren (Wilson); 3rd, Brett Nafziger (Olympia); 4th, Brett Vogel (Olympia); 5th, Kenneth Gaspar (Roanoke-Benson).

**Eight Grade:** 1st, Steve Marinelli (Wilson); 2nd, Matt Anderson (Immanuel Lutheran); 3rd, Jason Sanders (Olympia); 4th, Jason Reitzel (Morton); 5th, Lyndra Webb (Morton).

**Seventh Grade:** 1st, Danielle Barstad (Benjamin); 2nd, Jamie Getchius (Haines); 3rd, Alex Rozman (Wilson); 4th, Grant Barrick (Immanuel Lutheran); 5th, Phil Haning (Olympia).

**Sixth Grade:** 1st, Joseph Liu (Glendale-Normal); 2nd, Doug Coddling (Oakland); 3rd, Jon Young (Oakland); 4th, Sean Elder (Oakland); 5th, Toni Bitner (Washington).

**Fifth Grade:** 1st, Jason Bitner (Washington); 2nd, Jeff Neukomm (Roanoke-Benson); 3rd, Chris Wilkerson (Americana); 4th, Andrew Guler (Immanuel Lutheran).

**Fourth Grade:** 1st, Andy Newgren (Oakland); 2nd, Payan Moazzaz (Americana); 3rd, Tim Singer (Americana); 4th, Travis Bridges (Americana); 5th, Josh Stevens (Immanuel Lutheran).

**Third Grade:** 1st, Chuck Hasty (Morton Jefferson); 2nd, Kurt Marsden (Oakland); 3rd, Abraham Cremeens (Olympia); 4th, Matthew Ward (Roanoke-Benson); 5th, Christopher Hauger (Evergreen).

**Second Grade:** 1st, Adam Havens (Oakland); 2nd, Luke Hogan (Oakland); 3rd, Blair Marchaj (Evergreen); 4th, Benjamin Moore (Oakland); 5th, Rebecca Iutzi (Olympia).

**First Grade:** 1st, Jeffrey Legner (Oakland).

**Kindergarten:** 1st, Craig Cochran (Chicago Jr. School); 2nd, Craig Knabe (Olympia); 3rd, Staci Hieronymus (Olympia).

#####

Soon after the April tournament, the Olympia Middle School chess team traveled to Memphis, Tennessee to participate in the National Junior High School Chess Tournament on May 6, 7, and 8, 1988. In competition which included 70 teams and over 550 players, the Olympia varsity finished tenth and the junior varsity twelfth. Thirteen Olympia students played, and all scored well and contributed to the teams' excellent results. Brett Nafziger, Ginger Remus, and Lynn Roth each won special category trophies.

Individual scores were as follows:  
 Varsity -- Shawn Halsey, 4.5 points  
 (Shawn was ranked in the top 25  
 players at the end of the  
 tournament); Brett Vogel, 4; Joe  
 Rossi, 3.5; Brian Bolton, 3; Tom  
 Hendricks, 3; Brett Nafziger, 3 (and  
 third place in class "E"); Ginger  
 Remus, 3 (and second place in the  
 "Under 1000" rating group); Pete  
 Rossi, 2; Lynn Roth, 2 (and second  
 place among the girls); Junior  
 Varsity -- Robbie Remus, 4; Jason  
 Sanders, 4; Phil Haning, 3.5; Matt  
 Cremeens, 3.5.

### Games from Recent Events

Park Forest Open - October 9-10,  
 1988 (Game scores supplied by  
 Lawrence Cohen)

W: Billy Colias (2360) B: Peter  
 Connor (2124) Round 4 1.d4 Nf6  
 2.c4 g6 3.Nc3 Bg7 4.e4 d6 5.Be2 0-0  
 6.Bg5 h6 7.Be3 e5 8.d5 Nbd7 9.Qd2  
 Nc5 10.f3 Nh7 11.0-0 h5 12.h4 f5  
 13.exf5 gxf5 14.Nh3 Bd7 15.f4 Nf6  
 16.Bxc5 dxc5 17.fxe5 Ng4 18.e6 Be8  
 19.Bxg4 fxg4 20.Ng5 Bg6 21.Rhf1 Qd6  
 22.Nce4 Qa6 23.b3 Qa3+ 24.Kb1 b5  
 25.Qc1 Qb4 26.Qc2 bxc4 27.e7 Rxf1  
 28.Rxf1 cxb3 29.Nf6+ Kh8 30.Nf7+ 1-0

W: Howard Cohen (1953) B: Robert  
 Bain (2152) Round 4 1.e4 e6 2.d4  
 d5 3.Nd2 Nf6 4.e5 Nfd7 5.Bd3 c5 6.c3  
 Ne6 7.Ne2 cxd 8. cxd f6 9.f4 fxe  
 10.dxe Nc5 11.Bb1 Qb6 12.Ng3 Bd7  
 13.a3 Nd4 14.b4 Na4 15.Nf3 Nxf3  
 16.Qxf3 Qd4 17.Ra2 Bxb4 18.Bd2 Nc3  
 19.Ne2 Nxe2 20.Qh5+ Xd8 21.Rxb4 Nc3  
 22.Qh4+ Kc8 23.Bxc3 Qxc3 24.Kf2 Qd4+  
 25.Kf3 b6 26.Qe7 Rd8 28.R2c2 Qe4+  
 29.Kg3 Qe3+ 30.Kg4 Ka6 31.a4 g5  
 32.g3 gxf 33.Rc3 Qe2+ 34.Kh3 Qh5+  
 35.Kg2 fxg 36.Bd3+ Kh5 37.Rc5+ b5  
 38.Rxb5+ Bxb5+ 39.Qc7+ Kxh4 40.Bxb5+  
 0-1

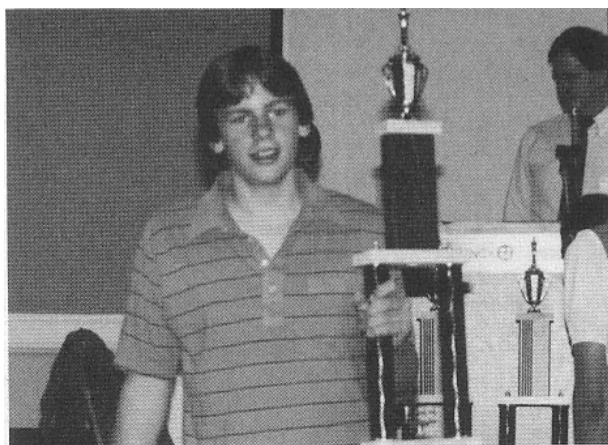
W: Billy Colias (2360) B: Peter  
 Stein (2240) Round 5 1.d4 f5 2.c4  
 Nf6 3.Nc3 e6 4.Nf3 d5 5.g3 c6 6.Bg2  
 Bd6 7.0-0 0-0 8.Bf4 Bxf4 9.gxf4 Ne4  
 10.Rc1 Nbd7 11.cxd5 exd5 12.b4 Ndf6  
 13.Qb3 Qe8 14.Ne5 Nd2 15.Qc2 Nxf1  
 16.Kxf1 Ng4 17.h3 Nxe5 18.dxe5 Kh8  
 19.b5 Be6 20.Qb2 Rc8 21.b6 a6 22.Na4  
 c5 23.Nxc5 Qe7 24.Nxe6 Qxe6 25.Rd1  
 Qh6 26.e3 Rc6 27.Bxd5 Rxb6 28.Qc2  
 Qxh3+ 29.Bg2 Qh5 30.Rd7 Qe8 31.Rxg7  
 Qb5+ 32.Ke1 Qb1+ 33.Qxb1 Rxb1+ 0-1

### 1988 NORTH AMERICAN CLASS CHAMPIONSHIPS CLASS D/E CROSSTABLE

1	YAKOVENKO, LAWRENC	IL	1368/5	1682	W2	W10	W23	W-8	W-5	W-9	6.0
2	CALIENDO, ANTHONY	IL	1257	1351	L-6	W21	W11	W32	W23	W-6	5.0
3	ADAMS, JR DAVID M	IL	1466	1477	W42	L20	W24	D14	W26	W16	4.5
4	CHARLES, MICHAEL	IL	1322	1382	W34	W26	D20	L-9	W14	W15	4.5
5	CARRAN, THOMAS	IL	1318/11	1443	W-9	W15	W14	W22	L-1	D-5	4.5
6	WINSAJER, DONALD	IL	1254	1271	W-2	L13	W35	W34	D16	D-5	4.0
7	MILLIGAN, LANDO R	WV	1459	1462	W37	W19	L-8	L12	W27	W13	4.0
8	MOORE, JOSEPH W. P	IL	1383	1417	W28	W11	W-7	L-1	W12	L-2	4.0
9	SHIDDEL, RON	AR	1374	1417	L-5	W38	W29	W-4	W13	L-1	4.0
10	SHULING, DALE	MO	1378	1394	W43	L-1	L34	W35	W24	W22	4.0
11	CHECHOWETH, BRUCE C	IL	1344	1354	B--	L-8	L-2	W36	W34	W20	4.0
12	ELORN, ROBERT	CO	1383	1353	L-1	W43	W42	W-7	L-8	W23	4.0
13	FRISNER, JEFFREY	MI	1403	1420	W16	W-6	D22	W20	L-9	L-7	3.5
14	FRY, WILLIAM J	OH	1392	1401	W36	W29	L-5	D-3	L-4	W32	3.5
15	WOODRUFF, PHILIP K	IL	1368	1367	W17	L-3	W--	W18	W30	L-4	3.5
16	GROVES, ROBERT L	OH	1299	1343	L13	W17	W23	W26	D-6	L-3	3.5
17	STANFORD, COLLEEN	MO	1299	1334	L15	L16	W21	W28	W25	D19	3.5
18	SIMS, MIKE	IL	1169/8	1260	W21	L22	D25	L15	W31	W29	3.5
19	ZEVNIK, LAWRENCE	IL	1432	1408	W30	L-7	W27	L23	D29	D17	3.5
20	KNUXTON, GERALD R	WI	1369	1371	W40	W-3	D-4	L13	D22	L11	3.0
21	BRADLEY, GREG	WI	1361	1342	L10	L-2	L17	W42	W36	W25	3.0
22	BUNN, RICHARD J	CO	1354	1365	W38	W18	D12	L-5	D20	L10	3.0
23	PALKER, KENNETH F	IL	1345/6	1380	W33	W25	L-1	W19	L-2	L12	3.0
24	DUPEE, ARTHUR B	IL	1223	1254	L25	W41	L-3	W40	L10	W29	3.0
25	ANDERSON, WILLIAM	IL	1427	1383	W24	L23	D18	D27	L17	D28	2.5
26	SUJARIT, TANAROD	MI	1386	1360	W41	L-4	W40	L10	L-3	D27	2.5
27	BARON, GILBERT	WV	1343	1330	D32	W29	L19	D25	L-7	D26	2.5
28	HICKLER, TERRY MIC	IN	1329	1297	L-9	L33	L--	L17	W37	D25	2.5
29	WEST, DALE D	WV	1324/6	1296	W21	L14	L-9	W33	D19	L10	2.5
30	WALSH, JR ROBERT J	IL	1324	1315	L19	W27	D38	W39	L15	U--	2.5
31	RICE, ANDRE	IL	1122/4	1104	L29	B--	L39	W41	L18	W--	2.5
32	COREY, BOB	0	0	1229	D27	D35	D30	L-2	W39	L14	2.5
33	SAINSBURY, JAN A	NY	1318	1280	L23	W40	L16	L29	L42	W41	2.0
34	DORAN, EILEEN	CA	1300	1301	L-4	W36	W10	L-6	L11	U--	2.0
35	LOJNS, R SCOTT	FL	1296	1280	W--	D32	L-6	L10	W41	L21	2.0
36	DUSCH, MONICA	IL	1285	1250	L14	L34	W43	L11	L21	W42	2.0
37	PRENTISS, COLLEEN	WV	1201	1179	L-7	L30	L41	W43	L20	B--	2.0
38	YOUNGLOD, LEE R	IL	1260/8	1245	L22	L-9	U--	U--	W43	W43	1.5
39	MORRIS, CHRIS TOPD	IL	1220/12	1162	W--	L27	W21	L30	L22	L24	1.5
40	TOPAS, THOMAS J	TX	1353	1311	L20	W42	L26	L24	U--	U--	1.0
41	RICE, ROBERT J	IN	1306	1230	L26	L-4	W37	L31	L25	L33	1.0
42	FINNIS, VINCE P	IL	121-	1184	L-3	L-0	L12	L21	W35	L26	1.0
43	WHITE, TOM	MO	1214	1149	L10	L12	L36	L37	B--	L20	1.0

Southern Illinois Class Championships - October 9, 1988 (Game  
 score from the SOUTHERN ILLINOIS CHESS BULLETIN)

W: Greg Hoffman (2144) B: Riley Sheffield (2108) 1.c4 e6  
 2.Nc3 d5 3.g3 c5 4.Bg2 Nf6 5.d3 Be7 6.Bf4 Nc6 7.cxd5 Nxd5  
 8.Nxd5 exd5 9.Nf3 Qa5+ 10.Qd2 Qxd2+ 11.Bxd2 h6 12.Bc3 d4  
 13.Bd2 Bf5 14.a3 a5 15.Bf4 g5 16.Bc1 0-0 17.h4 g4 18.Nd2 Kh7  
 19.Ne4 Rac8 20.Bf4 Bxe4 21.Bxe4 f5 22.Bd5 Rf6 23.Kd2 Bd6  
 24.Bxd6 Rxd6 25.Bg2 Re8 26.Rac1 b6 27.Rc2 Rde6 28.Bxc6 Rxc6  
 29.Rb1 Rce6 30.Kd1 Rf8 31.b4 axb4 32.axb4 f4 33.gxf4 Rxf4  
 34.bxc5 Rxf2 35.Rxb6 Rxb6 36.cxb6 Rf1+ 37.Kd2 Rb1 38.Rc6 g3  
 39.Rc7+ Kg6 40.b7 g2 41.Rc8 Kf7 42.Rc7+ Kf6 43.Rc6+ Kf5  
 44.Rc5+ Kf4 45.Rc1 Rb2+ 46.Rc2 Rxb7 47.Rc1 Rb2+ 0-1



Olympia's Shawn Halsey accepts 10th place trophy at 70  
 team 1988 National Junior High School Chess Tournament



# KREISMAN ANNOTATES

[Editor's Note: Chicagoan Bruce Kreisman is closing in on the Master title. He has submitted the following information about his recent rise from Class B player to Expert.]

I returned to tournament chess in 1985, after a nine year hiatus, with a rating of 1667. Less than three years later, my rating has risen to 2105. Three events have been largely responsible for my progress: the 1986 Master Challenge (rated 1747, I had a 3-0 start which included wins over a Master and an Expert); the 1987 World Open (I finished 4th out of 140 in the 1800-1899 with a final score of 6.5-1.5); and the 1988 National Open (I ended up 4-2, losing only to Grandmasters Arthur Bisguier and Dmitry Gurevich).

I've had three games published in the ILLINOIS CHESS BULLETIN, each a loss to a player rated at least 300 points higher than me. [Editor's Note: Two of those games were the aforesaid National Open defeats.] I am submitting the following contest to demonstrate that I do win at least some of the time!

1988 National Open Chicago, Illinois March 18-20, 1988  
White: Bruce Kreisman (1999)  
Black: Paul Rejto (2205)

Annotated by Bruce Kreisman

1.Nf3 Nf6 2.g3 d5 Bg2 e6 4.0-0 c5 5.d3 Be7 6.Nbd2 0-0 7.b3 Nc6 8.Bb2 Qc7 9.e4 b5!?

9...b6 is more solid.

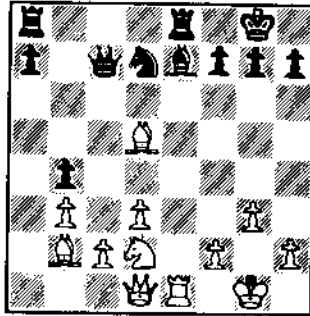
10.a4 bxa 11.Rxa4 Bd7 12.exd

Playing in hypermodern style, I am giving Black loose center pawns which are attacked from the flank. I considered 12.e5, but did not see an effective follow-up.

12...exd 13.Re1 Rfe8 14.Ne5 Nb4! 15.Nxd7 Nxd7?

15...Qxd7, 16.Nf3 gives White a good game but nevertheless is preferable to the actual continuation.

16.Rxb4! cxb4 17.Bxd5



White's position jumps to life. Now if the QR moves White has 18.Qh5 Nf6 19.Bxf7+ Kf8 20.Bxf6 Bxf6 (20...gxf, 21.Qxh7) Rxe8+ Rxe8 22.Bxe8, winning; or, if 18...g6 19.Bxf7+ Kxf7 20.Qxh7+ Kf8 21.Qg7 Mate.

17...Bf6 18.Bxf6 Nxf6 19.Bxa8 Rxa8

White is up a pawn. My opponent now offered a draw, which I (politely) declined. My object in the next portion of the game is to consolidate and trade down.

20.Qf3 Rd8 21.Nc4 h6 22.Qf5 Qc6?

This loses another pawn.

23.Qa5 Re8 24.Rxe8+ Qxe8 25.Qxb4

Now I attempt to avoid annoying Queen checks.

25...h5 26.h4 Ng4 27.Qd2 Qe6 28.Ne3 Nf6 29.Qb4 Qe5 30.Qb7 a5 31.Qc8+ Ne8

If 31...Kh7, then 32.Qf5+. 32.Nf5 g6 33.Nd6 Qxd6 34.Qxe8+ Kg7 35.Qe4

I'm now experiencing mild time pressure (about 5 minutes left for my next 10 moves) which is being exacerbated by the realization that I'm on the brink of defeating a Master.

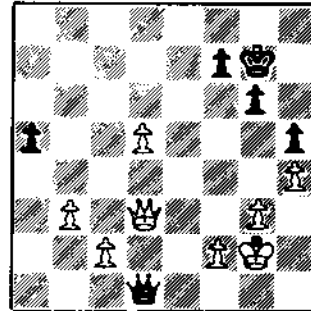
35...Qc5 36.d4 Qc3 37.d5 Qd2 38.Kg2

This avoids back row checks.

38...Qd1 39.Qe5+ Kg8 40.Qe4

Repeating the position is a good idea in time trouble.

40...Kg7 41.Qd3!



Forcing a won King and Pawn ending; if Black does not trade Queens, the d-pawn marches onward.

41...Qxd3 42.dxc Kf6 43.d6 Ke6 44.Kf3 Kxd6 45.Ke4 Kc5 46.d4+ Kd6 47.d5 f6 48.Kd4 g5 49.f4

Of course not 49.hxg fxg, allowing Black to obtain an outside passed Pawn by h4.

49...g4 50.f5 1-0

**MOVING?**

Send address changes and corrections to:

Alan Losoff  
ICA Membership Secretary  
P.O. Box 157  
Morton Grove, IL 60053



# TOURNAMENT CROSSTABLES

## HARVEST OF PAWNS -- SPRINGFIELD -- 9/24/88

PLAYER	PRE		POST				TOT
	ST	RTNG	RTNG	1	2	3	
1 VAN BUSKIRK, DOUGL	IL	2130	2143	W-6	W-4	W-2	3.0
2 MC GOWAN, ANDY J	IL	2019	2022	W-7	W-3	L-1	2.0
3 TAYLOR, MICHAEL L	IL	1936	1932	W-8	L-2	W-5	2.0
4 WHEELER, STEPHAN S	IL	1753	1758	W-9	L-1	W-7	2.0
5 FATHAUER, TERRY L	IL	1712	1723	W10	W-6	L-3	2.0
6 KING, JR ROBERT L	IL	1726	1709	L-1	L-5	W-9	1.0
7 LARSON, JAMES B	IL	1506	1502	L-2	W10	L-4	1.0
8 MC ILHANY, MICHAEL	IL	1429/10	1407	L-3	L-9	W10	1.0
9 TIARKS, RICHARD	IL	1313	1329	L-4	W-8	L-6	1.0
10 ANDERSON, THOR	IL	0	1142	L-5	L-7	L-8	.0

## SUMMER SAUNA -- SPRINGFIELD -- 7/23/88

PLAYER	PRE		POST				TOT
	ST	RTNG	RTNG	1	2	3	
1 VAN BUSKIRK, DOUGL	IL	2127	2130	W-4	W-3	D-2	2.5
2 OLTMAN, TIMOTHY A	IL	1942	1963	W-8	W-6	D-1	2.5
3 BOLITHO, THOMAS	IL	1953	1954	W10	L-1	W-5	2.0
4 KNOEDLER, THOMAS B	IL	1739	1759	L-1	W10	W-9	2.0
5 FERGUSON, II LEONA	IL	1623	1657	W-7	W-9	L-3	2.0
6 MEYER, WILLIAM L	IL	1743	1747	D-9	L-2	W-7	1.5
7 LOVEN, DALLAS	IL	1794	1763	L-5	W-8	L-6	1.0
8 GARDNER, K C	IL	1680	1663	L-2	L-7	B--	1.0
9 LERO, STEVEN	IL	1588	1571	D-6	L-5	L-4	.5
10 STAFFORD, JERRY T	IL	1685	1666	L-3	L-4	U--	.0

### SUMMER SAUNA OF 1988/2

PLAYER	PRE		POST				TOT
	ST	RTNG	RTNG	1	2	3	
1 KING, JR ROBERT L	IL	1679/16	1690	W10	W-9	W-8	3.0
2 ALTON, MATTHEW	IL	1421/3	1475	W-7	B--	D-3	2.5
3 MILLER, EARL	IL	1319	1351	B--	W-8	D-2	2.5
4 WARFIELD, THOMAS	IL	1479/10	1499	L-8	W-7	W-6	2.0
5 GARDNER, K C	IL	1663	1667	U--	U--	W-9	1.0
6 POKORSKI, JEFFREY	IL	1634/4	1477	L-9	W10	L-4	1.0
7 MC ILHANY, MICHAEL	IL	1465/7	1429	L-2	L-4	W10	1.0
8 EIHUSEN, LAUREL H	IL	1440	1439	W-4	L-3	L-1	1.0
9 EIHUSEN, KENNY R	IL	1324	1339	W-6	L-1	L-5	1.0
10 BILBREY, RICHARD	IL	0	1132	L-1	L-6	L-7	.0

## OAK PARK-FOREST PARK CHESS CLUB AUTUMN ACTION --10/29/88

PLAYER	PRE		POST					TOT	
	ST	RTNG	RTNG	1	2	3	4		5
1 BERRY, GREGORY F	IL	1976	2030	W-9	D-6	W-7	W-3	W-4	4.5
2 LA FRANA, ARTHUR	IL	1709	1804	W-8	W-7	L-3	W10	W-9	4.0
3 SURAK, STEVE S	IL	2058	2058	D-4	W12	W-2	L-1	W-7	3.5
4 CRAWFORD, BRAD	IL	1886	1937	D-3	W10	W-6	W-5	L-1	3.5
5 SEFCHECK, MARK M	IL	1809	1849	L-7	W-8	W-9	L-4	W10	3.0
6 BOUTON, BARRY R	IL	1931	1915	W11	D-1	L-4	L-7	W12	2.5
7 MC NAMARA, JAMES	IL	1957	1929	W-5	L-2	L-1	W-6	L-3	2.0
8 HOLMES, JEFFREY A	IL	1870	1829	L-2	L-5	W12	L-9	W11	2.0
9 WILLARD, GARY D	IL	1827	1812	L-1	W11	L-5	W-8	L-2	2.0
10 ROGAN, MARVIN	IL	2080	2006	H--	L-4	W11	L-2	L-5	1.5
11 ALLISON, ROGER D	IL	1801	1766	L-6	L-9	L10	W12	L-8	1.0
12 JOCHIM, GARY	IL	1620	1599	B--	L-3	L-8	L11	L-6	1.0

## PARK FOREST OPEN -- 10/8/88

PLAYER	PRE		POST					TOT	
	ST	RTNG	RTNG	1	2	3	4		5
1 COLIAS, BILLY	IN	2360	2357	W15	W19	W10	W-3	L-2	4.0
2 STEIN, PETER	IL	2240	2246	W-9	L10	W15	W14	W-1	4.0
3 CONNOR, PETER Y	IL	2124	2143	W16	W-5	W14	L-1	W-8	4.0
4 PUKEL, BERNARD B	IL	2020	2034	H--	W12	D13	D10	W15	3.5
5 COHEN, HOWARD	IL	1953	1972	W22	L-3	W16	W13	D-6	3.5
6 BARBERSTOCK, DAN	IL	1843	1878	L13	W21	W19	W12	D-5	3.5
7 CONDRON, JAMES K	IL	2041	2029	W11	L14	W-9	L-8	W10	3.0
8 BRUNNER, FRANK	IL	1975	1993	W21	D13	H--	W-7	L-3	3.0
9 FRANEK, MARTIN J	IL	1914	1922	L-2	W20	L-7	W22	W14	3.0
10 COHEN, LAWRENCE S	IL	1962	1978	W20	W-2	L-1	D-4	L-7	2.5
11 HALE, BOB	IL	1652	1652	L-7	D18	L12	W21	W16	2.5
12 PADILLA, RUDY R	IL	1561	1584	H--	L-4	W11	L-6	W18	2.5
13 BAIN, ROBERT C	IL	2152	2127	W-6	D-8	D-4	L-5	U--	2.0
14 LIPTEN, LEON	IL	1977	1963	W18	W-7	L-3	L-2	L-9	2.0
15 ADKINS, KEITH	IL	1854	1853	L-1	W17	L-2	W20	L-4	2.0
16 BURGESS, FRED	IL	1756	1736	L-3	W22	L-5	W17	L11	2.0
17 HENDERSON, HAROLD	IN	1634	1631	L19	L15	W18	L16	W20	2.0
18 PALMER, KENNETH F	IL	1429	1419	L14	D11	L17	X--	L12	1.5
19 MIDDLETON, DOUGLAS	IL	2097	2067	W17	L-1	L-6	U--	U--	1.0
20 BERKHEIMER, ED	IL	1471	1470	L10	L-9	W21	L15	L17	1.0
21 CARSON, DAVID L	IL	1449	1426	L-8	L-6	L20	L11	W22	1.0
22 DOBKINS, CHRIS	IN	1092	1087	L-5	L16	X--	L-9	L21	1.0

# TOURNAMENT CROSSTABLES

## ROADWAY INN SWISS ST. LOUIS, MO. -- 10/22/88

T-SUN OPEN CHAMPIONSHIP

November 5, 1988

PLAYER	PRE		POST			TOT	
	ST	RTNG	RTNG	1	2		3
1 HEURUNG, DAVID D	MO	2207	2215	W21	W10	W-7	3.0
2 BOCK, MAURICE R	MO	1984	2006	W22	W13	W-6	3.0
3 TARAS, ROBERT S	MO	1981	2009	W16	W20	W-5	3.0
4 RUDLOFF, MICHAEL D	MO	1906	1946	W18	W23	W12	3.0
5 SUTTER, JR ROBERT	MO	2133	2121	W11	W-8	L-3	2.0
6 BEASLEY, DWIGHT P	MO	2046	2034	W14	W15	L-2	2.0
7 HINTERLONG, DAVID	IL	1974	1969	X--	W17	L-1	2.0
8 BRANDT, WILLIAM C	MO	1801	1808	W19	L-5	W15	2.0
9 WISNIEWSKI, MARTIN	IL	1797	1792	L20	W16	W14	2.0
10 OESTREICH, MARK	IL	1770	1773	W24	L-1	W17	2.0
11 SUITS, MC CRAWLEY	MO	1733	1744	L-5	W19	W20	2.0
12 ZAFRIN, VLADIMIR	MO	1981	1940	D13	W-8	L-4	1.5
13 MARTIN, III EDBAR	IL	1463	1503	D12	L-2	W21	1.5
14 TAYLOR, JIMMIE W	MO	1717	1702	L-6	W24	L-9	1.0
15 WALKER, STEVEN M	MO	1619	1636	W23	L-6	L-8	1.0
16 CUNNINGHAM, GARY A	IL	1578	1579	L-3	L-9	W22	1.0
17 SCOTT, RICHARD J	MO	1458	1452	X--	L-7	L10	1.0
18 EWALT, ERIC JAMES	MO	1434	1438	L-4	L12	W24	1.0
19 MURRAY, GARY W.	IL	1395	1388	L-8	L11	B--	1.0
20 JUN, ERIC J.	MO	1283/10	1380	W-9	L-3	L11	1.0
21 NASH, KELVIN T	IL	1740	1701	L-1	D22	L13	.5
22 BLAIR, JOHN D	MO	1484	1481	L-2	D21	L16	.5
23 ODIAK, WALDO	MO	1967	1937	L15	L-4	U--	.0
24 ALPER, PHIL B	MO	1204/3	1222	L10	L14	L18	.0

RANK	PLAYER	ST	RATING	RD1	RD2	RD3	POINTS
1.	DAVID D. HEURUNG	MO	2225	W 6	W10	W 5	3.0
2.	REX DEMERS	MO	2001	W 9	W13	D 4	2.5
3.	ROSS M. DEVILBISS	IL	1776	D 8	W 7	W10	2.5
4.	JAMES A. DAVIES	MO	2199	D11	W15	D 2	2.0
5.	GREGORY WILLIAMS	MO	2090	W14	W 8	L 1	2.0
6.	ROBERT S. TARAS	MO	1981	L 1	W11	W12	2.0
7.	RICHARD L. SOBEL	FL	2166	W12	L 3	O 9	1.5
8.	W4.00 (DIAK)	MO	1984	D 3	L 5	W13	1.5
9.	MICHAEL D. RUDLOFF	MO	1915	L 2	18Y	D 7	1.5
10.	JIM McDONALD	MO	2004	W15	L 1	L 3	1.0
11.	MAURICE R. BOCK	MO	1980	D 4	L 6	D14	1.0
12.	DENNIS L. HUMPHRIES	IL	1936	L 7	W14	L 6	1.0
13.	BRADEY JOHNSON	MO	1757	18Y	L 2	L 8	1.0
14.	VLADIMIR ZAFRIN	MO	1932	L 5	L12	D11	0.5
15.	STEPHEN R. LANDRUM	MO	1912	L10	L 4	NP	.0

**RESERV**

RANK	PLAYER	ST	RATING	RD1	RD2	RD3	POINTS
1.	MARK OESTREICH	IL	1770	W 5	W 4	W 2	3.0
2.	DANIEL E. PERKAN	MO	1733	W 8	W 3	L 1	2.0
3.	MCCRAWLEY SUITS	MO	1722	W 6	L 2	W 5	2.0
4.	LOREN E. REEVES	IL	1592	W 7	L 1	W 6	2.0
5.	RICHARD J. SCOTT	MO	1478	L 1	W 7	L 3	1.0
6.	FARREL E. HILL	IL	1204	L 3	W 8	L 4	1.0
7.	LAURENCE C. RIDGE	IL	UNR	L 4	L 5	W 8	1.0
8.	ERIC J. EWALT	MO	1434	L 2	L 6	L 7	.0

## AUBURN-BOYLAN SUPER QUADS ROCKFORD -- 10/8/88

**AUBURN-BOYLAN SUPER QUAD**

PLAYER	PRE		POST			TOT	
	ST	RTNG	RTNG	1	2		3
1 STRAIN, LARRY	IL	1559	1578	L-3	W-2	W-4	2.0
2 MONROY, MARK	IL	1536	1559	W-4	L-1	W-3	2.0
3 RIFKIN, JAY	IL	1564	1566	W-1	D-4	L-2	1.5
4 HOFFMAN, TIM B	IL	1645	1601	L-2	D-3	L-1	.5

**AUBURN-BOYLAN SUPER QUAD/6**

PLAYER	PRE		POST			TOT	
	ST	RTNG	RTNG	1	2		3
1 SCORDATO, TED P.	IL	1280/6	1300	W-3	W-4	L-2	2.0
2 BEARD, DAVID	IL	1266/8	1286	W-4	L-3	W-1	2.0
3 ALEXANDER, STEVE E	IL	1244/11	1264	L-1	W-2	W-4	2.0
4 KAPANI, NIPAM	IL	0	909	L-2	L-1	L-3	.0

**AUBURN-BOYLAN SUPER QUAD/2**

PLAYER	PRE		POST			TOT	
	ST	RTNG	RTNG	1	2		3
1 STEVENS, BRAD	IL	1555	1563	W-4	L-3	W-2	2.0
2 WALSH, DONALD R	IL	1544	1554	W-3	W-4	L-1	2.0
3 BIGGERS, BRUCE	IL	1442	1470	L-2	W-1	W-4	2.0
4 LEWIS, RICHARD	IL	1505	1458	L-1	L-2	L-3	.0

**AUBURN-BOYLAN SUPER QUAD/7**

PLAYER	PRE		POST			TOT	
	ST	RTNG	RTNG	1	2		3
1 GRADE, HEIDI	IL	1200	1239	W-2	W-3	W-4	3.0
2 BURTON, JOHN B	IL	0	1237	L-1	W-4	W-3	2.0
3 CARTHIDGE, JOHN	IL	0	1060	W-4	L-1	L-2	1.0
4 BANDYOPADHYAY, SAP	IL	1241/7	1098	L-3	L-2	L-1	.0

**AUBURN-BOYLAN SUPER QUAD/3**

PLAYER	PRE		POST			TOT	
	ST	RTNG	RTNG	1	2		3
1 MC BRIDE, STEVE R	IL	1263	1332	W-4	W-3	W-2	3.0
2 FRIBERG, CHRIS J.	IL	1441/7	1452	W-3	W-4	L-1	2.0
3 BRZELL, BRANDON L	IL	1481	1451	L-2	L-1	W-4	1.0
4 JOHNSON, JOEL	IL	1502/4	1300	L-1	L-2	L-3	.0

**AUBURN-BOYLAN SUPER QUAD/8**

PLAYER	PRE		POST			TOT	
	ST	RTNG	RTNG	1	2		3
1 CARLSON, MARK A	IL	0	1223	W-2	L-4	W-3	2.0
2 KAPANI, NIKHIL	IL	0	1223	L-1	W-3	W-4	2.0
3 ALEXANDER, SCOTT	IL	1137/7	1092	W-4	L-2	L-1	1.0
4 DICKOVER, DAN W	IL	0	1017	L-3	W-1	L-2	1.0

**AUBURN-BOYLAN SUPER QUAD/4**

PLAYER	PRE		POST			TOT	
	ST	RTNG	RTNG	1	2		3
1 WREN, JAMES A.	IL	1442	1479	W-2	W-4	W-3	3.0
2 SQUIRES, RUSS L	IL	1370	1371	L-1	W-3	D-4	1.5
3 SHEKHANAT, JITENDR	IL	1451	1422	W-4	L-2	L-1	1.0
4 SOWDER, JASON B	IL	1262/10	1237	L-3	L-1	D-2	.5

**AUBURN-BOYLAN SUPER QUAD/9**

PLAYER	PRE		POST			TOT	
	ST	RTNG	RTNG	1	2		3
1 BASTIAN, JEFF B	IL	1234/8	1275	D-2	W-4	W-6	2.5
2 MORRISON, CHRIS J	IL	981/8	1083	D-1	W-6	W-5	2.5
3 SWEENEY, SHANNON W	IL	0	1133	W-6	L-5	W-4	2.0
4 PERRY, JEFF MICHAEL	IL	0	1000	W-5	L-1	L-3	1.0
5 SCORDATO, JOHN A	IL	0	1026	L-4	W-3	L-2	1.0
6 BOUTE, BRAD J	IL	0	848	L-3	L-2	L-1	.0

**AUBURN-BOYLAN SUPER QUAD/5**

PLAYER	PRE		POST			TOT	
	ST	RTNG	RTNG	1	2		3
1 FRIBERG, KEVIN M	IL	0	1717	W-2	W-3	W-4	3.0
2 NULL, CURT W	IL	1342	1352	L-1	W-4	U--	1.0
3 WILCOX, MARK R	IL	1337	1347	W-4	L-1	U--	1.0
4 KELLER, ALEX R.	IL	1331/10	1272	L-3	L-2	L-1	.0

# TOURNAMENT CROSSTABLES

## 6TH SOUTHERN ILLINOIS OPEN -- ALTON -- 9/25/88

PLAYER	PRE		POST			TOT	
	ST	RTNG	RTNG	1	2		3
1 SHEFFIELD, RILEY M	MO	2108	2123	W-8	D-2	W-6	2.5
2 WILLIAMS, GREGORY	MO	2069	2090	W-9	D-1	W-7	2.5
3 FROMAN, RONNIE A	MO	1904	1935	B--	D-4	W11	2.5
4 SUTTER, JR ROBERT	MO	2142	2134	D-5	D-3	W-9	2.0
5 JUENGEL, DANIEL A	MO	1949	1975	D-4	W11	D10	2.0
6 DRUCKERMAN, ZACHAR	MO	2009	2004	D-7	W10	L-1	1.5
7 SCHWALM, JERRY L	IL	1898	1915	D-6	W-8	L-2	1.5
8 ODAK, WALDO	MO	2016	1984	L-1	L-7	B--	1.0
9 ZAFRIN, VLADIMIR	MO	1950	1932	L-2	B--	L-4	1.0
10 OTTERSBAACH, JAMES	MO	1900	1897	D11	L-6	D-5	1.0
11 BOCK, MAURICE R	MO	2027	1980	D10	L-5	L-3	.5

## 6TH SOUTHERN/RESERVE

PLAYER	PRE		POST			TOT	
	ST	RTNG	RTNG	1	2		3
1 GREEN, JR DENNIS A	MO	1766	1794	W11	W10	W-4	3.0
2 HENDERSON, HAROLD	IN	1618	1642	W13	W14	W-8	3.0
3 HENKHAUS, MICHAEL	IL	1613/16	1648	W-7	W12	H--	2.5
4 GILCHRIST, DAVID	IL	1786	1782	W-6	W-9	L-1	2.0
5 WALKER, STEVEN M	MO	1576	1579	D16	W11	D-9	2.0
6 REGNA, PAUL D	MO	1503	1510	L-4	W17	W13	2.0
7 ALTON, MATTHEW	IL	1482/8	1531	L-3	W15	W12	2.0
8 REEVES, LOREN	IL	1609	1592	D10	W16	L-2	1.5
9 DYESS, DAVE C	MO	1580	1574	W17	L-4	D-5	1.5
10 BLAIR, JOHN D	MO	1478	1484	D-8	L-1	W14	1.5
11 NORTHROP, ALLEN	KY	1513	1501	L-1	L-5	W16	1.0
12 SCOTT, RICHARD J	MO	1488	1478	W15	L-3	L-7	1.0
13 IMHAUSER, JAY	MO	1364	1348	L-2	B--	L-6	1.0
14 HILL, FARREL E	IL	1213	1204	B--	L-2	L10	1.0
15 STEARMAN, JAMES R	KY	0	1236	L12	L-7	W17	1.0
16 AMBS, RONALD L	MO	0	1299	D-5	L-8	L11	.5
17 MONROE, PHIL	KY	1061/4	1049	L-9	L-6	L15	.5

## 3RD SOUTHERN ILLINOIS CHESS CHAMPIONSHIP MOUNT VERNON -- 10/9/88

PLAYER	PRE		POST			TOT	
	ST	RTNG	RTNG	1	2		3
1 SHEFFIELD, RILEY M	MO	2123	2136	W-4	W-2	W-3	3.0
2 HOFFMAN, GREGORY M	KY	2130	2131	W-3	L-1	L-4	1.0
3 SUTTER, JR ROBERT	MO	2134	2117	L-2	W-4	L-1	1.0
4 BOCK, MAURICE R	MO	1980	1984	L-1	L-3	W-2	1.0

### SOUTHERN IL. CHESS CHAMP/A

PLAYER	PRE		POST			TOT	
	ST	RTNG	RTNG	1	2		3
1 ZAFRIN, VLADIMIR	MO	1932	1981	W-2	W-5	W-4	3.0
2 ODAK, WALDO	MO	1984	1991	L-1	W-4	W-5	2.0
3 HINTERLONG, DAVID	IL	1994	1974	L-4	B--	U--	1.0
4 RUDLOFF, MICHAEL D	MO	1915	1986	W-3	L-2	L-1	1.0
5 SCHWALM, JERRY L	IL	1915	1887	H--	L-1	L-2	.5
6 LOVEN, DALLAS	IL	1832	1832	B--	U--	U--	.0

### SOUTHERN IL. CHESS CHAMP/B

PLAYER	PRE		POST			TOT	
	ST	RTNG	RTNG	1	2		3
1 TONKINSON, JOHN D	IL	1758	1758	L-3	W-6	W-4	2.0
2 SUITS, MC CAMELY	MO	1722	1733	L-4	W-3	W-5	2.0
3 BRAMSTEDT, JERRY	IL	1675	1696	W-1	L-2	W-6	2.0
4 REEVES, LOREN	IL	1592	1629	W-2	W-3	L-1	2.0
5 AMBLE, BRUCE	IL	1793	1760	W-6	L-4	L-2	1.0
6 BRAMSTEDT, JAMES A	IL	1663	1626	L-5	L-1	L-3	.0

### SOUTHERN IL. CHESS CHAMP/C

PLAYER	PRE		POST			TOT	
	ST	RTNG	RTNG	1	2		3
1 WALKER, STEVEN M	MO	1579	1619	W-7	W-5	W-8	3.0
2 DALTON, JOHNNY M	IL	1487	1456	B--	W-3	W-6	3.0
3 HOOVER, A GRAYDON	IL	1574	1572	W-8	L-2	W-9	2.0
4 MURRAY, JIM	IL	1593	1582	W-9	L-8	D-5	1.5
5 GUTHRIE, DENNIS K	IL	1511/8	1537	W-6	L-1	D-4	1.5
6 HENKHAUS, MICHAEL	IL	1648	1613	L-5	W-7	L-2	1.0
7 SCOTT, RICHARD J	MO	1478	1458	L-1	L-6	B--	1.0
8 BENSON, HARRY K	IL	1473	1472	L-3	W-4	L-1	1.0
9 GUTHRIE, VINCENT R	IL	1438	1419	L-4	B--	L-3	1.0

## SOUTHERN ILLINOIS CHESS LEAGUE SUMMER SPECIAL ALTON -- 7/10/88

PLAYER	PRE		POST			TOT	
	ST	RTNG	RTNG	1	2		3
1 DAVIES, JAMES A	MO	2211	2223	W33	W-9	W-7	3.0
2 SOBEL, RICHARD L	FL	2158	2174	B--	W20	W-6	3.0
3 SHEFFIELD, RILEY M	MO	2091	2097	W18	D10	W16	2.5
4 SUTTER, JR ROBERT	MO	2085	2095	W12	W-8	D-5	2.5
5 NEWSOM, GARY D	KY	1990	1999	W23	W14	D-4	2.5
6 MERLI, CHRISTOPHER	MO	2081	2076	W24	W21	L-2	2.0
7 BOCK, MAURICE R	MO	2075	2070	W22	W31	L-1	2.0
8 ZAFRIN, VLADIMIR	MO	1966	1960	W32	L-4	W23	2.0
9 FROMAN, RONNIE A	MO	1922	1930	W26	L-1	W17	2.0
10 OTTERSBAACH, JAMES	MO	1895	1900	W27	D-3	D11	2.0
11 WISNIEWSKI, MARTIN	IL	1776	1793	W34	D15	D10	2.0
12 OESTREICH, MARK	IL	1764	1770	L-4	W25	W26	2.0
13 REEVES, LOREN	IL	1605	1617	L15	W28	W27	2.0
14 HILL, FARREL E	IL	1183	1213	B--	L-5	W19	2.0
15 DRUCKERMAN, ZACHAR	MO	2060	2051	W13	D11	U--	1.5
16 AYKENT, SERDAR	MO	1999	1978	W30	D19	L-3	1.5
17 STEEVENS, WILLIAM	MO	1807	1809	H--	W22	L-9	1.5
18 DEVILBISS, ROSS M	IL	1751/12	1743	L-3	D32	W30	1.5
19 HENKHAUS, MICHAEL	IL	1588/3	1625	W29	D16	L14	1.5
20 ODAK, WALDO	MO	1991	1984	W25	L-2	U--	1.0
21 HULT, DAVID R	MO	1822	1819	W28	L-6	U--	1.0
22 TAYLOR, DENNIS GEO	GA	1734	1737	L-7	L17	W29	1.0
23 WALKER, STEVEN M	MO	1587	1585	L-5	W34	L-8	1.0
24 RIGEL, MARK J	MO	1576	1560	L-6	L27	W32	1.0
25 VOSS, KIM A	IL	1508	1500	L20	L12	B--	1.0
26 SCOTT, RICHARD J	MO	1437	1452	L-9	W33	L12	1.0
27 IMHAUSER, JAY	MO	1323	1343	L10	W24	L13	1.0
28 ALTON, MATTHEW	IL	0	1421	L21	L13	W34	1.0
29 PURCELL, CARL A	IL	1806	1755	L19	D30	L22	.5
30 MURRAY, JIM	IL	1534/9	1546	L16	D29	L18	.5
31 RIGEL, JOSEPH R	MO	1503	1502	H--	L-7	U--	.5
32 BLAIR, JOHN D	MO	1481	1478	L-8	D18	L24	.5
33 SCHNEIDER, JOHN E	MO	1731	1702	L-1	L26	U--	.0
34 FRIERSON, AVERY J	MO	1261/4	1234	L11	L23	L28	.0

## MIDWEST CLASSIC -- MOUNT VERNON -- 8/14/88

PLAYER	PRE		POST			TOT	
	ST	RTNG	RTNG	1	2		3
1 SHEFFIELD, RILEY M	MO	2097	2108	W13	W15	W-6	3.0
2 LOVEN, DALLAS	IL	1782	1832	W20	W10	W-5	3.0
3 BOCK, MAURICE R	MO	2048	2027	W16	L13	W14	2.0
4 DRUCKERMAN, ZACHAR	MO	2035	2022	W12	L-6	W15	2.0
5 SCHWALM, JERRY L	IL	1907	1898	W22	W-7	L-2	2.0
6 EGULF, FRANK T	TN	1856	1877	W-8	W-4	L-1	2.0
7 TONKINSON, JOHN D	IL	1757	1758	W18	L-5	W20	2.0
8 VOSS, KIM A	IL	1500	1541	L-6	W19	W11	2.0
9 NEWSOM, GARY D	KY	2029	1993	L14	W16	D13	1.5
10 JUENGEL, DANIEL A	MO	1979	1949	W21	L-2	D12	1.5
11 FROMAN, RONNIE A	MO	1893	1856	W17	D14	L-8	1.5
12 GILCHRIST, DAVID	IL	1756	1769	L-4	W17	D10	1.5
13 DEVILBISS, ROSS M	IL	1742	1776	L-1	W-3	D-9	1.5
14 WALKER, STEVEN M	MO	1535	1576	W-9	D11	L-3	1.5
15 PURCELL, CARL A	IL	1755	1752	W19	L-1	L-4	1.0
16 SUITS, MC CAMELY	MO	1723	1722	L-3	L-9	W22	1.0
17 MURRAY, JIM	IL	1595/16	1593	L11	L12	W18	1.0
18 SCOTT, RICHARD J	MO	1505	1504	L-7	W22	L17	1.0
19 ALTON, MATTHEW	IL	1475/5	1482	L15	L-8	W21	1.0
20 EIHUSEN, LAUREL H	IL	1439	1454	L-2	W21	L-7	1.0
21 HOOVER, A GRAYDON	IL	1623	1574	L10	L30	L19	.0
22 PARMAR, HARSHAD K	IL	1540	1511	L-5	L18	L16	.0

# IN MEMORY OF CHARLES E. "CHUCK" LANDRY

By Wayne Palmquist

It is my sad duty to report the death of a long time chess friend. Chuck Landry was a key member of the Park Forest Chess Club from the early 1960s through 1982. He held a number of officer positions, and served as president for several terms. Landry provided a conservative balance to another departed member, Jay Toll (1969). These men were responsible for the unparalleled growth of the club to 90 members in the mid to late '60s. (They also founded and organized the South Suburban Chess League, which functioned successfully from approximately 1964 to 1975.) Jay was the dreamer and promoter; Chuck kept accurate records and made sure of details. (While recently putting together a history of the 35 year existence of the Park Forest Chess Club I consulted with Chuck and made use of his excellent archives.)

In my opinion, Landry is an unsung hero of the Park Forest Club. He always spoke of a balanced and reasonable approach to activities, and wanted to insure that all members had an opportunity to play. Chuck was a "champion" of those local non-United State Chess Federation players who were strictly interested in playing a friendly game of chess.

Chuck's untimely passing is a great personal loss for me. I am indebted to him in many ways. As a youngster I often rode with him to the club and to tournaments. (I'm sure I never said "Thank you" enough times for all those rides.) As a teenager I benefited both from the wisdom of his opinions and from his patience in listening to mine. As an almost middle-aged adult I had the pleasure of his continuing friendship through the years.

Chuck Landry was known to everyone as an honest, upstanding guy. Never unrealistic about his chess abilities, he simply enjoyed the logical process required to play the game. He was one of the last true gentlemen of the Park Forest Chess Club.

For many years Chuck took care of his grandmother and mother. He married late in life at age 51. Always in excellent health, he and his wife Marianne were celebrating their fifth anniversary in Wisconsin when he suffered a fatal heart attack on August 6.

People say life can be unfair. In this case that is a major understatement.

---

## THE CLUB SCENE

### CLUB BITS AND PIECES ...

The Hillside Chess Club has been "matchless" in club matches this year, defeating Oak Park-Forest Park (12-7) in June, Tuley Park in July, and Park Forest (7.5-6.5) in October. (This last match, marked by seven upsets, was not decided until the victor's Alan Watson earned a full point against Pete Connor on board one in the last game to finish .... The Park Forest Chess Club's October 8-9 tournament attracted 22 players. Club President Lawrence Cohen says that future weekend events will include one day Swisses and unrated "Action Chess" ....

Grandmaster Sergey Kudrin won 16 of 19 games at a July 26 simultaneous exhibition

at the Oak Park-Forest Park Chess Club, yielding draws to Bill Buttny, Jeff Holmes, and Rhys Read. GM Dmitry Gurevich is tentatively scheduled to present a simul at the same club in mid or late January .... Tony Schroeder and Erv Sedlock tied for first and second in the OP-FP CC Closed Championship tournament ....

Elm Chess Club meets Wednesdays, 6:30 to 11 p.m., at 511 So. York (the Elmhurst Depot) in Elmhurst; contact Phillip Duke, (312) 834-0868 .... Shimer College Chess Club meets Mondays, 7 p.m. to 11 p.m., at the CoCoo House on Cory Ave. in Waukegan; contact Kevin Bachler or David Shiner, (312) 623- 8400.

**PLAY IN THE MIDWEST ACTION CHESS CHAMPIONSHIP  
JANUARY 14, 1989  
ANY PROFIT WILL BE DONATED TO THE U.S. OPEN FUND**

# ILLINOIS CHESS LEAGUE PLANS CHAMPIONSHIP TOURNAMENT

By Larry Stilwell

For the first time in a dozen years, the champions of the Illinois Chess League's three sections will be determined solely by the results of the league's playoff tournament. All chess clubs are welcome to enter as many six man teams as they wish in the playoffs, scheduled to begin at 9:00 a.m. on Saturday, January 28, 1989, at the Proviso West High School cafeteria in Hillside. The Championship Section will consist of teams with an average rating from 2100 to 1800, the Reserve Section, 1800 to 1500, and the Booster Section, 1500 to

1200. (The top two boards will have no rating restriction in the Championship Section only.)

The tournament will be either a round robin or a three round Swiss, depending on the number of entries. The time control is 30 moves in one hour, then "sudden death" in 40 minutes (30/60, SD/40). Round times are 9:20, 12:00, and 3:20; the entry fee is \$20 per team. Team trophies, engraved "First Place-Illinois Chess League" and listing the top team's members, will be awarded at each level.

Individual first place trophies will also be given to players on each section's winning team (boards one through six). A captains' meeting will be held between the second and third rounds to discuss possible changes in the Illinois Chess League for next year.

Larry Stilwell is the organizer and director of the ICL Championship Playoffs. Anyone with questions or interested in additional information can contact him at 4705 Elm St., Lisle, IL 50532.

## **\$1,000 WISCONSIN AMATEUR**

**January 7 - 8, 1989**

*(see Chess Life or this magazine for full details!)*

### **NO BONES MINI TOUR -- AN ICA MINI-TOUR EVENT**

**WHEN: Saturday, January 28, 1988**

**WHERE: Am-Vets Post 66, 700 Old McHenry Rd. (Rt. 83), Wheeling, IL**

**WHAT: 4 Round Swiss**

**TIME LIMIT: 40/60; 20/30**

**MEMBERSHIPS REQUIRED: USCF & ICA**

**CASH PRIZES: \$420 (based on 30 entries) 1st: \$130 2nd: \$90 A/B, C/D, E/UNR: Each \$66**

**ENTRY FEE: \$18 in advance, \$22 at site**

**ROUND TIMES: 9:30, 12:00, 2:30, 5:00**

**INFORMATION AND ADVANCE ENTRIES: Dan Kamen, 3421 N. Arlington Heights Rd., Arlington Heights, IL 60004  
(312) 459-3040**

**LIMITED SMOKING -- WHEELCHAIR ACCESS**

**ILLINOIS TOURNAMENT CALENDAR  
(CONTINUED)**

Jan. 29: SICL Drury Inn Open, at the Drury Inn in Fairview Heights. John Tonkinson: (618) 462-5732.

Jan. 29: North Towne Open (an "Action Chess" event), at the North Towne Shopping Mall in Rockford. Gary Sargent, 2764 Panorama Dr., Rockford, IL 61109.

Feb. 4: Auburn High School "Pinnacle", at Auburn High School in Rockford. Jim Boyer: (815) 623-8148.

Feb. 4-5: Chess Center \$520 Grand Prix Guarantee, at the Chicago Chess Center. Jules Stein, 929-7010.

Feb. 11-12: For the Penny-Pinching Pawn Pusher, 1 day events, at the Chicago Chess Center. Jules Stein: 929-7010.

Feb. 12: Mt. Vernon Holiday Inn Swiss, at the Holiday Inn in Mt. Vernon. Mark Oestreich: (618) 532-5733.

**PATRON MEMBERS  
(CONTINUED)**

Peter Kuhn	Des Plaines, IL
Eugene Lopez	Elk Grove, IL
Alan Losoff	Morton Grove, IL
Kenneth Marshall	Lombard, IL
Eugene Martinovsky	Naperville, IL
James McNamara	Riverside, IL
Earl Miller	El Paso, IL
Patrick Moran	Wilmette, IL
Bill Naff	Peoria, IL
Wayne Palmquist	Oak Lawn, IL
Peter Pelts	Chicago, IL
Mieczyslaw Piatek	Chicago, IL
John Popovich	Evergreen Park, IL
Tim Redman	Lima, OH
Frederick Ryan	Chicago, IL
Ray Satterlee	Wheaton, IL
Vivian Schmucker	Goshen, IN
Mark Sefcheck	Naperville, IL
Tony Sillars	Chicago, IL
Arthur Sinclair	Evanston, IL
Richard Smiley	Chicago, IL
David Sprenkle	Knoxville, TN
Miomir Stevanovic	Lincolnwood, IL
David Taylor	Kankakee, IL
William Terbell	Glen Ellyn, IL
Don Townsend	Chicago, IL
Jim Warren	Western Springs, IL
Bill Wenz	Milwaukee, WI
Douglas White	Schaumburg, IL
Harold Winston	Naperville, IL
Marvin Winston	Old Bridge, NJ
David Wullatin	Oak Park, IL
Sandy Zabell	Chicago, IL
Max Zavaneli	Park Ridge, IL

**HELP SUPPORT ILLINOIS CHESS BY  
BECOMING AN ICA BENEFACTOR:**

CENTURY MEMBER \$100;  
GOLD CARD \$50; PATRON \$25.

Please mail your contribution to:  
Illinois Chess Association  
Guy Gruenberg  
P.O. Box 353  
Olympia Fields, IL 60461



**CHESS PHONE  
(312) 325-3666**

**DOWNSTATE CHESS PHONE  
(309) 655-0618**

**Please send all Chicago metropolitan area  
Tournament Clearinghouse material to:**

**Fred Gruenberg  
Box 43336  
Chicago, IL 60643  
(312) 396-984 (D)  
(312) 779-0306 (N)**

**Please send Downstate Tournament  
Clearinghouse material to:**

**Garrett Scott  
202 Foster Dr.  
Normal, IL 61761  
(309) 452-8116**

### CENTURY CLUB MEMBERS

Michael Belovesick	Elmhurst, IL
Fred Cramer	Mequon, WI
Tom Fineberg	Chicago, IL
Fred Gruenberg	Chicago, IL
Marc Lonoff	Northbrook, IL
Albert Sandrin	Chicago, IL
Angelo Sandrin	Chicago, IL
Bill Smythe	Chicago, IL
Burton Vincent	Chicago, IL

### GOLD CARD MEMBERS

Bill Buttny	Downers Grove, IL
Harland Hoisington	Ogden, UT
Ed Marshall	South Barrington, IL
Daniel Pradt	Glen Ellyn, IL
Michael Pratts	Chicago, IL
Irwin Rothschild	Park Forest, IL
Mitchel Sweig	Evanston, IL
Richard Verber	Chicago, IL
Louis Werner	Evanston, IL

### PATRON MEMBERS

Faneuil Adams	New York, NY
Bob Ash	Urbana, IL
Todd Barre	Clarendon Hills, IL
John Barstad, Sr.	Carol Stream, IL
Roy Benedek	Western Springs, IL
Timothy Bogan	Chicago, IL
Barry Bouton	Sandwich, IL
Bill Brock	Chicago, IL
Tyrone Brooks	Chicago, IL
Jim Brotsos	Chicago, IL
Fred Burgess	Oak Forest, IL
Sam Caldwell	Chicago, IL
Anthony Caliendo	Aurora, IL
Lynn Crewse	Arlington Heights, IL
David Cromer	Iowa City, IA
John Deutsch	Chicago, IL
Leroy Dubeck	Cherry Hill, NJ
Keith Esses	Chicago, IL
Gerard Garino	Evanston, IL
Jon Gotz	West Chicago, IL
Donald Graft	Wheaton, IL
William Graves	Chicago, IL
Guy Gruenberg	Matteson, IL
Walter Henry	Naperville, IL
Charles Hicks	Naperville, IL
Keith Holzmüller	Evanston, IL
Jeffery Hyland	Mount Prospect, IL
Robert Irons	Chicago, IL
Tim Just	Gurnee, IL
Dan Kamen	Wheeling, IL
Leo Kaushansky	Chicago, IL
Scott Kittsley	Shorewood, WI
Thomas Knoedler	Springfield, IL
Walter Kocjan	Northlake, IL
John Krom	Chicago, IL

### ICA ELECTED OFFICERS:

Tim Just, President  
37165 Willow Ln., Gurnee, IL 60031

Harold Winston, Metro Vice-President  
46 Robin Hill Dr., Naperville, IL 60540

Bill Naff, Downstate Vice-President  
212 W. Vail Ct., Peoria, IL 61614

Ken Marshall, Secretary  
357 W. Grove, Lombard, IL 60148

Guy Gruenberg, Treasurer  
P.O. Box 353, Olympia Fields, IL 60461

### USCF DELEGATES

by virtue of their USCF posts:

Harold Winston, President  
Todd Barre, Regional Vice-President  
Tim Just, Regional Vice-President  
Frank Skoff, Past President  
Helen Warren, Delegate at Large  
and Life Voting Member

### ICA APPOINTED USCF DELEGATES:

Tim Just	Ken Marshall
Fred Gruenberg	Richard Verber
Tom Fineberg	

### ICA APPOINTED USCF VOTING MEMBERS:

Bill Naff	Larry Stilwell
Bill Smythe	Bob Bain
Walter Brown	Mike Zacate
Erv Sedlock	Tom Knoedler
Dennis Grant	Barry Fisher
Wayne Palmquist	

### ICA APPOINTED USCF ALTERNATE VOTING MEMBERS:

Guy Gruenberg	Jim Condron
Chris Musgrave	Jim Brotsos
Eric Schiller	John Tankinson
Alan Losoff	Al Chow
John Bardstadt, Sr.	Burton Vincent
Bill Wilkinson	Mike Belovesick, Sr.
Angelo Sandrin	Dan Kamen
Byron Pappas	Larry Goch
Kevin Bachler	Philip Wong
Glen Panner	

## ILLINOIS TOURNAMENT CALENDAR

Call Chess Phone, (312) 325-3666, for recorded tournament announcements and results, often more up-to-date than CHESS LIFE or the ICB. The ICA Chess Phone voice is Todd Barre.

Unless otherwise noted, all tournaments require USCF membership. Illinois Tour events also require ICA membership. Phone numbers are area code 312 unless a different area code is listed. Announcements of ICA affiliates receive more space in the Tournament Calendar than do those of non-affiliates.

Dec. 24-25: For the Penny-Pinching Pawn Pusher, 1 day events, at the Chicago Chess Center. Jules Stein: 929-7010.

Dec. 31-Jan. 1: Ja'Doube, 1 day events, at the Chicago Chess Center. Jules Stein: 929-7010.

Jan. 7-8: Tim Just's Winter Open VI, at the Illinois Beach State Park Resort in Zion. AN ICA ILLINOIS MAXI-TOUR EVENT. Tim Just: 244-7954. SEE FULL PAGE AD IN THIS ICB.

Jan. 7-8: Ja'Doube, 1 day events, at the Chicago Chess Center. Jules Stein: 929-7010.

Jan. 7-8: \$1,000 WIS Amateur Open, at the Traveler's Inn in Fon du Lac, Wis. Mike Selig: (414) 739-7550.

Jan. 14: Second Annual Midwest Action Chess Championship, at the Holiday Inn O'Hare in Rosemont. AN ICA ILLINOIS MAXI-TOUR EVENT. Helen Warren: 244-6665. SEE FULL PAGE AD IN THIS ICB. (ANY PROFIT GOES TO U.S. OPEN FUND.)

Jan. 14-15: For the Penny-Pinching Pawn Pusher, 1 day events, at the Chicago Chess Center. Jules Stein: 929-7010.

Jan. 21: Albright Scholastic Tournament, at Albright Middle School in Villa Park. Jerry Esposito: 834-1138.

Jan. 21-22: Why Don't You Try This Tournament Idea? 1 day events, at the Chicago Chess Center. Jules Stein: 929-7010.

Jan. 28: No Bones Mini Tour, at Am-Vets Post 66, in Wheeling. AN ICA ILLINOIS MINI-TOUR EVENT. Dan Kamen: 459-3040. SEE HALF PAGE AD IN THIS ICB.

Jan. 28: Bradley Winter Open (an "Action Chess" event), at Garrett Center in Peoria. AN ICA ILLINOIS MINI-TOUR EVENT. Bill Wilkinson: (309) 673-9455. SEE HALF PAGE AD IN THIS ICB.

Jan. 28: Illinois Chess League Playoffs, at Proviso West High School in Hillside. Larry Stilwell: 963-6799.

Jan. 28: 10th Illinois High School Chess Classic, at Proviso West High School in Hillside. Larry Stilwell: 963-6799.

Jan. 28: 5th Illinois Grade School Tournament, at Proviso West High School in Hillside. Larry Stilwell: 963-6799.

Jan. 28-29: I Had A Won Game -But, 1 day events, at the Chicago Chess Center. Jules Stein: 929-7010.

(Continued on Page 28)

ILLINOIS CHESS BULLETIN  
357 W. GROVE  
LOMBARD, ILLINOIS 60148

Speedy Delivery Appreciated

Bulk Rate  
U.S. Postage Paid  
Lombard, IL 60148  
Permit No. 248