



ILLINOIS CHESS BULLETIN

Official Publication of the Illinois Chess Association a U.S.C.F. Affiliate
A Not For Profit Organization

SEPTEMBER - OCTOBER, 1988 VOLUME XI, NO. 5 BI-MONTHLY \$2.00

The New York Times

VOTE FOR CHESS !!

LOCALS STUNNED	TORONTO, ATHENS, LONDON, PARIS, ROME BOZIDOV, WASHINGTON		GENEVA SHOCKED
[Faded text]	[Faded text]	NO PROBLEM!	[Faded text]
CHICAGO		[Faded text]	HOUSTON
[Faded text]	SEATTLE	SAN FRANCISCO	[Faded text]

PLAY IN THE ILLINOIS CLASS CHAMPIONSHIPS
\$1,500 IN PRIZES . . . NOVEMBER 19 - 20

ILLINOIS CHESS BULLETIN

EDITOR:

KEN MARSHALL
357 W. Grove
Lombard, Illinois 60148
(312) 932-1455

TECHNICAL EDITOR:

MARY GAITHER MARSHALL

ASST. TECHNICAL EDITOR:

ALAN LOSOFF

GAMES EDITOR:

LAWRENCE CHACHERE

SUBSCRIPTIONS:

The Illinois Chess Bulletin (ICB) is published bimonthly by the Illinois Chess Association. ICA membership includes a subscription to the ICB. (Century, Gold, and Patron members receive their ICB by first-class mail.

ANNUAL MEMBERSHIP RATES:

Century Club:	\$100.00
Gold Card:	50.00
Patron:	25.00
Regular:	10.00
Junior (under 18):	6.00

Subscriptions, Address Changes, and Corrections should be sent to:

Alan Losoff, ICA Membership Secretary
P.O. Box 157
Morton Grove, IL 60053-0157

SUBMISSIONS:

Submit articles, photographs, crosstables, games, and other publishable materials to the Editor. Publication deadline for the next issue is November 21, 1988.

ADVERTISING RATES:

Full page	\$60
Full page (back cover)	\$80
Half page	\$36
Quarter page	\$21

10% discount for the same ad in consecutive issues. 1/3 discount for ICA affiliates. All advertising must be camera ready to qualify for these rates. The ICA and the ICB reserve the right to reject advertising.

TABLE OF CONTENTS

FROM THE EDITOR'S DESK	1
WHERE TO PLAY CHESS / CLUB AFFILIATES	2
PRESIDENTIAL PONDERINGS	3
WHAT'S NEW	4
ILLINOIS OPEN	7
CHACHERE ANNOTATES	10
ILLINOIS TOUR	11
MARTINOVSKY ANNOTATES	14
NORTH AMERICAN CLASS	17
ILLINOIS HIGH SCHOOL INVITATIONAL	19
DENKER NATIONAL HIGH SCHOOL CHAMPIONSHIP	20
GILES AT THE 1988 US OPEN	22



ICA AFFILIATION: Chess clubs and other organizations which promote chess activity may affiliate with ICA. Affiliate benefits include a copy of each ICB by first-class mail, a listing (if desired) under "Where to Play Chess" in each issue, discounted ICB advertising rates, three-line tournament announcements in the "Tournament Calendar", and the right to run ICA Tour events. ICA affiliation costs \$15; please remit to address shown under "Annual Membership Rates". Include your club meeting times, name of contact person, and other useful information in the format shown in "Where to Play Chess" on page 2.

CHESS PHONE
(312) 325-3666

DOWNSTATE CHESS PHONE
(309) 655-0618

From the Editor's Desk

Family and job responsibilities have resulted in this ICB coming out several weeks later than I had planned. (I now hope to bring out the November-December magazine in early December.) Although more material was available for publication, this issue is four pages shorter (and contains fewer photographs) than usual. Rising postal and printing costs are the culprits: unless the Illinois Chess Association obtains (and retains) more members, the ICA will have little choice but to face financial reality and either raise dues (hopefully a "last resort" option) or cut costs by permanently scaling back the number of pages and photos in the ICB. (Articles, games, etc. submitted by Kent Hieronymous, Bruce Kreisman, Wayne Palmquist, Cyrus Bondari, and others should appear in the next issue.)

Responding to requests from downstate chess players, the ICA scheduled the 1988 Illinois Open outside of Chicago. The result was disappointing: only 73 players turned out, less than half the number in the 1987 Open held at the Hyatt Regency O'Hare. Despite offering a reduced prize fund, the ICA lost nearly \$500 on the event. (The loss would have been higher had Tournament Director Tim Just not waived his director's fee.) Again, financial reality must be faced: the Illinois Open and Illinois Class tournaments now will probably be Chicago-based events for the foreseeable future.

Peter Pelts continued his amazing 1988 chess performance by winning the Illinois Open and State Championship. An article on this remarkable player is scheduled for the November-December ICB.

The Midwest/Illinois Tournament of Champions III gets under way on October 28 at the Hyatt Lincolnwood Hotel (located on Touhy just east of the Kennedy Expressway). New Illinois State Champion Peter Pelts, defending I of C champion Albert Chow, newcomer Ronald Cusi (rated over 2400), 1988 U.S. Open star Morris Giles, and Dr. Eugene Martinovsky are to be among the ten participants in the round robin invitational event, which was again organized by Helen Warren. The tournament consists of two rounds a day on October 28, 29, and 30, and on November 5 and 6. Spectators are welcome.

If you were a paid up ICA member as of October 22, 1988, your ICA election ballot is included in this ICB. Please vote and return your ballot (in an envelope postmarked no later than November 15) to Ken Marshall, ICA Secretary, 357 W. Grove, Lombard, Ill. 60148.

Regular readers of this magazine know that I have tried to devote its pages to chess play rather than to chess politics. I must, however, comment on Yasser Seirawan's "Fear and Loathing in Boston", his personal report on the United States Chess Federation delegates' meetings at the 1988 U.S. Open which appeared in the September 7, 1988 issue of his INSIDE CHESS. I was at those meetings, and can attest that many of Seirawan's observations consist of little more than self-serving grandstanding. I can live with that. What really angers me is Seirawan's attack on USCF President Harold Winston in commentary on what Seirawan calls the "Winston Deficit". Most of the "facts" in that commentary regarding the cause of the USCF's 1987-1988 deficit are simply not true, and Seirawan knew or should have known that they are not true. Perhaps the memory of his landslide loss to Winston in the 1987 USCF presidential race clouded his judgment. In any event, if Seirawan was as careless in preparing for his World Championship Candidate's Match with Jonathan Speelman as he was in preparing his "Fear and Loathing" article, it is not surprising that Speelman slaughtered him. (I would like to go on, but discretion and space limitations intervene. I should note, however, that I respect Seirawan as a chess player, and that I have a three year subscription to INSIDE CHESS, which provides excellent coverage of the world chess scene when it is not promoting its editor's political agenda.)

ICB Assistant Technical Editor Alan Losoff has taken on the additional duties of ICA Membership Secretary. A new or renewing ICA member should now receive an acknowledgment and a membership card within a week or two after joining or renewing. Alan asks that each member check his or her mailing label on this ICB to make certain that the information on it (including the expiration date) is accurate. Corrections should be sent to Alan Losoff, ICA Membership Secretary, P.O. Box 157, Morton Grove, Ill. 60053-0157.



WHERE TO PLAY CHESS: ICA CLUB AFFILIATES



AMERICAN POSTAL CHESS TOURNAMENTS

sponsors postal events of various kinds, and sells chess books and equipment. Contact Jim or Helen Warren, P.O. Box 305, Western Springs 60558. (312) 246-6665.

AUBURN HIGH SCHOOL CHESS CLUB, 4273

Straw Lane, Roscoe 61073. Contact James G. Boyer, sponsor. (815) 623-8148.

CENTRAL LAKE COUNTY CHESS CLUB meets

Fridays, 7:15 p.m. to midnight, College of Lake County, Bldg. 1, Washington at Route 45, Grayslake. Contact Dennis Grant, 1657 McKay, Waukegan 60087. (312) 336-5188.

CHICAGO CHESS ASSOCIATION organizes

major tournaments at the Holiday Inn O'Hare. Also master chess lessons, \$40/3hr. Contact Dick Verber, 1261 W. Loyola, Chicago, 60626. (312) 262-9100 after 3 p.m.

CHICAGO CHESS CENTER meets for casual

chess 7 days a week, 6 p.m. to 1 a.m., 2923 N. Southport, Chicago 60657. Also sponsors rated tournaments on selected weekends. Contact Jules Stein, (312) 929-7010.

CHICAGO INDUSTRIAL CHESS LEAGUE

organizes frequent competition among commercial/government teams with awards, ratings, and special events. Contact Jim Brotsos, (312) 775-5054, or Bruce McNeil, (312) 742-5195.

DECATUR CHESS CLUB meets every Thursday

evening from 7:00 p.m. to midnight at the Sheraton Inn, 450 E. Pershing, Decatur. Contact Bill Meyer, 2365 Esther, Decatur 62521 (217) 864-4797.

DOWNERS GROVE PARK DISTRICT CHESS

CLUB meets every Thursday, 6:30 -10 p.m., Lincoln Center, 935 Maple Ave., Downers Grove. Affiliated with USCF and ICA. Contact George Uffner, (312) 910-0421.

FRED REINFELD CHESS CLUB meets Sunday

afternoons from 2-6 p.m. at Coslow's, 200 E. Johns St., Champaign. Speed chess is emphasized. Contact Barry Fisher, 2112 Cyprus, Champaign 61821. (217) 333-9083.

GREATER PEORIA CHESS FEDERATION

meets Mondays, 7 to 11 p.m., Bradley Student Center Cafeteria, 901 N. Elmwood, Peoria. Contact Bill Wilkinson, 901 N. Rebecca Pl., Peoria 61606. (309) 673-9455.

ILLINOIS VALLEY CHESS CLUB meets

Thursdays, 6-10 p.m. Grace United Methodist Church, 1345 Chartres St., LaSalle. Contact Byron Pappas, 432 Creve Coeur, LaSalle 61301. (815) 224-2869.

LAKE COUNTY CHESS ASSOCIATION

sponsors rated tournaments in the Grayslake/Zion area. Contact Tim Just, 1521 Circle Ct., Waukegan 60085. (312) 244-7954.

OAK PARK / FOREST PARK CHESS CLUB

meets Tuesdays, 7 p.m. to midnight, Mohr Community Center, Jackson and DesPlaines, Forest Park. Contact Ken Marshall, 357 W. Grove, Lombard 60148. (312) 932-1455.

PARK FOREST CHESS CLUB meets Thursdays,

7 to 10:30 p.m., Freedom Hall, Orchard & Lakewood, Park Forest. Contact Wayne Palmquist, 9820 S. 51st Ave. Oak Lawn 60453 (312) 857-8150.

SOUTHERN ILLINOIS CHESS LEAGUE

sponsors rated tournaments throughout southern Illinois. Contact John Tonkinson, 105A Manor Court, Alton 62002. (618) 462-5732.

ST. CHARLES CHESS CLUB meets Thursdays

at 7 p.m., Baker Community House, 101 S. 2nd (Route 31), St. Charles. Contact Erv Sedlock, 6 N. 307 Old Homestead Rd., St. Charles 60174. (312) 377-7995.

TULEY PARK CHESS CLUB meets Saturdays,

1 to 5 p.m., Tuley Park Fieldhouse, 501 E. 90th Pl., Chicago. Contact Thomas Fineberg, 7321 S. South Shore Dr., Chicago 60649. (312) 721-3979.

TWIN CITY CHESS CLUB meets Monday

evenings, Parks & Rec. Bldg., 611 S. Linden, Normal, except 1st Monday/month, Garcia's, Wattersen Place. Speed tournaments 50 cents/game. Contact Andy McGowan, 520 E. Chestnut, Bloomington 61701. (309) 827-7892.

CHESS PHONE

(312) 325-3666

PRESIDENTIAL PONDERINGS

By ICA President Tim Just

1988 REGION VII CHESS CHAMPIONSHIP

This tournament will take place in St. Louis, Missouri on November 12-13, 1988. The champions of Iowa, Missouri, and Nebraska (the three states which, along with Illinois, make up Region VII) are scheduled to compete. I hope new Illinois State Champion Peter Pelts can attend and bring the Regional title home with him to Chicago. Illinois players can enter this \$1325 prize fund event for \$17 if they register before November 11. For more information, write to organizer Bill Moushey at 3145 Oregon Ave., St. Louis, Mo. 63118, or call him at (314) 664-0612. (See the full page ad for the Region VII Championship in this ICB.)

1988 ILLINOIS CLASS CHAMPIONSHIPS

NOVEMBER 19-20, 1988, the WEEKEND BEFORE THANKSGIVING, is also the weekend of the Illinois Class Championships, which will again be played in

the excellent facilities of Morgan Park Academy in Chicago.

The \$1500 prize fund is guaranteed. Advance entry fees (applicable up to November 15) are as follows: Masters and Experts, \$25; Classes A, B, and C, \$20; Classes D, E, and Unrated, \$15. Send advance entries to Todd Barre, #16C, 16W520 59th St., Clarendon Hills, Ill. 60514. (See the two page ad in this ICB for full tournament details.)

THE 1989 U.S. OPEN AND YOU

One of Helen Warren's first tasks as Chairperson of the U.S. Open is fund raising. A tournament like the Open does not just happen. Organizing such an event requires not only much time and energy, but also money. Dollars are needed up front to cover expenses. If you or your club can donate money to help out, please do so; if you can't spare money, please give some time. A lot of effort from a lot of workers is needed to put on a U.S. Open. Any help will be appreciated. (See Helen Warren's fund raising message

in this ICB.)

DO YOU KNOW ANYTHING ABOUT CURT MERSEBURGER?

Curt Merseburger emigrated to the United States from Germany and settled in Chicago for a time in the late 1800s. He had a career as chess player in Chicago, and the Chicago Chess Club reportedly erected a memorial to him under the name Charles Curt Merseburger. Dr. John Krois of Emory University, who is writing a biographical entry about Mr. Merseburger for a German reference work, would appreciate hearing from anyone who has any information about his subject. Correspondence can be directed to him at the Department of Philosophy, Emory University, Atlanta, Georgia 30322.

TIM JUST HAS MOVED

By the time you receive this ICB, I will have moved to 37165 Willow Lane, Gurnee, Ill. 60031. Ma Bell tells me that I can keep my old phone number [(312) 244-7954].

RONNENBERG (Continued from page 20)

If I had won I would have tied for first. Instead I ended up in a massive tie for fourth. This year the tournament was shortened to five rounds, resulting in three players sharing first place with 4-1 scores. This had not happened when the event went six rounds. One more round would probably have determined a clear champion. I ruined my chances by losing my first game. My only interesting contest came in the fourth round:

Denker Tournament of [High School] Champions
August 8-12, 1988

White: Erik Ronneberg
Black: Scott Berger
Annotated by Erik Ronneberg

1.e4 c5 2.Nf3 d6 3.d4 cxd
4.Nxd4 Nf6 5.Nc3 g6 6.Be3
Bg7 7.f3 0-0 8.Qd2 Re8?
9.0-0-0 a6?

Berger doesn't know
the Dragon very well.

10.h4 Nc6 11.g4

11.Bc4 is better.

11...Qa5

Nxd4 and Be6 are more
natural.

12.Bc4 Qb4 13.Bb3 Na5
14.h5 Nxb3 15.cxb Qa5

Black senses no
danger and continues with
his elaborate plans.

16.Rdg1 Be6 17.hxg Rec8

17...hxg 18.Bh6 Bh8
19.Qh2 loses quickly for
Black.

18.Kb1 hxg 19.Nf5

This is more flashy
than Bh6, which also
works.

19...gxf

Berger is skeptical.
20.gxf Bxf5 21.Rxg7+

My opponent now
looked taken aback, but
this move should not have

been a surprise.

21...Kg7 22.Bh6+ Kg8

I had hoped for

22...Kh7 23.Bg7+ Kg8

24.Rg8+ Kxg7 25.Qh6 mate.

23.Qg5+ Bg6 24.Qxa5 and
White won in 42 moves.

I would like to thank the
Illinois Chess Association
for arranging a qualifying
event and for covering
part of my expenses for
the Denker Tournament over
the last three years.

[Editor's Note: First
place in the Illinois High
School Invitational
Championship carried with
it a \$200 contribution
toward the winner's costs
of attending the Denker
event.] Perhaps the ICA
might consider sending a
different player to the
Denker Tournament every
year so that more Illinois
high school players would
have a chance to play in a
national championship.

(Of course I can say this
after going myself three

What's new

WILDER WINS 1988 U.S. CHESS CHAMPIONSHIP

International Master Michael Wilder, one of two non-Grandmasters in the twelve player field, finished 6.5-4.5 to win the 1988 United States Chess Championship tournament, which took place from October 1 through October 16 in Cambridge Springs, Pennsylvania. Boris Gulko and former champion Yasser Seirawan tied for second and third with scores of 6-5. Sharing fourth through tenth places at 5.5-5.5 were 1987 co-champions Joel Benjamin and Nick DeFirmian, Maxim Dlugy, John Federovich, Sergey Kudrin, Michael Rohde, and IM Victor Frias. Former champion Lev Alburt followed with a 5-7 result, while Anthony Miles scored 4-8.

SECOND MIDWEST ACTION CHESS CHAMPIONSHIP TO BE ON ICA ILLINOIS TOUR

Organizer Helen Warren has announced that the second annual Midwest Action Chess Championship, set for January 14, 1989, at the Holiday Inn O'Hare, will be an ICA Illinois Maxi-Tour event. 1988's inaugural tournament drew 112 entrants, a record for Action Chess competition at that time.

CHARLES E. LANDRY: 1932-1988

Charles "Chuck" Landry, an active member of the Park Forest Chess Club for more than twenty years, died in August. Wayne Palmquist's tribute to this long time friend of Illinois chess will appear in the next ICB.

CHESS MASTER SEEKS CONTRACT WORK IN DATA PROCESSING

I am a chess master. I love chess, but presently have no time to study the game and therefore have little hope of further improvement.

I would like an alternative to full time employment which will give me some free time between projects. I am looking for contract work in data processing. I have 8 years of experience in business application programming in both on-line and batch processing.

I would appreciate any help which my fellow chess players might be able to give me regarding job opportunities.

PETER PELTS (312) 878-6951

(Paid Advertisement)

CHICAGO

- Prestigious Playing Site
- I.C.A. Maxi-Tour Event
- Free Parking

1988 ILLINOIS CLASS CHAMPIONSHIPS

NOVEMBER 19 & 20

(THE WEEK-END BEFORE THANKSGIVING)

ONLY
2 GAMES
A DAY

\$1,500 IN PRIZES

ONLY
2 GAMES
A DAY

Master/Expert: \$400, \$200, \$100
Expert: \$100

Class A: \$100, \$60, \$30

Class B: \$100, \$60, \$30

Class C: \$100, \$60, \$30

D/E/UNR: \$80, \$40, \$10

MORGAN PARK ACADEMY — ALUMNI HALL

2153 West 111th Street • Chicago, Illinois

(Just Behind the "Beverly Art Center")

4 ROUND SWISS: EF: MASTER/EXPERT — \$25.00

CLASSES A,B,C — \$20.00

D/E/UNR — \$15.00

BY NOVEMBER 15TH

All entries are \$5.00 more at the door!

TIME CONTROL: 45/2; **ROUNDS:** 10-4, 11/19 & 11/20.

REGISTRATION: Saturday, November 19, 8:30 a.m. - 9:30 a.m.

ILLINOIS CHESS ASSOCIATION membership required of Illinois residents, neighboring state membership OK.

Players may play in their class or ONE class above.

Latest supplement used for ratings; NO SMOKING.

1/2 point bye rounds 1, 2, or 3 if requested in advance.

— EASY TO GET TO — SEE OTHER SIDE FOR DETAILS —

PLEASE BRING YOUR CHESS CLOCK & CHESS SET!

ILLINOIS CLASS CHAMPIONSHIPS

DIRECTIONS FOR REACHING THE ILLINOIS CLASS AT THE MORGAN PARK ACADEMY

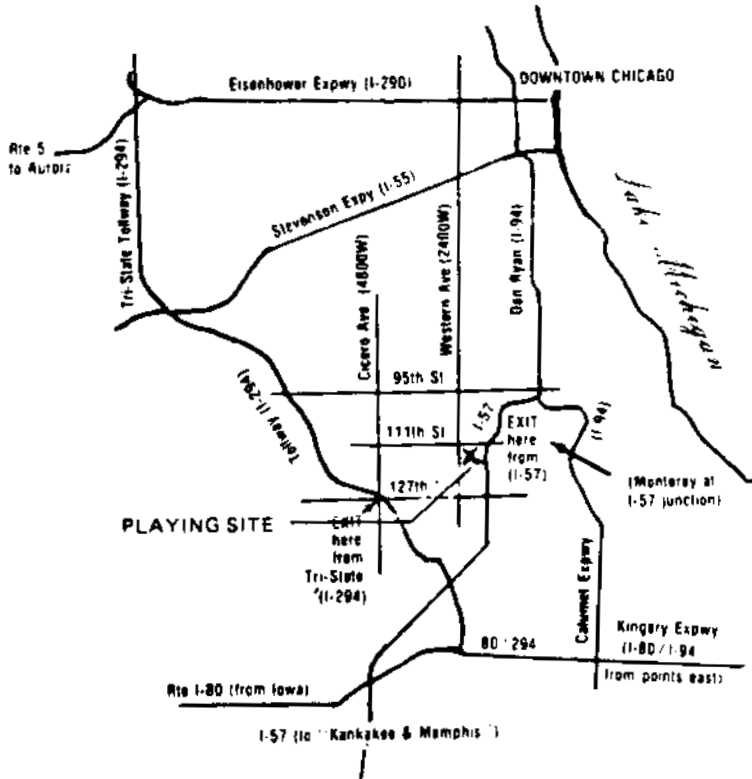
From the north, take the Dan Ryan Expressway south (I-94). Be sure to stay right at the fork just beyond 95th Street, on the extension which leads to Kankakee (I-57).

Exit the 111th Street exit and continue one more block south. Turn right, (west) and proceed approximately one mile west to the top of the hill and the Art Center on south side of street at 2153 West 111th Street.

From the south, take I-57 north to the 111th Street exit. Proceed west on 111th Street approximately one mile.

Via 294 Tollway, exit at 127th Street and Cicero. Drive north on Cicero to 111th Street, and east on 111th Street approximately four miles. We are approximately two blocks east of Western Avenue (2400 west).

NOTE: Alumni Hall is directly behind the Beverly Art Center.



ENTRIES & INFORMATION

MAIL TO: Todd Barre, 16W520 59th St. #16C
Clarendon Hills, IL. 60514
PHONE: 312-323-7385

EARLY ENTRY FORM

NAME _____ USCF RATING _____

ADDRESS _____

CITY, STATE, ZIP _____

USCF ID # _____ USCF EXPIRATION _____ ICA EXP. _____

CHECK SECTION: M/X (\$25) _____ A (\$20) _____ B (\$20) _____ C (\$20) _____

D/E/UN (\$15) _____

ICA new/renew: Adults (\$10) _____ Youth (\$6) _____

USCF new/renew: Adults (\$25) _____ Youth (\$12) _____

Make checks payable to Illinois Chess Association

PELTS TAKES 1988 ILLINOIS STATE CHAMPIONSHIP

By Tim Just

Page 14 of the July-August 1988 ILLINOIS CHESS BULLETIN had the evidence. It was the kind of evidence that sports broadcasters savor on their pre-game shows, the kind of information that stands out when discernible differences between combatants in a sporting event are negligible. Some would say it represents desire, others would say intensity. It reveals an emotional state of being, the kind of passion that is often the difference between winning and losing.

Peter Pelts placed an ad on page 14 of the July-August ICB stating that he is looking for contract work in data processing. He said that he is seeking such an alternative to full time employment so that he will have more time to study chess. Chess thus is more important to him than full time work. That attitude reflects the desire or intensity which made Pelts the 1988 Illinois State Champion.

Peter won the state title by scoring 4.5-.5 at the 1988 Illinois Open in Peru, Illinois on September 3-5. His first place result in the 43 player Open section included wins over top rated Senior Master Eugene Martinovsky and the BP computer program. (Losing only to Pelts, BP beat Master Cyrus Bondari and Expert Kevin Gensler and drew with Master Ken Wallach on its way to a 3.5-1.5 finish and an Expert rating.) Only Alan Watson, who won the top Expert prize

(and became Illinois' newest Master in the process), managed to hold Pelts to a draw. Watson's 4-1 score earned him a tie for second through fifth places with Albert Chow, Ronald Cusi, and Scott Zingheim.

Kevin Gensler, William Naff, Ray Satterlee, Luis Bernal, and Anthony Marquez each finished with 3 points to share the second Expert prize. Bill Butny topped Class "A" with a 3.5-1.5 result, followed by Roman Golla and Erv Sedlock at 3-2.

Top honors in the 30 player Reserve section went to Barry Bouton, who posted the only perfect 5-0 score. Frank Chloupek and Charles Schlenker each garnered 4 points to tie for second and third. Splitting the Class "C" prize money were Duane Bayer and Rudy Padilla at 3.5-1.5. Ken Palmer led the "D/E" players with a 2.5-3.5 result, a point ahead of George Ferroni and Chris Munoz. Unrated Don Browning finished 1-4.

The 1988 Illinois Open was directed by Tim Just with the assistance of Dennis Grant. Byron Pappas and his Illinois Valley Chess Club helped the Illinois Chess Association organize the event.

[Editor's Note: The games on page 8 are from Illinois Open score sheets provided by tournament director Tim Just.]

1988 ILLINOIS OPEN AND RESERVE

CHAMPIONSHIP SECTION	pre	post	score	tour
1 PELTS Peter	IL 2396	2407	4.5	16 M
2 ZINGHEIM Scott	IL 2274	2364	4	8 M
3 WATSON Alan	IL 2198	2222	4	8 M, 3
4 CUSI Ronald	IL 2424	2420	4	8 M
5 CHOW Albert	IL 2444	2428	4	8 M
6 MARTINOVSKY Eugene	IL 2463	2454	4	8 M
7 SCHILLER Eric	IL 2260	2262	4	8 M
8 COMPY B P	IL 1945	2023	4	8 M, 3, A
9 BUTNY William	IL 1864	1912	4	8 M, 3, A
10 BERNAL Luis	IL 2073	2095	4	8 M, 3, A
11 WALLACH Ken	IL 2267	2264	4	8 M
12 SATTERLEE Ray Doyle	IL 2118	2114	4	8 M
13 BONDARI Cyrus	IL 2239	2222	4	8 M
14 GENSLER Kevin	IL 2191	2166	4	8 M
15 GOLLA Roman	IL 1883	1936	4	8 M
16 MARQUEZ Anthony	IL 1942	1963	4	8 M
17 SEDLOCK Erv	IL 1887	1924	4	8 M
18 NAFF William	IL 2168	2142	4	8 M
19 BAIN Robert	IL 2124	2134	4	8 M
20 MARSHALL Ken	IL 1879	1919	4	8 M
21 REYES Virginia	IL 2095	2079	4	8 M
22 BRATTLEFORD James	IL 1920	1939	4	8 M
23 STINSON Marcus	IL 1989	1952	4	8 M
24 CRAWFORD Brad	IL 1834	1856	4	8 M
25 CONNOR Lawrence	IL 2006	1964	4	8 M
26 MC DONAH Andy	IL 2070	2019	4	8 M
27 BURGESS Fred	IL 1726	1756	4	8 M
28 ULICH Douglas	IL 1982	1947	4	8 M
29 WARGENTODC Ian	IL 1834	1829	4	8 M
30 STEELE Robert	IL 1924	1927	4	8 M
31 FARMER Glenn	IL 1834	1835	4	8 M
32 GODFREY Jacques	IL 1825	1851	4	8 M
33 NIERONIVUS Kent	IL 1731	1731	4	8 M
34 MARSTNIK Richard	IL 2149	2139	4	8 M
35 LUNDQUIST Doug	IL 1975	1995	4	8 M
36 ZIEGLER Kevin	IL 1899	1890	4	8 M
37 MORRI Chris	IL 1877	1852	4	8 M
38 HALLISON Roger	IL 1754	1754	4	8 M
39 SOLTIHO Thomas	IL 1913	1879	4	8 M
40 ILDSVAY Paul	IL 1873	1843	4	8 M
41 VAUGHAN Stan	IL 2230	2209	4	8 M
42 WATOCCHI Mario	IL 1851	1852	4	8 M
43 DECPAN Stephen	IL 1883	1843	4	8 M
44 ANDERSON Phil	IL 1998	1999	4	8 M
45 MUNOZ Chris	IL 1128	1154	4	8 M

RESERVE SECTION	pre	post	score	tour
1 BOUTON Barry	IL 1873	1909	5	32 B
2 CHLOUPEK Frank	IL 1792	1803	4	8 B
3 SCHLENKER Charles	IL 1488	1711	4	8 B, 3
4 INGRAM Randy	IL 1600	1668	4	8 B
5 BAYER Duane	IL 1681	1720	4	8 B
6 PADILLA Rudy	IL 1482	1529	4	8 B
7 FLYNN Michael	IL 1678	1680	4	8 B
8 STAFFORD Jerry	IL 1629	1644	4	8 B
9 SWANSON Victor	IL 1685	1693	4	8 B
10 SOLTICH Kevin	IL 1759	1741	4	8 B
11 RYAN Evan	IL 1758	1741	4	8 B
12 SPANH Robert	IL 1784	1756	4	8 B
13 KOHAL Edward	IL 1534	1548	4	8 B
14 KLEIN Robert	IL 1595	1598	4	8 B
15 PALMER Kenneth	IL 1380	1429	4	8 B
16 JOHNSON Lee	IL 1413	1417	4	8 B
17 KALEEL David	IL 1642	1632	4	8 B
18 GARDNER Keith	IL 1647	1644	4	8 B
19 HARRISON Ken	IL 1718	1670	4	8 B
20 WARREN Helen	IL 1619	1624	4	8 B
21 SPANH Dennis	IL 1716	1643	4	8 B
22 ALBERTO Albert	IL 1460	1405	4	8 B
23 SPANH David	IL 1463	1417	4	8 B
24 MUNOZ Chris	IL 1128	1154	4	8 B
25 FERRONI George	IL 1318	1311	4	8 B
26 BURGESS Fred	IL 1726	1678	4	8 B
27 BROOME Ed	IL 1492	1464	4	8 B
28 HARRIS Greg	IL 1357	1314	4	8 B
29 BROWNING Donald	IL -	1201	4	8 B
30 WOODS Rick	IL 1252	1211	4	8 B

CHESS PHONE
 (312) 325-3666

DOWNSTATE CHESS PHONE
 (309) 655-0618

**GAMES FROM THE 1988
ILLINOIS OPEN**

**W: Ray Satterlee (2112) B:
Peter Pelts (2373)** Round 2

1.e4 c5 2.Nf3 d6 3.d4 cxd4
4.Nxd4 Nf6 5.Nc3 a6 6.f4 e5
7.Nf3 Qc7 8.Bd3 Be7 9.O-O O-O
10.Kh1 b5 11.fxe5 dxe5 12.Bg5
Nbd7 13.Nh4 b4 14.Nf5 Bd8
15.Ne2 Nc5 16.Neg3 Ne8 17.Bxd8
Qxd8 18. Bc4 Qxd1 19.Raxd1
Bxf5 20.Rxf5 Nf6 21.Bd5 Rad8
22.Rxe5 Ng4 23.Bxf7+ Kxf7
24.Rf1+ Kg8 25.Rxc5 Rxf1+
26.Nxf1 Rd1 27.Kg1 Ne3 28.Kf2
Nxf1 29.h3 Rc1 30.Rc7 Nd2
31.Ke3 b3 32.axb3 Nxb3 33.Rc3
Na5 34.Rc5 Nb3 35.Rc3 Na1
36.Kd2 Rg1 37.g4 Rg2+ 38.Kd3
Rg3+ 39.Kd2 Rg2+ 40.Kd3 Kf7
41.Rc7+ Kf6 42.Rc6+ Ke5 43.Rxa6
Nxc2 44.Ra5+ Kf4 45.Rf5+ Kg3
46.Rf7 Ne1+ 47.Kc3 Rc2+ 48.Kb3
g5 49.Rxh7 Re2 50.Kc3 Rc2+
51.Kb3 Rc5 52.Ka4 Nd3 53.Rd7
Nxb2+ 54.Kb4 Re5 55.Kc3 Na4+
56.Kd4 Ra5 57.Rh7 Nc5 58.e5
Ne6+ 59. Ke4 Nf4 60.h4 gxh4
61.Kf5 Nd3 62.Re7 h3 63.Ke4 h2
64.Rh7 Nf2+ 65.Kf5 Nh3 Q-1

**W: BP Computer (1940) B:
Cyrus Bondari (2241)** Round

1. e4 c5 2.Nf3 Nc6 3.d4 cxd4
4.Nxd4 Nf6 5.Nc3 d6 6.Bb5 Bd7
7.Nxc6 bxc6 8.Be2 Qb6 9.O-O g6
10.Rb1 Bg7 11.Be3 Qc7 12.Qd3
O-O 13. Rfd1 Rfd8 14.Bf4 e5
15.Bg5 Be6 16.Qf3 Qe7 17.b3 h6
18.Bh4 g5 19.Bg3 Nd7 20.b4 a5
21.a3 axb4 22.axb4 Nb6 23.Qe3
Rab8 24.b5 c5 25.Qf3 Rf8 26.Qd3
Rbd8 27.Ra1 f5 28.Ra6 Qb7 29.f3
Kh8 30. Qxd6 Rxd6 31.Rxd6 Na8
32.Rxe6 Nc7 33.Re7 Qb8 34.Rg6
Ne8 35. Rgxg7 Nxxg7 36.Bxe5 Qa8
37.Bxxg7+ Kh7 38.Bxxf8+ Kg8
39.Bxxh6 Qa1+ 40.Nd1 Qd4+ 41.Nf2
Qa1+ 42.Bf1 Qc1 43.exf5 Qxc2
44.f6 1-0

**W: BP Computer (1940) W:
Peter Pelts (2373)** Round 4

1. e4 e6 2.d4 d5 3.Nc3 Bb4 4.e5
Ne7 5.a3 Bxc3+ 6.bxc3 b6 7.Qg4
Nf5 8.Bb5+ Bd7 9.Bxd7+ Qxd7
10.Bf4 Nc6 11.Nf3 O-O-O 12.O-O
f6 13. exf6 gxf6 14.Rfe1 h5
15.Qh3 Rdg8 16.Rab1 Rg4 17.g3
Qg7 18.Qg2 Rg8 19.Bd2 Qd7
20.Qf1 h4 21.Qe2 hxg3 22.fxg3

Nxxg3 23.hxxg3 Rxxg3+ 24.Kf1 e5
25.Qa6+ Kb8 26.Re3 Qh3+ 27.Ke2
Qg2+ 28.Kd1 Rxf3 29.Re1 Qg4
30.dxe5 Re3+ 31.Kc1 Rxe1+
32.Bxe1 Nxe5 33.Qf1 Qe4 34.Rb4
Nc4 35.Rxc4 dxc4 O-1

**W: Eugene Martinovsky
(2454) W: Peter Pelts
(2373)** Round 5

1.d4 Nf6 2.Nf3
c5 3.g3 cxd4 4.Nxd4 d5 5.Bg2 e5
6.Nb3 Nc6 7. Bg5 Be6 8.Nc3 d4
9.Ne4 Bb4+ 10.Nbd2 Be7 11.Nxf6+
Bxf6 12.Bxf6 Qxf6 13.O-O O-O
14.f4 exf4 15.Nb3 Rad8 16.Qd2
Qe5 17.Rxf4 Rd6 18.Raf1 Bc4
19.Nc1 Bd5 20.Nd3 Qe7 21.Bf3
Bxf3 22.exf3 Re6 23. Re1 f5
24.g4 g6 25.gxf5 gxf5 26.Kf2
Kh8 27.c3 Rg8 28.Rxe6 Qxe6
29.cxd4 Qg6 30.Ne1 Qg1+ 31.Ke2
Rd8 32.Nc2 Qxx2+ 33.Kd3 Ne5+
34.Kc3 Rc8+ O-1

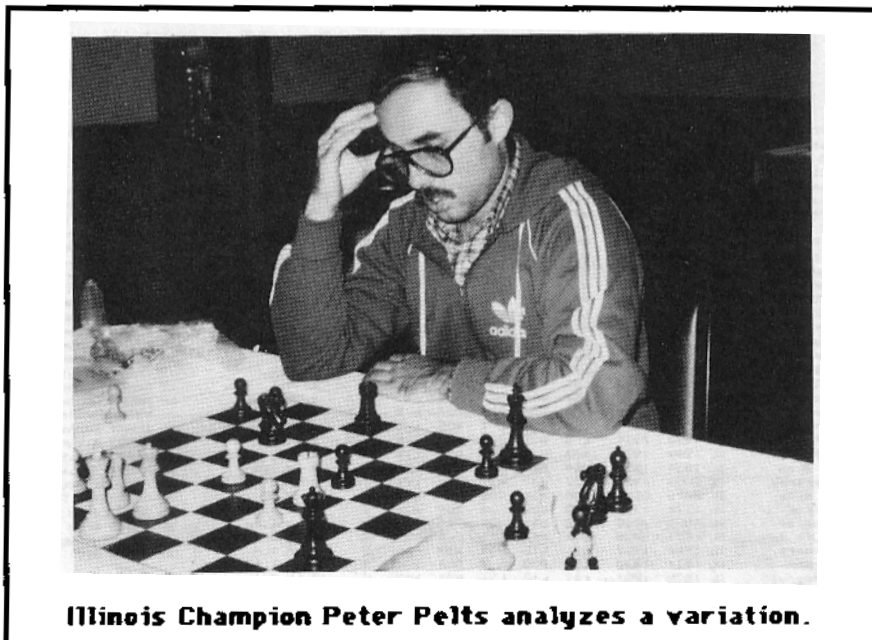
**W: Eric Schiller (2260) B:
Albert Chow (2444)** Round 5

1.e4 c5 2.Nf3 e6 3.d4 cxd4
4.Nxd4 Nc6 5.Nb5 d6 6.c4 Nf6
7.N1c3 a6 8.Na3 Be7 9.Be2 O-O
10.O-O b6 11.Be3 Bb7 12.f3 Qc7
13.Qe1 Nd7 14.Qf2 Nc5 15.Rfd1
Rac8 16.Rac1 Rfe8 17.Nc2 Bf6
18.Ne1 Qb8 19.Kh1 Ba8 20.Bf4
Ne5 21.b4 Ncd7 22.c5 bxc5
23.Bxa6 Bb7 24. Bxb7 Qxb7 25.b5
Be7 26.a4 Qb6 27.Nd3 Ng6 28.Be3
Nf6 29.Nb2 Red8 30.Nc4 Qb7

31.Bg5 d5 32.exd5 exd5 33.Na5
Qa8 34.Nc6 Rxc6 35.bxc6 Qxc6
36.Qc2 h6 37.Bxf6 Bxf6 38.a5
Ne5 39.a6 c4 40.a7 Nd3 41.Rxd3
cxd3 42.Qxd3 Rc8 43.g3 Qa8
44.Rb1 Bxc3 45.Rb8 Rxb8
46.axb8=Q+ Qxb8 47.Qxc3 g6
48.Kg2 Qa7 49.Qd2 Qc5 50.Kf1 h5
51.Ke2 Qc4+ 52.Ke3 Qc5+ 53.Ke2
Kf8 54.Qb2 Ke7 55.Kd3 Ke6
56.Qe2+ Kf5 57.Qa2 g5 58.Qb2 g4
59.fxxg4+ hxxg4 60.Qg7 Qa3+ 61.
Kd2 Qb4+ 62.Kd1 Qa4+ 63.Kd2
Qa2+ 64.Ke3 Qb3+ 65.Kd2 Qb4+
66. Kd1 Ke6 67.Qh6+ f6 68.Qh8
Qd4+ 69.Ke2 Qe4+ 70.Kd2 Qd4+
71.Ke2 Qc4+ 72.Kd2 Qb4+ 73.Ke2
Qe4+ 74.Kd2 Kf7 75.Qd8 d4
76.Qd7+ Kg6 77.Qd8 Qe3+ 78.Kc2
Qe2+ 79.Kb3 Qd3+ 80.Kb4 Qc3+
81.Ka4 Qc4+ 82.Ka3 d3 83.Qe8+
Kg5 84.Qe3+ Kf5 85.Qd2 Qc5+ O-1

**W: Barry Bouton (1799) B:
Randy Ingram (1600)**

Reserve Round 5 1.e4 d6 2.d4
Nf6 3.Nc3 Nbd7 4.Nf3 g6 5.Bg5
h6 6.Bh4 Bg7 7. Be2 c6 8.O-O
O-O 9.Nd2 e5 10.d5 a6 11.Nc4
Qc7 12.dxc6 Nc5 13. Bxf6 Bxf6
14.Nd5 Qxc6 15.Nxf6+ Kg7 16.Nd5
Be6 17.f3 Nd7 18.c3 Rad8 19.Kh1
Nc5 20.Na5 Qd7 21.a4 Qc8 22.Nc4
Qb8 23.Ndb6 Qc7 24.a5 Qc6
25.Qc2 f5 26.b4 Nd7 27.exf5
gxf5 28.f4 d5 29.Nxd7 1-0



Illinois Champion Peter Pelts analyzes a variation.

American Postal Chess Tournaments

APCT

P.O.Box 305 • Western Springs, Il. 60558

Helen and Jim Warren

A combined fifty years of service to Chicago, Illinois and U.S. Chess.

Our reputation is our best advertisement.

APCT stocks over 600 titles, a few of which are the following:

CHESS INFORMANT #45 (Jan-June 1988).....	20.95
DEVELOPMENTS IN THE SICILIAN: DRAGON 1984-88, Ward & Wade, 58 dbl col pp.	6.15
" " " " SVESHNIKOV 1985-88, Gallagher, 55 " " "	6.15
" " " " 2 f4 1980-88, Bangiev, 59 double col. pp...	6.15
BLACK TO PLAY AND WIN WITH 1...g6--A Complete Defensive System, IGM Andrew Soltis, 126 pp.....	12.25
AN UNBEATABLE WHITE REPERTOIRE AFTER 1 e4 e5 2 Nf3, IGM Larry Evans & Ken Smith, 152 pp.....	12.25
MARSHALL GAMBIT IN THE FRENCH AND SICILIAN DEFENSES, Kennedy & Sheffield, 68 pp.....	7.50
GROB'S ATTACK, Bill Wall, 84 double column pp.....	5.70
FIANCHETTO AGAINST THE WEST INDIANS, Eric Schiller, 92 double column pp..	6.15
SHOWDOWN IN SEVILLE--KASPAROV-KARPOV IV, Keene, Goodman & Spanier, 126 pp	9.45
JOHN CURDO'S CHESS CAREER--FORTY YEARS AT THE TOP, John Curdo, Edited by Bob Sanchez, 130 double column pp.....	8.50
DEVELOPMENTS IN THE ENGLISH OPENING, GM Kuligowski, 58 double column pp..	5.20
" " " KING'S GAMBIT 1980-88, Alexander Bangiev, 60 " " "	6.20
HOW CHESSMASTERS THINK, Paul Schmidt, 127 pp.....	7.50
MODERN ART OF ATTACK--The Era of Tal, Fischer & Kasparov, Ken Smith and John Hall, 168 pp.....	12.95
SCANDINAVIAN DEFENSE, ANDERSSEN COUNTER ATTACK, W. John Lutes, 132 pp....	6.50
GRUENFELD DEFENSE; RUSSIAN VARIATIONS (revised ed.), Eric Schiller, 100pp	6.20
1987 MIDWEST MASTERS INVITATIONAL, Kevin Bachler.....	6.95
WINNING WITH 1 d4, IGM Andrew Soltis, 145 pp.....	12.25
" " 1 e4, " " " 156 pp.....	12.25
WINNING WITH THE ENGLISH OPENING, IGM Soltis (Rev. & Expanded Ed.), 144pp	11.95
" " " COLLE, Smith & Hall, 234 pp.....	13.95
UNORTHODOX OPENINGS, Joel Benjamin & Eric Schiller, 153 pp.....	8.50
SPANISH WITHOUT ...a6, IM Mikhail Yudovich, 124 pp.....	8.50
SECRETS OF GRANDMASTER PLAY, John Nunn & Peter Griffiths, 212 pp.....	8.50
QUEEN'S GAMBIT ACCEPTED, GM Eduward Gufeld, 120 pp.....	8.50
KING'S INDIAN ATTACK, Ken Smith & John Hall, 203 pp.....	13.95
HOW TO CREATE COMBINATIONS, Pafnutieff, 224 pp.....	8.50
HOW TO PLAY THE RUY LOPEZ, Taulbot, 124 pp.....	8.50
HOW TO PLAY THE SICILIAN DEFENSE, Levy & O'Connell, 133 pp.....	8.50
ELEPHANT GAMBIT 1 e4 e5 2 Nf3 d5, Jensen, Purser & Pape, 83 pp.....	6.95
ESSENTIAL CHESS ENDINGS EXPLAINED MOVE BY MOVE, Jeremy Silman, 187 pp....	11.95

ORDERING INFORMATION...

Order from: APCT, PO Box 305, Western Springs, IL 60558-0305

Orders over \$30 may take 10% discount. Orders shipped USPS postpaid unless you desire the faster UPS delivery, for which add \$1 or 2%, whichever is greater, and supply street address (UPS does not deliver to PO Box numbers.) Out of U.S.A. orders should add \$3 bank charge.

INFORMANT #45 IS IN STOCK!!
APCT PRICE.....\$ 20.95

ICB GAMES EDITOR CHACHERE ANNOTATES

[Editor's Note: I plan to ask new Games Editor Lawrence Chachere annotate some games from upcoming Illinois Tournament of Champions III for the next ICB. In the meantime, here are two of his own games - a draw with an International Master and a draw with a Grandmaster - which have been awaiting publication.]

October 4-5, 1986

White: IM Kamran Shirazi (2560)

Black: NM Lawrence Chachere (2340)

Sicilian Defense

Annotated by Lawrence Chachere

1.e4 c5 2.Nf3 d6 3.Bb5+ Bd7
4.a4 Nf6 5.d3 Nc6 6.0-0 e6

6...g6 is a better plan. I was worried about Shirazi's crazed attacking style, but, after all, he has castled Kingside.

7.Bg5 Be7 8.Nbd2 0-0 9.Re1 a6
10.Bxc6 Bxc6 11.e5 Ng4!?

11...dxe5 followed by 12...Be8 and 13...h6 is probably good for Black. My move forces the exchange of a couple of pieces.

12.Bxe7 Qxe7 13.exd6 Qxd6 14.h3
Bxf3 15.Qxf3?!

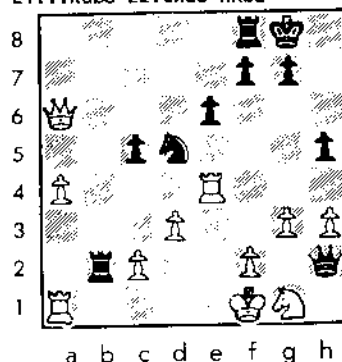
I really didn't expect this since 15.Nxf3 seems about equal. It's hard to tell whether Black's pawn sacrifice is sound or not, however. Shirazi probably took the pawn hoping to outplay me in the resulting complications.

15...Qh2+ 16.Kf1 Nf6 17.Qxb7
Nd5 18.Nf3 Qh1+ 19.Ng1 Qh2
20.g3!?

White avoids the draw which would result after 20.Nf3.
20...h5! 21.Re4
21.c4 would chase Black's

Knight away from its dominant post, but White's pawns would then become weak. On 21.h4?! Black must try 21...g5!?

21...Rab8 22.Qxa6 Rxb2



23.Qc4?

Shirazi cracks! This is a mistake, as is 23.Rc4, but if 23.Rc1, I was going to play 23...Rfb8 threatening 24...Rb1.

23...h4! 24.Re2

24.Rxh4 allows 24...Rxc2! followed by 25...Ne3+ winning the Queen. 24.gxh4 looks ugly, but White would be two pawns up; in response, I probably would have played 24...Rfb1.

24...hxg3 25.fxg3 Qxg3 26.Qxc5
Nf4?!

26...Rfb8 is better and should win. Both players were now getting very short of time.

27.Rd2 Nxf3 28.Rg2 Qxf4+
29.Ke2 Rxc2?

I thought that White would get a winning attack after 29...Nxf3 30.Raxg1 g6 31.Rh1, but after ...e5! Black's King seems safe enough.

30.Qxc2 Qe5+ 31.Kf3 Qf4+
32.Ke2 Qe5+ 33.Kf3 Qf4+ 34.Ke2
Qe5+ .5-.5

I claimed the draw before

playing 34...Qe5+ on the board. If the King had gone to d2, I would have had good winning chances with 33...Qxa1 34.Nxh3 Rfb8 despite being a piece down.

**Midwest Masters
March 3-6, 1987**

White: NM Lawrence Chachere (2301)

Black: GM Dmitry Gurevich (2635)

Nimzo-Indian Defense

Annotated by Lawrence Chachere

1.d4 Nf6 2.c4 e6 3.Nc3 Bb4 4.e3
c5 5.Nge2 b6

This plan is very risky for Black.

6.a3 Ba5 7.Rb1 Qe7 8.Qa4?!

8.Bd2 is better. 8.Qa4 seems to be a waste of time.

8...0-0 9.Bd2 Na6 10.Ng3 cxd4
11.exd4 Bxc3! 12.Bxc3 d5 13.c5?!

I was reluctant to play this. I was sure that Dmitry would find 13...e5! which gives Black the advantage.

13...Nc7 14.cxb6 axb6 15.Bb4?

White keeps an edge with this, but 15.Qc6! was winning, with the ideas of 16.Qxb6 and 16.Bb4.

15...Rxa4 16.Bxe7 Re8 17.Bd6 Ra7
18.Rc1 Na8 19.Bb8

White starts playing useless moves here, and ends up throwing away an advantage.

19...Ra5 20.Be5 Ne4 21.Bd3 f6
22.Bf4 e5 23.Bd2 exd4 24.Nxe4
Rc5 25.Rxc5 bxc5 26.f3 dxe4
27.fxe4 f5 28.e5!

This move gives White a draw.

28...Rxe5 29.Kf2 Nb6 30.Rc1 Na4
31.b3 Nb2 32.Bf1 Be6 33.Rb1 c4
34.Rxb2 c3 35.Bxc3 dxc3 36.Rc2
Ra5 37.Rxc3 Rxa3 38.Bd3 Kf7
39.Bc2 Kf6 40.g3 Ke5 41.Ke3 g5
.5-.5

1988 ILLINOIS TOUR

by Bill Smythe

The 1988 Illinois Tour points listed below are based on the following ICA Tour events held so far this year:

- TIM JUST WINTER OPEN/RESERVE, January (MAXI event)
- PEORIA WINTER TORNADO, January (MINI event)
- GREATER PEORIA OPEN/RESERVE, April (MAXI event)
- PEORIA SPRING TORNADO, June (MINI event)
- TULEY PARK ACTION MINI-TOUR, June (MINI event)
- MASTER CHALLENGE X, June (MAXI event)
- ILLINOIS OPEN AND STATE CHAMPIONSHIP/RESERVE, September (MAXI event)

A player with a perfect score is awarded 32 points in a MAXI event, 16 points in a MINI. For each half-point below a perfect score, the Tour award is cut in half. When the award thus calculated falls below the score, the score itself is used instead. No points are awarded for a score of zero. Here are some examples:

FIVE-ROUND TOURNAMENT:

Score:	--Tour Points--	
	MAXI	MINI
5-0	32	16
4.5-0.5	16	8
4-1	8	4
3.5-1.5	4	3.5
3-2	3	3
2.5-2.5	2.5	2.5
2-3	2	2
1.5-3.5	1.5	1.5
1-4	1	1
0.5-4.5	0.5	0.5
0-5	0	0

FOUR-ROUND TOURNAMENT:

Score:	--Tour Points--	
	MAXI	MINI
4-0	32	16
3.5-0.5	16	8
3-1	8	4
2.5-1.5	4	3
2-2	2	2
1.5-2.5	1.5	1.5
1-3	1	1
0.5-3.5	0.5	0.5
0-4	0	0

Watch for upcoming Tour events in Chess Life (listed there as "ICA membership required"), including the Illinois Class, the year's final MAXI event in November.

Listed below are all players with 5 or more Tour points so far (3 or more in class D). The number of events, if less than the minimum required three to win Tour prizes, is given in parentheses.

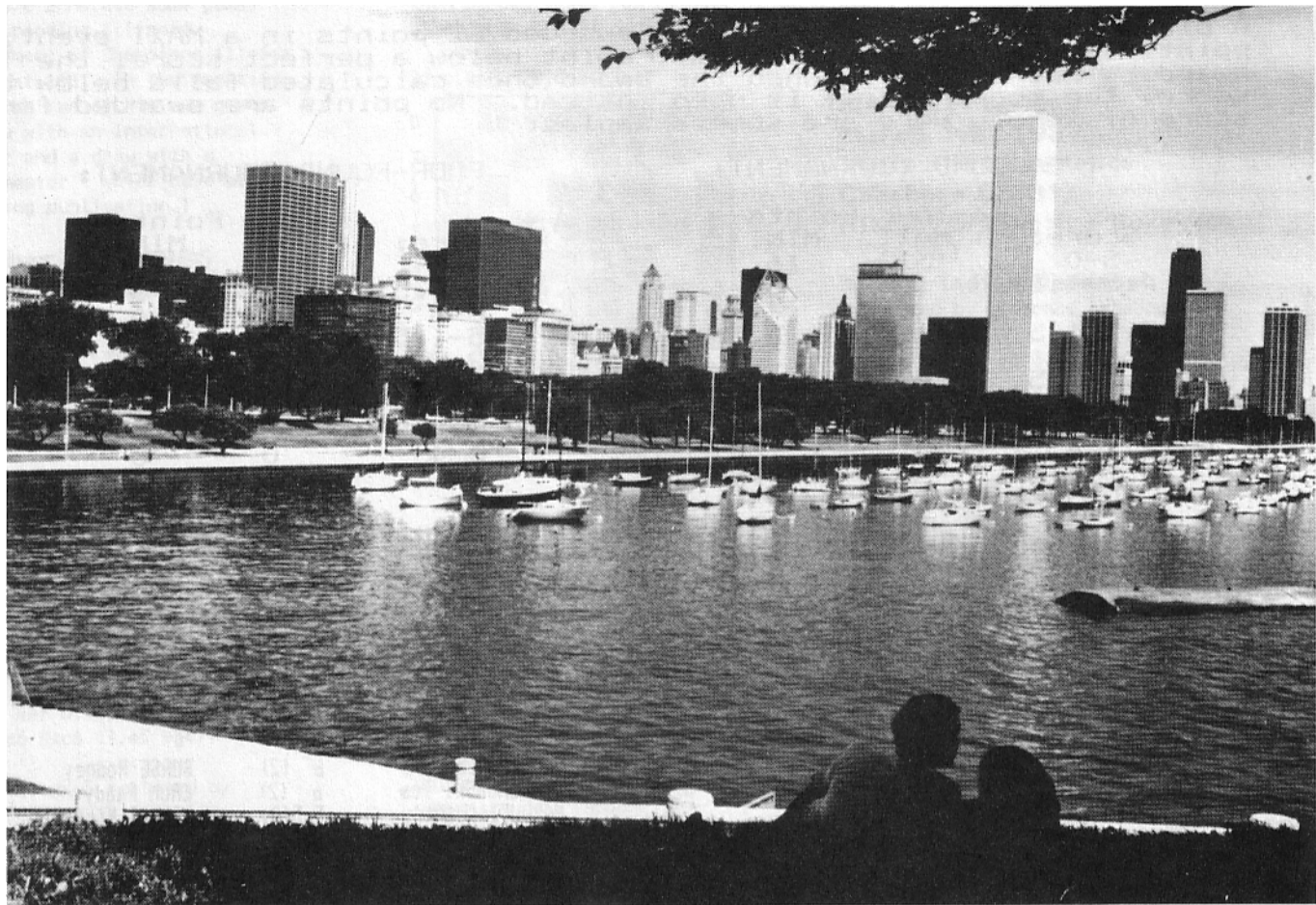
Master Tour Points:	GRAVES William	5.5	BEASLEY Leonard	6 (2)	BURSE Rodney	8 (1)	
CHOW Albert	48	MARQUEZ Anthony	5.5(2)	MAZUCHOWSKI Tom	6 (2)	CRUM Randy	8 (1)
PELTS Peter	32 (2)	NAFF William	5.5(2)	MARQUEZ Anthony	5.5(2)	DENNIS Mike	8 (1)
BONDARI Cyrus	27	GOLLA Roman	5 (2)	NAFF William	5.5(2)	SCHLENKER Charles	8 (1)
CHACHERE Lawrence	16 (2)	Expert Tour Points:		GOLLA Roman	5 (2)	BURGESS Fred	7.5
WALLACH Ken	15	VAN BUSKIRK Douglas	19 (2)	VERO Carl	5 (2)	LEBO Steven	6
PUKEL Bernard	12	BOLITHO Thomas	13	Class A Tour Points:		BAYER Duane	5.5(2)
BOLITHO Thomas	11	BOLITHO Thomas	13	BOLITHO Thomas	13	BROWN Tony	5.5(2)
COHEN Lawrence	9.5	COHEN Lawrence	12	COHEN Lawrence	10	FATHAUER Terry	5.5(2)
GENSLER Kevin	9.5	PUKEL Bernard	12	PUKEL Bernard	9	ROBINSON Harrison	5.5(2)
SATTERLEE Ray Doyle	9.5	SCHOLL Paul	12 (2)	FAGAN James	8 (1)	RYMES Evan	5.5(2)
CUSI Ronald	8 (1)	GENSLER Kevin	9.5	GAGNON Mark	8 (1)	KAPTONAK Robert	5 (2)
ECKERT Doug	8 (1)	SATTERLEE Ray Doyle	9.5	GRAVES William	7.5	MARSHALL Ken	5 (2)
GAGNON Mark	8 (1)	BONDARI Cyrus	8	BUNGARDNER Gerald	6.5(2)	MEYER William	5 (2)
HEURUNG David	8 (1)	CONDRON James	8 (1)	BUTTNY William	6.5(2)	MOORE Rod	5 (2)
KARKLINS Erik	8 (1)	FAGAN James	8 (1)	BEASLEY Leonard	6 (2)	SWANSON Victor	5 (2)
MOULIN Pierre	8 (1)	GAGNON Mark	8 (1)	GOLLA Roman	5 (2)	Class C Tour Points:	
SCHOLL Paul	8 (2)	SCHROEDER Tony	8 (1)	VERO Carl	5 (2)	SMITH Colin	16 (1)
SCHROEDER Tony	8 (1)	SURAK Steve	8 (1)	Class B Tour Points:		PADILLA Rudy	9.5
SURAK Steve	8 (1)	WATSON Alan	8 (1)	BOUTON Barry	43	LEBO Steven	6
UMEZINWA George	8 (1)	GRAVES William	7.5	SMITH Colin	16 (1)	BAYER Duane	5.5(2)
WATSON Alan	8 (1)	BERNAL Luis	7 (2)	CHLOUPEK Frank	13.5	MOORE Rod	5 (2)
ZINGHEIN Scott	8 (1)	BOLDEN Darren	7 (2)	SPHAR Robert	12.5	Class D Tour Points:	
BERNAL Luis	7 (2)	BUTKO Nathaniel	7 (2)	GARDNER Keith	12	PADILLA Rudy	4
BUTKO Nathaniel	7 (2)	VLASTNIK Richard	7	STOTLER Richard	10 (2)	BENNETT Bradley	3 (1)
VLASTNIK Richard	7	BUNGARDNER Gerald	6.5(2)	PADILLA Rudy	9.5	MADSEN Dave	3 (2)
BUTTNY William	6.5(2)	ZABELL Sandy	6.5(2)	INGRAM Randy	8.5		
ZABELL Sandy	6.5(2)	ACOSTA Mariano	6 (2)	STAFFORD Jerry	8.5		
BEASLEY Leonard	6 (2)	ANDERSON Phil	6				
MAZUCHOWSKI Tom	6 (2)						

REMEMBER: YOU MUST PLAY IN AT LEAST THREE TOUR EVENTS TO BE ELIGIBLE FOR TOUR PRIZES

C E L E B R A T E in
CHICAGO

"WE'VE GOT IT ALL"

**C
E
L
E
B
R
A
T
E**



U.S.C.F. 50th Golden Anniversary AT THE

1989 U.S. OPEN

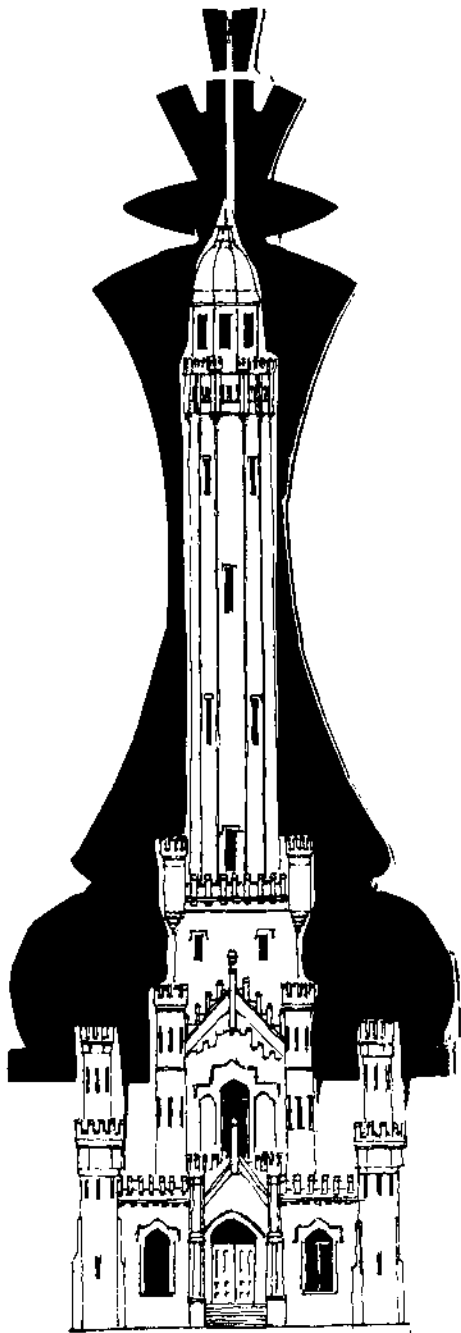
\$30,000 IN PRIZES

August 5th — 13th 1989

BRINGING IT ALL BACK HOME



Helen Warren, Chief Organizer
U. S. Open 1989



The Water Tower

A Golden Anniversary is a one-time celebration. It's a milestone that says, "We've come a long way together; let's continue the journey and make it even better."

In August 1989 chess players from around the country and some from foreign lands will celebrate USCF's 50 years of service to chess. They will assemble here in Chicago where it all began in 1939, when the American Chess Federation and the National Chess Federation merged to form the USCF. The fledgling organization was incorporated in the state of Illinois and remains so today.

Since 1939 three U.S. Opens have been held in Chicago--in 1963, 1973, and 1979. But 1989 promises to be the grandest of them all. Our host hotel will be the HYATT REGENCY O'HARE, an elegant, yet affordable site just a few minutes from the airport and accessible to just about everything in the metropolitan area. Circle the dates on your calendar: AUGUST 5-13! This will be a nine-day Open, a format so many players have asked for, enabling them to take only a week's vacation and still satisfy the appetite of the hungriest chess fan. Oh, yes; free unlimited parking at the Hyatt is another rare and attractive feature. The playing site will be the massive and beautiful 24,000 square feet HALL E of the EXPO CENTER, adjacent to the Hyatt. Imagine 800 or more players in ONE room!

We are planning a veritable chess extravaganza for you: the tournament itself, the annual awards banquet and Hall of Fame inductions, exciting day time events including several Action Chess tourneys, grandmaster lectures and simuls, workshops of variety and interest, and the annual delegates meetings. In addition, we'll have a gala menu of entertainment events for players and their families, ranging from downtown museum, restaurant, and shopping excursions to sporting events, Great America and everything in between. We will extend Chicago hospitality and an invitation to experience the wonders of our city.

As chief organizer of this ambitious project, really a year-long piece of work, I look to the Chicago and Illinois chess community, our chess clubs, the ICA, and our players, for help of all kinds: from manning demo boards to assisting with hospitality chores, and from stuffing envelopes to working on the tournament program. In the coming weeks and months many of you will hear from me personally to ask for your help. You have an idea of how you'd like to help already, you say? Great! Pick up the phone and call me. I guarantee I'll find the right job for the right volunteer!

You will find many familiar names on the organizing committee list: Tim Just, Ken Marshall, Guy Gruenberg, and Todd Barre will all have vital roles. I'm delighted that Fred Gruenberg has agreed to serve as Publicity Chairman. In coming weeks and months we will staff several sub-committees and inform you periodically about our progress.

Something everyone can help with, even if your time is limited: give the U.S. Open 89 a boost with a financial contribution. After all, the real difference between a routine Open and a 50th Anniversary event depends on the enthusiasm and support of our players right here in Illinois. The presence of our country's top grandmasters, importing exciting chess personalities like the Dean of American Chess, George Koltanowski, and Arpad Elo, one of USCF's founders, and a prize fund worthy of the event--all cost money.

I've asked Regional V-P Todd Barre to serve as treasurer of the U.S. Open 89. I urge each of you to join this team effort by sending a check to Todd, payable to U.S. Open 1989. Your name will be listed as a patron of the tournament in the official program, a copy of which will be presented to each contributor, as well as a set of the daily games bulletins. Those who contribute \$100 or more will also receive a special bonus: a lovely multi-colored pin commemorating USCF 50th anniversary. It's a real beauty! Please join us in making the U.S. Open 1989 a banner event in the real spirit of Chicago!

TODD BARRE, Treasurer, U.S. Open 1989
16 W 520 59th St., #16C
Clarendon Hills, IL 60514-1753

U.S. OPEN 1989 WILL COME TO CHICAGO

MARTINOVSKY ANNOTATES

[Editor's Note: In this issue Dr. Eugene Martinovsky, one of Illinois' top players and a frequent ICB contributor, annotates two of his games with National Master Marvin Dandridge. Presently rated over 2350, Dandridge generally is among the top finishers in any tournament in which he participates. He, Dr. Martinovsky, and NM Ken Wallach shared first place in the Master/Expert section of the 1987 Illinois Class Championships.]

After three rounds of the 1987 Illinois Class Championships, Marvin Dandridge and I each had a 3-0 score. Our last round contest would decide the winner of the Master/Expert section. Most of my many past games with Marvin had been cut throat affairs, and this one proved to be no exception. In the beginning, Marvin seemed peacefully disposed and willing to accept a draw and a tie for first. I wanted more, however, and by move 30 I thought I was going to win. But the situation changed quickly, and by move 40 it was Marvin who was pressing for the win while I fought for a draw. Then, by move 53, the tables turned again. Although we did eventually split the point, the game was certainly not a "grandmaster draw"!

**1987 Illinois Class
Championships
Master/Expert Section
November 22, 1987**

**White: Eugene Martinovsky
(2451)**

**Black: Marvin Dandridge
(2295)**

Annotated by Eugene Martinovsky

1.e4 I don't usually open with this move, but here I was challenging Marvin to play his favorite Caro-Kann line: 1.e4

c6 2.d4 d5 3.Nc3 dxe4 4.Nxe4 Nf6 5.Nxf6+ exf6. I also play this line, and I was eager to try to refute it. Marvin was not interested, however. I am probably one of the three players in Illinois (and perhaps in the world) against whom Marvin does not like to test the aforesaid variation. (The other two are Erik and Andrew Karklins, who have their own "truth serum" against the line.)

1...g6 2.d4 Bg7 3.Nf3 d6 4.g3 Nf6 5.Nc3 0-0 6.Bg2 c6 7.a4 a5 8.0-0 Na6

This is the Pirc or a form of the King's Indian Defense. Dandridge plays it like a professional. Here he takes aim at b4 with his Knight.

9.Re1 Nb4 10.Nb1 d5 11.e5 Ne8 12.c3 Na6

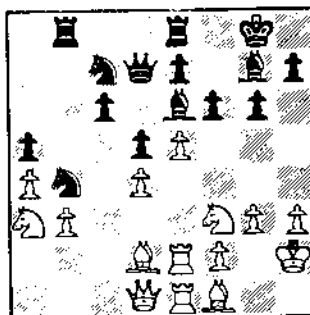
I managed to chase this Knight from b4 back to a6 and the other Knight from f6 to e8. I also gained some space in the center, but I had to retreat my Knight to b1. White is still somewhat better, however.

13.b3 Nec7 14.Na3 f6 15.h3 Be6 16.Ra2 Qd7 17.Kh2 Rac8 18.Rae2 Rfe8 19.Bf4?

White had some advantage but Black was not without counterplay. This last move was at least a waste of time. 19.Bd2 was better.

19...b5! 20.Bd2 Rb8 21.Bf1 b4! 22.cxb4 Nxb4

The Knight is back on his favorite square and Black stands at least equal, maybe even better.



23.Re3!

This move untangles White's pieces and provides good defense for the Queenside.

23...Bf5 24.Nh4! fxe4? 25.Nxf5 Qxf5 26.Rf3 Qd7 27.dxe5 Rf8 28.Rxf8+ Rxf8 29.f4 Rb8

The complications have resolved, leaving White with some advantage.

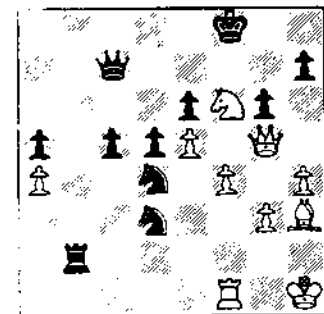
30.Be3 e6 31.Nc4 Ne8 32.Bc5 Bf8 33.Bxf8 Kxf8 34.h4

Unfortunately I could not capture the Pawn on a5 because Black could reply Qa7, costing me my Knight.

34...Qc7 35.Ne3 Ng7

My last few moves might not have been the best; perhaps the exchange of the dark squared Bishops is open to question. Black's Kingside looks weak, but it is not easy to get to the Black King. Now Black is about to start his counterplay by pushing his d and c pawns. As both players were getting into time trouble (where many games are decided) I overestimated my position and went for an attack on the Black King. In doing so, I let Black move his Pawns in the center, and his counterattack proved stronger.

36.Bh3 c5! 37.Ng4 Nf5 38.Nf6 Nd4! 39.Qg4 Nd3 40.Rf1 Rxb3 41.Qg5 Rb2+ 42.Kh1



My Queenside is wiped out

and Black's Knights and Rook are on a rampage in my territory; my chances lie in the belated attack on the Black King. Here the time pressure was severe (the control was move 45), so I moved my King away from the Knight fork. Losing the exchange did not seem to matter; all I wanted was to stop the Black assault and resume mine on his King. In retrospect, however, it would have been better to play 42.Bg2 or 42.Kg1 and preserve my Rook.

42...Nf2+ 43.Rxf2 Rxf2 44.Ng4 Ra2 45.Qf6+ Qf7

The time control has now been reached. There is no mate, but I now faced the task of finding a draw by perpetual check.

46.Qd8+ Kg7 47.Nf6

47.h5 was an alternative, the threat being h6 mate.

47...Nf3

This move makes things very unpleasant for me. It defends against 48.Ne8+ Kh6 49.Qg5 mate (or 48.Ne8+ Kg8 49.Nf6++ draw) and threatens to mate me by Rh2. I am also in danger of losing my Bishop. I found a defense, however; perhaps Black's alternative, 47...Nc6, was better.

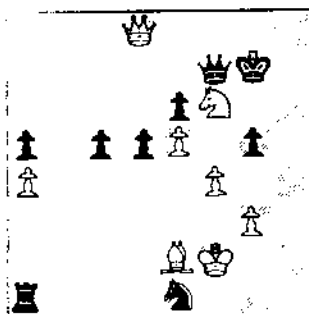
48.Bg2! Ra1+ 49.Bf1 g5

After the intended 49...Rxf1+ 50.Kg2 Black will lose the piece back: 50...Nd2 51.Ne8+ Kh8 52.Nd6+ Qg8 53.Nf7+ Kg7 54.Qf6+ Kf8 55.Nh6+ 1-0, or 51...Kh6 52.Qg5 mate, or 51...Kg8 52.Nf6++ draw. Marvin saw all of this and decided to create an escape hatch for his King.

50.Kg2! Ne1+ 51.Kf2 h6

51...gxh4 or 51...gxf4 again lead to a perpetual at least by 52.Ne8+, so Marvin needs another square (h7) for his King to escape.

52.hxg5! hxg5 53.Be2!



Now White's Bishop is not only saved, but also is poised to attack the Black King and win. The threat is Bh5 and Qg8 mate! Black's Knight cannot move, and Black's Rook must continue to protect the Knight. Here again I was thinking about victory. How is Black to defend against Bh5? Marvin found the way in the nick of time.

53...c4!

The only move! Now if 54.Bh5? then Qa7+! and Black wins. White therefore must hold on to a draw by perpetual check or by repetition of moves.

54.Nh5+ Kh7!

Not Kg6? 55.Qxg5+ Kh7 56.Nf6 Kh8 57.Qh6+ and White wins. This demonstrates the importance of White's 52.hxg and only after hxg 53.Be2.

55.Nf6+ Kg7! 56.Nh5+ Kh7 57.Nf6+ .5-.5

**Midwest Class Tournament
Master Class
July 18, 1987
White: Eugene Martinovsky
Black: Marvin Dandridge**

Annotated by Eugene Martinovsky

1.e4 g6 2.d4 Bg7 3.Nf3 d6 4.Nc3 a6

An interesting move, preparing b5.

5.g3 b5 6.Bg2 Bb7 7.0-0 Nd7

7...b4 8.Nd5 e6 9.Nxb4 Bxe4 10.Re1 d5 11.c4 is unclear but probably better for White.

8.Re1 c5 9.Be3!

9.e5? cxd!

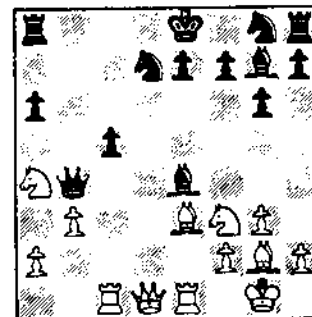
9...b4

Black wins a Pawn, but he is underdeveloped.

10.Na4 Qa5

10...Bxe4 11.dxc5 Qa5 12.c3 dxc5 13.Nxc5 Nxc5 14.Bxc5 Qxc5 15.Rxe4+-


11.c3 Bc6 12.b3 Bxe4 13.dxc5! dxc5 14.cxb4 Qxb4 15.Rc1!



White's very active pieces and Black's lack of development far outweigh Black's one Pawn advantage.

15...Ngf6 16.Nxc5 Nxc5 17.Bxc5 Qa5 18.Ng5 Rd8 19.Qe2 Rd2 20.Qc4 1-0

20...0-0 21.Nxe4 wins at least one piece.



CHESSE PHONE
(312) 325-3666

DOWNSTATE CHESSE PHONE
(309) 655-0618

Please accept this cordial invitation to play chess

THE UNITED STATES CHESS FEDERATION
and the
CHESS ASSOCIATION OF SAINT LOUIS
proudly present the

1988 USCF REGION VII OPEN CHESS CHAMPIONSHIP

TO BE PLAYED IN THE MAIN BALLROOM
OF THE

SHERATON HOTEL - SOUTH
INTERSTATE 55 and LINDBERGH BOULEVARD
SOUTH SAINT LOUIS COUNTY, MISSOURI

NOVEMBER 12-13, 1988

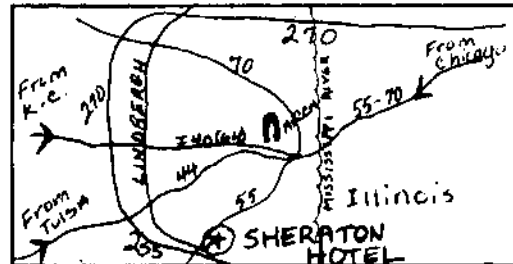
TOTAL CASH PRIZE FUND OF \$1,325.00!
TOP TWO OVERALL CASH PRIZES ARE GUARANTEED
NINE HUGE TROPHIES!
REMAINING PRIZE FUND BASED ON 111 PLAYERS

PRIZE FUND

1st OVERALL	- \$300 Guaranteed, a Huge Trophy, and the Title of 1988 USCF Region VII Chess Champion.
2nd OVERALL	- \$150 Guaranteed
1st EXPERT	- \$100, Plus Trophy; 2nd EXPERT - \$50
1st CLASS A	- \$100, Plus Trophy; 2nd CLASS A - \$50
1st CLASS B	- \$100, Plus Trophy; 2nd CLASS B - \$50
1st CLASS C	- \$100, Plus Trophy; 2nd CLASS C - \$50
1st CLASS D	- \$100, Plus Trophy; 2nd CLASS D - \$50
1st CLASS E	- \$ 50, Plus Trophy; 2nd CLASS E - \$25
1st UNRATED	- \$ 50, Plus Trophy

Trophy To Top Scholastic Player (Grades KG - 12)
No Person May Win More Than One Trophy.

PLEASE NOTE: If more than 111 players show up, the prize fund will be INCREASED over what is announced above



FORMAT

Five rounds of chess paired via the Swiss System: One open section: Absolutely NO accelerated pairings: A half-point bye may be taken in any one of the first four rounds: Time control - 30/70, 25/60, 25/60: Games will be adjourned 20 minutes before the start of the start of the next round, including round four: Rounds three and five will be played to a conclusion.

SCHEDULE

REGISTRATION: 8:00 AM to 9:30 AM
ROUNDS: Saturday - 10:00 AM - 2:30 PM - 7:00 PM
Sunday - 10:00 AM - 3:00 PM

TIE BREAKS (For Trophies ONLY)

Your performance rating based on five rounds of chess.
Any unplayed round will be computed as USCF rating of 1200.

ENTRY FEES

\$17.00 by mail (or hand delivered) by November 11
\$21.00 by telephone (before 10 PM) on November 11
\$25.00 at site.

PLEASE NOTE: Membership in one of the four state chess associations is required. USCF membership may be bought or renewed at the door for \$21.00
NO FREE ENTRIES

HOTEL RATES

\$55.00 for single / double / triple / quadruple

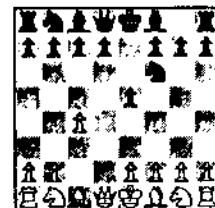
PLEASE NOTE: The Sheraton South Hotel has asked me to coordinate all reservations. Send me no money for room reservations! However, if you plan on staying over at the Sheraton South Hotel, please send to Bill Moushey the total number of people in your party, the number of rooms you will require, and what nights you are staying over. You must make your room reservations through me before November 1 to insure the above reduced rates. Also, although the Sheraton South has not required of me a minimum number of rooms or room nights for this tournament, it would be greatly appreciated if all out-of-town players and their families stayed at the Sheraton South.

For the health and comfort of all players, there will be No Smoking in the main ballroom.

Chief Tournament Director - Bill Moushey, Senior USCF Director
Chancellor of the Exchequer (and all-around wonderful wife) - Sandy Moushey

ENTRIES, INQUIRIES, AND ROOM RESERVATIONS

Bill Moushey
3145 Oregon Avenue
Saint Louis, Missouri 63118
Telephone: (314) 664-0612



NORTH AMERICAN CLASS ATTRACTS 372 PLAYERS

KUDRIN TAKES FIRST AHEAD OF DEFIRMIAN, BYRNE, GUREVICH

By Ken Marshall

Grandmaster Sergey Kudrin beat fellow GM Robert Byrne in the final round to finish 5-1 and claim clear first in the Master section of the North American Class Championships, held at the Holiday Inn O'Hare in Rosemont on July 28-31, 1988. Byrne, the long time chess columnist of the NEW YORK TIMES who was the sole leader going into Round 6, scored 4.5-1.5 to tie for second through seventh with GM (and 1987 U.S. Co-Champion) Nick DeFirmian, International Master Igor Ivanov, Alexander Ivanov, GM Dmitry Gurevich, and FIDE Master (and 1988 National Open champion) Michael Brooks. DeFirmian and Brooks drew their final round game, as did A. Ivanov and Gurevich; a win by any of them would have resulted in a first place tie.

Ordinarily, a turnout of 372 players (the second largest for a Chicago chess event in the 1980s) could not be called disappointing. When a \$21,500 guaranteed prize fund is offered, however, more than 372 entries are needed to avoid financial disaster. Organizer Richard Verber lost nearly \$14,000 on the tournament, and so far has been able to make only partial payments to the prize winners. Acknowledging his obligation to pay the remainder (about 50%) of the prize money, Verber said that he hopes to satisfy that obligation by mid-December. Long time Chicago chess player and recently retired federal judge George Leighton has volunteered to help raise money to accomplish this.

No games from the North American Class were made available for inclusion in this ICB. Prize winners in all classes are listed below.

North American Class Prize Winners

Master: 1st, Sergey Kudrin, 5-1; 2nd-7th, Nick DeFirmian, Igor Ivanov, Alexander Ivanov, Dmitry Gurevich, Michael Brooks, Robert Byrne, 4.5-1.5.

Expert: 1st-4th, Michael Toney, Stephen Ahlstrom, Erik Ronneberg, Lionel Davis, 5-1; 5th, William Harris, Jr., 4.5- 1.5.

Class A: 1st, Ernesto Encarnacion, 5.5-.5; 2nd-4th, Carl Boor, Ron Easter, Wesley Suzuki, 5-1; 5th, Thomas LaForge, Mickey Maloy, Virgilio Fuentes, Akihiro Yamada, 4.5-1.5.

Class B: 1st-2nd: Stephen Stockman, Paul Berland, 5.5-.5; 3rd-5th, Carlos Pesantes, Calvin Mills, Michael Taylor, Tony Brown, 5-1.

Class C: 1st: Fred Flyer, 5.5-.5; 2nd-5th, William Reith, Kevin Mahoney, Duane Bayer, David Cieslek, 5-1.

Class D/E: 1st: Lawrence Yakowenko, 6-0; 2nd, Anthony Caliendo, 5-1; 3rd-5th, David Adams, Jr., Michael Charles, Thomas Curran, 4.5-1.5.

1988 NORTH AMERICAN CLASS CHAMPIONSHIPS

PLAYER	ST	PRE RTNG	POST RTNG	1	2	3	4	5	6	TOT
1 KUDRIN, SERGEY	CT	2654	2671	W33	D37	D-5	W13	W-8	W-7	5.0
2 DE FIRMIAN, NICH E	CA	2647	2648	W32	W16	L-4	W19	W17	D-6	4.5
3 IVANOV, IGOR		2646	2647	W29	W17	D-6	L-4	W24	W16	4.5
4 IVANOV, ALEXANDER	MA	2625	2636	W25	W35	W-2	W-3	L-7	D-5	4.5
5 GUREVICH, DMITRY	NY	2602	2616	W34	W19	D-1	D-6	W16	D-4	4.5
6 BROOKS, MICHAEL A	MO	2575	2590	W44	W22	D-3	D-5	W-9	D-2	4.5
7 BYRNE, ROBERT E	NY	2537	2558	W46	D-9	W18	W12	W-4	L-1	4.5
8 MARTINOVSKY, EUGEN	IL	2420	2431	D15	W27	D-9	W30	L-1	W11	4.0
9 REYES, ROJDEL	NY	2403	2424	W31	D-7	D-8	W11	L-6	W17	4.0
10 TYENHUA, BEN	NY	2212	2273	D12	W14	L-7	D21	W32	W18	4.0
11 CHOI, ALBERT C	IL	2433	2444	D20	D15	W20	L-9	W14	W25	3.5
12 MORRIS, WALTER D	VA	2429	2423	D10	W20	W37	L-7	D13	D14	3.5
13 BELBY, MATTHEW AR	CA	2407	2401	D38	W36	W29	L-1	D12	D15	3.5
14 CHACHERE, LAWRENCE	IL	2371	2364	D27	L10	W36	W29	D11	D12	3.5
15 HENRY, RONALD L	WI	2234	2268	D-8	D11	L23	W41	W33	D13	3.5
16 SHAPKOVICH, LEDNID	NY	2533	2530	W42	L-2	W33	W23	L-5	L-3	3.0
17 DUBI, RONALD	IL	2493	2486	W39	L-3	W25	W22	L-2	L-9	3.0
18 PELTS, PETER	IL	2419	2396	L37	W44	L22	W30	W26	L10	3.0
19 KAWKINS, ANDREW	IL	2364	2384	W40	L-9	W35	L-2	D25	D20	3.0
20 LONOFF, MARC J	IL	2349	2356	L-3	W40	L11	W35	D23	D19	3.0
21 BLANKENAU, MIKE P	NE	2344	2332	L35	W42	D30	D10	W22	L-8	3.0
22 UREZINA, GERBGE O	IL	2332	2332	W41	L-6	W18	L17	L21	W37	3.0
23 CARLIN, ALFRED BLA	LA	2437	2424	D29	D30	W15	L16	D20	U--	2.5
24 ECKERT, DOUG D	MO	2375	2355	D30	L29	W38	W28	L-3	U--	2.5
25 CLAININGHAM, WALTER	PL	2324	2325	L-4	W28	L17	W27	D19	L11	2.5
26 BERGOLD, PETER	IN	2318	2306	L-7	L25	W39	W40	L18	D30	2.5
27 HARMON, CLARK R	WA	2277	2265	D14	L-8	D31	L32	D35	W36	2.5
28 BAIKT-BAKHO, JA RA	IL	2216	2225	D11	L12	W34	L24	D36	D29	2.5
29 KROW, JA JOHN W	IL	2213	2222	D23	W24	L13	L14	D37	D26	2.5
30 KAHN, NICK A	IN	2178	2202	D24	D23	D21	L18	D34	D24	2.5
31 BLANKINS, JEFF	WI	2124	2133	L-9	D34	D27	L36	D39	W41	2.5
32 SMALL, GREGG H	TX	2378	2357	L-2	W39	W41	L-8	L10	U--	2.0
33 WEISS, MITCHELL J	IA	2360	2345	L-1	W30	L16	W27	L15	U--	2.0
34 LEVINE, DAVID M	IL	2331	2302	L-5	D31	L20	W30	U--	U--	2.0
35 WARCHAND, ERICH MA	NY	2204	2204	W21	L-4	L19	L20	D27	D36	2.0
36 ESSER, KEITH A	IL	2170	2163	Z--	L13	L14	W31	D28	L27	2.0
37 FORBUSH, RAMSEY F	WI	2127	2147	W18	D-1	L12	L25	D29	L22	2.0
38 COOK, B P	IL	1906	1945	D13	L33	L24	L34	W41	D35	2.0
39 HURUNG, DAVID D	MO	2250	2225	L17	L32	L26	D43	D21	U--	1.0
40 BUNDO, G GREGORY	IL	2201	2179	L19	L20	B--	L26	U--	U--	1.0
41 SMYTHE, BILL	IL	1984	1984	L22	B--	L32	L15	L30	L31	1.0
42 STEIN, KURT W	IL	2305	2289	L16	L21	H--	U--	U--	U--	1.0
43 LORING, STEVE W	IL	2070	2070	U--	U--	U--	D29	U--	U--	1.0
44 KRECKLER, WARREN	IL	2294	2282	L-6	L10	U--	U--	U--	U--	1.0

NORTH AMERICAN CLASS/EXPERT

PLAYER	ST	PRE RTNG	POST RTNG	1	2	3	4	5	6	TOT
1 TONEY, MICHAEL W	CA	2206	2243	W17	W40	W26	W10	W12	L-3	5.0
2 AHLSTROM, STEPHEN	MO	2183	2222	W32	W46	D-2	W15	D18	W13	5.0
3 RONNEBERG, ERIK F	IL	2153	2195	W48	W42	D-2	D11	W-6	W-1	5.0
4 DAVIS, LIONEL L	NY	2100	2150	W22	W25	L18	W40	W20	W12	5.0
5 HARRIS, JR WILLIAM	OH	2102	2203	W30	L12	W23	D41	W26	W10	4.5
6 FRIEDMAN, EDWARD	RI	2234	2233	W59	L12	W46	W31	L-3	W20	4.0
7 WHEELER, WAYNE W	IL	2217	2220	D37	W29	D31	D20	W39	D-9	4.0
8 WACHTEL, HOWARD K	WI	2200	2206	L45	W54	W56	D16	D14	W27	4.0
9 FLASA, KRZYSTOF	IL	2193	2202	L12	W59	D39	W42	W41	D-7	4.0
10 HARRIS, THOMAS J	IN	2121	2140	W69	D31	D20	D26	D21	W30	4.0
11 HAZUCHOWSKI, THOMA	MI	2121	2137	D23	W47	W36	D-3	L13	W31	4.0
12 TORREGROSSA, RON W	IL	2120	2155	W-9	W-6	W24	W13	L-1	L-4	4.0
13 GREGORY, JAMMIE	IL	2103	2130	W33	W-5	W41	L12	W11	L-2	4.0
14 SPLINTER, JOE C	IL	2010	2068	L10	D22	W43	W36	D-8	W40	4.0
15 EAP, DR EDWARD R	MA	2203	2200	D39	W51	W37	L-2	D16	D19	3.5
16 BENSIELE, KEVIN M	IL	2199	2191	L42	W32	W25	D-8	D15	D17	3.5
17 BASERCU, NEIL	WI	2190	2192	L-1	W43	W27	L20	W22	D16	3.5
18 KAWKINS, ERIK	IL	2197	2194	W14	W27	W-4	L-1	D-2	L-5	3.5
19 DOWLING, JOHN	CA	2169	2159	L56	D52	W51	D37	W47	D15	3.5
20 HOLLING, BOB	MO	2167	2163	L31	W53	W40	W17	L-4	D21	3.5
21 NORMAN, BRYAN A	OK	2111	2122	D24	L36	W52	W33	D10	D20	3.5
22 AYOUBA, CARL	NJ	2024	2064	L-4	D14	W30	W23	L17	W44	3.5
23 ROGAN, MARVIN	IL	1991	2022	D11	W50	L-5	L25	W36	L-1	3.0
24 PAIR, ROBERT B	UT	2198	2160	D21	W50	L-1	D10	L-3	D32	3.0
25 INUMERABLE, JR FLO	IL	2164	2161	H--	L37	W34	W23	D20	U--	3.0
26 GAZMER, ETHELBERT	IL	2156	2140	W52	W56	L-1	D10	L-3	D33	3.0
27 ERNST, EDWARD R	KY	2146	2136	W34	L10	L17	W48	W42	L-6	3.0
28 SOCHA, RAYMOND R	IL	2130	2124	D43	W55	D10	D-7	D20	L-8	3.0
29 REYES, VIRGILIO T	IL	2112	2095	H--	L-7	W55	L22	D43	W40	3.0
30 THOMPSON, CEDRIC A	WI	2060	2067	L-9	L40	W54	W56	W46	L10	3.0
31 KENNEDY, JOE E	IN	2040	2074	W20	D10	D-7	L-6	W44	L11	3.0
32 FLYBARE, BRIAN K	MA	2027	2025	L35	L16	B--	D49	W30	D24	3.0
33 BECKER, SIDNEY D	IL	1975	2010	L13	W60	D44	L21	W50	D26	3.0
34 FISHER, BARRY W	IL	1973	1985	L27	B--	L25	L46	W54	W47	3.0
35 LEVARDI, DR DAVID I	MI	1844	1918	W32	L-4	L16	W45	L24	W46	3.0
36 THOMAS, CARLTON	MI	2152	2132	D38	L-4	L11	L14	L24	W53	2.5
37 TULJIN, JAMES T	MO	2100	2110	D-7	W25	L15	D19	D40	U--	2.5
38 JAKETIS, KAZIMIERA	IL	2102	2080	D36	L24	L22	W55	L32	W50	2.5
39 CONNOR, PETER Y	IL	2008	2107	D15	D49	D-9	W24	L-7	U--	2.5
40 SCOTT, GENE	IL	2003	2074	W54	L-1	W45	L-4	D37	L14	2.5

41	FLEMMER, FRANK	IL	2068/9	2092	W58	W45	L13	D-3	L-9	U--	2.5
42	FULLMAN, DAVID A	IL	2014	2021	M16	L-3	W49	L-9	L27	D43	2.5
43	BUTMANIS, ERIC V	IL	1811	1850	D28	L17	L14	W53	D29	D42	2.5
44	DEMOS, JOHN	KY	2150	2103	L46	W58	D33	D47	L31	L22	2.0
45	SATTERLEE, RAY DOY	IL	2136	2093	M-0	L41	L48	L35	L48	W55	2.0
46	WYKOWSKI, GEORGE	TX	2082	2049	M44	L-2	L-6	W34	L38	L23	2.0
47	FORBIS, ROBERT E	IL	2037	2018	U--	L11	W58	D44	L19	L34	2.0
48	JORDAN, RANDAL V	IL	1980	1987	L-3	W38	L28	L27	W45	L29	2.0
49	KUTKO, NATHANIEL K	WJ	2103	1988	U--	D39	L42	D32	U--	U--	1.5
50	SAX, ROBERT	IL	2053	2044	U--	L23	L47	W58	L33	L38	1.5
51	ANDERSON, PHIL	IL	2019	1998	U--	L15	L19	L52	W56	L--	1.5
52	WHITE, JOE	IL	2009	2011	L26	D19	L21	W51	U--	U--	1.5
53	MARICILLAS, JR RAUL	IL	2082	2015	L2	L30	D38	L42	D52	L36	1.0
54	LORING, STEVE W	IL	2078	2012	L42	L-8	L-8	F--	L24	U--	1.0
55	PUKEL, BERNARD F	IL	2006	1966	U--	L38	L29	L38	D32	L42	1.0
56	BOYKIN, JIMMIE C	TN	1958	1950	M15	L26	L-8	L38	L51	U--	1.0
57	LEIGHTON, GEORGE N	IL	1891	1914	U--	U--	U--	U--	W52	U--	1.0
58	1991	L41	L44	D33	L52	L27	U--	1.0

NORTH AMERICAN CLASS/A

PLAYER	ST	PRE	POST	RTNG	1	2	3	4	5	6	TOT
1 ENCARNACION, JR ER	NY	2011	2077	W56	M19	W58	W49	W44	D-2	2.5	
2 BOOR, CARL R	OH	2020	2073	M49	W52	W38	D-8	W30	D-1	2.0	
3 EASTER, RON	IL	1983	2026	D47	M16	D-7	W52	M14	M11	2.0	
4 SUIKAI, WESLEY Y	MI	1968	1989	L-6	W49	W39	W34	L-1	W12	5.0	
5 LA FORGE, THOMAS A	MI	1972	1989	L-6	W49	W45	D40	W46	W17	4.5	
6 HALDY, MICKEY D	MI	1841	1916	D-5	L39	W43	W21	D28	W23	4.5	
7 FUENTES, VIRSIDO CA	1835	1920	W35	W64	D-3	D13	W29	W28	4.0		
8 YARADA, AKIHIRO	1802/12	1924	W57	W54	W57	D-2	L11	W26	4.0		
9 SAGANO, MARI	CA	2054	2050	L10	M17	W49	L11	W52	W36	4.0	
10 LAUD, CHRIS	IL	2023	2028	L23	W59	D18	W27	D24	W34	4.0	
11 GUID, JULIAN	IL	2018	2025	L36	W42	W46	W-9	W-8	L-3	4.0	
12 FRESBE, M HUNTER	IN	1961	1964	W54	D27	D17	W56	W38	L-4	4.0	
13 BARCLAY, DEAN	IL	1958	1969	L14	W63	W47	D-7	W40	U--	4.0	
14 DAVIS, ROBERT P	NY	1942	1985	M13	D57	W44	D32	L-3	W30	4.0	
15 COX, WILLIAM G	IL	1910	1913	L61	W66	L32	W51	W47	X--	4.0	
16 HERNANDEZ, HECTOR	IL	1898	1922	M-1	D13	W45	W57	D27	X--	4.0	
17 CLOVER, KELLY D	TX	1896	1946	W-9	D21	D12	W39	W34	L-3	4.0	
18 BOGAN, TIMOTHY J	IL	1896	1938	W32	L-4	D10	D42	W54	W25	4.0	
19 JANAKUSKAS, MARYS	IL	1987	1978	W68	L-1	W58	D24	L28	W48	3.5	
20 DOWD, JOSEPH	OH	1978	1978	W63	W48	L-1	W37	D-6	L-7	3.5	
21 WHEATLEY, DANIEL D	IL	1945	1932	W78	D17	D27	L-6	W48	D25	3.5	
22 SJERVEN, DONALD E	IN	1943	1932	L52	W65	D41	L23	W56	W46	3.5	
23 BRADY, LINDELL L	MI	1988	1937	M10	D44	L29	W22	W32	L-6	3.5	
24 CALTON, BILL J	MI	1847	1884	W33	L-8	W54	D19	D18	D26	3.5	
25 SHIPMAN, JUDITH C	NY	1848	1889	L31	W66	L38	W43	W33	D21	3.5	
26 BONCHAROFF, NIKOLA	IL	1832	1868	D29	D42	M--	D28	W37	D24	3.5	
27 LAIRD, CURTIS LYND	TX	1815	1865	W67	D12	D21	L18	D16	W44	3.5	
28 PRZYBODA, LEON	IL	0	1982	M--	X--	D35	D26	W19	L-8	3.5	
29 SAGALOVSKY, LEONID	IL	1998	1964	L41	W59	W25	L-1	L-7	D32	3.0	
30 BRADSHAW, BRAD	KY	1985	1925	W25	L35	D48	L46	W59	D49	3.0	
31 BURBANK, MICHAEL S	IN	1978	1965	L18	W68	M18	D14	L23	D28	3.0	
32 BURBANK, DENNIS	IL	1928	1938	L48	D46	D40	L38	L25	W45	3.0	
33 BOLTING, THOMAS	IL	1954	1927	X--	W41	W38	L-4	L17	L10	3.0	
34 HADES, RICHARD S	FL	1944	1944	D-7	D40	D28	D41	W55	L18	3.0	
35 FAGAN, JAMES B	IL	1916	1926	M11	W31	L-2	L38	W42	L-9	3.0	
36 SCHUSCHTEL, HANS	IL	1912	1884	M--	D47	M11	L28	L26	X--	3.0	
37 CHORAZY, MIKE	IL	1909	1922	W65	W41	L34	W36	L12	U--	3.0	
38 BULLOCKUS, THEODOR	CA	1904	1915	W51	M-6	L-4	L17	W41	U--	3.0	
39 CALLOWAY, BRAD	IL	1889	1867	X--	D25	D32	D-5	L12	D31	3.0	
40 OLSON, ERIC	IN	1791	1887	W48	L38	D23	D32	L39	X--	3.0	
41 HIERONYMUS, KENT P	IL	1789	1737	D45	L11	X--	D18	L36	W58	3.0	
42 BALE, LESLIE	IL	1931	1891	L46	W78	L-6	L25	W51	D47	2.5	
43 CALTON, DAVID W	MI	1905	1905	W58	D23	L14	L48	W45	L17	2.5	
44 YAKICH, BOB	IL	1882	1866	D42	D39	L16	W64	L44	W32	2.5	
45 PRULISE, PAUL	IL	1879	1887	W47	L33	L11	W21	L-5	L22	2.5	
46 KUMH, PETER H	IL	1842	1850	D-3	D37	L13	W58	L15	D-3	2.5	
47 SCHNECK, MARK W	IL	1829	1856	W62	L28	D21	W44	L21	L19	2.5	
48 SCHMUCKER, VIVIAN	IN	1823	1822	L-2	L-2	L-9	D25	W63	W29	2.5	

NORTH AMERICAN CLASS/C

PLAYER	ST	PRE	POST	RTNG	1	2	3	4	5	6	TOT
1 FLYER, FRED	IL	1833/9	1744	W56	W57	W55	W19	M13	D-5	5.5	
2 KEITH, WILLIAM	OH	1733	1741	W49	L18	W71	W52	M-9	M15	5.0	
3 MANONEY, KEVIN	NY	1638	1636	W41	W25	L17	W36	M11	W48	5.0	
4 RAYOR, DUANE K	IL	1590	1621	M-1	L-9	W68	W29	W13	L-6	5.0	
5 CIESLEK, DAVID M	IL	1527	1624	W32	M17	W36	M18	D-8	D-1	5.0	
6	5.0	
7	5.0	
8	5.0	
9	5.0	
10	5.0	
11	5.0	
12	5.0	
13	5.0	
14	5.0	
15	5.0	
16	5.0	
17	5.0	
18	5.0	
19	5.0	
20	5.0	
21	5.0	
22	5.0	
23	5.0	
24	5.0	
25	5.0	
26	5.0	
27	5.0	
28	5.0	
29	5.0	
30	5.0	
31	5.0	
32	5.0	
33	5.0	
34	5.0	
35	5.0	
36	5.0	
37	5.0	
38	5.0	
39	5.0	
40	5.0	
41	5.0	
42	5.0	
43	5.0	
44	5.0	
45	5.0	
46	5.0	
47	5.0	
48	5.0	
49	5.0	
50	5.0	
51	5.0	
52	5.0	
53	5.0	
54	5.0	
55	5.0	
56	5.0	
57	5.0	
58	5.0	
59	5.0	
60	5.0	
61	5.0	
62	5.0	
63	5.0	
64	5.0	
65	5.0	
66	5.0	
67	5.0	
68	5.0	
69	5.0	
70	5.0	
71	5.0	
72	5.0	
73	5.0	
74	5.0	

NORTH AMERICAN CLASS/B

PLAYER	ST	PRE	POST	RTNG	1	2	3	4	5	6	TOT
1 STOCKMAN, STEPHEN	MI	1889	1871	M54	D49	W-8	W-7	W22	W18	5.5	
2 BERLAND, PAUL	IL	1881	1859	W69	W43	M25	D18	W26	W-5	5.5	
3 PEBANDES, CARLOS	GA	2416	2403	L12	W52	W73	W23	M15	W20	5.0	
4 MILLS, CALVIN	TN	1889	1905	W76	D21	D44	W27	W29	L16	5.0	
5 TAYLOR, MICHAEL L	IL	1794	1829	W78	M18	M17	W-8	W24	L-2		

RONNEBERG TOPS 1988 ILLINOIS HIGH SCHOOL INVITATIONAL

By Kevin Bachler

Waukegan's Shimer College began its new chess program by hosting the 1988 Illinois High School Invitational Chess Championship on June 10-12, 1988. Seven of Illinois' top high school players accepted invitations to play in the round robin event. A Waukegan East High School student was invited so that the field would have an even number of players, but a last minute withdrawal left only seven participants.

As expected, top rated Erik Ronneberg of Chicago's Kenwood Academy, who won this event in 1986 and 1987, again took first place, scoring 6-0 to finish a commanding two points ahead of runner up Matthew Stephen Crouse of Charleston High School. (Erik's accomplishment is made more impressive by the fact that several players aimed for draws from the first move when facing him.) In addition to the title of Illinois High School Invitational Champion, Erik won the right to represent Illinois in the Denker Tournament of [High School] Champions, held concurrently with the U.S. Open.

Shimer College will host this tournament again in 1989. Though details are not yet set, a recent increase in college facilities and a prize fund in the area of \$5000.00 in scholarships should make for a good event.

Here are some games from the tournament:

W: Erik Ronneberg
B: Matthew Steven Crouse
1. e4 e5 2. Nf3 Nf6 3. Nxe5 d6 4. Nf3 Nxe4 5. d4 d5 6. Bd3 Be7 7. O-O O-O 8. c4 Nf6 9. h3 Nc6 10. Nc3 Nb4 11. Be2 Bf5 12. Bf4 dxc4 13. Bxc4 Nbd5 14. Nxd5 Nxd5 15. Bxd5 Qxd5 16. Bxc7 Be4 17. Re1 Rac8 18. Be5 Bb4 19. Re3 f5 20. Qb3 Rc4 21. Ne1 Bd2 22. Rg3 g6 23. f3 Rb4 24. fxe4 Rxb3 25. exd5 Rxb2 26. Nd3 Rc2 27. d6 Rc3 28. Rf3 f4 29. Nc5 Be3+ 30. Kh2 Rc8 31. d7 1-0

W: Matthew Steven Crouse
B: Paul Berland
1. b3 d5 2. Bb2 c5 3. e3 Bf5 4. Nf3 Nc6 5. Bb5 a6 6. Bxc6+ bxc6 7. Ne5 Qd6 8. g4 Bc8 9. f4 f6 10. Nd3 c4 11. Ba3 Qd7 12. bxc4 Qxg4 13. Qxg4 Bxg4 14. cxd5 cxd5 15. Nc3 e6 16. Bxf8 Kxf8 17. Rb1 Ne7 18. Kf2 Kf7 19. Rb7 Rbc8 20. Rb1 Ke8 21. Rg1 Bf5 22. Rxg7 Ng6 23. Rxh7 Rcb8 24. Kg3 Rxb7 25. Rxb7 Ne7 26. h4 Kf7 27. Nb4 Rg8+ 28. Kf2 Rc8 29. Ra7 a5 30. Rxa5 Kg6 31. Ra7 Nc6 32. Nxc6 Rxc6 33. a4 Bxc2 34. Rb7 d4 35. exd4 Rc4 36. Ke3 Bxa4 37. Kd3 Bc6 38. Rc7 Bd5 39. Rxc4 Bxc4+ 40. Kxc4 Kh5 41. Kc5 Kxh4 42. Kd6 f5 43. Kxe6 Kg4 44. d5 1-0

[Editor's Note: Erik Ronneberg contributed the following comments regarding the 1988 Illinois High School Invitational.]

I enjoyed the Illinois qualifying tournament more than the Denker event. [Ronneberg's article on the Denker tournament appears

elsewhere in this ICB.] I went 6-0 with a bit of luck. Almost all of the games were hard fought and interesting. My opponents knocked each other off while I played games such as these:

W: Erik Ronneberg
B: James Fagan
1. e4 e6 2. d4 d5 3. Nd2 Nf6 4. e5 Nfd7 5. f4 c5 6. c3 Nc6 7. Ndf3 Qb6 8. g3 cxd 9. cxd Bb4+ 10. Kf2 g5! 11. h3 f6 12. exf Nf6 13. fxd Ne4+ 14. Kg2 Bd6 15. Ne2 e5 16. Nc3 Nxc3 17. bxc Rf8 18. g4 Be6 19. Qb3 Qc7 20. dxe Nxe5 21. Nxe5 Bxe5 22. Bb5+ Kd8 23. Ba3 Bd6 24. Rhf1 Ke7 25. Rae1 Rxf1 26. Bxf1 Kf7 27. Bxd6 Qxd6 28. Qxb7+ and White won in 52 moves. This complex game has so many critical moments that it would take pages to analyze it. 16...Nd4 17.Nd5 is one important line. White seems to be hanging by a thread but appears to hold in all variations.

The next contest featured unique complications.

W: Ernesto Guerrero
B: Erik Ronneberg
1. d4 Nf6 2. c4 g6 3. Nf3 Bg7 Nc3 0-0 5. Bf4 d6 6. h3 Nbd7 7. e3 c5 8. Be2 cxd 9. cxd Nh5 10. Bd2

10. Be3 or 10. Bh2 saves a tempo.

10...e5 11. Be3 f5 12. Ng5

This looks strong but doesn't work out. 12. dxe dxe 13. Ng5 Ndf6 holds for Black.

12...f4 13.Ne6 Qf6 14.Nxf8
 fxe 15.fxe Qh4+ 16.Kd2 exd
 17.exd Qxd4+ 18.Kc2 Qxd1+
 19.Rhxd1 Nxf8 20.Bxh5+ Bf5+
 21.Kb3 gxh 22.Rxd6 Ne6
 23.Ne2? Nc5 24.Kb4 Nd3 25.Kb3
 Be5 26.Rd5 Be4 27.Rb5 Bc6
 28.Re5

This is forced, as
 28.Ra5 b6 29.Ra3 Bb2 wins the
 exchange anyway.

28...Nxe5 and Black won in 53
 moves after mistakes on both
 sides.

**RONNEBERG ENDS HIGH SCHOOL
 CHESS CAREER WITH FOURTH
 PLACE TIE IN DENKER
 TOURNAMENT OF [HIGH SCHOOL]
 CHAMPIONS**

By Erik Ronneberg

[Editor's Note: For the past
 three years Erik Ronneberg
 has been Illinois' strongest
 high school chess player. He
 won the 1986, 1987, and 1988
 Illinois High School
 Invitational Championship (an
 annual round robin event
 sponsored by the Illinois
 Chess Association to which
 the state's six highest rated
 players and the Illinois High
 School Association Class A
 [small school] and Class AA
 [large school] individual
 champions are invited). As
 the Illinois Invitational
 winner, Ronneberg represented
 his state at the Denker
 Tournament of [High School]
 Champions held in conjunction
 with the U.S. Open. He
 finished tied for fourth
 place in that event in both
 1987 and 1988.]

My experience with high
 school chess is finally over.
 It ended on a bittersweet
 note with the following game.

Denker Tournament of [High
 School] Champions
 August 8-12, 1988
 Annotated by Erik Ronneberg

W: Erik Ronneberg
 B: Kash Patel

1988 Illinois High School Invitational

1	Ronneberg, Erik	Kenwood Academy	x 1 1 1 1 1 1	6-0
2	Crouse, Matthew	Charleston H.S.	0 x 1 1 0 1 1	4-2
3	Berland, Paul	Kenwood Academy	0 0 x 1 1 .5 0	2.5-3.5
4	Fagan, James	Harlan Acad.	0 0 0 x 1 .5 1	2.5-3.5
5	Petersen, Mark	Elgin H.S.	0 1 0 0 x .5 1	2.5-3.5
6	Gallionetti, Joe	Roanoke-Benson	0 0 .5 .5 .5 x .5	2-4
7	Guerrero, Ernesto	Waukegan East	0 0 1 0 0 .5 x	1.5-4.5

1.e4 c5 2.Nf3 d6 3.d4 cxd
 4.Nxd4 Nf6 5.Nc3 e6 6.Be3
 a6 7.f3 Be7 8.Qd2 b5 9.g4
 Qc7 10.g5 Nfd7 11.a3?!

So far we have played
 logically. Black will play
 for an eventual b4 and d5.
 I wanted to keep Nc3 in
 place but a3 only
 encourages b4 and creates a
 weakness. 11.0-0-0 or
 11.h4 looks stronger.

11...Bb7 12.0-0-0 Nc6
 13.Nxc6 Bxc6 14.Kb1?

I was concerned about
 my King but moving it
 doesn't help. 14.Bd4 or
 14.h4 would have been much
 better.

14...Rb8 15.Ne2 d5! 16.Bf4
 Bd6 17.exd Bxd5 18.Bxd6
 Qxd6 19.Nc3 Ng6 20.Qd4

I am now okay, but I
 wasn't thinking at all.
 Bd3 followed by Be4 gives
 Black an isolated pawn, but
 this is not enough to win.
 20.h4 0-0 21.h5 Rfd8 is
 obscure as Black threatens
 Ba2+.

20...0-0 21.h4

Bd3 or Ne4 followed by
 sacrifices looked scary to
 my opponent but unsound to
 me. For instance, 21.Ne4
 Qc7 22.Nf6+ gxf 23.gxf Kh8
 24.Bd3 Rg8 25.Qh4 Rg6 and
 Black defends adequately.

21...Rfd8!

Now Ba2+ slows me
 down.

22.Nxd5

22.Qg4 looks too
 slow.

22...Qxd5?

22...Nxd5 looks
 winning for Black, with
 the idea of b4 and Nc3+.
 For example, 23.Bd3 b4
 24.h5 Nc3 25.bxc bxc
 leads to mate.

23.Qxd5 Rxd5 24.Rxd5
 Nxd5 25.Bd3 h6 26.Be4
 Kf8 27.Rd1 Rd8 28.Kc1
 Ke7 29.Rd4 hxg 30.hxg f6

31.gxf gxf 32.a4 Rd6
 33.axb axb 34.Rd1 Nc7
 35.Rh1

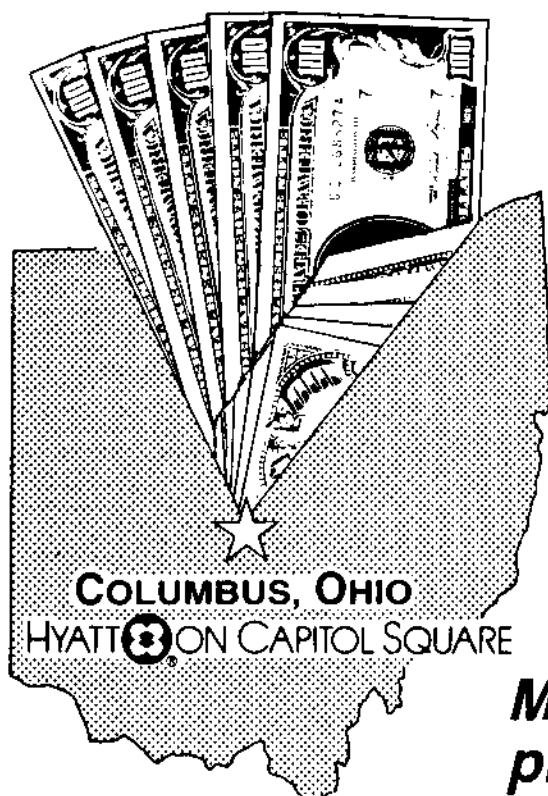
This waste of time
 dissipates my last bit
 of advantage.

35...Rd8 36.Rh7+ Kd6
 37.b3 Rd7 38.Rh8 f5
 39.Bd3 Ke5 40.Kd2 Rg7
 41.Rh4 Rg2+ .5-.5

I was surprised
 that my opponent did not
 continue to play, since
 he now stands better.

The above game gave me a
 final score of 3.5-1.5.

(Continued on page 3)



**\$10,000 Guaranteed
120 Grand Prix Points**

Cardinal Open

January 6-8, 1989

**More cash, masters & grand
prix points than ever before!**

Every Cardinal Open winner since 1982 has placed at or near the top of the Grand Prix standings!!

CHAMPIONSHIP (Open to any masters or former masters. Limited number of non-master entries accepted.)

First	\$2,500	Third	\$1,000	Fifth	\$500
Second	\$1,400	Fourth	\$600	First Under 2400	\$500

Playing Conditions: NO SMOKING; 6,000 sq. ft. playing hall; 50-60 footcandles; roped off area to top boards; wheelchair access. Applicable results will be F.I.D.E. rated.

Registration: 5:00-7:00 p.m. Friday.

Entry Fees: Free to Grandmasters. All other masters: \$55 if postmarked by Oct. 31; \$62 if postmarked by Dec. 31; \$75 at site. Non-masters \$100 (Limited number of non-master entries available. Contact organizer for details)

Time Control: 40 moves in 2 hours, Secondary 20/1

Round Times: Round One, Friday, 1/6, 8:00 p.m.; Round Two, Sat., 1/7, 11:00 a.m.; Round Three, Sat., 1/7, 5:00 p.m.; Round Four, Sun., 1/8, 10:00 a.m.; Round Five, Sun., 1/8, 4:00 p.m.

PREMIER (Open to under 2200 & unr)

First	\$500	2000-2099	\$300	\$100
Second	\$300	1900-1999	\$300	\$100
		1600-1899	\$300	\$100

Registration: 5:00-7:00 p.m. Friday or 8:00-9:00 a.m. Saturday.

Entry Fee: \$38 if postmarked by Oct. 31; \$45 if postmarked by Dec. 31; \$55 at site. U.S.C.F. and O.C.A. membership required. Other states O.K. for non-Ohio residents. Second Chance Option (See note)

Time Control: 50 moves in 2 hours, Secondary 25/1

Round Times: Optional First Round, Friday, 1/6, 8:00 p.m. or Saturday, 1/7, 10:00 a.m.; Round Two, 1/7, 3:00 p.m.; Round Three, 1/7, 8:00 p.m.; Round Four, 1/8, 10:00 a.m.; Round Five, 1/8, 4:00 p.m.

RESERVE (Open to under 1800 & unr)

First	\$400	1600-1699	\$200	1300-1399	\$150
Second	\$200	1500-1599	\$200	Under 1300	\$150
		1400-1499	\$200	Unrated	\$100

Registration: 5:00-7:00 Friday or 8:00-9:00 a.m. Saturday.

Entry Fee: \$25 if postmarked by Oct. 31; \$32 if postmarked by Dec. 31; \$40 at site. U.S.C.F. and O.C.A. membership required. Other states O.K. for non-Ohio residents. Second Chance Option (See note)

Time Control: 50 moves in 2 hours, Secondary 25/1

Round Times: Optional First Round, Friday, 1/6, 8:00 p.m. or Saturday, 1/7, 10:00 a.m.; Round Two, 1/7, 3:00 p.m.; Round Three, 1/7, 8:00 p.m.; Round Four, 1/8, 10:00 a.m.; Round Five, 1/8, 4:00 p.m.

ALL SECTIONS

Format

5 Round Swiss System Tournament

Byes

½ point byes available by request in advance, rounds 1-4

Special Hotel Rates

\$41 single, \$43 double, \$45 triple, \$49 quad. Make reservations early. Call (614) 228-1234.

Directors

Chief TD: Larry R. Paxton, NTD
Randall J. Ryan, NTD
David A. Hater, NTD

Entries & Inquiries

1989 Cardinal Open
c/o Randall J. Ryan, NTD
341 Smalley Blvd.
Hamilton, Ohio 45013
Phone: (513) 863-6151

Inquiries

David A. Hater
Phone: (614) 263-3352

NOTE: Second Chance Option (Premiere and Reserve only) - If you lose or draw Friday night, you may re-enter Saturday morning for an additional \$10 fee. Your Friday result will be rated but will not count for tournament standing.

GILES BEATS, DRAWS GRANDMASTERS ON WAY TO 9-3 1988 U.S. OPEN RESULT

2500 RATING IN SIGHT FOR CHICAGO SENIOR MASTER

By Ken Marshall

Senior Master Morris Giles, whose tactical flair has made him one of Illinois' best players, finished 9-3 to tie for sixth through seventeenth places at the 634 player 1988 U.S. Open, held in Boston, Mass. between August 7 and 19. Giles' result, apparently the best U.S. Open score by an Illinois player in recent history, included wins over Grandmaster Walter Browne (in 26 moves!), recent Soviet emigre Alexander Ivanov, and a Novag computer, and draws with GMs Lev Alburt and Andy Soltis; his only loss was to GM (and 1987 U.S. Co-Champion) Joel Benjamin.

Giles' spectacular performance appears to have raised his 2451 rating by about 30 points. The question now is whether he can reach 2500 by December 31, 1988, and thereby win the \$500 prize offered by Chicago organizer Fred Gruenberg to the first Illinois player to attain that rating by the end of the year. If his play in the upcoming Illinois Tournament of Champions III meets the standard he set in Boston, Giles may well make the aforesaid deadline with time to spare.

Here are some of Giles' U.S. Open games, as published by Jim Marfia and David Moody in the tournament's daily bulletins.

White: Morris Giles (2454) Black: Novag X

-A- (2096) Round 2
1.e4 e5 2.f4 exf 3.Nf3 g5
4.h4 g4 5.Ne5 Nf6 6.d4 d6
7.Nd3 Nxe4 8.Bxf4 Qe7
9.Be2 Bg7 10.Nd2 Bxd4
11.c3 Bxc3 12.Qb3 Bxd2+
13.Bxd2 Ng3 14.Kf2 Qxe2+
15.Kxg3 Qxd2 16.Rae1+ Kf8
17.Rhf1 f5 18.Nf4 Nc6
19.Ne6+ Bxe6 20.Qxe6 Qd3+
21.Kh2 g3+ 22.Kh3 Kg7
23.Qd7+ Kg8 24.Rxf5 Qxf5
25.Qxf5 Ne5 26.Re3 h5
27.Rxg3+ Ng4 28.Qg6+ Kf8
29.Rf3+ Ke7 30.Rf7+ Kd8
31.Qg7 Nf2+ 32.Kh2 Ng4+
33.Kg3 Re8 34.Rd7+ Kc8
35.Rxc7+ Kb8 36.Rxb7+ Kc8
37.Qc7++ 1-0

White: Morris Giles (2451) Black: Victor Polyak (2166)

Round 5
1.e4 e5 2.f4 exf 3.Nf3 Nf6
4.e5 Nh5 5.d4 d5 6.Be2 g6
7.0-0 Bg4 8.c4 c5 9.cxd
cxg 10.Qxd4 Qb6 11.Qxb6
axb 12.Bb5+ Bd7 13.Nc3
Bc5+ 14.Kh1 h6 15.e6 fxe
16.dxe Bc6 17.Bd3 Rg8
18.Ne5 g5 19.Bg6+ Rxg6
20.Nxg6 Nf6 21.Ne5 Ke7
22.Nxc6+ bxc 23.g3 fxg

24.hxg Kxe6 25.Bd2 Nbd7
26.Rae1+ Kf7 27.Ne4 Bd4
28.Bc3 Bxc3 29.Nxc3 b5
30.a3 Rb8 31.Ne4 Kg6
32.Nxf6 Nxf6 33.Re6 Rf8
34.Rxc6 Kg7 35.Kg2 Rf7
36.Rb6 g4 37.b3 Rf8
38.Rxb5 Rf7 39.Rf5 1-0

White: George Shainsvit (2228) Black: Morris Giles (2451)

Round 6 d4
Nf6 2.c4 g6 3.Nc3 Bg7 4.e4
d6 5.f3 0-0 6.Be3 a6 7.Bd3
Nc6 8.Nge2 Nd7 9.0-0 e5
10.Bc2 exd 11.Nxd4 Nde5
12.b3 Nxd4 13.Bxd4 c5
14.Bxe5 Bxe5 15.Qe1 b5
16.Rc1 Qa5 17.Bd3 b4
18.Na4 Bd7 19.Bc2 Rae8
20.Qh4 Qc7 21.Rcd1 Kg7
22.Kh1 f5 23.Qf2 f4 24.Bb1
g5 25.Nb2 g4 26.fxg Bxg4
27.Rd2 Kh8 28.Qh4 Qg7
29.Nd3 Bf6 30.Qf2 Bg4
31.Qe1 f3 32.g3 Bh3
33.Rff2 Bg2+ 34.Rxg2 fxg+
35.Bxg2 Rxe4 0-1

White: Morris Giles (2451) Black: Alexander Ivanov

(2594) Round 7 1.e4 c5
2.Nf3 d6 3.d4 cxd 4.Nxd4
Nf6 5.Nc3 Nc6 6.Bc4 Qb6

7.Nde2 e6 8.0-0 Be7 9.Bb3
a6 10.Bg5 Bd7 11.Bxf6 gxf
12.Kh1 Na5 13.f4 Nxb3
14.axb h5 15.f5 0-0-0
16.Nf4 Rdg8 17.Qe2 Kb8
18.b4 d5 19.exd e5 20.Nd3
h4 21.h3 Rh7 22.Nc5 Bc8
23.N3e4 Rhg7 24.Rf2 Qxb4
25.c3 Qb6 26.b4 Rd8 27.Qa2
Rg3 28.Nxg3 hxg 29.Rf3
Bxc5 30.bxc Qxc5 31.c4 Qd4
32.Raf1 Rg8 33.Qb3 Rg5
34.Rb1 Qe4 35.c5 a5 36.c6
a4 37.Qb6 Qxd5 38.cxb Bxb7
39.Qxf6 Rg8 40.Re1 a3
41.Qh4 a2 42.Rxg3 Rc8
43.Qa4 Qd2 44.Qd1 Qxd1
45.Rxd1 f1g 1-0

White: GM Joel Benjamin (2691) Black: Morris Giles (2451)

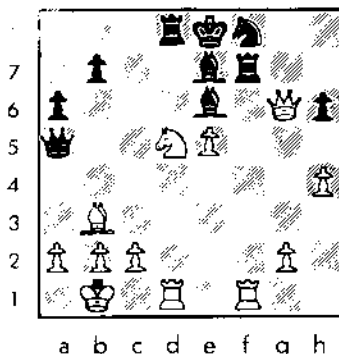
Round 8 1.e4 c5 2.Nf3 d6
3.d4 cxd 4.Nxd4 Nf6 5.Nc3
e6 6.g4 a6 7.g5 Nfd7 8.Be3
b5 9.a3 Bb7 10.Qg4 Ne5
11.Qh3 Nbc6 12.Nxc6 Nxc6
13.g6 Rc8 14.0-0-0 Qf6
15.gxf7+ Qxf7 16.Be2 b4
17.axb Nxb4 18.Bg4 Ke7
19.Rhe1 h5 20.Rd4 a5 21.e5
d5 22.Bg5+ Kd7 23.Rf4 Qg6
24.Bxe6+ Kc7 25.Qf5 1-0

White: Morris Giles (2451) Black: Eric Chapa (2271) Round 9

1.e4 c5 2.Nf3 Nc6 3.d4 cxd
4.Nxd4 Nf6 5.Nc3 e5 6.Ndb5
d6 7.Bg5 a6 8.Bxf6 gxf
9.Na3 b5 10.Nd5 f5 11.c3
Bg7 12.exf Bxf5 13.Nc2 0-0
14.N2e3 Be4 15.Bd3 Bxd5
16.Nxd5 e4 17.Bc2 f5 18.0-0
Kh8 19.f3 Rg8 20.fxe Be5
21.Qh5 Rg5 22.Qh3 Qg8
23.Rad1 f4 24.Nxf4 Qxa2
25.Ne6 Rg6 26.Rf7 h6
27.Rf8+ Rxf8 28.Nxf8 Rf6
29.Nd7 Rg6 30.Rf1 Qxb2
31.Rf8+ Kg7 32.Qf3 Bxh2+
33.Kxh2 1-0

White: Morris Giles (2451) Black: GM Walter Browne (2617)

Round 10 1.e4 c5 2.Nf3 d6
3.d4 cxd 4.Nxd4 Nf6 5.Nc3
a6 6.Bg5 e6 7.f4 Be7 8.Qf3
Nbd7 9.Bc4 h6 10.Bxf6 Bxf6
11.0-0-0 Qb6 12.Nxe6 fxe
13.Bxe6 Nf8 14.Bb3 Be6
15.e5 dxe 16.fxe Bg5+
17.Kb1 Rd8 18.h4 Be7
19.Be4+ Nd7 20.Nd5 Qa5
21.Rhf1 Rf8 22.Qh5+ Rf7
23.Bb3 g6 24.Qxg6 Nf8



25.Nc7+ Qxc7 26.Qxf7+ 1-0

White: GM Lev Albut (2617) Black: Morris Giles (2451) Round 11

1.d4 Nf6 2.c4 g6 3.Nc3 Bg7
4.e4 d6 5.Be2 0-0 6.Bg5 c5
7.d5 h6 8.Bf4 e6 9.dxe
Bxe6 10.Qd2 Nc6 11.Bxh6
Bxh6 12.Qxh6 Qa5 13.h4
Nxe4 14.Rc1 Nd4 15.Kf1
Nxc3 16.Rxc3 Nf5 17.Qd2
Qxa2 18.h5 Qb1+ 19.Rc1 Qe4
20.Nf3 Nd4 21.Nxd4 Qxd4
22.Qxd4 cxd 23.hxg fxg
24.Rh4 d5 25.c5 Kg7
26.Rxd4 Rh8 27.Kg1 Kf6
28.Bf3 Rh7 29.g3 g5 30.b4

a5 31.Re1 axb 32.Rxb4 Ra6
33.Rd4 Rd7 34.Red1 Ke5
35.Bg2 Ra5 36.f4+ Kf6
37.fxg+ Kxg5 38.Bxd5 Bf5
39.Rc1 Be6 40.Rcd1 Bf5
41.g4 Bc2 42.Bg2 Rxd4
43.Rxd4 Rxc5 44.Bxb7 Bb3
45.Kf2 Rc4 46.Rd3 Rf4+
47.Bf3 Be6 48.Kg3 Bxg4
49.Rd5+ Rf5 .5-.5

White: GM Andy Soltis (2529) Black: Morris Giles (2451) Round 12

1.e4 c5 2.Nc3 d6 3.Nge2
Nc6 4.d4 cxd 5.Nxd4 e6
6.Bc4 Nf6 7.Bb3 Be7 8.Be3
0-0 9.Qe2 a6 10.0-0-0 Qc7
11.Rhg1 b5 12.g4 b4
13.Nxc6 bxc 14.Nxe7+ Qxe7
15.Bd4 cxb+ 16.Bxb2 Bb7
17.e5 dxe 18.Qxe5 Rfc8
19.g5 Ne8 20.Rd3 Rc5
21.Qe3 Qc7 22.g6 hxg
23.Rxg6 Bd5 24.Rxd5 exd
25.Rxg7+ Nxg7 26.Qd4 Kf8
27.Qxg7+ Ke7 28.Qf6+ Kd7
29.Ba4+ Kc8 30.Be5 Qd8
31.Qxf7 Rd8 32.Bd7+ Qxd7
33.Qf8+ Kb7 34.Qxb8+ Kc6
35.Qa8+ Qb7 36.Qe8+ .5-.5

SOY CITY FALL TORNADO -- AN ICA MINI-TOUR EVENT

WHEN: Saturday, November 5, 1988

WHERE: Best Western Shelton Motor Inn, 450 E. Pershing Rd., Decatur, IL

WHAT: 4 round Swiss

TIME LIMIT: 30/60 15/30 SD/30

MEMBERSHIPS REQUIRED: USCF & ICA

GUARANTEED CASH PRIZES: \$350 based on 30 entries
First: \$100 Second: \$50 A, B, C, D/E/Unr: Each \$50

ENTRY FEE: \$16 at site

ROUND TIMES: 9:00, 12:15, 3:15, 6:15

INFORMATION: William L. Meyer, 2365 Esther Ave., Decatur, IL (217) 864-4797

NO SMOKING OR COMPUTERS ALLOWED -- PLEASE BRING SETS, BOARDS, & CLOCKS

ILLINOIS TOURNAMENT CALENDAR
(CONTINUED)

Nov. 19: Dust Bowl Open of 1988, at Washington Park Pavillion, in Springfield. Thomas Knoedler: (217) 523-7265, after 6 p.m.

Nov. 19-20: For the Penny-Pinching Pawn Pusher, 1 day events, at the Chicago Chess Center. Jules Stein: 929-7010.

Nov. 19-20: 1988 Illinois Class Championships, at the Morgan Park Academy, in Chicago. AN ICA ILLINOIS MAXI-TOUR EVENT. Todd Barre: 323-7385. SEE TWO PAGE AD IN THIS ICB.

Nov. 20: SICL Partner Championship, at the Ramada Inn, in Alton. John Tonkinson: (618) 462-5732.

Nov. 24, 25, 26, 27: \$4 Four Big Bang for A Buck Days, four 1 day events, at the Chicago Chess Center. Jules Stein: 929-7010.

Dec. 4: SICL "King City" Swiss, at the Holiday Inn, in Mount Vernon. John Tonkinson: (618) 462-5732.

Dec. 10: Illinois Valley Quad No. 3, at Grace United Methodist Church, in LaSalle. Byron Pappas: (815) 224-2869.

Jan. 7-8, 1989: Tim Just Winter Open/Reserve, in Zion. AN ICA ILLINOIS MAXI-TOUR EVENT. Tim Just: 244-7954.

Jan. 14, 1989: Second Annual Midwest Action Chess Championship, at the Holiday Inn O'Hare, in Rosemont. AN ICA ILLINOIS MAXI-TOUR EVENT. Helen Warren: 246-6665.

PATRON MEMBERS
(CONTINUED)

James McNamara	Riverside, IL
Eugene Martinovsky	Oak Brook, IL
Piatek Mieczyslaw	Chicago, IL
Patrick Moran	Wilmette, IL
Bill Naff	Peoria
Wayne Palmquist	Oak Lawn, IL
Peter Pelts	Chicago, IL
Tim Redman	Lima, OH
Harrison Robinson	Chicago, IL
Ray Satterlee	Wheaton, IL
Vivian Schmucker	Goshen, IN
Mark Sefcheck	Naperville, IL
Tony Sillars	Chicago, IL
Arthur Sinclair	Evanston, IL
Richard Smiley	Chicago, IL
David Sprengle	Knoxville, TN
Miomir Stevanovic	Lincolnwood, IL
David Taylor	Kankakee, IL
William Terbell	Glen Ellyn, IL
Don Townsend	Chicago, IL
John Tums	Oak Park, IL
Jim Warren	Western Springs, IL
Bill Wenz	Milwaukee, WI
Douglas White	Schaumburg, IL
Harold Winston	Naperville, IL
Marvin Winston	Old Bridge, NJ
Sandy Zabell	Chicago, IL
Max Zavanelli	Park Ridge, IL

TOURNAMENT CLEARINGHOUSE
MATERIAL

**Please send all Chicago metropolitan area
Tournament Clearinghouse material to:**

**Harold Winston,
46 Robin Hill Dr.
Naperville, IL 60540
(312) 717-1044.**

**Please send Downstate Tournament
Clearinghouse material to:**

**Bill Naff
212 W. Vail Ct.
Peoria, IL 61614
(309) 691-4624**

**HELP SUPPORT ILLINOIS CHESS BY
BECOMING AN ICA BENEFACTOR:**

CENTURY MEMBER \$100;

GOLD CARD \$50; PATRON \$25.

Please mail your contribution to:

Illinois Chess Association

Guy Gruenberg

P.O. Box 353

Olympia Fields, IL 60461

CENTURY CLUB MEMBERS

Michael Belovesick	Elmhurst, IL
Fred Cramer	Mequon, WI
Tom Fineberg	Chicago, IL
Fred Gruenberg	Chicago, IL
Marc Lonoff	Northbrook, IL
Albert Sandrin	Chicago, IL
Angelo Sandrin	Chicago, IL
Bill Smythe	Chicago, IL
Burton Vincent	Chicago, IL

GOLD CARD MEMBERS

Bill Buttny	Downers Grove, IL
John Deutsch	Chicago, IL
Harland Hoisington	Ogden, UT
Ed Marshall	South Barrington, IL
Daniel Pradt	Glen Ellyn, IL
Michael Pratts	Chicago, IL
Irwin Rothschild	Park Forest, IL
Mitchel Sweig	Evanston, IL
Richard Verber	Chicago, IL
Louis Werner	Evanston, IL

PATRON MEMBERS

Bob Ash	Urbana, IL
Todd Barre	Clarendon Hills, IL
John Barstad, Sr.	Carol Stream, IL
Roy Benedek	Western Springs, IL
Timothy Bogan	Chicago, IL
Bill Brock	Chicago, IL
Tyrone Brooks	Chicago, IL
Jim Brotsos	Chicago, IL
Sam Caldwell	Chicago, IL
Anthony Caliendo	Aurora, IL
Lynn Crewse	Arlington Heights, IL
David Cromer	Iowa City, IA
Leroy Dubeck	Cherry Hill, NJ
Keith Esses	Chicago, IL
Gerard Garino	Evanston, IL
Jon Gotz	West Chicago, IL
Donald Graft	Wheaton, IL
William Graves	Chicago, IL
Guy Gruenberg	Matteson, IL
Walter Henry	Naperville, IL
Charles Hicks	Naperville, IL
Jeffery Hyland	Mount Prospect, IL
Robert Irons	Chicago, IL
Tim Just	Waukegan, IL
Dan Kamen	Wheeling, IL
Leo Kaushansky	Chicago, IL
Thomas Knoedler	Springfield, IL
Walter Kocjan	Northlake, IL
John Krom	Chicago, IL
Eugene Lopez	Elk Grove, IL
Alan Losoff	Morton Grove, IL
Kenneth Marshall	Lombard, IL

ICA ELECTED OFFICERS :

Tim Just, President
37165 Willow Ln., Gurnee, IL 60031

Harold Winston, Metro Vice-President
46 Robin Hill Dr., Naperville, IL 60540

Bill Naff, Downstate Vice-President
212 W. Vail Ct., Peoria, IL 61614

Ken Marshall, Secretary
357 W. Grove, Lombard, IL 60148

Guy Gruenberg, Treasurer
P.O. Box 353, Olympia Fields, IL 60461

USCF DELEGATES**by virtue of their USCF posts :**

Harold Winston, President
Todd Barre, Regional Vice-President
Tim Just, Regional Vice-President
Frank Skoff, Past President
Helen Warren, Delegate at Large
and Life Voting Member

ICA APPOINTED USCF DELEGATES :

Tim Just	Ken Marshall
Fred Gruenberg	Richard Verber
Tom Fineberg	

ICA APPOINTED USCF VOTING MEMBERS :

Bill Naff	Larry Stilwell
Bill Smythe	Bob Bain
Walter Brown	Mike Zacate
Erv Sedlock	Tom Knoedler
Dennis Grant	Barry Fisher
Wayne Palmquist	

**ICA APPOINTED USCF
ALTERNATE VOTING MEMBERS :**

Guy Gruenberg	Jim Condron
Chris Musgrave	Jim Brotsos
Eric Schiller	John Tonkinson
Alan Losoff	Al Chow
John Bardstadt, Sr.	Burton Vincent
Bill Wilkinson	Mike Belovesick, Sr.
Angelo Sandrin	Dan Kamen
Byron Pappas	Larry Goch
Kevin Bachler	Philip Wong
Glen Panner	

ILLINOIS TOURNAMENT CALENDAR

Call Chess Phone, (312) 325-3666, for recorded tournament announcements and results, often more up-to-date than CHESS LIFE or the ICB. The ICA Chess Phone voice is Todd Barre.

Unless otherwise noted, all tournaments require USCF membership. Illinois Tour events also require ICA membership. Phone numbers are area code 312 unless a different area code is listed. Announcements of ICA affiliates receive more space in the Tournament Calendar than do those of non-affiliates.

Oct. 28-30, Nov. 5-6: Midwest/Illinois Tournament of Champions III, 10 player round robin invitational, at the Hyatt-Lincolnwood. Spectators invited. Helen Warren: 246-6665.

Oct. 29: Oak Park-Forest Park Autumn Action, at the Mohr Community Center, in Forest Park. Ken Marshall: 932-1455.

Oct. 29-30: Chicago Great Lakes Experts Invitational, at the Chicago Chess Mates. Richard Verber: 262-9100 after 3 p.m.

Oct. 29-30: Chicago Great Lakes Class A Invitational, at the Chicago Chess Mates. Richard Verber: 262-9100 after 3 p.m.

Oct. 29-30: \$4 fee/ccc Get-Acquainted Month, at the Chicago Chess Center. Jules Stein: 929-7010.

Nov. 1, 8, 15, 22, 29: Chicago November Tuesday Swiss, at the Chicago Chess Mates. Richard Verber: 262-9100 after 3 p.m.

Nov. 5: Chicago Saturday Classic, at the Chicago Chess Mates. Richard Verber: 262-9100 after 3 p.m.

Nov. 5: Soy City Fall Tornado, at the Best Western Shelton Motor Inn in Decatur. AN ICA ILLINOIS

MINI-TOUR EVENT. Wm. L. Meyer: (217) 864-4797. SEE HALF PAGE AD IN THIS ICB.

Nov. 5-6: Duffers Delight, 1 day events, at the Chicago Chess Center. Jules Stein: 929-7010.

Nov. 10: Chicago Thursday Action Chess, at the Chicago Chess Mates. Richard Verber: 262-9100 after 3 p.m.

Nov. 12-13: Chicago Amateur Championship, at the Chicago Chess Mates. Richard Verber: 262-9100 after 3 p.m.

Nov. 12-13: 1988 USCF REGION VII OPEN, at the Sheraton Hotel-South in St. Louis, Mo. Bill Moushey: (314) 664-0612. SEE FULL PAGE AD IN THIS ICB.

Nov. 12-13: Big Bang for a Buck, 1 day events, at the Chicago Chess Center. Jules Stein: 929-7010.

Nov. 17: Chicago Thursday Action Chess, at the Chicago Chess Mates. Richard Verber: 262-9100 after 3 p.m.

Nov. 19: North Boone Fall Rated, at Boone High School, in Poplar Grove. Guenter Wohlfarth: (815) 569-2157.

(Continued on Page 24)

ILLINOIS CHESS BULLETIN
357 W. GROVE
LOMBARD, ILLINOIS 60148

Speedy Delivery Appreciated

Bulk Rate
U.S. Postage Paid
Lombard, IL 60148
Permit No. 248