

# ILLINOIS CHESS BULLETIN

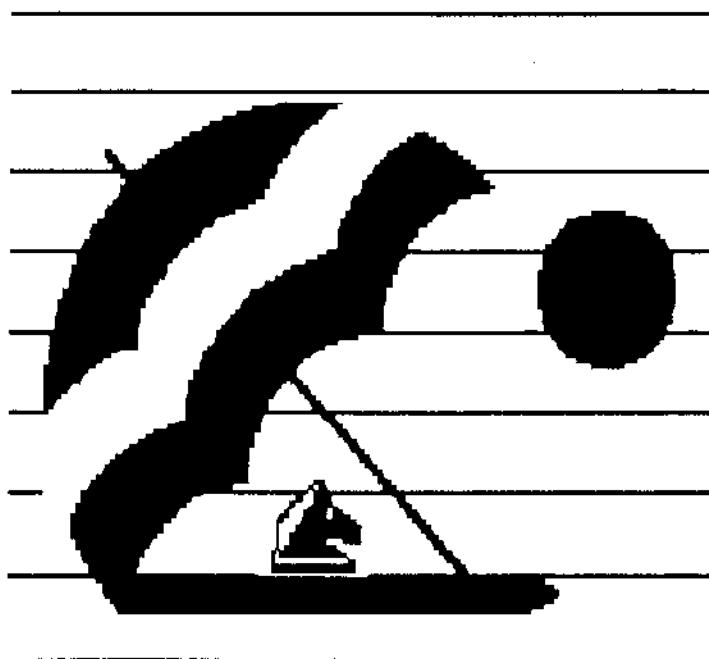
Official Publication of the Illinois Chess Association a U.S.C.F. Affiliate  
A Not For Profit Organization

JULY - AUGUST, 1988

VOLUME XI, NO. 4

BI-MONTHLY

\$2.00



BEAT THE HEAT:  
PLAY IN THE ILLINOIS OPEN



# ILLINOIS CHESS BULLETIN

**EDITOR:**

**KEN MARSHALL**  
357 W. Grove  
Lombard, Illinois 60148  
(312) 932-1455

**TECHNICAL EDITOR:**

**MARY GAITHER MARSHALL**

**ASST. TECHNICAL EDITOR:**

**ALAN LOSOFF**

**GAMES EDITOR:**

**AL CHOW**

**SUBSCRIPTIONS:**

The Illinois Chess Bulletin (ICB) is published bimonthly by the Illinois Chess Association. ICA membership includes a subscription to the ICB. (Century, Gold, and Patron members receive their ICB by first-class mail.

**ANNUAL MEMBERSHIP RATES:**

Century Club:	\$100.00
Gold Card:	50.00
Patron:	25.00
Regular:	10.00
Junior (under 18):	6.00

Subscriptions, Address Changes, and Corrections should be sent to:

Illinois Chess Bulletin  
357 W. Grove  
Lombard, IL 60148

**SUBMISSIONS:**

Submit articles, photographs, crosstables, games, and other publishable materials to the Editor. Publication deadline for the next issue is September 15, 1988.

**ADVERTISING RATES:**

Full page	\$60
Full page (back cover)	\$80
Half page	\$36
Quarter page	\$21

10% discount for the same ad in consecutive issues. 1/3 discount for ICA affiliates. All advertising must be camera ready to qualify for these rates. The ICA and the ICB reserve the right to reject advertising.

## TABLE OF CONTENTS

FROM THE EDITOR'S DESK	1
WHERE TO PLAY CHESS / CLUB AFFILIATES	2
PRESIDENTIAL PONDERINGS	3
WHAT'S NEW	4
PRAIRIE STATE INVITATIONAL	7
CYRUS BONDARI	11
MASTER CHALLENGE X	13
ILLINOIS CHESS LEAGUE	14
MARTINOVSKY ANNOTATES	15
ICA MINUTES	18
ILLINOIS TOUR	19
NATIONAL OPEN CROSSTABLES	20
READER'S SHOWCASE	23
TOURNAMENT CROSSTABLES	25
ILLINOIS VALLEY CHESS CLUB	27

**ICA AFFILIATION:** Chess clubs and other organizations which promote chess activity may affiliate with ICA. Affiliate benefits include a copy of each ICB by first-class mail, a listing (if desired) under "Where to Play Chess" in each issue, discounted ICB advertising rates, three-line tournament announcements in the "Tournament Calendar", and the right to run ICA Tour events. ICA affiliation costs \$15; please remit to address shown under "Annual Membership Rates". Include your club meeting times, name of contact person, and other useful information in the format shown in "Where to Play Chess" on page 2.

---

**CHESS PHONE**  
**(312) 325-3666**

---

**DOWNSTATE CHESS PHONE**  
**(309) 655-0618**

---

---

# ≡ From the Editor's Desk ≡

---

---

The five round 1988 Illinois Open and State Championship will take place on Labor Day weekend, September 3-5, 1988, at the Holiday Inn in Peru, Illinois. Round 1 is set for noon on Saturday, so most players can come in that morning rather than the night before. The final round will start at 10 a.m. Monday, so most players can be home by late afternoon. The tournament site is easily accessible from all areas of Illinois. Why not end your summer by playing in the Illinois Open and State Championship, an ICA Illinois Maxi-Tour event?

\*\*\*\*\*

As a United States Chess Federation delegate from Illinois, I spent four days in mid-August at the U.S. Open in Boston. (See "What's New" in this ICB for the tournament's results.) Because the Federation suffered a loss of \$190,000 last year, the delegates voted to raise the annual USCF dues from \$25 to \$30, double the fee for rating games from \$.25 to \$.50, and cut spending in several areas. Despite efforts by Illinois representatives to obtain a separate rating system for "Action Chess" (as directed by ICA members at the July 10, 1988 ICA meeting), the question was referred to committee for study. For at least the next year, "action" events will continue to be rated in the same system as "traditional" tournaments. (A straw poll of all delegates showed 33 in favor of one rating system, 28 in favor of separate systems, and 20 in favor of one system with "action" tournament games being rated at one-half the value of "traditional" games for purposes of gaining or losing rating points.) A final Illinois note: Helen Warren, whose three year USCF Policy Board term expired in Boston, was named a USCF Life Voting Member and Delegate at Large.

\*\*\*\*\*

Illinois Chess Association elections are scheduled for November of this year. Any ICA member in good standing may run for ICA office. Nominations for President, Metro [Chicago area] Vice President, Downstate Vice President, Secretary, and Treasurer must be submitted in writing to the ICA Secretary no later than October 1, 1988. Nominations must include the

signatures of 10 ICA members as well as a statement by the nominee permitting his or her name to be placed in nomination for a specific office. Ballots will be mailed to all ICA members in good standing on November 1, 1988. Any such member wishing to obtain information about the duties of a particular ICA office may contact the present holder of that office at the address on the inside of the back cover of this ICB.

\*\*\*\*\*

1988's sizzling summer heat has been matched by Peter Pelts and Anthony Schroeder, two of the hottest chess players in Illinois over the last several months. Pelts won the 110 player Master Challenge X and the 105 player Western Open tournaments on consecutive weekends, while Schroeder shared top Expert honors at the National Open, tied for second (and won the 2100-2199 prize) at the Prairie State Master/Expert Open, and took first among the Experts at Master Challenge X. Look for more on these two players in the next ICB.

\*\*\*\*\*

The ILLINOIS CHESS BULLETIN has again received a Cramer Magazine Grant. Allen Kaufman, Executive Director of the American Chess Foundation, indicates that the 1988 grant, donated by ACF Advisory Board member and former United States Chess Federation President Fred Cramer, is "designed to identify and assist excellent local publications". On behalf of both the ICB and the ICA, I thank Mr. Cramer for his continuing generosity.

\*\*\*\*\*

Citing his busy schedule, Albert Chow has resigned as ICB Games Editor. Al, who plans to be in London in late August to compete in FIDE rated events, will continue to contribute some of his games for publication in the ICB. Taking over as Games Editor will be Lawrence Chachere, currently rated 2371 and one of the best young players in Illinois. Lawrence's annotated games will begin appearing in the next issue.

(Continued on Page 14)



## WHERE TO PLAY CHESS: ICA CLUB AFFILIATES



### AMERICAN POSTAL CHESS TOURNAMENTS

sponsors postal events of various kinds, and sells chess books and equipment. Contact Jim or Helen Warren, P.O. Box 305, Western Springs 60558. (312) 246-6665.

### AUBURN HIGH SCHOOL CHESS CLUB, 4273

Straw Lane, Roscoe 61073. Contact James G. Boyer, sponsor. (815) 623-8148.

### CENTRAL LAKE COUNTY CHESS CLUB meets

Fridays, 7:15 p.m. to midnight, College of Lake County, Bldg. 1, Washington at Route 45, Grayslake. Contact Dennis Grant, 1657 McKay, Waukegan 60087. (312) 336-5188.

### CHICAGO CHESS ASSOCIATION organizes

major tournaments at the Holiday Inn O'Hare. Also master chess lessons, \$40/3hr. Contact Dick Verber, 1261 W. Loyola, Chicago, 60626. (312) 262-9100 after 3 p.m.

### CHICAGO CHESS CENTER meets for casual

chess 7 days a week, 6 p.m. to 1 a.m., 2923 N. Southport, Chicago 60657. Also sponsors rated tournaments on selected weekends. Contact Jules Stein, (312) 929-7010.

### CHICAGO INDUSTRIAL CHESS LEAGUE

organizes frequent competition among commercial/government teams with awards, ratings, and special events. Contact Jim Brotsos, (312) 775-5054, or Bruce McNeil, (312) 742-5195.

### DECATUR CHESS CLUB meets every Thursday

evening from 7:00 p.m. to midnight at the Sheraton Inn, 450 E. Pershing, Decatur. Contact Bill Meyer, 2365 Esther, Decatur 62521 (217) 864-4797.

### DOWNERS GROVE PARK DISTRICT CHESS

CLUB meets every Thursday, 6:30 -10 p.m., Lincoln Center, 935 Maple Ave., Downers Grove. Affiliated with USCF and ICA. Contact George Uffner, (312) 910-0421.

### FRED REINFELD CHESS CLUB meets Sunday

afternoons from 2-6 p.m. at Coslow's, 200 E. Johns St., Champaign. Speed chess is emphasized. Contact Barry Fisher, 2112 Cyprus, Champaign 61821. (217) 333-9083.

### GREATER PEORIA CHESS FEDERATION

meets Mondays, 7 to 11 p.m., Bradley Student Center Cafeteria, 901 N. Elmwood, Peoria. Contact Bill Wilkinson, 901 N. Rebecca Pl., Peoria 61606. (309) 673-9455.

### ILLINOIS VALLEY CHESS CLUB meets

Thursdays, 6-10 p.m. Grace United Methodist Church, 1345 Chartres St., LaSalle. Contact Byron Pappas, 432 Creve Coeur, LaSalle 61301. (815) 224-2869.

### LAKE COUNTY CHESS ASSOCIATION

sponsors rated tournaments in the Grayslake/Zion area. Contact Tim Just, 1521 Circle Ct., Waukegan 60085. (312) 244-7954.

### OAK PARK / FOREST PARK CHESS CLUB

meets Tuesdays, 7 p.m. to midnight, Mohr Community Center, Jackson and DesPlaines, Forest Park. Contact Ken Marshall, 357 W. Grove, Lombard 60148. (312) 932-1455.

### PARK FOREST CHESS CLUB meets Thursdays,

7 to 10:30 p.m., Freedom Hall, Orchard & Lakewood, Park Forest. Contact Wayne Palmquist, 9820 S. 51st Ave. Oak Lawn 60453 (312) 857-8150.

### SOUTHERN ILLINOIS CHESS LEAGUE

sponsors rated tournaments throughout southern Illinois. Contact John Tonkinson, 105A Manor Court, Alton 62002. (618) 462-5732.

### ST. CHARLES CHESS CLUB meets Thursdays

at 7 p.m., Baker Community House, 101 S. 2nd (Route 31), St. Charles. Contact Erv Sedlock, 6 N. 307 Old Homestead Rd., St. Charles 60174. (312) 377-7995.

### TULEY PARK CHESS CLUB meets Saturdays, 1

to 5 p.m., Tuley Park Fieldhouse, 501 E. 90th Pl., Chicago. Contact Thomas Fineberg, 7321 S. South Shore Dr., Chicago 60649. (312) 721-3979.

### TWIN CITY CHESS CLUB meets Monday

evenings, Parks & Rec. Bldg., 611 S. Linden, Normal, except 1st Monday/month, Garcia's, Watterson Place. Speed tournaments 50 cents/game. Contact Andy McGowan, 520 E. Chestnut, Bloomington 61701. (309) 827-7892.

---

## CHESS PHONE

**(312) 971-3666**

# PRESIDENTIAL PONDERINGS

By ICA President Tim Just

## WHO WILL SUCCEED JIM RIZZITANO AS ILLINOIS STATE CHAMPION?

Having recently moved back to Massachusetts, International Master Jim Rizzitano will not be defending his Illinois State Champion title this year. Who will succeed him at the top of Illinois chess? Find out at the 1988 ILLINOIS OPEN & STATE CHAMPIONSHIP, scheduled for September 3-5, 1988 at the Holiday Inn in Peru, Illinois. (See the two page ad in this ICB for full tournament details.)

## CAN TIM JUST GO HOME AGAIN?

Author Thomas Wolfe wrote, "You can't go home again." I was born and raised in Peru, Illinois. When the Holiday Inn there was being built, I was a teenager working for an electrical contractor supply business (owned by my uncle) which delivered equipment used in the construction. I grew up, and my parents still live, only a few miles from the hotel site; I can recall when it was still farm land. It has been 18 years since I spent more than a couple of days in the Peru area, and more years than I can remember since I was president of the LaSalle-Peru High School/Junior College Chess Club.

When Byron Pappas and the Illinois Valley Chess Club, through Illinois Chess Association Downstate Vice

President Bill Naff, suggested to the ICA board that the 1988 ILLINOIS OPEN be held in the Peru area, I had more than a passing interest. I think Thomas Wolfe was wrong. You can go home again! I am looking forward to seeing you all at this year's ILLINOIS OPEN !!

## CHEAP CHESS WEEKEND!

For those playing in the 1988 ILLINOIS OPEN, the Peru Holiday Inn is offering a \$50 flat room rate. That means \$50 a night for a single/double/triple (quad?) room. If three players share a room, the cost will be only \$16.67 apiece. Imagine how little you will spend if you car pool AND share a hotel room!

## BUT, CAN YOU SWIM IN A CAR POOL?

You and your friends can ponder this philosophical question over the Labor Day weekend as you travel together to Peru, Illinois for this year's ILLINOIS OPEN.

If you are coming from ROCKFORD, PEORIA, BLOOMINGTON/NORMAL, or KANKAKEE, you will have only about one hour to consider this burning issue.

Those of you car pooling from ROCK ISLAND or CHICAGO'S LOOP can plan to think about this question for about 90 minutes.

Car poolers from CHAMPAIGN/URBANA, WAUKEGAN, and DECATUR will have less than two hours to solve this problem.

If you are traveling from parts of SOUTHERN ILLINOIS, three hours of thinking time will be your limit.

Your car pool can win FREE GASOLINE by coming up with the best answer to the pool puzzle. Just follow these rules: 1) Make a photo copy of this "Presidential Ponderings" column; 2) On the back of that copy, set out your conclusions regarding the "car pool" question, and also list the names and addresses of all the members of your car pool who are playing in the ILLINOIS OPEN; 3) Give the copy to me at the OPEN. I'll "FILL IT UP" for the car pool with the most creative response (which complies with the above rules) to the question "But, Can You Swim In a Car Pool?"

## BOB LONG

Bob Long (CHESSCO) is scheduled to be at the 1988 ILLINOIS OPEN selling chess books and equipment. Even if you cannot play, stop at the Peru Holiday Inn to check out Bob's fine selection. I have yet to look over one of his displays without purchasing something! After inspecting his wares, I am sure you will react the same way.

SEE YOU AT THE ILLINOIS OPEN -- BE THERE!!!!

# What's New

## KUDRIN TOPS MASTER SECTION AT NORTH AMERICAN CLASS

Grandmaster Sergey Kudrin scored 5-1 to win the \$3,000 first prize in the Master section of the 370 player North American Class Championships on July 28-31, 1988, at the Holiday Inn O'Hare in Rosemont. Steve Ahlstrom, Erik Ronneberg, Lionel Davis, and Michael Toney tied for top Expert at 5-1. Ernesto Encarnacion won Class A, Steven Stockman and Paul Berland Class B, and Fred Flyer Class C, all with 5.5-.5 results. The tournament's only 6-0 score was posted by Class D/E first place finisher Larry Yakowenko. (A full story on the North American Class Championships is planned for the next ICB.)

\*\*\*\*\*

## RONNEBERG TAKES FIRST AT 1988 ILLINOIS HIGH SCHOOL INVITATIONAL, TIES FOR FOURTH IN NATIONAL TOURNAMENT OF CHAMPIONS

After winning the Illinois State High School Invitational Championship for the third straight year, *Kenwood Academy's Erik Ronneberg* went on to score 4.5-1.5 and share fourth place (as he did in 1987) at the Denker High School Tournament of Champions, held in Boston in early August along with the 1988 U.S. Open. (The next ICB should contain more details about the aforesaid events and Ronneberg's performances in them.)

\*\*\*\*\*

## WULATIN, APCT NEWS BULLETIN WIN CHESS JOURNALISM AWARDS

David Wulatin and the APCT NEWS BULLETIN each won two awards in the annual chess journalism competition sponsored by the Chess Journalists of America (CJA). Wulatin's "The TD Nightmare Quiz", which appeared in the January-February, 1988 ICB, was named best humorous article, while his "How to Play in the Big Tournaments" (March-April, 1988 ICB) received an honorable mention in the "Humor" category. The APCT NEWS BULLETIN, edited by Helen Warren for her American Postal Chess Tournaments organization, won the award for best cover (July, 1987 issue) and an honorable mention in the contest for "Best Postal Chess Magazine".

\*\*\*\*\*

## GREVICH WINS U.S. OPEN; ILLINOIS PLAYERS SCORE WELL

Grandmaster Dmitry Gurevich finished 10-2 to take first place at the 634 player 1988 U.S. Open, held August 7-19 in Boston, Mass. Sharing second through fifth places with 9.5 points were GM Michael Rohde, GM Larry Christiansen, GM Roman Dzindzichashvili, and International Master Bryan Nickoloff. FIDE Master Morris Giles, at 2451 the highest rated Illinois entrant (and 26th on the wall chart), scored 9-3 to tie for sixth through seventeenth. Giles' excellent result included victories over GM Walter Browne and IM Alexander Ivanov and draws with GMs Lev Alburt and Andy Soltis. Other Illinois players also did well: Expert Ray Satterlee, 7.5-4.5; Experts Jim Warren and Erik Ronneberg, 7-5; Donald Townsend (Class A), 5-7; Tom Fineberg (Class B), 5-7; Clifford Seigh, 6-6. (This information was supplied by Jim Warren just before the ICB went to the printer.)



# **ILLINOIS** CHESS ASSOCIATION

*proudly invites you to*

## **THE 1988 ILLINOIS OPEN**

**SEPTEMBER 3 - 5**

**SUPPORT YOUR I.C.A. PLAY IN THIS PRESTIGIOUS TOURNAMENT**

### **\$2,000 PRIZE FUND**

#### **CHAMPIONSHIP SECTION**

1st \$350 + Trophy + Illinois State Champion

2nd - \$200, 3rd - \$135, 4th - \$70

Expert: \$130 - \$65      Class A: \$130 - \$65

#### **Reserve Section (Under 1800)**

1st - \$200, 2nd - \$135, 3rd - \$70

Class C: \$130 - \$65      Class D/E: \$130 - \$65

Unrated: \$60

**AN ILLINOIS TOUR EVENT**

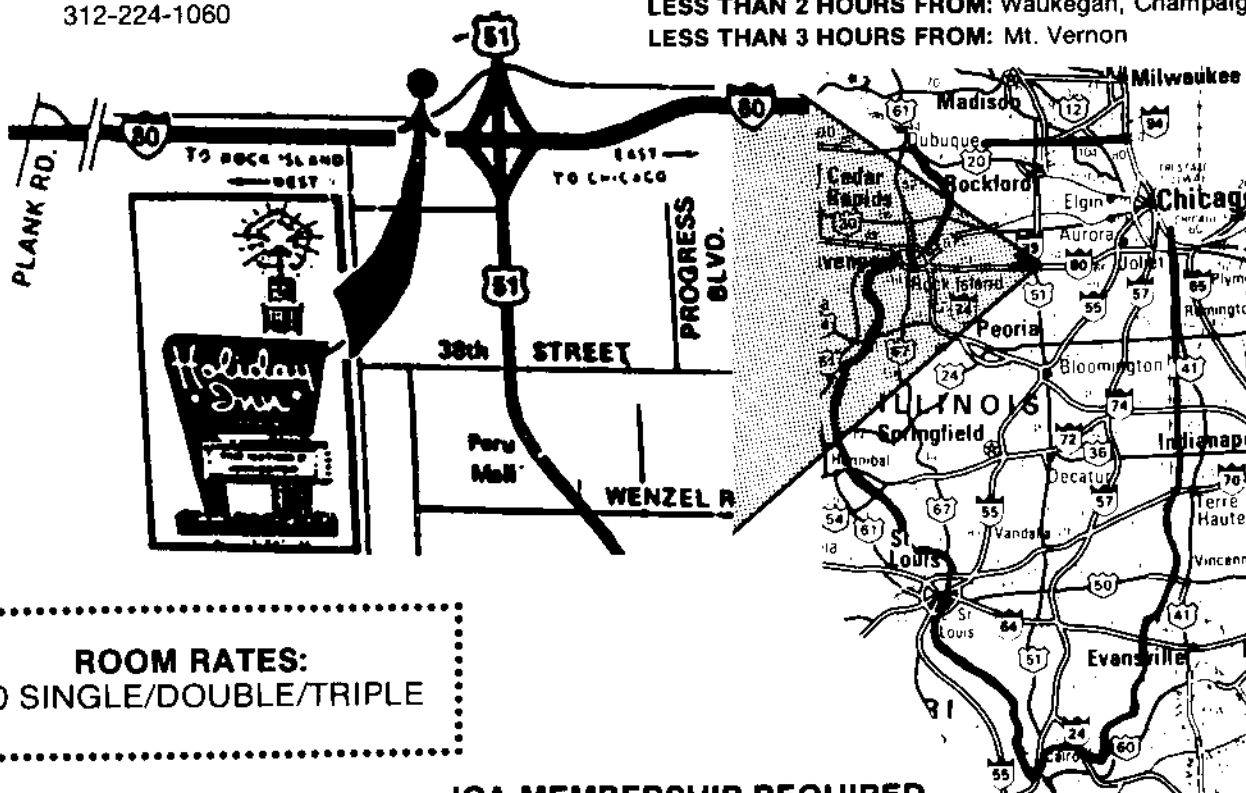
**DON'T MISS THIS TOURNAMENT**

**10 GRAND PRIX POINTS**

Details - See Other Side

**HOLIDAY INN, PERU, ILLINOIS**  
 Rte. 251 (old 51) & I-80 (exit 75)  
 312-224-1060

**1 HOUR FROM:** Rockford, Peoria, Bloomington, and Kankakee.  
**90 MINUTES FROM:** Chicago and Rock Island.  
**LESS THAN 2 HOURS FROM:** Waukegan, Champaign, and Decatur.  
**LESS THAN 3 HOURS FROM:** Mt. Vernon



**ROOM RATES:**  
 \$50 SINGLE/DOUBLE/TRIPLE

**ICA MEMBERSHIP REQUIRED**

**CHAMPION SECTION:** Open to players of ALL ratings \$\$\$\$ Entry Fee = \$35 by 8/31/88, \$40 at the site.

**RESERVE SECTION:** Open to players rated below 1800 \*\* Latest supplements used for ratings \$\$\$\$ Entry Fee = \$30 by 8/31/88, \$35 at the site.

**BOTH:** 5 round swiss, Saturday: 12-6; Sunday: 10-4; Monday: 10 \*\* 1/2 point bye rounds 1, 2, or 3 with advanced request \*\* 45/2, 25/1 \*\* Enter at the site on 9/3/88 from 9-11 a.m., \*\* NS \*\* ICA Organizers; Tim Just and Byron Pappas.

\*\*\*\*\*  
 \* **BOOKSELLER: BOB LONG** \*  
 \*\*\*\*\*

**BRING SETS, BOARDS, AND CLOCKS**

**ENTRIES:** Tim Just, 1521 Circle ct., Waukegan, IL 60085 (312-244-7954)

NAME \_\_\_\_\_ USCF RATING \_\_\_\_\_

ADDRESS \_\_\_\_\_

CITY, STATE, ZIP \_\_\_\_\_

USCF ID # \_\_\_\_\_ USCF EXPIRATION \_\_\_\_\_ ICA EXP. \_\_\_\_\_

**PLEASE CHECK SECTION:** CHAMPIONSHIP \_\_\_\_\_ RESERVE \_\_\_\_\_

USCF \$25 \_\_\_\_\_ ICA Adult \$10 \_\_\_\_\_ ICA Youth \$6 \_\_\_\_\_

MAKE CHECK PAYABLE TO ILLINOIS CHESS ASSOCIATION



# PRAIRIE STATE'S BEST: AL CHOW, 6-0

By Tim Just

Up to 1988, no winner of either Helen Warren's Midwest Masters Invitational or her Prairie State Open for Masters and Experts had ever taken first place with a perfect score. Al Chow has changed that. Chow's 6-0 result at this year's fourth annual Prairie State further assures him of a permanent place in Midwest chess history.

Al managed his unprecedented feat in a strong 41 player field which included the likes of Jim Rizzitano, Ed Formanek, Morris Giles, and Andy Karklins.

Al's historic achievement began simply in Round 1. His 2102- rated opponent, Virgilio Reyes, failed to show up for the game. [Editor's Note: Reyes later indicated that his return to Illinois from California had been unexpectedly delayed.] Howard Wachtel, rated 2164, faced Chow in the second round. A Wisconsin resident who had to choose between the Prairie State and the concurrent Wisconsin state championship tournament, Wachtel became Chow's next victim. In Round 3, Al took on his first master level opponent, 2271 rated George Umezina. Though the competition was growing stronger, Al kept right on winning.

At 3-0, he had the only perfect score at the tournament's halfway point.

Round 4 featured a showdown between Chow and International Master Jim Rizzitano. At 2552, Illinois State Champion Rizzitano was the highest rated player in the tournament. When the smoke cleared, Rizzitano went home and Chow was 4-0. Next came Morris Giles, whose tactical flair and 2451 rating could prove a tough hurdle for the 2439 rated tournament leader. Chow entered the endgame a piece up, but no observer could see a clear victory for him. Those who examined the position expected the players to split the point. Lady Luck smiles on some, however, and frowns on others. Giles blundered. Chow now had a 5-0 score.

Another round 5 game saw Andy Karklins (2412) face Ed Formanek (2495). This battle lasted well beyond the scheduled starting time of the final round. All

spectators agreed that Andy had a small endgame plus and could probably do no worse than draw. Karklins realized that a win or a draw would result in a Chow-Karklins pairing for round 6. He fought long and hard, hoping to take on Chow with 4.5 points rather than 4. Formanek held, however, and the game was drawn after 88 moves.

Round 6 had the expected Chow-A. Karklins pairing. According to onlookers, Karklins turned down an early draw offer. After his long fight the preceding round, Andy wanted more than half a point - he wanted a win and a share of first place. Chow prevailed, however, and ended up 6-0!

Morris Giles, Eduard Zelkind, George Umezina, and Tony Schroeder finished tied for second through fifth with scores of 4.5-1.5. Schroeder also took first place honors in the 2100-2199 category. Because he entered the event after the first round games had started, Tony received a half point bye for Round 1. In one of the finest performances of his chess career, he then added 40 points to his 2189 rating by going through the rest of the tournament undefeated. Schroeder thus became Illinois' newest Master by taking advantage of the opportunity to face strong opposition provided by the Prairie State event. (Greg Bungo's 4.0-2.0 result returned him to the Master ranks.)

Living in southern Illinois, Robert Ash (2040) gets few chances to play in Master/Expert events. Ash has competed in every Prairie State tournament, making the long journey to Grayslake each of the last four years. Up to 1988 his results reflected his status as one of the event's lower rated experts. This year, however, Ash finished 3.5-2.5. His best ever Prairie State score was good for first place in the 2000-2099 category.

Seth Goldstein, rated 1887, is the Minnesota State Grade School Champion. This 12 year old has the likes of Eduard Zelkind (2346) to guide him in improving his chess skills.

Goldstein was allowed to compete with the Masters and Experts at this year's Prairie State. His 2.5-3.5 final score included wins over Experts Lynn Crewse and Scot Henderson and a draw with Expert Cliff Wallach.

Two father-son duos -- Erik Karklins/Andy Karklins and Ed Zelkind/Mike Zelkind -- attended the event, and the brothers Wallach, Ken and Cliff, also put in their annual appearance. Tim Just, who has directed all of the Prairie State tournaments, hoped for some sort of family feud pairing among the Karklins, Zelkinds, and Wallachs. Maybe next year!?

[Editor's Note: The following games are from Prairie State score sheets provided by Tournament Director Tim Just.]

### GAMES FROM THE 1988 PRAIRIE STATE OPEN FOR MASTERS AND EXPERTS

**W: Morris Giles (2451)**  
**B: Jon Gotz (2125)** Round 1  
 1.e4 c5 2.Nf3 Nc6 3.d4 cxd4 4.Nxd4 Nf6 5.Nc3 e5 6.Ndb5 d6 7.Bg5 a6 8.Bxf6 gxf6 9.Na3 b5 10.Nd5 f5 11.c3 Bg7 12.exf5 Bxf5 13.Nc2 0-0 14.Nce3 Be6 15.g3 f5 16.Bh3 Ra7 17.0-0 Raf7 18.f4 Ne7 19.Rf2 Nxd5 20.Nxd5 Kh8 21.a4 bxa4 22.Rxa4 a5 23.Qd3 24.Qd1 Rb7 25.Rxe4 fxe4 26.Bxe6 Qb8 27.Qe2 a4 28.f5 Be5 29.Kg2 e3 30.Nxe3 a3 31.bxa3 Bxc3 32.Nc4 Bd4 33.Rf3 Rb1 34.Qe4 Rg1+ 35.Kh3 Bf6 36.Rd3 Qe8 37.Qg4 Qa8 38.Bd5 Qb8 39.Rd1 Rxd1 40.Qxd1 Qc7 41.a4 Qc5 42.a5 Bd4 43.Qf3 Rf6 44.Qe4 Be5 45.Nxe5 dxe5 46.Qxe5 Qf8 47.a6 Qh6+

48.Kg4 Qg7+ 49.Kf4 h5 50.Qe8+ Kh7 51.Qxh5+ Rh6 52.Qf7 1-0

**W: James Rizzitano (2552)**  
**B: Michael Kebrdle (2115)** Round 1  
 1.e4 c6 2.d4 d5 3.e5 Bf5 4.h4 h6 5.g4 Be4 6.f3 Bg6 7.h5 Bh7 8.e6 Qd6 9.exf7+ Kxf7 10.Bd3 Qxg3+ 11.Kf1 Bxd3+ 12.Qxd3 Qd6 13.Bf4 Qe6 14.Nc3 Ke8 15.Re1 Qf7 16.Nge2 Nf6 17.Bxb8 Rxb8 18.Nf4 Ne4 19.Ng6 Rg8 20.Ne5 Ng3+ 21.Kg2 Qf4 22.Nxd5 cxd4 23. Qb5+ Kd8 24.Qd7 Mate 1-0

**W: Seth Goldstein (1887)**  
**B: Lynn Crewse (2066)** Round 2  
 1.d4 Nf6 2.c4 g6 3.Nc3 d5 4.Nf3 Bg7 5.cxd5 Nxd5 6.e4 Nxc3 7.bxc3 c5 8.Be3 0-0 9.Bc4 Nc6 10.0-0 Qc7 11.Rc1 Rd8 12.Re1 a6 13.Ng5 e6 14.e5 Bxe5 15.Qf3 Bg7 16.Bf4 Qd7 17.Qh3 h5 18.g4 Na5 19.Be2 c4 20.gxh5 e5 21.Qxd7 Bxd7 22.dxe5 gxh5 23.Bxh5 Be6 24.Nxe6 fxe6 25.Be3 Nc6 26.f4 Bh6 27.Kf2 Rf8 28.Kg3 Rad8 29.Rcd1 Ne7 30.Bg4 Kf7 31.Bc5 Rg8 32.Kf3 Nd5 33.Bh5+ Kg7 34.Rg1+ Kh7 35.Rg4 Nxc3 36.Rxd8 Rxd8 37.Bg6+ Kh8 38.Be7 Rd2 39.Bf6+ Bg7 40.Rh4+ Kg8 41.Rh7 Rd7 42.h4 Nd5 43.h5 Rc7 44.h6 Bxh6 45 Rh8 Mate 1-0

**W: Rick Weisenstein (2089)**  
**B: Erik Karklins (2187)** Round 2  
 1.e4 e5 2.Nf3 Nc6 3.Bc4 Nf6 4.d4 exd4 5.0-0 Ne4 6.Re1 d5 7.Bxd5 Qxd5 8.Nc3 Qa5 9.Nxe4 Be6 10.Bd2 Qd5 11.Bg5 Bc5 12.c4 Qxc4 13.Rc1 Qxa2 14.Nxc5 0-0 15.Nxb7 Qxb2 16.Rxc6 Qxb7 17.Rc1 Bd5 18.Qxd4 f6 19.Rb1 Qc6 20.Rbc1 Qb7 21.Bf4 c6 22.Qc5 Rf7 23.Nd4 g5 24.Bg3 f5 25.Bd6Rc8 26.Re5 Rd8

27.Nxf5 1-0

**W: George Umezina (2271)**  
**B: Albert Chow (2439)** Round 3  
 1.d4 Nf6 2.Nf3 g6 3.c4 Bg7 4.Nc3 d5 5.Qb3 dxc4 6.Qc4 0-0 7.e4 Nc6 8.Be2 Bg4 9.Be3 Bxf3 10.gxf3 e5 11.dxe5 Nxe5 12.Qb5 Nh5 13.h4 c6 14.Qb3 Qf6 15.0-0-0 Nf4 16.h5 Nxh5 17.Kb1 Nf4 18.Bxf4 Qxf4 19.Rh3 h5 20.Rdh1 Bf6 21.Bd1 Qd2 22.Qc2 Rad8 23.Be2 Qf4 24.Rd1 b5 25.Qc1 Rxd1 26.Nxd1 Bg5 27.Qxf4 Bxf4 28.Kc2 Rd8 29.Ne3 Kg7 30.Rh4 Bg5 31.Rh3 Rd6 32.a3 Nd7 33.Nf1 Nc5 34.Ne3 Ne6 35.Rh1 Nd4+ 36.Kd3 Nxf3+ 37.Kc3 Bf6+ 38.Kb4 Ng5 39.Rg1 Rd2 40.e5 Be7+ 41.Kc3 Ne4+ 42.Kb3 Rxe2 0-1

**W: Andrew Karklins (2412)**  
**B: Thomas Mazuchowski (2123)** Round 3  
 1.e4 c5 2.Nf3 Nc6 3.d4 cxd4 4.Nxd4 Qb6 5.Nb3 Nf6 6.Nc3 e6 7.g3 Bb4 8.Bg2 d5 9.0-0 Bxc3 10.bxc3 Nxe4 11.Qg4 Bd7 12.Be3 Qc7 13.Qxg7 0-0-0 14.c4 Rdf8 15.Rfd1 Ne7 16.Qd4 b6 17.Bf4 Qxc4 18.Qxc4 dxc4 19.Bxe4 cxb3 20.cxb3 Nd5 21.Rac1+ Kd8 22.Bxd5 exd5 23.Rxd5 Ke7 24.Rc7 Rd8 25.Bg5+ 1-0

**W: Michael Dreiger (2126)**  
**B: Greg Bungo (2172)** Round 3  
 1.e4 d6 2.d4 Nf6 3.Nc3 g6 4.f4 Bg7 5.Nf3 0-0 6.Be3 b6 7.Qd2 Bb7 8.Bd3 c5 9.0-0-0 Nbd7 10.h3 cxd4 11.Bxd4 Nc5 12.Rhe1 Rac8 13.Kb1 a6 14.g4 b5 15.g5 Nfd7 16.Bxg7 Kxg7 17.Nh4 Nxd3 18.cxd3 e5 19.f5 f6 20.fxg6 hxg6 21.Rg1 f5 22.exf5 gxf5 23.Rdf1 f4 24.Ne4 Qb6 25.Nf6 Nxf6 26.gxf6+ Kxf6 27.Rxf4+ exf4 28.Qxf4+ Ke6 29.Qg4+ Ke7 30.Re1+ Kd8 31.Ng6 Qf2 32.Qg5+ Rf6 33.Nf8 0-1

## GAMES FROM THE 1988 PRAIRIE STATE

**W: Albert Chow (2439)**

**B: James Rizzitano**

**(2552) Round 4 1.d4 Nf6**

2.Nf3 g6 3.Bg5 Ne4 4.Bf4 d5  
5.e3 Bg7 6.Nbd2 Bf5 7.Nxe4  
Bxe4 8.Bd3 Bxd3 9.Qxd3 0-0  
10.0-0 Nd7 11.Rfd1 c6 12.c4  
e6 13.cxd5 exd5 14.b4 a6  
15.a4 Re8 16.Rac1 Nb6 17.b5  
axb5 18.axb5 Nc4 19.bxc6  
bxc6 20.Rb1 Ra3 21.Qf1 Qa5  
22.Rd3 Ra2 23.Qe1 Qa6  
24.Rdb3 h6 25.h3 g5 26.Bg3  
Bf8 27.Qc3 Bd6 28.Bxd6 Nxd6  
29.Rb8 Qe2 30.R6b2 Rxb2  
31.Qxb2 axb2 32.Rxb2 Nc4  
33.Rb7 Kg7 34.Rc7 Re6  
35.Ne1 Kg6 36.Nd3 f5 37.g3  
Rf6 38.Kg2 Re6 39.Kf3 Nd2+  
40.Ke2 Nc4 41.Nb4 Kf6  
42.Nxc6 f4 43.Nb4 Nxe3  
44.fxe3 Rxe3 45.Kf2 Rxc3  
46.Rc3 Rxc3 47.Nxd5 Kf5  
48.Nxc3 h5 49.Ke2 g4 50.h4  
Ke6 51.Kf2 Kf5 52.Kg2 Ke6  
53.Kg1 Kf5 54.Kf2 Ke6  
55.Ne2 Kf5 57.Ng3 Ke5  
58.Nxh5 Kxd5 59.Nf6 Ke5  
60.Nxg4 1-0

**W: Charles Smith (2024) B:**

**Eduard Zelkind (2346)**

**Round 5 1.d4 Nf6 2.c4 g6**

3.Nc3 Bg7 4.e4 d6 5.f3 Nc6  
6.Be3 a6 7.Qd2 0-0 8.Nge2  
Rb8 9.Rb1 Nd7 10.d5 Nce5  
11.Nd4 c5 12.dxc6(ep) bxc6  
13.Be2 c5 14.Nc2 Re8 15.0-0  
Nc6 16.f4 e5 17.f5 Nd4  
18.Nd5 Bb7 19.fxg6 hxg6  
20.Bh6 Nxe2+ 21.Kh1 Qh4  
22.Bg5 Qh5 23.Rf3 Bxd5  
24.Qxd5 Nf4 25.Bxf4 exf4  
26.Qxd6 Ne5 27.R3f1 Qe2  
28.Na3 Rxb2 29.Rg1 f3  
30.Rxb2 Qxb2 31.Qxc5 Nd3  
32.gxf3 Nxc5 0-1

**W: Anthony Schroeder**

**(2189) B: Kenneth**

**Wallach (2266) Round 5**

1.Nf3 Nf6 2.d4 g6 3.c4 Bg7  
4.Nc3 0-0 5.Bf4 d6 6.h3 Nc6  
7.Qd2 a6 8.e4 Nd7 9.Be2 e5  
10.dxe5 dxe5 11.Bg5 Bf6  
12.Bh6 Re8 13.Be3 Nf8  
14.Qxd8 Bxd8 15.0-0 Ne6  
16.Rfd1 Bf6 17.Nd5 Bg7

18.Ng5 Ncd8 19.Nxe6 Nxe6  
20.Bg4 f5 21.exf5 gxf5  
22.Bxf5 Nf4 23.Be4 Nxd5  
24.cxd5 Bf8 25.Rac1 Bd6  
26.Bc5 Re7 27.Rd3 Rf7  
28.Bxd6 cxd6 29.Rdc3 Bd7  
30.Rc7 Rb8 31.R1c3 b6  
32.Rg3+ Kf8 33.Rf3 Rxf3  
34.gxf3 Ke8 35.Bxh7 Bxh3  
36.Rg7 Kd8 37.Kh7 Bd7  
38.Kg3 Rb7 39.Bf5 Rc7  
40.Rxd7+ Rxd7 41.Bxd7 Kxd7  
42.Kg4 Ke7 43.Kf5 Kf2 44.a4  
b5 45.axb5 axb5 46.b4 Ke7  
47.Kg6 1-0

**W: Andrew Karklins**

**(2412) B: Edward**

**Formanek (2495) Round**

5 1.e4 e5 2.Nf3 Nc6 3.Bb5  
Qe7 4.0-0 Nd8 5.Re1 c6  
6.Bf1 d6 7.d4 g6 8.c4 Bg4  
9.c5 dxc5 10.dxe5 Bg7  
11.Nbd2 Bxe5 12.Nc4 Bd4  
13.e5 Ne6 14.Nd6+ Kf8  
15.Bc4 Kg7 16.Nxd4 Bxd1  
17.N4f5+ gxf5 18.Nxf5+ Kf8  
19.Nxe7 Bc2 20.Nxg8 Rxc8  
21.Bxe6 fxe6 22.Bh6+ Kf7  
23.Rac1 Bf5 24.Rxc5 Rad8  
25.Rc3 Rg4 26.Be3 Re4  
27.Ra3 Rxe5 28.Rxa7 Rb5  
29.b3 Rdd5 30.Rc1 Kf6  
31.Kf1 Bd3+ 32.Ke1 Ra5

33.Rxa5 Rxa5 34.a4 Rd5  
35.b4 Bf5 36.Rc3 Rd3  
37.Rxd3 Bxd3 38.Kd2 Bf1  
39.g3 Bg2 40.Kc3 Bf3 41.Kd4  
Bd1 42.a5 Be2 43.Bf4 Kf5  
44.Bd6 Bf1 45.f3 Be2 46.Ke3  
Bd1 47.g4+ Kf6 48.Kf4 Kg6  
49.h3 Be2 50.h4 Bd1 51.Be5  
Kf7 52.Bc3 Ke7 53.Be5 Be2  
54.Ke3 Bd1 55.h5 Kf7 56.Bc3  
Ke7 57.Be5 Kf7 58.Ke4 Ke7  
59.Bd4 Kf7 60.Bc3 Ke7  
61.Kf4 Kf7 62.g5 Be2 63.Ke3  
Bd1 64.Bd4 Bb3 65.Be5 Bd1  
66.Bc3 Kf8 67.h6 Bc2 68.Kd4  
Ke7 69.Kc5 Kd7 70.Kb6 Kc8  
71.Be5 Bc3 72.Bh2 Bc2  
73.Bg3 Bc3 74.Bf4 Bc2  
75.Bh2 Bd3 76.Be5 Bc2 77.a6  
bxa6 78.Kxc6 Kd8 79.Bf6+  
Ke8 80.Kb6 Bd3 81.g6 Bxc6  
82.Kxa6 Kd7 83.Be5 Bd3+  
84.Kb6 Be2 85.f4 Bd3 86.Kc5  
Kc8 87.Kb6 Be4 88.b5 Bf3  
.5-.5

**W: Bernard Pukel (2020)**

**B: Robert Ash (2040)**

**Round 6 1.c4 Nf6 2.Nc3 g6**  
3.d4 Bg7 4.e4 d6 5.Be2 0-0  
6.Bg5 h6 7.Bh4 c5 8.dxc5  
Qa5 9.Qd2 Qxc5 10.f3 Qa5  
11.Bd3 Nc6 12.a3 Kh7  
13.Nge2 Ne5 14.b4 Qd8



**Morris Giles (left) and Albert Chow begin their fifth round contest.**

# GAMES FROM THE 1988 PRAIRIE STATE

15.0-0 Be6 16.Bxf6 Bxf6  
 17.Nd5 Bxd5 18.cxd5 Nxd3  
 19.Qxd3 Bxa1 20.Rxa1 Qb6+  
 21.Kh1 Rac8 22.Rd1 Qc7  
 23.Kg1 Qc3 24.Nd4 Qxd3  
 25.Rxd3 Rc1+ 26.Kf2 Rfc8  
 27.Ne2 R1c2 28.Ke3 Ra2  
 29.h4 Rcc2 30.Nf4 g5  
 31.hxg5 hxg5 32.Nh3 Rxg2  
 33.f4 Rg3 0-1

**W: Kevin Gensler (2154)**  
**B: Morris Giles (2451)**

Round 6 1.e4 c5 2.Nf3 d6  
 3.d4 cxd4 4.Nxd4 Nf6 5.Nc3  
 e6 6.Be2 a6 7.0-0 Be7 8.f4  
 0-0 9.Kh1 Nc6 10.Be3 Bd7  
 11.a4 Qc7 12.Qe1 Rac8  
 13.Qg3 Kh8 14.Rad1 Nb4  
 15.e5 Nfd5 16.Nf5 exf5  
 17.Nxd5 Nxd5 18.Rxd5 Qxc2  
 19.exd6 Bf6 20.Rd2 Qxa4  
 21.Bf3 Rfe8 22.Bxb7 Qb5  
 23.Qf3 Rxe3 24.Bxc8 Rxf3  
 25.Rxf3 Bxc8 0-1

**W: Anthony Schroeder (2189)**  
**B: George Umezima (2271)** Round

6 1.Nf3 Nf6 2.d4 e6 3.e3  
 b6 4.Bd3 Bb7 5.c4 Bb4+  
 6.Bd2 c5 7.Bxb4 cxb4 8.Nbd2  
 0-0 9.0-0 d5 10.Qc2 Nbd7  
 11.Rfc1 dxc4 12.Bxc4 Qe7  
 13.Qd1 e5 14.dxe5 Nxe5  
 15.Qe2 a6 16.Bb3 b5 17.Rd1  
 Rad8 18.Nxe5 Qxe5 19.Nf3  
 Rxd1 20.Rxd1 Bxf3 21.Qxf3  
 a5 22.Rd4 h6 23.g3 Qc5  
 24.Qd1 g6 25.Rd6 Qf5 26.Bc2



Andy Karklins (left) and Ed Formanek drew an 88 move game in round five.

Qe5 27.Qd4 Qxd4 28.exd4 Kg7  
 29.Rb6 Rd8 30.Rxb5 Rxd4  
 31.Rxa5 Rd2 32.Bb3 Ne8  
 33.Ra7 Nd6 34.Rd7 g5  
 35.Bxf7 Kf6 36.Bb3 Ke5  
 37.Kg2 Rxb2 38.Rh7 Ne4  
 39.Rxh6 Rxf2+ 40.Kg1 Rd2  
 41.Rb6 Nc3 .5-.5

**W: Albert Chow (2439)**  
**B: Andrew Karklins (2412)** Round 6 1.Nf3 Nf6

2.c4 e6 3.d4 b6 4.g3 Ba6  
 5.b3 Bb4+ 6.Bd2 Be7 7.Nc3  
 0-0 8.e4 Bb7 9.Bd3 d5  
 10.cxd5 exd5 11.e5 Ne4  
 12.0-0 Nd7 13.Rc1 c5 14.Re1

Nxd2 15.Qxd2 cxd4 16.Nxd4  
 Nc5 17.Nf5 a6 18.Bf1 d4  
 19.Qxd4 Qxd4 20.Nxd4 g6  
 21.Red1 f6 22.Bc4+ Kh8  
 23.exf6 Bxf6 24.Bd5 Rad8  
 25.Nde2 Bc8 26.b4 Ne6  
 27.Ne4 Ng5 28.Nxf6 Rxf6  
 29.f4 Nh3+ 30.Kg2 Bg4

[Editor's Note: Chow now had 110 minutes to Karklins' 12 minutes for the next ten moves.] 31.Bf3 Bxf3+ 32.Kxf3 Re8 33.Rd7 Ng5+ 34.Kg4 Nf7 35.Nd4 h5+ 36.Kh4 Re4 37.Nf3 Rf5 38.Ng5 Rxf4+ 39.gxf4 Rxf4+ 40.Kg3 Rg4+ 41.Kf2 1-0

## 1988 PRAIRIE STATE

PLAYER	ST	PRE RTNG	POST RTNG	1 2 3 4 5 6						TOT							TOT				
				1	2	3	4	5	6		1	2	3	4	5	6					
1 CHOW, ALBERT C	IL	2439	2472	X--	W11	W-4	W20	W-2	W-6	6.0	22 DREIGER, MICHAEL E	NE	2126	2113	L-3	W36	L-7	L30	W37	D24	2.
2 GILES, MORRIS C	IL	2451	2454	W37	W-7	D-3	W21	L-1	W12	4.5	23 GRATZ, GLEN E	IL	2086	2084	L-9	L14	W34	D32	L17	W33	2.
3 ZELKIND, EDWARD	MN	2346	2371	W22	W12	D-2	L-6	W28	W-8	4.5	24 CONDRON, JAMES K	IL	2082	2073	H--	D32	L19	D17	D25	D22	2.
4 UMEZIMA, GEORGE O	IL	2271	2289	W41	W19	L-1	W18	W-7	D-5	4.5	25 SPLINTER, JOE C	IL	2042	2039	L-6	D30	W31	L10	D24	D26	2.
5 SCHROEDER, ANTHONY	IL	2189	2229	H--	W26	D-8	W15	W-9	D-4	4.5	26 SOLLANO, E D	IL	2041	2052	W17	L-5	W32	L-7	L14	D25	2.
6 KARKLINS, ANDREW	IL	2412	2413	W25	D10	W13	W-3	D-8	L-1	4.0	27 HAUBRICH, SCOTT A	WI	2030	2053	H--	W39	L11	U--	W32	U--	2.
7 BUNGO, D GREGORY	IL	2172	2201	W15	L-2	W22	W26	L-4	W16	4.0	28 SMITH, CHARLES L	IL	2024	2046	H--	W29	D-9	D16	L-3	L10	2.
8 FORMANEK, EDWARD W	PA	2495	2476	W18	D16	D-5	W11	D-6	L-3	3.5	29 GUSTAF, BERNARD B	IL	2020	2019	D32	L20	W30	L12	W33	L15	2.
9 WALLACH, KENNETH T	IL	2266	2261	W23	D20	D20	W19	L-5	D11	3.5	30 PUSTAFSON, DALE L	MN	2008	2021	L13	W40	L29	W22	L11	D32	2.
10 ZABELL, SANDY L	IL	2179	2189	W30	D-6	L21	W25	L12	W28	3.5	31 GOLDSTEIN, SETH	MN	1887	1919	L19	W41	L25	W38	D18	L13	2.
11 WACHTEL, HOWARD K	WI	2164	2183	W34	L-1	W27	L-8	W30	D-9	3.5	32 CROWDER, M SCOTT	MO	2130	2093	D29	D24	L26	D23	L27	D30	2.
12 GENSLER, KEVIN M	IL	2154	2171	W36	L-3	D33	W29	W10	L-2	3.5	33 WEISENSTEIN, RICK	IL	2089	2055	L16	W17	D12	L13	L29	L23	1.
13 MAZUCHOWSKI, THOMA	MI	2123	2143	W30	D21	L-6	W33	L16	W31	3.5	34 STINSON, MARCUS E	IL	2051	2018	L11	L18	L23	D37	W36	L35	1.
14 KEADLE, MICHAEL P	MI	2115	2130	L20	W23	L15	W36	W26	D17	3.5	35 REYES, VIRGILIO T	IL	2102	2112	F--	U--	U--	U--	U--	W34	1.
15 ASH, ROBERT B	IL	2040	2076	L-7	W37	W14	L-5	D19	W29	3.5	36 MATHERLY, MELVIN D	IL	2025	1977	L12	L22	B--	L14	L34	U--	1.
16 ZELKIND, MIKE	MN	2269	2262	W33	D-8	L20	D20	W13	L-7	3.0	37 GOTZ, JON	IL	2125	2077	L-2	L15	L17	D34	L22	U--	.
17 KARKLINS, ERIK	IL	2187	2187	L26	L33	W37	D24	W23	D14	3.0	38 HENDERSON, SCOT L	NY	2023	1982	L10	D25	L18	L31	U--	U--	.
18 WALLACH, CLIFF H	IL	2133	2131	L-8	W34	W30	L-4	D31	D19	3.0	39 LOSOFF, ALAN R	IL	1942	1930	H--	L27	U--	U--	U--	U--	.
19 FORBIS, ROBERT E	IL	2081	2089	W31	L-4	W24	L-9	D15	D18	3.0	40 GAZMEN, ETHELBERT	IL	2141	2120	L21	L30	U--	U--	U--	U--	.
20 RIZZITANO, JAMES A	MA	2552	2540	W14	D-9	W16	L-1	U--	U--	2.5	41 CREWSE, LYNN	IL	2066	2035	L-4	L31	U--	U--	U--	U--	.
21 PELTS, PETER	IL	2380	2373	W40	D13	W10	L-2	U--	U--	2.5											

# BONDARI MARKS RETURN TO CHESS BY WINNING 1987 ILLINOIS TOUR

By Ken Marshall

When 1987 Illinois Tour winner Cyrus Bondari began playing serious chess again in April of 1987, he had been away from the tournament scene for six years. "While in college at Iowa State, I was an active player and had a rating of 2092", said Bondari. "Then, in the early '80s, I moved to Decatur and started a new job. I had little time for chess, and lost interest in the game. In the meantime, my brother Siamack became a master and won the Iowa state championship. His success motivated me to return to chess competition".

Bondari began his comeback by playing in events in Peoria, LaSalle, and

Bloomington. Several of these tournaments were on the Illinois Tour, and winning them propelled the Decatur resident to the top of the Tour standings. "I didn't consciously set out to win the Tour", Bondari stated. "In fact, it wasn't until late in the year that I realized I was in a position to finish first". During 1987, Bondari played more than 40 tournament games, losing only four of them. None of his losses (two of which came at the hands of masters at the Prairie State Master-Expert Invitational) were to Illinois players.

By early 1988, Bondari's rating had risen to 2182. His recent results - clear second at the 1988 Greater

Peoria Open (behind Senior Master Albert Chow, with whom he drew a 70 move, 6 hour game) and a tie for top expert at the 1988 National Open - brought him the Master title.

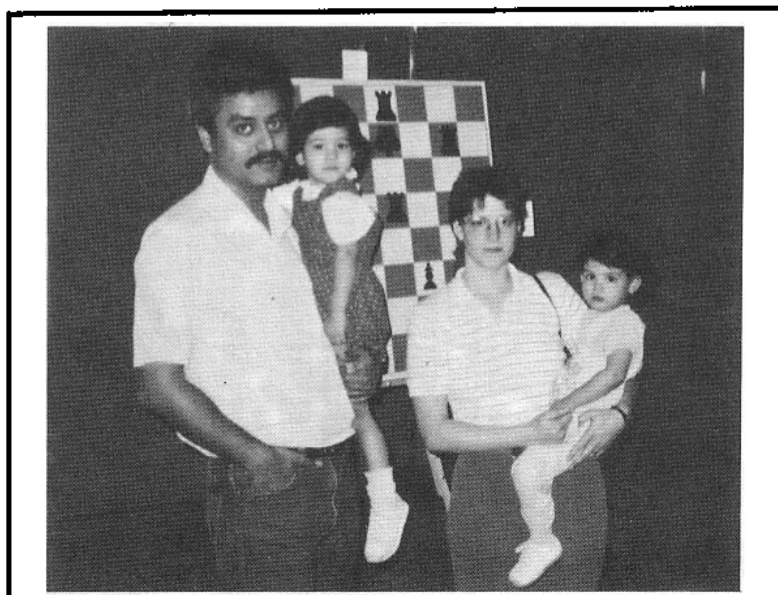
Bondari credits his improvement to frequent play and intensive study. "I study chess for three or four hours almost every night", he said. "I find the Informant to be the best source for keeping up with current chess practice and new ideas."

Here are two of Bondari's games, one from his Iowa days and one from his 1987 "comeback" year.

## Cedar Rapids, Iowa February 23, 1980

**White: Cyrus Bondari  
(1882)**  
**Black: International  
Master Walter Morris  
(2407)**

1.e4 c5 2.Nf3 d6 3.d4 cxd4  
4.Nxd4 Nf6 5.Nc3 a6 6.Bg5 e6  
7.f4 Qb6 8.Qd2 Qxb2 9.Nb3  
Qa3 10.Bxf6 gxf6 11.Be2 Nc6  
12.0-0 Bd7 13.Nb1 Qb2 14.Nc3  
Qa3 15.Nb1 Qb4 16.Qe3 Ne7  
17.Kh1 f5 18.Bf3 fxe4 19.a3  
Nf5 20.Qf2 e3 21.axb4 exf2  
22.Bxb7 Rb8 23.Bxa6 Rxa4  
24.Rxf2 Bg7 25.Ra3 Ke7  
26.Bd3 Bb2 27.Ra6 Bd4 28.Re2  
Rc8 29.N1d2 Bb5 30.Bxb5 Rxb5  
31.c4?? [g4 wins-Bondari]  
Rb6 32.Rxb6 Bxb6 33.g4 Nd4  
34.Nxd4 Bxd4 35.Re4 Bc3  
36.Nf3 Rc5 37.Kg2 h6 38.h4  
f5 39.gxf5 Rxf5 40.Nd4 Rf6



Cyrus Bondari brought his wife Gail and children Denilae and Alesha with him to the 1988 National Open.

41.Kg3 h5 42.Nf3 Kd7 43.Re3  
 Bb4 44.Ng5 Bd2 45.Re4 d5  
 46.cxd5 exd5 47.Ra4 Rf5  
 48.Nf3 Be3 49.Ne5 Kd6  
 50.Nd3 Kc6 51.Kf3 Bb6  
 52.Ra8 Bd4 .5-.5

**Third Prairie State  
 Masters and Experts  
 Open  
 Grayslake, Illinois  
 May 23, 1987**

**White: Cyrus Bondari  
 (2092)  
 Black: Peter Pelts  
 (2342)**

Annotated by Cyrus Bondari

1	c4	e5
2	Nc3	Nf6
3	Nf3	Nc6
4	d3	g6
5	g3	Bg7
6	Bg2	O-O
7	O-O	d6
8	Rb1	a5
9	a3	Re8?

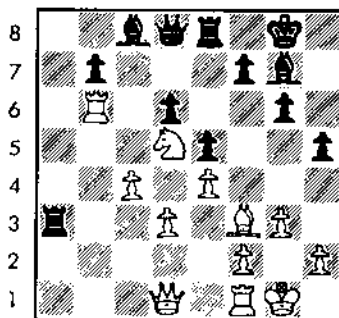
The correct move is 9...h6  
 to stop Bg5.

10	Bg5	h6
11	Bxf6	Bxf6
12	b4	axb4
13	axb4	Nd4
14	e3	Nxf3+
15	Bxf3	h5

16	Nd5	Bg7?!
----	-----	-------

It might have been better  
 to force the exchange by  
 16...c6. White's Knight on  
 d5 is very strong.

17	b5	Bf5
18	b6	cxb6
19	Rxb6	Ra3
20	e4	Bc8



21	Qd2!	...
----	------	-----

This move is powerful,  
 aiming for b4 and also  
 allowing Rfb1.

21	...	Re6
----	-----	-----

The Rook defends d6; if  
 21...Ra6, then 22.Rfb1+.

22	h4!	...
----	-----	-----

If White plays Bg2 first,  
 Black replies with g5 and  
 then g4.

22	...	Kh7
23	Bg2	Bh6
24	Qb4	Rxd3
25	Bh3	Bd2
26	Qb1	Rd4

27	Bxe6	fxe6
28	Ne3	g5
29	Ng2	Rxc4
30	Rb3	g4
31	f3	Bc3
32	fxg4	hxg4
33	Qd1	Bd4+
34	Kh2	Rc7
35	Qxg4	Rg7
36	Qh5+	Kg8
37	Rbf3	Bd7
38	Rf7	Qe8
39	Rxg2+	Kxg2
40	Qg5+	Kh7
41	Rf6	1-0

1988 ILLINOIS OPEN and  
 STATE CHAMPIONSHIP  
 -----  
 SEPTEMBER 3 - 5, 1988  
 ROUND TIMES: 12-6, 10-4, 10  
 TIME CONTROL: 45/2,25/1  
 -----  
 HOLIDAY INN  
 RT. 251 & RT. 80 (EXIT 75)  
 PERU, ILLINOIS  
 -----  
 \$2000 GUARANTEED  
 -----  
 2 SECTIONS:  
 CHAMPIONSHIP (OPEN TO ALL)  
 RESERVE (1799 and BELOW)  
 -----  
 ENTRY FEES AT SITE:  
 OPEN: \$40  
 RESERVE: \$35



THIS IS YOUR INVITATION  
 TO VISIT CHICAGO'S GREAT NEW CHESS CLUB  
**CHICAGO CHESS MATES**  
 1261 W. LOYOLA ★ PHONE 262-9100



# ILLINOIS CHESS LEAGUE NEWS

By Wayne Palmquist

## RULE CHANGES FOR 1988 - 1989 SEASON

Illinois Chess League team captains met on July 10, 1988, at the Hillside Baptist Church to discuss new ideas for the upcoming season. The group decided to continue to experiment with the league's format. Rules were expanded in some areas and refined in others in order to provide keen competition between clubs while maintaining the enjoyment of league play.

The following rule changes will be in effect for the 1988- 1989 season:

1. Average team ratings have been raised to 2100 for the championship

section, with a minimum rating of 1800. The reserve section ratings have been changed to 1800 and 1500 and the booster section ratings to 1500 and 1200, respectively.

2. Regulations concerning team rosters have been revised to allow members of one club to play on more than one team.

3. Time controls will be 30/1, then SD/40.

4. Smaller sections may be combined and cross-paired to provide more matches during the regular season.

5. Larry Stilwell is introducing a new playoff format which will allow all teams to compete in the finals! The playoffs will be funded separately, with section winners from the regular season being given free entry. Trophies to the winning teams and team members will be awarded.

Rules and entry forms will be sent out in late August to previous team captains. Anyone wishing to participate in the Illinois Chess League who does not receive this information can call Wayne Palmquist, (312) 857-8150.

---

### FROM THE EDITOR'S DESK (Continued from page 1)

Kent Hieronymus and others have submitted material dealing with scholastic chess. Space limitations kept that information out of this issue. The next ICB will contain a number of stories about and games from scholastic events.

\*\*\*\*\*

Tim Just has advised that he forgot to state in his May-June, 1988 ICB column ("Winning Tournament Tactics") that the column was inspired by and based on a similar idea in "Argallian Analysis", a column by David Argall which appeared in the November-December, 1987 issue of RANK AND FILE, the magazine of the Southern California Chess Federation.

---

### CHESS MASTER SEEKS CONTRACT WORK IN DATA PROCESSING

I am a chess master. I love chess, but presently have no time to study the game and therefore have little hope of further improvement.

I would like an alternative to full time employment which will give me some free time between projects. I am looking for contract work in data processing. I have 8 years of experience in business application programming in both on-line and batch processing.

I would appreciate any help which my fellow chess players might be able to give me regarding job opportunities.

PETER PELTS  
(312) 878-6951



# MARTINOVSKY ANNOTATES

[Editor's Note: Dr. Eugene Martinovsky regularly contributes annotated games to the ICB. In this issue, the doctor analyzes three of his contests with fellow Senior Master Albert Chow. These battles between two of the best and most active tournament players in Illinois illustrate the fierce competitive spirit typical of Martinovsky--Chow encounters.]

Albert Chow and I have always played interesting "fighting chess". Some of our games have been quite dramatic, while others have featured drastic changes of fortune due to time trouble. Several of our efforts have appeared in recent ICBs. Here are three more contests with my comments.

**Futurity Tournament  
Chicago Chess Center  
January 15, 1987  
White: Albert Chow  
Black: Eugene  
Martinovsky**

Annotated by Eugene Martinovsky

1.d4 d5 2.c4 dxc4 3.Nf3 Nf6  
4.e3 Bg4 5.Bxc4 e6 6.h3 Bh5  
7.0-0 Nc6!?

This is the so-called Modern Variation of the Queen's Gambit Accepted -- a very double-edged opening. Black frequently has to sacrifice his b7 pawn but then he gets dangerous counterchances. Here Black does not have to make this sac because White played 7.0-0 rather than

7.Qb3 Bxf3 8.gxf3 Nbd7  
9.Qxb7 c5 with a double-edged game. By playing 7.0-0 White refuses to enter the aforesaid line. He instead prefers to keep his Kingside pawn formation unspoiled. Black usually now plays either 7...Nbd7, aiming at Bd6 (or e7) and then either e5 or c5, or 7...a6 and then Nc6, Bd6, e5, preventing the unpleasant pin of the Knight on c6 by Bb5. My move is playable, but involves risks. But I had played similar positions before, and was prepared to take those risks.

8.Bb5 Bd6 9.Qa4

This aggressive move threatens to win a pawn. But I was not worried because I knew that Black would get more than enough compensation.

9... Bxf3 10.gxf3 0-0!  
11.Bxc6 bxc6 12.Qxc6 Nd5!

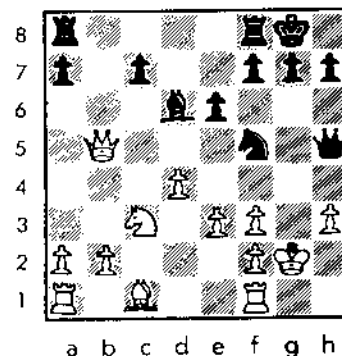
White is a pawn up, but look at the position. Black's pieces, including his Queen, are aimed at White's Kingside, while White's pieces are far away and not well poised for defense.

13.Nc3 Qg5+ 14.Kh1 Qf5  
15.Kg2 Qg6+ 16.Kh1 Qh5  
17.Kg2 Ne7!

After maneuvering with my Queen (which also gave me some time on the clock to plan more decisive action), I certainly have a draw in hand. White's position has turned out to be more defensible than I

anticipated. My last move is somewhat risky, but one must take some chances to win against Albert Chow!

18.Qb5! Nf5



19.Rg1?

19.f4! was a better move but in the game it looked as if the White King was hanging by a thread. Al did not like the numerous mating possibilities here, yet it seemed to me that White had a defense against all tries.

I used a lot of time prior to reaching this position trying to calculate a winning blow, but I did not find it. I still played the line, knowing that I have at least a draw, and most likely something better. Here are the tries and defenses after 19.f4 a) 19...Nh4+ 20.Kh2! (20.Kg3 Qxf3+ 21.Kh4 Be7! 0-1) Qxf3 21.Qg5! Be7 22.Qg3 and White is okay; b) 19...Nh4+ 20.Kh2! Qg6 21.Qc6! and White holds--no mate, no big material loss!

19... Nh4+ 20.Kf1 Qxf3  
21.Qg5 Qxh3+ 22.Ke2 Qf3+  
23.Kd3 Ng6

Black is a pawn up now and the White King has been chased into the center.

Black has a won position, but White is still quite alive and has some threats on the Kingside. Also, we are getting into time trouble (especially me), and in time pressure many things can happen. I remember very well a 1986 game with Chow in which I was always winning but then got into time trouble, made two bad moves which threw away my advantage, and saw my flag fall. Here I was luckier; it was Chow who made a blunder and lost.

24.Bd2 Rab8 25.b3 e5 26.d5 h6 27.Qg2? Nf4+! 0 -1

#####

**Illinois Tournament of Champions I  
February 8, 1987**

**White: Eugene Martinovsky  
Black: Albert Chow**

Annotated by Eugene Martinovsky

1.d4 Nf6 2.Nf3 b6 3.g3 Bb7 4.Bg2 c5 5.c3 e6 6.0-0 Be7 7.a4

This is not a regular move here, but Black is okay no matter what White plays. I was not too happy with the opening. I knew I had no advantage; but I also knew that I did not stand worse. Though equal, the game is not drawish. I was eager for a fight and so was Al.

7... 0-0 8.Nbd2 cxd4 9.Nxd4 d5

9...Bxg2 leads to equality but Chow preferred an unbalanced double-edged position.

10.a5 Na6 11.Nc4?

Here I thought I made a very smart move, with my inventive play putting pressure on b6 and also aiming at e5. But Chow nicely refuted my idea and, to my disbelief, won my a pawn.

11... Qc7! 12.Na3

Necessary. I was still confident in my position; with one of my Knights targeting b5, surely Chow can't take my a pawn and hold on to it! Yet Al not only did just that, he also destroyed my Queenside.

12... bxa5! 13.Bh3!

13.Nab5 was not good. After 13.Qb6 14.Qa4 Bd8 my calculations showed me that in all lines I would not get a pawn back and that I would be lucky not to lose one of my Knights. Black is threatening e5, Nc5, and later Bc6. So I decided to leave the a pawn alone and instead make tactical threats to keep Al worried.

13... Nc5 14.Be3 a4 15.Nac2 Bc8! 16.Nb4 Bd7 17.f3 a5 18.Nd3 Rab8 19.Ra2 Rb7 20.Qc2 Nxd3 21.exd3 Rc8 22.Rc1 Bc5 23.Qf2 Rcb8 24.Rc2 Bd6 25.f4 a3!

Chow played the whole game very well and completely outplayed me. This breakthrough shatters my Queen side to smithereens.

26.bxa3 Rb1+ 27.Kg2 Ba4! 28.Rd2 Qxc3

Terrible, terrible--is it really possible that I won this game? But we were both getting into time trouble; we each had about 12 minutes left for the

next 12 moves.

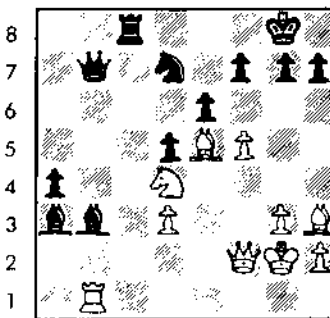
29.Me2 Qc7 30.Bd4 Bb3 31.Rab2 Rxb2 32.Rxb2 Bxa3 33.Be5 Qb7?

Chow's first mistake. 33...Bd6 was safer and better.

34.Rb1 Rc8 35.Nd4 a4 36.f5!

Now I have something.

36... Nd7



a b c d e f g h

37.Bxg7!

This must be played, whether correct or not. Suddenly I have a ferocious attack on the Black King, and Black's two Bishops are stranded on the Queen side.

37... Kxg7 38.fxe6 fxe6 39.Rf1!

This move wins for White! Chow did not see it in time pressure. He will lose his Queen protecting against mate threats.

39... Nf8 40.Qf6+ Kg8 41.Bxe6+ Nxe6 42.Qxe6+ Kh8 43.Rf7! Qxf7 44.Qxf7 Rf8 45.Qh5!

Very careful play is required for White to win this endgame, but time trouble was over and I now could make lengthy and detailed calculations.

45... Be7 46.Ne6! d4  
47.Nxf8 Bxf8 48.Qb5

This is not so easy. I must keep the a-pawn from running, protect my d-pawn, employ my King, and, by stalemating the Bishops, win a-pawn or the d-pawn or both.

48... h6 49.Qe5+ Bg7  
50.Qb8+ Kh7 51.Qb4 Bc2  
52.Qd2 Bb3 53.Qb2 Kg6  
54.Kf3 Bd5+ 55.Kf4 Bf6  
56.Qb5 Bb3 57.h4 Kg7  
58.Qd7+ Bf7

If 58... Kg6 then  
59.h5+ Kxh5 60.Qg4 Mate; if  
58... Kg8 then 59.Kf5 and  
White will soon win.

59.Qxa4 h5 60.Qd7 Kg8  
61.Kf5 Bg7 62.Qe7 1-0

After 62... Bf8 63.Qd8  
and the pawn on d4 falls.  
Chow really did not make  
many mistakes in this game.

He played the first part  
(until move 33) like a  
grandmaster and totally  
outplayed me. But he  
became a bit too confident  
in time trouble and put all  
of his pieces on the Queen  
side instead of better  
securing his King. This  
allowed me to mount a  
desperado attack which,  
luckily for me, succeeded.  
Al was really unlucky in  
this tournament. He won  
his first four games and  
led the field, but then  
luck turned on him and he  
lost a few games like this  
one. Chow did much better  
in the Tournament of  
Champions II in October and  
November of 1987. He went  
ahead in that event at the  
beginning and remained  
there to the end. That  
time luck was not against  
him, and that is important.

#####

**Grand Prix Tournament  
Chicago Chess Center  
October 11, 1987  
White: Eugene  
Martinovsky  
Black: Albert Chow**

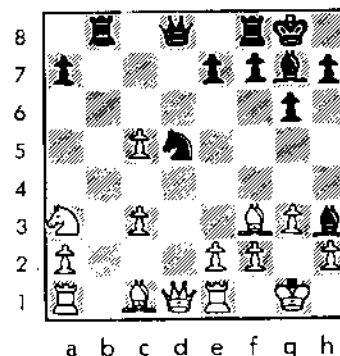
Annotated by Eugene  
Martinovsky

1.d4 Nf6 2.Nf3 g6 3.g3 Bg7  
4.Bg2 0-0 5.0-0 d5 6.c4  
dxc4 7.Na3 c3 8.bxc3 c5  
9.Ne5 Nc6 10.Nxc6 bxc6  
11.Bxc6 Bh3 12.Re1

The Encyclopedia of  
Chess Openings (Book D, pp.  
381, 383) gives 12.Bxa8  
Qxa8 13.f3 Nd5=. The same  
book says 12.Re1 is no good  
because of 12... Nd5 13.Bb2  
Rb8 14.Qd2 Nxc3 15.Bxc3  
cxd4 16.Bb2 Qb6 17.Bb5 a6  
18.Rad1 Qb7 19.f3 axb5  
20.Bxd4 Rfd8- Pancenko-  
Malanjuk, USSR, 1980 (p.  
383). I believe that this  
conclusion is too  
far-fetched. On almost  
every move both White and  
Black had other  
alternatives. One of my  
games (in a semifinal  
section of the World  
Correspondence Championship  
XVI) went 12.Re1 Nd5  
13.Bxd5 Qxd5 14.e4 Qd2  
15.Be3 Rad8 16.Nc2 f5 17.f3  
fxe4 18.fxe4 Bg4 19.Qd2  
cxd4 20.Nxd4 Qc7 21.Qb2 Rb8  
22.Qc2 Rfd8 23.Rac1 e5  
24.Nb3 Bf8 25.c4 Ba3 26.Rb1  
Be6 27.c5 Rb4. I retained  
a pawn but Black has  
compensation for it. In  
summary: I think 12.Re1 is  
a good move. The whole  
line is so complicated and  
full of choices for both  
sides that either player  
may find himself suddenly  
or imperceptibly slipping  
into a difficult position.  
Detailed analysis of the

lines is almost impossible.

12... Rc8 13.Bb7! Rb8  
14.Bf3 Nd5 15.dxc5!



Here I calculated, to  
the extent this was  
possible, that I have an  
advantage after both 15...  
Bxc3 and 15... Nxc3. For  
example, 15... Bxc3 16.Bh6  
Bxa1 17.Qxa1 Nf6 18.Bxf8  
Qxf8 and White is a sound  
pawn up; if 16... Re8  
17.Qxd5, White has a  
material advantage; if  
16... Bxe1 17.Bxd5 Re8  
18.Qd4 e5 19.Qc4 Rb4  
20.Bxf7+ Kh8 21.Qc1 and  
White should win. (In this  
last line White can also  
play 17.Qxe1 Re8 18.Rd1 e6  
19.e4 with favorable  
complications.) Chow  
thought for a long time  
here and then took with his  
Knight and offered a draw.  
I was relieved that he  
decided not to capture with  
the Bishop, in case I had  
missed something after  
15... Bxc3. Confident that  
I stood better with my pawn  
up and c5 pawn, I turned  
the offer down.

15... Nxc3 16.Qxd8 Rfxd8  
17.Bg5?

This ambitious move is  
a mistake; 17.Bf4 e5  
18.Bg5, or 17.c6 were  
better, though in either  
case White will not have an  
easy time realizing his  
material advantage.

17... Nb5! 18.Nxb5 Bxa1 19 a4!

It is necessary to keep the Knight on b5 at least for a while and threaten c5-c6-c7 and prevent Black's Bc3.

19... a6 20.c6

Here Al offered a draw again, but I was too blood-thirsty to make peace.

21.c7 Bc3 22.Rc1 Bb2!

Now if 23.Rb1 bxa4 24.cxb8(Q) Rxb8 25.Bxe7 Be6 26.Ba3 Be5 and Black stands better. White has however 24.Bxe7 Rdc8 25.cxb8(Q) Rxb8 26.Ba3 Be5 27.Rxb8+ Bxb8 28.Bc6 and White wins a pawn but the ending is a

draw with correct play. The above line was the proper one, but instead of playing it I plunged into utter hazard; I wouldn't be surprised if someone discovers a win for Black in the following continuation.

23.Bxe7!? Bxc1  
Chow accepts the challenge and is going for a win too. 23... bxa4 leads to analyzed lines with drawish outcomes.

24.Bxd8 Rc8 25.axb5 Bg5!

Excellent defense. In the excitement of time trouble I did not see how Chow was going to stop b5-b6-b7-b8. This seems to be the only way, and he

found it.

26.Bxg5

A must. Otherwise if, for example, 26.b6? Bxd8 27.b7 Bxc7 and Black's goal line defense prevents a White touchdown.

26... Rxc7 27.Bc6 Bd7!  
28.Bxd7

If Bf4, Bxc6 draw.

28... Rxd7 29.b6 Rd1+  
30.Kg2 Rb1 31.Be3 Kf8  
32.Kf3 Ke7 33.Ke4 Kd6 34.h4  
h5 35.f3

Not a very good move, but the position is not winable anyway.

35... Rb2 36.Kd3 Rb3+  
37.Ke4 Rb2 .5-.5

## Summary of Minutes of July 10, 1988 ICA Meeting

Twenty ICA members present; Tournament Clearinghouse Calendar distributed by Metro Vice President Harold Winston. Treasurer Guy Gruenberg's Report (5 pages): review of ICA financial condition and recent income (ICA's share of '88 Nat'l Open profit: \$860; Cramer grant to ICB: \$300 for 1st half of '88; Discussion re problems re transition to new treasurer; MOTION PASSED: All financial, membership, computer records to be turned over to G. Gruenberg w/i 10 days; Discussion re ICA financial situation, ideas re fund raising; MOTION PASSED: ICA will have a balanced budget beginning 1/1/89; MOTION PASSED: Thanks to G. Gruenberg for work as new Treasurer. Membership Secretary Bill Smythe not present; Discussion re membership problems; MOTION PASSED: Dennis Grant new Membership Secretary, checks for memberships to be sent to G. Gruenberg, who will forward names to D. Grant; Discussion re ideas to increase ICA membership. Downstate Vice President Bill Naff's report: Attendance at downstate tournaments lower this summer; Tour events in Peoria and Decatur; need strong Chicago support to make '88 Illinois Open a success; discussion re coordinating Chicago area and downstate clearinghouses re conflicting tournament dates, and possible creation of scholastic clearinghouse. ICB Editor Ken

Marshall's report: ICB coming out toward end of each two month cycle, will try to improve here; discussion re publishing Just/Verber letters in 5/88-6/88 issue; minutes of ICA meetings to be printed in future ICBs. Todd Barre's Chess Phone (Chicago area) report: Out of service for 2.5 weeks in 5/88 because of Illinois Bell fire; 130 to 150 calls per week; cost: \$16.84 per month. Tournament reports: Erik Ronneberg won High School Invitational 6-0, received air fare to Denker Tournament of High School Champions in Boston; North American Class (7/28-7/31/88); Illinois Open (9/3-9/5/88): car pooling being encouraged, Bob Long will be book dealer; Midwest Tournament of Champions III (10/28 and 11/6/88); Illinois Class will again be at Morgan Park Academy in Chicago the weekend before Thanksgiving (11/19-11/20/88). 1989 U.S. Open: ICA currently organizing it, looking for chief organizer; G. Gruenberg interim chairman; Fred Gruenberg will distribute flyer at '88 Open in Boston; discussion of various aspects of organizing event and need for cooperation to have successful tournament. New Business: MOTION PASSED to form All-State Chess Players Committee to award certificates to Illinois' top scholastic players USCF President Harold Winston's report: update on USCF matters, including proposed dues increase, search for new Executive Director, etc. Ken Marshall, ICA Secretary

# 1988 ILLINOIS TOUR

By Bill Smythe

The following ICA Tour events have been held so far in 1988:

MAXI event: TIM JUST WINTER OPEN (Open and Reserve), January  
 mini event: PEORIA WINTER TORNADO, January  
 MAXI event: GREATER PEORIA OPEN (Open and Reserve), April  
 mini event: PEORIA SPRING TORNADO, June  
 mini event: TULEY PARK ACTION MINI-TOUR, June  
 MAXI event: MASTER CHALLENGE X, June

Listed below are players with 5 or more Tour points (3 or more in class D), followed by the number of events if less than 3.

## Master Tour Points:

CHOW Albert	40
BONDARI Cyrus	24 (2)
CHACHERE Lawrence	16 (2)
PELTS Peter	16 (1)
PUKEL Bernard	12
WALLACH Ken	12 (2)
BOLITHO Thomas	10
ECKERT Doug	8 (1)
GAGNON Mark	8 (1)
HEURLING David	8 (1)
KARKLINS Erik	8 (1)
MOULIN Pierre	8 (1)
SCHOLL Paul	8 (2)
SCHROEDER Tony	8 (1)
SURAK Steve	8 (1)
UMEZINWA George	8 (1)
COHEN Lawrence	7.5
BUTKO Nathaniel	7 (2)
GENSLER Kevin	6.5(2)
SATTERLEE Ray Doyle	6.5(2)
ZABELL Sandy	6.5(2)
BEASLEY Leonard	6 (2)
MAZUCHOWSKI Tom	6 (2)
GRAVES William	5.5
VLASTNIK Richard	5.5(2)

## Expert Tour Points:

VAN BUSKIRK Douglas	19 (2)
BOLITHO Thomas	12
PUKEL Bernard	12
SCHOLL Paul	12 (2)
COHEN Lawrence	10
BONDARI Cyrus	8 (2)
CONDON James	8 (1)
FAGAN James	8 (1)
GAGNON Mark	8 (1)
SCHROEDER Tony	8 (1)
SURAK Steve	8 (1)
GRAVES William	7.5
BOLDEN Darren	7 (2)
BUTKO Nathaniel	7 (2)
BUNGARDNER Gerald	6.5(2)
GENSLER Kevin	6.5(2)
SATTERLEE Ray Doyle	6.5(2)
ZABELL Sandy	6.5(2)
ACOSTA Mariano	6 (2)
ANDERSON Phil	6 (2)

BEASLEY Leonard	6 (2)
MAZUCHOWSKI Tom	6 (2)
VLASTNIK Richard	5.5(2)
VERO Carl	5 (2)

## Class A Tour Points:

BOLITHO Thomas	12
COHEN Lawrence	10
PUKEL Bernard	9
FAGAN James	8 (1)
GAGNON Mark	8 (1)
GRAVES William	7.5
BUNGARDNER Gerald	6.5(2)
BEASLEY Leonard	6 (2)
VERO Carl	5 (2)

## Class B Tour Points:

SMITH Colin	16 (1)
BOUTON Barry	11 (2)
GARDNER Keith	10
STOTLER Richard	10 (2)
SPHAR Robert	9.5(2)
BURSE Rodney	8 (1)
CRUM Randy	8 (1)
DENNIS Mike	8 (1)
LEBO Steven	6
BROWN Tony	5.5(2)
BURGESS Fred	5.5(2)
CHLOUPEK Frank	5.5(2)
FATHAUER Terry	5.5(2)
PADILLA Rudy	5.5(2)
ROBINSON Harrison	5.5(2)
STAFFORD Jerry	5.5(2)
KAPTONAK Robert	5 (2)
MEYER William	5 (2)
MOORE Rod	5 (2)

## Class C Tour Points:

SMITH Colin	16 (1)
LEBO Steven	6
PADILLA Rudy	5.5(2)
MOORE Rod	5 (2)

## Class D Tour Points:

PADILLA Rudy	4 (2)
BENNETT Bradley	3 (1)
MADSEN Dave	3 (2)

**REMEMBER: YOU MUST PLAY IN AT LEAST THREE TOUR EVENTS TO BE ELIGIBLE FOR TOUR PRIZES.**

1988 NATIONAL OPEN CRIBSTATES

[Editor's Note: Stories on the 1988 National Open appeared in the March-April and May-June issues of the ICB.]

Table with columns: PLAYER, CT RTMG, POST, RTMG, 1, 2, 3, 4, 5, 6, TOT. It lists 120 players and their performance statistics across various categories.







# ICB READER'S SHOWCASE

"The following game is interesting because I defeated a Master (for the first time!) after literally handing him a pawn in the opening", writes Randy Pals.

**January 30, 1988**  
**Floyd Bolton Memorial**  
**Hammond, IN**

**White: Randy Pals**  
**(1793)**  
**Black: Pete Bereolos**  
**(2309)**

Modern Defense

Annotated by Randy Pals and Albert Chow

- 1 d4 g6
- 2 e4 Bg7
- 3 c3 d6
- 4 Nf3 ...

**RP:** 4 Bc4 is "book".  
 4 ... Nf6  
 5 Bg5(? RP, ... ?? AC)

**RP:** Let me explain. I used to play a system against the Modern with Nc3 followed by Bg5. Recently, I have been looking over the system with 3 c3. Here, I discover a hybrid of the two which fails to protect the e-pawn! I played the move quickly, without realizing what I was really doing.

**AC:** People often blunder when they are in a rush to blitz out the "book" moves they have tried to memorize. There are lots of interesting moves in "the book", but what if you have a different book? What happens when your opponent tries to confuse

you by playing a move not listed as the best? It's important to understand the position on the board in front of you at the present moment. Sometimes discovering the many ideas inside each position takes more than a few seconds, so thinking before you move helps you to avoid mistakes. Because Black's last move threatens the e-pawn, 5.Bd3, 5.Nbd2, and 5.e5 all make sense.

- 5 ... Nxe4
- 6 Bf4 0-0
- 7 Bd3 Nf6

**AC:** Just because Black is winning doesn't mean he has to retreat into defense. Instead 7...d5 gains space in the center while protecting the centralized Knight.

- 8 0-0 c5

**AC:** It's important to create a plan to improve your game even when ahead in material. Since Peter is up a clear pawn against a player rated under 2000 he could be just a bit over confident, or perhaps he is confused by White's crazy gambit. In any case Black's plan over the next few moves only improves White's mobility, thus giving White some compensation. After 8...c5 9.dxc Black must take with his d- pawn, increasing the power of Bf4 to square b8. Other ideas include 8...d5, 8...Bf5, 8...a6, or my favorite 8...b6! followed by ...Bb7, ...Nbd7 and then ...c5!

- 9 dxc5 dxc5
- 10 Qe2 Bg4

**PR:** I am very relaxed, figuring I will just lose another game to a Master--hardly unexpected.

Yet the pawn plus seems to be having a strange effect on Pete--he is playing v-e-r-y s-l-o-w-l-y.

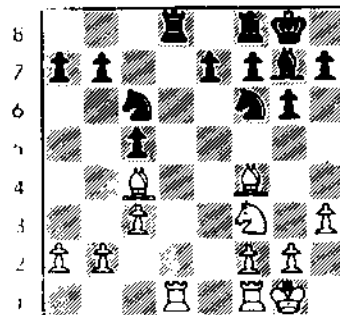
- 11. h3 Bxf3
- 12 Qxf3 ...

**AC:** Now White has something - the bishop pair in an open game. Black will experience technical difficulties.

- 12 ... Nc6
- 13 Nd2 Qd5

**RP:** Pedestrian. 13 ... Qb6 looks better. 13 ... Re8 is also okay.

- 14 Bc4 Qxf3
- 15 Nxf3 Rad8
- 16 Rad1 ...



a b c d e f g h

- 16 ... b6(? RP, ? AC)

**RP:** Actually, Black's 16th and 17th deserve one long "?" ala Mengarini. Now White is beginning to get some compensation.

**AC:** Simplest was 16 ... Rd1! 17 Rd1 Rd8 when Black still stands slightly better. It's often good to exchange when up material, reducing complications.

- 17 Bb5 Na5
- (! RP) (? RP)

**RP:** The lesser evil is 17...Nb8, where the steed covers the weak light squares.

- 18 Rfe1 Nd5
- 19 Bg3 e6

20 Ne5 ...  
**RP:** 20. c4 looked unclear to me at the time. In fact, I'm not so sure Black isn't better after 20.c4 Nb4 21.Bd6 Bxb2! 22.Bxf8 Rxf8 when Black is threatening both Nxa2 and a6. Comments, Al?

**AC:** Yes indeed! This game proves that a point count of the material isn't everything. The value of the initiative is clear.

20 ... f6(? RP)  
 (? AC)

**RP:** Pete had about 3 or 4 minutes left to get to move 30.

21 Bd7(! RP) Rxd7

**AC:** 21...Nc7 doesn't help because of 22.Nc6! Nxc6 23.Bxc7. Except for his very weak fifth move, Pals has played well, with help from Black. Now that it is White who is ahead in material, Pals looks like he is the higher rated as Black never gets counterplay.

22 Nxd7 Rf7  
 23 Nb8 Nc7  
 24 Bxc7 Rxc7  
 25 Rxe6 Kf7  
 26 Re2 f5  
 27 Rd7+ Rxd7  
 28 Nxd7 Nc6

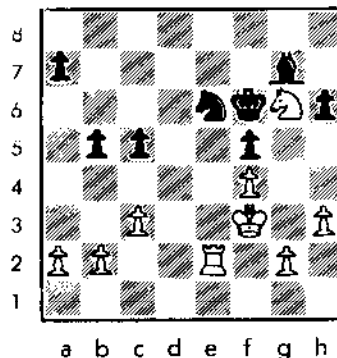
29 f4 h6  
 30 Kf2 Nd8  
 31 Kf3 Ne6(? RP)

**RP:** Curious-the time scramble is over, and yet another mistake. Black now faces an unpleasant choice - and still probably chooses the worst option.

32 Ne5+ Kf6

**AC:** 32...Be5 33 Re5 is better, but in the long run the result should be the same.

33 Nxc6 b5



34 Ne5 b4  
**RP:** Beware the fork.  
 35 Nc6 Kf7  
 36 cxb4 cxb4

37 Rd2 ...

**RP:** Another pawn falls. The rest of the game requires less comment.

37 ... b3  
 38 axb3 a6  
 39 b4 h5  
 40 g3 Bf8  
 41 Rd7+ Ke8  
 42 Ra7 Bd6  
 43 Rxa6 h4  
 44 g4 Kd7  
 45 Ne5+ Ke7  
 46 Nc6+ ...

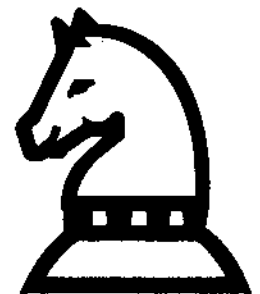
**RP:** I had forgotten that I had already made the second time control.

46 ... Kd7  
 47 gxf5 Nxf4  
 48 Kg4 Ng2  
 49 b5 Ne3+  
 50 Kxh4 Nxf5+  
 51 Kg5 Ng3  
 52 Ra7+ Ke6  
 53 b6 Ne4+  
 54 Kg6 Kd5  
 55 Ne7+ Kc5  
 56 Ra4 Nf2  
 57 Nc8 Be5

**RP:** Finally!!

58 Ra5+ Kd4  
 59 Rxe5 Resigns

**RP:** Though no masterpiece (to be sure), this was a game I will nonetheless never forget.



THIS IS YOUR INVITATION

TO VISIT CHICAGO'S GREAT NEW CHESS CLUB

**CHICAGO CHESS MATES**

1261 W. LOYOLA ★ PHONE 262-9100

						Score:	Tour:
1 BONDARI Cyrus	2217	W18	W 5	W 7	W 3	4	16 M
2 SHOLL Paul	2012	W15	D13	W17	W 7	3.5	8 M, X
3 BOLITHO Thomas	1845	W20	W 8	W 4	L 1	3	4 M, X, A
4 HALL John	1825	W14	W10	L 3	W 8	3	4 M, X, A
5 STAFFORD Jerry	1692	D 6	L 1	W11	W 9	2.5	2.5M, X, A, B
6 KING Robert	-	D 5	L 7	W16	W14	2.5	
7 BLAIR Charles	1843	W19	W 6	L 1	L 2	2	2 M, X, A
8 LERO Steven	1594	W12	L 3	W10	L 4	2	2 M, X, A, B, C
9 ZEVNIK Larry	1390	W17	L16	W12	L 5	2	2 M, X, A, B, C, D
10 POKORSKI Jeff	-	W16	L 4	L 8	W19	2	
11 DOND Gail	1341	L13	W15	L 5	W18	2	2 M, X, A, B, C, D
12 MARFIELD Thomas	-	L 8	W20	L 9	W16	2	
13 SPHAR Robert	1702	W11	D 2	-	-	1.5	1.5M, X, A, B
14 POMELL Frank	1417	L 4	D18	W20	L 4	1.5	1.5M, X, A, B, C
15 SUAREZ Ronald	1549	L 2	L11	D18	W20	1.5	1.5M, X, A, B, C
16 GARDNER Keith	1610	L10	W 9	L 6	L12	1	1 M, X, A, B
17 WHEELER Stephan	1747	L 9	W19	L 2	-	1	1 M, X, A, B
18 ANDERSON Darrin	1570	L 1	D14	D15	L11	1	1 M, X, A, B, C
19 MADSEN Dave	1430	L 7	L17	Wbye	L10	1	1 M, X, A, B, C
20 GOLDENSOPH Alan	1430	L 3	L12	L14	L15	0	

ILLINOIS VALLEY QUADS

LA SALLE

05/21/88

ILLINOIS VALLEY QUADS LASALLE 03/19/88

PLAYER	ST	RTNG	PRE	POST	RTNG	1	2	3	TOT
1 VLASTNIK, RICHARD	IL	2106	2101	W-4	D-2	D-3			2.0
2 ULTCH, DOUGLAS A	IL	1966	1983	D-3	D-1	W-4			2.0
3 STEELE, ROBERT B	IL	1964	1981	D-2	W-4	D-1			2.0
4 WHALEN, T. SEAN	IL	1854	1826	L-1	L-3	L-2			.0
1 BORRI, CRAIG	IL	1851	1877	W-4	W-2	W-3			3.0
2 TAYLOR, MICHAEL L	IL	1677	1700	W-3	L-1	W-4			2.0
3 SPHAR, ROBERT L	IL	1738	1719	L-2	W-4	L-1			1.0
4 KALEEL, DAVID M	IL	1683/12	1617	L-1	L-3	L-2			.0
1 WALSH, DONALD R	IL	1501	1544	W-3	W-4	D-2			2.5
2 SCHLENKER, CHARLES	IL	1649	1650	L-4	W-3	D-1			1.5
3 SIMMONS, RONALD W	IL	1684/16	1639	L-1	L-2	W-4			1.0
4 EIHUSEN, LAUREL M	IL	1403/14	1434	W-2	L-1	L-3			1.0
1 SUAREZ, RONALD J	IL	1449/B	1549	W-2	W-4	W-3			3.0
2 STEFFA, RACHEL	IL	1457	1480	L-1	W-3	W-4			2.0
3 HUDSON, ALAN	IL	0	1446	W-4	L-2	L-1			1.0
4 ADAMS, CLIFFORD A	IL	1464	1422	L-3	L-1	L-2			.0
1 ANDERSON, DARRIN M	IL	0	1570	W-2	W-4	W-3			3.0
2 MILLER, EARL	IL	1223	1245	L-1	W-3	W-4			2.0
3 MITCHELL, BYRON	IL	1288	1269	W-4	L-2	L-1			1.0
4 CALHOUN, PAUL	IL	0	960	L-3	L-1	L-2			.0
1 FRIBERG, CHRIS J.	IL	1378/4	1441	W-3	W-4	W-2			3.0
2 EIHUSEN, KENNY R	IL	1240/6	1271	W-4	W-3	L-1			2.0
3 GLADD, PAUL	IL	0	1139	L-1	L-2	W-4			1.0
4 DEFENBAUGH, PAUL C	IL	1030/12	1004	L-2	L-1	L-3			.0

PLAYER	ST	RTNG	PRE	POST	RTNG	1	2	3	4	TOT
1 VLASTNIK, RICHARD	IL	2101	2123	* W	W	W				3.0
2 ULTCH, DOUGLAS A	IL	1983	1983	L	*	D	W			1.5
3 STEELE, ROBERT B	IL	1981	1966	L	D	*	D			1.0
4 ILOSVAY, PAUL J	IL	1889	1875	L	L	D	*			.5
1 DECMAN, STEPHEN J	IL	1903	1930	* W	D	W				2.5
2 BORRI, CRAIG	IL	1877	1877	L	*	D	W			1.5
3 JOHNSON, BRUCE L	IL	1900	1880	D	D	*	L			1.0
4 WHALEN, T. SEAN	IL	1826	1819	L	L	W	*			1.0
1 SCHLENKER, CHARLES	IL	1650	1681	* W	D	W				2.5
2 TAYLOR, MICHAEL L	IL	1798	1790	L	*	W	W			2.0
3 SIMMONS, RONALD W	IL	1673	1668	D	L	*	W			1.5
4 ANDERSON, DARRIN M	IL	1570/3	1439	L	L	L	*			.0
1 FINLEY, DONALD F	IL	0	1839	* W	B	D				2.5
2 KALEEL, DAVID M	IL	1617/15	1640	L	*	W	W			2.0
3 SUAREZ, RONALD J	IL	1549/11	1563	U	L	*	W			1.0
4 CARR, ANDREW	IL	1528	1517	D	L	L	*			.5
1 BABINSKI, CHUCK	IL	1600	1612	* W	W	W				3.0
2 FERRONI, GEORGE D	IL	1308	1327	L	*	W	W			2.0
3 SCHALLBERG, SCOTT	IL	1359	1338	L	L	*	W			1.0
4 CAIN, STEVE	IL	0	1022	L	L	L	*			.0
1 KING, JR ROBERT L	IL	1740/6	1729	W-5	W-3	D-2				2.
2 JACKSON, ALFRED	IL	1180/3	1418	W-4	W-5	D-1				2.
3 MILLER, EARL	IL	1242	1268	W-6	W-4					2.
4 ANDERSON, WILLIAM	IL	1369	1346	L-2	W-6	L-3				1.
5 DEFENBAUGH, PAUL C	IL	1004/15	1056	L-1	L-2	W-6				1.
6 ANDERSON, MARK D	IL	1187/4	1041	L-3	L-4	L-5				.5

Tuley Park Action Mini-Tour

June 18, 1988

						Score:	Tour:
1 CONDRON James	2074	W14	W13	W12	D 4	3.5	8 X
2 FAGAN James	1884	W27	D 4	W13	W 7	3.5	8 X, A
3 BOLDEN Darren	2111	W10	W 8	D 7	D 4	3	4 X
4 YU Henry	1991	W21	D 2	W18	D 3	3	4 X, A
5 BAUGH Christopher	1801	W20	W18	L 6	W12	3	4 X, A
6 ACOSTA Mariano	2191	Dbye	W11	W 5	D 1	3	4 X
7 COHEN Lawrence	1968	W22	W19	D 3	L 2	2.5	2.5X, A
8 ADKINS Keith	1904	W26	L 3	W14	D 9	2.5	2.5X, A
9 PESIC Radovan	1702	W16	L12	W21	D 8	2.5	2.5X, A, B
10 CLARK Lawrence	1682	L 3	D26	W22	W15	2.5	2.5X, A, B
11 PEACOCK John	1628	Dbye	L 4	W20	W18	2.5	2.5X, A, B
12 DOTSON John	1975	W15	W 9	L 1	L 5	2	2 X, A
13 GRAVES William	1929	W24	L 1	L 2	W22	2	2 X, A
14 LESTER Michael	1537	L 1	W24	L 8	W20	2	2 X, A, B, C
15 MICHALIK Philip	1474	L12	W16	W	L10	2	2 X, A, B, C
16 COBB Carmel	-	L 9	L15	W27	W21	2	
17 MAC PHERSON James	951	L19	L22	W24	W23	2	2 X, A, B, C, D
18 SMYTHE Bill	2051	W23	L 5	L 4	L11	1	1 X
19 BUTLER Herb	1703	W17	L 7	LF	-	1	1 X, A, B
20 SONG Patrick	1124	L 5	W23	L11	L14	1	1 X, A, B, C, D
21 FENNER Charles	1514	L 4	W27	L 9	L16	1	1 X, A, B, C
22 REIDELBACH John	1445	L 7	W17	L10	L13	1	1 X, A, B, C
23 WEAVER Ron	1523	L18	L20	W26	L17	1	1 X, A, B, C
24 ZACATE Michael	1416	L13	L14	L17	W24	1	1 X, A, B, C
25 JOHNSON Marvin	1829	-	-	-	W27	1	1 X, A
26 FRANKLIN Charles	1300	L 8	D10	L23	L24	0.5	0.5X, A, B, C, D
27 THOMAS David	1264	L 2	L21	L16	L25	0	

# TOURNAMENT CROSSTABLES

MT. VERNON "HOLIDAY INN" SWISS

FEBRUARY 14, 1988

7TH SOUTHERN ILLINOIS WINTER OPEN  
MOUNT VERNON -- MARCH 13, 1988

RANK	ID NUMBER	PLAYER	ST	RATING	RD1	RD2	RD3	PRE				POST						
								ST	RTNG	RTNG	1	2	3	TOT				
1	10362318	RILEY M. SHEFFIELD	MO	2040	W22	W11	W 7	3.0										
2	10358493	John D. Tonkinson	IL	1788	D15	W18	W12	2.5	1	DAVIES, JAMES A	MO	2186	2202	W11	W-8	W-9	3.0	
3	12157210	Carl A. Purcell	IL	1777	W25	W13	D10	2.5	2	BOCK, MAURICE R	MO	2047	2060	W21	W10	W-7	3.0	
4	12405270	Pascal Bercker	MO	1759	W 9	W19	D 6	2.5	3	CROWDER, M SCOTT	MO	2122	2118	W16	D-4	W12	2.5	
5	12447749	William Steevens	MO	1717	W18	W15	D13	2.5	4	PURCELL, CARL A	IL	1784	1816	W20	D-3	W13	2.5	
6	10360595	Jerry L. Schwalm	IL	1901	BY	W20	D 4	2.0	5	BATTISTONI, MARTY	IL	1933	1917	L13	W24	W18	2.0	
7	12314110	Dennis E. Humphries	IL	1795	W14	W 8	L 1	2.0	6	SCHWALM, JERRY L	IL	1914	1904	W17	L-7	W19	2.0	
8	10359783	William L. Meyer	IL	1671	W23	L 7	W19	2.0	7	ZAFRIN, VLADIMIR	MO	1900	1913	W22	W-6	L-2	2.0	
9	12395400	Johnny M. Dalton	IL	1340	L 4	W23	W16	2.0	8	LOVEN, DALLAS	IL	1793	1798	W19	L-1	W20	2.0	
10	RECEIPT	Vladimir Zafrin	MO	UNR	D12	W22	D 3	2.0	9	SZEWCIK, EDWARD J	IL	1725/15	1770	W23	W15	L-1	2.0	
11	12438499	William Christensen	IL	1732	W17	L 1	D14	1.5	10	HOOVER, A GRAYDON	IL	1572	1589	W14	L-2	W21	2.0	
12	12496729	Terry L. Fathauer	IL	1671	D10	W24	L 2	1.5	11	DEVILBISS, ROSS M	IL	0	2052	L-1	W17	W15	2.0	
13	12450160	Steven Walker	MO	1567	W21	L 3	D 5	1.5	12	TONKINSON, JOHN D	IL	1842	1839	W24	D13	L-3	1.5	
14	12399201	Loren E. Reeves	IL	1486	L 7	W21	D11	1.5	13	SCOTT, RICHARD J	MO	1488	1526	W-5	D12	L-4	1.5	
15	12283960	Franklin W. Lay	IL	1404	D 2	L 5	W20	1.5	14	RIGEL, MARK J	MO	1408	1425	L10	D21	W22	1.5	
16	12423780	Henry G. Ives	IL	1710	L20	W25	L 9	1.0	15	SHEFFIELD, RILEY M	MO	2075	2040	W18	L-9	L11	1.0	
17	12474949	Earl Miller	IL	1255	L11	1B Y	NP	1.0	16	REEVES, LOREN	IL	1512	1494	L-3	L20	W24	1.0	
18	12480760	Howard T. Ritter	IL	1200	L 5	L 2	W24	1.0	17	LAY, FRANKLIN W	IL	1497	1502	L-6	L11	W23	1.0	
19	12450313	Jeff Maurice	IL	1047	1B Y	L 4	L 8	1.0	18	VOSS, KIM A	IL	1462	1469	L15	W23	L-5	1.0	
20	12499318	Laurel H. Eihusen	IL	UNR	W16	L 6	L15	1.0	19	BENSON, HARRY K	IL	1358/7	1444	L-6	W22	L-6	1.0	
21	Receipt	Kenny R. Eihusen	IL	UNR	L13	L14	W25	1.0	20	HILL, FARREL E	IL	1204	1229	L-4	W16	L-8	1.0	
22	12406632	Harshad Parmar	IL	1544	L 1	L10	D23	0.5	21	LANGIN, CHESTER	IL	1437	1425	L-2	D14	L10	.5	
23	Receipt	Mark Rigel	MO	UNR	L 8	L 9	D22	0.5	22	WALKER, STEVEN M	MO	1630	1581	L-7	L19	L14	.0	
24	12466575	Jaclyn J. Schwalm	IL	1255	BY	L12	L18	0.5	23	JUN, ERIC	MO	1437/4	1360	L-9	L18	L17	.0	
25	12471319	Farrel E. Hill	IL	1263	L 3	L16	L21	.0	24	HAMILTON, TOM J	IL	1387	1373	L12	L-5	L16	.0	

## 6TH SOUTHERN ILLINOIS "ALMOST SPRING" OPEN ALTON -- APRIL 10, 1988

ALTON CONNECTION OPEN #10  
MAY 15, 1988

RANK	PLAYER	ST	RATING	RD1	RD2	RD3	POINTS	PRE				POST					
								ST	RTNG	RTNG	1	2	3	TOT			
1	DROZKOWSKI, RAYMON	MO	2083	2098	W14	W-9	W-8	3.0									
2	SHEFFIELD, RILEY M	MO	2040	2057	W23	W19	W13	3.0									
3	BOCK, MAURICE R	MO	2058	2059	W24	W18	D-4	2.5									
4	FRENCH, J. KEVIN	IL	1907	1934	W29	W-5	D-3	2.5									
5	DEVILBISS, ROSS M	IL	2052/3	1962	W21	L-4	W25	2.0									
6	ZAFRIN, VLADIMIR	MO	1911	1910	W17	D12	D11	2.0									
7	OTTERSBAACH, JAMES	MO	1900	1892	W30	D11	D12	2.0									
8	FRANEK, MARTIN J	IL	1893	1898	W20	W10	L-1	2.0									
9	PURCELL, CARL A	IL	1816	1816	W31	L-1	W26	2.0									
10	FATHAUER, TERRY L	IL	1713	1733	W15	L-8	W23	2.0									
11	WALKER, STEVEN M	MO	1581	1608	W28	D-7	D-6	2.0									
12	WALKER, JOHN	IL	1578	1615	W22	D-6	D-7	2.0									
13	BROWN, DENNIS L	MO	1577	1610	W27	W16	L-2	2.0									
14	DYESS, DAVE C	MO	1558	1570	L-1	W31	W28	2.0									
15	RITTER, HOWARD T	IL	1426	1472	L10	W20	W19	2.0									
16	ODAK, WALDO	MO	1907	1892	W26	L13	U--	1.0									
17	PURCELL, CARL A	IL	1816	1784	L-6	L22	W21	1.0									
18	TONKINSON, JOHN D	IL	1801	1799	W25	L-3	U--	1.0									
19	MEYER, WILLIAM L	IL	1760	1743	W32	L-2	L15	1.0									
20	REEVES, LOREN	IL	1597	1593	L-8	L15	W31	1.0									
21	RIGEL, JOSEPH R	MO	1526/6	1551	L-5	W29	L17	1.0									
22	RIGEL, MARK J	MO	1519	1527	L12	W17	L24	1.0									
23	REGNA, PAUL D	MO	1506	1503	L-2	W32	L10	1.0									
24	BLAIR, JOHN D	MO	1493	1490	L-3	L25	W22	1.0									
25	EIHUSEN, LAUREL H	IL	1434	1448	L18	W24	L-5	1.0									
26	SCHMIDT, ROGER C	IL	1397	1407	L16	W27	L-9	1.0									
27	EIHUSEN, KENNY R	IL	1271/9	1320	L13	L26	W30	1.0									
28	REED, DALE	CO	1228	1247	L11	W30	L14	1.0									
29	MURRAY, JIM	IL	0	1442	L-4	L21	W32	1.0									
30	SCOTT, RICHARD J	MO	1503	1451	L-7	L28	L27	.0									
31	BENSON, HARRY K	IL	1444/10	1401	L-9	L14	L20	.0									
32	HILL, FARREL E	IL	1229	1215	L19	L23	L29	.0									

"BLITZ" TOURNEY (NON-RATED)

1	JULIO SANTIAGO	MO	2137	W 4	W 2	W 3	3.0
2	J. KEVIN FRENCH	IL	1937	W 5	L 1	W 6	2.0
3	VLADIMIR ZAFRIN	MO	1910	W 6	W 4	L 1	2.0
4	WALDO ODAK	MO	1892	L 1	L 3	W 5	1.0
5	MARK J. RIGEL	MO	1527	L 2	W 6	L 4	1.0
6	ROBERT W. ZIMMERLE	IL	1639	L 3	L 5	L 2	.0

## THE ILLINOIS VALLEY CHESS CLUB

By Ken Marshall

In late 1986, organized chess activity in the LaSalle-Peru vicinity (about 100 miles southwest of Chicago) was confined to the LaSalle-Peru High School Chess Club, which English teacher Byron Pappas served as faculty advisor. According to Pappas, the 25 or so adult area residents who belonged to the United States Chess Federation knew each other, but

did not meet or play chess on a regular basis. Then Bill Naff, ICA Downstate Vice President, suggested the formation of a local chess club. "Bill pointed out that, besides attracting local players, a club might draw members from Rockford, Bloomington, and Kankakee, all about 60 miles away", said Pappas. "I decided to contact the players I knew to see if they were interested in organized chess activity". Shortly thereafter Pappas founded the Illinois Valley Chess Club.

"Nineteen people joined the Club initially. Fred Gruenberg donated some money which was used to buy chess sets and boards", Pappas stated. "Our first Saturday tournament in early 1987 had 45 entrants. Three other 1987 events each drew between 20 and 30 players". The IVCC affiliated with the ICA, and several of its tournaments have

been Illinois Mini-Tour events. Tournament regulars include IVCC members Richard Vlastnik, Doug Ultch, Craig Borri, Robert and David Steele, Ronald Simmons, George Feroni, and Charles Schlenker.

Pappas noted that, although most IVCC members are from the LaSalle-Peru area, the

Club's tournaments have had players from Chicago and its suburbs, as well as from Bloomington, Decatur, Peoria, and Rock Island. "We do seem to be about 60 miles from everywhere", he laughed. This central location was a key factor in the IVCC's decision to ask that the 1988 Illinois Open be held in Peru. "We are within reasonable driving distance of the Chicago area, and we

also hope to draw those downstate players who generally do not travel to Chicago to play chess", Pappas said.

For more information on the Illinois Valley Chess Club, which meets Thursday nights from 6 p.m. to 10 p.m. at the Grace United Methodist Church, 1345 Chartres St., LaSalle, contact Byron Pappas at 432 Creve Coeur, LaSalle, Ill. 61301, or call him at (815) 224-2869.



Illinois Valley Chess Club Founder Byron Pappas

**CHESS PHONE:  
(312) 325-3666**



**DOWNSTATE  
CHESS PHONE:  
(309) 655-0618**

**ILLINOIS TOURNAMENT CALENDAR  
(CONTINUED)**

- Oct. 1: Lake Count Open XI, at the College of Lake County in Grayslake. Dennis Grant: 336-5188.
- Oct. 1, 2: Get-Acquainted Month, 1 day events, at the Chicago Chess Center. Jules Stein: 929-7010.
- Oct. 8,9: For the Penny-Pinching Pawn Pusher, 1 day events, at the Chicago Chess Center. Jules Stein: 929-7010.
- Oct. 9: Southern Illinois Class Championships in Mt. Vernon. John Tonkinson: (618) 462-5732.
- Oct. 9-10: Park Forest Open at Freedom Hall, Orchard & Lakewood in Park Forest. Larry Cohen: 748-5911.
- Oct. 18: World Blitz Chess Association Qualifying Tournament for Closed Championship, at the Mohr Community Center in Forest Park. Ken Marshall: 932-1455.
- Oct. 22: Action on the Mall, Randall Rd. and Rte. 38, in St. Charles. Ery Sedlock: 377-7995.
- Oct. 22: Scholastic Events, at Proviso West High School in Hillside. Larry Stilwell: 963-6799.
- Oct. 22: '88 Tuley Park Amateur Action Swiss, at 501 E. 90th Pl., Chicago. Thomas Fineberg: 721-3979.
- Oct. 28-30, Nov. 5-6: Midwest/Illinois Tournament of Champions III, 10 player round robin invitational, at the Hyatt-Lincolnwood. Spectators invited. Helen Warren: 246-6665.
- Oct. 29: Oak Park-Forest Park Autumn Action, at the Mohr Community Center, in Forest Park. Ken Marshall: 932-1455.

**HELP SUPPORT ILLINOIS CHESS BY  
BECOMING AN ICA BENEFACTOR:**

CENTURY MEMBER \$100;  
GOLD CARD \$50; PATRON \$25.  
Please mail your contribution to:  
Illinois Chess Association  
Guy Gruenberg  
P.O. Box 353  
Olympia Fields, IL 60461

**PATRON MEMBERS  
(CONTINUED)**

James McNamara	Riverside, IL
Eugene Martinovsky	Oak Brook, IL
Piatek Mieczyslaw	Chicago, IL
Patrick Moran	Wilmette, IL
Bill Naff	Peoria
Wayne Palmquist	Oak Lawn, IL
Peter Pelts	Chicago, IL
Daniel Pradt	Glen Ellyn, IL
Tim Redman	Lima, OH
Harrison Robinson	Chicago, IL
Ray Satterlee	Wheaton, IL
Vivian Schmucker	Goshen, IN
Mark Sefcheck	Naperville, IL
Tony Sillars	Chicago, IL
Arthur Sinclair	Evanston, IL
Richard Smiley	Chicago, IL
David Sprengle	Knoxville, TN
Miomir Stevanovic	Lincolnwood, IL
David Taylor	Kankakee, IL
William Terbell	Glen Ellyn, IL
Don Townsend	Chicago, IL
John Tums	Oak Park, IL
Jim Warren	Western Springs, IL
Bill Wenz	Milwaukee, WI
Douglas White	Schaumburg,, IL
Harold Winston	Naperville, IL
Marvin Winston	Old Bridge, NJ
Sandy Zabell	Chicago, IL
Max Zavanelli	Park Ridge, IL

---

**TOURNAMENT CLEARINGHOUSE  
MATERIAL**

**Please send all Chicago metropolitan area  
Tournament Clearinghouse material to:**

**Harold Winston,  
46 Robin Hill Dr.  
Naperville, IL 60540  
(312) 717-1044.**

**Please send Downstate Tournament  
Clearinghouse material to:**

**Bill Naff  
212 W. Vail Ct.  
Peoria, IL 61614  
(309) 691-46524**

**CENTURY CLUB MEMBERS**

Michael Belovesick	Elmhurst, IL
Fred Cramer	Mequon, WI
Tom Fineberg	Chicago, IL
Fred Gruenberg	Chicago, IL
Marc Lonoff	Northbrook, IL
Albert Sandrin	Chicago, IL
Angelo Sandrin	Chicago, IL
Bill Smythe	Chicago, IL
Burton Vincent	Chicago, IL

**GOLD CARD MEMBERS**

Bill Buttny	Downers Grove, IL
John Deutsch	Chicago, IL
Harland Hoisington	Ogden, UT
Ed Marshall	South Barrington, IL
Michael Pratts	Chicago, IL
Irwin Rothschild	Park Forest, IL
Mitchel Sweig	Evanston, IL
Richard Verber	Chicago, IL
Louis Werner	Evanston, IL

**PATRON MEMBERS**

Bob Ash	Urbana, IL
Todd Barre	Clarendon Hills, IL
John Barstad, Sr.	Carol Stream, IL
Roy Benedek	Western Springs, IL
Timothy Bogan	Chicago, IL
Bill Brock	Chicago, IL
Tyrone Brooks	Chicago, IL
Jim Brotsos	Chicago, IL
Sam Caldwell	Chicago, IL
Lynn Crewse	Arlington Heights, IL
David Cromer	Iowa City, IA
Leroy Dubeck	Cherry Hill, NJ
Keith Esses	Chicago, IL
Gerard Garino	Evanston, IL
Jon Gotz	West Chicago, IL
Donald Graft	Wheaton, IL
William Graves	Chicago, IL
Guy Gruenberg	Matteson, IL
Walter Henry	Naperville, IL
Charles Hicks	Naperville, IL
Jeffery Hyland	Mount Prospect, IL
Robert Irons	Chicago, IL
Tim Just	Waukegan, IL
Dan Kamen	Wheeling, IL
Leo Kaushansky	Chicago, IL
Thomas Knoedler	Springfield, IL
Walter Kocjan	Northlake, IL
John Krom	Chicago, IL
Eugene Lopez	Elk Grove, IL
Alan Losoff	Morton Grove, IL
Kenneth Marshall	Lombard, IL

**ICA ELECTED OFFICERS:**

Tim Just, President  
1521 Circle Ct., Waukegan, IL 60085

Harold Winston, Metro Vice-President  
46 Robin Hill Dr., Naperville, IL 60540

Bill Naff, Downstate Vice-President  
212 W. Vail Ct., Peoria, IL 61614

Ken Marshall, Secretary  
357 W. Grove, Lombard, IL 60148

Guy Gruenberg, Treasurer  
P.O. Box 353, Olympia Fields, IL 60461

**USCF DELEGATES****by virtue of their USCF posts:**

Harold Winston, President  
Todd Barre, Regional Vice-President  
Tim Just, Regional Vice-President  
Frank Skoff, Past President  
Helen Warren, Delegate at Large  
and Life Voting Member

**ICA APPOINTED USCF DELEGATES:**

Tim Just	Ken Marshall
Fred Gruenberg	Richard Verber
Tom Fineberg	

**ICA APPOINTED USCF VOTING MEMBERS:**

Bill Naff	Larry Stilwell
Bill Smythe	Bob Bain
Walter Brown	Mike Zacate
Erv Sedlock	Tom Knoedler
Dennis Grant	Barry Fisher
Wayne Palmquist	

**ICA APPOINTED USCF****ALTERNATE VOTING MEMBERS:**

Guy Gruenberg	Jim Condron
Chris Musgrave	Jim Brotsos
Eric Schiller	John Tonkinson
Alan Losoff	Al Chow
John Bardstadt, Sr.	Burton Vincent
Bill Wilkinson	Mike Belovesick, Sr.
Angelo Sandrin	Dan Kamen
Byron Pappas	Larry Goch
Kevin Bachler	Philip Wong
Glen Panner	

## ILLINOIS TOURNAMENT CALENDAR

Call Chess Phone, (312) 325-3666, for all recorded tournament announcements and results, often more up-to-date than CHESS LIFE or the ICB. The ICA Chess Phone voice is Todd Barre.

Unless otherwise noted, all tournaments require USCF memberships. Illinois Tour events also require ICA membership. Phone numbers are area code 312 unless a different area code is listed. Announcements of ICA affiliates receive more space in the Tournament Calendar than do those of non-affiliates.

Sep. 3,4: Who is the Highest Rated Player?, 1 day events, at the Chicago Chess Center. Jules Stein: 929-7010.

Sep. 3-5: Illinois Open & State Championship, at Holiday Inn, Peru. AN ICA ILLINOIS MAXI-TOUR EVENT. Tim Just: 244-7954. SEE TWO PAGE AD IN THIS ICB.

Sep. 10: Chicago Saturday Booksale & Tornado II, at the Chicago Chess Mates. Richard Verber: 262-9100 after 3 p.m.

Sep. 10,11: Once Upawn a Knight, 1 day events, at the Chicago Chess Center. Jules Stein: 929-7010.

Sep. 11: Chicago Sunday Adult's Tornado, at the Chicago Chess Mates. Richard Verber: 262-9100 after 3 p.m.

Sep. 11: Chicago Sunday Scholastic Tornado, at the Chicago Chess Mates. Richard Verber: 262-9100 after 3 p.m.

Sep. 17-18: Chicago Masters & Experts, at the Chicago Chess Mates. Richard Verber: 262-9100 after 3 p.m.

Sep. 17,18: Stalemate Social, 1 day events, at the Chicago Chess Center. Jules Stein: 929-7010.

Sep.18: 6th Southern Illinois Open and Reserve, at the Ramada Inn in Alton. John Tonkinson: (618) 462-5732.

Sep. 24: Forest City Open, at Rockford College/Burpee Center in Rockford. Gary Sargent: 2764 Panorama Dr., Rockford, IL 61109.

Sept. 24: Harvest of Pawns 1988, at the Washington Park Pavilion, in West Springfield. Thomas Knoedler: (217) 523-7265 after 6 p.m.

Sep. 24: Tuley Park Action Cheapo, at 501 E. 90th Pl., Chicago. Thomas Fineberg: 721-3979.

Sep. 24-25: Fox Valley Open, at Kane County Extension Services Bldg. in St. Charles. Ery Sedlock: 377-7995.

Sep. 24, 25: For the Penny-Pinching Pawn Pusher, 1 day events, at the Chicago Chess Center. Jules Stein: 929-7010.

Sep. 27, Oct. 4, 11, 18, 15: Chicago Tuesday Evening Swiss II: at the Chicago Chess Mates. Richard Verber: 262-9100 after 3 p.m.

Oct. 1: Peoria Novice/Tornado, at the Garrett Center, in Peoria. Bill Wilkinson: (309) 673-9455.

(Continued on Page 28)

ILLINOIS CHESS BULLETIN  
357 W. GROVE  
LOMBARD, ILLINOIS 60148

Speedy Delivery Appreciated