

ILLINOIS CHESS BULLETIN

Official Publication of the Illinois Chess Association a U.S.C.F. Affiliate
A Not For Profit Organization

MAY - JUNE, 1988

VOLUME X1, NO. 3

BI-MONTHLY

\$2.00



MASTER CHALLENGE
IS TEN YEARS OLD



ILLINOIS CHESS BULLETIN

EDITOR:**KEN MARSHALL**

357 W. Grove

Lombard, Illinois 60148

(312) 932-1455

TECHNICAL EDITOR:**MARY GAITHER MARSHALL****ASST. TECHNICAL EDITOR:****ALAN LOSOFF****GAMES EDITOR:****AL CHOW****SUBSCRIPTIONS:**

The Illinois Chess Bulletin (ICB) is published bimonthly by the Illinois Chess Association. ICA membership includes a subscription to the ICB. (Century, Gold, and Patron members receive their ICB by first-class mail).

ANNUAL MEMBERSHIP RATES:

Century Club:	\$100.00
Gold Card:	50.00
Patron:	25.00
Regular:	10.00
Junior (under 18):	6.00

Subscriptions, Address Changes, and Corrections should be sent to:

Illinois Chess Association
P.O. Box 267847
Chicago, IL 60626-7847

SUBMISSIONS:

Submit articles, photographs, crosstables, games, and other publishable materials to the Editor.

Publication deadline for the next issue is July 15, 1988.

ADVERTISING RATES:

Full page	\$60
Full page (back cover)	\$80
Half page	\$36
Quarter page	\$21

10% discount for the same ad in consecutive issues. 1/3 discount for ICA affiliates. All advertising must be camera ready to qualify for

TABLE OF CONTENTS

FROM THE EDITOR'S DESK	1
WHERE TO PLAY CHESS / CLUB AFFILIATES	2
PRESIDENTIAL PONDERINGS	3
LETTERS TO THE EDITOR	4
WHAT'S NEW	6
NATIONAL OPEN & AN EVENING WITH TAL	7
TOURNAMENT CROSSTABLES	14
MARTINOVSKY ANNOTATES	15
HIGH SCHOOL CHESS	16
MIDWEST MASTERS	20
MASTER CHESS: AN ORGANIZER'S VIEW	22
THE CLUB SCENE	23

these rates. The ICA and the ICB reserve the right to reject advertising.

ICA AFFILIATION: Chess clubs and other organizations which promote chess activity may affiliate with ICA. Affiliate benefits include a copy of each ICB by first-class mail, a listing (if desired) under "Where to Play Chess" in each issue, discounted ICB advertising rates, three-line tournament announcements in the "Tournament Calendar", and the right to run ICA Tour events. ICA affiliation costs \$15; please remit to address shown under "Annual Membership Rates". Include your club meeting times, name of contact person, and other useful information in the format shown in "Where to Play Chess" on page 2.

CHESS PHONE
(312) 325-3666

DOWNSTATE CHESS PHONE
(309) 655-0618

From the Editor's Desk

This year marks the tenth anniversary of the Oak Park - Forest Park Chess Club's Master Challenge event, the biggest club-sponsored annual tournament in the Chicago area. The 1988 version - Master Challenge X - is scheduled for June 24 - 26 at the Mohr Community Center in Forest Park, and features a guaranteed prize fund of \$3,000. Conceived by OP-FP CC co-founder Chris Musgrave as a means for the lower rated player to "challenge" his master and expert compatriots, Master Challenge has in the past attracted the likes of Grandmasters Art Bisguier and Andy Soltis as well as the strongest players in Illinois, and has averaged about 125 players per year.

Master Challenge is a "true" open tournament - there is no reserve section. Any entrant therefore may be paired with anyone else, making Master Challenge the largest local event in which a Class B or C player may find himself facing an opponent rated over 2000. (The chess lesson the lower rated player usually gets in such a situation may itself be worth the tournament's entry fee!)

As ICB editor, I want to see all Illinois tournaments succeed. As Illinois Chess Association secretary, I like to see ICA Illinois Tour events (Master Challenge is once again a Maxi-Tour tournament) do well. As OP-FP CC president, I have a special interest in the continued success of the Master Challenge series. I therefore hope that the Illinois chess community will continue to provide strong support for what has long been one of the Chicago area's top yearly chess events.

The next ICA membership meeting will take place at noon on Sunday, July 10, 1988, at the Mohr Community Center in Forest Park. All ICA members are invited to attend. Among the topics to be discussed are the 1988 Illinois Open (set for September 3 - 5 in Peru) and the 1989 U.S. Open (scheduled for August 5 - 13, 1989 at the Exposition Center of the Hyatt Regency O'Hare).

The Illinois Chess League captains' meeting also will be held on July 10, 1988, at 2 p.m. at the Hillside Baptist Church. Because the meeting sites are less than a 15 minute drive from each other, interested parties should be

able to attend both the ICA and the ICL events.

The Chicago area Chess Phone number has changed; the new number is (312) 325-3666. The downstate (Peoria area) Chess Phone number remains (309) 655-0618.

Starting with the July - August issue (which I hope to bring out by early August), minutes of ICA membership meetings will be published in the ICB. In the meantime, typed copies of the minutes of the June and October 1987 and February 1988 meetings are available from the ICA secretary on request.

At its May, 1988 meeting, the United States Chess Federation's Policy Board decided that Richard Verber would no longer be the chief organizer of the 1989 U.S. Open. In light of this action, the ICA has formed a 1989 U.S. Open Committee, with ICA Treasurer Guy Gruenberg as Interim Chairman, to explore other possibilities for organizing the tournament and keeping it in Chicago.

I had intended to include both a "Reader's Showcase" game and an Illinois Tour page in this ICB. As of June 6, however, Games Editor Al Chow had not submitted the "Showcase" contest he was annotating, and Tour Director Bill Smythe had submitted no new material. (Because there apparently were no Tour events scheduled between early March and early June, however, the Tour standings published in the March - April ICB will not have changed.)

Next issue (hopefully): More Midwest Masters games, an editorial on the controversy over whether "Action Chess" should be separately rated, "Reader's Showcase", updated Illinois Tour information, an article (finally) on the Illinois Valley Chess Club, a story on 1987 Illinois Tour winner Cyrus Bondari, National Open cross tables, tournament reports, and more.



WHERE TO PLAY CHESS: ICA CLUB AFFILIATES



AMERICAN POSTAL CHESS

TOURNAMENTS sponsors postal events of various kinds, and sells chess books and equipment. Contact Jim or Helen Warren, P.O. Box 305, Western Springs 60558. (312) 246-6665.

AUBURN HIGH SCHOOL CHESS CLUB, 4273 Straw Lane, Roscoe 61073. Contact James G. Boyer, sponsor. (815) 623-8148.

CENTRAL LAKE COUNTY CHESS CLUB meets Fridays, 7:15 p.m. to midnight, College of Lake County, Bldg. 1, Washington at Route 45, Grayslake. Contact Dennis Grant, 1657 McKay, Waukegan 60087. (312) 336-5188.

CHICAGO CHESS ASSOCIATION organizes major tournaments at the Holiday Inn O'Hare. Also master chess lessons, \$40/3hr. Contact Dick Verber, 2725 W. 84th St., Chicago, 60652. (312) 434-2118.

CHICAGO CHESS CENTER meets for casual chess 7 days a week, 6 p.m. to 1 a.m., 2923 W. Southport, Chicago 60657. Also sponsors rated tournaments on selected weekends. Contact Jules Stein, (312) 929-7010.

CHICAGO INDUSTRIAL CHESS LEAGUE organizes frequent competition among commercial/government teams with awards, ratings, and special events. Contact Jim Brotsos, (312) 775-5054, or Bruce McNeil, (312) 742-5195.

DECATUR CHESS CLUB meets every Thursday evening from 7:00 p.m. to midnight at the Sheraton Inn, 450 E. Pershing, Decatur. Contact: Bill Meyer, 2365 Esther, Decatur, IL 62521, (217) 864-4797.

DOWNERS GROVE PARK DISTRICT CHESS CLUB meets every Thursday, 8:30 - 10 p.m., Lincoln Center, 935 Maple Ave., Downers Grove. Affiliated with USCF and ICA. Contact George Uffner, (312) 910-0421.

FRED REINFELD CHESS CLUB meets Sunday afternoons from 2-6 p.m. at Costlow's, 200 E. Johns St., Champaign. Speed chess is emphasized. Contact Barry Fisher, 2112 Cyprus, Champaign, IL 61821. (217) 333-9083.

GREATER PEORIA CHESS FEDERATION meets Mondays, 7 to 11 p.m., Bradley Student Center Cafeteria, 901 N. Elmwood, Peoria. Contact Bill Wilkinson, 901 N. Rebecca Pl., Peoria 61606. (309) 673-9455.

ILLINOIS VALLEY CHESS CLUB meets Thursdays, 6-10 p.m. Grace United Methodist Church, 1345 Chartres St., LaSalle. Contact Byron Pappas, 432 Creve Coeur, LaSalle, IL 61301. (815) 224-2869.

LAKE COUNTY CHESS ASSOCIATION sponsors rated tournaments in the Grayslake/Zion area. Contact Tim Just, 1521 Circle Ct., Waukegan 60085. (312) 244-7954.

OAK PARK / FOREST PARK CHESS CLUB meets Tuesdays, 7 p.m. to midnight, Mohr Community Center, Jackson and DesPlaines, Forest Park. Contact Ken Marshall, 357 W. Grove, Lombard 60148. (312) 932-1455.

PARK FOREST CHESS CLUB meets Thursdays, 7 to 10:30 p.m., Freedom Hall, Orchard & Lakewood, Park Forest. Contact Wayne Palmquist, 10605 Southwest Hwy. #1F, Worth 60482. (312) 361-2571.

SOUTHERN ILLINOIS CHESS LEAGUE sponsors rated tournaments throughout southern Illinois. Contact John Tonkinson, 105A Manor Court, Alton 62002, (618) 462-5732.

ST. CHARLES CHESS CLUB meets Thursdays at 7 p.m., Baker Community House, 101 S. 2nd (Route 31), St. Charles. Contact Erv Sedlock, 6 W. 307 Old Homestead Rd., St. Charles 60174. (312) 377-7995.

TULEY PARK CHESS CLUB meets Saturdays, 1 to 5 p.m., Tuley Park Fieldhouse, 501 E. 90th Pl., Chicago. Contact Thomas Fineberg, 7321 S. South Shore Dr., Chicago 60649. (312) 721-3979.

TWIN CITY CHESS CLUB meets Monday evenings, Parks & Rec. Bldg., 611 S. Linden, Normal, except 1st Monday/month, Garcia's, Wattersen Place. Speed tournaments 50 cents/game. Andy McGowan, 520 E. Chestnut, Bloomington 61701. (309) 827-7892.

CHESS PHONE

(312) 325-3666

PRESIDENTIAL PONDERINGS

By ICA President Tim Just

WINNING TOURNAMENT TACTICS

EQUIPMENT

Participants in any sport must have the proper equipment in order to play. You should ALWAYS bring a set, board, clock, and pencil or pen with you to a chess tournament. If you show up without such equipment, do not be surprised or insulted should others require you to post some reasonable security when you want to borrow their extra gear. If you have equipment you are not using, be courteous and do not refuse to loan it to another needy player who can provide reasonable security for its use.

When an organizer supplies sets and boards, return them to the playing area if you and your opponent have moved them to the analysis room following your game. The equipment will be needed in the tournament hall for the next game.

If you play at weekly club events, put the boards, sets, and clocks away after you have finished with them. Remember, someone else took the time to set out the equipment for you.

Standard tournament equipment does not include pop cans, coffee cups, napkins, fast food bags, etc. Do not leave these items at your board after your game is over.

WITHDRAWING

Should you decide to withdraw, let the tournament director know as soon as possible. Do not wait until the pairings for the next round are made! If you are unsure about the procedure for withdrawing from a particular event, ask the TD. Be considerate; do not cause a round to start late, or the player you are paired with to go without a game, by withdrawing without promptly informing the TD of your action.

DRAWS

United States Chess Federation rules state that you should offer a draw only after you make your move. Once you propose to split the point, you cannot withdraw the offer before your opponent accepts or rejects it. If your proposal is turned down, do not keep repeating the offer. Your opponent knows what you are playing for, so you do not have to continually remind him. Do not insult the other player by offering a draw from an inferior position.

GAME ANALYSIS

After your tournament game is finished, offer to go over it with your opponent. The winner can teach; the loser can learn. Conduct the postmortem away from the playing area, however. (Other players rarely will be interested in, and probably will be disturbed by, your analysis while they are still playing.) Do not forget to report the result of the game BEFORE you start to analyze. This will allow the TD to do his job while you are playing over your game.

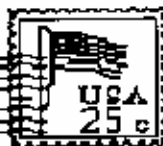
TOURNAMENT DIRECTORS/ORGANIZERS

If you think that a TD or an organizer has made a mistake, call his attention to it. The possible error which you courteously point out may or may not be resolved to your satisfaction. The possible error which you yell and scream about also may or may not be resolved to your satisfaction; however, in this second case you can get so upset you do not enjoy the rest of the event.

CHESS PHONE

(312) 325-3666

Letters to the Editor



Hobby: "An activity or interest engaged in primarily for pleasure".

As someone involved as either a player or tournament director in the last three big prize fund Dick Verber organized chess tournaments (Greater Chicago Midwest Championship 7/19-20/86, Midwest Class 7/17-19/87, and National Open 3/18-20/88), I want to change that dictionary definition to read:

Hobby: "An activity or interest engaged in primarily for pleasure - unless you are participating in a Dick Verber chess tournament".

Movie producers use ad campaigns to convince people where to spend their movie dollars. Often, the ad campaigns with the most intense media blitzes seemingly deliver the most mediocre films. The flyers we get from Dick Verber in the mail, advertising his chess tournaments, act much in the same way.

How many players have sent in a large entry fee after one of Dick Verber's ad blitzes only to receive less than they bargained for once they appeared at the tournament site?

How many players have paid attention to the Dick Verber microphone announcements at the start of each round after the pairings have been posted? At the recent National Open, Mr. Verber spent over a total of 3 hours at the microphone, as timed by one of the players.

How many players have at the start of a round seen flyers

at their boards advertising the next Verber event, but then had to go and pick up a score sheet because score sheets had not been placed at the boards?

How long does this list of questions have to be before players decide that they got less than they bargained for when they sent their entry fee in for a Dick Verber event?

Dick Verber is a professional chess organizer. He is a chess businessman. In business, if I do not get what I expect for my money, I point it out. If the problem I point out is not corrected, I simply take my business elsewhere until it is taken care of. So it will be with Dick Verber.

As a tournament director at Dick Verber's two most recent events, I had to field all sorts of complaints regarding Dick's decisions in organizing those events. I sent the players to Dick with their complaints; however, I observed no effort on Mr. Verber's part, at either of the tournaments, to respond to those complaints.

I therefore will no longer play in nor will I direct at any Dick Verber tournament until I observe that Mr. Verber is more responsive to the wants and needs of the tournament chess player.

If Dick Verber, chess businessman, has not given players, as chess customers, satisfaction, then those players may want to reassess their commitment to supporting his tournaments until he responds to their needs.

[Richard Verber responds: Just about everyone I have spoken with since the 1988 National Open has congratulated me on organizing the most enjoyable Chicago chess tournament in years. Why then did Tim Just write his letter?

The answer is Chicago chess politics. The answer is rivalry among chess organizers over a fairly static number of Illinois chess players.

Tim Just neglects to mention my argument with him at the National Open over his rude and arrogant style as a tournament director, or my decision not to hire him for future events. Instead he pretends that the best Chicago tournament since 1973 is at fault.

Tim Just implies that the players did not get their money's worth at the National Open - but that is not what people told me! The week after the National I visited the New York Open. Many of the same players who had been in Chicago commented that entry fees were almost three times higher in New York, but that tournament conditions were better in Chicago!

Tim Just's deception concerning microphone announcements in Chicago is no accident. Tim knows that all of the announcements made by Eric Schiller, Walter Brown, and me took less time than he claims. (Most of my announcements were intended to fill time while the tournament staff worked on pairings.)

I am proud that I brought Mikhail Tal to the United
(Continued on Page 23)

Tim Just

MASTER CHALLENGE

X

Presented By

**THE OAK PARK-FOREST PARK
CHESS CLUB**

JUNE 24, 25, 26, 1988

**MOHR COMMUNITY CENTER
7650 JACKSON BOULEVARD
FOREST PARK, ILLINOIS**

\$3,000⁰⁰

GUARANTEED

PRIZE FUND

1st: \$700 • 2nd: \$450 • 3rd: \$225 • 4th: \$110

Expert \$250, \$120, \$65

Class A \$240, \$115, \$60

Class B \$220, \$105, \$55

Class C/below . . . \$160, \$75

Unrated \$50 and Trophy

**REGISTRATION: JUNE 24—6-7 PM
JUNE 25—8-8:45 AM**

**ROUNDS: JUNE 24—7:30
JUNE 25—9 - 1:30 - 6
JUNE 26—10 - 3**

SPLIT 1ST ROUND

Player chooses either Friday or Saturday morning round.
Everyone plays last 4 rounds.

TIME CONTROL: 40 / 100

**ENTRY FEE: \$33⁰⁰ IN ADVANCE BY 6/20
\$39⁰⁰ AT SITE**

**BY MAIL TO: Ken Marshall
357 W. Grove
Lombard, IL 60148
Information: (312) 932-1455**

A GRAND PRIX & ILLINOIS TOUR EVENT
ICA MEMBERSHIP REQUIRED FOR ILLINOIS PLAYERS

What's New

CHICAGO AREA CHESS PHONE HAS NEW NUMBER

The new Chicago area Chess Phone number is (312) 325-3666. (Although the number was unreachable for several weeks in May because of the telephone problems in Chicago's western suburbs, it came "on line" in early June.) The downstate (Peoria area) Chess Phone number remains (309) 655-0618.

CHOW TOPS PRAIRIE STATE MASTERS/EXPERTS OPEN

Senior Master Albert Chow scored 6-0 to take undisputed first place at Helen Warren's Fourth Prairie State Open for Masters and Experts, held May 28 - 30, 1988 at the College of Lake County in Grayslake. Chow's victory in this 41 player event, which earned him \$650, included wins over International Master James Rizzitano, FIDE Master Morris Giles, and Senior Master Andrew Karklins. Giles, Eduard Zelkind, George Umezima, and Anthony Schroeder tied for second through fifth at 4.5 -1.5. Schroeder took the 2100 - 2199 prize, while Robert Ash's 3.5 result was the best among the 2000 - 2099 players.

"CHICAGO CHESS MATES" OPENS FOR BUSINESS

Chicago Chess Mates, a chess club which includes a book store and chess school, has opened at 1261 W. Loyola in Chicago. The club, according to founder Richard Verber, will feature daily skittles chess, as well as rated Action Chess tournaments, seven minute Blitz events, master simultaneous exhibitions, and scholastic tournaments. Chess books will be sold, and chess lesson can be arranged with Senior Masters Verber and Albert Chow. Chess Mates is open from 3 p.m. to midnight every day except Monday. For more information, call Richard Verber after 3 p.m. at 262-9100.

BENJAMIN FRANKLIN SCHOOL TAKES FOURTH PLACE IN PRIMARY SECTION OF 1988 NATIONAL ELEMENTARY SCHOOL CHAMPIONSHIPS

Glen Ellyn's Benjamin Franklin Elementary School, runner up for the 1988 Illinois primary school title, finished fourth among the nearly 80 teams competing in the Primary Section of the 1988 National Elementary School Championships in Southfield, Michigan on April 20 - 22, 1988. Coached by Ruth Jacobsen, the Benjamin Franklin team included Anna Liss Jacobsen, Ben Blott, Josh Sproch, and Ricky Temple.

PERU TO HOST 1988 ILLINOIS OPEN

The 1988 Illinois Open will take place over the Labor Day weekend (September 3-5, 1988) at the Holiday Inn at Peru, Illinois. (Located about 100 miles southwest of Chicago, Peru is within reasonable driving distance of Bloomington, Peoria, and Rockford as well.) The five round tournament will feature a \$2,000 prize fund and both Open and Reserve (under 1800) sections.

1988 NATIONAL OPEN REVISITED: SIMULS, SPEED TOURNAMENT, MORE GAMES

By Ken Marshall

[Editor's Note: The March-April ICB carried a story on the National Open itself, as well as a number of games from the event (and the three games of the "Blitz Match" between young Grandmasters Joel Benjamin and Maxim Dlugy). This issue features articles on other tournament-connected activities, and includes some additional games.]

Those among the 700 players in the 1988 National Open who came to the Holiday Inn O'Hare the night before the tournament found plenty of chess action awaiting them. Following their "Blitz Match" (which ended in a 1.5-1.5 draw), GMs Benjamin and Dlugy and fellow GM Sergey Kudrin were each scheduled to present a 20 board simultaneous exhibition. When only 48 players signed up for the simul, however, Dlugy took on 25 of them himself, while Benjamin and Kudrin gave a "tandem exhibition" (in which they alternately made moves on each board without consulting each other) against 23 opponents.

Dlugy won 24 of his games, allowing only one draw. The Benjamin - Kudrin team finished 23-0. (These two GMs later provided some light moments while discussing one of the games in which each thought the other would make an "obvious" rook sacrifice. [As I recall, it was Benjamin who finally did so.]

Those who did not want to face the aforesaid GMs in simultaneous play could challenge two others in the seven round National Open Speed Championship. Grandmasters Walter Browne and Dmitry Gurevich finished 6-1 in this 92 player event to tie for first with FIDE Master Michael Brooks and National Masters David Levine and Ronald Cusi. The expert prize was shared by Jova Mihailovich, Richard Scott, Mariano Acosta, Mike Rudloff, and Zach Druckerman, all with 5-2 scores. Jeff Csima, Roy Knuth, and David Calton ended up 4-3 to split the Class A money, while Paul Berland and Steven Rowe topped Class B with 4.5-2.5 results. Class C/Below honors went to Loren Reeves for his 3-4 effort.

Mike Zecate and International Arbiter Carol Jarecki directed the speed event, assisted by Bill Smythe. All entry fees were returned as prize money.

Soviet Grandmaster Mikhail Tal, the former world champion who was the National Open's star attraction, gave a simultaneous exhibition each of the three evenings before the tournament. The first two simul took place at the Holiday Inn O'Hare on March 15 and 16, when Tal played 30 and then 31 boards. He reportedly had 27 wins, one loss, and two draws the first night. The next evening's event began nearly an hour late, but when Tal did appear he quickly won over an increasingly impatient crowd with a short lecture on one of his victories over Bobby Fischer and with interesting (and often humorous) answers to questions. (Although Tal speaks English fairly well, he had GM Dmitry Gurevich interpret for him.)

Once the simul began, Tal took his task seriously. In less than 2-1/2 hours he defeated 29 opponents while yielding only one draw (to Leonard Spiegel, rated 1914). But the former world champion had dropped a piece early in his game with Barry Rabovsky, and now sat down to play his 1578-rated opponent "one on one". After a tension-filled half hour with dozens of spectators crowded around the board, Tal turned over his king. (A true sportsman, Tal did not demand that Rabovsky respond instantly to his own moves once the "match game" began. Rabovsky nevertheless did reply quickly, however, and took more than 30 seconds on only one or two occasions.)

Rabovsky noted that he had been studying Tal's games in an effort to improve his own chess. When he started doing so, he had no idea that shortly thereafter he would be able to play, much less defeat, the former world champion.

[Editor's Note: See "An Evening with Mikhail Tal" in this ICB with regard to Tal's third simul, presented at the Park Forest Chess Club on March 17, 1988.]

MORE NATIONAL OPEN GAMES

[Editor's Note: The following games are taken from THE NATIONAL NEWS, the National Open's tournament bulletin, courtesy of organizer Richard Verber and NEWS editor Steve Erbach.]

[Games begin on Page 8]

GAMES FROM THE NATIONAL OPEN

W: GM L. Shamkovich (2517)
B: Kazys Jancauskas (2000)

1. e4 c5 2. Nf3 Nc6 3. Bb5 a6 4. Ba4 Nf6 5. O-O Be7 6. Re1 b5 7. Bb3 O-O 8. c3 d6 9. h3 Na5 10. Bc2 c5 11. d4 Qc7 12. Nbd2 Bd7 13. de5 de5 14. Nh2 Rfd8 15. Qf3 c4 16. Ndf1 Nb7 17. Bg5 Nc5 18. Ng4 Bg4 19. hg4 Qc6 20. Ne3 g6 21. Rad1 Nd3 22. Bd3 cd3 23. Bf6 Qf6 24. Qf6 Bf6 25. Nd5 Bg7 26. Rd3 Kf8 27. Red1 Rac8 28. Kf1 Rc4 29. f3 Bh6 30. Nb6 Rd3 31. Rd3 Rc5 (1-0).

W: Robert Glick (2008)
B: GM Walter Browne (2634)

1. e4 c5 2. Nf3 d6 3. d4 cd4 4. Nd4 Nf6 5. Nc3 a6 6. h3 c5 7. Nde2 b5 8. g4 Bb7 9. Bg2 b4 10. g5 bc3 11. gf6 Qf6 12. Nc3 Nd7 13. Be3 Rc8 14. Qd2 Be7 15. O-O-O Qe6 16. Kbl Qc4 17. h4 Nf6 18. f3 O-O 19. h5 d5 20. Bf1 Qc7 21. Nd5 Nd5 22. ed5 Bd5 23. Qf2 Qc6 24. Rh3 Rfd8 25. b3 Be6 26. Rd8 Rd8 27. Rh1 Rd1 28. Bc1 Ba3 29. Bg2 Rcl (0-1).

W: FM Michael Brooks
B: Mark Siwek

1. e4 c6 2. d4 d5 3. Nc3 dc4 4. Ne4 Nd7 5. Be4 Ngf6 6. Ng5 e6 7. Ne2 Nb6 8. Bb3 h6 9. Nf3 Bd6 10. Qd3 O-O 11. g4 e5 12. Ne5 Be5 13. de5 Qd3 14. cd3 Nfd7 15. d4 c5 16. Be3 c4 17. Be2 Nd5 18. Bd2 b5 19. Be4 Bb7 20. Nc3 Nc3 21. Bb7 Rab8 22. Be6 Na4 23. Bd7 Nb2 24. Rbl Nd3 25. Kc2 a6 26. Bf5 (1-0)

W: Doug McClintock (2439)
B: R. Sutter (1998)

1. g3 e5 2. Bg2 d5 3. c4 c6 4. b3 Be6 5. Bb2 f6 6. d3 Bd6 7. Nf3 Ne7 8. O-ONd7 9. Nc3 g5 10. cd5 Nd5 11. d4 h5 12. Ne4 Bc7 13. de5 Ne5 14. Neg5 fg5 15. Ne5 Rg8 16. e4 Nf6 17. Qc2 Qc7 18. Nc6 bc6 19. Bf6 (1-0)

W: Allen Coffey (2007)
B: James Rizzatano (2563)

1. e4 c5 2. Nf3 d6 3. d4 cd4 4. Qd4 a6 5. Be3 Nd7 6. Nc3 Ngf6 7. h3 g6 8. e5 de5 9. Ne5 Bg7 10. Nd7 Qd7 11. O-O-O Qd4 12. Bd4 Be6 13. g4 O-O-O 14. f4 h5 15. g5 Ne8 16. Bg7 Rd1 17. Kd1 Ng7 18. Bd3 Rd8 19. Kc2 Nf5 20. Rh2 Rd4 21. Bf5 Bf5 22. Kc3 Rb4 23. b3 Rb6 24. h4 Rc6 25. Kd2 Rc6 26. Re2 c6 27. Ne4 Kc7 28. c4 b5 29. Kc3 bc4 30. bc4 Rb6 31. Nd2 Rd6 32. Rc3 Rd8 33. a4 Kb6 34. Nb3 Rd1 35. a5 Kc7 36. Nd4 Bg4 37. Nf3 Rh1 38. Nc5 Rh4 39. Nf7 Bf5 40. Rf3 Rh2 41. Nh6 Ah3 42. Rh3 Bh3 43. Kd4 Bf1 44. Nf7 h4 45. Kc3 h3 (0-1)

W: Ruben Reyes (2122)
B: GM Dmitry Gurevich (2574)
Round 2

1. e4 c5 2. Nc3 b6 3. e4 Bb7 4. g3 g6 5. Bg2 Bg7 6. Ngc2 e6 7. O-O Ne7 8. d3 O-O 9. Bf4 Nbc6 10. Qd2 Ne5 11. Rad1 f5 12. b3 N7c6 13. Bg5 Qc8 14. Nb5 Qb8 15. Bf4 a6 16. Nbc3 Rf7 17. f3 Qf8 18. Kh1 Rb8 19. Be3 fxc4 20. fxc4 Nf3 21. Qc1 N6d4 22. Bf4 Nxe2 23. Nxe2 Ne5 24. Be3 Rxf1+ 25. Rxf1 Qe7 26. dxc4 27. Bxd4 b5 28. Qc3 Nc6 29. Bxg7 Qxg7 30. cxb5 axb5 31. Qd2 Ne5 32. h3 Bc6 33. Nd4 Ba8 34. Qb4 Nc6 35. Nxc6 Bxc6 36. a4 Qe5 37. a5 Qxg3 38. Qe7 Qe5 39. Qf7+ Kh8 40. Qe7 Kg8 41. Qf7+ Kh8 42. Qe7 h5 43. Rf8+ Rxf8 44. Qxf8+ Kh7 45. Qf7+ Kh6 46. Qf8+ Drawn

W: John Burke (2230)
B: James Rizzatano (2563)
Round 3, Board 5

1. d4 Nf6 2. c4 e6 3. Nc3 Bb4 4. e3 b6 5. Nf3 Bb7 6. Bd3 Ne4 7. Qc2 f5 8. O-O Bc3 9. bc3 O-O 10. Ne1 Nc6 11. f3 Nf6 12. e4 fe4 13. fe4 e5 14. Nf3 Qe7 15. Bg5 h6 16. Bc2 Kh7 17. Kh1 d6 18. d5 Nb8 19. Nd4 Be8 20. Nf5 Bf5 21. Rf5 Nbd7 22. Ra1 Nc5 23. Bc1 Nfd7 24. Qd2 Rf5 25. Rf5 Rf8 26. Rf8 Qf8 27. Kg1 Qf7 28. Bc2 Kg8 29. Qe2 Qg6 30. Ba3 Qg5 31. g3 h5 32. Kg2 h4 33. Qe2 Qg4 34. Qf3 Qg5 35. Qd2 Nf6 36. Bc5 d5 37. Kh3 Qg4 38. Kg2 Ne4 39. Qe3 Ng5 40. Qe5 Qf3 (0-1)

W: Siamack Bondari (2264)
B: GM Maxim Dlugy (2670)
Round 3, Board 2

1. e4 c5 2. c3 d5 3. ed5 Qd5 4. d4 cd4 5. cd4 e6 6. Nf3 Nf6 7. Be2 Be7 8. Nc3 Qd6 9. O-O O-O 10. Bg5 Nc6 11. Qd2 b6 12. Rfd1 Nd5 13. Nd5 Qd5 14. Be7 Ne7 15. Ne5 Qd6 16. Bf3 Nd5 17. Ne4 Qe7 18. Ne5 Qd6 19. Nc4 Qd8 20. Rac1 Bb7 21. Ne3 Qd6 22. Nd5 Bd5 23. Qc3 Rf8 24. h3 Rd7 25. a3 Rad8 26. Qe3 g6 27. Be2 Bb7 28. Rc3 Qd5 29. Bf3 Qb5 30. Rb3 Qf5 31. Bb7 Rb7 32. Rbd3 Rbd7 33. Kf1 Qb5 34. Qe2 Rd5 35. Rc3 Qd7 36. Rdc1 Rd4 37. Rc7 Qe4 38. Rc8 Qe8 39. Rd8 Qd8 40. Kg1 Qd6 41. b4 Rd3 42. Qb2 e5 43. Rc8 Kg7 44. Rcl Qd5 45. Rc2 Rd1 46. Kh2 (0-1)

W: Leonid Shamkovich (2517)
B: Erich Marchand (2197)

Round 3

1. d4 d5 2. c4 c6 3. Nc3 Nf6 4. e3 e6 5. Nf3 Nbd7 6. Bd3 Bb4 7. O-O O-O 8. Qc2 dc4 9. Bc4 Bd6 10. Ne4 Ne4 11. Qe4 Qe7 12. Bd2 e5 13. de5 Ne5 14. Bc3 Nf3 15. gf3 Qg5 16. Kh1 Bf5 17. Qd4 Qb6 18. f4 e5 19. Qd5 Qg6 20. f3 Be6 21. Qd2 Bc4 22. Rg1 Rad8 23. Rg6 hg6 24. b3 Bc7 25. Qb2 (1-0)

W: Leslie Kistler (2076)
B: Marc Lonoff (2292)

Round 3

1. e4 e6 2. d4 d5 3. Nd2 Nf6 4. e5 Nfd7 5. Bd3 c5 6. c3 Nc6 7. Ne2 cd4 8. cd4 f6 9. Nf4 Nd4 10. Qh5 Ke7 11. e6f6 Nf6 12. Ng6 hg6 13. Qh8 Kf7 14. O-O e5 15. Nf3 Nf3 16. gf3 Nh5 17. Qb7 Qf6 18. Rd2 Bd6 19. Rfcl e4 20. fe4 Bh2 21. Kg2 Bb3 22. Kh3 Qf3 23. Kh4 Qf2 (0-1)

W: Steve Mitchell (2063)
B: GM Dmitry Gurevich (2574)
Round 4

1. d4 Nf6 2. c4 e6 3. Nc3 Bb4 4. a3 Bxc3 5. bxc3 b6 6. Bg5 h6 7. Bxf6 Qxf6 8. e3 Bb7 9. Nf3 d6 10. Be2 O-O 11. O-O c5 12. Nd2 Nc6 13. Bf3 cxd4 14. cxd4 Rac8 15. Qa4 Qe7 16. Rfcl Na5 17. Bxb7 Qxb7 18. Rc2 Rc6 19. c5 dxc5 20. dxc5 Rfc8 21. Nc4 bxc5 22. Qxa5 Rb6 23. Nd2 c4 24. Rac1 Rb5 25. Qa4 Rg5 26. g3 Rd8 27. Qxc4 Rgd5 28. Nf1 h5 29. h4 Rd3 30. Qb4 Qd5 31. Rc8 Rxc8 32. Rxc8+ Kh7 33. Qc5 Qxc5 34. Rxc5 Rxa3 35. Rrh5+ Kg8 36. Rc5 f5 37. Rc7 Ra6 38. Kg2 Kh7 39. Nd2 Kg6 40. Nf3 Ra2 41. Nd4 e5 42. Rc6+ Kf7 43. Nxf5 a5 44. Ra6 a4 45. Kf3 Ra1 46. Ke4 a3 47. Kxc5 a2 48. Ra7+ Kf8 49. Nxx7 Rbl 50. Ne6+ Ke8 51. Rxa2 Rb4 52. Nd4 (1-0)

GAMES FROM THE NATIONAL OPEN

W: Albert Chow (2428)
B: Howard Stern (2109)

Round 3

1.d4 d5 2.c4 e6 3.Nf3 c5 4.cxd5 cxd5 5.g3
Nc6 6.Bg2 Nf6 7.O-O cxd4 8.Nxd4 Bc5
9.Nb3 Bb6 10.Nc3 Bc6 11.Na4 O-O
12.Nxb6 Qxb6 13.Be3 Qc7 14.Rc1 a6
15.Nd4 Rac8 16.Nxc6 bxc6 17.b3 Qd7
18.Qd3 Qb7 19.Rc5 Nd7 20.Ra5 Ra8
21.Rc1 Rfc8 22.Bd4 f6 23.h3 Bf7 24.c3
Ne5 25.Qc3 Qe7 26.e4 dxc4 27.Bxe5 fxe5
28.Rxe5 Qd7 29.Bxe4 Qxh3 30.Bf5 Qh6
31.Bxc8 Rxc8 32.Qe3 Qf6 33.Qf4 Qxf4
34.gxf4 (1-0)

W: GM Maxim Dlugy (2670)
B: Revi Schea (2349)

Round 4

1.d4 Nf6 2.c4 c5 3.d5 b5 4.cb5 a6 5.f3 g6
6.e4 d6 7.a4 Bg7 8.Na3 O-O 9.Ne2 ab5
10.Nb5 Na6 11.Nec3 Nd7 12.Bc2 f5
13.ef5 gf5 14.Bg5 h6 15.Bh4 Ne5 16.f4
Ng6 17.Bg3 Rb8 18.O-O e5 19.dxc6 Be6
20.Bf3 Nb4 21.Nd5 Bd5 22.Bd5 Kh7
23.Bf3 Rb6 24.Bel Nf4 25.Bb4 cb4
26.Qd2 Qg5 27.Kh1 Ne6 28.Qb4 Be5
29.Rae1 Rbb8 30.Qc4 Nf4 31.g3 Nh5
32.Qh4 Qh4 33.g4 Nf4 34.b3 Rfc8
35.Rc1 Nd3 36.Rc8 Rc8 37.a5 Rc2 38.a6
Rh2 39.Kg1 Ra2 40.a7 Ra7 41.Na7 Bd4
42.Kh2 Ba7 43.Be2 Ne5 44.Rf5 Kg6
45.Rf8 Bc5 46.Kg3 Nc6 47.h5 Kg7
48.Rf4 Bc3 49.Rc4 Bc5 50.Rg4 Kf7
51.Bc4 Ke7 52.Rg7 (1-0)

W: Eugene Martinovsky (2435)
B: Maurice Broomes (2280)

Round 4

1.d4 Nf6 2.Nf3 b6 3.c4 c5 4.Nc3 cd4
5.Nd4 Bb7 6.f3 g6 7.e4 Bg7 8.Bc3 O-O
9.Qd2 Nc6 10.Rd1 Nd4 11.Bd4 d6
12.Be2 Qc8 13.O-O Qc6 14.Nb5 Rfc8
15.Rf2 h6 16.b3 Kh7 17.Bd3 Bc6 18.Nc3
Qd7 19.h3 Qb7 20.Nd5 Nc8 21.Bg7 Ng7
22.f4 Bd5 23.ed5 f5 24.Rel Rf8 25.Rc3
Rac8 26.Rfe2 Rf7 27.Kh2 Nh5 28.g3
Ng7 29.a4 Qc8 30.b4 c6 31.Qe1 Rfc7
32.g4 e5 33.fc5 Rc5 34.Rc5 de5 35.gf5
gf5 36.Rg2 e4 37.Qg3 Qd7 38.Qg6 Kg8
39.Be2 Qe7 40.Qf5 Qe5 41.Qe5 Rc5
42.Bg4 Kf7 43.d6 h5 44.Rf2 Ke8 45.d7
Ke7 46.Rf8 (1-0)

W: Steve Surak (2119)
B: Robert O'Donnell (2249)

Round 4

1.e4 c5 2.Nf3 Nc6 3.d4 cd4 4.Nd4 Nf6
5.Nc3 d6 6.Bg5 e6 7.Qd2 Bd7 8.O-O-O
a6 9.f3 Bc7 10.Be3 O-O 11.g4 Nd4
12.Bd4 Bc6 13.Qe2 b5 14.Bd3 b4 15.Nc2
a5 16.h4 e5 17.g5 cd4 18.gf6 Bf6 19.Nd4
Qb6 20.Bc4 a4 21.Qc3 Qc5 22.Qd3 Bd7
23.Ne2 Rfc8 24.Bd5 Bb5 25.Qd2 b3
26.ab3 ab3 27.Ba8 Ra8 28.Nc3 Bc3 (0-1)

W: Dennis Bourgerie (1834)
B: Larry Basenspiler (2025)

Round 4

1.e4 e5 2.Nf3 Nc6 3.Bc4 Bc5 4.b4 Bb4
5.c3 Ba5 6.d4 ed4 7.O-O d6 8.Qb3 Qd7
9.e5 de5 10.Re1 e4 11.Re4 Nge7 12.Bf7
Kf8 13.Be6 Qd8 14.Rf4 Ke8 15.Bf7 Kf8
16.Bg6 (1-0)

W: Virgilio Ferro (1976)
B: Gary Colvin (2126)

Round 4

1.e4 g6 2.d4 Bg7 3.Nf3 d6 4.Be3 Nf6
5.Nc3 c6 6.h3 b5 7.a3 O-O 8.Qd2 Nbd7
9.Be2 Nb6 10.b3 d5 11.Bd3 dxc4 12.Bxe4
Nxe4 13.Nxe4 Nd5 14.O-O Nxe3
15.Qxc3 Qd5 16.Nc5 Bf5 17.c3 Rfe8
18.Rfe1 h5 19.Ra2 Rad8 20.Rae2 Bc8
21.Qf4 a5 22.Rxe7 Rxe7 23.Rxe7 Kf8
24.Rc7 Bf5 25.g4 hrg4 26.hrg4 Bc8
27.Ng5 f5 28.gxf5 gxf5 29.Nh7+ Kg8
30.Qg5 (1-0)

W: GM Arthur Bisguier (2452)
B: Kenneth Jones (2305)

Round 5

1.d4 Nf6 2.Nf3 g6 3.Bg5 Bg7 4.Nbd2 O-O
5.e4 d6 6.c3 Nc6 7.Bd3 e5 8.h3 Qe8 9.O-O
h6 10.Be3 b6 11.Rc1 Nh5 12.Nc4 Nf4
13.Bf1 g5 14.a4 a5 15.Qd2 Kh7 16.Kh2 f5
17.dxc5 fxc4 18.Bxf4 Rxf4 19.cxd6 Qf7
20.Qc2 Bf5 21.Ne3 Bg6 22.Bc4 Qf8
23.dxc7 cxf3 24.Bd3 Ne5 25.Bxg6+ Nrg6
26.Nd5 fng2 27.Rc6 Rxf2 28.Qxg6+ Kh8
29.Rg1 Rxb2 30.Nf6 Bxf6 31.Rxf6 Qg7
32.Qxh6+ Qxh6 33.Rxh6+ Kg7 34.Rc6
Rc8 35.Rxg2 Rh3 36.Rxg5+ Kf7 37.Rc5
Rh3+ 38.Kg3 Rd2 39.Rh5 Kg7 40.Rb4
Rd7 41.Rhc4 Kf7 42.h4 Ke7 43.h5 Rd3+
44.Kg4 Kd7 45.Rg6 Rh8 46.c8=Q+ (1-0)

W: GM Dmitry Gurevich (2574)
B: Bruce Kreisman (1999)

Round 6

1.d4 d5 2.c4 c6 3.Nf3 Nf6 4.Nc3 dxc4 5.e4
b5 6.e5 Nd5 7.a4 e6 8.Ng5 h6 9.Nge4 Bc7
10.axb5 Nxc3 11.Nxc3 cxb5 12.Qf3 Qxd4
13.Qxa8 Qxc5+ 14.Qe4 Qxc4+ 15.Nxc4
Bb7 16.f3 a6 17.Be3 O-O 18.Bc5 Bh4+
19.g3 Bxe4 20.Bxf8 Bxf3 21.gxb4 Bxh1
22.Bd6 Nc6 23.Rxa6 Nd4 24.Kf2 Nf5
25.h5 Be4 26.Bc5 Bc2 27.Rb6 Ba4 28.Rh3
Kh7 29.Bg4 Kg8 30.Rb8+ Kh7 31.Rf8 f6
32.Rc8 Bc2 33.Rxc6 (1-0)

W: Ronald Cusi (2290)
B: Leonid Shamkovich (2517)

Round 6

1.d4 Nf6 2.Nf3 g6 3.c4 Bg7 4.Nc3 d5 5.Bf4
O-O 6.e3 c5 7.dxc5 Ne4 8.Rc1 Nxc3 9.bxc3
Qa5 10.Qb3 dxc4 11.Rxc4 Qxc5 12.O-O
Nc6 13.Qb5 Qxb5 14.Bxb5 Na5 15.c4 a6
16.Ba4 Be6 17.Bb3 Rac8 18.Nd2 Rfd8
19.Rc2 Rd3 20.e4 Rc3 21.Rfc1 Rxc2
22.Rxc2 Nc6 23.Kf1 Nb4 24.Ke2 Nxc2
25.Bxc2 b5 (0-1)

W: Benjamin Finegold (2487)
B: Mike Blankman (2304)

Round 6

1.d4 d5 2.c4 dxc4 3.e3 Nf6 4.Bxc4 e6 5.Nf3
c5 6.O-O a6 7.Qe2 b5 8.Bb3 Bb7 9.Rd1
Nbd7 10.a4 b4 11.Nbd2 cxd4 12.cxd4 Be7
13.Nc4 O-O 14.Bg5 Nb6 15.Nxb6 Qxc4
16.d5 Rbc8 17.a5 Qc7 18.dxc6 fxc6 19.Ra1
Qxa5 20.Qe6+ Kh8 21.Ne5 Bc5 22.Nf7+
Kg8 23.Qf5 Nd5 24.Bxd5 Bxd5 25.Qxd5
Re1+ 26.Rxe1 Rxf2+ 27.Kxf2 Qxd5
28.Kg1 Rxf7 29.Be7 h6 (0-1)

W: GM Dmitry Gurevich (2574)
B: Christopher Eagle (2078)

Round 5

1.d4 Nf6 2.c4 c5 3.Nf3 e6 4.d5 cxd5 5.cxd5
d6 6.Nc3 g6 7.Bf4 a6 8.a4 Bg7 9.e4 Bg4
10.Be2 O-O 11.O-O Qe7 12.Nd2 Bxc2
13.Qxc2 Nbd7 14.Nc4 Ne5 15.Nxe5 dxc5
16.Bg5 Qd6 17.a5 Nd7 18.Be3 f5 19.f3
Rab8 20.Na4 Bf6 21.Rfc1 Rfc8 22.Rc4 Bd8
23.Qd2 Rc7 24.Ra1 Rbc8 25.Qe2 b5
26.axb6 Nxb6 27.Nxb6 Qxb6 28.cxf5 Kf7
29.fng6+ hrg6 30.h4 Rd7 31.h5 Rxd5
32.Rg4 Rd6 33.hrg6+ Kg7 34.Qf5 Rc7
35.Bb6+ (1-0)

NATIONAL OPEN SIDELIGHTS



Grandmaster Mikheil Tal (right) lost only to Barry Rabovsky (left) at a 31 board March 16 simultaneous exhibition



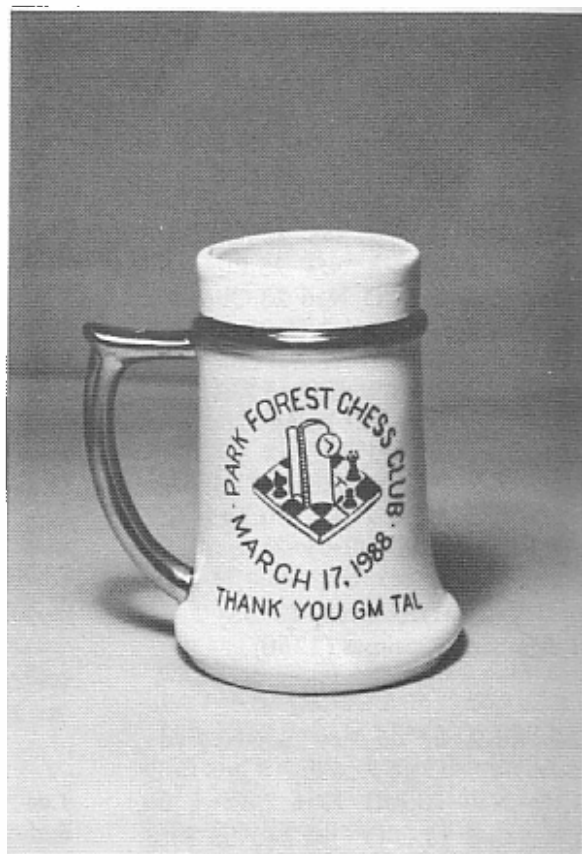
Grandmaster Maxim Dlugy yielded only one draw while winning 24 of 25 simultaneous exhibition games.



Former world champion Tal lectured and answered questions before presenting a 30 board "simul" at the Park Forest Chess Club on March 17.



Grandmaster Tal scored 28 wins, 1 loss, and 1 draw at the Park Forest event



The Park Forest Chess Club presented Grandmaster Tal with this souvenir mug.

Top two photos by Ken Marshall
Other photos by Nancy Fay-Palmquist

AN EVENING WITH MIKHAIL TAL

By Wayne Palmquist

On March 17, 1988, Jim Condon and I had the distinct privilege of escorting Grandmaster and former World Champion Mikhail Tal to the south suburbs for a simultaneous exhibition at the Park Forest Chess Club. Upon leaving the Holiday Inn O'Hare, we immediately became immersed in tollway rush hour traffic and Tal, looking exhausted, fell fast asleep. The former world champion's visit to the United States had been somewhat marred by organizational problems not involving us and we feared those problems might jeopardize the success of our event as well. Fortunately, this was not to be the case.

An hour later we arrived at the restaurant where we would have dinner. The grandmaster ordered a Gin & Tonic, a shrimp and crab salad and a main course of frog legs! The meal seemed to refresh him. When we got to the Club at about 7:15 p.m., I introduced Tal to the members and we presented him with a souvenir mug as a gesture of thanks and welcome. He then delighted the audience with a lecture and a lighthearted question and answer session. Tal preferred to speak through a translator, and apologized for the quality of his own English. (In fact, his English was quite good). Here, to the best of my recollection, are some of his remarks.

Tal said:

- England is the number two chess power in the world.
- Kasparov will be world champion for one more cycle; then, who knows?
- His favorite game is his next one!
- He is very tired because of his schedule of 10 simulms in 11 days. When his friends back home ask him about his first trip to America, he'll have to tell them what he remembers from books and movies because so far he has seen nothing but chessboards.
- Americans are very friendly, and he has enjoyed meeting many people.
- Swiss style tournaments are becoming more popular in the USSR but not that many have been held yet.
- He wants to play more, not write more books.
- Americans play very theoretically (as opposed to creatively) in simul games.
- Action Chess is good for the future of chess. A second rating system is not necessary, however; it wouldn't make much difference and would be too complicated.
- Computers in chess? Someday one may be strong enough to be world champion; if this

happens, humans won't let them play. Computers will be very valuable to masters for study; their vast memory can be most important. (Tal doesn't think too much of computers in tournaments.)

- What's the best way to study chess? If the formula for becoming world champion was to drink tomato juice, then there would be no tomatoes left! Study techniques will be different for everyone, but in general, a player should study his own games for mistakes and then study the games of great players like Capablanca, Nimzowitsch, Alekhine and Botvinnik for ideas.

When I asked Tal about his conditions for the exhibition, he said "No passes". He had allowed one pass earlier on his tour but had discovered that Americans don't know when to resign! The grandmaster noted that passes only prolong simulms which take too long even without them. After the question and answer period, I reminded the players that Tal was very tired and asked that they be gentlemen and resign at an appropriate time. I stated that anyone who finds himself a knight or rook down should please give up! At this point Tal leaned over and commented "Or maybe not!" I then said, "If you're not Tal, resign!", and we all had a good laugh.

As the simul began, Tal shook hands with and wished good luck to each player. The former world champion, playing at a very fast pace, completed the exhibition to rousing applause at 10:45 p.m. He scored 28 wins, one loss (to PFCC member Floyd Moose) and one draw (with Les Kistler of Hammond). Some 30 to 35 spectators attended. Although Tal went through two packs of cigarettes, he spent more time carrying them than smoking them. Whenever he arrived at board one he lit a new cigarette, making me wonder if this is why he limits his simulms to 30 boards!

Many of those present had played the likes of Karpov, Smyslov, Portisch, Gligoric, Larsen, and Browne in simulms before, but I think all agreed that there is nothing quite like playing Tal! He autographed every book, picture, and score sheet handed to him at the end of the exhibition, and even posed for pictures when requested to do so.

Tal was a great gentleman, an entertaining speaker, and an awesome chess opponent. He gave us a mesmerizing evening we shall not forget!!



THIS IS YOUR INVITATION
TO VISIT CHICAGO'S GREAT NEW CHESS CLUB

CHICAGO CHESS MATES

1261 W. LOYOLA ★ PHONE 262-9100

Hours: DAILY 3 PM to MIDNIGHT, BUT CLOSED MONDAY
CHESS CLUB; BOOK STORE & SCHOOL

FRIDAY EVENING BLITZ TOURNAMENTS -- 12-player Round-Robin starting 7 PM
WEDNESDAY EVENING GROUP LESSONS --- With Chess Masters Al Chow and
Richard Verber -- \$ 10 Fee includes lesson and simul game versus the masters

GOAL: Our aim is to be the strongest and most active Chess Club in the Midwest and to create a "Chess Renaissance" in Chicago. We expect to have more Master, Expert, and Class A Members than any other Club — but there will also be frequent activities for Intermediate and Novice Players rated 1200 to 1800.

PROGRAM: In addition to USCF weekend tournaments starting in Mid-June, we plan weekly 7-minute Blitz Tournaments, Master Simuls, Group Chess Lessons, Scholastic Tournaments, and Action Chess Events. And, of course, our regular daily feature is casual (skittles) chess. Our spacious and attractive new quarters will accommodate 50-60 players. VISIT THE CLUB & JUDGE FOR YOURSELF!

VISITOR'S FEE: \$3 per day. Yearly Membership Dues are \$100. Patron Dues of \$200 per year entitle you to a free 2 hour chess lesson with a Master, a discount on all Club Tournaments, and a 15% discount on chess books. Patrons will also receive our bimonthly Club Publication starting in September.

USCF TOURNAMENTS: See the upcoming issue of CHESS LIFE for details on events Sunday, June 19; Saturday and Sunday, July 9 and 10, etc. Chess sets are provided, but please bring your chess clock.

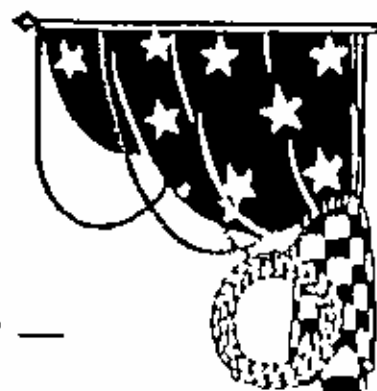
CHESS BOOKS: In the coming weeks we will stock a wide selection of chess books. NOW you will be able to look at books in person, instead of taking a chance by ordering books "sight-unseen" from a catalog. Chicago Chess Masters Richard Verber and Albert Chow will recommend to our Club Members only those books which we consider valuable educational tools. Group Chess Lessons and Simuls begin in Mid-June.

INDIVIDUAL CHESS LESSONS: Phone Chess Masters Richard Verber or Al Chow at 262-9100 (after 3 PM) to make arrangements. Or, visit the club for details.

TRANSPORTATION: The Club is easily accessible by car or by public transportation. We are located 1/2 block West of the Loyola "L" Stop (6500 N.).

**Phone 262-9100 after 3 PM for further information.
Before 3 PM, phone Richard Verber, 262-8050.**





Make Your Vacation Plans Today —

For the biggest Chess Tournament ever held in Chicago!

NORTH AMERICAN CLASS CHAMPIONSHIP

JULY 29-30-31 ★ \$21,500!!

(\$5500 LARGER THAN THE 700-PLAYER 1988 NATIONAL OPEN IN CHICAGO!)



**AT THE HOLIDAY INN O'HARE, SITE OF THE 1988 NATIONAL OPEN
THE BEST PLAYING CONDITIONS IN AMERICA!**

Join the Grandmasters in Chicago for an affordable 3 or 4 day Chess Vacation at the beautiful Holiday Inn O'Hare — featuring 2 swimming pools and the magnificent HOLIDOME. See for yourself why the Holiday Inn O'Hare has become the most popular tournament site in the Chicago area. Never before has a Chicago Tournament offered you such an excellent chance to win a BIG CASH PRIZE. You will play 6 opponents in your own class. Players of similar rating whom you have a realistic chance of beating. Play 6 interesting games against challenging competition. Many Grandmaster Exhibitions will begin Thursday evening July 28 at 7 PM. For additional information, see Tournament Life section of CHESS LIFE, or write Organizer, Richard Verber, Chicago Chess Association, 1261 W. Loyola, Chicago, IL 60626. We urge you to make your hotel reservations early to assure yourself the discount chess rate. Please phone the hotel at 312-671 6350

For Information phone 262-9100 evenings.

MAKE YOUR HOTEL RESERVATION EARLY! - BY JULY 1st



TOURNAMENT CROSSTABLES

OAK PARK - FOREST PARK CHESS CLUB SPRING OPEN APRIL 30 - MAY 1, 1988

PLAYER	PRE ST RTNG	POST RTNG	1	2	3	4	5	TOT
1 UMEZINWA, GEORGE D	IL 2235	2259	H--	W18	W-4	W-2	W-5	4.5
2 WHEELER, WAYNE W	IL 2170	2184	W20	W10	W-7	L-1	W-9	4.0
3 SZPISJAK, STEVEN J	IL 2110	2107	W16	L-6	W13	W11	W-8	4.0
4 REYES, CATALINO R	IL 2061	2081	W21	W12	L-1	W15	W-7	4.0
5 SATTERLEC, RAY DOY	IL 2080	2080	W29	W15	H--	W-6	L-1	3.5
6 ALLISON, ROGER D	IL 1774	1816	W28	W-3	H--	L-5	W13	3.5
7 SAX, ROBERT	IL 2126	2117	W14	W-8	L-2	W19	L-4	3.0
8 PUKEL, BERNARD B	IL 2053	2037	W26	L-7	W20	W12	L-3	3.0
9 SPALINTER, JOE C	IL 2052	2042	W17	D11	H--	W10	L-2	3.0
10 HOLMES, JEFFREY A	IL 1864	1870	W25	L-2	W16	L-9	W20	3.0
11 GAPUZ, WILFREDO C	IL 1830	1844	W24	D-9	H--	L-3	W22	3.0
12 BROWN, TONY	IL 1760	1782	W32	L-4	W26	L-8	W19	3.0
13 SWANSON, VICTOR W	IL 1759	1746	D22	W30	L-3	W18	L-6	2.5
14 BURGESS, FRED	IL 1696	1679	L-7	L26	W24	D22	W25	2.5
15 RYDBERG, JR STEVE	IL 1695	1692	W31	L-5	W21	L-4	D18	2.5
16 WULATIN, DAVID	IL 1649	1650	L-3	W28	L10	D26	W24	2.5
17 KAMINSKI, MICHAEL	IL 1565	1570	L-9	D24	L22	W28	W26	2.5
18 ISAAC, THEODORE E	IL 1518	1564	W27	L-1	W29	L13	D15	2.5
19 BUTTNY, WILLIAM P	IL 1876	1845	D30	W23	H--	L-7	L12	2.0
20 KIMURA, JAMES H	IL 1721	1716	L-2	W25	L-8	W21	L10	2.0
21 KIRCHNER, RALPH R	NV 1500/6	1513	L-4	W32	L15	L20	W28	2.0
22 WINSAUER, DENN D	IL 1354/8	1481	D13	L27	W17	D14	L11	2.0
23 MARSHALL, KENNETH	IL 1726	1718	H--	L19	U--	U--	W32	1.5
24 EMERY, STEVE	IN 1415	1412	L11	D17	L14	W32	L16	1.5
25 MUNOZ, ALBERTO J	IL 1390	1400	L10	L20	H--	W29	L14	1.5
26 JOCHIM, GARY	IL 0	1585	L-8	W14	L12	D16	L17	1.5
27 FISCHER, GREGORY A	IL 1975	1949	L18	W22	U--	U--	U--	1.0
28 CURDERO, RIMLAND	IL 1428	1395	L-6	L16	B--	L17	L21	1.0
29 WYNKOOD, WALKER E	IL 1507	1461	L-5	D31	L18	L25	U--	.5
30 KOSTECKA, KEITH	IL 1476	1484	D19	L13	U--	U--	U--	.5
31 RAJES, JR ROBERT J	IL 1319	1324	L15	D29	U--	U--	U--	.5
32 MUNOZ, CHRIS A	IL 1139	1128	L12	L21	H--	L24	L23	.5

1988 Tuley Park Open II

April 16, 1988

PLAYER	PRE RTNG	POST RTNG	1	2	3	4	5	TOT
1 FAGAN James	1863	W14	W3	D5	W6	W6	3.5	
2 ARMISTEAD Angela	1850	W16	W4	L6	W8	3		
3 UMEZINWA George	2299	W8	L1	W9	W5	3		
4 CONDRON James	2059	W11	L2	W10	W7	3		
5 JORDAN Roland	1974	W13	W9	D1	L3	2.5		
6 WILLIAMS Kenneth	1798	Dbye	W7	W2	L1	2.5		
7 WISLOVE David	1731	W10	L6	W13	L4	2		
8 CLARK Lawrence	1664	L3	W17	W11	L2	2		
9 ADKINS James	1725	W18	L5	L3	W14	2		
10 WEAVER Ron	-	L7	W14	L4	W13	2		
11 WATKINS Fred	1644	L4	W16	L8	W1	2		
12 FINBERG Thomas	1732	W17	-	-	-	1		
13 FENNER Charles	1561	L5	W18	L7	L10	1		
14 FRANKLIN Charles	1191	L1	L10	W17	L9	1		
15 KU Tang	-	-	-	-	W16	1		
16 YOUNGLOOD Lee	-	L2	L11	W1	L15	1		
17 ISAAC Theodore	-	L12	L8	L14	L1	0		
18 ZAVORAL Robert	-	L9	L13	L1	-	0		

SPRINGFIELD AFTER THE BLIZZARD OPEN FEBRUARY 20, 1988 SECTION A

PLAYER	PRE ST RTNG	POST RTNG	1	2	3	TOT
1 COOKE, PAUL S	IL 2248	2247	W-8	W-4	D-3	2.5
2 VAN BUSKIRK, DOUGL	IL 2123	2123	W-9	D-5	W-7	2.5
3 SMITH, G. BRAD	IL 1763	1817	W-6	W10	D-1	2.5
4 DEJMEK, MARK W	IL 1846	1666	W10	L-1	W-5	2.0
5 DESTREICH, MARK	IL 1750	1776	W-7	D-2	L-4	1.5
6 MARSHALL, JAMES A	IL 1984	1958	L-3	W-9	L-8	1.0
7 FRANEK, MARTIN J	IL 1951	1926	L-5	W-8	L-2	1.0
8 PURCELL, CARL A	IL 1770	1704	L-1	L-7	W-6	1.0
9 HALL, JOHN R	IL 1825	1812	L-2	L-6	U--	.0
10 WHEELER, STEPHAN	IL 1742	1727	L-4	L-3	U--	.0

SPRINGFIELD AFTER THE BLIZZARD/B

PLAYER	PRE ST RTNG	POST RTNG	1	2	3	TOT
1 MEYER, WILLIAM L	IL 1658	1681	W10	D-3	W-6	2.5
2 GARDNER, K C	IL 1610	1646	W-4	W-8	D-3	2.5
3 KNOEDLER, THOMAS B	IL 1724	1739	W-9	D-1	D-2	2.0
4 SHANE, DAVID W	IL 1563	1594	L-2	W10	W-7	2.0
5 FERGUSON, II LEONA	IL 1644	1639	D-6	L-7	W-8	1.5
6 KONONI, DAVID H	IL 1513	1529	D-5	W-9	L-1	1.5
7 WOLF, WILLIAM P	IL 1671	1647	L-8	W-5	L-4	1.0
8 INGRAM, RANDY	IL 1639	1635	W-7	L-2	L-5	1.0
9 GALLAGHER, DANNY L	IL 1599	1565	L-3	L-6	D10	.5
10 LARSON, JAMES B	IL 1527	1506	L-1	L-4	D-9	.5

SPRINGFIELD AFTER THE BLIZZARD/C

PLAYER	PRE ST RTNG	POST RTNG	1	2	3	TOT
1 LEBD, STEVEN	IL 1528	1559	W-7	W-6	W-4	3.0
2 LAY, FRANKLIN W	IL 1492	1497	W-5	L-4	W-8	2.0
3 HOLT, LESLIE W	IL 1422/3	1403	L-6	W-9	W-7	2.0
4 JOHNSON, DAVID	IL 1375/8	1401	W-9	W-2	L-1	2.0
5 HEALY, JAMES D	IL 0	1438	L-2	W-8	W-6	2.0
6 PRATHER, WILLIAM L	IL 1389	1385	W-3	L-1	L-5	1.0
7 DOMBROWSKI, RICHAR	IL 1335	1315	L-1	B--	L-3	1.0
8 MILLER, EARL	IL 1214	1203	B--	L-3	L-2	1.0
9 LEVINE, MASON G	IL 0	1038	L-4	L-3	U--	.0

Spring Showers of 1988 Open April 30, 1988

Section A	
1 MARSHALL Jim	1870 W3 D7 W2 2.5
2 DEJMEK Mark	1846 W4 W6 L1 2
3 VAN BUSKIRK Douglas	2123 L1 W5 W6 2
4 FISHER Barry	2008 L2 W8 W5 2
5 FRENCH Kevin	1900 W7 L3 L4 1
6 GLAYE Manuel	1914 W8 L2 L3 1
7 TORREGROSSA Ron	2146 L5 D1 - 0.5
8 YONKINSON John	1808 L6 L4 - 0

Section B	
1 KING Robert Jr	- W10 W7 W4 3
2 FATHAUER Terry	1737 D3 W11 W7 2.5
3 FLYER Rich	- D2 W10 W9 2.5
4 SMITH Brad	1751 W9 W8 L1 2
5 MC ILHANNY Michael	- L7 D6 W8 1.5
6 FERGUSON Leonard	1644 - D5 W11 1.5
7 EIMUSEN Laurel	1363 W5 L1 L2 1
8 MARTINKA Michael	1249 W12 L4 L5 1
9 EIMUSEN Kenny	1172 L4 W12 L3 1
10 GARDNER Keith	1610 L1 L3 - 0
11 WARFIELD Thomas	- - L2 L6 0
12 HENDGZA Gilbert	- L8 L9 - 0

MARTINOVSKY ANNOTATES

[Editor's Note: Dr. Eugene Martinovsky, long one of Illinois' top players, earned his first International Master norm at the annual Hastings (England) tournament in January of 1988. He played the following game at a Norwegian event in early 1987.]

Gausdal International 1987

Gausdal, Norway

White: Eckhard Schmittlil
(2425 Elo)

Black: Eugene Martinovsky
(2280 Elo)

Caro-Kann (Panov Variation)

Annotated by Eugene
Martinovsky

1	e4	c6
2	c4	d5
3	exd	exd
4	cxd	Nf6
5	Nf3	Nxd5
6	Nc3	Nc6
7	d4	Bg4
8	Qb3	Bxf3
9	gxf	e6
10	Qxb7	Nxd4
11	Bb5+	Nxb5
12	Rc6+(!)	Ke7
13	Qxb5	Qd7

This is all very well known; the most recent famous game was between two former world champions, Robert Fischer and Max Euwe. Euwe here played 13 ... Nxc3 14 bxc Qad7 and after 15 Rb1! stood poorly and lost (Leipzig 1960). Since then much has changed and my move 13 ... Qd7 is presently considered best, giving Black equality (or at least close to it.)

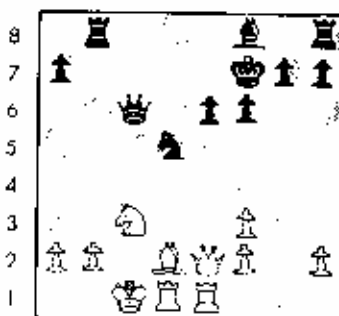
14 Qe2 ...
Theory recommends 14 Nxd5+ Qxd5 15 Qxd5 exd and now some authors say the

position is equal; others say that white has some minimal advantage.

14	...	f6
15	Bd2	Kf7
16	0-0-0	...

This is an ambitious but also a dangerous plan.

16	...	Rb8!
[I would like to prevent White's Kc1-b1-a1.]		
17	Rhe1	Qc6!



a b c d e f g h

Black's last two moves have all but paralyzed White's position. White pieces only look like they are well placed. In fact White is already in serious trouble.

18	Qe4	Bb4
19	a3	Ba5

19 ... Bxc3 20 Bxc3 Rxb2 is not good for Black because of 21 Kxb2 Qxc3+ 22 Ka2 or if 21 ... Rb8+ 22 Bb4! Qc3+ 23 Ka2 Rxb4 24 Qxc6+. So the sac is presently premature, almost good but not quite. Other moves such as 19 ... Be7 or 19 ... f5 are just as good as the text.

20	Kc2	...
----	-----	-----

20 Qa4 was a serious consideration and now Black has 20 ... Qc7, 20... Qb6 or 20... Qb7, in all cases with a strong attack. I calculated 20 ... Qc7 during the game and then possibly 21 Rxe6 Kxe6 22 Qe4+ Qe5 23 Nxd5 Bxd2+ 24 Rxd2 Rxc8+ 25 Kb1 Qxe4+ 26 fxe and White may be able to hold the game despite being an exchange

down due to his strong protected knight on d5. I discounted 21 Rxe6 Nxc3 because of 22 Bxc3 and White threatens Rd7+; on 22 ... Kxe6 23 Qg4+ f5 24 Re1+ things are not good for Black. I could however have played 21 Rxe6 Bxc3 22 Bxc3 Nxc3 23 Rd7+ Kxe6 24 Qg4+ f5! and Black wins.

20	...	Rxb2+!!
----	-----	---------

Now the sac is good because in a crucial position, where Black gives check with Rb8+, White will not have Bb4 as he did in the situation in the note after move 19. Also, if Black does not want to risk anything and plays 20 ... Rxc8 White might defend successfully with 21 Rc1.

21	Kxb2	Rb8+
22	Kc2	...

I expected 22 Ka2 Bxc3! 23 Rb1 Bxd2+.

22	...	Bxc3
23	Rb1!	f5!

This makes Qa4+ possible; simply 23 ... Bxd2+ 24 Kxd2 Qc3+ 25 Ke2 does not accomplish much.

24	Qd3	...
----	-----	-----

If 24 Dh4 then Bxd2+ 25 Kxd2 Qc3+ 26 Ke2 Rxb1 27 Rxb1 Qc2+ and Black wins. So the White queen must go to d3.

24	...	Qa4+
25	Kc1	Rc8!

This is the best but 25 ... Qxa3 + should also win.

26	Rb7+	Kf8
27	Kb1	...

During the game I became worried about 27 Rxe6 threatening Qxf5+ etc. I planned to answer this move by 27 ... Rf6+! and now 28 Kb1 Qd1+ 29 Ka2 Rc2+ 30 Kb3 Rxd2+ and Black wins.

27	...	Qxa3
28	Rd1	Qa1+
29	Kc2	Bb4+!
30	Kb3	Qa3 Mate!

0-1

CHess PHONE

(312) 325-3666

HUNDREDS COMPETE FOR TEAM AND INDIVIDUAL TITLES IN ILLINOIS HIGH SCHOOL ASSOCIATION CHESS CHAMPIONSHIPS

By Michael E. Zacate

TEAM CHAMPIONSHIPS: Kenwood Academy (Chicago) and the Illinois Academy of Math and Science (Aurora) each posted 6-0 results to top the 1988 IHSA Team Chess Championships, hosted by Evergreen Park High School on March 25-26, 1988. Kenwood took the Class AA (large school) crown by beating Lane Tech (Chicago) in a final round battle of undefeated teams. Illinois Math and Science, needing only a last round draw to win the Class A (small school) title, beat Christian Life (Rockford) to finish with a perfect score.

Thanks to the United States Chess Federation's decision to rate scholastic events without requiring all players to be USCF members, the team championships were rated for the first time. Proceeds from the Chess Coaches Clinic previously held at Evergreen Park paid the rating fees for all of the games in the 120 player Class A section and the games of the top six (out of eight) boards of the 560 player Class A section.

INDIVIDUAL CHAMPIONSHIPS: Mark Petersen (Elgin) and Joseph Gallianetti

(Roanoke-Benson) each scored 4.5-1.5 to win the IHSA Individual Chess Championships at Rock Island High School on April 22-23, 1988. Petersen finished ahead of 62 other Class AA players on tiebreaks over Doug Lundquist (Auburn of Rockford), Sean Bradley (St. Ignatius of Chicago), and Kevin Leuthold (Urbana), while Gallianetti ended up a half point in front of the 36 player Class A field. The two winners were invited by the Illinois Chess Association to participate in the 1988 Illinois State High School Invitational Championship, which will determine the Illinois representative to the 1988 Denker Tournament of High School Champions to be held in Boston in August at the time of the U.S. Open.

The distance to the Rock Island site may have kept some players from attending. Class AA team champion Kenwood, among other schools, was unrepresented. Nevertheless, nearly all of the qualifying Class A players and the usual two-thirds of the qualifying Class AA players did appear. (A team member's record in the team championship tournament determines whether he qualifies for the individual championship event.)

CLASS A TEAM RESULTS

Place	Score	Break	SCHOOL	ROUND 1 pts	ROUND 2 pts	ROUND 3 pts	ROUND 4 pts	ROUND 5 pts	ROUND 6 pts	Individual points
1.	4.0	472.5	ME Ill Math & Sci Academy (Aurora)	08.0 w 17	08.0 w 07	09.0 w 13	09.0 w 04	06.5 w 02	08.0 w 05	48.5
2.	4.5	461.0	MF Helen Franciscan (Chicago)	10.0 w 20	05.5 w 05	08.0 w 08	07.0 w 06	05.5 w 01	05.0 w 03	39.0
3.	4.5	448.0	MT Westmont	08.0 w 18	02.0 w 04	08.0 w 09	08.5 w 17	04.5 w 07	05.0 w 02	38.5
4.	4.0	440.0	SV Stillman Valley	10.0 w 16	08.0 w 03	07.5 w 06	01.0 w 01	02.0 w 05	09.0 w 13	37.5
5.	4.0	427.5	CL Christian Life (Rockford)	10.0 w 14	04.5 w 02	06.5 w 10	06.0 w 11	08.0 w 04	02.0 w 01	37.0
6.	4.0	419.0	RR Roanoke-Benson	10.0 w 09	08.0 w 12	02.5 w 04	03.0 w 02	06.0 w 08	07.0 w 13	36.5
7.	4.0	415.5	GR Georgetown-Ridge Farm	10.0 w 21	02.0 w 01	09.0 w 14	07.0 w 15	03.5 w 03	06.5 w 11	36.0
8.	3.5	400.0	Ha Hampshire	05.0 w 22	04.0 w 16	02.0 w 02	10.0 w 17	02.0 w 06	07.0 w 10	32.0
9.	3.5	478.0	Va Virginia	00.0 w 06	10.0 w 19	02.0 w 03	09.0 w 16	05.0 w 15	08.0 w 17	34.0
10.	3.0	700.0	CI Clinton	00.0 w 04	06.0 w 18	03.5 w 05	06.5 w 14	14.0 w 17	03.0 w 08	29.0
11.	3.0	478.0	ME North Boone (Naplar Grove)	05.0 w 16	05.0 w 22	07.0 w 13	04.0 w 05	07.0 w 21	03.5 w 07	31.5
12.	3.0	454.5	OI Olympia (Stanford)	10.0 w 19	02.0 w 06	06.0 w 22	01.5 w 03	04.0 w 13	08.0 w 16	33.5
13.	3.0	420.0	Bs Research-Hawking	04.0 w 15	10.0 w 23	03.0 w 11	10.0 w 22	06.0 w 12	03.0 w 06	34.0
14.	3.0	542.0	SD Sherrard	00.0 w 05	06.0 w 20	01.0 w 07	03.5 w 10	07.0 w 22	04.0 w 19	23.5
15.	2.5	790.0	OR Bergley North (Chicago)	06.0 w 13	09.0 w 24	01.0 w 01	03.0 w 07	05.0 w 09	01.0 w 04	25.0
16.	2.5	434.0	By Byron	05.0 w 11	04.0 w 08	07.0 w 19	01.0 w 09	08.0 w 18	02.0 w 12	27.0
17.	2.0	494.0	Wv Waverly	02.0 w 01	08.0 w 23	10.0 w 24	00.0 w 08	00.0 w 10	02.0 w 09	22.0
18.	2.0	598.0	LR Lutheran (Rockford)	02.0 w 05	09.0 w 19	09.0 w 20	04.0 w 21	02.0 w 14	08.0 w 22	29.0
19.	2.0	578.0	SF South Fork (Kimcard)	00.0 w 12	00.0 w 09	02.0 w 14	06.0 w 24	05.5 w 20	04.0 w 14	18.5
20.	2.0	537.5	EP Evergreen Park	00.0 w 02	04.0 w 14	01.0 w 18	14.0 w 23	04.5 w 19	06.5 w 21	24.0
21.	2.0	515.0	MC Newman Catholic (Iller)sgp	00.0 w 07	02.0 w 17	07.0 w 23	05.0 w 10	03.0 w 13	03.5 w 20	20.5
22.	1.0	407.0	SH Dunker Hill	05.0 w 08	05.0 w 11	02.0 w 12	00.0 w 13	03.0 w 14	02.0 w 18	17.0
23.	1.0	389.0	Oh Ohio	03.0 w 24	00.0 w 15	03.0 w 21	00.0 w 20	06.0 w bye	withdrew	12.0
24.	1.0	248.0	Rd Redick	07.0 w 23	06.0 w 15	06.0 w 17	00.0 w 19	withdrew	withdrew	07.0

CLASS AA TEAM RESULTS

Place	Year	Score	Team	SCHOOL	ROUND 1		ROUND 2		ROUND 3		ROUND 4		ROUND 5		Individual		
					tm	pts	tm	pts	tm	pts	tm	pts	tm	pts	tm	points	
1.	6.0	2747	Kw	Kenwood (Chicago)	19.0	218	55.0	49	49.0	07	51.5	13	52.0	13	67.0	32	284.5
2.	5.0	2595	Lf	Lane Tech (Chicago)	63.0	55	63.0	23	43.5	04	36.0	05	47.5	03	21.0	01	174.5
3.	5.0	2583	Ur	Urbana H.S.	68.0	24	43.0	15	58.0	30	52.5	14	20.5	02	50.0	12	292.0
4.	5.0	2334	Eg	East St. Louis Senior	58.0	49	58.0	44	24.5	02	40.0	10	50.5	20	42.0	11	293.0
5.	5.0	2123	Pw	Proviso West (Hillside)	68.0	46	40.5	28	54.0	25	32.0	02	48.0	27	50.0	14	292.5
6.	5.0	2068	Ap	Apburn (Rockford)	62.0	56	52.5	27	38.5	08	19.5	13	52.5	43	19.0	10	264.0
7.	5.0	2056	Ss	Downers Grove South	62.0	58	49.0	32	19.0	01	46.0	39	48.5	37	47.5	30	272.0
8.	5.0	1943	Tw	Thornwood (South Holland)	48.0	53	37.5	17	29.5	06	44.5	18	34.0	20	37.5	13	233.0
9.	4.0	2764	Rl	Rock Island	63.0	60	33.0	01	55.0	39	38.0	22	03.0	11	41.0	41	215.0
10.	4.0	2531	Lb	Lindblom (Chicago)	52.0	21	64.5	39	68.0	43	28.0	04	62.0	17	29.0	36	304.5
11.	4.0	2366	Sl	St. Ignace (Chicago)	53.5	22	64.0	19	55.5	16	16.5	01	63.0	09	26.0	34	258.5
12.	4.0	2310	Mc	Morton (Cicero)	41.0	44	17.0	16	44.5	32	37.0	19	40.5	33	18.0	03	209.0
13.	4.0	2157	Bb	Bradley-Bourbonnais	56.0	57	58.0	25	49.5	20	48.5	06	15.0	01	36.5	08	256.5
14.	4.0	2047	Mw	Miles West (Skokie)	62.0	51	52.0	47	47.0	37	15.5	03	59.0	21	18.0	05	253.5
15.	4.0	2042	Gw	Glensbrook (Northbrook)	51.0	40	25.0	03	33.0	22	58.0	45	44.0	46	58.0	33	271.0
16.	4.0	1891	Sn	Senn (Chicago)	62.0	26	51.0	32	12.5	11	24.5	30	48.0	25	48.0	45	244.0
17.	4.0	1846	Cb	Carbondale	68.0	45	30.5	08	52.0	54	37.5	25	04.0	10	43.0	37	237.0
18.	4.0	1845	Et	Evanston Township	29.0	01	63.0	40	44.0	31	21.5	08	38.0	44	62.5	34	260.0
19.	4.0	1804	Wt	Whitney Young (Chicago)	63.0	68	24.0	11	47.0	46	31.0	12	41.0	26	54.0	29	260.0
20.	4.0	1768	Mh	Miles North (Skokie)	45.0	38	44.5	31	19.5	13	56.0	56	32.0	08	34.5	27	233.5
21.	4.0	1638	Hn	Hanston	15.0	10	41.5	24	57.5	47	50.5	42	09.0	14	31.5	32	205.0
22.	4.0	1528	Mc	Marion (Chicago)	14.5	11	68.0	62	35.0	15	30.0	09	38.5	47	34.0	42	222.0
23.	4.0	1453	Wh	Wheeling	43.5	50	05.0	02	33.5	29	51.5	58	47.0	48	40.0	48	220.5
24.	4.0	1220	Dw	Downers Grove North	00.0	33	68.0	46	11.0	04	60.0	68	37.0	36	35.0	43	231.0
25.	3.0	2984	Lk	Lincoln-Way (New Lenox)	54.0	63	68.0	33	14.0	05	30.5	17	20.0	16	68.0	57	256.5
26.	3.0	1956	Mp	Marion Military (Aurora)	06.0	16	26.5	21	58.0	61	59.0	65	27.0	19	42.0	59	218.5
27.	3.0	1771	Sp	St. Patrick's (Chicago)	47.0	42	15.5	06	50.0	57	40.0	29	20.0	03	31.5	20	204.0
28.	3.0	1596	Rb	Robeson (Chicago)	27.0	32	37.5	41	42.0	48	27.0	43	29.0	34	57.0	60	219.5
29.	3.0	1588	Oo	Orr (Chicago)	58.0	66	28.0	30	34.5	23	28.0	27	42.0	35	14.0	19	214.5
30.	3.0	1549	Bv	Bovian (Rockford)	51.5	65	40.0	29	10.0	03	43.5	16	17.5	04	20.5	07	183.0
31.	3.0	1540	Sr	St. Rita (Chicago)	38.0	41	23.5	20	22.0	18	44.0	55	28.5	32	52.0	51	208.0
32.	3.0	1532	Dl	Dak Law Community	41.0	28	19.0	07	21.5	12	44.0	54	39.5	31	24.5	21	189.5
33.	3.0	1457	Wc	Waukegan East	39.0	34	40.0	25	44.0	38	41.0	44	37.5	12	10.0	15	161.5
34.	3.0	1438	Mw	Wheaton North	29.0	33	31.0	27	56.0	64	52.0	51	39.0	28	05.5	18	212.5
35.	3.0	1436	Sj	St. Joseph (Westchester)	68.0	62	10.0	13	38.0	49	33.5	37	26.0	29	53.0	58	228.5
36.	3.0	1392	El	Elgin	68.0	69	27.5	05	19.5	03	12.0	20	31.0	24	53.5	55	241.5
37.	3.0	1376	Wa	Washington (Chicago)	54.0	70	37.0	34	21.0	14	24.5	35	19.5	07	25.0	17	191.0
38.	3.0	1368	Fw	Fernick (Oak Park)	23.0	20	45.0	63	24.0	33	44.0	53	26.0	41	40.0	48	202.0
39.	3.0	1349	Dp	Oak Park-River Forest	48.0	48	33.5	13	50.5	50	32.0	07	29.0	40	35.0	49	187.0
40.	3.0	1340	Be	Belleisle East	17.0	15	44.0	46	21.0	19	53.0	52	40.0	39	28.0	23	205.0
41.	3.0	1319	Tn	T. Frac North (Calumet City)	30.0	31	30.5	28	68.0	65	43.0	54	42.0	38	27.0	09	240.5
42.	3.0	1281	An	Andrew (Tinley Park)	21.0	27	48.5	65	53.0	56	17.5	21	44.5	59	32.0	22	216.5
43.	3.0	1279	Sh	Shepard (Palms Heights)	59.0	61	47.0	54	00.0	10	41.0	28	13.5	04	33.0	24	193.5
44.	3.0	1232	Jr	Jefferson (Rockford)	60.0	54	00.0	04	37.0	24	27.0	33	30.0	18	48.0	53	202.0
45.	3.0	1048	Bc	Bowen (Chicago)	00.0	17	46.0	55	48.0	52	10.0	15	50.0	56	20.0	14	174.0
46.	3.0	0984	Cv	Carver (Chicago)	00.0	35	24.0	40	68.0	69	40.5	58	22.0	15	35.0	47	189.5
47.	2.0	1394	Tt	Thornton Township (Harvey)	68.0	68	16.0	14	10.5	21	47.0	49	29.5	22	33.0	46	204.0
48.	2.0	1388	Cw	Curvie (Chicago)	20.0	39	47.0	58	26.0	28	57.0	57	21.0	23	28.0	38	219.0
49.	2.0	1256	Hr	Harlan (Chicago)	27.0	12	59.0	68	30.0	35	23.0	47	46.0	47	33.0	39	216.0
50.	2.0	1185	Bv	Batavia	24.5	23	57.0	51	17.5	39	27.5	46	27.0	58	51.0	65	184.5
51.	2.0	1162	Bp	Bradley (Midlothian)	04.0	14	31.0	50	55.0	60	16.0	24	50.0	61	16.0	31	174.0
52.	2.0	1118	Ts	Thorn Frac South (Lansing)	21.0	24	53.0	61	20.0	45	15.0	40	30.0	60	61.0	66	200.0
53.	2.0	1107	Hf	Homewood-Flossmoor	20.0	08	62.0	70	18.5	36	24.0	38	62.0	68	20.0	44	206.5
54.	2.0	1050/8	Pr	Prospect (Mt. Prospect)	47.0	52	21.0	43	16.0	17	24.0	32	37.0	64	23.0	56	148.0
55.	2.0	1050/6	Fr	Freese (Palatine)	04.5	02	22.0	45	39.0	46	24.0	31	45.0	62	14.5	36	149.0
56.	2.0	0996	Nt	New Trier (Winnetka)	06.0	36	56.0	69	15.0	42	25.0	41	18.0	45	45.0	54	165.0
57.	2.0	0962/7	Rg	Rich South (Richton Park)	12.0	13	53.0	67	13.0	27	11.0	48	35.0	63	14.0	25	138.0
58.	2.0	0962/6	Bv	Barrville	06.0	07	21.0	48	42.5	62	16.5	27	16.0	50	15.0	15	255.5
59.	2.0	0856	Rh	Holling Meadows	00.0	04	45.0	64	11.0	09	39.5	63	23.5	42	26.0	26	145.0
60.	2.0	0678	Ot	Ottawa Township	05.0	09	03.0	18	13.0	51	44.0	70	38.0	52	11.0	28	116.0
61.	2.0	0654	Mw	Waukegan West (Des Plaines)	09.0	43	15.0	52	18.0	26	47.0	69	18.0	51	47.0	68	146.0
62.	2.0	0647	Hn	Hulkrest (Country Club Hills)	00.0	35	00.0	22	25.5	58	38.0	64	23.0	55	42.0	63	148.5
63.	1.0	1059	Ae	Aurora East	12.0	25	23.0	38	50.0	67	28.5	59	33.0	57	32.0	62	178.5
64.	1.0	0900	Rb	Riverside-Brookfield	08.0	44	25.0	59	12.0	34	30.0	62	31.0	54	40.0	67	146.0
65.	1.0	0734	Sv	Stevenson (Prairie View)	16.5	30	19.5	42	00.0	41	09.0	26	34.0	69	12.0	50	093.0
66.	1.0	0678	Gf	Oak Forest	00.0	29	00.0	24	29.0	55	31.0	67	50.0	70	07.0	52	117.0
67.	1.0	0642	Ct	Crystal Lake South	00.0	47	10.0	57	18.0	74	37.0	66	17.0	49	28.0	63	110.0
68.	1.0	0544	Rn	Rantoul	00.0	19	09.0	49	43.0	70	08.0	42	04.0	53	21.0	61	089.0
69.	1.0	0452	Ei	Eisenhower (Blue Island)	00.0	36	12.0	56	00.0	46	21.0	61	20.0	65	42.0	70	095.0
70.	0.0	0444	Tr	Thornridge (Darien)	14.0	37	06.0	53	12.0	68	20.0	60	12.0	66	15.0	69	079.0

Illinois High School Association Individual Chess Championship

Rock Island High School

April 22-23, 1988

CLASS AA

CLASS A

Place	NAME	Sch	Rate	Rd. 1	Rd. 2	Rd. 3	Rd. 4	Rd. 5	Pts
1	PETERSEN; MARK	EI	1815	W-040	W-039	W-021	W-005	D-003	4.5
2	LUNDQUIST; DOUG	AR	1809	W-041	0-009	W-017	W-033	W-010	4.5
3	BRODLEY; SEAN	SI	1553	W-055	W-018	W-020	W-022	D-001	4.5
4	LEUTHOLD; KEVIN	W	1759	W-040	W-040	W-014	D-012	W-009	4.5
5	PAYNE; ANDREW	SI	1712	W-025	W-037	W-007	L-001	W-014	4
6	RYNES; EMMY	DS	1650	W-019	D-013	D-015	W-043	W-028	4
7	GUERREAO; ERNESTO	ME	0000	W-016	W-058	L-005	W-019	W-020	4
8	ORTIZ; EDOTE	LT	1633	L-038	W-024	W-027	W-023	W-017	4
9	BHARGAVA; VINAY	PM	1453	W-030	D-002	W-032	W-013	L-004	3.5
10	WHITE; JOHN	OH	1356	W-045	W-050	W-028	D-004	L-002	3.5
11	KETZBACK; THOR	SA	1371	D-032	W-026	L-013	W-054	W-033	3.5
12	SHAH; RUPESH	TW	1779	L-037	D-015	W-051	W-026	W-031	3.5
13	BARTNSKI; CHUCK	BB	1426	W-057	D-006	W-011	L-009	D-016	3
14	BERLAND; PAUL	KW	1758	W-023	W-030	L-004	W-039	L-005	3
15	TSAU; JOHN	NM	0000	W-043	D-012	D-006	L-017	W-046	3
16	LOWE; JASON	AR	1447	L-007	W-052	W-025	D-021	D-013	3
17	BULMANN; SCOTT	DS	1549	W-061	W-040	L-002	W-015	L-008	3
18	EATON; JOHN	SP	1614	(W-043)	L-003	D-024	W-032	D-021	3
19	WSEH; LIM-SONG	CB	1793	L-006	W-049	W-033	L-007	W-037	3
20	STEVENSAN; WILLIE	MN	1409	W-051	W-045	L-003	W-037	L-007	3
21	FRANKLIN; A. ALBERT	TW	1620	W-053	W-035	L-001	D-016	D-010	3
22	FAGAN; JAMES	HR	1886	W-058	W-038	D-031	L-003	D-024	3
23	HOFFMAN; TIMOTHY	BR	1568	L-014	W-062	W-029	L-008	W-039	3
24	SEYMOUR; CHRIS	DW	0000	W-052	L-008	D-018	W-048	D-022	3
25	BROWN; DAVID B.	TT	1409	L-005	W-044	L-016	W-053	W-042	3
26	SUNG; RICHARD	GN	1810	BYE	L-011	W-050	L-012	W-038	3
27	WU; KEN	GN	1618	W-042	L-029	L-008	W-055	W-040	3
28	FIELDS; IRVIN	PM	1583	W-056	W-060	L-010	W-038	L-006	3
29	PRUDE; SCORICK	HR	1450	L-048	W-027	L-023	(W-059)	W-041	3
30	MILLER; GREG	JR	1713	L-009	L-014	W-045	W-057	(W-043)	3
31	HINTON; CHRIS	CV	1300	W-062	W-046	D-022	L-002	L-012	2.5
32	COHEN; ARIK	EG	0000	D-011	W-056	L-009	L-018	W-049	2.5
33	LAR; RON	SA	0000	W-047	D-041	L-019	W-049	L-011	2.5
34	ERDAKOS; JASON	RS	1121	L-044	W-053	L-036	D-035	W-052	2.5
35	CLEMENS; JOHN	PR	0000	L-050	L-021	W-061	D-034	W-054	2.5
36	PHAM; CHINH	PC	0000	L-049	D-051	L-041	W-060	W-048	2.5
37	MIZANUDDIN; ADIL	DS	1576	W-012	L-005	W-044	L-020	L-019	2
38	COLLINS; DAVID	SJ	1361	W-008	L-022	W-034	L-028	L-026	2
39	BENNETT; GREG	SP	1454	W-046	L-001	W-059	L-014	L-023	2
40	GREY; DARICK	TR	1585	L-001	L-017	W-047	W-044	L-027	2
41	SINGER; ROBBY	WA	0000	L-002	D-033	W-036	D-042	L-029	2
42	CARROLL; MALCOLM	W	1701	L-027	W-047	D-048	D-041	L-025	2
43	MROSLAW; CHOMAZY	SZ	0000	L-015	W-061	W-055	L-006	(L-030)	2
44	ANANDALAI; MANIK	PM	1051	W-034	L-025	L-037	L-040	W-056	2
45	PATTON; HENRY	NC	0000	L-010	L-020	L-030	W-061	W-057	2
46	NGUYEN; THAO	TN	1354	L-039	L-031	W-056	W-050	L-015	2
47	HOLDREN; BRIAN	AE	0000	L-033	L-042	L-040	BYE	W-055	2
48	NGUYEN; DANNY	SA	0000	W-029	L-004	D-042	L-024	L-036	1.5
49	COLVIN; CHESTER	TS	0930	W-036	L-019	D-054	L-033	L-032	1.5
50	SINGH; GAGANDEEP	EI	1463	W-035	L-010	L-026	L-046	D-053	1.5
51	KALYANS; TOM	PM	1309	L-020	D-036	L-012	L-052	W-060	1.5
52	WHELAN; MIKE	EI	0000	L-024	L-016	D-060	W-051	L-034	1.5
53	ECHAVEZ; PAUL	NN	0000	L-021	L-034	BYE	L-025	D-050	1.5
54	THOMAS; TERRY	RI	1038	L-059	W-057	D-049	L-011	L-035	1.5
55	YAM; ROBERT	AN	1377	L-003	W-059	L-043	L-027	L-047	1
56	YOO; CHAN	SA	1405	L-028	L-032	L-046	W-058	L-044	1
57	WIMBERLY; TERRY	ET	0000	L-013	L-054	W-058	L-030	L-045	1
58	BRODIE; JEFF	GN	1416	L-022	L-007	L-057	L-054	W-061	1
59	BIDENMAN; SERGE	SV	0000	W-054	L-055	L-039	(L-029)	W/D	1
60	LASKY; JIM	SR	1472	L-004	L-028	D-052	L-036	L-051	.5
61	PARSONS; GREG	LP	1324	L-017	L-043	L-035	L-045	L-058	0
62	NAYAN; MIKE	EI	0000	L-031	L-023	W/D	W/D	W/D	0
63	WITTBRODT; ANDY	PM	0000	(L-018)	W/D	W/D	W/D	W/D	0

Place	NAME	Sch	Rate	Rd. 1	Rd. 2	Rd. 3	Rd. 4	Rd. 5	Pts
1	GALLIANNETTI; JOE	RB	1597	W-019	W-030	W-012	D-006	W-003	4.5
2	HOOLESLEY; JOHN	MS	1416	L-007	W-032	W-018	W-010	W-006	4
3	ONG; YUNUS	WI	0978	W-024	W-020	W-008	W-009	L-001	4
4	HALSEY; SHAWN	OI	1512	L-029	W-025	W-016	W-015	W-009	4
5	DAMES; RAY	MS	0000	W-035	W-010	L-006	W-021	W-008	4
6	KNECHT; DOUG	RB	1297	W-027	W-029	W-005	D-001	L-002	3.5
7	PETERMAN; ROBERT	GR	1285	W-002	L-008	W-020	W-023	D-014	3.5
8	MCCAUGHEY; THOMAS	GN	1629	W-031	W-007	L-003	W-013	L-005	3
9	KELLY; BILL	BI	0000	W-034	W-015	W-011	L-003	L-004	3
10	BRANSTITER; WADE	CL	1551	W-026	L-005	W-017	L-002	W-022	3
11	MALLIN; JASON	NC	0000	W-016	W-022	L-009	D-014	D-012	3
12	LEWIS; JAMAL	HF	1523	D-018	W-013	L-001	W-019	D-011	3
13	RIBANDO; JASON	MS	1517	W-014	L-012	W-022	L-008	W-026	3
14	SMITH; JERRY	CL	1116	L-013	W-034	W-024	D-011	D-007	3
15	TURNBULL; DOUG	MS	1323	W-023	L-009	W-030	L-004	W-021	3
16	PETERSEN; NAT	SV	1125	L-011	W-028	L-004	W-032	W-029	3
17	ONG; ANDREAS	WI	0000	W-021	L-018	L-010	W-031	W-023	3
18	NBERE; TOMMY	HF	1292	D-012	W-017	L-002	L-020	W-029	2.5
19	BRODACH; RON	WI	1446	L-001	D-033	W-025	L-012	W-030	2.5
20	SQUIRES; RUSS	NB	1317	W-036	L-003	L-007	W-018	L-016	2
21	JUND; SCOT	CL	0000	L-017	W-031	W-026	L-005	L-015	2
22	DANIEL; JOHN	GR	1097	W-028	L-011	L-013	W-027	L-010	2
23	SRONCE; GAVIN	EI	1180	L-015	W-036	W-029	L-007	L-017	2
24	ENGELKES; BARRY	SV	0000	L-003	W-027	L-014	D-033	D-025	2
25	GLAZIER; AARON	NA	0000	D-032	L-004	L-019	W-035	D-024	2
26	PASKO; STEVE	W	1359	L-019	W-035	L-021	W-036	L-013	2
27	BOUTON; MARC	MA	1447	L-006	L-024	W-034	L-022	W-035	2
28	HAFFZIGER; BRETT	OI	1226	L-022	L-016	L-031	W-034	W-033	2
29	PHENICIE; DOUG	GR	1645	W-004	L-006	L-023	D-030	L-018	1.5
30	BIGGERS; BRUCE	SV	1344	W-033	L-001	L-015	D-029	L-019	1.5
31	WILLARD; TIM	LR	0000	L-008	L-021	W-028	L-017	D-032	1.5
32	JOHNSON; MARK	WA	0945	D-025	L-002	D-033	L-016	D-031	1.5
33	VASRUSSEN; MIKE	NB	0000	L-030	D-019	D-032	D-024	L-028	1.5
34	AYALA; JIMMIESCO	GN	0000	L-009	L-014	L-027	L-028	W-036	1
35	MARSH; BRIAN	EP	1100	L-005	L-026	D-036	L-025	L-027	.5
36	ENGEL; CHRIS	CL	0000	L-020	L-023	D-035	L-026	L-034	.5

**ILLINOIS CHESS ASSOCIATION
MEETING**

JULY 10, 1988 - NOON

**MOHR COMMUNITY CENTER
7650 JACKSON BLVD.
FOREST PARK, IL**



**1988
ILLINOIS OPEN**



SEPTEMBER 3-5

**HOLIDAY INN
PERU, ILLINOIS**

\$2000 PRIZE FUND

2 SECTIONS



BE THERE!!!



1988 MIDWEST MASTERS INVITATIONAL VI REVISITED: CROSS TABLE AND MORE GAMES

[Editor's Note: Eric Schiller's story on the 1988 Midwest Masters, along with 12 of the event's games, appeared in the March-April ICB. The tournament's cross table, another dozen games (all of which involve at least one Illinois player), and organizer Helen Warren's commentary on master chess are presented in this issue.]

MORE GAMES FROM THE 1988 MIDWEST MASTERS

[Editor's Note: The following game scores were compiled by Eric Schiller using BOOKUP VI and Chess Base software. They are used courtesy of Schiller and Helen Warren.]

W: National Master Brian Schuman (IL) - 2277

B: FIDE Master Doug McClintock (CA) - 2441

1.d4 Nf6 2.Nc3 d5 3.e4 de4
4.f3 e3 5.Be3 g6 6.Qd2 Nbd7
7.O-O O Nb6 8.d5 c6 9.dc6
Qxd2+ 10.Rxd2 bc6 11.g3 Bg7
12.Bd3 O-O 13.Nge2 Nfd5
14.Nd5 cd5 15.f4 Bd7 16.Bd4
f6 17.b3 e5 18.Bb2 Rfc8
19.Ba6 Rc5 20.b4 Bf5 21.Ba3
Rc7 22.a5 Be4 23.Re1 Nc8
24.Bb2 Nd6 25.Nc3 Rc6 26.Ne4
de4 27.Rd6 Rd6 28.Bc4 Kh8
29.fe5 fe5 30.Re4 Rad8
31.Bc3 Rd1+ 32.Kb2 Rh1 33.h4
Rh3 34.Re3 Bf6 35.Re5 (1-0)

W: NM Lawrence Chachere (IL) - 2397

B: NM Randy Zumbrunnen (WI) - 2227

1.d4 d5 2.c4 e6 3.Nc3 c5
4.cd5 ed5 5.Nf3 Nc6 6.g3 Nf6
7.Bg2 Be7 8.O-O O-O 9.Bg5
cd4 10.Nd4 h6 11.Be3 Re8
12.Rc1 Bg4 13.h3 Bh5 14.Nc6
bc6 15.Na4 Bd6 16.Re1 Bg3
17.Qd2 Bd6 18.Rc6 Qd7
19.Rc1 Ne4 20.Qd3 Re6
21.Kf1 Bh2 22.Re6 Qe6 23.Nc5
Qf6 24.Ne4 de4 25.Qd5 Be2
26.Ke2 Qb2 27.Kf1 Re8 28.Be4
Qa3 29.Kg2 Bb8 30.Qd7 Re4
31.Rc8 (1-0)

W: FM Albert Chow (IL) - 2448

B: FM Michael Brooks (MO) - 2572

1.d4 Nf6 2.c4 g6 3.Nc3 Bg7
4.e4 d6 5.f3 O-O 6.Be3 Nbd7
7.Bd3 e5 8.d5 c6 9.Nge2 cd5
10.cd5 a6 11.O-O Nh5 12.Qd2
f5 13.ef5 g5 14.f4 ef4

15.Nf4 Nf4 16.Bf4 Ne5 17.Kh1
Bd7 18.Be2 Rc8 19.Bh6 Qf6
20.Bg7 Qg7 21.Qd4 Nc4 22.Qg7+
Kg7 23.Bc4 Rc4 24.Rae1 b5
25.a3 a5 26.Kg1 Rf7 27.Rf2 b4
28.ab4 ab4 29.Ne2 Re4 30.Ra1
f4 31.Ra7 Rfe7 32.Kf1 Bb5
33.Re7 Re7 34.Ke1 Re5 35.Kd2
Rd5 36.Kc2 Be2 37.Re2 Rh5
38.h3 f3 39.gf3 Rh3 40.Rf2
Kf6 41.Kb3 Rh4 42.f4 Kf5
43.Kb4 Rf4 44.Rf4+ Kxf4
45.Kc4 Ke5 46.b4 Ke6 47.b5
Kd7 48.Kd5 h5 (0-1)

W: FM Andrew Karklins (IL) - 2417

B: GM Walter Browne (CA) - 2634

1.e4 c5 2.Nf3 d6 3.d4 cd4
4.Nd4 Nf6 5.Nc3 a6 6.Bc4 e6
7.a3 Be7 8.Ba2 O-O 9.Qe2 Nc6
10.Nc6 bc6 11.e5 de5 12.Qe5
Nd5 13.Bd2 Bf6 14.Qg3 Qb6
15.Ne4 Bb2 16.Rb1 Qd4 17.O-O
f5 18.c3 Qe4 19.Rb2 f4 20.Qf3
Qf3 21.gf3 Rf5 22.Rfb1 Kf7
23.Kf1 g5 24.Rb8 Rb8 25.Rb8
Ne7 26.c4 c5 27.Bb1 Rf6
28.Bc3 e5 29.Bh7 Bh3+ 30.Ke2
Nc6 31.Rb7+ Kf8 32.Be4 Bg2
33.Rb6 g4 34.Rc6 Bf3+ 35.Ke1
Rc6 36.Bc6 Bc6 37.Be5 f3
38.Bd6+ Kf7 39.Bc5 Ke6 40.Kd2
Ba4 41.Ke3 Bb3 42.Kd4 Kd7
43.Kd5 Ba2 44.Bb6 Bb3 45.Ba5
Ba2 46.Bb4 Bb3 47.Kd4 Ke6
48.Bd2 Ba2 49.Bf4 Bb3 50.Bg3
Ba2 51.Kc3 Kd7 52.Kd4 Ke6
53.Ke4 Bc4 54.Kf4 Kf6 55.Kg4
Be2 56.h4 (.5-.5)

W: IM James Rizzitano (IL) - 2552

B: NM Marc Lonoff (IL) - 2297

1.c4 Nf6 2.Nc3 d5 3.cd5 Nd5
4.Nf3 g6 5.e4 Nc3 6.dc3 Qd1
7.Kd1 Bg4 8.Bf4 c6 9.Kc2 Bf3
10.gf3 Nd7 11.Rd1 e6 12.Be2
Bc5 13.Bg3 e5 14.b4 Bb6 15.Bc4
Rf8 16.h4 Bc7 17.Kd2 Ke7
18.Ke3 Bb6 19.Kc2 Bc7 20.Ke3
Bb6 21.Ke2 Bc7 22.B4 a5 23.Bb3
h6 24.Ke3 Bb6 25.Ke2 Bc7
26.Ke3 Bb6 27.Xe2 Bc7 28.Ke3
(.5-.5)

W: NM Peter Stein (IL) - 2261

B: NM Marvin Dandridge (IL) - 2354

1.d4 g6 2.e4 Bg7 3.Nc3 d6
4.Bg5 c6 5.Qd2 a5 6.Nf3 Bg4
7.Be2 a4 8.O-O a3 9.Ba3 Ra3
10.Rab1 Bc8 11.Rb3 Ra5 12.Rfb1
Nf6 13.d5 O-O 14.Bh6 Nbd7
15.Bg7 Kg7 16.dcb bc6 17.Nd4
Qc7 18.f4 e5 19.fe5 de5 20.Nf3
Nc5 21.Rb4 Rd8 22.Qe1 Ne6
23.Qh4 Nf4 24.Bc4 Ra3 25.Bb3
Ng4 26.h3 Ne3 27.Ng5 Rd2
28.Qh7+ Kf6 29.Nf7 Rg2+ 30.Kh1
Rb3 31.Qh8+ Kf7 32.Qh7+ Kf6
33.Qc7 Rb4 34.Qd6 Be6 35.Qb4
Rg3 36.Qf8+ Bf7 37.Qd6+ Be6
38.Qd8+ Kg7 39.Qe7+ Kh6
40.Qf8+ Kg5 41.Qe7+ Kh5 42.Rb8
Rh3+ 43.Kg1 Kg4 44.Nc2 Nc2+
45.Kf2 Nf4 46.Rf8 Rf3+ 47.Ke1
Rf1+ 48.Kd2 Rf2+ 49.Kc1 Rc2+
50.Kb1 Ba2+ 51.Ka1 Bc4 52.Qd7+
Kg3 53.Rb8 Nd3 (0-1)

W: Nachum Salmen (OH) - 2219

B: Albert Chow (IL) - 2448

1.d4 Nf6 2.Nf3 g6 3.Nc3 d5
4.Bf4 Bg7 5.e3 O-O 6.Be2 b6
7.Ne5 Bb7 8.h4 c5 9.h5 Nbd7
10.Bf3 cxd4 11.exd4 Ne4
12.Nxd7 Qxd7 13.Qd3 Qf5 14.Ne2
g5 15.Be3 h6 16.Qd1 Rc8 17.c3
a5 18.Nc1 Qd7 19.Nd3 Qd6 20.g4

Rfd8 21.Qb3 Ba6 22.Be2 Bc4
 23.Qd1 Qe6 24.Rg1 b5 25.a3
 Qd6 26.Bf3 b4 27.axb4 Bxd3
 28.Qxd3 axb4 29.c4 Ra8
 30.Rxb8 Rxa8 31.c5 Qh2
 32.Qf1 Ra1+ 33.Bd1 Nc3
 34.bxc3 bxc3 35.Rh1 c2
 36.Ke2 cxd1+ 37.Qxd1 Qxh1
 38.Qxh1 Rxh1 39.c6 Ra1 (0-1)

W: IM James Rizzitano (IL)
 - 2552
 B: Angelo Sandrin (IL) -
 2160

1.e4 c5 2.Nf3 Nc6 3.d4 cxd4
 4.Nxd4 g6 5.c4 Bg7 6.Be3 Nf6
 7.Nc3 Ng4 8.Qxg4 Nxd4 9.Qd1
 Ne6 10.Rc1 Qa5 11.Qc2 b6
 12.Bd3 Bb7 13.h4 h5 14.0-0
 Bb4 15.Bxd4 Nxd4 16.Qe3 Ne6
 17.a3 d6 18.Nb5 Bc6 19.b4
 Qe6 20.f4 Qb7 21.f5 Nc7
 22.e5 Nxb5 23.cxb5 Bxg2
 24.exd6 e6 25.Rf2 Bd5 26.Rc7
 Qb8 27.fxg6 (0-1)

W: NM Peter Pelts (IL) -
 2315
 B: William Maddex (OR) -
 2102

1.d4 d6 2.e4 g6 3.Nf3 Bg7
 4.c4 Bg4 5.Be2 Nc6 6.Be3 e5
 7.dxe5 dxe5 8.Qa4 Qd7 9.Nc3
 Nd4 10.Nxd4 exd4 11.Bxg4
 Qxa4 12.Nxa4 dxe3 13.f4 Rd8
 14.Rd1 Nf6 15.Bf3 Nd7 16.e5
 c6 17.Ke2 f6 18.e6 Nf8
 19.Nc5 b6 20.Bxc6+ Ke7
 21.Rxd8 Kxd8 22.Rd1+ Ke7
 23.Nb7 f5 24.b3 Bh6 25.g3 g5
 26.Rd8 Ng6 27.Rd7+ Kxe6
 28.Nd8+ Rxd8 29.Rxd8 gxf4
 30.gxf4 Bxf4 31.Ra8 Ne5
 32.Bc5+ Kd6 33.Rxa7 Kc5
 34.Rxh7 Kd6 35.Bf3 Kc3 36.h4
 Nd3 37.Rh5 Kc2 38.Rxf5 Nc1+
 39.Kf1 Bg3 40.h5 (1-0)

W: Angelo Sandrin (IL) -
 2160
 B: Eric Schiller (IL) -
 2184

1.d4 Nf6 2.c4 d6 3.Nc3 Bf5
 4.f3 e5 5.dxe5 dxe5 6.Qb3
 Qc8 7.e4 Be6 8.Qb5+ Nfd7
 9.Be3 Nc6 10.Rd1 a6 11.Qa4
 Bb4 12.Qc2 0-0 13.Kf2 Nd4
 14.Bxd4 exd4 15.Nd5 Bxd5
 16.cxd5 c6 17.dxc6 bxc6

18.Bd3 Ne5 19.Ne2 c5 20.Rc1
 Rd8 21.Mf4 Qb8 22.Nd5 Qd6
 23.Rhd1 Rab8 24.Kg1 Qh6
 25.Qf2 Nxd3 (0-1)

W: NM John Tomas (IL) -
 2240
 B: NM Kurt Stein (IL) -
 2211

1.e4 c5 2.Nf3 e6 3.d4 cxd4
 4.Nxd4 Nf6 5.Nc3 Nc6 6.Ndb5
 d6 7.Bf4 e5 8.Bg5 a6 9.Na3
 b5 10.Nd5 Be7 11.Bxf6 Bxf6
 12.c3 0-0 13.Nc2 Bg5 14.a4
 bxa4 15.Rxa4 Ne7 16.Nxe7+
 Qxe7 17.Mb4 Qb7 18.Qd5 a5
 19.Bc4 Bc1 20.b3 Bb2 21.Na2
 Qb8 22.Bb5 Be6 (0-1)

W: NM James Mills, Jr.
 (IN) - 2343
 B: David Lee (IL) - 2122

1.d4 d5 2.Bg5 c6 3. Nc3 Nf6
 4.Bf6 e6 5.e3 Bb6 6.Bd3 Qe7
 7.Nge2 Bg4 8.Qd2 Nd7 9.Ng3
 g6 10.f3 Be6 11.0-0-0 0-0-0
 12.e4 de4 13.Nge4 Bb4 14.Kb1
 f5 15.Ng3 Nb6 16.Nge2 Na4
 17.d5 Bc3 18.Nc3 Nc3 19.Qc3
 Rd5+ 20.Qh8+ (1-0)

1988 MIDWEST MASTERS INVITATIONAL

PLAYER	ST	RTNG	POST						TOT													
			RTNG	1	2	3	4	5												6		
1 FRIAS, VICTOR J	NY	2632	2652	W23	W41	W11	W-9	D-2	W-8	5.5	40	DANDRIDGE, MARVIN	IL	2354	2355	H--	W74	L-7	W47	U--	U--	7
2 GUREVICH, DMITRY	NY	2589	2602	W63	W19	D16	W18	D-1	W13	3.0	41	ROLLETSCHER, HEINR	OH	2334	2308	D68	L-1	D59	D50	L36	W62	2.5
3 BROWNE, WALTER S	CA	2634	2627	W24	D-6	D13	D39	W29	W21	4.5	42	LEVINE, DAVID M	IL	2318	2332	W69	D38	D12	D-3	L11	U--	2.5
4 GILES, MORRIS C	IL	2443	2455	W73	D44	W31	W22	D-8	D-6	4.5	43	HALLACH, KENNETH T	IL	2306	2276	H--	D58	D67	L25	D58	D52	2.5
5 LINDSAY, FRED	MI	2412	2417	D74	W47	D14	D42	W22	W25	4.5	44	HAYWARD, KEITH A	MI	2291	2314	W27	D-4	D39	L17	D29	U--	2.5
6 HORVITZ, RICHARD P	OH	2361	2399	W59	D-3	W31	W38	D-7	D-4	4.5	45	HERCULUS, PETER	IN	2272	2271	W60	D-8	L38	W51	L17	L26	1.5
7 SCHUMAN, BRIAN	IL	2277	2342	W10	D12	W40	D13	D-6	W17	4.5	46	STEIN, PETER	IL	2261	2244	H--	L-5	W71	L40	D63	D53	2.0
8 BROOKS, MICHAEL A	MO	2572	2368	W72	D45	W21	W16	D-4	L-1	4.0	47	WILSON, RUSSELL	OH	2241	2231	D26	L18	L62	W72	W51	L29	2.5
9 SHIRAZI, KAMRAN	CA	2554	2550	W30	D21	W20	L-1	D32	W31	4.0	48	SALMAN, NACHUM	OH	2219	2230	W32	L16	L15	D56	W61	U--	2.5
10 BLOCKER, CALVIN	OH	2542	2338	L-7	W33	W46	W29	L13	W32	4.0	49	STEIN, KURT W	IL	2211	2219	L39	L24	W73	D41	D43	D29	2.5
11 BISQUIER, ARTHUR B	NY	2448	2451	W66	W15	L-1	D34	W42	D14	4.0	50	HARRIS, JR WILLIAM	OH	2184	2196	W34	D39	L-6	L45	L40	W66	2.5
12 STONE, RAY		2444	2440	W55	D-7	D42	D14	W34	D15	4.0	51	LEE, DAVID F	NY	2173	2184	H--	L20	D30	W33	L24	D43	2.5
13 MARTINOVSKY, EUGEN	IL	2442	2455	W56	W57	D-3	D-7	W10	L-2	4.0	52	KONARKOMSKA-SOHL	IL	2121	2221	L21	D30	W72	L32	L46	W69	2.5
14 PELTS, PETER	IL	2315	2349	H--	W71	D-5	D12	W18	D11	4.0	53	O'DONNELL, ROBERT	MI	2249	2228	L12	D27	L64	W68	D53	L60	2.0
15 LONOFF, MARC J	IL	2297	2335	W64	L11	W49	D37	W16	D12	4.0	54	ZUNBRUNNEN, RANDY	MI	2227	2208	L13	L34	W77	W49	D64	L26	2.0
16 CHOW, ALBERT C	IL	2448	2447	W67	W49	D-2	L-8	L15	W38	3.5	55	RHINE, FREDERICK S	IL	2214	2229	W75	L13	D32	L21	D33	U--	2.0
17 MC CLINTOCK, DOUG	CA	2441	2432	H--	W35	L22	W44	W45	L-7	3.5	56	MARFIA, JIM	MI	2212	2239	D18	D43	W19	U--	U--	U--	2.0
18 SHTERN, IGOR	TX	2413	2409	D58	W40	W33	L-2	L14	W46	3.5	57	SULLIVAN, MATTHEW	CA	2206	2201	L-6	D23	D41	L19	W60	L33	2.0
19 RADERMACHER, TIMOT	MI	2374	2365	W77	L-2	L50	W59	W35	D24	3.5	58	NAFF, WILLIAM A	IL	2191	2181	L45	D72	L35	D66	L59	W55	2.0
20 MOULIN, PIERRE	MO	2365	2369	D63	W52	L-9	W67	L-3	W40	3.5	59	GENBLER, KEVIN M	IL	2149	2154	U--	U--	W69	D73	L49	D71	2.0
21 LEVERETT, BRUCE W	PA	2350	2388	W54	D-9	L-8	W57	W30	L-3	3.5	60	RHILSTROM, STEPHEN	MO	2142	2148	D33	L22	W48	D24	L30	L41	2.0
22 BLANKENAU, MIKE P	NE	2309	2325	D71	W62	W17	L-4	L-5	W39	3.5	61	SCHMUGGERON, KEVIN P	IL	2139	2155	D20	D28	L34	D46	D47	U--	2.0
23 HEURUNG, DAVID D	MO	2257	2289	L-1	D59	W36	W26	W39	U--	3.5	62	THOMAS, KENNETH A	IL	2126	2130	L15	D66	W55	L31	D56	L35	2.0
24 UMEZINWA, GEORGE O	IL	2230	2247	L-3	W50	D53	D62	W52	D19	3.5	63	KRECKLER, WARREN	IL	2294	2294	L-2	W77	D28	L27	U--	U--	1.5
25 SCHILLER, ERIC	IL	2184	2223	D31	L29	W70	W43	W28	L-5	3.5	64	WILLEY, MARK	IA	2250	2206	L11	D64	L26	D60	D69	L51	1.5
26 FRIEDMAN, EDWARD	RI	2137	2174	D48	L33	W66	L23	W67	W45	3.5	65	BURKE, JOHN F	IL	2230	2215	L16	W76	D43	L20	L26	U--	1.5
27 BRADFORD, JOSEPH M	TX	2535	2518	L44	D55	W74	W65	D31	U--	3.0	66	AVERY, ROBERT W	MI	2201	2202	D41	L31	U--	L55	W72	U--	1.5
28 CHACHERE, LAWRENCE	IL	2397	2365	D36	D63	D65	D35	L25	W56	3.0	67	WACHTEL, MONARD K	WI	2170	2144	L42	L46	L61	W71	D66	L54	1.5
29 SMALL, GREGG H	TX	2358	2331	H--	W25	D37	L10	D44	D50	3.0	68	BANDRIN, ANGELO	IL	2160	2139	H--	L37	L25	L36	D71	D72	1.5
30 MILLS, JR JAMES A	IN	2343	2330	L-9	D54	D52	W53	W62	L16	3.0	69	MADEE, WILLIAM I	DR	2102	2007	D22	L14	L47	L69	D70	D61	1.5
31 BRASNET, CURT JUST	MI	2331	2332	D25	W63	L-4	W64	D27	L-9	3.0	70	KARLINS, ERIK	IL	2287	2233	L-8	D60	L54	L40	L68	D70	1.0
32 WEISS, MITCHELL J	IA	2309	2311	L49	W73	D57	W54	D-9	L10	3.0	71	TOMAS, JOHN S	IL	2240	2200	L-4	L32	L50	D61	U--	U--	1.5
33 FISCHVOGT, ERIC V	MI	2309	2290	D62	W26	L18	L52	D37	W59	3.0	72	KRAM, JR JOHN W	IL	2214	2210	D-5	L40	L27	U--	U--	U--	1.5
34 MYLE, STEPHEN L	OH	2306	2300	L31	W56	W63	D11	L12	D36	3.0	73	DE FOTIS, GREG S	IL	2411	2399	L57	U--	U--	U--	U--	U--	1.0
35 BROOKES, MARJICE	MA	2200	2293	D37	L17	W60	D28	L19	W44	3.0	74	ZIMMERM, SCOTT	IL	2309	2276	L53	L67	U--	U--	U--	U--	1.0
36 LUKOWIAK, WILLIAM A	MA	2225	2246	D20	U--	L23	W78	W41	D34	3.0	75	LEOPOLDI, NORBERT	IL	2048	2029	L19	L63	L56	U--	U--	U--	1.0
37 RIZZITANO, JAMES A	IL	2552	2539	D35	W70	D29	D15	U--	U--	2.5	76											
38 DONALDSON, JOHN W	WA	2523	2502	W46	D42	W45	L-6	L21	U--	2.5	77											
39 KARKLINS, ANDREW	IL	2417	2394	W50	D51	D44	D-3	L23	L22	2.5												

MASTER CHESS IN THE UNITED STATES: AN ORGANIZER'S VIEW

By Helen Warren

[Editor's Note: Helen Warren, organizer of the annual Midwest Masters and Prairie State Masters/Experts Invitational tournaments, has long been a friend and supporter of master chess. The opinions expressed in the following article are not necessarily those of the ICB editor or of the Illinois Chess Association.]

Sometimes I'm asked what lies ahead for master chess in this country, as if somehow the future of top level play is separable from what happens to chess in general. This separatism alarms me. As long as such estrangement in thought persists, the outlook for our art/sport/hobby is pessimistic.

Money is not the sole answer, though it certainly remains a large part of it. What is really needed is a change in attitude as to how we look at chess. Until we accept that chess is not merely a game, but, like music or art or literature, is worthy of the dedicated life with all that such a life entails - rigorous study and training, challenges in competition, travel, the acquisition of specific skills in kindred fields - until then, chess will be what it has always been: known and loved by but a fragment of our people.

The "problem" created by chess bureaucrats and politicians, i.e., the war between what is sometimes called "elitism" and "chess for everybody", has relevance only because it perpetuates the bureaucrats and politicians themselves and thereby impedes serious chess in our country. This impasse creates power brokers, but inhibits genuine progress and long

term growth. It seems unlikely that there will be an easy or imminent resolution of this struggle. For this reason American professional chess players, and those who are one with them, must look beyond present organizational structures to achieve desired ends. The emergence of PROCHES [Editor's Note: an association of American grandmasters and chess professionals] is a hopeful symbol, but it is only that - a symbol. It has yet to prove itself as a bargaining agent and lobbyist for the American chess professional. I hope it tries - and succeeds.

In the meantime, we are in a holding pattern in this country when it comes to serious chess. Our professional players are seldom invited to play abroad because we as a nation do not return the favor with international tournaments of our own. How many times will you be asked over for dinner if you don't return the invitation? But a holding pattern doesn't mean stagnation. The chess organizer, long the agent of state associations or national chess bodies - or of his own pocket - must emerge with a chess conscience to provide opportunities for our talented players. This may be the biggest challenge facing American chess today: the development of a core of organizers willing to take risks for quality.

The American Master is our greatest chess resource, our most priceless asset. He is our writer and our teacher; he is the creator and the practitioner of new ideas. Let us not only admire his chess moves, but let us espouse his cause. Let us not only respect his talent, but let us work for his right to pursue his craft with dignity and professionalism.

'88 TULEY PARK ACTION: AN ICA MINI-TOUR EVENT

WHEN: Saturday, June 18, 1988

WHERE: 501 E. 90th Pl., Chicago, IL

WHAT: 4 round Swiss

MEMBERSHIPS REQUIRED: USCF & ICA

TIME LIMIT: Game /30

ENTRY FEE: \$12

GUARANTEED CASH PRIZES: \$200

REGISTRATION: 10-11 A.M.

\$60 First \$40 Second

ROUND TIMES: 11:20, 12:40, 2:00, 3:20

Top U2100, \$25 Top U1900, \$20

Top U1700, \$20 Top U1500, \$20

Top Unr., \$15

(Letters . Continued
from page 4)

States for the first time and that I began the process of restoring Chicago's reputation as a major center of chess. This July 29-31 I am inaugurating the North American Class Championships in Chicago. Yasser Seirawan will be coming to the Holiday Inn O'Hare for the Thursday evening opening ceremonies.

Chicago chess will begin to achieve great things if ever the chess organizers learn to work together in peace and harmony.

Richard Verber)

While reading through the March-April ICB I was encouraged to see your assertion that "I will not allow the "Letters" to degenerate into a chronicle of 'who hates whom in Illinois chess'". But then I read Eric Schiller's article on the Midwest Masters which chastised the junior players who didn't play: "The low turnout among the young players was a great disappointment. Many of the most promising players are taking their college studies seriously, but one or two opted to try to win local

events where the competition was weaker. They have lost a few friends here, as this is a tournament which draws strong loyalty".

Schiller's attack on young players was unnecessary. I can't see what good it will do as nobody is going to be shamed into playing in the Midwest Masters next year. I doubt that friends are lost by not playing in one tournament. A true friend would understand when someone can't afford to spend a whole weekend playing chess but still wants to play chess. Would Schiller prefer that people not play at all that weekend if they can't play in the Midwest Masters? Is that better for chess?

I can remember playing in the Midwest Masters last year. I went 1 1/2 - 3 1/2 and didn't have a very good time. I can see why juniors who had the weekend free would not want to spend it losing for the "experience" or for their "development". If any future articles have needless criticism of others please don't print that criticism in the ICB. It is this kind of unthinking writing that ruins an otherwise good article.

Thank you.

Erik Ronneberg

I was very disappointed to see a childish Larry Parr letter take up space in the [March-April] ILLINOIS CHESS BULLETIN. For the past 10 years of ICBs, I can't recall reading anything in poorer taste. The letter has very little relevance to Joel Benjamin's complaint the CHESS LIFE edited his letter; it simply rambles on about missing titles, wrong page numbers, and incorrect dates (although the "April" CL does come out at the beginning of March nowadays). Though Parr is only making himself look bad, I don't think that name-calling and reminders of ridiculous political issues belong in the ICB. I will quite likely cancel my membership upon seeing any more of Larry Parr's words in a future issue.

Lawrence Chachere

[Editor's Note: I know, like, and respect Joel Benjamin; I cannot say the same about Larry Parr. I nevertheless believe that Parr had the right to reply, in his own way, to the criticism contained in the Benjamin interview published in an earlier ICB.]

THE CLUB SCENE

[Editor's Note: I planned to begin this feature with a story on the Illinois Valley Chess Club. That story will instead appear in the next ICB as part of a preview of the 1988 Illinois Open, which will take place in Peru, Illinois, the home (along with LaSalle) of the IV CC.]

CLUB BITS AND PIECES . . . Al Jonatis scored 5-1 to win the 1987 Central Lake County Chess Club Championship in a 19 player November event; Kevin Gensler took the 1988 CLC CC Speed title on March 25 with a 9.5-1.5 result . . . Bill Buttny and Keith Esses finished 4.5-5 to share the title of 1988 Oak Park-Forest Park Chess Club Open Champion, the OP-FP CC hosted a 20 board match with the Hillside Chess Club on June 14 (More on this in the July-August ICB) . . . The Decatur Chess Club will sponsor its first major USCF tournament on July 17.

ILLINOIS TOURNAMENT CALENDAR (CONTINUED)

July 28-31: North American Class Championship, at the Holiday Inn O'Hare in Rosemont. Richard Verber: 262-9100 after 3 p.m. SEE FULL PAGE AD IN THIS ICB.

July 30, 31: Where are the Score Sheets?, 1 day events, at the Chicago Chess Center. Jules Stein: 929-7010.

August 6: Bradley Summer Open, at the Garrett Center, in Peoria. Bill Wilkinson: (309) 673-9455.

August 6, 7: Don't Hassle My Castle, 1 day events, at the Chicago Chess Center. Jules Stein: 929-7010.

August 13, 14: The King and I, 1 day events, at the Chicago Chess Center. Jules Stein: 929-7010.

August 14: Midwest Classic Championship, at the Holiday Inn, in Mt. Vernon. John Tonkinson: (618) 462-5732.

PATRON MEMBERS CONTINUED

Daniel Pradt	Glen Eflyn, IL
Tim Redman	Lima, OH
Harrison Robinson	Chicago, IL
Ray Satterlee	Wheaton, IL
Vivian Schmucker	Goshen, IN
Mark Sefcheck	Naperville, IL
Tony Sillars	Chicago, IL
Arthur Sinclair	Evanston, IL
Richard Smiley	Chicago, IL
David Sprenkle	Knoxville, TN
Miomir Stevanovic	Lincolnwood, IL
David Taylor	Kankakee, IL
Don Townsend	Chicago, IL
John Tums	Oak Park, IL
Jim Warren	Western Springs, IL
Bill Wenz	Milwaukee, WI
Douglas White	Schaumburg, IL
Harold Winston	Naperville, IL
Marvin Winston	Old Bridge, NJ
Sandy Zabell	Chicago, IL
Max Zavanelli	Park Ridge, IL

HELP SUPPORT ILLINOIS CHESS BY BECOMING AN ICA BENEFACTOR:

CENTURY MEMBER \$100;
GOLD CARD \$50; PATRON \$25.
Please mail your contribution to:
Illinois Chess Association
Guy Gruenberg
P.O. Box 353
Olympia Fields, IL 60461

TOURNAMENT CLEARINGHOUSE MATERIAL

Please send all Tournament Clearinghouse material to:

Harold Winston
46 Robin Hill Dr.
Naperville, IL 60540
(312) 717-1044.

Please send Downstate Tournament Clearinghouse material to:

Bill Naff
212 W. Vail Ct.
Peoria, IL 61614
(309) 691-4624

'88 TULEY PARK ACTION: AN ICA MINI-TOUR EVENT

WHEN: Saturday, June 18, 1988

WHERE: 501 E. 90th Pl., Chicago, IL

WHAT: 4 round Swiss

TIME LIMIT: Game /30

GUARANTEED CASH PRIZES: \$200

\$60 First \$40 Second

Top U2100, \$25 Top U1900, \$20

Top U1700, \$20 Top U1500, \$20

Top Unr., \$15

ENTRY FEE: \$12

REGISTRATION: 10-11 A.M.

ROUND TIMES: 11:20, 12:40, 2:00, 3:20

CENTURY CLUB MEMBERS

Michael Belovesick	Elmhurst, IL
Fred Cramer	Mequon, WI
Tom Fineberg	Chicago, IL
Fred Gruenberg	Chicago, IL
Marc Lunoff	Northbrook, IL
Albert Sandrin	Chicago, IL
Angelo Sandrin	Chicago, IL
Bill Smythe	Chicago, IL
Burton Vincent	Chicago, IL

GOLD CARD MEMBERS

Bill Buttny	Downers Grove, IL
John Deutsch	Chicago, IL
Harland Hoisington	Ogden, UT
Ed Marschall	South Barrington, IL
Michael Pratts	Chicago, IL
Irwin Rothschild	Park Forest, IL
Mitchel Swieg	Evanston, IL
Richard Verber	Chicago, IL
Louis Werner	Evanston, IL

PATRON MEMBERS

Bob Ash	Urbana, IL
Todd Barre	Westmont, IL
John Barstad, Sr.	Carol Stream, IL
Roy Benedek	Western Springs, IL
Bill Brock	Chicago, IL
Tyrone Brooks	Chicago, IL
Jim Brotsos	Chicago, IL
Sam Caldwell	Chicago, IL
Lynn Crewse	Arlington Heights, IL
Leroy Dubeck	Cherry Hill, NJ
Gerard Garino	Evanston, IL
Jon Gotz	West Chicago, IL
Donald Graft	Wheaton, IL
William Graves	Chicago, IL
Guy Gruenberg	Matteson, IL
Walter Henry	Naperville, IL
Jeffery Hyland	Mount Prospect, IL
Robert Irons	Chicago, IL
Tim Just	Waukegan, IL
Dan Kamen	Wheeling, IL
Leo Kaushansky	Chicago, IL
Thomas Knoedler	Springfield, IL
Walter Kocjan	Northlake, IL
John Krom	Chicago, IL
Eugene Lopez	Elk Grove, IL
Alan Losoff	Morton Grove, IL
Kenneth Marshall	Lombard, IL
Eugene Martinovsky	Oak Brook, IL
James McNamara	Riverside, IL
Piatek Mieczyslaw	Chicago, IL
Patrick Moran	Wilmette, IL
Bill Naff	Peoria, IL
Peter Pelts	Chicago, IL

ICA ELECTED OFFICERS:

Tim Just, President
1521 Circle Ct., Waukegan, IL 60085

Harold Winston, Metro Vice-President
46 Robin Hill Dr., Naperville, IL 60540

Bill Naff, Downstate Vice-President
212 W. Vail Ct., Peoria, IL 61614

Ken Marshall, Secretary
357 W. Grove, Lombard, IL 60148

Guy Gruenberg, Treasurer
P.O. Box 353, Olympia Fields, IL 60461

Walter Brown, Immediate Past President
811 Elrose Ct., Crest Hill, IL 60435

USCF DELEGATES by virtue of their USCF posts:

Harold Winston, President
Helen Warren, Policy Board Member
Todd Barre, Regional Vice-President
Jim Warren, Regional Vice-President
Frank Skoff, Past President

ICA APPOINTED USCF DELEGATES:

Tim Just	Ken Marshall
Fred Gruenberg	Richard Verber
Tom Fineberg	

ICA APPOINTED USCF VOTING MEMBERS:

Bill Smythe	Bill Naff
Walter Brown	Erv Sedlock
Wayne Palmquist	Dennis Grant
Larry Stillwell	Tom Knoedler
Bob Bain	Barry Fisher
Mike Zacate	

ICA APPOINTED USCF ALTERNATE VOTING MEMBERS:

Glen Panner	Chris Musgrave
Byron Pappas	Eric Schiller
John Tonkinson	Bill Wilkinson
Jim Condron	Kevin Bachler
Jim Brotsos	Angelo Sandrin
John Barstad, Sr.	Dan Kamen
Al Chow	Mike Belovesick, Sr.
Philip Wong	Burton Vincent
Larry Goch	

ILLINOIS TOURNAMENT CALENDAR

Call Chess Phone, (312) 325-3666, for all recorded tournament announcements and results, often more up-to-date than CHESS LIFE or the ICB. The ICA Chess Phone voice is Todd Barre.

Unless otherwise noted, all tournaments require USCF memberships. Illinois Tour events also require ICA membership. Phone numbers are area code 312 unless a different area code is listed. Announcements of ICA affiliates receive more space in the Tournament Calendar than do those of non-affiliates.

June 18: Tuley Park Action Chess Tournament, at 501 E. 90th Place in Chicago. AN ICA ILLINOIS TOUR MINI-EVENT. Tom Fineberg: 721-3979. SEE TWO QUARTER PAGE ADS IN THIS ICB.

June 24 - 26: Master Challenge X, at the Mohr Community Center in Forest Park. AN ICA ILLINOIS MAXI-TOUR EVENT. Ken Marshall: 932-1455. SEE FULL PAGE AD IN THIS ICB.

June 25, 26: I Had a Won Game, But... 1 day events, at the Chicago Chess Center. Jules Stein: 929-7010.

July 2, 3, 4: Why Do I Get Black Twice in a Row?, 1 day events, at the Chicago Chess Center. Jules Stein: 929-7010.

July 9-10: Chicago Chess Renaissance 5-Round Swiss, at the Chess Mates Book Store. Richard Verber: 262-9100 after 3 p.m.

July 9,10: For the Penny Pinching Pawn Pusher, 1 day events, at the Chicago Chess Center. Jules Stein: 929-7010.

July 10: SICL Summer Special at the Ramada Inn, in Alton. John Tonkinson: (618) 462-5732.

July 10: Illinois Chess Association Meeting at 1:30 p.m. at the Mohr Community Center in Forest Park. Ken Marshall: 932-1455.

July 10: Illinois Chess League Captains' Meeting at Hillside Baptist Church. Wayne Palmquist: 361-2571 or Bob Bain: 349-6918..

July 16: Chicago Chess Renaissance 1-day Tornado, at the Chicago Chess Mates Book Store. Richard Verber: 262-9100 after 3 p.m.

July 16, 17: CCC \$100 Guarantee, 1 day events, at the Chicago Chess Center. Jules Stein: 929-7010.

July 17: Soy City Open I, at the Shelton Motor Inn, in Decatur. William Meyer: (217) 864-4797.

July 23: Chicago Chess Renaissance Saturday High School & Grammar School Tornado, at the Chicago Chess Mates Book Store. Richard Verber: 262-9100 after 3 p.m.

July 23: Summer Sauna of 1988, at the Washington Park Pavilion in Springfield. Thomas Knoedler: (217) 523-7265 after 6 p.m.

(Continued on Page 24)

ILLINOIS CHESS BULLETIN
357 W. GROVE
LOMBARD, ILLINOIS 60148

Speedy Delivery Appreciated

Bulk Rate
U.S. Postage Paid
Lombard, IL 60148
Permit No. 248