



ILLINOIS CHESS BULLETIN

Official Publication of the Illinois Chess Association • U.S.C.F. Affiliate
A Not For Profit Organization

NOVEMBER - DECEMBER, 1987 VOLUME X, NO. VI BI-MONTHLY \$2.00



JULES STEIN • 1980 ARTIST • DESIGNER



ILLINOIS CHESS BULLETIN

EDITOR:

KEN MARSHALL

357 W. Grove

Lombard, Illinois 60148

(312) 932-1455

TECHNICAL EDITOR:

MARY GAITHER MARSHALL

GAMES EDITOR:

AL CHOW

SUBSCRIPTIONS:

The Illinois Chess Bulletin (ICB) is published bimonthly by the Illinois Chess Association. ICA membership includes a subscription to the ICB. (Century, Gold, and Patron members receive their ICB by first-class mail.

ANNUAL MEMBERSHIP RATES:

Century Club:	\$100.00
Gold Card:	50.00
Patron:	25.00
Regular:	10.00
Junior (under 18):	6.00

Subscriptions, Address Changes, and Corrections should be sent to:

Illinois Chess Association
P.O. Box 267847
Chicago, IL 60626-7847

SUBMISSIONS:

Submit articles, photographs, crosstables, games, and other publishable materials to the Editor.

Publication deadline for the next issue is January 15, 1988.

ADVERTISING RATES:

Full page	\$60
Full page (back cover)	80
Half page	36
Quarter page	21

10% discount for the same ad in consecutive issues. 1/3 discount for ICA affiliates. All advertising must be camera ready to qualify for these rates. ICA reserves the right to reject advertising

TABLE OF CONTENTS

FROM THE EDITOR	1
WHERE TO PLAY CHESS / CLUB AFFILIATES	2
PRESIDENTIAL PONDERINGS	3
WHAT'S NEW	4
SOUTHERN ILLINOIS CHESS LEAGUE	6
ILLINOIS CLASS CHAMPIONSHIP	7
ILLINOIS CLASS CROSSTABLES	9
ILLINOIS CHESS LEAGUE	12
TOURNAMENT OF CHAMPIONS II	13
DOWNSTATE CROSSTABLES	17
ILLINOIS TOUR	18
C C C GRAND PRIX TOURNAMENT	19
SENIOR OPEN	21
U. S. CHAMPIONSHIP	23
LETTERS TO THE EDITOR	24

ICA AFFILIATION: Chess clubs and other organizations which promote chess activity may affiliate with ICA. Affiliate benefits include a copy of each ICB by first-class mail, a listing (if desired) under "Where to Play Chess" in each issue, discounted ICB advertising rates, three-line tournament announcements in the "Tournament Calendar", and the right to run ICA Tour events. ICA affiliation costs \$15 per year; please remit to address shown under "Annual Membership Rates". Include your club meeting times, name of contact person, and other useful information in the format shown in "Where to Play Chess" on page 2 of this issue.

FROM THE EDITOR

The U.S. Postal Service willing, this ICB should be in your hands before the end of 1987. The magazine will now revert back to its regular bi-monthly schedule, with the January-February issue coming out no later than February 5. Future deadlines for the submission of material will be the fifteenth day of the first month of each publishing period- e.g., the deadline for the next ICB is January 15. (Eventually it may be feasible to bring out each issue closer to the beginning of the first month of its cycle. This will not happen in the foreseeable future, however, unless I win the lottery or discover some other method of providing for my family without having to devote most of my time to my regular job.)

If you are reading this magazine, you presumably have more than a casual interest in chess. You probably have played dozens - maybe even hundreds or thousands - of chess games, and have recorded a good number of those contests. You may be a good player, a modestly rated woodpusher, or an out and out patzer. But, regardless of your chess prowess, you have, at one time or another, years ago or yesterday, played the game. It was probably (though not necessarily) against a better or higher rated player. You remember it- the queen sac that led to mate, the positional maneuvering that squeezed out a win, or the victory that was achieved after offering a rook that could not be taken. And somewhere, framed and hanging on the living room wall, hidden in an old score book, or buried under the rubble in the back of a closet, you have the record of that game. Now you have the opportunity to share your triumph with the world.

The ICB "Readers' Showcase" will debut in the January-February issue. The "Showcase" will feature games sent in by non-master ICA members.

Annotated submissions are encouraged but not required. Games received will be reviewed by Games Editor Al Chow, who (in consultation with me) will decide which to publish. (I presently hope to print every game received, but space limitations may preclude this.) Each published game will include Al's annotations and comments (as well as those, if any, made by the player himself).

Send your game (or games) to Readers' Showcase,

Illinois Chess Bulletin, 357 W. Grove, Lombard, IL 60148. If you wish your submission returned, please enclose a self-addressed, stamped envelope.

[In the last ICB, I noted that the "Readers' Showcase" feature would be similar to that presented by Larry Evans in CHESS LIFE. Coincidentally, Grandmaster Evans' January, 1988 CL column quotes a lengthy remark by former world champion Boris Spassky which originally appeared in the May, 1987 ICB. While it is flattering to realize that GM Evans reads this magazine, it would have been nice to have the ICB credited as the source of the quotation.]

Speaking of credit, I will acknowledge the source of any information or the author of any story which appears in the ICB, either by use of a by-line or otherwise. Articles without by-lines (such as those in the last issue on the Illinois Open, the Illinois Valley Tornado, and the Southern Illinois Chess League) were written by me. I took any photographs which were not credited to someone else. (I like seeing my name in print as much as anyone, but eight or nine personal by-lines and photo credits an issue would be a bit much.) I know the feeling an author gets when his work goes uncredited (as did my story on Master Challenge IX in the August-September ICB before I became editor). I therefore will exercise more care in this area than I did in the last issue, when I neglected to note that Bill Smythe had prepared updated Illinois Tour information and Dick Verber, John Tonkinson, and Ery Sedlock had provided various tournament cross tables.

The American Chess Foundation recently forwarded to the ICB the remainder of a previously awarded 1987 Cramer Magazine Grant. Allen Kaufman, ACF Executive Director, notes that the grant, made possible through the generosity of ACF Advisory Board member and former USCF President Fred Cramer, is designed to both honor and assist excellent local chess magazines. On behalf of the ICA and the ICB, I thank the ACF and Mr. Cramer. I hope to keep up and build on the tradition of quality which has made the ICB one of the best state chess publications over the last several years.

(Continued on Page 24)

WHERE TO PLAY CHESS: ICA CLUB AFFILIATES

AMERICAN POSTAL CHESS TOURNAMENTS sponsors postal events of various kinds, and sells chess books and equipment. Contact Jim or Helen Warren, P.O. Box 305, Western Springs 60558 (312) 246-6665.

CENTRAL LAKE COUNTY CHESS CLUB meets Fridays, 7:15 p.m. to midnight, College of Lake County, Bldg. 1, Washington at Route 45, Grayslake. Contact Dennis Grant, 1657 McKay, Waukegan 60087. (312) 336-5188.

CHICAGO CHESS ASSOCIATION organizes major tournaments at the Holiday Inn O'Hare. Also master chess lessons, \$40/3hr. Contact Dick Verber, 2725 W. 84th St., Chicago, 60652. (312) 434-2118.

CHICAGO CHESS CENTER meets for casual chess 7 days a week, 6 p.m. to 1 a.m., 2923 N. Southport, Chicago 60657. Also sponsors rated tournaments on selected weekends. Contact Jules Stein, (312) 929-7010.

CHICAGO INDUSTRIAL CHESS LEAGUE organizes frequent competition among commercial/government teams with awards, ratings, and special events. Contact Jim Brotsos, (312) 775-5054, or Bruce McNeil, (312) 742-5195.

DOWNERS GROVE PARK DISTRICT CHESS CLUB meets every Thursday, 6:30-10 p.m., Lincoln Center, 935 Maple Ave., Downers Grove. Affiliated with USCF and ICA. Contact George Uffner, (312) 910-0421.

GREATER PEORIA CHESS FEDERATION meets Mondays, 7 to 11 p.m., Bradley Student Center Cafeteria, Wilkinson, 901 N. Elmwood, Peoria. Contact Bill Wilkinson, 905 N. Rebecca Pl., Peoria 61606. (309) 673-9455.

ILLINOIS VALLEY CHESS CLUB meets Mondays, 6-10 p.m. Grace United Methodist Church, 1345 Chartres St., LaSalle. Contact Byron Pappas, 432 Creve Coeur, LaSalle, IL 61301. (815) 224-2869.

LAKE COUNTY CHESS ASSOCIATION sponsors rated tournaments in the Grayslake/Zion area. Contact Tim Just, 1521 Circle Ct., Waukegan 60085. (312) 244-7954.

MIDWEST CHESS ASSOCIATION organizes major tournaments for masters and experts. Contact Helen Warren, P.O. Box 305, Western Springs 60558. (312) 246-6665.

NORTH BOONE HIGH SCHOOL CHESS CLUB 17641 Poplar Grove Rd., Poplar Grove 61065. Contact Guenter Wohlfarth, sponsor. (815) 765-3311.

DAK PARK / FOREST PARK CHESS CLUB meets Tuesdays, 7 p.m. to midnight, Mohr Community Center, Jackson and DesPlaines, Forest Park. Contact Ken Marshall, 357 W. Grove, Lombard 60148. (312) 932-1455.

ORLAND PARK CHESS CLUB meets Fridays, 7 to 11 p.m., George Brown Commons, 15045 West Ave., Orland Park. Contact Glenn Panner, 14300 S. Ridge, Orland Park 60462. (312) 460-3111.

PARK FOREST CHESS CLUB meets Thursdays, 7 to 10:30 p.m., Freedom Hall, Orchard & Lakewood, Park Forest. Contact Wayne Palmquist, 10605 Southwest Hwy #1F, Worth 60482. (312) 361-2571.

RAE PRODUCTS AND CHEMICALS, 10926 S. Western, Chicago 60643. Contact Fred Gruenberg, (312) 779-3360.

SOUTHERN ILLINOIS CHESS LEAGUE sponsors rated tournaments throughout southern Illinois. Contact John Tankinson, 105A Manor Court, Alton 62002. (618) 462-5732.

ST. CHARLES CHESS CLUB meets Thursdays at 7 p.m., Baker Community House, 101 S. 2nd (Route 31), St. Charles. Contact Erv Sedlock, 6 N. 307 Old Homestead Rd., St. Charles 60174. (312) 377-7995.

TULEY PARK CHESS CLUB meets Saturdays, 1 to 5 p.m., Tuley Park Fieldhouse, 501 E. 90th Pl., Chicago. Contact Thomas Fineberg, 7321 S. South Shore Dr., Chicago 60649. (312) 721-3979.

PRESIDENTIAL PONDERINGS

By ICA President Tim Just

I have a few comments and observations at the end of my first year as ICA President.

MASTER CHESS

The list of Illinois masters grows longer each year. We have more players with International Chess Federation (FIDE) titles than at any other time in our history. Why? Helen Warren! Her commitment to providing opportunities and support for high level chess in Illinois has nurtured a growing crop of masters (and experts). The Midwest Masters, the Prairie State Invitational, and the emergence of the Illinois Tournament of Champions (top 10 Illinois players, round robin, FIDE rated) have created a real spawning ground for FIDE titles.

HOTEL ROW

Large tournaments with big prizes have returned to the Illinois chess scene. Dick Verber, along with a little help from his friend Fred Gruenberg, is back organizing these events. In 1987, he brought us the Midwest Class. Now we can look forward to the 1988 National Open and the 1989 U.S. Open. The hotels along River Road in Rosemont, near O'Hare Airport, are the perfect locations for such tournaments. Easy to reach by car (free parking) and convenient to public transportation, these sites make it possible for all of us to participate in major chess events. The largest ICA-sponsored tournament this year, the Illinois Open, was held at the Hyatt O'Hare; the ICA organized the 1987 National Amateur Team Midwest at this same site. Can we expect to see Master Challenge head on out to Hotel Row?

NON-CHICAGOLAND CHESS

Yes, Virginia, there is chess in Illinois outside of the Chicago vicinity. The Greater Peoria Chess Federation organizes adult and scholastic tournaments in the Peoria area. It has a bulletin/newsletter and a regular schedule of events. (The Greater Peoria Open can always be counted on for a fine weekend of chess.) The GPCF is under the excellent leadership of organizers like Bill Wilkinson, Bill Naff, and Murrel Rhodes. Current projects include the possible installation of a downstate Chessphone and bidding for the 1989 National Junior High Championship. Bill Naff, our current ICA Downstate Vice-President, gives

substantial support to organizers like Byron Pappas, who runs those great LaSalle tournaments

John Tankinson's Alton-based Southern Illinois Chess League is providing plenty of action in the southern part of the state. The SICL holds about a dozen tournaments a year, sponsors a tour, and publishes a bulletin/newsletter for its members.

Organizers like Barry Fisher (Champaign-Urbana), Tom Knoedler (Springfield), Garrett Scott (Bloomington-Normal), and Gary Sargent (Rockford) all are helping to keep chess in Illinois alive and well beyond the Chicago metropolitan area.

SCHOLASTIC CHESS

Scholastic chess will produce the masters of the future. Scholastic organizers and tournament directors like Jerry Esposito (Villa Park), Mr. and Mrs. John Barstad (Carol Stream), Ery Sedlock (St Charles), Larry Stilwell (Hillside), Mike Zacate (Evergreen Park), and the Greater Peoria Chess Federation are doing great work for Illinois grade school and high school students. They should not have to carry on alone, however. The ICA must provide assistance and become active in scholastic chess in order to help insure the continued growth and health of Illinois chess.

USCF

Illinois has contributed much to the national chess community. United States Chess Federation President Harold Winston, past USCF Presidents Tim Redman and Frank Skoff, and current Policy Board member Helen Warren all have roots here in our state. Illinois organizer Fred Gruenberg gave the USCF its 948 player National Open in Las Vegas this year.

ICA

The ICA does not run itself. It is a TEAM effort! As President, I have the privilege of serving with fellow ICA officers Harold Winston, Bill Smythe, Bill Naff, Ken Marshall, and Walter Brown. No one person can do it all. We work together, along with the ICA Board of Directors, to make chess fun for all the players of Illinois. Finding enough time for family, work, and chess can often be difficult for us. Working with the team of ICA officers eases the strain considerably. A full time ICA Executive Director would provide additional relief in this regard.

What's new

FORMER WORLD CHAMPION MAY PLAY IN NATIONAL OPEN

Soviet Grandmaster Mikhail Tal, world chess champion in 1960-1961 and one of the greatest attacking players in chess history, may be coming to Chicago in March to play in the 1988 National Open. Organizer Dick Verber has been in contact with USCF FIDE representative Don Schultz, U.S. Grandmaster Arnold Denker, and Eric Schiller in an effort to bring the 51 year old former world champion to the United States for the first time. According to Verber, Schultz has indicated that the chances of success in this regard are now better than 50%. The USSR Chess Federation's decision whether to send Tal should be made within the next three to six weeks.

MINI-EVENTS COMPLETE 1987 ILLINOIS TOUR

The 1987 Illinois Tour ended on December 12 with mini-tour tournaments at the Chicago Chess Center and in Urbana. Angela Sandrin and George Umezinwa each scored three points to tie for first in the 20 player three round Chicago event (Sandrin upset Albert Chow in the final round.) Three and one half points earned William Naff, Lawrence Cohen, and James Marshall top honors in Urbana. Organizer Barry Fisher reports that this four round contest attracted 23 participants and resulted in eight new ICA memberships.

The final results of the 1987 Illinois Tour will appear in the next ICB. Full details concerning the 1988 Tour and its \$1300 prize fund will also be forthcoming then.

MARTINOVSKY, CHOW TO MEET IN MATCH IN EARLY 1988

Senior Masters Eugene Martinovsky and Albert Chow, long two of the best players in Illinois, have agreed to contest a match early next year. While terms and conditions remain to be set, it is possible that some of the games will be played at various ICA affiliate sites. The Martinovsky-Chow rivalry has become intense in recent years as the two very active tournament participants have often played in the same events. The next ICB will feature two of their 1987 battles: Martinovsky's win at the Prairie State invitational in March, and Chow's victory at the Midwest Class Championships in July. (Each game will be annotated by its winner.)

CHESS PHONE

(312) 971-3666

US CHESS
FEDERATION

&

Chess
Association
of
CHICAGO

Proudly Announces

1988 National Open

MARCH 18-19-20 IN CHICAGO

Join the Grandmasters in Chicago



GM Robert Byrne



GM Dimitri Gurevich



U.S. Champ Joel Benjamin



GM Maxim Dlugy



GM Arthur Bisguier

Previous Winners
Joel Benjamin
Pat Benko
Arthur Bisguier
Walter Browne
Robert Byrne
Maxim Dlugy
Larry Evans
Dimitri Gurevich
Sergey Kudrin
Tony Miles
Samuel Reshevsky
James Tarjan

For the Chess Vacation of the Year.

\$16,000 PRIZE FUND

CHAMPIONSHIP SECTION - OPEN TO ALL

\$3500 - \$2000 - \$1000 - \$800 - \$700 - \$500

EXPERT: \$800 - \$400 - \$200

CLASS A: \$800 - \$400 - \$200

RESERVE SECTION - OPEN TO 1799 AND UNDER

\$1000 - \$500 - \$300 - \$200 - \$150

CLASS C: \$700 - \$350 - \$200

CLASS D-E: \$600 - \$300 - \$200

Join the Grandmasters in Chicago for an affordable 3 or 4 day Chess Vacation at the beautiful Holiday Inn O'Hare featuring 3 swimming pools and the magnificent HOLIDOME. See for yourself why the Holiday Inn O'Hare has become the most popular tournament site in the Chicago area. This prestigious USCF National Tournament is co sponsored by USCF and the Chicago Chess Association. For additional information, see the Tournament section of CHESS LIFE, or write Organizer Richard Verber, 2725 W. 84th St., Chicago, IL 60652. The 1987 National Open in Las Vegas was one of the most successful tournaments of the year, attracting an amazing total of 948 players from throughout the U.S.! Since we expect to fill the Holiday Inn O'Hare from March 17 - 20, we urge you to make your hotel reservations early to assure yourself the discount chess rate. Please phone the hotel at 312-671-6350. Many special events are scheduled for Thursday evening, March 17 before the Friday afternoon start of the National Open. Don't miss the guest appearance and simul by U.S. Chess Champion Joel Benjamin and the fascinating \$500 BENJAMIN-DLUGY 3-game BLITZMATCH!

Don't miss this Exciting Tournament

(Make your reservations early)



SOUTHERN ILLINOIS CHESS LEAGUE



SICL "KING CITY" SWISS

November 22, 1987

RANK	ID NUMBER	PLAYER	ST	RATING	RD1	RD2	RD3	PTS	PRIZE
1	10362318	RILEY M. SHEFFIELD	MO	2040	W17	W12	W 7	3.0	\$33.00
2	12025700	FRANK T. EGULF	TN	1871	W19	W16	W 9	3.0	\$33.00
3	11239471	Daniel B. Elankenship	MO	2031	L14	W10	W13	2.0	
4	12429384	Maurice R. Bock	MO	1996	W15	L 7	W11	2.0	
5	10360641	Dallas E. Loven	IL	1798	L20	W14	W16	2.0	\$ 7.00
6	12157210	Carl A. Purcell	IL	1775	W21	L 9	W17	2.0	\$ 7.00
7	10358493	John D. Tonkinson	IL	1765	W24	W 4	L 1	2.0	
8	12491641	Lin-Song Hsieh	IL	1756	L 9	W21	W18	2.0	\$ 7.00
9	12283960	Franklin W. Lay	IL	1402	W 8	W 6	L 2	2.0	\$21.00
10	10360395	Jerry L. Schwalm	IL	1921	½BY	L 3	W23	1.5	
11	10363624	James Ottersbach	MO	1905	W18	D13	L 4	1.5	
12	10360587	Mark Oestreich	IL	1765	W22	L 1	D14	1.5	
13	12447749	William Steevens	MO	1721	W23	D11	L 3	1.5	
14	12450160	Steven M. Walker	MO	1549	W 3	L 5	D12	1.5	
15	12397427	Kim A. Voss	IL	1445	L 4	D23	W19	1.5	
16	12403598	A. Graydon Hoover	IL	1580	W25	L 2	L 5	1.0	
17	12406632	Harshad K. Parmar	IL	1553	L 1	W22	L 6	1.0	
18	12421540	Paul D. Regna	MO	1517	L11	W24	L 8	1.0	
19	12377390	C. Jackson Dunn	IL	1444	L 2	W25	L15	1.0	
20	12458439	Chester Langin	IL	1408	W 5	NP	NP	1.0	
21	12262290	Dave C. Dyess	MO	1329	L 6	L 8	W24	1.0	\$10.50
22	12471319	Ferrel E. Hill	IL	1308	L12	L17	W25	1.0	\$10.50
23	12494667	Peter E. Rowan	IL	1239	L13	D15	L10	0.5	
24	12497789	Khue Pham	IL	1242	L 7	L18	L21	.0	
25	12495276	Scott Boehne	IL	1172	L16	L19	L22	.0	



SOUTHERN ILLINOIS CHESS LEAGUE

INVITES YOU TO PARTICIPATE IN THE



SOUTHERN ILLINOIS CHESS LEAGUE

INVITES YOU TO PARTICIPATE IN THE



ALTON CONNECTION OPEN • 9 JANUARY 31, 1988

3-ROUND SWISS SYSTEM PAIRINGS
TIME CONTROL: 30 MOVES IN 70 MINUTES
 THEN 40 MOVES IN 1 HOUR
REGISTRATION: 8-9:15 AM
ROUNDS: 9:30-1:00 & 5:00
PLAYING SITE: BANADA INN, 1900 BOMER ADAMS PARKWAY (HIGHWAY 111), ALTON, IL 62002
ENTRY FEES: \$12.00 IF REC'D BY JANUARY 30, '88.
 \$15.00 AT THE DOOR.
SPECIAL: \$2.00 OFF ADVANCE OR DOOR ENTRY TO SICL MEMBERS!

PRIZES \$250.00 (based on 40-5/class) **PRIZES**
1ST PLACE: \$80.00 **1ST CLASS A:** \$50.00 **1ST CLASS B:** \$45.00
1ST CLASS C: \$40.00 **1ST CLASS D-E:** \$35.00 **1ST UNRATED:** CHESS SET AND BOARD

BONUS PRIZES:
 FREE CHESS SET AND BOARD TO TOP UPSET OF THE DAY!!
 FREE LUNCHES TO 1ST 3 WINNERS OF THE 2ND ROUND!!

ENTRIES AND INQUIRIES: JOHN D. TONKINSON, 1054 MANOR COURT., ALTON, IL 62002
 PH: (618) 462-3732
 USCF MEMBERSHIP REQUIRED AND CAN BE PURCHASED AT THE DOOR: \$25-ADULT; \$12-YOUTH;
 \$3 TOURNAMENT MEMBERSHIP.
 SICL MEMBERSHIP ENCOURAGED: \$7/YEAR. INCLUDES SUBSCRIPTION TO THE "SOUTHERN IL
 CHESS BULLETIN". ICA (ILLINOIS CHESS ASSOCIATION) MEMBERSHIP AVAILABLE AT SITE.
NO SMOKING IN THE PLAYING ROOM! NO COMPUTERS PLEASE! ACCESS TO UNDERGROUND!

MT. VERNON HOLIDAY INN SWISS FEBRUARY 14, 1988

3-ROUND SWISS SYSTEM PAIRINGS
TIME CONTROL: 30 MOVES IN 70 MINUTES
 THEN 40 MOVES IN 1 HOUR
REGISTRATION: 8-9:15 AM
ROUNDS: 9:30-1:00 & 5:00
PLAYING SITE: FIELD AND FARRINGTON ROOMS, HOLIDAY INN, HIGHWAYS 57, 64 and 151,
 MT. VERNON, IL 62664.
ENTRY FEES: \$12.00 IF REC'D BY FEBRUARY 13, '88.
 \$15.00 AT THE DOOR.
SPECIAL: \$2.00 OFF ADVANCE OR DOOR ENTRY TO SICL MEMBERS!

PRIZES \$150.00 (based on 40-5/class) **PRIZES**
1ST PLACE: \$80.00 **1ST CLASS A:** \$50.00 **1ST CLASS B:** \$45.00
1ST CLASS C: \$40.00 **1ST CLASS D-E:** \$35.00 **1ST UNRATED:** CHESS SET AND BOARD

BONUS PRIZES:
 FREE CHESS SET AND BOARD TO TOP UPSET OF THE DAY!!
 FREE LUNCHES TO 1ST 3 WINNERS OF THE 2ND ROUND!!

ENTRIES AND INQUIRIES: JOHN D. TONKINSON, 1054 MANOR COURT., ALTON, IL 62002.
 PH: (618) 462-3732
 USCF MEMBERSHIP REQUIRED AND CAN BE PURCHASED AT THE DOOR: \$25-ADULT; \$12-YOUTH;
 \$3 TOURNAMENT MEMBERSHIP.
 SICL MEMBERSHIP ENCOURAGED: \$7/YEAR. INCLUDES SUBSCRIPTION TO THE "SOUTHERN IL
 CHESS BULLETIN". ICA (ILLINOIS CHESS ASSOCIATION) MEMBERSHIP AVAILABLE AT SITE.
NO SMOKING IN THE PLAYING ROOM! NO COMPUTERS PLEASE! ACCESS TO UNDERGROUND!

Martinovsky, Wallach, Dandridge Top 1987 Illinois Class

By Ken Marshall

Senior master Eugene Martinovsky and masters Ken Wallach and Marvin Dandridge scored 3.5-.5 to share the first three places in the Master/Expert section of the Illinois Class Championships, which took place on November 21-22, 1987, at the Morgan Park Academy in Chicago. Martinovsky and Dandridge battled to a draw in a wild final round melee, while Wallach defeated master Scott Zingheim in their last round contest. The winners topped a 39 man field which included 11 masters, 19 experts, and 9 Class A players who decided to "play up". (Bill Smythe, a former ICB editor and an outspoken advocate of "playing up" whenever possible, followed his own advice and improved his 1895 rating by beating a master and an expert on his way to a 2.5-1.5 result.)

Honors in the 20 player Class A section went to Lynn Crewse and Dan Wheatley, who each totaled 3.5 points. Howard Cohen and Russell Osterlund followed with scores of 3-1.

Class B provided one of the highlights of the tournament. Fred Burgess, "playing up" a class and dead last on the 21 player wall chart with a rating of 1445, won all four of his games to finish alone in first place. Burgess, who said he has played in four or five events since late 1986 after being out of tournament chess for several years, defeated players rated 1687, 1770, 1771, and 1722. Second through fifth places were shared by Randall Pais, Joshua Flores, James Fagan, and Evan Rynes, all of whom garnered 3 points.

David Wulatin led Class C with a 4-0 score, while James Adkins' 3.5-.5 total earned him second place. David Sjaholm, Daryl Zelinski, and Doug Williams came in next at 3-1 in this 24 player section.

The Class D/E/Unrated section, which attracted 15 entries, was won by Robert Raimo and Bruce Chenoweth, who drew their individual game and ended up tied at 3.5-.5. Third place went to James Petrie for his 3-1 score.

Illinois Chess Association President Tim Just and Todd Barre directed the 118 player Illinois Class

events, which Just organized on behalf of the ICA. The tournament is scheduled to return to the Morgan Park Academy site in November of 1988.

[Editor's Note: The next ICB should contain some games from the Illinois Class. Space limitations precluded the inclusion of such games in the present issue.]

ILLINOIS CLASS PRIZE WINNERS

MASTER/EXPERT 1st-3rd: Eugene Martinovsky, Ken Wallach, Marvin Dandridge, 3.5-.5

CLASS A 1st-2nd: Lynn Crewse, Dan Wheatley, 3.5-.5; Howard Cohen, Russell Osterlund, 3-1

CLASS B 1st: Fred Burgess, 4-0; 2nd-5th: Randall Pais, Joshua Flores, James Fagan, Evan Rynes, 3-1

CLASS C 1st: David Wulatin, 4-0; 2nd, James Adkins, 3.5-.5, 3rd-5th: David Sjaholm, Daryl Zelinski, Doug Williams, 3-1

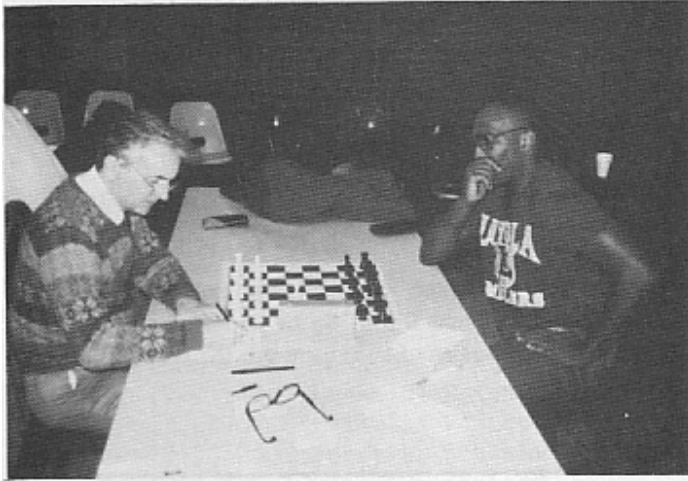
CLASS D/E/UNRATED 1st-2nd: Robert Raimo, Bruce Chenoweth, 3.5-.5; 3rd: James Petrie, 3-1

CHESS PHONE

(312) 971-3666



ILLINOIS CLASS CHAMPIONSHIPS



Eugene Martincovsky (left) and Marvin Dandridge begin their last round contest



Lynn Crewse (right) earned a share of the Class A title by beating Russell Osterlund



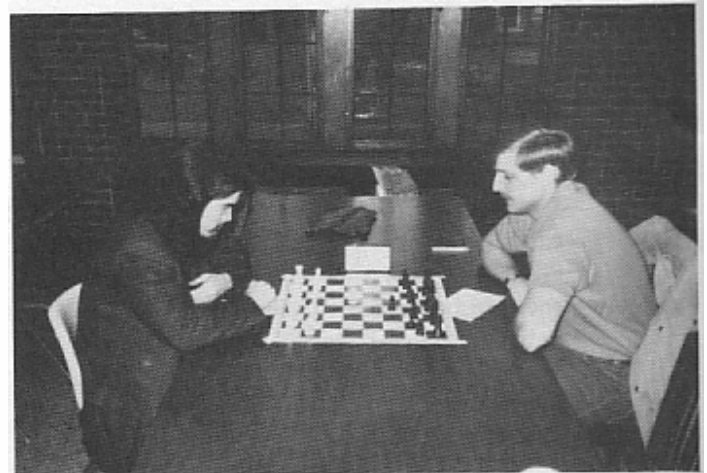
Class B sensation Fred Burgess (flanked by Mike Flynn) awaits his next opponent



David Wuletin (left) won this battle with Doug Williams for first place in Class C



Class D co-champion Robert Reimo (left foreground) defeated Arthur Dupee in the final round



Al Chow (left) and Steve Surak square off in round four
Photos by Ken Marshall

MASTER-EXPERT SECTION

1	DANDRIDGE Marvin	2295	W27	W18	W 7	D 2	3.5
2	MARTINOVSKY Eugene	2451	W32	W19	W 8	D 1	3.5
3	WALLACH Ken	2358	W26	D 6	W20	W 4	3.5
4	ZINGHEIM Scott	2258	W25	W21	W 9	L 3	3
5	KRECKLER Warren	2251	W33	W23	D17	D 6	3
6	KROM John	2167	W34	D 3	W11	D 5	3
7	CHOW Albert	2426	W13	W15	L 1	W16	3
8	PELTS Peter	2296	W30	W10	L 2	W18	3
9	UMEZINWA George	2338	W31	W16	L 4	W15	3
10	GENSLER Kevin	2151	W36	L 8	D25	W26	2.5
11	SMYTHE Bill	1895	D28	W38	L 6	W32	2.5
12	FORBIS Robert	2126	D17	D24	D19	W23	2.5
13	WALLACH Cliff	2122	L 7	D29	W30	W25	2.5
14	COX William	1860	W21B	L17	W32	D19	2.5
15	SANDRIN Angelo	2165	W22	L 7	W27	L 9	2
16	SURAK Steve	2147	W35	L 9	W22	L 7	2
17	GILES Morris	2449	D12	W14	D 5	-	2
18	MOOSE Floyd	2148	W39	L 1	W35	L 8	2
19	LEE John David	2198	W29	L 2	D12	D14	2
20	WHEELER Wayne	2108	D24	W28	L 3	D21	2
21	ZABELL Sandy	2162	W37	L 4	D23	D20	2
22	JANKAUSKAS Kazys	1980	L15	W31	L16	W33	2
23	HAUBRICH Scott	2041	W38	L 5	D21	L12	1.5
24	LEVINE David	2298	D20	D12	D26	-	1.5
25	DELRIE Thomas	2025	L 4	W39	D10	L13	1.5
26	SOCHA Ray	2121	L 3	W34	D24	L10	1.5
27	BOLDEN Darren	2059	L 1	W37	L15	D29	1.5
28	WONG Philip	2143	D11	L20	D29	D31	1.5
29	KREISMAN Bruce	1993	L19	D13	D28	D27	1.5
30	GAZMEN Ethelbert	2103	L 8	D36	L13	W35	1.5
31	MAZUCHOWSKI Thomas	2120	L 9	L22	W37	D28	1.5
32	GOTZ Jon	2128	L 2	W33	L14	L11	1
33	JORDAN Roland	2023	L 5	L32	W34	L22	1
34	SAGALOVSKY Leonid	1989	L 6	L26	L33	W37	1
35	BOGAN Timothy	1905	L16	W19A	L18	L30	1
36	TAMEZ Isidro	1937	L10	D30	-	-	0.5
37	SEFCHECK Mark	1966	L21	L27	L31	L34	0
38	SCHILLER Eric	2291	L23	L11	-	-	0
39	DECMAN Steve	1913	L18	L25	-	-	0

Illinois Valley Tornado

October 17, 1987

1	PLUM Marc	2233	W10	W 4	W 7	D 2	3.5
2	STEIN Peter	2219	W14	W 5	W 8	D 1	3.5
3	BONDARI Cyrus	2183	W13	W 9	W 6	D 7	3.5
4	BORRI Craig	1860	W17	L 1	W14	W11	3
5	STEELE David	1946	W21	L 2	W13	W10	3
6	STEELE Robert	1964	Wbye	W15	L 3	W 9	3
7	VLASTNIK Richard	2080	W11	W12	L 1	D 3	2.5
8	ILTCH Doug	2004	D15	W18	L 2	W16	2.5
9	KALEEL David	1685	W20	L 3	W19	L 6	2
10	SIMMONS Ron	1672	L 1	W16	W18	L 5	2
11	JOHNSON Jeff	1552	L 7	W29	W12	L 4	2
12	COHEN Lawrence	1852	W19	L 7	L11	W17	2
13	ERNAT William	1559	L 3	W17	L 5	W18	2
14	SCHLENKER Charles	1670	L 2	W21	L 4	W19	2
15	LEBO Steven	1527	D 8	L 6	L16	W20	1.5
16	PADILLA Rudy	1485	Dbye	L10	W15	L 8	1.5
17	MITCHELL Byron	1294	L 4	L13	W20	L12	1
18	TAYLOR Steve	1259	Wbye	L 8	L10	L13	1
19	FERRONI George	1292	L12	Wbye	L 9	L14	1
20	BERGQUIST Cynthia	-	L 9	L11	L17	L15	0
21	FAUSCH Mark	1480	L 5	L14	-	-	0

Illinois Class

November 21-22, 1987

CLASS A SECTION

1 WHEATLEY Dan	1897	W14	D11	W 7	W 9	3.5
2 CREMSE Lynn	1922	D 6	W17	W12	W 3	3.5
3 OSTERLUND Russell	1843	W 4	W 5	W 8	L 2	3
4 COHEN Howard	1955	L 3	W14	W13	W 8	3
5 BUTTNY William	1868	W15	L 3	W19	D10	2.5
6 HERNANDEZ Hector	1938	D 2	D 9	D10	W12	2.5
7 HICKMAN Roger	1914	D18	W16	L 1	WF	2.5
8 COHEN Lawrence	1852	W20	W10	L 3	L 4	2
9 BEASLEY Leonard	1970	D17	D 6	W11	L 1	2
10 SAI Robert	1944	W13	L 8	D 6	D 5	2
11 PANNER Glenn	1868	W19	D 1	L 9	LF	1.5
12 PUKEL Bernard	1890	D16	W18	L 2	L 6	1.5
13 CHRISTIAN Raymond	1838	L10	W15	L 4	D19	1.5
14 CALHAMER Allan	1816	L 1	L 4	W16	D15	1.5
15 KOSIBA Lawrence	1773	L 5	L13	W17	D14	1.5
16 BOUTON Barry	1778	D12	L 7	L14	WF	1.5
17 STOLTZ Robert	1867	D 9	L 2	L15	LF	0.5
18 STEIN Mark	1939	D 7	L12	-	-	0.5
19 MAKASKAS Tony	1717	L11	L35X	L 5	D13	0.5
20 LEIGHTON George	1956	L 8	-	-	-	0

Illinois Class

November 21-22, 1987

CLASS C SECTION

1 WULATIN David	1515	W14	W10	W11	W 3	4
2 ADKINS James	1575	W19	W15	D 6	W10	3.5
3 WILLIAMS Doug	1587	W 9	W 7	W 4	L 1	3
4 ZELINSKI Daryl	1577	W18	W12	L 3	W 6	3
5 SCHOEN David	1588	W20	L 5	W12	W13	3
6 MADERA William	1456	W24	W 5	D 2	L 4	2.5
7 BUTLER Herb	-	W21	L 3	W23	D11	2.5
8 BERKHEIMER Ed	1454	L10	W24	D15	W16	2.5
9 KEMNER Robert	1424	L 3	Dbye	W18	W15	2.5
10 LESTER Michael	1599	W 8	L 1	W16	L 2	2
11 HENDERSON Harold	1539	D16	W22	L 1	D 7	2
12 PADILLA Rudy	1430	W23	L 4	L 5	W21	2
13 KHALE Edward	1492	L15	W20	W14	L 5	2
14 FENNER Charles	1404	L 1	W21	L13	W20	2
15 KULONSKI Joseph	1375	W13	L 2	D 8	L 9	1.5
16 WESLEY John	1416	D11	W17	L10	L 8	1.5
17 GROVER David	1492	D22	L16	W19	-	1.5
18 PETERS James	1436	L 4	D23	L 9	W22	1.5
19 TRBOJEVIC George	1434	L 2	Dbye	L17	W23	1.5
20 CARSON David	1443	L 5	L13	W24	L14	1
21 CALLAHAN Gerard	1485	L 7	L14	W22	L12	1
22 HAGER Gregory	1388	D17	L11	L21	L18	0.5
23 BANNON Joseph	1569	L12	D18	L 7	L19	0.5
24 SCOTT George	-	L 5	L 8	L20	L15B	0

Illinois Class

November 21-22, 1987

CLASS B SECTION

1 BURGESS Fred	1445	W10	W 4	W 2	W 6	4
2 FLORES Joshua	1772	W15	W 9	L 1	W 8	3
3 PALS Randall	1788	W19	D 6	D11	W 7	3
4 FAGAN James	1770	W13	L 1	W18	W10	3
5 RYNES Evan	1600	D 7	D 8	W 9	W11	3
6 FRAATS Daniel	1722	W18	D 3	W14	L 1	2.5
7 FLYNN Michael	1723	D 5	D17	W12	L 3	2
8 PARADAN L D	1717	D16	D 5	W21	L 2	2
9 BURKE Marcellus	1763	W12	L 2	L 5	W14	2
10 GRUENBERG-Fred	1687	L 1	W20	W16	L 4	2
11 MARSHALL Ken	1750	W20	Dbye	D 3	L 5	2
12 RUSH Bradley	1626	L 9	W13	L 7	W16	2
13 ROBINSON Harrison	1636	L 4	L12	W20	W21	2
14 VITKAUSKAS Vytautas	1771	D17	W21	L 6	L 9	1.5
15 HORSOM Nathaniel	1659	L 2	D16	L19	W24C	1.5
16 TURNER Keith	1557	D 8	D15	L10	L12	1
17 GRANT Dennis	1644	D14	D 7	-	-	1
18 STINCHCOMBE Adam	1589	L 6	W19	L 4	-	1
19 PADILLA Frank	1687	L 3	L18	W15	-	1
20 BAYER Duane	1611	L11	L10	L13	-	0
21 HENDERSON Robin	1516	L14X	L14	L 8	L13	0

Illinois Class

November 21-22, 1987

CLASSES D-E-UMRATED

1 RAIMO Robert	1326	W13	W 5	D 2	W 4	3.5
2 CHENOWETH Bruce	1276	W15	W 8	D 1	W 6	3.5
3 PETRIE James	-	L 4	W14	W11	W10	3
4 DUPEE Arthur	1290	W 3	D10	W 8	L 1	2.5
5 STYPINSKI Andrew	1253	W11	L 1	W12	D 7	2.5
6 SPUNELLE John	-	W 9	Dbye	W10	L 2	2.5
7 GRUENBERG Guy	1223	Dbye	D11	W 9	D 5	2.5
8 YOUNG Dan	1343	W12	L 2	L 4	W13	2
9 BOYLE Sean	1366	L 6	W13	L 7	W12	2
10 ROBERTSON James	1373	W14	D 4	L 6	L 3	1.5
11 JOHNSON Lee	1395	L 5	D 7	L 3	W14	1.5
12 LUNDIN Brian	-	L 8	W15	L 5	L 9	1
13 MOTLEY James	-	L 1	L 9	W14	L 8	1
14 ABERCROMBIE Tim	924	L10	L 3	L13	L11	0
15 WOODS Devere	-	L 2	L12	-	-	0

1988 MIDWEST ACTION CHESS CHAMPIONSHIP!

PRIZE FUND

1st: \$250
2nd: \$150
3rd: \$100

Top Expert \$125-75
Top Class A \$100-50
Top Class B \$100-50
Top Class C & Below .. \$100-50

ROUND TIMES

9:30 AM, 11 AM, 1 PM, 2:30 PM, 4 PM and 5:30 PM

1/2 pt. bye available for first round if requested with entry; **NONE** at site.

At site registration: 8:30 AM — 9:15 AM

Pre-tournament announcements on special rules:
9:15 AM.

r

SITE

HOLIDAY INN O'HARE, 5440 N. River Rd.
Rosemont, IL 60018
Lower Level, Love A & B

TIME CONTROL: GAME/ 30 minutes

Each player must make ALL moves within 30 minutes; no game can last longer than one hour!

A few special rules apply which will be explained by the TDs BEFORE the start of play! All players will receive a rules sheet before game time and a copy will be posted.

Players are required to keep a score sheet until the last 5 minutes of play.

ENTRY FEES

ADVANCE ENTRY: \$18 if received by 12/24
AFTER 12/24 or at site: \$25.

ADVANCE ENTRY FOR JUNIORS: \$14; \$20 at site.

5 junior entries from the same school entering in **one** envelope BEFORE 12/24; \$60 IDs and expirations **MUST** be provided.

SPECIAL HOTEL RATES FOR OUT OF TOWNERS COMING ON FRIDAY NIGHT OR STAYING OVER SATURDAY NIGHT: \$59 for single or Double! A great mini-vacation!

FREE UNLIMITED PARKING

PLEASE BRING SET, BOARD, AND CLOCK!!! NONE WILL BE PROVIDED!

Further information from: Helen Warren, Midwest Chess Association, P.O. Box 305,
Western Springs, IL 60558 (312) 246-6665.

SEE TOURNAMENT LIFE ANNOUNCEMENT IN DECEMBER & JANUARY CHESS LIFE!

**GET A GREAT START ON YOUR CHESS NEW YEAR BY PLAYING IN
THE MIDWEST ACTION CHESS CHAMPIONSHIP!!**

ILLINOIS CHESS LEAGUE
Section Results
as of 12/4/87

CHAMPIONSHIP Section
Director: Bob Bain, 349-6918

Match Results

Team	1	2	3	4	5	Total
Park Forest South	x	1/2	1	1	1	3 1/2
Hillside	1/2	x	0	1	1*	2 1/2
Park Forest West	0	1	x	0	1*	2
Tuley Park	0	0	1	x	*	1*
Univ. of Chicago	0	0*	0*	*	x	0*

* match not yet played

Prize Fund: 1st- \$65, 2nd- \$20

RESERVE Section
Director: Wayne Palmquist, 361-2571

Match Results

Team	1	2	Total
Tuley Park	x-x	1/2-1	1 1/2
Hillside	1/2-0	x-x	1/2

Prize Fund: 1st- \$35

BOOSTER Section
Director: Larry Cohen, 748-5911

Match Results

Team	1	2	3	Total
Hillside	x-x	1-1	*-1/2	2 1/2*
Park Forest	0-0	x-x	1-1/2	1 1/2
Bishops of Battle	*-1/2	0-1/2	x-x	1*

* match not yet played

Prize Fund: 1st- \$50

Illinois Tournament of Champions II

As noted in the October-November ICB, Albert Chow won the ten player Illinois Tournament of Champions II, completed on November 1, 1987. Organizer Helen Warren is preparing an article on this event. That story, along with a cross table and some annotated games, should appear in the next ICB. In the meantime, here are the eight tournament "quick kills"- games of fewer than 30 moves which ended decisively. (White won all eight of these battles!) (Game scores were provided by Helen Warren.)

W: Bill Colias (2377) B: Ken Wallach (2344) French
 1.e4 e6 2.d4 d5 3.Nd2 Nf6 4.e5 Nfd7 5.c3 c5 6.Bd3 Nc6 7.Ne2 Qb6 8.O-O cd 9.cd f6 10.Nf4 Nd4 11.Qh5+ Ke7 12.Ng6+ hg 13.ef+ Nf6 14.Qh8 Kf7 15.Nb3 Nb3 16.ab e5 17.Bg6+ Kg6 18.Qf8 d4 19. b4 Qc6 20.Ra3 Nh5 21.Qe7 1-0

W: Morris Giles (2449) B: Leo Kaushansky (2343) Sicilian
 1.e4 c5 2.Nf3 Nc6 3.d4 cd 4.Nd4 Nf6 5.Nc3 e5 6.Ndb5 d6 7.Bg5 a6 8.Bf6 gf 9.Na3 b5 10.Nd5 f5 11.ef Bf5 12.Bd3 Bg6 13.O-O Bg7 14.c3 f5 15.Nb5 ab 16.Bb5 Rc8 17.Qa4 Kd7 18.Rfd1 Bf7 19. Nb4 Qb6 20.c4 Bh6 21.Nd5 Qb7 22.c5 Bd5 23.Rd5 Bf8 24.Rad1 Qb8 25.cd Rg8 26.Rc5 Bd6 27.Bc6+ Ke7 28.Qh4+ Ke6 29.Bd5+ 1-0

W: Lawrence Chachere (2379) B: Bill Colias (2377)
 1.d4 c5 2.d5 g6 3.c4 Bg7 4.Nc3 f5 5.Nf3 Bc3+ 6.bc d6 7.g3 Qa5 8.Qc2 Nf6 9.Bg2 Nbd7 10.O-O Nb6 11.Nd2 Bd7 12.Re1 O-O-O 13.e4 fe 14.Ne4 Bf5 15.Bg5 h6 16.Bf6 ef 17.Qe2 Rf8 18.Rab1 Kc7 19.Rb5 Qa4 20.Nd6 Rd6 21.Qe7+ 1-0

(Continued on Page 14)

#####

OAK PARK - FOREST PARK CHESS CLUB AUTUMN CLASSIC

OCTOBER 24 - 25, 1987

1	KRAMER, CHARLES A	IL	2272	2294	w=8	w=2	w10	D=4	w=6	4.5
2	GENSLER, KEVIN M	IL	2163	2179	w=9	L=1	w=5	w=6	w=4	4.0
3	KERMAN, MARK	IL	1589	1665	H=+	L=7	w16	w12	w=9	3.5
4	ACOSTA, MARIANO A	IL	2184	2173	w12	D=6	w=7	D=1	L=2	3.0
5	RUSH, BHADLEY CRAI	CA	1626	1694	L14	w17	L=2	w13	w=9	3.0
6	PUKEL, BERNARD B	IL	1939	1971	w13	D=4	w14	L=2	L=1	2.5
7	COHEN, LAWRENCE S	IL	1906	1895	r=+	w=3	L=4	L=9	w15	2.5
8	BUTTNY, WILLIAM P	IL	1656	1852	L=1	w16	D=9	w11	L=3	2.5
9	PETERS, EDWARD J	IL	1706	1729	L=2	w15	D=8	w=7	L=5	2.5
10	STEIN, PETER	IL	2255	2247	w17	w11	L=1	U=+	U=+	2.0
11	ALLISON, ROGER D	IL	1838	1834	w15	L10	w12	L=8	U=+	2.0
12	SWANSON, VICTOR O	IL	1765	1760	L=4	w13	L11	L=3	w16	2.0
13	CARSON, DAVID L	IL	1414	1477	L=6	L12	w17	L=5	w14	2.0
14	SURAK, STEVE S	IL	2147	2112	w=5	H=+	L=6	U=+	L13	1.5
15	BALES, JR ROBERT J	IL	1256	1274	L11	L=9	H=+	w16	L=7	1.5
16	PADILLA, RUDY R	IL	1404	1374	H=+	L=8	L=3	L15	L12	.5
17	BROWN, TOKY	IL	1721	1697	L10	L=5	L13	U=+	U=+	.0

Illinois Tournament of Champions II
(Continued from Page 13)

W: Ken Wallach (2344) B: Morris Giles (2449) King's Indian
1.d4 Nf6 2.c4 g6 3.Nc3 Bg7 4.e4 d6 5.f3 O-O 6.Be3 a6 7.Qd2
Nc6 8.Nge2 Rb8 9.g4 b5 10.h4 Na5 11.Ng3 Nc4 12.Bc4 bc 13.h5
Bg4 14.fg Ng4 15.O-O-O c5 16.dc Qa5 17.hg Rb2 18.gf+ Kf7
19.Qd5+ Ke8 20.Qc6+ Kd8 21.Rd6+ ed 22.Bg5+ Bf6 23.Qd6+ Kc8
24.Qe6+ Kd8 25.Rd1+ Kc7 26.Bf4+ Be5 27.Be5+ Ne5 28.Qe5+ Kc8
29.Kb2 1-0

W: Morris Giles (2449) B: Eugene Martinovsky (2440)
1.e4 e5 2.f4 Bc5 3.Nf3 d6 4.c3 Nf6 5.d4 ed 6.cd Bb4+ 7.Bd2
Bd2+ 8.Nd2 O-O 9.Bd3 Re8 10.O-O c5 11.d5 c4 12.Nc4 Ne4 13.Qc2
Nf6 14.Rae1 Re1 15.Re1 Na6 16.Ng5 g6 17.Qd2 Nc5 18.Re2 h6
19.b4 hg 20.bc gf 21.Nd6 b6 22.Qf4 Kg7 23.Re8 Qc7 24.c6 Nh5
25.Qe5+ f6 26.Re7+ Kg8 27.Rc7 1-0

W: Greg DeFotis (2418) B: Andrew Karklins (2383)
1.c4 Nf6 2.g3 e6 3.Bg2 d5 4.Nf3 d4 5.b4 Bb4 6.Qa4+ Nc6 7.Ne5
Rb8 8.O-O O-O 9.Nc6 bc 10.a3 Bc5 11.d3 Nd7 12.Nd2 Nb6 13.Qa5
Be7 14.Ne4 c5 15.Nc5 Bc5 16.Qc5 f6 17.Bd2 Qd6 18.Bb4 Qc5
19.Bc5 Rd8 20.Rfb1 e5 21.a4 Bg4 22.a5 Be2 23.Rb3 Nd7 24.Rb8
Nb8 25.Ba7 Bd3 26.Bb8 Rb8 27.Bd5+ 1-0

W: Bill Colias (2377) B: Leo Kaushansky (2343) Sicilian
1.e4 c5 2.Nf3 Nc6 3.d4 ed 4.Nd4 Nf6 5.Nc3 e5 6.Ndb5 d6 7.Bg5
a6 8.Bf6 gf 9.Na3 b5 10.Nd5 f5 11.Bb5 ab 12.Nb5 Ra4 13.Nbc7+
Kd7 14.O-O Ra7 15.Nb5 Rb7 16.c4 fe 17.f4 Be7 18.Qh5 Ke8
19.Rad1 ef 20.Ne7 Ke7 21.Nd6 Qf8 22.Qc5 Ke6 23.Qc6 1-0

W: Andrew Karklins (2383) B: Bill Colias (2377) Ruy Lopez
1.e4 e5 2.Nf3 Nc6 3.Bb5 a6 4.Ba4 Nf6 5.O-O Be7 6.Re1 b5 7.Bb3
O-O 8.a4 Bb7 9.c3 d6 10.d4 h6 11.Nbd2 ed 12.Nd4 Nd4 13.cd c5
14.Bc2 cd 15.Nf3 d5 16.e5 Ne4 17.Nd4 f6 18.ef Bb4 19.fg Rf2
20.Re4 de 21.Bb3+ Bd5 22.Kf2 Bc5 23.Be3 Qf6+ 24.Kg1 Bc4
25.Bc4+ bc 26.Qh5 Qd6 27.Rf1 Bd4 28.Qf7+ 1-0

Some Thoughts on Chess and Chess Players

Chess is a game of understanding, not of memory.

E. A. Znosko-Borovsky

The move is there, but you must see it.

S. G. Tartakower

A man who will take back a chess move will pick a pocket.

R. F. Fenton

[Source : Chess: Quotations from the Masters,
compiled by Henry Hunvald, Peter Pauper Press, 1972]



TIM JUST WINTER OPEN/RESERVE V

JANUARY 2-3, 1988

\$1700 GUARANTEED!



OPEN-Open to all players

1st-2nd \$225-\$150
 Expert: 1-2 \$125-\$100
 A: 1-2 \$125-\$100

RESERVE-Below 1800

1st-2nd \$225-\$150
 C: 1-2 \$125-\$100
 D/E: 1-2 \$125-\$100
 UNR. 1st \$50

ICA MAXI-TOUR EVENT ***** GRAND PRIX POINTS = 5

5 ROUND SWISS: Saturday 9:30-2:30-7; Sunday 10-4

TIME CONTROL: Saturday 40/100, 30/1; Sunday 45/2, 25/1

1/2 point byes rounds 1, 2, or 3 if requested in advance

EARLY ENTRY FEE = \$30

LATE & PHONE ENTRY FEE = \$37

EARLY FEES & INFO:
 by 12/30/87

TIM JUST
 1521 CIRCLE CT.
 WAUKEGAN, IL. 60085
 812-244-7954

LATE REGISTRATION AT SITE:
 8-9 AM on 1/2/88

ILLINOIS BEACH RESORT
 SHERIDAN RD & WADSWORTH to the Lake
 Zion, Illinois 60099
 Hotel Rates: 312-249-2100

ICA Membership required--other states OK *** NS; NC; Wheelchair

**IL. BEACH
STATE PARK**

**TIM JUST
WINTER OPEN**

**\$35/NIGHT
ROOM RATE
249-2100**

BE A PART OF THE ICA TOUR!

\$1300 PRIZE FUND IN 1988

NEW FEE SCHEDULE

ONLY \$1 PER PLAYER!!!

MAXI-TOUR: You pay no more than \$100 and no less than \$50.

MINI-TOUR: You pay no more than \$50 and no less than \$25.

Examples: A MAXI-TOUR event with 60 players costs \$60.
A MAXI-TOUR event with 125 players costs \$100.
A MAXI-TOUR event with 48 players costs \$50.
A MINI-TOUR event with 42 players costs \$42.
A MINI-TOUR event with 65 players costs \$50.
A MINI-TOUR event with 20 players costs \$25.

WHAT YOU GET:

1. Increased event attendance. Now ALL players, rather than just the various class and event winners, can accumulate Tour Points. The new revised Tour Point formula awards points to ALL players in your event that score above 0. The more events these players participate in, the more Tour Points they gain!
2. Free ICB ads!! MAXI = 1 Page, MINI = 1/2 page.
3. Promotional priority on Chess Phone.
4. A list of ICA members to help you verify that ALL PLAYERS in your event are CURRENT ICA members.
5. Forms to register new and renewed ICA Members.
6. A current list of ICA Tour players and their accumulated Tour Points.

WHAT WE NEED FROM YOU:

1. A Copy of the Wallchart (not USCF X-Table!).
2. ICA Tour event payment.
3. New and renewed ICA membership forms along with any dues collected.

FOR DETAILS & INFO: ICA PRESIDENT TIM JUST, 1521 CIRCLE CT., WAUKEGAN, ILLINOIS 60085 312-244-7954.

Masters Section

1	LEVINE, David	2298	D3	BYE	W5(F)	W2	D4	4
2	RIZZITANO, James	2549	BYE	W4	D3	L1	W5	3.5
3	CHOW, Albert	2420	D1	W5	D2	D4	BYE	3.5
4	MARTINOVSKY, Eugene	2427	L5	L2	BYE	D3	D1	2
5	SANDRIN, Angelo	2291	W4	L3	L1(F)	BYE	L2	2

Expert - Class A

1	BERNAL, Luis	1982	D2	W5	W3	BYE	W(F)	4.5
2	GOLDBERG, Neal	2084	D1	W4	BYE	W(F)	D3	4
3	SUKIENNIK, Leopold	1889	L5	BYE	L1	W(F)	L2	2.5
4	ACOSTA, Mariano	2184	BYE	L2	W5	WD	WD	2
5	SMITH, Charles	2025	W3	L1	L4	WD	WD	1

Class B

1	FRAATS, Dan	1722	D3	W8	L6	W4	W2	3.5
2	LYON, Mark	1652	W7	W9	W4	D3	L1	3.5
3	SYPUŁSKI, Jaimie	1633	D1	D7	W9	D2	W5	3.5
4	ROBINSON, Harrison	1655	W6	W5	L2	L1	BYE	3.5
5	OSANYANJOBI, Toks	1577	BYE	L4	W8	W6	L3	3
6	FLEGEL, Richard	1616	L4	BYE	W1	L5	W8	3
7	JOHNSON, Paul	1732	L2	D3	BYE	L8	WD	1.5
8	WOLFE, Ron	1676	BYE	L1	L5	W7	L6	1.5
9	SMITH, Orlan	1470	BYE	L2	L3	WD	WD	1

State champion Jim Rizzitano, coming off a 5-0 performance at the Illinois Open in early September, saw his winning streak end when he drew with Albert Chow in the third round. David Levine then defeated Rizzitano in round four. Here are those games.

W: Albert Chow (2420) B: James Rizzitano (2549) Dutch

1.d4 f5 2.g3 Nf6 3.Bg2 g6 4.Nf3 Bg7 5.O-O O-O 6.c4 d6 7.Nc3 Nc6 8.b3 e5 9.de de 10.Ba3 Re8 11.Qd8 Rd8 12.Rad1 Bd7 13.e4 Ne4 14.Ne4 fe 15.Ng5 Nd4 16.Ne4 Bg4 17.f3 Bf5 18.Be7 Ne2+ 19.Kf2 Rd1 20.Rd1 Nd4 21.Nc3 Re8 22.Bg5 c6 23.Be3 c5 24.Rd2 b6 25.Nb5 Re7 26.Bf1 Rd7 27.g4 Be6 28.Bd3 a6 29.Nc3 Rf7 30.Be4 .5-.5

(Continued on Page 20)

CHess CENTER GRAND PRIX

OCTOBER 16-17, 1987

White: IM Jim Rizzitano

Black: NM David Levine

Vienna Game

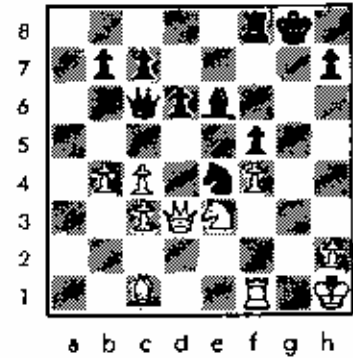
Annotated by Albert Chow

bishop. This idea is not without logic, and perhaps White should have also regrouped with 14 Qe2, 15 d3.

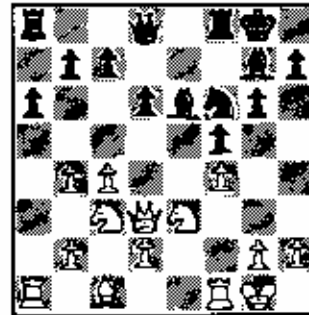
14 Nf5 g6
15 e4 d6
16 Nc3 f5

Threatening to break open White's kingside with 17 ... f4, 18 ... f3.

17 f4 Qe6
18 g4 Nf5



1 e4 e5
2 Nc3 Nf6
3 Bc4 Nxe4!
Black is able to capture this central pawn because after 4 Ne4 d5 Black recovers the piece with equal chances. Instead White might prevent Black from castling with 4 Bf7 Kf7 5 Ne4 but then with 5 ... d5 Black's central initiative brings counterplay.



a b c d e f g h

4 Qb5 Ne6
5 Bb3 Be7

Black develops and is ready to castle. White will use time recapturing the e pawn giving Black good chances. If instead Black was greedy and tried to keep the gambit pawn with 5 ... Nc6 then White creates monstrous threats with 6 Nb5! g6 7 Qf3 f5 8 Qd5.

6 Nf3 Nc6
7 Nxe5 g6
8 Qe2 Nd4
9 Qd3? ...

White's early queen excursion has failed to tempt any mistakes due to Levine's accurate play. It was best to admit the queen is safest on her original square with 9 Qd1 and White could then develop with normal moves O-O, d3, etc.

9 ... Nxb3
10 axb O-O
11 O-O Bf6
12 Ng4 Bg7
13 Ne3 Ne8

By moving his knight, Black is able to advance his d pawn obtaining freedom for his light squared

Black's piece mobility is excellent, and the Black bishop pair seems to have more potential than White's B on c1. White's best idea is to activate the power of this dormant piece with either 19 b3, 20 Bb2 or 19 Qe2, 20 c3.

19 b5 axb
20 Rxa8 Qxa8
21 Nxb5 Qb8
22 b4 Ne4

An important move preventing Bb2.

23 Nd4 Bf7
24 g4? ...

An aggressive attacking move is probably premature since White first needs to equalize! Opening the kingside is most likely to favor the side with the more powerful pieces.

24 ... Qa7?
25 Nb5 ...
25 Bb2 Qa2! doesn't solve White's problems.
25 ... Qb6
26 gxf gxf
27 Kh1 Be6
28 Nc3 Bxc3!
29 dxc Qc6

With alert moves Levine proves his judgment has been accurate. It's not easy to stop Black's threat of discovered check. 30 Rg1 Kf7 doesn't help, and neither does 30 Nd5 b5!

30 Kg1 Rf7
31 NQ? ...

A mistake in a bad position. The only way to survive was 31 Rd1 Rg7 32 Kf1 and although it's clear Black has the advantage, it may not be decisive.

31 ... Ng3
32 Nd5 Bxd5
33 cxd Qxc3
34 Qxc3 Ne2+
35 Kf1 Nxc3
36 Bd2 Nd5

0-1



1987 SENIOR OPEN

Dr. Eugene Martinovsky's 1987 Senior Open victory (on tie-break over eight other co-champions) was detailed in the October-November ICB. The doctor has annotated the following games from the event.

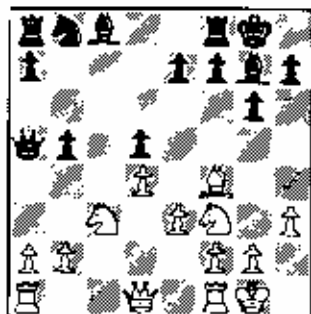
1987 Senior Open

White: A. Greensite (2174)
Black: E. Martinovsky (2418)
Gruentfeld Defense (Bf4 line)

Annotated by Eugene Martinovsky

Mr. Greensite shared 1st place with the rest of us. Here he stood better all the time and could well have won the game and the championship. After some careless opening play trying to win or get a double-edged position at any cost, I nearly lost. At the end I played hazardously to draw!

- 1 d4 Nf6
- 2 c4 g6
- 3 Nc3 d5
- 4 Bf4 Bg7
- 5 Nf3 c6
- 6 e3 O-O
- 7 h3 Ra5
- 8 Bd3 dxc
- 9 B xc4 N5?
- 10 Bb3 Nd5
- 11 Bxd5! cxd
- 12 O-Oa ...



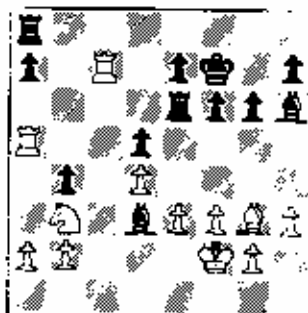
Now I saw that I stood very badly indeed. No matter what I do I will have serious weaknesses on the

queen side and difficulties developing there. What did I do wrong? Perhaps 9... b5?

- 12 ... b4
- 13 Qa4! Qxa4
- 14 Nxa4 Na6
- 15 Rfc1 Bb7
- 16 Nc5 Nxc5
- 17 Rxc5 Rfc8
- 18 Rac1 Bf8
- 19 Rc7 f6
- 20 Nd2 Ba6
- 21 f3 Kf7

I am really barely holding this terrible position.

- 22 Bd6 Rcb8!
- 23 Ric5 Bc3
- 24 Bg3 Rb6
- 25 Ra5 Ra6
- 26 Nb3 Bb6
- 27 Kf2 Re6



I am getting some counterplay but not really enough. Earlier my opponent could have won a pawn but I would have had good compensation in return. He later said, "I've been playing this game for 40 years. I know from long experience that taking such pawns is no good."

- 28 f4 g5
- 29 f5 ...

29 Nc5 was probably better, for instance, 29... gxf 30 Bxf4! Bxf4 31 Nxe6 Bxc7 32 Nxc7 and White will win the pawn on a7 too!

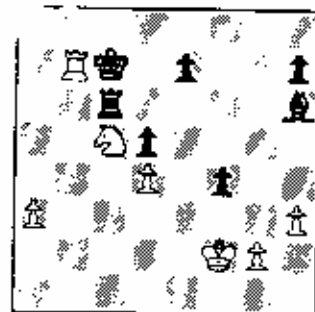
- 29 ... Bxf5
- 30 Nc5 Rb6
- 31 Rxa7 Rxa7
- 32 Rxa7 Bb1

32 ... Bf8 was better but I was in severe time trouble here.

- 33 Bc7 Rc6
- 34 a4 bxa (ep)
- 35 bxa f5

35 ... Bf8 is better.

- 36 Rb7 f4
- 37 exf gxf
- 38 Bd8 Ke8
- 39 Rxb1 Kxd8
- 40 Rb8+ Kc7
- 41 Rb7+ Kd8
- 42 Rb8+ Kc7
- 43 Rb7+ .5-.5



The game is drawn by repetition of moves. White could have played 42.Rd7+ and won the pawn at d5, but either did not want to or did not see this in time trouble.

```

#####
#
#
# 1988 NATIONAL OPEN
#
# MARCH 18 - 20, 1988
#
# HOLIDAY INN O'HARE
#
# $16,000 PRIZE FUND
#
# FORMER WORLD CHAMPION MIKHAIL TAL
# MAY PLAY
#
# BENJAMIN - BLUGY BLITZ MATCH
#
# JOIN THE GRANDMASTERS AT THE
# BIGGEST CHICAGO TOURNAMENT OF 1988
#
#####
    
```

CHESS PHONE
(312) 971-3666

1987 SENIOR OPEN

White: E. Martinovsky (2418)

Black: Hans Morrow (2132)

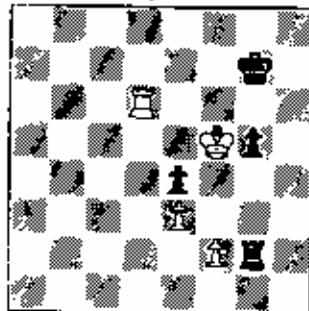
Queens Gambit

Annotated by E. Martinovsky

This was another game between two of the co-champions.

1 d4 d5
 2 c4 c6
 3 Nf3 Nf6
 4 Nc3 e6
 5 Bg5 Be7
 dsc leads to Anti-Meran Gambit
 6 e3 O-O
 7 Qc2 Nbd7
 8 Rd1 Re8
 9 a3 b6
 10 cxd exd
 11 Bd3 g6
 12 O-Oa Kg7
 13 Rfel Bb7
 14 b4 a5
 15 Qb2 axb
 16 axb Nh5
 17 Bxe7 Rxe7
 18 b5! Nhf6
 19 bxc Bxc6
 20 Bb1 h6
 21 Rec1 Kg8
 22 Nb5 Re6
 23 h3 Ne4
 24 Bxe4 dxe
 25 Nd2 Bxb5
 26 Qb5 Ra5
 27 Qe2 Ra2=
 28 Ral Qa8
 29 Qd1 Nf6
 30 Rxa2 Qxa2
 31 Qc2 Bxc2
 32 Rxc2g Nd5
 33 Rc8+ Kg7
 34 Kf1 g5
 35 g4 h5
 36 Nc4 hxg
 37 hxg f6
 38 Rd8 Rc6
 39 Nd6 Nc3
 40 d5 Rc5

41 Nf5+ Kf7
 42 Re7+ Ke8
 43 Re7+ Kd8
 44 d6 Rd5
 45 Re6 b5
 46 Rxf6 b4
 47 Rf8+ Kd7
 48 Rf7+ Kd8
 49 Rb7 Nb5
 50 Ne7 Rd1+
 51 Kg2! Rxd6
 52 Rxb5 Kxe7
 53 Rxb4a Re6
 54 Rb5 Kf6
 55 Rf5+ Kg6
 56 Kf1 Ra6
 57 Re5 Ra4
 58 Re6+ Kf7
 59 Rd6 Ra8
 60 Ke2 Ra2+
 61 Rd2 Ra8
 62 Rd4 Re8
 63 Kd2 Kf6
 64 Rd5 Ra8
 65 Rd6+ Kf7
 66 Rd4 Re8
 67 Rd5 Kg6
 68 Kc3! Rf8
 69 Rd6+? (Sealed move)
 69 ... Kh7?
 69...Kg7 is better and most likely draws
 70 Rd5! Kg6
 71 Rf5! Rd8
 72 Ra5! Rf8
 73 Ra6+ Kh7
 74 Ra2 Rd8
 75 Kc4! Kg6
 76 Kc5 Rd1
 77 Ra6+ Kg7
 78 Rd6! Rf1
 79 Rd2 Rg1
 80 Kd5 Rzg4
 81 Ke5 Kg6
 82 Rd6+ Kg7
 83 Kf5!+- Rg2



It took a long time and many fancy tactics for me to obtain this won position. Now I should have played as planned: 84 Rd2 g4 85 Kxe4 g3 86 Rd7+ Kg6 87 f4! and White will win. But I became careless and decided to further push the Black king down to the eighth rank before instituting the above procedure. You'll see what happened.)

84 Rd7+?? Kf8!-
 85 Rd2 g4!

Now if 86 Kxe4 g3 87 Rd8+? Ke7 and my Rook is attacked and I have no time for f4. So all of my previous work was for nothing! The game should now have been a draw. My opponent, however, did not correctly defend in the rook and one pawn vs. pawn ending that followed.)

86 Rd8+ Ke7
 87 Rd4 Rxf2+
 88 Kxg4 Kf7
 89 Rxe4 Rf6
 90 Re5 Ra6
 91 Kf4 Ra4+
 92 Kf5 Ra6!
 93 Rb5 Ra7?

Not yet fatal but following a wrong plan. Black must keep the 6th rank until the White pawn gets to e6. Then the Black rook should go to the 1st rank and check the white king from behind. That is the way to draw this ending. My opponent apparently wanted to defend the 7th rank and that cost him the game.)

94 e4 Ke7? (Ra6=)
 95 Rb6! Ra5+?
 96 e5 +- Ra7
 97 Rh6! Ra5
 98 Rh7+ Kd8
 99 Kf6 Ra1
 100 Rh8+ Kc7
 101 e6 Rf1+
 102 Ke7 Rf2
 103 Rh1 Rc2
 104 Re1 Rc3
 105 Ke8 Rh3
 106 e7 Rd3
 107 Kf8 Rf3+
 108 Kg7 Rg3+
 109 Kf6 1-0

BENJAMIN, DEFIRMIAN SHARE 1987 U.S. CHAMPIONSHIP

Grandmasters Joel Benjamin and Nick deFirmian each scored 8-5 to tie for first and second places at the 1987 U.S. Championship tournament in Estes Park, Colorado, which ended on November 18. Benjamin, perhaps best known in Illinois for taking first place in both the 1986 and 1987 Midwest Masters, beat defending champion Yasser Seirawan and former Soviet champion Boris Gulko in rounds 11 and 12 of the 14 player round robin event. He and deFirmian, the only players to finish undefeated, drew their individual game on the way to identical results of three wins and 10 draws.

Seirawan, GMs Maxim Dlugy and John Fedorowicz, and International Master Michael Wilder came in third -sixth with 7.5 points. Gulko, who could have joined the winners as co-champion by beating IM Michael Rohde with white in the last round, instead lost and ended up in seventh place with 7 points. (Tournament results were provided by the USCF).

[Editors' Note: CHESS LIFE will no doubt publish the most interesting games from the 1987 U.S. Championship. The following contest is not from that event. The game, Joel Benjamin's win over a Mephisto Munich/Dallas computer which concluded with a forced mate in four, was played as part of the 31 board simultaneous exhibition which Benjamin gave at the Oak Park-Forest Park Chess Club in March of 1987. (The grandmaster won 28 games and drew three.)

W: Joel Benjamin B: Mephisto Munich/Dallas Computer
1.d4 Nf6 2.c4 g6 3.Nc3 d5 4.Nf3 Bg7 5.Qb3 dxc4 6.Qxc4 O-O
7.e4 Bg4 8.Be3 Nfd7 9.Qb3 Nb6 10.Rd1 Bxf3 11.gxf3 Nc6 12.d5
Ne5 13.Be2 Qd7 14.h4 Rfc8 15.h5 c5 16.hxg6 hxg6 17.f4 Ng4 18.
e5 Nxe3 19.fxe3 c4 20.Qb4 e6 21.Bg4 Bf8 22.d6 Qc6 23.Kf2 a5
24.Qb5 Qxb5 25.Nxb5 Na4 26.Rd2 Nc5 27.Kf3 Rc6 28.Rc2 Nd3
29.Nc7 Rd8 30.Nxe6 fxe6 31.Bxe6+ Kg7 32.Rch2 Nxe5+ 33.fxe5 g5
34.Rh7+ Kg6 35.Kg4 Bg7 36.Rlh6+ Bxh6 37.Bf5 Mate.

During the Benjamin-Mephisto encounter, a spectator stumbled over the computer's electrical cord and pulled it out of a wall socket. The machine then "crashed", resulting in the loss of its internal recording of the game. The position was reset by using the computer's "problem mode", but the previous moves could not be restored to the machine's memory. The next day, as I drove Benjamin to the airport, I noted that the Mephisto's operator was disappointed about having no score of the contest. I then asked the grandmaster if he might be able to recall the game, but noted that it would be understandable if he could not, since remembering all the moves from one of 31 games while rushing to catch a plane might be difficult. In response, Benjamin smiled and jotted down the 37 moves without hesitation!]

FROM THE EDITOR (Continued from Page 1)

Jules Stein provided the cover design of this issue. ICB readers know Jules as the keeper of the Chicago Chess Center and the sponsor of dozens of tournaments a year. The many who have visited the Center, either for tournament or casual play, also know that Jules is an accomplished graphic artist. (His original work, much of it chess-oriented, covers the Center's walls.)

Crosstables in this issue were prepared by Bill Smythe, except for those from the "King City" Swiss (John Tonkinson), the Chicago Chess Center Grand Prix (Ken Marshall), and the Oak Park-Forest Park Chess Club Autumn Classic (USCF). Wayne Palmquist supplied the Illinois Chess League results.

The new year is almost here, and with it the first chess events of 1988. Check out this issue's "Illinois Tournament Calendar"—you'll certainly find a tournament (and a time control) that's right for you. Especially keep in mind the 1988 National Open, convenient location (Holiday Inn O'Hare), \$16,000 prize fund, and (maybe) former world champion Mikhail Tal (see "What's New" in this issue).

Finally, a sad note: Jules Stein reports that Jose Rodriguez, a longtime Chicago resident and chess expert who often played in Chicago Chess Center events, died on December 12. Jules notes that Jose, who leaves a wife and two young children, was always good company and a favorite among CCC regulars because of his wit, charm, and humor. He will be missed. The Chicago chess community extends its sympathy to his family.

LETTERS TO THE EDITOR

Dear Sir,
I would like to thank the masters who annotate games for us. I play through the games and store them in my computer. This type of learning experience is much more important to me than the human side of chess. However, who says we can't have the best of both? Good luck in your future publishing efforts!

Sincerely,
Earl Miller
Bloomington, IL

PATRON MEMBERS CONTINUED

Vivian Schmucker	Goshen, IN
Tony Sillars	Chicago, IL
Arthur Sincjar	Evanston, IL
David Sprenkle	Urbana, IL
Miomir Stevanovic	Lincolnwood, IL
David Taylor	Kankakee, IL
Don Townsend	Chicago, IL
Helen Warren	Western Springs, IL
Douglas White	Evanston, IL
Harold Winston	Naperville, IL
Sandy Zabel	Chicago, IL
Michael Zacate	Mokena, IL
Max Zavanelli	Park Ridge, IL

HELP SUPPORT ILLINOIS CHESS BY BECOMING AN ICA BENEFACTOR:

CENTURY MEMBER
\$100
GOLD CARD
\$50
PATRON
\$25

Please mail your contribution to
Illinois Chess Association
Bill Smythe, Treasurer
6945 N Ashland #F3
Chicago, IL 60626

TOURNAMENT CLEARINGHOUSE MATERIAL

Harold Winston has resumed handling the Tournament Clearinghouse. Please send all material to:

Harold Winston
46 Robin Hill Dr
Naperville, IL 60540
(312) 244-7954

Please send Downstate Tournament Clearinghouse material to:

Bill Naff
212 W. Van Ct
Peoria, IL 61614
(309) 691-4624

CENTURY CLUB MEMBERS

Michael Belovesick	Elmhurst, IL
Fred Cramer	Mequon, WI
Lawrence Goch	Chicago, IL
Fred Gruenberg	Chicago, IL
Bill Smythe	Chicago, IL
Burton Vincent	Chicago, IL
Philip Wong	Evanston, IL

GOLD CARD MEMBERS

Bill Buttny	Downers Grove, IL
John Deutsch	Chicago, IL
Thomas Fineberg	Chicago, IL
Harland Heisington	South Ogden, UT
Charles Kramer	Dalton, IL
Ed Marshall	South Barrington, IL
James Norris	Naperville, IL
Michael Pratts	Chicago, IL
Irwin Rothschild	Park Forest, IL
Albert Sandrin	Chicago, IL
Angela Sandrin	Chicago, IL
Mitchel Sweig	Evanston, IL
Richard Verber	Chicago, IL
Jim Warren	Western Springs, IL
Louis Werner	Evanston, IL

PATRON MEMBERS

Bob Ash	Urbana, IL
Todd Barre	Westmont, IL
John Barstad	Carol Stream, IL
Roy Benedek	Oak Park, IL
Bill Brock	Chicago, IL
Tyrone Brooks	Chicago, IL
Jim Brotsas	Arlington Heights, IL
Brian Chapman	Arlington Heights, IL
Lynn Crewse	Arlington Heights, IL
Leroy Dubeck	Cherry Hill, NJ
Robert Glick	Lincolnwood, IL
Jon Gotz	West Chicago, IL
William Graves	Chicago, IL
Guy Gruenberg	Matteson, IL
Walter Henry	Naperville, IL
Jeffery Hyland	Berwyn, IL
Robert Irons	Chicago, IL
Tim Just	Waukegan, IL
Dan Kamen	Wheeling, IL
Leo Kaushansky	Chicago, IL
Thomas Knoedler	Springfield, IL
Kenneth Marshall	Lombard, IL
James McManara	Riverside, IL
Piatek Mieczyslaw	Chicago, IL
Patrick Moran	Wilmette, IL
Peter Pelts	Chicago, IL
Kevin Reardon	Urbana, IL
Tim Redman	Lima, OH
Ray Satterlee	Wheaton, IL

ICA ELECTED OFFICERS:

Tim Just, President
1521 Circle Ct., Waukegan, IL 60085

Harold Winston, Metro Vice-President
46 Robin Hill Dr., Naperville, IL 60540

Bill Naff, Downstate Vice-President
212 W. Vail Ct., Peoria, IL 61614

Ken Marshall, Secretary
357 W. Grove, Lombard, IL 60148

Bill Smythe, Treasurer
6945 N. Ashland #F3, Chicago IL 60626

Walter Brown, Immediate Past President
811 Elrose Ct., Crest Hill, IL 60435

USCF DELEGATES

by virtue of their USCF posts:

Heien Warren, Policy Board Member
Todd Barre, Regional Vice-President
Jim Warren, Regional Vice-President
Frank Stoff, Past President

ICA APPOINTED USCF DELEGATES:

Tim Just	Todd Barre
Harold Winston	Bill Smythe
Richard Verber	

ICA APPOINTED USCF VOTING MEMBERS:

Tom Fineberg	Ken Marshall
Bill Naff	Dennis Grant
Walter Brown	Lawrence Stilwell
Erv Sedlock	Tom Knoedler
Glenn Panner	Robert Bain
Wayne Palmquist	Barry Fisher

ICA APPOINTED USCF ALTERNATE VOTING MEMBERS:

Chris Musgrave	John Barstad Sr.
Eric Schifler	Dan Kamen
Bill Wilkinson	Albert Chow
Mike Zaccato	David Sprengle
Jim Condron	Mike Belovesick Sr.
Kevin Bachler	Philip Wong
Jim Brotsas	Burton Vincent
Angelo Sandrin	Larry Goch

ILLINOIS TOURNAMENT CALENDAR

Call Chess Phone, (312) 971-3666, for all recorded tournament announcements and results, often more up-to-date than Chess Life or the ICB. The ICA Chess Phone voice is Todd Barre

Unless otherwise noted, all tournaments require USCF membership. ICA Tour events also require ICA membership. All phone numbers are area code 312 unless otherwise noted

Jan. 1, 2, 3: For the Penny-Pinching Pawn Pusher, two 1-day events at Chicago Chess Center. Jules Stein: 929-7010

Feb. 27: 8th Illinois High School Classic; 2nd Grade School Class; 3rd Alumni Tournament, in Hillside. Lawrence Stilwell: 963-6799.

Jan. 2-3: TIM JUST WINTER OPEN/RESERVE V, in ZION. An ICA Tour maxi-event. \$1700 GUARANTEED. SEE FULL PAGE AD IN THIS ICB.

Mar. 11-13: 1988 Midwest Masters Invitational, at Holiday Inn O'Hare in Rosemont. Helen Warren: 246-6665.

Jan. 2, 3: Chess Life LIX & LX, two 1-day events at Chicago Lawn Chess Association. 476-5716.

Mar. 18-20: 1988 National Open, at Holiday Inn O'Hare in Rosemont. Dick Yerber: 434-2118. SEE FULL PAGE AD IN THIS ICB.

Feb. 6-7, Feb. 13-14, Feb. 20-21: Chicago Chess Center events. Jules Stein: 929-7010.

1988 National Open

MARCH 18-19-20 IN CHICAGO

ILLINOIS CHESS BULLETIN
357 W. GROVE
LOMBARD, ILLINOIS 60148

Speedy Delivery Appreciated

Bulk Rate
U.S. Postage Paid
Chicago, IL 60660
Permit No. 8523