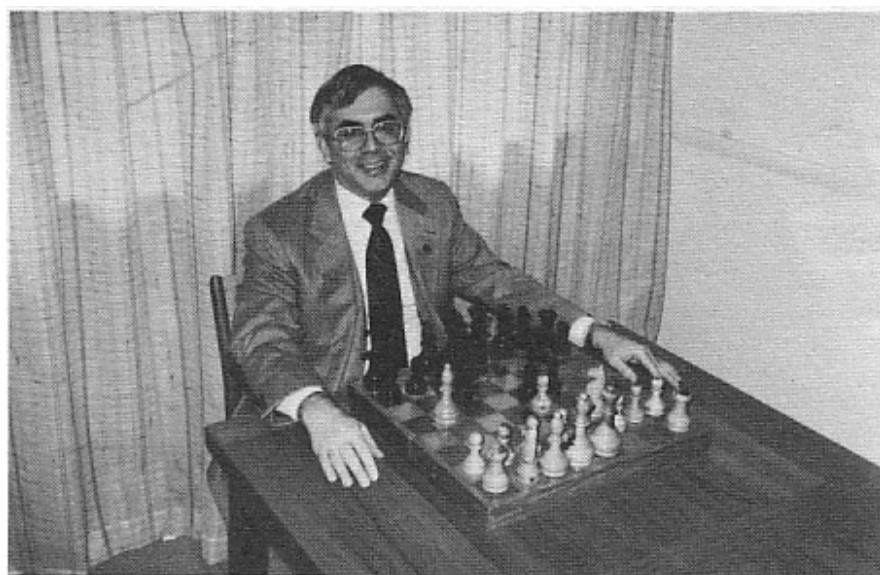


ILLINOIS CHESS BULLETIN

Official Publication of the Illinois Chess Association of U.S.C.F. Affiliate
A Not For Profit Organization

OCTOBER - NOVEMBER, 1987 VOLUME X, NO. V BI-MONTHLY \$2.00



INTERVIEW WITH HAROLD WINSTON
NEW U.S.C.F. PRESIDENT

ILLINOIS CLASS CHAMPIONSHIPS
\$1,500 IN PRIZES . . . NOVEMBER 21st & 22nd



ILLINOIS CHESS BULLETIN

EDITOR:

KEN MARSHALL
357 W. Grove
Lombard, Illinois 60148
(312) 932-1455

TECHNICAL EDITOR:

MARY GAITHER MARSHALL

GAMES EDITOR:

AL CHOW

SUBSCRIPTIONS:

The Illinois Chess Bulletin (ICB) is published bimonthly by the Illinois Chess Association. ICA membership includes a subscription to the ICB. (Century, Gold, and Patron members receive their ICB by first-class mail.)

ANNUAL MEMBERSHIP RATES:

Century Club:	\$100.00
Gold Card:	50.00
Patron:	25.00
Regular:	10.00
Junior (under 18):	6.00

Subscriptions, Address Changes, and Corrections should be sent to:

Illinois Chess Association
P.O. Box 267847
Chicago, IL 60626-7847

SUBMISSIONS:

Submit articles, photographs, crosstables, games, and other publishable materials to the Editor. Publication deadline for the next issue is December 1, 1987.

ADVERTISING RATES:

Full page	\$60
Full page (back cover)	80
Half page	36
Quarter page	21

10% discount for the same ad in consecutive issues. 1/3 discount for ICA affiliates. All advertising must be camera ready to qualify for these rates. ICA reserves the right to reject advertising.

TABLE OF CONTENTS

FROM THE EDITOR	1
WHERE TO PLAY CHESS / CLUB AFFILIATES	2
PRESIDENTIAL PONDERINGS	3
LETTERS TO THE EDITOR	3
WHAT'S NEW	4
INTERVIEW WITH HAROLD WINSTON	7
ILLINOIS VALLEY TORNADO	10
ILLINOIS OPEN	11
ILLINOIS OPEN CROSSTABLES	13
SOUTHERN ILLINOIS CHESS LEAGUE	14
ILLINOIS TOUR	16
SENIOR OPEN	19
MIDWEST CLASS CROSSTABLES	21
LAKE COUNTY OPEN X	23
ST. CHARLES OPEN	23

ICA AFFILIATION. Chess clubs and other organizations which promote chess activity may affiliate with ICA. Affiliate benefits include a copy of each ICB by first-class mail, a listing (if desired) under "Where to Play Chess" in each issue, discounted ICB advertising rates, three-line tournament announcements in the "Tournament Calendar", and the right to run ICA Tour events. ICA affiliation costs \$15 per year; please remit to address shown under "Annual Membership Rates" include your club meeting times, name of contact person, and other useful information in the format shown in "Where to Play Chess" on page 2 of this issue.

FROM THE EDITOR

Bear with us, folks. You have received four issues of the ICB during the first 9-1/2 months of 1987, we will be bringing out two issues in the last 2-1/2 months. Timely publication is our first priority, and, as most chess players know, time pressure is not always conducive to top quality. Once the ICB returns to its regular bi-monthly schedule in early 1988, you can look for improvements with regard to graphics, photos, etc.

Perhaps a note about your new editors is in order. I am a 39 year old attorney, now president of the Oak Park-Forest Park Chess Club and ICA secretary. My wife Mary and I live in Lombard with our two young children. Mary presently teaches at the College of DuPage. Her "Technical Editor" title is not an honorary one. This ICB is being produced on a newly purchased Leading Edge home computer using a "First Publisher" program about which I know nothing. I am doing the editing, Mary is making the computer program run. With luck, this teamwork will lead not to a divorce but to the timely and successful publication of your state chess magazine.

As ICB editor, my plans include more extensive coverage of scholastic chess and of Illinois chess outside of the Chicago vicinity. In this regard, I will be appearing at scholastic and downstate events to meet organizers and players. I share former editor Dick Verber's interest in the "human side" of chess, and hope to publish stories on such subjects as chess clubs and leagues, Illinois chess "personalities", and Illinois chess history. I will of course continue to report on tournament results, upcoming events, and other current Illinois chess activity. Annotated games and tournament crosstables, while not the mainstay of the ICB, will not be forgotten. (Among the features I intend to introduce in 1988 is a "Reader's Showcase" for non-master games, similar to that which Larry Evans has in CHESS LIFE.) The heavy emphasis on crosstables in the final 1987 ICBs represents an effort to "catch up" in this area before the end of the year.

In putting together this issue, I have discovered what every new editor of a chess periodical discovers: the work takes about five times as long as anticipated. Even with the unflagging assistance

of the technical editor, I simply will not have the time to write an entire magazine every two months and still retain my job and my sanity. Organizers, club officers, scholastic advisors, masters, players - I NEED YOUR HELP. Send me tournament stories and results, club news, annotated games, crosstables. I will do my best to use anything you contribute. Remember, the ICB is your magazine.

In closing, I want to thank Dick Verber for his work as ICB editor and for his help during this transition period. Dick had some problems with publishing deadlines, but he produced a quality product. I hope to do so also, on a timely basis.

Again, bear with us, folks.

MOVING?

MAKE SURE YOU NOTIFY
THE ICA OF YOUR NEW ADDRESS.

Unless you are an ICA Century Club, Gold Card, or Patron member, your ICB is sent third class mail and will not be forwarded. If you do not notify the ICA of your new address, you will not receive the magazine. Send address changes and corrections to: Illinois Chess Association, P.O. Box 267847, Chicago, IL 60626-7847.

The editor wishes to thank the Regal-Courier Printing Company for printing this ICB on a "rush" basis.



WHERE TO PLAY CHESS: ICA CLUB AFFILIATES

AMERICAN POSTAL CHESS TOURNAMENTS

sponsors postal events of various kinds, and sells chess books and equipment. Contact Jim or Helen Warren, P.O. Box 305, Western Springs 60558. (312) 246-6665.

CENTRAL LAKE COUNTY CHESS CLUB

meets Fridays, 7:15 p.m. to midnight, College of Lake County, Bldg. 1, Washington at Route 45, Grayslake. Contact Dennis Grant, 1657 McKay, Waukegan 60087. (312) 336-5188.

CHICAGO CHESS ASSOCIATION organizes major tournaments at the Holiday Inn O'Hare. Also master chess lessons, \$40/3hr. Contact Dick Verber, 2725 W. 84th St., Chicago, 60652. (312) 434-2118.

CHICAGO CHESS CENTER meets for casual chess 7 days a week, 6 p.m. to 1 a.m., 2923 N. Southport, Chicago 60657. Also sponsors rated tournaments on selected weekends. Contact Jules Stein, (312) 929-7010.

CHICAGO INDUSTRIAL CHESS LEAGUE

organizes frequent competition among commercial/government teams with awards, ratings, and special events. Contact Jim Brotsos, (312) 775-5054, or Bruce McNeil, (312) 742-5195.

DOWNERS GROVE PARK DISTRICT CHESS

CLUB meets every Thursday, 6:30-10 p.m., Lincoln Center, 935 Maple Ave., Downers Grove. Affiliated with USCF and ICA. Contact George Uffner, (312) 910-0421.

GREATER PEORIA CHESS FEDERATION

meets Mondays, 7 to 11 p.m., Bradley Student Center Cafeteria, Wilkinson, 901 N. Elmwood, Peoria. Contact Bill Wilkinson, 905 N. Rebecca Pl., Peoria 61606. (309) 673-9455.

ILLINOIS VALLEY CHESS CLUB

meets Mondays, 6-10 p.m. Grace United Methodist Church, 1345 Chartres St., LaSalle. Contact Byron Pappas, 432 Creve Coeur, LaSalle, IL 61301. (815) 224-2869.

LAKE COUNTY CHESS ASSOCIATION

sponsors rated tournaments in the Grayslake/Zion area. Contact Tim Just, 1521 Circle Ct., Waukegan 60085. (312) 244-7954.

MIDWEST CHESS ASSOCIATION

organizes major tournaments for masters and experts. Contact Helen Warren, P.O. Box 305, Western Springs 60558. (312) 246-6665.

NORTH BOONE HIGH SCHOOL CHESS CLUB

17641 Poplar Grove Rd., Poplar Grove 61065. Contact Guenter Wohlfarth, sponsor. (815) 765-3311.

DAK PARK / FOREST PARK CHESS CLUB

meets Tuesdays, 7 p.m. to midnight, Mohr Community Center, Jackson and DesPlaines, Forest Park. Contact Ken Marshall, 357 W. Grove, Lombard 60148. (312) 932-1455.

ORLAND PARK CHESS CLUB

meets Fridays, 7 to 11 p.m., George Brown Commons, 15045 West Ave., Orland Park. Contact Glenn Panner, 14300 S. Ridge, Orland Park 60462. (312) 460-3111.

PARK FOREST CHESS CLUB

meets Thursdays, 7 to 10:30 p.m., Freedom Hall, Orchard & Lakewood, Park Forest. Contact Wayne Palmquist, 10605 Southwest Hwy. #1F, Worth 60482. (312) 361-2571.

RAE PRODUCTS AND CHEMICALS

10926 S. Western, Chicago 60643. Contact Fred Gruenberg, (312) 779-3360.

ST. CHARLES CHESS CLUB

meets Thursdays at 7 p.m., Baker Community House, 101 S. 2nd (Route 31), St. Charles. Contact Ery Sedlock, 6 N. 307 Old Homestead Rd., St. Charles 60174. (312) 377-7995.

TULEY PARK CHESS CLUB

meets Saturdays, 1 to 5 p.m., Tuley Park Fieldhouse, 501 E. 90th Pl., Chicago. Contact Thomas Fineberg, 7321 S. South Shore Dr., Chicago 60649. (312) 721-3979.

CHESS PHONE
(312) 971-3666

PRESIDENTIAL PONDERINGS

by ICA President Tim Just

With this issue we welcome aboard Ken Marshall as our new ICB Editor. Many of you know Ken as the President of the Oak Park-Forest Park Chess Club. He is also the current ICA secretary.

Ken and I have talked extensively regarding his taking over the ICB. I am convinced that his commitment to timeliness will get the magazine back on schedule by 1988.

Ken's editorial point of view should give the ICB a new and refreshing look in the coming months. We can expect a publication that covers tournaments and players throughout the state and from all rating classes.

The ICA is working on some exciting projects which could mean free ICA membership for some of you! Watch for details in the coming months.

If you have not yet played in an ICA Tour event this year, do so now! You can win extra prize money at the end of the year by being the best player on the Tour. Remember, each time you score above zero in a Tour tournament, YOU GET TOUR POINTS! Some quick thinking will show you that the more Tour events you play in, the more points you build up. In addition to prizes for the top players, there are class prizes too!! The Illinois Tour -- BE THERE!

Check out page 20 of the November CHESS LIFE. Yours truly got a by-line. As you talk to others who have had articles published in CHESS LIFE, a common theme is that the material in the magazine in no way resembles the material which was submitted. This is true of the article that bears my name. The CHESS LIFE story is 100% BETTER than anything I sent in. Further, to keep the record straight, I am not yet a National Tournament Director as suggested by the published report. Either that, or they know something I don't!

You might also want to look for the picture containing some familiar Illinois faces on page 26 in November CHESS LIFE. What would that magazine do without us Illinois folk to keep it going?

LETTERS TO THE EDITOR

[Editor's Note: I sent the following letter to the former editor in late May. Despite promising to publish it, he did not do so. At the risk of appearing self-indulgent, I am printing the letter now.

Although space limitations are always a problem, I will make every effort to publish all letters sent to the editor on subjects of interest to the Illinois chess community.]

To the Editor:

I found the May, 1987 Illinois Chess Bulletin to be interesting and informative. The "What's New" section and the features on Tom Fineberg and on the St. Charles Chess Club were especially welcome in a magazine which has often seemed devoted to annotated games at the expense of the "human side" of chess. I must, however, take serious issue with you in one area.

I was amazed and chagrined by the many changes in wording, style, tone, and content which you made in my article on Boris Spassky (ICB, May, 1987). While I recognize your prerogatives as editor, your decision to rewrite virtually every sentence made the story as published more yours than mine. Seeing my work so radically altered would have been disappointing in any event; the fact that most of the changes were (in my opinion) for the worse was especially difficult to accept. Unfortunately, the editing (or, more accurately, the rewriting) process, particularly with regard to the first half of the article, resulted in the publication of a story under my name which bore only a general resemblance to the manuscript which I submitted. For this reason, had I seen the final version of the article before it went to press, I would have asked that my by-line be removed from it.

I must also note that both a serious factual mistake and an erroneous implication were introduced during the editing stage. Chris Musgrave and I did not "point out to Spassky those of his opponents sporting master and expert ratings". At the beginning of the simul, I informed the grandmaster only that I thought his strongest opponent was

(continued on page 10)

What's new

CHICAGO AWARDED 1988 NATIONAL OPEN

Meeting at the Holiday Inn O'Hare on October 10-11, 1987, the USCF Policy Board decided to accept organizer Dick Verber's bid to hold the 1988 National Open at that same site on March 17-20, 1988. The Illinois Chess Association had endorsed the bid, and ICA President Tim Just and ICA Secretary (and new ICB editor) Ken Marshall joined Verber in presenting Chicago's case to the Policy Board. The tournament, with a prize fund of \$15,000 to \$20,000, will be the biggest chess event held in the Chicago area since the 1979 U.S. Open. All Illinois players will now have the chance to compete in a prestigious national event without having to travel out of state to do so.

**IT'S NOT TOO EARLY TO MAKE YOUR PLANS FOR MARCH OF 1988!!
MARK YOUR CALENDAR FOR THE NATIONAL OPEN: MARCH 17-20!!**

LEVINE UPSETS RIZZITANO, WINS GRAND PRIX EVENT

National Master David Levine, undaunted by Jim Rizzitano's reputation and 251 point rating advantage, handed the International Master his first Illinois defeat en route to first place in the Chicago Chess Center's Grand Prix Class tournament on October 10-11, 1987. Rated 2298, Levine also drew with Senior Masters Eugene Martynovskiy and Albert Chow while compiling a 4-1 score. This recently arrived Downers Grove resident apparently will join Rizzitano as a new member of the Chicago area chess elite. (Full coverage of the Grand Prix event, including some annotated games, will appear in the next ICB.)

NEW SUBURBAN CHESS LEAGUE BEGINS PLAY

The Suburban Chess League, newly organized by Oak Park-Forest Park Chess Club co-founder and former president Chris Musgrave, started its six month season on October 19, 1987. The league, made up of six OP-FP CC teams, as well as two from St. Charles, one from Hillside, one from Naperville, and one from Orland Park, features four man teams and matches every two weeks. The four top teams will play for the league title in late April. (For further information, call Chris Musgrave at 386-3051.)

What's new

CHOW TAKES FIRST PRIZE IN TOURNAMENT OF CHAMPIONS II

Albert Chow scored 6-3 to win the ten-player Illinois Tournament of Champions II, held October 23-25 and October 31-November 1, 1987, at the Lincolnwood Hyatt Hotel. Chow secured clear first with an uncharacteristic nine move "grandmaster draw" in his final round game with Ken Wallach. Tying for second through fourth places with 5.5 points were Andrew Karklins, Morris Giles, and Lawrence Chachere. Eugene Martinovsky garnered 5 points, followed by Greg DeFotis with 4.5, Wallach and Alan Federl with 3.5, and Leo Kaushansky and Bill Colias with 3 (New Illinois state champion Jim Rizzitano had been expected to compete, but had to work and was unable to do so.) Helen Warren organized the round robin event. (Some annotated games from this tournament will be published in the next ICB.)

1989 U. S. OPEN COMES TO CHICAGO

As this ICB went to press, the USCF Policy Board agreed to award the 1989 U. S. Open to Chicago and organizer Dick Verber. The nine day event, co-sponsored by the Illinois Chess Association, will take place from August 5 through August 13, 1989 in the Exposition Center at the Hyatt Regency O'Hare. Chicago won out over Jacksonville, Florida in the bidding for the tournament. Dick Verber has now obtained important national chess events for Chicago in both 1988 (the National Open) and 1989. It will be up to Illinois chess players to vindicate Dick's efforts by playing in these tournaments and thus demonstrating that Chicago can support major chess events.

CHESS PHONE: (312) 971-3666





CHICAGO

- Prestigious Playing Site
- I.C.A. Maxi-Tour Event
- Free Parking

1987 ILLINOIS CLASS CHAMPIONSHIPS

NOVEMBER 21ST & 22ND

(THE WEEK-END BEFORE THANKSGIVING)



ONLY
2 GAMES
A DAY

\$1,500 IN PRIZES



ONLY
2 GAMES
A DAY

Master/Expert: \$400, \$200, \$100
Class A: \$100, \$60, \$30 Expert: Class B: \$100, \$60, \$30
Class C: \$100, \$60, \$30 \$100 D/E/UNR: \$80, \$40, \$10

MORGAN PARK ACADEMY — ALUMNI HALL
2153 West 111th Street • Chicago, Illinois
(Just Behind the "Beverly Art Center")

4 ROUND SWISS: EF: MASTER/EXPERT — \$25.00
CLASSES A,B,C — \$20.00
D/E/UNR — \$15.00

— BY NOVEMBER 17TH —

All entries are \$5.00 more at the door!

TIME CONTROLL: 45/2; **ROUNDS:** 10-4, 11/21 & 11/22.

REGISTRATION: Saturday, November 21, 8:30 a.m. - 9:30 a.m.

ILLINOIS CHESS ASSOCIATION membership required of
Illinois residents, neighboring state membership OK.

Players may play in their class or ONE class above.

Latest supplement used for ratings; NO SMOKING.

1/2 point bye rounds 1, 2, or 3 if requested in
advance.

Send entry to Tim Just, 1521 Circle Ct., Waukegan, Ill. 60085

PLEASE BRING YOUR CHESS CLOCK & CHESS SET!

INTERVIEW WITH HAROLD WINSTON

By Ken Marshall

At forty-two years of age, Harold Winston has worked as a chess organizer for over twenty years. His experience involves virtually all areas of chess, from local and college club organizer and team captain to Illinois Chess Association president, from United States Chess Federation committee chairman to chess journalist, from national tournament organizer to USCF Policy Board member. In 1987, Winston ran for USCF president. His opponent was Grandmaster Yasser Seirawan, the present United States Chess Champion and a candidate for the world chess title. In balloting by USCF voting members, Winston defeated Seirawan, 207 to 123. He began his three year term at the U.S. Open in Portland, Oregon, in August.

A long-time Illinois resident and recent law school graduate, Winston recently moved from Evanston to Naperville. He spoke about his chess background and his goals as USCF President in the following interview:

Ken Marshall: First of all, how is your health?

Harold Winston: I had a heart attack on August 19, 1987, and underwent single bypass surgery the following day. During my convalescence, USCF Vice President Harry Sabine did a fine job as acting President. I reassumed the presidency on October 8, 1987. My medical prognosis is good.

KM: You have a nationwide reputation as a chess organizer. How did you become interested in chess and in chess organization?

HW: I learned to play chess while watching a neighbor boy play his dad when I was about seven years old. Between the ages of 11 and 13, I organized tournaments at summer camp. I liked chess, and frankly, I thought I was the strongest player in camp and could win the tournaments! I eventually became involved in college chess as an organizer and team captain because I enjoyed the game, and I thought college clubs could be structured so as to appeal to more players and give others the opportunity to experience this enjoyment. I arrived at the University of Chicago as a graduate student in the fall of 1965, and helped to revitalize the university's chess club, based on my experience with college clubs back in New York. Since then, I have been involved with college, state, and national chess activities on a regular basis. I have attended every USCF annual delegates meeting since 1969.

KM: Why did you decide to run for the USCF presidency in 1987?

HW: I had been doing USCF work for nearly twenty years, and during that time I developed ideas on a number of subjects, ranging from how to make chess more popular with the public and in schools to how to make the USCF more democratic. In all honesty, I declared my candidacy because I did not think that anyone else could do a better job as Federation president at the present time.

KM: Have you had any discussions with Grandmaster Seirawan since the election?

HW: I have a high regard for Yasser, and I have spoken to him several times to solicit his thoughts on World Chess Federation (FIDE) matters. I believe we have a cordial relationship. I plan to talk with him in the near future about the possibility of his becoming a "Chess Ambassador" to work with the media and corporations on behalf of U.S. chess. I am always interested in his views, and intend to keep seeking his opinions with regard to various subjects, including FIDE and media concerns.

KM: What are your major goals for the USCF?

HW: First, I would like to see chess get much more attention in the mass media. Two excellent opportunities

for this are now at hand. "Action chess", with its fast time control, is ideally suited for television coverage, and should make the game more attractive to television producers and audiences. Also, Grandmaster Seirawan has qualified for the world championship candidates matches which will be held in Canada next January. I'm sure that Yasser will do well. The closer he comes to becoming the challenger for the world title, the more the American media will be interested.

I also want to encourage chess activity in the schools. In the past, a major problem has been getting teachers involved. Perhaps teachers can be reached through ads in magazines such as the NATIONAL EDUCATION ASSOCIATION JOURNAL, or with a scholastic chess brochure, or by appearances at teacher conferences. Articles such as "Chess Makes Kids Smart", a study appearing in PARENTS MAGAZINE, and films like THE MIGHTY PAWNS, which showed the beneficial effect of a chess program at an inner-city school, can be brought to the attention of national educational conventions. Video cassettes and other educational materials can be provided to help teach the game. Unfortunately, many children are not given the opportunity to participate in organized chess because there are not enough teacher-sponsors. This denies youngsters the chance to enjoy the game, and also may result in talented young chess players never being discovered. The new USCF scholastic membership should help encourage wider participation in tournaments by grade school children.

KM: What should the USCF do for master chess?

HW: I approve of the concept of a Master Development Committee, which would provide help for lower rated and rising young masters. The USCF should help to make foreign chess periodicals more readily available to American masters, and also should provide lists of events and addresses to players who want to travel abroad. Liaison with Prochess, an organization which includes many of the leading U.S. players, should be strengthened.

KM: Over the last year, there have been complaints about poor service from the USCF business office. How will you approach this situation?

HW: Unfortunately, in past years there has been a high turnover in the Federation's business office. Recently, salary increases have been implemented to make the USCF competitive with other employers in the New Windsor area. Service should improve as employees stay longer and gain more experience. I believe that rating reports should be processed in three weeks or less, rather than six to eight weeks, and that new members should receive their membership cards within a week, rather than in four weeks. As the USCF staff becomes more experienced, service will improve in these and other areas. Organizers want, expect, and deserve prompt and efficient service. I will actively monitor business office performance to see that the level of service becomes and remains high.

KM: How do you propose to obtain the corporate sponsorship which many believe is necessary for chess to truly grow in the United States?

HW: The key element is to approach potential sponsors with concrete, specific projects for which help is needed. A corporate sponsor is more likely to respond to a request involving the United States Grand Prix or the United States Championship, rather to a nebulous plea that the sponsor "help chess". Companies must be convinced that sponsoring chess is worthwhile for them, and that they will receive some benefit for their money. I plan to set up a task force made up of USCF members who have corporate experience to help develop proposals in this area.

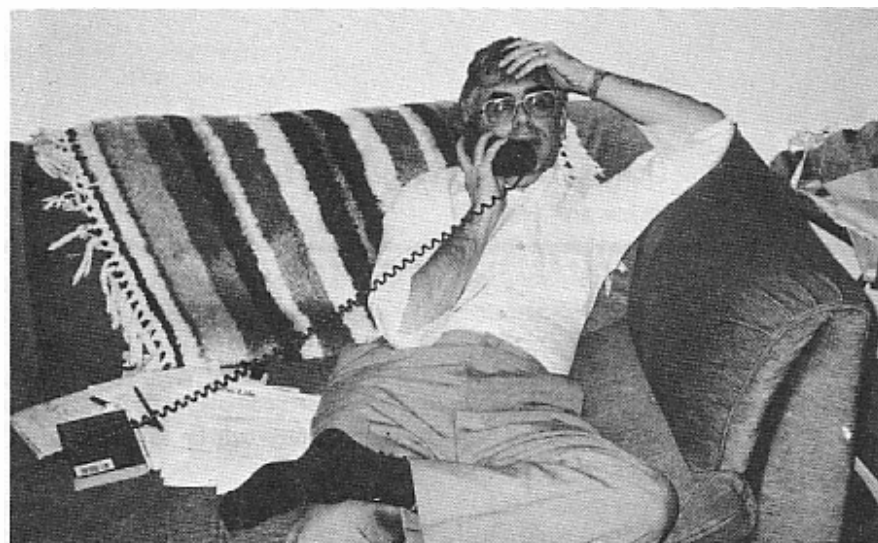
KM: Where do you hope to see the USCF at the end of your three year term?

HW: I hope that, when I leave office, the Federation is on a sound financial footing, and has made great inroads into the schools. Scholastic chess is our future. Hopefully, over the next three years, more teachers, school administrators, and school boards will become educated about the value of chess, and more teachers will develop an interest in the game and then be willing to sponsor school chess clubs and

scholastic chess events. Other areas, such as master assistance and development, media publicity, corporate sponsorship, and improved national office service are also important, but scholastic chess is my key concern.



A player of near expert strength, Winston has won his share of trophies.



After a day at the office, Winston "talks chess" while relaxing at home.

PLUM, STEIN, BONDARI TOP ILLINOIS VALLEY TORNAOO

Running true to form, the three highest rated players tied for first in the Illinois Valley Fall Tornado, held October 17, 1987, in Peru, Illinois. A last minute site change (through no fault of organizer Byron Pappas) had no effect on masters Marc Plum and Pete Stein and expert Cyrus Bondari, all of whom scored 3.5-5 in the four round ICA Mini-Tour event. The masters drew their last round game, while Bondari shared the final point with expert Richard Vlastnik.

Three points earned Robert Steele, David Steele, and Craig Borri shares of the class "A" money. David Kaleel, Ron Simmons, Charles Schlenker, William Ernat, and Jeff Johnson split class "B" honors with two points. First place in the "C/Below" category went to Byron Mitchell, George Ferroni, and Steve Taylor, each finishing with one point.

This 20 player tournament was the latest event sponsored by the Illinois Valley Chess Club, an active ICA affiliate which meets every Monday night in LaSalle, Illinois. For further information about the Club, see the "ICA Club Affiliates" list in this issue.



Marc Plum (left) and Pete Stein at Illinois Valley Tornado

LETTERS (continued from page 3)

master Greg Bungo. When I then asked if he wanted me to point out other good players, Spassky responded (as stated in the story I submitted) that this would not be necessary, since he would be able to identify the better players within the first six or seven moves.

The article as published implied that Spassky played slowly and thus caused the simul to last seven hours. In fact (again, as set out in the story I wrote) it was the former world champion's decision to allow consultation (and thereby permit the many spectators to take an active part in the proceedings) which added to the length of the exhibition. Many of the games, including my own, would have ended hours before they did had some of the players not been receiving advice from observers, several of whom were of master or near master strength.

Kenneth N. Marshall

RIZZITANO WINS ILLINOIS OPEN

FRONEK, BOLITHO, FAGAN SHARE RESERVE TITLE

International Master Jim Rizzitano scored 5-0 to take first place in the 1987 Illinois Open held September 5-7, 1987 at the O'Hare Hyatt. Rizzitano topped a field of 69 players which included 10 masters and 28 experts. Among his victims were masters Warren Kreckler, Lawrence Chachere, and Scott Zingheim, and experts Eitelbert Gazmen and John Krom, Jr. Leonid Kaushansky and George Umezimwa shared second and third places with 4.5 points, while Kreckler, Peter Stein, and Luis Bernal (who gained 123 rating points with his performance) garnered 4 points to finish tied for fourth through sixth.

Honors in the 80 player Reserve section went to Randy Fronek, Thomas Bolitho, and James Fagan, who totaled 4.5 points. Seven players followed with 4-0 scores.

The 1987 Illinois Open ran smoothly under the direction of Todd Barre and Walter Brown. Illinois Chess Association President Tim Just organized the event on behalf of the ICA.

Illinois Open 1987

White: IM Jim Rizzitano

Black: NM Warren Kreckler

Annotated by Albert Chow

1 d4 Nf6
2 c4 e6
3 Nf3 Bb4+
4 Bd2 a5

It's strange to see a pawn move to rook four so early in the opening. But it is not bad to protect the bishop, and later in the middlegame ...a5 becomes a useful part of Black's pawn formation.

5 g3 O-O
6 Bg2 d6
7 O-O Bxd2
8 Qxd2 Qe7
9 Nc3 e5
10 e4 Bg4
11 Rfe1 ...

Other alternative ideas include 11 d5, gaining space, but after something like 11...Bf3 12 Bf3 Nbd7 Black is very solid and ...a5 looks great.

11 Ne1 might also be considered.

11 ... Bxf3
12 Bxf3 Nc6

White has won the fight for central light squares, but Black strikes back with his dark square attack. Now if 13 d5 Nd4 Kreckler clearly could be happy, so instead Rizzitano mixes things up.

13 Nd5 Qd8
Not 13...Nd5 14 ed Nd4?? 15 Qd4.

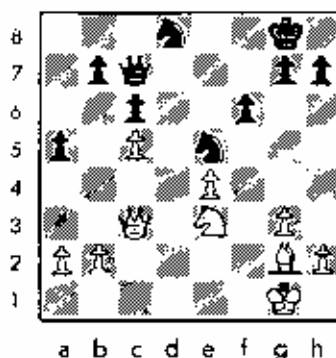
14 dxe5 dxe5

14...Ne5 is also good, with active play.

15 Bg2 Nd4
16 f4 Nd7
17 Rad1 c6

Another logical move is 17 ...c5, preventing Black's Knight from becoming undermined.

18 fxe5 Ne6
19 Ne3 Nxe5
20 Qc3 Qc7
21 Re2 Rfd8
22 Red2 Rxd2
23 Rxd2 f6
24 c5 Rd8
25 Rxd8 Nxd8



Both Kings are somewhat exposed since Queens are still on the board. If Queens are exchanged Black's chances would improve because of White's vulnerable c and e pawns. A dynamic situation now exists, and both sides must fight for the initiative.

26 Bh3 Nf3+
26...Nd7 27 Be6 Qd8 was interesting.
27 Kf2 Ng5
28 Bg2 Qe7

An unnecessary sacrifice, or an enterprising inaccuracy? Black's compensation is not clear, and now the IM has reason to be optimistic. Why not something like 28...Nd7 or 28...Kf8?

29 Qxa5 Nde6
30 Qa8+ ...

30 b4!?

30 ... Nf8

31 Ke2

This is surprising since the White King becomes exposed. 31 h4 Ne4 32 Be4 Qe4 33 Qb7 improves on the game.

31 ... Nxe4

32 Bxe4 Qxe4

33 Qxb7 Ne6

34 Qc8+ Kf7

35 Qd7+ Kf8

36 Qd3

Black was threatening 36... Nd4+ with big counterplay. Of course White could have drawn by perpetual, but the higher rated player wanted more. At this point White welcomes the Queen exchange with 36... Qd3 37 Kd3 Ne5 38 Kc4 etc. Kreckler has so far put up very stubborn resistance but perhaps the continuing pressure cracked his nerves. Things might have ended differently if Black had played 36... Nd4! 37 Kd2 Nf3 38 Ke2 Nd4 39 Kd2 Nf3 40 Kc3 (40Kc2??) Qe5.

36 ... Qb4??

37 Qd6+ Kf7

38 Qd7+ Resigns

ILLINOIS OPEN PRIZE WINNERS

OPEN 1st: Jim Rizzitano, 5-0; 2nd-3rd: Leo Kaushansky, George Umezima, 4.5-5; 4th-6th: Warren Kreckler, Pete Stein, Luis Bernal, 4-1

EXPERT 1st-5th: John Krom, Jr., Marvin Rogan, Thoman Mazuchowski, Phil Anderson, Eric Ronnenberg, 3.5-1.5

CLASS A 1st: Luis Bernal, 4-1; 2nd: Robert Blick, 3.5-1.5

RESERVE 1st-3rd: Randy Fronck, Thomas Bolitho, James Fagan, 4.5-5

CLASS C 1st-2nd: Fred Gruenberg, Ed Ortiz, 3.5-1.5

CLASS D/E 1st: Bill Madera, 4-1; 2nd: David Ciesiek, 3.5-1.5

UNRATED 1st: Vince Halvey, 3.5

THE 1988 NATIONAL OPEN IS COMING TO CHICAGO!!

Tournament Site is the beautiful Holiday Inn O'Hare, less than 5 minutes from O'Hare Airport, 5540 N. River Road, Rosemont, Illinois — our most popular tournament site in the Chicago area. Parking is free.

1988 NATIONAL OPEN

at Chicgo's most popular tournament site, the Holiday Inn O'Hare!

For information, phone Richard Verber at 434-2118.

Or write to Richard Verber, 2725 West 84th Street, Chicago, IL 60652

The biggest Chicago chess tournament since the 1979 U.S. Open in Chicago.

March 18, 19, 20 — Friday, Saturday, Sunday

JOIN THE GRANDMASTERS IN CHICAGO FOR THE 1988 NATIONAL OPEN!!

\$15,000 - \$20,000 IN PRIZES!!

6 Round Swiss in 2 sections: Championship and Reserve (under 1800)

**PLEASE MAKE YOUR VACATION PLANS NOW —
TAKE A DAY OFF FROM WORK ON FRIDAY, MARCH 18**



SOUTHERN ILLINOIS CHESS LEAGUE



John Tonkinson and his Southern Illinois Chess League have been sponsoring monthly rated tournaments, primarily in Alton and Mt. Vernon, throughout 1987. Upcoming three round events include the SICL King City Swiss at the Mt. Vernon Holiday Inn on November 22, 1987, and the SICL Partner Championship at the Alton Ramada Inn on December 13, 1987. (The Partner Championship involves using the average rating of both players for class distribution and pairings. Partners will be available for those who come alone.) For further information about these tournaments (and about the SICL, in which a \$7 annual membership includes a subscription to the quarterly SICL Bulletin), please contact John Tonkinson, 105A Manor Court, Alton, Ill. 62002. (Phone: (618) 462- 5732).

ALTON CONNECTION 46 August 16, 1987

RANK	ID NUMBER	PLAYER	ST	RATING	R01	R02	R03	R04
1	10318310	KEE A. WALLER	MO	2006	423	410	419	3.0
2	10319988	THOMAS A. BARNARD	IL	1970	413	425	411	3.0
3	10409966	JIM MCDONALE	MO	1956	425	424	416	3.0
4	10342232	MARTIN J. FRANK	IL	1872	432	419	417	3.0
5	10418678	ROBERT S. FARAS	MO	1963	431	416	403	2.5
6	10418642	WILLIAM J. SANDROONE	IL	2078	412	414	413	2.0
7	10362318	KELET M. SKIFFIELD	MO	2032	416	422	414	2.0
8	10363497	MICHAEL D. RUDLOFF	MO	1923	426	431	426	2.0
9	10381364	BRUCE L. JOHNSON	IL	1746	430	420	413	2.0
10	10402876	DEANIS A. GREEN JR	IL	1743	435	411	424	2.0
11	10360567	MARK DESTREICH	IL	1743	428	418	412	2.0
12	10414920	ROBERT J. KEENE	MO	1736	416	424	425	2.0
13	10417398	DANIEL E. MERLAK	MO	1597	412	435	422	2.0
14	10417332	WALDO ODAR	MO	1841	413	416	407	1.5
15	10426091	MATTHEW A. TIM	MO	1829	410	433	416	1.5
16	10315710	CARL A. PURCELL	IL	1773	407	415	416	1.5
17	10358426	RALPH L. GOTTTEL	IL	1697	420	430	414	1.5
18	10367830	WALD S. BOKNING	MO	1869	417	431	415	1.5
19	10421544	PAUL D. BEGNA	MO	1415	415	414	426	1.5
20	10319471	DANIEL BLANKENSHIP	MO	2052	417	410	409	1.0
21	10424384	MAURICE R. BOY	MO	2001	424	426	415	1.0
22	10419141	LIN-SONG HSIEH	IL	1822	431	411	412	1.0
23	10404460	JOSH R. MCKENZIE	IL	1867	411	426	425	1.0
24	10413440	KEITH C. GARNER	IL	1639	421	413	410	1.0
25	10361320	STANLEY X. HORTON JR	MO	1596	415	421	412	1.0
26	10410427	HARSHAD K. PARMAR	IL	1578	416	421	426	1.0
27	MO 11	BRENT F. MILLMAN	IL	1719	416	425	423	1.0
28	MO 197	SAMUEL E. STELSON	MO	1282	411	423	426	1.0
29	10358493	JOHN L. TONKINSON	IL	1775	407	411	415	0.5
30	10404667	PETER E. ROMAN	IL	1332	419	427	431	0.5
31	10415486	STACEY TRAYLOR	MO	1282	415	416	420	0.5
32	10404456	DANIEL BAERENH	MO	1509	414	409	407	0.0
33	10362052	MICHAEL J. SCOTT	MO	1478	414	415	427	0.0
34	10427952	KELLY SULLINGER	IL	1365	422	414	409	0.0
35	10429453	WY S. EVENSON	MO	1237	410	413	423	0.0

7TH SOUTHERN ILLINOIS OPEN CHAMPIONSHIP SEPTEMBER 23, 1987

RANK	ID NUMBER	PLAYER	ST	RATING	R01	R02	R03	R04
1	10379471	HARSHAD K. PARMAR	MO	2052	420	419	418	3.0
2	10377740	YAN KAMDIYER	IL	1895	423	412	417	3.0
3	10429784	MARCELO R. ROCK	MO	2041	421	417	419	2.5
4	10360919	JAMES BERSZYN	IL	1955	415	416	417	2.5
5	10367487	MICHAEL D. RUDLOFF	MO	1923	430	431	418	2.5
6	10070627	MARTIN H. WISNIEWSKI	IL	1772	432	414	416	2.5
7	10360661	RAYMOND DRUZONSKI	MO	2132	414	416	412	2.0
8	12150960	RICK WEISBERGER	IL	2092	431	411	411	2.0
9	12412872	WALDO ODAR	MO	1841	424	413	411	2.0
10	12407441	LIN-SONG HSIEH	IL	1822	425	417	422	2.0
11	10364641	HALLAS LOYER	IL	1798	426	414	424	2.0
12	10360567	MARK DESTREICH	IL	1743	424	412	426	2.0
13	12447349	WILLIAM STEVENS	MO	1719	429	410	425	2.0
14	12446724	TEPPEY PATRICK	IL	1872	417	420	427	2.0
15	12412321	GREGORY COTTLE	IL	1806	414	432	428	2.0
16	10360545	JERRY L. SCHWALM	IL	1899	422	418	416	1.5
17	12157250	CARL A. PURCELL	IL	1773	428	413	414	1.5
18	10414920	ROBERT J. KEENE	MO	1736	423	414	415	1.5
19	10364641	JOHN D. TONKINSON	IL	1775	427	411	409	1.0
20	12419489	DAVID GILCHRIST	IL	1636	413	427	430	1.0
21	12419489	MERTAB NEGAR	IL	1622	413	426	432	1.0
22	12413396	A. GRAYDON HOOVER	IL	1552	416	433	410	1.0
23	10362032	RICHARD J. SCOTT	MO	1478	417	429	433	1.0
24	12407427	EIM A. VOSS	IL	1445	419	434	411	1.0
25	12413960	FRANLIM W. LAY	IL	1392	410	429	413	1.0
26	12413962	TYM J. HAMILTON	IL	1332	411	422	414	1.0
27	12414967	PETER E. ROMAN	IL	1332	419	420	414	1.0
28	12471314	PARRIS E. WILK	IL	1301	417	423	415	1.0
29	MO 197	PHAM THUC	IL	1282	413	425	424	1.0
30	12404412	HARSHAD K. PARMAR	IL	1504	415	414	420	0.5
31	12444218	JOHN E. DUGRAF	IL	1240	416	415	409	0.0
32	12414969	EARL HILLER	IL	1241	416	415	421	0.0
33	12404412	WALTER L. SCHWALM	IL	1249	418	427	423	0.0
34	12415111	JEFF HAIRICE	IL	1282	412	424	429	0.0



SOUTHERN ILLINOIS CHESS LEAGUE

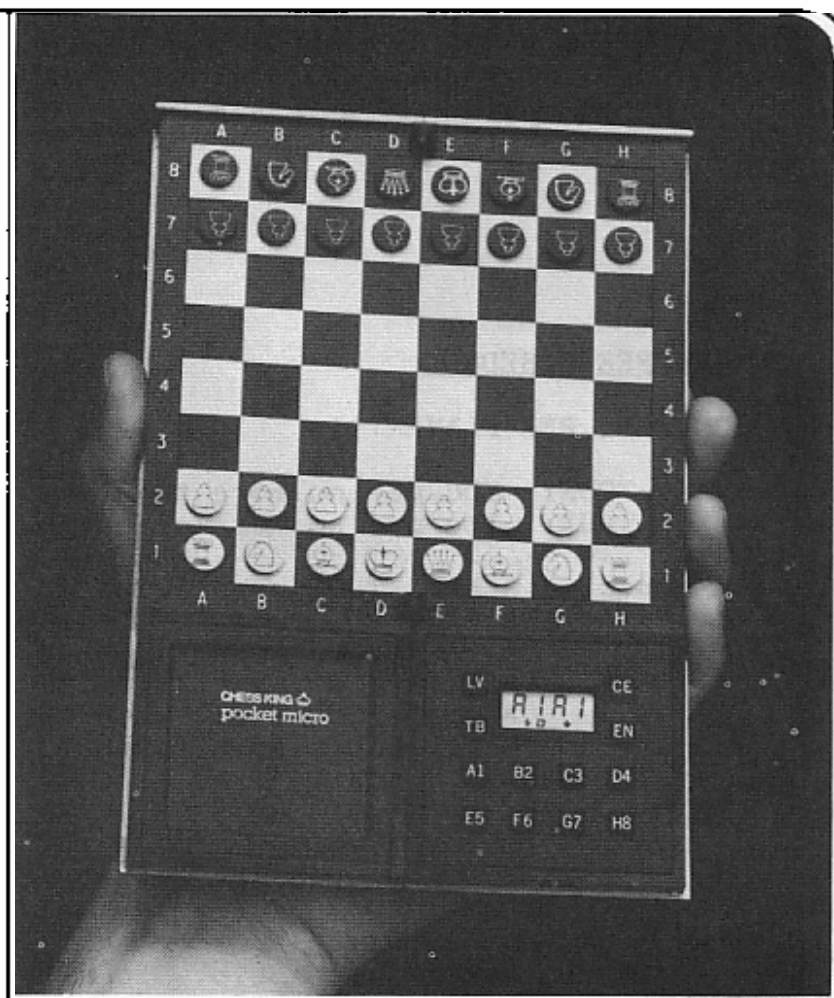


\$39.95

CHESS

KING

*Sophisticated
computer chess
that fits in
your pocket!*



Manufactured in England, Chess King™ is the first pocket-sized magnetic chess sets in the world that features a built-in computer. Enter your moves on the 12-button keypad, the computers' moves are displayed on the LCD screen. The highly sophisticated computer can play on any of 8 skill levels, knows 450 opening moves and is capable of castling, "EN PASSANT" captures and pawn promotion. Beeps if you make an illegal move. Allows you to take back moves, change sides, ask for advice or verify a position. Even watch the computer challenge itself! Since you move actual pieces, it's easy to visualize the game and plan strategy. Also use the board to play human opponents. Sliding storage tray holds magnetic pieces. Measures only 7½"H. × 2½" W. × 1" D. when folded. Runs about 400 hours on Lithium battery (included). Ten-year memory stores positions of an interrupted game. Comes complete with instructions, leatherette case and full, one-year warranty. Order yours today! Send \$39.95 plus \$5.00 shipping & handling. (IL residents add sale tax.) Allow 2-4 weeks for delivery.

Mastercard VISA Check (Payable to Sentra)

Acct. No. _____

Name _____

Address _____

City _____ State _____ Zip _____

Signature _____

© 1987 Sentra Corp
JC200101

Mail to Sentra-Chess King™ Dept. 9000-10 P.O. Box 599006,
Chicago IL 60659-9006

BE A PART OF THE ICA TOUR!

NEW FEE SCHEDULE

ONLY \$1 PER PLAYER!!!

MAXI-TOUR: You pay no more than \$100 and no less than \$50.

MINI-TOUR: You pay no more than \$50 and no less than \$25.

Examples: A MAXI-TOUR event with 60 players costs \$60.
A MAXI-TOUR event with 125 players costs \$100.
A MAXI-TOUR event with 48 players costs \$50.
A MINI-TOUR event with 42 players costs \$42.
A MINI-TOUR event with 65 players costs \$50.
A MINI-TOUR event with 20 players costs \$25.

WHAT YOU GET:

1. Increased event attendance. Now ALL players, rather than just the various class and event winners, can accumulate Tour Points. The new revised Tour Point formula awards points to ALL players in your event that score above 0. The more events these players participate in, the more Tour Points they gain!
2. Free ICB ads!! MAXI = 1 Page, MINI = 1/2 page.
3. Promotional priority on Chess Phone.
4. A list of ICA members to help you verify that ALL PLAYERS in your event are CURRENT ICA members.
5. Forms to register new and renewed ICA Members.
6. A current list of ICA Tour players and their accumulated Tour Points.

WHAT WE NEED FROM YOU:

1. A Copy of the Wallchart (not USCF X-Table!).
2. ICA Tour event payment.
3. New and renewed ICA membership forms along with any dues collected.

FOR DETAILS & INFO: ICA PRESIDENT TIM JUST, 1521 CIRCLE CT.,
WAUKEGAN, ILLINOIS 60085 312-244-7954.

BONDARI LEADS ILLINOIS CHESS TOUR

As the 1987 ICA Tour moves into its final months, expert Cyrus Bondari dominates both the Master and Expert sections with 48 points. The class races are much closer, with several players in the running for top honors. The following list includes the leaders of the six Tour divisions (Master, Expert, A, B, C, and D) through the Illinois Open.

Master Tour Leaders:

Cyrus Bondari	48
Ricardo Szmetan	40
Ken Wallach	35
James Rizzitano (1)	32
George Umezina (2)	24
Albert Chow (2)	20
Peter Stein	20
Scott Zingheim (2)	20

Expert Tour Leaders:

Cyrus Bondari	48
Phil Anderson	19
Richard Vlastnik	17
Bernard Pukel	15.5
William Graves	15
Steve Surak	15
Curtis Ikuechi	14.5
Sandy Zabell	13

Class A Tour Leaders:

Bernard Pukel	15.5
William Graves	15
Phil Anderson	10.5
Lawrence Cohen	10.5
Winfield Scott	10.5
Jeff Britt	9.5
Kevin French (2)	9.5

Class B Tour Leaders:

Randy Fronek (2)	18.5
Thomas Bolitho (1)	16
James Fagan (1)	16
Davar Hamadani (2)	16
James Marshall	16
Bakhshali Hamedani	14
Steve Fahrenholz	12

Class C Tour Leaders

Daryl Zelinski	11
Bill Madera (1)	8
Rudy Padilla	6
Gerard Callahan (2)	5
Evan Rynes (2)	5
David Sjolholm (2)	5

Class D Tour Leaders

Bill Madera (1)	8
Stan Biezynski (2)	4.5
David Cieslik (1)	4
Ron Simmons (2)	4
Colin Smith (1)	4
Scott Schallberg (2)	3.5

REMEMBER: YOU MUST PLAY IN AT LEAST THREE TOUR EVENTS (AND BE AN ICA MEMBER) TO WIN A TOUR PRIZE. For players who have participated in fewer than three Tour events (as of early September), the number of events is given in parentheses. If these players do not compete in at least three Tour tournaments by year-end, they will not win any Tour money, regardless of their final Tour scores.

SEE THE ILLINOIS TOURNAMENT CALENDAR IN THIS ICE CONCERNING
REMAINING 1987 ILLINOIS CHESS TOUR EVENTS



TIM JUST WINTER OPEN/RESERVE V

JANUARY 2-3, 1988

\$1700 GUARANTEED!



OPEN-Open to all players

1st-2nd \$225-\$150
 Expert: 1-2 \$125-\$100
 A: 1-2 \$125-\$100

RESERVE-Below 1800

1st-2nd \$225-\$150
 C: 1-2 \$125-\$100
 D/E: 1-2 \$125-\$100
 UNR. 1st \$50

ICA MAXI-TOUR EVENT ***** GRAND PRIX POINTS = 5

5 ROUND SWISS: Saturday 9:30-2:30-7; Sunday 10-4

TIME CONTROL: Saturday 40/100, 30/1; Sunday 45/2, 25/1

1/2 point bye rounds 1, 2, or 3 if requested in advance

EARLY ENTRY FEE = \$30

LATE & PHONE ENTRY FEE = \$37

EARLY FEES & INFO:
 by 12/30/87

TIM JUST
 1521 CIRCLE CT.
 WAUKEGAN, IL. 60086
 312-244-7954

LATE REGISTRATION AT SITE:
 8-9 AM on 1/2/88

ILLINOIS BEACH RESORT
 SHERIDAN RD & WADSWORTH to the Lake
 Zion, Illinois 60099
 Hotel Rates: 312-249-2100

ICA Membership required--other states OK *** NS; NC; Wheelchair

MARTINOVSKY, SATTERLEE TOP 1987 SENIOR OPEN

by Eugene Martinovsky

The 1987 Senior Open took place June 14-19 in San Diego, California at the Vacation Island's Princess Cruises Resort. Some 160 Seniors (50 years old and up) set a new attendance record for the event. The tournament ended in a nine way tie for first. I was fortunate enough to be the winner and to be awarded the trophy on tie break. (It took the tournament officials 2-1/2 hours to work out the tie break order!)

Among the co-champions was Illinois' Ray Doyle Satterlee. He played very well in San Diego, and I note that his play in Illinois lately has been quite successful. Satterlee and I were paired in the second round. Here is the game.

[Editor's Note: At the editor's request, Ray Satterlee has also annotated this game.]

Ruy Lopez
(Archangel'sk Variation)

W: R.D. Satterlee (2097)
B: E.S. Martinovsky (241B)

1 e4 e5
2 Nf3 Nc6
3 Bb5 ...

RS: I rarely play this but I had lost my three previous encounters with Eugene so I thought the Ruy would give me some drawing chances.

3 ... a6
4 Ba4 Nf6
5 O-O b5
6 Bb3 Bb7

RS: I was not familiar with this move.

EM: 6...Nxe4 was the correct response.

7 c3 Be7

RS: I didn't notice Nxe4 was a possibility. About this time the people in the next room began talking about their sex lives. The discussion was so fascinating that I immediately decided the Senior Open would be an annual event on my chess schedule.

8 Re1 O-O
9 d4 d6

10 Nbd2 ...

RS: I didn't know what I was doing, but I hadn't lost any material, and I sure was learning a lot from the people next door!

EM: White stands better. He is a tempo up on regular lines because he did not have to play h3, since Black's Bishop is already on b7 and does not threaten Bg4.

10 ... h6
11 Nf1 Re6
12 Ng3 Bf8

EM: This is not really the Archangel'sk line, but rather the Smyslov or Karpov line where White did not have to play h3 and therefore is at least a tempo ahead.

13 d5 ...

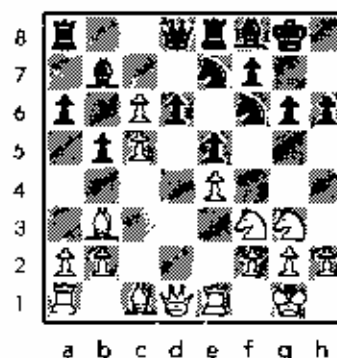
RS: This closes the position and blocks off my bishop. Perhaps dxe would have been more forceful.

EM: Not a bad move, but it is not the best. I was happy to see it. I think my defense will now not be too difficult. White still stands better, however.

13 ... Ne7
14 c4 g6
15 c5 c6(! per RS)

RS: This move surprised me, and I could find no refutation.

16 dxc ...



16 ... Bxc6(! per
RS and EM)

17 cxd Nc8

EM: The pawn sac is just temporary. Black will soon equalize - it's about time!

18 Bd2 Nxd6
19 Bc3 Nd7

RS: Black's position looks shaky but I couldn't see any knockout punch.

EM: 19...Nfxe4 would have led to fireworks but could have equalized.

20 Rc1 Rc8
21 Qe2 ...

EM: 21 N4 was better.

21 ... a5

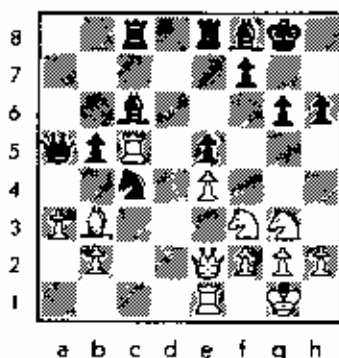
RS: About this time Black starts to get the initiative. Dr. Martinovsky is such a fine player I figured that now it would not rain in California, it would pour!

22 a3 Nc5

EM: Black undertakes an initiative on the Queen side with dangerous unclear consequences.

23 Bxa5 Qxa5

24 Rxc5 Nc4



RS: Oh-Oh! My rook is trapped. Dr. Richter, where are you now that I need you?

25 Qxc4 ...

RS: About 2.1 on the Richter scale.

EM: I did not anticipate this! I expected 25 Rxc4, leaving me with some advantage in a double edged position where a draw is not likely. After Satterlee's Queen sacrifice I was lucky to find my own Queen counter sacrifice which gave me a serious advantage.

25 ... Qxe1+(! per EM)

RS: Forced. I'd give it 6.3!

26 Nxe1 bxc

27 Rxc4 Bb5

28 Rxc8 Rxc8

RS: Black obviously has the advantage, now I must get down to business or else. I can't let the Rook penetrate the first rank.

EM: Time trouble started here. Satterlee had only 10 minutes left for 12 moves. I had 37 minutes, plenty of time. Satterlee held on remarkably well in a difficult position. He must have had good training in blitz!

29 Bc2 N5

EM: 29...Bc5 was better.

30 Nf1 Bc5

31 b5 Bb4

32 a4 Bd7

33 Ne3 Bc3

34 Nd3 Bd4

35 Ne1 f5

RS: I was in terrible trouble here. My position was very precarious, I was in severe time pressure, and the people next door had a forced mate in three! This move seemed to relieve some of the pressure. The more pawns I can get rid of the harder it will be for my opponent to win.

36 exf gxf

37 Kf1 ...

RS: I can't take the f-pawn because of Rc1 followed by Bc3.

37 ... e4

38 Bb3+ Kf8

39 Nc4 Bxa4(? per EM)

EM: 39...Be6! would have won.

40 Nd6 Rc1

EM: I was putting lots of hope in this move and in Bc3 but White found a way out. After the time trouble Satterlee played the endgame like a grandmaster and made a draw.

41 Bxa4 Bc3

42 g3(! per EM) ...

RS: Time pressure was over, the discussion in the next room was over. Now for a long shot drawing attempt!

42 ... Bxe1

43 Nxf5 ...

RS: Eliminate those pawns! Draw! I have nothing to fear from the discovered check.

43 ... Bxb4+

44 Kg2 Bc5

45 Bc6 Re1

46 Ne3(! per EM) Re2

EM: If 46...Bxe3 47 fxe Rxe3 48 Kf2 Rf3+ 49 Ke2! =

47 Kf1 Rb2

48 Bxe4 ...

RS: There goes another one!

48 ... Bxe3

49 fxe Rch2

50 Bg2(! per EM) N4

RS: Forced.

51 gxf ...

RS: Also forced. But basically the position is a book draw at this point.

51 ... Rch4

52 Kf2 Ke7

53 Kg3 Rb4

54 e4 Kf6

55 Kf4 Rb2
 56 e5+ Ke6
 57 Bh3+ Kd5
 58 Bg4 Rf2+
 59 Bf3+ Ke6
 60 Ke4 Rf1

RS: With this move Dr. Martinovsky offered a draw. I was very happy to have split the point with such a fine player. (Little did I know that I would defeat a master in the final round and tie for first!)

Draw Agreed

RS: It takes 50 years to become eligible for the U.S. Senior Open, but the wait is worth it. The setting was a resort hidden in a garden of flowers. I enjoyed the tournament, and I was fortunate to draw with one of my favorite people, Dr. Martinovsky, who has always been friendly and encouraging to me in my chess endeavors.

EM: Princess Cruises Resort is a nice place full of flowers, waterfalls, creeks, and other natural beauties. The tournament hall was good, as was the organization. We had two or three somewhat noisy rounds when the hotel placed a dance band, and then a seminar in which participants discussed their sex lives, in the room right next to the playing hall. So one day we all played chess while listening to confessions about people's sexual activities. This did not seem to disturb the senior crowd too much. Those doing the talking did not know that they had an audience, so it did not matter to them either!

[Editor's Note: Dr. Martinovsky has annotated several more of his games from the 1987 Senior Open, including those with two other co-champions. Although space limitations preclude publication at this time, some or all of those games will appear in the next ICB.]

July 17 - 19, 1987

MIDWEST CLASS CROSSTABLES

(Open and Expert Section Tables Appeared in August - September ICB)

Class A

PLAYER	POST	RTNG	1	2	3	4	5	TC1
1 MANCELLAR, JR PAUL	2074	R45	R45	R43	R17	R06	R-7	5.0
2 JARGSZ, JR STANLEY	2091	R62	R14	R15	D-0	R-9		4.5
3 SEFCHICK, MARK M	1966	R59	R12	D11	R38	R10		4.5
4 CHANEY, RONALD L	1463	R25	L-6	R21	R47	R18		4.0
5 GELFRICH, TOM	2025	R60	L10	D42	R52	R38		3.5
6 JORDAN, ROLAND Y	2030	R22	R-4	R18	L-1	D16		3.5
7 BUTKO, NATHANIEL A	2019	R54	D13	R34	R53	L-1		3.5
8 TUTT, BRYCE R	2012	D20	R40	R52	D-2	D15		3.5
9 JONATHAN, ALGIS J	1960	R55	D47	R56	R27	L-2		3.5
10 MC NAMARA, JAMES	1973	R63	R-5	D27	R11	L-3		3.5
11 BERRY, GREGORY F	1967	R36	R20	D-3	L10	R32		3.5
12 GRAYES, WILLIAM E	1956	R31	L-3	D24	R33	R29		3.5
13 BROTHERTON, MIKE	1933	R60	D-7	D16	D29	R31		3.5
14 LINA, DAVID D	1941	R67	L-2	R57	D19	R28		3.5
15 COHEN, HOWARD	1955	R39	R57	L-2	R26	D-0		3.5
16 OECMAN, STEPHEN J	1912	R-0	R50	D13	R17	D-6		3.5
17 TAKICH, BOB	1904	R45	R29	L-1	L16	R41		3.0
18 LEIGHTON, GEORGE W	1955	R23	R21	L-6	R43	L-4		3.0
19 GREENSTEIN, BENJAM	1917	R-0	R-0	D47	D14	D20		3.0
20 CHANDLER, PAUL A	1907	D-0	D46	R40	R25	U-0		3.0
21 SERGENT, BRENT E	1869	R40	L18	L-4	R59	R04		3.0
22 GABRIEL, ROBERT A	1857	L-6	D25	R55	R64	R40		3.0
23 EVANS, LARRY M	1886	L18	L40	R65	R57	R37		3.0
24 NICKS, ROBERT W	1833	R26	L11	D12	R51	D18		3.0
25 BUCH, HEART	1770	L-4	R22	R41	L20	R43		3.0
26 BASENSPILER, LARRY	2025	R-0	D32	R30	L15	D36		2.5
27 LEDAG, GEE Y	1973	R-8	R30	D10	L-9	U-0		2.5
28 PEEL, JR ARTHUR W	1906	L24	R45	R36	D32	L14		2.5
29 ALLISON, ROGER D	1842	R54	L17	R60	D13	L12		2.5
30 WEINRICH, JOEL G	1897	R49	L27	L26	D39	R50		2.5
31 PANKH, GLENN E	1888	L12	R58	D48	R42	L13		2.5
32 BURRI, CRAIG	1867	D50	D26	R39	D28	L11		2.5
33 CURRY, ROBERT E	1853	L51	D59	R50	L12	R60		2.5

34 FOURGERIE, DENNIS	1857	R-0	R37	L-7	R48	U-0		2.5
35 ERUEKWER, DON J	1849	R-0	L52	L58	R62	R51		2.5
36 BUCH, JEFF	1843	L11	R49	L28	R60	L26		2.5
37 UNDEFWOOD, WESLEY	1940	D33	L34	L59	R56	L23		2.0
38 DOTSON, JOHN B	1975	L41	R40	R54	L-3	L-5		2.0
39 SMELIS, PHILIP R	1946	L15	R60	L32	D30	D42		2.0
40 WAREPA, DAVID	1870	R-2	L-0	L20	R48	L22		2.0
41 KILISER, JOHN	1863	L47	R55	L25	R45	L17		2.0
42 WONG, FRED	1842	L40	R60	D-5	L31	D39		2.0
43 CSTERLUND, JR RUSB	1843	R32	L-1	R46	L18	L25		2.0
44 DE BOTA, STEVEN D	1818	L57	L38	R63	L40	R68		2.0
45 FLEEMAN, DAVID A	1814	L17	L20	R49	L41	R59		2.0
46 JOHNSON, PAUL V	1732	R-0	D20	L43	R54	L21		2.0
47 BELCHESICK, MICHAEL	1731	R41	L-9	D19	L-4	U-0		2.0
48 FISCHER, GREGORY A	1917	L21	R23	D31	L34	U-0		1.5
49 PUKEL, HERMAN B	1843	L30	L36	L45	D63	R68		1.5
50 POLK, ALAN	1847	D32	L16	L35	R68	L30		1.5
51 TORRANCE, DONALD	1842	R33	R-0	F-0	L24	L35		1.5
52 KEGNER, MARK	1870	R-0	R35	L-8	L-5	U-0		1.5
53 WILLIAMS, JOHN G	1849	D37	L56	R62	L-7	U-0		1.5
54 STAMPER, MIKE A	1818	L-7	R65	L38	L46	U55		1.5
55 PARAGAN, I C	1727	L-9	L41	L22	R-0	D54		1.5
56 ROBINSON, WAREISON	1636	R-0	R53	L-9	L37	U-0		1.5
57 EUGENIC, ANET	2025	R46	L15	L14	L23	U-0		1.0
58 CREWSE, LYNN	1922	L21	L31	R35	U-0	U-0		1.0
59 ARNOLD, RICHARD J	1848	L-3	F33	D37	L21	L85		1.0
60 MARSHALL, JAMES A	1851	L-5	R63	L29	L36	L33		1.0
61 BOGAN, TIMOTHY J	1965	U-0	L-0	U-0	U-0	R66		1.0
62 KUCSEURGER, LEONAR	1792	L-2	D66	L53	L35	D63		1.0
63 KOSIAR, LAWRENCE A	1773	L10	L40	L44	D49	D62		1.0
64 DELI, IMRE	1721	L13	L42	R68	L22	L44		1.0
65 LOPEZ, EUGENE C	1579	L-1	L54	L23	U-0	R-0		1.0
66 LIU, CHICK	1741	U-0	D62	U-0	U-0	L61		.5
67 LA ROCCA, ERIC R	1943	L14	U-0	L-0	U-0	U-0		.0
68 BOUTEN, BARRY R	1778	L27	L39	L68	L50	L49		.0
69 KAMSEL, MARK	1865	R-0	L-0	U-0	U-0	U-0		.0

WALLACH WINS LAKE COUNTY OPEN X

By Tim Just

Caveman Ken Wallach continues to rack up those Illinois Tour points! His 4.5-1.5 performance in the Lake County Open on September 26-27, 1987, gave him clear first place. Wallach's only draw was with Kevin Gensler, who scored 4-1 to finish alone in second place in the Open section. Gensler also took the honors as best expert. (A draw with a 2300 and all this glory! Can Kevin handle it?) William Graves posted a 2.5-2.5 result to capture first place in Class A.

At 4.5-1.5, Steve Fahrenholz was undisputed champion of the Reserve section. His last round draw with Scott Kittsley locked up first place. Kittsley and Caveman Chess Club members Dave Sjoholm and Daryl Zelinski shared runner-up honors with scores of 4-1. Sjoholm and Zelinski also tied for top Class C result.

Dr. Arthur Dupee, a Caveman Chess Club alumnus, scored 2-3 to take the Class D/E title. Newest Caveman Brian Davidson claimed the Unrated prize by finishing 1-4.

Caveman Chess Club members had good results in this tenth annual Lake County event. They will be out there looking for more chess action at the Tim Just Winter Open at Illinois Beach State Park on January 2-3, 1988.

ST. CHARLES OPEN

AUGUST 22 - 23, 1987

PLAYER	BT	RTNG	PRE	POST	RTNG					TCT
					1	2	3	4	5	
1 KRAMER, CHARLES M	IL	2262	2262	2262	W-8	W-9	W-6	W-2	0-2	4.5
2 SURAR, STEVE S	IL	2128	2147	2147	W-7	W-9	W-3	W-4	0-1	4.0
3 GOTZ, JON	IL	2115	2128	2128	W-11	W-5	W-4	D-5	W-10	4.0
4 BALE, LESLIE	IL	1905	1950	1950	W-5	L-1	W-3	W-7	W-4	4.0
5 HARRIS, THOMAS J	IA	2173	2173	2173	W-8	W-22	D-14	D-3	D-6	3.5
6 GENSLER, KEVIN M	IL	2143	2151	2151	W-20	W-6	L-1	W-3	D-5	3.5
7 FUKEL, BERNHARD B	IL	1863	1887	1887	W-33	L-12	W-9	D-8	W-16	3.5
8 FRONK, RANDY J	IL	1773	1807	1807	L-3	W-32	W-31	D-7	W-15	3.5
9 SATTEENLEE, RAY DOT	IL	2132	2101	2101	D-19	L-29	D-21	W-31	W-20	3.0
10 LANE, KEVIN K	IL	1843	1863	1863	W-36	L-14	W-24	W-21	L-3	3.0
11 PRADY, DANIEL D	IL	1690	1708	1708	L-3	W-26	L-17	W-28	W-23	3.0
12 STEIN, PETER	IL	2198	2168	2168	W-3	W-7	L-13	L-1	W-4	2.5
13 CONDRON, JAMES K	IL	2065	2067	2067	W-24	W-17	L-12	L-6	W-4	2.5
14 NIEMEL, JEFF K	IL	2052	2040	2040	W-31	W-14	D-5	L-2	L-4	2.5
15 BUTTNY, WILLIAM P	IL	1678	1868	1868	W-26	L-5	W-4	W-29	L-8	2.5
16 GUNCHAROFF, NIKOLA	IL	1856	1841	1841	W-27	L-6	D-20	W-19	L-7	2.5
17 REED, BILL T	IL	1813	1811	1811	W-37	L-13	W-11	L-4	D-18	2.5
18 OBERNEIS, JAMES D	IL	1748	1755	1755	L-5	W-25	L-22	W-26	D-17	2.5
19 SWANSON, VICTOR U	IL	1720	1737	1737	D-9	L-2	W-35	L-16	W-25	2.5
20 FLYNN, MICHAEL M	IL	1712	1723	1723	L-6	W-27	D-16	W-33	L-4	2.5
21 REEVES, CHRISTOPHE	IL	2038	2010	2010	W-35	D-30	D-9	L-10	W-4	2.0
22 LEIGHTON, GEORGE K	IL	1955	1956	1956	W-28	L-5	W-18	W-4	W-4	2.0
23 PARADAN, L O	IL	1727	1717	1717	L-12	W-33	L-4	W-35	L-11	2.0
24 JOHNSON, DALE	IL	1604	1592	1592	L-13	W-28	L-10	L-25	W-32	2.0
25 JACOBSEN, RUTH	IL	1536	1588	1588	L-4	L-18	W-27	W-24	L-19	2.0
26 BAILEY, THEODORE D	IL	1397/75	1471	1471	L-15	L-11	W-37	L-18	W-35	2.0
27 OBERNEIS, JIM	IL	1390	1402	1402	L-16	L-20	L-25	W-37	W-36	2.0
28 HANDECKER, KICK A	IL	1356	1375	1375	L-22	L-24	W-36	L-11	W-37	2.0
29 HOLCOMB, LARRY L	IL	1229	1363	1363	W-36	W-9	L-7	L-15	L-4	2.0
30 MC CORMICK, GENE M	IL	1781	1789	1789	W-34	D-21	L-2	W-4	W-4	1.5
31 JACOBSEN, EBILL	IL	1533/4	1560	1560	L-14	W-30	L-8	L-9	D-33	1.5
32 PADILLA, RUDY R	IL	1450	1430	1430	W-4	L-6	L-33	W-34	L-24	1.5
33 CARSON, DAVID L	IL	1434	1443	1443	L-7	L-23	W-32	L-20	W-31	1.5
34 STUMP, PAUL M	IL	1260/4	1304	1304	L-30	L-31	W-4	L-32	W-36	1.5
35 ANDERSON, RICHARD	IL	1526	1499	1499	L-21	W-37	L-19	L-23	L-26	1.0
36 JACOBSEN, MICKY	IL	1402	1342	1342	L-10	L-29	L-28	L-34	L-27	.0
37 JACOBSEN, ANNA LIS	IL	1283	1245	1245	L-17	L-35	L-26	L-27	L-28	.0

ILLINOIS TOURNAMENT CALENDAR

(Continued from back cover)

DEC. 19, 20: CCC \$100 Guarantee, two 1-day events at Chicago Chess Center. Jules Stein: 929-7010.

DEC. 19, 20: Chess Life LVII & LVIII, two 1-day events at Chicago Lawn Chess Association. 476-5716.

DEC. 26, 27: For the Penny-Pinching Pawn Pusher, two 1-day events at Chicago Chess Center. Jules Stein: 929-7010.

Jan. 1, 2, 3: For the Penny-Pinching Pawn Pusher, two 1-day events at Chicago Chess Center. Jules Stein: 929-7010.

Jan. 2-3: TIM JUST WINTER OPEN/RESERVE V, in ZION. An ICA Tour maxi-event. \$1700 GUARANTEED. SEE FULL PAGE AD IN THIS ICB.

Jan. 2, 3: Chess Life LIX & LX, two 1-day events at Chicago Lawn Chess Association. 476-5716.

Jan. 9: Midwest Action Chess Championship, at Holiday Inn O'Hare. Helen Warren: 246-6665.

PATRON MEMBERS CONTINUED

Tony Sillars	Chicago, IL
Arthur Sinclair	Evanston, IL
David Sprenkle	Urbana, IL
Miomir Stevanovic	Lincolnwood, IL
David Taylor	Kankakee, IL
Don Townsend	Chicago, IL
Helen Warren	Western Springs, IL
Douglas White	Evanston, IL
Harold Winston	Naperville, IL
Sandy Zabełł	Chicago, IL
Michael Zacate	Mokena, IL
Max Zavanelli	Park Ridge, IL

HELP SUPPORT ILLINOIS CHESS BY BECOMING AN ICA BENEFACTOR:

CENTURY MEMBER	\$ 100
GOLD CARD	50
PATRON	25

Please mail your contribution to:
Illinois Chess Association
Bill Smythe, Treasurer
6945 N. Ashland
Chicago, IL 60626

**ILLINOIS
CLASS
CHAMPIONSHIPS
\$1500 IN PRIZES
NOVEMBER
21 - 22**

TOURNAMENT CLEARINGHOUSE MATERIAL

While Harold Winston is convalescing after his recent surgery, please send all Tournament Clearinghouse material to:

Tim Just
1521 Circle Court
Waukegan, IL 60085
Phone Tim at (312) 244-7954.

Please send Downstate Tournament Clearinghouse material to:

Bill Naff
212 W. Vail Ct.
Peoria, IL 61614
Phone Bill at (309) 691-4624.

CENTURY CLUB MEMBERS

Michael Belovesick	Elmhurst, IL
Fred Cramer	Mequon, WI
Lawrence Goch	Chicago, IL
Fred Gruenberg	Chicago, IL
Bill Smythe	Chicago, IL
Burton Vincent	Chicago, IL
Philip Wong	Evanston, IL

GOLD CARD MEMBERS

Bill Buttny	Downers Grove, IL
John Deutsch	Chicago, IL
Thomas Fineberg	Chicago, IL
Harland Hoisington	South Ogden, UT
Charles Kramer	Dalton, IL
Ed Marshall	South Barrington, IL
James Norris	Naperville, IL
Michael Pratts	Chicago, IL
Irwin Rothschild	Park Forest, IL
Albert Sandrin	Chicago, IL
Angelo Sandrin	Chicago, IL
Mitchel Sweig	Evanston, IL
Richard Verber	Chicago, IL
Jim Warren	Western Springs, IL
Louis Werner	Evanston, IL

PATRON MEMBERS

Bob Ash	Urbana, IL
Todd Barre	Westmont, IL
John Barstad	Carol Stream, IL
Roy Benedek	Oak Park, IL
Bill Brock	Chicago, IL
Tyrone Brooks	Chicago, IL
Jim Brotsos	Arlington Heights, IL
Brian Chapman	Arlington Heights, IL
Lynn Crewse	Arlington Heights, IL
Leroy Dubeck	Cherry Hill, IL
Robert Glick	Lincolnwood, IL
Jon Gotz	West Chicago, IL
William Graves	Chicago, IL
Guy Gruenberg	Matteson, IL
Walter Henry	Naperville, IL
Jeffery Hyland	Berwyn, IL
Robert Irons	Chicago, IL
Tim Just	Waukegan, IL
Dan Kamen	Wheeling, IL
Leo Kaushansky	Chicago, IL
Thomas Knoedler	Springfield, IL
Kenneth Marshall	Lombard, IL
James McNamara	Riverside, IL
Piatek Mieczyslaw	Chicago, IL
Patrick Moran	Wilmette, IL
Peter Pelts	Chicago, IL
Kevin Reardon	Urbana, IL
Tim Redman	Lima, IL
Ray Satterlee	Wheaton, IL

ICA ELECTED OFFICERS:

Tim Just, President
1521 Circle Ct., Waukegan, IL 60085

Harold Winston, Metro Vice-President
46 Robin Hill Dr., Naperville, IL 60540

Bill Naff, Downstate Vice-President
212 W. Vail Ct., Peoria, IL 61614

Ken Marshall, Secretary
357 W. Grove, Lombard, IL 60148

Bill Smythe, Treasurer
6945 N. Ashland #F3, Chicago IL 60626

Walter Brown, Immediate Past President
811 Elrose Ct., Crest Hill, IL 60435

USCF DELEGATES

by virtue of their USCF posts:

Helen Warren, Policy Board Member
Todd Barre, Regional Vice-President
Jim Warren, Regional Vice-President
Frank Skoff, Past President

ICA APPOINTED USCF DELEGATES:

Tim Just	Todd Barre
Harold Winston	Bill Smythe
Richard Verber	

ICA APPOINTED USCF VOTING MEMBERS:

Tom Fineberg	Ken Marshall
Bill Naff	Dennis Grant
Walter Brown	Lawrence Stilwell
Erv Sedlock	Tom Knoedler
Glenn Panner	Robert Bain
Wayne Palmquist	Barry Fisher

ICA APPOINTED

USCF ALTERNATE VOTING MEMBERS:

Chris Musgrave	John Barstad Sr.
Eric Schiller	Dan Kamen
Bill Wilkinson	Albert Chow
Mike Zacate	David Sprenkle
Jim Condon	Mike Belovesick Sr.
Kevin Bachler	Philip Wong
Jim Brotsos	Burton Vincent
Angelo Sandrin	Larry Goch

ILLINOIS TOURNAMENT CALENDAR

Call Chess Phone, (312) 971-3666, for all recorded tournament announcements and results, often more up-to-date than Chess Life or the ICB. The ICA Chess Phone voice is Todd Barre.

Unless otherwise noted, all tournaments require USCF membership. ICA Tour events also require ICA membership. All phone numbers are area code 312 unless otherwise noted.

NOV. 21-22: ILLINOIS CLASS CHAMPIONSHIPS, an ICA Tour maxi-event at the Morgan Park Academy in Chicago. \$1500 GUARANTEED. SEE FULL PAGE AD IN THIS ICB.

NOV. 21: High School, Grade School, and Octagon Plus One events, in Hillside. Lawrence Stilwell: 963-6799.

NOV. 21: North Boone Fall Rated (Open and Scholastic), in Poplar Grove. G. Wohlfarth, NBHS Chess Club, 17641 Poplar Grove Rd., Poplar Grove, Ill. 61065.

NOV. 21: Central Illinois Scholastic Open, in Peoria. Murrel Rhodes, (309) 676-0951.

NOV. 21, 22: Bargain Basement Bonom, two 1-day events at Chicago Chess Center. Jules Stein: 929-7010.

NOV. 21, 22: Chess Life LIII & LIV, two 1-day events at Chicago Lawn Chess Association. 476-5716.

NOV. 22: SICL King City Swiss, in Mt. Vernon. John Tonkinson: (618) 462-5732.

NOV. 28, 29: Mating Mania, two 1-day events at Chicago Chess Center. Jules Stein: 929-7010.

DEC. 5: Tuley Park Action Chess Open, in Chicago. Tom Fineberg: 721-3979.

DEC. 5,6: Chess Life LV & LVI, two 1-day events at Chicago Lawn Chess Association. 476-5716.

DEC. 5,6: Pawn Passion, two 1-day events at Chicago Chess Center. Jules Stein: 929-7010.

DEC. 12: ICA LAST CHANCE MINI-TOUR TORNADO at Chicago Chess Center. An ICA Tour mini-event. ICA, P.O. Box 267847, Chicago, Ill. 60626-7847. 761-2455.

DEC. 12: CHAMPAIGN MINI-TOUR EVENT (FRED REINFELD CHESS CLUB TORNADO #8), in Urbana. An ICA Tour mini-event. Barry Fisher. (217) 333-9083.

DEC. 13: SICL Partner Championship, in Alton. John Tonkinson: (618) 462-5732.

(continued on p. 24)

ILLINOIS CHESS BULLETIN
357 W. GROVE
LOMBARD, ILLINOIS 60148

Speedy Delivery Appreciated

Bulk Rate
U.S. Postage Paid
Chicago, IL 60660
Permt No. 8523

ADDRESS CORRECTION REQUESTED
RETURN POSTAGE GUARANTEED