



ILLINOIS CHESS BULLETIN

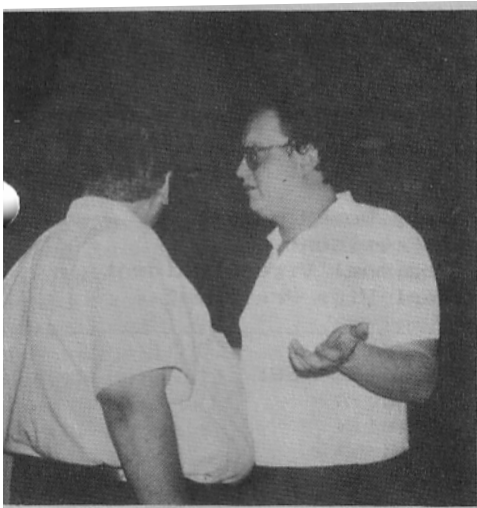
Official Publication of the Illinois Chess Association a U.S.C.F. Affiliate
A Not For Profit Organization

July-August 1986

Bimonthly

Volume IX, No. 4

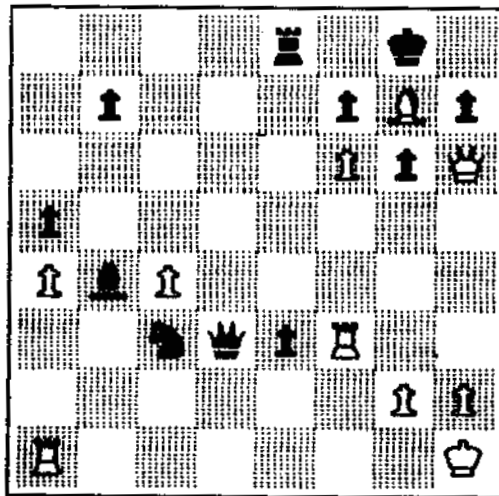
CHICAGO — MIDWEST CHAMPIONSHIPS



Robert Gruchacz & T.D. Richard Verber

DID OUR ANNOTATOR MISS SOMETHING?

MADL ILDIKO (2215)



ROBERT GRUCHACZ (2469)

CHECK IT OUT ON PAGE 23.



Giles/Umeziga



Maria Ivanka (2357), having just accepted an apple from her student, Madi Ildiko (2215). Story on page 18.



Sergey Kudrin — A Surprise Visitor — left some rating points!

PEARLE MANN REMEMBERED. PAGE 3

Teacher to a generation of American Artists



Official Publication of the Illinois Chess Association, a USCF Affiliate

Editor and membership secretary:

Bill Saythe
6945 N Ashland #F3
Chicago IL 60626-3312
(312) 761-2455

Submit articles, photos, crosstables, games, and other publishable material to the above address. Publication deadline for the next issue is August 25. Also send address changes and corrections to the above.

SUBSCRIPTIONS: The Illinois Chess Bulletin (ICB) is published bimonthly by the Illinois Chess Association. ICA membership includes a subscription to the ICB.

ANNUAL MEMBERSHIP RATES:

Century Clubs: \$100.00
Gold Cards: \$50.00
Patrons: \$25.00
Regular: \$10.00
Junior (under 18): \$6.00

Century, Gold, and Patron members receive their ICB by first-class mail. Remit to:
Illinois Chess Association
PO Box 43336
Chicago IL 60643

ICA AFFILIATION: Chess clubs and other organizations which promote chess activity may affiliate with ICA. Affiliate benefits include a copy of each ICB by first-class mail, a listing (if desired) under Where to Play Chess in each issue, discounted ICB advertising rates, three-line tournament announcements in the Tournament Calendar, and the right to run ICA Tour events. ICA affiliation costs \$15.00 per year; please remit to the address shown above under Annual Membership Rates. Include your club meeting times, the name of a contact person, and other useful information in the format shown in Where to Play Chess on page 4 of this issue.

ADVERTISING RATES:

Full page \$60.00
Half page \$36.00
Quarter page \$21.00
Flyer inserts \$25.00

10% discount for same ad in consecutive issues. 1/3 discount for ICA affiliates. All advertising must be camera ready to qualify for these rates. Add 20% if you wish layout done. ICA reserves the right to reject advertising.

Metro tournament clearinghouse:

Todd Barre
821 S Williams St #A-503
Westmont IL 60559
(312) 971-2523

Downstate tournament clearinghouse:

Thomas Knoedler
2206 Westchester #4
Springfield IL 62704
(217) 787-7545

ICA ELECTED OFFICERS:

Walter Brown, President
811 Elrose Ct, Crest Hill IL 60435

Todd Barre, Metro Vice-President
821 S Williams #A503, Westmont IL 60559

Thomas Knoedler, Downstate Vice-President
2206 Westchester #4, Springfield IL 62704

Tim Just, Secretary
1521 Circle Ct, Waukegan IL 60085

Fred Gruenberg, Treasurer
2035 W 110th Pl, Chicago IL 60643

USCF DELEGATES by virtue of their USCF posts:

Helen Warren, Policy Board Member
Frank Skoff, Past President
Fred Gruenberg, Regional Vice-President
Jim Warren, Regional Vice-President

ICA APPOINTED USCF DELEGATES:

Walter Brown
Todd Barre
Tim Just
Thomas Fineberg
Harold Winston

ICA APPOINTED USCF VOTING MEMBERS:

Bill Saythe	Wayne Palaquist
David Sprengle	Eric Schiller
Erv Sedlock	Lawrence Stilwell
Thomas Knoedler	Richard Verber
William Naff	Robert Bain
Kevin Bachler	Chris Musgrave

ICA APPOINTED USCF ALTERNATE VOTING MEMBERS:

Dennis Grant	Jules Stein
Glenn Panner	Jim Brotsos
Bill Wilkinson	Jim Condron
John Barstad	Angelo Sandrin
Kenneth Marshall	Albert Chow
John Tomas	Dan Kamen
Michael Zacate	Guy Gruenberg

Michael Belovesick	Northbrook	IL
alter Brown	Crest Hill	IL
red Cramer	Mequon	WI
awrence Goch	Chicago	IL
red Gruenberg	Chicago	IL
urton Vincent	Chicago	IL
Philip Wong	Evanston	IL

===== GOLD CARD MEMBERS =====

Bill Buttny	Downers Grove	IL
ariand Hoisington	Chicago	IL
Charles Kramer	Dolton	IL
ames Norris	Naperville	IL
rwin Rothschild	Park Forest	IL
lbert Sandrin	Chicago	IL
ngelo Sandrin	Chicago	IL
ill Smythe	Chicago	IL
im Warren	Western Springs	IL
ouis Werner	Evanston	IL

===== PATRON MEMBERS =====

ob Ash	Urbana	IL
odd Barre	Westmont	IL
ohn Barstad	Carol Stream	IL
oy Benedek	Westmont	IL
im Brotsos	Chicago	IL
rian Chapman	Arlington Heights	IL
ynn Crewse	Arlington Heights	IL
eroy Dubeck	Cherry Hill	NJ
omas Fineberg	Chicago	IL
regory Fischer	Des Plaines	IL
obert Glick	Lincolnwood	IL
on Gotz	West Chicago	IL
illiam Graves	Chicago	IL
uy Gruenberg	Matteson	IL
ry Gustafson	North Conway	NH
ffery Hyland	Berwyn	IL
obert Irons	Chicago	IL
im Just	Waukegan	IL
eonid Kaushansky	Chicago	IL
omas Knoedler	Springfield	IL
d Marschall	South Barrington	IL
enneth Marshall	Lombard	IL
ames McNamara	Riverside	IL
atrick Moran	Wilmette	IL
evin Reardon	Urbana	IL
im Redman	Lima	OH
ay Satterlee	Wheaton	IL
ivian Schmucker	Goshen	IN
ony Sillars	Chicago	IL
rthur Sinclair	Evanston	IL
avid Sprengle	Urbana	IL
iomir Stevanovic	Lincolnwood	IL
elen Warren	Western Springs	IL
ouglas White	Evanston	IL
arold Winston	Evanston	IL
andy Zabell	Chicago	IL
ichael Zacate	Mokena	IL
ax Zavanelli	Park Ridge	IL

 Please look at your mailing label on the back page to see if it's time to renew your subscription!

There have been lots of major tournaments during the past two months. We've covered the Prairie State Master-Expert Invitational on page 6, the Greater Chicago Midwest Championship on page 18, the Master Challenge VIII on page 28, and the Eighth South Suburban Open on page 34. Three of these four events were on the ICA Tour, so we've also included a Tour update on page 14.

In other departments, we editorialize on high B players (and others who try to win basement-section prizes) on page 4. Readers' letters are on page 5; as usual, letters to the editor are always welcome. A summary of Illinois Chess League rule changes appears on page 12, while the minutes of the June ICA Board meeting are on page 27. The issue finishes off with Coming Attractions, the Postal page, and the Tournament Calendar on the last three pages.

With all the tournament coverage, even with 36 pages, some stuff regretfully had to be omitted. For example, this issue includes no Ask Miroseg column. It'll be back next month, so send your opening, middle game, and ending questions to:

Miroseg Zog, c/o
 David Sprengle
 805 W Green #B-15
 Urbana IL 61801

Also omitted were some nice games annotated by Bill Colias, a piece by Eric Schiller, and the usual USCF tidbits. Our apologies to these contributors, whose work we expect to include next issue.

In Memoriam

PEARLE MANN

by Richard Verber and Bill Smythe

It is with sorrow that we learn of the passing of Pearle Mann, chess organizer extraordinaire of Milwaukee. Pearle was active at all levels of the royal game, from scholastic chess in the Milwaukee public schools to FIDE, where she served as the USCF representative.

Pearle Mann was teacher to a generation of Chicago tournament directors. In the late 1950s and early 1960s, the Milwaukee tournaments organized by Ernest Olfe and Pearle Mann regularly drew more than 150 players at a time when Chicago tournaments never exceeded 100. It was not until the 266-player 1963 U.S. Open in Chicago that Milwaukee began to be outshone as the chess capital of the Midwest. For two decades Pearle Mann was Milwaukee's best-known chess name after that of many-time Wisconsin State Champion Bill Martz.

Those who played in Milwaukee's annual Western Open and North Central Open in the 60's and 70's fondly remember an elegant, almost old-fashioned tournament at the Plankinton House, where 100 identical, sturdy chess sets were

activities and meeting times
of ICA affiliates

PLAY UP!

by Bill Smythe

AMERICAN POSTAL CHESS TOURNAMENTS sponsors postal events of various kinds, and sells chess books and equipment. Contact Jim or Helen Warren, PO Box 305, Western Springs 60558. (312) 246-6665.

CENTRAL LAKE COUNTY CHESS CLUB meets Fridays, 7:15 pm to midnight, College of Lake County, Bldg 1, Washington at Route 45, Grayslake. Contact Dennis Grant, 1657 McKay, Waukegan 60087. (312) 336-5188.

CHICAGO CHESS CENTER meets for casual chess 7 days a week, 6 pm to 1 am, 2923 N Southport, Chicago 60657. Also sponsors rated tournaments on selected weekends. Contact Jules Stein, (312) 929-7010.

CHICAGO INDUSTRIAL CHESS LEAGUE organizes frequent competition among commercial/government teams with awards, ratings, and special events. Contact Jim Brotsos, (312) 775-5054, or Bruce McNeil, (312) 742-5195.

FOREST PARK CHESS CLUB meets Tuesdays, 6:45 pm to midnight, Mohr Community Center, Jackson & DesPlaines, Forest Park. Contact Chris Musgrave, 1127 S Humphrey, Oak Park 60304. (312) 386-5124.

GREATER PEORIA CHESS FEDERATION meets Mondays, 7 to 11 pm, Bradley Student Center Cafeteria, 901 N Elmwood, Peoria. Contact Bill Wilkinson, 905 N Rebecca Pl, Peoria 61606. (309) 673-9455.

HINSDALE SOUTH HIGH SCHOOL CHESS CLUB is for Hinsdale students only. Contact James Carvell, 7401 S Clarendon Hills Rd, Darien 60521.

LAKE COUNTY CHESS ASSOCIATION sponsors rated tournaments in the Grayslake/Zion area. Contact Tim Just, 1521 Circle Ct, Waukegan 60085. (312) 244-7954.

MIDWEST CHESS ASSOCIATION organizes major tournaments for masters and experts. Contact Helen Warren, PO Box 305, Western Springs 60558. (312) 246-6665.

NORTH BOONE HIGH SCHOOL CHESS CLUB, 17641 Poplar Grove Rd, Poplar Grove 61065. Contact Guenter Wohlfarth, sponsor. (815) 765-3311.

ORLAND PARK CHESS CLUB meets Fridays, 7 to 11 pm, George Brown Commons, 15045 West Ave, Orland Park. Contact Glenn Panner, 14300 S Ridge, Orland Park 60462. (312) 460-3111.

PARK FOREST CHESS CLUB meets Thursdays, 7 to 10:30 pm, Freedom Hall, Orchard & Lakewood, Park Forest. Contact Wayne Palmquist, 10605 Southwest Hwy #1F, Worth 60482. (312) 361-2571.

RAE PRODUCTS AND CHEMICALS, 10926 S Western, Chicago 60643. Contact Fred Gruenberg, (312) 779-3360.

ST CHARLES CHESS CLUB meets Thursdays at 7 pm, Baker Community House, 101 S 2nd (Route 31), St Charles. Contact Ery Sedlock, 6 N 307 Old Homestead Rd, St Charles 60174. (312) 377-7995.

TULEY PARK CHESS CLUB meets Saturdays, 1 to 5 pm, Tuley Park Fieldhouse, 501 E 90th Pl, Chicago. Contact Thomas Fineberg, 7321 S South Shore Dr, Chicago 60649. (312) 721-3979.

In 1972 in the USCF office in Newburgh, New York, I had the pleasure of rating the under-1800 section of the Atlantic Open, the fore-runner of today's World Open. I noticed with glee that, of the top two dozen or so players in the section, almost all did poorly and many dropped out before completing the tournament.

More recently and more locally, of the top rated players in the Amateur section of the Greater Chicago Midwest Championship, only five won their first-round games. Of these five, three lost and one drew in round 2. None of the ten went on to win the section; this honor went to a 1687 player, number 27 the wallchart. The top ten starters could do no better than to get three of their number into a 12-way tie for fifth.

This sort of thing happens again and again, and the lesson is clear: If your rating is just under 1800, don't play in under-1800 sections! You have nothing to gain, and everything to lose. Drop one game, and you might as well go home.

Under-1800 sections are not won by 1799 players. They are won by 2000-strength players whose ratings, for whatever reason, are below 1800 -- usually well below. Unless you are underrated by at least 200 points, you can forget about winning prizes in Amateur, Booster, or Reserve sections.

By contrast, six under-1800 players in the recent tournament chose the Championship section. Three of the six scored significant upsets at least once; one did so twice. More importantly, all improved their chess by facing higher-rated opponents. When the playing strength goes up, the rating soon follows, and along with it the ability to win honest prizes against real competition.

My advice: If you are within 100 points of the cut-off in a multi-section tournament, *play up*. It is much more enjoyable to score an upset than to give your opponent that pleasure.

On second thought, if you're an A player, and I'm playing in the tournament, stay where you are. I'd like to keep all those Experts to myself.

(continued from page 3)

not only furnished but also set up before the start of each round, where a stage and three wallboards displayed the top games at all times, and where there were no adjournments. Such touches of class were typical of Pearl Mann's approach to chess organization.

Pearle Mann was a great American tournament director and FIDE arbiter, a full member of small elite club that, with her passing, no perhaps includes only George Koltanowski, T. Redman, Bill Goichberg, and Ben Nethercot.

LETTERS...

I recently took on the job as editor of the 1986 Midwest Masters games booklet. This is a big task, and I would like to make this the best Midwest Masters games booklet yet. Moreover, I have a heavy school and work load, so I would like to complete as much of the booklet as possible before school resumes in September.

Therefore, I am asking all the players who participated in this event to donate annotated games to the booklet. All I ask is that the annotations be neatly written and very legible. Annotations should be sent to:

Kevin L. Bachler
361 Ashwood Court
Vernon Hills, Illinois 60061-2334

Contributions to the booklet will be acknowledged.

Kevin Bachler

A few issues ago you presented the Kudrin-Ivanov game from the 1986 Midwest Masters.

Angelo Sandrin told me that the score was not accurate. It so happened that I had made a copy of the game score from Ivanov's copy. I enclose a photocopy in case you are interested in giving ICB readers the correct version.

Frank Skoff

The version Frank sent differs from the version published in the March-April ICB at White's 22nd and 37th moves. The published version, perhaps the result of a hard-to-read score, is legal, but the corrected version certainly makes more sense: 1 e4 c5 2 Nf3 e6 3 d4 cxd4 4 Nxd4 Nf6 5 Nc3 d6 6 Be2 Be7 7 O-O O-O 8 f4 Nc6 9 Kh1 Bd7 10 Nb3 Rc8 11 Bf3 a6 12 a4 b6 13 g4 Be8 14 g5 Nd7 15 Qe2 Nc5 16 Be3 Nxb3 17 cxb3 b5 18 axb5 19 Qg2 b4 20 Na4 Bd7 21 f5 Re8 22 Bb6 23 f6 Bf8 24 aRc1 Qb8 25 e5 d5 26 Bh5 27 Bxg6 hxg6 28 Qh3 cRc8 29 Bc5 Qxe5 30 Bxf8 Nd4 31 cRe1 Ne2 32 Bg7 Qe4+ 33 Rf3 34 Qxf3 e5 35 Qxe2 Bf5 36 Qf2 Bg4 37 Nb6 cRd8 38 Qg3 Bh5 39 Rxe5 d4 40 Rxe8+ 41 e8 1-0. -- Editor]

I would like to compliment you and your artist on the front cover of the May-June ICB. This is the most eye-catching and attractive one yet. It really could be used regularly and be

perhaps with a different problem on board each time. Thank you!

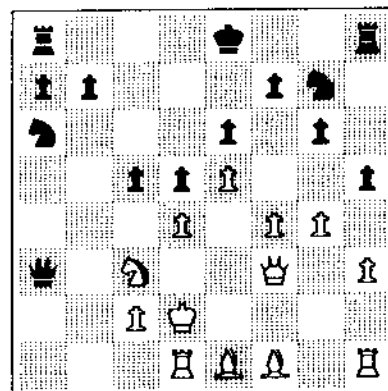
Richard Stotler

[You can thank Fred Gruenberg for digging up the cover illustration and negotiating with the printing house for the necessary multi-color format. No way we can use it regularly, though, especially with a different position each time! -- Editor]

ERRATA

In the March-April issue, the photos on pages 16, 18, and the cover, depicting the scene at the Orland Park Futurity, should have been attributed to Dave Willett. Our apologies for this omission.

In the May-June issue, the following position was reached in the Todd Schremser - Leslie Bale game on page 25:



Schremser now played 18 Bb5+, not 18 Bg3 as published. [The score looked like B-N3, but it must have been B-N5.] Black replied 18...Ke7?? and resigned after 19 Nxd5+. Instead, 18...Kf8 is mandatory, because 18...Kd8 is met by 19 Bh4+ followed by 20 Ra1 and 21 hRb1. Looks like Black's going to have a tough time of it in any case.

PRAIRIE STATE INVITATIONAL

by Kevin Bachler

The Prairie State Invitational drew 50 players from nearly every midwestern state and Florida to the College of Lake County in Grayslake, Illinois over Memorial Day weekend. The tournament provided Andrew Karklins and Greg DeFotis an opportunity to show that they are at the top of their game, as each player scored 5 out of six to tie for first. Morris Giles, Leonid Kaushansky, and Eric Schiller each came in with 4.5 points to tie for 3rd through 5th. Eric Fischvogt scored 4 to take home the 2100-2199 prize, and Steve Loring and Tony Schroeder each scored 4 to tie for the 2000-2099 prize.

I was duly impressed by the play of both DeFotis and Karklins. In fact, Karklins got to impress me at close range in round five. At this moment, I would have to say that these two players have regained all of their old form, and perhaps more. While several other players are close, the form these two demonstrated in this tournament made me feel they are currently the strongest players in Illinois.

This tournament was one of the toughest events I have seen. After three rounds there were no perfect scores, and after four rounds eleven players were tied for first with 3 points each. This is when the second tournament -- a two-round Swiss -- began, and when DeFotis and Karklins came to the fore. DeFotis defeated Marc Lonoff (2302) and Miles Ardaman (2390) while Karklins mopped up on me (2243) and Eugene Martinovsky (2418).

Going into round 5, the significant scores were:

3 points: Martinovsky, DeFotis, Giles, Karklins, Ardaman, Kaushansky, Peter Pelts, Lonoff, Bill Colias, Ken Wallach, Bachler, Phil Wong.

2.5: Schiller, Bill Brock, Kevin Czuhai, Pete Stein, Loring.

2 points: Fischvogt, Ramsey Forbush, Bob Bain, Randy Zumbunnen, Thomas Babcock, Jon Gotz, Cliff Wallach, Andy McGowan, Schroeder, George Umezina.

Here are some significant games from round five:

White: Eugene Martinovsky (2418).
Black: Peter Pelts (2325).

Annotated by Bachler.

1	d4	Nf6
2	Nf3	c5
3	e3	e6
4	c4	Be7
5	Nc3	O-O
6	Bd3	d6

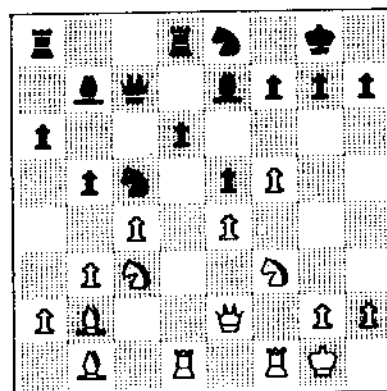
7	O-O	bNd7
8	Qe2	a6
9	b3	Qc7
10	Bb2	b6
11	aRd1	Bb7
12	e4	cxd4
13	Nxd4	Nc5

13...Re8 intending 14...d5 is interesting.

14	Bb1	fRd8
15	f4	Ne8
16	f5	e5
17	Nf3	

17 Nc2 intending Ne3 and Nd5 is an alternative.

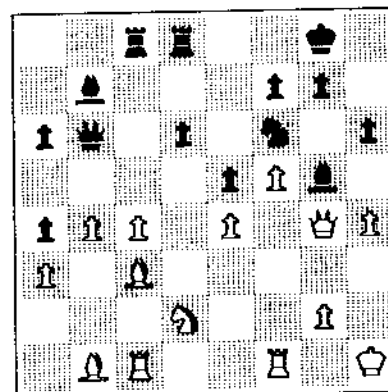
17	b5
----	------	----



18	b4!	
18	cx b5 axb5	19 Nxb5 Qb6.
18	Na4
19	Nxa4	bxa4
20	Kh1	
20	Nf6
21	Rc1	Qb6
22	a3	aRc8
23	Nd2	Nd7
24	Bc3	

PreventingNc5.

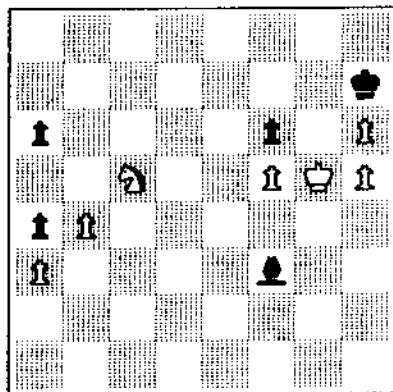
24	Bg5
25	Qg4	h6
26	h4	Nf6



27	Qg3	
27	Qh3!?	intending g4 and eventually g5 \ is possible.
27	Bf4
28	Rxf4	exf4
29	Qxf4	Kh7
30	Bc2	Qc6

31	Re1	Re8
32	Bd3	Re7
33	Nf3	cRe8
34	Bxf6	gxf6
35	Nh2	Rxe4
36	Rxe4	Rxe4
37	Bxe4	Bxe4
38	Qxe4	Bxe4
39	Ng4	Kg7
40	Ne3	Kf8
41	Kh2	Ke7
42	Kg3	Bd3
43	Kf4	Kf8
44	Kf3	Ke8
45	Kf2	Kd7
46	Kf3	Ke8
47	Kf4	Kf8
48	c5	Ke7
49	Nd5+	Kd7
50	Nxf6+	Kc6
51	cxd6	Kxd6
52	h5	Be2
53	g4	Ke7
54	g5	Bd1
55	Nd5+	Kf8
56	gxh6	Kg8
57	Nf6+	Kh8
58	Kg5	Bf3
59	Nd7	Kh7
60	Nc5	f6+

and White won.



1	DE FOTIS Greg	2411	N26	W42	D13	D15	W14	W 8	5
2	KARKLINS Andrew	2402	Dbye	W24	W34	D 7	W19	W 6	5
3	KAUSHANSKY Leonid	2379	W36	D21	W30	D 13	W20	D 5	4.5
4	SCHILLER Eric	2223	D28	W48	W29	L 5	W16	W17	4.5
5	GILES Morris	2403	L16	W44	W41	W 4	W13	D 3	4.5
6	MARTINOVSKY Eugene	2418	W18	W10	D 7	D14	W15	L 2	4
7	WALLACH Ken	2243	W44	W43	D 6	D 2	L 8	W25	4
8	ARDAMAN Miles	2390	D35	D27	W23	W34	W 7	L 1	4
9	LORING Steve	2040	D22	L25	W46	W42	W30	D14	4
10	MILLS James	2240	W39	L 6	L20	W33	W41	W27	4
11	SCHROEDER Tony	2023	D30	Dbye	D17	D27	W23	W22	4
12	FISHVOGT Eric	2195	Dbye	D17	W32	L19	W34	W20	4
13	COLIAS Bill	2293	W33	W23	D 1	D 3	L 5	D15	3.5
14	LONOFF Marc	2302	W40	D20	W21	D 6	L 1	D 9	3.5
15	PELTS Peter	2325	Dbye	W35	W25	D 1	L 6	D13	3.5
16	BROCK Bill	2120	W 5	Dbye	W22	-	L 4	W30	3.5
17	CZUHAI Kevin	2209	Dbye	D12	D11	W29	W21	L 4	3.5
18	BABCOCK Thomas	2120	L 6	D50	D45	W38	D31	W32	3.5
19	BACHLER Kevin	2240	W51	L34	W26	W12	L 2	-	3
20	WONG Phil	2096	D49	D14	W10	W31	L 3	L12	3
21	ZABELL Sandy	2144	W32	D 3	L14	W43	L17	D28	3
22	MOTE David	2230	D 9	W40	L16	D24	W35	L11	3
23	FORBUSH Ramsey	2149	W50	L13	L 8	W39	L11	W36	3
24	ZUMBRUNNEN Randy	2133	D45	L 2	W48	D22	L25	W34	3
25	THOMAS Kenny	2215	Dbye	W 9	L15	D35	W24	L 7	3
26	RUNNING Jeff	2124	L 1	W47	L19	D32	D29	W39	3
27	UMEZINWA George	2184	Dbye	D 8	D43	D11	W36	L10	3
28	GENSLER Kevin	2031	D 4	Dbye	D42	L30	W46	D21	3
29	KAMEN Dan	2101	Dbye	W49	L 4	L17	D26	W35	3
30	STEIN Peter	2190	D11	W45	L 3	W28	L 9	L16	2.5
31	BUNGO Greg	2235	L34	W51	W33	L20	D18	-	2.5
32	MAC ARTHUR John	2004	L21	W36	L12	D26	W42	L18	2.5
33	PAULSON Bill	2070	L13	W38	L31	L10	D44	W46	2.5
34	MC GOMAN Andy	2041	W31	W19	L 2	L 8	L12	L24	2
35	GOTZ Jon	2119	D 8	L15	W50	D25	L22	L29	2
36	WALLACH Cliff	2105	L 3	L32	W51	W45	L27	L23	2
37	SANDRIN Angelo	2232	W38	-	-	-	W51	-	2
38	LEONG Gee	1957	L37	L33	W44	L18	W50	-	2
39	LEE David	2064	L10	D46	Dbye	L23	W40	L26	2
40	DREISER Michael	2089	L14	L22	L47	W50	L39	W44	2
41	BAIN Bob	2142	Dbye	Dbye	L 5	W47	L10	-	2
42	UTTERBERG Cary	2213	W47	L 1	D28	L 9	L32	-	1.5
43	ASH Robert	1992	W46	L 7	D27	L21	-	-	1.5
44	SMITH Charles	2065	L 7	L 5	L38	W51	D33	L40	1.5
45	GLICK Robert	1963	D24	L30	D18	L36	-	-	1
46	GRATZ Glenn	2138	L43	D39	L 9	D48	L28	L33	1
47	VESELY Peter	2025	L42	L26	W40	L41	-	-	1
48	CONDON James	2016	Dbye	L 4	L24	D46	-	-	1
49	SMALL Gregg	2323	D20	L29	-	-	-	-	0.5
50	BERNAL Luis	2011	L23	D18	L35	L40	L38	-	0.5
51	BRINK Richard	2064	L19	L31	L36	L44	D52	L37	0.5
52	VDNESH Ed	1909	-	-	-	-	D51	-	0.5

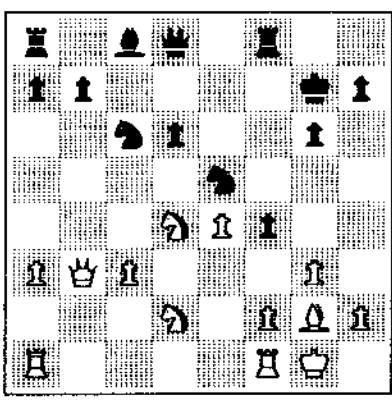


White: Kevin Bachler (2240).
Black: Andrew Karklins (2402).

Unnotated by Bachler.

1	Nf3	Nf6
2	g3	d6
3	b4	e5
4	d3	g6
5	Bg2	Bg7
6	Bb2	O-O
7	O-O	Nc6
8	a3	Ng4
9	e4	f5
10	bNd2	f4
11	b5	Ne7
12	d4	exd4
13	Bxd4	Bxd4

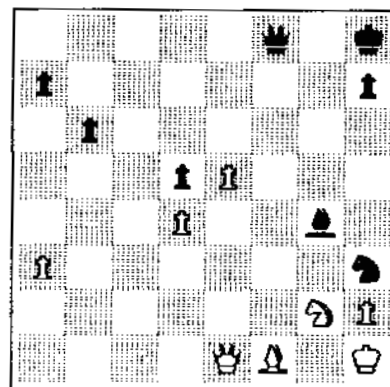
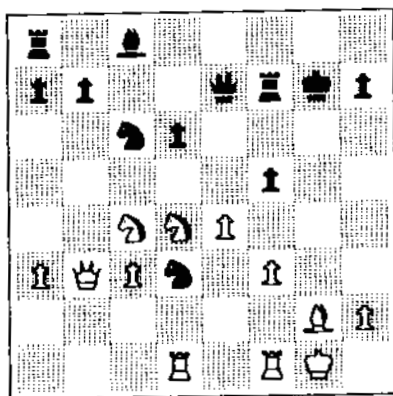
14	Nxd4	Ne5
15	c3	c5
16	bxc6	7Nxc6
17	Qb3+	Kg7



18 Ne6+ f3 19 Qxe6 f3 20 Bh3 is better than I originally thought. 20....g5 had me concerned, but 21 fRd1 looks equal or unclear.

18 Qe7
19 Nc4 Rf7
20 gxf4 Nd3
21 f5

Hoping for 21....gxf5 22 aRd1 Nf4 23 Nxd6!
21 gxf5
22 aRd1



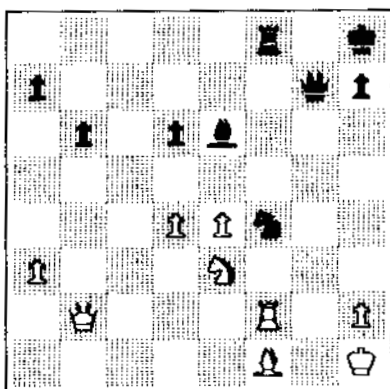
40 Qf2!
Even now I didn't understand that I was dead lost.

41 Qxf2 Nxf2+
42 Kg1 Nh3+
43 Kh1 Bf3

Black now wins byh5,h4,Nf4 andh3.

44 Bb5 Kg7
45 Bd3?? Bxg2+
46 0-1

22 Nxd4!
23 cxd4 Nf4
24 Rd2 b6
25 Ne3 Be6
26 Qb2 Kg8
27 Kh1 aRf8
28 Rg1 Rg7
29 Bf1
29 Qb5 or 29 e5 may be better.
29 fxe4
30 Rxc7+ Qxc7
31 fxe4 Kh8
32 Rf2



These fifth-round encounters, along with some other very interesting games, set up several interesting struggles in the last round. The three most important games occurred on the top three boards, with Karklins facing Martinovsky, Ardaman versus DeFotis, and Giles squaring off with Kaushansky. Races were also close for the top Expert prizes. Unfortunately, several of the most important Expert encounters of the last two rounds were either not available or undecipherable.

The following game was one of the most interesting of the tournament, with two long-time Illinois masters meeting in the last round. One played his favorite opening, the other produced some of his famous home-brewed analysis. I was exceptionally impressed by Karklins' handling of this win over Dr. Martinovsky.

White: Andrew Karklins (2402).
Black: Eugene Martinovsky (2418).

Annotated by Bachler.

32 d5!
33 e5 Rg8
34 Ng2?
34 Bg2 was necessary.
34 Nh3
35 Rf3 Rf8
36 Qe2 Bg4
37 Rxf8+ Qxf8
38 Qe1 Nf2+
39 Kg1 Nh3+
40 Kh1

1 e4 e5
2 Nf3 Nf6

Perhaps Martinovsky's favorite defense. He has had many successful results with this opening. I recall the last round of the 1979 Chicago International, when Dr. Martinovsky defeated R. Ayer with this opening to tie first with P. Biyiasis and F. Lorota of Columbia.

3 Nxe5 d6
4 Nd3

Not in any of my books! Apparently this is some of Karklins' old fashioned home cookin'.

6 b3 Bf5
7 Bb2 Nd7
If 7...Nc6 8 f3 gives White a chance to double Black's Pawns after 8...Nf6 9 Bxf6 Qxe2+ 10 Bxe2 gxf6.

8 Na3 0-0-0

Somehow the Black King position seems less safe than with the Knight on c6. Also the thrust ...d5, eyeing the Knight at a3 and stopping Nc4, seems less potent without the direct connection between the d-Pawn and the Rook at d8.

9 0-0-0 eNf6
10 Nc4 Re8
11 Ne3 Be6
12 Nf4 d5
13 Nh5!

Much stronger than 13 Nxe6 which would allow Black to play an eventual ...e5 with a good center. Now the Bishop at b2 becomes stronger, and White gets his pieces untied.

13 Nxb5
14 Qxb5 c6

No Rook on d8 to defend the guy on d5.

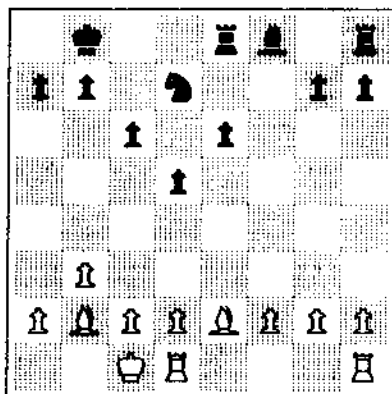
15 Nf5 Bxf5
16 Qxf5 Qe6

Apparently White's 15th move was an error, allowing Black to rid himself of a bad Bishop and get his pieces out. In reality, the move is quite deep. Karklins will demonstrate the power of the two Bishops.

17 Qf3 Ne5
18 Qe3 Kb8!
19 Be2

Black was threatening 19...Ng4, with Qf4+ (or Qg3+) met by ...Bd6.

19 Nd7
20 Qxe6 fxe6



21 Bh5!

This one move goofs up all of Black's men and gets them on the wrong squares. White's two Bishops come to life!

21 Re7
22 Ba3 c5
23 Bb2

With Black's men screwed up, the Bishop returns to a better post.

23 Nf6
24 Be5+ Kc8
25 Bf3 Re8
26 dRe1 Kd7
27 c4

Karklins is more developed and is threatening to open lines for the two Bishops.

27 Bd6

Taking his chances with opposite colored Bishops.

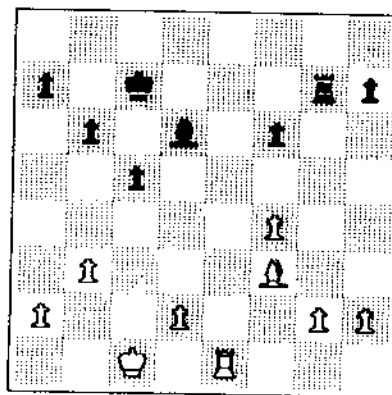
28 Bxf6 gxf6
29 cxd5 exd5
30 Bxd5 b6

White is a Pawn up in an opposite colored Bishop ending, so it must be a draw, right? But White does have the better Bishop, and Rooks are still on the board.

31 Bf7 Re7
32 Bh5

Now White can control the e-file.

32 Re5
33 Bg4+ Kc7
34 f4 Rxe1+
35 Rxe1 Rg8
36 Bf3 Rg7



At this point I thought Black had good drawing chances, even though his Bishop is not great. I thought that White's winning attempt would have to be on the K-side, since his extra Pawn is there -- but his K-side Pawns are also great targets.

37 g3 Re7
38 Re3

So 38...Rxe3 39 dxe3 would give White a 4-to-2 K-side Pawn majority.

38 b5
39 Kc2 a5
40 Rxe7+ Bxe7
41 h6 h6
42 Kd3 Kd6
43 Bh7!

Now White threatens to march his King to the K-side.

43 Bd8
44 a4!

This fixes the Black Q-side Pawns on dark squares, and so keeps Black's Bishop bad. Inroads for the White King are also created on the Q-side. Excellent play by Karklins.

44 bxa4
45 bxa4 Bb6

Hoping for 46...c4+ 47 Kxc4 Bg1 with some counterchances.

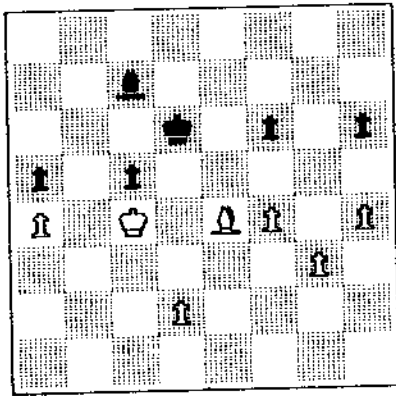
46 Kc4 Bd8
47 Bf5!

A good tempo move restricting Black's King.

47 Kc6
48 Be4+ Kd6
49 h4

Now White threatens to play both Kb5 and g4-g5, possibly creating a passed Pawn.

49 Bc7



50 Bf5!

White is very patient and watches his timing very carefully. If 50 g4 Ke6! 51 f5+ [51 Kxc5 Bxf4 52 d4 Be3 53 Kc4 h5! 54 gxh5 Bf2 = or 53 Kb5 Bxd4 54 Kxa5 Be3 55 Ka6 (55 Bg6 Bf2 =) h5! 56 gxh5 Kf7 and 57....Bf2 =] 51....Kd6 makes the ending much more difficult.

50 Bb6

51 Bh7

If 51 g4 Bd8 52 Kb5 Kd5! 53 g5 fxg5 54 hxg5 hxg5 55 fxg5 Bxg5 =.

51 Kc6

52 Bg8 Bc7

53 Kd3!

Back to the K-side.

53 Bb6

With the idea ofc4 andBf2.

54 h5!

Preventingc4 and threatening g4-g5 withfxg5 56 fxg5 hxg5 57 h6-h7 etc.

54 c4+!

This is Black's only chance since otherwise White makes like PACMAN on the K-side after Ke4-f5-g6.

55 Bxc4!

Still more patience. There is no reason to hurry and try to win with the d-Pawn, since Black's K-side is still very weak.

55 Bf2

56 g4 Kc5

57 Bf7 Be1

58 Ke3 Kd6

59 g5! fxg5

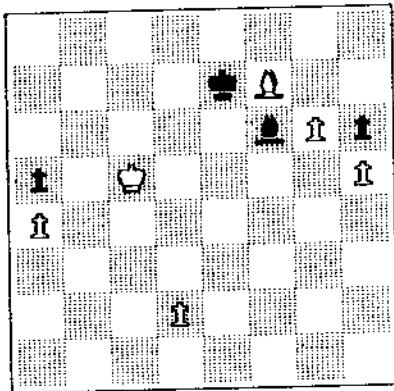
60 fxg5 Ke7

61 g6 Bh4

62 Ke4 Bf6

63 Kd5 Kd7

64 Kc5 Ke7



65 Kb5!
The simplest method.

65	Bg5
66	Kxa5	Bxd2+
67	Kb5	Kf6
68	a5	Be3
69	Kc6	Kg7
70	a6	Bd4
71	Kb7	Be3
72	a7	Bxa7
73	Kxa7	Kf6
74	Kb6	Kg7
75	Kc5	Kf6
76	Kd5	Kg7
77	Ke5	Kf8
78	Bc4	Kg7
79	Bf1	1-0

A superb ending by Karklins.



White: Greg DeFotis (2411).
Black: Miles Ardaman (2390).

Annotated by Bachler.

1 g3 d5
2 f4!? Nf6!?

Interesting and a bit more uncharted is 2....h5!?! which appears to give Black equality. If 3 Nf3 h4! and now 4 Bg2 hxg3 5 hxg3 Rxh1 6 Bxh1 Nc6 [or 6....c5] is unclear or equal. Black can aim for putting his fN on g4, Q-side castling, andf6 followed bye5. Because of the hole at g4, White probably can't do a great deal to stop this plan. Note that 4 Nxh4 probably loses to 4....Rxh4 5 gxh4 e5 6 d3 Qxh4+ 7 Kd2 Bc5 threatening 8....Qxf4+ 9 e3 Bxe3+ or 9 Kc3 Qb4 mate.

3 Bg2 c5
4 Nf3 Nc6

The position is now a sort of Leningrad Dutch Reversed, except Black decides not to playg6 andBg7.

5 d3 e6
6 O-O Be7

Here Black could have tried 6....Bd6 aiming for control of e5.

7 a4!

It took me a while to grasp this move, which serves several purposes. It prevents Q-side expansion by Black, allows White to play Na3 without concern overc4 andBxa3, and is an excellent positional move which helps to establish freedom of action for White's men.

7 Qc7
8 Na3 a6
9 Qe1 O-O
10 e4 Rb8
11 c3 dxe4
12 dxe4

At this point I prefer White. He controls the center and can easily move his pieces. Black has a harder time coordinating his Bishops with his other men. White's pieces just flow more freely.

12 b5
13 Kh1 Qb6

his is a move I'm not quite sure I understand. Black's point is probably to prepare ...Bb7 without worrying about axb5. 7 a4 is a well conceived move! However, ...Na5 can be considered, with the ideasBb7, orNb3, orb4 and ...Nc4.

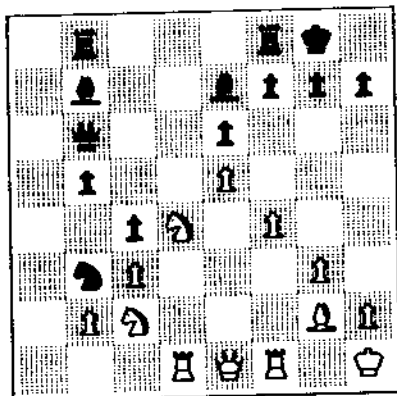
14 axb5 axb5
15 e5 Nd5
16 Nc2 Na5
17 Be3 Nxe3
18 Nxe3

White has rid himself of a bad Bishop, and is now mobilized to begin actions on the K-side. Black could consider 18...Bb7 or B...Bb6!? intendingb4 andNc4.

18 Nb3
19 Rd1 c4
20 Nc2

o grab d4.

20 Bb7
21 fNd4



21 Nc5

Trying for more than equality, Black gets in trouble. 21...Bxg3+ 22 Kxg2 Nxd4 23 Nxd4 Nc5 is to be considered. Black can then try ...b4 to create counterplay on the Q-side.

22 Nb4! Bxg2+
23 Kxg2 fRc8

24 Nc6 had to be prevented.

24 f5

Taking his chance to operate on the K-side.

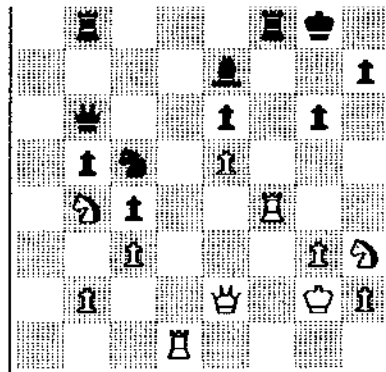
24 Bf8
25 Rf4

In a few moves White has significantly improved his advantage. Black must be careful not to be overrun.

25 g6
26 fxe6 fxe6

This prevents Nd5 and still allows for a possibleNd3, butNxe6 looks much better to me. Black now has weaknesses on the K-side and in the center, particularly at e6, f6, and d6.

27 Qe2 Bh6
28 Rh4 Bg7
29 Nf3 Rd8
30 hRd4 Bf8
31 Ng5 Be7
32 Nh3 Rf8
33 Rf4



33 g5

Ardaman has been fighting throughout this game -- probably too hard. He continues to do so, to the point of being lost.

34 Rxf8+ Rxf8
35 Nf2 Qb7+
36 Kg1 Nb3
37 Ne4 Qb6+
38 Kg2 Qb7
39 Kg1 Rf5
40 Nd6 Qa7+
41 Kg2 Rf8
42 Kh3 Rf2
43 Qg4! Nc5
44 Qd4 Rxb2
45 Nc6 Qa2
46 Nxe7+ Kf8
47 Rf1+ Kxe7
48 Rf7+ Kd8
49 Nf5+ 1-0

White: Morris Giles (2403).
Black: Leonid Kaushansky (2379).

Annotated by Bachler.

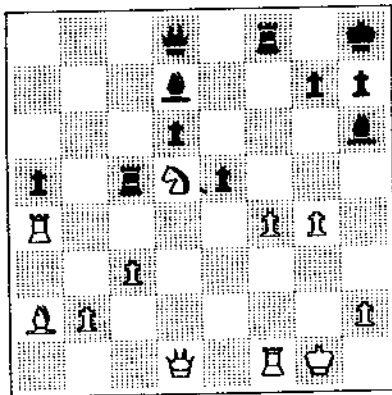
1 e4 c5
2 Nf3 Nc6
3 d4 cxd4
4 Nxd4 Nf6
5 Nc3 e5
6 dNb5 d6
7 Bg5 a6
8 Na3 b5
9 Nd5 Be7
10 Bxf6 Bxf6
11 c3 Bg5
12 Nc2 0-0
13 Bd3

Although I have played this move with success, I believe 13 a4 to be stronger.

13 Be6
14 cNe3 Ne7
15 Bc2 Rc8
16 0-0

16 a4 was also good.

16 Rc5
17 Bb3 Nxd5
18 Nxd5 Kh8
19 a4 bxa4
20 Rxa4 a5
21 Ba2 f5
22 exf5 Bxf5
23 f4 Bh6
24 g4 Bd7

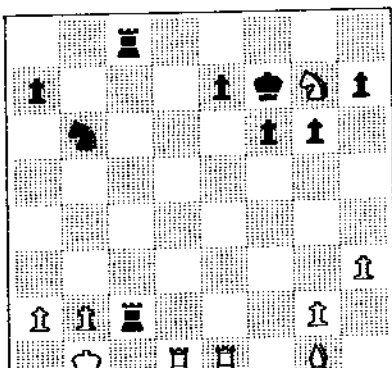


25 Re4
 Not 25 g5 Bxa4 26 Qxa4 Bxg5 27 fxc5 Qxg5+
 -+.

25	exf4
26	b4	axb4
27	cx b4	Rc8
28	Nxf4	Qb6+
29	Kg2	Qc6
30	Bd5	Qc2+
31	Qxc2	Rxc2+
32	Ne2	Rxf1
33	Kxf1	Bb5
34	Draw	

White: Kevin Czuhai (2209).
 Black: Eric Schiller (2223).

1	d4	d5
2	Nc3	c6
3	Bg5	g6
4	Qd2	Bg7
5	O-O-O	Nd7
6	f3	Qa5
7	Kb1	gNf6
8	e4	Nb6
9	Bf4	dxe4
10	fxe4	Bg4
11	Nf3	Rc8
12	h3	Be6
13	d5	cxd5
14	exd5	fNxd5
15	Nxd5	Qxd5
16	Qxd5	Bxd5
17	Bb5+	Bc6
18	Bxc6+	bxc6
19	hRe1	Nd5
20	Be5	f6
21	Bd4	c5
22	Bg1	Nb6
23	Nd2	Kf7
24	Ne4	Rc7
25	Nxc5	hRc8
26	Ne6	Rxc2
27	Nxg7	



27	Na4!!
28	Rd7	Rxb2+
29	Ka1	Re2!
30	dRd1	cRc2
31	Rxe2	Rxe2
32	O-O	

Black threatens 32....Nc3 and 33....Rxa2 mate. If 32 Rc1 Kxg7 33 g4 Nb6 -+.



This was a wonderful tournament all around. The event was sponsored by the Midwest Chess Association and the Lake County Chess Association, and was hosted by the College of Lake County and the CLC Chess Club. Helen Warren did a superb job of organizing the event, and the refreshments she provided -- including a trayful of sandwiches -- was most enjoyable. A TV was also available for those who didn't want to miss Saturday morning cartoons, Alfred Hitchcock, or their favorite soap opera. Tim Just served as chief TD, and the tourney came off without a hitch. He was assisted by Dennis Grant and Don Martin.

The Prairie State is another tournament that continues to grow. The facilities provided at the College are wonderful for chess, and due to the addition of a new college wing, should improve (if that is possible) next year. The staff of the College of Lake County (Director of Activities Ed Snyder and Nancy Franz) provided us with everything we could have asked. They were exceptionally helpful and well-organized.

I strongly urge all midwest Experts and Masters to take advantage of this event, which now serves as the best training ground tournament in the midwest. This tournament has become the lower tier to the stronger Midwest Masters. Between these two events, our developing players now have the tournaments that 5 years ago they could only dream about. Thank you Helen!

ILLINOIS CHESS LEAGUE

RULE CHANGES FOR 1986-87

These changes were approved at a team captains' meeting June 29. A more detailed list will be sent to last year's captains along with entry forms, (

(1) The Open section has been eliminated. (2) A Master/Expert section has been added with an average team rating of 2100 or less and a floor rating (lowest) of 1900. (3) The Reserve section has been modified to a floor rating of 1600. Average team rating will still be 1900 or less. (4) The Booster section has been modified to an average team rating of 1800 or less with a cap (highest) rating of 1799 and a floor rating of 1200.

(5) Forfeits of individual boards in a match will now be from board 6 up. No more saying board 1 is supposed to show or is late and starting match on boards 1. If match is to start those present must play highest board available.

The schedule for the 1986-87 season is as follows:

(a) Deadline for receipt of entries is August 22, 1986. Send entries to:
 John Siadak
 18503 Claire Lane (312) 331-3320
 South Holland IL 60473
 Make checks payable to Wayne Palmquist.

(b) Schedules will be sent to team captains by September 15. (c) Matches the week of September 29. (d) Playoffs will be held during January.

(e) Possible prize fund could include an entry into the Amateur Team Championships to be held in Chicago February 14-16, 1987.

If you are interested in having a team from your club play in the Illinois Chess League and you are not on the team captain mailing list, please call (312) 331-3320 for more information and entry forms.

HELP US — HELP OURSELVES!

The Kasparov — Karpov re-match has started — we will be seeing the first one-third of the match on local television. WTTW, Channel 11, has agreed to start telecasting the match starting Saturday, August 16th.

We will only be seeing the first one-third because we need additional funding to produce the whole series for television.

Please help us, chess and you by sending a donation (ANYTHING!) to finance this match and make it available for our Local T.V. Stations.

Please send your tax deductible check, made payable to:

AMERICAN CHESS FOUNDATION

to the

Illinois Chess Association

Box 43336

Chicago, Illinois 60643

WE NEED YOUR HELP!!

— *Call Chess-phone for updates and T.V. schedules* —
233-8500

ICA TOUR UPDATE

So far in 1986 there have been three maxi- and two mini-events on the Illinois Tour, as follows:

Tim Just Winter Open, January	mini
Greater Peoria Open, April	MAXI
Eighth South Suburban Open, May	mini
Master Challenge VIII, June	MAXI
Chicago Midwest Championship, July	MAXI

Players earn ICA Tour Points by finishing first, second, or third overall, or first or second in their class, in a Tour event. Cash prizes, both championship and class, are paid at the end of the year to the highest finishers. Details are in the January-February ICB.

All players must have competed in at least 3 Tour events by year-end in order to be eligible for Tour prizes. Upcoming Tour events are expected to include the following:

Tim Just's Open/Reserve	mini-event, August 2-3
Bradley Summer Open	mini-event, August 16
Illinois State Championship	MAXI-EVENT, August 30 - September 1
Lake County Open/Reserve IX	mini-event, September 27-28
ICA Officers' Tornado	mini-event, October 26
Illinois Class Championships	MAXI-EVENT, November 22-23
Last Chance Tour Tornado	mini-event, December 20

Keep in touch with the Tournament Calendar (back page), ChessPhone [(312) 233-8500], or Chess Life for details. All players in Tour events must be ICA members, except out-of-staters who do not wish to be eligible for Tour prizes.

Listed below are all players who have accumulated ICA Tour points so far this year. The number of events for each player is listed in parentheses.

So far, the Tour calculations are only partially computerized, so there are likely to be errors. If you think you see one, please WRITE (do not call, I don't want my phone ringing off the hook) the editor at the address on the inside front cover.

Championship Tour Points:

Morris Giles	35.00	(4)
Eugene Martinovsky	30.00	(2)
Eric Schiller	30.00	(1)
? Lester VanMeter	30.00	(1)
Robert Gruchacz	20.00	(2)
William Naff	20.00	(1)
Lawrence Chachere	15.00	(1)
George Umezina	10.00	(3)
Andrew Karklins	10.00	(1)
Erik Karklins	10.00	(1)
Walter Brown	5.00	(1)
Tom Smit	5.00	(1)
Robert Sax	4.25	(4)
Ray Satterlee	3.00	(3)
Ken Wallach	3.00	(2)
Scott Zingheim	3.00	(2)
Ramsey Forbush	3.00	(1)
Glenn Panner	1.25	(5)
Luis Bernal	1.25	(3)
Greg Small	1.25	(1)

Expert Tour Points:

Krzyzstof Flaga	24.00	(1)
William Naff	24.00	(1)
George Umezina	15.00	(3)
Luis Bernal	11.14	(3)
Ray Satterlee	9.00	(3)
Ramsey Forbush	9.00	(1)
Walter Brown	6.00	(1)
Tom Smit	6.00	(1)
? Lasa Goonetilleke	5.14	(2)
Peter Stein	5.14	(2)
? William Groeller	5.14	(1)
? James Kulbacki	5.14	(1)
Alan Watson	5.14	(1)
? John Wygrecki	5.14	(1)
Kevin Gensler	3.00	(1)
Kazimieras Jakstas	3.00	(1)
? Dan Vasto	3.00	(1)

Class A Tour Points:

Robert Sax	23.00	(4)
Phil Anderson	20.00	(1)
Allen Coffey	15.00	(2)
John Urbanik	15.00	(1)
? Joel Mandeville	10.00	(1)
Robert Manaster	5.50	(3)
Craig Sandford	3.00	(3)
Joel Heinrich	3.00	(2)
Peter Walhout	3.00	(2)
Gregory Berry	3.00	(1)
Ethelbert Gazmen	3.00	(1)
Jonathan Goldman	3.00	(1)
Lawrence Kosiba	3.00	(1)
Edward Ross	3.00	(1)
John Popovich	2.50	(2)
? David Monatelli	1.67	(2)
Phil Jarrette	1.67	(1)
? Michael Selig	1.67	(1)

Class B Tour Points:

? Karl Smart	16.00	(1)
Leonard Spiegel	16.00	(1)
Carlos Vegh	12.00	(2)
Carl Vero	12.00	(1)
+ Glenn Panner	8.00	(5)
Imre Deli	8.00	(1)
Victor Swanson	6.00	(2)
? David Kurfman	6.00	(1)
Steeve Rydberg	2.67	(3)
William Graves	2.67	(2)
Bruce Kreisman	2.67	(2)
Tom Friske	2.00	(3)
Bernard Pukel	2.00	(2)

Class C Tour Points:

Rudy Padilla	12.00	(4)
David Freeman	12.00	(4)
? Mark Thompson	12.00	(4)
Randy Eichler	6.00	(4)
Donald Kirkpatrick	6.00	(4)
Henderson Johnson	3.86	(4)
Mark Petersen	3.86	(4)
Glenn Panner	3.00	(4)
Robert Kempner	3.00	(4)
Mark Kerman	3.00	(4)
Bill Parker	3.00	(4)
Myron Cannell	.86	(4)
Michael Berdich	.86	(4)
Calvin Hayes	.86	(4)
? Mike Morgan	.86	(4)
Thomas Schaffer	.86	(4)

Class D/E Tour Points:

David Carson	8.00	(4)
Joseph Haines	8.00	(4)
Jim Burns	4.00	(4)
Mike Ginsburg	4.00	(4)
Gary Levy	4.00	(4)
? Danny Moore	4.00	(4)
Michael Pratts	4.00	(4)
David Wulatin	4.00	(4)
Bruce Chenoweth	2.00	(4)
Dennis Cain	2.00	(4)
Rod Moore	2.00	(4)
? David Andrews	1.00	(4)
Guy Gruenberg	1.00	(4)

+ plus points carried up from lower class.

? denotes out-of-state non-member. Out-of-state players need not join ICA play in Tour events, but unless they join, their Tour points do not count.

ICA TOUR OST ACTIVE

following player has
fect attendance
rd of five ICA Tour
ts so far this year:

Glenn Panner

following players
e each played in four
r events this year:

Morris Giles
Robert Sax

following have each
yed in three events:

Luis Bernal
David Carson
Bruce Chenoweth
Thomas Friske
Fred Gruenberg
Timothy Just
Robert Manaster
Barry Mayworm
Rudy Padilla
Steeve Rydberg
Craig Sandford
Ray Doyle Satterlee
Bill Smythe
George Umezina

following have each
yed in two Tour
nts, putting them on
verge of breaking
o the list of year-
l prize qualifiers:

James Abbott
Roger Allison
Leslie Bale
Leonard Beasley
? Stan Biezynski
William Brock
Gregory Bungo
William Buttny
Myron Cannell
Albert Chow
Lawrence Clark
Allen Coffey
Lawrence Cohen
Jay Cole
Charles Cunningham
Robert Dreessen
Robert Forbis
? Lasa Goonetilleke
Jon Gotz
William Graves
Robert Gruchacz
? Scott Haubrich
Joel Heinrich
? Mark Hoshor
Henderson Johnson
Robert Kempner
Mark Kerman
Bruce Kreisman
Chris Land
Tim Macejak
Donald Martin
Eugene Martinovsky
Hal Meltzer
Alexander Mihajlov
? Dave Monatelli

UNITED STATES REGION VII OPEN TEAM CHAMPIONSHIP

At the beautiful Downtown St. Louis Marriott Hotel

OCTOBER 4 • 5, 1986

THE \$1,500.00 IS GUARANTEED BY
CUSANELLI'S RESTAURANT

TEAM ELIGIBILITY: This tournament is open to any four-player team (no alternates). No limit on average team rating. No half-point byes. Board order determined strictly by September rating supplement; unrated players assigned fifty points below lowest-rated team member.

SCORING: Prizes and pairings are determined by game points, not match points. For example, a team's perfect score would be 16-0. Tiebreak systems for trophies: Solkoff, Sutter, Sonnenborn-Berger, Blitz Game.

PLAYING SITE / HOTEL RATES: Hawthorne Ballroom, St Louis Marriott Hotel, One Broadway, St Louis MO 63101 (corner of Market & Broadway, across from Busch Stadium). Lodging: \$50.00 per room per night, limit four per room. Reserve by 9-15-86, mention tournament. Reservations: (314) 421-1776.

PRIZES: The \$1,500.00 prize fund is guaranteed by Cusanelli's Restaurant, 705 Lemay Ferry Road, in south St Louis County.

\$500.00	First Place Team	Trophy:	Top player on each board
\$200.00	Second Place Team	Plaque:	Each member of top team
\$200.00	Top Expert Average Team	Trophy:	Top scholastic team with all four players attending same school, grades 1-12
\$180.00	Top Class A Average Team		
\$160.00	Top Class B Average Team		
\$140.00	Top Class C Average Team		
\$120.00	Top Class D/E Average Team		

ENTRY FEE: \$48 per team by mail, \$64 per team by phone, \$80 per team at site. Ad hoc teams can and will be formed during the registration period Saturday. Membership in the U.S. Chess Federation (\$4) is required in addition to a Region VII state association: MO Chess Association (\$4), IL Chess Association (\$10), IA State Chess Association (\$8), or NE State Chess Association (\$4). Free MCA membership with \$25 USCF renewal.

SCHEDULE: Registration:
8:00-9:30 am Saturday.
Time limit: 45/2, then 25/1.
Rounds begin: 10:00 & 4:00
Saturday, 9:00 & 3:00 Sunday.

ENTRIES: William J. Moushey
3145 Oregon Street
St Louis MO 63118
(314) 664-0612

ASSISTANTS: Bob Sutter
Bill Merrell

TEAM COORDINATORS: Contact these people to join a team from your area:

IA:	Carl Dunn	(319) 753-1835
	Mitch Weiss	(515) 424-0946
	Roger Gotschall	(515) 233-4239
NE:	Gary T. Marks	(402) 475-5406
IL:	Jim Warren	(312) 246-6665
	Tim McEntee	(309) 672-3724
MO:	Don Oswald	(913) 299-3976
	Bob Holliman	(816) 836-8950
	Bob Sutter	(314) 867-2151

Allen Dean Moore
Alberto Munoz
Mark Petersen
John Popovich
Bernard Pukel
Harrison Robinson
Jim Roy
Evan Rynes
Angelo Sandrin
Tony Schroeder
Mark Sefcheck
Charles Smith
Ely Sollano
Joseph Splinter
Kurt Stein
Peter Stein
Robert Stoltz
? Stephen Storkel
Victor Swanson

Donald Townsend
Stacy Van Petten
Carlos Vegh
Donald Walhout
Peter Walhout
Cliff Wallach
Ken Wallach
Wayne Wheeler
Sandy Zabell
Scott Zingheim

? denotes out-of-state non-member. These players should join ICA immediately if they wish their Tour standings to count toward Tour prizes at the end of the year.



CHICAGO CHESS CENTER

twenty nine twenty three north southport
chicago, illinois 60657 / telephone 929-7010

A LETTER TO TOURNAMENT PLAYERS OF CHICAGO, THE SUBURBS AND OTHER SEMI-NEARBY COMMUNITIES

The Chess Center is presenting a new format with regard to the hallowed Chicago low entry fee. As you will notice, the entry fee in advance for this event is almost \$100. bucks. I know the first reaction will be - - "\$100. bucks thats a lot of loot, you guys will have to stop smoking pot.

So right at the start we'll have to reassure you that the most potent stuff imbibed here is Hill's Bros. coffee, although we'll have to confess its not caffeine free. We don't think that the coffee bean has caused anyone to become completely irrational. You know that for players who travel to New York or Philadelphia, the entry fee is about \$160. bucks and thats just the beginning. Figuring conservatively, round trip air fare about \$150., hotel 4 nights \$60., food \$50., the unexpected out of town expense \$20. - - total \$440. Whether you appraise the matter this way or not, your cost to play in the New York Open or World Open is at least the amount indicated.

Now the object of this letter is not to dissuade you from going to these important yearly events, spending the money, and having a good time. Our intent is to try to minimize the impulsive and negative reaction to what we think is a logical-practical idea for good prize funds in your own general community.

Remember: no plane, long train, or automobile trips to wear you out. No hotel - you sleep at home. Finally, how easy to get here. These are some of our creative, innovative suggestions. There is camel caravan, covered wagon, pony express, bicycle, motor scooter, dog sled (if it snows), and for the jogger - unparalleled public pavements. For those who wish to swim - beautiful Lake Michigan and the Chicago River.

We know a couple of high rated players who could walk here and deprive the CTA of bus fare. Last but not least, those entrants who are not disposed to eat out, can bring their lunch from home and munch their vittles in our luxuriously appointed kitchen.

Incidentally, we serve food here which will improve your chess performance by a minimum of 100 rating points.

(this is no laughing matter)

Cordially,



Jules Stein



OCT. 11.12

CHICAGO CHESS CENTER

\$\$\$G 2800

GRAND PRIX CLASS

5 SS · SAT. 40/100 · SUN. 40/2



MASTERS 500-200

EXPERTS 500-200

CLASS A 500-200

CLASS B 500-200

EF \$95 IF REC'D BY 10/8 \$105 BY PHONE \$115 AT SITE

PROJECTED PRIZE FUND BEYOND INITIAL \$2800 GUARANTEE

IF 12 ENTRIES PER CLASS **600-300-100**

IF 15 ENTRIES PER CLASS **700-300-200**

IF 20 ENTRIES PER CLASS **800-400-300**

REG 9-9:45 RDS 10-2:30-7 10-3 LS NC

CHICAGO CHESS CENTER

2923 n. southport/telephone 929-7010/chicago 60657

GREATER CHICAGO MIDWEST CHAMPIONSHIP

Twenty years ago, the Greater Chicago Open was one of a handful of tournaments played during the year in Chicago. It was an eight-round, two-weekend event run by Frank Skoff and Peter Wolf of the Chicago Chess Foundation.

Following Skoff's retirement from active tournament organizing, Richard Verber took over the event, shortened it to one weekend, and re-titled it the Greater Chicago City Championship. The tournament continued to be recognized as one of the premier chess events of each year.

Fred Gruenberg entered the picture only a few years ago, waiting until this year to put his stamp on the annual affair in a big way. The tournament is now called the Greater Chicago Midwest Championship, but old-timers still refer to it as "the GCO."

Grandmaster Sergey Kudrin and Hungarians Maria Ivanka and Madl Ildiko were brought in through Fred's generous contributions, with further financial aid from Norbert Leopoldi. 186 players couldn't resist the opportunity to share the tournament hall with these and other luminaries. Crowding was not a problem, though, as the playing site was the Holiday Inn O'Hare ballroom, featuring room to spare, good lighting, and padded chairs.

Maria Ivanka almost won the National Open in Las Vegas last March, playing tactically to score same-day, back-to-back upsets in the middle rounds. In Chicago, she continued her crowd-pleasing ways, sacrificing a Queen for a Rook in an unclear position in round 4. Dozens of spectators gathered, watching her turn down several forced draw opportunities to press her attack and snare the full point. In round 5, playing on the stage, she again played audience chess, but finally had to resign to Dr. Eugene Martinovsky. Both of these games are annotated by Albert Chow in the following pages.



Dr. Martinovsky and Maria Ivanka beginning their last-round slugfest.

Madl Ildiko, 16, recently won the world Junior Women's title by two full points, defeating five Russians on her way to the crown. She is in the U.S. for only two months, to get a USCF rating and to play chess. She gets good grades in school and enjoys sports, movies, and knitting. Her father makes wine barrels and does not play chess. Her most interesting game, ironically, was her fourth-round loss to Robert Gruchacz. That game, too, is annotated by Chow. The editor modestly believes that the annotator missed something, so keep those cards and letters coming.

Sergey Kudrin wasn't feeling too well at times, and his Friday night sight-seeing expedition with Ildiko and Ivanka (Sears Tower, Chinatown, etc) probably didn't help. He played Saturday until 4:00 a.m.

In addition to the notables, there were plenty of us mortals. A dozen unrated players participated, including 9-year-old Evan Geller, playing in his first rated event.

The tournament made the Chicago Tribune and the Channel 2 News on Saturday night. Radio Free Europe did an interview on the Hungarian women for broadcast throughout Europe the following week. Several dozen spectators trickled in throughout the tournament, picking up leftover copies of the Illinois Chess Bulletin on their way through.

Tournament winners and Tour Point winners were as follows:

CHAMPIONSHIP SECTION:	ICA TOUR POINTS
1st: Eugene Martinovsky	20.00
Robert Gruchacz	20.00
Morris Giles	20.00
Exp: Krzysztof Flaga	24.00 X
George Umezina	3.00 X
Kevin Gensler	3.00 X
Kazimieras Jakstas	3.00 X
Dan Vasto	?? 3.00 X
A: Allen Coffey	15.00 A
John Urbanik	15.00 A

AMATEUR SECTION:	ICA TOUR POINTS
1st: Leonard Spiegel	16.00 B
2nd: Imre Deli	8.00 B
C: David Freeman	12.00 C
Mark Petersen	.86 C
Calvin Hayes	.86 C
Michael Berdich	.86 C
Myron Cannell	.86 C
Mike Morgan	?? .86 C
Henderson Johnson	.86 C
Thomas Schaffer	.86 C
D: Michael Pratts	4.00 D
Gary Levy	4.00 D
David Wulatin	4.00 D
Junior: John Nielson	
Unrated: Leonard Beasley	

In addition, bonus Class prizes were awarded to downstate or out-of-state players as follows: Victor Pagan (A); Banks Moore, Je Britt, Steven Storkel (B); Mike Morgan (C).

?? -- Dan Vasto and Mike Morgan are from outside Illinois and are not ICA members. Their Tour points will count only if they join ICA when they enter their next Tour events.



Above: Ed Formanek in round 5.

Below: Ex-Illinoisian Dan Vasto, visiting from the Iowa cornfields.

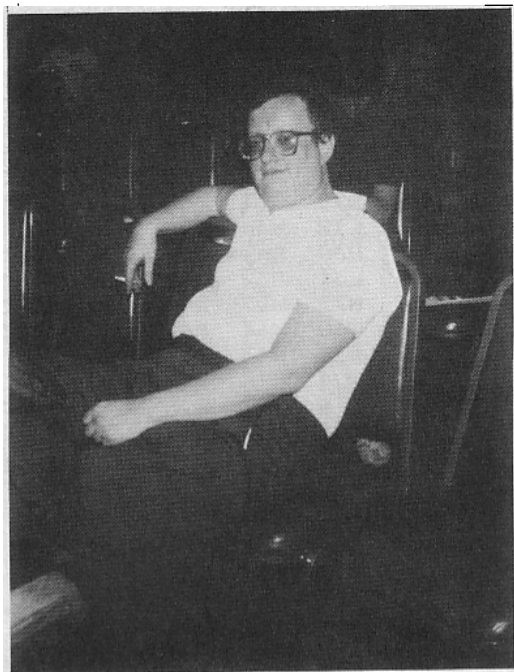


CHAMPIONSHIP SECTION

1	MARTINOVSKY Eugene	2425	W75	W61	D 8	W53	W 9	4.5
2	BRUCHACZ Robert	2469	W34	D23	W31	W13	W 4	4.5
3	GILES Morris	2435	D35	W54	W23	W11	W10	4.5
4	KUDRIN Sergey	2580	W69	W21	W20	W19	L 2	4
5	FORMANEK Ed	2433	D39	W50	W63	D22	W 8	4
6	FLAGA Krzysztof	2125	W18	L43	W65	W28	W22	4
7	ZINGHEIM Scott	2272	L32	W60	W46	W31	W21	4
8	QUIGLEY Lawrence	2230	W26	W40	D 1	W12	L 5	3.5
9	IVANKA Maria	2357	W25	W44	D11	W29	L 1	3.5
10	STEIN Kurt	2270	W38	W62	D12	W30	L 3	3.5
11	UMEZINWA George	2174	W42	W32	D 9	L 3	W35	3.5
12	GENSLER Kevin	2079	W57	W14	D10	L 8	W32	3.5
13	IDILKO Madl	2215	W76	D29	W53	L 2	W34	3.5
14	HOSHOR Mark	2286	W46	L12	W38	W24	D15	3.5
15	JAKSTAS Kazimieras	2170	W58	D30	Dbye	W25	D14	3.5
16	VASTO Dan	2192	W74	L31	D32	W39	W29	3.5
17	COFFEY Allen	1935	L19	W72	W67	W44	D20	3.5
18	URBANIK John	1859	L 6	W68	W64	D47	W33	3.5
19	KRECKLER Warren	2233	W17	W33	W43	L 4	-	3
20	WISEMAN Michael	2242	W27	W24	L 4	D34	D17	3
21	GOOMETILLEKE Lasa	2137	W65	L 4	W27	W26	L 7	3
22	SANDRIN Angelo	2189	W51	W45	Dbye	D 5	L 6	3
23	SATTERLEE Ray Doyle	2134	W41	D 2	L 3	D36	W30	3
24	JASIUWIENAS Leonard	2058	W48	L20	W37	L14	W45	3
25	EASTER Ron	1980	L 9	W73	W66	L15	W48	3
26	SANDFORD Craig	1932	L 8	W71	W61	L21	W47	3
27	PAGAN Victor	1952	L20	W48	L21	W71	W44	3
28	GREENSTEIN Benjamin	1838	D53	Dbye	W40	L 6	W46	3
29	VESELY Peter	2025	W56	D13	W47	L 9	L16	2.5
30	SCANLON John	1856	W77	D15	W55	L10	L23	2.5
31	FORD Sam	2019	W49	K16	L 2	L 7	D37	2.5
32	SZUSTOWSKI Paul	1941	W 7	L11	D16	W50	L12	2.5
33	BERNAL Luis	2043	W72	L19	D36	W56	L18	2.5
34	SOLLANO Ely	2015	L 2	W41	W49	D20	L13	2.5
35	SPLITTER Joseph	2009	D 3	L47	W54	W55	L11	2.5
36	HEINRICH Joel	1846	L61	W75	D33	D23	D38	2.5
37	BOSSAERS Phil	1871	D63	D64	L24	W68	D31	2.5
38	MACEJAK Tim	1959	L10	W52	L14	W60	D36	2.5
39	SCOTT Gene	2007	D 5	L55	W70	L16	W58	2.5
40	KISTLER Leslie	2038	W71	L 8	L28	W7	D41	2.5
41	SILAS Jeff	1880	L23	L34	W72	W66	D40	2.5
42	BUTTNY William	1910	L11	L66	Dbye	W54	W53	2.5
43	CHOW Albert	2429	W68	W 6	L19	-	-	2
44	BLANKENAU Mike	2095	W73	L 9	W45	L17	L27	2
45	SMYTHE Bill	1883	W67	L22	L44	W49	L24	2
46	MARCOWKA Robert	1968	L14	W57	L 7	W70	L28	2
47	INUMERABLE Florentino	2199	Dbye	W35	L29	D18	L26	2
48	WALHOUT Donald	1804	L24	L27	W74	W65	L25	2
49	OSTERLUND Russell	1730	L31	W74	L34	L45	W73	2
50	LEE David	2064	D60	L 5	Dbye	L32	W57	2
51	CREWSE Lynn	1925	L22	L56	D57	D52	W71	2
52	YAKICH Bob	1811	L62	L38	D58	D51	W68	2
53	DAMOCLES Job	2094	D28	W59	L13	L 1	L42	1.5
54	FRAATS Daniel	1691	W66	L 3	L35	L42	D60	1.5
55	ZABELL Sandy	2144	Dbye	W39	L30	L35	-	1.5
56	VAN PETTEN Stacy	1738	L29	W51	Dbye	L33	-	1.5
57	HAAPAPURO Jerry	1821	L12	L46	D51	W59	L50	1.5
58	ABBOTT James	1901	L15	L67	D52	W72	L39	1.5
59	WALHOUT Peter	1827	D64	L53	L69	L57	W66	1.5
60	HANSEL Mark	1811	D50	L 7	Dbye	L38	D54	1.5
61	BROCK William	2101	W36	L 1	L26	-	-	1
62	SCHROEDER Tony	2060	W52	L10	-	-	-	1
63	SCHUMAN Brian	2126	D37	D70	L 5	LF	-	1
64	GOTZ Jon	2090	D59	D37	L18	-	-	1
65	SEFCHECK Mark	1895	L21	W69	L 6	L48	-	1
66	ANDRESSEN Terry	1710	L54	W42	L25	L41	L59	1
67	WHEELER Wayne	2136	L45	W58	L17	-	-	1
68	SAX Rob	1985	L43	L18	W73	L37	L52	1
69	HOLZMUELLER Keith	2015	L 4	L65	W59	-	-	1
70	MC NAMARA Jim	1868	Dbye	D63	L39	L46	-	1
71	BAUTISTA Vincent	1749	L40	L26	Wbye	L27	L51	1
72	CRADDOCK Joseph	1762	L33	L17	L41	L58	Wbye	1
73	ALLISON Roger	1841	L44	L25	L68	Wbye	L49	1
74	MANASTER Robert	1926	L16	L49	L48	-	-	0
75	LORING Steve	1981	L 1	L36	-	-	-	0
76	LAHVIC Tim	1927	L13	-	-	-	-	0
77	BAIN Robert	2109	L30	-	-	-	-	0

AMATEUR SECTION

1	SPIEGEL Leonard	1687	W 99	W 63	W 31	W 9	W 5	5
2	FREEMAN David	1596	W 76	W 11	W 25	D 23	W 19	4.
3	BEASLEY Leonard	-	W 34	W 47	D 7	W 17	W 23	4.
4	DELI Imre	1715	D 36	W 85	WF	W 43	W 6	4.
5	NIELSEN John	1713	W 89	W 67	W 28	W 22	L 1	4
6	ELLIOTT James	1681	W 77	W 62	W 61	W 8	L 4	4
7	NOVAK Gregory	1671	W 87	W 71	D 3	W 20	D 10	4
8	DUMERER Richard	1737	W 75	W 51	W 30	L 6	W 24	4
9	KREISMAN Bruce	1747	W 55	W 90	W 60	L 1	W 27	4
10	JUST Tim	1707	W 56	W 45	Dbye	W 26	D 7	4
11	STORKEL Stephen	1755	W 73	L 2	W 68	W 46	W 32	4
12	SMITH Wayne	1743	W 72	L 60	W 70	W 31	W 35	4
13	BURKE J Marcellus	1717	W 70	L 28	W 72	W 63	W 22	4
14	TOWNSEND Donald	1762	L 68	W 56	W 45	W 29	W 34	4
15	MOORE Banks	1763	L 67	W 86	W 69	W 30	W 25	4
16	BRITT Jeff	1756	L 45	W 99	W 67	W 60	W 33	4
17	BARSTAD John	1730	W 46	D 26	W 36	L 3	W 52	3.
18	COLE Jay	1738	W 96	D 35	W 50	L 19	W 49	3.
19	PANNER Glenn	1659	W103	W 48	Dbye	W 18	L 2	3.
20	GILMOUR Jack	1796	D 51	W 75	W 82	L 7	W 44	3.
21	GRAVES William	1785	W 69	L 29	W 41	D 24	W 43	3.
22	PRATTS Michael	1262	W 58	W 32	W 29	L 5	L 13	3
23	LAND Chris	1781	W 74	W 44	D 27	D 2	L 3	3
24	LEVY Gary	1398	W 33	W 59	D 43	D 21	L 8	3
25	RUZIC Neil	1711	W 86	W 68	L 2	W 28	L 15	3
26	PETERSEN Mark	1594	W 95	D 17	W 78	L 10	D 37	3
27	FRISKE Tom	1633	W 98	W 92	D 23	Dbye	L 9	3
28	HAYES Calvin	1575	W 37	W 13	L 5	L 25	W 62	3
29	VARELA Eric	1650	W 38	W 21	L 22	L 14	W 63	3
30	BROWN Tony	1611	W106	W 39	L 8	L 15	W 61	3
31	BERDICH Michael	1584	W 88	W 91	L 1	L 12	W 66	3
32	BENNETT Michael	1663	W 93	L 22	W 94	W 62	L 11	3
33	FLYNN Michael	1663	L 24	W 88	W 66	W 38	L 16	3
34	PARADAN L O	1702	L 3	W107	W 93	W 61	L 14	3
35	CANNELL Myron	1593	W 97	D 18	Dbye	W108	L 12	3
36	MORGAN Mike	1443	D 4	W102	L 17	D 40	W 60	3
37	STOLTZ Robert	1785	L 28	W 89	W 90	D 44	D 26	3
38	WULATIN David	1374	L 29	W 74	W 47	L 33	W 69	3
39	RYDBERG Steve	1743	W 81	L 30	L 46	W 71	W 74	3
40	ROBINSON Harrison	1652	L 62	W 77	D 48	D 36	W 73	3
41	JOHNSON Henderson	1555	L 78	W 98	L 21	W 94	W 64	3
42	SCHAFFER Thomas	1467	L 91	W 97	Dbye	W 53	D 54	3
43	PLUKEL Bernard	1651	W 79	W 54	D 24	L 4	L 21	2.
44	WEBER John	1657	W 53	L 23	W 95	D 37	L 20	2.
45	HENSLEY Harvey	1527	W 16	L 10	L 14	W 95	D 47	2.
46	PETERS Ed	1471	L 17	W105	W 39	L 11	D 50	2.
47	MAYWORM Barry	1685	W107	L 3	L 38	W 75	D 45	2.
48	BENNETT Greg	1117	W 65	L 19	D 40	L 49	W 88	2.
49	HOBSON Nathaniel	1645	L 71	W 87	D 53	W 48	L 18	2.
50	MELTZER Hal	1616	W 94	D 78	L 18	Dbye	D 46	2.
51	DREESSEN Robert	1586	D 20	L 8	W 57	D 54	D 56	2.
52	MC NEAL Daniel	1565	L 92	D 79	W104	W 78	L 17	2.
53	COSTELLO Mike	1389	L 44	W 83	D 49	L 42	W 85	2.
54	FARKAS Kalman	1767	W 83	L 43	Dbye	D 51	D 42	2.
55	SUDMALA Robert	1512	L 9	W 84	Dbye	W102	-	2.
56	FRAHM Tim	-	L 10	L 14	W 97	W 83	D 51	2.
57	RIFFLE James	-	D 80	L 82	L 51	W 86	W 81	2.
58	CUNNINGHAM Charles	1598	L 22	L 93	W 99	D 70	W 76	2.
59	LEGG Wilbur	1671	WF	L 24	Dbye	W 85	-	2.
60	FAHRENHOLZ Steve	1598	W104	W 12	L 9	L 16	L 36	2
61	SAMPLE Howard	1437	W105	W 64	L 6	L 34	L 30	2
62	CARSON David	1387	W 40	L 6	W 64	L 32	L 28	2
63	POPOVIC Marko	1469	W101	L 1	W 91	L 13	L 29	2
64	MOHAMED-ALY Hossa	1686	W100	L 61	L 62	W 72	L 41	2
65	FINEBERG Tom	1708	L 48	W100	W101	-	-	2
66	HAIRGROVE Steven	-	D102	D 80	L 33	W 67	L 31	2
67	ROY Jim	1555	W 15	L 5	L 16	L 66	W 93	2
68	FROSTICK Harold	1554	W 14	L 25	L 11	L 76	W 98	2
69	DAVIDSON Allan	1579	L 21	W103	L 15	W 96	L 38	2
70	HUGHES Nathaniel	1449	L 13	W101	L 12	D 58	D 71	2
71	MOORE Allen Dean	1368	W 49	L 7	Dbye	L 39	D 70	2
72	RYNES Evan	1486	L 12	W106	L 13	L 64	W 94	2
73	ZELINSKI Daryl	1521	L 11	L 94	W 77	W 89	L 40	2
74	FAGAN James	1569	L 23	L 38	W100	W 93	L 39	2
75	GARINO Gerard	1477	L 8	L 20	W 87	L 47	W 95	2
76	BIEZYNSKI Stan	1247	L 2	D 81	Dbye	W 68	L 58	2
77	MC COWAN Michael	-	L 6	L 40	L 73	W101	W 97	2

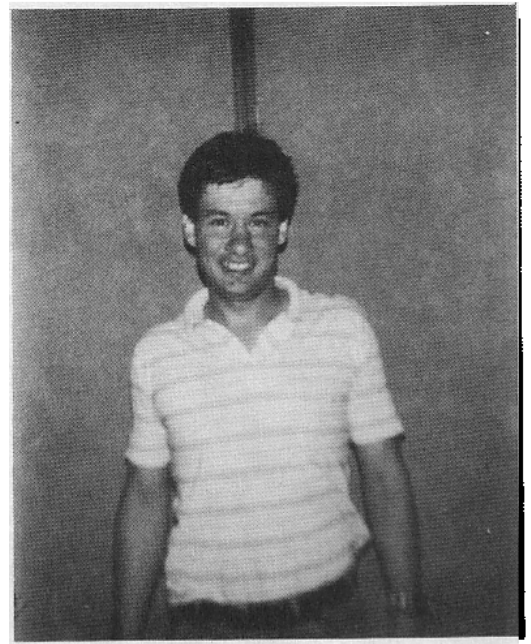


Above: Leonard Spiegel, 5-0 in the Amateur section.

Below: Nine year old Evan Geller in his first rated tournament.



GRANT Dennis	1673	D 57	D 66	Dbye	-	-	1.5
MORGAN Todd	1502	L 39	D 76	L 79	W103	L 57	1.5
MILEWSKI Wayne	1647	Dbye	W 57	L 20	-	-	1.5
DIETRICH John	1559	L 54	L 53	W107	L 56	D 87	1.5
CHAKUNG Bruce	1336	L 90	L 55	D 86	W104	-	1.5
MARSHALL Ed	1466	Dbye	L 4	W102	L 59	L 53	1.5
KEMPNER Robert	1441	L 25	L 15	D 84	L 57	W105	1.5
VINCI Jim	-	L 7	L 49	L 75	W100	D 83	1.5
CARTER Rondell	-	L 31	L 33	Dbye	W105	L 48	1.5
PADILLA Rudy	1442	L 5	L 37	Dbye	L 73	W104	1.5
CLARK Lawrence	1625	W 84	L 9	L 37	-	-	1
BROWN Anthony	1719	W 42	L 31	L 63	-	-	1
FORBIS Robert	1777	W 52	L 27	-	-	-	1
SIDNEY Davis	-	L 32	W 58	L 34	L 74	L 67	1
RITA Marcelino	1325	L 50	W 73	L 32	L 41	L 72	1
SHEFT Mark	1244	L 26	W 96	L 44	L 45	L 75	1
MODLIN Steve	1484	L 18	L 95	W 98	L 69	-	1
MUNOZ Chris	1144	L 35	L 42	L 56	W107	L 77	1
MUNOZ Alberto	1346	L 27	L 41	L 96	W 99	L 68	1
GRIGGS Isaac	-	L 1	L 16	L 58	L 98	W103	1
CALIFF Joseph	-	L 64	L 65	L 74	L 87	W107	1
BAHEL Ajay	1142	L 63	L 70	L 65	L 77	Wbye	1
RIEGEL Martin	1682	D 66	L 36	L 85	L 55	-	0.5
CALLAHAN Gerard	1389	L 19	L 69	Dbye	L 81	L 99	0.5
DUPEE Arthur	1253	L 60	Dbye	L 52	L 84	L 89	0.5
BALES Robert	1188	L 61	L 46	Dbye	L 88	L 86	0.5
CHENOWETH Bruce	1277	L 30	L 72	Dbye	-	-	0.5
GELLER Evan	-	L 47	L 34	L 83	L 97	L100	0
GRUENBERG Fred	1665	-	-	-	L 35	-	0
SHAH Paul	-	LF	-	-	-	-	0



Bob Gruchacz disguising himself as a spectator.



White: Maria Ivanka (2357).
Black: Peter Vesely (2025).

Annotated by Albert Chow.

1 c4 Nf6
2 Nc3 c6
3 Nf3 d5
4 e3 bNd7
5 cxd5 cxd5
6 d4 e6
7 Bd3 Be7
8 O-O O-O
9 a3 a6

For some reason Black wants to copy, but it would be better to give the c-Bishop some air with 9....b6.

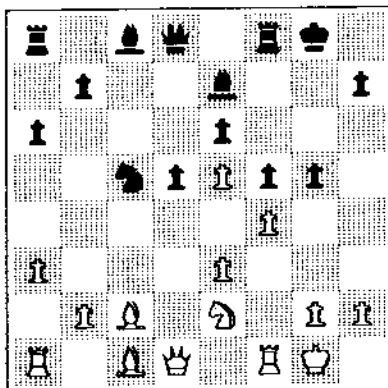
10 Ne5! Nxe5

If Black allows White to play f4 it would be too dangerous to exchange on e5 since White could take with the f-Pawn.

11 dxe5 Nd7
12 f4 Nc5
13 Bc2

Naturally White prevents the exchange of the powerful attacking Bishop.

13 f5
14 Ne2 g5?

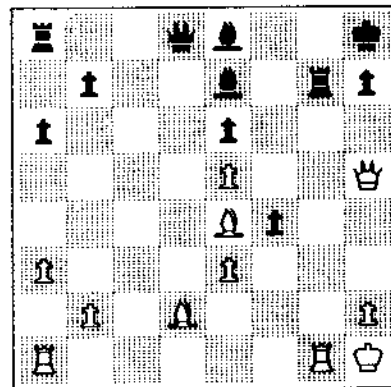


White's pieces are in attacking position, Black's are not. The open lines on the Kingside will speed up White's attack. Black should defend solidly with 14....Bd7 15 Nd4 Kh8.

15 g4! fxe4
16 Ng3! gxf4
17 Qxg4+ Kh8
18 Qh5 Ne4
19 Nxe4 dxe4
20 Bxe4 Rg8+
21 Kh1 Rg7
22 Bd2!

This is much stronger than 22 exf4 Bd7 23 Be3 Bc6. When attacking the King, every tempo counts. White connects Rooks and threatens Rg1.

22 Bd7
22....fxe3? 23 Rg1 wins. 22....Qxd2 23 Qe8+ Rg8! 24 Qxe7 Qd7! stops mate, but the endgame after 25 Qxd7 Bxd7 26 exf4 is lost.
23 Rg1 Be8



23....Qf8? 24 Rxe7 Qxe7 25 Rg1 wins.

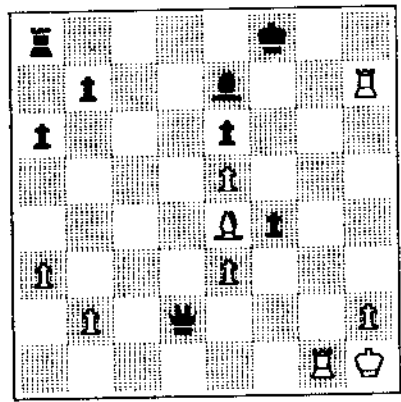
24 Rxe7!?

An interesting sacrifice, especially for the spectators. But 24 Qh3 was strong and risk-free. Everybody likes a gambling Grandmaster.

25 Rxh7+ Kg8
 26 Rxh5?
 26 Rg1+ gives White excellent winning chances after either 26...Bg5 27 Bb4! or 26...Kf8 27 Rh8+ Kf7 28 Rxd8 Rxd8 29 Bc1!
 26 Qxd2
 27 Rg1+ Kf7
 28 Bg6+ Kf8
 29 Rh8+ Kg7
 30 Rh7+

After 30 Rxa8 both 30...fxe3 and 30...Qxe3 give unclear counterplay.

30 Kg8
 31 Be4+
 31 Rxe7!? fxe3!?.
 31 Kf8



32 Bxb7!?
 Playing for the win! 32 Rh8+ Kf7 33 Rh7+ draws.

32 Ra7?
 32...Qxe3 33 Bxa8 Qxe5 gives Black counterplay. 32...fxe3! seems to give Black winning possibilities, for example 33 Bxa8 e2. And last but not least 32...Rb8 is unclear.

33 Bc6 Bg5
 How to defend the threat of 34 Rh8+ Kf7 35 Be8+ mate? 33...Bc5 34 Rh8+ Kf7 35 Be8+ Ke7 36 Rg7+ Kd8 37 Bb5 isn't the answer.

34 Rxa7 fxe3
 35 Rf1+! Kg8
 36 Be4! Bh6
 36...e2 37 Bh7+.
 37 Ra8+ Kg7
 38 Ra7+ Kg8
 39 Ra8+ Kg7
 40 Rg1+ Kf7
 41 Bf3! e2
 42 Bh5+ Ke7
 43 Ra7+ Kf8
 44 Rf7+ 1-0



It is clear that Ivanka is not afraid to take chances. But things turned out differently when she played Dr. Martinovsky, the most solid player in Illinois.

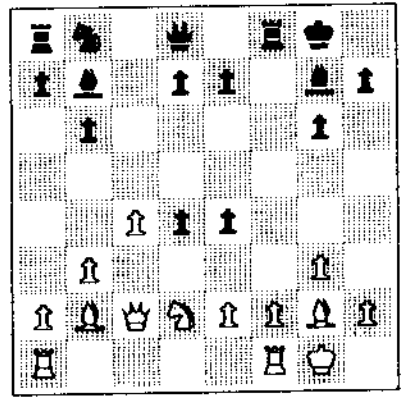
White: Eugene Martinovsky (2425).
 Black: Maria Ivanka (2357).

Annotated by Albert Chow.

1 Nf3 c5
 2 g3 b6
 3 Bg2 Bb7
 4 0-0 Nf6
 5 c4 g6
 6 b3 Bg7
 7 Bb2 0-0

diagonal trouble. Black might eventually equalize after 8...cxd4 9 Nxd4 Bxg2 or 9 Qxd4 Nc6.

9 fNd2! f5?
 This weakens the Black central Pawns and King position. 9...Nd6! would be good.
 10 Qc2 cxd4
 Note that after 10...Nxd2 11 Bxb7 Nxf1 17 Bxa8 the black horse is trapped.
 11 Nxe4 fxe4
 12 Nd2!



Complete development, the sharpest idea. After 12...Nc6 13 Nxe4 the centralized horse is powerful, so Ivanka tries to complicate.

12 d3
 13 exd3 exd3
 14 Qxd3! Bxg2
 14...Bxb2 15 aRb1 would be similar to the game and White may also try 15 Bxb7.
 15 Kxg2 Bxb2
 16 aRb1

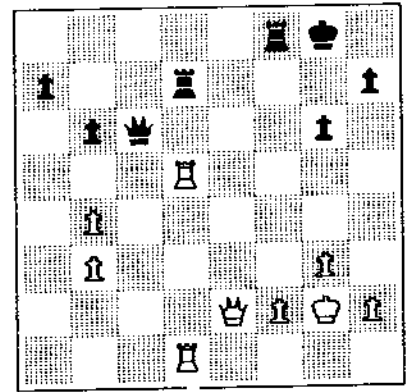
White now regains the piece since if the Bishop retreats, 17 Qd5+ will leave Black down the Exchange.

16 e6
 The d6 square shouldn't be weakened unless forced. 16...Nc6 16 Rxb2 Qc7 gave better long-term defensive chances.
 17 Rxb2 Qf6
 18 bRb1 Nc6
 19 Ne4 Qf5

The smoke has cleared and White has a big advantage because the Black e- and d-Pawns are weaknesses requiring protection.

20 bRd1 Nb4
 Perhaps the best practical chance. 20...aRd 21 Nd6 allows White to slowly build up the pressure.

21 Qe2 d5
 22 Nd6! Qf6
 23 a3 aRd8
 24 Nb7 Rd7
 25 axb4 Rxb7
 26 cxd5 exd5
 27 Rxd5 Qc6
 28 fRd1 Rd7



The remaining moves were: 30 Qe6+ dRf7 31 f4
 g7 32 Kg1 Qc7 33 Qc6 Qe7 34 Qc3+ Kg8
 35 Re1 Qc7 36 Qc6 Kg7 37 h4 Rc8 38 Rd6 Qb8
 39 Qd5 Rc5 40 Qd4+ Kh6 41 g4 Qb7 42 Qe3 Rc2
 43 f5+ Kg7 44 Qd4+ Kh6 45 Qf4+ Kg7 46 f6+
 47 Rd8+ 1-0.

f 47....Rg8 48 Rxf8 Kxf8 49 Qh6+.



Madl Ildiko, casting a shadow over Brian Schuman on the next board.



Robert Gruchacz used different systems to defeat the dreaded Sicilian Defense:

White: Robert Gruchacz (2469).
 Black: Madl Ildiko (2215).

Annotated by Albert Chow.

1	e4	c5
2	Nf3	Nc6
3	d4	cxd4
4	Nxd4	Nf6
5	Nc3	d6
6	f4	e5
7	Nb3	Be7
8	Be2	O-O
9	O-O	a5!?

With the idea of hitting the Knight with ...a4, and breaking White's Queenside with ...a3. Another idea is 9....exf4 10 Bxf4 e6 supporting a future ...d5.

10	a4!	Nb4
----	-----	-----

How the Knight can protect the weakened d5 square without fear of being hit by a3.

11	Kh1	Be6
12	f5?	

White loses control over d5 and lets the Black Pawn advance. 12 Bf3 was good.

12	Bxb3
13	cxb3	d5!
14	exd5	bNxd5
15	Bf3	Nxc3
16	bxc3	e4
17	Be2	Nd5!
18	Bc4!	

The best fighting chance. 18 Bg2 e3 and 19 c4 Nc3 clearly favor Black.

18	Nxc3
19	Qe1	Bb4?

This Bishop is needed for Kingside defense. After 19....Bf6 it isn't clear how much compensation White has for a Pawn; for example: 20 Ba3 Re8 21 Rc1 Na2.

20	Qg3	Kh8
21	Be3?	

21 f6 is more accurate.

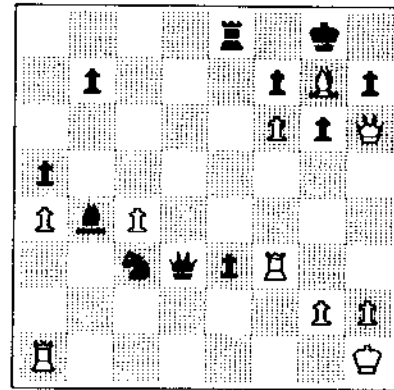
21	Rc8?
----	------	------

21....f6! was good.

22	f6	g6
23	Bh6	Rxc4!
24	bxc4	Re8
25	Bg7+	Kg8
26	Qe3	Qd3!
27	Qh6	e3?

The last chance was 27....Re5.

28	Rf3	
----	-----	--



28	Re5
----	------	-----

The only defense against 29 Qxh7+.

29	Re1?	
----	------	--

29 Rh3 Rh5 30 Qxe3 is simplest.

29	Nd1
30	Qf4	Re8
31	Qh4	

31 Rh3, with the idea of 32 Rxf7.

31	Bxe1??
----	------	--------

31....Re5.

32	Qxh7+!	1-0
----	--------	-----

Editor's note: Just a cotton-pickin' minute here. In the diagrammed position, couldn't Ildiko have continued as follows?

28	e2!
29	Re1	Ne4!!
30	Rxd3	Nf2+
31	Kg1	Nxd3
32	Rxe2	Rxe2
33	g3	

To stop the mate. If 33 h3 Bd6 and White has to play 34 g3 anyway.

33	Bc5+
34	Kf1	

34 Kh1?? drops the Queen to 34....Nf2+.

34	Rf2+
35	Kg1	Rf5+
36	Kh1	

36 Kg2 Ne1+ wins King or Queen.

36	Nf2+
37	Kg2	Ng4
38	Qc1	Rf2+
39	Kh3	h5
40	Qg1	Rxh2+
41	Qxh2	Nxh2
42	Kxh2	Bf8

and Black wins easily. All of White's moves seem forced, or at least best. Holy cow! Did your A-player editor find something overlooked by two master players and a master annotator? 2

At least the talented 16-year-old put up a battle. By contrast Gruchacz squashed GM Kudrin rather easily:

White: Robert Gruchacz (2469).
Black: Sergey Kudrin (2580).

Annotated by Albert Chow.

1 e4 c5
2 Ne2!?

A weird move, leaving normal book lines. One logical equalizing try is 2....Nf6 3 bNc3 d5.

3....d5!
4 Bg2 g6
5 c3 Bg4?!
6 f3 Bd7
7 d4 cxd4
8 cxd4 Bg7
9 bNc3 Nf6
10 Be3 h5
11 h3! Rc8
12 Qd2 a6
13 O-O b5

Black's passive play has left White with a big space advantage.

14 aRc1 O-O
15 b3 Qa5
16 d5! Nb8
17 Nd4 Rc7
18 Qb2!

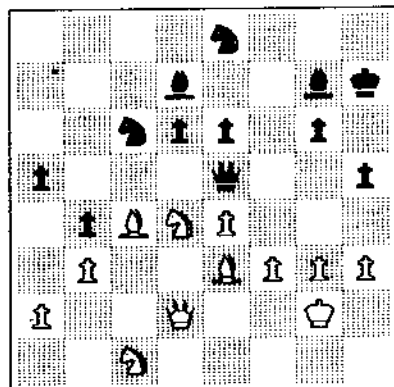
By threatening 19 b4 Qb6 20 Nf5 White tempts the Black Queenside Pawns forward, creating new weaknesses.

18 b4
19 cNe2 fRc8
20 Rxc7 Rxc7
21 Rc1 Ne8
22 Qd2 Qa3
23 Bf1 Kh7
24 Rc2 Rxc2
25 Qxc2 Qa5
26 Qd2

With the possible idea Nc1, Nd3.

26 e6!
27 dxe6 fxe6
28 Nc1 Qe5
29 Kg2 a5
30 Bc4 Nc6?

After defending well, a very un-GM-like blunder. 30....Nc7 was indicated.



31 Bxe6!

Wins a Pawn and the game. Gruchacz shows excellent technique in the remaining moves:
31....Bxe6 32 Nxc6 Qa1 33 Nxa5 Bc3 34 Qc2 d5 35 exd5 Bxd5 36 Nc4 Ng7 37 Nd2 Nf5 38 Bf2 Kh6 39 Qb1 Qxb1 40 Nxb1 Bd4 41 Nd3 g5 42 Nxb4 Bb7 43 Nc2 Be5 44 g4 hxg4 45 hxg4 Nh4+ 46 Bxh4 gxh4 47 Nd2 Kg5 48 Kh3

Bg3 49 Ne3 Bae 50 Ng2 Bc7 51 f4 Bc3 52 Kxh4 Bb7 53 Kg3 Ba5 54 Nc4 Bc3 55 g5+ Kg6 56 Nh4+ Kh5 57 Nf3 Bc8 58 fNe5 Bf5 59 Kf3 Bb1 60 a3 Bc2 61 b4 Ba4 62 Ke4 1-0

Black did not always lose with the Sicilian. Giles used it in his important last round.

White: Kurt Stein (2270).
Black: Morris Giles (2435).

Annotated by Albert Chow.

1 e4 c5
2 Nc3 d6
3 Nf3 Nf6
4 d4 cxd4
5 Nxd4 e6
6 Be3 Be7
7 f4 O-O
8 Qf3!?

The Queen develops to prepare O-O-O possibly followed by g4 and a Kingside attack.

8 Nc6
9 Nb3?

When the Kings castle on opposite sides of the board, both sides race to make certain their attack comes first. Play is very sharp and each move counts. The Knight retreat to b3 loses time and accelerates Black's Queenside play. 9 O-O-O! was called for, since White need not be afraid ofe5 tricks. For example: 9....e5? 10 Nxc6 bxc6 11 fxe5 Bg4 12 Qg3 Bd1 13 exf6 Bxf6 14 Nd1. 11....Ng4 12 Bf4 is no improvement.

9 a5
10 a4 Nb4
11 O-O-O Bd7

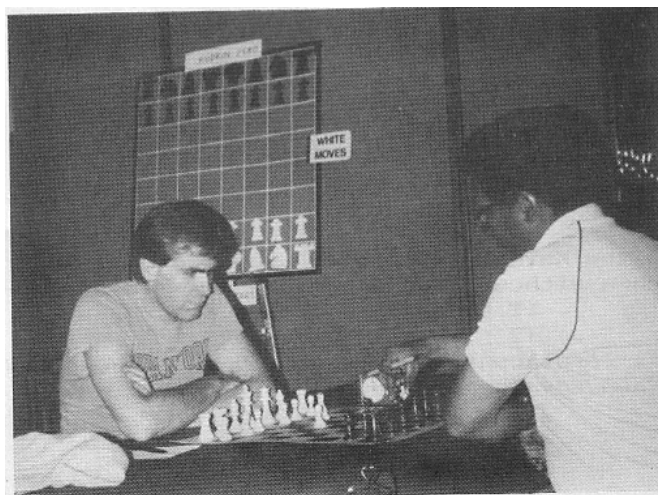
Black has a clear advantage because White's castled position has already been weakened.

12 g4 d5!
13 e5 Ne4!
14 Bb5

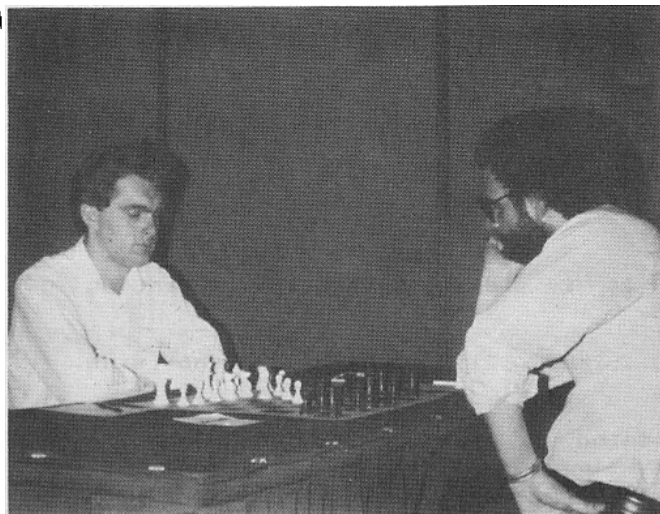
After 14 Nxe4 dxe4 15 Qxe4 Black has his choice between 15....Qc7 or 15....Bc6.

The remaining moves were: 14....Nxc3 15 bxc3 Na6 16 Bd4 Nc7 17 Bd3 Bxa4 18 Qh3 g6 19 Qh6 Re8! 20 Nc5 Bc6 21 dRf1 b6 22 Nb3 a4 23 Na1 Bb5 24 Bxb6 Bxd3 25 cxd3 Rb8 26 Be3 Bf8 27 Qh3 Nb5 28 f5 exf5 29 gxh5 Qc8 30 e6 Qxc3+ 31 Nc2 eRc8 32 Rf2 Qxd3 33 exf7+ Kh8 34 Rd2 Rxc2+ 35 O-1.

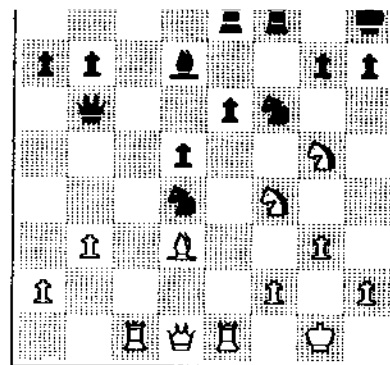
If 34 fxg6 Ba3+.



Kurt Stein and Morris Giles.



Sergey Kudrin and Warren Kreckler at the start of round 4.



19	Bxh7!	Nxh7
20	Qh5	Nf3+
21	Nxf3	Kg8
22	Re5	
22	Bc6
23	Rf1	Rf6
24	Ng6	Qd8
25	Ng5	Nxg5
26	Rxg5	Rf5
27	f4	d4
28	Qh8+	Kf7
29	Qh7	1-0

All White's pieces co-operate to attack the weakened Black Kingside.

White: Sergey Kudrin (2580).
Black: Warren Kreckler (2233).

Annotated by Albert Chow.

1	e4	e6
2	d4	d5
3	Nd2	Nf6
4	e5	fNd7
5	Bd3	c5
6	c3	Nc6
7	Ne2	cxd4
8	cxd4	f6

Black can also play B...Qb6 or B...Nb6.

9	exf6	Nxf6
10	Nf3	Bd6
11	O-O	Qc7
12	g3	O-O
13	Bf4	Bd7

Here Black misses a chance to activate his pieces. 13...e5! 14 dxe5 Nxe5 15 Nxe5 Bxe5 16 Rc1 Qd6.

14 Re1
14 Rc1 was more accurate.

14 aRe8
14....e5?!
15 Rc1 Bxf4?

Black loses a tempo bringing the White Knight to f4. Black must fight for the critical e5 square with 15...Ng4!, when 16 h3 e5! and 16 Bxd6 Qxd6 17 Nf4 e5! are both satisfactory.

16 Nxf4 Qb6
17 b3

Now White has a solid grip on e5, making sure the e6 Pawn is a permanent target. Also note the difference in attacking mobility between White's Bishop and Black's.

17 Kh8?

The King is better on g8 for tactical reasons. The most solid defense was 17...Re7 and 18...fRe8.

18 Ng5! Nxd4



White: Angelo Sandrin (2189).
Black: Ed Formanek (2433).

Annotated by Albert Chow.

1	d4	Nf6
2	c4	e6
3	Nf3	c5
4	Nc3	cxd4
5	Nxd4	Nc6
6	g3	d5
7	Bg2	Bc5
8	Nb3	Bb4

9 O-O!? dxc4 10 Nd2 is possible.

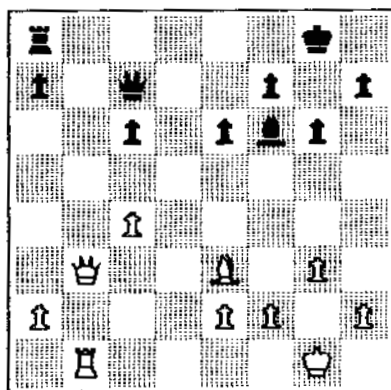
9 Nxd5
10 Bd2

Other 10th moves are good too. 10 Qc2, 10 a3!?, 10 O-O!?

10	Nxc3
11	bxc3	Be7
12	O-O	O-O
13	Rb1	Qc7?

This Queen move is too lazy. 13...e5 takes d4 away from White's Knight and threatens ...Bf5. After 14 Qc2 Be6 Black's pieces have activity.

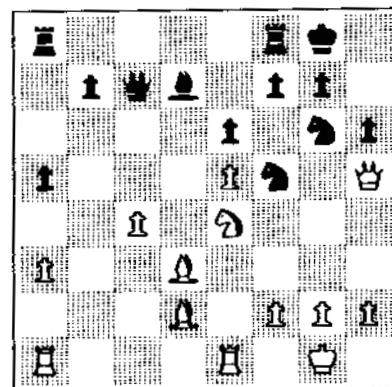
14	Nd4!	Rd8
15	Qa4	Bd7
16	Nxc6	Bxc6
17	Bxc6	bxc6
18	Be3	g6
19	Rb3!	dRb8
20	fRb1	Rxb3
21	Qxb3	Bf6
22	c4?	



By allowing Black's Bishop onto e5, White is letting Black contest the b-file. 22 Bd4! e5 23 Be3 e4 24 Bd4! gives Black problems due to the threat of Qb7.

22 Be5!
23 Qb7 Rb8!

The game was drawn in 20 more moves: 24 Qxb8+ Qxb8 25 Rxb8+ Bxb8 26 Kg2 f5 27 Kf3 Kf7 28 Bc5 a6 29 Ke3 Bc7 30 Kd4 Kf6 31 e4 f4 32 Ba7 fxg3 33 fxg3 Ke7 34 Bc5+ Kd7 35 Bb4 h5 36 Bd2 Bd6 37 Bf4 c5+ 38 Ke3 Be7 39 Be5 Bg5+ 40 Kd3 Be7 41 h3 Bg5 42 Kc3 Kc6 43 Kb3 Draw



20 Nf6+?

20 f4 is simple, eventually continuing g4, g5.

20....Kh8? 21 Bxf5 exf5 22 Bxh6 wins.
21 exf6 Qd8!
22 Bxf5 Qxf6?

Missing 22....exf5 23 Qxh6 Qxf6. Black may have feared 23 Re7 butRa6! defends in all variations.

23 Be4 Bc6
24 Bxc6 bxc6
25 aRc1 fRd8
26 Qxh6 Qh8
27 Qg5 Rd3
28 Rxe6!

White won in 27 more moves: 28....Qd4 29 Re2 Rxa3 30 Be3 Qe4 31 Rd2 Re8 32 Rd4 Qe5 33 h4 Qxg5 34 Bxg5 a4 35 h5 Nf8 36 c5 Ne6 37 Rg4 Kh7 38 Be3 Rg8 39 Rb4 Ra2 40 Rb7 Kg7 41 Rc4 Ra1+ 42 Kh2 Ra8 43 h6+ Kg6 44 Rg4+ Kf5 45 f3 f6 46 h7 Ng5 47 Rxg5+ fxg5 48 Bd4 Rc1 49 Ra7 Rxa7 50 hQ Kg6 51 Qg8+ Kh6 52 Be3 Rc2 53 Bxg5+ Kh5 54 Bf4 Rxc5 55 Qg4+ 1-0

White: Morris Giles (2435).
Black: George Umezina (2174).

Annotated by Albert Chow.

1 e4 e6
2 d4 d5
3 Nc3 Bb4
4 e5 c5
5 a3 Bxc3+
6 bxc3 Nc6

6....Ne7 is more accurate.

7 Qg4 gNe7
8 Nf3

8 Qxg7 Rg8 9 Qxh7 cxd4 is unclear.

8 Qc7
9 Bd2

9 Qxg7 Rg8 10 Qxh7 cxd4 11 cxd4? Nxd4! is the reason for Black's eighth move and White's ninth. But 9 Bd3! is most aggressive, preparing to castle plus preventing 9....0-0? due to the standard sac 10 Bxh7+ Kxh7 11 Qh5+ Kg8 12 Ng5 Rd8 13 Qh7+! Kf8 14 Qh8+ Ng8 15 Nh7+ Ke7 16 Bg5+ Kd7 17 Bxd8 Qxd8 18 Qxg7 Qe8? 19 Qxg8 etc.

9 0-0
10 Bd3 Nf5

10....f5!

11 0-0 cNe7
12 dxc5

Making certain lines stay open. Otherwise Black can close the Queenside withc4.

12 Qxc5
13 fRe1 Bd7
14 c4 a5
15 cxd5 Nxd5
16 c4 dNe7
17 Ng5 Qc7
18 Qh5 h6
19 Ne4 Ng6

19....Qxe5? 20 a4.

White: Phil Bossaers (1871).
Black: Rob Sax (1985).

Annotated by Bossaers.

1 d4 Nf6
2 c4 g6
3 Nc3 d5
4 Nf3 Bg7
5 cxd5 Nxd5
6 e4 Nxc3
7 bxc3 0-0
8 Be2 c5
9 Rb1 Nc6
10 d5 Bxc3+

All book up to now, but this move is incorrect. Best is 10....Ne5 with a sharp theoretical battle to come.

11 Bd2 Bxd2+
12 Qxd2 Nb8?

Black is really asking for it. Best is 12....Nd4 giving back the Pawn, where White has only a slight advantage.

13 h4 e6
14 e5!

To keep Black from defending the Kingside with 14....Qf6 and 15...Qg7.

14 exd5
15 Qh6 f6
16 h5 Qe7

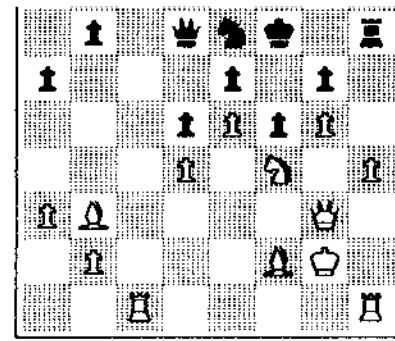
Black's next few moves are forced.

18 gxh7+ Kh8
 19 Qxg7+ Kxg7
 20 exf6+ Kh8
 21 Bd3 Nc6
 22 Rh6 Nb4?

After defending well, Black goes astray.
 Black has to get the central Pawns rolling
 with 22....c4.

23 Rxb4! cxb4
 24 Nh4 1-0

Black will end up a piece down with a bad
 position to boot.

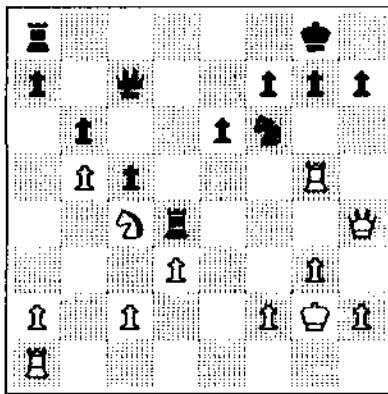


34 h5 gxh5 35 g6+ Nxg6 36 Qxg6+ Ke7 37 Bh4+
 Nf6 38 Qxf6+ 1-0



White: John Urbanik (1859).
 Black: Luis Bernal (2043).

1 Nf3 Nf6 2 g3 b6 3 Bg2 Bb7 4 0-0 e6 5 d3
 Be7 6 e4 d6 7 b4 bNd7 8 Bb2 0-0 9 bNd2 c5
 10 b5 Qc7 11 Re1 fRc8 12 Nc4 d5 13 exd5
 Nxd5 14 fNe5 Bf6 15 Qg4 Nxe5 16 Bxe5 Bxe5
 17 Rxe5 Nf6 18 Qh4 Bxg2 19 Kxg2 Rd8 20 Rg5
 Rd4



21 Rxxg7+! Kxg7 22 Qg5+ Kf8 23 Qxf6 aRd8
 24 Ne5 BRd6 25 Qh8+ Ke7 26 Nxf7! Qb7+
 27 Kg1 Rd7 28 Ne5! Kd6 29 Nxd7 Qxd7 30 Re1
 Qe7 31 Qb8+ Qc7? 32 Rxe6+ 1-0



The following is the game that handed Leonard
 Spiegel the championship of the Amateur
 section.

White: Leonard Spiegel (1687).
 Black: John Nielsen (1713).

1 e4 c5 2 c3 d6 3 d4 cxd4 4 cxd4 g6 5 Bc4
 Bg7 6 Ne2 Nf6 7 f3 e6 8 Bb3 Bd7 9 bNc3 Nc6
 10 Be3 Rc8 11 0-0 0-0 12 Nb5 Ne8 13 Rc1 a6
 14 Na3 Nc7 15 Qd2 Re8 16 Nc4 Bf8 17 Nb6 Rb8
 18 Nxd7 Qxd7 19 Bf2 d5 20 e5 bRc8 21 a3 Bg7
 22 f4 Qe7 23 g4 f5 24 g5 Kf7 25 Ng3 Rh8
 26 h4 h6 27 Ne2 hxg5 28 fxg5 Rh7 29 Kg2
 cRh8 30 Rh1 Qd7 31 Nf4 Ne7 32 Qc3 Ne8
 33 Qg3 Bf8

MINUTES

ICA Board Meeting 6-29-86
 Morgan Park Methodist Church

The following minutes are subject to approval by the ICA Board.

Attending: H Warren, F Skoff, F Gruenberg, M Brown, T Just, T Fineberg,
 H Winston, B Saythe, E Sedlock, B Naff, W Palaquist, R Verber, B Bain,
 G Panner, K Marshall, M Zacate, J Condon, A Sandrin.

Observing: L Cohen, B Chapman.

Meeting was called to order at 1 pm by Walter Brown.

Motion by Winston, 2nd by Bain: Minutes of 2/3/86 Board meeting be approved.
 Passed 18-0

The officers reported the following:

1. The Illinois Open will be at the Palmer House this year. The format will be like last year. Barre and Just will direct.
2. Harold Winston was appointed to head a committee to organize the 1987 Midwest Amateur Team.
3. Eric Schiller was appointed to run the 1986 ICA Clinic.
4. The Park Forest Chess Club was reappointed to again run the Illinois Chess League.
5. Petitions for nominations for President (Tim Just) and Secretary (Glenn Panner) were received by the ICA Secretary.

6. Fred Gruenberg answered questions regarding the investments and type of accounts the ICA is involved in.

Motion by Brown, 2nd by Winston: All reports by officers be accepted. Passed 18-0

Motion by Verber, 2nd by Fineberg: The ICA officers will have the authority to approve the budget of the 1987 Amateur Team Midwest committee. Passed 15-0-3
 Motion by Verber, 2nd by Sedlock: The ICA Board commend Bill Saythe on the recent ICB. Passed by acclamation.

The Board accepted a report from Bill Saythe that membership was down by about 15 members.

The Board heard a report from Helen Warren on the USCF Policy Board meeting.
 Motion by Verber, 2nd by Zacate: The ICA supports the proposed scholastic membership motion, including any possible change to an age of 14 years old, at the 1986 U.S. Open Delegates' meeting. Passed 16-0-2

Motion by Verber, 2nd by Zacate: Helen Warren be commended for her efforts towards U.S. scholastic chess. Passed 17-0-1

A discussion of the Policy Board candidates followed.

A discussion on attracting and retaining ICA members followed.

Motion by Verber, 2nd by Bain: Bill Naff be commended for his efforts to attract and retain ICA members. Passed by acclamation.

Motion by Marshall, 2nd by Gruenberg: ICA shall go on record as opposing the sending of a U.S. team to Dubai. Failed 6-8-4

Motion to adjourn by Verber, 2nd by Just: Passed 18-0

Call for Nominations

Nominating petitions, with the signatures of at least 10 ICA members, for the offices of President, Metro VP, Downstate VP, Secretary, and Treasurer for the 1987-1988 term must be submitted to the ICA Secretary by August 15.

Next ICA Meeting

The annual ICA membership meeting will be held on an as yet undetermined Saturday or Sunday in October.

MASTER CHALLENGE VIII

The 8th edition of Forest Park's annual top-heavy tournament, the Master Challenge, lived up to its name and reputation on June 20-22 with four senior masters, twelve masters, and 28 experts heading a field of 122. The winner was lucky number 13, Eric Schiller (2269), who defeated top-rated Robert Gruchacz (2469) in a final-round time-forfeit dispute to finish 5-0. Escaping with 4.5 were Dr. Eugene Martinovsky, the only senior master to be so successful, and the father-son team of Erik and Andrew Karklins. Nine players followed at 4-1, all rated at least 2000. The highest finisher whose rating began with the digit 1 was Karl Smart (1701) at 3.5.

The use of quarter pairings helped to ensure that only Schiller would finish with a perfect score. In the first round of a quarter-paired tournament, the top quarter is paired against the second, and the third against the fourth. In round 2, top-half winners play each other, but top-half losers play bottom-half winners. If all goes according to plan, the losers defeat the winners, so that only 1/8 of the tournament instead of the usual 1/4 emerges at 2-0. Rounds 3 and beyond are paired normally.

In this tournament, if your rating was 1900, you didn't make the cut, and were paired down against the fourth quarter in round 1. The median rating was 1910. Players were given their choice of either a Friday night or a Saturday morning first round. As usual, the Friday group was a bit stronger, with 64 of the 121 players choosing this option.

The split first round created an interesting controversy after Kurt Stein (2270) was upset by Ely Sollano (2077) on Friday night. His hopes of finishing near the top having been dashed, Stein withdrew and requested re-entry into the tournament on Saturday morning. Chief TD Todd Barre at first turned down the request, as it could open the floodgates to complaints from other players who had also lost Friday night. Barre was overruled by organizer Chris Musgrave, but only on the condition that Kurt pay a full new entry fee. He did so, wiping out his first-round goose egg except for rating purposes. Justice prevailed, however, as Kurt suffered a couple of early draws in his re-incarnation and dropped out again.

Late in the fourth round on Sunday afternoon, the following sign appeared on the TD table:

ANSWERS

- 1) 40/100.
- 2) 25/1.
- 3) 3:00.
- 4) No, I don't have change for a dollar.
- 5) There's nothing I can do about the Coke machine.
- 6) No.
- 7) See #6.

This sign is destined to become a classic, no doubt available soon at an exorbitant price in a gold-engraved version from USCF.

Tour maxi-event. Players gaining Tour points were:

1st:	Eric Schiller		30.00
2nd:	Eugene Martinovsky		10.00
	Erik Karklins		10.00
	Andrew Karklins		10.00
Exp:	Peter Stein		5.14
	John Wygrecki	??	5.14
	Alan Watson		5.14
	William Groeller	??	5.14
	Lasa Goonetilleke	??	5.14
	James Kulbacki	??	5.14
	Luis Bernal		5.14
A:	Robert Sax		3.00
	Edward Ross		3.00
	Jonathan Goldman		3.00
	Craig Sandford		3.00
	Ethelbert Gazmen		3.00
	Robert Manaster		3.00
	Gregory Berry		3.00
	Lawrence Kosiba		3.00
	Joel Heinrich		3.00
	Peter Walhout		3.00
B:	Karl Smart	??	16.00
	William Graves		2.67
	Bruce Kreisman		2.67
	Steeve Rydberg		2.67
C:	Rudy Padilla		12.00
	Mark Petersen		3.00
	Henderson Johnson		3.00
D:	Joseph Haines		8.00
	Danny Moore	??	4.00

?? denotes out-of-state players who were not required to join ICA. However, their Tour points do not count unless they join before the start of the next Tour event.

The tournament crosstable appears on the following pages. Ratings shown are the official pre- and post-event ratings from USCF. In a few cases, the ratings shown are more recent than those which appeared on the tournament wallchart. The wallchart ratings, because they were official at the time of the tournament, were used to calculate Tour points.

White: Eric Schiller (2269).
Black: Albert Chow (2429).

Annotated by Schiller.

1 e4 d5!?

Presumably to avoid my favorite system against the French, which created problems for Chow in our last meeting, though I failed to capitalize on them.

2 exd5 Nf6

This caught me somewhat by surprise. I only switched back to 1 e4 about 8 months ago, and therefore hadn't learned all my theory yet. So I had to improvise.

3 Nc3?! Nxd5

4 Nf3

This is not mentioned in the Grefe/Silman book.

4 Nxc3

Why not? 4....Nb6 is also reasonable.

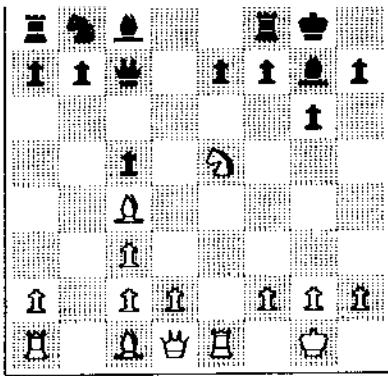
5 bxc3 g6

6 Bc4 Bg7

7 O-O O-O

8 Re1 c5

9 Ne5 Qc7!



I had expected the development of the bN, and subsequent exchange of Knights, after which I would be left with control of the e-file to offset my rather useless cB.

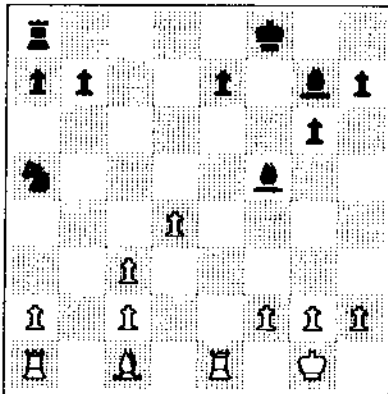
10 Qe2 Nc6!

My strategy had been to prevent the development of the bN, because of the simple tactic of exchanging Knights and grabbing the e-Pawn. After Black's 10th move I suddenly realized that on 11 Nxc6 Qxc6 12 Qxe7 Bf5! provides very strong counterplay for Black. This could, therefore, be a critical moment for the game. I could concede simple equality by retreating my Knight, but Black would soon take over the initiative against passive play. The path I chose was based primarily on retaining the initiative -- at all costs!

11 Nxf7 Rxf7
12 Bxf7+ Kxf7
13 Qc4+ Kf8
14 Qxc5 Bf5!
15 d4 Qa5!

Now the exchange of Queens is forced.

16 Qxa5 Nxa5



How should this position be evaluated? I feel that potentially, Black is better because the White Pawn mass is vulnerable at c3 and c2. But Black must also activate his Knight, or else he is, effectively, playing down something like the Exchange (although the Knight always has defensive value, particularly influence over the c4 square). That the Knight does not move until the game is effectively over speaks strongly to this point. White's task remains the same -- he must hang on to the initiative at all costs.

17 Bg5! Bf6
18 Bxf6 exf6

What is this? White parts with a strong attacking piece and repairs Black's Pawn structure! At the same time he abandons hope of saving his Pawns on the c-file. Yet there is method in the madness. White's two Rooks are now free to dominate the e-file.

21 Re8+ Kg7
22 Ra8!?

The inclusion of this move is not of great significance, as it turns out, but the idea was to loosen up the Black Queenside so that Black could not employ the Knight to defend the a-Pawn, which is now forced to advance, since otherwise the Queenside Pawns are plucked like grapes, for example 22...Rxc2 23 Rxa7 Rxa2 24 d5! and the pin immobilizes the Black pieces, e.g. 24...Ra3 25 d6 Nc6 26 Rxa2 Nxa3 27 d7! Bxd7 28 Re7+ Kh6 29 Rxd7 b5 30 Kf1 etc.

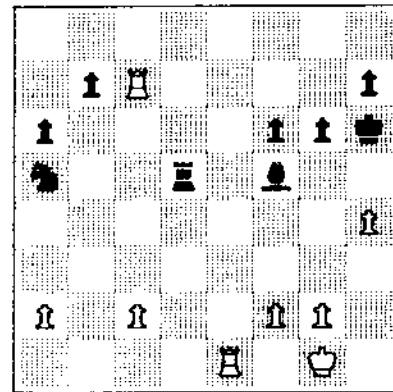
22 a6
23 h4 Rc7

Black has defended his second rank, but that really is not so important. 23...g5 comes into consideration.

24 d5!

A Pawn sacrifice which is designed to keep the Knight in its place at a5.

24 Rd7
25 Rc8! Rxd5
26 Rc7+ Kh6



All Black has to do is playRb5 andNc6 and the game is just about over.

27 g4!!

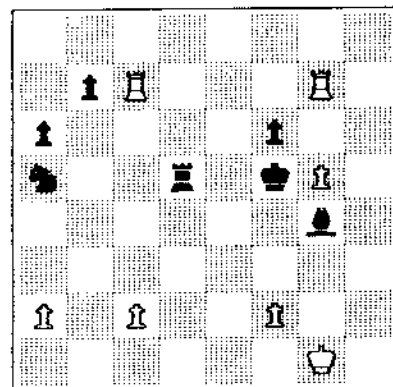
White's Rooks have conspired to severely limit the scope of the Bishop, so that the Pawn sacrifice must be accepted, and the h7 square must now fall.

27 Bxg4
28 eRe7 g5
29 Rxh7+ Kg6
30 hRg7+

Inviting a draw after 30...Kh6, but Black is obviously in no mood for such a conclusion to a game he was confident he could win.

30 Kf5
31 hxg5

At this point the clock showed 25 minutes for me, and just 8 for Al, with the 40th move still well in the distance. The position was quite complicated:



31 Bf3?!

This was an attempt to checkmate, with the seconds ticking away. Afterwards, Chow regretted this choice, since the simple 31....fxg5 looks good enough. My initial train of thought ran along the lines of 32 cRe7, hoping to shuttle the Rooks to and from f7 with some sort of perpetual, but 32....Kf4! would have eliminated that plan. So probably 32 gRf7+ hoping for 32....Ke6 33 f3 Bh3 [33....Bf5 34 Rg7!?] 34 Kh2 Bf5 35 Kg3 with the clock providing a few chances of salvation.

32 gxf6! Kf4?!

Surely there must be a mate, somewhere. Even with only two minutes, it must appear, right? Wrong. There is no mate. But that doesn't mean that White is out of the woods yet!

Black could have played 32....Rd1+ 32 Kh2 Kf4, an idea rejected because of 33 Rg1, but then 33....Rd5!? recreates the threat along the h-file. On 34 Rg3 then 34....Rf5 prevents the Pawn from advancing while the horse gallops toward a final confrontation with the White King. 34 Rh7! Rf5 35 f7 (intending Rg8) Bd5 36 Rh4+ Ke5 37 Re1+ Kd6 38 Rd1 Rxf7 looks fine for Black if White

plays 39 Rxd5+ Kxd5 40 Rh5+ Kc4 41 Rxa5 Rxf2+ 42 Kg3 Kb4 and the a-Pawn falls, and with time control passed, Black romps. This is not a fate which White must accept, since he has at his disposal 39 Rh5! winning the Bishop and the game.

33 cRd7! Rh5
34 Rh7 Rb5
35 Kh2 Rb1
36 Rd4+! Ke5
37 Kg3!

Now White has repulsed the attack and need not worry about 37....Kxa5 because then the f-Pawn marches home.

37 Kxf6
38 Kxf3 Rb2
39 Ra4 Nc6

Fittingly, the offside Knight re-enters the game as Black's final move.

40 Ke3 1-0

And the flag fell to give White the victory which was now inevitable on the board as well as the clock. This game is rather typical of my style. Despite spending most of my spare time writing opening books, I usually manage to botch the opening at some point and have to fight my way out of a bad position.

Master Challenge VIII

June 20-22, 1986

		pre	post							
1	SCHILLER Eric	IL	2290	2334	W 75	W 99	W 62	W 5	W 16	5
2	MARTINOVSKY Eugene	IL	2419	2423	W 76	W 9	W 63	D 3	W 18	4.5
3	KARKLINS Erik	IL	2266	2294	W 35	W 33	W 64	D 2	W 15	4.5
4	KARKLINS Andrew	IL	2344	2362	D 23	W 31	W 50	W 17	W 14	4.5
5	CHOW Albert	IL	2429	2429	W 83	W 8	W 29	L 1	W 26	4
6	KULBACKI James	MI	2060	2101	W 80	W 72	L 14	W 78	W 25	4
7	WATSON Alan	IL	2155	2177	W118	D 87	W 69	D 39	W 34	4
8	WYGRECKI John	MI	2229	2246	W 51	L 5	W 37	W 31	W 41	4
9	GOOMETILLEKE Lasa	IN	2113	2138	W 73	L 2	W108	W 66	W 24	4
10	COLIAS Bill	IN	2352	2349	W 95	L 17	W107	W 35	W 32	4
11	GROELLER William	MI	2199	2197	D 50	W100	D 66	W 36	W 28	4
12	STEIN Peter	IL	2145	2153	L 99	W 67	W 79	W 29	W 39	4
13	BERNAL Luis	IL	2005	2040	L 88	W 77	W 97	W 68	W 27	4
14	GILES Morris	IL	2443	2437	W 32	W 21	W 6	D 15	L 4	3.5
15	PELTS Peter	IL	2325	2331	W 58	W 26	W 65	D 14	L 3	3.5
16	GRUCHACZ Robert	IL	2469	2457	W 22	W 27	D 17	W 24	L 1	3.5
17	TUTUSH Dusan	IN	2129	2162	W 36	W 10	D 16	L 4	W 55	3.5
18	ENRIQUEZ Clodie	IL	2153	2164	D 43	W 37	W101	W 19	L 2	3.5
19	SPLINTER Joe	IL	2009	2058	D 71	W 98	W 87	L 18	W 49	3.5
20	SMART Karl	IN	1701	1796	W117	L 50	W106	W 74	D 40	3.5
21	UMEZINWA George	IL	2166	2172	W 34	L 14	W 44	D 43	W 53	3.5
22	KROM John	IL	2124	2134	L 16	W 97	W100	D 48	W 51	3.5
23	SCHROEDER Anthony	IL	2115	2116	D 4	L 63	W110	W 54	W 48	3.5
24	KREISMAN Bruce	IL	1747	1834	W109	W 83	W 25	L 16	L 9	3
25	RUBIN David	IL	2294	2271	W 74	W 28	L 24	W 73	L 6	3
26	YODER Ronnie	IN	2132	2135	W 90	L 15	W 46	W 67	L 5	3
27	SANDRIN Angelo	IL	2178	2170	W106	L 16	W 80	W 33	L 13	3
28	SOLLAND Eleazar D	IL	2077	2098	W122	L 25	W 59	W 62	L 11	3
29	GOLDMAN Jonathan	IL	1951	2024	W121	W102	L 5	L 12	W 72	3
30	WALLACH Cliff	IL	2080	2074	W 55	D 88	L 67	W 60	D 43	3
31	MANASTER Robert	IL	1934	1956	W 42	L 4	W 81	L 8	W 78	3
32	WHEELER Wayne	IL	2136	2135	L 14	W 54	W 56	W 63	L 10	3
33	SANDFORD Craig	IL	1932	1966	W 38	L 3	W 82	L 27	W 70	3
34	SAX Robert	IL	2014	2023	L 21	W 57	W 98	W 64	L 7	3
35	ROSS Edward	IN	1959	1962	L 3	W 52	W104	L 10	W 67	3
36	BERRY Gregory	IL	1920	1933	L 17	W 94	W 57	L 11	W 68	3
37	WALHOUT Peter	IL	1827	1864	W 93	L 18	L 8	W 79	W 83	3
38	KOLMAN Gene	IL	2173	2163	L 33	W 49	W 45	-	W 52	3
39	KAMEN Dan	IL	2116	2113	Dbye	W101	W 72	D 7	L 12	3
40	WALLACH Ken	IL	2266	2239	D 53	L 48	W 90	W 69	D 20	3
41	HAUBRICH Scott	WI	2130	2127	Dbye	W 70	D 78	W 65	L 8	3
42	RYDBERG Steeve	IL	1743	1782	L 31	W116	D 51	D 75	W 80	3

44	HEINRICH Joel	IL	1846	1851	L 91	W 85	L 21	W 81	W 62	3
45	KOSIBA Lawrence	IL	1848	1854	L 62	W110	L 38	W 86	W 82	3
46	GRAVES William	IL	1796	1801	L 79	W109	L 26	W105	W 73	3
47	BOLDEN Darren	IL	2059	2043	L102	L 62	W116	W104	W 66	3
48	ALLISON Roger	IL	1841	1874	W 86	W 40	L 71	D 22	L 23	2.5
49	MARSHALL James	IL	1780	1819	W110	L 38	D 76	W 89	L 19	2.5
50	MACEJAK Timothy	IL	1959	1978	D 11	W 20	L 4	L 52	W 64	2.5
51	POPOVICH John	IL	1992	1980	L 8	W 79	D 42	W 91	L 22	2.5
52	DIXON Raymond	IL	1810	1651	D 66	L 35	W 94	W 50	L 38	2.5
53	READ Rhys	IL	1991	2019	D 40	L 65	W 92	W 93	L 21	2.5
54	ENOCHS James	IN	1772	1780	W113	L 32	D 75	L 23	W 92	2.5
55	FORRO Virgilio	IL	1901	1913	L 30	D 84	W 61	W 95	L 17	2.5
56	WALHOUT Donald	IL	1804	1809	L 57	W112	L 37	W 85	D 58	2.5
57	FRISKE Thomas	IL	1671	1715	W 56	L 34	L 36	Dbye	W 90	2.5
58	REYES Catalino	IL	2085	2046	L 15	L 66	W112	W 98	D 56	2.5
59	FORBIS Robert	IL	1777	1770	D 92	L 74	L 28	W116	W 91	2.5
60	SEFCHECK Mark	IL	1895	1871	L 68	W114	Dbye	L 30	W 96	2.5
61	PADILLA Rudy	IL	1425	1475	L 97	Dbye	L 55	W115	W 98	2.5
62	MAYWORM Barry	IL	1685	1728	W 45	W 47	L 1	L 28	L 44	2
63	TOWNSEND Donald	IL	1762	1793	W111	W 23	L 2	L 32	-	2
64	HAINES Joseph	IL	1303	1384	W 82	W118	L 3	L 34	L 50	2
65	VAN PETTEN Stacy	IL	1738	1796	W107	W 53	L 15	L 41	-	2
66	COHEN Lawrence	IL	1792	1825	D 52	W 58	D 11	L 9	L 47	2
67	BALE Leslie	IL	1850	1858	W 85	L 12	W 30	L 26	L 35	2
68	SWANSON Victor	IL	1731	1761	W 60	L 76	W 99	L 13	L 36	2
69	BUTTNY William	IL	1875	1883	W104	D 71	L 7	L 40	D 77	2
70	LAND Chris	IL	1849	1854	W114	L 41	D 89	D 76	L 33	2
71	STEIN Kurt	IL	2270	2243	D 19	D 69	W 48	-	-	2
72	STOLTZ Robert	IL	1812	1804	W 96	L 6	L 39	W109	L 29	2
73	MOODY David	MI	2058	2016	L 9	W105	W103	L 25	L 46	2
74	SMITH Charles	IL	2013	2002	L 25	W 59	W 96	L 20	-	2
75	MUSGRAVE Chris	IL	1992	1979	L 1	W 81	D 54	D 42	-	2
76	GOTZ Jon	IL	2086	2065	L 2	W 68	D 49	D 70	-	2
77	LUTZKE Ricky	IL	1674	1686	W119	L 13	L 43	D 90	D 69	2
78	MONTI Steven	IL	1789	1789	W116	Dbye	D 41	L 6	L 31	2
79	PETERSEN Mark	IL	1594	1622	W 46	L 51	L 12	L 37	W109	2
80	SMYTHE Bill	IL	1883	1872	L 6	W 91	L 27	W 84	L 42	2
81	WALLACE Mark	IL	1645	1666	W108	L 75	L 31	L 44	W110	2
82	HAMEDANI Bakhshali	IL	1689	1694	L 64	W119	L 33	W107	L 45	2
83	SATTERLEE Ray Doyle	IL	2134	2105	L 5	L 24	W111	W 97	L 37	2
84	PANNER Glenn	IL	1719	1705	L100	D 55	D105	L 80	W111	2
85	JOHNSON Henderson	IL	1518	1537	L 67	L 44	W119	L 56	W104	2
86	MELTZER Hal	IL	1616	1627	L 48	L 90	W117	L 45	W105	2
87	KAUSHANSKY Leonid	IL	2387	2362	W 89	D 7	L 19	-	-	1.5
88	HOSHOR Mark	VA	2288	2286	W 13	D 30	-	-	-	1.5
89	HARRIS Tom	IN	2006	1976	L 87	W103	D 70	L 49	-	1.5
90	ABBOTT James	IL	1926	1893	L 26	W 86	L 40	D 77	L 57	1.5
91	CLARK Lawrence	IL	1694	1691	W 44	L 80	Dbye	L 51	L 59	1.5
92	RYNES Evan	IL	1486	1509	D 59	L106	L 53	W114	L 54	1.5
93	BROADIE Richard	IL	1660	1654	L 37	W113	Dbye	L 53	-	1.5
94	MOORE Danny	IN	1314	1365	D105	L 36	L 52	L 96	W114	1.5
95	BROCK William	IL	2160	2135	L 10	Dbye	W115	L 55	-	1.5
96	MC LAREN John	IL	1490	1493	L 72	Dbye	L 74	W 94	L 60	1.5
97	MIHAJLOV Alexander	IL	1781	1780	W 61	L 22	L 13	L 83	-	1
98	TOKARZ Paul	IL	1746	1722	W115	L 19	L 34	L 58	L 61	1
99	COFFEY Allen	IL	1935	1932	W 12	L 1	L 68	-	-	1
100	MONATELLI Dave	IL	1865	1865	W 84	L 11	L 22	-	-	1
101	DELRICH Tom	IL	1805	1805	W120	L 39	L 18	-	-	1
102	MILLS James	IN	2260	2268	W 47	L 29	-	-	-	1
103	JUST Timothy	IL	1706	1705	W112	L 89	L 73	-	-	1
104	GAZIN Henry	AZ	1778	1729	L 69	W117	L 35	L 47	L 85	1
105	KNIGHT Jerry	IL	1414	1413	D 94	L 73	D 84	L 46	L 86	1
106	MACHUCA Virgilio	IL	1934	1920	L 27	W 92	L 20	-	-	1
107	CHRISTEN Scott	IL	1918	1887	L 65	W120	L 10	L 82	-	1
108	MARTIN Donald	IL	1823	1799	L 81	W111	L 9	-	-	1
109	MOORE Allen Dean	IL	1368	1421	L 24	L 46	W120	L 72	L 79	1
110	ROY Jim	IN	1604	1584	L 49	L 45	L 23	W112	L 81	1
111	KERMAN Mark	IL	1524	1525	L 63	L108	L 83	W120	L 84	1
112	SJOHOLM David	IL	1490	1478	L103	L 56	L 58	L110	W116	1
113	SEGAL Seayon	IL	1114	1182	L 54	L 93	Dbye	LF	-	1
114	CANNELL Myron	IL	1593	1538	L 70	L 60	Dbye	L 92	L 94	0.5
115	ZEMGULYS Joe	IL	1497	1484	L 98	Dbye	L 95	L 61	-	0.5
116	CARSON David	IL	1387	1368	L 78	L 42	L 47	L 59	L112	0
117	MUNOZ Alberto	IL	1346	1337	L 20	L104	L 86	-	-	0
118	KAWAND John	IL	1927	1903	L 7	L 64	-	-	-	0
119	CHENOWETH Bruce	IL	1271	1259	L 77	L 82	L 85	-	-	0
120	CUNNINGHAM Charles	IL	1630	1572	L101	L107	L109	L111	-	0
121	BUNGO Gregory	IL	2218	2202	L 29	-	-	-	-	0
122	STEIN Kurt	IL	2270	2243	L 28	-	-	-	-	0

White: Albert Chow (2429).
 Black: Ronnie Yoder (2113).

Annotated by Lester VanMeter.

1	d4	Nf6
2	c4	g6
3	Nc3	Bg7
4	e4	d6
5	f3	O-O
6	Be3	Nc6

The Panno idea is a popular choice against the Saemisch. Yoder has played this before. At the Midwest Masters this year we saw Chow playing classically vs the King's Indian.

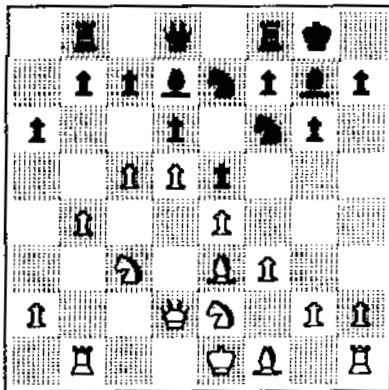
7	gNe2	Rb8
8	Qd2	a6

In a game vs Larry Quigley, Yoder played 8....Re8 and then faced 9 Rb1. I feelRe8 is a more flexible move here, and a bit better. It seems Rb1 is not as dangerous for Black as playing some good caveman chess and going after the Black King via g4, h4, h5, etc.

9	Rb1	Bd7
10	b4	e5

This is the same mistake that he made against Quigley. The way to counteract Rb1 and b2-b4 is to play for the advance b7-b5. The advance e7-e5 can only be effective if White has made an inaccuracy in his buildup in this particular variation.

11	d5	Ne7
12	c5	



Chow wastes no time in taking the Queenside initiative. Just look at this position; it is everything White could want -- strong center, Queenside attack, no Black Kingside attack.

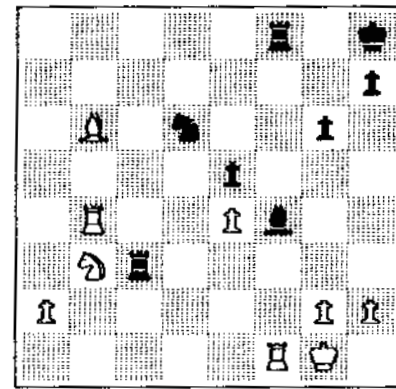
12	Ne8
13	Nc1	f5
14	b5!	

15 c6 is now a strong threat. Opening lines on the Queenside is to White's advantage.

14	axb5
15	Bxb5	Bxb5
16	Rxb5	dxc5
17	Bxc5	Nd6
18	Rb4	b6
19	Be3	c5

Black makes a bid for freedom. He doesn't lose a piece, but a Pawn does go and this is serious. It is hard to blame him for choosing this path over slow strangulation.

20	dx6	Nxc6
21	Qd5+	Kh8
22	Qxc6	Rc8
23	Qxb6	Rxc3
24	O-O	Qxb6
25	Bxb6	Bh6
26	Nb3	fxe4
27	fxe4	g4



When annotating others' games it is always interesting to speculate just how much was foreseen at certain times. It would be beneficial to know the times spent over each move. For example, how long did Yoder spend on his 19th and the subsequent follow-up? Did Yoder see this far, or even farther to move 30 and the recovery of his Pawn? That would be some calculation! Speculating that he hadn't seen that far ahead, I would like to know just how much time pressure he was in.

28	g3	Be3+
29	Bxe3	Rxf1+
30	Kxf1	Rxe3
31	a4	Nxe4
32	a5	Rxb3

To play this blunder indicates that he must have been in serious time trouble. The finish is easy.

33	Rxb3	Nd2+
34	Kf2	Nxb3
35	a6	1-0

White: Joe Splinter (2009).
 Black: Leonid Kaushansky (2378).

Annotated by Lester VanMeter.

1	e4	c5
2	f4	Nc6
3	Nf3	g6

To playg6 systems against the Grand Prix attack has never struck me as too sensible. Back in 1975 I played the "Untheoretical Sicilian" 1 e4 c5 2 Nc3 Nc6 3 f4 -- and I was always being asked when I was going to start playing seriously vs the Sicilian. Today that system is now recognized as part of the Grand Prix, but then....

I always welcomed the inclusion of an earlyd6 by Black, org6. Here I would have played 4 Nc3 and on 4....Bg7 5 Bc4. Splinter's plan to double the c-Pawns also has its adherents and I recall a fine win by Ken Rogoff over Vladimir Tukmakov with this method.

4	Bb5	Bg7
5	Bxc6	bx6
6	d3	Qb6

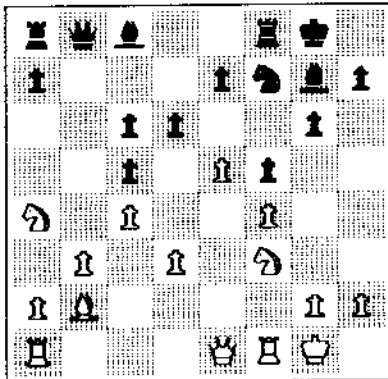
This move makes a funny impression. The idea must be to keep the Bishop at c1, but fringe benefits include more control of d4 and if 7 O-O, thenc4+ would dissolve the doubleton.

7	Nc3	Nh6!?
8	O-O	f5

I like the idea of playing 8....c4+ 9 d4 d5 to capture f5 and/or rid myself of the

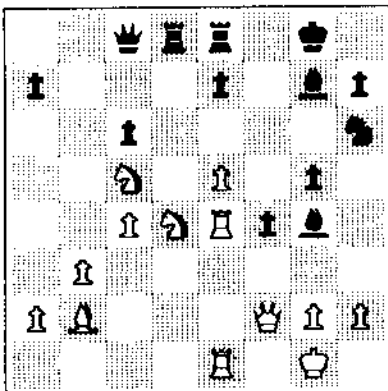
doubletons while opening up the position. The other major plan to go for would be a dark square stonewall. This idea seems bad to me.

9	e5	O-O
10	Qe1	Nf7
11	Na4	Qb5
12	b3	d6
13	c4	Qb8
14	Bb2	



White has a clear advantage. His minor pieces will work well, and his space advantage will allow for a good buildup for an attack. Meanwhile, just what will Black undertake with his Bishops? He also lacks levers for his Rooks.

14	Re8
15	Qg3	Be6
16	fRe1	Qc7
17	Re2	aRd8
18	aRe1	Qc8
19	d4	cxd4
20	Nxd4	dxg5
21	fxe5	g5
22	Nc5	f4
23	Qf2	Bg4
24	Re4	Nh6



25 e6!

This disrupts the communication links in the Black position. Another good idea seems to be 25 h4.

25	Rd6
26	h3	Bh5
27	Re5	

Excellent! White realizes that the only piece of value for Black is the Bishop at g7.

27 Bxe5

27....Bf6 28 Nf3 Bxf3 29 gxh3 was the alternative when it is hard to see how Black defends against the ideas of h4, or Qg2 and Rxc7. Splinter plays the rest of the attack well, and it doesn't seem too complicated.

28	Rxe5	Bg6
29	Rxc7	Rf8
30	Qh4	Rxd4
31	Bxd4	Qd8
32	Nd7	Nf7
33	Rxc6+	hxc6
34	exf7+	Kxf7
35	Qxf4+	1-0

White: Lasa Goonetilleke (2137).
Black: Eugene Martinovsky (2425).

Annotated by Lester VanMeter.

1	c4	e5
2	Nc3	Nc6
3	Nf3	Nf6
4	d3	d5

A rather bold step to simply play a Sicilian Defense reversed. Now it would be normal for White to play 6 g3 and a Dragon, but I'm not sure about this Bd2 move. It seems wrong, and might just be the tempo Black needs to justify things.

5	cxd5	Nxd5
6	Bd2	Be7
7	g3	Be6
8	Bg2	O-O
9	O-O	f5
10	Rc1	Nxc3

Change the colors and throw inBd7 and we've got the classical Dragon. But if Black has an extra gift move I don't think he would spend it on such a modest development.

11	Bxc3	Bf6
12	Nd2	Re8
13	Nc4	Bd5
14	Ne3	Bxc2
15	Qb3+	

An attractive tempo gain, but not advisable. Better to save such a move and capture on g2 first. Black continues with his straightforward plan, and with his King now safer he has fewer worries of counterplay.

15	Kh8
16	Kxg2	f4
17	Nd5	Bg5
18	Rc2	Qd7
19	e4	

White is forced into this concession due to the awkward placement of the Knight on d5. Black now threatens the Knight and forces the following tactical sequence.

19	Nd8
20	Ba5	Ne6
21	Rxc7	

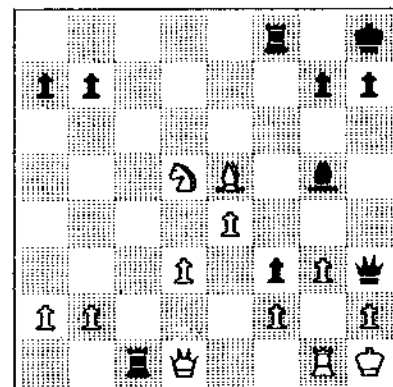
He would have preferred to take with the Knight, but that is not possible. 21 Nxc7 f3+ 22 Kxf3 Nxc7 23 Rxc7 Qh3 24 Ke2 Bd8. In this line playing 22 Kh1 makes no difference. Of course,Nd4 must also be dealt with.

21	f3+
22	Kh1	Nxc7
23	Bxc7	

23 Nxc7 fails to regain the Exchange after 23....Qh3 24 Rg1 aRc8 and now Black would have 25....Rc1 in response to 25 Nxe8.

23	aRc8
24	Qd1	Rf8
25	Bxe5	Qh3
26	Rg1	Rc1

This looks to be a killer, but there is a way out. Can you find it?



29 Bxf4 Rxf1+
 30 Kxg1 g5
 It seems like we can again speak of time pressure. The battle of four Pawns against a Rook doesn't seem like it should last long.
 31 e5 gxf4
 32 Qd5+ Kh8
 33 e6
 This threatens a perpetual, and on 33....Qf5 White has 34 e7!

35 hxg3 Re8
 36 Qe5+ Qg7
 37 Qe3 Qf6
 38 d5 Kg7
 39 f4 Rc8
 40 f5 Qxb2
 41 f6+ Qxf6
 42 d6 Qb2
 43 0-1

EIGHTH SOUTH SUBURBAN OPEN

Orland Park was not too far out of the way for Morris Giles, as he swept the Eighth South Suburban Open 4-0 on May 31. Twenty-five players participated in this ICA Tour mini-event, with four points being distributed as follows:

1st:	Morris Giles	15.00
2nd:	George Umezina	10.00
3rd:	Greg Small	1.25
	Luis Bernal	1.25
	Robert Sax	1.25
	Glenn Panner	1.25
Exp:	George Umezina	12.00 X
	Luis Bernal	6.00 X
A:	Robert Sax	10.00 A
	Robert Manaster	2.50 A
	John Popovich	2.50 A
B:	Glenn Panner	8.00 B
	Bernard Pukel	2.00 B
	Tom Friske	2.00 B
C:	Randy Eichler	6.00 C
	Mark Kerman	3.00 C
D:	Jim Burns	4.00 D
	Bruce Chenoweth	2.00 D

Glenn Panner organized the event, assisted by Fred Gruenberg. Walter Brown was the director.

South Suburban Open

May 31, 1986

1	GILES Morris	2407	W15	W 5	W10	W 3	4
2	UMEZINWA George	2184	WF	D 9	W 8	W 7	3.5
3	SMALL Greg	2303	W17	W19	W 4	L 1	3
4	BERNAL Luis	2043	W 6	W22	L 3	W11	3
5	SAX Robert	1972	W14	L 1	W16	W12	3
6	PANNER Glenn	1686	L 4	W23	W22	WF	3
7	STEIN Peter	2190	W20	D 8	W 9	L 2	2.5
8	MANASTER Robert	1926	W23	D 7	L 2	W16	2.5
9	POPOVICH John	1961	W24	D 2	L 7	W15	2.5
10	MIHAJLOV Alexander	2022	W21	W11	L 1	LF	2
11	SMYTHE Bill	1883	W12	L10	W13	L 4	2
12	EICHLER Randy	1411	L11	W21	W20	L 5	2
13	PUKEL Bernard	1651	L19	W17	L11	W22	2
14	FRISKE Tom	1633	L 5	D15	D17	W20	2
15	COHEN Larry	1838	L 1	D14	W18	L 9	1.5
16	KERMAN Mark	1517	Dbye	W18	L 5	L 8	1.5
17	DESMEK Mark	1813	L 3	L13	D14	Wbye	1.5
18	BURNS Jim	1347	Dbye	L16	L15	W23	1.5
19	GODFREY Jonathan	1986	W13	L 3	-	-	1
20	DECMAN Steve	1811	L 7	W24	L12	L14	1
21	GRUENBERG Fred	1665	L10	L12	W24	-	1
22	CHENOWETH Bruce	1297	Wbye	L 4	L 6	L13	1
23	PADILLA Rudy	1463	L 8	L 6	Wbye	L18	1
24	POPE Ray	1617	L 9	L20	L21	-	0
25	FRIEDMAN Jeff	1731	LF	-	-	-	0

COMING ATTRACTIONS

Lots of good stuff is coming up in Illinois. On President's Day weekend in February, the U.S. Amateur Team will be held in four cities in the nation. Plans are underway to make one of these the Chicago metropolitan area. The tournament is a 6-round Swiss for teams of 4. Top teams in each of the four cities play off by telephone for the title of U.S. Amateur Team Champion. Expected entry fee is \$60 in advance, \$75 at the door. Last year Columbus, Ohio inaugurated the U.S. Amateur Team Midwest and drew 29 teams. If this event is in Chicago with the support of the Illinois Chess League, our goal is 41 teams. Keep watching the Illinois Chess Bulletin for future news, and reserve the February 14-16 dates for a tournament that's a lot of fun!

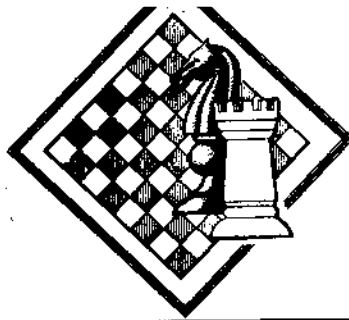
If February seems far away, try the Illinois State Championship. This will be held on the Labor Day weekend at Chicago's Palmer House, a

site many of you thought had disappeared from the Illinois chess map. It's back, and it'll be great -- see you there.

Six weeks after the State Championship, you can try for big bucks in a class tournament at the Chicago Chess Center. This departure from Jules Stein's usual format is detailed in the Tournament Calendar on the back page, and also in a full two-page ad in this issue.

Two ICA Tour mini-events are coming up soon, one in north suburban Zion and one farther south in Peoria. See the back-page Calendar for details. Four more Tour events are also on tap before year's end.

Finally, if you'd like some guaranteed Missouri greenbacks, head on down to the Region VII Team Championship in St. Louis the first weekend in October. Details appear in a half-page ad elsewhere in this issue.



Postal Chess

Helen Warren, Director
Tim Just, Dir., 1984

REGION VII POSTAL RATINGS

83 F-1 PLAYERS	Prelim Score	1	2	3	4	5	6	7	SCORE
BELICS (MO)	4½-1½	♙		1	1	1	½	0	
FIELD (IA)	5-1		♚	1	1				
FISHER (IL)	5-1	0	0	♙	0	0	0	0	0-6
SILDMETS (NE)	5-1	0	0	1	♚	0	0	0	1-5
D WALHOUT (IL)	5-1	0		1	1	♙		1	
J WARREN (IL)	4½-1½	½		1	1		♚	0	
ZAVANELLI (IL)	6-0	1		1	1	0	1	♙	

83 F-2 PLAYERS	Prelim Score	1	2	3	4	5	6	7	SCORE
BROCK (IL)	4½-1½	♙	0	0	0	0	0	1	1-5
FAWBUSH (MO)	5-1	1	♚	0	0	0	0	1	2-4
GUSTAFSON (NH)	5-1	1	1	♙	0	0	0	1	3-3
PRAY (IA)	4½-1½	1	1	1	♚			1	
SANDFORD (IL)	5-1	1	1	1		♙	1	1	
D TAYLOR (IL)	6-0	1	1	1		0	♚	1	
VANDERLINDEN (IA)	4½-1½	0	0	0	0	0	0	♙	0-6

AMELUNG, A (MO)	1048	LAROSE, M (IL)	722
ANDERSON, A (IL)	888	LAWRENCE, B (IL)	800
ANDERSON, R (NE)	820	LEGG, J (IL)	778
BACHLER, K (IL)	872	LENKE, D (IA)	770
BAUMANN, H (IL)	782	LEWIS, S (MO)	742
BELICS, G (MO)	931	LIEF, A (CA)	1058
BENDER, F (IL)	952	LOOMIS, H (MO)	740
BETHEL, R (IL)	758	LOVEN, D (IL)	811
BOZZELL, V (IA)	787	LUTHER, R (MO)	838
BROCK, B (IL)	877	MARTIN, D (IL)	704
BROWN, J (IA)	800	MARTINDALE, J (IL)	888
BUSTAMANTE, A (IL)	701	MCKINNEY, C (IL)	737
CATINO, C (IL)	881	MILBRATZ, W (IL)	980
CHANEY, R (IA)	802	NICKS, J (MO)	784
CHRISTEN, S (IL)	843	NURNI, R (IA)	727
COHEN, S (IL)	788	O'HEARN, J (OR)	721
COLLISTER, C (IL)	820	O'KEEFE, M (IL)	808
CONNOR, P (IL)	830	OLTRAN, T (IL)	818
CROUSE, T (IA)	828	PETERSON, P (IL)	820
DANBOY, F (IL)	783	POPE, R (IL)	741
DAVIES, J (MO)	886	PRAY, R (IA)	788
DEARIN, J (IL)	778	RAMIREZ, E (IL)	781
EICHMORN, G (IA)	883	REARDON, J (IL)	840
ELLENWOOD, D (IL)	720	ROECKER, J (IL)	828
EWALT, E (MO)	781	ROTHSCHILD, I (IL)	884
FAWBUSH, G (MO)	1001	SANDER, D (IL)	746
FIELD, D (IA)	1018	SANDFORD, C (IL)	828
FISHER, B (IL)	788	SCHREMSER, T (IL)	788
FOLEY, J (IL)	780	SCORZA, S (IA)	800
GAPUZ, W (IL)	830	SEDLACK, E (IL)	881
GEMSLER, K (IL)	788	SEXTON, C (IA)	788
GLASCOCK, D (OK)	828	SHOLL, P (IL)	878
GOTZ, J (IL)	884	SILDMETS, A (NE)	848
GUSTAFSON, G (IL)	848	SILLARS, A (IL)	877
HAGEMANN, W (MO)	788	SMITH, M (IL)	880
HARNACH, C (IL)	781	SMITH, R (NE)	800
HARPER, R (MO)	708	SOGIN, L (IL)	700
HARRIS, W (IL)	888	SPITZNAGEL, L (IL)	774
HEALY, S (IL)	888	STEVENSON, D (NE)	820
HEINBAUGH, M (IA)	728	STOTLER, R (IL)	800
HERNANDEZ, H (IL)	724	SWICGOOD, J (IL)	808
HEUBINKVELD, W (IA)	718	TAYLOR, D (IL)	1143
HINTERLONG, D (IL)	800	TAYLOR, K (IL)	881
HOBSON, N (IL)	707	THOMPSON, M (IA)	830
HOUSH, K (IL)	788	URGANA, C (IL)	747
JABLONKOW, V (IL)	820	VANDERLINDEN, E (IA)	820
JAMASON, R (IL)	848	WALHOUT, D (IL)	1078
JANISON, L (IL)	700	WALHOUT, P (IL)	888
JOHNSON, B (IL)	784	WARREN, H (IL)	787
JOHNSON, J (IA)	818	WARREN, W (IL)	871
JONES, M (IL)	787	WEISS, M (IA)	1008
JUST, T (IL)	888	WERNER, L (IL)	838
KAPELA, R (IL)	818	WHITE, D (MO)	800
KLAUS, J (IA)	788	WHITE, G (MO)	800

YOUNG, L (IL)	780
ZAVANELLI, M (IL)	1093
ZIEGLER, K (IL)	788

ZEROING IN ON THE 1983 REGION VII POSTAL CHAMPIONSHIP...

... are crosstables from the two Finals sections of the 1983 event. As usual, the last few games will tell the story. Our winner was a Feb. '87 finisher for this event, but it looks like we will finish well ahead of schedule. A tie, of course, will mean a playoff for the dollars and trophy.

Following is an interesting upset from the 83F-2 section. Craig Sandford bests the first ICA Postal Champ with an opening close to the loser's heart--the Benko.

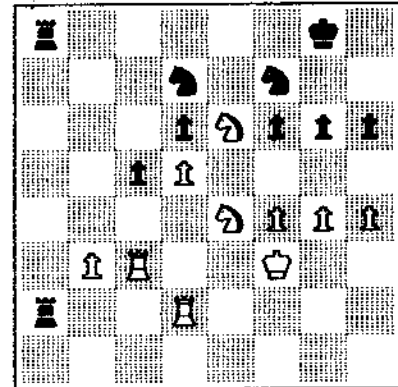
C Sandford - D Taylor

d4 Nf6 2 c4 c5 3 d5 b5 4 cxb5 a6 5 bxa6 Bxa6 f3 g6 7 e4 Bxf1 8 Kxf1 d6 9 Be3 Bg7 10 Qd2 Qb6 11 Nc3 bNd7 12 Rb1 Ne5 13 b3 0-0 [13...Qa6+!?] 14 gNe2 fNd7? [antithematic] 15 Kf2 f5 16 exf5 17 h3 Qa6 18 hRd1 fRf8 19 Nf4 fRc8 20 Ne6 21 Bg5 Nf8 22 Bxf6 exf6 23 f4 24 Re1 Nd7 25 Re3 Qa3 26 Rb2 aRb8 27 Ne4 Qb4 28 g4 [Qd1!? It is probably best to retain the Benko] Qxd2+ 29 Rxd2 Rb6 30 Kf3 Ra8 31 Nf2 Rb7 32 h4 h6 33 Ne4 bRa7 34 Rc3 [laying a subtle, somewhat speculative trap] Rxa2 [taking the bait] 35 Rxa2 Rxa2 36 b4 f5 37 gxf5 gxf5 38 Ng3 Nf6 39 Qxc5 Nxd5 40 Rd3 Nb4 41 Rb3 dxc5 42 Nxf5 Rc2 43 Kf4 Kh7 44 Nf8+! Kg8 45 Nd7 Nd5 46 h5! Rg2+ 47 Kf3 Rh2 48 Rb8+ and Black resigns [48...Kh7 49 Nf8+ Kg8 50 Ne6+ Kh7 51 Rf8 Nh8 52 Rd8 Nb6 53 Nf8+ winning material].

... moves are by Craig Sandford.

REGION VII TOP TEN

- DAVE TAYLOR (IL)...1143
- DON FIELD (IA)...1015
- MAX ZAVANELLI (IL)...1093
- MITCH WEISS (IA)...1008
- DON WALHOUT (IL)...1076
- JIM WARREN (IL)... 971
- ADAM LIEF (CA).....1058
- FRED BENDER (WI). 952
- ANDY AMELUNG (MO)..1049
- G BELICS (MO).... 931



Position after 34...Rxa2

Call ChessPhone, (312) 233-8500, for recorded tournament announcements and results, often more up-to-date than Chess Life or the Illinois Chess Bulletin. ChessPhone is provided through the courtesy of Fred Gruenberg.

All tournaments require USCF membership. ICA Tour events also require ICA membership. All phones are area (312) unless otherwise noted.

Regional Events and Events by ICA and its Affiliates

Aug 2-3: Tim Just's Open/Reserve, Zion. In 2 sections, open and under-1800. See half-page ad in May-June issue. AN ICA TOUR MINI-EVENT.

Aug 2-3: For the Penny-Pinching Pawn Pusher. Two one-day events, Chicago Chess Center, 2923 N Southport, Chicago. Jules Stein, 929-7010.

Aug 3-15: U.S. OPEN, Somerset, New Jersey.

Aug 9-10: Saturday Twister/Sunday Typhoon. Two one-day events, Chicago Chess Center, 2923 N Southport, Chicago. Jules Stein, 929-7010.

Aug 16-17: Bradley Summer Open. 4-round Swiss, Bradley U Student Center Cafeteria, Peoria. \$\$ 75-30; B,C,D each 25 (class prizes based on 6 per class). AN ICA TOUR MINI-EVENT. Bill Wilkinson, (309) 673-9455.

Aug 16-17: St Charles Open. \$\$ 425 based on 40 entries. Kane County Extension Service, St Charles. Erv Sedlock, 377-7995.

Aug 16-17: Potzer Pains. Two one-day events, Chicago Chess Center, 2923 N Southport, Chicago. Jules Stein, 929-7010.

Aug 23-24: Fianchetto Fever. Two one-day events, Chicago Chess Center, 2923 N Southport, Chicago. Jules Stein, 929-7010.

Sep 6: Chicago Industrial Chess League Tornado. Mohr Community Center, Forest Park. Chris Musgrave, 386-5124.

Sep 6-7: Rook and Roll. Two one-day events, Chicago Chess Center, 2923 N Southport, Chicago. Jules Stein, 929-7010.

Sep 13-14: CCC \$350 Guarantee. 1675/below. \$\$ 150-80, D-60, E-60 (class prizes based on 6 per class). Chicago Chess Center, 929-7010.

Sep 20-21: Art of Sacs. Two one-day events, Chicago Chess Center, 2923 N Southport, Chicago. Jules Stein, 929-7010.

Sep 27-28: Lake County Open/Reserve IX, Zion. AN ICA TOUR MINI-EVENT. Tim Just, 1521 Circle Ct, Waukegan 60085. 244-7954.

Sep 27-28: Pawnic Stricken. Two one-day events, Chicago Chess Center, 2923 N Southport, Chicago. Jules Stein, 929-7010.

Oct 4-5: USCF REGION VII OPEN TEAM CHAMPIONSHIP, St Louis, MO. See half-page ad on page 15.

Oct 4-5: For the Penny Pinching Pawn Pusher. Two one-day events, Chicago Chess Center, 2923 N Southport, Chicago. Jules Stein, 929-7010.

Oct 11-12: CHICAGO CHESS CENTER \$2800 GRAND PRIX CLASS. 5-round Swiss in 4 sections: Master, Expert, A, B. EF \$95 by 10/8, \$105 by phone, \$115 at site. \$\$ 500-200 per section, more based on entries. See ad on pages 16-17.

===== Other Events =====

- Aug 2-3: Chicago Lawn Chess Assn, 476-5716
- Aug 16-17: Chicago Lawn Chess Assn, 476-5716
- Aug 30-31: Chicago Lawn Chess Assn, 476-5716
- Sep 13-14: Chicago Lawn Chess Assn, 476-5716
- Sep 27-28: Chicago Lawn Chess Assn, 476-5716
- Oct 11-12: Chicago Lawn Chess Assn, 476-5716

===== Upcoming Events =====

- Oct 18-19: St Charles Chess Club event.
- Oct 25: ICA Scholastic Clinic, Morgan Park.
- Oct 26: ICA Officers' Tornado, Morgan Park.
- Nov 8: Central Illinois Scholastic, E Peoria.
- Nov 22-23: ILLINOIS CLASS, Morgan Park.

ILLINOIS CHESS ASSOCIATION
P.O. Box 43336
Chicago, IL 60643