

# ILLINOIS CHESS BULLETIN

Official Publication of the Illinois Chess Association, a USCF Affiliate

May-June 1986

Bimonthly

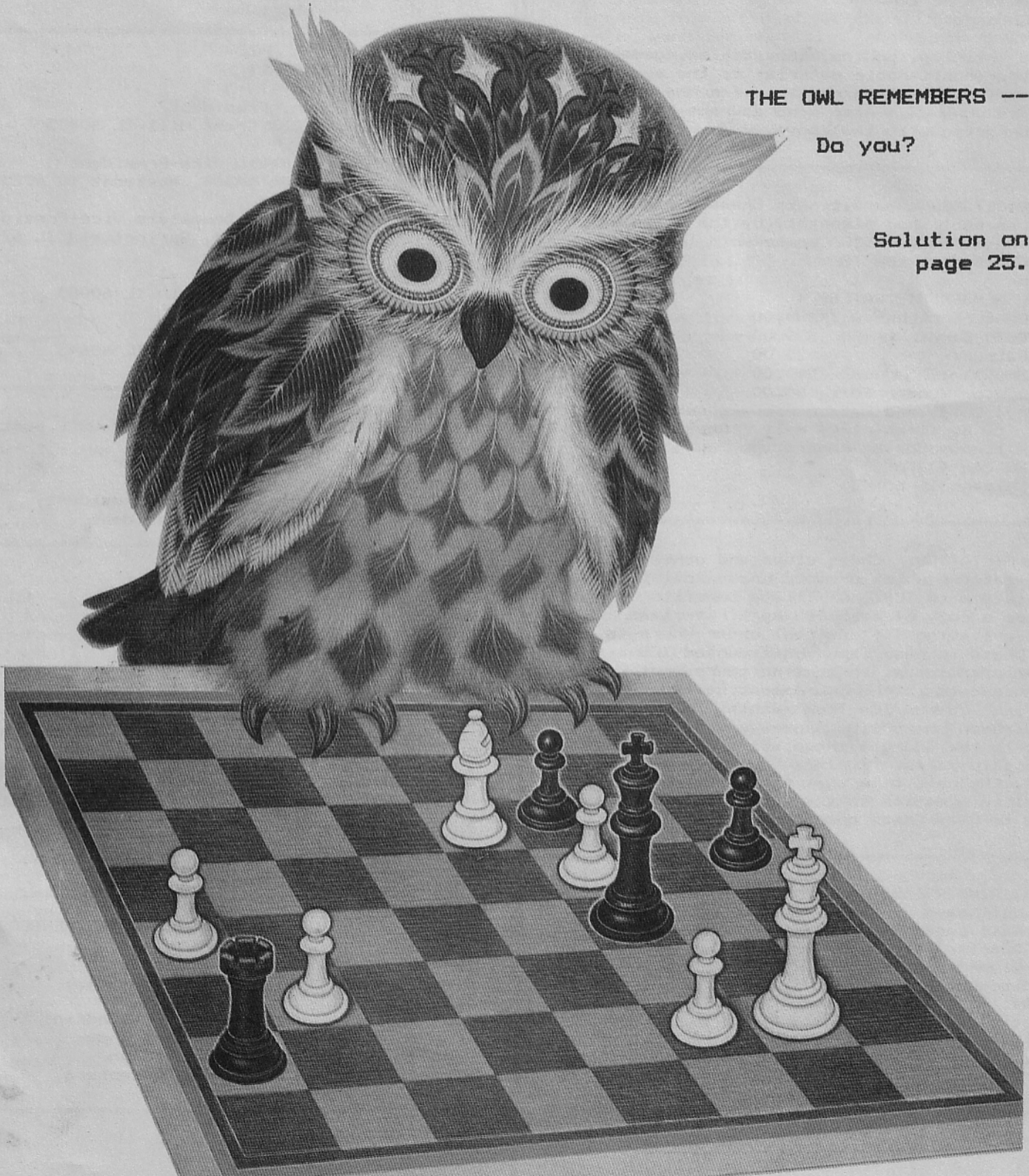
Volume IX, No. 3

---

THE OWL REMEMBERS --

Do you?

Solution on  
page 25.





# ILLINOIS CHESS BULLETIN

Official Publication of the Illinois Chess Association, a USCF Affiliate

---

**Editor and membership secretary:**

Bill Saythe  
6945 N Ashland #F3  
Chicago IL 60626-3312  
(312) 761-2455

Submit articles, photos, crosstables, games, and other publishable material to the above address. Publication deadline for the next issue is June 25. Also send address changes and corrections to the above.

---

**SUBSCRIPTIONS:** The Illinois Chess Bulletin (ICB) is published bimonthly by the Illinois Chess Association. ICA membership includes a subscription to the ICB.

**ANNUAL MEMBERSHIP RATES:**

Century Club: \$100.00  
Gold Card: \$50.00  
Patron: \$25.00  
Regular: \$10.00  
Junior (under 18): \$6.00

Century, Gold, and Patron members receive their ICB by first-class mail. Remit to:  
Illinois Chess Association  
PO Box 43336  
Chicago IL 60643

---

**ICA AFFILIATION:** Chess clubs and other organizations which promote chess activity may affiliate with ICA. Affiliate benefits include a copy of each ICB by first-class mail, a listing (if desired) under Where to Play Chess in each issue, discounted ICB advertising rates, three-line tournament announcements in the Tournament Calendar, and the right to run ICA Tour events. ICA affiliation costs \$15.00 per year; please remit to the address shown above under Annual Membership Rates. Include your club meeting times, the name of a contact person, and other useful information in the format shown in Where to Play Chess on page 4 of this issue.

---

**ADVERTISING RATES:**

Full page \$60.00  
Half page \$36.00  
Quarter page \$21.00  
Flyer inserts \$25.00

10% discount for same ad in consecutive issues. 1/3 discount for ICA affiliates. All advertising must be camera ready to qualify for these rates. Add 20% if you wish layout done. ICA reserves the right to reject advertising.

---

**Metro tournament clearinghouse:**

Todd Barre  
821 S Williams St #A-503  
Westmont IL 60559  
(312) 971-2523

---

**Downstate tournament clearinghouse:**

Thomas Knodler  
2206 Westchester #4  
Springfield IL 62704  
(217) 787-7545

---

**ICA ELECTED OFFICERS:**

Walter Brown, President  
811 Hirose Ct, Crest Hill IL 60435

Todd Barre, Metro Vice-President  
821 S Williams #A503, Westmont IL 60559

Thomas Knodler, Downstate Vice-President  
2206 Westchester #4, Springfield IL 62704

Tim Just, Secretary  
1521 Circle Ct, Waukegan IL 60085

Fred Gruenberg, Treasurer  
2035 W 110th Pl, Chicago IL 60643

---

**USCF DELEGATES by virtue of their USCF posts:**

Helen Warren, Policy Board Member  
Frank Skoff, Past President  
Fred Gruenberg, Regional Vice-President  
Jim Warren, Regional Vice-President

---

**ICA APPOINTED USCF DELEGATES:**

Walter Brown  
Todd Barre  
Tim Just  
Thomas Fineberg  
Harold Winston

---

**ICA APPOINTED USCF VOTING MEMBERS:**

|                |                   |
|----------------|-------------------|
| Bill Saythe    | Wayne Palaquist   |
| David Sprinkle | Eric Schiller     |
| Erv Sedlock    | Lawrence Stilwell |
| Thomas Knodler | Richard Verber    |
| William Naff   | Robert Bain       |
| Kevin Bachler  | Chris Musgrave    |

---

**ICA APPOINTED USCF ALTERNATE VOTING MEMBERS:**

|                  |                |
|------------------|----------------|
| Dennis Grant     | Jules Stein    |
| Glenn Panner     | Jim Brotsos    |
| Bill Wilkinson   | Jim Condron    |
| John Barstad     | Angelo Sandrin |
| Kenneth Marshall | Albert Chow    |
| John Tomas       | Dan Kamen      |
| Michael Zacate   | Buy Gruenberg  |

# IN THIS ISSUE...

## ==== CENTURY CLUB MEMBERS =====

|                    |            |    |
|--------------------|------------|----|
| Michael Belovesick | Northbrook | IL |
| Walter Brown       | Crest Hill | IL |
| Ed Cramer          | Mequon     | WI |
| Lawrence Goch      | Chicago    | IL |
| Fred Gruenberg     | Chicago    | IL |
| Murton Vincent     | Chicago    | IL |
| Philip Wong        | Evanston   | IL |

## ==== GOLD CARD MEMBERS =====

|                    |                 |    |
|--------------------|-----------------|----|
| Bill Buttny        | Downers Grove   | IL |
| Harland Hoisington | Chicago         | IL |
| Charles Kramer     | Dolton          | IL |
| James Norris       | Naperville      | IL |
| Erwin Rothschild   | Park Forest     | IL |
| Albert Sandrin     | Chicago         | IL |
| Angelo Sandrin     | Chicago         | IL |
| Bill Smythe        | Chicago         | IL |
| Jim Warren         | Western Springs | IL |
| Louis Werner       | Evanston        | IL |

## ==== PATRON MEMBERS =====

|                    |                   |    |
|--------------------|-------------------|----|
| Job Ash            | Urbana            | IL |
| Odd Barre          | Westmont          | IL |
| John Barstad       | Carol Stream      | IL |
| Loy Benedek        | Westmont          | IL |
| Jim Brotsos        | Chicago           | IL |
| Brian Chapman      | Arlington Heights | IL |
| Lynn Crewse        | Arlington Heights | IL |
| Haroy Dubeck       | Cherry Hill       | NJ |
| Thomas Fineberg    | Chicago           | IL |
| Gregory Fischer    | Des Plaines       | IL |
| Robert Glick       | Morton Grove      | IL |
| Don Gotz           | West Chicago      | IL |
| William Graves     | Chicago           | IL |
| Larry Gruenberg    | Matteson          | IL |
| Larry Gustafson    | North Conway      | NH |
| Jeffery Hyland     | Berwyn            | IL |
| Robert Irons       | Chicago           | IL |
| Jim Just           | Waukegan          | IL |
| Leonid Kaushansky  | Chicago           | IL |
| Thomas Knoedler    | Springfield       | IL |
| Ed Marshall        | South Barrington  | IL |
| Kenneth Marshall   | Lozard            | IL |
| Eugene Martinovsky | Oak Brook         | IL |
| James McNamara     | Riverside         | IL |
| Patrick Moran      | Wilmette          | IL |
| Kevin Reardon      | Urbana            | IL |
| Jim Redman         | Lima              | OH |
| Ray Satterlee      | Wheaton           | IL |
| William Schmucker  | Goshen            | IN |
| Donny Sillars      | Chicago           | IL |
| Arthur Sinclair    | Evanston          | IL |
| David Sprenkle     | Urbana            | IL |
| Tomir Stevanovic   | Lincolnwood       | IL |
| John Warren        | Western Springs   | IL |
| Douglas White      | Niles             | IL |
| Harold Winston     | Evanston          | IL |
| Andy Zabell        | Chicago           | IL |
| Michael Zacate     | Mokena            | IL |
| Max Zavanelli      | Park Ridge        | IL |

## ----- TOURNAMENTS .....

We lead off our tournament coverage this issue with the Greater Peoria Open. An article, crosstable, prize list, and game annotated by Lester VanMeter appear on pages 6-7. I'm happy to say that the game was won by the player playing the Black side of the French.

Continuing last issue's coverage of Helen Warren's Midwest Masters Invitational IV, Lester VanMeter annotates four games and two game fragments on pages 9-11.

Harold Winston writes about, and players annotate three of their games from, the 8th annual Midwest Women's Open on pages 12-14.

Larry Stilwell's pride is showing as he describes the victory of Proviso West in the state high school team championship. Page 15.

A Grand Prix tournament at the Chicago Chess Center in April is covered in a crosstable and game on pages 16-17.

Crosstables for the 11th annual Hyde Park Open and related tournaments are on pages 18-19.

Speaking of high school events, Eric Ronneberg won the 5-player ICA High School Invitational, and shows us how on pages 20-21.

The Peoria Spring Tornado crosstable is on page 25.

## ----- OTHER .....

Despite our best efforts to enrage our readers, Letters to the Editor are only trickling in. These are on page 5.

Meanwhile, we try again to touch a few sensitive nerves by sounding off about women's tournaments in the Editorial on page 4. **WARNING:** If this doesn't work, we'll talk about motherhood and apple pie next time.

Miroseg Zog, like the editor, is having trouble with reader response. David Sprenkle's Albanian acquaintance comes up with a solution to the problem, on page 8.

An ICA Tour update appears on page 16. Five additional Tour tournaments are coming up, all listed on the Calendar along with other events on page 28. Half- or full-page ads for two of the Tour events appear on pages 5 and 27.

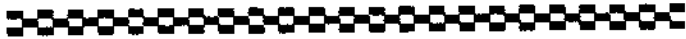
Loose pieces from USCF are dropped in the corner of page 17.

Miscellaneous games annotated by Bill Colias, Adam Lief, and the editor (shudder) appear on pages 21-25.

If you who missed Helen Warren's postal column last issue, you'll be happy to see it this time on page 26.

\*\*\*\*\*  
Please look at your mailing label on the back page to see if it's time to renew your subscription!  
\*\*\*\*\*

activities and meeting times  
of ICA affiliates



AMERICAN POSTAL CHESS TOURNAMENTS sponsors postal events of various kinds, and sells chess books and equipment. Contact Jim or Helen Warren, PO Box 305, Western Springs 60558. (312) 246-6665.

CENTRAL LAKE COUNTY CHESS CLUB meets Fridays, 7:15 pm to midnight, College of Lake County, Bldg 1, Washington at Route 45, Grayslake. Contact Dennis Grant, 1657 McKay, Waukegan 60087. (312) 336-5188.

CHICAGO CHESS CENTER meets for casual chess 7 days a week, 6 pm to 1 am, 2923 N Southport, Chicago 60657. Also sponsors rated tournaments on selected weekends. Contact Jules Stein, (312) 929-7010.

CHICAGO INDUSTRIAL CHESS LEAGUE organizes team play every 3 weeks through commercial/industrial chess clubs. Contact Jim Brotsos, 6563 N Tahoma, Chicago 60646. (312) 775-5054.

FOREST PARK CHESS CLUB meets Tuesdays, 6:45 pm to midnight, Mohr Community Center, Jackson & DesPlaines, Forest Park. Contact Chris Musgrave, 1127 S Humphrey, Oak Park 60304. (312) 386-5124.

GREATER PEORIA CHESS FEDERATION meets Mondays, 7 to 11 pm, Bradley Student Center Cafeteria, 901 N Elmwood, Peoria. Contact Bill Wilkinson, 905 N Rebecca Pl, Peoria 61606. (309) 673-9455.

HINSDALE SOUTH HIGH SCHOOL CHESS CLUB is for Hinsdale students only. Contact James Carvell, 7401 S Clarendon Hills Rd, Darien 60521.

LAKE COUNTY CHESS ASSOCIATION sponsors rated tournaments in the Grayslake/Zion area. Contact Tim Just, 1521 Circle Ct, Waukegan 60085. (312) 244-7954.

MIDWEST CHESS ASSOCIATION organizes major tournaments for masters and experts. Contact Helen Warren, PO Box 305, Western Springs 60558. (312) 246-6665.

NORTH BOONE HIGH SCHOOL CHESS CLUB, 17641 Poplar Grove Rd, Poplar Grove 61065. Contact Guenter Wohlfarth, sponsor. (815) 765-3311.

ORLAND PARK CHESS CLUB meets Fridays, 7 to 11 pm, George Brown Commons, 15045 West Ave, Orland Park. Contact Glenn Panner, 14300 S Ridge, Orland Park 60462. (312) 460-3111.

PARK FOREST CHESS CLUB meets Thursdays, 7 to 10:30 pm, Freedom Hall, Orchard & Lakewood, Park Forest. Contact Wayne Palmquist, 228 S Orchard, Park Forest 60466. (312) 747-2120.

RAE PRODUCTS AND CHEMICALS, 10926 S Western, Chicago 60643. Contact Fred Gruenberg, (312) 779-3360.

ST CHARLES CHESS CLUB meets Thursdays at 7 pm, Baker Community House, 101 S 2nd (Route 31), St Charles. Contact Ery Sedlock, 6 N 307 Old Homestead Rd, St Charles 60174. (312) 377-7995.

TULEY PARK CHESS CLUB meets Saturdays, 1 to 5 pm, Tuley Park Fieldhouse, 501 E 90th Pl, Chicago. Contact Thomas Fineberg, 7321 S South Shore Dr, Chicago 60649. (312) 721-3979.

## WOMEN'S TOURNAMENTS — AN OLD IDEA?

by Bill Smythe

This year's edition of the Midwest Women's Open, an annual event since 1979, drew the smallest turnout in its eight-year history. This disappointment prompts me to raise again some age-old questions: Are women's tournaments necessary? What is their purpose? Are they an idea whose time has passed?

Why shouldn't women be content to play in open tournaments alongside the men? Indeed, I know a few women who, on principle, refuse to play in women-only tournaments. And many of those who do play are also active in open events. Surely Alexey Rudolph, Vivian Schmuicker, and Brenda Lawrence would remain interested in chess without women's tournaments.

At the opposite extreme are those who play in the Midwest Women's year after year but never push a Pawn in between. For these players, the MWO has served no useful purpose, either.

There have been cases of players starting out in women's events and then graduating to open, regular tournament play. Such players, however, may not be sufficiently numerous to justify the existence of women's tournaments.

There is, however, another justification that is often overlooked, especially by male players. A man playing in an open tournament usually has a sense of belonging. A woman, outnumbered 25:1 or 200:3, may have a tough time feeling this way. In a women's event, it is easy for each participant to feel like just another player. Many in the Midwest Women's have spoken of the camaraderie that develops among the players.

Compounding the numbers problems in open tournaments are the attitudes of some men. "She's pretty good, for a girl," is a frequently heard comment. On one occasion, I'm happy to say, the high-rated player who uttered this remark was trounced in 33 moves by the person about whom he had just spoken, a recent immigrant playing in her first U.S. event.

Perhaps, with the recent successes of Maria Ivanka, the Polgar sisters, and others, the time is coming when women's tournaments will no longer be necessary. Until then, men should accept women players as competitors, women should be willing to be outnumbered, and both should concentrate mainly on chess.



MINI-TOUR EVENT

# TIM JUST'S OPEN/RESERVE

AUGUST 2-3, 1986



5 ROUND SWISS 40/100

EF: \$15 if Rec'd by July 31  
\$20 at SITE

ENT: TIM JUST 1521 Circle Ct.  
Waukegan, IL 60085  
312-244-7954

OPEN: \$90-\$55, EX=\$45, A=\$35

RESERVE: \$90-\$55, C=\$45, D/E/U=\$35

BASED on Twenty-five/Section

SITE: IL Beach Resort  
IL Beach State Park

Sheridan Rd & Wadsworth to Lakefront  
ZION, IL 60099

LS, NC, W, ICA membership Req'd

REG: 8:30-9:15am on August 2nd

RNDS: 9:30-2-6:30 \*\*\* 10-3

## LETTERS...

Dear Editor:

We take pleasure in announcing that your publication is among the recipients of the 1986 Cramer Magazine Grants which identify and award excellence in local chess magazines. We are well aware of the effort and resources needed to produce your fine magazine and we appreciate its value in promoting the game.

These grants are again made possible by the continuing dedication and generosity of ACF Advisory Board member Fred Cramer. I am sure you know of Fred's unsurpassed record of contributions to American chess. We are happy to be able to assist you while simultaneously recognizing Fred's lifetime of service to chess in the U.S.

An equal grant will be made to your magazine in the fall.

Allen Kaufman, Executive Director  
American Chess Foundation

Your grant was for \$300.00. Thank you,  
American Chess Foundation and Fred Cramer!  
- Editor]

There was nothing on postal chess in the March-April ICB. Very disappointing.

Max Zavanelli

[Postal editor Helen Warren felt there was not enough material last time. You'll be glad to know her column is back this time, on page 26. And I'm sure Helen will be glad to know her column was missed. -- Editor]

## WANTED

Correct addresses for the following current and recently expired ICA members:

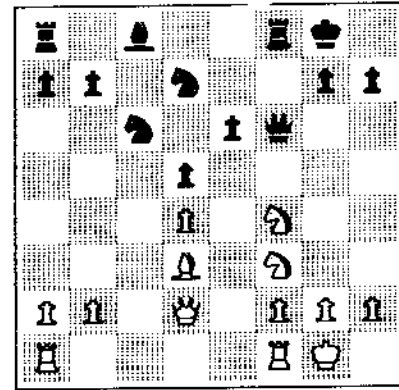
| Name:              | Last known address: |
|--------------------|---------------------|
| Stanley Brooks     | Chicago             |
| Edward Kluapp      | Blue Island         |
| Douglas Middleton  | Crest Hill          |
| Victor Petik       | Mount Prospect      |
| Anthony Poindexter | Chicago             |
| Eleazar Sollano    | Chicago             |

If you can help us with any of these, please contact the membership secretary at the address on the inside front cover.

# GREATER PEORIA OPEN

by Lester VanMeter

It just seemed smaller this year, due no doubt to the new two-section format. Actually this year's attendance of 34 was equal to last year's, despite the siphoning effect of a big St. Louis tournament and several small Chicago events. Bill Wilkinson made the event quite pleasant with his usual smooth job of directing. With any luck, next year the attendance will improve.



White: Phil Anderson (1953).  
Black: Walter Brown (2114).

|   |     |      |
|---|-----|------|
| 1 | e4  | e6   |
| 2 | d4  | d5   |
| 3 | Nd2 | Nf6  |
| 4 | e5  | fNd7 |

I have never been a big fan of the Tarrasch vs the French. An interesting system for Black instead of the text is 4....Ne4!? I'm not saying that such a move is best, but it certainly leads to interesting untried positions. And, if Black happens to be the better player, then he can hope for success, as I have had with this system in my games.

|   |     |     |
|---|-----|-----|
| 5 | Bd3 | c5  |
| 6 | c3  | Nc6 |
| 7 | Ne2 | Be7 |

This is an unusual move, although it "looks normal". The main continuation is 7....cxd4, with the Bishop at f8 often going directly to b4. Other moves that have been played at this point are ....f6, ....b6, ....Nb6, ....Qa5, ....Qb6. All of these may transpose amongst themselves and are typical French moves. Such a situation is "for homework" for the players, to use Igor Ivanov's words from the post-mortem of his game with Al Chow at the Midwest Masters.

|   |     |  |
|---|-----|--|
| 8 | Nf3 |  |
|---|-----|--|

An entirely different plan would ensue after 8 f4 as in Radulov-Quinteros 1973.

|   |      |     |
|---|------|-----|
| 8 | .... | O-O |
|---|------|-----|

Black could have chosen ....b6, which might have been a bit more logical when you consider his 7th move.

|    |      |      |
|----|------|------|
| 9  | Nf4  | cxd4 |
| 10 | cxd4 | Bb4+ |
| 11 | Bd2  |      |

11 Kf1 makes a better impression. The King will be safe enough and can walk to g1 if need be. The hR is brought into play via h3, and the Pawn push h2-h4 is also helpful in prosecuting the Kingside attack.

|    |      |      |
|----|------|------|
| 11 | .... | Qe7  |
| 12 | O-O  | Bxd2 |
| 13 | Qxd2 | f6   |
| 14 | exf6 | Qxf6 |

It can be seen now that White is much worse off than after the recommended Kf1 at move 11. The Black pressure along the f-file is more meaningful with the Bishop at c1 exchanged, and the White Kingside attack doesn't appear to be getting off the ground.

|    |       |  |
|----|-------|--|
| 15 | Bxh7+ |  |
|----|-------|--|

When I glanced over to see this position my first thought was, "What kind of sacrifice is this?" It sure didn't look right.

|    |      |      |
|----|------|------|
| 15 | .... | Kxh7 |
| 16 | Nxe6 | Rh8  |

Naturally the Knight is immune. This was probably the main point to White's play, judging from the clock times and his post-game comment that he hadn't seen at first that he could obtain a third Pawn for his Knight. Going for a third Pawn may not seem like a ba idea, but it is more to the point in position of this kind to attack. When a piece is battling 3 Pawns I like to bet on the piece picking off a Pawn or two. For these reasons 17 fNg5+ comes to mind. For example, 17....Kh6 18 Nf7+, or 17....Kg6 18 Nf4+! Kf5 19 gNe6! and Black's King is smoked out. The sharp-eyed reader will have noted that 18....Kh6 19 fNe6 leads to a repetition, an that 17....Kg8 18 Nc7 Rb8 19 Nxd5 is not merely a Pawn grab: 19....Qxd4? would lose the Queen, while 19....Qd6 which threatens mate forces off the Queens after 20 Qf4 Qxf4 21 Nxf4 and now 21....Nxd4 might be premature since 22 aRd1 Nc6 25 aRe1 Nf6 24 b4. [Readers: did any of you understand that last sentence? -- Editor.] The disorganized nature of the Black army will allow White some play.

Regardless of the accuracy of all of these lines, the point is that an immediate assault was indicated. The key point for the chess student is not exact methods, but rather, the feel for what to do in different positions.

|    |      |     |
|----|------|-----|
| 17 | aRe1 | Nf8 |
| 18 | Nc7  | Rb8 |
| 19 | Nxd5 | Qd6 |
| 20 | Qg5  |     |

Now the White pieces seem to get in each other's way, especially with respect to g5, and the White attack does not have any mating patterns available.

|    |      |     |
|----|------|-----|
| 20 | .... | Be6 |
| 21 | Nf4  | Bf7 |

21....Bc4 also seems good.

|    |    |     |
|----|----|-----|
| 22 | d5 | Nd8 |
|----|----|-----|

The Black pieces have all been driven back, but this has not hurt his prospects at all because White's pieces are not effectively placed either.

|    |     |     |
|----|-----|-----|
| 23 | Re7 | Ng6 |
|----|-----|-----|

A little simplification is to Black's advantage as mentioned before. The three Pawns are still not particularly dangerous.

|    |      |      |
|----|------|------|
| 24 | Nxg6 | Bxg6 |
| 25 | Ne5  | Rf8  |
| 26 | Re1  | Rf5  |
| 27 | Qg4  | Nf7  |
| 28 | Nxg6 | Qxg6 |

Greater Peoria Open

April 26-27, 1986

OPEN SECTION

|                    |      |     |     |      |     |     |     |
|--------------------|------|-----|-----|------|-----|-----|-----|
| 1 VAN METER Lester | 2331 | W 4 | L 2 | W 3  | W 5 | W 6 | 4   |
| 2 NAFF William     | 2016 | W 8 | W 1 | Dbye | L 3 | W 7 | 3.5 |
| 3 BROWN Walter     | 2114 | W 6 | W 5 | L 1  | W 2 | L 4 | 3   |
| 4 SMIT Tom         | 2006 | L 1 | W 8 | L 5  | W 7 | W 3 | 3   |
| 5 MC ENTEE Tim     | 2103 | W 7 | L 3 | W 4  | L 1 | D 8 | 2.5 |
| 6 ANDERSON Phil    | 1953 | L 3 | L 7 | Wbye | W 8 | L 1 | 2   |
| 7 MANDEVILLE Joel  | 1898 | L 5 | W 6 | D 8  | L 4 | L 2 | 1.5 |
| 8 ANDERSON David   | 1830 | L 2 | L 4 | D 7  | L 6 | D 5 | 1   |

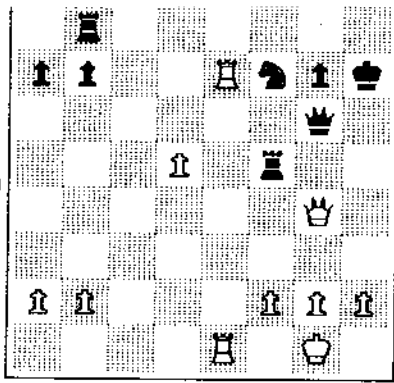
RESERVE SECTION

|                       |      |     |     |      |     |     |     |
|-----------------------|------|-----|-----|------|-----|-----|-----|
| 1 VEGH Carlos         | 1763 | W14 | W 4 | W 7  | D 2 | W 3 | 4.5 |
| 2 VERO Carl           | 1721 | W19 | W20 | W16  | D 1 | W 7 | 4.5 |
| 3 STORTEL Stephen     | 1699 | W21 | W 9 | W15  | W 5 | L 1 | 4   |
| 4 SMITH Raymond       | 1694 | W23 | L 1 | W17  | W15 | W12 | 4   |
| 5 THOMPSON Mark       | 1408 | W26 | D12 | W 9  | L 3 | W17 | 3.5 |
| 6 STAFFORD Jerry      | 1622 | W12 | L 7 | Dbye | W20 | W11 | 3.5 |
| 7 LUNDQUIST Doug      | 1720 | W25 | W 6 | L 1  | W 8 | L 2 | 3   |
| 8 PANNER Glenn        | 1686 | W13 | L15 | W23  | L 7 | W20 | 3   |
| 9 HEIRIGS Craig       | 1788 | W11 | L 3 | L 5  | W23 | W10 | 3   |
| 10 RYDBERG Steeve     | 1762 | W17 | L16 | D11  | W22 | L 9 | 2.5 |
| 11 GUILD Roger        | 1661 | L 9 | W25 | D10  | W21 | L 6 | 2.5 |
| 12 COLE Jay           | 1784 | L 6 | D 5 | W18  | W13 | L 4 | 2.5 |
| 13 BROWN Leela        | -    | L 8 | D22 | W25  | L12 | W21 | 2.5 |
| 14 KIRKPATRICK Donald | 1587 | L 1 | L23 | Dbye | W24 | W22 | 2.5 |
| 15 BETHEL Robert      | 1745 | W22 | W 8 | L 3  | L 4 | -   | 2   |
| 16 ZIMMERLE Wayne     | 1687 | W24 | W10 | L 2  | -   | -   | 2   |
| 17 DREESSEN Robert    | 1585 | L10 | W24 | L 4  | W18 | L 5 | 2   |
| 18 WILSON Gene        | -    | L20 | W19 | L12  | L17 | W23 | 2   |
| 19 BETTS Jason        | 1451 | L 2 | L18 | L22  | WF  | W24 | 2   |
| 20 LYBARGER Dean      | 1664 | W18 | L 2 | D21  | L 6 | L 8 | 1.5 |
| 21 CARSON David       | 1362 | L 3 | W26 | D20  | L11 | L13 | 1.5 |
| 22 ROWLAND Clayton    | 1494 | L15 | D13 | W19  | L10 | L11 | 1.5 |
| 23 MOORE Rod          | 1283 | L 4 | W14 | L 8  | L 9 | L18 | 1   |
| 24 CAIN Dennis        | 1160 | L16 | L11 | Wbye | L14 | L19 | 1   |
| 25 RYLANDER Lyle      | 1399 | L 7 | L11 | L13  | LF  | -   | 0   |
| 26 BLAIR Charles      | 1722 | L 5 | L21 | -    | -   | -   | 0   |

=====  
Greater Peoria Open Prize Winners  
=====

| OPEN SECTION         | Cash   | ICA Tour Points  |
|----------------------|--------|------------------|
| Top: Lester VanMeter | 200.00 | 30.0             |
| William Naff         | 100.00 | 20.0 plus 24.0 X |
| Walter Brown         |        | 5.0 plus 6.0 X   |
| Tom Smit             |        | 5.0 plus 6.0 X   |
| A: Phil Anderson     | 75.00  | 20.0 A           |
| Joel Mandeville      |        | 10.0 A           |

| RESERVE SECTION    | Cash   | ICA Tour Points |
|--------------------|--------|-----------------|
| Top: Carlos Vegh   | 112.50 | 12.0 B          |
| Carl Vero          | 112.50 | 12.0 B          |
| C: Mark Thompson   | 60.00  | 12.0 C          |
| Donald Kirkpatrick |        | 6.0 C           |
| D/E: David Carson  |        | 8.0 D           |
| Rod Moore          |        | 2.0 D           |
| Dennis Cain        |        | 2.0 D           |
| Unr: Leela Brown   | 50.00  |                 |



Black has finally eliminated the danger to his King. Now it is time to use the extra piece in the best possible manner, by attacking the White King.

29 Qd4

White's best holding chance is to exchange Queens to lessen any mating attack, get to an ending, and trade off as many Pawns as possible. After all, King and Knight vs King is drawn, even if both sides have a Rook. Many times a player in the heat of battle will lose track (or simply be unaware) of what his best chance might be.

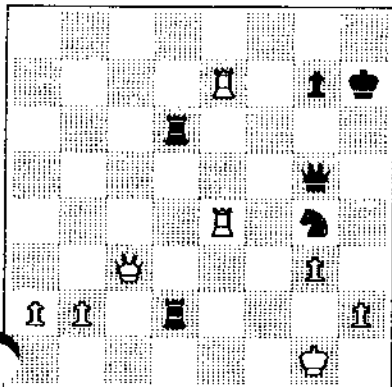
29 .... Rd8  
30 Qxa7 fRxd5  
31 Qxb7

White's problems here are complicated not only by his opponent's attack, but also by his own time trouble.

31 .... Ng5  
32 Kh1 Ne4  
33 Qb3 Nxf2+  
34 Kg1 Nd3  
35 1Re3 Nf4  
36 g3 Rd2  
37 Qc3

Both players are in time pressure now, but White's is more acute. A good attacking finish for Black would be 37....Rg2+ 38 K-any 1Rd2. The Knight is immune from capture, and mate is threatened.

37 .... Nh3+  
38 Kh1 Nf2+  
39 Kg1 Ng4  
40 3Re6 Qg5  
41 Re4 BRd6



In this position White lost on time. Objectively he still has chances if he can trade off the major pieces.



# ASK MIROSEG

by David Sprenkle

It was time for Miroseg Zog's bi-monthly visit, but all was not well. I had no thought-provoking questions from his loyal readers to pass on to him, and I knew it would crush his tender ego. So I formulated a plan. When he knocked on my door I was ready with a white lie.

"Miroseg, old buddy old pal," I said with my customary grace under pressure. "Hey, ah, you know, well, uh, I lost all the readers' questions for your column. And I had a whole bunch of them. Gosh, they were thought-provoking. They really were. Honest."

The intrepid Albanian didn't bat an eye. "Is good, yes. Last questions lousy. I almost think you make them up." He sauntered over to my chess shelf and started rooting around, and then added, "but remember, I get pay for column anyway."

"I don't pay, Bill Smythe pays! And he's paying for your legendary chess wisdom, not a blank white page. I guess you're going to have to annotate one of your own games or something."

"OK, OK, I do something. But what this?" He pulled a batch of my old scoresheets out of an old shoebox. I paled. "Hey, I got idea. I tell readers how you play bad, and then they know not to do! Ha, ha, just kidding." I wasn't so sure.

"Miro, if you're going to annotate one of my games, at least let me pick one. Please?" I snatched for the scoresheets, but he jerked them away like he was Lucy holding a football for Charlie Brown.

"Come on, Dave, be good sport! Get your pen and start writing. Here one you even win."

White: C. Nowe (2029)  
Black: D. Sprenkle (2215)

World Open, 1977

1 d4 d5  
2 c4 Bf5

"Dave, this terrible variation. Is only giant shot-cheap." I nodded in whole-hearted agreement. "Now his next move fine, but almost everything good if White stop Nc6-b4-c2."

3 cxd5 Bxb1  
4 Rxb1

"I see you know variation and he do not. 3...Qxd5 4 Nc3 allow White big center in few moves. But he should play 4 Qa4+ first to force you to make choice you no want make."

4 .... Qxd5  
5 Qa4+ b5?!

I expected Zog to break out laughing at this move, but he only smiled. "8...Nc6 is perfectly fine move. Why you burn your bridges?" Frankly, after 9 years I couldn't remember.

6 Qb3 Qf5  
7 Ra1 Nc6  
8 Nf3?

Miroseg grabbed my pen and affixed the question mark himself, saying, "too slow! Not 8 e3 to kill two peasants with one machine gun? You must guard b-Pawn, but then you lose initiative."

8 .... e5!

This caught Miroseg by surprise, I'm proud to say. But after a few minutes thought he started pounding me on the back and commending my ancestors. "Davey! You play like crazy man!" I took that to mean I could give myself an exclamation mark.

9 Qxb5 Bb4+  
10 Bd2 Ne7

Miroseg looked ready to kiss me on both cheeks, so I threw in my two cents worth. "I know I had to develop like a banshee or die a horrible death. I was just lucky this sequence of moves happened to work tactically." But Miroseg shook his head. "I no luck. 8 Nf3 lose initiative. You sense you must find best moves or lose initiative back."

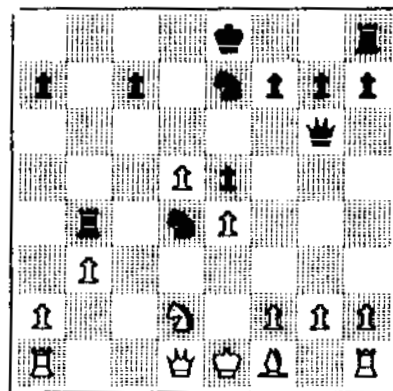
11 d5

"Of course 1 Bxb4 Rb8 and Black get piece back, but maybe that better."

11 .... Rb8  
12 Qa4 Bxd2+  
13 Nxd2 Rb4  
14 Qd1 Nd4  
15 e4 Qg6

I was starting to remember the game now so I said, "I wanted to pressure his g-Pawn to hinder his development, and I was also thinking of playing ....f5. And I'm setting up a trap he's about to fall into." Miroseg nodded and said, "is true. 16 f3 maybe best choice among bad brides." I assumed that was an old Albanian folk saying.

16 b3?



16 .... Nxd5!  
17 exd5? Nc2+  
18 Ke2 Rd4!  
19 Rcl Qd3 mate

Miroseg was full of praise. "Is cute. But you must promise never, never to play 2...Bf5 again! And don't lose letters again or we look at loss of yours next issue!"

Readers, you've been warned. Send your questions on chess or Albanian culture to:

Ask Miroseg, c/o  
David Sprenkle  
805 W Green #B-15  
Urbana IL 61801



# CONTINUED

by Lester VanMeter

Editor's note: Our last issue included a restable and some games from the Midwest Masters. This article is a continuation of that coverage.]

The Midwest Masters Invitational has been the premier tournament in the Midwest. The fourth edition of Helen Warren's series remained just that, but it added another dimension as well, becoming prominent on a national level. In the field of 77 players were six Grandmasters and six International Masters. The field had again become larger (up 20 players) and also stronger with an average rating of 2337 (up 25 points).

A major difference in the event this year was that for the first time it had an elegant playing site at the Lincolnwood Hyatt. Perhaps that, along with the increased size and strength of the field, led to some exciting chess. In addition, there seemed to be an increased combativeness this year. The games were hard-fought; the only short draw I recall was the last-round game on board 1. In the first round, the first result did not come in until after three hours of play.

If we compare the Midwest Masters with Lone Pine, we might get a better perspective of what we have here. The Midwest Masters has had a slightly larger field in each of its four years, and a higher average rating in three of the four. This makes us realize how hard a job Helen Warren and her assistants have been doing. If the curve keeps going up, the whole chess world will know of the Midwest, but even if it just stays the same, it will still be a national event of import. Now let's look at the play.

Joel Benjamin had a fairly easy time of it in the first three rounds. He was not pressed and simply exploited the errors of his opponents. His key game came in round 4 when he had Black against GM Gurevich. Dmitri tried out a supposed improvement in the Benko:

White: Dmitri Gurevich (2601).  
Black: Joel Benjamin (2627).

```

1   d4       Nf6
2   c4       c5
3   d5       b5
4   cxb5     a6
5   e3       Bb7
6   Nc3      axb5
7   Bxb5     Qa5
8   Bd2      Qb6
9   Qb3      e6
10  Bc4

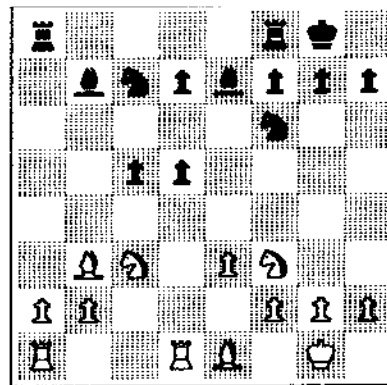
```

This has been mentioned as a possible improvement for White, but I cannot agree. Benjamin certainly demonstrates what to do:

```

10  ....    Qxb3
11  Bxb3     Na6
12  Nf3      exd5
13  O-O      Be7
14  fRd1     O-O
15  Be1      Nc7

```



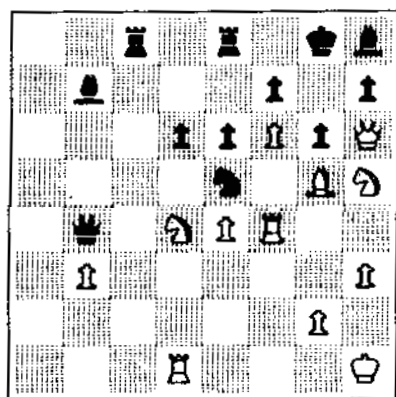
|    |     |      |
|----|-----|------|
| 12 | Kh1 | Re8  |
| 13 | Qg3 | Bf8  |
| 14 | f5  | cNe5 |
| 15 | Bh5 | g6   |
| 16 | Be2 | Bg7  |
| 17 | Qh3 | Nb6  |

It appears that Black has done well in the opening by getting his pieces to their best posts with White not yet having any concrete attacking scheme.

|    |      |      |
|----|------|------|
| 18 | Bh6  | Bh8  |
| 19 | Qh4  | bNc4 |
| 20 | Bxc4 | Nxc4 |
| 21 | Bc1  | Ne5  |
| 22 | f6   | b5   |
| 23 | a3   | Rb8  |
| 24 | cNe2 | Bb7  |
| 25 | Ng3  | bRd8 |
| 26 | c3   | Qc4  |
| 27 | h3   | a5   |
| 28 | Qh6  | b4   |

Both sides press forward on their side. I think Black has a more promising position, but....

|    |      |      |
|----|------|------|
| 29 | cxb4 | axb4 |
| 30 | axb4 | Qxb4 |
| 31 | b3   | Rc8  |
| 32 | Bg5  | Rc5  |
| 33 | Bf4  | cRc8 |
| 34 | Nh5  |      |



|    |      |      |
|----|------|------|
| 34 | .... | Bxe4 |
|----|------|------|

Naturally if 34....gxh5 35 Bxe5.  

|    |     |     |
|----|-----|-----|
| 35 | Ng7 | Qb7 |
| 36 | Rf2 | Rf8 |

The idea is to defend against a sacrifice on e6 followed by f7. He must also beware to prevent any White Knight from appearing on g5.

|    |      |      |
|----|------|------|
| 37 | Bxe5 | dxe5 |
| 38 | Nf3  | Bxf3 |
| 39 | Rxf3 | cRd8 |
| 40 | Rxd8 | Rxd8 |
| 41 | Nxe6 | Bxf6 |
| 42 | Draw |      |

Morris undoubtedly weighed the consequences carefully before agreeing to the draw. If, after taking the Exchange, he can manage to trade Queens, he would have excellent chances. But it is not easy to see how this can be accomplished. Without such a trade the dark squares, particularly h2, would be difficult to defend adequately.



Kudrin also played an outstanding game against Leverett in round 4. This game is interesting because the opening is a favorite of Leverett; in last year's MMI Leverett won a key game with it against Kuznetsov. That game was

annotated by Leverett for the tournament book. This game can be understood with few notes, but that does not detract from its excellenc

White: Sergey Kudrin (2533).  
 Black: Bruce Leverett (2377).

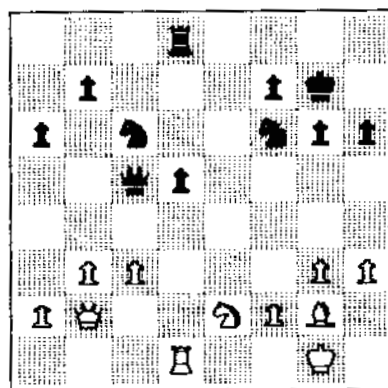
|   |       |      |
|---|-------|------|
| 1 | e4    | e6   |
| 2 | d4    | d5   |
| 3 | Nd2   | c5   |
| 4 | exd5  | exd5 |
| 5 | gNf3  | Nc6  |
| 6 | Bb5   | Bd6  |
| 7 | dxcc5 | Bxc5 |
| 8 | O-O   | Ne7  |
| 9 | Nb3   | Bb6  |

This is Leverett's wrinkle. Though it is no new, his interpretation is vastly better than theory. Kudrin, though, plays with good finesse, and avoids the book recommendation.

|    |      |      |
|----|------|------|
| 10 | Re1  | O-O  |
| 11 | Bg5  | h6   |
| 12 | Be3  | Bxe3 |
| 13 | Rxe3 | Bg4  |
| 14 | h3   | Bxf3 |
| 15 | Qxf3 | Qd6  |
| 16 | Rd1  | aRd8 |

Now it is a question of exploiting the isolated d-Pawn. Kudrin's method of play is worth careful study:

|    |      |      |
|----|------|------|
| 17 | c3   | a6   |
| 18 | Bf1  | Kh8  |
| 19 | Qh5  | Ng8  |
| 20 | g3   | Nf6  |
| 21 | Qe2  | Qc7  |
| 22 | Nd4  | Na5  |
| 23 | b3   | fRe8 |
| 24 | dRd3 | g6   |
| 25 | Bg2  | Kg7  |
| 26 | Qb2  | Nc6  |
| 27 | Ne2  | Rxe3 |
| 28 | Rxe3 | Qb6  |
| 29 | Rd3  | Ne5  |
| 30 | Rd4  | Nc6  |
| 31 | Rd1  | Qc5  |



After the buildup it is now time for the finishing touches.

|    |      |      |
|----|------|------|
| 32 | Nf4  | Rd6  |
| 33 | Qd2  | Ne5  |
| 34 | c4   | d4   |
| 35 | Bxb7 | a5   |
| 36 | Nd3  | Nxd3 |
| 37 | Qxd3 | Qh5  |
| 38 | Kg2  | Qe5  |
| 39 | Bf3  | Nd7  |
| 40 | Bd5  | Kf6  |
| 41 | Qxd4 | 1-0  |

It would seem that Kudrin played the best chess of the three winners, although it was not Benjamin's or Gruenfeld's fault that the opponents did not put up as much resistance. All three deserved their places at the top.

he next tier of players at 4 points also shared in the money. Anatoly Lein barely managed to survive in round 1 when he swindled a draw against Greg Small. Then in round 2 he was able to make no progress whatever in his game against Kenny Thomas and wound up with his second draw. After wins over Marvin Landridge and Bill Colias he became the only obstacle to Morris Giles' push for a first-place tie:

White: Morris Giles (2401).  
 Black: Anatoly Lein (2601).

|   |       |      |
|---|-------|------|
| 1 | e4    | c6   |
| 2 | d4    | d5   |
| 3 | Nd2   | dxe4 |
| 4 | Nxe4  | Nf6  |
| 5 | Nxf6+ | exf6 |

Harper is ....gxf6.

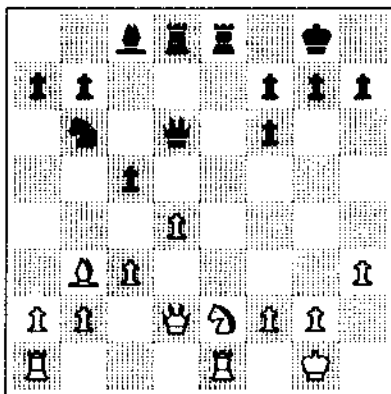
|   |     |     |
|---|-----|-----|
| 6 | Bc4 | Bd6 |
| 7 | Ne2 |     |

More usual is 7 Qe2+.

|    |      |      |
|----|------|------|
| 7  | .... | O-O  |
| 8  | O-O  | Nd7  |
| 9  | Bf4  | Nb6  |
| 10 | Bb3  | Bg4  |
| 11 | Bxd6 | Qxd6 |
| 12 | c3   | aRd8 |
| 13 | h3   | Bc8  |

Black has managed to equalize.

|    |      |      |
|----|------|------|
| 14 | Qd2  | fRe8 |
| 15 | fRe1 | c5   |



typical freeing thrust. Giles now errs:

|    |      |     |
|----|------|-----|
| 16 | aRd1 | Be6 |
| 17 | d5?  | c4  |

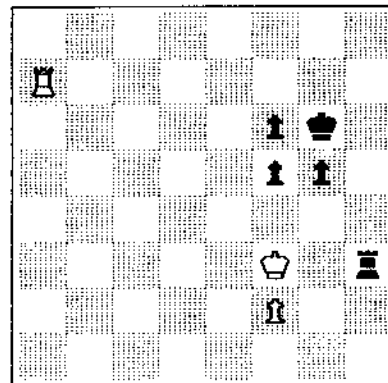
Now Black is better.

|    |       |      |
|----|-------|------|
| 18 | Nd4   | Bd7  |
| 19 | Bc2   | Qxd5 |
| 20 | Qf4   | Qc5  |
| 21 | Qh4   | h6   |
| 22 | Be4   | Na4  |
| 23 | Bxb7  | Nxb2 |
| 24 | Rxe8+ | Rxe8 |
| 25 | Rb1   | Qa3  |
| 26 | Bd5   | Qxc3 |
| 27 | Qh5   | Re7  |
| 28 | Nf5   | Bxf5 |
| 29 | Qxf5  | Re1+ |
| 30 | Kh2   | Qe5+ |
| 31 | Qxe5  | Rxe5 |
| 32 | Rxb2  | Rxd5 |
| 33 | Rb8+  | Kh7  |

The Rook ending is instructive, but White is clearly lost.

|    |      |      |
|----|------|------|
| 34 | Rc8  | Ra5  |
| 35 | Rxc4 | Rxa2 |
| 36 | Kg3  | g5   |

|    |      |       |
|----|------|-------|
| 39 | Rc6+ | f6    |
| 40 | Rc8  | h5    |
| 41 | g3   | Ra4   |
| 42 | Rg8+ | Kh7   |
| 43 | Rc8  | h4    |
| 44 | gxh4 | Rxh4  |
| 45 | Rc7+ | Kg6   |
| 46 | Rxa7 | Rxh3+ |

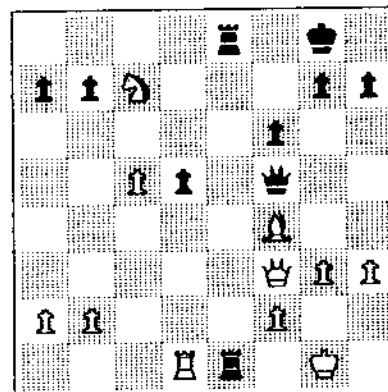


Note how Lein was not afraid to simplify.

|    |      |       |
|----|------|-------|
| 47 | Kg2  | g4    |
| 48 | Ra4  | Rf3   |
| 49 | Ra8  | f4    |
| 50 | Rg8+ | Kf5   |
| 51 | Ra8  | Rb3   |
| 52 | Rg8  | Rb2   |
| 53 | Kg1  | f3    |
| 54 | Rg7  | Rb1+  |
| 55 | Kh2  | Rf1   |
| 56 | Rxg4 | Rxf2+ |
| 57 | O-1  |       |

Lein avoids the transparent stalemate, and sets up a poignant finish in which he retains, ironically, those doubled f-Pawns which cause theoreticians to dismiss Black's opening set-up as inferior.

Vince McCambridge had trouble with Todd Miller in round 2 when Miller's two Bishops and passed a-Pawn were more than he could handle. His best game was against Paul Poschel in round 3. In the last found McCambridge faced Greg DeFotis; the fate of the game rested on the following position:



Greg automatically and incorrectly captured the Rook on e1. If he had played a King move instead, he would have won. As it turned out McCambridge was able to go on and win a nice ending.

# RUDOLPH TOPS MIDWEST WOMEN'S

by Harold Winston

Twenty year old Alexey Rudolph (2006) of Seattle, Washington captured her fourth Midwest Women's Open title in Evanston on April 19-20. Now a graduate student in education, Rudolph went undefeated, scoring 4.5-0.5 to top the strong field of 10 women from 5 states. While this was the smallest turnout at a Midwest Women's, it was the first coast-to-coast MWO with players from Massachusetts to Washington state. Half the entries were rated over 1700. Rudolph had won this tournament previously in 1981, 1983, and 1985, the latter being a joint win with Diane Savereide.

ICA Patron Member Vivian Schmuicker of Goshen, Indiana was the only player to draw Rudolph. Schmuicker took clear 2nd with 3.5-1.5. She is the current chairman of the USCF Women's Committee and the most active woman chess-player in the Midwest. Two Chicagoans shared 3rd: Mila Stamm, formerly Mila Zelenkovsky, who scored a sparkling win over Schmuicker in the last round, and Brenda Lawrence, who also took the C prize. Mila Stamm's 1804 rating would place her in the USCF top 50 Women's list if she would return to active regular tournament play. Jackie Newman came from downstate Mount Vernon to compete in her second rated tournament and took the unrated prize. Ruth Jacobsen of Glen Ellyn gained the upset prize with her 2nd-round victory (a 278-point rating difference) over USCF Regional Vice President Gail Lingner of Lunenburg, Massachusetts.

The aid of the American Chess Foundation was greatly appreciated. This event was directed by Bill Smythe and organized by Vivian Schmuicker and Harold Winston. Many of the participants enjoyed a Chinese dinner at the Pineyard Restaurant on Saturday night.

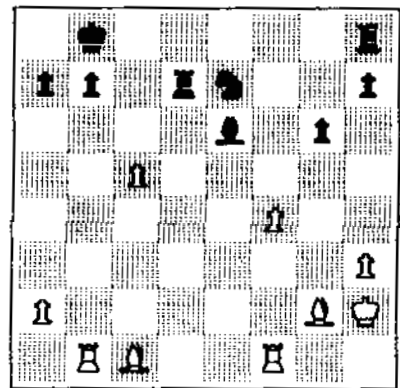


Runner-up Vivian Schmuicker in the middle game versus unrated winner Jackie Newman.

White: Alexey Rudolph (1985).  
Black: Vivian Schmuicker (1737).

Annotated by Schmuicker.

|    |      |       |
|----|------|-------|
| 1  | g3   | g6    |
| 2  | Bg2  | Bg7   |
| 3  | e4   | e5    |
| 4  | c3   | c5    |
| 5  | Ne2  | Nc6   |
| 6  | O-O  | gNe7  |
| 7  | d3   | d6    |
| 8  | f4   | Be6   |
| 9  | h3   | f5    |
| 10 | Nd2  | Qd7   |
| 11 | Kh2  | O-O-O |
| 12 | Qa4  | Kb8   |
| 13 | Rb1  | fxe4  |
| 14 | dxe4 | exf4  |
| 15 | gxf4 | d5    |
| 16 | b4   | cxb4  |
| 17 | cxb4 | dxe4  |
| 18 | Nxe4 | Nd4   |
| 19 | Qxd7 | Rxd7  |
| 20 | Nxd4 | Bxd4  |
| 21 | Nc5  | Bxc5  |
| 22 | bxc5 |       |



22 .... Bd5  
If 22....Bxa2 23 c6 Bxb1 24 cxd7 and White is threatening 25 Ba3 attacking Black's Knight and Bishop. White is also threatening 25 Re1 N-any 26 Re8+ and Black is unable to meet all these threats.

|    |      |      |
|----|------|------|
| 23 | Rd1  | hRd8 |
| 24 | Bxd5 | Rxd5 |
| 25 | Re1  | Nc6  |
| 26 | Be3  | Rd3  |
| 27 | Kg2  | Re8  |
| 28 | Bf2  | Rxe1 |
| 29 | Rxe1 | Kc7  |
| 30 | Re8  | Rd7  |
| 31 | f5   | Rf7  |

31....gxf5?? 32 Bg3 mate.

|    |      |      |
|----|------|------|
| 32 | fxg6 | hxg6 |
| 33 | Rg8  | Ne7  |
| 34 | Ra8  | a6   |
| 35 | Bg3+ | Kc6  |
| 36 | Bd6  | Nf5  |
| 37 | Rg8  | Nxd6 |
| 38 | cxd6 | Kxd6 |

38....Rf6 would win the d-Pawn for free.

|    |       |     |
|----|-------|-----|
| 39 | Rxg6+ | Ke5 |
| 40 | Rg4   | Kf5 |
| 41 | Kg3   | Rc7 |
| 42 | Rf4+  | Kg6 |
| 43 | Draw  |     |

Black offered a draw and the game was adjourned. White agreed to the draw after seeing Black's sealed move.

White: Alexey Rudolph (1985).  
 Black: Mila Stamm (1804).

Notated by Rudolph.

1 g3 e5  
 2 Bg2 Nf6  
 3 d3 h6

Be maturely cautious.

4 Nf3 Nc6  
 5 O-O Bc5  
 6 a3 a5

Otherwise White may play b4, c4, and Bb2.

7 Nxe5

Trying to make things exciting.

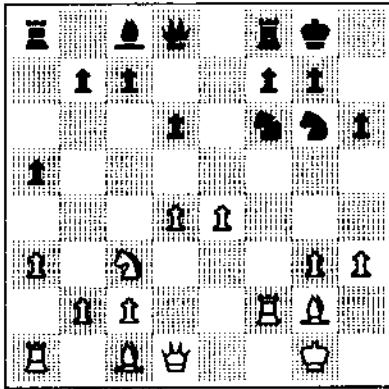
7 .... Bxf2+

Correct is ....Nxe5 8 d4 Bd6 keeping the bishop.

8 Rxf2 Nxe5  
 9 h3 O-O

...c5, stopping White's center, is better.

10 d4 Ng6  
 11 e4 d6  
 12 Nc3



12 .... Re8?  
 ....c5 is +=.  
 13 Bxh6 gxh6  
 14 Qf3 Re6  
 15 Nd5!  
 If 15 d5 Ne5 +- If 15 e5 dxe5 16 d5 Rb6 +-  
 15 .... Nxd5  
 15....Kg7 16 aRf1. 15....Nxe4 16 Qxf7+.  
 16 Qxf7+ Kh8  
 17 exd5 Ne5  
 18 dxe5 Rxe5  
 19 Rf6! Rh5  
 20 aRf1 Bf5  
 21 1Rx f5 Qe8  
 22 Rxh5 Qe3+  
 23 Kh2 Rg8  
 24 hRxh6+ 1-0

Thanks to Harold Winston and the American Chess Foundation for making my participation in this tournament possible.



Above: Ruth Jacobsen beginning her game with Brenda Lawrence.

Left: Alexey Rudolph demonstrating her position on the wallchart.



8th Midwest Women's Open

April 19-20, 1986

|    |                  | pre | post |      |      |     |      |     |     |     |
|----|------------------|-----|------|------|------|-----|------|-----|-----|-----|
| 1  | RUDOLPH Alexey   | WA  | 1985 | 2006 | W 6  | D 2 | W 7  | W 3 | W 5 | 4.5 |
| 2  | SCHMUCKER Vivian | IN  | 1737 | 1768 | W 9  | D 1 | W 5  | W 7 | L 3 | 3.5 |
| 3  | STAMM Mila       | IL  | 1804 | 1801 | W10  | L 7 | W 8  | L 1 | W 2 | 3   |
| 4  | LAWRENCE Brenda  | IL  | 1421 | 1441 | L 7  | W10 | Dbye | D 5 | W 9 | 3   |
| 5  | JACOBSEN Ruth    | IL  | 1477 | 1503 | W 9  | W 6 | L 2  | D 4 | L 1 | 2.5 |
| 6  | LINGNER Gail     | MA  | 1733 | 1729 | L 1  | L 5 | Dbye | W 9 | W 7 | 2.5 |
| 7  | MC NEIL Marjorie | WI  | 1950 | 1897 | W 4  | W 3 | L 1  | L 2 | L 6 | 2   |
| 8  | SAPP Jane        | IL  | 1178 | 1177 | Dbye | -   | L 3  | WF  | -   | 1.5 |
| 9  | NEWMAN Jackie    | IL  | 1485 | 1349 | L 2  | L 5 | W10  | L 6 | L 4 | 1   |
| 10 | BOZILENKO Marina | IL  | -    | 1125 | L 3  | L 4 | L 9  | LF  | -   | 0   |

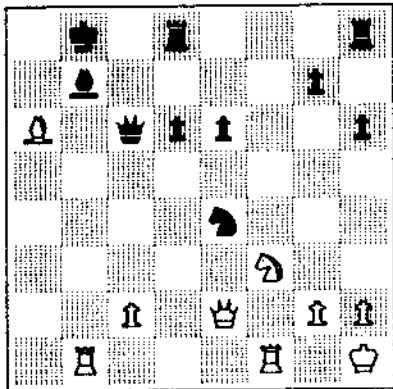
White: Mila Stamm (1804).  
Black: Vivian Schmuicker (1737).

Annotated by Schmuicker.

- 1 e4 c5
- 2 Nf3 d6
- 3 d4 cxd4
- 4 Nxd4 Nf6
- 5 Nc3 a6
- 6 Bd3 e6
- 7 Bg5 Be7
- 8 O-O Qc7
- 9 Nb3 bNd7
- 10 f4 b5
- 11 a3 Bb7
- 12 Nd2 h6
- 13 Bxf6 Bxf6
- 14 Nf3 Bxc3
- 15 bxc3 Qxc3
- 16 f5 Nf6
- 17 fxe6 fxe6
- 18 Qe2 Qc5+
- 19 Kh1 O-O-0

This led to my downfall.

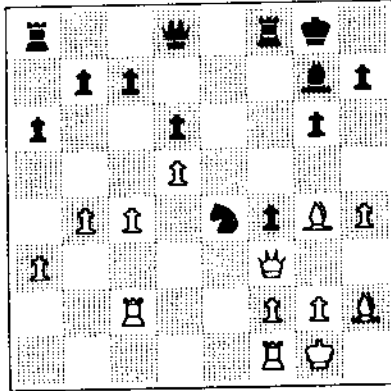
- 20 a4 Kb8
- 21 axb5 axb5
- 22 Bxb5 Nxe4
- 23 Ba6 Qc6
- 24 aRb1



- 24 .... Nc3??!
  - 25 Rxb7+
  - 25 Bxb7 would win a piece outright.
  - 25 .... Qxb7
  - 26 Qd3 Qb4
  - 26....Qb2 is better, so that Black can answer
  - 27 Nd4 with ....Re8.
  - 27 Nd4
  - I can't stop all the forks.
  - 27 .... Kc7
  - 28 Nxe6+ Kd7
  - 29 Nxd8 Rxd8
  - 30 Rf7+ Kc6
  - 31 Bb7+ Kc5
  - 32 Rc7+ Kb6
  - 33 Rc6+ Kxb7
  - 34 Qa6+ Kb8
  - 35 Rb6+ 1-0
- Black resigned on move 46.



Ben Finegold managed to play under control well. He won a nice ending vs Robert Fischer in round 1, and was close to victory against Leonid Shamkovich in round 4, but the wily GI escaped. Ben had the following position against Michael Brooks in the last round:



Brooks now tried 24....Ng3 which is tricky but it didn't fool Ben:

- 24 .... Ng3
- 25 Bxg3
- 25 fxxg3 is obviously bad.
- 25 .... fxg3
- 26 Qxg3 Be5
- 27 Qh3 Rf4
- 28 g3 Rd4
- 29 h5 gxh5
- 30 Qxh5 Qe8
- 31 Qh3

The Black King is vulnerable and White will easily attack.

- 31 .... a5
- 32 Kg2 axb4
- 33 axb4 Bg7
- 34 Be6+ Kh8
- 35 Rh1 h6
- 36 Qf5 Ra3
- 37 Re2 Rxc4

White wins with the obvious 38 Bf7.



Long-distance travelers Gail Lingner (Massachusetts) and Marjorie McNeil (Wisconsin) blending into the scenery on the Northwestern University campus.

# PROVISO WEST WINS IHSA AA TEAM STATE CHAMPIONSHIP

by Larry Stilwell

62 Class AA high school teams converged at Evanston High School March 21-22 for the team state championship. Several coaches remarked that team strength was the strongest in several years. Proviso West won their fourth championship of the 1980's by defeating New Trier 63-5, Kenwood 51-17, Urbana 58-10, Glenbrook North 42.5-25.5, Rockford Auburn 45-23, and in the final round Fenwick 56-12.

Christopher Gray on board 3, John Nielsen on board 4, and Steve Slagle on board 6 finished first in the state on their boards. Joe Pierotti was 4th on board 7, captain Jim Reed 5th on board 2, Jason Brawka 5th on board 8 and Armon Haynes 8th on board 5. Tom Vlach, West Suburban Conference scoring record holder, lost only to the top 3 finishers on board 1.

break for the top seven teams were Proviso West 881.5, Elgin 772.5, Fenwick 733.5, Rock Island 637, Rockford Auburn 605.5, Thornwood 579, and St Ignatius of Chicago 546.

46 from class AA and 22 from class A qualified from the team state championship to the individual state championship held April 25-26 at Ottawa High School. State champions were Andrew Payne, St Ignatius, in class AA; and John Wilson, University High at Normal, in class A.

Andrew Payne of St Ignatius, John Nielsen of Proviso West, and Erik Ronneberg of Kenwood each scored 4 wins and a draw. Andrew and John each had 14 tie-break points and Erik 11.5. Andrew won the state championship with 16.5 second tie-break points to 16 for John. Peter Walhout, Rockford Auburn, scored four wins. Finishing with 3.5 were defending champion Dave Rajendran, Fenwick; Jonathan McCaunaghey, Senn; Shai Ben-Zui, Carbondale; Ivan Jonota, Maine West; Eric Nore, Elgin; Dwayne Falls, Carver; and Jay Saltzman, Glenbrook North.

Eric Krok, University High of Urbana, drew John Wilson, but lost on tie-break 14.5-12.5. Hans Helbakkmo scored 4 wins. Scoring 3.5 points were Chris Leman of Roanoke-Benson and Jason Wallin of Sterling Newman.



Proviso West AA Team State Champions

Standing, left to right: Armon Haynes, board 5; Jason Brawka, board 8; Joe Pierotti, board 7; Steve Smolen, board 9; Charles Cairo, board 10; Larry Stilwell, coach. Seated, left to right: Chris Gray, board 3; Tom Vlach, board 1; James Reed, board 2; John Nielsen, board 4. Not pictured: Steve Slagle, board 6.



# ICA TOUR UPDATE

Listed below are all players who have earned points in either of the two ICA Tour Events held so far this year: the Tim Just Winter Open in January, and the Greater Peoria Open in April. Not included is the South Suburban Open, May 31 in Orland Park, which will have been played by the time you read this.

All players must have completed their Tour events by the end of the year in order to win Tour cash prizes. See the January-February issue for details. Upcoming Tour events are expected to include the following:

Master Challenge VIII (June 20-22)  
 Greater Chicago Open (July 19-20)  
 Tim Just Open/Reserve (August 2-3)  
 Bradley Summer Open (August 16)  
 Illinois State Championship (Labor Day)

## Championship Tour Points:

|                   |       |
|-------------------|-------|
| Lester VanMeter   | 30.00 |
| William Naff      | 20.00 |
| Lawrence Chachere | 15.00 |
| Walter Brown      | 5.00  |
| Tom Smit          | 5.00  |
| Ramsey Forbush    | 3.00  |
| Ray Satterlee     | 3.00  |
| Robert Sax        | 3.00  |
| Ken Wallach       | 3.00  |
| Scott Zingheim    | 3.00  |

## Expert Tour Points:

|                |       |
|----------------|-------|
| William Naff   | 24.00 |
| Ramsey Forbush | 9.00  |
| Ray Satterlee  | 9.00  |
| Walter Brown   | 6.00  |
| Tom Smit       | 6.00  |

## Class A Tour Points:

|                 |       |
|-----------------|-------|
| Phil Anderson   | 20.00 |
| Joel Mandeville | 10.00 |
| Robert Sax      | 10.00 |
| Phil Jarrette   | 1.67  |
| David Monatelli | 1.67  |
| Michael Selig   | 1.67  |

## Class B Tour Points:

|                |       |
|----------------|-------|
| Carlos Vegh    | 12.00 |
| Carl Vero      | 12.00 |
| David Kurfman  | 6.00  |
| Victor Swanson | 6.00  |

## Class C Tour Points:

|                    |       |
|--------------------|-------|
| Mark Thompson      | 12.00 |
| Donald Kirkpatrick | 6.00  |
| Robert Kempner     | 3.00  |
| Glenn Panner       | 3.00  |
| Bill Parker        | 3.00  |

## Class D/E Tour Points:

|                 |      |
|-----------------|------|
| David Carson    | 8.00 |
| Mike Ginsburg   | 4.00 |
| Dennis Cain     | 2.00 |
| Rod Moore       | 2.00 |
| David Andrewski | 1.00 |
| Guy Gruenberg   | 1.00 |

NOTE: ICA membership is required of all Illinois residents who play in ICA Tour events. Out-of-staters need not join ICA, but must do so if they wish their Tour points to count toward cash prizes. A few non-members are listed above, either because they are from out of state or because a tournament organizer overlooked collecting their memberships. All non-members with Tour points should join ICA immediately.

## Chess Center \$520 Grand Prix

April 19-20, 1986

# CHESS CENTER GRAND PRIX

The Chicago Chess Center, well-known for its four-round, one-day events and for its casual chess, occasionally makes a foray into the world of Grand Prix tournaments. Such was the case on April 19-20, as 30 players participated in the two-day, 5-round event with a \$520 guaranteed prize fund. Prize winners were:

|      |                   |        |
|------|-------------------|--------|
| 1st: | Morris Giles      | 150.00 |
| 2nd: | Bill Colias       | 50.00  |
|      | Lawrence Chachere | 50.00  |
| A:   | Krzysztof Flaga   | 85.00  |
| B:   | Kalman Farkas     | 65.00  |
| C:   | Henderson Johnson | 30.00  |
|      | David Sjolholm    | 30.00  |
| D/U: | Randy Byrnes      | 60.00  |

|    |                   |      |     |     |      |      |     |     |
|----|-------------------|------|-----|-----|------|------|-----|-----|
| 1  | GILES Morris      | 2403 | W19 | W 7 | W17  | W 2  | D 3 | 4.5 |
| 2  | COLIAS Bill       | 2293 | W14 | W10 | W 6  | L 1  | W 8 | 4   |
| 3  | FLAGA Krzysztof   | 1884 | D16 | W19 | W23  | W 5  | D 1 | 4   |
| 4  | CHACHERE Lawrence | 2244 | W27 | L 6 | W13  | W10  | W 7 | 4   |
| 5  | SANDRIN Angelo    | 2232 | W24 | W11 | W 9  | L 3  | D 6 | 3.5 |
| 6  | BERNAL Luis       | 2011 | W22 | W 4 | L 2  | W12  | D 5 | 3.5 |
| 7  | JANKY Denis       | 2080 | W20 | L 1 | W14  | W 9  | L 4 | 3   |
| 8  | SMITH Daniel      | 2092 | W25 | L 9 | W27  | W11  | L 2 | 3   |
| 9  | READ Rhys         | 1953 | W29 | W 8 | L 5  | L 7  | W18 | 3   |
| 10 | NELSON Herman     | 2065 | W21 | L 2 | W24  | L 4  | W15 | 3   |
| 11 | MC DANIEL Keith   | 1987 | W30 | L 5 | W18  | L 8  | W16 | 3   |
| 12 | SAX Rob           | 1972 | W28 | L17 | W25  | L 6  | W19 | 3   |
| 13 | SOLLAND Ely       | 1986 | W26 | D23 | L 4  | L15  | W25 | 2.5 |
| 14 | MARTEN Don        | 1831 | L 2 | W16 | L 7  | D25  | W24 | 2.5 |
| 15 | FARKAS Kalman     | 1733 | L23 | W26 | Bye  | W13  | L10 | 2.5 |
| 16 | BYRNES Randy      | -    | D 3 | L14 | W20  | WF   | L11 | 2.5 |
| 17 | BROCK Bill        | 2120 | W18 | W12 | L 1  | -    | -   | 2   |
| 18 | MAGNER James      | 1707 | L17 | W30 | L11  | W28  | L 9 | 2   |
| 19 | ALLISON Roger     | 1863 | L 1 | L 3 | W30  | W20  | L12 | 2   |
| 20 | VARELA Eric       | 1607 | L 7 | W28 | L16  | L19  | W26 | 2   |
| 21 | JOHNSON Henderson | 1570 | L10 | L24 | L26  | W29  | W28 | 2   |
| 22 | SJOHOLM David     | 1407 | L 6 | L27 | L28  | Wbye | W29 | 2   |
| 23 | UMEZINWA George   | 2184 | W15 | D13 | L 3  | LF   | -   | 1.5 |
| 24 | FLORES Joshua     | 1735 | L 5 | W21 | L10  | D26  | L14 | 1.5 |
| 25 | BROWN Tony        | 1633 | L 8 | W29 | L12  | D14  | L13 | 1.5 |
| 26 | BERLAND Paul      | 1304 | L13 | L15 | W21  | D24  | L20 | 1.5 |
| 27 | GAPUZ Wilfredo    | 1801 | L 4 | W22 | L 8  | -    | -   | 1   |
| 28 | FRIEL Spenser     | 1275 | L12 | L20 | W22  | L18  | L21 | 1   |
| 29 | GUGENHEIM Oliver  | 1177 | L 9 | L25 | Wbye | L21  | L22 | 1   |
| 30 | HOLMES Fred       | 1343 | L11 | L18 | L19  | -    | -   | 0   |

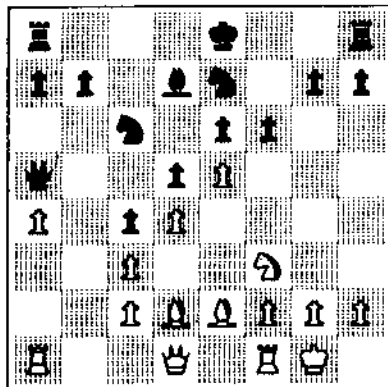
White: Rob Sax (1972).  
 Black: Bill Brock (2120).

Annotated by Brock.

|    |       |       |
|----|-------|-------|
| 1  | e4    | e6    |
| 2  | d4    | d5    |
| 3  | Nc3   | Bb4   |
| 4  | e5    | c5    |
| 5  | a3    | Bxc3+ |
| 6  | bxc3  | Ne7   |
| 7  | a4    | bNc6  |
| 8  | Nf3   | Qa5   |
| 9  | Bd2   | Bd7   |
| 10 | Bd3?! | c4    |
| 11 | Be2   |       |

White is down a tempo in comparison with the main variation 10 Be2.

|    |      |    |
|----|------|----|
| 11 | .... | f6 |
| 12 | O-O  |    |



|    |      |       |
|----|------|-------|
| 12 | .... | O-O-O |
|----|------|-------|

In Play the French, Watson points out that 12...fxe5 13 Nxe5 Nxe5 14 dxe5 O-O gives Black a small edge, but I wanted to play for a Kingside attack. The most exact move may be Watson's 12...Ng6, which keeps open the option of castling on either side.

|    |       |  |
|----|-------|--|
| 13 | exf6? |  |
|----|-------|--|

The passive 13 Re1 Ng6 14 Bf1 seems better. Now White is in trouble -- the exchange on f6 opens the g-file for Black's artillery, making it easy for Black to pile up on g2. Also, White has no Pawn levers to open the center for his Bishops, while Black can play ...e5 at the appropriate moment.

|    |      |       |
|----|------|-------|
| 13 | .... | gx f6 |
| 14 | Qb1  |       |

Or 14 Bf4 Ng6 15 Bd6 e5! and Black is better. However, this is preferable to the game continuation, as White's buildup along the b-file is pointless unless his minor pieces are pointed towards the Queenside as well.

|    |      |      |
|----|------|------|
| 14 | .... | Ng6  |
| 15 | Qb2  | Qc7  |
| 16 | fRb1 | dRg8 |
| 17 | Bf1  | Nd8! |

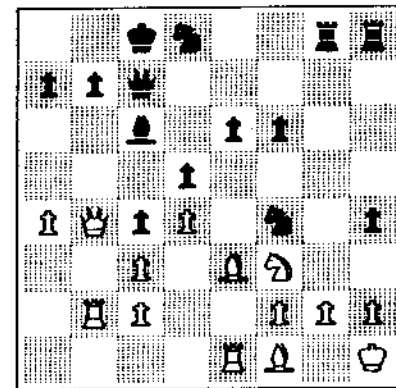
An all-purpose move. The Bishop will come to rest on c6, which in turn will clear the Queen's path to g7. The Knight defends b7 and can be transferred to the Kingside via f7, if needed.

|    |     |    |
|----|-----|----|
| 18 | Qb4 | h5 |
| 19 | Be3 | h4 |

I should have played ...Bc6 before pushing the h-Pawn, as 20 Qc5 Qxc5 dxc5 allows White to get the Queens off the board. Still, Black

can continue his attack with ...e5, ...Bc6, ...Ne6, and ...gNf4. If White survives the middlegame, his tripled Pawns should fall in the ending.

|    |       |     |
|----|-------|-----|
| 20 | Rb2?! | Nf4 |
| 21 | Kh1   | Bc6 |
| 22 | Re1   |     |



|    |      |       |
|----|------|-------|
| 22 | .... | Nxg2! |
| 23 | Bxg2 | h3    |
| 24 | Bf1  | e5    |
| 25 | Ng1  | Rxg1+ |

Aesthetically inferior to 25...Qg7 26 f3 Qg2+!, but unfortunately White can play 26 Nf3 Qg4 27 Ng5 and force Black to win more mundanely.

|    |      |      |
|----|------|------|
| 26 | Kxg1 | Qg7+ |
| 27 | Kh1  | Qg4  |
| 28 | Bxh3 | Qxh3 |
| 29 | O-1  |      |

A typical example of what happens to White in the Winawer when he ignores the Kingside. I empathize with my opponent, as I've lost several games from the White side in similar fashion.

## LOOSE PIECES

The National High School Championship attracted 667 players to King of Prussia, PA in April. Vivek Rao and Danny Edelman, both masters, tied for first at 6.5-0.5. First place team prize was won by University High of Tucson, AZ.

Robby Adamson of Tucson, AZ won the National Junior High in Spokane, WA in May. His team, University High ninth grade, also won the team title. Meanwhile, nine year old Alex Chang won the National Elementary in Charlotte, NC.

Closer to the opposite end of the age scale, John Curdo won the National Senior Open in May over a field of 44 players over the age of 50.

426 players showed up in Los Angeles for the Memorial Day Classic. The top chunk of the \$16,000 prize fund was shared by Nick deFirmian, Larry Christiansen, Dmitry Gurevich, Sergey Kudrin, Igor Ivanov, Kamran Shirazi, and Larry Remlinger.

Gary Kasparov, warming up for his all-too-soon world championship rematch, trounced Tony Miles of England 5.5-0.5 in an exhibition match in Switzerland in May.

Our thanks to USCF for all of the above information.

# BROCK, KRAMER WIN HYDE PARK OPEN

by Harold Winston

Bill Brock (2103) and Charles Kramer (2300) each scored 3-0 to win the 11th annual Hyde Park Open on February 2. This was the second straight year Brock has shared first place. Luis Bernal (1957) took the A prize with 2.5 and drew top-rated Bill Colias (2315). Other class prizewinners were Geoffrey Genz and Robert Johnson (B), Daniel McNeal (C), and Jon Weintraub (D/E/unrated).

Jim Condron won the top section of the Groundhog Swiss with a perfect 3-0 score. The other Swiss section winners were all playing in their first rated event: Jeff Buhlmann, Hossam Mohammed-Aly, and Larry Smith.

Wilson School in Rockford dominated the Hyde Park Scholastic, scoring 16 out of a possible 16 points. Flinn School in Rockford took second with 11 followed by Barker School in Michigan City, Indiana with 10. The remaining team trophy winners were Albright with 9 and Carver with 8.5. Russ Miller has done a fine job coaching Wilson.

Wilson dominated the individual trophies as well. Brad McGee, Doug Drennan, Billy Flaherty, and Rachel Steffa, all of Wilson, scored 4-0 with the first two named placing first and second respectively on tiebreak. Top 6th grade and below was Michael Jackson of Jefferson School in Michigan City with 3-1. A total of 7 school teams and 62 players competed in the Scholastic. Coaches George Ramey and Ken Thomas shared directing duties in the Scholastic with organizer Harold Winston.

The three events drew a total of 119 players (31 in the Open, 26 in the Swiss). Harold Winston was organizer and chief TD for the University of Chicago Chess Club.

## ICA MEETING

There will be an ICA Board of Directors meeting at 1 p.m. June 29, 1986 at the Morgan Park Methodist Church, 110th Place and Longwood Drive (rear entrance), Chicago. ICA members

|                      | pre  | post |     |     |     |     |  |
|----------------------|------|------|-----|-----|-----|-----|--|
| 1 BROCK William      | 2103 | 2120 | W10 | W18 | W 6 | 3   |  |
| 2 KRAMER Charles     | 2300 | 2310 | W21 | W15 | W 5 | 3   |  |
| 3 BERNAL Luis        | 1957 | 1989 | W23 | D 7 | W14 | 2   |  |
| 4 SMALL Gregg        | 2308 | 2305 | W17 | D14 | W16 | 2   |  |
| 5 NELSON Herman      | 2038 | 2048 | W12 | W19 | L 2 | 2   |  |
| 6 RONNEBERG Erik     | 2037 | 2048 | W30 | W20 | L 1 | 2   |  |
| 7 COLIAS Billy       | 2315 | 2297 | W27 | D 3 | D 8 | 2   |  |
| 8 ROSS Edward        | 1955 | 1993 | D16 | W 9 | D 7 | 2   |  |
| 9 JOHNSON Robert     | 1780 | 1830 | W11 | L 8 | W19 | 2   |  |
| 10 GENZ Geoffrey     | 1666 | 1692 | L 1 | W29 | W21 | 2   |  |
| 11 SCOTT Gene        | 2146 | 2137 | L 9 | W23 | W22 | 2   |  |
| 12 YAKICH Bob        | 1784 | 1799 | L 5 | W31 | W18 | 2   |  |
| 13 MC NEAL Daniel    | 1493 | 1565 | L15 | W27 | W25 | 2   |  |
| 14 MADDEX William    | 1947 | 1945 | W24 | D 4 | L 3 | 1.5 |  |
| 15 MC DANIEL Keith   | 1998 | 2004 | W13 | L 2 | D17 | 1.5 |  |
| 16 BONE Jonathan     | 1628 | 1666 | D 8 | W25 | L 4 | 1.5 |  |
| 17 NC NAMARA James   | 1884 | 1888 | L 4 | W24 | D15 | 1.5 |  |
| 18 SMILEY Richard    | 1872 | 1846 | W29 | L 1 | L12 | 1   |  |
| 19 REDDICK Harold Jr | 1898 | 1882 | W28 | L 5 | L 9 | 1   |  |
| 20 STEIN Peter       | 2194 | 2180 | W22 | L 6 | -   | 1   |  |
| 21 CRONIN Mike       | 1901 | 1875 | L 2 | W30 | L10 | 1   |  |
| 22 MUENCH Dean       | 1849 | 1842 | L20 | W28 | L11 | 1   |  |
| 23 CLARK Lawrence    | 1631 | 1628 | L 3 | L11 | W31 | 1   |  |
| 24 REDDICK Harold Sr | 1410 | 1416 | L14 | L17 | W29 | 1   |  |
| 25 HEINRICH Joel     | 1814 | 1811 | D26 | L16 | L13 | 0.5 |  |
| 26 SCHMUGGEROW Kevin | 2204 | 2194 | D25 | -   | -   | 0.5 |  |
| 27 HAMEDANI Bakhshal | 1879 | 1810 | L 7 | L13 | D28 | 0.5 |  |
| 28 WEINTAUB Jon      | 1119 | 1208 | L19 | L22 | D27 | 0.5 |  |
| 29 FRIEB Spenser     | -    | 1249 | L18 | L10 | L24 | 0   |  |
| 30 TRIBELL William   | 1428 | 1425 | L 6 | L21 | -   | 0   |  |
| 31 BERLAND Paul      | 1202 | 1238 | -   | L12 | L23 | 0   |  |

### 10th Annual Groundhog Swiss

February 2, 1986

| SECTION A            |      | pre  | post |      |      |     |  |
|----------------------|------|------|------|------|------|-----|--|
| 1 CONDRON James      | 2024 | 2034 | W 3  | W 5  | W 2C | 3   |  |
| 2 SUZUKI Wesley      | 2114 | 2117 | W 6  | W 4  | -    | 2   |  |
| 3 FAGAN James        | 1501 | 1591 | L 1  | W 7  | W 5  | 2   |  |
| 4 FINEBERG Thomas    | 1690 | 1697 | W 7  | L 2  | W 7C | 2   |  |
| 5 CONGER Edwin       | 1620 | 1621 | W 8  | L 1  | L 3  | 1   |  |
| 6 DANGOY Fred        | 1607 | 1592 | L 2  | L 2C | W 7  | 1   |  |
| 7 LAWRENCE Brenda    | 1448 | 1429 | L 4  | L 3  | L 6  | 0   |  |
| 8 BERLAND Paul       | 1238 | 1236 | L 5  | -    | -    | 0   |  |
| SECTION B            |      | pre  | post |      |      |     |  |
| 1 BULMANN Jeff       | -    | 1887 | W 4  | W 3  | W 2  | 3   |  |
| 2 ESPOSITO Michael   | 1286 | 1358 | W 8  | W 6  | L 1  | 2   |  |
| 3 BURIAN David       | 1408 | 1436 | W 5  | L 1  | W 6  | 2   |  |
| 4 KEMPNER Robert     | 1434 | 1441 | L 1  | W 8  | D 5  | 1.5 |  |
| 5 ALVARADO Miguei    | 1430 | 1429 | L 3  | W 7  | D 4  | 1.5 |  |
| 6 SMITH Orlan        | 1366 | 1364 | W 7  | L 2  | L 3  | 1   |  |
| 7 MAYFIELD Michael   | 1418 | 1396 | L 6  | L 5  | W 8  | 1   |  |
| 8 ORNELAS Demetrio   | 1410 | 1350 | L 2  | L 4  | L 7  | 0   |  |
| SECTION C            |      | pre  | post |      |      |     |  |
| 1 MOHAMED-ALY Hossam | -    | 1755 | W 6  | W 5  | W 3  | 3   |  |
| 2 JACOBSEN Ruth      | 1445 | 1477 | W 7  | W 6A | L 1A | 2   |  |
| 3 HOLMES Frederick   | 1330 | 1343 | W 3D | W 4  | L 1  | 2   |  |
| 4 WU Peter           | -    | 1141 | W 6  | L 3  | L 2D | 1   |  |
| 5 KRAMER Farrell     | 1448 | 1446 | L 1D | L 1  | W 7  | 1   |  |
| 6 QUEZADA Leo        | -    | 1288 | L 1  | L 4  | L 4D | 0   |  |
| 7 CHENOWETH Bruce    | 1322 | 1297 | L 2  | L 4A | L 5  | 0   |  |
| SECTION D            |      | pre  | post |      |      |     |  |
| 1 SMITH Larry        | -    | 1633 | W 5C | W 2  | W 3  | 3   |  |
| 2 BANOS Milton       | -    | 1443 | W 4  | L 1  | W 4C | 2   |  |
| 3 BULMANN Scott      | -    | 1232 | L 3C | W 4  | L 1  | 1   |  |
| 4 KRUPICKA Mike      | 1215 | 1195 | L 2  | L 3  | W 6C | 1   |  |

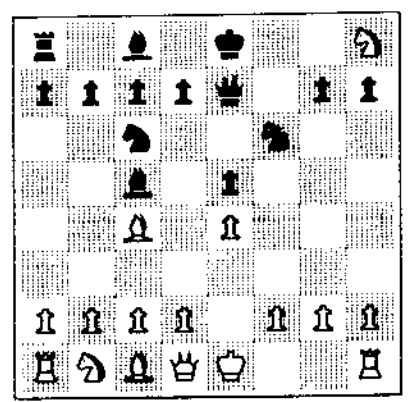
|                       | pre  | post |     |     |     |     |     |  |
|-----------------------|------|------|-----|-----|-----|-----|-----|--|
| 1 MC GEE Brad         | 1549 | 1573 | W34 | W26 | W10 | W 6 | 4   |  |
| 2 DRENNAN Doug        | 1486 | 1531 | W35 | W25 | W 9 | W21 | 4   |  |
| 3 FLAHERTY Billy      | 1332 | 1410 | W49 | W24 | W21 | W 5 | 4   |  |
| 4 STEFFA Rachel       | 1306 | 1396 | W17 | W52 | W22 | W23 | 4   |  |
| 5 JACKSON Michael     | 1350 | 1373 | W50 | W19 | W13 | L 3 | 3   |  |
| 6 WILCOX Mark         | 1310 | 1393 | W36 | W28 | W12 | L 1 | 3   |  |
| 7 WALSH Donald        | 1396 | 1417 | W41 | W15 | W11 | L17 | 3   |  |
| 8 LOWE Jason          | 1275 | 1290 | W44 | W47 | W23 | L14 | 3   |  |
| 9 CRAIG Matt          | 1161 | 1226 | W42 | W27 | L 2 | W26 | 3   |  |
| 10 HALFACRE Jeff      | 1349 | 1364 | W53 | W29 | L 1 | W28 | 3   |  |
| 11 FRIEDMAN Joshua    | 1158 | 1222 | W57 | W14 | L 7 | W25 | 3   |  |
| 12 KOENIGSBERGER Kurt | 1185 | 1243 | W58 | W30 | L 6 | W22 | 3   |  |
| 13 RIFKIN Jay         | 1249 | 1263 | W59 | W48 | L 5 | W24 | 3   |  |
| 14 NOVAK David        | 1309 | 1332 | W45 | L11 | W34 | W 8 | 3   |  |
| 15 GRADE Heidi        | 1158 | 1213 | W56 | L 7 | W37 | W31 | 3   |  |
| 16 ANDERSON Brian     | 1111 | 1219 | W60 | L21 | W29 | W27 | 3   |  |
| 17 MILLER Greg        | 1413 | 1452 | L 4 | W39 | W30 | W 7 | 3   |  |
| 18 JACKSON Bobby      | 1260 | 1266 | L47 | W44 | W50 | W32 | 3   |  |
| 19 HARGRAVES Scott    | 1141 | 1182 | W62 | L 5 | W36 | D20 | 2.5 |  |
| 20 FINLEY David       | 1278 | 1285 | W31 | L22 | W43 | D19 | 2.5 |  |
| 21 CAIN Grant         | 1527 | 1524 | W43 | W16 | L 3 | L 2 | 2   |  |
| 22 JENSEN Jeff        | -    | 1427 | W52 | W20 | L 4 | L12 | 2   |  |
| 23 ESTEBO John        | 1187 | 1255 | W37 | W33 | L 8 | L 4 | 2   |  |
| 24 OLDEJANS Dan       | 1121 | 1150 | W38 | L 3 | W47 | L13 | 2   |  |
| 25 KLOSA Brian        | 1379 | 1361 | W46 | L 2 | W51 | L11 | 2   |  |
| 26 KLEIN Brian        | 1182 | 1191 | W55 | L 1 | W41 | L 9 | 2   |  |
| 27 JOHNSON Chad       | 1280 | 1264 | W54 | L 9 | W35 | L16 | 2   |  |
| 28 DANGOY Fredi       | 1075 | 1144 | W40 | L 6 | W49 | L10 | 2   |  |
| 29 MONROY Mark        | -    | 1294 | W39 | L10 | L16 | W48 | 2   |  |
| 30 SODHI Jaspal       | 1397 | 1381 | W51 | L12 | L17 | W42 | 2   |  |
| 31 HOFFMAN Nathan     | -    | 1213 | L20 | W57 | W33 | L15 | 2   |  |
| 32 CAIN Matthew       | 1202 | 1184 | L48 | W53 | W38 | L18 | 2   |  |
| 33 BERTALANI Bob      | 1229 | 1207 | W61 | L23 | L31 | W54 | 2   |  |
| 34 WATT Demond        | 1029 | 1068 | L 1 | W55 | L14 | W53 | 2   |  |
| 35 BIRKUS David       | 1036 | 1055 | L 2 | W59 | L27 | W55 | 2   |  |
| 36 JEFFRIES Andre     | 831  | 1033 | L 6 | W61 | L19 | W52 | 2   |  |
| 37 STAPLETON Charles  | 1009 | 1039 | L23 | W60 | L15 | W47 | 2   |  |
| 38 JACOBSEN Anna Liss | 1116 | 1112 | L24 | W54 | L32 | W50 | 2   |  |
| 39 NESSEL Tim         | 1378 | 1347 | L29 | L17 | W56 | W49 | 2   |  |
| 40 TERBELL Tracy      | 1066 | 1070 | L28 | L49 | W59 | W51 | 2   |  |
| 41 PETOSKE Terence    | 1043 | 1052 | L 7 | W46 | L26 | D44 | 1.5 |  |
| 42 JACOBSEN Mickey    | 1220 | 1196 | L 9 | D45 | W48 | L30 | 1.5 |  |
| 43 O'BRIEN Robbie     | 1263 | 1229 | L21 | W56 | L20 | D46 | 1.5 |  |
| 44 BRISCOE Jason      | 1260 | 1176 | L 8 | L18 | W45 | D41 | 1.5 |  |
| 45 JEFFRIES Leeroy    | 880  | 970  | L14 | D42 | L44 | W59 | 1.5 |  |
| 46 BALLANTINE Melissa | 943  | 990  | L25 | L41 | W57 | D43 | 1.5 |  |
| 47 HENSCHEN Aric      | 1033 | 1021 | W18 | L 8 | L24 | L37 | 1   |  |
| 48 RICHARDS Shawn     | 729  | 831  | W32 | L13 | L42 | L29 | 1   |  |
| 49 MILLER Mike        | -    | 1130 | L 3 | W40 | L28 | L39 | 1   |  |
| 50 TERRACCIANO Mike   | 1035 | 1021 | L 5 | W58 | L18 | L38 | 1   |  |
| 51 NULL Curt          | 1221 | 1112 | L30 | W62 | L25 | L40 | 1   |  |
| 52 VERNER Kishan      | 1277 | 1242 | L22 | L 4 | W58 | L36 | 1   |  |
| 53 POLAY Brandon      | 1017 | 1001 | L10 | L32 | W60 | L34 | 1   |  |
| 54 JACOBS Chere       | -    | 936  | L27 | L38 | W62 | L33 | 1   |  |
| 55 EARING Matt        | -    | 902  | L26 | L34 | W61 | L35 | 1   |  |
| 56 UNDERHILL Eric     | 865  | 942  | L15 | L43 | L39 | W62 | 1   |  |
| 57 MUENCH Kyle        | -    | 972  | L11 | L31 | L46 | W60 | 1   |  |
| 58 NAGY Aileen        | -    | 991  | L12 | L50 | L52 | W61 | 1   |  |
| 59 PEMBLE Jyame       | 1040 | 898  | L13 | L35 | L40 | L45 | 0   |  |
| 60 CABLE Angie        | 763  | 752  | L16 | L37 | L53 | L57 | 0   |  |
| 61 FLEMING Megan      | -    | 698  | L33 | L36 | L55 | L58 | 0   |  |
| 62 ZBACNIK Michelle   | 758  | 732  | L19 | L51 | L54 | L56 | 0   |  |

The following game, from the state high school team tournament (see article page 15), harks back to the days when chess was chess -- the Immortal Game, the Evergreen Game, etc. Enjoy.

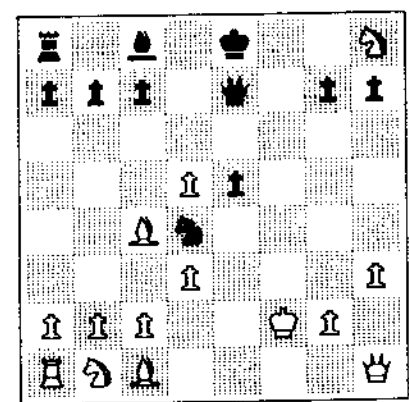
White: Keyur Shah (1397)  
Bradley Bourbonnais

Black: James Fagan (1583)  
Harlan Academy

- 1 e4 e5
- 2 Nf3 Nc6
- 3 Bc4 Nf6
- 4 Ng5 Bc5!?
- 5 Nxf7 Qe7
- 6 Nxh8



- 6 .... Bxf2+?!?
- 7 Kf1 d5
- 8 exd5 Nd4
- 9 h3 Ne4
- 10 d3 Ng3+
- 11 Kxf2 Nxh1+
- 12 Qxh1



12 .... Qf6+

12....Nxc2 is possible, but less fun.

13 Kg3 Ne2+

14 Kh2 Qf2

15 Nc3 Qg3 mate

If 15 Qd1 Bxh3 wins Queen or King.

# ICA HIGH SCHOOL INVITATIONAL

Erik Ronneberg of Chicago's Kenwood High School won the ICA High School Invitational Championship, a five-player round-robin held April 5-6. Erik thus becomes Illinois' representative at the Arnold Denker Tournament for High School Champions, to be held in conjunction with the U.S. Open August 4-10 in Somerset, New Jersey.

The following game from the tournament is annotated by the winner.



White: David Rajendran (1967).  
Black: Erik Ronneberg (2016).

```

1   d4           Nf6
2   c4           g6
3   Nc3          Bg7
4   e4           d6
5   Be2

```

A little history is needed to understand White's moves. The last King's Indian Defense we played I won against his traditional 5 Nf3 6 Be2 7 0-0 set-up. Needing to win this game, he tries the Averbach system.

```

5   ....        0-0
6   Bg5          bNd7

```

....c5 is book and probably better but leads to the Benoni after 7 d5 which I don't like playing.

```

7   Nf3
7   Qd2 is also book and better.
7   ....        e5
8   d5           h6
9   Bh4          a6

```

Preparing ....Qe8, ....Nh7, ....f5.

```

10  Nd2          Qe8
11  b4           Nh7
12  f3

```

To support c5.

```

12  ....        Bf6
13  Bf2          Bg5

```

....Be7, delaying c5, might be better.

```

14  c5           f5
15  Nc4          Be7
16  c6?

```

A strategic mistake. The changed Pawn structure will help Black.

```

16  ....        bxc6
17  dxc6         dNf6
18  Nd5

```

Although this helps Black, he wants to keep his c-Pawn, key to his slight bind now and won endgame later. 19 Na5 looks bad and after ....fxe4 he has two bad choices: 20 fxe4 Ng5 or 20 Nxe4 giving up the center.

```

18  ....        Nxd5
19  exd5         Qf7

```

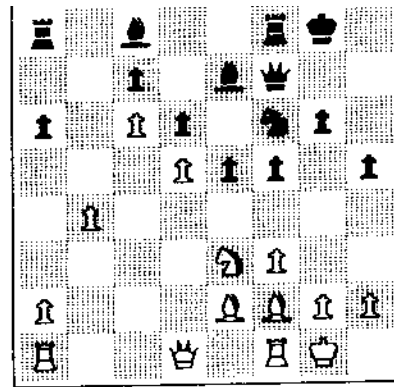
Plans to win the d-Pawn but since this doesn't work ....Nf8 is better.

```

20  0-0          Nf6
21  Ne3          h5

```

Preventing Ng4 after f4.



22 Qb3

I was now calculating: ....f4 23 N-any Nxd5 24 Bc4 Be6 25 Rd1 Nf4 wins a Pawn.

22 .... f4

....g5 is good.

23 Nc2 g5

If you didn't notice (I didn't before),

....Nf4 doesn't work because a Pawn is on f4.

24 aRd1 Qg7

25 Kh1 Kf7

26 Rg1

26....g4 27 g3 opens up the Kingside to White's advantage, so....

26 .... h4

Prevents 27 g3.

27 h3 Nh5

28 Qd3

A bad square for the Queen but Black will check and eventually play ....g4, breaking through.

28 .... Ng3+

29 Kh2 Bf5

30 Qd2

Forced.

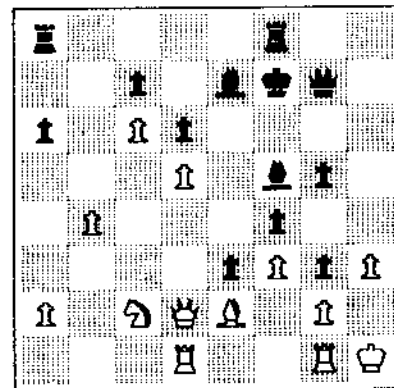
30 .... e4

31 Bxg3?

He is scared of the Knight but removing it is fatal. The threat is stronger than the execution. 31 Bd4 gives Black no forced win.

31 .... hxg3+

32 Kh1 e3



33 Nxe3

Desperation. 33 Qc1 loses to 33....Rh8 33....Rh4 34....Qh6 35....Bxh3 or something like that.

33 .... fxe3

34 Qxe3 Qh6

35 gRe1 Bf6

36 Bf1 Be5

37 a4 Rh8

38 Qb3 Qf6

39 b5 axb5

40 axb5 Bd4

41 Re2 Bf2

42 Qc4 Rh4

43 Qb3 Qh6

44 0-1

|   | grade             | city | school   | pre     | post | 1    | 2 | 3 | 4 | 5 |   |     |
|---|-------------------|------|----------|---------|------|------|---|---|---|---|---|-----|
| 1 | RONNEBERG Erik    | 10   | Chicago  | Kenwood | 2016 | 2060 | - | W | W | W | W | 4   |
| 2 | RAJENDRAN David   | 12   | Berkeley | Fenwick | 1967 | 1970 | L | - | W | D | W | 2.5 |
| 3 | WALHOUT Peter     | 11   | Rockford | Auburn  | 1808 | 1827 | L | L | - | W | W | 2   |
| 4 | REDDICK Harold Jr | 10   | Chicago  | CVS     | 1882 | 1870 | L | D | L | - | W | 1.5 |
| 5 | NORE Eric         | 12   | Elgin    | Elgin   | 1771 | 1734 | L | L | L | I | - | 0   |

## OTHER GAMES

White: Bill Colias (2322).  
Black: Bob Stoltz (1808).

Annotated by Colias.

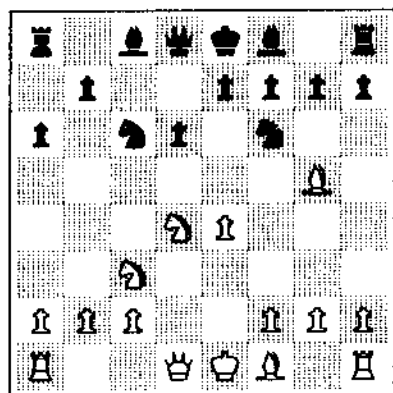
1 e4 c5  
2 Nc3

I used this move order because I thought Stoltz only played the variation 1 e4 c5 2 Nf3 Nc6 3 d4 cxd4 4 Nxd4 e5 5 Nb5 a6 which would not be possible after the game continuation. Stoltz told me after the game he has recently played games with the variation he now chose.

2 .... Nc6  
3 gNe2 d6  
4 d4 cxd4  
5 Nxd4 Nf6  
6 Bg5

6 Bc4 is also very interesting. I played the text as I feel White has a little more control over the position than with the more combinative 6 Bc4.

6 .... a6!?



7 Bxf6

Accepting the challenge. Velimirovic-Nicevski (Skopje 1971) continued 7 Qd2 h6 8 Bxf6 gx f6 9 0-0-0 e6 10 f4 Bd7 11 g3 Qb6 12 Nb3 h5 13 Kb1 0-0-0 14 Be2 Kb8 with a real fight ahead. With 7 Bxf6 White will try to prove that Black's Bishops and Pawn center will not work very well together.

7 .... gx f6  
8 Nb3

It took me a while to play this move. I didn't want Black to get his King's Rook and Bishop into active positions, so I decided to place my Queen on h5, tying down these pieces and aiding in a Pawn advance to f5 which will keep the position closed and Black's Bishops inactive.

8 .... Bd7  
9 Qh5 b5  
10 f4 e6  
11 f5 b4  
12 fxe6 Bxe6  
13 Nd5

White has succeeded in splitting Black's Pawn structure. In return Black will receive a strong post for his Knight on e5.

13 .... Ne5  
14 Be2 Rg8  
15 0-0 Bxd5  
16 exd5

The dust has settled somewhat and White has come out on top. Black's Pawn structure is weak; furthermore, Black's King Bishop has been kept out of the game. White will now try to launch an attack against the Black King which is stuck in the center.

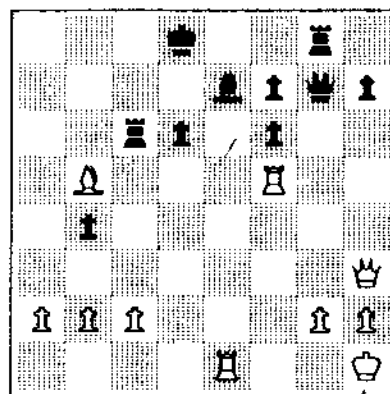
16 .... Qb6+  
17 Kh1 Qe3  
18 aRe1 Qg5  
19 Qh3

I decided to keep a bind on the White squares instead of exchanging Queens, and still keep the Black King in the center.

19 .... Be7  
20 Rf5 Qg7  
21 Nd4 Kd8  
22 Nc6+ Nxc6  
23 dxc6

White has accomplished the difficult task of removing the Knight from e5. The game now ends with a few tactical shots.

23 .... Rc8  
24 Bxa6 Rxc6  
25 Bb5



25 .... Rc7

If 25....Rxc2 26 Rg5 deciding the game through mate on d7 or the loss of Black's Queen.

26 Rc5 Qxg2+

Of course 26....Rxc5 27 Qd7 is mate but 26....dxc5 27 Rd1+ Bd6 28 Rxd6+ Ke7 29 Rd7+ Rxd7 30 Qxd7+ Kf8 31 Qe8+ also mates.

27 Qxg2 Rxc2  
28 Rxc7 0-1

28....Kxc7 29 Rxe7+ Kd8 30 Re8+ Kc7 31 Kxg2 leaves White a Rook and Bishop ahead.

White: Bruce Chenoweth (1255).  
 Black: Ethelbert Gazmen (1820).

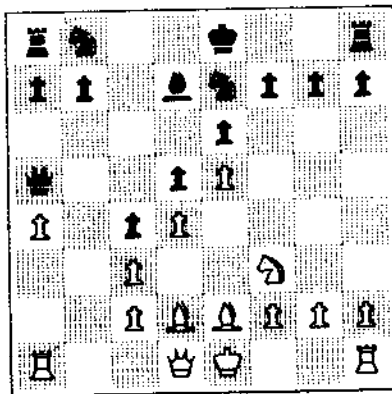
Annotated by the editor.

|   |      |       |
|---|------|-------|
| 1 | e4   | e6    |
| 2 | d4   | d5    |
| 3 | Nc3  | Bb4   |
| 4 | e5   | Ne7   |
| 5 | a3   | Bxc3+ |
| 6 | bxc3 | c5    |
| 7 | Nf3  | Bd7   |
| 8 | a4   | Qa5   |
| 9 | Bd2  |       |

9 Ba3 would more consistent with White's 8th.  
 9 .... c4

Black has some shenanigans in mind, and wants the position closed so he can get away with them.

10 Be2



10 .... Bxa4?!

Most players would not even consider this capture. Now White can play 11 Ra2 followed by 12 Qa1, apparently forcing 12....b5 and other awkward moves.

11 0-0? Qb5  
 12 Qb1

White should still go for the line mentioned above.

12 .... Qxb1  
 13 fRxb1 Bc6

Even so, White still has a lot of pressure, reminiscent of the Benko Gambit for Black.

|    |      |      |
|----|------|------|
| 14 | Ng5  | 0-0  |
| 15 | f4   | Na6  |
| 16 | Bg4  | h6   |
| 17 | Nf3  | Nc7  |
| 18 | Nh4  | f5   |
| 19 | exf6 | Rxf6 |
| 20 | Rf1  | Nf5  |
| 21 | Nf3  | Nb5  |
| 22 | Ne5  | Be8  |
| 23 | g3   |      |

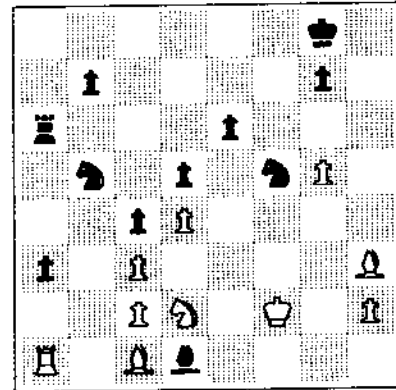
The position seems to call for something faster, such as 23 Be2 followed by 24 g4.

23 .... a5  
 24 Bc1 a4  
 25 Rf3

White should strongly consider 25 Ba3, especially with so many Pawns on Black squares.

|    |      |      |
|----|------|------|
| 25 | .... | a3   |
| 26 | Bh3  | Ra6  |
| 27 | g4   | fNd6 |

|    |      |      |
|----|------|------|
| 28 | g5   | hxg5 |
| 29 | fxg5 | Rxf3 |
| 30 | Nxf3 | Nf5  |
| 31 | Kf2  | Bh5  |
| 32 | Nd2  | Bd1  |



The entire orchestra has assembled and the fat lady is beginning to sing.

33 Nb1 a2  
 34 Ke1 Bxc2

Black could have won a piece, but he is after bigger game.

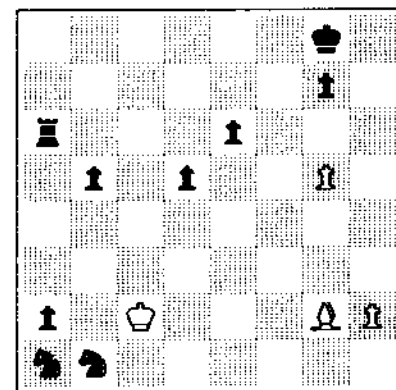
35 Nd2 Nxc3  
 36 Nf3 Ne4

Adding the c-Piccolo to the symphony.

|    |      |      |
|----|------|------|
| 37 | Ke2  | b5   |
| 38 | Bd2  | Bd3+ |
| 39 | Ke1  | Bb1  |
| 40 | Bg2  | c3   |
| 41 | Bxc3 |      |

Otherwise the b-Pawn can't be stopped, not that this really helps.

|    |      |       |
|----|------|-------|
| 41 | .... | Nxc3  |
| 42 | Nd2  | Nxd4  |
| 43 | Nxb1 | Nxb1  |
| 44 | Kd1  | Nb3   |
| 45 | Kc2  | Nxa1+ |



Aw, darn. The Knight is trapped.

|    |      |          |
|----|------|----------|
| 46 | Kb2  | Nc2      |
| 47 | .... | aQ       |
| 48 | Bh3  | Qc3+     |
| 49 | Kxb1 | Ra1 mate |



White: Kevin Bachler (2243).  
Black: Mark Siwek (1944).

Annotated by Adam Lief.

```

1 e4 c6
2 d4 d5
3 exd5 cxd5
4 c4 Nf6
5 c5 Nc6
6 Nc3 g6
7 Nf3 Bg4
8 Bb5 Qc7

```

Not a good spot for the Queen, as it will be harrassed later. 8....Qa5 was better.

```

9 h3 Bxf3
10 Qxf3 Bg7
11 O-O O-O
12 Bf4 Qd8
13 aRd1 e6
14 fRe1

```

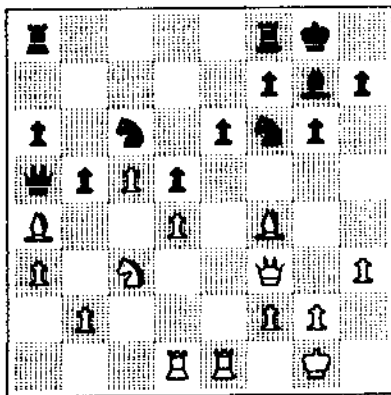
14 Bd6 Re8 gives nothing.

```

14 .... a6
15 Ba4 Qa5
16 a3 b5

```

Black's Queen at last finds the right square.



17 b4!

Well-timed, preventing 17....b4.

```

17 .... Qd8
18 Bc2 Nh5?

```

This starts a rather dubious idea; I would prefer 18....Ne8 intending ....Nc7, ....f6, and an eventual ....e5.

```

19 Be3 Bf6
20 g4 Ng7
21 Rd3 Be7

```

Black appears not to have a plan. Rather than give White's Bishop freedom, he should have played 21....Ne8 intending 22....Nc7 and 23....a5.

```

22 Bh6 Bg5
23 Bxg5 Qxg5
24 Qg3 Qd8
25 f4 Qb8
26 Nd1 a5
27 bxa5 Nxa5
28 Rf1 Nc6
29 Qh4 b4
30 a4 Qd8
31 Qg3 Qb8
32 Qg2

```

White prepares for f5, and there is little Black can do about it.

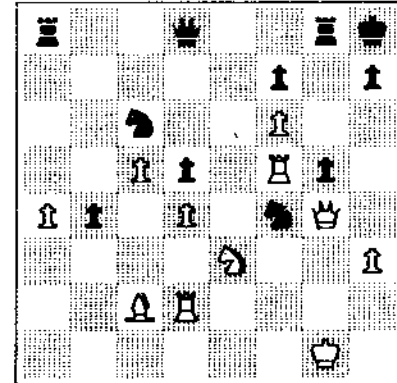
```

32 .... Qd8
33 f5 exf5
34 gxh5 g5?
35 f6 Ne6
36 Rf5 Kh8
37 Qg4 Rg8
38 Ne3 Nf4!
39 Rd2?

```

This defense should have lost quickly.

39 Rd1 was essential.



39 .... Rg6?

39....b3!! was very strong, e.g. 40 Bxb3 Qa5 41 Rd1 Qc3 winning. Or 41 Rc2 Qe1+ 42 Nf1 Nxd4 -. Or 41 Qd1 aRe8 42 Nxd5 Nxd4! with a crushing attack. Or 42 Bxd5 Nxd4! 43 Rxd4 Rxe3 with a strong initiative. 40 Bb1 Qa5 does not improve matters.

40 Kh2 Rxf6?

40....b3! still should have been played, although it is less effective than on the previous move.

```

41 Qxg5 Rxf6
42 Qxf5 Qh4
43 Ng2!

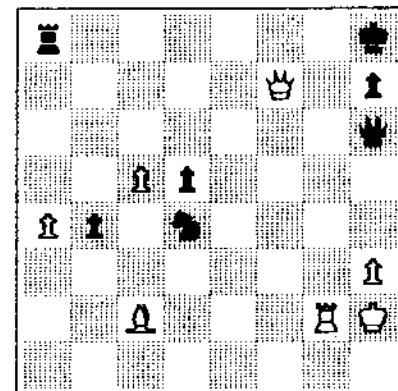
```

Now all is in order.

```

43 .... Nxg2
44 Rxg2 Nxd4
45 Qxf7 Qh6

```



46 Bxh7! Nf3+

Desperation. Not 46....Qxh7 47 Qf6+ and mates.

47 Qxf3 Rf8

47....Kxh7 was better, but Black is lost in any case.

```

48 Qxf8+ Qxf8
49 Rg8+ Qxg8
50 Bxg8 b3
51 Bxd5 1-0

```



White: Larry Servi (1935).  
 Black: Kevin Bachler (2243).

Annotated by Adam Lief.

- 1 d4 Nf6
- 2 c4 g6
- 3 Nc3 Bg7
- 4 e4 d6
- 5 f3 c6
- 6 Be3 a6
- 7 a4 a5
- 8 gNe2

ECO gives

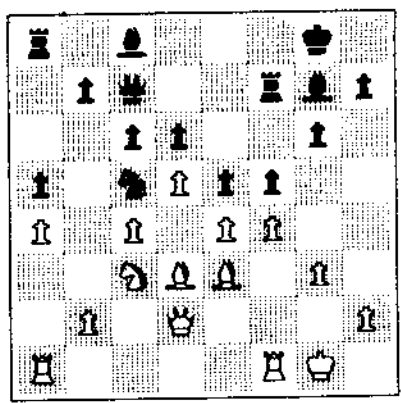
- 8 Bd3. 0-0
- 9 Qd2 Na6
- 10 Nc1 Qc7
- 11 Be2 e5
- 12 d5 Nd7
- 13 Nd3 f5
- 14 g3

This move looks artificial. 14 exf5 gxf5  
 15 f4 appears more stable.

- 14 .... Nb4
- 15 0-0 Rf7

The purpose of this Rook move is not clear.  
 16 Bh6 is not a threat if Black follows up  
 his original idea immediately, e.g.

- 15....Nxd3 16 Bxd3 Nc5.
- 16 f4!? Nxd3
- 17 Bxd3 Nc5



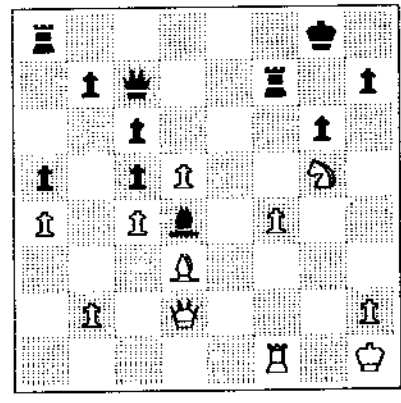
18 Bxc5?

Definitely inferior, giving up the valuable  
 dark-squared Bishop. Better was 18 exf5 gxf5  
 (18....Nb3 19 Qd1 Nxa1 20 fxc6 gives White  
 a powerful attack) 19 Bc2.

- 18 .... dxc5
- 19 aRe1
- 19 .... exf4
- 20 gxf4 fxe4
- 21 Nxe4 Bh3
- 22 Ng5!

The best chance for counterplay.

- 22 .... Bxf1
- 23 Rxf1 Bd4+
- 24 Kf1



24 .... cxd5!

Wisely deciding not to hold on to the  
 material, as a continuation like 24....Re7  
 25 Ne6 Qd6 26 Qg2 might have proved ruinous.

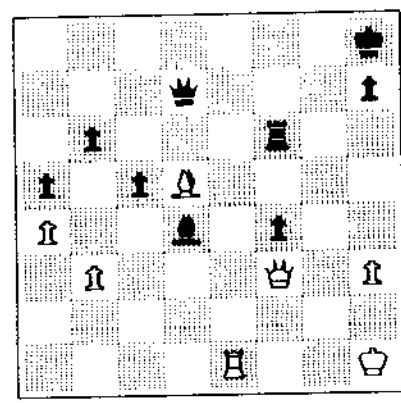
- 25 Nxf7 Qxf7
- 26 f5 dxc4!

Just in time, for if 27 fxc6 Qd5+ wins.

- 27 Be4 Rf8
- 28 Qg2 Kh8
- 29 Bd5 Qf6
- 30 Bxc4 gxf5
- 31 Bd3 Qg7
- 32 b3

White cannot afford to trade Queens because he  
 will be two Pawns down with Black's King close  
 to the center.

- 32 .... Qd7
- 33 h3 f4
- 34 Bc4 Qf5
- 35 Bd5 b6
- 36 Qf3 Rf6
- 37 Re1 Qd7



38 Bc6?

In time pressure, White blunders, but it was  
 hard to find a defense to ....Rf6-g6-g3.

- 38 .... Qxc6
- 39 Qxc6 Rxc6
- 40 ReB+ Kg7
- 41 0-1

The following game, The Case of the Backward-Moving Bishops, should not be viewed within two hours on either side of lunch.

White: Todd Schreaser (1785).  
Black: Leslie Bale (1794).

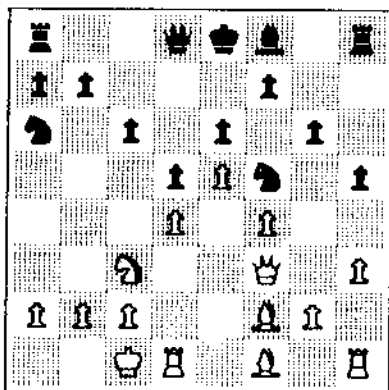
1 e4 g6  
2 d4 Bg7  
3 Nc3 c6  
4 f4 d5  
5 e5 h5

The purpose of this move will become unclear later.

6 Nf3 Bg4  
7 h3 Bxf3  
8 Qxf3 e6  
9 Bd2 Ne7  
10 O-O-O Nf5

Aha! So that's it. 11 g4 is prevented.

11 Be1 Na6  
12 Bf2 Bf8



13 g4

I thought that was prevented, or at least made less desirable.

13 .... Ng7

The purpose of Black's 5th is now unclear. He retreats anyway.

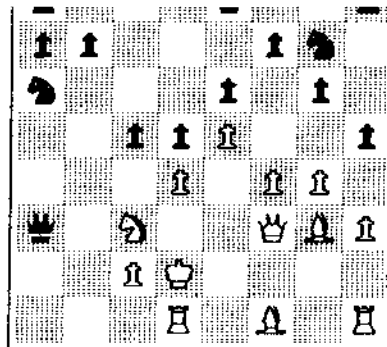
14 a3 Qa5  
15 Be1 Bxa3

At last, some excitement.

16 bxa3

16 Nb5 was worth considering.

16 .... Qxa3+  
17 Kd2 c5  
18 Bg3



18 .... Ke7

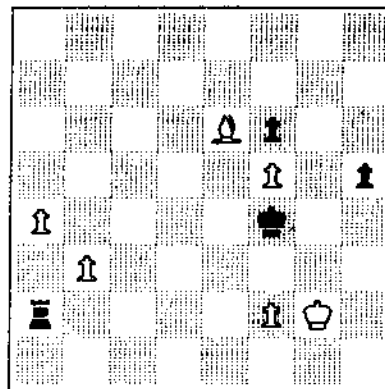
Castling is over-rated, right?

19 Nxd5+ 1-0

Dops.

ON THE COVER .....

The position is the one that handed Bobby Fischer the World Championship in 1972. It occurred at the adjournment of the twenty-first game of the 24-game match vs defending champion Boris Spassky. Fischer had just played 40....h6-h5, about which Svetozar Gligoric, in his book *Fischer vs Spassky, the Chess Match of the Century*, writes, "Black's 40th move was not the most precise. He should have played 40....Kg4! first and then 41....h5 taking control of all the squares in front of the White King."



Spassky sealed 41 Bd7. Gligoric continues: "The sealed move made after a short reflection. Probably Spassky momentarily lost his drive. Now 41....Kg4 puts things right again for Black."

Spassky then resigned without resuming the adjourned game.

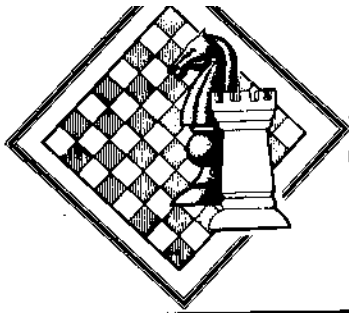
Peoria Spring Tornado

May 10, 1986

## PLAYING IN PEORIA...

Organizers Bill Naff and Bill Wilkinson have come up with a new way to cut tournament expenses: play in their own events, and take home first and second prizes. A perfectly executed example of that theory is shown at the right.

|                     |      |     |     |     |      |     |
|---------------------|------|-----|-----|-----|------|-----|
| 1 NAFF William      | 2016 | W 7 | W 4 | W 2 | D 3  | 3.5 |
| 2 WILKINSON William | 2078 | W 5 | W12 | L 1 | W 6  | 3   |
| 3 SANDBOTHE Bill    | 1949 | W13 | D 6 | D 5 | D 1  | 2.5 |
| 4 SCOTT Winfield    | 1816 | W 8 | L 1 | D 6 | W10  | 2.5 |
| 5 MILLS Paul        | 1784 | L 2 | W 9 | D 3 | W 7  | 2.5 |
| 6 JOHNSON Bruce     | 1786 | W11 | D 3 | D 4 | L 2  | 2   |
| 7 VERO Carl         | 1721 | L 1 | W10 | W11 | L 5  | 2   |
| 8 MC COWAN Michael  | -    | L 4 | L10 | W13 | W11  | 2   |
| 9 LYONS Mack III    | 1652 | D12 | L 5 | D10 | Wbye | 2   |
| 10 PROSTERMAN Keith | 1502 | L 7 | W 8 | D 9 | L 4  | 1.5 |
| 11 CRUISE Don       | -    | L 6 | W13 | L 7 | L 8  | 1   |
| 12 WILLIS Mike      | 1881 | D 9 | L 2 | -   | -    | 0.5 |
| 13 LYBARGER Dean    | 1664 | L 3 | L11 | L 8 | -    | 0   |



# Postal Chess

Helen Warren, Director  
Tim Just, Dir., 1984

Things are moving right along in the 1984 Region VII Postal Championship. On April 1st of this year TD Tim Just assigned the players to their Finals section.

Two players from each of the prelims qualified for the Finals; however, George Fawbush from 84-1 with a score of 5-1 had to decline his advanced placement due to health reasons. If Jake Klaus of that same section can post a score of 4-2 by winning his last game with Paul Peterson, he will be allowed to take Fawbush's place in the Finals.

Also of note is that 3 players from 84-3 advanced to the Finals. Lief has one game to go in the prelims; however, even if he should lose he would score 4.5-1.5. This is the same score that both Don Field and Don Walhout posted as their final score in that section. This is also the best score in that section if Adam Lief loses. If he wins, of course, he will post a 5.5-.5 score to take with him into the finals. This still leaves Field and Walhout tied for 2nd in that section.

Other qualifiers include Dave Taylor (5.5-.5) and Andy Amelung (5-1) from 84-2. Max Zavanelli posted a perfect 6-0 in 84-1 to advance to the Finals.

Besides the crosstable and player assignments for the 1984 finals, I have also included the crosstables for the prelims. All results are current as of May 10, 1986.

All remaining games on December 31, 1986 in the prelims will be adjudicated.

|   |              |   |   |   |   |   |   |     |
|---|--------------|---|---|---|---|---|---|-----|
| 1 | Zavanelli, M | 1 | 1 | 1 | 1 | 1 | 1 | 6-0 |
| 2 | Martin, D    | 0 | 1 | 0 | 0 | 0 | 0 | 0-6 |
| 3 | Klaus, J.    | 0 | 1 | 1 | 0 |   | 1 |     |
| 4 | Pray, R.     | 0 | 1 | 0 | 1 | 0 | 0 | 1-5 |
| 5 | Fawbush, G.  | 0 | 1 | 1 | 1 | 1 | 1 | 5-1 |
| 6 | Peterson, P. | 0 | 1 |   | 1 | 0 | 1 |     |
| 7 | Warren, H.   | 0 | 1 | 0 | 1 | 0 | 1 | 3-3 |

| 84-2 PLAYERS  | 1   | 2 | 3   | 4 | 5   | 6   | 7 | SCORE  |
|---------------|-----|---|-----|---|-----|-----|---|--------|
| 1 Taylor, D.  | 1   | 1 | 1   | 1 | 1/2 | 1   |   | 5.5-.5 |
| 2 Bethal, R.  | 0   | 1 | 0   | 0 | 1   | 0   |   | 2-4    |
| 3 Stotler, R. | 0   | 0 | 1   | 0 | 0   | 1/2 | 0 | .5-5.5 |
| 4 Amelung, A. | 0   | 1 | 1   | 1 | 1   | 1   |   | 5-1    |
| 5 Baumann, H. | 0   | 1 | 1   | 0 | 1   | 0   |   |        |
| 6 Gotz, J.    | 1/2 | 0 | 1/2 | 0 | 1   | 1   | 0 | 2-4    |
| 7 Walhout, P. |     | 1 | 1   | 0 |     | 1   | 1 |        |

| 84-3 PLAYERS     | 1 | 2   | 3   | 4 | 5 | 6   | 7   | SCORE   |
|------------------|---|-----|-----|---|---|-----|-----|---------|
| 1 Hageman, W.    | 1 | 0   | 0   | 0 | 0 | 0   | 0   | 0-6     |
| 2 Warren, J.     | 1 | 1   | 0   | 1 | 1 | 1/2 | 0   | 3.5-2.5 |
| 3 Walhout, D.    | 1 | 1   | 1   | 1 | 1 | 0   | 1/2 | 4.5-1.5 |
| 4 Bustamante, A. | 1 | 0   | 0   | 1 | 1 |     | 0   |         |
| 5 Just, T.       | 1 | 0   | 0   | 0 | 1 | 0   | 0   | 1-5     |
| 6 Lief, A.       | 1 | 1/2 | 1   |   | 1 | 1   | 1   |         |
| 7 Field, D.      | 1 | 1   | 1/2 | 1 | 1 | 0   | 1   | 4.5-1.5 |

| 84-F PLAYERS | 1 | 2 | 3 | 4 | 5 | 6 | 7 | SCORE |
|--------------|---|---|---|---|---|---|---|-------|
| 1 Zavanelli  | 1 |   |   |   |   |   |   |       |
| 2 Taylor     |   | 1 |   |   |   |   |   |       |
| 3 Field      |   |   | 1 |   |   |   |   |       |
| 4 Lief       |   |   |   | 1 |   |   |   |       |
| 5 Walhout    |   |   |   |   | 1 |   |   |       |
| 6 Amelung    |   |   |   |   |   | 1 |   |       |
| 7            |   |   |   |   |   |   | 1 |       |

|                    |      |                     |      |
|--------------------|------|---------------------|------|
| AMELUNG, A (MO)    | 1049 | HARPER, R (MO)      | 706  |
| ANDERSON, A (IL)   | 859  | HARRIS, W (IL)      | 899  |
| ANDERSON, R (NE)   | 800  | HEALY, S (IL)       | 689  |
| BACHLER, K (IL)    | 872  | HEIMBAUGH, M (IA)   | 728  |
| BAUMANN, H (IL)    | 762  | HERNANDEZ, H (IL)   | 724  |
| BELICS, G (MO)     | 912  | HEUSINKVELD, W (IA) | 713  |
| BENDER, F (IL)     | 948  | HINTERLONG, D (IL)  | 800  |
| BETHEL, R (IL)     | 755  | HOBSON, N (IL)      | 707  |
| BOOZELL, V (IA)    | 787  | HOUSH, K (IL)       | 788  |
| BROCK, B (IL)      | 977  | JABLOKOW, V (IL)    | 819  |
| BROWN, J (IA)      | 800  | JAMASON, R (IL)     | 645  |
| BUSTAMANTE, A (IL) | 701  | JAMISON, L (IL)     | 700  |
| CATINO, C (IL)     | 681  | JOHNSON, B (IL)     | 764  |
| CHANEY, R (IA)     | 800  | JOHNSON, J (IA)     | 815  |
| CHRISTEN, S (IL)   | 843  | JONES, M (IL)       | 800  |
| CDHEN, S (IL)      | 789  | JUST, T (IL)        | 782  |
| CONNDR, P (IL)     | 830  | KAPELA, R (IL)      | 619  |
| CRDUSE, T (IA)     | 825  | KLAUS, J (IA)       | 768  |
| DANGOY, F (IL)     | 763  |                     |      |
| DAVIES, J (MO)     | 896  |                     |      |
| DEAKIN, J (IL)     | 775  | LAWRENCE, B (IL)    | 800  |
| EICHHORN, G (IA)   | 863  | LEGG, J (IL)        | 773  |
| ELLENWOOD, D (IL)  | 720  | LEMKE, D (IA)       | 770  |
| EWALT, E (MO)      | 779  | LEWIS, S (MO)       | 742  |
| FABUSH, G (MO)     | 1001 | LIEF, A (CA)        | 1058 |
| FIELD, D (IA)      | 1000 | LOOMIS, H (MO)      | 740  |
| FISHER, B (IL)     | 783  | LOVEN, D (IL)       | 811  |
| FOLEY, J (IL)      | 800  | LUTHER, R (MO)      | 838  |
| GAPUZ, W (IL)      | 830  | MARTIN, D (IL)      | 704  |
| GENSLER, K (IL)    | 765  | MARTINDALE, J (IL)  | 895  |
| GLASCOCK, D (OK)   | 851  | MCKINNEY, C (IL)    | 737  |
| GOTZ, J (IL)       | 884  | MILBRATZ, W (IL)    | 950  |
| GUSTAFSON, G (IL)  | 848  | NICKS, J (MO)       | 784  |

|                    |     |                      |      |
|--------------------|-----|----------------------|------|
| DLTMAN, T (IL)     | 818 | THOMPSON, M (IA)     | 810  |
| PETERSON, P (IL)   | 842 | URGENA, C (IL)       | 779  |
| POPE, R (IL)       | 741 | VANDERLINDEN, E (IA) | 820  |
| PRAY, R (IA)       | 793 | WALHOUT, D (IL)      | 1081 |
| RAMIREZ, E (IL)    | 781 | WALHOUT, P (IL)      | 849  |
| REARDON, J (IL)    | 840 | WARREN, H (IL)       | 817  |
| ROECKER, J (IL)    | 839 | WARREN, J (IL)       | 973  |
| ROTHSCHILD, I (IL) | 694 | WEISS, M (IA)        | 1008 |
| SANDER, D (IL)     | 746 | WERNER, L (IL)       | 835  |
| SANFORD, C (IL)    | 889 | WHITE, D (MO)        | 800  |
| SCHREMSER, T (IL)  | 769 | WHITE, G (MO)        | 800  |
| SCORZA, S (IA)     | 800 | YOUNG, L (IL)        | 760  |
| SEDLACK, E (IL)    | 851 | ZAVANELLI, M (IL)    | 1076 |
| SEXTON, C (IA)     | 769 | ZIEGLER, K (IL)      | 763  |
| SHDL, P (IL)       | 678 |                      |      |
| SILDMETS, A (NE)   | 874 |                      |      |
| SILLARS, A (IL)    | 877 |                      |      |
| SMITH, M (IL)      | 680 |                      |      |
| SMITH, R (NE)      | 800 |                      |      |
| SMITH, R (NE)      | 800 |                      |      |
| SOGIN, L (IL)      | 700 |                      |      |
| SPITZNAGEL, L (IL) | 774 |                      |      |
| STEVENSON, D (NE)  | 800 |                      |      |
| STOTLER, R (IL)    | 600 |                      |      |
| STOTLER, R (IL)    | 808 |                      |      |



**Biggest Class Prizes  
ever awarded in the  
Chicago Midwest Championship!**

# **1986 CHICAGO-MIDWEST CHAMPIONSHIP**

**A CHESS/FUN WEEK-END!      JULY 19 — 20**

\* EXCELLENT PLAYING CONDITIONS    \* GENEROUS PRIZE FUND

\* **FREE PARKING**    \* **LOW ROOM RATES - \$55.00 SINGLE, DOUBLE, TRIPLE**    \* **EASY TO GET TO**

*Holiday Inn*  **O'HARE**

**\$2750 IN PRIZES    •    JULY 19-20**

Excellent playing conditions at the Holiday Inn O'Hare —  
Site of the 1985 Illinois State Championship.

## **TWO BIG SECTIONS:**

**CHAMPIONSHIP: \$\$400, 225, 150**

Expert: \$200,125 • Class A: \$200,125

**AMATEUR (UNDER 1800): \$\$250, 150, 100**

Class C: \$200,125 • Class D-E: \$150,100

*TROPHIES TO TOP UNRATED AND TOP JUNIOR UNDER 19*

**SPECIAL PRIZES: \$75 each**

to top out-of-state or downstate Illinois Class A, B & C players.

This U.S.C.F. Rated Regional Tournament is co-sponsored by U.S.C.F. Regional Vice-President Fred Gruenberg and the Chicago Chess Association. The tournament consists of 2 sections, 5 rounds per section at the Holiday Inn O'Hare, 5440 North River Road., Rosemont, Illinois (5 mins. from O'Hare Airport). For details phone Richard Verber (312) 764-1404 or Fred Gruenberg (312) 779-3360. Registration is Saturday, July 19, 1986 from 8:00 to 10:00 a.m. in the Ballroom on the Main Floor.

---

**ENTRY FEE IS \$28 POSTMARKED BY JULY 1.  
\$30 POSTMARKED BY JULY 14.    \$35 AT THE DOOR.  
(\$3.00 OFF TO JUNIORS — MAIL ONLY!)**

# TOURNAMENT CALENDAR

Call ChessPhone, (312) 233-8500, for recorded tournament announcements and results, often more up-to-date than Chess Life or the Illinois Chess Bulletin. ChessPhone is provided through the courtesy of Fred Gruenberg.

All tournaments require USCF membership. Some also require ICA membership. All phones are area code (312) unless otherwise noted.

## Regional Events and Events by ICA and its Affiliates

Jun 20-22: MASTER CHALLENGE VIII. 5-round Swiss, Mohr Community Center, DesPlaines and Jackson, Forest Park. EF \$35; \$28 by 6/16. Chris Musgrave, 1127 S Humphrey, Oak Park 60304. 386-5124. AN ICA TOUR MAXI-EVENT.

Jun 28-29: Sacs Instruction. Two one-day events, Chicago Chess Center, 2923 N Southport, Chicago. Jules Stein, 929-7010.

Jul 2-6: WORLD OPEN, Philadelphia.

Jul 5-6: Duffers Delight. Two one-day events, Chicago Chess Center, 2923 N Southport, Chicago. Jules Stein, 929-7010.

Jul 12-13: Chicago Chess Center \$100 Guarantee. Two one-day events, 2923 N Southport, Chicago. Jules Stein, 929-7010.

Jul 12-13: Caveman Quads. Two one-day events, College of Lake County, Grayslake. Don Martin, 546-6972.

Jul 19-20: GREATER CHICAGO-MIDWEST CHAMPIONSHIP. See full-page ad, inside back cover. AN ICA TOUR MAXI-EVENT.

Jul 19-20: Chicago Chess Center events. Two one-day events, 2923 N Southport, Chicago. Jules Stein, 929-7010.

Jul 26-27: Chicago Chess Center events. Jules Stein, 929-7010.

Aug 2-3: Tim Just's Open/Reserve. See half-page ad this issue. AN ICA TOUR MINI-EVENT.

Aug 3-15: U.S. OPEN, Somerset, New Jersey.

Aug 9-10: Chicago Chess Center events. Jules Stein, 929-7010.

## Other Events

Jun 21-22: Chicago Lawn Chess Assn, 476-5716.  
Jul 5-6: Chicago Lawn Chess Assn, 476-5716.  
Jul 12: Tuley Park vs Hillside Huge Match.  
Jul 19-20: Chicago Lawn Chess Assn, 476-5716.  
Aug 2-3: Chicago Lawn Chess Assn, 476-5716.

## Upcoming Events

Aug 16: Bradley U Peoria ICA TOUR MINI-EVENT.  
Aug 16-17: St Charles Chess Club event.  
Aug 30-Sep 1: ILLINOIS STATE CHAMPIONSHIP.  
Sep 27-28: Lake County Open/Reserve IX, Zion.  
Oct 4-5: Region VII Team Champ'p, St Louis.

## ILLINOIS CHESS ASSOCIATION

P.O. Box 43336  
Chicago, IL 60643