

# ILLINOIS CHESS BULLETIN

Official Publication of the Illinois Chess Association a U.S.C.F. Affiliate  
A Not For Profit Organization

March-April 1986

Bimonthly

Volume IX, No. 2

---



Masters  
gather  
in two  
important  
events.

Pages 8, 14.

---

Special this issue: NUDE CENTERFOLD! Page 18.



Official Publication of the Illinois Chess Association, a USCF Affiliate

=====  
**Editor and membership secretary:**

Bill Saythe  
6945 N Ashland #F3  
Chicago IL 60626-3312  
(312) 761-2455

Submit articles, photos, crosstables, games, and other publishable material to the above address. Publication deadline for the next issue is April 27. Also send address changes and corrections to the above.

=====  
**SUBSCRIPTIONS:** The Illinois Chess Bulletin (ICB) is published bimonthly by the Illinois Chess Association. ICA membership includes a subscription to the ICB.

=====  
**ANNUAL MEMBERSHIP RATES:**

Century Club: \$100.00  
Gold Card: \$50.00  
Patron: \$25.00  
Regular: \$10.00  
Junior (under 18): \$6.00

Century, Gold, and Patron members receive their ICB by first-class mail. Remit to: Illinois Chess Association  
PO Box: 43336  
Chicago IL 60643

=====  
**ICA AFFILIATION:** Chess clubs and other organizations which promote chess activity may affiliate with ICA. Affiliate benefits include a copy of each ICB by first-class mail, a listing (if desired) under Where to Play Chess in each issue, discounted ICB advertising rates, three-line tournament announcements in the Tournament Calendar, and the right to run ICA Tour events. ICA affiliation costs \$15.00 per year; please remit to the address shown above under Annual Membership Rates. Include your club meeting times, the name of a contact person, and other useful information in the format shown in Where to Play Chess on page 4 of this issue.

=====  
**ADVERTISING RATES:**

Full page \$60.00  
Half page \$36.00  
Quarter page \$21.00  
Flyer inserts \$25.00

10% discount for same ad in consecutive issues. 1/3 discount for ICA affiliates. All advertising must be camera ready to qualify for these rates. Add 20% if you wish layout done. ICA reserves the right to reject advertising.

=====  
**Metro tournament clearinghouse:**

Todd Barre  
821 S Williams St #A-503  
Westmont IL 60559  
(312) 971-2523

=====  
**Downstate tournament clearinghouse:**

Thomas Knoedler  
2206 Westchester #4  
Springfield IL 62704  
(217) 787-7545

=====  
**ICA ELECTED OFFICERS:**

Walter Brown, President  
811 Elrose Ct, Crest Hill IL 60435

Todd Barre, Metro Vice-President  
821 S Williams #A503, Westmont IL 60559

Thomas Knoedler, Downstate Vice-President  
2206 Westchester #4, Springfield IL 62704

Tim Just, Secretary  
1521 Circle Ct, Naukegan IL 60085

Fred Gruenberg, Treasurer  
2035 W 110th Pl, Chicago IL 60643

=====  
**USCF DELEGATES by virtue of their USCF posts:**

Helen Warren, Policy Board Member  
Frank Skoff, Past President  
Fred Gruenberg, Regional Vice-President  
Jim Warren, Regional Vice-President

=====  
**ICA APPOINTED USCF DELEGATES:**

Walter Brown  
Todd Barre  
Tim Just  
Thomas Fineberg  
Harold Winston

=====  
**ICA APPOINTED USCF VOTING MEMBERS:**

Bill Saythe  
David Sprinkle  
Erv Sedlock  
Thomas Knoedler  
William Naff  
Kevin Bachler  
Wayne Palaquist  
Eric Schiller  
Lawrence Stilwell  
Richard Verber  
Robert Bain  
Chris Musgrave

=====  
**ICA APPOINTED USCF ALTERNATE VOTING MEMBERS:**

Dennis Grant  
Glenn Panner  
Bill Wilkinson  
John Barstad  
Kenneth Marshall  
John Tomas  
Michael Zacate  
Jules Stein  
Jim Brotsos  
Jim Condon  
Angelo Sandrin  
Albert Chow  
Dan Kamen  
Guy Gruenberg

===== CENTURY CLUB MEMBERS =====

Walter Brown	Crest Hill	IL
Fred Gruenberg	Chicago	IL
Michael Belovesick	Northbrook	IL
Lawrence Goch	Chicago	IL
Fred Cramer	Mequon	WI
Arthur Weiner	Glencoe	IL
Burton Vincent	Chicago	IL

===== GOLD CARD MEMBERS =====

Jim Warren	Western Springs	IL
Harland Hoisington	Chicago	IL
Tim Redman	Lima	OH
Charles Kramer	Dolton	IL
Irwin Rothschild	Park Forest	IL
Louis Werner	Evanston	IL
Bill Snythe	Chicago	IL
Bill Buttny	Downers Grove	IL
Angelo Sandrin	Chicago	IL
Albert Sandrin	Chicago	IL
Philip Wong	Evanston	IL
James Norris	Naperville	IL

===== PATRON MEMBERS =====

Bob Ash	Urbana	IL
Todd Barre	Westmont	IL
John Barstad	Carol Stream	IL
Roy Benedek	Westmont	IL
Jim Brotsos	Chicago	IL
Brian Chapman	Arlington Heights	IL
Lynn Crewse	Arlington Heights	IL
Leroy Dubeck	Cherry Hill	NJ
Thomas Fineberg	Chicago	IL
Gregory Fischer	Des Plaines	IL
Robert Glick	Morton Grove	IL
Jon Gotz	West Chicago	IL
William Graves	Chicago	IL
Guy Gruenberg	Matteson	IL
Gary Gustafson	North Conway	NH
Jeffery Hyland	Berwyn	IL
Robert Irons	Chicago	IL
Tim Just	Waukegan	IL
Leonid Kaushansky	Chicago	IL
Thomas Knoedler	Springfield	IL
Kenneth Marshall	Lombard	IL
Eugene Martinovsky	Oak Brook	IL
James McNamara	Riverside	IL
Walter Milbratz	Half Moon Bay	CA
Patrick Moran	Wilmette	IL
Kevin Reardon	Urbana	IL
Ray Satterlee	Mheaton	IL
Vivian Schaecker	Goshen	IN
Tony Sillars	Chicago	IL
Arthur Sinclair	Evanston	IL
David Sprenkle	Urbana	IL
Miomir Stevanovic	Lincolnwood	IL
Helen Warren	Western Springs	IL
Douglas White	Niles	IL
Harold Winston	Evanston	IL
Sandy Zabell	Chicago	IL
Michael Zacate	Mokena	IL
Max Zavanelli	Park Ridge	IL

## IN THIS ISSUE...

The chess event of the past two months in Illinois was the Midwest Masters Invitational IV in Lincolnwood. Helen Warren has made an enormous contribution to midwest chess by sponsoring, and sinking money and time into, this event for four consecutive years now. Story, crosstable, and games begin on page 8.

A second significant event for strong players, the Orland Park Futurity, was held just a week before the Midwest Masters. Give Glenn Fanner credit for this one. Story, crosstables, photos, and games begin on page 14.

We sound off editorially on tournament time controls on page 4.

Last issue's editorial on digital clocks was designed to draw irate letters from both supporters and opponents of the gadgets. It didn't work. One letter was promised, but none was delivered. So, the Letters page this issue is devoted wholly to corrections of the editor's silly oversights. Page 5.

Although Helen Warren did not provide us with a postal page this time (not enough material, she says), she does have an interesting report to members from her vantage point as USCF Policy Board member. Page 6.

A crosstable and list of prize winners for Grayslake's latest offering, Tim Just's College of Lake County Open/Reserve, appears on page 19.

Also on page 19 is a summary of the 1985 Illinois Chess League.

Down a bit from the master population, in both age and rating, were the 108 players in the Illinois Grade School State Championship. Story, prize list, and crosstables begin on page 20.

Although the National Open was held in Las Vegas, it has strong Illinois connections, both organizationally and recreationally. Story and games begin on page 22.

Readers' questions are answered in the Ask Miroseg column. Keep the questions coming. This issue you'll find Miroseg on page 29.

The long-lost minutes of the ICA Board of Directors' meetings are on pages 30-31.

The tournament calendar, as usual, is on the back page.

\*\*\*\*\*  
 \* Please look at your mailing label on \*  
 \* the back page to see if it's time to \*  
 \* renew your subscription! \*  
 \*\*\*\*\*

activities and meeting times  
of ICA affiliates

**AMERICAN POSTAL CHESS TOURNAMENTS** sponsors postal events of various kinds, and sells chess books and equipment. Contact Jim or Helen Warren, PO Box 305, Western Springs 60558. (312) 246-6665.

**CENTRAL LAKE COUNTY CHESS CLUB** meets Fridays, 7:15 pm to midnight, College of Lake County, Bldg 1, Washington at Route 45, Grayslake. Contact Dennis Grant, 1657 McKay, Waukegan 60087. (312) 336-5188.

**CHICAGO CHESS CENTER** meets for casual chess 7 days a week, 6 pm to 1 am, 2923 N Southport, Chicago 60657. Also sponsors rated tournaments on selected weekends. Contact Jules Stein, (312) 929-7010.

**CHICAGO INDUSTRIAL CHESS LEAGUE** organizes team play every 3 weeks through commercial/industrial chess clubs. Contact Jim Brotsos, 6563 N Tahoma, Chicago 60646. (312) 775-5054.

**FOREST PARK CHESS CLUB** meets Tuesdays, 6:45 pm to midnight, Mohr Community Center, Jackson & DesPlaines, Forest Park. Contact Chris Musgrave, 1127 S Humphrey, Oak Park 60304. (312) 386-5124.

**GREATER PEORIA CHESS FEDERATION** meets Mondays, 7 to 11 pm, Bradley Student Center Cafeteria, 901 N Elmwood, Peoria. Contact Bill Wilkinson, 905 N Rebecca Pl, Peoria 61606. (309) 673-9455.

**HINSDALE SOUTH HIGH SCHOOL CHESS CLUB** is for Hinsdale students only. Contact James Carvell, 7401 S Clarendon Hills Rd, Darien 60521.

**LAKE COUNTY CHESS ASSOCIATION** sponsors rated tournaments in the Grayslake/Zion area. Contact Tim Just, 1521 Circle Ct, Waukegan 60085. (312) 244-7954.

**MIDWEST CHESS ASSOCIATION** organizes major tournaments for masters and experts. Contact Helen Warren, PO Box 305, Western Springs 60558. (312) 246-6665.

**NORTH BOONE HIGH SCHOOL CHESS CLUB**, 17641 Poplar Grove Rd, Poplar Grove 61065. Contact Guenter Wohlfarth, sponsor. (815) 765-3311.

**ORLAND PARK CHESS CLUB** meets Fridays, 7 to 11 pm, 15045 West Ave, Orland Park. Contact Glenn Panner, 14300 S Ridge, Orland Park 60462. (312) 460-3111.

**PARK FOREST CHESS CLUB** meets Thursdays, 7 to 10:30 pm, Freedom Hall, Orchard & Lakewood, Park Forest. Contact Wayne Palmquist, 228 S Orchard, Park Forest 60466. (312) 747-2120.

**RAE PRODUCTS AND CHEMICALS**, 10926 S Western, Chicago 60643. Contact Fred Gruenberg, (312) 779-3360.

## FORTY, PLEASE

by Bill Smythe

Age-old tournament time-control questions: Should we try 40/1, and play 4 games per day? Maybe 40/2 is better, to promote quality chess? How about a compromise, say 40/100?

Tournament organizers must grapple with these questions every time they plan a tournament. Let's see, we're running a two-day, 5-round event, we expect 100-200 players, we'd like a lot of masters. Let's make it 40/2. Wait a minute, 40/2 could be deadly on Saturday, with its three rounds. Let's try 40/100 the first day, and slow it down a bit Sunday. Maybe 40/2 is too much of a slowdown, though. Make it 45/2.

And thus is born the typical Illinois two-day format: 40/100 Saturday, 45/2 Sunday. Sounds reasonable, at first. The early games are quick knockouts, the later games are the climactic master-vs-master struggles.

But on Sunday morning, reality strikes. Four or five players lose on time in round 4 by forgetting that the time control comes at move 45, not 40. Even some of Illinois' best masters have been known to lose Sunday morning games in this manner.

The losers invariably blame themselves, but why invite trouble? *Time forfeits of this sort create artificial results, leave a bad taste in everyone's mouth, and are not good for organized chess.*

I urge organizers to abandon the atrocious 40/100, 45/2 idea. If the time control must be changed from day to day, leave the number of moves at 40. Just change the number of minutes: 40/100 Saturday, 40/2 Sunday. If the latter is too slow, try 40/110 Sunday.

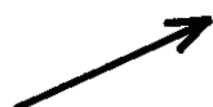
In fact, I'd like to go even further. A 45-move control, even if uniform throughout the tournament, can result in time-forfeits by forgetful players. Why not run all tournaments at 40/xxx? Tornados can be 40/1, master events 40/2, large open tournaments 40/100, two-day events any 2 of the above. Also acceptable would be 40/80, 40/90, 40/110.

There are many benefits in standardizing the first time control at 40 moves. It's time to do what is right for the players.

---

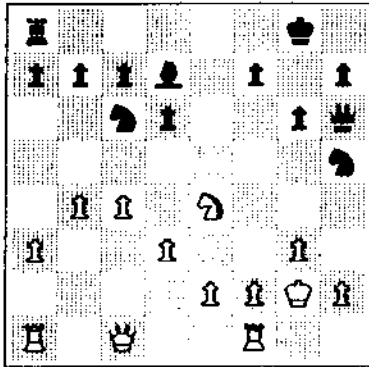
**ST CHARLES CHESS CLUB** meets Thursdays at 7 pm, Baker Community House, 101 S 2nd (Route 31), St Charles. Contact Erv Sedlock, 6 N 307 Old Homestead Rd, St Charles 60174. (312) 377-7995.

**TULEY PARK CHESS CLUB** meets Saturdays, 1 to 5 pm, Tuley Park Fieldhouse, 501 E 90th Pl, Chicago. Contact Thomas Fineberg, 7321 S South Shore Dr, Chicago 60649. (312) 721-3979.



# LETTERS...

I was pleasantly surprised to see my first published game in the January-February Illinois Chess Bulletin (page 19), even in a losing effort. However, I should point out

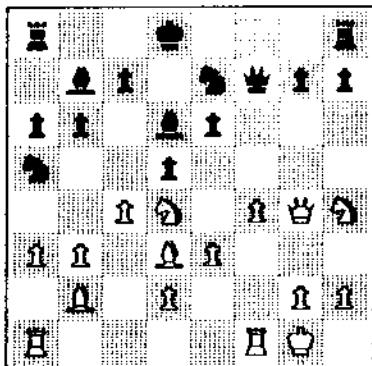


that in the diagrammed position, in response to 15...Bh3+ I eschewed 16 Kxh3 because of the prosaic 16...Nf4+ 17 Kg4 Ne5 mate.

Yours truly,  
Bruce Kreisman

[Oops. This error was also pointed out by the winner, Tom Mayka, who calls the game one of his most "accurate". Too bad the accuracy of the notes doesn't measure up to that of the game! -- Editor]

The solution to the problem on your cover page of January-February 1986 misses a greater material gain for White. Instead of the

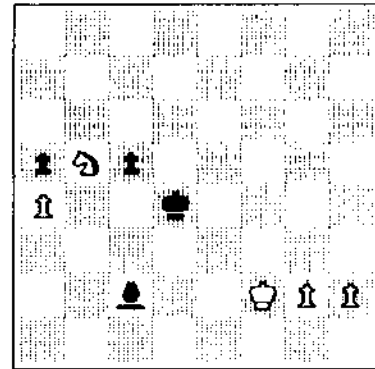


published 1 Qxg7 Qxg7 2 Nxe6+ winning two Pawns, White should play 1 Nxe6+ Ke8 [forced] 2 Nxg7+ followed by 3 Ne6+ and 4 Bxh8 gaining for White a Rook in addition to the two Pawns.

Yours,  
Tri T. Nguyen

[Oops again. This time the improvement was also discovered by David Sprengle and Glenn Panner. -- Editor]

In reviewing Lester VanMeter's fine article on the Midwest Team Championship in the January-February issue of ICB [page 18] I noticed he overlooked the following continuation in my game with Jim Mills.

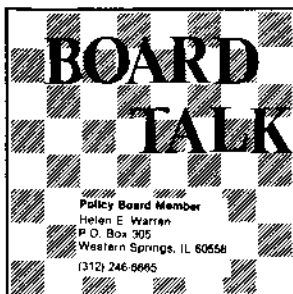


Had Black played the recommended 40...Kd3 during mutual time trouble, White would not venture 41 Nd6 but instead secure the draw as follows:

40	....	Kd3	
41	h4	Bxa4	
42	h5	Bb3	
43	g4	Bf7	
43....Ke4	44 h6 Bg8	45 Ke2 Kf4	46 Kd3 Kxg4
47 h7 holds,	as does	43....Bg8	44 g5 Ke4
45 g6 Kf5	46 Nd6+.		
44....a4	45 Nxf7	Bg8	and the Pawns race to a draw.
45 g5	a4		
46 Nb5			

and now Black must abandon his Queenside to pursue White's Pawns.

Sincerely,  
Peter M. Vesely



"What's happening in the USCF these days?" I asked the question in years past and resolved that should I ever be in the position to answer it, I would. Life on the USCF Policy Board is a mixed bag; it has its moments of accomplishment and satisfaction as well as its times of frustration. Compromise is the name of the game. One impression, however, certainly seems recurrent: the great majority of the seven of us work hard and want the best for chess and the federation.

So, in line with what I promised as a candidate for the at-large member post, I thought readers of state magazines and members generally who expect accounting from their leadership would like a progress report on their USCF. The following isn't intended as an exhaustive report by any means. I'll hit the highlights and invite your questions by mail or phone.

---

THE NEW WINDSOR OFFICE BUILDING  
WILL BE MORTGAGE-FREE THIS YEAR .....

---

At the February meeting of the Policy Board some exciting programs were started, some significant decisions made, and a few historic steps were taken. One of them involves the exercise of the option for early payment of the building mortgage. The financial condition of the federation has improved markedly, mainly due to strong sales, thus making the payoff of the mortgage possible. This means a savings in interest charges of about \$24,000. I'd expect that we'll have a symbolic burning of the mortgage at the U.S. Open Delegates' meeting in Somerset, New Jersey this August. In the same financial spirit the PB directed the USCF Finance Committee to make a final recommendation on Life Membership reserves and report back in June for possible action.

---

OFFICIAL RULES OF CHESS,  
3rd EDITION, SOON OFF THE PRESS ....

---

TDs rejoice! The long-awaited USCF Rulebook has been reviewed, modified, and accepted by the PB and will soon be rolling off the McKay presses. This rulebook should fill the wishes of TDs of all levels for a workable, coherent, and clear tool. Much of the credit for the new rulebook is due Tim Redean and his co-editors. Theirs was a tedious job.

---

FIDE, THE HALL OF FAME, ICLA, AND POSTAL ....

---

A return to the three-year World Championship cycle was endorsed by the PB in February. In other FIDE-related business, the sending of a U.S. team to the Dubai Olympiad was authorized. A platform of policy statements on FIDE matters, including a strong anti-apartheid statement, was passed.

The sum of \$10,000 was authorized for the renovation of office space to establish the U.S. Chess Hall of Fame and Museum in New Windsor. The membership will soon read of plans for this ambitious project in the pages of Chess Life. Charter members will be inducted at the U.S. Open in New Jersey this August in special ceremonies. You guessed the two chess personalities, of course: Paul Morphy and Bobby Fischer.

The PB approved the absorption of the Inter-collegiate Chess League of America. ICLA affiliates will vote on this shortly. This move will go a long way to insure the financial integrity of future Pan Am tournaments, while at the same time allowing for college affiliates to enjoy input to USCF decision-making through a special committee.

USCF postal ratings will undergo a significant change. Soon your USCF postal rating will look a lot more like your OTB numbers. The old Harkness scale is being abandoned in favor of Elo-like numbers. The postal bulletin will be discontinued for lack of subscribers.

---

U.S. CHAMPIONSHIP FOR ESTES PARK, CO ....  
A PENSION PLAN FOR NEW WINDSOR WORKERS ....

---

The U.S. Championship will be held in Estes Park, Colorado in the late fall. Because this is a zonal year, this event will consist of 16 players. A Women's Championship will be held as well, with a field of ten.

A pension plan, called the Employee Incentive Plan, was adopted by the PB and will be retroactive to 1/86. This program will do much to encourage employee retention -- at least that's our hope!

---

RVPs, MASTERS SPEAKING BUREAU, AND A NEW TITLE

---

\$1500 has been allocated for the establishment of a Chess Masters' Speaking Bureau. This package will include the names and addresses, fees, etc. of all GMs and IMs available for speaking appearances and simul; other masters may be included for a modest fee. The Business Office will prepare the package for distribution to affiliates. Masters and organizers should welcome this innovation.

A new title, National Grandmaster, has been established. Don't ask me to detail this one. You'll see some sort of explanation in CL. In my opinion it's a cheapie.

Scholastic organizers in elementary schools will be pleased to know that the long-awaited publication for students and teachers, **PAWN AND QUEEN & IN BETWEEN**, will be a reality very soon -- by August. In January this board member went to New Windsor to assist with this project. A promotional packet to school sponsors, principals, curriculum directors, etc. is now being prepared which will precede the distribution of the periodical. It will be interesting to see if this approach yields significant results in promoting chess among the very young.

In April this PB member will again trek to New Windsor to work on membership promotion with fellow PB members Harry Sabine and Tony Cottell. We're eager for your suggestions in any membership area: how to increase it, how to keep the members we have, how to promote our organization in untapped territory. One of the happy tasks I'll have on the board this year and next will be the development of the USCF's 1987 Paul Morphy Sesquicentennial program. Paul Morphy was born in 1837 making

1987 his 150th birthday year. Let me hear from you with ways to make it a memorable chess year.

A number of national tournaments are coming up: the *Senior Open* (for USCFers in my age group!) will be held on May 4-9 in Hot Springs, AR. This is a first time for a national tournament in Arkansas. You'll have a great time in this vacation spot with all sorts of sport and recreational activity -- and a leisurely pace of one round a day. If you're 50 or over, this is a terrific way to relax and enjoy chess, too.

*The U.S. Amateur Championship* goes to Baltimore this May. Bob Erkes has promised a great time for the non-masters on May 24-26.

*The U.S. Junior* in Pittsburgh, PA from July 18-20 for players under 19 is followed by the granddaddy of them all: the *U.S. Open*, August 3-15 in Somerset, NJ. Come for the entire twelve days -- or if time is short, come in for the *Busy Man Special*. Details in CL.

---

## IN MEMORIAM

RICHARD F. MC CORMICK

by Wayne Palmaquist

R.F. "Mac" McCormick, a member of the Park Forest Chess Club for over 20 years, passed away in December 1985.

Mac was a member of the Park Forest team during the Jay Toll era when the South Suburban Chess League was in full swing during the '60s. Although Mac's rating never got higher than about 1600, he could sting the higher rated players if they took him too lightly (including this writer).

We got to know Mac best during car rides to tournaments. He was a retired engineering instructor from the Purdue-Calumet campus where he taught math and instrumentation. He could speak on a variety of subjects from music to engineering with a youthful interest that belied his age.

One of the funnier but grimly realistic stories involves a ticking mechanical valve in Mac's heart. (Mac told me it gave him 10 years for free.) He was watching an important tournament game and all was quiet except for a distinct ticking emanating from the vicinity of Mac. One of the players asked him to stop that ticking sound. Without a pause, Mac's retort was, "Not unless you want me to die!" The surprised and confounded chessplayer went back to his game without another word.

In poor health the last few years, he rarely missed a club night even due to bad weather. Mac's wife called and said the club meant a lot to him and she knew he would want the club to have his chess books and equipment. With Mac's passing, another generation of the Park Forest Chess Club fades into memory. A gentleman we will miss.

---

## LOOSE PIECES

The National Elementary School Championship, for students in grades 6 and under, is scheduled for May 3-4 in Charlotte, North Carolina. A week later, May 10-11 in Spokane, Washington, is the National Junior High School Championship for grades 9 and under.

April 14-16 in Berne, Switzerland there will be a "Salute to Gulko" tournament, featuring former Soviet citizens Lev Albur, Maxim Dlugy, and Viktor Korchnoi. The organizers will seek to have Soviet dissident GM Boris Gulko participate by telephone, under provisions of the Helsinki Accords. The tournament is intended to generate publicity for the Gulko family's plight, thereby encouraging the Soviet government to grant visas.

Our thanks to USCF for providing information on the above three events.

Matthew Cain, age 6, and his brother Grant, age 10, of Minooka, IL (near Joliet) have qualified for assistance from the American Chess Foundation under the ACF teaching support program. This program assists promising youngsters by matching funds provided by the youngsters' family for payment to qualified master teachers for tutoring. Matthew's rating of 1210 and Grant's rating of 1500 fulfill the requirement for ACF aid: age x 100 + 500.

The boys' teacher will be Senior Master Albert Chow. Al will begin a series of ten lessons for the boys, report to ACF on their progress, and the ACF will assess the results there-after. Matthew and Grant have been steadfast players in area scholastic tournaments.

This information is from Helen Warren, who adds, "These are two youngsters to watch in months and years to come! I'm delighted that I was able to secure assistance for them."

## MIDWEST MASTERS INVITATIONAL IV

The chess event of the year so far in Illinois, the Midwest Masters Invitational IV, was held March 7-9 at the Hyatt Lincolnwood Hotel on the northern edge of Chicago. Organized by former ICB editor and ICA president Helen Warren, who has always shown a strong devotion to organized chess in general and master chess in particular, this year's edition drew over 70 players rated 2200 and up. Five rounds proved sufficient to prevent any 5-0 scores, as International Master Joel Benjamin and Grandmaster Yehuda Grunfeld drew their last-round encounter to finish with 4.5 points. Also tying for first was Grandmaster Sergey Kudrin, after a third-round draw with Illinois Senior Master Morris Giles.

The ratings shown on the crosstable are those from the tournament wallchart, as the USCF crosstable was not available to us at press time. Five games from the tournament follow, annotated by master Bill Colias. We hope to have more games from this event in the May-June issue.



## THE REAL THING

by Helen Warren  
organizer

Said the master from Ohio to the master from Illinois, "Why do I feel like this is a very special tournament?" "Because it is," said the Illinoisan. "Welcome to the real U.S. Masters Open."

There's not much to add, even from an organizer's point of view. The Midwest Masters Invitational IV continued the steady evolution of the

(continued next page)

1	BENJAMIN Joel	IM	2627	W51	W28	W18	W 4	D 2	4.5
2	GRUNFELD Yehuda	GM	2626	W52	W36	W44	W 9	D 1	4.5
3	KUDRIN Sergey	GM	2533	W55	W27	D 8	W11	W10	4.5
4	GUREVICH Dmitri	GM	2601	W22	W29	W15	L 1	W18	4
5	FINEGOLD Ben		2399	W66	W35	D13	D12	W20	4
6	MC CAMBRIDGE Vince	IM	2548	W58	L26	W63	W24	W21	4
7	LEIN Anatoly	GM	2601	D71	D65	W47	W19	W 8	4
8	GILES Morris		2401	W34	W33	D 3	W14	L 7	3.5
9	BUZBUCHI Ionut		2476	W67	W32	W46	L 2	D17	3.5
10	IVANOV Igor	IM	2580	W50	D45	W26	W13	L 3	3.5
11	LEVERETT Bruce		2377	W49	W57	D14	L 3	W31	3.5
12	SHAMKOVICH Leonid	GM	2491	W68	D46	W30	D 5	D16	3.5
13	CHOW Albert		2436	W73	W47	D 5	L10	W30	3.5
14	FORMANEK Ed	IM	2452	W62	W63	D11	L 8	W29	3.5
15	MARTINOVSKY Eugene		2408	W43	W64	L 4	D22	W27	3.5
16	READEY John		2364	D48	W40	D32	W37	D12	3.5
17	SHTEIN Igor		2340	L57	W61	W66	W44	D 9	3.5
18	RAC Vivek		2429	W53	W38	L 1	W45	L 4	3
19	COLIAS Bill		2322	W70	D20	W31	L 7	D23	3
20	BROOKS Michael		2521	W60	D19	D45	W28	L 5	3
21	DE FOTIS Greg		2411	L56	W53	W38	W26	L 6	3
22	KAVNATSKY Valentin		2307	L 4	W69	W41	D15	D37	3
23	LIEF Adam		2410	L64	W42	W65	D27	D19	3
24	AROMAN Miles		2403	L35	W43	W64	L 6	W47	3
25	BISGUIER Arthur	GM	2521	L47	W73	D56	D34	W51	3
26	MILLER Todd		2335	W41	W 6	L10	L21	D39	2.5
27	ROSE John		2331	W54	L 3	W57	D23	L15	2.5
28	LINDSAY Fred		2359	W61	L 1	W35	L20	D42	2.5
29	HORVITZ Richard		2342	W59	L 4	D33	W49	L14	2.5
30	ZELKIND Eduardo		2332	D40	W48	L12	W56	L13	2.5
31	KARKLINS Andrew		2409	D65	W71	L19	W58	L11	2.5
32	PELTS Peter		2317	W74	L 9	D16	D39	D33	2.5
33	MOTE David		2213	W75	L 8	D29	D46	D32	2.5
34	MILLS Jim		2223	L 8	W75	W36	D25	-	2.5
35	BUNGO Greg		2224	W24	L 5	L28	W63	D36	2.5
36	LEVINE David		2358	W69	L 2	L34	W59	D35	2.5
37	BLOCKER Calvin	IM	2537	L63	W62	W67	L16	D22	2.5
38	VAN METER Lester		2267	W76	L18	L21	D48	W56	2.5
39	STEIN Peter		2205	L45	D50	W60	D32	D26	2.5
40	SHILLER Eric		2200	D30	L16	D68	W64	D52	2.5
41	BURKE John		2200	L26	W55	L22	D53	W63	2.5
42	STEVANOVIC Miroir		2231	L44	L23	W70	W57	D28	2.5
43	BONDARI Siamak		2225	L15	L24	W74	D50	W60	2.5
44	SZMETAN Ricardo		2412	W42	W56	L 2	L17	-	2
45	KAUSHANSKY Leonid		2354	W39	D10	D20	L18	-	2
46	ECKERT Doug		2324	W72	D12	L 9	D33	-	2
47	DANDRIDGE Marvin		2290	W25	L13	L 7	W66	L24	2
48	CHACHERE Larry		2215	D16	L30	D50	D38	D53	2
49	CONCINI John		2215	L11	D52	W71	L29	D50	2
50	WEISS Mitch		2305	L10	D39	D48	D43	D49	2
51	JONES Ken		2317	L 1	L66	W72	W65	L25	2
52	O'DONNELL Robert		2315	L 2	D49	L59	W61	D40	2
53	KRECKLER Warren		2246	L18	L21	W69	D41	D48	2
54	INUMERABLE Florentino		2200	L27	D60	L58	D55	W66	2
55	BERELOS Peter		2291	L 3	L41	D61	D54	W69	2
56	WALLACH Ken		2231	W21	L44	D25	L30	L38	1.5
57	LOVE David		2200	W17	L11	L27	L42	D62	1.5
58	LONOFF Marc		2302	L 6	D59	W54	L31	-	1.5
59	SCHMUGGEROW Kevin		2204	L29	D58	W52	L36	-	1.5
60	KARKLINS Erik		2290	L20	D54	L39	W71	L43	1.5
61	AHLSTROM Steve		2212	L28	L17	D55	L52	W72	1.5
62	TOMAS John		2249	L14	L37	-	W70	D57	1.5
63	POSCHER Paul		2300	W37	L14	L 6	L35	L41	1
64	DOE William		2229	W23	L15	L24	L40	-	1
65	THOMAS Ken		2227	D31	D 7	L23	L51	-	1
66	FISCHER Robert		2217	L 5	W51	L17	L47	L54	1
67	ZINGHEIM Scott		2263	L 9	W70	L37	-	-	1
68	STEIN Kurt		2281	L12	D72	D40	-	-	1
69	SANDRIN Angelo		2210	L36	L22	L53	W72	L55	1
70	LINN Gina		2100	L19	L67	L42	L62	W74	1
71	SMALL Greg		2308	D 7	L31	L49	L60	-	0.5
72	ZELKIND Mike		2130	L46	D68	L51	L69	L61	0.5
73	BACHLER Kevin		2248	L13	L25	-	-	-	0
74	SCOTT Gene		2145	L32	-	L43	-	L70	0
75	DAMOCLES Job		2361	L33	L34	-	-	-	0
76	GRUCHACZ Robert	IM	2480	L38	-	-	-	-	0
77	EPSTEIN Robert		2200	-	-	-	-	-	0



strongest tournament of its size ever held in the midwest. Seventy-six players from sixteen states, Israel and Canada combined to produce five rounds of stellar chess -- exciting and glorious. Six grandmasters and six international masters led the rating chart with almost half the field FIDE-rated.

Grand Prix status has added to the magnetism of this event, growing from a modest 36 players just four years ago to double that number. For players in our immediate environs the MMI means the chance to play five tough games and achieve a FIDE-ratable performance, or shy of that, to better individual Elo's. An average rating of 2339 in this event, the presence of five past competitors in the U.S. Junior Championship, participation by no fewer than six principals in the U.S. Championship itself, all combined to make the 1986 version memorable. Especially gratifying was the support given by masters of recent vintage; this event has special meaning for them. Eleven players have participated in all four MMIs; the veterans.

Chess cannot prosper in this country without tournaments like this one. The reach for excellence and sometimes its attainment does not come with gigantic class events and 30/30 time controls. To players for whom chess is more than a weekend's escape there is no substitute for the rigorous encounter. Here is where the rich and beautiful games are created for all of us to enjoy.

My thanks must go to the organizations and individuals who have helped me financially this year and in the past. All are acknowledged in the tournament brochure and will be mentioned as well in the games book now in preparation. My thanks to two fine TDs: Walter Brown and Bob Bain, to Todd Schreier for a great job on the wall boards, to the Hyatt Lincolnwood and its accommodating staff. Special thanks to Jim Warren whose help was immeasurable.

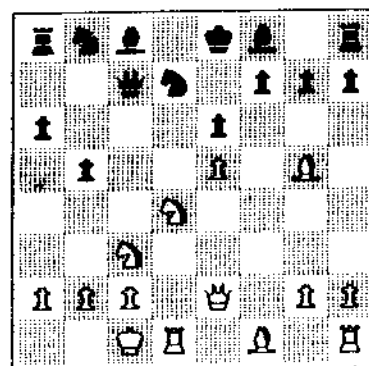
My warm applause to the gifted players who made the event happen: the U.S. Master. May the opportunities for their play increase, their talents grow, their numbers multiply.



White: Yehuda Grunfeld (2626).  
Black: Ionut Buzbuchi (2476).

Annotated by Bill Colias.

1	e4	c5
2	Nf3	d6
3	d4	cxd4
4	Nxd4	Nf6
5	Nc3	a6
6	Bg5	e6
7	f4	b5
8	e5	dxе5
9	fxe5	Qc7
10	Qe2	fNd7
11	0-0-0	



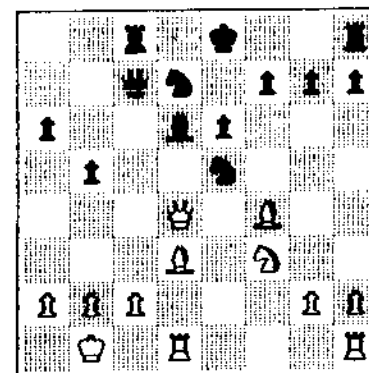
11 .... Bc5!? (TN)

An apparent novelty. Other tries have been ....Bb4, ....b4, ....Nc6, ....Be7 all meeting some kind of disaster. Theory considers only ....Bb7 playable, without even mentioning ....Bc5. On 11....Bb4 12 Ne4 Qxe5 13 Nf3 Qc7 14 a3 Bf8 15 g4 Bb7 16 Bg2 Qc4 17 Qxc4 bxc4 18 Ne5 with White standing much better in Giterman-Stein Odessa 1960. 11....Be7 12 Bxe7 Kxe7 13 Qg4 Qxe5 14 Bxb5 Bb7 15 hRc1 h5 16 Nf5+ Kd8 17 Qh4+ g5 18 Qxg5+ f6 19 Bxd7 fxg5 20 Bxe6+ and Black resigned in Kupper-Walther Zurich 1961.

12	Nf3	Bb7
13	Ne4	Bxe4
14	Qxe4	Nc6
15	Kb1	Rc8
16	Bd3	cNxе5

16....dNxе5 with the idea of controlling the d4 square should strongly be considered, as the game continuation seems to favor White.

17	Bf4	Bd6
18	Qd4	



18 .... Nxf3

Black's pieces feel a little awkward, but 18....Qc5 19 Bxe5 Nxe5 20 Qxc5 Rxc5 21 Bxb5+ axb5 22 Rxd6 Nxf3 23 gxh3 Ke7 offered better chances of survival.

19 Qxg7 Bxf4

Now Black's position falls apart.

20 Qxh8+ Ke7

21 Qxh7 Ng5

At the moment Black is fine materially but his pieces just don't coordinate.

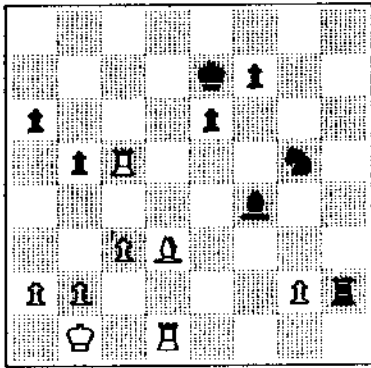
22 Qh4 Nc5

23 c3 Qe5

24 hRc1 Rh8

25 Rxe5 Rxf4

26 Rxc5 Rxf2



27 g3  
This is probably what Black missed when playing for this type of ending.

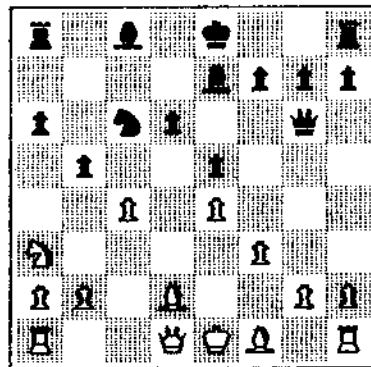
- |    |       |      |
|----|-------|------|
| 27 | ....  | Bd2  |
| 28 | Rc7+  | Kd6  |
| 29 | Ra7   | f5   |
| 30 | Rxa6+ | Ke5  |
| 31 | Bxb5  | Ne4  |
| 32 | Bc4   | Rh6  |
| 33 | Bd3   | Rh2  |
| 34 | Bc4   | Rh6  |
| 35 | g4    | fxg4 |
| 36 | Bd3   | Rh2  |
| 37 | Ra5+  | Kf4  |
| 38 | Ra4   | Ke3  |
| 39 | Rxe4+ | 1-0  |



White: Leonid Shashkovich (2491).  
Black: Kurt Stein (2281).

Lasker-Pelikan opening.  
Annotated by Bill Colias.

- |    |       |      |
|----|-------|------|
| 1  | e4    | c5   |
| 2  | Nf3   | e6   |
| 3  | Nc3   | Nc6  |
| 4  | d4    | cxd4 |
| 5  | Nxd4  | Nf6  |
| 6  | dNb5  | d6   |
| 7  | Bf4   | e5   |
| 8  | Bg5   | a6   |
| 9  | Na3   | b5   |
| 10 | Nd5   | Qa5+ |
| 11 | Bd2   | Qd8  |
| 12 | Nxf6+ | Qxf6 |
| 13 | c4    | Qg6  |
| 14 | f3    | Be7  |



15 Be3  
White declines the sacrifice, as after  
15 cxb5 Bh4+ 16 g3 Bxg3+ 17 hxg3 Qxg3+  
18 Ke2 things get very messy.

15....0-0 16 cxb5 axb5 was played in  
Fichtl-Nun 1/2-Czech ch 75.

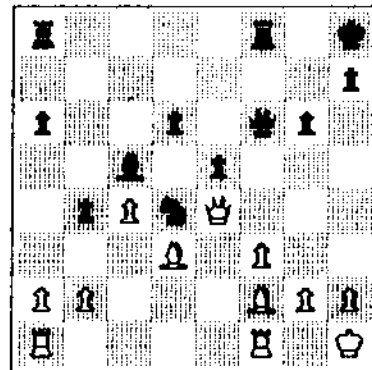
- |    |      |         |
|----|------|---------|
| 15 | .... | b4 (TN) |
| 16 | Nc2  | 0-0     |
| 17 | Bf2  | Be6     |

17....Kh8 first may prove to be useful, as  
Black's white-square Bishop is still undecided  
as to which square will be best.

- |    |     |     |
|----|-----|-----|
| 18 | Ne3 | Kh8 |
| 19 | Bd3 | Nd4 |
| 20 | 0-0 | Bd8 |

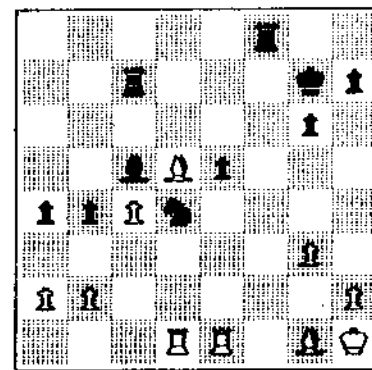
Both 20....Qh6 and 20....Rg8 are  
interesting alternatives.

- |    |      |      |
|----|------|------|
| 21 | Kh1  | Bb6  |
| 22 | Nf5  | Bxf5 |
| 23 | exf5 | Qf6  |
| 24 | Qe1  | Bc5  |
| 25 | Qe4  | g6   |
| 26 | fxg6 | fxg6 |



Now we see why Shashkovich is a GM; he  
conducted the gray zone of the game  
beautifully. A few moves ago it was hard to  
see what was going on but now things are  
becoming clear. Black's position is starting  
to show weaknesses, namely, the backward  
d-Pawn and pawn structure in general.

- |    |      |      |
|----|------|------|
| 27 | Qh4  | Qg7  |
| 28 | Be4  | aRc8 |
| 29 | aRd1 | Rc7  |
| 30 | Qh3  | Qd7  |
| 31 | Qxd7 | Rxd7 |
| 32 | Be3  | kg7  |
| 33 | fRe1 | a5   |
| 34 | f4   | dRf7 |
| 35 | fxe5 | dxs5 |
| 36 | g3   | a4   |
| 37 | Bd5  | Rc7  |
| 38 | Bg1  |      |



38 .... Nf3  
 Better was 38....Re7 39 Bxd4 exd4 40 Rxe7+  
 Bxe7 41 Rxd4 Rf1+ 42 Kg2 Rb1 43 Rd2 Bf6.  
 So White should play 39 Re4 with advantage.

39 Bxc5 Rxc5  
 40 Re3 Nd4  
 41 Rxe5

One cannot help but be impressed with Shaakovich's play. He's played the whole game so logically and beautifully, he makes it look easy. With his last move he has won a Pawn and with it the game.

41 .... Nc6  
 42 Re6 Na5  
 43 Re7+ Kh6  
 44 Rd4 Rf2  
 45 Rh4+ Kg5  
 46 efxh7 Nxc4  
 47 Bxc4 Rxb2  
 48 Rf4 Rf5  
 49 h4+ Kf6  
 50 Re4 1-0

10 .... c4  
 11 Nf2 exf4  
 12 gxf4 f5  
 13 b3 cxb3  
 14 d4 Bd6?!  
 14....Bb4 would have been better.  
 15 e4 fxe4  
 16 fNxe4 Bf5  
 17 Qxb3 Bxe4  
 18 Nxe4 Be7  
 19 Ng5 Rf8  
 20 Qxb7 Nxd4  
 21 Be3 Bxg5  
 22 fxg5 Rxf1+  
 23 Rxf1 g6  
 24 Qe4+ dNe6  
 25 Qe5 1-0

I'm sure we will be seeing a lot more of 8 Ne1 in the future.



White: Albert Chow (2436).  
 Black: Eduardo Zelkind (2332).

King's Indian.  
 Annotated by Bill Colias.

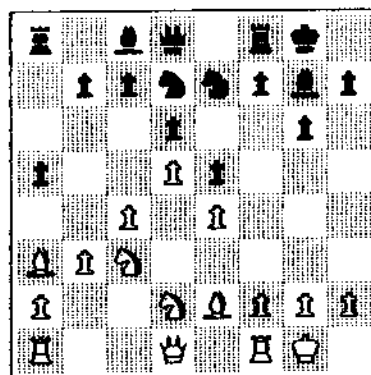
1 d4 Nf6  
 2 c4 g6  
 3 Nc3 Bg7  
 4 e4 d6  
 5 Nf3 O-O  
 6 Be2 e5

In round 1 against Chow, Kevin Bachler played 6....bNd7 7 O-O e5 8 Be3 Ng4 9 Bg5 f6 10 Bh4 Nh6 11 Qd2 g5 12 Bg3 g4 13 Nh4 exd4 14 Qxd4 Nc5 15 Qd1 Be6 16 Nf5 Nxf5 17 exf5 Bxf5 18 b4 Be6 19 bxc5 and White won in 35.

7 O-O Nc6  
 8 d5 Ne7  
 9 Nd2 a5

9....c5 gives Black better chances of gaining the initiative, although the text is not bad.

10 b3 Nd7  
 11 Ba3

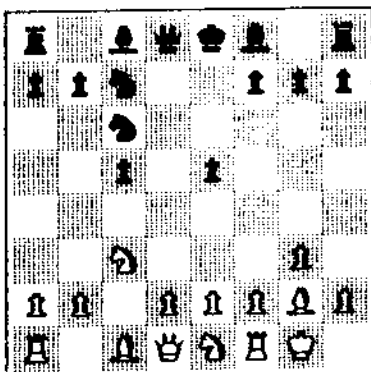


11 .... f5?!  
 11....Nc5 12 b4 axb4 13 Bxb4 Na6 14 Ba3 b6  
 15 Nb3 f5, with equal chances, was played in Korchnoi-Geller, game 1, Candidates 1971.  
 12 b4 axb4  
 13 Bxb4 Kh8?!  
 14 a4 Ng8

White: Igor Ivanov (2580).  
 Black: Albert Chow (2436).

Annotated by Bill Colias.

1 c4 c5  
 2 Nf3 Nf6  
 3 Nc3 d5  
 4 cxd5 Nxd5  
 5 g3 Nc6  
 6 Bg2 Nc7  
 7 O-O e5  
 8 Ne1



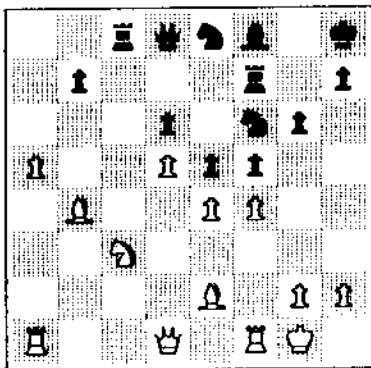
In his book, English c5, John Watson says there have been few practical tests but that the move 8 Ne1 looks good. Other tries for White have included b3, a3, and d3 with d3 being the most popular.

8 .... Bd7  
 Black avoids 8....Be6?! 9 Bxc6+ bxc6 10 Ra4 Qd7 11 Nd3 f6 12 b3 Nb5 13 Bb2 Nd4 14 f4 played in Matson-Grunberg, Gausdal 1980.

9 Nd3 f6  
 10 f4! (TN)  
 Matson gives only 10 b3 Bg4 11 Bxc6+ bxc6 12 f3 Bf5 13 Nf2.

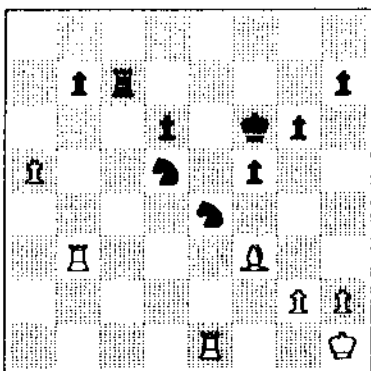
Black's idea is just too slow. He started by counter-attacking with 11....f5, then changed over to passive defense with 13....Kh8, 14....Ng8 while allowing White a free hand on the Queenside. Compare the position from Korchnoi-Geller to the present and you can see that White is definitely much better in the latter.

15	Nb3	Rf7
16	c5	dNf6
17	cx d6	cx d6
18	Nd2	Ne8
19	Nc4	Bf8
20	a5	gNf6
21	Nb6	Rb8
22	Nxc8	Rxc8
23	f4	



23 .... Rxc3  
 Better was 23....Nxe4 24 Nxe4 fxe4 25 fxe5 Rxf1+ but White still has the advantage after 26 Qxf1.

24	Bxc3	Nxe4
25	Bb2	Bg7
26	Kh1	Qh4
27	Qe1	Qxe1
28	aRxe1	exf4
29	Bxg7+	Kxg7
30	Rxf4	BNf6
31	Rf3	Rc7
32	Rb3	Nxd5
33	Bf3	Kf6



Although Black does have a Pawn and a well placed Knight for the Exchange, it is still insufficient. His b- and d-Pawns are weak and White's a-Pawn is a potential threat.

34	eRb1	Rc5
35	Rb5	dNc3
36	Rxc5	Nxc5
37	Rxb7!	Nxb7
38	a6	1-0

A very well played game from the White side of a King's Indian.



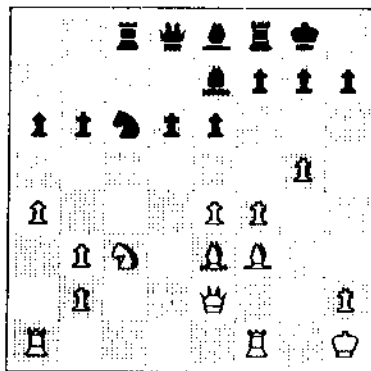
White: Sergey Kudrin (2533).  
 Black: Igor Ivanov (2580).

Sicilian Scheveningen.  
 Annotated by Bill Colias.

1	e4	c5
2	Nf3	e6
3	d4	cx d4
4	Nx d4	Nf6
5	Nc3	d6
6	Be2	Be7
7	O-O	O-O
8	f4	Nc6
9	Kh1	Bd7
10	Nb3	Rc8
11	Bf3	a6
12	a4	b6
13	g4	

The Scheveningen has received a lot of attention of late possibly due to Kasparov's successful use of it against Karpov. In the present game Ivanov arranges his pieces a little differently than Kasparov has preferred. The main difference is the aR would have moved to b8 instead of c8 so the Bishop can go back to the a8-h1 diagonal.

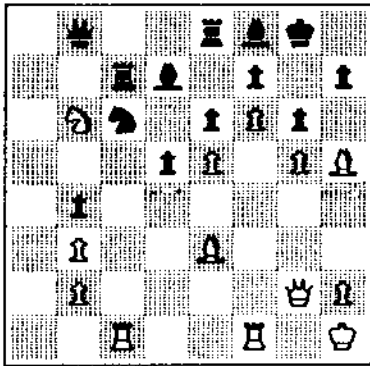
13	....	Be8
14	g5	Nd7
15	Qe2	Nc5
16	Be3	Nxb3
17	cx b3	



17	....	b5!?
18	ax b5	ax b5
19	Qg2	

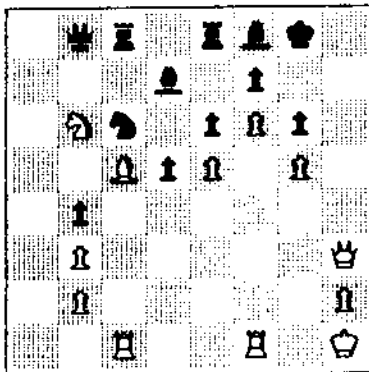
19 Nxb5 would be a mistake. As White is attacking on the Kingside, it makes sense to keep the Queenside and center as closed as possible.

19	....	b4
20	Na4	Bd7
21	f5	Re8
22	Nb6	Rc7
23	f6	Bf8
24	aRc1	Qb8
25	e5	d5
26	Bh5	g6



27 Bxg6  
A sacrifice in true Kudrin style. This game is typical of the fighting chess played at this year's Midwest Masters.

27 .... hxg6  
28 Qh3 cRc8  
28....Rb7 comes into consideration.  
29 Bc5



29 .... Qxe5  
No better was 29....Bxc5 30 Nxd7 Qa7 31 Qh6 Bf8 32 Nxf8 Rxf8 33 Qg7 mate.

30 Bxf8 Nd4  
The following phase of the game can be attributed to time trouble.

31 cRe1 Ne2  
32 Bg7 Qe4+  
33 Rf3 Qxf3+  
34 Qxf3 e5  
35 Qxe2 Bf5  
36 Qf2 Bg4  
37 Bh6 cRd8  
38 Qg3 Bh5  
39 Rxe5 d4  
40 Rxe8+ Rxe8 and 1-0

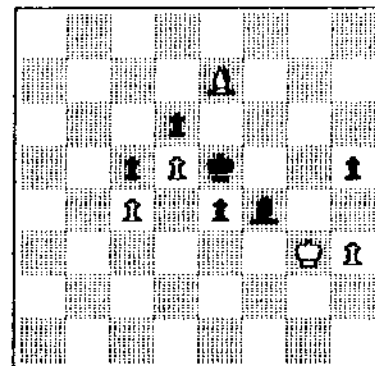
## LEIN SIMLA

On the way to the Midwest Masters Invitational, GM Anatoly Lein stopped in at the St. Charles Chess Club March 6 to take on 18 comers simultaneously. Lein's final score: 16 wins, 1 draw, 1 loss. Naturally, we hereby present his one loss.

White: GM Anatoly Lein  
Black: John Marcconet (2139)

1	e4	e6
2	d4	c5
3	d5	exd5
4	exd5	d6
5	Bb5+	Nd7
6	a4	Nf6
7	Nf3	a6
8	Bc2	g6
9	O-O	Bg7
10	Bf4	Qc7
11	Na3	O-O
12	Nc4	Ne8
13	a5	b5
14	axb6	Nxb6
15	Ra2	h6
16	Nxb6	Qxb6
17	Nd2	g5
18	Nc4	Qd8
19	Bg3	f5
20	f4	g4
21	Be1	h5
22	Ba5	Nc7
23	Nb6	Rb8
24	Nxc8	Qxc8
25	c3	Nb5
26	Bc4	Re8
27	Re1	Re4
28	Rxe4	fxe4
29	Qe2	Qf5
30	Qe3	Rf8
31	Ra1	Qxf4
32	Qxf4	Rxf4
33	Rf1	Be5
34	Bd8	Rxf1+
35	Bxf1	Bf4
36	Kf2	Bc1
37	Bxb5	axb5
38	b3	Kf7
39	c4	bxc4
40	bxc4	Kg6
41	h3	gxh3
42	gxh3	Kf5
43	Be7	Ke5
44	Kg3	Bf4+

White resigns, as his center Pawns will soon fall.



# ORLAND PARK FUTURITY

Illinois masters had a field day in March. The week before the Midwest Masters Invitational IV, Glenn Panner of Orland Park organized a two-section, 8-player round robin futurity for selected masters and experts. At least two players, Peter Pelts and Peter Stein, may have obtained FIDE ratings from this event.

A special welcome-back to Dr. Steven Tennant, who used this event to return to organized play after a long absence. His 4-3 result shows that he has not allowed rust to gather in all these years. One of his games is annotated below.

	1	2	3	4	5	6	7	8			
1	VAN METER Lester	2267	-	W	D	W	L	WF	W	D	5
2	CHOW Albert	2436	L	-	W	W	D	W	L	D	4
3	GILES Morris	2401	D	L	-	D	W	W	D	D	4
4	STEIN Peter	2205	L	L	D	-	D	WF	D	W	3.5
5	MILLER Todd	2335	W	D	L	D	-	LF	LF	W	3
6	THOMAS Ken	2227	LF	L	L	LF	WF	-	W	W	3
7	WATSON Alan	2151	L	W	D	D	WF	L	-	L	3
8	FRIEDMAN Ed	2199	D	D	D	L	L	L	W	-	2.5

	1	2	3	4	5	6	7	8			
1	MARTINOVSKY Eugene	2406	-	L	W	W	W	W	WF	6	
2	PELTS Peter	2317	W	-	W	L	L	W	WF	WF	5
3	MILLS Jim	2223	L	L	-	D	W	W	W	WF	4.5
4	TENNANT Steven	2331	L	W	D	-	D	L	W	WF	4
5	COLIAS Bill	2322	L	W	L	D	-	D	W	WF	4
6	KRECKLER Warren	2246	L	L	L	W	D	-	D	W	3
7	BAIN Bob	2154	L	LF	L	L	L	D	-	WF	1.5
8	CHACHERE Lawrence	2215	LF	LF	LF	LF	LF	L	LF	-	0

Notes: Chachere lost to Kreckler and then withdrew. Bain forfeited due to a death in the family. Thomas withdrew due to illness.

## VAN METER ANNOTATES

by Lester Van Meter

It was very nice to be invited to play in the Orland Park Futurities. In effect this was the first true all-master (more or less) all-play-all tourney I have been in. (I do not consider 6-player, 5-game, 2-day events to be in the same category as this tournament, although they, too, are a good alternative to the usual Swiss.)

Even better, this event came at a time when there were no good alternatives for play until the Midwest Masters. The organization of the event was done at express speed, and while this may have caused a few problems, the event was successful in my opinion, and I look forward to future events along similar lines.

Another good feature was the format of two concurrent 8-player sections. When I first saw the make-up of the sections, I thought my section was much stronger than the other. But in calculating the average ratings I realized that the difference between 2278 and 2277 was negligible!

I was pleased to be able to play two of my most dangerous rivals, Morris Giles and Albert Chow, in the first two rounds. If I could do well in those games, the path to first place would be wide open for me.

I think the key game was mine with Chow; let's look at that.

Whites: Lester VanMeter (2267).  
Blacks: Albert Chow (2436).

1	d4	[3:59]	Nf6	[3:59]
2	c4	[3:59]	c5	[4:00]
3	d5	[3:59]	b5	[4:00]

I must say that the Benko Gambit came as a surprise to me. I hoped to be able to return the favor shortly. I recently played 4 Nf3 vs Calvin Blocker.

4	cxb5	[3:59]	a6	[4:00]
5	bxm6	[3:59]		

I suspect that he was well prepared for 5 e3 as I chose against Scott Zingheim at the 3rd Midwest Masters.

5	....		Bxa6	[4:00]
6	Nc3	[3:59]	d6	[4:01]
7	f4!	[3:59]		

This was "my" surprise, but as one can see the play continued apace.

7	....		g6	[4:01]
8	Nf3	[3:59]	Bg7	[4:01]
9	e4	[3:59]	Bxf1	[4:01]
10	Rxf1	[3:59]	O-O	[4:01]

My opening preparation is not known for its thoroughness and in this case I can tell you the history. I read Robert Byrne's New York Times column of 12/03/85 on the Thursday before the Midwest Team Championship. He featured this line, and that Thursday night I used it in one speed game. That Saturday in round two of the Team tournament I used this same idea against Scott Zingheim, and now I use it again.

Chow was very quick to castle here, but 10 bNd7 might be a better choice. Benko once recommended 10 Qb6 (Chess Life, 06/75).

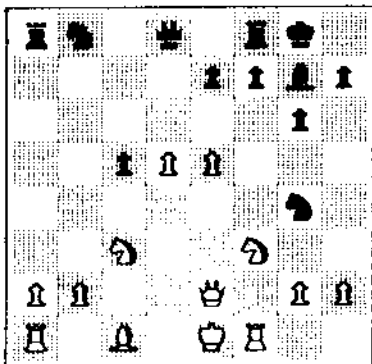
11 e5!? [4:01] dx5 [4:09]

White's 11th was the new idea presented by Byrne when he analyzed the game Ramayrat-Frias. Previously 11 Kf2 with the idea of Kg1 had been played. For details on that, see ECO, A58/4.

Zingheim played 11....fNd7 12 Qe2 Na6 13 e6 fxe6 14 Qxe6+ Kh8 15 Ng5 Nb4 16 Qh3 Nf6 17 Rf2 c4. That game was eventually drawn, but I think the play can be improved for both sides.

Chow's first think finds him playing the most aggressive and dangerous line.

12 fxe5 [4:01] Ng4 [4:09]  
13 Qe2 [4:02]



The battle lines are drawn! Are the White center Pawns weak, or a force to be reckoned with? And let's not forget the White King still in the center. As compensation White has an extra Pawn.

Frias tried to attack the White center with 13....Qc7 since 14 Bf4 is not good for White. Chow decides to bring his Knight into play in the only possible manner, as 13....Nd7 is not good:

13 .... Na6 [4:16]  
14 h3 [4:16]

My first think and I decided upon an ambitious plan designed to secure a better ending. My main point was to cut the two Kingside Black minor pieces out of the action. While that is a bit slow, I didn't mind even giving back the Pawn.

14 .... Nh6 [4:16]  
15 g4 [4:17] Nb4 [4:18]  
16 Kf2 [4:22] Nxd5 [4:22]  
17 Rd1 [4:26] Nxc3 [4:23]

The alternative was 17....e6 and it was my intention to answer that with 18 Qc4.

18 Rxd8 [4:27] Nxe2 [4:25]  
19 Rxa8 [4:27] Rxa8 [4:28]  
20 Kxe2 [4:27] f5?! [4:28]

A safer alternative was 20....f6. The simplification involved in exchanging one Kingside Pawn would offset White's better King position, and allow Black to bring out his pieces more efficiently if White exchanges on h6 as in the game.

21 Bxh6 [4:35] Bxh6 [4:29]

21....fxg4 is possible, but White would be a little better in the resulting Rook ending.

By keeping the minor pieces on, the possibility of a Bishop vs Knight struggle looms.

22 g5 [4:36] Bg7 [4:29]

Perhaps 22....Bf8 should be considered. Of course, in that case White might transfer his Knight to c4.

23 Kd3? [4:36]

White dissipates his entire advantage with one quick move! 22 b3 would have kept the edge.

23 .... Ra4! [4:30]  
24 b3 [4:36] Rf4 [4:30]

I had underestimated the activity of this Rook.

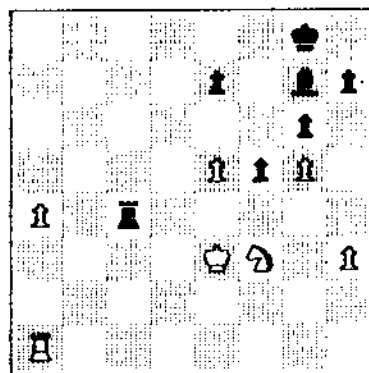
25 Ke3 [4:36] Re4+ [4:32]  
26 Kd3 [4:39] c4+ [4:45]

This is the only way to play for a win. Naturally 26....Rf4 would draw, but after his upset loss in round 1 Chow would like to win if he can. Also clear is that 26....Bxe5? wins a Pawn, but loses the game due to the runner on the a-file.

27 bxc4 [4:44] Rf4 [4:45]  
28 Ke3 [5:22]

I offered a draw here as after the long think I couldn't find anything convincing for me -- or him. He avoids 28....Re4+ etc.

28 .... Rxc4 [4:46]  
29 a4 [5:22]



29 .... Rc3+ [5:19]

The text tries to gain a move by forcing the King back. But is it too late to go for the draw? On 29....Bxe5 30 Nxe5 Re4+ 31 Kd3 Rxe5 32 a5 Rd5+ 33 Kc4 Rd8 34 a6 e5 35 a7 Ra8 36 Kd5 f4 37 Kc6 f3 38 Kb7 Rxa7+ 39 Kxa7 e4 40 Rf1 wins.

29....Re4+ 30 Kd3 Rf4 31 a5 Rxf3+ 32 Kc4 Bxe5 33 a6 Rc3+ 34 Kd5 Rc8 35 Kxe5 Kf7 36 a7 Ra8 37 h4 e6 38 Ra6! Kg7 39 Ra4!! However, it is clear that Black can improve with 34....Bb8 to sacrifice the Bishop for the a-Pawn.

For White, 32 Kd4 Rb3 33 a6 Rb8 34 a7 Ra8 35 Kd5 with the idea of Kc6-b7. When White plays Kc6 Black will play Rxa7 to sacrifice the Exchange but he will find it extremely difficult to hold out.

30 Ke2 [5:26] Kf7 [5:40]

Now he will always be too late for ....Rc4 ideas as the a-Pawn will be one step closer.

For example 30...Rc4 [5:40] 31 a5 Bxe5  
 32 Nxe5 Re4+ 33 Kf3! Rd4 34 a6 Rd8 35 Kf4  
 transposing to a line from the last note.

31 a5 [5:28] Ke6 [5:40]  
 32 a6 [5:30] Rc8 [5:41]  
 33 Ra5! [5:38]

This idea was missed by him. He had only counted on 33 a7 Ra8 when he would win the a-Pawn.

33 .... Kd7 [5:41]  
 34 Nd4 [5:40] Ra8 [5:43]  
 35 Rd5+? [5:53]

I failed to appreciate 35 Kd3 e6 36 Rb5!, and resigned myself to the draw after 35...Kc7 36 Rc5+ Kd7 etc.

35 .... Kc7 [5:48]  
 36 Rc5+ [5:54] Kb7? [5:54]

He continues his plan, but now he is lost.

37 Rc6+ [5:54] Ka5 [5:54]  
 38 Re6 [5:55] Bf8 [5:58]

38...Rxa6 29 Rxe7 was his best chance now, but that would be hopeless in the long run. He had missed my next move in his earlier calculations.

39 a7 [5:55] Ka4 [5:59]  
 40 Ra6+ [5:56] Kb4 [5:59]  
 41 Ne6 [5:57] 1-0

This was certainly not a perfect game, but hard fought, interesting, and thought-provoking. A definite master struggle. Al Chow is to be congratulated for the fine fighting spirit he showed in overcoming his poor start by scoring 4 out of the next 5. Also to be noted were the fine performances by Dr. Martinovsky, Peter Pelts, and Jim Mills in the other section.



Lester VanMeter (left) and Peter Pelts analyzing, while Albert Chow kibitzes.



White: Peter Pelts (2317).  
 Black: Steve Tennant (2331).

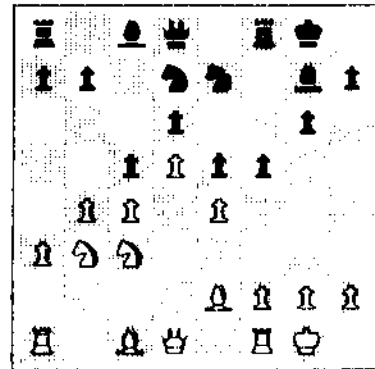
1 d4 Nf6  
 2 Nf3 g6  
 3 c4 Bg7  
 4 Nc3 0-0  
 5 e4 d6  
 6 Be2 e5  
 7 0-0 Nc6  
 8 d5 Ne7  
 9 Nd2 c5

It was always my impression that this type of advance helps White on the Queenside. I would now play 10 Rb1, not wasting a tempo on a3 unless Black plays ....a5.

10 a3 Nd7

Usually 10...Ne8 is played, but Tennant is known to have researched his openings well.

11 b4 f5  
 12 Nb3



The difference between ....Ne8 and ....Nd7 is the protection of d6. Also, Black should avoid having to recapture on c5 with his d-Pawn. An attempt for White to take advantage of this move order would be 12 Nb5. The idea would be to capture on c5 after the Knight moves from d7, playing Nb3 in answer to ....Rf6, and answering ....Qb6 with a4. Black now has time to answer with ....b6.

12 .... b6  
 13 bxc5 bxc5  
 14 a4 Nf6  
 15 f3 f4

The opening has ended in Black's advantage. He is ready for the Kingside attack and White has no immediate Queenside prospects.

16 Bd2 a6  
 17 a5 Bd7  
 18 Na4 Rb8  
 19 Qc2 g5

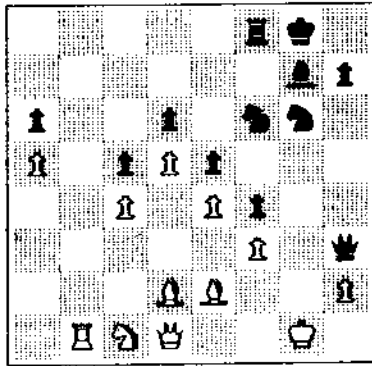
Black has even had time to consolidate on the Queenside before beginning this attack.

20 Nb6 g4  
 21 Nxd7 Qxd7  
 22 fRb1 Ng6  
 23 Nc1 gxf3  
 24 gx f3

24 Bxf3 seems better as White's Bishop isn't doing very much on e2. White could then contemplate doubling on the b-file and penetrating. The idea would be to exploit the Bishop at g7. Now Tennant's Kingside attack can go through!

24 .... Qh3  
 25 Qd1 Rxb1  
 26 Rxb1





26 .... Ng4!  
 27 fxg4 f3  
 28 Bf1 Qxg4+  
 29 Kh1

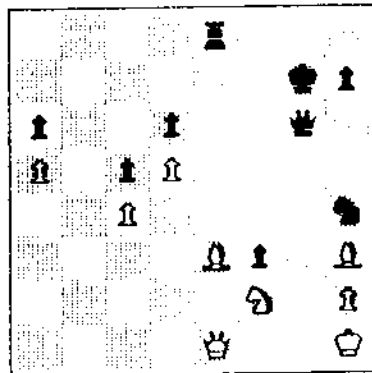
29 Kf2 Bf6 and White has lots of moves, but none of them do any good. Don't be misled by the lack, in this case, of an immediate win for Black but he even has time to play 30...Qxe4 before playing ...Bh4+.

Naturally there are various mates if White on his 30th puts a piece on e2 or d3.

29 .... Nh4  
 30 Nd3 Qxe4  
 31 Nf2 Qg6  
 32 Rb7 e4  
 33 Rxc7+

Otherwise Black plays ...Bd4 and ...e3. Even so the finish is still nice.

33 .... Kxg7  
 34 Qe1 Re6  
 35 Bh3 e3  
 36 Bxe3



36 .... Qg2+!  
 37 Bxg2 fxg2+  
 38 Kg1 Nf3+  
 39 Kxg2 Nxe1+  
 40 0-1



White: Jim Mills (2223).  
 Black: Peter Pelts (2317).

1 Nf3 d5  
 2 b3 c5  
 3 Bb2 f6  
 4 e3 e5  
 5 d4 cxd4  
 6 exd4 e4  
 7 fNd2 f5

8 c4 Nf6  
 9 Nc3 Be6  
 10 cxd5 Nxd5  
 11 Bc4 Bb4

Regular readers of my ICB articles will recall the game Mills-VanMeter from the Prairie State Invitational (August 1985, page 6). There I erred by playing 11...Nf4. I recommended the text instead.

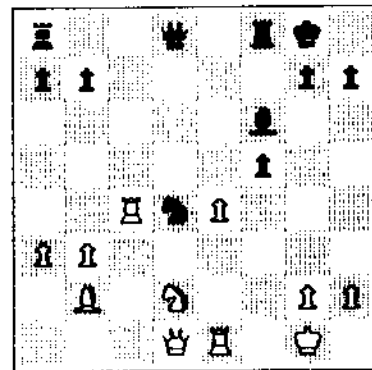
12 Rc1 Nc6

I think that 12...Nf4! is much better. Safer for White is 12 Nxd5. In that case the crux of the struggle will revolve about the isolated d-Pawn. Mills and I differ on this. He thinks it is acceptable while I think it's a definite liability.

13 Nxd5 Bxd5  
 14 0-0 0-0  
 15 a3 Be7

In my opinion Black stands better here. Whether or not he can win is a different story.

16 Re1 Bf6  
 17 f3 Bxc4  
 18 Rxc4 Nxd4  
 19 fxe4



19 .... b5

An interesting alternative here is 19...Nf3+ with the idea of aiming for Bishop vs Knight with Rooks on. While in theory Black would be better off in such a setting, the better placement of the Rooks for White would be an important consideration.

20 Rc3 Ne6  
 21 e5 Bh4  
 22 Rf1

22 g3 followed by Nf3 looks like a better set-up. Mills had difficulties with Rook moves in this tournament in his games vs Colias and Tennant.

22 .... Qd4+  
 23 Kh1 aRd8  
 24 Rc2 Qd3  
 25 Rf3 Qd5  
 26 Qe2 Bg5  
 27 Nf1 Nf4

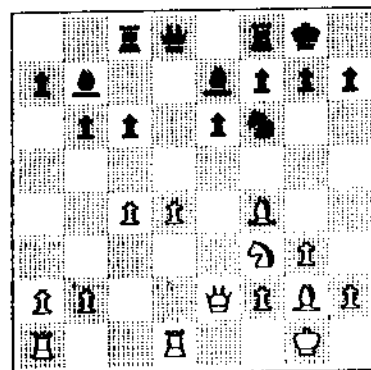
White has managed to survive the pin on the d-file but the Black initiative and time pressure do him in.

28 Qf2 Qd1  
 29 h4 Bxh4  
 30 g3 Nd3  
 31 Rxd3 Rxd3  
 32 gxh4 Rf3  
 33 Rc1 0-1

Mills lost on time here, but it is clear that he has no hope after 33...Rxf2. I am wondering if Mills will ever play this opening again.



Seated, clockwise from left: Lester VanMeter, Eugene Martinovsky, Bill Colias, Todd Miller. Standing, left to right: Warren Kreckler, assistant ID Len Weber, organizer Glenn Panner, Morris Giles, Jim Mills (partially obscured), Peter Pelts, Peter Stein.



14 .... Bd6?  
The beginning of an ill-conceived regrouping.  
15 Ne5 Qe7  
16 Bg5

This move guarantees the breaking up of the Kingside. If now 16...h6 17 Bxf6 Qxf6 18 Nd7 so 17...gxf6 was forced anyway. The text threatens 17...h6, but it is a tempo late. 15...a6 was a necessary prelude to ....Qe7.

16 .... fRdB  
17 Ng4 Rd7  
18 Qf3 dRc7

The finish to this game reminds me of my game vs Martinovsky at the Prairie State. I didn't like that too much as I am sure Bain doesn't here. It is difficult to play good chess on only three ranks.

19 Nxf6+ gxf6  
20 Bxf6 Qd7  
21 c5 Be7  
22 Qg4+ Kf8  
23 Qg7+ Ke8  
24 Qg8+ Bf8  
25 Bf3 Ba6  
26 Be5 1-0



White: Eugene Martinovsky (2406).  
Black: Bob Bain (2154).

1	c4	e6
2	Nf3	Nf6
3	g3	d5
4	Bg2	Be7
5	0-0	0-0
6	d4	bNd7

The Catalan seems well suited to Martinovsky's style. When I talked to him he said this was his best game from this event. His other games were all long, drawn-out struggles. Two of his games were adjourned, and his only loss came vs Pelts in the first round when he tried too hard to win an even position.

7	bNd2	c6
8	Qc2	b6
9	e4	dx4
10	Nxe4	Bb7

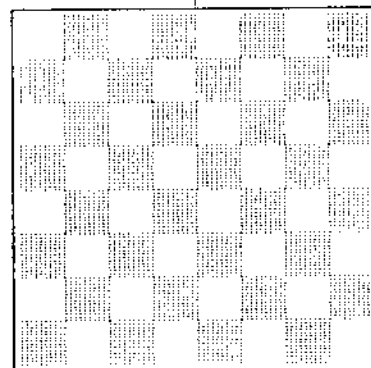
I don't have extensive experience with the Catalan, and haven't paid much attention to the transpositions which get us to a "normal" line. From ECO I get the impression that ....dx4 and ....Bb7 don't go together very well.

11	Rd1	Rc8
----	-----	-----

This move does not make a good impression; I don't understand the Rook's function on c8. Black's plan should be pressure on d5 and prevention of d5. To play ....c5 (which this Rook supports) would encourage d5 and an attack on Black's King. The Rook would still have to find a different post.

12	Bf4	Nxe4
13	Qxe4	Nf6
14	Qe2	

fold  
here



fold  
here

Here's your nude position, gawkers. April Fool.

## CLC OPEN/RESERVE

Thirty players in two sections participated in Tie Just's College of Lake County Open/Reserve in Grayslake on March 1-2. Prize winners were:

### OPEN SECTION:

1st:	Eric Fischvogt	\$60
2nd:	Kevin Schauggerow	45
A:	Mark Siwek	15
	Gee Leong	15

### UNDER 1800 SECTION:

1st:	James Jupa	\$60
2nd:	Alexander Mihajlov	45
C:	Frank Randle	15
D/Unr:	David Rockwell	15

Don Martin directed.

### OPEN SECTION

1	FISCHVOGT Eric	2195	W10	W 3	D 2	W 4	W 6	4.5
2	SCHAUGGEROW Kevin	2174	W 6	W 9	D 1	W 5	D 3	4
3	SIWEK Mark	1944	W 4	L 1	D 7	W10	D 2	3
4	WALLACH Cliff	2111	L 3	W11	W 9	L 1	W 7	3
5	HAUBRICH Scott	2052	Dbye	W13	D 8	L 2	W 9	3
6	LEONG Gee	1957	L 2	Wbye	W11	WF	L 1	3
7	GOTZ Jon	2099	L 9	W10	D 3	W13	L 4	2.5
8	LORING Steve	2049	Dbye	W12	D 5	LF	-	2
9	SANDFORD Craig	1944	W 7	L 2	L 4	Wbye	L 5	2
10	GENSLER Kevin	2031	L 1	L 7	Wbye	L 3	W13	2
11	NORIN Wallace	1883	W12	L 4	L 6	-	-	1
12	SMITH Charles	2035	L11	L 8	W13	-	-	1
13	ALLISON Roger	1818	Wbye	L 5	L12	L 7	L10	1

### UNDER 1800 SECTION

1	JUPA James	1427	W 7	W 5	W 4	D 2	W 9	4.5
2	MIHAJLOV Alexander	-	W10	D 8	W11	D 1	W 7	4
3	ROCKWELL David	-	W17	L 4	W 6	D 7	W 8	3.5
4	RANDLE Frank	1598	W15	W 3	L 1	D 8	D 5	3
5	GRANT Dennis	1722	W14	L 1	D15	W10	D 4	3
6	KITTSLEY Scott	1683	W12	L11	L 3	W15	W14	3
7	FARNHAM Robert	1743	L 1	W13	W14	D 3	L 2	2.5
8	CANNELL Myron	1448	W 9	D 2	Dbye	D 4	L 3	2.5
9	JUST Tim	1756	L 8	W16	D10	W11	L 1	2.5
10	KEYES Richard	1506	L 2	W12	D 9	L 5	W16	2.5
11	DUPEE Arthur	1216	Wbye	W 6	L 2	L 9	D12	2.5
12	SJOHOLM David	1400	L 6	L10	Wbye	W16	D11	2.5
13	PADILLA Rudy	1463	L16	L 7	Dbye	WF	W15	2.5
14	CALLAHAN Gerard	1417	L 5	W17	L 7	Wbye	L 6	2
15	BIEZYNSKI Stan	1271	L 4	Wbye	D 5	L 6	L13	1.5
16	ROGERS Mark	-	W13	L 9	L17	L12	L10	1
17	SINKOWSKI Maciej	1464	L 3	L14	W16	LF	-	1

## ILLINOIS CHESS LEAGUE

### 1985 Final Team Results

	Won	Lost	Drew	Match Pts	Game Pts	Prize
<b>OPEN SECTION</b>						
Hillside	4	1	1	4.5	23.0	\$100
Park Forest	4	2	0	4.0	21.5	
Oak Park	3	3	0	3.0	19.0	
Chess Center	0	5	1	0.5	8.5	
<b>RESERVE SECTION, West Division</b>						
Doctor's Pawns (Oak Park)	4	1	0	4.0	17.0	\$25 + playoff
Baker House Irregulars (St Charles)	3	2	0	3.0	16.5	playoff
M-Team (Oak Park)	2	1	2	3.0	15.5	
St Charles Knights	1	2	2	2.0	14.0	
Arlington Heights/Mount Prospect	1	2	2	2.0	14.0	
Hillside Reserve	0	3	2	1.0	13.0	
<b>RESERVE SECTION, South Division</b>						
Park Forest A	2	0	2	3.0	15.0	\$25 + playoff
Lithuanian	2	1	1	2.5	13.0	playoff
Orland Park	2	1	1	2.5	12.5	
Park Forest B	2	2	0	2.0	11.0	
Tuley Park	0	4	0	0.0	4.0	
<b>BOOSTER SECTION</b>						
Hillside	6	0	0	6.0	28.0	\$50
Tuley Park	4	2	0	4.0	23.0	\$25
Orland Park	4	2	0	4.0	21.0	\$25
Teachers (Oak Park)	3	3	0	3.0	16.0	
St Charles	2	3	0	2.0*	11.0	
The Blitz (Oak Park)	1	4	0	1.0*	11.0	
Villagers (Oak Park)	0	6	0	0.0	9.0	
*The remaining match between St Charles and The Blitz will not be played.						
<b>RESERVE SECTION PLAYOFF</b>						
Park Forest A	-	D	W	WF	2.5	\$75
Baker House Irregulars (St Charles)	D	-	D	WF	2.0	\$25
Doctor's Pawns (Oak Park)	L	D	-	WF	1.5	
Lithuanian	LF	LF	LF	-	0.0	

# ILLINOIS GRADE SCHOOL CHAMPIONSHIP

by Erv Sedlock

While 70+ masters gathered in Lincolnwood for the Midwest Masters Invitational, 108 possible future masters assembled at the Albright Middle School in Villa Park for the Illinois Grade School State Championship. This individual-and-team event attracted schools from the Rockford and Peoria areas as well as Chicago and suburbs. The tournament was run in two sections, grades 6-8 and grades 5 and below. Team and individual trophy winners are listed on the facing page.

Also awarded in each section were team trophies for 2nd thru 5th and individual ribbons for 3rd thru 10th. In all, 64 players and 10 teams went home with a prize. Jerry Esposito was the tournament organizer, while Erv Sedlock served as chief TD. Many volunteers helped the 7-round tournament run smoothly, but a special thanks to the Barstad family and to Mike Kuipickor for their efforts.

## Illinois Grade School State Championship

Grades 6-8

March 8-9, 1986

Rank	Name	Grade	Score	W41	W16	D 3	W14	W12	W 2	W 4	6.5
1	MILLER Greg	7 Flinn	1428	W34	W 9	W28	D12	W 4	L 1	W 5	5.5
2	MC GEE Brad	8 Wilson	1549	W50	W26	D 1	L 5	W20	W13	W12	5.5
3	STEFFA Rachel	8 Wilson	1306	W47	W19	W21	W 6	L 2	W15	L 1	5
4	SODHI Jaspal	7 Albright	1397	W20	L13	W34	W 3	W18	W 7	L 2	5
5	CRAWFORD Brad	6 Fairmont	1464	W23	W18	W 7	L 4	L13	W22	W15	5
6	PATEL Ravi	6 Glenside JH	1556	W24	W25	L 6	W21	W19	L 5	W14	5
7	WALSH Don	7 Wilson	1396	W17	W22	L14	L13	W23	W31	W16	5
8	DRENNAN Doug	8 Wilson	1486	W38	L 2	L20	W36	W35	W29	W17	5
9	BURTON Bill	7 Benjamin	1272	W33	L21	L17	W39	W32	W19	W13	5
10	NESSER Tim	7 Albright	1378	W49	L30	L16	W34	W21	W46	W25	5
11	MONROY Mark	7 Flinn	-	W35	W29	W13	D 2	L 1	W25	L 3	4.5
12	FREESTROM James	6 Albright	1412	W44	W 5	L12	W 8	W 6	L 3	L10	4
13	NULL Curt	8 Flinn	1221	W48	W27	W 8	L 1	L15	W20	L 7	4
14	NIPPERT Chris	8 Benjamin	1269	L36	W50	W32	W30	W14	L 4	L 6	4
15	WILCOX Mark	8 Flinn	1310	W42	L 1	W11	L17	W33	W18	L 8	4
16	PRUDE Sedrick	8 Gillespie	1223	L 8	W31	W10	W16	L25	W28	L 9	4
17	HARGRAVES Scott	8 Flinn	1112	W45	L 6	W41	W23	L 5	L16	W32	4
18	JOHNSON Chad	8 Flinn	1280	W46	L 4	W39	W28	L 7	L10	W31	4
19	GRADE Heidi	8 Flinn	1185	L 5	W45	W 9	W22	L 3	L14	W30	4
20	OLDEJANS Dan	8 Flinn	1071	W40	W10	L 4	L 7	L11	W39	W38	4
21	COURTIN Alan	7 Benjamin	1163	W31	L 8	W35	L20	W24	L 6	W34	4
22	BALDWIN Craig	7 Benjamin	1250	L 6	W42	W37	L18	L 8	W26	W28	4
23	STREAMS Nicky	6 Benjamin	1149	L 7	L37	W47	W43	L22	W42	W29	4
24	POLAY Brandon	6 Albright	1017	W37	L 7	D26	W33	W17	L12	L11	3.5
25	HALSEY Shawn	7 Atlanta JH	1183	W30	L 3	D25	L46	W27	L23	W41	3.5
26	BIGGERS Bruce	8 Flinn	-	W32	L14	Dbye	-	L26	W40	W46	3.5
27	REDDY Sushael	7 Glenside JH	1540	W39	W36	L 2	L19	W46	L17	L23	3
28	BETTS Ryan	6 Hensey	1294	W43	L12	L33	W42	W40	L 9	L24	3
29	EVERLING Todd	8 Flinn	1188	L26	W11	W36	L15	L31	W33	L20	3
30	PETERSON Dan	8 Benjamin	1220	L22	L17	W45	W49	W30	L 8	L19	3
31	ALAMAZON Luis	6 Kandon Magnet	-	L27	W48	L15	W44	L10	W36	L18	3
32	ZOLLNER Matt	8 Benjamin	1120	L10	W40	W29	L25	L16	L30	W43	3
33	JONES Wyeth	7 Hadley	958	L 2	W44	L 5	L11	W45	W37	L22	3
34	MC KOWN Michael	7 Atlanta JH	1131	L12	W43	L22	W37	L 9	L38	W42	3
35	COLAW Scott	8 Atlanta JH	1044	W15	L28	L30	L 9	W44	L32	W40	3
36	TERRACCIANO Mike	6 Albright	960	L25	W24	L23	L35	W50	L34	W39	3
37	JENSEN Jeff	7 Flinn	-	L 9	L41	L43	W47	W49	W35	L21	3
38	TIMMONS Robert	8 Kandon Magnet	-	L28	W49	L19	L10	W43	L21	L37	2
39	HUFFMAN Eddie	6 Atlanta JH	731	L21	L33	W48	W41	L29	L27	L36	2
40	GEDDERT Marshall	8 Atlanta JH	-	L 1	W38	L18	L40	L42	W48	L26	2
41	KRUPICKA Kim	7 Albright	1076	L16	L23	W50	L29	W41	L24	L35	2
42	KEEFER John	7 Kandon Magnet	-	L29	L35	W38	L24	L39	W44	L33	2
43	SAGE Mike	7 Benjamin	-	L13	L34	W50	L32	L36	L43	W45	2
44	MARTINEZ Juan	6 Kandon Magnet	-	L18	L20	L31	W48	L34	L44	W47	2
45	LEGORETA Matt	8 Benjamin	698	L19	D47	L49	W26	L28	L11	L27	1.5
46	EVENTES Maribel	8 Kandon Magnet	-	L 4	D46	L24	L38	L48	W50	L45	1.5
47	YOCOM Alison	8 Atlanta JH	989	L14	L32	L40	L45	W47	L41	D50	1.5
48	DJEDA Julio	6 Kandon Magnet	-	L11	L39	W46	L31	L38	-	-	1
49	JONES Jenny	8 Hadley	1210	L 3	L15	L42	L44	L37	L47	D48	0.5
50	CARBONE Steve	7 Benjamin	856								

===== TEAM CHAMPIONS =====

grades 5 & below: John Hensey School  
 grades 6-8: Wilson (Rockford)

===== INDIVIDUAL CHAMPIONS =====

grades 5 & below: Hugh Freestrom  
 (4th grade, Villa Park)  
 grades 6-8: Greg Miller  
 (7th grade, Rockford)

===== GRADE CHAMPIONS =====

grades 3 & below: 1st: Mickey Jacobsen  
 2nd: Anna Liss Jacobsen  
 grade 4: 1st: Jason Betts  
 2nd: Grant Cain, Robbie O'Brien  
 grade 5: 1st: Brian Isbell  
 2nd: Joshua Friedean  
 grade 6: 1st: Brad Crawford  
 2nd: Ravi Patel  
 grade 7: 1st: Jaspai Sodhi  
 2nd: Don Walsh  
 grade 8: 1st: Brad McGee  
 2nd: Rachel Steffa

Illinois Grade School State Championship

Grades 1-5

March 8-9, 1986

	grade											
1	FREESTROM Hugh	4 Albright	1246	W54	W24	W19	W12	W 6	W 2	L 3	6	
2	JACOBSEN Mickey	3 Franklin	1220	W 4	W29	W14	W 3	W 5	L 1	W 7	6	
3	BETTS Jason	4 Hensey	1492	W40	W22	W18	L 2	W 9	W 5	W 1	6	
4	ISELL Brian	5 Hensey	-	L 2	W16	W24	W36	W17	W11	W13	6	
5	FRIEDMAN Joshua	5 Albright	1158	W30	W 7	W 8	W11	L 2	L 3	W25	5	
6	MILLER Mike	5 Whitehead	-	W 9	W36	W32	W25	L 1	L13	W19	5	
7	MILLER Josh	5 Hensey	-	W16	L 5	W41	W19	W18	W 8	L 2	5	
8	CAIN Grant	4 Mindoka	1527	W45	W44	L 5	W21	W12	L 7	W14	5	
9	RIFKIN Scott	5 King	1079	L 6	W26	W48	W34	L 3	W32	W18	5	
10	O'BRIEN Robbie	4 Albright	1263	L28	W57	L25	W43	W29	W22	W17	5	
11	BRISCOE Jason	5 Mindoka	1260	W50	W21	W17	L 5	W33	L 4	D12	4.5	
12	SIGLIN Brett	5 Benjamin	1132	W43	W38	W13	L 1	L 8	W23	D11	4.5	
13	BERTOLANI Bob	4 Albright	1229	W23	W20	L12	D44	W28	W 6	L 4	4.5	
14	BETTS Chanda	4 Hensey	1109	W47	W39	L 2	D20	W44	W27	L 8	4.5	
15	FURLONG Jason	4 Benjamin	-	L24	D46	W54	L37	W41	W44	W27	4.5	
16	BARSTAD Danielle	5 Benjamin	1134	L 7	L 4	D26	W31	W49	W28	W30	4.5	
17	DE GUZMAN Ron	5 Americana	1148	W58	W28	L11	W23	L 4	W20	L10	4	
18	CHURCH J T	4 Franklin	1158	W57	W41	L 3	W35	L 7	W37	L 9	4	
19	JACOBSEN Anna Liss	1 Franklin	1116	W42	W34	L 1	L 7	W35	W21	L 6	4	
20	JONES Bredon	4 Franklin	1036	W49	L13	W39	D14	D25	L17	W34	4	
21	CARBONE Jimmy	4 Benjamin	1051	W53	L11	W42	L 8	W48	L19	W35	4	
22	WILSON Marc	4 Americana	1073	W56	L 3	L23	W42	W34	L10	W32	4	
23	SPARA-NA Alex	3 Franklin	931	L13	W56	W22	L17	W36	L12	W40	4	
24	PEMBLE Jyane	5 Mindoka	1040	W15	L 1	L 4	W55	D30	D26	W38	4	
25	BELLUOMINI Brian	5 Americana	1240	Dbye	W31	W10	L 6	D20	W33	L 5	4	
26	ANTAIEK Nicole	3 Kandon	-	L36	L 9	D16	W39	W46	D24	W33	4	
27	CASALE Tony	5 Americana	1088	L38	W58	D28	W45	W37	L14	L15	3.5	
28	BALLANTINE Melissa	5 Mindoka	943	W10	L17	D27	W46	L13	L16	W45	3.5	
29	RHODES Jenny	5 Father Sweeney	1036	W51	L 2	L34	W52	L10	W42	D59	3.5	
30	PATEL Sangit	5 Americana	-	L 5	L37	W53	W41	D24	W36	L16	3.5	
31	GOMEZ Monica	4 Kandon	-	D59	L25	L46	L16	W54	W51	W49	3.5	
32	CAIN Matthew	1 Mindoka	1202	W48	W35	L 6	L33	W50	L 9	L22	3	
33	SCHMAN J J	5 Benjamin	1040	L39	W47	W43	W32	L11	L25	L26	3	
34	KORELC Jennifer	5 Mindoka	-	W46	L19	W29	L 9	L22	W48	L20	3	
35	NOMALANY Joey	5 Americana	1027	W37	L32	W38	L18	L19	W49	L21	3	
36	COURTRIGHT Jill	5 Mindoka	1096	W26	L 6	W40	L 4	L23	L30	W44	3	
37	EARING Chris	4 Mindoka	-	L35	D31	W30	D45	W15	L27	L18	3	
38	DE LA FUENTE Arnoldo	5 Kandon	-	W27	L12	L35	L48	W53	W50	L24	3	
39	KILROY Lauren	5 Mindoka	-	W33	L14	L20	L26	W43	L40	W47	3	
40	JUDSON Vicky	5 Americana	962	L 3	W53	L36	L49	W52	W39	L23	3	
41	HENSCHEN Aric	5 Mindoka	1033	W55	L18	L 7	L30	L15	W56	W50	3	
42	UNDERHILL Eric	5 Mindoka	865	L19	W55	L21	L22	W56	L29	W48	3	
43	GUPTA Kaushal	5 Americana	-	L12	W50	L33	L10	L39	W52	W51	3	
44	MOSTKIEWICZ Kevin	4 Americana	1060	W52	L 8	W51	D13	L14	L15	L36	2.5	
45	STAPLETON Charles	5 Albright	1009	L 8	W52	D37	L27	L47	W57	L28	2.5	
46	SENG Scooter	4 Franklin	1045	L34	D15	W31	L28	L26	L47	W57	2.5	
47	RANDS Ricardo	5 Kandon	-	L14	L33	L49	D54	W45	W46	L39	2.5	
48	SMITH Dan	5 Americana	880	L32	W49	L 9	W38	L21	L34	L42	2	
49	EARING Matt	5 Mindoka	-	L20	L48	W47	W40	L16	L35	L31	2	
50	HANSEN Aaron	5 Benjamin	943	L11	L43	W56	W51	L32	L38	L41	2	
51	NAGY Aileen	5 Mindoka	-	L29	W54	L44	L50	W55	L31	L43	2	
52	ELY Danny	1 Mindoka	-	L44	L45	W58	L29	L40	L43	W55	2	
53	ELY David	3 Mindoka	-	L21	L40	L30	W58	L38	D55	D54	2	
54	SEVERSEN Curt	4 Americana	883	L 1	L51	L15	D47	L31	W58	D53	2	
55	MORALES Andrew	3 Kandon	-	L41	L42	W57	L24	L51	D53	L52	1.5	
56	MACIT Halit	3 Kandon	-	L22	L23	L50	W57	L42	L41	D58	1.5	
57	ZABAICNIK Michelle	5 Mindoka	785	L18	L10	L55	L56	W58	L45	L46	1	
58	LEMIS Randy	2 Albright	-	L17	L27	L52	L53	L57	L54	D56	0.5	
59	EARING Chris	4 Mindoka	-	-	-	-	-	-	-	D29	0.5	

# NATIONAL OPEN

The 1986 National Open drew 726 players to Las Vegas, Nevada March 14-16. The 238-player Championship section (open to all) ended in a four-way tie for first:

1st-4th:	Dmitry Gurevich	NY	2601	5.5
	Walter Browne	CA	2585	
	Sergey Kudrin	CT	2533	
	Joseph Fradford	TX	2559	
5th-13th:	Larry Christiansen	CA	2627	5.0
	Yehuda Gruenfeld	Israel	2626	
	Leonid Shamkovich	NY	2491	
	Joel Benjamin	NY	2627	
	Boris Kogan	GA	2588	
	Kaeran Shirazi	CA	2565	
	David Strauss	CA	2491	
	Tom Braunlich	WA	2275	
	Kenneth Larsen	AZ	2273	
Expert:	Milford Fredenburgh	CA	2051	4.5

Gurevich's only draw came in round 4 against Zsuzsa Polgar (2446), world's highest-rated 16-year-old. Browne's draw was against Maria Ivanka (2349), who also scored back-to-back upsets of Gruenfeld (2626) and Shamkovich (2491). Her win over Gruenfeld appears below. Kudrin drew James Maki (2390) who, we are pleased to report, was in turn held to a draw by Illinois' John Krom (2127), in a game annotated below by Krom. The remaining winner, Bradford, had his draw versus David Glikman (2404).

The Reserve section (under 2000) drew 488 players and was won by Leslie Colin (1934) of Idaho and David Butler (1753) of Washington state, both at 6-0.

Our thanks to USCF for providing most of the above information, as well as the first four games below.

For the past several years this tournament has had a strong Illinois connection, being co-sponsored by Chicago chess enthusiast and philanthropist Fred Gruenberg. To make sure this year's tournament ran smoothly, he hired an all-Illinois team of engine-room directors for the mammoth Reserve section: Walter Brown, Todd Barre, Tim Just, and your editor. The smaller Championship section was run (equally smoothly) by Ben Nethercot of California and Bill Snead of Texas. In addition, a tournament room supervisory staff headed by Carol Jarecki of New Jersey and Eric Schiller of Illinois maintained order and kept the players out of our hair at critical moments.

Twenty-eight ICA members participated in this tournament. Their results are shown in the next column.

## CHAMPIONSHIP SECTION:

Peter Pelts	2317	4.5
John Krom	2127	3.5
Dan Kamen	2101	2.5
Jon Gotz	2099	3
Philip Wong	2095	2.5
Steven Loring	2049	1.5
James Condron	2016	2
Craig Sandford	1944	2.5
Larry Servi	1906	1.5

## RESERVE SECTION:

Robert Glick	1979	4
Rhys Read	1971	4.5
Gee Leong	1957	3
Mike Cronin	1907	4
Ken Kirby	1905	3
Mark Felker	1837	4.5
Dennis Bourgerie	1834	3
Allen Mohr	1827	4
Roger Allison	1818	3
Don Martin	1804	3
Vivian Schœucker	1774	3.5
Robert Johnson	1761	4
Rich Phillips	1736	4
Dennis Grant	1722	3
L O Paraoan	1719	2.5
Joseph Bannon	1493	2
John McLaren	1493	2
Joseph Baxter	1360	2
John Donovan	--	1.5

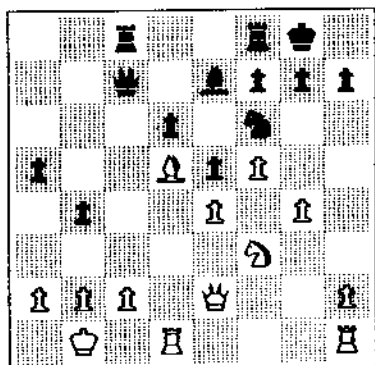
Especially to be noted were the performances of Rhys Read, who was 4-0 after four rounds, and Mike Cronin, who stood at 3-0 after three.



White: Yehuda Gruenfeld (2626).  
Black: Maria Ivanka (2349).

Annotated by the editor.

1	e4	c5
2	Nf3	d6
3	Nc3	Nf6
4	d4	cxd4
5	Nxd4	a6
6	Bg5	e6
7	f4	Qc7
8	Bd3	Be7
9	Nf3	bNd7
10	Qe2	e5
11	Bc4	b5
12	Bb3	Bb7
13	O-O-O	Rc8
14	Kb1	O-O
15	f5	b4
16	Bxf6	Nxf6
17	Nd5	Bxd5
18	Bxd5	a5
19	g4	

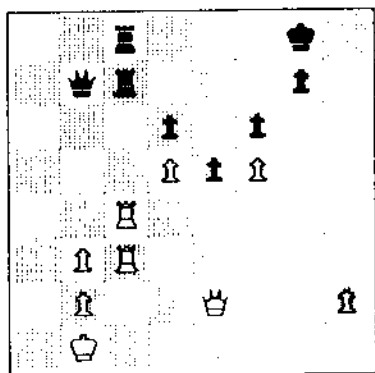


19 .... h6  
 Even the great must defend now and then.  
 20 hRg1 a4  
 21 g5 Nxd5  
 Now 22 gxh6 must be tempting, but perhaps  
 not for a grandmaster.

22 exd5 hxg5  
 23 Nxc5 Bxc5  
 24 Rxc5 f6  
 25 Rg4

Is Black's Queenside weak or strong?

25 .... b3  
 26 axb3 axb3  
 27 cxb3 Qb7  
 28 Rd3 Rc7  
 29 Rc4 fRc8  
 30 dRc3



30 .... Rxc4!  
 Undoubling White's extra Pawn and making it  
 count, but Ivanka is not worried.

31 bxc4 Qa7  
 32 Qd2 Qg1+  
 33 Kc2 Qg4

If the Queenside isn't weak anymore, let's go  
 after the Kingside.

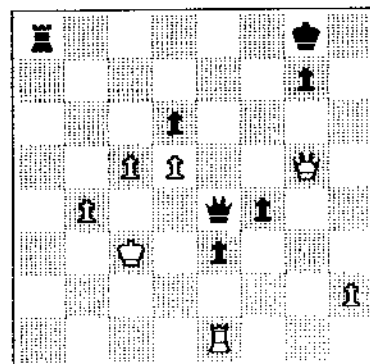
34 Qd3

Now Black could go for the draw (or the h-  
 Pawn) with 34....Qg2+, but even a Pawn down,  
 she's after bigger game:

34 .... e4!  
 35 Qe3 Qxf5  
 36 b4 Qe5  
 37 Kb3 f5  
 38 Qg5 Re8  
 39 Rc1

Not 39 Re3 f4 with the odds strongly in  
 Black's favor in the Rook ending.

39 .... e3  
 40 Re1 Qe4  
 41 Kc3 f4  
 42 c5 Ra8



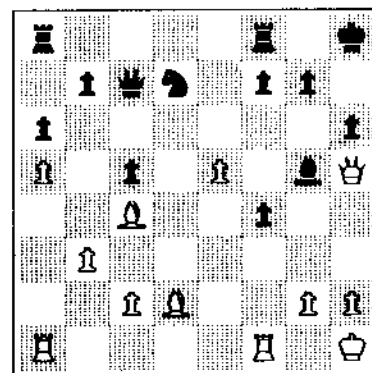
43 Ra1?  
 Going for the perpet, perhaps in time trouble  
 (time control was 45/2). But it doesn't work:

43 .... Rxa1  
 44 Qd8+ Kh7  
 45 Qh4+ Kg8  
 46 Qd8+ Kf7  
 47 0-1



White: Sergey Kudrin (2533).  
 Black: Romeo Ignacio (2306).

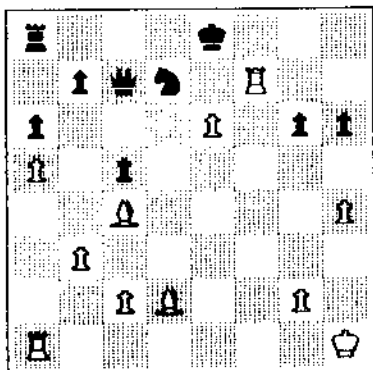
1 e4 c5  
 2 Nf3 e6  
 3 d4 cxd4  
 4 Nxd4 a6  
 5 Bd3 Qc7  
 6 O-O Nf6  
 7 Kh1 Nc6  
 8 Nxc6 dxc6  
 9 Nd2 c5  
 10 Qe2 e5  
 11 a4 Be7  
 12 a5 Be6  
 13 Nc4 Nd7  
 14 b3 O-O  
 15 Bd2 Bxc4  
 16 Bxc4 Kh8  
 17 f4 exf4  
 18 e5 Bg5  
 19 Qh5 h6



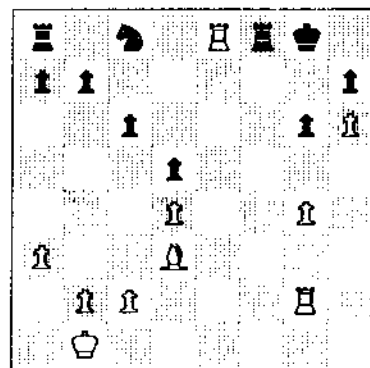
20 h4 g6  
 This looks like a crowd-pleaser, but it probably costs the game.

21 Qf3 Be7  
 22 Qxf4 Kh7  
 23 Qxf7+!! Rxf7  
 24 Rxf7+ Kg8  
 25 Rxe7+ Kf8  
 26 Rf7+ Ke8  
 27 e6 1-0

White now has enough nickels and dimes for his Queen.



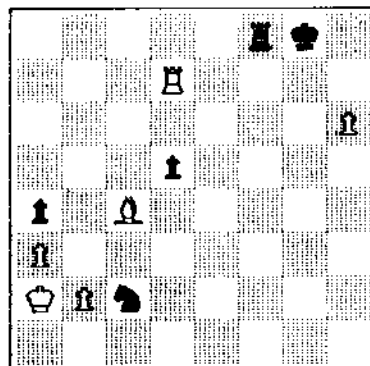
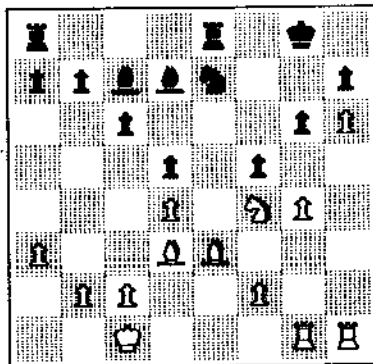
20 Nh5!! Kf7  
 Black wants no part of 20...gxh5 21 gxf5+.  
 21 Ng7 Rg8  
 22 f3 Bd6  
 23 Rg2 fxg4  
 24 fxg4 gRf8  
 25 Re1 Kg8  
 26 Bg5 Nc8  
 27 Kb1 Rf7  
 28 Ne8 Bxe8  
 29 Rxe8+ Rf8  
 30 Re6 Bf4  
 31 Bxf4 Rxf4  
 32 Re8+ Rf8



33...hxg6 34 h7+ Kg7 35 Rxf8.  
 34 Bxe8 Nd6  
 35 Bh5 Rf8  
 36 g5 Rf1+  
 37 Ka2 Nf5  
 38 Re2! Nxd4  
 39 Re7 Rf5  
 40 g6! hxg6  
 41 Bxg6 Rf8  
 42 Rxb7 a5  
 43 Rc7 a4  
 44 Bd3 Kh8  
 45 Rh7+ Kg8  
 46 Ra7 c5  
 47 Rd7 c4  
 48 Bxc4 Nxc2

White: Kamran Shirazi (2565).  
 Black: Joel Benjamin (2627).

1 e4 e6  
 2 d4 d5  
 3 Nc3 Bb4  
 4 Ne2 Ne7  
 5 a3 Ba5  
 6 Qd3 bNc6  
 7 Be3 dxe4  
 8 Qxe4 Nd5  
 9 0-0-0 0-0  
 10 Nxd5 Qxd5  
 11 Qxd5 exd5  
 12 Nf4 Rd8  
 13 Be2 Ne7  
 14 g4 c6  
 15 h4 Re8  
 16 dRg1 Bc7  
 17 h5 Bd7  
 18 Bd3 f5  
 19 h6 g6



49 Bxd5+ 1-0  
 White can simply win the a-Pawn and end Black's dream of planting a Rook at a1.



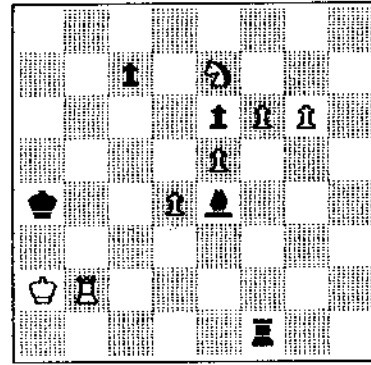


White: Alfred Carlin (2383).  
 Black: Larry Christiansen (2627).

- |    |       |       |
|----|-------|-------|
| 1  | d4    | Nf6   |
| 2  | Nf3   | e6    |
| 3  | Bg5   | h6    |
| 4  | Bxf6  | Qxf6  |
| 5  | e4    | d6    |
| 6  | e5    | dxe5  |
| 7  | dxe5  | Qe7   |
| 8  | bNd2  | Nc6   |
| 9  | Bd3   | g5    |
| 10 | h3    | Bg7   |
| 11 | Qe2   | Bd7   |
| 12 | O-O-O | O-O-O |
| 13 | hRe1  | h5    |
| 14 | g4    | hxg4  |
| 15 | hxg4  | Nb4   |
| 16 | Qe3   | Nxd3+ |
| 17 | cxd3  | Kb8   |
| 18 | Nxg5  |       |

A Pawn is worth some trouble.

- |    |      |      |
|----|------|------|
| 18 | .... | Bb5  |
| 19 | d4   | Bh6  |
| 20 | dNe4 | Bc6  |
| 21 | f4   | Bd5  |
| 22 | Kb1  | Bxg5 |
| 23 | Nxg5 | Rh4  |
| 24 | Rg1  | dRh8 |
| 25 | f5   | Rh2  |
| 26 | Rd2  | a5   |
| 27 | f6   | Qb4  |
| 28 | Rxh2 | Rxh2 |

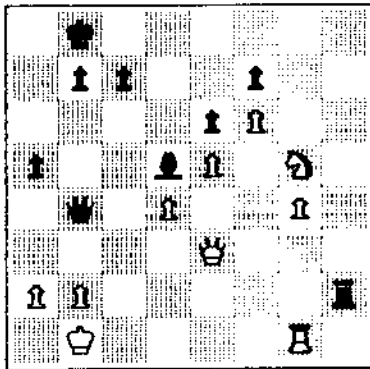


- |                         |     |     |
|-------------------------|-----|-----|
| 46                      | g7  | Rf3 |
| Well, it's worth a try. |     |     |
| 47                      | Re2 | 1-0 |



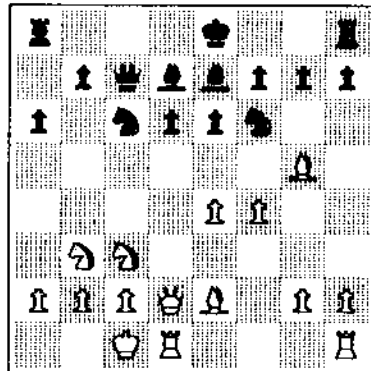
White: John Krom (2127).  
 Black: James Maki (2390).

Annotated by Krom.



- |    |       |       |
|----|-------|-------|
| 1  | e4    | c5    |
| 2  | Nf3   | Nc6   |
| 3  | d4    | cxd4  |
| 4  | Nxd4  | Nf6   |
| 5  | Nc3   | d6    |
| 6  | Bg5   | e6    |
| 7  | Qd2   | Be7   |
| 8  | f4    | a6    |
| 9  | O-O-O | Qc7!? |
| 10 | Be2   | Bd7   |
| 11 | Nb3   |       |

- |   |      |       |
|---|------|-------|
| 29  | Qc3  |       |
| Does this defend everything? No!....        |      |       |
| 29  | .... | Bxa2+ |
| 30  | Ka1  | Qa4   |
| 31  | Qa3  | Qxa3  |
| Not 31....Qxd4 32 Nf3 Qf2 33 Nxh2 Qxg1+     |      |       |
| 34 Kxa2 Qxh2 35 Qf8+ Ka7 36 Qxf7 and        |      |       |
| White's f-Pawn is unstoppable.              |      |       |
| 32  | bxa3 | b5    |
| 33  | Nxf7 | Bd5   |
| 34  | Nh6! | Ra2+  |
| 34....Rxh6 35 g5 and the two Pawns beat the |      |       |
| Rook.                                       |      |       |
| 35  | Kb1  | Rf2   |
| 36  | g5   | Be4+  |
| 37  | Ka1  | Bg6   |
| 38  | Ng8  | b4    |
| 39  | axb4 | axb4  |
| 40  | Ne7  | Be4   |
| 41  | Rb1  | Ka7   |
| 42  | Rxb4 | Ka6   |
| 43  | g6   | Ka5   |
| 44  | Rb2  | Rf1+  |
| 45  | Ka2  | Ka4   |

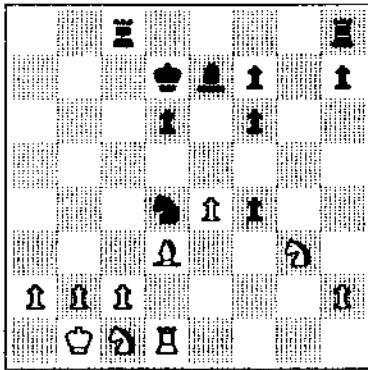


Probably 11 Bf3 is better, hindering ....b5.

11 .... Rd8!?  
 Fearing 11....O-O 12 Bxf6 gxf6 or  
 12....Bxf6 13 Qxd6 Qxd6 14 Rxd6 Bxc3 15  
 Rxd7! Perhaps 11....b5!

12 g4!?  
 Hoping for 12....O-O 13 Bxf6 Bxf6 14 g5!  
 Be7 15 f5 but....  
 12 .... b5!  
 13 Bf3 b4

14 Ne2 e5  
 15 Bxf6 gxf6  
 16 Ng3?!  
 Better 16 f5, idea h4, g5.  
 16 .... a5!  
 17 Kb1 a4  
 18 Nc1 Nd4  
 19 Be2 Rc8  
 20 Bd3 Bxg4  
 21 Qxb4! Bxd1  
 Tempting. Maybe 21...Ra8 is better.  
 22 Qxa4+ Qd7  
 He should keep Queens on, I think, because the  
 resulting position will now be equal due to  
 Black's weaknesses and White's passed Pawns.  
 23 Qxd7+ Kxd7  
 24 Rxd1 exf4



25 Nf5  
 Not 25 Ba6 fxf3! 26 Bxc8+ Rxc8 27 Rxd4 gxh2  
 28 Rd1 Rg8 29 Rh1 Rg1 30 Rxh2 f5! 31 c3 Bg5  
 32 Rc2 h5! But 25 Nh5! is best, as  
 25...Ne6 26 Ne2 f3 27 Ng3! blocks the  
 g-file.

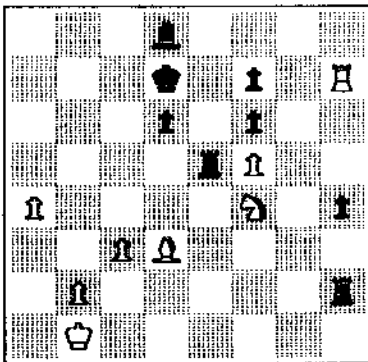
25 .... Nxf5  
 26 exf5 hRg8!  
 27 Rf1 Rg2  
 28 h3 Rh2  
 29 Ne2 Rxh3  
 30 Nxf4 Rh2  
 31 Bb5+! Kd8

I wanted to keep his cR away from h8. Now  
 strong is 32 c4! intending Nd5 and Re1 or  
 Rg1.

32 c3? Rc5!  
 White's Bishop is driven back to a passive  
 square. Now Black should consider activating  
 his Bishop with ....d5 and ....Bd6.

33 Bd3 h5  
 34 Rg1! h4  
 35 Rg8+ Kd7  
 36 Rh8 Bd8?!

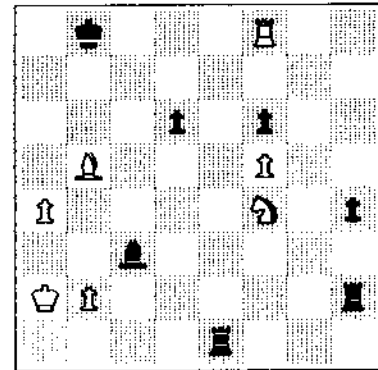
Best is 36...d5! with advantage.  
 37 Rh7! Re5  
 38 a4



38 .... Ba5  
 The different move order 38...Re1+ 39 Ka2  
 Ba5 40 Bb5+ Ke7 is no good because 41 Rh8!  
 wins a Rook.

39 Bb5+ Kc8  
 Also no better is 39...Kc7 40 Rxf7+ Kb6  
 41 Nd3! Rxf5 42 b4!.  
 40 Rxf7 Re1+  
 If 40...Bxc3 41 Nd3! wins a piece (Maki).  
 41 Ka2 Bxc3  
 42 Rf8+ Kb7  
 43 Rf7+ Kb8  
 44 Rf8+ Draw

An incredible final position. White must  
 stand better if Black agrees to lose his  
 Bishop at c3.



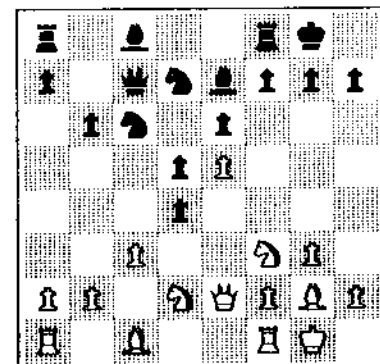
White: Eddie Falcon (2040).  
 Black: John Krom (2127).

Annotated by Krom.

1 Nf3 Nf6  
 2 g3 c5  
 3 Bg2 e6  
 4 O-O d5  
 5 d3 Nc6  
 6 hNd2 Be7  
 7 c3 O-O  
 8 e4 Qc7  
 9 Qe2 b6

Starting with a King's Indian Reversed, White  
 now sees that Black won't play ....e5, so he  
 seeks a kind of French. But it would have  
 been better to implement this with ....Re1  
 instead of ....Qe2 and ....c3.

10 e5 Nd7  
 11 d4?! cxd4!



White has to lose a Pawn, since the recapture  
 12 cxd4 fails to the hidden 12....Nb4!  
 where, strangely, White can't avoid losing the  
 Exchange.

12 Nxd4 Qxe5  
 13 Qxe5 dNxe5  
 14 Nxc6 Nxc6  
 15 c4 Nb4  
 16 Rd1!?

This loses time. His toughest try is  
 16 cxd5, hoping for 16....exd5 17 a3! Nc2  
 18 Bxd5 Ba6 19 Bxa8 Bxf1 20 Rb1! Bd3  
 21 Be4. True, Black can simply play  
 16....Nxd5.

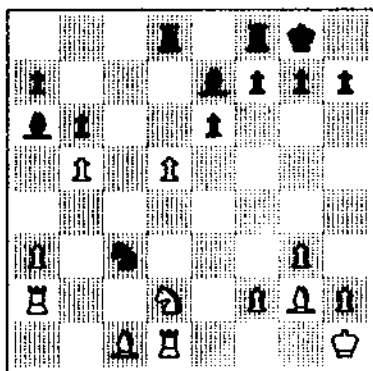
16 .... Ba6!  
 17 a3 Nc2  
 18 Ra2

A last trick, which backfires.

18 .... aRdB  
 19 b4 Nd4  
 20 cxd5?

On 20 Bb2 dxc4 Black has two extra buttons.

20 .... Ne2+  
 21 Kh1 Nc3  
 22 b5



22 .... Nxd1?

A mistake! Just 22....Bb7 lets Black win a  
 whole Rook.

23 bxa6 Nxf2+  
 24 Kg1 Nd3  
 25 Nb3 Nxc1

White lost in 43 moves.



White: Zsuzsa Polgar (2446).

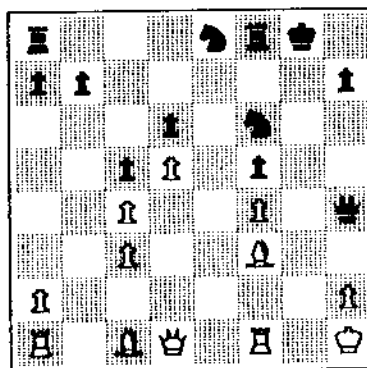
Black: William Duckworth (2241).

1 d4 Nf6  
 2 c4 c5  
 3 d5 e5  
 4 Nc3 d6  
 5 e4 bNd7  
 6 g3 g6  
 7 Bg2 Bg7  
 8 gNe2 0-0  
 9 0-0 Ne8  
 10 f4 exf4  
 11 gxf4

Risky, but Polgar knows she has an audience.

11 .... f5  
 12 Ng3 Bd4+  
 13 Kh1 Qh4

14 exf5 dNf6  
 15 Bf3 Bxc3  
 16 bxc3 Bxf5  
 17 Nxf5 gxf5



18 Rg1+ Ng7  
 19 Rb1 Rf7  
 20 Rb2 Re8  
 21 bRg2 h5  
 22 Bd2 Ng4  
 23 Qf1 fRe7  
 24 Bd1 Kh8  
 25 Qf3 Qf6  
 26 Qf1 Qh4

Who wants the win badly enough to go for it?

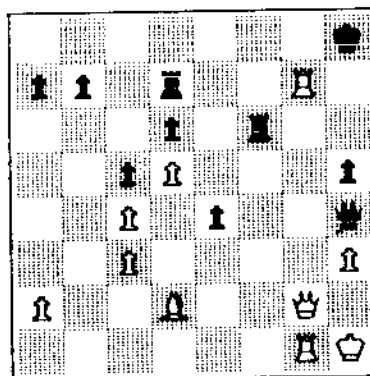
27 Ba4 Rf8  
 28 Qf3 fRf7  
 29 h3 Kh7  
 30 Bc2 Re8  
 31 Ba4 Re4  
 32 Bc2 eRe7  
 33 Rf1 Nf6  
 34 fRg1 Ng4

Isn't either side ready to blunder yet?

35 Rf1 Nf6  
 36 fRg1 Rf8  
 37 Rg5 Ne4  
 38 Bxe4 fxe4  
 39 Qg2 eRf7  
 40 f5! Rd7  
 41 f6 Rxf6

41....Ne8 and 41....Nf5 are no better,  
 because of 42 Rg8.

42 Rxg7+ Kh8

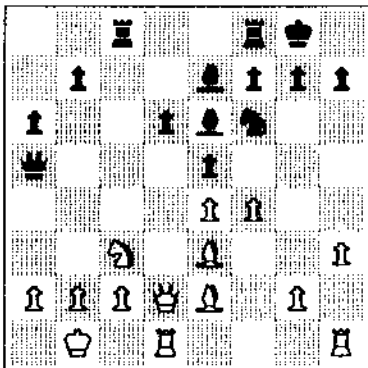
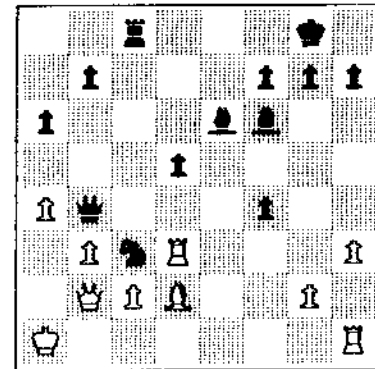


43 Rh7+ 1-0



White: Jay Morin (1776).  
 Black: Mike Cronin (1907).

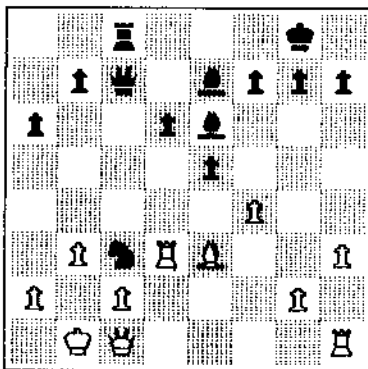
- |    |       |      |
|----|-------|------|
| 1  | e4    | c5   |
| 2  | Nf3   | d6   |
| 3  | d4    | cxd4 |
| 4  | Nxd4  | Nf6  |
| 5  | Nc3   | a6   |
| 6  | Be2   | Nc6  |
| 7  | Be3   | e5   |
| 8  | Nb3   | Be6  |
| 9  | h3    | Be7  |
| 10 | Qd2   | O-O  |
| 11 | O-O-O | Na5  |
| 12 | f4?   | Rc8  |
| 13 | Nxa5  | Qxa5 |
| 14 | Kb1   |      |



25 .... Nxa4?!?  
 Some players know how to meet their responsibility to the fans.  
 26 Bxb4 Nxb2  
 27 Rf3 Nd3+  
 28 O-1  
 Two pieces for a Rook might be acceptable, but not three.

14 .... Nxe4!  
 Oops. Somebody fell for something.  
 15 Qe1 Rxc3!  
 16 b3?!?  
 16 bxc3 couldn't be too much worse -- or could it?

16 .... Qc7  
 17 Bd3 Rxd3  
 This is probably not necessary, but it certainly is sporting.  
 18 Rxd3 Rc8  
 19 Qc1 Nc3+

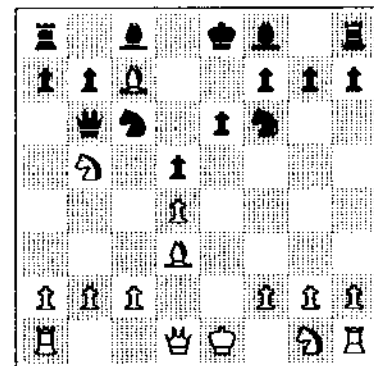


20 Kb2 Qa5  
 21 a3 d5  
 While we're at it, let's throw another piece or two into the action.  
 22 a4 Qb4  
 23 Ka1 exf4  
 24 Bd2 Bf6  
 25 Qb2



White: Charles Pickett (1796).  
 Black: W D Veatch (1640).

- |   |      |      |
|---|------|------|
| 1 | e4   | c6   |
| 2 | d4   | d5   |
| 3 | exd5 | cxd5 |
| 4 | Bd3  | Nf6  |
| 5 | Bf4  | Qb6  |
| 6 | Nc3  | e6   |
| 7 | Nb5  | Nc6  |
| 8 | Bc7  | i-o  |



# ASK MIROSEG

transmitted by David Sprenkle

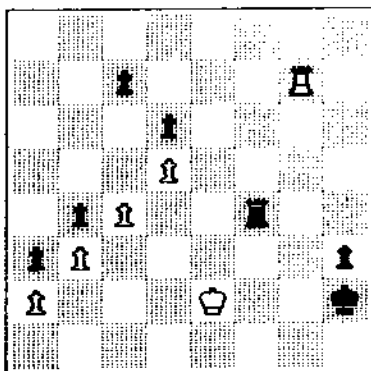
"Dave: Is this a real column? Or do you just make up all the questions? And if Miroseg is such a wonderful player, how come I don't see his name on the FIDE rating list?" -- Ed Anderson, Rushville

I'm glad you brought this up, Ed. Let me resolve the confusion. Yes, this is a real column. Would Bill Søythe allow an unreal column in the ICB? No, I don't make up all the questions. How can you be so cynical? And finally, Miroseg isn't on the FIDE list because he's been inactive for more than three years. He tells me he ran into trouble with the ACF (Albanian Chess Federation). But Ed, address your questions to Miroseg next time, huh? After all, he's the guy who's getting paid for this column. -- Dave

"Dear Dave: I really like your column a lot, especially Miroseg and Sophie. Can you tell me what they look like? I picture them as looking like Robert Redford and Meryl Streep in 'Out of Africa'." -- Sally Smithson, Matseka

Redford and Streep? Nah. Think of Boris and Natasha in "The Bullwinkle Show". Thanks for your letter, Sally, and don't be shy. Go ahead and address your letter to Miroseg next time. He'll understand, he was young once too. -- Dave

"Dear Miroseg: I saw your analysis of Torregrossa's win over Spelts in the January-February ICB. I believe that Torregrossa does have a win. However, I have only glanced at the position, so I may have missed something.

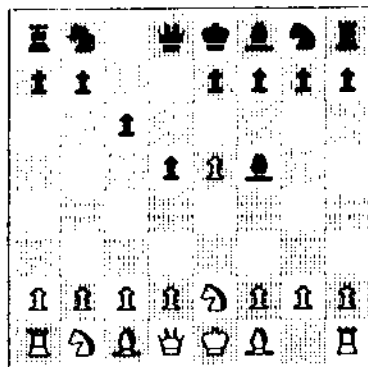


Spelts-Torregrossa

After 1...Kh1 how does White hold? If the White King leaves the defence of f1, Black will get in ...Rf1-g1. If the White Rook moves off the g-file, then Black can play ...Rg4. If White does nothing, say 2 Rg8, then 2...h2 3 Rg7 Rxc4 wins. I suppose this leaves 2 Rg6 and 3 Rg8, so the Rook can be brought along the eighth rank behind a passed Pawn, or 2 Rxc7 Rg4 3 c5 as White's best chances for play, but I haven't the time to examine these." -- Kevin Bachler, Vernon Hills

I am please to get such letter. Even in Albania we hear of Kevin Bachler, "King of Kaveman Chess". But you think of correct plan yourself. White can keep Rook at g8 or g3 to stop ...Rxc4. So 1...Kh1 2 Rg3 h2 3 Rg8 Rxc4 4 bxc4 b3 5 axb3 a2 6 Rf8! Kg2 7 Rf2+ Kg3 8 Rf1 and will be draw. -- Miroseg

"Dear Miroseg: Glancing through ECO the other day I noticed a strange line against the Caro-Kann and decided to try it in a speed game. The game went 1 e4 c6 2 Ne2! d5 3 e5 and now instead of 3...c5 he played 3...Bf5. I chickened out and replied with 4 d4, but isn't 4 Nd4 Bg6 5 e6 better for White?" -- H.H. Hanson, Chicago



after 3...Bf5

Maybe if you buy ZCO instead of silly ECO you get real scoop, no? But I answer question anyway. After 4 Nd4 Bg6 5 e6 Black play 5...Qd6! and take center soon. And 5 h4 no help because Black just play 5...h5 (6 Ne2 Bf5!). So 4 d4 or 4 Ng3 look best, but White won't get advantage. -- Miroseg

Remember, you too can write Miroseg Zog, Chess Legend at:

Ask Miroseg, c/o  
David Sprenkle  
805 W Green, #B-15  
Urbana IL 61801

# MINUTES

of the meetings of  
the ICA Board of Directors

Due to oversights by the Editor and others, it has been a long time since ICA Board minutes have appeared in the ICB. The Board has directed that this situation be corrected. To catch you up on recent history, we are hereby publishing minutes for all Board meetings held during the past year. The first two are in kumquat format, easily readable "with the aid of an ordinary household electron microscope," to quote David Lien. Minutes for the third meeting follow, in ordinary format.

MINUTES OF ICA BOARD MEETING, 4/21/85, 2:30 pm, Morgan Park Methodist Church, 110th & Longwood, Chicago.

ATTENDING: Tim Redman, Walter Brown, Tom Knoedler, Tim Just, Fred Gruenberg, Bill Saythe, Harold Winston, Frank Skoff, Helen Warren, Jim Warren, Tom Fineberg, Erv Sedlock, Wayne Palaquist, Chris Nusgrave, Bill Maff, Kevin Bachler, Larry Stilwell, Todd Barre, Bob Bain, Jim Brotsos, Jim Condron, Angelo Sandrin, Dennis Grant.

OBSERVER: Gerard Dullea.

Bill Saythe was appointed as the 3rd member of the constitutional change committee.

The ICB Editor was directed to bring to the attention of ICA members the importance of checking their ICB labels for any information regarding the expiration of ICA membership.

A discussion of the failure of the ICA-sponsored Region VII (1984) Postal Event to break even came about. Tim Just will make recommendations for the 1985 event at the next meeting.

Due to lack of interest by any Illinois organizer, Kevin Bachler was directed to inform the MCA that Illinois is not interested in participating in a 1985 Illinois-Wisconsin match.

MOTION: That the Board accept the Treasurer's report. (Barre, 2nd Winston) Passed 23-0

MOTION: That the ICA recognize the IHSA Individual Champion as the ICA state Junior Champion. (Fineberg, 2nd Winston)

MOTION: That the Board consider a substitute motion in place of the Fineberg motion. (Palaquist, 2nd Gruenberg) Passed 16-4-3

SUBSTITUTE MOTION: The ICA will send the IHSA Individual Champion into the ICA State Invitational Junior Championship. The top high school finisher in that event will receive the \$200 award as per the letter received by ICA President Tim Redman from Steve Miller of the Mizze Chess Club. (Palaquist, 2nd Gruenberg) Passed 18-3-2

MOTION: The Park Forest Chess Club shall be responsible for all activities of the Illinois Chess League for 1985. (Palaquist, 2nd Just) Passed 23-0

MOTION: The ICA donate \$100 to the organizers of the Prairie State Invitational; furthermore, this tournament will also be designated as the ICA Master-Expert Invitational. (Bachler, 2nd Barre) Passed 22-0-3

MOTION, sponsored by the ICA President and 2 Vice-Presidents: The ICA Board amend the constitution by accepting the proposed change of article VI, Sections 5 & 6 as stated, with the term Downstate Vice-President to replace the term First Vice-President:

Article VI, Section 5, METRO VICE-PRESIDENT  
In the absence of the president or in the event of the president's inability or refusal to act, the metro vice-president shall perform the duties of the president and when so acting, shall have all the powers of and be subject to all the restrictions upon the president.

Article VI, Section 6, DOWNSTATE VICE-PRESIDENT  
In the absence of the president and metro vice-president or in the event of their inability or refusal to act, the downstate vice-president shall perform the duties of the president and when so acting, shall have all the powers of and be subject to all the restrictions upon the president.

Passed 23-0

October 26, 1985 was set as a tentative date for the ICA Clinic.

Frank Skoff wanted it noted for the record that the U.S. Open in 1973 made \$20,000 and was split 2 ways (between Dick Verber and USCF) (but see amendment to these minutes in the 10/20/85 minutes below -- Editor). This followed a discussion on a bid for a national event for Chicago.

MOTION: That the ICA Executive Board consider ICA bidding for a national tournament such as a 9-day U.S. Open or a U.S. Class and report to the directors by the Autumn directors meeting. (Winston, 2nd Just) Passed 16-0-7

MOTION: To adjourn the meeting. (Winston, 2nd Barre) Passed 23-0

Respectfully submitted,  
Tim Just, Secretary

MINUTES OF ICA BOARD MEETING, 10/20/85, 1:15 pm, Holiday Inn, 5400 N River Rd, Rosemont.

ATTENDING: Frank Skoff, Walter Brown, Todd Barre, Tom Knoedler, Fred Gruenberg, Tim Just, Helen Warren, Jim Warren, Tom Fineberg, Richard Verber, Kevin Bachler, Bill Saythe, Jim Condron.

OBSERVERS: Glenn Panner, Harold Winston, Thomas Rutkowski.

Meeting called to order at 1:20 pm after the general ICA membership meeting was canceled due to lack of a quorum.

H. Winston was appointed an alternate voting member.

MOTION: Accept the amended minutes of the last meeting (P. Verber's facts are that the 1973 US Open made \$16,500). (Barre, 2nd Winston) Passed 14-0

Discussion of the Region VII and ICA Class tournaments followed.

MOTION: The ICA shall write a letter to the other Region VII states expressing regret about the conflict between the Region VII and ICA Class tournaments. (Barre, 2nd Just) Passed 14-0

Officers reports followed, by Just, Barre, and Gruenberg.

MOTION: The officers reports are accepted. (Bachler, 2nd Just) Passed 14-0

MOTION: The ICA would like to thank Tim Redman and Fred Gruenberg for their outstanding work on the Illinois Open. (Verber, 2nd Fineberg) Passed 14-0

MOTION: That the ICB Editor be instructed to include the name, meeting time and place, and name of a contact for each ICA affiliate within each issue. (Bachler, 2nd H. Warren) Passed 14-0

MOTION: The ICA will donate \$200 to the Olympiad. (Verber, 2nd Gruenberg) Passed 13-0-1, Condron abstaining

The meeting adjourned at 3:29 for 5 minutes.

The meeting readjusted at 3:34 pm.

MOTION: That Tim Just be appointed to head a committee which will explore the possibility of holding a U.S. Open in Chicago in 1989. This committee should assemble all the information necessary to prepare a bid for the U.S. Open, and will report to the ICA in January of 1987 with this information, or from time to time as needed. (Bachler, 2nd H. Warren) Passed 11-3-0

H. Warren inquired as to the plans for 1986 for the ICA Banquet, Scholastic Clinic, and Picnic; further, concern was expressed about the lack of ICA Board meetings. The ICA Executive Board will report back to Ms. Warren about her concerns.

MOTION: To adjourn. (H. Warren, 2nd Just) Passed 14-0

Respectfully submitted,  
Tim Just, Secretary

TENTATIVE MINUTES OF ICA BOARD MEETING,  
2/23/86, 1:00 pm, Holiday Inn, 5400 N River Rd, Rosemont. Subject to approval by the Board.

ATTENDING: Helen Warren, Frank Skoff, Fred Gruenberg, Jim Warren, Todd Barre, Tim Just, Tom Fineberg, Harold Winston, Bill Saythe, Erv Sedlock, Wayne Palaquist, Bob Bain, Dennis Grant, Glenn Panner, John Barstad, Ken Marshall, Jim Condron, Angelo Sandrin.

Meeting was called to order by Todd Barre at 1 pm.

MOTION: Minutes of 10/20/85 be approved. Passed 18-0

MOTION: Amended Treasurer's report be approved. Passed 18-0

MOTION: The ICA President shall resolve the 1984 ICL prizes by the next ICA Board meeting. He shall report to the Board his actions. Passed 18-0

Board accepted a report from Palaquist on the ICL for 1985.

MOTION: Wayne Palaquist and Jim Condron shall be commended for a full and prompt report on the 1985 ICL activities. Passed 16-0-2

# EIGHTH SOUTH SUBURBAN OPEN

May 31, 1986

George Brown Commons, 15045 West Avenue, Orland Park 60462.

4-round Swiss, 30 moves in one hour.

Entry fee: \$12 before May 24. \$15 at site.

## AN ICA TOUR MINI-EVENT

ICA membership required (\$10, under 18 \$6).  
Neighboring state membership cards honored.

300 guaranteed prizes: 1st \$100, 2nd \$50, 3rd \$20, A \$40, B \$35, C \$25, D/E \$20, Unrated \$10. Registration 8:15-9:00 a.m. Saturday, May 31. Rounds at 9:15, 12:30, 3:30, 6:30.

Entries and inquiries: Glenn Panner, 14300 S Ridge, Orland Park IL 60462. (312) 460-3111. NOTE: The ad in Chess Life apparently will contain several errors; please disregard it in favor of this ad.

Helen Warren gave a report regarding her attendance at the last USCF Policy Board meeting.

**MOTION:** A committee chaired by Malter Brown shall be formed to review the Illinois Tour procedures and practices for 1987. The committee shall report back to the Board by the annual October meeting. Passed 18-0

**MOTION:** The ICA hereby donates \$100 to the 1986 Prairie State Tournament, funds received by the Midwest Chess Association by 5/1/86. The winner of this event will be designated the Illinois Master/Expert Invitational Champion. Passed 18-0-2

**MOTION:** Minutes of all ICA Board of Directors meetings will be published in the earliest possible ICB. Minutes not yet approved will be so marked. Passed 17-1-1

**MOTION:** Article VI, section 1 of the ICA Constitution shall be changed to:  
Annual Meeting. An annual meeting of the members shall be held during the month of October of each year for the purpose of conducting such business as may come before the meeting.  
Passed 18-0

**MOTION:** Article VI, section 4 shall add:  
Notice of the annual meeting shall be deemed as given upon the publication in the appropriate issue of the Illinois Chess Bulletin of the place, date and hour of said meeting.  
Passed 18-0

**NOTE:** The first motion will allow any weekend in October to serve as the annual meeting of members rather than the now mandated third weekend. The second motion will eliminate the need to spend funds on a mailing to all members regarding the annual meeting. It also allows each member to still be notified of said meeting via the ICB.

Motions are sponsored by the Executive Board. They arose in closed session.

**MOTION:** Article VI, section 2 shall be changed to:  
Election and Term of Office. The officers of the ICA shall be elected every even-numbered year by the membership via mail ballot following such procedures as set forth by the by-laws except the office of past president. The past president shall be filled by the president leaving office and the term shall be for one year. Vacancies may be filled at any meeting of the Board of Directors by a majority vote of those present except that the office of past president shall not be filled if a vacancy should occur. Each officer, except the past president, shall hold office until a successor shall have been duly elected and shall have qualified or until death or resignation or removal in the manner hereinafter provided. The Treasurer may succeed himself. Officers may succeed themselves for one term except for past president.

This motion is by Fred Gruenberg.

**NOTE:** This motion will allow the elected officers to repeat themselves in office for one term; i.e. they may be elected again to the same office, but only for one more term immediately following their current term. Officers will be allowed to hold the same office 2 times in a row (you can serve 2 terms -- same office -- back to back).  
Passed 18-0

Discussion of realigning regions for Illinois followed.

**MOTION** to adjourn at 3:05 pm. Passed 18-0

Respectfully submitted,  
Tim Just, Secretary

# TOURNAMENT CALENDAR

Call ChessPhone, (312) 233-8500, for recorded tournament announcements and results, often more up-to-date than Chess Life or the Illinois Chess Bulletin. ChessPhone is provided through the courtesy of Fred Gruenberg.

All tournaments require USCF membership. Some also require ICA membership. All phones are area code (312) unless otherwise noted.

## Regional Events and Events by ICA and its Affiliates

Apr 19-20: 8th Midwest Women's Open, NJ, Evanston. EF \$12; \$10 by 4/16. V Schaucker, (219) 533-2596, or H Winston, (312) 475-7022.

Apr 19-20: Chicago Chess Center Events. Two one-day events. Jules Stein, 929-7010.

Apr 26-27: Greater Peoria Open, Ramada Hotel, Peoria. EF \$25; \$20 by 4/24. Open \$\$ 200-100, A 75. Under-1800 \$\$ 150-75, C 60, D/E 50. B Wilkinson, 905 N Rebecca, Peoria 61606. AN ICA TOUR MAXI-EVENT. See attached flyer.

Apr 26-27: Fox Valley Open, Kane County Extension Service, St Charles. EF \$20; \$15 by 4/24. \$\$ 425 b/40. Erv Sedlock, 377-7995.

Apr 26-27: Chicago Chess Center Events. Two one-day events. Jules Stein, 929-7010.

May 3: Cavemen Play Chess on Saturdays, Too. College of Lake County, Grayslake. Don Martin, 546-6972.

May 3-4: Chicago Chess Center events. Two one-day events. Jules Stein, 929-7010.

May 10: Peoria Spring Tornado, Bradley U Cafeteria. EF \$13; \$11 by 5/8. \$\$ 75-50; plus B, C, D/E b/entries. (309) 691-4624.

May 10-11: Chicago Chess Center Events. Two one-day events. Jules Stein, 929-7010.

May 17-18: APCT Chess Book and Equipment Sale. 5333 Woodland, Western Springs. Jim Warren, 246-6665.

May 17-18: Chicago Chess Center events. Two one-day events. Jules Stein, 929-7010.

May 24-25: Chicago Chess Center events. Two one-day events. Jules Stein, 929-7010.

May 24-26: 2nd Prairie State Masters/Experts Open. Open to 2000 and over. 6-SS, 40/2. EF \$46; \$36 by 5/20. \$\$ 500-300-200; 2100-2199 175; 2000-2099 150. College of Lake County, Grayslake. Helen Warren, 246-6665.

May 31: Eighth South Suburban Open. AN ICA TOUR MINI-EVENT. See half-page ad page 31.

Jun 7-8: Chicago Chess Center events. Two one-day events. Jules Stein, 929-7010.

Jun 14-15: Chicago Chess Center events. Two one-day events. Jules Stein, 929-7010.

## Other Events

Apr 12-13: Chicago Lawn Chess Assn, 476-5716.  
Apr 25-26: IHSA Individual Champ'shp, Ottawa.  
Apr 26: North Boone HS, Poplar Grove.  
Apr 26-27: Chicago Lawn Chess Assn, 476-5716.  
May 10-11: FRCC III, Urbana. (217) 351-1600.  
May 10-11: Chicago Lawn Chess Assn, 476-5716.  
May 24-25: Chicago Lawn Chess Assn, 476-5716.  
Jun 7-8: Chicago Lawn Chess Assn, 476-5716.

## Upcoming Events

Jun 20-22: Master Challenge VIII, Forest Pk.  
Jun 21: Peoria 2nd Quarter Cash Novice/Quad.  
Jul 2-6: World Open, Philadelphia, PA.  
Jul 19-20: Greater Chicago Open, Chicago.  
Aug 2-3: Tim Just's Open/Reserve, Zion.  
Aug 3-15: U.S. Open, Somerset, NJ.  
Aug 16: Bradley Summer Open, Peoria.

## ILLINOIS CHESS ASSOCIATION

P.O. Box 43336  
Chicago, IL 60643