

ILLINOIS CHESS BULLETIN

Official Publication of the Illinois Chess Association a U.S.C.F. Affiliate
A Not For Profit Organization

OCTOBER, 1985

BIMONTHLY

VOLUME VIII, No. 5



JOHN NUNN

“BILLY” In Europe
at Lloyds Bank
London, England

B. COLIAS

ILLINOIS CHESS BULLETIN

Official Publication of the Illinois Chess Association, a USCF Affiliate

EDITOR: David Sprenkle
805 W. Green B15
Urbana, IL 61801
217-328-7271

ICA OFFICERS:

President: Walter Brown, 811 Elrose Ct., Cresthill 60435
Metro-VP: Todd Barre, 1300 E. Algonquin Rd. 1-C,
Schaumburg 60195
Downstate VP: Thomas Knoedler, 2206 Westchester No.4,
Springfield 62704
Secretary: Tim Just, 1521 Circle Ct., Waukegan 60085
Treasurer: Fred Gruenberg, 2035 W. 110th Place, Chicago
60643
Immediate Past-Pres.: Helen Warren, Box 305, Western
Springs 60558

USCF DELEGATES by virtue of their USCF posts

Immediate Past President Tim Redman
Member-at-Large Harold Winston, 1567 Ridge No.601,
Evanston 60201
Life Voting Member Frank Skoff, Box 214, 3952 N South-
port, Chicago 60613
Regional VP Walter Brown
Regional VP Fred Gruenberg

ICA APPOINTED DELEGATES

Helen Warren, Box 305, Western Springs 60558
Jim Warren, Box 305, Western Springs 60558
Tom Fineberg, 7321 South Shore Dr., Chicago 60649
Tim Just, 1521 Circle Ct., Waukegan 60085
Richard Verber, 2725 W 84th St., Chicago 60652

ICA VOTING MEMBERS

Thomas Knoedler	Bill Naff
Erv Sedlock	Kevin Bachler
David Sprenkle	Larry Stilwell
Wayne Palmquist	Todd Barre
Chris Musgrave	Kevin Kaufhold
John Tomas	Bill Smythe

ALTERNATE VOTING MEMBERS

Eric Schiller	Dan Kumro
Bob Bain	George Leighton
Mike Zacate	John Tonkinson
Jules Stein	John Barstad
Jim Brotsos	Mike Hensley
Jim Condron	Guy Gruenberg
Angelo Sandrin	Marvin Dandridge
Norbert Leopoldi	Dennis Grant
Albert Chow	

METRO CLEARINGHOUSE:

Todd Barre, 1300 E. Algonquin Rd. 1-C, Schaumburg 60195
(312)-397-1477

DOWNSTATE CLEARINGHOUSE:

Thomas Knoedler, 2206 Westchester No.4, Springfield
62704

CALL CHESSPHONE
(312) 233-8500

For Tournament News & Update

===== CENTURY CLUB MEMBERS =====

Walter Brown	Crest Hill	IL
Fred Gruenberg	Chicago	IL
Michael Belovesick	Northbrook	IL
Lawrence Goch	Chicago	IL
Fred Cramer	Mequon	WI
Arthur Weiner	Glencoe	IL
Burton Vincent	Chicago	IL

===== GOLD CARD MEMBERS =====

Helen Warren	Western Springs	IL
Jim Warren	Western Springs	IL
Harland Hoisington	Chicago	IL
Tim Redman	Chicago	IL
Charles Kramer	Doitton	IL
Irwin Rothschild	Park Forest	IL
Louis Werner	Evanston	IL
Bill Smythe	Chicago	IL
Bill Butny	Downers Grove	IL
Charles Taylor	Chicago	IL
Angelo Sandrin	Chicago	IL
Albert Sandrin	Chicago	IL
Philip Wong	Evanston	IL

===== PATRON MEMBERS =====

Bob Ash	Urbana	IL
Todd Barre	Schaumburg	IL
Roy Benedek	Westmont	IL
Jim Brotsos	Chicago	IL
Esmond Coopwood Sr	Matteson	IL
Lynn Crewse	Arlington Heights	IL
Leroy Duback	Cherry Hill	NJ
Thomas Fineberg	Chicago	IL
Edward Frumkin	New York	NY
Robert Glick	Morton Grove	IL
William Graves	Chicago	IL
Gary Gustafson	North Conway	NH
Jeffery Hyland	Oak Park	IL
Robert Irons	Chicago	IL
Tim Just	Waukegan	IL
Leonid Kaushansky	Chicago	IL
Thomas Knoedler	Springfield	IL
John Krom	Chicago	IL
Armin Kusswurm	Chicago	IL
Kenneth Marshall	Lombard	IL
Eugene Martinovsky	Oak Brook	IL
James McNamara	Riverside	IL
Walter Milbratz	Half Moon Bay	CA
Patrick Moran	Wilmette	IL
James Norris	Naperville	IL
Ray Satterlee	Wheaton	IL
Vivian Schmucker	Goshen	IN
Tony Sillars	Chicago	IL
Arthur Sinclair	Evanston	IL
David Sprenkle	Urbana	IL
Miomir Stevanovic	Lincolnwood	IL
Douglas White	Niles	IL
Harold Winston	Evanston	IL
Sandy Zabeli	Chicago	IL
Michael Zacate	Mokena	IL
Max Zavanelli	Park Ridge	IL

It has become impractical to list our increasing number of Patron Members in chronological order. Beginning with this issue, therefore, Patrons will be listed alphabetically. Our heartfelt thanks go to all of our Patron, Gold Card, and Century Club members -- both long-time and recent.

DEADLINE FOR NEXT ISSUE: November 4

Please look at your mailing label on #
the back page to see if it's time to #
renew your subscription! #
#####



BILLY IN EUROPE

Fred Gruenberg tells me that everyone is asking him how Billy Colias is doing in Europe. I'll be happy to pass on what Fred has passed on to me, sketchy though it may be. Billy has been staying with a family in England, paying just \$7 a day for room and board. He has played a lot in England against international level competition, like GM John Nunn (see the cover photo). He scored 4.5-4.5 in the prestigious Lloyd's Bank Open. He has also played in Czechoslovakia, Switzerland, and Scotland. In the Scottish event he was ranked last in a field of 130, but was playing on board 1 in the last round (he lost). I think we've all got to be careful when we next play Billy in a local event!

Once again, sorry this is so sketchy folks, but by the time you read this Billy will already be back, and you can get your information first hand. Maybe we can also persuade him to give us the scoop for our next issue.

CONGRATULATIONS!

...to Helen Warren on her election to the USCF Policy Board. She joins another Policy Board member from Illinois, Harold Winston



New ICA President Walter Brown presents a 20 year Meritorious Service Plaque to former President Tim Redman, who is leaving to teach at Ohio St. Univ. at Lima. Our thanks and best wishes to Tim!

SUBSCRIPTION RATES: ICA membership includes subscription to the ILLINOIS CHESS BULLETIN. Regular adult membership: \$10 a year, \$19.50 for two years, and \$28.75 for three years. Juniors: \$6 per year. Patron Membership: \$25, Gold Card: \$50, and Century Club: \$100. Affiliate Membership for clubs and schools: \$15 per year.

The ICB is published bi-monthly by the Illinois Chess Association. Affiliates and Patrons receive the ICB by First Class Mail. Checks should be made payable to the ICA and sent to Fred Gruenberg, ICA Treasurer, Box 43336, Chicago IL 60643.

ADVERTISING RATES: \$60 for full page or 2/3 of back cover. Half page \$36; quarter page \$21. Flyer inserts \$25. 10% discount for multiple months of run. ICA affiliates get 1/3 discount. Checks for advertising should be sent to ICA Treasurer Fred Gruenberg. All advertising copy must be camera ready at the above rates. Add 20% if you wish layout done. The ICA reserves the right to reject advertising.

Pay as you play

THE Lloyds Bank annual international tournament, of which the ninth ended on Wednesday, is run on an unusual system. Play was in a sumptuous venue, the Park Lane hotel in Piccadilly.

Anybody can enter. You, if you wish. If you are ungraded or very lowly graded, however, you must pay a thumping £120 fee for the remote chance of being paired against a famous world grand master and the even remoter chance of winning the £1,200 first prize or one of the 21 other prizes. From this £120, the entry fees range down by stages to zero for grand masters or international masters.

There are reduced charges for juniors who, by slightly contrived pairings, are given a chance to qualify for master norms and eventually titles.

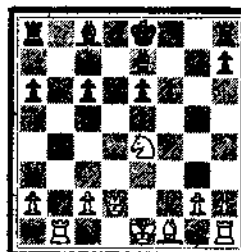
An ambitious young American Billy Colias made little headway in this game.

Colias	Nunn
White	Black
1 P-K4	P-QB4
2 N-KB3	P-Q3
3 P-Q4	PxP
4 NxP	N-KB3
5 N-QB3	P-QR3
6 B-KN5	P-K3
7 P-B4	Q-N3
8 Q-Q2	QxP

The famous "poisoned pawn" variation, which has been analysed to exhaustion. People still go into it thinking that they have perhaps studied it a couple of moves more deeply than their opponent. Recent experience has been: "drawish on the whole."

9 R-QN1	Q-R5
10 P-B5	N-B3
11 PxP	PxP

12 NxN	PxN
13 P-K3	PxP
14 RxN	PxB
15 N-K4	B-K2



16 B-K2	P-KR4
---------	-------

He has to forestall 17 B-R5ch.

17 R-N3	Q-R5
18 NxPch	BxN

The sacrifice, though it has been tried before, does not quite click.

19 P-B4	R-QR2
20 Castles	R(R2)-KB3
21 R-N8	Castles
22 BxB	R-Q2
23 Q-B1	

Horrifyingly, we are not yet out of the "books."

A recent game by correspondence, Strand v Szilagyi, went: 25 Q-K2 Q-R6 24 BxB (B8) BxB 25 BxB Q-B8ch 26 R-B1 Q-N4 27 Q-B5 Q-B5 28 Q-KR3 Q-Q5ch 29 K-R1 QxP with everything obscure.

Better for White now, though inadequate, would be 24 RxQB RxR 25 BxB.

24 R-B2	Q-R4
25 R-B3	Q-B4ch

and White, realising that his attack had fizzled out and that he was still a piece behind, resigned without awaiting White's reply.

ILLINOIS TOP 20 - (active)

1 Robert S Gruenacz	2471
2 Albert C Chow	2430
3 Greg S DePotis	2424
4 Jonathan S Yudidia	2382
5 Leonid Kaushansky	2370
6 David C Sprenkle	2369
7 Eugene Martinovsky	2357
8 Andrew Karklins	2343
9 Morris C Giles	2337
10 Todd Q Miller	2337
11 Charles W Kramer	2317
12 Sheldon M Gelbart	2317
13 Steven Tennant	2314
14 Michael D Gold	2301
15 Marc J Lenoff	2291
16 Gregg H Small	2291
17 Marvin Dandridge	2289
18 Erik Karklins	2279
19 Peter Pelts	2279
20 Peter Thompson	2267

IN THIS ISSUE...

GRUCACZ TOPS II, OPEN, W Brown.....	pg. 4-5
US SENIOR OPEN, E Martinovsky.....	5
CHOW SWEEPS MASTER CHALLENGE, T Barre.....	6-7
GAMES FROM MASTER CHALLENGE, A Chow.....	7
BRADLEY SUMMER OPEN.....	10
TIM JUST'S OPEN/RESERVE, K Bachler & Tim Just... ..	10
IL-WISCONSIN MATCH, K Bachler.....	10
THE MIDNIGHT OIL, J Tomas.....	11-13
IL TOUR UPDATE, K Bachler.....	14-15
ICA AFFILIATE LIST, B Smythe.....	15
MASTER CHALLENGE CROSSTABLE.....	16
IL OPEN CROSSTABLE.....	17
POSTAL CHESS, H Warren.....	18-19
TOURNAMENT CALENDAR.....	20

GRUCHACZ TOPS IL OPEN

by Walter Brown

The 1985 Illinois Open and State Championship had an excellent turnout of 176 players at the Holiday Inn in Rosemont. The tournament, which was held over the Labor Day weekend, was run with an Open and a Reserve section competing for \$3000 in prize money, the state title, and Illinois Tour Points.

The Open section of 16 masters and 89 total players ended in a three-way tie for first. Winning the title on tiebreak was Robert Gruchacz with 4.5 points in the 5-round tournament. Also at 4.5 were Al Chow, the defending state champion, and James Thinnsen, who recently moved to Illinois from California.

While Gruchacz did win, he had to overcome Eugene Martinovsky, a shortage of time, and some bad moves to win his last round game. The end of that game is a story in itself. To set the stage for it, I will summarize the first four rounds.

Round 1:

Form held true in this round as the 16 masters yielded only 3 draws, and the rest of the top half lost only 5.5 points.

Round 2:

With the top-ranked player facing a high 2100 player more upsets would be expected, and there were three major ones. The No. 3 player Greg DeFotis, who had just been awarded the FIDE Master title at the recent FIDE meetings, lost to Alan Watson. The No. 6 player Leonid Kaushansky lost to Pete Stein, while No. 9 Marvin Dandridge lost to Roy Satterlee.

Round 3:

With masters facing masters things were getting tough. Both the No. 1 and 2 players were held to draws. Gruchacz was held to a draw by Erik Karklins, while Thinnsen and Gary Utterberg also played to a draw. Watson continued to surprise by drawing Morris Giles. After three rounds there were only five perfect scores remaining.

Round 4:

Martinovsky beat Jonathan Yedidia to reach four points. Chow looked like he would join Martinovsky at four, but drew Marc Lonoff. Al won a pawn, but in the double rook ending Lonoff's active rooks kept Al on the defensive. After a trade of one set of rooks Al offered a draw as his extra pawn, even though passed, was not going anywhere. The other 3-pointer, Peter Pelts, lost to Gruchacz.

Going into round 5, Martinovsky was alone with four points, and there were six players with 3.5-0.5.

Round 5:

The pairings were: Bd. 1 Gruchacz-Martinovsky
2 Thinnsen-Lonoff
3 Giles-Chow
4 Zingheim-Pelts

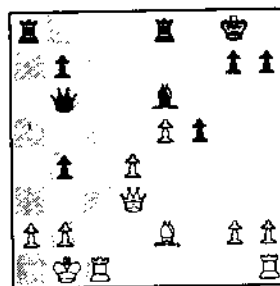
Both Thinnsen and Chow quickly moved to 4.5 points. Peter Pelts beat Scott Zingheim, who started the round at 3.5 after a first round draw.

The game that meant everything proceeded slowly with both sides using one hour by move 10. Gruchacz won a pawn and had connected passed pawns in the middle of the board. At this point it looked like it would be Gruchacz's game. As both sides completed development of

their pieces they kept consuming more time. By move 25 both sides had only 5 minutes left and still had to make 20 more moves.

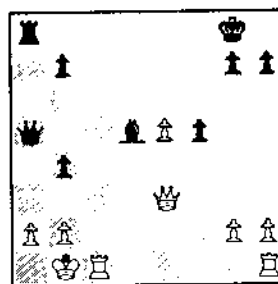


THINNSEN, GRUCHACZ



AFTER 23...axh4

White had to accept. After 27 Bxd5 Bxd5 White should have played 28 Rc4 and given back the exchange. Black could not play 28...b5 to win the rook because of 29 Rc8+ followed by Qxd5+. However, White played 28 Qe3?? after using all but a minute of his remaining time.



AFTER 28 Qe3??

Bd5 32 Qc3 Qe6 33 Rfe1 Be4 34 Qc4 Qxc4 35 Rxc4 White was the exchange ahead. As both sides rushed to get to move 45 Black ran out of time.

Other prize winners were Martinovsky, Pelts, and unrated Job Damocles who shared 4th place with four points. Ray Satterlee also scored four points to take the expert prize, and seven experts scored 3.5 to split second. George Umezina scored 3.5 to win Class A while there was a five-way split of second A money.

In the Reserve section of 87 players, Todd Schremser scored five wins to take clear first. He defeated Joel Heinrich in the last round. Roger Bowen also had four points entering the last round, but he lost to Mark Hansel. Mark's score of 4.5 was good for second place. There was a eight-way tie for third with 4 points.

The Class C prize went to Randy Fronek with four. John Weber and John Scanlon scored 3.5 for second C.

The Class D/E saw a three-way tie among Myron Cannell, Subooh Verma, and Arthur Dupee who all scored 2.5 points. Hal Meltzer was top unrated with 2.5.

From the diagram, the state title was on the line. With the a-file having just been opened up for Black, it appeared that Martinovsky was getting some attacking chances. Gruchacz played 24 d5 to block off the bishop, but after 24...Red8 25 Bf3 Qa5 Black was winning the d-pawn.

White played 26 Qb3 to cover a2. Black then gave up the exchange with 26...Rxd5 which

Martinovsky could now have won the game and the state championship with 28...Be4+. White must play 29 Rc2, but then 29...Qxa2+ 30 Kc1 Rd8! (even better than 30...Qa1+) mates White. After about four minutes of thought, Black played 28...b3?? overlooking that 29 a3 was indeed possible! After 29...Be4+ 30 Kal Qxe5 31 Qxb3+ (eliminating the threat of 31...Rxa3 mate)

The tournament was directed by Walter Brown and Tim Just. Everything went smoothly and there wasn't even one adjournment. The playing site and location was excellent, and the Officers of the ICA were extremely pleased with the turnout. Future events with this size prize fund can be expected since the turnout was so good.

(We'll have more IL Open games in our next issue)

US SENIOR OPEN

by Dr. Eugene Martinovsky

This year's U.S. Senior Open was held June 16-20 in San Diego, CA. There were 92 participants, the highest number ever. The Grosvenor Inn was a comfortable yet inexpensive motel close to downtown San Diego. The playing site itself was comfortable and well lit. The organizers and the tournament directors did an excellent job in organizing and running the tournament.

The participants were real Gentlemen and Ladies, and they conducted themselves as Gentlemen and Ladies. There were no disputes, no protests, and the Dean of American Chess Doctor Koltanowski had a very pleasant, perhaps even boring job as director. Only once did he become somewhat excited. Karl Stani and Jerry Hanken discovered in the postmortem of their 3rd round game that Mr. Stani did indeed make an illegal move while in time trouble. His queen curved her way across the board between b3 and f8, and sacrificed herself for a rook on f8. Jerry Hanken didn't see it and he resigned in a few more moves. He did not complain later, not officially anyway. Apparently he no longer had grounds to complain after resigning. Doctor Koltanowski was quite intrigued by the case and he discussed the possibility of a complaint, but no such luck, no one complained!

The tournament ended in a three-way tie for first with 5.5 out of 6, between myself, Mr. A. London and Mr. Hugh Noland. I received the championship trophy on tiebreak. I was the highest rated player in the tournament, Jerry Hanken being second. After Jerry's mishap in round 3 he lost two more games to end up with only 3 points. My toughest competitor was Mr. Don Bicknell, a former master and a former (1983) U.S. Senior Champion. He ripped through his first five opponents while I drew my round 5 game against Alexander London, a stockbroker from La Jolla, CA.

E. Martinovsky-A. London

1 Nf3 d5 2 d4 c6 3 Nc3 Bf5 4 g3 Nf6 5 Bg2 e6 6 Nh4 Bg4 7 h3 Bh5 8 g4 Bg6 9 Nxg6 hxg6 10 e4!? Bb4! 11 f3? (Better is 11 e5) c5! 12 a3 cxd4 13 Oxd4 Nc6 14 Qd3 Bxc3+ 15 Qxc3 dxe4! 16 Bg5 Qd4 17 fxe4 Qxc3+ 18 bxc3 Nd7 (Black has the advantage) 19 Rb1! f6 20 Be3 h6 (20...0-0 is better) 21 Kf2 g5? 22 Rhd1 Nde5 23 Bf1 Ke7 24 c4! (Now White stands a little better) Nd7 25 c5! Rb8 26 cxb6 Nxb6 27 Bc5+ Kf7 28 Bxb6 Rxb6 29 Rxb6 axb6 30 Rd7+ Kg6 31 Rd6 Rc8! 32 Rxe6 Ne5 33 Bd3 Rc3! 34 Ke2! Rxa3 35 Rxb6 Nxd3 36 cxd3 Ra2+ 37 Kf3 Rh2! 38 Kg3 Rd2! 39 Rd6 Kf7 40 h4 gxh4+ 41 Kxh4 g5+! 42 Kg3 Ke7 43 Rd5 Ke6 44 Kf3 Rh2 45 Kg3 Rd2 46 d4 Rd3+ 47 Kf2 Rd2+ 48 Ke3 Rg2 49 Kf3 Rd2 50 Rd8 Ke7! 51 Ke3! Rg2! 52 Ra8 Rg3+! 53 Ke2 Rxd4 54 Kd3 Rf4! 55 Ra7+ Kf8? (better is 55...Kd8!) 56 d5 Ke8! 57 Rg7 Kd8 58 Kd4 Ke8 59 d6 f5 60 Kd5 Rxe4 61 Rxd5 Ra4 62 Rg8+ Kd7 63 Rg7+ Kd8 64 Ke6 Re4+ 65 Kxf5 Re1 1/2-1/2

With a little bit of luck, I won that last round game against Bicknell and tied for first:

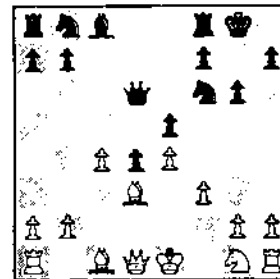
D. Bicknell-E. Martinovsky

1 d4 Nf6 2 c4 g6 3 Nc3 d5 4 f3 (A somewhat off-beat line, but not bad) 4...c5 (Ignoring White's last move

Greg DeFotis-Alan Watson Dutch

1 d4 f5 2 g3 Nf6 3 Bg2 g6 4 b3 Bg7 5 Bb2 0-0 6 Nd2 d6 7 Nh3 Nc6 8 Nc4 e6 9 0-0 Qe8 10 Nf4 g5 11 Nxe6 Bxe6 12 d5 Nxd5 13 Bxg7 Kxg7 14 Bxd5 Bxd5 15 Qxd5 Qf7 16 Rad1 Rae8 17 Qb5 Nd8 18 Ne3 h6 19 Rd2 f4 20 Ng2 Re5 21 Qb4 a5 22 Qc3 Nc6 23 Rd3 Qf6 24 Qd2 Rc5 25 gxf4 gxf4 26 Rf3 Rf5 27 e4 Ne5 28 Rc3 Rg5 29 Rxc7+ Kh8 30 Kh1 Rfg8 31 Qxf4 Qxf4 32 Nxf4 Nf3 0-1

with 4...Bg7 is probably better. However, I had to play for a win at any cost because my opponent had 5 points and I had 4.5. I also believed at the time that striking at the center was the best answer to 4 f3) 5 dxc5 d4 6 Nb5 e5 7 Nd6+ Bxd6 8 cxd6 0-0! (This is better than the immediate 8...Qxd6. I was happy that the position wasn't drawish. As I write I am not sure who stands better) 9 e4 Qxd6 (I could have played 9...Nxe4!? with good attacking chances, but I couldn't see the end of the line. One example could be 9...Nxe4 10 fxe4 Qh4+ 11 Kd2 Qf4+ 12 Kc2 Qxe4+ 13 Kb3 Nc6 14 Qf3 Na5+ with an unclear position. I decided not to risk that much, since I was satisfied with my position after the simpl 9...Qxd6) 10 Bd3



AFTER 10 Bd3

10...b5! (I estimated that the moves 10...Nc6, 10...Na6, or 10...Be6 were too slow and that these moves would allow White to complete his development and castle. I decided that Benko's idea was the best here in spite of the absence of my king bishop, and I was correct) 11 cxb5 a6! 12 bxa6 (I think White should not have taken the second pawn. Better was 12 b6 or even better yet 12 Ne2 axb5 13 0-0) 12...Bxa6 (This is better than 12...Nxa6 13 Ne2 Nc5 14 0-0 Nxd3 15 Qxd3 Ba6 16 Qd2 and White has a defensible position) 13 Nh3 Bxd3 14 Qxd3 Na6 15 Bd2 (15 0-0 Nb4 16 Qb3 Rfb8 or 15 0-0 Nc5 16 Qd1 Rfb8 is also unsatisfactory for White) Rfb8 16 Qb1 d3! 17 a3 (If 17 0-0 then 17...Qd4+ and ...Rxb2) Qd4 18 Nf2 (If 18 b4 then 18...Nxb4! and Black wins, or if 18 Ra2 then 18...Nxe4! 19 fxe4 Qxe4+ 20 Kf1 Qe2+ and Black wins) 18...Rxb2 0-1 (If 19 Qxd3 Rxd2! 20 Kxd2 Qxf2+ 21 Kc3 Rc8+ 22 Kb3 Nc5+)

This years Senior Open had many ladies participating. Mrs. Alina Markowski from San Diego was a participant, in addition to being the chief organizer. Jerry Hanken's wife Christine played some very tough games. Ursula Foster tied for 1st-2nd in the B class. I also met several colleagues: psychiatrists, psychologists, and physicians. To name a few: Dr. Jonathan Malev, psychiatrist from Houston TX; Dr. Giles Koelshe, retired internist from Sun City AZ, who spent 30 years as a physician at Mayo Clinic; Dr. Patty, a psychologist from Los Angeles; Dr. Joseph Wagner, orthopedic surgeon from Los Angeles; and Doctor Dennis Kolding from the Univ. of Louisville. Also participating was Mr. Bill Church of Church's Fried Chicken fame, and many other well accomplished gentlemen. Dr. Wagner's wife demonstrated her superb athletic abilities when she rode her 18 speed special bicycle from Los Angeles to San Diego, a 100 mile trip! All in all it was a pleasure playing chess in this classy company.

Doctor Koltanowski performed his amazing Knights Tour one more time. The organizers also showed a fascinating old Russian movie, "Chess Fever", which was shot at the 1925 Moscow International tournament. Capablanca was then the reigning champion and he stars in the movie. Other notables like Alekhine, Torre, and Marshall are also seen in the movie. In summary, the organizers, directors, and participants all deserve congratulations for the success of this tournament.

CHOW SWEEPS MASTER CHALLENGE

by Todd Barre

Two-time Illinois State Champion Albert Chow cemented his new U.S. Senior Master title with an impressive 5-0 sweep to take clear first at Master Challenge VII. The 1985 edition brought 134 players to the Mohr Community Center in Forest Park to compete for a Master Challenge record \$2850 in prizes on the weekend of June 21-23.

Although the tournament attendance was down slightly from last year's 154, Master Challenge continues to be the strongest open tournament in the Chicago area. This year's median rating was 1881, and the field was headed by three senior masters, thirteen masters, and thirty-two experts. Heading the pre-tournament list was International Master Vincent McCambridge (2567) who now resides in the New York City area where he works on the USCF staff. Vince's two previous trips to Chicago produced first place finishes at the Midwest Masters and the Windy City International. Joining him in the field were International Master Ed Formanek (2463) from Pennsylvania and Chicago's Greg Defotis (2415) who is rounding into top form again. The Master list included a number of familiar faces whose chances certainly could not be discounted: Lester Van Meter (2394), Jonathan Yedidia (2387), Chow (2371), Leonid Kaushansky (2369), Andrew (2361) and Erik Karklins (2240), Morris Giles (2345), "Put the Fun Back" winner Marvin "Big D" Dandridge (2311), and last year's surprise Master Challenge co-champion Peter Bereolos (2235). An exciting tournament was imminent.

ROUND 1 (FRIDAY)

As has become a Master Challenge tradition, the players had the choice of commencing aggressions either Friday night or Saturday morning. With accelerated pairings in force the first two rounds, the players had to be sharp.

In all, 70 players elected to play Friday night and although all three senior masters sat out, the field was somewhat stronger opening night. Van Meter found himself on Board 1 but could only manage a draw against Matt Morris (2124). For Lester, it proved to be the beginning of a long tournament, part of a long slump he has been suffering through. Two other masters, however, found the going even rougher. Dandridge was upset by Mark Marovitch (2095) who always seems to be in top form for Master Challenge. In addition, Scott Zingheim (2246) was ousted by John Krom (2067). Chow began his drive to the top by knocking off Dan Kamen (2107).

ROUND 1 (SATURDAY)

The rest of the field rolled into action with the top three (McCambridge, Formanek, & DeFotis) all scoring victories. But Kaushansky was held to a half point by ICA Membership Secretary Bill Smythe (1969), and Indiana master James Mills (2307) adjourned a lost ending against South Sider Roger Hickman (1942). Hickman later notched the point after play resumed to score the upset.

ROUND 2

The entire field was now packed in to the playing hall, with another round of accelerated pairings facing them. This time, however, the round was fairly devoid of upsets. Steve Surak (2125) notched the best performance, snipping a half point away from DeFotis. Also held to draws were Bereolos (against Jeff Wiewel (2069)) and Ken Wallach (2210) (against Krom). These three draws would prove to be a "Swiss Gambit" of sorts for these three strong players. Meanwhile, Ken's brother Cliff (2114) became Chow's second victim.

ROUND 3

The field returned to regular pairings; a breather of sorts for the leaders before the "real wars" were to begin on Sunday. Chow made it 3-0 with a win over Hickman. Meanwhile, John Krom continued his role as giant killer by knocking out Kaushansky. Also seeing his perfect score tumble was Giles, who was nicked for a half point by David Linn (1877). As we headed into day three, only six perfect scores remained out of the starting field of 134: McCambridge, Formanek, Yedidia, Chow, and most interesting of all, Andy and Erik Karklins.

ROUND 4

Chow (2371)	1-0	McCambridge (2567)
Formanek (2463)	1-0	A. Karklins (2361)
E. Karklins (2240)	1-0	Yedidia (2387)
DeFotis (2415)	1-0	Wiewel (2069)
Zabell (2079)	1/2-1/2	Giles (2345)
Bereolos (2235)	1-0	Krom (2067)
Easter (1916)	0-1	K. Wallach (2210)

Formanek and Chow were both thorough in their respective victories. For Albert, the win must have been sweet revenge for his surprisingly quick loss to McCambridge at the Midwest Masters. The most exciting game for the crowd proved to be the Board 3 match-up between Erik Karklins and Yedidia. After a time scramble with 40 moves completed, Karklins achieved a winning position where he could have forced mate in two. To the surprise of the crowd watching the game, Karklins, after six minutes of thought, missed the combination. He did not, however, give up his superior position, and managed to grind out the point some time later. An interesting case of time pressure befuddling the mind even after the actual control has been made.

Closing in on the three leaders were three others with 3 1/2-1/2: DeFotis, Bereolos, and Ken Wallach (remember, they all drew in Round 2!). The stage was set for an interesting final round.

ROUND 5

Chow (2371)	1-0	Formanek (2463)
DeFotis (2415)	1/2-1/2	E. Karklins (2240)
K. Wallach (2210)	1-0	Bereolos (2235)

Not only did Albert Chow win his fifth straight, but he unmercifully dispatched Formanek in 23 moves. Even though Ed won an exchange early, it was not nearly enough compensation for the fury of Chow's lethal Kingside attack. It was now a waiting game for Albert as the DeFotis-Karklins game would determine if he would share the title or win the title outright. DeFotis and Karklins soon

traded Queens off and after a time scramble, couldn't achieve anything better than an opposite colored Bishops ending. They quickly agreed to halve the point, and Albert Chow staked his claim to the \$600 first prize. For Albert, this was another title in an already impressive string of championships in a fairly short chess career. His new rating of 2430, however, attests to the rewards that talent and hard work can produce. We all certainly look forward to watching Albert's future overtures in the national and international arenas.

Erik Karklins' draw in the last round gave him 4 1/2-1/2 and a share of second place and a \$300 prize. Erik played solid chess throughout and was well deserving of the prize. He was joined by young Ken Wallach, who by defeating last year's co-champion Bereolos, also scored 4 1/2-1/2. He too was well deserving of his position.

Finally, a few notes on some other fine performances:

Six players shared the Expert prize, each winning \$73.33. Among those, Sandy Zabell (2079) had a fine tournament, taking a first round half-point bye, drawing Giles in a nice display of tenacious endgame defense, and upsetting Gregg Small (2295) to achieve his 4-1 score. In the *deja-vu* department stood Mark Marovitch. For the second straight year, he upset James Mills in the last round to score 4-1 and share a prize, this time for top Expert.

The top-rated A player, E. O. Sollano (1998) was the only A player to score 3 1/2-1 1/2, thus earning him the \$240 prize. The other big prize winner was Henderson Johnson (1435), whose 3-2 score took the Top /Below prize of \$160. After losing his first two games, Johnson roared back to win his last three, including upsets over Vivian Schmucker (1765) and Vic Fera (1873).

As usual, the tournament was organized by the Oak Park-Forest Park Chess Club. Todd Barre and Chris Musgrave directed the event. In addition, the directors are grateful for the assistance from Greg Bungo, Erv Sedlock, Steve Surak, John Barstad and John Barstad (father and son) in "set-up" and "tear-down". See you next June at Master Challenge VIII!

GAMES FROM MASTER CHALLENGE

annotated by Albert Chow

FM Albert Chow-IM Edward Formanek

1 d4 Nf6 2 c4 e6 3 g3 c5 (3...d5 and 3...Bb4+ are solid alternatives) 4 d5 exd5 5 cxd5 b5 6 Bg2 Bb7 (This bishop move prevents the natural developing move 7 Nf3. Lawrence Chachere played 6...d6 against me at the 1983 Illinois Open. See the April 1985 ICB) 7 e4 c4? (What is the meaning of this weird pawn advance? Depending on White's move, Black can place his bishop on b4 or c5. White must not react mindlessly or Black's idea will be justified, e.g. 8 Ne2 Bc5 9 O-O Qb6 10 Nbc3 Ng4! 11 Qe1 Ne5 and Black is very happy. However, the drawbacks of 7...c4 are clear. White now has the d4 square for his pieces. A knight would be especially strong on this central square, hitting b5 and f5. A better move for Black was 7...d6, leading to an interesting Benoni battle) 8 Be3! (8 e5 was very tempting, since I wanted to punish Black's 7th move. But after ...Bb4+ a continuation such as 9 Nc3 Qe7 10 f4 d6 leads to an unclear mess, since White's "strong" central pawns may become weak. Another idea is moving off the e-file with 9 Kf1 Ng8, but I wasn't crazy about having my king wandering around the center. 8 Be3 develops a piece, controls the g1-a7 diagonal, and

MASTER CHALLENGE VII PRIZE LIST

1st	Albert Chow	5-0	\$600.00
2nd-3rd	Erik Karklins	4 1/2-1/2	300.00
" "	Ken Wallach	" "	" "
4th-10th	Vincent McCambridge	4-1	14.29
" "	Ed Formanek	" "	" "
" "	Greg DeFotis	" "	" "
" "	Jonathan Yedidia	" "	" "
" "	Morris Giles	" "	" "
" "	Marvin Dandridge	" "	" "
" "	Scott Zingheim	" "	" "
1st-6th Expert	Lawrence Chachere	4-1	73.33
" "	Kevin Noren	" "	" "
" "	Mark Marovitch	" "	" "
" "	Sandy Zabell	" "	" "
" "	Jon Gotz	" "	" "
" "	Thomas Harris	" "	" "
1st A	E. O. Sollano	3 1/2-1 1/2	240.00
2nd-10th A	Gee Leong	3-2	20.00
" " "	Keith McDaniel	" "	" "
" " "	Larry Servi	" "	" "
" " "	Roger Hickman	" "	" "
" " "	Craig Sandford	" "	" "
" " "	Mark Siwek	" "	" "
" " "	David Linn	" "	" "
" " "	Rob Sax	" "	" "
" " "	Roger Allison	" "	" "
1st-5th B	William Buttny	3-2	77.00
" " "	Dave Monatelli	" "	" "
" " "	Mark Sefcheck	" "	" "
" " "	Bob Yakich	" "	" "
" " "	David Byrnes	" "	" "
1st C/Below	Henderson Johnson	3-2	160.00
2nd-3rd C/Below	Jim Froelich	2 1/2-2 1/2	40.00
" " "	Myron Cannell	" "	" "
1st Unrated	Dean Moore	1-4	50.00 + Trophy








closes the e-file) Bb4+ 9 Nc3 Qe7 (Black threatens the e-pawn, and if White defends it he may lose the initiative, e.g. 10 f3? Nxd5, or 10 Qc2 Ng4 11 Bd4 Ne5, or 10 Qd4 d6 unclear. But Black has paid a price for all these "aggressive" moves. Black's king isn't castled, his queenside pieces don't participate, and it takes time to go pawn grabbing) 10 Nge2! Nxe4 11 O-O Bxc3 (White's lead in development gives Black problems on other replies as well. 11...Nf6? 12 d6, 11...Nxc3 12 bxc3 Bd6 13 Nd4, and 11...Nd6 12 Nd4 are all unpleasant) 12 bxc3 O-O 13 Re1! d6 14 Nd4! (White threatens to pin and then win the knight on e4 with 15 Bf4, and the b5 pawn is hit too) 14...Nc5? (The knight must move and Black is attracted to the possibility of planting it on d3. But this is wrong because now the knight can't help defend the king. 14...Nf6 was better after which White can choose to restore material equality with 15 Nxb5 or try for more with 15 Nf5 Qd8 16 Bd4. Two different blunders are 14...Bxd5? 15 Nf5 Qe6 16 Qxd5!, and 14...Nxc3? 15 Bd2!) 15 Nf5! (Much stronger than 15 Nxb5) 15...Qf6 (15...Qd8 16 Qg4 g6 17 Bd4 f6 18 Re7 and White's attack doesn't stop) 16 g4 (I didn't play 16 Qg4 because 16...Bc8 is annoying, but 16 Bh3 was also good) 16...Nd3 (16...Nbd7 17 Bd4 and 16...Qd8! 17 Bd4 f6 18 Re7 Rf7 19 Rxf7 Kxf7 20 g5! are both advantageous for White) 17 Bd4 Qd8 18 Bxg7! (Black's king now comes under the fire of White's pieces and there isn't a good defence) 18...Nxe1





(cont. on pg. 19)

2ND MIDWEST TEAM CHAMPIONSHIP

5-Round Swiss System -- Time Limit: 50 moves/2 hours

- WHEN:** Saturday and Sunday, December 7-8, 1985
- WHERE:** Mohr Community Center, Jackson & Desplaines, Forest Park, IL.
Conveniently located off the Eisenhower Expy. (I-290).
Eastbound-exit at Desplaines, then turn left. Westbound-exit
at Harlem and go north to Jackson, then turn left.
- WHO:** Open to 4-player teams plus 1 alternate per team. Average
rating of top 4 players must be under 2200 using NOVEMBER,
1985 rating supplement. Unrateds will be figured at 50 pts.
below lowest rated player on team.
- ENTRY FEE:** \$60 per team if received by December 4. \$72 per team at site
- CASH PRIZES:** \$1125 based on 25 teams. Class prizes based on 4 teams per
class.
1st \$300 + free entry to US Amateur Team Championship-Midwest
2nd \$150
Team Average Under 2000 - 1st \$200, 2nd \$100
Team Average Under 1800 - 1st \$150, 2nd \$75
Team Average Under 1600 - 1st \$125
Best Team Name or Team Gimmick - \$25
4 INDIVIDUAL TROPHIES to best performance on each board.
TROPHY to top High School Team.
- REGISTRATION:** 8:00 - 9:00 a.m. Captain's Meeting (Mandatory) - 9:00 a.m.
- ROUND TIMES:** Saturday - 9:30, 2:30, 7:30
Sunday - 10:30, 3:30

    ATTENTION INDIVIDUAL PLAYERS    

 If you don't have a team but wish to play in the tournament, you 
may enter as an individual entry at 1/4 of the team's entry fee
(\$15 by December 4, \$18 at site). Please be at the Tournament
 site by 8:45 a.m. on Saturday or call Todd Barre at (312) 294-3202 
for further information or team assignment.

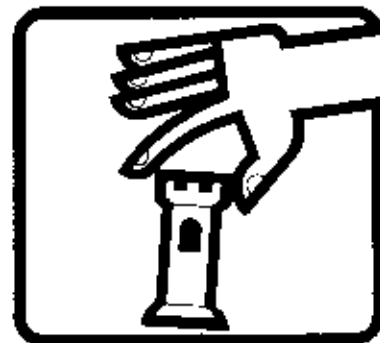
**ENTRIES &
INFORMATION:** Send entries to Todd Barre, 821 S. Williams St. #A503,
Westmont, IL 60559. For more information, contact Todd at
(312) 294-3202 (weekdays).

SPONSORED BY THE OAK PARK-FOREST PARK CHESS CLUB

November 16-17, 1985



Illinois Class



Championships

4-SS, 45/2, Orland Park Administration Building, 14700 Park Avenue, Orland Park, IL. Players may play in their class or one class above. 5 sections: MASTER/EXPERT, EF: \$20 if rec'd by 11/12. \$\$G 250-125, 2199/under 100. CLASS A, EF: \$15 by 11/12. \$\$ (b/15): 75-25. CLASS B, EF: \$15 by 11/12. \$\$ (b/15): 75-25. CLASS C, EF: \$15 by 11/12. \$\$ (b/\$5): 75-25. CLASS D/E/Unr., EF: \$10 by 11/12. Chess clock. Unr. may play in D/E/Unr. or M/E section only. ALL, EF \$5 more at site. ICA mem. req. of IL res. \$10, jr. \$6, other states OK. Reg. 8:30-9:30 a.m., Rds. 10-4 each day. An IL tourn event. Ent: ICA, P.O. Box 43336, Chicago, IL 60643. Info: Walter Brown (815) 723-9453. LS.

(6 Blocks West of LaGrange Road)

BRADLEY SUMMER OPEN

50 players came to Peoria on August 3 for this Mini-Tour event, and 36 became new ICA members. Congratulations to TD Bill Wilkinson and the Greater Peoria Chess Federation on a marvelous turnout! Tim Sage won all his games to take clear first, and he was never pressed. But the real surprise had to be 19 year old West German exchange student Bernd Skiera, who is currently living in Springfield. Bernd described himself as a "club" player with an estimated strength of 1900, but he scored 3.5-0.5 against 4 experts. His provisional rating off the computer crosstable is 2383!

Richard Vlastnik(2058)-Marc Plum(2106) King's Gambit

1 e4 e5 2 f4 exf4 3 Nf3 g5 4 h4 g4 5 Ne5 Nf6 6 Bc4 d5 7 exd5 Bg7 8 Nc3 O-O 9 d4 Nh5 10 Nxc4? Ng3! 11 Rh2 Qe7+ 12 Kf2 h5 13 Ne5 Bxe5 14 dxe5 Qc5+ 15 Kcl Qg1+ 0-1

Doug Ulitch(2003)-Bruce Gardner(2226) Modern Defence

1 e4 g6 2 d4 Bg7 3 Be3 d6 4 Nc3 Nd7 5 Nge2 Ngf6 6 f3 c6 7 Qd2 Qa5 8 Nc1 a6 9 Be2 b5 10 Nb3 Qc7 11 O-O 0-0 12 a3 c5 13 d5 Nb6 14 Bh6 Rb8 15 Bxg7 Kxg7 16 Rb1 Bd7 17 Nd1 h5 18 Ne3 Rh8 19 c3 Rbg8 20 Nc1 g5 21 Bd3 h4 22 Ne2 Kf8 23 b4 c4 24 Bc2 Qc8 25 Nd4 g4 26 Nef5 gxf3 27 Rxf3 Ng4 28 Rb1 Ne5 29 Rh3 Bxf5 30 Nxf5 Ng6 31 Qf2! Qc7 32 Nxb4 Ne5 33 Ng6+ Rxc6 34 Rxb8+ Rg8 35 Qh4 f6 36 Qh6+ Kf7 37 Bd1 Rxb8 38 Qxb8 Kg6 39 Rf5 Nxd5 40 Bh5 mate

Marc Plum(2106)-Bernd Skiera(UNR) English

1 Nf3 Nf6 2 g3 g6 3 Bg2 Bg7 4 c4 c5 5 Nc3 Nc6 6 h3 O-O 7 Bb2 e5 8 O-O h6 9 Ne1 d6 10 Nc2 Ne8 11 Nd5 f5 12 f4 Nf6 13 h4 cxb4 14 fxe5 dxe5 15 a3 bxa3 16 Bxa3 Re8 17 Bc5 e4 18 Bb6 Qd6 19 Nc7 Rb8 20 Nxe8 Nxe8 21 Rxa7 Nxa7 22 Bxa7 Ra8 23 Be3 Bd7 24 d4 exd3 25 exd3 Bc6 26 Qd2 Bxg2 27 Kxg2 Ra2 28 Rf2 Nf6 29 h3 Nh5 30 Bf4 Nxf4+ 31 gxf4 Rb2 32 Qe3 Rb3 33 Rd2 Kh7 34 Ne1 Bd4 35 Qf3 Rb1 36 Re2 Bf6 37 Nc2 Qb6 38 Qe3 Qc6+ 39 Qf3 0-1 (39...Rg1+)

Tim Sage-Andy McGowan Sicilian

1 e4 c5 2 Nf3 d6 3 d4 cxd4 4 Nxd4 Nf6 5 Nc3 a6 6 Be2 e5 7 Nb3 Be6 8 f4 Qc7 9 g4 Bc4 10 g5 Nfd7 11 f5 Be7 12 Be3 b5 13 Qd2 Nb6 14 O-O-O N8d7 15 Rhf1 b4 16 Nd5 Bxd5 17 exd5 Nc4 18 Bxc4 Qxc4 19 Qd3 Qxd3 20 Rxd3 Bd8 21 Nd2 f6 22 h4 Bb6 23 Ne4 Bxe3+ 24 Rxe3 Ke7 25 Rg3 Rhf8 26 gxf6+ Nxf6 27 Rxc7+ Rf7 28 Rxf7+ Kxf7 29 Nxd6+ Ke7 30 Nc4 e4 31 d6+ Ke8 32 Kd2 Nd7 33 Ke3 Kf7 34 Kxe4 Rc8 35 Kd4 Rc5 36 Re1 1-0

Wisconsin 40.5-Illinois 19.5

Remember the horrible score above from last year's Illinois-Wisconsin match? Well, we have a score to settle in a big way, and we will get our chance to do it on either November 9th or 10th in Racine, Wisconsin. SET THIS DATE ASIDE NOW!!

Current plans call for the same rules as last year. This means we will be allowed an average team rating of 2000, so players of all strengths will have a chance to participate. The teams will consist of 30 players, although more players may be allowed to play if both sides have players available-last year Wisconsin had over 40 players available, while Illinois could field only 29.

In order to defeat Wisconsin, also known as the Great White North, we will need a much better turnout by Illinois masters. MASTERS TAKE NOTE!!! WE NEED YOU FOR

TIM JUST'S OPEN/RESERVE

by Tim Just and Kevin Bachler

Scott Zingheim and Morris Giles tied for 1st-2nd in the 18 player Open section at Illinois Beach State Park in Zion. Each scored 4-1. Brian Ruggiero and Roger Allison shared class A honors with their scores of 2-3.

The 18 player Reserve section saw 1st-2nd money split three ways, between the two highest rated players, Herb Baumann (1792) and Don Martin (1787), and Jay Saltzman (1163). Each scored 4-1. Jay also took top honors in the D/E/UNR class. Top C was Philip Pilgrim with 3-2.

The last time Giles and Zingheim faced off in the last round of a tournament, they went in tied for 1st, and Giles won. Zingheim wanted to repay the favor in this game, although a draw would have given him 1st outright. It was not to be.

Giles-Zingheim: 1 e4 c5 2 Nf3 Nc6 3 Nc3 Nc6 4 Bb5 g6 5 O-O Bg7 6 e5 Ng4 7 Bxc6 dxc6 8 Re1 O-O 9 d3 Nh6 10 Ne4 b6 11 h3 f6 12 exf6 exf6 13 Bf4 Nf7 14 c3 Ba6 15 d4 cxd4 16 Nxd4 f5 17 Nd6 g5 (17...Nxd6 18 Nxc6 or 18 Ne6) 18 Ne6 Qf6 19 Nxf8 gxf4 20 Nxf7 Bxf8 21 Ne5 Bb7 22 Qh3+ Kh8 23 Rad1 c5 24 Rd7 Be4 25 Nf7+ Kg7 26 Ng5+ Kh6 27 Nxe4 Qe5 28 Qf7 Bg7 29 Rd6+ 1-0

Lately we've been telling people that Lake County is the "Home of Caveman Chess". Apparently Kevin Schmutzgerow felt right at home.

Schmutzgerow-Bungo: 1 e4 d6 2 d4 Nf6 3 Nc3 g6 4 Bg5 Bg7 5 Qd2 h6 6 Be3 c6 7 g3 Qc7 8 f4 e5 9 dxe5 dxe5 10 Bc5 Nbd7 11 Bd6 Qb6 12 Nf3 Ng4 13 O-O-O Qf2 14 Bc4 Qxf3 15 Nd5 cxd5 16 Qxd5 Bf6 17 Qxf7+ Kd8 18 Be6 Re8 19 Bxd7 Bxd7 20 Bc7+ Kxc7 21 Qxd7+ Kh8 22 Qxe8+ Kc7 23 Qd7+ Kh8 24 Qd6+ Kc8 25 h3 Nf2 26 Qxf6 Nxd1 27 Rxd1 Qe3+ 28 Kbl 1-0

Overall I had a horrible tournament. I played some terrible moves against Bungo -- which he punished most effectively! In the final round I had lost interest to the point of playing "speed chess" against expert George Ljashenko and throwing a large opening advantage into the lake! But in round 3, one of my favorite fellow cavemen and I slugged it out in the middle of the board.

Bachler-Giles: 1 Nf3 d6 2 d4 f5 3 Bg5!? Nbd7 4 Nc3 Ngf6 5 d5 e5 6 dxe6 Nc5 7 Nd4 Nxe6 8 Nxe6 Bxe6 9 e4 Be7 10 exf5 Bxf5 11 Bc4 Ne4! 12 Nxe4 Bxe4 13 Be3 Bf6 14 Qg4 Qe7 15 O-O-O h5! 16 Qh3 Qd7 17 Be6 Qa4 18 Rd2 Qb5 19 Bd4 Bg5 20 Re1! Bxd2+ 21 Kxd2 Qg5+ 22 Re3?! (22 Kd1 with good prospects) Kd8 23 f4! Qxf4 (23...Qxg2+ 24 Qxg2 Rxc2 25 Bxc7 Rh7 26 Bf6+ Ke8 27 Bg8+) 24 Bxc7 Rh7 25 Qg3! Qxg3 26 Bxf6+ Ke8 27 Rxc3 Rf7 28 Bxf7+ Kxf7 29 Bd4 Rg8 30 Rxc8 Kxc8 1/2-1/2

THIS MATCH!! ENTER EARLY AND OFTEN!!

We also need VOLUNTEERS to provide transportation to the Great White North for our team. Though a dogsled may be handy, any automobile will do fine.

Whether you want to play, watch, or just help out, your team needs you! To keep up on match developments, or to place your entry for the match, WRITE:

Kevin L. Bachler, 2851 Glen Flora #111, Waukegan, IL 60085.

Entries MUST be received by midnight October 19th. Team rosters will be mailed to all entrants on October 21st. Only mail entries will be accepted. Notification to team members will also be by mail only!

The Midnight Oil

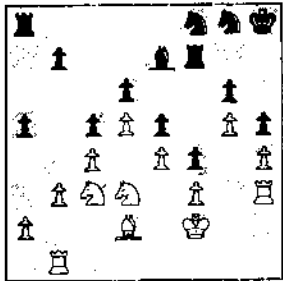
by John Tomas

Late in 1981 I was asked to annotate some games for RHM Press. At that time my rating was well over 2300 and I had gained a certain amount of notoriety for the quality of my annotations in the ICB. So, one evening I received a call from International Master Jeffrey Kastner who told me that RHM was planning a series of loose-leaf supplements to their opening books and wanted some masters to do short, original notes to games of theoretical importance. Helen Warren had suggested my name and would I like to do some games at \$10 a game? The possibility of getting paid to annotate games I would have to annotate for myself anyway was irresistible and naturally I immediately signed on.

I later learned that this work was much harder than it might appear. For one thing, there was the need to be original. Several of the games had already appeared in Informant, and it is very difficult to find anything new to say about a game annotated by, say, a Ftacnik or a Huebner. Moreover, I didn't always understand the games! I recall one game Sax-Federowicz from Hastings a few years ago which baffled me completely. I annotated it, but whether my annotations had anything at all to do with what the players were thinking about, I had not the slightest idea. (During the Student Team, I had the joy of discovering from Federowicz that the players themselves didn't understand the game!) All in all, the work I did meant that I averaged about \$2.50 an hour; slave wages in anyone's book.

However, when I started I was full of enthusiasm for the project, especially since I was assigned to the Pirc and King's Indian sections of the survey. My enthusiasm lasted through the first game, a rather easy to understand Ulf Andersson endgame, and I sat down to my second game, Butnoris-Mochalov, Krasnodar 1981, at about 9 PM one evening determined to finish it off in a couple of hours and earn \$5 an hour. Alas, it was not to be.

The opening and early middlegame went quickly enough; Black had tried ...c5 in a long line (what the French call a "Grande Variante") King's Indian and then made a couple of errors in a slightly inferior position to leave himself without counterplay in the position diagrammed below.

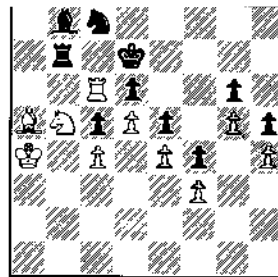


AFTER WHITE'S 27th MOVE

White has the type of endgame advantage which experienced masters can expect to win against just about any opposition. White has exchanged his bad bishop and left Black with a very bad bishop and considerably less space. Moreover, White will break open the queenside with b3-b4 and his spatial advantage means that Black will have problems preventing penetration.

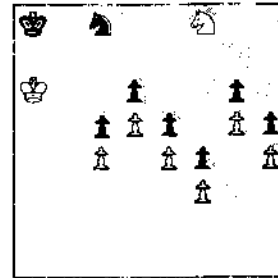
Perhaps most importantly, Black has no possibility of generating counterplay to cut across White's plan. That plan is simplicity itself: 1) march the king to the queenside; 2) break with b3-b4; 3) exchange off all the pieces; 4) penetrate with the king; 5) win the pawn on d6 and the game.

It was now about 9:45 and I fully expected to finish before 11 PM. 27...Bd8 28 Nb5 Bc7 29 Ke2 Bb8 30 Rhh1 Ne7 31 a3 Nc8 32 b4 axb4 33 axb4 b6 34 Ral Rxa1 35 Rxa1 (Parts one and two of the plan are now complete, and I was very happy; everything was so obvious that I hadn't been required to make a single note) 35...Rb7 36 Ra6 Nd7 37 bxc5 bxc5 38 Bc3 Ncb6 39 Nb2 Kg8 40 Kd3 Kf7 41 Ba5 Ke7 42 Kc3 Nc8 43 Kb3 Ndb6 44 Na4 Nxa4 45 Kxa4 (Each time another piece comes off, White's king penetrates a little farther) 45...Kd7 46 Rc6!



AFTER 46 Rc6!

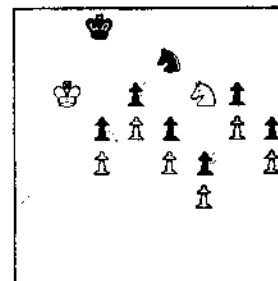
(Zugzwang! Once the Black knight moves, White can force the exchange of rooks) 46... Ne7 (If Black plays 46...Ba7? 47 Rxc8! Kxc8 48 Nxd6+ is an even easier win) 47 Rb6 Rxb6 48 Bxb6 Kc8 49 Ka5 Kb7 50 Bd8 Nc8 51 Nc3! Bc7+ (Black takes the opportunity to rid himself of his bad bishop. If he doesn't White's coming Nc3-a4-b6 forces him into a pure bishop ending which offers no possibility to resist) 52 Bxc7+ Kxc7 53 Ka6 Kb8 54 Nb5 Ka8 55 Nc7+ (Adjourned) Kb8 56 Ne6 Ka8 57 Nf8



AFTER 57 Nf8

(It was now about 11 PM and I figured I was about done) 57...Kb8?!! (What's this? Why is he giving up the pawn? It can't be a simple blunder, not this soon after adjournment. Now the win is relatively trivial) 58 Nxxg6 Kc7 59 Nf8 Ne7 60 g6 Kd8 61 Kh7 Ke8 62 g7 Kf7 63 Kc7 Kxxg7 64 Ne6+ Kf6 65 Kxd6 Ng6 66 Kc7 1-0

Why did he give up the pawn? He must have seen something during adjournment which convinced him that 57... Ne7 gave White a straightforward win and decided to try the less obvious move, the one White may not have analyzed. But what was it? The more I looked, the less I understood what was going on. About 12:30 I decided to try and relax: I took a bath, opened a beer and put on some Mozart. but the position haunted me, and about 1:30 I decided to have "one last look" at the position before I went to bed. Well, 57...Ne7 58 Kb6 Kb8 59 Nd7+ Kc8 60 Nf6! was once again zugzwang.



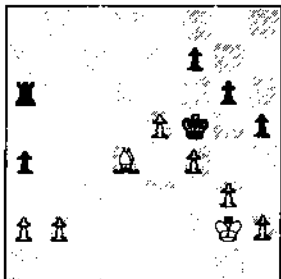
AFTER 60 Nf6!

If Black played 60...Kb8 then 61 Ne8 Nc8+ 62 Kc6 is simple, but what about the move which had baffled me earlier: 60...Kd8? Then 61 Kb7 Nc8 62 Kc6 Ke7 63 Kc7 Na7 traps the knight. But then I realized that 64 Kb7? Nb5! lets the knight out since White cannot capture on b5. I tried mightily to find a win after allowing the knight to escape, but about 3:00 AM I finally gave up. Just about that time I discovered the final piece of the puzzle. After 63...Na7 White ignores the knight! I had tried that before, but after 64 Nd7 Black is finally forced to capitulate since 64...Nb5+ 65 cxb5! c4 66 Nc5!! wins. If Black captures the knight White's pawn on d5 runs through to queen first, and if he plays c3, White has d3 for his knight.

[There is an easier solution which explains why Black felt he had to try 57...Kb8. After 57...Ne7 White should play 58 Nd7! to trap Black's king. He then wins easily after either 58...Ng8 59 Kb6 Ne7 60 Kc7, or 58...Nc8 59 Nb6+. I still like the story John, and I'm glad you found something pretty after all your hard work!-DS]

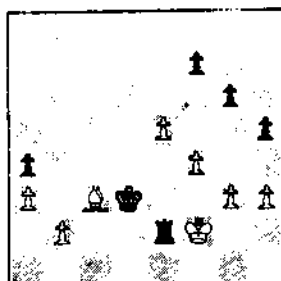
I mention this story because it seems typical of the experience of many chessplayers, either tournament or professional. This game of ours encourages this type of all-night commitment to working out the ramifications of specific positions. If we are lucky, we get the type of obviously right result that I got as a result of my all-nighter. If not, we wake up the next morning with a chess hangover and go to work tired and frustrated.

My second example comes from my own praxis. Like many chess masters, I keep a journal in which I list and analyze all the games I play. At least this is the way it works in theory; practice is another matter. Right now I am about two years behind and falling further off the pace. Recently I was analyzing a game I won in 1981 against John Burke in the Chicago Summer Classic. It's best not to wait so long to analyze such games because it's very easy to forget things which were very obvious during the game or post-mortem, but sometimes such strictures are totally beside the point. The game was rather an up and down affair -- Burke got the advantage out of the opening, but made a speculative sacrifice which I could have refuted out of hand but did not. Instead I kept an extra exchange but defended the position poorly and was forced to return a couple of pawns and allow him a repetition if he wanted it. Not unnaturally he chose to try to win, but quickly reached the difficult endgame shown in the diagram below.



AFTER BLACK'S 40th

rook into the game) 45 h3 Re4 46 Kf2 Re2+...



AFTER 46...Re2+

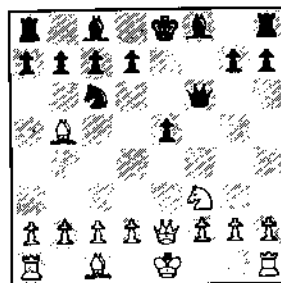
making an off-hand comment to the effect that then I could win by making use of zugzwang. But thinking that and actually proving it were two different things as I found out late one night recently.

It's fairly clear that Black doesn't want to allow White to eliminate most of the pawns with a timely g3-g4, so Black should play 47...Rh2 48 h4. Now I forgot my original idea and tried plans featuring ...Kc2 and got nowhere. But even a glance at the position shows that White has no reasonable moves. So all Black should have to do is repeat the position with White to move, and White would be in zugzwang. 48...Re2 49 Bd4! Rc2! 50 Bc3 Rh2! and the required zugzwang has been achieved. This would have been a much nicer way to end the game. Honesty compels me to admit that 48...Rc2 49 g4 also wins, but it allows White unnecessary swindling chances.

It is not only endings which generate late night study, I've also been involved in quite a bit of opening study late into the night. A couple of years ago Eric Schiller, who was then editor of the ICB, asked me to review his (with Leonid Shamkovich) new book on the Ruy Lopez Schliemann. Since he was giving me as much space as I needed, I decided to do the job up right. In spite of the fact that I hadn't been playing 1 e4 for a couple of years, I knew quite a bit about the Schliemann, but only from the White side. Basically, I distrusted the opening, as I instinctively do any system in which Black sacrifices a pawn in the opening.

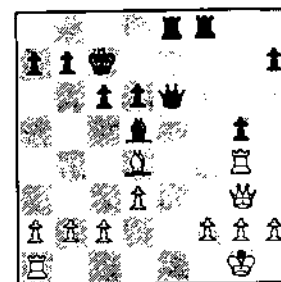
I was pleased to find that I enjoyed the book (I hate giving books bad reviews), but I did feel that the authors were a little too willing to sacrifice pawns, and were also too willing to assume compensation. This is alright in subvariations which few people are likely to play, but must be challenged in the main lines. Well, what is the main line of the Schliemann? Obviously, it must be the line with 4 Nc3 (1 e4 e5 2 Nf3 Nc6 3 Bb5 f5 4 Nc3). One of the nice things about the book was that Shamkovich and Schiller were willing to admit that the classical line: 4...fxe4 5 Nxe4 d5 6 Nxe5! was simply bad for Black. However they asserted that Black could equalize with Tartakower's move 5...Nf6!? Clearly this was the place to start serious analysis.

The line I chose to examine occurs after the moves 6 Nxf6+ Qxf6 7 Qe2!?



AFTER 7 Qe2!?

ing or recommending it) 11 O-O Bd6 12 Nc4 Rhf8 13 Bd2 (Once again Shamkovich and Schiller mention the possibility that 13 Be3 may be better, but do not analyze it) Rde8 14 Qf3 Qg6 and now the column concludes by quoting the 1976-77 correspondence game Troomsdorf-Roose which continued 15 Nxd6+ cxd6 16 Rfel Be6 17 Qg3 Qf5 18 Bc3 g5 19 Bd4 Kc7 20 Re4 Bd5! 21 Rg4 Qe6! and Black has a slight edge.

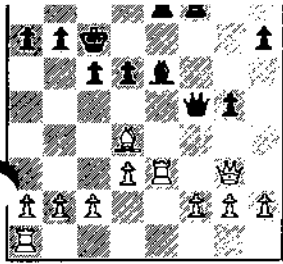


AFTER 20...Qe6!

and win easily.

My next thought was that White might play an immediate 21 f3! to close the long diagonal and protect e1. Then White even has a threat: 22 c4! winning the obnoxious Black bishop. I even considered 21...c5 22 Bxc5 Bc6 for Black but eventually discarded it. Black must play 22...Qe2 with the threat of 23...h6 followed by 24...Be6 among others. To meet this White plays 23 Rxf5 Rg8 24 h4! Qxc2, and the position is obscure. Both sides have kings which are insecure, and the opposite color bishops mean that the middlegame will be full of danger for both sides and the endgames will be drawish.

This is the type of position which can be analyzed forever, but at the time it seemed as though Black had about equal chances. This was obviously not the way to go, especially not at 2:30 in the morning, but how about earlier; to be specific, why not try 20 Re3 rather than 20 Re4 which allows Black to post his bishop on d5 with tempo?



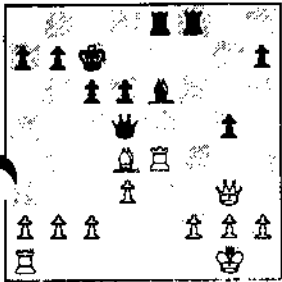
AFTER 20 Re3

now 20...Qd5 21 Rxe3
 22 Rxe3 leaves White clearly better, and 20...h5 21 Rf3 Qd5! (Clearly the only move to give Black any play) 22 Rxf8 Rxf8 23 Qe3!, and all the complications seem to be in White's favor, e.g. 23...Re8 24 Bf6! Bf7 25 Qxg5! is even possible. After I found that 20 Re3 was significantly better than 20 Re4? I didn't even bother to examine 13 Be3;

after all it was 3 AM!

That should have been the end of the story: I had sought and found what I thought was a very generous example of Black compensation for a pawn sacrifice. But when the ICB arrived a couple of months later, I found that the story had not yet ended.

When I had shown 20 Re3 to Eric, he had suggested that 20...Qd5 would keep play in the position. By the time my review appeared in print, he and Shamkovich were touting 20...Qd5 as a move which "gave compensation for the pawn". Of course this is quite different from an advantage for Black, which is what they claimed from the original variation, but I wasn't satisfied with my moral victory; I wanted more. The original idea behind 20 Re3 was to keep Black's bishop off the important d5 square. After 20...Qd5 I had achieved that aim. Now that Black no longer had Bd5 to gain a tempo, I could move the Rook there in safety. So, this night I played 21 Re4! replacing Schiller and Shamkovich's quiescent 21 Bc3.



AFTER 21 Re4!


Now White threatens to chase Black's queen with 22 c4 and then to follow up with c5, exploiting the pin on Black's pawn on d6. Black can't simply cry to get the bishop to d5, for on 21...Qf5 22 Re1! develops White's last piece, and if Black has anything for a pawn, I can't see it.

I thought that Black's best try would be to allow c4 and try to escape into an ending: 21...h5 22 c4 Qf5 23 c5 Qd5 (I find 22...Bd5 23 cxd6+ Kd7 24 Re7+! with a strong attack for White singularly unappetizing) 24 Qxd6+ Qxd6 25 cxd6+ Kxd6 26 Rael and the bishops of opposite colors may offer some drawing chances. This same idea occurs in several different sequences after 21 Re4. In some variations Black manages to exchange a pair of rooks and get his rook to the 7th rank; all without getting enough play to guarantee the draw.

So, is the pawn sacrifice sound or not? In one sense it depends on what you mean by sound. If you mean that it gives you enough play to ensure that the endgames are almost always drawn, I would have to say no, in spite of what Schiller and Shamkovich believe. If you mean by sound that it gives Black active play which he might eventually turn into a draw, or if White plays badly, a win, well.... Please note however, that I'm willing to be convinced. If there's anyone out there who wants to burn his own midnight oil and can improve on this analysis, I'd like to hear from them.

A quarter-century ago Mikhail Botvinnik and Mikhail Tal contested two world championship matches in as many years. Now Gary Kasparov and Anatoly Karpov are about to do the same. Who will win this match? Will it finish? Will it even take place?

If it does take place, my pick is Kasparov in a very close match. In the year since the last match, he has shown a marked improvement in playing strength. In his two matches against Ulf Andersson and Robert Huebner he did something he has never done before -- outplay strong opponents in the endgame. Moreover, he showed that in spite of the strain of the long match, he and his match team were capable of creating new ideas in important openings. On the other hand, in his sole appearance since the match, at Tilburg, Karpov simply showed more of the same -- strong, but with no new ideas. He'll have to be better, both technically and psychologically to beat Kasparov this time around, and I don't think he can do it.





MINI-TOUR EVENT

**ICA OFFICERS
TORNADO III/CLCC
BIRTHDAY BASH FOR
TIM JUST**

OCTOBER 19, 1985

Rds: 9:15-12:45-4





PRIZES GUARENTEED!!!!!!


\$100-\$50-\$20, A=\$40, B=\$35, C=\$25
D/E=\$20, Unr.= \$10

EF: \$9 if rec'd by 10/17,
\$12 at site: 8:15-9 AM

ENT: ICA, 1521 Circle Ct.,
Waukegan, Il. 60085
312-244-7954

SITE: College of Lake County
Bldg 1,
Rt. 45 & Washington St.
Grayslake, Il.
Take tollway to Rt 120
West to Rt 45, then North

NS,NC,W,3-SS,40/1, ICA mem. Req'd



ILLINOIS TOUR UPDATE

by Kevin Bachler

Illinois Tour Standings as of September 9, 1985.

The following standings include results through the Illinois Open. Please note, however, that the Illinois Open results included here are only partial. If you won tour points in the Illinois Open, your results should be completely reflected below. If the Illinois Open simply counts as an additional event for you, then your result is not yet reflected in the standings.

There are over 400 player entries in my tour logbook (including duplicate entries for players that have changed classes.) This makes it very easy for errors to occur! For example, last issue I reported that Robert Manaster had 20 tour points in Class A. In fact, the person on the next line in my logbook, E. O. Sallano, should have been listed with 20 points and tied for first in Class A in the last ICB.

THEREFORE: CHECK THE STANDINGS. IF YOU HAVE ANY QUESTIONS, WRITE (DO NOT CALL) ME. My address is: 361 Ashwood Court, Vernon Hills, Il. 60061-2334.

DON'T FORGET, YOU MUST PLAY IN THREE TOUR EVENTS TO QUALIFY FOR A PRIZE.

Championship Section

1	Albert Chow	60	3
2	J. Bruce Gardner	30.38	2
3	Roman Dzindzichashvili	30	1
4	Steve Surak	22.5	3
5-7	Morris Giles	20	7
5-7	Bob Gruchacz	20	1
5-7	Jim Thinnsen	20	1
8	Florentino Inumerable	17.5	4
9-11	Erik Karklins	15	2
9-11	Ken Wallach	15	2
9-11	Tim Sage	15	1
12	Kevin Bachler	12.5	2
13-18	William Brock	10	3
13-18	K. A. Czerniecki	10	2
13-18	Bernd Skiera	10	1
13-18	Greg Small	10	3
13-18	John Tomas	10	1
13-18	John Wygrecki	10	1
19-20	Tim McEntee	7.5	1
19-20	Eric Schiller	7.5	1
21-25	Bob Bain	6	2
21-25	Greg Bungo	6	4
21-25	Angelo Sandrin	6	4
21-25	Peter Vesely	6	2
21-25	Scott Zingheim	6	3
26	John Gotz	2.5	1
27-38	Howard Bohannon	.38	1
27-38	Jeffrey Britt	.38	2
27-38	J. Kevin French	.38	1
27-38	Terry Vonzel Hutson	.38	1
27-38	Victor Mata	.38	1
27-38	Andrew McGowan	.38	1
27-38	Marc Plum	.38	1
27-38	Irving Rosenfeld	.38	1
27-38	David Shin	.38	1
27-38	Robert Steele	.38	1
27-38	Douglas Ultch	.38	1
27-38	Paul Windsor	.38	1

Expert Section

1	Florentino Inumerable	26	4
2-3	J. Bruce Gardner	24	2
2-3	Ray Doyle Saterlee	24	4
4	Steve Surak	21	3
5	John Gotz	16	3

6-8	William Brock	12	3
6-8	K. A. Czerniecki	12	2
6-8	John Wygrecki	10	1
9-10	Greg Bungo	9.71	5
9-10	Angelo Sandrin	9.71	5
11-13	Kevin Bachler	9	1
11-13	Andrew McGowan	9	1
11-13	Marc Plum	9	1
14	Lawrence Chachere	7.71	1
15-19	Thomas J. Harris	6	1
15-19	Mark Marovitch	6	3
15-19	Kevin Noren	6	1
15-19	Pete Stein	6	1
15-19	Sandy Zabell	6	2
20-24	Siamack Bondari	1.71	1
20-24	Dan Kamen	1.71	1
20-24	Tim McEntee	1.71	2
20-24	Mark Zvilius	1.71	1

Class A

1-3	Tim McEntee	20	2
1-3	E. O. Sollano	20	1
1-3	George Umeziuwa	20	1
4-6	Jon Gotz	10	3
4-6	Bernd Skiera	10	1
4-6	Peter Vesely	10	1
7-8	Mike Cronin	7.5	2
7-8	John Popovitch	7.5	1
9	Robert Johnson	7.43	4
10	Philip Anderson	7	1
11	Mark Sefcheck	6.8	2
12	Keith McDaniel	6.11	2
13-17	Luis Bernal	6	2
13-17	Chris Brown	6	1
13-17	Mike Ferguson	6	1
13-17	Jon Goldman	6	1
13-17	David Rajendran	6	1
18	Thomas Barnard	5	1
19	Bill Smythe	4.58	5
20-22	Kevin Gensler	3.75	1
20-22	Douglas Middleton	3.75	1
20-22	David Steele	3.75	1
23-25	Leon Lipten	2	1
23-25	Bob Rundorf	2	1
23-25	Frank Tegel	2	1
26-27	Roger D. Allison	1.94	1
26-27	Roger Hickman	1.94	1
28-33	Gee Leong	1.11	2
28-33	David D. Linn	1.11	1
28-33	Craig Sandford	1.11	1
28-33	Rob Sax	1.11	1
28-33	Larry Servi	1.11	3
28-33	Mark Siwek	1.11	1
34-38	Howard Bohannon	1	1
34-38	Terry Vonzel Hutson	1	1
34-38	Irving Rosenfeld	1	1
34-38	Robert B. Steele	1	1
34-38	Douglas A. Ultch	1	1
39-41	Leslie Kistler	.83	2
39-41	Virgilio Machuco	.83	2
39-41	Edward J. Ross Jr.	.83	3

Class B

1	Todd Schremser	18	4
2-3	Phil Bossaers	16	1
2-3	Jeffrey Britt	16	2
4-6	Steven Ashby	8	1
4-6	James Enochs	8	4
4-6	Mark Hansel	8	3
7	Robert Johnson	7.43	4
8	William Buttny	6.8	2
9-12	Leslie Bale	6	2
9-12	Eric Nore	6	1
9-12	Tim Pradzinski	6	1
9-12	Richard Smiley	6	1
13-16	David Byrnes	4.8	1
13-16	Dave Monatelli	4.8	1

13-16	Mark Sefcheck	4.8	1
13-16	Bob Yakich	4.8	1
17-20	Dennis Grant	4	2
17-20	J. Kevin French	4	1
17-20	John Porter	4	1
17-20	David Shin	4	2
21-26	Timothy Bogan	3.43	1
21-26	Roger Bowen	3.43	2
21-26	Robert Forbis	3.43	1
21-26	Miguel Hernandez	3.43	1
21-26	Vivian Schmucker	3.43	2
21-26	Gregory Shapiro	3.43	1
27	Wayne Smith	3	4
28-31	James Abbott	2	1
28-31	Herbert Baumann	2	1
28-31	Jay Cole	2	1
28-31	Donn E. Nicholson	2	3
32	J. Marcellus Burke	1	2

Class C

1	Glenn Panner	12.5	7
2-5	Jeffrey Britt	12	1
2-5	Henderson Johnson	12	1
2-5	Chris Land	12	2
2-5	Randy Fronck	12	1
6	Jim Froehlich	8	2
7-11	James Enochs	6	1
7-11	Edward Klumpp	6	2
7-11	Victor Mata	6	1
7-11	Frank Randle	6	1
7-11	John Scanlon	6	2
12-13	Robert A. Dreesen	3	1
12-13	Wayne Smith	3	3
14-18	Jay Cole	2	1
14-18	Doug Lundquist	2	1
14-18	Jim Roy	2	1
14-18	Clarence Walton	2	2
14-18	Matthew Zacate	2	2
19-22	Richard Anderson	1.5	1
19-22	Ed Marschall	1.5	1
19-22	Robert Mensinger	1.5	1
19-22	Phillip Pilgrim	1.5	1
23-28	J. Marcellus Burke	1	1
23-28	Lawrence Clarke	1	1
23-28	David Cromer	1	1
23-28	Jim Marshall	1	1
23-28	Sara Sengenberger	1	1
23-28	Lawrence Serewicz	1	2

Class D/E

1	Myron Cannel	16	3
2	Glenn Panner	11	7
3	Joseph Baxter	8.86	4
4-5	Bruce Chenoweth	6	4
4-5	Andrew B. Paine	6	1
6-7	Jason Betts	4	1
6-7	Paul Windsor	4	1
8	Robert Raimo	3	1
9-10	Arthur Dupee	2	2
9-10	Subodh Verma	2	1
11-14	Kevin Brown	1	1
11-14	Ed J. Powers	1	1
11-14	Jordy Rocheleav	1	1
11-14	Lyle C. Rylander	1	1
15-20	David Carson	.86	4
15-20	Tom Fattes	.86	1
15-20	Daniel McNeal	.86	3
15-20	Jay Saltzman	.86	1
15-20	William Terbell	.86	1
15-20	Alan Thirsk	.86	1

1st prize! Also notice that many of the leaders have only played in one tour event, and may have difficulty playing in two more events to qualify for a prize. So don't count yourself out!

UPCOMING TOUR EVENTS

September 21-22 Lake County Open, Illinois Beach Resort & Conference Center, Waukegan

October 19th ICA Officer's Tornado III (Tim Just's Birthday Bash!)

The 1986 Illinois Tour

Organizers: I am working on revamping the tour to make it more organized, more exciting, more fair and simpler to understand in 1986. I will be presenting proposals to ICA in the near future regarding the 1986 tour. Among these is a proposal to announce the entire 1986 tour schedule in the December ICB.

In order to accomplish this, I anticipate all events for the 1986 tour must be announced to me by October 19th, 1985. While this is not yet 'law', I strongly urge all organizers to submit their 1986 tour events, including dates, to me, by October 19th.

----- ICA AFFILIATES -----

B7TH STREET CHESS CLUB
c/o Thomas Fineberg (312) 723-0150
721 S South Shore Dr
Chicago IL 60649

AMERICAN POSTAL
CHESS TOURNAMENTS (312) 246-6665
PO Box 305
Western Springs IL 60558

CENTRAL LAKE COUNTY CHESS ASSN
c/o Dennis Grant
1657 McKay
Waukegan IL 60087

CHESS MATES CHESS CLUB
c/o Tom Kirke
5844 Capulina
Morton Grove IL 60053

CHICAGO CHESS CENTER
2923 N Southport (312) 929-7010
Chicago IL 60657

CHICAGO INDUSTRIAL CHESS LEAGUE
c/o Jim Brotsos (312) 775-5054
6563 N Tahoma
Chicago IL 60646

HINSDALE SOUTH HIGH SCHOOL CHESS CLUB
c/o James Carvell
7401 S Clarendon Hills Rd
Darien IL 60521

LAKE COUNTY CHESS ASSOCIATION
c/o Tim Just (312) 244-7954
1521 Circle Et
Waukegan IL 60085

MIDWEST CHESS ASSOCIATION
c/o Helen Warren (312) 246-6665
PO Box 305
Western Springs IL 60558

PARK FOREST CHESS CLUB
c/o Wayne Palmquist (312) 747-2120
218 S Orchard
Park Forest IL 60466

RAE PRODUCTS & CHEMICALS
10926 S Western Ave (312) 779-3360
Chicago IL 60643

ST CHARLES CHESS CLUB
c/o Erv Sedlock (312) 252-1320
224 Dodson
Geneva IL 60134

REMEMBER! You must play in three tour events to qualify for a prize. So, if you are already in the race for a prize, be certain to play in three tournaments. If you haven't picked up any tour points yet, remember there are several events left and in most class two good results could garner

ILLINOIS OPEN AUGUST 31, 1985

PLAYER	ST	RTNG	POST					TOT	
			RTNG	1	2	3	4		5
1 GRUCHACZ, ROBERT S	IL	2471	2480	W6	W25	D23	W-5	W-4	4.5
2 THINSEN, JAMES AL	CA	2437	2446	W85	W15	D24	W36	W-9	4.5
3 CHON, ALBERT C	IL	2399	2411	W65	W37	W26	D-9	W-8	4.5
4 MARTINOVSKY, EUGEN	IL	2357	2373	W44	W52	W17	W22	L-1	4.0
5 PELTS, PETER	IL	2279	2299	W56	W39	W-6	L-1	W10	4.0
6 SATTERLEE, RAY DOY	IL	2089	2147	W35	W11	L-5	W26	W25	4.0
7 DAMOCLES, JOB C.	IL	0	2361	W84	L13	W39	W51	W28	4.0
8 GILES, MORRIS C	IL	2359	2357	W33	W50	D27	W24	L-3	3.5
9 LONOFF, MARC J	IL	2291	2302	W43	W33	W51	D-3	L-2	3.5
10 ZINGHEIM, SCOTT	IL	2289	2288	D64	W42	W34	W12	L-5	3.5
11 DANDRIDGE, MARVIN	IL	2289	2283	W87	L-6	W69	W50	H--	3.5
12 SANDRIN, ANGELO	IL	2271	2264	W48	D18	W62	L10	W42	3.5
13 SWEIG, MITCHEL J	IL	2255	2255	D47	W-7	D38	W54	D19	3.5
14 BUNGO, D GREGORY	IL	2217	2206	W67	L34	W76	D38	W45	3.5
15 CHACHERE, LAWRENCE	IL	2206	2209	W88	L-2	W55	W31	D18	3.5
16 BONDARI, STAMACK	IA	2203	2194	L18	W82	W77	D35	W48	3.5
17 ZVILIOUS, MARK	IL	2158	2162	W58	W79	L-4	W33	D20	3.5
18 UMEZINNA, GEORGE O	IL	2137	2165	W16	D12	D54	W37	D15	3.5
19 KAMEN, DAN	IL	2078	2090	L70	W57	W59	W34	D13	3.5
20 MC EETEE, TIM R	MD	2066	2090	L34	W67	W70	W49	D17	3.5
21 PUKEL, BERNARD B	IL	1437/11	1672	U--	W40	D29	W64	W38	3.5
22 YEDIDIA, JONATHAN	IL	2385	2384	W41	W28	W49	L-4	U--	3.0
23 KARKLINS, ERIK	IL	2279	2290	W40	W29	D-1	D27	U--	3.0
24 UTTERBERG, CARY	MN	2235	2233	W49	W30	D-2	L-8	D29	3.0
25 INUMENABLE, JR FLO	IL	2204	2196	W59	L-1	W44	W30	L-6	3.0
26 CZEHNIECKI, K A	IL	2179	2170	W57	W70	L-3	L-6	W55	3.0
27 WATSON, ALAN L	IL	2115	2151	W78	W74	D-8	D23	U--	3.0
28 SURAN, STEVE S	IL	2112	2121	W77	L22	W43	W32	L-7	3.0
29 TEGEL, FRANK	IL	2060	2083	W43	L23	D21	W46	D24	3.0
30 ANDERSON, PHIL	IL	1998	1995	X--	L-24	W41	L25	W60	3.0
31 GLICK, ROBERT S	IL	1949	1954	L79	W58	W71	L15	W56	3.0
32 RUNDORFF, ROBERT L	MO	1946	1949	W41	L49	W60	L28	W57	3.0
33 LIPTEN, LEON	IL	1945	1969	L-4	L35	W78	W79	W52	3.0
34 SEFCHECK, MARK M	IL	1870	1922	W20	W14	L10	L19	X--	3.0
35 MORAN, PATRICK G	IL	1793	1877	L-6	W33	W52	D16	H--	3.0
36 KRECKLER, WARREN	IL	2219	2213	D45	W64	W63	L-2	U--	2.5
37 HOUGH, KENNETH J	IL	2118	2107	W60	L-3	W56	L18	D44	2.5
38 MAYKA, TOM R	IL	2045	2053	D69	W46	D13	L14	L21	2.5
39 REYES, CATALINO B	IL	2026	2026	W72	L-5	L-7	W77	D43	2.5
40 CHAPMAN, BRIAN W	IL	2024	2021	L73	L21	D66	W68	W69	2.5
41 MC DANIEL, KEITH	IL	1967	1957	L22	D68	L46	W66	W70	2.5
42 EASTER, RON	IL	1952	1972	D13	L10	W61	W69	L12	2.5
43 WEISZ, PIERRE	IL	1925	1936	L-9	W83	L28	W72	D39	2.5
44 WEDLOCK, ERVIN F	IL	1925	1943	L-4	W72	L25	W71	D37	2.5
45 JOFFEY, ALLEN F	IL	1863	1896	D34	L54	W68	W63	L14	2.5
46 JENORAS, GERARD J	IL	1853	1879	H--	L38	W41	L29	W64	2.5
47 GREENSTEIN, BENJAM	IL	1811	1838	L50	H--	L64	W62	W65	2.5
48 FISCHER, GREGORY A	IL	1784	1804	L12	H--	X--	W62	L18	2.5
49 RABIN, JEFFREY M	IL	2197	2183	W82	W32	L22	L20	U--	2.0
50 MARDOVITCH, MARK	IL	2166	2158	W47	L-8	W60	L11	U--	2.0
51 STEIN, PETER	IL	2153	2162	W68	W75	L-9	L-7	U--	2.0
52 SMITH, CHARLES L	IL	2081	2053	W66	L-4	L35	W67	L33	2.0
53 FORD, SAMUEL M	IL	2025	2019	W71	L-9	W79	L17	U--	2.0
54 CUNDORIN, JAMES K	IL	2013	2022	H--	W45	D18	L13	U--	2.0
55 CHAR, HUNG WING	IA	1960	1963	L74	W78	L15	W59	L26	2.0
56 REARDON, KEVIN	IL	1940	1919	L-5	W88	L37	W81	L31	2.0
57 NORKUS, LEE	IL	1888	1870	L76	L19	W88	W80	L32	2.0
58 JOHNSON, BRUCE L	IL	1870	1858	L17	L31	L65	W78	W79	2.0
59 GONCHAROFF, NIKOLA	IL	1853	1835	L25	X--	L19	L55	W60	2.0
60 GUTMANIS, ERIC V	IL	1831	1855	L37	W65	L50	W76	L30	2.0
61 VAN PETTEN, STACY	IL	1771	1758	D73	L63	L42	W89	D67	2.0
62 WINSTON, HAROLD J	IL	1980	1953	W60	H--	L12	L48	U--	1.5
63 READ, RHY S	IL	1950	1933	H--	W61	L36	L45	U--	1.5
64 STEELE, GREGORY S	IN	1940	1934	D10	L36	W47	L21	L46	1.5
65 SMYTHE, BILL	IL	1908	1874	L-3	L60	W58	D70	L47	1.5
66 BUTTNY, WILLIAM P	IL	1892	1867	L52	L76	D40	L41	W89	1.5
67 SAK, ROBERT	IL	1857	1856	L14	L20	W85	L52	D61	1.5
68 BOSSAERS, PHIL J	IL	1828	1808	L51	D41	L45	L40	X--	1.5
69 MEISSEN, BOWEN F	IL	1786	1792	D38	W73	L11	L42	L40	1.5
70 ALLISON, ROGER D	IL	1762	1781	W19	L26	L20	D65	L41	1.5
71 DOBRZYNSKI, WITOLD	IL	1757	1758	L53	W87	L31	L44	D72	1.5
72 MAOBY, PAUL W	IL	1752	1732	L39	L44	W69	L43	D71	1.5
73 UNTIZ-SIERRA, ALEJ	IL	1683/4	1700	D61	L69	U--	W88	U--	1.5
74 DE FOTIS, GREG S	IL	2424	2411	W55	L27	U--	U--	U--	1.0
75 KAUSHANSKY, LEONID	IL	2370	2354	W76	L51	U--	U--	U--	1.0
76 BERNAL, LUIS F	IL	1993	1971	L75	W66	L14	L60	U--	1.0
77 PINDAK, KIM C	IL	1858	1860	L28	W85	L16	L39	U--	1.0
78 BAUTISTA, VINCENT	IL	1839/5	1749	L27	L55	L33	L58	W88	1.0
79 SCHMUCKER, WIVIAN	IN	1712	1715	W31	L17	L53	L33	L58	1.0
80 SINKOWSKI, MACIEJ	IL	0	1517	L62	B--	L32	L57	L59	1.0
81 RUMBAUGH, ERIC	MI	0	1604	L32	W89	L30	L56	U--	1.0
82 MACHUCA, VIRGILIO	IL	1907	1871	L49	L16	D83	L47	U--	.5
83 MADDOCK, JOSEPH L	IL	1771	1762	L29	L43	D82	U--	U--	.5
84 TSELY, PETER M	IL	2060	2055	L-7	U--	U--	U--	U--	.0
85 WICKMAN, ROGER	IL	1971	1927	L-2	L77	L67	U--	U--	.0
86 MANASTER, ROBERT A	IL	1949	1947	L-1	U--	U--	U--	U--	.0
87 SKINNER, JR JAMES	IL	1939	1912	L11	L71	U--	U--	U--	.0
88 OSTROWSKY, BERNARD	IN	1609	1578	L15	L56	L57	L73	L78	.0
89 MIECZYSLAW, PIATEK	IL	0	1434	L94	L81	L72	L61	L66	.0

RESERVE

PLAYER	ST	RTNG	POST					TOT	
			RTNG	1	2	3	4		5
1 SCHREMSE, TODD	IL	1781	1859	W74	W28	W10	W25	W-6	5.0
2 HANSEL, MARK	IL	1731	1792	W70	W-5	D14	W32	W-8	4.0
3 BAUMANN, HERBERT A	IL	1680	1898	W73	W41	W35	L-6	W15	4.0
4 BOWEN, ROGER S	IL	1784	1829	W85	W56	W33	W16	L-2	4.0
5 YAKICH, BOB	IL	1778	1806	W43	L-2	W79	W35	W27	4.0
6 HEINRICH, JOEL G	IL	1772	1814	X--	W52	W19	W-3	L-1	4.0
7 BRITT, JEFFERY E	IL	1736	1756	W41	D60	W69	D12	W19	4.0
8 SWANSON, VICTOR O	IL	1734	1769	W46	L33	W75	W34	W24	4.0
9 BROWN, ANTHONY	IL	1711	1737	W79	W75	L16	W49	W25	4.0
10 BURKE, J MARCELLUS	IL	1660	1717	W64	W62	L-1	W18	W32	4.0
11 FRONEK, RANDY J	IL	1540	1631	L18	W59	W62	W36	W40	4.0
12 CLARK, DOUGLAS A	IA	1786	1792	D84	W42	W29	D-7	D14	3.0
13 SCANLON, JOHN G	IL	1684	1690	W48	H--	D20	D40	X--	3.0
14 KREISMAN, BRUCE S	IL	1667	1707	W49	W63	D-2	O27	D12	3.0
15 WEBER, JOHN	IL	1534	1657	W84	W23	D50	W17	L-3	3.0
16 BALE, LESLIE	IL	1838	1847	W22	W24	W-9	L-4	U--	3.0
17 GROVER, GREGORY P	IL	1786	1777	L31	W58	W60	L15	W44	3.0
18 JOHNSON, ROBERT A	IL	1753	1761	W11	L25	W57	L10	W53	3.0
19 SMITH, WAYNE E	IL	1737	1739	W86	W37	L-6	W51	L-7	3.0
20 GRANT, DENNIS S	IL	1724	1721	W45	D29	D13	D28	H--	3.0
21 FROELICH, JIM	IL	1697	1672	L67	L49	W59	W81	W61	3.0
22 REID, HOWARD	IL	1677	1666	L16	L55	W78	W76	W62	3.0
23 MONTI, STEVEN	IL	1660	1666	W58	L15	H--	W70	D30	3.0
24 GRUFBERG, FRED	IL	1660	1686	W47	L16	W46	W50	L-8	3.0
25 FORMAN, WILLIAM	IL	1655	1684	W71	W18	W36	L-1	L-9	3.0
26 HUNTER, DAVID J	IL	1646	1634	L40	L64	W77	W58	W55	3.0
27 FRISKE, THOMAS G	IL	1646	1647	W43	W60	H--	D14	L-5	3.0
28 WILSON, STEPHEN R	IL	1637	1661	W61	L-1	W64	D20	H--	3.0
29 FLYNN, MICHAEL W	IL	1631	1650	W59	D20	L12	W68	D33	3.0
30 ROBINSON, MARRISON	IL	1627	1641	W55	L36	H--	W69	D23	3.0
31 HEIRIGS, CRAIG J	IA	1611	1632	W17	L51	L55	W75	W60	3.0
32 MARSHALL, JAMES A	IL	1578	1615	W42	W40	W51	L-2	L10	3.0
33 GOSSAGE, JOHN L	IL	1523	1610	W65	W-8	L-4	D37	D29	3.0
34 JOHNSON, HENDERSON	IL	1508	1549	L35	W80	W39	L-8	W51	3.0
35 BARSTAD, JOHN W	IL	1751	1744	W34	W72	L-3	L-5	D49	2.0
36 KAST, BYRON	IL	1740	1726	W57	W30	L25	L11	H--	2.0
37 NORE, ERIC	IL	1727	1735	W33	L19	W76	D33	U--	2.0
38 GIERTZ, CHARLES E	IL	1709	1689	L75	W79	D67	W55	U--	2.0
39 KOVAC, PAUL F	IL	1708	1678	L68	W81	L34	W64	D46	2.0
40 COLE, JAY L	IL	1692	1660	W76	L32	X--	D13	L11	2.0
41 JACKSON, DONALD E	IL	1628	1633	W77	L-3	D68	W67	U--	2.0
42 BERDICH, MIKE	IL	1544	1544	H--	L12	L44	W82	W63	2.0
43 VERMA, SURUDH K	IA	1531/13	1538	L-5	L57	W73	W65	W70	2.0
44 ERLENBORN, MARK	IL	1502	1555	D12	L50	W42	W66	L17	2.0
45 SUOMALA, ROBERT L	IL	1494	1512	L20	H--	W71	W47	U--	2.0
46 PANNER, GLENN E	IL	1494	1553	L-8	W65	L24	W52	D39	2.0
47 CANNEL, MYRON J	IL	1436	1465	L24	W73	D54	L45	W67	2.0
48 DUPEE, MD ARTHUR B	IL	1250/13	1286	L13					

Postal Chess

Helen Warren, TD
Tim Just, '84 TD

Following are crosstables from the 1984 Region VII Postal Championship, prelim rounds, provided by TD Tim Just. Please check these crosstables carefully and report any corrections or additions to Tim, 1521 Circle Ct., Waukegan, IL 60085.

84-1 PLAYERS	1	2	3	4	5	6	7
1 Zavanelli, M		1	1	1			1
2 Martin, D	0						0
3 Klaus, J.	0						
4 Pray, R.	0				0	0	0
5 Fawbush, G.				1		1	1
6 Peterson, P.				1	0		0
7 Warren, H.	0	1		1	0	1	

ANDERSON, A (IL)	858	MARTINDALE, V (IL)	895
BACHLER, K (IL)	918	MCKINNEY, C (IL)	737
BAUMANN, H (IL)	764	WILBRATZ, W (IL)	952
BELICS, G (MO)	893	NICKS, J (MO)	784
BENDER, F (IL)	933	NURMI, R (IA)	727
BETHEL, R (IL)	744	O'HEARN, J (OR)	724
BROCK, B (IL)	989	O'KEEFE, M (IL)	606
BROWN, J (IA)	800	OLTMAN, T (IL)	818
BUSTAMANTE, A (IL)	685	PETERSON, P (IL)	806
CATINO, C (IL)	681	POPE, R (IL)	741
CHRISTEN, S (IL)	843	PRAY, R (IA)	799
COHEN, S (IL)	789	RAMIREZ, E (IL)	781
CONNOR, P (IL)	830	REARDON, J (IL)	840
CROUSE, T (IA)	825	ROECKER, J (IL)	839
DANGOY, F (IL)	783	ROTHSCHILD, I (IL)	712
DAVIES, J (MO)	800	SANDER, D (IL)	746
DEAKIN, J (IL)	775	SANDFORD, C (IL)	888
EICHHORN, G (IA)	863	SCHREMSER, T (IL)	789
ELLENWOOD, D (IL)	720	SCORZA, S (IA)	779
FAWBUSH, G (MO)	1006	SEDOCK, E (IL)	851
FIELD, D (IA)	988	SEXTON, C (IA)	789
FISHER, B (IL)	857	SHOLL, P (IL)	678
GAPUZ, W (IL)	830	SILDMETS, A (NE)	874
GENSLER, K (IL)	785	SILLARS, A (IL)	877
GLASCOCK, D (OK)	868	SMITH, M (IL)	680
GOTZ, J (IL)	941	SOGIN, L (IL)	700
GUSTAFSON, G (IL)	853	SPITZNAGEL, L (IL)	774
HAGEMANN, W (MO)	776	STOTLER, R (IL)	612
HARNACH, C (IL)	751	SWICEGOOD, J (IL)	808
HARPER, R (MO)	708	TAYLOR, D (IL)	1146
HARRIS, W (IL)	889	TAYLOR, K (IL)	881
HEALY, S (IL)	689	VANDERLINDEN, E (IA)	820
HEIMBAUGH, M (IA)	728	WALHOUT, D (IL)	1064
HERNANDEZ, H (IL)	724	WALHOUT, P (IL)	825
HEUSINKVELD, W (IA)	713	WARREN, H (IL)	844
HOBSON, N (IL)	707	WARREN, J (IL)	853
HOUSH, K (IL)	770	WEISS, M (IA)	989
JABLOKOW, V (IL)	825	WERNER, L (IL)	851
JAMASON, R (IL)	845	WHITE, G (MO)	800
JAMISON, L (IL)	700	YOUNG, L (IL)	780
JOHNSON, B (IL)	764	ZAVANELLI, M (IL)	1038
JOHNSON, J (IA)	815	ZIEGLER, K (IL)	763
JUST, T (IL)	768		
KAPELA, R (IL)	819		
KLAUS, J (IA)	898		
LAROSE, M (IL)	722		
LEGG, J (IL)	773		
LEMKE, D (IA)	770		
LEWIS, S (MO)	742		
LIEF, A (CA)	1008		
LOOMIS, H (MO)	740		
LOVEN, D (IL)	811		

29 games were rated for this issue. 41 of 97 ratings changed, 42% Greatest gain of 97 made by D Field. Average rating: 809

84-3	1	2	3	4	5	6	7
1 Hageman, W.					0		0
2 Warren, J.					1	1/2	
3 Walhout, D.				1	1		
4 Bustamante, A.			0		1		0
5 Just, T.	1	0	0	0		0	0
6 Lief, A.		1/2			1		
7 Field, D.	1			1	1		

Assignments to the 1983 Finals were made this month. Following are lineups for the two sections, with prelim score carried over. Note that weighted points are used: wins count 1.5 in the Finals, draws .75. Prelim score is combined with Finals score to determine cumulative points.

83 Reg. VII-F-1

G Belics (MO)	4½-1½
D Field (IA)	5-1
B Fisher (IL)	5-1
A Sildmets (NE)	5-1
D Walhout (IL)	5-1
J Warren (IL)	4½-1½
M Zavanelli (IL)	6-0

83 Reg. VII-F-2

B Brock (IL)	4½-1½
G Fawbush (MO)	5-1
G Gustafson (NH)	5-1
R Pray (IA)	4½-1½
C Sandford (IL)	5-1
D Taylor (IL)	6-0
E Vanderlinden (IA)	4½-1½

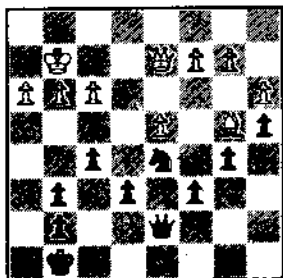
Our first postal Champion Dave Taylor sends along this game with Dennis Glascock from 82-F-2. Dave points out that the game was a struggle and shows some of the maneuvering which can go on in a tough postal encounter. He also notes the game has some instructional value. All notes are by Dave Taylor.

Glascock-Taylor: Center Counter;

1. e4 d5 2. e:d Q:d 3. Nc3 Qa5 4. d4 Nf6 5. Bc4 c6 6. Nge2 Bf5 7. 0-0 e6 8. Ng3 Bg6 9. Re1 Bb4 10. Bd2 0-0 11. Qe2 Nbd7 12. g3 B:c3 13. B:c3 Qe7 14. Rad1 b5 (Black is willing to unbalance the pawn structure a little to improve his chances of winning--this also gives him a better chance to lose?) 15. Bd3 (15. Ba2 followed by redeployment of the other Bishop and a push of the Queen side Pawns is a possibility. But that line of play gives Black a lot of counter play. The problem with 15. Bd3 is that Black gets rid of his "bad" Bishop.) 15... Nd5 16. B:g6 h:g6 17. Nc4 N7f6 18. N:f6+ N:f6! (Black now has a Knight vs a slightly "bad" Bishop; i.e., the d pawn restricts the activity of White's Bishop. Another reason Black has the better game is that if all Rooks are exchanged Black will have Queen and Knight vs. Queen and Bishop. (Q+N is usually superior to Q+B). On the other hand, White has no weaknesses in his Pawn structure and has a slight lead in development.) 19. Bb4 Rfd8 20. Qe5 Qb7 (Still eyeing and eventual Q+N vs. Q+B endgame. This move does not lose time because of the follow up on the next move) 21. h3 Rd5 22. Qe3 a5 23. Bc5 a4 (This move helps to "fix" the Queenside pawns.)

27. g3 Ne8 (Black has time in the semi-closed position to bring the Knight to the Queen side or to make other maneuvers)
 28. Kg2 Nc7 29. Bb4 Na6 30. Qe1 Qd8 31. Qc3 Qa8! (Black threatens c5 winning. Of course White sees the obvious "threat"; however when he masks the threat with a pawn he creates a slight weakness on the Kingside. Now Black can switch play back to that side of the board.) 32. f3 Nc7 33. Re1 Ne8 34. Re5 Nf6 35. R:d5 R:d5 36. Re3 Qb7 37. Re5 (White is trading off the Rooks so that Black cannot swing them on the 5th rank; however, this leads to the afore mentioned Q+N vs. Q+B ending.) 37 ... Qd7 38. R:d5 N:d5 39. Qd2 f5!!

Kingside Pawns in order to force entries into the White Kingside position.)
 40. Bc5 f4 41. g:f4 (41. g4 would leave holes at h4, g3 and e3) 41... Qc7 (not 41... Qf7?? 42. Bd6) 42. h4 (Whites best) 42. ... N:f4+ 43. Kf1 Nd5 44. Kg2! Qf7 45. Bd6 (Black should win no matter how White defends here) 45... Qf5 46. Bg3 (Overlooking Black's threat of Q:c2. 46. c3 and Black could win by penetrating White's Queen side with his pieces. Black also has a threat of N-b6-c4) 46... Q:c2 47. Q:c2 Ne3+ 48. Kf2 N:c2 49. Be5 Na1 50. Bf4 Kf7 (Black would like to play 50... Nb3 51 Ke3 Na5 52. Be5 Nc4+ 53. Kf4 N:b2 but 54. d5 Nc4 55. d:c6 is OK for White) 51. Ke3 Nb3 52. Bc7 Kf6! (Black cannot make progress unless he allows White to win the Pawn on g7) 53. Be5+ Kf5 54. B:g7 Na5 55. f4 (55. Bh8 Nc4+ 56. Ke2 e5! 57. B:e5 N:e5 58. d:e5 K:e5 + or 57 d:e4 and both 57... N:b7 & 57... Ke6 win for Black) 55... Kg4 56. Bf6 Nc4+ 57. Ke2 K:f4 58. Kf2 Ke4 59. Kg3 Kd5 60. Kf4 N:b2 61. Be7 b4 0-1 (62. B:b4 Nd3+ 63. Kg5 N:b4 or 62 a:b4 a3 or 62. Kg5 b3 all win for Black)



GLASCOCK
 Position after
 39...f5
 TAYLOR

ANNOUNCING

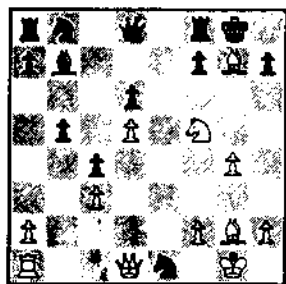
THE 1985 REGION VII POSTAL CHAMPIONSHIP WILL BE ORGANIZED AND DIRECTED BY HELEN WARREN AND THE AMERICAN POSTAL CHESS TOURNAMENTS (APCT). YOU WILL RECEIVE AN INVITATION TO PARTICIPATE IN THIS POSTAL EVENT IN LATE SEPT. ALL PRIZES WILL BE UNCONDITIONALLY GUARANTEED BY APCT. THIS EVENT WILL BE OPEN TO PLAYERS IN REGION VII: IL, MO, IA, and NE.

REGION VII TOP RATED PLAYERS AS OF AUGUST 29, 1985:

DAVE TAYLOR (IL).....1146
 DON WALHOUT (IL).....1064
 A AMELUNG (MO).....1043

MAX ZAVANELLI (IL)...1038
 ADAM LIEF (CA).....1008
 GEORGE FAWBUS (MO)...1006

BILL BROCK (IL).....989
 MITCH WEISS (IA).....989
 DON FIELD (IA).....966
 JIM WARREN (IL).....953



AFTER 18...Nxe1

23 Rxf7+ Kxh6 24 Be4 1-0 (Black can't prevent both Rxb7 and Qe3)

IM Vince McCambridge-Matthew Morris

1 d4 d5 2 c4 c6 3 Nc3 Nf6 4 Nf3 dxc4 5 e4 b5 6 e5 Nd5 7 a4 Nxc3 8 bxc3 e6 9 Ng5 Be7 10 Qg4 Bxg5? 11 Bxg5 Qc7 12 Be2 Bb7 13 Bh4 g6 14 Qg5 h6 15 Qf6 Rh7 16 f4 Qd7 17 Bf3 bxa4? 18 Rb1 1-0 (White threatens 19 Rxb7, and 18...Ba6 19 Rxb8+! Rxb8 20 Bxc6! doesn't help)

FM Albert Chow-IM Vince McCambridge

1 d4 Nf6 2 c4 e6 3 g3 Bb4+ 4 Bd2 Be7 5 Bg2 d5 6 Nf3 0-0 7 0-0 Nbd7 8 b3 Ne4! 9 Nc3 Nxd2 10 Qxd2 c6 11 e4 Nf6 12 e5! Ne8 13 Rfel b6 14 Bf1! Bb7 15 cxd5 cxd5 (15...exd5!?) 16 Bd3 Rc8 17 a3 Nc7 18 b4

(MASTER CHALLENGE, from pg. 7)

(18...Re8 19 Rxe8+ Qxe8 20 Bd4) 19 Qd4! (Threatening 20 Nh6 mate) f6 20 Rxe1+! (All White's pieces enter the game. Notice the sleepy Black queen-side) 20...Nd7 (I was hoping for 20...Rf7 since then 20 Bxf6! is nice. After either 20...Qxf6 21 Re8+ Rf8 22 Qxf6 or 20...Rxf6 21 Re8+! Qxe8 22 Qxf6 Black loses his queen) 21 Re7 (Threatening 22 Nh6 mate) Rf7 22 Nh6+! Kxg7

Qd7 19 Qc2 h6 20 Qe2 Rfd8 21 h4 g6 22 Kg2 Qe8 23 h5 g5 24 Bb1? Qf8 25 Nh2 Ne8 26 Qd3? Qg7 27 Ng4 Rc4! 28 Ba2 Rdc8! 29 Racl a5! 30 Kh3 axb4 31 axb4 Rxb4 32 Rbl Qh7? 33 Qd2 Kg7 34 Nxd5?! Rxb1? (34... Rc2! Sollano) 35 Bxb1 Bxd5 36 Bxh7 Kxh7 37 Rcl Ra8 38 Qd3+ Kg7 39 Ne3 Ra3 40 Qd2 Be4! 41 Rc8 Ral 42 Rxe8 Bf3 43 g4 Bc6 44 d5? Bxe8 45 Qc3 Ra3 46 Qc8 Bb5 47 dxe6! Bc5 48 Qc7! Ra2 49 Qxf7+ Kh8 50 Qf6+ Kg8 51 Qg6+ Kh8 52 Qxh6+ 1-0

Kevin Schmugetrow-Andrew Karklins

1 e4 e5 2 Bc4 d6 3 f4 Qh4+ 4 g3 Qe7 5 Nf3 g6 6 d4 Bg7 7 fxe5 dxe5 8 0-0 Nc6 9 Ng5 f6 10 Nf7 Na5 11 Nxe5 fxe5 12 Bf7+ Qxf7 13 Rxf7 Kxf7 14 dxe5 Nc6 15 Bf4 Nge7 16 Nc3 Be6 17 Nd5 Rhd8 18 c4 Kg8 19 Qe1 Rac8 20 Qc3 h6 21 h4 Rf8 22 Nf6+ Kh8 23 Kg2 Ng8 24 Nd5 Nd8 25 Rd1 Nf7 26 c5 c6 27 Nb4 Rcd8 28 Nd3 Rd7 29 a4 Rfd8 30 b4 Ne7 31 Rd2 Kg8 32 Rf3 g5 33 Be3 Rxd3! 34 Rxd3 Rxd3 35 Qcl Nxe5+ 36 Ke2 Bg4+ 37 Kf2 Be6 38 hxg5 Ng4+ 0-1

Roger Allison(1825)-Lester Van Meter(2395)

1 d4 d5 2 Nf3 Nf6 3 e3 Bf5 4 c4 c6 5 Nc3 e6 6 Be2 Nbd7 7 0-0 Bd6 8 a3 h5? 9 Nh4 Ng4 10 g3 dxc4 11 e4 Bh7 12 h3 Nh6 13 Bxc4 g5 14 Ng2 Bg6 15 Be3 Be7 16 Qd2 c5 17 d5 Ne5 18 Bb5+ Kf8 19 f4 a6 20 Be2 gxf4 21 Bxf4 Neg4 22 hxg4 Nxg4 23 Rad1 c4 24 Bxg4 hxg4 25 dxe6 Qa5 26 Bh6+ Kg8 27 Nd5 Bc5+ 28 Be3 Qxd2 29 Rxd2 Bxe3+ 30 Ngxe3 fxe6 31 Ne7+ Kg7 32 Nxg6 Kxg6 33 Nxg4 Rh3 34 Kg2 Rah8 35 Rd6 Kg5 36 Rxe6 Kxg4 37 Rf4+ Kg5 38 Rf5+ Kg4 39 Rg6 mate



TOURNAMENT CALENDAR



Abbreviations: RR-round robin, SS-swiss system, TL-time limit, EF-entry fee, \$\$-prize fund, b/-based on () entries. All phone numbers are area code 312 unless otherwise noted.

Call (312)-238-8500 for recorded messages on tournament results and upcoming events. Call regularly, as some events are scheduled at the last minute and don't always make the CHESS LIFE or ICB listings.

Oct. 5-6 Bargain Basement Benoni, two one-day events
Chicago Chess Center. Call Jules Stein at 929-7010.

Oct. 5-6 P.S. Means Paul Smith, Not Post Script I+II
Two one-day events. Chicago Lawn Chess Assoc. Call Tim O'Neil at 476-5716.

Oct. 12 Paul Keres Memorial
Illini Union, Urbana. Call Barry Fisher at (217)-333-9083.

Oct. 12-13 St. Charles Open
5-SS; EF:\$15, \$20 at site; TL:40/100; \$\$:425 b/40, 100-75, A 60, B 55, C 50, D/E 45, UNR 40. Kane County Extension Service, St. Charles. Call Erv Sedlock at 232-1320.

Oct. 12-13 For the Penny-Pinching Pawn Pusher
Two one-day events. Chicago Chess Center. Call Jules Stein at 929-7010.

Oct. 12-13 Moanin With Mike Cronin, two one-day events
Chicago Lawn Chess Assoc. Call Tim O'Neil at 476-5716.

Oct. 19 ICA OFFICERS TORNADO III
An ICA Mini-Tour Event. See ad this issue!

Oct. 19-20 Mating Mania, two one-day events
Chicago Chess Center. Call Jules Stein at 929-7010.

Oct. 26-27 ICA SCHOLASTIC CLINIC
Details in this issue!

Oct. 26-27 Sacs Appeal, two one-day events
Chicago Chess Center. Call Jules Stein at 929-7010.

Oct. 26-27 Rating Wars I+II, two one-day events
Chicago Lawn Chess Assoc. Call Tim O'Neil at 476-5716.

Nov. 2-3 Chicago Chess Center
Call Jules Stein at 929-7010.

Nov. 2-3 Rating Wars III+IV, two one-day events
Chicago Lawn Chess Assoc. Call Tim O'Neil at 476-5716.

Nov. 9 ILLINOIS-WISCONSIN MATCH (Racine, WI)
Details in this issue!

Nov. 9-10 Bargain Basement Benoni, two one-day events
Chicago Chess Center. Call Jules Stein at 929-7010.

Nov. 16-17 REGION VII CHAMPIONSHIP (Omaha, NE)

Nov. 16-17 Sacs Instruction, two one-day events
Chicago Chess Center. Call Jules Stein at 929-7010.

Nov. 16-17 Rating Wars V+VI, two one-day events
Chicago Lawn Chess Assoc. Call Tim O'Neil at 476-5716.

Nov. 23 9th Illinois Scholastic Team Tournament,
12th Illinois High School Chess Events Tournament, and
12th Octagon Plus One. Proviso West H.S., Hillside.
Call Larry Stilwell at 963-6799.

Nov. 23 Peoria 4th Quarter Cash Novice and Quad
Call Wayne Zimmerle at (309)-682-6460.

Nov. 23-24 For the Penny-Pinching Pawn Pusher
Two one-day events. Chicago Chess Center. Call Jules Stein at 929-7010.

Nov. 28,30, Dec. 1 It's Your Move, Turkey!
Three one-day events. Chicago Chess Center. Call Jules Stein at 929-7010.

Nov. 30-Dec. 1 Rating Wars VII+VIII, two one-day events
Chicago Lawn Chess Assoc. Call Tim O'Neil at 476-5716.

Dec. 7 Ruzic's Pearl Harbor Bomb
Illini Union, Urbana. Call David Ruzic at (217)-867-2537.

Dec. 7-8 2ND MIDWEST TEAM CHAMPIONSHIP
See ad this issue!

Dec. 14-15 Chicago Chess Center, two one-day events
Call Jules Stein at 929-7010.

Dec. 14-15 Rating Wars IX+X, two one-day events
Chicago Lawn Chess Assoc. Call Tim O'Neil at 476-5716.

UPCOMING EVENTS:

Dec. 28 ICA Last Chance Mini-Tour Tornado (Chicago)

Jan. 4-5 Tim Just's Winter Open

Jan. 25 Urbana Tornado

Feb. 2 11th Hyde Park Open

Feb. 15-17 US AMATEUR TEAM CHAMPIONSHIP-MIDWEST
(Columbus, OH)

ILLINOIS CHESS ASSOCIATION

P.O. Box 43336
Chicago, IL 60643

Dated Material, Speedy Delivery
Appreciated