

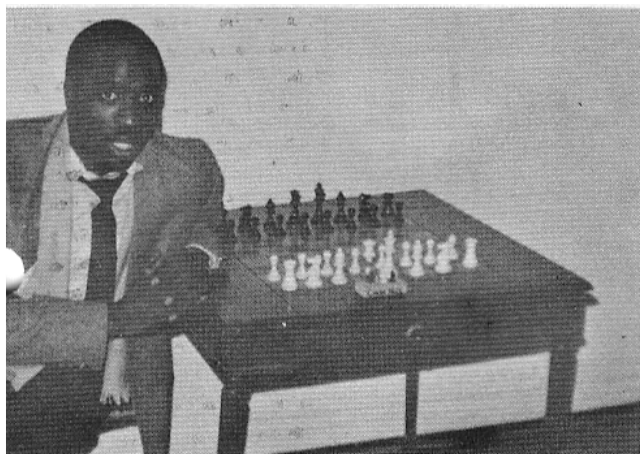
ILLINOIS CHESS BULLETIN

Official Publication of the Illinois Chess Association a U.S.C.F. Affiliate

FEBRUARY 1985

BIMONTHLY

VOLUME VIII No. 1



Marvin Dandridge

ONLY PERFECT SCORE AT

THE PUT THE FUN BACK INTO CHESS!

IN THIS ISSUE...

FINAL TOUR STANDINGS, J Warren.....	pg. 4
LAKE COUNTY OPEN, T Just and K Bachler.....	pg. 4
PUT THE FUN BACK INTO CHESS, F Gruenberg.....	pg. 5
ILLINOIS CLASS.....	pg. 6
MIDWEST TEAM, T Barre.....	pg. 6
LAKE COUNTY NEWS, K Bachler.....	pg. 7
NEWS FROM ADAM LIEF.....	pg. 10
ASK MIROSEG, D Sprenkle.....	pg. 11
PFBC CROSSTABLE.....	pg. 12
IL CLASS CROSSTABLE.....	pg. 13
POSTAL PAGE, H Warren.....	pg. 14
TOURNAMENT CALENDAR.....	pg. 15



ILLINOIS CHESS BULLETIN

Official Publication of the Illinois Chess Association, a USCF Affiliate

EDITOR: David Sprenkle
302 S. Busey, No. 203
Urbana, IL 61801
217-328-7271

GAMES EDITOR: Albert Chow
3513 N. Seminary
Chicago, IL 60657

ICA OFFICERS:

President: Tim Redman, 6923 N Wayne 3A, Chicago 60626
Metro-VP: Walter Brown, 811 Elrose Ct., Cresthill 60435
Downstate VP: Thomas Knoedler, 2206 Westchester No.4,
Springfield 62704
Secretary: Bill Smythe, 6945 N Ashland F3, Chicago 60626
Treasurer: Fred Gruenberg, 2035 W. 110th Place, Chicago
60643
Immediate Past-Pres.: Helen Warren, Box 305, Western
Springs 60558

USCF DELEGATES by virtue of their USCF posts

Immediate Past President Tim Redman
Member-at-Large Harold Winston, 1567 Ridge No.601,
Evanston 60201
Life Voting Member Frank Skoff, Box 214, 3952 N South-
port, Chicago 60613
Regional VP Walter Brown
Regional VP Fred Gruenberg

ICA APPOINTED DELEGATES

Helen Warren, Box 305, Western Springs 60558
Jim Warren, Box 305, Western Springs 60558
Tom Fineberg, 7321 South Shore Dr., Chicago 60649
Tim Just, 1521 Circle Ct., Waukegan 60085
Richard Verber, 2725 W 84th St., Chicago 60652

METRO CLEARINGHOUSE:

Walter Brown, 811 Elrose Ct., Cresthill 60435

DOWNSTATE CLEARINGHOUSE:

Thomas Knoedler, 2206 Westchester No.4, Springfield
62704

SUBSCRIPTION RATES: ICA membership includes subscrip-
tion to the ILLINOIS CHESS BULLETIN. Regular adult
membership: \$10 a year, \$19.50 for two years, and
\$28.75 for three years. Juniors: \$6 per year. Patron
Membership: \$25, Gold Card: \$50, and Century Club:\$100.
Affiliate Membership for clubs and schools: \$15 per
year.

The ICB is published bi-monthly by the Illinois Chess
Association. Affiliates and Patrons receive the ICB by
First Class Mail. Checks should be made payable to the
ICA and sent to Fred Gruenberg, ICA Treasurer, Box
43336, Chicago IL 60643.

CALL CHESSPHONE: 312-233-8500

DEADLINE FOR NEXT ISSUE: March 7

Century Club

Helen Warren	Western Springs	IL
Jim Warren	Western Springs	IL
Walter M. Brown, Jr.	Crest Hill	IL
Fred Gruenberg	Chicago	IL
Michael Belovesick	Northbrook	IL
Julius Stein	Chicago	IL
Lawrence Goch	Chicago	IL
Fred Cramer	Mequon	WI

Gold Card

Harland S Hoisington	Chicago	IL
Tim Redman	Chicago	IL
Kevin Kaufhold	Belleville	IL
Charles Kramer	Dolton	IL
Irwin Rothschild	Park Forest	IL
Louis Werner	Evanston	IL
Bill Smythe	Chicago	IL
Aaron L. Meyers	Chicago	IL
Bill Buttny	Downers Grove	IL
Norbert Leopoldi	Chicago	IL
Chas. Taylor	Chicago	IL
Angelo Sandrin	Chicago	IL
Albert Sandrin	Chicago	IL

Patrons

Michael E Zecate	Mokena	IL
Tom Kirke	Crystal Lake	IL
Thomas A. Fineberg	Chicago	IL
Roy Benedek	Westmont	IL
Leroy Dubeck	Cherry Hill	WV
Thomas B. Knoedler	Springfield	IL
Edmond Coopwood, Sr.	Matteson	IL
Leonid Kaushansky	Chicago	IL
Edward A. Frunkin	Brooklyn	NY
Kenneth N. Marshall	Lombard	IL
Guy Gruenberg	Matteson	IL
Ray D. Satterlee	Wheaton	IL
Vivian S. Schmucker	Goshen	IN
Walter Milbratz	Sunnyvale	CA
David Sprenkle	Urbana	IL
Miomir Stevanovic	Lincolnwood	IL
Arthur C. Sinclair	Evanston	IL
Armin Kuseworn	Chicago	IL
Jim Brotoos	Chicago	IL
William E. Graves	Chicago	IL
James W. McNamara	Riverside	IL
Harold Winston	Evanston	IL
Max Zevanelli	Park Ridge	IL
Philip Wong	Evanston	IL
Sandy Zabell	Chicago	IL
Tim Just	Waukegan	IL
Steven Cohen	Chicago	IL
Gary Gustafson	Minnetonka	MN
Kevin Bachler	Waukegan	IL
Sabin Cheveresev	Mundelein	IL
Todd Barre	Schaumburg	IL
Robert Glick	Morton Grove	IL
Jeffery M. Hyland	Oak Park	IL
Robert Irons	Chicago	IL
Bob Ash	Urbana	IL
Patrick G. Moran	Wilmette	IL

A note from the membership secretary

Membership renewals (and new memberships)
should be sent to the Treasurer, Fred
Gruenberg, at the following address:

Illinois Chess Association
P.O. Box 43336
Chicago IL 60643

Address corrections, etc. (anything not
involving money) may be sent directly to me:

Bill Smythe
6945 N Ashland #F3
Chicago IL 60626

ADVERTISING RATES: \$60 for full page or 2/3 of back
cover. Half page \$36; quarter page \$21. Flyer inserts
\$25. 10% discount for multiple months of run. ICA
affiliates get 1/3 discount. Checks for advertising
should be sent to ICA Treasurer Fred Gruenberg. All ad-
vertising copy must be camera ready at the above rates.
Add 20% if you wish layout done. The ICA reserves the
right to reject advertising.

PRESIDENT'S PAGE

by Tim Redman

I think it most appropriate to begin a new term with thanks to our outgoing ICA officers who worked with such dedication during the past two years. So to outgoing President Helen Warren, Metro Vice-President Fred Gruenberg, Downstate Vice-President Bill Naff, Secretary Erv Sedlock, and Treasurer and Membership Secretary Jim Warren goes our appreciation for a job well done.

Our appreciation, too, goes to all of our Century Club, Gold Card, and Patron Members. ICA regular dues cover the cost of producing the ICB. Our patrons make possible the other chess events and programs sponsored by the ICA and is an important component of our success. Our thanks belong to them as well.

The new officers of the ICA took over on January 1. The new team consists of Walter Brown, Metro Vice-President; Tom Knoedler, Downstate Vice-President; Tim Just, Secretary; Fred Gruenberg, Treasurer; Bill Smythe, Membership Secretary; and Kevin Bachler, ICA Tour Statistician. Helen Warren will remain on the Executive Board for a year as past president.

We will again have an ICA Tour this year with an expanded prize fund of \$1,850.

1st \$300	Experts \$150 - 100
2nd \$200	Class A \$150 - 100
3rd \$150	Class B \$140 - 70
4th \$100	Class C \$130 - 60
5th \$ 50	Class D/E \$100 - 50

Watch the ICB for more details.

EDITOR'S PAGE

NOW HEAR THIS!

Yes, this issue is appearing later than usual, by a couple of weeks. The bulk of the delay can be blamed on our change in printers, for as I write this bids are still being taken. But a contributing cause has been inability of some people to meet the deadlines for submitting material. So I'm forced to strictly enforce a deadline. The deadline will always be the 7th of the month preceding the issue date. This means the deadline for the next issue (April) is MARCH 7. This means you!

Of course some of our contributors are real dolls. In particular I'd like to mention Kevin Bachler, Helen Warren, and Todd Barre, who all contributed excellent material well ahead of the deadline.

Not coincidentally, much of the material submitted by Kevin, Helen, and Todd was CAMERA READY. If you have a "professional quality" typewriter or printer, you could save me a lot of time by using no more than 55 characters a line if your machine uses elite type (12 chars an inch), or 46 if you have pica (10 chars). And what's "professional quality"? Just so your ribbon isn't worn out!

OOPS DEPARTMENT

Thanks to those of you who enjoyed my opening article on the Moleslavsky Sicilian last issue. You were kind enough not to point out that many of the symbols for evaluating positions were missing! Unfortunately the computer I work on doesn't easily reproduce those symbols, and I didn't notice that what I wanted to appear didn't actually appear. "Openings That Theory Has Forgotten" will appear semi-regularly, as I or others are able to produce more analysis.

NEW FEATURES

First I would like to announce that we will now be paying for the photos we use, \$5 (\$10 for cover) for one-time use. Formerly Fred Gruenberg was just about the only one to provide photos, but it's the will of the officers that the ICB use more (I think they are even going to put that in my contract!) Help me out here folks, and make a few bucks on the side!

Secondly, "Ask Miroseg" begins in this issue as a regular feature (subject to public outrage!) Give it a look. Send questions, comments, and fan mail to me, and I'll pass them on to Miroseg.

Finally, I need more tournament news. No tournament is too small to report! Properly reporting on Illinois

chess news is the number one priority of this publication, so give me a little help here TDs! It doesn't take more than a few minutes to just put a list of prize winners on a postcard and slip it in the mail. Or you could just photocopy the tournament crosstable when you get it back from the USCF, and mail the copy to me. I don't mind writing up or editing a tournament report, but first I need the basic info!

GOSSIP

Eric Schiller has started to hold occasional FIDE-rated "team tournaments", where 4 or 5 FIDE-rated players play the same number of non-rated players. The idea is that you can give deserving players a shot at an international rating within a minimum amount of time. A single tournament can be held over a weekend, and only two FIDE-ratable results in such events are necessary to earn yourself a rating.

Eric is also planning a full-blown international open, with real shots at IM norms. Tentative dates are March 19-29. Get in touch with Eric if you have international aspirations!

Bill Naff reports that the Greater Peoria Chess Fed. is looking into bidding for the 1986 National Elementary Championships. Peoria has a significant base of school-age players, as well as a host of dedicated organizers and directors. Here's to a successful bid!

HO-HUM MATCH

Is anyone still following the Karpov-Kasparov match? I'm not. They took a week break upon the death of Marshal Ustinov (bet that was Karpov's idea) and I didn't even notice. One thing for sure, Fischer's nutty idea about playing to a certain number of wins instead of playing a fixed number of games (24) is going to be put to rest once and for all. And another thing we can all pray for is that we don't see two Soviets squaring off in a Championship final again for a long while!

Still got a little space to fill, so with apologies to Bob Bain, here's a game from the Illinois Class.

David Sprenkle-Robert Bain French

```
1 e4 e6 2 d4 d5 3 Nd2 Nf6 4 e5 Nfd7 5 Bd3 c5 6 c3
Nc6 7 Ne2 cxd4 8 cxd4 Nb6 9 a3 Bd7 10 b4 a6 11 O-O
Na7 12 f4 g6 13 f5 gxf5 14 Nf4 Qe7 15 Rf2 Bb5 16
Bc2 Nc4 17 Nb3 Ba4 18 Bxf5! Bxb3 19 Qxb3 Nb5 20 Qd3
h5 21 Bh3 Bh6 22 Ng6! fxe6 23 Qxe6+ Kd8 24 Bxh6 Ke8
25 Bxe6+ Kb8 26 Bxd5 Ncxa3 27 Rf7 Qe8 28 Rxb7+ Kc8
29 Qf5+ 1-0
```



CHESS ASSOCIATION

The Illinois Chess Association proudly announces

1984 ILLINOIS CHESS TOUR

1st - \$300	A: \$150 - 100
2nd - \$200	B: \$140 - 70
3rd - \$150	C: \$130 - 60
4th - \$100	D: \$100 - 50
5th - \$70	E: \$60 - 20

1984 ILLINOIS CHESS TOUR

Final Standings

- Includes: Winter Swiss--Oak Park
- Tornado I--Morgan Park
- St. Charles Open
- Memorial Day Open--Waukegan
- Greater Chicago Open
- Greater Peoria Open
- Master Challenge VI--Oak Park
- Illinois Open--Hillside
- Tornado II--Chicago Chess Center
- Lake County Open--Zion
- Tornado III--Evanston
- Illinois Class--Morgan Park
- Put Fun Back into Chess--Morgan Park

JAMES WARREN, 1984 ICA TOUR STATISTICIAN

CHAMPIONSHIP:

1	Morris Giles	84 1/6	\$300
2	Billy Colias	46	200
3	Albert Chow	40	150
4	Lester Van Meter	34 1/3	100
5	Bene Martinovsky	26	70
6	Mariano Acosta	20	
7	Scott Zingheim	16 2/3	
8	Angelo Sandrin	16 1/3	
9-10	John Burke	10	
9-10	Sandy Zabell	10	
11-12	Rhys Read	7 1/2	
11-12	Donn Nicholson	7 1/2	
13	Mark Marovich	6	
14-15	Steve Szpisjak	3	
14-15	Jim Condron	3	
16	Steve Surak	1 1/4	
17-18	Chris Firestone	1	
17-18	Leon Lipten	1	
19-21	Kevin Schmuggerow	5/6	
19-21	Michael LaBudde	5/6	
19-21	Joe Splinter	5/6	

CLASS D:

1	Rudolfo Padilla	10 5/6	\$100
2	Jerry Knight	8 1/6	50
3-5	Marcellus Burke	8	
3-5	Gregory Shapiro	8	
3-5	Evan Rynes	8	
6	Bruce Chenoweth	5 2/3	

CLASS E:

1	Bruce Chenoweth	5	\$60
2	Jason Brawka	4	20
3	Francine Atwell	2	
4	Aaron Harnes	1	

CLASS A:

1	Rhys Read	22	\$150
2	William Harrison	21 1/2	100
3	Leon Lipten	18	
4	Steve Surak	10 3/7	
5-8	Mark Marovitch	10	
5-8	Bill Brock	10	
5-8	John Dotson	10	
5-8	Dave Rajendran	10	

CLASS B:

1	Roy Levin	30 1/2	\$140
2	Donn Nicholson	20	70
3-5	Mack Lyons	16	
3-5	Steve Decan	16	
3-5	David Ferris	16	
6	Vic Swanson	12	

CLASS C:

1	Marcellus Burke	20	\$130
2	Roy Levin	18 1/2	60
3	Donn Nicholson	12	
4-5	Fred Dangoy	3	
4-5	Myron Cannell	3	
6-8	Jim Elliott	1 1/2	
6-8	George Stone	1 1/2	
6-8	John Barstad	1 1/2	

LAKE COUNTY OPEN VII

BY

Tim Just and Kevin Bachler

In the seven year history of the LAKE COUNTY OPEN no one has ever repeated as champion! With Wisconsinite Bill Williams (LCO V Champ), Illinois favorite Eugene Martinovsky (LCO VI Champ), and Illinois Tour Leader Morris Giles each scoring 4.5-.5 that has all changed. With only prize money to share for their first place efforts, there was no need to use any tie break system to award a trophy to these fine players.

The Expert class saw Doyle Saterlee, Peter Stein, Jim Condron, Cliff Wallach, Sandy Zabell, plus Wisconsinites Fred Gehloff and Mike Nietman score 3-2 to take first place honors.

Class A had Jovito Ybanez Jr. from the Philippines score 3.5-.5 in his second tournament in the U.S. This effort gave him clear first place in his class.

Dave Kavesh, Anthony Kasenga, Dave Shiner, and Vic Swanson took home a share of the first place money for Class B with scores of 2-5 each.

Class C belonged to Wisconsin. William Joiner Jr. and Art Peel each scored 2-3 to share first place glory in their class.

Ross Torkelson stood alone in the winners circle in the D/E/UN class with a score of 2-3.

We would like to thank the ICA, WCA, and George Carian for making it possible for this event to be on BOTH the Wisconsin and Illinois Chess Tours!! Thank you one and all.

(Games from this event appear on pg. 7)

All cash prizes have been paid by ICA Treasurer Jim Warren. Awarding of certificates will be handled by 1985 ICA officers.

Put the Fun back into CHESS

by Fred Gruenberg

One hundred-seventy, the largest turnout in Chicago (and Illinois) this year, came to play in the 5th "Put the FOOD back into Chess" tournament. If you haven't played in one of these you wouldn't understand, but briefly, we served 80 lbs of corned beef, 70 lbs ham, 25 lbs cheese, 20 lbs salami, 40 lbs potato salad, 30 lbs cole slaw, 1200 cups of coffee, lemonade, milk, tea, or whatever, 33 loafs of bread, and trays and trays of brownies, cake, sweetrolls, cookies, and apples. All this for free, and a free raffle too! Raffle prizes included radios, pens, vacuum cleaners, bike pumps, chess books, leather key cases, and even a rod-iron tea cart. It was a FUN tournament. If you missed it this year, don't miss it in '85!

First place in the tournament and the \$350 first prize went to Marvin Dandridge, who came back from what looked like a hopelessly lost position against Morris Giles in the last round. Marvin was the only player with a perfect 5-0 score. GM Arthur Bisquier was hard pressed to get a draw with black against Eugene Martinovsky in another crucial last round encounter. Both players finished with 4.5-0.5 and tied for 2nd with Bill Colias, Lester Van Meter, and Mark Marovitch.



MARTINOVSKY AND BISQUIER

Larry Younkle from Milwaukee, Wisc. upset GM Dimtry Gurevich (2559) in round 2 when Gurevich thought he only had 5 seconds left on his clock, and actually had 45. Gurevich dropped a rook and the game in a won position. It seems that the favorite never wins this tournament. But at least 10 local players got to play the two Grandmasters.

This tournament brought Greg DeFotis (2444), the strongest player ever to come out of the Chicago area, back into tournament competition. Greg only scored 3 points, but we hope that he will continue to honor us with what we know will be some spectacular chess. Here is his first game back after 10 years!

DeFotis-Flynn Benoni

1 g3 g6 2 Bg2 Bg7 3 d4 Nf6 4 e4 d6 5 Ne2 0-0 6 0-0
 c5 7 d5 b5 8 a4 b4 9 c4 bxc3 10 Nexc3 Nbd7 11 Na3
 Rb8 12 Ncb5 Ba6 13 Re1 Bxb5 14 axb5 Ne8 15 Bf1 Nc7
 16 f4 Nb6 17 Nc2 Ra8 18 Ra5 Qd7 19 b4 f5 20 e5 dxe5
 21 bxc5 Nbx d5 22 fxe5 e6 23 Ne3 Rfd8 24 c6 Qe7 25
 Ba3 Nxe3 26 Bxe7 Rxd1 27 Rxd1 Nxd1 28 Bd6 Nxb5 29
 Bxb5 Nc3 30 c7 Nd5 31 Bc6 1-0



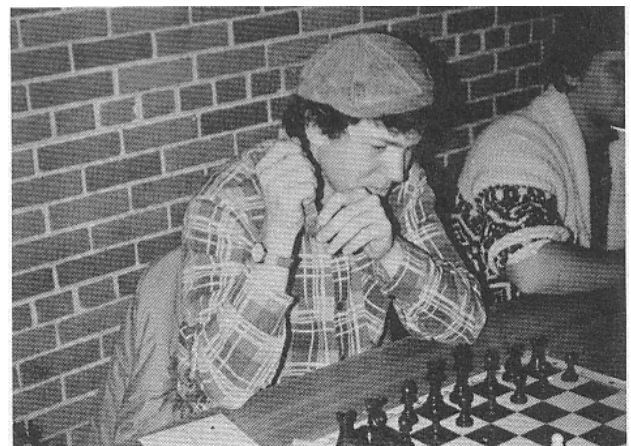
GUREVICH AND DEFOTIS

GM Arthur Bisquier also honored us with a Sunday morning breakfast simul. We ate and had a good time, but he had a better time, he won ALL the games. Not even ONE lowly draw. I guess that proves you can't play on a full stomach!



BISQUIER AT BREAKFAST SIMUL

As usual Walter Browne and Mike Zacate did their usual brilliant job of directing, and we got 8 new players for chess, 8 people who had never played tournament chess before. We also had a newcomer from Germany, just in this country four months, Joram Seewe, who scored a very fine 3 points. A great time, hope to see you next year!



DAN KAMEN WITH "LUCKY PAINT BRUSH"

1984 ILLINOIS CLASS



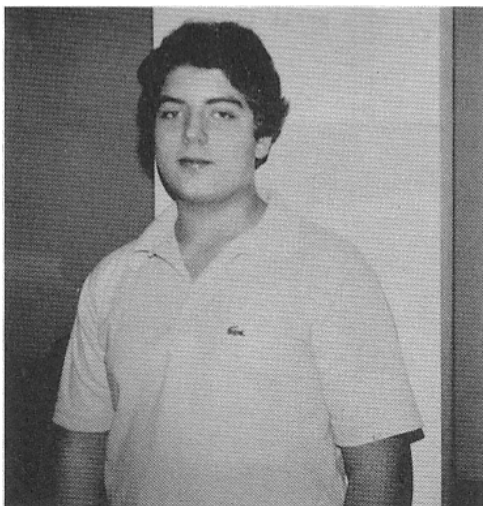
BILL COLIAS

Bill Colias continues to rocket towards the Senior Master level. At the IL Class Championships, held Nov. 24-25 at the Morgan Park Methodist Church, he beat his most dangerous competition back to back to win the Master/Expert section outright.

In round 3 Colias beat slumping ICB Editor David Sprenkle in a tactical melee resulting from a theoretically important Tarrasch Defence. Then in round 4 he beat Albert Chow when the state champ loosened his kingside in a time scramble. By taking a quick draw versus Mariano Acosta in the last round, Colias locked up the section honors. Acosta and Chow (who beat Sprenkle in the last round) shared 2nd place with 4-1 scores.

Leon Lipten, David Rajendran, and John Dotson scored 4-1 to dominate the A section, each player scoring 1-1 against the other two. Dotson sported a pre-tournament rating of only 1587, but his fine result tacked another 120 points to that figure!

David Ferrie, Dujuan Meekins, and Barry Fisher finished 1st, 2nd, and 3rd respectively in the class B section, while Marcellus Burke took the C section, with Joe Owano and Donald Jackson a half point behind. D/E/Unrated section winner Evan Rynes had the best result of the tournament, finishing with a 5-0 score a point and a half ahead of Steve Reedy, James Peters, and John Nielson. This was particularly impressive since Rynes went 0-5 in his first tournament, the IL Open held over the Labor Day weekend!



EVAN RYNES (photos by Fred Gruenberg)

Organizers Helen Warren and Fred Gruenberg were pleased with the total of 95 entries, especially since the event was put together on relatively short notice. The ever so competent Tim Just directed. The only negative might have been the large number of players who

withdrew before the final round, in part due to the last round scheduled starting time of 6 PM.

Bill Colias-David Sprenkle Tarrasch Queens Gambit

1 Nf3 Nf6 2 c4 e6 3 Nc3 c5 4 g3 d5 5 cxd5 exd5 6 d4 Nc6 7 Bg2 Be7 8 O-O O-O 9 dxc5 Bxc5 10 Bg5 d4 11 Bxf6 Qxf6 12 Nd5 Qd8 13 Nd2 Re8 14 Rc1 Bb6 15 Re1 Bg4 16 Nc4 Ba5 17 Nxa5 Qxa5 18 b4 Qxa2 19 Nc7 d3 20 Rall (20 Qxd3 Rad8 21 Bd5 Rxe2!!) dxe2 21 Qc1 Qb3 22 Nxa8 Rxa8 23 h3! Be6 24 Rxe2 Nd4 25 Rb2 Qd3 26 Qd1 Qc3 27 Rd2 Rd8 28 Rxa7 g6 29 Kf1 Bb3 30 Qe1 b5 31 Ra8 Rxa8 32 Bxa8 Be6 33 Qd1 Nb3 34 Rd8+ Kg7 35 Qd6 Qe1+ 36 Kg2 Bc4 37 Qf8+ Kf6 38 Qh8+ Kf5 39 g4+ Kg5 40 f4+! Kxf4 41 Qf6+ Ke3 42 Qf3 mate

Dujuan Meekins(1695)-David Ferrie(1675) French

1 e4 e6 2 d3 d5 3 Nd2 Nf6 4 Ngf3 b6 5 g3 dxe4 6 dxe4 Ba6 7 c4 Bb7 8 Bg2 Bb4 9 Qa4+ Nc6 10 Ne5 Qd6 11 Nxc6 Bxc6 12 Qc2 Rd8 13 a3 Bxd2+ 14 Bxd2 Bxe4! 15 Qa4+ Qd7 16 Qxd7+ Rxd7 17 Bxe4 Nxe4 18 Bc3 O-O 19 O-O Rfd8 20 Rb1 Nd2 21 Bxd2 Rxd2 22 Rfe1 Kf8 23 Kf1 Rc2 24 Rc1 Rdd2 25 Rxc2 Rxc2 26 b3 Ke7 27 Rd1 a5 28 Rd4? Rc3 29 b4 Rxa3 30 bxa3 Rxa5 31 f4 Ra4 32 f5 b5 33 fxe6 Rxc4 34 Rd5 c6 35 Rh5 h6 36 exf7 Kxf7 37 Kg2 b4 38 Ra5 b3 39 Ral b2 40 Rbl Rc2+ 41 Kf3 c5 42 Ke4 c4 43 h3 c3 44 Kd4 Rc1 O-1

NEW YORK TEAM WINS MIDWEST TEAM TITLE BY TODD BARRE

The 1st Annual Midwest Team Championship was invaded by a team from New York City, the "Manhattan Transfer", who walked away with a 3.5-0.5 score and the \$300 first prize. The tournament, held December 1-2 at the Mohr Community Center in Forest Park, drew 12 teams and 51 players.

The members of the winning team were Murray Schechter (2184), Michael Pustilnik (2106), Bruce Bowyer (2101), and Ted Violet (1929). Violet on Board 4 proved to be the driving force on the team, as he was the only player in the tournament to record a perfect 4-0 score.

Three teams tied for second with 3-1 scores. A team called "Wait, Error in Pairings" composed of players from Indiana could have captured the title with a last round win over "Manhattan Transfer", but could manage a 2-2 drawn match. "Wait, Error in Pairings" was led by 1st Board Lester Van Meter (2268) who scored 3-1, and 3rd Board Nick Adams (1975) who scored 3.5-0.5. John Petrison (2232) and William Ralph (1907) were the other team members. Also scoring 3-1 was a team composed of some of the top players from the Chicago Industrial Chess League's North Division. "CICL-North" was led by team captain Gee Leong (2014), who scored 3.5-0.5 on Boards 2 and 3. Other team members were Philip Wong (2125), Edward Buerger (2034), Frank Tegel (1926), and Mark Siwek (1874). Also coming in at 3-1 and capturing the Under 1750 prize were the "Speed Demons", consisting of Cliff Wallach (2102), Jon Gotz (1911), Larry Servi (1932), and Craig Sandford (1801).

Second Under 1850 honors were won by an Oak Park-Forest Park Chess Club team known as the "Mating Knights". Mariano Acosta (2230) and Greg Bungo (2052) each scored 3-1 to lead the "Knights" to their prize. The top team Under 1800 was a team from IIT known (quite coincidentally) as the "I.I. Team". Top scorer was John Gossage (1335) with 2.5-1.5. Finally, the unofficial award for Best Dressed Team goes to Fred Gruenberg's "Fearsome Foursome", who arrived in matching blue t-shirts. But despite Albert Chow's (2353) 3-1 score on 1st Board, the foursome wasn't so fearsome, and finished out of the money.

The tournament was organized by Chris Musgrave (who scored a respectable 3-1 on 2nd board for his team!) for the Oak Park-Forest Park Chess Club. Erv Sedlock assisted in the tournament organization, and Todd Barre served as tournament director. Plans are already in the works to make the Midwest Team Championship an annual event.

ILLINOIS-WISCONSIN MATCH

By
Tim Just and Kevin Bachler

They came! They saw! They conquered!
On October 28, 1984 Wisconsin brought their 30 player team (average rating 2006) to Illinois Beach State Park in Zion, Illinois to maul the Illinois 30 player team (average rating 1849) by a score of 40 1/2 to 19 1/2.

Players of each team were looking forward to playing the same opponent twice that day. (once with each color). Before the first game started the Wisconsin team was desperately trying to fill its roster so that their team could average under 2000 (as per match rules). The Illinois team was desperately trying to fill all 30 boards. The team captains, Luke Ludwig for Wisconsin and Kevin Bachler for Illinois, solved their respective problems via a mutual agreement. Wisconsin could use an average team rating of 2006 if Illinois could fill its roster with Frank Randle from Kenosha. Frank may live in Wisconsin; however, he belongs to an Illinois club (Zion) and plays all of his rated games in Illinois.

Soon after the first game of the match started, ICA President Helen Warren did her best imitation of Kreskin and predicted that Illinois would lose round 1 by a score of 21 to 9. When the smoke cleared at the end of the first round, Illinois had lost by a score of 21 to 9!!! The power of prophecy comes easily to those with the gift!?

Round two saw Wisconsin score 19 1/2 to an Illinois effort of 10 1/2. You may have noted that Wisconsin scored as much in this round as Illinois scored altogether in both rounds!!

Ten Wisconsin players scored 2 wins; while only 6 Illinois players could muster up a point and a half. No Illinois player could come up with 2 points!!

The 2 point scorers for Wisconsin include: Odendahl, Penkalski, Schneider, Nyquist, Leonard, Nielson, LaBudde, Arvola, Meier, and Gibson.

The top scorers with 1 1/2 points each for Illinois include: Acosta, Ybanez, Kamen, John Barstad Sr., John Barstad Jr., and Sengenberger.

The TDs were Tim Just and Luke Ludwig.

There is one note of minor interest. While the match was being played, an inexpensive ratings tournament was being held in an adjoining room. Three players in that event also played in the match! John Wagner, Dave Kochman, and Paul Sullivan dashed between two opponents in different tournaments at the same time. It seems like a good way to keep in shape while playing chess!! John Wagner went 1-1 in the match; however, he tied for 1st in the ratings tournament with a score of 2 1/2 - 1/2. John tied with Chris Maisa in that event. I understand that playing in two events at the same time is not something new to John. You may want to ask him about it at his next tournament!?

Many thanks to ICA Secretary Erv Sedlock for the use of his organization's sets and boards at the match. Paul Sullivan provided an Illinois flag to hang up while the games were in progress.

Next year's match will be held in Wisconsin. I am sure Illinois will be looking forward to bringing the plague back to Illinois with them. I am also sure Wisconsin wants to keep that trophy in their possession.

CENTRAL LAKE COUNTY CHESS CLUB CHAMPIONSHIP

The Central Lake County Chess Club Championship, held during October and November was won by Kevin Bachler with a score of 4-1. Finishing second in the field of 13 was Stuart Gaede. The top finisher with a rating under 1500 was David Kraft.

The club meets on Friday evenings at the College of Lake County in Grayslake, Illinois. For details, contact Harley Yoder, 662-3792.

Bachler-Gaede, Ret1: 1 Nf3 Nf6 2 g3 b6 3 Bg2 Bb7 4 00 e6 5 c4 c5 6 Nc3 d6 7 a3?! Be7 8 d4 cxd4 9 Qxd4 Nbd7 10 b4 a6 11 Bb2 Qc7 12 Racl 00 13 Nd1 Rfd8 14 Ne3 Ne8 15 Rfd1 Bf6 16 Qd2 Bxb2 17 Qxb2 Ndf6 18 Rd4 Rac8 19 g4 h6 20 h4 Qe7 21 Qbl e5 22 Rddl Be4 23 Qb2 Qe6 24 g5 Ng4 25 Qd2 Nxe3 26 Qxe3 Rxc4? 27 Rxc4 Qxc4 28 Nxe5! Qc7 29 Nxf7 Bxg2 30 Nxd8 Qxd8 31 Kxg2 hxg5 32 hxg5 Qc8 33 Qh3 Qc6+ 34 Qf3 Qc2 35 Qd5+ Kf8 36 Rd2 Qc3 37 Rd3 Qc2 38 g6 Qc7 39 Rf3+ Nf6 40 Qa8+ Ke7 41 Re3+ Kd7 42 Qf8 Qb7+ 43 f3 Nd5 44 Qxg7+ Kc6 45 Qxb7+ Kxb7 46 Re4 Kc6 47 g7 Nf6 48 Re6 Ng8 49 Re8 Nf6 50 Rf8 1-0.

GAMES FROM THE 1984 LAKE COUNTY OPEN

ROUND 1

Board 1: Nelson Campbell (1907)-Albert Chow (2353), Sicilian Dragon: 1 e4 c5 2 Nf3 d6 3 d4 cxd4 4 Nxd4 Nf6 5 Nc3 g6 6 Be3 Bg7 7 f3 00 8 Qd2 Nc6 9 000 (9 Bc4, 9 g4) 9...d5 10 exd5 Nxd5 11 Nxc6 bxc6 12 Nxd5 cxd5 13 Qxd5 Qc7 14 Qc5 Qb8 15 Qa3 a5! (Until Black's 15th, this was all book and is fully discussed in the book SICILIAN DRAGON: YUGOSLAV ATTACK by Miles and Moskow. 15...a5 seems a little slow, but it works out here) 16 Qb3? (This move lends a point to 15...a5, since White's queenside will be weakened. Instead 16 Bc4 followed by 17 Bd4 seems like a better idea) 16...Be6 17 Qxb8 Rfxb8 18 Bd4 Bxa2 (Suddenly material is equal and White is behind in development. Moreover, his King is not completely safe) 19 Bxg7 Kxg7 20 Rd7 a4! 21 Be2 a3 22 b3 Bxb3 23 cxb3 Rxb3 24 Kc2 Rb2 25 Kd3 a2 26 Ral Ra3+ 27 Kc4 Rxe2 0-1.

Board 2: Eugene Martinovsky (2328)-Lawrence Kress (1862), Pirc: 1 g3 g6 2 Bg2 Bg7 3 Nf3 Nf6 4 00 00 5 d4 d6 6 Nc3 Nbd7 7 e4 c5 8 Rel Qb6 9 e5 dxe5 10 dxe5 Ng4 11 Nd5 Qd8 12 Bg5 Re8 13 e6 Ndf6 14 exf7+ Kxf7 15 Bf4 Nxd5 16 Ng5+ Kg8 17 Bxd5 1-0.

ROUND 5

Board 2 Williams-Chow: 1 c4 c5 2 Nc3 Nf6 3 g3 d5 4 cxd5 Nxd5 5 Bg2 Nc7 6 Nf3 Nc6 7 00 e5 8 d3 Be7 9 a3 00 10 e3 Bg4 11 h3 Bf5 12 Ne4 c4 13 Nel Qd7 14 g4 Be6 15 Qc2 b5 16 Ng3 Rac8 17 dxc4 Bxc4 18 b3 Bd5 19 Nf3 Na6 20 Qd2 Qe6? (Chow) 21 Ng5 Bxg5 22 Qxd5 Qxd5 23 Bxd5 DRAWN.

Board 4, Condron-Bachler, Pirc: 1 e4 g6 2 d4 Bg7 3 Nc3 d6 4 f4 Nf6 5 Nf3 00 6 e5 dxe5 7 fxe5?! Nd5= 8 Bc4 Be6 9 Bxd5 Bxd5 10 Nxd5 Qxd5 11 00 c5 12 c3 Nc6 13 Be3 Rad8 14 Qe2 cxd4 15 cxd4 Qe4 16 Rf2 f6 17 exf6 exf6 18 Qc4+?! Kh8 19 Re2 Ne5! (Black is winning) 20 Nxe5 fxe5 21 Rd1 Rc8 22 Bf2 Rxc4 23 Rxe4 Rc2 24 Bg3 exd4 25 Bd6 Rd8 26 Ba3 Bf6 27 h4 d3 28 Kf1 Bxb2 29 Be7 Rd7 30 Bg5 Kg7 31 g4 Bf6 32 Bxf6+ Kxf6 33 Rf4+ Ke5 34 Rf8 Rxa2 35 Rel+ Kd4 36 Rf4+ Kc3 37 Rcl+ Rc2 38 Rd1 a5 39 h5 gxh5 40 gxh5 b5 41 Rf5 Rh2 42 Kgl Rb2 43 h6 Rd6 0-1.

An Affordable Event.



USCF PROUDLY ANNOUNCES

1985 National Open

March 15-16-17

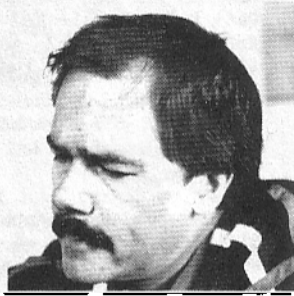
Las Vegas, Nevada

Play with the Stars in the City of the Stars.

They'll be there – will you?



G.M. Arthur Bisguier



G.M. Walter Browne
6 time U.S. Champion



G.M. Roman Dzindzichashvili



G.M. Dmitry Gurevich

Join U.S.C.F. and your friends in the Chess Vacation of the Year.

\$12,000 PRIZE FUND

Championship Section

\$2,500 - 1,500 - 1,000 - 800 - 500 - 200

Under 2400 - \$500 - 250 - 100

Under 2200 - \$500 - 250 - 100

Reserve Section (1999 and under)

Class A \$500 - 300 - 200, Class B - \$500 - 300 - 200

Class C - \$400 - 200 - 100, Class D - \$300 - 200

Class E - \$200 - 100, Unrated - \$200 - 100

120 GRAND PRIX POINTS

Plus the Edmondson Cup

DON'T MISS THIS TOURNAMENT

1985 National Open

(An Affordable Event)

6 Round Swiss, 45/2
Registration: 8:30-11:30a.m.
Rounds: Friday 12-7
Saturday 11-6
Sunday 9-4

1/2 pt. bye available for 1st or 6th rd.
Entry Fee: only \$50. if postmarked to
USCF before February 23. \$60. at site.
186 Route 9W, New Windsor, NY 12550

Co-sponsored by USCF and RAE
PRODUCTS & CHEMICAL CORP., Mr. Fred
Gruenberg, 10926 S. Western Ave.
Chicago, IL 60643 / (312) 779-3360

For special air fares
from Chicago please call
"Pat" at (312) 951-5654

Lots of Specials to An Affordable Event

Special room rate, \$39 single or double
occupancy, add \$8 for triple occupancy.
Make your reservations early - special
room rates cannot be guaranteed after
February 14th.

Thursday Night - A Special Simul. Six
time U.S. Champ WALTER BROWNE. (For
complete details, see Feb. 1984 issue
of CHESS LIFE.)

Labate's Chess Centre of Anaheim,
California will be bringing one of the
largest collections of chess items ever!
Books (over 1,500 titles), equipment (a
dozen different clocks), and computers.

Tournament Directors

Myron Lieberman, Bill Snead,
Walter Brown, Michael Goodall,
Bob & Ramona Gordon.



Imperial Palace/Hotel & Casino, Las Vegas, NV

Affordable elegance surrounds you
at the Imperial Palace. With 1500
rooms, the hotel meets the unique
needs of every traveler. Enjoy sumptuous
dining, exotic cocktails, and shopping
as well as relaxing by the beautiful
Shangri-la Pool with its two-story
waterfall and heated therapy pool.

Come alive in our beautiful casino
where all the excitement of live gam-
ing awaits you. You will find, too, all
your favorite slots and video gaming
machines. Be our guest for a compli-
mentary class in the school of gam-
ing and receive a free gaming guide.
Enjoy breakfast or lunch at the
Emperor's Buffet for \$2.47, dinner for
only \$3.47.

Imperial Palace Auto Collection

More than 200 vintage autos are on
display daily in the Imperial Palace
Antique and Classic Auto Collection
on the fifth floor of the hotel's parking
facility. This multi-million dollar col-
lection is one of the largest private au-
tomobile collections in the world.
Chess Tournament guests receive a
free pass to the Collection.

Legends In Concert

Presented in the beautiful Imperial
Theater, LEGENDS IN CONCERT is
a dazzling special effects extrav-
aganza featuring live re-creations of
legendary superstars.

Call toll free:
(800) 634-6401 (Western States)
(800) 634-6441 (National)

SEE YOU AT THE

IMPERIAL PALACE
HOTEL & CASINO LAS VEGAS, NEVADA

NEWS FROM ADAM LIEF (compiled by Kevin Bachler)

Former Illinoisian Adam Lief, now of Rossmoor, California, has had several excellent results over the past few months, and should now be around 2300. Adam will turn 16 in March. He sent the following games from some of his recent events. Notes by Adam Lief.

LaBates Chess Center #28, 8/19/84, Steve Ramos (2250)-Adam Lief, Ruy Lopez: 1 e4 e5 2 Nf3 Nc6 3 Bb5 a6 4 Ba4 Nf6 5 Qe2 (The Worrall Attack) 5...Be7 6 c3 b5 7 Bb3 (7 Bc2 may have been better) 7...d6 8 a4 Rb8 (8...Bb7 was better, exploiting White's lack of development, since if he plays to win a pawn, White gets crushed. 9 axb5 axb5 10 Rxa8 Qxa8 11 Qxb5 Nxe4 12 Bxf7+ [12 Qc4 00! 13 Qxe4 Nd4] 12...Kxf7 13 Qc4+ Ke8 14 Qxe4 Nd4 and Black is winning) 9 axb5 axb5 10 d3 00 11 Nbd2 b4 12 Bd5 (A waste of time, correct being 12 00) 12...Qe8 13 Bc4 Be6 14 00 Qd7 15 d4 (Attempting to expand in the center, but Black is better developed, so the idea falls short) 15...Bxc4 16 Nxc4 bxc3 17 bxc3 exd4 18 cxd4 d5! (Breaking up White's center) 19 Nce5 Nxe5 20 Nxe5 Qe6 21 Ra6 (White could have done without this move, which gives Black a passed b-pawn) 21...Rb6 22 Rxb6 cxb6 23 exd5 Nxd5 (Threatening ...f6) 24 Qb5 Rc8 25 Bd2 f6 26 Re1? (This attractive looking move leads to a forced loss)

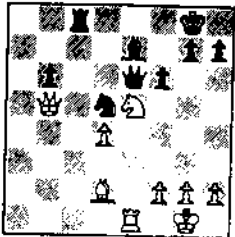


DIAGRAM 1

DIAGRAM 1
26...Nc7! (Not 26...fxe5 27 Rxe5 regaining the piece with an extra pawn. If now 27 Qd7 then fxe5 wins for Black) 27 Nc6 (Forced) Nxb5 28 Rxe6 Bf8 (Now Black threatens 29...Kf7 and if 29 d5, then 29...Nc7 wins the d-pawn) 29 f4 Kf7 30 f5 Nd6! (This interference motif wins the f-pawn) 31 d5 (If 31 Nb4 Rc4! 32 d5 Nxf5 wins as

33 Rxb6 Bc5+ wins the Rook) 31...Nxf5 32 Bb4 Nd4? (Black gets carried away and places his winning chances in jeopardy. 32... Rxc6! was correct, 33 dxc6 Kxe6 34 Bxf8 g6 and Black wins by forcing the c-pawn to c7, and then winning it by Kd7 and bringing his Knight to bear on the pawn) 33 Nxd4 Bxb4 34 Rc6! Rd8 (34...Rxc6 is drawn: 35 dxc6 Kf7 36 Nb5 and Black cannot approach the passed pawn) 35 Ne6? (35 Rc7+ would have drawn: 35...Kg8 [35...Kg6 36 Ne6 Rg8 37 Rb7=] 36 Ne6 Rxd5 37 Rxd7+ Kh8 38 Rb7 Bc5+ 39 Kf1 h5=) 35...Rxd5 36 Rxb6 Bd6! 37 Nd8+ Ke8 38 Nb7 Rd1+ 39 Kf2 Bxh2 40 Ke2 Rd5 41 Rc6 Kf7 42 Nc5 Kg6 43 Nd3 Kf5 4 Rc4 Bg3 45 Nb4 Ra5 46 Nc2 h5 47 Kf3 Be5 48 Ne3+ Kg5 49 Nc2 g6 50 Ke2 f5 51 Ne1 Ra6 52 Nf3+ Kf6 53 Ne1 g5 54 Rc8 g4 55 Nd3 Re6 56 Kf1 Kg5 57 Rg8+ Kh4 58 Rf8 Kg5 59 Rg8+ Kf6 60 Rf8+ Kg6 61 Rg8+ Kh6 62 Rf8 Bf6 63 Rc8 h4 64 Ra8 Rd6 65 Ke2 Bg5 66 Re8 Rd7 67 Re6+ Kh5 68 Rc6 f4 69 Nf2 f3+ 70 gxf3 Rd2+ 71 Kf1 g3 72 Ne4 g2+ 0-1.

LaBate's Chess Center #28, Matthew Beelby (2346)-Adam Lief, 8/19/84, Nimzo-Indian: 1 d4 Nf6 2 c4 e6 3 Nc3 Bb4 4 e3 c5 5 Bd3 Nc6 6 a3 cxd4! (Instead, Black could transpose to the Saemisch variation, which normally arises by 4 a3 Bxc3+ 5 bxc3 c5. The text idea Black played was introduced by Czech GM Hort in the late 1960's) 7 axb4 dxc3 8 bxc3 Ne5? (This move wastes time and drives White's Bishop to a good square. 8...d5! was much better, e.g. 9 cxd5 exd5 or 9 Nf3 e5 in both cases with a good game for Black) 9 Be2 d6 10 Nf3 Nxf3+ 11 Bxf3 (Now White's Bishop is on an excellent square, hampering Black's development by preventing b6.) 11... Qc7 12 00 00 (12...Qxc4 13 Qxd6 Qxc3 14 Bxa3 and 15 b5 is disastrous) 13 Qd3 Nd7! (This fine defensive move enables Black to complete his development, gaining time with the threat of 14...Ne5)

14 Be2 Rd8 (Otherwise 15 Rd1 wins the d-pawn) 15 e4 (15 f4 followed by 16 Rd1 and 17 Bf3 was better) 15...b6 16 Bg5 f6 17 Bh4 Ne5 18 Qd4 B7 19 Rfd1 (If 19 f4 Ng6 20 Bg3 e5! 21 Qe3 exf4 22 Bxf4 Re8 with a good game for Black) Qc6 20 f3 Qe8 21 Bg3 Nf7 22 Bf1 (22... d5 was threatened) 22...Qe7 23 Ra2 Bc8 24 Bf2 e5! 25 Qd3 Be6 26 b5! (Fixes Black's a-pawn, but further weakens White's c-pawns) 26...Rac8 27 Ra4 Rd7 28 Qb1 Nd8 29 Qa2 Bf7 (Preparing to transfer Black's Knight to c5) 30 Re1 R8c7 31 g3 Ne6 32 Bh3 (Preventing the Knight sortie) 32...g5 (To restrain f4) 33 Qd2 Rd8 34 Qa2 R8d7 35 Be3 Kh8 36 Qa3 Bg6 37 Ra2 h6 38 Qc1 Kh7 39 Qa1 (After some moving about White threatens 40 Bxe6 Qxe6 41 Rxa7) 39...Kg7! 40 Bxe6 Qxe6 41 Rxa7 Qxc4 42 Rxc7 (If 42 Bxb6 Rxa7 43 Rxa7 Qxb5 and Black is fine. White tries for more and gets less) 42...Qxc7 43 Ra6 (White had calculated up to here, and had determined that he was winning a pawn. However, Black has strong counterchances which White had underestimated) 43...g4 (This move begins White's troubles. Since both 45 Rxb6 gxf3 and 45 Bxb6 Qc4 46 Ra7 are better for Black, White must accept a ruined king-side pawn formation) 44 fxe4 Qc4! (Much better than 44...Bxe4. Now that Black's queen becomes active, his counterattack is very strong. White's only chance is to bail out into the inferior ending with 45 Ra7 Qxb5 46 Rxd7+ Qxd7 47 Bxb6 Bxe4) 45 Qc1? Bxe4 46 Bxh6+ Kg6 47 Qf1 (47 Qd2 Qf3 48 Be3 Qh1+ 49 Kf2 Qxh2+ 50 Kf1 Qh1+ 51 Kf2 Rh7 is crushing) Qxf1+ 49 Kxf1 Kxh6 50 c4? Bd3+ 0-1

LaBate's Chess Center #29, 9/16/84, Lief-Michael Walder (2310) Hedgehog: 1 Nf3 c5 2 g3 b6 3 Bg2 Bb7 4 00 Nf6 5 c4 e6 6 Nc3 Be7 7 d4 cxd4 8 Qxd4 (8 Nxd4 prematurely trades light-squared Bishops. Instead, White's Queen is well placed here, as an attempt to drive it away with 8...Nc6 leaves Black's Knight misplaced, since it belongs on d7) 8...d6 9 e4 Nbd7 10 h3 a6 11 Ba3 Nc5 12 Rfe1 00 13 Rad1 Qb8 14 e5 (This break is less effective without Black's Queen on c7) 14...dxe5 15 Qxe5 Qa7 (The point: Black keeps the Queen's on the board. After 15...Qxe5 16 Nxe5 Bxg2 17 Kxg2 Rac8 18 b4 Nb7 19 Nd7 Rfe8 [19...Nxd7 20 Rxd7 Rxc4 21 Nbl wins a piece] 20 Nxb6 with a tremendous game for White) 16 Qe2 Rac8 17 Nd4 (Perhaps 17 Ne5 is better) 17...Rfe8 18 Bb2 (18...Nxb3 was threatened) 18...Ncd7 19 Bh3! (Avoiding the trade of light squared Bishops and creating sacrificial threats on e6) 19...Qa8! (An excellent defensive move, taking advantage of White's weakness on the long diagonal. If now 20 Nxe6 Bf3! wins) 20 Qd2 (Renewing the threat of 21 Nxe6 fxe6 22 Bxe6+ Kh8 23 Bxd7 winning two pawns. If 23...Rcd8 24 Bxe8! Rxd2 25 Rxd2 Qxe8 26 Rde2 Ng8 27 Ba3 with a winning position) 20...Bb4 21 a3 Bxc3?! (A questionable decision. Black believes his better control of the center will offset White's two Bishops and Kingside attacking chances) 22 Qxc3 Nc5 (Not 22...Ne4? 23 Rxe4 Bxe4 24 Nxe6 Nf6 25 Nxe7! and wins) 23 Qe3 h6 24 Qf4 Nce4 25 Nxe6! (Objectively 25 Bg2 may have been better, but White's move has enormous psychological effect) 25...fxe6 26 Rxe4 Bxe4 (26...Nxe4 27 Rd7 Nf6 28 Rxd7 leads to mate) 27 Bxf6 gxf6? (This loses, as does 27...Rf8 28 Bxe6+ Kh7 [28...Kh8 29 Qxh6+] 29 Bxc8 Rxf6 30 Qc7 Bh1 31 Bh3+. 27...Qb7 was the best attempt: 28 Bxg7 Kxg7 29 Qe5+ Kf7 30 Rd4 Bg6 31 Rf4+ Kg8 32 Bxe6+ Kh7 33 Bxc8 wins. This last line is not an attempt to show that White has a forced win, but does show that his attack is very dangerous) 28 Rd7! Rc5 29 Qxf6 Rg5 30 Bxe6+ 1-0.

THE DOWNERS GROVE PARK DISTRICT CHESS CLUB MEETS THURSDAYS AT 6:30-10:30 PM ON A YEARAROUND BASIS. ADDITIONAL TIMES ARE AVAILABLE FOR TOURNAMENTS. THE CLUB MEETS AT LINCOLN CENTER, 935 MAPLE AVENUE, DOWNERS GROVE. FOR MORE INFORMATION CONTACT GEORGE UFFNER AT 852-6139, OR THE PARK DISTRICT AT 963-1300.

Ask Miroseg

Good news certainly travels fast! Already numerous ICB readers have been pestering me with inquiries about the defection of that famed Albanian theoretician, Miroseg Zog. I am pleased to report that the "Animal of the Adriatic" is already losing himself in the great ethnic melting pot that is Chicago, but he still fears retaliation from the Albanian Secret Police. I'm sure you'll understand when I explain that at present only myself (and the State Department) know his whereabouts. So no more inquiries about simula! However, I can pass on questions from the ICB readership, please send your questions to:

Ask Miroseg
c/o David Sprenkle
302 S. Busey, No. 203
Urbana, IL 61801

Already I've conducted an interview with our new arrival, which should be of some interest to the chess world.

DS: Tell us about your defection.

MZ: Dave, as you know, I sought refuge in US consulate in Thessaloniki, Greece, near conclusion of recent Chess Olympiad there. I had been serving in usual role as team analyst for Albanian team. My application for political asylum was quickly accepted, and I soon find myself in your wonderful country.

DS: What precipitated your defection?

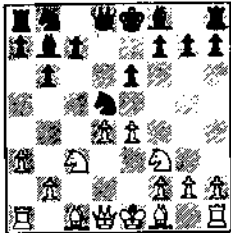
MZ: Excuse please?! I don't remember rain when I defected...

DS: Er, sorry, why did you defect?

MZ: Albanian team political officer and team masseuse grew angry, blaming me for team's losses to imperialist and revisionist lackies. Too harsh, but I was not at my best.

DS: Would you mind giving an example?

MZ: Not at all. Here is opening played in match with Faroe Islands. After 1 d4 Nf6 2 c4 e6 3 Nf3 b6 4 a3 Bb7 5 Nc3 d5 6 cxd5 Nxd5, a very popular position is reached. First White players tried 7 e3, then Kasparov tried moves like 7 Qc2, to play e4 next move. I thought, "why not try a gambit?", and recommended 7 e4 to our 2nd board.



AFTER 7 e4!?

The game continued 7...Nxc3 Bxe4 9 Ne5!, and now Black must watch white squares, and f7 square especially. For example...

DS: You realize of course that the latest Informants feature games from Soviet players with this idea?

MZ: Eh? No, I fear our copies arrive late, and with all the Soviet and Chinese games

blotted out. Anyway, was 9...f6 mentioned?

DS: No.

MZ: Aha! So I am not so stupid. 2nd board from Faroe Islands played 9...f6, something we had not analyzed. The game continued 10 Qg4 fxe5 11 Qxe4 Qd5! 12 Qxe5 Qxe5 13 dxe5 Nd7 14 Bc4 (best chance) Nxe5 15 Bxe6 Nd3+ 16 Kd2 (so as not to block the e-file) Nxc1 17 Kxc1 Ke7 18 Re1 Kf6! and Black has no problems. In fact our player even left pawn hanging and lost!

DS: And they blamed that on you?!

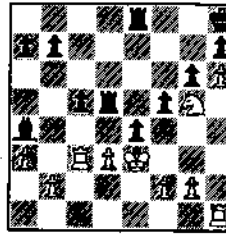
MZ: Yes, it was judged my poor opening analysis left him demoralized.

DS: If you don't mind my saying so, if that's the worst bit of analysis they could blame on you...

MZ: Well, not worst...There was adjourned game...But it was of little interest...

DS: Let's see it!

MZ: Oh alright! Here is position, our 1st board playing against player from Sri Lanka.



ADJOURNED POSITION

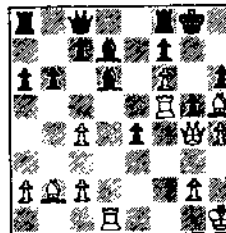
DS: The reasons for your defection are becoming clearer. What will you do now?

MZ: Am writing book on my defection and King's Gambit. Until it finished I must rely on your generous offer to write for your wonderful magazine for...

DS: Don't mention figures! Albert Chow might get jealous. Let's put you to work on some of the material and questions we've already received from our eager readers.

MZ: Very well.

DS: How about this combination sent in by Greg Shapiro?



AFTER 29 Rf5 Bd7

37 Rf1+ Bf5 38 Rf7+ doesn't help matters) 37 Rxc7+ Be5 (37...Kg8 38 Rxc8+ Rxc8 39 Rxd6 also loses) 38 Bxe5+ Kg8 39 Rxc8+ and White won easily. What do you think?

MZ: Nice. Either White saw far ahead to play combination, or was resourceful when forced into combination!

DS: See any holes?

MZ: Hmm, no. Black's 34th place to look, but what?! 34...Bg4 35 g8/Q+ Kxg8 36 Rg8+ Kf8, and now instead of 37 Rf1+ Bf3!, 37 Bxg4 wins easily. 34...Qg8 35 Rxd7 is not way, and 34...Kg8 35 Rdf1 with idea of Rf6, Rxh6, and Rh8 mate stinks too.

DS: Alright then, how about this question from an anonymous Iowan. He writes, "I recently saw some annotations in the Iowa chess magazine, EN PASSANT, in which a master suggested that doubled and isolated pawns could be favorable to the player who has them. Could you ask Miroseg to explain?"

MZ: Anything can be favorable in right situation.

DS: Wisdom of the ages. Lets look at the actual game used as an example. The master was playing Black against a much lower-rated player, and the game went 1 e4 Nc6 2 f4 d5 3 exd5 Qxd5 4 Nc3 Qa5 5 Nf3 Bg4 6 Bb5 and now Black played 6...a6 7 Bxc6+ bxc6. What do you think?

MZ: Ugh! Is awful! White won of course?

DS: Well, actually he played 8 d4 and went on to lose. MZ: 8 d4? That is stinky move too! Why he want to make his bishop bad? Lets play 8 h3 instead. Now if bishop exchanges with 8...Bxf3 9 Qxf3 Black must scramble to guard weak c-pawn. If 9...Qb6 or 9...Qc5, then 10 d3 and 11 Be3, gaining time attacking exposed queen. White's pieces are better placed, AND Black has weak pawns!

DS: Then maybe exchanging the bishop is bad. How about 8...Bf5 or 8...Bd7?

MZ: Also bad, White plays 9 Ne5! followed by Qf3 with big advantage once again. This was bad example to show advantages of doubled pawns.

DS: O.K.! You gonna be back next issue to answer more questions?

MZ: I got something better to do? Of course!

We felt White would seal 41 dxe4, and so we prepared to win a piece. Game continued 41...f4+ 42 Kxf4 Rf8+ 43 Kg4 Bd7+ 44 Kh4 Rf4+ 45 Kg3 Rg4+ 46 Kf3 Rdxg5. That is all we analyzed, and we expected White to resign. Instead came 47 Rd1! Be6 (47...Re5 48 Rxd7 Rgxe4 is still lost endgame) 48 Rd8+ Bg8 and now White played 49 g3! and Black is in zugzwang!

It occurred in the game Shapiro-Burdich, from a Chicago Chess Center event in July. Greg played 30 Rxg5+! Kh8 (30...Kh7 31 Rg7+ Kh8 32 Rh7+! Kxh7 33 Qg7 mate) 31 Rf5 Rg8 32 Qg7+! Rxg7 33 fxe4+ Kh7 (33...Kg8 34 Bxf7+ Kh7 35 g8/Q+ Qxg8 36 Bxg8+ Kxg8 37 Rf6 should win easily for White) 34 Rxf7 Be6 35 g8/Q+ Kxg8 36 Rg7+ Kh8 (36...Kf8

Put the Fun back into CHESS

ST	PLAYER	PRE	POST	1	2	3	4	5	TOT
1	DANDRIDGE, MARVIN	IL 2277	2305	K-54	K-73	M106	W-22	K-19	5.0
2	BISGUIER, ARTHUR B	NY 2493	2497	K-32	W-71	W-12	W-10	D--4	4.5
3	VAN METER, LESTER	MI 2359	2374	K-76	K-26	M-13	W-21	D--5	4.5
4	MARTINOVSKY, EUGEN	IL 2356	2379	K-15	W-45	W-40	W-38	D--2	4.5
5	COLIAS, BILLY	IN 2317	2335	K-74	K-44	K-48	W-11	D--3	4.5
6	MAROVITCH, MARK	NY 2085	2101	D129	K-61	M134	K-91	K-25	4.5
7	GUREVICH, DMITRY	NY 2364	2552	M141	L-40	M132	W-76	K-25	4.0
8	MILLS, JR JAMES A	IN 2247	2236	K-52	L-48	K-99	W-54	K-47	4.0
9	BERCOLOS, PETER	IN 2228	2228	K-96	K-27	L-29	W-95	K-44	4.0
10	TOMAS, JOHN S	IL 2223	2234	W-56	K-93	W-85	L--2	K-43	4.0
11	SCOTT, GENE	IL 2208	2206	M142	K-57	M116	L--5	K-63	4.0
12	FISCHVOGT, ERIC V	MI 2174	2187	K-94	K-64	L--2	W-52	K-48	4.0
13	ZVILLIUS, MARK	IL 2190	2147	M143	M102	L--3	W-50	K-41	4.0
14	KAMEN, DAN	IL 2093	2050	L--4	M133	M145	W-58	K-68	4.0
15	FORD, SAMUEL M	IL 2046	2073	L-20	M104	K-77	M-51	K-37	4.0
16	NELSON, HERMAN H	IL 2030	1974	D-35	D-62	M147	M108	K-38	4.0
17	POPOVICH, JOHN D	IL 1948	1881	L-38	M136	M150	W-40	K-42	4.0
18	GLOCKNER, ALEXANDE	NJ 1800	2302	K-95	D-46	M-35	W-75	L--1	3.5
19	GILES, MORRIS C	IL 2318	2242	K-16	K-72	L-22	W-74	D-26	3.5
20	CHUHAI, KEVIN	MI 2254	2215	X--	K-49	M108	L--3	D-27	3.5
21	SCHILLER, ERIC	IL 2226	2146	M128	K-59	W-20	L--1	D-28	3.5
22	MORRIS, MATTHEW	IL 2137	2100	D-55	K-62	L-75	K-69	K-79	3.5
23	MOSS, LARRY L	TX 2117	2060	L-57	M107	M102	W-55	D-31	3.5
24	CONDON, JAMES K	IL 2085	2097	M-53	D-37	W-82	K-81	L--6	3.5
25	BAIN, ROBERT C	IL 2083	2047	M-66	L--9	M143	K-57	D-20	3.5
26	SURAK, STEVE S	IL 2026	1997	K-19	L--9	M103	K101	D-21	3.5
27	MC DANIEL, KEITH	IL 1976	1973	L102	M148	M146	M106	D-22	3.5
28	ROSS, JR EDWARD J	IN 1971	2055	M144	K-41	K--9	D-37	L--7	3.5
29	BARRE, TODD J	IL 1960	1921	Z--	L106	K-88	M134	K-85	3.5
30	LINN, GINA	NY 1918	1914	L-37	M110	M112	M121	C-24	3.5
31	FLYNN, MICHAEL F	IL 1899	1903	L--2	D134	M136	K-78	K-75	3.5
32	CHRISTIAN, RAYMOND	IL 1892	1805	L-41	K-85	Z--	K-87	K-83	3.5
33	BUTTNY, WILLIAM P	IL 1786	1748	D-47	M149	L-37	M113	K-89	3.5
34	GODFREY, JOAQUIM	IL 1715	1741	D-17	M117	L-19	M139	K-72	3.5
35	LEVIN, ROY	IL 1678	1996	M145	L-39	M148	D-85	K-81	3.5
36	GAEDE, STUART R	IL 0	2419	K-31	D-25	K-34	D-29	L-16	3.0
37	DE FOTIS, GREG S	IL 2444	2189	K-18	K-58	K-69	L--4	L-17	3.0
38	SANDRIN, ANGELO	IL 2200	2168	K-50	K-36	D-81	D-46	U--	3.0
39	PETRISON, JOHN	IN 2173	2136	K-97	W--7	L--4	L-18	K-91	3.0
40	YOUNKER, JR LARRY	WI 2125	2052	K-33	L-29	K-59	W-96	L-14	3.0
41	SEEWI, JORAM	MI 2063/10	2036	L-58	M103	K-80	K-97	L-18	3.0
42	STEIN, PETER	IL 2067	2042	K-79	L-81	M104	W-64	L-10	3.0
43	SMYTHE, BILL	IL 2055	2047	K-60	L--5	K-62	W-65	L--9	3.0
44	ROSENFELD, IRVING	IL 2049	2022	M100	D--4	L-66	M112	A102	3.0
45	MILLER, STEVEN C	IL 2044	2033	M100	L-14	K-87	D-39	L--	3.0
46	SCHMUGGERON, KEVIN	IL 2007	1979	D-34	D-75	K-98	W-60	L--8	3.0
47	ALKHOVSKY, LUCY	IL 1992	1966	K-80	K--8	L--5	W-67	L-12	3.0
48	STERN, HOWARD W	IL 1930	1900	K-66	L-21	M110	M116	L-13	3.0
49	HENDERSON, SCOT L	OH 1897	1869	L-39	K-88	M117	L-13	M108	3.0
50	CHAPMAN, BRIAN W	IL 1864	1837	L-71	M125	M156	L-16	M116	3.0
51	BOLTON, MATT W	IL 1840	1846	L--8	K-83	M140	L-12	M103	3.0
52	COMSTOCK, RON	MI 1833							

ILLINOIS CLASS

IL CLASS CHAMPIONSHIP/EXPERT MASTER

PLAYER	PRE ST	RTNG	1	2	3	4	5	TOT
1 COLLAS, BILLY	IL 2310	2349	M14	M21	M-9	M-2	U-3	4.5
2 CHOM, ALBERT C	IL 2345	2362	M11	M-7	M-4	L-1	M-9	4.0
3 ACOSTA, MARIANO A	IL 2297	2309	M-8	D19	M16	M10	D-1	4.0
4 SANDRIN, ANGELO	IL 2223	2232	M25	M13	L-2	M-5	D-7	3.5
5 PASCOV, ALEXANDER	IN 2160	2180	M12	D-9	M17	L-4	M11	3.5
6 WALLACH, KEN	IL 2237	2242	L21	M-8	M14	M13	U--	3.0
7 ZVALIUS, MARK	IL 2123	2140	M26	L-2	M21	D11	D-4	3.0
8 SMYTHE, BILL	IL 1978	2043	L-3	L-6	M15	M21	M12	3.0
9 SPRENKLE, DAVID C	IL 2339	2318	M15	D-5	L-1	M16	L-2	2.5
10 MILLS, JR JAMES A	IN 2240	2230	D17	M24	M19	L-3	U--	2.5
11 WALLACH, CLIFF H	IL 2122	2030	L-2	M25	M18	D-7	L-5	2.5
12 FIRESTONE, CHRIS	IL 2016	2026	L-5	D15	M26	M17	L-8	2.5
13 DAVENPORT, ALAN L	IL 1953	1969	B--	L-4	M23	L-6	D16	2.5
14 SUZUKI, WESLEY Y	IL 2194	2185	L-1	M26	L-6	M19	U--	2.0
15 MAROVITCH, MARK	IL 2097	2066	L-9	D12	L-8	B--	D17	2.0
16 BAIN, ROBERT C	IL 2094	2083	D24	M23	L-3	L-9	D13	2.0
17 AGEE, LARRY J	IL 1993	2009	D10	M20	L-5	L12	D15	2.0
18 CHACHERE, LAWRENCE	IL 2222	2207	D23	M22	L11	U--	U--	1.5
19 HENDERSON, SCOT L	OH 1892	1897	B--	D-3	L10	L14	U--	1.5
20 KORNFELD, ALLEN I	IL 2239	2225	M22	L17	U--	U--	U--	1.0
21 ZABELL, SANDY L	IL 2095	2079	M-6	L18	L-7	L-8	U--	1.0
22 BROCK, WILLIAM	IL 2033	2031	L20	L18	M24	U--	U--	1.0
23 SURAK, STEVE S	IL 2048	2021	D18	L16	L13	U--	U--	.5
24 BERNAL, LUIS F	IL 1976	1962	D16	L10	L22	U--	U--	.5
25 SCHMUGGEROW, KEVIN	IL 2027	2007	L-4	L11	U--	U--	U--	.0
26 BECKER, SIDNEY D	IL 2003	1969	L-7	L14	L12	U--	U--	.0

IL CLASS CHAMPIONSHIP/CLASS A

PLAYER	PRE ST	RTNG	1	2	3	4	5	TOT
1 LIPTEN, LEON	IL 1906	1976	M10	M-8	L-3	M-5	M-2	4.0
2 RAJENDRAN, DAVID	IL 1894	1956	M12	M-7	M13	M-3	L-1	4.0
3 DOTSON, JOHN D	MO 1587	1708	B--	M-4	M-1	L-2	M-6	4.0
4 FLYNN, MICHAEL F	IL 1864	1899	M11	L-3	L-5	M14	M13	3.0
5 EASTER, RON	IL 1879	1905	D13	D11	M-4	L-1	M-8	3.0
6 KOSIBA, LAWRENCE A	IL 1811	1850	M10	L-9	M12	M-8	L-3	3.0
7 HARRISON, WILLIAM	IL 2033	2009	M-9	L-2	D10	D12	U--	2.0
8 WEISZ, PIERRE	IL 2024	1981	M15	L-1	M-9	L-6	L-5	2.0
9 CHRISTIAN, RAYMOND	IL 1887	1892	L-7	M-6	L-8	M13	U--	2.0
10 READ, RHY S	IL 1976	1977	L-1	M15	D-7	U--	U--	1.5
11 DECMAN, STEPHEN J	IL 1841	1811	L-4	D-5	L14	B--	U--	1.5
12 TOWNSEND, DONALD	IL 1815	1811	L-2	M14	L-6	D-7	U--	1.5
13 NICHOLSON, DONN E	IL 1797	1765	D-5	B--	L-2	L-9	L-4	1.5
14 GRAVES, WILLIAM E	IL 1813	1785	L-6	L12	M11	L-4	U--	1.0

111 PITRODA, MUKESH	IL 1938/4	1468	L-69	L138	M164	M158	L-56	2.0	
112 SOLCICH, KEVIN G	IL 1529	1530	M160	L-95	L114	L-45	M152	2.0	
113 STONE, GEORGE G	IL 1512	1500	L139	M114	L-93	L-30	M153	2.0	
114 WALKER, JULIUS L	IL 1467/3	1413	L-89	L113	L144	M170	M149	2.0	
115 ZACATE, MATTHEW O	IL 1453	1438	L125	M164	L-54	L-56	M159	2.0	
116 MILLER, KEVIN E	IL 1441	1468	M157	K-56	L-11	L-49	L-51	2.0	
117 O'NEIL, TIMOTHY J	IL 1416	1421	M158	L-35	L-50	L-59	M161	2.0	
118 FROST, JASON	IL 1347/12	1358	L146	L158	M160	M145	L-58	2.0	
119 KEMPER, ROBERT H	IL 1333	1326	L107	L101	M169	X--	L-65	2.0	
120 PADILLA, RUDY R	IL 1322	1330	L-82	L-70	M161	L-80	M150	2.0	
121 PANNER, GLENN E	IL 1321	1356	L103	M127	M-53	L-31	L-57	2.0	
122 ANDERSON, DOMINIC	IL 1259/5	1408	L106	L-99	M127	L-61	M148	2.0	
123 BROWN, CORTLAND J	IL 1157/14	1221	L-68	L156	M153	M148	L-64	2.0	
124 GRAY, CHRISTOPHER	IL 1157	1224	M140	L-60	L101	M110	L-59	2.0	
125 NIELSEN, JOHN	IL 0	1509	M115	L-51	L-65	M104	M151	2.0	
126 WOZDZIERZ, LESZEK	IL 0	1530	L-86	M-90	L100	M146	L-60	2.0	
127 BUKATA, PABLO A	IN 0	1278	L-67	L121	L122	M164	M150	2.0	
128 PASSWATER, TONY	IN 1843	1618	L-22	L-69	M167	D-86	U--	1.5	
129 MOORE, PAUL L	IL 1776	1764	D--6	M-84	L-91	L-83	U--	1.5	
130 JUST, TIMOTHY W	IL 1769	1707	L--5	L132	M159	D140	L-88	1.5	
131 SEFCHECK, MARK M	IL 1768	1724	Z--	L108	M163	L-89	U--	1.5	
132 VOGELE, DAVID E	IN 1681	1669	C-58	M130	L--7	L-79	L-78	1.5	
133 MOORE, VICTOR	IL 1615	1593	M155	L-15	M--	L-73	L-86	1.5	
134 SOMMERS, IZZY	IL 1577	1568	M138	D-32	L--6	L-30	L-90	1.5	
135 BANNON, JOSEPH E	IL 1503	1493	M170	L-96	L-95	L-94	D138	1.5	
136 FINNEY, JAMES R	IL 1437	1443	O-92	L118	L-32	M162	L-84	1.5	
137 BUSTAMANTE, AVELIN	IL 1424	1425	M169	L-74	M--	U--	U--	1.5	
138 RYAN, EVAN	IL 1407/10	1427	L134	M111	L-57	L-9A	D135	1.5	
139 MAYOROM, BARRY J	IL 1404/5	1457	M113	L-53	Z--	L-35	L-87	1.5	
140 CANNELL, MYRON J.	IL 1394	1395	L124	M160	L-52	D130	L-82	1.5	
141 BULLARD, DWIGHT A	IA 1887	1842	L--7	L-85	M157	L105	U--	1.0	
142 JOHNSON, MARVIN J	IL 1658	1849	L-11	D-98	Z--	U--	U--	1.0	
143 SOMA, WALTER S	IL 1718	1713	L-13	M167	L-26	U--	U--	1.0	
144 BEARD, GLENN A.F.	IL 1704	1628	L-29	L152	M114	L109	U--	1.0	
145 ROSS, MICHAEL NM	IL 1685	1628	L-36	M168	L-15	L118	L-82	1.0	
146 ELLIOTT, JAMES R	IL 1678	1652	M118	L-14	L-28	L126	U--	1.0	
147 GASATAYA, EUGENE R	IL 1593/13	1585	M154	L-91	L-17	U--	U--	1.0	
148 ANDERSON, RICHARD	IL 1586	1536	M152	L-28	L-36	L123	L112	1.0	
149 ZEMGULYS, JOE G	IL 1524	1508	M-70	L-34	L-96	L-53	L114	1.0	
150 CARSON, DAVID L	IL 1398	1370	L-61	M169	L-18	L-99	L127	1.0	
151 SLAGLE, STEVE S	IL 1334	1322	L-75	M170	L-55	L102	L125	1.0	
152 HUGHES, NATHANIEL	IL 1306	1317	L148	M144	L-58	L103	L112	1.0	
153 OGUSZ, PAUL M	IL 1240/4	1227	L-78	L-77	L123	M160	L113	1.0	
154 BRAWKA, JASON	IL 1231	1226	L147	L-80	M170	L-62	L110	1.0	
155 NATHAN, NICOL	IL 1227/5	1219	L133	D157	L-84	L-88	D162	1.0	
156 CHENOWETH, BRUCE C	IL 1218	1230	L104	M123	L-51	L-77	L107	1.0	
157 GRUENBERG, KURT	IL 1144	1128	L116	D155	L141	L-90	D164	1.0	
158 HAYNES, ARMON	IL 1071/14	1114	L117	M118	L-60	L111	L120	1.0	
159 POINDEXTER, ANTHON	IL 781/2	1137	L-87	L-66	L130	M169	L115	1.0	
160 LEVY, GARY W	IN 0	1107	L112	L140	L118	L153	M168	1.0	
161 THIRSK, ALAN E	IL 0	1190	L105	L109	L120	M168	L117	1.0	
162 UODMAN, ROY	IL 0	1310	D-83	L-65	L-79	L134	D155	1.0	
163 SLAVIS, MARK	IL 1342/15	1353	D-84	L-97	L131	L131	L-92	U--	.5
164 COLEMAN, HYBITHA M	IL 0	1019	L110	L115	U--	U--	L127	D157	.0
165 NICHOLSON, DONN E	IL 1765	1765	F--	U--	U--	U--	U--	U--	.0
166 BRUNNER, FRANK	IL 1737	1732	L-26	U--	U--	U--	U--	U--	.0
167 ALPERT, BERNARD	IL 1236	1231	L108	L143	L128	U--	U--	U--	.0
168 ATWELL, FRANCINE	IL 1227	1184	L-85	L145	L-56	L161	L160	U--	.0
169 LAGUE, BRAD K	IN 1115/9	1045	L137	L150	L119	L159	U--	U--	.0
170 LONGSHORE, JIM L	IN 1014/6	1002	L135	L151	L154	L114	U--	U--	.0



Helen Warren, TD

AMELUNG, A (MO)	950	MILBRATZ, W (IL)	892
ANDERSON, A (IL)	859	NICKS, J (MO)	784
BACHLER, K (IL)	918	NURMI, R (IA)	727
BAUMANN, H (IL)	727	O'HEARN, J (OR)	724
BELICS, G (MO)	849	O'KEEFE, M (IL)	606
BENDER, F (IL)	884	OLTMAN, T (IL)	818
BETHEL, R (IL)	783	PETERSON, P (IL)	797
BROCK, B (IL)	916	POPE, R (IL)	761
BROWN, J (IA)	800	PRAY, R (IA)	823
CATINO, C (IL)	731	RAMIREZ, E (IL)	776
CHRISTEN, S (IL)	841	REARDON, J (IL)	840
COHEN, S (IL)	789	ROECKER, J (IL)	919
CONNOR, P (IL)	887	ROTHSCHILD, I (IL)	759
CROUSE, T (IA)	827	SANDER, D (IL)	746
DANGOY, F (IL)	763	SANDFORD, C (IL)	879
DAVIES, J (MO)	819	SCHREMSER, T (IL)	778
DEAKIN, J (IL)	775	SCORZA, S (IA)	779
DEMAURO, J (IL)	1077	SEDLACK, E (IL)	823
ECKERT, D (MO)	874	SEXTON, C (IA)	922
EICHMORN, G (IA)	863	SHOLL, P (IL)	678
ELLENWOOD, D (IL)	720	SILDMETS, A (NE)	820
FAWBUSH, G (MO)	961	SILLARS, A (IL)	858
FIELD, D (IA)	874	SIMS, L (IL)	959
FISHER, B (IL)	839	SMITH, M (IL)	680
GAPUZ, W (IL)	848	SDGIN, L (IL)	700
GENSLER, K (IL)	785	SPITZNAGEL, L (IL)	787
GLASCOCK, D (OK)	839	STOTLER, R (IL)	625
GUSTAFSON, G (IL)	843	SWICEGOOD, J (IL)	808
HAGEMANN, W (MO)	801	TAYLOR, D (IL)	1139
HARNACH, C (IL)	751	TAYLOR, K (IL)	861
HARPER, R (MO)	758	VANDERLINDEN, E (IA)	824
HARRIS, W (IL)	898	WALHOUT, D (IL)	1015
HEALY, S (IL)	705	WALHOUT, P (IL)	791
HEIMBAUGH, M (IA)	728	WARREN, J (IL)	919
HERNANDEZ, H (IL)	724	WEISS, M (IA)	953
HEUSINKVELD, W (IA)	713	WERNER, L (IL)	898
HOBSON, N (IL)	782	WHITE, G (MO)	800
HOUSH, K (IL)	740	YOUNG, L (IL)	760
JABLOKOW, V (IL)	877	ZAVANELLI, M (IL)	1082
JAMASON, R (IL)	645	ZIEGLER, K (IL)	820
JAMISON, L (IL)	700		
JOHNSON, B (IL)	764		
JOHNSON, J (IA)	835		
JUST, T (IL)	819		
KAPELA, R (IL)	619		
LAROSE, M (IL)	722		
LEGG, J (IL)	773		
LENKE, D (IA)	770		
LEWIS, S (MO)	742		
LOOMIS, H (MO)	740		
LOVEN, D (IL)	769		
LUTHER, R (MO)	838		
MARTINDALE, J (IL)	895		
MCKINNEY, C (IL)	737		

Games rated for this issue were received by 12/11.

Greatest point gain of 59 by A Amerlung. 38% of ratings changed.

REGION VII TOP TEN

DAVID TAYLOR (IL).....	1139	1981 ICA Champion
MAX ZAVANELLI (IL).....	1082	Joe Demauro is now living in New Jersey and is not presently active in Region VII competition.
DONALD WALHOUT (IL).....	1077	
GEORGE FAWBUSH (MO).....	961	
LARRY SIMS (IL).....	959	
MITCH WEISS (IA).....	953	
ANDY AMELUNG (MO).....	950	
CHAPLES SEXTON (IA).....	922	
JOHN ROECKER (IL).....	919	
JIM WARREN (IL).....	919	

PLAYERS

	1	2	3	4	5	6	7	8	9	10	11	12	13	14
1 ALLAN ANDERSON (IL)	1	0	1	0	1	1	1	1	0	0	0	0	1	7
2 KEVIN BACHLER (IL)	0	1	0	1	0	1	1	0	1	0	0	1	0	7
3 FRED BENDEP (IL)	1	0	1	0	1	1	1	1	1	0	0	0	1	0
4 STEVE COHEN (IL)	0	0	0	1	0	0	1	0	1	0	1	1	0	0
5 JOE DEMAURO (IL)	1	1	1	1	0	1	1	1	1	1	1	1	0	12
6 GEORGE FAWBUSH (MO)	0	0	0	1	0	0	1	1	0	0	0	0	0	3
7 RICHARD JAMASON (IL)	0	0	0	0	0	0	0	0	0	0	0	0	0	0
8 JERRY LEGG (IL)	0	1	0	1	0	0	1	0	1	0	1	0	0	4
9 ADAM LIEF (IL)	1	0	0	0	0	1	1	1	0	0	1	0	1	6
10 DAVID TAYLOR (IL)	1	0	1	0	1	1	0	1	0	1	0	0	1	8
11 IRWIN ROTHSCHILD (IL)	0	1	1	0	0	1	1	0	1	0	0	0	1	7
12 JIM WARREN (IL)	1	0	0	0	1	1	1	0	1	1	0	1	1	8
13 JOE MARTINDALE (IL)	0	0	1	1	1	1	0	1	1	1	0	1	1	8
14 WALTER BROWN (IL)	0	0	0	1	1	1	1	0	0	0	0	0	0	4

CONGRATULATIONS TO....

GEORGE FAWBUSH & MAX ZAVANELLI who have tied for first in the 1980 ICA Consolation Finals. Each receives a \$20 cash prize.

QUALIFIERS FROM THE 1983 PRELIMS:

In addition to Max Zavanelli and Dave Taylor announced last month as first qualifiers, we have GARY Gustafson as qualifier. (Incidentally, Gary has moved from IL to New Hampshire, but continues his ICA/Reg. VII postal play.)

REMINDER...By the time this issue of the ICB reaches you 1984 Postal Director Tim Just will have mailed out prelim assignments. In the event that early withdrawals occur, there may be an opening or two for anyone interested. Contact Tim Just if interested. His address 1521 Circle Ct. Waukegan, IL 60085.

GAMES FROM THE ILLINOIS-WISCONSIN MATCH

Bd.1 Angelo Sandrin-IM Steve Odendahl King's Indian

1 Nf3 Nf6 2 e4 d6 3 d4 g6 4 Nc3 Bg7 5 e4 0-0 6 Be2 Nbd7 7 0-0 e5 8 Re1 e6 9 d5 e5 10 Bg5 h6 11 Bh4 a6 12 Nd2 Qe8 13 a3 Nh7 14 Rb1 Ng5 15 b4 f5 16 exf5 gxf5 17 Bh5 Qd8 18 Kh1 Qc7 19 Qc2 e4 20 Be2 Ne5 21 Na4 cxb4 22 Rxb4 b5 23 Nb2 Ng6 24 Bxb5 hgx5 25 Rcl Be5 26 cxb5 Qh7 27 Nf1 axb5 28 Bxb5 Rxa3 29 Nc4 Rc3 30 Qd1 Rxc1 31 Qxc1 Bf4 32 Qal Qh4 33 g3 Qh3 34 Rbl Be5 35 Qa3 f4 36 gxf4 Bc3 37 Nce3 Qf3+ 38 Kgl Nxf4 0-1

Bd.1 IM Steve Odendahl-Angelo Sandrin Benoni

1 d4 Nf6 2 c4 e6 3 g3 c5 4 Nf3 b6 5 Bg2 Bb7 6 d5 exd5 7 Nh4 g6 8 Nc3 Bg7 9 cxd5 d6 10 0-0 0-0 11 e4 Re8 12 f4 b5 13 e5 dxe5 14 fxe5 Rxe5 15 Bf4 Re8 16 Nxb5 Ba6 17 Nc7 Bxf1 18 Qxf1 Nbd7 19 Nxe8 Nxe8 20 Nf3 Qb6 21 Re1 Nd6 22 Ng5 Bd4+ 23 Kh1 Rf8 24 Ne4 Nxe4 25 Rxe4 Qxb2 26 Re2 Qal 27 Qxal Bxal 28 Re7 Nb6 29 Rxa7 Re8 30 h4 Be5 31 a4 Bxf4 32 gxf4 Rd8 33 a5 Nxd5 34 a6 Nb4 35 Bf1 Rd4 36 Ra8+ Kg7 37 a7 Rxf4 38 Kg2 1-0

ICA AFFILIATES

American Postal Chess Mates, Ltd. Chicago	Chess Tournaments Chess Club Chess Center	APCT 517 Dempster St. 2933 N. Southport	P. O. Box 305	Western Springs IL 60558-0305 (312)246-6665
Chicago Industrial	Chess League Chess Association	c/o Jim Brotsos c/o Robt. Cotter	6563 N. Tahome 1637 Tove String Rd	Evanston IL 60201- () - Chicago IL 60657- (312)929-7010
Indiana State Lake County Marmion Midwest Park Forest RAE Products & Univ. of Chicago 87th Street	Chess Association Chess Club Chess Association Chess Club Chemicals Corp. Chess Club Chess Club	Bro. Jude Such D.S.B c/o Helen Warren c/o Wayne Palmquist 10926 S. Western Ave Ida Noyes Hall c/o Thomas Fineberg	1521 Circle St. Butterfield Road P. O. Box 305 228 S. Orchard 1212 E. 59th St. 7321 S. Shore Drive	Chicago IL 60646- (312)775-5054 Indianapolis IN 46217- () - Waukegan IL 60085- (312)244-7954 Aurora IL 60504- () - Western Springs IL 60558-0305 (312)246-6665 Park Forest IL 60466- (312)747-2120 Chicago IL 60643- (312)779-3360 Chicago IL 60637- (312)947-0503 Chicago IL 60649- (312)723-0150

TOURNAMENT CALENDAR

Abbreviations: RR-round robin, SS-swiss system, TL-time limit, EF-entry fee, \$\$-prize fund, b/-based on () entries. All phone numbers are area code 312 unless otherwise noted.

Call (312)-238-8500 for recorded messages on tournament results and upcoming events. Call regularly, as some events are scheduled at the last minute and don't always make the CHESS LIFE or ICB listings.

Feb. 2 Patzer's Paradise I
4SS; EF:\$10, \$12 at site; TL:30/1; \$\$:75-40, A 35, B 30, C 25, D/below 20. Illini Union (room 269), 1401 W Green, Urbana. Call Barry Fisher at (217)-328-2941.

Feb. 3 HYDE PARK OPEN, SCHOLASTIC, AND GROUNDHOG SWISS A Mini-Tour event. See half-page ad for details.

Feb. 2-3 Penny Pinching Pawn Pusher, two one-day events Chicago Chess Center. Call Jules Stein at 929-7010.

Feb. 2-3 Chicago Lawn Chess Assoc. No. 87+88
Two one-day events.

Feb. 9-10 Saturday Deluge/Sunday Drizzle
Two one-day events. Chicago Chess Center. Call Jules Stein at 929-7010.

Feb. 16-17 Chicago Lawn Chess Assoc. No. 89+90
Two one-day events.

Feb. 17 ILLINOIS CHESS LEAGUE PLAYOFFS

Feb. 23 Peoria Winter Tornado
4SS; EF:\$11, \$13 at site; TL:30/1; \$\$:200, 75-50, B,C, D/below each 25. Bradley Student Center Cafeteria. Call Bill Naff at (309)-691-4624.

Feb. 23-24 Bargain Basement Benoni, two one-day events Chicago Chess Center. Call Jules Stein at 929-7010.

Mar. 2-3 ICA Grade School State Champ.-Carol Stream

Mar. 2-3 Chicago Lawn Chess Assoc. No. 91+92
Two one-day events.

Mar. 8-10 MIDWEST MASTERS INVITATIONAL III
Univ. of Chicago International House.

Mar. 16 Proviso Scholastic and Alumni Events

Mar. 16-17 Chicago Lawn Chess Assoc.
Two one-day events.

Mar. 16-17 Chicago Chess Center
Two one-day events. Call Jules Stein at 929-7010.

Mar. 19-29 UNIV. OF CHICAGO INTERNATIONAL (tentative)

Mar. 23-24 Chicago Chess Center
Two one-day events. Call Jules Stein at 929-7010.

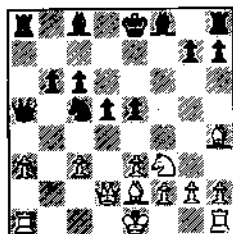
Mar. 23-24 Chicago Lawn Chess Assoc.
Two one-day events.

MORE DETAILS NEXT ISSUE:

Mar. 30 Peoria 1st Quarter Cash Novice and Quad
Mar. 30-31 Chicago Chess Center
Mar. 30-31 Chicago Lawn Chess Assoc.
Mar. 30-31 Oak Park-Forest Park Spring Open
Apr. 6-7 Chicago Chess Center
Apr. 6-7 Chicago Lawn Chess Assoc.
Apr. 12-13 IHSA Team Champ.-Rock Island
Apr. 13-14 Chicago Lawn Chess Assoc.
Apr. 13-14 GREATER PEORIA OPEN
Apr. 20-21 Chicago Chess Center
Apr. 27-28 Chicago Chess Center
Apr. 27-28 IHSA Individual Champ.-Glenbard East
May 4 Patzer's Paradise II-Urbana
May 11 Peoria 2nd Quarter Cash Novice and Quad
May 11-12 \$99 Class Tournament-Zion
May 25-26 Palmer House Tournament (tentative)
June 1-2 Midwest Women's Champ. (tentative)
June 22-23 MASTER CHALLENGE

Put the Fun Back into Chess V
S. Henderson-E. Schiller Cambridge Springs

(Notes by Eric Schiller)
1 d4 d5 2 c4 e6 3 Nc3 Nf6 4 Bg5 Nbd7 5 e3 c6 6 Nf3 Qa5 7 a3! (This is a dubious innovation. Black's reply is easy to find) Ne4! 8 c5! (Probably forced. If 8 b4 then 8...Bxb4! 9 axb4 Qxb4 gives Black a decisive advantage. Other moves allow 8...Nxc3 9 Nxc3 dxc4!) Nxc3 9 Qd2! (The only move) e5! 10 bxc3 f6 11 Bh4 b6 (Having constructed an ideal pawn center, Black now turns his attention to undermining White's pawn chain. The following exchanges result in a substantial advantage for Black, who can take potshots at the weak White pawns at c3 and a3, while maintaining a firm grip on the center) 12 cxb6 axb6 13 dxe5 fxe5 14 Be2 Nc5!?



AFTER 14...Nc5

ible *) g6 17 Nxc6 hxc6 (Not 16...Nxd?? 17 Ne5 mate!) 18 Bxc6 Kd7 19 Bxe4 Rxb4 (The dust has settled and Black has a piece for three pawns, but White's real

problem involves involves the safety of his king) 20 Bf5+ Kc7 21 Bxc8 Rxc8 22 O-O Bg7 23 Racl (White is hoping that Black will grab the a-pawn, allowing White to seize the a-file and attack the Black king) Rch8 24 h3 d4! (Black must act decisively or else White will bring his queen into the game along the light squares. If White is allowed to play Qd2-d3 he will have access points at a6,g6, and f5. Qa5-b5 or a6 would keep the White queen from d3, but allow similar invasions from c2. The pawn sacrifice leads to an opening up of the kingside) 25 exd4 Bh6 26 f4 Qf5! (This is the point. All of the key light squares are now defended, and Black can start dreaming about sacrifices at h3) 27 Qe2 Bxf4 28 g4?! (This weakens the kingside critically. Better was 28 Qe7+ Kx8! 29 Rcl, although Black should still win the ending after 29...Rxb3!) Qg5! 29 Rcl Rxb3 30 Qe7+ Qxe7 31 Rxe7 Kd8 32 Reel Rg3+ 33 Kf2 and now White resigned before Black could play 33...Rh2 mate.

*[An endgame with an outside passed pawn will indeed give Black all the winning chances. But an endgame hasn't arisen yet, let alone the outside passed pawn! White can make it hard to win back the pawn by playing 18 Bh5+! Kd7 (18...g6 19 Bf6) 19 Ne5+ Kc7 (19...Ke6 20 f4), and strangely enough 21 Bg4+ Kd6 22 Nf7+ can't be easily stopped) 20 Nf7 Rg8 21 Bg3+ Kc6 (21...Kd7 22 Ne5+ is annoying, and if 21...Kb7 22 Nd6+ Kc6 23 Rcl Bxd6 24 Bxd6 Kxd6 25 Rxc3) 22 Be5 Nb5 (22...Ne4 23 Bb2) 23 a4!

As Larsen said, "Long analysis, wrong analysis!". But I suspect 18...Nc5 was too ambitious.]

10th annual HYDE PARK OPEN

Sunday Feb 3, 1985

now a new Illinois Minitour Event

\$100 1st, \$50 2nd

\$60 A, \$50 B,

\$40 C, \$30 D/E/U

Entry: \$8 received by Feb 1
\$10 later

ICA membership required

at University of Chicago HS

5840 S. Kenwood, Chicago (near CTA base &

NS

reg ends 8:30 AM

59th St. Illinois

RDS: 9-12:30-3:30

Central stop)

ENT: Harold Winston, 1567 Ridge #601
Evanston IL 60201

475-7022

***** also on Feb 3 we are holding the 9th Groundhog Swiss and
the 10th Hyde Park Scholastic (8th grade & below)
details in Chess Life

KEEP POSTED ON CHESS IN ILLINOIS!

CALL (312) 233-8500

ILLINOIS CHESS ASSOCIATION

P.O. Box 43336
Chicago, IL 60643

Dated Material. Speedy Delivery
Appreciated



NAWCA
NATIONAL ASSOCIATION
OF WOMEN CHESS PLAYERS