

ILLINOIS CHESS BULLETIN

Official Publication of the Illinois Chess Association, a USCF Affiliate

DECEMBER, 1979

VOL. III, No. 1



Single copy: \$1.50



ILLINOIS CHESS BULLETIN

Official Publication of the Illinois Chess Association, a USCF Affiliate

Helen Warren, Editor 246-6665
John Tomas, Assoc. Ed.

Games Editor North: Master Jeremy Silman
721 Aldine, #3
Chicago, IL 60657

Games Editor South: Master David Sprenkle
1913 Harding Dr.
Urbana, IL 61801

Scholastic Editor: Chris Slupik
214 S 44th Ave.
Northlake, IL 60164

ICA OFFICERS:

President: Tim Redman, 6923 N Wayne, #3, Chicago, 60623
Metro V-P: Chris Musgrave, 1127 S Humphrey, Oak Park, 60304
Downstate V-P: David Sprenkle, address above
Secretary: Paul Segedin, 828 Monroe, Evanston, IL 60202
Treasurer: Walter Brown, PO Box 183, Mokena, IL 60448

USCF DELEGATES BY VIRTUE OF THEIR USCF POSTS:

Tim Redman, USCF V-P, address above
Mike Zacate, Regional V-P, 9401 Birch, Mokena, IL 60448
Frank Skoff, USCF Life Delegate, 1402 Warner, Chicago, 60613
Helen Warren, USCF Regional V-P, PO Box 70, Western Spgs.,
IL 60558

USCF DELEGATES:

Richard Verber, 724 W Cornelia, Chicago, 60657
Walter Brown (address above)
David Sprenkle (address above)
Chris Musgrave (address above)
Paul Segedin (address above)

USCF VOTING MEMBERS:

Larry Stilwell, 14 Ashbel Ave., Hillside, 60162
Eric Vann, 103 Travers, Wheaton, 60187
David Brown, 204 Irving, Rockford, 61103
Harold Winston, 1450 E 55th Pl. 830-S, Chgo. 60637
Tom McCormack, 5810 East Ave., Lot 89, Countryside, 60525
John Tomas, 5103 S Ellis #1, Chicago, 60615
Bill Wilkinson, 905 N Rebecca, Peoria, 61606
Jim Brotsos, 6563 N Tahoma, Chicago, 60646
Winton Fulk, 9451 N Kostner, Skokie, 60076
Josette Donnelly, 8 Long Bay, Springfield, 62707
Tom Fineberg, 7321 S Shore Dr., Chicago, 60619
Ray Socha, 3214 W 66th Pl., Chicago, 60629

ALTERNATE VOTING MEMBERS:

Newton Berry	Lou Marovitch	Mike Quinlan
Tom Kirke	Dick Temple	Gerald Bumgardner
Sheldon Gelbart	Bill Smythe	Julian Morrison
Chris Slupik	Bob Stendel	Kevin Bachler
Steve Decman	George Leighton	

The ICB is published five times a year by the Illinois Chess Association. Membership is \$5 per year for individuals, \$15 for affiliates, and \$25 for Patron Members. Checks should be made payable to ICA and sent to Editor Helen Warren. Advertising copy and accompanying check should also be sent to the editor.

on the cover...sketch by Jules Stein, copyrighted. He requests that this sketch not be reproduced elsewhere. This sketch, and a new 1979 design, are available in lovely Christmas cards from Jules Stein at the Chicago Chess Center, 2666 N Halsted, Chicago, 929-7010.

Advertising Rates: \$60 per page, \$70 for inside or outside back cover. 1/2 pg. (inside) \$35, cover, back, \$38, 1/4 pg., \$20, \$22 cover, back. Camera ready copy. An additional \$10 for preparation of copy and layout. 10% discount for multiple months of run. Tournament announcements and club activities at 1/3 discount to affiliates. \$16 for flyer inserts (8 1/2 x 11" horizontal or any smaller size at discretion of the affiliate, same rate applying).

Average circulation per issue: 500

DEADLINE FOR SUBMISSION OF COPY FOR NEXT ISSUE: JANUARY 20

PATRON MEMBERS OF ICA

- 1 Helen Warren, Western Springs, IL
- 2 Jim Warren, Western Springs, IL
- 3 Walter Brown, Mokena, IL
- 4 Mike Zacate, Mokena, IL
- 5 Tim Redman, Chicago

You can become a PATRON MEMBER of ICA by sending your check for \$25 at renewal time (or anytime!) to the editor. Privileges of PATRON MEMBERSHIP include 1st Class mailing of your ILLINOIS CHESS BULLETIN and a special membership card. Your support of the Illinois Chess Association is a pledge of your support for chess! Be a patron!

in this issue.....

What's New.....	pg. 3
News...ICL Report, Musgrave.....	pg. 4
President's Page, Redman.....	pg. 5
AN INTERVIEW WITH GERRY DULLEA, Warren.....	pg. 6
Games Editor South, Sprenkle.....	pg. 8
Games Editor North, Silman.....	pg. 9
Chicago International, Martinovsky.....	pg. 10
Slate, Atkins, and 4.9, Jim Warren.....	pg. 11
Scholastic Chess, Slupik.....	pg. 12
The Composed Endgame, Tomas.....	pg. 13
FOCUS on the Club Affiliate: SPRINGFIELD....	pg. 14
USCF Commentary, Redman.....	pg. 15
The Problem Page, Holladay.....	pg. 16
World View, Tomas.....	pg. 17
Games from Recent Events.....	pg. 17
Letters to the Editor.....	pg. 18
CICL News.....	pg. 19
Speed Ratings, Fineberg.....	pg. 19
Directory of Metro-Chicago clubs, Quinlan....	pg. 20
ICA Affiliate Directory.....	pg. 21
Region VII Veep Notes, Davies, Warren.....	pg. 21
ICA Constitution.....	pg. 22
Tournament Calendar.....	pg. 24



RESULTS OF ICA ELECTION FOR OFFICERS, TERMS FROM OCT '79 to DECEMBER, 1980

President:	Redman 118	H Winston 72	1 write-in
Vice-Pres. Metro:	Chris Musgrave: 175	5 write-ins	
Vice-Pres. Downstate:	David Sprenkle: 178	2 write-ins	
Secretary:	Paul Segedin: 174	6 write-ins	
Treasurer:	Walter Brown: 178	2 write-ins	

191 ballots counted and accepted

CLEARINGHOUSE:

Chicago metro-area: Chris Musgrave, 1127 S Humphrey,
Oak Park, IL 60304
Downstate: David Sprenkle, 1913 Harding, Urbana, 61801

What's New

Kornfeld Wins IL. Open

by Chief TD Walter Brown

138 players came to Chicago's Palmer House to vie for the 1979 Illinois State Championship over Labor Day. The field included Ove Kroll, the only master, and eleven experts (though Sprenkle and Kornfeld are now masters). Defending Champion Roy Benedek was on hand to try for a repeat. Using accelerated pairings for two rounds, only six of the top thirteen players had perfect 2-0 scores going into the third round. After four rounds only Allen Kornfeld and Eric Pedersen had a clean slate. They drew in round 4 and were joined at 4½ by Ove Kroll, David Sprenkle, Dan Vasto, and Chris Kus. In the last round Kroll won from Vasto, Sprenkle took the point from Pedersen, and, in the very last game to finish, Kornfeld edged Kus to leave the tournament in a three-way tie. On cumulative tie-break Kornfeld was declared the state champion.

In 4th and 5th were Miomir Stevanovic and Tim Redman, each with 5 pts. Also with 5 was Emery Tate, a Class B player, who performed most creditably. Ganged up in 6th were Kurt Stein, Roy Benedek, Dan Vasto, John Tomas and Chris Kus.

1st and 2nd A prizes went to veteran Erik Karklins and Kazys Jankauskas. Eric Pederson made it a three-way affair with 4½ pts.

1st B prize was won by Emery Tate while 2nd B was split 8 ways! Scoring 4 pts were Al Chow, Hugh Wheeler, William Harris, Dan Bartlett, Paul Segedin, Scott Struthers, Basil Seldon and Richard Smiley.

1st C was shared by Dan Hrozencik and Mario Spinosa with 4½. Pete Dudman, Brendan Henry, and Jack Newman scored 3½ to take 1-2nd D prize. Eric Hennell capped the E group with 3½ while Ester Miller scored 3 pts to take 2nd E. The Unrated prize was split by John Burke and Eric Sindelar, each with 3½.

The tournament was co-sponsored by the Chicago Chess Foundation with the ICA. Tournament Organizer was Richard Verber; TDs were Walt Brown and Ray Socha.

Ratings - at last!

USCF appears to have solved the lion's share of its rating problems. Nine months is a long time for the rating hungry chess player to wait for a fresh look see at his ultimate status symbol. Lack of timely rating updates took its toll on tournament attendance and the patience of organizers and players alike. So, they're out at last--and for Illinois we sift the following data:

TOP TWELVE ILLINOIS PLAYERS AS OF 11/79

- | | |
|-------------------------------|----------------------------|
| 1. 2396 - Richard Verber | 7. 2289 - Joseph Pundy |
| 2. 2373 - Jeremy Silman | 8. 2280 - David Presser |
| 3. 2362 - Danny Kopec | 9. 2277 - Sheldon Gelbart |
| 4. 2348 - Steve Tennant | 10. 2220 - Vic Palciauskas |
| 5. 2308 - Eugene Martinovskyy | 11. 2214 - David Sprenkle |
| 6. 2307 - Ove Kroll | 12. 2209 - Allen Kornfeld |

By the time we go to press with our next issue we hope USCF's "Junior" will have crosstable capability as well as ranking of players within a state.

North American Class Attracts 308 in Chgo.

By Organizer Richard Verber

Ordinarily any tournament luring as many as 308 players must be called a success. But one which offers a guaranteed prize fund of \$10,000 needs something more than that to break even, about 380. Although several factors might have contributed to the less than fabulous turn-out, certainly the most devastating cause was the lateness of the USCF Rating Supplement--nine months since the last one. Players had a right to think that class distinctions were blurred. While the first North American Class was a loss to the organizer to the tune of \$3200, the prizes were paid in full.

Twenty competed in the Master-Expert Class won by Leonid Bass. He played some sparkling chess, winning over new IM Walter Morris of Iowa and Dr. Eugene Martinovsky, and paced the field by a full point with 4½. Danny Kopec, Morris, Les VanMeter came equal second with 3½, while Viktor Pupols, Vic Palciauskas, Jim Ellis, and Martinovsky scored 3 for 5th-8th. Kopec and Palciauskas (re-turning to the chess wars after a long hiatus) join Dave Sprenkle in the master rank, bringing the Champaign-Urbana total to three masters. Class A money went to Casimir Ramas who finished with 4½ ahead of 4 pt.ers Jeff Ginsburg, Erik Karklins, Ed Buerger, Mitchell Weiss, and Larry Epsteir. Brent Chromczak (who will certainly not be in Class B for long) took the prize for that group with a perfect score: 5 pts. ahead of Ron Washington who has also been burning up the boards recently. Ron wound up with 4½. E Olins, Dave Derda, N Milojic, Gerard Jendras, and Emery Tate all had 4 pts.

Class C ended in a three-way tie among Dan Kamen, Wallace Gordon, and Larry Dripps with 4½. Angelo Armisted, Mario Spinosa, Edgar Eichbaum, John Berg, Tyrone Lee, and Robert Taliaferro all finished with 4. Class D Champ is Larry Younker whose faultless 5-0 performance was a half point better than runner-up Billy Colias. Ralph Johnson, Maureen Kelly, Anthony Kasenga, Roy Welland, Michael Am-born, and Charles Linen all finished with 4.

Bruce Gardner's 5-0 took Class E, followed by Brian Golchert with 4½, and Moses Racks, Greg Niemi, Eric Hennell, Ester Miller, Peter Bereolos, and Hans Griebel all had 4. The Unrated prize went to Russian emigre Gennady Kudelman. (Kudelman's first published rating is a healthy 2195!) He swept through the field with 5 pts; behind came William Ralph, Alan Nelson, Victory Feria, Filomeno Ngitngit, and Jean Margot.

Chief TD was Tim Redman, assisted by Walter Brown, Ray Socha, and Paul Segedin. My thanks to Tom Kirke, Newton Berry, and the editor who helped with registration and to Chris Musgrave for use of boards.

Support ICA!

Become A PATRON MEMBER!

MORE NEWS

Illinois Chess League

by CHRIS MUSGRAVE, ICL Director

HECTOR HERNANDEZ-MADRIGAL reports that the Back of the Yards Chess Club Championship Section I (for players under age 14) was won by MIGUEL A SEVILLA with a clean sweep of 4-0, while coming in equal second with three were C.J. MURZYN, RENE GUERRERO, and RICKY GUERRERO. Section II (for players over 14) was taken by JOE MARTINEZ and ED WAMBAJA. On the same afternoon Chicago Expert DAVE OSHANA entertained with a 15 board simul. The Back of the Yards Chess Club meets on Thursdays at 6:00 PM--and how did they escape being listed on Mike Quinlans's list of metro clubs!??

THE NORTHWESTERN UNIV. FALL SWISS saw to oldtimers best the field of fifteen: MARVIN ROGAN and ROBERT GERBER tied with 5-1. The Northwestern Club is on the move again--see their ad in this issue.

GM LARRY CHRISTIANSEN did a whirlwind simul tour of Illinois from north (Chicago) to south (St Louis, Springfield) and was a delight. Christiansen plays at an extraordinarily fast speed. He finished 28 boards in less than two hours at the Oak Park Chess Club, for example. But Faithful Reporter HAROLD WINSTON writes us that Christiansen thought his stiffest opposition came from the University of Chicago. And not only the toughest, but the longest, too. Four UC students scored wins of 25 games played: RICK HEYN (1422), TODD BARRE (1835), KEN LARSEN (1911) and GEORGE FOWLER (1816). (See Todd Barre's game elsewhere in this issue.)

The U of C Autumn Swiss attracted 25 players and was won by RICK HEYN and JEFF PLUHAR (1685), both with 3½-½. They then proceeded to draw a playoff game. Harold Winston directed.

DICK TEMPLE and his KOMAREK GRADE SCHOOL CHESS TEAM continues to be among the most active in the area. They visited the veterans at HINES HOSPITAL last month. This project has become one of Komarek's trademarks. The little guys and gals are very big in sharing their love of the game. Bravo!

Last month USCF V-P TIM REDMAN and your editor visited Komarek. Tim presented USCF's certificate of merit to the kids, to Dick Temple, and to long time chess booster CHARLEY BROKASKI, a mainstay at the school's lunchtime sessions.

Lots of activity in PEORIA...

Peoria's September Gambit Swiss, a tourney conducted with pre-determined openings, was won by LARRY CLAUSEN 3-0. What openings, you ask? Why, the Scotch, Evans, Greco-counter, and King's Gambit. 13 competed in this wild man's delight. And speaking of Mr. Clausen...we'll have you know that he was the lone player to hold GM Larry Christiansen to a draw when Larry visited Peoria on his tour of the state. Did the GM know what the gambiteer was likely to play? Dunno, but Larry opened 1 b3...

Peoria's Third Quarter Novice was a fine success; it drew 43 players, was won by GREGG FISCHER and CRAIG BORRI with 4 pts. R Miller and A Crum directed.

The Newcomers Tournament for players who have never competed in an organized event lured 10 players and was topped by PAT HURST with 4-0. Tied for second with 3-1 were JOHN DAVIS and RON RIPPEY.

The PEORIA CHESS LEAGUE, a commercial-industrial group, has started its season (and in our next issue we will correctly move news from this source to the ICL page) with eight teams. Too early for any significant result.

THE ILLINOIS RAPID (SPEED) CHAMPIONSHIP held at Gompers Park was won by RICHARD VERBER ahead of Martinovsky and Redman. What the event lacked in numbers (a disappointing 14) it made up for in strength at the top, with a host of experts (and a couple former experts) and a master (Verber).

CLUB EVENTS AND NEWS? SEND THEM TO YOUR EDITOR. LET US KNOW WHAT'S HAPPENING AT YOUR CLUB!

All clubs have finished three matches of the four scheduled except for the North Division where only three were played. CHICAGO CHESS CLUB A and YUGOSLAV CHESS CLUB are the two top finishes in that division; they advance to the Finals.

NORTH SECTION * FINAL*

	W	L	D	M.P.	Total Pts.
Chicago CC "A"	8	3	1	5	13½
Yugoslav CC	4	6	2	3	8
Gompers Park	4	5	3	2	7½
Chicago CC "B"	5	7	0	2	7

SOUTH SECTION

U. of Chgo "A"	11	0	5	8	21½ (only team finished)
H-Floss. "A"	5	4	3	4	10½
U. of Chgo "B"	6	5	1	3	9½
H-Floss. "B"	4	6	2	3	8
Tuley Park "B"	4	6	2	2	7
H-Floss. "C"	2	6	4	1	5
Tuley Park "A"	2	7	3	1	4½

So the U. of C "A" team is assured of advancing to the Finals, while second place and the other Finals spot is still wide open, depending on outcome of the 4th match.

WEST SECTION

Hillside "A"	7	0	5	6	15½
Hillside "C"	10	2	0	5	15
Hillside "B"	6	2	4	5	13
Argonne	5	4	3	3	9½
Hickory Hills	5	5	2	2	8
Oak Park "C"	3	6	3	1	5½
Oak Park "A"	1	8	3	1	3½
Oak Park "B"	0	10	2	0	1

The six teams who qualify into the Finals will play a 3-rd Swiss to determine the ICL Championship team. In our next issue we will give final standings, results of the playoffs, and some individual scores.

NECROLOGY ...Arthur Frick, 1897-1979

by Dick Temple

Unknown to most of you, Art Frick touched deeply the lives of some chessplayers. He loved the game for its beauty, children for their innocent propensities and the combination of the two for its magical chemistry.

Art played a full schedule of postal games and over-the-board mostly with the Komarek children. Like the late Robertson Sillers, Art's was a human devotion to the game that transcended Elo points and frigid tiebreaks.

As a young man Art wrestled to the middle-weight championship at the same time when Ed "Strangler" Lewis was the heavyweight champion. Art chose to forego a certain Olympic berth and professional athletic career to become an electrical engineer, radio operator, and raise a family.

At 72 Art took up scuba diving and at 75 he navigated by radio a ferry boat through the St Lawrence Seaway to commemorate the 50th Anniversary of his initial job as a radio man.

Art came to Komarek School to share chess with us five years ago and continued coming until his death. We achieved a symbiotic relationship in which Art and the children recharged each other's batteries through the wonderful medium of chess. Testimonial to this was the attendance of 14 children at Art's funeral Mass.

The Komarek kids and I are richer for having known Art Frick.



NEW ICA PRESIDENT REDMAN

PRESIDENT'S PAGE

MIKE ZACATE: AN APPRECIATION by ICA Pres. TIM REDMAN

It seems appropriate to begin my first president's column for the ICB with an account of the accomplishments of my predecessor. The ICA has been very fortunate in having some very distinguished individuals serve it as its president: Frank Skoff, Richard Verber, and Harold Winston all made considerable contributions during their terms of office. Now that Mike Zacate's name is added to the list, it is fitting to summarize his achievements and I am the logical person to do so.



OUTGOING PRESIDENT ZACATE

Mike is a quiet, unostentatious man whose commitment to chess stretches back for well over a decade. His

primary interest has always been in Junior and scholastic chess, logical since Mike is the father of two promising young players and the coach of the chess team at Evergreen Park High School, where he teaches. Mike is the author of the Official Illinois High School Association chess rulebook, and the founder of the successful Illinois Junior Chess Foundation. He is also one of the select group of USCF National Tournament Directors, and is currently serving on the USCF Tournament Director Certification Committee, a blue ribbon group which has been charged with the task of revising the USCF Rulebook.

As ICA President, Mike inherited an organization which, though strong, was fraught with structural and procedural defects. The ICA presidency then was largely a ceremonial office (the ICA president did not even have the authority to buy a postage stamp without the consent of the other officers), the procedure for the selection of USCF Delegates and Voting Members was subjective and often gave rise to controversy, and the awarding of important Illinois championships seemed haphazard. Mike wrote a series of president's position papers on important ICA questions, the first step toward securing the needed consensus for reform. He then prepared a draft of the new constitution, based on the model for not-for-profit corporations recommended by the Illinois Bar Association. By dint of hard work and his own personal prestige the new constitution was adopted. Thus, in only one year, Mike succeeded in a complete reform of the outmoded procedures of the ICA, putting the organization on a sound operating basis. Finally, it should be mentioned that Mike signed up over sixty high school chess coaches as members of the ICA, a step which we hope will be important in forging new links between IHSA and ICA chess activity in this state. The Illinois Chess Association certainly owes Mike Zacate a vote of thanks for his activities on its behalf during the past year.

NEW DIRECTIONS FOR THE ICA

The ICA officers voted at a recent meeting to tentatively schedule six issues of the ICB for publication during the next volume year. It was necessary to make this a tentative decision: with printing costs constantly rising and the state of the ICA treasury still unsteady, anything more definite would be lacking in prudence. Nonetheless there is considerable reason for optimism. The new format saves on printing costs while at the same time presenting the same amount of material in a more attractive manner. And the ICA Board of Directors has started a membership drive, to end in June, which will help bring unit costs down. Members can help with the drive by showing their copies of the ICB to their friends, or even by signing up new members themselves. Anyone signing up ten new members or more during the membership drive will be eligible to win a gold and silver plated chess set (retail value \$100) which I have donated to help make the drive a success. The set will be awarded by lot among

those eligible at the June meeting of the ICA Board of Directors. The ten new members needed for eligibility (members who have lapsed before September 1 count as new) should be sent directly to me; other membership correspondence should be sent to Helen Warren.

The ICA is considering holding either the U.S. Amateur or the U.S. Junior Open (or both!) in 1980. The U.S. Amateur is one of the oldest and most prestigious American tournaments, while the U.S. Junior Open offers an opportunity for tomorrow's chess talents (and to the winner, qualification into the U.S. Junior Invitational). Anyone interested in helping out with either of these tournaments should contact me. We will need a site for the U.S. Junior Open if we are to put in a bid, preferably a college with dormitory space and a central location.

HAVE A HAPPY HOLIDAY SEASON!

from your editor...

For an editor there is nothing quite so exciting as the creation of a new publication; a close second is a freely redesigned one. We have worked hard to bring you a fully transformed ILLINOIS CHESS BULLETIN, fresh in its appearance and we hope richer in its content. We expect that future issues will reveal some happy surprises as we explore and discover the endless fascination and variety of chess in print.

The past two years have been fertile and challenging. We have seen the ICA grow and the ICB achieve national recognition. Much of the credit must go to a dedicated staff of columnists committed to excellence, and to many ICA officers who in the past two years have given me unstinting support. My special thanks to outgoing president Mike Zacate whose contribution to the ICA will gain significance as time passes.

I am grateful to the present officers for my reappointment to the editorship; together we can look for continued growth in ICA membership, increased tournament activity, and a publication of wide appeal.

Most especially at this time of year we wish for all our friends who read our pages a joyous holiday season. May 1980 be a year of vitality and prosperity for chess! In Illinois let us work together to achieve that end.

Helen Warren, Editor

GERRY DULLEA



USCF Executive Director talks about USCF, its present problems and hopes for the future. Dullea has been at the New Windsor helm now for a year. He became Executive Director by USCF Policy Board appointment, succeeding Richard Meyerson who held the post of Staff Director briefly after the resignation of Martin Morrison. We invited a USCF spokesman to be interviewed after the publication of the Hochberg interview and are grateful to Mr Dullea for sharing his remarks with us.

HW: Briefly summarize your background and the events which led to your coming to USCF as Executive Director.

GD: I'm 36 years old and I spent most of many of those years accumulating a PH.D. in English. Most of my working life, therefore, has been academic and scholarly, though I've also had dozens of part time and summer jobs and responsibilities, including small business things that started with a landscaping business when I was in college. My formal training includes business and graphic arts/printing.

My chess background goes back to childhood, but I've been in USCF for only about ten years, starting when I was teaching at the University of Maine and met George Cunningham. He got me into tournament chess, and soon I was organizing and directing

with him. Then came a regular newspaper column and a TV show. I've never been involved in chess politics beyond the club level.

Last August George called me in Pennsylvania from the U.S. Open in Phoenix. He said he smelled trouble for USCF and wondered if I had a fireman's hat handy. At that time, I was a one-man custom woodworking business, so I said I thought I'd be able to help if necessary. The possibility became a reality a couple of weeks later, so I closed my shop to new business and came to help--on a strictly temporary basis. I stayed on to help Dick Meyerson in early 1979, telling him I was willing to leave whenever he wanted me to. Instead, he asked me to stay on a relatively permanent basis. After some soul searching (my wife works 150 miles away), I agreed. When he left, the Policy Board asked me to assume his duties and I did.

HW: Can you describe the general state of the office at that time and its morale?

GD: Bad. The staff was understandably depressed, demoralized, and apprehensive. People they had worked with and for were leaving and they were left to face the unknown, including me. It took a while to demonstrate that the new management cared about them and their efforts for the Federation.

This personnel issue was made more difficult by the many systems changes we had to make. Understandably, people resented newcomers who said they had a better way of doing things that had been going on for years. After trying some of our ideas, they came to believe we weren't crazy, and they took pride in the positive tone of our letters that started arriving in response to improved service.

The other major area of difficulty was what George Cunningham calls "rat holes", various ways for the Federation to spend or waste money without adequate return. These ranged from points in the personnel policy to unnecessary computer programs and some disastrous pricing policies in our inventory. Plugging them was a constant task. I think these morale and personnel problems are behind us now and that we have an exceptionally dedicated staff of office workers serving the members.

HW: USCF critics, some of them defeated candidates for the Policy Board, frequently and in print talk of imminent USCF bankruptcy. Just what is the financial picture?

GD: It is tight, but we are solvent and intend to stay that way. For the immediate future (years, not weeks), we will have to watch every dollar closely, but that's always a good idea, I think. As in any non-profit organization, our major asset is our existence and the relationship we have with members. As long as chess is healthy--and I think the computer games are increasing its popularity--the USCF can be a useful organization if we continue to deliver a reasonable percentage of what people want from us.

HW: What are the major arguments, apart from inflation, justifying a dues increase?

GD: The only major reason for a dues increase is inflation. Regular dues were raised to \$15 in 1975, so that's five years at the same rate. The 33% increase to \$20 does not cover the inflation rate for that period, of course, but we're hoping to maintain equivalent or better service through cost-efficient procedures and general frugality.

HW: Fred Townsend suggests that the old computer system could have been utilized at an undisclosed cost to USCF. What would such cost have been and would it have been a feasible alternative to the present new system?

GD: The cost would have been \$50,000 a month, basically the cost of maintaining the whole network that had been shared by a number of users. Even if we had been willing to pay this amount, we were unable to do so.

HW: Can you briefly summarize the present USCF-IRS investigation?

GD: Some agents and regional officers are questioning the tax status of the USCF. It seems to me and the tax lawyer we have retained that their case is specious and covers grounds already included in the granting and reaffirmation of our tax-exempt status. Nevertheless, we must absorb the nuisance and expense of answering the various charges.

HW: The USCF membership drive conducted last year did little save keep the count level, i.e., it added members while old members did not renew. Do you think another membership drive is in order and how can it best be handled?

GD: More members will make a stronger Federation with more flexibility, but I personally prefer natural growth to dragooning new members in special drives. I keep thinking of a church analogy, and I hope the fire in our current members will inspire their neighbors because willing converts are the best ones. All of us have to "keep the faith" and show our friends that chess and USCF play valuable parts in our lives. Particular membership drives can be built easily on such a foundation.

HW: Can you briefly define USCF priorities in relation to allocation of available funds.

GD: This issue approaches one of major policy and so is beyond my direct control. As you know, we are all supposed to be thinking about this issue in preparation for the 1980 Delegates' Meeting. One principle dominates my own thinking: we must invest rather than spend. If we can get good value for an investment in master chess, we ought to do it. If a school program will do more for chess life in America, then we ought to give it a higher priority than the lesser value. Given the accounting problem regarding life members, I would seriously consider capital investment such as the purchase of an office building, an asset to set against our deferred liabilities.

Because my tasks involve so much of operations, my thoughts turn in that direction--labor saving machinery and such. Others have other biases, which is why such decisions should be reached by more than one person.

HW: Do you see any practical value in public relations expertise going to work for the USCF on a large scale? How about advertising in hobby and games magazines?

GD: When you talk about scale, I talk about the investment principle. As always, I'd want to know what we are likely to get for our dollar. I'm pretty convinced that more exposure is warranted, and when we have even a little money to spare, I'm planning such exposure in magazines such as GAMES and PERSONAL COMPUTING. I do think we ought to provide something more of chess for those who don't play in tournaments, but how to do it is another question. School programs are one good angle and a magazine of wider interest is another.

HW: Speaking of the magazine...what about the Delegates guidelines of 1978 (Phoenix) and general thrust for CHESS LIFE and REVIEW?

GD: I am comfortable with the guidelines, as is the new editor, Fairfield Hoban. It seems to us that the guidelines suggest we should produce a magazine for the entire membership, not a particular portion of it. We realize we can never be all things to all readers, but we have in mind that about two-thirds of the tournament-playing members are rated under 1500. Many other former members have dropped out. With my encouragement, Fairfield is aiming for a magazine that is a monthly adventure into the chess world, exploring some of the byways as well as the highway that is good solid chess and lots of it. We are in agreement that highway and byway should not be confused and also that a monthly magazine of this sort should not be, for example, a treatise on the newest in opening theory. Other publications do those things.

HW: Hochberg's comment in the ICB interview (last issue, Sept.) include remarks about "distrust" in your relationship. Can you comment on this.

GD: No. I can't comment because I don't know what Burt was referring to.

HW: Do you believe in what has been called "a strong editor"?

GD: Yes. I believe in strength. Strong editors, strong publishers, strong writers. I believe that the best work comes from a blending of these strengths and that disagreements can bring desirable pressure on a topic, much as the beauty of marble is formed from pressures on ordinary limestone. If "strength" for an editor means "total independence", then I don't believe in it. Anyone who wants to answer only to himself should not pretend to work for someone else or for an organization, but should found his own magazine or whatever. One of my jobs is to be publisher of our magazine, and that means more than the business manager functions such as circulation and advertising. In a general way, I am responsible for the magazine, though the editor is responsible for creating feature ideas and columns, choosing writers, determining layout and emphasis, and so forth. It has to be a real team effort.

HW: A certain cynicism seems to have invaded organized chess circles. Why was the honeymoon for the new Policy Board so short? What are the effects on the Business Office, if any?

GD: The Policy Board's honeymoon is a political question you'll have to ask a politician or at least a political analyst. It's not my concern or business except as it might interfere with operations. So far, I haven't seen much impact of this cynicism you speak of, and I think that's proper. I view myself and the staff as analogous to civil servants, responsive to elected leaders but still independent of them and their political fortunes. Public opinion of a Nixon or Carter should not slow down social security checks or cause potholes in interstate highways. Like editor and publisher, however, the Policy Board and the Executive Director have to work as a team. If this Board is indeed suffering political arrows, they are not letting them interfere with my work, which is predicated on fair and even treatment of all members and organizers.

HW: How influential is the Policy Board in daily operations?

GD: Not very. There is a specific limit on my authority to contract for the Federation. In general, they do take seriously their constitutional duty to oversee the affairs of the Federation, but it is silly to think of them pulling a puppet's strings, as some would have it. Occasionally, for example, a Board member will receive a routine complaint about a shipping error, a rating problem, a missing magazine. The usual procedure is to forward the complaint to me for a staff response with a copy to the Board member so he/she knows the member is well answered. I do what I can to keep the Board informed about what's happening ranging from monthly summaries of finances and membership levels to committee progress, promotional ideas, or whatever. I also use Board members for advice in their areas of expertise just as I use committee personnel and other interested members. It seems to me they were elected to such a role.

HW: You seem to be the logical person to ask for the straight story on the Fedorowicz "missed application". Just what did happen?

GD: I honestly don't know what happened. The FIDE meeting was in mid-October so the 60-day deadline occurred in mid-August, about a month before I arrived in New Windsor. Doris Thackrey has said in print that I got glassy when she tried to explain what needed doing, but I don't recall that John's name came up. Neither I nor anyone else found a folder with a half-completed workup or anything of the sort. Ken Rogoff's GM application needed some finishing touches, and we did supply those for him.

HW: Tournament activity seems to have been off this past year. What factors do you see responsible for this malaise?

GD: I'm not sure that it is off, at least not much. My barometer is the rating fees paid, and that income this year is very close to what it was last year. Many larger events drew less than they have in the past or than the organizer expected. The rating delay has been blamed by some, but I don't know with what accuracy. Another problem might be the structure of the large tournaments: I suspect that many players are unwilling to pay an entry fee of \$25-50-100, even for a chance at a big prize. In such events, chess takes on some aspects of cranshooting, and I know there are some players who prefer nice quiet weekend or club events without major financial pressures. By way of example, I've been running a traditional five-rounder in Pennsylvania for the past few years. We've held the entry fee to \$15, and we got our expected 60 players this summer, allowing us to exceed the guaranteed fund and provide a good time for everyone.

HW: Free money prizes are now being offered to lower rated players in class events. How does this strike you?

GD: I drifted into this area in my last answer. Obviously, such tournaments are attractive to many players, but they

Games Editors



SOUTH: DAVID SPRENKLE

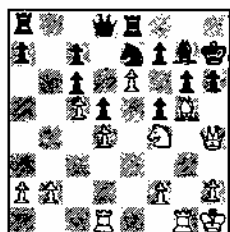
Since three of my losses and a draw were published in the last ICB, I dearly want to present one of my wins. Unfortunately, the following draw is the most exciting game I've played lately!

SPRENKLE-ALBURT, Chgo International

Alekhine Def.

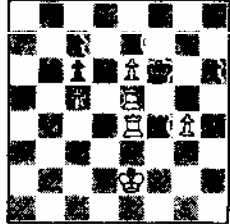
- 1 e4 Nf6 (a)
- 2 e5 Nd5
- 3 d4 d6
- 4 Nf3 Bg4
- 5 Be2 e6
- 6 O-O Be7
- 7 c4 Nb6
- 8 Nc3 O-O
- 9 Be3 d5
- 10 c5 Bxf3
- 11 gxf3 (b) Nc8
- 12 f4 Nc6
- 13 Bb5! (c) g6 (d)
- 14 Kh1 Re8
- 15 Rg1 Bf8
- 16 f5! (e) exf5
- 17 Qf3 N8e7
- 18 Ne2 Bg7
- 19 Bg5 Kh8?! (f)
- 20 Rad1 h6? (g)
- 21 Qh3! Kh7
- 22 Nf4 Rh8
- 23 Bxc6 bxc6
- 24 Qh4! (h) Re8
- 25 e6?! (i)

ALBURT



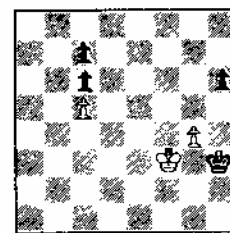
SPRENKLE
Position after 25 e6

ALBURT



SPRENKLE
Position after 58...Rf4

ALBURT



SPRENKLE
Final position

63 Ke4 (y)	Ke6
64 Kd4	Kf6
65 Ke4	Kg5
66 Kf3	Kh4 (z)
67 Kf4	Kh3

(see diagram)

- 25 ... f6
- 26 Bxf6 Bxf6
- 27 Qxf6 Rg8
- 28 Rd3 Qf8
- 29 Qe5 Rc8
- 30 Ra3 (j) Qe8! (k)
- 31 Rxa7 g5
- 32 Nd3? Qh5
- 33 Ne1? (l) Rg7
- 34 Qe3 (m) f4
- 35 Qf3 Qg6
- 36 Qd3 Qe4+
- 37 f3 Qxd3
- 38 Nxd3 Nf5 (n)
- 39 Re1 Re7
- 40 a4 (o) Nxd4
- 41 Kg2 Nc2 (p)
- 42 Re5 Rb8
- 43 a5 Ne3+ (q)
- 44 Kf2 (r) Nd1+
- 45 Kg1 Nxb2
- 46 Nxb2 Rxb2
- 47 Ra8 Kg7
- 48 a6 Ra2
- 49 a7 g4!? (s)
- 50 fxc4 d4
- 51 Rd8 Rxa7
- 52 Rxd4 Ra1+
- 53 Kg2 Ra2+
- 54 Kf3 (t) Rxh2
- 55 Kxf4 Kf6
- 56 Rde4 (u) Rf2+
- 57 Ke3 Rf1
- 58 Ke2? (v) Rf4!
- (see diagram)
- 59 Rxf4+ (w) Kxe5
- 60 Ke3! (x) Kxe6
- 61 Re4+ Kf6
- 62 Rxe7 Kxf7

- (a) Lev Alburt is an easy player to prepare for: he always answers 1 e4 with Alekhine's Defense.
- (b) So 11...Ne4 can be met by 12 Bxc4 dxc4 13 Qa4 winning a pawn.
- (c) In Round 1 Gajic beat Alburt in a nice game with the new move 13 Bb5, and then told me that Alburt thought the idea was quite strong. With that knowledge, my course was clear! The idea of 13 Bb5 is to restrain ...b6. White also has the option of playing Bxc6 and working on the weakened pawns.
- (d) Unfortunately, I had to figure Alburt would have an improvement ready. Against Gajic he tried 13...a6 and then set up his K-side defenses with ...g6, ...Kh8, ...Rg8, and Bf8. This set-up proved to be difficult to hold when Gajic transferred his rooks to the h-file.
- (e) It took me forty minutes to decide on this. For a pawn I clear the way for my QB, free the f4 square for my Knight, and keep his Knight from f5. This game would seem to indicate the sacrifice was a good idea, but Alburt's defence is uninspiring.
- (f) To prepare ...h6 (19...h6!? 20 Bf6!).
- (g) Consistent, but bad. If 20...Qd7 I was planning Nf4 and e6, possibly prefaced with Rge1.
- (h) He can meet 24 e6? with 24...f6! rather than 24...fxe6 25 Nxc6!
- (i) During the game I didn't even consider alternatives, but I have since discovered 25 Rd3! would have won. 25...Qd7 (25...h5 26 Nxc6! gxc6 27 Qxc6! Kg8 28 Bf6) 26 e6! fxe6 27 Rh3 Ng8 28 Bxc6! Bxc6 (or 28...Nxc6) 29 Rxc6 and White smashed through.
- (j) Up to this point, I thought I had totally outplayed my opponent, and I expected a quick finish. Unfortunately, I soon learned why he is a GM and I'm not.
- (k) His only hope is to go on the defensive. I realized this, but felt his position would crumble at any moment.
- (l) Silly. With the threat of perpetual check gone 34 Rxc7 should finish things quickly, right? Wrong!
- (m) I finally noticed 34 Rxc7 Rxc7 35 Qxc7 Qe2! and my pawns will drop in rapid succession. Unfortunately, my position is already disintegrating rapidly.
- (n) Now my pawns start to fall one by one. I decided to hold my e pawn as long as possible to keep him tied down.
- (o) The a pawn is another potent distraction.
- (p) Black decides his best bet is to keep both rooks on the board. The threat is 42...Ne3+ followed by 43...Rxe6.
- (q) 43...Rb3 looks tempting, but after 44 Ra8! Rxd3 45 a6 Rd1 46 a7 Ra1 47 Rd7! White wins!
- (r) After 44 Kg1, Black could play 44...Rb3 45 Ra8 Rxd3 46 a6 Rd1+ gaining a crucial tempo on the previous note. 44 Kh3 is dangerous too because after 44...Kg6 45...h5 and 46...g4+ White will be mated.
- (s) Black plays to set up two passed pawns and distract my rook from a7.
- (t) 54 Kh3 f3!
- (u) I had made the second time control at move 55, and now figured I had an impenetrable position without winning chances.
- (v) Here I offered a draw, but there was an unpleasant shock awaiting me.
- (w) The sealed move. Fortunately the draw is still there.
- (x) Now he must enter the King and pawn ending, since 60...Kd5 61 Rf5! would not get him any where.
- (y) I don't even need the opposition here, since Black's King has no effective way to penetrate.
- (z) 66...h5 67 gxc5 Kxc5 68 Kf4 Kg6 69 Ke5 Kf7 70 Kf5! is also a draw.
- (aa) I'm not falling for 68 g5?? hxg5+ 69 Kxc5 Kg3 70 Kf5 Kf3 71 Ke6 Ke4 72 Kd7 Kd5 and Black wins.

and 68 Kf3 (aa) 1/2-1/2



NORTH: JEREMY SILMAN

Last issue I published a game in which Ron Washington beat Sanchez in a beautiful positional squeeze. In the U.S. Open Ron played every game in a mature positional style.

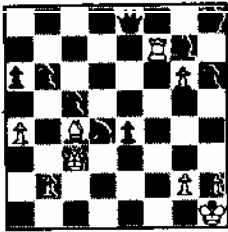
Lately Ron decided to improve on his tactics. I told him that the best book on attack and tactics is by Vukovic entitled "The Art of Attack". The following entertaining (though imperfect) game was instrumental in Ron's final score of 4½-½ at the Class Championships (Class B). By the way, this game is typical of what happens to one's style after reading Vukovic!

R WASHINGTON-E BINKLEY

1 e4 e6 2 f4 d5 3 e5 c5 4 c3 Nc6 5 d4 c4?! 6 Nf3? (White should play 6 b3! b5 7 a4 or 6...Na5 7 b1) 6...b5 7 Be2 h5! 8 Ng5?! g6 9 O-O Nh6 10 Kh1?! Nf5 11 Qe1 b4 12 Bf3 Rb8 13 Nbd2 bxc3 14 bxc3 Qa5? 15 Nxc4! Qa4 16 Ne3 Nxe3 17 Qxe3 Na5 18 Bxd5! (Though probably not sound, it gives White an initiative. Black must now be very careful.) 18...exd5 19 e6 f6 20 Nf7 Rh7?? (20...Rg8 refutes) 21 Qg3 Bxe6 22 f5! Qb5! 23 Re1 g5 24 Nxe5 Rg7 25 Rxe6+ Kd7 26 h4! Qf1+? 27 Kh2 Rb6 28 Ba3!! (A real shocker!) Qx1 29 Bxf8 fxe5 30 Rxb6 axb6 31 Qd6+ Kc8 32 Bxg7 g4 33 Be5 Qxc3 34 Qxb6 Nb7 35 f6 Nd8 36 f7 Nxf7 37 Qe6+ 1-0

The following position was played in a casual game between Emery Tate and Ron Washington. Emery, a crazed tactician, has given Ron a lot of lessons on tactics.

WASHINGTON



TATE

Black to move played 28 Nf5 29 g4!! e3! 30 Be6!! (Not 30 gxf5 Qe4+ 31 Kg1 Qg4+ 32 Ke1 Bxc3+) Qa8+ 31 Kg1 e2! 32 gxf5 e1=Q 33 Qxe1 Bd4+ 34 Qf2! Bxf2+ 35 Kxf2 Qg8 36 Ra6 1-0.

Former games editor John Tomas must have done something to anger his opponent who scores a quick knockout in the following game.

TOMAS-GREGORY Illinois Open, 1979

1 Nf3 c5 2 b3 d6 3 c4 Nc6 4 Bb2 c5 5 d3 g6 6 g3 Bg7 7 Bg2 Nge7 8 O-O f5 9 Nc3 O-O 10 a3 h6 11 Nd2 f4 12 e3 g5 13 Nd5 Be6 14 Rfe1 Ng6 15 Bc3 Qd7 16 b4 Bh3 17 Bh1 Rf7 18 Ne4 b6 19 Rb1 Raf8 20 Qd2 f3 21 Rb3? Nh4 22 gxh4 Qg4+ 23 Ng3 gxh4 24 b5 hxg3 25 hxg3 h5! 26 Kh2 h4 27 Rg1 Bg2 28 Bxg2 hxg3+ 29 fxe3 fxg2 0-1. A well played game by Mr Gregory!

Mr. Kramer has kindly submitted two games played in the Oak Park Masters Challenge. Notes are by C Kramer.

KRAMER-L BASS

1 e4 c5 2 Nf3 Nc6 3 Nc3 e6 4 d4 cd 5 N:d4 Nf6 6 Ndb5 d6 7 Bf4 a5 8 Bg5 a6 9 Na3 b5 10 B:f6 gf 11 Nd5 f5 12 Bd3 Be6 13 Qh5 Bg7 14 c3 O-O 15 ef B:d5 16 f6 e4 17 fg Re8 18 Be2 Re5 19 Qh6 Ra7 (Up to this point, so much book, with each player using about 8 minutes so far. Leonid thought for sixteen minutes on this move, which I can't find anywhere. It looks interesting.) 20 O-O Rae7 21 Nc2 R7e6 22 Qd2 Qh4

23 Ne3 Bc4 24 g3 Rg6 25 Ng2? (Now I think White should play N:e4. If 25...bc 26 Q:d6 looks good for White.) Qf6 26 B:c4 bc 27 b4 Rf5 28 Kh1 Ne5 29 Nh4 Rh5 30 Qf4 (I was drifting into time trouble and did not see the forced continuation after this move. If 33 Rae1 Rg2. An interesting finish!) Q:f4 31 gf Nf3 32 N:f3 ef 33 Rg1 R6h6 and White resigns.

KRAMER-MADDIGAN Caro-Kann

1 e4 c6 2 d4 d5 3 Nd2 de 4 N:e4 Nf6 5 N:f6+ gf 6 Nf3 Bg4 7 Be2 Qc7 8 Be3 Nd7 9 Qd2 e6 10 h3 Bh5 11 O-O-O Bd6 12 g4 Bg6 13 Nh4 O-O-O 14 N:g6 hg 15 d5 (I think this is a good move. It opens the position for my Bishops and pressures Black's King.) ed 16 B:a7 c5 17 Kb1 Bf4 18 Qc3 d4 19 Qa3 Bd6 20 Bb5 g5 21 c3 dc 22 Q:c3 Be5 (Black offered a draw after this move. I knew he was lost, but I was nervous anyway. This game was my first win against a master!) 23 B:d7+ R:d7 24 R:d7 K:d7 25 Q:c5 Q:c5 26 B:c5 Kc6 27 Be3 Kd5 28 f3 Kc6 29 Kc2 Re8 30 Bd2 Bg3 31 Rg1 Bf2 32 Rg2 Bd4 33 Bc3 B:c3 34 bc Kc5 35 Rd2 Re3 36 Rd3 Re2+ 37 Kb3 Rh2 38 f4 (The last ten moves before the time control (move 40) were played quickly by both of us because of time pressure. But after 38 f4 I knew there was no way he was going to slip away from me.) gf 39 a4 Kc6 40 Rf3 Kb6 41 R:f4 R:h3 42 R:f6+ Kc5 43 R:f7 Rg3 44 Rf5+ and Black resigns.

CALL FOR GAMES....

We need your games for the Games Editors' column! OR, if not complete games, then your best combinations, best endings, etc. Note change of address for Jeremy.

DULLEA INTERVIEW, cont'd.

approach professional events regardless of the ratings involved. From letters I get and from my own experience as an organizer, I know that other members dislike this trend and want genuinely amateur chess--for the love of it. I would hope that there is room enough for both sorts of events and both sorts of players. I personally have never played in a tournament because of the prizes offered.

HW: Who is to blame for the rating delay

GD: Maybe it was Murphy and his law that what can go wrong will. We certainly had no good luck on this project. The manufacturers were very late in providing the hardware. The machine we were to test programs on never materialized. The first on-site programmer had to leave the project. The second one, who got out the supplement, says it's not the hardest program he ever tackled, but "it's the sneakiest." This difficulty or "sneakiness" may have caused serious underestimation of the time required, despite what we should have learned when we first computerized ratings some years ago. I feel especially bad about the delay, not only because it was an interruption of expected service, but also because I made predictions based on what experts were telling me, predictions that turned out to be overly optimistic.

HW: Have any major changes been made in the postal chess department since you became Executive Director?

GD: Besides introducing postal matches, we have just finished the groundwork for a very major change in our handling of postal chess. Within months, the postal chess insert will virtually disappear from the magazine except for semiannual ratings. Results will be acknowledged individually rather than in the magazine, speeding this process by months. Players who want them can get crosstables of their sections as soon as play is completed. Also, we expect to computerize postal ratings very soon and to include updated ratings on the magazine labels, just as we do for OTB ratings.

END

Chicago International

martinovsky



Pupols-Martinovsky Caro-Kann

1 e4 c6 7 O-O Nf6
 2 d3 d5 8 Qe1 Nbd7
 3 Nd2 de 9 Nb3 Bd6
 4 de e5 10 Bd2 Nb6
 5 Nf3 Bc5 11 Bd3 C-O
 6 Bc4 Qe7

11...Na4+ 11...Bq4

12 a4 Bg4
 13 a5!

13 Qe2? Ne4! 14 Qe4 f5
 15 Qe2 e4 16 Bc4 Kh8+

13... Nbd7
 14 Qe2

14 Nh4 Ne4! 15 Qe4 Qh4
 16 f3 Nf6! 17 Qc4 e4!-+

14... Kh8

14...Ne4? 15 Qe4 f5 16 Qc4+-

15 h3 Be6 20 Kh1 Rae8
 16 Bc3? Nh5! 21 Bc3 f6
 17 Bd2 g6 22 Rfd1 Nf4
 18 Nh2 Nc5 23 Qe1 Rd8
 19 Nc5 Bc5

Black stands superior, but there is no mate and no material gains for Black in sight. Pupols was in substantial time trouble. I decided not to take too much time and to avoid risky lines. My aim was simply to make sound-looking moves and to capitalize on his time trouble with the eventual mistakes that might result.

The time trouble is over, but Pupols position is lost.

31 Rd8 Rd8 33 Bg2 Rg8
 32 Qc3 hg White resigns

If 34 Rg1 Qh3 wins, or if 34 Qf3 Qh6 35 Kg1 Bh3 wins. The only move would have been 34 Bh3, but even then Black wins even if

not immediately: 34...Qh6 35 Kh2 Qh4
 36 Rf1 Bg4 and there is no defense against f3 and Qh3.

Pupols is a dangerous tactician: he likes to go after the King. So I decided to cool him off with the Caro-Kann. In this unusual line the books give an exclamation point to my 5...Bc5! and state that 6...e5: Bf2:+! 7 Kf2: Qd4+ gives Black a plus. However, very recently one young chess player showed me the newest analysis in which White actually has a wor(!) position here after 8 Ke1 Qe5: 9 Nc4! Qe4:+ 10 Re2. Black has a hard time after Nd6+ suggesting that 5...Bc5 is questionable, or perhaps more analysis is needed.

++++

Rajan Ayyar-Martinovsky Petroff

This was the last round game of the Chicago International. Ayyar needed a draw to tie for first and I needed a win perhaps to tie. Ayyar did not want to take too much of a risk, so he played for a draw most of the game, but at times did attack. The game was a long grind, and while I had a slight advantage throughout, I managed to eke out a win with the help of my opponent.

1 e4 e5 9 O-O O-O
 2 Nf3 Nf6 10 Qc2 Bd6
 3 Ne5 d6 11 Nbd2 Re8
 4 Nf3 Ne4 12 Re1 Nd2
 5 d4 Be7 13 Bd2 Bd3
 6 Bd3 d5 14 Qd3 Ne7
 7 h3 Nc6 15 Ng5 g6!
 8 c3 Bf5

White has a small, but temporary attack. Still it requires a careful defence. If, for example, 15...Ng6? 16 Qf5 Black's position becomes very uncomfortable. He cannot play f6 or h6 because of Nh7 or Nf7 respectively.

16 Qf3 Rf8
 17 Qd3

Otherwise Black threatens h6 and White's Knight is caught!

17... Qd7 19 Rael
 18 Re2 Rae8

Here my opponent offered a draw for the second time (the first was after move 5!) I saw that my Bishop was slightly better and decided to play on.

19... Nf5 24 Qd1 Kf7
 20 Nf3 f6 25 Qe1 Re2
 21 b3 c6 26 Qe2 Bc7
 22 Qc2 Re2 27 Ne1 Qd6
 23 Re2 Re8 28 g3 Qa3!

Now I am getting somewhere! I have a few threats, my opponent is in time trouble, and this is a good time to become adventurous. White has some trouble defending the pawn at a2. Now if 29 Nd3 Qa2 30 Nc5 Ng7! 31 Qg4 f5 and Black is safe with a pawn advantage. If White wants to save the pawn he must play the text move.

29 g4 Qd6!

30 Nf3 Ng7
 31 Qe3

The time control is over and I can see that in spite of White's weaknesses on the b8-h2 diagonal, I cannot do too much there. I was considering forcing the exchange of Queens, breaking the pawns, and getting my King to d3 via e6, f5, and e4. But this was not easy.

31... Qe6
 32 Ne1 Qd6

As I saw no way to get my King through the white squares after a Queen exchange, I decided to keep the Queens.

33 Nd3 Qh2

I gave this check because I saw nothing else too decisive. I hoped for developments with my Queen pinning the King's territory, but with nothing did develop, I returned Queen home.

34 Kf1 b6 37 Kd1 Qd6
 35 Qf3 Ne6 38 Kc2 a5
 36 Ke2 Kg7

The situation has changed. White's King is now on the Q-side, attacking the King. My advantage is now gone--or very slight at best.

39 h4 c5
 40 h5?

This was a mistake. White should have played 40 Re3 in which case I had planned 40...c4 41 bc dc with a subsequent b5 and b4, and perhaps Qa3 later.

40... cd! 42 Bc3 d4
 41 hg dc 43 Bd2 hg

I am a pawn up and my opponent is in a time squeeze. I have good winning chances.

44 Qe4 Nc5 46 Qb7
 45 Nc5 bc

I expected this move and prepared a good reply. Perhaps White should have kept the blockade of my d and c pawns.

46... d3! 48 Qc8 Bd8!
 47 Kb1 Kf8

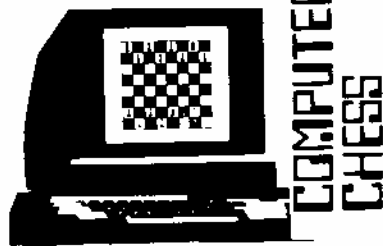
It is not easy to hide from checks. Now if 49 Ba5 d2! wins.

49 Kc1 Qd4 52 Qa7 Qg4
 50 Kb1 Kf7 53 Qa5 Qd1
 51 Qb7 Be7

At this point we were playing at blitz rate, but I had more time. I was able to calculate before a series of moves while my opponent could not afford such a luxury. His next move is an understandable blunder. He did not want to play 54 Kb2 Qc2 55 Ka3 c4+, but while this looks bad for him, that is exactly what he should have played! Black would have had some problems winning that position.

54 Bc1? Qc2

White resigns



Slate, Atkins & 4.9

By JIM WARREN

It has been ten years since the first ACM North American Computer Conference. Those of us who followed the competition in the early years (we attended the 2nd meeting here in Chicago at the Conrad Hilton in 1971) marvel at the progress made: the weakest program in the 1979 event is better than the winner of the first in 1970. Yet the winners are the same--David Slate and Larry Atkins with CHESS 3.0 in 1970 and Slate and Atkins in 1979 with CHESS 4.9. Certainly this Evanston team constitutes the most proficient and imaginative tandem in the area of computer chess.

The pre-tournament prospectus listed the Slate-Atkins program as the more familiar CHESS 4.7, but cautioned that they might well arrive with a new program. It looks like they did--and it looks like it worked. CHESS 4.9 swept its first three games over OSTRICH 8.0, BLITZ 6.9, and an improved DUCHESS. The final round saw CHESS 4.9 draw with the most formidable threat in the event: Ken Thompson and Joe Condon's Bell Telephone Lab's BELLE, last year's champion in Washington, DC.

For those among us who are more technically oriented, it will be curious to learn what improvements were made in the program to upgrade it from its former 4.7 level. It doesn't take much to see that Slate and Atkins have had a head-start: after all, they had won seven of the first nine ACM North Americans and came second the other two times. CHESS 4.7 played at about a 2050 rating, as does its chief human counterpart, David Slate. Readers will recall that CHESS 4.7 played David Levy five games of a six game match last year, winning one, drawing one, and losing three. But then David Levy is not only an International Master, but a computer expert as well. Part of CHESS 4.7's success must rest with the powerful computer the program runs on--the CDC CYBER 176. We met and talked with the CDC arm of the team, Dr. David Cahlander, when he was visiting the U.S. Open this past summer. We learned that the CDC CYBER 176 executes about 14,000,000 instructions per second. Yes, 14,000,000. And if CHESS 4.7 was able to look at 3600 positions per second, we wonder what Big Brother 4.9 can do.

The second and third place finishers were no real surprise: BELLE and DUCHESS, followed by CHAOS. Twelve programs competed including four from Canada. These three programs deserve to be called "the class of the field".

Hats off to the Northwestern University team of David Slate and Larry Atkins. Perhaps we can entice them to provide some follow-up notes on this great showing for CHESS 4.9 in the next ICB. Meanwhile, we present some game scores for your pleasure.

```

chess 4.9 -- duchess
1 e4 d5 2 e:d5 Q:d5 3 Nc3
Qd6 4 d4 Bf5 5 Nf3 Nc6 6 Nb5
Qd7 7 Bf4 Rc8 8 Ne5 N:e5 9
d:e5 Qc6 10 Qf3 Q:f3 11 g:f3
a6 12 Nd4 Bd7 13 o-o-o g6 14
Nb3 Rd8 15 Na5 Bc8 16 R:d8+
K:d8 17 Bc4 Ke8 18 Rd1 Bh6
19 Bd2 Bg7 20 Bc3 c6 21 e6
Bh6+ 22 Kb1 f6 23 N:b7 B:b7
24 Ba5 Kf8 25 Rd7 Bf4 26 h3
Be5 27 R:b7 g5 28 B:a6 h5 29
a4 Rh6 30 Bc4 f5 31 Bd2 Rg6
32 a5 Bd4 33 a6 8:f2 34 a7
B:a7 35 R:a7 g4 36 Bc3 Nf6
37 Bb4 Ng8 38 Ra8+ Kg7 39
Bc3+ Kh6 40 Bd2+ Kg7 41 f:g4
h:g4 42 h:g4 R:g4 43 Bd3 f4
44 Bc3+ Kh6 45 Rf8 c5 46 Be5
f3 47 R:f3 c4 48 Rf4 Rg1+ 49
Bf1 Kg5 50 Rf7 Kh6 51 Ka2
Rh1 52 B:c4 Re1 53 Bg7+ Kg5
54 Bf8 Re4 55 Rg7+ Kf6 56
Bd3 Ra4+ 57 Kb3 Ra7 58 R:g8
K:e6 59 Bc4+ Ke5 60 Rg7 Rb7+
61 Kc3 resign

```

*"THESE TOURNAMENTS, IN A SENSE, SERVE THE
COMPUTER INDUSTRY IN THE SAME WAY AS THE
INDY 500 DOES THE AUTO WORLD..."*

*Monty Newborn, ACM Computer Chess Committee
Chairman, 1979*

```

blitz 6.9 -- chess 4.9
1 e4 Nc6 2 d4 d5 3 e5 f6 4
f4 Bf5 5 Ne2 e6 6 Ng3 f:e5 7
f:e5 Qh4 8 Be3 Nh6 9 Nc3 Ng4
10 Bg1 Be7 11 Nb5 Rc8 12 c4
d:c4 13 B:c4 a6 14 Nc3 Nb4
15 Kd2 Qg5+ 16 Ke2 N:e5 17
B:e6 B:e6 18 Qb1 Bg4+ 19 Kf1
o-o+ 20 Bf2 R:f2+ 21 Kg1 Qe3
22 Nd5 Nf3+ 23 g:f3 Rf1+ 24
K:f1 Bh3++

```

*Our thanks to George Koltanowski for sending us the
game scores from Rds. 1-3 and the program for the
ACM event in Detroit. We were delighted that George
visited with us on his way from San Francisco to
Detroit where he was the guest of the organizers of
this year's North American Computer Chess Champion-
ship.*

*Jim Warren, a seventeen year member of the ACM
(Association for Computing Machinery) is a
Senior Information Systems Analyst for Western
Electric and has been in computer systems for
twenty-three years. He is the creator of the
program for calculation of the self-consistent
ratings, making possible the first ELO/FIDE
rating list.*

SCHOLASTIC CHESS



By CHRIS SLUPIK, Scholastic Editor

LARRY STILWELL and the PROVISO WEST HIGH SCHOOL CHESS CLUB hosted the 7th annual Illinois High School Chess Events tournament held on November 10 in the Proviso West cafeteria. WILLIAM HARRIS (1815) of Bradley-Bourbonnais was awarded the trophy of tournament champion on tiebreak ahead of CHRIS SLUPIK (1865-Proviso), ROB MANASTER (1499-Maine East), HELAMUT MORGENROTH (New-Bradley-Bourbonnais), and SCOTT ZINGHEIM (1760-Hinsdale Central), all with 3½. BRADLEY-BOURBONNAIS won the team championship with 16 pts. ahead of PROVISO WEST with 14. WHITINLY YOUNG and LANF TECH tied for 3rd-4th places with 13½ pts. and CARVER placed 5th with 13.

Ten days later (on November 20, tournament director Larry Stilwell announced that there had been an error in the tiebreaking for the title of tournament champion. One of the Assistant TDs (whose identity may never be revealed) inadvertently marked an extra tiebreak point on William Harris' pairing card.

The corrected tiebreak reveals that the tournament champion is...yours truly.

So why not start this column all over again, and set the record straight?

ICB Scholastic Chess Editor Chris Slupik (1865-Proviso West) won the seventh annual ILLINOIS HIGH SCHOOL CHESS EVENTS tournament held on November 10 in the Proviso West Cafeteria. In the 2nd-5th places were...William Harris, Rob Manaster, Helamut Morgenroth, and Scott Zingheim, all with 3½-½.

Team results were unaffected. For curious readers, Harris has kept his first-place trophy, and Stilwell has ordered a slightly bigger trophy for this writer. Enough said.

Also on November 10 at Proviso West was the third annual ILLINOIS SCHOLASTIC TEAM tournament, directed by Larry Stilwell, with help from DICK TEMPLE. GOWER placed first with 19 pts. Second through fifth places were KOMAREK (16 pts), CARVER (14½), DEER CREEK (12) and GLEN CREST (8½). Individual Champion in this 8th grade-and-below section is DAVID FROST (1346) of Gower with a perfect 4-0 score on Board 1. Champs on Boards 2, 3, 4 were MICHAEL GJACOBBE (1068) of Komarek, LENNIE FISCHER (1022) also of Komarek, and KARL WALASEK (806) of Gower respectively.

(h) Black stands better because his pawns at f5 and e5 control many central squares, which is more important than White's Q-side pawn majority.

(i) Aiming for a possible ...Ne5 and a subsequent invasion on the white squares, especially d3.

(j) Prevents the above maneuver, but gives Black a strong passed e pawn.

(k) Black must neutralize the pressure on the d-file.

(l) White cannot afford to surrender this important file.

(m) Black begins maneuvers to remove White's blockading pieces.

(n) White exchanges his "bad" Bishop, but now he must keep either his King or Knight back to block Black's e pawn, while Black can attack on the Q-side with both King and Knight.

TOM LAFFLEUR (1009) of High Ridge was the champion of the open section--for grade schoolers without a team; he scored a fine 4-0.

Attendance in the high school tournament was about the same as last year with 97 players, while the scholastic tournament was down to 51 from last year's 90+ entries.

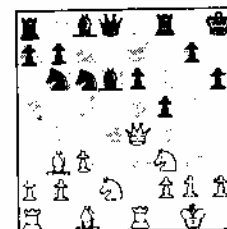
As of this writing, I have yet to receive a single game from any high school or grade school player! This is a reminder to ALL tournament players in the state: send me your games with grade school and high school players!

Following is a game of my own against the Illinois Junior Invitational Champion.

From Bd. 2 of the 1979 Illinois High School Varsity State Championship, April 21, 1979

DAVE RUBIN-CHRIS SLUPIK Sicilian (E52/c)

1 e4 c5
 2 c3 (a) Nf6 (b)
 3 e5 Nd5
 4 d4 cd
 5 Qd4 (c) e6
 6 Bc4 Nc6
 7 Qe4 Nb6?! (d)
 8 Bb3 d6
 9 ed Dd6
 10 Nf3 h6!? (e)
 11 O-O O-O
 12 Nhd2 Kh8!
 13 Re1 f5



Position after 13...f5

(see diagram)

14 Qh4 (f)	Qh4 (g)	35 Bd4	Bf6
15 Nh4	Rf6	36 Rf6 (n)	Rf6
16 Nc4	Nc4	37 h4	Nc5
17 Bc4	e5 (h)	38 Ne5	Ke6!?
18 g3	e4 (i)	39 Ke3!?	Nd7!?
19 f4 (j)	g6	40 Nc6 (p)	a6
20 Se3	Re6	41 Kd4	Kd6
21 Be6	Re6	42 Nb4 (q)	Nb8
22 Rad1	Kg7	43 Ke3	a5
23 Ng2	Kf7	44 Nc2	Nc6
24 Re2	Ke7	45 Na3	Kc5
25 Red2	Rad8	46 Nc4	a4
26 Kf1	b6	47 Ne5?? (r)	Ne5
27 Bf2	Bc7 (k)	48 fe	Kd5
28 Rd3	Bd8	49 Kf4	a5
29 Ne3	Ra6	50 ab	b5
30 Rd6 (l)	Kd6	51 c4+	bc
31 Ke2	Na5 (m)	52 bc+	Ke6
32 h3	h5	53 c5	Kd5
33 b3	Nb7	54 c6	Kc6
34 Nc4+	Ke6	55 Kg5	Kd7 0-1

(a) Becoming increasingly popular with players who would like to avoid the Sicilian memory-game.

(b) Also possible is 2...d5 3 ed Qd5 4 d4.

(c) Aiming for quick development. I would prefer 5 cd, keeping two center pawns.

(d) Misplacing the Knight. Better is 7...Nde7! 8 Nf3 Qc7 9 O-O Ng6! 10 Re1 b6! with the idea of 11...Bb7, 12...O-O-O, and 13...f6, as in Timoschenko-Zacik, USSR 1977 - 24/311.

(e) Not 10...O-O? 11 Ng5 g6 (11...f5 12 Be6+ Kh8 13 Qh4+-) 12 Qh4 h5 13 g4 +.

(f) 14 Qe2 e5 with ...Qf6, ...Be6, and ...Rae8 to follow is good for Black.

(g) 14 ...Qe8!?

The Composed Endgame

By JOHN TOMAS

ASSOCIATE EDITOR

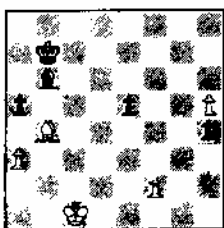
It is axiomatic that the themes of the arts cannot develop; they are so closely allied with the manner of production, with the form, and with the reality underlying them, that each rendering of the theme is a unique creation. It is otherwise with the pseudo-arts, among which we number endgame composition. Here themes are not quite so closely tied to form or reality and a composer may quite consciously decide to elaborate a specific theme.

Consider #4 for example:

A Monterde

IV Prize

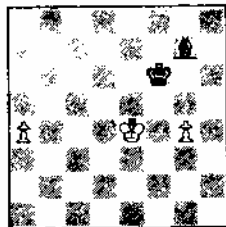
Sydvenska Dagblatt Snaellposten



White wins

Black maneuvers to stop White's "h" pawn from Queening. 1 h6 Bd4 2 Bc5! Ba1 3 Kb1 Bc3 4 Kc2 Ba1 5 Bd4! Bd4 6 Kd3 Ba1 7 Ke4! and White has finally managed to blockade the pawn that interferes with the return of the Black Bishop. The theme is a rather nice elaboration of a famous didactic study by H. Otten in "The Boys Own Paper".

#5 H Otten 1892

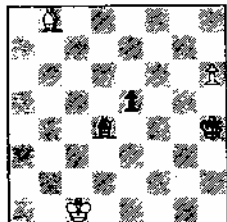


White wins

Otten's opus revolves about the same desperate need for a diagonal: 1 a5 Bf8 2 Kd5 Bh6 3 g5+! Bg5 4 Ke4 Bh5 5 Kf3! After 3...Kg5 the Bishop is likewise stymied. It is possible to trace Monteredede's idea from Otten's. Both feature the same madcap dance of the White King and a self-block on an important diagonal.

But, one must ask, although Monterde has elaborated the original theme, is his offering the ultimate expression of his theme? After all, look at all those superfluous rook pawns! Something of the sort must have gone through the mind of the German Paul Henaecker:

#6 Paul Henaecker Neue Freie Presse, 1931



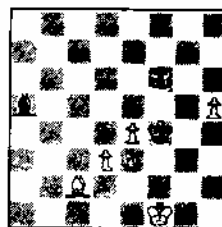
White wins

The solution ought to be obvious: 1 Ba7! Ba1 2 kb1 Bc3 3 :c2 Ba1 4 Bd4! Bd4 5 Kd3 Ba1 6 Ke4!

Certainly there is no question of originality here; even the setting duplicates the Monteredede. But Henaecker has advanced; he eliminates unnecessary material and thus, like Otten's, maximizes the effect.

One might think that Henaecker's is the end of the matter, but things are not always that simple. Everyone thinks his elaboration is the one that adds the important something extra to the theme. So for your delectation!

#7 E Rusenescu Revista de Sah



White wins

Oh, yes. That #3 solution from last time.

1 Rb5+ Ke4 2 Rd5 Qa1 3 Nc7 Qb2 4 Kc2 Qc2 5 Na6 Qb2 6 Nb4 f5 7 Rd4+ Ke5 8 Nd3+

The subvariations are quite nice.
+++++

Northwestern University C.C.

cordially invites you to play in the 1980
WINTER SWISS on consecutive Monday evenings
starting on JANUARY 21. A USCF rated event.

6 rds.	45/105 min.	7:00 PM
--------	-------------	---------

NO ENTRY FEE REQUIRED, BUT NUCC (\$2/quarter)
MANDATORY.

++++

Excellent tournament facilities
and skittles room. No smoking in
the tournament room.

+++

Registration at the Norris Center, Room 2E,
6:30-7:00 PM on January 21 or by mail to
NUCC (c/o Norris Center)

Norris Center
1999 Sheridan Rd
Evanston, IL 60201

More info: JAY NITSCHKE (492-8284)

focus ...

Springfield C.C.

in the land of
Lincoln...

by JOSETTE DONNELLY

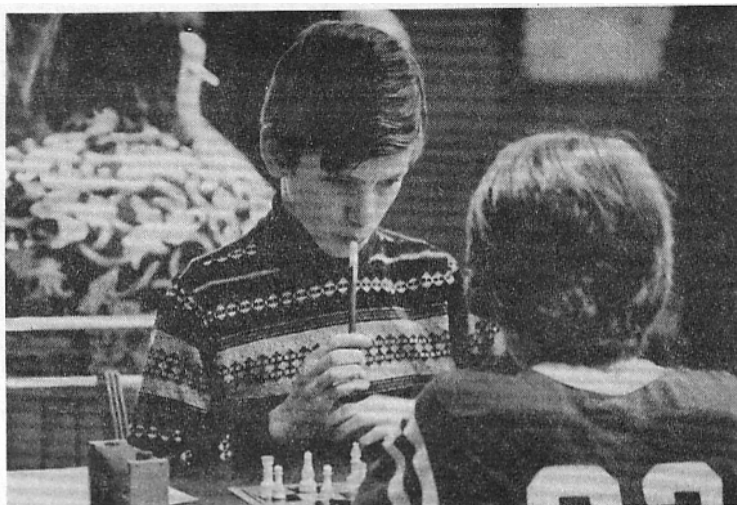


club
affiliates

on the

Dues for adults at the Springfield C.C. is \$5 per year and for high school students and younger it is \$2. The club is open to the public, however, at no charge and at all times. This generates a constant flow of new players without the burden of "investment" on guests.

The program for high school students is a great source of pride to everyone. The Individual City High School Championship was finally retired in 1978 after being won three years in a row by John Donnelly of Griffin High School. During his three years of tournament play John remained undefeated. Now the six high schools of Springfield utilize the team concept. The travelling trophy is awarded every February. This specially designed trophy is shaped in the likeness of the State Capitol Building in keeping with the theme that the winner is the Capitol champion. The trophy this year went to the Springfield High School team. This tournament is organized, managed, directed and entirely financed by the Springfield Chess Club members.



Springfield highschooler ponders move



Mr. Christiansen paces on a grand chess

A variety of programs is offered to members and non-members alike. Occasionally a USCF rated club tournament, sometimes a non-rated tourney, a simul a few times a year usually with our EXPERT Charles VanBuskirk doing the honors, the annual speed tournament and the annual Springfield Championship are the usual formats. Grandmaster Larry Christiansen's visits in 1978 and 1979 were a tremendous delight to everyone.

The Springfield C.A. is small enough and large enough to insure excellent relations with the news media. Frequent newspaper articles and live television coverage (especially for the Christiansen simuls) encourages and reminds the rest of the world that Springfield's chess club is alive and doing nicely.

Coffee is free weekly both to players and spectators. When the treasury is healthy enough, the very popular "free lunch" USCF-rated Open is held. The next one is scheduled for January, 1980. Watch CL&R for details. Sometimes even the treasury will support a Grand Prix tournament. Two were held in 1980. The winner in May was Master Walter Morris of Iowa and September was won by our very own Charles VanBuskirk.

Springfield's current major project is establishing contact with the smaller towns in central and southern Illinois who were USCF affiliates in the past. Formulation of team competition will hopefully encourage re-affiliation and more USCF members. It will follow that these teams will be introduced to the ICA. After the adult teams become active, we will attempt team competition among all the high school students. Also in the immediate future, Springfield will bid for a national tournament. Our new convention center is finally in use, so a large tournament can be supported. President Bumgardner is now negotiating with the Center for a 1981 National.

The club is frequently requested to give a chess demonstration to service clubs. The calendar now includes a simultaneous for Lincoln Library. The Abraham Lincoln Memorial Garden has scheduled a simul, blindfold, speed, and double bug-house with other boards available for serious chess play. While SCC does not charge a fee for these services, all donations are gracefully accepted.

Springfield owes its continuing success to many wonderful people. Foremost are the loyal SCC members who support their club so enthusiastically, even in times of crisis. All the previous and current officers deserve applause for their selfless dedication, but especially to Pres. Gerald Bumgardner and V.P. and T.D. Jim Larson for having the courage to attempt the Grand Prix tournaments, and to T.D.s Don Townsend and Tim Oltman for their generosity in directing events for only an occasional thank you. We are located on Interstate 55, on the Amtrak, in the middle of the state of Illinois--a most convenient place from anywhere in our state! The Land of Lincoln welcomes you!

USCF commentary

TIM REDMAN



The Policy Board met last month in New Windsor. The meeting was originally scheduled for Boston, but was changed to USCF headquarters so that the board could have a first-hand look at the computer situation. I am happy to report that at the time of this writing almost all computer services have been restored (and some new ones added), except for the capacity of the machine to print out selected labels requested by class (e.g., masters residing in Pennsylvania) which is due by the first of the year. The annual rating supplement will appear in an expanded January issue, with events rated through October 1, and a February supplement containing virtually all 1979 events will be sent to all affiliates. Everyone is certainly happy that this difficult period is now behind us. One writer, in a letter to selected Delegates, went so far as to insist that the USCF should have leased another system in the interim, neglecting to point out that the cost would have been a prohibitive \$55,000 a month! The meeting of the board scheduled for Boston has been put off until May. What follows is a summary of some of the important actions taken by the board, and comments on some other matters.

The Friday before the board meeting I attending a luncheon meeting at the Harvard Club in Manhattan to discuss design changes for CL&R with Editor Fairfield Hoban, Assistant Editor Frank Elley (pronounced ee-lee), Gerry Dullea, and design consultant Bart Lewis. Bailey, Lewis and Associates had prepared two different design proposals for the magazine, both of which provide a unified look by using recurring graphics which encompass the cover, table of contents, and regular columns. We finally decided on the more conservative of the two designs, so look for some striking changes in the magazine early next year. Lewis also made some constructive suggestions about increasing the advertising revenues of CL&R, and improving newsstand sales. Hoban and Elley are very different individuals, each impressive in his own way. Elley is a quiet, intense individual, young but with a remarkable background in the technical aspects of an editor's job and a wide knowledge of USCF. Hoban is a lively individual in his middle fifties, very witty and a born raconteur. He plans some very interesting new features for the magazine, and wants to increase the number of games per issue. We should bear in mind that the impact of the new staff upon the magazine will not be felt until spring, since they have inherited a lot of material from the previous editor. Toward the end of the meeting I suggested ways in which to bring the cover date of CL&R more into sync with its actual appearance, so that the magazine is received on or before the first of the month. Dullea and Hoban have agreed to look into this.

The PB meeting convened on Saturday November 10, with the entire board present. Gary Sperling presented his FIDE report, stating that the 1980 Olympics will be held in Malta in the fall. Gary has been actively pursuing some promotional possibilities for U.S. chess, and there is a good chance for a USA vs USSR match, home and home, for 1981 and 1982, or if the travel funds cannot be found, for a satellite match between the two countries.

He is also pushing for another Karpov tour here in the U.S. and a possible tour by World Women's Champion Maya Chiburdandize. Gary is certainly on the right track with these plans. Just think of the promotional and media possibilities inherent in these events!

The results of the previous day's meeting about CL&R were presented to the board by Hoban, Elley, and Dullea. The Executive Director was given the authority to enter a new, and hopefully better, contract for the newsstand distribution of the magazine. Dullea also reported on the contract with Compugraphic for the five year lease of one of their typesetting machines. In my opinion this was one of the most important steps taken by the Federation in recent years, and represents admirable initiative on the part of Dullea, who first proposed the idea to the Board last August, and has seen it through. By leasing one of the more advanced Compugraphic Editwriter machines, the USCF will acquire its own typesetting capability. This will eliminate the middleman (Unitron Graphics, which currently does our typesetting), giving the editors more control over the final appearance of the magazine, giving CL&R

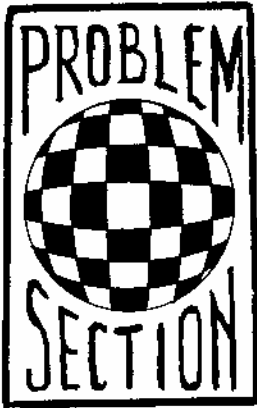
greater timeliness, and eventually saving the Federation close to \$20,000 a year on typesetting expenses. The machine should be in place in 3-5 months, and it is hoped that the transition to in-house typesetting will be complete by the end of 1980.

A proposal I made to price tournament directors' supplies available from USCF at cost, in order to promote more tournament activity, was adopted, as were the new categories of "voluntary memberships" authorized by the Delegates and proposed by the dues subcommittee of the board. The new categories of membership will encourage our wealthier members to contribute to the promotion of their favorite game by offering them recognition (if desired) for their generosity as well as some unique premiums as a token of the Federation's gratitude. Watch the January and February CL&R for details. The board also established a FIDE events fund to support U.S. participation abroad.

The Executive Director was authorized to proceed with the preparation of a USCF Guidebook which will include updated organizational material useful to chess promotion. And the 1st Regional Vice-Presidents in each region were requested to resolve tournament date conflict disputes in their respective regions, working with the established clearing-houses or, if necessary, establishing new ones. This is the first of a projected series of steps the board will take to upgrade the role of the regional Vice-Presidents.

FROM THE GRAPEVINE...

AL BOZAR has resigned as trustee of the USCF Chitable Trust, after many years of service. The USCF owes him its thanks...GM LEV ALBURT will shortly join VIKTOR KORCHNOI in Switzerland to help him prepare for the upcoming Candidates matches...the race for the GRAND PRIX is in its last stretch with ZALTSMAN in front and BISGUIER (a Chicago favorite) a close second. Look for a photo finish, with Bisguier's participation in the Chicago Christmas Class Championship here on Dec. 28-30 providing his last chance to overtake Zaltsman...BILL GOICHERG will be concentrating less on chess, more on bridge and prechess in the future. But don't worry, the 1980 World Open should be bigger and better than ever!...Two(!) International tournaments were being held concurrently in NYC: BILL GOICHERG'S Chess Institute International was won handily by LEV ALBURT with 31-1 while at the Casa de Espana, Israeli GM DZINDZHASHVILI came first with 7½-½. This was the strongest (category 8) tournament held in the U.S. since San Antonio 1972. While at the Marshall we met BRUCE PANDOLFINI, Executive Director of the newly founded Chess Institute. Bruce reports that the project has been quite a success, and he plans to expand its course offerings next term...GEORGE KOLTANOWSKI was at the OAK PARK CHESS CLUB in late October in a lecture and demonstration sponsored by DICK VERBER'S CHICAGO CHESS ASSOCIATION. Kolty gave a really great show, as always, but the event was complimented by a rare treat: the chance to see Kolty play an individual game against a man who challenged him to play for \$100. The game is given on the Games Page and is a rare recent example of Kolty's style.



EDGAR HOLLADAY
 1580 White Ash Drive
 Carmel, IN 46032

Solutions to problems in the last issue:

- No. 66 F.W. Wynne, First Prize Birmingham News, 1903.
 1 Bc6, waiting. 1...Q random 2 Rg5 or 6Sg7. 1...Qg6 2 Rf2. 1...Qf6 2 Sd6. 1...Qxe6 2 Qf1.
 1...S random 2 Be4. 1...Sxe6 2 Qe4.
- No. 67 Frederick Gamage, Falkirk Herald, 1941.
 1 Bc2, threat 2 Qf5. 1...Be4 2 Bc1 (Qd2?). 1...Be6 2 Qd2 (Bc1? Sf3?). 1...Re4 2 Sf3.
 1...Re6 2 Pg8=Q. 1...Re5 Rxe5. 1...cSe6 2 Qxd5 (Re5?). 1...dSe6 2 Sf7 (Re5?).
- No. 68 P. A. Orlimont, Wiener Schachzeitung, 1931.
 Complete block. Tries 1 Qc4? Bf2! 1 Qe6? Sf2!
 Solution 1 Qc6, waiting. 1...Bf2 2 Qc4. 1...Sf2 2 Qe6. 1...Ke2 2 Qe4+.
- No. 69 Jan Hartong, Honorable Mention, Good Companions, 1922.
 1 Ra6, waiting. 1...Rh7 2 Sg7, and the black queen is blocked from reaching h7. 1...Bg7
 2 Rxb6, and the black queen cannot reach e5. 1...Pxa6 2 Qc6+. 1...Qe5 2 Qxe5. 1...Pa3
 2 Rxa3+.
- No. 70 Hans Lepuschutz, Second Prize, Wiener Schachzeitung, 1936.
 1 Se6+ Pxe6+ 2 Kxg6 Sd7/Sc6/Qxd6 3 Be3+; 2...Qf7+ 3 Sxe7.
- No. 71 Godfrey Heathcote, American Chess Bulletin, 1943.
 1 Bg3 Ra4 2 Qxc3 (threat) Rd4 3 Qe3+ Pxe3 4 Pf3; 2...Pd4 3 Qf3+ Kxe5 4 Bxf4. 1...Pf6/
 Pf5 2 Qe3+ Pxe3 3 Pf3+ Kd4 4 Se6. 1...Bd7 2 Pf3+ Kxe5 3 Qb4 Pxd3 4 Pf4. 1...Pc2
 2 Qxc2+ Kxe5 3 Bxf4+ Kxf4 4 Qf5. 1...Kxe5 2 Bxf4+ Kxf4 3 Qe3+ Kg4 4 Qg3. 1...Pb4
 2 Pf3+ Kxe5 3 Bf2. A little-known masterpiece with six model mates.

All Readers are welcome to participate in the ladder competition! Deadline for submitting solutions to Problems #72-77:

JANUARY 20, 1980

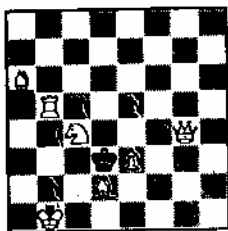
Solver J Leonard Sheets is to be congratulated on his perfect score on the problems in the last three issues. He receives the one-year ICA membership prize, his score is cancelled, and he starts again at the bottom of the ladder. Other solvers' scores are retained. David L Brown has also done admirably, tripping only on the extraordinarily difficult No. 70.

Here are the scores as of the end of the first leg of the ladder tourney, in alphabetical order (numbers in parentheses are scores for individual issues). Scores will be given again two issues hence, at the end of the second leg of the tourney.

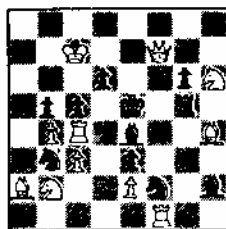
William L Barclay (-, -, 10)	10
David L Brown (15, 16, 14)	45
Eric M Hassberg (15, 9, 7)	31
Frederick M Mihalek (4, 9, 2)	15
J Leonard Sheets (15, 16, 18)	49
James E Warren (-, -, 11)	11

The six problems in this issue average somewhat less difficult than the tie-breaking set in the last issue. Nos. 72-77 each have pinning of black.

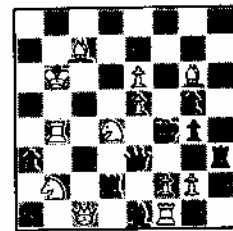
No. 72
 Pieter ten Cate
 "Falkirk Herald"
 1926



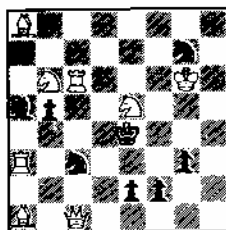
No. 73
 Rafael M Kofman
 First Prize
 "Deutscher Arbeiter Schachbund"
 1932



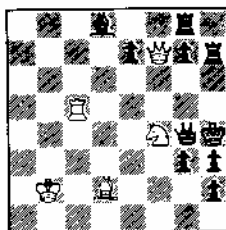
No. 74
 Lev Loshinski
 "Schachmatnogo Bjuro Abastumani"
 1933



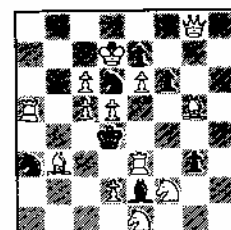
No. 75
 Mikhail M Barulin
 First prize, ex aequo
 "Shakhmaty v SSR"
 1940



No. 76
 Cenek Kainer
 "Nar. Osvobozeni"
 1926



No. 77
 Zivoni M Birnov
 Commendation
 "Trud"
 1950



GAMES

From the North American Class, the last round clincher.

BASS-W MORRIS 1 d4 Nf6 2 c4 g6 3 Nf3 Bg7 4 g3 d6
5 Bg2 0-0 6 0-0 Nc6 7 d5 Na5 8 Nfd2 c5 9 Nc3 a6
10 Qc2 Rb8 11 b3 b5 12 Bb2 Bh6 13 f4 Bg7 14 Rae1
bc 15 bc e5 16 Nd1 ef 17 gf Bf5 18 e4 Bg4 19 Bc3
Bd1 20 Rd1 Nh5 21 Bg7 Ng7 22 Qc3 Qc7 23 e5 Nf5
24 Ne4 Rb4 25 Qh3 h6 26 Nf6+ Kg7 27 Be4 Ne7 28 Rf3
Rh8 29 f5 Nc4 30 fg Ne5 31 Nh5+ Kg8 32 Rf7 Nf7
33 gf+ Kf8 34 Qg3 1:0

"A see-saw battle where now White, now Black stood better even to the end. But the scale never tipped decisively one way or another." Dr. Marlinovsky

BISGUIER-MARTINOVSKY, Chicago International 1 e4 e5
2 Nf3 Nf6 3 Nc3 Nc6 4 Bb5 Bb4 5 0-0 d6? 6 Nd5!
Bc5 7 d4 ed: 8 Nd4: Bd7 9 Nb3 Ne5! 10 Bd7+: Nfd7:
11 Nc5: Nc5: 12 f3 0-0 13 b3 f5! 14 ef: Rf5:
15 Ne3 Rf7 16 Qd2 Qf6! 17 Rb1 Qg6 18 Kh1 Re8
19 Bb2 h5? 20 Rbe1! Ncd7! 21 f4 Nc6! 22 Nd5 Re1:
23 Re1: Nb6 24 c4 Qf5 25 Nb6: ab: 26 g3 h4 27 Kg2
h3+ 28 Kf2 Ne5! 29 Be5: de: 30 Qd5! ef: 31 Re8+
Kh7 32 Qf5+: Rf5: 33 Re7 Rg5 34 Rc7: fg:+ 35 hg:
b5 36 Rb7: bc: 37 bc: Rg4 39 Kg1 g5 40 g4! Rg4:+
41 Kh2 Rg2+! 42 Kh3: Ra2: 43 Kg4 Kg6 44 Rb6+ Kf7
45 Kg5 Drawn 1/2-1/2

From the Christiansen simul at the U of C....

1 d4 Nf6 2 c4 c5 3 Nf3 cxd4 4 Nxd4 e6 5 g3 Nc6 6 Bg2 a6
7 0-0 Bc5 8 Nb3 Ba7 9 Nc3 d6 10 Bf4 e5 11 Bg5 Nd4 12 Nxd4
Bxd4 13 Nd5 Be6 14 e3 Bc5 15 Rc1 h6 16 Bxf6 gxf6 17 Qh5
f5 18 Rfd1 Bxd5 19 Bxd5 Qf6 20 a3 Ke7 21 b4 Ba7 22 Bxb7
Rag8 23 Qe2 h5 24 c5 dxc5 25 bxc5 h4 26 Rd6 Qg7 27 Rcd1
hxg3 28 Rd7+ Kf6 29 Rld6+ Kg5 30 hxg3 Bxc5 31 f4+ exf4
32 Kg2 Bxd6 33 Rxd6 fvg3 34 Qf3 Qb2+ 35 Kf1 Qb1+ 36 Rd1
Rh1+ 37 Kg2 Wc2+ 0-1

Following is the \$100 game we referred to on the USCF Commentary Page. Our thanks to Koltly for reconstructing it for us! (Tim Fedman)

GUENSBURG-KOLTANOWSKI Oct. 25, 1979 Oak Park, IL 1 P-K4 P-K4
2 N-KB3 N-QB3 3 P-KN3 B-B4 4 B-N2 N-B3 5 0-0 0-0 6 P-Q3
P-Q3 7 P-B3 P-KR3 8 N1-Q2 P-QR4 9 P-QR4 P-KN4 10 Q-B2 K-N2
11 N-B4 B-K3 12 BxP? Px8 13 NxNP BxN 14 Px8 N-K2 15 N-B3
N-N3 16 P-R4 R-R1 17 N-N5 Q-K2 18 B-R3 QR-KN1 19 K-N2 K-B1
20 R-KR1 RxP! 21 P-QN4 PxP 22 PxP B-Q5 23 QR-KB1 N-B5+! and
White resigned.

As it turned out, Mr. Guensberg was a reader of Koltly's column in the CHICAGO SUN TIMES for twenty years. Sixteen years ago he called George about a position. George was not in, but returned the call. Ever since then Mr. Guensberg has wanted to play George in person. George was reluctant at first, but when Mr. Guensberg promised him that the money would go to the Koltanowski Foundation for Junior Chess, he agreed. Those interested in donating to Koltly's Junior Chess Foundation should write to 1200 Gough St., Apt. D-8, San Francisco, CA 94109. Well, we to say, a good time was had by all who saw Koltly at Oak Park.



world View

by JOHN TOMAS, Assoc.Ed.

This year's Interzonals contained few positive surprises. Certainly the qualifiers, with the exception of Adorjan/Ribli, should have been no surprise. Petrosian first qualified for the Candidates in 1956, Tal in 1958, Portisch in 1964, Hubner in 1970, and Polugaevsky in 1973. The real surprises during this Interzonal were negative: Timman's failure, the failure of the younger Russians, particularly Vaganian, who finished with a minus score. Gheorghiu, capping a superb year with...a loss to the Brazilian Trois.

The great positive surprise, outside of Jaime Sunye's showing, was Tal's outstanding form. Surely, somewhere, there is a player who wouldn't like to see a healthy Tal win the Candidates and challenge Karpov for the World Championship, but nobody has seen him.

How, then, do the Candidates matches shape up? The easiest way to attack the matches is to divide the participants into three groups:

- 1 Also-Rans
- 2 Outsiders
- 3 Winners

1 Also-Rans: Ribli, Polugaevsky, and Hubner. Polugaevsky's name may appear strange in this group, but he has clear losses to Petrosian and Korchnoi on his record and he has also lost a match to Timman. Hubner might surprise. He is the only candidate who is not a professional chessplayer and given that fact, his results are nothing short of miraculous.

2 Outsiders: Portisch, Petrosian, Spassky These players are clearly a cut above the players in the previous group, but have only outside chances to beat one of our winners. Portisch is the best active non-Soviet player. He made great strides last year with his victory over Larsen and his near thing with Spassky. Petrosian has been world champion and remains a formidable player. He is less consistent and tends to draw with and lose to inferior players more often now. He is 54 years old and no longer has the stamina for a tough match. He could give Tal problems with his

style. Spassky was the greatest match player in the world during the 60s. He has defeated Portisch, Hort, Keres, Larsen, Geller, Petrosian and Tal. He did so by having the patience and psychological insight to adapt his style perfectly to his opponent. He beat Geller by attacks and let Larsen, Tal, and Korchnoi destroy themselves. Now, however, his legendary laziness dominates his results. He came to the last cycle without ideas and it cost him against Korchnoi.

That leaves...Tal and Korchnoi!

Both are marvelous tacticians and now that Tal has added patience to his repertoire he is even more dangerous than ever. My feeling is that Korchnoi was right in calling many of Tal's ideas stereotyped; and so I think Korchnoi will again win the right to meet Karpov in 1981.

Whom do you think will win this Karpov-Korchnoi match?

And speaking of Tal, let's share one of his games from the Riga tournament where he outdistanced the field by 2½ pts, finishing with an astonishing 11-0-6, 14 pts.!

POLUGAEVSKY-TAL 1 Nf3 c5 2 c4 Nf6 3 Nc3 d5 4 cxd5 Nxd5
5 e4 Nb4 6 Bc4 Be6 7 Bxe6 Nd3+ 8 Kf1 fxe6 9 Ng5 Qb6
(The AITF Newsletter comments at this point: This is said to be an idea of Kapengut, Tal's new second, who surely must have a good influence on Tal's games.) 10 Qe2 c4 11 b3 h6 12 Nf3
Nc6 13 bxc4 0-0-0 14 g3 g5 15 Kg2 Qc5 16 Rb1 Bg7 17 Nb5
Qxc4 18 Qe3 Rhf8 19 Rhf1 g4 20 Nh4 Nxf2 21 Ng6 Rd3 22 Na3
Qa4 23 Qe1 Rdf3 24 Nxf8 Nd3 25 Qd1 Qxe4 26 Rxf3 gxf3+
27 Kf1 Qf5 28 Kg1 Bd4+ 0-1

Quite a performance before his home town fans!

Dear editor

We invite your comments for this page, ask that you keep your letters brief, the easier to publish as many as possible. Unsigned letters will never be published.

"...new realism"...

Your interview with Burt Hochberg, according to Steven Dann, our revered high priest of chess editing, is a "profound historical document in chess journalism and current USCF events." Now Steve may just be right. But one must search the interview profoundly to discover its true profundities.

Burt frankly acknowledges Edmondson as his "boss and mentor of ten years, who knew how to harness" Burt's personality. The verbiage and symbolism are surprisingly akin to that in Wisconsin Chess News last June where, on page 4, Burt is portrayed "with a ring in his nose" with Edmondson as "his tetherman-mentor." WCN was referring to those dozen dismal years that you, Helen, have so completely forgiven and forgotten, to such barbarities as censorship in the name of Elo, or suppression of anything related to Acers, or Collins, (or Cramer, for that matter), to running page after page of unedited Edmondson self-adulation, even to running Townsend's license plate on the cover. All this and more, Burt has confided to me more than once, was by fiat from Newburgh.

Burt is charming and cultured, of considerable competence, and it will be difficult to replace him instantaneously. I like him and Carol; he has always been honest with me, albeit occasionally with some understandable reluctance. He might have done far better had he not had to call Newburgh every time he wanted to visit the bathroom. And he might have stayed with us had his loyalty (and subservience) been programmed to management in general rather than to a particular individual. (Yes, we lost more than money in those sorry years.)

The bottom line remains that there has been no "new role" of "professional humiliation" for the editor, but there has been a new realism of management policy, forced by the absence of some half-a-million dollars, the same money that made Burt so "comfortable" while it was running out during what Dann describes, with unintended irony, as "the golden age of CL&R."

(signed) FRED CRAMER, Mequon, WI (*Fred Cramer served as USCF President in the sixties. Luckily, I'm batting about .500 with Fred. Ed*)

I enjoyed very much your interview of Burt Hochberg. I think, finally, you have epitomized the qualities not only of Burt Hochberg but also of Margaret Schwab, Doris Thackrey, Eric Bone, and Jack Battell who were all men and women "of competence and conviction, circumscribed by conscience rather than guidelines. Possibly (they) were too big for the job." The Federation could not afford their loss.

(Signed) MARTIN MORRISON, San Lorenzo, CA

(*Martin Morrison succeeded Ed Edmondson as Executive Director of USCF; he was followed by Richard Meyerson, then Gerry Dullea, present Exec. Dir. Morrison resigned with Doris Thackrey, Margaret Schwab, Eric Bone, and Jack Battell in September, 1978.*)

After reading the Sept. issue of the ICB, the only suggestion I have is to include a regular feature, an "How to Improve Your Chess Play" type article such as Jeremy Silman wrote on the endgame in the February and May issues. I'm sure I'm not the only reader who looks forward to such articles written by a Master or Expert. Surely with all the playing talent in Illinois, it shouldn't be too hard to find someone to write an article on a particular phase of the game...

(signed) WILLIAM NAFF, Peoria, IL

(*A good suggestion--and we'll work on getting this in as a regular feature. Masters and Experts, are you out there? Ed.*)

membership consisted of active tournament players who provided the nucleus for future growth. ICA's growth has been due not only to the editor's work but also to requiring ICA membership at state titled tournaments and to the efforts of individual organizers to recruit members. In the last 3 years I have probably brought in more ICA members than any other organizer in the state. My campaign statement, "I have worked to build ICA membership" was an understatement as many readers know..."

(signed) HAROLD WINSTON

SLUPIK, cont'd.

(o) 39 Ng6 Nd7 40 Ke3 Kf6 41 Ne5 Ne5 42 fe+ Ke5 is not quite clear, but probably a draw, e.g., 43 c4 Kd6 44 Kd4 a5 45 a3 Kc6 46 b4 ab 47 ab Kd6 48 c5+ (48 Ke3?? Ke5+) bc 49 bc+ Kc6 50 Kc4= Or 39 Ng6 Nd3 40 Ke3! is the same thing because Black cannot play 40...Nc1 41 Kd2! Na2?? 42 Kc2+-.

I want to add my thanks...for the Hochberg interview. To me it was remarkable in its good taste--thought provoking, informative to those of us among the chess laity, challenging to the chess leadership, but without that shrill bitterness so characteristic of the expose-style interview..Hochberg deported himself honorably...under what must have been difficult circumstances...

(signed) CHARLES VAUGHAN, Coral Gables, FL

USCF ignored National Chess Day this year, which from the beginning I have considered too short a time for really effective promotion or for library displays (too costly in time and effort to set up a display for less than a month). So when I was in Oshkosh I called it National Chess Month. And this (last) October I have had in the glass display case just inside the Middleton Library a colorful display of chess, with one shelf devoted to correspondence chess. Now the Madison Public Library wants me to do a chess display, on a much bigger scale...It is scheduled for January.

(signed) LEONARD ARCHER, Middleton, WI

(*Len Archer did much organizing in the Oshkosh area. He is a retired librarian, and the recipient of numerous library awards in Wisconsin. Ed.*)

An editorial in the last ICB sniped at my record as ICA president...The editor's statements about my past presidency and membership growth were misleading. When I became president many of our members were really subscribers owed back issues of the ICB. After my first year as president our

(p) 40 Ng6 Kf6 with variations similar to the above note.
(q) 42 Ne5!? is unclear.
(r) An unfortunate losing blunder: White cannot follow with a quick Kd4. After 42 Nd2 the game is still difficult for both sides.

CICL news...

CHICAGO INDUSTRIAL CHESS LEAGUE

entering its 23rd season

of league play...

The CICL elected officers for 1979-80 with the following results: Division Chairman are appointed.

Pres.: Gee Leong (Kemper Insurance)
 Treas.: Jim Brotsos (Alumni team)
 Sec.: Charles Ward (Bell Tel.)
 Bulletin Editor: Beryl Price
 Ratings Chairman: Paul Weston (W-E)

East: Tom Gaffigan (1st Nat. Bank)
 North: Lee Stansaker (Signode)
 Near West: Dan Kumro (W-E)
 Far West: Joe Brozovitch (W-E)

The CICL lost several teams this year (5), but also added four to keep the balance. New to CICL play for this season are Combustion Engineering and Swift, both in the East Division, Teletype II in the North Division, and Harza Engineering II in the East wing.

It's far too early to report standings that are meaningful; most teams have played only one match at press time. By our next issue we should have some jockeying for position.

Here's a game played by CICL veteran Jim Brotsos in last year's league competition. It's noteworthy because the captain of the OPPOSING team reminded Jim at move 43 that he had in fact not made the time control. Jim's score sheet showed him at move 45 when only the 43rd had been made. (THAT sort of chivalry could happen ONLY in the CICL!)

Brotsos-Szatmary 1 P-K4 P-QB4 2 N-KB3 N-QB3
 3 P-Q4 PxP 4 NxP N-B3 5 N-QB3 P-K3 6 B-KN5 B-K2 7 P-B4
 P-KR3 8 BxN BxB 9 P-K5 B-K2 10 Q-Q3 Q-N3 11 N/4-N5
 P-Q2 12 N-Q6+ BxN 13 PxP Q-Q5 14 P-KN3 QxQ 15 BxQ
 P-QN4 16 B-K4 B-N2 17 K-B2 P-B4 18 B-N2 QR-N1 19 KR-K1
 K-B2 20 QR-Q1 P-N4 21 N-K2 B-R1 22 P-B3 KR-QB1 23 R-Q2
 K-B3 24 N-Q4 NxN? 25 BxB RxB 26 RxN P-KN5 27 K-K3 R-B3
 28 K-Q3 R-QN1 29 K-B2 K-B2 30 K-N3 P-QR4 31 R-K2 R/1-N3
 32 R/K-Q2 K-K1 33 P-QR3 R-N1 34 K-R2 K-B2 35 R/2-Q3
 P-R4 36 P-N3 K-K1 37 P-B4 PxP 38 PxP R-B4 39 R-N3 R-R1
 40 P-QR4 K-Q1 41 R-N5 RxR 42 RpxR K-B1 43 K-R3 K-N2 44
 P-B5 K-B1 45 R-B4 K-N2 46 K-R4 K-B1 47 P-N6 K-N2 48
 K-N5 P-KR5 49 R-R4 PxP 50 PxP P-K4 51 PxP R-K1 52 RXP
 RXP 53 R-R7+ K-N1 54 RXP R-K6 55 R-Q8+ Resigns

Interested in CICL play for your company? Contact Gee Leong, Kemper Ins., 540-3341 (work) or 367-4132 (home).

speed chess

By TOM FINEBERG

Including the ICA Rapid Championship, 1979

DEFOTIS, GREG	2397	MILLSON, D.	1629
SILMAN, JEREMY	2340	SCHROEDER, TONY	1627
MARTINOVSKI, EUGENE	2293	MARKUNNIT, JOHN	1611
VENBER, RICHARD	2149	YOUNG, RON	1606
MIHALOVIC, JOVA	2208	ULSLEY, PETER	1584
KEYES, RUBIN	2206	BARRETT, PHILIP	1578
SLATE, DAVID T.	2161	FINEBERG, THOMAS	1574
KUJEVITSKI, JOHN	2153	LAUSON, BOB	1552
TENNANT, STEVEN	2141	WILKINSON, TOM	1544
TAUVAISIS, P.	2110	STONE, GEORGE	1544
GELBART, SHELDON	2105	DOBBS, GEORGE	1535
MAROVICH, MARK	2092	LUCERO, THOMAS	1531
GILKUTH, PETER	2087	LARSON, RALPH	1522
REDMOND, TIM	2058	MILLER, J. A.	1517
RHINE, FRED	2014	BRYANT, MAURICE	1515
KORNFIELD, ALLAN	1992	KARLBERG, GARY	1510
WARREN, JAMES	1986	WHITE, JOE	1500
TOMAS, JOHN	1974	STILLWELL, LARRY	1494
STEVANOVIC, MICHIR	1963	DEMERSKI, WILLIAM A.	1489
WOLF, PETER	1960	GIDDINGS, ELEN	1484
HANSON, ROBERT W.	1958	FROST, DAVE	1477
SCHNEIDER, BORIS	1955	HERRY, EARL D.	1465
HERRY, VINCE	1953	WARREN, HELEN	1457
ARTIHELLO, ALBERT	1933	LEINER, BILL	1452
KURETSKY, PETER	1929	PETERSON, MARK	1454
BALLARD, NICK	1920	HUSGRAVE, CHRIS	1453
HOLZMUELLER, KEITH	1903	PATAK, MARY	1434
SEGERIN, PAUL	1903	PALACIAS, MIGUEL	1433
POKORNY, FRANK	1885	SLUPIN, CHRIS	1423
DANBRIDGE, MARVIN	1872	LUCAS, LAHONT	1419
EDDES, KEITH A.	1871	ZINGHEIM, SCOTT	1417
PUNGO, GREG	1845	VENZFRA, KEN	1397
MITCHELL, JEROME	1830	MANN, KEN	1392
RURCH, JEFF	1824	DOWSE, JOHN	1391
KAMIS, LUIS	1822	PATTON, DARRYL	1376
BROWN, WALTER	1818	KAZAKEVICIUS, A.	1339
SURAK, STEVE	1806	WALASEK, ART	1339
PINSLER, MURRIS	1792	BLUM, JOHN	1338
BECKER, SID	1785	MULKEY, WILLIE	1335
LAUMER, HELMET	1784	ZACATE, MICHAEL	1315
KOCHMAN, TOM	1771	STEFEN, JERALD	1304
SZUSTOWSKI, PAUL	1765	BRITTS, LAURENCE	1298
PERELMUTER, E.	1744	FUKU, SHIZUKO	1283
COFFEE, AL	1743	UNTERMEYER, ABRAHAM	1255
ILOSUAY, PAUL	1737	KONIC, MARINCO	1255
MORSO, ELIS	1736	SCHENBERG, RICH	1240
MCGIMAN, ANDY	1721	VANN, ERIC	1230
WINSTON, HAROLD	1713	FLANAGAN, PATRICK	1194
BOBSON, JOHN	1713	UNTERMEYER, ALEX	1148
LEIGHTON, GEORGE	1707	ESPPOSITO, TIM	1148
RUBEN, DAVE	1703	BYUN, IL	1137
SHYTHE, BILL	1699	ROBINSON, ED	1126
HICKMAN, ROBER	1684	WIEN, JEFF	1123
KONIC, MARINKO	1683	WHITE, DAVID	1099
GARRETT, DAVID	1680	KAMP, JAMES	1083
COLEMAN, GENE	1678	MILFAJT, BOB	1071
BISKOWSKI, MARTY	1655	KLASEN, PETER	957

SUMMARY OF MINUTES TO ICA MEETINGS

Board of Directors Meeting, Oct. 14, 1979, Mokena, IL

Secretary Brown reported that 191 ballots of 480 sent were returned. Treasurer Gelbart reported that ICA was in much healthier condition now than at the same point last year with checking holding \$954.22 and savings account \$450.31. With pending bills to be paid, the treasury in checking would stand at about \$500 and savings \$450.31.

Questionable ballots were discussed and accepted or rejected. Both candidates for contested office disclaimed any charges or accusations pertaining to the validity of the election. Mr Winston expressed disappointment over the editorial of the editor in the ICB and a letter by Pres. Zacate to IHSA coaches. Both Warren and Zacate defended their positions.

Marvin Dandridge, Tom Kirke, and Sheldon Gelbart were appointed election tellers. Election results were announced and accepted. Pres. Redman took the chair. (See election results elsewhere in this issue.)

ICA tournament reports were submitted (ILL Junior, ILL Open, ILL Speed). Ballots for the constitution were discussed. The presence of minority opinions as parts of an official ballot was questioned. Tom McCormack replied to a letter from J Donnelly of Springfield. Motions to recognize Frank Skoff's birthday, thank the outgoing officers, and thank Walter Brown for election services passed. Pres. Redman suggested Eric Vann replace R Pacetti as membership secretary. Motion carried unanimously. Letters to the Editor column was discussed. Meeting adjourned at 5:55 PM

Officers Meeting, Oct. 28, 1979

The ICA Membership drive was discussed. Helen Warren's ICB proposal was discussed and adopted with minor date change. ICA bid for national tournaments was discussed. National Accord of State Organizations (recognition of out of state membership cards) was discussed and voted upon (accepted). Appointments of Delegates, Alternate Delegates, and Alternate Voting Members were discussed and voted upon. The final list passed unanimously. The matter of bidding on national tournaments was discussed with authority for making such bid tendered to the president. This vote passed 3-0 with Redman abstaining. The next officers' meeting was scheduled for Dec. 9 at Evansston H.S. during the IL Class Championships.

- ARLINGTON HEIGHTS Meets at Arlington Heights Recreation Park Bldg., 500 E. Miner St.,
Wed. 7:30-11 PM. Dues \$4 for adults annually; juniors free. R. McGraw
(392-3747)
- AURORA Meets at LaSalle St. Community Center, 69 S LaSalle, Thurs. 7:30-10 PM (855-9693)
- CHICAGO (14)
- American Athletic Club (Polish Eagles), 3159 W Fullerton, Sun. 2-9 PM. Dues is \$3 per month. Ed Flor (394-6028).
 - * Chicago Chess and Backgammon Shoppe, noon-11 PM daily, 1126 N State. Dues is 60¢ an hour. Ron Washington (924-3143).
 - * Chicago Chess Center, 6 PM-midnight daily, 2666 N Halsted St., Dues \$1 per day; \$50 annually. Jules Stein (929-7010).
 - * Chicago Chess Club at the No Exit Cafe, 3 PM-2AM daily, 7001 N Glenwood. Dues \$35 annually; 30¢ hourly. Tues. speed chess. Susan Kozin (743-3355).
 - Chicago Lithuanian Chess Club, Lithuanian Youth Center, 56th & Claremont, Fri. 7:30-11 PM. Dues \$5 annually for adults. Al Darjuzis (423-9738).
 - Chicago State Univ. CC, 1-5 PM Mon.-Thurs. at the Kay Robinson Bldg., Rm K-103, 95th & Martin Luther King Dr. Dues \$1 students; \$5 non-students annually. L. Blaylock (874-3889).
 - ** Dankhaus (German-American), F. Lowe (439-8978).
 - 87th St CC, (Tuley Park) meets 1-5:30 PM Sat., Tuley Pk. Fields., 501 E 90th Pl., Dues \$2 annually. Tom Fineberg (721-3979).
 - Gompers Park CC, 7:30-11 PM Fri., at fields., 4224 W Foster. Dues \$12 adults and \$6 juniors annually. Winton Fuik (676-2170).
 - Kennedy Park CC, 7-10 PM, Thurs. at the fields., 11320 S Western Ave., Dave Mishlove (435-5865). Dues \$3 annually.
 - Marquette Park CC, 7-10:30 PM, Tues. at the fields., 6700 S Kedzie. Dues \$2 annually. Joe Bannon (445-0631).
 - ** Philippine-American CC at Rizal Center, 1332 W Irving Park. L. Alandy (263-5492).
 - Polish-American CC (see American Athletic Club)
 - Tuley Park CC (see 87th St CC)
 - Univ. of Chgo CC, 7-10 PM Mon., Ida Noyes Hall, 1212 E 59th St., Dues \$3 annually. H. Winston (947-0501).
 - Yugoslav-American "Kolo" CC, 6-10 PM, Wed., 4343 N Lincoln Ave. Dues \$12 adults; \$6 juniors and seniors annually. S Aleksic (332-5558).
- CICERO
- ** 6-11 PM, Fri., Warren Park fields., 5634 16th St., Free. L. Marovitch (656-2668).
- EVANSTON
- * Chess Mates CC, 7 PM-midnight daily, 517 Demster, Dues 50¢ an hour; \$36 annually. T. Kirke (869-4100).
- GLENDALE HEIGHTS Northeastern Ill CC, 7:30-10:30 PM, Mon., Glendale Hgts. Recreation Bldg., 1425 Circle Dr., Dues (which includes USCF memb.) \$10 adults; \$8 juniors annually. S. Merit (469-9539).
- GRANVILLE Central Ex. 111, 7-10:30 PM, Thurs., Warren Newnort Library, 224 N O'Plaine Rd., Dues \$11 adults; \$4 juniors annually. Kevin Sachler (972-9522).
- HAMMOND, IN. 7-11 PM Thurs., Inland Branch, Hammond Public Library, 171st & Grand, Dues \$8 adults; \$4 juniors annually. H. Matlin (862-8282).
- HICKORY HILLS (formerly Bridgeview) CC, 7-10:30 PM Fri., Park District Bldg., 8047 W 91st Pl., Glenview, (437-8471).
- HIGHLAND PARK 7:30-11 PM Thurs., Highland Park Recreational Center, 1950 Greer Bay Rd., Free. Richard Brannon (330-7611).
- HILLSIDE 7-11 PM Sat. at the Hillside Baptist Church, 6132 Sutterfield Rd., Free. Larry Stillwell (445-3924).
- HOMERWOOD Homewood-Pleasanton Park District CC, 7-11 PM Fri., Merchants Pk Bldg., 18350 Harwood Ave., Dues \$4 annually. Newton Berry (335-2392).
- LAGUNA 6-10 PM Wed., West Suburban YMCA, 21 E Ogden Ave., Tues. \$5 YMCA social fee annually. Charles Brookes* (495-6523).
- LANSING 7-11 PM Fri., Lansing Public Library, 2750 Indiana Ave., Dues \$3 annually. Phil Chouringa (474-2317).
- MOULT PROSPECT 7:30-11 PM Fri., Park District Recreation Center, See-given and Shabone Sts., Dues \$5 annually; \$2.50 juniors. Bob Spauldino (263-4645).
- MUNSELENE 7-11 PM Tues., Kracklauer Hs. basement, 100 N Seymour, Dues \$1 initiation. J. Johnson (566-4690).
- NORTH RIVERSIDE Komarek School CC, noon-1 PM, Mon-Fri., 8940 W 24th St., School days only, Dick Temple (477-8030). Free.
- OAK LAWN 7-11 PM, 1st, 2nd, and 4th Thurs., Northbrook Park trailer, 89th & Ridgeland, Free. 599-9678 during above hrs.
- OAK PARK 7-10:30 PM, Tues., Harvard Congregational Church, Harvard & Kenilworth Ave., Dues \$15 adults, \$10 juniors annually. Dick Bodenstab (263-4466).
- PARK FOREST 7-11 PM Thurs., Freedom Hall, 410 Lakewood, Free, J. Siadek (957-3536).
- PARK RIDGE 7:30-11 PM Tues., at the Log Cabin, Sibley & Forest View Rds., Dues \$8 adults and \$4 annually. Tom Sprandel (692-3411).
- RIVERSIDE 7-10 PM Thurs., Riverside Town Hall, 27 Riverside Rd., George Glaser (447-0280).
- ROMEDEVILLE 7-10 PM Tues., Romeoville Recreational Center, 809 W 135th St. Dues \$7 adults and \$3 juniors annually. Lloyd Baker (815-886-5146).
- ST. CHARLES 7-10:30 PM Thurs., Baker Comm Hs., 101 S 2nd, Free. B. Bloom (594-8241).
- SKOKIE 7-10:30 PM Tues., Skokie Park District Bldg., 4781 Oakton, Free. 674-1500.
- WESTCHESTER 10 am-noon Sat., Westchester Public Library, 10700 Canterbury St., Free. grade school ages only. Tom LeFleur (562-0972).
- WHEELING Indian Trails Library CC, adults: 7-9 PM 2nd Thurs. of the month; juniors: 1-5 PM, 2nd Sat. Library Bldg., 850 Jenkins Ct., Free. Chris Gibson (537-4011).

* indicates 7-day-a-week club

** indicates a new club

Win More Games

by increasing your understanding of the openings; your greatest likelihood of doing that is through ownership of

COMPREHENSIVE CHESS OPENINGS

by Yakov Estrin and Vasily Panov

THE CHESS PUBLISHING EVENT OF THE DECADE!

This great 3-volume set, now in its fifth edition in the Soviet Union, has just been translated from Russian into English and the original, one and only CHESS BOOK CLUB is now accepting members' orders for Volume 1 or for the complete set. We are always "First With the Best" of the forthcoming chess titles; join now to find out how you can get them.

GAIN THE COMPETITIVE EDGE by obtaining the most worthwhile of the new books, often before your opponents even become aware of their existence.

SAVE MONEY, TOO. We absorb all mailing costs and (where applicable) sales taxes. Naturally, we also offer discounts on all of the hard cover and many of the soft cover books which we make available to our members.

The regular one-time fee to become a member and have your name placed on our exclusive mailing list to receive the newsletter CHESSBOOKNOTES is \$3.00, which we use to defray the expenses of producing CHESSBOOKNOTES and of sending it to you by First Class Mail. But, we make a

SPECIAL OFFER

to readers of the ILLINOIS CHESS BULLETIN Your

REMEMBER THIS IMPORTANT FACT ABOUT OUR CLUB. You order only those titles you want and no book is sent to you which you have not specifically ordered.

one-time cost of joining our Chess Book Club is just \$2.25 if you mail your check or money order by December 25, 1979 to:

Ed Edmondson
47-169A Hui Akepa Place
Kaneohe, HI 96744

Do it now and we will rush to you the CHESS-BOOKNOTES which tells all about "CCO".

ICA AFFILIATES

APCT, AMERICAN POSTAL CHESS TOURNAMENTS, Box 70, Western Spgs., IL 60558 (Postal chess), Helen & Jim Warren (246-6665)
CHESS MATES CHESS CLUB, 517 Dempster, Evanston, nightly 7-12, (869-4100)
CHICAGO CHESS CENTER, 2666 N Halsted St., Chgo., Jules Stein, 2-midnight (929-7010)
CHICAGO CHESS CLUB, 7001 N Glenwood, at the No-Exit Cafe, (743-3355)
GOMPERS PARK CHESS CLUB, 4224 Foster Ave., Chgo., W Fulk, Friday nights (676-2170)
HOMWOOD-FLOSSMOOR CHESS CLUB, 18350 Harwood Ave., Homewood, Fri. 8-midnight, Newton Berry (335-2382)
INDUSTRIAL CHESS LEAGUE, c/o Gee Leong, Kemper Insurance Co., Long Grove, IL (540-3341)
87th ST CHESS CLUB, Tuley Park, Sat. afternoons, c/o Tom Fineberg, 7321 South Shore Dr., (721-3979)
GREATER PEORIA CHESS FEDERATION, c/o A Crum, RR 1, Peoria, 61614.
HILLSIDE CHESS CLUB, Hillside Baptist Church, L Stilwell, Friday nights (449-9364)
ILLINOIS JUNIOR CHESS FOUNDATION, Mike Zacate, 9401 Birch, RR 3, Mokena, (479-9380)
KOMAREK CHESS CLUB, Komarek School, 8924 W 24th St., No. Riverside, meets daily at lunchtime, club open to all, Dick Temple, (447-8030)
NORTHWESTERN UNIV. CHESS CLUB, Norris Center, 1999 Sheridan Rd., Evanston, Monday nights, Jay Nitschke (492-8284)
OAK PARK CHESS CLUB, Harvard Church, Harvard & Kenilworth, Oak Park, Tues. PM, Chris Musgrave (386-5124)
PARK RIDGE CHESS CLUB, "Log Cabin", Sibley & Forest View, Park Ridge, Tues. 7:30, T Sprandel (692-3411)
RANTOUL CHESS CLUB, Rantoul Public Library, corner Rts. 45 & 136, Wed. 7 PM
SPRINGFIELD CHESS CLUB, Washington Park, Wed. PM, Josette Donnelly, (529-7261)
UNIVERSITY OF CHICAGO CHESS CLUB, Ida Noyes Hall, 1212 E 59th St., Monday 7-10 PM, Harold Winston (947-0503)
YUGOSLAV-AMERICAN CHESS CLUB, "KOLO", 333 N Michigan Ave., Chicago

Clubs listed above are affiliates of the ICA. If you would like your club listed in the next ICB, your annual Affiliation dues of \$15 will assure you a space. Send your check, payable to ICA, to Editor Helen Warren. We welcome your club news, tournament announcements, results from your club events, crosstables, etc. We are eager to give coverage to your club's events, before and after! Be sure to include day and time you meet, and a local telephone number with name of club officer is always helpful.

REGION VII



veep notes

SENIOR REGIONAL V-P: JIM DAVIES
(1980) St. Louis, MO
REGIONAL V-P: MIKE ZACATE
(1981) Mokena, IL
REGIONAL V-P: HELEN WARREN
(1982) Western Spgs., IL

USCF has divided the fifty states into 12 Regions each with two or more Regional Vice-presidents. Region VII is composed of Illinois, Iowa, and Missouri. RVPs are elected for a three year term by USCF Voting Members in each state. The role of the Regional V-P depends in large measure upon the individual: some handle the clearinghouse, others serve on USCF committees. Communication within the region, cooperative planning of events of common interest to organizers and players within the three-state area, and within the next year, we hope the inauguration of a REGION VII CHAMPIONSHIP, all concern your three Regional V-Ps. We would like to hear from you!

FROM JIM DAVIES....

Missouri chessplayers are experiencing their busiest period of activity in recent years. In Kansas City DON OSWALD has built a solid base of new tournament players in a series of successful events. Don also became the new owner of THE CHESS HOUSE, and is expanding its services in providing chess books and equipment, as well as a place for players to meet. Springfield has an active club, largely through the efforts of FRANK ELLEY, JR who recently joined the staff of CHESS LIFE AND REVIEW as its managing editor. In the bootheel, DAVE KOEHLER is developing local players with a club in Cape Girardeau. At the Univ. of MO, Rolla campus, DR SELDEN TRIMBLE organizes two events a year and planning has started for a major event for the summer of 1980.

The St. Charles (MO) Chess Club, with DAVE STENNETT as its moving force, has been the most active club in the greater St. Louis area. However, a newcomer to St. Louis, DENNIS GORG, has started a new club this fall to take up after the unfortunate demise of GEORGE THOMPSON's Chess Conglomerate. Tournament activity in St. Louis has expanded through the efforts of BOB SUTTER in the rebuilding of the St. Louis Chess Foundation. The prestigious St. Louis District Championship will be revived in the spring of 1980 after a four year lapse. This event will include the strongest players in the area by invitation, plus a qualifier from the Robert Scrivener Memorial tournament on Dec. 15-16.

Scholastic play is beginning in St. Louis area high schools. About 25 teams will be competing, and BILL GROSBOLL's team from East St. Louis High, dominating champions of the past few years, is expected to be the team to beat. I invite readers with new for this column to write me directly at 7358 Shaftesbury, St. Louis, MO (314-721-4967).

FROM HELEN WARREN....

(Our thanks to the St. Louis Chess Foundation for having your editor as banquet speaker.

One of the more challenging and exciting ventures now under discussion with BURLINGTON, IOWA organizers is the prospect of a REGION VII CHAMPIONSHIP for the fall of 1980. Burlington is ideally suited to attract players from the Quad Cities, the St. Louis area, Iowa City, Des Moines, and Cedar Rapids, as well as Illinois. I have played in tournaments in Burlington and am impressed with the quality of the directing there. Strong Illinois support is essential for the success of a Regional Championship and we will be reporting more on this as plans take shape.

NEW CONSTITUTION OF THE ILLINOIS CHESS ASSOCIATION

ARTICLE I: Name and Office

The name of this association shall be the Illinois Chess Association, Incorporated. The corporation shall maintain in the state of Illinois a registered office and a registered agent, at such office and may have other offices within the state.

ARTICLE II: Purposes

Section 1. The Illinois Chess Association, Inc. (hereafter referred to as the ICA) is organized exclusively for educational purposes.

Section 2. The purpose of the ICA shall be met through, but not limited to, the publication of a statewide chess magazine; the promotion of adult, junior, team, and interscholastic chess events; holding of annual chess championships of interest to the chess playing community of Illinois; and the sponsorship of chess lectures and exhibitions aimed at improving the chess capabilities of the public.

Section 3. The ICA shall be responsible for the annual selection of the United States Chess Federation Voting Members for Illinois.

ARTICLE III: Members

Section 1. CLASSES OF MEMBERS. The ICA shall have three classes of members. The designation of each class shall be as follows:

Member: any person interested in the development of chess activity in Illinois upon payment of the required dues shall be a member of the ICA.

Patron: any person interested in assisting the ICA financially to fulfill its purposes shall, upon payment of the required dues, be made a patron member of ICA.

Affiliate: any chess organization in Illinois may affiliate with the ICA upon payment of the required dues.

Section 2. PRIVILEGES. All classes of members shall receive the ICA's chess magazine during their active status as a member. Members shall receive such other privileges as shall be set forth in other sections of the Constitution or By-laws.

Section 3. VOTING RIGHTS. Members and patrons shall have one vote on each matter submitted to a vote of the members.

Section 4. TERMINATION OF MEMBERSHIP. The board of directors by affirmative vote of 2/3 of all the members of the board may suspend or expel a member for cause after an appropriate hearing.

Section 5. RESIGNATION. Any member may resign by filing a written resignation with the Secretary, but such resignation shall not relieve the member so resigning of the obligation to pay dues, assessments, or other charges theretofore accrued and unpaid.

Section 6. REINSTATEMENT. Upon written request signed by a former member and filed with the Secretary, the Executive Board may, by affirmative vote of 2/3 of the members of the Executive Board reinstate such former member to membership upon terms as the Executive Board may deem appropriate.

Section 7. TRANSFER OF MEMBERSHIP. Membership in the ICA is not transferable or assignable.

ARTICLE IV: Meetings of Members

Section 1. ANNUAL MEETING. An annual meeting of the members shall be held during the month of October on the third Sunday of each year for the purpose of conducting such business as may come before the meeting.

Section 2. SPECIAL MEETING. Special meetings of the members may be called either by the president, the board of directors, or not less than one-tenth of the members having voting rights.

Section 3. PLACE OF MEETING. The board of directors may designate any site in Illinois as the place of meeting for any annual meeting or any special meeting.

Section 4. NOTICE OF MEETINGS. Written notice stating the place, date, and hour of any meeting not less than ten nor more than forty days before the date of such meeting, shall be sent to all members eligible to vote at the meeting. In case of a special meeting or when required by statute or by this constitution, the purpose for which the meeting is called shall be stated

in the notice. If mailed, the notice of a meeting shall be deemed delivered when deposited in the United States mail addressed to the member at his address as it appears on the records of the association, with postage thereon prepaid.

Section 5. QUORUM. The members holding one-tenth of the votes which may be cast at any meeting shall constitute a quorum at such meeting. If a quorum is not present at any meeting of members, a majority of the members present may adjourn the meeting at any time without further notice. At any adjourned meeting at which a quorum shall be present, any business may be transacted which might have been transacted at the original meeting; withdrawal of members from any meeting shall not cause failure of a duly constituted quorum at that meeting.

Section 6. RESULTS OF MEMBERS' MEETINGS. Matters passed by a majority of members present shall be sent as a recommendation to the board of directors for possible action.

ARTICLE V. Board of Directors

Section 1. GENERAL POWERS. The affairs of the ICA shall be managed by a board of directors.

Section 2. NUMBER, TENURE, AND QUALIFICATIONS. The number of directors shall be set by the by-laws and shall include those Illinois residents serving in national and regional positions in the United States Chess Federation. Each director shall hold office until their successor shall have been selected and qualified. Directors shall be residents of Illinois and a member of the ICA. The number of directors may be decreased to not fewer than three by amendment of this article or any by-law.

Section 3. REGULAR MEETINGS. A regular annual meeting of the Board of Directors shall be held immediately after, and at the same place as, the annual meeting of members. The board of directors may provide by resolution the time and place, for holding of additional regular meetings of the board.

Section 4. SPECIAL MEETINGS. Special meetings of the board of directors may be called by the president or any 3 members of the executive board. The person or persons calling such special meetings of the board shall fix the time and place for holding said special meeting.

Section 5. NOTICE. Notice of any meeting of the board of directors shall be given at least ten days previous thereto by written notice to each director at their address shown by the records of the corporation. If mailed, such notice shall be deemed to be delivered when deposited in the United States mail in a sealed envelope so addressed with postage thereon prepaid.

Section 6. QUORUM. A majority of the board of directors shall constitute a quorum for the transaction of business at any meeting of the board, provided that if less than a majority of the directors are at said meeting, a majority of the directors present may adjourn the meeting.

Section 7. MANNER OF ACTING. The act of a majority of the board of directors present at a meeting at which a quorum is present shall be the act of the board of directors, unless the act of a greater number is required by statute, this constitution, or the articles of incorporation.

Section 8. VACANCIES. Any vacancy occurring in the board of directors shall be filled from the ordered list of Alternate USCF Voting Members from Illinois.

Section 9. COMPENSATION. Directors shall not receive any stated salaries for their services, but by resolution of the board of directors a fixed sum and expenses of attendance, if any, may be allowed for each regular or special meeting of the board, provided that nothing herein contained shall be construed to preclude any director from serving the corporation in any other capacity and receiving reasonable compensation therefore.

ARTICLE VI: Executive Board

Section 1. MEMBERS. The Executive Board of the ICA shall consist of a president, first vice-president, metro-vice-president, treasurer, and secretary and past president.

Section 2. ELECTION AND TERM OF OFFICE. The officers of the ICA shall be elected every even numbered year by the membership via mail ballot following such procedures as set forth in the by-laws except the office of past president. The past president shall be filled by the president leaving office and the term shall be for one year. Vacancies may be

filled at any meeting of the Board of Directors by a majority vote of those present except that the office of past president shall not be filled if a vacancy should occur. Each officer, except the past president, shall hold office until a successor shall have been duly elected and shall have qualified or until death or resignation or shall have been removed in the manner hereinafter provided. Officers may not succeed themselves.

Section 3. REMOVAL. Any officer elected by the membership or appointed by the Board of Directors may be removed by the Board of Directors whenever in its judgment the best interests of the ICA would be served thereby, but such removal shall be without prejudice to the contract rights, if any, of the person so removed provided such action in the affirmative vote of 2/3 of the Board of Directors.

Section 4. PRESIDENT. The president shall be the principal executive officer of the association. Subject to the direction and control of the board of directors, he shall be in charge of the business and affairs of the corporation; he shall see that the resolutions and directives of the board of directors are carried into effect except in those instances in which that responsibility is assigned to some other person by the board of directors; and, in general, he shall discharge all the duties incident to the office of president and such other duties as may be prescribed by the board of directors. Except in those instances in which the authority to execute is expressly delegated to another officer or agent of the association or a different mode of execution is expressly prescribed by the board of directors or these by-laws, he may execute for the corporation any contracts, deeds, mortgages, bonds, or other instruments which the board of directors has authorized to be executed, and he may accomplish such execution either under or without the seal of the corporation and either individually or with the secretary, or any other officer thereunto authorized by the board of directors, according to the requirements of the form of the instrument. He may vote all securities which

Section 8. SECRETARY. The secretary shall record the minutes of the meetings of members and of the board of directors in one or more books provided for that purpose; see that all notices are duly given in accordance with the provisions of these by-laws or as required by law; be custodian of the association records and of the seal of the association; keep a register of the postoffice address of each member which shall be furnished to the secretary by such member; and perform all duties incident to the office of secretary and such other duties as from time to time may be assigned to him by the president or by the board of directors.

Section 9. PAST PRESIDENT. The past president shall provide his experience as president of the association in assisting and guiding the president. The past president shall preside at any regular or special meeting of the members, board of directors, or Executive Board that neither the president nor vice-presidents are able to preside. The past president shall be available to perform such duties as from time to time may be assigned by the president or Executive Board.

Section 10. ASSISTANT SECRETARIES. Assistant secretaries may be appointed by the Executive Board to perform such duties as shall be assigned to them by the secretary or by the president or the board of directors.

ARTICLE VII. Committees

Section 1. COMMITTEES OF DIRECTORS. The board of directors, by resolution adopted by a majority of the directors in office may designate one or more committees, each of which shall consist of two or more directors, which committees, to the extent provided in said resolution and not restricted by law, shall have and exercise the authority of the board of directors in the management of the association; but the designation of such committees and the delegation thereto of

the association is entitled to vote except as and to the extent such authority shall be vested in a different officer or agent of the association by the board of directors.

Section 5. FIRST VICE-PRESIDENT. The first vice-president shall assist the president in the discharge of his duties as the president may direct and shall perform such other duties as from time to time may be assigned by the president or by the board of directors. In the absence of the president or in the event of the president's inability or refusal to act, the first vice-president shall perform the duties of the president and when so acting, shall have all the powers of and be subject to all the restrictions upon the president. The first vice-president shall serve as a coordinator of tournament activity outside of the metropolitan Chicago area and as the major communications link between affiliates and members outside the metropolitan Chicago area and the ICA. He shall not reside in the zipcodes 60000-60699.

Section 6. METRO-VICE-PRESIDENT. The metro vice-president shall assist the president in the discharge of his duties as the president may direct and shall perform such other duties as from time to time may be assigned by the president or by the board of directors. In the absence of the president and the first vice-president or in the event of their inability or refusal to act, the metro vice-president shall perform the duties of the president and when so acting, shall have all the powers of and be subject to all the restrictions upon the president. The metro vice-president shall serve as coordinator of tournament activity in the metropolitan Chicago area. He shall reside in zipcodes 60000-60699.

Section 7. TREASURER. The treasurer shall be the principal accounting and financial officer of the association. He shall: (a) have charge of and be responsible for the maintenance of adequate books of account for the association, (b) have charge and custody of all funds and securities of the association, and be responsible therefore, and for the receipt and disbursement thereof; and (c) shall perform all the duties incident to the office of treasurer and such other duties as may from time to time be assigned to him by the president or the board of directors. If required by the board of directors, the treasurer shall give a bond for the faithful discharge of his duties in such sum and with such surety or sureties as the board of directors shall determine.

authority shall not operate to relieve the board of directors, or any individual director, of any responsibility imposed on it or him by law.

Section 2. OTHER COMMITTEES. Other committees not having and exercising the authority of the board of directors may be formed by a majority of the Executive Board. Except as otherwise provided in such resolution, members of each such committee shall be members of the association, and the president of the association shall appoint the members thereof. Any member thereof may be removed by the person(s) authorized to appoint such member whenever in their judgment the best interests of the association shall be served by such removal.

Section 3. TERM OF OFFICE. Each member of a committee shall continue as such until the next annual meeting of the members of the association and until his successor is appointed, unless the committee shall be terminated, or unless such member be removed from such committee, or unless such member shall cease to qualify as a member thereof.

Section 4. CHAIRMEN. One member of each committee shall be appointed chairman.

Section 5. VACANCIES. Vacancies to the membership of any committee may be filled by appointments made in the same manner as provided in the case of original appointment.

Section 6. QUORUM. Unless otherwise provided in the resolution of the board of directors designating a committee, a majority of the whole committee shall constitute a quorum and the act of the majority of the members present at a meeting at which a quorum is present shall be the act of the committee.

Section 7. RULES. Each committee may adopt rules for its own government not inconsistent with this constitution or with rules adopted by the board of directors.

Our next issue will proceed with nine articles and bylaws.

TOURNAMENT CALENDAR

DECEMBER

- 15-16 Chicago Chess Center, Saturday Cyclone-Sunday Squall, two 1-day events. (A)
- 15 Springfield (A)
- 22-23 Chess Mates, Evanston, 5-SS (A)*
- 28-30 Heraldica Imports, Chicago Christmas Class Championship, Palmer House, Grand Prix event.
- 29-30 Chicago Chess Center, New Year's Feast-I-VaI (A)

JANUARY

- 19 Springfield, 4 rd.-1 day Tornado (A)
- 21-2/25 Northwestern Univ. C.C, 6-SS on Monday evenings

FEBRUARY

- 3 Hyde Park Open, Ground Hog Swiss, and Scholastic Tournament, U of C (A) *
- 16 Rantoul
- 16 Springfield, 4 rd. -1 day Tornado (A)
- 23 Peoria, 1st Quarter Novice (A)

MARCH

- 14-16 Oak Park Open (A)
- 22-23 Springfield, 5-rd-two day Swiss (A)
- 22 Chesterton, IN

1980 JANUARY 1980

SUN	MON	TUE	WED	THU	FRI	SAT
		1	2	3	4	5
6	7	8	9	10	11	12
13	14	15	16	17	18	19
20	21	22	23	24	25	26
27	28	29	30	31		

1980 FEBRUARY 1980

SUN	MON	TUE	WED	THU	FRI	SAT
					1	2
3	4	5	6	7	8	9
10	11	12	13	14	15	16
17	18	19	20	21	22	23
24	25	26	27	28	29	

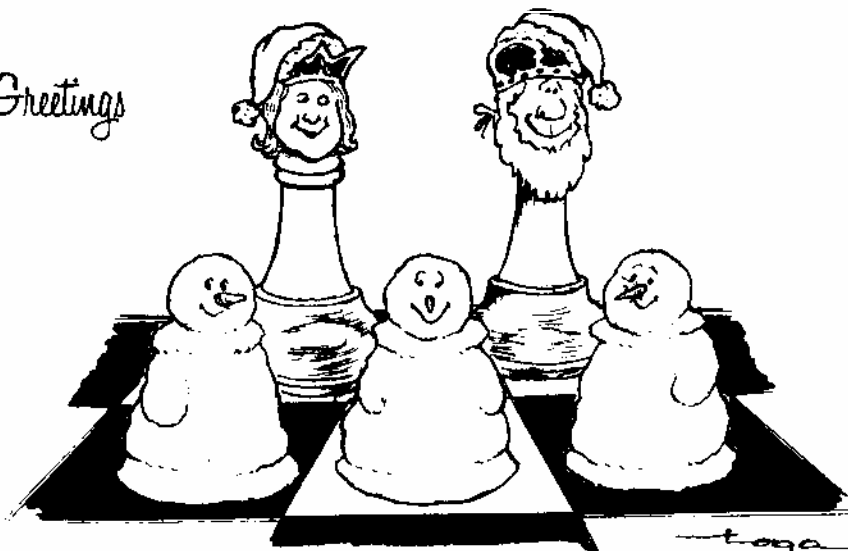
1980 MARCH 1980

SUN	MON	TUE	WED	THU	FRI	SAT
						1
2	3	4	5	6	7	8
9	10	11	12	13	14	15
16	17	18	19	20	21	22
23	24	25	26	27	28	29

Organizers should inform clearinghouse of dates as early as possible to avoid conflicts.

Zipcodes 600-606: Chris Musgrave, 1127 S Humphrey, Oak Park, IL 60304
 607-629: David Sprengle, 1913 Harding Dr., Urbana, IL 61801

Season's Greetings



ILLINOIS CHESS BULLETIN
 Helen E. Warren, Editor
 PO Box 70
 Western Springs, IL 60558

Bulk mail
 Permit No 1
 Western Spgs,
 IL 60558