



ILLINOIS CHESS BULLETIN

Official Publication of the Illinois Chess Association, a USCF Affiliate

JUNE, 1978

VOL. I, No. 3



AT THE CROSSROADS

OUR CHOICES FOR USCF POLICY BOARD....PG. 5

ILLINOIS CHESS BULLETIN

Editor: Helen E Warren, Box 70, Western Spgs., IL 60558

ICB is published quarterly by the Illinois Chess Association, a USCF affiliate. Membership in ICA is \$3 a year for individuals, \$10 for clubs. Checks should be made payable to ICA, and sent to Harold Winston.

Advertising Rates: \$20 per pg.; \$12 per 1/2 pg. camera ready copy. \$5 additional for layouts. Display ads for ICA affiliates' tourneys at a 25% discount. 10% discount for multiple months of run for same ad.

Games Editors:

John Tomas, 5329 S Ellis, #1, Chgo., 60615 (Chicago area)

David Sprenkle, 1913 Harding, Urbana, 61801 (downstate)

ICA OFFICERS, 1977-78:

Pres.: Harold Winston, 1450 E 55 Pl., 830-S, Chicago, IL 60637
1st V-P: Walter Brown, Jr., PO Box 183, Mokena, IL 60448
2nd V-P: Josette Donnelly, No. 8, Long Bay Dr., Springfield, IL 62707
Treas.: Marvin Rogan, 2328 W Greenleaf, Chicago, IL 60645
Secretary: Joan Winston, 1450 E 55 Pl., 830-S, Chicago, IL 60637

USCF Delegates:

Mike Zacate, 9401 Birch, RR2, Mokena, IL 60448
Walter Brown, PO Box 183, Mokena, IL 60448
Randy Pacetti, 2300 Beau Monde Terr., Lisle, IL 60532
Marvin Rogan, 2328 W Greenleaf, Chicago, IL 60645
Helen Warren, PO Box 70, Western Spgs., IL 60558

USCF Delegates by virtue of the USCF posts:

USCF Immed. Past Pres.: Frank Skoff
USCF PB Member: Harold Winston
USCF Regional VP: Paul Ilosvay

Alternate Delegates: Joan Winston, Richard Verber, Larry Stilwell, Ron Fortunato, Bill Smythe, Josette Donnelly, Jim Brotsos, David Brown, Norman Vorne, Murrel Rhodes, Jim Scott, John Tomas

Alternate Voting Members: Sheldon Gelbart, Dennis Keen, David Sprenkle, Steven Tennant, Robert Lauson, Ralph Larson, Paul Segegin, Hugh Persson, Tom Fineberg, Chris Musgrave, George Dobbins, Bill Wilkinson, Ray Socha, Tim Redman, Dick Temple

on the cover...

AUSCJ award-winner David Miller of Naples, FL catches the current mood...an election is in the offing for USCF Policy Board...

DEADLINE FOR SUBMISSION OF COPY FOR SEPT. ISSUE: August 5, 1978 (honest!)

CLEARINGHOUSE REPRESENTATIVES:

Walter Brown, Jr.: Metropolitan Chicago
Josette Donnelly: downstate IL

Please clear your event with one of the above. No dates rec'd from J Donnelly this issue.

ICA ELECTIONS-1978

All ICA members as of Aug. 31, 1978 are eligible to vote in the 1978 elections. Ballots will be mailed Sept. 1 NOMINATIONS DEADLINE: AUGUST 15, Nominations for Pres., VP, Treas., Secty. must include FIVE signatures of ICA members and the nominee's permission & sent to the Secty. Joan Winston no later than Aug. 15

in this issue....

The Big Stories.....pg. 3
The President's Page, Winston.....pg. 4
An Editorial.....pg. 5
Chicago Picks the Winner, Verber.....pg. 6
Yugoslav Chess in Chicago.....pg. 8
What's New.....pg. 9-10
BROWNE!.....pg. 11
Games Editor North, Tomas.....pg. 12
Games Editor South, Sprenkle.....pg. 13
Tennant at the National Open.....pg. 14
CICL Notes, Baurac.....pg. 19
Speed Ratings, Fineberg.....pg. 19
The Problem Section, Holladay.....pg. 20
Dear Editor.....letters.....pg. 23
Crosstables.....pg. 26
Chess Archives.....pg. 28
Club Directory.....pg. 31
Calendar of Events.....pg. 32

coming next time... +++++

many crosstables--from the Chess Center, from Peoria...and TWO full pgs of games!

Budrys Takes IL Junior

By Paul Segedin, TD

The 1977-78 Illinois Junior Championship, held March 18-19 at Evanston Township High School, attracted 28 players from all over the state, including one master and one expert. In the end the clear winner was Steve Budrys (2009) who scored $4\frac{1}{2}-\frac{1}{2}$ against a strong field. Steve became the favorite in the tournament after top ranked David Sprenkle (2205) was upset in the 1st rd by David Greenstein (1444). Steve's key game was his 4th rd win against Allen Kornfeld (1955) which allowed him to draw quickly with Steven Dowd in the fifth and final round, and clinch the title.

Kornfeld, Dowd, and Mark Marovitch (1929) all scored 4-1 to tie for second. Tom Mayka (1751) was fifth with $3\frac{1}{2}-1\frac{1}{2}$. The C prize was won jointly by Mark Zvilius and Peter Dunten with 3-2. Zvilius' fine result included wins against Mark Marovitch and David Klepacki (1926). Perhaps the most notable result was turned in by Jean Harrow (1323) who won the D prize with 3-2. She beat Klepacki and two C players to win the prize. Top unrated was Toshikazu Nishida. University High School won the team prize. The event was directed by Paul Segedin assisted by Richard Rukin. As director I would like to thank all 28 players for making the tournament a pleasure to direct. The lack of problems and complaints is something any TD appreciates. I would also like to thank Harold Winston and the ICA for giving a new TD a chance to direct this event.

(CROSSTABLE ON PG. 26.)

- 2 A Finance Committee to explore ways of raising funds.
- 3 Establishment of a central booking facility with USCF.
- 4 Establishment of an annual Masters Open and a Masters Tour.
- 5 A committee geared to increase spectator interest in chess and arouse public support.
- 6 Establishment of a committee to establish educational programs utilizing the skills of masters.
- 7 The PCA went on record deploring the USCF employment and CL&R employment practices.

Certainly not all will agree with all proposals of this fledgling organization. Yet, it stands as the first articulate and organized attempt to redirect the heretofore aimless non-policy of New Windsor toward US Masters. Non-masters are welcome to join the PCA as non-voting members and to subscribe to PCA publications. This first annual meeting of the PCA took place on April 8, 1978. It is perhaps a happy coincidence that some two weeks later Larry Evans settled his dispute with USCF, signed a contract to do "What's the Best Move", and to revive "Readers' Showcase". We join with the US chess community in wishing the PCA well as it tackles challenging problems. May it thrive.

Tomas GCO Champ in strong field

John Tomas produced an admirable 7-1 score to win a strong Greater Chicago Open held at the Chicago Chess Club March 18-19, 25-26. A field of 32 players with a median rating of about 1750 saw Ray Dittrichs take second with 6-2, followed by Ed Vano, Tim Kras with $5\frac{1}{2}$, and a host of 6 with five points. Crosstable in this issue on pg.27

The Robertson Sillars Family donated two prizes for best played game awards. The first went to David Baurac for his win over Gregory Bungo and the second was won by Walter Sowa.

ICB Games Editor John Tomas analyzes one of his wins elsewhere in this issue, his 6th rd point over Peter Gilruth. John faced players who finished 2nd through 6th--the roughest competition possible! Good going, John!

Following is Dave Baurac's best game award effort; we will have analysis of the game in a future issue. (Cf. pg.22)

PCA Formed

It is now a reality. The Professional Chess Association meeting in Lone Pine at the Stat-ham Tournament elected officers and adopted a 10 point program of action. Elected as the PCA's first president was John Peters, three VPs were elected: Larry Evans, James Tarjan, Arthur Bisguier; William Lombardy becomes its first Secretary-Treasurer. A bi-monthly publication, written by masters, but available to the at large chess community was proposed. Among the objectives of this new organization:

- 1) Establishment of a permanent committee to decide all matters for masters events.

The President's Page

By Harold Winston, ICA Pres.

Many ICA members have told me they are very pleased and impressed by the work our new editor has done on the ICB. Show your appreciation by renewing your membership before it expires and getting your friends to join ICA.

The US CLASS CHAMPIONSHIP returns to Chicago, July 21-23 with a \$7300 prize fund. Two years ago this event drew over 500; this year the turnout may top 600. Don't miss this opportunity to compete against players in your own class. The Chicago Chess Club is the co-sponsor along with USCF, Tim Redman is the chief TD, and Dick Verber is tournament chairman.

Two other major events this summer will be the Forest City Open at Rockford, July 15-16 and the 1978 ILLINOIS OPEN at LaGrange YMCA. The Illinois Open will be held over Labor Day week-end in the southwest Chicago suburbs with the same low \$15 advance entry fee as last year, but with considerably increased prizes. Over \$600 will be spread among the top four players and most classes will have two cash prizes. Inexpensive housing is available at the air-conditioned site and the chief organizer is Mike Zacate.

Kevin Bachler deserves congratulations for starting a weekly chess column in the Waukegan Sun. Steve Budrys gets a salute for becoming the Illinois Junior Champion. Ed Formanek continues to rack up fine results both abroad and at Lone Pine. We are also all proud of Steve

Tennant's splendid showing at the 1978 National Open at Charleston: he tied for 2nd place.

Interest in league competition seems on the increase. The Illinois Chess League had a successful inaugural season under Steve Tennant's direction. The Hillside Chess Club (organized by Larry Stilwell and Sheldon Gelbart) won the top division while the Chicago Chess Center took 2nd place. The downstate league seems on the verge of becoming a reality.

National Chess Day will be Saturday, October 7. Start planning for it now. If there is to be an Illinois team in the 1979 National Chess League (telephone league) that also has to be planned as soon as possible and the funds raised.

June is the last month of the USCF membership drive. Illinois has steadily been among the top 15 states in the drive. Let's do our best in this last month!

It looks like the Pan American Intercollegiate will be held in Chicago, December 26-30 at the Ramada O'Hare Inn. Watch for further information in the September ICB.

Review

by JOHN TOMAS

Modern Chess Theory, PO Box 50, Romford RM, 6 6DP Essex, England. \$21 (\$25 airmail), 20 pgs. monthly, Fig. algeb.

Since the middle '60s England has developed a reputation of originating some of the most comprehensive and inventive opening theory either side of the Iron Curtain. The organs that have promulgated these achievements (Batsford, BCM, CHESS, and Chessman Quarterly) have deservedly high international reputations. Modern Chess Theory recently joined these journals with an all grandmaster staff aimed at presenting the very latest in practical opening trends.

Each issue offers 5-6 articles by practicing grandmasters (Keene, Stean, Hort, Olafsson, Tal, Geller, Polugaevsky and Botvinnik to date). Each article contains an introduction of between 50-300 words discussing the strategical background and layout of the material. Since the articles are aimed at advanced players these introductions tend to be sketchy, if generally to the point.

The articles themselves are up-to-date and very well researched. They generally cover lines that are popular in current grandmaster praxis. As a result most articles have dealt with Closed and Semi-Closed openings. Don't subscribe expecting articles on the Latvian Gambit! A further word of caution. The material provided by the Soviet GMs has been very uneven. Polugaevsky's article on the Semi-Tarrasch is a rehash of well-known material, while Geller contributes a useless article on the King's Indian, refuting a line already known to be bad, and Tal's article on the Schlieman repeats erroneous analysis. If you stay with Stean, Keene, and Hort you are assured of getting quality material--albeit very advanced.

an editorial

OUR ENDORSEMENTS FOR USCF
POLICY BOARD, 1978.....

The opinions and endorsements in this editorial are those of the editor of the ICB, and hers alone. They in no way are intended to represent the views of the Illinois Chess Association, its officers--or for that matter, any segment of its membership. Ed.

No office sets the pace more. He will exact high priority from a new Policy Board for improved member service by setting higher standards and exacting them in the day to day operations at New Windsor. Under his leadership, the POLICY BOARD, not the Business Office, will SET POLICY. Sperling has support on both coasts--& in the heartland--Illinois. Sperling brings to the USCF presidency what it most needs NOW: 1) the leadership to achieve unity, 2) a mandate to restore efficiency in the Business Office by restoring its credibility as a member-oriented vehicle, 3) the know-how needed in the area of public relations and fund raising aimed at future growth and fiscal health.

FOR PRESIDENT
GARY SPERLING, NY

FOR VICE-PRESIDENT
TIM REDMAN, IL

It would be difficult to find a candidate more steeped in CHESS--and that IS the name of the game. There is not an area of chess activity in which Tim has had no experience: As a player, as an NTD, as a Regional VP, as an organizer--promoter, from Channel 11's coverage of Fischer-Spassky to a 7000 player simul in Chicago's Civic Center, as USCF committee chairman, and as a working journalist, former editor of ICB. No incumbent candidate comes as close to the PLAYER or is so instinctively sensitive to his needs. You can expect Tim's special areas of interest to include the revitalization of CL&R: its focus, its potential as a recruitment tool, its graphics. Tim has earned national office because he has served with diligence in the past. He will work effectively with Gary Sperling.

Shaking hands and writing letters doth not a secretary make. PRODUCING for chess consistently--and substantially--comes first. Lieberman's credentials include directing (National Opens, The US Open, 1978 in Phoenix, Lone Pine), editing (he has not missed a journalists' meeting since the inception of the Association of US Chess Journalists) and he now edits En Passant, and service on USCF committees, including the Elo (rating) Committee. Lieberman is committed especially to the restoration of priorities in New Windsor: "Current PB incumbents seem to have become very closely tied to the business office and appear to have developed personal relationships that can act as obstacles to effective service to members." This is from Paul Webb's endorsement of Lieberman for USCF Secretary. Lieberman favors the restoration of the annual rating list to where it belongs: in CL&R pages. He is a WORKER for chess.

FOR SECRETARY
MYRON LIEBERMAN, AZ

FOR TREASURER
GEORGE CUNNINGHAM, ME

"He is unique." Perhaps that is the expression most frequently used about George Cunningham. He is also a person of perceptive wit and unchallenged integrity. He is perhaps more than any other candidate dedicated to the cause of junior and scholastic chess. He has long and deep experience in his home state of Maine and in the New England area in general. For the office of Treasurer he will be a 'natural'. George will provide insight in fiscal matters with a common sense approach the USCF needs right now.

When a state chess association achieves a membership doubling its size or tripling it in a matter of a few years, the reason usually rests with state officers--and a vibrant, imaginative editor of a state publication. Sue Benoit founded NJ's pub, The Castled King, and that's when things started to move in NJ. Her special areas of interest include membership (acquisition AND RETENTION!) and chess journalism. She will have much to say about the direction and contents of CL&R. She has been a USCF TD since 1973. Most of all, she is independent of crony ties with New Windsor. She is a hard worker, part of a chess-oriented, chess-contributing family. And, fellow delegates, no one knows what that means more than this editor.

FOR THE 3 YR PB TERM
OF MEMBER AT LARGE
SUSAN BENOIT, NJ

CHICAGO'S BEST MAKE PICKS...

TOP CHICAGO PLAYERS MAKE THEIR PREDICTIONS--AND DISAGREE SHARPLY

A Survey by Dick Verber for the Illinois Chess Bulletin

July 16 is the date and the Phillipines is the place. The stakes are about a half million in dollars and an infinite amount in prestige and glory: the World Championship match between Challenger Viktor Korchnoi, expatriate now living in Germany, and World Champion Soviet Anatoly Karpov. This may well be a match to rival in media coverage and popular appeal the Icelandic encounter between Spassky and Fischer: there are signs that Public T-V may carry it and the pre-match publicity in the lay press has been wide and frequent. Added to the color of the match is the fact that Korchnoi's family still resides in the USSR; to many 'at home' Karpov represents something of a national cause, a zealot, a standard bearer. We in the West (and Korchnoi himself) have performed the same identity transfer: Korchnoi to many of us is "the good guy". When Dick Verber did his telephone survey for the ICB we thought the results would be close--but this close!? Take a look at what our top Chicago players have to say about the coming match, and if such mighties dare to disagree, is there anything certain under the sun.....? Ed.

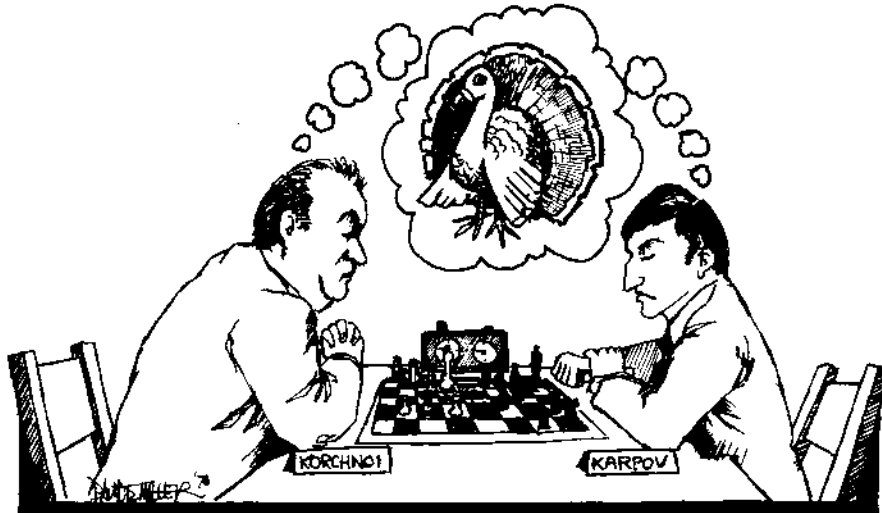
First player to win six games takes the title, draws not counting....

1. DR EUGENE MARYINOWSKY (2330): "Karpov 6, Korchnoi 4, with 18 draws. Karpov is younger and slightly stronger. He has better results. It will be a close match, but Karpov will win."
2. ELLIOTT WINSLOW (2320): "Korchnoi 6, Karpov 3, many draws. The match will be marked by "outrageous complications" favoring Korchnoi, versus "heartless and soulless defense" by Karpov."
3. MITCHELL SWEIG (2270): "Korchnoi 6, Karpov 3, with 18 draws. Korchnoi has great endurance and he will "squeeze" Karpov. I was impressed by the way Korchnoi totally crushed Polugaevsky, and went on to defeat Petrosian and Spassky."
4. ANDREW KARKLINS (2281): "A toss-up. Chances are 50-50; the match could go either way. Both players have improved since their 1975 match."
5. GREG DEFOTIS (2442): "Karpov 6, Korchnoi 4, with 10 draws. Karpov is stronger. He is a fantastic endgame player. He will avoid complications, preferring clear-cut, microscopic advantages in the endgame. However, Fischer is still the best player in the world 'by a lot': give Fischer time to prepare, and he would beat Karpov."
6. GARY DEFOTIS (2163): "Korchnoi 6, Karpov 3, 25 draws. Korchnoi is playing so creatively. This match of opposites is reminiscent of Alekhine-Capablanca. Korchnoi also seems to gain strength by disliking his opponents personally. Karpov is Petrosian's protege: Korchnoi should have little trouble disliking him for ideological and stylistic reasons. It will be good for chess if Korchnoi beats Karpov: Fischer may agree to play Korchnoi for the title."
7. AL SANDRIN (LIFE MASTER): "Karpov 6, Korchnoi 1 with 5 draws. Karpov is very steady; he rarely makes mistakes. Korchnoi will beat himself pressing too hard."
8. DAVID OSHANA (2018): "Karpov 6, Korchnoi 5, 21 draws. Both GMs will press hard, but neither will collapse. It will be an exciting match: the styles and personalities of the players are almost totally opposite. Karpov's drawing ability will have a dampening effect. Korchnoi will have to be very careful. Korchnoi is perhaps too much an artist, an expressionist who tries to superimpose his own personality on every game. Karpov accepts the essence of the game and allows himself to flow along harmoniously."
9. WALTER (Chicago) BROWN (2056): "Karpov 6-3, 20 draws. Karpov is steadier. Korchnoi fell apart against Spassky, and almost lost. This would prove disastrous against Karpov."
10. RICHARD VERBER (2391): "Korchnoi 6, Karpov 5, 20 draws. Both of these super-GM's are in top form. Karpov is objectively a shade stronger, but he may crack under the psychological and political pressure of the World Champion Match. The momentum of the victories against Polugaevsky, Petrosian, and Spassky will help Korchnoi. Karpov will be unable to defeat Korchnoi's French Defense and Korchnoi will play for a win with White."

11. POVILAS TAUTVAISAS (Life Master): "Karpov 6-4, 10-14 draws. I will say Bravo! if Korchnoi wins, but I doubt it. Korchnoi is the deeper, more creative player, but Karpov is hard to beat and his nerves are better than Korchnoi's. Youth is on his side. Karpov plays in the style of a modern Capablanca; Korchnoi is more like Alekhine: brilliant and eccentric. However, I still think that Fischer is 'unique'; the greatest chess master of all time. He would defeat Karpov."
12. DAVID PRESSER (2250): "Karpov 6-5, 14 draws. Karpov is steadier, more stable than Korchnoi and his youth is an advantage. However, Korchnoi has excellent chances, better than 1975. This is Korchnoi's last chance, and he will put everything into this match. There may be an upset."
13. IGM WALTER BROWNE (2560--the current US Chess Champion): "Karpov will win--largely because he is younger than Korchnoi. However, Fischer is still the strongest player in the world. If Fischer had time to prepare against Karpov, he would be an 8-5 favorite in my opinion." (Expressed during Walter's April 30th simul and lecture at the Chicago Chess Club.)
14. DAVID SLATE (Chess computer genius, inventor of Northwestern's 4/6): "Korchnoi 6-5 12 draws. Korchnoi is 'psyched up' this time, while Karpov is not as 'hungry'. Korchnoi will push the games into exciting, razor sharp positions on the razor's edge. This is Korchnoi's last chance and he knows it!"
15. JOHN TOMAS (1978 Greater Chicago Open Champion, 2140): "Korchnoi 6-5, with a great number of draws. Karpov is not nearly as good as Korchnoi in closed and semi-closed positions. Karpov cannot beat Korchnoi's French Defense; Korchnoi will equalize with Black. Despite his age Korchnoi has greater physical stamina than Karpov and more experience in match play. With the help of his British second, Raymond Keene, Korchnoi will be better prepared than during his 1975 match with Karpov."

AND HOW DO YOU SEE IT, READERS?

Perhaps Korchnoi and Karpov "see it" themselves as artist-cartoonist David Miller portrays it in the panel below.....



"MUTUAL ADMIRATION"

CHES AND THE HUMANITIES: An Inquiry into the Uses and Values of a Leisure Activity

Sponsored by the Lincoln Chess Foundation and the Univ. of Nebraska, Lincoln

This unique symposium will be held at the Lincoln Hilton Hotel May 26-27 with a tournament following, directed by George Koltanowski, on May 27-29. The public is invited to attend the reading of papers, participate in discussion, and attend the banquet. The tournament is an invitation for organizers, journalists, TD's, etc. We think you will be interested in the titles of some of the papers and the people delivering them. (Papers are available in copy form for a nominal charge from Project Director Bud Narveson, University of Nebraska-L, Lincoln, NE 68588.

	Paper Title	Speaker
Fri.	"Chess is for Heavies: Images of Chess Players in Detective Fiction"	Franz Blaha
	"Chess Players are Human: Chess and Human Cognition"	Sara Golden
	"Chess as Education: Character Assassination or Life of the Mind."	Tim Redman
	"Global Community: The Phenomenon of Postal Chess"	Helen Warren
Sat.	"Cultural, Social and Political Influences in the Rise and Decline of Chess Dominance"	Arpad Elo
	"Chess and the Federal Government: The Evolution of Opportunity"	Bernard Hagerty

and a late addition for Fri.: Troy Armstrong

We will give a report on the papers and the tournament in our next issue. Hope to see many of you there! Or by the time you read this...hope many of you WERE there!

DR EUGENE MARTINOWSKY REPORTS ON CHESS ACTIVITY AMONG CHICAGO'S YUGOSLAV COMMUNITY.....

by Dr. Eugene Martinowsky

I wish to report an interesting chess event that took place at the Montrose Inn-Bash Charshia, 3717 W Montrose in Chicago. For three consecutive Sundays, 4/2, 4/9, and 4/16 34 Yugoslav-American chess players from the Chicago metropolitan area played for the Championship of Yugoslav-Americans. The tournament was played rather informally and only in a few games were clocks used. The tournament was organized by Yugoslav Kolo, Yugoslav TV program Channel 26 and Mr Aleksich, owner of the travel agency AIE. I won the tournament with a perfect score 8-0 in the half-finals and 11-0 in the finals. My toughest opponent was Mr. Victor Georgievich, known speed shark. He took 3rd place; the second prize went to Mr Paldrmic Raiko. What was refreshing in this tournament is that it was commercially sponsored by JAT (Yugoslavian Airlines) and the AIE Travel Agency and 13 other business and commercial establishments. JAT gave a round trip air ticket to NYC-Belgrade and AIE gave a trip to Las Vegas including hotel accommodations for three nights as 2nd prize. There were eleven other prizes. This event shows that it is possible and beneficial for

for all for commercial establishments to sponsor chess tournaments and, of course, benefit from the publicity. As far as the players go, everybody knows that just about all Yugoslavs play chess and like the game. Some of my opponents in this tournament gave me a hard time, but luck was on my side. Yugoslavians in Chicago have several very strong players and if they organize themselves into a club they can have a very strong team. I will mention a few such strong players some of whom didn't play in this tournament: Mihailovich, Kostic, Georgievich, Paldrmic, Skundric, Radic, D Betinski and myself. The sponsors plan to make a Yugoslavian American Championship a yearly event each April and I think the idea is good. I think that many regular tournaments could be organized on a commercially sponsored basis, and if this happens, American chess would make a big step forward.

Congratulations to Dr Martinowsky on his first place finish!

BROWNE SWEEPS CHICAGO CHESS CLUB SIMUL

Proving that even Walter Browne can mellow like decent wine, the 3-time US Champ gave some forty spectators a bird's eye view of his game with Arthur Bisguier from the 1974 US Championship before proceeding to take on 32 bds including Chicago Expert Peter Gilruth. A short 2½ hrs later perpetual-motion Browne was finished--he won them all! Especially interesting were Browne's remarks about the newly formed Professional Chessplayers Association, its program and its goals. It all happened on April 30.

CHICAGO CHESS CLUB ELECTS OFFICERS AND DIRECTORS

A revitalized Chicago Chess Club, the oldest continuing chess club in the United States contrary to press releases from Big Burt, elected Richard Verber its President, Dennis Keen, VP, Lou Marovitch, Secretary and John Deutsch, Treasurer. Directors appointed were Pat Graham, Ray Socha, Paul Carpenter, Bob Stendel, Mike Zacate, Paul Ilosvay, Wayne Ellice, George Dobbins, Bob Colan, Richard Mate, Greg Minnis, and Helen Warren.

We are hopeful that this is the beginning of a new day in Chicago chess. The US CLASS CHAMPIONSHIPS (don't miss the full ad in this issue) will be co-sponsored by the CCC in cooperation with USCF with a prize fund of \$7300 on July 21-23. SEE YOU THERE!

FROM SPRINGFIELD....

The annual City High School Chess Championship, sponsored by the Springfield CC and Springfield Park District was held on February 25 with 21 entries. Winner for the third consecutive year was JOHN DONNELLY, a senior at Griffin HS. Second place trophy went to JEFF HUTHER a senior at Springfield HS, and third to TOM BUMGARDNER, a senior at Lanphier HS; 4th spot went to FERNANDO PARDO, a sophomore at Springfield HS.

also from the state cap...

The annual Springfield Speed Chess Championship greeted 19 players on March 1 and was won by JOHN KOLBER. Second place trophy went to ROBERT TURNER. Josette Donnelly reports that a wild time was had by all in this event, co-sponsored by the Springfield CC and Park District.

FROM GOMPERS PARK...

The Gompers Park Class Championships were played on Friday nights from 10/14/77-3/17/78. After many delays caused by bad weather, SHELDON GELBART swept the top section 11-0, FRED RHINE was 2nd with 8½-2½, losing only to Gelbart, MORRIS PIMSLER and JOE WHITE tied for 3rd with 7-4. In the second section (1400-1700) GERALD JENDRAS was first with 10½-½, BENJAMIN GREENSTEIN was 2nd 8½-2½, RICHARD GUETL was 3rd with 7-4 and ANDREW SCHILLER was 4th with 6½-4½. In the third section (1400 and under), FRED LASCH was first with 10-1, followed closely by KEVIN SIMONS at 9½-1½, and tied for 3rd were JEROLD STEFEK and WILHELM WENZEL at 7-4. The tournament was directed by Winton Fulk assisted by Sheldon Gelbart.

ILLINOIS JUNIOR CHESS FOUNDATION under the OF MIKE ZACATE is off the drawing board and functioning. Its purpose is to award scholarships to graduating seniors of Illinois High Schools based upon active participation in chess programs during their school years, pro-



MORE WHAT'S NEW ON PG. 10

FROM PEORIA....

This super tournament drew 42 players--and it should have drawn twice that number with proper publicity and promotion. It was a SUPER event: THE GREATER PEORIA OPEN held April 1-2. Taking top honors was ACOSTA; tied for 2nd was HUGH MYERS and DAVID SPRENKLE. ED FRUMKIN, coming from New York!, took the Class A prize. We are unable to report on other place-finishes--no crosstable or summary from the TD in our hands as we go to press. Excellent facilities at Bradley Univ., a competent tournament staff made this a good event.

FROM DICK TEMPLE AT KOMAREK SCHOOL, NO RIVERSIDE...

On April 15 grade school kids from Dick Temple's Komarek School went to Hines Hospital to visit with and play chess with patients at the hospital. This is Dick's second visit to Hines and the vets, many disabled, look forward to Komarek's visits with special anticipation.

vide funds for travel and entry fees for Illinois students to major national tourneys, and support school chess programs. (more elsewhere!)

MORE NEWS FROM AROUND THE STATE....

KEVIN BACHLER has a by-line in the Waukegan NEWS-SUN called "Checking on Chess"--and a lengthy and well written one it is. It's a weekly accenting local news of the Zion and Waukegan Chess Clubs, some international notes, and a plug for USCF and ICA. Good stuff from Kevin!

+++++

We had hoped to report final results of the Championship and Booster Section of the IL CHESS LEAGUE with this issue, but game disputes in the latter division make this premature. It IS safe to say that 87th St CC, Shoreland, and Homewood-Flossmoor look safe for the top three spots, though we are unsure what order will result after disputes are settled.

The Championship Division, however, was decided with HILLSIDE taking top spot winning their matches 5-1 with 21½-14½ game pts.; second was CHICAGO CHESS CENTER with 3½-2½ and 19-17; third came U OF CHICAGO with an even 3-3 and 18½-17½ game pts and the LATVIANS finished fourth with 13-23 game pts, but able to rescue only half point in match results. Members of the Championship Team (and an all-star cast!):

Dr Eugene Martinowsky	3½-2½
Peter Gilruth	3-3
Kurt Stein	1½-½
Sheldon Gerbart	3½-2½ (Captain)
Pete Marovich	3-1
Greg Bungo	3½-2½
Paul Szustowski	3-1
Paul Ilosvay	½-1½

Hillside's only loss of the premier season was to CHICAGO CHESS CENTER. A run down of the top man on boards:

Bd 1 Andrew Karklins	4½-1½
Bd 2 Ruben Reyes	4-2
Bd 3 Nekvasil	4-2
Bd 4 Marovich	3-1
Bd 5 Bungo	3½-2½
Bd 6 Szustowski	3-1

Our thanks to Larry Stilwell and Steve Tennant for timely reporting of results. We should consider this first season most successful, while some bugs in rules and procedure need ironing out, we can attribute these to the freshman-blues. Next round will see smoother sailing, added times, and much increased interest.

DO YOU HAVE NEWS FOR THIS PAGE? WE'D LIKE TO HAVE IT!

FAREWELL TO THE LINCOLN PARK CHESS CLUB...

When a chess clubs folds we should all pause. Ron Fortunato tried hard to present an appealing calendar of events at the LPCC with large entry fees and large prizes. We are sorry to see his efforts end. Hindsight is better than foresight--or easier anyway. One factor contributing was undoubtedly the inability of local organizers to respect dates and play ball with each other. Wonder if we've learned a lesson. An effective clearinghouse is a MUST if local organizers want chess to thrive in the Chicago area. On one week-end alone FIVE tournaments competed with each other for the player-market. With an attitude like this, NOBODY wins.

+++++

Illinois is doing well in the USCF Membership Drive. Listed below are our top 10 member and affiliate builders.:

Greater Peoria Chess Federation.....	26 (A)
Kenneth Barr (12 in nation!).....	18 (I)
Proviso West HS.....	15 (A)
Lincoln Park CC.....	13 (A)
Rolling Meadows HS.....	11 (A)
Chicago Chess Center.....	10 (A)
87th St Chess Club.....	10 (A)
Tom Fineberg.....	5 (I)
John Siadek.....	5 (I)
Kevin Bachler.....	4 (I)

Greater Peoria Chess Fed. also stands 18th nationally!

This is a great job! Worrysome, however, is the seeming inability of USCF to hold on to members he has! For while there has been a new member influx of about 4550 ... the TOTAL USCF membership is up only 1800 This means that 2700+ did not renew, or their exit is a result of other factors since 7/77.

BE A BUILDER!! All it takes is U + 2!

+++++

FROM AROUND REGION VII...

CARL DUNN from Burlington, IA reports an upsurge of chess activity in eastern Iowa... keep it up, Carl...

TD Don Oswald reports 98 entries into the Spring Heart of America held in KC, MO this past April. Especially encouraging was the fact that 30 unrated players participated in Beginners Section. The 46 player Open Section was won by JIM DACUS of KS; PAUL SCHLEGAL took the Beginners' Section.

BROWNE:

"...I consider this game with Bisguier in 1974 as the best I have ever played...one sacrifice, two...and everything falls into place..."

"A computer World Champion? Not in this century....show me a computer with imagination..."



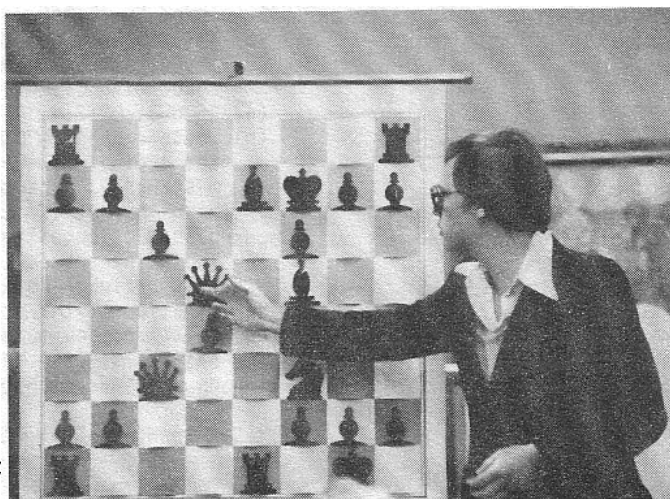
"...Yes, the FCA will succeed...it will succeed because the masters are for it and the masters are the backbone of chess...the FCA wants chess to become a spectator sport played and enjoyed by many more....."

"Karpov.. looks better to me, but all Fischer would need is nine months to prepare and he would be the 8-5 favorite...."

"Promising chess prospects in this country. Christiansen, Rogoff if he would play more, and Sierwan....great natural talent..."

photos courtesy of Richard Mate

He may have mellowed, all right; but he is still dynamic, almost electric. US Champion Walter Browne gestured, lectured, mused, strutted the pieces across the board with a magnetic energy that kept his audience rapt. Every inch a champ.....a privilege for the Chicago Chess Club to host him...an event organized by Richard Verber.....



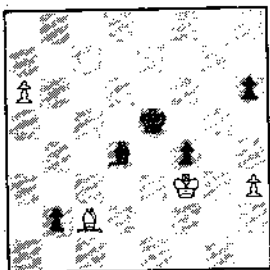
TOMAS . . .

GAMES EDITOR NORTH . . .

P Gilruth (2113) J Tomas (2042)

GCO, Rd 6 Queen's Pawn

1	d4	Nf6 (a)
2	Bg5	e6
3	e4	h6
4	Bf6:	Qf6:
5	Nf3	b6 (b)
6	Nbd2	Bb7
7	Bd3	d6
8	Qe2	Nbd7 (c)
9	c3	g6 (d)
10	O-O	Bg7
11	Rfe1	O-O (e)
12	Rad1	Rad8 (f)
13	Bb1	Qe7 (g)
14	Qc4	c5
15	e5? (h)	de5:
16	de5:	Bf3:!
17	Nf3:	Ne5:
18	Ne5:	Rd1:
19	Rd1:	Be5:
20	g3	Kg7
21	Qd3	Bf6
22	Kg2? (i)	Rd8
23	Qf3 (j)	Rd1:
24	Qd1:	c4! (k)
25	Be4	b5
26	Qd2	a5
27	Bf3	Qc5
28	Qe3	Qd6 (l)
29	Be2	Bd8
30	Bf3 (m)	Bb6
31	Qe2	Qc5
32	Qd2	b4
33	Qc2 (n)	b3!
34	ab3:	cb3:
35	Qd2 (o)	a4
36	Qd4+ (p)	Qd4:
37	cd4:	a3!
38	ba3:	Kf6
39	Bd1	b2
40	Bc2	Bd4
41	a4 (q)	Ke5
42	a5	Bc5



- (a) I had just played the Leningrad Dutch against Tim Kras and had no desire to repeat that against an opponent prepared to meet it. I could have avoided 2 Bg5 with 1...g6, which is in fact my usual move, but I felt that I was better acquainted with the positions that result than Pete was.
- (b) Karpov played this against Korchnoi at Hastings '71 and although he lost the game, his opening was not at fault.
- (c) Karpov played ...a6 to prevent the exchange of bishops, but I consider the whole idea dubious for White anyway.
- (d) The paradoxical...Qd8! is considered best by Korchnoi. My move allows Black to castle Q-side if White should.
- (e) I offered a draw here because 1) my position is not better, 2) I respect Gilruth's ability, 3) I was sure he wouldn't take it! Pete had drawn his previous two games and was in no mood for a draw. My offer put the pressure to avoid the draw on him. This can be an advantage with players of a certain temperament.
- (f) Preventing 13 e5? because of the Bishop hanging on d3.
- (g) Now 14 e5 is a threat, so I withdrew the Q to prepare ...c5.
- (h) Black's patience (not usually my strong suit) is rewarded with a blunder! Better is 15 a4 Rc8 16 Qb3 Qd8! 17 Nc4 Qc7 18 d5 with a complicated and double-edged game.
- (i) This is the move that gives White real winning chances. Simply 22 Qd7! Rd8 23 Qd8: Rd8: 24 Rd8: leaves a drawn Bishop of opposite color ending.
- (j) 23 Qd8:?? Qb7+ is the super-cheapo that 22 Kg2 put into the position.
- (k) Now it is clear just what Black has accomplished. With the rooks off the board White's control of the open file means nothing. At the same time Black's K-side majority and the weak pawns on b2 and aiming at the position that actually occurs after move 31, tries to tie White down even further with K-side pressure.
- (l) Black doesn't want to exchange until he's sure of the most favorable B ending possible.
- (m) 30 Qd4+ simply loses another pawn after the exchange followed by ...Bf6.
- (n) This is bad, but White is rapidly running out of playable moves. If he temporizes with 33 Kg1 etc. Black simply grabs space with ...e5 and ...f5.
- (o) 35 Qb3: Qf2:+ 36 Kh3 Qf1+! mates or wins the Bishop.
- (p) White exchanges Q's because he doesn't believe he can hold the ending with Q's on while I allow the exchange, perhaps mistakenly, because I can now force an ending with passed pawns on both sides of the board. Unless this can be done bishop of opposite color endings are almost always drawn. Those interested in studying this theme further should consult Unzicker-Botvinnik, Varna, '62 for a masterly demonstration of the principles behind such endings.
- (q) White decides to hold by sitting tight. The other possibility is 41 f4 hoping to leave Black an f pawn blocked on f4--an ending that cannot be won. (cf. diagram)

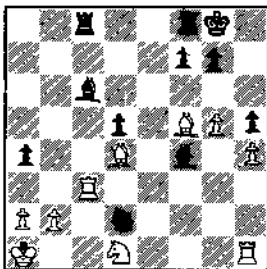
cont'd, pg. 30

SPRENKLE . . . GAMES EDITOR SOUTH . . .

Mark Zvilius, an Urbana Uni High team member, upsets one of the favorites at the IL JUNIOR OPEN in the following time scramble scarred game.

Mark Marovich (1929)-Mark Zvilius(1594) Sicilian

- | | | |
|--------------|-----------|-------------------------------------------------------------------------------------------------------------------------------------------------------------------------------------------------------------------------------------------------------------------------------|
| 1 e4 | c5 | (a) The most sensible course if one is unprepared for the complications after 3 e5 Nd5. |
| 2 Nf3 | Nf6 | (b) This move has grown in popularity recently as an alternate to 8...Bd7. The pin is broken (9Bh4?! Nxe4!), but the advanced h pawn might prove to be a weakness if White storms the K-side. |
| 3 Nc3 (a) | Nc6 | (c) 10 f3 is equally popular. It gives the e pawn support while preparing a pawn storm with g4 and h4. |
| 4 d4 | cxd4 | (d) Most accurate, since the threat of b4 practically forces White's next move. |
| 5 Nxd4 | d6 | (e) 11a3? Qb8!, planning 12...b4 leaves White vulnerable on the Q-side. 11 Bd3 protects the e pawn, but puts the B on an ineffective square. |
| 6 Bg5 | e6 | (f) This and 13...Bc6 constitute an important maneuver for increasing the pressure on the e pawn. |
| 7 Qd2 | a6 | (g) An interesting alternate to the usual 14 Rhe1, but it doesn't seem any more effective. Perhaps White feared 14 Rhe1 b4 which seemingly drives the Knight to b1, since 15 Ne2 loses a pawn. However 15 Bxf6! Bxf6 16 Nd5! gives White the advantage. |
| 8 0-0-0 | h6 (b) | (h) This effectively breaks up White's pawns. |
| 9 Be3 | Bd7 | (i) Here the Q is well placed for action on both sides. A Q exchange would not help White since his pawn structure is suspect. |
| 10 f4 (c) | b5 (d) | (j) Now both sides must worry about pawn storms! |
| 11 Bd3 (e) | Be7 | (k) The proper way to meet the threat of 22 g5 hxg5? 23 hxg5 Qxg5 24 Reg1 Qe5 25 Qh3. |
| 12 h3 | Nxd4! (f) | (l) This overambitious move might have been prompted by a tactical illusion, or a distaste for 22 exd5 Qxd5 which gives White nothing. |
| 13 Bxd4 | Bc6 | (m) Here too White should probably swallow his pride and try to get his pawn back with 23 Bxe4 dxe4 24 gxh6 exf3 25 Rxe5 Bf6 (25 ...Bd6 26 Rg5) 26 Rc5 and 27 hxg7. Any illusion of a K-side is soon shattered. |
| 14 Rde1! (g) | 0-0 | (n) Trying to exchange Queens before Black's attack gets too serious. |
| 15 g4 | b4 | (o) Around this point the game becomes ragged as Black struggles to make the time control at move 40, and White plays quickly to try and push Black over. Given the time pressure, Black should simplify with 25...Qxh2 26 Rxh2 Bd6 after which he has a dominating position. |
| 16 Nd1 | Qa5 | (p) Very practical. Now that White has control of d4, Black's attack is no longer so strong. |
| 17 Kb1 | e5! (h) | (q) Hoping for 28 Kc1 bxa2! Black has five minutes left. |
| 18 Bf2 | exf4 | (r) Can't permit 29...c1/Q+! |
| 19 Qxf4 | Qe5 (i) | (s) Played quickly without realization of the upcoming tactics! |
| 20 Qf3 | a5 (j) | (t) This appears to win the exchange after 33...Rc7 34 Bb6. Unfortunately.... |
| 21 h4 | d5! (k) | (u) 34 Bxc8 Nxc3 35 Nxc3 Rxc8 is no better. White's K-side pawns are fixed and will be excellent targets. 34 Rf3 is met in the same way as the text move. |
| 22 g5? (l) | Nxe4 | (v) Now Black's two Bishops and passed pawn insure victory. |
| 23 Qh3? (m) | h5! | (w) Hardly a perfect game, but certainly an interesting one! |
| 24 Be3 | a4 | |
| 25 Qh2 (n) | Bd6? (o) | |
| 26 Qg1! (p) | b3 | |
| 27 Bd4 | Nd2+ (q) | |
| 28 Ka1 | bxg2 | |
| 29 Bxc2 (r) | Qg3 | |
| 30 Qxg3 | Bxg3 | |
| 31 Re3 | Bf4 | |
| 32 Rc3 | Rac8 (s) | |
| 33 Bf5 (t) | | |



POSITION AFTER 33 Bf5

- | | | |
|------------|--------|--------------------------------------------------------------|
| 33... | Ne4! | |
| 34 Rc2 (u) | Bd7! | (v) Now Black's two Bishops and passed pawn insure victory. |
| 35 Bxe4 | dxe4 | (w) Hardly a perfect game, but certainly an interesting one! |
| 36 Nc3 | Rfe8 | |
| 37 Re2 | e3 (v) | 38 Rf1 Bg4 39 Rxf4 Bxe2 40 Nxe2 Rc2! (w) |

Illinois State Champion Steven Tennant enjoyed his most satisfying and successful tournament at the National Open in Charleston, SC this past March. Steve finished tied for second in a strong field of 168 which included 10 Masters (among them tournament victor Arthur Bisguier and Finland's GM Westerinen) as well as 21 Experts. FCA secretary Marvin Rogan reported that this event "...was the best organized and directed we have ever been in..." Following is Steve's personal account of the tournament....

NATIONAL OPEN

By Dr Steve
Tennant

SAT. MARCH 18 While waiting at my departure gate at O'Hare, I am pleased to find that I will have company on my flight down because Marv Rogan is on the same plane. We arrive in Charleston after 11 PM and upon arrival at the Francis Marion Hotel we meet Vic Swanson who will be sharing a room with me.

MARCH 19 There are five Senior Masters in the tournament: Zaltsman (2465), GM Westerinen (2450), GM Bisguier (2439) IM Biyiasas (2418) and Filguth (2405) of Brazil. Sun-ye, last year's winner is on Bd. 8, Martinovsky on Bd. 9, and I start on Bd. 15. My 2206 is the lowest rating of any master here. My game starts 1 e4 e5 2 Nf3 f5? 3 Ne5 Nf6? 4 ef d6 5 Nf3 Bf5. White has a full pawn, virtually free. Soon I get a lead in development and the bishop pair.. In spite of an early exchange of Queens, I have a fair attack. My 22nd move attacks a rook which he dare not move. It does. My 23rd move is mate. Very few of the higher players seem to be having any trouble. One is in severe time pressure in the middle game, but he wins anyway. On the top 40 bds., the higher rated players score 39½ pts. One expert was quite lucky to draw.

RD. 2 My opponent has a rating of 1836. He opens 1 c4 g6 2 g3 Bg7 3 Bg2 c5 (Not the best third move if you are playing for a win.) 4 Nc3 Nc6 5 e3 e6 6 Nge2 Nge7 7 00 00 (This is why Black can't easily break the symmetry.) 8 d4 cd 9 Nd4 Nd4 10 ed d5 11 cd Nd5 12 Nd5 ed 13 Be3 Be6 (I make a mental note to play 3...Nf6 in the future if I want to win.) 14 Qb3? (Finally. 14 Qd2 is correct; b3 should be reserved for a pawn to answer a later ...Ra4)14... Qd7 15 Rfcl Rfc8 16 Rc3 (16 Re5 is met by ...b8) 16...Rc3 (Now Black will control the c-file or White will have a weak pawn there.) 17 bc Rc8 18 Bd2 h5 19 h4 Rc6 20 Qb5? (stopping the move...Rb8, but 20 Qa4 does so correctly) 20...Bd4 (I should find such a move in a five-minute game, but it probably took me 5 minutes to see this over the board!) 21 cd? Rcl+ 22 Rc1 Qb5 23 Rc5 Qa4 24 Be3 Qa2 White played eight more moves before resigning.

Other players are not so lucky. Martinovsky has a difficult position before 15 moves, but his opponent makes one mistake and stands worse. Martinovsky never lets him get off the floor. Moskow and Powell, both masters, draw A players; Acosta loses to Birnbaum (1621). The other favored players are not having trouble. The top ten have won two games each.

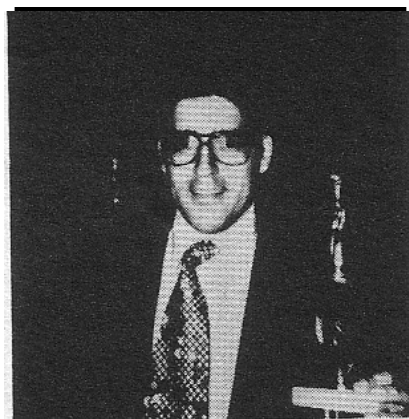
MARCH 20 RD. 3 I have White against a player from Florida rated 1939. By move 8 I have a position with B vs N and I will be able to set up a pawn roller on the K-side. Black won't be able to get much counterplay. By move 26 he is down the exchange...and resigns. Thus far I have not spent forty minutes on any of my games. Again, other masters have opponents who play better than mine. Martinovsky gets into serious trouble on the White side of the Dutch and ultimately loses to Carswell, an expert from Florida. He is not the only casualty...I can tell from the wallcharts that I will be paired up--I expect to get Black against either Bisguier or Westerinen. I hope for the former as I am more familiar with his style....

RD 4 My prediction is correct. I am playing Westerinen on Bd. 2

Westerinen (2450) S Tennant (2206) Sicilian, Maroczy Bind

1 e4	c5	(a) This, played after some thought. It is not easy to beat a strong
2 Nf3	fc6	opponent on the Black side of a Maroczy Bind, but this isn't dis-
3 d4	cd	turbing, either.
4 Nd4	g6	(b) This is mildly unusual. 9 Be3 is more common, but 9...h6 can't be
5 c4 (a)	Nf6	correct. There are some advantages in having the B on g5, but
6 Nc3	d6	some disadvantages, too. 9...h6 is only a weakening.
7 Be2	Nd4	(c) Now I have a choice. Superficially, both moves seem unattract-
8 Qd4	Bg7	ive. 14...Nd5 15 cd seems to give White a pawn, but 15...f6

9 Bg5 (b) O-0 Leaves Black an easy game. How-
 10 Qd2 Be6 ever, I play...
 11 Rc1 Qa5 (d) 14...Bd5 15 ed and the White B
 12 f3 Rfc8 pair should give him some advan-
 13 Nd5 Qd2+ tage.
 14 Kd2 (c) Kf8 (d) (e) Now we see why 9 Bg5 was good
 15 Nf6+ ef (e) and bad: good because Black's
 16 Bf4 (f) f5 (g) pawn structure is weakened (with
 17 Bd6 Kg8 (h) Be3, Black has Bf6), and bad be-
 18 Ke3 (i) fe cause Black gains a tempo,
 19 f2 (j) Rc6 (k) doesn't he?
 20 c5 Rd8! (f) Black thinks not.
 21 Kf3 (l) Bb2 (m) (g) Anyway!
 22 Rb1 Ba3 (n) (h) Now White studieies the position
 23 Rb7 (o) Bc5 for a long time. Black has many
 24 Bc5 Rc5 threats--Bb2, Rd8 followed by
 25 Rd1! (p) Rc3+ Bh6 or Be5 or fe.
 26 Kf2 Rd1 (q) (i) Breaking the pin on the Q-file,
 Drawn but staying on the h6-c1 diagon-
 al.



ILL: Champ Steve Tennant

...In top form at Charleston

- (j) Not Ke4, Bb2 and 20 Rb1? Bf5+.
- (k) With the obvious threat of Rd6. Rxc1 will not meet the threat here or next move. Ba3 or e5 allow Bh6+.
- (l) Finally removing the skewer threat.
- (m) I always feel better when I've regained my sacrificed pawn. Now White can't play 22 Rc2 Rdd6.
- (n) Careful! 22...Bd4? 23 Bb5 Rcc8 24 Be7, Besides, this stops him from defending the c pawn.
- (o) The Finnish IGM said, Draw, if you want one." Well, I expected to get one, but I didn't want one yet.
- (p) As I expected, he saw that 25 Ra7? lost to Rc3+.
- (q) Here I offered a draw, which was accepted.

After my game, Bisguier and Denker both complimented me on my play. Westerinen said I played 'very strong'. I can't tell you how flattering it is to have players of their caliber praise your play.

MARCH 21 RD. 5 There are only six perfect scores at this point: Sunye, Bisguier, Biyiasas, and Joseph Friedman as well as Coudari and Denker. The pairings on the top three boards are Couradi-Bisguier, Biyiasas-Sunye and Denker-Shipman. I have White on Bd. 6 vs Powell (2249) and I'm not going to be thrilled if I draw him as I did yesterday. I'm not slighting Powell, but he's not Westerinen and I have White.

Tennant-Powell 1 d4 Nf6 2 c4 g6 3 Nc3 Bg7 4 e4 d6 5 f3 O-0 6 Be3 e5 7 d5 c6 8 Bd3 Na6 9 Nge2 cd 10 cd Bd7 11 O-0 Nc5 12 Bc2 a5 13 a3 Qb6 14 b3 Rfc8 15 Kh1! Qd8 16 Qd2 b5 17 b4 Na6 18 Rab1 ab 19 ab Nh5 20 Bd3 Nc7? 21 Rbc1 f5 22 f4! fe 23 Ne4 Bg4 24 Rc6 Be2 25 Be2 ef? 26 Bb6! Be5 27 Bg4 Qh4 28 Bc8 Rc8 29 Qf2 Qg4 30 Rc7 Rf8 31 Qf3 Qh4 32 Qh3 1-0.

Meanwhile Coudari lost to Bisguier, Biyiasas and Sunye drew, Shipman and Denker drew, Westerinen won. I expect to be paired with Sunye next.

MARCH 22 RD 6 The expected pairing was made but not until they paired me with Westerinen again and then noticed their error. In the skittles room there is a sign offering odds on the seven leading players and Zaltsman (the leading 4 pter). Not surprising I am the lonshot to place and show, and just slightly ahead of Zaltsman to win. There is an offer to take all bets in Room 1340. (There are only 12 floors and room numbers don't go as high as 40!)

Sunye opened with the English, and this time I avoided the symmetrical variation (real smart!?), but I got the better of the game when he tried to trap my QB. Soon after I won a Rook for B + P. All I had to do was win an easily won position to be the only player with-in ½ pt of Bisguier with one round left! Unfortunately, I played badly, unnecessarily

(cont'd pg 18)

VOTE FOR

**MYRON
LIEBERMAN**

FOR U.S.C.F. SECRETARY

HE IS THE ORGANIZER OF THE

1978 U.S. OPEN

IN PHOENIX, ARIZONA

PLAY IN THIS YEAR'S U.S. OPEN

VOTE FOR LIEBERMAN

PAID FOR BY FRIENDS OF MYRON LIEBERMAN

**SUSAN
BENOIT**

IS RUNNING FOR THE THREE-YEAR TERM
OF MEMBER-AT-LARGE
IN THE UPCOMING U.S.C.F. ELECTIONS
PLEASE GIVE HER YOUR SUPPORT AND
ESPECIALLY YOUR VOTE!

PAID FOR BY THE FRIENDS OF SUSAN BENOIT

National Open, Tennant, cont'd.

returned the material, but still achieved a won R + 2 P vs R + 2 P ending. However I failed to notice that a simple King move won quickly by zugzwang. I was unable to win with R + P vs R. A 97 move draw!

I would like to mention here that all of the top four players impressed me as being sportsmen, except the Brazilians. Sunye repeatedly banged down on my clock in his time pressure in spite of my requests that he not do so. I learned later that he objected to my talking even on my time, but I don't want my clock ruined. Apparently there was a language problem, but Filguth would have translated if asked. Filguth, I was told, refused to play 5-min chess with the lesser lights unless it was for a stake.

MARCH 23 RD 7 Bisguier leads with 6-0. 12 players have 5-1: Zaltsman, Westerinen, Filguth, Denker, Couardi, Sunye, Martinowsky, Tennant, and four experts including Carswell. I am paired with Filguth on Bd. 3. Bisguier is tough to beat, needing only a half point to take clear first. Westerinen defeated Martinowsky in a Richter Rauzer. My game with Filguth was an early ending. I had 2 B vs B + N, but I also had weak pawns. He could have gotten an easy opposite color Bishop ending for a draw, but tried for more, probably due to money considerations and my play the previous day against Sunye.

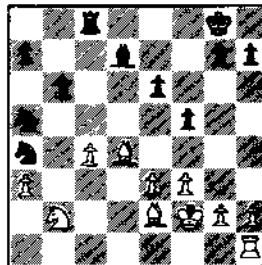
And so I regained the ½ pt I threw away the previous round. I tied for 2nd in the National Open despite having the toughest pairings of anyone other than the winner Bisguier. This makes at least three straight years that an Illinois player tied for 2nd or better at the National Open: In 1976 Ed Formanek tied for 1st with Miles; In 1977 Sprenkle tied for 2nd. And in 1978 I tied for 2nd. To celebrate my victory I ate two hot dogs while waiting for the airport bus since no meal was scheduled on my flight home.

~~~~~  
Another crucial game from the National Open...from Rd 6 Bisguier-Biyiasas

1 d4 Nf6 2 c4 g5 3  
Nc3 Bg7 4 Nf3 0-0 5 Bg5 d6 6 e3 Nbd7 7 Be2 e5 8 0-0 Re8 9 Qc2  
c6 10 Rfd1 Qe7 11 Ne4 Qf8 12 Nxd6 e4 13 Bxf6 exf3 14 Bxg7 Qxd6  
15 Be5 Nxe5 16 dxe5 Qxe5 17 Bxf3 Bf5 18 Qb3 Re7 19 Rd4 Qc5 20  
Rad1 Be6 21 Bg4 f5 22 Be2 b5 23 Qc3 Kf7 24 Rd6 b4 25 Qd4 Qxd4 26  
Rlxd4 Rc7 27 c5 Rb8 28 b3 a5 29 g4 Re8 30 Bf3 fxc4 31 Rc4+ Kg7  
32 Bxc6 Rle7 33 Re4 Bf5 34 Rxe7+ Rxe7 35 Bd5 Rc7 36 e4 Bc8 37 c6  
Kf8 38 Kg2 Ke7 29 e5 Ba6 40 Kg6 Be2 41 Kf4 resigns

Game score courtesy of USCF press release No. 3, 1978

FILGUTH



TENNANT

Position after Black's 20th move.....

|         |      |         |      |
|---------|------|---------|------|
| 21 Rd1  | Nb2  | 38 Kd4  | Kb7  |
| 22 Bb2  | Ba4  | 39 e4   | Kc6  |
| 23 Rd4  | Nb3  | 40 ef   | gf   |
| 24 Rd6  | Kf7  | 41 h3!  | Nf8  |
| 25 Ke1  | Ke7  | 42 Ke5  | Kc5  |
| 26 Rd3  | g6?  | 43 Kf6  | Kc4  |
| 27 Bd1  | Nc5  | 44 Bd6  | Nd7+ |
| 28 Rd4  | Bc6? | 45 Ke6  | Nc5+ |
| 29 Bc2  | Rc7  | 46 Kf5  | Kd5  |
| 30 Rh4  | h5?? | 47 Bc5! | bc   |
| 31 Be5  | Rd7  | 48 g4   | hg   |
| 32 Rd4  | Ba4  | 49 fg   | c4   |
| 33 Ba4  | Na4  | 50 g5   | c3   |
| 34 Kd2  | Nc5  | 51 g6   | c2   |
| 35 Kc3  | Kd8  | 52 g7   | c1Q  |
| 36 Bg3! | Kc8  | 53 g8Q+ | Kd6? |
| 37 Rd7  | Nd7  | 54 Qd8+ | 1-0  |

# CICL News & Notes

| NEAR WEST DIVISION | W | L | D | Pts. |
|--------------------|---|---|---|------|
| WE Chargers        | 9 | 1 | 0 | 44½  |
| Argonne Knights    | 6 | 2 | 2 | 32½  |
| Argonne Monarchs   | 5 | 4 | 1 | 32   |
| WesCom             | 5 | 5 | 0 | 28½  |
| BTL Royals         | 4 | 5 | 1 | 32   |
| CPC International  | 2 | 5 | 3 | 26½  |
| Zenith-Rauland     | 2 | 6 | 2 | 21½  |
| Int'l Harvester    | 1 | 7 | 2 | 17   |

| EAST DIVISION     | W | L | D | Pts. |
|-------------------|---|---|---|------|
| Alumni Central    | 8 | 0 | 2 | 43½  |
| Harza Engineering | 9 | 1 | 0 | 42½  |
| First Nat'l Bank  | 5 | 2 | 3 | 40½  |
| R R Donnelley     | 6 | 3 | 1 | 39½  |
| Sears #1          | 5 | 2 | 3 | 37   |
| Sears Challengers | 6 | 4 | 0 | 38   |
| IBT A             | 4 | 3 | 3 | 38   |
| GATX              | 3 | 7 | 0 | 24   |
| IBT B             | 1 | 9 | 0 | 11   |
| Metropolitan CC   | 1 | 9 | 0 | 7    |

## FINAL LEAGUE STANDINGS, 1978

| FAR WEST DIVISION | W | L | D | Pts. |
|-------------------|---|---|---|------|
| Argonne Pawns     | 8 | 2 | 0 | 41½  |
| BTL Dragons       | 7 | 2 | 1 | 38½  |
| Argonne Rooks     | 5 | 3 | 2 | 39   |
| Wheaton Crusaders | 5 | 3 | 2 | 34   |
| WE Kingsmen       | 5 | 4 | 1 | 26½  |
| WE Montgomery     | 2 | 6 | 2 | 22½  |
| Argonne Bishops   | 2 | 6 | 2 | 20   |
| Amoco             | 1 | 8 | 1 | 22   |

| NORTH DIVISION   | W | L | D | Pts. |
|------------------|---|---|---|------|
| Motorola         | 8 | 0 | 1 | 37½  |
| EXcaliburs       | 7 | 2 | 0 | 37½  |
| Zenith-Glenview  | 5 | 2 | 2 | 29   |
| Teletype         | 4 | 3 | 2 | 33   |
| Procon           | 4 | 3 | 2 | 29½  |
| Kemper Insurance | 3 | 4 | 2 | 29   |
| Signode          | 2 | 5 | 2 | 25   |
| ITT #1           | 2 | 5 | 2 | 20   |
| Sara Lee         | 2 | 7 | 0 | 21½  |
| ITT#2            | 0 | 8 | 1 | 3    |

## DAVID BAURAC

A knock-out tournament is now in progress pairing the top two eligible teams in each division (Alumni teams are not eligible) to determine an overall league champion. As we go to press WE Chargers have won over Zenith-Glenview and First Nat'l Bank has won over Argonne Pawns.

# speed chess

TOM FINEBERG

|                      |                    |                     |                      |
|----------------------|--------------------|---------------------|----------------------|
| Schweig.....2393     | Bronfeld.....1662  | Murrah.....1367     | Stefek.....1283      |
| Martinowski.....2313 | Biskowski.....1655 | Roach.....1366      | Perry.....1274       |
| Reyes.....2246       | Marconnet.....1611 | Smith.....1363      | Gray.....1273        |
| Verber.....2233      | Hughes.....1596    | Walasek.....1338    | Esposito.....1262    |
| Tennant.....2155     | Kerman.....1594    | Blum.....1338       | Martin.....1258      |
| Presser.....2154     | Hughes, H.....1589 | Johnson, M.....1328 | Stankoski.....1231   |
| Marovich, M.....2118 | Vesely.....1585    | Patton.....1322     | Nicholson.....1218   |
| Gelbart.....2104     | Graham.....1584    | Mulkey.....1319     | Boone.....1170       |
| State.....2101       | Barrett.....1578   | Clay.....1319       | Harris.....1162      |
| Gilruth.....2086     | Branch.....1570    | Jones, S.....1298   | Esposito, T.....1147 |
| Stevonovich.....2033 | Lauson.....1551    | Hilton.....1288     | Robinson.....1125    |
| Warren, J.....2011   | Young.....1550     |                     |                      |
| Tomas.....1910       | Bryant.....1544    | Griable.....1120    |                      |
| Dandridge.....1887   | Miller.....1536    | Crump.....1112      |                      |
| Mitchell.....1857    | Larson.....1522    | McDonald.....1112   |                      |
| Brown.....1855       | Stilwell.....1497  | Austin.....1106     |                      |
| Hanson.....1848      | Soulides.....1490  | Carter.....1106     |                      |
| Bungo.....1845       | Giddings.....1484  | Milfajt.....1098    |                      |
| Becker.....1840      | Frost.....1477     | Mack.....1091       |                      |
| Powell.....1835      | Dubose.....1469    | Dempsey.....1080    |                      |
| Lindberg.....1831    | Dunwoody.....1468  | Heralson.....1075   |                      |
| Scott.....1811       | Fineberg.....1467  | Allen.....1060      |                      |
| Eggerton.....1778    | Bradley.....1458   | Holt.....1046       |                      |
| Szustowski.....1764  | Petersen.....1456  | Temple.....1046     |                      |
| Coffee.....1743      | Ptacek.....1430    | Klasek.....957      |                      |
| Ilosvay.....1736     | Slupik.....1430    | McEwan.....875      |                      |
| Sanchez.....1733     | Ivy.....1408       |                     |                      |
| Sohn.....1713        | Alsberry.....1399  |                     |                      |
| Coleman.....1703     | Baladan.....1390   |                     |                      |
| Klaus.....1700       | Mijou.....1385     |                     |                      |
| Chromczak.....1663   | Zingheim.....1384  |                     |                      |

The speed rating list grows longer! This is a sign of spirited activity. In future issues we will list ACTIVE speed players, i.e., those who have played within the last six months.

## Problem Section

EDGAR HOLLADAY  
 1668 Garand Drive  
 Deerfield, Illinois 60015

### Solutions:

No. 30 Hassberg. 1 Sf5, threat 2 Rxe5. 1...Qxf5 2 Qd3 1...Qxe6 2 Qxf3 1...Ke4 2 Qd4

No. 31 Kofman and Loshinski. 1 Sd3, threat 2 Se7. 1...Rd6 2 Pc4 1...Rb6 2 Sb4 1...  
 Pd6 2 Sh6

No. 32 Barulin et al. 1 Rb5, threat 2 Se4 1...Qd5/e6 2 Bg4 1...Qa8 2 Sb7 1...Re5  
 2 Sxf4 1..Rxe7 2 Se6

No. 33 Greenwood. 1 Bh1 Pd6 2 Rg2 Kxe4 3 Rd2

No. 34 Kraemer. 1 Rb1 Kg7 2 Qb7+ Kh8 3 Qb2 Try 1 Rb8+? Kg7 2 Qb7+ Kf6! 3 Rb6?

No. 35 Hindre. 1 Bg1 Ra7 2 Qf2 1...Rb8 2 Bh2 1...Be6 2 Rxa8 1...Bd7 2 Rxd7+

+++++

### Seventh of nine articles:

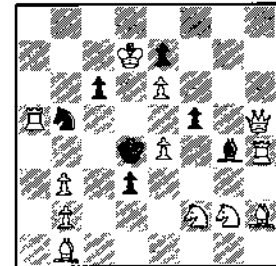
Several decades ago attention increasingly was given to dual avoidance and black correction play, both of which involve the prevention of mates other than the threat (here called the primary threat).

No. 36, however, is a waiting move problem. It features passive dual avoidance, in which potential mates are prevented by white weakness in these potential mating moves. After 1...Pf4 and 1...Sa7, White must avoid removing new white guards on black flights. And after moves by the g4 bishop and d3 pawn, White must avoid closing white lines of guard just opened by Black.

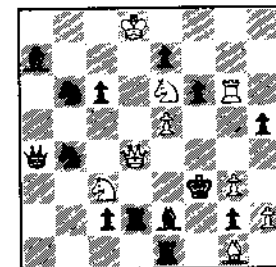
No. 37 shows active dual avoidance, in which potential mates are avoided by black strategy. The primary threat is 2 Rf5. A random arrival of a black piece on the d2-d8 pin-line unpins the white queen to set up four secondary threats, 2 Qf4, 2 Qe4, 2 Qf2, and 2 Qe3. A secondary threat caused by a random arrival is called an arrival threat. Here, each of the black defenses 1...Bd3, 1...6Sd5, 1...4Sd5, and 1...Sd3 not only defeats the primary threat but also avoids duals by preventing three of the four secondary threats. So this problem can be said to feature four-fold separation of arrival threats.

Any mate resulting from a random removal of a black man from a square is called a removal threat. In No. 38, the removal of the e5 knight from that square results in a number of secondary removal threats, including 2 Rg3, 2 Qf7, 2 Qh3, 2 Qd5, 2 Qd3, and 2 Qd1. But each of six moves of the e5 knight not only defeats the initial threat but also prevents five of the just-listed removal threats. So the problem can be said to feature six-fold separation of removal threats. A seventh move by the knight, 1...Sxc6+, prevents all the removal threats but permits an entirely new mate.

No. 39 features black correction play. A random move by the e4 knight defeats the primary threat (2 Rxd5) but creates a secondary removal threat, 2 Sf3 (thanks to an opening of the white line d4...f4 permitting White to close f2...f4). Black, seeing the error of such a random move, then corrects it by moving the e4 knight more carefully to specific squares so as to prevent 2 Sf3. One such correction move, ...1...Sd6, subtly closes



No. 36 Mate in two  
 Jan Hartong, First prize  
 Dutch Problem Society,  
 1951

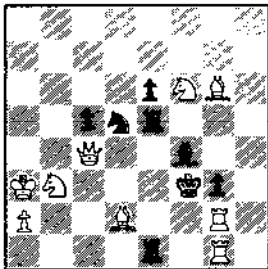


No. 37 Mate in two  
 Z.Z. Yurka, First place  
 Latvian Championship  
 1950

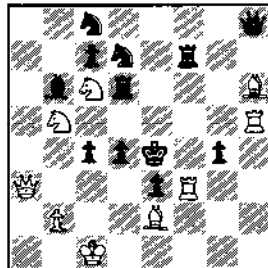
ap...TD so that white cannot close f2..f3, but it blocks up so that white can reply 2 Sc6. Further correction moves by the e4 knight are 1...Sg5 and 1...Sd2. There is also a correction play by the d5 knight. Readers may notice that random moves by each black knight lead to the same mating move that follows a correction move of the other knight; this feature is called reciprocal correction.

In No. 40, after a waiting key, a random move by each of four black men corrects the removal threat. Experts may argue the degree of purity of the corrections 1...1Rxe3 and 1...5Rxe3 (since the black rook guards on e2 and e4, respectively, are not really removed), but this problem is included here because it also illustrates correction of an arrival threat. A random black arrival on e3 (illustrated here by 1...Sxe3) allows 2 Sd2, an arrival threat, but 1...1Rxe3, 1...5Rxe3, and 1...Bxe3 correct this arrival threat by pinning the b3 knight or directly guarding d2.

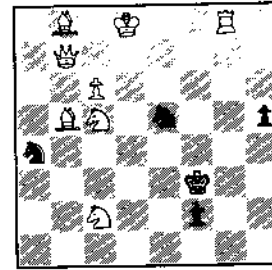
In No. 41, if one examines the play following 1...Ba5, 1...Se5, and 1...Rxb6 in that order, he will see that the three white moves Qc2+, Rxe3+, and Sc3+ are arranged cyclically so that the mating move of each variation becomes White's second move in the next variation. Such cyclical repetition of white moves has been shown in a number of three-movers in recent years, but this problem carries the idea further: the additional defenses 1..Qxh6, 1...Sc5, and 1...Rxc6 lead to a reversal of the fore-going pattern!



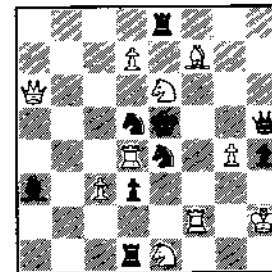
No. 40 Mate in two  
Vjaceslav Vladimirov  
About 1960



No. 41 Mate in three  
Robin C. O. Matthews  
First Prize, BCM, 1968



No. 38 Mate in two  
J Hartong & J Swane  
Honorable Mention  
Schakend Nederland  
1961



No. 39 Mate in two  
Gustav Jonsson  
First Prize, Nagasinet  
1939

*A much overdue, and  
thoroughly deserved,  
tribute to EDGAR  
HOLLADAY appears in  
the MAY issue of  
CL&R.*

GAMES, GAMES, GAMES...

From the Greater Peoria, April 1, 1978

SPRENKLE-FRUMKIN 1 e4 e6 2 d4 d5 3 Nd2 Nh6  
4 Ngf3 f5 5 e:d5 e:d5 6 Ne5 Bd6 7 Qh5+ Kf8  
8 Ndf3 Qe8 9 Q:e8+ K:e8 10 B:h6 g:h6 11 OOO  
Ke7 12 Bd3 Kf6 13 Rhe1 Nd7 14 Re2 Nf8 15  
Rde1 Be6 16 Nh4 Rg8 17 g3 Re8 18 Ng2 Ng6  
19 f4 Re7 20 Ne3 c6 21 Rf1 Bc8 22 c3 Reg7  
23 g4 Ne7 24 h3 a6 25 Rg2 c5 26 Rfg1 c4  
27 Bc2 b5 28 Kd2 a5 29 Ke2 a4 30 a3 Bc7  
31 Kf3 Bd6 32 g:f5 R:g2 33 R:g2 R:g2 34  
K:g2 B:f5 35 N5g4+ Ke6 36 N:f5 N:f5 37 Kf3  
Nh4+ 38 Kg3 Nf5+ 39 Kf3 Nh4+ 40 Kg3 Nf5+  
41 Kf3 ½-½ Rep.

Notes to Weibull-Ditrichs by Games Ed. Tomas

From the GCO, 1978, Rd. 4 Weibull-Ditrichs

1 e4 c5 2 Nc3 Nc6 3 Nf3 Nf6 4 d4 cd4: 5  
Nd4: e5 6 Ndb5 d6 7 Bg5 a6 8 Bf6: gf6: 9  
Na3 b5 10 Nd5 f5 11 Bd3 Be6! (The 12 f4  
Pelikan-Sveshnikov pits White's static advan-  
tages, strong squares on d5 and f5 and good  
knight vs bad bishop) against Black's dynamic  
advantages: Bishop pair, better development,  
center preponderance). Thus White's 12th,  
aiming to open the position early, and thus  
exploit dynamic advantages, should be wrong.)  
12..Bg7 13 c3 O-O 14 Qh5 fe4 15 Be4: f5 16  
Nf6+ Qf6: 17 Bc6: Rac8 18 Bb7 b4! 19 Bc8:  
Rc8: 20 Nb1 Bc4 21 Kf2 d5 22 Rel Qb6+ 23  
Kg3 Rc6! 24 h3 Rg6+ 25 Kh2 Qf2 26 Rg1 Be2 O-1

The Third Annual

# U.S. CLASS CHAMPIONSHIPS

At the Palmer House, Chicago, Illinois  
Dedicated to the memory of Robertson Sillars

July 21-23

5-Round Swiss

8 Sections

**\$7,000 in Guaranteed Cash Prizes**

**\$300 in Extra Prizes**

You play only against opponents in your own group, in other words, those with whom you are competing for prizes.

## 7 Class Sections

Master (Above 2199), Expert (2000-2199), Class A (1800-1999), Class B (1600-1799),  
Class C (1400-1599), Class D (1200-1399), Class E (Below 1200)

**Identical Prizes Totaling \$1,000 in Each Class Section**

1st, \$500; 2nd, \$250; 3rd, \$125; 4th, \$75; 5th, \$50; Plus a Trophy to the Champion in Each Section.

**Extra Prizes: \$200 to 1st Master, \$100 to 2nd Master**

Donated in the memory of Robertson Sillars by Helen E. Warren.

## A Separate Section for Unrateds

Unrateds play in an 8th section among themselves (this section will be USCF rated).

**Trophies to 1st, 2nd, and 3rd Unrateds**

**FLASH!**  
**The U.S. CLASS CHAMPIONSHIP**  
**RETURNS TO CHICAGO!**

7 Sections, 5-SS

**\$7300 IN GUARANTEED PRIZES!**

July 21-23 at the Chicago Palmer House Hotel

Chief TD: Tim Redman, National Tournament Director

**entry:** \$27.50 payable  \$35 after July 7 and  
to USCF before July 7  at site

BRILLIANCY (BEST PLAYED GAME) PRIZE AWARD WINNER FROM GCO: Baurac-Bungo, Rd 6

1 P-K4 P-Q3 2 P-Q4 N-KB3 3 N-QB3 P-KN3 4 B-QB4 B-N2 5 KN-K2 0-0 6 P-B3 P-B3 7 P-QR4  
Q-K1 8 B-K3 P-N3 9 Q-Q2 P-K4 10 P-KN4 B-QR3 11 BxB NxN 12 P-Q5 PxP 13 NxP NxN 14 Q-  
Q-K3 15 0-0-0 N-B4 16 N-B3 QxQ 17 RxQ KR-Q1 18 KR-Q1 N-N2 19 N-N5 B-B1 20 B-N5 R-Q2  
21 RxKP PxR 22 RxR N-B4 23 RxRP RxR 24 NxR NxRP 25 B-B6 B-N2 26 B-Q8 P-B3 27 N-N5 K-B2  
28 P-N3 B-R3+ 29 K-N1 N-B4 30 BxNP N-Q2 31 B-B2 K-K3 32 P-QB4 B-B1 33 K-B2 P-B4 34 K-E  
PxKP 35 PxP N-B3 36 K-Q3 NxNP 37 B-N1 N-B3 38 N-B7+ K-Q3 39 N-Q5 N-Q2 40 P-N4 K-B3 41  
K-B3 P-N4 42 K-N3 P-R4 43 K-R4 P-N5 44 B-B2 B-R3 45 P-N5+ K-N2 46 P-B5 N-N1 47 P-B6  
NxP 48 PxN+ KxP 49 B-N3 B-N4 50 BxP P-R5 51 K-N3 B-Q7 52 N-B6 P-N6 53 PxP PxP 54 Bx  
B-N4 55 P-K5 K-N4 56 K-B3 K-B3 57 K-B4 K-B2 58 K-Q5 K-Q1 59 K-K6 B-B8 60 K-B7 B-R6 6  
P-K6 B-N5 62 N-K4 B-K2 63 B-K5 1:0 Judged by TD for GCO, Dennis Keen.

# Dear editor

*We welcome your letter of observation or opinion on any chess topic. If you keep your comments brief we will print your letter in its entirety; if you were loquacious we may be forced to edit...unless, of course...*

"Alexander the Great was not the only man who wept because he had no more worlds to conquer. Consider the plight of Chicago's masters and experts. After countless hours of study, after laboriously analyzing their tournament games, and after finally achieving a degree of success which eludes the vast majority of their cohorts, they find themselves ostracized rather than applauded.

There simply are no opportunities for our stronger players to maintain their skills. The vast majority of tournaments held in Chicago-land exclude them. This would be acceptable if there were enough tournaments in which strong players could participate. But there are not. As an example, though I make every effort to participate, there has been only one Chicago tournament within the last year which afforded me that opportunity.

Think about it. When was the last time you saw a tournament game between two Chicago masters? Why has the nation's second largest city produced so few masters in the last ten years? Why have such outstanding talents as DeFotis and Chellstorp and Giles dropped out of chess entirely? Why does Edward Formanek have to travel overseas just to get competition? Why has the number of players of all strengths dropped off dramatically?

The reason is obvious. Strong players want to play strong players. Weak players also want a chance to play strong players. And that's why strong players should be encouraged to enter tournaments. Excluding them is more than unfair; it is counterproductive.

Current tournament policy in effect relegates our masters to an involuntary retirement which is just as dull as Bobby Fischer's voluntary retirement. It is bad for chess."

DR. TENNANT, Palos Heights, IL

++++

"I was very interested in your comments in the March issue of the ICB regarding shipping procedures of the USCF. Your experience was inexcusable. However, I also feel that while we all have an obligation to voice our criticism I also feel the Federation richly deserves publication when they do something right. The Springfield Chess Club ordered 12 chess sets shortly after we received the March ICB. Immediate shipment was essential. As a result of your implicit warning in your article I took the trouble of sending it directly to Martin

"A new chess organization is starting in Illinois. Not only is it a new organization, it is a new concept in chess as well. The organization is the ILLINOIS JUNIOR CHESS FOUNDATION. Started by high school coaches interested in seeing juniors receive recognition and reward for their participation in chess, it is also hoped that it will create a broader base of interest in chess and stimulate increased activity in chess among adults in coming years.

The IJCF is designing programs to provide instruction, tournament activity, recognize advancement, and provide scholarships. Advancement will be recognized by individuals earning 'scholarship points' by playing in tournaments (more pts for winning and playing difficult competition). Unlike the USCF rating system, points will not be lost by losing games....

Financial assistance to junior chess players is a significant goal for the IJCF. Beginning with scholarships for graduating seniors, financial assistance will be created for individuals and/or teams to attend major tournaments.

Individual contributions of any amount would be appreciated. Help...from a business would be welcome. Contributions to the Foundation will be placed in high interest accounts with the contribution preserved and the earned interest used to operate the programs. Regional scholarships will be named to honor any individual or corporation making a suitable contribution. Tournaments on a local, regional, or state wide basis will likewise be named to honor those whose contributions make it possible to operate them each year.

For more information about the programs and plans of the Illinois Junior Chess Foundation write to the foundation at 9401 W Birch Ave., Arbury Hills Subdivision, Mokena, IL 60448."

MIKE ZACATE, Mokena, IL

++++

Morrison...I am pleased to report that Springfield had the order in less than two weeks. I would like to emphasize, of course, that direct contact with Mr Morrison should not be necessary..." JOSETTE DONNELLY, Springfield, IL

*(Yeah, I'd like to emphasize that, too. On second thought, maybe Josette should place ALL USCF orders for Illinois members. The operator at the USCF switchboard knows my voice by now ...it's about the ONLY way we get an order... ed.)*

+++

The following was sent to Policy Board member and former USCF President Frank Skoff, and transmitted to us for these pages with permission of the writer.

"I have a serious complaint about the USCF and I believe you should know about it. I'm writing with the hope that you can do something to help the members who have ordered merchandise from the USCF.

I ordered a chess clock for my son on Jan. 9, 1978 and it has never arrived. The order was processed and my Master Charge was billed for the clock on FEBRUARY 17, six weeks after I ordered. Other members are having similar experiences...my letter to Martin Morrison on March 11 requesting him to ship my clock produced nothing but a curt reply about a "shipping accident in the Atlantic". Now the reason given for not shipping is 'storm conditions'.

I believe the truth isn't being told to the members. Is the truth being told to you by the Chess Federation office? *(Underlining by the writer, not the editor.)* Why would it take six weeks to enter an order? Why does it take months to ship?

Why is this unbelievable situation permitted at the USCF Office?"

DAVID BAKER, PE, Hudson, OH April 16

*(Ed note: we were informed that the clock in question was received by Mr Hudson on April 20; the order was originally placed on Jan. 9. The USCF had the use of Mr Baker's money for more than two months, while Mr Baker did not have either his clock--or his money.)*

+++

"I would like to nominate Mike Zacate for the office of 1978-1979 President of the Illinois Chess Association. Mike Zacate has a record of accomplishment in Illinois chess, especially in the area of promoting junior chess on a state-wide base. Mike is known for his fairness and non-partisanship, traits that are of the utmost importance in the chief officer of a state chess organization"

RICHARD VERBER, Pres., CCC & 1978 US Class Championship Chairman

"I paid special handling and special delivery charges to USCF for a book and waited seven weeks. Will I order from USCF again? Is Anita Bryant gay?"

F GERLACH, Ft Lauderdale, FL

++++

"...when you gouge the little guy too many times, the little guy will finally say "UNCLE" ...By giving poorer service and expecting increased prices...a 5% 'surcharge', SELLING the annual rating list...what will our membership be when the old ones die and all the young ones have quit?"

DICK TEMPLE, No Riverside--and sponsor of a chess club of almost 100 at Komarek School.

++++

"Dennis Keen's letter in the March ICB questioned the credentials of three people to be USCF delegates and VM's, but forgot to mention that each of the three was an elected officer. The ICB has not yet announced the mail ballot vote: Pres.: Winston: 65, others 4; 1st VP: Walt Brown 61, others 8; 2nd V-P: Randy Pacetti 62, others 7; Treas.: Marv Rogan 61, others 8; Secty: Joan Winston 46, Dennis Keen 20, others 3. All five elected officers made the appointments (of delegates).

Joan Winston, named a VM, has attended USCF meetings and workshops in 1975, 1976, 1977, has been to several regional meetings, and was an assistant at the 1977 IL Open. As elected Secty it would have been extraordinary for her not to be named at least a VM.

Marv Rogan is primarily a player; he wanted to be a delegate, and has already submitted a motion for the USCF meetings' agenda. No previous elected officer who wished to be a delegate has ever been refused. Marv ran expecting a contested election for Treas., but his opponent withdrew.

Randy Pacetti had attended both the last two USCF annual meetings and was President of the Intercollegiate Chess League. No one knew when the appointments were made that three months later Randy would start a job in the Chicago area.

By contrast Dennis Keen was the only ICA secretary never to submit written minutes and the only Illinois VM who failed to vote in both the 1976 and 1977 annual USCF elections. He has never won an election by ICA members; last year he was appointed secretary when the person elected declined."

HAROLD WINSTON, ICA Pres.

More letters, pg. 25



MORE LETTERS

FROM BILL SMYTHE, EVANSTON

"In your last issue, Dennis Keen decries the section of Joan Winston and Marvin Rogan as USCF VMs because they have "never organized or directed a chess event." I think it's about time to discard the notion that only organizers and directors should be in positions of power in USCF. Perhaps if players had more control and organizers had less, USCF would be in better shape and CL&R would be more interesting. Many ICA members apparently agree--they voted for player Joan Winston more than 2 to 1 over organizer Dennis Keen in the recent election for ICA Secretary."

and, curiously, ten days later, another missive from the author of the above letter...following:

"...perhaps I should clarify my views...I am enclosing a copy of my September report to the new ICA Executive Board (Paul Flosvay and I were appointed as a nominating committee for IL VMs). YOU WILL NOTE THAT MY PROPOSED LIST DIFFERS FROM THE LIST FINALLY DECIDED UPON BY THE OFFICERS..!"

*(Ed note: Indeed, we do notice that your list differs: among those you would have as a delegate is Richard Verber, the area's leading organizer: he is on your list for full delegate. He was omitted on the list chosen by the officers. Also on your list as a VM is Dennis Keen (!) whom the officers hacked off. It is strange that officers don't heed the very nominating committee appointed by them to do a job!)*

++++

Mike Zacate, delegate and nominee for ICA president, has asked us to quote from the Illinois Chess Association constitution, ARTICLE 3, Government, A Duties: "...The Executive Board shall be responsible for appointing USCF delegates and Voting Members. THESE DELEGATES AND VOTING MEMBERS SHALL BE APPOINTED BASED ON THE IMPORTANCE OF THEIR CONTRIBUTION TO USCF ACTIVITY IN ILLINOIS AS REPRESENTED BY THEIR DIRECT OR INDIRECT ORGANIZATION OF USCF TOURNAMENTS..."

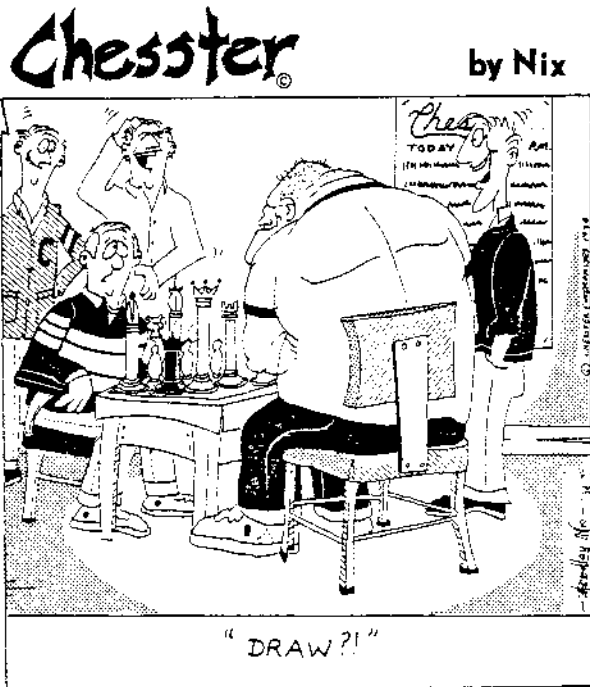
Zacate brought this article up at the last ICA meeting, quoted it directly, and the president of ICA, Harold Winston, speedily agreed that the appointment of delegates was NOT in conformity to the ICA constitution.

It shall not happen again in Illinois: either change the constitution or abide by it when making delegate and VM appointments.

Helen E Warren, delegate

++++

*And with both sides having had their say on this subject, your editor closes the book on it once and for all in these pages. After all that we should be ready for a laugh with CHESSTER...*



VERY LATE NEWS...

Illinois High School Team Championships, by Mike Zacate

The IL HS Assoc. ran its 4th annual HS team chess championship finals at Homewood-Flossmoor High School on May 5-6, 1978 with 22 Class AA teams, each with eight boards, and eight Class A teams, each with five boards, participating. A gigantic event, ably directed by Walter Brown, ICB Games Editor South DAVE SPRENKLE coached the CLASS A Champion team UNIVERSITY (URBANA) HIGH with Elgin's ST EDWARD second and GEORGETOWN 3rd; in the CLASS A group, Champion school was ROCK ISLAND, followed by PROVISO WEST, EAST ST. LOUIS AND MORTON EAST (tied). Many more details, including board results, in our next issue. BRAVO to the winners!

## ILLINOIS JUNIOR, March 18-19

## SCHOLASTIC NOTES

| SR | Player           | Finish |
|----|------------------|--------|
| 1  | Sprenkle (2205)  | 6-14   |
| 2  | Budrys (2209)    | FIRST  |
| 3  | Kornfeld (1955)  | 2-4    |
| 4  | Marovitch(1929)  | "      |
| 5  | Klepacki (1926)  | 6-14   |
| 6  | Dowd (1860)      | 2-4    |
| 7  | Krause (1758)    | 6-14   |
| 8  | Mayka (1751)     | 5      |
| 9  | Sah (1720)       | 6-14   |
| 10 | Morris (1715)    | 6-14   |
| 11 | Zvilius (1594)   | 6-14   |
| 12 | Harrison (1581)  | 17-22  |
| 13 | Kearny (1522)    | 23-27  |
| 14 | Dunten (15120)   | 6-14   |
| 15 | Greenstein(1444) | 17-22  |
| 16 | Rodriguez(1437)  | 15-16  |
| 17 | Juten (1422)     | 17-22  |
| 18 | Atkin (1324)     | 17-22  |
| 19 | Harrow (1323)    | 6-14   |
| 20 | Meyer (1316)     | 23-27  |
| 21 | Keer (1260)      | 15-16  |
| 22 | Stricker (1167)  | 28     |
| 23 | Carmen (1095)    | 23-27  |
| 24 | White (956)      | 17-22  |
| 25 | Talashak (UNR)   | 23-27  |
| 26 | Coakes (UNR)     | 23-27  |
| 27 | Latrop (UNR)     | 17-22  |
| 28 | Nishida (UNR)    | 6-14   |

## Reg. 9 REGIONAL-INTERCOLLEGIATE

|    |               |            |     |     |     |     |     |     |
|----|---------------|------------|-----|-----|-----|-----|-----|-----|
| 1  | Hamm          | Western IL | W4  | W16 | W6  | D5  | W8  | 4.5 |
| 2  | Rudd          | Illinois   | L12 | W20 | W14 | W7  | W5  | 4   |
| 3  | Alson         | Purdue     | W9  | L6  | D7  | W12 | W10 | 3.5 |
| 4  | DeVilbiss     | SIU (Car)  | L1  | W17 | D10 | W11 | W6  | 3.5 |
| 5  | Goss          | West.IL    | W21 | W13 | W15 | D1  | L2  | 3.5 |
| 6  | Henson        | IL         | W19 | W3  | L1  | W13 | L4  | 3   |
| 7  | Smith         | West.IL    | W18 | D11 | D3  | L2  | W14 | 3   |
| 8  | Dandridge     | East. IL   | L10 | W12 | W9  | W15 | L1  | 3   |
| 9  | Harrison      | IL         | L3  | W19 | L8  | W17 | W13 | 3   |
| 10 | Caccamise     | Purdue     | W8  | L15 | D4  | W16 | L3  | 2.5 |
| 11 | Davenport     | SIU (Edw)  | W22 | D7  | L13 | L4  | W12 | 2.5 |
| 12 | Sewell        | Belleville | W2  | L8  | W16 | L3  | L11 | 2   |
| 13 | Fowler        | Purdue     | W14 | L5  | W11 | L6  | L9  | 2   |
| 14 | Thornton      | Belleville | L13 | W21 | L2  | W18 | L7  | 2   |
| 15 | Weaver        | Indiana U  | W20 | W10 | L5  | L8  | -   | 2   |
| 16 | Courteau      | Purdue     | W17 | L1  | L12 | L10 | W20 | 2   |
| 17 | Moore         | E IL       | L16 | L4  | W21 | L9  | W19 | 2   |
| 18 | Myers         | IL         | L7  | W22 | L20 | L14 | W21 | 2   |
| 19 | Saeger        | West. IL   | L6  | L9  | W22 | D20 | L17 | 1.5 |
| 20 | Killingsworth | SIU        | L15 | L2  | W18 | D19 | L16 | 1.5 |
| 21 | Sammet        | In St      | L5  | L14 | L17 | W22 | L18 | 1   |
| 22 | Schlusser     | Belleville | L11 | L18 | L19 | L21 | BYE | 1   |

Crosstable for Reg. 8 on pg.27

EISENHOWER WINS HYDE PARK SCHOLASTIC  
A record 51 players and 5 teams competed in the Hyde Pk Scholastic on Feb 5. When the smoke had cleared a new team, coached by Eric Vann, had captured the top prize with a 12-4 record: Eisenhower Jr HS. Komarek School, coached by Dick Temple, was right behind with 11½, while Morris Kennedy Middle School took 3rd with 11. (Close!) Eisenhower entered 11 players, all new to USCF! Five scored 3 pts: Bruce Kim, Ed Kim and Paul bonarek as well as James Tsugawa and John Poterask. Andrew Ball of MKMS was top individual with 4-0 edging Lenny Giddings of Komarek on tiebreak. The event was directed by John Tomas, John Quigley, and Harold Winston, assisted by Joan Winston.

Without the coaches, scholastic chess would not exist. People like DICK TEMPLE of Komarek, JAY WILCOX-EN of Ray, JOE BRENNAN of Morris Kennedy, ERIC VANN of Eisenhower, and ANNA SOBUN of Britten deserve thanks for their fine efforts. On May 20 will be the U-High Scholastic in Chicago.

++++

TD David Sprenkle submitted crosstable for Reg. 9 Intercollegiate; Dennis Keen acted as TD for Reg. 8 and prepared crosstable. Region 9 encompasses IL, not including Chicago and Indiana. Reg. 8 includes the Chicago area and Wisconsin.

++++

The West Suburban Conference tournament was won by DOWNERS GROVE NO. reports Larry Stilwell last month. Participating schools included Proviso West, Oak Park, Proviso East, Downers Grove NO, York, Maine East, Glenbard West, Lyons Twp., and Hinsdale Central, Riverside-Brookfield.

Top scoring individual players were Marty Biskowski (RB), Allen Coffey (PW), Charles Eischloeger (DG), Scott Zingheim (HC), Dennis Smith (PW), Bruce Hendrickson (OP), Rich Ratieke (DG) and Mike Penway (OP).

1978 GREATER CHICAGO OPEN; Robertson Sillars  
Memorial Tournament, March 18-26

DON'T FORGET!

| FR/SR | PLAYER           | RATING | 1   | 2    | 3    | 4   | 5    | 6   | 7   | 8   | T  |
|-------|------------------|--------|-----|------|------|-----|------|-----|-----|-----|----|
| 01/04 | John Tomas       | 2031   | W25 | W13  | D2   | D8  | W4   | W5  | W3  | W6  | 7  |
| 02/08 | Ray Ditrichs     | 1909   | W19 | W14f | D1   | W7  | D5   | D6  | W16 | D3  | 6  |
| 03/07 | Ed Vano          | 1953   | W31 | W23  | L5   | W14 | W13  | W16 | L1  | D2  | 5½ |
| 04/09 | Tim Kras         | 1892   | W15 | L5   | W20  | W18 | L1   | D7  | W14 | W13 | 5½ |
| 05/02 | Peter Gilruth    | 2113   | W24 | W4   | W3   | D6  | D2   | L1  | W7  | L9  | 5  |
| 06/03 | Dan Vasto        | 2035   | W17 | W10  | W9   | D5  | L16  | D2  | W15 | L1  | 5  |
| 07/06 | Thomas Weibull   | U-2024 | W21 | W22  | D8   | L2  | W24f | D4  | L5  | W14 | 5  |
| 08/14 | Laurence Epstein | 1785   | W17 | W28  | D7   | D1  | L9   | L14 | W11 | W17 | 5  |
| 09/10 | Gregory Bungo    | 1870   | W12 | W16  | L6   | D24 | W8   | L15 | D10 | W5  | 5  |
| 10/12 | Ray Socha        | 1852   | W27 | L6   | W19  | L16 | D17  | W12 | D9  | W15 | 5  |
| 11/13 | Larry Goch       | 1817   | L23 | W26  | L15  | W29 | W20  | D13 | L8  | W19 | 4½ |
| 12/27 | Kalman Farkas    | 1535   | L9  | L17  | W31  | D25 | W29f | L10 | W23 | W22 | 4½ |
| 13/11 | Robert Hamm      | 1860   | W32 | L1   | W21  | W15 | L3   | D11 | D17 | L4  | 4  |
| 14/16 | Luis Ramos       | 1730   | W20 | L2f  | W30  | L3  | W18  | W8  | L4  | L7  | 4  |
| 15/26 | David Baurac     | 1548   | L4  | W25  | W11  | L13 | W22  | W9  | L6  | L10 | 4  |
| 16/01 | Edward Friedman  | 2161   | W30 | L9   | W17  | W10 | W6   | L3  | L2  | WD  | 4  |
| 17/20 | Bill Reed        | 1672   | L6  | W12  | L16  | W19 | D10  | W24 | D13 | L8  | 4  |
| 18/29 | Fred Mirsky      | 1495   | L8  | W29  | W22  | L4  | L14  | W26 | L19 | W21 | 4  |
| 19/25 | Water Sowa       | 1552   | L2  | W30  | L10  | L17 | W21  | W20 | W18 | L11 | 4  |
| 20/22 | Alan Mellor      | 1631   | L14 | W27  | L4   | W23 | L11  | L19 | W22 | W26 | 4  |
| 21/23 | Thomas Sipusic   | 1620   | L7  | W32  | L13  | L22 | L19  | W27 | W26 | L18 | 3  |
| 22/15 | Bruce Nelson     | 1735   | W26 | L7   | L18  | W21 | L15  | D23 | L20 | L12 | 2½ |
| 23/30 | Stacy VanPetten  | 1436   | W11 | L3   | L24  | L20 | W25f | D22 | L12 | WD  | 2½ |
| 24/18 | Saleem Khan      | U-1700 | L5  | W31  | W23  | D9  | L7f  | L17 | WD  |     | 2½ |
| 25/19 | Gerald Johnson   | 1689   | L4  | L15  | W32f | D12 | L23f |     |     |     | 1½ |
| 26/32 | Maureen Kelley   | 1156   | L22 | L11  | BYE  | L30 | L27  | L18 | L21 | L20 | 1  |
| 27/31 | Kirnes Holland   | 1429   | L10 | L20  | L29  | NP  | W26  | L21 | WD  |     | 1  |
| 28/05 | M Stevanovic     | 2028   | W29 | L8   | WD   |     |      |     |     |     | 1  |
| 29/21 | Roger Allison    | 1669   | L28 | L18  | W27  | L11 | L12f |     |     |     | 1  |
| 30/17 | Donald Townsend  | 1717   | L30 | L19  | L14  | W26 | WD   |     |     |     | 1  |
| 31/24 | Irwin Rothchild  | 1587   | L3  | L24  | L12  | BYE | WD   |     |     |     | 1  |
| 32/28 | Paul Sullivan    | 1505   | L13 | L21  | L25f |     |      |     |     |     | 0  |

THE 1978 ILLINOIS OPEN, ORGANIZED BY MIKE ZACATE, COMES TO THE LAGRANGE YMCA, OGDEN AVE AT LAGRANGE RD!! MANY OF YOU WILL REMEMBER THE EXCELLENT FACILITIES AT THE LAGRANGE "Y" FROM THE OLD GREAT LAKES CHESS ASSOCIATION TOURNEY THERE ALMOST TWENTY YEARS AGO. THE "Y" is easy to reach from downtown Chicago on the Burlington Northern RR, ample free parking in a huge lot within the Y grounds. Let's make this the biggest and best Illinois Open ever. See ad elsewhere.



+++++

REGION VIII INTERCOLLEGIATE

|    |             |      |     |     |     |     |     |     |    |            |       |     |     |     |     |     |     |
|----|-------------|------|-----|-----|-----|-----|-----|-----|----|------------|-------|-----|-----|-----|-----|-----|-----|
| 1  | Puschell    | UW-L | W30 | W8  | W15 | W4  | D3  | 4.5 | 19 | Kras       | IIT   | L34 | W17 | D2  | D14 | w/d | 2.5 |
| 2  | Weibull     | UICC | W33 | W5  | D19 | W20 | W9  | 4.5 | 20 | Szustowski | Tri   | W25 | W21 | D18 | L2  | w/d | 2.5 |
| 3  | Mote        | UICC | W11 | D10 | W16 | W18 | D1  | 4.0 | 21 | Johnson    | MX    | W35 | L20 | W13 | L6  | L11 | 2   |
| 4  | Scott       | UICC | W23 | W26 | W6  | L1  | W7  | 4.0 | 22 | Pine       | UW-S  | L5  | W35 | L9  | W24 | L13 | 2   |
| 5  | Milson      | UW-M | W22 | L2  | W29 | W11 | W6  | 4.0 | 23 | Nielsen    | UW-P  | L4  | D28 | D17 | W30 | L14 | 2   |
| 6  | Dizon       | IIT  | W7  | W9  | L4  | W21 | L5  | 3.0 | 24 | Vilen      | UW-P1 | W27 | L15 | L12 | L22 | W31 | 2   |
| 7  | Danielson   | UW-P | L6  | W32 | W14 | W15 | L4  | 3.0 | 25 | Ho         | UW-P1 | L20 | L11 | W35 | L13 | W33 | 2   |
| 8  | Holzmueller | NU   | W13 | L1  | D10 | W16 | D15 | 3.0 | 26 | Adelsen    | UW-P  | BYE | L4  | L11 | W32 | L12 | 2   |
| 9  | Thomas      | NU   | W32 | L6  | W22 | W12 | L2  | 3.0 | 27 | Esch       | UW-L  | L24 | L16 | L28 | W33 | W30 | 2   |
| 10 | Yoder       | Lake | W28 | D3  | D8  | D19 | D17 | 3.0 | 28 | Abbott     | MX    | L10 | D23 | W27 | L17 | w/d | 1.5 |
| 11 | Jendras     | NE I | L3  | W25 | W26 | L5  | W21 | 3.0 | 29 | Davis      | SP    | L15 | W33 | L5  | L14 | L16 | 1   |
| 12 | Mirsky      | NE I | L18 | W31 | W24 | L9  | W26 | 3.0 | 30 | Mudrock    | UW-P1 | L11 | L13 | W31 | L23 | L27 | 1   |
| 13 | Dumerer     | IIT  | L8  | W30 | L21 | W25 | W22 | 3.0 | 31 | Foster     | MX    | L14 | L12 | L30 | W35 | L24 | 1   |
| 14 | Vesely      | UICC | W31 | L18 | L7  | W29 | W23 | 3.0 | 32 | Boyea      | VT    | L9  | L7  | W33 | L26 | w/d | 1   |
| 15 | Bachler     | Lake | W29 | W24 | L1  | L7  | D8  | 2.5 | 33 | Howard     | MX    | L2  | L29 | L32 | L27 | L25 | 0   |
| 16 | Soulides    | Loy. | D17 | W27 | L3  | L8  | W29 | 2.5 | 34 | Nitschke   | NU    | D19 | w/d |     |     |     | .5  |
| 17 | Ludwig      | UW-M | D16 | L19 | D23 | W28 | D10 | 2.5 | 35 | Coty       | VT    | L21 | L22 | L25 | L31 | w/d | 0   |
| 18 | Vecerek     | IIT  | W12 | W14 | D20 | L3  | w/d | 2.5 |    |            |       |     |     |     |     |     |     |

Serial No. 44 Rubric: Opening Index: 12f(E09b)

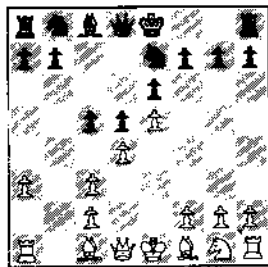
FRENCH DEFENCE: The Winawer Variation, 3...Bb4.  
 Mainline 4.e5 c5 5.a3 Bc3+  
 6.bc3:, the continuation 6...Ne7  
 7.Qg4!7

**Characteristics:** As is well known, on the seventh move of this variation, white must make an important decision: whether to continue in a purely positional manner - with 7.Nf3 or 7.a4 - or select a sharp thrust after which black is practically compelled to offer a gambit, in which he remains a pawn down in most variations, but receives as compensation, a significant developmental advantage.

This sharp variation was recently discussed in the second game of the Spassky-Korchnoi match. Spassky chose a rather antiquated continuation and was handed a painful defeat. His loss of confidence in this particular method of play was indicated by his selection, in the fourth match game, of the quieter 7.a4.

It was in October, 1975 when we last concerned ourselves with the variation 7.Qg4. (See serial No. 39.) We present now an overview of the most recent experience with this line. Two theoretically significant games from the latest world championship cycle have been selected as the mainline continuations. After the previously mentioned 2nd match game from Belgrade, the game between Mecking and Korchnoi from the Interzonal Tournament in Manila, is of principle significance.

- 1. e2-e4 e7-e6
- 2. d2-d4 d7-d5
- 3. Nb1-c3 Bf8-b4
- 4. e4-e5 c7-c5
- 5. a2-a3 Bb4xc3+
- 6. b2xc3 .....



6. .... Ng8-e7

After 6...Qc7 7.Qg4!7 (Lately the quieter line 7.Nf3 has been preferred over the text move.) the game can transpose into the mainline, providing that black continues with: 7...Ne7 8.Qg7:Rg8 9.Qh7: cd4:.. Moreover, black has the additional possibility of 7...f5. We shall return to the examination of this continuation later.

7. Qd1-g4 c5xd4

The continuation 7...Qc7 will only lead to a transposition of moves: 8.Qg7: Rg8 9.Qh7: cd4: and so on. In addition, the following moves have been tested here:

1) 7...0-0 8.Nf3 Nbc6 9.Bd3 f5 10.e6:e.p. Rf6: 11.Bg5 Rf7 12.Qh3 h6 13.Bg6 Rf8 14.Ne5 Ne5: 15.de5: Qc7 16.Be7: Qe7: (Levy-Farago, Cienfuegos 1973) and now the continuation 17.0-0 Qg5 18.Qg3 Qg3: 19.hg3:, followed by 20.f4, leads to a decided positional advantage for white.

2) 7...Nf5 8.Bd3 h5 9.Qf4! (This appears stronger than the complicated variant which arises from 9.Qh3 cd4: 10.Nf3 Qc7 11.Rb1 dc3: 12.g4 Ne7) 9...cd4: (Or 9...Qh4 10.Ne2! Qf4: 11.Nf4: Ne7 12.Be2 h4 13.Nh5 Kf8 14.Bg5 cd4: 15.cd4: b6 16.g4 hg3:e.p. 17.fg3: Ba6 18.g4 Be2: 19. Ke2: and black has a difficult game. -- Gligoric-Pachman, Munich Olympiad, 1958) 10.cd4: Qh4 11.Qh4: Nh4: 12.Bg5! Nf5 13.Ne2 Nc6 14.c3 Bd7 15.Bf5: e5: 16.Nf4 and white, according to analysis of Keres', has a small advantage.

3) 7...Qa5 8.Bd2 Ng6 9.h4 h5 10.Qg5 Qd8 11.Nf3 Nc6 12.Bd3 Qg5: 13.hg5: Bd7 14.a4 with advantage for white. (Gurgenidse-Lutikov, 27th Soviet Championship, 1960.)

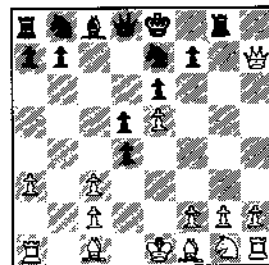
4) 7...Kf8 8.h4 Qa5 9.Bd2 Qa4 10.Kd1 Nbc6 11.Nf3 Bd7 12.h5 h6 13.Qf4 and also here white stands significantly better. (Vasiukov-Lahti, Student-World Championship, Uppsala, 1956.)

8. Qq4xg7 .....

Through 8.Bd3 (Introduced by Geller) white can decline the pawn sacrifice by black and offer a gambit himself, although after 8...Qa5 9.Ne2 0-0 10.0-0 dc3: 11.Ng3 or 8...Qc7!7 9.Ne2 dc3: 10. Qg7: Rg8 11.Qh7: Nbc6 12.f4 Bd7 13.0-0 0-0-0 it would appear dubious whether anything is obtained.

8. .... Rh8-g8

9. Qq7xh7 .....



9. .... Qd8-c7

The alternative, 9...Qa5, is considered weaker here:

1) 10.Rb1 Qc3:+ 11.Bd2 Qc7 12.f4 Nbc6 13.Nf3 Bd7 14.Ng5! Rg5: 15.fg5: 0-0-0 16.Qf7: Qe5:+ 17.Kd1 and black could find no satisfactory compensation for the exchange sacrifice. (Alexander-Botvinnik, England-USSR Match, 1946.)

2) 10.Ne2 dc3: 11.Ng3! Nd7 12.Nh5 d4 13.f4 b6!7 (It would appear here that the move 13...Qd5! is good, since 14.Nf6+ Nf6: 15.ef6: doesn't bring anything in because of Qf5!) 14.a4! (Now 15.Nf6+ Nf6: 16.ef6: is nevertheless a threat, in which 16...Qf5 can be refuted by 17.Bb5+.) 14...Ba6? 15.Nf6+? (Much stronger would have been 15.Ba6:1 Qa6: 16.Nf6+ Nf6: 17.ef6: Rg2: 18.Qe4 winning.) 15...Nf6: 16.ef6: d3! 17.Bd3: Bd3: 18.Qd3: Nd5 19.0-0 Qc5+ 20.Kh1 0-0-0 21.Ba3 Qc6 22.Qe4 Kb7 and black's position is satisfactory. (Timman-Korchnoi, Match, 1976.)

10. Ngl-e2 .....

The alternative 10.Kd1 has, of late, been chosen less often, the primary reason being because of the sharp reply 10...Nbc6 11.Nf3 Ne5: 12.Bf4 Qc3: 13.Ne5: Qal:+ 14.Bc1 Rf8 15.Bd3 Bd7 16.Re1 (16.Ke2 0-0-0 17.Nf7: Rf7: 18.Qf7: Re8 19.Re1 e5! 20.Kf1 e4 21.Be2 Qc3, Matulovich-Jahr, Reggio-Emilia, 1969, is not any better.) 16...Nc6 (16...Ba4 appears to be weaker, for example: 17.Ke2 Qc3 18.Bh6 Bc2: 19.Bf8: Bd3:+ 20.Nd3: Ng6 21.Bb4 with advantage for white. Ankerat-Nikolac, Yugoslavian Championship, 1965) 17.Nf7: Rf7: 18.Bg6 0-0-0 19.Qf7: e5 20.Ke2 e4 21.Kf1 Qc3 and now:

1) 22.Bg5 Ne7! 23.Rb1 Ng6: 24.Bd8: Qc2: 25.Ra1 Qc3 26.Rd1 Qc2 27.Ra1 Qc3 drawn. (Schmid-Pachman, Havana, 1967.)

2) 22.Bf5 Qc4+ 23.Kg1 Bf5: 24.Qf5+ Kc7 25.Bf4+ Kb6 26.Qf7 Ka6! 27.Rb1 b6 28.h4 Qc5 29.h5? Rf8 30.Qc7 e3! White resigned. (Wittmann-Despotovich, Postal game, 1975-6)

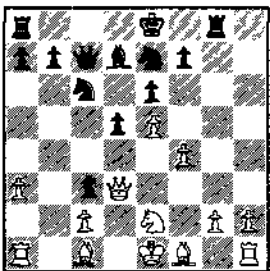
10. .... Nb8-c6

11. f2-f4 Bc8-d7

12. Qh7-d3 .....

Naturally not 12.cd4:?, because of 12...Nd4:!

12. .... d4c3



We now examine as 'Game Analysis' two significant continuations: A) 13.Be3 B) 13.Rb1

White has, moreover, the following alternatives:

1) 13.Nc3: a6 leads to the following variants:

1a) 14.Bd2(?) Rc8 15.h3 (Or 15.g3 Na5 16.Nd1? Nc4 17.Bc3 Bb5 18.a4 Nb2 19.Qd2 Nd1: 20.Ba5 Qc5 with advantage for black. Kupper-Schmid, 1954) 15...Na5! 16.Qh7 Qc5 17.g4 Qa7! 18.Nd5:7 ed5: 19.Ba5: Qe3+ 20. Be2 Bb5 and black won. (Monti-Janata, Vrnjacka Banja, 1963.)

1b) 14.Rb1 Na5 (Also to be considered is 14...Rc8. In the game Bednarski-Uhlmann, Marienbad, 1965, there followed, 15.h4! Na7 16.Rh3 Nb5 17.Rb3 Nf5 and now white could have retained a small advantage with 18.h5!) 15.h4 Nf5 16.Rh3 0-0-0 17.h5 (The queen

sacrifice 17.Qf5? proved itself in the game, Fuchs-Uhlmann, Championship of the GDR, 1967, to be incorrect after the further 17...ef5: 18.Nd5: Qc2: 19.Rc3 Qc3: 20. Nc3: Be6.) 17...Rg4 (As we have already indicated in Serial No. 39, 17...Nc4 leads, after the further moves, 18.Rb4 Bc6 19.Ne2 Bb5 20.a4 Ne5: 21.Qc3 Be2: 22.fe5: Bf1: 23.Qc7:+ Kc7: 24.Kf1:, to an endgame in which the passed pawn on h5 is an important white trump -- Hort-Uhlmann, Hastings, 1970. In the game Hort-Ivkov, 1971, after 17...Bc6 a draw was immediately agreed upon, which, unfortunately delays the further testing of the 17...Bc6 continuation. The text move is presently considered to be black's best chance.) 18.Qf3 (Previously 18.h6 Rh8 19.h7 Rg7 20.Rb4 Nc4 would have been played, with: 21.Qf5:2 ef5: 22.Nd5: Qa5 23.Bc4: Rhh7: 24.Rc3 Rh1+ 25.Bf1+ Kd8 and also here the queen sacrifice proves incorrect. (Dueball-Uhlmann, 1970) Or 21.Nd5:!

ed5: 22.Qd5: Na5 23.Qe4 Ng3 24.Rg3:1 Rg3: 25.Bb2 Rg6! with a sharp game and unclear chances --Schneider-Hellsten, Postal game, 1973.) 18...Rdg8 19.h6 R4g6 20.h7 Rh8 21.g4 Ne7 22.a4 Nc4 23.Bd3 Rg7 and also here the chances for either party are quite unclear -- the white pawn on h7 is clearly strong, but the black counterchances along the 'c' file (Nce5: is threatened) are not to be under-rated. (Baluyev-Kikolich, Postal Game, 1974-5.)

2) 13.Qc3: Nf5 and now:

2a) 14.h4 Rc8 15.Ra2 Ncd4 16.Qc7: Rc7: 17.Nd4: Nd4: 18.Kf2 Ba4 19.Rh3 Bc2: 20.Be3 Nf5 21.Bd2 Be4 22.h5 Nh6 23.Rb2 f5! 24.ef6:e.p. Drawn. (Sagorovsky--Rittner, VI Postal Chess Olympiad, 1968, 71.)

2b) 14.Rb1 d4 (14...Rc8 is stronger here, according to Keres, Black has after 15.Bd2 a6 16.Ng3 Nce7 the slightly better game.) 15.Qc4 Qa5 16.Bd2 Qa3: 17.Rb7: Ne3! (Certainly not 17...Qal+7 18.Kf2 Rc8 19.

cont'd pg.30

Schach-Archiv, cont'd.

Qd3 Nce7 20.c4! and white obtains the advantage -- Portisch-Uhlmann, Monte Carlo, 1968.) 18.Be3: de3: 19.Qc3 Qc3: 20.Nc3: Ne7 21.Ne4 Bc6! 22.Nd6+ Kd8 and the game is even. (Analysis of Uhlman's)

3) 13.Ng3 0-0-0 14.Be2 Nf5 15.Nf5: ef5: 16.0-0 d4 17.Rb1 (Keres recommended the continuation 17.Bf3 Rg6 18.Re1 Be6 19.Rb1 as sound for white. Instead of 17...Rg6, black can continue even sharper and stronger with 17...f6! and this commonly re-occurring (in this entire variation) breakthrough in the center, secures him good counterplay.) 17...f6 18.ef6: Rgf8 19.Bf3 Rf6: 20.Re1 Re6 with a sharp game and unclear chances. (Ivkov-Sofrevsky, Yugoslav Championship, 1962.)

A) 13. Bcl-e3 .....

**"SCHACH-ARCHIV" - CHESS ARCHIVES**

The finest theoretical publication in the world! Edited by GM Luděk Pachman, this German language theory magazine arrives monthly, 16 loose-leaf sheets, 5x8, 32 pages of in-depth analysis on the openings, middlegame and endgame. An added bonus is the huge collection of foreign language chess literature available through "S-A".

**ANNUAL SUBSCRIPTIONS: \$18.50**

Send check or money-order: Mike Thomas, S-A Subscriptions, 4001 9th Ave NE, Seattle, WA 98105. (All subscriptions begin Jan. of each year, subscribers receive all previous issues to date of subscription) "S-A" arrives airmail from Germany, 3rd class from Seattle, WA.

\*\*\*\*\*PLEASE MENTION ICB WHEN ORDERING\*\*\*\*\*

-----  
 MORE IN OUR NEXT ISSUE  
 -----

GAMES EDITOR NORTH, Tomas, cont'd

|            |          |         |        |
|------------|----------|---------|--------|
| 43 Kf3     | Kd4      | 53 gh4: | gh4:   |
| 44 Ke2     | e5       | 54 Kf1  | Kf4    |
| 45 f3      | f5       | 55 Kg2  | e3     |
| 46 a6      | e4       | 56 Kf1  | Kf4    |
| 47 fe4:    | fe4:     | 57 Bd3  | Bb6    |
| 48 Bb1     | Ke5! (r) | 58 Ke1  | Ba5+   |
| 49 Bc2     | h5       | 59 Kd1  | b1(Q)+ |
| 50 Bb1     | g5       |         |        |
| 51 Bc2 (s) | Kf5      |         | 0-1    |
| 52 h3      | h4       |         |        |

This position, and similar positins with the g pawn are drawn because Black's B cannot stop White's a pawn and protect the f pawn at the same time. This line is probably White's best chance since a straightforward advance of the K-side pawns leads nowhere. Instead Black can probably win with 41...e5 42 fe5:+ Ke5: 43 a4 Bb6 44 Kf3 Kd4 45 Ke2 Kc3 46 Bb1 Kb3, but there are many subvariations and White has many more chances than in the rather uncomplcated text.

(r) The simplest win. Black threatens to pick up the K-side pawns.  
 (s) The best defense is 51 Kd2 with the idea ...Kg4 52 Be4: Kh3 53 Kc2 Kh2: 54 Bg6! drawing. Black wins with 51...Bd4! (1) 52 a7 Ba7: 53 Kc3 g4! 2) 52 Ke2 Kg4 53 Be4: Kh3 54 Kd3 b1!--which I overlooked during the game) 3) 52 Kc2 allows e3.



-----  
 VERY SPECIAL! A CHESS TOURNAMENT FOR JUNIORS ONLY!  
 -----



To be held on Sept. 3 and 4 at the YMCA in LaGrange: 6 Rds. USCF rated 40/1  
 Entry fee: \$4 (\$1 less to ICA members) COMBINED ENTRY & MEMB. DISCOUNTS!

Join and/or renew in the chess organizations that are building chess in Illinois:  
 USCF (part. Jr) + ICA + IJCF + Entry = \$10.50 for just \$7.00 Checks should be made  
 USCF (reg. Jr) + ICA + IJCF + Entry = \$16.00 for just \$11.00 payable to IJCF.

Inquiries to Mike Zacate, IJCF, 9401 W Birch Ave., Arbury Hills Subdivision, Mokena, IL 60448  
 SCHOLARSHIP PTS for junior members of IJCF; tourney status ordinary

AWARDS: Individuals: 8th grade: 1, 2, 3--medal Teams: 7th & 8th grade--1st pl trophy  
 7th grade: " 6th and under--1st place trophy  
 6th grade: 1, 2, 3, 4, 5--ribbon Members & coach of winning teams receive ribbons  
 5th & 4th & under: 1, 2, 3--ribbon

7th & 8th graders in one playing group and 6th and under in one playing group unless number of entrants makes further division by grade possible.

JUNIORS!!! THIS TOURNAMENT IS FOR YOU!

WHERE TO PLAY CHESS IN ILLINOIS: A DIRECTORY

CHICAGO CHESS CLUB, 25 N Franklin, Chicago, 4th fl, noon-10, Dennis Keen, (726-1137)  
 CHICAGO CHESS CENTER, 2666 N Halsted, Chicago, Jules Stein, 2-midnight, (929-7010)  
 GOMPERS PARK CHESS CLUB, 4224 W Foster, Fri. nights, Sheldon Gelbart, pres., (345-7164)  
 87TH ST CHESS CLUB, Tuley Park, 90th & King Dr., Chicago, Sat. 1-4 PM, J Miller (494-7986)  
 UNIV. OF CHICAGO CHESS CLUB, Ida Noyes Hall, 1212 E 59th St., Mon. 7-10, J Quigley (753-2261)  
 HILLSIDE CHESS CLUB, Hillside Baptist Church, Fri., PM, Larry Stillwell (449-9364)  
 NORTHWESTERN UNIV. CHESS CLUB, Morris Center, Evanston, B Smythe, (864-0576)  
 KOMAREK CHESS CLUB, Komarek School, 8924 W 24th St., No. Riverside, grade school club open  
 to all, meets lunchtime daily, D Temple, (447-8030)  
 YUGOSLAV-AMERICAN CHESS CLUB "Kolo", 333 N Michigan Ave., Chicago, 60601  
 RANTOUL CHESS CLUB, Rantoul Public Library, corner of Rts. 45 & 136, Wed., 7 PM  
 GREAT LAKES CHESS ASSOC., Bill Smythe, 1310 Chicago Ave., Apt. 1-H, Evanston  
 SPRINGFIELD CHESS CLUB, Lincoln Park Pavilion, Wed. PM, J Donnelly, Springfield, (529-7261)

Clubs listed above are affiliates of the Illinois Chess Association. If you would like to see your club listed in our next issue, your \$10 annual affiliation dues, payable to Harold Winston, will assure you a space. Your editor welcomes your club news and results of your events. Be sure to include local address of your club, night and time of meeting, an officer whom interested players can contact, and a phone number, if possible.

\*\*\*\*\*



THE 1978 ILLINOIS STATE OPEN CHESS CHAMPIONSHIP



Operated by the Illinois Chess Association and co-sponsored this year by the Illinois Junior Chess Foundation

|                                                                                                                                    |                                                                                      |                                                                    |
|------------------------------------------------------------------------------------------------------------------------------------|--------------------------------------------------------------------------------------|--------------------------------------------------------------------|
| DATE: Sept. 2-4, 1978<br>Sat., Sun., Mon.                                                                                          | MEMBERSHIPS REQUIRED:<br>All players must be or<br>become members of USCF<br>and ICA | PLACE: YMCA Building<br>31 E Ogden<br>LaGrange, IL                 |
| FORMAT: 6 Rd Swiss                                                                                                                 |                                                                                      | CONTROLS: 40 moves in 2 hrs<br>then 20/1 hr                        |
| TIME: Sat. & Sun: 1 & 6 pm<br>Mon.: 9 am and 3 pm                                                                                  |                                                                                      |                                                                    |
| ENTRY FEE: \$15 if mailed by Aug. 28, 1978 (except new players)                                                                    |                                                                                      | \$5 late fee if mailed later<br>or paid at tour, registra-<br>tion |
| SPECIAL: For NEW players (first USCF tourney)                                                                                      |                                                                                      |                                                                    |
| RATES your entry will be a 1 yr memb. in both<br>USCF (\$15) and the ICA (\$3). Renew both USCF & ICA plus advance entry for \$25. |                                                                                      |                                                                    |
| JUNIORS: Junior USCF (\$8) and ICA (\$3) plus advance entry all for \$22; \$25 with late<br>registration                           |                                                                                      |                                                                    |
| ENTRIES: ILL JUNIOR CHESS FOUNDATION, 9401 W Birch Ave., Arbury Hills Subdivision, Mokena, IL<br>60448                             |                                                                                      |                                                                    |
|                                                                                                                                    |                                                                                      | Late Registration: at the YMCA, Sat. 10 am-noon                    |
| CHECKS SHOULD BE MADE PAYABLE TO THE ILLINOIS CHESS CHAMPIONSHIP and inquiries to MIKE ZACATE<br>at 312-479-9380 after 7 PM        |                                                                                      |                                                                    |
| AWARDS: Trophy + Title to top scoring individual from Illinois                                                                     |                                                                                      |                                                                    |
| 1st: \$300 2nd: \$200 3rd: \$100 4th: \$75 Class A, B, C, D each 1st: \$80, 2nd \$40<br>Class E: 1st \$50                          |                                                                                      |                                                                    |
| New and unrated: Trophy to 1st & 2nd and scholarship pts for Junior members of IJCF                                                |                                                                                      |                                                                    |

TOURNAMENT CALENDAR

JUNE

- 3-4 Chicago Chess Club
- 9-11 Chicago Chess Center, "The Mating Game"
- 10 Chess Mates, 70% Return #4, Evanston
- 11 Blue Island
- 16-18 Chicago Chess Club Open
- 24-25 Harper College
- 24-25 Chicago Chess Center, "Greenstuff Gambit"
- 25 Chess Mates, Evanston

JULY

- 4 World Open, Philadelphia
- 4 Western Open, Milwaukee
- 8-9 Chicago Chess Center, "God Save the Queen"
- 15-16 Rockford, Forest City Open
- 15 Chess Mates
- 15 Park Forest

---

21-23 US CLASS CHAMPIONSHIPS, PALMER HOUSE, Co-sponsored by USCF and the Chicago Chess Club

---

- 29-30 DeKalb, Northern IL Open
- 29 Chicago Chess Center, "Pawndemonium"

AUGUST

- 5-6 Chess Mates, Evanston
- 5-6 Park Ridge
- 6 Homewood

---

6-18 US OPEN, Phoenix, AZ

---

- 12-13 Chicago Chess Center, "Dollars and Sense"
- 12-13 Park Forest

SEPT.

- 2-4 ILLINOIS OPEN, LaGrange YMCA

NOV.

- 18 Proviso West: Grade School-High School; Octagon Open

---

ILLINOIS CHESS BULLETIN  
 Helen E Warren, Editor  
 PO Box 70  
 Western Spgs., IL 60558  
 (address corr. requested  
 and return postage guar.)

June 1978

| S  | M  | T  | W  | T  | F  | S  |
|----|----|----|----|----|----|----|
|    |    |    |    | 1  | 2  | 3  |
| 4  | 5  | 6  | 7  | 8  | 9  | 10 |
| 11 | 12 | 13 | 14 | 15 | 16 | 17 |
| 18 | 19 | 20 | 21 | 22 | 23 | 24 |
| 25 | 26 | 27 | 28 | 29 | 30 |    |

July 1978

| S  | M  | T  | W  | T  | F  | S  |
|----|----|----|----|----|----|----|
|    |    |    |    |    |    | 1  |
| 2  | 3  | 4  | 5  | 6  | 7  | 8  |
| 9  | 10 | 11 | 12 | 13 | 14 | 15 |
| 16 | 17 | 18 | 19 | 20 | 21 | 22 |
| 23 | 24 | 25 | 26 | 27 | 28 | 29 |
| 30 | 31 |    |    |    |    |    |

August 1978

| S  | M  | T  | W  | T  | F  | S  |
|----|----|----|----|----|----|----|
|    |    |    |    |    |    | 1  |
| 2  | 3  | 4  | 5  | 6  | 7  | 8  |
| 9  | 10 | 11 | 12 | 13 | 14 | 15 |
| 16 | 17 | 18 | 19 | 20 | 21 | 22 |
| 23 | 24 | 25 | 26 | 27 | 28 | 29 |
| 30 | 31 |    |    |    |    |    |

